

# Antique & Modern Jewellery

Thursday 13th November 2014



**Fellows**  
Established 1876



# Antique & Modern Jewellery

Thursday 13th November 2014 at 11.00am

# Fellows

Established 1876

Our November auction of Antique & Modern Jewellery can be described by two key words: quality and quantity! Although this could be said of any one of our jewellery auctions, this description seems particularly apt when considering this month's offerings. This catalogue's pages are adorned with an array of glittering treasures and exquisite jewels. From the rich glow of garnets and topaz, to the unmistakable sparkle of diamonds, there is something to delight the eye at every turn.

Our front cover this month boasts a particularly striking design; the regal blue and green tones of the strutting peacock. The beautiful emerald and diamond cluster ring (lot 351) is certainly something to proud of: the 3.58ct cushion-shape emerald is accompanied by a report stating that it is of Colombian origin. The accompanying sapphire and diamond cluster ring (lot 412) is an equally impressive piece. This oval-shape sapphire has a stunning purple-blue tone, enclosed within the dazzling old-cut diamond surround.

The soft, warm, natural hues of autumn are a prominent feature throughout this catalogue. We have a selection of beautiful insect jewellery, including a late 19th century gold, diamond, tiger's-eye and enamel bee brooch (lot 94). The intricate detailing of the black enamel

and rose-cut diamond stripe body, and the red gem-set eyes, give this bug a wonderfully life-like appearance! Other autumnal offerings include an interesting late 19th century moss agate and garnet necklace (lot 122), and an eye-catching silver and gold topaz and diamond cluster ring (lot 93).

For classic, timeless appeal, look no further than our back cover. This features two single-stone diamond rings of remarkable quality. The rectangular-cut diamond (lot 262) is near perfection, with a very bright and lively stone and very slight inclusions. Similarly, the 18ct gold diamond single-stone ring (lot 364) weighs an impressive 6.04cts.

This month's selection of designer offerings includes a Cartier crystal, enamel and diamond brooch of geometric design (lot 290) and a luxurious Kutchinski diamond ring (lot 313), which features a glamorous three-row shoulder detail. A true highlight is a pair of David Morris earrings designed as two alternating oval-shape ruby and diamond curved lines (lot 298).

We sincerely hope that you enjoy browsing this catalogue, and find the wealth of jewellery on offer as beautiful and captivating as we do!

## Index

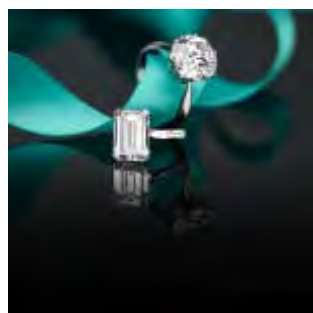
Antique & Modern	1 - 269
Designer & Named Pieces	270 - 333
Antique & Modern	334 - 580
Cufflinks & Dress Stud Sets	581 - 591
Novelties	592 - 598
Cocktail Watches	599 - 611

## Featured lots

Lots 351 & 412  
(front cover)



Lots 364 & 262  
(back cover)



## Certificated stones

### Certified Lots

7, 26, 150, 162, 177, 236, 245, 262, 351, 364 & 393

**Certificated Stones**



**ANCHORCERT®**  
GEMMOLOGICAL LABORATORY

## Viewing times

Saturday 8th November	11.00am - 4.00pm
Tuesday 11th November	10.00am - 4.00pm
Wednesday 12th November	10.00 am - 6.30pm (late viewing)
Thursday 13th November	8.30am - 11.00am

Please be aware that you will be asked for photographic proof of identification to be allowed access to the viewing area.

# General Information

# Fellows

Established 1876

## Why Buy?

**COMPETITIVE** buyer's premium

**LIVE** online bidding

**FULLY** illustrated catalogue

**EASY** to use, functional website

**ACCURATE** condition reports

**SPECIALISTS** on hand to offer advice

**TRACKED AND INSURED** shipping\*

\*Please contact Fellows for further information.

## Contact the Jewellery department...

<b>Bryony Meredith</b> Director 0121 212 6317 bryony@fellows.co.uk	<b>Heather Bailey</b> Senior Specialist 0121 212 6303 heather@fellows.co.uk	<b>Georgina Kettle</b> Specialist 0121 212 6301 georgina@fellows.co.uk
---	--	---

## Further Information



**Additional Images and Condition Reports** can be found online at our website [www.fellows.co.uk](http://www.fellows.co.uk)



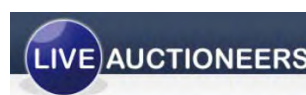
**Telephone Bidding** is available if you cannot attend an auction. Please ring 0121 212 2131 to arrange a telephone line.



**Live Bidding** via the internet is available at [www.the-saleroom.com/fellows](http://www.the-saleroom.com/fellows)



**Download** our catalogue app today and view our printed catalogues on your device.



### Buyer's Premium

The buyer's premium is 20% (+ VAT) or 24% (VAT inclusive) on the first £50,000 of any individual lot. For any individual lot in excess of £50,000, the buyer's premium is 10% (plus VAT) or 12% (VAT inclusive). Lots prefixed with \* will carry VAT at 20% on the hammer price.

### Live Online Bidding Charges

Buyers will pay a commission charge of an additional 3% (+ VAT) of the hammer price if lots are successfully purchased online via Live Auctioneers and the-saleroom.com.

### Seller's Commission

Sellers will pay a commission charge of 12.5% (+ VAT) on items which have a hammer price over £3,001 or more. Items sold for £3,000 or under will have a commission rate of 15% (+ VAT).

### Important Notice

Neither Fellows nor the Vendors are responsible for any reference as to the condition of lots listed. The absence of such reference does not imply that a lot is in good condition or free from faults or imperfections.

All weights and dimensions are approximate. Purchasers are advised to carefully inspect lots and make their own opinion as to the condition. Please see section 7 under 'Bidders'.

### Key to Symbols



Item may have export restrictions for customers outside of the EU.



Lot comes with box.



Certified Lots

## Why Sell?

**HIGH PRICES** consistently achieved

**FLEXIBLE** commission rates

**FREE** valuations with no obligation to consign

**RAPID** turnaround for your goods

**TARGETED** advertising to a global audience

**SUPERIOR** quality catalogues

**FULLY** integrated website



## Follow Us On...



[facebook.com/fellowsauctions](https://facebook.com/fellowsauctions)



[pinterest.com/fellowsauctions](https://pinterest.com/fellowsauctions)



[@fellowsauctions](https://twitter.com/fellowsauctions)



[youtube.com/fellows1876](https://youtube.com/fellows1876)

For any further enquiries please call **0121 212 2131**

## Antique & Modern

1

An 18ct gold sapphire and diamond three-stone ring. The oval-shape sapphire, to the pear-shape diamond shoulders and plain band. *Estimated total diamond weight 0.10ct. Hallmarks for London, 2009. Weight 3.8gms. £200-300*



5

A mid 20th century 18ct gold and platinum demantoid garnet and diamond three-row ring. The slightly graduated old-cut diamond line, with circular-shape demantoid garnet sides, to the plain band. *Estimated total diamond weight 0.30ct. Weight 3gms. £150-200*



10



A diamond cluster ring. The brilliant and baguette-cut diamond cluster panel, to the raised shoulders and plain band. *Estimated total diamond weight 1.80cts. Hallmarks rubbed. Weight 6.2gms. £340-440*

2 

An early 20th century gold split pearl brooch. The seed and split pearl cluster, to the split pearl foliate bar. *Length 4cms. Weight 3.7gms. With associated case. £70-100*



6

An early 20th century 15ct gold amethyst, split pearl and enamel brooch. The circular amethyst collet, to the scrolling white enamel sides and split pearl collet accents. *Length 3.6cms. Weight 3.2gms. £100-150*



3

A diamond and enamel Royal Engineers regimental brooch. The diamond point monogram, within a blue enamel surround reading 'HONI SOIT QUI MAL Y PENSE', to the diamond point wreath and crown surmount. *Length 2.9cms. Weight 7.1gms. £150-200*



7

A late 19th century 18ct gold split pearl pendant. Designed as an openwork trefoil, set throughout with split pearls and suspending a later split pearl drop. *May be worn as a brooch. Length 4cms. Weight 7gms. £120-180*



11

A mid 20th century platinum, diamond and sapphire cluster ring. The oval-shape sapphire, within an alternating old-cut diamond and circular-shape sapphire scalloped surround. *Estimated total diamond weight 0.60ct. Weight 3.8gms. £300-500*



4

An 18ct gold emerald and diamond ring. The graduated circular-shape emerald line, with brilliant-cut diamond spacers, to the scrolling gallery and shoulders. *Estimated total diamond weight 0.30ct, H-I colour, SI clarity. Hallmarks for Birmingham, 1990. Weight 4.9gms. £200-300*



8

An early 20th century 18ct gold diamond five-stone ring. The graduated old-cut diamond line, to the scrolling shoulders and plain band. *Estimated total diamond weight 0.30ct. Hallmarks for Birmingham, partially rubbed. Weight 3.2gms. £100-150*



12

An early 20th century 15ct gold seed pearl necklace. The split pearl openwork panel, to the similarly-set stylised foliate sides and trace-link back chain. *Length 36cms. Weight 4.8gms. £200-300*



9 

An emerald, ruby and diamond swivel ring. The square-shape ruby and emerald line, to the single-cut to the hinged diamond line sides. *Estimated total diamond weight 0.40ct. Ring size L. Weight 5.8gms. £200-300*



13

An 18ct gold diamond and sapphire floral ring. The heart-shape sapphire flower, with brilliant-cut diamond centre, to the crossover shoulders. *Hallmarks for London. Weight 3.5gms. £150-200*





**14**

A pair of 18ct gold aquamarine and diamond ear pendants. Each designed as a rectangular-shape aquamarine and brilliant-cut diamond trefoil, suspended from a brilliant-cut diamond surmount. *Estimated total diamond weight 0.55ct. Hallmarks for Birmingham. Length 2.1cms. Weight 4.4gms. £240-340*

**15**

An aquamarine and diamond dress ring. The rectangular-shape greenish blue aquamarine, to the graduated baguette-cut diamond shoulders and plain band. *Approximate dimensions of aquamarine 18.7 by 11.9 by 7.1mms. Estimated total diamond weight 0.25ct. Weight 6.3gms. £200-300*

**16**

A 15ct gold diamond and seed pearl crescent moon brooch. The seed pearl, within an old-cut diamond scalloped crescent, to the similarly gem-set accent knife-edge bar. *One seed pearl deficient. Estimated total diamond weight 0.25ct. Length 4.4cms. Weight 2.9gms. £50-80*

**17**

A natural pearl and diamond pendant. The oval light grey natural pearl, weighing 9.34cts, to the old-cut diamond and bifurcated surmount, suspended from an 18ct gold curb-link chain. *Accompanied by report number 20014794, dated 5th March 2014, from AnchorCert, stating that the pearl is natural, origin opinion saltwater. Estimated diamond weight 0.40ct. Chain with hallmarks for Sheffield. Length of pendant 2.4cms. Length of chain 41cms. Total weight 6.3gms. £1,300-1,800*

**18**

An early 20th century platinum amethyst and diamond negligee pendant. The pear-shape amethyst staggered drops, with rose and old-cut diamond knife-edge bar intervals, suspended from an old-cut diamond triple halo surmount, to the fancy-link chain. *Estimated total diamond weight 0.25ct. Length 46cms. Weight 6gms. See plate 1. £400-600*

**19**

An early 20th century 18ct gold opal and diamond ring. The three graduated oval opal cabochons, with old-cut diamond triple spacers, to the scrolling gallery and plain band. *Estimated total diamond weight 0.10ct. Weight 4.6gms. £150-200*

**20**

An 18ct gold diamond three-stone ring. The graduated old-cut diamonds, to the tapered shoulders and plain band. *Total diamond weight 0.83ct, estimated I-J colour, P1-P2 clarity. Hallmarks for London, 1983. Weight 3gms. See plate 1. £300-400*

**21**

An early 20th century 9ct gold peridot and split pearl pendant. The circular-shape peridot and split pearl floral cluster, within a peridot and split pearl stylised ribbon and floral wreath, to the similarly-set drop and marquise-shape surmount. *One split pearl deficient. Length 5cms. Weight 3.8gms. See plate 1. £260-360*

**22**

An early 20th century 9ct gold citrine single-stone brooch. The oval-shape citrine, within a rope-twist surround. *Approximate citrine dimensions 30.2 by 20.5 by 17mms. Maker's mark J.C&S. Weight 21.3gms. £100-150*

**23**

A diamond cross pendant. Set throughout with brilliant-cut diamonds, suspended from a snake-link chain. *Estimated total diamond weight 0.90ct, G-H colour, SI clarity. Length of pendant 4.6cms. Length of chain 45cms. Weight 6.9gms. £300-400*

**24**

An early 20th century 18ct gold ruby and diamond ring. The circular-shape ruby, within a single-cut diamond surround, to the cushion-shape ruby sides and openwork shoulders. *Estimated total diamond weight 0.20ct. Weight 3.1gms. £100-150*

**25**

A pair of diamond ear pendants. Each old-cut diamond scrolling pendant, centrally suspending an old-cut diamond drop. *Estimated total diamond weight 2cts. Length 5.5cms. Weight 9gms. £3,000-4,000*

26 



An 18ct gold diamond single-stone ring. The brilliant-cut diamond, weighing, 1.51cts, to the plain band. *Accompanied by report number 20020070, dated 20th October 2014, from AnchorCert, stating the diamond is H colour, VS2 clarity. Hallmarks for Sheffield. Weight 4.2gms. £4,500-5,500*

27



An early 20th century silver and gold diamond cultured pearl brooch. Of foliate design, the cultured pearl and rose-cut diamond petal flowers, to the similarly-cut diamond foliate spray. *Length 7.1cms. Weight 13.5gms. £240-340*

28



A mother-of-pearl fringe necklace. The front designed as a series of graduated pear-shape mother-of-pearl panels, to the belcher-link chain. *Length 45cms. Weight 17.2gms. £150-200*

29



A morganite and diamond dress ring. The cushion-shape morganite, to the brilliant-cut diamond claws and sides. *Estimated total diamond weight 0.60ct. Estimated dimensions of morganite: 14.1mms by 14.1mms by 9mms. Weight 18.7gms. £400-600*

30



A diamond hinged bangle. The front designed as a series of brilliant-cut diamonds, within a rope-twist border, to the openwork and rope-twist back. *Estimated total diamond weight 0.60ct. Inner diameter 5.8cms. Weight 24.7gms. £480-680*

31 



An early 20th century 18ct gold sapphire and diamond five-stone ring. Designed as a series of alternating old-cut diamonds and circular-shape sapphires, to the scrolling shoulders and plain half-band. *Estimated total diamond weight 0.30ct. Weight 2.6gms. With associated case. £120-180*

32



A late 19th century 9ct gold split pearl star pendant. Designed as an eight-rayed stylised star, the split pearl stepped panels, to the plain suspension loop. *Length 3.6cms. Weight 3.4gms. See plate 1. £150-200*

33



A set of diamond and amethyst jewellery. The brooch designed as a circular-shape amethyst within a rose-cut diamond star-shape panel, with similarly designed ear clips. *Diameter of brooch 3.8cms. Diameter of ear clips 2cms. Weight 21.9gms. £700-900*

34



A pair of diamond foliate ear clips. Each designed as a brilliant-cut diamond floral cluster, with vari-cut diamond leaf and bow detail, suspending a detachable brilliant and marquise-cut diamond articulated tassel. *Estimated total diamond weight 3.50cts. Length 4cms. Weight 15.7gms. £1,000-1,500*

35



A diamond cluster bar brooch. The old-cut diamond, within a similarly-cut diamond surround, to the knife-edge bar. *Estimated total diamond weight 0.40ct. Length 6.8cms. Weight 4.9gms. £180-260*

36



An 18ct gold diamond single-stone ring. The brilliant-cut diamond, to the plain band. *Estimated diamond weight 0.60ct, I-J colour, SI clarity. Hallmarks for Birmingham, 1975. Weight 2.2gms. £300-400*

37



A pair of cultured pearl and diamond ear studs. Each designed as a cultured pearl, to the brilliant-cut diamond surmount. *Estimated total diamond weight 0.20ct. Length 1.2cms. Weight 2.6gms. £150-200*



**38** ✕

A ruby and split pearl floral necklace. Designed as circular-shape ruby and split pearl stylised floral and foliate front, to the similarly designed sides and belcher-link back chain. Length 39.5cms. Weight 16.4gms. £340-440

**39** ✕

A set of mid 20th century coral jewellery. The ring designed as a rectangular-shape floral panel, together with matching ear clips. Length of ring 1cm. Diameter of ear clips 1.2cms. Total weight 6.6gms. £120-180

**40**

An early 20th century 15ct gold split pearl and diamond brooch. The old-cut diamond, to the split pearl floral panel, with split pearl collets and scrolling surround. Length 2.6cms. Weight 5.8gms. £150-200

**41**

An early 20th century 9ct gold turquoise pendant. The oval turquoise cabochon, within a scrolling openwork panel, suspending a circular turquoise cabochon drop, to the tapered surmount. Maker's marks for Henry Matthews. Length 4.3cms. Weight 2.4gms. See plate 1. £70-100

**42**

A late 19th century enamel and diamond ladybird pendant. The slightly open red and black enamel wings, revealing a graduated line of old-cut diamonds, with further diamond highlights. Estimated total diamond weight 0.10cts. Length 1cm. Weight 2.5gms. £300-400

**43**

An 18ct gold amethyst and diamond pendant. The briolette amethyst with single-cut diamond cap, suspended from a brilliant-cut diamond foliate panel, to the figaro-link chain. Estimated total diamond weight 0.60ct. Hallmarks for Sheffield. Length of pendant 4.5cms. Length of chain 39cms. Weight 8.4gms. £150-200

**46**

A sapphire, diamond and cultured pearl four-row necklace. Designed as four strands of fifty-two, fifty-two, fifty and forty-nine cultured pearls, each measuring approximately 6mms, to the oval and circular-shape sapphire, old and rose-cut diamond openwork clasp. Estimated total old-cut diamond weight 1.50cts. Length 35.5cms. Weight 89.2gms. £1,200-1,800

**44**

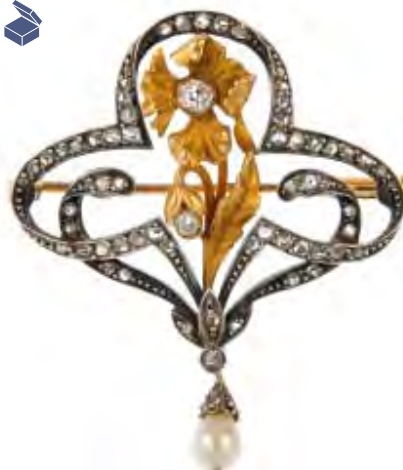
An Edwardian 18ct gold ruby and diamond ring. The replacement synthetic ruby centre and cushion-shape ruby sides, with rose-cut diamond spacers, to the plain band. Hallmarks for Chester, 1901. Weight 3gms £50-80

**47**

A garnet and diamond cluster ring. The oval-shape garnet, within a brilliant-cut diamond surround, to the plain band. Estimated total diamond weight 0.80ct. Weight 4.1gms. £240-340

**45** ✕

An Art Nouveau 18ct gold and silver diamond and cultured pearl brooch. The old-cut diamond floral sprig, within a rose-cut diamond scrolling surround, suspending a cultured pearl and diamond point drop. Estimated total old-cut diamond weight 0.20ct. French assay marks. Length 4.5cms. Weight 11.1gms. With associated case. See plate 1. £900-1,400

**48**

A pair of coloured diamond single-stone ear studs. Each set with a brownish yellow coloured brilliant-colour diamond. Estimated total diamond weight 0.60ct, tinted colour, SI clarity. Untested for natural colour origin. £150-180

**49**

A late 19th century 15ct gold turquoise and split pearl bracelet. Designed as a series of curved tapered panels, alternately set with circular turquoise cabochons and split pearls, to the partially concealed clasp. Approximate inner diameter 5.7cms. Weight 20.4gms. See plate 1. £360-460



**50**

A mid 20th century diamond bar brooch. Of bi-colour design, the old-cut diamond within a square-shape mount, to the diamond point sides and plain bar. *Principal diamond estimated weight 0.40ct, L-tinted colour, SI2-P1 clarity. Length 4.8cms. Weight 4.4gms. £120-180*

**51**

Two early 20th century 9ct gold split pearl and gem-set brooches. The first designed as a circular turquoise cabochon and split pearl bird and foliage, within a turquoise cabochon wreath, the second designed as an openwork split pearl foliate panel. *Lengths 2.5 and 3cms. Weight 5.8gms. £60-90*

**52**

A mid 19th century 18ct gold garnet and enamel brooch. Designed as a stylised foliate panel, with an oval-shape garnet and blue enamel front, to the similarly-designed pear-shape garnet drop pendant. *Length 3.6cms. Weight 7.8gms. £120-180*

**53**

An early 20th century 15ct gold split pearl floral necklace. Designed as a split pearl foliate fringe, suspended from a split pearl floral cluster and knife-edge bar line, to the trace-link back-chain and barrel clasp. *Length 39.5cms. Weight 14.1gms. See plate 1. £500-700*

**54**

A pair of emerald and diamond ear pendants. Each designed as a square-shape emerald line, to the rose-cut diamond and diamond point curved line, suspended from an oval-shape emerald scrolling surmount. *Length 4.7cms. Weight 8.4gms. £240-340*

**55**

A late Victorian 18ct gold diamond cluster ring. The old-cut diamond marquise-shape cluster, to the tapered band. *Estimated total diamond weight 0.55ct. Hallmarks for Birmingham, partially rubbed. Weight 3.5gms. See plate 1. £150-200*

**56**

An 18ct gold diamond three-stone ring. The graduated circular-cut diamond line, to the ci-colour mount and plain band. *Total diamond weight 0.41ct, estimated J-K colour, SI2-P1 clarity. Weight 2.3gms. £120-180*

**57**

A topaz pendant. The pear-shape topaz, to the bifurcated surmount, with bead detail, suspended from a fancy-link chain. Approximate topaz dimensions 26 by 15 by 6.4mms. *Length of pendant 4cms. Length of chain 43cms. Weight 10gms. See plate 1. £400-600*

**58**

A sapphire and diamond bangle. The square-shape sapphire line, with brilliant-cut diamond spacers, inset to the undulating bangle. *Estimated total diamond weight 0.25ct. Inner diameter 5.7cms. Weight 9.4gms. £150-200*

**59**

A pair of sapphire and diamond floral cluster ear studs. Each designed as a circular-shape sapphire collet, within a brilliant-cut diamond scalloped surround. *Total sapphire weight 0.40ct. Total diamond weight 0.33ct. Weight 2.9gms. £440-640*

**60**

An early 20th century gold split pearl brooch. The central stylised floral motif, to the crescent bar with scrolling accents, set throughout with split pearls. *Length 5.3cms. Weight 6.1gms. £150-200*

**61**

An Art Nouveau seed pearl, diamond and enamel pendant. The vari-coloured enamel flower set to the centre of an openwork scrolling plaque, decorated with brilliant-cut diamonds and seed pearls, suspended from a fine-link chain with seed pearl intervals. *May be worn as a brooch. Length of pendant 3.5cms. Length of chain 47cms. Weight 13.9gms. £1,600-2,200*



**62**

A platinum diamond single-stone ring. The rectangular-shape diamond, within a collet setting, to the tapered shoulders and plain band. *Diamond weight 2.25cts, stamped to band, estimated I-J colour, VS clarity. Hallmarks for Birmingham. Weight 5.7gms. £3,000-5,000*

**63**

A pair of stained cultured pearl and diamond ear studs. Each designed as a stained cultured pearl, measuring 10mms, to the brilliant-cut diamond collet surmount. *Estimated total diamond weight 0.10ct. Weight 7.5gms. £180-260*

**64**

A late 19th century gem and enamel brooch. The pear-shape foil-back garnet, to the split pearl line and green enamel stylised bow surmount. *Replacement gems and enamel. Length 4.5cms. Weight 11.7gms. £300-400*

**65**

An early 20th century 15ct gold and platinum aquamarine and diamond bar brooch. The oval-shape aquamarine, with old-cut diamond sides, to the plain bar. *Approximate aquamarine dimensions 12 by 8.4 by 5.6mms. Estimated total diamond weight 0.10ct. Length 7cms. Weight 5gms. £120-180*

**66**

A 9ct gold amethyst and split pearl necklace. The oval-shape amethyst, within a split pearl floral panel, suspending a pear-shape amethyst drop, to the similarly-set foliate panels and trace-link chain. *Hallmarks for London, 1984. Length 37cms. Weight 4.7gms. See plate 1. £400-600*

**67** ✕

An early 20th century ruby and diamond cluster bar brooch. The circular-shape ruby, within a single-cut diamond surround, to the plain bar. *Estimated total diamond weight 0.25ct. Length 5.1cms. Weight 4.2gms. £100-150*

**68**

A diamond cross pendant. The rose-cut diamond collet cross, suspended from a trace-link chain. *Length of pendant 1.7cms. Length of chain 41cms. Weight 6.2gms. £120-180*

**69**

A set of 1960s diamond jewellery. The necklace designed as a stylised scarf, the woven strap gathered by a brilliant-cut diamond foliate panel, with similarly-cut diamond terminal tassels and similarly-designed ear pendants. *Estimated total diamond weight 1.20cts. Necklace with French assay marks. Length of necklace 39cms. Length of ear pendants 3.7cms. Total weight 81.5gms. £1,600-2,200*

**70** ✕

A pair of ruby and diamond earrings. Each designed as three graduated circular-shape rubies, within an old and rose-cut diamond scrolling panel, to the old-cut diamond collet. *Estimated total diamond weight 1ct. Length 2.1cms. Weight 9.8gms. £700-900*

**71**

A diamond and seed pearl pendant. The old-cut diamond, within seed pearl and diamond point foliate wreath panel, suspending a similarly designed drop, to the scrolling surmount and connecting trace-link chain. *Some gems deficient. Length 6.4cms. Weight 5.5gms. See plate 1. £300-400*

**72** ✕

A ruby and diamond cluster ring. The oval-shape ruby, within a brilliant-cut diamond surround, to the grooved band. *Estimated total diamond weight 0.50ct. Weight 4.9gms. £300-400*

**73**

A diamond full-circle eternity ring. The brilliant-cut diamond line, inset to the polished band. *Estimated total diamond weight 0.85ct. Weight 1.4gms. Ring size O. £100-150*





Plate 1



55

18

20

49

45

32

71

53

57

66

21

41



**74** ✕

A diamond and ruby cluster ring. Of square-shape outline, the brilliant-cut diamond, within a calibré-cut ruby border and single-cut diamond surmount. *Estimated total diamond weight 0.70ct. Weight 2.6gms. See plate 2. £800-1,200*

**75**

An early 20th century 18ct gold diamond five-stone ring. The graduated old-cut diamond line, to the scrolling gallery and shoulders. *Estimated total diamond weight 0.75ct, L-tinted colour, P1-P2 clarity. Hallmarks for London, partially rubbed. Weight 2.9gms. £150-200*

**76**

An opal and diamond bangle. The slightly graduated oval opal cabochon line, with rose-cut diamond double spacers, to the trifurcated hinged bangle. *Inner diameter 5.6cms. Weight 14.6gms. £400-600*

**77** ✕

A platinum ruby and diamond line bracelet. Comprising a series of calibré-cut stones to include square-shape rubies alternating with square-shape diamonds. *Estimated total diamond weight 3.50cts. Hallmarks for London, 2012. Length 17.2cms. Weight 19.7gms. See plate 2. £3,500-4,500*

**78**

A diamond single-stone stud. The square-shape diamond, within a four-claw setting. *Estimated diamond weight 1.20cts, tinted colour, SI2 clarity. £700-900*

**79** ✕

A late 19th century gold, coral and split pearl brooch. Of oval outline, the alternating graduated circular coral cabochon and split pearl line, within a split pearl and bead accent double surround. *Length 3.9cms. Weight 6.9gms. £150-200*

**80**

A diamond seven-stone ring. Designed as a series of brilliant-cut diamonds, to the plain band. *Estimated total diamond weight 1ct. Weight 3.1gms. £240-340*

**81**

A pair of mabé-pearl and diamond earrings. Each designed as a blue mabé-pearl, with brilliant-cut diamond and diamond point scrolling foliate accent. *Estimated total diamond weight 0.10ct. Diameter 1.8cms. Weight 20.3gms. £200-300*

**82** ✕

A ruby and diamond floral brooch. The circular-shape ruby bombé cluster, within pavé-set diamond petal surround, to the baguette-cut ruby stem and brilliant-cut diamond leaves. *One ruby deficient. Estimated total diamond weight 9cts. Length 6.8cms. Weight 31.2gms. £4,000-6,000*

**83**

Two items of gem-set jewellery, to include an opal and amethyst quatrefoil brooch, together with a pear-shape mabé-pearl and brilliant-cut diamond pearl enhancer. *Lengths 3.2 and 2.7cms. Weight 9.2gms. £80-120*

**84**

A pair of diamond ear hoops. Each designed as a brilliant-cut diamond curved line, to the hinged back. *Estimated total diamond weight 0.70ct. Length 1.7cms. Weight 3.6gms. £150-200*

**85**

An early 20th century 15ct gold split pearl bird brooch. Designed as three graduated swallows in flight, inset with split pearls, to the curved bar surmount. *Length 6.5cms. Weight 8.2gms. £120-180*



**86**

A late Victorian topaz brooch, circa 1880. Of lozenge-shape outline, the circular-shape golden topaz cross, with pear-shape golden topaz accents with foliate spacers. *Length 4.5cms. Weight 13gms.* See plate 2. £120-180

**91**

A mid 20th century diamond bangle. The front designed as a series of eleven graduated old-cut diamonds, to the scroll engraved gallery and openwork half-bangle. *Estimated total diamond weight 4.40cts, I-K colour, SI1-P1 clarity. Inner diameter 5.4cms. Weight 15.4gms.* £2,800-3,200

**94**

A late 19th century gold diamond, tiger's-eye and enamel bee brooch. The black enamel and rose-cut diamond stripe body, with tiger's-eye cabochon accent, to the rose-cut diamond pierced wings and red gem-set eyes. *Length 5cms. Weight 12.6gms.* See plate 2. £300-400

**87**

A diamond half-circle eternity ring. The brilliant-cut diamond line, to the plain half-band. *Total diamond weight 1.15cts, stamped to band. Weight 4.8gms.* £440-640

**95** ✕

A ruby ring. The oval ruby cabochon, to the grooved surround and sides. *Weight 12.1gms.* £260-360

**88**

A diamond single-stone ring. The cushion-shape diamond, within an extended claw setting, to the tapered scrolling band. *Diamond weight 0.79cts, estimated I-J colour, VS clarity. Weight 2.8gms.* £800-1,200

**92**

A pair of late 19th century 15ct gold seed pearl ear pendants. Each designed as a seed pearl hollow heart, suspended from a replacement cultured pearl surmount and hook fitting. *Length 3cms. Weight 4gms.* £260-360

**96**

An early 20th century 18ct gold diamond five-stone ring. The old-cut diamond graduated line, to the scrolling gallery and shoulders. *Estimated total diamond weight 1ct, I-J colour, SI2-P1 clarity. Weight 3.9gms.* £400-600

**89**

A 9ct gold Mizpah ring. Designed as a tapered 'Mizpah' panel, to the tapered band. *Hallmarks for Birmingham, 1971. Weight 2.8gms.* £50-80

**93**

A late 19th century silver and gold foil-back topaz and diamond cluster ring. The cushion-shape golden topaz, within an old-cut diamond surround, to the bifurcated shoulders and plain band. *Woven hair panel to reverse. Approximate topaz dimensions 10 by 7mms. Estimated total diamond weight 1ct. Length 2cms. Weight 7.3gms.* See plate 2. £500-800

**97**

An early 20th century 9ct gold Albert chain. The graduated curb-link chain, suspending a t-bar, to the lobster terminals. *Hallmarks for Birmingham. Length 39cms. Weight 48.9gms.* £400-600

**90**

A 9ct gold diamond single-stone ring. The brilliant-cut diamond, to the similarly-cut diamond line shoulders and plain half-band. *Principal diamond estimated 0.50ct, I-J colour, P1 clarity. Hallmarks for Birmingham, 1992. Weight 2.5gms.* £200-300

**98**

A garnet dress ring. The oval-shape garnet, within a spiral mount, to the scrolling trifurcated shoulders and plain half-band. *Weight 8gms.* £150-200





99 ✕



A ruby and diamond dress ring. The old-cut diamond, collet, within a calibr -cut ruby surround, to the single-cut diamond border and shoulders. *Principal diamond estimated weight 0.65ct, J-K colour, P1 clarity. Weight 4.4gms. See plate 2.  1,200-1,800*

103 ✕

A ruby and diamond full-circle eternity ring. The square-shape ruby channel-set panels, with brilliant-cut diamond panel intervals, to the plain sides. *Estimated total diamond weight 0.50ct. Ring size M. Weight 4.4gms.  800-1,200*



104

A sapphire and diamond full-circle eternity ring. The square-shape sapphire channel-set panels, with brilliant-cut diamond panel intervals, to the plain sides. *Estimated total diamond weight 0.50ct. Ring size N. Weight 3.6gms.  800-1,200*



107 ✕



A pair of ruby and diamond ear clips. Each designed as an oval-shape ruby and brilliant-cut diamond cluster, to the calibr -cut ruby undulating surmount. *Estimated total diamond weight 0.20ct. Length 1.5cms. Weight 8.2gms. See plate 2.  800-1,200*

100



A cultured pearl single-strand necklace. Comprising a single row of forty light grey cultured pearls, measuring approximately 11.2 to 8.5mms, to the blue and colourless paste cluster clasp. *Length 48cms.  100-150*

105



An early 20th century 9ct gold aquamarine bar brooch. The oval-shape aquamarine, within a collet mount, to the tapered bar sides. *Estimated dimensions of aquamarine 16.7mms by 9.6mms, by 4.8mms. Length 6.4cms. Weight 5.8gms.  60-90*

108 ✕



An early 20th century split pearl and ruby swallow brooch. Designed as two split pearl swallows in flight, with circular ruby cabochon eyes, to the knife-edge bar. *One split pearl deficient. Length 4.8cms. Weight 5.5gms.  80-120*

101



A diamond star brooch. The brilliant-cut diamond six-ray star, with knife-edge detail. *Estimated total diamond weight 1ct. Length 2.5cms. Weight 7.3gms.  180-260*

106 ✕



A ruby and diamond cluster ring. The brilliant-cut diamond collet within a calibr -cut ruby surround to the single-cut diamond scalloped border. *Estimated total diamond weight 0.80ct. Weight 3.3gms.  1,000-1,500*

109 ✕



A ruby, emerald, sapphire and diamond three-row dress ring. The brilliant-cut diamond marquise-shape panels, to the sapphire, emerald and ruby calibr -cut line sides, to the plain band. *Estimated total diamond weight 0.10ct. Weight 5.7gms.  150-200*

102



A diamond single-stone ring. The circular-cut diamond, to the openwork gallery and plain band. *Estimated diamond weight 1ct, I-J colour, SI2-P1 clarity. Weight 2.7gms.  1,400-2,000*

110



An aquamarine and diamond dress ring. The cushion-shape aquamarine, within a brilliant-cut diamond halo, to the similarly-cut diamond line shoulders and openwork gallery. *Estimated dimensions of aquamarine 11.1mms by 11mms, by 6.7mms. Estimated total diamond weight 0.50ct. Weight 4.7gms.  240-340*

**111**

An 18ct gold diamond single-stone pendant. The brilliant-cut diamond, weighing 0.70ct, to the tapered surmount. *Estimated G-H colour, SI clarity. Hallmarks for Sheffield. £600-800*

**112**

An 18ct gold diamond three-stone ring. The graduated brilliant-cut diamonds, to the tapered band. *Estimated total diamond weight 0.80ct, K-tinted colour, SI clarity. Import marks for London, 1999. Weight 3gms. £300-400*

**113**

A pair of shell ear clips. Each designed as a textured spiral shell. *Length 3.1cms. Weight 20.6gms. £300-400*

**114**

A sapphire single-stone ring. The oval-shape pale yellow sapphire, to the trifurcated shoulders and plain band. *Approximate sapphire dimensions: 14.8 by 11.5 by 7.3mms. Weight 4.4gms. See plate 2. £200-300*

**115**

An enamel, diamond and tiger's-eye bee brooch. The black and brown enamel thorax, to the circular tiger's-eye cabochon body, with diamond point wings and head. *Length 2.5cms. Weight 7.3gms. See plate 2. £800-1,200*

**116** ✕

Two late 19th to early 20th century 18ct gold gem-set rings. Each designed as a circular-shape ruby and red-gem, old-cut diamond and colourless paste five-stone tapered panel ring. *One with maker's marks for Deakin & Francis. Hallmarks for Birmingham, 1890 and 1912. Weight 4.5gms. £100-150*

**117**

A cultured pearl bracelet. Designed as a series of cultured pearls, measuring 7mms, interspaced by stylised knot links, to the push-piece clasp. *Length 20cms. Weight 20gms. £300-400*

**118** ✕

A ruby and diamond cluster ring. The oval-shape ruby, within a brilliant-cut diamond surround, to the brilliant-cut diamond trefoil shoulders and plain band. *Approximate ruby dimensions 7.7 by 5.9 by 3mms. Estimated total diamond weight 0.75ct, I-J colour, SI clarity. Weight 3.7gms. See plate 2. £600-800*

**119**

A diamond bracelet. Designed as a series of grooved circular-shape openwork panels, with brilliant-cut diamond accents, to the partially concealed clasp. *Estimated total diamond weight 0.20ct. Length 16cms. Weight 34.3gms. £700-900*

**120**

A diamond seven-stone ring. Designed as a series of brilliant-cut diamonds, to the plain band. *Estimated total diamond weight 1ct. Weight 3gms. £240-340*

**121** ✕

A pair of ruby lion face earrings. Each designed as a lion face, with circular-shape ruby eyes and textured finish. *Length 2.4cms. Weight 17gms. £300-400*

**122** ✕

A late 19th century gold agate and foil-back garnet necklace. The front designed as an oval moss agate panel, suspended from a series of graduated moss agate panels, with circular-shape garnet spacers, each within a rope-twist surround, to the moss agate push-piece clasp. *Length 43cms. Weight 24.3gms. With associated case. See plate 2. £800-1,200*



**123** ✕

A late 19th century 18ct gold ruby and diamond three-stone ring. The oval-shape ruby and old-cut diamond, with diamond point spacers, to the scrolling gallery and plain band. *Estimated ruby weight 0.75ct. Estimated total diamond weight 0.60ct. Weight 2.6gms. See plate 2. £1,000-1,500*

**127** ✕

A late 19th century 18ct gold ruby and diamond cluster ring. Of marquise-shape outline, the graduated circular-shape ruby line, within an old-cut diamond border, to the plain band. *Estimated total diamond weight 0.65ct. Length 2.1cms. Weight 4gms. See plate 2. £200-300*

**128**

An 18ct gold amethyst and diamond cluster ring. The oval-shape amethyst, to the brilliant-cut diamond and kite-shape amethyst accent scalloped surround. *Estimated total diamond weight 0.30ct. Hallmarks for London, 1989. Weight 3.6gms. £340-440*

**131**

A gem-set pendant. The pear-shape amethyst and aquamarine trefoil sides, to the pavé-set diamond chevron surmounts, suspending a pink sapphire and aquamarine fringe. *Total diamond weight 0.37ct, stamped to mount. Length 6.2cms. Weight 17.7gms. £400-600*

**124**

A citrine, paste and split pearl brooch. Of cross configuration, the oval-shape citrine, with three circular and oval-shape yellow paste and split pearl clusters, to the sphere and knife-edge bar. *Made with late 19th century components. Length 4.1cms. Total weight 8.6gms. £60-90*

**129**

A diamond full-circle eternity ring. The brilliant-cut diamond line, inset to the polished band. *Estimated total diamond weight 0.80ct. Weight 1.5gms. Ring size O. £120-180*

**132** ✕

A ruby and diamond dress ring. The old-cut diamond and circular-shape ruby, each within a hexagonal-shape surmount, to the pierced shoulders and plain band. *Estimated diamond weight 0.15ct. Weight 2.7gms. £120-180*

**125**

A gold sapphire and diamond cluster ring. The marquise-shape sapphire, within a brilliant-cut diamond double surround, to the plain band. *Total diamond weight 1.86cts, stamped to band. Hallmarks partially rubbed. Weight 5.6gms. £240-340*

**130** ✕

A pair of Retro ruby and diamond ear clips. Each designed as a brilliant-cut diamond and circular-shape ruby cluster, to the bi-colour spray surmount. *Estimated total diamond weight 0.50ct. Sponsors mark's for Alabaster and Wilson. With fitted case. See plate 2. £800-1,200*

**133**

An 18ct gold sapphire and diamond three-stone ring. The oval-shape pink sapphire, to the brilliant-cut diamond shoulders. *Estimated total diamond weight 0.60ct, J-K colour, SI clarity. Hallmarks for Birmingham. Weight 3.6gms. £180-260*

**126**

A cultured pearl and aquamarine single-strand necklace. Comprising a single row of fifty cultured pearls, measuring approximately 11 to 8.7mm, to the oval-shape aquamarine and cultured pearl cluster clasp, with suspended cultured pearl drop. *Dimensions of aquamarine 19 by 12.7 by 9mm. Length 52cms. £150-200*

**134**

A pair of gem-set ear pendants. Each designed as an oval-shape aquamarine, with rose-cut diamond accent knife-edge bar, suspended from a cultured pearl surmount. *Lengths 4.7 and 4.5cms. Weight 5.3gms. £240-340*





130

107

99

123

77

86

93

135

139

122

94

115

143

114

118

127

74

142



**135** ✕

A late 19th century silver and gold diamond, ruby and shell cameo pomander. Designed as a horses hoof, the shell cameo carved to depict a lady in profile, to the ruby buckle and diamond point pomander with ruby screw top. *Estimated total diamond weight 1.20cts. Length of pomander 3.5cms. Weight 36.4gms. See plate 2. £500-700*

**136**

An early to mid 20th century 9ct gold bracelet. The fancy-link openwork panels, to the heart-shape padlock clasp. *Length 19cms. Weight 16.4gms. £150-200*

**137**

A diamond dress ring. The old-cut diamond, within a square-shape mount, to the bi-colour geometric surround and sides, with diamond point accents. *Principal diamond estimated weight 0.20ct, I-J colour, SI clarity. Egyptian marks. Weight 5.1gms. £150-200*

**138**

A pair of 18ct gold brilliant-cut diamond single-stone ear studs. *Total diamond weight 2.04cts, estimated J-K colour, SI2-P1 clarity. Hallmarks for Sheffield. £2,000-2,500*

**139**

A sapphire and diamond cluster ring. The rectangular-shape yellow sapphire, within a brilliant-cut diamond surround, to the brilliant-cut diamond sides and plain band. *Approximate sapphire dimensions: 7.3 by 6.8 by 5.5mms. Estimated total diamond weight 1ct, I-J colour, SI2-P1 clarity. Weight 5gms. See plate 2. £1,000-1,500*

**140**

A late 19th century 15ct gold brooch. The cannetille flower, with geometric cannetille sides, to the rectangular-shape panel and bead surround. *Length 4.4cms. Weight 4.3gms. £60-90*

**141**

A pair of 9ct gold diamond earrings. Each designed as a scrolling bow, with old-cut diamond highlights. *Estimated total diamond weight 0.70ct. Import marks for London, 1986. Length 2.4cms. Weight 11.9gms. £280-380*

**142**

An 18ct gold diamond and sapphire bee brooch. The textured and pavé-set diamond body, with the textured wings and circular-shape sapphire eyes. *Sponsors marks for Cropp and Farr. Import marks for London, 1987. Length 2.3cms. Weight 8gms. See plate 2. £200-300*

**143**

An 18ct gold tri colour enamel bird of prey brooch. Designed as a bird in flight with tri-colour wings and a black and white enamel head. *Sponsors marks for Alabaster & Wilson. Hallmarks for Birmingham, 1993. Length 6cms. Weight 14.3gms. See plate 2. £300-400*

**144**

A gentleman's 18ct gold diamond ring. The circular-cut diamond, to the scalloped gallery and grooved shoulders. *Diamond weight 0.43ct, estimated H-I colour, P1 clarity. Hallmarks for Birmingham, 1937. Weight 4.4gms. £180-260*

**145**

A star sapphire and diamond cluster ring. The oval white star-sapphire cabochon, within a tapered baguette-cut diamond surround, to the plain band. *Estimated total diamond weight 0.85ct. Weight 7.3gms. £200-300*

**146**

A sapphire and diamond necklace. The fancy-shape pink sapphire, weighing 2.33cts, within a brilliant-cut diamond curved halo, suspending three graduated pink sapphire briolettes, to the graduated brilliant-cut diamond double collet surmount and trace-link chain. *Total briolette sapphire weight 1.34cts. Total diamond weight 0.77ct. Length 46.5cms. Weight 5.4gms. £1,800-2,400*

147



An 18ct gold diamond cluster ring. The brilliant-cut diamond, within a similarly-cut diamond surround. *Principal diamond estimated weight 1ct, L colour, VS2 clarity. Remaining diamonds estimated total weight 1ct. Hallmarks for Birmingham, 1976. Weight 4.4gms* See plate 3. £1,200-1,800

151 ✕

A pair of ruby and paste ear pendants. Each designed as a marquise-shape ruby and circular-shape colourless paste foliate cluster drop, suspended from a circular-shape ruby and colourless paste scrolling surmount. *Two rubies deficient. Length 3.5cms. Weight 13.7gms. £300-400*



152 ✕

A ruby necklace. Designed as a series of oval ruby collets, with circular ruby collet spacers. *Length 84cms. Weight 9.8gms. £300-400*

155 

A pair of diamond ear pendants. Each designed as an old-cut diamond collet, suspending a marquise and brilliant-cut diamond trefoil, to the graduated circular-cut diamond articulated drops. *Estimated total diamond weight 3.15cts, I-tinted, SI1-P1. Length 2.4cms. Weight 5.1gms. With associated box. See plate 3. £3,000-4,000*

148

A diamond panel ring. The three circular-shape diamond collets, within a single-cut diamond double halo and scalloped surround, to the tapered shoulders and plain band. *Estimated total diamond weight 0.65ct. Weight 2.9gms. £500-700*



153

An early 20th century platinum and 15ct gold diamond and seed pearl bar brooch. The alternating cultured pearl and old-cut diamonds, to the bifurcated bar. *Estimated total diamond weight 0.20ct. Length 6.5cms. Weight 3.6gms. £180-260*



156

A cultured pearl and paste dress ring. The cultured pearl and circular-shape blue paste, to the asymmetric curved shoulders and plain band. *Weight 3.6gms. £120-180*



149



A selection of three pairs of cultured pearl ear studs. *Diameter of cultured pearls approximately 8.2 to 5.2mm. £40-60*

154

A diamond dress ring. Of crossover design, the brilliant-cut diamonds, within shared claw settings, to the bifurcated shoulders and plain band. *Estimated total diamond weight 0.45ct. Hallmarks for London, 2002. Weight 4.5gms. £150-200*



157

A mid 20th century gold diamond single-stone ring. The old-cut diamond, to the similarly-cut diamond tapered shoulders and plain band. *Principal diamond estimated weight 0.45ct, I-J colour, P1 clarity. Weight 1.6gms. £200-300*

150  

An early 20th century natural pearl and diamond jabot pin. Designed as a natural pearl, with rose-cut diamond foliate surmount, to the similarly-cut diamond pear-shape terminal and diamond point collet accents. *Accompanied by report number 06763, dated 28th November 2012, from Gem and Pearl Laboratory, stating that the pearl is natural saltwater. Length 6.8cms. Weight 4.4gms. With associated case. See plate 3. £2,000-2,500*

158

A bi-colour diamond dress ring. Of crossover design, the single-cut diamond curved lines, to the plain band. *Estimated total diamond weight 0.45ct. Weight 4.6gms. £120-180*





**159**

A gentleman's 18ct gold diamond three-stone ring. The brilliant-cut diamond line, within star settings, to the tapered band.

*Estimated total diamond weight 1.50cts. Hallmarks for London, 1980. Weight 15.9gms. £1,000-1,500*

**160**

An 18ct gold stained cultured pearl and diamond dress ring. The stained cultured pearl measuring 11mms, within a pavé-set diamond curved surmount, to the tapered band.

*Hallmarks indistinct. Estimated total diamond weight 0.45ct. Weight 8gms. £240-340*

**161**

An 18ct gold diamond dress ring. Of bi-colour design, the brilliant-cut diamond line, within a channel setting, to the similarly-cut diamond sides.

*Estimated total diamond weight 3.30cts. Hallmarks for London. Ring size K. Weight 8.4gms. £700-900*

**162**

A diamond single-stone ring. The brilliant-cut diamond, weighing 1.54cts, to the tapered shoulders and polished band. *Accompanied by report number 20015657, dated 19th March 2014, from AnchorCert, stating the diamond is H colour, SI2 clarity. Weight 3.6gms. See plate 3. £2,800-3,200*

**163**

A cultured pearl and diamond three-row necklace. Comprising three rows of thirty-nine, forty-three and forty-six cultured pearls, measuring approximately 8.5mms, to the 18ct gold openwork brilliant-cut diamond clasp, suspending a further cultured pearl and diamond drop.

*Estimated total diamond weight 1.50cts. Import marks for Sheffield, 1990. Length 39.5cms. With associated case. See plate 3. £900-1,400*

**164**

An 18ct gold diamond cross pendant. Depicting a high cross, with raised woven and Celtic motif and brilliant-cut and square-shape diamond accents, suspended from a fancy-link chain.

*Estimated total diamond weight 0.75ct. Hallmarks for Birmingham, 1999. Length of pendant 4.9cms. Length of chain 45cms. Weight 25.9gms. £700-900*

**165**

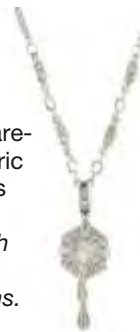
A mid 20th century 18ct gold and platinum diamond cluster ring. The circular-cut diamond collet, within a circular-cut diamond surround, to the tapered band.

*Estimated total diamond weight 1ct, I-J colour, SI-P1 clarity. Weight 2.6gms. £460-660*

**166**

A diamond pendant. The single-cut diamond drop, suspended from a square-shape and single-cut diamond geometric panel, to the vari-cut diamond line links and 18ct gold back-chain.

*Estimated total diamond weight 0.50ct. Chain with hallmarks for Birmingham. Length of pendant 6.5cms. Length of chain 40cms. Total weight 9.1gms. £300-400*

**167**

A pair of sapphire and diamond earrings. Each designed as a detachable pendant comprising a circular-shape yellow sapphire, with brilliant-cut diamond chevron terminal, suspended from a hexagonal-shape yellow sapphire and old-cut diamond surmount.

*Estimated total diamond weight 1ct. Length 2.8cms. Weight 4.2gms. £120-180*

**168**

A pair of mabé-pearl and wood ear clips. Each designed as a mabé-pearl, to the circular wooden panel, with rope twist detail.

*Diameter 2.8cms. Weight 16.4gms. £360-460*

**169**

A diamond dress ring. The old-cut diamond marquise-shape panel, to the tapered shoulders.

*Estimated total diamond weight 0.55ct. Weight 3.4gms. £300-400*

**170**

A pair of diamond ear pendants. Each of openwork design, the brilliant-cut diamond geometric panel, with similarly-cut diamond collet highlights and articulated line drops, suspended from a brilliant-cut diamond bow surmount.

*Estimated total diamond weight 4cts. Length 6.9cms. Weight 26.9gms. See plate 3. £3,000-4,000*

**171**

A diamond dress ring. The old-cut diamond line and sides, each within a geometric mount, to the scrolling foliate and pierced panel surround. *Estimated total diamond weight 0.60ct, I-J colour, SI2-P2 clarity. Weight 3.2gms. £100-150*

**172**

An 18ct gold tanzanite and diamond cluster ring. The oval-shape tanzanite and brilliant-cut diamond floral cluster, to the plain band. *Hallmarks for London, 2008. Weight 2.6gms. £180-260*

**173**

An 18ct gold diamond three-stone ring. The slightly graduated circular-cut diamonds, to the tapered band. *Estimated total diamond weight 0.80cts, H-I colour, SI clarity. Hallmarks for Sheffield, 1992. Weight 2.3gms. £340-440*

**174**

A pair of diamond cluster ear pendants. Each designed as an old-cut diamond cluster, suspended from a similarly-cut diamond two-stone surmount. *Estimated total diamond weight 2.40cts. Length 2.6cms. Weight 4.1gms. See plate 3. £800-1,200*

**175**

An early 20th century diamond cluster ring. The cushion-cut diamond, within an old-cut diamond surround, to the pierced gallery and plain band. *Principal diamond estimated weight 1.55cts, I-J colour, VS clarity. Estimated total diamond weight of surround 2cts, I-J colour, SI-P1 clarity. Weight 4.9gms. See plate 3. £3,000-4,000*

**176**

An 18ct gold sapphire and diamond pendant. The circular-shape pink and yellow sapphires, each within a brilliant-cut diamond surround, to the connecting bar, suspended from a belcher-link chain with brilliant-cut diamond cylindrical spacers. *Estimated total diamond weight 0.25ct. Hallmarks for London. Length 40cms. Weight 4.5gms. £200-300*

**177**

A coloured diamond and diamond three-stone ring. The fancy light yellow cushion-cut diamond, weighing 0.73cts, to the old-cut diamond sides and plain band. *Principal diamond accompanied by report number 74727, dated 28th May 2014, from SSEF, stating the diamond is natural yellow (fancy light). Estimated total diamond weight of side diamonds 0.60ct. Weight 3.3gms. £1,200-1,800*

**178**

An 18ct gold diamond single-stone ring. The brilliant-cut diamond, to the plain band. *Estimated diamond weight 0.45ct, K-L colour, SI clarity. Hallmarks for Birmingham, 2001. Weight 3.2gms. £260-360*

**179**

A 9ct gold citrine necklace. Designed as a graduated oval-shape citrine fringe, suspended from a similarly-set citrine line, to the belcher-link back chain. *Hallmarks for London. Length 42cms. Weight 7.5gms. £100-150*

**180**

A cultured pearl and diamond dress ring. Designed as a cultured pearl, with inset brilliant-cut diamond highlights, to the curved band. *Weight 5.5gms. £100-150*

**181**

An early 20th century 18ct gold diamond five-stone ring. The graduated old-cut diamond line, to the scrolling gallery and shoulders. *Estimated total diamond weight 0.30ct. Weight 3gms. £90-140*

**182**

A pair of old-cut diamond single-stone ear studs. *Total diamond weight 3.46cts, estimated K-L colour, SI2-P1 clarity. Weight 2.6gms. See plate 3. £6,000-8,000*



**183**

A mid 20th century 18ct gold diamond single-stone ring. The old-cut diamond, with brilliant-cut diamond sides, to the openwork geometric gallery and plain band. *Principal diamond weight 2.50cts, estimated I-J colour, SI2-P1 clarity. Weight 5.2gms. See plate 3. £3,000-4,000*

**187**

An 18ct gold diamond cluster ring. The brilliant-cut diamond, raised to the similarly-cut diamond surround. *Estimated total diamond weight 1.25cts, H-I colour, SI clarity. Hallmarks for London, 1777. Weight 5.7gms. £280-380*

**188**

A diamond half-circle eternity ring. Of bi-colour design, the single-cut diamond line, with geometric engraved sides. *Estimated total diamond weight 0.30ct. Weight 2.9gms. £120-180*

**\*191**

A diamond single-stone ring. The rectangular-shape diamond, weighing 2.42cts, to the tapered baguette-cut diamond sides. *Estimated K-L colour, VS clarity. Weight 4.6gms. £7,000-9,000*

**184**

A diamond turtle brooch. Designed as a stylised turtle, with single-cut diamond shell and baguette-cut diamond feet. *Estimated total diamond weight 5.20cts. Length 4.6cms. Weight 13.4gms. £1,000-1,500*

**189**

A mid 20th century diamond bar brooch. Of geometric design, the three old and single-cut diamonds, with diamond point accents, within a zig-zag halo, to the plain bar. *Estimated total diamond weight 0.15ct. Length 8cms. Weight 5.5gms. £120-180*

**192**

An aquamarine and diamond pendant. The rectangular-shape aquamarine, to the brilliant and single-cut diamond triangular surmount. *Length 2.3cms. Weight 5.8gms. £150-200*

**185**

A pair of diamond and gem-set earrings. Each designed as a brilliant-cut diamond and circular-shape black gem chequerboard. *Estimated total diamond weight 0.35ct. Length 0.9cm. Weight 3.1gms. £400-600*

**190**

A diamond and black-gem dress ring. Of geometric design, the circular-cut diamond pierced panel, with square-shape black-gem and curved line detail. *Estimated total diamond weight 1.60ct. Weight 7.9gms. See plate 3. £1,500-2,000*

**193**

An 18ct gold and platinum diamond ring. The vari-shape old-cut diamond quatrefoil, to the asymmetric shoulders and plain band. *Estimated total diamond weight 0.25ct. Weight 2.5gms. £100-150*

**186**

A tanzanite pendant. The circular-shape tanzanite, with bifurcated surmount, suspended from a fancy-link chain. *Length of pendant 1.1cms. Length of chain 42cms. Weight 4.1gms. £120-180*

**194**

A diamond bow brooch. Of openwork design, the old-cut diamond cluster, to the openwork panel sides with similarly-set diamond foliate detail and old-cut diamond scalloped edging. *Length 5.8cms. Weight 8.1gms. £400-600*



**195**

A cultured and seed pearl, chrysoberyl cat's-eye and diamond single-strand necklace. Comprising 106 graduated cultured and seed pearls, to the circular chrysoberyl cats-eye cabochon and old-cut diamond cluster clasp. *Estimated total diamond weight 0.55ct. Length 48.5cms. See plate 3. £300-400*

**200**

An early 20th century gold split pearl and diamond bangle. Designed as two split pearl and rose-cut diamond overlapping hearts, with similarly-cut diamond bow surmount, to the bifurcated hinged bangle and rose-cut diamond line sides. *Inner diameter 5.8cms. Weight 14.8gms. See plate 3. £1,000-1,500*

**203**

A mid 20th century platinum diamond and sapphire half-circle eternity ring. The oval-shape sapphire and old-cut diamond alternating line, to the scrolling sides and plain band. *Estimated total diamond weight 0.25ct. Weight 5.1gms. £400-600*

**\*196**

A diamond pendant. Of openwork design, the brilliant-cut diamond spiral line panel, with scattered similarly-cut diamond accents and triangular-shape terminals, suspended from a brilliant-cut diamond line surmount. *Total diamond weight 0.62ct, stamped to surmount. Length 5.6cms. Weight 5gms. £600-800*

**204**

A composite split pearl necklace. Designed as a split pearl floral panel, with similarly designed sides, suspending a heart shape pendant, to the fancy-link back chain. *Some split pearls deficient. Length 43.5cms. Weight 14.5gms. £260-360*

**197**

A sapphire and diamond cluster ring. The circular-shape sapphire, within a single-cut diamond surround, to the tapered shoulders and plain band. *Estimated total diamond weight 0.25cts. Weight 3.2gms. £300-400*

**201**

A cultured pearl single-strand necklace. Comprising forty-three cultured pearls, measuring 8mms, to the vari-cut diamond clasp, suspending a cultured pearl drop. *Estimated total diamond weight 0.25ct. Length 41.8cms. £280-380*

**205**

A late Victorian 18ct gold opal and diamond ring. The three circular opal cabochons, with old-cut diamond double spacers, to the grooved shoulders and plain band. *Hallmarks for Birmingham, 1896. Weight 2.8gms. £120-180*

**198**

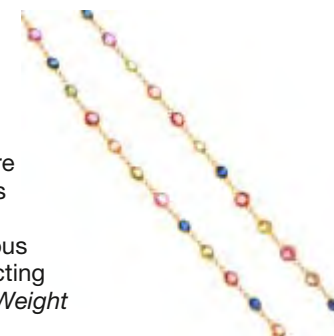
A mid 20th century diamond full-circle eternity ring. The single-cut diamonds, to the scrolling sides. *Estimated total diamond weight 0.95ct. Ring size O 1/2. Weight 2.6gms. £200-300*

**202**

A pair of diamond ear clips. Each designed as two bi-colour marquise-shape panels, set throughout with brilliant-cut diamonds. *Estimated total diamond weight 1.85cts. Length 2cms. Weight 18gms. £600-800*

**206**

A multi-colour sapphire necklace. Designed as a series of spectacle-set sapphires, of various colours, to the connecting links. *Length 41cms. Weight 4.6gms. £80-120*

**199**

A diamond and cultured pearl bracelet. The front designed as three old and rose-cut diamond openwork marquise-shape links, with cultured pearl ribbon spacers, to the expandable bracelet and push-piece clasp. *Estimated total diamond weight 0.30cts. Length 17cms. Weight 10.5gms. £1,000-1,500*

**207**

An early 20th century gold split pearl and diamond ring. The graduated split pearl line, within an old-cut diamond surround, to the tapered band. *Estimated total diamond weight 0.65cts. Weight 4.9gms. See plate 3. £400-600*







207

195

174

163

147

155

190

227

150

175

221

170

200

262

162

182

183

236

212

213

611



**208** ✕

A ruby, sapphire and diamond swivel ring. The square-shape ruby and sapphire line, to the hinged single-cut diamond line sides. *Estimated total diamond weight 0.35ct. Ring size M. Weight 5.2gms. £220-320*

**213**

A diamond single-stone ring. The old-cut diamond, with tapered baguette-cut sides, to the plain band. *Principal diamond estimated weight 3.45cts, K-L colour, P1-P2 clarity. Weight 3.8gms. See plate 3. £4,000-6,000*

**216**

A pair of cultured pearl and diamond earrings. Each designed as a cultured pearl, with old-cut diamond cluster surmount. *With clip fittings. Estimated total diamond weight 0.80ct. Length 1.8cms. Weight 10.4gms. £600-800*

**209**

An 18ct gold diamond half-circle eternity ring. The brilliant-cut diamond channel-set line, to the grooved shoulders and plain band. *Estimated total diamond weight 1ct. Hallmarks for London. Weight 5.1gms. £300-400*

**217**

A mid 20th century gold aquamarine and diamond ring. The rectangular-shape aquamarine, to the single-cut diamond sides, with scrolling gallery. *Weight 4.6gms. £400-600*

**210**

A diamond necklace. Designed as a brilliant-cut diamond collet line, suspended from a fancy-link chain. *Estimated total diamond weight 1.70cts. Length 41.5cms. Weight 7.3gms. £280-380*

**214**

Two sapphire and diamond rings. The first designed as a rectangular-shape sapphire, to the calibr e-cut sapphire and brilliant-cut diamond tapered shoulders, together with a circular-shape sapphire full-circle eternity ring. *Two sapphires deficient. One with hallmarks for Birmingham. Total weight 4.7gms. £240-340*

**218**

A mid 20th century diamond bar brooch. Of geometric design, the old-cut diamond collets, with rose-cut diamond trefoil accents, to the tapered sides. *Estimated total diamond weight 1.70cts. Length 7cms. Weight 8gms. £600-800*

**211**

A late Victorian 18ct gold sapphire and diamond five-stone ring. The graduated oval-shape sapphire line, with old-cut diamond spacers, to the tapered band. *Estimated total diamond weight 0.40ct, I-J colour, P1 clarity. Hallmarks for Birmingham, 1895. Weight 4.3gms. £240-340*

**215**

A platinum diamond single-stone pendant. The old-cut diamond, to the brilliant-cut diamond tapered surmount, suspended from an 18ct gold belcher-link chain. *Principal diamond estimated weight 1.15cts, J-K colour, SI2-P1 clarity. Hallmarks for London and Birmingham. Length of pendant 1.1cms. Length of chain 41cms. Weight 3.8gms. £1,600-2,200*

**219**

An 18ct gold sapphire and diamond three-stone ring. The circular-shape sapphire, to the brilliant-cut diamond sides and plain band. *Estimated total diamond weight 0.25ct. Hallmarks for London, 1982. Weight 3.7gms. £100-150*

**212**

An 18ct gold diamond bracelet. Designed as a series of brilliant-cut diamond tapered wave panels, to the partially concealed clasp. *Estimated total diamond weight 3.80cts. Import marks for London, 1998. Length 18cms. Weight 20.4gms. See plate 3. £800-1,200*

**220**

A diamond single-stone ring. The brilliant-cut diamond, to the plain band. *Diamond weight 0.51ct, stamped to band, estimated H-I colour, SI clarity. Weight 4.5gms. £500-700*





**221**

A diamond necklace. Designed as a series of brilliant-cut and baguette-cut diamond kite-shape clusters, interspersed with similarly-cut diamond curved bars, to the bifurcated double-link and bar chain. *Estimated total diamond weight 7.50cts. Length 44.5cms. Weight 34.4gms. See plate 3. £4,000-6,000*

**222**

An 18ct gold diamond ring. Of chevron-shape outline, the marquise-shape diamond collet, to the brilliant-cut diamond curved bar sides and plain half-band. *Estimated total diamond weight 0.95ct, principal diamond estimated I-J colour, VS2-SI1 clarity. Hallmarks for Birmingham, 1993. Weight 3.6gms. £260-360*

**223**

An early 20th century platinum, sapphire and diamond full-circle eternity ring. The alternating vari-cut diamond and calibre-cut sapphire panel line, to the engraved sides. *Estimated total diamond weight 0.25ct. Ring size M. Weight 2.7gms. £260-360*

**224**

A gentleman's diamond bracelet. The front designed as a square-shape diamond three-row panel, to the four and three-row bar links. *Estimated total diamond weight 3.40cts, G-H colour, SI clarity. Length 22cms. Weight 61gms. £1,300-1,800*

**225**

A mid 20th century sapphire and diamond cluster ring. The oval sapphire cabochon, within an old-cut diamond surround. *Six paste replacements. Estimated total diamond weight 0.30ct. Weight 3.8gms. £300-400*

**226**

A platinum diamond band ring. The brilliant-cut diamond line, raised to the similarly-cut diamond double spacers, inset to the tapered band. *Estimated total diamond weight 1.40cts, H-I colour, VS clarity. Hallmarks for London, 2002. Weight 11.9gms. £700-900*

**229**

A pair of 18ct gold brilliant-cut diamond single-stone ear studs. *Total diamond weight 1.42cts, estimated G-H colour, SI2-P1 clarity. Hallmarks for Sheffield. £1,400-2,000*

**227**

A diamond brooch. Of openwork design, the old-cut diamond collet, to the vari-cut diamond geometric panel. *Principal diamond estimated weight 0.65ct, H-I colour, P1 clarity. Length 4.2cms. Weight 6.5gms. See plate 3. £300-400*

**230**

An early 20th century 18ct gold opal and diamond cluster ring. The oval opal cabochon, within an old-cut diamond surround, to the shell shoulders. *Estimated total diamond weight 0.35ct. Weight 3.8gms. £200-300*

**228**

A cultured pearl seven-row necklace with late 19th century blue enamel clasp. Comprising seven rows of graduated cultured pearls, measuring approximately 7.3 to 3.7mms, to the late 19th century gold blue enamel clasp. *Length of clasp 4cms. Length 49cms. £360-460*

**231**

A sapphire and diamond cluster ring. The circular-shape sapphire, within a brilliant-cut diamond surround, to the trifurcated scroll shoulders and tapered band. *Estimated total diamond weight 0.50ct. Weight 4.8gms. £1,200-1,800*

**232**

A diamond bar brooch. Designed as an oval plaque, the central circular-cut diamond collet, within an openwork surround with diamond detail. *Principal diamond estimated weight 0.35cts, J-K colour, SI2-P1 clarity. Length 5cms. Weight 4.2gms. £150-200*

**233**

A diamond line bracelet. Designed as a series of square-shape diamond panels, with curved bar sides, to the partially concealed clasp. *Estimated total diamond weight 4.50cts. Length 20.4cms. Weight 29gms. £800-1,200*

**241**

A diamond single-stone ring. The brilliant-cut diamond, to the elongated shoulders and scrolling gallery. *Estimated diamond weight 0.20ct, H-I colour, P1 clarity. Weight 3.6gms. £60-90*

**234**

A pair of sapphire single-stone ear clips. Each designed as an oval-shape cabochon, within a grooved surround, to the plain surmount. *Estimated total sapphire weight 5.30cts. Length 1.8cms. Weight 13.4gms. £600-800*

**237** ✕

A multi-gem bead necklace. Designed as seven graduated rows of faceted beads, including ruby, sapphire and emerald, to the adjustable woven back cord. *Length approximately 100cms. £200-300*

**242**

A pair of square-shape diamond ear studs. Each within a collet setting. *Estimated total diamond weight 0.95ct, I-J colour, SI2-P1 clarity. Weight 1.8gms. £1,200-1,800*

**235**

An emerald and diamond five-stone ring. The circular-shape emerald, with graduated old-cut diamond side, to the bifurcated shoulders and plain band. *Estimated total diamond weight 0.25ct. Weight 5gms. £150-200*

**238**

Two pairs of mid 20th century hardstone ear clips. Each designed as a square-shape panel, within a scrolling surround, set with tiger's-eye and amazonite respectively. *Lengths 2.5cms. Weight 20gms. £120-180*

**243**

A diamond band ring. The square-shape diamond line, within a channel setting, to the plain band. *Total diamond weight 1.26cts, stamped to band, estimated J-K colour, SI2-P2 clarity. Weight 6gms. £200-300*

**236** ✎

A diamond single-stone ring. The old-cut diamond, weighing 2.01cts, to the tapered shoulders and plain band. *Accompanied by report number 20014392, dated 22nd January 2014, from AnchorCert, stating the diamond is L colour, SI2 clarity. Weight 3.4gms. See plate 3. £3,500-4,500*

**239**

A late Victorian gold shell cameo brooch. The shell carved to depict a bacchante, within a wide collet mount. *Length 5.2cms. Weight 16.7gms. £150-200*

**240**

A diamond crossover ring. The brilliant-cut diamond collet, to the asymmetric shoulders set with either baguette-cut or square-shape diamonds. *Estimated total diamond weight 0.50ct. Weight 2.5gms. £200-300*

**244**

A sapphire, glass-filled ruby and diamond triple cluster dress ring. The oval-shape sapphire, yellow sapphire, glass-filled ruby and brilliant-cut diamond clusters, with brilliant-cut diamond accents, to the asymmetric shoulders and plain band. *Estimated total diamond weight 1ct. Weight 9.2gms. £800-1,200*



**245** 

A pair of emerald and diamond ear pendants. Each designed as a pear-shape emerald, weighing 4.82 and 4.26cts respectively, within a square-shape emerald surround, suspended between a brilliant-cut diamond scrolling panels and surmount. Accompanied by report numbers B14001019 and B14001020, dated 13th February 2014, from International Gemological Reports, stating that the emeralds are natural, possible origin Colombia, with clear oil treatment. Estimated total diamond weight 3.75cts, I-J colour, VS clarity. Length 5.5cms. Weight 27.4gms. £4,000-6,000

**249** 

Two gem-set bar brooches. To include an early 20th century 15ct gold square-shape sapphire and seed pearl geometric openwork brooch, together with an early 20th century 9ct gold circular-shape garnet scrolling openwork brooch. Lengths 5.2 and 5cms. Weight 5.2gms. With associated case. £40-60

**253**

A pair of diamond ear pendants. Each designed as a brilliant-cut diamond and textured pear-shape panel, suspended from a brilliant-cut diamond surmount. Estimated total diamond weight 1.20cts, K-L colour, P1 clarity. Length 1.9cms. Weight 2.6gms. £900-1,400

**246**

An emerald and diamond floral dress ring. Of crossover design, the asymmetric arms with brilliant-cut diamond and marquise-shape emerald floral clusters. Total diamond weight 0.22ct, engraved to band. Weight 3.5gms. £150-200

**251**

A synthetic star sapphire and diamond cluster ring. The circular synthetic star sapphire cabochon, within a single-cut diamond surround. Estimated total diamond weight 0.40ct. Weight 6.4gms. £200-300

**\*254**

An emerald and diamond dress ring. The square-shape emerald, within a tapered baguette and brilliant-cut diamond cluster surround. Emerald weight 0.73ct, total diamond weight 0.53ct, each stamped to band. Weight 7gms. £1,000-1,500

**247**

An early 20th century 18ct gold diamond three-stone ring. The graduated circular-cut diamond line, to the openwork gallery and plain band. Estimated total diamond weight 0.80ct, H-I colour, SI clarity. Weight 2.2gms. £300-400

**252**

A moonstone necklace. The graduated circular moonstone cabochon line, suspending a similarly graduated oval moonstone cabochon fringe, to the fancy-link chain. Clasp deficient. Length 39.8cms. Weight 7.1gms. £150-200

**255**

A cultured pearl necklace. Designed as a series of bar links, interspaced with cultured pearls. Length 81cms. Weight 17cms. £280-380

**248**

An emerald and diamond bracelet. Designed as a series of square-shape emerald line links, with brilliant-cut diamond bar spacers, to the partially concealed clasp. Estimated total diamond weight 0.30ct. Length 20.4cms. Weight 36.5gms. £700-900

**256**

A pair of diamond ear hoops. Each asymmetric hoop, suspending a brilliant-cut diamond marquise-shape fringe. Estimated total diamond weight 1ct. Length 3.2cms. Weight 9.1gms. £360-460

**257**

An emerald and diamond brooch. Of marquise-shape outline, the rectangular-shape emerald and single-cut diamond openwork panel, to the millegrain detail. *Approximate emerald dimensions 5.8 by 4.4 by 2.9mms. Estimated total diamond weight 0.20ct. Foreign assay marks. Length 7.1cms. Weight 5.1gms. £300-400*

**258**

A tourmaline accent bracelet. Of bi-colour design, the interwoven strands, suspending a series of three bi-colour tourmaline, to the toggle clasp with further green tourmaline drop. *Length 18.7cms. Weight 39.2gms. £500-700*

**259**

A mid 20th century diamond three-stone ring. The graduated circular-cut diamond line, to the openwork gallery and tapered band. *Estimated total diamond weight 0.90ct, I-J colour, SI1-P1 clarity. Weight 2.7gms. £600-800*

**260**

An 18ct gold tanzanite and diamond cluster ring. The oval-shape tanzanite, within a brilliant and baguette-cut diamond rectangular-shape surround, to the plain band. *Estimated total diamond weight 0.50ct. Hallmarks for London, 2008. Weight 4gms. £240-340*

**261**

A diamond line bracelet. Designed as a series of brilliant-cut fifty-three diamonds, to the push-piece clasp. *Estimated total diamond weight 3.35cts, stamped to mount, estimated J-K colour, SI clarity. Length 17.5cms. Weight 8.2gms. £1,000-1,500*

**262**

A diamond single-stone ring. The rectangular-cut diamond, weighing 4.52cts, to the tapered shoulders and plain band. *Accompanied by report number 1162649873, from The Gemmological Institute of America stating the diamond is H colour, VS1 clarity. Weight 3gms. See plate 3. £30,000-40,000*

**263**

A pair of 18ct gold tourmaline and diamond ear pendants. Each designed as a rectangular-shape green tourmaline, suspended from a brilliant-cut diamond marquise-shape panel surmount. *Estimated total diamond weight 0.20ct. Hallmarks for Birmingham. Length 3.3cms. Weight 5gms. £80-120*

**264**

A bead and diamond torsade. Comprising fourteen strands of red beads, decorated at intervals by clear rondelles, to the pavé-set diamond terminals and hook clasp. *Estimated total diamond weight 0.50ct. Length 47cms. £150-200*

**265**

A 1960s 9ct gold onyx signet ring. The oval-shape onyx panel, inset to the tapered band. *Hallmarks for Birmingham, 1963. Weight 6.2gms. £50-80*

**266**

An early 20th century 18ct gold ruby, synthetic ruby and diamond five-stone ring. The oval-shape synthetic ruby, with old-cut diamond and circular-shape ruby sides, inset to the tapered band. *Estimated total diamond weight 0.15ct. Hallmarks for Chester, 1911. Weight 3.8gms. £150-200*

**267**

An 18ct gold aquamarine and diamond dress ring. The square-shape aquamarine, with square-shape diamond panel sides, to the brilliant-cut diamond line shoulders. *Estimated total diamond weight 0.30ct. Hallmarks for London. Weight 3.4gms. £100-150*

**268**

An early 20th century seed and split pearl brooch. The seed and split pearl floral spray, to the split pearl crescent. *Length 3.9cms. Weight 5.4gms. £80-120*

**269**

An 18ct gold turquoise dress ring. Of bombé design, the circular turquoise cabochon, to the rope-twist scalloped surround and grooved band. *Maker's mark MG. Hallmarks for London, 1959. Weight 16.4gms. £260-360*







328

287

332

313

278

295

293

273

294

272

277

290



Designer & Named Pieces

270



BULGARI - a charm bracelet. The belcher-link bracelet with logo disc spacers and clasp, suspending an articulated coil charm. *Signed Bulgari. Length 18.9cms. Weight 19.7gms. See plate 5. £600-900*

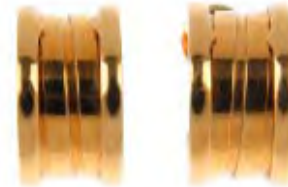
271

BULGARI - a diamond 'Alveare' band ring. Of flexible design, the brilliant-cut diamond panels, to the segmented band with similarly-set diamond accents. *Signed Bulgari. Estimated total diamond weight 0.65ct. Weight 17.7gms. See plate 5. £1,200-1,500*



274

BULGARI - a pair of 'B.Zero1' ear hoops. Each designed as a grooved central panel, to the Bulgari logo sides. *Signed Bulgari. Length 1.7cms. Weight 15.9gms. See plate 5. £500-700*



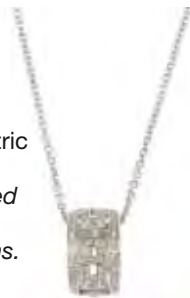
278



BULGARI - diamond 'Piramide' ring. Designed as a brilliant-cut diamond quatrefoil raised panel, within a grooved surround. *Signed Bulgari. Estimated total diamond weight 0.40cts. Weight 14.4gms. See plate 4. £900-1,400*

272

BULGARI - diamond 'Parentesi' pendant. Designed as an openwork ring, with pavé-set diamond geometric motif, suspended from a fine-link chain with bulgari motif detail. *Signed Bulgari. Estimated total diamond weight 1ct. Length of pendant 1.5cms. Length of chain 44cms. Weight 12.2gms. See plate 4. £500-800*



275

BULGARI - a pair of diamond 'B.Zero1' ear hoops. Each designed as a brilliant-cut diamond line, to the hinged half-hoop and Bulgari logo gallery. *Signed Bulgari. Estimated total diamond weight 0.50ct. Length 1.9cms. Weight 14.4gms. See plate 5. £800-1,200*



279

BULGARI - a 'Bulgari Bulgari Tondo Taurus' pendant. Of bi-colour design, the circular-shape plaque, with openwork bull head motif, suspended from black leatherette cord. *Signed Bulgari. Length of pendant 4.3cms. Length of cord 38cms. Weight 24gms. £200-300*



273



BULGARI - a pair of diamond 'Parentesi' ear pendants. Each designed as an openwork panel, suspended from a brilliant-cut diamond tapered surmount. *Signed Bulgari. Estimated total diamond weight 0.40cts. Italian marks. Length 4cms. See plate 4. £800-1,200*

276

BULGARI - a 'B.Zero1' ring. The spring coiled band, to the Bulgari logo sides. *Signed Bulgari. Ring size U. Italian marks. Weight 13.1gms. £300-400*



280

BULGARI - a 'Bulgari Bulgari Tondo Capricorn' pendant. Of bi-colour design, the circular-shape plaque with openwork zodiac motif, suspended from a black leatherette cord. *Signed Bulgari. Length of pendant 4.3cms. Length of cord 38cms. Weight 24gms. £200-300*



277

BULGARI - a 'B.Zero1' ring. The spring coiled band, to the Bulgari logo sides. *Signed Bulgari. Italian marks. ring size R 1/2. Weight 10.7gms. See plate 4. £300-500*



281

BULGARI - a 'B.Zero1' bracelet. Designed as three tri-colour articulated coil links, to the Bulgari logo disc spacers and belcher-link chain. *Signed Bulgari. Length 22.3cms. Weight 10.3gms. See plate 5. £300-400*





**282**

BULGARI - a charm bracelet. Designed as a series of three circular-shape Bulgari logo charms, each with openwork motif, suspended from a belcher-link chain with logo disc spacers. *Signed Bulgari. Length 19.5cms. Weight 26.6gms. See plate 5. £1,500-2,000*

**291**

CHAUMET - a tanzanite ring. The oval-shape tanzanite, with side bars mount, to the tapered band with 'Chaumet' logo side. *Signed and numbered Chaumet, 694960. French assay marks. Weight 10.2gms. £300-400*

**283**

CARTIER - a 'Trinity' ring. Designed as three tri-colour interwoven bands. *Signed and numbered Cartier, MU636 S. Weight 12.9gms. With maker's case. £300-400*

**287**

CARTIER - a diamond single-stone ring. The brilliant-cut diamond, weighing 0.34ct, to the tapered shoulders and plain band. *Signed Cartier. Accompanied by mini report number 1136462502, dated 13th June 2011, from the Gemological Institute of America, stating that the diamond is E colour, VVS1 clarity. Weight 2.7gms. With maker's case and papers. See plate 4. £800-1,200*

**292**

CHANEL - a pair of imitation pearl ear clips. Each designed as an imitation mabé-pearl, to the textured surround with grooved panel accents. *Maker's marks for Chanel. Diameter 2.8cms. £100-150*

**284**

CARTIER - an 18ct gold 'love' ring. Decorated with a series of screw-head motifs. *Signed and numbered Cartier F79172. Convention marks for Switzerland. Weight 8.1gms. See plate 5. £200-300*

**288**

CARTIER - a 'C de Cartier' dress ring. The plain band, with stylised 'C' terminals. *Signed and numbered Cartier, J85682. Ring size K 1/2. Weight 11.5gms. £400-600*

**293**

CHOPARD - an 18ct gold diamond 'Happy Diamond' pendant. Of square-shape outline, the free-moving brilliant-cut diamond collet, within a brilliant-cut diamond surround, suspended from a fine belcher-link chain. *Signed Chopard. Estimated total diamond weight 0.50cts. Convention marks for Switzerland. Length of pendant 1.5cms. Length of chain See plate 4. £600-900*

**285**

CARTIER - an 18ct gold 'Love' bangle. Decorated with a series of screw-head motifs. *Signed and numbered Cartier, CO8847. Convention marks for Switzerland. Inner diameter 6cms. Weight 33.6gms. With maker's case. See plate 5. £1,800-2,400*

**289**

CARTIER - a 'C de Cartier' diamond ring. The polished band, with textured recess and brilliant-cut diamond stylised 'C' terminals. *Signed and numbered Cartier, NB8642. Weight 7gms. £600-800*

**294**

CHOPARD - a diamond 'Happy Spirit' pendant. Of circular outline, containing seven free-moving concentric circles, one with brilliant-cut diamond collet, suspended from a fancy-link double chain. *Signed Chopard. Diameter of pendant 4.2cms. Length of chain 57cms. Weight 46.3gms. See plate 4. £1,200-1,800*

**286**

CARTIER - a band ring. *Signed and numbered Cartier, 695891. French assay marks. Weight 9.7gms. £200-300*

**290**

CARTIER - a rock crystal, enamel and diamond brooch. Designed as an octagonal rock crystal plaque, with geometric engraving, to the white enamel surround and diamond decoration. *Signed Cartier. Length 2.5cms. Weight 6.6gms. See plate 4. £300-400*



**295**

CHOPARD - a diamond 'Happy Snowflakes' pendant. Of circular outline, the free-moving brilliant-cut diamond snowflake, within a brilliant-cut diamond surround, suspended from a fancy-link double chain. *Signed Chopard. Estimated total diamond weight 1ct. Diameter of pendant 1.6cms. Length of chain 42cms. See plate 4. £700-900*

**299** 

DE BEERS - a platinum diamond single-stone 'Forever' ring. The brilliant-cut diamond, to the plain band. *Signed and numbered De Beers A72751. Diamond weight 1.10ct, H colour, SI2 clarity. Hallmarks for Sheffield. Weight 3.2gms. With maker's case and papers. £3,000-4,000*

**303** 

DE BEERS - an 18ct gold diamond 'Enchanted Lotus' pendant. Of openwork design, the brilliant-cut diamond stylised lotus, suspended from a belcher-link chain. *Signed and numbered DB B47409. Estimated total diamond weight 0.40ct. Hallmarks for London. Length of pendant 1.8cms. Length of chain 41.5cms. With maker's case and papers. £400-600*

**296**

CHOPARD - a 'Happy Diamonds' pendant. The free moving brilliant-cut diamond collet, within a pear-shape surround, suspended from a belcher-link chain. *Signed Chopard. Length of pendant 1.7cms. Length of chain 42.5cms. Weight 11.5gms. See plate 5. £1,600-2,200*

**297**

DAMIANI - a diamond band ring. Designed as a plain band, with brilliant-cut diamond gallery. *Estimated total diamond weight 0.20ct. Weight 6.1gms. £150-200*

**300** 

DE BEERS - a pair of 18ct gold diamond ear pendants. Each designed as a graduated brilliant-cut diamond line. *Signed and numbered DB B39540. Estimated total diamond weight 0.65ct. Hallmarks for London. Length 2.2cms. Weight 3.5gms. With maker's case and papers. £500-700*

**304**

DE VROOMEN - a 1970s 18ct gold enamel dress ring. The textured band, with raised undulating line detail and red enamel central panel. *Maker's marks for De Vroomen. Hallmarks for London, 1976. Ring size M. Weight 8.2gms. See plate 5. £150-200*

**298** 

DAVID MORRIS - a pair of ruby and diamond ear clips. Each designed as two alternating oval-shape ruby and diamond curved lines. *CEstimated total ruby weight 10cts. Estimated total diamond weight 7cts. Length 3cms. Weight 19.1gms. See plate 5. £20,000-30,000*

**301**

DE BEERS - a platinum diamond half-circle eternity ring. Designed as a series of eight brilliant-cut diamonds, to the plain half-band. *Signed and numbered De Beers B31480. Estimated total diamond weight 0.65ct. Hallmarks for London. Weight 5.4gms. £500-700*

**305** 

DE VROOMEN - a pair of 18ct gold mabé-pearl and enamel earrings. Each designed as a mabé-pearl, within a grey enamel surround. *Maker's marks for De Vroomen. Hallmarks for London, 1994. Diameter 3.3cms. Weight 57.6gms. With maker's case. See plate 5. £1,200-1,800*

**302**

DE BEERS - a platinum diamond bracelet. Designed as a brilliant-cut diamond line, to the partially concealed clasp. *Estimated total diamond weight 3.30cts. Hallmarks for Birmingham. Length 17.5cms. Weight 13.8gms. £1,800-2,400*





**306**

GARRARD & CO. - a 'Knightrider' diamond sword pendant. The pavé-set diamond blade and crossbar, to the spiral grip and brilliant-cut diamond pommel, suspended from a trefoil surmount and 18ct gold trace-link chain. *Maker's mark for Garrard&Co. Estimated total diamond weight 0.90ct. Chain with hallmarks for Birmingham, 2008. Length of pendant 5.6cms. Length of chain 61cms. Weight 27.8gms. £700-900*

**311**

GUCCI - a split cross pendant and chain. Designed as two asymmetric panels, forming a cross, suspended from a trace-link chain. *Signed Gucci. Italian marks. Length of pendant 2.9cms. Length of chain 51cms. Weight 8.9gms. £150-200*

**315**

LALAOUNIS - a heart necklace. Of bi-colour design, the series of bi-colour heart-shape links, to the piece piece clasp. *With maker's mark. Length 40cms. Weight 42cms. With maker's case. £400-600*

**307**

GRIMA - a diamond twist ring. The brilliant and single-cut diamond scroll, to the plain band. *Signed Grima. Estimated total diamond weight 0.50ct. Weight 4.1gms. £300-400*

**312**

JARRETIERE - a bi-colour expandable diamond bracelet. Designed as a series of brilliant-cut diamond collets, with grooved bead spacers, to the expandable inner core. *Estimated total diamond weight 0.60ct. Approximate inner diameter 5.5mms. With maker's case. £400-600*

**316**

LINKS OF LONDON - an 18ct gold sapphire, ruby and emerald necklace. The fine-link chain suspending to the front a sapphire, emerald and ruby bead fringe. *Maker's mark for Links of London. Hallmarks for London. Length 42cms. Weight 3.1gms. Case stamped Links of London. £80-120*

**308**

GUCCI - an 18ct gold enamel heart pendant. The blue enamel scrolling heart, within a plain surround. *Stamped Gucci. Hallmarks for London, 1975. Length 3.6cms. Weight 7.3gms. £100-150*

**313**

KUTCHINSKY - a diamond ring. The rectangular-shape diamond collet, to the baguette-cut diamond three-row shoulders. *Signed Kutchinsky. Estimated total diamond weight 2cts. Weight 9.5gms. Case stamped Kutchinsky. See plate 4. £1,800-2,400*

**317**

LINKS OF LONDON - an 18ct gold diamond '20/20' band ring. The rotating band, with single-cut diamond line accent, to the plain sides with faceted accents. *One Swarovski paste replacement. Maker's marks for Links of London. Hallmarks for Edinburgh, 2010. Ring size M. Weight 9.6gms. £180-260*

**309**

GUCCI - an 18ct gold cross pendant. The plain cross, suspended from a Gucci logo tag, to the stylised belcher-link chain. *Signed Gucci. Hallmarks for Birmingham. Length of pendant 2.9cms. Length of necklace 58.5cms. Weight 6.5gms. See plate 5. £120-180*

**318**

LINKS OF LONDON - an 18ct gold ring. The domed panel, with openwork, scattered circular-shape interior accents. *Maker's marks for Links of London. Hallmarks for Edinburgh, 2007. Weight 18.6gms. £300-400*

**310**

GUCCI - an 'Icon' band ring. Designed as a wide band, with double 'G' motifs, to the connecting dot lattice. *Signed Gucci. Made in Italy. Weight 10.2gms. £200-300*

**314**

LALAOUNIS - A dress ring. Of openwork design, the stylised Greek-key terminals and sides with textured motif. *Maker's mark for Ilias Lalaounis. Length of ring head 3cms. Weight 8gms. £300-400*

**319**

LORIS ABATE - a lapis lazuli and diamond elephant ring. The lapis lazuli panel, carved to depict an elephant, with brilliant-cut diamond eye detail, to the bifurcated band. *Signed Loris Abate. Weight 12.8gms. £280-380*



**320** 

MURRLE BENNETT & CO. - an early 20th century 15ct gold turquoise matrix brooch. The turquoise matrix cabochon suspended from a similarly-set openwork abstract panel. *Maker's mark for Murrle Bennet & Co. Length 4.2cms. Weight 3.3gms. £70-100*

**324**

PALOMA PICASSO for TIFFANY & CO. - a brooch. Designed as a scrolling ostrich feather. *Maker's marks for Tiffany & Co. Facsimile signature for Paloma Picasso. Length 5cms. Weight 11.7gms. £300-400*

**329**

TIFFANY & CO. - a silver 'Atlas' ring. The wide band, with two grooved channels. *Maker's marks for Tiffany & Co. Hallmarks for London, 1999. Width 0.9cm. Weight 11.3gms. £50-80*

**321**

MIKIMOTO - a platinum cultured pearl and diamond pendant. The dark grey cultured pearl measuring approximately 11.4 by 10.7mms, to the heart-shape diamond surmount, suspended from a fancy-link chain. *Maker's mark for Mikimoto. Estimated diamond weight 0.30ct, H-I colour, VS clarity. Hallmarks for London. Length of pendant 2.4cms. Length of chain 46cms. Weight 7.7gms. £260-360*

**325**

TIFFANY & CO. - a necklace. Designed as a heart-shape charm, suspended from a belcher-link chain. *Charm signed Tiffany & Co. Hallmarks for London. Length of charm 3.2cms. Length of chain 39.9cms. Weight 51.3gms. See plate 5. £1,500-2,000*

**330**

TIFFANY & CO. - a pair of 18ct gold ear hoops. Each designed as a plain hoop, with geometric profile. *Signed Tiffany & Co. Hallmarks for London, 2005. Length 2.6cms. Weight 14.7gms. With maker's pouch. £380-480*

**322** 

POMELLATO - a rose quartz single-stone ring. The top faceted rose-quartz, to the tapered band. *Signed Pomellato. Weight 15.4gms. With maker's case and papers. £300-400*

**326**

TIFFANY & CO. - a pair of 'Signature' ear hoops. Each hoop with cross detail. *Signed Tiffany & Co. Length 2cms. Weight 8.8gms. £240-340*

**331**

ELSA PERETTI for TIFFANY & CO. - an 'open heart' ring, by Elsa Peretti for Tiffany & Co. The stylised heart, to the undulating band and tapered terminal. *Signed Tiffany & Co. Facsimile signature for Elsa Peretti. Weight 6.9gms. £300-400*

**323** 

BEN ROSENFELD - an 18ct gold diamond and ruby poodle brooch. Designed as a sitting poodle, with single-cut diamond coat and collar, to the circular-shape ruby eye accents. *Maker's marks for Ben Rosenfeld. Estimated total diamond weight 0.40ct. Hallmarks for London, 1973. Length 3.1cms. Weight 13.7gms. See plate 5. £280-380*

**327**

TIFFANY & CO. - an 18ct gold ring. Designed as an undulating ribbon, with raised edges and crossed terminals. *Maker's marks for Tiffany & Co. Import marks for London, 1989. Weight 5.9gms. £260-360*

**332** 

VERSACE - an 18ct gold topaz and diamond dress ring. The circular blue topaz, within a square-shape plaque, pavé-set with single-cut diamonds. *Signed Versace. Estimated total diamond weight 0.30cts. Hallmarks for Birmingham. Italian marks. Weight 26gms. Case stamped Versace. See plate 4. £600-800*

**328** 

TIFFANY & CO. - a diamond half-circle eternity ring. The brilliant-cut diamonds, within a channel setting, to the plain half band. *Signed Tiffany & Co. Estimated total diamond weight 0.35cts. Weight 3.5gms. Box stamped Tiffany & Co. See plate 4. £380-480*

**333**

ZOLOTAS - a pair of ear clips. Each designed as a stylised animal head with scroll embossed collar, to the coiled surmount. *Signed Zolotas. Length 3.2cms. Weight 30.4gms. See plate 5. £800-1,200*





285



333



309



325



305



298



323



270



275



274



271



284



304

296



282

281



Antique & Modern

**334**

A late 19th century 18ct gold and seed pearl crescent brooch. Designed as two rows of graduated split pearls. *Diameter 2.6cms. Weight 6gms. See plate 6. £150-200*



**335**

A multi-gem cluster pendant. Designed as a panel of vari-shape garnet, with circular-shape emerald detail and freshwater pearl accents. *Length 5.3cms. Weight 9.9gms. £120-180*



**336**

An aquamarine and diamond cluster pendant. The rectangular-shape aquamarine, within a brilliant-cut diamond surround, to the brilliant-cut diamond line surmount, suspended from a trace-link chain. *Estimated total diamond weight 0.50ct. Length of pendant 1.9cms. Length of chain 40.5cms. Weight 3.3gms. £500-700*



**337**



An early 20th century 15ct gold diamond bangle. The rhombus-shape central panel, set with an old-cut diamond, to the double bar sides with bead accents and plain hinged bangle. *Inner diameter 5.6cms. Weight 9.9gms. £120-180*

**338**

An 18ct gold diamond single-stone ring. The brilliant-cut diamond, atop a baguette-cut diamond line, to the brilliant-cut diamond collet side detail. *Total diamond weight 0.50ct, stamped to band. Hallmarks for London. Weight 5.2gms. £300-400*



**339**



An early 20th century desk or boudoir timepiece. The white Arabic dial with blue numerals and gilt dot minute markers, within a ribbon-tied cast laurel bezel, to the Louis XV-style pink guilloche enamel case with tri-colour foliate swag mounts and reeded bun feet. *Spurious Faberge marks. Height 13.2cms. £6,000-8,000*

**340**



A zircon brooch. Designed as a line of graduated circular-shape blue zircons. *Length 6.3cms. Weight 9.8gms. £80-120*

**341** ✕



A gold diamond and enamel fob watch. The spherical lavender enamel watch fob, with rose-cut diamond floral and engraved detail, suspended from a similar enamel and gem-set scrolling dolphin surmount entwined with crossed boat hook and oar motif. *Spurious Faberge marks. Diameter of watch face 1.1cms. Length 6cms. Weight 29.1gms. £800-1,200*

**342**



An early 20th century gold amethyst and split pearl brooch and a stickpin. The brooch designed as a circular-shape amethyst and split pearl cluster, to the knife-edge bar with split pearl spacers and terminals, the stickpin designed as a purple gem accent knot. *Length of brooch 4cms. Weight 2.1gms. £40-60*

**343**

An 18ct gold diamond floral cluster ring. The brilliant-cut diamond collet, within a similarly-cut diamond scalloped surround, to the square and brilliant-cut diamond shoulders. *Estimated total diamond weight 1.40cts. Hallmarks for London, 1993. Weight 4gms. £480-680*



**344**

A pair of garnet and diamond ear pendants. Each designed as a pear-shape garnet and rose-cut diamond cluster drop, suspended from a rose-cut diamond foliate link and similarly-set circular-shape cluster surmount. *Estimated total diamond weight 1.60cts. Length 5cms. Weight 9.5gms. £400-600*



**345**

An andesine single-stone ring. The oval-shape andesine, within a beaded geometric surmount, to the plain band. *Approximate andesine dimensions: 10 by 8 by 5.7mms. Weight 10.6gms. £220-320*



**346**

A late 19th century gold diamond and split pearl crescent brooch. The graduated old-cut diamond and split pearl crescent brooch with split pearl star accent. *Estimated total diamond weight 0.45ct. Diameter 3cms. Weight 8.7gms. See plate 6. £300-400*





**347**

An emerald and diamond half-circle eternity ring. The alternating circular-shape emerald and brilliant-cut diamond line, inset to the plain band, with milled edge. *Estimated total diamond weight 0.30ct. Weight 5.6gms. £240-340*

**348**

A mid 20th century platinum diamond full-circle eternity ring. Designed as a series of old-cut diamonds, to the engraved gallery. *Estimated total diamond 0.90ct. Ring size P. Weight 5gms. £200-300*

**349**

An 18ct gold diamond snake ring. Designed as a coiled snake, the head with rose-cut diamond eye detail. *Weight 15.2gms. £280-380*

**350**

A pair of 18ct gold brilliant-cut diamond single-stone ear studs. *Total diamond weight 2.02cts, estimated J-K colour, VVS-VS clarity. Hallmarks for Sheffield. See plate 6. £4,000-6,000*

**351** 

A Colombian emerald and diamond cluster ring. The cushion-cut emerald, weighing 3.58cts, to the old-cut diamond surround and grooved band. *Accompanied by report number 20019987, dated 17th October, 2014, from AnchorCert, stating that the emerald is of Colombia origin, with insignificant enhancement. Estimated total diamond weight 2cts, H-I colour, SI clarity. Weight 6gms. See plate 6. £9,000-14,000*

**352**

A late 19th century diamond and cultured pearl stick pin. The cultured pearl and rose-cut diamond articulated cluster, within a rose-cut diamond surround. *One diamond deficient. Length 7cms. Weight 3.4gms. £90-140*

**353**

A pair of aquamarine and diamond ear pendants. Each designed as a brilliant-cut diamond line, suspending an aquamarine briolette. *Estimated total diamond weight 0.85ct. Hallmarks for London. Length 3.9cms. Weight 4.5gms. £150-200*

**354**

An onyx cameo ring. The oval onyx cameo, depicting a bearded gentleman, to the scroll engraved shoulders. *Weight 6.7gms. £200-300*

**355**

A late 19th century silver and 18ct gold diamond dress ring. Of marquise-shape outline, the old-cut diamond panel to the replacement band. *Estimated total diamond weight 1.60cts. Weight 4gms. See plate 6. £400-600*

**356**

An opal, paste, diamond and green-gem set brooch. Of circular outline, the circular-shape green paste and opal cabochon floral cluster, within a diamond point surround, to the green-gem and paste detail. *Length 2.5cms. Weight 4.3gms. £60-90*

**357** 

An early 20th century platinum and 9ct gold ruby and diamond bar brooch. The graduated oval-shape rubies, interspaced by diamond point double spacers, to the plain band. *One synthetic ruby replacement. Length 5.7cms. Weight 3.1gms. £100-150*

**358**

A 9ct gold citrine and cultured pearl necklace, with 9ct gold citrine ear studs. The graduated oval-shape citrine and cultured pearl spacer necklace to the trace-link back chain, together with similarly-set ear studs. *Hallmarks for Birmingham and Edinburgh, 1964. Lengths 43cms and 1.1cms. Weight 22.2gms. £400-600*

**359**

A gold and silver blister and seed pearl, emerald and diamond pendant. The blister pearl, measuring approximately 19 by 10 by 6mms, suspended from a rectangular-shape emerald and old-cut diamond scrolling surmount, to the cultured pearl trefoil. *Estimated total diamond weight 0.65cts. Length 4.5cms. Weight 8gms. See plate 6. £1,200-1,800*



**360**

A foil-back emerald and diamond cluster ring. The rectangular-shape foil-back emerald, within a vari-shape rose-cut diamond surround, to the scrolling band. *Approximate emerald dimensions: 6.5 by 5.3mms. Weight 3gms. See plate 6. £180-260*

**361**

A mid 20th century platinum diamond five-stone ring. Designed as a series of graduated circular-cut diamonds, to the tapered shoulders. *Estimated total diamond weight 1.55cts, H-J colour, SI1-P1 clarity. Weight 3.7gms. £660-860*

**362**

A diamond bow pendant. The pear-shape rose-cut diamond collet, suspended from a rose-cut diamond line, to the similarly-cut diamond openwork bow surmount and trace-link chain. *Length of pendant 5cms. Length of chain 48cms. Total weight 8.2gms. £200-300*

**363**

A mid 20th century diamond brooch. Of lozenge-shape outline, the pierced panel set throughout with old-cut diamonds. *Estimated total diamond weight 2cts. Length 4cms. Weight 5.4gms. See plate 6. £600-900*

**364**

An 18ct gold diamond single-stone ring. The brilliant-cut diamond, weighing 6.04cts, to the tapered band. *Accompanied by report number 20019982, dated 14th October 2014, from AnchorCert stating the diamond is L colour and SI1 clarity. Hallmarks for Sheffield, 2004. Weight 6gms. See plate 6. £18,000-25,000*

**365**

A pair of mabé-pearl and diamond earrings. Each designed as a mabé-pearl, to the panel surround highlighted with three brilliant-cut diamonds. *With clip fittings. Estimated total diamond weight 0.25ct. Length 2.3cms. Weight 19.1gms. £260-360*

**366**

A diamond crossover ring. The graduated brilliant-cut diamond line, to the textured, asymmetric shoulders. *Estimated total diamond weight 0.55ct. Weight 3.6gms. £180-260*

**367**

A mid 20th century jade and pearl necklace. The carved jadeite panel, suspended from a marquise-shape link and cultured pearl, to the belcher-link chain. *Jade untested. Length of jade 4.2cms. Length of chain 42cms. Weight 7.7gms. See plate 6. £800-1,200*

**368**

A mid 20th century jade and diamond panel ring. Of geometric design, the oval jadeite cabochon, within a single-cut diamond rectangular panel, to the plain band. *Jade untested. Estimated total diamond weight 0.30ct. Length of panel 2cms. Weight 3.4gms. £180-260*

**369**

A diamond panel ring. The two brilliant-cut diamonds, within a brilliant-cut diamond rectangular-shape surround, to the plain band. *Estimated total diamond weight 0.70ct. Weight 3.6gms. £600-800*

**370**

A pair of gem-set ear pendants. Each designed as a circular-shape garnet, citrine and peridot line, suspending a heart-shape garnet drop. *Length 5.6cms. Weight 9.6gms. £100-150*

**371**

A diamond and emerald dress ring. The square-shape diamond, with calibré-cut emeralds sides, to the pavé-set diamond pieced gallery and sides. *Principal diamond estimated weight 0.80cts, E-F colour, VS2-SI1 clarity. Weight 5.2gms. See plate 6. £3,000-4,000*





**372**

A platinum and 18ct gold diamond single-stone ring. The old-cut diamond, weighing 1.56cts, to the tapered band. *Accompanied by report number 20019797 dated 13th October 2014 from AnchorCert stating the diamond is K colour, VS1 clarity. Weight 3gms. See plate 6. £2,000-2,500*

**373**

A set of diamond accent jewellery. The cuff designed as a grooved tri-colour panel with single-cut diamond horseshoe terminals, with similarly-designed ear clips. *Estimated total diamond weight 0.20ct. Inner diameter of cuff 5.8cms. Length of ear clips 1.6cms. Weight 22gms. £400-600*

**374**

A 1970s tribal mask pendant. Of concave oval outline, the textured mask with stylised facial features, suspended from a period trace-link chain. *Length of pendant 5.1cms. Length of chain 62cms. Weight 37.5gms. £600-800*

**375**

An emerald and diamond bracelet. The rectangular-shape emerald, to the gradated circular-cut diamond sides and single-cut diamond two-row bracelet. *Emerald weight 5.10cts. Estimated total diamond weight 3.25cts. Length 17cms. Weight 19.6gms. See plate 6. £4,000-6,000*

**376**

A malachite and gem-set negligee pendant. Designed as a rectangular-shape malachite plaque, suspending two pear-shape malachite and circular green-yellow gem pendants, to the similarly-set sides and rope-twist neck chain. *Length 41cms. Weight 10.9gms. £240-340*

**377** ✕

A jade and cultured pearl spray brooch. The marquise-shape jadeite panels, with cultured pearl accents. *Jade untested. Length 6cms. Weight 6.8gms. See plate 6. £100-150*

**378**

A pair of pearl and diamond cluster ear studs. Each designed as a pearl, within a rose-cut diamond scalloped surround. *Pearls untested. Diameter 1cm. Weight 4.9gms. £700-900*

**379**

A platinum diamond ring. The square-shape diamond, to the graduated square-shape diamond sides. *Estimated total diamond weight 0.70ct, H-I colour, VS2-SI1 clarity. Hallmarks for Birmingham. Weight 6.8gms. £500-700*

**\*380**

An emerald and diamond cluster ring. The oval-shape emerald, within a brilliant-cut diamond floral surround. *Approximate emerald dimensions: 12.6 by 9.6 by 6.7mms. Weight 8.2gms. See plate 6. £1,800-2,400*

**381**

A mabé-pearl and diamond dress ring. The blue mabé-pearl, with brilliant-cut diamond and diamond point foliate accent, to the bifurcated shoulders and grooved band. *Weight 9.7gms. £150-200*

**382**

A pair of diamond ear clips. Of bi-colour design, each comprising a brilliant-cut diamond, to the bi-colour single-cut diamond accent cross and foliate lattice surround. *Estimated total diamond weight 0.45ct, I-J colour, SI2-P1 clarity. Length 2.2cms. Weight 25.8gms. £500-700*

**383**

A diamond five-stone ring. Designed as a graduated rectangular-shape diamond line, each within a shared collet setting, to the plain band. *Total diamond weight 2cts, engraved to band, estimated H-J colour, VS2-SI1 clarity. Weight 4.8gms. £2,200-2,800*

**384**

A sapphire and diamond pendant. Of openwork design, the oval-shape pink sapphire, within a rose-cut diamond surround, to the circular-shape pink, green sapphire and rose-cut diamond border. *Length 3cms. Weight 4.2gms. £70-100*

**388**

An early 20th century 18ct gold opal and demantoid garnet necklace. Of scroll design, designed as a series of three oval opal panels, with circular-shape demantoid garnets, to the later added back-chain. *Length of pendant 6cms. Length of chain 40cms. Weight 10.6gms. See plate 6. £1,200-1,800*

**392** ✕

A star ruby and diamond three-stone ring. The circular-shape six-ray star ruby collet, with brilliant-cut diamond collet sides, to the tapered shoulders and plain band. *Weight 4.3gms. £150-200*

**385**

A pair of aquamarine and diamond earrings. Each designed as an oval-shape aquamarine, suspended from a brilliant-cut diamond surmount. *Estimated total diamond weight 0.40ct, I-J colour, P1 clarity. Length 1.5cms. Weight 3.9gms. £700-900*

**393** ✦

A diamond single-stone ring. The rectangular-cut diamond, weighing 1.05cts, to the brilliant-cut diamond shoulders and plain band. *Accompanied by report number 20014451, dated 28th January, 2014, from AnchorCert stating the diamond is D colour, VS2 clarity. Weight 3.6gms. £3,000-4,000*

**386** ✕

A ruby, diamond and seed pearl hinged bangle. The diamond point eight-rayed star and split pearl crescent, with circular and oval-shape ruby scrolling sides, to the late Victorian 15ct gold trifurcated bangle. *Inner diameter 5.6cms. Weight 19.6gms. £380-480*

**389**

A turquoise and cultured pearl bracelet. Designed as a series of alternating cultured pearl and turquoise freeform beads, to the spring clasp. *Length 19cms. Weight 10gms. £150-200*

**394**

An early 20th century diamond, opal and demantoid garnet bar brooch. The rose-cut diamond, oval opal cabochon demantoid garnet cluster, to the old-cut diamond and circular opal cabochon terminals. *Estimated total diamond weight 0.80ct. Length 5.5cms. Weight 4.8gms. See plate 6. £280-380*

**387** ✕

An opal and ruby necklace. The front designed as a series of oval opal cabochon quatrefoil and trefoil clusters, with circular-shape ruby accents, to the belcher-link back-chain. *Length 40cms. Weight 11.5gms. £300-400*

**390**

A diamond five-stone ring. Designed as a graduated line of old-cut diamonds, within a tapered surround, to the plain band. *Estimated total diamond weight 0.80cts. Weight 4.8gms. £150-200*

**391**

A mid 20th century platinum and 18ct gold opal and diamond cluster ring. The circular opal cabochon, within an old-cut diamond surround, to the plain band. *Approximate opal dimensions: 7.8 by 7.9 by 3.2mm. Estimated total diamond weight 0.65ct. Weight 3.8gms. See plate 6. £300-400*

**395**

A gem-set necklace. Designed as a series of circular-shape vari-colour sapphire and zircon scrolling panels, to the fancy-link chain, with cultured pearl accents and swag detail. *Length 38.5cms. Weight 17.1gms. £400-600*





**396**

A tanzanite and diamond three-stone ring. The oval-shape tanzanite, with brilliant-cut diamond sides, to the tapered shoulders and plain band. *Approximate tanzanite dimensions 9 by 7 by 4.5mms. Estimated total diamond weight 0.50ct, K-L colour, P1 clarity. Weight 4.9gms. £600-800*

**397**

Two pairs of mid 20th century ear clips. Each designed as a square-shape panel, within a scrolling surmount, set with rose-quartz or amethyst respectively. *Lengths 2.5cms. Weight 18.9gms. £120-180*

**398**

A pair of cultured pearl and diamond ear pendants. Each designed as diamond point curved line, suspending a cultured pearl fringe, to the similarly-set diamond surmount. *Length 6.5cms. Weight 33.1gms. £500-700*

**399**

An 18ct gold diamond crossover ring. The old-cut diamond diagonal line, to the asymmetric sides and plain band. *Estimated total diamond weight 1.60cts, I-J colour, SI2-P1 clarity. Hallmarks for London, 1987. Weight 4.1gms. £1,600-2,200*

**400**

An emerald and diamond pendant. The pear-shape emerald, within a brilliant-cut diamond border, to the brilliant-cut diamond surmount and belcher-link chain. *Approximate emerald dimensions: 11.5 by 6.4 by 3.2mms. Estimated total diamond weight 0.65cts. Length of pendant 2.4cms. Length of chain 41cms. Weight 4.5gms. See plate 6. £1,200-1,800*

**401**

A sapphire and diamond dress ring. The calibre-cut sapphire line, to the circular-cut stylised wing motif panel. *Estimated total diamond weight 0.35ct. Weight 2.8gms. £300-400*

**402**

An assortment of three early 20th century bar brooches. To include a turquoise and old-cut diamond cluster, an old-cut diamond stylised bow and an old-cut diamond star. *Estimated total diamond weight 0.40cts. Lengths 6.2 to 4.5cms. Weight 10.1gms. £180-260*

**403**

A mid 20th century emerald and diamond jardinière brooch. The vari-shape emerald and old and rose-cut diamond floral arrangement, to the openwork basket. *Sponsor's marks for Alabaster and Wilson. Estimated total old-cut diamond weight 0.50ct. Length 3.5cms. Weight 5.3gms. See plate 6. £220-320*

**404**

An early 20th century 18ct gold diamond ring. The old-cut diamond marquise-shape panel, to the tapered shoulders and plain band. *Estimated total diamond weight 0.70ct. Weight 3.1gms. £100-150*

**\*405**

A sapphire and diamond pendant. The pear-shape sapphire and brilliant-cut diamond cluster, suspended from a brilliant-cut diamond spacer and circular-shape sapphire surmount. *Total sapphire weight 0.63ct, total diamond weight 0.19ct, each stamped to surmount. Length 1.8cms. Weight 1.4gms. £340-440*

**406**

An early 20th century 9ct gold opal and diamond pendant. The oval opal cabochon, suspended from a knife-edge bar, to the old-cut diamond collet surmount and bi-colour fancy-link chain. *Length of pendant 4cms. Length of chain 40cms. Weight 3.5gms. £240-340*

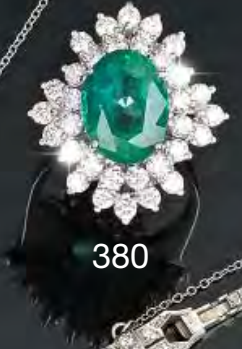
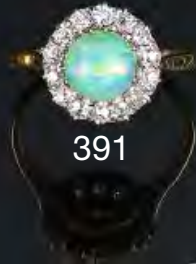
**407**

An opal and diamond cluster pendant. The oval opal cabochon, within a brilliant-cut diamond surround, to the graduated similarly-cut diamond collet surmount and trace-link chain. *Opal weight 3.12ct. Total diamond weight 0.88ct. Length of pendant 3.1cms. Length of chain 44.5cms. Weight 6.4gms. See plate 6. £1,500-2,000*





Plate 6





**408**

An Edwardian diamond and enamel brooch. Of circular-shape outline, the cultured pearl, within a violet, white and pink guilloché enamel panel with rose-cut diamond border. *Estimated total diamond weight 0.50ct. Diameter 2.8cms. Weight 9.7gms. See plate 7. £300-400*

**409**

An early 20th century 15ct gold aquamarine and split pearl wreath brooch. Set throughout with alternating circular-shape aquamarine and split pearls. *Diameter 2.2cms. Weight 3.2gms. £90-140*

**410**

A sapphire and diamond five-stone ring. The alternating brilliant-cut diamond and circular-shape sapphire line, to the plain band. *Estimated total diamond weight 0.40ct. Weight 3.8gms. £180-260*

**411**

A pair of sapphire and diamond ear pendants. Each designed as an old-cut diamond, to the openwork geometric panel with rose-cut diamond accents and calibré-cut sapphire line detail, suspended from a similarly-set link and surmount. *Estimated total diamond weight 0.10ct. Length 5cms. Weight 4.4gms. £400-600*

**412**

A sapphire and diamond cluster ring. The oval-shape sapphire, within an old-cut diamond surround. *Approximate sapphire dimensions 14 by 9.92 by 6.52mms. Estimated total diamond weight 3cts. Weight 11.2gms. See plate 7. £3,500-4,500*

**413**

A pair of mabé-pearl ear clips. Each designed as a mabé-pearl, within a textured panel surround. *Diameter 2.2cms. Weight 19.2gms. £240-340*

**414**

A mid 20th century sapphire and diamond brooch. Of geometric design, the single-cut diamond square-shape panel, with calibré-cut sapphire and single-cut diamond pierced sides. *Estimated total diamond weight 0.60ct. Length 3.6cms. Weight 5gms. See plate 7. £200-300*

**415**

An opal bead necklace. Composed of ninety-eight graduated opal beads, measuring 8 by 6mms, to the cultured pearl bow clasp. *Length 41cms. Weight 21gms. See plate 7. £500-700*

**416**

A mid 19th century 9ct gold, enamel and gem-set sentimental pendant. The diamond point and split pearl cluster, to the blue enamel quatrefoil surround, with scrolling foliate and split pearl accents and blue enamel surmount. *Length 3cms. Weight 4gms. £200-300*

**417**

An 18ct gold diamond floral cluster ring. The brilliant-cut diamond floral cluster, to the plain band. *Total diamond weight 1ct, stamped to band. Hallmarks for Sheffield. Weight 4.3gms. £480-680*

**418**

A sapphire and diamond cluster ring. The rectangular-shape sapphire, within a brilliant-cut diamond surround, to the bifurcated shoulders and plain band. *Estimated total diamond weight 1ct. Weight 5.5gms. £280-380*

**419**

A sapphire and diamond dress ring. The oval-shape sapphire, with graduated fancy-shape sapphire channel-set sides, to the brilliant-cut diamond border and tapered band. *Total sapphire weight 1.67cts. Total diamond weight 0.45ct. Weight 5.8gms. £1,700-2,000*



**420**

An early 20th century 18ct gold sapphire and diamond ring. Designed as three graduated circular-shape sapphires, with old-cut diamond spacers, to the openwork gallery and plain band. *Hallmarks for Chester, 1912. Weight 2.6gms. £100-150*

**424**

A late 19th century gold aquamarine and diamond heart pendant. The heart-shape aquamarine, within a rose-cut diamond border. *Estimated total diamond weight 0.50ct. Length 1.5cms. Weight 3.4gms. See plate 7. £400-600*

**429**

A sapphire and diamond novelty brooch. Designed as a tropical bird on a perch, set throughout with vari-size circular-shape sapphire, tapered baguette-cut pink sapphire and vari-cut diamonds. *Estimated total diamond weight 2.50cts. Length 7.5cms. Weight 17.1gms. £1,400-2,000*

**421**

A sapphire and diamond cluster panel ring. The square-shape sapphire channel-set line, within a brilliant-cut diamond scalloped surround, to the tapered shoulders and plain band. *Estimated total diamond weight 0.30ct. Weight 2.9gms. £400-600*

**425**

An 18ct gold opal and diamond ring. The oval opal cabochon, to the single-cut diamond trefoil sides and slightly tapered band. *Weight 3.3gms. £60-90*

**422**

An aquamarine and diamond pendant. The rectangular-shape aquamarine, to the grooved bar with brilliant-cut diamond accent. *Estimated diamond weight 0.25ct, H-I colour, SI clarity. Length 4.7cms. Weight 7.6gms. £240-340*

**426**

An 18ct gold sapphire and diamond ring. The oval-shape sapphire, to the old-cut diamond double sides. *Estimated total diamond weight 0.60ct. Hallmarks for Birmingham. Weight 3.9gms. See plate 7. £200-300*

**430**

An early 20th century 18ct gold sapphire and diamond cluster ring. The oval sapphire cabochon, within an old-cut diamond and calibre-cut sapphire border, to the plain band. *Ten calibre-cut sapphires deficient. Approximate principal sapphire dimensions 9 by 6.8 by 6.7mms. Estimated total diamond weight 0.50ct. Weight 5gms. £300-400*

**423**

A pair of early 20th century pearl and diamond ear pendants. Each designed as a pearl drop, with rose-cut diamond cap, suspended from an old-cut diamond and pearl surmount. *Pearls untested. Principal diamonds estimated total weight 0.10ct. Length 3.5cms. Weight 5gms. £1,000-1,500*

**427**

A star sapphire single-stone ring. The oval star sapphire cabochon, to the tapered curved shoulders. *Weight 11.6gms. £180-260*

**431**

An 18ct gold diamond full-circle eternity ring. The brilliant-cut diamond scattered line, inset to the undulating edge band. *Estimated total diamond weight 0.60ct. Hallmarks for Sheffield. Ring size R. Weight 6.5gms. £150-200*

**428**

A sapphire and diamond salamander brooch. The circular-shape sapphire graduated body with single-cut diamond sides and feet. *Estimated total diamond weight 0.50ct. Length 5cms. Weight 10gms. See plate 7. £700-900*

**432**

A peridot and diamond dress ring. The rectangular-shape peridot, to the graduated brilliant-cut diamond panel shoulders. *Estimated total diamond weight 0.90ct. Weight 10.5gms. £240-340*





**433**

A diamond bow brooch. The brilliant-cut diamond scrolling ribbon, gathered by a baguette-cut diamond line. *Estimated total diamond weight 3.50cts. Length 4.5cms. Weight 9.5gms. See plate 7. £800-1,200*

**437**

An 18ct gold tanzanite and diamond ring. The oval-shape tanzanite, within a collet mount, to the graduated baguette-cut diamond line sides and tapered band. *Estimated total diamond weight 0.55ct. Hallmarks for London, 2001. Weight 8.2gms. £360-460*

**438**

A 9ct gold citrine five-stone ring. The graduated oval-shape citrine line, to the bifurcated shoulders and plain band. *Hallmarks for Birmingham. Weight 2.7gms. £60-90*

**441**

A mid 20th century sapphire, cultured pearl and diamond floral brooch. Designed as a flower, the cultured pearl and oval-shape sapphire and old-cut diamond cluster, to the old-cut diamond petals with calibré-cut sapphire line and cushion-shape sapphire accent. *Estimated total diamond weight 3.60cts. Length 4.5cms. Weight 18.3gms. See plate 7. £1,200-1,800*

**434**

An amethyst fringe necklace. The front designed as a series of nine graduated pear-shape amethyst drops, to the belcher-link chain. *Length 39cms. Weight 11.8gms. £400-600*

**439**

A pair of diamond earrings. Each designed as a baguette-cut diamond figure of eight. *Estimated total diamond weight 0.40cts. Length 1.8cms. Weight 11.1gms. £300-400*

**442**

A sapphire single-stone ring. The rectangular-shape yellow sapphire, to the tapered band. *Weight 3.3gms. £150-200*

**435**

A pair of diamond cross earrings. Of bi-colour design, the brilliant-cut diamond cross-shape panel, to the polished surround. *Estimated total diamond weight 0.20ct. Length 1.7cms. Weight 21.5gms. £340-440*

**440** ✕

A late 19th century gold tortoiseshell padlock. The pear-shape tortoiseshell panel, with openwork scrolling surmount and padlock detail. *Length 5.2cms. Weight 9.7gms. £200-300*

**443**

An 18ct gold diamond cross pendant. Designed as a cross pavé-set throughout with brilliant-cut diamond. *Estimated total diamond weight 2.25ct. Hallmarks for 2011. Length 3.1cms. Weight 4.4cms. £700-900*

**\* 436**

A diamond bracelet. Designed as a series of pavé-set diamond tapered kite-shape panels, to the partially concealed clasp. *Total diamond weight 5.46cts, stamped to mount. Length 17.3cms. Weight 16.6gms. £3,000-4,000*

**444**

A cultured pearl floral dress ring. The cultured pearl, within a textured petal panel surround, to the slightly tapered band. *Maltase marks. Weight 14.6gms. £200-300*



**445**

A diamond bracelet. The brilliant-cut diamond line, to the partially concealed clasp. *Estimated total diamond weight 4.40cts. Length 16.8cms. Weight 16gms. £800-1,200*

**453**

A dress ring. Designed as four, interlinked curved bands. *Weight 5.2gms. £60-90*

**446**

A pair of cultured pearl ear pendants. Of vari-colour design, each comprising an oval-shape green blister pearl, suspended from a white blister pearl surmount, connected by a black cultured pearl and circular-cut diamond chain. *Length 6cms. £200-300*

**449**

A diamond pendant. The brilliant-cut diamond quatrefoil, suspended from a tapered surmount, to the flattened figaro-link chain. *Total diamond weight 0.25ct, stamped to mount. Length 50cms. Weight 4.8gms. £90-140*

**454**

An early 20th century 18ct gold diamond and split pearl bar brooch. The old-cut diamond and split pearl cluster, to the tapered band. *Estimated diamond weight 0.35ct, I-J colour, SI clarity. Length 6cms. Weight 3.2gms. £150-200*

**447**

An aquamarine and diamond pendant. The oval-shape aquamarine, within a brilliant-cut diamond surround, to the pavé-set diamond surmount. *Estimated total diamond weight 0.50cts. Length 3.5cms. Weight 8.5gms. See plate 7. £400-600*

**450**

An 18ct sapphire and diamond cluster ring. The oval-shape sapphire, within a brilliant-cut diamond surround. *Estimated total diamond weight 0.60ct. Weight 5.3gms. See plate 7. £220-320*

**455** ✕

Two early 20th century 18ct gold diamond and gem-set three-stone rings. To include an Edwardian oval-shape sapphire and single-cut diamond tapered band ring, together with a single-cut diamond and circular-shape ruby tapered band ring. *Hallmarks for Chester, 1900 and 1904. Weight 8.4gms. £150-200*

**448** 

A late 19th century silver and 9ct gold diamond pendant. The old-cut diamond within an old-cut diamond star border, to the old-cut diamond surmount, may be worn as a brooch. *Principal diamond estimated weight 0.65ct, I-J colour, SI clarity. Estimated total diamond weight if surround and border 0.50ct. Diameter 2cms. Weight 6gms. With fitted case. See plate 7. £900-1,400*

**451**

A fancy-link panel bracelet. Designed as a fancy-link openwork panel, with cannetille accents, to the partially concealed clasp. *Length 18cms. Weight 38.1gms. £700-900*

**452**

A foil-back diamond, emerald and amethyst cluster ring. The rose-cut diamond, within a square-shape emerald and amethyst surround, to the stylised band. *Weight 4gms. £600-800*

**456**

A sapphire and diamond tri-colour floral brooch. Designed as two bunches of circular-cut diamond and circular-shape sapphire clusters, to the foliate surmount and pavé-set diamond stems. *Estimated total diamond weight 0.70ct. Length 7cms. Weight 16gms. £400-600*



**457**

A tanzanite and diamond ring. The rectangular-shape tanzanite collet, within a brilliant-cut diamond scalloped surround. *Estimated total diamond weight 2cts. Weight 6.5gms. See plate 7. £1,600-2,200*

**\*461**

A diamond single-stone ring. The cushion-shape diamond, to the tapered baguette-cut diamond sides. *Principal diamond weight 2.10cts, estimated tinted colour, VS2-SI1 clarity. Weight 4gms. £3,500-4,500*

**465**

A pair of tanzanite and diamond earrings. Each designed as an oval-shape tanzanite, suspended from a brilliant-cut diamond surmount. *Estimated total diamond weight 0.50ct, H-I colour, SI2-P1 clarity. Length 1.5cms. Weight 4gms. See plate 7. £1,400-2,000*

**462**

A pair of diamond ear clips. Each designed as an old-cut diamond openwork panel, to the replacement clip fittings. *Estimated total diamond weight 0.80ct. Length 2cms. Weight 6.8gms. £400-600*

**466**

A diamond band ring. The old-cut diamond three-stone panel, later inset to the 22ct gold band ring. *Estimated total diamond weight 0.35ct. Hallmarks rubbed. Weight 3.7gms. £150-200*

**458**

A turquoise and diamond bar brooch. The circular turquoise cabochon and old-cut diamond three-stone diagonal line, to the knife-edge bar, with oval turquoise cabochon and old-cut diamond triple terminals. *Estimated total diamond weight 0.70ct. Length 6.2cms. Weight 5.1gms. £200-300*

**463** ✕

An emerald, ruby and diamond panel ring. The oval and circular-shape emeralds, within a circular-shape ruby and diamond point scrolling panel, to the grooved shoulders and plain band. *Weight 4.7gms. £180-260*

**467**

An 18ct gold colour treated diamond band ring. The cushion-court shape band, inset with green, yellow and blue colour treated brilliant-cut diamonds. *Estimated total diamond weight 0.20ct. Import marks for London, 1996. Weight 12.2gms. £280-380*

**459**

A mid 19th century continental 18ct gold gem-set cannetille brooch. The three oval-shape purplish-pink topaz and replacement circular-shape emeralds, within a foliate engraved panel, to the floral and bead accents. *Length 3.2cms. Weight 6.5gms. £150-200*

**464**

A diamond floral cluster ring. The brilliant-cut diamond, within a similarly-set diamond surround. *Estimated total diamond weight 1.65cts, H-I colour, VS1-SI2 clarity. Weight 4.6gms. £800-1,200*

**468** ✕

A ruby split pearl and enamel pendant. The heart-shape outline blue enamel pendant, to the ruby and split pearl star detail. *Length 2.8cms. Weight 6.7gms. £80-120*

**460**

A turquoise bracelet. The circular turquoise cabochon panel, to the partially concealed clasp. *Italian marks. Length 19cms. Weight 74.7gms. £1,000-1,500*

**469**

A diamond cross pendant. Of openwork design, the rose-cut diamond collet cross, with diamond point cross detail and rose-cut diamond terminal surround. *Length 5.2cms. Weight 5.9gms. £90-140*







433



450



428



447



424



457



426



408



448



471



441



412



414



553



475



465



476



**470**

An 18ct gold diamond single-stone pendant. The square-shape diamond, weighing 1.01cts, to the tapered surmount. *Estimated F-G colour, VVS clarity. Hallmarks for Sheffield.* £2,800-3,800

**475**

A sapphire and diamond three stone ring. The oval-shape sapphire, to the brilliant-cut diamond sides. *Estimated total diamond weight 0.60ct. Weight 3.9gms.* See plate 7. £1,200-1,800

**478**

A platinum diamond single-stone ring. The rectangular-shape diamond, to the tapered shoulders and plain band. *Estimated diamond weight 0.65ct, H-I colour, SI clarity. Hallmarks for Sheffield, 1999. Weight 5.2gms.* £700-900

**471**

An early 20th century 18ct gold sapphire and diamond horseshoe brooch. Inset with alternating cushion-cut sapphires and old-cut diamonds. *Estimated total diamond weight 0.30ct. Length 2.8cms. Weight 6.4gms.* See plate 7. £200-300

**479**

A diamond panel ring. of rectangular-shape outline, the circular-shape diamond collet, within an old-cut diamond pierced surround, to the plain band. *Estimated total diamond weight 0.50ct. Length of panel 1.3cms. Weight 2.6gms.* £500-700

**472**

A mid 20th century gold synthetic ruby and diamond ring. Of geometric design, the circular-cut diamond scrolling panels, with circular synthetic ruby cabochon and square-shape synthetic ruby line detail. *Estimated total diamond weight 0.65ct. Weight 7.5gms.* £400-600

**476**

An early 20th century gold lapis lazuli and diamond brooch. The rose-cut diamond line, to the rectangular-shape lapis lazuli panel and scrolling sides. *Length 3.8gms. Weight 5.6gms.* See plate 7. £120-180

**480**

A diamond five-stone ring. The graduated old-cut diamond line, to the tapered shoulders. *Estimated total diamond weight 0.65ct. Weight 2.7gms.* £200-300

**473**

An 18ct gold smokey quartz and diamond dress ring. The rectangular-shape smokey quartz, to the brilliant-cut diamond bifurcated shoulders and plain band. *Estimated total diamond weight 0.15ct. Hallmarks for Edinburgh. Weight 12.4gms.* £200-300

**477** ✕

A pair of diamond and gem-set ear studs. Each designed as an oval amethyst cabochon and circular ruby cabochon surmount, within a brilliant-cut diamond scalloped surround. *Estimated total diamond weight 1.20cts. Length 2cms. Weight 8.9gms.* £600-800

**481**

An 18ct gold diamond seven-stone ring. The brilliant-cut diamond line, to the grooved shoulders. *Estimated total diamond weight 0.70ct. Hallmarks for Sheffield, 1976. Weight 4gms.* £150-200

**474**

A selection of late 19th to early 20th century gold jewellery. To include a ruby and diamond horseshoe brooch, a 9ct gold ruby and split pearl bangle, three diamond and paste rings, a chain, together with a gold plated mythical sea creature watch key converted to a brooch. *Weight excluding converted watch key 22.1gms.* £280-380

**482** ✕

A pair of glass-filled ruby and diamond cluster earrings. Each designed as an oval-shape glass-filled ruby, within a brilliant-cut diamond surround. *Estimated total diamond weight 0.65ct. Length 1.1cms. Weight 4.9gms.* £150-200



**483**

An early 20th century gold enamel and turquoise bracelet. Designed as four floral enamel panels, each within an openwork foliate surround, to the similarly designed turquoise accent panels. *Length 20cms. Weight 41.7gms.* See plate 8. £700-900

**492**

A late Victorian gold garnet padlock. The oval garnet cabochon, to the scrolling foliate embossed heart-shape panel and clasp loop. *Length 3cms. Weight 6.3gms.* £100-150

**484**

A seed pearl, diamond and red-gem double-sided pendant. Of circular outline, the hand painted panel, depicting the portrait of a lady, within a rose-cut diamond, circular-shape red gem and seed pearl accent surround, to the enamel floral reverse. *French assay marks to surmount. Length 3.5cms. Total weight 11.2gms.* £150-200

**\*488** ✕

A floral reverse intaglio brooch. The oval-shape panel carved and hand painted panel, to the mother-of-pearl detail, and plain mount. *Foreign marks. Length 3cms. Weight 8.4gms.* See plate 8. £400-600

**493**

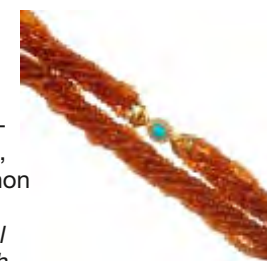
A late 19th gold shell cameo pendant. The shell cameo carved to depict a lady in profile, wearing a shawl, to the textured and bead detail surround, to the later locket reverse and suspension loop. *Length 6.1cms. Weight 30.2gms.* £260-360

**485**

A mid 19th century 9ct gold amber brooch. The oval-shape modified amber panel, to the scrolling surround, to the bead accents. *Length 5.4cms. Weight 15.7gms.* £150-200

**489**

A diamond single-stone ring. The old-cut diamond collet, to the square-shape diamond sides and stylised chain link band. *Principal estimated diamond weight 1.40cts, I-J colour SI1-SI2 clarity. Weight 6.2gms.* £1,000-1,500

**494**

A citrine, diamond and turquoise torsade. The multi-strand citrine bead necklace, to the oval turquoise cabochon and brilliant-cut diamond cluster clasp. *Estimated total diamond weight 0.35. Length 52.7cms.* £600-800

**486** 

A late 19th century 15ct gold bangle. Of bi-colour design, the foliate motif, to the geometric panel sides and plain half-bangle. *Inner diameter 5.9cms. Weight 14.2gms. With associated case.* £200-300

**490**

An early 20th century gold composite Albert chain. The 9ct gold graduated curb-link chain, with lobster clasp terminals, suspending a 15ct gold T-bar. *Hallmarks for Birmingham. Length 48cms. Total weight 50.4gms.* £400-600

**495**

A 9ct gold necklace. The graduated circular-shape red plastic cabochons each within a rope-twist surround, to the fancy link-spacers and back-chain. *Length 39.5cms. Weight 22.5gms.* £260-360

**487**

A pair of diamond ear pendants. Each designed as a brilliant-cut diamond collet, to the foliate panel, suspending a series of similarly-cut diamond articulated lobed drops. *Estimated total diamond weight 1.15cts. Length 4.3cms. Weight 20.6gms.* £600-800

**491**

A mid 19th century gold enamel and ruby brooch. The enamel panel depicting a mountainous landscape scene, within a scrolling border to the cabochon ruby detail. *Length 5.1cms. Weight 12.1gms.* See plate 8. £300-400

**496**

A carnelian intaglio dress ring. The oval carnelian cabochon, carved to depict two figures, to the spiral bar sides and floral shoulders. *Weight 8.7gms.* £150-200



**497**

A citrine and diamond brooch. Of bi-colour design, the oval citrine within an openwork floral plaque, set throughout with diamond point accents. *Length 5cms. Weight 17.7gms. £200-300*

**498** ✕

A coral ring. The oval coral cabochon, within a collet mount, to the bifurcated shoulders and plain band. *Italian assay marks. Weight 3.2gms. £60-90*

**499**

A pair of 1970s 18ct gold sapphire and diamond ear clips. Each designed as a series of polished and spiral grooved loops, with scattered brilliant-cut diamond and circular-shape sapphire accents. *Estimated total diamond weight 0.50ct. Import marks for London, 1972. Length 2.3cms. Weight 14.3gms. £700-900*

**500**

A diamond set floral brooch. Of bi-colour design, the three brilliant-cut diamond and openwork petal flowers, to the graduated brilliant-cut diamond tapered curve. *Estimated total diamond weight 0.40ct. Length 3.5cms. Weight 7.9gms. £200-300*

**501**

An early 20th century 18ct gold diamond five-stone ring. The graduated old-cut diamond line, to the scrolling gallery and plain band. *Estimated total diamond weight 0.45ct. Weight 2.6gms. £150-200*

**502**

A pair of diamond bi-colour earrings. Each designed as a bi-colour abstract textured panel, with brilliant-cut diamond detail. *Estimated total diamond weight 0.30ct. Length 2.4cms. Weight 19.1gms. See plate 8. £400-600*

**503**

A fire opal ring. The rectangular-shape fire opal, to the grooved shoulders and tapered band. *Approximate fire opal dimensions: 8.4 by 6.9 by 4.1mms. Weight 5.5gms. £240-340*

**504**

A diamond bi-colour hinged bangle. The bi-colour abstract textured panel, with brilliant-cut diamond detail to the hinged bangle. *Estimated total diamond weight 0.40ct. Inner diameter 5.9cms. Weight 36.1gms. See plate 8. £800-1,200*

**505**

A 9ct gold garnet and cultured pearl fringe necklace. The oval and pear-shape garnet cabochon line, suspending a pear-shape garnet cabochon and cultured pearl bead fringe, to the curb-link back chain. *Hallmarks for Sheffield. Length 48cms. Weight 17.1gms. £240-340*

**\*506** ✕

An 18ct gold ruby and diamond ring. The oval-shape ruby and oval-shape diamond sides, to the baguette-cut diamond shoulders and brilliant-cut diamond gallery. *Ruby weight 0.61ct, total diamond weight 0.45ct, each stamped to band. Hallmarks for Birmingham. Weight 3.2gms. £500-700*

**507** ✕

An 18ct gold ruby and diamond hinged bangle. The graduated circular-shape ruby line, with brilliant-cut diamond double spacers, to the scrolling gallery and foliate engraved sides. *Estimated total diamond weight 0.20ct. Hallmarks for London, 1987. Inner diameter 5.6cms. Weight 15.8gms. £400-600*

**508**

A late 19th century 18ct gold gold brooch. The oval domed panel, within a plain surround, to the beaded edge. *Length 4.8cms. Weight 7.6gms. £70-100*

**509** ✕

A 9ct gold ruby and diamond triple cluster ring. The circular-shape ruby line, within a brilliant-cut diamond shared surround, to the tapered shoulders and plain band. *Total diamond weight 0.42ct, stamped to band. Hallmarks for Sheffield. Weight 2.3gms. £120-180*

**510**

A topaz and diamond crossover ring. Comprising two pear-shaped topaz flowers of blue and pink hues, to the brilliant-cut diamond asymmetric two-row shoulders. *Estimated total diamond weight 0.30cts. Weight 9.7gms. £800-1,200*

**514**

An early 20th century floral enamel brooch. The rectangular enamel hand-painted floral panel, within a scrolling foliate engraved border. *Length 6.6cms. See plate 8. £70-100*

**518**

A mid 20th century diamond feather brooch. The scrolling feather, with textured sides and graduated single-cut diamond stem. *Estimated total diamond weight 0.30ct. Length 7.7cms. Weight 22.1gms. £400-600*

**515**

A 9ct gold fancy-link bracelet. Of openwork design, comprising a series of quatrefoil gate-link panels, to the lobster clasp and T-bar terminals. *Import marks for London, 1998. Length 19.5cms. Weight 30.1gms. £280-380*

**511**

A late 19th century 15ct gold seed pearl and diamond ring. Designed as a series of rose-cut diamond and seed pearl lines, to the plain band. *Weight 3.4gms. £100-150*

**516** ✕

A ruby and diamond cluster panel ring. The three graduated oval-shaped rubies, within a brilliant-cut diamond surround. *Estimated total diamond weight 0.45ct. Weight 3.5gms. £400-600*

**519**

A 9ct gold Albert chain. The curb-link chain, suspending a T-bar, to the lobster clasp. *Hallmarks for Birmingham, 1991. Length 47cms. Weight 32.2gms. £300-400*

**512**

An early 20th century 15ct gold necklace. Designed as a series of spherical beads, to the sprung-clasp and safety chain. *Length 44cms. Weight 14.3gms. £220-320*

**517** ➤

A mid 19th century 18ct gold gem-set brooch. The oval-shaped pink foil back rock crystal trefoil and green gem accent cluster, within a scrolling foliate surround, suspending a similarly designed drop and fancy-link swags. *Length 7.6cms. Weight 16.9gms. With case. £400-600*

**520**

A bracelet. The curb-link chain with partially concealed clasp. *Length 21cms. Weight 72.1gms. £1,000-1,500*

**513**

A synthetic opal dress ring. The oval synthetic opal cabochon, within a plain surround, to the scrolling shoulders with brilliant-cut diamond highlights and ridged half-band. *Weight 4.4gms. £150-200*

**521** ✕

A ruby and sapphire double brooch. Designed as two scrolling flowers, decorated with either sapphire or ruby beads. *May be worn separately. Length 6cms. Weight 20.5gms. £400-600*



**522** ✕

A jade panel bracelet. Comprising four jadeite carved panels, connected by a fine-link double chain with openwork plaque spacers depicting a pagoda. *Jade untested. Length 18.5cms. Weight 10.5gms. £500-700*

**530**

A diamond panel ring. Of geometric design, the rectangular-shaped diamond, within a brilliant-cut diamond openwork kite-shape panel, to the plain band. *Estimated total diamond weight 0.65ct. Weight 3.3gms. £900-1,400*

**523**

A 1970s 9ct gold treated jade ring. The oval-shape treated jadeite panel, carved to depict a floral motif, within a rope-twist surround. *Jade untested. Estimated jadeite dimensions 24 by 17 by 4.5mms. Hallmarks for London, 1974. Weight 8gms. £80-120*

**526**

A pair of mid 20th century 9ct gold nephrite jade and diamond floral earrings. Each designed as a single-cut diamond flowering rose, with nephrite jade leaves. *Jade untested. Estimated total diamond weight 0.95ct. Length 3.1cms. Weight 21.5gms. £300-400*

**531**

An early 20th century 9ct gold bracelet. The curb-link chain, to the heart-shape padlock clasp, with engraved 'E.L.B.' initials. *Hallmarks for Birmingham, 1901. Length 19cms. Weight 18.1gms. £150-200*

**524**

An 18ct gold diamond single-stone ring. The old-cut diamond, to the plain band. *Estimated diamond weight 0.55ct, J-K colour, P1 clarity. Hallmarks for London, 1988. Weight 2.2gms. £360-460*

**527**

An 18ct gold diamond dress ring. The square-shape diamond kite-shape panel, to the square and brilliant-cut diamond openwork sides and tapered half-band. *Estimated total diamond weight 0.65ct. Hallmarks for London. Weight 4.2gms. £500-700*

**532**

An 18ct gold diamond three-stone ring. The brilliant-cut diamond line, within an oval-shape surround, to the plain band. *Estimated total diamond weight 1ct, I-J colour, S11-P1 clarity. Hallmarks for London, 1974. Weight 9.6gms. £300-400*

**525** ✕

A pair of coral ear pendants. Each designed as an openwork panel, to the three pear-shape coral drops and button shape coral surmount. *Length 6.2cms. Weight 7gms. See plate 8. £500-700*

**528** ✕

A jade, sapphire and diamond foliate ring. The circular-shape yellow sapphire, within a pear-shape jadeite cabochon, brilliant and single-cut diamond trefoil surround, to the grooved shoulders and plain band. *Jade untested. Estimated total diamond weight 0.60ct. Weight 6.4gms. £200-300*

**529**

A late Victorian 9ct gold diamond bangle. Designed as a series of old-cut diamonds, each within a textured surround, to the geometric sides and cannetille detail. *Estimated total diamond weight 0.50ct. Inner diameter 5.8cms. Weight 37.1gms. £340-440*

**533** ✕

A pair of jade ear hoops. Each designed as a jadeite hoop, suspended from a half-bead surmount. *Jade untested. Length 4.5cms. £1,600-2,000*

**534**

A sapphire and diamond necklace. The pear-shape sapphire, suspended from a brilliant-cut diamond chevron, to the oval-shape sapphire and brilliant-cut diamond curved line sides and belcher-link back chain. *Estimated total diamond weight 0.30ct. Length 41.3cms. Weight 8.3gms. £260-360*

**539**

A gem-set bracelet. Designed as a circular peridot and blue topaz cabochon, alternating with mabé-pearls, to the fancy-link chain. *Italian marks. Length 17.2cms. Weight 33.1gms. £400-600*

**\*535**

A diamond half-circle eternity ring. The brilliant-cut diamond line, inset to the plain half-band. *Total diamond weight 0.73ct, stamped to band. Weight 4.9gms. £600-800*

**540** ✕

A jade, seed pearl and lapis lazuli panel necklace. The pierced jadeite panels, interspaced by three-rows of spaced seed pearl and lapis lazuli beads, to the belcher-link back-chain. *Jade untested. Length 44cms, Weight 12.4gms. £1,200-1,800*

**544**

Two late 19th century 18ct gold split pearl and diamond rings. To include a split pearl and diamond cluster ring, together with a split pearl band ring. *The band ring with hallmarks for Birmingham, 1888. Total weight 6gms. £60-90*

**536**

A late 19th century 9ct gold longuard chain. The belcher-link chain, to the lobster claw clasp. *Length 158cms. Weight 30.1gms. £260-360*

**541** ✕

A selection of three brooches. To include an early 20th century 9ct gold and tortoiseshell Army Ordnance Corps brooch, an early 20th century 9ct gold single-cut diamond bar brooch, together with a cultured pearl bar brooch. *One brooch with hallmarks for London, 1915. Lengths 4.5 to 2.7cms. Total weight 5.8gms. £40-60*

**545**

An amethyst and diamond cluster ring. The oval-shape amethyst, within a brilliant-cut diamond scalloped surround, to the grooved shoulders and plain band. *Estimated total diamond weight 0.70ct. Weight 6.3gms. £400-600*

**537**

A set of turquoise bead jewellery. To include a necklace designed as a series of thirty spherical turquoise beads measuring 11.9 to 12.3mms, with textured spacers together with matching ear pendants. *Lengths 41 and 5.3cms. Weight 93.5gms. See plate 8. £400-600*

**542**

A 9ct gold split pearl and turquoise hinged bangle. The split pearl and turquoise cabochon cluster, to the grooved hinged bangle. *Inner diameter 6.1cms. Weight 16.7gms. £120-180*

**546**

A multi-gem seal. Designed with six hard stone intaglio seals, including bloodstone, and carnelian, to the rotating mount, and carved amethyst handle. *Length 9cms. See plate 8. £400-600*

**538**

An early 20th century cameo brooch. The oval shell carved to depict a male in profile, within a gold surround with rope-twist and bead detail. *Length 6cms. £260-360*

**543**

A late 19th century gold turquoise cross pendant. The square-shape turquoise cross with scroll and bead surround, set to the cross panel with scrolling terminals. *Length 6.4cms. Weight 5.3gms. £60-90*

**547**

A set of aquamarine and diamond jewellery. The pendant designed as a rectangular-shape aquamarine to the brilliant-cut diamond trefoil surmount, together with matching earrings. *Estimated dimensions of principal aquamarine: 22.3mms by 16.5mms, by 11.2mms. Estimated total diamond weight 0.30ct. Weight 18.5gms. £1,400-2,000*







514

537

546

537

488

525

504

491

483

502



**548**

A diamond cluster panel ring. The circular-cut diamond collet, within a single and baguette-cut diamond halo panel, to the single-cut diamond shoulder accents and plain band. *Estimated total diamond weight 0.65ct. Weight 3.1gms. £500-700*

**552**

An aquamarine bracelet. Designed as three oval and pear-shape aquamarines, with a bead and floral surround, to the fancy-link chain with engraved detail. *Made with antique elements. Length 20cms. Weight 13.2gms. £300-400*

**557**

A chrysoberyl cat's-eye and diamond dress ring. The chrysoberyl cat's-eye, with kite-shape diamond sides and baguette-cut diamond border, to the baguette-cut diamond bifurcated shoulders. *Estimated chrysoberyl weight 6.75cts. Estimated total diamond weight 0.40ct. Weight 6.5gms. £3,000-4,000*

**549**

An Edwardian 9ct gold hinged bangle. The foliate and scroll engraved front panel, to the tapered half-bangle. *Hallmarks for Birmingham, 1902. Inner diameter 6.1cms. Weight 6.9gms. £50-80*

**553**

An 18ct gold tanzanite and diamond ring. The oval-shape tanzanite to the brilliant-cut diamond duo sides and tapered baguette-cut diamond shoulders. *Estimated total diamond weight 0.40ct. Approximate tanzanite dimensions 10.46 by 7.7 by 4.81mms. Hallmarks for London. Weight 4.6gms. See plate 7. £400-600*

**550**

An early 20th century blister pearl and diamond brooch. Designed as a grey blister pearl, flanked by white blister pearls, highlighted with circular-cut diamonds. *Estimated total diamond weight 0.40cts. Length 2.8cms. Weight 7.9gms. £300-400*

**554** ✕

A diamond and ruby bird brooch. The rose-cut diamond and circular ruby cabochon eye bird, *en tremblant* to the similarly gem-set floral spray. *Length 9.8cms. £200-300*

**558**

An 18ct gold citrine and diamond necklace. The triangular-shape citrine and brilliant-cut diamond cluster, suspended from brilliant-cut diamond crossover links, to the box-link chain. *Estimated total diamond weight 0.60ct. Hallmarks for London. Length 39cms. Weight 12.3gms. £400-600*

**551**

A diamond and cultured pearl bangle. The cultured pearl and rose-cut diamond floral panel, to the similarly-cut diamond asymmetric sides and openwork half-bangle. *Inner diameter 5.9cms. Weight 33.3gms. £800-1,200*

**555**

A turquoise fringe necklace. The front designed as a series of turquoise cabochon pear-shape drops, each suspended from a circular-shape turquoise cabochon panel, to the belcher-link back-chain. *Length 49cms. Weight 14.7gms. £300-400*

**559**

A mid 20th century agate panel bracelet. Designed as a series of rectangular-shape gem-set panels, to include blue lace agate, tiger's-eye and amethyst. *Length 20cms. Weight 61gms. £300-400*

**556**

A pair of early 20th century turquoise, seed and split pearl floral brooches. The seed pearl and circular turquoise cabochon forget-me-not flowers, to the split pearl foliate scrolls. *Lengths 2.2cms. Weight 7.4gms. £150-200*

**560**

An early 20th century 15ct gold necklace. Designed as a rope-twist chain, to the ovoid-shape rope-twist and bead detail spacers. *Length 49cms. Weight 23.7gms. £300-400*





**561**

An enamel and gem-set bracelet and brooch. The bracelet designed as a series of circular red-gem collet and enamel blackamour panels, with similarly designed spacers, together with a similarly-set bar brooch. *Length of bracelet 18.8cms. Length of brooch 4.8cms. Weight 32.2gms. £800-1,200*

**568** ✕

A ruby and diamond panel ring. The square-shaped ruby and circular-cut diamond line panel, to the circular-cut diamond stepped shoulders and plain band. *Estimated total diamond weight 0.50ct. Weight 3.1gms. £700-900*

**562**

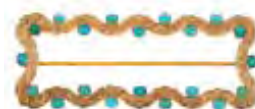
A mid 20th century gold opal and diamond dress ring. The oval opal cabochon, to the single-cut diamond stepped sides and plain band. *Approximate dimensions of opal 17 by 13.4 by 7.8mms. Estimated diamond weight 0.35ct. Weight 6.6gms. £500-700*

**564** ✕

A coral and hematite torsade necklace. The entwined coral and hematite strands, with polished bead spacers, to the domed clasp. *Length 40.8cms. £600-800*

**569**

An 18ct gold emerald and diamond hinged bangle. Designed as two alternating circular-shaped emerald and brilliant-cut diamond lines, with diagonal bar intervals, to the plain half-bangle. *Estimated total diamond weight 0.50ct. Import marks for London, 1989. Inner diameter 5.5cms. Weight 18.3gms. £200-300*

**565** ✕

An early 20th century turquoise brooch. Of buckle design, comprising an openwork rectangular plaque of undulating outline, decorated with scrolling engraving and oval turquoise cabochon collets. *Length 6.5cms. Fitted case stamped S. Bright & co Goldsmiths Buxton. £150-200*

**\*570** ✕

A ruby and diamond ring. The tapered panel, consisting of an alternating series of circular-shaped ruby and brilliant-cut diamond diagonal lines, to the slightly tapered half-band. *Total ruby weight 0.84ct, total diamond weight 0.40ct, each stamped to band. Weight 5.1gms. £400-600*

**563**

A pair of gem-set and seed pearl ear pendants. Each designed as a pink gem and rose-cut diamond floral panel, to the similarly-set dome, suspending a seed pearl and garnet bead fringe. *Length 7.8cms. Weight 22.9gms. £500-700*

**566**

A late 19th century 9ct gold longuard chain. The fancy-link chain, to the lobster claw clasp. *Length 147cms. Weight 50.1gms. £400-600*

**567**

A pressed amber brooch. The oval-shaped pressed amber cabochon, within a plain mount. *Length 3.4cms. Weight 9.2gms. £80-120*

**571** ✕

A ruby and diamond foliate spray brooch. The circular-cut diamond, within an illusion setting, to the circular-shaped ruby, single and old-cut diamond scrolling panel. *Estimated total diamond weight 0.50ct. Length 3.7cms. Weight 8.6gms. £200-300*



**572**

A late 19th century diamond brooch. The old-cut diamond stylised crown, to the similarly-cut diamond scrolling foliate sides. *Estimated total diamond weight 1ct. Length 4cms. Weight 5.6gms. £400-600*

**576**

A diamond hinged bangle. The brilliant-cut diamond line, inset to the plain half-bangle. *Estimated total diamond weight 2.20cts. Inner diameter 5.8cms. Weight 22gms. £900-1,400*

**579**

An early 20th century silver gilt plique-a-jour enamel wings hair comb. Designed as a pair of red, blue and green plique-a-jour enamel out-stretched wings, with engraved cylindrical support for further ornament and hinged grip for comb. Comb and ornament deficient. *French assay marks. Length 9cms. Total weight 13.5gms. £200-300*

**573**

A 9ct gold charm bracelet. The early 20th century curb-link chain, suspending eight charms, to include a coffee pot, a hinged man in a shoe charm and a violin charm, to the 9ct gold padlock clasp. *Length of bracelet 19cms. Total weight 18.5gms. £200-300*

**580**

An antique gold mounted agate intaglio seal. The tapered agate fob, carved to depict an armorial shield, with grooved mount and surmount loop. *Length 3.8cms. £80-120*

**574**

A pair of diamond ear pendants. Each designed as a brilliant-cut diamond articulated line. *Estimated total diamond weight 1.35cts. Length 7.8cms. Weight 6.5gms. £300-400*

**577** ✕

A ruby and diamond double cluster ring. Of crossover design, each pear-shape ruby, within a brilliant-cut diamond surround, to the grooved band. *Estimated total diamond weight 0.60ct. Weight 4.3gms. £220-320*

**Cufflinks & Dress Stud Sets****581**

A late 19th century gold cultured pearl and diamond stickpin. Designed as a cultured pearl, within an old-cut diamond surround. *Estimated total diamond weight 0.50ct. Diameter 1cms. Weight 3gms. £200-300*

**575**

A diamond and synthetic ruby three-stone ring. The circular-shape synthetic ruby collet, to the circular-cut diamond collet sides and plain band. *Estimated total diamond weight 1.60cts. Weight 6.6gms. £2,000-2,500*

**578**

A mid 20th century diamond brooch. Of scrolling design, comprising a cluster panel of textured feathers, with brilliant-cut diamond scattered highlights. *Estimated total diamond weight 0.60ct. Length 5cms. Weight 30.8gms. £500-700*

**582**

A pair of early 20th century gold cufflinks. Each designed as a dog head holding a diamond in its mouth, connected to a scrolling panel by a belcher-link chain. *Length of cufflink face 1cm. Weight 10.1gms. £700-900*

**583**

A pair of composite early 20th century 18ct gold cufflinks. Each designed as a convex oval-shape panel, with engraved edge, to the torpedo back and connecting figure-eight link. *Cufflink fronts with hallmarks for London, 1914. Length of cufflink faces 1.8cms. Total weight 11.1gms. £200-300*



**584**

A pair of 9ct gold cufflinks. Each designed as a stylised knot, to the hinged back and connecting bar. *Hallmarks for Sheffield. Diameter of knot 1.1cms. Weight 10.5gms. £80-120*

**589**

Two pairs of cufflinks. To include a pair of single-cut diamond cufflinks, together with a pair of silver oval cream and blue enamel cufflinks. *Silver cufflinks with hallmarks for Birmingham, 1995 and maker's mark for Deakin and Francis. Estimated total diamond weight 0.20ct. Length of cufflink faces 2.3 and 1.7cms. Total weight 28gms. £180-260*

**594**

An early 20th century 9ct gold pill box. Of rectangular scalloped outline, the front panel with personal inscription 'From Nance, Floss, Ben & Harry, to Amy, Xmas 1930'. *Maker's marks for Deakin & Francis. Hallmarks for Birmingham, 1929. Length 5cms. Weight 41.1gms. £400-600*

**585**

A pair of 9ct gold cufflinks. Each designed as a cylindrical panel, with raised and grooved terminals, to the hinged back and connecting bar. *Hallmarks for Birmingham, 1999. Length 1.8cms. Weight 14gms. £150-200*

**590**

An American dress stud set. Comprising a pair of cufflinks, with matching buttons and studs, each designed as a black plastic floral disc, within an octagonal-shape surround. *Weight 13.4gms. With fitted case, AF. £80-120*

**595**

An Edwardian 9ct gold vesta. Of rectangular-shape outline, with curved corners and circular suspension loop. *Hallmarks for Birmingham, 1909. Length 5.4cms. Weight 30.1gms. £300-400*

**586**

An early 20th century 9 and 18ct gold mother-of-pearl and sapphire dress set. Of geometric design, the cufflinks designed as two chain connecting square-shape mother-of-pearl panels with square-shape sapphire accent, together with four matching buttons and two dress studs. *Length of cufflink face 1cm. Total weight 11.5gms. With fitted case. £400-600*

**591**

A pair of onyx cufflinks. Each designed as a rectangular-shape onyx panel, with stylised cross motif, to the openwork panel links. *Length of cufflink face 1.6cms. Weight 6.6gms. £120-180*

**596**

An early 20th century 9ct gold matchbook cover. Of rectangular outline, with stripe engraved panels. *Hallmarks for Birmingham, 1925. Length 5.8cms. Weight 30.3gms. £300-400*

**587**

A set of early 20th century gold mother-of-pearl, onyx and seed pearl dress studs. Each designed as an onyx and mother-of-pearl concentric panel, with seed pearl centre, to the octagonal panel surround and connecting links. *Lengths of stud face 1.3 to 0.7cm. Weight 14.1gms. With fitted case. £360-460*

**Novelties****592**

An early 20th century 9ct gold retractable pencil. The engine-turned case, suspended from a stylised coiled snake. *Hallmarks for Birmingham, 1913. Length when open 8cms. Weight 7.6gms. £60-90*

**597**

A mid 20th century cigarette case. Of rectangular outline, with curved sides and flush push clasp. *AF. Austrian assay marks. Length 8.9cms. Weight 103.4gms. £1,400-2,000*

**588**

A pair of early 20th century diamond, enamel and mother-of-pearl cufflinks. Each designed as an old-cut diamond, to the circular-shape engraved mother-of-pearl panel and blue enamel textured surround. *Diameter of cufflink face 1.4cms. Weight 4.1gms. £150-200*

**593**

An early 20th century 9ct gold double sovereign case. Of oval outline, with scroll and foliate engraved panels, to the circular suspension loop. *Hallmarks for Birmingham, 1911. Length 6.6cms. Weight 33.5gms. £300-400*

**598**

CARTIER - a 1930s 18ct gold diamond match box. Of rectangular outline, the ridged panels and side striking line, to the rose-cut diamond clasp detail. *Signed and numbered Cartier, 63185. Import marks for London, 1931. Length 5cms. Weight 38.8gms. £1,000-2,000*

## Cocktail Watches

### 599

A lady's late 19th century 18ct gold sapphire and split pearl fob watch. The cream enamel dial with gilt Arabic numerals and minute track, the reverse with central circular sapphire cabochon and split pearl edge. *Diameter 2.2cms. Weight 12.9gms. £200-300*



### 604

A lady's diamond cocktail watch. The circular-shape cream dial with Arabic numerals and baton markers, to the single-cut diamond bezel and scalloped lugs, with black leatherette strap. *Estimated total diamond weight 0.90ct. Length 17cms. £120-180*



### 608

A lady's Retro diamond manual wind cocktail watch. The rectangular-shape dial with black Arabic numerals and baton markers, to the geometric surround and sides, with single-cut diamond lug detail and snake-link double row bracelet. *Estimated total diamond weight 0.50ct. Length 17cms. Total weight 42.9gms. £800-1,200*



### 600

OMEGA - a lady's early 20th century platinum diamond cocktail watch. The square-shape dial, with hourly applied increments, to the single-cut diamond bezel and vari-shape diamond sides, to the black fabric strap. *Estimated total diamond weight 0.90ct. Length 16.5cms. Weight 14.7gms. £120-180*



### 605



A lady's mid 20th century platinum diamond manual wind cocktail watch. The circular-shape silvered dial, with black Arabic numerals, to the single-cut diamond bezel and similarly-set diamond openwork link strap. *Estimated total diamond weight 3.70cts. French assay marks. Length 16.5cms. Weight 33.2gms. £900-1,400*

### 609 ✕

A lady's ruby and diamond cocktail watch. The oval-shape red dial, with silvered hands and baton hour markers, to the single-cut diamond and circular-shape ruby double surround, to the textured integral bracelet. *Estimated total diamond weight 0.20ct. Length 15.2cms. Total weight 30gms. £400-600*



### 601

A lady's early 20th century 18ct gold diamond cocktail watch. The circular white dial with Arabic numerals within a circular-cut diamond bezel, to the black cord double strap. *Import marks to back of watch case for London, 1915. Length 19cms. Weight 16.1gms. £240-340*



### 610

A lady's 9ct gold diamond cocktail watch. The rectangular-shape dial with hourly black batons, to the brilliant-cut diamond bezel and fancy-link bracelet. *Estimated total diamond weight 0.50ct. Hallmarks for Birmingham. Length 17.4cms. Total weight 26gms. £200-300*



### 602

A lady's early 20th century platinum diamond cocktail watch. The rectangular-shape dial, with Arabic numerals, to the single-cut diamond bezel and similarly-set openwork sides, with replacement expanding strap. *Length 16cms. Weight 19.3gms. £240-340*



### 606

A lady's mid 20th century platinum and diamond watch head. The geometric silvered dial, with black Arabic numerals and minute track, to the vari-cut diamond geometric surround and engraved sides. *Estimated total diamond weight 1.10cts. Length 3.8cms. Total weight 13.2gms. £300-400*



### 611

A lady's diamond manual wind cocktail watch. The brilliant and single-cut diamond spiral cover, hinged to reveal a cream dial with Arabic numeral and baton hour markers, to the tapered baguette and single-cut diamond woven strap bracelet. *Estimated total diamond weight 4.50cts. French assay marks. Length 16.5cms. Total weight 40.8gms. See plate 3. £1,800-2,400*



### 603

Two early to mid 20th century diamond watch heads. The first with tapered rectangular dial, the second with circular dial, each within a single-cut diamond surround. *Estimated total diamond weight 1ct. Lengths 3.1 and 2.5cms. Weight 15.4gms. £180-260*



### 607

A lady's mid 20th century diamond watch bangle. The rose-cut diamond panel lid, hinged to reveal a silvered dial with Arabic numeral and baton hour markers, to the rose-cut diamond line and hinged cuff sides. *Inner diameter 5.3cms. Total weight 24.3gms. £240-340*







**An auction of  
Silver & Plated Ware**  
Monday 15th December at 10am

**An invitation to consign**

A Victorian electroplated charger, 'A Pompeian Lady at her Toilet',  
by Elkington & Co., and designed by Leonard Morel-Ladeuil.  
Recently sold for **£940**

For more information please contact Naomi Wilson on  
**0121 212 6302** or email [naomi@fellows.co.uk](mailto:naomi@fellows.co.uk)





An auction of  
Vintage & Modern  
Wrist Watches  
Monday 19th January at 11am

An invitation to consign

A COMEX issue gentleman's Oyster  
Perpetual Sea-Dweller bracelet watch  
Sold for £43,000

For more information please contact Conrad Cunningham on  
0121 212 5506 or email [Conrad@fellows.co.uk](mailto:Conrad@fellows.co.uk)





**An auction of  
Antique & Modern Jewellery**  
Thursday 15th January at 11am

**An invitation to consign**

**Previously sold through auction**

BULGARI - a multi gem-set and diamond 'Allegra' pendant.

Sold for **£1,750**

BULGARI - a multi gem-set and diamond 'Allegra' bracelet.

Sold for **£1,800**

For more information please contact **Bryony Meredith** on  
0121 212 6301 or email [Bryony@fellows.co.uk](mailto:Bryony@fellows.co.uk)



# Fellows' London Office

Recently we've opened our new office in London's luxurious Mayfair.

With these premises, which are staffed by some of our most experienced specialists, we hope to establish a higher and more personal level of service for those based in and around London.

A short walk from Berkeley Square, the office is based in the heart of Mayfair on Queen Street, and is open Monday -Friday, 9.30am-4.30pm for free valuations by appointment only.

If you would like to book an appointment, please telephone 020 7127 4198.  
For more information visit: [www.fellows.co.uk/london](http://www.fellows.co.uk/london)

2nd Floor, 3 Queen Street, London, W1J 5PA





# Fellows

Established 1876

## Auction Calendar 2014

Thursday 20 November  
Jewellery & Watches

Monday 1 December  
Stones For Tender

Monday 15 December  
Silver & Plated Ware

Monday 24 November  
Pocket Watches & Accessories

Thursday 4 December  
Jewellery & Watches

Thursday 18 December  
Jewellery & Watches

Monday 24 November  
Watches & Watch Parts

Thursday 11 December  
Antique & Modern Jewellery

For further information please contact:

### **Jewellery**

Heather Bailey  
heather@fellows.co.uk  
0121 212 6303

### **Watches**

Conrad Cunningham  
conrad@fellows.co.uk  
0121 212 5506

### **Silver & Coins**

Naomi Wilson  
naomi@fellows.co.uk  
0121 212 6302

### **Antiques & Fine Art**

Kevin Jackson  
kevin@fellows.co.uk  
0121 212 2131

If you are unable to attend an auction day then you can still watch and bid live online at:  
[www.the-saleroom.com/fellows](http://www.the-saleroom.com/fellows)



## IMPORTANT NOTICES FOR PURCHASERS

### IMPORTANT NOTICE TO PROSPECTIVE BUYERS OF GEMSTONES/JEWELS

Purchasers are advised that whilst great care has been taken in the examination of gemstones, it is not possible to test every gemstone in multi-gemstone lots.

#### Notes 1 – Coloured Gemstones

Historically, many coloured gemstones have been subjected to a variety of treatments designed to enhance their appearance. Certain enhancement methods, such as heating, are routinely used to improve colour or transparency in rubies and sapphires. Other methods, such as oiling, enhance the clarity of emeralds. The international jewellery trade has generally accepted these methods. Other coloured gemstones may have undergone other permanent or semi-permanent treatments, such as dyeing, irradiation, coating and impregnation, possibly requiring further re-treatment in order to retain their appearance.

Prospective purchasers should assume that all gemstones will have been treated unless statements are made to the contrary. Gemmological reports from internationally recognised Gemmological Laboratories will be noted in the item description where available.

#### Note 2 – Diamonds

Recent advancements in technology have led to some diamonds being treated in a number of ways, all designed to improve their appearance or alter colour. These processes include fracture filling, laser drilling, a combination of drilling and filling, HPHT, irradiation and various coatings. Buyers are also alerted to the fact that synthetic (laboratory created) diamonds, notably in small (melee) sizes are now produced in large quantities. Whilst every effort is made to identify or disclose treated and synthetic goods, it is not possible for Fellows to guarantee that all diamond set lots do not contain such material.

Fellows do not knowingly offer treated diamonds for sale, unless a gemmological report disclosing the type of treatment has been obtained from an internationally recognised Gemmological Laboratory, and stated within the item description. Diamond grades for colour and clarity (see separate Notes on Diamond Grading terms) where printed in the catalogues are intended as guides for prospective purchasers, with the given limitations of mounts and settings, and are not guaranteed by Fellows.

Statements in the catalogue regarding the condition of lots in this sale may appear in the description, however, the absence of such a reference does not imply that a lot is in a perfect or near perfect condition, or completely free from wear or imperfections. Fellows will be pleased to offer Condition Reports to interested clients for lots with estimates of £100 or more.

## Diamond Grading Terms

### DIAMOND COLOUR

GIA	OLD WORLD TERMS	EXPLANATION	GIA	OLD WORLD TERMS	EXPLANATION
D	Finest White (Jager)	Colourless	K	Silver Cape (Top Cape)	Traces of colour. Small stones in this range will 'face up' colourless when mounted but larger stones will be tinted.
E	Finest White (River)	Colourless	L	Silver Cape (Top Cape)	Traces of colour. Small stones in this range will 'face up' colourless when mounted but larger stones will be tinted.
F	Fine White (River)	Colourless	M	Light Cape (Cape)	Traces of colour. Small stones in this range will 'face up' colourless when mounted but larger stones will be tinted.
G	Fine White (Top Wesselton)	Near Colourless: diamonds 'face up' colourless. Slight traces of colour will not be apparent in the mounted stones to other than the trained eye.	N	Light Cape (Low Cape)	Diamonds graded N through Z+ display a yellowish tint even to the untrained eye.
H	White (Top Wesselton)	Near Colourless: diamonds 'face up' colourless. Slight traces of colour will not be apparent in the mounted stones to other than the trained eye.	P	Cape O – R (Very Light Yellow)	Diamonds graded N through Z+ display a yellowish tint even to the untrained eye.
I	White (Top Wesselton)	Near Colourless: diamonds 'face up' colourless. Slight traces of colour will not be apparent in the mounted stones to other than the trained eye.	Z	Cape R – Z (Very Light Yellow)	Diamonds graded N through Z+ display a yellowish tint even to the untrained eye.
J	Top Silver (Top Wesselton)	Near Colourless: diamonds 'face up' colourless. Slight traces of colour will not be apparent in the mounted stones to other than the trained eye.	Z+	Fancy Yellow	Diamonds graded N through Z+ display a yellowish tint even to the untrained eye.

### DIAMOND CLARITY

GIA	OLD WORLD TERMS	EXPLANATION	GIA	OLD WORLD TERMS	EXPLANATION
IF	Internally Flawless	No inclusions visible with a 10x lens even to an experienced grader.	SI1 & SI2	Slightly Included	Noticeable inclusions visible with a 10x lens.
VVS1 & VVS2	Very Very Slightly Included	Minute inclusions, which are difficult, even for experienced graders, to see with a 10x lens.	I1, I2 & I3	Pique 1, 2 & 3	Obvious inclusions, may be visible to the unaided eye, face up. In I3 they may affect the stone's durability.
VS1 & VS2	Very Slightly Included	Minor inclusions, observable with effort with a 10x lens.			



## PRICES REALISED

Antique & Modern Jewellery – Thursday 16th October 2014

1	£320	42	£170	86	£2,000	135	£420	183	£110	235	£600	296	£240
2	£300	43	£300	87	£180	136	£190	184	£340	238	£1,000	297	£2,500
3	£260	44	£240	88	£280	137	£360	186	£220	239	£340	298	£160
4	£150	45	£420	90	£400	140	£200	187	£300	241	£170	300	£160
5	£130	46	£420	91	£380	141	£100	188	£100	243	£280	301	£100
6	£170	48	£1,600	93	£380	142	£1,100	190	£4,800	245	£1,200	302	£260
7	£190	49	£130	95	£90	143	£300	193	£320	247	£160	303	£380
8	£380	50	£280	96	£140	144	£65	194	£1,600	249	£360	304	£440
9	£500	51	£340	97	£220	145	£800	196	£130	254	£400	307	£150
10	£320	52	£440	98	£2,800	147	£920	197	£6,300	256	£320	308	£180
11	£160	53	£320	99	£380	148	£190	198	£180	258	£700	309	£1,200
12	£160	55	£80	100	£140	149	£300	202	£5,000	260	£600	310	£700
13	£440	56	£160	101	£280	150	£540	204	£660	262	£520	311	£300
14	£150	57	£420	102	£260	151	£160	205	£170	263	£260	313	£540
15	£350	58	£80	104	£110	152	£150	206	£220	265	£760	315	£700
16	£70	59	£100	105	£700	153	£4,800	207	£560	267	£960	319	£440
17	£200	60	£560	107	£140	154	£460	208	£260	268	£2,000	320	£110
18	£320	61	£220	108	£640	156	£340	209	£2,600	269	£440	322	£300
19	£150	62	£95	109	£280	157	£180	211	£380	271	£9,500	323	£440
21	£620	63	£200	110	£1,300	158	£540	212	£740	272	£500	324	£90
22	£240	64	£820	111	£160	159	£720	213	£90	273	£520	326	£220
23	£280	65	£1,300	112	£170	160	£480	214	£180	274	£380	327	£480
25	£300	66	£190	114	£1,400	162	£2,800	215	£240	275	£280	328	£190
26	£170	67	£170	115	£360	164	£240	216	£100	276	£960	330	£140
27	£300	68	£260	116	£280	165	£170	218	£1,200	279	£1,750	331	£120
29	£280	69	£360	118	£160	166	£420	219	£600	280	£1,800	332	£420
30	£280	70	£500	119	£740	167	£220	220	£95	281	£7,100	334	£940
31	£170	73	£1,000	122	£190	168	£380	221	£240	284	£340	335	£420
32	£480	74	£360	125	£1,200	169	£2,600	222	£1,100	285	£340	339	£160
33	£380	75	£60	126	£5,000	170	£4,200	223	£150	286	£340	341	£250
34	£130	76	£200	127	£400	171	£500	224	£400	287	£540	343	£190
35	£240	77	£380	128	£780	173	£3,300	225	£740	288	£1,800	344	£360
36	£300	78	£170	129	£660	174	£760	226	£780	289	£1,600	346	£2,200
37	£280	79	£280	130	£260	176	£240	227	£190	290	£660	347	£320
38	£260	80	£180	131	£220	177	£170	228	£780	292	£1,400	349	£300
39	£320	81	£500	132	£1,000	179	£320	229	£200	293	£1,400	351	£640
40	£660	82	£100	133	£3,000	180	£220	231	£420	294	£360	356	£800
41	£1,700	85	£800	134	£4,000	182	£4,000	232	£440	295	£840	358	£360



361	£200	403	£300	449	£70	496	£170	544	£240	586	£260	626	£280
363	£2,200	404	£190	451	£1,200	498	£660	545	£60	587	£120	627	£280
364	£150	405	£560	452	£320	499	£280	546	£190	588	£720	628	£240
365	£260	408	£100	454	£2,300	502	£340	547	£440	590	£120	629	£190
367	£200	410	£200	457	£360	503	£460	549	£110	592	£200	630	£190
369	£400	411	£120	460	£100	504	£1,200	550	£70	594	£200	631	£150
371	£1,400	413	£200	462	£260	506	£110	552	£140	597	£160	632	£80
372	£600	416	£1,100	463	£460	513	£380	553	£620	598	£190	633	£260
373	£340	418	£150	464	£190	514	£150	554	£1,300	600	£1,900	634	£190
375	£170	419	£160	465	£260	516	£75	555	£300	601	£140	635	£1,500
378	£1,500	420	£190	467	£240	518	£680	556	£240	602	£500	636	£340
380	£340	422	£260	469	£360	519	£220	557	£300	604	£380	637	£300
382	£480	423	£320	470	£160	521	£360	559	£800	605	£85	638	£160
384	£400	424	£460	473	£180	523	£280	560	£300	606	£150	639	£200
385	£240	427	£300	475	£190	524	£200	564	£170	609	£420	640	£120
387	£660	428	£220	478	£340	525	£150	565	£130	611	£70	641	£85
388	£800	430	£260	480	£680	527	£340	567	£160	612	£380	642	£110
389	£740	431	£140	481	£180	528	£190	568	£110	615	£280	643	£280
390	£2,600	432	£110	482	£180	529	£560	570	£1,200	616	£320	644	£220
392	£300	433	£160	483	£200	530	£300	573	£280	617	£100	645	£130
393	£500	434	£320	484	£460	534	£760	574	£65	618	£200	646	£150
394	£720	436	£300	485	£300	536	£150	575	£90	619	£120	649	£50
395	£4,100	437	£700	487	£260	537	£220	577	£160	620	£190	650	£95
398	£140	439	£200	490	£480	538	£340	578	£220	621	£200	652	£280
399	£700	440	£160	492	£340	539	£120	583	£460	622	£300	654	£240
400	£130	446	£120	493	£120	540	£360	584	£2,200	623	£120	655	£880
401	£260	448	£90	494	£260	543	£300	585	£140	624	£130		

# Fellows & Sons Ltd

## Terms and Conditions

Fellows & Sons Ltd carries on business, including the conduct of Auctions, on the following general conditions. This includes business with Bidders, Buyers, Vendors, consignors, users of this website, and with all those present on the Premises prior to or in connection with an Auction (all as hereinafter defined).

### 1. INTRODUCTION

1.1 The following defined terms are used in these Conditions :

“Auction” means any Auction conducted by Fellows, either at their premises or elsewhere (including any internet-based auctions);

“Auctioneer” means Fellows or its authorised Auctioneer, as appropriate;

“Bidder” means a bidder at an Auction, including bidders personally present at the venue and those bidding by telephone or over the internet or otherwise;

“Buyer” means the bidder whose bid was the last bid when the Auctioneer brings down the hammer;

“Conditions” means these terms and conditions;

“Consigned Property” means the items consigned by the Vendor to Fellows for offer at an Auction;

“Deliberate Forgery” means an imitation made with the intention of deceiving as to authorship, origin, date, age, period, culture or source but which is unequivocally described by Fellows in the catalogue as being the work of a particular creator and which at the date of the sale had a value materially less than it would have had if it had been in accordance with the description;

“Fellows” means Fellows & Sons Ltd;

“Hammer Price” means the level of bidding reached (at or above any reserve) when the Auctioneer brings down the hammer;

“Includes” means “includes but not limited to”, and “including” means “including but not limited to”

“Lot” means any Consigned Property accepted by Fellows for offer at Auction;

“Stated Rate” means Fellows’ published rates of commission for the time being and value added tax thereon (also available on request);

“Terms of Consignment” means any stipulated terms and rates of commission on which Fellows accepts instructions from Vendors [or their agents];

“Total Amount Due” means the Hammer Price in respect of the Lot sold together with any premium, commission, value added tax chargeable and any additional charges payable by a defaulting Buyer under these Conditions;

“Vendor” means the vendor of an item (including Consigned Property) which is submitted to Fellows for offer for sale at an Auction;

“Website” means this website;

“You” means any user of the Website.

### 2. WEBSITE

2.1 You may access most areas of the Website without registering your details with us. Certain areas of the Website are only open to you if you register. By accessing any part of the Website, you shall be deemed to have accepted these Conditions notice in full. If you do not accept this legal notice in full, you must leave the Website immediately.

2.2 Fellows may revise these Conditions at any time by updating this posting. You should check the Website from time to time to review the then current legal notice, because it is binding on you. Certain provisions of this legal notice may be superseded by expressly designated legal notices or terms located on particular pages at the Website.

2.3 Unless otherwise stated, the copyright and other intellectual property rights in all material on the Website (including without limitation photographs and graphical images) are owned by Fellows or its licensors. If you breach any of the terms in this

legal notice, your permission to use the Website automatically terminates and you must immediately destroy any downloaded or printed extracts from the Website.

2.4 No part of the Website may be reproduced or stored in any other website or included in any public or private electronic retrieval system or service without Fellows’ prior written permission.

2.5 Any rights not expressly granted in these Conditions are reserved.

### 3. VISITOR MATERIAL AND CONDUCT

3.1 Other than personally identifiable information, which is covered under our Privacy Policy, any material you transmit or post to the Website shall be considered non-confidential and non-proprietary. Fellows shall have no obligations with respect to such material. Fellows and its designees shall be free to copy, disclose, distribute, incorporate and otherwise use such material and all data, images, sounds, text and other things embodied therein for any and all commercial or non-commercial purposes.

3.2 You are prohibited from posting or transmitting to or from the Website any material: that is threatening, defamatory, obscene, indecent, seditious, offensive, pornographic, abusive, liable to incite racial hatred, discriminatory, menacing, scandalous, inflammatory, blasphemous, in breach of confidence, in breach of privacy or which may cause annoyance or inconvenience; or for which you have not obtained all necessary licences and/or approvals; or which constitutes or encourages conduct that would be considered a criminal offence, give rise to civil liability, or otherwise be contrary to the law of or infringe the rights of any third party, in any country in the world; or which is technically harmful (including, without limitation, computer viruses, logic bombs, Trojan horses, worms, harmful components, corrupted data or other malicious software or harmful data).

3.3 You may not misuse the Website (including, without limitation, by hacking).

3.4 Each registration is for a single user only. Fellows does not permit you to share your user name and password with any other person nor with multiple users on a network.

3.5 Responsibility for the security of any passwords issued rests with you.

### 4. THE VENDOR

4.1 Fellows shall act as agent of the Vendor only. Any contract for the sale of a Lot will be formed between the Vendor and the Buyer.

4.2 The Vendor warrants and represents to Fellows and the Buyer that the Vendor is the sole and true owner of the Consigned Property or is properly authorised by the sole and true owner to consign it for sale and is able to transfer good and marketable title to the property free from any third party claims. The Vendor warrants and representatives that the Vendor has revealed all pertinent information that the Vendor possesses about the items, including in relation to any repairs or alterations that may have been carried out. The Vendor shall indemnify Fellows and the Buyer against any loss and expense caused by any breach of this clause 4.2.

4.3 The Vendor shall be entitled to place prior to the Auction a reserve on any Lot, being the minimum Hammer Price at which Lot may be sold. Reserves must be reasonable and Fellows may decline to offer goods which in Fellows’ opinion would be subject to an unreasonably high reserve (in which case goods carry the storage and insurance charges stipulated in the terms of consignment). Reserves will not be accepted on items with a bottom estimate less than £100. The Auctioneer also reserves the right not to accept items which they deem to be unsuitable for Auction. Any estimate given shall be an opinion and is not an undertaking of any kind.

4.4 A reserve once set cannot be changed except with the written prior consent of Fellows.

4.5 Where a reserve has been placed only Fellows may bid on behalf of the Vendor.

4.6 The Vendor authorises Fellows to deduct commission from any sold items at a rate



- of 15% (plus VAT) on any item with a hammer price of £3,000 (or under) or 12.5% (plus VAT) on items over £3,000. Loss or liability for damage will be charged at a rate of 1.5% (plus VAT) calculated on the hammer price. A Marketing fee of £10 (plus VAT) will be charged for each Lot, if unsold we will charge a nominal handling fee of £5 (plus VAT). All items below £35 are subject to a minimum fee of £5 (plus VAT) per Lot.
- 4.7 Fellows will pay the Hammer Price achieved for the Lot (less its commission and applicable fees in accordance with clauses 4.6, 9.2 and 9.3), to the Vendor on receipt of payment of the Total Amount Due in full by the Buyer.
- 4.8 The Vendor authorises Fellows in their discretion to negotiate a sale by private treaty in the case of a Lot unsold at Auction, in which case the same charges will be payable as if the Lot had been sold at Auction.
- 4.9 Fellows do not themselves undertake the collection of any items but may, as the Vendor's agent, instruct a contractor on behalf of the Vendor. Fellows accepts no liability for the actions of such contractor who contracts with the Vendor direct.
- 4.10 Fellows disclaims all liability for items delivered to their saleroom without sufficient sale instructions, and reserves the right to make a minimum warehousing charge of [£1.00] per item per day. Unsold items are subject to the same charges if the Vendor does not remove them within a reasonable time of notification. If not removed within three weeks Fellows reserves the right to sell the items and defray charges from any net proceeds of sale or at the Vendor's expense to consign them to the local authority for disposal. Fellows disclaims any liability for default by the Buyer or for paying out the Vendor before receiving payment by the Buyer.
- 4.11 Subject to clause 4.9, Fellows holds all items on their premises and in their custody covered against the risks of fire, burglary and water damage on the scale of charges notified in the terms of consignment and payable by the Vendor up to the date of any sale and (in Fellows' discretion) the Buyer thereafter until collection.
- 4.12 The right of Fellows to bid on behalf of the Vendor is expressly reserved. The Vendor acknowledges that Lots are sold subject to the stipulations of these Conditions in their entirety and on the Terms of Consignment as notified to consignors at the time of the entry of the Lot.
- 4.13 The Auctioneer reserves the right to dispose of any item that in their opinion is unsaleable. Items, including electrical goods and soft furnishings, which do not comply with current legislation will not be offered at Auction.
- 4.14 Any items unsold after an Auction will be reoffered in a subsequent Auction at a reduced reserve to be agreed within seven days. The Auctioneer may request the removal of an item if a reduced price cannot be agreed; items not removed within 14 days will be subject to a storage charge.
- 4.15 A charge of 10% (plus VAT) based on the middle estimate – plus any other charges incurred – may be levied for any Lot withdrawn by the Vendor from offer at an Auction. If the item has to be returned by post (or any other method) the Vendor will be responsible for this charge. These charges are to be paid before the item is returned.
- 4.16 By submitting the item to Fellows for offer at Auction, the Vendor agrees to the Terms of Consignment and authorises Fellows to deduct the specified charges.
- 5. PUBLICITY**
- 5.1 Any catalogue and buyer guides are provided for information only and do not form part of these Conditions. The catalogue and the buyer guides may contain additional terms and conditions.
- 5.2 Fellows reserve the right to use any photographs, background information, and research for publicity purposes both before and after the sale.
- 6. THE AUCTION**
- 6.1 Any Auction shall be conducted at the absolute discretion of the Auctioneer.
- 6.2 The Auctioneer shall conduct the Auction with reasonable skill and care. For example, what constitutes a bid shall be at the absolute discretion of the Auctioneer, acting with reasonable skill and care.
- 6.3 The Auctioneer shall have the right to refuse any bid which does not exceed the previous bid by at least 10% or by such greater proportion as the Auctioneer shall in his or her absolute discretion direct.
- 6.4 Where two or more bids at the same level are simultaneously received by the Auctioneer, the Auctioneer at his absolute discretion shall determine which bid to prefer. Subject to the foregoing, where two or more bids at the same level are simultaneously received by the Auctioneer, any bid by a Bidder personally present at an Auction shall take preference over any bid submitted by telephone or over the internet. Any bid made or attempted by telephone or over the internet shall be deemed to have been made only if received by the Auctioneer.
- 6.5 Fellows shall have the right, at its absolute discretion, to refuse admission to its premises or attendance at (or participation in) any Auction by any person.
- 7. BIDDERS**
- 7.1 Bidders may be required to register their particulars. Bidders attending in person may be required to satisfy Fellows' security arrangements before entering any part of the premises to view or bid.
- 7.2 You accept full liability for all bids submitted via your My Fellows account. Once a bid has been made by a Bidder on our website, the bid can be lowered or increased up until 9am on the day of the auction. You must sign into your My Fellows account to do this and you will receive an email confirmation for any changes made. Should a bid be placed in error on the website you must contact Fellows immediately. Failure to contact Fellows before the auction takes place will result in liability for the full payment of the item.
- 7.3 Subject to clause 6.3, the highest Bidder at the Hammer Price shall be the Buyer. Any dispute about a bid shall be settled at the Auctioneer's absolute discretion.
- 7.4 Bidders are deemed to act as principals unless there is a written prior acknowledgement by Fellows that a Bidder is acting as an agent for a named principal.
- 7.5 Bidders are strongly encouraged to attend the Auction in person. Bidders shall be responsible for any decision to bid for a particular Lot and shall be deemed to have carefully inspected and satisfied themselves as to its condition. Neither Fellows nor its employees or agents shall be responsible for any neglect or default in doing or failing to do so.
- 7.6 Bidders are given ample opportunities to view and inspect before any sale and prospective Buyers must satisfy themselves as to all such matters. Neither Fellows or its employees or agents nor the Vendor accept liability for the correctness of such opinions and all conditions and warranties, express, implied or statutory are hereby excluded.
- 8. THE BUYER**
- 8.1 Immediately a Lot is sold, the Buyer shall:
- (a) give to Fellows their name and address and, if requested proof of identity, and
- (b) pay to Fellows the Total Amount Due.
- 8.2 [Fellows may, at its absolute discretion, agree credit terms with the Buyer before an Auction under which the Buyer may be entitled to take possession of Lots up to an agreed value in advance of payment by a stipulated future date of the Total Amount Due.]
- 8.3 Cheques shall not be acceptable by Fellows (unless Fellows in its absolute discretion permits payment by such method) nor are third party references or credit facilities with other Auction houses. If a cheque is tendered Fellows reserves the right to instruct its bank to check the Buyer's status and account balance before exercising any discretion. Any credit arrangement must be settled at least 4 days before the relevant sale. Any permitted payment by credit card shall carry an extra charge to the Buyer of such percentage of the Total Amount Due as is displayed on the premises.
- 8.4 Any payments by a Buyer to Fellows may be applied by Fellows towards any sums owing from that Buyer to Fellows on any account whatever without regard to any directions of the Buyer or his agent, whether express or implied.

## 9. THE PURCHASE PRICE

- 9.1 On the first £50,000 of the Hammer Price (of any Lot) the Buyer will pay the Hammer Price and a premium of 20% (plus VAT on the total of the Hammer Price and the premium). Value Added Tax is charged at the rate prevailing by law at the date of sale
- 9.2 On the excess over £50,000 of the Hammer Price (of any individual Lot), the Buyer will pay the Hammer Price and a premium of 10% (plus VAT). The said premium not being negotiable and payable by ALL Buyers. The Vendor authorises Fellows to retain beneficially the premium payable by Buyers.
- 9.3 Value Added Tax on the Hammer Price is imposed on all items affixed with an asterisk thus - \*.
- 9.4 Live Online Bidding Charges – Buyers will pay a commission charge of an additional 3% (+ VAT) of the hammer price if lots are successfully purchased online via a live bidding platform such as Live Auctioneers and the-saleroom.com.

## 10. TITLE AND COLLECTION OF PURCHASES

- 10.1 The ownership of any Lot purchased shall not pass to the relevant Buyer until they have made payment in full to Fellows of the Total Amount Due.
- 10.2 Buyers shall at their own risk and expense take away any Lot that they have purchased and paid for not later than 2 working days following the day of the Auction after which they shall be responsible for any removal, storage and insurance charges.

## 11. DEFAULT BY BUYER OR VENDOR

- 11.1 As Fellows act as agent for the Vendor, Fellows is not responsible for default by the Vendor or the Buyer.
- 11.2 If any Lot is not paid for in full and taken away in accordance with these Conditions, or if there is any other breach of these Conditions, Fellows as agent for the Vendor shall at its absolute discretion and without prejudice to any other rights it may have, be entitled to exercise all or any of the following rights and remedies:
- (a) to proceed against the Buyer for an action for debt or damages for breach of contract;
- (b) to rescind the sale of that Lot and/or any other Lots sold by Fellows to the defaulting Buyer;
- (c) to re-sell the Lot by Auction or private treaty. If a lower Hammer Price is achieved on the re-sale than that achieved on the original sale the defaulting Buyer shall be liable for the difference (after crediting any part payment and adding any re-sale costs). Fellows will account to the Vendor for any surplus achieved on a re-sale, however, it shall only be required to account to the Vendor for any resulting deficiency in the event that it receives payment of such sum in full from the defaulting Buyer.
- (d) to remove, store and insure the Lot at the expense of the defaulting Buyer and, in the case of storage, either at Fellows' premises or elsewhere;
- (e) to charge interest at a rate not exceeding [1.5%] per month on the total amount due to the extent it remains unpaid for more than 2 working days after the sale;
- (f) to retain that or any other Lot sold to the defaulting Buyer until that Buyer pays the total amount due;
- (g) to reject or ignore bids from the defaulting Buyer at future Auctions or to impose conditions before any such bids shall be accepted;
- (h) to apply any proceeds of sale of other Lots due or in future becoming due to the defaulting Buyer towards the settlement of the total amount due and to exercise a lien on any of the Buyer's property in Fellows' possession for any purpose.

## 12. DELIBERATE FORGERIES

- 12.1 Subject to clause 12.2, any representation or statement by Fellows (including in any catalogue) as to authorship, genuineness, origin, date, age, provenance, condition or estimated selling price is a statement of opinion only. Prospective Buyers are given ample opportunities to view and inspect before any sale and prospective Buyers must satisfy themselves as to all such matters. Neither Fellows

or its employees or agents nor the Vendor accept liability for the correctness of such opinions and all conditions and warranties, express, implied or statutory are hereby excluded.

- 12.2 Any Lot which proves to be a Deliberate Forgery may be returned to Fellows by the Buyer within 21 days of the Auction provided it is in the same condition as when bought, and is accompanied by particulars identifying it from the relevant catalogue description and a written statement of defects. If Fellows is satisfied from the evidence presented that the Lot is a Deliberate Forgery Fellows shall refund the money paid by the Buyer for the Lot (but not the amount of any consequential loss, damages, expenses or interest) provided that (1) if the catalogue description reflected the accepted view of scholars and experts as at the date of sale or (2) the Buyer personally is not able to transfer a good and marketable title to Fellows.

## 13. LIMITATIONS OF LIABILITY

- 13.1 All members of the public on the premises are there at their own risk and must note the lay-out of the accommodation and security arrangements.
- 13.2 Any indemnity under these Conditions shall extend to all actions, costs, expenses, claims and demands whatsoever suffered or incurred by the person entitled to the benefit of it and Fellows declares itself to be a trustee of the benefit of every such indemnity so far as it is expressed to be for the benefit of its employees and agents.
- 13.3 While Fellows endeavours to ensure that the information on the Website is correct, Fellows does not warrant the accuracy and completeness of the material on the Website. Fellows may make changes to the material on the Website, or to the products and prices described in it, at any time without notice. The material on the Website may be out of date, and Fellows makes no commitment to update such material.
- 13.4 The material on the Website is provided "as is", without any conditions, warranties or other terms of any kind. Accordingly, to the maximum extent permitted by law, Fellows provides you with the Website on the basis that Fellows excludes all representations, warranties, conditions and other terms which, but for this legal notice, might have effect in relation to the Website.

## 14. GENERAL

- 14.1 Any notice to any Buyer, Vendor, Bidder or viewer may be given by first class mail or email in which case it shall be deemed to have been received by the addressee 48 hours after posting or sending. All notices to Fellows must be sent in writing and email is not acceptable.
- 14.2 Any indulgence extended to any person by Fellows notwithstanding the strict terms of these Conditions or the Terms of Consignment shall affect the position at the relevant time only and in respect of that particular concession only; in all other respects these Conditions shall be construed as having full force and effect.
- 14.3 These Conditions and any disputes or claims arising out of or in connection with it or their subject matter or formation (including non-contractual disputes or claims) are governed by and construed in accordance with the law of England.
- 14.4 The parties irrevocably agree that the courts of England have exclusive jurisdiction to settle any dispute or claim that arises out of or in connection with the Agreement or its subject matter or formation (including non-contractual disputes or claims).

## 15. SHIPPING

- 15.1 We offer a tracked and insured shipping service for a standard rate of £15.00\* per parcel.
- 15.2 \*Larger items, as well as those exceeding a value of £5,000 or weighing in excess of 2kg may be subject to additional fees.
- 15.3 Due to the size and vulnerability of the items in our Antique Furniture and Silver auctions, we are unable to post these items and advise buyers to check the cost of shipping before bidding.

**Fellows**  
Established 1876



# Fellows

Established 1876

## Catalogue Subscription Service

If you would like to receive catalogues on a regular basis, please mark the appropriate category and return this form with a cheque made payable to Fellows for the full amount.

### Subscriptions last for a 12 month period

<b>Antique &amp; Modern Jewellery</b> 12 catalogues per year	£100	
<b>Vintage &amp; Modern Wrist Watches</b> 4 catalogues per year	£35	
<b>Pocket Watches &amp; Accessories</b> 4 catalogues per year	£35	
<b>Silver &amp; Plated Ware</b> 4 catalogues per year	£35	
<b>Vintage Jewellery &amp; Accessories</b> 6 catalogues per year	£50	
<b>Jewellery</b> 24 catalogues per year	£150	
<b>Watches</b> 24 catalogues per year	£150	
<b>Coins &amp; Medals</b> 3 catalogues per year	£30	
<b>Antiques &amp; Fine Art</b> 4 catalogues per year	£35	
<b>Loose Stones for Tender</b> 4 catalogues per year	£35	

All of the above catalogues are available to view **FREE** of charge on our website [www.fellows.co.uk](http://www.fellows.co.uk)

Name (Block Capitals) .....

Address (Block Capitals) .....

Post Code .....

Telephone .....

Signature .....

Date .....

Email .....

# Fellows

Established 1876

## Commission Bidding Slip

**Thursday 13th November 2014**  
 Antique & Modern Jewellery

**Please bid on my behalf for the lot(s) shown below.**

The bids will be executed as cheaply as is permitted by other bids in the room or reserves.

I have read and agree to comply with the Conditions of Sale as printed in the catalogue.

Any account for items purchased on my behalf will be settled within 24 hours of the sale and the items collected within two days of sale.

Please complete in block capitals.

Name .....

Address .....

.....

..... Postcode .....

Telephone .....

Email .....

Signed ..... Date .....

<b>Lot</b>	<b>Price</b>	<b>Lot</b>	<b>Price</b>	<b>Lot</b>	<b>Price</b>	<b>Lot</b>	<b>Price</b>

**Buyer's Premium**

The buyer's premium is 20% (+ VAT) or 24% (VAT inclusive) on the first £50,000 of any individual lot. For any individual lot in excess of £50,000, the buyer's premium is 10% (+ VAT) or 12% (VAT inclusive).

Lots prexed with \* will carry VAT at 20% on the hammer price.

**Please note the bidding increments**

£50 – £100	£5 increments
£100 – £200	£10 increments
£200 – £1000	£20 increments
£1000 – £10,000	£100 increments
Over £10,000	£1000 increments

Any bids shown not complying with these increments will be **ROUNDED UP** to the next increment.

**Please check your bids**



# Fellows

Established 1876

## Contact Information

### Directors

---

Stephen Whittaker BA (Hons)  
Jayne Whittaker

Ben Griffiths BSc (Hons)  
Adrian Hailwood MA (Hons)

Bryony Meredith BA (Hons), FGA

### Departments

---

#### Operations

0121 212 5508

Ben Griffiths BSc (Hons)  
beng@fellows.co.uk

#### Insurance

0121 212 5504

Geoff Whitefield FIRV, FNAG  
geoff@fellows.co.uk

#### Marketing

0121 212 5500

Qucie Green MA  
qucie@fellows.co.uk

#### London Office

#### Jewellery & Watches Specialist

Kirsti Atherton PJ Dip  
Kirsti@fellows.co.uk

#### Accounts

0121 212 2131

Sandra Ford  
sandra@fellows.co.uk

#### Photography

Claire Cleaver  
Peter Long BA (Hons)

Howard Cheung BA (Hons)  
howard@fellows.co.uk

Elizabeth McNab  
elizabeth@fellows.co.uk

Emma Cann BA(Hons)  
emmac@fellows.co.uk

### Specialist Departments

---

#### Jewellery

0121 212 6303

Emma Scriven BA (Hons), FGA, DGA  
Heather Bailey  
Bryony Meredith BA (Hons), FGA  
Claire Stafford FGA, DGA  
Georgina Kettle BA (Hons), FGA, DGA  
Ben Randall BA (Hons), G.G., A.J.P.  
Louise Ludlam BA (Hons), DGA, FGA  
Jenny Darcy BA (Hons)

Leah England BA (Hons)  
Emma Mogridge BA (Hons), FGA, DGA  
Jennifer Muntz BA (Hons), Cert GA  
Sophie Higgs  
Simon Welsh A.J.P.  
Natalie Craddock FGA, DGA

#### Watches

0121 212 5506

Adrian Hailwood MA (Hons)  
Conrad Cunningham BA (Hons)  
Steven Yambo BA (Hons)  
Michael Jagiela  
Laura Mackay MA (Hons)  
Philip Showell BA (Hons)  
Harriet Mustard

#### Antiques & Fine Art

0121 212 2131

Kevin Jackson  
Mark Huddleston MA (Hons)

#### Silver & Coins

0121 212 6302

Naomi Wilson BA (Hons), DGA  
Alison Jakeway MA MRICS  
Sarah Isaacs BA (Hons)



Situated in the heart of Birmingham's Jewellery Quarter, Fellows is easily accessible from all parts of the United Kingdom, Europe and beyond.

### By Air

Birmingham International Airport has daily flights to most European capitals either direct or via Schiphol. A rail link, Birmingham International Station, connects to Birmingham New Street Station or a 25 minute taxi ride brings you to the salerooms.

### By Rail

There is a half-hourly train service to and from London Euston to Birmingham New Street via Birmingham International Station. The saleroom is a five minute taxi ride from New Street Station, which is right in the centre of the City.

### Directions to Fellows

From the M6, at junction 6 join the Aston Expressway (A38M), keep to the inside lane.

Take second exit, signed ring road (Convention Centre, and Indoor Arena).

At the roundabout (Pump Island) take the third exit, following the signs for the Ring Road, and continue through two sets of traffic lights to next roundabout, and take second exit (straight on).

At the next roundabout, straight over - first exit, under railway bridge - turn left into Pitsford Street, and continue up hill to T junction.

Turn LEFT on to Vyse Street then first RIGHT (Hockley Street), continue 50 metres to mini roundabout and follow right into Northampton Street which leads into Augusta Street.

Augusta House is approximately 150 metres on the left, with parking facilities to the front.

### Where to stay

Birmingham has a full range of International hotels, and accommodation is available in a wide range of prices. Please call us for a list of suggestions.





# Fellows

Established 1876

Augusta House | 19 Augusta Street | Birmingham B18 6JA  
Tel 0121 212 2131 | Fax 0121 212 1249 | [www.fellows.co.uk](http://www.fellows.co.uk)