

Vintage Jewellery & Accessories

Monday 8th June 2015



Fellows
Established 1876

Vintage Jewellery & Accessories

Monday 8th June 2015

Session One, Lots 1 – 897 In the upstairs saleroom from 10am

Session Two, Lots 898 – 1498 In the downstairs saleroom from 12pm

Fellows

Established 1876

We have another large Vintage Jewellery & Accessories auction for you to browse through this month. Due to its size we will be splitting the auction into two sessions. Session one will include lots 1 to 897, these will be auctioned from 10am in the upstairs saleroom. Then session 2 will include lots 898 to 1498, these will be auctioned from 12pm in the downstairs saleroom, so the auctions will overlap. Please ensure you take this into account when planning your bidding.

There is a charming collection of Sibyl Dunlop pieces in this auction, many with their original boxes, so if you are a fan of Arts & Crafts jewellery you are guaranteed to love these, they are lots 215 to 222, many featuring her classic multi-gem, moonstone and enamel designs.

Amber is still proving as popular as ever and we have a rare natural Burmese red amber necklace on offer, lot 637, that will attract plenty of attention from amber collectors.

The group lots of antique jewellery boxes always sell really well and we have over thirty of these lots in this auction, hopefully enough to please all the buyers that want to get their hands on them.

There are some great designer bags on sale again, including a Louis Vuitton suitcase, lot 1429 and a Chanel tan lambskin leather shoulder bag, lot 1417.

A great addition to this auction is a collection of hats and fascinators we have at the end of the auction, perfect timing for summer weddings and race days, you should get yourself a bargain with these so they are definitely worth a look!

Please also look at our website for additional photographs and condition reports and if you have any further enquiries do not hesitate to contact us.

Index

Session One from 10am in the Upstairs Saleroom

Georgian, Victorian, Edwardian, Arts & Crafts	1 - 225
Cameos	226 - 312
Locketts, Stickpins & Hatpins	313 - 419
Fobs & Medallions	420 - 492
Scottish & International	493 - 578
Organics, Gem-set & Micro Mosaic	579 - 820
Paste, Marcasite & Charms	821 - 897

Session Two from 12pm in the Downstairs Saleroom

Silver & Gold	898 - 1035
Designer Jewellery	1036 - 1134
Scandinavian & Modernist	1135 - 1154
Costume Jewellery	1155 - 1331
Jewellery Boxes & Novelties	1332 - 1404
Designer Accessories, Glasses & Bags	1405 - 1457
Clothes, Accessories & Headwear	1458 - 1498

Featured lots

Lots 567, 579, 589, 604, 1043, 1047, 1368 & 1429 (front & back cover)



Viewing times

Wednesday 3rd June	10.00am - 4.00pm
Thursday 4th June	10.00am - 4.00pm
Friday 5th June	10.00am - 4.00pm
Saturday 6th June	11.00am - 4.00pm
Monday 8th June	8.30am - 10.00am

Please be aware that you will be asked for photographic proof of identification to be allowed access to the viewing area.

General Information

Fellows

Established 1876

Why Buy?

COMPETITIVE buyer's premium

LIVE online bidding

FULLY illustrated catalogue

EASY to use, functional website

ACCURATE condition reports

SPECIALISTS on hand to offer advice

TRACKED AND INSURED shipping*

*Please contact Fellows for further information.

Contact the Jewellery department...

Louise Ludlam

BA (Hons), DGA, FGA

Senior Specialist

0121 212 6306

louise@fellows.co.uk

Sophie Higgs

Department Assistant

0121 212 6306

sophieh@fellows.co.uk

Rachel Owen

Department Administrator

0121 212 6306

rachelo@fellows.co.uk

Why Sell?

HIGH PRICES consistently achieved

FLEXIBLE commission rates

FREE valuations with no obligation to consign

RAPID turnaround for your goods

TARGETED advertising to a global audience

SUPERIOR quality catalogues

FULLY integrated website



Follow Us On...



facebook.com/fellowsauctions



[@fellowsauctions](https://twitter.com/fellowsauctions)



pinterest.com/fellowsauctions



youtube.com/fellows1876



[fellowsauctions](https://instagram.com/fellowsauctions)

Further Information



Additional Images and Condition Reports

can be found online at our website www.fellows.co.uk



Telephone Bidding is available if you cannot attend an auction. Please ring 0121 212 2131 to arrange a telephone line.



Live Bidding

via the internet is available at www.the-saleroom.com/fellows



Download our catalogue app today and view our printed catalogues on your device.



Buyer's Premium

The buyer's premium is 20% (+ VAT) or 24% (VAT inclusive) on the first £50,000 of any individual lot. For any individual lot in excess of £50,000, the buyer's premium is 10% (plus VAT) or 12% (VAT inclusive). Lots prefixed with * will carry VAT at 20% on the hammer price.

Live Online Bidding Charges

Buyers will pay a commission charge of an additional 3% (+ VAT) of the hammer price if lots are successfully purchased online via Live Auctioneers and the-saleroom.com.

Seller's Commission

Sellers will pay a commission charge of 12.5% (+ VAT) on items which have a hammer price over £3,001 or more. Items sold for £3,000 or under will have a commission rate of 15% (+ VAT). Please view our terms and conditions for further detail.

Important Notice

Neither Fellows nor the Vendors are responsible for any reference as to the condition of lots listed. The absence of such reference does not imply that a lot is in good condition or free from faults or imperfections.

All weights and dimensions are approximate. Purchasers are advised to carefully inspect lots and make their own opinion as to the condition. Please see section 7 under 'Bidders' in our full terms and conditions. View Fellows Important Notices in full and full terms and conditions at the back of the catalogue.

Key to Symbols



Item may have export restrictions for customers outside of the EU.



Lot comes with box.



Lot comes with associated papers/warranty cards.

For any further enquiries please call **0121 212 2131**

1



A late 18th century gold enamel memorial band ring. The central black enamel band, with raised inscription. Ring size L. Weight 3.9gms. £100-150

2



A late Georgian 18ct gold garnet ring. The cushion-shape garnet to the scrolling embossed bezel and shoulders. Weight 2.3gms. £150-200

3



An early 19th century gold garnet pendant. The foil back circular and pear-shape garnets, to the later split pearl surmount. Length 4.5cms. Weight 4.9gms. £50-80

4



A George III gold mourning brooch. The marquise-shape woven hair panel, to the reverse with personal inscription 'M Hudson Ob 15 Jan 1793 at 58'. Length 3.4cms. Weight 6.6gms. £40-60

5



A George IV gold paste memorial brooch. The rectangular-shape hair panel, within a circular-shape black paste surround, to the reverse with personal inscription 'R.J. Died 5th Feb 1822 Aged 36'. One paste deficient. Length 1.7cms. Weight 2.5gms. £30-50

6



A George IV enamel mourning brooch. The vacant panel, within a foliate border and black enamel 'In Memory Of' surround, to the reverse with personal inscription 'J.F.Mansel Ob 22 Nov 1829 at 22'. Length 3.4cms. £240-340

7



A late Georgian gold woven hair and foil-back paste memorial brooch. The woven hair panel, within a foil-back pink paste border. Length 2.5cms. Weight 6gms. £60-90

8



An early 19th century silver and gold diamond and gem-set pendant. The pear-shape foil back topaz, within a circular-shape emerald and rose-cut diamond floral surround. Length 3.2cms. Weight 4.8gms. £120-180

9



Two items of Georgian gold mourning jewellery. To include a woven hair panel and black paste ring engraved 'C.P. Galabin Ob 16 April 1812 at 38', together with a woven hair panel and black enamel brooch engraved 'Sam Blount died 22 Sept 1826 aged 67'. Length of brooch 2.1cms. Total weight 7.9gms. £70-100

10



An early 19th century 9ct gold memorial brooch. The marquise-shape woven hair panel, within a stepped border. May be worn as a pendant. Length 3cms. Weight 4.8gms. £40-60

11



An early 19th century garnet and split pearl mourning ring. The oval garnet cabochon, within a split pearl surround, to the partially engraved band with split pearl line sides. Weight 6.4gms. £150-200

12



A George III gold memorial pendant. Of oval-shape outline, the opalescent glass panel with applied hair and split pearl tomb, to the woven hair panel reverse. Memorial inscription reads "HEN CLARKSON OB JAN 6 1806 AE H Y". Length 7.5cms. Weight 41.4gms. £300-400

13

An early 19th century gold garnet, split pearl and enamel ring. The oval garnet cabochon, within a split pearl surround, to the black and white enamel rectangular-shape surround and similarly designed tapered band. *Weight 6.4gms. £200-300*

**14**

A William IV 18ct gold enamel memorial ring. The white and black enamel band reading; In Memory Of. *Hallmarks for London, 1832. Ring size N. Weight 4.1gms. £150-200*

**15**

A mid 19th century gold miniature portrait pendant. The circular-shape panel, depicting an elegant lady, with initial monogram to reverse. *Diameter 4.4cms. Weight 21.6gms. £250-350*

**16**

A mid 19th century gold 'Regard' ring. The graduated foil-back ruby, emerald, garnet, amethyst, ruby and diamond line, to the bead border and scrolling foliate band. *Weight 2.3gms. With associated case. £600-800*

17

A mid 19th century gold memorial brooch. Of rectangular outline, the imitation pearl line to the arranged hair panel. *Length 3.5cms. Weight 9gms. £40-60*

**18**

A mid Victorian 18ct gold coral ring. The rectangular weaved hair panel, within a circular coral cabochon surround, to the bifurcated shoulders. *Coral untested. Weight 4.4gms. £70-100*

**19**

A mid 19th century gold garnet and enamel pendant. The foil-back oval garnet cabochon trefoil, with overlaid replacement blue enamel floral and foliate detail, to the floral engraved surmount. *Length 4.8cms. Weight 13.4gms. £400-600*

**20**

A mourning ring. The early 19th century marquise-shape ivory panel, painted to depict a maiden writing in a book, to the later collet and band. *Band with hallmarks for Birmingham, 1957. Total weight 5.9gms. £80-120*

**21**

A mid Victorian gold split pearl memorial brooch. The oval arranged hair panel, within a split pearl border and scrolling surround, to the reverse inscribed 'Captain Henderson of Stemster died Oct 31st 1859'. *Length 5.4cms. With associated case. £440-540*

22

A mid Victorian 18ct gold diamond, split pearl and enamel morning ring. The rose-cut diamond and split pearl floral cluster, within a black enamel surround, to the scrolling shoulders and ridged band. *Hallmarks for Birmingham, 1845. Weight 2.8gms. £150-200*

**23**

A mid 19th century gold swivel mourning ring. The rectangular-shape carnelian and woven hair swivel panel, to the tapered shoulders and ridged band. *Weight 3.2gms. £60-90*

**24**

A mid Victorian gold, enamel and split pearl brooch. Of oval outline with central woven hair panel to the black enamel leaf surround with split pearl accents and hinged reverse glass back panel. *One split pearl deficient. Length 4.2cms. Weight 7.8gms. £60-90*



25

A mid Victorian 15ct gold split pearl and woven hair mourning ring. The split pearl scrolling line, to the engraved open band with platted hair line. *Hallmarks for Chester, 1865. Weight 2.8gms. £60-90*

**29**

A late Victorian 15ct gold enamel memorial ring. The oval-shape black enamel panel, with forget-me-not seed pearl cluster. *Hallmarks for Chester, 1893. Ring size P 1/2. Weight 1.8gms. £30-50*

**33**

A late 19th century gold split pearl memorial pendant. Of circular outline, the glazed hair panel, with split pearl surround and central accent, to the blue enamel mount and glazed hair reverse. *Diameter 4.9cms. Total weight 30.9gms. With fitted case. £150-200*

26

A mid Victorian coral and hair brooch. The coral cabochon surround to the glazed platted hair panel. *Coral untested. Length 2cms. Weight 3.8gms. £40-60*

30

A late Victorian seed pearl and onyx memorial pendant. The seed pearl star, within a black onyx panel. *Length 4.8cms. Weight 12.6gms. £150-200*

27

A George III 18ct gold split pearl and enamel ring. The split pearl quatrefoil around a blue enamel stylised knot, with blue enamel sides and plain band. *Hallmarks for Birmingham, 1813. Weight 1.9gms. £40-60*

**31**

A pair of late 19th century ear pendants. Each designed as an oval-shape hair lattice, to the embossed detail and surmount. *Length 5.2cms. Total weight 1.5gms. £60-90*

34

A late Victorian 18ct gold and diamond memorial brooch. The old-cut diamond to the cannetille and bead surround, with glazed hair panel to the reverse. *Length 3.9cms. Weight 9.2gms. £150-200*

28

A late 19th century 15ct gold target brooch. Of oval outline, with cannetille surface detail and reverse glass panel. *Length 4.2cms. Weight 14gms. £200-300*

32

A late Victorian target brooch, circa 1880. Designed as a circular cannetille dome, within a petal and bead tiered border. *Weight 13.4gms. £120-180*

35

A late Victorian 15ct gold mourning ring. The split pearl within a six-pointed star setting to the oval black enamel background and tapered black enamel shoulders. *Weight 1.9gms. £50-80*

36

A late Victorian gold diamond memorial brooch, circa 1880. The rose-cut diamond trefoil, within a tiered bead and rope-twist surmount. *Estimated total diamond weight 0.15ct. Diameter 3.7cms. Weight 10.5gms. £150-200*

37

A late 19th century gold, red paste and enamel memorial brooch. The oval red paste cabochon, raised on a spiral surround to the black enamel and geometric motif border, with glazed reverse. *Length 3.5cms. Weight 8.8gms. £60-90*

41

A late 19th century target brooch. Of circular outline, with scalloped border and vacant panel to reverse. *Diameter 2.8cms. Weight 6.2gms. £60-90*

46

A late 19th century gold memorial brooch. The oval-shaped scalloped panel, within a quatrefoil surround, to the bead accents. *Length 3.3cms. Weight 5.2gms. £40-60*

38

A late 19th century hair necklace and a memorial brooch. The necklace designed as woven hair with five 9ct gold band spacers, together with a gold memorial brooch designed as an oval-shaped hair panel with engraved border to reverse. *Lengths 1.9 and 120cms. Weight of brooch 3.2gms. £30-50*

**42**

A late 19th century gold diamond and enamel ring. The three slanted rose-cut diamond lines, interspaced by black enamel, to the rose-cut diamond shoulders and tapered band. *Weight 2gms. £80-120*

**47**

A late 19th century gold diamond memorial brooch. The old-cut diamond, inset to the marquise-shaped panel, within a bead and rope-twist surround. *Length 5cms. Weight 7.2gms. £80-120*

39

A late 19th century gold banded agate split pearl and enamel pendant. The split pearl and rose-cut diamond star, within a banded agate cabochon, to the split pearl and enamel border. *Personalised engraving to the reverse reads, 'In memorandum Samuel Bright, 28:Jany. 1870.'* *Length 4.7cms. Weight 17.9gms. £500-700*

43

A late Victorian 15ct gold memorial brooch. The oval raised dome, with bead and rope-twist decoration, to the stepped surround and vacant panel reverse. *Hallmarks for Chester, 1887. Length 3.7cms. Weight 7.2gms. £100-150*

48

A late 19th century gold split pearl memorial brooch. Of cushion-shaped outline, the woven hair panel, within a split pearl double surround. *Length 2.3cms. Weight 4.4gms. £40-60*

44

A late 19th century 15ct gold diamond, coral and split pearl brooch. Of marquise-shaped outline, the old-cut diamond, within a circular coral cabochon surround, to the scrolling bar with split pearl terminals. *Estimated diamond weight 0.25ct, I-J colour, SI clarity. Length 5cms. Weight 6gms. £100-150*

49

A late 19th century 15ct gold split pearl and enamel memorial brooch. The scroll engraved buckle, with split pearl and blue enamel detail, to the circular-shaped scroll engraved surround, suspended swags and tassel drop. *Length 7.2cms. Weight 23gms. £540-640*

40

A late 19th century split pearl and turquoise brooch. The split pearl and turquoise cabochon cluster, to the grapevine wreath. *Diameter 2.7cms. Weight 6.3gms. £90-140*

**45**

A late 19th century gold split pearl and enamel ring. The three split pearls and black enamel, interspaced by text reading 'In memoriam', to the tapered band. *Weight 2.6gms. £100-150*



50

A late Victorian diamond, split pearl and onyx memorial brooch. The old-cut diamond and split pearl foliate sides, to the onyx panel. *Length 3.8cms. Weight 7gms. £90-140*

55

A late 19th century 18ct gold lozenge-shape brooch. The lozenge-shape dome, within a sphere and rope-twist surround. *Length 4.9cms. Weight 9.7gms. £90-140*

59

A late 19th century garnet and split pearl memorial brooch. The woven hair panel, within a split pearl and circular-shape garnet surround. *One replacement paste. Length 2.6cms. £40-60*

51

A late 19th century 9ct gold synthetic ruby and split pearl memorial brooch. Of oval outline, the synthetic ruby and split pearl cluster, to the tiered panel surround with rope-twist and bead detail. *Length 3.9cms. Weight 5gms. £40-60*

**56**

A late 19th century 15ct gold split pearl brooch. The split pearl star set to the oval-shape panel, within a bead accent scalloped surround. *Length 4cms. Weight 6.8gms. £100-150*

60 ✕

A late Victorian 15ct gold ruby and diamond cannetille brooch. The cushion-shape ruby and old-cut diamond sides, within a bead and rope-twist border. *Hallmarks for Chester, letter date indistinct. Length 4.3cms. Weight 5.5gms. £120-180*

52

A late 19th century 9ct gold split pearl diamond and enamel sentimental brooch. The blue guilloche enamel and overlaid split pearl and diamond point forget-me-not detail, within a scroll surround, to the vacant back panel. *Length 4.5cms. £60-90*

**57**

A late 19th century gold garnet and split pearl memorial brooch. The rectangular-shape vacant panel, within a split pearl and circular-shape garnet surround. *One replacement gem. Length 2.5cms. Weight 6.8gms. £40-60*

61

A late Victorian 15ct gold diamond and split pearl brooch. The old-cut diamond, within a split pearl surround to the detailed rope-twist sides. *Hallmarks for Chester, 1897. Length 3.9cms. Weight 3gms. £50-80*

53

A late Victorian 15ct gold split pearl and diamond memorial brooch. The alternating split pearl and old-cut diamond line, within a cannetille surround, to the woven hair panel reverse. *Estimated total diamond weight 0.10ct. Length 5cms. Weight 10gms. £120-180*

62

Two items of mid Victorian gold memorial jewellery. To include a ring with woven hair recess, together with a split pearl brooch with woven hair central panel. *Length of brooch 1.7cms. Weight 3.7gms. £50-80*

54

A turquoise and chalcedony sentimental brooch. The late 19th century vacant panel and circular turquoise cabochon cluster, atop a mid 20th century 9ct gold white chalcedony surround. *Length 4.5cms. Weight 12.7gms. £60-90*

**58**

A late 19th century 9ct gold split pearl, diamond and enamel sentimental brooch. The split pearl and diamond point forget-me-not centre, within a black enamel surround, to the vacant back panel. *One split pearl deficient. Length 4cms. £60-90*

**63**

Two mid Victorian memorial brooches. Each of rectangular outline, the woven hair panels, within scrolling surrounds. *Lengths 2.3cms each. £50-80*



64

Two late 19th century brooches. The first designed as an arranged scrolling hair panel, to the scrolling surround, the second designed as three oval-shape garnets, to the scrolling sides. *Lengths 4 to 2cms. Weight 11.7gms. £90-140*

**69**

Four items of late 19th century jewellery. To include a chalcedony locket, an enamel pendant with glazed reverse, an oval-shape cross pendant and an enamel cross motif locket. *Locket AF. Lengths 3.1 to 2cms. £50-80*

**73**

A pair of 9ct gold split pearl ear pendants. Each designed as a gloved hand, clasping a floral garland, with split pearl highlights. *Import marks for Birmingham, 1989. Length 3.6cms. Weight 2.2gms. £80-120*

65

Two late Victorian brooches. To include a 15ct gold sapphire and rose-cut diamond cannetille brooch, together with a woven hair panel brooch. *Lengths 4 and 2.7cms. Total weight 10.4gms. £80-120*

70

Three memorial brooches. To include a late 19th century garnet and blue enamel memorial brooch, together with two mid to late 19th century woven hair memorial brooches, one with circular-shape purple paste surround. *Enamel deficient. Lengths 2.6 to 1.9cms. £60-90*

66

Two late 19th century 18ct gold onyx and seed pearl memorial brooches. The first designed as an oval-shape onyx cabochon, with seed pearl star motif and rope-twist border, together with a lozenge-shape brooch of similar design. *Lengths 3.6 and 4.1cms. Weight 19.8gms. £220-320*

**71**

A late 19th century 15ct gold diamond brooch. Of circular-shape outline, the domed centre with old-cut diamond accent, to the decorative tiered surround with bead border. *Diameter 3.3cms. Weight 6.9gms. £100-150*

74

A chalcedony and gem-set brooch. Of oval-shape outline, the rectangular-shape chalcedony, within a circular chalcedony cabochon and blue-gem surround, to the foliate detail. *AF. Length 5.3cms. £40-60*

**67**

Five mid to late Victorian memorial brooches. To include a rectangular-shape brooch, the glazed woven hair panel to the black enamel and scrolling surround, together with two oval brooches of similar design with 'In Memory Of' inscription to the enamel. *Lengths 2.8 to 4.2cms. £70-100*

**75**

A late Victorian gilt longuard chain. The faceted belcher-link chain, with lobster and spring clasp. *Length 76cms. £30-50*

**68**

Two late Victorian gold brooches. The first designed as a marquise-shape onyx panel with overlaid split pearl leaf, within a rope-twist surround, the second designed as an onyx bar, with central old-cut diamond collet. *Lengths 4 and 4.1cms. Weight 12.2gms. £100-150*

72

A late 19th century gold horseshoe brooch. The cat's eye moonstone cabochons with seed pearl accent border. *Three gems deficient. Length 3cms. Weight 7gms. £240-340*

**76**

A pair of late 19th century jet ear pendants. Each designed as a carved lattice dome, within a pear-shape surround, to the oval-shape link surmount. *Length 3.8cms. £30-50*



77



A late Victorian gold diamond '1886' ring. The diamond set numbers '1886' to the plain gold band. *Weight 4.6gms. £180-260*

78

A late Victorian gold and diamond brooch, of oval outline, the four central old-cut diamonds within a tiered rope-twist and beaded border. *Estimated total diamond weight 0.40ct. Length 4.5cms. Weight 19.2gms. £250-350*



79

A late 19th century gold seed pearl and onyx memorial brooch. The seed pearl flower, to the onyx panel and scroll border. *Diameter 2.5cms. Weight 5.4gms. £50-80*



80



A late 19th century garnet and gem-set brooch. Designed as two oval-shape garnet and circular-shape colourless gem lines, within a tapered surround, with filigree detail, to the tapered panel terminals and later brooch fitting. *Length 5.2cms. Total weight 7.2gms. £120-180*

81 ✕



A late 19th century coral and seed pearl crescent and star brooch. The coral bead crescent and coral bead star, with seed pearl accents. *Coral untested. Length 2.6cms. Weight 3.7gms. £40-60*

82

A pair of late 19th century turquoise ear pendants. Each designed as a square-shape turquoise line, to the kite-shape surmount with bead border, suspending a horseshoe drop with bead accents. *Length 5.1cms. Weight 7.5gms. £150-200*



85 ✕

A mid Victorian tortoiseshell padlock clasp. The heart-shape tortoiseshell with keyhole to centre and scrollwork top to the hinged padlock clasp. *Length 4.6cms. Weight 9.8gms. £40-60*



86

A late 19th century gold garnet cluster brooch, of circular-shape outline, the circular and pear-shape garnet cluster, to the embossed surmount. *Diameter 3.5cms. Weight 8.3gms. £60-90*



83



A late Victorian 18ct gold, silver and diamond cross pendant. The twenty-five diamonds, to the contrasting metal setting and engraved reverse. *Length 5.3cms. Weight 6.9gms. £100-150*

87 ✕

A late 19th century gold diamond, ruby and emerald cluster ring. The rose-cut diamond, to the circular-shape emerald and ruby double surround and grooved shoulders. *Weight 4.2gms. £180-260*



88

A turquoise forget-me-not brooch. Designed as an open circle of forget-me-not flowers, buds and leaves, the turquoise cabochons to the petals and buds. *Length 3.2cms. Weight 6.7gms. With unassociated antique case. £100-150*



84



A mid 19th century micro mosaic bracelet depicting Roman scenes. The six panels each depicting a Roman building, including the Pantheon and Colosseum, to the engraved borders. *AF. Length 17cms. Weight 35.7gms. £240-340*

89

A late Victorian turquoise and split pearl ring. The three turquoise cabochons alternating with two split pearls to the scrolling gallery and shoulders. *Weight 2.1gms. £40-60*

**94**

A late 19th century 9ct gold turquoise brooch. Of heart-shape outline, the stylised knot, with circular turquoise cabochon collet terminals. *Length 2.5cms. Weight 4.6gms. £50-80*

**98**

A pair of early 20th century gold split pearl ear pendants. Each designed as a split pearl, within a Maltese cross-shape surround, with bead detail. *Length 3cms. Weight 4.7gms. £150-200*

90

A late 19th century gold diamond and enamel brooch. The rose-cut diamond floral centre, to the blue enamel and scrolling surmount. *Enamel damaged. Length 3.6cms. Weight 4.8gms. £90-140*

**95**

A pair of late 19th century gold diamond ear pendants. Each designed as an old-cut diamond, within a stepped geometric surround, with scroll and bead detail. *Estimated total diamond weight 0.15ct. Length 2.6cms. Weight 4.5gms. £180-280*

**91**

A late 19th century 15ct gold garnet ring. The graduated cushion-shape garnet line, to the spiral sides and foliate-engraved shoulders. *Hallmarks for Birmingham, partially illegible. Weight 1.5gms. £30-50*

**96**

An Edwardian 18ct gold turquoise ring. The graduated circular turquoise cabochon line, to the extended claws and grooved shoulders. *Hallmarks for Birmingham, 1904. Weight 3.4gms. £60-90*

**99**

A late Victorian 18ct gold turquoise ring. The graduated oval turquoise cabochon line, to the scrolling gallery and shoulders. *Hallmarks for London, 1900. Weight 3.7gms. £60-90*

**92**

A late Victorian banded agate brooch. The banded agate cabochon to the marquise-shape beadwork mount. *Length 4.7cms. £40-60*

**97**

A late 19th century gold purple paste and split pearl brooch. The oval-shape purple paste, within a split pearl and bead accent surround. *Length 3.7cms. Weight 13.2gms. £150-200*

**100**

An early 20th century 15ct gold portrait pendant. The glazed panel, within a plain border, to the tapered surmount. *Length 6.7cms. Weight 19.2gms. £260-360*

**93**

A mid 19th century gold chain. The textured belcher-links, to the turquoise cabochon and cannetille barrel clasp. *Length 125cms. Weight 46.8gms. £1,000-1,500*

**101**

A late Victorian 15ct gold diamond pendant. The raised oval panel and central old-cut diamond, within a 15ct gold stylised flower and ropetwist scalloped surround. *Estimated diamond weight 0.15ct. Outer border with hallmarks for Chester partially rubbed. Length 4.2cms. Total weight 5.2gms. £80-120*





169

21

599

12

3

124

189

314

22

39

33

93

384

183

431

118

179

572

140

88

108

19

102 ✕

A late Victorian 18ct gold diamond and ruby ring. The single-cut diamond heart, to the graduated ruby and foliate sides with trefoil terminals and tapered band. *One ruby deficient. Hallmarks for Birmingham, 1899. Weight 3.6gms. £70-100*

**107**

A late 19th century 9ct gold diamond brooch. The graduated old-cut diamond line, star-set to the marquise-shape panel, within a bead and scrolling surround. *Estimated total diamond weight 0.30ct. Length 4.9cms. Weight 3.8gms. £60-90*

**111** ✕

An early 20th century 18ct gold ruby and diamond ring. The circular-shape ruby and rose-cut diamond quatrefoil, to the circular-shape ruby sides and plain band. *Weight 2.9gms. £80-120*

**103**

A garnet and split pearl mourning brooch. The rectangular-shape vacant panel, within a split pearl and foil-back circular-shape garnet surround. *Length 2.5cms. Weight 3.5gms. £40-60*

**108**

A late 19th century gold enamel sentimental cross pendant. The replacement seed pearl, to the enamel cross surmount with forget-me-not accents. *Length 3cms. Weight 1.2gms. £50-80*

**112**

An early 19th century gold gem and split pearl mourning brooch. The rectangular-shape woven hair panel, within a split pearl and foil-back purple-gem surround. *Length 2.5cms. Weight 4.9gms. £40-60*

**104** ✕

A late Victorian ruby and diamond brooch. The two circular-shape rubies and one diamond to the marquise-shape brooch and beadwork accents. *Hallmarks for Birmingham, 1896. Length 4.6cms. Weight 3.2gms. £50-80*

**113**

A late 19th century gold garnet three-stone ring. The cushion and circular-shape garnets, to the scrolling gallery and plain band. *Weight 2.4gms. £60-90*

**105**

A mid 19th century portrait pendant. The oval-shape glazed panel sides, displaying a hand-tinted photograph of a young boy, with vacant reverse, to the floral embossed surround and surmount loop. *Length 4.8cms. £90-140*

**109**

A late 19th century gold split pearl ring. The split pearl hoop, to the similar-set three row shoulders and ridged band. *Weight 4.3gms. £100-150*

**114**

A late 19th century gold garnet and gem brooch. The foil-back circular-shape garnet and colourless-gem curved line, to the textured fan surmount, suspending three foil-back pear-shape garnet drops. *Length 4.3cms. Weight 6.9gms. £120-180*

**106**

A mid 19th century gold fede gimmel ring. Of hinged triple band design, the clasping hands and floral cuffs separating to reveal two hearts. *Weight 7.9gms. £240-340*

**110**

A late Victorian gold garnet brooch. The oval cabochon garnet to the scalloped border. *Length 2.1cms. Weight 4.3gms. £40-60*

**115**

A late Victorian 9ct gold split pearl and garnet press ring. The split pearl star, with circular-shape garnet and split pearl sides. *Hallmarks for Birmingham, 1893. Weight 1.9gms. £40-60*



116



A late 19th century gold enamel mourning brooch. The rectangular-shape woven hair panel, within a black enamel surround reading 'In memory of'. Length 3cms. Weight 7.4gms. £70-100

120



A late 19th century gold paste ring. The alternating foil-back pink paste and split pearls, within a green paste surround, to the later replacement engraved band. *Paste deficient. Replacement band with 15ct gold hallmarks for Birmingham, 1876. Weight 1.7gms. £60-90*

125



A turquoise five-stone ring. The slightly graduated circular turquoise cabochons, to the engraved angular band. Weight 3.6gms. £90-140

117



A late Victorian 18ct gold Mizpah ring. The 'Mizpah' text, to the tapered band. *Hallmarks for Birmingham, 1888. Weight 3.6gms. £80-120*

121



A late Victorian 15ct gold seed pearl and synthetic ruby ring. The seed pearl and oval-shape synthetic ruby quatrefoil, to the seed pearl sides and plain band. *Hallmarks for Birmingham, 1896. Weight 2.2gms. £50-80*

126 ✕



An early Victorian 9ct gold ring and a pair of ear studs. The ring designed as an oval agate to the split pearl and bead work shoulders, together with a pair of ruby and seed pearl cluster ear studs. *First with hallmarks for Birmingham, 1855. Ear stud lengths 1cm. Weight 4.1gms. £90-140*

118



A late 19th century gem brooch. Designed as turquoise forget-me-not flowers on a chalcedony panel with a scrolling and foliate engraved surround. Length 5cms. Weight 21gms. £60-90

122



A late 19th century 15ct gold diamond and gem-set brooch. Designed as a sunburst, with diamond point centre, to the scrolling bar sides with bead border and similarly-set pink gem terminals. Length 4.2cms. Weight 3.4gms. £50-80

127 ✕



A late 19th century tortoiseshell pique brooch and a pietra dura pendant. The brooch of circular-outline, with geometric inlaid panel, and the pendant with inlaid floral motif. *AF. Diameter of brooch 3.6cms. Length of pendant 5.6cms. £50-80*

123 ✕



A late Victorian 18ct gold ruby and split pearl dress ring. The split pearls, within a square-shape ruby marquise-shape surround, to the scrolling shoulders and plain band. *Hallmarks for Birmingham, 1870. Weight 2.4gms. £60-90*

128



An enamel and seed pearl locket and a 9ct gold photo pendant. To include a late 19th century oval-shape black enamel locket, with overlaid split pearl cross and an Edwardian 9ct gold photo pendant, with interior painted photograph. *One with hallmarks for Chester, 1906. Lengths 3.4 and 4.3cms. Weight of photo pendant 7.5gms. £50-80*

119



An early 20th century gold turquoise and split pearl floral cluster ring. The split pearl within a circular turquoise cabochon border, to the split shoulders and grooved band. *Hallmarks for Switzerland 1909. Weight 0.9gms. £40-60*

124



A late 19th century gold bog oak rams head bracelet. Designed as a series of six carved bog oak rams head links, each within a rope-twist surround, to the partially concealed clasp. Length 17.2cms. Weight 46.8gms. £400-600

129

Three late 19th century brooches. To include a split pearl and woven hair panel memorial brooch, a black paste and woven hair panel memorial brooch, together with an orange-paste cluster brooch. *Lengths 1.7 to 2.3cms. Total weight 7.6gms. £60-90*

134

Three late 19th to early 20th century seed pearl brooches. The first designed as a circle of seed pearls to the gold mount, the second a gold bar brooch with seed pearls set to the central diagonal band, together with a memorial brooch the rectangular frame of seed pearls to the decorative glass hair panel. *Lengths 2 to 3cms. Weight 8.9gms. £120-180*

138 ✕

A group of three late 19th century 9ct gold brooches. To include a diamond accent and red-paste brooch, a rose-cut diamond and floral accent brooch together with a foliate and heart motif brooch. *Two with hallmarks for 9ct gold. Lengths 3.9 to 4.3cms. Total weight 7gms. £50-80*

130

Two items of late Victorian 18ct gold jewellery. The brooch designed as a cultured pearl to the tiered circular panel and cannetille scalloped surround, together with a pendant designed as a garnet cabochon with split pearl accent to the rope-twist border. *Lengths 2.8 to 2.9cms. Weight 10.1gms. £200-300*

135

Two late 19th century 15ct gold brooches. The first designed as a marquise-shape cannetille panel, with diamond point and red gem accents, the second of oval-shape outline with bead and cannetille detail. *One with hallmarks for Birmingham, partially indistinct. Lengths 3.2 and 4cms. Total weight 8.8gms. £100-150*

139

Two late Victorian gold diamond brooches, circa 1890. To include a 15ct gold brooch with an old-cut diamond star-set to the cannetille surround, together with a similarly designed 18ct gold brooch with split pearl accents. *Lengths 4.3 and 4.6cms. Total weight 7.7gms. £80-120*

131

Two late 19th century 18ct gold gem-set rings. To include a late Victorian opal cabochon and circular-cut ruby cluster ring, together with a late 19th century alternating split pearl and turquoise horseshoe ring. *The first with hallmarks for Birmingham, 1874. Total weight 5.8gms. £50-80*

140

Three items of gem-set jewellery. To include a late 19th century bloodstone shield locket, together with a multi-colour paste spherical pendant and a banded agate bead pendant. *Lengths 2.2 to 2.4cms. Total weight 11.8gms. £80-120*

132

A late Victorian hinged silver bangle and a brooch. The brooch engraved with a cockerel to the central panel to the fancy scrolling and geometric surround, together with a hinged bangle with fancy beadwork to the half-bangle. *Hallmarks for Birmingham, 1880 and 1882. Length of brooch 4.5cms. Inner diameter of bangle 6cms. £50-80*

136

A late 19th century locket and brooch. The locket of oval-shape outline, with floral engraved detail, together with a pink paste foliate brooch. *One garnet replacement. Lengths 2.1 and 2.2cms. £60-90*

141

A selection of three items of late 19th century jewellery. To include a pair of floral ear studs, a carnelian oval-shape brooch and an oval-shape chalcedony brooch with overlaid floral detail. *Length of brooches 2.4 and 4.5cms. Diameter of ear studs 1.8cms. Weight 25.4gms. £40-60*

133

Three early 20th century 9ct gold photograph pendants. Each of circular outline, designed as a double-sided photograph panel. *One with hallmarks for Birmingham, 1902. Lengths 4.7 to 2.7cms. Total weight 14.3gms. £60-90*

137

Four early 20th century photographic lockets. To include three double-sided lockets, together with a hand-tinted photographic locket. *Three with marks indicating 9ct gold. Weight of marked items 17.3gms. £200-300*

142

A selection of three items of memorial jewellery. To include a French jet two-row necklace, a jet foliate brooch and a woven hair panel and black enamel brooch. *Length of necklace 44cms. Length of brooches 4.5 and 5 cms. £40-60*

143



Three late 19th century bog oak panels. The first designed as three lozenge-shape carved bog oak panels, with circular-shape colourless paste centres, suspending three similarly designed drops and adjoining swags, together with an imitation pearl and carved bog oak brooch and a loose panel. *Lengths 1.8 to 8.8cms. £50-80*

147 ✕



Three items of late 19th century jewellery. To include a split pearl and enamel memorial brooch, with personalised engraving, a coral brooch and a fede ring. *Coral untested. Engraving reads F.H.G. Obt 11th March 1884. Length of brooches 3 to 4cms. £60-90*

152



Three items of jet jewellery. To include a cross motif carved bracelet with graduated plain-links, together with a late Victorian foliate pendant and a cameo panel. *AF. Length of bracelet 19.5cms. Length of pendant 4.3cms. Length of cameo 5.5cms. £70-100*

148



Five mid to late Victorian brooches. To include a purple paste brooch, the three purple pastes collet set to the centre to the purple paste drop, together with a rectangular-shape brooch, the circular garnet surround to the glazed central panel. *Lengths 2.2 to 7cms. £90-140*

153 ✕



A selection of late 19th century and later gold jewellery. To include a pair of Edwardian 9ct gold mother-of-pearl and enamel buttons, a 15ct gold sapphire and split pearl bar brooch, a pair of 18ct gold banded agate dress studs, an 18ct gold cannetille bead pendant, a 9ct gold mourning brooch, together with a loose old-cut diamond of 0.25ct. *Total weight 15.8gms. £150-200*

144 ✕



Two early 20th century 15ct gold brooches. To include an Edwardian brooch with diamond and ruby highlights, together with an oval-shape brooch with scrolling detail. *Hallmarks for Chester and Birmingham, 1905. Lengths 4.3 and 4.5cms. Weight 6.7gms. £100-150*

149



Three items of jet and other jewellery. To include a jet cameo bracelet, each cameo carved to depict a lady in profile, a vulcanite pendant with high relief cameo of a lady, together with a bog oak brooch. *Length of bracelet 17cms. Length of pendant 8cms. Length of brooch 4.2cms. £70-100*

154



A selection of late 19th century Albertinas. To include two multi-strand Albertinas, a trace-link chain with later tassel, a selection of chain and a chain with T-bar and tassel. *Lengths 38 to 6cms. Total weight 53.6gms. £40-60*

145



Five silver brooches. To include a horseshoe bar brooch, the engraved horseshoe to the foliate sides, together with a bar brooch, the central sphere to the circular surround and tapered sides. *Hallmarks for Chester, 1872 and 1892, Birmingham, 1997. Lengths 4 to 5.8cms. Weight 23.7gms. £30-50*

150



A selection of late Victorian jewellery. To include an anchor pendant the metal hook and rope to the agate mount, together with a decorative metal hairpiece. (6) *Lengths 2.5 to 11cms. £40-60*

155



Five items of mid to late Victorian gold jewellery. To include a sapphire set stickpin and another set with two seed pearls. *Marks indicating gold. Lengths 1.5 to 5.5cms. Weight 12.9gms. With fitted stickpin case. £120-180*

146



Two late Victorian gold memorial brooches. The first of marquise-shape outline, the single central single-cut diamond to the beadwork and foliate sides, together with an oval brooch, the five graduated single-cut diamonds to the central raised marquise panel and cannetille border. *Estimated total diamond weight 0.12ct. Lengths 4.4cms. Weight 11.6gms. £120-180*

151



A selection of late Victorian silver jewellery. To include an Albertina, the rope-chain to the floral toggle and tassel terminal, together with a fancy-link necklace. (7) *Lengths 2.5 to 48cms. Weight 157.2gms. £50-80*

156 ✕



Two gold diamond and gem-set brooches. To include a late Victorian 15ct gold diamond and ruby cluster brooch with foliate surround, together with an early 20th century 9ct gold brooch with diamond point accent and scrolling detail. *Hallmarks for Chester, 1897 and 1912. Lengths 4.3 and 4.5cms. Total weight 6.5gms. £70-100*

157

A selection of mainly gold plated 19th century jewellery. To include a blue and red paste snake-head mount, an Austrian silver and black enamel hinged bangle with split pearl star accents, a necklace, a fob seal, two longuard chains, a pencil, AF, a brooch and two lockets. *Length of snake mount 5.3cms. £70-100*

**158**

A selection of Victorian jewellery. To include an enamel memorial stickpin, together with three memorial brooches and a bog oak brooch carved to depict fruit. (8) *Lengths 3 to 6.8cms. Weight 41.5gms. £50-80*

**159**

A selection of late 19th to early 20th century silver and white metal brooches. To include an Edwardian silver bi-colour heart brooch with entwined foliate detail, together with a late Victorian silver engraved star brooch and ten further brooches. *Seven with hallmarks for silver. Lengths 2.5 to 5cms. Total weight 51.5gms. £60-90*

**160**

A selection of late 19th to early 20th century silver jewellery. To include a bar brooch with a bird on a branch, together with a Maltese cross brooch with floral engraving to the centre. (13) *Some AF. Hallmarks for Birmingham, 1876, 1889, 1893, 1902, 1911, 1916. Lengths 1.9 to 6.2cms. Weight 61.2gms. £50-80*

**161**

A selection of 19th century jewellery. To include a 9ct gold trace-link chain with barrel clasp, a woven hair and chalcedony memorial brooch, a memorial locket, an agate brooch and a double-sided photographic locket suspended from a 9ct gold trace-link chain and converted T-bar. *Length of necklace 41cms. Weight of necklace 5.4gms. £80-120*

**162** ✕

A pair of late 19th century gold tortoiseshell pique ear pendants. Each designed as a faceted tortoiseshell drop, with floral inlay to the sphere surmount. *Length 5.7cms. Weight 5.4gms. £120-180*

163 ✕

Two items of late 19th century tortoiseshell pique jewellery. The brooch designed as a circular outline, the geometric patterns to the hexagonal-shape raised centre, together with a pair of ear pendants, the floral inlay to the elongated pyramid drops. *Pin deficient from brooch. Lengths 3.2 to 4.7cms. £80-120*

**164**

A paste double crescent brooch. The oval-shape green paste and barley centre, within a green and colourless paste double crescent. *Length 4.5cms. Weight 10gms. £200-300*

165

An early 20th century gold miniature portrait double sided pendant. Of circular-shape outline, the portraits depicting a baby and young girl, within a bead border. *Length 3.8cms. Weight 12.9gms. £150-200*

**166**

A gold diamond and paste brooch. Designed as an early 20th century 15ct gold bow, with old-cut diamond highlight, to the later added green paste drop with scrolling detail. *Length 4.5cms. Total weight 4.5gms. £50-80*

**167**

An early 20th century 9ct gold fox head bar brooch. The textured fox head, with red gem eyes, to the plain bar. *Length 3.4cms. Weight 4.2gms. £40-60*

**168** ✕

A coral and split pearl brooch. The alternating coral and split pearl line, within a split pearl border and bead surround. *Length 3.8cms. Weight 6.9gms. £120-180*

**169**

An early 20th century gold hair and enamel hinged bangle. The woven hair and openwork half bangle, hinged to the Maltese cross and enamel reverse. *Personalised engraving reads "Jessie, April 6th April 1901" Inner diameter 6.2cms. Weight 10.6gms. £150-200*



170 ✕

An early 20th century seed pearl brooch. The seed pearls set to a mother-of-pearl mount, designed as a scrolling floral motif to the foliate seed pearl drop. *Length 14cms. £100-150*

**174**

An early 20th century 9ct gold brooch. Of oval-shape outline the painted panel depicting a lady in period dress, to the photograph reverse. *Length 3.8cms. Weight 5.8gms. £40-60*

**179**

An early 20th century gold diamond, seed pearl and enamel pendant. The split pearl and rose-cut diamond heart-shape cluster, within a similarly-shaped green enamel surround, to the white enamel and seed pearl border. *Length of pendant 2.1cms. Length of chain 40cms. Weight 6gms. £240-340*

171

An amethyst and split pearl cluster brooch. The oval-shape amethyst, within a split pearl border. *Length 3.5cms. Weight 3.9gms. £100-150*

175

An early 20th century 9ct gold hand brooch. The hand holding a diamond point heart, with curb-link bracelet and articulated padlock. *Hallmarks for Birmingham, 1911. Length 3.5cms. Weight 2.8gms. £70-100*

172 ✕

An early 20th century silver and gold, diamond and ruby brooch. The rose-cut diamond wreath, intersected by a rose-cut diamond bow surmount, set throughout with cushion-shape ruby highlights. *Length 3.2cms. Weight 4.2gms. £90-140*

176

An early 20th century 9ct gold blister and split pearl brooch. Of marquise-shape outline, the blister pearl, within a scrolling openwork halo, to the split pearl accents. *Length 3cms. Weight 3.5gms. £30-50*

180 ✕

An early 20th century 15ct gold split pearl and ruby pendant. Of heart-shape outline, the split pearl panel, with circular-shape ruby diagonal line detail, to the hoop surmount. *Length 2cms. Weight 1.7gms. £40-60*

**177**

An early 20th century seed pearl bar brooch. Designed as a swallow set with seed pearls to the knife-edge bar brooch. *Length 4.2cms. Weight 2.7gms. £40-60*

181

An early 20th century gold diamond, split pearl and enamel fraternity pin. The 'Theta Delta Chi' black and blue enamel shield, with diamond point accents and split pearl border, to the reverse with personal inscription 'F.W Cooper, Dec 9 1911'. *Length 1.6cms. Weight 4.9gms. £80-120*

173

An early 20th century 18ct gold diamond and enamel pendant. Of heart-shape outline, the old-cut diamond within a green guilloche enamel surround, to the glazed panel reverse. *Estimated diamond weight 0.10ct. Length 1.9cms. Weight 4.1gms. £180-260*

**178**

A mid 19th century split pearl double-sided photograph pendant. Each side with a photographic portrait, the front with graduated split pearl surround and surmount loop. *Diameter 3.5cms. Weight 12.1gms. £80-120*



182

An early 20th century 15ct gold split pearl heart pendant. The pavé-set split pearl heart, with glazed reverse and surmount loop. *Length 2.2cms. Weight 3.1gms. £70-100*

**186**

An early 20th century 9ct gold miniature portrait brooch. The oval-shape ceramic plaque, depicting a young girl and boy, within a rope-twist surround. *Length 6.1cms. Weight 22gms. £60-90*

**190**

An early 20th century rose-cut diamond crescent brooch. The twenty-three diamonds set to the crescent and stars. *Length 5.6cms. Weight 4gms. £50-80*

**183** ✕

An early 20th century 9ct gold split pearl portrait miniature pendant. The circular-shape portrait depicting a woman in period dress, signed Madeline Bach, to the split pearl surround and tapered surmount. *Diameter of pendant 5cms. Weight 23.6gms. £280-380*

187

A diamond and enamel heart-shape bracelet. The old-cut diamond, within a green enamel surround and rose-cut diamond border, to the brick-link bracelet. *Principal diamond estimated weight 0.10ct. Length 17.2cms. Weight 15.8gms. £260-360*

**191**

An early 20th century split pearl brooch. Of foliate design, the leaves set with a split pearl. *Mark indicating gold. Length 5cms. Weight 4gms. £50-80*

**188**

An early 20th century 9ct gold diamond and enamel bar brooch. The old-cut diamond and black enamel leaves, within a heart-shape border, to the plain sides. *Estimated diamond weight 0.10ct. Length 4.5cms. Weight 3.5gms. £70-100*

**192**

A pair of early 20th century gold miniature portrait and enamel earrings. Each designed as a miniature portrait depicting an elegant lady, within a blue enamel border. *Length 2cms. Weight 7gms. £180-260*

**184**

An early 20th century gold diamond single-stone brooch. The old-cut diamond claw-set to the centre to the split bow-shaped sides. *Estimated diamond weight 0.25ct. Length 4.4cms. Weight 4.9gms. £120-180*

**189**

An early 20th century 15ct gold split pearl and sapphire portrait brooch. The circular portrait of a young woman to the crescent and floral split pearl and blue sapphire surround. *With foreign marks. Length 2.5cms. Weight 5.1gms. £120-180*

**193**

Two early 20th century gold paste bar brooches. To include a cushion-shape blue paste and imitation pearl brooch, together with a circular-shape blue paste and pierced scroll brooch. *Lengths 5.5 to 6.5cms. Total weight 5.8gms. £40-60*

**185**

An early 20th century 9ct gold painted portrait locket. The painted portrait of a young man with green hat, with scrolling border and surmount to the glazed reverse. *Length 4.2cms. Weight 7.1gms. £40-60*

**194**

A selection of early 20th century paste and enamel jewellery. To include a circular-shape miniature portrait brooch with seed pearl surround, together with an enamel foliate bar brooch, a paste bow brooch and three further items. *Two with marks indicating silver. Lengths 1.4 to 3.4cms. Total weight 18.1gms. £50-80*



195

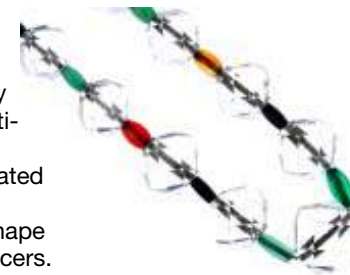
Two early 20th century silver and 9ct gold cluster rings. To include an oval cabochon and rose-cut diamond cluster ring, together with an oval blue paste and circular-shape colourless paste cluster ring. *Weight 5.2gms. £50-80*

**200**

Two early 20th century 15ct gold seed and split pearl brooches. The first designed as a stylised bird with scrolling sides, the second designed as a foliate wreath, each with seed and split pearl detail. *Lengths 2.3 and 4.4cms. Weight 5.5gms. £90-140*

**205**

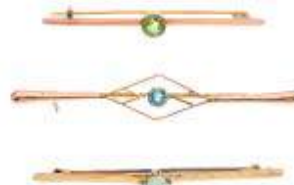
An early 20th century rock crystal and multi-gem single-strand necklace. The graduated faceted rock crystal beads, with barrel-shape vari-colour bead spacers. *Length 38cms. £80-120*

**196**

Three items of early 20th century jewellery. To include a 15ct gold bar brooch with a split pearl double heart and bow panel, an Edwardian 9ct gold picture pendant, with a further cross pendant. *One with hallmarks for 9ct gold. Length of brooch 4.6cms. Length of pendants 4.6 and 7.5cms. Total weight 13.4gms. £70-100*

**201**

A selection of three early 20th century 9ct gold single-stone bar brooches. Each set with a circular-shape opal, peridot or synthetic spinel respectively. *Lengths 5.3 to 6.6cms. Weight 6.8gms. £40-60*

**206**

An Arts and Crafts silver peridot and split pearl dress ring. The circular-shape peridot, within a floral and split pearl surround, to the tapered shoulders and plain band. *Weight 5.1gms. With Sybil Dunlop case. £120-180*

**197**

Two late 19th century gold turquoise and split pearl bar brooches. To include a late Victorian curved bar brooch with two turquoise and split pearl bird panels and chain detail, with a further turquoise cabochon collet brooch with scrolling sides. *One with hallmarks for Chester 1898. Lengths 4.4 and 4.6cms. Total weight 4gms. £40-60*

**202**

Two early 20th century 15ct gold brooches. The first designed as an alternating turquoise cabochon and split pearl curved line, to the staggered double bars, the second designed as a split pearl line, to the scrolling sides. *Lengths 4.2cms. Weight 6.9gms. £100-150*

**207**

An Arts and Crafts silver hardstone cameo necklace. The replacement hardstone cameo, carved to depict Ares, to the bead accent interwoven surround, suspended from an integral fancy-link chain with toggle clasp. *Length 42cms. Weight 9gms. £70-100*

**198**

Two early 20th century gold gem-set brooches. The first designed as an oval-shape garnet, to the tapered bar sides with seed pearl accents, together with a seed pearl foliate bar brooch. *Four seed pearls deficient. Lengths 4 to 4.5cms. Weight 4.6gms. £50-80*

**203**

An Edwardian silver belt. Designed as a series of floral scrolling panels, to the similarly designed double panel clasp. *Hallmarks for Birmingham, 1903. Length 63cms. Weight 125.4gms. £60-90*

**208**

Four items of early 20th century enamel jewellery. To include a silver blue guilloche and floral highlight enamel locket, together with a blue enamel bow brooch, a green enamel bow brooch and a butterfly brooch. *AF. Two with marks indicating silver. Lengths 3.5 to 2.8cms. Weight of marked items 15.7gms. £30-50*

**199**

An early 20th century 9ct gold nephrite jade brooch and later 9ct gold portrait brooch. The first designed as a rectangular-shape nephrite bar, with foliate engraved and monogram details, the second designed as an enamel portrait brooch. *Lengths 5.8 and 3.1cms. £60-90*

**204**

An Art Nouveau gold pendant. The circular painted ceramic panel depicting a lady in profile wearing a pink bonnet to the old-cut diamond and seed-pearl surround. *Length 3cms including surmount loop. Weight 5.2gms. £150-200*

**209**

An early 20th century silver enamel pendant. Designed as a blue enamel scrolling panel, to the flower surmount. *Hallmarks for Birmingham, 1910. Length 3.5cms. Weight 2.2gms. £50-80*



210

An early 20th century silver and enamel armlet. Designed as openwork panels of leaves to the yellow, blue and green enamel flowers. *Inner diameter 8.9cms. Weight 32.5gms. £90-140*

211  

An Arts and Crafts silver gem-set pendant. Of tapered form, the oval opal cabochon collet, within a vari-cut sapphire, ruby, demantoid garnet, opal, amethyst, chalcedony and marcasite surround, to the tapered surmount. *Length 4.5cms. Weight 8.8gms. With Sybil Dunlop case. £80-120*

**214**

MURRELE BENNETT & CO. - a silver and enamel necklace. The tapered drop and scrolling floral panel, with polychrome enamel, suspended from similarly-enamelled interlaced spacers to the fancy-link chain with toggle clasp. *Maker's marks for Murrle Bennett & Co. Length 42cms. Weight 12gms. £200-300*

217 

SIBYL DUNLOP (attributed to) - a pair of Arts and Crafts silver gem-set ear pendants. Each designed as an oval moonstone cabochon collet, within a foil-back circular amethyst cabochon and vari-cut chalcedony scrolling surround, to the oval moonstone cabochon surmount. *Length 4.4cms. Weight 10.2gms. With maker's case. £200-300*

212

An early 20th century gold and silver synthetic ruby and paste negligee pendant. The oval-shape synthetic ruby and circular-shape colourless paste cluster, suspending two oval-shape synthetic ruby drops, to the 18ct gold belcher-link back chain. *Length of pendant 5.5cms. Length of chain 42cms. Weight 13.4gms. £150-200*

**215** 

SIBYL DUNLOP (attributed to) - an Arts and Crafts silver gem-set pendant. The oval moonstone cabochon collet, within a foil-back circular amethyst cabochon and vari-cut chalcedony lozenge-shape surround, to the oval moonstone cabochon drop, suspended from a fancy-link chain. *Length of pendant 7.5cms. Length of chain 45.5cms. Weight 21gms. With maker's case. £400-600*

218 

SIBYL DUNLOP - a silver garnet and marcasite brooch. The marquise-shape garnet cabochon, within a marcasite surround. *Maker's marks for Sibyl Dunlop. Hallmarks for London, 1959. Length 4.6cms. Weight 11.7gms. With maker's case. £150-200*

213

MURRELE BENNETT & CO. - an early 20th century 15ct gold gem-set pendant. The oval garnet cabochon and seed pearl centre, within a scrolling surround, suspending a baroque seed pearl. *Maker's marks for Murrle Bennett & Co. Length 3.8cms. Weight 3.4gms. £120-180*

216 

SIBYL DUNLOP - a silver moonstone and chalcedony brooch. Of oval-shape outline, the oval moonstone cabochon, within an openwork circular moonstone cabochon and circular-shape green chalcedony surround. *Maker's mark for Sibyl Dunlop. Hallmarks for Birmingham, 1957. Length 3.7cms. Weight 13.5gms. With maker's case. £120-180*

219 

SIBYL DUNLOP (attributed to) - an Arts and Crafts silver moonstone ring. The oval moonstone cabochon, to the marcasite tapered shoulders and plain band. *Weight 5gms. With maker's case. £80-120*

220

SIBYL DUNLOP (attributed to) - an Arts and Crafts silver and gold citrine brooch. The lozenge-shape citrine, within a scroll and circular-shape citrine surround. *Length 4.4cms. Weight 16.3gms. £150-200*



220



SIBYL DUNLOP Ltd
Jewellers & Silvermiths.
69,
KENSINGTON CHURCH ST,
LONDON, W. 8.

217



218



211



213



212



419



419



216



221 

SIBYL DUNLOP - a silver moonstone and enamel necklace. Designed as a series of ten oval moonstone collets, with blue and green enamel scrolling links, to the fancy-link back chain. *Maker's mark for Sibyl Dunlop. Hallmarks for London, 1964. Length 44cms. Weight 26.4gms. With maker's case. £600-800*

222 

SIBYL DUNLOP (attributed to) - an Arts and Crafts silver and gold citrine ring. The rectangular-shape citrine, within an openwork intertwined loop surround, to the plain band. *Weight 4.6gms. With maker's case. £120-180*

**223** 

HEINRICH LEVINGER - a jugendstil silver, plique-a-jour enamel and pearl pendant. Designed as a semi-baroque pearl, suspended from an oval-shaped mother-of-pearl panel with green and purple plique-a-jour enamel 'wing' sides, to the fancy-link surmount and chain. *Pendant with maker's marks for Heinrich Levinger. Length of pendant 4.9cms. Length of chain 42cms. Total weight 7.9gms. £200-300*

224

RHODA WAGER (attributed to) - a silver and opal doublet bracelet. The oval opal doublet collet, to the tapered foliate links, with partially concealed clasp. *Length 17.2cms. Weight 18.1gms. £800-1,200*

225

Three early 20th century brooches. To include a Kensington Art ceramic brooch designed as a plain blue-green ceramic oval, together with a Bernard Instone brooch designed as two purple and white enamel flowers with green enamel leaves and a circular Astra ceramic brooch. *Marks for silver. Lengths 3 to 5.9cms. Weight 28.4gms. £70-100*

Cameos**226**

A 9ct gold shell cameo brooch. Carved to depict The Three Graces, within a scrolling border. *Hallmarks for Birmingham, 1968. Length 7cms. Weight 25.7gms. £100-150*

227

An early 20th century gold cameo brooch. Of oval outline, the cameo carved to depict Dionysus, the god of wine. *Length 5.4cms. Weight 22gms. £200-300*

228

A shell cameo bracelet. The oval-shaped cameo panels, carved to depict bunches of flowers, to the push clasp. *Length 17cms. Weight 13.4gms. £120-180*

229

A shell cameo brooch. The carved panel depicting a bacchante in profile with grapes and vines in her hair, to the lily and leaf surround. *Length 5cms. Weight 36.1gms. £220-320*

230

A hardstone cameo ring. The circular-shape hardstone cameo, depicting the profile of a lady, within a rope-twist surround. *Weight 2.6gms. £50-80*

231

A 9ct gold mounted shell cameo brooch. The oval shell cameo, depicting the profile of a lady, within a spiral surround. *Hallmarks for London, 1968. Length 6.3cms. Weight 21.2gms. £100-150*

232

A lava cameo bracelet, AF and a brooch. The bracelet depicting the portraits of different ladies to each of the seven panels, together with a brooch of similar design. *Lengths 2.4 to 19cms. Weight 39.3gms. £80-120*

237

A gentleman's hardstone cameo ring. The sardonyx carved to depict two overlapping figures, to the tapered shoulders and replacement band. *Weight 5gms. £40-60*

241

A cameo brooch. The carved shell depicting a lady in profile wearing a necklace and a flower. *Length 3.7cms. Weight 6.4gms. £30-50*

233

A shell cameo brooch. Of oval-outline the cameo carved to depict a lady in profile, within a foliate border. *Length 2.8cms. Weight 7.2gms. £60-90*

238

A 14ct gold hardstone cameo brooch. The pear-shape hardstone, within a rope-twist border. *Hallmarks for Sheffield, 1991. Length 4.2cms. Weight 10.3gms. £80-120*

242

A 9ct gold shell cameo ring. The oval-shape shell cameo carved to depict a lady in profile. *Hallmarks for Birmingham, partially indistinct. Weight 5.1gms. £60-90*

234

An early 20th century 9ct gold cameo brooch. Of oval outline, the shell cameo depicting a bacchante, to the rope-twist border. *Length of brooch 5.5cms. Weight 14gms. £120-180*

243

A 9ct gold shell cameo brooch. The oval shell cameo, depicting a bacchante, to the plain surround. *Hallmarks for Birmingham, 1985. Length 3.7cms. Weight 8.7gms. £60-90*

235

A mounted shell cameo brooch. Of oval outline, the shell cameo depicting the profile of a lady, within a rope-twist surround. *Length 4.5cms. Weight 9.5gms. £50-80*

239

An early 20th century hardstone button. The oval-shape hardstone cameo, within a scroll border. *Lengths 2.3cms. Weight 4.6gms. £50-80*

236

An 18ct gold cameo brooch. The carved shell cameo depicting a lady in profile to the scrolling floral surround. *Marks for gold. Hallmark for London, part illegible. Length 5.3cms. Weight 15.2gms. £150-200*

240

A 9ct gold shell cameo brooch. The oval cameo, carved to depict a lady in profile, with floral spray, to the rope-twist surround. *Hallmarks for London, 1975. Length 4.8cms. Weight 14.9gms. £40-60*

244

A cameo brooch. The carved shell depicting a lady in profile wearing earrings and a necklace. *Hallmark for Birmingham, 1992. Length 6.7cms. Weight 24.4gms. With associated case. £70-100*

245

A late 19th century 9ct gold shell cameo pendant. Of oval outline, the cameo carved to depict a gentleman in profile, within a plain border. *Length 5cms. Weight 10gms. £100-150*

**246**

An early 20th century 15ct gold hardstone cameo bar brooch. The oval hardstone cameo, depicting the profile of a lady, to the tapered sides. *Length 6.1cms. Weight 6gms. £40-60*

**247**

A shell cameo brooch. The oval shell cameo brooch, depicting a Roman chariot and horses, to the rope-twist surround. *Length 3.9cms. Weight 8.2gms. £30-50*

**248**

A late 19th century cameo. The oval-shaped shell cameo, carved to depict Flora in profile, wearing a garland of roses in her hair, within a twist surround. *Length 6.5cms. £30-50*

**249**

A mid 19th century gold shell cameo brooch. The oval-shaped shell cameo carved to depict a bacchante, with high relief vine detail, to the floral engraved surround. *Length 6.2cms. Weight 28.9gms. £500-700*

**250**

A late 19th century gold hardstone cameo and split pearl bar brooch. The cameo depicting a male in profile, with graduated seed pearl and bead surround, to the plain bar. *Length 6.4cms. Weight 8.5gms. £60-90*

**251**

A 1950s 9ct gold shell cameo brooch. Of oval outline, carved to depict a lady in profile, within a scrolling surround. *Hallmarks for Birmingham, 1957. Length 4.7cms. Weight 12.8gms. £80-120*

**252**

A seed pearl and cameo brooch. The shell cameo depicting a woman in profile to the rope-twist cannetille and seed pearl surround. *Length 3.5cms. Weight 10.9gms. £70-100*

**253**

A shell cameo brooch. The rectangle-shape brooch designed as a waterfront scene, with a moored rowing boat and domed building, to the rope-twist surround. *Length 3.9cms. Weight 13.4gms. £100-150*

**254**

An early 20th century 9ct gold conch shell cameo brooch. Of oval-shape outline, the conch shell carved to depict the side profile of a lady, within a curved line and sphere surround. *Length 3.8cms. Weight 11.2gms. £80-120*

**255**

A late 19th century hardstone cameo pendant. The oval-shaped hardstone cameo, carved to depict the side profile of a lady, within a filigree and rope-twist surround, to the associated surmount. *Length 3.4cms. Weight 4.2gms. £60-90*

**256** ✕

An early 20th century gold ivory cameo brooch. Carved to depict a bacchante, with grape and vine detail, to the rope-twist surround. *Length 4.6cms. Weight 9.3gms. £40-60*

**257**

A cameo brooch. The carved shell depicting Athena, Goddess of War, wearing a helmet with serpent decoration and armour, to the scalloped edge and seed pearl surround. *Length 4.5cms. Weight 11.6gms. £100-150*



258

A mid 20th century shell cameo bracelet. Designed as a series of circular cameos, each depicting the profile of a lady, within a floral halo, to the floral intervals and circular clasp. *Length 19.5cms. Weight 19.3gms. £120-180*

263

A late 19th century gold shell cameo brooch. The oval-shape shell, carved to depict a woman in profile, with flowers in her hair, to the near period wide surround with raised scrolling foliate and graduated bead motif. *Length 6.4cms. Weight 27.2gms. £280-380*

267

A shell cameo. The carved cameo depicting the portrait of a lady, to the rope-twist surround. *Length 5.4cms. Weight 15.9gms. £40-60*

259

An early 20th century silver and 9ct gold shell cameo and diamond and synthetic sapphire brooch. The cameo depicting a lady in profile to the rose-cut and diamond point foliate surmount with synthetic sapphire line detail. *Length 6cms. Weight 13gms. £220-320*

**268**

An early 20th century 9ct gold shell cameo pendant. The shell carved to depict Nyx, to the plain surround and later added surmount loop. *Length 4.9cms. Total weight 8.9gms. £40-60*

**260**

A 1970s 9ct gold shell cameo brooch. Of oval outline, carved to depict a lady in profile, within a spiral surround. *Hallmarks for London, 1974. Length 5cms. Weight 13.4gms. £80-120*

**264**

An early 20th century 9ct gold shell cameo brooch. Carved to depict a woman with cupid attendant, to the scroll surround. *Length 5.2cms. Weight 14.4gms. £40-60*

**269**

A cameo brooch depicting a horse. The ceramic white horse to the graduated white to blue background and scrolling surround. *Hallmark for Birmingham, 1997. Length 4.8cms. Weight 11.7gms. £60-90*

261

A 9ct gold shell cameo brooch. The oval cameo carved to depict the profile of a lady, within a rope-twist surround. *Hallmarks for Birmingham, 1973. Length 3.4cms. Weight 7.1gms. £40-60*

**265**

A 9ct gold hardstone cameo ring. The oval-shape hardstone, depicting a woman in profile, to the stepped collet mount and tapered band. *Hallmarks for Birmingham, 1995. Weight 5.6gms. £50-80*

**262**

A cameo bracelet. Designed as six graduated cameo panels, depicting the profile of Bacchante with vine leaves in her hair, to the push-piece clasp. *Length 17cms. Weight 19.7gms. £150-200*

266

An early 20th century 9ct gold shell cameo brooch. Of oval outline, carved to depict Demeter in profile, with bead and scrolling surround. *Length 5.2cms. Weight 9.5gms. £80-120*

**270**

An early 20th century 9ct gold shell cameo brooch. The conch shell, carved to depict Floral, within a bead and scalloped surround. *Length 4.4cms. Weight 12.7gms. £60-90*



271

Two late Victorian shell cameo brooches. To include a cameo depicting The Three Graces, together with a cameo depicting Hebe feeding an Eagle nectar. Lengths 6 to 6.3cms. £50-80

272

Two shell cameo rings. The first carved to depict The Three Graces, the second carved to depict a lady in profile. Weight 4.5gms. £50-80

273

A selection of cameos. To include two shell cameos depicting portraits of Dionysus with vine leaves in her hair, one to the jet surround the other to the scrolling surround. (8) One with mark to indicate silver. Lengths 2.5 to 5.5cms. £60-90

**274**

Two shell cameo brooches. Each designed as an oval cameo depicting a lady in profile, within a stylised border. One with Import marks for Sheffield. Lengths 3 to 3.5cms. Weight 9gms. £40-60

275

A cameo brooch and bracelet. The bracelet designed as a series of individual cameos with rope-twist surrounds and double chain links to the push-piece clasp, together with a cameo brooch, depicting a lady in profile to the undulating surround. Length 18.5cms. £30-50

**276**

A selection of four cameo brooches. To include a conch shell cameo ring and brooch, together with a shell cameo brooch and pendant. Lengths 3.6 to 2.5cms. Weight 19.6gms. £70-100

**277**

A selection of cameos. To include a shell cameo depicting St Peter holding the keys to the gates of heaven, together with another depicting Aurora riding a chariot pulled by a winged putto. (9) Lengths 3 to 6.2cms. Weight 95.8gms. £60-90

278

Four items of lava cameo jewellery. To include a marquise-shape cameo depicting a bearded man in a hat, an oval-shape cameo depicting a lady in profile, together with two smaller rectangular-shape cameos. Lengths 4 to 1.9cms. Total weight 20.9gms. £50-80

**279**

Two cameo brooches. The first depicting the portrait of a lady with ringlets in her hair, the second of a lady with curled hair. Marks indicating gold. Lengths 3 to 3.8cms. Weight 10.7gms. £40-60

280

A selection of loose cameos and brooches. To include an oval shell cameo depicting a lady in profile within a jet surround, together with three further brooches and seven loose cameos. (11) Length of brooches 3.4 to 4.9cms. Length of cameos 3 to 5cms. £30-50

**281**

Three cameo brooches. The first depicting The Three Graces, together with one depicting a lady in profile. Lengths 3.4 to 5.7cms, Weight 30.8gms. £100-150

282

Three items of cameo jewellery. To include a hardstone cameo ring, a shell cameo ring, together with a 9ct gold shell cameo brooch. Brooch with hallmarks for 9ct gold. Length of brooch 3cms. Total weight 11gms. £90-140

**283**

Two shell cameo brooches. Each designed as an oval-shape shell cameo, carved to depict a classical theme, within a plain surround. Lengths 4.3 and 3.4cms. Weight 14gms. £60-90

284

Two shell cameo brooches. Each designed as an oval shell cameo, depicting the profile of a lady, within a rope-twist surround. Lengths 4 and 3.4cms. Weight 11.8gms. £70-100

285

Three 9ct gold cameo rings. Each designed as an oval shell cameo, carved to depict the profile of a lady, within a decorative border, to the tapered or bifurcated shoulders. *Hallmarks for Birmingham, 1972, 1973 and 1976. Weight 9.9gms. £60-90*

**289**

Two 9ct gold cameo brooches and a cameo ring. To include two 9ct gold cameos, each carved to depict a lady in profile, and a similarly carved cameo ring. *Two with hallmarks for 9ct gold. Lengths of brooches 3.3 and 3.1cms. Total weight 15.1gms. £100-150*

**294**

Two shell cameo brooches. To include an early 20th century 9ct gold shell cameo brooch, carved to depict Psyche within a scalloped foliate engraved surround, together with a 9ct gold oval-shape cameo brooch. *Second with hallmarks for Birmingham, 1995. Lengths 2.7 and 4.2cms. Weight 13.6gms. £60-90*

**286**

Two items of shell cameo jewellery. To include a 9ct gold oval-shape cameo brooch, carved to depict The Three Graces, together with a ring. *Brooch with import marks for London, 1990. Length of brooch 4.1cms. Total weight 10.8gms. £40-60*

**290**

Two 9ct gold shell cameo brooches. To include an early 20th century brooch, together with a 1970s brooch, both carved to depict a lady in profile within scrolling surrounds. *One with hallmarks for Birmingham, 1975. Lengths 3.6 and 4.1cms. Total weight 16.2gms. £60-90*

**295**

Four brooches and a pair of earrings. The rectangular-shape pietra dura brooch depicting lilies to the geometric border, together with a cameo brooch, the circular-shape garnet border to the shell cameo of a portrait of a lady. *Mark indicating silver. Hallmark for Birmingham, 1964. Lengths 1.7 to 6.6cms. Weight 40.2gms. £70-100*

**287**

A cameo brooch and ring. To include a 9ct gold mounted oval shell cameo brooch, depicting the profile of a lady, within a rope-twist surround, together with a floral cameo ring. *Brooch with hallmarks for Sheffield. Length of brooch 4.2cms. Total weight 13.9gms. £80-120*

**291**

Two shell cameo brooches. Both of oval-shape outline, the shell cameos carved to depict the side profile of a lady. *Lengths 3.7 and 3.8cms. £80-120*

**296**

Three 9ct gold shell cameo brooches. Each of oval-shape outline, the cameos carved to depict the side profile of female figures. *Hallmarks for 9ct gold. Lengths 2.8 to 3.7cms. Weight 19.8gms. £90-140*

**288**

A gold shell cameo brooch and two gold stickpins. To include an early 20th century 9ct gold oval-shape shell cameo brooch carved to depict a lady in profile, together with two early 20th century gold gem-set stickpins. *Lengths 5.5 to 6cms. Weight 11.4gms. £50-80*

292

Three items of 9ct gold cameo jewellery. To include a pendant in onyx, depicting a lady in profile with ringlets in her hair to the 9ct gold surmount and trace-link chain, together with a ring and brooch. *Hallmarks for Birmingham, 1989, Birmingham (illegible) and Sheffield, 1997. Lengths 5.4 to 42.3cms. Weight 20.4gms. £80-120*

**293**

Two shell cameo brooches. To include a 9ct gold shell cameo brooch and an oval-shape cameo brooch, carved to depict the side profile of a lady. *One with hallmarks for Birmingham, 1963. Lengths 3 and 3.9cms. Weight of 9ct gold brooch 6.3gms. £90-140*

**297**

A selection of early 20th century shell cameo pieces. To include a 9ct gold ring depicting a gentleman in profile, a pair of ear pendants depicting a lady in profile, together with a stickpin depicting Hermes. *Ring with hallmarks for Chester, 1912. Length of ear pendants 3.6cms. Length of stickpin 7.2cms. Total weight 7.8gms. £40-60*



298

Two 9ct gold shell cameo brooches. Each carved to depict a lady in profile, within scrolling surrounds. Both can be worn as a pendant. *Hallmarks and import marks for Birmingham, 1979 and Sheffield, 1990. Lengths 3.3cms each. Weight 12.1gms. £60-90*

303

Three 9ct gold shell cameo brooches. Each carved to depict a lady in profile, within scrolling and collet surrounds. *Hallmarks for Birmingham, 1955 and 1994. Lengths 2.7 to 3cms. Weight 12gms. £60-90*

308

Two cameos. The first a brooch, depicting a lady in profile, with ruffled collar to the rope twist surround, the second, a loose cameo panel depicting a winged charioteer with three horses. *Hallmark for Birmingham, 1972. Lengths 3.5 to 5.5cms. Weight 8.8gms. £100-150*

**299**

A cameo brooch & earrings. The brooch designed as the carved portrait of a lady in profile to the scrollwork border, together with a pair of ear pendants of similar design and a curb-link chain. *Marks for gold. Hallmarks for Birmingham, 1991. Lengths 2 to 32cms. Weight 15.9gms. £60-90*

**304**

Two 9ct gold shell cameo brooches. Each carved as a woman in profile, within an openwork surround. *Hallmarks for Birmingham, 1968 and London, 1970. Lengths 4.1 and 3.2cms. Weight 15.5gms. £90-140*

309

A selection of cameo jewellery. To include brooches, rings, earrings and pendants. *£40-60*

300

Two 9ct gold shell cameo rings. Each carved to depict a woman in profile, to the rope-twist surround and trifurcated sides. *Hallmarks for Birmingham, 1995. Weight 4.2gms. £40-60*

**305**

Three 9ct gold shell cameo pendants. Each of oval outline, depicting a lady in profile, within scrolling surrounds. Two may be worn as a brooch. *Hallmarks for 9ct gold. Lengths 3 to 4cms. Weight 14.9gms. £80-120*

310

A 9ct gold Wedgwood jasperware cameo ring. The oval-shape black and white jasperware cameo depicting a woman draped over a broken column, to the fancy-link surround and bifurcated shoulders. *Hallmarks for Birmingham, 1976. Weight 3.4gms. £30-50*

**301**

Two 9ct gold shell cameo brooches. Each carved to depict a lady in profile, within a rope-twist surround. *Hallmarks for Birmingham, 1972 and 1977. Lengths 3.8 and 3.1cms. Weight 15.6gms. £80-120*

306

Eight items of Wedgwood jewellery. To include two oval-shape brooches and six pendants. *Lengths 4.4 to 3cms. Weight 36.8gms. £40-60*

**311**

A selection of Wedgwood jewellery. To include a pink oval ceramic cameo depicting five infants at play with a dog, together with a rectangular pendant depicting a lady with a water pitcher and an eagle. *With maker's marks. Marks for silver. Lengths 2.9 to 5cms. Weight 62.3gms. One with maker's case and leaflet. £60-90*

**302**

Two cameo brooches. The first designed as three muses holding hands, to the rope-twist and bead work surround, the second as a mother and baby with mountains to the background. *Import mark for gold. Lengths 3.5 to 5cms. Weight 19.9gms. £80-120*

307

A shell cameo pendant and brooch. To include a 9ct gold heart-shape shell cameo pendant, with foliate surround, together with an oval shell cameo brooch. *Pendant with hallmarks for Birmingham. Lengths 4.4 and 3.5cms. Total weight 16.3gms. £80-120*

312

A quantity of cameo jewellery. To include brooches, pendants and necklaces, some shell some plastic. *£60-90*



313



A 9ct gold locket. The oval-shape locket with a scroll embossed front, suspended from a belcher-link chain. *Hallmarks for Birmingham, 1991. Length of locket 4.2cms. Length of chain 60cms. Weight 35.3gms. £280-380*

316



An early 20th century 9ct gold heart locket. Of heart-shape outline, with split pearl accent. *Hallmarks for Birmingham, 1910. Length 2.7cms. Weight 3.9gms. £40-60*

320



A mid to late 19th century gold, split pearl and enamel locket. Of oval outline, the split pearl and blue and cream enamel star, to the scalloped and textured surround and plain reverse. *Length 3.4cms. Weight 7.2gms. £100-150*

317



A late 19th century locket. Of oval-outline, with engraved scroll detail and rope-twist line sides, to the tapered surmount. *Length 4cms. Weight 8.5gms. £150-200*

321



A cased gold locket. The front designed as an underwater scene with two koi carp, a shrimp, crab, frog and snail amongst sea shells and foliage, to the reverse three oriental men at work, amongst bamboo and a blank shield panel. *Length 4.6cms. Weight 17.4gms. With unassociated antique case. £300-400*

314 

A late 19th century cased turquoise locket. The oval locket with turquoise cabochons set as a cross and fan pattern to the reverse engraved with acanthus leaves in a similar design. *Length 3.5cms. Weight 15.8gms. With monogrammed case. £100-150*



318



A late Victorian 18ct gold and enamel locket and later chain. The blue enamel to the geometric scrolling design to the front and back. *Length 3.2cms. Weight 5.7gms. £60-90*

315



A late Victorian paste locket and chain. The circular-shape colourless paste star, to the gilt metal locket, suspended from a later box-link chain. *Length of locket 5cms. Length of chain 56cms. Weight of chain 7.5gms. £90-140*

319



A late 19th century 18ct gold photograph locket. The circular-shape acanthus engraved case opening to reveal a glazed hinged insert. *Length 2.9cms. Weight 7gms. £80-120*



322



An early 20th century gold locket. Of oval outline, the front and reverse with floral engraved detail. *Length 3.4cms. Weight 7.9gms. £120-180*

323



A heart-shape locket. The asymmetric heart-shape set with one old-cut diamond of approx 0.05ct. *Length 2cms. Weight 3.6gms. £70-100*

324

An early 20th century gold foliate locket. Of heart-shape outline, with pink paste and seed pearl foliate detail. *Length 3.4cms. Weight 7.5gms. £60-90*

**329**

A late 19th century 9ct back and front hinged locket. Of oval outline, with engraved wreath and foliate detail. *Length 3.5cms. Weight 9.3gms. £70-100*

**333**

An early 20th century 15ct gold synthetic ruby and diamond heart locket. The circular-shape synthetic ruby and rose-cut diamond cluster, to the heart-shape locket. *Length 1.6cms. Weight 2.1gms. £60-90*

**325**

A late Victorian 15ct gold diamond locket. Of oval-shape outline, the front with old and rose-cut diamond star accent, to the plain surmount. *Estimated principal diamond weight 0.10ct. Length 5.5cms. Weight 15.5gms. £300-400*

**330**

A late Victorian gold seed pearl and enamel locket. The seed pearl and blue enamel belt, to the oval-shape plain locket. *Length 3.3cms. Weight 7.5gms. £200-300*

334

A late 19th century 9ct gold photograph pendant. The circular undulating floral motif and purple paste frame to the bevelled glass inserts. *Length 3.8cms including surmount loop, chain 21.5cms. £100-150*

**326**

A late 19th century gold oval locket. The acanthus engraved locket opening on both sides to the woven hair panel within. *Length 5cms. Weight 21.7gms. £120-180*

**335**

A mid 20th century 9ct gold hinged locket. Of oval outline, the front panel with scroll engraved border, to the plain reverse. *Hallmarks for Birmingham, 1969. Length 5.7cms. Weight 15.5gms. £150-200*

**327**

A late 19th century gold locket. Of oval outline, the front with raised initial monogram, suspended from a tapered surmount. *Length 4.8cms. Weight 17.8gms. £320-420*

**331**

An Edwardian 15ct gold locket. Of circular-shape outline, with scroll and foliate engraving, suspended from a belcher-link chain. *Pendant with hallmarks for Chester, 1903. Length of pendant 2.3cms. Length of chain 45cms. Total weight 6gms. £100-150*

**336**

An early 20th century gold enamel locket. Of oval outline, the blue enamel belt, to the scroll embossed locket. *Length 3cms. Weight 3.7gms. £80-120*

**328**

An early 20th century 15ct gold locket. Of circular outline, the vacant circular-shape centre, within engine turned line detail. *Maker's marks for Deakin & Francis. Hallmarks for Birmingham, 1917. Diameter 4cms. Weight 15.3gms. £240-340*

**332**

A late Victorian hardstone locket. Of oval outline, the onyx shield, within a foliate engraved surround, to the foliate engraved reverse. *Length 3.3cms. £40-60*



337

A 9ct gold locket. Of geometric shape, with scroll engraving suspended from a curb-link chain. *Locket with hallmarks for Birmingham. Length of locket 4.2cms. Length of chain 52cms. Total weight 11.4gms. £100-150*

**342**

A late Victorian silver photograph pendant. Of oval outline, the heart-shape and bar frame, with undulating and bead border, to the butterfly and flower engraved reverse. *Length 5.9cms. Weight 10.5gms. £40-60*

**346**

A mid Victorian silver double-sided locket. Of oval outline, the slightly domed, hinged sides, opening to reveal twin daguerreotypes of a man and a woman, to the surmount loop. *Length 6.4cms. Weight 34.3gms. £50-80*

**338**

A late 19th century 9ct gold front and back locket and 9ct gold chain. The locket, with vacant shield-shape panel within a wreath surround, suspended from a faceted belcher-link chain. *Length of locket 4cms. Length of chain 43cms. Total weight 15gms. £80-120*

**343**

A late Victorian silver locket. The floral engraved central panel to the embossed scrolling border. *Length 6.2cms. Weight 22gms. £40-60*

**347**

A late Victorian silver locket. The floral central panel to the scalloped edge and star motif surround and castellated border to the reverse. *Hallmark for Birmingham, 1880. Length 4.8cms. Weight 13.1gms. £90-140*

339

An early 20th century 9ct gold locket and longuard chain. The circular-shape locket, with scroll embossed front and back, to the faceted belcher-link longuard chain. *Locket with hallmarks for Chester, 1917. Diameter of locket 2.3cms. Length of chain 70cms. Total weight 33.7gms. £380-480*

**344**

A late Victorian silver locket, circa 1880. The oval-shape locket, with applied Gothic script monogram, and tapered surmount loop. *Length 7.2cms. Weight 27.8gms. £50-80*

348

A late Victorian silver locket. Of oval outline, the scrolling foliate and geometric engraved sides, suspended from a tapered surmount loop. *Length 6.9cms. Weight 15.9gms. £50-80*

**340** ✕

A late Victorian 15ct gold ruby locket. Of circular-shape outline, the replacement circular-shape ruby, within an engine-turned surround. *Diameter 2.2cms. Weight 6.1gms. £120-180*

**341**

A mid 19th century double sided locket. The oval-shape sides with engine-turned engraving and monogram, to the floral embossed surround and surmount. *Length 4.7cms. Total weight 13.6gms. £120-180*

**345**

A late Victorian silver locket. The repeat Maltese cross engraving to the front panel and leaf pattern and scalloped engraving to the reverse panel. *Length 5.8cms. Weight 18.1gms. £40-60*

**349**

A late Victorian silver locket. The front depicting a stylised bird, flowers and sky to the scalloped beadwork surround. *Hallmark for Birmingham 1882. Length 6.2cms. Weight 14.2gms. £90-140*



350

A late Victorian silver collar. The fancy-link chain, with bead chain, to the spring-ring clasp. *Length 53cms. Weight 81gms. £50-80*

**351**

Three late 19th century lockets. Each of oval outline, to include a black enamel 'In Memory Of' cross locket, with arranged hair panel interior, an 18ct gold split pearl and blue enamel cross locket, together with a blue enamel Greek-key locket. *Lengths 3.3 to 2.8cms. Weight of second 7.9gms. £120-180*

352

Two lockets. To include a 9ct gold circular-shape locket with scrolling foliate accent and tapered surmount loop, together with a rose motif locket with inscription for Queen Elizabeth II Golden Jubilee. *One with hallmarks for Birmingham, 1964. Lengths 3.8 and 3.4cms. Weight of hallmarked locket 6.2gms. £80-120*

**353**

Three early 20th century lockets. To include a 9ct gold circular locket, an oval-shape double hinged locket with foliate engraving, together with a heart-shape locket. *First with hallmarks for Birmingham, 1917. Lengths 3.6 to 2.5cms. Weight of first 8.2gms. £150-200*

**354**

A Victorian silver locket and brooch. The brooch designed as a circular floral panel to the centre with foliate border and bead work accents, together with an oval locket, the front panel depicting vine leaves and grapes in relief to the raised border. *Hallmark for Birmingham, date illegible and 1884. Lengths 3 to 4cms. Weight 17.8gms. £70-100*

**355**

Two late Victorian silver items. To include a silver textured fancy-link Albert chain with T-bar and lobster clasp terminals, together with a loop and barrel-shape link collar with alternating scroll engraved panels. *Length of Albert 30cms. Length of collar 46cms. Total weight 102.7gms. £60-90*

**356**

Two late 19th century lockets. To include a late Victorian silver oval-shape locket with scroll engraved detail, together with a late 19th century oval-shape floral locket. *One with hallmarks for Birmingham, 1882. Lengths 4 to 5.5cms. Total weight 22.7gms. £70-100*

**357** ✕

A selection of silver and white metal lockets. To include a silver oval-shape locket, with scroll engraved detail, a heart-shape scroll engraved locket, together with various further lockets, some with chains. *(16) Some with hallmarks or marks indicating silver. Lengths of lockets 1.7 to 6.3cms. Total weight 165.8gms. £70-100*

**358**

A selection of silver and white metal lockets. To include an engraved book design locket, a Siam heart-shape locket, an early 20th century heart-shape locket with raised bow detail, together with various further lockets, some with chains. *(33) Some with marks indicating silver. Lengths of lockets 1.6 to 2.8cms. Total weight 134gms. £50-80*

**359**

Three lockets. The first designed as a circular-shape with two horseshoes embossed to the front, the second with repeat floral pattern to the front and zigzag engraved border. *Hallmarks for Birmingham, 1900 and 1966. Lengths 2.1 to 5cms. Weight 25.1gms. £60-90*

**360**

Two late Victorian silver lockets. Each of oval outline, with floral engraving to one side, one locket with aesthetic engraving of bird and bullrushes to the other. *One with hallmarks for Birmingham, partially indistinct. Length 5.8cms each. Total weight 29.1gms. £50-80*

**361**

A selection of silver and white metal lockets. To include oval, circular and heart-shapes, with scrolling and foliate engraved designs. *Most with marks to indicate silver. Lengths 1.5 to 3.6cms. Total weight 65gms. £30-50*

**362**

A selection of lockets. To include a heart-shape locket with scrolling leaf engraving to the front, together with a plain elongated oval-shape locket. *(50) Weight 254.1gms. £100-150*



363

A early 20th century locket and a mid 20th century thimble. The 9ct gold front and back locket, of oval outline with engraved bird detail, the thimble with scrolling engraved rim. *Length of pendant 3.5cms. Total weight 11.6gms. £100-150*

**367**

A selection of two lockets and a pendant. To include an early 20th century circular blue paste cabochon heart-shape pendant, together with two engraved heart-shape lockets. *Lengths 1.8 to 2.2cms. £40-60*

**372**

Three early 20th century and later lockets. To include a foliate engraved gilt metal locket, a heart-shape silver front and back locket and one further locket, two suspended from chains. *Lengths of lockets 2.8 to 2.3cms. Lengths of chains 46 to 40cms. £30-50*

364

Five late 19th century gold front and back lockets. To include a blue enamel and split pearl locket, a cross motif locket, with a further three floral engraved lockets. *Lengths 3.8 to 2.4cms. £70-100*

368

A selection of 9ct gold and front and back lockets. To include four heart-shape lockets, a circular-shape locket and an oval-shape locket. *Lengths 2.5 to 1.3cm. Total weight 12.4gms. £50-80*

**369**

Two lockets. The first of oval outline, the central acanthus leaf engraved panel to the scalloped border and blank reverse, the second of circular outline with foliate engraving to the reverse and guilloche floral enamel panel to the front. *Hallmark for Birmingham 1924 and import mark. Lengths 6.5 and 5.5cms. Weight 60.2gms. £80-120*

**373**

Two 9ct gold lockets. To include an oval-shape locket, with engraved detail and a rectangular-shape locket, with partial scroll engraved detail. *Hallmarks for Birmingham. Lengths 2.2 and 2.8cms. Weight 4.3gms. £50-80*

**365**

A selection of five rolled gold lockets. To include four heart-shape lockets and an oval-shape locket. *Lengths 3.5 to 1.6cms. Total weight 15.5gms. £120-180*

370

A selection of jewellery. To include a 9ct gold front and back heart-shape locket, two oval-shape lockets, a bug pendant and two beads. (6) *Length of lockets 3 to 1.8cms. Total weight 14.8gms. £40-60*

374

A selection of rolled gold lockets. To include an oval-shape geometric locket, a heart-shape scroll embossed locket and a rectangular-shape locket with angular border. (29) *Lengths 5.8 to 1.5cms. Total weight 136gms. £50-80*

**366**

Two lockets and a chain. To include a late 1930s 9ct gold locket with personal engraving, suspended from a trace-link chain, together with an oval-shape textured locket. *Hallmarks for London, 1939. Length of lockets 3 and 4cms. Weight of 9ct gold locket and chain 5.8gms. £150-200*

**371**

A selection of three lockets. To include an early 20th century rolled gold back and front floral locket, a rolled gold scroll heart-shape locket, together with a floral locket. *Lengths 2.2 to 4cms. Total weight 10gms. £60-90*

**375**

A selection of three early to mid 20th century 9ct gold front and back lockets. To include two circular-shape scrolling lockets and a heart-shape locket. *Lengths 1.6 to 2.6cms. Total weight 10.8gms. £50-80*



376

Two 9ct gold heart-shape lockets. To include a heart-shape locket, with Celtic knot detail and a heart-shape textured locket. *Hallmarks for Sheffield, 2011 and Birmingham. Lengths 2.1 and 2.2cms. Weight 4gms. £40-60*

377

A selection of 9ct gold front and back lockets. To include a floral bird locket, a foliate heart-shape locket and a locket with scalloped border. (12) *Lengths 3.5 to 2cms. Total weight 55.9gms. £100-150*

378

Three late 19th century lockets. To include an oval-shape split pearl and blue enamel star motif locket with engraved reverse, a circular-shape scrolling foliate engraved locket, together with a split pearl star 9ct gold front and back locket. *Lengths 3.3 to 2.4cms. Total weight 11.8gms. £100-150*

379

Two 9ct gold lockets. To include an oval-shape locket with floral engraved decoration and an oval-shape locket with chequer board engraved detail. *Hallmarks for Birmingham. Lengths 3.1 and 3.5cms. Weight 6.9gms. £60-90*

380

A selection of 9ct gold front and back lockets. To include a rectangular-shape locket with vacant setting and textured reverse, a scroll embossed circular-shape locket and a foliate heart-shape locket. (12) *Lengths 3 to 2cms. Total weight 41.8gms. £100-150*

381

A selection of lockets. To include an early 20th century circular-shape green guilloche enamel locket, together with seven further variously oval, heart and rectangular-shape lockets, four suspended from chains. *Some with marks to indicate silver. Total weight 72.3gms. £40-60*

**382**

A selection of lockets. To include oval, circular, octagonal and heart-shapes, with varying designs. (25) *Some with marks to indicate silver. Lengths 1.3 to 3.5cms. Total weight 122.8gms. £70-100*

383

A selection of nine lockets. Of heart, oval and circular design, most with scrolling foliate motif, together with three chains. *Three with hallmarks for silver. Lengths 4.6 to 1.5cms. Total weight 70.7gms. £40-60*

384

A late 19th century gold hardstone cameo stickpin. The circular-shape onyx, carved to depict Hera, within a rope-twist surround. *Diameter of stickpin head 2.2cms. Weight 6.8gms. £90-140*

385

A miniature portrait stickpin. The painted porcelain portrait, depicting a young girl. *Length 8cms. Weight 4.7gms. £80-120*

386

An early 20th century gold pearl and diamond stickpin. Designed as a cluster of three diamonds to a scroll and bar with seed pearl terminals. *Length 5.9cms. Weight 3gms. £100-150*

387

A diamond stickpin. The oldcut diamond set within the mouth of a gargoyle face. *Estimated diamond weight 0.20ct. Length 7cms. Weight 3.7gms. £80-120*

388

A late 19th century gold diamond and split pearl stickpin. The split pearl cross, with cushion-shape diamond centre. *Estimated diamond weight 0.15ct. Length 6.1cms. Weight 1.9gms. With associated case. £60-90*

389

An enamel stickpin. Depicting a blue flag with white cross, and red crown centre. *Length 6cms. Weight 1.9gms. £60-90*

394

An early 20th century diamond single-stone stickpin. The brilliant cut diamond claw-set to the gold pin. *Estimated diamond weight 0.15ct. Length 6.8cms. Weight 1.7gms. £50-80*

398

An early 20th century gold diamond single-stone stickpin. Designed as an old-cut diamond, within a halo surround. *Estimated diamond weight 0.10ct. Length 6.1cms. Weight 1.8gms. £40-60*

390

A diamond stickpin. The central brilliant-cut diamond accented by twelve smaller brilliant-cut diamonds. *Estimated principal diamond weight 0.20ct. Length 5.6cms. Weight 1.4gms. £70-100*

395

A mid Victorian Scottish agate stickpin. Designed as a stylised knot with decorative engraving, within a vari-colour agate circular surround. *Length 7.2cms. £40-60*

399

An early 20th century gold shell cameo stickpin. The cameo carved to depict an elegant lady in profile within a scroll engraved border. *Length 8.5cms. Weight 3.5gms. With fitted case. £50-80*

391

A mid Victorian memorial stickpin. The oval-shaped panel, with arranged hair, within a rope-twist border. *Personal Inscription to reverse reads In memory of a kind father, Dec. 1858. Length 6.6cms. Weight 3.8gms. £30-50*

396

An 18ct gold enamel horse and jockey stickpin. The green, yellow and white enamel jockey, astride the textured leaping horse. *Length 6.4cms. Weight 8.7gms. £300-400*

400

A diamond stickpin. The graduated old-cut diamond curved line, to the spiral pin. *Estimated total diamond weight 0.30ct. Length of stickpin head 1.6cms. Weight 1.2gms. £50-80*

392

A cultured pearl stickpin. The cultured pearl with a flower-shaped cap and decorative rope-twist wire to the underside. *Length 7.7cms. Weight 2.4gms. £30-50*

401

A cultured pearl stickpin. The cultured pearl set to the top of the pin with a flower-shaped cap and decorative rope-twist wire to the underside. *Length 7.7cms. Weight 2.5gms. £30-50*

393

A garnet single-stone stickpin. The cushion-shaped garnet, within an eight-claw setting. *Length 5.5cms. Weight 1.7gms. £30-50*

397

A late 19th century gold diamond stickpin. The old-cut diamond, raised to the textured halo and spiral pin. *Estimated diamond weight 0.10ct. Diameter of stickpin head 1cm. Weight 2.7gms. £40-60*

402

An early 20th century gold diamond stickpin. The pear-shaped old-cut diamond drop, to the old-cut diamond surmount. *Estimated total diamond weight 0.50ct, I-J colour, SI clarity. Length 6.5cms. Weight 1.5gms. £150-200*

403

An early 20th century turquoise composite stickpin. The early 20th century cultured pearl, tiered turquoise and green enamel head set to a stickpin of a similar age. *Length 6.2cms. Weight 7.5gms. £70-100*

**404**

An early 20th century gold diamond cluster stickpin. The old-cut diamond, within an old-cut diamond scalloped border. *Estimated total diamond weight 0.35ct. Length 5.5cms. Weight 1.3gms. £150-200*

**405**

Three stickpins. The first designed as a central cultured pearl to the circular rope-twist 9ct gold surround and pin, together with scorpion designed stickpin set with diamond accents and a further late Victorian 9ct gold example. *Hallmarks for London, 1959 and Birmingham, 1898. Lengths 5 to 5.7cms. Weight 6.9gms. £40-60*

406

Two gem-set stickpins. To include a late 19th century 14ct gold pink and colourless paste knot stickpin, together with an oval turquoise cabochon stickpin. *Lengths 6.6 and 6.2cms. Weight 3.4gms. £20-30*

**407**

Four stickpins. To include a late 19th century 15ct gold stickpin with green paste and seed pearl cluster to the rope-twist and bead work surround, together with a stickpin designed as a turquoise cabochon to the knot surround. *Lengths 5 to 6cms. Weight 8.3gms. With associated case. £60-90*

**408**

Two stickpins. To include a diamond point floral stickpin, together with a cultured pearl stickpin. *Lengths 5.7 and 6.5cms. Total weight 2.4gms. £30-50*

**409** ✕

Three early 20th century gold gem-set stickpins. To include an 18ct gold ruby and diamond shooting star pin, an 18ct gold diamond point openwork quatrefoil pin with seed pearl accent halo, together with a 15ct gold mounted amethyst pin. *Length of stickpin heads 1.2 to 1.5cms. Weight 5.8gms. £40-60*

**410**

Two stickpins. The first designed as three rose-cut diamonds set to the floral engraved head, the second of floral outline with a circular diamond set to the star engraved centre. *Lengths 4.5 to 7.3cms. Weight 4.1gms. £70-100*

**411**

Three diamond and gem-set stickpins. To include an early 20th century 15ct gold diamond point stickpin, an early 20th century 15ct gold knot stickpin with sapphire accent, together with a cultured pearl stickpin. *Lengths 5 to 6.2cms. Weight 3.5gms. £50-80*

**412**

Two stickpins. The first designed as a single cultured pearl head, together with a stickpin designed as an oval green paste within a seed pearl surround. *French hallmarks for gold. Lengths 5.9 to 7.9cms. Weight 4.8gms. £50-80*

**413**

A selection of five late 19th century stickpins. To include three 15ct and 9ct gold diamond accent stickpins, a mourning stickpin, together with a foil back garnet foliate stickpin. *Length of stickpin heads 1.9 to 0.9cm. Total weight of three gold stickpins 3.9gms. £30-50*

**414**

A selection of six gem-set stickpins. To include a pale grey star sapphire cabochon stickpin, an old-cut diamond stylised knot stickpin and a split pearl and turquoise cabochon cluster stickpin. *Lengths 6 to 5cms. Total weight 11.8gms. £70-100*

**415**

A selection of ten stickpins. To include an early 20th century circular foil-back colourless paste stickpin, a late Victorian silver horseshoe stickpin and an early 20th century red paste cluster stickpin. *Lengths 4 to 7cms. Total weight 12.4gms. £40-60*



416

A selection of twelve stickpins. To include a silver frog stickpin, a late 19th century knot stickpin, a circular-shape diamond point accent embossed pin, a sapphire and stylised knot pin together with further stickpins. *One with hallmarks for silver. Two with marks to indicate gold.* £40-60

**417**

A selection of late 19th to early 20th century mostly gold stickpins. To include a cultured pearl and coiled snake pin, an imitation pearl fruit pin, together with eight further pins. *One stamped 15ct, three stamped 9ct. Weight of nine stickpins 12.5gms.* £80-120

**418**

A large quantity of stickpins. To include novelty, ceramic, paste, micro mosaic and gem examples. *Some AF.* £40-60

419

CHARLES HORNER - two Edwardian silver hatpins. Each designed as an openwork scroll, to the plain pin. *Hallmarks for Chester, 1905 and 1907. Length of pin heads 2.5cms each. Weight 10.9gms.* £100-150

**Fobs & Medallions****420**

A 9ct gold smoky quartz elephant fob. The oval-shape smoky quartz, to the elephant pedestal. *Hallmarks for London, 1979. Length 3cms. Weight 19.5gms.* £150-200

421

A late 19th century gold bloodstone seal fob. The rectangular-shape bloodstone, with initial engraving, to the scrolling pedestal. *Length 3cms. Weight 19.2gms.* £300-400

**422**

A late 19th century gold bloodstone seal fob. The rectangular-shape bloodstone, with initial monogram, to the scrolling pedestal. *Length 3.5cms. Weight 15.2gms.* £150-200

**423**

An early 20th century 9ct gold quartz seal fob. The rectangular-shape quartz, with initial engraving, to the scrolling border and interlinked pedestal. *Length 2.5cms. Weight 4.7gms.* £40-60

**424**

An early 20th century gold carnelian seal fob. The oval-shape carnelian depicting an angel, to the scroll engraved pedestal. *Length 3.5cms. Weight 25gms.* £300-400

**425**

A late 19th century 15ct gold hardstone swivel fob. The circular-shape carnelian and bloodstone swivel, to the grooved pedestal. *Hallmarks for Birmingham, 1885. Length 2.4cms. Weight 6gms.* £60-90

**426**

A 9ct gold intaglio fob seal. The carnelian seal depicting the profile of a man wearing a helmet, to the acanthus leaf pedestal. *Hallmark for London, 1968. Length 4cms. Weight 15.6gms.* £120-140

**427**

An early 20th century gold oval fob. The chalcedony with intaglio depicting a lion rampant and shield to the openwork pedestal. *Length 3.2cms. Weight 8.5gms.* £80-120

**428**

A 9ct gold hardstone fob. The circular moss-agate and ammonite panels, rotating to the scrolling surmount. *Hallmarks for Sheffield, 2007. Length 4.6cms. Weight 12.1gms.* £90-140



429

A hardstone fob. The oval chalcedony collet, to the scrolling surmount. Length 2.3cms. Weight 6gms. £40-60

**433**

A late Victorian 9ct gold hardstone fob. The oval bloodstone and carnelian discs, revolving to the curved bar surmount. Hallmarks for Birmingham, 1898. Length 3cms. Weight 7.6gms. £40-60

**438**

An early 20th century 9ct gold carnelian fob locket. The circular carnelian disc and hinged panel reverse, rotating to the scroll and bar surmount, suspended from a belcher-link chain. Hallmarks for Birmingham, partially indistinct and Sheffield, 1984. Length of fob 3.2cms. Length of chain 45cms. Weight 9.7gms. £80-120

**430**

An intaglio fob. The carnelian fob with intaglio designed as the profile of a man with long hair to the scalloped pedestal. Length 3.2cms. Weight 11.5gms. £100-150

**434**

An intaglio fob. The carnelian fob reads 'Eliza', to the scroll and shell pedestal. Length 3.5cms. Weight 11.2gms. £80-120

**439****431**

A late 19th century carnelian fob seal. The rectangular-shaped carnelian panel, with initial engraving, to the scrolling pedestal. Length 3.2cms. Weight 13gms. £100-150

435

A late 19th century carnelian fob. The rectangular carnelian panel, within a floral surround, to the openwork pedestal. Length 3.3cms. £70-100



A late 19th century carnelian fob seal. The cushion-shaped carnelian, with engraved initial monogram, to the scrolling pedestal. Length 3.2cms. Weight 11.4gms. £100-150

436

A mid Victorian stone-set fob. Set with bloodstone and carnelian to the chain-link pedestal. Hallmark for Birmingham 1871. Length 3.2cms. Weight 7.7gms. £60-90

**440**

A late 19th century fob seal. The cushion-shaped foil-back rock crystal, with engraved initial monogram, to the scrolling and foliate pedestal. Length 3cms. Weight 11.8gms. £80-120

**432**

A late Victorian 9ct gold hardstone swivel fob. The square-shaped carnelian and bloodstone panels, rotating to the chain-link surmount. Hallmarks for Birmingham, 1896. Length 3.4cms. Weight 8.3gms. £50-80

**437**

A late 19th to early 20th century 9ct gold hardstone swivel fob. The late Victorian 9ct gold oval carnelian and bloodstone double-sided swivel fob, with curb-link chain pedestal, suspended from an early 20th century 9ct gold bow. Hallmarks for Birmingham. Length 4.8cms. Weight 11.1gms. £70-100

**441**

An early 20th century gem-set fob seal. The cushion-shaped foil-back amethyst intaglio, depicting a bird of prey, to the curved surmount. Length 2.4cms. Weight 9.9gms. £50-80



442

An early 20th century 9ct gold fob. The rectangular-shape panel, with openwork scrolling pedestal. *Hallmarks for Birmingham, 1912. Length 3.3cms. Weight 9.5gms. £120-180*

**446**

An early 20th century 18ct gold bloodstone fob seal. The oval-shape seal, depicting a horned mountain goat and motto *Gwell Pwyll Nac Aur*, meaning prudence is better than gold, to the scrolling surround and openwork pedestal. *Length 3.1cms. Weight 17gms. £280-380*

**450**

A stone-set fob. The oval-shape bloodstone to the scalloped and scrolling pedestal. *Hallmark for Birmingham, date illegible. Length 2.1cms. Weight 2.6gms. £40-60*

**443**

A bloodstone and carnelian swivel fob. Designed as a circular-shape bloodstone and carnelian swivel, to the geometric pedestal. *Length 3.9cms. Weight 10.5gms. £100-150*

**451**

A carnelian fob. The rectangular-shape carnelian, to the scrolling foliate mount and similarly designed surmount. *Length 2.8cms. £50-80*

**444**

An early 20th century gold hardstone swivel fob. The circular-shape carnelian and bloodstone panels, within a rotating plain mount, to the plain surmount, with scrolling foliate highlight. *Length 3.8cms. Weight 10.7gms. £150-200*

**447**

A late Victorian 9ct gold hardstone swivel fob. The rotating oval-shape bloodstone and carnelian panels, to the rope-twist surmount. *Hallmarks for Birmingham, 1886. Length 3.1cms. Weight 6.3gms. £40-60*

**452**

A 9ct gold carnelian fob. The rectangular-shape carnelian, to the scrolling foliate and grooved mount, with similarly designed surmount. *Hallmarks part illegible. Length 2.8cms. Weight 12.9gms. £100-150*

**445**

An early 20th century gold foil-back citrine fob. The oval-shape citrine, to the tri-colour foliate and scrolling pedestal. *Length 2.3cms. Weight 6.5gms. £90-140*

**448**

A garnet fob. The oval-shape garnet collets, to the cannetille detail surmount. *Length 3.3cms. Weight 12.6gms. £150-200*

**453**

A late 19th century foil-back gem-set fob. The circular foil-back rock crystal, to the bi-colour foliate pedestal. *Length 2.5cms. Weight 7gms. £100-150*

**449**

An early 20th century 9ct gold compass fob. The compass, within a interlined surmount. *Length 3.5cms. Weight 7gms. £80-120*

**454**

A carnelian monogram fob. The oval-shape carnelian, with engraved initial monogram, reading *J M*, to the plain surround and scrolling surmount. *Length 3.3cms. Weight 12.4gms. £100-150*



455

A 9ct gold hardstone fob and four other fobs. The 9ct gold carnelian fob, together with three hardstone seal fobs and an amethyst fob. Lengths 2.4 to 1.7cms. Total weight 24.4gms. £150-200

**459** ✕

A stone-set fob. The pear-shape labradorite to one side and mother-of-pearl to the other, to the scrolling surmount. Hallmark for Sheffield, 1998. Length 4.8cms. Weight 13gms. £50-80

**464**

Two 9ct gold hardstone swivel fobs. To include an oval tiger's-eye and onyx cabochon fob with scroll pedestal, together with an oval bloodstone and onyx cabochon fob with bifurcated pedestal. Hallmarks for 9ct gold. Lengths 2.5 to 2.8cms. Total weight 11.6gms. £50-80

456

A late 19th century bloodstone fob seal. The bloodstone panel, with initial engraving, to the scrolling pedestal. Length 2.2cms. Weight 5.5gms. £70-100

**460**

A late 19th century bloodstone fob. The rectangular-shape bloodstone, to the scroll and grooved pedestal. Length 2.2cms. Weight 3.8gms. £50-80

**465**

Two fobs and a seal. To include a 9ct gold bloodstone and carnelian swivel fob, an early 20th century sardonyx fob seal, the crest depicting a clenched fist and sword, together with an early 20th century sardonyx and bloodstone shield-shape swivel fob. One with hallmarks for 9ct gold. Lengths 1.8 and 3cms. Total weight 17.4gms. £60-90

457

A stone-set fob. The Blue John to the acanthus and scroll pedestal. Hallmark for Sheffield, 1990. Length 2.8cms. Weight 9.4gms. £80-120

461

A stone-set fob. The malachite to the beadwork and scrolling pedestal. Length 3cms. Weight 7.8gms. £60-90

**462**

Three hardstone swivel fobs. To include two 9ct gold early 20th century bloodstone and carnelian fobs, together with a onyx, carnelian and bloodstone three-stone swivel fob. Hallmarks for Chester, 1906 and Birmingham, 1904. Length 2 to 3cms. Total weight 13.9gms. £120-180

466

Two late 19th century gem-set swivel fobs. To include a 9ct gold carnelian and bloodstone double-sided fob with lion surmount, together with a smoky quartz and eagle composite fob. First with hallmarks partially indistinct. Lengths 3.9 and 4cms. Total weight 21.9gms. £100-150

458

A late Victorian 9ct gold citrine swivel fob. The faceted citrine, to the scrolling foliate engraved surmount. Hallmarks for Birmingham, 1897, partially indistinct. Length 3.5cms. Weight 18.7gms. £100-150

**463**

Two hardstone seal fobs. To include a rectangular-shape carnelian carved to depict an eagle feeding three chicks, together with an oval bloodstone carved to depict a dog. Length 2 and 2.2cms. Total weight 9.4gms. £80-120

467

Three late 19th century hardstone and gem-set fobs. To include a quartz scrolling fob, a bloodstone fob and a carnelian fob. Lengths 2.3 to 1.8cms. Total weight 10.5gms. £80-120

468

Two gem-set fobs. To include a 9ct gold orange paste scrolling fob, together with an oval onyx grooved and grape vine fob. *One with hallmarks for London, 1963. Lengths 3 to 3.5cms. Total weight 15.3gms. £60-90*

472

A selection of three gem-set fobs. To include a 9ct gold bloodstone fob, a 9ct gold onyx scroll fob and a yellow paste swivel fob. *Two with hallmarks for 9ct gold. Lengths 2.5 to 1.5cms. Total weight 12.5gms. £60-90*

477

Two 9ct gold glass swivel fobs. To include a yellow glass fob with scrolling foliate engraved surmount, together with a purple glass fob with openwork surmount. *Hallmarks for Birmingham, 2007 and London, 1970. Lengths 3.5 and 2.8cms. Total weight 14gms. £90-140*

469

Four fobs and a compass fob. The compass fob with chain-link pedestal to the surmount loop, together with a carnelian and onyx swivel fob to the scrolling mount and three further hardstone fobs. *Hallmark for Chester, 1920 and 1926. Lengths 2.2 to 3.8cms. Weight 20.4gms. £120-180*

473

Two early 20th century gem-set fobs. To include a cushion-shape citrine fob, engraved 'Marion', together with an oval bloodstone fob with replacement wirework pedestal. *Lengths 2.6 and 2.1cms. £60-90*

478

Two 9ct gold hardstone swivel fobs. To include a dyed pink hardstone and dyed lapis lazuli rectangular-shape swivel fob, together with a carnelian, onyx and jasper three-stone swivel fob. *Hallmarks for Sheffield, 2004 and Birmingham, 1975. Lengths 3.6 and 2.8cms. Total weight 19.2gms. £90-140*

470

Two fobs and an 18ct gold chain. The first fob designed as a colourless quartz, with a stag intaglio to the ornate scalloped pedestal, the second with intaglio depicting a squirrel eating a nut to the scrolling pedestal, together with a late Victorian, 18ct gold, fancy-link chain. *Length 21cms. Weight 52gms. £740-940*

474

Two late 19th century hardstone items. To include a 9ct gold carnelian and bloodstone swivel fob with crescent pedestal, together with an onyx and white chalcedony swivel watch key. *Length of fob 2.8cms. Length of watch key 4.1cms. Weight of first 5.1gms. £80-120*

475

Two late 19th century gem-set fobs. To include a hardstone fob and a foil-back amethyst fob, each with a scroll pedestal. *Lengths 2 to 2.3cms. Total weight 5.6gms. £80-120*

479

Two late 19th century foil-back fobs. Each set with a foil-back quartz, to the scrolling pedestal. *Lengths 2 to 2.3cms. Total weight 6.7gms. £90-140*

471

Two hardstone fobs. To include a 9ct gold carnelian and onyx scrolling swivel fob, together with a bloodstone, carnelian and onyx three-stone swivel fob. *One with hallmarks for Birmingham. Lengths 2.5 to 4.1cms. Total weight 14gms. £50-80*

476

Two early 20th century gold gem-set fobs. The first designed as a faceted citrine, to the bamboo style bifurcated surmount, the second designed as a rotating oval-shape carnelian and bloodstone fob, to the scrolling surmount. *Hallmarks for Birmingham, 1919 and Chester, partially rubbed. Lengths 3.8 and 4cms. Weight 19.2gms. £100-150*

480

Two early 20th century gold seal fobs. The first designed as a circular-shape white chalcedony carved to depict a flower to the 15ct mount, the second designed as a rectangular bloodstone carved with a monogram to the 18ct mount. *Lengths 2.3 and 2.1cms. Weight 11.1gms. £180-240*

481

Two late Victorian gold fobs. The first designed as an 18ct gold carnelian and bloodstone swivel fob, the second designed as a 15ct gold bloodstone and compass fob. *Hallmarks for Birmingham, 1882 and London 1896. Lengths 2.9 and 2.7cms. Total weight 22.1gms. £150-200*

482

Four late 19th century and later 9ct gold hardstone fobs. To include a bloodstone monogram seal, together with an agate and carnelian swivel fob, and two further seals. *Lengths 2.9 to 2cms. Weight 16.3gms. £100-150*

**483**

Three hardstone swivel fobs. To include an early 20th century 9ct gold bloodstone and monogram fob, a later 9ct gold bloodstone and carnelian fob and one similarly designed fob. *Two with hallmarks for gold. Lengths 3.6 to 2.3cms. Total weight 22.5gms. £180-240*

**484**

Four late Victorian to early 20th century 9ct gold swivel fobs. To include one faceted citrine swivel fob, together with three carnelian and bloodstone swivel fobs. *Two with hallmarks for 9ct gold. Lengths 3.6 to 2.1cms. Total weight 24.6gms. £180-240*

**485**

A selection of four hardstone fobs. To include a 9ct gold blue gem and onyx swivel fob, a 9ct gold blue paste fob, together with two further fobs. *Two with hallmarks for 9ct gold. Lengths 3 to 3.5cms. Total weight 27gms. £180-240*

486

Two hardstone swivel fobs. Each set with a bloodstone and carnelian, to the stylised pedestal. *Lengths 3.3 to 2.5cms. Weight 15.3gms. £80-120*

487

Four late Victorian and early 20th century 9ct gold fobs and two further fobs. To include two 9ct gold bloodstone and carnelian swivel fobs, a 9ct gold bloodstone swivel fob, a 9ct gold compass fob and a further two hardstone fobs. *Four with hallmarks for 9ct gold. Lengths 3.1 to 2.5cms. Total weight 31.3gms. £250-300*

**488**

Two agate seals. Each designed as an orange banded agate tapered column, with octagonal-shape terminal. *Lengths 3.1 to 3.6cms. £50-80*

489

An early 20th century 9ct gold enamel medallion. The circular blue enamel 'Liverpool Daily Post' banner, within a stylised wreath surround, to the reverse reading 'Points medal won by J. Clutton, R&B. F. Show, 1937'. *Hallmarks for Birmingham, 1935. Length 3.7cms. Weight 9.5gms. With fitted case. £80-120*

490

A selection of nine silver medallion fobs. To include five 1930s darts medallions, together with four further fobs. *Eight with hallmarks for silver. Total weight 97.7gms. £50-80*

491

An Edwardian silver double Albert chain and two medallions. The graduated curb-links, with T-bar and lobster claw clasp, suspending an Edwardian silver shield medallion and a later base metal religious medallion. *Chain and first medallion with hallmarks for Birmingham, 1904. Length of chain 30cms. Total weight 37.3gms. £40-60*

**492**

A late Victorian silver Albert chain. The curb-links, suspending a T-bar, mounted coins and locket, to the lobster claw terminals. *Hallmarks for Birmingham, 1896. Length 45cms. Weight 78.1gms. £30-50*





723

570

736

1367

528

493

526

563

525

570

760

570

570

321

717

570

493



A late Victorian 18ct gold Scottish agate, amethyst and citrine brooch. Of openwork design, the oval-shaped citrine and amethyst collets, to the scrolling engraved panel, with agate curved sides. *Length 6.4cms. Weight 22gms. £400-600*

494



A Scottish paste brooch. Designed as a dirk set with two raised faceted yellow paste accents, to the engraved surmount and colourless paste insets and brown faceted paste terminal. *Length 9.8gms. Weight 15gms. £60-90*

495



A Scottish gem-set bracelet. Designed as two oval banded agate cabochons and an oval rose quartz cabochon, alternating with carved bloodstone panels, to the scroll engraved clasp. *One link broken. Length 19.9cms. Weight 25.4gms. £40-60*

496



An agate bead necklace. The forty-seven graduated spherical beads measuring 1.7 to 0.6cms spaced along a black cord to the push-piece clasp. *Length 120cms. £500-700*

497



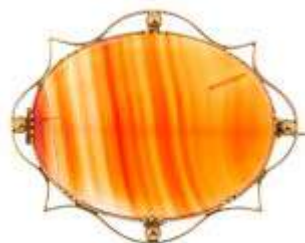
A 9ct gold agate pendant. The oval agate cabochon, within a scalloped border. *Hallmarks for London, 1961. Length 5.8cms. Weight 18gms. £150-200*

498



A late 19th century silver citrine penannular brooch. With circular-shaped citrines and engraved detail. *AF. Diameter 5cms. Weight 17.8gms. £80-120*

499



An early 20th century 9ct gold banded agate brooch. The oval agate, within a bead and scalloped border. *Length 5.1cms. Weight 13.9gms. £20-30*

500



A late 19th century Scottish silver agate bracelet. Designed as a series of grooved rectangular-shaped panels with floral engraved mounts, alternating with cushion-shaped agate panels, to the hook clasp. *Length 18.5cms. Weight 26.2gms. £80-120*

501



An agate brooch. The oval-shaped brown banded agate panel, within a rope-twist surround. *Length 5.3cms. £40-60*

502



An agate bead necklace and earrings. The necklace comprising a series of faceted banded agate beads, together with matching ear pendants. *Length of necklace 72cms. Length of earrings 3.8cms. £80-120*

503



Thirteen sardonyx beads. *Measuring approximately 14.9 to 25mms. £150-200*

504



An agate pendant. The polished agate slice to the wirework mount. *Length 7cms. Weight 26gms. £60-90*

505



An agate brooch. The oval-shaped brown banded agate panel, within a plain surround, to the bead highlights. *Length 6.1cms. £70-100*

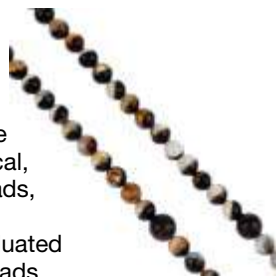
506



An early 20th century silver bracelet. Designed as a heart-shaped padlock clasp inlaid with green hardstones, to the chain of shamrock-shaped links, each leaf inlaid with similar heart-shaped hardstones. *Length 19cms. Weight 11.3gms. £40-60*

507

Two agate bead necklaces. To include an agate necklace designed as a row of spherical, polished and unpolished beads, together with an agate bead necklace designed as a graduated row of flattened spherical beads. *Beads measure 1 to 2.2cms. Length 104 to 156cms. £70-100*

**511**

A selection of Scottish jewellery. To include a Malcolm Gray pendant and brooch, a John Hart ring, and a further pendant. *Three with mentioned maker's marks. Marks to indicate silver. Weight 11.3gms. £30-50*

**516**

Four late 19th century Scottish agate brooches. One designed as a hardstone set buckle with scalloped surround, together with one of open floral design, the banded agate to the petal-shapes. *Lengths 3.2 to 5.4cms. £90-140*

508

A selection of banded agate items. To include two late 19th century buttons, a late 19th century dress stud, two beads and two pendants. *Lengths 1.1 to 1.9cms. £40-60*

**512**

A selection of banded agate jewellery. To include a ring, a locket, two pairs of ear pendants, with two single earrings and a brooch. *Length of locket 3.7cms. Lengths of ear pendants 2.8 and 2cms. Length of brooch 4.1cms. £60-90*

**509**

A selection of Scottish jewellery. To include a 1970s silver carnelian openwork necklace, three late 19th century hardstone and paste brooches, together with five further brooches and a hardstone bead necklace. *One with hallmarks for Edinburgh, 1978. Two with marks indicating silver. Lengths 2.7 to 67cms. Weight of hallmarked and marked items 34.3gms. £80-120*

**513**

Four late 19th century Scottish agate brooches. To include three dirk brooches, one set with a jasper to the scabbard and engraved overlay, together with a bar brooch the scrolling bar to the citrine terminals. *Hallmark illegible to one. Lengths 5 to 10cms. Weight 29.4gms. £50-80*

**517**

Three banded agate items. To include a late 19th century banded agate brooch, a similarly aged banded agate pendant and a later banded agate trinket box. *Lengths 7.6 to 3.7cms. £40-60*

**514**

A selection of agate and hardstone jewellery. To include a triangular moss agate bead necklace, an agate slice pendant, with four further items. (6). *£30-50*

**518**

A selection of silver and white metal Scottish jewellery. To include nine brooches, one designed as a stylised thistle with purple paste to the flower, together with a thistle pendant. (10) *Lengths 1.7 to 8.4cms. Weight 81.7gms. £50-80*

**510**

An agate brooch and ring. The brooch set with a cushion-shape agate, the ring set with an oval agate cabochon. *Length of brooch 2cms. Total weight 7.1gms. £70-100*

**515**

An agate brooch and a banded agate bead pendant. The brooch designed as a rectangular-shape agate, to the plain surround, the pendant designed as a single banded agate bead, to the imitation pearl fringe and surmount. *Length of brooch 2.8cms. Length of pendant 4cms. £40-60*



519

A selection of four gem-set Scottish brooches. To include a hardstone brooch, a circular-shape citrine wreath brooch, a purple paste thistle brooch and one further paste brooch. *Two with hallmarks for silver. Lengths 5.5 to 3cms. Total weight 36.4gms. £50-80*

520

Six items of mainly agate jewellery. To include a dendritic agate and moonstone pendant, a vari-colour agate bead necklace, with four further pendants. *Marks to indicate silver. Weight 66gms. £40-60*

521

Three items of agate jewellery. To include a late 19th century banded agate panel brooch, with scrolling openwork surround, together with a late 19th century mounted hardstone pendant and a mid 20th century silver purple paste and hardstone brooch. *One with hallmarks for Edinburgh, 1964. Lengths 3.6 to 8.9cms. Weight of hallmarked brooch 10.6gms. £40-60*

522

A selection of agate jewellery. To include an oval agate brooch, the agate set to a scalloped mount, together with a loose rectangular-shape agate. *Lengths 5 to 45cms. £40-60*

523

A late 19th century Austro-Hungarian enamel and gem pendant. Designed as a central mother-of-pearl with emerald accents to the two green and blue enamel figureheads and gargoyle surround. *Length 5.8cms. Weight 12gms. £90-140*

524

An Austro-Hungarian enamel and diamond pendant. Depicting an elegant lady wearing a red, blue and yellow enamel robe with a green enamel laurel wreath to her hair, holding a green enamel snake and old-cut diamond mirror, suspended from a seed pearl and enamel chain and surmount. *Length 7.7cms. Weight 30gms. £300-400*

525

An enamel and gem-set pendant. The mid 19th century initial monogram reverse carved intaglio, within an Austro-Hungarian gem-set and enamel scrolling surmount. *Length 7cms. Weight 26.3gms. £150-200*

526 ✕

An Austro-Hungarian pendant. The red, blue and white enamel bar brooch suspending two enamel griffins holding blue sapphire collet drops, to the mother-of-pearl, ruby and blue enamel central panel and the foliate enamel base suspending three seed pearls. *Length 8cms. Weight 18gms. £150-200*

527

A late Victorian garnet and paste bracelet, circa 1880. The circular-shape garnet and red paste graduated triple clusters, to the similarly-set floral line sides. *Length 16.8cms. £120-180*

528

A late 19th century garnet and paste necklace. Designed as a series of three circular garnet cabochon and circular-shape red paste clusters, to the red paste cluster back-chain and partially concealed clasp. *Length 35cms. £180-260*

529

A late 19th century garnet and red paste brooch. The oval, pear and circular-shape multifaceted red-gems, to the pavé-set garnet and circular-shape red gem surrounds. *Length 4.5cms. £50-80*

530

A late 19th century garnet and paste bracelet. Designed as a series of circular red paste clusters, with similarly-cut garnet accents, to the partially concealed clasp. *Length 17.5cms. £120-180*

534

A late Georgian garnet cluster brooch and matching rings. The brooch designed as a circular garnet cabochon, within a circular-shape garnet tiered border, together with two similarly designed garnet cluster rings. *Length of brooch 2.7cms. Total weight 15.7gms. £280-380*

538

A late 19th century cut steel pendant. The square-shape openwork pendant, to the similarly designed surmount, suspended from a velvet ribbon. *Length of pendant 9cms. Length of ribbon 56cms. £30-50*

531

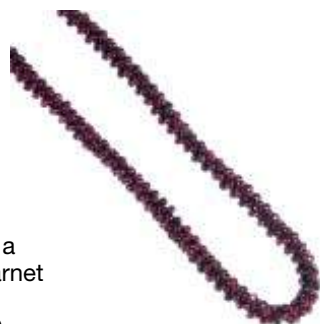
A garnet cluster brooch. The circular-shape top faceted garnet cabochon cross, interspaced by similarly-cut garnet clusters. *Length 5.6cms. Weight 24.2gms. £300-400*

535

A garnet brooch and a red paste brooch. The first designed as an oval foil-back garnet cabochon cluster, the second designed as a red paste bar brooch. *Lengths 2.5 and 4.5cms. Weight 7.7gms. £40-60*

539

An Egyptianesque bead necklace. The front panel with tassel terminals, to the enamel floral link and bead accents. *Length 63cms. £100-150*

532

A garnet and paste necklace. Designed as a series of interwoven garnet and red paste beads. *Length 75cms. £50-80*

536 ✕

A garnet brooch and a moonstone, ruby and sapphire bar brooch. The first designed as a circular-shape tiered cluster, the second designed as a heart-shape moonstone cabochon, within an oval-shape ruby border and circular-shape white sapphire sides. *Lengths 4.4 and 2.7cms. Weight 13.2gms. £40-60*

540

An Egyptianesque necklace. The glass lotus blossom drop to the pharaoh surmount and the green and colourless glass bead strand. *Length of necklace 25cms. Length of drop 11cms. £70-100*

533

A garnet three-stone brooch. The oval garnet, to the large garnet sides with beaded border. *Length 4.8cms. Weight 9.9gms. £100-150*

537

Five items of garnet and red paste jewellery. To include a circular-shape cluster brooch, a floral design openwork brooch, a pair of ear-studs and a single ear pendant. *Length of brooches 4.3 and 3.2cms. Diameter of ear studs 1.1cms. Length of ear pendant 3.5cms. £70-100*

541

Two Egyptianesque necklaces. The first designed as a row of glass beads suspending a hardstone and metal pharaoh, the second a herringbone chain suspending a metal, resin pharaoh and paste drop. *Length of chains 54cms. Length of pendants 5cms. £60-90*

542

An Egyptianesque necklace. The front carved panel, to the vari-shape green bead necklace. *Length 71cms.* £100-150

546

An Egyptianesque necklace. The scrolling metal centre piece depicting the Sphinx to the ornate capped blue glass beads and kite-shape drop. *Length 78cms.* £70-100

551

A micro mosaic memorial pendant. The oval-shape micro mosaic depicting a pair of lovebirds, with stylised floral detail, to the filigree surround and surmount. *AF.* *Length 6cms.* £30-50

543

Two Egyptianesque necklaces. The first designed as a metal butterfly suspending five drops of blue glass beads, to the blue glass bead necklace, the second a green glass bead necklace suspending a green hardstone with metal sphinx panel. *Lengths of chains 46 to 58cms.* *Length of drops 6.5 to 7cms.* £60-90

547

A pair of enamel scarab ear pendants. Each designed as a blue enamel scarab, suspended from a bead surmount. *Length 3.9cms.* *Weight 4.6gms.* £60-90

552

Two micro mosaic brooches and a gold plated filigree brooch. The first micro mosaic brooch to a red background depicting three flowers, the second a mid 20th century brooch in a 9ct gold mount of floral design, together with a filigree pendant. *Lengths 2.3 to 6.8cms.* *Weight 26.6gms.* £30-50

544

An Egyptianesque necklace. The blue paste bead and metal scarab necklace to the blue paste pharaoh panel and bead drop. *Length 72cms.* £70-100

548

An Egyptianesque necklace. The pharaoh surmount suspending a brown fancy pear-shape paste, to the spherical glass bead chain and tapered spacers. *Length 56cms.* £70-100

553

Twenty items of micro mosaic jewellery. To include one cross pendant, one hinged bangle, one pair of ear clips, one pendant, five bracelets and eleven brooches. *Some AF.* £50-80

545

An Austrian early 20th century Egyptian revival pendant. The red glass scarab and stylised foliate sides, with green glass cabochons, to the green enamel accent face mask and foliate surmount. *Length 5.6cms.* £70-100

549

A pair of Egyptianesque earrings. Each designed as an oval paste pharaoh panel to the scrolling frame and elongated hexagonal-shape lapis lazuli drops. *Length 11cms.* £50-80

554

Twelve items of micro mosaic jewellery. To include mostly brooches with one pair of ear-clips. *Lengths of brooches 5.1 to 2.3cms.* *Length of ear clips 2cms.* £40-60

550

An Egyptianesque necklace. The red paste bead necklace suspending an openwork lotus blossom central panel with an embossed Sphinx and colourless pastes to the red paste pear-shape drop. *Length of chain 48cms,* *length of drop 10cms.* £50-80

555

Fifteen items of micro mosaic jewellery. To include a fringe necklace, nine brooches, two bracelets and three further items of jewellery. £40-60

**560**

A selection of Siam jewellery. To include a brooch, designed as a fan shape with dancers depicted to the central panel, together with a rectangular brooch of similar design. (22) *Some AF. Marks to indicate silver. Lengths 1.8 to 17cms. Weight 235.1gms. £90-140*

**563**

A satsuma brooch. Designed as a hexagonal outline, the enamel landscape picture with Japanese acer leaves, to the blue enamel border. *Length 4.6cms. Weight 22.6gms. £40-60*

**556**

A selection of micro mosaic jewellery. To include an oval brooch, the floral centre to the red, black and white border, together with a pendant, the micro-mosaic heart-shape panel suspending three further pear-shape drops. (28) *Some AF. Five with stamps for Italy. Lengths 1.2 to 30cms. £60-90*

**561**

A selection of Siam jewellery. To include four bracelets, two pairs of earrings, two rings, four pendants, a single clip and nine brooches. (22) *Some AF. Length of bracelets 17 to 18cms. Total weight 218gms. £40-60*

**564**

A satsuma buckle. Of oval outline, with humming bird and foliate scene. *Length 4.5cms. Weight 20gms. £50-80*

**557**

A late 19th century shakudo bracelet. The six links shaped as fans and each depicting two partridges walking amongst foliage. *Clasp AF. Length 18cms. Weight 47.5gms. £300-400*

**565**

Three cinnabar jewellery items. To include a carved dragon bangle, a cinnabar foliate carved bead and wooded panel bracelet and a necklace. *Inner diameter of bangle 6.5cms. Length of necklace 40cms. £30-50*

**558**

A selection of Siam jewellery. To include five brooches, two rings, six pendants, four bracelets and two pairs of ear clips. (20) *Some AF. Length of bracelets 16 to 18cms. Length of pendants 1.5 to 6.5cms. Weight 206.4gms. £40-60*

**562**

A selection of Siam jewellery. To include a necklace, three bracelets, three rings, two pendants, two clips, a pair of earrings and twelve brooches. (24) *Length of bracelets 18cms. Length of necklace 40cms. Total weight 198gms. £40-60*

**566**

A Chinese enamel and tiger's-eye bracelet. Designed as three tiger's-eye masks, each within a floral enamel filigree panel link, to the similarly-designed tapered panel sides and push clasp. *Length 17.2cms. Weight 23.6gms. £40-60*

**559**

A selection of Siam jewellery. To include seven brooches all depicting Siamese dancers, together with five octagonal buttons of similar design. (20) *Lengths 2 to 47cms. Weight 119.2gms. £40-60*

**567**

A Chinese enamel and tiger's-eye set. The brooch designed as a carved tigers-eye dragon head, with vari-shade blue enamel foliate sides, to the openwork octagonal panel, with matching ring and earrings. *Length of brooch 3.7cms. Length of earrings 2.1cms. Weight 18.9gms. £50-80*



568 ✕

A jade, enamel and seed pearl brooch. The bar brooch suspending a seed pearl and blue enamel drop to the grasshopper carved jade with seed pearl and lapis lazuli bead drops. *Jade untested. Mark indicating gold. Length 7.1cms. Weight 11.6gms. £150-200*

**569** ✕

Four items of oriental jewellery. To include a satsuma brooch depicting a dragon chasing the pearl of wisdom, a coral, turquoise and enamel finger guard brooch, a tiger's-eye cluster brooch, together with a floral engraved brooch designed as a Chinese character. *Lengths 8.7 to 4.8cms. Weight excluding satsuma brooch 57.5gms. £60-90*

**570** ✕

A selection of oriental jewellery. To include a jadeite cabochon, enamel and filligree brooch, a pair of tiger's-eye and enamel ear clips, together with three further items. (5) *Jade untested for natural colour origin. £60-90*

**571**

A selection of oriental jewellery. To include a bar brooch the central cylindrical bar with scrolling cannetille detail and two collet set green hardstones to the spherical green hardstone terminals, together with two matching brooches depicting tropical birds to the green ceramic tear-drop shapes. *Length 4 to 7.8cms. £70-100*

572

A late 19th century gold, enamel and gem-set brooch. The faceted rock crystal stylised heart locket, hinged to the reverse, within a polychrome enamel bow and laurel garland surround with dove, floral and diamond accents. *Length 2.9cms. Weight 5gms. £200-300*

573

Three items of continental jewellery. To include a horn-shape hinged compass, with niello decoration, an Austrian pendant, the oval miniature painting depicting the Karlskirche in Vienna, to the marcasite and blue enamel surmount and a carved carnelian seal. *Pendant with Austrian marks. Length of compass 2.4cms. Length of pendant 3.5cms. £40-60*

574 ✕

A gem-set brooch. The vari-shape ruby, sapphire and colourless gem floral surmount, to the similarly designed tapered stem and stylised arrow-head terminal. *Converted from a sarpech. Length 12.7cms. Weight 25.3gms. £60-90*

575 ✕

A pair of Arts and Crafts silver multi-gem ear pendants. Each designed as an openwork panel of square-shape emerald and circular ruby cabochon collets, with split pearl highlight and similarly-designed surmount. *Length 5.5cms. Weight 8.3gms. £100-150*

576

A necklace. The blue, green and iridescent glass bead necklace suspending a metal panel in the shape of a lady's head with butterfly wings to the blue paste drop. *Length of necklace 48cms. Length of drop 9.5cms. £50-80*

577

A necklace. The iridescent glass bead and fancy brown bead necklace to the metal winged figure drop. *Length of chain 25cms. Length of drop 7.5cms. £50-80*

578

A necklace. The faceted green and pink glass bead necklace, to the metal angel central panel to the green and pink bead drop. *Length of chain 72cms. Length of drop 10.4cms. £50-80*

579 ✕



A coral, ruby and sapphire pendant. Of oriental design, the carved coral head, with emerald pin to arranged hair and circular-shape ruby and sapphire fringe, suspended from a fancy-link chain. *Coral untested. Length of pendant 6cms. Length of chain 52cms. Total weight 51cms. £1,400-2,000*

583 ✕



A late 19th century gold coral cameo bracelet. Designed as three oval coral cameos, each depicting the profile of a gentleman, within a plain gold surround, to the cylindrical faceted coral bead two row bracelet. *Coral untested. Length 16cms. Weight 19.9gms. £220-320*

588 ✕



A fancy link bracelet. The rectangular and spherical link bracelet, suspending a coral bead drop. *Length 17.6cms. Weight 11.1gms. £120-180*

584 ✕

A pair of mid 19th century coral cameos. The oval-shape coral cameos, carved to depict the profile of lady, later mounted into ear pendants. *Coral untested for natural colour origin. Length of cameos 1.5cms. Weight 2.5gms £60-90*



589 ✕



A coral single-stone ring. The circular coral cabochon collet, with central foliate accent, to the bifurcated shoulders. *Coral untested. Weight 4.5gms. £60-90*

580 ✕



A pair of coral ear clips. The faceted oval coral to the concave frame. *Coral untested. Length 2.2cms. Weight 3.7gms. £150-200*

585 ✕

A mid 19th century gold coral cameo brooch. The oval-shape high-relief coral cameo, carved to depict a muse, within a floral cannetille surround. *Coral untested, Length 5.4cms. Weight 25.2gms. With fitted case. £900-1,400*

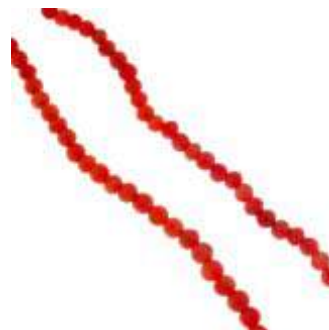


581 ✕



A coral necklace. The graduated circular beads measuring 0.3 to 0.8cms to the extending chain and spring-ring clasp. *Coral not tested. Length 100cms. Weight 38.7gms. £100-150*

586 ✕



A coral single-row necklace. Composed of graduated coral beads, measuring 8 to 3.5mms, to the spring clasp. *Coral untested. Length 44cms. Weight 16.5gms. £50-80*

590 ✕



A pair of coral and diamond ear pendants. Each designed as a coral bead, with central rose-cut diamond suspending a tapered coral bead. *Coral untested for natural colour origin. Length 4.3cms. Weight 10.5gms. £240-340*

582 ✕



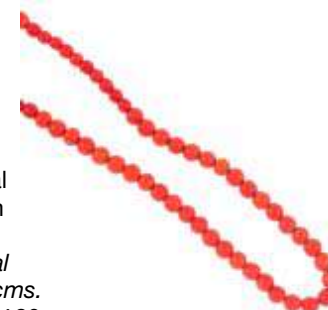
A pair of coral ear pendants. Each designed as a spherical coral bead, within a scrolling filigree mount, to the bow surmount. *Coral untested. Length 4cms. £40-60*

*587 ✕



A pair of coral and diamond ear pendants. Each designed as a late 19th century carved coral drop, to the later coral cabochon and rose-cut diamond surmount. *Coral untested for natural colour origin. Length 4.3cms. Weight 7.9gms. £300-400*

591 ✕



A coral single-strand necklace. Comprising a strand of eighty-two slightly graduated coral beads, measuring from 5.7 to 4mms, to the base metal clasp. *Coral untested. Length 38.5cms. Weight 15.1gms. £80-120*

592 ✕

A pair of coral ear pendants. The tear-drop shape coral to the tapered cap and hook fastening. *Coral untested. Length 2.3cms. Weight 1.8gms. £40-60*

**597** ✕

A coral and diamond necklace. The coral pendant, carved to depict a lady with grapes in her hair, to the brilliant-cut diamond crescent sides and two-row coral bead necklace. *Coral untested for natural colour. Estimated total diamond weight 0.55ct. Length of pendant 6.2cms. Length of necklace 40cms. Weight 80.8gms. £1,000-1,500*

**600** ✕

A coral bead necklace. Designed as a series of coral bead swags, to the mid 19th century gold oval-shape woven hair panel clasp, with blue enamel detail. *Coral untested for natural colour origin. Length 39cms. Weight 30.6gms. £60-90*

**593** ✕

A coral bracelet. The engine-turned rectangular-shape links with floral carved circular coral piece to the centre of each, to the spring-ring clasp. *Coral untested. Length 17.5cms. Weight 13.4gms. £50-80*

**601** ✕

A pair of coral earrings. Each designed as a marquise-shape coral cabochon, within a plain border. *Coral untested. Length 2.2cms. Weight 4.4gms. £90-140*

**594** ✕

A coral bead ring. The two rotating circular coral beads, with geometric shoulders, to the grooved band. *Coral untested. Weight 4.3gms. £60-90*

**598**

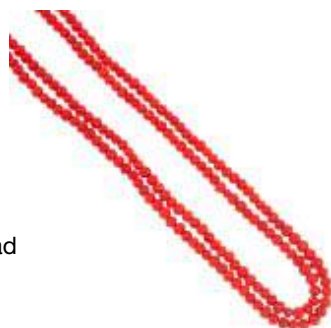
A pair of late 19th century 18ct gold coral ear pendants. The foliate engraved figure-of-eight and leaf to the cluster of six coral beads. *Coral untested. Length 4.5cms. Weight 4.7gms. £280-380*

**602** ✕

A coral and cultured pearl brooch. The carved coral strands, with cultured pearl terminals. *Coral untested. Length 5cms. Weight 8.8gms. £60-90*

**595** ✕

A coral necklace. Comprising a coral bead line. *Coral untested. Length 72cms. Weight 22.4gms. £90-140*

**599**

A late 19th century gold coral brooch. Designed as four interwoven circles with three clusters of coral beads to the floral detail. *Coral untested. Length 5cms. Weight 11.8gms. £400-600*

**603**

A coral and diamond ring. The oval coral cabochon to the diamond accents and scrolling surround and triple band. *Coral untested. Estimated total diamond weight 0.15ct. Mark for gold. Weight 7.1gms. £150-200*

**596** ✕

A pair of coral ear pendants. Each designed as a floral and geometric carved coral drop, to the conical terminal and faceted bead surmount. *Coral untested. Length 6.1cms. Weight 6gms. £40-60*



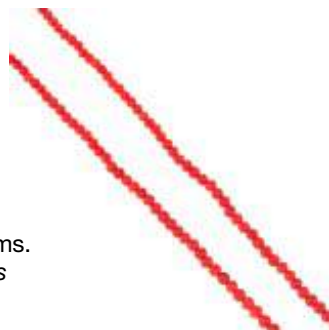
604 ✕

A coral bead necklace. Comprising twenty-nine graduated spherical coral beads, measuring 22.5 to 15mms, to the spring clasp. *Coral untested. Length 51cms. Weight 197.5gms. £150-200*



608 ✕

Two coral bead single-row necklaces. Each designed as a slightly graduated coral bead necklace, measuring approximately 6 to 3mms. *Coral untested. Lengths 53 and 37cms. Weight 25.6gms. £60-90*



612 ✕

Four items of coral jewellery. To include three free-form coral bead necklaces, with a pair of flower-shape coral earrings. *Coral untested. Length of necklaces 54 to 77cms. Weight 271.8gms. £30-50*



605



A pair of faceted coral ear pendants. The faceted circular coral beads to the screw-back fasteners. *Coral untested. Length 3cms. Weight 5gms. £40-60*

609 ✕

Three items of coral jewellery. To include a pair of fox head carved ear studs, a high relief cameo and a high relief carved bust of a woman, within an embossed surround. *Coral untested. Length of ear studs 1.6cms. Length of brooch 3.2cms. Weight 18gms. £70-100*



613 ✕

Three items of coral jewellery. To include an early 20th century gold bouton coral cross pendant, a 9ct gold oval coral cabochon ring, together with a further coral ring. *Coral untested. Two bouton coral deficient. First with French assay marks. Second with hallmarks for Birmingham. Length of pendant 4.5cms. Total weight 8.3gms. £60-90*



606

A coral ring. The circular coral bead to the wirework band and beaded shoulders. *Coral untested. Weight 0.7gms. £30-50*



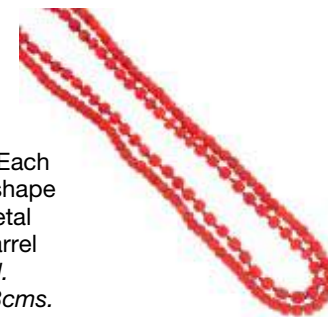
610 ✕



Four items of coral jewellery. To include a horseshoe brooch, the twenty-four spherical beads claw-set to the curved inner channel, together with a coral cameo ring, depicting a simplistic portrait of a lady. *Coral untested. Lengths 3 to 3.3cms. Weight 12.4gms. £40-60*

614 ✕

Two coral necklaces. Each designed as a barrel-shape strand, to the base metal screw and 9ct gold barrel clasps. *Coral untested. Lengths 42.7 and 51.8cms. Weight 45gms. £100-150*



607



A coral cameo brooch. The carved coral depicting the portrait of a bearded man to the shell and cannetille border. *Coral untested. Length 3cms. Weight 7.8gms. £300-400*

615



Two pairs of carved coral ear studs. To include a pair of carved coral rose ear studs and a pair of carved coral heart ear studs. *Coral untested for natural colour origin. Lengths 1.2cms. Weight 4gms. £70-100*

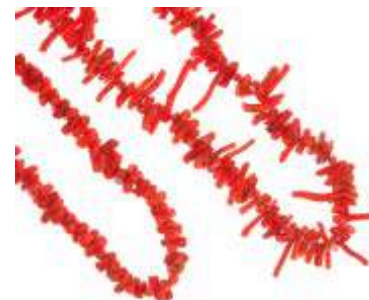
611 ✕

Two coral necklaces and some loose coral beads. The first necklace designed as a series of circular beads, the second of similar narrower design, together with a selection of approximately 100 beads, the majority of circular-shape and a metal pendant set with four cabochon coral pieces. *Coral not tested. Length 50 to 66cms. Weight 56.6gms. £60-90*



616 ✕

Two branch coral necklaces. *Coral untested. Lengths 40 and 59cms. Weight 65.1gms. £100-150*



617

A natural rumanite mixed amber bead necklace with two carved beads. The graduated cylindrical beads measuring 2.7 to 0.9cms, with two of the larger beads carved with a fern leaf design. *Length 42cms. Weight 50.8gms. £200-300*

621

A bag of natural amber beads. Comprising a small group of thirty-seven oval and spherical amber beads, together with a single amber bead ear pendant, beads measuring approximately 20 to 10mms. *Some part strung. Weight 53.2gms. £400-500*

**626**

A mixed colour amber bead necklace. The freeform-shape amber beads measuring 0.3 to 1.8cms. *Length 52cms. Weight 15.4gms. £90-140*

**622**

A natural Baltic amber bead necklace. The graduated natural Baltic amber beads measuring 1 to 1.3cms. *Length 45cms. Weight 18.5gms. £180-260*

**627**

A natural and modified amber bead single-strand necklace. Designed as a series of graduated oval beads, measuring 20.1 to 8mms, to the lobster spring clasp. *Length 67cms. Weight 39.2gms. £120-180*

**618**

A single-row natural amber, reconstructed amber and plastic bead necklace. The twenty-seven graduated beads measuring 1.8 to 0.8cms to the screw clasp. *Length 42cms. Weight 33.5gms. £200-300*

**623**

A plastic and natural amber bead single-row necklace. Composed of forty-three natural amber beads measuring 18 to 7mms and twenty-eight plastic beads measuring 18 to 10mms, to the screw thread clasp. *Length 83cms. £50-80*

**628**

A natural amber bead necklace. The graduated oval-shape beads measuring 1.7 to 0.7cms. *Length 52cms. Weight 15.2gms. £200-300*

619

A natural amber bead necklace. The thirty graduated oval-shape beads measuring 9 to 17mms, to the push-piece clasp. *Length 50cms. Weight 31.1gms. £120-180*

**624**

A single-row of natural oval amber beads. The freeform beads measuring 2.4 to 1.8cms. *Marks indicating silver. Length 48cms. Weight 34.3gms. £150-200*

**620**

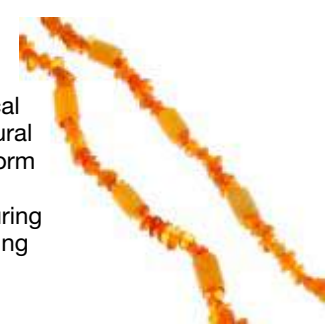
A natural amber bead necklace. The graduated necklace comprising thirty-three natural amber beads, measuring 13.5mms to 10mms. *Length 43.5cms. Weight 22.6gms. £150-200*

**625**

A natural amber bead bracelet. Comprising twenty-one spherical natural amber beads. *Length 22cms. Weight 14.1gms. £150-200*

**629**

A single-row of cylindrical and irregular-shape natural amber beads. The freeform beads and seventeen cylindrical beads measuring from 1.5 to 0.8cms, strung as a continuous loop. *Length 106cms. Weight 81.5gms. £400-600*



630

A natural amber bracelet. Comprising a series of twenty cylindrical natural amber beads. *Length 24.5cms. Weight 41.5gms. £180-260*

634

A Fushun amber bead single-strand necklace. Designed as a series of spherical beads, measuring approximately 15.5mms, to the S-shape clasp. *Length 47cms. Weight 62.2gms. £500-700*

638

A selection of loose natural amber beads. To include twenty-eight variously sized amber beads, measuring 3 to 1.3cms. *Weight 60gms. £300-400*

635

An amber bead necklace. Composed of thirty-three graduated amber beads, measuring 14 to 6mms, to the spring clasp. *Length 38cms. Weight 20gms. £200-300*

639

A natural amber bead necklace. Designed as a series of thirty-seven graduated irregular-shape natural amber beads. *Length 44.2cms. Weight 162.4gms. £240-340*

631

A natural amber bead necklace. The graduated oval beads measuring 0.6 to 1.1cms. *Length 49cms. Weight 14.7gms. £200-300*

636

A large piece of polished natural amber. *With large crack to centre. Approximate dimensions 9 by 8.5 by 3.3cms. Weight 112.3gms. £80-120*

632

A conical-shape natural amber single-row necklace. The conical amber beads measuring 1.9cms to the screw clasp. *Length 64cms. Weight 40.9gms. £120-180*

637

A natural Burmese amber single-strand necklace. Designed as a series of spherical beads, measuring approximately 10mms, to the oval push-piece clasp. *Length 53cms. Weight 23.5gms. £1,500-2,000*

640

A polished natural root amber pendant. *Length 6.1cms. Weight 35.3gms. £100-150*

633

A piece of natural amber. The freeform piece measuring 5.2cms. *Weight 26.8gms. £120-180*

641

A natural amber bead single-strand necklace. Comprising a single row of forty-two graduated oval amber beads, measuring approximately 25 to 10.5mms, to the barrel clasp. *Length 66cms. Weight 54.9gms. £600-800*

642

Two single-row natural amber necklaces. The first designed as faceted graduated oval beads measuring 1.8 to 0.8cms, the second designed as a series of graduated faceted bouton-shape beads measuring 0.7 to 1.3cms. *Lengths 38 to 46cms. Weight 33.2gms. £150-200*

**643**

Two natural amber brooches. To include an oval amber cabochon foliate brooch, together with a free form amber brooch. *Lengths 6.2 and 5.8cms. Total weight 25.6gms. £40-60*

**644**

Two reconstructed amber single-strand necklaces. The first designed as a series of graduated oval-shape beads measuring 1.5 to 0.8cms, the second a series of spherical beads measuring 1 to 0.6cms. *Lengths 50 to 44cms. Weight 50.1gms. £40-60*

**645**

A reconstructed amber bead necklace. The graduated reconstructed amber beads, to the geometric engraved oval-shape clasp. *Length 85cms. Weight 80gms. £50-80*

**646**

A selection of natural, modified and reconstructed amber pieces. To include an asymmetric cabochon weighing 10gms, together with approximately ninety-eight variously shaped pieces. *Total weight 140gms. £40-60*

**647**

A selection of natural and modified amber jewellery. To include a natural amber irregular-shape bead single-strand necklace, a natural amber single-stone bangle, together with further irregular-shape amber bead necklaces and bracelets. (8) *Inner diameter of bracelets approximately 6cms. Lengths 62 to 89cms. Total weight 289.2gms. £40-60*

648

Nine modified and natural amber jewellery items, and loose beads. To include eight irregular-shape bead single-strand necklaces, a bracelet and a quantity of loose beads. *Length of necklaces 45 to 108cms. Inner diameter of bracelet 6cms. Weight 988.3gms. £40-60*

**649**

A selection of mainly amber jewellery and cheroots. To include an assortment of natural amber and tortoiseshell cheroot holders, all AF, together with five loose amber pieces and a further bag of 109 freeform natural amber beads. *Weight 125.9gms. £50-80*

650

A selection of amber jewellery. To include two natural amber necklaces, a spherical pressed amber necklace, two modified amber necklaces and a pair of earrings, a polyburn necklace, two pressed amber pipe mouth pieces, AF and a pair of plastic ear clips. *Length of necklaces 51 to 66.5cms. Total weight 325.7gms £40-60*

**651**

A selection of natural and modified amber jewellery. To include a graduated bead necklace, a free form ring, together with two bracelets. (4) *Length of necklace 45cms. Total weight 98.4gms. £40-60*

**652**

A selection of loose amber pieces and some beads. The faceted natural amber bead brooch together with approximately seventy mainly natural loose amber pieces of varying shapes and sizes. *Some AF. Lengths of loose pieces from 2.7 to 0.7cms. Weight 73.2gms. £70-100*

**653**

A selection of nine oval-shape natural amber beads. *Length 13.8 10.3mms. Weight 5.5gms. £30-50*

**654**

A natural and modified amber necklace, a natural amber pendant and a modified amber pendant. The necklace with alternating colours and types of amber, between square-shape metal beads, together with a modified amber heart-shape pendant and a natural amber cabochon pendant. *Lengths 54 to 3.5cms. Weight 69.3gms. £40-60*

**655**

A selection of modified amber jewellery. To include a freeform modified amber necklace together with a necklace comprising graduated circular modified amber beads. (22) *Lengths 2.7 to 80cms. Weight 312gms. £40-60*





761



640



639



641



637



617



627



625



634

656

A selection of amber pieces. To include a heart-shape pendant with cross surmount, two freeform amber panels, together with two drilled vari-shape beads and a number of broken components. *Length of panels 4.5 and 3.5cms. Total weight 35.6gms. £100-150*

657

A selection of natural amber jewellery. To include a pendant, the freeform natural amber to the acorn and oak leaf surmount, together with ear pendants of a similar design. (7) *Marks indicating silver. Lengths 2.8 to 6.5cms. Weight 88.6gms. £100-150*

**658**

Three pieces of amber. To include two partially polished cross-section pieces mounted as a brooch and a pendant, together with a loose piece. *Length of brooch 7cms. Length of pendant 5.7cms. Total weight 42.8gms. £90-140*

659

A selection of amber and plastic jewellery. To include a single row of faceted graduated plastic beads, together with four further necklaces, a natural amber piece necklace, a single natural amber ear pendant and a loose cabochon natural amber bead. *Lengths 2.4 to 90cms. £50-80*

**660**

Three pieces of natural amber. To include two pieces of irregular-shape polished natural amber and a piece of rough amber. *Lengths 5 to 9.2cms. Weight 110.7gms. £90-140*

661

A selection of amber jewellery. To include a leaf brooch, an amber bead necklace and a circular amber cabochon brooch, together with further loose amber beads. *Length of brooches 4 and 3.5cms. Length of pendant 57cms. £80-120*

**662**

A selection of natural amber. To include three pieces of irregular-shape polished amber. *Lengths 6.2 to 3.9cms. Weight 38.2gms. £40-60*

663

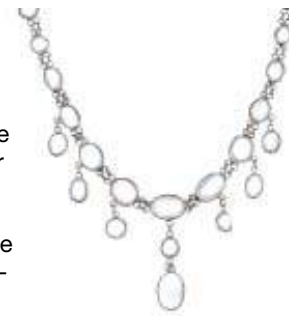
Three pairs of earrings. To include a pair of natural antique amber ear pendants in a pear-shape drop design, a pair of natural antique amber carved drop earrings with bead spacer and a pair of red plastic double bead ear pendants. *Lengths 4 to 6.5cms. Weight of amber 15.2gms. £80-120*

**664**

A selection of loose natural amber beads, a pair of earrings and broken brooch. The thirty-one oval-shape loose natural amber beads measuring 1.3 to 0.8cms, together with a pair of ear clips, the curved clip suspending a single oval-shape amber bead measuring 1.5cms. *Lengths 4.5 to 5.2cms. Weight 32.5gms. £100-150*

**665**

A moonstone necklace. The graduated oval and circular moonstone cabochon fringe, suspended from a similarly-shaped moonstone cabochon line, to the trace-link back-chain. *Length 42cms. £70-100*

**666**

A moonstone bracelet and a pendant. The bracelet designed as a graduated oval and circular moonstone cabochon line to the belcher-link back-chain, the pendant designed as an oval moonstone cabochon with circular-shape emerald surround and trefoil sides. *Length of bracelet 17.5cms. Length of pendant 4.5cms. Weight of pendant 8.2gms. £40-60*

**667**

A moonstone necklace. The belcher-link chain suspending nine graduated oval and circular-shape moonstones. *Length 46cms. Weight 5.1gms. £40-60*

**668**

A selection of five items of moonstone jewellery. To include two moonstone line bracelets, a pair of moonstone cufflinks and a moonstone scroll brooch. *AF. Some moonstone deficient. Length of bracelets 19 to 14cms. Weight 50gms. £100-150*

**669**

Five items of moonstone and labradorite jewellery. To include a spectacle set oval cabochon moonstone necklace, a circular moonstone cabochon star pendant with three items of labradorite cabochon jewellery. *Some with marks for silver. Length of necklace 62cms. Length pendant 4cms. Total weight 41.6gms. £40-60*



670

A sapphire and diamond cultured pearl double-row necklace. Comprising two strands of fifty-six and fifty-one cultured pearls, each measuring 7.1 to 7.4mms, to the vari-shape sapphire and single-cut diamond bow clasp. *Estimated total diamond weight 0.15ct. Length 47.5cms. £80-120*

**675**

MIKIMOTO - a cultured pearl brooch. The cultured pearl cluster, with outer curved lines. *Maker's mark for Mikimoto. Length 5.8cms. Weight 10gms. £70-100*

679

A cultured pearl three-row necklace. The three graduated rows of cultured pearls to the 9ct gold garnet and split pearl clasp. *Hallmarks for London. Length 41cms. With associated case. £80-120*

**671**

A cultured pearl necklace. Designed as graduated cultured pearls to the push-piece clasp and safety chain. *Marks indicating platinum. Length 40cms. £40-60*

**680**

An opal and cultured pearl brooch. The oval opal cabochon, within a cultured pearl surround. *Length 3cms. Weight 4.2gms. £40-60*

**672**

A cultured pearl three-row bracelet with diamond clasp. Designed as three rows of cultured pearls, to the single-cut diamond push-piece clasp. *Length 19cms. £150-200*

**676**

A cultured pearl single row necklace. The single row to the marquise-shape clasp. *Marks indicating gold. Length 46cms. £50-80*

**681**

A cultured pearl single-strand necklace. Designed as a series of alternating cultured and seed pearls, to the rose-cut diamond terminals. *Clasp AF. Length 71cms. £150-200*

**673**

A two-row Mikimoto necklace. The two rows of cultured pearls to the embossed floral push-piece clasp with cultured pearl to the centre. *Mikimoto maker's mark. Length 21cms. £120-180*

**677**

A cultured pearl single-strand necklace. Designed as a series of alternating cultured and seed pearls, to the rose-cut diamond terminals and clasp. *Length 53cms. £150-200*

**682**

A cultured pearl and diamond necklace. Comprising 100 cultured pearls, measuring 6.8 to 7.3mms, to the brilliant-cut diamond clasp. *Italian marks. Estimated total diamond weight 0.30ct. Length 89cms. Weight 6.1gms. £100-150*

**674**

A cultured pearl single-row necklace. Comprising eighty-eight slightly graduated cultured pearls, measuring 4.9 to 4.2mms, to the spring ring clasp. *Length 41cms. £20-30*

**678**

A single-row cultured pearl necklace. Designed as a single-row of cultured pearls to a flower-shape clasp with cultured pearl to the centre. *Marks indicating silver. Length 27cms. £60-90*

**683**

A seed and cultured pearl necklace. The seed pearl strands, with cultured pearl spacers, to the early 20th century seed pearl gold barrel clasp. *Length 36cms. Weight 5gms. £70-100*



684

A semi-baroque cultured pearl single-row necklace, with diamond clasp. The semi-baroque cultured pearls, measuring 8.5 to 8.7mms, to the 18ct gold partially textured oval-shape clasp, with inlaid brilliant-cut diamond detail. *Clasp with hallmarks for London, 2005. Length 46cms. £60-90*

688

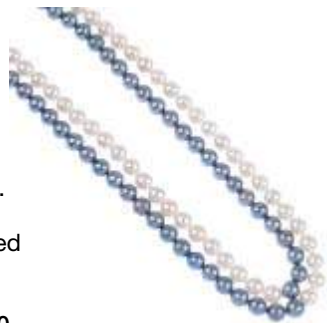
A cultured pearl single-strand necklace. Designed as a series of alternating cultured and seed pearls, with one engraved terminal. *One terminal deficient. Length 60.5cms. £40-60*

693 ✕

Five items of cultured pearl jewellery. To include a double row bracelet with ruby-set push-piece clasp, together with a cultured pearl ring with diamond accents. *Bracelet AF. Marks for gold. Lengths to 1.8 to 19.5cms. £50-80*

**685**

A cultured pearl two-row necklace. The two rows of cultured pearls, measuring 5.6 to 6mms, to the oval-shape engraved clasp. *Length 46cms. £60-90*

689

A cultured pearl and stained grey cultured pearl two-row necklace. The two cultured pearl and stained grey cultured pearl rows, to the oval-shape ridged clasp. *Length 42cms. £70-100*

694

A cultured pearl necklace, with platinum and 9ct gold diamond clasp. The graduated cultured pearl, to the early 20th century platinum and 9ct gold old and rose-cut diamond clasp. *Length 53cms. Weight 11.8gms. £120-180*

686

A set of 9ct gold cultured pearl and conch shell jewellery. The necklace comprising cultured pearls with grooved spacers and carved conch shell beads, to the similarly-set clasp, with matching bracelet. *Hallmarks for London, 1981 and 1982. Lengths 38 and 18cms. £70-100*

690

A single-strand cultured pearl necklace. Designed as a uniform row of cultured pearls measuring approximately 5mms to the push-piece clasp. *Marks for 10ct gold. Length 40cms. £30-50*

695

A cultured pearl single-row necklace. The cultured pearls, measuring 7.5 to 7.9mms, to the 9ct gold bi-colour clasp, with brilliant-cut diamond accents. *Hallmarks for London, 2006. Length 47cms. £50-80*

691

An early 20th century seed pearl and imitation pearl necklace. Comprising a single-row of 152 slightly graduated seed and imitation pearls, to the gold marquise-shape push-piece clasp, with rose-cut diamond accents. *Length 42.2cms. £60-90*

696

Five freshwater cultured pearl double-row necklaces. Each designed as two strands of bouton-shape freshwater cultured pearls, measuring approximately 6mms, to the spherical push-piece clasp. *Lengths 43 to 44cms. £60-90*

687

A pair of cultured pearl ear pendants. Each designed as a textured star, suspending a cultured pearl. *Length 2cms. Weight 2.5gms. £40-60*

692

Two freshwater cultured pearl double-row necklaces. Each designed as two strands of bouton-shape freshwater cultured pearls, measuring approximately 6mms, to the spherical push-piece clasp. *Lengths 43cms each. £30-50*

697

Two cultured pearl single-row necklaces. To include a grey cultured pearl necklace, with oval-shape textured clasp and a vari-shade cultured pearl necklace. *Pearls untested for natural colour origin. Lengths 47 and 78cms. £80-120*

**702**

Two cultured pearl single-strand necklaces. The first with a 9ct gold stylised knot clasp, the second with a green paste and cultured pearl cluster clasp. *One clasp with hallmarks for Birmingham. Lengths 48.7 and 45.6cms. £50-80*

**707**

Three pairs of cultured pearl ear studs. To include a pair of 9ct gold grey cultured pearl triangular-shape ear studs, a pair of cultured pearl ear studs and a pair of textured star and dark grey cultured pearl ear pendants. *Cultured pearls untested for natural colour origin. One pair with hallmarks for 9ct gold. Length of ear pendants 1.9cms. £70-100*

698

Four cultured pearl necklaces and a bracelet. To include a cultured pearl single-row necklace, two grey freshwater cultured pearl necklaces, a peach freshwater cultured pearl necklace and a cultured pearl bracelet. *Cultured pearls untested for natural colour origin. Lengths of necklaces 42 to 43cms. Length of bracelet 18cms. £70-100*

**703**

Two stained grey cultured pearl single-row necklaces. To include a stained grey cultured pearl necklace, with oval-shape clasp and a stained dark grey cultured pearl necklace, with textured oval-shape clasp. *Lengths 46 and 42cms. £70-100*

**699**

Two cultured pearl single-row necklaces, with marcasite clasps. Each designed as a graduated row of cultured pearls, measuring approximately 7 to 3mms, to the marcasite cluster clasps. *Lengths 40 to 42cms. £70-100*

**704**

Two cultured pearl necklaces and a pair of cultured pearl cluster ear studs. To include a cultured pearl single-row necklace, a stained grey cultured pearl necklace and a pair of 9ct gold cultured pearl cluster ear studs. *Ear studs with hallmarks for Birmingham, 2010. Lengths of necklaces 42cms. £70-100*

**708**

A cultured pearl single-row necklace and bracelet. The cultured pearl necklace, with oval-shape clasp, together with a cultured pearl single-row necklace. *Length of necklace 49cms. Length of bracelet 18cms. £50-80*

**700**

Four freshwater cultured pearl double-row necklaces. Each designed as two strands of bouton-shape freshwater cultured pearls, measuring approximately 6mms, to the spherical push-piece clasp. *Lengths 43 to 44cms. £50-80*

**705**

Three freshwater cultured pearl double-row necklaces. Each designed as two strands of bouton-shape freshwater cultured pearls, measuring approximately 6mms, to the spherical push-piece clasp. *Lengths 43.5cms each. £40-60*

**709**

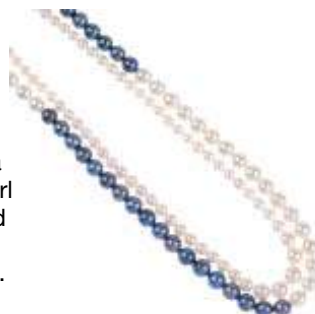
Two pairs of cultured pearl earrings. To include a pair of vari-shade cultured pearl ear pendants and a pair of cultured pearl ear pendants. *Cultured pearls untested for natural colour origin. Lengths 2 and 3.7cms. £70-100*

**701**

A selection of three freshwater pearl single-strand necklaces. To include two single-strands comprising forty-two dyed and non-dyed freshwater cultured pearls and one single-strand comprising thirty-seven similar freshwater cultured pearls. *Lengths 44.5 to 43.5cms. £70-100*

**706**

Two cultured pearl necklaces. To include a graduated cultured pearl necklace and a cultured pearl and stained grey cultured pearl necklace. *Lengths 43 and 45cms. £70-100*

**710**

Two cultured pearl necklaces and a cultured pearl ring. To include two vari-shade cultured pearl necklaces and a 9ct gold cultured pearl crossover ring. *Ring with hallmarks for Birmingham, 2009. Cultured pearls untested for natural colour origin. Length of necklaces 45 and 47cms. Weight of ring 2.2gms. £80-120*



711

Three pairs of cultured pearl ear studs. To include two pairs of grey cultured pearl ear studs and a pair of dark grey cultured pearl ear pendants. *Cultured pearls untested for natural colour origin. Length of ear pendants 2.1cms. £80-120*

**712**

A selection of cultured pearl jewellery. To include a cultured pearl two-row necklace, a cultured pearl single-row necklace, a pair of cultured pearl ear studs and a cultured pearl and diamond pendant. *Length of bracelet 18cms. Length of necklace 41cms. £80-120*

713

Four pairs of cultured pearl earrings. To include two pairs of pink freshwater cultured pearl ear studs, a pair of 9ct gold cultured pearl ear studs and a pair of 9ct gold cultured pearl and grey cultured pearl ear pendants. *Cultured pearls untested for natural colour origin. Two with hallmarks for 9ct gold. £70-100*

714

Five cultured pearl necklaces. Each designed as a series of irregular-shape cultured pearls, measuring 17 to 7.5mm. *Lengths 39 to 60cms. £30-50*

715 ✕

An early 20th century ivory brooch. Designed as a rose surrounded by smaller flowers and leaves. *Length 5cms. £40-60*

716 ✕

A late 19th century ivory necklace. The floral carved graduated beads to the plain circular-shape beads and screw clasp. *Length 54cms. £40-60*

717 ✕

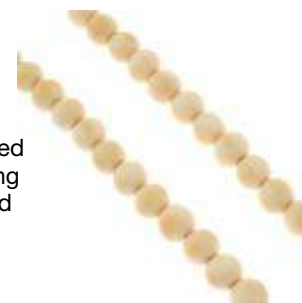
An early 20th century gold and carved ivory brooch. The carved ivory depicting a bird with wings open in flowering foliage. *Length 5.4cms. Weight 14.7gms. £70-100*

718 ✕

Two early 20th century ivory bead necklaces. Both designed as a series of graduated circular beads, one to the screw-clasp and one to the spring-ring clasp. *Lengths 80cms. £80-120*

719 ✕

An early 20th century gold carved ivory brooch. The central scene, within a carved floral ivory border and cannetille surmount. *Length 4.5cms. Weight 14.4gms. £60-90*

720 ✕

Two early 20th century ivory necklaces. The first designed as fifty graduated spherical beads measuring 1.5 to 0.9cms, the second of similar design, the beads measuring 0.7 to 0.4cms. *Lengths 60 to 68cms. £100-150*

721 ✕

A selection of early 20th century ivory. To include two small turned containers, three triangular-shape openwork pieces and a seven further items. *Lengths 1.7 to 4.7cms. £40-60*

722 ✕

Two late 19th century ivory bead necklaces and a bone necklace. The first designed as re-strung early 20th century graduated, spherical ivory beads, the second of a smaller, similar design with carved ivory bead spacers, together with a carved bone bead necklace. *Lengths 42 to 78cms. £30-50*

723 ✕

A late 19th century ivory necklace with carved pendant. The floral carved detail, with spherical bead detail, suspended from a single-strand graduated necklace. *Length of pendant 5.5cms. Length of necklace 112cms £30-50*

724

A selection of bone jewellery. To include necklaces, brooches and bracelets with carved detail. (23). £50-80

725 ✕

A pair of early 20th century ivory ear studs and a malachite egg. Each earring of oval-shape outline, carved to depict a selection of flowers, to the replacement back fittings, together with a malachite egg. *Length of ear studs 2.3cms. Length of malachite egg 3.1cms.* £40-60

726 ✕

A selection of freshwater cultured pearl and mother-of-pearl jewellery. To include a hematite and freshwater cultured pearl single-strand necklace, a mother-of-pearl bead necklace, together with four further necklaces and a bracelet. (7) *Length of necklace 42 to 56.5cms. Length of bracelet 17cms.* £40-60

727 ✕

A selection of mainly organic jewellery. To include a mother-of-pearl bead necklace, a malachite bead necklace and a nephrite jade carved fish pendant. *Some AF.* £60-90

728 ✕

An coral brooch and a cinnabar necklace. To include an early 20th century coral brooch of oval outline, designed as a stylised foliate cluster, together with a cinnabar single-strand necklace comprising twenty-five circular foliate carved beads, measuring 14 to 16.5mm. *Coral untested. Length 46.5cms.* £50-80

729

A cultured pearl necklace and a turquoise ring. The necklace designed as a series of stained cultured pearls to the fancy-link chain, the ring set with an oval turquoise cabochon. *Ring band split. Length 40cms. Total weight 6.4gms.* £30-50

730 ✕

A jade ring and a cultured pearl necklace. The ring designed as a rectangular-shape panel carved to depict flowers to the claw setting, scroll design shoulders and plain shank, together with a single-row, graduated cultured pearl necklace with marcasite-set clasp. *Jade untested. Length of necklace 39cms. Weight of ring 5.4gms.* £70-100

731

A selection of jet, vulcanite and bog oak jewellery. To include a jet pendant designed as a book, together with a necklace, the interlinking figure-of-eight vulcanite links to the faceted oval-shape jet pendant. *Lengths 2.2 to 26cms.* £40-60

732 ✕

A carved coral brooch and a jet brooch. The jet brooch designed as an oval outline with Maltese cross to the centre and engraved border, together with a coral brooch carved in the shape of a rose. *Coral untested. Lengths 4 to 5.5cms. Weight of coral brooch 13.9gms.* £60-90

733

A selection of jewellery. To include a pair of early 20th century red paste ear pendants, a pair of imitation pearl ear clips and a cultured pearl pendant. *AF. Length of earrings 2.2cms. Total weight 8.8gms.* £30-50

734 ✕

A pair of early 20th century Chinese jade and seed pearl ear pendants. Each designed as a jadeite panel, carved to read as 'happiness', suspended from a seed pearl lattice, to the circular jadeite cabochon and split pearl cluster surmount with filigree surround. *Jade untested. Length 6cms. Weight 7.9gms.* £70-100

735 ✕

A jade pendant. Carved to depict grapes and vines. *Jade untested. Length 4.5cms.* £40-60

736 ✕

A jade hinged bangle. The jadeite rectangular-shape panels, to the engraved foliate detail. *Jade untested. Inner diameter 6.2cms. Weight 31.4gms.* £150-200

737 ✕

A pair of jade earrings. Each carved as a circular shape with Chinese characters to the scrolling top with screw-clasps. *Lengths 2cms.* £50-80

738 ✕

A jade pendant. The carved jade in the shape of a man in prayer. *Jade untested. Length 4.2cms. Weight 6.3gms. £20-30*

742

A green gem bangle. *Width 10mms. Inner diameter 5.8cms. £40-60*

747 ✕

Three items of jadeite jewellery. To include a pair of mid 20th century 9ct gold mounted jadeite drop earrings, together with two jadeite disc pendants. *Jadeite untested for natural colour origin. One with hallmarks for Birmingham, 1955. Lengths 2.8 to 4.4cms. Total weight 22gms. £70-100*

739 ✕

A jade and glass bead necklace and feldspar ear pendants. The necklace designed as a series of treated jadeite spherical beads, between colourless glass spacers, with amazonite feldspar ear pendants. *Jade untested. Lengths 44.5 and 4.6cms. £30-50*

743 ✕

A group of jadeite beads. *Measuring approximately 7.1 to 9.6mms. Jade untested for natural colour origin. £40-60*

748 ✕

Two dyed jade pendants and a hardstone bangle. To include a circular dyed jadeite panel depicting dragons and a 'yin yang' symbol, an asymmetric dyed jadeite panel with bamboo motif, together with a hardstone bangle with dragon detail. *Inner diameter of bangle 6.6cms. Length of pendants 5.2 and 5cms. £40-60*

740 ✕

A carved jade pendant. The jadeite carved to depict a dog of fo on a plinth. *Jade untested for natural colour. Length 2.5cms. Weight 13.6gms. £300-400*

744 ✕

A carved jade pendant. The jadeite carved to depict Buddha, to the openwork backing. *Jadeite untested for natural colour. Length 2.9cms. Weight 7.8gms. £60-90*

745 ✕

A jade bangle, a gem bangle and a carved gem pendant. To include a jadeite bangle, a green-gem bangle and a carved green-gem pendant, with aventurine quartz bead surmount, suspended from a red cord. *Jade untested. Inner diameters of bangles 5.1 and 5.6cms. Length 4.4cms. £60-90*

749

A selection of nephrite jade jewellery. To include a nephrite jade bead necklace, two nephrite jade Maori pendants, together with two further nephrite jade items. *Lengths 2.7 to 83.5cms. £50-80*

741 ✕

A set of jade jewellery. To include a necklace comprising seven circular jadeite beads with connecting trace-link chain and split pearl clasp, with jadeite ear pendants of a similar design. *Jade untested. Length of necklace 39.5cms. Length of ear pendants 4.9cms. £50-80*

746

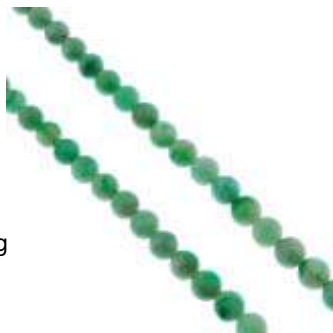
A nephrite jade brooch and pendant. The brooch designed as a nephrite jade bar with foliate and initial NZ accents, the pendant designed as a kite-shape panel with geometric engraved mount. *Length of brooch 5.6cms. Length of pendant 5.5cms. Total weight 9.9gms. £50-80*

750 ✕

A selection of nephrite jade jewellery. To include a nephrite jade bar brooch with engraved bands to each end, together with a brooch, the rose carved coral and nephrite jade leaves to the wire mount. (12) *Lengths 4.8 to 6.5cms. £30-50*

751

Two items of nephrite jade jewellery. To include a panel bracelet and a spray brooch. *Length of bracelet 18cms. Length of brooch 5.5cms. Total weight 25.9gms. £30-50*

752 ✕

Three items of jade jewellery. To include a jade bangle together with a necklace, the circular graduated beads to the spring-ring clasp. *Jade untested. Length 4.1 to 70cms. £60-90*

753

A carnelian and smoky quartz necklace. The octagonal and circular-shape carnelian beads alternating with the rectangular and circular-shape smoky quartz beads to the marcasite push-piece clasp. *Mark indicating silver. Length 52cms. £120-180*

754

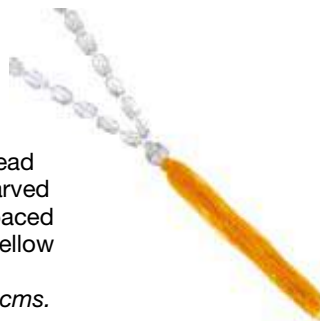
An aventurine quartz necklace. Designed as a series of rectangular and square-shape aventurine quartz beads, with plain bar spacers, to the spring clasp. *Length 58cms. Weight 17.4gms. £150-200*

755

A pair of late 19th century bog oak ear pendants. Each designed as a conical drop, with spiral and stylised foliate engraving, to the similarly engraved cabochon surmount. *Length 7.8cms. £30-50*

756

A synthetic chrysoberyl ring and pearl necklace. To include a synthetic chrysoberyl single-stone ring, the cushion-shape synthetic chrysoberyl, to the tapered shoulders and plain band, together with an early 20th century seed pearl single-strand necklace. *Pearls measuring 3.1 to 1.8mms. Length 36.5cms. £40-60*

757

A carved rock crystal bead necklace. Each bead carved to depict a face, interspaced by plain beads, to the yellow cord tassel. *Length of carved beads 1.9 to 2.7cms. £120-180*

758

A topaz and marcasite cluster ring and a pearl necklace. To include a mid 20th century silver, topaz and marcasite cluster ring, of marquise-shape outline, the topaz within a marcasite pierced surround, together with a cultured pearl single-row necklace with a 9ct gold openwork bow clasp. *Clasp with hallmarks for Birmingham, 1999. Length of necklace 41cms. £30-50*

759

An opal bracelet. Designed as nine graduated oval jelly opals measuring 1 to 1.6cms. *AF. Length 18cms. Weight 10.5gms. £40-60*

760

A white metal agate bracelet and pendant set. The bracelet designed as a series of six oval-shape agate cabochons to the push-piece clasp, together with a matching pendant. *Length of bracelet 20cms. Length of pendant 5.5cms. Length of chain 51cms. £70-100*

761

A piece of polished natural amber. *Length 7.7cms. Weight 64.8gms. £100-150*

762

A multi-gem faceted bead necklace. Designed as a series of alternating oval faceted beads, to include garnet, peridot and amethyst, to the lobster-claw clasp. *Length 44cms. £40-60*

763

A silver and diamond jewellery set and two necklaces. The pendant and ear pendant set, together with a silver and diamond lariat pendant and cultured pearl single-strand necklace. *Estimated total diamond weight 0.10ct. Three with hallmarks for silver. Lengths 4.7, 37.5 and 64cms. Weight of hallmarked items 22.6gms. £40-60*

764 ✕

An early 20th century mother-of-pearl brooch. Of oval-shape outline, the mother-of-pearl, with overlaid lily of the valley decoration. *Length 3.6cms. Weight 8.9gms. £20-30*



Two gem-set necklaces. The first designed as a series of vari-colour hardstone and synthetic opal collets with similarly-set central panel and fringe, the second designed as a series of articulate hardstone panels. *Lengths 40 and 46 cms. Weight 62.7gms. £30-50*

766 ✕

Two jade and dyed jade pendants. To include a dyed jadeite trefoil and rope-twist heart pendant, together with a mid 20th century 9ct gold nephrite jade heart and engraved leaf pendant. *Lengths 2.5 and 5.3cms. Total weight 19.3gms. £40-60*



767

Two multi-gem necklaces and a hematite necklace. The hematite necklace designed as a series of graduated bouton-shape beads each enamelled to one half, together with two multi-gem necklaces with freeform, circular and faceted gem and paste beads. *Lengths 60 to 64cms. £30-50*



768

Two items of blue john jewellery. To include a silver blue john single-stone ring, together with a pair of blue john cufflinks. *One with hallmarks for Sheffield, 1981. One with marks indicating silver. Length of cufflink face 1.7cms. Total weight 11.1gms. £30-50*



769



Two gem-set brooches. To include a mid 19th century rectangular-shape citrine brooch with foliate engraved surround and hair panel reverse, together with a mid 20th century blue paste and imitation pearl brooch. *Lengths 2.6 and 2.4cms. £40-60*

770

A cultured pearl necklace and a synthetic colour change sapphire pendant. The single row graduated cultured pearl necklace to the pearl-set push-piece clasp, together with a rectangular-shape synthetic colour change sapphire pendant. *Lengths 3.5 to 45cms. Weight 7gms. £30-50*



771

Two pairs of agate ear pendants. To include a pair of brown and white banded agate ear pendants, with rope-twist floral surmounts and a pair of tapered orange banded agate bead ear pendants. *Lengths 3 to 3.8cms. Weight 14.4gms. £50-80*



772



Three gem-set items of jewellery. To include a blue john necklace, the rectangular-shape blue john collet-set to reveal both sides, together with ear-studs of a similar design and an amethyst necklace. *Hallmarks for Sheffield, 1982. Lengths 2 to 25cms. Weight 42.6gms. £60-90*

773



A pair of 14ct gold stained cultured pearl ear hoops and a turquoise bar brooch. The earrings designed as a stained cultured pearl inset to a hinged hoop, together with an oval turquoise cabochon bar brooch. *Ear hoops with hallmarks for Edinburgh. Length of bar brooch 4.2cms. Length of ear hoops 1.4cms. Total weight 5.8gms. £50-80*

774

Three pairs of gem-set earrings. To include a pair of nephrite jade ear studs, a pair of cultured pearl ear studs and a pair of brilliant-cut diamond and tapered turquoise bead ear pendants. *Length of ear pendants 1.9cms. Weight 4.2gms. £70-100*



775

A zircon single-stone ring. The circular-shape zircon, within a textured surround, to the floral shoulders and plain band. *Weight 3gms. £50-80*



776

A pair of ear pendants. The bell-shape iridescent glass to the bouton shape jelly opal bead and ear hook. *Length 3.8cms. £70-100*



777

Two pairs of gem-set ear pendants. To include a pair of pear-shape opal three-stone articulated ear pendants and a pair of peridot ear pendants. *Lengths 3cms. Weight 2.7gms. £30-50*



778

Eight items of gem-set jewellery. To include a malachite panel bracelet, a circular amethyst cabochon brooch and a multi-gem-set pendant. (8) *Five with marks indicating silver.* £40-60

782

A selection of gem jewellery. To include a turquoise bead wire bangle, three dyed howlite bracelets, with further items. (44). £30-50

787

A selection of six gem necklaces. To include two free-form single-row modified amber bead necklaces and a freeform single-row modified amber bead bracelet, two peridot spherical bead single-strand necklaces, together with a hematite spherical bead single-strand necklace. *Lengths 42 to 74.5cms.* £40-60

779

A selection of gem-set jewellery. To include a moonstone fringe necklace, an amethyst scrolling pendant, with further items. (11) *Most with marks to indicate silver.* Total weight 191.1gms. £50-80

783

A selection of mainly natural amber beads. Beads are of various colours shapes and sizes, includes one plastic and two reconstructed amber beads. (47) *Lengths 0.5 to 2.8cms. Weight 39.1gms.* £50-80

788

A selection of gem jewellery. To include malachite bead necklaces, hardstone bracelets, brooches, various rings and pendants. (95). £70-100

784 ✕

A selection of gem jewellery. To include a freeform garnet bead necklace, together with a banded agate brooch, the oval agate to the scrolling mount and a three-strand coral bead necklace. (55). £40-60

789

A selection of blue john jewellery. To include an oval-shape pendant, with matching ear studs, together with a circular-shape pendant. *Pendants with hallmarks for silver. Length of pendants 3.8 and 2.7cms. Total weight 20.7gms.* £60-90

780 ✕

A selection of gem and bead jewellery. To include coral, turquoise, cultured pearl and further gemstones. (36). £50-80

785

A selection of gem jewellery. To include a malachite necklace, the graduated beads to the screw clasp, together with a faceted labradorite bracelet. (16) *Marks for silver. Lengths 2 to 76cms.* £50-80

781 ✕

A selection of gem-set jewellery. To include an amethyst necklace, the pear-shape amethysts to the trace-link chain and spring-ring clasp, together with a labradorite and garnet pendant. (48) *Some with marks indicating silver.* Weight 470.8gms. £90-140

786

A selection of gem-set jewellery. To include a cultured pearl brooch, together with various items of hardstone, tiger's-eye and turquoise jewellery. (32 and 5 single earrings) *Many with marks to indicate silver.* Weight 489gms. £90-140

790

A selection of gem-set jewellery. To include a bracelet, the oval-shape rutilite quartz cabochons to the t-bar clasp, together with a blue john pendant, the oval stone to the scrolling mount. (20) *Marks indicating silver. Lengths 2.2 to 44cms. Weight 250.2gms.* £60-90

791

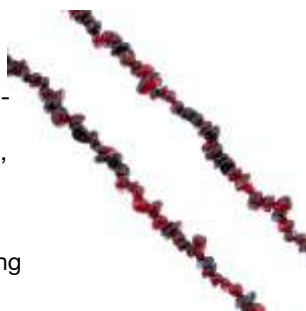
A selection of blue john jewellery. To include an early 20th century silver pendant, a pair of cufflinks and a tie pin. *Length of pendant 3.8cms. Total weight 19.6gms. £60-90*

796

Eleven items of cultured pearl jewellery. To include five single-row cultured pearl necklaces dyed varying colours together with six cultured pearl bracelets. *Lengths of necklaces 82 to 90cms. £20-30*

801

Five items of gem-set jewellery. To include a split pearl and marcasite foliate bracelet, a silver topaz and black-gem bracelet, with two further rings and a bead necklace. *Bracelet with hallmarks for silver. Four with marks to indicate silver. Total weight 61gms. £40-60*

792

A selection of mainly gem-set jewellery. To include three hardstone pendants, together with six further pendants and four single-strand gem necklaces. Some with marks indicating silver. *Weight of marked items 52.8gms. £30-50*

797

A selection of gem-set jewellery. To include two amethyst necklaces, a multi-gem bracelet, with further items. (7) *Marks to indicate silver. Weight 61.1gms. £30-50*

793

Ten items of cultured pearl jewellery. To include a bracelet, the freshwater cultured pearls to the adjustable purple tassel, together with a pale blue single-row cultured pearl necklace. (10) *Lengths 86 to 90cms. £20-30*

798 ✕

Three turquoise bead necklaces. Each designed as a series of freeform turquoise beads, variously set with coral branch, bead and tiger's-eye bead spacers. *Coral untested. Lengths 58 to 61cms. £30-50*

802 ✕

A selection of mother-of-pearl jewellery. To include twenty-one pendants of scrolling and geometric designs, together with a single-stone ring. (22) *Most with marks to indicate silver. Lengths 3.5 to 4.5cms. Total weight 335.3gms. £70-100*

794

Four items of jewellery. To include a multi-gem necklace and bracelet designed as a series of freeform gemstones, a paste bead necklace with an oval yellow bead drop, together with a pair of paste bead earrings. *Lengths 4.1 to 69.6cms. £30-50*

799 ✕

A selection of gem jewellery and items. To include three items of tiger's-eye jewellery, two multi-gem bead necklaces, and further gem-set jewellery and other items. (14) *Some AF. £30-50*

803

Nine items of gem-set jewellery. To include three dyed pyrite pendants and matching ring, a tourmaline and vari-gem bead necklace, with four further items. *Marks to indicate silver. Weight 57.6gms. £50-80*

795

A selection of gem-set jewellery. To include four items of modified amber jewellery, four pairs of shell ear pendants and six further items of gem-set jewellery. *Earring surmounts deficient. Eight with marks indicating silver. Total weight excluding base metal item 100gms. £40-60*

800

Six items of gem-set jewellery. To include a silver peridot and green gem bracelet, a peridot necklace, together with two further rings and two pendants. *Bracelet with hallmarks for silver. Four with marks to indicate silver. Total weight 45.6gms. £40-60*

804 ✕

A selection of gem jewellery. To include a jet necklace and pair of ear pendants, three freshwater cultured pearl necklaces and a bracelet, a dyed coral necklace, a lapis lazuli necklace, a turquoise necklace, together with further jewellery items. *£60-90*

805

Six items of gem-set jewellery. To include a vari-colour tourmaline bead necklace, a peridot and colourless gem cluster pendant, with four further items. *Marks to indicate silver. Weight 27.1gms. £40-60*

**810** ✕

Six items of gem-set jewellery. To include a ruby bead necklace, a glass-filled ruby and colourless gem ring, with four further items. *Marks to indicate silver. Weight excluding bead necklaces 7.7gms. £40-60*

**814**

Six items of gem-set jewellery. To include a vari-shade blue sapphire bead necklace, a topaz and moonstone pendant, with a further necklace and three rings. *Marks to indicate silver. Weight excluding bead necklaces 25.1gms. £40-60*

**806** ✕

Six items of gem-set jewellery. To include a ruby bead necklace, a multi-colour tourmaline bead necklace, a dendritic agate pendant, with three further pendants. *Marks to indicate silver. Weight (excluding bead necklaces) 35.6gms. £40-60*

**811**

Seven items of gem-set jewellery. To include a tanzanite bead necklace, a labradorite pendant, an amethyst pendant, with four further rings. *Marks to indicate silver. Weight 50gms. £50-80*

**815** ✕

Five bead necklaces. To include a coral, dyed coral and shell necklace suspending a carved hardstone bird, with four further plastic and hardstone bead necklaces. *Coral untested. Lengths 52.5 to 61cms. £30-50*

**807** ✕

A selection of gem jewellery. To include an early 20th century carved ivory necklace the three floral carved beads to the graduated spherical beads and a pendant of similar age and floral design, together with a seven row freshwater cultured pearl necklace. (14) *Lengths 4 to 53cms. £30-50*

**816**

A selection of plastic and modified amber jewellery. To include four plastic bead necklaces, a modified amber necklace and two reconstructed amber bracelets. *Length of necklaces 57 to 78cms. Approximate inner diameter of bracelets 6cms each. £40-60*

**808**

Five items of opal and gem-set jewellery. To include two tanzanite and opal pendants, an opal bead necklace, with two further rings. *Marks to indicate silver. Weight 22.1gms. £40-60*

**812**

A selection of gem-set jewellery. To include a rock crystal and aquamarine bracelet, a dyed chalcedony bracelet, a green quartz necklace, together with four further items of similarly-set jewellery. *Most with marks to indicate silver. Lengths 46 to 19.5cms. Total weight 82.4gms. £50-80*

**817**

A plastic bead necklace. Composed of thirty-five graduated plastic beads, measuring 3 to 1.4cms, to the screw clasp. *Length 64cms. £40-60*

**809**

A selection of gem-set jewellery items. To include three costume jewellery necklaces, five gem-set bead necklaces and a turquoise ring. (11) *Some with marks to indicate silver. £40-60*

**813** ✕

Five items of gem-set jewellery. To include a pink tourmaline bead necklace, a glass-filled ruby three-stone ring, with two further rings and a pendant. *Marks to indicate silver. Weight 26.6gms. £40-60*

**818**

Two plastic bead necklaces. Each designed as a series of barrel-shaped red plastic beads, with grooved bead terminal. *Lengths 69 and 75cms. £50-80*



819

A selection of micro mosaic jewellery. To include an oval brooch, the floral centre to the red, blue and white border, together with a bracelet the eight panels depicting flowers to the rope-twist and red and white surrounds. (25) *Some AF. Five with stamps for Italy. Lengths 1.2 to 16.5cms. £70-100*

820

A selection of micro mosaic jewellery. To include six bracelets, one with five links each with four abstract multi-colour panels, together with a marquis-shape floral micro mosaic bar brooch. (17) *Some AF. Five with stamps for Italy. Lengths 1.8 to 20cms. £70-100*

Paste, Marcasite & Charms

821

An early 20th century silver French paste brooch. The oval-shape blue paste domed cluster, with circular-shape colourless paste accents. *French assay marks. Length 3.8cms. Weight 18.7gms. £30-50*

822

A pair of mid 20th century paste ear pendants. The imitation pearl suspended from a paste drop to the ear hooks. *Length 5.6cms. Weight 9gms. With associated case. £60-90*

823

An early 20th century silver paste floral brooch. Designed as a rose on a stem with two leaves set with colourless pastes. *Hallmark illegible. Length 4cms. Weight 17.5gms. £30-50*

824

An early 20th century silver paste cross pendant. The slightly graduated cushion-shape paste cross, suspended from a similarly-set surmount. *Length 5.7cms. Weight 8.8gms. £30-50*

825

An early 20th century gold and silver paste monkey brooch. Designed as a hanging monkey and monkey perched atop a plain bar, each set throughout with colourless paste. *One paste deficient. Length 7cms. Weight 8gms. £100-150*

826

An early 20th century red paste necklace. Designed as a series of five square-shape pastes claw-set at intervals with open marquis-shape links between. *Length 21cms. Weight 4.3gms. £50-80*

827

An early 20th century paste ring. The two circular-cut paste stones to the smaller paste stone accents on the asymmetric shoulders. *Hallmark illegible. Weight 2.3gms. £30-60*

828

An early 20th century French paste butterfly brooch. The wings outlined in green circular pastes to the colourless paste body and red paste eyes. *Length 3.7cms. Weight 6.8gms. £50-80*

829

A mid 20th century paste pendant. The oval-shape green paste and faceted drop, to the scroll and bead surmount. *Length 5.5cms. Weight 5.6gms. £30-50*

830

A selection of late 19th to early 20th century paste jewellery. To include a green and colourless paste snake and crescent brooch, a colourless paste swallow brooch and four colourless paste cluster brooches. (10) *One with hallmarks for silver. Several paste deficient. £60-90*

831

A selection of four early 20th century paste brooches. To include two colourless paste crescents brooches and a colourless paste crawling lizard brooch with a novelty fly brooch. *Two with marks indicating silver. Lengths 6.1 to 2.1cms. £40-60*

832

Five items of early 20th century paste jewellery. To include a brooch, the two removable geometric colourless paste clips to the marquise-shape mount, together with a square-shape red paste and circular colourless paste clip. *Lengths 4 to 6cms. Weight 65gms. £50-80*

**836**

A paste pendant and necklace. To include a paste pendant, the circular-shape colourless paste drop, suspended within a colourless paste openwork wreath, together with a paste necklace designed as a series of circular-shape foil-back colourless paste trefoils. *Length 35.5cms. £50-80*

**840**

A cubic zirconia line bracelet. The channel-set square-shape cubic zirconias to the push-piece clasp. *Marks for silver. Length 18cms. Weight 11.6gms. £50-80*

**833**

A paste and marcasite cross pendant. Designed as a patriarchal cross set throughout with square-shape purple paste and marcasite, with two replacement purple-gems. *AF. Length 5.6cms. Weight 9.2gms. £50-80*

837

A pair of plastic, cubic zirconia and enamel ear pendants. The red enamel and colourless cubic zirconia split bars suspending black plastic hoops with semi-circular metal caps set with black pastes. *Marks for silver. Length 7.5cms. Weight 14.2gms. £30-50*

**841**

Three items of paste jewellery. To include a colourless and red paste swallow brooch, a colourless openwork brooch and a pair of colourless paste cluster ear studs. *Some paste replacement. One with marks indicating silver. Lengths of brooches 4.3 and 3.4cms. Diameter of ear studs 1.6cms. £40-60*

**838**

A paste cluster ring. The rectangular-shape green paste, within a circular-shape colourless paste surround to the tapered band. *One paste deficient. Weight 4.9gms. £50-80*

**842**

A pair of plastic, cubic zirconia and enamel ear pendants. The red and black enamel and colourless cubic zirconia bars suspending red plastic hoops. *Marks for silver. Length 7cms. Weight 8.6gms. £30-50*

**834**

A pair of freshwater cultured pearl, cubic zirconia and plastic ear pendants. The black plastic and colourless cubic zirconia alternating discs to the freshwater cultured pearl and black plastic bead tassels. *Marks for silver. Length 8cms. Weight 26.4gms. £80-120*

**839**

A selection of brooches. To include three 20th century paste brooches, a mid 20th century paste star brooch, a German silver gilt brooch designed as a centrally sprung butterfly, together with a double butterfly bar brooch. *Second stamped Geschuzt. Lengths 2.9cms to 4.3cms. £60-90*

**843**

A selection of jewellery. To include a paste crescent moon brooch, two foil-back paste necklaces, with further items. (12). *£30-50*



A paste bracelet. Designed as a series of circular-shape colourless paste lines, interspaced by similarly-set lozenge-shape links, to the partially concealed clasp. *One paste deficient. Length 17.7cms. Weight 47.2gms. £40-60*

835

844

A pair of onyx and marcasite ear pendants. Each designed as a rectangular-shape onyx, to the marcasite geometric surround and surmount. *Two marcasite deficient. Length 5.2cms. Weight 5.8gms. £50-80*

**848**

A selection of marcasite jewellery. To include a golf brooch, a brooch depicting a flag, club, ball and the number one, together with a selection of five rings. (8) *Marks indicating silver. Length 2.7 to 6cms. Weight 33gms. £40-60*

**853**

A selection of silver and white metal marcasite jewellery. To include a pair of imitation pearl and marcasite ear clips and a dyed howlite and marcasite pendant, together with a selection of further marcasite jewellery. (16) *Some marcasite deficient. Twelve with marks indicating silver. Total weight 98.1gms. £50-80*

**845**

A marcasite brooch and earrings. The brooch designed as a floral and foliate bouquet, together with similar scrolling ear clips. *Ear clips with marks to indicate silver. Lengths 3.7 and 10cms. Weight 62.6gms. £40-60*

**849**

A selection of mostly mid 20th century silver and white metal marcasite jewellery. To include a cluster ring, a lizard brooch, two floral brooches and a pair of later ear pendants. *Three with marks to indicate silver. Lengths 5.8 to 3.3cms. Total weight 33.8gms. £40-60*

**854**

A selection of marcasite jewellery. To include double clip brooches, earrings and pendants. (22) *Some with marks to indicate silver. Total weight 130.5gms. £70-100*

**846**

A selection of early 20th century and later marcasite and paste jewellery. To include a nephrite jade and marcasite brooch, five colourless paste buckles, eight clasps and a further two items. *Some with marks indicating silver. £30-50*

**850**

A selection of marcasite jewellery. To include an early 20th century silver marcasite floral necklace, together with an early 20th century silver marcasite miniature portrait brooch and a selection of further jewellery. (12) *Marcasite deficient. Eight with marks indicating silver. Total weight 91.6gms. £50-80*

**855**

A selection of thirty-one silver and white metal marcasite rings. To include nineteen marcasite dress rings, with twelve marcasite and paste or gem-set rings. *Most with marks for silver. Total weight 119gms. £50-80*

**847** ✕

Three marcasite necklaces. To include a marcasite, mother-of-pearl and onyx necklace designed as a series of kite-shape marcasite panel links, with alternating mother-of-pearl and onyx spacers, together with a silver amethyst and marcasite necklace, the oval-shape amethyst collet to the marcasite foliate panel sides and a red paste and marcasite bow necklace. *One with hallmarks for London, 2013. One stamped 925. Lengths 40.5 to 43.2cms. Weight 66gms. £60-90*

851

A selection of marcasite jewellery. To include a watch with marcasite set bezel and bracelet together with five brooches including one designed as a dog. (12) *Hallmark for Chester, 1950. Lengths 2.7 to 9.3cms. Weight 117.4gms. £50-80*

**856**

A selection of marcasite jewellery. To include an enamel peacock brooch, a bow brooch and a scroll design necklace, together with various other items. (20) *Some with hallmarks and marks indicating silver. £40-60*

**852**

A selection of mid 20th century silver and white metal marcasite jewellery. To include a marcasite and imitation pearl floral brooch, a wreath brooch, AF, together with three pairs of earrings. *Four with marks indicating silver. Lengths of brooches 7.5 and 2.5cms. Length of earrings 2.6 and 1cm. Total weight 36.9gms. £40-60*

**857**

A selection of marcasite jewellery. To include mainly brooches of foliate design. (26) *Some with marks to indicate silver. £50-80*



858

A selection of marcasite jewellery. To include spray design brooches, an iguana brooch, together with various earrings, bracelets, pendants and rings. (42 and 6 single earrings) *Many with marks to indicate silver.* Weight 381gms. £120-180

**859**

A selection of marcasite jewellery. To include floral design brooches, a crocodile brooch, an Eifel tower brooch and various necklaces, bracelets and earrings. (26 and 7 single earrings) *Many with marks to indicate silver.* Weight 355gms. £120-180

**860**

A selection of marcasite jewellery. To include animal and floral brooches, together with various earrings, bracelets and necklaces. (42 and 14 single earrings). £80-120

**861**

A selection of marcasite jewellery. To include various floral or foliate design brooches and earrings, together with rings and necklaces. (40 and 13 single earrings). £80-120

**862**

A selection of marcasite jewellery. To include a floral spray brooch together with a bracelet, the rectangular links with open scrollwork. (26) *Marks indicating silver.* Lengths 2.7 to 17cms. Weight 191.4gms. £100-150

**863**

Three silver and white metal charm bracelets with charms. The two curb-link and one gate bracelet suspending a total of fifty-seven charms, with nine further loose charms, including a bear, a mouse and a windmill. *AF. Most with marks for silver.* Lengths of bracelets 20 to 17cms. Total weight 203.8gms. £70-100

864

Four silver and white metal charm bracelets with charms. The three curb-link chains and one belcher-link chain, suspending a total of forty-one charms, to include a kiwi bird, an enamel nurse and a piano. *AF.* Length of bracelets 20.5 to 17.5cms. Total weight 135.3gms. £50-80

865

Six charm bracelets. Suspending a total of thirty-three charms including a saxophone charm and an owl charm. Lengths 18cms. Weight 156.7gms. £50-80

**866**

Four charm bracelets. The curb-link bracelets suspending a total of fifty-two charms including a Siam charm and an enamel Wales shield. *Marks indicating silver.* Lengths 16 to 18cms. Weight 230.3gms. £80-120

**867**

Seven charm bracelets. The curb-link and fancy-link chains suspending a total of thirty-eight charms, including a Winston Churchill charm and a tiger charm. *Marks for silver.* Lengths 18 to 20cms. Weight 160.2gms. £60-90

868

Six charm bracelets. The curb-link and fancy-link bracelets suspending a total of forty charms to include an Eiffel Tower charm and a graduation hat charm. *Marks indicating silver.* Lengths 18 to 19cms. Weight 197.6gms. £70-100

869

Two charm bracelets and a selection of loose charms. To include a fetter and single-link bracelet suspending six charms, a curb-link bracelet suspending three charms and a selection of loose charms. *Some with marks indicating silver.* Weight 129.1gms. £50-80

870

Three charm bracelets. The curb-link bracelets suspending a total of forty-five charms including a crown charm and a horseshoe charm. *Marks for silver.* Lengths 18cms. Weight 228.8gms. £80-120

**871**

Two charm bracelets and fifteen loose charms. The curb-link chain suspending a total of thirty charms, together with fifteen loose charms to include a cat and heart locket charm. *Marks for silver.* Lengths 18 to 20cms. Weight 147.7gms. £50-80



872

A selection of charm bracelets and fancy-link bracelets. To include two charm bracelets and four fancy-link bracelets. (6) Lengths 20 to 16cms. Total weight 239gms. £90-140

**876**

Four charm bracelets. The curb-link chains suspending a total of seventeen charms, to include a swan, a fox and a monkey. Some with marks to indicate silver. Lengths 17 to 18.5cms. Total weight 76.3gms. £30-50

**881**

A white metal charm bracelet. The curb-link bracelet, suspending seventeen charms, to include a lion, a hat and a crab. Two with marks indicating silver. Length 21.5cms. Total weight 86.6gms. £40-60

**873****877**

Two charm bracelets. The curb-link chains suspending a total of twenty-eight charms, to include a selection of keys, a kangaroo and a church. Some with marks to indicate silver. Lengths 17 and 19cms. Total weight 77.9gms. £40-60

**882**

Four charm bracelets. The curb and belcher-link chains suspending a total of fifty charms, to include a sewing machine, a stork and a speed boat. Most with marks to indicate silver. Lengths 17 to 21cms. Total weight 206.2gms. £80-120

878

A selection of loose charms. To include a Thomas Sabo charm, an enamel English rose and a chariot. (29) Some with marks to indicate silver. Lengths 1.5 to 3.5cms. Total weight 90.9gms. £40-60

A selection of four charm bracelets. Each of vari-link chain, suspending a total of fifty-seven charms, to include an enamel champagne bucket and a pig. Most with marks indicating silver. Total weight 131.1gms. £50-80

874

Four charm bracelets. The curb-link chains suspending a total of seventy-two charms, to include a quantity of enamel tourist shields, bagpipes and a bible. Most with marks to indicate silver. Lengths 17.5 to 21cms. Total weight 191.4gms. £80-120

**879**

Two charm bracelets. The curb and vari-link chains suspending a total of 107 charms, to include a large quantity of enamel tourist shields. Most with marks to indicate silver. Lengths 17 and 18cms. Total weight 159.5gms. £70-100

**883**

Two white metal charm bracelets. Each designed as a curb-link bracelet, suspending fourteen and nineteen charms, to include an alarm clock, a horseshoe and a man of the moon charm. Lengths 17 and 18cms. Total weight 125gms. £60-90

875

Two charm bracelets. The curb-link chains suspending a total of thirty-eight charms, to include a horseshoe, an 18 key and a hedgehog. Some with marks to indicate silver. Lengths 18cms each. Total weight 109.7gms. £40-60

**880**

A selection of four charm bracelets. The curb and trace-link chains, suspending a total of forty-nine charms. Most with marks indicating silver. Total weight 109.8gms. £50-80

**884**

A selection of four charm bracelets. Each designed as a curb-link chain, suspending a total of thirty-three charms, to include two early 20th century silver charms depicting a frog and a kitten with yarn. Most with marks indicating silver. Total weight 137.4gms. £60-90



885

A charm bracelet. The fancy-link chain, suspending a sweet shop charm, a green paste charm, a pig charm and a foil-back garnet heart-shape charm. Length 18cms. Total weight 14gms. £240-340

889

A gold plated charm bracelet. The gold plated hollow curb-link chain, suspending five 9ct gold charms and three further charms. Five charms with hallmarks for 9ct gold. Length 18cms. Total weight 38gms. £80-120

893

A selection of glass charms. To include Rhonda Sutton examples. (55) Most with marks to indicate silver. Total weight 132gms. £20-30

886

Two silver charm bracelets. Each designed as a curb-link chain, suspending a total of twenty-three charms, to include a harp and a skull and crossbones. Most with marks indicating silver. Total weight 85.4gms. £40-60

**890**

Two charm bracelets. Each comprising a double curb-link chain, suspending a total of eighteen charms. Length 18cms each. Weight 50.5gms. £30-50

**894**

Twenty-six charm bracelets. Each designed as a snake chain to the lobster-claw clasp each suspending four decorative glass beads. Total weight 487gms. £40-60

**887**

A charm bracelet. The curb-link chain, suspending seventeen charms, to include a plane, a crown and a chair. Six with marks indicating silver. Length 18cms. Total weight 123gms. £40-60

**891**

An Art Deco silver enamel charm bracelet and five loose charms. The bar-link bracelet, suspending a series of seventeen mostly enamel charms, to include a sports car, a Dalmatian dog, two elephants and a couple kissing under a beach umbrella, together with five further loose charms. Most with marks to indicate silver. Length 18.5cms. Total weight 31.2gms. £30-50

895

A selection of charms. To include an apple charm, a bi-colour star charm and a pair of red enamel charms. Approximately 200 charms total. Most stamped 925. Gross weight 529.9gms. £40-60

888

Two silver charm bracelets. Each designed as a curb-link chain, suspending a total of twenty-three charms, to include a Welsh woman and bells, and a kitten playing with a ball of yarn. Most with marks indicating silver. Lengths 18 and 17.5cms. Total weight 83.9gms. £30-50

896

A selection of bracelets and charm bracelets. To include a heart-shape and glass bead bracelet, together with further items of jewellery. (36) Most with marks to indicate silver. Total weight 679.9gms. £90-140

**892**

A selection of charm and coin bracelets. To include five charm bracelets a coin bracelet and six loose charms. Lengths 17 to 18cms. Total weight 138gms. £40-60

897

A selection of charms. To include a red ladybird charm, a bi-colour present charm and a pair of pink enamel charms. Approximately 200 charms total. Most stamped 925. Gross weight 475.6gms £40-60