

Vintage Jewellery & Accessories

Monday 30th January 2017

Fellows
Established 1876



Vintage Jewellery & Accessories

Monday 30th January 2017 at 10am

Fellows

Established 1876

This is our first Vintage Jewellery & Accessories auction of the year and we're kicking it off in style! We have a slight change to this auction, our large bags of Costume Jewellery are now being sold separately via a timed online auction. To view our Costume Jewellery lots please visit www.the-saleroom.com/fellows where you will need to register to bid. The online auction starts on Wednesday 25th January at 9am and finishes on Monday 30th January at 12 noon. During this allotted time if you are outbid, you will be notified, giving you the opportunity to submit a higher bid. To subscribe to the Costume Jewellery catalogue from Fellows, or if you have any queries please email louise@fellows.co.uk

Getting back to the Vintage Jewellery & Accessories auction, there are some beautiful and very interesting Georgian and Victorian pieces. Including lot 1, an early 18th century decorative, woven hair, thread and rock crystal clasp, it being such an early piece should grab a lot of attention from collectors. Also lot 7, a George III silver reliquary crucifix pendant, if you want to learn more about this interesting piece check out our blog at www.fellows.co.uk/our-blogs.

We have some gorgeous early 20th century designer pieces in this auction too, designer names include Bonté, Theodor Fahrner, Charles Horner, Liberty & Co. and Gourdel Vales & Co.

For further information, condition reports and additional images please visit our website and do not hesitate to contact us if you have any queries.

Index

Georgian, Victorian & Edwardian	1-102	Silver & Gold	355-461
Cameos	103-137	Designer Jewellery	462-500
Locketts & Stickpins	138-178	Scandinavian & Enamel	501-521
Fobs, Albert Chains & Medallions	179-204	Costume Jewellery	522-561
Scottish & International	205-232	Jewellery Boxes & Novelties	562-582
Organics & Gem-set	233-339	Bags & Accessories	583-588
Paste & Marcasite	340-354	Clothing & Furs	589-612

Featured Lots

Lots 93, 101, 102, 298, 340
& 501 (Front cover)



Lots 217, 219
& 220 (Back cover)



Viewing Times

Friday 27th January	10.00am - 4.00pm
Saturday 28th January	11.00am - 4.00pm
Monday 30th January	8.30am - 10.00am

Please be aware that you will be asked for photographic proof of identification to be allowed access to the viewing.

General Information

Fellows
Established 1876

Why Buy?

COMPETITIVE buyer's premium
LIVE online bidding
FULLY illustrated catalogue
EASY to use, functional website
ACCURATE condition reports
SPECIALISTS on hand to offer advice
TRACKED AND INSURED shipping*

*Please contact Fellows for further information.

Contact the Jewellery department...

Louise Ludlam

BA (Hons), DGA, FGA

Senior Specialist
0121 212 6306

louise@fellows.co.uk

Claire Duerden BA (Hons)

claired@fellows.co.uk

Department Assistant
0121 212 6306

Emma Boydell

LLB (Hons), BVC

Cataloguer
emmab@fellows.co.uk

Further Information



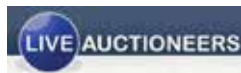
Additional Images and Condition Reports
can be found online at our website www.fellows.co.uk



Telephone Bidding is available if you cannot attend an auction. Please ring 0121 212 2131 to arrange a telephone line.



Live Bidding
via the internet is available at www.the-saleroom.com/fellows



Buyer's Premium

The buyer's premium is 20% (+ VAT) or 24% (VAT inclusive) on the first £50,000 of any individual lot. For any individual lot in excess of £50,000, the buyer's premium is 10% (plus VAT) or 12% (VAT inclusive). Lots prefixed with * will carry VAT at 20% on the hammer price.

Live Online Bidding Charges

Buyers will pay a commission charge of an additional 3% (+ VAT) of the hammer price if lots are successfully purchased online via Live Auctioneers and the-saleroom.com.

Seller's Commission

Sellers will pay a commission charge of 12.5% (+ VAT) on items which have a hammer price over £3,001 or more. Items sold for £3,000 or under will have a commission rate of 15% (+ VAT). Please view our terms and conditions for further detail.

Why Sell?

HIGH PRICES consistently achieved
FLEXIBLE commission rates
FREE valuations with no obligation to consign
RAPID turnaround for your goods
TARGETED advertising to a global audience
SUPERIOR quality catalogues
FULLY integrated website



facebook.com/
fellowsauctions



@fellowsauctions



pinterest.com/
fellowsauctions



youtube.com/fellows1876



fellowsauctions



Download our catalogue app today and view our printed catalogues on your device.

Key to Symbols



Item may have export restrictions for customers outside of the EU.



Lot comes with box.



Lot comes with associated papers/ warranty cards.

Important Notice

Neither Fellows nor the Vendors are responsible for any reference as to the condition of lots listed. The absence of such reference does not imply that a lot is in good condition or free from faults or imperfections.

All weights and dimensions are approximate. Purchasers are advised to carefully inspect lots and make their own opinion as to the condition. Please see section 7 under 'Bidders' in our full terms and conditions. View Fellows Important Notices in full and full terms and conditions at the back of the catalogue.

For any further enquiries please call **0121 212 2131**

Georgian, Victorian & Edwardian

1

An early 18th century clasp. Of oval outline, the scalloped edge to the faceted rock crystal panel with woven hair and decorative gold-tone thread beneath, to the engraved monograms on the reverse. Length 2.4cms. Weight 6.6gms. **£1,200-1,800**



2

A George I gold diamond and foil-back garnet memorial ring. The cushion-shape foil-back garnet, with rose-cut diamond sides and scrolling black enamel band reading 'B:W: OB 96. July. 1721 AET:30.' Ring size M. Weight 3.1gms. **£120-180**



3



A George III gold and split pearl memorial brooch. Designed as an oval-shape sepia panel depicting a weeping willow, a maiden and a tomb, with foliate and split pearl alternating rectangular-shape surrounds. Memorial inscription reads 'Matthew Walker Died 21 Nov 1818 aged 63.' AF. Length 4.5cms. Weight 21.4gms. **£800-1,200**

4

An early 19th century waxed string ring. The dark-colour waxed string woven into three parallel bands, with white string interwoven to the top and bottom in a striped pattern and to the centre the initials 'DAM'. Ring size P 1/2. With associated box. **£100-150**



5



A George III gold memorial ring. Of oval shape, the glazed panel over a sepia scene of a mourning figure at a graveside and an angel, to the engraved inscription to the reverse. Ring size M. Weight 7.4gms. **£300-400**

6



An early 19th century memorial brooch. The rectangular glazed woven hair panel with black faceted gems surrounding to the engraved inscription to the reverse. Length 1.8cms. Weight 4.6gms. **£40-60**

7



A George III silver reliquary crucifix pendant, hinged with screw fastening. Engraved to both sides with initials and a sapling, the screw fastening releasing the hinged surface of the cross to reveal compartments within. Length 9.4cms. Weight 49.2gms. **£500-700**

8



A late Georgian gold garnet and rose-cut diamond ring. The oval-shape garnet cabochon with two rose-cut diamonds to either shoulder. Ring size L. Weight 1.7gms. **£70-100**

9

A George IV paste and hair mourning brooch. Of navette shape, the paste surround with engraved edge to the central glazed woven hair panel and personal memorial inscription to the reverse. Pin AF. Length 4.5cms. Weight 19.3gms. **£70-100**



10

A George IV 18ct gold memorial band ring. The diagonally textured band with narrow enamel line through the middle, to the inner inscription. Hallmark for London, 1823. Ring size P. Weight 5.1gms. **£120-180**



11



A late Georgian silver and split pearl silhouette brooch and a Wedgwood button. The circular brooch depicting a lady in profile in silhouette, to the split pearl surround, the button of black jasperware, depicting a horse in white relief, to the safety chain. Hallmark to button for Chester, 1957. Weight 9.3gms. **£100-150**

12



A late Georgian gold enamel, split pearl and diamond ring. Of navette shape, the blue enamel surrounding three diamonds, to the split pearl surround and trefoil shoulder. Ring size L. Weight 6.7gms. **£120-180**

13

A late Georgian paste brooch. Designed as a floral cluster set with colourless pastes, suspending a pear-shape colourless drop with further colourless pastes to the surround. Length 4.5cms. Weight 11.2gms. **£240-340**



18

A late Victorian enamel envelope charm with mourning hair panel. The blue enamel in floral patterns to the hinged flap, opening to reveal an oval-shape hair panel with engraved surround. Length 1.4cms. Weight 1.4gms. **£30-50**



22

A late 19th century citrine memorial brooch. Of circular outline, the central circular citrine, collet-set with a rope-twist edge and wirework surround, to the glazed panel on the reverse. Length 3.6cms. Weight 12.4gms. **£150-200**



14

A mid Victorian gold, black garnet, enamel and hair panel ring. The black enamel band with personal inscription in gold lettering, black garnet above and below to the central woven hair panel with a black garnet surround. Ring size M. Weight 6.7gms. **£100-150**



19

A late Victorian gold gem-set brooch. The circular-shape greyish-blue gem collet, within an oval-shape garnet and circular-shape greyish-blue gem double surround, to the raised motif border and lock of hair reverse. AF. Diameter 3.1cms. Weight 9.8gms. **£150-200**



23

A late Victorian gold memorial hair ring. Designed as a shield shape cartouche, engraved with a monogram, to the band inlaid with woven hair through the indented channel and with foliate border. Ring size R. Weight 2.1gms. **£60-90**



15

A mid Victorian gold enamel and pearl snake memorial brooch. The blue enamel snake coiled into a figure-of-eight, with split pearls set to its back and circular turquoise cabochons to its eyes, with a further blue enamel drop setting a cultured pearl and to the reverse a small glazed vacant panel. Has been re-enamelled. Length 3.9cms. Weight 10.5gms. **£150-200**



20

A late Victorian hair Albert chain with 9ct gold spacers. The oval-shape woven hair links, with gold spacers at six junctions, to the T-bar at one end and lobster-claw terminals. Length 60cms. Weight 16.3gms. **£200-300**



24

A late Victorian garnet memorial brooch. Designed as an open circle-shape with figure of eight detail and suspending within it a collet-set garnet cabochon and to its reverse a glazed woven hair panel. Length 4.2cms. Weight 10.3gms. **£50-80**



16

A mid Victorian garnet and hair memorial ring. The rectangular glazed woven hair panel, with circular garnet surround and garnet shoulders. Ring size O. Weight 3gms. **£50-80**



21

A late 19th century gold banded agate and split pearl memorial pendant and chain. The fancy-link chain suspending an oval-shape black enamel pendant with a central banded agate cabochon with split pearl accents to the further circular black enamel drop set with a split pearl and suspending a further cultured pearl, to the glazed back with personal inscription. Length of chain 48cms. Length of pendant 6cms. Weight 20.1gms. **£500-700**



25

A late 19th century diamond memorial brooch. Of quatrefoil shape, the central oval panel set with a single diamond, to the tiered scalloped accents and a vacant glazed panel to the reverse. Length 3.6cms. Weight 7.3gms. **£50-80**



17

A mid Victorian garnet and split pearl memorial brooch. Designed as a central rectangular shape hair panel within a split pearl border to the oval and circular-cut garnet surround. With later added suspension loop. Length 3cms. Weight 5.7gms. **£50-80**



26

A late Victorian memorial brooch. The central oval arranged hair panel with seed pearl detail, to the black enamel surround and further scroll design border. With safety chain. Length 4.8cms. Weight 25.4gms. **£200-300**



27



A late Victorian gold enamel, split pearl and diamond memorial bangle. The hinged bangle, designed as a blue enamel dome, set with central split pearls and diamonds, to a tiered surround, with blue enamel detail, engravings and split pearl-set star shape accents, to the similarly designed shoulders and further engraving to the full bangle, with a glazed panel to the reverse. Inner diameter 5.8cms. Weight 63.9gms. **£1,800-2,200**

31



A late Victorian gold enamel and gem-set locket. The vari-shape opal and ruby star-shape cluster, with blue enamel surround, foliate engraved border and reverse and tapered surmount. Length 6.5cms. Weight 19.7gms. **£440-640**

35



A late Victorian acorn brooch, circa 1880. The acorn and oak tree leaves, within a cannetille border. Diameter 3cms. Weight 6.8gms. **£90-140**

28

A late Victorian gold enamel, split pearl and diamond ring. The old-cut diamond, with split pearl quatrefoil and rose-cut diamond surround with blue enamel tapered shoulders. Ring size O1/2. Weight 3.4gms. **£120-180**



32x



A late Victorian gold, coral and split pearl brooch. The coral cabochon star-set disc, with split pearl bar sides and cannetille surrounds. Length 4.3cms. Weight 8.2gms. **£100-150**

36

A late Victorian memorial brooch. Of oval outline, the scrolling border to the black enamel surround, reading 'In memory of' in gold tone lettering, with a central glazed decorative hair panel. Length 4.8cms. Weight 22gms. **£50-80**



29

A late Victorian 15ct gold brooch. Of oval outline, the raised cannetille panel, within a similarly-designed scrolling surround. Hallmarks for Birmingham, 1887. Length 3.6cms. Weight 10.9gms. **£150-200**



33

A late 19th century memorial brooch with replacement stone. The central oval-shape replacement red glass cabochon within a scrolling surround to the vacant panel reverse. Length 4.7cms. Weight 12.9gms. **£80-120**



37

A mid Victorian memorial brooch and an early 20th century brooch. The memorial brooch of oval shape with pointed ends, to the central vacant oval-shape glazed panel, together with a brooch in the shape of a bee, set with two circular citrines and with red gems to its eyes. Lengths 1.9 to 2cms. Weight 4.5gms. **£60-90**



30

A late Victorian garnet three-stone brooch. The vari-shape garnet diagonal line, with scrolling foliate highlights and curved line surround. Length 4.7cms. Weight 10.3gms. **£100-150**



34

A late Victorian 9ct gold garnet and split pearl ring. The graduated oval-shape garnet line, with split pearl and scrolling sides, to the foliate engraved band. Hallmarks partially indistinct. Ring size N. Weight 1.8gms. **£150-200**



38

Two early to mid 19th century memorial brooches. The first a rectangle with floral motifs surrounding a vacant glazed panel, the second a glazed rectangular woven hair panel, with circular garnets and split pearls around. Length 1.8 to 2.5cms. Weight 6.7gms. **£150-200**



39

A mid Victorian 9ct gold foil-back amethyst cluster brooch. The oval-shape foil-back amethyst, within a cushion-shape green gem and bead surround. Length 2.8cms. Weight 6.4gms. **£150-200**



40

A mid Victorian citrine brooch. The rectangular citrine with scalloped claws to the textured ribbon-like surround and an engraved memorial inscription to the reverse. Length 3.1cms. Weight 10.3gms. **£40-60**



41

An early Victorian 18ct gold ring. Designed as two intertwined hearts one set with a green paste, the other with a red paste, each surrounded by diamonds, to the diamond-set bow above. Hallmark partially visible. Ring size O. Weight 2.7gms. **£150-200**



42

A mid Victorian gold foil-back topaz and split pearl cluster brooch, circa 1850. The oval-shape foil-back golden topaz, with split pearl and later cannetille surrounds. Length 2.4cms. Weight 6.6gms. **£150-200**



43

An agate and diamond ring. The oval-shape dendritic agate cabochon with diamonds to the shoulders, to the scroll detail to the band. Ring size L. Weight 2.8gms. With associated case. **£560-660**



44



A late 19th century gold brooch. Of circular outline, with applied lettering reading 'Dulcissime Rerum', translating as 'Sweetheart' or 'Sweet Things' with a knot of gold through the centre, and scalloped detail to either side. Length 4.9cms. Weight 16.5gms. **£340-440**

45



A mid Victorian brooch. The replacement rectangular-shape opal panel, with split pearl double surround. Length 3.1cms. Weight 8.9gms. **£150-200**

46

A late Victorian gold enamel and diamond ring. The tapered band with diagonal turquoise enamel bands and diamonds between. Ring has been re-enamelled. Ring size Q. Weight 2.6gms. **£70-100**



47

A late Victorian gold brooch. Of circular outline, the gold bead and ivy leaf motif, with grooved surround. Length 3.2cms. Weight 7.8gms. **£70-100**



48

A late Victorian silver posie holder brooch. Designed as an open-ended trumpet shape with applied horseshoe and flowers. Hallmark for Birmingham, 1890. Length 5.2cms. Weight 4gms. **£60-90**



49

A pair of late Victorian earrings. Each designed as oval-shape panels with scalloped fan shapes to the bottom, the enamel edged star shape with split pearl to the centre, to the screw backs. British Registry marks for 1874. Length 3.2cms. Weight 4gms. **£80-120**



50



An amethyst and diamond ring. The central circular amethyst collet-set with diamonds set to the shoulders and scrollwork to the profile. Ring may a composite piece. Stamp to band indicating gold. Ring size K1/2. Weight 3.3gms. **£500-700**

51

A pair of garnet and split pearl earrings. Each designed as a pear-shape garnet cabochon, suspended from a split pearl cluster surmount and similarly-set twin heart and bow spacer. Length 4cms. Weight 9.4gms. **£180-260**



52

A late 19th century gold medal. In the shape of a crown atop a shield and engraved 'Edinburgh Golf Club' to one side and 'Won by Dr McLarty, 1898' to the other. Length 2.7cms. Weight 5gms. **£60-90**



56

An opal and split pearl panel ring. The rectangular panel of a central cushion shape replacement white opal with split pearl surround, to the trefoil shoulders. Ring size O. Weight 3.2gms. **£60-90**



61

Four late 19th to early 20th century brooches. The first in the shape of a bow suspending a heart shape, set with circular turquoise cabochons, the second a bar brooch with collet-set operculum shell, together with a bloodstone bar brooch and an oval-shape Blue John brooch. Lengths 3.7 to 4.3cms. Weight 26.7gms. **£60-90**



53



A late Victorian 9ct gold chatelaine. The pin fastening with curb-link chain suspending from the scrolled mount, six items, to include an oval shape hinged mirror, a powder compact with internal mirror, a lipstick holder, a penknife, a retractable pencil, all embossed with floral and foliate designs and a mesh bag with pierced handle. Length 26cms. Weight 144.9gms. **£3,000-4,000**

57

A late Victorian paste star brooch. The cushion-shape paste, within a fourteen ray star. Diameter 2.3cms. Weight 3.2gms. **£60-90**



62

A selection of late 19th to early 20th century silver jewellery. To include a late 19th century silver medal, a late 19th century horseshoe brooch, a silver chain, together with four further items. Three with hallmarks for silver. Length of chain 41.5cms. Length of brooches 3 to 5cms. Length of medal 4.9cms. Total weight 59gms. **£30-50**



58

A late Victorian gold split pearl brooch. Designed as a crescent shape with a star to the inner curve all set with seed pearls. Lengths 3cms. Weight 7gms. **£70-100**



63

Three late 19th to early 20th century gold photograph pendants. Two of oval shape, the first with coloured black and white photographs of a lady and gentleman beneath glazed panels, the second with a colour photograph of a man to one side, the other side without glass, the third a circular, two sided photograph pendant with black and white photographs beneath the glazed panels, to the scalloped edge. Lengths 3.5 to 5.6cms. Weight 19.6gms. **£150-200**



54

A late Victorian gold diamond brooch. The circular panel with old-cut diamond flower, to the old-cut diamond flower sides, within a cannetille border. Estimated total diamond weight 0.30ct. Length 3.8cms. Weight 6.8gms. **£200-300**



59

A late 19th century gilt miniature portrait pendant. Of oval outline, the floral and foliate frame surrounding a glazed panel with portrait of a gentleman, with engine-turned detail to the reverse. Length 4.2cms. Weight 7.3gms. **£80-120**



55

A late Victorian 18ct gold ring. Designed as a series of abstract panels, with rope-twist edge. Hallmarks for Birmingham, 1894. Ring size L1/2. Weight 4.8gms. **£100-150**



60

Three items of late 19th to early 20th century jewellery and novelties. The first a late Victorian silver scarf ring, engraved with floral designs, the second a silver plated vesta case engraved with ivy leaves and a monogrammed panel to one side, together with a pair of oval-shape ear pendants engraved with trees and with applied water birds, the hook backs, later added. Hallmark for Birmingham, 1891. Lengths 2.2 to 6.2cms. Weight 8.2gms. **£40-60**



64

A selection of jewellery. To include a necklace, with locket, a brooch and complementing earrings, the necklace designed as pierced rectangular links suspending an oval-shape locket, with beaded detail and applied textured designs, the brooch and earrings of similar design. Lengths 3.5 to 50cms. Weight 100.1gms. In fitted case. **£600-800**



65



A late Victorian 15ct gold, split pearl and enamel slider and three cameo brooches. Designed as a black ribbon with adjustable buckle detail, setting an enamel initial and seed pearl monogram slider, together with three cameo brooches. All with marks indicating gold. Length (at widest adjustment) 20cms. Total weight 30.3gms. **£150-200**

70x



A selection of late 19th to early 20th century jewellery and novelties. To include five mother-of-pearl and split pearl dress studs, a vulcanite locket with applied carved floral detail to the front, a tortoiseshell case with inlaid decoration and five silver brooches. Lengths 1 to 7.8cms. Weight of brooches 16gms. **£100-150**

75



A selection of jet and vulcanite jewellery. To include a cross shape pendant, carved with various flowers, a brooch of two interlinking oval-shapes and a cameo-style brooch. Lengths 6 to 9cms. **£50-80**

66



Two late Victorian 9ct gold rings. The first a memorial ring, with a monogram engraved shield-shape cartouche, the band reading 'In Memory Of', the second set with two circular opal cabochons, with a yellow paste between. Hallmarks for Chester 1892 and 1897. Ring size M and P. Weight 4gms. **£40-60**

71



Three items of late 19th to early 20th century gold jewellery. The first a three stone ring set with green gems and split pearl accents, the second a rectangular agate brooch, the third a dirk style Scottish agate brooch. Lengths 2.2 to 4.7cms. Weight 6.9gms. **£70-100**

76



Two late Victorian jet brooches. The first a large brooch of oval outline carved with a central faceted design panel to the further carved and engraved outer detail, together with a carved navette-shape brooch. Lengths 4.1 and 6.5cms. **£60-90**

67



A selection of mainly late 19th to early 20th century silver jewellery. To include a lozenge shape brooch with pierced writing reading 'Mother', another in the shape of a crescent with applied flowers and leaves and two Mizpah brooches. (13) Nine with hallmarks. Lengths 2.6 to 4.9cms. Weight 70.7gms. **£70-100**

72



A ceramic brooch and a late 19th century memorial brooch. The first of rectangular outline painted to depict a castle atop a hill, within a rope-twist border and applied scroll detail to the surround, the second designed as a central oval, woven hair panel, within a black enamel 'In memory of' surround to the outer scrolling border and personal inscription to the reverse. Lengths 4.7 and 5.8cms. Weight of second 22.9gms. **£100-150**

77



A selection of late 19th to early 20th century silver jewellery. To include a brooch in the shape of an anchor with applied leaf detail, together with two oval-shape name brooches, one for 'Edith', the other 'Mac'. (21) Many with hallmarks. Weight 111.7gms. **£50-80**

68



A set of jet and porcelain earrings and pendant. Each designed as ovoid shape jet panels inset with oval-shape porcelain panels hand-painted with winged putti, the earrings with hook backs. Lengths 6.5 to 7.7cms. **£100-150**

73



A selection of mostly 19th century jewellery. To include a circular carnelian cabochon clasp, a rectangular-shape floral engraved clasp, a 15ct gold oval-shape amethyst clasp, together with two further items. Lengths 1.2 to 2.1cms. Total weight 9.5gms. **£80-120**

78



A selection of mainly mid to late Victorian jewellery. To include a Vauxhall glass brooch of flower shape, the layered petals in red glass, together with an oval shape brooch, the rotating glazed panel with vine leaf detail and curved border. Lengths 3.4 to 5.5cms. Weight 81.2gms. **£40-60**

69



A selection of mainly Victorian silver and white metal jewellery. To include a fancy-link collar with beaded edge detail, an oval chalcedony brooch, nine further brooches, a thimble, a hinged bangle and a matchbox. (14) Most with marks to indicate silver. Lengths 2 to 47cms. Weight 109gms. **£50-80**

74



A selection of late 19th to early 20th century jewellery. To include a pair of ear clips, an Albertina with tassel terminal, a cross pendant, five brooches and a scrolling silver panel. Ear clip fittings later added. Lengths 2 to 22.5cms. Weight 55gms. **£40-60**

79



Six late 19th to early 20th century brooches. To include an 'Annie' name brooch, three Mizpah brooches and further two brooches. Three with silver hallmarks. Lengths 3.3 to 4.1cms. Weight 20gms. **£50-80**



80X

A late 19th century tortoiseshell pique brooch. Of circular outline, the central domed panel with inlaid floral design, to the gold-tone border and geometric surround. Length 4cms. Weight 7.7gms. **£40-60**

**84**

A late 19th century 9ct gold sapphire and split pearl brooch. Designed as a graduated circular-shape sapphire and split pearl line. Length 4.2cms. Weight 2.9gms. **£60-90**

**88**

An early 20th century 15ct gold portrait pendant. The glazed panel, within a plain border, to the tapered surmount. Length 6.7cms. Weight 19.2gms. **£180-260**

**81X**

A late 19th century tortoiseshell pique brooch. Of circular outline, the plain border with beaded edge and applied rectangular pieces, with inlaid star shapes to the background. Length 3.3cms. Weight 6.8gms. **£40-60**

**85**

An Edwardian 15ct gold split pearl and peridot brooch. The rectangular-shape peridot, suspended from a split pearl openwork bow, Length 3.5cms. Weight 4gms. **£120-180**

**89**

An early 20th century 9ct gold bow brooch. In the form of a tied ribbon, suspending from the centre a lobster-claw clasp. Hallmark for Chester, 1906. Length 3.2cms. Weight 4.1gms. **£90-140**

**82X**

A pair of late 19th century tortoiseshell pique earrings. Of tear-drop shape, the spherical upper bead inlaid with a star motif, to the main drop inlaid with floral designs. Lengths 4.2cms. Weight 5.1gms. **£60-90**

**86**

An early 20th century turquoise cabochon necklace. Designed as a belcher-link chain to the oval-shape claw-set turquoise cabochons, further fringe drops and a central pear-shape drop, with T-bar clasp. Length 40cms. Weight 18.5gms. **£460-660**

**90X**

An early 20th century 18ct gold carved mother-of-pearl and blister pearl pendant. Of openwork design, the carved mother-of-pearl foliate panel, with blister pearl bud, suspended from a surmount loop. Length 3.5cms. Weight 4.4gms. **£100-150**

**83X**

A late 19th century tortoiseshell pique brooch. Of rectangular outline with central inlaid floral detail to the decorative border. Length 4cms. **£70-100**

87

An early 20th century 18ct gold ring. The tapered band with floral and foliate detail to the front. Hallmarks for Birmingham, 1908. Ring size U. Weight 5.8gms. **£100-150**

91

An early 20th century 9ct gold and split pearl photograph pendant. Of oval outline the glazed photograph panel with a photograph of a lady, to the bird and leaf motif and surmount loop above set with split pearls. Length 5.6cms. Weight 13.2gms. **£80-120**

**92**

An early 20th century gold box. Of rectangular shape and with an engine turned pattern, the hinged lid with a vacant oblong cartouche. French assay marks. Length 7.3cms. Weight 19.3gms. **£400-600**



93



BONTÉ - an Art Nouveau carved horn necklace. AF. Designed as a bead drop, suspended from a horn dragonfly, pond and reed openwork panel, to the cord necklace with bead and horn highlights. AF. Length of pendant 12.5cms. **£80-120**

94

An early 20th century 9ct gold pendant and pair of late 19th century silver floral earrings. The pendant of openwork design with purple paste and scrolling surround, the earrings each designed as a rope-twist bead with petal and halo surround. Length of pendant 3cms. Diameter of earrings 1cm. Weight of pendant 0.9gms. **£50-80**



95

An Edwardian 15ct gold brooch and a further gold fronted brooch. The first designed as a 15ct gold ruby and diamond point line within a scrolling and floral motif surround, the second designed as a scalloped panel with foliate engraved motif. One with hallmarks for Birmingham, 1910. Lengths 4 to 4.2cms. Weight of 15ct gold brooch 2.9gms. With case. **£60-90**



96

An early 20th century photograph pendant and brooch. Both of circular design, the brooch with scrollwork surround set with split pearls, to the glazed centre, the pendant with plain surround and surmount loop. Lengths 3.5 to 3.9cms. Weight 13.9gms. **£60-90**



97



Five items of early 20th century silver enamel jewellery. To include a bird shape brooch by Charles Horner, in blue and green enamel, a rectangular buckle in purple guilloche enamel and white enamel corner detail. Lengths 3.2 to 18cms. Weight 30.5gms. **£60-90**

98



THEODOR FAHRNER - an enamel brooch. Designed as a stylised leaf shape, with purple to blue graduated enamel to either side and a green gem collet-set to the centre. With maker's marks. Length 3.2cms. Weight 5.3gms. **£120-180**

99

THEODOR FAHRNER - a Weiner Werkstatte brooch. Designed as a stylised bird set with marcasite and with a green gem eye to the curling foliate surround. With maker's marks. Length 3.8cms. Weight 11.6gms. **£90-140**



100

CHARLES HORNER - an enamel necklace. Designed as a curb-link chain narrowing to a circular enamel panel in blue and purple and suspending a winged scarab shape drop in blue, green and purple enamel. Hallmark for Chester. 1908. Length 48cms. Weight 3.2gms. **£100-150**



101



LIBERTY & CO. - five Cymric enamel buttons. Each of circular outline, with wave or swirl designs to the front, decorated with blue and green enamel. Hallmark for Birmingham, 1904. With maker's marks. Stamped Cymric. Lengths 2.2cms. Weight 19.3gms. **£100-150**

102

GOURDEL VALES & CO. - an Art Nouveau enamel silver necklace, circa 1910. Designed as an abstract leaf with pale green re-enamelled panel, a hammered edge and curved wirework, to the plain surmount loop. With maker's mark. Length 4.7cms. Weight 3.3gms. **£50-80**



Cameos

103



A cameo necklace. Comprising five graduated shell cameos, each carved to depict a lady in profile, within a filigree surround, suspended from a fancy-link chain. Cameos AF. Length of principal drop 4.8cms. Length 40cms. Weight 56gms. **£1,000-1,500**

104



A cameo brooch. Of oval outline, the carved shell depicting St. George and the dragon, with a scrolling surround. Length 7cms. With unassociated box. **£40-60**

105

A 9ct gold shell cameo brooch. The oval shape cameo carved to depict a lady in profile surrounded by flowers, and a bird, to the rope-twist surround. Hallmark for Birmingham, 1992. Length 5.3cms. Weight 11.8gms. **£40-60**



110

A 9ct gold cameo brooch. Of oval outline, the shell carving of a lady in profile, to the engraved scalloped surround. Hallmark for Birmingham, 1986. Length 5.8cms. Weight 19gms. **£150-200**



115



Three items of cameo jewellery. To include a brooch, ear clips and a pendant, all of oval shape with flower shape surrounds, the pendant and ear clips carved in the image of ladies in profile, the brooch depicting Eos and a putti. Lengths 1.9 to 5.3cms. Weight 27.3gms. **£240-340**

106

A shell cameo brooch. Of oval outline, the shell cameo carved to depict a man in profile in classical robes, to the scrollwork mount and personal mourning inscription and monogram to the reverse. Length 6.7cms. Weight 21.8gms. **£80-120**



111

A 9ct gold cameo ring. Of oval outline, the shell carving depicting a lady in profile, to the rope-twist surround. Hallmark for Birmingham, 1991. Ring size N. Weight 6.6gms. **£40-60**



116



Three cameo brooches. All of oval outline, the first depicting the Three Graces, the second depicting the goddess Nix with a crescent moon to her head, the third a lady in profile with ringlets to her hair. Lengths 4 to 4.2cms. Weight 26.7gms. **£200-300**

107

A cameo brooch. Of oval outline, the shell depicting the goddess Diana in a chariot drawn by horses, to the rope-twist surround. Length 4.7cms. Weight 14.9gms. **£120-180**



112

A cameo pendant of the Virgin Mary and child. The oval shape carved shell, with rope-twist surround. Length 3.7cms. Weight 5.1gms. **£40-60**



117



Two cameo brooches. Both of oval outline, the shells depicting ladies in profile, the first with concentric oval surround, the second with rope-twist surround. Lengths 4.2 to 4.3cms. Weight 21gms. **£120-180**

108



A lava cameo bracelet. Comprising seven oval-shape vari-colour lava panels, each depicting ladies in profile, to the push-piece clasp. Length 19cms. Weight 39.4gms. With unassociated Garrard & Co. case. **£150-200**

113

A cameo brooch. The oval shell cameo, carved to depict Demeter, within a rope-twist surround. Length 3.8cms. Weight 10.8gms. **£30-50**



118



Two cameo brooches. Both of oval outline, the first with rope-twist surround, the shell carved to depict the Three Graces, together with another depicting a lady in profile, to the textured surround. Lengths 4 to 5.4cms. Weight 27.9gms. **£200-300**

109

A late 19th century cameo brooch. The oval-shape shell, carved to depict Hebe feeding Zeus as an eagle from a bowl, within a scrolling detailed surround. Length 9.5cms. Weight 35.2gms. With case. **£300-400**



114



A lava cameo bracelet. Comprising eight oval-shape vari-colour lava cameo panels, each depicting the profile of a classical gentleman, to the push-piece clasp. Length 17.5cms. Weight 12.7gms. With associated case. **£220-320**

119



Three cameo brooches. The smallest depicting a lady with flowers to her hair, the largest a lady in profile, with engraved mount. Lengths 2.5 to 4cms. Weight 18gms. **£140-180**

120



A lava cameo bracelet, brooch and earrings. The lava panels all carved into the form of ladies in profile, the bracelet comprising eight graduated oval-shape panels, to a push-piece clasp, the brooch a single oval-shape panel, the ear pendants with hook clasps. With unassociated box. Lengths 1.5 to 19cms. Weight 46.8gms. **£240-340**

121



Two cameo brooches. One designed as two cameos linked with scalloped surround, one cameo depicting Dionysus, the other a lady in profile, the other depicting Diana, goddess of the hunt, with a quiver of arrows. Lengths 4.3 to 5.3cms. Weight 22gms. **£150-200**

122



Two cameo brooches. Both depicting ladies in profile, the first with a plain surround, the second the mount with a scrolling edge. Lengths 4.9 to 5cms. Weight 19.4gms. **£150-200**

123



Four cameo brooches. To include a small oval-shape brooch with carved shell depicting a putti with a wreath of flowers draped around him, together with another depicting a couple dancing. Hallmark for Birmingham, 1984. Lengths 2.4 to 3.8cms. Weight 21.6gms. **£120-180**

124

Two cameo brooches. The first depicting a bacchante below her two crossed thyrsus, together with a larger oval shape cameo depicting a lady in profile, to the scalloped surround. Lengths 2.9 to 5cms. Weight 17.2gms. **£120-180**



125

Two 9ct gold cameo brooches. Both carved to depict a lady in profile, the first with twist surround, the second with scalloped surround. Hallmarks for Birmingham 1955 and 1971. Lengths 3 to 4.3cms. Weight 17.1gms. **£120-180**



126

Two cameo brooches. The first of rectangular outline depicting a lady in profile, to the tiered rope-twist surround, the second of oval outline, the carved shell of a similar theme, with twist surround. Hallmark for Birmingham, 1992. Lengths 3.5 to 3.8cms. Weight 18.5gms. **£150-200**



127

Two cameo brooches. Both of oval outline, depicting ladies in profile, the first of plain surround, the second with scalloped mount. Hallmark for Birmingham, 1975. Length 4 to 4.3cms. Weight 19.1gms. **£150-200**



128✕

A mother-of-pearl cameo and an abalone cameo brooch. The first an oval-shape mother-of-pearl brooch carved into the profile of a young lady, the second of carved shell depicting a lady in profile, to the floral and foliate surround. Lengths 3.2 to 6.3cms. Weight 29.4gms. **£200-300**



129



Five pairs of cameo earrings. All of carved shell and each depicting a lady in profile, to include a pair of circular ear studs, a pair of oval ear clips with scalloped edge and three further pairs. Lengths 1 to 1.5cms. Weight 14.3gms. **£100-150**

130



Five cameo pendants. All of oval outline, carved to depict a lady in profile, one with a belcher-link chain, suspending the pendant with diamond patterned surround. Lengths 2.7 to 40cms. Weight 17.3gms. **£120-180**

131



Five cameo pendants. All of oval outline, carved to depict a lady in profile, one with a fancy-link chain, suspending the pendant with fleur de lis surround. Lengths 2.7 to 40cms. Weight 17.3gms. **£120-180**

132



Six cameo rings. All of oval shape, depicting ladies in profile, four with scalloped edge mounts, two with textured mounts. Ring sizes H to T. Weight 20.2gms. **£150-200**

133



A pietra dura brooch, a ceramic panel and a selection of cameos. The oval-shape pietra dura brooch depicting a flower within a rope-twist surround, the ceramic panel depicting a lady holding a dove, a cameo brooch and three loose shell cameo panels. Lengths 3 to 6.7cms. **£50-80**

134

Six cameo rings. All of carved shell, each depicting a lady in profile, one with a scalloped mount, another with a rope-twist mount, two claw-set. Three with hallmarks. Ring sizes K to V. Weight 15.3gms. **£100-150**



135

Five cameo rings. To include an oval shape onyx cameo depicting a lady with ringlets to her hair, to the plain surround and split shoulders, together with two oval-shape claw-set cameos of similar design. Ring size M to Q. Weight 15gms. **£100-150**



136

A selection of cameo jewellery. To include a pair of shell cameo earrings, carved with a rose to each, a necklace with cameo set to the central drop, to the wirework chain set with purple pastes, together with a complementing bracelet. Lengths 1.2 to 44cms. Weight 84.8gms. **£30-50**



137



WEDGWOOD - a selection of jewellery. To include a pink jasperware pendant depicting a putti, together with an oval-shape brooch of dark blue jasperware depicting many figures in relief. Lengths 1.3 to 45cms. Weight 64.8gms. **£70-100**

Locket & Stickpins

138

A mid Victorian enamel and diamond locket. Of heart-shape, the blue enamel to front and back, to one side a floral motif set with diamonds, to the other a stylised letter 'S', to the engraved border and opening to a glazed hinged panel within. Length 2.6cms. Weight 5.1gms. **£660-860**



139

A late Victorian gold diamond and enamel locket. Of oval outline, with rose-cut diamond and blue enamel buckle motif, suspended from a tapered surmount. Length 6cms. Weight 20.7gms. **£480-680**



140

A late 19th century locket and later chain. The curb-link chain suspending a shield-shape locket, with a vertical foliate blue enamel band to the centre, engraved to either side concealing a hinged compartment with an oval-shape vacant photo panel within. Hallmark to chain. Length 44cms. Weight 8.5gms. **£240-340**



141

A late 19th century gold locket, circa 1880. Of oval outline, the locket with applied horseshoe detail, to the tapered surmount. Length 4.5cms. Weight 14.1gms. **£180-260**



142

A late 19th century split pearl and enamel locket. Of oval outline, the front with applied buckle design, set with split pearls and with a blue enamel edge, opening to reveal a glazed panel. Length 4cms. Weight 16.4gms. With fitted case. **£480-680**



143

An early 20th century 9ct gold front and back locket and gold plated chain. The circular locket, with floral engraved motif, suspended from a hinged surmount and belcher-link chain. Length of locket 3.5cms. Length of chain 44cms. Total weight 9.3gms. **£100-150**



144

A late Victorian base metal memorial locket, circa 1880. Of oval-shape outline, the engine turned panels, with a scrolling border. Length 4.3cms. **£100-150**



145

A 9ct gold locket. Of oval outline, the scrolling foliate engraved locket. Hallmarks for Birmingham, 1992. Length 5.9cms. Weight 12.9gms. **£120-180**



146

A 9ct gold amethyst locket. Of octagonal outline, the square shape amethyst collet-set at an angle, to the foliate border and opening to a vacant compartment. Length 2.9cms. Weight 3gms. **£30-50**





147

A 9ct gold locket. Of oval-shape outline, with geometric and scroll embossed detail. Hallmarks for Birmingham. Length 6.3cms. Weight 12.9gms. **£120-180**



152

Two late Victorian silver oval lockets. The first with central engraved reeds to the floral outer border, the second with central engraved scrolling detail to the embossed faceted bead outer border. Lengths 5 and 6cms. Weight 25.7gms. **£50-80**



157

A selection of silver and white metal lockets. To include a heart-shape locket with flowers engraved to both sides, a locket in the shape of a cats face and one of oval-shape with acanthus leaves engraved to the front. Lengths 1.8 to 6.5cms. Weight 196.2gms. **£100-150**



148

An early 20th century gold and enamel locket with chain. Of heart-shape outline, with enamel profile highlights, suspended from a trace-link chain. Length of locket 2.7cms. Length of chain 49cms. Weight 8.3gms. **£90-140**



153

Three lockets. To include a large oval-shape silver locket, a locket of scalloped outline and a heart-shape locket. All with marks to indicate silver. Lengths 2.2 to 5.7cms. Weight 38.5gms. **£40-60**



158

A selection of silver and white metal lockets. To include seven oval lockets, three circular, two heart-shape, three pear-shape and three further lockets, of varying designs. (18) Lengths 2.5 to 5.1cms. Weight 122gms. **£40-60**



149

A late 19th century black enamel and split pearl locket. Of oval outline, the star motif to the centre set with split pearls, opening to reveal a painted portrait of a bearded man. Length 5cms. Weight 24.8gms. **£50-80**



154

Five late Victorian lockets. The first of shield-shape outline, the second of navette-shape outline, the remaining of oval outline, all with engraved decoration, one with applied monogram. Lengths 3 to 5cms. Weight 43.6gms. **£70-100**



159

Six 9ct gold lockets. To include an oval shape locket set with a central diamond, two heart-shape lockets and three further oval-shape lockets. All with hallmarks. Lengths 2.1gms. Weight 9.8gms. **£120-180**



150

A late 19th century silver locket and collar. The collar designed as an open-link chain, the outer links engraved with acanthus leaves, suspending an oval-shape locket engraved with ivy to both sides, opening to photographs in both glazed recesses and with a scalloped edge. Length of collar 41cms. Length of drop including locket 9.2cms. Weight 58.1gms. **£80-120**



155

A selection of silver and white metal lockets. To include a rectangular locket with embossed foliate border, together with another circular locket with stylised flower embossing to the front. Weight 209.2gms. **£70-100**



160

Five 9ct gold lockets. To include three oval and two heart-shape lockets, three with floral or foliate engraving. All with hallmarks. Lengths 1.9 to 3.7cms. Weight 11.6gms. **£120-180**



151

A late Victorian silver locket. Of oval outline, depicting an applied gold bird perching on an engraved branch with engraved foliate detail, suspended from a bar brooch. Length 5.5cms. Weight 16gms. **£60-90**



156

A selection of silver and white metal lockets. To include nine heart-shape lockets, one set with marcasites and an oval-shape onyx cabochon, together with an oval-shape locket with acanthus engraving to the front. (17) Lengths 2 to 6.5cms. Weight 99gms. **£40-60**



161

Two 9ct gold lockets and a chain. The lockets both of heart-shape, one engraved with floral and foliate patterns, the other plain, together with a fancy belcher-link chain. Hallmarks for Chester, 1902 and Birmingham, 1912. Lengths 2.3 to 46cms. Weight 10.8gms. **£120-180**



162



A selection of 9ct back and front lockets. Of oval, circular and heart-shape outlines, all with engraved decoration, one inset with an oval cameo, two with chains. (11) Locket lengths 2 to 3cms. Weight 39gms. **£120-180**

163



A selection of 9ct back and front and rolled gold lockets. To include two rolled gold oval-shape photograph pendants, together with three heart-shape lockets, one with floral engraving to the front panel and four further oval-shape lockets. Lengths 2 to 4.3cms. Weight 50gms. **£120-180**

164

Three late 19th century lockets. The first a memorial pendant of oval outline, to one side a glazed woven hair panel, to the other banded engraving, the second a circular pendant with glazed woven hair panels to both sides, one side with overlaid monogram in split pearls, together with an engraved oval locket with photograph within. Lengths 1.9 to 6cms. Weight 39.4gms. **£80-120**



165



Four late 19th century lockets. To include a gold front and back locket of oval outline, the front reading 'Forget me Not', the back with a vacant shield-shape cartouche, together with another oval locket, with enamel design of a floral bouquet and the word 'Souvenir' to a pink enamel ribbon. Lengths 3.2 to 3.9cms. Weight 38.9gms. **£80-120**

166



Two 9ct back and front lockets and a 9ct gold locket. The first back and front locket of rectangular outline, with ivy-leaf engraving to the front and scrolls to the back, together with an oval-shape locket with blue enamel trefoil pattern, together with a third 9ct gold locket of heart-shape. Hallmark for London, 1958. Lengths 2.4 to 3.4cms. Weight 14.5gms. **£150-200**

167



Five lockets. To include a circular locket and four heart-shaped lockets, one set with a blue glass cabochon, another set with colourless pastes in a fleur-de-lis outline. One with hallmark for Birmingham, 1970. One stamped rolled gold. One stamped 9ct bk & ft. Lengths 2 to 2.6cms. Weight of gold locket 3.3gms. Weight of remaining 15gms. **£120-180**

168



Five lockets. One of oval outline, the remaining of circular outline with engraved decoration of varying designs. Three with marks indicating 9ct back and front. Lengths 2.2 to 3cms. Weight 19gms. **£150-200**

169



Five lockets. To include two of oval outline, one depicting swallows set with split pearls, another of circular outline and two of rectangular outline, all with engraved decoration. Lengths 2.5 to 3.4cms. Weight 18gms. **£120-180**

170



Three 9ct back and front lockets. To include two of shield-shape outline and another of rectangular outline, all with engraved floral and foliate decoration and all with a central vacant cartouche. Lengths 3cms. Weight 6.9gms. **£80-120**

171



Three late 19th to early 20th century lockets. To include on oval locket with embossed repeated elongated drop detail, together with a further oval locket and a circular locket, both with engraved foliate decoration. Two stamped back and front. Lengths 2.6 to 3.6cms. Weight 16gms. **£100-150**

172



Two late 19th century enamel lockets. Both of oval outline with black enamel decoration, the first depicting central flowers, the second with scrolling and floral detail. Lengths 3.7 to 4.5cms. Weight 12gms. **£100-150**

173



An early 20th century 18ct gold fox stickpin. The three-dimensional fox beneath a clear glass dome. Marks indicating gold. Length 7.5cms. Weight 4.1gms. **£180-280**

174



A late 19th century 18ct gold onyx stickpin. The oval shape onyx cameo depicting a Roman man in profile, with laurel head wreath. Partial hallmark. Length 8.5cms. Weight 7.1gms. **£120-180**

175



Three gem-set stickpins. To include one claw-set with a circular moonstone cabochon, one with a circular claw-set diamond and one designed as a white enamel figure-of-eight the open spaces set with a seed pearl and a blue gem cabochon. Lengths 4.6 to 6.5cms. Weight 3.9gms. **£50-80**

176

Three stickpins. To include one designed as a circular garnet cabochon with a diamond inset to its centre, together with a quatrefoil shape stickpin with pink gem to the centre and another designed as a jockey's hat with green and blue enamel panels. Lengths 5.5 to 6.9cms. Weight 4.3gms. **£30-50**



181

A carved intaglio seal fob. Of oval outline, the carnelian carved to depict a goddess holding a sword and anchor, to the tapered pedestal. Length 3.2cms. Weight 8.5gms. **£200-300**



186

Five fobs. The first a carnelian fob of oval outline, to the petal-like pedestal, the second a small green gem intaglio fob engraved with a ship on the sea, to the textured pedestal. Lengths 1.5 to 3.7cms. Weight 16.6gms. **£70-100**



177

Three stickpins. The first designed as a wishbone shape with an enamel bird holding a seed pearl in its mouth and with diamond-set body, the second designed as a faceted green gem, the third as a seed pearl set flying insect. Lengths 6.1 to 7.4cms. Weight 7.3gms. **£120-180**



182

A 9ct gold fob. The oval shape bloodstone to the interwoven wire pedestal. Partial hallmark visible for Chester. Length 2.8cms. Weight 4.3gms. **£40-60**



187

Three hardstone fobs. To include a mid Victorian gold-cased scrolling floral swivel fob, a carnelian and shield motif fob, together with a 9ct gold swivel fob. One with hallmarks for London, 1990. Lengths 2.5 to 3.5cms. Total weight 32.5gms. **£80-120**



178

Six stickpins and a late Georgian 9ct gold ring. One stickpin designed as a circle with a central diamond and split pearl border, to the rope-twist edge, together with an oval-shape agate stickpin and a 9ct gold ring set with two replacement red pastes and four turquoise cabochon accents. Lengths 4.6 to 6.9cms. Ring size H. Weight 8.6gms. With associated stickpin box. **£50-80**



183

A dog fob. Of arched shape, the domed circular panel with glazing over a raised image of a black and white dog and to the other side a white hardstone with the image of a french horn inlaid in blue. Length 4cms. Weight 15.6gms. **£40-60**



188

Three fobs. To include two 9ct gold bloodstone and carnelian fobs, with openwork surmounts, together with a bloodstone and onyx swivel fob. Two with hallmarks for 9ct gold, partially worn. Lengths 3.1 to 3.9cms. Total weight 21.3gms. **£150-200**



Fobs, Albert Chains & Medallions

179

A bloodstone intaglio seal fob. Of rectangular outline a shield engraved to the bloodstone, with floral and foliate surround, to the lion pedestal. Length 2.1cms. Weight 8.1gms. **£70-100**



184

Two 20th century carnelian fobs. Of oval-shape outline, to the petal-like and openwork pedestal. Lengths 3cms to 2cms. Total weight 10.3gms. **£100-150**



189

A gold swivel fob and a selection of further fobs. The gold fob with three panels of hardstone, to the scrolling pedestal, together with a green gem intaglio fob depicting a leaping fox, to the acanthus leaf pedestal. Hallmark for Sheffield, 1995. Lengths 3 to 3.4cms. Weight 40.6gms. **£90-140**



180

An 18ct gold swivel fob. Of oval outline, set with carnelian to one side and bloodstone to the other, to the knot design pedestal. Length 3.5cms. Weight 11gms. **£200-300**



185

Three gem-set fobs. To include a gold swivel fob, with carnelian to one side and blank to the other to the curb-link chain style pedestal, together with another of oval outline, the carnelian with acanthus engraved border and acanthus leaf pedestal and one other. Lengths 2.9 to 3.3cms. Weight 20.2gms. **£100-150**



190

Three fobs. To include an agate fob, the agate carved into a curved pedestal, to the engraved intaglio monogram, a carnelian intaglio fob reading 'Carline' in script and a further carnelian fob. Lengths 2.3 to 4cms. Weight 22.3gms. **£50-80**



191

A fob and watch key. The fob designed as a plain bar brooch, suspending a scrollwork pedestal and swivel agate fob, the watch key a pear-shape bloodstone and citrine with acanthus patterns to the mount. Lengths 3.6 to 4cms. Weight 10.4gms. **£80-120**



196

An Albert chain and a silver medallion. The curb-link Albert chain suspending a shield-shape medallion with engraved detail. Hallmark for Birmingham, 1917. Length 38.5cms. Weight 66.8gms. **£30-50**



201



An Albert chain with two shield medallions. The graduated curb-link chain suspending two shield-shaped medallions, a T-bar and with a lobster-claw clasp. Hallmarks for Birmingham. Length 28cms. Weight 88gms. **£30-50**

192

Two late 19th and early 20th century silver Albert chains with shield medallions. Both designed as curb-link chains suspending a shield-shape medallion, one also suspending a T-bar, both with lobster-claw clasps. Both with hallmarks. Lengths 37 and 46cms. Weight 89gms. **£30-50**



197

Three curb-link chains. To include two Albert chains with lobster-claw clasps. Hallmarks for Birmingham, 1913. Lengths 28 to 41.5cms. Weight 108gms. **£40-60**



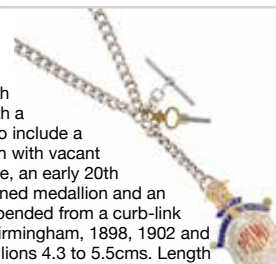
193

Three chains. To include a curb-link chain, a curb-link Albert chain suspending a T-bar, a charm and with two lobster claw clasps and a further Albert chain of fancy-link design with a lobster-claw clasp. All with marks to indicate silver. Lengths 26.5 to 43cms. Weight 100gms. **£40-60**



198

A selection of late Victorian and early 20th century medallions with a similarly aged chain. To include a late Victorian medallion with vacant shield-shape cartouche, an early 20th century similarly designed medallion and an enamel medallion suspended from a curb-link chain. Hallmarks for Birmingham, 1898, 1902 and 1918. Length of medallions 4.3 to 5.5cms. Length of chain 66.5cms. Weight 150.6gms. **£70-100**



202

A late Victorian silver collar and a selection of Alberts and chains. The collar designed with fancy engraved links, together with a belcher-link chain suspending two fobs to the terminals, a similar chain suspending fancy tapered terminals and three Albert chains. Lengths 31 to 89cms. Weight 162gms. **£150-200**



194

Two Albert chains. The first a curb-link chain suspending a T-bar, a medallion and with two lobster-claw clasps, the second designed of fancy elongated links with T-bar and lobster-claw clasp. Both with hallmarks. Lengths 30.5 and 37.5cms. Weight 81gms. **£30-50**



199

Four curb-link chains. To include three Albert chains, one suspending a T-bar, two with lobster-claw clasps. Three with marks to indicate silver. Lengths 23 to 43cms. Weight of three 99.4gms. **£50-80**



203

Seven silver medallions. Three of circular outline, two of shield-shape outline and two further medallions, five with personal inscriptions. All with hallmarks. Lengths 3 to 5cms. Weight 79.5gms. **£30-50**



195

Three late 19th to early 20th century silver Albert chains. Two of graduated curb-link design, one suspending a medallion, T-bar and tassel, the third designed with a herringbone chain, rectangular floral engraved slider and T-bar, all with lobster-claw clasps. Lengths 26.5 to 31cms. Weight 90.7gms. **£50-80**



200

Two Albert chains with medallions. The first of graduated curb-link design suspending a T-bar, shield-shape enamel medallion and a lobster-claw clasp, the second designed as a fancy-link chain suspending a circular medallion to the lobster-claw clasp. Lengths 35 and 38cms. Weight 110gms. **£30-50**



204

Eight medallions. Most of circular or shield-shape design, four with personal inscriptions. All with hallmarks. Lengths 2.7 to 3.7cms. Weight 68gms. **£30-50**



Scottish & International

205



A late 19th century gold Scottish hardstone, citrine and paste dirk brooch. The tapered blue lace agate, jasper and bloodstone panels, with fancy-shape paste accents, to the similarly-cut citrine hilt. Length 7.6cms. Weight 9gms. **£240-340**

206



A late 19th century gold, agate highlanders broadsword brooch. Designed as a tapered green-colour agate set to a sword shape brooch with red-colour agate to the pommel. Length 6.5cms. Weight 4.5gms. **£200-300**

207



A banded agate and rock crystal necklace. The spherical banded agate beads of brown and white colour bands, alternating with smaller, faceted circular rock crystal beads, to the spring-ring clasp. Length 40cms. Weight 87.3gms. **£460-660**

208



A late 19th century silver Scottish agate brooch. Of circular outline, the outer frame with inlaid agate, to the central cross motif also set with agate, with circular yellow gem cabochons between. Length 5.4cms. Weight 24.6gms. **£50-80**

209



A 9ct gold agate pendant. The oval agate cabochon, within a scalloped border. Hallmarks for London, 1961. Length 5.8cms. Weight 18gms. **£40-60**

210



An early 20th 18ct gold gem thistle bar brooch. The gem-set thistle with citrine and amethyst to the flower head, with textured leaves and a plain bar mount. Length 7.1cms. Weight 6.2gms. **£70-100**

211



A banded agate necklace. Designed as a black cord, knotted at intervals with thirty-one spherical banded agate beads measuring 0.9 to 1.9cms, to the tied ends. Length 130cms. **£300-400**

212



Three Scottish agate brooches. The first designed in the shape of a fly comprising three vari-colour agate pieces representing its body and wings, the second a circular border of agate, to the central thistle motif set with a yellow paste flower, the third of oval outline with scalloped edge and vari-colour agate segments. Lengths 2.7 to 5.3cms. Weight 45.9gms. **£150-200**

213



A 9ct gold Scottish brooch and a further agate brooch. The circular Scottish brooch set with semi-circular hardstones, a thistle-shape to the centre set with further hardstones to the flower head, together with an oval shape agate brooch. Hallmark for Birmingham. Lengths 2.9 to 4.1cms. Weight 22.6gms. **£60-90**

214



A selection of mainly Scottish jewellery. To include one of roughly oval shape set with square-shape vari-colour hardstones, together with one of kilt pin design, the central shamrock inlaid with green hardstone. Length 3 to 8.6cms. Weight 76.6gms. **£70-100**

215



Four items of Scottish jewellery. To include a bookmark with purple paste thistle terminal, an elongated thistle brooch and a circular thistle brooch, together with a cross design inlaid hardstone brooch. Lengths 3.3 and 7.6cms. Weight 19gms. **£40-60**

216



A selection of Scottish and agate jewellery. To include a bar brooch, set with three circular banded agate, a figa pendant carved from agate and a kilt pin. Lengths 2.7 to 6cms. Weight 169gms. **£70-100**

217



An Austro-Hungarian beryl and pearl necklace. Designed as a fancy-link chain set with split pearls and square and rectangular green beryl, to the circular pendant similarly set, with three further drops. Length 38cms. Weight 29.4gms. **£200-300**

218x



An Auto-Hungarian foil-back emerald, mother-of-pearl and blister pearl pendant. Designed as a trio of rectangular-shape foil-back emeralds, within vari-size openwork surrounds, to the mother-of-pearl accents and blister pearl drops. Length 6cms. Weight 5.7gms. **£100-150**

219



An Austro-Hungarian enamel and gem pendant. Of two-tone metal, the central figure of Psyche, with a lyre, to the scrolling base with vari-coloured enamel detail, collet-set opal and garnets and to the top the face of a putti. Length 7.7cms. Weight 17gms. **£300-400**

220

An Austro-Hungarian enamel St George and the dragon pendant. Depicting St George in blue enamel robes, astride a white enamel horse, pointing his joust at the teal colour enamel dragon below, suspended from two chains set with seed pearls. Length 5.5cms. Weight 23.5gms. With associated case. **£250-350**



221



A garnet brooch. Of tiered circular design, set with faceted, circular garnets, suspending three graduated garnet drops. Length 8cms. Weight 19.3gms. **£40-60**

222

A garnet brooch and ring. The ring designed as an eternity band fully set with circular faceted garnets, the brooch a star-shape cluster. Ring size L. Length 3.3cms. Weight 9.5gms. **£30-50**



223



A bronze and bead necklace. A composite piece, the mainly spherical beads of vari-colour ceramic to the bronze figure drop. Length 50cms. Weight 54.1gms. **£300-500**

224



A scarab bracelet, circa 1960s. Designed as six oval shape links set with green-blue scarab-shape stones, the panels between them each engraved with palm trees and winged scarabs. Length 18.5cms. Weight 39gms. **£400-600**

225



An Egyptianesque enamel brooch. Designed as a bird, the open wings with enamel detail, set with turquoise cabochons and red faceted gem accents. Egyptian assay marks. Length 4.2cms. Weight 7.3gms. **£100-150**

226



An early 20th century Egyptianesque enamel bracelet. Designed as angular, ankh and flower shaped panels with light blue, orange and white enamel, depicting Egyptian scenery. Length 18.5cms. Weight 18.3gms. **£50-80**

227



Designed as tapered cross and angular panels with blue, white and green enamel, depicting Egyptian scenery. Bracelet missing some jump rings and part of the clasp. Length 18cms. Weight 18.6gms. **£50-80**

228

A Russian enamel bow brooch. Designed as a white enamel bow, set with red and green pastes, the bow terminals suspending pierced spherical beads, set with green paste cabochons. Stamped to clasp, 84 and partial city mark. Length 7cms. Weight 15.2gms. **£50-80**



229

A citrine necklace with Chinese coin panels. The chain comprising alternate faceted citrine beads and Chinese lucky coin panels, suspending a large faceted pear-shape citrine drop. Length 38cms. Weight 35.7gms. **£260-360**



230x

A snuff bottle. The orange plastic body of the bottle with overlaid wire and beadwork detail to the base, top and lid, set with turquoise and coral cabochons. Length 7cms. Weight 63.2gms. **£40-60**



231

A continental set of utensils hung from a chain. The belcher-link chain suspending to one end three tools, one with a decorative serpent-like handle. Length 37cms. Weight 44.6gms. **£40-60**



232

A selection of micro mosaic jewellery. To include a brooch in the form of a guitar inlaid with vari-colour micro-mosaic and a four-panel micro-mosaic bracelet, designed as floral patterns. Lengths 2.7 to 14.5cms. **£60-90**



Organics & Gem-set

233x



A carved coral bracelet. The gate-style coral bracelet to the centre panel of carved coral flowers, leaves and pine cones, with a concealed push-piece clasp beneath. Length 17.4cms. Weight 24.7gms. With fitted case. **£660-860**

234x



A coral necklace. Comprising a single row of graduated spherical coral beads, to the push-piece clasp set within a spherical coral bead. Length 54cms. Weight 22.9gms. **£260-360**

235x



A pair of coral earrings. Designed as oval coral cabochons, suspending black enamel bars, to the pear-shape coral drops. Marks to indicate gold. Lengths 6.5cms. Weight 10.8gms. **£960-1,200**

235A



A pair of coral earrings. Designed as articulated drops with carved coral leaves and spherical beads, to the hook backs. Lengths 5cms. Weight 6.9gms. **£460-660**

236x



A coral pendant. Designed as a circular coral cabochon, suspending an oval-shape arrangement of carved coral pieces in the form of roses and leaves. Length 6cms. Weight 15.3gms. **£600-800**

237x



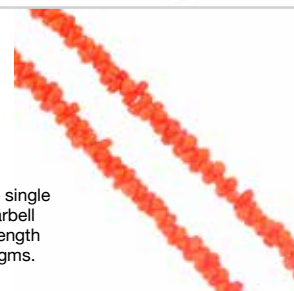
A coral brooch and earrings. The brooch designed as three rows of five spherical coral beads set in a rectangular shape, the earrings designed as a drop of three spherical beads, to a hook back and an additional loose bead. Length 3.2cms. Weight 11gms. With associated case. **£70-100**

238x



A coral and diamond pendant. The coral carved in the image of the face of a bearded wise man, with rope-twist head band set with a diamond, to the plain surmount loop. Mark indicating gold. Length 4.2cms. Weight 11.2gms. **£150-200**

239x



A coral necklace. The single row of intersecting barbell shape coral beads. Length 100cms. Weight 56.7gms. **£180-280**

240x



A pair of coral earrings. Designed as a vertical row of coral beads carved into flowers, fruit and leaves, with further pear-shape drops to either side. Lengths 6.1 to 6.5cms. Weight 8.7gms. **£360-460**



207



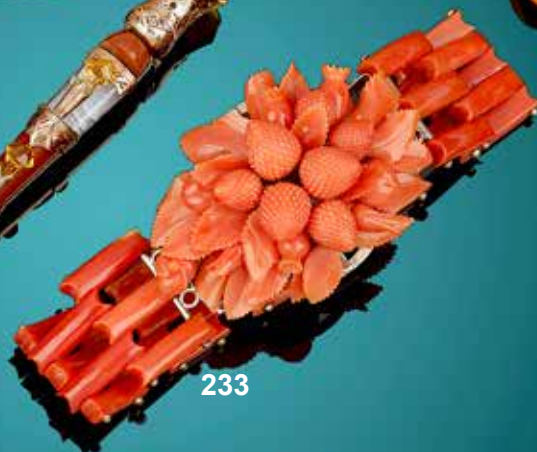
246



297



205



233



208



234



249



236



224

241 ✕

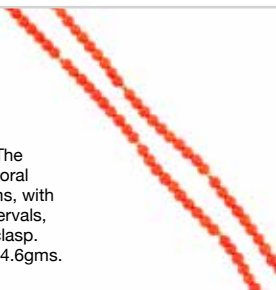
A coral necklace and a selection of partly strung and loose coral beads. To include a single row coral bead necklace, a three row coral bead necklace and a large number of coral beads of various shapes. **£70-100**

**242 ✕**

A pair of coral earrings. Designed as a circular coral cabochon, suspending a black enamel bar, to a pear-shape coral drop with black enamel cap to the top. Lengths 5.2 to 5.4cms. Weight 9.9gms. **£1,200-1,800**

**243 ✕**

A coral bead necklace. The single row of spherical coral beads, measuring 0.4cms, with small metal beads at intervals, to the spring and hook clasp. Length 51cms. Weight 14.6gms. **£30-50**

**244 ✕**

A carved coral brooch. The brooch designed as a series of carved coral pieces in the form of flowers, fruit and leaves, set as a spray to a branch coral mount with a pin to the reverse. Length 4.5cms (excluding pin). Weight 14gms. **£90-140**

**245 ✕**

Two items of coral jewellery. To include a ring, the oval coral panel carved to depict the profile of a lady within a rope-twist surround, together with a bar brooch, with central oval coral panel carved to depict a lady in profile. Split to ring band. Brooch with safety chain. Ring size M. Brooch length 3.6cms. Weight 6.1gms. **£50-80**

**246**

A natural amber bead necklace. Comprising a single row of thirty-one graduated oval-shape natural amber beads measuring 0.9 to 3cms, to the concealed screw clasp. Length 46cms. Weight 41.3gms. **£700-900**

**247**

A pair of natural amber earrings. Both designed as pear-shape drops of natural amber, to the foliate scalloped caps and hook fasteners. Lengths 7cms. Weight 8.8gms. **£70-100**

**248**

A natural amber necklace. Designed as a series of flat bouton shape natural amber beads, measuring 1.3 to 1.8cms and a further series of spherical beads measuring 0.4cms, three beads are plastic (some beads AF). Length 40cms. Weight 20.6gms. **£60-90**

**249**

A natural amber ring. The circular natural amber cabochon measuring 1.3 by 1.4cms, with a surround of layered flowers and branches. Polish assay marks. Ring size V. Weight 10.6gms. **£120-180**

**250**

A natural amber bead necklace. Designed as a graduated row of fifty-five oval-shape natural amber beads, measuring 0.8 to 2.2cms. Length 62cms. 35.5gms. **£150-200**

**251**

Two pieces of natural amber with insect inclusions. Both of free-form shape, the smaller containing a bristle-tail bug inclusion, the larger with a harvestman spider inclusion. Lengths 3 to 4.1cms. Weight 14gms. **£150-200**

**252**

A natural amber bead necklace. Comprising a graduated row of twenty-three barrel-shape natural amber beads measuring 1.6 to 2.3cms, to a tied cord. Length 47cms. Weight 76gms. **£1,000-1,500**

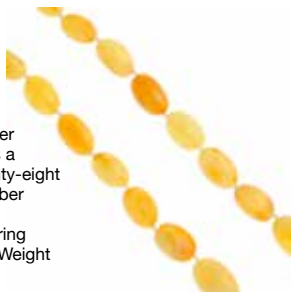
**253**

A pair of natural amber earrings. Designed as collet-set circular faceted natural amber pieces, suspending a faceted tear-drop shape natural amber drop. Lengths 4.4cms. Weight 6.4gms. **£260-360**



254

A modern natural amber necklace. Designed as a graduated row of twenty-eight oval-shape natural amber beads measuring 1 to 1.6cms, to the spring-ring clasp. Length 43cms. Weight 18.2gms. **£90-140**



259

Two graduated natural amber necklaces. The first comprising of fifty-one oval shape beads measuring 0.8 to 1.7cms, the second comprising fifty-four oval-shape beads measuring 0.7 to 2cms, to the plastic screw clasp. Thread broken to second necklace. Length of first necklace 54cms. Total weight 47.5gms. **£150-200**



263

A selection of amber pieces. To include an amber cabochon flower brooch, three amber pendants and three free-form amber pieces. (7) Lengths 2.5 to 5cms. Weight 42.8gms. **£50-80**



255

A natural amber bead necklace. Comprising a single row of forty-three oval-shape natural amber beads, measuring 1.2 to 3.1cms. Length 68cms. Weight 62.5gms. **£600-800**



260

A natural amber pipe and cheroot. The pipe with curved natural amber stem, to the bowl and 18ct gold band and rim, the cheroot of natural amber. Lengths 6 to 17cms. Weight 52.7gms. With fitted cases. **£400-600**



264

A selection of rough amber pieces. To include approximately twenty-two rough amber pieces. Approximate sizes 3 to 6cms. Weight 268gms. **£600-800**



256

A natural amber necklace. Comprising a single row of freeform natural amber beads measuring approximately 1.2 to 2.2cms. Length 69cms. Weight 111.6gms. **£30-50**



265

A reconstructed amber bead necklace. Designed as graduated oval-shape beads measuring 1 to 2.5cms to the spring ring clasp. Length 100cms. Weight 88.6gms. **£70-100**



257

An amber, quartz and plastic bead necklace. Designed as a single cord suspending three rows of flat circular natural amber beads, larger faceted circular smoky quartz beads and barrel shape plastic beads. Length 64cms. Weight 272.4gms. **£100-150**



261

Three items of amber jewellery. To include a natural amber pendant, of free-form outline, with a plain cap setting and surmount loop, together with two modified amber pendants, one a square shape cabochon, the other an oval-shape cabochon pendant, with fancy mount to a leather cord. Lengths 3.7 to 40cms. Weight 63.8gms. **£40-60**



266

Two reconstructed amber necklaces. The first a single row of colourless faceted beads and cylindrical reconstructed amber beads, the second a single row of freeform reconstructed amber beads. Lengths 64 to 65cms. Weight 136.8gms. **£20-30**



258

Four pieces of natural amber with various inclusions. To include a pear-shape piece containing a number of flying insect inclusions, a lozenge shape piece with similar inclusions and two further pieces one with a flying insect inclusion. Length 3.4 to 5.5cms. Weight 28.2gms. **£150-200**



262

Three items of gem jewellery. To include a free-form modified amber pendant, a pair of ear pendants with oval-shape modified amber cabochons to a vine and grapes motif above and an oval-shape boulder opal cabochon pendant. Lengths 2.8 to 4.8cms. Weight 16.6gms. **£40-60**



267

A selection of mainly modified amber silver and white metal jewellery. To include a rectangular natural amber cabochon pendant, an oval-shape modified amber brooch, together with various rings, pendants, earrings and bracelets. Most with marks to indicate silver. Weight 199gms. **£50-80**



268

Two pairs of 9ct gold modified amber earrings and two plastic bead necklaces. The first a pair of circular cabochon modified amber ear studs, the second a pair of oval-shape modified amber cabochon ear pendants, together with two plastic bead necklaces one AF. Earrings with hallmarks. Lengths 1 to 2.8cms. Length of necklace 76cms. Weight of earrings 4.9gms. **£60-90**



272

A bakelite bead necklace. Designed as twenty-seven graduated oval-shape beads measuring 1 to 3cms, to the spring-ring clasp. Length 57cms. Weight 51.4gms. **£500-700**



277



A cultured pearl two-row necklace. Comprising two-rows of eighty-five and eighty-nine graduated cultured pearls, measuring approximately 7.4 to 3.1mms, to the early 20th century gold circular turquoise cabochon domed cluster clasp. Length 46cms. **£150-200**

269



Two items of amber jewellery. To include a modified amber cabochon ring and an oval-shape reconstructed amber cabochon brooch in a collet setting. Brooch length 3.3cms. Ring size Q. Weight 14.3gms. **£50-80**

273



A selection of plastic, amber and costume jewellery. To include a natural amber necklace, comprising single row of oval and spherical beads, a pair of plastic heart shape ear clips, four brooches and a plastic bead necklace. Lengths 2.9 to 78cms. **£60-90**

270



A reconstructed amber necklace. Comprising a single row of oval-shape reconstructed amber beads, measuring 0.8 to 1.6cms. Length 44cms. Weight 25.1gms. **£40-60**

274

MIKIMOTO - a single strand cultured pearl necklace. Designed as a single row of cultured pearls to the bow-shape push-piece clasp set with a further cultured pearl. Length 60cms. Weight 32.9gms. With maker's case. **£50-80**



278

A graduated cultured pearl single-strand necklace. Designed as a single row of graduated pearls, to a push-piece clasp. Length 55cms. Weight 19gms. **£60-90**



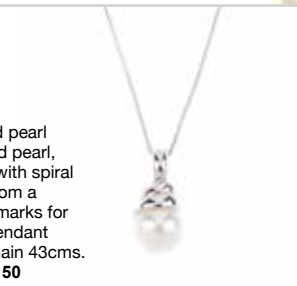
275

A three row cultured pearl necklace. The three rows of similar sized cultured pearls to the textured cylindrical push-piece clasp. Mark to indicate gold. Length 45cms. **£100-150**



279

An 18ct gold cultured pearl pendant. The cultured pearl, measuring 8.8mms, with spiral mount, suspended from a trace-link chain. Hallmarks for London. Length of pendant 1.8cms. Length of chain 43cms. Weight 4gms. **£100-150**



271



A bakelite bead necklace. The single row of oval shape bakelite beads, all measuring approximately 1.7cms, to the spring-ring clasp, later added, the original matching screw-clasp present but no longer attached. Length 3 to 36cms. Weight 55.1gms. **£120-180**

276

A cultured pearl three-row necklace, with 9ct gold garnet cluster clasp. Comprising three graduated rows of cultured pearls to the push-piece clasp set with a floral cluster of cultured pearls and a central garnet. Partial hallmark to clasp. Length 44cms. Weight 41.2gms. With associated case. **£30-50**



280

A cultured pearl necklace with late 19th century 9ct gold garnet and split pearl clasp. The double row of cultured pearls to the oval-shape push-piece clasp with central garnet, split pearl surround and a further garnet border. Length 42cms. Weight 61.8gms. With associated case. **£100-150**

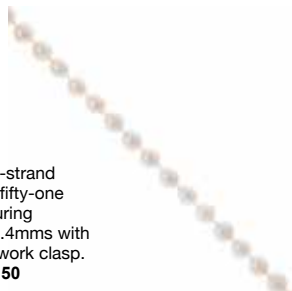


281

A three-row cultured pearl necklace, with gold clasp. The three rows of graduated cultured pearls to the circular push-piece clasp set with a central red paste and split pearl surround. (AF) Length 55cms. Weight 40.1gms. **£60-90**

**286**

A cultured pearl single-strand necklace. Comprising fifty-one cultured pearls, measuring approximately 8.1 to 8.4mms with marquise-shape openwork clasp. Length 45cms. **£100-150**

**291**

Four cultured pearl necklaces and a set of studs. The necklaces of uniform design, the cultured pearls measuring 0.4 to 0.6cms, two with spring-ring clasps, one a push-piece clasp, another a 9ct gold clasp set with a cultured pearl and two marcasites, together with five gold plated dress studs. One clasp with import marks for London, 1981. Remaining clasps with marks to indicate gold. Necklace lengths 42 to 52cms. **£80-120**

**282**

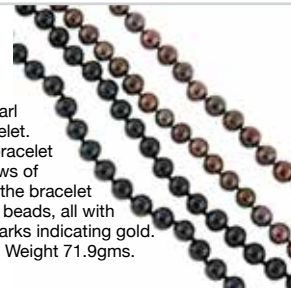
A pair of cultured pearl ear pendants. Designed as a vertical line of four circular colourless pastes to the cultured pearl drop and posts with butterfly backs. Lengths 2.4cms. Weight 3.1gms. **£20-30**

**287**

A cultured pearl necklace and bracelet. The necklace of grey tone cultured pearls, to an oval-shape push-piece clasp, the bracelet a single row of white cultured pearls, to a spherical push-piece clasp. Lengths 18 to 44cms. Weight 31.1gms. **£50-80**

**292**

Two dyed cultured pearl necklaces and a bracelet. Both necklaces and bracelet designed as single rows of dyed cultured pearls, the bracelet with alternating metal beads, all with push-piece clasps. Marks indicating gold. Lengths 18 to 42cms. Weight 71.9gms. **£120-180**

**283**

A cultured pearl necklace. Comprising a single row of roughly oval-shape vari-colour cultured pearls, to the brushed spherical push-piece clasp. Clasp with marks to indicate gold. Length 42cms. Weight 48.4gms. **£100-150**

**288**

Three pairs of cultured and imitation pearl earrings. To include a pair of cultured pearl and opal disc ear pendants, a pair of graduated cultured pearl ear pendants, together with a pair of cultured and imitation pearl and colourless paste ear pendants. Lengths 2.8 to 4cms. **£30-50**

**293**

Two cultured pearl necklaces. Both designed as single rows of cultured pearls, the first with a gold-tone oval-shape push-piece clasp, the second a silver-tone navette shape push-piece clasp. Lengths 42 to 50cms. Weight 51gms. **£40-60**

**284**

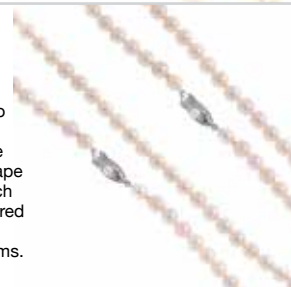
A cultured pearl necklace. Comprising fifty-nine graduated cultured pearls, to the 9ct gold cultured pearl push-piece clasp. Clasp with hallmarks for Birmingham, 1985. Length 43cms. **£40-60**

**289**

Two cultured pearl necklaces. Both single rows of cultured pearls, one with a spherical push-piece clasp, the other with a marquise shape push-piece clasp. Lengths 45 to 50cms. Weight 34.6gms. **£50-80**

**294**

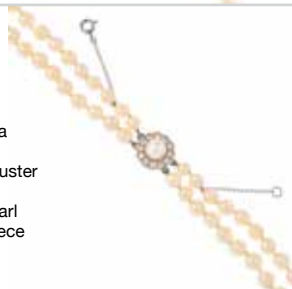
Three cultured pearl necklaces. Each of single row design, two with navette shape push-piece clasps the third with a flower-shape push-piece clasp, each set with a single cultured pearl. Lengths 38 to 40cms. Weight 81.7gms. **£90-140**

**285**

Four cultured pearl necklaces. To include one with irregular shape cultured pearls, to a spherical push-piece clasp, together with a single row of cultured pearls with a navette shape clasp set with a single pearl. Two with marks indicating gold. Lengths 42 to 46cms. Weight 168.2gms. **£40-60**

**290**

Two cultured pearl necklaces. To include a cultured pearl two row necklace with paste cluster clasp, together with a graduated cultured pearl necklace with push-piece clasp. Lengths 47 and 52cms. **£80-120**

**295**

Eight rows of freshwater cultured pearls. Each a continuous single row of freshwater cultured pearls. Lengths 73cms. **£200-300**



296×

Two early 20th century pieces. The first a carved ivory brooch, in the form of a bunch of flowers, the second an ivory aide-memoire, with decorative clasp opening to three ivory pages. Lengths 5.6 to 5.8cms. Weight 22gms. **£40-60**

297

A carved jade and diamond pendant. The jade panel, carved to depict a series of fish, is suspended from a brilliant-cut diamond accent surmount. Length 5.8cms. Weight 27gms. **£600-800**

298

A jade bead necklace. Comprising a single row of ninety-eight graduated spherical jade beads, measuring 0.3 to 0.9cms, to the spring-ring clasp. Mark indicating gold. Length 64cms. Weight 59.4gms. **£100-150**

**299**

A carved jadeite plaque. Of roughly oval outline, carved with the image of a bird of paradise, to one side with textured carved surround, to the other side a serpent or dragon, to a black cord. Length of jadeite panel 12cms. Weight 152gms. **£100-150**

**300**

A carved jade bangle. The solid circular bangle with carved repeat pattern to the edges and birds and foliage carved to the outer surface. Inner diameter 6.3cms. Width 1.7cms. Weight 95.1gms. **£60-90**

301

A carved jade pendant. The roughly rectangular shape pendant, tapered to the top, carved to depict fruit and leaves, to the simple surmount loop. Length 5.6cms. Weight 11.1gms. **£40-60**

**302**

Two jade bangles. Both designed as solid bangles of a circular profile, the first of dark green colour, the second of light green. Inner diameters 5.5 to 5.6cms. Weight 97.3gms. **£30-50**

303

Two carved jade plaques. One a rectangular panel carved as a leaping rabbit, with stylised plants surrounding, the other a big cat with similar backdrop. Lengths 7 to 8.2cms. Weight 138.4gms. **£40-60**

**304**

A selection of nephrite jade jewellery. To include a single row nephrite jade necklace of spherical beads, a hinged nephrite jade bangle with push-button clasp, an oval cabochon pendant and a further bracelet. Lengths 3.2 to 50cms. Weight 159.1gms. **£50-80**

**305×**

A turquoise and coral necklace. The chain comprising wirework, sodalite, coral and turquoise beads, suspending a pendant, designed as an abstract setting of coral and turquoise cabochons of varying shapes, with wirework detailed surround. Length of chain 40cms. Length of pendant 5.5cms. Weight 114.4gms. **£250-350**

306

A pair of 18ct gold gem earrings. Designed as concentric circles set with a diamond-shape green gem, with a similarly set blue gem below, suspending three rows of ruby beads. Hallmarks for Sheffield, 1992. Lengths 4.9cms. Weight 10.2gms. **£90-140**

**307**

A dyed sodalite necklace. Designed as a single row of spherical sodalite beads to a turned sodalite bead and a drop of two textured spherical beads and a tassel. Length 52cms. Weight 51.5gms. **£150-200**

**308×**

An enamel gem-set pendant. In the shape of a fanned peacock, the feathers in blue and green enamel, blue gems to the body and red gems to the feathers, with a mother-of-pearl and two seed pearl drops. Length 6.3cms. Weight 9.5gms. **£150-200**



309



A pair of mid 20th century earrings, each depicting a bird. Both of circular outline, with rope-twist surround, the first depicting a mallard duck in flight, the second a wading bird on grass, to the clip back. Marks indicating silver. Length 1.9cms. Weight 9.4gms. **£180-260**

313



A pair of lapis lazuli cufflinks. Designed as oval cabochons with toggle clasps. Length 2.4cms. Weight 18.3gms. **£30-50**

317X



Two gem brooches. To include a sapphire and ruby butterfly brooch and a seahorse with coral eye detail. AF. Lengths 4.6 to 5.6cms. Weight 13.3gms. **£200-300**

310



A topaz necklace. Designed as a series of oval-shape foil-backed topaz, suspended from a trace-link chain. Length 46cms. Weight 21.7gms. **£200-300**

314



A topaz single-stone ring. The oval-shape blue topaz, with tapered band. Ring size O 1/2. Weight 3.3gms. **£30-50**

318



A cameo brooch and a pair of amethyst earrings. The cameo brooch of oval-shape depicting Athena in portrait, a serpent-like creature to her helmet, together with a pair of oval-shape amethyst earrings, the faceted cabochons to the ear hooks. Lengths 3.2 to 4.3cms. Weight 21.3gms. **£40-60**

315



A pair of 18ct gold gem earrings. Designed as concentric circles set with a diamond-shape green gem, with a similarly set blue gem below, suspending three rows of ruby beads. Hallmarks for Sheffield, 1992. Lengths 4.9cms. Weight 9gms. **£90-140**

319



A malachite cross and a carved jadeite pendant. The cross pendant designed with faceted and pointed malachite arms to a central oval malachite cabochon, together with a jadeite pendant carved to depict a reptile clinging to foliage. Lengths 5 and 7cms. **£30-50**

311



An amethyst ring. Designed as a circular amethyst, collet-set to a two-tone, banded mount. Ring size P. Weight 19.2gms. **£30-50**

316



An early 20th century gold and opal cabochon necklace. Designed as a fine belcher-link chain, to the row of round and oval opal cabochons, with chain swags and further cabochon drops. Length 37cms. Weight 3.1gms. **£60-90**

320X



A coral necklace and a red plastic bead necklace. The first single row of graduated spherical beads, measuring 0.4 to 1cms, to the spring-ring clasp, together with a plastic necklace of forty-five graduated beads, measuring 0.9 to 1.3cms. Lengths 50 to 68cms. Weight of coral 18.6gms. Weight of plastic 50.7gms. **£60-90**

312



A topaz bracelet. Each link designed as a claw-set oval-shape topaz, to the push-piece clasp. With marks to indicate gold. Length 20.5cms. Weight 8gms. **£50-80**

321X



A dyed coral necklace, a pair of aventurine quartz ear studs and a bracelet comprising three rectangular panels inlaid with lapis lazuli, turquoise and red gems. Bracelet with marks to indicate silver. Lengths 18 to 44cms. Weight 123.9gms. **£50-80**

322

A lapis lazuli necklace and a freshwater cultured pearl necklace. The single row of lapis lazuli beads with alternating smaller gold-tone beads, to the ivy leaf and grape clasp, together with a single row of dyed freshwater cultured pearls to a navette shape clasp. Lengths 45 to 50cms. **£150-200**



323



A selection of earrings. To include seven pairs of earrings designed as fish inlaid with lapis lazuli and a pair of cylindrical shaped earrings decorated with embossed script and images. Lengths 5 to 7cms. **£40-60**

324

Three pairs of 9ct gold ruby earrings. All designed as gold arch-shapes, suspending three rows of graduated bouton shape ruby beads, together with four butterfly earring backs. With hallmarks. Lengths 4.1cms. Weight 25.4gms. **£70-100**



325

Two gem-set rings. The first a modified amber cabochon of oval-shape to the rope-twist surround, the second with a central oval-shape opal cabochon, to the seed pearl accents and foliate shoulders. Partial hallmark to first. Ring sizes M and O. Weight 5.7gms. **£50-80**



326

A lapis lazuli bangle, ring and earrings. The bangle of open cuff design, set with three rectangular lapis lazuli cabochons, with engraved and beaded surround, together with a pair of ear pendants designed as tear-drop shape beads and a ring with central lapis lazuli. Lengths 7.5cms. Ring size P. Inner diameter 6.1cms. Weight 101.3gms. **£70-100**



327

A selection of Blue John jewellery. To include three oval-shape pieces with rope-twist surrounds, a brooch, a pendant and a pair of ear clips. Lengths 1 to 2.8cms. Weight 11.6gms. **£40-60**



328

Two gem-set single-stone rings. Each designed as a rectangular-shape smoky quartz or purple synthetic spinel, to the openwork or tapered shoulders. Weight 12.2gms. **£50-80**



329

A lapis lazuli bracelet, necklace and earrings. The bracelet elasticated with barrel-shape panels, the ear pendants with spherical and oval-shape beads and the necklace with collet-set oval and pear-shape lapis lazuli. Lengths 4.5 to 41cms. Weight 76.9gms. **£50-80**



330

A selection of gem jewellery. To include a graduated horn bead necklace, a garnet bead necklace, an expandable rose quartz bead bracelet and various further items of gem jewellery. **£60-90**



331

A selection of gem jewellery. To include a malachite fringe necklace, a cultured pearl single-strand necklace and a pair of malachite and paste cluster earrings. Length of cultured pearl strand 46cms. **£50-80**



332x

A dyed coral necklace and earrings, a ruby in zoisite necklace and a plastic bead necklace. The dyed coral necklace with cylindrical beads, to the hook clasp, similarly designed ear pendants, a yellow plastic bead necklace with metal bead accents and a ruby in zoisite necklace with earrings. Lengths 3.4 to 48cms. **£60-90**



333

A selection of jade, butterfly wing and gem-set jewellery. To include a bracelet, the circular cabochon moonstones set to a floral cluster, to the collet-set moonstone chain, together with a circular clip, set with leaf-shape jade panels, with sea-creature designs between. (16) Lengths 2.7 to 47cms. Weight 119.2gms. **£60-90**



334

A ruby bead necklace and other items of jewellery. The necklace designed as a single row of graduated, bouton shape ruby beads, two charms set with diamonds and a spherical push-piece clasp, together with other gem necklaces, two bracelets of bouton shape ruby beads and loose ruby beads. With marks to indicate gold. Lengths 18 to 84cms. **£120-180**



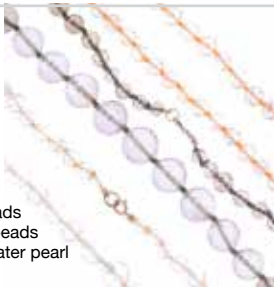
335

A quantity of semi-precious beads. To include dyed opal, dyed agate, quartz, wood, cork and imitation pearls. **£30-50**



336✕

A selection of gem necklaces and loose mainly gem beads. To include loose freeform turquoise beads, spherical garnet beads, carved leaf-shape amethyst beads and a variety of further beads including quartz, freshwater pearl and coral beads. **£50-80**



337✕

A selection of gem jewellery. To include a bone necklace designed as oval-shape discs, a dyed coral necklace, an expandable tiger's-eye bracelet and various items of jewellery. **£60-90**



338✕

A selection of gem jewellery. To include a mother-of-pearl panel expandable bracelet with transferred flower design decoration, an agate necklace, a carved bone necklace and various other items of jewellery. **£60-90**



339

A plastic bangle and a single-strand of black wooden beads. The orange and brown bangle and a necklace designed as a series of oval wooden beads. Inner diameter of bangle 6.7cms. Length of necklace 91.5cms. **£30-50**



Paste & Marcasite

340



A 1920s beaded necklace. The beading in green and gold tones, designed as five floral bead clusters, with swags comprising multiple rows of vari-size beads, to the hook clasp. Length 36cms. **£50-80**

341

A pair of early 20th century silver, red and colourless paste earrings. Both of circular design with a scalloped edge, to the centre a floral cluster of pear-shape red pastes, to the spokes and colourless paste surround, suspended from a belcher link chain to the hook backs. Lengths 4.2cms. Weight 10.7gms. **£50-80**



342

An imitation pearl and paste two-row necklace and matching ear pendants. The necklace comprising two rows of imitation pearls, to a floral junction and a further imitation pearl and colourless paste drop, together with a pair of complementing ear pendants. Lengths 6 to 45cms. **£150-200**



343

Two early 20th century brooches. To include a brooch of crown design set with circular-shape colourless pastes, together with a bar brooch, the central shield-shape panel set with diamonds and a pearl. Pearl untested. Lengths 2.5 and 3.9cms. Weight 11.7gms. **£40-60**



344



A paste collar and earrings set. The collar designed as alternating yellow and orange oval-shape pastes with colourless pastes between, together with similarly designed ear studs. Lengths 1.5 to 40cms. Weight 86.2gms. With associated box. **£60-90**

345



A selection of mainly early 20th century paste jewellery. To include a heart-shape pendant, set with turquoise cabochons, to the reverse with glazed panel deficient, together with a bar brooch by Charles Horner, set with a circular blue paste to the centre. Lengths 2 to 5.5cms. Weight 53.5gms. **£40-60**

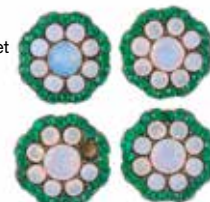
346



A selection of early 20th century paste jewellery. To include a stickpin, the kite-shape terminals with geometric design set with colourless paste, together with an oval-shape amethyst brooch with white gem accents and another in the shape of a star. Lengths 2 to 7cms. Weight 33.5gms. **£50-80**

347

A selection of marcasite and paste jewellery. To include a set of four opalescent and green paste buttons, a marcasite brooch in the shape of a gondola, together with various brooches, rings, pendants, earrings, necklaces and a bracelet. Some with marks to indicate silver. Lengths 1.3 to 42cms. Weight 267gms. **£70-100**



348

A citrine and marcasite bracelet. Designed as square-shape panels with scrolling design, each with a central oval-shape citrine, to the push-piece clasp. Length 18cms. Width 2.1cms. Weight 53.7gms. **£70-100**



353

A selection of marcasite jewellery. To include a brooch in the shape of a dragonfly, the wings inlaid with pear-shape onyx cabochons, to the marcasite body, together with another in the shape of a bow. Weight 472.5gms. **£180-260**



357

A charm bracelet with mainly enamel charms. The curb-link chain with heart-shape padlock clasp, suspending thirty five enamel place charms, including charms for Cardiff and Holland and six additional charms. Length 18cms. Weight 85.3gms. **£30-50**



349

A selection of marcasite brooches. To include one in the shape of a tortoise, one a colourless glass outer ring with green gem and marcasite accents, together with six further brooches. Lengths 3.5 to 5.9cms. Weight 74.4gms. **£60-90**



354

A quantity of marcasite jewellery. To include a brooch in the shape of a rose, set with marcasite, another in the shape of a bow to a bunch of leaves or feathers. Weight 959gms. **£100-150**



358

A charm bracelet. Of curb-link chain, suspending seventy-one charms, to include a wishing well charm and a horseshoe charm. Length 18cms. Weight 136.8gms. **£50-80**



350

Two items of marcasite and gem jewellery. The first an oval-shape pendant or brooch, the cameo depicting The Virgin Mary with a basket of flowers, to the marcasite and multi-gem surround, together with a necklace, the pendant in the shape of a cross, with centrally set, diamond shape amethyst and marcasite accents. Lengths 7.5 to 68cms. Weight 58.6gms. **£30-50**



Silver & Gold

355

A charm bracelet. The curb-link bracelet suspending a total of ten charms, to include a hinged kettle charm and a hinged grand piano charm. Length 18cms. Weight 80gms. **£60-90**



359

Three charm bracelets. All with curb-link chains, two with heart-shape padlock clasps, together suspending a total of sixty-five charms, including a wishbone charm, a horseshoe charm and one in the form of the Houses of Parliament. Lengths 18cms. Weight 195.2gms. **£70-100**



351

A large selection of marcasite jewellery. To include a brooch in the form of a bee, with a resin cabochon body and enamel wings with marcasite set to the edge, together with a brooch designed as two leaves with cultured pearl accents. Weight 960.1gms. **£100-150**



360

Two charm bracelets and three loose enamel charms. The curb-link bracelets suspending sixty-two charms, to include a hinged lamp enclosing a genie and a typewriter charm, together with three loose enamel town charms. Most with marks to indicate silver. Lengths 17 and 20cms. Weight 200.9gms. **£70-100**



352

A selection of mainly marcasite jewellery. To include a circular pendant, set with a circular red paste with a marcasite surround, together with a Wedgwood ring, the blue jasperware depicting a man with a stag. (30) Weight 122.7gms. **£50-80**



356

A charm bracelet and three loose charms. Designed as a bar-link bracelet suspending a total of eighteen charms, together with three further loose charms including a wishing well and a boot. Length of bracelet 18cms. Weight 73.4gms. **£50-80**



361

Three charm bracelets. All designed as curb-link bracelets to the heart padlock clasps, suspending a total of thirty-seven charms, to include a hinged beehive and church. A spinning charm AF. Most with marks to indicate silver. Lengths 16 to 18cms. Weight 150gms. **£100-150**



362

Three charm bracelets. All designed with curb-link bracelets, two with spring-ring clasps, one with a heart padlock clasp, suspending a total of fifty-four charms, to include a jewellery box charm and a grand piano charm. Lengths 16 to 18cms. Weight 136.9gms. **£100-150**

**367**

Two charm bracelets. The first of curb-link design, to an engraved heart-shape padlock clasp, the second of similar, finer chain, suspending a total of twenty-three charms including a donkey charm and a gondola charm. Lengths 18 to 19cms. Weight 137.2gms. **£50-80**

**372**

Three charm bracelets. A double curb-link chain, a curb-link chain and a fancy-link chain, suspending a total of fifty-six charms to include a goat charm and a lion charm. Lengths 16 to 17cms. Weight 163.8gms. **£70-100**

**363**

Two charm bracelets. The first a mid 20th century fancy-link chain suspending nine charms all in vari-colour pastel tone enamel in the shape of Caribbean islands, the second a double curb-link chain suspending twenty charms including a church charm with hinged base, opening to reveal a couple being married at an altar and a cowbell charm. Lengths 18 to 20.5cms. Weight 96.1gms. **£40-60**

**368**

Three charm bracelets. All curb-link chains, suspending a total of twenty-eight charms, to include an abacus charm and a policeman's helmet charm. Lengths 18 to 20cms. Weight 126.5gms. **£50-80**

**373****364**

Two charm bracelets. Both of curb-link design, one with a heart-shape padlock clasp, the other with a lobster claw clasp, together suspending thirty-five charms, including a moonface charm and a teapot charm. Lengths 18 to 19.5cms. Weight 147.6gms. **£60-90**

**369**

Three charm bracelets. To include a curb-link chain with a heart-shape padlock clasp, a double curb-link chain and a fancy-link chain, suspending a total of twenty-three charms, to include an owl charm and a teddy bear charm. Lengths 17 to 18cms. Weight 151.8gms. **£50-80**



Two charm bracelets. Both designed as curb-link bracelets suspending a total of thirty-three charms, to include a hinged birdcage charm and a hinged bible charm, both with heart padlock clasps. Lengths 16cms. Weight 138.6gms. **£60-90**

365

Three charm bracelets. All three bracelets of curb-link design, with heart-shape padlock clasps, suspending a total of thirty-four charms, including a gnome charm and a clog charm. Lengths 16 to 19cms. Weight 128.8gms. **£50-80**

**370**

Two charm bracelets. One a flat curb-link chain, one a curb-link chain with alternating rope-twist links, both with heart-shape padlock clasps, suspending a total of twenty-four charms, including a spaniel charm and a lizard charm. Lengths 18 to 19cms. Weight 105.1gms. **£40-60**

**374**

A selection of enamel charms. The thirty-two charms, all of shield shape each with vari-colour enamel designs for different countries and cities, including Koln, Dusseldorf, Paris and Ostende. Many with marks indicating silver. Lengths 1.5 to 2cms. Weight 34.7gms. **£30-50**

**366**

Three charm bracelets. Two of double curb-link chain, the other two of curb-link design, suspending a total of thirty-three charms, to include a drum charm and a hinged treasure chest charm. Lengths 16 to 18cms. Weight 161.1gms. **£60-90**

**371**

A selection of bracelets. To include a coin bracelet and four charm bracelets, the charm bracelets designed as curb-link chains suspending a total of thirty-eight charms, to include a train and a hedgehog charm, three with spring-ring clasps and one with a heart padlock clasp. Lengths 17 to 19cms. Weight 158.2gms. **£60-90**

**375**

Seventeen loose charms. To include a log cabin charm and a barrel charm, opening to reveal a drunk man inside. Lengths 1.3 to 2.2cms. Weight 74.3gms. **£30-50**



376

A silver hinged bangle. Designed with a central inlaid gold stepped rectangular motif to the engine turned, herringbone surround. Hallmarks for Birmingham, 1960. Width 2.5cms. Inner diameter 5.8cms. Weight 50.6gms. **£40-60**

380

Six bangles. Of hinged, torque and stone inlaid designs. Some with marks indicating silver. Inner diameter of bangles 6 to 7.7cms. Weight 619.2gms. **£260-360**

385

Four hinged bangles. All with engraved decoration, two to the half bangle, two to the full bangle. Widths 0.8 to 1.4cms. Weight 86gms. **£80-120**

377

A necklace. Designed as oval links with two central holes, interspaced by carnelian, dyed agate and nephrite jade spherical beads, to the spring-release clasp. Length 140cms. Weight 89.5gms. **£80-120**

381

A selection of jewellery. To include an opal doublet ring, a carnelian ring, a brooch, together with a pair of shell and marcasite cameo stud earrings. Ring sizes J to H. Total weight 18.3gms. **£40-60**

386

A selection of jewellery. To include a sponge coral bracelet, an Albertina, a hinged acorn pendant opening to reveal an enamel squirrel, an abstract pendant set with a circular quartz, together with further items of jewellery. (12) Weight 246gms. **£220-320**

378

Two hinged bangles. The first a silver bangle with hexagonal repeat texture to the full-bangle, the second with floral and foliate engraving to the half-bangle. Hallmarks for Birmingham, 1966 and London, 1967. Inner diameters 6 to 6.1cms. Weight 102.5gms. **£40-60**

382

Three pendants, one chain and a necklace. The first pendant an oval moonstone with tiered surround, the second a heart-shape paste with a surround of flower shapes setting circular colourless pastes, together with a further necklace with enamel palm tree pendant and a box-link chain. Length 45cms. Weight 37.9gms. **£50-80**

387

Five hinged bangles. All with engraved foliate design to the half bangle. Widths 0.7 to 1.2cms. Inner diameters 5.9 to 6.3cms. Weight 78gms. **£70-100**

379

Three gem necklaces. The first designed as pear-shape emeralds with accenting diamond clusters, to a box-link chain, the second a 9ct gold necklace with pear-shape cubic zirconia and a further cubic zirconia cluster necklace. Second with hallmark. Lengths 42 to 44cms. Weight 8.3gms. **£80-120**

383

A selection of synthetic opal jewellery. To include a pair of oval-shaped ear pendants, with post backs, a pear-shape synthetic opal pendant and an oval synthetic opal pendant with marcasite surround and two further items. Lengths 1.4 to 3.7cms. Weight 17gms. **£50-80**

388

Two items of jewellery. To include a large circular brooch with central script surrounded by circular red glass cabochons, together with a necklace designed as spherical filigree beads to the push-piece clasp. Lengths 6.6 and 60cms. Weight 80gms. **£70-100**

384

SUARTI - a silver necklace and a bracelet. The necklace designed as a circular carnelian cabochon within a decorative surmount suspended from a fancy chain, together with a bracelet of similar design suspending an elephant charm, both with T-bar clasps. Hallmarks for Birmingham, 2006. Lengths 19.5 and 43.5cms. Weight 56.9gms. **£40-60**

389

Two hinged silver bangles. Both with engraved scrolling acanthus leaf decoration to the half bangle. Hallmarks for Birmingham 1959 and 1965. Widths 2.5cms. Inner diameters 5.8 and 6cms. Weight 82.5gms. **£80-120**

390

A selection of silver and white metal jewellery. To include three lockets, two suspended from chains, a late Victorian silver brooch, a floral marcasite brooch and a Scottish silver sword and shield brooch by Robert Allison. (6) Five with marks to indicate silver. Lengths 3.8 to 67.5cms. Weight 77.6gms. **£70-100**



395

Two silver hinged bangles. The first of overlapping clasp design with engraved ivy leaf decoration and rope-twist detail to the clasp, the second with engraved scrolling acanthus detail to the half bangle. Widths 1.8 and 2.8cms. Inner diameters 5.9 and 6.1cms. Weight 74.9gms. **£30-50**



400

Three military brooches. To include two RAF wing brooches, one with blue and red enamel detail, together with a United States Forces In England brooch of circular and bow design with red, blue and white enamel. Both with marks to indicate silver. Lengths 4 to 5.7cms. Weight 20.4gms. **£50-80**



391

Two hinged silver bangles. The first, a late 19th century bangle, engraved with decoration to one half depicting a central bird within an ivy leaf surround, the second with engraved scrolling acanthus leaf decoration. Second with hallmarks for Birmingham, 1961. Widths 3.7 and 3.8cms. Inner diameters 6 and 6.3cms. Weight 76.9gms. **£70-100**



396

Six silver and white metal brooches. To include an early 20th century silver swallow brooch set with colourless paste, three marcasite brooches, and two further brooches. All with marks to indicate silver. Lengths 2.8 to 4.7cms. Weight 50.2gms. **£70-100**



401

Four bangles. To include three hinged bangles, all with engraved foliate decoration, together with a bangle, the central band of detail depicting flowers, fish and birds. Three with marks to indicate silver. Widths 0.7 to 2.5cms. Weight 133.6gms. **£60-90**



392

Two curb-link necklaces and two bracelets. One necklace with a figure-of-eight clasp, one with a spring-release clasp, the first bracelet of thick curb-link design, the second of belcher-link design with a T-bar clasp and suspending two heart-shape panels. One clasp AF. All with marks to indicate silver. Lengths 19 to 48cms. Weight 171gms. **£70-100**



397

Three hinged bangles. The first designed with three panels depicting engraved birds, the second with applied bird, leaf and butterfly detail, the third with engraved scrolling acanthus leaf decoration. Two with hallmarks for Birmingham, 1969 and 1988. Widths 1.2 to 2cms. Inner diameters 5.8 to 6.2cms. Weight 78.8gms. **£30-50**



402

A selection of silver and white metal jewellery. To include a labradorite pendant and a silver ingot pendant with decorative hallmark for 1977. Weight 223.1gms. **£80-120**



393

A selection of bangles and bracelets. To include a wide panel bracelet, each panel embossed to depict grape vines, together with a bracelet designed as circular and heart-shape links to the push-piece heart-shaped clasp. (5) Three with marks to indicate silver. Length 18.5cms. Inner diameters 5.5 to 6.3cms. Weight 165gms. **£150-200**



398

A selection of brooches. To include a brooch in the shape of a Highland Terrier, together with a harp shape brooch set with green hardstone. Lengths 2 to 7cms. Weight 45gms. **£40-60**



394

A scent bottle, pendant and two brooches. The scent bottle embossed with a lady in profile, suspended from a belcher-link chain, together with two filigree brooches, each designed as a pair of shoes suspended from a bow brooch, both with green and blue enamel detail. Lengths 3.5 to 68.5cms. Weight 23.6gms. **£40-60**



399

Two silver hinged bangles. Both with engraved scrolling floral and foliate design to the half bangle. Hallmarks for Birmingham 1937 and 1963. Widths 2.8 and 3.1cms. Inner diameters 6cms. Weight 97.7gms. **£40-60**



403

Three hinged bangles. All with engraved foliate decoration to the half bangle, two with personal inscriptions. Two with marks to indicate silver. Widths 1.7 to 2.7cms. Inner diameters 5.4 to 5.7cms. Weight 104gms. **£40-60**



404X

A selection of silver and white metal jewellery. To include a silver brooch of convex rectangle shape, set with two split pearls and a circular blue gem cabochon through the central indentation, together with a pendant of rectangular shape set with sponge coral and a split pearl. Two with hallmarks for Edinburgh. Lengths 1.5 to 18cms. Weight 80.9gms. **£30-50**



405

A selection of bangles. To include four silver hinged bangles pierced with scrolling design, together with five rolled gold hinged bangles, of plain design with rope-twist edging. Silver bangles with hallmarks for Sheffield. Widths 0.6 to 1.5cms. Weight of silver bangles 111gms. Weight of rolled gold bangles 51.8gms. **£40-60**



406

Seven brooches. To include a brooch by Ola M Gorie, in the form of a flying gull, an early 20th century oval-shape brooch with applied lettering reading 'Baby' and engraved around, together with a Scandinavian abstract leaf brooch. Hallmark for Birmingham, 1908. Lengths 3.1 to 65.3cms. Weight 53.6gms. **£40-60**



407

A selection of silver and white metal jewellery. To include a hinged bangle the banded texture to the two lion head terminals, each with a ring to its mouth gripping a safety chain, together with a silver embossed letter opener. Bangle stamped Depose. Lengths 2.1 to 10.8cms. Weight 81.1gms. **£60-90**



408

A selection of jewellery. To include a Scottish agate brooch, the scalloped edge set with vari-colour agate, together with a bar brooch set with a rectangular citrine, to the stylised shoulders. Lengths 1.6 to 9.4cms. Weight 128.8gms. **£30-50**



409



A selection of silver and white metal jewellery. To include a pair of earrings, of circular design, the central moonstone cabochon to the applied leaves around and blue gem accents, together with an oval-shape agate brooch. (15) Weight 146.3gms. **£50-80**

410

A selection of silver and white metal jewellery. To include an agate pendant, a further pendant, a gem-set brooch, two pairs of earrings and eight rings. (13) Some with marks to indicate silver. Lengths 0.6 to 4.6cms. Weight 73.1gms. **£60-90**



411

A selection of silver and white metal jewellery. To include a silver bangle in the form of a snake, with textured back and interior, a pair of complementing ear pendants and an engraved silver bangle. (9) Hallmark for Birmingham, 1961 and London, 1987. Lengths 5.2 to 7.6cms. Weight 156.6gms. **£50-80**



412

A selection of jewellery. To include a retractable pencil with casing designed as an enamel sarcophagus, a circular micro mosaic brooch depicting a Maltese cross, a hinged silver bangle, a jet 'Mother' brooch, a vulcanite hand brooch, together with further items of jewellery. **£70-100**



413

A selection of jewellery. To include an abstract curl design brooch, an oval agate brooch and a cameo brooch, depicting to the carved shell, a flower. Lengths 2.8 to 45cms. Weight 34.5gms. **£30-50**



414

A selection of silver and white metal jewellery. To include an enamel brooch, a green and colourless paste cluster ring, a silver openwork ring, an aventurine quartz pendant, together with a number of jewellery items. Hallmarks for Birmingham, 1975. Total weight 591gms. **£240-340**



415

A selection of silver and white metal jewellery. To include a silver bracelet, two silver ingots, together with a number of jewellery items. Hallmarks for London, 1928 and Birmingham 1976 and 1977. Total weight 276gms. **£60-90**



416

A selection of rings. To include a ring with a circular white opal, to the geometric surround, a channel set multi-gem ring and a Pandora ring with faceted pale green gem. (35) Weight 118.7gms. **£50-80**



417X

A selection of silver and white metal gem-set jewellery. To include a torque bangle with faceted gem terminals, an abalone shell butterfly brooch, a coral filigree bracelet and further items of jewellery. Most with marks to indicate silver. Weight 235gms. **£60-90**



418

A selection of silver and white metal jewellery. To include a blue-purple and colourless cubic zirconia cluster ring, a red and colourless cubic zirconia two-stone crossover ring, together with a green and colourless cubic zirconia cluster ring. (36) Many with marks indicating silver. Weight 170.9gms. **£60-90**



423

A selection of silver and white metal gem-set rings. One set with a lapis lazuli cabochon, another with a circular red paste and another with a rectangular malachite cabochon. (51) Some AF. Weight 239.8gms. **£80-120**



428

A selection of silver and white metal jewellery. To include a marcasite watch, a marcasite bracelet, a cross pendant suspended from a curb-link chain and various other items of jewellery. Many with marks to indicate silver. Weight 394gms. **£180-260**



419

A selection of silver and white metal jewellery. To include seven bangles, various chains, a pair of black and white enamel cufflinks and further items of jewellery. Most with marks to indicate silver. Weight 247gms. **£60-90**



424

A selection of silver and white metal jewellery, with further costume jewellery items. To include a charm bracelet suspending fifteen charms, with further rings, pendant and earring and costume jewellery necklaces and bracelets. (19) Total estimated weight of silver and white metal items 140.5gms. **£60-90**



429x

A selection of silver and white metal mainly gem-set jewellery. To include a mesh brooch in the shape of a stylised butterfly, with applied collet-set coral and turquoise cabochons and enamel detail to the coral bead drop, together with an oval shape rose quartz pendant. Weight 707gms. **£200-300**



420x

A selection of silver and white metal rings. To include a sovereign ring with scroll detail to the shoulders, another set with mother-of-pearl and a seven stone ring by Ti Sento set with orange pastes. (approximately 90) Weight 383.8gms. **£100-150**



425

A selection of silver and white metal mainly gem-set jewellery. To include a large multi-gem cabochon bracelet, an oval rose quartz cabochon pendant, an amethyst and labradorite bracelet and further items of jewellery. Most with marks to indicate silver. Weight 695gms. **£180-260**



421

A selection of silver and white metal jewellery. To include twenty four rings, together with five pairs of earrings, a bracelet and a pendant with chain. The leopard pendant, may be worn as a brooch, with hallmarks for London. Total weight 175gms. **£90-140**



426

A selection of silver and white metal jewellery. To include a pave-set cubic zirconia stylised angel wing pendant, a cubic zirconia hinged bangle and a similarly-set snowflake pendant. Some with marks indicating silver. Weight 201.4gms. **£80-120**



430

A selection of silver and white metal jewellery. To include a blue synthetic quartz bracelet, a Mexican bracelet, a graduated Greek-key link bracelet and further items of jewellery. (16) Many with marks to indicate silver. Weight 364gms. **£180-260**



422

A selection of silver and white metal jewellery. To include a Masonic brooch, the oval-shape vari-colour enamel panel, to the textured star-shape mount, together with a silver penknife with engine-turned handle. Weight 513.4gms. **£120-180**



427

A selection of silver and white metal gem-set rings. To include a banded agate ring of oval claw-set design and an oval-shape fluorite cabochon ring. Weight 299.5gms. **£80-120**



431

A selection of silver and white metal rings. Many of the same scrolling floral design set with a split pearl, together with a tiger's-eye cabochon ring, a marcasite cluster ring and further rings of varying designs. (105) Many with marks to indicate silver. Weight 510gms. **£240-340**



432



A selection of silver and white metal bangles. To include a plain open bangle of concave profile, a closed bangle with curb-link chain design through the centre and a torque style bangle with geometric black enamel design. Weight 557.5gms. **£150-200**

433



Fifty-nine silver and white metal rings. Of varying designs, many set with different coloured cubic zirconias and paste, some gem-set. Many with marks to indicate silver. Weight 257gms. **£120-180**

434



A selection of silver and white metal bangles. To include a tapered open bangle, set with a circular lapis lazuli cabochon, together with a closed plain bangle. Many with marks indicating silver. Weight 559gms. **£150-200**

435



A selection of silver and white metal jewellery. To include an early 20th century large silver frame, AF, a silver buckle, a curb-link identity bracelet and further items of jewellery. Most with marks to indicate silver. Weight 614gms. **£150-200**

436✕



A selection of silver and white metal bangles. The hammered bangle with textured edge, together with an open bangle with wirework detail, set with three coral cabochons. Weight 709.7gms. **£200-300**

437



A selection of silver and white metal jewellery. To include a pair of John Hardy cufflinks, a pair of multi-gem ear pendants, together with various pendants, earrings, brooches and a bracelet. Many with marks to indicate silver. Lengths 1.5 to 42cms. Weight 292gms. **£120-180**

438✕



A selection of silver and white metal jewellery. To include a torque collar, a mother-of-pearl and silver teddy bear rattle, a malachite brooch and further items of jewellery. Most with marks to indicate silver. Weight 502gms. **£120-180**

439



A selection of filigree jewellery. To include a pendant in the form of a cross, each panel in decorative filigree work, together with a flower-shape brooch. Weight 673gms. **£150-200**

440



A selection of silver and white metal bangles. To include a hinged silver bangle, engraved with acanthus leaves to the half-bangle and a closed bangle with gold-tone accents. Weight 703.3gms. **£200-300**

441



A selection of silver and white metal jewellery. To include a Siam bracelet, the rectangular niello panels depicting dancing characters, together with a gate-link bracelet and a curb-link chain bracelet with heart-shape padlock clasp. Weight 683gms. **£200-300**

442

A selection of silver and white metal gem-set jewellery. The navette shape brooch with scrolling border and flower detail to the tiger's eye cabochon, together with a bar brooch, set with an oval red paste, to the wirework mount. Weight 661.9gms. **£200-300**



443



A selection of silver and white metal jewellery. To include two small trinket boxes, the first a hinged box of shell shape, with a scalloped edge and foliate engraving to the lid, the second a circular box with scroll detail to the base, together with a number of pendants and further jewellery items. Weight 426.5gms. **£100-150**

444



An elephant hair ring. The solid band with elephant hair inlaid into two parallel channels, with heart-shape motifs accenting. Ring size S 1/2. Weight 4.8gms. **£120-180**

445



A pair of turquoise earrings. Designed as spheres set with circular turquoise cabochons, suspending a bell-shape drop set with further turquoise, to the tassel below. Length 5cms. Weight 8.9gms. **£660-860**

446



A diamond and enamel brooch. Of oval outline, the central blue enamel panel with diamond-set flower to the ridged border and further diamond surround. Length 2.9cms. Weight 7.5gms. **£150-200**

447



A pair of citrine brooches. Each set with three claw-set oval-shape citrines, with floral wirework detail. Lengths 2.4cms. Weight 5.7gms. **£60-90**

448

A pair of gem ear pendants. The ear hooks collet-setting coloured gem cabochons, two chains with seed pearl station and a floral drop set with circular cabochons and seed pearl accents. Lengths 5cms. Weight 4.1gms. **£50-80**



449

A pendant. Of oval outline, the engraved panel, with grooved crossover detail and vacant setting. Length 5cms. Total weight 11gms. **£150-200**



450

Six rings. The first a tiered cluster of circular diamonds, to a tapered band, the second a decagon shape ring, each side engraved with foliate and floral designs, together with a further four gem-set rings. All with marks indicating gold. Ring sizes all P. Weight 11.6gms. **£90-140**



451



Two brooches. The first an oval shape cameo carved to depict The Three Graces, to the rope-twist surround, the second designed as abstract branches with vine leaves and three cultured pearls set to the brooch. Hallmark for London. Lengths 2.8 to 3.5cms. Weight 9.9gms. **£60-90**

452



Three brooches, a locket and two pendants. To include a late Victorian 9ct gold horseshoe and ivy motif brooch, an early 19th century memorial brooch with woven hair panel and floral embossed surround, a 9ct gold 1970s cultured pearl trefoil openwork pendant, together with three further items. One AF. Two with hallmarks for Birmingham, 1891 and 1971. Weight of hallmarked items 4.2gms. **£100-150**

453



An elephant hair bangle and ring. The ring designed as hair, to the oval-shape metal panel, the hair bracelet, with a metal band wrapped around it. French assay mark. Inner diameter of bracelet 7.2cms. Ring size K. Weight 1.9gms. **£80-120**

454



Two rings. The first a late Victorian gold ring designed as a memorial ring with an engraved shield-shape cartouche, with date and monogram to the woven hair inlaid to the channel and panels reading 'In memory of', the second of elephant hair with a band of metal wrapped diagonally around it. Ring sizes O and P. Weight 3.4gms. **£60-90**

455



A 9ct back and front locket and two 9ct gold pendants. The first of heart-shape with a split-pearl surround and turquoise set in a trefoil design to the centre, the second a heart-shape locket, with floral engraving and the name 'Bernice' to the centre, together with one further pendant set with split pearls and turquoise cabochons. Lengths 2 to 3cms. Weight 6.8gms. **£80-120**

456

A selection of jewellery. To include a signet ring, set with an oval-shape bloodstone to the tapered band, together with a pair of oval-shape cufflinks with engraved border. Some AF. Hallmark to one for Chester, 1888. All with marks to indicate gold. Lengths 0.6 to 44cms. Weight 35.8gms. **£180-260**



457

Three pairs of earrings and a stickpin. To include a claw stickpin grasping a spherical bead, together with two pairs of earrings and two jewellery components. Length of stickpin 5cms. Length of earrings 0.7 to 2.6cms. Weight 6.9gms. **£70-100**



458X

A selection of silver and white metal jewellery. To include an early 20th century 9ct gold, silver, coral, diamond and marcasite ring, a pair of marcasite and cultured pearl ear pendants, a medallion, a continental pendant and further items of jewellery. (8 and 3 single earrings) Most with marks to indicate silver. Lengths 0.7 to 51cms. Weight 60gms. **£40-60**



459

A pair of cameo earrings and a brooch. The earrings designed as oval-shape cameos, depicting a lady in profile, suspended from a flower-shape mount with post back, together with an oval-shape brooch with inlaid floral design. Lengths 2 to 2.6cms. Weight 7.4gms. **£70-100**



460

Four items of gold jewellery. To include an oval-shape cameo carved to depict a lady in profile, to the twist surround, together with a cultured pearl stickpin, an opal stickpin and a quatrefoil shape brooch set with turquoise. Lengths 2.3 to 5.8cms. Weight 22.9gms. **£90-140**



461

A selection of jewellery. To include a 9ct gold cameo ring, a cameo brooch, two 9ct gold watch heads, one attached to a leather watch strap, together with a 9ct gold watch strap. Four with hallmarks. One with marks to indicate gold. Lengths 3 to 16cms. Weight 52gms. **£180-260**



464



CHRISTIAN DIOR - a necklace and matching earrings. The necklace designed as a row of imitation moonstone beads and two rows of pale blue and colourless vari-shape pastes, to the hook and eye extender clasp, together with a pair of similarly styled ear clips. Lengths 3.9 to 38cms. With maker's case. **£100-150**



467



FREY WILLE - a bangle. The hinged enamel bangle with blue, gold and black enamel detail and concealed clasp. Signed Frey Wille, Made in Austria. Inner diameter 5.8cms. With maker's pouch and case. **£70-100**

468



GUCCI - a necklace and a bracelet. Both of ball-link design with T-bar clasps engraved 'Gucci'. Lengths 20 to 42.5cms. Weight 43.4gms **£40-60**

Designer Jewellery

462



BUTLER & WILSON - two necklaces. The first designed as an imitation pearl heart locket with foliate bow surmount and spacer to the snake-link chain, the second designed as a circular paste cluster suspended from a series of similarly-set bar links. Signed Butler & Wilson. Length of locket necklace 51.5cms. With maker's case. **£40-60**

465



FREY WILLE - a bangle. The hinged enamel bangle, with white, gold and black foliate detail and concealed clasp. Signed Frey Wille, Made in Austria. Inner diameter 5.8cms. With maker's case. **£70-100**

469



GUCCI - a bracelet and a pendant. The bracelet a ball-link chain with a heart-shape charm made from two interlinking letter 'G's, the necklace also a ball-link chain suspending a rectangular pendant, engraved 'Gucci'. Lengths 16 to 51cms. Weight 36.3gms. Each with a maker's box and pouch. **£70-100**

463



CHANEL - an enamel necklace. The flat-curb link chain suspending a circular pendant, the pink enamel with flower design and a CC logo to the middle. Length 42cms. **£80-120**

466



FREY WILLE - an enamel pendant. Designed as a polychrome enamel disc and detachable hinged surmount, suspended from a fabric cord. Signed Frey Wille. Diameter of disc 4.8cms. Length of cord 45cms. With maker's case. **£50-80**

470

HERMÈS - a leather cord bracelet. Designed as a brown leather cord, looping twice, to the figure-of-eight shape clasp. Clasp does not close flush. Signed Hermès. Length 38cms. **£90-140**



471



KNOLL & PREZINGER - a mid 20th century paste and enamel tiger brooch. Designed with black enamel stripes, alternating with stripes set with circular colourless pastes. With maker's marks. Length 5cms. Weight 14.9gms. **£50-80**



472



LALIQUE - a necklace. Designed as a series of tulip-shape beads closely linked to a belcher-link chain, to the lobster claw clasp. Length 40cms. Weight 181.9gms. With maker's case. **£150-200**

476



LINKS OF LONDON - a pair of silver novelty cufflinks. Each designed as a golf bag with clubs and a half golf ball, connected by a chain. Maker's marks for Links of London. Hallmarks for London, 2000. Length of cufflink faces 1.2 and 2.4cms. With maker's case. **£30-50**

480

SHAUN LEANE - a silver diamond and enamel pendant and earring set. The necklace designed as a long belcher-link chain, suspending a branch-like pendant with cultured pearl accents and three cream enamel flowers, each set with a diamond to their centre, the earrings also designed as enamel and diamond flowers. With maker's marks. Lengths 1.2 to 84cms. Weight 21.9gms. With hallmarks. With maker's case. **£80-120**



477

MICHAELA FREY - five items of jewellery. To include a hinged bangle with inlaid vari-colour panels in abstract patterns, together with an oval-shape locket, the front with blue and gold-tone enamel tree design. Inner diameters 4.5 to 6.7cms. **£60-90**



481

SWAROVSKI - a selection of jewellery. To include a brooch in the form of a faceted paste tulip flanked by long leaves, together with a necklace, the curb-link chain suspending a tear-drop shape pendant set with colourless pastes. (21) All with maker's marks. Lengths 0.5 to 44cms. Three with maker's cases. **£60-90**



473

LALIQUE - a silver bangle, the open bangle designed as a square glass panel depicting a face in relief, with sea creatures either side, to the wavy sides. Signed Lalique. Inner diameter 5.9cms. Weight 18.3gms. **£30-50**



478

PANDORA - a stocking charm. The stocking with a bow to one side and toys visible to the opening. With maker's marks. Length 1.3cms. Weight 4.3gms. **£10-20**



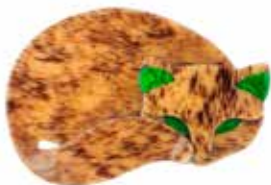
482



THEODOR FAHRNER - a brooch. The circular-shape amethyst cabochon, with square-shape twisted rope halo. AF. Signed Fahrner. Length 3cms. Weight 12.8gms. **£100-150**

474

LEA STEIN - a cat brooch. Comprising a mottled brown plastic body with green plastic detail to the eyes and ears. Signed Lea Stein, Paris. Length 7cms. **£40-60**



479

POPPY DANDIYA - a pair of gem-set ear studs and a ring. The ear studs of circular outline, each set with a central circular garnet cabochon surrounded by four amethyst cabochons, the ring collet set with circular amethyst cabochons with beaded and rope-twist detail. With maker's marks. With marks to indicate silver. Ear stud diameters 2.3cms. Ring width 0.9cm. Ring size O. Weight 16.8gms. **£40-60**



483

THEODOR FAHRNER - a brooch. Designed as a scalloped, spiral motif bar, with circular-shape blue paste highlight. Signed Fahrner. Length 7.1cms. Weight 6.7gms. **£100-150**



484

TIFFANY & CO. - a pendant and chain. The ball-link chain suspending an oval-shape pendant reading 'Please return to Tiffany & Co. New York'. Length 80cms. Weight 26.2gms. **£70-100**



489

TIFFANY & CO. - a pendant with cord chain. The cord of rubber-like material, cinched to a metal junction and suspending a rectangular pendant with enamel Roman numerals. With maker's marks. Length 25cms. Weight 15.6gms. With maker's pouch. **£70-100**



493

TIFFANY & CO. - a pendant and chain. The snake-link chain suspending a lozenge-shape pendant of concave profile, stamped T&Co. 1837. Length 45cms. Weight 12.5gms. **£60-90**



485



TIFFANY & CO. - an identity bracelet. Designed as a central plain curved panel to the box-link chain. Signed Tiffany & Co. Length 17cms. Weight 17.3gms. **£50-80**

490

TIFFANY & CO. - an Atlas pendant and chain. The fine belcher-link chain suspending a circular pendant, the open border with Roman numeral detail. Length 41cms. Weight 4gms. **£60-90**



494



YVES SAINT LAURENT - a limited edition 1960s sodalite necklace. The collar of undulating ribbon design set with three pieces of polished sodalite to the hook clasp. Signed Yves Saint Laurent Rive Gauche Made in France. Length 36cms. **£600-800**

486

TIFFANY & CO. - a ring. Designed as a concave band ring stamped 925 T & CO 1837. Signed Tiffany & Co. Ring size I. Weight 7gms. With maker's pouch. **£30-50**



491

TIFFANY & CO. - a ring. Designed as a concave band ring, stamped to the edges 925 T & Co. 1837. Signed Tiffany & Co. Ring size J 1/2. Weight 4.7gms. **£30-50**



487

TIFFANY & CO. - a pendant and chain. The ball-link chain suspending a heart-shape pendant reading 'Please Return to Tiffany & Co. New York'. Length 46cms. Weight 15gms. **£70-100**



492

TIFFANY & CO. - a necklace. The ball-link chain suspending an oval shape dog-tag style pendant stamped 'Please return to Tiffany & Co. New York'. Length 84cms. Weight 25.3gms. With maker's box. **£60-90**



495

A selection of designer jewellery. To include a pendant in the shape of a cross, designed as bamboo canes, together with an asymmetric ring by Emporio Armani and a Christian Dior flower brooch. (8) Lengths 3 to 42cms. **£80-120**



488

TIFFANY & CO. - a key ring. Designed as a U-shaped key ring to the ball terminals, suspending a heart-shape tag. Signed Tiffany & Co. Length 5.3cms. Weight 20gms. **£30-50**



496

A selection of mainly designer jewellery. To include a Charles Horner enamel brooch of pale blue colour in a quatrefoil shape, together with a pair of N.E. From cloak clips of plain oval design and a single Georg Jensen cufflink, designed as a circle with a boat in relief. Lengths 2.1 to 16.5cms. Weight 58.6gms. **£60-90**



497

A Gucci necklace and a Links of London charm. The Gucci necklace designed as a ball-link chain, to the T-bar clasp engraved 'Gucci', the charm of roughly oval shape, with three indentations to either side. Lengths 2.4 to 39cms. Weight 30.6gms. **£60-90**



498

A selection of designer jewellery. To include a heavy-weight curb-link bracelet, with rectangular compartment reading 'Dior', hinging open to reveal two lip glosses within, together with a ring by Calvin Klein, set with tapered black resin. Lengths 1.5 by 55cms. **£50-80**



499

Two items of designer jewellery. The first a lozenge-shape Mikimoto mirror with applied heart-shape and a key-shape charm to the chain, with fitted pink case, together with a Givenchy chain suspending a 'G' shape pendant. Length 39cms. **£40-60**



500



A selection of designer costume jewellery. To include a textured cuff bangle, by Sphinx, two necklaces by Chantal, the first of South American style design, together with a pair of Swarovski ear studs. All with maker's marks. Lengths 7.4 to 50cms. **£50-80**

Scandinavian & Enamel

501



ELVIK & CO. - an enamel bracelet. Comprising eight links designed as stylised shells in purple guilloche enamel to the push-piece clasp. With maker's marks. Length 21cms. Weight 43gms. **£60-90**

502



GEORG JENSEN - a silver collar. Designed as a series of rectangular panels with stylised flowers to the concealed push-piece clasp. Signed Georg Jensen, 56. Length 34cms. Weight 102gms. With fitted box. **£300-400**

503

GEORG JENSEN - a silver bird brooch. Of roughly circular outline, the bird with foliate surround. Signed Georg Jensen, 70. Length 6.1cms. Weight 26.8gms. **£120-180**



504

GEORG JENSEN - a necklace. Comprising ten links, each with hooks to the terminals, and a circular link between. Signed Georg Jensen, 175. Length 64cms. Weight 38.2gms. **£340-440**



505



GEORG JENSEN - a pair of cufflinks. Each designed as a circular-shape panel, depicting a Viking long boat. Stamped Georg Jensen, Denmark 925. Diameter 2cms. Weight 15.7gms. **£80-120**

506

GEORG JENSEN - a brooch. Designed as a stylised open flower. Signed Georg Jensen, 107. Length 3.4cms. Weight 7gms. **£50-80**



507

GEORG JENSEN - a pair of silver cufflinks. Each designed as two tapered panels, with connecting bar. Signed Georg Jensen. Import marks for London, 1963. Length of cufflink face 2.3cms. Weight 17.9gms. **£50-80**



508

GEORG JENSEN - a silver brooch. Of heart-shape with a bird and plants. Signed Georg Jensen, 239. Hallmark for London, 1953. Length 4.1cms. Weight 15.5gms. **£100-150**



509

GEORG JENSEN - a brooch. Of oval outline, depicting a kneeling deer with stylised leaves around. Signed Georg Jensen, 256. Length 4.5cms. Weight 15.3gms. With associated maker's case. **£100-150**



510



GEORG JENSEN - three singular cufflinks. Each designed as a rectangular or circular-shape panel, with hinged back fitting. Signed Georg Jensen. Length of cufflink faces 1.8 to 2cms. Weight 26.1gms. **£30-50**

514



LAPPONIA - a ring. Of abstract curved design. With maker's marks. Ring size M. Weight 6.8gms. **£60-90**

518



A selection of mainly enamel jewellery. To include a purple enamel James Fenton stickpin terminal, two enamel Charles Horner pendants, a further Charles Horner enamel brooch, a Scandinavian white enamel twisted circular brooch and four further items. Seven with marks to indicate silver. Lengths 2 to 4.3cms. Weight 41gms. **£80-120**

511



GEORG JENSEN - a brooch. The square-shape with two birds perched to a central ear of corn. Signed Georg Jensen, 250. Length 3.9cms. Weight 19.1gms. **£60-90**

515



Four Scandinavian brooches. The first designed as a yellow guilloche enamel butterfly by David Andersen, the second by Norne, a white enamel flower, together with a wirework and enamel brooch with flower-shape swags. Three with maker's marks. Lengths 2.6 to 4.7cms. Weight 19.5gms. **£50-80**

519



A selection of enamel jewellery. To include cloisonné pieces, many brooches, bangles, earrings, necklaces, also including pieces by Fish. Some AF. **£60-90**

516



J AITKEN & SON - two enamel brooches. The first in the form of a butterfly with yellow enamel wings and red enamel spots, the second in the shape of a dragonfly in lilac enamel, with green enamel to its body. Lengths 5 to 6.4cms. Weight 24.4gms. **£30-50**

520



HILA RAWET KARNI - twenty items of Industrial Jewellery and ten titanium rings not by Hila Rawet Karni. The industrial jewellery to include wire necklaces, bracelets and ear pendants, together with ten titanium rings not by Hila Rawet Karni. Six titanium rings with boxes. **£60-90**

512



HANS MYHRE - a Norwegian enamel bracelet. Designed as panels of graduated interlocking, yellow guilloche enamel curves, to the push-piece clasp. With maker's mark. Stamped 925S Sterling Made in Norway. Length 16.5cms. Width 3.8cms. Weight 38.5gms. **£40-60**

517



An enamel necklace. Designed as a fancy-link chain (AF), with four butterfly shape junctions, each coloured in blue, red and yellow enamel to the similarly designed drop. Length 44cms. Weight 9.1gms. **£50-80**

521



GUAYASAMIN - a necklace with turquoise cabochon. Designed as a fancy rectangular-link chain, suspending a pendant of hinged concentric squares, to the central star, set with a turquoise cabochon. Signed Guayasamin. Length of chain 65cms. Length of pendant 7cms. Weight 78.6gms. **£200-300**

513



JENS TAGE HANSEN - a Danish silver abalone shell necklace. The kite-shape abalone shell panel, with tapered bar surmount, suspended from a curved bar and fancy-link chain. Maker's marks for Jens Tage Hansen. Import marks for Sheffield, 1990. Length of pendant 6cms. Length of chain 41.5cms. Weight 25.1gms. **£60-90**

Costume Jewellery

522

Three items of costume jewellery to include two by Attwood & Sawyer. The Attwood & Sawyer ring designed as a navette shape panel of circular pave-set colourless pastes, with a border of rectangular colourless pastes, together with a pair of similarly designed ear clips and a non-designer necklace of swag design set with colourless pastes. Lengths 2.4 to 36cms. **£40-60**



523

A selection of designer jewellery. To include a Christian Dior brooch designed as a graduated ridged shell with paste detail, a Michaela Frey enamel bangle, a Pandora ring, a Hollywood rose brooch and further items of jewellery. (11 and a single earring) Lengths 1.5 to 61cms. Bangle inner diameters 6.2 to 6.7cms. **£60-90**



527

A selection of jewellery. To include two openwork amethyst brooches, an amethyst and split pearl brooch, together with further jewellery items. One brooch with hallmarks for Glasgow, 1961. **£50-80**



531

A selection of jewellery. To include a 9ct gold cameo ring, of oval-shape, depicting a lady in profile, together with a three-row graduated cultured pearl necklace with colourless paste set push-piece clasp and a bracelet of similar design (AF). Hallmark for Birmingham, 1986. Lengths 4 to 49cms. Ring sizes L and R. Weight of ring 3.6gms. **£60-90**



532x

A selection of jewellery. To include two 1920s bead necklaces, one of faceted colourless beads, a Stanhope cross pendant, two jade rings and four gold rings. Hallmarks to four rings. Lengths 39 to 48cms. Ring sizes K to M. Weight 8.4gms. **£50-80**



524

A selection of designer costume jewellery. To include an Attwood & Sawyer necklace, the rope-link chain suspending a blue and colourless paste oval-shape pendant, together with a flat curb-link chain by Givenchy and a blue leather and paste bracelet by Davis. **£40-60**



528

A selection of jewellery and two watches. To include an imitation pearl stickpin, a paste double clip and a pair of leaf ear clips. (10) Stickpin with case. **£20-30**



533

A selection of early to mid 20th century necklaces. To include a faceted pink and colourless bead necklace, a faceted colourless bead necklace and a purple spherical glass bead necklace. Lengths 38 to 92cms. **£40-60**



525

A selection of designer costume jewellery and a designer Danish ring. To include a selection of costume jewellery and a Danish amethyst ring, with earrings by Napier and a Dunhill lighter. (14) **£40-60**



529

A selection of jewellery. To include five jewellery boxes, including a blue push-button case from Faulkners jewellers of Regent Street, London, together with a paste star brooch and two gold cross pendants each with personal engraving. **£40-60**



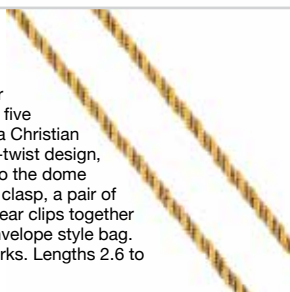
534x

A selection of jewellery. To include an early 20th century ivory purse, of rectangular shape with a pink silk lining (AF), ten hatpins many set with cultured pearls and a selection of enamel and paste brooches. **£50-80**



526

A selection of designer costume jewellery and five handbags. To include a Christian Dior necklace, of rope-twist design, the two-tone strands to the dome end terminals and clip clasp, a pair of black enamel Bergere ear clips together with a tan crocodile envelope style bag. Many with maker's marks. Lengths 2.6 to 36cms. **£40-60**



530

A selection of jewellery and a cased thimble. To include a necklace, designed as a series of alternative oval-shape and circular-shape panels, with embossed Japanese scenery details, suspending a similar style butterfly-outline pendant, to the partially concealed clasp and a silver thimble, together with four further jewellery items. Thimble with hallmarks for Chester, 1899. Thimble with fitted case. **£40-60**



535x

A mother-of-pearl necklace and matching ear clips and a hinged bangle. The necklace designed as carved mother-of-pearl panels in the shape of leaves and circular discs, with seed-pearl accents and a spring-ring clasp, the ear clips of similar design, together with a hinged textured bangle with screw-clasp. Lengths 3.6 to 38cms. Inner diameter 5.8cms. Weight 46.2gms. **£30-50**



Our large bags of Costume Jewellery are now being sold via a timed online Costume Jewellery Auction. The online auction starts on Wednesday 25th January at 9am and finishes on Monday 30th January at 12 noon.

To view our Costume Jewellery lots please visit www.the-saleroom.com/fellows where you will need to register to bid.

To subscribe to the Costume Jewellery catalogue from Fellows, or if you have any queries please email louise@fellows.co.uk



536

An early to mid 20th century gold brooch and earrings and a selection of novelties. The bar brooch with a central oval-shape opal, to engraved detail at either side, together with a buckle in the form of two masks or stylised faces, and a similarly designed brooch. Hallmark for Sheffield, 1902. Lengths 1.5 to 10.5cms. Weight 15.1gms. **£40-60**



537

A selection of jewellery. To include four late 19th to early 20th century 9ct gold brooches, two oval shell cameo brooches, a stickpin and a cultured pearl necklace with push-piece marcasite clasp. Lengths 3.3 to 56cms. Weight of gold brooches 5.4gms. **£50-80**



538

A selection of jewellery. To include a Scottish John Hart Iona bracelet, designed as agate cabochons interspaced by circular panels depicting ships, a Norwegian enamel brooch by Hans Myhre and a Delft brooch. (6) Lengths 2.5 to 108cms. **£60-90**



539

A selection of jewellery. To include nine pairs of Pierre Cardin earrings, of hoop and stud design, one pair in the shape of a bow, together with a freshwater cultured pearl ten row necklace and a heart-shape locket. **£40-60**



540

A selection of jewellery. To include a Mexican pendant designed as a black carved stone face with head dress and ear pendant details, together with a brooch by Ivar Holth, of oval outline, depicting a boat at sea and a bar brooch with applied ivy leaf detail and three coral cabochons. Weight 244.6gms. **£60-90**



541

A selection of jewellery. To include a synthetic sapphire ring, two watches, loose faceted reconstructed amber beads, three gem necklaces and two mid 20th century glass necklaces. **£70-100**



542

A selection of jewellery. To include a bar brooch of swirl texture, to the black gem cabochon terminals, together with a yellow leather wrap-around bracelet, with gold-tone rose charm and six further items of jewellery. Lengths 3.8 to 62cms. Weight 31.8gms. **£40-60**



543

A selection of costume jewellery. To include a necklace, claw-set with five triangular pink pastes, with swastika shapes between, together with a photograph pendant and a number of other items. Hallmark for London, 1978. Lengths 3.7 to 72cms. Weight 26.2gms. **£30-50**



544

A selection of costume jewellery. To include a ptarmigan claw brooch, with purple paste set to the mount with stag detail, together with a broad textured bangle. **£40-60**



545

A selection of costume jewellery. To include a gold-tone cuff, set with circular red paste cabochons, with applied wire and beadwork, together with a brooch in the form of a dragonfly, the body and wings set with black and colourless pastes. **£30-50**



546

A selection of costume jewellery and compacts. To include a pair of paste earrings, various compacts, together with a number of costume jewellery pieces. **£40-60**



547

A quantity of designer costume and other jewellery. To include a seed pearl necklace, with pear-shape seed pearl drops, a Mickey Mouse watch dial and a Cartier jewellery case, with pink exterior. (18) Lengths 3.5 to 60cms. **£50-80**



548

A selection of costume jewellery. To include an imitation pearl necklace, a necklace of gold-tone hammered-effect panels and a cameo brooch. **£40-60**



549

A selection of Bering rings, modified amber jewellery and gents accessories. To include a pair of Masonic cufflinks, a large number of rings of various designs by Bering and a number of modified amber jewellery items. **£40-60**



550

A selection of costume jewellery and novelties. To include an oval-shape locket, with embossed foliate and grape vine motif, an enamel locket pendant, together with a number of watch parts and jewellery items. **£50-80**



555

A quantity of costume jewellery and jewellery boxes. To include a painted wooden box with scene of angels and a god to the lid, together with an embossed metal jewellery box with multiple compartments, a colourless paste brooch in the shape of a letter D and several further items of costume jewellery. **£50-80**



559



A selection of Scottish costume jewellery. To include brooches of varying designs, ptarmigan claw brooches, Celtic designs, thistle designs and pieces by Miracle, together with bracelets and necklaces. **£40-60**

551

A selection of costume jewellery and a cultured pearl necklace. To include a single row cultured pearl necklace with a lozenge-shape push-piece clasp set with three further cultured pearls, together with a garnet necklace comprising fancy-cut garnet beads, to a screw-clasp. **£40-60**



556

A bag containing costume jewellery. To include a mid 20th century purple paste necklace, Scottish style costume jewellery to include Miracle brooches, a tiger's-eye bracelet, two Hollywood brooches, an Exquisite brooch, a Jewelfcraft brooch and a Mexican Alpaca brooch together with a quantity of paste costume jewellery and other items of costume jewellery. Some AF. **£60-90**



560



A selection of mainly costume cameo jewellery. To include an oval cameo brooch depicting Mary and baby Jesus within a rope-twist surround, together with various brooches, bracelets, pendants and rings. Some AF. **£40-60**

552X



A quantity of silver and white metal and costume jewellery. To include a pink and colourless cubic zirconia full-circle eternity ring, a cubic zirconia cluster ring, a similarly-set half-circle eternity ring, together with further jewellery items. **£30-50**

557



A selection of jewellery. To include two pairs of Scandinavian earrings, the first designed as Viking boats, the second as blue guilloche enamel bows, together with a silver napkin ring, a jewellery box and further items of jewellery. Some AF. **£60-90**

561



Two bags of costume jewellery, thread, fittings and bead stringing related items. To include various items of costume jewellery, a medal, coins, many different coloured threads, clear threads, clasps fittings, jump rings together with other items. Some AF. **£40-60**

553X



A selection of jewellery. To include a 9ct gold cameo ring, an early 20th century 9ct gold watch, a small mother-of-pearl inlaid trinket box, two further trinket boxes and further items of jewellery. Some AF. Ring with hallmark, indistinct. **£40-60**

558



A selection of mainly novelty stickpins. To include ceramic flowers, enamel, paste and imitation pearl set stickpins. Some AF. **£40-60**

554



A selection of jewellery findings. To include leather cord, various clasps, rolls of wire, various designs of spacers, pins, ear hooks, ear clips, jump rings and mounts, all mainly metal. **£30-50**

Jewellery Boxes & Novelties

562



A selection of Mappin & Webb cases. To include a white card box of two parts, with silver lettering to the lid, reading 'Mappin & Webb, London, Paris, Dusseldorf, Tokyo,' and with Royal Warrant crests, together with three blue hinged boxes, each with gold-tone detail, opening to white linings with similar gold-tone lettering. Lengths 4.7 to 20.2cms. **£30-50**

563



Twenty-one antique and later jewellery boxes. To include a bangle case of bell-shape, the double hinged lid, with clip clasp, to the purple lining, together with an earring box of black material, hinging open to a pale green lining marked for Hall & Co. Manchester. (21) **£80-120**

564



A bag containing jewellery boxes. To include boxes for rings, pendants and bracelets. Some AF. **£30-50**

565



Twenty-nine mainly antique jewellery boxes. To include a square ring box with hinged lid and push-button, a hinged bangle box in black and a red box of oval shape with push button and gold-tone border. Lengths 2.9 to 10.4cms. **£100-150**

566



Two bags containing jewellery boxes. To include boxes for pendants, bracelets and rings. Some AF. **£50-80**

567



Four jewellery boxes. To include a wooden box with decorative mother of pearl bird design with compartment trays and velvet lining (fastening AF), with three other leather boxes. Measuring 9.5 by 8 by 6cms to 32 by 20.5 by 16cms. **£30-50**

568



A selection of items. To include mother of pearl, glass and enamel buttons, a pair of hair combs, a large magnifying glass, a mother-of-pearl handled fish knife and a pair of miniature candlesticks. Lengths 2 to 20cms. **£40-60**

569



A selection of thimbles, an early 20th century aide-memoire and a magnifying glass. The fourteen thimbles of dimpled or floral design, together with a magnifying glass, with floral and foliate border, to the plain handle and a silver aide-memoire, the cannetille cover opening to four ivory pages. Lengths 2 to 6.8cms. Weight 108.9gms. **£40-60**

570



A selection of novelties. To include a set of six bone and mother-of-pearl spoons, a red guilloche enamel perfume atomiser, three glass swizzle sticks and a carved bone toothpick. **£30-50**

571



C PACKER & CO. - a retractable pencil. The grooved body with hexagonal-shape bloodstone terminal. Signed and numbered C Packer & Co., 132857. Length 7.5cms. Weight 21.8gms. **£100-150**

572



A mid 20th century enamel and marcasite compact. The blue guilloche enamel compact of circular outline, the translucent lid with marcasite surround and an applied marcasite set floral motif. Width 5.2cms. Weight 63.2gms. **£70-100**

573

MAPPIN & WEBB - an Art Deco silver enamel, paste and marcasite compact. The orange paste foliate carving, with marcasite partial surround, atop the black enamel hinged compact. Maker's marks for Mappin & Webb. Hallmarks for London, 1915. Length 8.3cms. Weight 90.6gms. **£80-120**



574

A pair of 9ct gold mother-of-pearl cufflinks. Of oval outline, each cufflink inlaid with mother-of-pearl, to the T-bar hinged backs. Hallmarks for London. Length 1.5cms. Weight 5.2gms. **£60-90**



575

Fifteen pairs of silver and white metal cufflinks. To include two pairs with the Masonic square and compass motif, to blue enamel backgrounds, a pair in the form of golf balls and tees and one of plain rectangular design. Lengths 0.8 to 2.2cms. Weight 157.7gms. **£90-140**



576

A selection of cufflinks. To include two pairs of Danish cufflinks, a pair of Chinese cufflinks, a single John Hart cufflink and three single cufflinks. (3 pairs and 3 single) Weight 57.7gms. **£40-60**



577

A selection of assorted cufflinks. To include a pair of oval grooved disc cufflinks with hinged backs and a pair of rectangular-shape engraved motif cufflinks. (9 pairs, 49 single) Most with marks indicating silver. Weight 365gms. **£150-200**



578



A pair of theatre binoculars. The binocular barrels engraved with flowers and leaves, to the plain eyepieces, suspended from a red cord. Length of binoculars 8.5cms. With associated purse/bag. **£80-120**

579x

A pair of opera glasses. The glasses with mother-of-pearl case and folding handle, the lenses marked 'Dixon & Hempenstall, Dublin'. Width 10.5cms. With associated pouch. **£30-50**



580

A late 19th century magnifying glass. The lense of cushion shape, with floral and foliate surround, to the similarly designed handle and surmount loop. Length 7.4cms. Weight 13.9gms. **£100-150**



581

A rolled gold monocle. Of circular outline, the magnifying lense to the plain surround and surmount loop, set to a cord. Length without cord 4.6cms. **£20-30**



582

A pair of early 20th century lorgnettes and a late 19th century turquoise and chalcedony brooch. The lorgnettes of plain handle and engraved nose-piece, with spring release to the handle, together with a brooch of oval outline, the chalcedony panel with applied leaf design, turquoise-set flowers and a floral and foliate border. Lengths 5.3 to 10.4cms. Weight 43.1gms. **£50-80**



Bags & Accessories

583

LULU GUINNESS - two canvas handbags. To include an icon print Romilly handbag, featuring red lips and grey cats with patent handles and silver-tone twist-lock fastening, together with a black and white printed tote featuring a pleated front and textured handles, both with scarlet red lining. Measuring 30 by 38cms and 30 by 33cms. With maker's dust bag and labels. **£40-60**



584

LULU GUINNESS - two handbags. To include a large Pollyanna clutch in hot pink satin, featuring a pixelated embroidered rose and a cream oversized snap top fastening, together with an extra large Maddy shoulder bag in grey patent leather with a circular silver-toned front flap fastening. Measuring 19 by 30cms and 35 by 42cms. With maker's labels and dust bags. **£50-80**



585

RUSSEL & BROMLEY - an evening bag and matching shoes. The dark red satin small baguette shaped bag with a collection of red roses embroidered onto the bag, together with matching mule heeled shoes. Length of bag 20cms, height 13cms. Shoes labelled size 8, heel measures 2 inches. **£50-80**



586

Two designer handbags. A baby pink leather Furla hand bag with shoulder cut out design, two internal pockets and a zip fastening together with an A. Reinares black leather clutch bag, with gold colour metal square studs and an internal pocket. Both with makers dust bags. Lengths 32 and 36cms, height 19 and 23cms. **£50-80**



587

A selection of thirty scarves. To include many silk scarves, two Liberty scarves and a Jacquard scarf. **£40-60**



588

VERTU - a mobile phone. The beige snakeskin case with metal Russian alphabet keypad and metal and snakeskin to the reverse. Length 10.8cms. **£70-100**



Clothing & Furs

589



HERMES - a gentlemen's brown pinstripe suit. To include a blazer with front button fastenings and four outer pockets, together with a pair of matching trousers. Labelled Hermes. Believed to be a size M. **£90-140**

590



BLUMARINE - three fur trimmed cardigans. All similar in design, with a deep v-neck, front button fastening and ribbed cuffs and hem, to include one pale blue, one pink lace-knit and one purple example, all with matching coloured mink or fox fur collars. Believed to fit UK sizes 8 to 12. **£30-50**

591



A dark ranch mink knee-length coat. Featuring a lapel collar, hook and eye fastenings, cuff sleeves, two exterior and internal pockets. Believed to be size 14-16. **£180-260**

592



A pieced dyed fox fur coat and matching hat. Featuring a short lapel collar, hook and eye clasp fastenings, two external pockets and matching pill hat. Labelled Rieger. Believed to be size 16-18. **£70-100**

593



An azure mink and fox fur jacket. Featuring fox fur sleeves and collar, hook and eye fastenings and two exterior pockets. Labelled Faulkes. Believed to be size 14. **£150-200**

594



A tourmaline mink three-quarter length jacket. Featuring a round collar, hook and eye fastenings and two exterior pockets. Labelled Faulkes. Believed to be size 10. **£60-90**

595



A demi-buff mink three-quarter coat and a faux fur short jacket. Featuring a mandarin collar, hook and eye clip fastenings, two exterior pockets and cuffed sleeves, together with a light brown faux fur short jacket. Fur coat labelled Faulkes. Fur coat believed to be size 12-14. Faux fur jacket believed to be size 8-10. **£60-90**

597



A pastel mink knee length coat. Featuring a notched collar, decorative double breasted buttons, hook and eye clip fastenings, two exterior pockets and waist belt. Labelled Bernard Ruben. **£40-60**

599



SAGA - a demi-buff mink mid length jacket. Featuring a lapel collar, hook and eye clip fastenings, cuffed sleeves. Labelled SAGA MINK. Believed to be size 10-12. **£70-100**

596



A blue fox fur coat. Featuring a notched lapel collar, hook and eye clip fastenings, two outer pockets and one inner patch pocket. Believed to be a size 12-14. **£40-60**

598



A blue fox fur jacket. Featuring a short full collar with hook and eye clip fastenings. Size 16. **£50-80**

600



A blue fox fur jacket. Featuring cream leather panels to the under arms and on sides, hook and eye fastenings, and crop sleeves. Believed to be size 8-10. **£50-80**

601



A pastel pink fur jacket. Featuring a mandarin collar with a brown leather cord tie, hook and eye fastening, cuff sleeves and two external pockets. Labelled Faulkes. Believed to be size 10. **£60-90**

603



A dark brown fur three-quarter jacket. Featuring a notched lapel collar, hook and eye clip fastening and two exterior pockets. Labelled Charles Moss Furs. Believed to be size 14. **£50-80**

605



A pink fur three quarter length coat with fox fur collar. Featuring shawl collar, hook and eye clip fastenings, tie waist, bishop sleeves and two external pockets. Labelled Faulkes. Believed to be size 10. **£60-90**

602



A light blue fur coat. featuring a shawl collar, hook and eye fastenings and two external pockets. Labelled Faulkes. Believed to be size 10. **£60-90**

604



A light blue fur coat. Featuring a notched lapel collar, hook and eye clip fastenings and two exterior pockets. Believed to be size 10-12. **£60-90**

606



A light blue fur coat. Featuring a mandarin collar, hook and eye fastenings, two external and one internal pocket. Labelled Faulkes. Believed to be size 10. **£40-60**

607



A demi-buff mink pieced knee-length coat. Featuring a chevron pattern, a short full collar, hook and eye clip fastenings with a decorative top button and two exterior pockets. Labelled Hernan-Piel. Believed to be size 14-16. **£70-100**

608



A pastel mink jacket. Featuring a notched lapel collar, hook and eye fastenings with embellished button details and a scalloped hem. Labelled Harrison's of Worcester & Luton. Believed to be a size 12 to 14. **£80-120**

609



A pearl mink bolero. Featuring a cross over body design, cape sleeves with press studs beneath the underarms, decorative button fastenings with an interior pocket. Believed to be size 14. **£70-100**

610



Two suede and fur coats. First a full length black suede coat with a mink collar and cuffs, button fastenings and tie waist, the second tan suede jacket with coney fur panelling, a zip fastening and two external pockets. Believed to be size 8. **£40-60**

611



Two musquash fur coats, a cropped leather jacket, two fur hats, another hat and two fur trimmings. Featuring two natural and dyed flank musquash full length coats, both with hook and eye fastening, together with a cropped black military style leather jacket, a dyed coney collar, a natural musquash hat, pastel mink hat and a cross mink skin. Size of coats believed to be 10. **£40-60**

612



A pieced pastel mink fur jacket. Featuring a notched collar, hook and eye fastening with decorative buttons and detachable half-belt. Believed to be size 10. **£50-80**

Fellows

Established 1876

Auction Calendar 2016

January

Vintage Jewellery & Accessories
Monday 30th at 10am

The Watch Sale
Tuesday 31st at 11am

February

Jewellery & Pawnbroker Jewellery
Thursday 2nd at 10am

Antique & Modern Jewellery
Thursday 9th at 11am

Jewellery & Pawnbroker Jewellery
Thursday 16th at 10am

The Designer Collection
Monday 20th at 11am

Antiques, Silver & Collectables
Monday 27th at 10am

The Watch Sale
Tuesday 28th at 11am

March

Jewellery & Pawnbroker Jewellery
Thursday 2nd at 10am

Antique & Modern Jewellery
Thursday 9th at 11am

Vintage Jewellery & Accessories
Monday 13th at 10am

Jewellery & Pawnbroker Jewellery
Thursday 16th at 10am

Watches & Watch Parts
Monday 20th at 10am

The Gemstone Sale (Timed)
Friday 31st at 12pm

Check the website for the latest Antiques & Fine Art auction dates. Dates are subject to change. *Timings are approximate.
The Pawnbroker Watches & Jewellery sale begins immediately after the Jewellery auction has concluded

For further information please contact:

Jewellery

Heather Bailey
heather@fellows.co.uk
0121 212 6303

Watches

Conrad Cunningham
conrad@fellows.co.uk
0121 212 5506

Silver & Coins

Naomi Clarke
naomi@fellows.co.uk
0121 212 2131

Antiques & Fine Art

Kevin Jackson
kevin@fellows.co.uk
0121 212 2131

1	£1,100	57	£380	107	£150	176	£110	249	£80	309	£90	395	£40	466	£42	529	£80
2	£340	58	£240	108	£75	177	£65	253	£160	313	£80	396	£46	467	£150	530	£85
3	£280	59	£190	109	£280	179	£180	254	£700	314	£90	397	£70	468	£28	531	£65
4	£480	60	£180	110	£110	180	£90	256	£80	317	£3,600	398	£50	469	£50	532	£160
5	£44	61	£110	111	£190	181	£80	257	£70	318	£340	399	£75	470	£34	533	£220
6	£260	62	£70	112	£460	182	£85	258	£65	319	£360	401	£44	471	£100	534	£75
8	£220	63	£90	113	£170	184	£40	259	£65	321	£2,000	403	£130	472	£36	535	£65
9	£520	64	£140	115	£70	188	£90	261	£140	322	£1,900	405	£380	473	£300	536	£170
10	£240	65	£200	118	£120	191	£150	261A	£190	324	£1,400	409	£280	475	£360	537	£70
11	£440	66	£120	119	£120	192	£120	262	£420	325	£740	414	£95	476	£50	538	£150
13	£260	67	£160	121	£120	193	£190	263	£80	327	£180	416	£85	477	£50	539	£130
14	£180	68	£90	122	£75	196	£220	265	£220	328	£50	418	£80	478	£55	541	£100
15	£180	69	£300	124	£220	199	£85	267	£65	329	£620	419	£85	479	£55	542	£120
16	£130	70	£170	128	£180	200	£100	268	£65	330	£1,500	420	£90	480	£110	543	£180
17	£140	71	£200	130	£65	201	£90	269	£100	331	£240	421	£100	483	£55	544	£140
18	£190	72	£140	131	£85	202	£160	270	£44	334	£1,200	422	£55	484	£60	545	£190
19	£110	73	£200	133	£130	203	£140	271	£36	335	£150	423	£50	485	£50	546	£340
20	£340	74	£110	137	£40	204	£140	272	£95	337	£80	424	£85	486	£70	547	£260
21	£30	75	£100	138	£240	206	£80	273	£40	342	£75	427	£85	487	£40	548	£130
22	£840	77	£420	139	£150	207	£70	274	£90	345	£560	428	£34	489	£90	549	£120
23	£160	78	£160	141	£60	210	£150	275	£540	346	£38	430	£46	490	£90	550	£220
24	£80	79	£150	142	£220	212	£65	276	£380	347	£48	431	£95	491	£60	551	£180
25	£380	80	£55	143	£65	213	£44	277	£70	348	£1,400	435	£190	492	£42	552	£100
27	£100	81	£160	144	£280	214	£50	278	£50	349	£180	436	£55	493	£240	553	£280
28	£340	82	£46	145	£150	216	£200	279	£150	356	£90	437	£75	494	£30	554	£240
29	£380	83	£200	146	£70	217	£90	280	£240	357	£320	439	£80	495	£65	555	£120
30	£220	84	£120	147	£170	218	£190	281	£70	359	£170	440	£42	500	£50	556	£140
32	£600	85	£70	148	£160	219	£140	283	£65	362	£200	441	£90	502	£50	557	£120
34	£300	86	£190	150	£85	221	£20	284	£50	365	£55	442	£100	504	£80	558	£180
35	£120	87	£220	151	£280	222	£150	285	£150	367	£75	443	£120	505	£170	559	£250
36	£46	88	£110	152	£170	223	£50	286	£190	369	£46	444	£46	507	£42	560	£190
39	£260	89	£220	154	£120	224	£95	287	£220	370	£110	445	£34	508	£40	562	£180
40	£150	90	£940	155	£55	225	£160	288	£30	371	£140	447	£30	511	£46	563	£170
41	£180	91	£140	158	£90	226	£130	289	£44	372	£55	448	£48	513	£120	564	£130
42	£70	92	£1,300	159	£240	227	£42	290	£110	373	£30	449	£85	516	£55	565	£180
43	£280	93	£130	161	£60	229	£160	291	£200	376	£50	451	£100	517	£40	567	£150
44	£130	94	£280	162	£120	230	£100	292	£2,400	378	£55	452	£80	519	£60	568	£140
45	£110	95	£90	163	£55	233	£70	293	£260	380	£60	454	£55	520	£85	569	£140
47	£75	97	£100	165	£140	234	£75	294	£85	384	£90	456	£180	521	£48	570	£140
48	£520	99	£100	166	£240	241	£120	295	£220	385	£120	457	£65	522	£46	571	£140
49	£420	100	£42	167	£55	242	£190	298	£85	386	£50	459	£50	523	£50	572	£140
50	£190	101	£150	170	£42	244	£44	300	£500	387	£90	461	£48	524	£46	573	£60
53	£95	102	£90	171	£150	245	£150	303	£170	389	£40	462	£34	525	£130	574	£110
54	£180	103	£55	172	£200	246	£60	305	£240	391	£90	463	£80	526	£50	575	£260
55	£360	104	£800	174	£100	247	£180	307	£85	392	£70	464	£40	527	£90	576	£190
56	£240	105	£150	175	£140	248	£180	308	£140	393	£36	465	£130	528	£160	577	£150

579	£260	642	£190	689	£60	743	£110	804	£240	852	£70	904	£36	950	£20	1001	£150
580	£240	643	£110	691	£90	744	£100	805	£240	853	£95	905	£20	951	£20	1004	£36
581	£140	644	£95	692	£130	745	£95	806	£280	855	£42	906	£36	952	£20	1005	£200
582	£140	645	£150	693	£60	747	£40	807	£240	856	£42	907	£20	953	£20	1006	£130
583	£140	646	£150	694	£75	748	£160	808	£190	857	£110	908	£36	954	£20	1007	£42
584	£140	647	£130	695	£44	749	£48	809	£110	861	£100	909	£60	955	£20	1009	£46
586	£80	648	£85	696	£85	751	£40	810	£85	862	£220	910	£55	956	£20	1010	£65
590	£140	649	£120	697	£130	752	£38	811	£320	863	£55	911	£34	957	£20	1016	£50
592	£90	650	£160	698	£65	754	£60	812	£150	864	£160	912	£20	958	£20	1017	£95
593	£90	651	£90	699	£80	755	£28	813	£75	865	£32	913	£20	960	£20	1018	£60
594	£70	652	£120	700	£110	756	£38	814	£110	866	£120	914	£20	961	£20	1019	£50
595	£90	653	£55	701	£42	757	£48	815	£100	867	£120	915	£34	962	£20	1021	£80
596	£130	654	£65	702	£65	760	£38	816	£100	868	£40	916	£100	963	£20	1022	£90
598	£100	655	£110	703	£55	763	£70	817	£60	869	£32	917	£34	964	£60	1024	£26
599	£65	656	£120	704	£70	764	£50	818	£55	870	£160	918	£75	965	£20	1025	£50
600	£32	657	£40	705	£30	765	£36	819	£55	871	£55	919	£50	966	£40	1026	£110
602	£50	658	£160	706	£60	766	£40	820	£44	872	£32	920	£48	967	£40	1030	£30
603	£85	659	£130	708	£65	768	£95	822	£42	873	£36	921	£20	968	£40	1031	£55
604	£40	660	£70	709	£55	769	£50	823	£42	874	£42	922	£44	969	£20	1032	£65
605	£160	661	£140	710	£55	770	£70	824	£55	875	£34	923	£20	970	£40	1033	£180
606	£40	662	£140	711	£130	771	£75	826	£42	876	£32	924	£20	971	£40	1035	£720
607	£44	663	£460	712	£55	773	£130	827	£36	877	£140	925	£20	972	£40	1036	£190
608	£55	664	£46	713	£65	774	£55	828	£22	879	£20	926	£20	973	£40	1040	£34
609	£55	665	£70	716	£65	775	£46	829	£22	880	£20	927	£20	974	£100	1041	£240
610	£120	666	£50	717	£70	776	£65	830	£32	881	£36	928	£20	975	£40	1042	£90
613	£240	667	£34	718	£50	777	£85	831	£22	882	£20	929	£50	976	£60	1043	£70
614	£140	668	£55	720	£75	778	£48	832	£60	883	£20	930	£20	977	£40	1044	£75
615	£120	669	£44	721	£85	779	£36	833	£140	884	£36	931	£20	978	£60	1047	£85
618	£60	670	£50	723	£65	780	£100	834	£32	885	£36	932	£50	979	£65	1049	£42
621	£44	671	£55	724	£34	783	£65	835	£100	886	£36	933	£20	980	£95	1052	£50
624	£65	672	£55	725	£34	784	£26	836	£130	887	£36	934	£50	981	£420	1053	£60
625	£50	673	£100	726	£50	785	£40	837	£75	888	£36	935	£20	982	£100	1055	£70
627	£42	674	£55	727	£55	786	£50	838	£75	889	£20	936	£50	983	£110	1056	£60
628	£32	675	£90	728	£50	788	£26	839	£120	890	£20	937	£20	984	£130	1058	£44
629	£110	676	£48	729	£75	790	£28	840	£40	891	£20	938	£20	987	£36	1060	£90
631	£36	677	£60	730	£70	791	£75	841	£100	892	£20	939	£20	988	£320	1061	£50
632	£800	678	£65	731	£40	792	£40	842	£100	893	£36	940	£20	989	£30	1062	£48
633	£130	679	£100	732	£65	793	£50	843	£110	894	£20	941	£20	991	£30		
634	£100	680	£100	734	£95	796	£110	844	£110	895	£20	942	£20	992	£680		
635	£150	681	£30	736	£380	797	£55	845	£110	896	£36	943	£20	993	£320		
636	£160	682	£55	737	£60	798	£38	846	£120	897	£36	944	£20	994	£40		
637	£130	684	£60	738	£140	799	£190	847	£95	899	£20	945	£20	995	£180		
638	£130	685	£120	739	£170	800	£260	848	£110	900	£20	946	£20	996	£180		
639	£95	686	£30	740	£120	801	£300	849	£65	901	£20	947	£20	997	£90		
640	£360	687	£60	741	£70	802	£260	850	£55	902	£20	948	£20	998	£110		
641	£120	688	£50	742	£46	803	£220	851	£110	903	£20	949	£20	999	£36		

IMPORTANT NOTICES FOR PURCHASERS

IMPORTANT NOTICE TO PROSPECTIVE BUYERS OF GEMSTONES/JEWELS

Purchasers are advised that whilst great care has been taken in the examination of gemstones, it is not possible to test every gemstone in multi-gemstone lots.

Notes 1 – Coloured Gemstones

Historically, many coloured gemstones have been subjected to a variety of treatments designed to enhance their appearance. Certain enhancement methods, such as heating, are routinely used to improve colour or transparency in rubies and sapphires. Other methods, such as oiling, enhance the clarity of emeralds. The international jewellery trade has generally accepted these methods. Other coloured gemstones may have undergone other permanent or semi-permanent treatments, such as dyeing, irradiation, coating and impregnation, possibly requiring further re-treatment in order to retain their appearance.

Prospective purchasers should assume that all gemstones will have been treated unless statements are made to the contrary. Gemmological reports from internationally recognised Gemmological Laboratories will be noted in the item description where available.

Note 2 – Diamonds

Recent advancements in technology have led to some diamonds being treated in a number of ways, all designed to improve their appearance or alter colour. These processes include fracture filling, laser drilling, a combination of drilling and filling, HPHT, irradiation and various coatings. Buyers are also alerted to the fact that synthetic (laboratory created) diamonds, notably in small (melee) sizes are now produced in large quantities. Whilst every effort is made to identify or disclose treated and synthetic goods, it is not possible for Fellows to guarantee that all diamond set lots do not contain such material.

Fellows do not knowingly offer treated diamonds for sale, unless a gemmological report disclosing the type of treatment has been obtained from an internationally recognised Gemmological Laboratory, and stated within the item description. Diamond grades for colour and clarity (see separate Notes on Diamond Grading terms) where printed in the catalogues are intended as guides for prospective purchasers, with the given limitations of mounts and settings, and are not guaranteed by Fellows.

Statements in the catalogue regarding the condition of lots in this sale may appear in the description, however, the absence of such a reference does not imply that a lot is in a perfect or near perfect condition, or completely free from wear or imperfections. Fellows will be pleased to offer Condition Reports to interested clients for lots with estimates of £100 or more.

Diamond Grading Terms

DIAMOND COLOUR

GIA	OLD WORLD TERMS	EXPLANATION	GIA	OLD WORLD TERMS	EXPLANATION
D	Finest White (Jager)	Colourless	K	Silver Cape (Top Cape)	Traces of colour. Small stones in this range will 'face up' colourless when mounted but larger stones will be tinted.
E	Finest White (River)	Colourless	L	Silver Cape (Top Cape)	Traces of colour. Small stones in this range will 'face up' colourless when mounted but larger stones will be tinted.
F	Fine White (River)	Colourless	M	Light Cape (Cape)	Traces of colour. Small stones in this range will 'face up' colourless when mounted but larger stones will be tinted.
G	Fine White (Top Wesselton)	Near Colourless: diamonds 'face up' colourless. Slight traces of colour will not be apparent in the mounted stones to other than the trained eye.	N	Light Cape (Low Cape)	Diamonds graded N through Z+ display a yellowish tint even to the untrained eye.
H	White (Top Wesselton)	Near Colourless: diamonds 'face up' colourless. Slight traces of colour will not be apparent in the mounted stones to other than the trained eye.	P	Cape O – R (Very Light Yellow)	Diamonds graded N through Z+ display a yellowish tint even to the untrained eye.
I	White (Top Wesselton)	Near Colourless: diamonds 'face up' colourless. Slight traces of colour will not be apparent in the mounted stones to other than the trained eye.	Z	Cape R – Z (Vey Light Yellow)	Diamonds graded N through Z+ display a yellowish tint even to the untrained eye.
J	Top Silver (Top Wesselton)	Near Colourless: diamonds 'face up' colourless. Slight traces of colour will not be apparent in the mounted stones to other than the trained eye.	Z+	Fancy Yellow	Diamonds graded N through Z+ display a yellowish tint even to the untrained eye.

DIAMOND CLARITY

GIA	OLD WORLD TERMS	EXPLANATION	GIA	OLD WORLD TERMS	EXPLANATION
IF	Internally Flawless	No inclusions visible with a 10x lens even to an experienced grader.	SI1 & SI2	Slightly Included	Noticeable inclusions visible with a 10x lens.
VVS1 & VVS2	Very Very Slightly Included	Minute inclusions, which are difficult, even for experienced graders, to see with a 10x lens.	I1, I2 & I3	Pique 1, 2 & 3	Obvious inclusions, may be visible to the unaided eye, face up. In I3 they may affect the stone's durability.
VS1 & VS2	Very Slightly Included	Minor inclusions, observable with effort with a 10x lens.			

Fellows & Sons Ltd

Terms and Conditions

Fellows & Sons Ltd carries on business, including the conduct of Auctions, on the following general conditions. This includes business with Bidders, Buyers, Vendors, consignors, users of this website, and with all those present on the Premises prior to or in connection with an Auction (all as hereinafter defined).

1. INTRODUCTION

1.1 The following defined terms are used in these Conditions :

“Auction” means any Auction conducted by Fellows, either at their premises or elsewhere (including any internet-based auctions);

“Auctioneer” means Fellows or its authorised Auctioneer, as appropriate;

“Bidder” means a bidder at an Auction, including bidders personally present at the venue and those bidding by telephone or over the internet or otherwise;

“Buyer” means the bidder whose bid was the last bid when the Auctioneer brings down the hammer;

“Conditions” means these terms and conditions;

“Consigned Property” means the items consigned by the Vendor to Fellows for offer at an Auction;

“Deliberate Forgery” means an imitation made with the intention of deceiving as to authorship, origin, date, age, period, culture or source but which is unequivocally described by Fellows in the catalogue as being the work of a particular creator and which at the date of the sale had a value materially less than it would have had if it had been in accordance with the description;

“Fellows” means Fellows & Sons Ltd;

“Hammer Price” means the level of bidding reached (at or above any reserve) when the Auctioneer brings down the hammer;

“Includes” means “includes but not limited to”, and “including” means “including but not limited to”

“Lot” means any Consigned Property accepted by Fellows for offer at Auction;

“Stated Rate” means Fellows’ published rates of commission for the time being and value added tax thereon (also available on request);

“Terms of Consignment” means any stipulated terms and rates of commission on which Fellows accepts instructions from Vendors [or their agents];

“Total Amount Due” means the Hammer Price in respect of the Lot sold together with any premium, commission, value added tax chargeable and any additional charges payable by a defaulting Buyer under these Conditions;

“Vendor” means the vendor of an item (including Consigned Property) which is submitted to Fellows for offer for sale at an Auction;

“Website” means this website;

“You” means any user of the Website.

2. WEBSITE

2.1 You may access most areas of the Website without registering your details with us. Certain areas of the Website are only open to you if you register. By accessing any part of the Website, you shall be deemed to have accepted these Conditions notice in full. If you do not accept this legal notice in full, you must leave the Website immediately.

2.2 Fellows may revise these Conditions at any time by updating this posting. You should check the Website from time to time to review the then current legal notice, because it is binding on you. Certain provisions of this legal notice may be superseded by expressly designated legal notices or terms located on particular pages at the Website.

2.3 Unless otherwise stated, the copyright and other intellectual property rights in all material on the Website (including without limitation photographs and graphical this legal notice, your permission to use the Website automatically terminates and you must immediately destroy any downloaded or printed extracts from the Website.

2.4 No part of the Website may be reproduced or stored in any other website or included in any public or private electronic retrieval system or service without Fellows’ prior written permission.

2.5 Any rights not expressly granted in these Conditions are reserved.

3. VISITOR MATERIAL AND CONDUCT

3.1 Other than personally identifiable information, which is covered under our Privacy Policy, any material you transmit or post to the Website shall be considered nonconfidential and non-proprietary. Fellows shall have no obligations with respect to such material. Fellows and its designees shall be free to copy, disclose, distribute, incorporate and otherwise use such material and all data, images, sounds, text and other things embodied therein for any and all commercial or non-commercial purposes.

3.2 You are prohibited from posting or transmitting to or from the Website any material: that is threatening, defamatory, obscene, indecent, seditious, offensive, pornographic, abusive, liable to incite racial hatred, discriminatory, menacing, scandalous, inflammatory, blasphemous, in breach of confidence, in breach of privacy or which may cause annoyance or inconvenience; or for which you have not obtained all necessary licences and/or approvals; or which constitutes or encourages conduct that would be considered a criminal offence, give rise to civil liability, or otherwise be contrary to the law of or infringe the rights of any third party, in any country in the world; or which is technically harmful (including, without limitation, computer viruses, logic bombs, Trojan horses, worms, harmful components, corrupted data or other malicious software or harmful data).

3.3 You may not misuse the Website (including, without limitation, by hacking).

3.4 Each registration is for a single user only. Fellows does not permit you to share your user name and password with any other person nor with multiple users on a network.

3.5 Responsibility for the security of any passwords issued rests with you.

4. THE VENDOR

4.1 Fellows shall act as agent of the Vendor only. Any contract for the sale of a Lot will be formed between the Vendor and the Buyer.

4.2 The Vendor warrants and represents to Fellows and the Buyer that the Vendor is the sole and true owner of the Consigned Property or is properly authorised by the sole and true owner to consign it for sale and is able to transfer good and marketable title to the property free from any third party claims. The Vendor warrants and representatives that the Vendor has revealed all pertinent information that the Vendor possesses about the items, including in relation to any repairs or alterations that may have been carried out. The Vendor shall indemnify Fellows and the Buyer against any loss and expense caused by any breach of this clause 4.2.

4.3 The Vendor shall be entitled to place prior to the Auction a reserve on any Lot, being the minimum Hammer Price at which Lot may be sold. Reserves must be reasonable and Fellows may decline to offer goods which in Fellows’ opinion would be subject to an unreasonably high reserve (in which case goods carry the storage and insurance charges stipulated in the terms of consignment). Reserves will not be accepted on items with a bottom estimate less than £100. The Auctioneer also reserves the right not to accept items which they deem to be unsuitable for Auction. Any estimate given shall be an opinion and is not an undertaking of any kind.

4.4 A reserve once set cannot be changed except with the written prior consent of Fellows.

4.5 Where a reserve has been placed only Fellows may bid on behalf of the Vendor.

4.6 The Vendor authorises Fellows to deduct commission from any sold items at a rate of 15% (plus VAT) on any item with a hammer price of £3,000 (or under) or 12.5% (plus VAT) on items over £3,000. Loss or liability for damage will be charged at a rate of 1.5% (plus VAT) calculated on the hammer price. A Marketing fee of £10 (plus VAT) will be charged for each Lot, if unsold we will charge a nominal handling fee of £5 (plus VAT). All items below £35 are subject to a minimum fee of £5 (plus VAT) per Lot.

4.7 Fellows will pay the Hammer Price achieved for the Lot (less its commission and applicable fees in accordance with clauses 4.6, 9.2 and 9.3), to the Vendor on receipt of payment of the Total Amount Due in full by the Buyer.

- 4.8 The Vendor authorises Fellows in their discretion to negotiate a sale by private treaty in the case of a Lot unsold at Auction, in which case the same charges will be payable as if the Lot had been sold at Auction.
- 4.9 Fellows do not themselves undertake the collection of any items but may, as the Vendor's agent, instruct a contractor on behalf of the Vendor. Fellows accepts no liability for the actions of such contractor who contracts with the Vendor direct.
- 4.10 Fellows disclaims all liability for items delivered to their saleroom without sufficient sale instructions, and reserves the right to make a minimum warehousing charge of [£1.00] per item per day. Unsold items are subject to the same charges if the Vendor does not remove them within a reasonable time of notification. If not removed within three weeks Fellows reserves the right to sell the items and defray charges from any net proceeds of sale or at the Vendors expense to consign them to the local authority for disposal. Fellows disclaims any liability for default by the Buyer or for paying out the Vendor before receiving payment by the Buyer.
- 4.11 Subject to clause 4.9, Fellows holds all items on their premises and in their custody covered against the risks of fire, burglary and water damage on the scale of charges notified in the terms of consignment and payable by the Vendor up to the date of any sale and (in Fellows' discretion) the Buyer thereafter until collection.
- 4.12 The right of Fellows to bid on behalf of the Vendor is expressly reserved. The Vendor acknowledges that Lots are sold subject to the stipulations of these Conditions in their entirety and on the Terms of Consignment as notified to consignors at the time of the entry of the Lot.
- 4.13 The Auctioneer reserves the right to dispose of any item that in their opinion is unsaleable. Items, including electrical goods and soft furnishings, which do not comply with current legislation will not be offered at Auction.
- 4.14 Any items unsold after an Auction will be reoffered in a subsequent Auction at a reduced reserve to be agreed within seven days. The Auctioneer may request the removal of an item if a reduced price cannot be agreed; items not removed within 14 days will be subject to a storage charge.
- 4.15 A charge of 10% (plus VAT) based on the middle estimate – plus any other charges incurred – may be levied for any Lot withdrawn by the Vendor from offer at an Auction. If the item has to be returned by post (or any other method) the Vendor will be responsible for this charge. These charges are to be paid before the item is returned.
- 4.16 By submitting the item to Fellows for offer at Auction, the Vendor agrees to the Terms of Consignment and authorises Fellows to deduct the specified charges.

5. PUBLICITY

- 5.1 Any catalogue and buyer guides are provided for information only and do not form part of these Conditions. The catalogue and the buyer guides may contain additional terms and conditions.
- 5.2 Fellows reserve the right to use any photographs, background information, and research for publicity purposes both before and after the sale.

6. THE AUCTION

- 6.1 Any Auction shall be conducted at the absolute discretion of the Auctioneer.
- 6.2 The Auctioneer shall conduct the Auction with reasonable skill and care. For example, what constitutes a bid shall be at the absolute discretion of the Auctioneer, acting with reasonable skill and care.
- 6.3 The Auctioneer shall have the right to refuse any bid which does not exceed the previous bid by at least 10% or by such greater proportion as the Auctioneer shall in his or her absolute discretion direct.
- 6.4 Where two or more bids at the same level are simultaneously received by the Auctioneer, the Auctioneer at his absolute discretion shall determine which bid to prefer. Subject to the foregoing, where two or more bids at the same level are simultaneously received by the Auctioneer, any bid by a Bidder personally present at an Auction shall take preference over any bid submitted by telephone or over the internet. Any bid made or attempted by telephone or over the internet shall be deemed to have been made only if received by the Auctioneer.
- 6.5 Fellows shall have the right, at its absolute discretion, to refuse admission to its premises or attendance at (or participation in) any Auction by any person.

7. BIDDERS

- 7.1 Bidders may be required to register their particulars. Bidders attending in person may be required to satisfy Fellows' security arrangements before entering any part of the premises to view or bid.
- 7.2 You accept full liability for all bids submitted via your My Fellows account. Once a bid has been made by a Bidder on our website, the bid can be lowered or increased up until 9am on the day of the auction. You must sign into your My Fellows account to do this and you will receive an email confirmation for any changes made.
Should a bid be placed in error on the website you must contact Fellows immediately. Failure to contact Fellows before the auction takes place will result in liability for the full payment of the item.
- 7.3 Subject to clause 6.3, the highest Bidder at the Hammer Price shall be the Buyer. Any dispute about a bid shall be settled at the Auctioneer's absolute discretion.
- 7.4 Bidders are deemed to act as principals unless there is a written prior acknowledgement by Fellows that a Bidder is acting as an agent for a named principal.
- 7.5 Bidders are strongly encouraged to attend the Auction in person. Bidders shall be responsible for any decision to bid for a particular Lot and shall be deemed to have carefully inspected and satisfied themselves as to its condition. Neither Fellows nor its employees or agents shall be responsible for any neglect or default in doing or failing to do so.
- 7.6 Bidders are given ample opportunities to view and inspect before any sale and prospective Buyers must satisfy themselves as to all such matters. Neither Fellows or its employees or agents nor the Vendor accept liability for the correctness of such opinions and all conditions and warranties, express, implied or statutory are hereby excluded.

8. THE BUYER

- 8.1 Immediately a Lot is sold, the Buyer shall:
(a) give to Fellows their name and address and, if requested proof of identity, and
(b) pay to Fellows the Total Amount Due.
- 8.2 [Fellows may, at its absolute discretion, agree credit terms with the Buyer before an Auction under which the Buyer may be entitled to take possession of Lots up to an agreed value in advance of payment by a stipulated future date of the Total Amount Due.]
- 8.3 Cheques shall not be acceptable by Fellows (unless Fellows in its absolute discretion permits payment by such method) nor are third party references or credit facilities with other Auction houses. If a cheque is tendered Fellows reserves the right to instruct its bank to check the Buyer's status and account balance before exercising any discretion. Any credit arrangement must be settled at least 4 days before the relevant sale. Any permitted payment by credit card shall carry an extra charge to the Buyer of such percentage of the Total Amount Due as is displayed on the premises.
- 8.4 Any payments by a Buyer to Fellows may be applied by Fellows towards any sums owing from that Buyer to Fellows on any account whatever without regard to any directions of the Buyer or his agent, whether express or implied.

9. THE PURCHASE PRICE

- 9.1 On the first £50,000 of the Hammer Price (of any individual Lot) the Buyer will pay the Hammer Price and a premium of 20% (plus VAT). The said premium not being negotiable and payable by ALL Buyers. The Vendor authorises Fellows to retain beneficially the premium payable by Buyers. Value Added Tax is charged at the rate prevailing by law at the date of sale.
- 9.2 On the excess over £50,000 of the Hammer Price (of any individual Lot), the Buyer will pay the Hammer Price and a premium of 10% (plus VAT). The said premium not being negotiable and payable by ALL Buyers. The Vendor authorises Fellows to retain beneficially the premium payable by Buyers. Value Added Tax is charged at the rate prevailing by law at the date of sale.
- 9.3 Value Added Tax on the Hammer Price is imposed on all items affixed with an asterisk thus - *.

- 9.4 Buyers will pay a commission charge of an additional 3% + VAT of the hammer price if lots are successfully purchased online via Live Auctioneers and the-saleroom.com.
- 9.5 Non UK or EU VAT registered buyers can have most classes of VAT refunded on their purchases - please note that auctioneers are under no obligation to provide VAT refunds, although many will offer this service. HMRC are the ultimate refunding authority. VAT refunds are subject to provision of statutory export/import documentation. HMRC have decreed that VAT on buyer's premium is always payable whether the buyer is domiciled in the UK, the EU or outside the EU or wherever the goods are to be sent. So auctioneers cannot refund VAT on buyer's premium if the goods are sold under normal VAT rules.
10. TITLE AND COLLECTION OF PURCHASES
- 10.1 The ownership of any Lot purchased shall not pass to the relevant Buyer until they have made payment in full to Fellows of the Total Amount Due.
- 10.2 Buyers shall at their own risk and expense take away any Lot that they have purchased and paid for not later than 2 working days following the day of the Auction after which they shall be responsible for any removal, storage and insurance charges.
11. DEFAULT BY BUYER OR VENDOR
- 11.1 As Fellows act as agent for the Vendor, Fellows is not responsible for default by the Vendor or the Buyer.
- 11.2 If any Lot is not paid for in full and taken away in accordance with these Conditions, or if there is any other breach of these Conditions, Fellows as agent for the Vendor shall at its absolute discretion and without prejudice to any other rights it may have, be entitled to exercise all or any of the following rights and remedies:
- (a) to proceed against the Buyer for an action for debt or damages for breach of contract;
 - (b) to rescind the sale of that Lot and/or any other Lots sold by Fellows to the defaulting Buyer;
 - (c) to re-sell the Lot by Auction or private treaty. If a lower Hammer Price is achieved on the re-sale than that achieved on the original sale the defaulting Buyer shall be liable for the difference (after crediting any part payment and adding any re-sale costs). Fellows will account to the Vendor for any surplus achieved on a re-sale, however, it shall only be required to account to the Vendor for any resulting deficiency in the event that it receives payment of such sum in full from the defaulting Buyer.
 - (d) to remove, store and insure the Lot at the expense of the defaulting Buyer and, in the case of storage, either at Fellows' premises or elsewhere;
 - (e) to charge interest at a rate not exceeding [1.5%] per month on the total amount due to the extent it remains unpaid for more than 2 working days after the sale;
 - (f) to retain that or any other Lot sold to the defaulting Buyer until that Buyer pays the total amount due;
 - (g) to reject or ignore bids from the defaulting Buyer at future Auctions or to impose conditions before any such bids shall be accepted;
 - (h) to apply any proceeds of sale of other Lots due or in future becoming due to the defaulting Buyer towards the settlement of the total amount due and to exercise a lien on any of the Buyer's property in Fellows' possession for any purpose.
12. DELIBERATE FORGERIES
- 12.1 Subject to clause 12.2, any representation or statement by Fellows (including in any catalogue) as to authorship, genuineness, origin, date, age, provenance, condition or estimated selling price is a statement of opinion only. Prospective Buyers are given ample opportunities to view and inspect before any sale and prospective Buyers must satisfy themselves as to all such matters. Neither Fellows or its employees or agents nor the Vendor accept liability for the correctness of such opinions and all conditions and warranties, express, implied or statutory are hereby excluded.
- 12.2 Any Lot which proves to be a Deliberate Forgery may be returned to Fellows by the Buyer within 21 days of the Auction provided it is in the same condition as

when bought, and is accompanied by particulars identifying it from the relevant catalogue description and a written statement of defects. If Fellows is satisfied from the evidence presented that the Lot is a Deliberate Forgery Fellows shall refund the money paid by the Buyer for the Lot (but not the amount of any consequential loss, damages, expenses or interest) provided that (1) if the catalogue description reflected the accepted view of scholars and experts as at the date of sale or (2) the Buyer personally is not able to transfer a good and marketable title to Fellows.

13. LIMITATIONS OF LIABILITY

- 13.1 All members of the public on the premises are there at their own risk and must note the lay-out of the accommodation and security arrangements.
- 13.2 Any indemnity under these Conditions shall extend to all actions, costs, expenses, claims and demands whatsoever suffered or incurred by the person entitled to the benefit of it and Fellows declares itself to be a trustee of the benefit of every such indemnity so far as it is expressed to be for the benefit of its employees and agents.
- 13.3 While Fellows endeavours to ensure that the information on the Website is correct, Fellows does not warrant the accuracy and completeness of the material on the Website. Fellows may make changes to the material on the Website, or to the products and prices described in it, at any time without notice. The material on the Website may be out of date, and Fellows makes no commitment to update such material.
- 13.4 The material on the Website is provided "as is", without any conditions, warranties or other terms of any kind. Accordingly, to the maximum extent permitted by law, Fellows provides you with the Website on the basis that Fellows excludes all representations, warranties, conditions and other terms which, but for this legal notice, might have effect in relation to the Website.

14. GENERAL

- 14.1 Any notice to any Buyer, Vendor, Bidder or viewer may be given by first class mail or email in which case it shall be deemed to have been received by the addressee 48 hours after posting or sending. All notices to Fellows must be sent in writing and email is not acceptable.
- 14.2 Any indulgence extended to any person by Fellows notwithstanding the strict terms of these Conditions or the Terms of Consignment shall affect the position at the relevant time only and in respect of that particular concession only; in all other respects these Conditions shall be construed as having full force and effect.
- 14.3 These Conditions and any disputes or claims arising out of or in connection with it or their subject matter or formation (including non-contractual disputes or claims) are governed by and construed in accordance with the law of England.
- 14.4 The parties irrevocably agree that the courts of England have exclusive jurisdiction to settle any dispute or claim that arises out of or in connection with the Agreement or its subject matter or formation (including non-contractual disputes or claims).

15. SHIPPING

- 15.1 We offer a tracked and insured shipping service for all items with the exception of those in our Antiques & Fine Art sales.
- 15.2 Items posted outside of the UK will incur a £30 charge
- 15.3 Within the UK, hammer totals under £100 will incur a £10 charge
- 15.4 Hammer totals over £100 will incur a £20 charge
- 15.5 Larger items, as well as those exceeding a value of £20,000 or weighing in excess of 2kg may be subject to additional fees

Fellows
Established 1876

Fellows

Established 1876

Catalogue Subscription Service

If you would like to receive catalogues on a regular basis, please mark the appropriate category and return this form with a cheque made payable to Fellows for the full amount.

Subscriptions last for a 12 month period

Antique & Modern Jewellery 12 catalogues per year	£100	
Watches & Watch Parts 4 catalogues per year	£35	
Silver & Plated Ware 4 catalogues per year	£35	
Vintage Jewellery & Accessories 8 catalogues per year	£70	
Jewellery 24 catalogues per year	£150	
The Watch Sale 12 catalogues per year	£100	
Coins & Medals 3 catalogues per year	£30	
Antiques & Fine Art 4 catalogues per year	£35	
Loose Stones for Tender 4 catalogues per year	£35	

All of the above catalogues are available to view **FREE** of charge on our website **www.fellows.co.uk**

Name (Block Capitals)

Address (Block Capitals)

.....

Post Code Telephone

Signature Date

Email

Established 1876

Please check your bids

Contact Information

Directors

Stephen Whittaker BA (Hons)	Jayne Whittaker	Ben Griffiths BSc (Hons)	Adrian Hailwood MA (Hons)
-----------------------------	-----------------	--------------------------	---------------------------

Departments

Customer Services 0121 212 5508 info@fellows.co.uk David Pregun MA (Hons) Gemma Sheldon Charlotte Bonnell Kain Holroyd	Finance 0121 212 2131 accounts@fellows.co.uk Ayman Elkady BSC Wendy Butler Craig Ledger Charlotte Cheung Natasha Parker	Photography 0121 212 2131 photography@fellows.co.uk Claire Cleaver Peter Long BA (Hons) Gareth Partington Helen Nodding Grace Kemp	Marketing 0121 212 5500 marketing@fellows.co.uk Emily Felix-Davies Jorden Guest MA (Hons) Howard Cheung BA (Hons) Mary Smith BA (Hons) London Office 0207 127 4198 london@fellows.co.uk Alexandra Whittaker BA (Hons) Nicola Whittaker BSc (Hons) Cert. GA Natalie Evans BA (Hons) FGA DGA Karen Regan Cert. GA
---	---	--	--

Specialist Departments

Jewellery 0121 212 6303 jewellery@fellows.co.uk Emma Scriven BA (Hons), FGA, DGA Heather Bailey Claire Stafford FGA, DGA Georgina Kettle BA (Hons), FGA, DGA Ben Randall BA (Hons), G.G., A.J.P. Jenny Darcy BA (Hons) Leah England BA (Hons) Emily Tebbutt GG, AJP, BA (Hons) Natalie Craddock FGA, DGA Liz Bailey BA (Hons), Cert GA Lindsay Beardmore DGA Simon Welsh A.J.P. Jennifer Muntz BA (Hons) Patricia Grant BA (Hons)	Silver & Coins 0121 212 6302 silver@fellows.co.uk Naomi Clarke BA (Hons), DGA Alison Jakeway MA MRICS Sarah Isaacs BA (Hons) Watches 0121 212 5506 watches@fellows.co.uk Adrian Hailwood MA (Hons) Conrad Cunningham BA (Hons) Steven Yambo BA (Hons) Michael Jagiela Laura Bishop MA (Hons) Philip Showell BA (Hons)	Pawnbrokers 0121 212 6308 pawnbrokers@fellows.co.uk Leah England BA (Hons) Rachel Bache Kate Bannister Alexandra Becket Antiques & Fine Art 0121 212 2131 antiques@fellows.co.uk Kevin Jackson Mark Huddleston MA (Hons) Dannielle Blackledge MA (Hons)	Vintage & Designer Collection 0121 212 6306 vintage@fellows.co.uk thedesignercollection@fellows.co.uk Louise Ludlam BA (Hons), FGA, DGA Sophie Higgs Emma Boydell LLB (Hons), BVC Claire Duerden BA (Hons) Annaliese Foster BA (Hons)
--	---	---	---



Birmingham Saleroom – The Jewellery Quarter Birmingham

Situated in the heart of Birmingham's Jewellery Quarter, Fellows is easily accessible from all parts of the United Kingdom, Europe and beyond.

Head Office & Saleroom
Augusta House
19 Augusta Street
Birmingham
B18 6JA

Telephone: 0121 212 2131
Fax: 0121 212 1249
Email: info@fellows.co.uk

London Office – Mayfair

Fellows' London office offers valuations by appointments, please call to arrange a time to visit.

London Office
3 Hill Street
London
W1J 5LA

Telephone: 020 7127 4198
Email: london@fellows.co.uk

Follow us on....



[facebook.com/
fellowsauctions](https://facebook.com/fellowsauctions)



[@fellowsauctions](https://twitter.com/fellowsauctions)



[pinterest.com/
fellowsauctions](https://pinterest.com/fellowsauctions)



youtube.com/fellows1876



fellowsauctions



Fellows

Established 1876

Head Office & Saleroom: Augusta House | 19 Augusta Street | Birmingham B18 6JA
London Office (Valuations by appointment): 3 Hill Street | Mayfair | London W1J 5LA
Tel 0121 212 2131 | Tel 020 7127 4198 | Fax 0121 212 1249 | www.fellows.co.uk