



Jewellery

Thursday 4th October 2018

Fellows

Established 1876

Jewellery

Thursday 4th October 2018 at 10.00am

Fellows
Established 1876

Index

Jewellery 1 - 689

Viewing Times

London | 29 Charles Street | Mayfair
Tuesday 25th September 12pm – 7pm

Birmingham Head Office & Saleroom
Saturday 29th September 11am – 4pm
Tuesday 2nd October 10am – 4pm
Wednesday 3rd October 10am – 4pm
Thursday 4th October 8.30am – 10am

(Photo ID required)

Featured Lots

Lot 422, 423 and 424
(Front cover)



Lot 190, 265 and 489
(Back Cover)



We also hold sales of...

Antique & Modern
Jewellery



The Watch
Sale



Why Buy?

- COMPETITIVE** buyer's premium
- LIVE** online bidding
- FULLY** illustrated catalogue
- EASY** to use, functional website
- ACCURATE** condition reports
- SPECIALISTS** on hand to offer advice
- TRACKED AND INSURED** shipping*

*Please contact Fellows for further information.

Why Sell?

- HIGH PRICES** consistently achieved
- FLEXIBLE** commission rates
- FREE** valuations with no obligation to consign
- RAPID** turnaround for your goods
- TARGETED** advertising to a global audience
- SUPERIOR** quality catalogues
- FULLY** integrated website



Contact the Jewellery Department...

Natalie Hutchings
FGA, DGA
Specialist
0121 212 2131
natalie@fellows.co.uk

Heather Bailey
Specialist
0121 212 6303
heather@fellows.co.uk

Emma Testill
FGA, DGA
Junior Cataloguer
0121 212 2131
emmat@fellows.co.uk

Follow Us On...



facebook.com/fellowsauctions



@fellowsauctions



fellowsauctions

Further Information



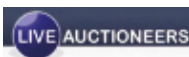
Additional Images and Condition Reports can be found online at our website www.fellows.co.uk



Telephone Bidding is available if you cannot attend an auction. Please ring 0121 212 2131 to arrange a phone line.



Live Bidding via the internet is available at www.fellows.co.uk



Buyer's Premium

The buyer's premium is 23% (plus VAT) or 27.6% (VAT included) on the first £100,000 of any individual lot.

For any individual lot in excess of £100,000 the buyer's premium is 23% (plus VAT) or 27.6% (VAT included) on the first £100,000, for all amounts after £100,001 the buyer's premium is 15% (plus VAT) or 18% (VAT included).

Lots prefixed with * will carry VAT at 20% on the hammer price.

Live Online Bidding Charges

Buyers will pay on the-saleroom.com there is an additional charge of 3% +VAT of the hammer price and for Live Auctioneers a 5% additional charge + VAT. With Easy Live Auction, buyers can choose whether to pay a live bidding charge of 3% (plus VAT) of the hammer price, or a fixed fee of £3 per sale. Normal buyer's premium applies.

Important Notice

Neither Fellows nor the Vendors are responsible for any reference as to the condition of lots listed. The absence of such reference does not imply that a lot is in good condition or free from faults or imperfections.

All weights and dimensions are approximate. Purchasers are advised to carefully inspect lots and make their own opinion as to the condition.

Please see section 7 under 'Bidders' in our full terms and conditions. View Fellows Important Notices in full and full terms and conditions at the back of the catalogue.

Key to Symbols



Item may have export restrictions for customers outside of the EU.



Lot comes with box.



Certified Lots

Seller's Commission

Sellers will pay a commission charge of 12.5% (+ VAT) on items which have a hammer price over £3,001 or more. Items sold for £3,000 or under will have a commission rate of 15% (+ VAT). Please view our terms and conditions for further detail.

1

An 18ct gold ruby pendant. Designed as a stylised butterfly, with pear-shape ruby wings, suspended from a tapered surmount and an 18ct gold faceted bead-link chain. *Hallmarks for Birmingham. Length of pendant 2.2cms. Length of chain 40.5cms. Weight 6.1gms. See Plate 1. £120-180 (plus 27.6% BP*)*

**6**

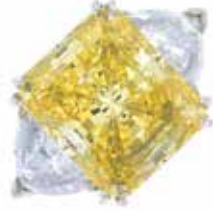
A pair of 9ct gold mice earrings. Each designed as a textured mouse, with polished tail. *Hallmarks for Edinburgh, 1987. Length 1.1cms. Weight 1.1gms. £40-60 (plus 27.6% BP*)*

**2**

An early 19th century 18ct gold memorial ring. Designed as a recessed black enamel band reading 'In Memory Of', with scrolling foliate border and rectangular-shape woven hair panel. *Hallmarks for London, 1830. Ring size Q. Weight 5.1gms. £120-180 (plus 27.6% BP*)*

**7**

A 9ct gold cubic zirconia dress ring. The rectangular-shape yellow cubic zirconia, with triangular-shape colourless cubic zirconia sides. *Estimated dimensions of yellow cubic zirconia 14.6 by 12.5 by 8.2mms. Hallmarks for Edinburgh, 2006. Ring size K. Weight 10gms. £80-120 (plus 27.6% BP*)*

**3**

A mid 20th century platinum ruby full eternity ring. Designed as a rectangular-shape ruby and synthetic ruby line, with engraved scrolling foliate gallery. *Ring size I. Weight 3.8gms. £200-300 (plus 27.6% BP*)*

**8**

A pair of 18ct gold sapphire earrings. Each designed as a marquise-shape orange sapphire floral cluster, with similarly-shaped polished highlights. *Hallmarks for Birmingham, 2006. Length 1.7cms. Weight 5.7gms. See Plate 1. £120-180 (plus 27.6% BP*)*

**4**

A pair of 9ct gold sapphire earrings. Each designed as a vari-hue calibre-cut sapphire line, within a channel setting. *Hallmarks for Birmingham. Length 2cms. Weight 4.9gms. £180-260 (plus 27.6% BP*)*

**9**

An amethyst and diamond cluster ring. The pear-shape amethyst, within a brilliant-cut diamond double surround and similarly-cut diamond line shoulders. *Estimated total diamond weight 0.60ct. Ring size N. Weight 3.6gms. £200-300 (plus 27.6% BP*)*

**5**

An early 20th century 18ct gold pearl and diamond cluster ring. The pearl, measuring 4.8mms, within an old-cut diamond scalloped surround. *Estimated total diamond weight 0.40ct. Ring size N. Weight 2.7gms. Pearl untested. £70-100 (plus 27.6% BP*)*

**10**

An early 20th century gold and platinum seed pearl and diamond brooch. Designed as an old-cut diamond and cultured pearl crown, atop a bi-colour trumpet. *Estimated total diamond weight 0.25ct. Length 4.4cms. Weight 3.4gms. With case. £80-120 (plus 27.6% BP*)*



11 

A mid Victorian gold diamond and split pearl mourning brooch. Of circular outline, the rose-cut diamond accent flower, atop a black enamel panel, with split pearl double surround. *Diameter 2.6cms. Weight 7.3gms. With case. £250-350 (plus 27.6% BP*)*

**16**

A mid Victorian gold and enamel memorial ring. Designed as a wide band, with black enamel 'In memory of' script and scroll engraved detail. Enamel AF. *Ring size J1/2. Weight 3.4gms. £80-120 (plus 27.6% BP*)*

**12**

A pair of sapphire and diamond cluster earrings. Each designed as an oval-shape green sapphire, within a brilliant-cut diamond surround. *Estimated total diamond weight 0.50ct. Length 1cm. Weight 2.6gms. £150-200 (plus 27.6% BP*)*

17

A pair of diamond earrings. Each designed as a pave-set diamond hoop, with brilliant-cut diamond collet surmount. *Estimated total diamond weight 0.40ct. Length 1.2cms. Weight 4.5gms. £150-200 (plus 27.6% BP*)*

13

A sapphire and diamond pendant. The oval-shape sapphire, with graduated brilliant-cut diamond accent openwork surmount, suspended from a curb-link chain. *Length of pendant 1.5cms. Length of chain 45.5cms. Pendant weight 2.1gms. £50-80 (plus 27.6% BP*)*

18

A 9ct gold chrome diopside and diamond ring. The alternating pear-shape chrome diopside line, with circular-cut diamond highlights. *Hallmarks for Sheffield. Ring size O. Weight 3.7gms. £60-90 (plus 27.6% BP*)*

14

A platinum sapphire three-stone ring. The graduated circular-shape pink sapphire line, each within a collet setting. *Hallmarks for Birmingham. Ring size I. Weight 5.7gms. £100-150 (plus 27.6% BP*)*

19

An 18ct gold diamond band ring. Designed as a brilliant-cut diamond shaped line. *Estimated total diamond weight 0.75ct. Hallmarks for Birmingham. Ring size I1/2. Weight 4.1gms. £120-180 (plus 27.6% BP*)*

15

A cubic zirconia dress ring. Designed as a leopard head and curled tail, pave-set throughout with circular-shape colourless cubic zirconia and green cubic zirconia eye highlights. *Ring size O. Weight 6.9gms. See Plate 1. £200-300 (plus 27.6% BP*)*

20

A jade and diamond pendant. The jadeite bi, with brilliant-cut diamond collet highlights, suspended from a similarly-cut diamond spiral surmount. *Maker's marks for Luk Fook. With report AF09773, from China Gems Laboratory Limited, stating Natural A-Jade. Total diamond weight 0.14ct, stamped to mount. Length 3.3cms. Weight 5gms. £200-300 (plus 27.6% BP*)*

BP* - Buyer's Premium of 23% (plus VAT) or 27.6% (VAT included)

21 ✕

A late 19th century 9ct gold Cantonese carved ivory brooch. Of oval outline, the ivory carved to depict an oriental scene, within a 9ct gold plain surround. *Length 4.8cms. Total weight 19.8gms. £120-180 (plus 27.6% BP*)*



26

An early 20th century 18ct gold ruby and diamond five-stone ring. Designed as an alternating oval-shape ruby and rose-cut diamond line, with scrolling shoulders. *Hallmarks for Birmingham. Ring size S1/2. Weight 3gms. £70-100 (plus 27.6% BP*)*



22

A 9ct gold sapphire and diamond hinged bangle. Designed as a textured leopard clutching a disc in its jaws, inset with single-cut diamonds and circular-shape sapphires. *Estimated total diamond weight 0.20ct. Hallmarks for London. Inner diameter 5.7cms. Weight 8.6gms. £100-150 (plus 27.6% BP*)*



27

A selection of 18ct gold jewellery. To include an 18ct gold circular-shape emerald and single-cut diamond cluster pendant, suspended from an 18ct gold curb-link chain, with a pair of 18ct gold oval-shape sapphire and brilliant-cut diamond cluster earrings. *Estimated total diamond weight 0.60ct. Hallmarks for Birmingham. Weight 6.6gms. £150-200 (plus 27.6% BP*)*



23

Two 14ct gold cubic zirconia necklaces. The first designed as three circular-shape cubic zirconia floral clusters at intervals to a trace-link chain, the second designed as an articulated circular-shape cubic zirconia line suspended from an integral trace-link chain. *Hallmarks for Edinburgh, 1999 and 2006. Lengths 40 and 41cms. Weight 5.9gms. £70-100 (plus 27.6% BP*)*



28

A diamond ring. The old-cut diamond, with similarly-cut diamond line shoulders. *Estimated total diamond weight 0.70ct, principal diamond estimated tinted colour, P1 clarity. Ring size Q. Weight 2.7gms. £200-300 (plus 27.6% BP*)*



24

An 18ct gold diamond ring. The heart-shape diamond, with square-shape diamond line shoulders. *Principal diamond estimated weight 0.75ct, H-I colour, SI clarity. Hallmarks for Sheffield, 1996. Ring size M. Weight 3.5gms. £1,000-1,500 (plus 27.6% BP*)*



29

Three 9ct gold gem-set rings. To include a cubic zirconia five-stone ring, a cubic zirconia dress ring, with an amethyst and diamond dress ring. *Hallmarks for 9ct gold. Weight 7.2gms. £70-100 (plus 27.6% BP*)*



25

A ruby and diamond dress ring. The oval and pear-shape rubies, with old-cut diamond spacers, to the openwork gallery and tapered shoulders. *Estimated total diamond weight 0.30ct, H-I colour, SI clarity. Ring size P. Weight 3.7gms. £250-350 (plus 27.6% BP*)*



30

A late Georgian rock crystal, diamond and garnet locket, with chain. The heart-shape rock crystal locket, with rose-cut diamond and rectangular-shape garnet ribbon surmount, suspended from a fancy-link chain. *Length of pendant 3.5cms. Length of chain 40.5cms. Weight 7.6gms. £450-650 (plus 27.6% BP*)*



BP* - Buyer's Premium of 23% (plus VAT) or 27.6% (VAT included)

31

An 18ct gold garnet and diamond cluster ring. The rectangular-shape purple garnet, with brilliant-cut diamond surround and tapered shoulders. *Garnet weight 2.28cts. Total diamond weight 0.36ct. Hallmarks for Edinburgh. Ring size N. Weight 6.6gms. £500-700 (plus 27.6% BP*)*

**36**

A pair of 9ct gold fluorite earrings. Each designed as a circular-shape fluorite collet, with grooved surmount. *Hallmarks for Sheffield, 2003. Length 2.3cms. Weight 4.8gms. £50-80 (plus 27.6% BP*)*

**32**

A collar necklace. Designed as a graduated series of textured tri-colour bars, with push-piece clasp. *Italian marks. Length 43.5cms. Weight 43.9gms. £900-1,400 (plus 27.6% BP*)*

**37**

A hardstone intaglio signet ring. The rectangular-shape sardonyx, carved to depict a coat of arms, with stepped shoulders and tapered band. *Ring size N. Weight 7gms. £300-400 (plus 27.6% BP*)*

**33**

A diamond pendant. Of bi-colour design, the pave-set diamond and plain interwoven hoops, suspended from a tapered surmount. *Estimated total diamond weight 0.70ct. Length 4cms. Weight 8.8gms. £180-260 (plus 27.6% BP*)*

**38**

An 18ct gold diamond necklace. Designed as a series of brilliant-cut diamond curved bars, with openwork geometric spacers and partially concealed push-piece clasp. *Estimated total diamond weight 1.20cts. Hallmarks for Birmingham and Sheffield. Length 43cms. Weight 19.7gms. £500-700 (plus 27.6% BP*)*

**34**

A pair of 18ct gold diamond and sapphire earrings. Each designed as a pave-set diamond bow, with oval-shape sapphire central collet. *Estimated total diamond weight 0.35ct. Hallmarks for London. Length 1.5cms. Weight 3.7gms. £450-650 (plus 27.6% BP*)*

**39**

A platinum and diamond half eternity ring. The square-shape diamond line, inset to the plain band, with grooved borders. *Estimated total diamond weight 0.65ct. Hallmarks for London, 2009. Ring size O. Weight 6.4gms. £120-180 (plus 27.6% BP*)*

**35**

An emerald and diamond hinged bangle. Of openwork design, with square-shape emeralds, each within a brilliant-cut diamond scalloped surround, with grooved sides. *Estimated total diamond weight 0.20ct. Inner diameter 5.3cms. Weight 20.3gms. £500-700 (plus 27.6% BP*)*

**40**

An early 20th century 15ct gold zircon bar brooch. Designed as a circular-shape blue zircon collet, with openwork grooved sides and slightly tapered terminals. *Length 5.5cms. Weight 4.4gms. With case. £70-100 (plus 27.6% BP*)*



BP* - Buyer's Premium of 23% (plus VAT) or 27.6% (VAT included)

41

A sapphire and diamond dress ring. The rectangular-shape pink sapphire collet, with baguette and brilliant-cut diamond surround. *Estimated dimensions of sapphire 7.2 by 5.9 by 2.8mm. Estimated total diamond weight 0.20ct. Ring size M1/2. Weight 2.8gms. £500-700 (plus 27.6% BP*)*



46

Three brooches and two pendants. To include a mid 20th century 9ct gold brooch engraved for services as Royal matron, a silver bloodstone and yellow paste tapered brooch, with two further brooches and a pendant. *Two with hallmarks for 9ct gold and silver. Length of pendants 3.1 and 6.2cms. Length of brooches 3.1 to 4.5cms. Total weight 20.8gms. £80-120 (plus 27.6% BP*)*



42

An early 20th century gold diamond three-stone ring. The old-cut diamond collet line, with slightly tapered shoulders. *Estimated total diamond weight 0.50ct, H-I colour, SI1-P1 clarity. Ring size Q. Weight 1.6gms. £150-200 (plus 27.6% BP*)*



47

Four Victorian gem-set pendants. To include a black enamel and diamond mourning pendant, a split pearl and banded agate pendant, with two further pendants. *Lengths 2.4 to 2.6cms. Weight 21gms. £350-450 (plus 27.6% BP*)*



43

Two gold diamond, coloured diamond and ruby rings. To include a 14ct gold single-cut diamond and brilliant-cut 'brown' diamond dress ring, with a 9ct gold circular-shape ruby and brilliant-cut diamond chevron ring. *Estimated total diamond weight 0.40ct. Hallmarks for 14ct and 9ct gold. Total weight 8.5gms. £150-200 (plus 27.6% BP*)*



48

A platinum half eternity ring. Designed as a brilliant-cut diamond line, with plain half-band. *Estimated total diamond weight 0.20ct. Hallmarks for Edinburgh. Ring size M. Weight 6gms. £200-300 (plus 27.6% BP*)*



44

Eight pendants and a pair of earrings. To include a nephrite panel carved to depict a dragon, a cultured pearl and paste pendant, a garnet-topped-doublet and split pearl pendant, with five further pendants and a pair of peridot earrings. *Length of pendants 1.8 to 6.2cms. Length of earrings 0.6cm. £60-90 (plus 27.6% BP*)*



49

A gem-set pendant. Designed as a vari-hue gem-set figure, set throughout with oval-shape amethyst, garnet, citrine, topaz and peridot, with articulated limbs and tapered surmount. *Length 5.6cms. Weight 4.1gms. £70-100 (plus 27.6% BP*)*



45

A pair of 18ct gold diamond hoop earrings. Each designed as a pave-set diamond curved line, with plain hinged reverse. *Estimated total diamond weight 0.15ct. Hallmarks for London. Length 1.2cms. Weight 3gms. £100-150 (plus 27.6% BP*)*



50

An 18ct gold diamond full eternity ring. Of bi-colour design, the brilliant-cut diamond line, offset to the polished band. *Estimated total diamond weight 0.30ct. Hallmarks for Birmingham, 2004. Ring size N. Weight 6gms. £150-200 (plus 27.6% BP*)*



51

An 18ct gold diamond ring. The brilliant-cut diamond floral cluster, with tapered sides. *Total diamond weight 0.50ct, stamped to band. Hallmarks for Sheffield. Ring size L1/2. Weight 3.9gms. £180-260 (plus 27.6% BP*)*

**56**

A diamond bracelet. Designed as a pave-set diamond brick-link chain, with partially concealed clasp. *Estimated total diamond weight 1.40cts. Length 17.1cms. Weight 15.7gms. £600-800 (plus 27.6% BP*)*

52

An early 20th century 15ct gold sapphire and diamond bar brooch. The circular-shape sapphire and old-cut diamond cluster, with cannetille sides and bead accent. *Estimated total diamond weight 0.30ct. Hallmarks for Chester. Length 4.8cms. Weight 5.6gms. £80-120 (plus 27.6% BP*)*

57

A peridot ring. Of openwork design, the oval-shape peridot, with crossover band. *Ring size N1/2. Weight 14.3gms. £350-450 (plus 27.6% BP*)*

53

A late Victorian 9ct gold ceramic portrait brooch. Of oval outline, painted to depict a kitchen maid, with hare and pheasants, within a scrolling surround and ceramic reverse. *Length 5.5cms. Total weight 14.9gms. With case. £100-150 (plus 27.6% BP*)*

**58**

A late Victorian gold enamel brooch. The oval polychrome panel, depicting a putto, with rope twist surround. *AF. Length 1.9cms. Weight 3.5gms. £60-90 (plus 27.6% BP*)*

**54**

A 9ct gold diamond cluster ring. The square-shape diamond quatrefoil, with brilliant-cut diamond shoulders. *Total diamond weight 0.33ct, stamped to band. Hallmarks for Birmingham. Ring size O1/2. Weight 3gms. £100-150 (plus 27.6% BP*)*

**59**

An early 20th century 9ct gold carnelian fob and an agate pendant. The fob designed as a fancy-shape carnelian panel, rotating within a fancy-link surmount, the pendant designed as an oval agate panel, within a rope-twist surround, suspended from a trace-link chain. *One with hallmarks for Birmingham, 1920. Total weight 19.7gms. £150-200 (plus 27.6% BP*)*

**55**

A tsavorite garnet and diamond cluster pendant. The oval-shape tsavorite garnet, within a brilliant-cut diamond surround, suspended from a bead-link chain. *Estimated total diamond weight 0.25ct. Length of pendant 1.9cms. Length of chain 40cms. Weight 3.9gms. £240-340 (plus 27.6% BP*)*

**60**

An 18ct gold sapphire and diamond cluster ring. The oval-shape sapphire, with brilliant-cut diamond surround. *Sapphire weight 1.17cts. Total diamond weight 0.19ct, stamped to band. Ring size L1/2. Weight 3.4gms. £550-750 (plus 27.6% BP*)*



BP* - Buyer's Premium of 23% (plus VAT) or 27.6% (VAT included)

61

Two cultured pearl necklaces. The first designed as a single-strand of cultured pearls with imitation pearl clasp, the second designed as a three-row cultured pearl necklace with marcasite clasp. One AF. Lengths 45 and 50cms. **£60-90** (plus 27.6% BP*)



66

A diamond ring. The brilliant-cut diamond, with similarly-cut diamond double line shoulders. *Principal diamond estimated 0.65ct, tinted colour, P2 clarity. Ring size P. Weight 5.2gms. £200-300* (plus 27.6% BP*)



62

Two 18ct gold diamond rings. The first designed as a brilliant-cut diamond with similarly-cut diamond sides and scrolling line shoulders, the second designed as a similarly-cut diamond chevron. *Principal diamond with laser inscription 'F6G96672', corresponding to the report dated 9th August 2014, from IGI, stating 0.24ct, H colour, P1 clarity. Hallmarks for London and Birmingham. Weight 6.1gms. Report not present. £200-300* (plus 27.6% BP*)



67

An 18ct gold diamond half eternity ring. The brilliant-cut diamond line, with plain half-band. *Estimated total diamond weight 0.70ct. Hallmarks for London. Ring size L. Weight 4.4gms. £300-400* (plus 27.6% BP*)



63

A ruby and diamond cluster ring. The oval-shape ruby, with brilliant-cut diamond surrounds, pave-set diamond openwork shoulders and similarly-set diamond accent band. *Ruby weight 1.13cts. Total diamond weight 0.52ct, stamped to band. Ring size L1/2. Weight 4.8gms. £1,100-1,400* (plus 27.6% BP*)



68

A sapphire and diamond dress ring. The rectangular-shape pink sapphire, with single and baguette-cut diamond sides, to the single-cut diamond tapered shoulders. *Estimated dimensions of sapphire 6 by 5 by 2.6mm. Estimated total diamond weight 0.40ct. Ring size O. Weight 3.2gms. £600-800* (plus 27.6% BP*)



64

An early 20th century gold, sapphire and diamond ring. Designed as a graduated vari-shape sapphire line, with old-cut diamond double spacers and scrolling engraved shoulders. *Ring size N. Weight 2.9gms. £70-100* (plus 27.6% BP*)



69

An 18ct gold diamond single-stone ring. The brilliant-cut diamond, with tapered shoulders and plain band. *Diamond weight 0.72ct, estimated H-I colour, SI clarity. Hallmarks for London. Ring size O. Weight 4.4gms. £550-750* (plus 27.6% BP*)



65

A mid Victorian gold diamond memorial ring. Designed as three old-cut diamonds, with partial green enamel surround, to the vacant recess band with personalised inner script. AF. *Estimated total diamond weight 0.30ct. Ring size M. Weight 2.2gms. £100-150* (plus 27.6% BP*)



70

A peridot and diamond dress ring. The rectangular-shape peridot, with single-cut diamond geometric sides and tapered band. *Ring size N1/2. Weight 8.1gms. £250-350* (plus 27.6% BP*)



BP* - Buyer's Premium of 23% (plus VAT) or 27.6% (VAT included)

71

A zircon and diamond cluster ring. The oval-shape blue zircon, within a brilliant-cut diamond surround, to the similarly-cut diamond geometric openwork shoulders. *Estimated total diamond weight 0.75ct. Ring size O. Weight 7.2gms. £200-300 (plus 27.6% BP*)*

**76**

An opal single-stone ring. The oval opal cabochon collet, with early 20th century 22ct gold band replacement. *Band with hallmarks for London, 1916. Ring size M. Total weight 6gms. £180-260 (plus 27.6% BP*)*

**72**

A selection of jewellery. To include a late Victorian diamond brooch, a late Victorian silver memorial brooch, with five further brooches and a split pearl stickpin. *Length of brooches 2.8 to 5cms. Length of stickpin head 1cm. Total weight 33.6gms. £80-120 (plus 27.6% BP*)*

**77**

A 9ct gold diamond and sapphire pendant. The pear-shape sapphire and single-cut diamond butterfly, with openwork heart surround, suspended from a tapered surmount and 9ct gold curb-link chain. *Hallmarks for Birmingham and Sheffield. Length of pendant 2.3cms. Length of chain 40cms. Weight 3gms. £50-80 (plus 27.6% BP*)*

**73**

An early 20th century silver Blue John bangle. The oval Blue John cabochon collets, with openwork scalloped surround. *Hallmarks for Birmingham, 1924. Inner diameter 7.6cms. Weight 22gms. £180-260 (plus 27.6% BP*)*

78

A diamond and onyx pendant. The pave-set diamond grid tapered barrel, containing a similar-shape onyx, suspended from a brilliant-cut diamond collet and pave-set diamond surmount, to the woven leather cord necklace. *Estimated total diamond weight 0.75ct. Length of pendant 5cms. Length of necklace 42cms. £300-400 (plus 27.6% BP*)*

**74**

A late 19th century silver hinged bangle. With ivy-leaf engraved motif. *AF. Inner diameter 5.7cms. Weight 28.2gms. £40-60 (plus 27.6% BP*)*

**79**

Seven charms. To include a 9ct gold golf caddy, an articulated fish, with five further charms. *One with hallmarks for 9ct gold. Lengths 1.1 to 4cms. Total weight 8.1gms. £80-120 (plus 27.6% BP*)*

**75**

An aquamarine pendant. The oval-shape aquamarine, with scrolling surround, suspended from a grooved floral motif surmount. *Estimated dimensions of aquamarine 20.8 by 14.6 by 8.4mm. Length 4.5cms. Weight 6.8gms. £500-700 (plus 27.6% BP*)*

**80**

An 18ct gold sapphire and diamond cluster ring. The circular-shape sapphire, with brilliant-cut diamond surround. *Total diamond weight 0.70ct, stamped to band, estimated H-I colour, SI2-P1 clarity. Hallmarks for Birmingham, 1975. Ring size N. Weight 5gms. £180-260 (plus 27.6% BP*)*



BP* - Buyer's Premium of 23% (plus VAT) or 27.6% (VAT included)

81

A 9ct gold diamond and ruby pendant. The circular-shape ruby quatrefoil, within a single-cut diamond border, suspended from a 9ct gold curb-link chain. *Hallmarks for Birmingham and Sheffield.* Length of pendant 2cms. Length of chain 45cms. Weight 2.9gms. **£50-80** (plus 27.6% BP*)



86

Two mid 20th century 18ct gold and platinum, diamond and sapphire rings. The first designed as a circular-shape sapphire with single-cut diamond surround, the second designed as a circular-cut diamond cluster with tapered shoulders. *Estimated total diamond weight 0.40ct. Weight 5.6gms.* **£120-180** (plus 27.6% BP*)



82

Two 9ct gold items of jewellery. To include a leopard pendant set throughout with circular-shape sapphires, and an opal and circular-shape cubic zirconia abstract ring with bead highlights. One AF. *Hallmarks for Birmingham and London, 1987.* Ring size O1/2. Length of pendant 2cms. Weight 7.3gms. **£80-120** (plus 27.6% BP*)



87

Two diamond rings. The first designed as a rectangular-shape diamond with brilliant-cut diamond line crossover shoulders, together with a brilliant-cut diamond line fitted band ring. To be worn together. *Estimated total diamond weight 1ct, principal diamond estimated I-J colour, P1 clarity.* Ring size P. Weight 7gms. **£800-1,200** (plus 27.6% BP*)



83

A 9ct gold diamond cluster ring. The circular-cut diamond cluster, with baguette-cut diamond petal surrounds and grooved shoulders. *Estimated total diamond weight 1.25cts.* *Hallmarks for Sheffield.* Ring size O. Weight 5gms. **£150-200** (plus 27.6% BP*)



88

A diamond single-stone ring. The brilliant-cut diamond, with openwork gallery. *Diamond weight 0.84ct, estimated K-L colour, P1 clarity.* Ring size L. Weight 3.7gms. **£600-800** (plus 27.6% BP*)



84

A pair of sapphire and diamond earrings. Each designed as a rectangular-shape sapphire, with brilliant-cut diamond quarterly highlights. *Total sapphire weight 6.80cts. Estimated total diamond weight 0.65ct. Length 1.5cms. Weight 5.4gms.* **£1,500-2,000** (plus 27.6% BP*)



89

A diamond crossover ring. The old-cut diamond cluster, with similarly-cut diamond asymmetric shoulders. *Estimated total diamond weight 0.75ct, principal diamond estimated 0.25ct, I-J colour, P1 clarity.* Ring size J. Weight 2.7gms. **£220-320** (plus 27.6% BP*)



85

A diamond and garnet pendant. Of geometric design, the brilliant-cut diamond panels, suspending a garnet briolette fringe, to the trace-link chain. *Estimated total diamond weight 0.95ct. Length of pendant 6cms. Length of chain 42cms. Weight 17.5gms.* **£550-750** (plus 27.6% BP*)



90

An 18ct gold diamond single-stone ring. The brilliant-cut diamond, with tapered shoulders. *Diamond weight 0.15ct, stamped to band, estimated H-I colour, SI clarity.* *Hallmarks for Sheffield.* Ring size P. Weight 3.5gms. **£100-150** (plus 27.6% BP*)



91

A sapphire and diamond pendant. Designed as a circular-shape sapphire cross, with brilliant-cut diamond surround. *Total sapphire weight 1.38cts. Total diamond weight 0.33ct, stamped to mount. Length 2.4cms. Weight 3.6gms. £440-640 (plus 27.6% BP*)*

**96**

A pair of cultured pearl and diamond earrings. Each designed as a cultured pearl, measuring 11.4 and 11.2mms, with brilliant-cut diamond highlight and similarly-cut diamond scrolling lines surmount. *Estimated total diamond weight 1ct. Length 2.5cms. Weight 11.6gms. £240-340 (plus 27.6% BP*)*

**92**

A tanzanite and diamond cluster pendant. The circular-shape tanzanite, with brilliant-cut diamond surround and surmount, suspended from an 18ct gold fancy-link chain. *Estimated total diamond weight 0.35ct. Chain with hallmarks for Birmingham. Length of pendant 1.6cms. Length of chain 45cms. Weight 8.4gms. £300-400 (plus 27.6% BP*)*

**97**

A selection of late Victorian jewellery. To include an enamel, agate and split pearl mourning brooch, a woven hair panel mourning brooch, a turquoise ring, with a set of seed pearl jewellery. One AF. *Total weight 33.4gms. £120-180 (plus 27.6% BP*)*

**93**

A reconstituted turquoise and diamond pendant. The pear-shape reconstituted turquoise cabochon, with pave-set diamond panel surround, suspended from a similarly-set diamond tapered surmount. *Estimated dimensions of reconstituted turquoise 32 by 21 by 7mms. Estimated total diamond weight 0.85ct. Length 5.6cms. Weight 24.8gms. £200-300 (plus 27.6% BP*)*

**98**

A 9ct gold peridot and diamond ring. The triangular-shape peridot, with diamond accent asymmetric sides. *Hallmarks for Birmingham. Ring size L1/2. Weight 1.7gms. £40-60 (plus 27.6% BP*)*

**94**

A 9ct gold garnet single-stone ring. The oval-shape garnet, with diamond accent crossover shoulders. *Hallmarks for Birmingham. Ring size N. Weight 2.2gms. £40-60 (plus 27.6% BP*)*

**99**

An early 20th century gold split pearl brooch. Designed as a split pearl double heart, with a stylised bamboo cane bar. *Two split pearls deficient. Length 6.8cms. Weight 4.9gms. £100-170 (plus 27.6% BP*)*

**95**

A late Victorian 18ct gold diamond five-stone ring. The graduated old and brilliant-cut diamond line, with openwork gallery. *Estimated total diamond weight 0.40ct. Hallmarks for Birmingham, 1897. Ring size O. Weight 2.7gms. £150-200 (plus 27.6% BP*)*

**100**

An 18ct gold diamond cluster ring. Of marquise outline, the brilliant-cut diamonds, with tapered baguette and brilliant-cut diamond double surround, to the brilliant-cut diamond shoulders. *Total diamond weight 1ct, stamped to band. Partial hallmarks for 18ct gold. Ring size S1/2. Weight 4.9gms. £250-350 (plus 27.6% BP*)*



BP* - Buyer's Premium of 23% (plus VAT) or 27.6% (VAT included)

101

A pair of diamond cluster earrings. Each designed as a brilliant-cut diamond, within a similarly-cut diamond surround. *Estimated total diamond weight 0.50ct, principal diamonds estimated H-I colour, SI clarity. Diameter 0.7cm. Weight 1.9gms. £150-200 (plus 27.6% BP*)*

102

A diamond cluster ring. The brilliant-cut diamond, with similarly-cut diamond surround and gallery highlights. *Estimated total diamond weight 0.45ct, principal diamond estimated I-J colour, SI2-P1 clarity. Ring size O. Weight 3gms. £200-300 (plus 27.6% BP*)*

**106**

An 18ct gold diamond single-stone ring. The brilliant-cut diamond, with tapered shoulders. *Diamond weight 0.50ct, estimated H-I colour, P1 clarity. Hallmarks for London, 1991. Ring size L1/2. Weight 2gms. £200-300 (plus 27.6% BP*)*

**107**

An early 20th century silver and gold diamond and ruby pendant. The heart-shape pendant, set throughout with old and rose-cut diamonds, with circular-shape ruby highlights, suspended from a curb-link chain. *Principal diamond estimated weight 0.15ct, H-I colour, P1 clarity. Length of pendant 2.3cms. Length of chain 48cms. Total weight 6.7gms. £700-900 (plus 27.6% BP*)*

**103**

A diamond cluster pendant. The brilliant-cut diamond, with similarly-cut diamond surround, suspended from a plain tapered surmount. *Estimated total diamond weight 0.45ct, principal diamond estimated H-I colour, SI clarity. Length 1.4cms. Weight 1.4gms. £120-180 (plus 27.6% BP*)*

**108***

A diamond half eternity ring. The brilliant-cut diamond line, with plain band. *Total diamond weight 0.55ct, stamped to band. Ring size M. Weight 2.2gms. £380-480 (plus 27.6% BP*)*

**104**

Nine gem-set rings. To include a 9ct gold diamond dress ring, a 9ct gold cubic zirconia ring, a 9ct gold paste ring, with six further rings. Four AF. *Total diamond weight 0.33ct, stamped to band. Three with hallmarks for 9ct gold. Weight of hallmarked rings 6.4gms. £150-200 (plus 27.6% BP*)*

**109**

Two diamond rings. Designed as two interlocking bands, one with brilliant-cut diamond terminal, the other inset with similarly-cut diamond line. *Estimated total diamond weight 2cts, principal diamond estimated H-I colour, P1-P2 clarity. One with hallmarks for platinum. Weight 12.4gms. £900-1,400 (plus 27.6% BP*)*

**105**

Five 18ct gold diamond rings. To include three early 20th century 18ct gold and platinum diamond rings, an early 20th century 18ct gold diamond ring, with a 1970s 18ct gold diamond ring. *Estimated total diamond weight 0.15ct. One with hallmark for 18ct gold. Total weight 9.3gms. £200-300 (plus 27.6% BP*)*

**110**

An 18ct gold diamond single-stone ring. The brilliant-cut diamond, weighing 0.30ct, with similarly-cut diamond line shoulders. *Estimated total diamond weight 0.52ct, I-J colour, SI2-P1 clarity. Ring size M. Weight 3.6gms. £450-650 (plus 27.6% BP*)*



BP* - Buyer's Premium of 23% (plus VAT) or 27.6% (VAT included)

111

A diamond band ring. Of bi-colour design, the brilliant-cut diamond line, within a channel setting, to the shaped band. *Ring size S. Weight 4.2gms. £90-140 (plus 27.6% BP*)*

**116**

Three 9ct gold gem-set rings. To include a prasiolite and diamond dress ring, a cultured pearl single-stone ring and a sapphire and split pearl dress ring. One split pearl deficient. *Estimated total diamond weight 0.15ct. Hallmarks for 9ct gold. Weight 6.3gms. £70-100 (plus 27.6% BP*)*

**112**

Four early 20th century and Edwardian 9ct gold gem-set brooches. To include a rose-cut diamond scrolling brooch, a sapphire and split pearl foliate brooch, a garnet and split pearl bar brooch, with a garnet single-stone bar brooch. One clasp AF. *One with hallmarks for 9ct gold. Lengths 3.8 to 4.7cms. Weight 8.6gms. £80-120 (plus 27.6% BP*)*

**117**

An 18ct gold diamond three-stone ring. The brilliant-cut diamond diagonal line, with similarly-cut diamond asymmetric shoulders. *Total diamond weight 0.35ct, stamped to mount. Hallmarks for Birmingham. Ring size M. Weight 3.2gms. £120-180 (plus 27.6% BP*)*

**113**

A late Victorian 18ct gold opal and diamond ring. The circular opal cabochon, with similarly-shaped opal sides and old-cut diamond duo spacers. AF. *Hallmarks for Birmingham, 1899. Ring size N. Weight 3.2gms. £70-100 (plus 27.6% BP*)*

**118**

A selection of jewellery. To include a 9ct gold gem-set ring, a pair of 9ct gold floral drop earrings, a pair of 9ct gold knot earrings, with further items. *Four with hallmarks for 9ct gold. Weight of hallmarked items 5.3gms. £150-200 (plus 27.6% BP*)*

**114**

A diamond and ruby pendant. Of bi-colour design, the brilliant-cut diamond and marquise-shape ruby cluster, within a scalloped surround, suspended from a box-link chain. *Italian marks. Length of pendant 2cms. Length of chain 36cms. Weight 7.7gms. £180-260 (plus 27.6% BP*)*

**119**

An opal pendant. The triangular opal cabochon, within a plain surround and tapered surmount. *Estimated dimensions of opal 21.2 by 17.4mms. Length 3.3cms. £100-150 (plus 27.6% BP*)*

**115**

A pair of diamond earrings. Each of bi-colour design, with brilliant-cut diamond highlight and grooved tapered surmount. *Estimated total diamond weight 0.20ct. Length 1.3cms. Weight 4.5gms. £150-200 (plus 27.6% BP*)*

**120**

A diamond hinged bangle. The brilliant-cut diamond line, with plain half-bangle. *Estimated total diamond weight 0.75ct. Inner diameter 6cms. Weight 10.6gms. £300-400 (plus 27.6% BP*)*



BP* - Buyer's Premium of 23% (plus VAT) or 27.6% (VAT included)

121

Six bar brooches. To include an early 20th century 9ct gold plain bar brooch, a garnet and split pearl brooch, an opal cluster brooch, a turquoise and split pearl crown bar brooch, with two further brooches. One AF. *One with hallmarks for 9ct gold. Lengths 3.8 to 5.6cms. Total weight 15.2gms. £150-200 (plus 27.6% BP*)*

126

A ruby and gem-set cluster ring. The circular-shape ruby stepped cluster, with similar-shape colourless gem highlights and plain band. *Ring size K. £80-120 (plus 27.6% BP*)*

122

Three rings. To include an 18ct gold diamond band ring, a garnet, citrine, blue topaz and amethyst four-stone ring, and a rope-twist knot ring. *One with hallmarks for 18ct gold. Estimated total diamond weight 0.15ct. Total weight 9.1gms. £200-300 (plus 27.6% BP*)*

**127**

An 18ct gold diamond full eternity ring. Designed as a brilliant-cut diamond line. *Estimated total diamond weight 1.75cts. Hallmarks for Sheffield, 1988. Ring size L1/2. Weight 3.3gms. £450-650 (plus 27.6% BP*)*

**123**

An enamel elephant hinged bangle. Of openwork design, the asymmetric elephants, with blue enamel accents, green enamel eyes and similarly designed bodies. *Inner diameter 5.6cms. Weight 32.4gms. £650-850 (plus 27.6% BP*)*

**128**

A 9ct gold gate bracelet. Designed as a series of eight straight and curved grooved bars, with brick-link spacers and a heart-shape padlock clasp. *Hallmarks for London, 1965. Length 20cms. Weight 40gms. £400-500 (plus 27.6% BP*)*

**124**

Four pendants and two charms. To include a diamond hand pendant, an emerald and diamond fringe pendant, with two further pendants and two charms. *Estimated total diamond weight 0.15ct. Length of pendants 2.4 to 3.2cms. Total weight 14.7gms. £250-350 (plus 27.6% BP*)*

**129**

An 18ct gold sapphire and diamond band ring. Designed as two brilliant-cut diamond lines, with circular-shape sapphire highlights and raised border. *Estimated total diamond weight 0.60ct. Hallmarks for London, 1980. Ring size P. Weight 5.6gms. £300-400 (plus 27.6% BP*)*

**125**

A late Victorian 18ct gold sapphire and diamond five-stone ring. The alternating graduated circular-shape sapphire and old-cut diamond line, within an elongated claw setting. *Estimated total diamond weight 0.35ct. I-J colour, SI1-P2 clarity. Hallmarks for Chester, 1890. Ring size O. Weight 4.4gms. £250-350 (plus 27.6% BP*)*

**130**

An Edwardian 9ct gold garnet-topped-doubled and diamond hinged bangle. The circular-shape pink garnet-topped-double and diamond point panel, with bead and rope-twist scrolling surrounds, to the plain half-bangle. *Hallmarks for Chester, 1907. Inner diameter 6cms. Weight 7.3gms. £80-120 (plus 27.6% BP*)*



BP* - Buyer's Premium of 23% (plus VAT) or 27.6% (VAT included)

131

A late Victorian 18ct gold opal five-stone ring. The circular opal cabochon line, with grooved shoulders. *Hallmarks for Birmingham, 1898. Ring size L. Weight 2.5gms. £100-150 (plus 27.6% BP*)*



136

A ruby and diamond cluster ring. The cushion-shape ruby, with old-cut diamond surround and circular-shape ruby sides. *Estimated total diamond weight 0.50ct. Ring size Q1/2. Weight 4.1gms. £250-350 (plus 27.6% BP*)*



132

An 18ct gold kunzite single-stone ring. The rectangular-shape kunzite, with vacant cluster surround. *Hallmarks for Birmingham, 2017. Ring size Q. Weight 12.1gms. £380-480 (plus 27.6% BP*)*



137

A diamond band ring. Designed as a brilliant-cut diamond triple row, with rectangular spacers. *Estimated total diamond weight 1.45cts. Ring size N/2. Weight 7.4gms. £200-300 (plus 27.6% BP*)*



133

A sapphire and diamond cluster ring. The oval-shape sapphire, with brilliant-cut diamond surround and tapered shoulders. *Estimated dimensions of sapphire 7.7 by 5.7 by 4.7mms. Estimated total diamond weight 0.50ct. Ring size L. Weight 3.2gms. £350-450 (plus 27.6% BP*)*



138

A 14ct gold cubic zirconia lariat necklace. Designed as a box-link chain, with pave-set cubic zirconia bar terminals and loop fastening. *Hallmarks for Edinburgh, 2001. Length 57cms. Weight 7.8gms. £90-140 (plus 27.6% BP*)*



134

A set of diamond jewellery. The pendant designed as a pave-set brilliant-cut diamond sphere, suspended from a similarly-cut diamond surmount and articulated line, with matching earrings. *Estimated total diamond weight 7 to 8cts. Length of each 4.4cms. Weight 19.9gms. £450-650 (plus 27.6% BP*)*



139

A natural saltwater pearl single stud earring. The natural saltwater pearl, measuring approximately 7.7mms. With verbal from GCS, stating natural, saltwater. *Weight 0.7gm. £200-300 (plus 27.6% BP*)*



135

A diamond and ruby pendant. Of bi-colour design, the circular-shape ruby and single-cut diamond cluster, with similarly-cut diamond textured petal surrounds and circular-shape ruby highlights, suspended from a single-cut diamond tapered surmount. *AF. Estimated total diamond weight 0.80ct. Length 4cms. Weight 8.1gms. £180-260 (plus 27.6% BP*)*



140

A diamond heart pendant. The scattered brilliant-cut diamond heart, suspended from a grooved surmount and curb-link chain. *Maltese marks. Length of pendant 1.9cms. Length of chain 39.5cms. Weight 6.8gms. £150-200 (plus 27.6% BP*)*



BP* - Buyer's Premium of 23% (plus VAT) or 27.6% (VAT included)

141



A locket. The polished oval locket, with tapered surmount. Length 6.2cms. Weight 22.3gms. £450-650 (plus 27.6% BP*)

146



Three mid 20th century gem-set and enamel brooches. All of similar design, to include a diamond and enamel floral brooch, a sapphire, diamond and enamel asymmetric brooch, and a ruby, diamond and enamel scrolling brooch. Estimated circular-cut diamond total weight 0.15ct. Lengths 4.8 to 5.6cms. Weight 24gms. £340-440 (plus 27.6% BP*)

142



An 18ct gold diamond three-stone ring. The brilliant-cut diamond line, inset to the bi-colour band. Hallmarks for Sheffield. Ring size O1/2. Weight 6.9gms. £140-200 (plus 27.6% BP*)

147



A synthetic colour-change sapphire single-stone ring. The circular-shape synthetic colour-change sapphire, with tapered band. Ring size O. Weight 12.2gms. £180-260 (plus 27.6% BP*)

143



An 18ct gold bracelet. Designed as a series of criss-cross links, with partially-concealed push-piece clasp. Import marks for London, 1991. Length 18cms. Weight 44.8gms. £900-1,400 (plus 27.6% BP*)

148



A late Victorian gold shell cameo brooch. Of oval outline, carved to depict Medusa in profile, with plain surround. Length 5.6cms. Total weight 19.6gms. £200-300 (plus 27.6% BP*)

144



A 9ct gold amethyst bracelet. Designed as a series of alternating oval-shape amethyst links, with concealed push-piece clasp. Hallmarks for Birmingham, 2006. Length 20cms. Weight 21.1gms. £240-340 (plus 27.6% BP*)

149



A 9ct gold ruby and diamond ring. The graduated circular-shape ruby line, with brilliant-cut diamond spacers and openwork shoulders. Hallmarks for Birmingham, 2008. Ring size Q. Weight 2.5gms. £200-300 (plus 27.6% BP*)

145



Three gold diamond and gem-set rings. To include an 18ct gold diamond collet ring, a 9ct gold sapphire and diamond cluster ring, with a 9ct gold diamond half eternity ring. One AF. Estimated total diamond weight 0.50ct. Hallmarks for 9ct and 18ct gold. Total weight 7.5gms. £180-260 (plus 27.6% BP*)

150



A 9ct gold diamond brooch. Of bi-colour design, the brilliant-cut diamond, atop a scrolling panel. Hallmarks for Birmingham. Length 4.1cms. Weight 4.2gms. £70-100 (plus 27.6% BP*)

BP* - Buyer's Premium of 23% (plus VAT) or 27.6% (VAT included)

151

A diamond ring. The pave-set diamond cushion-shape cluster, with raised surround, to the tapered band. *Estimated total diamond weight 0.40ct. Ring size M. Weight 11.5gms. £280-380 (plus 27.6% BP*)*



156

An early 20th century 18ct gold synthetic ruby and diamond ring. The circular-shape synthetic ruby, with old-cut diamond line sides and rose-cut diamond accents. *Estimated old-cut diamond total weight 0.50ct. Ring size M1/2. Weight 2.7gms. £150-200 (plus 27.6% BP*)*



152

A diamond half eternity ring. Designed as a brilliant-cut diamond line, with tapered band. *Estimated total diamond weight 0.40ct. Ring size N. Weight 3.8gms. £250-350 (plus 27.6% BP*)*



157

A jade and diamond brooch. Comprising two foliate engraved and pierced jadeite panels, with pave-set diamond line spacer and chevron terminals. *Estimated total diamond weight 0.20ct. Length 9.1cms. Weight 15.9gms. Jade untested. £1,200-1,800 (plus 27.6% BP*)*



153

A diamond, ruby, sapphire and emerald pendant. Of geometric design, the central Arabic script panel, within a brilliant-cut diamond, marquise-shape ruby, sapphire and emerald surround. *Estimated total diamond weight 1.10cts. Foreign marks. Length 4.5cms. Weight 12.1gms. £280-380 (plus 27.6% BP*)*



158

A cubic zirconia dress ring. Designed as a vari-shape cubic zirconia floral cluster, with circular-shape cubic zirconia petals and tapered shoulders. *Ring size N. Weight 5.1gms. £100-150 (plus 27.6% BP*)*



154

A 1970s sapphire and diamond brooch. Of bi-colour design, the marquise and circular-shape sapphire curved line, atop a textured panel, with circular-cut diamond highlights. *Length 3.9cms. Weight 11.9gms. £200-300 (plus 27.6% BP*)*



159

A pair of 18ct gold diamond earrings. Each designed as a brilliant-cut diamond scroll. *AF. Estimated total diamond weight 1.50cts. Italian marks. Length 4.5cms. Weight 17.4gms. £300-400 (plus 27.6% BP*)*



155

A sapphire and diamond dress ring. The cushion-shape sapphire, with old-cut diamond surround and openwork gallery. *Sapphire weight 14.97cts. Estimated total diamond weight 0.45ct. Ring size L. Weight 8.5gms. £1,800-2,400 (plus 27.6% BP*)*



160

A diamond pendant. The brilliant-cut diamond Arabic script, reading 'Allah', atop the openwork rectangular panel, with similarly-cut diamond line sides and surmount. *Estimated total diamond weight 0.70ct. Length 5.3cms. Weight 14.1gms. £340-440 (plus 27.6% BP*)*



BP* - Buyer's Premium of 23% (plus VAT) or 27.6% (VAT included)

161

A ruby and diamond dress ring. Of openwork design, the square-shape ruby collet, with diamond point asymmetric surround and sides. *Ring size O. Weight 2.5gms. £150-200 (plus 27.6% BP*)*

**166**

A crossover band ring. Designed as overlapping polished and textured lines. *Ring size O. Width 1.2cms. Weight 6.6gms. £120-180 (plus 27.6% BP*)*

**162**

A diamond single-stone ring. The brilliant-cut diamond, with tapered band. *Estimated diamond weight 0.35ct, H-I colour, VS2-SI1 clarity. Ring size L1/2. Weight 1.5gms. £150-200 (plus 27.6% BP*)*

**167**

A tortoiseshell bangle and a citrine bracelet. To include a solid tortoiseshell bangle with brilliant-cut diamond highlight, together with a curb-link bracelet with vari-size faceted citrine beads and spring-ring clasp. *Bangle inner diameter 6.5cms. Length of bracelet 20cms. £60-90 (plus 27.6% BP*)*

**163**

A mid 20th century diamond and synthetic ruby ring. Of abstract design, the rose-cut diamond line centre, with calibre-cut synthetic ruby line sides, atop a raised gallery and tapered band. *Ring size O1/2. Weight 16.8gms. £500-700 (plus 27.6% BP*)*

**168**

An early 20th century gold double locket pendant. Of oval outline, with engraved scrolling foliate and geometric detail. *Length 4.5cms. Total weight 12.7gms. £250-350 (plus 27.6% BP*)*

**164**

An opal and diamond ring. Designed as a graduated circular opal cabochon line, with old-cut diamond double spacers and scrolling gallery. *Estimated total diamond weight 0.15ct. Ring size M1/2. Weight 3.5gms. £120-180 (plus 27.6% BP*)*

**169**

A pair of diamond hoop earrings. Each designed as a brilliant-cut diamond double line, with plain half-hoop. *Estimated total diamond weight 0.35ct. Length 1.8cms. Weight 8.4gms. £180-260 (plus 27.6% BP*)*

**165**

An 18ct gold diamond band ring. Designed as three square-shape diamonds, inset to the polished band. *Estimated total diamond weight 0.10ct. Hallmarks for Birmingham, 2009. Ring size M. Weight 5.7gms. £150-200 (plus 27.6% BP*)*

**170**

An early 20th century gold ruby and diamond cluster ring. The circular-shape ruby, with rose-cut diamond scalloped surround. *Ring size S. Weight 3.5gms. £80-120 (plus 27.6% BP*)*



BP* - Buyer's Premium of 23% (plus VAT) or 27.6% (VAT included)

171

An 18ct gold diamond two-stone ring. The brilliant-cut diamond line, with asymmetric shoulders. *Estimated total diamond weight 0.30ct, I-J colour, SI clarity. Hallmarks for London, 1981. Ring size P1/2. Weight 2.7gms. £120-180 (plus 27.6% BP*)*



176

Three items of gem-set jewellery. To include a 9ct gold topaz cross pendant, suspended from a 9ct gold belcher-link chain, a pair of amethyst floral drop earrings, with a citrine fob. *Two with hallmarks for 9ct gold. Total weight 15.3gms. £120-180 (plus 27.6% BP*)*



172

A diamond cluster ring. The brilliant-cut diamond cluster, within a similarly-cut diamond double surround, to the openwork shoulders. *Estimated total diamond weight 1ct, principal diamond estimated J-K colour, P1-P2 clarity. Ring size N. Weight 3.5gms. £200-300 (plus 27.6% BP*)*



177

A cubic zirconia full eternity ring. The circular-shape cubic zirconia line, with raised borders. *Ring size N. Weight 4.7gms. £60-90 (plus 27.6% BP*)*



173

Three items of early 20th century gold jewellery. To include an openwork brooch with amethyst centre, a heart and foliate bar brooch, with a synthetic blue spinel and colourless gem ring. One AF. *Length of brooches 4.5 and 4.7cms. Ring size J. Weight 8.1gms. £90-140 (plus 27.6% BP*)*



178

A mid Victorian 15ct gold ring and an early 20th century gold brooch. The ring designed as an oval and pear-shape garnet line with split pearl trefoil sides, the brooch designed as a split pearl ray with circular turquoise cabochon highlights. Both AF. *Ring with hallmarks for Birmingham, 1872. Total weight 5.8gms. £100-150 (plus 27.6% BP*)*



174

An emerald and diamond pendant. Designed as an Arabic script tablet, with circular-shape emerald and brilliant-cut diamond openwork surround, suspending a similarly-cut diamond fringe. *Estimated total diamond weight 0.40ct. Length 7cms. Weight 21.2gms. £440-640 (plus 27.6% BP*)*



179

A 9ct gold charm bracelet. The curb-link chain, suspending thirteen 9ct gold charms, to include a carnelian fob with lion pedestal, a hedgehog, a Rolls Royce, with ten further charms and a 9ct gold padlock clasp. *Hallmarks for 9ct gold. Length 18cms. Weight 87gms. £1,000-1,500 (plus 27.6% BP*)*



175

A zircon and diamond ring. The cushion-shape blue zircon, with brilliant-cut diamond line shoulders. *Estimated total diamond weight 0.20ct. Ring size M. Weight 4.7gms. £120-180 (plus 27.6% BP*)*



180

An 18ct gold emerald and cubic zirconia dress ring. The oval emerald cabochon, with circular-shape cubic zirconia double surround. *Hallmarks for London, 2018. Approximate ring size K. Weight 4.8gms. £250-350 (plus 27.6% BP*)*



BP* - Buyer's Premium of 23% (plus VAT) or 27.6% (VAT included)

181

A 14ct gold diamond five-stone ring. The raised brilliant-cut diamond, with slightly graduated similarly-cut diamond line sides. *Estimated total diamond weight 1ct, H-I colour, P1 clarity. Hallmarks for London. Ring size I. Weight 3.7gms. £300-400 (plus 27.6% BP*)*



186



A pair of 18ct gold diamond earrings. Each designed as a brilliant-cut diamond collet, within a crossover bar. *Estimated total diamond weight 0.20ct. Hallmarks for London. Length 1.5cms. Weight 10.8gms. £250-350 (plus 27.6% BP*)*

182

A 9ct gold cubic zirconia dress ring. Of crossover design, the circular-shape cubic zirconia curved line, to the tapered band. *Hallmarks for London. Ring size P1/2. Weight 4.8gms. £70-100 (plus 27.6% BP*)*



187



An early 20th century gold tourmaline bracelet. The cushion-shape green tourmaline line, with plain circular disc duo spacers, to the rope-twist bracelet. *Length 18cms. Weight 5.4gms. £80-120 (plus 27.6% BP*)*

183 ✕

A coral lariat necklace. The trace-link chain, with spherical coral bead spacers and terminals. *Length 40cms. Weight 4.6gms. Coral untested. £120-180 (plus 27.6% BP*)*



188

A citrine and cubic zirconia pendant. Of openwork design, the fancy-shape citrine, with polished heart-shape accent, to the circular-shape cubic zirconia scrolling partial surrounds. *Length 3.8cms. Weight 9.1gms. £200-300 (plus 27.6% BP*)*



184

A synthetic ruby dress ring. Of openwork design, the oval-shape synthetic ruby, with scrolling pierced surrounds and stylised fleur-de-lis shoulders. *Ring size L. Weight 5gms. £100-150 (plus 27.6% BP*)*



189

A diamond and sapphire five-stone ring. The circular-shape sapphire line, with old-cut diamond spacers. *Estimated total diamond weight 0.25ct. Ring size M. Weight 4.7gms. £500-700 (plus 27.6% BP*)*



185



A late Victorian gold split pearl and onyx brooch. Of oval outline, designed as a stylised split pearl cross, atop an onyx panel, within a rope-twist surround. *Length 3cms. Weight 6.2gms. £100-150 (plus 27.6% BP*)*

190



A 9ct gold bracelet. Designed as a series of horseshoes, with belcher-link chain spacers and lobster clasp. *Hallmarks for Sheffield, 2000. Length 20cms. Weight 11.4gms. £120-180 (plus 27.6% BP*)*

191

A lapis lazuli, diamond and gem-set pendant. The pear-shape lapis lazuli panel, with brilliant-cut diamond Arabic 'Allah' script, within an openwork vari-shape sapphire, ruby, emerald and brilliant-cut diamond surround. *Estimated total diamond weight 0.35ct. Length 6.5cms. Weight 25.2gms. £300-400 (plus 27.6% BP*)*



196

Two diamond rings. To include a brilliant-cut diamond cluster, with similarly-cut diamond half eternity ring. *Estimated total diamond weight 0.40ct. Weight 6.9gms. £150-200 (plus 27.6% BP*)*



192



Three items of gem-set jewellery. To include a 9ct gold peridot single-stone ring, a pair of aquamarine stud earrings, with an 18ct gold diamond bow bracelet. *Bracelet with maker's marks for Cropp & Farr. Estimated total diamond weight 0.10ct. Two with hallmarks for 9ct and 18ct gold. Length of bracelet 19cms. Diameter of earrings 0.6cm. £70-100 (plus 27.6% BP*)*

197

Six gem-set rings. To include a 9ct gold amethyst and cubic zirconia cluster ring, a 9ct gold amethyst and diamond ring, an onyx signet ring, with three further gem-set rings. One AF. *Two with hallmarks for 9ct gold. Weight of hallmarked rings 3.7gms. £60-90 (plus 27.6% BP*)*



193

An 18ct gold diamond crossover ring. The asymmetric band, inset with square-shape diamond highlights. *Estimated total diamond weight 0.25ct. Hallmarks for Birmingham, 1994. Ring size K1/2. Weight 5.9gms. £120-180 (plus 27.6% BP*)*



198

A gem-set floral dress ring. The circular-shape brown sapphire cabochon, with pear-shape vari-hue hardstone petal surround. *Ring size L. Weight 7.2gms. £150-200 (plus 27.6% BP*)*



194

Three diamond rings. To include a late Victorian 18ct gold diamond five-stone ring, a diamond single-stone ring, and a diamond five-stone ring. *Estimated total diamond weight 0.60ct. One with hallmarks for Birmingham, 1890. Weight 7.3gms. £180-260 (plus 27.6% BP*)*



199

A 9ct gold diamond and opal ring. The heart-shape opal cabochon, with single-cut diamond asymmetric sides. *Hallmarks for Birmingham. Ring size P. Weight 2.1gms. £40-60 (plus 27.6% BP*)*



195

A platinum diamond single-stone ring. The baguette-cut diamond, with tapered band. *Estimated diamond weight 0.40ct, H-I colour, VS clarity. Hallmarks for London. Ring size N. Weight 6.7gms. £250-350 (plus 27.6% BP*)*



200

Two brooches and a pendant. To include two early 20th century 9ct gold gem-set brooches, together with a carved jadeite and pink sapphire Buddha pendant. *One with hallmarks for Birmingham, 1906. Length of brooches 4.5 and 4.2cms. Length of pendant 3cms. Total weight 9.4gms. £80-120 (plus 27.6% BP*)*



BP* - Buyer's Premium of 23% (plus VAT) or 27.6% (VAT included)

201

A diamond dress ring. Of openwork design, the brilliant-cut diamond lines, with similarly-cut diamond gallery sides. *Estimated total diamond weight 1ct. Ring size O1/2. Weight 29.9gms. See Plate 1. £400-600 (plus 27.6% BP*)*



206

An 18ct gold sapphire and diamond dress ring. The circular-shape sapphire collet, atop the tapered band, with floral motif and brilliant-cut diamond line sides. *Estimated total diamond weight 0.50ct. Hallmarks for London, 1997. Ring size O. Weight 11.9gms. See Plate 1. £450-650 (plus 27.6% BP*)*



202

A pair of 9ct gold gem-set earrings. Each designed as a vari-hue, vari-gem tapered drop, suspended from a circular-shape blue gem surmount. *Hallmarks for London, 2006. Length 4.2cms. Weight 3.6gms. See Plate 1. £50-80 (plus 27.6% BP*)*



207

A diamond dress ring. Designed as overlapping bands, two are pave-set with brilliant-cut diamonds. *Estimated total diamond weight 2cts. Ring size N. Weight 12.6gms. See Plate 1. £200-300 (plus 27.6% BP*)*



203

A sapphire and diamond dress ring. Of abstract outline, pave-set with circular-shape sapphires and brilliant-cut diamonds, to the similarly-cut diamond border. *AF. Estimated total diamond weight 2cts. Approximate ring size O1/2. Weight 26.8gms. See Plate 1. £400-600 (plus 27.6% BP*)*



208

A pair of brilliant-cut diamond stud earrings. *Estimated total diamond weight 0.80ct, H-I colour, SI2-P1 clarity. Weight 1.9gms. £350-450 (plus 27.6% BP*)*



204

An 18ct gold diamond and emerald bangle. The pave-set diamond panel, with circular-shape emerald highlights, to the hinged half-bangle. *Estimated total diamond weight 1.10cts. Hallmarks for London, 2000. Inner diameter 5.8cms. Weight 20.7gms. See Plate 1. £650-850 (plus 27.6% BP*)*



209

An amethyst ring. Designed as a rough amethyst crystal geode, with a textured surround and band. *Ring size I. Weight 15.4gms. £400-600 (plus 27.6% BP*)*



205

A tanzanite pendant. The oval-shape tanzanite, suspended from a trace-link chain with faceted bead spacers. *Estimated dimensions of tanzanite 11 by 8.6 by 6.2mm. Length of pendant 1.4cms. Length of chain 46cms. Weight 2.9gms. See Plate 1. £250-350 (plus 27.6% BP*)*



210

A 1980s 9ct gold ruby snake necklace. Designed as a textured snake's head and tail, with circular-shape ruby eyes and flexible chain body. *Maker's marks for Cropp & Farr. Hallmarks for Birmingham. Length 50cms. Weight 36.6gms. £400-600 (plus 27.6% BP*)*





211



A pair of 14ct gold cubic zirconia earrings. Each designed as a textured hoop, with Roman numeral central line and rectangular-shape cubic zirconia sides. *Hallmarks for Edinburgh, 1999. Length 1.3cms. Weight 5.8gms. £90-140 (plus 27.6% BP*)*

216

An 18ct gold diamond cluster ring. The square-shape diamond quatrefoil, with openwork gallery and tapered shoulders. *Estimated total diamond weight 0.80ct, H-I colour, SI1-P1 clarity. Hallmarks for Edinburgh. Ring size J1/2. Weight 3.3gms. £200-300 (plus 27.6% BP*)*



212

An 18ct gold diamond ring. The brilliant-cut diamond, with square-shape diamond shoulders. *Estimated total diamond weight 0.60ct, principal diamond estimated H-I colour, P1 clarity. Hallmarks for Birmingham, 1994. Ring size O1/2. Weight 3.2gms. £300-400 (plus 27.6% BP*)*



217

A sapphire and diamond ring. The shield-shape yellow sapphire collet, with pave-set diamond line sides, to the tapered band. *Estimated dimensions of sapphire 9 by 8.5 by 6.3mms. Estimated total diamond weight 0.35ct. French assay marks. Ring size I. Weight 11gms. £650-850 (plus 27.6% BP*)*



213

A gem-set ring and a pair of earrings. The ring designed as an alternating circular-shape sapphire and marquise-shape cubic zirconia line, together with a pair of bi-colour disc stud earrings. *Italian marks. Ring size K. Diameter of earrings 0.9cm. Weight 3.2gms. £70-100 (plus 27.6% BP*)*



218



An 18ct gold bracelet. Designed as a series of five belcher-link chains, with a bi-colour spring-ring clasp. *Hallmarks for Sheffield, 2007. Length 20.5cms. Weight 35.4gms. £700-900 (plus 27.6% BP*)*

214

A set of cultured pearl and white sapphire jewellery. To include a cultured pearl and white sapphire cluster pendant, suspended from a fancy-link chain, with matching ring and earrings. *Weight 16.1gms. £60-90 (plus 27.6% BP*)*



219

A brooch and a pair of earrings. The brooch of openwork design, comprising a series of interwoven ribbons and bead highlights, with a pair of floral scalloped earrings. *Length of brooch 4.5cms. Length of earrings 1.2cms. Weight 19.9gms. £360-460 (plus 27.6% BP*)*



215

An 18ct gold diamond single-stone ring. The brilliant-cut diamond inset to the tapered band. *Estimated diamond weight 0.35ct, J-K colour, SI clarity. Hallmarks for London, 2000. Ring size N1/2. Weight 16.4gms. £550-750 (plus 27.6% BP*)*



220

An 18ct gold sapphire and diamond ring. The oval-shape sapphire, with brilliant-cut diamond crossover shoulders. *Hallmarks for Birmingham. Ring size Q. Weight 5.2gms. £120-180 (plus 27.6% BP*)*



BP* - Buyer's Premium of 23% (plus VAT) or 27.6% (VAT included)

221

Two gem-set rings. To include an oval star sapphire cabochon single-stone ring, with a cultured pearl and diamond asymmetric shoulders ring. *Weight 7.1gms. £150-200 (plus 27.6% BP*)*

**226**

A diamond single-stone ring. Of bi-colour design, the old-cut diamond collet, with openwork scrolling surround, to the plain half-band. *Estimated diamond weight 0.10ct. Ring size R. Weight 3.3gms. £50-80 (plus 27.6% BP*)*

**222**

A 9ct gold diamond and gem-set dress ring. Designed as a textured leopard head, with single-cut diamond highlights and circular-shape green-gem eye detail. *Estimated total diamond weight 0.10ct. Hallmarks for Birmingham. Ring size M1/2. Weight 3gms. £40-60 (plus 27.6% BP*)*

**227**

A diamond three-stone ring. Of asymmetric design, the brilliant-cut diamond diagonal line, within an illusion setting and textured shoulders. *Estimated total diamond weight 0.30ct, principal diamond estimated H-I colour, SI2-P1 clarity. Ring size O. Weight 5.3gms. £150-200 (plus 27.6% BP*)*

**223**

A late Victorian 15ct gold necklace. Designed as a series of openwork fancy-links, each with star motif. *Length 53cms. Weight 25.2gms. £450-650 (plus 27.6% BP*)*

**228**

An early 20th century 18ct gold onyx cameo signet ring. The oval onyx cameo, carved to depict a lady in profile, with tapered band. *Hallmarks for London, 1913. Ring size M. Weight 16gms. £350-450 (plus 27.6% BP*)*

**224**

An emerald and diamond cluster ring. The brilliant-cut diamond, within a similarly-cut diamond and circular-shape emerald spiral surround. *Estimated total diamond weight 1.50cts, principal diamond estimated I-J colour, SI clarity. Ring size T. Weight 9.5gms. £350-450 (plus 27.6% BP*)*

**229**

Two cultured pearl and cubic zirconia rings. The first designed as a 9ct gold cultured pearl with circular and pear-shape cubic zirconia surround, the second designed as a cultured pearl with marquise and circular-shape cubic zirconia sides. *One with hallmarks for Edinburgh, 2005. Total weight 12.6gms. £120-180 (plus 27.6% BP*)*

**225**

Four gem-set rings. To include a 9ct gold peridot crossover ring, a 9ct gold colourless gem eternity ring, a garnet cluster ring, with a diamond chevron ring. *Two with hallmarks for 9ct gold. Total weight 8.3gms. £100-150 (plus 27.6% BP*)*

**230**

A chrysoberyl and split pearl cluster ring. The oval chrysoberyl cabochon, within a split pearl surround, to the tapered shoulders. *One split pearl deficient. Ring size O. Weight 6.2gms. £120-180 (plus 27.6% BP*)*



BP* - Buyer's Premium of 23% (plus VAT) or 27.6% (VAT included)

231

Two 9ct gold diamond and sapphire brooches. Each designed as an openwork scrolling panel, the first set with a single-cut diamond, the second set with a circular-shape sapphire. *Hallmarks for Birmingham, 1992 and 1993. Diameters 2.2 and 2.9cms. Weight 4.2gms. £30-50 (plus 27.6% BP*)*



236

A late Victorian silver and gold, diamond and cultured pearl sword hilt brooch. The rose-cut diamond grip and scrolling cross guard, with cultured pearl accents, to the similarly-cut diamond highlight and imitation pearlommel. *Length 4cms. Weight 6.4gms. £380-480 (plus 27.6% BP*)*



232

A pair of diamond and cultured pearl earrings. Each designed as a cultured pearl, suspended from an old-cut diamond duo surmount. *Cultured pearl measuring 8mms. Estimated total diamond weight 0.15ct. Length 1.8cms. Weight 2.9gms. £150-200 (plus 27.6% BP*)*



237

A cultured pearl single-strand necklace and a pair of earrings. Comprising a series of 107 graduated cultured pearls, together with a pair of cultured pearl stud earrings and a bag of loose cultured pearl beads. *Length of necklace 52cms. £60-90 (plus 27.6% BP*)*



233



A pair of ruby and diamond cluster earrings. Each designed as an oval-shape ruby, with brilliant-cut diamond surround. *Estimated total diamond weight 0.50ct. Length 1cm. Weight 2.9gms. £200-300 (plus 27.6% BP*)*

238

A diamond single-stone ring. The brilliant-cut diamond, with asymmetric grooved shoulders. *Estimated diamond weight 0.35ct, H-I colour, VS clarity. Ring size O. Weight 3.2gms. £140-200 (plus 27.6% BP*)*



234

A cultured pearl single-strand necklace. Comprising eighty-four graduated cultured pearls, measuring 7 to 2mms, with rose-cut diamond and cultured pearl clasp. *AF. Length 36cms. £50-80 (plus 27.6% BP*)*



239

A mid 20th century 18ct gold and platinum diamond ring. The pave-set diamond marquise-shape panel, with tapered shoulders. *Ring size L1/2. Weight 2.2gms. £50-80 (plus 27.6% BP*)*



235

Two necklaces and a pendant. To include a mabe pearl pendant, a graduated cultured pearl single-strand necklace with marcasite clasp, and an imitation pearl necklace. *Length of pendant 3cms. Length of necklaces 45 and 90cms. £40-60 (plus 27.6% BP*)*



240

A gem-set hinged bangle. Designed as a series of mabe pearl and circular-shape cubic zirconia clusters, with marquise-shape synthetic ruby, synthetic sapphire and green paste sides, atop the four-row seed pearl bangle. *Inner diameter 5.4cms. Weight 32gms. £650-850 (plus 27.6% BP*)*



241

A diamond cluster ring. The brilliant-cut diamond, within a similarly-cut diamond surround. *Estimated total diamond weight 0.25ct. Ring size M. Weight 3.7gms. £100-150 (plus 27.6% BP*)*

**246**

A mid 20th century diamond full eternity ring. The brilliant-cut diamond line, with textured gallery. *Estimated total diamond weight 0.65ct. Ring size P. Weight 3.6gms. £300-400 (plus 27.6% BP*)*

**242**

An 18ct gold diamond cluster ring. The brilliant-cut diamond cluster, with similarly-cut diamond accent gallery and asymmetric shoulders. *Total diamond weight 0.40ct, engraved to band. Principal diamond estimated H-I colour, SI clarity. Hallmarks for Birmingham, 2014. Ring size N. Weight 3.5gms. £250-350 (plus 27.6% BP*)*

**247**

A late Victorian gold brooch and a cultured pearl and diamond pendant. The brooch designed as a rose-cut diamond to the split pearl floral cluster atop a blue enamel dome, the pendant designed as a cultured pearl with foliate surround and brilliant-cut diamond accent. *Length of brooch 4.9cms. Length of pendant 2cms. Total weight 6.7gms. £100-150 (plus 27.6% BP*)*

**243**

An 18ct gold ruby and diamond cluster ring. The graduated circular-shape ruby line, with brilliant-cut diamond surround. *Estimated total diamond weight 0.35ct. Hallmarks for Birmingham, 2003. Ring size L. Weight 3.2gms. £180-260 (plus 27.6% BP*)*

**248**

A sapphire and diamond pendant. Designed as a marquise-shape pink sapphire, suspended within a brilliant-cut diamond halo, to the similarly-cut diamond articulated drop and surmount. *Sapphire weight 0.66ct. Total diamond weight 0.50ct, stamped to surmount. Length 3.9cms. Weight 1.7gms. £380-480 (plus 27.6% BP*)*

**244**

Two gem-set necklaces and a brooch. To include a rhodochrosite and lapis lazuli necklace, a green hardstone and garnet necklace with snake-link chain and a leaf brooch. *£100-150 (plus 27.6% BP*)*

**249**

A topaz single-stone ring. The square blue topaz cabochon, inset to the tapered band. *Estimated dimensions of topaz 7 by 7 by 6mms. Ring size M. Weight 16.9gms. £450-600 (plus 27.6% BP*)*

**245**

An 18ct gold diamond cluster ring. The brilliant-cut diamond, within a similarly-cut diamond surround. *Estimated total diamond weight 2.50cts, I-K colour, SI2-P2 clarity. Hallmarks for London. Ring size Q. Weight 6.2gms. £700-900 (plus 27.6% BP*)*

**250**

A diamond full eternity ring. Designed as a series of marquise-shape diamond collets, atop a textured band, with polished border. *Estimated total diamond weight 2cts. Ring size N1/2. Weight 14.5gms. £400-600 (plus 27.6% BP*)*



BP* - Buyer's Premium of 23% (plus VAT) or 27.6% (VAT included)

251

A sapphire and diamond cluster ring. The square-shape pink sapphire, with brilliant-cut diamond surround and shoulders. *Sapphire weight 1.22cts. Total diamond weight 0.26ct, stamped to band. Ring size M. Weight 2.8gms. £800-1,200 (plus 27.6% BP*)*



256

A platinum diamond single-stone ring and a band ring. The first designed as a brilliant-cut diamond with asymmetric scrolling shoulders, together with a shaped band ring. *Estimated diamond weight 0.35ct, H-I colour, SI2-P1 clarity. Hallmarks for London and Sheffield. Weight 8gms. £200-300 (plus 27.6% BP*)*



252

A pair of diamond and cultured pearl earrings. Each designed as a cultured pearl trefoil, with brilliant-cut diamond undulating ribbon accent. *Estimated total diamond weight 0.10ct. Length 1.8cms. Weight 5.4gms. £150-200 (plus 27.6% BP*)*



257

A late Victorian 15ct gold turquoise and split pearl ring. Designed as a circular turquoise cabochon stylised cross, with split pearl line sides. *Hallmarks for Chester, 1882. Ring size M. Weight 2.1gms. £80-120 (plus 27.6% BP*)*



253

An 18ct gold cultured pearl and diamond pendant. The cultured pearl, measuring approximately 7mms, with brilliant-cut diamond surmount, suspended from an 18ct gold curb-link chain. *Hallmarks for Edinburgh. Length of pendant 1cm. Length of chain 46cms. Weight 5gms. £100-150 (plus 27.6% BP*)*



258

A late Victorian silver locket. Of oval outline, with embossed monogram, opening to reveal two vacant compartments, suspended from a fancy-link chain. *Length of locket 4.5cms. Length of chain 42cms. Total weight 44.9gms. £50-80 (plus 27.6% BP*)*



254

An 18ct gold diamond cluster ring. The brilliant-cut diamond, within a single-cut diamond surround, to the tapered shoulders. *Estimated total diamond weight 0.35ct. Hallmarks for London, 1981. Ring size K. Weight 2gms. £100-150 (plus 27.6% BP*)*



259

A diamond single-stone ring. The old-cut diamond, within a star-setting surround, to the plain band. *Estimated diamond weight 0.20ct, H-I colour, SI clarity. Ring size M. Weight 3.3gms. £70-100 (plus 27.6% BP*)*



255

An 18ct gold diamond single-stone ring. Of bi-colour design, the brilliant-cut diamond, with asymmetric crossover shoulders and bar highlights. *Estimated diamond weight 0.25ct, I-J colour, P1 clarity. Hallmarks for London, 2001. Ring size O1/2. Weight 7.3gms. £180-260 (plus 27.6% BP*)*



260

Three items of jewellery. To include a cultured pearl bracelet, a pair of enamel stud earrings, with a pair of mother-of-pearl dress studs. *Length of bracelet 20cms. Diameter of earrings 0.8cm. Diameter of dress studs 1.2cms. Total weight 15.5gms. £90-140 (plus 27.6% BP*)*



261

A pair of 9ct gold diamond and coated topaz earrings. Each designed as a pear-shape coated orange topaz line, with single-cut diamond accent spacers. *Hallmarks for Birmingham.* Length 3.3cms. Weight 2.4gms. **£40-60** (plus 27.6% BP*)

**266**

A 9ct gold diamond and amethyst ring. The oval-shape amethyst, with single-cut diamond shoulders and plain band. *Hallmarks for Birmingham.* Ring size L. Weight 2.9gms. **£50-80** (plus 27.6% BP*)

**262**

A silver vari-hue enamel butterfly brooch. The butterfly with green enamel body, purple enamel wings and silver enamel highlights. *Hallmarks for Birmingham, 2018.* Length 6.8cms. Weight 18.7gms. **£70-100** (plus 27.6% BP*)

**267**

A sapphire and diamond three-stone ring. The oval-shape sapphire, with brilliant-cut diamond sides. *Estimated total diamond weight 0.50ct, H-I colour, VS2-SI1 clarity.* Ring size K. Weight 3.2gms. **£250-350** (plus 27.6% BP*)

**263**

A platinum band ring. Of bi-colour design, with grooved border. *Hallmarks for Birmingham, 2000.* Ring size Q1/2. Weight 5.2gms. **£120-180** (plus 27.6% BP*)

**268**

An 18ct gold diamond hinged bangle. Designed as a brilliant-cut diamond undulating line, to the plain half-bangle. *Estimated total diamond weight 0.45ct.* Import marks for London. Inner diameter 5.8cms. Weight 20gms. **£550-750** (plus 27.6% BP*)

**264**

A platinum diamond single-stone ring. Of openwork design, the brilliant-cut diamond, with tapered shoulders. *Estimated diamond weight 0.65ct, K-L colour, P1 clarity.* *Hallmarks for London, 2011.* Ring size L. Weight 13.2gms. **£650-850** (plus 27.6% BP*)

**269**

Two 9ct gold gem-set rings. The first designed as a rectangular-shape green tourmaline with single-cut diamond gallery highlights, the second designed as a circular-shape citrine with textured stepped surround. *Hallmarks and import marks for Birmingham, 1968.* Weight 9.8gms. **£100-150** (plus 27.6% BP*)

**265**

A 9ct gold horse brooch. Of openwork design, the galloping horse, within a plain circular border. *Hallmarks for Birmingham, 1986.* Diameter 4.5cms. Weight 13gms. **£150-200** (plus 27.6% BP*)

**270**

A late Victorian 15ct gold brooch. Of circular outline, with floral cannetille motif dome and geometric surround. *Diameter 3cms.* Weight 8.9gms. **£100-150** (plus 27.6% BP*)



BP* - Buyer's Premium of 23% (plus VAT) or 27.6% (VAT included)

271

An enamel and cubic zirconia daisy bracelet. Designed as a series of purple and white enamel and cubic zirconia daisies, with belcher-link chain spacers. *Length 16.5cms. Weight 4.2gms. £80-120 (plus 27.6% BP*)*

276

Four gem-set rings. To include an 18ct gold diamond dress ring, an 18ct gold diamond single-stone ring, with two further rings. *Estimated total diamond weight 0.20ct. Three with hallmarks for 18ct gold. Total weight 13.1gms. £280-350 (plus 27.6% BP*)*

272

An 18ct gold diamond cluster ring. The brilliant-cut diamond floral cluster, with similarly-cut diamond line shoulders. *Total diamond weight 1ct, stamped to band. Hallmarks for London. Ring size M. Weight 4.3gms. £400-600 (plus 27.6% BP*)*

277

An 18ct gold emerald and diamond cluster ring. The rectangular-shape emerald, with brilliant-cut diamond scalloped surround and openwork tapered shoulders. *Emerald weight 0.95ct. Total diamond weight 0.36ct. Hallmarks for London. Ring size N. Weight 4.1gms. £800-1,200 (plus 27.6% BP*)*

273

A diamond five-stone ring. Designed as a graduated old-cut diamond line, with scrolling gallery and shoulders. *Estimated total diamond weight 0.80ct, I-J colour, SI clarity. Ring size P. Weight 3.9gms. £450-650 (plus 27.6% BP*)*

278

A 9ct gold diamond and aquamarine crossover ring. The oval-shape aquamarine, with single-cut diamond accent sides. *Hallmarks for Birmingham. Ring size O. Weight 2.3gms. £40-60 (plus 27.6% BP*)*

274

A late Victorian 9ct gold ceramic portrait brooch. Of oval outline, painted to depict a young lady, within a rope-twist surround and ceramic reverse. *Length 6.5cms. Total weight 27gms. With case. £150-200 (plus 27.6% BP*)*

279

Two 18ct gold diamond half eternity rings. Each designed as a brilliant-cut diamond line, channel-set to the tapered band. *One AF. Estimated total diamond weight 0.35ct. Hallmarks for London. Weight 3.4gms. £80-120 (plus 27.6% BP*)*

275

A selection of gem-set jewellery. To include a 1970s 9ct gold glazed money box pendant, a diamond and ruby pendant, a polychrome enamel rooster pendant, with two further pendants, a 1980s 9ct gold brooch and a stickpin. *Two with hallmarks for 9ct gold. Total weight 18.1gms. £50-80 (plus 27.6% BP*)*

280

An early 20th century ruby and diamond brooch. Designed as an alternating circular-shape ruby and rose-cut diamond line, atop a curb-link panel. *Austrian marks. Length 2.8cms. Weight 3.7gms. With case. £90-140 (plus 27.6% BP*)*

BP* - Buyer's Premium of 23% (plus VAT) or 27.6% (VAT included)

281

A pair of brilliant-cut diamond collet stud earrings. *Estimated total diamond weight 0.40ct, I-J colour, SI clarity. Diameter 0.4cm. Weight 1.3gms. £320-420 (plus 27.6% BP*)*

286

A 9ct gold gem-set ring, a pair of earrings and a bar brooch. To include a 9ct gold goshenite and diamond dress ring, a pair of 9ct gold synthetic sapphire and cubic zirconia cluster earrings, with a blue chalcedony bar brooch. *Two with hallmarks for 9ct gold. Total weight 11gms. £90-140 (plus 27.6% BP*)*

**282**

An 18ct gold sapphire and diamond dress ring. The oval-shape sapphire, with brilliant-cut diamond trefoil shoulders. *Estimated total diamond weight 0.20ct. Hallmarks for London, 1989. Ring size O1/2. Weight 2.5gms. £100-150 (plus 27.6% BP*)*

**287**

An enamel and cubic zirconia daisy necklace. Designed as a series of purple and white enamel and cubic zirconia daisies, with belcher-link chain spacers. *Length 42cms. Weight 6.2gms. £120-180 (plus 27.6% BP*)*

**283**

A pair of brilliant-cut diamond stud earrings. *Total diamond weight 0.50ct, estimated H-I colour, P2 clarity. Weight 0.9gm. £180-260 (plus 27.6% BP*)*

288

Three late Victorian and early 20th century 9ct gold gem-set brooches. To include a garnet brooch with scrolling sides, a garnet and split pearl floral wreath brooch, with an amethyst and split pearl brooch. Amethyst brooch may be worn as a pendant. *Lengths 2.9 to 4.8cms. Weight 11.9gms. £150-200 (plus 27.6% BP*)*

284

A sapphire and diamond dress ring. Designed as an alternating circular-cut diamond and calibre-cut sapphire curved line, with similarly-cut diamond trefoil shoulders and openwork scrolling gallery. *Estimated total diamond weight 0.40ct. Ring Size O. Weight 3.4gms. £660-860 (plus 27.6% BP*)*

**289**

Two 9ct gold gem-set rings. The first designed as a circular-shape emerald and single-cut diamond crossover ring, the second designed as a circular-shape garnet cluster ring. *Hallmarks and import marks for London, 1970 and Birmingham, 1982. Weight 5.1gms. £60-90 (plus 27.6% BP*)*

**285**

A diamond half eternity ring. The baguette-cut diamond line, within a channel setting. *Estimated total diamond weight 0.30ct. Approximate ring size L. Weight 3.3gms. £250-350 (plus 27.6% BP*)*

**290**

A 1930s 18ct gold chalcedony signet ring. The chalcedony panel, inset to the tapered band. *Hallmarks for London, 1936. Ring size R1/2. Weight 5.6gms. £120-180 (plus 27.6% BP*)*



BP* - Buyer's Premium of 23% (plus VAT) or 27.6% (VAT included)

291

A diamond single-stone ring. The brilliant-cut diamond, with tapered shoulders. *Diamond weight 0.60ct, estimated H-I colour, SI2-P1 clarity. Ring size J1/2. Weight 2.1gms. £400-600 (plus 27.6% BP*)*



296

An 18ct gold necklace. Designed as a series of interwoven, scrolling links, with tapered terminals and lobster clasp. *Import marks for Birmingham, 1990. Length 42cms. Weight 46.5gms. £1,000-1,500 (plus 27.6% BP*)*



292

Three diamond rings. To include an 18ct gold diamond single-stone ring, an 18ct gold diamond band ring, together with a diamond two-stone ring. *Estimated total diamond weight 0.40ct. Two with hallmarks for Birmingham. Total weight 7.6gms. £180-260 (plus 27.6% BP*)*



297

A bloodstone intaglio signet ring. Of oval outline, the bloodstone carved to depict a crest, with tapered band. *Ring size Q1/2. Weight 10.2gms. £150-200 (plus 27.6% BP*)*



293



A 14ct gold cubic zirconia bracelet. Designed as a series of circular-shape cubic zirconia collet textured panel links, with similarly-textured spacers. *Hallmarks for Edinburgh, 2000. Length 17cms. Weight 12.1gms. £150-200 (plus 27.6% BP*)*

298

Five gem-set rings. To include a 9ct gold amethyst single-stone ring, a 9ct gold smoky quartz single-stone ring, with three further rings. *Four with hallmarks for 9ct gold. Total weight 17.5gms. £150-200 (plus 27.6% BP*)*



294

A tourmaline pendant and a ring. To include an openwork heart pendant with vari-hue tourmaline bead strand highlights, suspended from a similarly-set fancy-link chain, together with a matching ring. *Length of pendant 4cms. Length of chain 48cms. Ring size O1/2. Total weight 18.9gms. £180-260 (plus 27.6% BP*)*



299

A late Victorian gold diamond and turquoise pendant. The openwork pendant, with oval turquoise cabochon highlights, old-cut diamond and rope-twist accent, suspended from a fancy-link chain. *Estimated total diamond weight 1.20cts. Length of pendant 6.5cms. Length of chain 56cms. Weight 24.6gms. £1,000-1,500 (plus 27.6% BP*)*



295

A pair of 14ct gold cubic zirconia earrings. Each designed as a circular-shape cubic zirconia cluster, suspended from a similarly designed surmount, with bar spacer. *Hallmarks for Edinburgh, 2006. Length 2.7cms. Weight 3.7gms. £60-90 (plus 27.6% BP*)*



300

A diamond five-stone ring. Designed as a graduated brilliant-cut diamond line, with shared collet surround and tapered shoulders. *Estimated total diamond weight 1.50cts, J-K colour, SI2-P1 clarity. Ring size N. Weight 3.5gms. £1,400-2,000 (plus 27.6% BP*)*



BP* - Buyer's Premium of 23% (plus VAT) or 27.6% (VAT included)

301

A tanzanite and diamond pendant. Of openwork design, the rectangular-shape tanzanite, within a brilliant-cut diamond surround, suspended from a similarly-cut diamond chevron surmount. Tanzanite AF. *Estimated total diamond weight 0.50ct. Length of pendant 3cms. Weight 4.3gms. £280-380 (plus 27.6% BP*)*



306

A peridot, amethyst and diamond pendant. Comprising a graduated, alternating circular-shape peridot and amethyst line, articulated to baguette-cut diamond collet spacers and trapezoid-shape diamond surmount, suspended from an integral trace-link chain. *Estimated total diamond weight 0.50ct. Length of pendant 5.2cms. Length of chain 41cms. Weight 10.8gms. £600-800 (plus 27.6% BP*)*



302

A diamond cluster ring. The brilliant-cut diamond cluster, with tapered baguette-cut diamond shoulders. *Total diamond weight 0.52ct, stamped to band. Ring size N. Weight 4.6gms. £80-120 (plus 27.6% BP*)*



307

Three 9ct gold shell cameo rings and a brooch. To include three oval shell cameo rings, one carved to depict three dancing ladies and two carved to depict a lady in profile, with an oval shell cameo brooch carved to depict a lady in profile. *Hallmarks for 9ct gold. Weight 17.2gms. £120-180 (plus 27.6% BP*)*



303

A 1980s 9ct gold bangle. Designed as an interwoven polished and rope-twist bangle. *Hallmarks for London, 1984. Inner diameter 6cms. Weight 16.5gms. £120-180 (plus 27.6% BP*)*



308

A selection of jewellery. To include a split pearl and diamond point forget-me-not mourning brooch, two further mourning brooches, a cut steel snake brooch and a colourless paste ring mount. *Length of brooches 3 to 4.2cms. Weight (excluding snake brooch) 42gms. £280-380 (plus 27.6% BP*)*



304

A sapphire and diamond heart pendant. The pave-set sapphire heart, with brilliant-cut diamond scrolling highlights, suspended from a fancy-link chain. *Estimated total diamond weight 0.30ct. Length of pendant 2.5cms. Length of chain 40cms. Weight 6.8gms. £200-300 (plus 27.6% BP*)*



309

An emerald and diamond cluster ring. The rectangular-shape emerald, with brilliant-cut diamond surround and similarly-cut diamond line shoulders, to the grooved band. *Estimated dimensions of emerald 6.2 by 5.7 by 4.2mm. Estimated total diamond weight 1.20cts. Ring size N. Weight 4.8gms. £1,500-2,000 (plus 27.6% BP*)*



305

An 18ct gold amethyst and diamond dress ring. The square-shape amethyst, within a brilliant-cut diamond surround and similarly-cut diamond line shoulders. *Estimated total diamond weight 0.25ct. Hallmarks for London, 2006. Ring size G1/2. Weight 4.2gms. £250-350 (plus 27.6% BP*)*



310

An 18ct gold diamond cluster ring. The brilliant-cut diamond, with similarly-cut diamond surround and line shoulders. *Total diamond weight 0.82ct, stamped to band, principal diamond estimated I-J colour, SI2-P1 clarity. Hallmarks for Birmingham. Ring size K. Weight 3.3gms. £150-200 (plus 27.6% BP*)*



BP* - Buyer's Premium of 23% (plus VAT) or 27.6% (VAT included)

311

A late Victorian 15ct gold diamond memorial brooch. The brilliant-cut diamond, star-set atop a polished dome, with scalloped surround and glazed panel reverse. *Replacement pin with hallmarks for 9ct gold. Length 2.6cms. Weight 6.1gms. £70-100 (plus 27.6% BP*)*



316

A diamond foliate pendant. Designed as a series of single-cut diamond leaves, with vine detail. *Estimated total diamond weight 0.85ct. Length 7.2cms. Weight 17.6gms. £800-1,200 (plus 27.6% BP*)*



312

A late Victorian 9ct gold shell cameo brooch. The oval shell cameo, carved to depict Bacchus, within a rope-twist surround. *Length 5.2cms. Weight 14.7gms. £80-120 (plus 27.6% BP*)*



317

A platinum diamond single-stone ring. Designed as a square-shape diamond, with tapered shoulders. *Diamond weight 0.25ct, stamped to band, estimated G-H colour, P1 clarity. Hallmarks for London. Ring size 11/2. Weight 3.3gms. £120-180 (plus 27.6% BP*)*



313



A diamond and cultured pearl brooch. Of scrolling foliate and stem design, set throughout with brilliant-cut diamonds, with cultured pearl highlight. *Total diamond weight 0.49ct, stamped to the mount. Length 5.5cms. Weight 6.6gms. £250-350 (plus 27.6% BP*)*

318*

A set of ruby and diamond cluster jewellery. To include a ring, a pendant with chain and a pair of matching earrings, each designed as an oval-shape ruby with brilliant-cut diamond surround. *Estimated total diamond weight 0.40ct. Weight 7.3gms. £900-1,400 (plus 27.6% BP*)*



314



A selection of six brooches. To include a 15ct opal bar brooch, an early 20th century 9ct gold red paste heart and opal bar brooch, together with four mid 20th century costume brooches. *Lengths 2.5 to 4.8cms. Weight of gold brooches 5gms. £50-80 (plus 27.6% BP*)*

319

An 18ct gold and platinum diamond single-stone ring. The old-cut diamond, with openwork gallery and tapered shoulders. *Estimated diamond weight 0.25ct, H-I colour, P1-P2 clarity. Ring size M. Weight 2.1gms. £80-120 (plus 27.6% BP*)*



315

An 18ct gold topaz and diamond crossover ring. The oval-shape topaz duo, with single-cut diamond line asymmetric shoulders. One diamond deficient. *Hallmarks for Birmingham. Ring size M. Weight 3.6gms. £120-180 (plus 27.6% BP*)*



320

An early 20th century gold gem-set brooch. The circular-shape synthetic ruby heart panel, with scroll bar and swan sides, to the garnet-topped-doublet terminals. *Length 5.4cms. Weight 6.8gms. £100-150 (plus 27.6% BP*)*



321

An 18ct gold diamond single-stone ring. The brilliant-cut diamond, with tapered shoulders. *Estimated diamond weight 0.80ct, H-I colour, P2 clarity. Hallmarks for Sheffield, 2004. Ring size J1/2. Weight 2.7gms. £260-360 (plus 27.6% BP*)*

**326***

A sapphire and diamond pendant. Designed as a graduated series of marquise-shape sapphire and brilliant-cut diamond clusters, with similarly-cut diamond spacers. *Total sapphire weight 0.92ct, total diamond weight 0.41ct, stamped to mount. Length 3.4cms. Weight 2.8gms. £500-700 (plus 27.6% BP*)*

**322**

A diamond ring. The brilliant-cut diamond, with similarly-cut diamond line shoulders. *Total diamond weight 0.50ct, stamped to band. Ring size K1/2. Weight 4.8gms. £180-260 (plus 27.6% BP*)*

**327**

A diamond cluster ring. The rectangular-shape diamond, with brilliant and baguette-cut diamond surround, to the tapered shoulders. *Estimated total diamond weight 0.50ct, principal diamond estimated I-J colour, VS clarity. Ring size L. Weight 3.6gms. £250-350 (plus 27.6% BP*)*

**323**

Two diamond and gem-set three-stone rings. The first designed as a 9ct gold oval-shape ruby with old-cut diamond sides, the second designed as an oval-shape sapphire with brilliant-cut diamond sides. *Estimated total diamond weight 0.25ct. One with hallmarks for London, 1982. Total weight 6.1gms. £80-120 (plus 27.6% BP*)*

**328**

A hinged bangle. Designed as two curved crossover lines, hinged with a plain reverse. *Inner diameter 5.9cms. Weight 5.7gms. £70-100 (plus 27.6% BP*)*

**324**

An 18ct gold diamond pendant. The brilliant-cut diamond cluster, suspended from a tapered surmount and 9ct gold adjustable box-link chain. *Total diamond weight 1ct, stamped to mount. Hallmarks for Birmingham. Length of pendant 1.9cms. Length of chain 50cms. Total weight 4.6gms. £400-600 (plus 27.6% BP*)*

**329***

A pair of 18ct gold sapphire and diamond cluster earrings. Each designed as a square-shape pink sapphire, with brilliant-cut diamond surround. *Total sapphire weight 0.20ct. Total diamond weight 0.16ct. Hallmarks for Birmingham. Length 4.5cms. Weight 1.4gms. £200-300 (plus 27.6% BP*)*

**325**

A pair of late Victorian gold garnet earrings. Each designed as a pear-shape garnet, within an openwork cannetille surround, suspended from a similarly-designed surmount. *Length 3.5cms. Weight 7.3gms. £350-450 (plus 27.6% BP*)*

**330**

A diamond and onyx dress ring. Of abstract design, the brilliant-cut diamond and onyx rotating disc, to the off-set brilliant-cut diamond scrolling band. *Estimated total diamond weight 0.15ct. Approximate ring size L. Weight 6.7gms. £100-150 (plus 27.6% BP*)*



BP* - Buyer's Premium of 23% (plus VAT) or 27.6% (VAT included)

331*

A pair of sapphire and diamond cluster earrings. Each designed as an oval-shape sapphire, with brilliant-cut diamond surround. *Total sapphire weight 0.67ct, total diamond weight 0.19ct, stamped to mount. Length 0.8cm. Weight 2.1gms. £320-420 (plus 27.6% BP*)*

336

A pair of 9ct gold amethyst and diamond cluster earrings. Each designed as an oval-shape amethyst, within a single-cut diamond surround. *Estimated total diamond weight 0.15ct. Hallmarks for Birmingham. Length 0.9cm. Weight 1.5gms. £40-60 (plus 27.6% BP*)*

332

Two 9ct gold cubic zirconia dress rings. The first designed as a circular-shape cubic zirconia with rectangular-shape cubic zirconia sides, the second designed as a pear-shape cubic zirconia with rectangular-shape cubic zirconia line crossover shoulders. *Hallmarks for Edinburgh, 2005 and import marks for Birmingham, 1998. Weight 11gms. £90-140 (plus 27.6% BP*)*

**337**

A synthetic pink sapphire and diamond cluster ring. The cushion-shape synthetic pink sapphire, with single-cut diamond surround and tapered shoulders. *Estimated total diamond weight 0.30ct. Ring size T. Weight 3.8gms. £150-200 (plus 27.6% BP*)*

**333**

A mid 20th century 9ct gold bangle. The engraved scrolling flora and foliate front, with hinged half-bangle. *Maker's marks for Smith & Pepper. Hallmarks for Birmingham, 1940. Inner diameter 6cms. Weight 32gms. £350-450 (plus 27.6% BP*)*

338

A diamond four-stone ring. Designed as four square-shape diamonds, inset at intervals to the tapered band, with shallow chevron to one side. *Estimated total diamond weight 0.90ct, H-I colour, SI1-P1 clarity. Ring size N. Weight 7.1gms. £350-450 (plus 27.6% BP*)*

**334**

A sapphire and diamond three-stone dress ring. The circular-shape sapphire and brilliant-cut diamond line, with raised border and textured sides. *Estimated total diamond weight 0.30ct. Ring size L. Weight 5.7gms. £120-180 (plus 27.6% BP*)*

**339**

A selection of jewellery. To include a 9ct gold shell cameo ring with rope-twist border, together with three pairs of 9ct gold stud earrings and one further pair of earrings. *Four with hallmarks for 9ct gold. Ring size O. Total weight 5.5gms. £60-90 (plus 27.6% BP*)*

**335**

An 18ct gold diamond half eternity ring. Designed as a series of alternating brilliant and baguette-cut diamonds, with scalloped border. *Estimated total diamond weight 0.20ct. Hallmarks for London, 2001. Ring size N1/2. Weight 3gms. £90-140 (plus 27.6% BP*)*

**340**

An 18ct gold diamond three-stone ring. The brilliant-cut diamond, with pear-shape diamond sides. *Total diamond weight 0.58ct, principal diamond estimated K-L colour, SI clarity. Hallmarks for Birmingham. Ring size M. Weight 3.1gms. £300-400 (plus 27.6% BP*)*



341

A selection of late Victorian and early 20th century gold and gem-set jewellery. To include, two split pearl and rose-cut diamond floral cluster rings, a pearl and turquoise pendant, and a split pearl star pendant. One may be worn as a brooch. *Length of pendants 3.4 and 5cms. Weight 9.1gms. £150-200 (plus 27.6% BP*)*



346

An 18ct gold diamond band ring. Designed as three rows of brilliant-cut diamonds, set at intervals to the grooved band. *Total diamond weight 0.27ct, stamped to band. Hallmarks for London. Ring size M. Weight 4gms. £120-180 (plus 27.6% BP*)*



342

An 18ct gold diamond pendant. The brilliant-cut diamond, suspended from a tapered surmount and an 18ct gold belcher-link chain. *Estimated diamond weight 0.50ct, H-I colour, P2 clarity. Hallmarks for Birmingham, pendant partially indistinct. Length of pendant 1cm. Length of chain 40cms. Weight 2.7gms. £400-600 (plus 27.6% BP*)*



347

An 18ct gold diamond four-stone ring. The brilliant-cut diamond line, with tapered shoulders. *Estimated total diamond weight 0.80ct, I-J colour, SI1-P1 clarity. Hallmarks for Sheffield. Ring size N1/2. Weight 4.2gms. £200-300 (plus 27.6% BP*)*



343

A diamond single-stone ring. The brilliant-cut diamond, with similarly-cut diamond line asymmetric shoulders. *Principal diamond estimated weight 0.60ct, H-I colour, SI clarity. Ring size N. Weight 3gms. £900-1,400 (plus 27.6% BP*)*



348

A turquoise and diamond cluster ring. The oval turquoise cabochon, with single-cut diamond surround and similarly-cut diamond accent shoulders. *Estimated dimensions of turquoise 13.1 by 7.3 by 5mms. Estimated total diamond weight 0.80ct. Ring size U. Weight 5.6gms. £900-1,400 (plus 27.6% BP*)*



344

An 18ct gold diamond three-stone ring. Designed as a graduated brilliant-cut diamond line, with crossover shoulders. *Estimated total diamond weight 0.25ct. Hallmarks for London, 1994. Ring size K1/2. Weight 4.3gms. £100-150 (plus 27.6% BP*)*



349

A diamond single-stone ring. The brilliant-cut diamond, inset to the open band. *Estimated diamond weight 0.20ct, H-I colour, VS clarity. Ring size M. Weight 7gms. £180-260 (plus 27.6% BP*)*



345

A diamond and cultured pearl pendant. The cultured pearl with single-cut diamond geometric surmount, suspended from a 9ct gold flat curb-link chain. *Hallmarks for Birmingham and Sheffield. Length of pendant 2cms. Length of chain 46cms. Weight 2.6gms. £40-60 (plus 27.6% BP*)*



350

A diamond ring. The oval-shape raised panel, with pave-set diamond highlight, to the geometric panel sides and concave shoulders. *Estimated total diamond weight 0.15ct. Approximate ring size L. Weight 11.5gms. £250-350 (plus 27.6% BP*)*



BP* - Buyer's Premium of 23% (plus VAT) or 27.6% (VAT included)

351

A 14ct gold diamond cluster ring. Of pear-shape outline, the brilliant-cut diamond central cluster, with baguette and brilliant-cut diamond stepped surround, to the baguette and brilliant-cut diamond line shoulders.

Estimated total diamond weight 1.75cts. Hallmarks for Sheffield. Ring size O. Weight 5.4gms. £240-340 (plus 27.6% BP)*



356

A ruby heart brooch. Designed as a textured heart, with similar-shape pierced highlight and circular-shape ruby collet. *Length 2.9cms. Weight 4.9gms. £100-150 (plus 27.6% BP*)*



352

A late Victorian 18ct gold garnet single-stone ring. The oval-shape garnet, with openwork scrolling shoulders. *Hallmarks for Birmingham, 1876. Ring size N. Weight 2gms. £120-60 (plus 27.6% BP*)*



357

A mid 20th century 18ct gold diamond two-stone ring. The old-cut diamond duo, with asymmetric shoulders. *Estimated total diamond weight 0.80ct, H-I colour, SI2-P1 clarity. Ring size L. Weight 2.9gms. £400-600 (plus 27.6% BP*)*



353

An 18ct gold diamond half eternity ring. Designed as a brilliant-cut diamond line, with tapered half-band. *Total diamond weight 0.50ct, stamped to band. Hallmarks for London. Ring size L. Weight 2.9gms. £120-180 (plus 27.6% BP*)*



358

An 18ct gold emerald and diamond three-stone ring. The oval-shape emerald, with brilliant-cut diamond sides and tapered shoulders. *Estimated total diamond weight 0.30ct, H-I colour, P1 clarity. Import marks for Birmingham, 1993. Ring size L. Weight 2.5gms. £80-120 (plus 27.6% BP*)*



354

A diamond dress ring. The raised square-shape diamond, with similarly-cut diamond line sides. *Estimated total diamond weight 0.50ct, principal diamond estimated H-I colour, VS2-SI1 clarity. Approximate ring size I. Weight 3.8gms. £400-600 (plus 27.6% BP*)*



359

An early 20th century platinum and gold diamond, seed pearl and enamel bar brooch. The seed pearl, within a rose-cut diamond and white and blue enamel halo, to the seed pearl sides. *Length 5.8cms. Weight 3.8gms. £100-150 (plus 27.6% BP*)*



355

A brooch and a clip. To include a blue guilloché enamel and marcasite floral brooch, together with a paste double clip. *Lengths 4.3 and 6.1cms. £40-60 (plus 27.6% BP*)*



360

An amethyst and diamond pendant. The pear-shape amethyst, with brilliant-cut diamond scrolling surmount and similarly-cut diamond ribbon highlights. *Estimated dimensions of amethyst 30 by 24 by 17mms. Estimated total diamond weight 0.15ct. Length 3.8cms. Total weight 20.5gms. £100-150 (plus 27.6% BP*)*



361

An 18ct gold diamond ring. Designed as a series of scattered single-cut diamonds, inset into the plain band. *Estimated total diamond weight 0.10ct. Hallmarks for Sheffield. Ring size N. Weight 7.1gms. £120-180 (plus 27.6% BP*)*

**366**

Two late Victorian brooches and a locket. To include an agate brooch carved to depict Ajax with canneltile surround, a silver floral brooch, with a foliate engraved locket. *One with hallmarks for silver. Length of brooches 2.3 and 3.5cms. Length of locket 3.5cms. Total weight 18.5gms. £90-140 (plus 27.6% BP*)*

**362**

A diamond dress ring. The pave-set diamond band, with openwork band. *Estimated total diamond weight 0.50ct. Ring size L1/2. Weight 4.1gms. £150-200 (plus 27.6% BP*)*

**367**

Two 9ct gold brooches. The first designed as an oval opal cabochon collet atop a plain bar, the second designed as a textured iron golf club. *Hallmarks for London, 1991 and Birmingham. Lengths 5.1 and 6.4cms. Weight 7.7gms. £90-140 (plus 27.6% BP*)*

**363**

An early 20th century gold diamond memorial brooch. Of circular outline, the rose-cut diamond, star-set to the central panel, with canneltile and scrolling surround and glazed reverse. *Diameter 3.1cms. Total weight 8.7gms. With case. £200-300 (plus 27.6% BP*)*

**368**

Two gold rings. To include an Edwardian 18ct gold diamond three-stone ring, and an early 20th century 22ct gold band ring. *Hallmarks for Chester, 1904 and 1933. Total weight 6.9gms. £120-180 (plus 27.6% BP*)*

**364**

A citrine, diamond and cultured freshwater pearl brooch. Designed as a butterfly with fancy-cut citrine wings, cultured pearl body and brilliant-cut diamond highlight. *Estimated diamond weight 0.10ct. Length 3.2cms. Weight 11.7gms. £200-300 (plus 27.6% BP*)*

**369**

A coral hinged bangle. The circular coral cabochon floral cluster, with graduated coral bead sides and multi-row bangle. *Inner diameter 5.8cms. Coral untested. £250-350 (plus 27.6% BP*)*

**365**

Three diamond and sapphire rings. To include an early 20th century 18ct gold diamond crossover ring, a 1930s 18ct gold and platinum diamond five-stone ring, with one further 18ct gold and platinum diamond and sapphire five-stone ring. *Estimated total diamond weight 0.50ct. Total weight 7.8gms. £200-300 (plus 27.6% BP*)*

**370**

An 18ct gold diamond brooch. Of tri-colour design, comprising three pave-set diamond and polished gold leaves, tapered to a single stem. *Estimated total diamond weight 0.20ct. Hallmarks for Sheffield, 1999. Length 6.4cms. Weight 13.9gms. £250-350 (plus 27.6% BP*)*



BP* - Buyer's Premium of 23% (plus VAT) or 27.6% (VAT included)

371

A platinum diamond single-stone ring. The brilliant-cut diamond, with tapered shoulders. *With mini report F1P81429, dated 7th November 2012, from IGI, stating 0.40ct, G colour, SI2 clarity. Hallmarks for Birmingham. Ring size L. Weight 3.2gms. £400-600 (plus 27.6% BP*)*



376

A 9ct gold diamond and 'coloured' diamond ring. Of marquise-outline, the pave-set 'blue' diamond panel, with similarly-cut diamond surround and shoulders. *Estimated total diamond weight 0.75ct. Hallmarks for London. Ring size O. Weight 5.1gms. Diamonds untested. £150-200 (plus 27.6% BP*)*



372

An early 20th century 9ct gold amethyst and split pearl pendant. The circular-shape amethyst drop, to the openwork split pearl floral panel, with oval and circular-shape amethyst highlights, suspended from a tapered surmount. May be worn as a brooch. *Length 6.5cms. Weight 5.9gms. £80-120 (plus 27.6% BP*)*



377

A mid Victorian gold foil-back rock crystal, split pearl and diamond brooch. Of openwork design, the split pearl, rose-cut diamond and foil-back circular rock crystal cabochon cluster, within a halo surround, with rope-twist, snake-link chain and bead detail. *Length 4.5cms. Weight 21.5gms. £350-450 (plus 27.6% BP*)*



373

Three cultured pearl necklaces and six dyed cultured pearl necklaces. Each comprising a single-strand of cultured pearls, measuring approximately 8 to 6mms, together with jewellery components and sixty-eight loose cultured pearls. *Lengths 42 to 132cms. £60-90 (plus 27.6% BP*)*



378

A late Victorian gold split pearl brooch. The split pearl star, set atop an oval dome with cannetille and rope-twist surrounds, suspending a snake-link fringe. *Length 6cms. Weight 13.7gms. £350-450 (plus 27.6% BP*)*



374

A pair of tanzanite and diamond earrings. Each designed as an oval-shape tanzanite, within a brilliant-cut diamond surround, suspended from a similarly-cut diamond detachable half-hoop. *Estimated total diamond weight 0.60ct. Length 2.3cms. Weight 4.5gms. £300-400 (plus 27.6% BP*)*



379

A selection of amethyst jewellery. To include two 9ct gold oval-shape amethyst single-stone rings, together with a 9ct gold circular-shape amethyst openwork fob, suspended from a belcher-link chain. *Hallmarks for 9ct gold. Length of fob 2.5cms. Length of chain 157.5cms. Total weight 35.8gms. £260-360 (plus 27.6% BP*)*



375

A diamond and emerald five-stone ring. Designed as a graduated and alternating brilliant-cut diamond and rectangular-shape emerald line, with scrolling gallery. *Estimated total diamond weight 0.40ct, principal diamond estimated I-J colour, SI clarity. Ring size Q1/2. Weight 3.5gms. £250-350 (plus 27.6% BP*)*



380

A gem-set cross pendant. The pendant, set throughout with oval-shape chrysoprase, quartz, garnet, amethyst, blue topaz, peridot and yellow paste, with tapered surmount. *Length 4.8cms. Weight 7.2gms. £60-90 (plus 27.6% BP*)*



381 ✕

A coral pendant. The polished coral branch, with hoop surmount, suspended from a snake-link chain. *Length of pendant 6.6cms. Length of chain 42cms. Total weight 11.6gms. Coral untested. £150-200 (plus 27.6% BP*)*



386

Two necklaces. The first designed as an oval jet panel suspended from a multi-row vulcanite bead necklace, the second designed as a vari-shape and size bakelite bead necklace. *Length of necklaces 55 and 60cms. £90-140 (plus 27.6% BP*)*



382 ✕

A jade and coral necklace. Designed as an engraved nephrite disc pendant, suspended from a black cord necklace, with vari-size coral bead spacers and toggle clasp. *Diameter of pendant 9cms. Length of cord 40cms. With case. Coral untested. £60-90 (plus 27.6% BP*)*



387

A bakelite bead necklace. Designed as a single row of eighty-three graduated spherical green beads, to the spring-ring clasp. *Length 120cms. Weight 169.6gms. £70-100 (plus 27.6% BP*)*



383 ✕

A coral necklace and a pair of earrings. The necklace designed as a series of coral bead spheres, together with a pair of matching earrings with oval coral cabochon surmount and openwork spacer. *Length of earrings 4.2cms. Length of necklace 48cms. Weight 59gms. Coral untested. £80-120 (plus 27.6% BP*)*



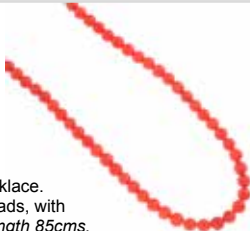
388

A bakelite single-strand necklace. Comprising forty-five oval-shape red bakelite beads, measuring approximately 31 to 10mms, with screw-clasp fastening. *Length of necklace 65cms. Weight 88.62gms. £80-120 (plus 27.6% BP*)*



384 ✕

A coral single-strand necklace. Comprising 154 coral beads, with cylinder-shape clasp. *Length 85cms. Weight 40gms. Coral untested. £100-150 (plus 27.6% BP*)*



389

A bakelite bead necklace. Designed as a single row of forty-nine graduated barrel-shaped yellow beads, to the spring-ring clasp. *Length 94cms. Weight 243gms. £120-180 (plus 27.6% BP*)*



385

Two bead necklaces. To include a vari-size purple hard plastic bead necklace with spherical metal spacers, with a vari-size vegetable ivory bead necklace. *Estimated dimensions of beads 30 to 8mms. Length of necklaces 50 and 72cms. £50-80 (plus 27.6% BP*)*



390

A bead necklace. Designed as a series of barrel-shape brownish-orange cracked beads. *Length 64cms. Weight 191gms. Beads untested. £90-140 (plus 27.6% BP*)*



BP* - Buyer's Premium of 23% (plus VAT) or 27.6% (VAT included)

391

A plastic bead necklace. Comprising thirty-three graduated oval-shape red plastic beads, measuring 35 to 9.5mms, with spring-ring clasp. *Length 50cms. £40-60 (plus 27.6% BP*)*

**396**

Six single-strand bead necklaces. To include an amber necklace, a plastic necklace, with four further necklaces. *Length of necklaces 42 to 86cms. Amber and plastic untested. £80-120 (plus 27.6% BP*)*

**392**

Two bead necklaces. The first designed as a yellow bakelite spherical bead necklace, the second designed as an orange plastic necklace. *Lengths 47 and 58cms. Weight 136.5gms. £90-140 (plus 27.6% BP*)*

**397**

An amber bead necklace. Comprising forty-four graduated oval amber beads, measuring 26 to 13mms, with spring-ring clasp. *Length 82cms. Amber untested. £300-400 (plus 27.6% BP*)*

**393**

Two natural amber pendants. The first designed as a Burmese amber pendant carved to depict a sitting Buddha, the second designed as a carved rabbit and bamboo trees, each suspended from a black cord with amber bead accent. *Total weight 63.2gms. £100-150 (plus 27.6% BP*)*

**398**

Two modified amber necklaces. Each designed as a series of irregular-shape beads. *Lengths 54 and 76cms. Weight 100.3gms. £90-140 (plus 27.6% BP*)*

**394**

Two natural Burmese amber pendants. The first root amber pendant carved to depict a 'Heart Sutra', the second carved to depict a Fenghuang bird, each suspended from an amber bead surmount and black cord. *Total weight 37.7gms. £80-120 (plus 27.6% BP*)*

**399**

A selection of loose beads and stones. To include amber, bakelite, hard plastics, with further types of bead and stones. *Estimated dimensions of beads 22 to 11mms. Amber untested. £70-100 (plus 27.6% BP*)*

**395**

A coated amber necklace. Designed as a series of sixty-three graduated oval beads. *Length 42cms. Weight 25.3gms. Amber untested. £60-90 (plus 27.6% BP*)*

**400 ✕**

Sixteen cultured freshwater pearl single-strand necklaces and a coral single-strand necklace. One AF. *Lengths 41 to 165cms. Coral untested. £80-120 (plus 27.6% BP*)*



BP* - Buyer's Premium of 23% (plus VAT) or 27.6% (VAT included)

Fellows

Established 1876



**An auction of
Antique & Modern Jewellery**
Thursday 11th October at 11am

For more information please contact Ben Randall
on 0121 212 6312 or email ben@fellows.co.uk

401

BOODLES & DUNTHORNE - a pair of 18ct gold tourmaline earrings. Each designed as a circular pink tourmaline cabochon collet, atop a curved disc. *Maker's marks for Boodles & Dunthorne. Import marks for London, 1995. Diameter 1.9cms. Weight 19.4gms. £500-700 (plus 27.6% BP*)*

406

CHANEL - a plastic and imitation pearl ring, with two further non-designer items. The Chanel ring designed as a black plastic band with imitation pearl highlights, with a non-designer black plastic cross suspended from a cord necklace and a non-designer cultured pearl single-strand necklace. **£70-100 (plus 27.6% BP*)**

**402**

CARTIER - a band ring. The plain band, with bevelled sides. *Signed Cartier, VO7988. Ring size L1/2. Cartier size 52. Weight 3.1gms. £120-180 (plus 27.6% BP*)*

**407**

CHIMENTO - an 18ct gold diamond ring. Of openwork design, set with brilliant-cut diamond highlights. *Signed Chimento. Estimated total diamond weight 0.15ct. Hallmarks for 18ct gold. Ring size O. Weight 9.8gms. £250-350 (plus 27.6% BP*)*

**403**

CARTIER - a 'Lanieres' ring. Designed as a series of square panels, with 'Cartier' logo. *Signed Cartier, AZ2282. Ring size L. Cartier size 51. Weight 6.3gms. £200-300 (plus 27.6% BP*)*

**408**

COBRA & BELLAMY - A cultured pearl single-strand necklace and an amethyst ring. The necklace comprising twenty-seven cultured pearls measuring approximately 14 to 12mms with hook clasp, with a carved amethyst ring. *Length of necklace 42cms. Ring size N. Necklace with case. £50-80 (plus 27.6% BP*)*

**404**

CARTIER - a 'Must de Cartier' trinity ring. Designed as three tri-colour entwined bands. *Signed Les Must de Cartier. Ring size L. Cartier size 51. Weight 7.7gms. £250-350 (plus 27.6% BP*)*

**409**

DAUM - a glass necklace. Designed as a blue glass 'horn', suspended from a cord necklace. *Signed Daum France. Length of pendant 5.8cms. Length of cord necklace 40cms. £40-60 (plus 27.6% BP*)*

**405**

CARTIER - an 18ct gold 'Love' ring. The polished band, with repeating screw motif. *Signed Cartier, M44636. Swiss convention marks. Ring size K. Cartier size 50. Weight 6.9gms. £250-350 (plus 27.6% BP*)*

**410**

DOLCE & GABBANA and MONT BLANC - two necklaces and a bracelet. To include a Dolce & Gabbana enamel daisy necklace, a silver Mont Blanc star pendant with pink and black cord necklace, with a silver Mont Blanc bead bracelet. *With maker's marks. Two with hallmarks for silver. Total weight 87.5gms. One with Mont Blanc case. £60-90 (plus 27.6% BP*)*



BP* - Buyer's Premium of 23% (plus VAT) or 27.6% (VAT included)

411

GEORG JENSEN - an 18ct gold 'Fusion' ring. Comprising two bi-colour, interlocking bands. *Maker's marks for George Jensen. Foreign marks. Ring size L. Weight 9.4gms. £250-350 (plus 27.6% BP*)*

**416**

MURRLE BENNETT - an amethyst brooch, with three non-designer items. To include a Murrle Bennett amethyst tapered bar brooch, together with a non-designer 9ct gold cubic zirconia single-stone ring, a 9ct gold diamond necklace, and a cultured pearl single-strand necklace. *Brooch with maker's marks for Murrle Bennett. Two with hallmarks for 9ct gold. £120-180 (plus 27.6% BP*)*

**412**

GEORG JENSEN - a cultured pearl 'Sphere' bangle. Designed as three cultured pearls, each measuring 7.1mms, set at intervals to the plain bangle. *Maker's marks for Georg Jensen. Inner diameter 6.4cms. Weight 17.8gms. £150-200 (plus 27.6% BP*)*

**417**

MURRLE BENNETT & CO. - an Arts & Crafts silver paste pendant. The oval-shape green paste collet, within a scrolling geometric surround, suspended from a similarly-designed green paste surmount. May be worn as a brooch. *Maker's marks for Murrle Bennett & Co. Length 7cms. Weight 12.4gms. £180-260 (plus 27.6% BP*)*

**413**

GUCCI - a gentleman's silver necklace. The interlocking 'GG' motif, suspended from a flat curb-link chain, with lobster clasp. *Signed Gucci. Hallmarks for London. Length 54cms. Weight 56.6gms. With case. £40-60 (plus 27.6% BP*)*

**418**

PANDORA - a bracelet and two charms. The snake-link chain with clip fastening, suspending a pink glass charm, with a rabbit charm. *Maker's marks for Pandora. Length of bracelet 20.3cms. Length of charms 1.2cms. Total weight 25.8gms. £400-600 (plus 27.6% BP*)*

**414**

JEAN-MARC GAREL - A diamond 'Ipitonga' bracelet. Designed as a flip flop, with brilliant-cut diamond accents, atop a pink leather bracelet. *Estimated total diamond weight 0.20ct. Maker's marks for Jean-Marc Garel. Length of shoe 2.4cms. Length of bracelet 21.4cms. Total weight 6.4gms. £70-100 (plus 27.6% BP*)*

**419**

PANDORA - a selection of jewellery. To include two bracelets, two bangles, fourteen charms, three rings, with one non-designer silver ring. *One with hallmarks for silver. Total weight 108.2gms. £120-180 (plus 27.6% BP*)*

**415**

LINKS OF LONDON - a cultured pearl bracelet. Designed as a series of hoop links, with cultured pearl spacers, to the elasticated band. *Maker's marks for Links of London. Length approximately 16cms. Weight 35.6gms. £340-440 (plus 27.6% BP*)*

**420**

PANDORA - a selection of thirteen charms and one non-designer charm. To include a present charm, a green enamel butterfly charm, with thirteen further charms. *Thirteen with maker's marks for Pandora. Total weight 43.9gms. £70-100 (plus 27.6% BP*)*



BP* - Buyer's Premium of 23% (plus VAT) or 27.6% (VAT included)

421

PANDORA - eight charms and two non-designer charms. To include a cubic zirconia black gem and enamel yin yang charm, a pink cubic zirconia heart charm, together with eight further charms. *Eight with maker's marks for Pandora. Total weight 26.8gms. £40-60 (plus 27.6% BP*)*

426 

TIFFANY & CO. - a selection of jewellery. To include a necklace designed as a padlock reading '925 T&CO. 1873' with belcher-link chain, together with a matching bracelet, and a band ring later adapted suspending a non-designer padlock. *Signed Tiffany & Co. Weight 71.6gms. With case. £200-300 (plus 27.6% BP*)*

**422**

PANDORA - two 18ct gold gem-set rings. To include a circular-shape amethyst and pear-shape garnet three-stone ring, with a pave-set diamond dress ring. *Maker's marks for Pandora. Estimated total diamond weight 0.10ct. Hallmarks for Edinburgh. Weight 7.3gms. £200-300 (plus 27.6% BP*)*

**427** 

TIFFANY & CO. - a pair of 18ct gold 'Full Heart' earrings. Each designed as a stylised heart. *Signed Tiffany & Co. Facsimile signature for Elsa Peretti. Length 0.9cm. Weight 2.4gms. With maker's case. £250-350 (plus 27.6% BP*)*

**423**

PANDORA - two 18ct gold gem-set single-stone rings. To include a circular-shape garnet ring, with a marquise-shape blue topaz ring. *Maker's marks for Pandora. Hallmarks for Edinburgh. Weight 8gms. £200-300 (plus 27.6% BP*)*

**428**

TIFFANY & CO. - a band ring. The polished band, with textured border. *Signed Tiffany & Co. Ring size M. Width 4mms. Weight 8.3gms. £300-400 (plus 27.6% BP*)*

**424**

PANDORA - two 18ct gold gem-set single-stone rings. To include a circular-shape peridot ring, with an oval-shape citrine ring. *Maker's marks for Pandora. Hallmarks for Edinburgh. Weight 8.2gms. £200-300 (plus 27.6% BP*)*

**429**

TIFFANY & CO. - a band ring. The plain band, with millegrain border. *Signed Tiffany & Co. Ring size V. Width 6mms. Weight 16.1gms. £320-420 (plus 27.6% BP*)*

**425**

PANDORA - two charm bracelets, nine Pandora charms and four non-designer charms. The bracelets both of snake-link chain design with barrel-shape clasps, with seven Pandora charms including a heart and a teddy bear, and two Pandora spacer charms, together with four non-designer charms. *Eleven with maker's marks. Length of bracelets 19 to 19.5cms. Weight 63gms. £70-100 (plus 27.6% BP*)*

**430** 

TIFFANY & CO. - a bangle. Designed as a series of mesh-links. *Maker's marks for Tiffany & Co. Inner diameter 6.2cms. Weight 18.2gms. With case, AF. £260-360 (plus 27.6% BP*)*



BP* - Buyer's Premium of 23% (plus VAT) or 27.6% (VAT included)

431

TIFFANY & CO. - a bow necklace and a 'Return to Tiffany' pendant. The necklace designed as an openwork bow on a trace-link chain, the pendant designed as a heart-shape 'Return to Tiffany' script. Signed *Tiffany & Co.* Length of pendants 1.5 and 1.9cms. Length of chain 40.5cms. Weight 4.6gms. **£50-80** (plus 27.6% BP*)



436

TIFFANY & CO. - an '1870' ring. Of bi-colour design, the two entwined bands, with 'T&CO.' and '1837' marked to the front. Signed *Tiffany & Co.* Ring size 1 1/2. Weight 5.8gms. **£200-300** (plus 27.6% BP*)



432

TIFFANY & CO. - a band ring. Signed *Tiffany & Co.* Ring size T. Width 6mms. Weight 14.9gms. **£350-450** (plus 27.6% BP*)



437

An early Victorian silver and gold, diamond and pearl brooch. Of openwork design, the pear-shape diamond floral surround and pearl highlights. Principal diamond estimated weight 1ct, H-I colour, SI clarity. Length 4.9cms. Weight 20.3gms. Pearls untested. **£3,000-4,000** (plus 27.6% BP*)



433

TIFFANY & CO. - a band ring. Signed *Tiffany & Co.* Ring size 1 1/2. Width 4mms. Weight 4.2gms. With case. **£100-150** (plus 27.6% BP*)



438

A band ring. Designed as a series of embossed geometric motifs. Ring size L. Width 2mms. Weight 1.7gms. **£60-90** (plus 27.6% BP*)



434

TIFFANY & CO. - a 'Loving Heart' pendant. Of openwork design, the stylised crossover heart, suspended from an integral trace-link chain. Signed *Tiffany & Co., Paloma Picasso.* Length of pendant 1.5cms. Length of chain 50cms. Weight 4.1gms. **£150-200** (plus 27.6% BP*)



439

An 18ct gold cultured pearl and diamond pendant. The cultured pearl, with brilliant-cut diamond scrolling surmount, suspended from a fancy-link chain. Cultured pearl measuring 6.5mms. Estimated total diamond weight 0.20ct. Pendant with hallmarks for London, 1985. Chain with Italian marks. Weight 5.4gms. **£150-200** (plus 27.6% BP*)



435

TIFFANY & CO. - a silver key ring. Designed as a semi-circular textured key ring, with spherical terminals, suspending a circular disc. *Maker's marks for Tiffany & Co. Hallmarks for London 2002.* Weight 22gms. With maker's pouch. **£40-60** (plus 27.6% BP*)



440

Two diamond rings. To include a single-cut diamond single-stone ring, with a brilliant and single-cut diamond cluster ring. Estimated total diamond weight 0.25ct. Weight 5.8gms. **£120-180** (plus 27.6% BP*)



BP* - Buyer's Premium of 23% (plus VAT) or 27.6% (VAT included)

441

A sapphire and diamond cluster ring. Designed as a rectangular-shape sapphire, with brilliant-cut diamond collet surround and similarly-cut diamond tapered shoulders.

Estimated total diamond weight 0.80ct. Ring size M. Weight 4.3gms. £900-1,400 (plus 27.6% BP)*



446

Two early 20th century 9ct gold opal and mother-of-pearl pendants. Each of openwork design, to include an oval opal cabochon pendant, with a circular mother-of-pearl pendant. One AF. *Lengths 4 and 4.9cms. Weight 3.5gms. £80-120 (plus 27.6% BP*)*



442

Two early 20th century 18ct gold diamond and sapphire rings. The first designed as a rose-cut diamond three-stone ring, the second designed as an alternating circular-shape sapphire and rose-cut diamond dress ring. *Estimated total diamond weight 0.10ct. Hallmarks for 18ct gold. Weight 4.1gms. £100-150 (plus 27.6% BP*)*



447

A 14ct gold sapphire and diamond brooch. Designed as a stylised butterfly, with single-cut diamond and circular-shape sapphire accents. *Total diamond weight 0.10ct, stamped to reverse. Hallmarks for Sheffield, 1989. Length 2.2cms. Weight 4.7gms. £100-150 (plus 27.6% BP*)*



443

A diamond single-stone ring. The circular-cut diamond, with openwork gallery and tapered shoulders. *Estimated diamond weight 0.75ct, H-I colour, P1 clarity. Ring size M1/2. Weight 2.5gms. £180-260 (plus 27.6% BP*)*



448

An 18ct gold diamond ring. Designed as a series of pave-set diamond and polished interwoven bands. *Estimated total diamond weight 0.25ct. French assay marks. Ring size P. Weight 8gms. £200-300 (plus 27.6% BP*)*



444

A cubic zirconia necklace. The circular-shape cubic zirconia collet, with bi-colour fancy-link sides. *Length 48.5cms. Weight 18.7gms. £350-450 (plus 27.6% BP*)*



449

A mid 20th century gold diamond three-stone ring. Designed as a graduated brilliant-cut diamond line, with scrolling gallery. *Estimated total diamond weight 1ct, H-I colour, P1-P2 clarity. Ring size N. Weight 2.1gms. £150-200 (plus 27.6% BP*)*



445

An 18ct gold ring. Designed as a rope-twist knot, with plain band. *Hallmarks for Birmingham, 1987. Ring size R. Weight 7.7gms. £200-300 (plus 27.6% BP*)*



450

A diamond five-stone ring. Designed as a graduated vari-cut diamond line, with tapered shoulders. *Estimated total diamond weight 0.15ct. Ring size R. Weight 2.1gms. £80-120 (plus 27.6% BP*)*



451

A set of 9ct gold cameo jewellery and a pair of earrings. To include a shell cameo pendant, suspended from a trace-link chain, together with a pair of matching earrings and a further pair of orange paste earrings. *Hallmarks for 9ct gold. Weight 4.9gms. £80-120 (plus 27.6% BP*)*



456

A ruby and diamond dress ring. Designed as a graduated oval-shape ruby line, with circular-cut diamond sides. *Estimated total diamond weight 0.20ct. Ring size L1/2. Weight 2.6gms. £360-460 (plus 27.6% BP*)*



452

An 18ct gold diamond single-stone ring. The brilliant-cut diamond collet, with crossover shoulders. *Estimated diamond weight 0.55ct, I-J colour, SI2-P1 clarity. Hallmarks for Birmingham. Ring size S1/2. Weight 3.4gms. £700-900 (plus 27.6% BP*)*



457



An 18ct gold diamond bracelet. Of bi-colour design, the brilliant-cut diamond hexagonal links, with bar spacers. *Estimated total diamond weight 0.50ct. Import marks for Sheffield. Length 18.6cms. Weight 16.5gms. £500-700 (plus 27.6% BP*)*

453

An opal triplet single-stone ring. The oval opal triplet cabochon, with engraved, tapered band. *Ring size O1/2. Weight 11.9gms. £250-350 (plus 27.6% BP*)*



458

A 9ct gold diamond single-stone ring. The brilliant-cut diamond, with similarly-cut diamond line shoulders, to the plain half-band. *Principal diamond estimated weight 0.80ct, H-I colour, P1 clarity. Hallmarks for London, 2017. Ring size I. Weight 2.6gms. £1,000-1,500 (plus 27.6% BP*)*



454

Two diamond rings. To include an old-cut diamond two-stone crossover ring, together with a brilliant-cut diamond four-stone ring. *Estimated total diamond weight 0.55ct. Weight 4.7gms. £150-200 (plus 27.6% BP*)*



459

A platinum band ring. *Hallmarks for Birmingham. Ring size H1/2. Width 3mms. Weight 5gms. £120-180 (plus 27.6% BP*)*



455

An 18ct gold sapphire and diamond ring. The oval-shape pink sapphire, with brilliant-cut diamond line sides. *Estimated total diamond weight 0.25ct. Hallmarks for Birmingham, 2007. Ring size N. Weight 3.2gms. £150-200 (plus 27.6% BP*)*



460

A sapphire single-stone ring. The circular-shape yellow sapphire, with bi-colour, crossover shoulders. *Ring size N. Weight 9.5gms. £150-200 (plus 27.6% BP*)*



BP* - Buyer's Premium of 23% (plus VAT) or 27.6% (VAT included)

461

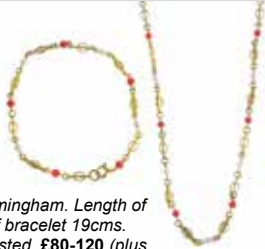
An 18ct gold emerald and cubic zirconia cluster ring. The oval-shape emerald, with circular-shape cubic zirconia surround and tapered shoulders. *Import marks for London, 1981. Ring size N1/2. Weight 3.5gms. £150-200 (plus 27.6% BP*)*

**466**

A diamond dress ring. Designed as a brilliant-cut diamond curved line, with similarly-cut diamond surround and openwork gallery. *Estimated total diamond weight 1.20cts, principal diamonds estimated I-J colour, SI clarity. Ring size P1/2. Weight 5.3gms. £900-1,400 (plus 27.6% BP*)*

**462**

A 9ct gold coral and seed pearl necklace and bracelet. The necklace designed as a fancy-link chain with spherical coral bead and seed pearl spacers, with matching bracelet. *Hallmarks for Birmingham. Length of necklace 37cms. Length of bracelet 19cms. Weight 9.8gms. Coral untested. £80-120 (plus 27.6% BP*)*

**467**

A platinum diamond full eternity ring. Designed as an alternating brilliant-cut and rectangular-shape diamond line, within a channel-setting. *Estimated total diamond weight 0.60ct. Hallmarks for London. Ring size M. Weight 4gms. £200-300 (plus 27.6% BP*)*

**463**

A platinum diamond single-stone ring. The square-shape diamond, weighing 0.61ct, with tapered shoulders. *With mini report 1149742702, dated 6th March 2013, from the GIA, stating D colour, SI2 clarity. Hallmarks for Birmingham. Ring size H1/2. Weight 4.1gms. £600-800 (plus 27.6% BP*)*

**468**

Two early 20th century gold split pearl brooches. Each of openwork design, the first an oval-shape citrine collet within a split pearl scrolling surround, the second a scrolling split pearl floral cluster brooch. One may be worn as a pendant. *One AF. Lengths 2.8 and 4.1cms. Weight 8gms. £80-120 (plus 27.6% BP*)*

**464**

A mid 20th century locket and Swedish bracelet. The locket of oval outline with floral design to both sides, the Swedish bracelet designed as ten links each in the form of a four-leaf clover to the spring-ring clasp. *One with Swedish marks. Length of locket 4.9cms. Length of bracelet 18cms. Weight 23.2gms. £50-80 (plus 27.6% BP*)*

**469**

An early 20th century 9ct gold gate bracelet. Of openwork design, comprising a series of geometric bar-links, to the heart-shape padlock clasp. *Length 18cms. Weight 19gms. £200-300 (plus 27.6% BP*)*

**465**

A late Victorian 22ct gold diamond signet ring. Designed as an old-cut diamond, within a star setting, with square-shape surround. *Estimated diamond weight 0.15ct, H-I colour, VS clarity. Hallmarks for Birmingham, 1892. Ring size I. Weight 5.4gms. £150-200 (plus 27.6% BP*)*

**470**

A ruby and diamond cluster ring. The oval-shape ruby collet, within a brilliant-cut diamond halo, with similarly-cut diamond quarterly highlights. *Estimated total diamond weight 0.40ct. Ring size O. Weight 3.1gms. £450-650 (plus 27.6% BP*)*



BP* - Buyer's Premium of 23% (plus VAT) or 27.6% (VAT included)

471

A diamond single-stone ring. The brilliant-cut diamond, with single-cut diamond line shoulders. *Principal diamond estimated weight 1ct, I-J colour, P1 clarity. Ring size M1/2. Weight 2.9gms. £1,200-1,800 (plus 27.6% BP*)*

**476**

A 9ct gold hinged bangle. The engraved foliate panel, with plain half-bangle. *Hallmarks for Birmingham, 2000. Inner diameter 6cms. Weight 4.8gms. £50-80 (plus 27.6% BP*)*

**472**

A diamond cluster ring. The brilliant-cut diamond, with similarly-cut diamond surround and openwork scrolling gallery. *Estimated total diamond weight 1.05cts, principal diamond estimated I-J colour, SI2-P1 clarity. Ring size N. Weight 3.7gms. £800-1,200 (plus 27.6% BP*)*

**477**

A mid 20th century gold diamond full eternity ring. Designed as a brilliant-cut diamond line, with textured sides. *Estimated total diamond weight 0.45ct. Ring size Q. Weight 4.8gms. £300-400 (plus 27.6% BP*)*

**473**

A sapphire cluster pendant. Designed as a series of vari-hue, pave-set sapphire concentric circles, with similarly-set sapphire sides, suspended from a belcher-link chain. *Length of pendant 1.4cms. Length of chain 40cms. Weight 3.9gms. £80-120 (plus 27.6% BP*)*

**478**

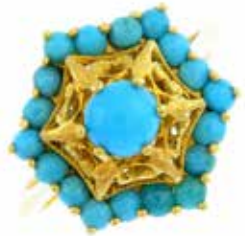
A pair of 9ct gold amethyst and cultured pearl earrings. Each designed as a cultured pearl, with brilliant-cut diamond collet cap, suspended from a belcher-link chain and circular-shape amethyst and brilliant-cut diamond surmount. *Hallmarks for Birmingham, 2006. Length 8.5cms. Weight 5.4gms. £60-90 (plus 27.6% BP*)*

**474**

A pair of gold, diamond and gem-set earrings. Each designed as a turtle, set throughout with diamonds, rubies, emeralds and blue and yellow sapphires, with articulated head and flippers. *Estimated total diamond weight 0.50ct. French assay marks. Length 2.4cms. Weight 9.6gms. £1,000-1,500 (plus 27.6% BP*)*

**479**

A turquoise cluster ring. The circular turquoise cabochon, with openwork surround and circular turquoise cabochon border. *Ring size S1/2. Weight 6.5gms. £120-180 (plus 27.6% BP*)*

**475**

A diamond dress ring. Of bi-colour design, the openwork brilliant-cut diamond kite-shape panel, with plain shoulders. *Estimated total diamond weight 0.30ct. Ring size T. Weight 6.4gms. £180-260 (plus 27.6% BP*)*

**480**

A ruby and diamond dress ring. Of asymmetric design, the calibre-cut ruby and brilliant-cut diamond lines, within a channel setting. *Estimated total diamond weight 0.25ct. Ring size M. Weight 4.8gms. £120-180 (plus 27.6% BP*)*



BP* - Buyer's Premium of 23% (plus VAT) or 27.6% (VAT included)

481

Three pairs of mabe pearl earrings. To include a pair of heart-shape mabe pearl and brilliant-cut diamond bow surmount earrings, with two pairs of mabe pearl stud earrings. *Estimated total diamond weight 0.15ct. One pair with hallmarks for 9ct gold. Lengths 1.5 to 2.2cms. Total weight 28.3gms. £80-120 (plus 27.6% BP*)*

482

An 18ct gold diamond single-stone ring. The brilliant-cut diamond collet, with pave-set diamond shoulders. *Principal diamond weight 0.25ct, estimated J-K colour, SI clarity. Hallmarks for London. Ring size M1/2. Weight 2.8gms. £350-450 (plus 27.6% BP*)*

**486**

Two gem-set rings. To include a 1970s 18ct gold circular-shape ruby eternity ring with grooved spacers and an oval chalcedony signet ring with scrolling enamel highlights. *One AF. One with hallmarks for Birmingham, 1973. Total weight 7.6gms. £120-180 (plus 27.6% BP*)*

**487**

An early 20th century 18ct gold diamond five-stone ring. The graduated brilliant-cut diamond line, with tapered shoulders. *Estimated total diamond weight 0.25ct. Ring size N. Weight 2.4gms. £100-150 (plus 27.6% BP*)*

**483**

Two pairs of cultured pearl earrings and a single earring. Each designed as a cultured pearl, measuring 11.1 to 5.4mms. *£70-100 (plus 27.6% BP*)*

**488**

Two gem-set pendants. The first designed as a brilliant-cut diamond within an openwork surround and split pearl bar surmount suspended from a belcher-link chain, the second designed as an oval garnet cabochon with rope-twist surround suspended from a belcher-link chain. *Length of pendants 1.2 and 3.8cms. Length of chains 38 and 40cms. Weight 4.1gms. £70-100 (plus 27.6% BP*)*

**484**

A selection of jewellery. To include a cultured pearl and diamond tapered bar brooch, a 9ct gold garnet bar brooch, together with a cultured pearl bracelet. Bracelet AF. *One with hallmarks for London, 1985. Total weight of brooches 7.3gms. £80-120 (plus 27.6% BP*)*

**489**

A 9ct gold horseshoe bracelet. Designed as a series of horseshoes, some with embossed horse head motifs, with belcher-link spacers and lobster-clasp. *Hallmarks for Sheffield, 2002. Length 18cms. Weight 16gms. £180-260 (plus 27.6% BP*)*

**485**

A ruby and diamond bar brooch. The oval-shape ruby, with brilliant-cut diamond line sides. *Estimated total diamond weight 0.20ct. Length 5.2cms. Weight 2.2gms. £200-300 (plus 27.6% BP*)*

**490**

A pair of tortoiseshell earrings. Each designed as stepped floral cluster, with inlaid circular motif, suspended from two belcher-link chains, to the a similarly inlaid spherical surmount. *Length 7.3cms. £600-800 (plus 27.6% BP*)*



BP* - Buyer's Premium of 23% (plus VAT) or 27.6% (VAT included)

491

A diamond single-stone ring. The brilliant-cut diamond, with plain band. *Diamond weight 0.72ct, estimated F-G colour, SI2-P1 clarity. Ring size L1/2. Weight 3.5gms. £600-800 (plus 27.6% BP*)*

**496**

An 18ct gold diamond dress ring. Designed as a brilliant-cut diamond two-row chevron, with slightly tapered band. *Estimated total diamond weight 0.70ct. Hallmarks for London, partially indistinct. Ring size O. Weight 2.9gms. £200-300 (plus 27.6% BP*)*

**492**

A pair of 14ct gold cubic zirconia cluster earrings. Each designed as a circular-shape blue cubic zirconia, with similar-shape colourless cubic zirconia surround. *Hallmarks for Edinburgh, 2006. Diameter 1.3cms. Weight 4.5gms. £80-90 (plus 27.6% BP*)*

**497**

An 18ct gold diamond brooch. The single-cut diamond floral cluster, within a single-cut diamond highlight petal surround. *Estimated total diamond weight 0.25ct. Hallmarks for Sheffield, 1992. Diameter 4cms. Weight 8.8gms. £250-350 (plus 27.6% BP*)*

**493**

An 18ct gold diamond pendant. The brilliant-cut diamond, suspended from a tapered surmount and an 18ct gold fancy-link chain. *Estimated diamond weight 0.70ct, I-J colour, P1 clarity. Hallmarks for London, 2005 and Birmingham. Length of pendant 1.1cms. Length of chain 38cms. Weight 3.7gms. £500-700 (plus 27.6% BP*)*

**498**

An 18ct gold diamond three-stone ring. The graduated brilliant-cut diamond line, with asymmetric shoulders. *Total diamond weight 0.50ct, stamped to band, estimated H-I colour, SI2-P1 clarity. Hallmarks for Birmingham 1997. Ring size O. Weight 4.1gms. £200-300 (plus 27.6% BP*)*

**494**

An early 20th century split pearl brooch. Designed as a split pearl star cluster, with split pearl foliate surround. *AF. Length 2.6cms. Weight 6.3gms. £90-140 (plus 27.6% BP*)*

**499**

A pair of 18ct gold cultured pearl earrings. Each designed as a grey cultured pearl, measuring 11mms. *Hallmarks for Edinburgh, 2005. Weight 4.9gms. £150-200 (plus 27.6% BP*)*

**495**

A platinum diamond single-stone ring. The brilliant-cut diamond, with tapered shoulders. *Diamond weight 1ct, estimated K-L colour, SI clarity. Hallmarks for Birmingham. Ring size M. Weight 4.8gms. £1,400-2,000 (plus 27.6% BP*)*

**500**

A suite of diamond floral jewellery. The open collar with brilliant-cut diamond floral terminal, with a similarly-designed cuff and pair of earrings. *Estimated total diamond weight 0.60ct. Italian marks. Weight 108gms. £2,200-3,000 (plus 27.6% BP*)*



BP* - Buyer's Premium of 23% (plus VAT) or 27.6% (VAT included)

501



A pair of Georgian silver garnet buckles. Each of rectangular outline, with cushion-shape garnet border. *Length 2.8cms. Weight 6.2gms. With case. See Plate 2. £100-150 (plus 27.6% BP*)*

506



A pair of Georgian silver garnet buckles. Each of marquise-shape outline, with circular-shape garnet border. *Length 2.8cms. Weight 8.8gms. With case. See Plate 2. £100-150 (plus 27.6% BP*)*

502



A pair of Georgian silver paste buckles. Each of oval outline, with circular-shape colourless and green paste border. *Length 4.6cms. Weight 33.1gms. See Plate 2. £80-120 (plus 27.6% BP*)*

507



A pair of Georgian silver paste buckles. Each of curved oval outline, with graduated fancy-shape paste and grooved inner panel. *Length 7.1cms. Total weight 68.6gms. £200-300 (plus 27.6% BP*)*

503



A Georgian silver garnet buckle. Of rectangular outline, the scrolling border set throughout with vari-shape garnets. *Length 5.1cms. Total weight 22.4gms. See Plate 2. £100-150 (plus 27.6% BP*)*

508



A pair of Georgian silver paste buckles. Each of curved rectangular outline, the circular-shape paste double border, with cross detail and grooved inner frame. *Length 6.8cms. Total weight 87.4gms. £200-300 (plus 27.6% BP*)*

504



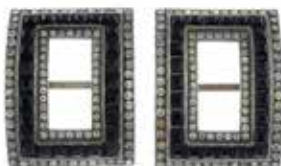
A pair of Georgian silver paste buckles. Each of oval outline, the circular-shape paste border, with quatrefoil highlights and scrolling bar detail. *Length 4.3cms. Weight 30.7gms. See Plate 2. £80-120 (plus 27.6% BP*)*

509



Two pairs of Georgian and later paste buckles. The first of oval design with circular-shape paste border, the second a pair of rectangular buckles with similar-shape paste border. *Lengths 1.9 and 3.5cms. £60-90 (plus 27.6% BP*)*

505



A pair of early 20th century paste buckles. Each of curved rectangular outline, with circular-shape colourless paste and calibre-cut black paste triple border. *Length 4.5cms. See Plate 2. £40-60 (plus 27.6% BP*)*

510



A pair of Georgian silver paste buckles. Each of curved rectangular outline, with circular-shape paste double border. *Length 6.3cms. Total weight 93.1gms. £120-180 (plus 27.6% BP*)*



506



504



501



505



503



502



511

A pair of Georgian silver paste buckles. Each of curved rectangular outline, with cushion shape paste border and graduated panel sides. *Length 6.7cms. Total weight 77.6gms. £200-300 (plus 27.6% BP*)*



516

A pair of George III silver buckles. Each of curved rectangular outline, with geometric openwork border. *Makers mark B.M. Frame with partial hallmarks for silver. Length 7.8cms. Total weight 108.5gms. £120-180 (plus 27.6% BP*)*



512

A pair of early 20th century paste buckles. Each of curved rectangular outline, the scrolling openwork design, set throughout with circular-shape paste. *Length 5.3cms. £60-90 (plus 27.6% BP*)*



517

Two Victorian paste buckles. The first of oval outline with circular-shape green and colourless paste floral cluster border, the second of oval outline with circular-shape colourless paste and pear-shape green and colourless paste double border. *Lengths 6.2 and 7.7cms. Weight 100.2gms. £80-120 (plus 27.6% BP*)*



513



An early 19th century silver and silver gilt paste buckle. Of curved rectangular outline, the circular-shape paste scrolling border, with grooved sides. *Length 10.5cms. Total weight 63.1gms. £150-200 (plus 27.6% BP*)*

518

Three Georgian and later paste buckles. The first of curved rectangular outline with calibre-cut blue paste border, the further two of marquise and oval outline set throughout with blue and colourless paste. *Lengths 4 to 6.8cms. Total weight 76.7gms. £100-150 (plus 27.6% BP*)*



514



Two early 19th century silver buckles. The first of curved rectangular outline with scrolling floral border, the second of curved rectangular outline with grooved border. *One with French marks. Lengths 7.5 and 7.7cms. Weight 86gms. £60-90 (plus 27.6% BP*)*

519

Four Georgian silver paste buckles. Each of geometric design, the scalloped borders set throughout with graduated circular-shape paste. *Lengths 4.9 to 5.3cms. Total weight 83.3gms. £150-200 (plus 27.6% BP*)*



515

Four Edwardian silver buckles and one Georgian silver buckle. *One pair of rectangular outline with scrolling floral border, together with two further Edwardian silver buckles and a Georgian floral motif buckle. Hallmarks for silver. Lengths 3.2 to 7.1cms. Total weight 61.6gms. £80-120 (plus 27.6% BP*)*



520

Four Georgian and later silver paste buckles. Each of geometric design, set throughout with colourless paste. *Lengths 2.5 to 4.7cms. Total weight 59.7gms. £120-180 (plus 27.6% BP*)*



521

Two 19th century paste buckles. The first of rectangular outline with circular-shape paste star border, the second of oval outline with circular-shape paste double border. Lengths 6.4 and 8.8cms. **£80-120** (plus 27.6% BP*)



526

A late Victorian 15ct gold garnet and paste ring. Designed as a square-shape colourless paste and circular-shape garnet quatrefoil, with circular-shape colourless paste and similarly-shaped garnet line sides, to the engraved band. Hallmarks for Birmingham, 1891. Ring size O. Weight 1.8gms. **£40-60** (plus 27.6% BP*)



522

A pair of early 19th century cut steel buckles. Of curved rectangular design, with circular-shape cut steel double border with similar-shape cut steel highlights. Length 6cms. **£100-150** (plus 27.6% BP*)



527

A late Victorian 18ct gold 'Everthine' ring. Designed as a scalloped panel with the text 'Everthine', to the tapered band. AF. Hallmarks for Birmingham, 1894. Ring size M. Weight 2.7gms. **£60-90** (plus 27.6% BP*)



523

Two pairs of 19th century gem-set buckles. The first of openwork scroll design, set throughout with cut steel, the second of curved rectangular outline with circular-shape colourless paste foliate border. One pair marked L.W Paris. Lengths 5 and 6cms. **£80-120** (plus 27.6% BP*)



528

An Edwardian 18ct gold sapphire and diamond dress ring. The cushion-shape sapphire, with old-cut diamond trefoil sides and tapered shoulders. Estimated dimensions of sapphire 6.1 by 5.4 by 3.1mm. Estimated total diamond weight 0.20ct. Hallmarks for London, 1905. Ring size O. Weight 3.5gms. **£80-120** (plus 27.6% BP*)



524

A pair of early 19th century cut steel buckles. Of curved rectangular design, with circular-shape cut steel double border with similar-shape cut steel highlights. Length 6cms. With fitted case. **£120-180** (plus 27.6% BP*)



529

An early 20th century gold diamond and gem-set bird lariat. Designed as rose-cut diamond dove holding a green gem leaf, threaded to the belcher-link chain with oval-shape topaz terminals. AF. Length 44.5cms. Weight 10.3gms. **£300-400** (plus 27.6% BP*)



525

A pair of Georgian silver paste buckles. Each of oval outline, the circular-shape paste border, with quatrefoil highlights. Length 5cms. Total weight 37.5gms. **£80-120** (plus 27.6% BP*)



530

A diamond bar brooch. The old-cut diamond duo, each within a floral surround, atop a tapered bar. Estimated total diamond weight 0.50ct, H-I colour, P1 clarity. Length 4.2cms. Weight 4.3gms. **£80-120** (plus 27.6% BP*)



BP* - Buyer's Premium of 23% (plus VAT) or 27.6% (VAT included)

531

A cubic zirconia band ring. Designed as a circular-shape cubic zirconia line, with textured and polished asymmetric shoulders. Ring size O. Weight 5.1gms. **£80-120** (plus 27.6% BP*)



536

A diamond cluster ring. The brilliant-cut diamond cluster, with tapered shoulders. Total diamond weight 0.50ct, stamped to band. Ring size O. Weight 2.8gms. **£80-120** (plus 27.6% BP*)



532

A diamond cluster ring. The square-shape diamond cluster panel, with baguette-cut diamond shoulders. Total diamond weight 0.50ct, stamped to band. Ring size K1/2. Weight 3.2gms. **£120-180** (plus 27.6% BP*)



537

A 1970s 9ct gold luckenbooth brooch. The conjoined hearts, with crown surmount and trefoil highlights. Hallmarks for Edinburgh, 1979. Length 3.8cms. Weight 6.7gms. **£70-100** (plus 27.6% BP*)



533

A platinum diamond single-stone ring. The square-shape diamond, with tapered shoulders. Estimated diamond weight 0.50ct, I-J colour, SI2-P1 clarity. Hallmarks for Birmingham. Ring size N. Weight 5.8gms. **£600-800** (plus 27.6% BP*)



538

A 9ct gold diamond and aquamarine pendant. The heart-shape aquamarine and diamond accent pendant, with tapered surmount, suspended from a fancy-link chain. Hallmarks for 9ct gold. Length of pendant 1.4cms. Length of chain 45cms. Weight 2.1gms. **£40-60** (plus 27.6% BP*)



534

A cultured pearl single-strand necklace. Comprising forty-six cultured pearls, measuring 7.7 to 7.5mms, with circular turquoise cabochon cluster clasp. Length 42cms. **£200-300** (plus 27.6% BP*)



539

A diamond ring. Designed as a brilliant-cut diamond crossover line, with similarly-cut diamond highlight. Estimated total diamond weight 0.15ct. Ring size P1/2. Weight 4.3gms. **£100-150** (plus 27.6% BP*)



535

A diamond single-stone ring. The brilliant-cut diamond, with tapered shoulders. Estimated diamond weight 0.45ct, J-K colour, P1-P2 clarity. Ring size J1/2. Weight 2gms. **£120-180** (plus 27.6% BP*)



540

A 1960s 9ct gold brooch. Designed as a standing textured pheasant, with circular-shape garnet eye detail. Hallmarks for London, 1966. Length 6cms. Weight 5.6gms. **£60-90** (plus 27.6% BP*)



BP* - Buyer's Premium of 23% (plus VAT) or 27.6% (VAT included)

541

A 9ct gold emerald and diamond dress ring. The oval-shape emerald panel, with single-cut diamond scalloped surround.

Hallmarks for Sheffield. Ring size O1/2. Weight 3.7gms. £80-120 (plus 27.6% BP)*

**546**

Three 14ct gold cubic zirconia rings. Two include two rectangular-shape cubic zirconia single-stone rings, with a rectangular-shape cubic zirconia and tapered baguette-shape cubic zirconia three-stone ring. *Hallmarks for Edinburgh. Weight 8.3gms. £120-180 (plus 27.6% BP*)*

**542**

A jade brooch. Carved to depict three, intertwined nephrite jade dragons. *Length 5.2cms. £500-700 (plus 27.6% BP*)*

**547**

An 18ct gold diamond cluster ring. The rectangular-shape diamond, with brilliant-cut diamond surround and halo, to the similarly-cut diamond line shoulders. *Estimated total diamond weight 1.60cts, principal diamond estimated I-J colour, VS2-SI1 clarity. Hallmarks for Birmingham. Ring size L. Weight 6.6gms. £1,200-1,800 (plus 27.6% BP*)*

**543**

A diamond single-stone pendant. The old-cut diamond, with elongated claw setting, suspended from a tapered surmount. *Estimated diamond weight 0.20ct, J-K colour, SI2-P1 clarity. Length 1.2cms. Weight 0.8gm. £100-150 (plus 27.6% BP*)*

**548**

Two 18ct gold diamond rings. Both of bi-colour design, the first designed as a brilliant-cut diamond cluster with asymmetric shoulders, the second designed as a band ring with brilliant-cut diamond accent. *Estimated total diamond weight 0.10ct. Hallmarks for London and Birmingham. Weight 6.1gms. £120-180 (plus 27.6% BP*)*

**544**

Two items of gold gem-set jewellery. To include a Georgian gold gem-set single-stone ring, and a mid Victorian gold circular quartz cabochon brooch. *Ring size K. Length of brooch 6.2cms. Total weight 11.5gms. £80-120 (plus 27.6% BP*)*

**549**

An enamel egg charm. Of pear-shape outline, the white enamel star, atop alternating green enamel and textured surrounds, with white enamel heart borders. *Length 2.6cms. Weight 7.5gms. £120-180 (plus 27.6% BP*)*

**545**

A pair of early 20th century gold cultured pearl and diamond earrings. Each designed as a cultured pearl and rose-cut diamond cluster, with cultured pearl trefoil surmount and graduated similarly-cut diamond line spacer. *Length 4.2cms. Weight 5.2gms. £500-700 (plus 27.6% BP*)*

**550**

An 18ct gold diamond three-stone ring. The graduated brilliant-cut diamond off-set line, with asymmetric shoulders. *Estimated total diamond weight 0.50ct, I-J colour, SI2-P1 clarity. Hallmarks for Birmingham, 1996. Ring size L. Weight 3.8gms. £200-300 (plus 27.6% BP*)*



BP* - Buyer's Premium of 23% (plus VAT) or 27.6% (VAT included)

551

A garnet and gem-set ring. The graduated circular-shape garnet line, with colourless gem double spacers and scrolling gallery. *Ring size O1/2. Weight 2.7gms. £80-120 (plus 27.6% BP*)*

**556**

A diamond half eternity ring. Designed as a brilliant-cut diamond line, with grooved sides. *Estimated total diamond weight 0.25ct. Ring size H. Weight 2.2gms. £200-300 (plus 27.6% BP*)*

**552**

An 18ct gold lapis lazuli necklace and earrings suite. The necklace designed as a series of oval lapis lazuli cabochon collets with belcher-link spacers and spring-ring clasp, with a pair of matching oval lapis lazuli cabochon collet earrings. *Import marks for Sheffield, 1989 and 1990. Length of necklace 42cms. Length of earrings 1.5cms. Weight 18.9gms. £250-350 (plus 27.6% BP*)*

**557**

An 18ct gold diamond dress ring. Designed as a series of graduated baguette-cut diamond lines, with similarly-cut diamond line sides and brilliant-cut diamond line spacers, to the grooved shoulders and gallery. *Estimated total diamond weight 2 to 2.50cts. Hallmarks for London. Ring size R. Weight 18gms. £750-950 (plus 27.6% BP*)*

**553**

Two 9ct gold diamond rings. The first designed as a brilliant-cut diamond single-stone with openwork floral gallery, the second designed as a brilliant-cut diamond cluster with similarly-cut diamond line shoulders. *Estimated total diamond weight 0.45ct. Hallmarks for London and Sheffield. Weight 3.9gms. £150-200 (plus 27.6% BP*)*

**558**

A mid 20th century 22ct gold chalcedony ring. The shield-shape chalcedony panel, inset to the plain band. *Hallmarks for Birmingham, 1938. Ring size N. Weight 4.2gms. £200-300 (plus 27.6% BP*)*

**554**

A late Victorian 18ct gold ruby and diamond three-stone ring. The old-cut diamond, with cushion-shape ruby sides and grooved shoulders. *Hallmarks for Birmingham, 1891. Ring size O. Weight 2.8gms. £60-90 (plus 27.6% BP*)*

**559**

A cubic zirconia necklace and bracelet. The necklace designed as a series of oval and circular-shape cubic zirconia floral clusters with bead-link spacers and back-chain, together with a matching bracelet. *Length of necklace 42.5cms. Length of bracelet 18cms. Weight 45.4gms. £650-850 (plus 27.6% BP*)*

**555**

A 14ct gold tanzanite and diamond cluster ring. The oval-shape tanzanite, with brilliant-cut diamond surround and pave-set diamond line shoulders. *Estimated total diamond weight 0.60ct. Hallmarks for London. Ring size O. Weight 4.3gms. £180-260 (plus 27.6% BP*)*

**560**

A 9ct gold diamond and emerald dress ring. The circular-shape emerald quatrefoil, with brilliant-cut diamond surround. *Estimated total diamond weight 0.15ct. Hallmarks for London, 1984. Ring size M. Weight 2.8gms. £60-90 (plus 27.6% BP*)*



BP* - Buyer's Premium of 23% (plus VAT) or 27.6% (VAT included)

561

Two late Victorian gold gem-set brooches and a pair of late Victorian gold earrings. To include an engraved amethyst mourning brooch, a bowenite and turquoise scalloped brooch, with a pair of hoop earrings. *Length of brooches 3.5 and 4.3cms. Length of earrings 2cms. Weight 23.8gms. £120-180 (plus 27.6% BP*)*

566

A platinum diamond single-stone ring. The square-shape diamond, with graduated brilliant-cut diamond line shoulders. *Principal diamond estimated 0.45ct, H-I colour, SI clarity. Hallmarks for Edinburgh. Ring size M. Weight 5.9gms. £300-400 (plus 27.6% BP*)*

562

A Burmese sapphire bracelet. Designed as twenty-six oval-shape Burmese pink sapphire collets slide, to the herringbone-link chain, with screw clasp. *With report 78154-44, dated 11th May 2018, from GCS, stating natural Myanmar (Burma), no heat. Length 17.5cms. Weight 26.6gms. £2,000-3,000 (plus 27.6% BP*)*

567

Two early 20th century gold moonstone and split pearl bar brooches. To include a circular moonstone cabochon brooch, with a split pearl twin hearts and foliate brooch. *Lengths 4.2 and 4.8cms. Weight 6gms. £120-180 (plus 27.6% BP*)*

563

Two pairs of gem-set earrings. The first pair each designed as a series of vari-size pink topaz, amethyst and rock crystal briolettes suspended from a textured surmount, the second pair each designed as a baroque pearl with foliate surmount. *One with hallmarks for Birmingham. Lengths 3.5 and 3.8cms. Total weight 20.6gms. £150-200 (plus 27.6% BP*)*

**568**

A diamond single-stone ring. Designed as a brilliant-cut diamond, with single-cut diamond line shoulders. *AF. Estimated total diamond weight 0.50ct, principal diamond estimated H-I colour, P1 clarity. Ring size J1/2. Weight 2.4gms. £200-300 (plus 27.6% BP*)*

**564**

An 18ct gold diamond and paste dress ring. Designed as a series of scattered vari-size brilliant-cut diamond and blue paste collets, with beaded band. *Estimated total diamond weight 0.20ct. Hallmarks for Sheffield, 2005. Ring size N. Weight 11.8gms. £250-350 (plus 27.6% BP*)*

**569**

A late Victorian gold brooch. The engraved monogram oval panel, with glazed reverse and scrolling surround. *Length 5cms. Total weight 14.8gms. £70-100 (plus 27.6% BP*)*

**565**

Two sapphire and diamond rings. To include a 9ct gold graduated oval-shape sapphire three-stone ring with brilliant-cut diamond double spacers, together with a similar-shape sapphire and single-cut diamond bi-colour dress ring. *Estimated total diamond weight 0.20ct. One with hallmarks for Birmingham. Total weight 6.5gms. £100-150 (plus 27.6% BP*)*

**570**

An early 20th century 18ct gold diamond dress ring. Designed as three star-set diamond square-shape panels, atop a textured rope-twist band. *Hallmarks for Birmingham, 1918. Ring size P. Weight 5.9gms. £180-260 (plus 27.6% BP*)*



BP* - Buyer's Premium of 23% (plus VAT) or 27.6% (VAT included)

571

A 9ct gold emerald and diamond dress ring. The oval-shape emerald, with brilliant-cut diamond surround and shoulders. *Estimated dimensions of emerald 10.9 by 8.8 by 5.5mms. Estimated total diamond weight 0.20ct. Hallmarks for Birmingham. Ring size M. Weight 5gms. £300-400 (plus 27.6% BP*)*



576

A cultured pearl single-strand necklace and a cultured pearl brooch. To include a cultured pearl single-strand necklace with turquoise floral clasp, and a cultured pearl starburst brooch. Two AF. *Length of brooch 2.8cms. Weight of brooch 4.1gms. £90-140 (plus 27.6% BP*)*



572



An agate cameo brooch. Carved to depict a lady in profile, with scrolling heart sides. *Length 4.8cms. Weight 18.8gms. £90-140 (plus 27.6% BP*)*

577

A pair of 18ct gold diamond earrings. Each designed as a scrolling ribbon, with pave-set diamond highlight. *Estimated total diamond weight 0.10ct. Hallmarks for London. Length 0.9cm. Weight 4.9gms. £120-180 (plus 27.6% BP*)*



573

A pair of diamond and garnet earrings. Each designed as a brilliant-cut diamond articulated undulating line, with garnet briolette fringe highlights. *Estimated total diamond weight 0.75ct. Length 5.5cms. Weight 13.3gms. £450-650 (plus 27.6% BP*)*



578

Two 9ct gold bangles. To include a wavy hinged-bangle with partially-concealed push-piece clasp and a wire bangle with stylised knot highlight. *Hallmarks for London, 1979 and Sheffield. Inner diameters 6.1 and 6.5cms. Weight 9.6gms. £100-150 (plus 27.6% BP*)*



574

A palladium diamond single-stone ring. The brilliant-cut diamond, weighing 0.34ct, to the asymmetric shoulders and tapered band. *With report F6H45560, dated 7th of December 2015, from IGI, stating F colour, SI2 clarity. Hallmarks for London. Ring size M1/2. Weight 2.6gms. With case. £250-350 (plus 27.6% BP*)*



579

An 18ct gold diamond half eternity ring. Designed as a brilliant-cut diamond chevron, within a channel setting. *Estimated total diamond weight 0.20ct. Hallmarks for Birmingham, partially indistinct. Ring size S1/2. Weight 4.4gms. £100-150 (plus 27.6% BP*)*



575

A suite of star-sapphire and diamond jewellery. To include a pear star-sapphire cabochon and single-cut diamond pendant, suspended from a belcher-link chain, a marquise star-sapphire cabochon and single-cut diamond dress ring, with a pair of oval star-sapphire cabochon and single-cut diamond earrings. *Weight 8.9gms. £150-200 (plus 27.6% BP*)*



580

An 18ct gold dress ring. Of bombe design, the interwoven textured and polished lines, with tapered shoulders. *Hallmarks for Birmingham. Ring size L1/2. Weight 5.4gms. £120-180 (plus 27.6% BP*)*



581

Four diamond and gem-set rings. To include an early 20th century ruby and diamond five-stone ring, an amethyst and diamond dress ring, together with two further 9ct gold diamond and gem-set rings. *Estimated total diamond weight 0.30ct. Three with hallmarks for 9ct gold. Total weight 11.2gms. £120-180 (plus 27.6% BP*)*



586

A 9ct gold cultured pearl necklace and a pair of 9ct gold diamond earrings. The necklace designed as a cultured pearl line with belcher-link spacers suspended from a belcher-link chain, the earrings each designed as a grooved shell with single-cut diamond highlight. *Hallmarks and import marks for Birmingham, 2006 and 1999. Length of necklace 42cms. Length of earrings 1.6cms. Weight 7.1gms. £80-120 (plus 27.6% BP*)*



582

A 9ct gold diamond and ruby ring. Of openwork ruby, the oval-shape ruby, with single-cut diamond accent asymmetric sides and tapered band. *Ring size N. Weight 2.6gms. £50-80 (plus 27.6% BP*)*



587

A diamond full eternity ring. Designed as three brilliant-cut diamond lines. *Estimated total diamond weight 1.40cts. Ring size L. Weight 2.8gms. £300-400 (plus 27.6% BP*)*



583

An iolite and amethyst dress ring. Of asymmetric design, the circular iolite cabochon terminals, with circular amethyst cabochon shoulders. *Ring size N1/2. Weight 7.2gms. £150-200 (plus 27.6% BP*)*



588

A pair of 18ct gold diamond earrings. Each designed as two brilliant-cut diamond wavy lines. *Estimated total diamond weight 0.30ct. Hallmarks for Edinburgh. Length 3.6cms. Weight 3.5gms. £180-260 (plus 27.6% BP*)*



584

A 14ct gold cubic zirconia ring. Designed as a graduated circular-shape cubic zirconia double-row, with similar-shape cubic zirconia accents. *Hallmarks for Edinburgh, 1999. Ring size P. Weight 6.3gms. £80-120 (plus 27.6% BP*)*



589

An opal and diamond pendant. The tapered opal panel, with single-cut diamond accent surmount, suspended from a box-link chain. *Length of pendant 4.4cms. Length of chain 50.5cms. £120-180 (plus 27.6% BP*)*



585

An 18ct gold diamond single-stone ring. The square-shape diamond, with asymmetric shoulders. *Estimated diamond weight 0.50ct, H-I colour, SI2-P1 clarity. Hallmarks for Birmingham. Ring size M1/2. Weight 4.6gms. £400-600 (plus 27.6% BP*)*



590

A gate bracelet. Designed as a series of six-bar links, with textured brick-link spacers and heart-shape padlock clasp. *Length 19cms. Weight 22.3gms. £250-350 (plus 27.6% BP*)*



BP* - Buyer's Premium of 23% (plus VAT) or 27.6% (VAT included)

591

A sapphire and diamond three-stone ring. The oval-shape sapphire, with old-cut diamond sides and tapered shoulders. *Sapphire weight 1.38cts. Total diamond weight 0.82ct, estimated I-K colour, SI1-P1 clarity. Ring size M1/2. Weight 3.3gms. £1,000-1,500 (plus 27.6% BP*)*



596

Three diamond and gem-set rings. To include a 9ct gold diamond three-stone ring, a sapphire and diamond illusion-set cluster ring, with a diamond four-stone dress ring. *Estimated total diamond weight 0.25ct. One with hallmarks for 9ct gold. Total weight 5.2gms. £120-180 (plus 27.6% BP*)*



592

An 18ct gold garnet and diamond cluster ring. The circular-shape garnet, within a single-cut diamond surround. *Estimated total diamond weight 0.10ct. Hallmarks for Birmingham, 1975. Ring size K1/2. Weight 4.8gms. £120-180 (plus 27.6% BP*)*



597

A diamond necklace. The brilliant-cut diamond collet, suspended from a chevron surmount, with tapered fancy-link sides. *Diamond weight 0.11ct, stamped to clasp. Italian marks. Length 42cms. Weight 18.1gms. £500-700 (plus 27.6% BP*)*



593

A diamond single-stone ring. The brilliant-cut diamond, with tapered shoulders. *Estimated diamond weight 0.80ct, H-I colour, P1 clarity. Ring size M. Weight 2.4gms. £400-600 (plus 27.6% BP*)*



598

A pair of 18ct gold brilliant-cut diamond stud earrings. *Total diamond weight 0.41ct, estimated I-J colour, SI2-P1 clarity. Hallmarks for Sheffield. Weight 0.9gm. £150-200 (plus 27.6% BP*)*



594

A diamond bracelet. Designed as a trace-link chain, with brilliant-cut diamond collet highlight. *Diamond weight 0.11ct, stamped to clasp. Length 17.5cms. Weight 1.3gms. £380-480 (plus 27.6% BP*)*



599

A diamond and opal pendant. Designed as a curling stone with rose-cut diamond girdle, to the old-cut diamond and circular opal cabochon accent scrolling surround. May be worn as a brooch. *Estimated total diamond weight 0.50ct, H-I colour, SI clarity. Length 3.7cms. Weight 7.4gms. £260-360 (plus 27.6% BP*)*



595

Five gem-set rings. To include a 'Birmingham City Football Club' emblem ring, a 9ct gold diamond ring, with three further rings. *Four with hallmarks for 9ct gold. Total weight 21.5gms. £200-300 (plus 27.6% BP*)*



600

A pair of diamond earrings. Each designed as two concentric hearts, set throughout with brilliant-cut diamonds and a collet centre highlight. *Estimated total diamond weight 1.50cts. Length 2.2cms. Weight 12.7gms. £400-600 (plus 27.6% BP*)*



601

An 18ct gold diamond ring. The brilliant-cut diamond floral cluster, with tapered sides. *Total diamond weight 0.34ct, stamped to band. Hallmarks for Sheffield. Ring size O. Weight 3gms. £120-180 (plus 27.6% BP*)*



606

A selection of twenty assorted designer jewellery boxes and cases. To include two Chopard boxes, four Adler boxes, two Gucci boxes, with twelve further designer jewellery boxes and cases. Some AF. **£100-150 (plus 27.6% BP*)**



602

An onyx and diamond pendant. The old-cut diamond, suspended within an oval onyx panel, with pear and brilliant-cut diamond drop and surmount, to the belcher-link chain. *Estimated total diamond weight 0.65ct, principal diamond estimated H-I colour, P1 clarity. Length of pendant 3.3cms. Length of chain 42cms. Total weight 8.1gms. £850-1,200 (plus 27.6% BP*)*



607

A selection of forty-six assorted jewellery boxes and cases. To include a red rectangular Sir John Bennett Ltd case, a blue rectangular brooch case, a pink leather WM Ogden case, with forty-three further boxes and cases, mainly antique. Some AF. **£100-150 (plus 27.6% BP*)**



603

An 18ct gold diamond pendant. The five free-moving brilliant-cut diamond collets, within a glazed panel, with single-cut diamond tapered surround, suspended from an 18ct gold fancy-link chain. *Estimated total diamond weight 0.50ct. Hallmarks for London and Sheffield. Length of pendant 2.6cms. Length of chain 44cms. Weight 13.5gms. £350-450 (plus 27.6% BP*)*



608

A selection of forty-nine assorted jewellery boxes and cases. To include a red rectangular bi-fold case, a green square Holmes fine jewels ring box, a blue triangular case, with forty-six further boxes and cases, mainly antique. Some AF. **£100-150 (plus 27.6% BP*)**



604

A selection of jewellery. To include a pair of early 20th century 15ct gold dress studs with star-set old-cut diamond highlights, a fancy-link chain, a gem-set pendant, with two further items. *One with hallmarks for Chester, 1919. Weight of gold dress studs 1.4gms. £70-100 (plus 27.6% BP*)*



609

A selection of thirty assorted designer jewellery boxes and cases. To include a Bulgari bi-fold jewellery case, a Bucherer jewellery case, an Adler jewellery case, with twenty-seven further designer jewellery boxes and cases. Some AF. **£100-150 (plus 27.6% BP*)**



605

A selection of sixty-two assorted boxes and cases. To include thirty oval ring boxes, a red rectangular Garrard & Co. case, a black square Tiffany & Co. box, with thirty other assorted boxes and cases. Some AF. **£60-90 (plus 27.6% BP*)**



610

A selection of forty-seven assorted jewellery boxes and cases. To include a red square bi-fold case, a brown square W. Elvin & Sons box, a red square Richard Ogden jewels box, with forty-four further boxes and cases, mainly antique. Some AF. **£100-150 (plus 27.6% BP*)**



BP* - Buyer's Premium of 23% (plus VAT) or 27.6% (VAT included)

611

A selection of thirty-two Cartier designer jewellery boxes and cases. To include a heart-shape case, a square 'Les must de Cartier' case, a blue rectangular case, with twenty-nine further Cartier boxes and cases. Some AF. **£100-150** (plus 27.6% BP*)



612

A selection of fourteen Tiffany & Co. designer jewellery boxes and cases. To include eight rectangular boxes, one square box, with five further Tiffany & Co. boxes and cases. **£100-150** (plus 27.6% BP*)



613

A diamond, emerald, ruby and sapphire pendant mount. The vacant circular mount, with brilliant-cut diamond, circular-shape ruby, emerald and sapphire surround. *Estimated total diamond weight 0.20ct. Length 4.9cms. Weight 8.5gms. £180-260* (plus 27.6% BP*)



614

A locket key ring. The textured and polished hexagonal panels, with foliate borders, opening to reveal two vacant panels, suspended from a fancy-link chain. *Length of panel 5.8cms. Length of chain 9.8cms. Weight 21gms. £320-420* (plus 27.6% BP*)



615

An early 20th century enamel stickpin. Designed as a blue enamel stylized knot. *Length of stickpin head 1.4cms. Weight 5.6gms. £90-140* (plus 27.6% BP*)



616

A late Victorian 15ct gold double sovereign holder. The polished case, with engraved monogram and crest, opening to reveal two coin holders. AF. *Maker's marks for Deakin & Francis. Hallmarks for Birmingham, 1891. Length 6.8cms. Weight 39.6gms. £700-900* (plus 27.6% BP*)



617

An early 20th century 9ct gold double sovereign holder. With engraved monogram, opening to reveal two coin holders. *Maker's marks for Aaron Lufkin Dennison. Hallmarks for Birmingham, 1914. Length 6.6cms. Weight 31.7gms. £380-480* (plus 27.6% BP*)



618

An Edwardian 9ct gold combination vesta case and sovereign holder. The oblong case, with hinged vesta case and sovereign holder compartments, suspended from a loop surmount. *Maker's marks for Horace Woodward & Co. Ltd. Hallmarks for Birmingham, 1905. Length 7.8cms. Weight 29.3gms. £320-420* (plus 27.6% BP*)



619

An Edwardian 15ct gold sovereign holder. Of circular outline, with monogram motif, opening to reveal an engine-turned spring platform. *Maker's marks JW. Hallmarks for London, 1905. Length 4.5cms. Weight 31.8gms. £500-700* (plus 27.6% BP*)



620

An early 20th century 9ct gold combination vesta case and sovereign holder. The oblong case, with hinged vesta case and sovereign holder compartments, suspended from a replacement loop surmount. *Maker's marks for W. Coulthard & Co. Hallmarks for Chester, 1913. Length 8.4cms. Weight 35.7gms. £380-480* (plus 27.6% BP*)



BP* - Buyer's Premium of 23% (plus VAT) or 27.6% (VAT included)

621

Three early 20th century silver purses. To include two mesh purses each with a kiss-clasp and fancy-link chains, with an oblong purse opening to reveal a leather interior and fancy-link chain. *Hallmarks for silver. Widths 7.2 to 15cms. Total weight 384.2gms. £120-180 (plus 27.6% BP*)*

**626**

A gentleman's 18ct gold diamond band ring. Of bi-colour design, the brilliant-cut diamond line, inset to the plain band, with raised sides. *Estimated total diamond weight 0.15ct. Hallmarks for Birmingham. Ring size V. Weight 9gms. £200-300 (plus 27.6% BP*)*

**622**

A late Victorian silver chatelaine. The belcher-link chain, suspending four foliate embossed items, including a hinged compartment, two vacant bottles, and a rotating pin cushion. *Hallmarks for silver. Length 13cms. Weight 41.6gms. £60-90 (plus 27.6% BP*)*

**627**

A gentleman's 9ct gold diamond ring. The pave-set diamond raised, tapered panel, with grooved sides. *Estimated total diamond weight 0.70ct. Hallmarks for London, 2007. Ring size W1/2. Weight 12.7gms. £200-300 (plus 27.6% BP*)*

**623**

A gentleman's 9ct gold sardonyx signet ring. The oval sardonyx panel, with tapered band. *Hallmarks for London, 1991. Ring size Q. Weight 7.7gms. £80-120 (plus 27.6% BP*)*

**628**

A gentleman's sardonyx signet ring. Designed as an oval sardonyx panel, with tapered shoulders. *Ring size Z+1. Weight 9.9gms. £150-200 (plus 27.6% BP*)*

**624**

A gentleman's 9ct gold diamond signet ring. The old-cut diamond, within a star-setting, to the tapered band. *Hallmarks for London, 1987. Ring size T. Weight 7.6gms. £80-120 (plus 27.6% BP*)*

**629**

A selection of military buttons, dress studs and enamel pins. To include vari-size military buttons with various military motifs, three red gem dress studs, with five enamel pins each with motto. *Diameter of military buttons 1.6 to 2.4cms. Diameter of dress studs 1.2cms. Length of pins 3.2cms. £70-100 (plus 27.6% BP*)*

**625**

A gentleman's platinum diamond band ring. The brilliant-cut diamond, inset to the plain band. *Hallmarks for London, 2005. Ring size R. Weight 10.3gms. £250-350 (plus 27.6% BP*)*

**630**

A lavender jade bangle and a pair of lapis lazuli cufflinks. The lavender jade bangle carved to depict a series of oriental motifs, with a pair of oval lapis lazuli cabochon cufflinks with lapis lazuli toggle clasps and belcher-link connecting chain. *Bangle inner diameter 6.3cms. Length of cufflink face 2cms. Jade untested. £100-150 (plus 27.6% BP*)*



BP* - Buyer's Premium of 23% (plus VAT) or 27.6% (VAT included)

631

A pair of early 20th century gold and enamel diamond and mother-of-pearl cufflinks. Each designed as an oval mother-of-pearl concave panel, with old-cut diamond highlight and white enamel border, to the tapered bar reverse and belcher-link connecting chain. *Estimated total diamond weight 0.10ct. Length of cufflink face 1.8cms. Weight 7.3gms. With case. £150-200 (plus 27.6% BP*)*



636

A pair of cultured pearl and ruby floral cufflinks. Each designed as a cultured pearl and circular-shape ruby cluster, with textured petal surround, to the hinged bar reverse. *Diameter of cufflink face 1.6cms. Weight 12.6gms. £200-300 (plus 27.6% BP*)*



632

A pair of early 20th century 18ct gold and enamel cufflinks. Each designed as two oval green and white enamel panels, with guilloche detail and connecting chain. *Length of cufflink face 1.7cms. Weight 8.5gms. With case. £180-260 (plus 27.6% BP*)*



637

A pair of chalcedony and emerald cufflinks. Each designed as two carved chalcedony barrels, with circular emerald cabochon terminals and connecting chain. *Length of cufflink face 2.3cms. £60-90 (plus 27.6% BP*)*



633

A pair of mother-of-pearl and gem-set cufflinks. Each designed as two circular mother-of-pearl panels, with circular blue gem cabochon highlights and hinged connecting bar. *Diameter of cufflink face 1.5cms. Weight 8.4gms. With case. £120-180 (plus 27.6% BP*)*



638

A pair of 9ct gold smoky quartz cufflinks. Each designed as a cushion-shape smoky quartz, with hinged bar reverse. *Hallmarks for Birmingham, 2006. Length of cufflink face 1.5cms. Weight 12.9gms. £80-120 (plus 27.6% BP*)*



634

A pair of lapis lazuli and sapphire cufflinks. Each designed as a grooved square lapis lazuli panel, with cylinder reverse, circular sapphire cabochon accent and connecting chain. *Length of cufflink face 1.5cms. £70-100 (plus 27.6% BP*)*



639

A pair of 18ct gold and enamel cufflinks. Each designed as two hexagonal panels, with black and red enamel geometric detail and articulated curved bar link. *French assay marks. Length of cufflink face 1.4cms. Weight 6.1gms. £120-180 (plus 27.6% BP*)*



635

A pair of diamond and gem-set cufflinks. Each designed as a pave-set diamond and black-gem square panel, with geometric surround, to the hinged back. *Estimated total diamond weight 0.15ct. Portuguese marks. Length 1.2cms. Weight 8.1gms. £250-350 (plus 27.6% BP*)*



640

A pair of 18ct gold cufflinks. Each designed as two oval panels, with engraved crowned lion motif and connecting belcher-link chain. *Maker's mark for Henry Griffith & Sons Ltd. Hallmarks for Chester, partially indistinct. Length of cufflink face 1.9cms. Weight 8.3gms. £180-260 (plus 27.6% BP*)*



641

A pair of cufflinks. Each designed as an oval panel, with textured starburst motif, to the bar reverse. *Length* 2.2cms. *Weight* 12.3gms. **£250-350** (plus 27.6% BP*)

646

Two pairs of cufflinks. The first pair each designed as two rectangular panels with circular band agate cabochon highlight, the second pair each designed as two oval panels with monogram motif. *One with hallmarks for Birmingham, 1928. Length of cufflink faces* 1.5 and 1.9cms. *Total weight* 13.7gms. **£120-180** (plus 27.6% BP*)

642

A pair of lapis lazuli cufflinks. Each designed as a rectangular lapis lazuli dome, with grooved bar reverse and connecting chain. *Length of cufflink face* 2.3cms. **£70-100** (plus 27.6% BP*)

647

A late Victorian 15ct gold Albert. Designed as a series of grooved fancy links, with rope-twist link accent, to the lobster clasp terminals. May be worn as a necklace. *Length* 44cms. *Weight* 37.5gms. **£650-850** (plus 27.6% BP*)

643

A pair of nephrite jade cufflinks. Each designed as two circular nephrite cabochons, with scrolling surround and curved connecting bar. *Diameter of cufflink face* 1.1cms. *Weight* 5.1gms. **£80-120** (plus 27.6% BP*)

648

An early 20th century 9ct gold longuard chain with charms. Designed as a trace-link chain, suspending five charms, to include a 'mouse in a shoe' charm, a turquoise four-leaf clover charm, and a 'Best English Wheat' bag charm, to the lobster clasp. *Length* 165cms. *Weight* 28.8gms. **£300-400** (plus 27.6% BP*)

644

A split pearl dress set. To include a pair of split pearl cufflinks, with two matching dress studs. *Length of cufflink face* 1.5cms. *Length of dress stud* 1.3cms. *Cufflinks with French assay marks. Weight* 18.2gms. **£700-900** (plus 27.6% BP*)

649

An early 20th century gold longuard chain. Designed as a series of textured fancy-links, with belcher-link spacers and lobster terminal. *Length* 134cms. *Weight* 32.8gms. **£700-900** (plus 27.6% BP*)

645

Two pairs of early 20th century gold and enamel cufflinks. The first pair each designed as two oval panels with black white and green enamel mosaic motif, the second pair each designed as a rectangular panel with yellow and white enamel detail and tapered reverse. *Length of cufflink faces* 1.5 and 1.8cms. *Weight* 9.9gms. *One with case.* **£100-150** (plus 27.6% BP*)

650

An early 20th century 18ct gold longuard chain. The belcher-link chain, with 15ct gold lobster clasp. *Length* 144cms. *Total weight* 59.2gms. **£1,200-1,800** (plus 27.6% BP*)

BP* - Buyer's Premium of 23% (plus VAT) or 27.6% (VAT included)

651

A late Victorian gold Albert. The fancy-link chain, suspending an engraved foliate tassel with snake-link fringe and lobster clasp. *Length 30cms. Weight 30.2gms. £340-440 (plus 27.6% BP*)*



656

A late Victorian gold rock crystal intaglio fob. The rock crystal, carved to depict a sword motif and motto within a belt, with grooved pedestal. *Length 2.6cms. Weight 11.5gms. £60-90 (plus 27.6% BP*)*



652

A late Victorian gold Albertina, with gold prasiolite fob. The multi-row snake-link chain, with lobster terminal, suspending a cushion-shape prasiolite within a foliate engraved pedestal. *Length of fob 2.8cms. Length of chain 11cms. Total weight 12.9gms. £100-150 (plus 27.6% BP*)*



657

An early 20th century 9ct gold snake fob. The oval-shape plain panel, with interwoven double snake pedestal. *Hallmarks for Chester, 1937. Length 2.2cms. Weight 5.3gms. £70-100 (plus 27.6% BP*)*



653

A late Victorian gold carnelian fob. The oval carnelian, carved to depict a monogram 'MV', with openwork pedestal. *Length 2.6cms. Weight 5.7gms. £40-60 (plus 27.6% BP*)*



658

A carnelian fob. The cushion-shape carnelian panel, carved to depict a crest designed as a belt beneath a boar head with the motto 'BYD BE', to the grooved pedestal. *Length 3.1cms. Weight 12gms. £70-100 (plus 27.6% BP*)*



654

A late Victorian gold carnelian intaglio fob and watch key. The fob designed as an oval carnelian, carved to depict Triton, with grooved pedestal and engraved hoop, suspending a watch key. *Length of fob 3.6cms. Weight 20.9gms. £100-150 (plus 27.6% BP*)*



659

Two 19th century gold agate fobs. To include a bloodstone swivel fob with bar accent pedestal, and a carnelian fob with tapered openwork pedestal. *One with hallmarks for Birmingham, partially indistinct. Lengths 3.8 and 4cms. Total weight 23.7gms. £120-180 (plus 27.6% BP*)*



655

A late Victorian gold carnelian intaglio fob. The oval carnelian, carved to depict an animal with monogram 'BGL' to the grooved, elongated pedestal and engraved hoop surmount. *Length 5.6cms. Weight 22.3gms. £120-180 (plus 27.6% BP*)*



660

Two mid 19th century gold, gem-set fobs and two watch keys. To include two circular bloodstone or chalcedony seal fobs, together with a similarly-set watch key and one further watch key, on an engraved split ring. *Lengths 1.9 to 3.1cms. Weight 10gms. £100-150 (plus 27.6% BP*)*



BP* - Buyer's Premium of 23% (plus VAT) or 27.6% (VAT included)

661

BUECHE GIROD - a lady's 9ct gold wrist watch. The rectangular textured dial, with similarly-designed tapered bracelet. *Signed Bueche Girod. Hallmarks for London, 1969. Length 17.2cms. Weight 47gms. £450-650 (plus 27.6% BP*)*

**666**

OMEGA - a lady's mid 20th century 18ct gold diamond wrist watch. The circular-shape dial, with brilliant-cut diamond sides, to the tapered mesh-link bracelet. *Dial signed Omega. Estimated total diamond weight 0.45ct. Hallmarks for London, 1961. Length 17cms. Total weight 35.2gms. £600-800 (plus 27.6% BP*)*

**662**

MAPPIN - a lady's mid 20th century platinum diamond cocktail watch. The rectangular-shape dial, with single-cut diamond sides and lugs, to the black leather cord bracelet. *Estimated total diamond weight 0.25ct. Length 17cms. Total weight 11.7gms. £80-120 (plus 27.6% BP*)*

**667**

VERTEX - a lady's mid 20th century platinum diamond cocktail watch. The rectangular-shape dial, with Arabic markers, within a single-cut diamond geometric surround and lugs, to the black cord bracelet. *Dial signed Vertex. Estimated total diamond weight 1.50cts. Length 17cms. Total weight 18.5gms. £220-320 (plus 27.6% BP*)*

**663**

MOVADO - a lady's mid 20th century platinum diamond cocktail watch. The rectangular-shape dial, with single-cut diamond surround and rectangular-shape diamond highlights, to the single-cut diamond lugs and black cord bracelet. *Dial signed Movado. Estimated total diamond weight 1.50cts. Length 18cms. Total weight 16.9gms. £180-260 (plus 27.6% BP*)*

**668**

VERTEX - a lady's mid 20th century platinum diamond cocktail watch. The rectangular-shape dial, with Arabic markers, within a vari-cut diamond geometric surround and spherical lugs, to the black cord bracelet. *Dial signed Vertex. Estimated total diamond weight 2cts. Length 15cms. Total weight 18.4gms. £200-300 (plus 27.6% BP*)*

**664**

OMEGA - a lady's 18ct gold wristwatch. The rectangular dial, with baton hour markers, to the textured integral bracelet. *Maker's marks for Omega. Import marks for London, 1989. Length 18.4cms. Total weight 38.4gms. £700-900 (plus 27.6% BP*)*

**669**

A lady's early 20th century 15ct gold wrist watch. The square-shape dial, with Arabic markers, to the later brick-link bracelet. *Import marks for London, 1911. Length 18cms. Total weight 25gms. £300-400 (plus 27.6% BP*)*

**665**

OMEGA - a lady's watch. The circular dial with baton and Arabic hourly markers, to the black leather strap. *Dial signed Omega. Length 20.5cms. Total weight 10.3gms. £100-150 (plus 27.6% BP*)*

**670**

A lady's early 20th century 9ct gold wrist watch. The circular-shape dial, with Arabic markers, within an old-cut diamond surround to the later rose-cut diamond openwork bracelet. *Estimated total diamond weight 1.50cts. Import marks for London, 1911. Length 16cms. Total weight 26.3gms. £400-600 (plus 27.6% BP*)*



BP* - Buyer's Premium of 23% (plus VAT) or 27.6% (VAT included)

671

A lady's mid 20th century platinum diamond cocktail watch. The rectangular-shape dial, with bi-hourly Arabic markers, with single-cut diamond ribbon surround, to the snake-link bracelet. *Estimated total diamond weight 1.20cts. Length 17cms. Total weight 22.3gms. £360-460 (plus 27.6% BP*)*



676

A late Victorian 18ct gold fob watch. The circular dial, with engraved floral motif and textured reverse. *Length 5.2cms. Total weight 28.6gms. £150-200 (plus 27.6% BP*)*



672

A lady's mid 20th century platinum diamond cocktail watch. The rectangular-shape dial, with Arabic markers, within a circular-cut diamond surround, to the similarly-cut diamond fancy-link bracelet. *Estimated total diamond weight 1ct. Length 16cms. Total weight 24.4gms. £380-480 (plus 27.6% BP*)*



677

A fob watch. The circular dial with Roman numeral hourly markers, with green enamel and imitation pearl reverse, suspended from a 9ct gold floral bar brooch with single-cut diamond accents. *Hallmarks for Birmingham, 1990. Length 5.3cms. Total weight 12.2gms. £50-80 (plus 27.6% BP*)*



673

A lady's mid 20th century platinum diamond wrist watch. The oval-outline dial, with single and rose-cut diamond geometric surround and lugs, to the black velvet bracelet. *Estimated total diamond weight 1.20cts. Length 21cms. Total weight 16.2gms. £180-260 (plus 27.6% BP*)*



678

Three bangles. To include a silver grooved cuff, a silver plain bangle, with a concave cuff. *Two with hallmarks for silver. Inner diameters 5.8 to 6.8cms. £60-90 (plus 27.6% BP*)*



674

A mid 20th century diamond cocktail watch. The square dial, with Arabic markers, within an old-cut diamond surround to the adjustable mesh-link bracelet. *Estimated total diamond weight 1.75cts. Length 20cms. Total weight 23.3gms. £400-600 (plus 27.6% BP*)*



679

Three silver charm bracelets and charms. Each designed as a curb-link chain, one suspending four charms, one suspending six charms, to include a hedgehog, a carriage charm and all with padlock clasps. *Bracelets with hallmarks for silver. Length of bracelets 15 to 18cms. Weight 98gms. £50-80 (plus 27.6% BP*)*



675

A selection of five watches. To include a 9ct gold Accurist watch with brick-link bracelet, a Nietella watch with fancy-link bracelet, a fob watch, with a watch face and a Cyma watch with cord bracelet. *Three with dials signed. One with hallmarks for 9ct gold. Length of hallmarked watch 15cms. Total weight 55.3gms. £60-90 (plus 27.6% BP*)*



680

Seven necklaces and an assortment of earrings. To include a silver curb-link chain, a pair of cultured pearl textured foliate earrings, with various necklaces and earrings. *Some with hallmarks for silver. £60-90 (plus 27.6% BP*)*



681



A selection of fifteen bracelets. To include a silver geometric-link bracelet, a silver fancy-link bracelet, with thirteen further items. *Two with hallmarks for silver. Two AF. Lengths 13 to 21cms. £60-90 (plus 27.6% BP*)*

686



A selection of jewellery. To include a pair of silver shamrock earrings, an amber and carnelian necklace, a labradorite necklace, with further items. **£90-140 (plus 27.6% BP*)**

682



A selection of silver jewellery and further items. To include a silver bangle, a silver carnelian and bloodstone swivel fob, a silver gem-set dirk brooch, with further items. **£100-150 (plus 27.6% BP*)**

687



A selection of jewellery. To include a rectangular floral brooch, a bird brooch, together with four further brooches and eleven rings. *Total weight 79.5gms. £50-80 (plus 27.6% BP*)*

683



A quantity of jewellery. To include a cameo brooch, a floral brooch, an engraved scalloped brooch, with further items. *Gross weight 105.6gms. £50-80 (plus 27.6% BP*)*

688



A selection of jewellery. To include eleven necklaces, two bangles, four pairs of earrings and eight pendants. *Total weight 129gms. £120-180 (plus 27.6% BP*)*

684



A selection of jewellery. To include an agate brooch, an agate and paste brooch, a carnelian single-stone ring, with further items. **£150-200 (plus 27.6% BP*)**

689



A selection of jewellery and a bag of loose onyx beads. To include a cultured pearl stylised shell brooch, a bracelet suspending twenty charms, a synthetic pink sapphire cross pendant, and a bag of loose onyx circular beads. *Length of brooch 3.7cms. Length of bracelet 16cms. Length of cross 4cms. £180-260 (plus 27.6% BP*)*

685



A selection of jewellery. To include a tri-colour graduated textured silver bead necklace, with matching bracelet, together with further items. *Three with hallmarks for silver. £100-150 (plus 27.6% BP*)*

BP* - Buyer's Premium of 23% (plus VAT) or 27.6% (VAT included)

Fellows

Established 1876

Auction Calendar

October	Costume Jewellery	Ends Thursday 4th at 12pm
	Antique & Modern Jewellery	Thursday 11th at 11am
	Jewellery & Pawnbroker Jewellery	Thursday 18th at 10am
	The Watch Sale	Tuesday 30th at 11am
November	Jewellery & Pawnbroker Jewellery	Thursday 1st at 10am
	Antique & Modern Jewellery	Thursday 8th at 11am
	Jewellery & Pawnbroker Jewellery	Thursday 15th at 10am
	The Watch Sale	Tuesday 27th at 11am
	Jewellery & Pawnbroker Jewellery	Thursday 29th at 10am
December	Antique & Modern Jewellery	Thursday 6th at 11am
	Watches & Watch Parts	Monday 10th at 10am
	Jewellery & Pawnbroker Jewellery	Thursday 13th at 10am
	Costume Jewellery	Ends Thursday 13th at 12pm

Check the website for the latest Antiques, Silver & Collectables auction dates. Dates are subject to change. *Timings are approximate. The Pawnbroker Watches & Jewellery sale begins immediately after the Jewellery auction has concluded.

For further information please contact:

Jewellery

Heather Bailey
heather@fellows.co.uk
0121 212 6303

Watches

Laura Bishop
laurab@fellows.co.uk
0121 212 5506

Silver & Coins

Alison Jakeway
alisonj@fellows.co.uk
0121 212 2131

Antiques & Fine Art

Kevin Jackson
kevin@fellows.co.uk
0121 212 2131



Valuations in person at Fellows

With years of experience and specialist knowledge of antiques, jewellery, watches, handbags, silver, coins and medals, our specialists are able to provide free auction valuations.

Our Birmingham office offers free walk-in valuations.

Our London office warmly welcomes free valuations of jewellery, watches, handbags or antiques throughout the week. To arrange a valuation with our London office simply email london@fellows.co.uk or call **0207 127 4198**.

Previous Auction Results



To view results from our previous auctions
please register or sign in to your Fellows account at
www.fellows.co.uk
and view our auction archive via the search bar
or a hard copy by request.

Fellows

Established 1876



At our London office, we offer valuations for jewellery, watches, handbags or antiques as well as viewing days for upcoming auctions.

For more information please contact our London office on 0207 127 4198 or london@fellows.co.uk

29 Charles Street, Mayfair, London, W1J 5DT

Fellows Auctioneers Ltd

Terms and Conditions

Fellows Auctioneers Ltd carries on business, including the conduct of Auctions, on the following general conditions. This includes business with Bidders, Buyers, Vendors, consignors, users of this website, and with all those present on the Premises prior to or in connection with an Auction (all as hereinafter defined).

1. INTRODUCTION

1.1 The following defined terms are used in these Conditions :

“Auction” means any Auction conducted by Fellows, either at their premises or elsewhere (including any internet-based auctions);

“Auctioneer” means Fellows or its authorised Auctioneer, as appropriate;

“Bidder” means a bidder at an Auction, including bidders personally present at the venue and those bidding by telephone or over the internet or otherwise;

“Buyer” means the bidder whose bid was the last bid when the Auctioneer brings down the hammer;

“Conditions” means these terms and conditions;

“Consigned Property” means the items consigned by the Vendor to Fellows for offer at an Auction;

“Deliberate Forgery” means an imitation made with the intention of deceiving as to authorship, origin, date, age, period, culture or source but which is unequivocally described by Fellows in the catalogue as being the work of a particular creator and which at the date of the sale had a value materially less than it would have had if it had been in accordance with the description;

“Fellows” means Fellows Auctioneers Ltd;

“Hammer Price” means the level of bidding reached (at or above any reserve) when the Auctioneer brings down the hammer;

“Includes” means “includes but not limited to”, and “including” means “including but not limited to”

“Lot” means any Consigned Property accepted by Fellows for offer at Auction;

“Stated Rate” means Fellows’ published rates of commission for the time being and value added tax thereon (also available on request);

“Terms of Consignment” means any stipulated terms and rates of commission on which Fellows accepts instructions from Vendors [or their agents];

“Total Amount Due” means the Hammer Price in respect of the Lot sold together with any premium, commission, value added tax chargeable and any additional charges payable by a defaulting Buyer under these Conditions;

“Vendor” means the vendor of an item (including Consigned Property) which is submitted to Fellows for offer for sale at an Auction;

“Website” means this website;

“You” means any user of the Website.

2. WEBSITE

2.1 You may access most areas of the Website without registering your details with us. Certain areas of the Website are only open to you if you register. By accessing any part of the Website, you shall be deemed to have accepted these Conditions notice in full. If you do not accept this legal notice in full, you must leave the Website immediately.

2.2 Fellows may revise these Conditions at any time by updating this posting. You should check the Website from time to time to review the then current legal notice, because it is binding on you. Certain provisions of this legal notice may be superseded by expressly designated legal notices or terms located on particular pages at the Website.

2.3 Unless otherwise stated, the copyright and other intellectual property rights in all material on the Website (including without limitation photographs and graphical this legal notice, your permission to use the Website automatically terminates and you must immediately destroy any downloaded or printed extracts from the Website.

2.4 No part of the Website may be reproduced or stored in any other website or included in any public or private electronic retrieval system or service without Fellows’ prior written permission.

2.5 Any rights not expressly granted in these Conditions are reserved.

3. VISITOR MATERIAL AND CONDUCT

3.1 Other than personally identifiable information, which is covered under our Privacy Policy, any material you transmit or post to the Website shall be considered nonconfidential and non-proprietary. Fellows shall have no obligations with respect to such material. Fellows and its designees shall be free to copy, disclose, distribute, incorporate and otherwise use such material and all data, images, sounds, text and other things embodied therein for any and all commercial or non-commercial purposes.

3.2 You are prohibited from posting or transmitting to or from the Website any material: that is threatening, defamatory, obscene, indecent, seditious, offensive, pornographic, abusive, liable to incite racial hatred, discriminatory, menacing, scandalous, inflammatory, blasphemous, in breach of confidence, in breach of privacy or which may cause annoyance or inconvenience; or for which you have not obtained all necessary licences and/or approvals; or which constitutes or encourages conduct that would be considered a criminal offence, give rise to civil liability, or otherwise be contrary to the law of or infringe the rights of any third party, in any country in the world; or which is technically harmful (including, without limitation, computer viruses, logic bombs, Trojan horses, worms, harmful components, corrupted data or other malicious software or harmful data).

3.3 You may not misuse the Website (including, without limitation, by hacking).

3.4 Each registration is for a single user only. Fellows does not permit you to share your user name and password with any other person nor with multiple users on a network.

3.5 Responsibility for the security of any passwords issued rests with you.

4. THE VENDOR

4.1 Fellows shall act as agent of the Vendor only. Any contract for the sale of a Lot will be formed between the Vendor and the Buyer.

- 4.2 The Vendor warrants and represents to Fellows and the Buyer that the Vendor is the sole and true owner of the Consigned Property or is properly authorised by the sole and true owner to consign it for sale and is able to transfer good and marketable title to the property free from any third party claims. The Vendor warrants and representatives that the Vendor has revealed all pertinent information that the Vendor possesses about the items, including in relation to any repairs or alterations that may have been carried out. The Vendor shall indemnify Fellows and the Buyer against any loss and expense caused by any breach of this clause 4.2.
- 4.3 The Vendor shall be entitled to place prior to the Auction a reserve on any Lot, being the minimum Hammer Price at which Lot may be sold. Reserves must be reasonable and Fellows may decline to offer goods which in Fellows' opinion would be subject to an unreasonably high reserve (in which case goods carry the storage and insurance charges stipulated in the terms of consignment). Reserves will not be accepted on items with a bottom estimate less than £300. The Auctioneer also reserves the right not to accept items which they deem to be unsuitable for Auction. Any estimate given shall be an opinion and is not an undertaking of any kind.
- 4.4 A reserve once set cannot be changed except with the written prior consent of Fellows.
- 4.5 Where a reserve has been placed only Fellows may bid on behalf of the Vendor.
- 4.6 The Vendor authorises Fellows to deduct commission from any sold items at a rate of 15% (plus VAT) on any item with a hammer price of £3,000 (or under) or 12.5% (plus VAT) on items over £3,000. Loss or liability for damage will be charged at a rate of 1.5% (plus VAT) calculated on the hammer price. A Marketing fee of £10 (plus VAT) will be charged for each Lot, if unsold we will charge a nominal handling fee of £5 (plus VAT). All items below £35 are subject to a minimum fee of £5 (plus VAT) per Lot.
- 4.7 Fellows will pay the Hammer Price achieved for the Lot (less its commission and applicable fees in accordance with clauses 4.6, 9.2 and 9.3) to the Vendor on receipt of payment of the Total Amount Due in full by the Buyer.
- 4.8 The Vendor authorises Fellows in their discretion to negotiate a sale by private treaty in the case of a Lot unsold at Auction, in which case the same charges will be payable as if the Lot had been sold at Auction.
- 4.9 Fellows do not themselves undertake the collection of any items but may, as the Vendor's agent, instruct a contractor on behalf of the Vendor. Fellows accepts no liability for the actions of such contractor who contracts with the Vendor direct.
- 4.10 Fellows disclaims all liability for items delivered to their saleroom without sufficient sale instructions, and reserves the right to make a minimum warehousing charge of [£1.00] per item per day. Unsold items are subject to the same charges if the Vendor does not remove them within a reasonable time of notification. If not removed within three weeks Fellows reserves the right to sell the items and defray charges from any net proceeds of sale or at the Vendor's expense to consign them to the local authority for disposal. Fellows disclaims any liability for default by the Buyer or for paying out the Vendor before receiving payment by the Buyer.
- 4.11 Subject to clause 4.9, Fellows holds all items on their premises and in their custody covered against the risks of fire, burglary and water damage on the scale of charges notified in the terms of consignment and payable by the Vendor up to the date of any sale and (in Fellows' discretion) the Buyer thereafter until collection.
- 4.12 The right of Fellows to bid on behalf of the Vendor is expressly reserved. The Vendor acknowledges that Lots are sold subject to the stipulations of these Conditions in their entirety and on the Terms of Consignment as notified to consignors at the time of the entry of the Lot.
- 4.13 The Auctioneer reserves the right to dispose of any item that in their opinion is unsaleable. Items, including electrical goods and soft furnishings, which do not comply with current legislation will not be offered at Auction.
- 4.14 Any items unsold after an Auction will be reoffered in a subsequent Auction at a reduced reserve to be agreed within seven days. The Auctioneer may request the removal of an item if a reduced price cannot be agreed; items not removed within 14 days will be subject to a storage charge.
- 4.15 A charge of 10% (plus VAT) based on the middle estimate – plus any other charges incurred – may be levied for any Lot withdrawn by the Vendor from offer at an Auction. If the item has to be returned by post (or any other method) the Vendor will be responsible for this charge. These charges are to be paid before the item is returned.
- 4.16 By submitting the item to Fellows for offer at Auction, the Vendor agrees to the Terms of Consignment and authorises Fellows to deduct the specified charges.
- ## 5. PUBLICITY
- 5.1 Any catalogue and buyer guides are provided for information only and do not form part of these Conditions. The catalogue and the buyer guides may contain additional terms and conditions.
- 5.2 Fellows reserve the right to use any photographs, background information, and research for publicity purposes both before and after the sale.
- ## 6. THE AUCTION
- 6.1 Any Auction shall be conducted at the absolute discretion of the Auctioneer.
- 6.2 The Auctioneer shall conduct the Auction with reasonable skill and care. For example, what constitutes a bid shall be at the absolute discretion of the Auctioneer, acting with reasonable skill and care.
- 6.3 The Auctioneer shall have the right to refuse any bid which does not exceed the previous bid by at least 10% or by such greater proportion as the Auctioneer shall in his or her absolute discretion direct.
- 6.4 Where two or more bids at the same level are simultaneously received by the Auctioneer, the Auctioneer at his absolute discretion shall determine which bid to prefer. Subject to the foregoing, where two or more bids at the same level are simultaneously received by the Auctioneer, any bid by a Bidder personally present at an Auction shall take preference over any bid submitted by

- telephone or over the internet. Any bid made or attempted by telephone or over the internet shall be deemed to have been made only if received by the Auctioneer.
- 6.5 Fellows shall have the right, at its absolute discretion, to refuse admission to its premises or attendance at (or participation in) any Auction by any person.
7. BIDDERS
- 7.1 Bidders may be required to register their particulars. Bidders attending in person may be required to satisfy Fellows' security arrangements before entering any part of the premises to view or bid.
- 7.2 You accept full liability for all bids submitted via your My Fellows account. Once a bid has been made by a Bidder on our website, the bid can be lowered or increased up until 9am on the day of the auction. You must sign into your My Fellows account to do this and you will receive an email confirmation for any changes made. Should a bid be placed in error on the website you must contact Fellows immediately. Failure to contact Fellows before the auction takes place will result in liability for the full payment of the item.
- 7.3 Subject to clause 6.3, the highest Bidder at the Hammer Price shall be the Buyer. Any dispute about a bid shall be settled at the Auctioneer's absolute discretion.
- 7.4 Bidders are deemed to act as principals unless there is a written prior acknowledgement by Fellows that a Bidder is acting as an agent for a named principal.
- 7.5 Bidders are strongly encouraged to attend the Auction in person. Bidders shall be responsible for any decision to bid for a particular Lot and shall be deemed to have carefully inspected and satisfied themselves as to its condition. Neither Fellows nor its employees or agents shall be responsible for any neglect or default in doing or failing to do so.
- 7.6 Bidders are given ample opportunities to view and inspect before any sale and prospective Buyers must satisfy themselves as to all such matters. Neither Fellows or its employees or agents nor the Vendor accept liability for the correctness of such opinions and all conditions and warranties, express, implied or statutory are hereby excluded.
8. THE BUYER
- 8.1 Immediately a Lot is sold, the Buyer shall:
- (a) give to Fellows their name and address and, if requested proof of identity, and
- (b) pay to Fellows the Total Amount Due.
- 8.2 [Fellows may, at its absolute discretion, agree credit terms with the Buyer before an Auction under which the Buyer may be entitled to take possession of Lots up to an agreed value in advance of payment by a stipulated future date of the Total Amount Due.]
- 8.3 Cheques shall not be acceptable by Fellows (unless Fellows in its absolute discretion permits payment by such method) nor are third party references or credit facilities with other Auction houses. If a cheque is tendered Fellows reserves the right to instruct its bank to check the Buyer's status and account balance before exercising any discretion. Any credit arrangement must be settled at least 4 days before the relevant sale. Any permitted payment by credit card shall carry an extra charge to the Buyer of such percentage of the Total Amount Due as is displayed on the premises.
- 8.4 Any payments by a Buyer to Fellows may be applied by Fellows towards any sums owing from that Buyer to Fellows on any account whatever without regard to any directions of the Buyer or his agent, whether express or implied.
9. THE PURCHASE PRICE
- 9.1 On the first £100,000 of the Hammer Price (of any individual Lot) the buyer will pay the Hammer Price and a premium of 23% (Plus VAT). The said premium not being negotiable and payable by ALL Buyers. The Vendor authorises Fellows to retain beneficially the premium payable by Buyers. Value Added Tax is charged at the rate prevailing by law at the date of sale.
- 9.2 On the excess over £100,000 of the Hammer Price (of any individual Lot), the Buyer will pay the Hammer Price and a premium of 15% (plus VAT). The said premium not being negotiable and payable by ALL Buyers. The Vendor authorises Fellows to retain beneficially the premium payable by Buyers. Value Added Tax is charged at the rate prevailing by law at the date of sale.
- 9.3 Value Added Tax on the Hammer Price is imposed on all items affixed with an asterisk thus - *.
- 9.4 Buyers will pay a commission charge of an additional 3% (plus VAT) of the hammer price if lots are successfully purchased online via the-saleroom.com and an additional 5% (plus VAT) of the hammer price if lots are successfully purchased online via Live Auctioneers.
- 9.5 Non UK or EU VAT registered buyers can have most classes of VAT refunded on their purchases - please note that auctioneers are under no obligation to provide VAT refunds, although many will offer this service. HMRC are the ultimate refunding authority. VAT refunds are subject to provision of statutory export/import documentation. HMRC have decreed that VAT on buyer's premium is always payable whether the buyer is domiciled in the UK, the EU or outside the EU or wherever the goods are to be sent. So auctioneers cannot refund VAT on buyer's premium if the goods are sold under normal VAT rules.
10. TITLE AND COLLECTION OF PURCHASES
- 10.1 The ownership of any Lot purchased shall not pass to the relevant Buyer until they have made payment in full to Fellows of the Total Amount Due.
- 10.2 Buyers shall at their own risk and expense take away any Lot that they have purchased and paid for not later than 2 working days following the day of the Auction after which they shall be responsible for any removal, storage and insurance charges.
11. DEFAULT BY BUYER OR VENDOR
- 11.1 As Fellows act as agent for the Vendor, Fellows is not responsible for default by the Vendor or the Buyer.
- 11.2 If any Lot is not paid for in full and taken away in accordance with these Conditions, or if there is any other breach of these Conditions, Fellows as agent for the Vendor shall at its absolute discretion and without prejudice to any other rights it may have, be entitled to exercise all or any of the following rights

and remedies:

- (a) to proceed against the Buyer for an action for debt or damages for breach of contract;
- (b) to rescind the sale of that Lot and/or any other Lots sold by Fellows to the defaulting Buyer;
- (c) to re-sell the Lot by Auction or private treaty. If a lower Hammer Price is achieved on the re-sale than that achieved on the original sale the defaulting Buyer shall be liable for the difference (after crediting any part payment and adding any re-sale costs). Fellows will account to the Vendor for any surplus achieved on a re-sale, however, it shall only be required to account to the Vendor for any resulting deficiency in the event that it receives payment of such sum in full from the defaulting Buyer.
- (d) to remove, store and insure the Lot at the expense of the defaulting Buyer and, in the case of storage, either at Fellows' premises or elsewhere;
- (e) to charge interest at a rate not exceeding [1.5%] per month on the total amount due to the extent it remains unpaid for more than 2 working days after the sale;
- (f) to retain that or any other Lot sold to the defaulting Buyer until that Buyer pays the total amount due;
- (g) to reject or ignore bids from the defaulting Buyer at future Auctions or to impose conditions before any such bids shall be accepted;
- (h) to apply any proceeds of sale of other Lots due or in future becoming due to the defaulting Buyer towards the settlement of the total amount due and to exercise a lien on any of the Buyer's property in Fellows' possession for any purpose.

12. DELIBERATE FORGERIES

- 12.1 Subject to clause 12.2, any representation or statement by Fellows (including in any catalogue) as to authorship, genuineness, origin, date, age, provenance, condition or estimated selling price is a statement of opinion only. Prospective Buyers are given ample opportunities to view and inspect before any sale and prospective Buyers must satisfy themselves as to all such matters. Neither Fellows or its employees or agents nor the Vendor accept liability for the correctness of such opinions and all conditions and warranties, express, implied or statutory are hereby excluded.
- 12.2 Any Lot which proves to be a Deliberate Forgery may be returned to Fellows by the Buyer within 21 days of the Auction provided it is in the same condition as when bought, and is accompanied by particulars identifying it from the relevant catalogue description and a written statement of defects. If Fellows is satisfied from the evidence presented that the Lot is a Deliberate Forgery Fellows shall refund the money paid by the Buyer for the Lot (but not the amount of any consequential loss, damages, expenses or interest) provided that (1) if the catalogue description reflected the accepted view of scholars and experts as at the date of sale or (2) the Buyer personally is not able to transfer a good and marketable title to Fellows.

13. LIMITATIONS OF LIABILITY

- 13.1 All members of the public on the premises are there at their own risk and must note the lay-out of the accommodation and security arrangements.
- 13.2 Any indemnity under these Conditions shall extend to all actions, costs, expenses, claims

and demands whatsoever suffered or incurred by the person entitled to the benefit of it and Fellows declares itself to be a trustee of the benefit of every such indemnity so far as it is expressed to be for the benefit of its employees and agents.

- 13.3 While Fellows endeavours to ensure that the information on the Website is correct, Fellows does not warrant the accuracy and completeness of the material on the Website. Fellows may make changes to the material on the Website, or to the products and prices described in it, at any time without notice. The material on the Website may be out of date, and Fellows makes no commitment to update such material.
- 13.4 The material on the Website is provided "as is", without any conditions, warranties or other terms of any kind. Accordingly, to the maximum extent permitted by law, Fellows provides you with the Website on the basis that Fellows excludes all representations, warranties, conditions and other terms which, but for this legal notice, might have effect in relation to the Website.

14. GENERAL

- 14.1 Any notice to any Buyer, Vendor, Bidder or viewer may be given by first class mail or email in which case it shall be deemed to have been received by the addressee 48 hours after posting or sending. All notices to Fellows must be sent in writing and email is not acceptable.
- 14.2 Any indulgence extended to any person by Fellows notwithstanding the strict terms of these Conditions or the Terms of Consignment shall affect the position at the relevant time only and in respect of that particular concession only; in all other respects these Conditions shall be construed as having full force and effect.
- 14.3 These Conditions and any disputes or claims arising out of or in connection with it or their subject matter or formation (including non-contractual disputes or claims) are governed by and construed in accordance with the law of England.
- 14.4 The parties irrevocably agree that the courts of England have exclusive jurisdiction to settle any dispute or claim that arises out of or in connection with the Agreement or its subject matter or formation (including non-contractual disputes or claims).

15. SHIPPING

- 15.1 We offer a tracked and insured shipping service for all items with the exception of those in our Antiques, Silver & Collectables sales.
- 15.2 Items posted outside of the UK will incur a £30 charge.
- 15.3 Within the UK, hammer totals under £100 will incur a £10 charge.
- 15.4 Hammer totals over £100 will incur a £20 charge.
- 15.5 Larger items, as well as those exceeding a value of £20,000 or weighing in excess of 2kg may be subject to additional fees.
- 15.6 If you have recently moved or wish to have your items sent to a different address, please contact us prior to the sale. We cannot accept alternative addresses for first-time buyers and your items will be sent the address on the ID/payment card. If you pay by bank transfer we can ship to any worldwide address of your choice.

IMPORTANT NOTICES FOR PURCHASERS

IMPORTANT NOTICE TO PROSPECTIVE BUYERS OF GEMSTONES/JEWELS

Purchasers are advised that whilst great care has been taken in the examination of gemstones, it is not possible to test every gemstone in multi-gemstone lots.

Notes 1 - Coloured Gemstones

Historically, many coloured gemstones have been subjected to a variety of treatments designed to enhance their appearance. Certain enhancement methods, such as heating, are routinely used to improve colour or transparency in rubies and sapphires. Other methods, such as oiling, enhance the clarity of emeralds. The international jewellery trade has generally accepted these methods. Other coloured gemstones may have undergone other permanent or semi-permanent treatments, such as dyeing, irradiation, coating and impregnation, possibly requiring further re-treatment in order to retain their appearance.

Prospective purchasers should assume that all gemstones will have been treated unless statements are made to the contrary. Gemmological reports from internationally recognised Gemmological Laboratories will be noted in the item description where available.

Note 2 - Diamonds

Recent advancements in technology have led to some diamonds being treated in a variety of ways designed to enhance their appearance. These treatments can include fracture filling, laser drilling, irradiation and coating, and whilst all efforts are made to identify such treatments, it is not possible for Fellows to guarantee that all lots containing diamonds are free of these enhancements.

Fellows do not knowingly offer treated diamonds for sale, unless a gemmological report disclosing the type of treatment has been obtained from an internationally recognised Gemmological Laboratory, and stated within the item description. Diamond grades for colour and clarity (see separate Notes on Diamond Grading terms) where printed in the catalogues are intended as guides for prospective purchasers, with the given limitations of mounts and settings, and are not guaranteed by Fellows.

Statements in the catalogue regarding the condition of lots in this sale may appear in the description, however, the absence of such a reference does not imply that a lot is in a perfect or near perfect condition, or completely free from wear or imperfections. Fellows will be pleased to offer Condition Reports to interested clients for lots with estimates of £100 or more.

Diamond Grading Terms

DIAMOND COLOUR

GIA	OLD WORLD TERMS	EXPLANATION	GIA	OLD WORLD TERMS	EXPLANATION
D	Finest White (Jager)	Colourless	K	Silver Cape (Top Cape)	Traces of colour. Small stones in this range will 'face up' colourless when mounted but larger stones will be tinted.
E	Finest White (River)	Colourless	L	Silver Cape (Top Cape)	Traces of colour. Small stones in this range will 'face up' colourless when mounted but larger stones will be tinted.
F	Fine White (River)	Colourless	M	Light Cape (Cape)	Traces of colour. Small stones in this range will 'face up' colourless when mounted but larger stones will be tinted.
G	Fine White (Top Wesselton)	Near Colourless: diamonds 'face up' colourless. Slight traces of colour will not be apparent in the mounted stones to other than the trained eye.	N	Light Cape (Low Cape)	Diamonds graded N through Z+ display a yellowish tint even to the untrained eye.
H	White (Top Wesselton)	Near Colourless: diamonds 'face up' colourless. Slight traces of colour will not be apparent in the mounted stones to other than the trained eye.	P	CAPE O - R (Very Light Yellow)	Diamonds graded N through Z+ display a yellowish tint even to the untrained eye.
I	White (Top Wesselton)	Near Colourless: diamonds 'face up' colourless. Slight traces of colour will not be apparent in the mounted stones to other than the trained eye.	Z	Cape R- Z (Very Light Yellow)	Diamonds graded N through Z+ display a yellowish tint even to the untrained eye.
J	Top Silver (Top Wesselton)	Near Colourless: diamonds 'face up' colourless. Slight traces of colour will not be apparent in the mounted stones to other than the trained eye.	Z+	Fancy Yellow	Diamonds graded N through Z+ display a yellowish tint even to the untrained eye.

DIAMOND CLARITY

GIA	OLD WORLD TERMS	EXPLANATION	GIA	OLD WORLD TERMS	EXPLANATION
IF	Internally Flawless	No inclusions visible with a 10x lens even to an experienced grader	Sit & SI2	Slightly Included	Noticeable inclusions visible with a 10x lens.
WS1 & WS2	Very Very Slightly Included	Minute inclusions, which are difficult, even for experienced graders, to see with a 10x lens.	I1, 12 & 13	Pique 1, 2 & 3 & 13	Obvious inclusions, may be visible to the unaided eye, face up. In 13 they may affect the stone's durability.
VS1 & VS2	Very Slightly Included	Minor inclusions, observable with effort with a 10x lens.			

Fellows

Established 1876

Commission Bidding Slip

Thursday 4th October 2018

Jewellery

Name _____

Please bid on my behalf for the lot(s) shown below.

Address _____

The bids will be executed as cheaply as is permitted by other bids in the room or reserves.

I have read and agree to comply with the Conditions of Sale as printed in the catalogue.

_____ Postcode _____

Any account for items purchased on my behalf will be settled within 24 hours of the sale and the items collected within two days of sale.

Telephone _____

Email _____

Please complete in block capitals.

Signed _____ Date _____

Lot	Price	Lot	Price	Lot	Price

Buyer's Premium Please note the bidding increments

The buyer's premium is 23% (+ VAT) or 27.6% (VAT inclusive) on the first £100,000 of any individual lot. For any individual lot in excess of £100,001, the buyer's premium is 15% (+ VAT) or 18% (VAT inclusive).

Lots prefixed with * will carry VAT at 20% on the hammer price.

Please note the bidding increments

£50 - £100	£5 increments
£100 - £200	£10 increments
£200 - £1000	£20 increments
£1000 - £10,000	£100 increments
Over £10,000	£1000 increments

Any bids shown not complying with these increments will be **ROUNDED UP** to the next increment.

Please check your bids

If you would like to receive catalogues on a regular basis, please mark the appropriate category and return this form with a cheque made payable to Fellows for the full amount.

Subscriptions last for a 12 month period

Antique & Modern Jewellery 12 catalogues per year	£100	
Jewellery 24 catalogues per year	£150	
The Watch Sale 8 catalogues per year	£100	
The Designer Collection 4 catalogues per year	£50	
Antiques, Fine Art & Collectables 4 catalogues per year	£50	
Silver, Coins & Medals 4 catalogues per year	£50	
The Gemstone Sale 4 catalogues per year	£35	
Watches & Watch Parts 4 catalogues per year	£35	

All of the above catalogues are available to view FREE of charge on our website www.fellows.co.uk

Name (Block Capitals)

Address (Block Capitals)

.....

Post Code Telephone

Signature Date

Email

Fellows

Established 1876

Contact Information

Directors

Stephen Whittaker BA (Hons)

Jayne Whittaker

Ben Griffiths BSc (Hons)

Departments

Customer Services

0121 212 5508

info@fellows.co.uk

Victoria Calvera

Kain Holroyd

Kathryn Leaney MGeol BSc (Hons)

Kasia McGovern-Hay

Gemma Sheldon

Photography

0121 212 2131

photography@fellows.co.uk

Francesca Allen

Claire Cleaver

Helen Nodding

Tiago Paulino

Polly Shave

London Office

0207 127 4198

london@fellows.co.uk

Francesca Garvey-Hughes BA (Hons), FGA

Oliver Horner DGA

Stroma Parker BA (Hons)

Nicola Whittaker Bsc (Hons), Cert. GA

Annabel Zarandi BA (Hons)

Finance

0121 212 2131

accounts@fellows.co.uk

Wendy Butler

Angela Donnelly BA (Hons) ACMA

Gemma Wilkes

Marketing

0121 212 5500

marketing@fellows.co.uk

Liam Bolland BA (Hons)

Howard Cheung BA (Hons)

Jorden Guest MA (Hons)

Luke Poole BA (Hons)

Alexandra Whittaker BA (Hons)

Specialist Departments

Jewellery

0121 212 2131

jewellery@fellows.co.uk

Heather Bailey

Alexandra Becket DGA, Cert GA

Ritsuko Birch BA (Hons), DGA

Jenny Darcy BA (Hons)

Alexander Duffy BSc (Hons), FGA, DGA

Patricia Grant BA (Hons)

Kathryn Hodkin MSci (Hons), FGA, DGA

Natalie Hutchings FGA, DGA

David Pregun MA (Hons), FGA, DGA

Ben Randall BA (Hons), G.G., A.J.P.

Emma Scriven BA (Hons), FGA, DGA

Georgina Stanley

Emma Testill FGA, DGA

Amanda Zhang FGA, Msc

Watches

0121 212 5506

watches@fellows.co.uk

Laura Bishop MA (Hons)

Charlotte Bonnell

Amy Hill CertHE

Michael Jagiela

Carrick Matley

Steven Yambo BA (Hons)

Pawnbrokers

0121 212 6308

pawnbroker@fellows.co.uk

Rachel Bache

Kate Bannister

Annaliese Foster BA (Hons)

Antiques, Silver & Collectables

0121 212 6302

antiques@fellows.co.uk

silverdept@fellows.co.uk

Danielle Blackledge MA (Hons)

Kevin Jackson

Alison Jakeway MA MRICS

Stephen Watton BA (Hons)

Designer Collection

0121 212 6306

thedesignercollection@fellows.co.uk

Sophie Higgs

Fellows

Established 1876

Travel Information



Birmingham Saleroom

Situated in the heart of Birmingham's Jewellery Quarter, Fellows is easily accessible from all parts of the United Kingdom, Europe and beyond.

Head Office & Saleroom
Augusta House
19 Augusta Street
Birmingham
B18 6JA

Telephone: 0121 212 2131
Email: info@fellows.co.uk

London Office

Fellows' London office offers valuations, please call to arrange a time to visit.

London Office
29 Charles Street
Mayfair
London
W1J 5DT

Telephone: 020 7127 4198
Email: london@fellows.co.uk



Follow us on....



[facebook.com/
fellowsauctions](https://facebook.com/fellowsauctions)



[fellowsauctions](https://instagram.com/fellowsauctions)



[@fellowsauctions](https://twitter.com/fellowsauctions)



youtube.com/fellows1876



Fellows

Established 1876

Head Office & Saleroom:

Augusta House | 19 Augusta Street | Birmingham B18 6JA

London Office:

29 Charles Street | Mayfair | London W1J 5DT

Tel 0121 212 2131 | Tel 020 7127 4198 | www.fellows.co.uk