

Fellows
Established 1876



Fine Jewellery

Thursday 11th July 2019



Fine Jewellery

Thursday 11th July 2019
Starts at 11:00am

Sale to be held in Upstairs Saleroom

Viewing Times

London

Tuesday 2nd July 2019

12 noon - 7pm

Birmingham

Saturday 6th July 2019

11am - 4pm

Tuesday 9th July 2019

10am - 4pm

Wednesday 10th July 2019

10am - 4pm

Thursday 11th July 2019

8.30am - 11am

(Photo ID required)

Please be aware that you will be asked for photographic proof of identification to be allowed access to the viewing.

Certificated stones

Lot No. 42, 44, 49, 60, 66, 83, 101, 114, 124, 140, 149, 150, 151, 157, 158, 169, 204, 205, 206, 271, 275, 276, 281, 285, 287, 291, 292, 295, 301, 303, 306, 308, 318, 330, 334, 340, 342, 353, 358, 360, 364, 369, 371, 372, 383, 391, 414

Featured Lots

Lots 145, 149, 150, 152, 167 and 168
(Front Cover)



Lots 151, 153 and 155
(Back Cover)



Free Live Bidding!

Fellows are delighted to announce the introduction of Fellows Live. This is a new bidding platform where all bidders can follow the sale and bid online for **free**. Say goodbye to additional surcharges when it comes to bidding! Anyone using Fellows Live will only have to pay the standard Buyer's Premium (plus VAT), on items purchased using this method.



Why Buy?

COMPETITIVE buyer's premium

FREE live online bidding

FULLY illustrated catalogue

EASY to use, functional website

ACCURATE condition reports

SPECIALISTS on hand to offer advice

TRACKED AND INSURED shipping*

*Please contact Fellows for further information.

Why Sell?

HIGH PRICES consistently achieved

FLEXIBLE commission rates

FREE valuations with no obligation to consign

RAPID turnaround for your goods

TARGETED advertising to a global audience

SUPERIOR quality catalogues


FULLY integrated website

Contact the department...

Heather Bailey Senior Specialist 0121 212 6306 heather@fellows.co.uk	Ben Randall Senior Specialist 0121 212 2131 ben@fellows.co.uk	Alex Duffy Junior Cataloguer 0121 212 5503 alex@fellows.co.uk
--	---	---

Further information





 **Additional Images and Condition Reports** can be found online at our website www.fellows.co.uk

 **Telephone Bidding** is available if you cannot attend an auction. Please ring 0121 212 2131 to arrange a telephone line.

Important Notice

Neither Fellows nor the Vendors are responsible for any reference as to the condition of lots listed. The absence of such reference does not imply that a lot is in good condition or free from faults or imperfections. All weights and dimensions are approximate. Purchasers are advised to carefully inspect lots and make their own opinion as to the condition. Please see section 7 under 'Bidders' in our full terms and conditions. View Fellows Important Notices in full and full terms and conditions at the back of the catalogue.

Key to Symbols

-  Item may have export restrictions for customers outside of the EU.
-  Lot comes with box.
-  Lot comes with Report.
-  Available in chocolate in collaboration with The Edible Museum

Follow Us



1

A late Victorian gold Burmese ruby and diamond ring. The graduated cushion-shape ruby line, with diamond point spacers. **Verbal** from GCS, stating Burma, no heat. Estimated dimensions of central ruby 5.6 by 3.8 by 2.2mms. Ring size K1/2. Weight 3.7gms.

£400-600 (plus 27.6% BP*)

2 

An early 20th century silver and gold, sapphire and diamond pendant. The graduated cushion-shape sapphire wreath, with diamond point foliate spacers, suspended from tapered knife-edge bars on similarly-designed surmount and integral trace-link chain. Estimated dimensions of largest sapphire 6 by 4.9 by 3.7mms. Length of pendant 4.7cms. Length of chain 42cms. Weight 5.5gms. With case.

£400-600 (plus 27.6% BP*)

3 

CHILD & CHILD - a late Victorian silver and enamel brooch. Designed as a pair of shaded blue enamel wings. *Maker's mark for Child & Child.* Length 3.4cms. Weight 3.1gms. With maker's case.

£300-400 (plus 27.6% BP*)

4

CHILD & CHILD - an Edwardian 18ct gold topaz and diamond brooch. The heart-shape pink topaz, with old-cut diamond surmount and green enamel wing sides. *Maker's mark for Child & Child.* Length 4.8cms. Weight 5.2gms.

£450-650 (plus 27.6% BP*)

5

A late Victorian silver and gold, Burmese ruby and diamond brooch. The cushion-shape ruby and old-cut diamond openwork flower head, with circular-shape ruby surround. May be worn as a pendant. **Verbal** from GCS, stating one synthetic, remaining Burma, no heat. Estimated total diamond weight 0.80ct. Diameter 2.9cms. Weight 9.1gms.

£400-600 (plus 27.6% BP*)

6

An Arts & Crafts 15ct gold gem-set pendant. The pear-shape mother-of-pearl, suspended from an oval mother-of-pearl panel with oval-shape purple garnet and split pearl floral and grape motif surround, to the similarly-designed surmount and trace-link chain. Length of pendant 7.2cms. Length of chain 39.5cms. Weight 11.7gms.

£400-600 (plus 27.6% BP*)

7

A late Victorian silver and 18ct gold, sapphire and diamond triple cluster ring. The cushion and circular-shape sapphire line, with circular-cut diamond shared surrounds. Estimated total diamond weight 0.75ct. Ring size S1/2. Weight 4.2gms.

£700-900 (plus 27.6% BP*)

8

A late Victorian silver and gold diamond brooch. The central rose-cut diamond, with similarly-cut diamond crown surmount and wings. Length 6cms. Weight 10.3gms.

£900-1,400 (plus 27.6% BP*)

9

A late Victorian 18ct gold opal and diamond cluster ring. Of marquise-shape outline, the oval opal cabochon, with old-cut diamond surround. Estimated dimensions of opal 19.7 by 9.2 by 5mms. Estimated total diamond weight 1.50cts. Stamped 750. Ring size M1/2. Weight 7.2gms.

£2,000-3,000 (plus 27.6% BP*)

10

A late Victorian 18ct gold opal and diamond bangle. The graduated oval opal cabochon line, with old-cut diamond line spacers, to the plain half-bangle. Estimated dimensions of principal opal 13.8 by 9.5 by 3mms. Estimated total diamond weight 0.90ct. Inner diameter 5.6cms. Weight 17.2gms.

£2,000-3,000 (plus 27.6% BP*)

11

A 19th century 18ct gold Colombian emerald, diamond and ruby brooch. The oval-shape emerald drop, with old-cut diamond and cushion-shape ruby scrolling surround, suspended from a rectangular-shape emerald and old-cut diamond bar surmount. **Verbal** from GCS, stating Colombia, minor enhancement. Principal emerald calculated weight 1ct, based on estimated dimensions 8.5 by 7.4 by 2.9mms. Estimated total diamond weight 1ct. Length 3.4cms. Weight 4.6gms.

£3,000-4,000 (plus 27.6% BP*)

12

A 19th century 18ct gold Colombian emerald, diamond and ruby ring. The square-shape emerald, with old-cut diamond and cushion-shape ruby trefoil sides, to the replacement band. **Verbal** from GCS, stating Colombia, minor enhancement. Estimated dimensions of emerald 5.8 by 5.5mms. Estimated total diamond weight 0.30ct. Ring size L1/2. Weight 3.9gms.

£2,000-2,500 (plus 27.6% BP*)

BP* - Buyer's Premium of 23% (plus VAT) or 27.6% (VAT included)



13

A diamond, emerald and ruby brooch. The oval-shape ruby, square-shape emerald and circular-cut diamond pierced kite-shape cluster, with later surround, to the similarly gem-set border. *Estimated total diamond weight 0.50ct. Length 4.2cms. Total weight 8.2gms.*

£550-750 (plus 27.6% BP*)

14

KREMENTZ - an early 20th century 14ct gold peridot, diamond and enamel brooch. The heart-shape peridot and old-cut diamond surmount, within a green enamel and lightly textured scrolling heart surround. May be worn as a brooch. *Maker's mark for Krementz. Estimated dimensions of peridot 10.3 by 9.9 by 6.7mms. Length 2.4cms. Weight 4.9gms.*

£600-800 (plus 27.6% BP*)

15

An early 20th century gold, diamond, split pearl and enamel floral brooch. The old-cut diamond stamen, to the blue, white and pink enamel petals, with split pearl line highlights. *Diamond weight estimated 0.20ct, I-J colour, P1 clarity. Length 2.8cms. Weight 7.4gms. With photograph of the piece being worn.*

£700-900 (plus 27.6% BP*)

16

An early 20th century 15ct gold aquamarine and split pearl pendant. Of openwork design, the oval-shape aquamarine collet, with split pearl surrounds, to the similarly-set drop and split pearl bow surmount. *Principal aquamarine weight 6.18cts. Stamped 15T. Length 6.6cms. Weight 10.6gms.*

£800-1,200 (plus 27.6% BP*)

17 

A pair of late Victorian silver and 15ct gold, citrine and diamond earrings. Each designed as a pear-shape citrine, suspended from an old-cut diamond and knife-edge bar line, to the similarly-cut diamond floral surmount. *Estimated total diamond weight 0.50ct. Length 4.9cms. Weight 7.5gms. With case.*

£1,000-1,500 (plus 27.6% BP*)

18

A citrine necklace. Designed as a graduated oval-shape citrine line, with belcher-link spacers and similarly-set clasp. *Estimated dimensions of central citrine 14.2 by 10.8 by 8mms. Length 48cms. Weight 36.2gms.*

£1,000-1,500 (plus 27.6% BP*)

19

An early 20th century diamond three-stone band ring. The slightly graduated old-cut diamond line, inset to the tapered band. *Estimated total diamond weight 1.30cts, G-H colour, VS2-P1 clarity. Hallmarks for Birmingham, 1922, partially indistinct. Ring size S. Weight 7.9gms.*

£1,000-1,500 (plus 27.6% BP*)

20

A diamond and demantoid garnet floral dress ring. The old-cut diamond bud, with demantoid garnet foliate sides and stem. *Estimated diamond weight 0.80ct, I-J colour, VS2-SI1 clarity. Ring size L. Weight 3.3gms.*

£1,000-1,500 (plus 27.6% BP*)

21

A diamond and coloured diamond brooch. The pear-shape diamond, suspended from an old-cut 'brown', 'yellow' and near-colourless diamond scrolling foliate panel, with old-cut 'pink' diamond highlight. *Estimated total diamond weight 3.25cts. Length 5cms. Weight 8.4gms. Diamonds untested.*

£1,400-2,000 (plus 27.6% BP*)

22

A diamond, sapphire and ruby ring. The slightly graduated old-cut diamond line, with circular-shape sapphire and ruby line sides. *Estimated total diamond weight 0.75ct. Ring size N. Weight 4.7gms.*

£1,800-2,400 (plus 27.6% BP*)



17



21



14



16



15



19



22



20



13

18

23

BOODLES - an 18ct gold tsavorite garnet pendant. The shell and fish motif, suspended from an oval-shape tsavorite garnet collet surmount, to the non-designer 18ct gold spiga-link chain. Signed Boodles. Estimated dimensions of tsavorite garnet 6 by 4 by 2.5mms. Hallmarks for London, 1994. Length of pendant 2.7cms. Length of chain 37.5cms. Weight 12.2gms.

£350-450 (plus 27.6% BP*)

24

DAVID MORRIS - an 18ct gold diamond gem-set ring. The brilliant-cut diamond and circular-shape pink tourmaline floral cluster, with similarly-designed blue topaz and diamond sides, to the polished band. Maker's marks for David Morris. Estimated total diamond weight 0.10ct. Italian marks. Ring size M. Weight 9.7gms. With maker's pouch.

£600-800 (plus 27.6% BP*)

25

FOPE - an 18ct gold diamond 'Maori' bracelet. The two fancy-link chains, with brilliant-cut diamond two-bar spacers. Maker's marks for Fope. Total diamond weight 0.18ct, stamped to clasp. Hallmarks for Sheffield. Length 20cms. Weight 28.2gms.

£700-900 (plus 27.6% BP*)

26

PIAGET - a diamond 'Deformation Heart' necklace. The fancy-link chain, with pave-set diamond loop and hinged heart clasp. Signed Piaget, D11816. Estimated total diamond weight 0.20ct. Swiss marks. Length 44.5cms. Weight 28.1gms.

£600-800 (plus 27.6% BP*)

27

A diamond cocktail watch. The pave-set diamond circular dial, to the geometric-link cuff with similarly-set diamond panel highlights. Estimated total diamond weight 2.50cts. Inner diameter 5.2cms. Total weight 75gms.

£1,000-1,500 (plus 27.6% BP*)

28

BULGARI - an 18ct gold topaz 'Pyramide' ring. The blue topaz sugarloaf cabochon, with grooved bi-colour motif surround. Signed Bulgari. Italian marks. Ring size L. Weight 17.1gms.

£700-900 (plus 27.6% BP*)

29

GARRARD - an 18ct gold multi-gem necklace. Designed as an alternating series of polished dome and blue topaz, amethyst and citrine cabochon lines, with bi-colour oval spacers, to the partially concealed clasp. Maker's mark for Garrard & Co. Import marks for London, 1997. Length 42.5cms. Weight 70.3gms.

£1,500-2,000 (plus 27.6% BP*)

30

CARTIER - a pair of Egyptian Revival 18ct gold sapphire scarab earrings. Each designed as a sapphire cabochon chevron fringe, suspended from a further sapphire cabochon, to the scarab surmount. Signed Cartier, HPS827. French assay marks. Length 4.3cms. Weight 16.7gms.

£1,800-2,400 (plus 27.6% BP*)

31

THEO FENNEL - an 18ct gold sapphire three-stone bombe ring. Of bi-colour design, the oval-shape sapphire collet and oval-shape yellow sapphire collet sides, raised to the tapered band with bead and ovoid highlights. Signed Fennell. Estimated dimensions of principal sapphire 8.6 by 6.3 by 5.5mms. Hallmarks for London, 2003. Ring size J. Weight 15.7gms.

£1,500-2,000 (plus 27.6% BP*)

32

A topaz and diamond ring. The oval-shape pink topaz collet, with pave-set diamond shoulders. Estimated dimensions of topaz 19.6 by 11.8 by 7.2mms. Estimated total diamond weight 0.50ct. Ring size M. Weight 10.3gms.

£1,200-1,800 (plus 27.6% BP*)



24

27

28

26

29

32

30

23

25

31

33

An 18ct gold aquamarine, amethyst and diamond negligee necklace. The aquamarine and amethyst briolettes, suspended from brilliant-cut diamond collet highlight staggered belcher-link chains and similarly-cut diamond surmount. *Estimated total diamond weight 1.40cts, principal diamonds estimated G-H colour, VS2-SI1 clarity. Hallmarks for London, 2013. Length 41.5cms. Weight 8gms.*

£500-700 (plus 27.6% BP*)

34

TIFFANY & CO. - a pair of diamond 'Kiss' earrings. Each designed as a stylised X, with brilliant-cut diamond line highlight. *Signed T&CO. Facsimile signature for Paloma Picasso. Estimated total diamond weight 0.15ct. Stamped 750. Length 1.4cms. Weight 4.2gms.*

£600-800 (plus 27.6% BP*)

35

MARCO BICEGO - a 18ct gold diamond 'Goa' necklace and earrings. The necklace comprising three interwoven modified snake-link strands with seven brilliant-cut diamond scattered highlights, together with similarly-designed earrings. *Signed Marco Bicego. Estimated total diamond weight 0.45ct. Hallmarks for London, 2012. Length of necklace 41cms. Diameter of earrings 1.5cms. Weight 26.9gms.*

£700-900 (plus 27.6% BP*)

36

A sapphire and diamond cluster ring. The oval-shape sapphire, with brilliant-cut diamond scalloped surround. *Estimated dimensions of sapphire 6.5 by 5.5 by 3.2mms. Estimated total diamond weight 0.85ct. Stamped 18ct. Ring size N1/2. Weight 4gms.*

£900-1,400 (plus 27.6% BP*)

37

CHOPARD - an 18ct gold diamond 'Happy Bubbles' ring. Designed as three stepped, overlapping circles, the topmost with a central free-moving brilliant-cut diamond collet and pave-set diamond surround. *Signed Chopard, 826983 3233615. Estimated total diamond weight 0.10ct. Swiss convention marks. Ring size M. Weight 8.2gms.*

£800-1,200 (plus 27.6% BP*)

38

A pair of sapphire and diamond cluster earrings. Each designed as an oval-shape sapphire, with brilliant-cut diamond surround. *Total sapphire weight 1.91cts, total diamond weight 0.61ct, each stamped to one back. Stamped 18K. Length 1.1cms. Weight 3.3gms.*

£1,000-1,500 (plus 27.6% BP*)

39 

CARTIER - a platinum diamond 'Destinee' full eternity ring. Comprising a brilliant-cut diamond line. *Signed Cartier, 86495B. Total diamond weight 1.60cts, stamped to band. Hallmarks for London. Ring size O1/2. Cartier size 56. Weight 3.7gms. With maker's case.*

£1,500-2,000 (plus 27.6% BP*)

40

A pair of sapphire and diamond earrings. Each designed as a cushion-shape sapphire collet, suspended from an old-cut diamond foliate terminal line, to the circular-shape sapphire surmount. *Estimated total diamond weight 0.75ct. Length 3.2cms. Weight 5.6gms.*

£2,000-3,000 (plus 27.6% BP*)

41

An 18ct gold diamond bracelet. Of openwork design, the rectangular-shape and brilliant-cut diamond geometric cluster links, with brilliant-cut diamond line spacers. *Total diamond weight 4.57cts, principal diamonds estimated H-I colour, VS clarity. Hallmarks for London, 2008. Length 17.5cms. Weight 14.4gms.*

£1,800-2,500 (plus 27.6% BP*)

42 

A sapphire and diamond cluster ring. The oval-shape sapphire, weighing 1.51cts, with circular-cut diamond scalloped surround. *With report 79207-19, dated 26th March 2019, from GCS, stating no heat. Estimated total diamond weight 1ct. Approximate ring size P1/2. Weight 3.3gms.*

£1,500-2,000 (plus 27.6% BP*)

43*

An 18ct gold tanzanite and diamond cluster ring. The triangular-shape tanzanite, with baguette-cut diamond line highlight pave-set diamond surround, to the pave-set diamond shoulders. *Tanzanite weight 5.02cts. Total diamond weight 1.56cts. Hallmarks for London, 2010. Ring size M. Weight 8.4gms.*

£2,500-3,000 (plus 27.6% BP*)

44 

An 18ct gold diamond single-stone ring. The brilliant-cut diamond, weighing 1.08cts, with plain band. *With mini report 20043153, from AnchorCert, stating E colour, VS1 clarity. Hallmarks for Birmingham. Ring size M. Weight 2.6gms.*

£3,500-4,500 (plus 27.6% BP*)

BP* - Buyer's Premium of 23% (plus VAT) or 27.6% (VAT included)



35



39



38



33



34



40



36



43



44



42



41



37

45

An 18ct gold, cultured pearl and diamond bracelet. Designed as a series of twin cultured pearl links, with brilliant-cut diamond scalloped spacers, to the similarly-cut diamond three-row clasp. *Estimated total diamond weight 0.50ct. Hallmarks for London, 2008. Length 19.4cms. Weight 19.6gms.*

£350-450 (plus 27.6% BP*)

46

An early 20th century silver and gold, diamond and gem-set butterfly brooch. The sugarloaf sapphire cabochon and pave-set diamond body, to the old-cut diamond head and emerald eyes, with pave-set emerald, diamond and sapphire wings. *Principal diamond estimated 0.45ct, K-L colour, SI clarity. Estimated total diamond weight 4.25cts. Length 4.9cms. Weight 16.6gms.*

£800-1,200 (plus 27.6% BP*)

47

A platinum diamond eternity ring. Designed as a brilliant-cut diamond line, with bar spacers. *Estimated total diamond weight 3.40cts, G-H colour, VS clarity. Hallmarks for London, 2004. Ring size L1/2. Weight 4.1gms.*

£800-1,200 (plus 27.6% BP*)

48

A diamond brooch. Designed as a graduated baguette and brilliant-cut diamond wreath, with calibre-cut diamond bow surmount suspending two pear-shape diamond drops, to the marquise-shape diamond foliate sides. May be worn as a pendant. *Estimated total diamond weight 8cts, pear-shape diamonds estimated G-I colour, VS2-SI1 clarity. Length 4cms. Weight 24.4gms.*

£1,000-1,500 (plus 27.6% BP*)

49 

A diamond single-stone ring. The rectangular-shape diamond, weighing 0.75ct, with brilliant-cut diamond line sides. *With report 1182367048, dated 1st May 2017, from the GIA, stating G colour, VVS1 clarity. Estimated total diamond weight 1.15cts. Stamped 14K. Ring size L. Weight 2.8gms.*

£1,200-1,800 (plus 27.6% BP*)

50

An 18ct gold diamond bangle. The brilliant-cut diamond single-loop bow, hinged to the polished half-bangle. *Estimated total diamond weight 2.75cts, G-H colour, VS clarity. Hallmarks for London, 2017. Inner diameter 5.8cms. Weight 32.2gms.*

£1,500-2,000 (plus 27.6% BP*)

51

CARTIER - an 18ct gold diamond 'Maillon Panthere' ring. The square-link motif band, pave-set with diamonds throughout. *Signed Cartier, 37981B. Estimated total diamond weight 1.45cts. French assay marks. Ring size I. Cartier size 48. Weight 9.8gms.*

£1,500-2,000 (plus 27.6% BP*)

52

VAN CLEEF & ARPELS - an 18ct gold tourmaline and diamond ring. The scattered brilliant-cut diamond and oval-shape pink tourmaline floral cluster, articulated to the crossover foliate band. *Signed VCA, BL 58707-51. Estimated dimensions of one tourmaline 8 by 6.9 by 4.5mms. Estimated total diamond weight 0.85ct. French assay marks. Approximate ring size K. Weight 10.7gms.*

£1,800-2,500 (plus 27.6% BP*)

53

A platinum diamond three-stone ring. The old-cut diamond, with similarly-cut diamond sides, to the tapered shoulders. *Estimated total diamond weight 2.50cts, G-I colour, P1 clarity. Hallmarks for Birmingham. Ring size O. Weight 7.7gms.*

£2,000-3,000 (plus 27.6% BP*)

54 

TIFFANY & CO. - a pair of Tahitian cultured pearl and diamond cluster earrings. Each designed as a cultured pearl, measuring approximately 11.7mms, with graduated vari-cut diamond surround. *Signed Tiffany & Co, 15484942. Estimated total diamond weight 6.50 to 7cts, H-I colour, VS clarity. Stamped PT950. Length 2.1cms. Weight 20.3gms. With maker's case.*

£5,000-7,000 (plus 27.6% BP*)



50



47



46



48



52



45



49



53



54



51



55

CARTIER - an 18ct gold multi-gem dress ring. The brilliant-cut diamond pear-shape loop, with vari-shape orange garnet, amethyst, ruby and citrine surround. *Signed Cartier. Estimated total diamond weight 0.20ct. French assay marks. Ring size K1/2. Cartier size 51. Weight 5.2gms.*

£600-800 (plus 27.6% BP*)

56

A pair of cultured pearl and diamond earrings. Each designed as a grey cultured pearl, measuring 11.8mms, with baguette and brilliant-cut diamond scrolling surround. *Estimated total diamond weight 0.75ct. Stamped 750, 18K. Diameter 1.8cms. Weight 12.5gms.*

£700-900 (plus 27.6% BP*)

57

An 18ct gold ruby and diamond dress ring. Of marquise-shape outline, the twin pear-shape rubies, with brilliant-cut diamond shared surround. *Estimated total diamond weight 0.50ct. Hallmarks for London, 1987. Ring size P1/2. Weight 4.8gms.*

£800-1,200 (plus 27.6% BP*)

58

A diamond pendant. The pave-set diamond heart, with similarly-set marquise-shape surmount. *Estimated total diamond weight 1.50cts. Length 2.7cms. Weight 3.8gms.*

£900-1,400 (plus 27.6% BP*)

59

A tourmaline, diamond and enamel pendant. The oval-shape orangey brown tourmaline, with old-cut diamond and black enamel surround, to the tapered surmount. *Estimated dimensions of tourmaline 15 by 12.5 by 11.4mms. Estimated total diamond weight 1.25cts. Length 3.1cms. Weight 13gms.*

£900-1,400 (plus 27.6% BP*)

60  

A pair of natural pearl and diamond earrings. Each designed as a bouton pearl, with old-cut diamond collet surmount. *With report 79193-78, dated 10th January 2019, from GCS, stating natural, saltwater. Estimated total diamond weight 0.55ct, I-J colour, P1 clarity. Length 1.7cms. Weight 3.8gms. With fitted case.*

£1,500-2,000 (plus 27.6% BP*)

61

A diamond single-stone ring. The old-cut diamond, with similarly-cut diamond line shoulders. *Principal diamond estimated weight 1.50cts, I-J colour, P1 clarity. Hallmarks for London, 1990. Ring size K. Weight 2.6gms.*

£1,500-2,000 (plus 27.6% BP*)

62 

A late Victorian silver and gold, diamond and emerald brooch. Designed as a vari-cut diamond frog, with circular-shape emerald collet eyes. *Estimated total old-cut diamond weight 1.35cts, estimated I-K colour, SI2-P2 clarity. Length 2.5cms. Total weight 6.2gms. With Carrington & Co. Ltd case.*

£1,800-2,400 (plus 27.6% BP*)

63

A diamond and ruby cluster ring. The oval old-cut diamond collet, with old and rose-cut diamond and calibre-cut ruby quatrefoil surrounds. *Principal diamond estimated weight 0.80ct, H-I colour, SI2-P1 clarity. Ring size P1/2. Weight 5.5gms.*

£2,000-2,500 (plus 27.6% BP*)

64

A late Victorian 18ct gold ruby and diamond three-stone ring. The cushion-shape ruby, with old-cut diamond sides and rose-cut diamond accents. *Ruby weight 1.10cts. Total old-cut diamond weight 1.15cts, estimated H-I colour, VS2-SI2 clarity. Ring size K. Weight 3.8gms.*

£2,500-3,000 (plus 27.6% BP*)

65

TIFFANY & CO. - a diamond necklace. Designed as a series of pave-set diamond panels, with knot spacers, to the grooved panel sides. *Signed Tiffany & Co. Estimated total diamond weight 2cts. Stamped 750 and PT 950. Length 39.5cms. Weight 49.9gms.*

£2,500-3,000 (plus 27.6% BP*)

66 

A late Victorian 18ct gold Burmese ruby and diamond five-stone ring. The alternating graduated cushion-shape ruby and old-cut diamond line, with scrolling gallery. *With report 79209-69, dated 10th March 2019, from GCS, stating Myanmar (Burma), no heat, total weight 2.22cts. Total diamond weight 1.22cts, estimated I-J colour, SI clarity. Hallmarks for Birmingham, 1896. Ring size M. Weight 3.9gms.*

£3,000-4,000 (plus 27.6% BP*)

67

A diamond five-stone ring. The graduated old-cut diamond line, with plain band. *Total diamond weight 2cts, estimated H-K colour, SI1-P1 clarity. Stamped 18. Ring size O1/2. Weight 3.7gms.*

£3,000-4,000 (plus 27.6% BP*)

68

A coloured diamond single-stone pendant. The square-shape 'brown' diamond collet, suspended from a jump ring. *Diamond weight 4.74cts, estimated P1 clarity. Length 2cms. Weight 2.5gms. Diamond untested.*

£4,500-5,500 (plus 27.6% BP*)



69

A lapis lazuli and diamond hinged bangle. Designed as a vari-shape lapis lazuli cabochon cross, with rose-cut diamond and textured foliate spacers, to the engraved sides. *Inner diameter 6.3cms. Weight 28.9gms.*

£900-1,400 (plus 27.6% BP*)

70

KUTCHINSKY - a 1960s 18ct gold diamond and turquoise dress ring. The brilliant-cut diamond and circular turquoise cabochons, scattered to the rope-twist loop bombe, with textured band. *Signed Kutchinsky. Estimated total diamond weight 0.50ct. Hallmarks for London, 1964. Ring size N. Weight 14gms.*

£1,000-1,500 (plus 27.6% BP*)

71

KUTCHINSKY - a 1960s 18ct gold turquoise, lapis lazuli and diamond brooch. Designed as a graduated scroll, the brilliant-cut diamond marquise-shape links, with textured, interwoven surrounds, to the scattered vari-shape turquoise and lapis lazuli cabochon terminals and highlights. *Signed Kutchinsky. Estimated total diamond weight 0.65ct. Hallmarks for London, 1966. Length 6cms. Weight 30.1gms.*

£1,000-1,500 (plus 27.6% BP*)

72

KUTCHINSKY - a 1960s 18ct gold diamond and lapis lazuli pendant. Comprising two brilliant-cut diamond and textured petal flowers, to the scroll grooved lapis lazuli sides with brilliant-cut diamond asymmetric cluster terminals. Converted from a brooch, original pin loose but present. *Maker's marks for Kutchinsky. Estimated total diamond weight 2cts. Length 7.8cms. Weight 49.9gms.*

£1,500-2,000 (plus 27.6% BP*)

73

KURT WAYNE - a pair of diamond earrings. Each designed as a textured scroll, encircled by a brilliant-cut diamond spiral. *Maker's mark for Kurt Wayne. Estimated total diamond weight 3cts. Stamped 18K. Length 2.9cms. Weight 21.1gms.*

£1,800-2,400 (plus 27.6% BP*)

74

PIAGET - a coin pocket watch. The late Victorian Five Pound coin case, opening to reveal a hinged circular watch head. *Dial signed Piaget. Length 4.3cms. Total weight 38.5gms.*

£1,600-2,200 (plus 27.6% BP*)

75

A 1940s 18ct gold and platinum, sapphire and diamond double clip brooch. Each designed as two tri-colour, square-shape sapphire and vari-cut diamond flowers, on single-cut diamond stems. *Estimated total diamond weight 2.25cts. Length 7.6cms. Weight 50.6gms.*

£1,800-2,400 (plus 27.6% BP*)

76

A late 20th century 14ct gold lapis lazuli bracelet. Designed as a series of square-shape lapis lazuli, each within lightly textured, undulating line concentric surrounds. *Maker's mark of twin acorns. French assay mark. Length 19.4cms. Weight 71.5gms.*

£1,800-2,400 (plus 27.6% BP*)



76



75



69



70



72



71



73



74

77

An aquamarine and diamond ring. Of bi-colour design, the oval-shape aquamarine, with diamond accent openwork foliate surround and shoulders. *Estimated dimensions of aquamarine 22 by 15 by 10.5mms. Approximate ring size R. Weight 11gms.*

£700-900 (plus 27.6% BP*)

78

A sapphire and diamond cluster ring. The oval-shape sapphire, with tapered baguette-cut diamond undulating surround. *Estimated dimensions of sapphire 7.5 by 6.1 by 4.3mms. Estimated total diamond weight 1.25cts. Stamped 18ct. Ring size P1/2. Weight 6.5gms.*

£700-900 (plus 27.6% BP*)

79

JAEGER-LECOULTRE - a ladies mid 20th century 18ct gold diamond cocktail watch. The circular dial, with brilliant-cut diamond surround, to the textured bracelet. *Signed Jaeger-LeCoultre. Estimated total diamond weight 0.35ct. Partial hallmarks for 18ct gold. Length 16.5cms. Total weight 53.3gms.*

£1,000-1,500 (plus 27.6% BP*)

80

A mid 20th century diamond and gem-set brooch. Comprising marquise-shape diamond foliate, circular-shape sapphire and baguette-cut diamond interwoven lines, with pave-set turquoise cabochon sides. *Estimated total diamond weight 3cts. Length 5.2cms. Weight 17.7gms.*

£1,500-2,000 (plus 27.6% BP*)

81

A 1960s 18ct gold diamond and sapphire brooch. The pear-shape and old-cut diamond asymmetric cluster, with circular-cut diamond and sapphire terminal tapered line surround. May be worn as a pendant. *Maker's mark CLd. Estimated total non-principal diamond weight 2.50 to 3cts. Hallmarks for London, 1965. Length 8.4cms. Weight 30.9gms.*

£1,500-2,000 (plus 27.6% BP*)

82 

CARTIER - an 18ct gold 'Love' bangle. The polished bangle, with screw head motif. *Signed Cartier, FW 9645. Swiss convention marks. inner diameter 6.7cms. Cartier size 21. Weight 37gms. With maker's case.*

£1,800-2,400 (plus 27.6% BP*)

83 

A gold and silver, Sri Lankan star sapphire and diamond cluster ring. The oval star sapphire cabochon, with old-cut diamond collet surround. *With report 78168, dated 5th July 2018, from GCS, stating Sri Lanka (Ceylon), no heat, estimated weight 18.40cts. Estimated total diamond weight 0.50ct. French assay marks. Ring size O. Total weight 9.2gms.*

£2,000-3,000 (plus 27.6% BP*)

84

A sapphire and diamond bracelet. The graduated oval-shape sapphire collet line, with brilliant-cut diamond duo collet spacers. *Estimated dimensions of central sapphire 9.5 by 7.5 by 4.1mms. Estimated total diamond weight 1ct. Length 18cms. Weight 19.6gms.*

£3,000-4,000 (plus 27.6% BP*)

85

BULGARI - a pair of enamel earrings. Each designed as a blue enamel, tapered, hinged hoop, with polished circular spacers. *Signed Bulgari. Stamped 18K. Length 4.1cms. Weight 46.4gms.*

£3,500-4,500 (plus 27.6% BP*)

86

VAN CLEEF & ARPELS - a 1970s platinum and 18ct gold diamond foliate brooch. Designed as a pave-set diamond heart-shape leaf asymmetric cluster. *Signed VCA, 14188. Estimated total diamond weight 6.50cts, G-H colour, VS clarity. French assay marks. Length 4.7cms. Weight 28gms.*

£14,000-20,000 (plus 27.6% BP*)



87

A mid 20th century 18ct gold bracelet. The modified curb-link chain, comprising bead terminal grooved loops, to the partially concealed clasp. *Italian marks. Length 21.5cms. Weight 46.9gms.*

£1,000-1,500 (plus 27.6% BP*)

88

An opal dress ring. The circular opal cabochon, with textured and raised scroll and shell motif surround and tapered band. *Estimated dimensions of opal 17 by 7.9mms. Ring size O. Weight 19.7gms.*

£1,200-1,800 (plus 27.6% BP*)

89

A diamond and gem-set brooch. Designed as a turtle, the pave-set turquoise and rose-cut diamond studded shell, with split pearl limbs and garnet eyes. *Portuguese marks. Length 4.7cms. Weight 15.3gms.*

£1,400-2,000 (plus 27.6% BP*)

90

A mid 20th century 18ct gold bracelet. Of bi-colour design, the grooved semi-cylindrical line, with brick-link sides. *Stamped 750. Length 19cms. Weight 64.2gms.*

£1,600-2,000 (plus 27.6% BP*)

91

An 18ct gold turquoise and diamond pendant. Of floral design, the circular and oval turquoise cabochon cluster, with brilliant-cut diamond highlight and single-cut diamond and polished foliate spacers. May be worn as a brooch. *Estimated total diamond weight 0.45ct. Estimated dimensions of central turquoise 13.5 by 10.8mms. Import marks for Sheffield, 1987. Length 5.7cms. Weight 45.8gms.*

£1,400-2,000 (plus 27.6% BP*)

92

A diamond brooch and earrings. Each designed as a pave-set diamond and textured foliate spray, with brilliant-cut diamond floral cluster highlight. *Estimated total diamond weight 4.75 to 5cts. Length of brooch 6cms. Length of earrings 4.5cms. Stamped 750. Weight 78.8gms.*

£1,600-2,200 (plus 27.6% BP*)

93

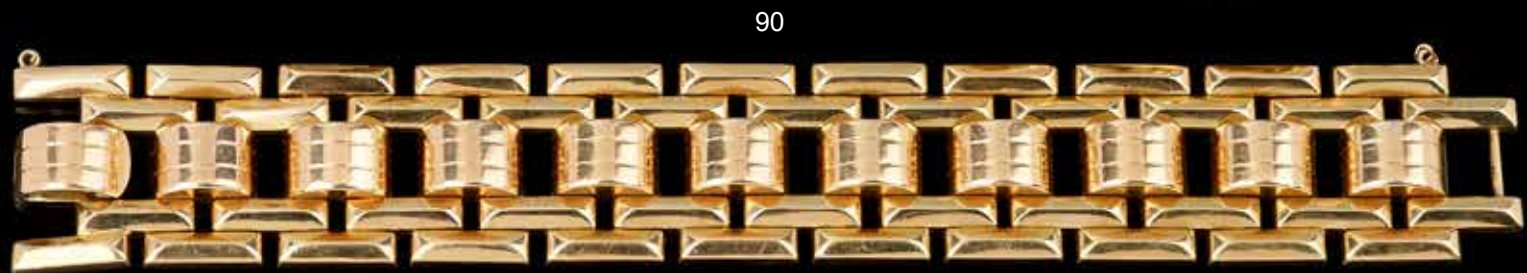
A mid 20th century 14ct gold and platinum, aquamarine and diamond brooch. Of openwork design, the rectangular-shape aquamarine, with circular-cut diamond surround and scroll highlights. *Estimated dimensions of aquamarine 19.3 by 15.2 by 8.5mms. Estimated total diamond weight 1ct. Length 4cms. Weight 18.9gms.*

£2,200-2,800 (plus 27.6% BP*)

94

A 1940s gold aquamarine and diamond collar. The rectangular-shape aquamarine, with single and circular-cut diamond accent swag and scalloped sides, to the tubular-link chain. *Estimated dimensions of aquamarine 18 by 16.3 by 11.4mms. Estimated total diamond weight 0.50ct. Length 46cms. Weight 118.4gms.*

£4,400-5,400 (plus 27.6% BP*)



95

A cultured pearl single-strand necklace. Comprising a series of fifty-one cultured pearls, each measuring approximately 9.5mms, to the cultured pearl, brilliant-cut diamond and circular-shape sapphire scattered cluster clasp. *Estimated total diamond weight 1.15cts. Clasp stamped 750. Length of clasp 2.3cms. Length 53cms.*

£700-900 (plus 27.6% BP*)

96

A mid 20th century gold mabe pearl, diamond and sapphire ring. The mabe pearl, measuring 15.8mms, with graduated brilliant-cut diamond and circular-shape sapphire surrounds intersected by a marquise-shape sapphire foliate terminal. *Estimated total diamond weight 1ct. Ring size N1/2. Weight 10.9gms.*

£700-900 (plus 27.6% BP*)

97

A mid 20th century turquoise and diamond brooch. Designed as a graduated circular turquoise cabochon and brilliant-cut diamond looped ribbon, the terminal forming an articulated tassel, with vari-cut diamond scroll highlights. *Estimated total diamond weight 4.85cts, principal diamonds estimated G-H colour, VS2-SI1 clarity. Length 6.7cms. Weight 24.9gms.*

£1,000-1,500 (plus 27.6% BP*)

98

A pair of mid 20th century cultured pearl and diamond earrings. Each designed as a semi-baroque cultured pearl, with brilliant-cut diamond accent cap, detachable from the brilliant-cut diamond and single-cut diamond scroll surmount. *Estimated total diamond weight 1.20cts. Length 3.8cms. Weight 16.3gms.*

£1,500-2,000 (plus 27.6% BP*)

99


JAEGER-LECOULTRE - a diamond cocktail watch. The circular dial, with brilliant-cut diamond surround and vari-cut diamond stylised foliate lugs, to the brilliant-cut diamond line bracelet. *Dial signed Jaeger-LeCoultre. Estimated total diamond weight 6cts. Length 16.5cms. Total weight 40.6gms.*

£2,000-2,500 (plus 27.6% BP*)

100

An aquamarine and diamond cluster ring. The oval-shape aquamarine, with brilliant-cut diamond surround, to the wire shoulders and grooved band. *Aquamarine weight 16.25cts. Estimated total diamond weight 1.25cts. Stamped 750. Ring size L1/2. Weight 9.5gms.*

£2,500-3,500 (plus 27.6% BP*)

101 

A diamond single-stone ring. The brilliant-cut diamond, weighing 1ct, with tapered shoulders. *With report 5266291731, dated 10th July 2017, from the GIA, stating E colour, VS2 clarity. Ring size K1/2. Weight 4.8gms.*

£2,500-3,000 (plus 27.6% BP*)

102

A platinum diamond three-stone ring. The old-cut diamond, with similarly-cut diamond sides. *Estimated total diamond weight 2cts, I-L colour, SI clarity. Italian marks. Ring size M. Weight 6gms.*

£3,000-4,000 (plus 27.6% BP*)

103

A diamond cluster ring. The brilliant-cut diamond, with similarly-cut diamond stepped surrounds. *Estimated total diamond weight 6 to 7cts. Principal diamond estimated weight 3.25cts, tinted colour, P1 clarity. Hallmarks for Sheffield, partially indistinct. Ring size I. Weight 11.4gms.*

£6,000-8,000 (plus 27.6% BP*)

104

TIFFANY & CO. - a diamond bracelet. Comprising a series of graduated brilliant-cut diamond scroll links, to the partially concealed clasp. *Signed Tiffany & Co. Estimated total diamond weight 4.50 to 5.50cts. Stamped PLAT. Length 17.5cms. Weight 29.9gms.*

£6,000-8,000 (plus 27.6% BP*)



95

100

103

96

102

99



97



101



98



104

105

An 18ct gold opal ring. The scalloped white opal cabochon, to the similarly-grooved band. *Estimated dimensions of opal 18.7 by 16.8 by 10.3mms. Hallmarks for London, 2013. Ring size L. Weight 18gms.*

£400-600 (plus 27.6% BP*)

106

An onyx bracelet. Comprising alternate, interwoven textured loops and onyx crescents, to the push clasp. *Maker's monogram CK. Stamped 585. Length 18.2cms. Weight 45.4gms.*

£600-800 (plus 27.6% BP*)

107

POMELLATO - an 18ct gold opal 'Victoria' ring. The faceted white opal, with Pomellato script signature shoulder. *Italian marks. Ring size K. Weight 37.2gms.*

£800-1,200 (plus 27.6% BP*)

108

VAN CLEEF & ARPELS - a pair of 18ct gold diamond and gem-set earrings. Each designed as a cultured pearl and brilliant-cut diamond floral cluster, atop a tapered agate half-hoop. *Signed VCA, NY 3K 376 13. Estimated total diamond weight 0.60ct. French assay marks. Length 2.5cms. Weight 26.7gms.*

£2,500-3,500 (plus 27.6% BP*)

109

FRASCAROLO - a mid 20th century 18ct gold, diamond, ruby and enamel brooch. The white and black-striped enamel seated white Bengal tiger, with pear-shape ruby eyes, red enamel nose and pave-set diamond muzzle and collar. *Maker's mark for Frascarolo. Italian marks. Length 6cms. Weight 41.3gms.*

£2,200-2,800 (plus 27.6% BP*)

110

CARTIER - an 18ct gold onyx 'Baiser du Dragon' ring. Designed as a square-shape onyx panel, with geometric overlay and tapered band. *Signed Cartier, 43749A. French assay marks. Ring size W1/2. Cartier size 66. Weight 50.5gms.*

£2,500-3,000 (plus 27.6% BP*)

111

de GRISOGONO - an 18ct gold hematite and diamond dress ring. The pave-set diamond scroll, to the tapered hematite band. *Signed de Grisogono, 53116/02-12. Estimated total diamond weight 1ct. French assay marks. Ring size N1/2.*

£3,000-4,000 (plus 27.6% BP*)

112

CARTIER - an 18ct gold diamond 'La Dona' ring. Designed as a series of pave-set diamond semi-circular panels, with similarly-shaped polished spacers. *Signed Cartier, OI 1610. Estimated total diamond weight 1.25cts. French assay marks. Ring size Q. Cartier size 57. Weight 22.5gms.*

£3,000-4,000 (plus 27.6% BP*)

113  

CARTIER - a mid 20th century 18ct gold blackamoor brooch. The black enamel bust, with grooved neck cuff, seed pearl earrings and rose-cut diamond and coral accent grooved turban. *Signed Cartier, 9314. French assay marks. Length 3.6cms. Weight 10.8gms. With fitted maker's case. Coral untested.*

£3,000-4,000 (plus 27.6% BP*)

114 

A diamond single-stone ring. The oval-shape diamond, weighing 4.45cts, with square-shape diamond trefoil sides. *With report 07020891001, dated 10th September 2007, from HRD, stating F colour, SI2 clarity. Ring size P. Weight 5gms.*

£8,000-12,000 (plus 27.6% BP*)

110



108



107



109



114



106



105



112



111



113



115

A 1970s 18ct gold diamond cocktail ring. Of bombe design, comprising a series of graduated brilliant-cut diamond and polished disc lines, tapered to the plain half-band. *Estimated total diamond weight 1.35cts. Hallmarks for Birmingham, 1975. Ring size K. Weight 16.6gms.*

£350-450 (plus 27.6% BP*)

116

TAPIO WIRKKALA (attributed) - a pair of 'Silver Moon' earrings. Each designed as a graduated series of concentric circles, centred on a hemisphere, with connecting bar and hook fittings. *Length 8.6cms. Weight 27.3gms.*

£1,500-2,000 (plus 27.6% BP*)

117

TAPIO WIRKKALA - a 'Silver Moon' pendant. Designed as a graduated series of concentric circles, centred on a hemisphere, with connecting bar and near-period trace-link chain. *Pendant with maker's marks for N. Westerback, Finnish marks for 1973 and Swedish import marks. Chain with Polish marks and later French assay marks. Length of pendant 14.3cms. Length of chain 70cms. Weight 53.9gms.*

£1,800-2,400 (plus 27.6% BP*)

118

An Art Deco platinum diamond bracelet. Designed as a series of pave-set diamond openwork geometric links, with old-cut diamond collet central highlight and similarly-cut diamond collet sides. *Estimated total old-cut diamond weight 7 to 8cts, principal diamond estimated tinted colour, P1 clarity. Length 15.5cms. Weight 32gms.*

£2,200-2,800 (plus 27.6% BP*)

119

VACHERON CONSTANTIN - an 18ct gold diamond and onyx watch. The cushion-shape onyx and pave-set diamond dial with factory set diamond dot hour markers, with similarly-set diamond bezel, to the textured mesh-link bracelet. *Maker's marks to case back and dial. Numbered 27047PB 616221. Unsigned quartz movement. Estimated total diamond weight 0.85ct. Swiss marks. Length 16.5cms. Weight 45.8gms.*

£2,500-3,500 (plus 27.6% BP*)

120

A platinum Colombian emerald and diamond ring. Of bombe design, the circular emerald cabochon, with pave-set diamond sides. **Verbal** from GCS stating Colombian. *Emerald weight 11.22cts. Estimated total diamond weight 1.60cts. French assay marks. Ring size O1/2. Weight 13.7gms.*

£4,000-6,000 (plus 27.6% BP*)



117



116



118



119



115



120

121


CHOPARD - a 'Happy Diamonds' ring. The three brilliant-cut diamond collets, within a glazed heart, to the similarly-cut diamond surround. *Signed Chopard, 9130929 82/4758. Estimated total diamond weight 0.60ct. Stamped 750. Ring size K1/2. Weight 7.9gms.*

£700-900 (plus 27.6% BP*)

122


A diamond and enamel butterfly brooch. The brilliant-cut diamond body, with green and blue enamel wings. *Estimated total diamond weight 0.15ct. Length 3.2cms. Weight 10.2gms.*

£1,000-1,500 (plus 27.6% BP*)

123 

TIFFANY & CO. - a platinum diamond bracelet. The oval belcher-link chain, suspending pave-set diamond hearts and pave-set diamond open heart highlight. *Signed Tiffany & Co. Estimated total diamond weight 1.10cts. Hallmarks for London. Length 18cms. Weight 16.7gms. With maker's case.*

£1,200-1,800 (plus 27.6% BP*)

124 

A jadeite and diamond pendant. The jade seal, carved to depict a Dog of Fo and ball, with brilliant-cut diamond fringe and similarly-cut diamond hoop surmount. *With report 78174-48, dated 23rd August 2018, from GCS, stating natural, no indications of impregnation. Estimated total diamond weight 0.90ct. Stamped PT950. Length of pendant 4.8cms. Weight 18.2gms.*

£1,500-2,000 (plus 27.6% BP*)

125

CARTIER - a platinum diamond full eternity ring. Comprising a pave-set diamond band. *Signed Cartier, NJ3954. Estimated total diamond weight 1ct. Swiss convention marks. Ring size K. Cartier size 51. Weight 4.3gms.*

£1,500-2,000 (plus 27.6% BP*)

126

BOODLES - a platinum aquamarine and diamond 'Raidance' ring. Designed as a scattered series of circular-shape aquamarine and brilliant-cut diamond collets, to the tapered, open band. *Signed Boodles. Estimated total diamond weight 0.60ct, G-H colour, VS clarity. Hallmarks for London, 2015. Ring size O. Weight 13gms.*

£2,000-2,500 (plus 27.6% BP*)

127

A peridot and diamond cluster ring. The rectangular-shape peridot, with brilliant and calibre-cut diamond double surround, to the baguette-cut diamond line shoulders. *Estimated dimensions of peridot 11.9 by 10 by 6.1mms. Estimated total diamond weight 1.35cts. Ring size O. Weight 10.2gms.*

£2,000-3,000 (plus 27.6% BP*)

128

A platinum sapphire and diamond dress ring. The oval sapphire cabochon, with partial collet surround and brilliant-cut diamond shoulders. *Estimated dimensions of sapphire 11.9 by 10.3 by 8.5mms. Estimated total diamond weight 0.50ct, H-I colour, VS clarity. French assay mark. Ring size O. Weight 12.7gms.*

£2,000-3,000 (plus 27.6% BP*)

129

A tourmaline and diamond pendant. The tapered rectangular-shape green tourmaline, with square-shape diamond surround and trapezoid-shape diamond surmount, suspended from an integral belcher-link chain. *Estimated dimensions of tourmaline 58.5 by 7.5 by 4.1mms. Estimated total diamond weight 3.50cts, principal diamond estimated 0.60ct, H-I colour, SI2-P1 clarity. Stamped 750. Length of pendant 6.9cms. Length of chain 40cms. Weight 17.6gms.*

£2,500-3,000 (plus 27.6% BP*)

130

CARTIER - an 18ct gold diamond 'Love' bangle. The polished bangle, with brilliant-cut diamond collet motif and screw head clasp. *Signed Cartier, BQH824. Estimated total diamond weight 1ct. Stamped Au750. Inner diameter 5.3cms. Cartier size 16. Weight 29gms.*

£5,000-7,000 (plus 27.6% BP*)

124



130



129



128



122



121



127



125



123



126



131

A diamond and sapphire brooch. Of rectangular outline, the old-cut diamond stylised foliate cluster, with pave-set diamond geometric crossover surround and triangular-shape sapphire highlights. *Estimated total diamond weight 4cts. Length 4.5cms. Weight 8.9cms.*

£500-700 (plus 27.6% BP*)

132

A mid 20th century palladium and 14ct gold diamond cocktail ring. The circular-cut diamond, within an old-cut diamond line, to the vari-cut diamond scrolling sides. *Principal diamond estimated weight 0.50ct, G-H colour, VS clarity. Stamped 14K. Ring size O1/2. Weight 7gms.*

£600-800 (plus 27.6% BP*)

133

A diamond full eternity ring. Comprising a brilliant-cut diamond line. *Total diamond weight 1.32cts, stamped to mount, estimated H-I colour, VS-SI clarity. Stamped 750. Ring size O. Weight 3.8gms.*

£800-1,200 (plus 27.6% BP*)

134

A 1970s 18ct gold, opal and diamond cluster ring. The oval opal cabochon, with brilliant and vari-size baguette-cut diamond irregularly-set surround. *Estimated dimensions of opal 23.3 by 15.3 by 7.9mms. Estimated total diamond weight 1.50cts. Ring size J1/2. Weight 14.6gms.*

£900-1,400 (plus 27.6% BP*)

135

A mid 20th century gold, diamond and gem-set brooch. Designed as a pave-set diamond dog, with emerald eyes and onyx nose, secured within a vari-cut diamond kennel by a similarly-set articulated lead. *Estimated total diamond weight 2.50cts. Length 6.2cms. Weight 9.2gms.*

£1,800-2,400 (plus 27.6% BP*)

136

A diamond single-stone ring. The old-cut diamond, with similarly-cut diamond accent shoulders, to the shamrock motif pierced and engraved surround. *Principal diamond weight 1.61 cts, estimated L-M colour, SI clarity. Stamped PLATINUM. Ring size N. Weight 3.5gms.*

£1,800-2,400 (plus 27.6% BP*)

137

A diamond bracelet. The old and circular-cut diamond stylised floral panel, with similarly-cut diamond geometric-link sides and polished back-chain. *Estimated total diamond weight 2.45cts. Swedish marks, stamped 18K. Length 16.3cms. Weight 33.5gms.*

£1,800-2,400 (plus 27.6% BP*)

138

A diamond necklace. Designed as a graduated brilliant-cut diamond line, to the box-link chain. *Estimated total diamond weight 11 to 12cts, principal diamonds estimated H-I colour, SI2-P1 clarity. Length 39cms. Weight 16.1gms.*

£3,500-4,500 (plus 27.6% BP*)

139

An aquamarine and diamond pendant. The oval-shape aquamarine, with single-cut diamond geometric cap and surmount, suspended from a trace-link chain. *Estimated dimensions of aquamarine 28 by 16.5 by 10mms. Length of pendant 4.8cms. Length of chain 40.5cms. Weight 11.3gms.*

£2,400-3,000 (plus 27.6% BP*)

140 

A brilliant-cut diamond, weighing 5.21 cts, with ring mount. *With report from GCS, stating S-Z colour, VVS1 clarity. Approximate ring size P1/2. Weight 4.8gms.*

£18,000-22,000 (plus 27.6% BP*)

131



139



136



140



138



137



132



134



135



133



141

A pair of diamond brooches. Each designed as a pave-set diamond scroll, with alternate brilliant-cut diamond and similarly-cut diamond arrow motif side. *Estimated total diamond weight 7.50 to 8cts, principal diamonds predominantly estimated G-I colour, SI2-P1 clarity. Length 4.8cms. Weight 28gms.*

£1,400-2,000 (plus 27.6% BP*)

142

A platinum diamond pendant. Designed as a pave-set diamond feathered and scalloped scroll, suspended from a similarly-designed surmount. *Estimated total diamond weight 4.50 to 5cts. French assay marks. Length 7cms. Weight 12.8gms.*

£2,000-3,000 (plus 27.6% BP*)

143

FRANCK MULLER - a lady's 18ct gold diamond 'Cintrée Curvex' wrist watch. The tonneau-shape guilloché enamel dial, with pave-set diamond surround and sapphire cabochon crown, to brilliant-cut diamond accent buckle and blue leather strap. *Signed Franck Muller Geneve, No. 211. Reference 2250 QZ D. Estimated total diamond weight 1 to 1.50cts. Swiss convention marks. Length 17.5cms. Total weight 35.3gms.*

£1,800-2,400 (plus 27.6% BP*)

144

A mid 20th century ruby and diamond floral brooch. The circular-shape ruby cluster stamen, with pave-set diamond petal surround. With pearl enhancer fitting. *Estimated total diamond weight 3 to 3.50cts. Length 3.8cms. Weight 22.6gms.*

£1,800-2,400 (plus 27.6% BP*)

145

An 18ct gold diamond dress ring. The old-cut diamond cluster, with circular and baguette-cut diamond trefoil surround. *Principal diamond estimated weight 0.60ct, I-J colour, SI clarity. Total diamond weight 3cts. Hallmarks for Birmingham, 1992, partially obscured. Approximate ring size M. Weight 8.1gms.*

£2,500-3,000 (plus 27.6% BP*)

146

A sapphire and diamond cluster ring. The oval-shape sapphire, with tapered baguette-cut diamond radial surround, to the open band. *Estimated dimensions of sapphire 8.8 by 6.7 by 4.9mms. Estimated total diamond weight 1.50cts. Ring size M. Weight 5.3gms.*

£2,500-3,000 (plus 27.6% BP*)

147

An 18ct gold diamond bracelet. Designed as an alternating series of brilliant-cut diamond scalloped and non-scalloped circles. *Estimated total diamond weight 7cts. French assay marks. Length 17.5cms. Weight 20.5gms.*

£4,500-5,500 (plus 27.6% BP*)

148

A pair of diamond earrings. Each designed as scattered brilliant-cut diamond cluster, with pave-set diamond curved line side. *Estimated total diamond weight 6.50 to 7cts, principal diamonds estimated predominantly G-H colour, VS2-SI1 clarity. Stamped 750. Length 2.5cms. Weight 17.7gms.*

£3,000-4,000 (plus 27.6% BP*)

149 

A Sri Lankan sapphire and diamond ring. The rectangular-shape sapphire, weighing 9.62cts, with marquise-shape diamond trefoil sides. *With report 78154-63, dated 1st May 2018, from GCS, stating Sri Lanka (Ceylon), no heat. Estimated total diamond weight 0.90ct, H-I colour, SI clarity. Ring size M. Weight 8.4gms.*

£12,000-18,000 (plus 27.6% BP*)

150 

A mid 20th century platinum Sri Lankan colour-change sapphire and diamond bracelet. The rectangular-shape sapphire, with vari-cut diamond lugs, to the graduated brilliant-cut diamond line sides. *With report 10140, dated 3rd May 2018, from Cisgem, stating Sri Lanka, no heat, colour-change, estimated dimensions 10.30 by 14.90 by 9.66mms. Estimated total diamond weight 7cts, principal diamonds estimated J-L colour, SI1-P1 clarity. Length 18cms. Weight 28.7gms.*

£18,000-22,000 (plus 27.6% BP*)



150



144



141



149



148



147



143




142



145



146

151 

CARTIER - a platinum and 18ct gold diamond cluster ring.

The brilliant-cut diamond, weighing 2.87cts, with overlapping, graduated pear-shape diamond petal surrounds and brilliant-cut diamond border. Signed Cartier Paris, 914829. With report 2191745829, dated 15th October 2018, from the GIA, stating E colour, VS1 clarity. Estimated total diamond weight 9 to 10cts, non-principal diamonds estimated G-H colour, VS clarity. French assay marks. Ring size Q. Weight 15.5gms.

£70,000-90,000 (plus 27.6% BP*)



GIA NATURAL DIAMOND GRADING REPORT

October 15, 2018

GIA Report Number 2191745829

Shape and Cutting Style Round Brilliant

Measurements 9.25 - 9.31 x 5.54 mm

GRADING RESULTS

Carat Weight 2.87 carat

Color Grade E

Clarity Grade VS1

Cut Grade Very Good

ADDITIONAL GRADING INFORMATION

Polish Very Good

Symmetry Very Good

Fluorescence None

Comments: Pinpoints are not shown. Surface graining is not shown.

BP* - Buyer's Premium of 23% (plus VAT) or 27.6% (VAT included)

151



152

An Art Deco platinum diamond bracelet, circa 1935.

Comprising three circular-cut diamond pierced foliate panel articulated links, with similarly-set foliate scroll sides, to the pave-set diamond rectangular spacers and tonneau connecting links. *Principal three diamonds estimated total weight 2.70cts, H-J colour, P1 clarity. Estimated total diamond weight 28 to 30cts. French assay marks. Length 19.4cms. Weight 103.3gms. With case.*

£14,000-20,000 (plus 27.6% BP*)

153

A diamond bracelet. Designed as a series of old-cut diamond collet links, each with similarly-cut diamond floral garland surround and diamond bar double spacers. *Estimated total diamond weight 10 to 12cts, principal diamonds estimated H-J colour, SI1 to P1 clarity. Length 17.5cms. Weight 24.4gms. With fitted Collingwood case.*

£7,000-9,000 (plus 27.6% BP*)

154

A mid 20th century platinum diamond brooch. Of openwork design, the circular-cut diamond collet, with circular and baguette-cut diamond scrolling geometric surround. *Principal diamond estimated weight 2 to 2.25cts, K-L colour, SI2-P1 clarity. Estimated total diamond weight 15cts. French re-strike assay marks. Length 7.5cms. Weight 32.2gms.*

£7,000-9,000 (plus 27.6% BP*)

155

A Burmese ruby and diamond bracelet. Designed as a square and oval ruby cabochon line, with vari-cut diamond geometric spacers, to the graduated old-cut diamond collet line sides. **Verbal** from GCS, stating Burma, no heat. *Estimated total diamond weight 7 to 7.50cts. Length 18cms. Weight 33.9gms. With un-associated Cartier case.*

£4,500-6,500 (plus 27.6% BP*)

156

A pair of 18ct gold emerald and diamond earrings. The pear-shape emerald and pave-set diamond surround, suspended from an alternately-orientated pear-shape diamond collet line. *Total emerald weight 4.26cts. Estimated total diamond weight 2.50 to 3cts, principal diamonds estimated H-I colour, VS2-SI2 clarity. French assay marks. Length 3.9cms. Weight 11.5gms.*

£4,000-6,000 (plus 27.6% BP*)

157

A pair of cushion-shape diamond stud earrings. *With reports 2294649318 and 7293635345, dated 18th and 19th July 2018, from the GIA, stating 1ct, D colour, VS1 clarity and 1.01cts, E colour, VS2 clarity respectively. Total diamond weight 2.01cts. Stamped 750. Weight 2.5gms.*

£5,000-7,000 (plus 27.6% BP*)

158

A Burmese ruby three-stone and diamond cluster ring. The cushion-shape ruby line, with brilliant-cut diamond surround and shoulders. *With report 5776-6669, dated 12th August 2016, from GCS, stating Burma (Myanmar), no heat, estimated total weight 2.20cts. Total diamond weight 1.28cts. Ring size M. Weight 6.6gms.*

£3,000-4,000 (plus 27.6% BP*)

159

A mid 20th century platinum diamond and emerald brooch. Of openwork design, the rectangular-shape emerald and graduated circular-cut diamond line, with vari-cut diamond surround and single-cut diamond bar sides. *Estimated total diamond weight 2.20cts, principal diamonds estimated H-I colour, SI2-P1 clarity. Estimated dimensions of emerald 6.3 by 4.6 by 3.2mms. Length 3.1cms. Weight 6.3gms.*

£2,000-3,000 (plus 27.6% BP*)

160

A mid 20th century gold emerald and diamond ring. Of openwork design, the rectangular-shape emerald collet and old-cut diamond collet line sides, with calibre-cut emerald and single-cut diamond scalloped surrounds, to the similarly-cut diamond shoulders. *Estimated total diamond weight 0.65ct. Approximate ring size L. Weight 5.6gms.*

£1,200-1,800 (plus 27.6% BP*)

161

A platinum, coloured diamond and diamond ring. The oval-shape Fancy Light Bluish Green diamond, weighing 0.42ct, with brilliant-cut 'pink' diamond surround, to the baguette-cut diamond sides and brilliant-cut diamond line shoulders. *With photocopy of report 16240681, dated 2nd July 2009, from the GIA, stating natural Fancy Light Bluish Green colour, VS2 clarity. Estimated total diamond weight 0.75ct. Hallmarks for London, 2015. Ring size J. Weight 6.1gms. Pink diamonds untested.*

£600-800 (plus 27.6% BP*)



152



154



158



155

153



159



157



161



160



156

162

A mid 20th century platinum and gold, diamond and ruby cocktail watch. The square-shape dial, with pave-set diamond rectangular bezel and square-shape ruby line accents, to the similarly-set graduated sides and sprung bracelet. *Estimated total diamond weight 2.50cts. Length 17.5cms. Total weight 34.1gms.*

£550-750 (plus 27.6% BP*)

163

A mid 20th century jade and diamond brooch. Designed as two foliate carved and pierced jadeite panels, with pave-set diamond floral cap, to the vari-cut diamond scrolling line stems. May be worn as a pendant. *Estimated dimensions of one jadeite panel 35 by 22mms. Estimated total diamond weight 1.75cts. Stamped 18K. Length 8.5cms. Weight 21gms. Jade untested.*

£1,000-1,500 (plus 27.6% BP*)

164

An emerald and diamond cluster ring. The oval-shape emerald, with old-cut diamond surround and brilliant-cut diamond pierced bar sides. *Estimated dimensions of emerald 11 by 8 by 5mms. Estimated total diamond weight 1ct. Ring size T. Weight 9.8gms.*

£2,800-3,200 (plus 27.6% BP*)

165

A diamond double clip brooch. Each clip designed as a brilliant-cut diamond with vari-cut diamond scrolling surround intersected by similarly-cut diamond 'ribbon' sides. *Estimated total diamond weight 7 to 7.50cts, principal diamonds estimated I-J colour, SI2-P1 clarity. Length 7.6cms. Weight 27.1gms.*

£2,800-3,200 (plus 27.6% BP*)

166

An emerald and diamond cluster ring. The oval-shape emerald, with vari-cut diamond crossover surround. *Estimated dimensions of emerald 12.4 by 11.4 by 5.9mms. Estimated total diamond weight 3 to 3.50cts. Approximate ring size M. Weight 10.2gms.*

£3,000-4,000 (plus 27.6% BP*)

167

An Art Deco platinum and 18ct gold diamond bracelet. Designed as a series of old-cut diamond highlight, pave-set diamond openwork geometric panels. *Estimated total diamond weight 20 to 22cts, principal diamonds estimated H-I colour, VS2-P1 clarity. French assay marks. Length 17.5cms. Weight 82.6gms.*

£9,000-14,000 (plus 27.6% BP*)

168

CARTIER - an Art Deco platinum emerald and diamond bangle. Of geometric design, the circular and baguette-cut diamond scroll terminals, with square-shape emerald line highlights and circular emerald cabochon sides. *Signed Cartier, 17261. Estimated total diamond weight 6.50 to 7cts. Inner diameter 5.5cms. Weight 58gms.*

£14,000-20,000 (plus 27.6% BP*)

169 

A platinum Burmese sapphire and diamond three-stone ring. The oval-shape sapphire, weighing 4.17cts, with brilliant-cut diamond sides. *With reports, dated 2018 and 2017, from GCS, stating: Myanmar (Burma), no heat; diamond weight 1.24cts, G colour, VS2 clarity; diamond weight 1.25cts, H colour, VVS2 clarity. Hallmarks for Birmingham, 2003. Ring size M1/2. Weight 7.6gms.*

£30,000-40,000 (plus 27.6% BP*)



167



163



168



166



162



165



164



169

170

A composite mid Victorian silver and 18ct gold sapphire and diamond ring. The alternating circular-cut diamond and sapphire kite-shape panel, to the similarly-set chevron sides, with scrolling shoulders and slightly tapered band. *Estimated total diamond weight 0.75ct. Ring size L1/2. Weight 4.1gms.*

£450-650 (plus 27.6% BP*)

171

An early 20th century 18ct gold and silver, ruby and diamond ring. The old-cut diamond line, with alternating similarly-cut diamond and circular-shape ruby two-row sides. *Estimated total diamond weight 1.20cts. Ring size N. Weight 6.4gms.*

£450-650 (plus 27.6% BP*)

172

A late Victorian silver and gold, diamond and enamel brooch. Designed as a rose-cut diamond floral cluster, within a blue enamel openwork petal surround. *Length 2.9cms. Total weight 9.4gms.*

£800-1,200 (plus 27.6% BP*)

173

A late Victorian silver and gold, diamond and gem-set brooch. Designed as a ruby, sapphire, pearl and diamond bee, atop a rose and old-cut diamond foliate spray. *Length 4.6cms. Weight 8.5gms. Pearl untested.*

£700-900 (plus 27.6% BP*)

174

A late Victorian gold and silver, ruby and diamond horseshoe brooch. The graduated cushion-shape ruby line, to the old-cut diamond line. *Estimated total diamond weight 0.65ct. Length 2.7cms. Weight 6.7gms.*

£1,200-1,800 (plus 27.6% BP*)

175

A mid 19th century gold enamel and diamond St. Esprit brooch. The blue guilloche enamel dove with old and rose-cut diamond accents, suspending a similarly enamel and diamond-set heart and cross. *Estimated total old-cut diamond weight 0.20ct. Length 6.7cms. Weight 11.1gms.*

£1,200-1,800 (plus 27.6% BP*)

176

A late Georgian gold diamond, enamel and split pearl pendant. Of circular outline, the vari-cut diamond star, atop a blue and white enamel panel, with graduated split pearl surround. *Estimated total old-cut diamond weight 1ct. Length 4.8cms. Weight 21.9gms.*

£2,000-3,000 (plus 27.6% BP*)

177

A late Victorian gold and silver, ruby and diamond heart pendant. The old-cut diamond open heart, with vari-shape ruby surround, suspended from a ruby and diamond line surmount. *Estimated total diamond weight 0.60ct. Length 2.6cms. Weight 6.3gms.*

£1,800-2,400 (plus 27.6% BP*)

178 

A diamond and gem-set brooch. The ruby and sapphire spiral motif egg, with rose-cut diamond girdle, later suspended from the late Victorian bouton pearl and old-cut diamond bow-terminal swag. *Estimated total old-cut diamond weight 1.50cts. Length 4.1cms. Total weight 11.1gms. With fitted case. Pearl untested.*

£1,500-2,000 (plus 27.6% BP*)

179

A late 19th century gold, diamond and enamel hinged bangle. The vari-cut diamond Prince-of-Wales feathers, atop a blue enamel marquise-shape panel, to the graduated vari-cut diamond palmette sides and engraved and pierced palmette half-bangle. *Estimated total old-cut diamond weight 0.75ct. French assay marks. Inner diameter 5.5cms. Weight 26.9gms.,.*

£2,000-2,500 (plus 27.6% BP*)

180

A mid Victorian gold, Burmese ruby, diamond and enamel hinged bangle. The cushion-shape ruby and old-cut diamond flower, within blue enamel interlaced circles, to the similarly designed sides and grooved blue enamel half-bangle. **Verbal** from GCS, stating Burma, no heat. *Estimated total diamond weight 1ct, H-I colour, SI2-P1 clarity. Inner diameter 5.7cms. Weight 29.3gms.*

£3,000-4,000 (plus 27.6% BP*)

181

An early 20th century sapphire and diamond brooch. The cushion-shape sapphire, with old-cut diamond trefoil surround and similarly-cut diamond sides. **Verbal** from GCS, stating Basaltic, no heat. *Estimated dimensions of sapphire 9.6 by 9.8 by 7.7mms. Estimated total diamond weight 1.20cts. Length 4.5cms. Weight 9.8gms.*

£3,000-4,000 (plus 27.6% BP*)

180



172



175



181



179



173



170



171



177



176



178



174



182

A mid to late Victorian 18ct gold diamond and enamel locket. The oval blue enamel domed panel, with diamond point initial S and scrolling foliate surround, to the polished locket, suspended from a rose-cut diamond surmount and late Victorian 9ct gold fancy-link chain. *Length of locket 4.9cms. Length of chain 55cms. Total weight 25.4gms.*
£500-700 (plus 27.6% BP*)

183

An early 20th century 14ct gold diamond and enamel pocket watch. The old and rose-cut diamond and blue enamel twin-headed eagle motif, atop the circular case, suspended from a later rope-twist chain. *Watch with Swiss marks. Length of pocket watch 5.5cms. Length of chain 75cms. Total weight 70.1gms.*
£1,500-2,000 (plus 27.6% BP*)

184

A late Victorian gold, split pearl and diamond brooch. The woven mesh-link and split pearl buckle motif and sides, atop a rose-cut diamond accent disc, suspending a seed pearl terminal tassel. *Length 6.2cms. Weight 25.2gms.*
£1,200-1,800 (plus 27.6% BP*)

185

A diamond cross pendant. The old-cut diamond cross, suspended from a polished surmount and integral rope-twist chain with rose-cut diamond clasp. *Estimated total diamond weight 3.50cts, H-J and tinted light bluish grey colour, VS2-P1 clarity. Length of pendant 4.7cms. Length of chain 40cms. Total weight 11.5gms.*
£1,200-1,800 (plus 27.6% BP*)

186

A garnet and ruby ring. The cushion-shape garnet, to the alternating graduated ruby and garnet collet shoulders, with bead accents. *Estimated dimensions of principal garnet 11 by 11 by 4.6mms. Approximate ring size P. Weight 4.8gms.*
£900-1,400 (plus 27.6% BP*)

187

A late Georgian silver and gold, diamond and enamel ring. The marquise-shape diamond and old-cut diamond sides, to the blue enamel ground and old-cut diamond marquise-shape surround. *Principal diamond weight 0.30ct, estimated G-H colour, SI clarity. Ring size J. Weight 2.2gms.*
£2,000-3,000 (plus 27.6% BP*)

188

A late Victorian silver and 18ct gold, sapphire and diamond bangle. Of openwork design, the oval-shape sapphire and old-cut diamond line, with rose-cut diamond sides and foliate spacers, to the three-row hinged bangle. *Estimated total old-cut diamond weight 0.60ct, H-I colour, SI2-P1 clarity. Inner diameter 6.2cms. Weight 23.9gms.*
£1,500-2,000 (plus 27.6% BP*)

189

A 19th century silver and gold diamond brooch. Designed as a pave-set diamond flower, with old and rose-cut diamond scrolling sides. *Estimated total diamond weight 3.50 to 4cts, principal diamond estimated I-J colour, P1 clarity. Length 6.2cms. Weight 8.5gms.*
£1,500-2,000 (plus 27.6% BP*)

190

A sapphire and diamond cluster ring. The oval-shape sapphire, with brilliant-cut diamond collet surround. *Estimated dimensions of sapphire 6.8 by 5.5 by 3.7mms. Estimated total diamond weight 0.80ct. Stamped 18ct. Ring size N1/2. Weight 4gms.*
£900-1,400 (plus 27.6% BP*)

191

A late Victorian 18ct gold sapphire and diamond five-stone ring. The alternating graduated old-cut diamond and cushion-shape sapphire line, with scrolling gallery and shoulders. *Estimated total diamond weight 0.90ct, principal diamond estimated weight 0.65ct, J-K colour, SI clarity. Ring size P. Weight 4.4gms.*
£1,000-1,500 (plus 27.6% BP*)

192

An early 20th century silver and gold, peridot and diamond necklace. The kite-shape peridot and vari-cut diamond scrolling panel, suspending three pear-shape peridot and rose-cut diamond drops, to the trace-link back-chain. *Estimated dimensions of principal peridot 10.8 by 10 by 4.4mms. Estimated total old-cut diamond weight 0.40ct. Length 49cms. Total weight 8.8gms.*
£1,200-1,800 (plus 27.6% BP*)

193

A sapphire and diamond bracelet. The oval sapphire cabochon line, with old-cut diamond scrolling spacers. *Estimated dimensions of one sapphire 6.1 by 5 by 2.6mms. Estimated total diamond weight 1.65cts. Length 19.5cms. Weight 16.1gms.*
£1,500-2,000 (plus 27.6% BP*)

194

A pair of diamond earrings. Each designed as an old-cut diamond, suspended from a similarly-cut diamond line surmount. *Principal diamonds estimated total weight 1.30cts, H-I colour, SI1-P1 clarity. Length 2.3cms. Weight 5.7gms.*
£1,800-2,500 (plus 27.6% BP*)

195

An 18ct gold diamond and enamel ring. The old and rose-cut diamond line, atop a blue enamel dome, with old-cut diamond surround and trefoil sides. *Estimated total diamond weight 0.80ct, principal diamond estimated J-K colour, P1 clarity. French assay marks. Ring size L. Weight 5.8gms.*
£2,000-3,000 (plus 27.6% BP*)



185

188

194

183

190

191

184

182

186

193

187

192

189

195

196

A late Victorian gold diamond and gem-set snake brooch.

The pear-shape emerald collet, suspended from a foliate and vari-cut diamond snake head, with ruby eyes, the engraved body coiled to form a circle. *Length 3.1cms. Weight 11gms.*

£600-800 (plus 27.6% BP*)

197

A late Victorian gold hinged snake bangle. Designed as an ouroboros, the engraved snake head, with ruby eyes, biting its tail. *Inner diameter 6.1cms. Weight 9.2gms.*

£700-900 (plus 27.6% BP*)

198 

A mid Victorian 18ct gold emerald snake necklace. The emerald and foliate engraved locket, suspended from the textured scale motif snake head with chrysoberyl eyes and graduated emerald line crest, to the graduated snake-link chain. *Length 38cms. Weight 28.7gms. With fitted case.*

£2,500-3,500 (plus 27.6% BP*)

199

A late Victorian silver and gold diamond insect brooch. Designed as a rose and old-cut diamond bug, with circular ruby cabochon eyes, to the old-cut diamond terminal pin. *Estimated total old-cut diamond weight 0.60ct, H-J colour, SI2-P1 clarity. Length 5.2cms. Weight 5.9gms.*

£800-1,200 (plus 27.6% BP*)

200

A cultured pearl two-row necklace. The graduated cultured pearl strands, to the rectangular-shape Colombian emerald and old-cut diamond clasp. *Verbal from GCS, stating emerald is Colombian, moderate enhancement. Estimated dimensions of emerald 8.4 by 7.4mms. Estimated total diamond weight 0.50ct. Length 45.5cms.*

£800-1,200 (plus 27.6% BP*)

201

An early 18th century gold Memento Mori ring. The woven hair panel, with gold thread monogram surmounted by enamel cherubs holding aloft a crown, to the scrolling surround and rock crystal cover. *Approximate ring size P. Weight 5.1gms.*

£1,800-2,400 (plus 27.6% BP*)

202

A late 19th century 18ct gold diamond and enamel pendant.

The old-cut diamond cluster, with diamond point accent green, blue and red enamel quatrefoil surround, suspending a similarly-set fringe, to the blue and green enamel fleur-de-lis surmount. *Estimated total diamond weight 2.75cts, H-J colour, SI1-P1 clarity. Length 6.2cms. Weight 11.5gms.*

£1,800-2,400 (plus 27.6% BP*)

203

A diamond five-stone ring. The graduated old-cut diamond line, with rose-cut diamond spacers and scrolling, bi-colour gallery. *Estimated total diamond weight 2.60cts, G-L colour, VS2-P1 clarity. Ring size L1/2. Weight 4gms.*

£3,000-4,000 (plus 27.6% BP*)

204  

A late Victorian silver and gold, diamond and natural pearl brooch. The pearl, measuring 13.29 by 9.46 by 7.19mms, suspended from an old and rose-cut diamond bow. *With report 79202-12, dated 25th February 2019, from GCS, stating natural, saltwater. Estimated total old-cut diamond weight 1.50cts. Length 3.2cms. Weight 6.8gms. With fitted case.*

£3,500-4,500 (plus 27.6% BP*)

205 

A mid Victorian gold Colombian emerald and diamond brooch. The rectangular-shape emerald and graduated old-cut diamond cluster, with similarly-set cluster surround and rose-cut diamond scalloped border. *With report 79212-14, dated 13th May 2019, from GCS, stating Colombia, insignificant to minor clarity enhancement, estimated total emerald weight 4.40cts. Length 3.5cms. Weight 14.1gms.*

£4,500-5,500 (plus 27.6% BP*)

206 

A 9ct gold and silver, Colombian emerald and diamond cluster ring. The square-shape emerald, weighing 2.45cts, with old-cut diamond surround, to the scrolling shoulders. *With report 78163-26, dated 18th June 2018, from GCS, stating Colombia, minor clarity enhancement. Estimated total diamond weight 1.75cts. French assay marks. Ring size M. Weight 7gms.*

£5,000-7,000 (plus 27.6% BP*)

207

A diamond single-stone ring. The old-cut diamond, with knife-edge shoulders. *Estimated diamond weight 4.35cts, tinted colour, VS2 clarity. Ring size O. Weight 5.5gms.*

£10,000-15,000 (plus 27.6% BP*)



200



201



197

204



205



202



207



206



203



198



196



199

208

A 1970s 18ct gold emerald and diamond pendant. The brilliant-cut diamonds and circular-shape emeralds, scattered across the vari-size, textured loop cluster. May be worn as a brooch. *Maker's marks for Cropp & Farr. Estimated total diamond weight 0.30ct. Hallmarks for Birmingham, 1979. Length 4.4cms. Weight 9.7gms.*

£450-650 (plus 27.6% BP*)

209

BOODLES - a pair of 18ct gold citrine and diamond earrings. Each designed as a modified pear-shape citrine, with brilliant-cut diamond teardrop-shape asymmetric surmount. *Signed Boodles. Hallmarks for London, 2005. Length 1.8cms. Weight 7.3gms. With maker's case.*

£600-800 (plus 27.6% BP*)

210

ZOLOTAS - an enamel, emerald and sapphire cross pendant. The sapphire and emerald cabochon highlights, to the cannetille scrolling cross, with green enamel dotted rims. *Maker's mark for Zolotas. Stamped K22. Length 6.7cms. Weight 35.4gms.*

£800-1,200 (plus 27.6% BP*)

211

CARTIER - a diamond 'Love' ring. Comprising alternate brilliant-cut diamond collet and screw head motifs. *Signed Cartier, L98489. Estimated total diamond weight 0.20ct. Stamped 750. Ring size K 1/2. Cartier size 51. Weight 8.3gms.*

£650-850 (plus 27.6% BP*)

212

CARTIER - an 18ct gold diamond single-stone ring. The brilliant-cut diamond, with C motif gallery, to the slightly tapered band. *Signed Cartier, 66LJ050. Estimated diamond weight 0.50ct, G-H colour, VS clarity. French assay marks, partially indistinct. Ring size J. Cartier size 49. Weight 8.2gms. With maker's case.*

£1,000-1,500 (plus 27.6% BP*)

213

CARTIER - a pair of 'Trinity' earrings. Each designed as three, tri-colour, interwoven hoops. *Signed Cartier, 777151. Stamped 750. Length 2.5cms. Weight 14.2gms.*

£500-700 (plus 27.6% BP*)

214

CARTIER - an 18ct gold 'Trinity' necklace. Comprising a series of eighteen circular links, with tri-colour, interwoven bar spacers and partially concealed clasp. *Signed Cartier, E57808. Swiss convention marks. Length 40cms. Weight 139.4gms. With maker's case.*

£3,500-4,500 (plus 27.6% BP*)

215

TIFFANY & CO. - a pair of 18ct gold jade cufflinks. Each designed as a carved nephrite jade bean, with similarly-shaped jade reverse, to the connecting bar. *Signed Tiffany & Co. Facsimile signature for Elsa Peretti. Hallmarks for London, 2008. Length of cufflink face 2cms. Weight 11.8gms.*

£900-1,200 (plus 27.6% BP*)

216

A tourmaline pendant. Designed as three pear-shape green tourmaline cabochon collets, suspended from a similarly-shaped orange tourmaline cabochon collet and oval green tourmaline cabochon surmount. *Length 7.7cms. Weight 44.8gms.*

£1,200-1,800 (plus 27.6% BP*)

217

An 18ct gold diamond dress ring. The brilliant-cut diamond, within an open collet, to the scattered similarly-cut diamond sides. *Principal diamond estimated weight 3.30cts, tinted colour, SI clarity. French assay marks. Ring size K. Weight 10.7gms.*

£7,000-9,000 (plus 27.6% BP*)



218

An 18ct gold ruby and diamond ring. The calibre-cut ruby line, with square-shape diamond line sides, inset to the slightly bevelled band. *Estimated total diamond weight 1.10cts. Hallmarks for London, 1999. Ring size N. Weight 11.1gms.*

£450-650 (plus 27.6% BP*)

219

An 18ct gold diamond and gem-set bombe ring. The brilliant-cut diamond and circular-shape gemstones, to include amethyst and pink sapphire, inset to the bombe band. *Estimated total diamond weight 0.15ct. Hallmarks for London, 2012. Ring size M. Weight 17.4gms.*

£500-700 (plus 27.6% BP*)

220

An 18ct gold sapphire and diamond dress ring. The pear-shape green sapphire, with brilliant-cut diamond surround and similarly-cut diamond heart shoulders. *Estimated dimensions of sapphire 10.1 by 7.3 by 4.1 mms. Estimated total diamond weight 1ct. Hallmarks for London, 1981. Ring size J1/2. Weight 8.4gms.*

£400-600 (plus 27.6% BP*)

221

A pair of sapphire and emerald earrings. Each designed as an oval-shape sapphire and square-shape emerald collet line, inset to the textured half-hoop, with bead accents and rope-twist and wire borders. *Estimated dimensions of one sapphire 5.8 by 4.5 by 3.3mms. Stamped 750. Length 2.3cms. Weight 27.2gms.*

£800-1,200 (plus 27.6% BP*)

222

TIFFANY & CO. - a pair of enamel 'Olive' cufflinks. Each designed as a raised spiral line oval motif, with red enamel spacers, to the graduated, similarly-designed reverse and connecting curved bar. *Signed Tiffany & Co, Schlumberger. Stamped 750. Length of cufflink face 1.6cms. Weight 16.1gms.*

£900-1,400 (plus 27.6% BP*)

223

A late 20th century 18ct gold plastic kinetic ring. Comprising three clear plastic rectangular panels with magnetic discs inset, hinged to alternate ends, within a rectangular mount. *French re-strike marks. Stamped 750. Approximate ring size L1/2. Weight 24.9gms.*

£1,500-2,000 (plus 27.6% BP*)

224

An 18ct gold diamond single-stone ring. The rectangular-shape diamond collet, with grooved shoulders and bi-colour half-band. *Estimated diamond weight 1ct, H-I colour, VS clarity. Import marks for Sheffield, 1998. Ring size N1/2. Weight 4.6gms.*

£1,500-2,000 (plus 27.6% BP*)

225

A late 20th century diamond and enamel brooch. Of curved triangular outline, the geometric motif polychrome enamel, with brilliant and pear-shape diamond collet and bi-colour overlay. *Signed Joanne Godwyn. Estimated total diamond weight 2.50cts. Length 7.9cms. Weight 41.5gms.*

£2,000-3,000 (plus 27.6% BP*)

226

An 18ct gold necklace. The openwork knot motif links, with tapered three-bar spacers, to the partially concealed clasp. *Import marks, indistinct. Length 43cms. Weight 147.6gms.*

£3,000-4,000 (plus 27.6% BP*)

227

MARINA B - an 18ct gold diamond charm bracelet. Designed as a series of vari-cut diamond and polished animal charms, suspended from a belcher-link chain. *Signed Marina B. Estimated total diamond weight 1.35cts. French assay marks. Length 18cms. Weight 55gms.*

£4,000-6,000 (plus 27.6% BP*)



223



218



226



225



221



224

219



220



222



227

228

ZOLOTAS (attributed) - a gem-set dress ring. Designed as a textured series of scalloped, scrolling crescents, with circular-shape ruby and red garnet highlights, to the similarly-textured shoulders and polished half-band. Stamped 18C. Ring size M1/2. Weight 11.8gms.

£400-600 (plus 27.6% BP*)

229

A ruby and diamond dress ring. Comprising pear-shape rubies, spaced to the baguette-cut diamond scrolling lines, with slightly tapered half-band. Estimated total diamond weight 1ct. Stamped 750. Ring size P. Weight 7.3gms.

£380-480 (plus 27.6% BP*)

230 ✕

A pair of coral and diamond floral earrings. Each designed as a circular coral cabochon, with graduated vari-cut diamond petal surround. Estimated total diamond weight 0.65ct. Diameter 2.5cms. Weight 19.4gms. Coral untested.

£500-700 (plus 27.6% BP*)

231

CHOPARD - a diamond and ruby 'Happy Diamonds' ladybird pendant. Designed as a stylised ladybird, the ruby cabochon studded wings, partially revealing the brilliant-cut diamond collet glazed body, suspended from a tapered surmount loop and belcher-link chain. Signed Chopard, 9128855 2186. Stamped 750. Length of pendant 2.4cms. Length of chain 41cms. Weight 13.3gms.

£700-900 (plus 27.6% BP*)

232

ASPREY - a pair of 18ct gold diamond and citrine floral earrings. Each designed as a pave-set diamond dome, with marquise-shape citrine petal surrounds. Signed Asprey. Estimated total diamond weight 0.50ct. Italian and French assay marks. Diameter 2.1cms. Weight 13.4gms.

£1,200-1,800 (plus 27.6% BP*)

233

A diamond single-stone dress ring. The circular-cut diamond, with groove motif scrolling mount and gallery, to the grooved band. Diamond weight 1.55cts, estimated H-I colour, P1 clarity. Ring size K. Weight 9.1gms.

£2,000-2,500 (plus 27.6% BP*)

234

A 1980s suite of 18ct gold jewellery. Comprising necklace, bracelet and earrings, each designed as a series of interlocking grooved bar links forming a chevron motif. Maker's marks for Deakin & Francis. Hallmarks for Birmingham, 1984 and 1985. Length of necklace 38.5cms. Length of bracelet 20.5cms. Length of earrings 2cms. Weight 231.6gms. With Garrard & Co. Ltd. retailer's case.

£4,500-6,500 (plus 27.6% BP*)

235

An 18ct gold emerald, ruby and diamond brooch. Designed as a pave-set emerald crocodile, the brilliant-cut diamond head with ruby eyes and nostrils, the hinged jaw opening to reveal a pave-set ruby sprung tongue. Estimated total diamond weight 1.50cts. French assay marks. Length 10.5cms. Weight 37.1gms. With fitted and monogrammed Garrard & Co. Ltd case.

£4,500-5,500 (plus 27.6% BP*)



234



231



228



230



229



233



235



232



236

A pair of 1950s carved ruby and diamond earrings. Each designed as a circular-cut diamond floral cluster, with carved foliate ruby and circular-cut diamond radial surround. *Estimated total diamond weight 2.25cts. Diameter 2.2cms. Weight 13.5gms.*

£800-1,200 (plus 27.6% BP*)

237 

A mid 20th century diamond and gem-set necklace. Comprising three graduated ruby, sapphire and emerald bead strands, to the foliate carved sapphire, emerald cabochon and emerald and ruby bead, pave-set diamond abstract foliate clasp. *Estimated total diamond weight 2.75cts. Length 47cms. With A. Chillcott & Co. case.*

£700-900 (plus 27.6% BP*)

238

A mid 20th century diamond, emerald, ruby and sapphire clip. Designed as a foliate cluster, each leaf comprising an oval ruby, sapphire or emerald cabochon with brilliant-cut diamond trefoil side. *Estimated total diamond weight 2cts. Length 4.2cms. Weight 26.2gms.*

£1,400-2,000 (plus 27.6% BP*)

239

A ruby and diamond floral dress ring. The brilliant-cut diamond cluster, with marquise-shape ruby surround, to the chevron shoulders. *Estimated total diamond weight 1ct. Stamped 18ct, partially indistinct. Ring size L. Weight 6.7gms.*

£1,500-2,000 (plus 27.6% BP*)

240

CHARLES DE TEMPLE - a 1970s 18ct gold diamond and gem-set ring. Designed as a recessed, textured series of off-set cuboid panels forming a circle, the front with brilliant-cut diamonds and circular-shape emeralds, rubies and sapphires scattered across the surface. *Maker's mark for Charles de Temple. Estimated total diamond weight 0.15ct. Hallmarks for London, 1972. Ring size M1/2. Weight 10.1gms.*

£1,500-2,000 (plus 27.6% BP*)

241

JAEGER-LECOULTRE - a 1960s 18ct gold ruby and diamond bracelet watch, retailed by Cartier. Comprising two tapered, crossover spiga-link strands, gathered to a brilliant-cut diamond and circular-shape ruby floral cluster, hinged to reveal a cream Jaeger-LeCoultre dial. *Signed to dial. Estimated total diamond weight 2.25 to 2.75cts. Length 16.7cms. Total weight 47.7gms. With paperwork dated 1962 from Cartier stating the piece is from their stock, 1962 retail price and images of the watch.*

£2,200-2,800 (plus 27.6% BP*)

242

An 18ct gold Colombian emerald and diamond cluster ring. The cushion-shape emerald cabochon, with graduated circular-cut diamond scalloped surround and shoulders. *Emerald weight 7.47cts, engraved to band. Estimated total diamond weight 1.30cts. French assay marks. Approximate ring size L. Weight 9.1gms.*

£5,500-7,500 (plus 27.6% BP*)

243

VAN CLEEF & ARPELS - a mid 20th century 18ct gold diamond and gem-set brooch. Designed as a scrolling series of graduated circular-shape emerald, sapphire and brilliant-cut diamond interwoven lines. *Signed Van Cleef & Arpels, 94602. Estimated total diamond weight 1.50cts. French assay marks. Length 8.5cms. Weight 17gms.*

£6,000-8,000 (plus 27.6% BP*)



243

237

242

240

238

239

236

241

244

BUCHERER - a pair of earrings. Each designed as a spiral grooved, tapered swag, hinged to the similarly grooved half-hoop. *Maker's marks for Carl Bucherer. Stamped 750. Length 4.2cms. Weight 23.6gms.*

£450-650 (plus 27.6% BP*)

245

A diamond cluster ring. The brilliant-cut diamond, with similarly-cut diamond surrounds. *Estimated total diamond weight 2.50cts. Principal diamond estimated weight 0.60ct, H-I colour, SI2-P1 clarity. Ring size P1/2. Weight 6.3gms.*

£800-1,200 (plus 27.6% BP*)

246

An 18ct gold zircon, ruby and diamond ring. The oval-shape green zircon, with brilliant-cut diamond and circular ruby cabochon scalloped surround, to the grooved band. *Estimated dimensions of zircon 16.6 by 13.9 by 10.5mms. Estimated total diamond weight 1.20cts. Italian marks. Approximate ring size N1/2. Weight 23.9gms.*

£1,200-1,800 (plus 27.6% BP*)

247

BURLE MARX - a 1970s opal brooch. The cushion-shape opal cabochon, off-set within a textured surround. May be worn as a pendant. *Maker's mark for Burle Marx. Estimated dimensions of opal approximately 39 by 24 by 7.7mms. Stamped 750. Length 4.9cms. Weight 25gms.*

£1,400-2,000 (plus 27.6% BP*)

248

A mid 20th century 18ct gold amethyst, diamond and citrine bracelet. The oval-shape amethyst, with vari-cut diamond rectangular-shape surround, to the calibre-cut amethyst and citrine three-row sides and fancy-link back-chain. *Estimated total diamond weight 0.35ct. Later hallmarks for London, 2017. Length 17.5cms. Weight 84.5gms.*

£1,600-2,000 (plus 27.6% BP*)

249

A diamond brooch. Designed as a pave-set diamond bow. *Estimated total diamond weight 8.50 to 9.50cts. Stamped 750. Length 7.2cms. Weight 35.2gms.*

£1,600-2,200 (plus 27.6% BP*)

250

A mid 20th century 18ct gold bracelet. The curved, alternate polished and spiral bars, to the off-set bar sides and partially concealed clasp. *Italian marks. Length 19.5cms. Weight 78.2gms.*

£1,800-2,400 (plus 27.6% BP*)

251

VAN CLEEF & ARPELS - a mid 20th century diamond compact. The diagonally-grooved rectangular case, with vari-cut diamond grip, opening to reveal a mirrored lid. *Signed Van Cleef & Arpels, N.Y. 12222. Estimated total diamond weight 0.20ct. Engraved 18k. Length 7.1cms. Total weight 142gms. With maker's pouch.*

£3,500-4,500 (plus 27.6% BP*)



251



249



247



244



250

248



246



245

252

BULGARI - a diamond and mother-of-pearl 'Serpenti Viper' ring. Comprising alternating pave-set diamond and mother-of-pearl tapered panels. *Signed Bulgari, BV6012. Estimated total diamond weight 0.40ct. Stamped 750. Ring size M. Weight 7.7gms.*

£600-800 (plus 27.6% BP*)

253

An 18ct gold diamond bracelet. Designed as two brilliant-cut diamond prongs, with square-shape diamond line spacer, to the circular-link sides. *Maker's mark indistinct, possibly T&Co. Estimated total diamond weight 1ct. Import marks for London, 1987, partially indistinct. Length 17.5cms. Weight 29.9gms.*

£900-1,400 (plus 27.6% BP*)

254

A pair of 18ct gold diamond earrings. Each designed as an overlapping series of curved panels, with graduated brilliant-cut diamond curved line highlights. *Signed Octavio Sarda. Estimated total diamond weight 2.25cts. French assay marks. Length 14.7gms.*

£900-1,400 (plus 27.6% BP*)

255

A ruby and diamond brooch. Designed as a charioteer driving two horses, with pave-set diamond and circular-shape ruby accents. *Estimated total diamond weight 0.10ct. Length 5.5cms. Weight 22.9gms.*

£900-1,400 (plus 27.6% BP*)

256

CHAUMET - an 18ct gold ruby and diamond ring. The oval-shape ruby, with pave-set diamond tapered shoulders. *Signed Chaumet, Paris. Estimated dimensions of ruby 7.5 by 5.4 by 2.2mms. Estimated total diamond weight 1.20cts. French assay marks. Ring size J. Weight 10.5gms.*

£1,200-1,800 (plus 27.6% BP*)

257

An 18ct gold sapphire, diamond and enamel pendant. The oval-shape sapphire collet, to the brilliant-cut diamond accent red enamel panel, suspended from a Bulgari 18ct gold belcher-link chain. *Chain signed Bulgari. Estimated dimensions of sapphire 6.4 by 5.2 by 3.8mms. Estimated total diamond weight 0.35ct. Hallmarks for London, 1999 and 2001. Length of pendant 3cms. Length of chain 42.5cms. Weight 15.7gms.*

£1,200-1,800 (plus 27.6% BP*)

258

BUCCELLATI - a pair of enamel earrings. Each designed as a blue enamel kite motif line, with engraved scroll surrounds and star spacers, to the textured hoop. *Signed M. Buccellati, Italy. Diameter 2.1cms. Weight 13.3gms.*

£1,400-2,000 (plus 27.6% BP*)

259

BUCCELLATI - a pair of 18ct gold diamond earrings. Each designed as three brilliant-cut diamond and foliate engraved stars, spaced to the textured hoop. *Signed M. Buccellati. Estimated total diamond weight 0.60ct. Italian marks. Length 3.1cms. Weight 25gms.*

£1,800-2,400 (plus 27.6% BP*)

260

CARTIER - an 18ct gold diamond necklace. The pave-set diamond curved bar, to the fancy-link back-chain. *Signed Cartier, 52230. Estimated total diamond weight 1.50cts. Import marks for London, 1976. Length 49cms. Weight 78.4gms.*

£1,800-2,400 (plus 27.6% BP*)

261

VAN CLEEF & ARPELS - an 18ct gold sapphire and diamond ring. Designed as a calibre-cut sapphire and brilliant-cut diamond tapered ribbon. *Signed Van Cleef & Arpels, M 39013. Estimated total diamond weight 0.80ct. French assay marks. Ring size K 1/2. Weight 9.4gms.*

£2,200-2,800 (plus 27.6% BP*)

259



256



255



257



260



252



258



261



254



253



262

A pair of 18ct gold sapphire and diamond earrings. Each designed as a pear-shape purplish pink sapphire, suspended from a graduated brilliant-cut diamond collet line. *With photocopy of report 13232, dated 23rd September 2016, from The Gem & Pearl Lab, stating no heat, dimensions 11-12 by 7.6 by 4.5mms and 10-11 by 7.8 by 4.4mms. Estimated total diamond weight 0.75ct. Hallmarks for London, 2017. Length 3.1cms. Weight 4.2gms.*

£600-800 (plus 27.6% BP*)

263

An 18ct gold rose quartz and tourmaline ring. Of bi-colour design, the square-shape rose quartz collet, with vari-size square-shape pink tourmaline highlights, inset to the tapered barrel band. *Estimated dimensions of rose quartz 8.2 by 8 by 5.2mms. Hallmarks for London, 2001. Ring size K1/2. Weight 16.4gms.*

£400-600 (plus 27.6% BP*)

264

An 18ct gold chalcedony and diamond ring. The oval blue chalcedony cabochon, with circular vari-gem cabochon and brilliant-cut diamond cluster highlight side, to the pave-set diamond surround and shoulders. *Estimated dimensions of chalcedony 21 by 18.7 by 7mms. Estimated total diamond weight 1.10cts. Hallmarks for London, 2017. Ring size M. Weight 14.7gms.*

£600-800 (plus 27.6% BP*)

265

MIKIMOTO - an 18ct gold cultured pearl and sapphire ring. The black South Sea cultured pearl, measuring 10.1mms, to the calibre-cut pink sapphire line shoulders and calibre-cut graduated pink sapphire line gallery. *Maker's marks for Mikimoto. Total sapphire weight 2.80cts. Hallmarks for London. Ring size M. Weight 10.5gms. With maker's case.*

£800-1,200 (plus 27.6% BP*)

266

A pair of amethyst and diamond earrings. Each designed as a circular amethyst cabochon and brilliant-cut diamond scalloped cluster, suspended from a similarly-cut diamond articulated line and surmount. *Estimated total diamond weight 1.50cts. Length 3.7cms. Weight 9.2gms.*

£700-900 (plus 27.6% BP*)

267

A pair of Indian Jaipur enamel, diamond and tourmaline earrings. Each designed as a diamond kundan work fish motif, with pink, green and white enamel reverse, suspending a pink tourmaline briolette and seed pearl fringe. *Length 6.36cms. Total weight 15.3gms.*

£800-1,200 (plus 27.6% BP*)

268

A glass and diamond dress set. Comprising a pair of cufflinks and four studs, each designed as an engine-turned disc, with purple glass overlay and single-cut diamond surround. *Estimated total diamond weight 1.75 to 2cts. Diameter of cufflink face and stud 1.4cms each. Dress stud stamped 750. Weight 27.3gms.*

£1,500-2,000 (plus 27.6% BP*)

269

A Burmese ruby and diamond three-stone ring. The cushion-shape ruby, weighing 1.09cts, with old-cut diamond sides. *With photocopy of report 79193-37, dated 4th January 2019, from GCS, stating Myanmar (Burma), no heat. Estimated total diamond weight 0.70ct, I-J colour, P1-P2 clarity. Stamped Platinum. Ring size M1/2. Weight 3.6gms.*

£1,800-2,400 (plus 27.6% BP*)

270

CHOPARD - a diamond, enamel and gem-set 'Happy Spirit - Colour' pendant. The free-moving brilliant-cut diamond, within concentric onyx, mother-of-pearl and pink enamel oval free-moving surrounds, with brilliant-cut diamond oval border, suspended from an 18ct gold Cartier belcher-link chain. *Pendant signed Chopard, 6062228 79/6288/01. Chain signed Cartier, N86763. Estimated total diamond weight 1.25cts. Chain with Swiss convention marks. Length of pendant 5.3cms. Length of chain 42cms. Total weight 44.3gms.*

£2,500-3,000 (plus 27.6% BP*)

271

A coloured diamond and diamond cluster pendant. The pear-shape Fancy Light Pink diamond, weighing 1.18cts, with brilliant-cut diamond surround, to the vari-cut diamond cluster surmount and platinum trace-link chain. *With report J80281512BE, dated 20th July 2015, from IGL, stating natural colour, SI2 clarity. Estimated total diamond weight 1.70cts. Chain with hallmarks for Sheffield. Length of pendant 2.3cms. Length of chain 41cms. Total weight 5.7gms.*

£3,000-4,000 (plus 27.6% BP*)



271



264



270



263



265



269



266



268



267



262



272

A diamond cluster ring. Of octagonal outline, the brilliant-cut diamond with similarly-cut diamond surround. *Estimated total diamond weight 1ct, principal diamond estimated tinted colour, P2 clarity. Stamped Plat. Ring size M. Weight 4.3gms.*

£800-1,200 (plus 27.6% BP*)

273

A diamond full eternity ring. Designed as a brilliant-cut diamond line. *Estimated total diamond weight 3.50cts, estimated predominantly G-I colour, VS2-SI2 clarity. Approximate ring size O1/2. Weight 7.1gms.*

£1,000-1,500 (plus 27.6% BP*)

274

A sapphire and diamond floral cluster ring. The oval-shape sapphire, with old-cut diamond scalloped surround. *Sapphire weight 2.77cts. Estimated total diamond weight 0.60ct. Approximate ring size O. Weight 3.2gms.*

£2,500-3,500 (plus 27.6% BP*)

275 

A ruby and diamond cluster ring. The oval-shape ruby, weighing 9.53cts, with brilliant-cut diamond surround and shoulders. *With report 17189, dated 26th April 2010, from The Gem & Pearl Lab, stating natural, heated, residue in fissures. Total diamond weight 0.44ct, stamped to band. Stamped 750. Ring size N. Weight 5.8gms.*

£2,500-3,500 (plus 27.6% BP*)

276 


A Colombian emerald and diamond ring. The cushion-shape emerald, weighing 8.18cts, with modified calf's-head-shape diamond shoulders and brilliant-cut diamond surround. *With report CDC1610043, dated 18th October 2016, from C. Dunaigre, stating Colombia, minor clarity enhancement. Total diamond weight 2.24cts, stamped to band. Ring size J. Weight 9.7gms.*

£6,000-8,000 (plus 27.6% BP*)

277

A diamond half eternity ring. The graduated baguette-cut diamond line, with brilliant-cut line borders, to the tapered half-band. *Total diamond weight 2.14cts, stamped to band. Ring size S. Weight 8gms.*

£500-700 (plus 27.6% BP*)

278 

A diamond bracelet. Designed as a baguette-cut diamond line, with brilliant-cut diamond borders. *Total diamond weight 15.61cts, stamped to mount, estimated G-H colour, VS-SI clarity. Stamped K18. Length 18cms. Weight 39.3gms. With fitted D.S. Lavender case.*

£6,000-8,000 (plus 27.6% BP*)

279

A diamond necklace. The graduated baguette-cut diamond line, with brilliant-cut diamond line borders. *Total diamond weight 26.44cts, stamped to clasp, estimated G-H colour, VS-SI clarity. Stamped K18. Length 42.5cms. Weight 72.6gms.*

£9,000-14,000 (plus 27.6% BP*)

280

An 18ct gold diamond single-stone ring. The brilliant-cut diamond, with similarly-cut diamond line shoulders. *Principal diamond weight 1.81cts, estimated I-J colour, VS clarity. Hallmarks for Birmingham. Ring size L1/2. Weight 4.1gms.*

£5,000-7,000 (plus 27.6% BP*)

281 

CARTIER - an impressive pair of 18ct gold brilliant-cut diamond stud earrings, weighing 1.28 and 1.25cts respectively. *Maker's marks for Cartier. With reports 10289193 and 10289194, dated 21st January 1998, from the GIA, each stating D colour, Internally Flawless clarity. Hallmarks for London, 1999. Weight 3.2gms. With maker's pouch.*

£15,000-20,000 (plus 27.6% BP*)

276



280



275



281



278



279

272



277



274



273



282

TIFFANY & CO. - a platinum diamond pendant. The brilliant-cut diamond cross, suspended from a trace-link chain. *Signed Tiffany & Co. Estimated total diamond weight 2.15cts, G-H colour, VS clarity. Hallmarks for London, partially indistinct. Length of pendant 2.7cms. Length of chain 46cms. Weight 5.4gms.*

£800-1,200 (plus 27.6% BP*)

283

A platinum diamond eternity ring. Designed as a rectangular-shape emerald line, with grooved sides. *Estimated total diamond weight 3.60cts, G+ colour, VS clarity. Hallmarks for London, 2004. Ring size M. Weight 6.2gms.*

£1,000-1,500 (plus 27.6% BP*)

284

A citrine and diamond dress ring. The circular-shape multifaceted citrine, with brilliant-cut diamond openwork loop surround and shoulders, to the tapered half-band. *Citrine weight 29.48cts, total diamond weight 1.40cts, each stamped to band. Stamped 18K 750. Ring size L 1/2. Weight 22gms.*

£800-1,200 (plus 27.6% BP*)

285

A Fancy Light Yellow diamond ring and fitted ring. To include a square-shape Fancy Light Yellow diamond ring with fancy-shape diamond sides with pave-set diamond shoulders, together with a pave-set diamond fitted band ring. *With report 2105741986, dated 3th June 2009, from the GIA, stating principal diamond is natural Fancy Light Yellow colour, VS2 clarity, weight 1.01 cts. Estimated total diamond weight 2cts. Ring size J 1/2. Weight 7.5gms.*

£1,200-1,800 (plus 27.6% BP*)

286

A sapphire and diamond ring. The cushion-shape sapphire, with brilliant-cut diamond scalloped surround and openwork lattice sides. *Estimated dimensions of sapphire 7.5 by 6.5 by 4.1mms. Estimated total diamond weight 0.75ct. Stamped Plat. Ring size M1/2. Weight 4.6gms.*

£1,200-1,800 (plus 27.6% BP*)

287

An 18ct gold diamond single-stone ring. The brilliant-cut diamond, weighing 1ct, with tapered shoulders. *With report S3C16076, dated 5th January 2012, from IGI, stating F colour, SI2 clarity. Hallmarks for Birmingham. Ring size M. Weight 3.7gms.*

£2,000-3,000 (plus 27.6% BP*)

288

A sapphire three-stone ring. The rectangular-shape yellow sapphire, with similarly-shaped blue sapphire sides. *Estimated dimensions of principal sapphire 9 by 5.7 by 3.9mms. Stamped 750. Ring size P. Weight 4.7gms.*

£1,500-2,000 (plus 27.6% BP*)

289

A sapphire and diamond cluster ring. The rectangular-shape sapphire, with brilliant-cut diamond surround, to the single-cut diamond two-row shoulders. *Estimated dimensions of sapphire 9.1 by 6.8 by 3.3mms. Estimated total diamond weight 1.15cts. Ring size 11/2. Weight 8gms.*

£2,500-3,000 (plus 27.6% BP*)

290

A pair of brilliant-cut diamond stud earrings. *Total diamond weight 2.71 cts, estimated I-J colour, P1-P2 clarity. Weight 2.1 gms.*

£5,000-7,000 (plus 27.6% BP*)

291

A 14ct gold Sri Lankan sapphire and diamond cluster ring. The oval-shape sapphire, weighing 16.12cts, with brilliant-cut diamond surround. *With report 79185-23, dated 31st October 2018, from GCS, stating Sri Lanka (Ceylon), no heat. Estimated total diamond weight 1.50cts. French assay marks. Ring size N. Weight 8.4gms.*

£4,000-6,000 (plus 27.6% BP*)

292

A platinum diamond single-stone ring. The circular-cut diamond, weighing 3.72cts, with tapered shoulders. *With report 2191926555, dated 21st December 2018, from the GIA, stating J colour, VS2 clarity. Hallmarks for Birmingham. Ring size M1/2. Weight 5.1gms.*

£10,000-15,000 (plus 27.6% BP*)

293

CARTIER - an 18ct gold diamond 'Naide' bracelet. The alternating brilliant-cut diamond collet and marquise-shape panel lattice, to the push-piece clasp. *Signed Cartier. 847280. Total diamond weight 19.50cts. Hallmarks for London. Length 18.5cms. Weight 61.8gms. With maker's case.*

£20,000-30,000 (plus 27.6% BP*)



283

293

284



289



291



286



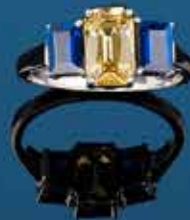
292



290



288



282



285



287



294*

An 18ct gold diamond crossover ring. The rectangular-shape and brilliant-cut diamond cluster asymmetric terminals, with brilliant-cut diamond tapered two-row sides. *Total diamond weight 1.01cts, principal diamonds estimated H-I colour, VS clarity. Hallmarks for London, 2009. Ring size M. Weight 4.1gms.*

£800-900 (plus 27.6% BP*)

295 

A pair of brilliant-cut diamond stud earrings. *With report card 16J556871803, from IGI, stating total weight 0.66ct, F-G colour, VS clarity. Stamped 18Kt. Weight 1.7gms.*

£600-800 (plus 27.6% BP*)

296

A diamond bracelet. Designed as a brilliant-cut diamond line, with partially concealed clasp. *Estimated total diamond weight 3cts, H-I colour, VS-SI clarity. Stamped Au750. Length 17cms. Weight 11.8gms.*

£800-1,200 (plus 27.6% BP*)

297

An 18ct gold diamond single-stone pendant. The oval-shape diamond, suspended from an integral trace-link chain. *Estimated diamond weight 0.70ct, G-H colour, VS2-SI1 clarity. Hallmarks for London, 2010. Length 43cms. Weight 2.9gms.*

£950-1,050 (plus 27.6% BP*)

298

TIFFANY & CO. - a platinum diamond single-stone ring. The brilliant-cut diamond, with tapered shoulders. *Signed Tiffany & Co. Estimated diamond weight 0.55ct, G-H colour, VS clarity. Hallmarks for London, 2011. Weight 5.3gms.*

£1,000-1,500 (plus 27.6% BP*)

299

A ruby and diamond ring. The rectangular-shape ruby, with graduated baguette-cut diamond stepped sides. *Estimated dimensions of ruby 7.6 by 5.3 by 3.6mms. Estimated total diamond weight 0.70ct. Stamped 750. Ring size J. Weight 4.3gms.*

£1,000-1,500 (plus 27.6% BP*)

300

A pair of ruby and diamond cluster earrings. Each designed as a pear-shape ruby, with brilliant-cut diamond surround. *Total ruby weight 2.06cts, total diamond weight 0.43cts, each stamped to one back. Stamped 18k. Length 1cm. Weight 3.2gms.*

£1,400-2,000 (plus 27.6% BP*)

301 

An 18ct gold Burmese ruby and diamond three-stone ring. The circular-shape ruby, weighing 1.19cts, with old-cut diamond sides. *With report 79185-20, dated 30th October 2018, from GCS, stating Myanmar (Burma), no heat. Estimated total diamond weight 0.70ct, H-J colour, SI clarity. French assay marks. Weight 3.1gms.*

£1,800-2,400 (plus 27.6% BP*)

302


A diamond single-stone ring. The marquise-shape diamond, with graduated baguette-cut diamond line sides. *Principal diamond weight 1.56cts, estimated L-tinted colour, SI clarity. Stamped 18ct Plat, partially indistinct. Ring size L1/2. Weight 3.4gms.*

£2,000-2,500 (plus 27.6% BP*)

303 

An 18ct gold Burmese ruby and diamond cluster ring. The oval-shape ruby, weighing 1.38cts, with old-cut diamond surround, to the curved shoulders. *With report 5776-4729, dated 23rd February 2016, from GCS, stating Burma (Myanmar), no heat. Estimated total diamond weight 1ct. French assay marks. Ring size N. Weight 4.5gms.*

£3,500-4,500 (plus 27.6% BP*)

304 

CARTIER - a pair of 18ct gold diamond earrings. Each designed as a brilliant-cut diamond front-facing hoop. *Signed Cartier, 876664. Estimated total diamond weight 2.45cts. Hallmarks for London. Diameter 3.6cms. Weight 20.3gms. With maker's case.*

£5,000-7,000 (plus 27.6% BP*)

305

A diamond necklace. Designed as a graduated brilliant-cut diamond line, with partially concealed push-piece clasp. *Total diamond weight 10cts, stamped to clasp. Principal diamonds estimated I-K colour, P1-P2 clarity. Length 46.2cms. Weight 25.5gms.*

£5,000-7,000 (plus 27.6% BP*)

306 

A platinum diamond single-stone ring. The rectangular-shape diamond, weighing 3.04cts, with crossover gallery. *With report SGLDL1794A, from the Solitaire Gemmological Laboratories, stating I colour, VS1 clarity. Hallmarks for Birmingham. Ring size M. Weight 5.5gms.*

£12,000-18,000 (plus 27.6% BP*)



297

302



294



300



305

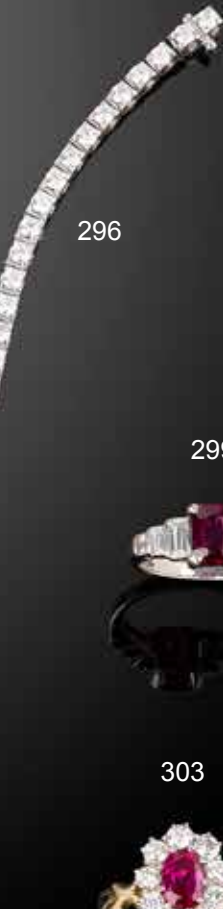
304



306



296



299



298



303



301



295



307

A pair of mid 20th century platinum and gold, Madagascar sapphire and diamond earrings. Each designed as a fancy-shape sapphire, with pave-set diamond ribbon surround and baguette-cut diamond line highlight. *Verbal* from GCS, stating Madagascar, no heat. Estimated total diamond weight 2cts. Length 2.4cms. Weight 11.4gms.
£400-600 (plus 27.6% BP*)

308 

A sapphire and diamond pendant. Designed as an old and rose-cut diamond bow, with cushion-shape sapphire 'knot', weighing 1.60cts, to the rose-cut diamond detachable surmount and trace-link chain. With report 79195-02, dated 16th January 2019, from GCS, stating no heat. Estimated total diamond weight 1.20cts. Length of pendant 3.6cms. Length of chain 55cms. Total weight 8.4gms.
£800-1,200 (plus 27.6% BP*)

309

An Art Deco platinum and gold diamond cocktail watch. The rectangular dial, with pave-set diamond geometric surround and sides, to the mesh-link loops and snake-link bracelet. Estimated total diamond weight 2cts. Length 16cms. Total weight 19gms.
£700-900 (plus 27.6% BP*)

310


A sapphire and diamond five-stone ring. Designed as a cushion-shape sapphire line, with old-cut diamond spacers. Total sapphire weight 1.58cts. Estimated total diamond weight 0.85ct, H-I colour, P1 clarity. Ring size M. Weight 3.7gms.
£1,000-1,500 (plus 27.6% BP*)

311

A mid 20th century 18ct gold synthetic sapphire and diamond cluster ring. The circular-shape synthetic sapphire collet, with brilliant-cut diamond scalloped surround. Estimated total diamond weight 0.70ct. Stamped '18ct & Pt'. Ring size L. Weight 3.8gms.
£500-700 (plus 27.6% BP*)

312

A sapphire three-stone and diamond ring. The slightly graduated oval-shape sapphire line, with circular-cut diamond double spacers. Total sapphire weight 1.79cts. Estimated total diamond weight 0.25ct. Ring size L1/2. Weight 2.1gms.
£1,200-1,800 (plus 27.6% BP*)

313 

A late Victorian silver and gold, opal and diamond brooch. The circular opal cabochon, with old-cut diamond scalloped surround. Estimated dimensions of opal 15 by 14 by 3.2mms. Estimated total diamond weight 0.40ct. Diameter 1.9cms. Weight 3.6gms. With fitted Cameo Corner case.
£1,500-2,000 (plus 27.6% BP*)

314

A diamond and gem-set brooch. Designed as a series of vari-cut diamond, coloured diamond, ruby and sapphire flowers, to the openwork lattice basket with brilliant-cut diamond foot. Estimated total diamond weight 3 to 3.50cts. Length 4.8cms. Weight 26.9gms. Coloured diamonds untested.
£1,500-2,000 (plus 27.6% BP*)

315

An emerald and diamond cluster ring. The rectangular-shape emerald, with single-cut diamond octagonal surrounds, to the openwork gallery and similarly-cut diamond shoulders. Estimated dimensions of emerald 8 by 6.5 by 4.6mms. Estimated total diamond weight 0.75ct. Ring size M1/2. Weight 8.3gms.
£1,800-2,400 (plus 27.6% BP*)

316

A diamond bracelet. Designed as a series of pave-set diamond overlapping panels, to the brilliant and single-cut diamond tapered sides and back-chain. Estimated total diamond weight 3cts. Length 15.8cms. Weight 18.7gms.
£1,800-2,200 (plus 27.6% BP*)

317

A mid 20th century 18ct gold and platinum, sapphire and diamond cluster ring. The oval-shape sapphire, with old-cut diamond and calibre-cut sapphire scalloped surrounds, to the wire band. Estimated dimensions of principal sapphire 11 by 8.5 by 4.8mms. Estimated total diamond weight 0.60ct. Approximate ring size L. Weight 6.9gms.
£2,000-3,000 (plus 27.6% BP*)

318  

A pair of natural pearl and diamond earrings. Each designed as a pear-shape pearl, suspended from a pave-set diamond chevron and vari-cut diamond line, with circular pearl surmount. With report 79193-39, dated 9th January 2019, from GCS, stating natural, saltwater. Estimated total diamond weight 0.40ct. Length 3.3cms. Weight 4.6gms. With fitted case.
£3,500-4,500 (plus 27.6% BP*)

319

A sapphire and diamond three-stone ring. The cushion-shape sapphire, with brilliant-cut diamond sides. Estimated dimensions of sapphire 8.2 by 7.3 by 3.9mms. Estimated total diamond weight 1.30cts, J-K colour, SI clarity. Ring size J. Weight 4gms.
£3,000-4,000 (plus 27.6% BP*)

320

A diamond bracelet. The marquise-shape and brilliant-cut diamond cluster line, with brilliant-cut diamond cluster spacers, to the pave-set diamond clasp. Estimated total diamond weight 8 to 8.50cts, principal diamonds estimated H-J colour, VS clarity. Stamped 750. Length 17.5cms. Weight 6gms.
£5,500-7,500 (plus 27.6% BP*)

319



307



310



320



308



311



317



315



316



313



312



309



318



314



321

A late Victorian silver and 15ct gold diamond pendant. The pave-set diamond heart, with locket mount reverse, suspended from a similarly-set surmount. *Estimated total diamond weight 1.50cts. Length 2.7cms. Weight 4.1gms.*

£550-750 (plus 27.6% BP*)

322

A pair of emerald and diamond cluster earrings. Each designed as a rectangular-shape emerald, with pear-shape diamond surround. *Estimated dimensions of one emerald 11.9 by 9.1 by 5.3mms. Total diamond weight 1.53cts, stamped to mount. Stamped 18K. Length 1.8cms. Weight 9.3gms.*

£800-1,200 (plus 27.6% BP*)

323

An emerald and diamond cluster ring. The rectangular-shape emerald, with brilliant and baguette-cut diamond openwork surround. *Estimated dimensions of emerald 12.9 by 9.1mms. Estimated total diamond weight 1.35cts. Approximate ring size L. Weight 8.8gms.*

£800-1,200 (plus 27.6% BP*)

324

A platinum diamond full eternity ring. The baguette-cut diamond line, within a channel setting. *Estimated total diamond weight 3cts, G-H colour, VS clarity. Hallmarks for London, 2004. Ring size L. Weight 7.7gms.*

£900-1,400 (plus 27.6% BP*)

325

An Akoya cultured pearl and diamond necklace. the marquise-shape and brilliant-cut diamond kite-shape panel, suspended from a cultured pearl line, with pave-set diamond barrel spacers. *Estimated total diamond weight 2cts, principal diamond estimated weight 0.35ct, I-J colour, SI clarity. Stamped 14k, 585. Length 43.5cms. Total weight 43.5gms.*

£1,000-1,500 (plus 27.6% BP*)

326

A pair of brilliant-cut diamond stud earrings. *Estimated total diamond weight 1.35cts, H-J colour, SI2-P1 clarity. Stamped 750. Weight 1.8gms.*

£1,200-1,800 (plus 27.6% BP*)

327

An emerald and diamond cluster ring. The oval-shape emerald, with brilliant-cut diamond surround and shoulders. *Estimated dimensions of emerald 9.1 by 7.1 by 5.1mms. Estimated total diamond weight 1ct. Ring size O. Weight 5.3gms.*

£1,400-2,000 (plus 27.6% BP*)

328

A diamond cluster ring. The old and brilliant-cut diamond marquise-shape panel, to the tapered double band. *Estimated total diamond weight 2.50 to 3cts, principal diamond estimated I-J colour, P1 clarity. Ring size Q. Weight 8.2gms.*

£1,500-2,000 (plus 27.6% BP*)

329

A platinum diamond single-stone ring. The 'Phoenix-cut' diamond, with triangular-shape diamond sides. *Principal diamond weight 1.03cts, stamped to band, estimated G-H colour, VS clarity. Total diamond weight 1.41cts. Hallmarks for London, 2008. Ring size L1/2. Weight 5.2gms.*

£2,000-3,000 (plus 27.6% BP*)

330

An 18ct gold diamond single-stone ring. The brilliant-cut diamond, weighing 1.01cts, with knife-edge shoulders. *With mini report 20043155, from AnchorCert, stating I colour, VS2 clarity. Hallmarks for Birmingham. Ring size M. Weight 3.1gms.*

£2,000-3,000 (plus 27.6% BP*)

331

A platinum diamond single-stone ring. The brilliant-cut diamond, with slightly tapered band. *Diamond weight 1ct, estimated H-I colour, VS clarity. Hallmarks for Sheffield. Ring size K1/2. Weight 4.9gms. With sterling silver ring box.*

£2,200-2,800 (plus 27.6% BP*)

332

An 18ct gold diamond bracelet. Designed as a brilliant-cut diamond line. *Estimated total diamond weight 7.50 to 8cts, H-tinted colour, VS1-P1 clarity. Hallmarks for Sheffield. Length 18.7cms. Weight 13.1gms.*

£3,000-4,000 (plus 27.6% BP*)



324



329



330



331



321



327



328



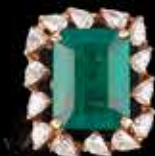
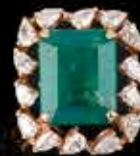
326

325

332

323

322



333

An 18ct gold opal and diamond ring. The oval opal cabochon, with brilliant-cut diamond surround and interwoven loop motif shoulders. *Estimated dimensions of opal 19.5 by 14.8 by 4.9mms. Estimated total diamond weight 0.35ct. Hallmarks for Birmingham. Ring size N. Weight 15gms.*

£500-700 (plus 27.6% BP*)

334

A platinum diamond single-stone ring. The square-shape diamond, weighing 0.55ct, with bar mount and asymmetric shoulders. *With report 1106762551, dated 11th May 2009, from the GIA, stating D colour, VS1 clarity. Hallmarks for Birmingham. Ring size 11/2. Weight 5.5gms.*

£700-900 (plus 27.6% BP*)

335

TIFFANY & CO. - a diamond 'Etoile' ring. The polished band, with scattered brilliant-cut diamond highlights. *Signed T&Co. Estimated total diamond weight 0.25ct. Stamped PT 950. Ring size N. Weight 8.6gms. With maker's case.*

£700-900 (plus 27.6% BP*)

336

FOPE - an 18ct gold diamond necklace. The pave-set diamond dome, suspended on a fancy-link cylindrical chain. *Signed Fope. Estimated total diamond weight 0.55ct. Length 39.5cms. Weight 22.4gms.*

£800-1,200 (plus 27.6% BP*)

337

CARTIER - an 18ct gold diamond 'Mailon Panthere' ring. The square link motif band, with pave-set diamond highlight. *Signed Cartier, ON8636. Estimated total diamond weight 0.55ct. French assay marks. Ring size I. Cartier size 48. Weight 12gms.*

£900-1,400 (plus 27.6% BP*)

338

A pair of diamond and gem-set earrings. Each designed as a turquoise drop, suspended from a brilliant-cut diamond collet, articulated line with black hoop spacer. *Estimated total diamond weight 0.55ct. Length 5.8cms. Weight 9.5gms.*

£1,000-1,500 (plus 27.6% BP*)

339*

A sapphire and diamond cluster ring. The oval-shape sapphire, with brilliant-cut diamond surround. *Sapphire weight 2.66cts. Total diamond weight 0.32cts. Stamped 750. Ring size L. Weight 3.3gms.*

£1,000-1,500 (plus 27.6% BP*)

340

A platinum diamond single-stone ring. The brilliant-cut diamond, weighing 0.74ct, with tapered shoulders. *With report 6205162122, dated 6th June 2015, from the GIA, stating F colour, VS2 clarity. Hallmarks for London, 2015. Ring size N. Weight 4.4gms.*

£1,400-2,000 (plus 27.6% BP*)

341

A pair of 18ct gold brilliant-cut diamond stud earrings. *Total diamond weight 1.85cts, estimated H-J colour, SI2-P1 clarity. Hallmarks for Sheffield. Weight 1.8gms.*

£1,800-2,400 (plus 27.6% BP*)

342

A diamond single-stone ring. The rectangular-shape diamond, weighing 1ct, to the brilliant-cut diamond band. *With report 15763439, dated 5th March 2007, from the GIA, stating E colour, SI1 clarity. Stamped PLAT. Ring size M. Weight 4.5gms.*

£1,800-2,500 (plus 27.6% BP*)

343

A platinum diamond cluster ring. The rectangular-shape diamond, weighing 1.01cts, with brilliant-cut diamond surround. *Principal diamond laser inscribed to girdle, GIA 1257157892, corresponding to a report dated 10th March 2017, from the GIA, stating D colour, VS2 clarity. Estimated total diamond weight 1.65cts. Hallmarks for Birmingham. Ring size L. Weight 6.8gms.*

£3,000-4,000 (plus 27.6% BP*)

344

An 18ct gold diamond bracelet. Comprising three brilliant-cut diamond lines, with partially concealed clasp. *Estimated total diamond weight 17 to 19cts. Hallmarks for London, 2018. Length 18cms. Weight 41.8gms.*

£7,000-9,000 (plus 27.6% BP*)



345*

A pair of diamond earrings. Each designed as a brilliant and tapered baguette-cut diamond floral cluster, within a brilliant-cut diamond openwork tapered surround. *Total diamond weight 0.85ct, stamped to mount. Stamped 18K. Length 1.4cms. Weight 5.3gms.*

£750-850 (plus 27.6% BP*)

346

An 18ct gold emerald and diamond cluster ring. The oval-shape emerald, with brilliant-cut diamond double surround. *Estimated dimensions of emerald 8 by 6.5 by 4.3mms. Estimated total diamond weight 1.25cts. Maltese marks. Ring size K. Weight 4.6gms.*

£800-1,200 (plus 27.6% BP*)

347

An 18ct gold amethyst, emerald and diamond ring. The circular-shape amethyst, with brilliant-cut diamond claws, to the similarly-cut diamond accent pave-set emerald band. *Signed Cantamessa. Estimated dimensions of amethyst 7 by 7mms. Estimated total diamond weight 0.50ct. Italian marks. Weight 7.9gms.*

£900-1,400 (plus 27.6% BP*)

348

An emerald and diamond pendant. Of openwork design, the oval-shape emerald, to the brilliant-cut diamond scrolling surround, with scattered similarly-cut diamond collet highlights and similarly designed surmount. With chain. *Emerald weight 2.76cts. Total diamond weight 0.84ct, stamped to mount. Pendant stamped 18k. Length of pendant 4.2cms. Length of chain 40cms. Weight of pendant 6.8gms.*

£1,200-1,800 (plus 27.6% BP*)

349

An emerald and diamond bracelet. The marquise-shape emerald links, set at an angle, with brilliant-cut diamond line spacers. *Estimated total diamond weight 0.65ct. Length 18.2cms. Weight 14.5gms.*

£1,500-2,000 (plus 27.6% BP*)

350

An 18ct gold diamond three-stone ring. The brilliant-cut diamond, with similarly-cut diamond sides. *Estimated total diamond weight 2cts, H-K colour, SI2-P1 clarity. Hallmarks for Birmingham, 1977. Ring size M. Weight 3.3gms.*

£1,800-2,400 (plus 27.6% BP*)

351

TIFFANY & CO. - a diamond and gem-set pendant. Designed as a pave-set diamond frog, with circular emerald cabochon eyes, clutching a cultured pearl, suspended from an integral belcher-link chain. *Signed Tiffany & Co. Estimated total diamond weight 2.50 to 3.50cts. Stamped 950 and 750. Length of pendant 2.7cms. Length of chain 41cms. Weight 20.5gms.*

£2,500-3,500 (plus 27.6% BP*)

352

MAUBOUSSIN - a mid 20th century platinum diamond and emerald cluster ring. The old-cut diamond, with alternating circular-shape emerald and single-cut diamond surround. *Signed Mauboussin, Paris, 68673, number partially indistinct. Principal diamond estimated weight 1.50cts, I-J colour, P1 clarity. French assay marks. Ring size N. Weight 6.8gms.*

£2,500-3,000 (plus 27.6% BP*)

353

A platinum diamond single-stone ring. The cushion-shape diamond, weighing 2cts, with brilliant-cut diamond line shoulders. *Principal diamond with report 3175485993, dated 28th May 2014, from the GIA, stating F colour, VS2 clarity. Hallmarks for Birmingham. Ring size K1/2. Weight 5.5gms.*

£7,000-9,000 (plus 27.6% BP*)

354

A diamond bracelet. Designed as a series of vari-cut diamond floral clusters, with tapered baguette-cut diamond line highlights, to the brilliant-cut diamond undulating line. *Estimated total diamond weight 20 to 22cts, principal diamonds estimated G-H colour, VS clarity. Length 20.5cms. Weight 41.8gms.*

£12,000-18,000 (plus 27.6% BP*)

350



348



351



353



352



349



354



347



345



346



355

A late Victorian pearl and diamond brooch. The semi-baroque pearl, with diamond point cap, suspended from an old and rose-cut diamond bow. *Estimated dimensions of pearl 9.8 by 8.6 by 10.4mms. Length 3.8cms. Weight 7gms. Pearl untested.*

£500-700 (plus 27.6% BP*)

356

A pearl and diamond bracelet. Comprising a series of seven pearls, with rose-cut diamond floral openwork spacers and sides, to the engraved push clasp. *Length 16.6cms. Weight 12.3gms. Pearls untested.*

£700-900 (plus 27.6% BP*)

357 

A late Victorian gold, diamond, seed pearl and enamel brooch. The rose-cut diamond joined hearts and bow surmount, to the blue enamel heart, with white enamel and seed pearl surrounds. *Length 2.8cms. Weight 5.6gms. With fitted case.*

£600-800 (plus 27.6% BP*)

358 

A natural pearl and diamond ring. The pearl, weighing 3.91 cts, with old-cut diamond line sides. *With report 5776-5310, dated 21st April 2016, from GCS, stating natural, saltwater. Ring size T1/2. Weight 2.4gms.*

£900-1,400 (plus 27.6% BP*)

359

A mid 20th century platinum diamond cluster ring. The pave-set diamond marquise-shape panel, with slightly tapered shoulders. *Estimated total diamond weight 1.40cts, principal diamond estimated weight 0.35ct, H-I colour, SI clarity. Stamped Plat. Ring size O1/2. Weight 4.4gms.*

£1,000-1,500 (plus 27.6% BP*)

360 

A Burmese ruby and diamond ring. The square-shape ruby line, with vari-cut diamond surround, to the circular-cut diamond line shoulders. *With report 79200-33, dated 14th February 2019, from GCS, stating Myanmar (Burma), no heat. Estimated total diamond weight 0.85ct. Approximate ring size M. Weight 3.8gms.*

£900-1,400 (plus 27.6% BP*)

361

A natural pearl five-row necklace. Comprising five pearl strands, to the late Victorian silver and gold old-cut diamond line clasp. *Previously assessed by AnchorCert, report 195306/20029157, stating representative sample of shortest strand natural, saltwater. Estimated total diamond weight 1.50cts, H-I colour, SI2-P1 clarity. Length 35cms.*

£1,400-2,000 (plus 27.6% BP*)

362

An early 20th century platinum and gold diamond pendant. The old-cut diamond collet, suspended within a vertical lattice disc with old and rose-cut diamond wreath surround, to the trace-link chain. *Estimated total old-cut diamond weight 1.30cts. Principal diamond estimated weight 0.70ct, K-L colour, SI2-P1 clarity. French assay marks. Length of pendant 3.7cms. Length of chain 38cms. Weight 8.6gms.*

£1,800-2,400 (plus 27.6% BP*)

363

An early 20th century platinum diamond pendant. Designed as a graduated old and single-cut diamond looped ribbon, together with trace-link chain. *Estimated total diamond weight 2.50cts, principal diamonds estimated H-I colour, VS clarity. Length of pendant 4.6cms. Length of chain 37cms. Weight 9.1gms.*

£2,000-2,500 (plus 27.6% BP*)

364  

A late Victorian silver and gold, natural pearl, diamond and pearl brooch. The natural grey pearl, measuring approximately 9.4 to 9.5 by 11.4mms, suspended within a graduated pearl and old-cut diamond bow and wreath surround. *With report 79192-48, dated 19th December 2018, from GCS, stating natural, saltwater. Estimated total old-cut diamond weight 1.25 to 1.50cts, principal diamonds estimated H-I colour, SI1-P1 clarity. Length 3.2cms. Weight 7.4gms. With fitted Worboys, Dublin case. Non-principal pearls untested.*

£3,500-4,500 (plus 27.6% BP*)

BP* - Buyer's Premium of 23% (plus VAT) or 27.6% (VAT included)

363



361



358

364



359



356



362



355



357



360



365

A sapphire and diamond dress ring. Comprising three circular and oval sapphire cabochons, with rose-cut diamond overlapping surrounds, to the similarly-cut diamond shoulders. *Total sapphire weight 3.69cts. Ring size M1/2. Weight 4.7gms.*

£900-1,400 (plus 27.6% BP*)

366

An early 20th century gold and platinum, zircon and diamond cluster ring. The rectangular-shape blue zircon, with old-cut diamond rectangular halo, to the pierced foliate gallery and old-cut diamond line shoulders. *Estimated dimensions of zircon 10 by 8 by 4.6mms. Estimated total diamond weight 0.75ct. Ring size P1/2. Weight 6.6gms.*

£700-900 (plus 27.6% BP*)

367 

A mid 20th century platinum and 18ct gold, sapphire and diamond bar brooch. The circular-cut diamond collet and rose-cut diamond surround, to the calibre-cut sapphire and rose-cut diamond tapered sides with rose-cut diamond terminals. *Principal diamond estimated weight 0.30ct, J-K colour, P1 clarity. French assay marks. Length 8.4cms. Weight 6.5gms. With monogrammed La Croix case.*

£1,000-1,500 (plus 27.6% BP*)

368

An Edwardian platinum and gold, diamond and seed pearl pendant. The rose-cut diamond stylised foliate panel, with similarly-cut diamond and seed pearl bud highlight, suspending an old-cut diamond fringe and seed pearl and diamond drop. May be worn as a brooch. *Estimated total old-cut diamond weight 0.40ct. Length 5.3cms. Weight 6gms.*

£900-1,400 (plus 27.6% BP*)

369 


An early 20th century platinum and 18ct gold, natural pearl and diamond jabot. The natural pearl, weighing 7.35cts, with rose-cut diamond floral cap, to the similarly-cut diamond foliate terminal. *With report O6763, dated 28th November 2012, from The Gem & Pearl Lab, stating natural, saltwater. French assay marks. Length 6.9cms. Weight 4.4gms.*

£1,800-2,400 (plus 27.6% BP*)

370


An Art Deco platinum diamond brooch. Of openwork design, the old and single-cut diamond scrolling flower, with similarly-cut diamond kite-shape surround, foliate corners and rectangular border. *Estimated total diamond weight 5.50 to 6cts. French assay marks. Length 5.8cms. Weight 17.6gms.*

£1,800-2,500 (plus 27.6% BP*)

371 

A platinum natural pearl and diamond pendant. The drop pearl, suspended within an old and single-cut diamond kite-shape halo, to the similarly-cut diamond bow spacer and tapered surmount on integral three and fetter chain. *With report 354651, dated 21st March 2019, from LFG, stating saltwater, no treatment, estimated 7.2-7.3 by 10.9mms. Estimated total diamond weight 0.40ct. French assay marks. Length of pendant 4.2cms. Length of chain 42cms. Weight 6.3gms.*

£1,500-2,000 (plus 27.6% BP*)

372 


A mid 20th century platinum, natural pearl and diamond brooch. The grey pearl, measuring approximately 12.7 by 11.2 by 9.2mms, with old-cut diamond overlapping strand heart-shape surround and border. *With report 78155-59, dated 17th May 2018, from GCS, stating natural, saltwater. Estimated total diamond weight 5.50cts. French assay marks. Length 4.5cms. Weight 20.1gms.*

£2,000-3,000 (plus 27.6% BP*)

373

An emerald and diamond ring. The oval emerald cabochon, to the old-cut diamond shoulders with rose-cut diamond pierced lattice surround and foliate engraved half-band. *Estimated dimensions of emerald 12.9 by 8 by 5.1mms. Estimated total old-cut diamond weight 0.40ct, H-I colour, VS2-SI2 clarity. Ring size N1/2. Weight 3.8gms.*

£4,000-6,000 (plus 27.6% BP*)

374 

Two mid 20th century platinum gem-set bracelets. To include an old-cut diamond line bracelet with engraved sides, together with a rectangular-shape sapphire line bracelet. *Estimated total diamond weight 3.10cts. One with French assay marks. Lengths 17.5 and 18cms. Total weight 32.9gms. With case.*

£4,500-6,500 (plus 27.6% BP*)



375

An 18ct gold sapphire and diamond dress ring. The oval-shape sapphire, with baguette-cut diamond line sides and pave-set diamond surround, to the tapered band. *Estimated dimensions of sapphire 7.5 by 6.5 by 4mms. Estimated total diamond weight 1ct. Italian marks. Ring size L 1/2. Weight 7.6gms.*

£800-1,200 (plus 27.6% BP*)

376

A pair of diamond brooches. Of bi-colour design, each comprising a brilliant-cut diamond openwork lattice. *Estimated total diamond weight 2.25cts. Stamped 750. Length 5.7cms each. Weight 35.5gms.*

£900-1,400 (plus 27.6% BP*)

377

A sapphire and diamond cluster ring. The oval-shape sapphire, with brilliant-cut diamond scalloped surround and baguette-cut diamond sides. *Estimated dimensions of sapphire 8 by 6 by 2.7mms. Estimated total diamond weight 0.65ct. Ring size P. Weight 4.8gms.*

£900-1,400 (plus 27.6% BP*)

378

A pair of 18ct gold ruby and diamond earrings. Each designed as an oval-shape ruby curved line, to the scrolling panel side and brilliant-cut diamond line highlight. *Estimated total diamond weight 0.25ct. Hallmarks for London, 2001. Length 2.2cms. Weight 13.1gms.*

£1,200-1,800 (plus 27.6% BP*)

379

CARTIER - an 18ct gold bangle. Designed as two, bi-colour, interlocking loops. *Signed Cartier, C73362. Swiss convention marks. Inner diameter 6.3cms. Cartier size 63. Weight 65gms.*

£1,500-2,000 (plus 27.6% BP*)

380

A diamond and enamel locket pendant. The blue enamel and diamond oval locket, with Arabic script highlight, suspended from a single-cut diamond surmount and bar-link chain. *Estimated total diamond weight 1.75cts. Length of pendant 5.5cms. Length of chain 70.5cms. Weight 47.6gms.*

£1,200-1,800 (plus 27.6% BP*)

381

A pair of 18ct gold diamond earrings. Each designed as a graduated circular-cut diamond duo, with chevron surmount. *Total diamond weight 2.60cts, principal diamonds estimated I-J colour, VS clarity. Hallmarks for Birmingham, 1986. Length 2.1cms. Weight 4.6gms.*

£2,000-3,000 (plus 27.6% BP*)

382

A diamond pendant. The square-shape diamond, suspended from a brilliant-cut diamond articulated line, to the integral trace-link chain. *Principal diamond weight 1ct, estimated H-I colour, SI clarity. Total diamond weight 1.75cts. Length of pendant 3.2cms. Weight 4.8gms.*

£2,500-3,500 (plus 27.6% BP*)

383

A coloured diamond and diamond ring. The rectangular-shape Fancy Light Yellow diamond, weighing 2.04cts, with brilliant-cut diamond surround, to the rectangular-shape diamond sides and pave-set diamond shoulders. *With report 2155925345, dated 13th March 2014, from the GIA, stating natural colour, VS2 clarity. Estimated total diamond weight 2.90cts. Stamped 750. Ring size I. Weight 6.7gms.*

£3,000-4,000 (plus 27.6% BP*)

384

A diamond single-stone ring. The old-cut diamond, with similarly-cut diamond line shoulders. *Principal diamond weight 1.42cts, estimated I-J colour, SI clarity. Stamped Plat. Ring size N. Weight 3.7gms.*

£3,000-4,000 (plus 27.6% BP*)

385

A diamond line bracelet. Comprising fifty-one vari-cut diamond links, to the push clasp. Marked to clasp, indistinct. *Estimated total diamond weight 5.10cts, G-H colour, VS-SI clarity. Length 18.6cms. Weight 11.2gms.*

£3,500-4,500 (plus 27.6% BP*)

386

CARTIER - a mid 20th century platinum diamond bracelet. Designed as a brilliant-cut diamond line, with partially concealed push-piece clasp. *Signed Cartier. Estimated total diamond weight 3.50cts. Length 16.4cms. Weight 19.5gms.*

£7,000-9,000 (plus 27.6% BP*)



381

379

383

380

385

375

377

382

386

376


384

378

387

CARTIER - an 18ct gold diamond 'Love' ring. The polished band, with brilliant-cut diamond collet motif. *Signed Cartier, NG 5999. Estimated total diamond weight 0.20ct. Italian marks. Ring size K 1/2. Cartier size 51. Weight 4.4gms.*

£700-900 (plus 27.6% BP*)

388 

CARTIER - a 'Love' bangle. The polished bangle, with screw head motif. *Signed Cartier, EZQ098. Stamped Au750. Inner diameter 5.6cms. Cartier size 17. Weight 19.6gms. With maker's case and certificate.*

£1,000-1,500 (plus 27.6% BP*)

389


VAN CLEEF & ARPELS - an 18ct gold diamond floral ring. The brilliant-cut diamond, raised within a similarly-cut diamond petal quatrefoil, to grooved, asymmetric shoulders. *Signed VCA, BL8699. Estimated total diamond weight 0.45ct, H-I colour, VS clarity. French assay marks. Ring size M. Weight 5.6gms.*

£700-900 (plus 27.6% BP*)

390

An 18ct gold emerald and diamond cluster ring. The rectangular-shape emerald, with brilliant-cut diamond scalloped surround. *Estimated dimensions of emerald 7 by 5.2 by 3.9mms. Estimated total diamond weight 1ct. Stamped 18ct. Ring size N1/2. Weight 4.1gms.*

£900-1,400 (plus 27.6% BP*)

391 

An 18ct gold diamond single-stone ring. The brilliant-cut diamond weighing 0.72ct, with tapered shoulders. *With report 2181725345, dated 12th of September 2017, from the GIA, stating F colour, VS2 clarity. Hallmarks for London, 2002. Ring size L. Weight 2.9gms.*

£1,000-1,500 (plus 27.6% BP*)

392

A sapphire and diamond cluster ring. The oval-shape sapphire, with brilliant-cut diamond scalloped surround, to the similarly-cut diamond fleur-de-lis shoulders. *Estimated dimensions of sapphire 7.5 by 5.5 by 3.5mms. Estimated total diamond weight 0.90ct. Ring size O. Weight 4.1gms.*

£900-1,400 (plus 27.6% BP*)

393

A pair of diamond stud earrings. Each designed as a brilliant-cut diamond, with similarly-cut diamond halo. *Principal diamonds total weight 1.04cts, estimated G-H colour, SI clarity. Stamped 750. Diameter 0.7cm. Weight 2.5gms.*

£1,200-1,800 (plus 27.6% BP*)

394

An 18ct gold diamond pendant. The brilliant-cut diamond, with similarly-cut diamond halo, suspended from a 9ct gold fancy-link chain. *Principal diamond weight 1ct, estimated G-H colour, SI2-P1 clarity. Hallmarks for Birmingham and Sheffield. Diameter of pendant 1cm. Length of chain 40cms. Total weight 2.8gms.*

£1,800-2,400 (plus 27.6% BP*)

395

A tourmaline, emerald and diamond dress ring. The oval-shape purplish red tourmaline, with pear-shape emerald cabochon and calibre-cut diamond three-row gallery. *Estimated dimensions of tourmaline 17.4 by 13.2 by 8.4mms. Estimated total diamond weight 2.50cts. Stamped 18K 750. Swiss convention marks. Ring size M1/2. Weight 22gms.*

£1,200-1,800 (plus 27.6% BP*)

396

CARTIER - an 18ct gold 'Astro Love' ring. The screw head motif ring, comprising three sections pivoted to form a spherical pendant. *Signed Cartier, 149979. Swiss convention marks. Ring size I. Cartier size 48. Weight 11.7gms.*

£400-600 (plus 27.6% BP*)

397

CARTIER - an 18ct gold 'Love' bangle. The polished bangle, with screw head motif. *Signed Cartier, CNX927. Swiss convention marks. Inner diameter 6cms. Cartier size 18. Weight 34.5gms. With screwdriver.*

£2,500-3,000 (plus 27.6% BP*)

398

A 9ct gold and silver, peridot and diamond ring. The oval-shape peridot collet, with calibre-cut diamond tapered sides, to the circular-cut diamond openwork surround. *Estimated dimensions of peridot 11 by 8.4 by 6.3mms. Estimated total diamond weight 1.35cts. French assay marks. Approximate ring size L. Weight 6.7gms.*

£1,500-2,000 (plus 27.6% BP*)

399

A mid 20th century platinum emerald and diamond cluster ring. The square-shape emerald, with brilliant-cut diamond surround, to the stylised fleur-de-lis shoulders. *Estimated dimensions of emerald 9.4 by 9.1 by 6.4mms. Estimated total diamond weight 3.50cts, I-J colour, SI1-P1 clarity. Stamped Platinum, partially indistinct. Ring size O. Weight 9.2gms.*

£1,800-2,400 (plus 27.6% BP*)

400

A sapphire and diamond cluster ring. The square-shape sapphire, with circular-cut diamond double surround and similarly-cut diamond line shoulders. *Estimated dimensions of sapphire 6.3 by 5.9 by 3.2mms. Estimated total diamond weight 0.80ct. Stamped 18CT. Ring size L. Weight 5.7gms.*

£2,000-3,000 (plus 27.6% BP*)

401

An 18ct gold diamond cluster ring. The old-cut diamond, raised within a similarly-cut diamond scalloped surround. *Estimated total diamond weight 2cts, H-I colour, P1-P2 clarity. Hallmarks for Birmingham, 1994. Ring size N. Weight 7.5gms.*

£1,800-2,500 (plus 27.6% BP*)

397



388



398



401



396



393



395



399



389



394



387



390



392



400



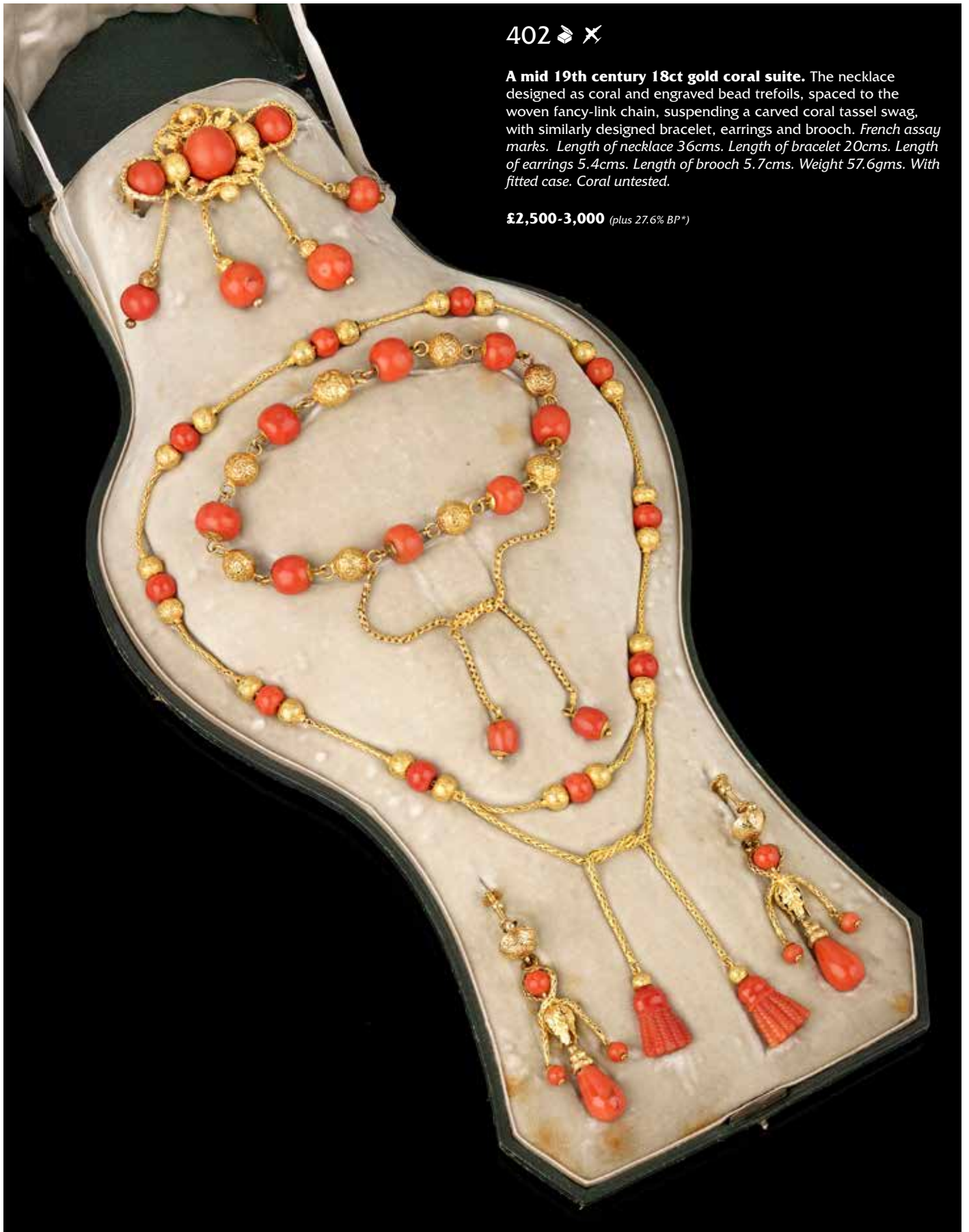
391



402  

A mid 19th century 18ct gold coral suite. The necklace designed as coral and engraved bead trefoils, spaced to the woven fancy-link chain, suspending a carved coral tassel swag, with similarly designed bracelet, earrings and brooch. *French assay marks. Length of necklace 36cms. Length of bracelet 20cms. Length of earrings 5.4cms. Length of brooch 5.7cms. Weight 57.6gms. With fitted case. Coral untested.*

£2,500-3,000 (plus 27.6% BP*)



BP* - Buyer's Premium of 23% (plus VAT) or 27.6% (VAT included)



403

A garnet and diamond ring. The pear-shape garnet cabochon 'hearts', with circular-cut diamond surround and bow surmount, to the foliate band. *Estimated dimensions of one garnet 8.5 by 6.5 by 3.1mms. Estimated total diamond weight 0.15ct. Ring size P. Weight 3.4gms.*

£500-700 (plus 27.6% BP*)

404 ✕

A late Victorian gold coral brooch. Carved to depict a coral bust of a young child, atop golden outstretched wings. *Length 4.4cms. Weight 9.8gms. Coral untested.*

£500-700 (plus 27.6% BP*)

405

An early Victorian 18ct gold turquoise bracelet. Designed as a foliate engraved bow with buckle motif and turquoise highlights, suspending similarly-designed drops, to the back-chain and barrel clasp. *Length 18.3cms. Weight 13.6gms.*

£450-650 (plus 27.6% BP*)

406

A late Georgian 18ct gold, turquoise and sapphire locket. The pink sapphire and turquoise floral cluster and cannetille surround, to the textured heart, suspended from a turquoise accent cannetille loop and late Victorian 9ct gold grooved belcher-link chain. *Length of pendant 3.6cms. Length of chain 49cms. Total weight 12.3gms.*

£500-700 (plus 27.6% BP*)

407

A bracelet. The geometric motif belcher-link chain, with emerald ring accent, textured hand clasp. *Length 20cms. Weight 12.9gms.*

£500-700 (plus 27.6% BP*)

408

An early Victorian 18ct gold diamond snake ring. Designed as a coiled snake, with rose-cut diamond eyes and crest, to the foliate engraved head. *French marks. Ring size J. Weight 3gms.*

£500-700 (plus 27.6% BP*)

409

A late Georgian gold foil back amethyst sentimental brooch. The oval foil back amethyst, with triple ouroboros surround, each mouth suspending either a heart, padlock or key on snake-link chain. *Length 3.6cms. Weight 6.7gms.*

£650-850 (plus 27.6% BP*)

410

A mid Victorian 18ct gold garnet snake necklace. The stylised scrolling head and heart-shape drop, with vari-shape garnet cabochon highlights, to the graduated snake-link chain. *Estimated dimensions of principal garnet 11.5 by 9mms. Length 36cms. Weight 21.2gms.*

£1,500-2,000 (plus 27.6% BP*)

411

A late 19th century 18ct gold, enamel and split pearl hinged bangle. The oval enamel panel depicting a maiden placing a rose wreath over a flaming heart with putto attendants, to the split pearl surround and grooved, hinged bangle sides. *Inner diameter 5.9cms. Total weight 21.8gms.*

£700-900 (plus 27.6% BP*)

412 ✕

A pair of late Victorian coral earrings. Each designed as a tapered drop fringe, suspended from a graduated, segmented oval and bar line, to the bead surmount. *Length 6.2cms. Weight 8.3gms. Coral untested.*

£1,000-1,500 (plus 27.6% BP*)

413

An early 19th century gold, topaz and chrysoberyl bracelet. The textured and polished mesh bracelet, with bead terminal sides, to the pink topaz and chrysoberyl cannetille clasp. *Length 17cms. Weight 34gms.*

£1,500-2,000 (plus 27.6% BP*)

414 

An 18ct gold and platinum, Thai ruby and diamond three-stone ring. The cushion-shape ruby, weighing 1.13cts, with old-cut diamond sides and rose-cut diamond accents, to the scrolling gallery. *With report 5776-5011, dated 24th March 2016, from GCS, stating Thailand, no heat. Total old-cut diamond weight 1.66cts, estimated H-J colour, SI clarity. French marks. Ring size P. Weight 4.8gms.*

£8,000-12,000 (plus 27.6% BP*)



404



405



411



408



406



410



409



412



414



403



407

413



415

A Georgian gold agate and hair memorial bracelet. Comprising five brown jasper agate cabochon links, to the glazed woven hair memorial clasp inscribed 'Sarah Gibson, Aged 17, 1779'. Length 18.2cms. Total weight 29.7gms.

£500-700 (plus 27.6% BP*)

416

An early Victorian 18ct gold chrysoprase brooch. The pear-shape chrysoprase cabochon, detachable from an oval chrysoprase cabochon, each with scrolling floral surround. Length 7.3cms. Weight 14.3gms.

£500-700 (plus 27.6% BP*)

417

An early 19th century silver and gold, topaz and diamond brooch. The cushion-shape foil back orange topaz, with old-cut diamond border, to the similarly-cut diamond foliate surround. Estimated total diamond weight 1.50cts. Length 2.7cms. Weight 8gms.

£500-700 (plus 27.6% BP*)

418

A 19th century 15ct gold diamond and enamel bird brooch. The rose-cut diamond, pave-set bird, with red and green enamel highlights and ruby eye. Length 3.9cms. Weight 11.2gms.

£600-800 (plus 27.6% BP*)

419

An early 19th century 12ct gold portrait miniature memorial brooch. Of oval outline, depicting a gentleman in period clothing, to the foliate engraved scroll surround, with hair work glazed reverse. Length 8cms. Weight 62.3gms.

£600-800 (plus 27.6% BP*)

420

A late Victorian 18ct gold buckle. Of oval outline, designed as a coiled snake. *Maker's mark attributed to Paul Robin. French assay marks.* Length 5.5cms. Weight 27.9gms.

£800-1,200 (plus 27.6% BP*)

421

A late Victorian gold cat's-eye chrysoberyl and diamond cluster brooch. The oval cat's-eye chrysoberyl cabochon, with old-cut diamond surrounds. Estimated dimensions of cat's-eye chrysoberyl 11 by 8.5 by 6.3mms. Estimated total diamond weight 2.25cts. Length 2.3cms. Weight 7.4gms.

£900-1,400 (plus 27.6% BP*)

422 

An early 19th century silver and gold, diamond portrait miniature clasp. The oval portrait, painted to depict a man in three-quarter profile, with old-cut diamond surround. Estimated total diamond weight 1.90cts. Austrian marks. Length 4.8cms. Total weight 20gms. With period case.

£1,200-1,800 (plus 27.6% BP*)

423

An Art Nouveau 18ct gold carnelian signet ring. The circular carnelian intaglio, carved to depict a figure holding a staff, to the female nude and Satyr shoulders with goat and grotesque mask and foliate highlights. French assay marks. Approximate ring size Q. Weight 14.2gms.

£1,500-2,000 (plus 27.6% BP*)

424

A late Victorian 18ct gold diamond and enamel necklace. Comprising a series of black and white spotted enamel scrolling foliate links, with old-cut diamond and similarly-enamelled disc spacers, to the hook clasp and later belcher-link extension. Estimated total diamond weight 0.45ct. Length 36cms. Weight 20.4gms.

This piece is in the manner of Carlo Giuliano.

£1,500-2,000 (plus 27.6% BP*)



424



419



420



421



423



415



416



417



418



422

Dear ...
very ...
...
to my ...
by help...

Fellows

Established 1876

Auctioneers & Valuers
Antiques | Jewellery | Watches

Fellows at The Game Fair

26th July - 28th July

Stand F606

Meet members of the team at this year's event at Hatfield House, Hertfordshire, for free valuations as well as previews of future auctions and enjoy a cooling refreshment.

Head Office & Saleroom | 0121 212 2131

Augusta House | 19 Augusta Street | Birmingham B18 6JA

London Office | 020 7127 4198

29 Charles Street | Mayfair | London W1J 5DT

www.fellows.co.uk | Free, no-obligation valuations available

Fellows

Established 1876

Sales Results For Antique & Modern Jewellery : 16/05/2019

1	£1,300	63	£3,600	140	£740	223	£5,700	303	£1,500
2	£500	64	£3,700	141	£1,400	228	£30,000	304	£760
3	£600	66	£640	142	£940	231	£620	306	£2,100
4	£920	69	£1,500	144	£1,700	234	£1,200	307	£980
5	£560	70	£1,100	145	£2,600	235	£6,200	308	£1,200
6	£1,500	73	£2,700	149	£3,000	237	£3,900	311	£1,000
7	£320	74	£2,900	151	£1,000	239	£4,100	312	£740
8	£740	75	£3,000	153	£1,000	240	£18,000	315	£2,700
9	£1,000	76	£1,900	154	£1,600	241	£1,300	317	£2,000
10	£720	77	£980	155	£2,700	242	£600	318	£720
11	£800	78	£440	157	£5,700	243	£1,300	319	£1,100
12	£3,800	80	£4,000	159	£1,700	245	£1,000	320	£1,400
13	£1,900	84	£1,100	160	£740	247	£2,700	321	£1,000
14	£960	85	£1,100	161	£660	249	£1,800	322	£1,600
16	£3,100	86	£860	163	£960	250	£5,000	323	£2,000
17	£3,200	87	£1,800	167	£1,300	252	£3,900	324	£1,400
18	£2,600	88	£860	168	£6,400	253	£820	327	£6,400
19	£2,500	90	£1,100	171	£820	254	£1,000	328	£1,100
20	£6,200	91	£1,300	172	£740	255	£1,900	329	£1,500
21	£1,200	92	£1,800	174	£1,000	257	£2,500	330	£960
22	£680	93	£2,000	175	£1,300	259	£3,000	331	£780
23	£980	94	£1,400	178	£1,500	263	£6,100	334	£1,100
24	£840	95	£2,000	180	£900	264	£9,100	335	£1,500
25	£2,900	96	£1,800	182	£1,200	265	£1,900	340	£860
27	£1,200	99	£520	187	£2,300	267	£2,000	342	£1,200
29	£2,400	100	£1,500	191	£8,400	268	£2,100	343	£1,800
30	£2,100	102	£2,700	193	£620	269	£3,400	344	£1,400
31	£2,000	107	£3,500	194	£740	270	£1,900	345	£2,100
32	£2,700	108	£8,700	195	£1,600	271	£1,800	349	£1,100
34	£8,700	109	£10,000	196	£1,700	273	£880	350	£1,600
35	£580	111	£1,300	197	£1,400	274	£1,200	353	£2,000
36	£860	113	£1,300	199	£3,500	275	£740	357	£4,500
37	£960	115	£1,100	200	£6,000	276	£2,000	358	£1,400
38	£800	116	£3,400	201	£5,400	277	£2,400	359	£800
39	£1,200	119	£5,800	202	£18,000	278	£860	362	£2,100
41	£1,000	120	£1,200	203	£620	280	£1,100	365	£3,600
43	£860	121	£500	204	£1,300	281	£2,200	367	£3,000
44	£3,600	122	£780	205	£1,400	283	£6,000	368	£5,200
45	£8,000	123	£1,000	206	£1,100	285	£750		
46	£6,800	124	£3,100	207	£1,200	286	£2,100		
47	£1,100	126	£1,300	209	£2,000	287	£1,800		
48	£920	127	£1,900	210	£2,200	288	£2,200		
49	£880	128	£320	211	£4,700	289	£2,100		
50	£1,900	129	£2,100	212	£16,500	291	£3,300		
51	£4,800	130	£540	214	£7,000	292	£4,100		
56	£1,800	131	£560	215	£1,300	293	£1,600		
57	£980	132	£820	216	£860	294	£740		
58	£820	133	£460	217	£1,300	297	£1,600		
60	£2,500	134	£1,200	218	£2,000	298	£1,700		
61	£1,900	135	£1,800	219	£6,200	299	£1,400		
62	£3,300	137	£1,300	221	£6,800	301	£4,200		

Fellows

Established 1876

Live Auctions

July	Jewellery & Pawnbroker Jewellery	Thursday 18th at 10am
August	Jewellery & Pawnbroker Jewellery	Thursday 8th at 10am
	The Watch Sale	Tuesday 13th at 11am
	Jewellery & Pawnbroker Jewellery	Thursday 22nd at 10am
August	Jewellery & Pawnbroker Jewellery	Thursday 6th at 10am
	Online Jewellery & Costume Jewellery	Ends Thursday 6th at 12pm
	The Watch Sale	Tuesday 18th at 11am
	Jewellery & Pawnbroker Jewellery	Thursday 20th at 10am
September	Fine Jewellery	Thursday 12th at 11am
	Antiques, Silver & Collectables	Monday 16th at 10am
	Jewellery & Pawnbroker Jewellery	Thursday 19th at 10am
	Watches	Monday 23rd at 10am
	The Designer Collection	Monday 30th at 11am

Timed Auctions**

Online Jewellery & Costume Jewellery	Ends Thursday 8th August at 11am
Online Jewellery	Ends Thursday 5th September at 11am
Online Watches & Watch Accessories	Ends Monday 23rd September at 10am

** Please note that these auctions are timed sales hosted by Fellows Live, more information can be found on our website.

Dates are subject to change, please check the website for the definitive auction list.

Fellows recommend that all bidders and buyers read our conditions of buying and buyer's premium available on our website.

For further information please contact:

Jewellery
Heather Bailey
heather@fellows.co.uk
0121 212 6303

Watches
Laura Bishop
laurab@fellows.co.uk
0121 212 5506

Silver & Coins
Alison Jakeway
alisonj@fellows.co.uk
0121 212 2131

Antiques & Fine Art
Kevin Jackson
kevin@fellows.co.uk
0121 212 2131

Fellows

Established 1876

IMPORTANT NOTICES FOR PURCHASERS

IMPORTANT NOTICE TO PROSPECTIVE BUYERS OF GEMSTONES/JEWELS

We recommend that you view any items you intend to purchase as refunds will not be given for buyer's remorse. This doesn't affect your statutory rights.

Notes 1 - Coloured Gemstones

Purchasers are advised that whilst great care has been taken in the examination of gemstones, it is not possible to test every gemstone within the constraints of time and equipment available outside of laboratory conditions. Any gemstone not provided with a laboratory report has been assessed by Fellows within the limitations of any mounting and an opinion has been given where possible.

Historically, many coloured gemstones have been subjected to a variety of treatments designed to enhance their appearance. Certain enhancement methods, such as heating, are routinely used to alter aspects of rubies, sapphires, and other gemstones. Oiling is often undertaken to enhance the clarity of emeralds. The international jewellery trade has generally accepted these and other enhancement methods. Some treatments are permanent whereas others may only be semi-permanent, possibly requiring further re-treatment in order to retain their appearance.

Because of the widespread variety of treatments within the jewellery industry, prospective purchasers should assume that all gemstones will have been treated unless statements are made to the contrary. Gemmological reports from internationally recognised Gemmological Laboratories will be noted in the item description where available.

Note 2 - Diamonds

Advancements in technology have led to some diamonds being treated in a number of ways, all designed to improve their appearance or alter their colour. Processes include but are not necessarily limited to: fracture filling, laser drilling, a combination of drilling and filling, HPHT treatment, irradiation and various coatings. Buyers are also alerted to the fact that synthetic diamonds are now produced in large quantities. Whilst every effort is made to identify or disclose treated and synthetic goods, it is not possible for Fellows to guarantee that all diamond set lots do not contain such material.

Fellows do not knowingly offer treated diamonds for sale, unless a gemmological opinion disclosing the type of treatment has been obtained and the treatment would be stated within the item description.

Note 3 - Weights and Measures

Estimated Diamond weights, colours and clarities (see Notes on Diamond Grading terms opposite) given by Fellows are intended as guides for prospective purchasers, with the given limitations of mounts and settings, and are opinions only, not guaranteed by Fellows.

Weights of coloured gemstones offered are extrapolated on the estimated dimensions, using trade standard formulae. Due to the traditional cutting techniques for coloured gemstones it is possible there may be discrepancy between the stated estimate and the unmounted weight.

Fellows uses a Thermo Scientific Nitron Handheld XRF Analyser to test metals. This technology is limited to examining metal to a depth of approximately 8 microns. Fellows does not guarantee the standard of gold or platinum unless an item is hallmarked. Results from electronically tested items should only be used as a guide and with caution, as false readings are possible.

Lengths and weights provided are estimates only.

The information stated in reports is the opinion of the respective laboratory and is not necessarily the opinion of Fellows auctioneers.

Note 4 - Condition Reports

Statements in the catalogue regarding the condition of lots in this sale may appear in the description, however, the absence of such a reference does not imply a lack of damage or wear, or lack of any further faults within the piece.

Please note that Fellows offer condition reports on almost every lot offered. Our condition reports are the opinion of Fellows and should only be referenced as a guide. We highly recommend that a prospective buyer views in person or sends a representative to satisfy themselves to the condition, originality and suitability of a piece(s) before bidding.

Our lots are almost exclusively antique or secondhand and as such should be expected to have small signs of wear and use commensurate with the age of the piece.

Some jewellery sales will also have a condition report banding scale which applies as follows:

A

No obvious faults other than wear in keeping with age and use.

B

Minor faults. There may be abrasion and/or small nicks to gemstones. General moderate wear from use possibly including but not necessarily limited to small dents and deep scratches. The piece may have been altered from its original design but to a reasonable standard.

C

Faults. Gemstones may be noticeably chipped along with abrasion and nicks. Non-principal gems may be deficient. The piece may have noticeable dents/tears or small losses that affect the overall appearance of the design. The piece may have had alterations from its original design that may be apparent under scrutiny.

D

Significant faults. Gemstones may be deficient, chipped or otherwise damaged. The piece may require attention before it is wearable, pins or clasps may be broken. There may be significant dents, tears, losses or alterations to the metal. The piece may have had alterations from its original design that are readily apparent.

E

At Fault. Gems will be damaged and/or deficient. Noticeable damage. The piece is unwearable.

Diamond Grading Terms

DIAMOND COLOUR

GIA	OLD WORLD TERMS	EXPLANATION	GIA	OLD WORLD TERMS	EXPLANATION
D	Finest White (Jager)	Colourless	K	Silver Cape (Top Cape)	Traces of colour. Small stones in this range will 'face up' colourless when mounted but larger stones will be tinted.
E	Finest White (River)	Colourless	L	Silver Cape (Top Cape)	Traces of colour. Small stones in this range will 'face up' colourless when mounted but larger stones will be tinted.
F	Fine White (River)	Colourless	M	Light Cape (Cape)	Traces of colour. Small stones in this range will 'face up' colourless when mounted but larger stones will be tinted.
G	Fine White (Top Wesselton)	Near Colourless: diamonds 'face up' colourless. Slight traces of colour will not be apparent in the mounted stones to other than the trained eye.	N	Light Cape (Low Cape)	Diamonds graded N through Z+ display a yellowish tint even to the untrained eye.
H	White (Top Wesselton)	Near Colourless: diamonds 'face up' colourless. Slight traces of colour will not be apparent in the mounted stones to other than the trained eye.	P	Cape O - R (Very Light Yellow)	Diamonds graded N through Z+ display a yellowish tint even to the untrained eye.
I	White (Top Wesselton)	Near Colourless: diamonds 'face up' colourless. Slight traces of colour will not be apparent in the mounted stones to other than the trained eye.	Z	Cape R - Z (Very Light Yellow)	Diamonds graded N through Z+ display a yellowish tint even to the untrained eye.
J	Top Silver (Top Wesselton)	Near Colourless: diamonds 'face up' colourless. Slight traces of colour will not be apparent in the mounted stones to other than the trained eye.	Z+	Fancy Yellow	Diamonds graded N through Z+ display a yellowish tint even to the untrained eye.

DIAMOND CLARITY

GIA	OLD WORLD TERMS	EXPLANATION	GIA	OLD WORLD TERMS	EXPLANATION
IF	Internally Flawless	No inclusions visible with a 10x lens even to an experienced grader.	S11 & S12	Slightly Included	Noticeable inclusions visible with a 10x lens.
VVS1 & VVS2	Very Very Slightly Included	Minute inclusions, which are difficult, even for experienced graders, to see with a 10x lens.	I1, I2 & I3	Pique 1, 2 & 3	Obvious inclusions, may be visible to the unaided eye, face up. In I3 they may affect the stone's durability.
VS1 & VS2	Very Slightly Included	Minor inclusions, observable with effort with a 10x lens.			

Our lots are almost exclusively antique or secondhand and as such should be expected to have small signs of wear and use commensurate with the age of the piece.

Some jewellery sales will also have a condition report banding scale which applies as follows:

A

No obvious faults other than wear in keeping with age and use.

B

Minor faults. There may be abrasion and/or small nicks to gemstones. General moderate wear from use possibly including but not necessarily limited to small dents and deep scratches. The piece may have been altered from its original design but to a reasonable standard.

C

Faults. Gemstones may be noticeably chipped along with abrasion and nicks. Non-principal gems may be deficient. The piece may have noticeable dents/tears or small losses that affect the overall appearance of the design. The piece may have had alterations from its original design that may be apparent under scrutiny.

D

Significant faults. Gemstones may be deficient, chipped or otherwise damaged. The piece may require attention before it is wearable, pins or clasps may be broken. There may be significant dents, tears, losses or alterations to the metal. The piece may have had alterations from its original design that are readily apparent.

E

At Fault. Gems will be damaged and/or deficient. Noticeable damage. The piece is unwearable.

Catalogue Subscription Service

If you would like to receive catalogues on a regular basis, please mark the appropriate category and return this form with a cheque made payable to Fellows for the full amount.

Subscriptions last for a 12 month period

Jewellery 18 catalogues per year	£120	
Fine Jewellery 6 catalogues per year	£60	
The Watch Sale 6 catalogues per year	£60	
The Designer Collection 5 catalogues per year	£50	
Antiques, Silver & Collectables 5 catalogues per year	£50	
The Gemstone Sale 4 catalogues per year	£35	
Watches & Watch Parts 4 catalogues per year	£35	

All of the above catalogues are available to view **FREE** of charge on our website www.fellows.co.uk

Name (Block Capitals)

Address (Block Capitals)

.....
.....

Post Code Telephone

Signature Date

Email

Fellows Auctioneers Ltd

Terms and Conditions

Fellows Auctioneers Ltd carries on business, including the conduct of Auctions, on the following general conditions. This includes business with Bidders, Buyers, Vendors, consignors, users of this website, and with all those present on the Premises prior to or in connection with an Auction (all as hereinafter defined).

1. INTRODUCTION

1.1 The following defined terms are used in these Conditions :

"Auction" means any Auction conducted by Fellows, either at their premises or elsewhere (including any internet-based auctions);

"Auctioneer" means Fellows or its authorised Auctioneer, as appropriate;

"Bidder" means a bidder at an Auction, including bidders personally present at the venue and those bidding by telephone or over the internet or otherwise;

"Buyer" means the bidder whose bid was the last bid when the Auctioneer brings down the hammer;

"Conditions" means these terms and conditions;

"Consigned Property" means the items consigned by the Vendor to Fellows for offer at an Auction;

"Deliberate Forgery" means an imitation made with the intention of deceiving as to authorship, origin, date, age, period, culture or source but which is unequivocally described by Fellows in the catalogue as being the work of a particular creator and which at the date of the sale had a value materially less than it would have had if it had been in accordance with the description;

"Fellows" means Fellows Auctioneers Ltd;

"Hammer Price" means the level of bidding reached (at or above any reserve) when the Auctioneer brings down the hammer;

"Includes" means "includes but not limited to", and "including" means "including but not limited to"

"Lot" means any Consigned Property accepted by Fellows for offer at Auction;

"Stated Rate" means Fellows' published rates of commission for the time being and value added tax thereon (also available on request);

"Terms of Consignment" means any stipulated terms and rates of commission on which Fellows accepts instructions from Vendors [or their agents];

"Total Amount Due" means the Hammer Price in respect of the Lot sold together with any premium, commission, value added tax chargeable and any additional charges payable by a defaulting Buyer under these Conditions;

"Vendor" means the vendor of an item (including Consigned Property) which is submitted to Fellows for offer for sale at an Auction;

"Website" means this website;

"You" means any user of the Website.

2. WEBSITE

2.1 You may access most areas of the Website without registering your details with us. Certain areas of the Website are only open to you if you register. By accessing any part of the Website, you shall be deemed to have accepted these Conditions notice in full. If you do not accept this legal notice in full, you must leave the Website immediately.

2.2 Fellows may revise these Conditions at any time by updating this posting. You should check the Website from time to time to review the then current legal notice, because it is binding on you. Certain provisions of this legal notice may be superseded by expressly designated legal notices or terms located on particular pages at the Website.

2.3 Unless otherwise stated, the copyright and other intellectual property rights in all material on the Website (including without limitation photographs and graphical this legal notice, your permission to use the Website automatically terminates and you must immediately destroy any downloaded or printed extracts from the Website.

2.4 No part of the Website may be reproduced or stored in any other website or included in any public or private electronic retrieval system or service without Fellows' prior written permission.

2.5 Any rights not expressly granted in these Conditions are reserved.

3. VISITOR MATERIAL AND CONDUCT

3.1 Other than personally identifiable information, which is covered under our Privacy Policy, any material you transmit or post to the Website shall be considered nonconfidential and non-proprietary. Fellows shall have no obligations with respect to such material. Fellows and its designees shall be free to copy, disclose, distribute, incorporate and otherwise use such material and all data, images, sounds, text and other things embodied therein for any and all commercial or non-commercial purposes.

3.2 You are prohibited from posting or transmitting to or from the Website any material: that is threatening, defamatory, obscene, indecent, seditious, offensive, pornographic, abusive, liable to incite racial hatred, discriminatory, menacing, scandalous, inflammatory, blasphemous, in breach of confidence, in breach of privacy or which may cause annoyance or inconvenience; or for which you have not obtained all necessary licences and/or approvals; or which constitutes or encourages conduct that would be considered a criminal offence, give rise to civil liability, or otherwise be contrary to the law of or infringe the rights of any third party, in any country in the world; or which is technically harmful (including, without limitation, computer viruses, logic bombs, Trojan horses, worms, harmful components, corrupted data or other malicious software or harmful data).

3.3 You may not misuse the Website (including, without limitation, by hacking).

3.4 Each registration is for a single user only. Fellows does not permit you to share your user name and password with any other person nor with multiple users on a network.

3.5 Responsibility for the security of any passwords issued rests with you.

4. THE VENDOR

4.1 Fellows shall act as agent of the Vendor only. Any contract for the sale of a Lot will be formed between the Vendor and the Buyer.

4.2 The Vendor warrants and represents to Fellows and the Buyer that the Vendor is the sole and true owner of the Consigned Property or is properly authorised by the sole and true owner to consign it for sale and is able to transfer good and marketable title to the property free from any third party claims. The Vendor warrants and representatives that the Vendor has revealed all pertinent information that the Vendor possesses about the items, including in relation to any repairs or alterations that may have been carried out. The Vendor shall indemnify Fellows and the Buyer against any loss and expense caused by any breach of this clause 4.2.

4.3 The Vendor shall be entitled to place prior to the Auction a reserve on any Lot, being the minimum Hammer Price at which Lot may be sold. Reserves must be reasonable and Fellows may decline to offer goods which in Fellows' opinion would be subject to an unreasonably high reserve (in which case goods carry the storage and insurance charges stipulated in the terms of consignment). Reserves will not be accepted on items with a bottom estimate less than £300. The Auctioneer also reserves the right not to accept items which they deem to be unsuitable for Auction. Any estimate given shall be an opinion and is not an undertaking of any kind.

4.4 A reserve once set cannot be changed except with the written prior consent of Fellows.

4.5 Where a reserve has been placed only Fellows may bid on behalf of the Vendor.

4.6 The Vendor authorises Fellows to deduct commission from any sold items at a rate of 15% (plus VAT) on any item with a hammer price of £3,000 (or under) or 12.5% (plus VAT) on items over £3,000. Loss or liability for damage will be charged at a rate of 1.5% (plus VAT) calculated on the hammer price. A Marketing fee of £10 (plus VAT) will be charged for each Lot, if unsold we will charge a nominal handling fee of £5 (plus VAT). All items below £35 are subject to a minimum fee of £5 (plus VAT) per Lot.

4.7 Fellows will pay the Hammer Price achieved for the Lot (less its commission and applicable fees in accordance with clauses 4.6, 9.2 and 9.3), to the Vendor on receipt of payment of the Total Amount Due in full by the Buyer.

4.8 The Vendor authorises Fellows in their discretion to negotiate a sale by private treaty in the case of a Lot unsold at Auction, in which case the same charges will be payable as if the Lot had been sold at Auction.

4.9 Fellows do not themselves undertake the collection of any items but may, as the Vendor's agent, instruct a contractor on behalf of the Vendor. Fellows accepts no liability for the actions of such contractor who contracts with the Vendor direct.

4.10 Fellows disclaims all liability for items delivered to their saleroom without sufficient sale instructions, and reserves the right to make a minimum warehousing charge of [£1.00] per item per day. Unsold items are subject to the same charges if the Vendor does not remove them within a reasonable time of notification. If not removed within three weeks Fellows reserves the right to sell the items and defray charges from any net proceeds of sale or at the Vendor's expense to consign them to the local authority for disposal. Fellows disclaims any liability for default by the Buyer or for paying out the Vendor before receiving payment by the Buyer.

4.11 Subject to clause 4.9, Fellows holds all items on their premises and in their custody covered against the risks of fire, burglary and water damage on the scale of charges notified in the terms of consignment and payable by the Vendor up to the date of any sale and (in Fellows' discretion) the Buyer thereafter until collection.

4.12 The right of Fellows to bid on behalf of the Vendor is expressly reserved. The Vendor acknowledges that Lots are sold subject to the stipulations of these Conditions in their entirety and on the Terms of Consignment as notified to consignors at the time of the entry of the Lot.

4.13 The Auctioneer reserves the right to dispose of any item that in their opinion is unsaleable. Items, including electrical goods and soft furnishings, which do not comply with current legislation will not be offered at Auction.

4.14 Any items unsold after an Auction will be reoffered in a subsequent Auction at a reduced reserve to be agreed within seven days. The Auctioneer may request the removal of an item if a reduced price cannot be agreed; items not removed within 14 days will be subject to a storage charge.

4.15 A charge of 10% (plus VAT) based on the middle estimate – plus any other charges incurred – may be levied for any Lot withdrawn by the Vendor from offer at an Auction. If the item has to be returned by post (or any other method) the Vendor will be responsible for this charge. These charges are to be paid before the item is returned.

4.16 By submitting the item to Fellows for offer at Auction, the Vendor agrees to the Terms of Consignment and authorises Fellows to deduct the specified charges.

5. PUBLICITY

5.1 Any catalogue and buyer guides are provided for information only and do not form part of these Conditions. The catalogue and the buyer guides may contain additional terms and conditions.

5.2 Fellows reserve the right to use any photographs, background information, and research for publicity purposes both before and after the sale.

6. THE AUCTION

6.1 Any Auction shall be conducted at the absolute discretion of the Auctioneer.

6.2 The Auctioneer shall conduct the Auction with reasonable skill and care. For example, what constitutes a bid shall be at the absolute discretion of the Auctioneer, acting with reasonable skill and care.

6.3 The Auctioneer shall have the right to refuse any bid which does not exceed the previous bid by at least 10% or by such greater proportion as the Auctioneer shall in his or her absolute discretion direct.

6.4 Where two or more bids at the same level are simultaneously received by the Auctioneer, the Auctioneer at his absolute discretion shall determine which bid to prefer. Subject to the foregoing, where two or more bids at the same level are simultaneously received by the Auctioneer, any bid by a Bidder personally present at an Auction shall take preference over any bid submitted by telephone or over the internet. Any bid made or accepted by telephone or over the internet shall be deemed to have been made only if received by the Auctioneer.

- 6.5 Fellows shall have the right, at its absolute discretion, to refuse admission to its premises or attendance at (or participation in) any Auction by any person.
- 7. BIDDERS**
- 7.1 Bidders may be required to register their particulars. Bidders attending in person may be required to satisfy Fellows' security arrangements before entering any part of the premises to view or bid.
- 7.2 You accept full liability for all bids submitted via your My Fellows account. Once a bid has been made by a Bidder on our website, the bid can be lowered or increased up until 9am on the day of the auction. You must sign into your My Fellows account to do this and you will receive an email confirmation for any changes made. Should a bid be placed in error on the website you must contact Fellows immediately. Failure to contact Fellows before the auction takes place will result in liability for the full payment of the item.
- 7.3 Bidders using the live bidding facility on www.fellows.co.uk are agreeing to the terms and conditions of sale for Fellows. Any successful bids using the live bidding facility will be subject to the usual Buyer's Premium, plus VAT.
- 7.4 Subject to clause 6.3, the highest Bidder at the Hammer Price shall be the Buyer. Any dispute about a bid shall be settled at the Auctioneer's absolute discretion.
- 7.5 Bidders are strongly encouraged to attend the Auction in person. Bidders shall be responsible for any decision to bid for a particular Lot and shall be deemed to have carefully inspected and satisfied themselves as to its condition. Neither Fellows nor its employees or agents shall be responsible for any neglect or default in doing or failing to do so.
- 7.6 Bidders are given ample opportunities to view and inspect before any sale and prospective Buyers must satisfy themselves as to all such matters. Neither Fellows or its employees or agents nor the Vendor accept liability for the correctness of such opinions and all conditions and warranties, express, implied or statutory are hereby excluded.
- 8. THE BUYER**
- 8.1 Immediately a Lot is sold, the Buyer shall:
- (a) give to Fellows their name and address and, if requested proof of identity, and pay to Fellows the Total Amount Due.
- 8.2 [Fellows may, at its absolute discretion, agree credit terms with the Buyer before an Auction under which the Buyer may be entitled to take possession of Lots up to an agreed value in advance of payment by a stipulated future date of the Total Amount Due.]
- 8.3 Cheques shall not be acceptable by Fellows (unless Fellows in its absolute discretion permits payment by such method) nor are third party references or credit facilities with other Auction houses. If a cheque is tendered Fellows reserves the right to instruct its bank to check the Buyer's status and account balance before exercising any discretion. Any credit arrangement must be settled at least 4 days before the relevant sale. Any permitted payment by credit card shall carry an extra charge to the Buyer of such percentage of the Total Amount Due as is displayed on the premises.
- 8.4 Any payments by a Buyer to Fellows may be applied by Fellows towards any sums owing from that Buyer to Fellows on any account whatever without regard to any directions of the Buyer or his agent, whether express or implied.
- 9. THE PURCHASE PRICE**
- 9.1 On the first £100,000 of the Hammer Price (of any individual Lot) the buyer will pay the Hammer Price and a premium of 23% (Plus VAT). The said premium not being negotiable and payable by ALL Buyers. The Vendor authorises Fellows to retain beneficially the premium payable by Buyers. Value Added Tax is charged at the rate prevailing by law at the date of sale.
- 9.2 On the excess over £100,000 of the Hammer Price (of any individual Lot), the Buyer will pay the Hammer Price and a premium of 15% (plus VAT). The said premium not being negotiable and payable by ALL Buyers. The Vendor authorises Fellows to retain beneficially the premium payable by Buyers. Value Added Tax is charged at the rate prevailing by law at the date of sale.
- 9.3 Value Added Tax on the Hammer Price is imposed on all items affixed with an asterisk thus - *.
- 9.4 Buyers using the Fellows Live bidding platform will not pay any additional commission, just the buyer's premium. Buyers will pay an additional commission charge of 4.95% + VAT of the hammer price if lots are successfully purchased online via the saleroom. Buyers using Easy Live Auction can choose whether to pay a live bidding charge of 3% + VAT of the hammer price, or a fixed fee of £3 per sale. Buyers will pay a commission charge of an additional 5% + VAT of the hammer price if lots are successfully purchased online via Live Auctioneers.
- 9.5 Non UK or EU VAT registered buyers can have most classes of VAT refunded on their purchases - please note that auctioneers are under no obligation to provide VAT refunds, although many will offer this service. HMRC are the ultimate refunding authority. VAT refunds are subject to provision of statutory export/import documentation. HMRC have decreed that VAT on buyer's premium is always payable whether the buyer is domiciled in the UK, the EU or outside the EU or wherever the goods are to be sent. So auctioneers cannot refund VAT on buyer's premium if the goods are sold under normal VAT rules.
- 10. TITLE AND COLLECTION OF PURCHASES**
- 10.1 The ownership of any Lot purchased shall not pass to the relevant Buyer until they have made payment in full to Fellows of the Total Amount Due.
- 10.2 Buyers shall at their own risk and expense take away any Lot that they have purchased and paid for not later than 2 working days following the day of the Auction after which they shall be responsible for any removal, storage and insurance charges.
- 11. DEFAULT BY BUYER OR VENDOR**
- 11.1 As Fellows act as agent for the Vendor, Fellows is not responsible for default by the Vendor or the Buyer.
- 11.2 If any Lot is not paid for in full and taken away in accordance with these Conditions, or if there is any other breach of these Conditions, Fellows as agent for the Vendor shall at its absolute discretion and without prejudice to any other rights it may have, be entitled to exercise all or any of the following rights and remedies:
- (a) to proceed against the Buyer for an action for debt or damages for breach of contract;
- (b) to rescind the sale of that Lot and/or any other Lots sold by Fellows to the defaulting Buyer;
- (c) to re-sell the Lot by Auction or private treaty. If a lower Hammer Price is achieved on the re-sale than that achieved on the original sale the defaulting Buyer shall be liable for the difference (after crediting any part payment and adding any re-sale costs). Fellows will account to the Vendor for any surplus achieved on a re-sale, however, it shall only be required to account to the Vendor for any resulting deficiency in the event that it receives payment of such sum in full from the defaulting Buyer.
- (d) to remove, store and insure the Lot at the expense of the defaulting Buyer and, in the case of storage, either at Fellows' premises or elsewhere;
- (e) to charge interest at a rate not exceeding [1.5%] per month on the total amount due to the extent it remains unpaid for more than 2 working days after the sale;
- (f) to retain that or any other Lot sold to the defaulting Buyer until that Buyer pays the total amount due;
- (g) to reject or ignore bids from the defaulting Buyer at future Auctions or to impose conditions before any such bids shall be accepted;
- (h) to apply any proceeds of sale of other Lots due or in future becoming due to the defaulting Buyer towards the settlement of the total amount due and to exercise a lien on any of the Buyer's property in Fellows' possession for any purpose.
- 12. DELIBERATE FORGERIES**
- 12.1 Subject to clause 12.2, any representation or statement by Fellows (including in any catalogue) as to authorship, genuineness, origin, date, age, provenance, condition or estimated selling price is a statement of opinion only. Prospective Buyers are given ample opportunities to view and inspect before any sale and prospective Buyers must satisfy themselves as to all such matters. Neither Fellows or its employees or agents nor the Vendor accept liability for the correctness of such opinions and all conditions and warranties, express, implied or statutory are hereby excluded.
- 12.2 Any Lot which proves to be a Deliberate Forgery may be returned to Fellows by the Buyer within 21 days of the Auction provided it is in the same condition as when bought, and is accompanied by particulars identifying it from the relevant catalogue description and a written statement of defects. If Fellows is satisfied from the evidence presented that the Lot is a Deliberate Forgery Fellows shall refund the money paid by the Buyer for the Lot (but not the amount of any consequential loss, damages, expenses or interest) provided that (1) if the catalogue description reflected the accepted view of scholars and experts as at the date of sale or (2) the Buyer personally is not able to transfer a good and marketable title to Fellows.
- 13. LIMITATIONS OF LIABILITY**
- 13.1 All members of the public on the premises are there at their own risk and must note the lay-out of the accommodation and security arrangements.
- 13.2 Any indemnity under these Conditions shall extend to all actions, costs, expenses, claims and demands whatsoever suffered or incurred by the person entitled to the benefit of it and Fellows declares itself to be a trustee of the benefit of every such indemnity so far as it is expressed to be for the benefit of its employees and agents.
- 13.3 While Fellows endeavours to ensure that the information on the Website is correct, Fellows does not warrant the accuracy and completeness of the material on the Website. Fellows may make changes to the material on the Website, or to the products and prices described in it, at any time without notice. The material on the Website may be out of date, and Fellows makes no commitment to update such material.
- 13.4 The material on the Website is provided "as is", without any conditions, warranties or other terms of any kind. Accordingly, to the maximum extent permitted by law, Fellows provides you with the Website on the basis that Fellows excludes all representations, warranties, conditions and other terms which, but for this legal notice, might have effect in relation to the Website.
- 14. GENERAL**
- 14.1 Any notice to any Buyer, Vendor, Bidder or viewer may be given by first class mail or email in which case it shall be deemed to have been received by the addressee 48 hours after posting or sending. All notices to Fellows must be sent in writing and email is not acceptable.
- 14.2 Any indulgence extended to any person by Fellows notwithstanding the strict terms of these Conditions or the Terms of Consignment shall affect the position at the relevant time only and in respect of that particular concession only; in all other respects these Conditions shall be construed as having full force and effect.
- 14.3 These Conditions and any disputes or claims arising out of or in connection with it or their subject matter or formation (including non-contractual disputes or claims) are governed by and construed in accordance with the law of England.
- 14.4 The parties irrevocably agree that the courts of England have exclusive jurisdiction to settle any dispute or claim that arises out of or in connection with the Agreement or its subject matter or formation (including non-contractual disputes or claims).
- 15. SHIPPING**
- 15.1 We offer a tracked and insured shipping service for all items with the exception of those in our Antiques, Silver & Collectables sales.
- 15.2 Items posted outside of the UK will incur a £30 charge
- 15.3 Within the UK, hammer totals under £100 will incur a £10 charge
- 15.4 Hammer totals over £100 will incur a £20 charge
- 15.5 Larger items, as well as those exceeding a value of £20,000 or weighing in excess of 2kg may be subject to additional fees
- 15.6 If you have recently moved or wish to have your items sent to a different address, please contact us prior to the sale. We cannot accept alternative addresses for first-time buyers and your items will be sent the address on the ID/payment card. If you pay by bank transfer we can ship to any worldwide address of your choice.

Fellows

Established 1876

Contact Information

Directors

Stephen Whittaker BA (Hons)

Jayne Whittaker

Ben Griffiths BSc (Hons)

Departments

Customer Services

0121 212 5508

info@fellows.co.uk

Victoria Calvera

Jade Daniels MIWFM

Kain Holroyd

Kasia McGovern-Hay

Gemma Sheldon

Photography

0121 212 2131

photography@fellows.co.uk

Francesca Allen BA (Hons)

Claire Cleaver

Helen Nodding BA (Hons)

Tiago Paulino

Polly Shave MA (Hons)

Marketing

0121 212 5500

marketing@fellows.co.uk

Liam Bolland BA (Hons)

Howard Cheung BA (Hons)

Jorden Guest MA (Hons)

Luke Poole BA (Hons)

Alexandra Whittaker BA (Hons)

Nicola Whittaker Bsc (Hons), Cert. GA

London Office

0207 127 4198

london@fellows.co.uk

Francesca Garvey-Hughes BA (Hons), FGA

Prudence Hopkins

Oliver Horner DGA

Jonathan Huish BA (Hons)

Annabel Zarandi BA (Hons)

Finance

0121 212 2131

wendy@fellows.co.uk

Wendy Butler

Angela Donnelly BA (Hons) ACMA

Gemma Wilkes

Specialist Departments

Jewellery

0121 212 6303

jewellery@fellows.co.uk

Heather Bailey

Lindsay Beardmore FGA, DGA

Ritsuko Birch BA (Hons), DGA, Cert GA

Jenny Darcy BA (Hons)

Alexander Duffy BSc (Hons), FGA, DGA

Penelope Gilliver FGA, DGA

Patricia Grant BA (Hons)

Kathryn Hodkin MSci (Hons), FGA, DGA

David Pregun MA (Hons), FGA, DGA

Ben Randall BA (Hons), G.G., A.J.P.

Emma Scriven BA (Hons), FGA, DGA

Emma Testill FGA, DGA

Amanda Zhang FGA, Msc

Watches

0121 212 5506

watches@fellows.co.uk

Laura Bishop MA (Hons)

Amy Hill CertHE

Michael Jagiela

Carrick Matley

Steven Yambo BA (Hons)

Pawnbrokers

0121 212 6308

pawnbroker@fellows.co.uk

Rachel Bache

Kate Bannister

Claire Dodwell

Annaliese Foster BA (Hons)

Antiques, Silver & Collectables

0121 212 6302

antiques@fellows.co.uk

silverdept@fellows.co.uk

Dannielle Blackledge MA (Hons)

Kevin Jackson

Alison Jakeway MA MRICS

Stephen Watton BA (Hons)

Designer Collection

0121 212 6306

thedesignercollection@fellows.co.uk

Sophie Higgs



Birmingham Saleroom

Situated in the heart of Birmingham's Jewellery Quarter, Fellows is easily accessible from all parts of the United Kingdom, Europe and beyond.

Head Office & Saleroom
Augusta House
19 Augusta Street
Birmingham
B18 6JA

Telephone: 0121 212 2131
Email: info@fellows.co.uk

London Office

Fellows' London office offers valuations, please call to arrange a time to visit.

London Office
29 Charles Street
Mayfair
London
W1J 5DT

Telephone: 020 7127 4198
Email: london@fellows.co.uk



Follow us on....



[facebook.com/
fellowsauctions](https://facebook.com/fellowsauctions)



[fellowsauctions](https://instagram.com/fellowsauctions)



[@fellowsauctions](https://twitter.com/fellowsauctions)



youtube.com/fellows1876



Fellows

Established 1876

Head Office & Saleroom: Augusta House | 19 Augusta Street | Birmingham B18 6JA

London Office: 29 Charles Street | Mayfair | London W1J 5DT

Tel 0121 212 2131 | Tel 020 7127 4198 | www.fellows.co.uk