

Fellows  
Established 1876



**Fine Jewellery**

Thursday 12th September 2019

## Free Live Bidding!

Fellows are delighted to announce the introduction of Fellows Live. This is a new bidding platform where all bidders can follow the sale and bid online for **free**. Say goodbye to additional surcharges when it comes to bidding! Anyone using Fellows Live will only have to pay the standard Buyer's Premium (plus VAT), on items purchased using this method.



### Why Buy?

- COMPETITIVE** buyer's premium
- FREE** live online bidding
- FULLY** illustrated catalogue
- EASY** to use, functional website
- ACCURATE** condition reports
- SPECIALISTS** on hand to offer advice
- TRACKED AND INSURED** shipping\*

\*Please contact Fellows for further information.

### Why Sell?

- HIGH PRICES** consistently achieved
- FLEXIBLE** commission rates
- FREE** valuations with no obligation to consign
- RAPID** turnaround for your goods
- TARGETED** advertising to a global audience
- SUPERIOR** quality catalogues
- FULLY** integrated website

## Fine Jewellery

Thursday 12th September 2019  
Starts at 11:00am

Sale to be held in Upstairs Saleroom

### Viewing Times

<b>London</b>	
Tuesday 3rd September 2019	12 noon - 7pm
<b>Birmingham</b>	
Saturday 7th September 2019	11am - 4pm
Tuesday 10th September 2019	10am - 4pm
Wednesday 11th September 2019	10am - 4pm
Thursday 12th September 2019	8.30am - 11am

(Photo ID required)

Please be aware that you will be asked for photographic proof of identification to be allowed access to the viewing.

### Certificated stones

Lot No. 6, 39, 60, 66, 80, 96, 103, 107, 119, 140, 163, 173, 176, 178, 179, 180, 294, 309, 341, 355, 377, 381, 392, 396, 401, 480, 510

### Featured Lots

Lots 12, 65, 73, 78, 82, 253, 438  
(Front Cover)

Lots 79, 81, 97, 106, 297, 307  
(Back Cover)



### Contact the department...

<b>Heather Bailey</b> Senior Specialist 0121 212 6306 heather@fellows.co.uk	<b>Ben Randall</b> Senior Specialist 0121 212 2131 ben@fellows.co.uk	<b>Alex Duffy</b> Junior Cataloguer 0121 212 5503 alex@fellows.co.uk
--	---	---

### Further information

**Additional Images and Condition Reports** can be found online at our website [www.fellows.co.uk](http://www.fellows.co.uk)

**Telephone Bidding** is available if you cannot attend an auction. Please ring 0121 212 2131 to arrange a telephone line.

### Important Notice

Neither Fellows nor the Vendors are responsible for any reference as to the condition of lots listed. The absence of such reference does not imply that a lot is in good condition or free from faults or imperfections. All weights and dimensions are approximate. Purchasers are advised to carefully inspect lots and make their own opinion as to the condition. Please see section 7 under 'Bidders' in our full terms and conditions. View Fellows Important Notices in full and full terms and conditions at the back of the catalogue.

### Key to Symbols

- Item may have export restrictions for customers outside of the EU.
- Lot comes with box.
- Lot comes with Report.
- Available in chocolate in collaboration with The Edible Museum

Follow Us



**1 A pair of mid 20th century platinum diamond butterfly earrings, with ruby eyes.**

Estimated total diamond weight 1.75cts, predominantly VS-SI clarity, H-I clarity.  
Length 2.2cms. 6.7gms.

**£450-650** (plus 27.6% BP\*)

**2 An 18ct gold diamond horse and jockey brooch.**

Estimated total diamond weight 0.65ct.  
Hallmarks for Birmingham, 2002. Length 4.4cms. 18.9gms.  
Engraved 1/100, monogram RH.

**£450-650** (plus 27.6% BP\*)

**3 An 18ct gold diamond and gem-set bombe ring.**

Estimated total diamond weight 0.15ct.  
Gems to include sapphire, yellow sapphire, pink sapphire, amethyst and peridot.  
Hallmarks for London, 2012. Ring size M. 18.2gms.

**£500-700** (plus 27.6% BP\*)

**4 A pair of 18ct gold brilliant-cut 'pink', 'yellow' and near-colourless diamond floral cluster earrings.**

Estimated total diamond weight 0.85ct, VS clarity.  
Hallmarks for London. Length 1.5cms. 6.8gms.  
Diamonds untested for natural colour origin.

**£550-750** (plus 27.6% BP\*)

**5 An 18ct gold oval opal cabochon and diamond cluster ring.**

Opal calculated weight 2.08cts, based on estimated dimensions 12 by 8.1 by 4.6mms.  
Estimated total diamond weight 0.80ct, H-I colour, VS1-SI1 clarity.  
Hallmarks for London, 1977. Ring size M1/2. 4.5gms.

**£700-900** (plus 27.6% BP\*)

**6 A platinum square-shape diamond single-stone ring, with calibre-cut diamond line shoulders.**

With report 2171627463, dated 11th May 2016, from the GIA, stating 1.01cts, E colour, VS2 clarity.  
Estimated total diamond weight 1.50cts.  
Hallmarks for London, 2017. Ring size L. 5gms.

**£2,200-3,200** (plus 27.6% BP\*)

**7 A diamond and pink sapphire flower brooch.**

May be worn as a pendant.  
Total sapphire weight 10.28cts, stamped to mount.  
Total diamond weight 0.73ct, stamped to mount.  
Stamped 750, 18K. Length 5cms. 24gms.

**£600-800** (plus 27.6% BP\*)

**8 A sapphire and diamond flower brooch.**

May be worn as a pendant.  
Total sapphire weight 15.12cts, stamped to mount.  
Total diamond weight 1.80cts, stamped to mount.  
Stamped 750, 18K. Length 6cms. 34.1gms.

**£800-1,200** (plus 27.6% BP\*)

**9 An 18ct gold diamond bow motif hinged bangle.**

Estimated total diamond weight 2.75cts, G-H colour, VS clarity.  
Hallmarks for London, 2017. Inner diameter 5.8cms. 31.2gms.

**£1,500-2,000** (plus 27.6% BP\*)

**10 A baguette-cut diamond full eternity ring.**

Estimated total diamond weight 2.45cts, predominantly H-I colour, VS clarity.  
Stamped K18. Ring size J. 3.6gms.

**£1,000-1,500** (plus 27.6% BP\*)

**11 A graduated brilliant-cut diamond line necklace.**

Estimated total diamond weight 8.50 to 9cts, H-J colour, SI1-P1 clarity.  
Stamped Plat. Length 40.5cms. 26.3gms.

**£2,000-3,000** (plus 27.6% BP\*)

**12 An 18ct gold rectangular-shape diamond single-stone ring, with triangular-shape diamond sides.**

Principal diamond weight 3.26cts.  
With copy of previously associated report 1102643223, dated 24th April 2009, from the GIA, stating F colour, VS2 clarity.  
Principal diamond has been re-cut since report.  
Hallmarks for Birmingham. Ring size M. 4.5gms.

**£18,000-22,000** (plus 27.6% BP\*)



BP\* - Buyer's Premium of 23% (plus VAT) or 27.6% (VAT included)

**13** A late Victorian, silver and 18ct gold Sri Lankan sapphire and rose-cut diamond cluster ring.

**Verbal** from GCS stating Sri Lanka, no heat. Sapphire calculated weight 2.75cts, based on estimated dimensions 9.3 by 6.9 by 5.1mms. Ring size N1/2. 5.1gms.

**£400-600** (plus 27.6% BP\*)

**14** An early 20th century 18ct gold opal and old-cut diamond cluster ring.

Estimated dimensions of opal 8 by 6 by 2mms. Estimated total diamond weight 1.40cts, G-J colour, P1 clarity. Stamped 18ct. Ring size Q. 4.1gms.

**£400-600** (plus 27.6% BP\*)

**15** A mid 20th century 18ct gold cultured pearl and diamond bar brooch.

Estimated total diamond weight 2cts, principal diamonds estimated predominately H-I colour, VS-SI clarity. Stamped 750. Length 8.7cms. 14.5gms.

**£600-800** (plus 27.6% BP\*)

**16** An early 20th century silver and gold, pearl and diamond necklace.

Estimated total diamond weight 0.50ct, H-J colour, SI1-P1 clarity. Length of pendant 3.7cms. Length of chain 38.5cms. 8.3gms. Pearls untested for natural origin.

**£700-900** (plus 27.6% BP\*)

**17** A late Victorian silver and 18ct gold, Burmese ruby and old-cut diamond triple cluster ring.

**Verbal** from GCS, stating Burma, no heat. Ruby total calculated weight 0.98ct, based on estimated dimensions. Estimated total diamond weight 0.75ct, H-I colour, VS-P1 clarity. Ring size M. 3.76gms.

**£400-600** (plus 27.6% BP\*)

**18** A composite mid Victorian silver and 18ct gold, sapphire and circular-cut diamond ring.

Estimated total diamond weight 0.75ct, H-I colour, SI clarity. Ring size L1/2. 4.1gms.

**£400-600** (plus 27.6% BP\*)

**19** A late Victorian silver and gold diamond brooch.

Estimated total diamond weight 6.50 to 7cts, H-J colour, VS2-P1 clarity. Length 6.8cms. 19.3gms.

**£2,500-3,500** (plus 27.6% BP\*)

**20** An early 20th century seed pearl sautoir, with natural pearl and rose-cut diamond bow drop and rose-cut diamond panel clasp.

**Verbal** from GCS stating pearl, natural, saltwater. Estimated dimensions of pearl 7.7 by 8.2 by 6mms. Length 50cms. Length of drop 6cms. 18.2gms.

**£900-1,400** (plus 27.6% BP\*)

**21** An early 20th century gold sapphire, diamond, seed pearl and white enamel brooch.

Sapphire weight 4.79cts. Estimated total old-cut diamond weight 0.10ct, H-I colour, SI2-P1 clarity. Length 3.8cms. 9.4gms.

**£2,500-3,500** (plus 27.6% BP\*)

**22** A star sapphire cabochon dress set, comprising cufflinks and two dress studs.

Sapphire estimated total weight 33cts. Diameter of one cufflink face 1.2cms. Diameter of one stud face 1.1cms. 17.5gms.

**£1,500-2,000** (plus 27.6% BP\*)



**23** A late Victorian silver and gold, banded agate and rose-cut diamond turtle brooch.

Length 2.6cms. 4.3gms.

**£300-400** (plus 27.6% BP\*)

**24** An early 19th century silver and gold, old and rose-cut diamond crescent brooch.

Estimated total old-cut diamond weight 1ct, I-K colour, SI1-P1 clarity.

Length 3cms. 7.3gms.

**£450-650** (plus 27.6% BP\*)

**25** An early 19th century silver and gold cluster ring, with replacement rose-cut diamonds and rubies.

Ring size M1/2. 5gms.

**£550-750** (plus 27.6% BP\*)

**26** A pair of Georgian silver circular and pear-shape paste cluster drop earrings.

Length 5.3cms. 19.3gms.

**£650-850** (plus 27.6% BP\*)

**27** A sapphire and brilliant-cut diamond three-stone ring.

Sapphire weight 1.05cts.

Estimated total diamond weight 0.50ct, G-H colour, SI clarity.

Ring size L1/2. 3.2gms.

**£1,000-1,500** (plus 27.6% BP\*)

**28** A late Victorian 9ct gold, old and rose-cut diamond star brooch.

Estimated total old-cut diamond weight 3 to 3.50cts, H-K colour, SI-P1 clarity.

Stamped 9C. Length 4.5cms. 22.7gms.

**£1,200-1,800** (plus 27.6% BP\*)

**29** A 17th century silver and gold rose-cut diamond bow ring, with arcaded enamel bezel.

Ring size K. 2.9gms.

**£1,200-1,800** (plus 27.6% BP\*)

**30** An 18ct gold cushion-shape diamond ring, with old-cut diamond sides.

Principal diamond estimated weight 2.75cts, tinted colour, P1 clarity.

Estimated total diamond weight 3.50cts.

Hallmarks for London, 1997. Ring size N1/2. 4.8gms.

**£2,200-3,200** (plus 27.6% BP\*)

**31** A late Georgian gold, aquamarine and topaz part set, comprising graduated necklace, cross pendant and two brooches.

Calculated total aquamarine weight 62.01cts.

Calculated total topaz weight 73.77cts.

Length of necklace. Length of pendant. Lengths of brooches. With period case.

**£3,000-4,000** (plus 27.6% BP\*)

**32** A late Victorian silver and gold, old-cut diamond butterfly brooch, with ruby eyes.

Estimated total diamond weight 5cts, G-tinted colour, VS2-P1 clarity.

Length 4.8cms. 9.6gms. With case.

**£4,500-6,500** (plus 27.6% BP\*)



BP\* - Buyer's Premium of 23% (plus VAT) or 27.6% (VAT included)

**33 A light pink topaz, black enamel, pearl and split pearl pendant.**

Topaz weight 31.95cts.  
Length 5cms. 13.1gms.  
Pearls untested for natural origin.

**£500-700** (plus 27.6% BP\*)

**34 An early 20th century silver and gold old-cut diamond floral spray brooch.**

Estimated total diamond weight 3 to 3.25cts, principal two diamonds estimated J-K colour, P1 clarity.  
Length 5.3cms. 11.2gms.

**£800-1,200** (plus 27.6% BP\*)

**35 A late Victorian gold ruby-eyed snake locket necklace.**

Length 38.5cms. 29.3gms.

**£1,200-1,800** (plus 27.6% BP\*)

**36 A pair of garnet cabochon and rose-cut diamond earrings.**

Length 2.9cms. 9.1gms.

**£1,000-1,500** (plus 27.6% BP\*)

**37 A late Victorian 18ct gold onyx cameo brooch, depicting Demeter.**

Length 8.7cms. 50.1gms.

**£1,500-2,000** (plus 27.6% BP\*)

**38 A late 19th century silver and gold, turquoise and old-cut diamond fleur-de-lis brooch.**

Estimated total diamond weight 1.50cts, predominantly G-I colour, SI2-P1 clarity.  
Length 3.8cms. 9.1gms.

**£1,000-1,500** (plus 27.6% BP\*)

**39 An 18ct gold Thai ruby and brilliant-cut diamond three-stone ring.**

With report 79215-54, dated 20th May 2019, from GCS, stating Thailand (Siam), heated, stated weight 1.27cts.  
Estimated total diamond weight 0.70ct, I-J colour, P1 clarity.  
Hallmarks for London, 1982. Ring size N1/2. 3.3gms.

**£1,400-2,000** (plus 27.6% BP\*)

**40 A late Victorian 15ct gold sapphire and diamond hinged bangle.**

Estimated total diamond weight 1.40cts, H-J colour, VS-P1 clarity.  
Inner diameter 5.8cms. 13.4gms.

**£2,000-3,000** (plus 27.6% BP\*)

**41 A cushion-shape emerald and old-cut diamond cluster ring.**

Estimated dimensions of emerald 9 by 6.5mms.  
Estimated total diamond weight 0.65ct, H-L colour, SI1-P1 clarity.  
Approximate ring size J1/2. 4gms.

**£2,000-3,000** (plus 27.6% BP\*)

**42 A sapphire, old and rose-cut diamond line pendant, on chain.**

Sapphire weight 3.10cts.  
Old-cut diamond weight 0.86ct, estimated J-K colour, SI clarity.  
Length of pendant 3.2cms. Length of chain 41cms. 5.3gms.

**£2,000-3,000** (plus 27.6% BP\*)



BP\* - Buyer's Premium of 23% (plus VAT) or 27.6% (VAT included)

**43** A late Victorian silver and gold, rose-cut diamond and enamel brooch, depicting Cupid firing an arrow, atop a scallop shell.

May be worn as a pendant.  
Length 3.8cms. 19gms.

**£500-700** (plus 27.6% BP\*)

**44** A mid 19th century 18ct gold aquamarine and garnet brooch.

Principal aquamarine calculated weight 5.93cts, based on estimated dimensions of 16 by 11 by 5.9mms.  
Length 6.6cms. 13.4gms.

**£450-650** (plus 27.6% BP\*)

**45** A 19th century ruby, emerald and rose-cut diamond crowned twin hearts ring.

Ring size N1/2. 4.1gms.

**£500-700** (plus 27.6% BP\*)

**46** An Edwardian 15ct gold locket bangle, with gem acrostic reading 'Rosemary'.

Inner diameter 5.7cms. 40.8gms.

**£1,000-1,500** (plus 27.6% BP\*)

**47** A mid Victorian gold snake necklace, with green gem eyes and foil back topaz crest, suspending a heart locket.

Length 36cms. 18.5gms.

**£1,800-2,400** (plus 27.6% BP\*)

**48** A 19th century gold shell cameo brooch, with detachable bracelet fitting.

Estimated dimensions of shell 56 by 46mms.  
Length of brooch 6.7cms. Length of bracelet 18cms. 67.7gms.

**£1,000-1,500** (plus 27.6% BP\*)

**49** A late Victorian 18ct gold red spinel ring, with old-cut diamond trefoil sides.

Spinel weight 1.18cts.  
Estimated total diamond weight 0.90ct, G-H colour, SI1-P1 clarity.  
Stamped 18ct. Ring size L1/2. 4.5gms.

**£1,200-1,800** (plus 27.6% BP\*)

**50** A late Victorian gold, lapis lazuli and split pearl floral locket, with 15ct gold necklace.

Chain stamped 15ct, with registration kite mark.  
Length of locket 6cms. Length of chain 36cms. 37.4gms.

**£2,000-3,000** (plus 27.6% BP\*)



**51 ✘** A mid to late 19th century bracelet, the Cantonese carved ivory panels, with filigree bow spacers. With spare spacer.

Length 17cms. 42.7gms.

**£550-750** (plus 27.6% BP\*)

**52** A late Victorian 18ct gold double snake ring.

Hallmarks for London, 1898.  
Ring size Q. 15.4gms.

**£700-900** (plus 27.6% BP\*)

**53** A late Victorian 18ct gold shell cameo brooch.

Diameter 6.1cms. 36.8gms.

**£1,000-1,500** (plus 27.6% BP\*)

**54** A late Victorian 18ct gold Albertina.

Maker's mark C.G. Length 20.5cms. 22.2gms.

**£900-1,400** (plus 27.6% BP\*)

**55** A late Victorian 18ct gold rose-cut diamond and black enamel star-set garnet hinged bangle.

Inner diameter 5.4cms. 31.7gms.

**£1,000-1,500** (plus 27.6% BP\*)

**56** A late Victorian gold amethyst necklace, with floral spacers and detachable drop.

Amethyst calculated total weight 261.38cts, based on estimated dimensions.  
Length 38.8cms. 84.8gms.

**£1,500-2,000** (plus 27.6% BP\*)





**57 ✕ A pair of sapphire cabochon and brown coral cufflinks, by Boucheron.**

French marks. Diameter of cufflink face 1.5cms. 11.1gms.

**£500-700** (plus 27.6% BP\*)

**58 A pair of 18ct gold amethyst 'Imperiale Cocktail' earrings, by Chopard.**

Swiss convention marks. Length 2.7cms. 7.5gms.

**£600-800** (plus 27.6% BP\*)

**59 An 18ct gold diamond 'Happy Bubbles' pendant, with chain, by Chopard.**

Swiss convention marks.  
Length of pendant 3cms. Length of chain 43cms. 9.9gms.

**£600-800** (plus 27.6% BP\*)

**60 ✎ A rectangular-shape diamond single-stone ring.**

With report 23062606750, dated 20th October 2018, from the GIA, stating 0.50ct, D colour, Internally Flawless clarity. Stamped 750. Ring size K. 2.1gms.

**£800-1,200** (plus 27.6% BP\*)

**61 A pair of 18ct gold, diamond and mother-of-pearl 'Dream Catcher' earrings, by Anoushka.**

Total diamond weight 2.08cts.  
Hallmarks for London, 2005. Length 7.4cms. 20.8gms.

**£700-900** (plus 27.6% BP\*)

**62 A cat brooch, by Tiffany & Co.**

Stamped 18K. Length 5.6cms. 31.8gms.

**£1,000-1,500** (plus 27.6% BP\*)

**63 ✎ A brilliant-cut diamond single-stone ring, by Bucherer.**

With Bucherer certificate dated 20th March 2018, stating 0.50ct, F-G colour, SI1 clarity. Stamped CB 750. Ring size L1/2. 3.1gms. With maker's case.

**£800-1,200** (plus 27.6% BP\*)

**64 ✎ An 18ct gold mother-of-pearl 'Bulgari Bulgari' necklace, by Bulgari.**

Hallmarks for Sheffield.  
Length 37.5cms. 34.4gms. With maker's case.

**£1,400-2,000** (plus 27.6% BP\*)

**65 ✎ An 18ct gold diamond 'Bulgari Bulgari' ring, by Bulgari.**

Estimated total diamond weight 0.90ct, estimated G-H colour, VS clarity. Hallmarks for Sheffield. Ring size M1/2. 10.8gms. With maker's case.

**£1,500-2,000** (plus 27.6% BP\*)

**66 ✎ A Colombian emerald and old-cut diamond cluster ring.**

With report 78161-10, dated 14th June 2018, from GCS, stating 0.89ct, Colombia, minor clarity enhancement. Estimated total diamond weight 1ct, G-I colour, SI1-P1 clarity. Ring size K1/2. 3.3gms.

**£2,500-3,500** (plus 27.6% BP\*)



**67** A pair of cultured pearl three-row earrings, with ruby and sapphire cabochon and brilliant-cut diamond highlights.

Estimated total diamond weight 0.60ct.  
Stamped 18ct gold. Length 3cms. 41.2gms.

**£600-800** (plus 27.6% BP\*)

**68** An alternating vari-hue tourmaline cabochon and pave-set diamond flexible cuff, with cultured pearl sides.

Estimated total diamond weight 0.40ct.  
Stamped 18ct gold. Inner diameter 5.5cms. 54.4gms.

**£800-1,200** (plus 27.6% BP\*)

**69** An early 20th century Austrian gold, pearl, circular-cut diamond and calibre-cut emerald ring.

Estimated total diamond weight 0.60ct, H-I colour, SI1-P1 clarity.  
Austrian marks. Ring size N1/2. 2.7gms.  
Pearl untested for natural origin.

**£600-800** (plus 27.6% BP\*)

**70** An 18ct gold, baroque cultured pearl mouse brooch, with ruby eyes and diamond accent ears, by E. Wolfe & Co.

Estimated total diamond weight 0.10ct.  
Length 3cms. 10.7gms.

**£450-650** (plus 27.6% BP\*)

**71** A brilliant-cut diamond geometric panel ring.

Total diamond weight 2.35cts, estimated predominantly G-H colour, VS clarity.  
French re-strike marks. Ring size K1/2. 4.8gms.

**£700-900** (plus 27.6% BP\*)

**72** An emerald and brilliant-cut diamond cluster pendant, on chain.

Emerald calculated weight 1.06cts, based on estimated dimensions 7.8 by 6 by 3.95mms.  
Estimated total diamond weight 1.10cts, H-I colour, SI clarity.  
Length of pendant 2.1cms. Length of chain 41.5cms. 3.7gms.

**£1,500-2,000** (plus 27.6% BP\*)

**73** A diamond 'Juste un Clou' bangle, by Cartier.

Estimated total diamond weight 0.70ct, G-H colour, VS2-SI2 clarity.  
Stamped 750. Inner diameter 5.8cms. Cartier size 18. 34.1gms.

**£1,000-1,500** (plus 27.6% BP\*)

**74** An 18ct gold ruby and brilliant-cut diamond cluster ring.

Ruby calculated weight 0.85ct, based on estimated dimensions of 5.2 by 5.1 by 3.5mms.  
Estimated total diamond weight 0.70ct, G-H colour, VS1-SI1 clarity.  
Hallmarks for Sheffield, 2003. Ring size M. Weight 4.4gms.

**£1,500-2,000** (plus 27.6% BP\*)

**75** A pave-set diamond heart pendant, with chain.

Estimated total diamond weight 3cts, predominantly I-K colour, SI clarity.  
Length of pendant 3.6cms. Length of chain 41.5cms. 9.8gms.

**£1,600-2,200** (plus 27.6% BP\*)

**76** An 18ct gold diamond, ruby and emerald watch, with floral dial, by William & Son.

Estimated total diamond weight 2cts, G+ colour, VS clarity.  
Swiss convention marks. Length 16cms. 128.1gms.  
With maker's case and spare travel box.

**£3,500-4,500** (plus 27.6% BP\*)



**77** A brilliant-cut diamond pendant, necklace and matching earrings, with marquise-shape diamond and black enamel highlights.

Principal three diamond estimated weights:

5.15cts, tinted colour, SI2-P1 clarity.

3.70cts, J-K colour, P1 clarity.

3.40cts, K-L colour, VS clarity.

Estimated total non-principal diamond weight 20.50cts, I-tinted colour, VS-SI clarity.

Length of pendant 6cms.

Length of chain 57.3cms.

Length of earrings 6.5cms.

151.2gms.

**£25,000-30,000** (plus 27.6% BP\*)



**78 A pear-shape diamond and pave-set diamond cluster pendant, on brilliant-cut diamond line necklace.**

Principal diamond estimated weight 5.75cts, tinted colour, VS clarity.  
Estimated total non-principal diamond weight 7.60cts, G-H colour, VS clarity.  
Stamped 750. Length 31.2cms. 47.3gms.

**£15,000-20,000** (plus 27.6% BP\*)

**79 A Colombian emerald cabochon and circular-cut diamond cluster ring.**

Emerald weight 7.47cts, engraved to band.  
Estimated total diamond weight 1.30cts, predominantly H-I colour, SI1-P1 clarity.  
French assay marks. Approximate ring size L. 9.1gms.

**£5,000-7,000** (plus 27.6% BP\*)

**80 A brilliant-cut diamond three-stone ring.**

With reports from the GIA, stating 1.19cts, F colour, VVS2 clarity, 0.31ct, D colour, VS1 clarity and 0.31ct, D colour, VS1 clarity.  
Stamped 18K. Ring size I. 4gms.

**£5,000-7,000** (plus 27.6% BP\*)

**81 A Colombian emerald and pave-set diamond cluster ring.**

**Verbal** from GCS, stating Colombia, moderate clarity enhancement.  
Emerald calculated weight 8.26cts, based on estimated dimensions of 12.3 by 11.6 by 9.25mms.  
Estimated total diamond weight 1.35cts, G-H colour, VS clarity.  
French assay marks. Ring size S. 18.5gms.

**£4,000-6,000** (plus 27.6% BP\*)

**82 A pair of pave-set and tapered baguette-cut diamond scroll earrings.**

Estimated total diamond weight 10 to 12cts, predominantly G-H colour, VS-SI clarity.  
Length 3.6cms. 36.4gms.

**£2,000-3,000** (plus 27.6% BP\*)

**83 A pave-set diamond and deep green enamel penguin brooch, with ruby eye.**

Estimated total diamond weight 2cts, G-H colour, VS-SI clarity.  
Length 4.6cms. 17.7gms.  
**£1,000-1,500** (plus 27.6% BP\*)

**84 A pair of emerald cabochon and brilliant-cut diamond earrings.**

Emerald calculated total weight 2.92cts, based on estimated dimensions of emeralds in one earring.  
Estimated total diamond weight 1.70cts, G-I colour, VS2-P1 clarity.  
Length 2.9cms. 15.6gms.

**£700-900** (plus 27.6% BP\*)

**85 An 18ct gold 'Icon' ring, by Gucci.**

Hallmarks for London,  
Ring size P. Gucci size 17. 17.5gms.

**£500-700** (plus 27.6% BP\*)

**86 A pair of emerald and diamond cluster earrings.**

Emerald calculated total emerald weight 1.45cts, based on estimated dimensions.  
Estimated total diamond weight 1.30cts, H-J colour, SI1-P1 clarity.  
Stamped 750. Length 1.5cms. 6.2gms.  
**£550-750** (plus 27.6% BP\*)

**87 An emerald and diamond cluster ring.**

Emerald calculated weight 0.86ct, based on estimated dimensions of 6.6 by 6.6 by 3.2mms.  
Estimated total diamond weight 0.60ct, G-H colour, VS-SI clarity.  
Stamped 18K. Ring size L. 5.2gms.

**£400-600** (plus 27.6% BP\*)



**88** A multifaceted citrine dress ring, with diamond crossover loop surround.

Citrine weight 29.48cts.  
Total diamond weight 1.40cts.  
Stamped 18K 750. Ring size L1/2. 22gms.

**£700-900** (plus 27.6% BP\*)

**89** A mid 20th century cultured pearl two-row necklace, with carved ruby and emerald, single-cut diamond and cultured pearl drop clasp.

Estimated total diamond weight 0.65ct.  
French assay marks. Length 49cms. 74.8gms.

**£700-900** (plus 27.6% BP\*)

**90** A natural jadeite cabochon and circular-cut diamond cluster ring.

Verbal from GCS, stating natural, no treatment.  
Jade calculated weight 4.90cts, based on estimated dimensions 13.7 by 9.8 by 4.1 mms.  
Estimated total diamond weight 0.75ct, H-I colour, SI1-P1 clarity.  
Ring size M. 7.5gms.

**£800-1,200** (plus 27.6% BP\*)

**91** An oval opal cabochon and vari-cut diamond cluster ring.

Opal calculated weight 5.43cts, based on estimated dimensions 15 by 13 by 6mms.  
Estimated total diamond weight 1ct.  
Stamped 18K. Ring size K1/2. 8.8gms.

**£900-1,400** (plus 27.6% BP\*)

**92** A pair of pink tourmaline and emerald asymmetric drop earrings.

Tourmaline calculated total weight 5.88cts, based on estimated dimensions of one earring.  
Emerald calculated total weight 1.66cts, based on estimated dimensions of one earring.  
Stamped 14K 585. Length 4.1cms. 8.5gms.

**£1,200-1,800** (plus 27.6% BP\*)

**93** An 18ct gold diamond Pekingese dog brooch, with sapphire eyes and enamel face.

Estimated total diamond weight 1.50cts, G-H colour, VS-SI clarity.  
Hallmarks for London. Length 3cms. 13gms.  
With fitted case.

**£1,500-2,000** (plus 27.6% BP\*)

**94** A brilliant-cut diamond and calibre-cut ruby cluster ring.

Principal diamond estimated weight 0.40ct, I-J colour, VS clarity.  
Ring size M. 3.2gms.

**£1,500-2,000** (plus 27.6% BP\*)

**95** A cultured pearl four-strand bracelet, with carved and pierced jade and brilliant-cut diamond Art Deco clasp.

Verbal from GCS, stating jadeite, no treatment.  
Estimated total diamond weight 2cts, G-H colour, predominantly VS clarity.  
Length 19.2cms.

**£1,800-2,400** (plus 27.6% BP\*)

**96** A Colombian emerald and diamond cluster ring.

With report 78153-96, dated 27th April 2018, from GCS stating 1.73cts, Colombia, moderate clarity enhancement.  
Estimated total diamond weight 1.40cts, G-H colour, VS-SI clarity.  
Stamped 950PT. Ring size L. 7gms.

**£3,500-4,500** (plus 27.6% BP\*)

**97** A Colombian emerald ring, with modified triangular-shape diamond sides.

Verbal from GCS, stating Colombia, moderate clarity enhancement.  
Emerald calculated weight 5.81cts, based on estimated dimensions of 15 by 11 by 4.8mms.  
Estimated total diamond weight 2cts, H-I colour, VS2-SI1 clarity.  
French marks.  
Ring size M. 7gms.

**£6,000-8,000** (plus 27.6% BP\*)



**98 A sapphire and diamond dress ring.**

Sapphire calculated weight 1.49cts, based on estimated dimensions 7.5 by 6.3 by 3.75mms.  
Estimated total diamond weight 0.45ct.  
Stamped PLAT, partially indistinct. Ring size N1/2. 5.2gms.

**£800-1,200** (plus 27.6% BP\*)

**99 A pair of rectangular-shape emerald and single-cut diamond earrings.**

Calculated total emerald weight 2.29cts, based on estimated dimensions.  
Estimated total diamond weight 2cts, G-H colour, SI1-P1 clarity.  
Length 4.1cms. 9.5gms.

**£900-1,400** (plus 27.6% BP\*)

**100 A platinum brilliant-cut diamond single-stone ring, with baguette-cut diamond stepped shoulders.**

Principal diamond estimated weight 0.90ct, I-J colour, P1 clarity.  
Estimated total diamond weight 1.50cts.  
Hallmarks for London, 1991. Approximate ring size M. 5.8gms.

**£1,000-1,500** (plus 27.6% BP\*)

**101 An Art Deco seed pearl lattice bracelet, with vari-cut diamond and emerald geometric highlight, signed Kobrin Bros.**

Estimated total diamond weight 4.25cts, H-I colour, VS clarity.  
Stamped OR, 950. Length 16.7cms. 34.2gms.  
With Mappin & Webb Ltd. case.

**£1,400-2,000** (plus 27.6% BP\*)

**102 A brilliant-cut diamond full eternity ring, with calibre-cut emerald spacers.**

Estimated total diamond weight 3.50cts, H-J colour, SI2-P1 clarity.  
Stamped PT 950. Ring size N. 6gms.

**£1,800-2,400** (plus 27.6% BP\*)

**103 A platinum and 18ct gold pear-shape diamond and Burmese ruby two-stone ring.**

With report 79225-18, dated 18th July 2019, from GCS, stating Myanmar (Burma), no heat, estimated weight 1ct.  
Estimated diamond weight 0.90ct, K-L colour, VS2-SI1 clarity.  
Stamped 18ct PLAT. Ring size M1/2. 3.2gms.

**£1,800-2,400** (plus 27.6% BP\*)

**104 A vari-cut diamond geometric floral cluster ring.**

Estimated total diamond weight 1.50cts, G-I colour, SI-VS clarity.  
Stamped 750. Ring size M. 9.9gms.

**£1,600-2,200** (plus 27.6% BP\*)

**105 An Art Deco platinum, old and single-cut diamond floral brooch.**

Estimated total diamond weight 5.50 to 6cts, predominantly G-I colour, VS-SI clarity.  
French assay marks. Length 5.8cms. 17.6gms.

**£1,800-2,400** (plus 27.6% BP\*)

**106 A Colombian emerald ring, with baguette-cut diamond shoulders.**

Verbal from GCS, stating Colombia, minor enhancement.  
Emerald calculated weight 3.39cts, based on estimated dimensions 10.7 by 7.2 by 6mms.  
Estimated total diamond weight 0.30ct, H-I colour, VS clarity.  
Stamped PLAT 18ct. Ring size Q. 4.7gms.

**£2,000-3,000** (plus 27.6% BP\*)

**107 A Colombian emerald and vari-cut diamond dress ring.**

With report 78159-72, dated 5th June 2018, from GCS, stating 2.14cts, Colombia, minor clarity enhancement.  
Estimated total diamond weight 0.75ct, G-H colour, VS-SI clarity.  
Ring size M. 6.4gms.

**£4,500-6,500** (plus 27.6% BP\*)

**108 An 18ct gold rectangular-shape diamond single-stone ring.**

Estimated diamond weight 4.65cts, tinted colour, VS clarity.  
Hallmarks for London, 2005. Ring size L. 5.6gms.

**£7,000-9,000** (plus 27.6% BP\*)

**109 An Art Deco platinum circular-cut diamond bracelet, circa 1935.**

Principal three diamonds estimated total weight 2.70cts, H-J colour, P1 clarity.  
Estimated total diamond weight 28 to 30cts.  
French assay marks. Length 19.4cms. 103.3gms. With case.

**£12,000-18,000** (plus 27.6% BP\*)



BP\* - Buyer's Premium of 23% (plus VAT) or 27.6% (VAT included)

**110** A mid 20th century geometric compact case, with sapphire line highlight and grip, by Van Cleef & Arpels.

Length 8.6cms.  
With maker's sleeve.

£700-900 (plus 27.6% BP\*)

**111** An 18ct gold octagonal-shape aquamarine and baguette-cut diamond ring.

Aquamarine weight 10.84cts.  
Estimated total diamond weight 1ct, G-H colour, VS-SI clarity.  
Hallmarks for Birmingham. Ring size M. 8.4gms.

£550-750 (plus 27.6% BP\*)

**112** A pair of 1940s platinum vari-cut diamond earrings.

Estimated total diamond weight 3 to 3.25cts, predominantly H-I colour, VS-SI clarity.  
Length 3cms. 14.9gms.

£700-900 (plus 27.6% BP\*)

**113** An 18ct gold diamond full eternity ring.

Estimated total diamond weight 3.50cts, predominantly G-H colour, VS clarity.  
Hallmarks for London, 1982. Ring size N1/2. 5.5gms.

£900-1,400 (plus 27.6% BP\*)

**114** A ladies mid 20th century platinum diamond cocktail watch, with later 9ct gold strap.

Estimated total diamond weight 3.75cts, predominantly G-I colour, VS2-SI1 clarity.  
Strap with hallmarks for Birmingham, 1986.  
Length 17cms. 21.9gms. With Garrard & Co. case.

£1,800-2,400 (plus 27.6% BP\*)

**115** A mid 20th century platinum diamond double-clip brooch.

Estimated total diamond weight 8 to 9cts, G-tinted colour, VS-P1 clarity.  
Length 5.3cms. 33.5gms.

£3,000-4,000 (plus 27.6% BP\*)

**116** A brilliant-cut diamond single-stone ring, with baguette-cut diamond stepped sides.

Principal diamond estimated weight 2.75cts, K-L colour, SI2-P1 clarity.  
Estimated total diamond weight 3.20cts.  
Ring size O1/2. 4.8gms.

£3,500-4,500 (plus 27.6% BP\*)

**117** A mid 20th century platinum and 18ct gold, old-cut diamond scroll brooch, monture Cartier.

Principal diamond estimated weight 1ct, H-I colour, P1 clarity.  
Estimated total diamond weight 7cts, H-I colour, VS-P1 clarity.  
Length 4.3cms. 15.4gms.

£3,500-4,500 (plus 27.6% BP\*)

**118** A diamond cuff bangle.

Estimated total diamond weight 18cts, G-H colour, VS clarity.  
Inner diameter 5.8cms. 52.7gms.

£4,000-6,000 (plus 27.6% BP\*)

**119** A mid 20th century platinum Sri Lankan colour-change sapphire and vari-cut diamond bracelet.

With report 10140, dated 3rd May 2018, from Cisgem, stating Sri Lanka, no heat, colour-change, estimated dimensions 10.30 by 14.90 by 9.66mms.  
Estimated total diamond weight 7cts, principal diamonds estimated J-L colour, SI1-P1 clarity.  
Length 18cms. 28.7gms.

£15,000-20,000 (plus 27.6% BP\*)



**120 An old-cut diamond openwork dress ring.**

Estimated total diamond weight 1ct, H-J colour, SI1-P1 clarity. Stamped Plat. Ring size M. 6.9gms.

**£900-1,400** (plus 27.6% BP\*)

**121 A mid 20th century platinum vari-cut diamond double clip brooch.**

Estimated total diamond weight 5.25cts, predominantly G-H colour, VS clarity. Length 4.3cms. 26gms.

**£1,000-1,500** (plus 27.6% BP\*)

**122 A mid 20th century platinum diamond cocktail watch.**

Estimated total diamond weight 3.50cts, G-J colour, VS-P1 clarity. Stamped Platinum. Length 16.5cms. 21.9gms.

**£1,400-2,000** (plus 27.6% BP\*)

**123 An old-cut diamond ring, with pave-set diamond hexagonal surround.**

Principal diamond weight 0.82ct, estimated I-J colour, SI2-P1 clarity. Estimated total diamond weight 1ct. Ring size K. 3.3gms.

**£1,500-2,000** (plus 27.6% BP\*)

**124\* An oval-shape sapphire and brilliant-cut diamond cluster ring.**

Sapphire calculated weight 2.86cts, based on estimated dimensions of 9.1 by 7 by 5.35mms. Total diamond weight 0.50ct, stamped to band. Stamped 750. Ring size N. 5.1gms.

**£1,200-1,800** (plus 27.6% BP\*)

**125 A diamond geometric bracelet.**

Estimated total diamond weight 3cts. Length 15.8cms. 18.7gms.

**£1,800-2,400** (plus 27.6% BP\*)

**126 A pair of cushion-shape sapphire and vari-cut diamond cluster earrings.**

Total sapphire weight 2.49cts. Total diamond weight 0.29ct, estimated G-H colour, VS-SI clarity. Stamped 18k 750. Length 1.2cms. 4.4gms. **£1,400-2,000** (plus 27.6% BP\*)

**127 An early 20th century 18ct gold and platinum, pearl and old-cut diamond triple cluster ring.**

Estimated dimensions of central pearl 6.6 by 6.4 by 6mms. Estimated total diamond weight 0.65ct. Stamped 18. Ring size K. 5.3gms. Pearls untested for natural origin.

**£1,800-2,400** (plus 27.6% BP\*)

**128 A pair of vari-cut diamond geometric drop earrings.**

Estimated total diamond weight 3 to 3.50cts. Pear-shape diamonds estimated total weight 0.80ct, G-H colour, SI clarity. Stamped 750. Length 4.1cms. 9.2gms.

**£2,400-3,000** (plus 27.6% BP\*)

**129 A mid 20th century platinum diamond double clip brooch.**

Estimated total diamond weight 7.75cts, H-I colour, VS2-SI2 clarity. Engraved Platino. Length 6.6cms. 27.7gms.

**£3,500-4,500** (plus 27.6% BP\*)

**130 A mid 20th century platinum diamond bracelet.**

Estimated total diamond weight 3.50 to 4cts, H-J colour, SI1-P1 clarity. French marks. Length 18.5cms. 26.2gms. With re-fitted Ogden case.

**£2,500-3,500** (plus 27.6% BP\*)

**131 An old-cut diamond single-stone ring, with tapered baguette-cut diamond sides.**

Principal diamond estimated weight 3.25cts, L-tinted colour, SI clarity. Stamped K18. Ring size M1/2. 5.6gms.

**£7,000-9,000** (plus 27.6% BP\*)



BP\* - Buyer's Premium of 23% (plus VAT) or 27.6% (VAT included)



**132** A 'Lanieres' ring, by Cartier, the script with diamond sides.

Stamped 750. Ring size N. Cartier size 54. 6.3gms.

**£400-600** (plus 27.6% BP\*)

**133** A diamond and blue plique-a-jour enamel floral pansy brooch.

Estimated total diamond weight 1.75 to 2cts, predominantly H-I colour, VS clarity.  
Foreign marks. Length 5.3cms. 28.3gms.

**£800-1,200** (plus 27.6% BP\*)

**134** A brilliant-cut diamond single-stone ring, with calibre-cut ruby and pave-set diamond shoulders.

Principal diamond estimated weight 0.95ct, tinted colour, VS clarity.  
Stamped 750. Ring size M. 4.7gms.

**£1,000-1,500** (plus 27.6% BP\*)

**135** A brilliant-cut diamond three-stone ring.

Estimated total diamond weight 1.35cts, G-H colour, SI1-P1 clarity.  
Stamped '18ct & PLAT'. Ring size O. 3.4gms.

**£700-900** (plus 27.6% BP\*)

**136** An oval-shape diamond, ruby and diamond cluster ring.

Principal diamond estimated weight 1ct, K-L colour, P1 clarity.  
Estimated total diamond weight 1.15cts.  
Ring size N. 5.6gms.

**£1,000-1,500** (plus 27.6% BP\*)

**137** A pair of rose-cut diamond, calibre-cut ruby and brilliant-cut diamond cluster earrings.

Estimated total brilliant-cut diamond weight 0.40ct, G-H colour, VS-SI clarity.  
Stamped PT950. Length 2.2cms. 6.4gms.

**£1,400-2,000** (plus 27.6% BP\*)

**138** A calibre-cut sapphire lattice, pave-set diamond and blue enamel egg pendant, by Faberge, with non-designer 18ct gold chain.

Total sapphire weight 1.30cts.  
Total diamond weight 0.39ct.  
Pendant stamped 750. Chain with hallmarks for Sheffield.  
Length of pendant 3cms. Length of chain 46cms. 13.3gms.  
With maker's case and certificate of authenticity.

**£1,500-2,000** (plus 27.6% BP\*)

**139** A pair of 18ct gold calibre-cut sapphire lattice and diamond hoop earrings, by Faberge.

Estimated total diamond weight 0.80ct.  
Hallmarks for Edinburgh. Length 2cms. 16.5gms.  
With maker's case.

**£1,800-2,400** (plus 27.6% BP\*)

**140** A natural pearl multi-strand bracelet, with circular-shape ruby and pave-set diamond clasp.

With report 79188-78, dated 10th December 2018, from GCS, stating natural, saltwater, no treatment.  
Estimated total diamond weight 1.50cts, G-H colour, VS clarity.  
Length 19cms. 19.2gms.

**£1,500-2,000** (plus 27.6% BP\*)

**141** An early 20th century platinum and gold, sapphire and diamond geometric negligee necklace.

Estimated total diamond weight 0.60ct, H-J colour, VS2-SI2 clarity.  
Length of pendant 5.4cms. Length of chain 42cms. 6.7gms.

**£1,400-2,000** (plus 27.6% BP\*)



**142 A pair of old-cut diamond floral cluster earrings.**

Estimated total diamond weight 1.50cts, predominantly H-K colour, SI2-P1 clarity.  
Diameter 1.2cms. 4.5gms.

**£600-800** (plus 27.6% BP\*)

**143 An early 20th century old-cut diamond pierced bow brooch.**

Principal diamond estimated weight 0.55ct, I-J colour, VS2-SI1 clarity.  
Estimated total diamond weight 1.40cts.  
Length 2.8cms. 3.3gms.

**£900-1,400** (plus 27.6% BP\*)

**144 An Edwardian platinum and diamond pendant, depicting diamond bull rushes, on integral trace-link chain.**

Estimated total diamond weight 0.20ct.  
French re-strike marks. Numbered 2911.  
Diameter of pendant 3.3cms. Length of chain 39cms. 10.4gms.  
With Tessier case.

**£1,200-1,800** (plus 27.6% BP\*)

**145 An Art Deco platinum, natural pearl and single-cut diamond ring.**

Verbal from GCS, stating natural, saltwater.  
Estimated diameter of pearl 8-8.2mms.  
Estimated total diamond weight 0.40ct.  
French assay marks. Ring size N. 4.3gms.

**£1,500-2,000** (plus 27.6% BP\*)

**146 An early 20th century grey guilloche enamel and diamond watch necklace.**

Length 51cms. 25.6gms.

**£1,400-2,000** (plus 27.6% BP\*)

**147 A Belle Epoque platinum, rose-cut diamond and grey guilloche enamel pocket watch, with rose-cut diamond bow winder and old-cut diamond openwork bar surmount.**

Length 5.6cms. 22.9gms.

**£2,000-3,000** (plus 27.6% BP\*)

**148 A graduated old-cut diamond dress ring.**

Estimated total diamond weight, 1.70cts, H-I colour, VS-P1 clarity.  
Ring size O. 6.1gms.

**£2,000-3,000** (plus 27.6% BP\*)

**149 A Belle Epoque gold and platinum, opal, demantoid garnet and rose-cut diamond brooch.**

Estimated dimensions of opal 16.3 by 11mms.  
French assay marks. Length 2.5cms. Weight 8.1gms.

**£1,500-2,000** (plus 27.6% BP\*)

**150 An Edwardian platinum and gold, diamond, seed pearl and blue guilloche enamel floral pendant, with later belcher-link chain.**

Estimated total old-cut diamond weight 0.15ct.  
Length of pendant 4.8cms. Length of chain 46cms. 21.5gms.

**£2,500-3,500** (plus 27.6% BP\*)

**151 A late Victorian silver and gold moonstone cameo and diamond pendant.**

Estimated total diamond weight 1.20cts, H-J colour, SI1-P1 clarity.  
Length 4.5cms. 11.9gms.

**£2,500-3,500** (plus 27.6% BP\*)

**152 A sapphire and old-cut diamond marquise-shape ring.**

Sapphire weight 1.30cts.  
Estimated total diamond weight 2.75 to 3cts, I-tinted colour, VS2-P1 clarity.  
French assay mark. Ring size M. 7.6gms.

**£3,000-4,000** (plus 27.6% BP\*)

**153 A mid 20th century diamond floral panel bracelet.**

Estimated total diamond weight 6.50 to 7cts, G-H colour, VS-P1 clarity.  
Length 16.5cms. 20.9gms.

**£4,500-6,500** (plus 27.6% BP\*)



BP\* - Buyer's Premium of 23% (plus VAT) or 27.6% (VAT included)

**154** A late Victorian gold and silver, opal twin hearts ring, with rose-cut diamond bow surmount and replacement band.

Estimated dimensions of one opal 9 by 8 by 4.2mms.  
Ring size P. 6.4gms.

£350-450 (plus 27.6% BP\*)

**155** An early 20th century sapphire and old-cut diamond cluster ring.

Sapphire calculated weight 1.58cts, based on estimated dimensions 7.5 by 6.3 by 4mms.  
Estimated total diamond weight 1ct, H-J colour, SI1-P1 clarity.  
Stamped 18ct. Ring size U. 4.5gms.

£700-900 (plus 27.6% BP\*)

**156** A natural pearl and seed pearl three-strand necklace, with late Victorian silver and gold old-cut diamond cluster clasp.

Verbal from GCS, stating natural, saltwater and seed pearls.  
Estimated total diamond weight 1ct, H-K colour, VS-SI clarity.  
Length 43cms. 25.7gms.

£1,000-1,500 (plus 27.6% BP\*)

**157** An 18ct gold old-cut diamond cluster ring.

Principal diamond estimated weight 0.90ct, I-J colour, SI2-P1 clarity.  
Estimated total diamond weight 1.80cts.  
Hallmarks for Birmingham. Ring size V. 4.9gms.

£900-1,400 (plus 27.6% BP\*)

**158** An early 20th century diamond and sapphire wreath necklace.

Sapphire total calculated weight 1.03cts, based on estimated dimensions.  
Principal diamond estimated weight 0.45ct, I-J colour, SI2-P1 clarity.  
Length of pendant 4cms. Length of chain 41.5cms. 4.6gms.

£1,200-1,800 (plus 27.6% BP\*)

**159** An early 20th century sapphire and old-cut diamond brooch.

Verbal from GCS, stating Basaltic, no heat.  
Sapphire calculated weight 6.80cts, based on estimated dimensions of 9.8 by 9.6 by 7.7mms.  
Estimated total diamond weight 1.20cts, H-J colour, SI1-P1 clarity.  
Length 4.5cms. 9.8gms.

£2,800-3,800 (plus 27.6% BP\*)

**160** An early 20th century old and rose-cut diamond graduated panel bracelet.

Estimated total diamond weight 2.25cts, H-J colour, SI1-P2 clarity.  
Length 18cms. 19.4gms.

£2,000-3,000 (plus 27.6% BP\*)

**161** A composite early 20th century silver and gold old-cut diamond bow negligee necklace.

Principal three diamonds estimated total weight 1.40cts, H-J colour, VS-SI clarity.  
Estimated total diamond weight 2cts.  
Length of pendant 6.7cms. Length of chain 43cms. 8.8gms.  
With fitted case.

£2,000-3,000 (plus 27.6% BP\*)

**162** A late Victorian silver and gold, old and rose-cut diamond crescent brooch.

Estimated total old-cut diamond weight 1.30cts, H-J colour, SI clarity.  
Length 3.2cms. 9.6gms.

£2,500-3,500 (plus 27.6% BP\*)

**163** An early 20th century gold Burmese sapphire and diamond cluster ring.

With report 79217-55, dated 25th June 2019, from GCS, stating Myanmar (Burma), no heat, estimated weight 2.10cts.  
Estimated total diamond weight 1.50cts, predominantly H-I colour, VS-SI clarity.  
Ring size K. 4.6gms.

£5,500-7,500 (plus 27.6% BP\*)



**164** A pair of 18ct gold diamond crossover hoop earrings, by Boodles.

Estimated total diamond weight 0.25ct.  
Hallmarks for London, 2008. Diameter 3.7cms. 19.9gms.

**£450-650** (plus 27.6% BP\*)

**165** A brilliant-cut diamond cluster pendant, with chain.

Principal diamond estimated weight 0.50ct, H-I colour, SI clarity.  
Estimated total diamond weight 0.75ct.  
Length of pendant 1.3cms. 2.3gms.

**£600-800** (plus 27.6% BP\*)

**166** A pair of 18ct gold brilliant-cut diamond stud earrings.

Total diamond weight 0.95ct, estimated G-I colour, SI2-P1 clarity.  
Hallmarks for Sheffield. 1.3gms.

**£750-950** (plus 27.6% BP\*)

**167** A platinum baguette-cut diamond full eternity ring.

Estimated total diamond weight 2cts, predominantly G-H colour, VS-SI clarity.  
Hallmarks for London, 2016. Ring size J. 5gms.

**£800-1,200** (plus 27.6% BP\*)

**168** A graduated old-cut diamond five-stone ring.

Estimated total diamond weight 1.15cts, I-tinted colour, SI1-P1 clarity.  
Stamped PLAT. Ring size M1/2. 4.9gms.

**£1,000-1,500** (plus 27.6% BP\*)

**169** A brilliant-cut diamond cluster drop pendant, on chain, by Tiffany & Co.

Estimated total diamond weight 0.35ct, G-H colour, VS clarity.  
Stamped PT950. Length of pendant 2.4cms. Length of chain 40.5cms. 3.5gms.  
With maker's case.

**£1,000-1,500** (plus 27.6% BP\*)

**170** A platinum diamond three-stone ring, central diamond loose from the mount.

Estimated total diamond weight 1.50cts, F-G colour.  
Hallmarks for Sheffield. Approximate ring size L1/2. 4.6gms.  
**£1,200-1,800** (plus 27.6% BP\*)

**171** An oval-shape tanzanite and brilliant-cut diamond cluster ring.

Tanzanite calculated weight 4.15cts, based on estimated dimensions of 11.1 by 9 by 6mms.  
Estimated total diamond weight 1.50cts, H-J colour, SI2-P1 clarity.  
Stamped 18ct. Ring size O. Weight 6.6gms.

**£1,500-2,000** (plus 27.6% BP\*)

**172** An 18ct gold brilliant-cut diamond single-stone ring.

Diamond weight 1.42cts, estimated G-H colour, P1 clarity.  
Hallmarks for Sheffield, partially indistinct. Ring size M1/2. 3.3gms.

**£2,500-3,500** (plus 27.6% BP\*)

**173** A rectangular-shape and brilliant-cut diamond cluster ring.

With report 2191796558, dated 29th October 2018, from the GIA, stating 1ct, G colour, Internally Flawless clarity.  
Estimated total diamond weight 1.30cts.  
Stamped 750. Ring size K1/2. 3.6gms.

**£3,000-4,000** (plus 27.6% BP\*)

**174** An oval-shape sapphire and brilliant-cut diamond cluster bracelet.

Total sapphire weight 13.48cts.  
Total diamond weight 2.60cts, estimated G-H colour, VS-SI clarity.  
Stamped 18k 750. Length 16.8cms. 17.8gms.

**£3,500-4,500** (plus 27.6% BP\*)

**175** A brilliant-cut 'brown' diamond single-stone pendant, weighing 3.70cts, with 18ct gold curb-link chain.

Diamond weight 3.70cts, estimated SI clarity.  
Pendant stamped 750. Chain with hallmarks for Sheffield.  
Length of pendant 1.5cms. Length of chain 40cms. 3.9gms.  
Diamond untested for natural colour origin.

**£5,500-7,500** (plus 27.6% BP\*)



**176**  **A circular-cut diamond and square-shape Fancy Yellow diamond ring.**


With reports FIP12379 and FIP12380, dated 15th of December 2011, from the IGI, stating 0.25ct, SI1 clarity and 0.26ct, SI1 clarity respectively.  
Principal diamond weight 0.86ct, estimated G-H colour, VS clarity. Stamped 750. Ring size L1/2. 3.5gms.

**£1,000-1,500** (plus 27.6% BP\*)

**177** **A pair of vari-cut 'yellow' diamond and diamond floral articulated earrings.**

Estimated total diamond weight 4.50 to 5cts, predominantly VS-SI clarity.  
Stamped 18K 750. Length 5.6cms. 10.4gms.  
Diamonds untested for natural colour origin.

**£1,800-2,400** (plus 27.6% BP\*)

**178**  **A pair of 18ct gold Fancy Yellow diamond and diamond cluster earrings.**


With reports 11137615 and 11137676, each dated **14th June 2000**, from the GIA, stating 0.95ct and 0.94ct, natural colour, SI2 and VS2 clarity.  
Estimated total diamond weight 2.40cts.  
Hallmarks for London, 2005. Length 1.1cms. 4.6gms.

**£1,800-2,400** (plus 27.6% BP\*)

**179**  **A platinum cushion-shape Fancy Intense Yellow diamond and brilliant-cut diamond cluster ring.**

With report 6127778171, dated **15th September 2010**, from the GIA, 0.91ct, stating natural colour, VS1 clarity.  
Estimated total brilliant-cut diamond weight 0.35ct, H-I colour, VS clarity.  
Hallmarks for Birmingham. Ring size L. 5.6gms.

**£2,000-3,000** (plus 27.6% BP\*)

**180**  **An 18ct gold Fancy Intense Yellow diamond and diamond cluster pendant, with curb-link chain.**

With report 13683219, dated **9th November 2004**, from the GIA, stating 1.76cts, natural colour.  
Estimated total diamond weight 2.15cts.  
Pendant with hallmarks for London, partially indistinct.  
Length of pendant 1.7cms. Length of chain 51cms. 8.3gms.

**£2,800-3,800** (plus 27.6% BP\*)

**181** **An 18ct gold 'brown' diamond and diamond cluster ring.**

Principal diamond estimated weight 4.10cts, P1-P2 clarity.  
Estimated total diamond weight 4.60cts.  
Hallmarks for Birmingham. Ring size M. 6.6gms.  
Principal diamond untested for natural colour origin.

**£3,000-4,000** (plus 27.6% BP\*)

**182** **A pair of brilliant-cut diamond stud earrings, weighing 1.79cts and 1.83cts respectively.**

**Verbal** from GCS, stating N-R colour, VS1 clarity respectively.  
Stamped 750. 2.9gms.

**£4,000-6,000** (plus 27.6% BP\*)

**183** **A marquise-shape Fancy Intense Yellowish Brown diamond and brilliant-cut diamond cluster pendant.**

**Verbal** from GCS, stating natural colour, SI2-P1 clarity.  
Principal diamond estimated weight 5.60cts.  
Estimated total non-principal diamond weight 2cts, G-H and 'yellow' colour, VS2-SI2 clarity.  
Length 4.2cms. 6.7gms.  
Yellow diamonds untested for natural colour origin.

**£6,500-8,500** (plus 27.6% BP\*)

**184** **A large 'yellow' diamond single-stone ring.**

Estimated diamond weight 10cts, P1-P2 clarity.  
Ring size L1/2. 7.7gms.  
Diamond untested for natural colour origin.

**£9,000-14,000** (plus 27.6% BP\*)

**185** **A brilliant-cut Fancy Light Yellowish Brown diamond, diamond and coloured diamond necklace, to include 'pink', 'brown' and 'yellow' hues.**

**Verbal** from GCS on principal diamond only, stating natural colour, VS2-SI1 clarity.  
Principal diamond estimated weight 4.50cts.  
Estimated total diamond weight 9cts. Stamped Pt.  
Non-principal diamonds untested for natural colour origin.

**£9,000-14,000** (plus 27.6% BP\*)



**186** A cultured pearl single-strand necklace, with brilliant-cut diamond spherical clasp.

Cultured pearls estimated diameter 13.7 to 10.3mms.  
Estimated total diamond weight 0.80ct.  
Foreign marks, stamped 750. Length 49.2cms.

**£500-700** (plus 27.6% BP\*)

**187** ✕ A pair of 1980s mother-of-pearl chequerboard earrings, by Angela Cummings.

Stamped 18k. Length 2cms. 17.3gms.

**£500-700** (plus 27.6% BP\*)

**188** A pair of 1980s onyx and mother-of-pearl earrings, by Angela Cummings for Tiffany & Co.

Stamped 18kt 750. Diameter 2.5cms. 24.8gms.

**£900-1,400** (plus 27.6% BP\*)

**189** ✕ A mother-of-pearl and brilliant-cut diamond leaf brooch.

Estimated total diamond weight 1.50cts, predominantly H-I colour, SI clarity.  
Stamped 18k, 750. Length 9.2cms. 24gms.

**£600-800** (plus 27.6% BP\*)

**190** A pair of mabe pearl earrings, with marquise-shape and brilliant-cut diamond spray surmount.

Estimated total diamond weight 1.70cts, G-I colour, VS-SI clarity.  
Length 2.8cms. 18.2gms.

**£800-1,200** (plus 27.6% BP\*)

**191** A grey and white cultured pearl crossover ring, with calibre-cut diamond shoulders.

Estimated dimensions of white cultured pearl 11 by 11.8mms.  
Estimated total diamond weight 0.90ct, G-H colour, VS2-SI1 clarity.  
French assay mark. Ring size J. 8.8gms.  
Pearls untested for natural colour origin.

**£1,200-1,800** (plus 27.6% BP\*)

**192** A pair of pave-set diamond, shaped onyx and black gem earrings, by Gavello.

Estimated total diamond weight 2cts, H-I colour, VS clarity.  
Length 4.6cms. 35.2gms.

**£1,400-2,000** (plus 27.6% BP\*)

**193** A grey cultured pearl and brilliant-cut diamond 'Fireworks' brooch, by Tiffany & Co.

Estimated total diamond weight 3cts, H-I colour, VS clarity.  
Stamped PT950. Length 4.2cms. 16.1gms.  
Cultured pearl untested for natural colour origin.

**£2,500-3,500** (plus 27.6% BP\*)

**194** A mid 20th century platinum diamond floral brooch, suspending a pear-shape diamond drop.

Principal diamond estimated weight 1.30cts, K-L colour, VS clarity.  
Estimated total non-principal diamond weight 3cts, H-I colour, VS clarity.  
Length 4.5cms. 11.6gms.

**£3,000-4,000** (plus 27.6% BP\*)

**195** A diamond scroll-link bracelet, by Tiffany & Co.

Estimated total diamond weight 4.50cts, G-H colour, VS-SI clarity.  
Stamped PLAT. Length 17.5cms. 29.9gms.

**£6,000-8,000** (plus 27.6% BP\*)



**196 An 18ct gold cushion-shape green tourmaline and diamond cluster pendant, with chain.**

Tourmaline calculated weight 1.73cts, based on estimated dimensions of 7 by 7 by 4.9mms.  
Estimated total diamond weight 1ct, G-H colour, VS clarity.  
Hallmarks for London, 2016 and 2017.  
Length of pendant 2.5cms. Length of chain 41cms. 6.6gms.

**£400-600** (plus 27.6% BP\*)

**197 A pair of turquoise and pave-set diamond hoop earrings.**

Estimated total diamond weight 0.70ct, G-H colour, SI1-P1 clarity.  
Stamped 750. Length 2.6cms. 21.5gms.

**£500-700** (plus 27.6% BP\*)

**198 A cushion-shape aquamarine and rose-cut diamond cluster pendant.**

Aquamarine calculated weight 12.67cts, based on estimated dimensions of 16.5 by 13.5 by 8.9mms.  
Length 3.2cms. 5gms.

**£700-900** (plus 27.6% BP\*)

**199 A pair of amethyst and brilliant-cut diamond openwork earrings, suspending a cultured pearl fringe.**

Estimated total diamond weight 1.50cts.  
Stamped 18K. Length 9cms. 52.7gms.

**£700-900** (plus 27.6% BP\*)

**200 An aquamarine and diamond ring.**

Aquamarine calculated weight 4.91cts, based on estimated dimensions 13.3 by 9.5 by 5.3mms.  
Estimated total diamond weight 0.15ct.  
Stamped 18K. Ring size L1/2. 5.8gms.

**£500-700** (plus 27.6% BP\*)

**201 A pair of ruby and brilliant-cut diamond cluster earrings.**

Ruby total calculated weight 1.32cts, based on estimated dimensions 6 by 4 by 2mms and 6 by 4.2 by 3mms.  
Estimated total diamond weight 0.60ct, G-I colour, VS2-SI2 clarity.  
Length 1.5cms. 6.9gms.

**£700-900** (plus 27.6% BP\*)

**202 A calibre-cut sapphire and pave-set diamond dress ring.**

Estimated total diamond weight 1.75cts, predominantly G-H colour, VS clarity.  
Ring size L. 5.5gms.

**£950-1,400** (plus 27.6% BP\*)

**203 A glass-filled ruby and pave-set diamond dress ring.**

Estimated total diamond weight 1.65cts, G-H colour, VS clarity.  
Stamped 750. Ring size K. 10gms.

**£1,400-2,000** (plus 27.6% BP\*)

**204 A calibre-cut amethyst, pink tourmaline, peridot, blue topaz and iolite cuff bangle, by Bulgari.**

Italian marks. Stamped GOLD UND STAHL, 750.  
Inner diameter 5.6cms. 86.6gms.

**£1,600-2,200** (plus 27.6% BP\*)

**205 A glass-filled ruby and brilliant-cut diamond cluster necklace, with similarly-set central drop.**

Estimated total diamond weight 6cts.  
Stamped 14K. Length 43.4cms. 45.6gms.

**£3,000-4,000** (plus 27.6% BP\*)



BP\* - Buyer's Premium of 23% (plus VAT) or 27.6% (VAT included)

**206 A square-shape and calibre-cut diamond dress ring.**

Estimated total diamond weight 1.50cts, principal diamonds estimated G-H colour, VS2-SI1 clarity. Ring size M. 4.8gms.

**£1,000-1,500** (plus 27.6% BP\*)

**207 A cabochon sapphire, calibre-cut ruby and pave-set diamond dress ring.**

Sapphire calculated weight 5.60cts, based on estimated dimensions 11 by 8 by 5.9mms. Estimated total diamond weight 0.25ct, H-I colour, VS-SI clarity. Ring size Q. 6.8gms.

**£800-1,200** (plus 27.6% BP\*)

**208 An 18ct gold pave-set diamond novelty duck brooch, with sapphire, mother-of-pearl and onyx accents.**

Estimated total diamond weight 0.70ct, G-I colour, VS-P1 clarity. Import marks for London, 1998. Length 5cms. 17.8gms.

**£1,800-2,400** (plus 27.6% BP\*)

**209 A mid 20th century platinum diamond brooch.**

Principal diamond estimated weight 0.70ct, I-J colour, VS clarity. Estimated total diamond weight 3cts. Length 4.1cms. 11gms.

**£1,400-2,000** (plus 27.6% BP\*)

**210 An old-cut diamond and calibre-cut ruby cluster ring, with pave-set diamond shoulders.**

Old-cut diamond estimated weight 2cts, tinted colour, P1 clarity. Ring size M. 4.6gms.

**£1,800-2,400** (plus 27.6% BP\*)

**211 A pink tourmaline and vari-cut diamond cluster necklace.**

Tourmaline calculated weight 1.38cts, based on estimated dimensions of 11 by 6.1 by 3.2mms. Estimated total diamond weight 2.25cts, H-I colour, VS1-SI1 clarity. Stamped 750. Length 41cms. 22.7gms.

**£1,600-2,200** (plus 27.6% BP\*)

**212 A sapphire and tapered baguette-cut diamond dress ring.**

Sapphire calculated weight 2.42cts, based on estimated dimensions of 8.8 by 6.7 by 4.9mms. Estimated total diamond weight 1.50cts. Ring size M. 5.3gms.

**£2,000-3,000** (plus 27.6% BP\*)

**213 A 1960s 18ct gold ruby and diamond spray brooch and earrings suite, by Kutchinsky.**

Estimated total diamond weight 1.75 to 2cts, H-I colour, VS-SI clarity. Hallmarks for London, 1961. Length of brooch 7.6cms. Length of earrings 2.9cms. 67gms. With fitted case.

**£2,800-3,800** (plus 27.6% BP\*)

**214 A mid 20th century platinum diamond floral spray brooch.**

Estimated total diamond weight 8.25 to 8.75cts, H-I colour, VS2-P1 clarity. Length 7.9cms. 26.5gms.

**£4,000-6,000** (plus 27.6% BP\*)

**215 An 18ct gold brilliant-cut diamond single-stone ring.**

Estimated diamond weight 3.10cts, J-K colour, VS clarity. Hallmarks for London. Ring size P. 5.1gms.

**£9,000-14,000** (plus 27.6% BP\*)



BP\* - Buyer's Premium of 23% (plus VAT) or 27.6% (VAT included)



**216** A 1940s bi-colour 18ct gold cultured pearl floral brooch, with rose-cut diamond accents, by Cartier.

French assay marks. Length 4.5cms. 16.6gms.

**£500-700** (plus 27.6% BP\*)

**217** A 1940s gold ruby and diamond bi-colour cocktail watch.

Estimated total diamond weight 0.20ct, G-I colour, SI clarity. Length 17cms. 28.8gms.

**£600-800** (plus 27.6% BP\*)

**218** A mid 20th century platinum vari-cut diamond brooch, of stylised foliate design.

Estimated total diamond weight 3cts, G+ colour, VS clarity. Length 4.6cms. 10.4gms.

**£650-850** (plus 27.6% BP\*)

**219** A 1950s 18ct gold die photographic pendant locket, by Cartier.

Hallmarks for London, 1955. Length of die face 2.2cms. 30.7gms.

**£1,000-1,500** (plus 27.6% BP\*)

**220** A 1940s 14ct gold bi-colour bracelet.

Length 19.5cms. 38.6gms.

**£1,000-1,500** (plus 27.6% BP\*)

**221** A mid 20th century 18ct gold and platinum diamond stylised buckle brooch.

Estimated total diamond weight 1ct. French marks. Length 4.4cms. 18.2gms.

**£1,000-1,500** (plus 27.6% BP\*)

**222** A mid 20th century gold flexible collar, suspending a graduated citrine and diamond swag.

Principal citrine calculated weight 2.32cts, based on estimated dimensions 9 by 9 by 5.4mms. Estimated total diamond weight 1.40cts, H-I colour, VS clarity. Length 40cms. 49.1gms.

**£1,400-2,000** (plus 27.6% BP\*)

**223** A 1940s gold calibre-cut sapphire and single-cut diamond hinged watch bangle.

Estimated total sapphire weight 7 to 7.50cts. Estimated total diamond weight 0.35ct, H-I colour, VS2-SI2 clarity. Inner diameter 6cms. 56.8gms.

**£1,400-2,000** (plus 27.6% BP\*)

**224** A 1940s ruby and diamond geometric brooch.

Estimated total ruby weight 2.50cts. Estimated total diamond weight 1ct, H-I colour, VS clarity. Length 3.3cms. 13.8gms.

**£2,000-3,000** (plus 27.6% BP\*)

**225** A mid 20th century platinum and 18ct gold old-cut diamond brooch, by J. Roca.

Principal diamond weight 2.54cts, estimated I-J colour, SI clarity. Estimated total diamond weight 8cts. Spanish marks. Length 3.9cms. 22.9gms. With fitted case.

**£8,000-12,000** (plus 27.6% BP\*)



**226 An enamel and diamond elephant ring, by Frascarolo.**

Stamped 750. Ring size L1/2. 15.1gms.

**£900-1,400** (plus 27.6% BP\*)

**227 A pair of mabe pearl and brilliant-cut diamond cluster earrings.**

Estimated total diamond weight 0.65ct.  
Stamped 18kt. Diameter 2.6cms. 29.4gms.

**£900-1,400** (plus 27.6% BP\*)

**228 A mid 20th century garnet and rose-cut diamond hinged bangle.**

Estimated total garnet weight 12 to 13cts.  
Signed A. Smoller.  
Stamped 750. Inner diameter 5.8cms. 25.5gms.

**£900-1,400** (plus 27.6% BP\*)

**229 A 1960s 9ct gold citrine crossover necklace.**

Hallmarks for London, 1960. Length 39cms. 78.8gms.

**£1,000-1,500** (plus 27.6% BP\*)

**230 A 1960s 9ct gold citrine and diamond bracelet.**

Citrine total calculated weight 10.91cts, based on estimated dimensions.  
Estimated total diamond weight 0.15ct.  
Hallmarks for London, 1960. Length 17.8cms. 95.3gms.

**£1,200-1,800** (plus 27.6% BP\*)

**231 A mid 20th century gold ruby and diamond buckle bracelet.**

Estimated total diamond weight 1ct, predominantly G-I colour, VS-SI clarity.  
Length 21cms. 58.3gms.

**£1,200-1,800** (plus 27.6% BP\*)

**232 A ruby bracelet, comprising scroll links.**

Estimated total ruby weight 1.80cts, based on calculated weight of one gem.  
Stamped 18K. Length 18cms. 23.8gms.

**£1,200-1,800** (plus 27.6% BP\*)

**233 A fire opal and diamond cluster ring.**

Estimated dimensions of fire opal 28 by 13.2 by 9.8mms.  
Estimated total diamond weight 0.65ct, G-H colour, SI1-P1 clarity.  
Stamped 750 18K. Ring size N. 8.8gms.

**£1,800-2,400** (plus 27.6% BP\*)



BP\* - Buyer's Premium of 23% (plus VAT) or 27.6% (VAT included)

**234 A lady's 1940s 18ct gold cocktail watch, by Longines.**

Dial and movement signed Longines.  
Case signed PAC Paris.  
French assay marks. Length 17cms. 38.6gms.

**£800-1,200** (plus 27.6% BP\*)

**235 A 1940s platinum and 18ct gold citrine and diamond foliate brooch.**

Estimated total diamond weight 1.25cts, H-I colour, VS-SI clarity.  
French assay marks. Length 7.5cms. 19.6gms.

**£1,400-2,000** (plus 27.6% BP\*)

**236 A ruby cabochon and diamond brooch.**

Estimated total diamond weight 1ct, H-I colour, VS2-SI1 clarity.  
French assay marks. Length 7.5cms. 17.6gms.

**£900-1,400** (plus 27.6% BP\*)

**237 A mid 20th century 18ct gold ruby, sapphire and green enamel dog brooch.**

French re-strike marks stamped 18k 750. Length 5.5cms. 16.7gms.

**£450-650** (plus 27.6% BP\*)

**238 A pair of dyed chalcedony cabochon earrings, with bead surround.**

Calculated weight of one chalcedony cabochon 14.83cts, based on estimated dimensions of 17.5 by 17.3 by 6.5mms.  
Length 2.2cms. 21.9gms.

**£800-1,200** (plus 27.6% BP\*)

**239 An opal triplet and diamond abstract textured pendant, suspended from a rope-twist chain.**

Estimated total diamond weight 1.50cts, predominantly G-H colour, VS clarity.  
Stamped 750, 18CT.  
Length of pendant 6.5cms. Length of chain 50cms. 40.6gms.

**£800-1,200** (plus 27.6% BP\*)

**240 A 1940s 18ct gold sapphire cabochon and diamond dress ring.**

Sapphire calculated weight 5.41 cts, based on estimated dimensions of 10.8 by 8 by 5.8mms.  
Estimated total diamond weight 1.25cts, H-I colour, VS-P1 clarity.  
French assay marks. Ring size O1/2. 11.9gms.

**£700-900** (plus 27.6% BP\*)

**241 A pair of 18ct gold cultured pearl and vari-cut diamond drop earrings.**

Estimated total brilliant-cut diamond weight 0.60ct, H-I colour, SI1-P1 clarity.  
French re-strike marks, stamped 18C.  
Length 5.5cms. 27.7gms.

**£1,200-1,800** (plus 27.6% BP\*)

**242 An orange topaz and diamond cluster ring.**

Topaz calculated weight 5.18cts, based on estimated dimensions of 13.9 by 8.5 by 5.9mms.  
Estimated total diamond weight 0.60ct, H-I colour, VS-SI clarity.  
Stamped 18CT PLAT. Ring size R. 7.7gms.

**£550-750** (plus 27.6% BP\*)

**243 A pair of 18ct gold ruby and brilliant-cut diamond foliate earrings.**

Estimated total diamond weight 0.80ct, H-I colour, SI clarity.  
Hallmarks for Birmingham. Length 3.9cms. 18gms.

**£1,400-2,000** (plus 27.6% BP\*)



BP\* - Buyer's Premium of 23% (plus VAT) or 27.6% (VAT included)

**244** An 'Astrale Cerchi Shield' ring, by Bulgari.

Italian marks. Stamped 750.  
Ring size L1/2. 11.6gms. With maker's case.

£300-400 (plus 27.6% BP\*)

**245** A brilliant-cut diamond and carved amethyst ring.

Estimated dimensions of amethyst 18.9 by 18.8mms.  
Estimated diamond weight 0.15ct, H-I colour, VS clarity.  
Hallmarks for London, 2015. Ring size M. 14.3gms.

£500-700 (plus 27.6% BP\*)

**246** A graduated set of three 1950s 18ct gold ruby bee clips.

Hallmarks for London, 1956.  
Lengths 4.2, 3.3 and 2.3cms. 17.3gms.

£450-650 (plus 27.6% BP\*)

**247** A pink tourmaline, diamond and 'brown' diamond ring.

Tourmaline calculated weight 4.59cts, based on estimated dimensions 12.4 by 9 by 6.4mms.  
Estimated total diamond weight 2cts.  
Stamped 750. Ring size N. 20.1gms.  
Diamonds untested for natural colour origin.

£900-1,400 (plus 27.6% BP\*)

**248** A pair of oval ruby cabochon and pave-set diamond earrings, by Bulgari.

Calculated total ruby weight 4.53cts, based on estimated dimensions.  
Estimated total diamond weight 1.20cts, predominantly G+ colour, VS clarity.  
Italian marks. Length 2.2cms. 17.6gms.  
£900-1,400 (plus 27.6% BP\*)

**249** A pink tourmaline and brilliant-cut diamond cluster ring.

Tourmaline calculated weight 3.98cts, based on estimated dimensions of 10.6 by 9.2 by 6.35mms.  
Estimated total diamond weight 1.80cts, I-L colour, SI2-P1 clarity.  
Stamped 750, 18K. Ring size N1/2. 9.5gms.

£1,500-2,000 (plus 27.6% BP\*)

**250** A pave-set diamond and pierced pig brooch, with pink tourmaline girdle and ruby eye.

Estimated total diamond weight 1.75cts, H-I colour, VS-SI clarity.  
Tourmaline calculated total weight 1.69cts, based on estimated dimensions.  
Length 3.7cms. 7.8gms.

£1,500-2,000 (plus 27.6% BP\*)

**251** A diamond 'Love' bangle, by Cartier.

Estimated total diamond weight 0.30ct.  
Stamped 750. Inner diameter 5.5cms. Cartier size 17. 30.7gms.

£3,000-4,000 (plus 27.6% BP\*)

**252** A limited edition diamond and vari-hue 'Sapphire Flower' necklace, by Bulgari.

Principal sapphire weight 2.77cts. Total sapphire weight 12.41cts.  
Total diamond weight 2.24cts, E-F colour, VVS-VS clarity.  
Italian marks, stamped 750.  
Length 42.5cms. 36.8gms. With maker's case.

£4,500-6,500 (plus 27.6% BP\*)

**253** A pair of 18ct gold brilliant-cut diamond collet stud earrings.

Estimated total diamond weight 2cts, G+ colour, VVS-VS clarity.  
Import marks for Birmingham, 1994.  
Diameter 9.5mms. 7.4gms.

£4,500-6,500 (plus 27.6% BP\*)



BP\* - Buyer's Premium of 23% (plus VAT) or 27.6% (VAT included)

**254** A foil back red gem, foil back diamond and enamel tikka.

Length 10.1cms. 13.2gms.

**£350-450** (plus 27.6% BP\*)

**255** Two foil-back diamond, enamel and green paste bracelets. One AF.

Inner diameters 5.1 and 5.3cms. 111.2gms.

**£1,400-2,000** (plus 27.6% BP\*)

**256** A pair of foil back diamond and enamel cluster earrings.

Together with similarly-designed chain sections.  
Length 7cms. 68.3gms.

**£1,800-2,400** (plus 27.6% BP\*)

**257** A foil-back diamond and enamel cluster necklace, with woven cord and bead back-chain.

Length 76cms. 220.4gms.

**£6,000-8,000** (plus 27.6% BP\*)



BP\* - Buyer's Premium of 23% (plus VAT) or 27.6% (VAT included)

**258 A pair of 'Trinity de Cartier' cufflinks, by Cartier.**

Stamped 750. Length of cufflink face 1.3cms. 19.6gms.

**£800-1,200** (plus 27.6% BP\*)

**259 A 'Trinity' tie clip, by Cartier.**

Stamped 750. Length 6.1cms. 12.6gms.

**£400-600** (plus 27.6% BP\*)

**260 A pair of cufflinks, by Tiffany & Co.**

Stamped 750. Length of cufflink face 1.4cms. 16.8gms.

**£700-900** (plus 27.6% BP\*)

**261 A 1960s 9ct gold wristwatch, by Jaeger LeCoultre.**

Hallmarks for London, 1965.  
Length 19cms. 63.6gms.

**£700-900** (plus 27.6% BP\*)

**262 An 18ct gold diamond buckle motif hinged bangle.**

Estimated total diamond weight 0.40ct.  
Import marks for Sheffield, 1998. Inner diameter 5.4cms. 40.8gms.

**£1,000-1,500** (plus 27.6% BP\*)

**263 A diamond collar, comprising bi-colour tapered panel links, with pave-set diamond highlight.**

Estimated total diamond weight 2.75cts.  
Italian marks. Dutch marks. Stamped 750. Length 42.5cms.  
79.4gms.

**£1,200-1,800** (plus 27.6% BP\*)

**264 A diamond cluster ring.**

Estimated total diamond weight 2.10cts, K-L colour, P1 clarity.  
Stamped 18ct. Ring size M. 4.7gms.

**£1,500-2,000** (plus 27.6% BP\*)

**265 A pair of 'Maillon Panthere' earrings, by Cartier.**

Stamped 750. Length 2.5cms. 26.8gms.

**£1,500-2,000** (plus 27.6% BP\*)

**266 A brilliant-cut diamond single-stone ring.**

Diamond weight estimated 2.30cts, I-J colour, P1 clarity.  
Stamped 18ct. Ring size P. 2.5gms.

**£3,200-4,200** (plus 27.6% BP\*)

**267 A pave-set diamond keyring, with enamel Ferrari logo.**

Estimated total diamond weight 6.50 to 7cts, G-H colour, VVS-VS clarity.  
Italian marks, surmount with 18ct gold hallmarks for London, 2001.  
Length 6.2cms. 34.2gms.

**£5,500-7,500** (plus 27.6% BP\*)



BP\* - Buyer's Premium of 23% (plus VAT) or 27.6% (VAT included)

**268** A 1970s 18ct gold brilliant-cut diamond, textured and polished abstract cluster ring.

Estimated total diamond weight 0.80ct, H-I colour, VS2-SI1 clarity. Hallmarks for Birmingham, 1977. Ring size M. 7.3gms.

£280-380

**269** An 18ct gold sunflower brooch, by Asprey.

Hallmarks for London, 1996. Length 3.5cms. 17.3gms. With maker's case.

£500-700 (plus 27.6% BP\*)

**270** A 1960s textured leaf brooch, with single-cut diamond accents.

Estimated total diamond weight 0.40ct. Import marks for London, 1963. Length 4.4cms. 20.6gms.

£500-700 (plus 27.6% BP\*)

**271** An 18ct gold ruby, emerald and diamond ring.

Principal diamond estimated weight 0.40ct, G-H colour, SI clarity. Hallmarks for Birmingham, 2011. Ring size M. 22.6gms.

£700-900 (plus 27.6% BP\*)

**272** A diamond half-eternity ring, by Boucheron.

Estimated total diamond weight 1.10cts, G+ colour, VS clarity. French assay marks, stamped OR750. Ring size L. 5.3gms.

£800-1,200 (plus 27.6% BP\*)

**273** A pair of cultured pearl and diamond earrings, by David Webb.

Estimated dimensions of one cultured pearl 15 by 11.2 by 10.3mms. Estimated total diamond weight 0.20ct. Stamped 18K. Length 1.8cms. 14.9gms.

£1,200-1,800 (plus 27.6% BP\*)

**274** A pair of coral and brilliant-cut diamond foliate earrings.

Estimated total diamond weight 3cts, G+ colour, VS clarity. Length 3.5cms. 25.2gms. Coral untested for natural colour origin.

£1,400-2,000 (plus 27.6% BP\*)

**275** A 1970s opal brooch, by Burle Marx.

Opal calculated weight 44.64cts, based on estimated dimensions 39.4 by 23.6 by 7.7mms. Stamped 750. Length 4.9cms. 25gms.

£2,500-3,500 (plus 27.6% BP\*)

**276** A mid 20th century black and cream enamel tiger bracelet, with emerald eyes and pave-set diamond crest and collar.

Estimated total diamond weight 1.75cts, G-H colour, VS clarity. Length 19.5cms. 85.6gms.

£3,000-4,000 (plus 27.6% BP\*)

**277** A brilliant-cut diamond, textured chevron motif bracelet.

Estimated total diamond weight 2.60cts, H-I colour, SI1-P1 clarity. Stamped 18K. Length 17.6cms. 73.5gms.

£3,400-4,400 (plus 27.6% BP\*)



BP\* - Buyer's Premium of 23% (plus VAT) or 27.6% (VAT included)

**278** A 'Trinity' ring, by Cartier.

Stamped 750. Ring size J. Cartier size 49. 15.2gms.

£400-600 (plus 27.6% BP\*)

**279** A pair of domed, abstract cluster earrings, by Boucheron.

French assay marks. Diameter 2.4cms. 20.5gms.

£650-850 (plus 27.6% BP\*)

**280** A mid 20th century gold malachite tortoise brooch, with sapphire eyes.

Stamped 18K. Length 4cms. 16.2gms.

£700-900 (plus 27.6% BP\*)

**281** A pair of 18ct gold cultured pearl 'Zodiac Shiraz' Pisces earrings, by Elizabeth Gage.

Hallmarks for London, 1994. Length 3.7cms. 23.2gms.

£700-900 (plus 27.6% BP\*)

**282** A sapphire and diamond bracelet.

Principal sapphire calculated weight 2.89cts, based on estimated dimensions of 8.9 by 6.9 by 4.8mms. Estimated total diamond weight 0.15ct. Stamped 750. Length 18cms. 41.1gms.

£1,000-1,500 (plus 27.6% BP\*)

**283** A pair of mid 20th century platinum and 18ct gold, diamond, sapphire and ruby floral earrings, by Boucheron.

Estimated total diamond weight 0.90ct, G-H colour, VS clarity. French assay marks. Length 2.9cms. 15.4gms.

£1,000-1,500 (plus 27.6% BP\*)

**284** A star sapphire and vari-cut diamond ring.

Sapphire calculated weight 9.23cts, based on estimated dimensions of 11 by 9 by 8.9mms. Estimated total diamond weight 2.40cts, G-H colour, VS-SI clarity. Stamped K18. Ring size N. 12gms.

£2,000-3,000 (plus 27.6% BP\*)

**285** A set of aquamarine and sapphire cabochon jewellery, comprising pendant, ring and earrings.

Aquamarine total calculated weight 43.31cts, based on estimated dimensions. Length of pendant 5.1cms. Length of earrings 4.5cms. 48.4gms.

£2,800-3,800 (plus 27.6% BP\*)

**286** A pair of Sri Lankan sapphire and brilliant-cut diamond earrings.

Verbal from GCS, stating Sri Lanka, no heat. Sapphire calculated total weight 76cts, based on estimated dimensions. Estimated total diamond weight 1.50cts, G-H colour, VS clarity. Length 2.5cms. 32.4gms.

£2,000-3,000 (plus 27.6% BP\*)

**287** A gold, sapphire, demantoid garnet and enamel 'Dauphin' brooch, designed by Jean Schlumberger for Tiffany & Co.

Length 6.4cms. 25.1gms

£6,000-8,000 (plus 27.6% BP\*)



BP\* - Buyer's Premium of 23% (plus VAT) or 27.6% (VAT included)



**288 An emerald and brilliant-cut diamond three-stone ring.**

Emerald calculated weight 0.64ct, based on estimated dimensions of 6.1 by 5 by 2.85mms.  
Estimated total diamond weight 0.50ct, H-I colour, SI clarity.  
Ring size O. 2.4gms.

**£500-700** (plus 27.6% BP\*)

**289 A sapphire and diamond cluster ring.**

Sapphire calculated weight 1.83cts, based on estimated dimensions of 9.5 by 5.6 by 4.1mms.  
Estimated total diamond weight 1ct, H-J colour, VS-SI clarity.  
French marks. Ring size N1/2. 6.1gms.

**£700-900** (plus 27.6% BP\*)

**290 A pair of ruby, sapphire, old-cut diamond and emerald earrings.**

Estimated total diamond weight 0.70ct, G-H colour, VS2-SI2 clarity.  
Length 2.1cms. 6gms.

**£500-700** (plus 27.6% BP\*)

**291 A ruby, sapphire, old-cut diamond and emerald necklace, with detachable drop.**

Estimated total diamond weight 0.75ct, G-H colour, SI1-P1 clarity.  
Italian marks, stamped 750.  
Length of pendant 4.5cms. Length of chain 42cms. 16.2gms.

**£1,000-1,500** (plus 27.6% BP\*)

**292 A glass-filled ruby and diamond cluster ring.**

Estimated total diamond weight 1.50cts, G-H colour, VS clarity.  
Ring size O1/2. 15gms.

**£700-900** (plus 27.6% BP\*)

**293 An 18ct gold bracelet.**

Hallmarks for Birmingham. Length 19cms. 57.4gms.

**£1,000-1,500** (plus 27.6% BP\*)

**294 A Colombian emerald pendant, with 18ct gold chain.**

With report from GCS, stating Colombian, moderate enhancement.  
Emerald weight 4.30cts.  
Necklace with hallmarks for Sheffield.  
Length of pendant 1.6cms. Length of chain 51cms. 4.6gms.

**£1,000-1,500** (plus 27.6% BP\*)

**295 A mid 20th century 18ct gold enamel lizard brooch, by Boucheron.**

Import marks for London, partially indistinct.  
Length 6.9cms. 14.4gms.

**£1,800-2,400** (plus 27.6% BP\*)

**296 A pair of foliate carved tanzanite earrings, with brilliant-cut diamond and emerald drop fringe.**

Estimated dimensions of one tanzanite 37.5 by 23.4mms.  
Estimated total diamond weight 0.50ct, tinted colour, VS clarity.  
Length 5.9cms. 30.7gms.

**£1,800-2,400** (plus 27.6% BP\*)

**297 A Colombian emerald single-stone ring.**

Verbal from GCS, stating Colombia, insignificant treatment.  
Emerald calculated weight 9.15cts, based on estimated dimensions of 13 by 12.5 by 9mms.  
Stamped 750. Ring size Q1/2. 10.4gms.

**£7,000-9,000** (plus 27.6% BP\*)



**298 An 18ct gold emerald and diamond ring.**

Emerald calculated weight 0.60ct, based on estimated dimensions of 5.5 by 4.4 by 3.35mms.  
Estimated total diamond weight 0.60ct, G-H colour, VS-SI clarity.  
Hallmarks for Edinburgh. Ring size I. 4.3gms.

**£450-650** (plus 27.6% BP\*)

**299 A pear-shape emerald and brilliant-cut diamond cluster pendant, on integral trace-link chain.**

Emerald calculated weight 1.50cts, based on estimated dimensions 11 by 7.5 by 3.35mms.  
Estimated total diamond weight 0.70ct, H-I colour, SI2-P1 clarity.  
Length of pendant 2.3cms. Length of chain 41cms. 4.9gms.

**£900-1,400** (plus 27.6% BP\*)

**300 An early 20th century 18ct gold pave-set diamond and enamel brooch, designed as a pheasant in flight.**

Estimated total single-cut diamond weight 0.25ct, H-J colour, SI1-P1 clarity  
Length 4.4cms. 4.9gms.  
With fitted Collingwood case.

**£1,000-1,500** (plus 27.6% BP\*)

**301 A pair of emerald, diamond and white enamel earrings.**

Emerald total calculated weight 6.81cts, based on estimated dimensions.  
Estimated total diamond weight 0.40ct, I-J colour, SI clarity.  
Stamped 18K. Length 3.7cms. 8.9gms.

**£1,000-1,500** (plus 27.6% BP\*)

**302 A cushion-shape emerald and brilliant-cut diamond cluster ring.**

Emerald weight 2.83cts.  
Total diamond weight 0.42ct, estimated G-H colour, VS-SI clarity.  
Ring size L1/2. 5gms.

**£1,400-2,000** (plus 27.6% BP\*)

**303 A pair of square-shape diamond panel cufflinks.**

Total diamond weight 3.56cts, stamped to mount, estimated H-I colour, VS clarity.  
Stamped 750. Length of cufflink face 1.7cms. 18.9gms.

**£1,600-2,200** (plus 27.6% BP\*)

**304 An emerald and brilliant-cut diamond collet line bracelet.**

Emerald calculated total weight 2.25cts, based on estimated dimensions of one emerald.  
Estimated total diamond weight 2.75cts, G-H colour, VS clarity.  
Stamped 750. Length 17.5cms. 17.9gms.

**£1,800-2,400** (plus 27.6% BP\*)

**305 A graduated brilliant-cut diamond collet line necklace.**

Estimated total diamond weight 5.50 to 6cts.  
Principal diamonds estimated 2cts, I-L colour, P1 clarity.  
Length 42cms. 39.9gms.

**£4,000-6,000** (plus 27.6% BP\*)

**306 A brilliant-cut diamond single-stone ring.**

Estimated diamond weight 2.15cts, H-I colour, VS2-SI1 clarity.  
Stamped 18ct. Ring size M1/2. 3.6gms.

**£5,000-7,000** (plus 27.6% BP\*)

**307 A Colombian emerald single-stone ring, with triangular-shape diamond sides, by Wempe.**

**Verbal** from GCS, stating Colombia, insignificant treatment.  
Emerald calculated weight 5.71cts, based on estimated dimensions 10.1 by 10 by 7.7mms.  
Estimated total diamond weight 1ct, G-H colour, SI clarity.  
Ring size M. 11.1gms.

**£7,000-9,000** (plus 27.6% BP\*)



BP\* - Buyer's Premium of 23% (plus VAT) or 27.6% (VAT included)

**308 A 1970s 'Silver Frolics' necklace, by Ilias Lalaounis.**

With non-designer chain.  
Pendant with maker's mark for Ilias Lalaounis.  
Stamped 900.  
Length of pendant 18.2cms.  
292.7gms.

**£1,000-1,500** (plus 27.6% BP\*)

A creative experiment following on from 'The Dawn of Art' collection, 'Silver Frolics' features the designs of children masterfully transformed into jewellery and objets d'art, conceptualising the 'beginnings of artistic consciousness and creation in the growing child'.

Having organised a competition, students aged from kindergarten to senior high school were invited to submit jewellery designs under such briefs as 'something they would like their mother to wear'. Of the thousands of submissions, each screened by a panel of educators, child psychologists and Greek painters, to include the esteemed Spyros Vasiliou and Jannis Spyropoulos, a few pieces were carefully selected. These successful submissions were then reimagined into such works as our featured necklace.



**309**  **A platinum brilliant-cut diamond single-stone ring.**

With report 1207548867, dated 11th August 2015, from the GIA, stating 0.52ct, E colour, VS1 clarity. Hallmarks for London, 2016. Ring size K1/2. 5.8gms.

**£700-900** (plus 27.6% BP\*)

**310** **A mid 20th century gold mabe pearl, diamond and sapphire dress ring.**

Estimated total diamond weight 1ct, H-I colour, VS-SI clarity. Ring size N1/2. 10.9gms.

**£600-800** (plus 27.6% BP\*)

**311** **An 18ct gold brilliant-cut diamond full eternity ring.**

Estimated total diamond weight 1ct, G-H colour, VS-SI clarity. Hallmarks for London, 2014. Ring size U. 4.2gms.

**£800-1,200** (plus 27.6% BP\*)

**312** **A mid 20th century platinum sapphire and diamond floral cluster brooch.**

Estimated total diamond weight 3 to 3.50cts, G-H colour, VS-SI clarity. Length 4.6cms. 23.4gms.

**£1,400-2,000** (plus 27.6% BP\*)

**313** **A brilliant-cut diamond cluster crossover ring.**

Estimated total diamond weight 2.50cts, H-K colour, VS-SI clarity. Stamped 18ct. Ring size P1/2. 5.2gms.

**£2,000-3,000** (plus 27.6% BP\*)

**314** **A pair of sapphire cabochon and single-cut diamond floral earrings.**

Sapphire calculated total weight 25.50cts, based on estimated dimensions. Estimated total diamond weight 1.30cts, predominantly H-I colour, VS-SI clarity. Length 3.1cms. 15.6gms. **£800-1,200** (plus 27.6% BP\*)

**315** **A cabochon sapphire and vari-cut diamond foliate bracelet, with similarly-cut diamond floral spacers.**

Sapphire total calculated weight 40.58cts, based on estimated dimensions. Estimated total diamond weight 2.40cts, H-I colour, SI1-P1 clarity. Stamped Pt950 and OR. Length 16.4cms. 38.4gms.

**£5,000-7,000** (plus 27.6% BP\*)

**316** **A pair of pave-set diamond flower earrings.**

Estimated total diamond weight 10 to 12cts, predominantly H-I colour, VS-SI clarity. Length 4.4cms. 43.4gms.

**£5,500-7,500** (plus 27.6% BP\*)

**317** **A lady's 18ct gold diamond cocktail watch, by The Royal Diamond.**

Estimated total diamond weight 22 to 24cts, G-H colour, VS-SI clarity. Swiss convention marks. Length 18cms. 61.7gms.

**£8,000-12,000** (plus 27.6% BP\*)

**318** **A circular-cut diamond single-stone ring, with rose-cut diamond openwork gallery and shoulders.**

Principal diamond estimated weight 5.05cts, K-L colour, SI clarity. Ring size K1/2. 6.4gms.

**£10,000-15,000** (plus 27.6% BP\*)



BP\* - Buyer's Premium of 23% (plus VAT) or 27.6% (VAT included)

**319** A fancy-cut morganite and brilliant-cut diamond dress ring.

Morganite estimated dimensions 18.5 by 13.8 by 8.4mms.  
Estimated total diamond weight 1ct, H-I colour, VS clarity.  
Stamped 750. Ring size L1/2. 1.3gms.

**£550-750** (plus 27.6% BP\*)

**320** A platinum vari-size baguette-cut diamond two-row full eternity ring.

Estimated total diamond weight 3.25 to 3.75cts, G-H colour, VS clarity.  
Hallmarks for London, 2013. Ring size M1/2. 6.1gms.

**£600-800** (plus 27.6% BP\*)

**321** An opal and brilliant-cut diamond cluster ring.

Opal weight 2.28cts.  
Estimated total diamond weight 1.50cts, G-H colour, SI1-P1 clarity.  
Ring size N. 4.4gms.

**£700-900** (plus 27.6% BP\*)

**322** A diamond and 'brown' diamond floral cluster ring, with calibre-cut ruby and diamond line shoulders.

Estimated total diamond weight 1ct, SI1-P1 clarity.  
Ring size Q. 9.7gms.  
Diamonds untested for natural colour origin.

**£900-1,400** (plus 27.6% BP\*)

**323** An 18ct gold pave-set diamond dog rose and drop necklace.

Estimated total diamond weight 2.50cts, H-I colour, VS clarity.  
Hallmarks for London, 2004. Length 42cms. 24.9gms.

**£1,200-1,800** (plus 27.6% BP\*)

**324** An 18ct gold pave-set diamond and lapis lazuli hinged bangle.

Estimated total diamond weight 0.90ct, I-J colour, VS clarity.  
Hallmarks for London, 1981. Inner diameter 6.6cms. 41.7gms.  
Lapis lazuli untested for natural colour origin.

**£1,000-1,500** (plus 27.6% BP\*)

**325** An oval tanzanite cabochon and brilliant-cut diamond ring.

Tanzanite calculated weight 15.55cts, based on estimated dimensions 16.3 by 12.7 by 8.5mms.  
Estimated total diamond weight 0.65ct, H-I colour, VS2-SI1 clarity.  
Ring size K1/2. 9.1gms.

**£1,400-2,000** (plus 27.6% BP\*)

**326** A star sapphire and brilliant-cut diamond cluster ring.

Sapphire weight 20.655cts, stamped to band.  
Total diamond weight 0.91ct, stamped to band, estimated G-H colour, VS-SI clarity.  
Stamped Pt900. Ring size K1/2. 13.9gms.

**£1,800-2,400** (plus 27.6% BP\*)

**327** An aquamarine single-stone ring, with brilliant-cut diamond sides.

Aquamarine weight 36.13cts.  
Estimated total diamond weight 1.50cts, H-I colour, VS-SI clarity.  
Ring size M. 18.3gms.

**£4,000-6,000** (plus 27.6% BP\*)

**328** A platinum pear-shape and brilliant-cut diamond cluster ring.

Principal diamond laser inscribed to girdle GIA 5106320951, corresponding to a report dated 12th May 2009, from the GIA stating 1.51cts, F colour, SI1 clarity.  
Estimated total diamond weight 1.95cts.  
Hallmarks for Edinburgh. Ring size M1/2. 8.7gms.

**£4,000-6,000** (plus 27.6% BP\*)



**329 A brilliant-cut diamond three-stone ring.**

Estimated total diamond weight 1ct, H-I colour, SI clarity.  
Stamped 18ct. Ring size J1/2. 3.7gms.

**£500-700** (plus 27.6% BP\*)

**330 An 18ct gold brilliant-cut diamond 'Atlas' ring, by Tiffany & Co.**

Estimated total diamond weight 0.20ct.  
Hallmarks for London, 2003. Ring size N1/2. 8gms.

**£550-750** (plus 27.6% BP\*)

**331 An 18ct gold diamond 'Etincelle' full eternity ring, by Cartier.**

Estimated total diamond weight 0.50ct, G+ colour, VS clarity.  
Swiss convention marks. Ring size I. Cartier size 48. 1.8cms.

**£700-900** (plus 27.6% BP\*)

**332 A pair of sapphire, ruby and diamond articulated turtle cufflinks.**

Estimated total diamond weight 0.20ct.  
Stamped 18K 750. Length of cufflink face 2.5cms. 17.1gms.

**£700-900** (plus 27.6% BP\*)

**333 A pair of 18ct gold fancy-shape diamond stud earrings, each cut to resemble a fish.**

Estimated total diamond weight 1.15cts, SI clarity, presumed D colour.  
Hallmarks for Birmingham. Length 0.9cm. 2.2gms.

**£1,000-1,500** (plus 27.6% BP\*)

**334 A turquoise and brilliant-cut diamond cluster pendant, with 18ct gold chain.**

Calculated weight of turquoise 31cts, based on estimated dimensions of 24 by 15.8 by 12.1mms.  
Estimated total diamond weight 1.35cts, predominantly G-I colour, VS-SI clarity.  
Length of pendant 3.9cms. Length of chain 46cms. Total weight 14.7gms.

**£1,000-1,500** (plus 27.6% BP\*)

**335 A sapphire and diamond cluster ring.**

Sapphire calculated weight 1.46cts, based on estimated dimensions 8.3 by 6.2 by 3.4mms.  
Estimated total diamond weight 1.25cts.  
Stamped PLAT. Ring size M. 6gms.

**£1,200-1,800** (plus 27.6% BP\*)

**336 A pave-set diamond frog pendant, with emerald eyes and cultured pearl, on chain, by Tiffany & Co.**

Estimated total diamond weight 2.50 to 3.50cts, G-H colour, VS clarity.  
Stamped 950 and 750. Length of pendant 2.7cms. Length of chain 41cms. 20.5gms.

**£2,000-3,000** (plus 27.6% BP\*)

**337 A pair of blue enamel hinged ear hoops, by Bulgari.**

Stamped 18K.  
Length 4.1cms. 46.4gms.

**£3,000-4,000** (plus 27.6% BP\*)

**338 A graduated brilliant-cut diamond and sapphire diagonal line bracelet.**

Estimated total diamond weight 8.10cts, G-H colour, VS-SI clarity.  
Length 17cms. 35.4gms.

**£3,200-4,200** (plus 27.6% BP\*)



BP\* - Buyer's Premium of 23% (plus VAT) or 27.6% (VAT included)

**339** A 'C de Cartier' ring, by Cartier, lightly textured with diamond terminals.


Estimated total diamond weight 0.10ct.  
Stamped 750. Ring size M. Cartier size 53. 7.9gms.

**£400-600** (plus 27.6% BP\*)

**340** An 18ct gold sapphire three-stone and diamond cluster ring.

Total sapphire calculated weight 2.35cts, based on estimated dimensions.  
Estimated total diamond weight 1ct, H-I colour, VS1-SI1 clarity.  
Hallmarks for London, 1975. Ring size L. 5.3gms.

**£500-700** (plus 27.6% BP\*)

**341**  An Australian black opal and diamond pendant, with integral trace-link chain.

With report 78153-04, dated 25th April 2018, from GCS, stating Australia, no treatment.  
Estimated total diamond weight 0.10ct, G-H colour, VS clarity.  
Length of pendant 4cms. Length of chain 38.5cms. 5.4gms.

**£500-700** (plus 27.6% BP\*)

**342** An Art Deco platinum and gold diamond cocktail watch.

Estimated total diamond weight 2cts.  
Length 16cms. 19gms.

**£550-750** (plus 27.6% BP\*)

**343** A pair of 18ct gold brilliant-cut diamond stud earrings.

Total diamond weight 0.81ct, estimated H-I colour, SI clarity.  
Hallmarks for Sheffield. 1.3gms.

**£700-900** (plus 27.6% BP\*)

**344** An old-cut diamond floral cluster ring.

Principal diamond estimated weight 0.85ct, J-K colour, SI clarity.  
Estimated total diamond weight 1.65cts.  
Stamped Plat. Ring size N. 4.2gms.

**£800-1,200** (plus 27.6% BP\*)

**345** A sapphire and diamond scalloped cluster ring.

Principal sapphire calculated weight 1.50cts, based on estimated dimensions 8.5 by 5.8 by 3.6mms.  
Estimated total diamond weight 0.70ct, I-J colour, SI1-P1 clarity.  
Ring size K. 4gms.

**£1,000-1,500** (plus 27.6% BP\*)

**346** A brilliant-cut diamond single-stone ring, with tapered baguette-cut diamond shoulders.

Principal diamond estimated weight 1.90cts, H-I colour, SI clarity.  
Ring size O. 3.7gms.

**£3,600-4,600** (plus 27.6% BP\*)

**347** An 18ct gold brilliant-cut diamond line bracelet.

Estimated total diamond weight 7.50 to 8cts, H-tinted colour, VS1-P1 clarity.  
Hallmarks for Sheffield. Length 18.7cms. 13.1gms.

**£2,800-3,800** (plus 27.6% BP\*)

**348** A pair of brilliant-cut diamond stud earrings.

Estimated total diamond weight 2.30cts, H-I colour, P1 clarity.  
1.5gms.

**£3,000-4,000** (plus 27.6% BP\*)

**349** An old-cut diamond single-stone ring.

Diamond weight 2.41cts, estimated I-J colour, SI2-P1 clarity.  
Ring size 11/2. 3.7gms.

**£4,000-6,000** (plus 27.6% BP\*)

**350** An old-cut diamond openwork drop pendant, with chain.

Principal diamond estimated weight 1.15cts, G-H colour, VS clarity.  
Estimated total non-principal diamond weight 0.85ct, G-H colour, VS-SI clarity.  
Length of pendant 5.8cms. Length of chain 62cms. 7.9gms.

**£5,000-7,000** (plus 27.6% BP\*)



**351** A 'C de Cartier' ring, with logo motif, by Cartier.

Stamped 750. Ring size K. Cartier size 51. 11.5gms.

**£400-600** (plus 27.6% BP\*)

**352** An emerald and vari-cut diamond cluster ring.

Emerald calculated weight 1.36cts, based on estimated dimensions 7.3 by 6.9 by 3.7mms.  
Estimated total diamond weight 1.25cts, H-J colour, VS clarity.  
Stamped 750. Ring size P. 4.7gms.

**£500-700** (plus 27.6% BP\*)

**353** A pair of cultured pearl and old-cut diamond drop earrings.

Estimated total diamond weight 0.65ct, H-I colour, SI clarity.  
Length 2.8cms. 5gms.

**£700-900** (plus 27.6% BP\*)

**354\*** A rectangular-shape emerald and brilliant-cut diamond cluster ring.

Emerald weight 2.05cts.  
Total diamond weight 0.64ct, estimated G-H colour, VS-SI clarity.  
Stamped 750. Ring size N. 5gms.

**£900-1,400** (plus 27.6% BP\*)

**355**  A rectangular-shape and brilliant-cut diamond cluster ring.

With report 7302977773, dated 22nd October 2018, from the GIA stating 0.53ct, D colour, Internally Flawless clarity.  
Estimated total diamond weight 0.85ct.  
Stamped 750. Ring size K. 3.4gms.

**£1,000-1,500** (plus 27.6% BP\*)

**356** A vari-cut diamond and emerald geometric cluster ring.

Estimated total diamond weight 1.15cts, I-K colour, VS-SI clarity.  
Stamped 750. Ring size M1/2. 6.1gms.

**£1,200-1,800** (plus 27.6% BP\*)

**357** An emerald and brilliant-cut diamond three-stone ring.

Calculated weight of emerald 4.05cts, based on estimated dimensions of 11.2 by 8.2 by 6mms.  
Estimated total diamond weight 1ct, H-I colour, VS clarity.  
Ring size O. 7.2gms.

**£1,800-2,600** (plus 27.6% BP\*)

**358** An emerald and diamond geometric link bracelet.

Estimated total diamond weight 2.60cts, H-I colour, VS-SI clarity.  
Estimated total emerald weight 2.08cts, based on calculated weight of one emerald.  
Stamped 750. Length 17.5cms. 23.2gms.

**£2,600-3,500** (plus 27.6% BP\*)

**359** A graduated brilliant-cut diamond line necklace.

Total diamond weight 10cts, stamped to clasp, predominantly estimated I-K colour, P1-P2 clarity.  
Stamped 750. Length 46.2cms. 25.5gms.

**£4,000-6,000** (plus 27.6% BP\*)



BP\* - Buyer's Premium of 23% (plus VAT) or 27.6% (VAT included)



**360** A 'C de Cartier' ring, with logo motif band, by Cartier.

Stamped 750. Ring size M. Cartier size 53. 12.5gms.

**£400-600** (plus 27.6% BP\*)

**361** An 18ct gold diamond 'Maillon Panthere' ring, by Cartier.

Estimated total diamond weight 0.55ct.  
French assay marks. Ring size I. Cartier size 48. 12gms.

**£800-1,200** (plus 27.6% BP\*)

**362** An old-cut diamond single-stone ring.

Estimated diamond weight 0.90ct, K-L colour, VS clarity.  
Stamped Plat. Ring size L. 2gms.

**£750-950** (plus 27.6% BP\*)

**363** An aquamarine briolette and brilliant-cut diamond necklace.

Aquamarine calculated weight 11.71cts, based on estimated dimensions of 23 by 11.5 by 7.4mms.  
Estimated total diamond weight 1.10cts, G-H colour, SI clarity.  
Stamped 750. Length 41cms. 8.3gms.

**£1,000-1,500** (plus 27.6% BP\*)

**364** A blue zircon and single-cut diamond brooch.

Zircon weight 27.60cts.  
Estimated total diamond weight 0.20ct. Length 4.9cms. 19.1gms.

**£1,200-1,800** (plus 27.6% BP\*)

**365** A pair of brilliant-cut diamond stud earrings.

Estimated total diamond weight 1.90cts, I-K colour, SI2-P1 clarity.  
1.9gms.

**£1,800-2,400** (plus 27.6% BP\*)

**366** A platinum diamond single-stone ring.

Diamond weight 1ct, estimated H-I colour, VS clarity.  
Hallmarks for Sheffield. Ring size K1/2. 4.9gms.  
With sterling silver ring box.

**£1,800-2,400** (plus 27.6% BP\*)

**367** A sapphire dress ring, with brilliant and baguette-cut diamond geometric surround.

Sapphire calculated weight 4.71cts, based on estimated dimensions 10.8 by 8.8 by 5.9mms.  
Estimated total diamond weight 0.80ct, H-I colour, VS-SI clarity.  
Ring size N1/2. 8.3gms.

**£1,800-2,400** (plus 27.6% BP\*)

**368** A brilliant-cut diamond full eternity ring.

Estimated total diamond weight 3.50cts, G-H colour, VS1-SI1 clarity.  
Marked Plat. Ring size M. 8.4gms.

**£2,000-3,000** (plus 27.6% BP\*)

**369** A pair of brilliant-cut diamond chandelier earrings, by Andreoli.

Estimated total diamond weight 6 to 6.50cts, G-I colour, SI1-P1 clarity.  
Italian marks, stamped 750. Length 4.7cms. 20.4gms.

**£2,000-3,000** (plus 27.6% BP\*)

**370** A brilliant-cut diamond single-stone ring, with diamond shoulders.

Principal diamond weight 1.78cts, estimated J-K colour, SI2-P1 clarity.  
Total diamond weight 1.98cts, stamped to band.  
Stamped K18. Ring size M1/2. 3.5gms.

**£3,500-4,500** (plus 27.6% BP\*)

**371** An 18ct gold brilliant-cut diamond three-row bracelet.

Estimated total diamond weight 17 to 19cts, G-H colour, VS clarity.  
Hallmarks for London, 2018. Length 18cms. 41.8gms.

**£6,000-8,000** (plus 27.6% BP\*)



BP\* - Buyer's Premium of 23% (plus VAT) or 27.6% (VAT included)

**372** A brilliant-cut diamond full eternity ring.

Estimated total diamond weight 1.25cts, predominantly G-H colour, SI1-P1 clarity.  
Ring size N. 4.6gms.

**£450-650** (plus 27.6% BP\*)

**373** An emerald, ruby and diamond dress ring.

Emerald calculated weight 2.08cts, based on estimated dimensions of 8.1 by 8 by 5.9mms.  
Estimated total diamond weight 0.50ct, I-K colour, SI1-P1 clarity.  
Stamped 18ct. Ring size O1/2. 8.5gms.

**£900-1,400** (plus 27.6% BP\*)

**374** A pair of pave-set and brilliant-cut diamond circular cluster cufflinks.

Estimated total diamond weight 3.75cts, I-J colour, VS-SI clarity.  
Stamped 18K. Diameter of cufflink face 1.9cms. 13.6gms.

**£900-1,400** (plus 27.6% BP\*)

**375** An oval-shape emerald and brilliant-cut diamond cluster ring.

Emerald weight 3.73cts.  
Total diamond weight 0.65ct, stamped to mount, estimated G-H colour, VS-SI clarity.  
Stamped 750. Ring size M1/2. 6.6gms.

**£2,500-3,500** (plus 27.6% BP\*)

**376** A graduated old-cut diamond line bracelet.

Estimated total diamond weight 8.75cts, H-L colour, VS2-P2 clarity.  
Stamped Pt950 to clasp. Length 18.7cms. 22.7gms.

**£3,000-4,000** (plus 27.6% BP\*)

**377** A Colombian emerald single-stone pendant, with an 18ct gold chain.

With report from GCS, stating Colombia, moderate clarity enhancement.  
Emerald weight 6.56cts.  
Chain with hallmarks for 18ct gold.  
Length of pendant 2cms. Length of chain 51cms. 3.9gms.

**£3,000-4,000** (plus 27.6% BP\*)

**378** A pair of cabochon emerald and vari-cut diamond earrings.

Emerald total calculated weight 18.52cts, based on estimated dimensions.  
Estimated total diamond weight 2.25cts, predominantly G-H colour, VS clarity.  
Length 4.8cms. 20.3gms.

**£4,500-6,500** (plus 27.6% BP\*)

**379** An 18ct gold Colombian emerald and brilliant-cut diamond scalloped cluster ring.

Verbal from GCS, stating Colombia, moderate clarity enhancement.  
Emerald calculated weight 8.35cts, based on estimated dimensions of 12.1 by 11.9 by 7.9mms.  
Estimated total diamond weight 1.60cts, H-I colour, SI clarity.  
Hallmarks for Sheffield, 1998. Ring size P1/2. 8.6gms.

**£4,500-6,500** (plus 27.6% BP\*)

**380** A graduated brilliant-cut diamond riviere necklace.

Total diamond weight 33.70cts, marked to clasp, estimated L-tinted colour, VVS-P1 clarity.  
Length 57.5cms. 67.7gms.

**£5,000-7,000** (plus 27.6% BP\*)

**381** A brilliant-cut diamond, weighing 5.21cts, with vacant ring mount.

With report 79219-51, dated 24th June 2019, from GCS, stating S-Z colour, VVS1 clarity.  
Approximate ring size P1/2. 4.8gms.

**£18,000-22,000** (plus 27.6% BP\*)



**382 A 'C de Cartier' ring, with black enamel inlay, by Cartier.**

Stamped 750. Ring size. Cartier size 57. 11.5gms.

**£400-600** (plus 27.6% BP\*)

**383 A pair of 18ct gold vari-cut diamond stud earrings.**

Estimated total diamond weight 0.75ct, I-J colour, SI clarity. Hallmarks for Sheffield. 1.1gms.

**£600-800** (plus 27.6% BP\*)

**384 A ruby and diamond pierced geometric dress ring.**

Estimated total diamond weight 0.40ct. Ring size N1/2. 4.5gms.

**£600-800** (plus 27.6% BP\*)

**385 A pair of turquoise and diamond earrings, with black hoop spacer.**

Estimated total diamond weight 0.55ct, H-I colour, SI clarity. Length 5.8cms. 9.5gms.

**£700-900** (plus 27.6% BP\*)

**386 A platinum oval-shape diamond and sapphire two-stone crossover ring.**

Estimated diamond weight 0.50ct, H-I colour, SI clarity. Sapphire calculated weight 0.68ct, based on estimated dimensions 6.7 by 5.1 by 2.4mms. Hallmarks for London, 2014. Ring size I1/2. 10.8gms.

**£800-1,200** (plus 27.6% BP\*)

**387 A longuard, with semi-baroque pearl highlights.**

Pearl diameter 6.7 to 5.1mms. Length 143cms. 29.5gms. Pearls untested for natural origin.

**£1,400-2,000** (plus 27.6% BP\*)

**388 A briolette aquamarine and old-cut diamond pendant.**

Aquamarine calculated weight 38.92cts, based on estimated dimensions 30.2 by 17.8 by 12.1mms. Estimated diamond weight 0.20ct, H-I colour, VS clarity. Length 4.1cms. 7.9gms.

**£1,400-2,000** (plus 27.6% BP\*)

**389 A brilliant-cut diamond single-stone ring.**

Estimated diamond weight 1.30cts, I-J colour, SI clarity. Stamped Plat. Ring size N1/2. 3.7gms.

**£2,000-3,000** (plus 27.6% BP\*)

**390 A pair of oval-shape diamond stud earrings.**

Total diamond weight 1.42cts, estimated G-I colour, SI clarity. 1.9gms.

**£2,800-3,800** (plus 27.6% BP\*)

**391 A diamond single-stone ring.**

Estimated diamond weight 2.50cts, L-tinted colour, P1 clarity. Stamped 750, infinity. Ring size J1/2. 5.8gms.

**£2,800-3,800** (plus 27.6% BP\*)

**392 An 18ct gold rectangular-shape diamond single-stone ring.**

With report 5201207255, dated 17th May 2019, from the GIA, stating 1.80cts, I colour, SI1 clarity. Hallmarks for Sheffield. Ring size L. 3.4gms.

**£5,000-7,000** (plus 27.6% BP\*)

**393 A mid 20th century platinum brilliant-cut diamond line bracelet, by Cartier.**

Estimated total diamond weight 3.50cts, G-I colour, VS-SI clarity. Length 16.4cms. 19.5gms.

**£7,000-9,000** (plus 27.6% BP\*)



BP\* - Buyer's Premium of 23% (plus VAT) or 27.6% (VAT included)

**394 An 18ct gold sapphire and diamond floral dress ring.**

Sapphire total calculated weight 1.10cts, based on estimated dimensions of one sapphire.  
Estimated total diamond weight 2.50cts, H-I colour, VS-SI clarity.  
Hallmarks for London, 1985. Ring size L1/2. 9.7gms.

**£700-900** (plus 27.6% BP\*)

**395 A pear-shape and brilliant-cut diamond cluster pendant, with integral 18ct gold chain.**

Principal diamond estimated weight 0.50ct, I-J colour, SI clarity.  
Estimated total diamond weight 1.75cts, non-principal diamonds estimated predominantly H-I colour, VS clarity.  
Chain with hallmarks for Sheffield. Length of pendant 3.2cms. Length of chain 39cms. 6.7gms.

**£900-1,400** (plus 27.6% BP\*)

**396 An unheated sapphire and diamond floral cluster ring.**

With report 79207-19, dated 26th March 2019, from GCS, stating 1.51cts, no heat.  
Estimated total diamond weight 0.80ct, H-I colour, VS-SI clarity.  
Approximate ring size P. 3.3gms.

**£1,000-1,500** (plus 27.6% BP\*)

**397 A pair of 18ct gold brilliant-cut diamond stud earrings.**

Total diamond weight 1.02cts, estimated G-I colour, VS-P2 clarity.  
Hallmarks for Sheffield. 1.6gms.

**£1,000-1,500** (plus 27.6% BP\*)

**398 A graduated brilliant-cut diamond open heart pendant, with chain.**

Total diamond weight 1.08cts, stamped to mount, estimated H-I colour, VS-SI clarity.  
Stamped 750.  
Length of pendant 2cms. Length of chain 42cms. 4.5gms.

**£1,000-1,500** (plus 27.6% BP\*)

**399 A vari-cut diamond openwork cluster ring.**

Estimated total diamond weight 1.25cts, H-K colour, VS1-SI1 clarity.  
Stamped 750. Ring size N. 7.1gms.

**£1,200-1,800** (plus 27.6% BP\*)

**400 A platinum diamond full eternity ring, by Tiffany & Co.**

Estimated total diamond weight 2cts, G-H colour, VS clarity.  
Hallmarks for London, 2011. Ring size K1/2. 6.5gms.

**£1,600-2,200** (plus 27.6% BP\*)

**401 An 18ct gold brilliant-cut diamond single-stone ring.**

With report S3C16076, dated 5th January 2012, from IGI, stating 1ct, F colour, SI2 clarity.  
Hallmarks for Birmingham. Ring size M. 3.7gms.

**£1,800-2,500** (plus 27.6% BP\*)

**402 A diamond, enamel and gem-set 'Happy Spirit - Colour' pendant, by Chopard, with 18ct gold Cartier belcher-link chain.**

Estimated total diamond weight 1.25cts.  
Chain with Swiss convention marks.  
Length of pendant 5.3cms. Length of chain 42cms. 44.3gms.

**£2,000-3,000** (plus 27.6% BP\*)

**403 A single-cut diamond fancy-link bracelet, with sapphire cabochon spacers.**

Sapphire calculated total weight 6.72cts, based on estimated dimensions of one sapphire 5.5 by 4.5 by 3.6mms.  
Estimated total diamond weight 1.50 to 2cts.  
Length 17cms. 18.3gms.

**£2,500-3,500** (plus 27.6% BP\*)

**404 A platinum rectangular-shape diamond single-stone ring.**

With photocopy of report 12491790, dated 24th January 2003, from the GIA, stating 1.01cts, G colour, VS1 clarity.  
Hallmarks for London. Ring size I. 3.9gms.

**£2,800-3,800** (plus 27.6% BP\*)

**405 A diamond single-stone ring, with single and baguette-cut diamond shoulders.**

Principal diamond estimated weight 1.75cts, K-L colour, P1 clarity.  
Stamped Plat. Ring size L1/2. 4.3gms.

**£2,800-3,800** (plus 27.6% BP\*)

**406 A platinum heart-shape diamond single-stone ring.**

Estimated diamond weight 2.35cts, H-I colour, P1 clarity.  
Hallmarks for Birmingham. Ring size L1/2. 7.4gms.

**£5,500-7,500** (plus 27.6% BP\*)



**407 A citrine and diamond dress ring.**

Calculated weight of citrine 7.29cts, based on estimated dimensions of 16.1 by 12.1 by 6.7mms.  
Estimated total diamond weight 0.60ct.  
Stamped 18K 750. Ring size M. 7gms.

**£600-800** (plus 27.6% BP\*)

**408 A platinum baguette-cut diamond full eternity ring.**

Estimated total diamond weight 3cts, G-H colour, VS clarity.  
Hallmarks for London, 2001. Ring size L. 5.7gms.

**£650-850** (plus 27.6% BP\*)

**409 An emerald and brilliant-cut diamond cluster ring.**

Emerald calculated weight 0.98ct, based on estimated dimensions of 7.1 by 5.1 by 3.7mms.  
Estimated total diamond weight 1ct, H-I colour, SI1-P1 clarity.  
Ring size M. 3.5gms.

**£700-900** (plus 27.6% BP\*)

**410\* A pair of vari-hue sapphire and brilliant-cut diamond half-hoop earrings.**

Total sapphire weight 3.20cts.  
Total diamond weight 0.71ct, estimated G-H colour, VS-SI clarity.  
Stamped 750. Length 2cms. 9.6gms.

**£900-1,400** (plus 27.6% BP\*)

**411 A sapphire cabochon and brilliant and tapered baguette-cut diamond dress ring.**

Sapphire calculated weight 3.43cts, based on estimated dimensions of 7.9 by 7.9 by 5.1mms.  
Estimated total diamond weight 1.25cts, G-H colour, VS-SI clarity.  
Stamped 18K. Ring size O1/2. 6.2gms.

**£1,500-2,000** (plus 27.6% BP\*)

**412 An 18ct gold diamond 'Love' bangle, by Cartier.**

Estimated total diamond weight 0.25ct, G+ colour, VS clarity.  
Swiss convention marks.  
Inner diameter 6cms. Cartier size 18. 21.4gms.

**£1,000-1,500** (plus 27.6% BP\*)

**413 An amethyst and diamond necklace.**

Principal amethyst calculated weight 17.68cts, based on estimated dimensions of 19 by 13.5 by 9.6mms.  
Estimated total diamond weight 0.75ct, predominantly G-I colour, SI1-P1 clarity.  
Length of pendant 5.5cms. Length of chain 50.5cms. 13.2gms.

**£1,400-2,000** (plus 27.6% BP\*)

**414 An 18ct gold diamond 'Agrafe' bracelet, by Cartier.**

Signed Cartier, CEO131.  
Estimated total diamond weight 0.30ct, G+ colour, VS clarity.  
Swiss convention marks. Length 16.5cms. 7.9gms.

**£2,000-3,000** (plus 27.6% BP\*)

**415 A pair of ruby earrings, with vari-cut diamond and ruby fringe.**

Estimated total diamond weight 1ct, G-H colour, VS clarity.  
French marks. Length 4cms. 12gms.

**£2,500-3,500** (plus 27.6% BP\*)

**416 A cushion-shape and brilliant-cut diamond cluster ring.**

Principal diamond weight 1.53cts, estimated L-tinted colour, VS clarity.  
Total diamond weight 1.92cts.  
Stamped 18K. Ring size L. 3.5gms.

**£3,000-4,000** (plus 27.6% BP\*)



BP\* - Buyer's Premium of 23% (plus VAT) or 27.6% (VAT included)

**417 A textured foliate motif band ring, by Buccellati.**

Stamped 750. Ring size N. 10.5gms.

**£350-450** (plus 27.6% BP\*)

**418 A brilliant-cut diamond openwork cluster band ring, by Buccellati.**

Estimated total diamond weight 0.60ct, H-I colour, VS clarity. Stamped 750. Ring size N. 7.1gms.

**£500-700** (plus 27.6% BP\*)

**419 A 'Tubogas' 'Parentesi' cuff bracelet, by Bulgari.**

Italian marks. Stamped Steel and Gold, 750. Inner diameter 5.4cms. 55.1gms.

**£600-800** (plus 27.6% BP\*)

**420 An 18ct gold diamond bracelet.**

Estimated total diamond weight 0.40ct. Hallmarks for Birmingham. Length 19.5cms. 29.8gms.

**£650-850** (plus 27.6% BP\*)

**421 A bi-colour and textured bracelet, by Marco Bicego.**

Italian marks, stamped 750. Length 18.8cms. 19.6gms.

**£650-850** (plus 27.6% BP\*)

**422 A bi-colour and textured necklace, by Marco Bicego.**

Italian marks, stamped 750. Length 44cms. 38.1gms.

**£1,200-1,800** (plus 27.6% BP\*)

**423 A pair of 'bamboo' earrings, by Cartier.**

French assay marks, stamped 750. Length 3.4cms. 27.6gms.

**£1,000-1,500** (plus 27.6% BP\*)

**424 A diamond single-stone band ring, by Buccellati.**

Diamond estimated weight 0.65ct, J-K colour, VS clarity. Stamped 750. Ring size N. 10.6gms.

**£1,000-1,500** (plus 27.6% BP\*)

**425 A pair of 18ct gold diamond earrings, by Buccellati.**

Estimated total diamond weight 0.60ct, H-I colour, VS clarity. Italian marks. Length 3.1cms. 25gms.

**£1,400-2,000** (plus 27.6% BP\*)

**426 A pave-set diamond dress watch.**

Estimated total diamond weight 6cts, H-I colour, VS clarity. Omega movement, calibre 625, serial 37951065 and Omega crown. Stamped 750. 19.5cms. 77.8gms.

**£2,000-3,000** (plus 27.6% BP\*)



BP\* - Buyer's Premium of 23% (plus VAT) or 27.6% (VAT included)

**427** A 'Trinity' ring, by Cartier.

Stamped 750. Ring size F1/2. Cartier size 45. 10.9gms.

**£350-450** (plus 27.6% BP\*)

**428** A sapphire and brilliant-cut diamond cluster ring.

Sapphire calculated weight 1.98cts, based on estimated dimensions 9 by 6 by 3.9mms.  
Estimated total diamond weight 0.30ct, H-I colour, VS2-SI1 clarity.  
Ring size N. 7.9gms.

**£450-650** (plus 27.6% BP\*)

**429** A circular sapphire cabochon and brilliant-cut diamond pendant, with 18ct gold chain.

Sapphire calculated weight 8.75cts, based on estimated dimensions 12.3 by 12.2 by 5.4mms.  
Estimated total diamond weight 0.35ct, tinted colour, SI clarity.  
Necklace with hallmarks for Sheffield.  
Length of pendant 2.4cms. Length of chain 45cms. 6.6gms.

**£500-700** (plus 27.6% BP\*)

**430** A 'Catene' necklace, by Bulgari.

Italian marks. Stamped 750.  
Length 50.5cms. 23.5gms. With maker's case.

**£600-800** (plus 27.6% BP\*)

**431** A pair of blue enamel ear hoops, by Buccellati.

Diameter 2.1cms. 13.3gms.

**£900-1,400** (plus 27.6% BP\*)

**432** A sapphire and diamond cluster ring.

Sapphire calculated weight 1.11cts, based on estimated dimensions 6.6 by 5.6 by 3.6mms.  
Estimated total diamond weight 0.90ct, I-J colour, SI clarity.  
Stamped 18ct. Ring size N. 4gms.

**£900-1,400** (plus 27.6% BP\*)

**433** A ruby and brilliant-cut diamond cluster pendant, with chain.

Ruby calculated weight 0.73ct, based on estimated dimensions 6 by 4.1 by 2.75mms.  
Estimated total diamond weight 0.30ct, I-J colour, VS2-SI1 clarity.  
Stamped 750. Length of pendant 2.4cms. Length of chain 55cms. 9.5gms.

**£900-1,400** (plus 27.6% BP\*)

**434** A pair of 18ct gold guilloche enamel cufflinks, by Faberge.

Hallmarks for London, 2007.  
Length of cufflink face 2cms. 10.2gms.  
With maker's case and certificate of authenticity.

**£700-900** (plus 27.6% BP\*)

**435** A vari-cut diamond cluster ring.

Estimated total diamond weight 1.25cts, H-J colour, VS2-SI2 clarity.  
Stamped 750. Ring size U. 6.8gms.

**£1,000-1,500** (plus 27.6% BP\*)

**436** A square-link chain, by Tiffany & Co.

Stamped 750. Length 51cms. 40gms.  
With maker's pouch.

**£1,000-1,500** (plus 27.6% BP\*)

**437** An 18ct gold old-cut diamond cluster ring.

Estimated total diamond weight 2cts, H-I colour, P1-P2 clarity.  
Hallmarks for Birmingham, 1994. Ring size N. 7.5gms.

**£1,500-2,000** (plus 27.6% BP\*)

**438** An 18ct gold 'Love' bangle, by Cartier.

Swiss convention marks.  
Inner diameter 5.5cms. Cartier size 17. 30.6gms.

**£2,500-3,500** (plus 27.6% BP\*)



BP\* - Buyer's Premium of 23% (plus VAT) or 27.6% (VAT included)

**439 X** A 19th century Cantonese carved ivory case, with red velvet interior.

Length 22.8cms. 156.2gms.

**£180-260**

**440** A graduated brilliant-cut diamond five-stone ring.

Estimated total diamond weight 1.20cts, H-J colour, SI clarity. Engraved 18CT PT950. Ring size L1/2. 2.9gms.

**£800-1,200** (plus 27.6% BP\*)

**441** A sapphire and diamond cluster ring.

Sapphire calculated weight 1.14cts, based on estimated dimensions 7 by 5.4 by 3.6mms.

Estimated total diamond weight 0.80ct. Stamped 18ct. Ring size N. 3.4gms.

**£800-1,200** (plus 27.6% BP\*)

**442** An emerald and old-cut diamond three-stone ring.

Emerald calculated weight 0.76ct, based on estimated dimensions 6.45 by 6.25 by 3mms.

Estimated total diamond weight 0.60ct, H-I colour, VS2-SI1 clarity. Stamped 18ct. Approximate ring size L. 3.6gms.

**£900-1,400** (plus 27.6% BP\*)

**443** A pair of 18ct gold, cultured pearl and diamond earrings, by Boodles.

Total diamond weight 0.62ct, estimated G-H colour, VS clarity. Hallmarks for London, 2001. Length 2cms. 12.2gms.

**£900-1,400** (plus 27.6% BP\*)

**444** An old-cut diamond navette-shape cluster ring.

Estimated total diamond weight 1.85cts, I-L colour, SI2-P2 clarity. Stamped 18ct. Ring size Q1/2. 5.2gms.

**£1,200-1,800** (plus 27.6% BP\*)

**445** An 18ct gold brilliant-cut diamond cluster ring.

Estimated total diamond weight 2.50cts, G-H colour, P1-P2 clarity. Hallmarks for Birmingham, 1971. Ring size N1/2. 7.9gms.

**£1,800-2,400** (plus 27.6% BP\*)

**446** A Swiss gold and enamel snuff box, circa 1815, by Francois Joanin.

Marks for Francois Joanin, Geneva. Length 8.7cms. 134gms.

**£3,500-4,500** (plus 27.6% BP\*)

**447** An 18ct gold brilliant-cut diamond line bracelet.

Estimated total diamond weight 6.25cts, G-H colour, VS1-SI1 clarity.

Hallmarks for Sheffield, 2002. Length 18.5gms. 21.3gms.

**£4,000-6,000** (plus 27.6% BP\*)

**448** An unusual oval-shape diamond single-stone pendant, with an 18ct gold chain.

Diamond weight 4.70cts, estimated VS clarity. Chain with hallmarks for London, 2004.

Length 2.2cms. 3.1gms.

**£6,000-8,000** (plus 27.6% BP\*)





**449 An amethyst heart and split pearl bow pendant.**

Amethyst calculated weight 17.80cts, based on estimated dimensions 18.9 by 17.3 by 10.5mms.  
Length 3.5cms. 5.8gms.

**£250-350** (plus 27.6% BP\*)

**450 A late Victorian 18ct gold, diamond and enamel twin cherub brooch, with vari-cut diamond star and pearl accents.**

Pearl estimated dimensions 8.7 by 7.5 by 7mms.  
Stamped 18. Length 5.2cms. 9.3gms.  
Pearl untested for natural origin.

**£450-650** (plus 27.6% BP\*)

**451 A late Victorian silver and gold, blue spinel and rose-cut diamond double heart brooch.**

Spinel total calculated weight 2.05cts, based on estimated dimensions.  
Length 2.2cms. 5.2gms.

**£360-460**

**452 An early 20th century 18ct gold amethyst and white enamel brooch.**

Amethyst calculated weight 44.26cts, based on estimated dimensions 29.3 by 17.2 by 12.7mms.  
Length 3.9cms. 22.3gms.

**£450-650** (plus 27.6% BP\*)

**453 A late 19th century silver and gold, amethyst and paste Kokoshnik tiara.**

Inner diameter 16.2cms. Height 3.9cms. 157gms.

**£550-650** (plus 27.6% BP\*)

**454 A late Victorian silver and gold, graduated conch shell and rose-cut diamond floral brooch.**

Estimated width range of conch 7.5 to 4.4mms.  
Length 8.1cms. 7.7gms.

**£700-900** (plus 27.6% BP\*)

**455 A late Victorian silver and gold, old-cut diamond floral spray brooch.**

Estimated total diamond weight 1.75cts, I-J colour, SI1-P1 clarity.  
Length 5.7cms. 7.9gms.

**£800-1,200** (plus 27.6% BP\*)

**456 An early 20th century silver and gold, peridot, single-cut diamond and seed pearl necklace.**

Principal peridot calculated weight 4.20cts, based on estimated dimensions 9.4 by 8 by 6.2mms.  
Estimated total diamond weight 0.15ct.  
Length 32cms. 10.2gms.

**£1,000-1,500** (plus 27.6% BP\*)

**457 A platinum and 18ct gold old-cut diamond marquise-shape ring.**

Estimated total diamond weight 2 to 2.50cts, H-J colour, SI1-P1 clarity.  
Ring size N1/2. 5.7gms.

**£1,200-1,800** (plus 27.6% BP\*)

**458 An Edwardian 18ct gold Burmese ruby five-stone and diamond ring.**

Verbal from GCS, stating Burma, no heat.  
Ruby total calculated weight 3.75cts, based on estimated dimensions.  
Hallmarks for Birmingham, 1907. Ring size Q1/2. 5.7gms.

**£800-1,200** (plus 27.6% BP\*)



**459** An early 20th century Russian gold, diamond, demantoid garnet and sapphire floral pendant.

Estimated total old-cut diamond weight 0.45ct, I-J colour, P1 clarity.  
Total sapphire calculated weight 1.80cts, based on estimated dimensions.  
Length 5.9cms. 8.6gms.

£350-450 (plus 27.6% BP\*)

**460** An early 20th century 15ct gold, split pearl, emerald and ruby dragonfly clip.

Stamped 15ct. Length 5.6cms. 9.6gms.  
With fitted D.S. Lavender case.

£450-650 (plus 27.6% BP\*)

**461** An early 20th century gold and guilloché blue enamel locket, with split pearl and gilt highlights.

French marks. Length 3.3cms. 9gms.  
With fitted J.C. Vickery case.

£450-650 (plus 27.6% BP\*)

**462** A late 19th century 18ct gold spherical watch pendant, with ruby and rose-cut diamond floral motif.

French marks. Length 3.2cms. 29.7gms.

£500-700 (plus 27.6% BP\*)

**463** An early 20th century gold and platinum, aquamarine, pearl and plique-a-jour enamel shell brooch.

Aquamarine calculated weight 9.46cts, based on estimated dimensions 16 by 9.8 by 7.4mms.  
Estimated total diamond weight 0.25ct. Length 3.2cms. 10.6gms.  
Pearls untested for natural origin.

£500-700 (plus 27.6% BP\*)

**464** A late Victorian silver and gold, rose-cut diamond and blue enamel butterfly brooch, with pearl highlight.

Length 3.1cms. 6.3gms.  
Pearl untested for natural origin.

£600-800 (plus 27.6% BP\*)

**465** An Art Nouveau gold and silver, emerald, rose-cut diamond and enamel iris floral ring.

Ring size N. 5.6gms.

£700-900 (plus 27.6% BP\*)

**466** An early 20th century gold, reverse carved and painted crystal, diamond and enamel 'Good Luck' locket, depicting a four-leaf clover, toadstool and pig.

Austrian marks. Length 1.9cms. 4.7gms.

£700-900 (plus 27.6% BP\*)

**467** An Art Nouveau gold, carved ivory bust brooch, with graduated blue enamel and rose-cut diamond wings, suspending a pearl.

Length 5.4cms. 11gms.  
Pearl untested for natural origin.  
With Breguet case.

£800-1,200 (plus 27.6% BP\*)

**468** A foliate carved sapphire and old-cut diamond cluster ring.

Sapphire weight 5.39cts.  
Estimated total diamond weight 1.80cts, I-K colour, SI1-P1 clarity.  
Ring size J1/2. 4.4gms.

£1,000-1,500 (plus 27.6% BP\*)

**469** An early 20th century gold, foliate carved sapphire and old-cut diamond cluster hinged bangle.

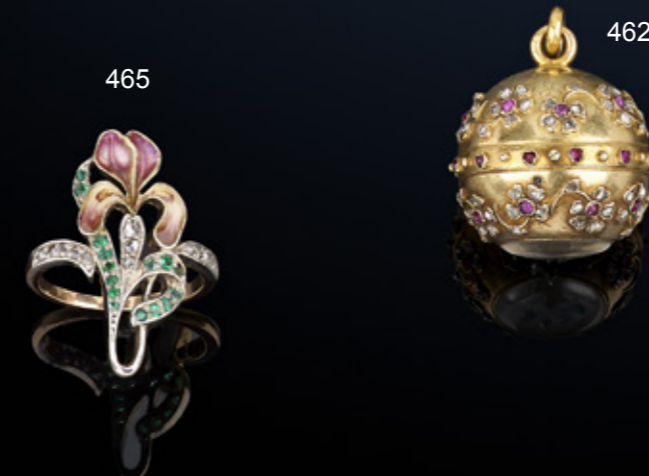
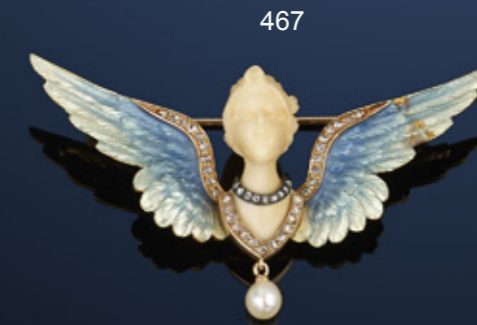
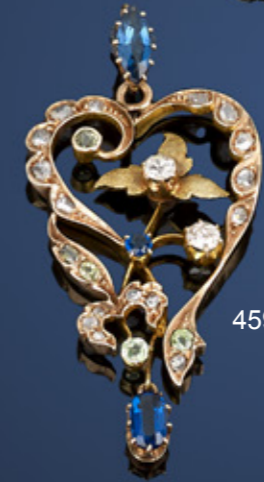
Sapphire weight 3cts.  
Estimated total diamond weight 3cts, G-I colour, VS1-P1 clarity.  
Inner diameter 5.8cms. 15gms.

£1,500-2,000 (plus 27.6% BP\*)

**470** An early 20th century silver and 18ct gold portrait miniature brooch, with rose-cut diamond scalloped surround.

With later chain.  
Diameter 3.1cms. 11.6gms.

£2,500-3,500 (plus 27.6% BP\*)



**471** An early 20th century 18ct gold ruby and old-cut diamond snake ring.

Calculated ruby weight 0.34ct, based on estimated dimensions of 4.2 by 4 by 2.5mms.  
Diamond estimated weight 0.20ct, G-H colour, SI clarity.  
Hallmarks for Chester, 1917. Ring size Z. 7.5gms.

**£200-300** (plus 27.6% BP\*)

**472** An early 20th century 15ct gold hollow, hinged bangle.

Marked 15ct. Inner diameter 5.8cms. 17.4gms.

**£380-480**

**473** Two early 20th century 18ct gold swallow brooches, with rose-cut diamond accents and ruby eyes.

Lengths 4.3cms. 15.4gms.

**£700-900** (plus 27.6% BP\*)

**474** An old-cut diamond articulated floral pendant, with pearl highlights, on trace-link chain.

Estimated total diamond weight 1ct, H-I colour, SI1-P1 clarity.  
Length of pendant 4.6cms. Length of chain 46cms. 6.2gms.  
Pearls untested for natural origin.

**£700-900** (plus 27.6% BP\*)

**475** An Art Nouveau 18ct gold opal, diamond and enamel dress ring.

Estimated dimensions of opal 19 by 9 by 3.9mms.  
Estimated total diamond weight 0.50ct, G-H colour, VS clarity.  
French marks, stamped 18k. Approximate ring size L. 9.2gms.

**£700-900** (plus 27.6% BP\*)

**476** A pair of late Victorian silver and 15ct gold, citrine and old-cut diamond earrings.

Citrine total calculated weight 11.79cts, based on estimated dimensions.  
Estimated total diamond weight 0.50ct.  
Length 4.9cms. 7.5gms. With case.

**£900-1,400** (plus 27.6% BP\*)

**477** A late Victorian silver and gold, peridot and diamond pendant, on platinum and gold chain.

Heart-shape peridot calculated weight 9.42cts, based on estimated dimensions 15 by 14.4 by 6.7mms.  
Estimated total diamond weight 0.75ct, H-I colour, VS-SI clarity.  
Length of pendant 5.2cms. Length of chain 36cms. 12gms.  
With fitted case.

**£1,000-1,500** (plus 27.6% BP\*)

**478** A late Victorian silver and gold, pear-shape peridot and old-cut diamond pendant.

May be worn as a brooch.  
Peridot calculated weight 4.17cts, based on estimated dimensions 13.7 by 8.3 by 5.5mms.  
Estimated total diamond weight 0.75ct, H-I colour, SI1-P1 clarity.  
Length 4.6cms. 9.6gms.

**£1,200-1,800** (plus 27.6% BP\*)

**479** An early 20th century 9ct gold sapphire and diamond cluster bracelet.

Sapphire calculated total weight 2.66cts, based on estimated dimensions.  
Estimated total diamond weight 1.75cts, H-J colour, SI1-P1 clarity.  
Stamped 9. Length 17.5cms. 16.7gms.

**£1,400-2,000** (plus 27.6% BP\*)

**480** An early 20th century 18ct gold Thai ruby three-stone ring, with old-cut diamond accents.

With report 79183-58, dated 25th October 2018, from GCS, stating Thailand (Siam), no heat, approximately 1.80cts total.  
Estimated total diamond weight 0.10ct, H-I colour, SI1-P1 clarity.  
Stamped 18ct. Ring size L. 3.8gms.

**£1,500-2,000** (plus 27.6% BP\*)



**481** A late Victorian 9ct gold, red guilloche and white enamel witches heart brooch, with old-cut diamond highlight, by Child & Child.

Length 2.1cms. 4.8gms.

£300-400 (plus 27.6% BP\*)

**482** A late Victorian rose-cut diamond and red enamel lover's knot and entwined hearts clasp, on cultured pearl three-strand choker.

Length 32.5cms.

£450-650 (plus 27.6% BP\*)

**483** A late 19th century Austrian 18ct gold seed pearl and rose-cut diamond floral wreath brooch.

Austrian marks. Maker's mark 'SR'. Length 3.2cms. 9.5gms.

£350-450 (plus 27.6% BP\*)

**484** An early 20th century 15ct gold diamond and foliate split pearl bracelet.

Estimated total diamond weight 0.25ct. Stamped 15ct. Length 17.4cms. 18.5gms.

£450-650 (plus 27.6% BP\*)

**485** A pink sapphire and rose-cut diamond cluster ring.

Ring size P. 3.1gms.

£650-850 (plus 27.6% BP\*)

**486** An early 20th century Secessionist gold, jasper, synthetic ruby, seed pearl and diamond pendant, on chain.

Marked indistinctly at clasp.

Length of pendant 5.5cms. Length of chain 47cms. 12.3gms.

£450-650 (plus 27.6% BP\*)

**487** An Art Nouveau 15ct gold, ruby, white sapphire and split pearl necklace.

Ruby total calculated weight 1.47cts, based on estimated dimensions.

Stamped 15ct, clasp stamped 9ct. Length 38cms. 34.6gms.

£1,000-1,500 (plus 27.6% BP\*)

**488** A pink sapphire and brilliant-cut diamond stylised floral ring.

Sapphire calculated weight 1.45cts, based on estimated dimensions 7.8 by 6.2 by 3.2mms.

Estimated total diamond weight 0.75ct, H-I colour, VS-SI clarity. Ring size N1/2. 7.2gms.

£1,400-2,000 (plus 27.6% BP\*)

**489** A late Victorian silver and gold, old-cut diamond openwork floral cluster brooch.

Estimated total diamond weight 3 to 3.50cts. Diameter 2.8cms. 8.6gms.

£1,200-1,800 (plus 27.6% BP\*)

**490** A late Victorian cushion-shape ruby and old-cut diamond crescent brooch.

Ruby total calculated weight 4.25cts, based on estimated dimensions.

Estimated total diamond weight 0.35ct. Diameter 2.8cms. 5.9gms.

£1,500-2,000 (plus 27.6% BP\*)



**491** A late Victorian 18ct gold amazonite scarab ring, with figural greyhound sides and band.

Ring size L. 11.2gms.

**£350-450** (plus 27.6% BP\*)

**492** A late Victorian gold floral micro mosaic brooch.

Length 5.9cms. 15.9gms. With case.

**£400-600** (plus 27.6% BP\*)

**493** A late Victorian 18ct gold, natural blister pearl, Burmese ruby, emerald, sapphire and rose-cut diamond stag beetle brooch.

**Verbal** from GCS, stating natural blister pearl and Burma, no heat ruby.

Length 4.2cms. 11gms.

**£500-700** (plus 27.6% BP\*)

**494** A late Victorian gold turquoise matrix, diamond and ruby bug brooch.

Turquoise matrix calculated weight 9.34cts, based on estimated dimensions of 19 by 12 by 5.5mm. Estimated total diamond weight 0.50ct, G-I colour, SI1-P1 clarity. Length 3.8cms. 7.9gms.

**£600-800** (plus 27.6% BP\*)

**495** A late Victorian 15ct gold, rose-cut diamond and blue enamel star-set locket bangle, with buckle motif sides.

Stamped 15. Inner diameter 6.1cms. 37gms.

**£800-1,200** (plus 27.6% BP\*)

**496** A late 19th century silver and gold, rose-cut diamond, cultured pearl and enamel portrait brooch.

May be worn as a pendant.  
Enamel portrait signed A. Meyer.  
Length 6.6cms. 22.2gms.

**£1,000-1,500** (plus 27.6% BP\*)

**497** A late 19th century suite of gold, split pearl and enamel jewellery, comprising bangle, brooch and earrings, with Cupid and buckle motifs.

Inner diameter of bangle 5.9cms. Length of brooch 6.1cms. Length of earrings 3cms. 39.8gms.

**£1,200-1,800** (plus 27.6% BP\*)

**498** An emerald and circular-cut diamond three-stone ring.

Emerald weight 0.79ct.  
Estimated total diamond weight 0.60ct, G-H colour, SI clarity.  
Ring size M1/2. 3.5gms.

**£1,200-1,800** (plus 27.6% BP\*)

**499** A mid Victorian gold, Burmese ruby, old-cut diamond and enamel hinged bangle.

**Verbal** from GCS, stating Burma, no heat.  
Estimated total diamond weight 1ct, H-I colour, SI2-P1 clarity.  
Inner diameter 5.7cms. 29.3gms.

**£2,800-3,800** (plus 27.6% BP\*)

**500** A pair of mid Victorian gold and silver, green enamel and diamond snake earrings.

Estimated total old and brilliant-cut diamond weight 1.10cts.  
Length 4.8cms. 11.8gms.

**£2,500-3,500** (plus 27.6% BP\*)



**501** A late Georgian pinchbeck necklace.

Length 95.3cms.

**£360-460**

**502** A late Georgian pinchbeck necklace.

Length 96.5cms.

**£450-650** (plus 27.6% BP\*)

**503** A ruby and split pearl peacock brooch.

Length 3.5cms. 9.1gms.

**£250-350** (plus 27.6% BP\*)

**504** A late Victorian 18ct gold Sri Lankan yellow sapphire stickpin, held by a textured eagle claw.

Verbal from GCS, stating Sri Lanka, no heat. Sapphire calculated weight 4.17cts, based on estimated dimensions 10 by 9.2 by 5.4mms. Length of stickpin head 2.5cms. 7gms.

**£400-600** (plus 27.6% BP\*)

**505** A 17th century gold Stuart Crystal slide, depicting a man and woman facing each other.

Length 2cms. 3.2gms.

**£500-700** (plus 27.6% BP\*)

**506** A citrine and seed pearl pendant with central cherub scene and seed pearl chain.

Length of pendant 7cms. Length of chain 43cms. 19gms.

**£500-700** (plus 27.6% BP\*)

**507** An early Victorian 18ct gold citrine foliate cross brooch.

Central citrine calculated weight 2.19cts, based on estimated dimensions of 11 by 8.7 by 4.1mms. Length 5.1cms. 10.9gms.

**£600-800** (plus 27.6% BP\*)

**508** A graduated oval-shape citrine necklace, with foliate surrounds and drop spacers.

Citrine total calculated weight 148.72cts, based on estimated dimensions. Length 37cms. 63.6gms. With fitted case.

**£4,000-6,000** (plus 27.6% BP\*)

**509** A late Victorian gold split pearl five-stone ring, with old-cut diamond spacers.

Estimated total diamond weight 0.10ct. Ring size K. 4.8gms.

**£700-900** (plus 27.6% BP\*)

**510** A Colombian emerald and old-cut diamond cluster ring.

With report 79216-09, dated 22nd May 2019, from GCS, stating Colombia, moderate treatment, approximate weight 3cts. Estimated total diamond weight 0.90ct. Approximate ring size N. 2.9gms.

**£4,000-6,000** (plus 27.6% BP\*)



BP\* - Buyer's Premium of 23% (plus VAT) or 27.6% (VAT included)

# Fellows

Established 1876

Auctioneers & Valuers  
Antiques | Jewellery | Watches

## What could your hidden treasures be worth?

Fellows offer free, no-obligation valuations online and at both of our offices.

Don't hesitate to get in touch by phone, email or visiting our website.

**Head Office & Saleroom | 0121 212 2131**

Augusta House | 19 Augusta Street | Birmingham B18 6JA

**London Office | 020 7127 4198**

29 Charles Street | Mayfair | London W1J 5DT

[www.fellows.co.uk](http://www.fellows.co.uk) | Free, no-obligation valuations available

# Fellows

Established 1876

## Sale Results For Fine Jewellery : 11/07/2019

1	£1,100	78	£700	175	£1,400	264	£560	360	£1,000
2	£1,300	79	£1,400	176	£2,200	265	£780	361	£1,400
3	£320	80	£1,700	178	£1,500	266	£940	362	£1,900
4	£760	82	£2,200	179	£2,600	267	£800	366	£940
5	£860	83	£2,400	182	£540	271	£3,000	368	£1,000
6	£500	87	£1,000	183	£2,000	272	£940	371	£1,700
7	£1,200	89	£1,400	185	£1,300	273	£1,200	372	£4,200
8	£1,600	92	£1,800	189	£1,500	275	£2,900	373	£3,900
14	£600	95	£740	190	£1,300	277	£1,400	375	£960
15	£780	97	£2,600	191	£1,000	278	£9,400	378	£1,200
19	£1,200	98	£1,900	194	£2,100	279	£17,000	380	£1,200
20	£1,000	99	£2,900	196	£680	280	£5,100	381	£2,900
21	£1,400	101	£3,100	198	£2,800	281	£23,000	383	£3,300
24	£760	102	£3,100	200	£880	282	£2,200	384	£3,000
25	£1,400	103	£6,600	202	£1,800	283	£2,700	387	£1,000
26	£900	105	£360	209	£580	285	£1,400	388	£1,900
27	£1,600	106	£580	210	£1,400	288	£1,500	389	£740
29	£1,600	107	£760	211	£760	291	£4,200	391	£1,400
30	£2,300	114	£17,000	212	£1,100	292	£13,500	392	£1,000
31	£1,700	115	£460	213	£560	293	£20,500	393	£1,100
33	£1,200	116	£1,750	214	£3,800	295	£720	394	£1,700
35	£1,400	117	£1,950	215	£900	296	£1,800	395	£1,350
37	£800	118	£2,900	218	£700	298	£1,100	396	£540
38	£1,200	119	£2,800	219	£580	307	£880	399	£3,400
39	£2,600	121	£740	222	£900	311	£560	402	£2,800
40	£2,300	122	£1,000	224	£1,600	312	£1,300	404	£1,000
41	£2,000	123	£1,500	225	£2,600	321	£800	405	£460
44	£3,500	126	£2,900	226	£3,150	322	£1,100	406	£720
45	£460	127	£1,800	229	£500	323	£940	407	£540
46	£2,100	129	£2,700	230	£500	324	£1,300	409	£860
47	£1,800	130	£5,000	231	£2,500	325	£1,100	412	£1,000
48	£3,800	131	£760	232	£1,400	326	£1,400	413	£1,500
49	£1,400	132	£760	234	£4,900	327	£1,350	416	£580
50	£1,400	133	£880	236	£1,500	329	£2,000	417	£640
51	£1,700	134	£1,400	237	£2,000	330	£2,400	418	£720
52	£2,100	135	£2,500	238	£1,900	333	£780	419	£640
53	£2,500	137	£1,900	240	£1,400	335	£660	420	£860
54	£5,500	138	£3,800	241	£4,000	336	£920	421	£2,800
55	£740	141	£1,800	244	£500	337	£900	424	£1,400
58	£940	142	£2,300	245	£960	339	£1,000		
59	£1,100	143	£3,100	247	£1,900	340	£2,200		
61	£1,900	155	£4,800	248	£1,600	341	£2,100		
63	£2,000	156	£4,300	249	£2,600	342	£1,900		
65	£2,500	158	£3,300	250	£1,800	345	£820		
69	£920	159	£1,950	252	£820	349	£1,500		
70	£1,000	161	£3,100	253	£900	350	£2,200		
71	£1,100	162	£1,100	256	£1,400	353	£7,300		
72	£1,900	163	£3,000	257	£1,200	355	£600		
73	£1,800	166	£3,300	260	£2,000	357	£660		
74	£2,000	171	£800	261	£2,300	358	£1,000		
75	£1,800	173	£720	262	£1,100	359	£1,000		

## Live Auctions

<b>September</b>	Antiques, Silver & Collectables	Monday 16th at 10am
	Jewellery & Pawnbroker Jewellery	Thursday 19th at 10am
	Watches	Monday 23rd at 10am
	The Designer Collection	Monday 30th at 11am
<b>October</b>	Jewellery & Pawnbroker Jewellery	Thursday 3rd at 10am
	The Watch Sale	Tuesday 15th at 11am
	Jewellery & Pawnbroker Jewellery	Thursday 17th at 10am

## Timed Auctions\*\*

Online Watches & Watch Accessories      Ends Monday 23rd September at 10am

\*\* Please note that these auctions are timed sales hosted by Fellows Live, more information can be found on our website.

Dates are subject to change, please check the website for the definitive auction list.

Fellows recommend that all bidders and buyers read our conditions of buying and buyer's premium available on our website.

### For further information please contact:

**Jewellery**  
**Heather Bailey**  
 heather@fellows.co.uk  
 0121 212 6303

**Watches**  
**Laura Bishop**  
 laurab@fellows.co.uk  
 0121 212 5506

**Silver & Coins**  
**Alison Jakeway**  
 alisonj@fellows.co.uk  
 0121 212 2131

**Antiques & Fine Art**  
**Kevin Jackson**  
 kevin@fellows.co.uk  
 0121 212 2131

### IMPORTANT NOTICES FOR PURCHASERS

#### IMPORTANT NOTICE TO PROSPECTIVE BUYERS OF GEMSTONES/JEWELS

We recommend that you view any items you intend to purchase as refunds will not be given for buyer's remorse. This doesn't affect your statutory rights.

##### Notes 1 - Coloured Gemstones

Purchasers are advised that whilst great care has been taken in the examination of gemstones, it is not possible to test every gemstone within the constraints of time and equipment available outside of laboratory conditions. Any gemstone not provided with a laboratory report has been assessed by Fellows within the limitations of any mounting and an opinion has been given where possible.

Historically, many coloured gemstones have been subjected to a variety of treatments designed to enhance their appearance. Certain enhancement methods, such as heating, are routinely used to alter aspects of rubies, sapphires, and other gemstones. Oiling is often undertaken to enhance the clarity of emeralds. The international jewellery trade has generally accepted these and other enhancement methods. Some treatments are permanent whereas others may only be semi-permanent, possibly requiring further re-treatment in order to retain their appearance.

Because of the widespread variety of treatments within the jewellery industry, prospective purchasers should assume that all gemstones will have been treated unless statements are made to the contrary. Gemmological reports from internationally recognised Gemmological Laboratories will be noted in the item description where available.

##### Note 2 - Diamonds

Advancements in technology have led to some diamonds being treated in a number of ways, all designed to improve their appearance or alter their colour. Processes include but are not necessarily limited to: fracture filling, laser drilling, a combination of drilling and filling, HPHT treatment, irradiation and various coatings. Buyers are also alerted to the fact that synthetic diamonds are now produced in large quantities. Whilst every effort is made to identify or disclose treated and synthetic goods, it is not possible for Fellows to guarantee that all diamond set lots do not contain such material.

Fellows do not knowingly offer treated diamonds for sale, unless a gemmological opinion disclosing the type of treatment has been obtained and the treatment would be stated within the item description.

##### Note 3 - Weights and Measures

Estimated Diamond weights, colours and clarities (see Notes on Diamond Grading terms opposite) given by Fellows are intended as guides for prospective purchasers, with the given limitations of mounts and settings, and are opinions only, not guaranteed by Fellows.

Weights of coloured gemstones offered are extrapolated on the estimated dimensions, using trade standard formulae. Due to the traditional cutting techniques for coloured gemstones it is possible there may be discrepancy between the stated estimate and the unmounted weight. Fellows uses a Thermo Scientific Nitron Handheld XRF Analyser to test metals. This technology is limited to examining metal to a depth of approximately 8 microns. Fellows does not guarantee the standard of gold or platinum unless an item is hallmarked. Results from electronically tested items should only be used as a guide and with caution, as false readings are possible.

Lengths and weights provided are estimates only.

The information stated in reports is the opinion of the respective laboratory and is not necessarily the opinion of Fellows auctioneers.

##### Note 4 - Condition Reports

Statements in the catalogue regarding the condition of lots in this sale may appear in the description, however, the absence of such a reference does not imply a lack of damage or wear, or lack of any further faults within the piece.

Please note that Fellows offer condition reports on almost every lot offered. Our condition reports are the opinion of Fellows and should only be referenced as a guide. We highly recommend that a prospective buyer views in person or sends a representative to satisfy themselves to the condition, originality and suitability of a piece(s) before bidding.

Our lots are almost exclusively antique or secondhand and as such should be expected to have small signs of wear and use commensurate with the age of the piece.

Some jewellery sales will also have a condition report banding scale which applies as follows:

A

No obvious faults other than wear in keeping with age and use.

B

Minor faults. There may be abrasion and/or small nicks to gemstones. General moderate wear from use possibly including but not necessarily limited to small dents and deep scratches. The piece may have been altered from its original design but to a reasonable standard.

C

Faults. Gemstones may be noticeably chipped along with abrasion and nicks. Non-principal gems may be deficient. The piece may have noticeable dents/tears or small losses that affect the overall appearance of the design. The piece may have had alterations from its original design that may be apparent under scrutiny.

D

Significant faults. Gemstones may be deficient, chipped or otherwise damaged. The piece may require attention before it is wearable, pins or clasps may be broken. There may be significant dents, tears, losses or alterations to the metal. The piece may have had alterations from its original design that are readily apparent.

E

At Fault. Gems will be damaged and/or deficient. Noticeable damage. The piece is unwearable.

### Diamond Grading Terms

#### DIAMOND COLOUR

GIA	OLD WORLD TERMS	EXPLANATION	GIA	OLD WORLD TERMS	EXPLANATION
D	Finest White (Jager)	Colourless	K	Silver Cape (Top Cape)	Traces of colour. Small stones in this range will 'face up' colourless when mounted but larger stones will be tinted.
E	Finest White (River)	Colourless	L	Silver Cape (Top Cape)	Traces of colour. Small stones in this range will 'face up' colourless when mounted but larger stones will be tinted.
F	Fine White (River)	Colourless	M	Light Cape (Cape)	Traces of colour. Small stones in this range will 'face up' colourless when mounted but larger stones will be tinted.
G	Fine White (Top Wesselton)	Near Colourless: diamonds 'face up' colourless. Slight traces of colour will not be apparent in the mounted stones to other than the trained eye.	N	Light Cape (Low Cape)	Diamonds graded N through Z+ display a yellowish tint even to the untrained eye.
H	White (Top Wesselton)	Near Colourless: diamonds 'face up' colourless. Slight traces of colour will not be apparent in the mounted stones to other than the trained eye.	P	Cape O - R (Very Light Yellow)	Diamonds graded N through Z+ display a yellowish tint even to the untrained eye.
I	White (Top Wesselton)	Near Colourless: diamonds 'face up' colourless. Slight traces of colour will not be apparent in the mounted stones to other than the trained eye.	Z	Cape R - Z (Very Light Yellow)	Diamonds graded N through Z+ display a yellowish tint even to the untrained eye.
J	Top Silver (Top Wesselton)	Near Colourless: diamonds 'face up' colourless. Slight traces of colour will not be apparent in the mounted stones to other than the trained eye.	Z+	Fancy Yellow	Diamonds graded N through Z+ display a yellowish tint even to the untrained eye.

#### DIAMOND CLARITY

GIA	OLD WORLD TERMS	EXPLANATION	GIA	OLD WORLD TERMS	EXPLANATION
IF	Internally Flawless	No inclusions visible with a 10x lens even to an experienced grader.	S11 & S12	Slightly Included	Noticeable inclusions visible with a 10x lens.
VVS1 & VVS2	Very Very Slightly Included	Minute inclusions, which are difficult, even for experienced graders, to see with a 10x lens.	I1, I2 & I3	Pique 1, 2 & 3	Obvious inclusions, may be visible to the unaided eye, face up. In I3 they may affect the stone's durability.
VS1 & VS2	Very Slightly Included	Minor inclusions, observable with effort with a 10x lens.			



## Catalogue Subscription Service

If you would like to receive catalogues on a regular basis, please mark the appropriate category and return this form with a cheque made payable to Fellows for the full amount.

### Subscriptions last for a 12 month period

<b>Jewellery</b> 18 catalogues per year	<b>£120</b>
<b>Fine Jewellery</b> 6 catalogues per year	<b>£60</b>
<b>The Watch Sale</b> 6 catalogues per year	<b>£60</b>
<b>The Designer Collection</b> 5 catalogues per year	<b>£50</b>
<b>Antiques, Silver &amp; Collectables</b> 5 catalogues per year	<b>£50</b>
<b>The Gemstone Sale</b> 4 catalogues per year	<b>£35</b>
<b>Watches &amp; Watch Parts</b> 4 catalogues per year	<b>£35</b>

All of the above catalogues are available to view **FREE** of charge on our website [www.fellows.co.uk](http://www.fellows.co.uk)

Name (Block Capitals) .....

Address (Block Capitals) .....

Post Code ..... Telephone .....

Signature ..... Date .....

Email .....

## Commission Bidding Slip

**Thursday 12th September 2019**

**Fine Jewellery**

**Please bid on my behalf for the lot(s) shown below.**

The bids will be executed as cheaply as is permitted by other bids in the room or reserves.

I have read and agree to comply with the Conditions of Sale as printed in the catalogue.

Any account for items purchased on my behalf will be settled within 24 hours of the sale and the items collected within two days of sale.

Please complete in block capitals.

Name .....

Address .....

Postcode.....

Telephone.....

Email.....

Signed ..... Date.....

Lot	Price	Lot	Price	Lot	Price	Lot	Price

**Buyer's Premium**  
The buyer's premium is 23% (+ VAT) or 27.6% (VAT inclusive) on the first £100,000 of any individual lot. For any individual lot in excess of £100,001, the buyer's premium is 15% (+ VAT) or 18% (VAT inclusive).

Lots prefixed with \* will carry VAT at 20% on the hammer price.

**Please note the bidding increments**

£50 - £100	£5 increments
£100 - £200	£10 increments
£200 - £1000	£20 increments
£1000 - £10,000	£100 increments
Over £10,000	£1000 increments

Any bids shown not complying with these increments will be **ROUNDED UP** to the next increment.



## Contact Information

### Directors

Stephen Whittaker BA (Hons)      Jayne Whittaker      Ben Griffiths BSc (Hons)

### Departments

#### Customer Services

0121 212 5508  
[info@fellows.co.uk](mailto:info@fellows.co.uk)  
 Jade Daniels MIWFM  
 Kain Holroyd  
 Janis Masters  
 Kasia McGovern-Hay  
 Gemma Sheldon

#### Photography

0121 212 2131  
[photography@fellows.co.uk](mailto:photography@fellows.co.uk)  
 Francesca Allen BA (Hons)  
 Claire Cleaver  
 Helen Nodding BA (Hons)  
 Polly Shave MA (Hons)

#### Marketing

0121 212 5500  
[marketing@fellows.co.uk](mailto:marketing@fellows.co.uk)  
 Liam Bolland BA (Hons)  
 Howard Cheung BA (Hons)  
 Jordan Guest MA (Hons)  
 Luke Poole BA (Hons)  
 Alexandra Whittaker BA (Hons)  
 Nicola Whittaker Bsc (Hons), Cert. GA

#### London Office

0207 127 4198  
[london@fellows.co.uk](mailto:london@fellows.co.uk)  
 Kirsty Basset  
 Prudence Hopkins BA (Hons), FGA, DGA  
 Jonathan Huish BA (Hons)  
 Rianna Roston MA (Hons)  
 Annabel Zarandi BA (Hons)

#### Finance

0121 212 2131  
[wendy@fellows.co.uk](mailto:wendy@fellows.co.uk)  
 Wendy Butler  
 Angela Donnelly BA (Hons) ACMA  
 Gemma Wilkes

### Specialist Departments

#### Jewellery

0121 212 6303  
[jewellery@fellows.co.uk](mailto:jewellery@fellows.co.uk)  
 Heather Bailey  
 Lindsay Beardmore FGA, DGA  
 Jenny Darcy BA (Hons)  
 Alexander Duffy BSc (Hons), FGA, DGA  
 Penelope Gilliver FGA, DGA  
 Patricia Grant BA (Hons)  
 Kathryn Hodkin MSci (Hons), FGA, DGA  
 David Pregun MA (Hons), FGA, DGA  
 Ben Randall BA (Hons), G.G., A.J.P.  
 Emma Scriven BA (Hons), FGA, DGA  
 Emma Testill FGA, DGA  
 Amanda Zhang FGA, Msc

#### Watches

0121 212 5506  
[watches@fellows.co.uk](mailto:watches@fellows.co.uk)  
 Laura Bishop MA (Hons)  
 Amy Hill CertHE  
 Michael Jagiela  
 Carrick Matley  
 Steven Yambo BA (Hons)

#### Antiques, Silver & Collectables

0121 212 6302  
[antiques@fellows.co.uk](mailto:antiques@fellows.co.uk)  
[silverdept@fellows.co.uk](mailto:silverdept@fellows.co.uk)  
 Dannielle Blackledge MA (Hons)  
 Kevin Jackson  
 Alison Jakeway MA MRICS  
 Stephen Watton BA (Hons)

#### Designer Collection

0121 212 6306  
[thedesignercollection@fellows.co.uk](mailto:thedesignercollection@fellows.co.uk)  
 Sophie Higgs

#### Pawnbrokers

0121 212 6308  
[pawnbroker@fellows.co.uk](mailto:pawnbroker@fellows.co.uk)  
 Rachel Bache  
 Kate Bannister  
 Claire Dodwell  
 Annaliese Foster BA (Hons)



### Birmingham Saleroom

Situated in the heart of Birmingham's Jewellery Quarter, Fellows is easily accessible from all parts of the United Kingdom, Europe and beyond.

Head Office & Saleroom  
 Augusta House  
 19 Augusta Street  
 Birmingham  
 B18 6JA

Telephone: 0121 212 2131  
 Email: [info@fellows.co.uk](mailto:info@fellows.co.uk)

### London Office

Fellows' London office offers valuations, please call to arrange a time to visit.

London Office  
 29 Charles Street  
 Mayfair  
 London  
 W1J 5DT

Telephone: 020 7127 4198  
 Email: [london@fellows.co.uk](mailto:london@fellows.co.uk)



### Follow us on....



[facebook.com/fellowsauctions](https://www.facebook.com/fellowsauctions)



[fellowsauctions](https://www.instagram.com/fellowsauctions)



[@fellowsauctions](https://twitter.com/fellowsauctions)



[youtube.com/fellows1876](https://www.youtube.com/fellows1876)



# Fellows

Established 1876

Head Office & Saleroom: Augusta House | 19 Augusta Street | Birmingham B18 6JA

London Office: 29 Charles Street | Mayfair | London W1J 5DT

Tel 0121 212 2131 | Tel 020 7127 4198 | [www.fellows.co.uk](http://www.fellows.co.uk)