

# Watches

Monday 23rd September 2019  
at 10am



Fellows  
Established 1876

## Watches

Monday 23rd September 2019 at 10am

### Watches

Selected Wrist Watches	1 - 240
Military Watches	241 - 249
Miscellaneous Wrist Watches	250 - 318
Pocket Watches	319 - 343
Repairers Pocket Watches	344 - 370
Stopwatches	371 - 373
Clocks & Novelties	374 - 375
Small Repairers Lots	376 - 470

### Viewing Times

London | 29 Charles Street | Mayfair  
Tuesday 17th September 12pm - 7pm

Birmingham Head Office & Saleroom  
Friday 20th September 10am - 4pm  
Saturday 21st September 11am - 4pm  
Monday 23rd September 8.30am - 10.00am

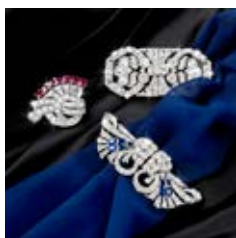
Please be aware that you will be asked for photographic proof of identification to be allowed access to the viewing area.



# Fellows

Established 1876

### Fine Jewellery



### The Designer Collection



### Jewellery



### Watches



## General Information

### Free Live Bidding!

Fellows are delighted to announce the introduction of Fellows Live. This is a new bidding platform where all bidders can follow the sale and bid online for **free**. Say goodbye to additional surcharges when it comes to bidding! Anyone using Fellows Live will only have to pay the standard Buyer's Premium (plus VAT), on items purchased using this method.



### Why Buy?

**COMPETITIVE** buyer's premium

**FREE** live online bidding

**FULLY** illustrated catalogue

**EASY** to use, functional website

**ACCURATE** condition reports

**SPECIALISTS** on hand to offer advice

**TRACKED AND INSURED** shipping\*

\*Please contact Fellows for further information.

### Why Sell?

**HIGH PRICES** consistently achieved

**FLEXIBLE** commission rates

**FREE** valuations with no obligation to consign

**RAPID** turnaround for your goods

**TARGETED** advertising to a global audience

**SUPERIOR** quality catalogues


**FULLY** integrated website

### Contact the department...

Steven Yambo  
BA (Hons)  
Senior Specialist  
0121 212 5506  
steveny@fellows.co.uk

### Further information


 **Additional Images and Condition Reports** can be found online at our website [www.fellows.co.uk](http://www.fellows.co.uk)


 **Telephone Bidding** is available if you cannot attend an auction. Please ring 0121 212 2131 to arrange a telephone line.


### Important Notice

Neither Fellows nor the Vendors are responsible for any reference as to the condition of lots listed. The absence of such reference does not imply that a lot is in good condition or free from faults or imperfections. All weights and dimensions are approximate. Purchasers are advised to carefully inspect lots and make their own opinion as to the condition. Please see section 7 under 'Bidders' in our full terms and conditions. View Fellows Important Notices in full and full terms and conditions at the back of the catalogue.

### Key to Symbols

 Item may have export restrictions for customers outside of the EU.

 Lot comes with box.

 Lot comes with associated papers/warranty cards.

Follow Us



SELECTED WRIST WATCHES

1

**BALL** - a gentleman's Engineer Master II DLC wrist watch. DLC-coated stainless steel case. Reference NM2020C, serial 7009406. Signed automatic movement. Black dial. Fitted to an unsigned black leather strap with gold plated pin buckle. 41mm. Box. Together with a gentleman's DLC-coated stainless steel Ball Fireman Night Train wrist watch. **£200-300** (plus 27.6% BP\*)



4

**BALL** - a gentleman's Engineer Hydrocarbon chronograph wrist watch. Stainless steel case. Reference CM2098C, serial 7120778. Signed automatic movement. Black dial. Fitted to an unsigned brown leather strap with gold plated pin buckle. 40mm. **£250-350** (plus 27.6% BP\*)



7x

**BAUME & MERCIER** - a gentleman's Clifton wrist watch. Stainless steel case with exhibition case back. Reference 65717, serial 5475572. Signed automatic calibre BM11260. Black dial. Fitted to a signed black alligator strap with stainless steel deployant clasp. 41mm. **£200-300** (plus 27.6% BP\*)



10

**BAUME & MERCIER** - a lady's Linea bracelet watch. Stainless steel case with calibrated bezel. Reference 65739, serial 5616724. Signed automatic calibre BM72671. Mother-of-pearl dial. Fitted to a signed stainless steel bracelet with double folding clasp. 27mm. Together with a lady's stainless steel Baume & Mercier Hampton watch head. **£120-180** (plus 27.6% BP\*)



2

**BALL** - a gentleman's Engineer Master II Telemeter chronograph bracelet watch. Stainless steel case. Reference CM1020C, serial 6041308. Signed automatic movement. Black dial. Fitted to a signed stainless steel bracelet with double folding clasp. 41mm. **£250-350** (plus 27.6% BP\*)



5

**BAUME & MERCIER** - a lady's Linea bracelet watch. Stainless steel case with chapter ring bezel. Reference 65690, serial 5121279. Signed quartz calibre BM8111. Mother-of-pearl dial. Fitted to a signed stainless steel bracelet with double folding clasp. 27mm. Box. Together with a similar lady's stainless steel Baume & Mercier Linea bracelet watch and a lady's stainless steel Baume & Mercier Hampton wrist watch. Boxes. **£120-180** (plus 27.6% BP\*)



8

**BAUME & MERCIER** - a lady's Hampton bracelet watch. Stainless steel case. Reference 65721, serial 5488575. Signed quartz calibre BM7111. Mother-of-pearl dial. Fitted to a signed stainless steel bracelet with double folding clasp. 22mm. Box and papers. Together with a gentleman's stainless steel Baume & Mercier Classima wrist watch. Box. **£100-150** (plus 27.6% BP\*)



11x

**BAUME & MERCIER** - a lady's Hampton wrist watch. Stainless steel case. Reference 65308, serial 3541502. Signed automatic calibre BM8395. Bronze dial. Fitted to a signed brown crocodile strap with stainless steel deployant clasp. 26mm. **£120-180** (plus 27.6% BP\*)



3x

**BALL** - a gentleman's Trainmaster Worldtime wrist watch. Stainless steel case with exhibition case back. Reference GM1020D, serial 7713352. Signed automatic movement. Black dial. Fitted to a signed black alligator strap with unsigned stainless steel pin buckle. 41mm. **£250-350** (plus 27.6% BP\*)



6x

**BAUME & MERCIER** - a mid-size Classima wrist watch. Yellow metal case, stamped 750 with poinçon. Reference 15603, serial 1639875. Signed quartz calibre BM9098. White dial. Fitted to an unsigned black lizard strap with gold plated pin buckle. 32mm. **£200-300** (plus 27.6% BP\*)



9

**BAUME & MERCIER** - a lady's Linea bracelet watch. Stainless steel case with chapter ring bezel. Reference MV045182, serial 4030784. Signed quartz calibre 5057. White dial. Fitted to a signed stainless steel bracelet with double folding clasp. 27mm. **£100-150** (plus 27.6% BP\*)



12x

**BAUME & MERCIER** - a gentleman's Classima wrist watch. Stainless steel case. Reference 65615, serial 5634983. Signed automatic movement. Silvered dial. Fitted to a signed brown alligator strap with stainless steel deployant clasp. 39mm. **£200-300** (plus 27.6% BP\*)



BP\* - Buyer's Premium of 23% (plus VAT) or 27.6% (VAT included)

BP\* - Buyer's Premium of 23% (plus VAT) or 27.6% (VAT included)

13



**BAUME & MERCIER** - a lady's wrist watch. 18ct yellow gold case. Numbered 758954 38307 08. Signed manual wind calibre BM777. White dial. Fitted to an unsigned brown leather strap with gold plated pin buckle. 19mm. **£180-260** (plus 27.6% BP\*)

16



**BREITLING** - a gentleman's wrist watch. Nickel plated case with stainless steel case back. Numbered 275 19. Signed manual wind movement. Silvered dial. Fitted to an unsigned black leather strap with nickel plated pin buckle. 34mm. **£70-100** (plus 27.6% BP\*)

19



**BREITLING** - a gentleman's Cadette wrist watch. Gold plated case with stainless steel case back. Signed manual wind movement. Copper and silvered dial. Fitted to an unsigned black leather strap with gold plated pin buckle. 34mm. **£180-260** (plus 27.6% BP\*)

22



**BULGARI** - a lady's B.zero1 wrist watch. Stainless steel case. Reference BZ22S, serial D108980. Signed quartz movement. Blue mother-of-pearl dial. Fitted to a signed green leather strap with stainless steel deployant clasp. 22mm. **£160-240** (plus 27.6% BP\*)

14



**BLANCPAIN** - a gentleman's Cyclotron wrist watch. Stainless steel case. Numbered 505790. Signed automatic calibre R-300. Silvered dial. Fitted to an unsigned black leather strap with nickel plated pin buckle. 35mm. **£200-300** (plus 27.6% BP\*)

17



**BREITLING** - a gentleman's wrist watch. Nickel plated case with stainless steel case back. Numbered 320489 113. Unsigned manual wind movement. Copper dial. Fitted to an unsigned brown leather strap with gold plated pin buckle. 34mm. **£240-340** (plus 27.6% BP\*)

20



**BREITLING** - a mid-size wrist watch. Stainless steel case. Reference 2915, serial 799963. Signed manual wind movement. Silvered dial. Fitted to an unsigned black leather strap with gold plated pin buckle. 30mm. **£200-300** (plus 27.6% BP\*)

23



**BULGARI** - a gentleman's Solotempo wrist watch. Stainless steel case. Reference ST35S, serial D85810. Signed quartz movement. Copper dial. Fitted to a signed brown leather strap with stainless steel pin buckle. 36mm. **£260-360** (plus 27.6% BP\*)

15



**BREITLING** - a gentleman's TransOcean wrist watch. Gold plated case with stainless steel case back. Numbered 899279. Signed automatic calibre B125. Silvered dial. Fitted to an unsigned brown leather strap with gold plated pin buckle. 35mm. **£200-300** (plus 27.6% BP\*)

18



**BREITLING** - a gentleman's wrist watch. Nickel plated case with stainless steel case back. Numbered 381969 124. Unsigned manual wind movement. Silvered dial. Fitted to an unsigned black leather strap with nickel plated pin buckle. 32mm. **£180-260** (plus 27.6% BP\*)

21 ✕



**BULGARI** - a lady's Ergon wrist watch. Stainless steel case. Reference EG30S, serial D7558. Signed quartz calibre MVE001. Black dial. Fitted to a signed black crocodile strap with stainless steel deployant clasp. 30mm. **£240-340** (plus 27.6% BP\*)

24



**BULOVA** - a gentleman's Accutron Spaceview wrist watch. Stainless steel case. Numbered N0 A25447. Signed electronic calibre 214. Skeletonized dial. Fitted to an unsigned black leather strap with stainless steel pin buckle. 33mm. **£180-260** (plus 27.6% BP\*)

25  

**BULOVA** - a gentleman's Precisionist wrist watch. Stainless steel case. Reference C877648, serial 11628275. Unsigned quartz movement. Brown dial. Fitted to a signed brown leather strap with stainless steel pin buckle. 45mm. Box and papers. **£60-90** (plus 27.6% BP\*)



28

**BULOVA** - a wrist watch. Gold plated case. Numbered 8580202. Signed manual wind calibre 10AN. Silvered dial. Fitted to an unsigned black leather strap with nickel plated pin buckle. 26mm. Together with a similar Bulova wrist watch and a stainless steel Bulova bracelet watch. **£100-150** (plus 27.6% BP\*)



31

**CARTIER** - a Must De Cartier Tank wrist watch. Silver case. Numbered 119026 5057001. Signed quartz calibre 057. Cream dial. Fitted to an unsigned black leather strap with gold plated pin buckle. 20mm. **£140-200** (plus 27.6% BP\*)



34

**CARTIER** - a Must de Cartier wrist watch. Gold plated silver case. Numbered 6 21760. Signed manual wind calibre 78-1. Burgundy dial. Fitted to an unsigned burgundy leather strap with gold plated pin buckle. 23mm. **£160-240** (plus 27.6% BP\*)



26

**BULOVA** - a mid-size wrist watch. Gold plated case with stainless steel case back. Numbered L2 5335094. Signed manual wind calibre 10BT. Silvered dial. Fitted to an unsigned black leather strap with gold plated pin buckle. 25mm. Together with a rolled gold Bulova wrist watch. **£80-120** (plus 27.6% BP\*)



29

**BULOVA** - a gentleman's Accutron wrist watch. Gold plated case with stainless steel case back. Numbered N2 3-388810. Signed electronic calibre 2182F. Brown gradated dial. Fitted to an unsigned brown leather strap with gold plated pin buckle. 38mm. **£70-90** (plus 27.6% BP\*)



32

**CARTIER** - a Must De Cartier 21 wrist watch. Stainless steel case with chapter ring bezel. Reference 1330, serial PL208150. Signed quartz calibre 90. Silvered dial. Fitted to an unsigned black leather strap with signed stainless steel deployant clasp. 31mm. **£180-260** (plus 27.6% BP\*)



35

**CHANEL** - a lady's Matelassé bracelet watch. Stainless steel case. Numbered 78389. Signed quartz movement. Black dial. Fitted to a signed bi-colour bracelet with double folding clasp. 19mm. **£180-260** (plus 27.6% BP\*)



27  

**BULOVA** - a gentleman's Precisionist wrist watch. Stainless steel case. Reference C877648, serial 12776650. Unsigned quartz movement. Black dial. Fitted to a signed black leather strap with stainless steel pin buckle. 45mm. Box and papers. **£60-90** (plus 27.6% BP\*)



30 

**BULOVA** - a gentleman's Precisionist chronograph bracelet watch. Stainless steel case. Reference C977805, serial 17478788. Signed quartz movement. Black dial. Fitted to a signed stainless steel bracelet with folding clasp. 48mm. Box. **£100-150** (plus 27.6% BP\*)



33 

**CARTIER** - a Must De Cartier wrist watch. Gold plated silver case. Reference 1861, serial CC152544. Signed quartz calibre 90. Cream dial. Fitted to an unsigned black crocodile strap with gold plated pin buckle. 30mm. **£220-320** (plus 27.6% BP\*)



36  

**DUNHILL** - a lady's bracelet watch. Stainless steel case with yellow metal bezel. Numbered 17 12702. Quartz movement. Burgundy dial. Fitted to a signed bi-colour bracelet with a clasp. 23mm. Box and papers. **£70-100** (plus 27.6% BP\*)



37

**DUNHILL** - a limited edition mid-size Millennium wrist watch. Number 0000 of 0000. Stainless steel case with exhibition case back. Reference PL 8020 ZZ UF. Signed automatic movement. Grey dial. Fitted to an unsigned brown rubber strap with stainless steel deployant clasp. 26mm. Due to the number stamped on the case this watch could possibly be a prototype or a pre-production model. **£120-180 (plus 27.6% BP\*)**



40

**EBEL** - a gentleman's Wave bracelet watch. Stainless steel case. Reference 03.314.1037, serial A355675. Unsigned quartz movement. Blue dial. Fitted to a signed stainless steel bracelet with double folding clasp. 40mm. **£120-180 (plus 27.6% BP\*)**



43 ✕

**EBEL** - a gentleman's Voyager GMT wrist watch. Stainless steel case with calibrated bezel showing cities of the world. Reference 9124913, serial 34500667. Signed automatic calibre 124. Black dial. Fitted to a signed red shark strap with stainless steel deployant clasp. 38mm. **£300-400 (plus 27.6% BP\*)**



46

**GUCCI** - a gentleman's 9100M bracelet watch. Stainless steel case. Signed quartz movement. Black dial. Fitted to a signed stainless steel bracelet with folding clasp. 32mm. **£50-80 (plus 27.6% BP\*)**



38

**DUNHILL** - a Millennium bracelet watch. Stainless steel case with gold plated bezel. Numbered 6 12626 110. Unsigned quartz movement. Black dial. Fitted to a signed stainless steel bracelet with folding clasp. 31mm. **£120-180 (plus 27.6% BP\*)**



41

**EBEL** - a lady's Sportswave bracelet watch. Stainless steel case with yellow metal bezel. Reference E6087621, serial 92950602. Signed quartz calibre 87. Cream dial. Fitted to a signed stainless steel bracelet with double folding clasp. 28mm. **£150-200 (plus 27.6% BP\*)**



44

**EBEL** - a lady's 1911 bracelet watch. Yellow metal case, stamped 18K 750 with poincon. Reference 883908, serial 12126884. Signed quartz calibre 83. Cream dial. Fitted to a signed yellow metal bracelet with folding clasp, stamped 750. 26mm. 77gms. **£1,400-2,000 (plus 27.6% BP\*)**



47

**GUCCI** - a gentleman's chronograph bracelet watch. Stainless steel case with exhibition case back. Reference 126.2, serial 1580778. Signed automatic movement. Black dial. Fitted to a signed stainless steel bracelet with double folding clasp. 45mm. **£70-100 (plus 27.6% BP\*)**



39

**DUNHILL** - a lady's bracelet watch. Gold plated case. Reference 8000 MA MC, serial CC 12918. Unsigned quartz movement. Off-white dial. Fitted to a signed integral gold plated bracelet with double folding clasp. 27mm. Box and papers. **£50-80 (plus 27.6% BP\*)**



42

**EBEL** - a lady's Wave bracelet watch. Stainless steel case. Reference 03.1.14.1032, serial A350278. Unsigned quartz movement. Salmon dial. Fitted to a signed stainless steel bracelet with double folding clasp. 30mm. **£100-150 (plus 27.6% BP\*)**



45

**FORTIS** - a gentleman's Flieger bracelet watch. Stainless steel case. Reference 595.10.46. Signed automatic movement. Black dial. Fitted to a signed stainless steel bracelet with folding clasp. 40mm. **£180-260 (plus 27.6% BP\*)**



48 ✎

**GUCCI** - a gentleman's 7700M bracelet watch. Stainless steel factory diamond set case. Numbered 0031878. Signed quartz movement. Silvered dial. Fitted to an unsigned stainless steel bracelet with double folding clasp. 28mm. Box. **£70-100 (plus 27.6% BP\*)**



BP\* - Buyer's Premium of 23% (plus VAT) or 27.6% (VAT included)

BP\* - Buyer's Premium of 23% (plus VAT) or 27.6% (VAT included)

49



**GUCCI** - a lady's Guccissima bracelet watch. Stainless steel case. Reference 134.3, serial 14976698. Signed quartz movement. Mother-of-pearl dial. Fitted to a signed stainless steel bracelet with clasp. 36mm. **£50-80** (plus 27.6% BP\*)

52



**GUCCI** - a lady's 4600L bracelet watch. Stainless steel factory diamond set case. Numbered 0046989. Signed quartz movement. Silvered dial. Fitted to an unsigned stainless steel bracelet with double folding clasp. 13mm. Box. **£100-150** (plus 27.6% BP\*)

55



**IWC** - a gentleman's wrist watch. Stainless steel case. Numbered 1626628. Signed manual wind calibre 401. Discoloured silvered dial. Fitted to an unsigned black leather strap with base metal pin buckle. 33mm. **£280-380** (plus 27.6% BP\*)

58



**LONGINES** - a lady's Conquest bracelet watch. Stainless steel case. Reference L3.277.4, serial 45633810. Signed quartz calibre L.250.2. Black dial. Fitted to a signed stainless steel bracelet with double folding clasp. 29mm. Box and papers. **£160-240** (plus 27.6% BP\*)

50



**GUCCI** - a 5500XL bracelet watch. Stainless steel case. Reference 5500XL, serial 11631862. Signed quartz movement. Black dial. Fitted to a signed stainless steel bracelet with double folding clasp. 38mm. Together with a gentleman's stainless steel Gucci 8500M bracelet watch and a lady's stainless steel Gucci 3900L wrist watch. Boxes. **£50-80** (plus 27.6% BP\*)

53



**HAMILTON** - a mid-size bracelet watch. Yellow metal case. Signed manual wind calibre 982. Silvered dial. Fitted to an unsigned yellow metal bracelet with folding clasp, stamped 18K. 23mm. 65gms. **£900-1,400** (plus 27.6% BP\*)

56



**LONGINES** - a gentleman's wrist watch. Stainless steel case. Numbered 22287, 114. Signed manual wind calibre 12L. Black dial. Fitted to an unsigned black leather strap with stainless steel pin buckle. 32mm. **Please see the condition report for details of third party intervention. £120-180** (plus 27.6% BP\*)

59



**LONGINES** - a gentleman's Ultronix Diver's bracelet watch. Stainless steel case with calibrated bezel. Reference 8484-3, serial 16128818. Signed electronic calibre 6312. Black dial. Fitted to an unsigned stainless steel bracelet with folding clasp. 40mm. **£180-260** (plus 27.6% BP\*)

51



**GUCCI** - a gentleman's I-Gucci wrist watch. Stainless steel case. Reference 316L 114-2, serial 13649912. Signed quartz calibre TM0501. Digital dial. Fitted to a signed white rubber strap with stainless steel double folding clasp. 45mm. **£300-400** (plus 27.6% BP\*)

54



**IWC** - a mid-size wrist watch. Stainless steel case. Numbered 1245005. Signed manual wind calibre C.88. Silvered dial. Fitted to an unsigned black leather strap with stainless steel pin buckle. 31mm. **£200-300** (plus 27.6% BP\*)

57



**LONGINES** - a gentleman's wrist watch. 9ct yellow gold case, hallmarked London 1973. Numbered 78571. Signed manual wind calibre 6942. Champagne dial. Fitted to an unsigned brown leather strap with gold plated pin buckle. 33mm. Box. Together with a gentleman's 9ct yellow gold Tissot wrist watch and a gentleman's 9ct yellow gold Smiths Astral wrist watch. **£180-260** (plus 27.6% BP\*)

60



**LONGINES** - a wrist watch. Rolled gold case. Numbered A27218. Signed manual wind calibre 22L. Silvered dial. Fitted to an unsigned brown leather strap with gold plated pin buckle. 24mm. Together with a gentleman's gold plated Hamilton wrist watch. **£90-140** (plus 27.6% BP\*)

61  



**LONGINES** - a gentleman's wrist watch. Yellow metal case, stamped 14K 0,585 with poinçon. Numbered 112 6518-1. Signed manual wind calibre 23ZS. Silvered dial. Fitted to a signed brown lizard strap with gold plated pin buckle. 34mm. Box. **£240-340** (plus 27.6% BP\*)

64



**LONGINES** - a gentleman's bracelet watch. Stainless steel case. Numbered 6118 7 381. Signed manual wind calibre 12.68Z. Silvered dial. Fitted to an unsigned stainless steel expandable bracelet. 36mm. **£120-180** (plus 27.6% BP\*)

67



**LONGINES** - a gentleman's Conquest wrist watch. Gold plated case with stainless steel case back. Numbered 9022 3 82. Signed automatic calibre 290. Silvered dial. Fitted to a signed black leather strap with gold plated pin buckle. 35mm. **£120-180** (plus 27.6% BP\*)

70



**LONGINES** - a lady's Prénée bracelet watch. 9ct yellow gold case. Reference 24.540.742, serial 612153. Signed quartz calibre L153.4. Champagne dial. Fitted to a signed integral 9ct yellow gold bracelet with folding clasp. 21mm. 26gms. **£200-300** (plus 27.6% BP\*)

62 



**LONGINES** - a gentleman's wrist watch. Stainless steel case. Numbered 1357 6995 2. Signed manual wind calibre 237S. Silvered dial. Fitted to an unsigned brown leather strap with nickel plated pin buckle. 35mm. Together with a gentleman's gold plated Longines wrist watch and a lady's gold plated Longines wrist watch. Boxes. **£80-120** (plus 27.6% BP\*)

65



**LONGINES** - a gentleman's Admiral HF wrist watch. Gold plated case with engraved stainless steel case back. Reference 2301 1, serial 16357868. Signed manual wind calibre 6942. Silvered dial. Fitted to an unsigned brown leather strap with gold plated pin buckle. 34mm. Together with a gentleman's gold plated Longines wrist watch. **£80-120** (plus 27.6% BP\*)

68



**LONGINES** - a gentleman's wrist watch. Gold plated case with stainless steel case back. Reference 633 1570, serial 1884332. Signed automatic calibre L633.1. Silvered dial. Fitted to an unsigned brown leather strap with gold plated pin buckle. 35mm. **£160-240** (plus 27.6% BP\*)

71



**LONGINES** - a gentleman's Opposition bracelet watch. Stainless steel case. Reference L3.617.4, serial 30200581. Signed quartz calibre L.263.2. Silvered dial. Fitted to a signed stainless steel bracelet with double folding clasp. 36mm. **£80-120** (plus 27.6% BP\*)

63  



**LONGINES** - a gentleman's Conquest Dichro bracelet watch. Stainless steel case with gold plated bezel. Reference L1.622.3, serial 26846229. Signed quartz calibre L.195. Black LCD dial. Fitted to a signed bi-colour bracelet with double folding clasp. 37mm. Box and papers. **£240-340** (plus 27.6% BP\*)

66 



**LONGINES** - a gentleman's wrist watch. Gold plated case with stainless steel case back. Reference 7694 1 300. Signed manual wind calibre 428. Silvered dial. Fitted to an unsigned brown lizard strap with base metal pin buckle. 33mm. **£100-150** (plus 27.6% BP\*)

69



**LONGINES** - a gentleman's wrist watch. Stainless steel case. Numbered D 2624 H. Signed manual wind movement. Black dial. Fitted to an unsigned black leather strap with gold plated pin buckle. 32mm. **£100-150** (plus 27.6% BP\*)

72



**LONGINES** - a wrist watch. Gold plated case. Numbered 2290-P 3128245. Signed manual wind calibre 9LT. Silvered dial. Fitted to an unsigned brown leather strap with gold plated pin buckle. 24mm. **£180-260** (plus 27.6% BP\*)

BP\* - Buyer's Premium of 23% (plus VAT) or 27.6% (VAT included)

BP\* - Buyer's Premium of 23% (plus VAT) or 27.6% (VAT included)



73

**LONGINES** - lady's wrist watch. Gold plated case with stainless steel case back. Numbered 21046396. Signed quartz calibre L962.2. Champagne dial. Fitted to an unsigned brown leather strap. 22mm. Together with a lady's gold plated Gucci wrist watch and a lady's gold plated Tissot watch head. **£50-80** (plus 27.6% BP\*)



76

**LONGINES** - a lady's wrist watch. 9ct yellow gold case. Numbered 20427632. Signed quartz calibre L960.2. White dial. Fitted to an unsigned black leather strap with gold plated pin buckle. 23mm. **£80-120** (plus 27.6% BP\*)



74

**LONGINES** - a gentleman's Conquest bracelet watch. Stainless steel case with gold plated bezel. L1.627.3, serial 27684208. Unsigned quartz movement. Silvered dial. Fitted to a signed bi-colour bracelet with double folding clasp. 35mm. Together with a lady's 9ct yellow gold Présence wrist watch. **£100-150** (plus 27.6% BP\*)



77

**LONGINES** - a lady's Dolce Vita bracelet watch. Stainless steel case. Reference L5.155.4, serial 28795046. Unsigned quartz movement. White dial. Fitted to a signed stainless steel bracelet with double folding clasp. 20mm. **£140-200** (plus 27.6% BP\*)



75  

**LONGINES** - a lady's La Grande Classique wrist watch. Gold plated case with stainless steel case back. Reference 7408, serial 26082205. Unsigned quartz movement. Cream dial. Fitted to an unsigned black lizard strap with gold plated pin buckle. 23mm. Papers. **£70-100** (plus 27.6% BP\*)



78 

**LONGINES** - a Weems Pilots wrist watch. Gold filled case with calibrated bezel. Numbered 9886531. Signed manual wind calibre 11L. White dial. Fitted to an unsigned black crocodile strap with stainless steel pin buckle. 27mm. **£280-380** (plus 27.6% BP\*)



BP\* - Buyer's Premium of 23% (plus VAT) or 27.6% (VAT included)

**79 X**

**LONGINES** - a gentleman's La Grande Classique wrist watch. Stainless steel case with exhibition case back. Reference L4.708.4, serial 34490872. Signed automatic calibre L593.2. White dial. Fitted to an unsigned black crocodile strap with signed stainless steel pin buckle. 34mm. **£120-180** (plus 27.6% BP\*)

**82**

**MAURICE LACROIX** - a lady's Milestone bracelet watch. Bi-metal case. Reference 59858, serial AE51962. Signed quartz movement. Silvered dial. Fitted to a signed bi-metal bracelet with double folding clasp. 24mm. **£70-100** (plus 27.6% BP\*)

**85**

**MOVADO** - a gentleman's Museum wrist watch. Gold plated case with stainless steel case back. Reference 07.1.36.1262, serial 14092047. Unsigned quartz movement. Black dial. Fitted to a signed black leather strap with gold plated pin buckle. 40mm. Together with a stainless steel Movado Museum wrist watch. **£60-90** (plus 27.6% BP\*)

**88**

**MOVADO** - a mid-size Curviplan wrist watch. Gold filled case with engraved case back. Numbered 61810 524243. Signed manual wind calibre 510. Discoloured silvered dial. Fitted to an unsigned brown leather strap with gold plated pin buckle. 23mm. **£180-260** (plus 27.6% BP\*)

**80**

**LONGINES** - a gentleman's bracelet watch. 18ct yellow gold case. Numbered 5537 954. Signed quartz calibre L954.2. Champagne dial. Fitted to an integral 18ct yellow gold bracelet with clasp. 32mm. 84gms. **£1,400-2,000** (plus 27.6% BP\*)

**83**

**MAURICE LACROIX** - a gentleman's Aikon Date bracelet watch. Stainless steel case. Reference AI 1008, serial AW 86496. Unsigned quartz movement. Black dial. Fitted to a signed stainless steel bracelet with double folding clasp. 41mm. **£260-360** (plus 27.6% BP\*)

**86**

**MOVADO** - a gentleman's Kingmatic Calendar wrist watch. Stainless steel case. Numbered 1935 15273. Signed automatic calibre 538. Silvered dial. Fitted to an unsigned brown vinyl strap with nickel plated pin buckle. 35mm. **£70-100** (plus 27.6% BP\*)

**89 X**

**MOVADO** - a mid-size triple date wrist watch. Stainless steel case, numbered A471702 14819. Signed manual wind movement. Silvered dial. Fitted to an unsigned brown lizard strap with gold plated pin buckle. 32mm. Box. **£220-320** (plus 27.6% BP\*)

**81**

**MAURICE LACROIX** - a gentleman's Miros bracelet watch. Stainless steel case. Reference MI1066, serial AJ89435. Signed quartz movement. Silvered dial. Fitted to a signed stainless steel bracelet with double folding clasp. 37mm. **£70-100** (plus 27.6% BP\*)

**84**

**MONTBLANC** - a lady's Meisterstück chronograph bracelet watch. Stainless steel case. Reference 7039, serial PL202123. Quartz movement. Silvered dial. Fitted to a signed grey leather strap with stainless steel pin buckle. 31mm. **£180-260** (plus 27.6% BP\*)

**87**

**MOVADO** - a mid-size bracelet watch. Gold plated case with stainless steel case back and chapter ring bezel. Numbered 87-46-870 B V 24 B. Unsigned quartz movement. Black dial. Fitted to a signed bi-colour bracelet with folding clasp. 31mm. Together with a gentleman's base metal Smiths wrist watch and a lady's stainless steel Seiko bracelet watch. **£70-100** (plus 27.6% BP\*)

**90**

**MOVADO** - a gentleman's wrist watch. Bi-metal case. Reference 11692, serial 0174441. Signed manual wind calibre 150MN. Silvered dial. Fitted to an unsigned black leather strap with stainless steel pin buckle. 32mm. **£120-180** (plus 27.6% BP\*)



BP\* - Buyer's Premium of 23% (plus VAT) or 27.6% (VAT included)

BP\* - Buyer's Premium of 23% (plus VAT) or 27.6% (VAT included)

91

**MOVADO** - a mid-size wrist watch. Yellow metal case, stamped 18K 0750 with poincon. Numbered R5313. Signed manual wind movement. Blue dial. Fitted to an unsigned black leather strap with gold plated pin buckle. 25mm. **£220-320** (plus 27.6% BP\*)



94

**OMEGA** - a gentleman's De Ville bracelet watch. Gold plated case with stainless steel case back. Reference 3961012. Signed quartz calibre 1430. Champagne dial. Fitted to a signed bi-colour bracelet with folding clasp. 32mm. **£140-200** (plus 27.6% BP\*)



97

**OMEGA** - a gentleman's Seamaster watch head. Gold plated case with stainless steel case back. Numbered 2759-9 2761. Signed manual wind calibre 420. Black dial. 34mm. **£80-120** (plus 27.6% BP\*)



100

**OMEGA** - a gentleman's wrist watch. Gold plated case with stainless steel case back. Numbered LU6304 K38148. Signed automatic calibre 550. Silvered dial. Fitted to an unsigned brown leather strap with gold plated pin buckle. 34mm. **£140-200** (plus 27.6% BP\*)



92

**OMEGA** - a gentleman's Seamaster wrist watch. Stainless steel case. Reference 166.089. Signed automatic calibre 750. Blue dial. Fitted to an unsigned black leather strap with nickel plated pin buckle. 39mm. **£200-300** (plus 27.6% BP\*)



95

**OMEGA** - a gentleman's Genève bracelet watch. Gold plated case with stainless steel case back. Numbered 1660098. Signed automatic calibre 1481. Silvered dial. Fitted to an unsigned gold plated expandable bracelet. 35mm. Together with a gentleman's stainless steel Omega Genève watch head. **£100-150** (plus 27.6% BP\*)



98

**OMEGA** - a gentleman's De Ville bracelet watch. Stainless steel case. Reference 166 051. Automatic movement. Silvered dial. Fitted to a signed stainless steel bracelet with folding clasp. 35mm. **£140-200** (plus 27.6% BP\*)



101

**OMEGA** - a lady's Genève wrist watch. Gold plated case with stainless steel case back. Numbered 511.363. Signed manual wind calibre 485. Silvered dial. Fitted to an unsigned black leather strap with gold plated pin buckle. 16mm. Together with a lady's gold plated Omega bracelet watch and a lady's gold plated Omega wrist watch. **£70-100** (plus 27.6% BP\*)



93

**OMEGA** - a gentleman's Seamaster bracelet watch. Stainless steel case. Numbered C2576-5. Signed bumper automatic calibre 344. Silvered dial. Fitted to a signed stainless steel bracelet with folding clasp. 34mm. **£80-120** (plus 27.6% BP\*)



96

**OMEGA** - a lady's bracelet watch. Stainless steel case. Reference 511.162. Signed manual wind calibre 484. Silvered dial. Fitted to an unsigned stainless steel bracelet with folding clasp. 16mm. Together with a lady's gold plated Omega bracelet watch. **£70-100** (plus 27.6% BP\*)



99

**OMEGA** - a lady's Ladymatic bracelet watch. Gold plated case with stainless steel case back. Reference 5510023. Signed automatic calibre 661. Champagne dial. Fitted to an unsigned gold plated expandable bracelet. 18mm. **£50-80** (plus 27.6% BP\*)



102

**OMEGA** - a lady's De Ville wrist watch. Gold plated case with stainless steel case back. Reference 591.0135.1. Signed quartz calibre 1387. Champagne dial. Fitted to an unsigned black leather strap with gold plated pin buckle. 21mm. **Box. £120-180** (plus 27.6% BP\*)



**103** ➤

**OMEGA** - a gentleman's Genève wrist watch. Gold plated case with stainless steel case back. Reference 166.070. Signed automatic calibre 565. Silvered dial. Fitted to an unsigned brown leather strap with signed gold plated pin buckle. 34mm. Box. **£90-140** (plus 27.6% BP\*)

**106**

**OMEGA** - a gentleman's Genève wrist watch. Gold plated case with stainless steel case back. Numbered 1360102. Signed manual wind calibre 1030. Champagne dial. Fitted to an unsigned black leather strap with gold plated pin buckle. 36mm. **£140-200** (plus 27.6% BP\*)

**109**

**OMEGA** - a gentleman's Genève wrist watch. Gold plated case with stainless steel case back. Reference 165.037. Signed automatic calibre 552. Silvered dial. Fitted to an unsigned black leather strap with gold plated pin buckle. 34mm. **£120-180** (plus 27.6% BP\*)

**112** ➤

**OMEGA** - a gentleman's Seamaster bracelet watch. Stainless steel case with gold plated bezel. Reference 1960241. Unsigned quartz movement. Grey and burgundy dial. Fitted to a signed bi-colour bracelet with folding clasp. 29mm. Box. **£80-120** (plus 27.6% BP\*)

**104** ➤

**OMEGA** - a lady's bracelet watch. 9ct yellow gold case, hallmarked London 1964. Numbered 7115631. Signed manual wind calibre 483. Silvered dial. Fitted to an integral 9ct yellow gold bracelet with folding clasp. 17mm. 23gms. Box. **£250-350** (plus 27.6% BP\*)

**107**

**OMEGA** - a lady's bracelet watch. Stainless steel case. Numbered 511.019. Signed manual wind calibre 620. Silvered dial. Fitted to an unsigned stainless steel expandable bracelet. 20mm. Together with a lady's stainless steel Omega Genève wrist watch and a lady's gold plated Omega wrist watch. **£70-100** (plus 27.6% BP\*)

**110**

**OMEGA** - a lady's De Ville wrist watch. Yellow metal case, stamped 8K 0.333 with poincon. Numbered 8575 073. Signed manual wind calibre 485. Champagne dial. Fitted to an unsigned black leather strap with gold plated pin buckle. 24mm. **£120-180** (plus 27.6% BP\*)

**113**

**OMEGA** - a lady's wrist watch. 9ct yellow gold case, hallmarked Birmingham 1961. Numbered 951 162817. Signed manual wind calibre 245. Silvered dial. Fitted to an unsigned brown leather strap with gold plated pin buckle. 20mm. **£80-120** (plus 27.6% BP\*)

**105**

**OMEGA** - a lady's Seamaster Dynamic bracelet watch. Stainless steel case. Quartz movement. Silvered dial. Fitted to a signed stainless steel bracelet with folding clasp. 26mm. **£100-150** (plus 27.6% BP\*)

**108**

**OMEGA** - a mid-size wrist watch. Stainless steel case. Reference 2165-5. Signed manual wind movement. White dial. Fitted to an unsigned black leather strap with nickel plated pin buckle. 30mm. **£80-120** (plus 27.6% BP\*)

**111**

**OMEGA** - a gentleman's De Ville bracelet watch. Gold plated case with stainless steel case back. Reference 396 1017, numbered 53913211. Unsigned quartz movement. Champagne dial. Fitted to a signed bi-colour bracelet with folding clasp. 30mm. **£120-180** (plus 27.6% BP\*)

**114** ✕

**OMEGA** - a mid-size De Ville wrist watch. Gold plated case with stainless steel case back. Numbered 191.0100.1. Signed quartz calibre 1365. Champagne dial. Fitted to a signed brown lizard strap with base metal pin buckle. 27mm. Together with a gentleman's gold plated Omega watch head and an incomplete lady's gold plated Omega Seamaster bracelet watch. **£50-80** (plus 27.6% BP\*)

**115**

**OMEGA** - a gentleman's Genève wrist watch. Gold plated case with stainless steel case back. Reference 135.070. Signed manual wind calibre 601. Silvered dial. Fitted to an unsigned black leather strap with stainless steel pin buckle. 34mm. **£150-200** (plus 27.6% BP\*)

**118**

**OMEGA** - a gentleman's Genève bracelet watch. Gold plated case with engraved stainless steel case back. Reference 166 0173. Signed automatic calibre 1012. Silvered dial. Fitted to a signed gold plated bracelet with folding clasp. 37mm. Box. **£120-180** (plus 27.6% BP\*)

**121**

**OMEGA** - a gentleman's wrist watch. Gold plated case with stainless steel case back. Reference 14714-62-SC. Signed manual wind calibre 286. Silvered dial. Fitted to an unsigned brown leather strap with gold plated pin buckle. 33mm. **£100-150** (plus 27.6% BP\*)

**124**

**OMEGA** - a gentleman's Seamaster wrist watch. Gold plated case with stainless steel case back. Reference 165002. Signed automatic calibre 1552. Silvered dial. Fitted to an unsigned black leather strap with gold plated pin buckle. 34mm. **£140-200** (plus 27.6% BP\*)

**116**

**OMEGA** - a gentleman's Seamaster wrist watch. Gold plated case with stainless steel case back. Reference 1960264. Signed quartz calibre 1430. Champagne dial. Fitted to an unsigned tan leather strap with stainless steel pin buckle. 29mm. **£80-120** (plus 27.6% BP\*)

**119**

**OMEGA** - a gentleman's Seamaster 600 wrist watch. Stainless steel case. Reference 136.011. Signed manual wind calibre 611. Light champagne dial. Fitted to an unsigned tan leather strap with nickel plated pin buckle. 34mm. **£180-260** (plus 27.6% BP\*)

**122**

**OMEGA** - a mid-size wrist watch. Yellow metal case, stamped 18K 0.750 with poinçon. Numbered 10535599. Signed bumper automatic movement. Silvered dial. Fitted to an unsigned black alligator strap with gold plated pin buckle. 33mm. **£450-650** (plus 27.6% BP\*)

**125**

**OMEGA** - a lady's Constellation bracelet watch. Stainless steel case. Reference 191.002. Unsigned quartz movement. Black dial. Fitted to a signed stainless steel bracelet with folding clasp. 29mm. **£100-150** (plus 27.6% BP\*)

**117**

**OMEGA** - a gentleman's De Ville wrist watch. Gold plated case with stainless steel case back. Reference 195 0075.2. Signed quartz calibre 1378. Black dial. Fitted to a signed black leather strap with gold plated pin buckle. 32mm. Box. **£70-100** (plus 27.6% BP\*)

**120**

**OMEGA** - a lady's De Ville wrist watch. Stainless steel case. Reference 5110552. Signed manual wind calibre 1100. Silvered dial. Fitted to a signed black leather strap. 19mm. **£60-90** (plus 27.6% BP\*)

**123**

**OMEGA** - a lady's Ladymatic bracelet watch. 9ct yellow gold case, hallmarked London 1968. Numbered 7515815. Signed automatic calibre 661. Silvered dial. Fitted to a signed 9ct yellow gold integral bracelet with folding clasp. 18mm. 22gms. **£180-260** (plus 27.6% BP\*)

**126**

**OMEGA** - a gentleman's Seamaster bracelet watch. Stainless steel case. Reference 166.0216. Signed automatic calibre 1020. Silvered dial. Fitted to a signed stainless steel bracelet with folding clasp. 36mm. **£120-180** (plus 27.6% BP\*)

127



**OMEGA** - a lady's Constellation bracelet watch. Stainless steel case. Reference 568.015. Signed automatic calibre 682. Silvered dial. Fitted to an unsigned stainless steel bracelet with folding clasp. 27mm. Together with a lady's gold plated Raymond Weil bracelet watch. **£200-300** (plus 27.6% BP\*)

130



**OMEGA** - a gentleman's Genève wrist watch. Gold plated case with engraved stainless steel case back. Numbered 135044. Signed manual wind calibre 601. Silvered dial. Fitted to a signed gold plated expandable bracelet. 34mm. **Box. £100-150** (plus 27.6% BP\*)

133



**OMEGA** - a gentleman's Genève wrist watch. Gold plated case with stainless steel case back. Reference 136.0102. Signed manual wind calibre 1030. Silvered dial. Fitted to an unsigned black leather strap with gold plated pin buckle. 36mm. **£70-100** (plus 27.6% BP\*)

136



**OMEGA** - a lady's Constellation bracelet watch. Factory diamond set stainless steel case. Reference 895 1230, serial 56924132. Signed quartz calibre 1376. Mother-of-pearl dial. Fitted to a signed stainless steel bracelet with folding clasp. 19mm. **£340-440** (plus 27.6% BP\*)

128



**OMEGA** - a gentleman's wrist watch. Gold plated case with stainless steel case back. Reference 196 0268. Signed quartz calibre 1432. Champagne dial. Fitted to an unsigned brown leather strap with gold plated pin buckle. 32mm. **£80-120** (plus 27.6% BP\*)

131



**OMEGA** - a gentleman's Seamaster wrist watch. Gold plated case with stainless steel case back. Reference 1660210. Signed automatic calibre 1022. Silvered dial. Fitted to an unsigned black leather strap with gold plated pin buckle. 35mm. **£150-200** (plus 27.6% BP\*)

134



**OMEGA** - a lady's De Ville bracelet watch. Gold plated case with stainless steel case back. Reference 795.0397.2, serial 53270017. Unsigned quartz movement. White dial. Fitted to a signed bi-colour bracelet with folding clasp. 22mm. **£50-80** (plus 27.6% BP\*)

137



**OMEGA** - a gentleman's De Ville bracelet watch. Stainless steel case with yellow metal bezel. Reference 196 0316. Signed quartz calibre 1436. Cream dial. Fitted to a signed stainless steel bracelet with folding clasp. 32mm. **£70-100** (plus 27.6% BP\*)

129



**OMEGA** - a gentleman's Seamaster wrist watch. Gold plated case with stainless steel case back. Reference 196 0313. Signed quartz calibre 1430. Champagne dial. Fitted to an unsigned brown leather strap with gold plated pin buckle. 33mm. **£70-100** (plus 27.6% BP\*)

132



**OMEGA** - a gentleman's Seamaster bracelet watch. Stainless steel case. Reference 196.0107. Signed quartz calibre 1345. Silvered dial. Fitted to a signed stainless steel bracelet with folding clasp. 36mm. **£140-200** (plus 27.6% BP\*)

135



**OMEGA** - a gentleman's Seamaster wrist watch. 9ct yellow gold case, hallmarked Birmingham 1963. Reference 1655410, numbered 224009. Signed automatic calibre 552. Light champagne dial. Fitted to an unsigned black leather strap with gold plated pin buckle. 34mm. **£180-260** (plus 27.6% BP\*)

138



**OMEGA** - a gentleman's Genève bracelet watch. Stainless steel case. Reference 166 0173. Signed automatic calibre 1012. Silvered dial. Fitted to a signed stainless steel bracelet with folding clasp. 36mm. **£240-340** (plus 27.6% BP\*)

139



**OMEGA** - a lady's bracelet watch. 9ct yellow gold case, import hallmarked London 1968. Numbered 1061 7115500. Signed manual wind calibre 620. Champagne dial. Fitted to an integral 9ct yellow gold bracelet with clasp. 20mm. 24gms. Papers. **£240-340** (plus 27.6% BP\*)

142



**OMEGA** - a gentleman's Seamaster Polaris bracelet watch. Bi-colour case. Reference 386.0822. Unsigned quartz movement. Black dial. Fitted to a signed stainless steel bracelet with bi-colour folding clasp. 32mm. **£100-150** (plus 27.6% BP\*)

145



**OMEGA** - a gentleman's Seamaster 200M bracelet watch. Stainless steel case with calibrated bezel. Reference 396 1041.3. Signed quartz calibre 1438. Black dial. Fitted to a signed stainless steel bracelet with folding clasp. 38mm. **£100-150** (plus 27.6% BP\*)

148



**OMEGA** - a gentleman's wrist watch. Gold plated case with stainless steel case back. Numbered LU6304 K86294. Signed automatic calibre 563. Silvered dial. Fitted to an unsigned brown leather strap with gold plated pin buckle. 34mm. **£90-140** (plus 27.6% BP\*)

140



**OMEGA** - a gentleman's wrist watch. Gold plated case. Reference C2445-6. Signed bumper automatic calibre 351. Two tone light champagne dial. Fitted to an unsigned black leather strap with gold plated pin buckle. 32mm. **£140-200** (plus 27.6% BP\*)

143



**OMEGA** - a gentleman's Genève bracelet watch. Stainless steel case. Reference 166 0191. Signed automatic calibre 1010. Silvered dial. Fitted to a signed stainless steel bracelet with folding clasp. 36mm. **£120-180** (plus 27.6% BP\*)

146



**OMEGA** - a gentleman's wrist watch. Stainless steel case. Numbered 13322 8438. Signed manual wind calibre 30T23C. Discoloured silvered dial. Fitted to an unsigned black leather strap with gold plated pin buckle. 33mm. Together with a mid-size stainless steel Omega watch head. **£80-120** (plus 27.6% BP\*)

149



**OMEGA** - a lady's bracelet watch. 9ct yellow gold case, hallmarked Birmingham 1960. Numbered 950 37024. Signed manual wind calibre 244. Silvered dial. Fitted to an unsigned 9ct yellow gold bracelet with folding clasp. 19mm. 36gms. **£400-500** (plus 27.6% BP\*)

141



**OMEGA** - a lady's De Ville Dynamic wrist watch. Stainless steel case. Automatic movement. Blue dial. Fitted to an unsigned black leather strap with gold plated pin buckle. 29mm. **£200-300** (plus 27.6% BP\*)

144



**OMEGA** - a De Ville bracelet watch. Silver case, import hallmarked London 1975. Numbered 8390 059. Signed manual wind calibre 625. Silvered dial. Fitted to a signed silver integral bracelet with clasp. 32mm. Box and papers. **£160-200** (plus 27.6% BP\*)

147



**OMEGA** - a lady's De Ville wrist watch. Gold plated case with stainless steel case back. Numbered 551047. Signed automatic calibre 674. Champagne dial. Fitted to an unsigned grey laminated leather strap with gold plated pin buckle. 23mm. **£70-100** (plus 27.6% BP\*)

150



**OMEGA** - a lady's watch head. Gold plated case with stainless steel case back. Reference 511-213. Signed manual wind calibre 620. Silvered dial. 20mm. Together with a gentleman's stainless steel Certina wrist watch. **£60-90** (plus 27.6% BP\*)

151



**OMEGA** - a lady's De Ville bracelet watch. Stainless steel case. Numbered 111096. Signed manual wind calibre 620. Silvered dial. Fitted to an unsigned stainless steel bracelet with folding clasp. 25mm. **£80-120** (plus 27.6% BP\*)

154



**OMEGA** - a lady's bracelet watch. 9ct yellow gold case, hallmarked Birmingham 1961. Numbered 950, 112117. Signed manual wind calibre 245. Silvered dial. Fitted to an unsigned 9ct yellow gold bracelet with clasp. 19mm. 13gms. **Box and papers. £140-200** (plus 27.6% BP\*)

157



**RADO** - a mid-size Diastar bracelet watch. Gold plated case with stainless steel case back. Reference 160.0281.3, serial 33125633. Signed quartz movement. White dial. Fitted to a signed bi-material bracelet with folding clasp. 24mm. **Papers. £80-120** (plus 27.6% BP\*)

160



**RADO** - a gentleman's Stag bracelet watch. Stainless steel case with gold plated bezel. Reference 603.3213.4, serial 9290351. Signed automatic movement. Champagne dial. Fitted to a signed bi-colour bracelet with folding clasp. 36mm. **£50-80** (plus 27.6% BP\*)

152



**OMEGA** - a gentleman's wrist watch. 9ct yellow gold case, hallmarked Birmingham 1958. Numbered 874334. Signed automatic calibre 501. Champagne dial. Fitted to an unsigned black leather strap with 9ct yellow metal pin buckle. 34mm. **Box and papers. £350-450** (plus 27.6% BP\*)

155



**ORIS** - a lady's Artelier Pointer Date bracelet watch. Stainless steel case with gold plated bezel and exhibition case back. Reference 7492. Signed automatic movement. Silvered dial. Fitted to a signed bi-colour bracelet with folding clasp. 28mm. **£80-120** (plus 27.6% BP\*)

158



**RADO** - a lady's Jubilé bracelet watch. Bi-material factory diamond set case. Reference 153.0633.3, serial 06373781. Unsigned quartz movement. White dial. Fitted to a signed factory diamond set stainless steel and ceramic bracelet with titanium double folding clasp. 22mm. **£200-300** (plus 27.6% BP\*)

161



**RADO** - a gentleman's wrist watch. Gold plated case with stainless steel case back. Reference 396.7981.2, serial 09800483. Signed manual wind calibre 905. Brown dial. Fitted to an unsigned black leather strap with gold plated pin buckle. 31mm. **£70-100** (plus 27.6% BP\*)

153



**OMEGA** - a lady's Dynamic wrist watch. Stainless steel case. Automatic movement. Silvered and blue dial. Fitted to a signed blue leather strap with stainless steel pin buckle. 30mm. **£340-440** (plus 27.6% BP\*)

156



**ORIS** - a gentleman's Super wrist watch. Gold plated case with stainless steel case back. Signed manual wind calibre 482 KIF. Silvered dial. Fitted to an unsigned brown leather strap with gold plated pin buckle. 33mm. **Box. £80-120** (plus 27.6% BP\*)

159



**RADO** - a gentleman's DiaStar chronograph bracelet watch. Bi-material case. Numbered 541.0638.3. Unsigned quartz movement. Black dial. Fitted to a signed stainless steel bracelet with titanium folding clasp. 39mm. **Box. £180-260** (plus 27.6% BP\*)

162



**RADO** - a gentleman's Companion bracelet watch. Gold plated case with stainless steel case back. Reference 603.3188.2, serial 8262337. Signed automatic movement. Silvered dial. Fitted to a signed gold plated bracelet with folding clasp. 39mm. **Box. £50-80** (plus 27.6% BP\*)



163

**RADO** - a lady's Esenza Jubile wrist watch. Stainless steel case with factory diamond set bezel and titanium case back. Reference 964.0543.3, serial 04715918. Unsigned quartz movement. Black dial. Fitted to an unsigned black patent leather strap with signed stainless steel pin buckle. 24mm. Box. **£450-650** (plus 27.6% BP\*)



166

**RAYMOND WEIL** - a gentleman's Tango chronograph wrist watch. Stainless steel case. Reference 4881, serial K005370. Unsigned quartz movement. Black dial. Fitted to an unsigned black leather strap with stainless steel pin buckle. 34mm. Together with a gentleman's nickel plated Cyma Cymaflex wrist watch and a gentleman's stainless steel Seiko bracelet watch. **£200-300** (plus 27.6% BP\*)



169

**RAYMOND WEIL** - a gentleman's Tradition bracelet watch. Stainless steel case. Reference 5466, serial E324915. Unsigned quartz movement. Black dial. Fitted to a signed stainless steel bracelet with double folding clasp. 39mm. Box. **£80-120** (plus 27.6% BP\*)



172

**RAYMOND WEIL** - a gentleman's Parsifal bracelet watch. Stainless steel case with yellow metal bezel. Reference rubbed, serial rubbed. Unsigned manual wind movement. Mother-of-pearl dial. Fitted to an unsigned bi-metal bracelet with double folding clasp. 28mm. Box. Together with a lady's gold plated Raymond Weil Tango bracelet watch. **£90-140** (plus 27.6% BP\*)



164

**RADO** - a lady's Centrix Diamonds bracelet watch. Gold plated case with stainless steel case back. Reference 111.0512.3, serial 14481869. Unsigned quartz movement. White dial. Fitted to a signed white bi-material bracelet with double folding titanium clasp. 28mm. Box and papers. **£150-200** (plus 27.6% BP\*)



167

**RAYMOND WEIL** - a lady's Tango bracelet watch. Stainless steel case. Reference 5391, serial V371006. Unsigned quartz movement. Mother-of-pearl dial. Fitted to a signed stainless steel bracelet with double folding clasp. 28mm. Together with a lady's bi-metal Raymond Weil Parsifal bracelet watch and a lady's bi-colour Raymond Weil Toccata bracelet watch. **£100-150** (plus 27.6% BP\*)



170

**RAYMOND WEIL** - a gentleman's Tradition wrist watch. Gold plated case with exhibition case back. Reference 2834, serial X366433. Signed automatic movement. White dial. Fitted to an unsigned brown leather strap with signed gold plated pin buckle. 36mm. **£100-150** (plus 27.6% BP\*)



173

**RAYMOND WEIL** - a gentleman's Tango bracelet watch. Stainless steel case. Reference 5381, serial K007747. Unsigned quartz movement. Silvered dial. Fitted to a signed stainless steel bracelet with double folding clasp. 28mm. Together with a bi-colour Fendi bracelet watch and a lady's gold plated Seiko bracelet watch. **£140-200** (plus 27.6% BP\*)



165

**RAYMOND WEIL** - a gentleman's Tango bracelet watch. Stainless steel case. Reference 5591, serial V438187. Unsigned quartz movement. Blue dial. Fitted to a signed stainless steel bracelet with double folding clasp. 38mm. Together with a bi-metal Raymond Weil Parsifal bracelet watch and a stainless steel lady's Raymond Weil Tango bracelet watch. **£80-120** (plus 27.6% BP\*)



168

**RAYMOND WEIL** - a gentleman's wrist watch. Gold plated case. Reference 2020, serial X031106. Signed automatic movement. Off-white dial. Fitted to a signed brown leather strap with gold plated pin buckle. 32mm. **£100-150** (plus 27.6% BP\*)



171

**RAYMOND WEIL** - a lady's Noemia bracelet watch. Stainless steel case. Reference 5927, serial K221404. Unsigned quartz movement. Mother-of-pearl dial. Fitted to a signed stainless steel bracelet with double folding clasp. 27mm. Together with a gentleman's stainless steel Raymond Weil Toccata bracelet watch. Boxes and papers. **£100-150** (plus 27.6% BP\*)



174

**RAYMOND WEIL** - a lady's Parsifal bracelet watch. Stainless steel case with yellow metal set bezel. Reference 9690, serial A544528. Unsigned quartz movement. Champagne dial. Fitted to an unsigned bi-colour bracelet with double folding clasp. 22mm. **£100-150** (plus 27.6% BP\*)



BP\* - Buyer's Premium of 23% (plus VAT) or 27.6% (VAT included)

BP\* - Buyer's Premium of 23% (plus VAT) or 27.6% (VAT included)

175



**RAYMOND WEIL** - a lady's Tango bracelet watch. Stainless steel case. Reference 5390, serial V288196. Unsigned quartz movement. White dial. Fitted to a signed stainless steel bracelet with double folding clasp. 28mm. **£90-140** (plus 27.6% BP\*)

178



**ROLEX** - a gentleman's Oyster Perpetual bracelet watch. Circa 1962. Stainless steel case. Reference 1002, serial 837759. Signed automatic calibre 1560. White dial. Fitted to a signed stainless steel Oyster riveted bracelet with Oysterclasp. 34mm. **£1,000-1,500** (plus 27.6% BP\*)

181



**ROLEX** - a lady's Oyster Perpetual Datejust bracelet watch. Circa 1979. 18ct yellow gold case with fluted bezel. Reference 6917, serial 6280161. Signed automatic calibre 2030. Champagne dial. Fitted to a signed 18ct yellow gold Jubilee bracelet with Oysterclasp. 26mm. **£1,800-2,600** (plus 27.6% BP\*)

184



**ROLEX** - a lady's Oyster Perpetual bracelet watch. Circa 1995. Stainless steel case. Reference 67180, serial W769830. Signed automatic calibre 2130. White dial. Fitted to a signed stainless steel Jubilee bracelet with Oysterclasp. 25mm. **£1,000-1,500** (plus 27.6% BP\*)

176



**ROLEX** - a lady's Oyster Perpetual Datejust bracelet watch. Circa 1978. Stainless steel case with yellow metal fluted bezel. Reference 6719, serial 5867276. Signed automatic calibre 2030. Champagne dial. Fitted to a bi-metal Oyster bracelet with Oysterclasp. 25mm. **£660-860** (plus 27.6% BP\*)

179



**ROLEX** - a bracelet watch. 15ct yellow gold case, import hallmarked Glasgow 1923. Numbered 4130. Signed manual wind movement. Silvered dial. Fitted to an unsigned yellow metal expandable bracelet. 26mm. **£140-200** (plus 27.6% BP\*)

182



**ROLEX** - a lady's bracelet watch. 9ct yellow gold case, hallmarked London 1972. Numbered 91897. Signed manual wind calibre 1400. Champagne dial. Fitted to a signed integral 9ct yellow gold bracelet with folding clasp. 18mm. 30gms. **£200-300** (plus 27.6% BP\*)

185



**ROLEX** - a lady's bracelet watch. 9ct yellow gold case, import hallmarked Glasgow 1937. Numbered 1582 35093. Signed manual wind movement. Silvered dial. Fitted to an unsigned yellow metal bracelet with clasp, stamped 9ct. 23mm. 17gms. **£200-300** (plus 27.6% BP\*)

177



**ROLEX** - a lady's Oyster Perpetual Datejust bracelet watch. Circa 1968. 18ct yellow gold case. Reference 6516, serial 1818025. Signed automatic calibre 1161. Silvered dial. Fitted to a signed 18ct yellow gold Jubilee bracelet with Oysterclasp. 25mm. **£1,800-2,600** (plus 27.6% BP\*)

180



**ROLEX** - a lady's Oyster Perpetual Date bracelet watch. Circa 1966. Stainless steel case with white metal fluted bezel. Reference 6517, serial 1382078. Signed automatic calibre 1161. Silvered dial. Fitted to a signed stainless steel Oyster bracelet with Oysterclasp. 25mm. **Please see the condition report for details of third party intervention. £800-1,200** (plus 27.6% BP\*)

183



**ROLEX** - a mid-size Oyster Perpetual Datejust wrist watch. Circa 1977. 18ct yellow gold case with fluted bezel. Reference 6824, serial 5381001. Signed automatic calibre 2030. Silvered dial. Fitted to an unsigned black leather strap with gold plated pin buckle. 30mm. **£1,800-2,600** (plus 27.6% BP\*)

186



**ROLEX** - a lady's Oyster Perpetual bracelet watch. Circa 1978. Stainless steel case with yellow metal fluted bezel. Reference 6724, serial 5617216. Signed automatic calibre 2030. Champagne dial. Fitted to a signed bi-metal Jubilee bracelet with Oysterclasp. 25mm. **Please see the condition report for details of third party intervention. £800-1,200** (plus 27.6% BP\*)

187



**ROLEX** - a gentleman's watch head. Rolled gold case, numbered 3721-A. Signed manual wind movement. White dial. 33mm. **£100-150** (plus 27.6% BP\*)

190



**ROLEX** - a lady's bracelet watch. 9ct yellow gold case with engraved case back, import hallmarked London 1919. Signed manual wind movement. White dial. Fitted to an unsigned yellow metal expandable bracelet, stamped 9ct. 26mm. 19gms. **£140-200** (plus 27.6% BP\*)

193



**ROLEX** - a lady's bracelet watch. 9ct yellow gold case, hallmarked London 1958. Signed manual wind movement. Silvered dial. Fitted to a signed 9ct yellow gold bracelet with folding clasp. 20mm. 21gms. Together with a lady's 9ct yellow gold Rolex wrist watch. **£200-300** (plus 27.6% BP\*)

196



**ROLEX** - a lady's Oyster Perpetual Date bracelet watch. Circa 1966. Stainless steel case with yellow metal fluted bezel. Reference 6517, serial 1321209. Signed automatic calibre 1160. White dial. Fitted to a signed bi-metal Oyster riveted bracelet with Oysterclasp. 25mm. **£900-1,400** (plus 27.6% BP\*)

188



**ROLEX** - a lady's Oyster Perpetual Date bracelet watch. Circa 1969. Stainless steel case with yellow metal fluted bezel. Reference 6517, serial 2098034. Signed automatic calibre 1161. Black dial. Fitted to a signed bi-metal Oyster bracelet with Oysterclasp. 25mm. **£800-1,200** (plus 27.6% BP\*)

191



**ROLEX** - a lady's Oyster Perpetual bracelet watch. Circa 1970. Stainless steel case with yellow metal fluted bezel. Reference 6619, serial 2434110. Signed automatic calibre 1161. Champagne dial. Fitted to a signed bi-metal Oyster bracelet with Oysterclasp. 25mm. **£750-1,000** (plus 27.6% BP\*)

194



**ROLEX** - a lady's Oyster Perpetual wrist watch. Circa 1963. 18ct white gold case with fluted bezel. Reference 6509, serial 998153. Signed automatic calibre 1120. Silvered dial. Fitted to an unsigned black leather strap with stainless steel pin buckle. 25mm. **£900-1,400** (plus 27.6% BP\*)

197



**ROLEX** - a lady's Oyster Perpetual bracelet watch. Circa 1973. Stainless steel case with engine turned bezel. Reference 6723, serial 3975695. Signed automatic calibre 2030. Grey dial. Fitted to a signed stainless steel Oyster bracelet with Oysterclasp. 25mm. **£600-800** (plus 27.6% BP\*)

189



**ROLEX** - a lady's Oyster Perpetual Date bracelet watch. Circa 1966. 18ct yellow gold case. Reference 6701, serial 1205080. Signed automatic calibre 1130. Champagne dial. Fitted to a signed 18ct yellow gold President bracelet with Oysterclasp. 24mm. **£1,800-2,600** (plus 27.6% BP\*)

192



**ROLEX** - a lady's Oyster Perpetual Date bracelet watch. Circa 1979. Stainless steel case with yellow metal fluted bezel. Reference 6917, serial 6280208. Signed automatic calibre 2030. Champagne dial. Fitted to a signed bi-metal Jubilee bracelet with Oysterclasp. 26mm. **£900-1,400** (plus 27.6% BP\*)

195



**ROLEX** - a wrist watch. 9ct rose gold case, import hallmarked London 1915. Numbered 670103. Signed manual wind movement. White dial. Fitted to an unsigned black leather strap with gold plated pin buckle. 27mm. **£180-240** (plus 27.6% BP\*)

198



**ROLEX** - a gentleman's Oysterdate Precision wrist watch. Circa 1970. Stainless steel case. Reference 6694, serial 2393010. Signed manual wind calibre 1225. Silvered dial. Fitted to an unsigned black leather strap with gold plated pin buckle. 35mm. **£900-1,400** (plus 27.6% BP\*)

199  



**TAG HEUER** - a gentleman's 2000 Sport bracelet watch. Stainless steel case with calibrated bezel. Reference WM1113, serial MH7694. Signed quartz movement. Blue dial. Fitted to a signed stainless steel bracelet with folding clasp. 37mm. Box and papers. **£120-180** (plus 27.6% BP\*)

202



**TAG HEUER** - a gentleman's S/el bracelet watch. Stainless steel case with calibrated bezel. Reference WG111A, serial BZ7919. Signed quartz movement. Blue dial. Fitted to a signed stainless steel bracelet with folding clasp. 38mm. **£150-200** (plus 27.6% BP\*)

205 



**TAG HEUER** - a gentleman's S/el bracelet watch. Stainless steel case with gold plated calibrated bezel. Reference WG1120-0, serial S65574. Signed quartz movement. Grey dial. Fitted to a signed bi-colour bracelet with folding clasp. 37mm. Box. **£100-150** (plus 27.6% BP\*)

208



**TAG HEUER** - a gentleman's S/el bracelet watch. Stainless steel case with calibrated bezel. Reference WG1113-0, serial S45171. Unsigned quartz movement. Grey dial. Fitted to a signed stainless steel bracelet with folding clasp. 37mm. Box. **£120-180** (plus 27.6% BP\*)

200



**TAG HEUER** - a mid-size Formula 1 bracelet watch. Stainless steel case with calibrated bezel. Reference WAC1212, serial JR6778. Unsigned quartz movement. Blue dial. Fitted to a signed stainless steel bracelet with folding clasp. 36mm. **£140-200** (plus 27.6% BP\*)

203



**TAG HEUER** - a lady's 2000 Series bracelet watch. Stainless steel case with gold plated calibrated bezel. Reference 964.015.2, serial A35812. Unsigned quartz movement. Champagne dial. Fitted to a signed bi-colour bracelet with folding clasp. 29mm. **£100-150** (plus 27.6% BP\*)

206



**TAG HEUER** - a lady's 2000 Series bracelet watch. Stainless steel case with gold plated calibrated bezel. Reference WE1422-R, serial V04301. Signed quartz movement. White dial. Fitted to a signed bi-colour bracelet with folding clasp. 27mm. **£120-180** (plus 27.6% BP\*)

209 



**TAG HEUER** - a gentleman's 2000 Series chronograph bracelet watch. Stainless steel case with calibrated bezel. Reference CK1111, serial EN4848. Unsigned quartz movement. White dial. Fitted to a signed stainless steel bracelet with folding clasp. 38mm. Box. **£180-240** (plus 27.6% BP\*)

201



**TAG HEUER** - a gentleman's 2000 Series bracelet watch. Stainless steel case with calibrated bezel. Numbered 972.606. Unsigned quartz movement. Black dial. Fitted to a signed stainless steel bracelet with folding clasp. 37mm. **£60-90** (plus 27.6% BP\*)

204



**TAG HEUER** - a mid-size Formula 1 wrist watch. Stainless steel case with plastic calibrated bezel. Numbered 372.513. Signed quartz movement. Luminous dial. Fitted to a signed green rubber strap with plastic pin buckle. 35mm. **£50-80** (plus 27.6% BP\*)

207 



**TAG HEUER** - a gentleman's Formula 1 wrist watch. Stainless steel case with calibrated bezel. Reference WAH1110-0, serial EBJ6834. Unsigned quartz movement. Black dial. Fitted to an unsigned black rubber strap with stainless steel deployant clasp. 41mm. Box. **£260-360** (plus 27.6% BP\*)

210



**TAG HEUER** - a mid-size Formula 1 bracelet watch. Stainless steel case with calibrated bezel. Reference WA1218. Signed quartz movement. White dial. Fitted to a signed stainless steel bracelet with folding clasp. 35mm. **£200-300** (plus 27.6% BP\*)

BP\* - Buyer's Premium of 23% (plus VAT) or 27.6% (VAT included)

BP\* - Buyer's Premium of 23% (plus VAT) or 27.6% (VAT included)

**211**

**TAG HEUER** - a gentleman's 2000 Exclusive bracelet watch. Stainless steel case with calibrated bezel. Reference WN2111, serial TX2072. Signed automatic calibre 5. Black dial. Fitted to a signed stainless steel bracelet with folding clasp. 37mm. **£180-240** (plus 27.6% BP\*)

**214** ➤

**TISSOT** - a gentleman's Seastar Seven wrist watch. Stainless steel case. Manual wind movement. Silvered dial. Fitted to an unsigned brown leather strap with stainless steel pin buckle. 34mm. Box. **£100-150** (plus 27.6% BP\*)

**217**

**TISSOT** - a gentleman's Seastar wrist watch. Stainless steel case. Numbered 61036-1. Signed automatic calibre 28.5R-21. Black dial. Fitted to an unsigned black leather strap with gold plated pin buckle. 34mm. **£90-140** (plus 27.6% BP\*)

**220**

**TISSOT** - a Stylist watch head. Yellow metal case, stamped 18K 750 with poincon. Numbered 171436. Signed manual wind calibre 709. Silvered dial. 31mm. 16gms. **£180-260** (plus 27.6% BP\*)

**212**

**TAG HEUER** - a mid-size Formula 1 wrist watch. Plastic case with calibrated bezel and stainless steel case back. Numbered 385.513. Signed quartz movement. White dial. Fitted to a signed red rubber strap with plastic pin buckle. 35mm. **£70-100** (plus 27.6% BP\*)

**215**

**TISSOT** - a gentleman's chronograph bracelet watch. Stainless steel case with calibrated bezel. Reference T362/462K SKQ-JA, serial 17515. Unsigned quartz movement. Blue dial. Fitted to a signed stainless steel bracelet with folding clasp. 40mm. **£60-90** (plus 27.6% BP\*)

**218**

**TISSOT** - a gentleman's Seastar bracelet watch. Stainless steel case. Reference 44661-1X. Signed automatic calibre 784-2. Blue dial. Fitted to a signed stainless steel bracelet with folding clasp. 37mm. Together with a stainless steel Tissot Visodate Seastar bracelet watch. **£60-90** (plus 27.6% BP\*)

**221** ➤

**TISSOT** - a gentleman's PR516 bracelet watch. Stainless steel case. Numbered 44630-3X. Signed automatic calibre 2481. Grey dial. Fitted to a signed stainless steel bracelet with folding clasp. 34mm. Box. Together with a gentleman's gold plated Seiko chronograph bracelet watch and a lady's 9ct yellow gold Rotary bracelet watch. **£120-180** (plus 27.6% BP\*)

**213**

**TAG HEUER** - a lady's 2000 Series bracelet watch. Stainless steel case with calibrated bezel. Reference WK1311, serial BM2065. Signed quartz movement. White dial. Fitted to a signed stainless steel bracelet with folding clasp. 28mm. **£90-140** (plus 27.6% BP\*)

**216**

**TISSOT** - a gentleman's Couturier chronograph bracelet watch. Stainless steel case with exhibition window to case back. Reference T035627A. Signed automatic movement. Black dial. Fitted to a signed stainless steel bracelet with double folding clasp. 45mm. **£120-180** (plus 27.6% BP\*)

**219**

**TISSOT** - a gentleman's V8 chronograph bracelet watch. Stainless steel case with tachymeter bezel. Reference T039417A, serial RKL-BG-26482. Unsigned quartz movement. Black dial. Fitted to a signed stainless steel bracelet with folding clasp. 42mm. **£80-120** (plus 27.6% BP\*)

**222** ➤

**TISSOT** - a gentleman's V8 chronograph bracelet watch. Stainless steel case with tachymeter bezel. Reference S762N/862N, serial SKP-BB-70659. Unsigned quartz movement. Black dial. Fitted to a signed stainless steel bracelet with folding clasp. 42mm. Box. **£100-150** (plus 27.6% BP\*)

BP\* - Buyer's Premium of 23% (plus VAT) or 27.6% (VAT included)

BP\* - Buyer's Premium of 23% (plus VAT) or 27.6% (VAT included)

**223** 

**TISSOT** - a mid-size Seastar bracelet watch. Bi-colour case. Unsigned quartz movement. Light champagne dial with LCD display. Fitted to a signed bi-colour bracelet with folding clasp. 26mm. Papers. **£30-50** (plus 27.6% BP\*)

**226**

**TUDOR** - a lady's bracelet watch. Stainless steel case. Numbered 87811 8037. Signed manual wind movement. Silvered dial. Fitted to an unsigned stainless steel expandable bracelet. 21mm. **£50-80** (plus 27.6% BP\*)

**229**

**TUDOR** - a gentleman's Prince Oysterdate bracelet watch. Stainless steel case. Reference 7966, serial 579296. Signed automatic movement. Silvered dial. Fitted to a stainless steel Oyster bracelet with Oysterclasp, signed Rolex. 34mm. **£260-360** (plus 27.6% BP\*)

**232**

**TUDOR** - a gentleman's Oyster wrist watch. Stainless steel case. Reference 4540, serial 465793. Signed manual wind movement. Silvered dial. Fitted to an unsigned brown leather strap with base metal pin buckle. 34mm. **£150-200** (plus 27.6% BP\*)

**224**

**TISSOT** - a gentleman's V8 chronograph bracelet watch. Stainless steel case with tachymeter bezel. Reference T039417B, serial 12BG0507231. Unsigned quartz movement. Blue dial. Fitted to a signed stainless steel bracelet with folding clasp. 43mm. **£50-80** (plus 27.6% BP\*)

**227**

**TUDOR** - a wrist watch. Gold plated case with stainless steel case back. Signed manual wind calibre 59. Cream dial. Fitted to an unsigned black leather strap with gold plated pin buckle. 28mm. **£160-240** (plus 27.6% BP\*)

**230** 

**TUDOR** - a lady's wrist watch. 9ct yellow gold case, hallmarked Chester 1961. Numbered 363845. Signed manual wind movement. Silvered dial. Fitted to an unsigned black leather strap with gold plated pin buckle. 21mm. Box and papers. **£90-140** (plus 27.6% BP\*)

**233**

**ULYSSE NARDIN** - a mid-size wrist watch. Gold plated case with stainless steel case back. Numbered 684345. Signed manual wind movement. Silvered dial. Fitted to an unsigned black leather strap with gold plated pin buckle. 29mm. **£60-90** (plus 27.6% BP\*)

**225**

**TUDOR** - a gentleman's Oyster Royal wrist watch. Stainless steel case. Reference 7934, serial 135560. Signed manual wind movement. Silvered dial. Fitted to an unsigned black leather strap with gold plated pin buckle. 34mm. **£120-180** (plus 27.6% BP\*)

**228**

**TUDOR** - a lady's Royal bracelet watch. 9ct yellow gold case, hallmarked London 1965. Numbered 26563. Signed manual wind calibre 2441. Silvered dial. Fitted to an integral 9ct yellow gold bracelet with clasp. 17mm. 16gms. **£180-260** (plus 27.6% BP\*)

**231**

**TUDOR** - a lady's Oyster Princess bracelet watch. Stainless steel case. Reference 7583/0, serial 609512. Automatic movement. Silvered dial. Fitted to a signed stainless steel bracelet with folding clasp. 25mm. **£240-340** (plus 27.6% BP\*)

**234**

**ULYSSE NARDIN** - a gentleman's wrist watch. Gold plated case with stainless steel case back. Numbered 107. Signed automatic movement. White dial. Fitted to an unsigned black leather strap with gold plated pin buckle. 34mm. **£180-260** (plus 27.6% BP\*)

BP\* - Buyer's Premium of 23% (plus VAT) or 27.6% (VAT included)

BP\* - Buyer's Premium of 23% (plus VAT) or 27.6% (VAT included)



## 235

**UNIVERSAL GENEVE** - a gentleman's Compax chronograph wrist watch. Stainless steel case with bi-colour calibrated bezel. Reference 698.410, serial 179184. Signed automatic movement. Black dial. Fitted to an unsigned black leather strap with nickel plated pin buckle. 39mm. Together with a gentleman's stainless steel Eterna-Matic wrist watch and a mid-size stainless steel Eterna wrist watch. **£90-140** (plus 27.6% BP\*)



## 238

**ZENITH** - a gentleman's Defy wrist watch. Stainless steel case. Numbered 753D428. Automatic movement. Silvered dial. Fitted to an unsigned black leather strap with stainless steel pin buckle. 36mm. Together with a gentleman's stainless steel Zenith XL-Tronic wrist watch and a gentleman's stainless steel Tissot PR516 watch head. **£70-100** (plus 27.6% BP\*)



## 236

**ZENITH** - a gentleman's XL-Tronic wrist watch. Stainless steel case. Numbered 01-0111-500. Signed electronic calibre 500. Blue dial. Fitted to a signed black leather strap with stainless steel pin buckle. 36mm. Together with two gentleman's Zenith wrist watches. **£70-100** (plus 27.6% BP\*)



## 239

**ZENITH** - a gentleman's wrist watch. 9ct yellow gold case, hallmarked Birmingham 1956. Numbered 12321 742212. Signed manual wind calibre 120. Discoloured champagne dial. Fitted to an unsigned black leather strap with gold plated pin buckle. 31mm. **£240-340** (plus 27.6% BP\*)



## 237

**ZENITH** - a gentleman's Victorious bracelet watch. Stainless steel case. Numbered 025A508. Signed manual wind movement. Silvered dial. Fitted to an unsigned stainless steel bracelet with pin buckle. 34mm. Together with a gentleman's gold plated Zenith wrist watch. **£70-100** (plus 27.6% BP\*)



## 240

**ZENITH** - a gentleman's Espada wrist watch. Stainless steel case. Numbered 01-0520.425. Signed quartz calibre 42.5. Silvered dial. Fitted to a signed black leather strap with stainless steel pin buckle. 35mm. Together with a gentleman's stainless steel Zenith Port Royal wrist watch. **£70-100** (plus 27.6% BP\*)



BP\* - Buyer's Premium of 23% (plus VAT) or 27.6% (VAT included)

MILITARY WATCHES

241



**CWC** - a military issue wrist watch. Stainless steel case stamped with British Broad Arrow. Numbered 0552/6645-99 5415317 70755 90. Unsigned quartz movement. Black dial. Fitted to an unsigned black and red nylon 'NATO' style strap with stainless steel pin buckle. 35mm. **£70-100** (plus 27.6% BP\*)

242



**HAMILTON** - a military issue wrist watch. Base metal case. Numbered MIL-W-46374A, 6645-952-3767, 3998, DAAA25-72-00458, October 1972, US. Manual wind movement. Black dial. Fitted to an unsigned black leather strap with stainless steel pin buckle. 34mm. **Please see the condition report for details of third party intervention. £180-260** (plus 27.6% BP\*)

243



**CWC** - a military issue wrist watch. Stainless steel case stamped with British Broad Arrow. Numbered W10/6645-99 5415317 25545 83. Unsigned quartz movement. Black dial. Fitted to an unsigned black and red nylon 'NATO' style strap with stainless steel pin buckle. 35mm. **£70-100** (plus 27.6% BP\*)

244



**MWC** - a military issue wrist watch. Stainless steel case, stamped with British Broad Arrow. Numbered 6BB-6645-99, 523-8290, 9442/91. Unsigned manual wind movement. Black dial. Fitted to an unsigned black nylon 'NATO' style strap with base metal pin buckle. 35mm. **£70-100** (plus 27.6% BP\*)

245



**PRECISTA** - a military issue wrist watch. Stainless steel case, stamped with British Broad Arrow. Numbered W10/6645-99 5415317 38006 84. Unsigned quartz movement. Black dial. Fitted to an unsigned black and grey nylon 'NATO' style strap with stainless steel pin buckle. 35mm. **£70-100** (plus 27.6% BP\*)

246



**ROTARY** - a military issue wrist watch. Stainless steel case. Numbered ATP 1114 369623. Signed manual wind calibre 9/440. Silvered dial. Fitted to an unsigned brown leather strap with nickel plated pin buckle. 30mm. **£120-180** (plus 27.6% BP\*)

247



**CWC** - a military issue wrist watch. Stainless steel case. Numbered 0555/6645-99 541 7362 069/94. Unsigned quartz movement. Black dial. Fitted to an unsigned black and red nylon 'NATO' style strap with stainless steel pin buckle. 35mm. **£80-120** (plus 27.6% BP\*)

248



A military issue wrist watch. Stainless steel case. Numbered GG-W-13 6645-066-4279 92230 GS-06S-6238. Manual wind movement. Black dial. Fitted to an unsigned black 'NATO' style strap with stainless steel pin buckle. 34mm. **£90-140** (plus 27.6% BP\*)

249



**ELGIN** - a military issue wrist watch. Nickel plated case. Numbered A-11 94-27834-B AF45-32671. Signed manual wind calibre 685. Black dial. Fitted to an unsigned black fabric strap with nickel plated pin buckle. 30mm. **£120-180** (plus 27.6% BP\*)

MISCELLANEOUS WRIST WATCHES

250



A mid-size wrist watch. 9ct yellow gold case, hallmarked Chester 1936. Unsigned manual wind movement. Silvered dial. Fitted to an unsigned brown leather strap with base metal pin buckle. 25mm. Together with a gold plated Hamilton wrist watch and a gold plated Illinois bracelet watch. **£50-80** (plus 27.6% BP\*)

251



A wrist watch. 9ct yellow gold case, hallmarked London 1934. Unsigned manual wind movement. Silvered dial. Fitted to an unsigned brown leather strap with gold plated pin buckle. 21mm. Together with two 9ct yellow gold trench style wrist watches. **£120-180** (plus 27.6% BP\*)

252



A lady's bracelet watch. 9ct rose gold case, import hallmarked London 1925. Unsigned manual wind movement. Fitted to an unsigned rose metal bracelet, stamped 9ct gold. 25mm. 21gms. **£120-180** (plus 27.6% BP\*)

BP\* - Buyer's Premium of 23% (plus VAT) or 27.6% (VAT included)

BP\* - Buyer's Premium of 23% (plus VAT) or 27.6% (VAT included)



**253**

A wrist watch. 9ct rose gold case, import hallmarked Edinburgh 1928. Numbered 59365. Unsigned manual wind movement. Silvered dial. Fitted to an unsigned burgundy leather strap with gold plated pin buckle. 20mm. Together with a Cyma wrist watch. **£120-180** (plus 27.6% BP\*)

**256**

**BARTHELAY** - a lady's Les Sloanes chronograph wrist watch. Stainless steel case with factory diamond set bezel. Reference 61206, serial 26983. Unsigned quartz movement. Blue mother-of-pearl dial. Fitted to an unsigned black leather strap with stainless steel deployant clasp. 31mm. **£400-600** (plus 27.6% BP\*)

**259**

**BENRUS** - a gentleman's wrist watch. Gold plated case with stainless steel case back. Signed manual wind calibre AO 6. Silvered dial. Fitted to an unsigned black leather strap with gold plated pin buckle. 27mm. Together with a gentleman's gold plated Benrus wrist watch. **£60-90** (plus 27.6% BP\*)

**262**

**BULOVA** - a lady's watch head. Gold plated case with stainless steel case back. Numbered N4 2949175. Signed manual wind calibre 6CL. Silvered dial. 23mm. Together with a lady's gold plated Oris watch. **£30-50** (plus 27.6% BP\*)

**254**

**ACCURIST** - a gentleman's Nivaflex wrist watch. Gold plated case with stainless steel case back. Signed manual wind movement. Silvered dial. Fitted to an unsigned tan leather strap with gold plated pin buckle. 33mm. **£30-50** (plus 27.6% BP\*)

**257**

**BARTHELAY** - a lady's Les Sloanes bracelet watch. Stainless steel case with factory diamond set bezel. Reference 53803, serial 6494. Unsigned quartz movement. Mother-of-pearl dial. Fitted to a signed stainless steel bracelet with double folding clasp. 21mm. **£140-200** (plus 27.6% BP\*)

**260**

**BOUCHERON** - a LCD digital wrist watch. Yellow metal case. Numbered 72858. Unsigned quartz movement. LCD digital dial. Fitted to an unsigned brown leather strap with gold plated pin buckle. 33mm. **£140-220** (plus 27.6% BP\*)

**263**

**BUREN** - a mid-size wrist watch. Stainless steel case. Numbered 04191. Signed manual wind movement. Silvered dial. Fitted to an unsigned olive green leather strap with nickel plated pin buckle. 31mm. **£80-120** (plus 27.6% BP\*)

**255**

**AIGNER** - a gentleman's Cortina chronograph wrist watch. Stainless steel case. Numbered A 26500. Unsigned quartz movement. Silvered dial. Fitted to a signed black leather strap with stainless steel pin buckle. 41mm. Papers. **£60-90** (plus 27.6% BP\*)

**258**

**BARTHELEY** - a lady's Les Sloanes bracelet watch. Stainless steel case with factory diamond set bezel. Reference 53803, serial 26030. Unsigned quartz movement. Mother-of-pearl dial. Fitted to an unsigned stainless steel bracelet with factory diamond set double folding clasp. 21mm. **£400-600** (plus 27.6% BP\*)

**261**

**BUECHE-GIROD** - a lady's bracelet watch. 9ct yellow gold case, hallmarked London 1977. Signed manual wind movement. Black dial. Fitted to an integral 9ct yellow gold bracelet with clasp. 25mm. 48gms. **£400-600** (plus 27.6% BP\*)

**264**

**BURAN** - a gentleman's KGB wrist watch. Stainless steel case. Numbered 666-1999. Automatic movement. Silvered dial. Fitted to a signed brown leather strap with signed nickel plated pin buckle. 39mm. Box. **£160-220** (plus 27.6% BP\*)

265



**CERTINA** - a gentleman's wrist watch. Nickel plated case with stainless case back. Numbered 43068 2 1209463. Signed manual wind calibre KF330. Silvered dial. Fitted to an unsigned brown leather strap with nickel plated pin buckle. 38mm. **£50-80** (plus 27.6% BP\*)

268



**CYMA** - a gentleman's Navystar bracelet watch. Stainless steel case. Manual wind movement. Silvered dial. Fitted to an unsigned stainless steel expandable bracelet. 34mm. Together with a gentleman's stainless steel Cyma wrist watch. **£50-80** (plus 27.6% BP\*)

271



**ELGIN** - an wrist watch. Rolled white gold case. Numbered 8039614. Signed manual wind movement. White dial. Fitted to an unsigned black leather strap with nickel plated pin buckle. 27mm. Together with a rolled gold Ollendorff wrist watch and a nickel plated Precista wrist watch. **£60-90** (plus 27.6% BP\*)

274



**GARRARD** - a gentleman's wrist watch. 9ct yellow gold case, hallmarked Birmingham 1957. Numbered 819572. Unsigned manual wind movement. White dial. Fitted to an unsigned brown leather strap with gold plated pin buckle. 29mm. **£80-120** (plus 27.6% BP\*)

266



**CREDIT SUISSE** - a mid-size 999.5 Platinum Ingot bracelet watch. Stainless steel case with white stone set bezel. Numbered 089725A. Unsigned quartz movement. Silvered dial. Fitted to an unsigned stainless steel bracelet with clasp. 27mm. **£100-150** (plus 27.6% BP\*)

269



**CYMA** - a mid-size Cymaflex wrist watch. 9ct yellow gold case, hallmarked Edinburgh 1959. Numbered 15704. Signed manual wind calibre R.458. Silvered dial. Fitted to an unsigned black strap with gold plated pin buckle. 30mm. Together with a gentleman's gold plated Tissot Seastar wrist watch. **£100-150** (plus 27.6% BP\*)

272



**ELLIOT BROWN** - a limited edition gentleman's Clipper Round The World Race UTC wrist watch. Number 49 of 1000. Stainless steel case. Quartz movement. Black dial. Fitted to a signed black rubber strap with stainless steel pin buckle. 43mm. Box. **£90-140** (plus 27.6% BP\*)

275



**GIO MONACO** - a limited edition lady's Eclipse wrist watch. Number 53 of 500. Stainless steel case. Unsigned quartz movement. Pink mother-of-pearl dial. Fitted to a signed pink alligator strap with stainless steel double folding clasp. 45mm. Box. **£220-320** (plus 27.6% BP\*)

267



**CROTON** - a gentleman's wrist watch. Gold plated case. Numbered ACY131208. Signed automatic calibre C2096. Champagne dial. Fitted to an unsigned brown leather strap with gold plated pin buckle. 32mm. Together with a gentleman's gold plated Gruen Continental wrist watch and gold plated Westfield Curvex watch head. **£90-140** (plus 27.6% BP\*)

270



**ELGIN** - a wrist watch. Rolled gold case. Numbered E281157. Signed manual wind calibre 559. Silvered dial. Fitted to an unsigned black leather strap with gold plated pin buckle. 23mm. Together with a gentleman's nickel plated Gruen Veri-Thin wrist watch and a gentleman's nickel plated Rotary wrist watch. **£80-120** (plus 27.6% BP\*)

273



**FESTINA** - a gentleman's wrist watch. Stainless steel case. Reference 16011. Unsigned quartz movement. Silvered dial. Fitted to a signed brown leather strap with stainless steel pin buckle. 37mm. **£50-80** (plus 27.6% BP\*)

276



**GLASHUTTE** - a lady's wrist watch. Nickel plated case. Signed manual wind movement. Silvered dial. Fitted to an unsigned black leather strap with nickel plated pin buckle. 15mm. **£100-150** (plus 27.6% BP\*)

BP\* - Buyer's Premium of 23% (plus VAT) or 27.6% (VAT included)

BP\* - Buyer's Premium of 23% (plus VAT) or 27.6% (VAT included)

277



**GRUEN** - a gentleman's wrist watch. Gold filled case with stainless steel case back. Numbered 415 CA-822 K248524. Signed manual wind calibre 415 CA. Silvered dial. Fitted to an unsigned brown leather strap with stainless steel pin buckle. 32mm. **£60-90** (plus 27.6% BP\*)

278



**GRUEN** - a mid-size Curvex wrist watch. Gold plated case. Numbered G611990 440 544. Signed manual wind calibre 440 Curvex. Silvered dial. Fitted to an unsigned black strap with gold plated pin buckle. 23mm. **£50-80** (plus 27.6% BP\*)

279



**GUEPARD** - a mid-size Imperial Cobra wrist watch. Stainless steel case. Reference 1112/C, numbered 95-00087. Unsigned quartz movement. Silvered dial. Fitted to a signed black leather strap with stainless steel pin buckle. 24mm. **£40-60** (plus 27.6% BP\*)

280



**H.MOSER & CIE.** - a converted pocket watch. Nickel plated case. Signed manual wind movement. White dial. Fitted to an unsigned black leather strap with nickel plated pin buckle. 47mm. **£120-180** (plus 27.6% BP\*)

281



**INVICTA** - a gentleman's chronograph wrist watch. Gold plated case with stainless steel case back. Numbered 628601. Signed manual wind Landeron calibre 149. Silvered dial. Fitted to an unsigned black leather strap with gold plated pin buckle. 36mm. **£180-260** (plus 27.6% BP\*)

282



**JUNGHANS** - a gentleman's bracelet watch. Bi-material case. Reference DCF77.5, numbered JJY40/60 WWVB 60. Signed radio controlled movement. Black dial. Fitted to a signed bi-material bracelet with double folding clasp. 38mm. **£70-100** (plus 27.6% BP\*)

59



404



290



BP\* - Buyer's Premium of 23% (plus VAT) or 27.6% (VAT included)

**283**

**JUVENIA** - a gentleman's Nautilus wrist watch. Stainless steel case with engraved case back. Numbered 532696. Signed automatic calibre 664. Grey dial. Fitted to an unsigned brown leather strap with stainless steel pin buckle. 36mm. **£70-100** (plus 27.6% BP\*)

**286**

**LORD ELGIN** - a wrist watch. Gold filled case. Numbered 377377. Signed manual wind calibre 559. Silvered dial. Fitted to an unsigned dark brown leather strap with gold plated pin buckle. 22mm. Together with a silver Tavannes wrist watch and a mid-size stainless steel Movado wrist watch. **£90-140** (plus 27.6% BP\*)

**289**

**MEMOSTAR** - a gentleman's Alarm wrist watch. Nickel plated case with stainless steel case back. Unsigned manual wind movement. Blue dial. Fitted to an unsigned brown leather strap with stainless steel pin buckle. 36mm. Together with a gentleman's stainless steel Squalo Ocean Diver bracelet watch. **£50-80** (plus 27.6% BP\*)

**292**

**OLE MATHIESEN** - a gentleman's Classic wrist watch. Stainless steel case. Reference 30/15-05, serial 9550.935.60. Unsigned quartz movement. White dial. Fitted to a signed black leather strap with unsigned stainless steel pin buckle. 35mm. **£150-200** (plus 27.6% BP\*)

**284**

**LE CHEMINANT** - a gentleman's Master Mariner wrist watch. Stainless steel case. Numbered 4537296. Automatic movement signed Moeris. Silvered dial. Fitted to an unsigned green leather strap with gold plated pin buckle. 34mm. **£30-50** (plus 27.6% BP\*)

**287**

**LOUIS ERARD** - a gentleman's Dual Time 1931 wrist watch. Stainless steel case with exhibition case back. Numbered 222. Signed automatic movement. Grey dial. Fitted to a signed grey leather strap with stainless steel deployant clasp. 44mm. *Box and papers.* **£200-300** (plus 27.6% BP\*)

**290**

**MIREXAL** - a gentleman's Divers bracelet watch. Stainless steel case with calibrated bezel. Numbered C 757.432. Unsigned automatic ETA calibre 2783. Blue dial. Fitted to an unsigned stainless steel bracelet with folding clasp. 40mm. *Box.* **£80-120** (plus 27.6% BP\*)

**293**

**ROAMER** - a gentleman's wrist watch. Gold plated case with stainless steel case back. Numbered 305 467 305 776. Automatic movement. Silvered dial. Fitted to an unsigned black leather strap with gold plated clasp. 33mm. **£80-120** (plus 27.6% BP\*)

**285**

**LEONIDAS** - a gentleman's chronograph wrist watch. Nickel plated case with stainless steel case back. Numbered 541456. Unsigned manual wind movement. Silvered dial. Fitted to an unsigned brown leather strap. 35mm. **£180-260** (plus 27.6% BP\*)

**288**

**MATHEY-TISSOT** - a gentleman's Renaissance wrist watch. Gold plated case with exhibition case back. Reference H9030P. Signed automatic movement. Blue dial. Fitted to a signed blue leather strap with gold plated deployant clasp. 43mm. *Box and papers.* **£70-100** (plus 27.6% BP\*)

**291**

**MUHLE GLASHUTTE** - a gentleman's Junior I bracelet watch. Stainless steel case. Reference M12500. Unsigned automatic movement. Blue dial. Fitted to a signed stainless steel bracelet with folding clasp. 36mm. *Box.* **£200-300** (plus 27.6% BP\*)

**294**

**ROTARY** - a gentleman's wrist watch. Gold plated case with stainless steel case back. Numbered 62 27 51 81. Signed automatic movement. Silvered dial. Fitted to an unsigned brown leather strap with gold plated pin buckle. 34mm. Together with a stainless steel Yema chronograph wrist watch and a gentleman's gold plated Wittnauer triple date moonphase wrist watch. **£70-100** (plus 27.6% BP\*)

BP\* - Buyer's Premium of 23% (plus VAT) or 27.6% (VAT included)

BP\* - Buyer's Premium of 23% (plus VAT) or 27.6% (VAT included)

295 



**ROTARY** - a gentleman's Elite wrist watch. 18ct yellow gold case. Reference 11299, serial PLO-001977. Unsigned quartz movement. Champagne dial. Fitted to an unsigned brown leather strap with gold plated pin buckle. 33mm. Together with a gentleman's titanium Seiko chronograph bracelet watch. *Box and papers.* **£150-200** (plus 27.6% BP\*)

298



**ROTARY** - a gentleman's Maximus wrist watch. 9ct yellow gold case with engraved case back, hallmarked London 1955. Numbered 3214. Unsigned manual wind movement. Silvered dial. Fitted to an unsigned brown leather strap with stainless steel pin buckle. 33mm. Together with a 9ct gold Avia wrist watch. **£120-180** (plus 27.6% BP\*)

301



**SEIKO** - a gentleman's Bell-Matic bracelet watch. Stainless steel case. Reference 4006-6031, serial 367554. Signed automatic calibre 4006A. Silvered dial. Fitted to a signed stainless steel bracelet with folding clasp. 39mm. **£60-90** (plus 27.6% BP\*)

304



**SEIKO** - a gentleman's Sports bracelet watch. Stainless steel case. Reference 6319-8070, serial 750398. Signed automatic calibre 6319A. Blue dial. Fitted to a signed stainless steel bracelet with folding clasp. 40mm. **£90-140** (plus 27.6% BP\*)

296



**ROTARY** - a gentleman's bracelet watch. 9ct yellow gold case, hallmarked Birmingham 1965. Unsigned automatic movement. Silvered dial. Fitted to an unsigned 9ct yellow gold bracelet with folding clasp. 34mm. 59gms. Together with a gentleman's 9ct gold Accurist wrist watch. **£180-260** (plus 27.6% BP\*)

299



**SEIKO** - a gentleman's Pogue chronograph bracelet watch. Stainless steel case with tachymeter bezel. Reference 6139-6002, serial 339968. Signed automatic calibre 6139B. Champagne dial. Fitted to a signed stainless steel bracelet with folding clasp. 41mm. **£100-150** (plus 27.6% BP\*)

302



**SEIKO** - a gentleman's Divers wrist watch. Stainless steel case with calibrated bezel. Reference 6309-7040, serial 943058. Signed automatic calibre 6309A. Black dial. Fitted to an unsigned black leather strap with gold plated pin buckle. 44mm. Together with a gentleman's stainless steel Tissot Seastar bracelet watch, a gentleman's 9ct gold Sovereign wrist watch and an Omega calibre 244 movement. **£120-180** (plus 27.6% BP\*)

305



**SIEGERIN** - a gentleman's wrist watch. Stainless steel case. Numbered D287299. Signed manual wind calibre 595. Black dial. Fitted to an unsigned brown leather strap with stainless steel pin buckle. 32mm. **£200-300** (plus 27.6% BP\*)

297 



**ROTARY** - a lady's bracelet watch. 9ct yellow gold case with white stone bezel, import hallmarked London 1978. Signed manual wind movement. Champagne dial. Fitted to an integral 9ct yellow gold bracelet with folding clasp. 23mm. 34gms. *Box.* **£280-380** (plus 27.6% BP\*)

300 



**SEIKO** - a gentleman's Bell-Matic bracelet watch. Gold plated case with stainless steel case back. Reference 4006-7012, serial 451341. Signed automatic calibre 4006A. Silvered dial. Fitted to a signed gold plated bracelet with folding clasp. 39mm. *Papers.* Together with a gold plated Sewills Prima wrist watch. **£120-180** (plus 27.6% BP\*)

303



**SEIKO** - a gentleman's Helmet chronograph bracelet watch. Stainless steel case. Reference 6139-7100, serial 732458. Signed automatic movement. White dial. Tachymeter rehaut. Fitted to a signed stainless steel bracelet with folding clasp. 41mm. **£60-90** (plus 27.6% BP\*)

306



**SPEER** - a mid-size bangle watch. Stainless steel case. Numbered D.R.P 609434. Unsigned manual wind movement. Silvered dial. Fitted to an unsigned stainless steel bangle. 27mm. **£50-80** (plus 27.6% BP\*)

BP\* - Buyer's Premium of 23% (plus VAT) or 27.6% (VAT included)

BP\* - Buyer's Premium of 23% (plus VAT) or 27.6% (VAT included)

**307**

**SULLY** - a gentleman's chronograph bracelet watch. Yellow metal case with engraved case back. Unsigned manual wind movement. Silvered dial. Fitted to an unsigned bi-colour expandable bracelet. 37mm. **£200-300** (plus 27.6% BP\*)

**310** ➤

**VERSACE** - a Destiny wrist watch. Stainless steel case. Reference 67Q99, serial K1254526. Unsigned quartz movement. Mother-of-pearl dial. Fitted to a signed black leather strap with stainless steel double folding clasp. 39mm. **Box. £280-360** (plus 27.6% BP\*)

**313** ✕

**WEMPE** - a gentleman's wrist watch. Stainless steel case. Unsigned quartz movement. White dial. Fitted to a signed brown crocodile strap with stainless steel pin buckle. 34mm. Together with a lady's stainless steel Wempe wrist watch. **£90-140** (plus 27.6% BP\*)

**316**

**ZODIAC** - a gentleman's Mystery bracelet watch. Gold plated case with steel case back. Numbered 883-963. Signed automatic calibre 88D. Silvered dial. Fitted to a signed gold plated bracelet with folding clasp. 35mm. **£120-180** (plus 27.6% BP\*)

**308**

**UNO** - a lady's wrist watch. 9ct yellow gold case, hallmarked London 1956. Signed manual wind movement. Silvered dial. Fitted to a signed black leather strap with gold plated pin buckle. 21mm. **£50-80** (plus 27.6% BP\*)

**311**

**VOILA** - a Figure 8 chronograph wrist watch. Stainless steel case. Reference 810-0-5040. Unsigned quartz movement. Silvered dial. Fitted to a signed blue leather strap with stainless steel double folding clasp. 39mm. **£100-150** (plus 27.6% BP\*)

**314** ➤

**WEST END WATCH CO.** - a gentleman's Prima bracelet watch. Gold plated case with stainless steel case back. Numbered 03 5027 35. Unsigned automatic movement. Silvered dial. Fitted to a signed gold plated bracelet with folding clasp. 36mm. **Box. £60-90** (plus 27.6% BP\*)

**317**

**ZODIAC** - a mid-size Sea Wolf bracelet watch. Stainless steel case with calibrated bezel. Reference ZO2800, numbered 0365. Unsigned quartz movement. Turquoise dial. Fitted to a signed stainless steel bracelet with folding clasp. 35mm. **£100-150** (plus 27.6% BP\*)

**309** ➤ 📄

**VENUTA** - a mid-size Sparc bracelet watch. Titanium case with exhibition case back. Numbered W10-1516. Signed automatic electronic calibre 99. Digital LCD dial. Fitted to a signed titanium bracelet with double folding clasp. 33mm. **Box and papers.** Together with a stainless steel Lancel alarm desk clock. **£50-80** (plus 27.6% BP\*)

**312** ➤

**VULCAIN** - a gentleman's Cricket alarm wrist watch. Stainless steel case. Numbered 303006. Signed manual wind movement. Silvered dial. Fitted to a signed black leather strap with stainless steel pin buckle. 34mm. **Box. £80-120** (plus 27.6% BP\*)

**315**

**WITTNAUER** - a wrist watch. Gold filled case. Numbered 2664865. Signed automatic calibre 9ARB. Silvered dial. Fitted to a signed brown leather strap with gold plated pin buckle. 28mm. **£60-90** (plus 27.6% BP\*)

**318**

**ZODIAC** - a lady's cocktail watch. White metal factory diamond set case. Numbered P288 91444. Signed manual wind calibre 39. Silvered dial. Fitted to a signed black fabric strap with nickel plated clasp. 19mm. **£120-180** (plus 27.6% BP\*)

**POCKET WATCHES**

**319**



A pair case pocket watch by E. Cowburne. Silver cases, hallmarked London 1824. Signed key wind full plate fusee and chain movement with verge escapement and pierced balance cock. White dial. Outer case 50mm. **£60-90** (plus 27.6% BP\*)

**320**



An open face pocket watch by W. Hinkley. Silver case, hallmarked London 1871. Signed key wind full plate fusee and chain movement with ratchet tooth lever escapement. Silvered dial. 54mm. Together with a silver open face pocket watch by Ford Galloway. **£70-100** (plus 27.6% BP\*)

**321**



An open face pocket watch by W.E. Watts. White metal case, stamped 0,935 with poincon. Unsigned key wind three quarter plate movement with club tooth lever escapement. White dial. 51mm. Together with a silver pocket watch and a base metal pocket watch. **£60-90** (plus 27.6% BP\*)

**322**



An open face pocket watch. Silver case, hallmarked London 1869. Unsigned key wind full plate fusee and chain movement with ratchet tooth lever escapement. Silvered dial. 54mm. Together with a similar silver open face pocket watch. **£60-90** (plus 27.6% BP\*)

**323**



An open face pocket watch by A. Burdels. Silver case, hallmarked London 1879. Signed key wind full plate fusee and chain movement with ratchet tooth lever escapement. White dial. 51mm. Together with a silver open pocket watch and two watch display domes. **£50-80** (plus 27.6% BP\*)

**324**



An open face pocket watch by Thomas Russell. Gold plated case. Signed keyless wind seventeen jewel movement with club tooth lever escapement. White dial. 50mm. **£60-90** (plus 27.6% BP\*)

**325**



An open face pocket watch. Silver case, hallmarked Chester 1896. Unsigned key wind full plate fusee and chain movement with ratchet tooth lever escapement. Silvered dial. 55mm. Together with a similar silver open face pocket watch by J. Ingham. **£60-90** (plus 27.6% BP\*)

**326**



An open face fob watch. Yellow metal case, stamped 18K. Unsigned keyless wind Swiss bar movement with club tooth lever escapement. Gilt dial. 34mm. 33gms. **£180-260** (plus 27.6% BP\*)

**327**



A full hunter pocket watch. Yellow metal case with portrait to inner case back, stamped 14K with poincon. Unsigned keyless wind Swiss bar movement with club tooth lever escapement. White dial. 36mm. 32gms. **£180-260** (plus 27.6% BP\*)

**328**



An open face fob watch. Yellow metal case with engraved inner case back, stamped 18K with poincon. Unsigned keyless wind Swiss bar movement with club tooth lever escapement. White enamel dial. 36mm. 41gms. **£300-400** (plus 27.6% BP\*)

**329**



An open face pocket watch. Yellow metal case, stamped K18. Numbered 96151. Unsigned key wind Swiss bar movement with cylinder escapement. Gilt dial. 39mm. 40gms. **£180-260** (plus 27.6% BP\*)

**330**



An open face fob watch. Yellow metal case, stamped K14. Unsigned keyless wind Swiss bar movement with cylinder escapement. White dial. 32mm. 26gms. **£120-180** (plus 27.6% BP\*)

BP\* - Buyer's Premium of 23% (plus VAT) or 27.6% (VAT included)

BP\* - Buyer's Premium of 23% (plus VAT) or 27.6% (VAT included)

**331**

An open face pocket watch by J.W. Benson. 9ct yellow gold case, hallmarked Birmingham 1929. Signed keyless wind fifteen jewel movement with club tooth lever escapement. White dial. 49mm. 89gms. **£200-300** (plus 27.6% BP\*)

**334**

An open face pocket watch. Yellow metal case, stamped 14K with poincon. Unsigned Swiss bar movement with cylinder escapement. White dial. 37mm. 42gms. **£180-260** (plus 27.6% BP\*)

**337**

An open face pocket watch by Ancre. Yellow metal case, stamped 14K with poincon. Unsigned keyless wind fifteen jewel movement with club tooth lever escapement. Champagne dial. 47mm. 62gms. **£220-320** (plus 27.6% BP\*)

**340**

An open face pocket watch by Omega. Silver case, import hallmarked London 1919. Signed keyless wind movement with club tooth lever escapement. White dial. 58mm. **£100-150** (plus 27.6% BP\*)

**332**

An open face fob watch. Yellow metal case, stamped 14C. Unsigned keyless wind Swiss bar movement with cylinder escapement. Gilt dial. 30mm. 22gms. **£100-150** (plus 27.6% BP\*)

**335**

An open face pocket watch by Elgin. Nickel plated case. Signed keyless wind nine jewel movement with club tooth lever escapement. Black dial. 51mm. Together with a silver full hunter pocket watch by Waltham and a base metal pocket watch by Buren. **£60-90** (plus 27.6% BP\*)

**338**

An open face pocket watch by Howard. Gold plated case. Signed keyless wind nineteen jewel Series 5 movement with club tooth lever escapement. Silvered dial. 52mm. **£120-180** (plus 27.6% BP\*)

**341**

An open face pocket watch by Omega. Gold plated case, numbered 917029. Signed keyless wind calibre 35.5L. White dial. 46mm. **£220-320** (plus 27.6% BP\*)

**333**

An open face pocket watch by Howard. Yellow metal case with Masonic engraving to the case back, stamped 14K 585. Signed keyless wind seventeen jewel movement with club tooth lever escapement. White dial. 46mm. 63gms. **£250-350** (plus 27.6% BP\*)

**336**

An open face pocket watch by Elgin. Yellow metal case, stamped 14K Warranted. Signed keyless wind seventeen jewel movement with club tooth lever escapement. Champagne dial. 47mm. 57gms. **£240-340** (plus 27.6% BP\*)

**339**

A full hunter pocket watch by Omega. White metal case, stamped 0,900. Signed keyless wind calibre 18SB. White dial. 49mm. **£80-120** (plus 27.6% BP\*)

**342**

An open face pocket watch by Zenith. White metal case, numbered 8319392. Signed key wind calibre 18-28-3-P. White dial. 48mm. **£70-100** (plus 27.6% BP\*)

BP\* - Buyer's Premium of 23% (plus VAT) or 27.6% (VAT included)

BP\* - Buyer's Premium of 23% (plus VAT) or 27.6% (VAT included)



**343**

An open face Kriegsmarine pocket watch. Base metal case with engraved case back. Numbered 532374. Unsigned movement with club tooth lever escapement. Black dial. 51mm. **£200-300** (plus 27.6% BP\*)

**346**

A pair case pocket watch by E. Bolton. Silver cases with engraved case backs, hallmarked London 1780. Signed key wind full plate fusee and chain movement with verge escapement, pierced balance cock and square baluster pillars. White dial. Outer case 50mm. Together with a white metal chain. Recommended for spares or repair purposes only. **£60-90** (plus 27.6% BP\*)

**349**

A full hunter pocket watch made for the Turkish market. White metal niello decorated case. Unsigned keyless wind movement. White dial. 54mm. Recommended for spares or repair purposes only. **£90-140** (plus 27.6% BP\*)

**352**

A full hunter pocket watch by J. Howard. Silver case, hallmarked London 1818. Signed key wind full plate fusee and chain movement with verge escapement, pierced balance cock and diamond end stone. White dial. 55mm. Together with a silver open face pocket watch by Dent and a white metal open face pocket watch. All recommended for spares or repair purposes only. **£100-150** (plus 27.6% BP\*)

**REPAIRERS POCKET WATCHES****344**

A gilt and tortoiseshell pair case pocket watch by E. Pamer. Tortoiseshell outer case with gilt inner case. Signed key wind full plate fusee and chain movement with verge escapement and pierced balance cock. White dial. Outer case 52mm. Recommended for spares or repair purposes only. **£70-100** (plus 27.6% BP\*)

**347**

A full hunter pocket watch by F. Gibbins. Silver case, hallmarked London 1801. Signed key wind full plate fusee and chain movement with verge escapement, pierced balance cock and diamond end stone. White dial. 53mm. Together with two silver full hunter pocket watches and a silver chain and fob. All recommended for spares or repair purposes only. **£80-120** (plus 27.6% BP\*)

**350**

A full hunter eight day pocket watch for the Turkish market. White metal case, stamped 0,800 with poinçon. Unsigned keyless wind eight day movement. White dial. 44mm. Together with a silver open face pocket watch. All recommended for spares or repair purposes only. **£50-80** (plus 27.6% BP\*)

**353**

An open face pocket watch by Cyma. White metal case, stamped 0,900 with poinçon. Signed keyless wind movement with club tooth lever escapement. White dial. 43mm. Recommended for spares or repair purposes only. **£50-80** (plus 27.6% BP\*)

**345**

A pair case pocket watch. Silver cases, hallmarked Birmingham 1842. Unsigned key wind full plate fusee and chain movement with verge escapement and pierced balance cock. White dial. Outer case 57mm. Together with a white metal open face pocket watch by Buchan. All recommended for spares or repair purposes only. **£60-90** (plus 27.6% BP\*)

**348**

An open face pocket watch by J. Forrest. Silver case, hallmarked Chester 1835. Unsigned key wind full plate fusee and chain movement with ratchet tooth lever escapement. Silvered dial. 55mm. Together with a base metal eight day pocket watch by Hebdomas and a silver pocket watch. All recommended for spares or repair purposes only. **£90-140** (plus 27.6% BP\*)

**351**

A half hunter pocket watch. Resin case with engraved case back. Unsigned key wind Swiss bar movement with cylinder escapement. White enamel dial. 45mm. Recommended for spares or repair purposes only. **£50-80** (plus 27.6% BP\*)

**354**

An open face fob watch. Yellow metal case, stamped 18K. Numbered 143480. Unsigned keyless wind Swiss bar movement with cylinder escapement. Gilt dial. 36mm. 38gms. Recommended for spares or repair purposes only. **£120-180** (plus 27.6% BP\*)

**355**

An open face pocket watch. Yellow metal case, possibly stamped K14 with poinçon. Unsigned keyless wind movement with club tooth lever escapement. White dial. 45mm. 52gms. Recommended for spares or repair purposes only. **£200-300** (plus 27.6% BP\*)

**358**

A half hunter pocket watch by J.W. Benson. 18ct yellow gold case, hallmarked London 1908. Signed three quarter plate movement with ratchet tooth lever escapement. White dial. 48mm. 90gms. Recommended for spares or repair purposes only. **£360-460** (plus 27.6% BP\*)

**361**

An open face pocket watch. Yellow metal case, stamped 18. Unsigned Swiss bar movement with ratchet tooth lever escapement. Champagne dial. 37mm. 40gms. Recommended for spares or repair purposes only. **£180-260** (plus 27.6% BP\*)

**364**

An open face pocket watch by W. Wray. 18ct yellow gold case, hallmarked London 1875. Signed key wind movement with ratchet tooth lever escapement. Gilt dial. 40mm. 51gms. Recommended for spares or repair purposes only. **£460-660** (plus 27.6% BP\*)

**356**

An open face pocket watch. 9ct yellow gold case, import hallmarked Glasgow 1931. Unsigned keyless wind movement with club tooth lever escapement. Silvered dial. 46mm. 55gms. Recommended for spares or repair purposes only. **£180-260** (plus 27.6% BP\*)

**359**

A half hunter pocket watch by Gustave Sandoz. White metal case. Numbered 8868. Unsigned Swiss bar movement with cylinder escapement. White dial. 51mm. Together with a pocket watch movement. Recommended for spares or repair purposes only. **£40-60** (plus 27.6% BP\*)

**362**

An open face pocket watch by IWC. Base metal case, numbered 1081286. Signed keyless wind calibre 67. White dial. 57mm. Recommended for spares or repair purposes only. **£120-180** (plus 27.6% BP\*)

**365**

A full hunter pocket watch by Hawkins. Yellow metal case. Signed key wind full plate fusee and chain movement with verge escapement and diamond end stone. White dial. 41mm. 58gms. Recommended for spares or repair purposes only. **£180-260** (plus 27.6% BP\*)

**357**

An open face fob watch. Yellow metal case with enamel scene to case back, signed Moser. Unsigned Swiss bar movement with cylinder escapement. White dial. 32mm. 25gms. Together with a yellow metal chain. Recommended for spares or repair purposes only. **£280-360** (plus 27.6% BP\*)

**360**

An open face pocket watch by H. Burgess. 18ct yellow gold case, stamped Birmingham 1896. Signed key wind full plate movement. Gilt dial. 40mm. 53gms. Recommended for spares or repair purposes only. **£340-440** (plus 27.6% BP\*)

**363**

A full hunter pocket watch by Rigorosa. Yellow metal case, stamped 14K with poinçon. Unsigned keyless wind movement with club tooth lever escapement. Champagne dial. 56mm. 87gms. Recommended for spares or repair purposes only. **£400-600** (plus 27.6% BP\*)

**366**

An open face pocket watch. 18ct yellow gold case, hallmarked London 1867. Unsigned key wind full plate movement. Gilt dial. 39mm. 51gms. Recommended for spares or repair purposes only. **£460-660** (plus 27.6% BP\*)

BP\* - Buyer's Premium of 23% (plus VAT) or 27.6% (VAT included)

BP\* - Buyer's Premium of 23% (plus VAT) or 27.6% (VAT included)

367



**A full hunter pocket watch.** 18ct yellow gold case, hallmarked Birmingham 1919. Unsigned keyless wind fifteen jewel movement with club tooth lever escapement. White dial. 50mm. 113gms. Recommended for spares or repair purposes only. **£800-1,200** (plus 27.6% BP\*)

370



An open face railway grade pocket watch by Elgin. Gold filled case. Numbered 6418167. Signed keyless wind B.W Raymond movement, numbered 27400059. White dial. 50mm. Together with a gold plated pocket watch by Rockford Watch Co. All recommended for spares or repair purposes only. **£60-90** (plus 27.6% BP\*)

373



An open face stopwatch by Lemania. Base metal case, stamped 2 GPO GGW 63 24803. Signed keyless wind calibre 8000. White dial. 51mm. Together with a silver open face pocket watch by J.G Graves, a nickel plated pocket watch by Smiths and a silver chain. **£140-200** (plus 27.6% BP\*)

## SMALL REPAIRERS LOTS

376

A lady's bracelet watch. 9ct yellow gold case, import hallmarked London 1922. Numbered 34171. Manual wind movement, signed Marconi. Discoloured silvered and gilt dial. Fitted to an unsigned yellow metal expandable bracelet. 25mm. 16gms. Together with a gold plated Brooks & Bentley The Sport of Kings Gold Ingot bracelet watch. Box. All recommended for spares or repair purposes only. **£80-120** (plus 27.6% BP\*)



368



An open face pocket watch by Waltham. Yellow metal case, stamped 10C. Signed key wind three quarter plate movement with club tooth lever escapement. White dial. 40mm. 54gms. Recommended for spares or repair purposes only. **£150-200** (plus 27.6% BP\*)

## STOPWATCHES

371



An open face stop watch by Heuer. Base metal case. Numbered 9372 26790. Signed keyless wind calibre 7711. Cream dial. 58mm. Box. **£80-120** (plus 27.6% BP\*)

## CLOCKS &amp; NOVELTIES

374



A purse watch by Movado. Leather coated stainless steel case, numbered 1260 287M. Manual wind movement. Silvered dial. Length when closed 49mm. **£120-180** (plus 27.6% BP\*)

377

A gentleman's wrist watch. 18ct yellow gold case, import hallmarked Glasgow 1924. Numbered 312544. Manual wind movement signed S&B Co. Silvered dial. Fitted to an unsigned brown leather strap with gold plated pin buckle. 32mm. Recommended for spares or repair purposes only. **£180-260** (plus 27.6% BP\*)



369



A half hunter pocket watch by Waltham. 9ct yellow gold case, hallmarked Chester 1926. Signed keyless wind seventeen jewel movement with club tooth lever escapement. White dial. 49mm. 90gms. Recommended for spares or repair purposes only. **£340-440** (plus 27.6% BP\*)

372



An open face stop watch by Heuer. Base metal case. Numbered 52147. Unsigned keyless wind seven jewel movement. White dial. 58mm. **£70-100** (plus 27.6% BP\*)

375



A purse watch by Laco. Leather coated gold plated case. Manual wind movement. Silvered dial. Length when closed 53mm. Together with a miniature alarm clock by Jown. All recommended for spares or repair purposes only. **£80-120** (plus 27.6% BP\*)

378

A lady's cocktail watch. White metal diamond set case, stamped Platinum. Manual wind movement, signed P.W.C. Silvered dial. Fitted to an unsigned 9ct white gold bracelet with folding clasp, hallmarked Birmingham 1962. 14mm. 17gms. Recommended for spares or repair purposes only. **£220-320** (plus 27.6% BP\*)



379

A lady's cocktail watch. White metal factory diamond set case, stamped Platinum. Unsigned manual wind movement. Silvered dial. Fitted to an unsigned white rolled gold strap with folding clasp and safety chain. 14mm. Recommended for spares or repair purposes only. **£100-150** (plus 27.6% BP\*)



382  

**BALL** - a gentleman's Trainmaster Cleveland Express wrist watch. Stainless steel case with exhibition case back. Reference PM1058D, serial 7805914. Signed automatic movement. Black dial. Fitted to a signed black crocodile strap with stainless steel deployant clasp. 43mm. Box. Together with a gentleman's stainless steel Ball Trainmaster wrist watch. *Box and papers.* All recommended for spares or repair purposes only. **£200-300** (plus 27.6% BP\*)



385

**BARTHELAY** - a lady's wrist watch. Stainless steel case with factory diamond set bezel. Numbered 51296. Unsigned quartz movement. Mother-of-pearl dial. Fitted to a signed black satin coated leather strap with stainless steel pin buckle. 30mm. Recommended for spare or repair purposes only. **£80-120** (plus 27.6% BP\*)



388 

**BAUME & MERCIER** - a gentleman's Clifton Chronograph Day Date chronograph wrist watch. Stainless steel case with exhibition case back. Reference 65731, serial 5149435. Signed automatic calibre BM137750. Silvered dial. Fitted to a signed black alligator strap with stainless steel deployant clasp. 43mm. Recommended for spares or repair purposes only. **£150-200** (plus 27.6% BP\*)



380

A trench style wrist watch. Silver case, import hallmarked London 1916. Unsigned manual wind movement. White dial. Fitted to an unsigned black leather strap with gold plated pin buckle. 33mm. Recommended for spares or repair purposes only. **£50-80** (plus 27.6% BP\*)



383   

**BALL** - a gentleman's Trainmaster Worldtime chronograph wrist watch. Stainless steel case with exhibition case back. Reference CM2052D, serial 7129430. Signed automatic movement. Black dial. Fitted to a signed black alligator strap with stainless steel deployant clasp. 43mm. Together with a gentleman's stainless steel Ball Trainmaster wrist watch. *Boxes and papers.* All recommended for spares or repair purposes only. **£200-300** (plus 27.6% BP\*)



386 

**BAUME & MERCIER** - a gentleman's Classima wrist watch. Stainless steel case. Reference 65774, serial 5729419. Signed quartz movement. White dial. Fitted to a signed black leather strap with stainless steel pin buckle. 40mm. Together with a gentleman's stainless steel Baume & Mercier Capeland chronograph wrist watch. *Boxes.* All recommended for spares or repair purposes only. **£70-100** (plus 27.6% BP\*)



389

**BAUME & MERCIER** - a gentleman's Clifton Complete Calendar wrist watch. Stainless steel case with exhibition case back. Reference 65718, serial 5132964. Signed automatic calibre BM11900. Silvered dial. Fitted to an unsigned black leather strap with signed stainless steel pin buckle. 43mm. Together with a gentleman's stainless steel Baume & Mercier Classima watch head. All recommended for spares or repair purposes only. **£100-150** (plus 27.6% BP\*)



381

A trench style wrist watch. Silver case, import hallmarked London 1915. Unsigned manual wind movement. White dial. Fitted to an unsigned brown leather strap with gold plated pin buckle. 33mm. Recommended for spares or repair purposes only. **£90-140** (plus 27.6% BP\*)



384 

**BALL** - a gentleman's Trainmaster Worldtime chronograph wrist watch. Stainless steel case with exhibition case back. Reference CM2052D, serial 7129093. Signed automatic movement. Black dial. Fitted to a signed black alligator strap with stainless steel double folding clasp. 43mm. Recommended for spares or repair purposes only. **£200-300** (plus 27.6% BP\*)



387

**BAUME & MERCIER** - a lady's Linea bracelet watch. Stainless steel case with yellow metal chapter ring bezel. Reference 5261, serial 1712479. Signed quartz calibre 5095. Champagne dial. Fitted to a signed bi-metal bracelet with folding clasp. 24mm. Recommended for spares or repair purposes only. **£50-80** (plus 27.6% BP\*)



390

**BENRUS** - a gentleman's Alarm wrist watch. Nickel plated case with stainless steel case back. Signed manual wind movement. Silvered dial. Fitted to an unsigned black leather strap with nickel plated pin buckle. 34mm. Recommended for spares or repair purposes only. **£40-60** (plus 27.6% BP\*)



BP\* - Buyer's Premium of 23% (plus VAT) or 27.6% (VAT included)

BP\* - Buyer's Premium of 23% (plus VAT) or 27.6% (VAT included)

**391**

**BENRUS** - a mid-size wrist watch. Yellow metal case, stamped 14 Karat Gold. Numbered 50018522. Signed manual wind calibre BB4. White dial. Fitted to an unsigned blue leather strap with gold plated pin buckle. 29mm. Recommended for spares or repair purposes only. **£100-150** (plus 27.6% BP\*)

**394**

**BULOVA** - a gentleman's Precisionist chronograph bracelet watch. Stainless steel case. Reference C877891, serial 18819427. Signed quartz movement. Black carbon-fibre effect dial. Fitted to a signed stainless steel bracelet with folding clasp. 48mm. Box. Recommended for spares or repair purposes only. **£90-140** (plus 27.6% BP\*)

**397**

**CHANEL** - a lady's Matelassé bracelet watch. Stainless steel case. Numbered F.D.87163. Quartz movement. Black dial. Fitted to a signed stainless steel bracelet with double folding clasp. 19mm. Recommended for spares or repair purposes only. **£160-220** (plus 27.6% BP\*)

**400**

**GEORGE JENSEN** - a gentleman's chronograph wrist watch. Stainless steel case. Reference 517, serial 002385. Unsigned quartz movement. Silvered dial. Fitted to a signed brown leather strap with stainless steel deployant clasp. 40mm. Recommended for spares or repair purposes only. **£280-380** (plus 27.6% BP\*)

**392**

**BUCHERER** - a gentleman's bracelet watch. Stainless steel case. Numbered 1805A. Signed automatic movement. Silvered dial. Fitted to an unsigned stainless steel bracelet with folding clasp. 39mm. Box. Recommended for spares or repair purposes only. **£50-80** (plus 27.6% BP\*)

**395**

**CARTIER** - a gentleman's Tank Francaise Chronoflex chronograph bracelet watch. Stainless steel case. Reference 2303, serial BB30991. Signed quartz calibre 212 P. Cream dial. Fitted to a signed bi-metal bracelet with double folding clasp. 28mm. Recommended for spares or repair purposes only. **£360-460** (plus 27.6% BP\*)

**398**

**CWC** - a military wrist watch. Stainless steel case, stamped with British Broad Arrow. Numbered W10/6645-99-541-5317, 4333/82. Quartz movement. Black dial. Fitted to an unsigned brown leather strap with gold plated pin buckle. 35mm. Together with a stainless steel CWC military wrist watch. All recommended for spares or repair purposes only. **£50-80** (plus 27.6% BP\*)

**401**

**GRUEN** - a mid-size wrist watch. White metal case, stamped 14K Gold. Numbered J46541 480 744. Signed automatic calibre 480 SS. Black dial. Fitted to an unsigned dark blue leather strap with stainless steel deployant clasp. 29mm. Recommended for spares or repair purposes only. **£220-320** (plus 27.6% BP\*)

**393**

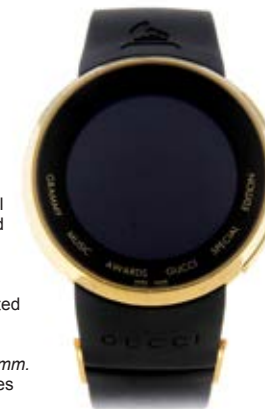
**BULOVA** - a gentleman's Accutron wrist watch. Stainless steel case. Numbered M4 1-223614. Signed electronic calibre 214H. Silvered dial. Fitted to an unsigned black leather strap with base metal pin buckle. 35mm. Recommended for spares or repair purposes only. **£30-50** (plus 27.6% BP\*)

**396**

**CARTIER** - a lady's Panthere bracelet watch. Stainless steel case with yellow metal bezel. Reference 166921, serial 079016. Signed quartz calibre 157. Cream dial. Fitted to a signed bi-metal bracelet with double folding clasp. 22mm. Papers. Recommended for spares or repair purposes only. **£800-1,200** (plus 27.6% BP\*)

**399**

**EBEL** - a lady's Brasilia bracelet watch. Stainless steel case. Reference E1976M22, serial A265355. Signed quartz calibre 976. Mother-of-pearl dial. Fitted to a signed stainless steel bracelet with double folding clasp. 24mm. Together with a lady's stainless steel Ebel bracelet watch. Boxes. All recommended for spares or repair purposes only. **£50-80** (plus 27.6% BP\*)

**402**

**GUCCI** - a gentleman's Grammy Awards Special Edition wrist watch. Gold plated case. Reference 316L, serial 13191880. Signed quartz calibre TM0501. Digital dial. Fitted to a signed black rubber strap with gold plated double folding clasp. 45mm. Recommended for spares or repair purposes only. **£400-600** (plus 27.6% BP\*)

BP\* - Buyer's Premium of 23% (plus VAT) or 27.6% (VAT included)

BP\* - Buyer's Premium of 23% (plus VAT) or 27.6% (VAT included)

**403**

**GUCCI** - a lady's 3900L bracelet watch. Factory diamond set stainless steel case. Numbered 0314974. Signed quartz movement. Mother-of-pearl dial. Fitted to a signed stainless steel bracelet with folding clasp. 12mm. Recommended for spares or repair purposes only. **£80-120** (plus 27.6% BP\*)

**406** 

**INVICTA** - a gentleman's Reserve Venom chronograph wrist watch. Stainless steel case with gold plated calibrated bezel. Reference 112803, serial 542213. Unsigned quartz movement. Silvered dial. Fitted to a signed brown leather strap with gold plated pin buckle. 52mm. *Box and papers.* Recommended for spares or repair purposes only. **£80-120** (plus 27.6% BP\*)

**409**

**LONGINES** - a gentleman's wrist watch. 9ct yellow gold case with engraved case back, hallmarked London 1963. Numbered 26864. Signed manual wind calibre 370. Silvered dial. Fitted to a signed black leather strap with gold plated pin buckle. 31mm. Recommended for spares or repair purposes only. **£100-150** (plus 27.6% BP\*)

**412**

**LONGINES** - a gentleman's wrist watch. Stainless steel case. Numbered 4858 22 179. Signed manual wind calibre 12.68Z. Silvered dial. Fitted to an unsigned black leather strap with nickel plated pin buckle. 32mm. Recommended for spares or repair purposes only. **£90-140** (plus 27.6% BP\*)

**404**

**HEUER** - a gentleman's 1000 bracelet watch. Stainless steel case and calibrated bezel. Reference 1272.018, serial 6727 W20. Unsigned quartz movement. Luminous dial. Fitted to a signed stainless steel bracelet with folding clasp. 37mm. Recommended for spares or repair purposes only. **£120-180** (plus 27.6% BP\*)

**407**

**LACO** - a mid-size Sport watch head. Nickel plated case with stainless steel case back. Numbered 81429. Manual wind movement. Silvered dial. 27mm. Recommended for spares or repair purposes only. **£100-150** (plus 27.6% BP\*)

**410 X**

**LONGINES** - a gentleman's wrist watch. Gold plated case with stainless steel case back. Reference L4.636.2, serial 27137668. Signed quartz calibre L156.4. White dial. Fitted to an unsigned brown lizard strap with gold plated pin buckle. 33mm. Recommended for spares or repair purposes only. **£50-80** (plus 27.6% BP\*)

**413**

**MARCONI** - a gentleman's wrist watch. Nickel plated case. Numbered 247147. Manual wind movement, signed Marconi and Rolex Watch Co. Silvered dial. Fitted to an unsigned brown leather strap with nickel plated pin buckle. 26mm. Recommended for spares or repair purposes only. **£70-100** (plus 27.6% BP\*)

**405**

**IKEPOD** - a gentleman's Hemipode chronograph bracelet watch. Stainless steel case with exhibition cut out to caseback. Numbered 0100/9999 1653. Signed automatic movement. Black dial. Fitted to a signed stainless steel bracelet with double folding clasp. 44mm. Recommended for spares or repair purposes only. **£750-950** (plus 27.6% BP\*)

**408 X**

**LECOULTRE** - a mid-size wrist watch. Yellow metal case, stamped 14K. Numbered 18560. Signed manual wind movement. Silvered dial. Fitted to a signed black crocodile strap with gold plated pin buckle. 29mm. Recommended for spares or repair purposes only. **£120-180** (plus 27.6% BP\*)

**411**

**LONGINES** - a gentleman's Flagship bracelet watch. Stainless steel case with exhibition case back. Reference L4.774.4, serial 46709109. Signed automatic calibre L888.2. Black dial. Fitted to a signed stainless steel bracelet with double folding clasp. 36mm. Recommended for spares or repair purposes only. **£70-100** (plus 27.6% BP\*)

**414**

**MICHELE** - a lady's wrist watch. Stainless steel case. Reference MW11A00, serial BR01089SS. Unsigned quartz movement. Mother-of-pearl dial. Fitted to a signed blue alligator strap with stainless steel pin buckle. 23mm. Recommended for spares or repair purposes only. **£50-80** (plus 27.6% BP\*)



BP\* - Buyer's Premium of 23% (plus VAT) or 27.6% (VAT included)

BP\* - Buyer's Premium of 23% (plus VAT) or 27.6% (VAT included)

**415** ✕

**MOVADO** - a gentleman's World Time wrist watch. Stainless steel case with engraved case back. Reference 18149, serial 1157404. Signed manual wind movement. Silvered dial. Fitted to an unsigned brown lizard strap with gold plated pin buckle. 36mm. Recommended for spares or repair purposes only. **£460-660** (plus 27.6% BP\*)

**418**

**OMEGA** - a gentleman's wrist watch. Gold plated case with stainless steel case back. Reference 196 0123. Signed quartz calibre 1345. Silvered dial. Fitted to an unsigned black leather strap with gold plated pin buckle. 35mm. Recommended for spares or repair purposes only. **£60-90** (plus 27.6% BP\*)

**421**

**OMEGA** - a gentleman's wrist watch. 9ct yellow gold case, hallmarked Birmingham 1964. Reference 1615002, numbered 300181. Signed automatic calibre 552. Silvered dial. Fitted to an unsigned brown leather strap with gold plated pin buckle. 32mm. Together with a lady's gold plated Eterna watch on a 9ct bracelet and a lady's gold plated Rotary wrist watch. All recommended for spares or repair purposes only. **£120-180** (plus 27.6% BP\*)

**424**

**OMEGA** - a gentleman's wrist watch. Stainless steel case with gold plated bezel. Numbered 2445-2 174. Signed bumper automatic calibre 342. Silvered dial. Fitted to an unsigned brown leather strap with gold plated pin buckle. 32mm. Recommended for spares or repair purposes only. **£140-200** (plus 27.6% BP\*)

**416**

**MOVADO** - a gentleman's Kingmatic wrist watch. Yellow metal case, stamped 18K 0.750. Numbered 544 5213. Signed automatic movement. Silvered dial. Fitted to an unsigned brown leather strap with gold plated pin buckle. 35mm. Recommended for spares or repair purposes only. **£400-600** (plus 27.6% BP\*)

**419**

**OMEGA** - a gentleman's Seamaster bracelet watch. Stainless steel case. Numbered 165.002. Signed automatic calibre 552. Silvered dial. Fitted to an unsigned stainless steel expandable bracelet. 34mm. Together with two lady's Omega bracelet watches. All recommended for spares or repair purposes only. **£60-90** (plus 27.6% BP\*)

**422**

**OMEGA** - a gentleman's Seamaster bracelet watch. Stainless steel case with gold plated calibrated bezel. Reference 196 0230. Signed quartz calibre 1337. Champagne dial. Fitted to a signed bi-colour bracelet with folding clasp. 38mm. Recommended for spares or repair purposes. **£140-200** (plus 27.6% BP\*)

**425**

**OMEGA** - a gentleman's Constellation bracelet watch. Stainless steel case with yellow metal chapter ring bezel. Reference 3980876. Signed quartz calibre 1431. Champagne dial. Fitted to a signed bi-metal bracelet with folding clasp. 32mm. Recommended for spares or repair purposes only. **£240-340** (plus 27.6% BP\*)

**417**

**OMEGA** - a gentleman's De Ville bracelet watch. Stainless steel case. Numbered 162045. Signed automatic calibre 1002. Silvered dial. Fitted to an unsigned stainless steel expandable bracelet. 32mm. Together with a gentleman's stainless steel Omega Genève Chronostop watch head. All recommended for spares or repair purposes only. **£100-150** (plus 27.6% BP\*)

**420**

**OMEGA** - a lady's bracelet watch. 14ct yellow gold case. Unsigned quartz movement. Champagne dial. Fitted to a signed integral 14ct yellow gold bracelet with folding clasp. 15mm. 12gms. Recommended for spares or repair purposes only. **£90-140** (plus 27.6% BP\*)

**423**

**OMEGA** - a lady's bracelet watch. 9ct yellow gold case, hallmarked Birmingham 1975. Signed manual wind calibre 625. Champagne dial. Fitted to an unsigned 9ct yellow gold bracelet with folding clasp. 19mm. 15gms. Recommended for spares or repair purposes only. **£90-140** (plus 27.6% BP\*)

**426** 📄 📁

**OMEGA** - a gentleman's De Ville bracelet watch. Gold plated case with stainless steel case back. Reference 396 1017. Signed quartz calibre 1430. White dial. Fitted to a signed bi-colour bracelet with folding clasp. 30mm. Box and papers. Recommended for spares or repair purposes only. **£150-200** (plus 27.6% BP\*)



**427**

**OMEGA** - a gentleman's F300 wrist watch. Gold plated case with stainless steel case back. Reference 198.001. Signed electronic calibre 1250. Light champagne dial. Fitted to an unsigned brown leather strap with gold plated pin buckle. 36mm. Recommended for spares or repair purposes only. **£120-180** (plus 27.6% BP\*)

**430**

**OMEGA** - a gentleman's Dynamic bracelet watch. Stainless steel case. Manual wind movement. Blue dial. Fitted to a signed stainless steel bracelet with folding clasp. 41mm. Recommended for spares or repair purposes only. **£140-200** (plus 27.6% BP\*)

**433**

**OMEGA** - a gentleman's Memomaster bracelet watch. Stainless steel case. Reference 182.0001. Signed quartz calibre 1632. Digital dial. Fitted to a signed stainless steel bracelet with folding clasp. 35mm. Together with a stainless steel Omega TC2 Time Computer watch head. All recommended for spares or repair purposes only. **£90-140** (plus 27.6% BP\*)

**436**

**OMEGA** - a gentleman's Seamaster wrist watch. Stainless steel case. Reference 2576-16. Signed bumper automatic calibre 342. Silvered dial. Fitted to an unsigned black leather strap with gold plated pin buckle. 34mm. Recommended for spares or repair purposes only. **£100-150** (plus 27.6% BP\*)

**428**

**OMEGA** - a lady's bracelet watch. 9ct yellow gold case, hallmarked London 1980. Numbered 7915715. Signed quartz movement. Champagne dial. Fitted to a signed 9ct yellow gold bracelet with folding clasp. 20mm. 25gms. Recommended for spares or repair purposes only. **£80-120** (plus 27.6% BP\*)

**431**

**OMEGA** - a lady's Constellation bracelet watch. Stainless steel case. Reference 568.0017. Signed automatic calibre 685. Silvered dial. Fitted to a signed stainless steel bracelet with folding clasp. 26mm. Recommended for spares or repair purposes only. **£80-120** (plus 27.6% BP\*)

**434**

**OMEGA** - a gentleman's Seamaster bracelet watch. Stainless steel case. Reference 196.0090. Signed quartz calibre 1342. Dark grey dial. Fitted to a signed stainless steel bracelet with folding clasp. 36mm. Recommended for spares or repair purposes only. **£150-200** (plus 27.6% BP\*)

**437**

**OMEGA** - a gentleman's Seamaster bracelet watch. 9ct yellow gold case, hallmarked London 1980. Reference 3965702. Signed quartz calibre 1342. Silvered dial. Fitted to an integral 9ct yellow gold bracelet with clasp. 34mm. 71gms. Recommended for spares or repair purposes only. **£560-760** (plus 27.6% BP\*)

**429**

**OMEGA** - a gentleman's Genève wrist watch. Gold plated case with engraved stainless steel case back. Reference 165.041. Signed automatic calibre 552. Champagne dial. Fitted to an unsigned black leather strap with gold plated pin buckle. 34mm. Recommended for spares or repair purposes only. **£70-100** (plus 27.6% BP\*)

**432**

**OMEGA** - a gentleman's Genève bracelet watch. Stainless steel case. Reference 1660173. Signed automatic calibre 1012. Silvered dial. Fitted to a signed stainless steel bracelet with folding clasp. 36mm. Recommended for spares or repair purposes only. **£140-200** (plus 27.6% BP\*)

**435**

**OMEGA** - a lady's bracelet watch. Yellow metal case, stamped 14K Gold. Reference H8600-R, numbered 287619. Signed manual wind calibre 1070. Champagne dial. Fitted to a signed integral yellow metal bracelet with folding clasp. 14mm. 16gms. Recommended for spares or repair purposes only. **£240-340** (plus 27.6% BP\*)

**438**

**OMEGA** - a gentleman's Genève wrist watch. Yellow metal case. Manual wind movement. Silvered dial. Fitted to an unsigned brown leather strap with gold plated pin buckle. 33mm. Recommended for spares or repair purposes only. **£150-200** (plus 27.6% BP\*)



**439**

**PIAGET** - a lady's wrist watch. Gold plated case with stainless steel case back. Numbered 21132. Unsigned quartz movement. Mother-of-pearl dial. Fitted to an unsigned black leather strap with gold plated pin buckle. *14mm*. Recommended for spares or repair purposes only. **Please see the condition report for details of third party intervention.** **£280-380** (plus 27.6% BP\*)

**442**

**RAYMOND WEIL** - a gentleman's Tradition wrist watch. Gold plated case. Numbered 6143. Unsigned quartz movement. White dial. Fitted to an unsigned black leather strap with gold plated pin buckle. *34mm*. Together with a gentleman's gold plated Raymond Weil bracelet watch. All recommended for spares or repair purposes only. **£50-80** (plus 27.6% BP\*)

**445**

**RAYMOND WEIL** - a lady's Jasmine bracelet watch. Stainless steel factory diamond set case. Reference 5229, serial K336144. Quartz movement. Silvered dial. Fitted to a signed bi-colour bracelet with double folding clasp. *28mm*. **Box and papers**. Recommended for spares or repair purposes only. **£80-120** (plus 27.6% BP\*)

**448**

**ROLEX** - a gentleman's Oyster Perpetual Air-King Precision bracelet watch. Circa 1995. Stainless steel case. Reference 14000, serial W991214. Signed automatic calibre 3000. Silvered dial. Fitted to a signed stainless steel Jubilee bracelet with Oysterclasp. *34mm*. Recommended for spares or repair purposes only. **£800-1,200** (plus 27.6% BP\*)

**440**

**RADO** - a Florence bracelet watch. Bi-colour case. Reference 129.3644.4, serial 03136638. Quartz movement. Champagne dial. Fitted to a signed bi-colour bracelet with clasp. *32mm*. Recommended for spares or repair purposes only. **£50-80** (plus 27.6% BP\*)

**443**

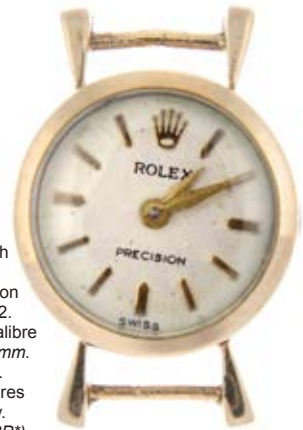
**RAYMOND WEIL** - a gentleman's Freelancer chronograph wrist watch. Stainless steel case with exhibition case back. Reference 7730, serial K417694. Signed automatic calibre RW5000. Black dial. Fitted to a signed brown leather strap with stainless steel deployant clasp. *42mm*. Together with a gentleman's stainless steel Raymond Weil Tradition wrist watch. All recommended for spares or repair purposes only. **£120-180** (plus 27.6% BP\*)

**446**

**ROLEX** - a wrist watch. 18ct yellow gold case, import hallmarked London 1915. Numbered 646004. Signed manual wind movement. White dial. Fitted to an unsigned brown leather strap with nickel plated pin buckle. *26mm*. Recommended for spares or repair purposes only. **£280-360** (plus 27.6% BP\*)

**449**

**ROLEX** - a lady's watch head. 9ct yellow gold case, hallmarked London 1961. Numbered 18042. Signed manual wind calibre 1400. Silvered dial. *15mm*. 5gms. **Box and papers**. Recommended for spares or repair purposes only. **£70-100** (plus 27.6% BP\*)

**441**

**RAYMOND WEIL** - a gentleman's Freelancer bracelet watch. Stainless steel case with exhibition case back and gold plated bezel. Reference 2770, serial K243111. Signed automatic movement. Silvered dial. Fitted to a signed bi-colour bracelet with double folding clasp. *38mm*. Recommended for spares or repair purposes only. **£60-90** (plus 27.6% BP\*)

**444**

**RAYMOND WEIL** - a gentleman's Tradition bracelet watch. Stainless steel case. Reference 5456, serial E369693. Unsigned quartz movement. Silvered dial. Fitted to a signed stainless steel bracelet with double folding clasp. *28mm*. Together with a lady's gold plated Raymond Weil Toccata bracelet watch and a stainless steel Raymond Weil Freelancer bracelet watch. All recommended for spares or repair purposes only. **£60-90** (plus 27.6% BP\*)

**447**

**ROLEX** - a lady's Oyster Perpetual Datejust bracelet watch. Circa 1990. Stainless steel case with yellow metal fluted bezel. Reference 69173, serial L400345. Signed automatic calibre 2135. Champagne and silver houndtooth check dial. Fitted to a signed bi-metal Jubilee bracelet with Oysterclasp. *26mm*. Recommended for spares or repair purposes only. **£1,200-1,800** (plus 27.6% BP\*)

**450**

**ROLEX** - a lady's Oyster Perpetual Date bracelet watch. Circa 1969. Stainless steel case. Reference 6516, serial 2198675. Signed automatic calibre 1181. Bronze dial. Fitted to a signed stainless steel riveted Oyster bracelet with Oysterclasp. *25mm*. Recommended for spares or repair purposes only. **£300-400** (plus 27.6% BP\*)



**451**

**ROLEX** - a mid-size Precision wrist watch. 9ct yellow gold case, hallmarked Birmingham 1960. Numbered 12857 10227. Signed manual wind calibre 1210. Silvered dial. Fitted to an unsigned black leather strap with gold plated pin buckle. 31mm. Recommended for spares or repair purposes only. **£360-460** (plus 27.6% BP\*)

**454**

**SEIKO** - a lady's bracelet watch. Gold plated case with stainless steel case back. Reference 2206-0290, serial 410103. Automatic movement. Champagne and brown dial. Fitted to a signed gold plated bracelet with folding clasp. 24mm. Recommended for spares or repair purposes only. **£50-80** (plus 27.6% BP\*)

**457**

**TAG HEUER** - a gentleman's Formula 1 chronograph bracelet watch. Stainless steel case with calibrated bezel. Reference CAH1015, serial EET2913. Unsigned quartz movement. Black dial. Fitted to a signed stainless steel bracelet with folding clasp. 44mm. Recommended for spares or repair purposes only. **£200-300** (plus 27.6% BP\*)

**460**

**TISSOT** - a gentleman's PR516 bracelet watch. Stainless steel case. Numbered 44630-2X. Signed automatic calibre 784-2. Grey dial. Fitted to a signed stainless steel bracelet with folding clasp. 33mm. Together with a mid-size bi-colour TAG Heuer 3000 wrist watch. All recommended for spares or repair purposes only. **£50-80** (plus 27.6% BP\*)

**452**

**ROYCE** - a gentleman's wrist watch. Stainless steel case with calibrated bezel. Numbered 11-132. Automatic movement. Black dial. Fitted to an unsigned bi-colour nylon 'NATO' style strap with stainless steel pin buckle. 38mm. Recommended for spares or repair purposes only. **£70-100** (plus 27.6% BP\*)

**455**

**SUIZA** - a gentleman's chronograph wrist watch. Nickel plated case with stainless steel case back. Unsigned manual wind movement. Silvered dial. Fitted to an unsigned dark blue leather strap with nickel plated pin buckle. 34mm. Recommended for spares or repair purposes only. **£180-260** (plus 27.6% BP\*)

**458**

**TAG HEUER** - a lady's Aquaracer bracelet watch. Stainless steel case with calibrated bezel. Reference WAF1410, serial EBF4963. Unsigned quartz movement. Black dial. Fitted to a signed stainless steel bracelet with folding clasp. 27mm. Papers. Recommended for spares or repair purposes only. **£250-350** (plus 27.6% BP\*)

**461**

**TISSOT** - a gentleman's Seastar bracelet watch. Stainless steel case. Numbered 44807-5X. Signed automatic calibre 2481. Blue dial. Fitted to a signed stainless steel bracelet with folding clasp. 37mm. Recommended for spares or repair purposes only. **£80-120** (plus 27.6% BP\*)

**453**

**SEIKO** - a gentleman's chronograph wrist watch. Stainless steel case and tachymeter bezel. Reference 6139-6000, serial 959433. Signed automatic calibre 6139B. Black dial. Fitted to an unsigned black leather strap with gold plated pin buckle. 40mm. Together with two gentleman's stainless steel Seiko bracelet watches. All recommended for spares or repair purposes only. **£50-80** (plus 27.6% BP\*)

**456**

**TAG HEUER** - a mid-size Formula 1 wrist watch. Plastic case with calibrated bezel and stainless steel case back. Numbered 381.513/1. Unsigned quartz movement. Blue dial. Fitted to a signed black rubber strap with plastic pin buckle. 35mm. Together with a TAG Heuer Connect watch head. All recommended for spares or repair purposes only. **£60-90** (plus 27.6% BP\*)

**459**

**TISSOT** - a gentleman's PR 516 wrist watch. Stainless steel case. Numbered 44672-2X. Signed automatic calibre 784-2. Blue dial. Fitted to an unsigned brown vinyl strap with gold plated pin buckle. 36mm. Recommended for spares or repair purposes only. **£70-100** (plus 27.6% BP\*)

**462**

**TISSOT** - a gentleman's T12 bracelet watch. Stainless steel case. Numbered 44678 44644. Signed automatic calibre 2481. Black dial. Fitted to a signed stainless steel bracelet with folding clasp. 44mm. Recommended for spares or repair purposes only. **£100-150** (plus 27.6% BP\*)



BP\* - Buyer's Premium of 23% (plus VAT) or 27.6% (VAT included)

BP\* - Buyer's Premium of 23% (plus VAT) or 27.6% (VAT included)

463



**TISSOT** - a gentleman's PR50 bracelet watch. Titanium case. Reference J176/276K RKK-JA, serial 12498. Unsigned quartz movement. Silvered dial. Fitted to a signed titanium bracelet with folding clasp. 35mm. Recommended for spares or repair purposes only. **£60-90** (plus 27.6% BP\*)

466



**TUDOR** - a lady's wrist watch. 9ct yellow gold case, import hallmarked London 1974. Signed manual wind movement. Silvered dial. Fitted to an unsigned brown leather strap with signed gold plated pin buckle. 19mm. Together with a lady's 18k yellow gold Tissot watch head. 14gms. **£100-150** (plus 27.6% BP\*)

469



**ZENITH** - a gentleman's wrist watch. Gold plated case with stainless steel case back. Numbered 27 0010 425. Signed quartz calibre 42.5. Champagne dial. Fitted to an unsigned black leather strap with gold plated pin buckle. 30mm. Together with a lady's stainless steel Raymond Weil Saxo bracelet watch. All recommended for spares or repair purposes only. **£50-80** (plus 27.6% BP\*)

Notes

---

---

---

---

---

---

---

---

---

---

464



**TUDOR** - a lady's Style bracelet watch. Stainless steel case with yellow metal bezel. Reference 12103, serial 1344267. Signed automatic calibre 2671. Silvered dial. Fitted to a signed bi-metal bracelet with folding clasp. 28mm. Box. Recommended for spares or repair purposes only. **£400-600** (plus 27.6% BP\*)

467



**VAN CLEEF & ARPELS** - a lady's watch head. 18ct yellow gold case. Reference 12301, serial 706. Signed manual wind calibre 839. Silvered dial. 28mm. 16gms. Recommended for spares or repair purposes only. **£200-300** (plus 27.6% BP\*)

470



**ZENITH** - a gentleman's Surf bracelet watch. Stainless steel case. Numbered 02.0700.380. Signed automatic calibre 2572 PC. Silvered dial. Fitted to a signed stainless steel bracelet with folding clasp. 35mm. Recommended for spares or repair purposes only. **£180-260** (plus 27.6% BP\*)

---

---

---

---

---

---

---

---

---

---

465



**TUDOR** - a gentleman's bracelet watch. 9ct yellow gold case, hallmarked Birmingham 1958. Numbered 12856 888381. Signed manual wind movement. Silvered dial. Fitted to an unsigned gold plated expandable bracelet. 30mm. Recommended for spares or repair purposes only. **£120-180** (plus 27.6% BP\*)

468



**VERITY** - a gentleman's chronograph wrist watch. Gold plated case with stainless steel case back. Numbered 1245. Unsigned manual wind Landeron calibre 48. Silvered dial. Fitted to an unsigned black leather strap with gold plated pin buckle. 35mm. Recommended for spares or repair purposes only. **£140-200** (plus 27.6% BP\*)

Notes

---

---

---

---

---

---

---

---

---

---

Fellows  
Established 1876



At our London office, we offer valuations for jewellery, watches and handbags  
as well as viewing days for upcoming auctions.

For more information please contact our London office on 020 7127 4198 or london@fellows.co.uk

29 Charles Street, Mayfair, London, W1J 5DT



## Free Live Bidding!

Fellows are delighted to announce the introduction of Fellows Live. This is a new bidding platform where all bidders can follow the sale and bid online for **free**. Say goodbye to additional surcharges when it comes to bidding!

Anyone using Fellows Live will only have to pay the standard Buyer's Premium (plus VAT), on items purchased using this method.

***"Our main aim is to make bidding at Fellows as easy and uncomplicated as possible"*** said Stephen Whittaker, the company's Managing Director. Adding, ***"Our team has been working to create a user-friendly platform, without the additional surcharges levied by the leading auction aggregator sites. We have absorbed the costs associated with live and timed bidding for our customers because we believe it should all be part of the service. We are committed to offering value for money at Fellows"***.

As well as Fellows Live we have introduced a number of new features to improve the user journey:

- Bid Calculator - See exactly how much you would pay when using different bidding methods.
- An accumulating bid basket - know exactly what you are spending as you are bidding live.
- Lot alerts – be informed as soon as an item you are interested in is listed in an online catalogue.
- Complete transparency on other bids – the platform informs the user where the other bids are coming from, whether it is another bidding platform, the room or on the phone.

## Auction Dates 2019

<b>September</b>	The Designer Collection	Monday 30th at 11am
<b>October</b>	Jewellery & Pawnbroker Jewellery	Thursday 3rd at 10am
	The Watch Sale	Tuesday 15th at 11am
	Jewellery & Pawnbroker Jewellery	Thursday 17th at 10am
<b>November</b>	Jewellery & Pawnbroker Jewellery	Thursday 7th at 10am
	Fine Jewellery	Thursday 14th at 11am
	Antiques, Silver & Collectables	Monday 18th at 10am
	Pawnbroker Jewellery	Thursday 21st at 11am*
	The Watch Sale	Tuesday 26th at 11am

## Timed Auctions\*\*

Online Watches & Watch Accessories	Ends Monday 23rd September at 10am
Online Jewellery & Costume Jewellery	Ends Thursday 3rd October at 10am
Online Jewellery	Ends Thursday 7th November at 10am

\*Please note that there will be only one viewing day for this sale, visit our website for more information

\*\* Please note that these auctions are timed sales hosted by Fellows Live, more information can be found on our website.

Dates are subject to change, please check the website for the definitive auction list.

Fellows recommend that all bidders and buyers read our conditions of buying and buyer's premium available on our website.

## For further information please contact:

<b>Jewellery</b> Heather Bailey heather@fellows.co.uk 0121 212 6303	<b>Watches</b> Laura Bishop laurab@fellows.co.uk 0121 212 5506	<b>Silver &amp; Coins</b> Allison Jakeway alisonj@fellows.co.uk 0121 212 2131	<b>Antiques &amp; Fine Art</b> Kevin Jackson kevin@fellows.co.uk 0121 212 2131
--	---	--	---

Fellows Auctioneers Ltd carries on business, including the conduct of Auctions, on the following general conditions. This includes business with Bidders, Buyers, Vendors, consignors, users of this website, and with all those present on the Premises prior to or in connection with an Auction (all as hereinafter defined).

### 1. INTRODUCTION

1.1 The following defined terms are used in these Conditions :

“Auction” means any Auction conducted by Fellows, either at their premises or elsewhere (including any internet-based auctions);

“Auctioneer” means Fellows or its authorised Auctioneer, as appropriate;

“Bidder” means a bidder at an Auction, including bidders personally present at the venue and those bidding by telephone or over the internet or otherwise;

“Buyer” means the bidder whose bid was the last bid when the Auctioneer brings down the hammer;

“Conditions” means these terms and conditions;

“Consigned Property” means the items consigned by the Vendor to Fellows for offer at an Auction;

“Deliberate Forgery” means an imitation made with the intention of deceiving as to authorship, origin, date, age, period, culture or source but which is unequivocally described by Fellows in the catalogue as being the work of a particular creator and which at the date of the sale had a value materially less than it would have had if it had been in accordance with the description;

“Fellows” means Fellows Auctioneers Ltd;

“Hammer Price” means the level of bidding reached (at or above any reserve) when the Auctioneer brings down the hammer;

“Includes” means “includes but not limited to”, and “including” means “including but not limited to”

“Lot” means any Consigned Property accepted by Fellows for offer at Auction;

“Stated Rate” means Fellows’ published rates of commission for the time being and value added tax thereon (also available on request);

“Terms of Consignment” means any stipulated terms and rates of commission on which Fellows accepts instructions from Vendors [or their agents];

“Total Amount Due” means the Hammer Price in respect of the Lot sold together with any premium, commission, value added tax chargeable and any additional charges payable by a defaulting Buyer under these Conditions;

“Vendor” means the vendor of an item (including Consigned Property) which is submitted to Fellows for offer for sale at an Auction;

“Website” means this website;

“You” means any user of the Website.

### 2. WEBSITE

2.1 You may access most areas of the Website without registering your details with us. Certain areas of the Website are only open to you if you register. By accessing any part of the Website, you shall be deemed to have accepted these Conditions notice in full. If you do not accept this legal notice in full, you must leave the Website immediately.

2.2 Fellows may revise these Conditions at any time by updating this posting. You should check the Website from time to time to review the then current legal notice, because it is binding on you. Certain provisions of this legal notice may be superseded by expressly designated legal notices or terms located on particular pages at the Website.

2.3 Unless otherwise stated, the copyright and other intellectual property rights in all material on the Website (including without limitation photographs and graphical this legal notice, your permission to use the Website automatically terminates and you must immediately destroy any downloaded or printed extracts from the Website.

2.4 No part of the Website may be reproduced or stored in any other website or included in any public or private electronic retrieval system or service without Fellows’ prior written permission.

2.5 Any rights not expressly granted in these Conditions are reserved.

### 3. VISITOR MATERIAL AND CONDUCT

3.1 Other than personally identifiable information, which is covered under our Privacy Policy, any material you transmit or post to the Website shall be considered nonconfidential and non-proprietary. Fellows shall have no obligations with respect to such material. Fellows and its designees shall be free to copy, disclose, distribute, incorporate and otherwise use such material and all data, images, sounds, text and other things embodied therein for any and all commercial or non-commercial purposes.

3.2 You are prohibited from posting or transmitting to or from the Website any material: that is threatening, defamatory, obscene, indecent, seditious, offensive, pornographic, abusive, liable to incite racial hatred, discriminatory, menacing, scandalous, inflammatory, blasphemous, in breach of confidence, in breach of privacy or which may cause annoyance or inconvenience; or for which you have not obtained all necessary licences and/or approvals; or which constitutes or encourages conduct that would be considered a criminal offence, give rise to civil liability, or otherwise be contrary to the law of or infringe the rights of any third party, in any country in the world; or which is technically harmful (including, without limitation, computer viruses, logic bombs, Trojan horses, worms, harmful components, corrupted data or other malicious software or harmful data).

3.3 You may not misuse the Website (including, without limitation, by hacking).

3.4 Each registration is for a single user only. Fellows does not permit you to share your user name and password with any other person nor with multiple users on a network.

3.5 Responsibility for the security of any passwords issued rests with you.

### 4. THE VENDOR

4.1 Fellows shall act as agent of the Vendor only. Any contract for the sale of a Lot will be formed between the Vendor and the Buyer.

- 4.2 The Vendor warrants and represents to Fellows and the Buyer that the Vendor is the sole and true owner of the Consigned Property or is properly authorised by the sole and true owner to consign it for sale and is able to transfer good and marketable title to the property free from any third party claims. The Vendor warrants and representatives that the Vendor has revealed all pertinent information that the Vendor possesses about the items, including in relation to any repairs or alterations that may have been carried out. The Vendor shall indemnify Fellows and the Buyer against any loss and expense caused by any breach of this clause 4.2.
- 4.3 The Vendor shall be entitled to place prior to the Auction a reserve on any Lot, being the minimum Hammer Price at which Lot may be sold. Reserves must be reasonable and Fellows may decline to offer goods which in Fellows' opinion would be subject to an unreasonably high reserve (in which case goods carry the storage and insurance charges stipulated in the terms of consignment). Reserves will not be accepted on items with a bottom estimate less than £300. The Auctioneer also reserves the right not to accept items which they deem to be unsuitable for Auction. Any estimate given shall be an opinion and is not an undertaking of any kind.
- 4.4 A reserve once set cannot be changed except with the written prior consent of Fellows.
- 4.5 Where a reserve has been placed only Fellows may bid on behalf of the Vendor.
- 4.6 The Vendor authorises Fellows to deduct commission from any sold items at a rate of 15% (plus VAT) on any item with a hammer price of £3,000 (or under) or 12.5% (plus VAT) on items over £3,000. Loss or liability for damage will be charged at a rate of 1.5% (plus VAT) calculated on the hammer price. A Marketing fee of £10 (plus VAT) will be charged for each Lot, if unsold we will charge a nominal handling fee of £5 (plus VAT). All items below £35 are subject to a minimum fee of £5 (plus VAT) per Lot.
- 4.7 Fellows will pay the Hammer Price achieved for the Lot (less its commission and applicable fees in accordance with clauses 4.6, 9.2 and 9.3), to the Vendor on receipt of payment of the Total Amount Due in full by the Buyer.
- 4.8 The Vendor authorises Fellows in their discretion to negotiate a sale by private treaty in the case of a Lot unsold at Auction, in which case the same charges will be payable as if the Lot had been sold at Auction.
- 4.9 Fellows do not themselves undertake the collection of any items but may, as the Vendor's agent, instruct a contractor on behalf of the Vendor. Fellows accepts no liability for the actions of such contractor who contracts with the Vendor direct.
- 4.10 Fellows disclaims all liability for items delivered to their saleroom without sufficient sale instructions, and reserves the right to make a minimum warehousing charge of [£1.00] per item per day. Unsold items are subject to the same charges if the Vendor does not remove them within a reasonable time of notification. If not removed within three weeks Fellows reserves the right to sell the items and defray charges from any net proceeds of sale or at the Vendor's expense to consign them to the local authority for disposal. Fellows disclaims any liability for default by the Buyer or for paying out the
- Vendor before receiving payment by the Buyer.
- 4.11 Subject to clause 4.9, Fellows holds all items on their premises and in their custody covered against the risks of fire, burglary and water damage on the scale of charges notified in the terms of consignment and payable by the Vendor up to the date of any sale and (in Fellows' discretion) the Buyer thereafter until collection.
- 4.12 The right of Fellows to bid on behalf of the Vendor is expressly reserved. The Vendor acknowledges that Lots are sold subject to the stipulations of these Conditions in their entirety and on the Terms of Consignment as notified to consignors at the time of the entry of the Lot.
- 4.13 The Auctioneer reserves the right to dispose of any item that in their opinion is unsaleable. Items, including electrical goods and soft furnishings, which do not comply with current legislation will not be offered at Auction.
- 4.14 Any items unsold after an Auction will be reoffered in a subsequent Auction at a reduced reserve to be agreed within seven days. The Auctioneer may request the removal of an item if a reduced price cannot be agreed; items not removed within 14 days will be subject to a storage charge.
- 4.15 A charge of 10% (plus VAT) based on the middle estimate – plus any other charges incurred – may be levied for any Lot withdrawn by the Vendor from offer at an Auction. If the item has to be returned by post (or any other method) the Vendor will be responsible for this charge. These charges are to be paid before the item is returned.
- 4.16 By submitting the item to Fellows for offer at Auction, the Vendor agrees to the Terms of Consignment and authorises Fellows to deduct the specified charges.
5. PUBLICITY
- 5.1 Any catalogue and buyer guides are provided for information only and do not form part of these Conditions. The catalogue and the buyer guides may contain additional terms and conditions.
- 5.2 Fellows reserve the right to use any photographs, background information, and research for publicity purposes both before and after the sale.
6. THE AUCTION
- 6.1 Any Auction shall be conducted at the absolute discretion of the Auctioneer.
- 6.2 The Auctioneer shall conduct the Auction with reasonable skill and care. For example, what constitutes a bid shall be at the absolute discretion of the Auctioneer, acting with reasonable skill and care.
- 6.3 The Auctioneer shall have the right to refuse any bid which does not exceed the previous bid by at least 10% or by such greater proportion as the Auctioneer shall in his or her absolute discretion direct.
- 6.4 Where two or more bids at the same level are simultaneously received by the Auctioneer, the Auctioneer at his absolute discretion shall determine which bid to prefer. Subject to the foregoing, where two or more bids at the same level are simultaneously received by the Auctioneer, any bid by a Bidder personally present at an Auction shall take preference over any bid submitted by telephone or over the internet. Any bid made or attempted by telephone or over the internet shall
- be deemed to have been made only if received by the Auctioneer.
- 6.5 Fellows shall have the right, at its absolute discretion, to refuse admission to its premises or attendance at (or participation in) any Auction by any person.
7. BIDDERS
- 7.1 Bidders may be required to register their particulars. Bidders attending in person may be required to satisfy Fellows' security arrangements before entering any part of the premises to view or bid.
- 7.2 You accept full liability for all bids submitted via your My Fellows account. Once a bid has been made by a Bidder on our website, the bid can be lowered or increased up until 9am on the day of the auction. You must sign into your My Fellows account to do this and you will receive an email confirmation for any changes made. Should a bid be placed in error on the website you must contact Fellows immediately. Failure to contact Fellows before the auction takes place will result in liability for the full payment of the item.
- 7.3 Subject to clause 6.3, the highest Bidder at the Hammer Price shall be the Buyer. Any dispute about a bid shall be settled at the Auctioneer's absolute discretion.
- 7.4 Bidders are deemed to act as principals unless there is a written prior acknowledgement by Fellows that a Bidder is acting as an agent for a named principal.
- 7.5 Bidders are strongly encouraged to attend the Auction in person. Bidders shall be responsible for any decision to bid for a particular Lot and shall be deemed to have carefully inspected and satisfied themselves as to its condition. Neither Fellows nor its employees or agents shall be responsible for any neglect or default in doing or failing to do so.
- 7.6 Bidders are given ample opportunities to view and inspect before any sale and prospective Buyers must satisfy themselves as to all such matters. Neither Fellows or its employees or agents nor the Vendor accept liability for the correctness of such opinions and all conditions and warranties, express, implied or statutory are hereby excluded.
8. THE BUYER
- 8.1 Immediately a Lot is sold, the Buyer shall:
- (a) give to Fellows their name and address and, if requested proof of identity, and
- (b) pay to Fellows the Total Amount Due.
- 8.2 [Fellows may, at its absolute discretion, agree credit terms with the Buyer before an Auction under which the Buyer may be entitled to take possession of Lots up to an agreed value in advance of payment by a stipulated future date of the Total Amount Due.]
- 8.3 Cheques shall not be acceptable by Fellows (unless Fellows in its absolute discretion permits payment by such method) nor are third party references or credit facilities with other Auction houses. If a cheque is tendered Fellows reserves the right to instruct its bank to check the Buyer's status and account balance before exercising any discretion. Any credit arrangement must be settled at least 4 days before the relevant sale. Any permitted payment by credit card shall carry an extra charge to the Buyer of such percentage of the Total Amount Due as is displayed on the premises.
- 8.4 Any payments by a Buyer to Fellows may be applied by Fellows towards any sums owing from that Buyer to Fellows on any account whatever without regard to any directions of the Buyer or his agent, whether express or implied.
9. THE PURCHASE PRICE
- 9.1 On the first £100,000 of the Hammer Price (of any individual Lot) the buyer will pay the Hammer Price and a premium of 23% (Plus VAT). The said premium not being negotiable and payable by ALL Buyers. The Vendor authorises Fellows to retain beneficially the premium payable by Buyers. Value Added Tax is charged at the rate prevailing by law at the date of sale.
- 9.2 On the excess over £100,000 of the Hammer Price (of any individual Lot), the Buyer will pay the Hammer Price and a premium of 15% (plus VAT). The said premium not being negotiable and payable by ALL Buyers. The Vendor authorises Fellows to retain beneficially the premium payable by Buyers. Value Added Tax is charged at the rate prevailing by law at the date of sale.
- 9.3 Value Added Tax on the Hammer Price is imposed on all items affixed with an asterisk thus - \*.
- 9.4 Buyers using the Fellows Live bidding platform will not pay any additional commission, just the buyer's premium. Buyers will pay an additional commission charge of 4.95% + VAT of the hammer price if lots are successfully purchased online via the saleroom. Buyers using Easy Live Auction can choose whether to pay a live bidding charge of 3% + VAT of the hammer price, or a fixed fee of £3 per sale. Buyers will pay a commission charge of an additional 5% + VAT of the hammer price if lots are successfully purchased online via Live Auctioneers.
- 9.5 Non UK or EU VAT registered buyers can have most classes of VAT refunded on their purchases - please note that auctioneers are under no obligation to provide VAT refunds, although many will offer this service. HMRC are the ultimate refunding authority. VAT refunds are subject to provision of statutory export/import documentation. HMRC have decreed that VAT on buyer's premium is always payable whether the buyer is domiciled in the UK, the EU or outside the EU or wherever the goods are to be sent. So auctioneers cannot refund VAT on buyer's premium if the goods are sold under normal VAT rules.
10. TITLE AND COLLECTION OF PURCHASES
- 10.1 The ownership of any Lot purchased shall not pass to the relevant Buyer until they have made payment in full to Fellows of the Total Amount Due.
- 10.2 Buyers shall at their own risk and expense take away any Lot that they have purchased and paid for not later than 2 working days following the day of the Auction after which they shall be responsible for any removal, storage and insurance charges.
11. DEFAULT BY BUYER OR VENDOR
- 11.1 As Fellows act as agent for the Vendor, Fellows is not responsible for default by the Vendor or the Buyer.
- 11.2 If any Lot is not paid for in full and taken away in accordance with these Conditions, or if there is any other breach of these Conditions, Fellows as agent for the Vendor shall at its absolute discretion and without prejudice to any other rights it may have, be

## Commission Bidding Slip

- entitled to exercise all or any of the following rights and remedies:
- (a) to proceed against the Buyer for an action for debt or damages for breach of contract;
  - (b) to rescind the sale of that Lot and/or any other Lots sold by Fellows to the defaulting Buyer;
  - (c) to re-sell the Lot by Auction or private treaty. If a lower Hammer Price is achieved on the re-sale than that achieved on the original sale the defaulting Buyer shall be liable for the difference (after crediting any part payment and adding any re-sale costs). Fellows will account to the Vendor for any surplus achieved on a re-sale, however, it shall only be required to account to the Vendor for any resulting deficiency in the event that it receives payment of such sum in full from the defaulting Buyer.
  - (d) to remove, store and insure the Lot at the expense of the defaulting Buyer and, in the case of storage, either at Fellows' premises or elsewhere;
  - (e) to charge interest at a rate not exceeding [1.5%] per month on the total amount due to the extent it remains unpaid for more than 2 working days after the sale;
  - (f) to retain that or any other Lot sold to the defaulting Buyer until that Buyer pays the total amount due;
  - (g) to reject or ignore bids from the defaulting Buyer at future Auctions or to impose conditions before any such bids shall be accepted;
  - (h) to apply any proceeds of sale of other Lots due or in future becoming due to the defaulting Buyer towards the settlement of the total amount due and to exercise a lien on any of the Buyer's property in Fellows' possession for any purpose.
- 12. DELIBERATE FORGERIES**
- 12.1 Subject to clause 12.2, any representation or statement by Fellows (including in any catalogue) as to authorship, genuineness, origin, date, age, provenance, condition or estimated selling price is a statement of opinion only. Prospective Buyers are given ample opportunities to view and inspect before any sale and prospective Buyers must satisfy themselves as to all such matters. Neither Fellows or its employees or agents nor the Vendor accept liability for the correctness of such opinions and all conditions and warranties, express, implied or statutory are hereby excluded.
- 12.2 Any Lot which proves to be a Deliberate Forgery may be returned to Fellows by the Buyer within 21 days of the Auction provided it is in the same condition as when bought, and is accompanied by particulars identifying it from the relevant catalogue description and a written statement of defects. If Fellows is satisfied from the evidence presented that the Lot is a Deliberate Forgery Fellows shall refund the money paid by the Buyer for the Lot (but not the amount of any consequential loss, damages, expenses or interest) provided that (1) if the catalogue description reflected the accepted view of scholars and experts as at the date of sale or (2) the Buyer personally is not able to transfer a good and marketable title to Fellows.
- 13. LIMITATIONS OF LIABILITY**
- 13.1 All members of the public on the premises are there at their own risk and must note the lay-out of the accommodation and security arrangements.
- 13.2 Any indemnity under these Conditions shall

extend to all actions, costs, expenses, claims and demands whatsoever suffered or incurred by the person entitled to the benefit of it and Fellows declares itself to be a trustee of the benefit of every such indemnity so far as it is expressed to be for the benefit of its employees and agents.

- 13.3 While Fellows endeavours to ensure that the information on the Website is correct, Fellows does not warrant the accuracy and completeness of the material on the Website. Fellows may make changes to the material on the Website, or to the products and prices described in it, at any time without notice. The material on the Website may be out of date, and Fellows makes no commitment to update such material.
- 13.4 The material on the Website is provided "as is", without any conditions, warranties or other terms of any kind. Accordingly, to the maximum extent permitted by law, Fellows provides you with the Website on the basis that Fellows excludes all representations, warranties, conditions and other terms which, but for this legal notice, might have effect in relation to the Website.
- 14. GENERAL**
- 14.1 Any notice to any Buyer, Vendor, Bidder or viewer may be given by first class mail or email in which case it shall be deemed to have been received by the addressee 48 hours after posting or sending. All notices to Fellows must be sent in writing and email is not acceptable.
- 14.2 Any indulgence extended to any person by Fellows notwithstanding the strict terms of these Conditions or the Terms of Consignment shall affect the position at the relevant time only and in respect of that particular concession only; in all other respects these Conditions shall be construed as having full force and effect.
- 14.3 These Conditions and any disputes or claims arising out of or in connection with it or their subject matter or formation (including non-contractual disputes or claims) are governed by and construed in accordance with the law of England.
- 14.4 The parties irrevocably agree that the courts of England have exclusive jurisdiction to settle any dispute or claim that arises out of or in connection with the Agreement or its subject matter or formation (including non-contractual disputes or claims).
- 15. SHIPPING**
- 15.1 We offer a tracked and insured shipping service for all items with the exception of those in our Antiques, Silver & Collectables sales.
- 15.2 Items posted outside of the UK will incur a £30 charge.
- 15.3 Within the UK, hammer totals under £100 will incur a £10 charge.
- 15.4 Hammer totals over £100 will incur a £20 charge.
- 15.5 Larger items, as well as those exceeding a value of £20,000 or weighing in excess of 2kg may be subject to additional fees.
- 15.6 If you have recently moved or wish to have your items sent to a different address, please contact us prior to the sale. We cannot accept alternative addresses for first-time buyers and your items will be sent the address on the ID/payment card. If you pay by bank transfer we can ship to any worldwide address of your choice.

**Monday 23rd September 2019 at 10am**

**Please bid on my behalf for the lot(s) shown below.**

The bids will be executed as cheaply as is permitted by other bids in the room or reserves.

I have read and agree to comply with the Conditions of Sale as printed in the catalogue.

Any account for items purchased on my behalf will be settled within 24 hours of the sale and the items collected within two days of sale.

Please complete in block capitals.

Name \_\_\_\_\_

Address \_\_\_\_\_

\_\_\_\_\_ Postcode \_\_\_\_\_

Telephone \_\_\_\_\_

Email \_\_\_\_\_

Signed \_\_\_\_\_ Date \_\_\_\_\_

Lot	Price	Lot	Price	Lot	Price

**Buyer's Premium Please note the bidding increments**

The buyer's premium is 23% (+ VAT) or 27.6% (VAT inclusive) on the first £100,000 of any individual lot. For any individual lot in excess of £100,001, the buyer's premium is 15% (+ VAT) or 18% (VAT inclusive).

**Please note the bidding increments**

£50 - £100	£5 increments
£100 - £200	£10 increments
£200 - £1000	£20 increments
£1000 - £10,000	£100 increments
Over £10,000	£1000 increments

Lots prefixed with \* will carry VAT at 20% on the hammer price. Any bids shown not complying with these increments will be **ROUNDED UP** to the next increment.

PRICES REALISED		Watches : 20/05/2019									
1	£180	79	£60	164	£280	245	£100	347	£65	433	£140
2	£120	80	£340	165	£320	246	£75	348	£420	434	£95
3	£300	81	£280	166	£380	247	£130	349	£65	435	£200
4	£320	82	£220	167	£360	248	£160	350	£130	436	£150
5	£180	83	£280	168	£240	249	£300	351	£44	437	£85
6	£380	84	£200	169	£360	250	£80	352	£60	438	£180
7	£60	85	£220	170	£140	252	£130	353	£120	439	£210
8	£240	86	£220	171	£180	253	£120	355	£55	441	£260
9	£70	87	£180	172	£200	254	£980	356	£260	442	£40
10	£260	88	£85	174	£360	258	£300	357	£240	443	£130
12	£80	89	£240	175	£620	259	£44	358	£65	444	£70
13	£110	91	£200	176	£440	260	£65	359	£200	445	£140
14	£95	93	£400	177	£120	261	£60	363	£150	446	£130
15	£140	94	£190	178	£180	262	£150	365	£820	447	£85
16	£48	96	£240	179	£460	263	£440	366	£100	448	£160
18	£80	97	£240	180	£300	264	£220	367	£65	450	£85
19	£70	98	£240	181	£170	265	£75	368	£100	451	£65
20	£560	100	£300	182	£260	266	£500	369	£80	452	£400
21	£280	101	£150	183	£400	267	£100	370	£160	453	£90
22	£260	102	£200	184	£150	268	£70	371	£150	454	£90
23	£340	103	£170	185	£140	269	£500	372	£170	455	£320
24	£320	104	£190	186	£60	270	£720	373	£160	456	£85
25	£320	105	£240	187	£140	271	£200	374	£95	458	£190
26	£95	106	£190	188	£130	272	£140	375	£110	461	£280
27	£220	107	£200	190	£110	274	£170	376	£130	463	£120
28	£150	110	£160	191	£120	275	£320	377	£660	464	£60
32	£90	112	£170	192	£220	277	£200	378	£180	465	£130
33	£80	113	£90	193	£80	278	£170	379	£200	466	£160
34	£120	114	£190	194	£180	279	£30	380	£46	467	£110
35	£220	115	£200	195	£90	280	£120	383	£130	468	£130
36	£240	116	£200	196	£36	281	£260	384	£220	469	£90
37	£200	117	£130	197	£170	284	£170	386	£48	470	£260
38	£110	119	£260	198	£180	285	£50	387	£55	471	£60
39	£960	120	£240	200	£190	286	£170	389	£32	472	£50
40	£140	122	£220	201	£160	288	£190	390	£130	474	£90
41	£280	123	£320	202	£180	289	£170	391	£740	476	£70
42	£260	124	£100	204	£280	290	£65	392	£3,000	477	£180
43	£360	125	£95	206	£460	291	£95	393	£780	478	£70
44	£280	126	£240	207	£260	292	£60	394	£2,800	479	£120
45	£100	127	£110	208	£55	294	£60	395	£600	480	£65
46	£220	128	£400	209	£320	295	£80	396	£240	482	£55
47	£130	129	£140	210	£80	297	£110	397	£920	483	£160
48	£260	130	£380	211	£160	298	£280	399	£1,100	484	£130
49	£140	131	£220	212	£60	299	£160	400	£300	486	£34
50	£140	133	£180	213	£70	300	£70	402	£36	487	£36
51	£160	135	£60	214	£150	301	£95	403	£110	488	£110
53	£140	136	£150	215	£100	302	£150	404	£120	489	£55
54	£110	137	£85	216	£110	303	£140	405	£260	490	£190
55	£150	138	£280	217	£90	304	£220	406	£180	492	£100
56	£95	139	£120	218	£280	306	£75	407	£180	494	£220
57	£960	140	£380	219	£190	307	£130	408	£95	495	£130
58	£140	141	£340	220	£220	308	£280	409	£55	496	£55
59	£140	142	£160	221	£320	309	£460	411	£360	497	£120
60	£280	143	£120	222	£110	310	£160	412	£240	498	£65
61	£150	144	£260	223	£150	312	£180	413	£140	499	£60
62	£280	145	£90	224	£280	313	£200	415	£95	500	£150
63	£70	146	£110	225	£120	314	£100	416	£130	501	£60
64	£120	147	£110	226	£130	315	£100	417	£220	502	£140
65	£90	148	£280	227	£160	318	£65	418	£170	503	£640
66	£90	149	£150	229	£110	321	£70	419	£170	504	£640
67	£120	151	£560	233	£120	324	£2,100	420	£120	505	£70
68	£70	153	£200	234	£95	326	£300	421	£660	506	£540
69	£150	154	£360	235	£150	327	£190	422	£110	507	£36
70	£70	155	£380	236	£100	333	£360	424	£110	509	£1,200
71	£170	156	£2,400	237	£65	334	£260	425	£36	510	£46
72	£70	157	£200	238	£42	335	£300	426	£100	511	£320
73	£240	158	£200	239	£55	338	£90	428	£280	512	£600
74	£100	159	£95	240	£300	339	£340	429	£130	513	£380
75	£95	160	£380	242	£55	340	£340	430	£70	514	£75
76	£220	162	£660	243	£200	341	£120	431	£460	515	£100
77	£140	163	£140	244	£150	342	£36	432	£34	516	£60

If you would like to receive catalogues on a regular basis, please mark the appropriate category and return this form with a cheque made payable to Fellows for the full amount.

### Subscriptions last for a 12 month period

Jewellery 18 catalogues per year	£120
Fine Jewellery 6 catalogues per year	£60
The Watch Sale 6 catalogues per year	£60
The Designer Collection 5 catalogues per year	£50
Antiques, Silver & Collectables 5 catalogues per year	£50
The Gemstone Sale 4 catalogues per year	£35
Watches 4 catalogues per year	£35

All of the above catalogues are available to view FREE of charge on our website [www.fellows.co.uk](http://www.fellows.co.uk)

Name (Block Capitals) .....

Address (Block Capitals) .....

Post Code ..... Telephone .....

Signature ..... Date .....

Email .....



## Contact Information

### Directors

Stephen Whittaker BA (Hons)      Jayne Whittaker      Ben Griffiths BSc (Hons)

### Departments

#### Customer Services

0121 212 5508  
[info@fellows.co.uk](mailto:info@fellows.co.uk)  
 Jade Daniels MIWFM  
 Kain Holroyd  
 Janis Masters  
 Kasia McGovern-Hay  
 Gemma Sheldon

#### Photography

0121 212 2131  
[photography@fellows.co.uk](mailto:photography@fellows.co.uk)  
 Francesca Allen BA (Hons)  
 Claire Cleaver  
 Helen Nodding BA (Hons)  
 Polly Shave MA (Hons)

#### London Office

0207 127 4198  
[london@fellows.co.uk](mailto:london@fellows.co.uk)  
 Kirsty Basset  
 Prudence Hopkins BA (Hons), FGA, DGA  
 Jonathan Huish BA (Hons)  
 Rianna Roston MA (Hons)  
 Annabel Zarandi BA (Hons)

#### Finance

0121 212 2131  
[wendy@fellows.co.uk](mailto:wendy@fellows.co.uk)  
 Wendy Butler  
 Angela Donnelly BA (Hons) ACMA  
 Gemma Wilkes

#### Marketing

0121 212 5500  
[marketing@fellows.co.uk](mailto:marketing@fellows.co.uk)  
 Liam Bolland BA (Hons)  
 Howard Cheung BA (Hons)  
 Jordan Guest MA (Hons)  
 Luke Poole BA (Hons)  
 Alexandra Whittaker BA (Hons)  
 Nicola Whittaker Bsc (Hons), Cert. GA

### Specialist Departments

#### Jewellery

0121 212 6303  
[jewellery@fellows.co.uk](mailto:jewellery@fellows.co.uk)  
 Heather Bailey  
 Lindsay Beardmore FGA, DGA  
 Jenny Darcy BA (Hons)  
 Alexander Duffy BSc (Hons), FGA, DGA  
 Penelope Gilliver FGA, DGA  
 Patricia Grant BA (Hons)  
 Kathryn Hodkin MSc (Hons), FGA, DGA  
 David Pregon MA (Hons), FGA, DGA  
 Ben Randall BA (Hons), G.G., A.J.P.  
 Emma Scriven BA (Hons), FGA, DGA  
 Emma Testill FGA, DGA  
 Amanda Zhang FGA, Msc

#### Watches

0121 212 5506  
[watches@fellows.co.uk](mailto:watches@fellows.co.uk)  
 Laura Bishop MA (Hons)  
 Amy Hill CertHE  
 Michael Jagiela  
 Carrick Matley  
 Steven Yambo BA (Hons)

#### Pawnbrokers

0121 212 6308  
[pawnbroker@fellows.co.uk](mailto:pawnbroker@fellows.co.uk)  
 Rachel Bache  
 Kate Bannister  
 Claire Dodwell  
 Annaliese Foster BA (Hons)

#### Antiques, Silver & Collectables

0121 212 6302  
[antiques@fellows.co.uk](mailto:antiques@fellows.co.uk)  
[silverdept@fellows.co.uk](mailto:silverdept@fellows.co.uk)  
 Danielle Blackledge MA (Hons)  
 Kevin Jackson  
 Alison Jakeway MA MRICS  
 Stephen Watton BA (Hons)

#### Designer Collection

0121 212 6306  
[thedesignercollection@fellows.co.uk](mailto:thedesignercollection@fellows.co.uk)  
 Sophie Higgs



### Birmingham Saleroom

Situated in the heart of Birmingham's Jewellery Quarter, Fellows is easily accessible from all parts of the United Kingdom, Europe and beyond.

Head Office & Saleroom  
 Augusta House  
 19 Augusta Street  
 Birmingham  
 B18 6JA

Telephone: 0121 212 2131  
 Email: [info@fellows.co.uk](mailto:info@fellows.co.uk)

### London Office

Fellows' London office offers valuations, please call to arrange a time to visit.

London Office  
 29 Charles Street  
 Mayfair  
 London  
 W1J 5DT

Telephone: 020 7127 4198  
 Email: [london@fellows.co.uk](mailto:london@fellows.co.uk)



### Follow us on....



[facebook.com/fellowsauctions](https://facebook.com/fellowsauctions)



[fellowsauctions](https://www.instagram.com/fellowsauctions)



[@fellowsauctions](https://twitter.com/fellowsauctions)



[youtube.com/fellows1876](https://youtube.com/fellows1876)

# Fellows

Established 1876

Head Office & Saleroom:

Augusta House | 19 Augusta Street | Birmingham B18 6JA

London Office:

29 Charles Street | Mayfair | London W1J 5DT

Tel 0121 212 2131 | Tel 020 7127 4198 | [www.fellows.co.uk](http://www.fellows.co.uk)