

The Watch Sale

Tuesday 15th October 2019



Fellows
Established 1876

Lot 145



Fellows

Established 1876

The Watch Sale

Tuesday 15th October 2019 at 11am

Index

Selected Wrist Watches	3 – 259
Miscellaneous Wrist Watches	260 – 289
Military Wrist Watches	290 – 292
Watch Boxes	293 – 299
Complicated Pocket Watches	300 – 303
Victorian Pocket Watches	304 - 305
Georgian Pocket Watch	306
20th Century Pocket Watches	307 – 309
Military Pocket Watch	310
Stopwatch	311
Clocks & Novelties	312 – 313
Albert Chains	314 – 315

Viewing Times

London | 29 Charles Street | Mayfair
Tuesday 8th October 12pm - 7pm

Birmingham | Head Office & Saleroom
Saturday 12th October 11am - 4pm
Monday 14th October 10am - 4pm
Tuesday 15th October 8.30am - 11am

Photo identification is required to gain access to the viewing.

Featured Lots

Lot 231
(Front cover)



Lot 231
(Back cover)



General Information

Fellows
Established 1876

Free Live Bidding!

Fellows are delighted to announce the introduction of Fellows Live. This is a new bidding platform where all bidders can follow the sale and bid online for **free**. Say goodbye to additional surcharges when it comes to bidding! Anyone using Fellows Live will only have to pay the standard Buyer's Premium (plus VAT), on items purchased using this method.

Why Buy?

COMPETITIVE buyer's premium

LIVE online bidding

FULLY illustrated catalogue

EASY to use, functional website

ACCURATE condition reports

SPECIALISTS on hand to offer advice

TRACKED AND INSURED shipping*

*Please contact Fellows for further information.

Further information



Additional Images and Condition Reports can be found online at our website www.fellows.co.uk



Telephone Bidding is available if you cannot attend an auction. Please ring 0121 212 2131 to arrange a telephone line.

Follow Us



Contact the department...

Michael Jagiela

Senior Specialist
0121 212 5506
michaelj@fellows.co.uk



Why Sell?

HIGH PRICES consistently achieved

FLEXIBLE commission rates

FREE valuations with no obligation to consign

RAPID turnaround for your goods

TARGETED advertising to a global audience

SUPERIOR quality catalogues

FULLY integrated website

Important Notice

Neither Fellows nor the Vendors are responsible for any reference as to the condition of lots listed. The absence of such reference does not imply that a lot is in good condition or free from faults or imperfections. All weights and dimensions are approximate. Purchasers are advised to carefully inspect lots and make their own opinion as to the condition. Please see section 7 under 'Bidders' in our full terms and conditions. View Fellows Important Notices in full and full terms and conditions at the back of the catalogue.

Key to Symbols



Item may have export restrictions for customers outside of the EU.



Lot comes with box.



Lot comes with associated papers/warranty cards.



Lot has a 360° photograph available on our website.

For any further enquiries please call 0121 212 2131

THE WATCH SALE

AUDEMARS PIGUET	3		
BLANCPAIN	4		
BREITLING	4		
BREMONT	9		
BULGARI	10		
CARTIER	10		
CHANEL	15		
CHOPARD	15		
CORUM	17		
DE GRISOGONO	17		
EBEL	17		
FRANCK MULLER	18		
GIRARD-PERREGAUX	19		
GLASHÜTTE ORIGINAL	19		
GRAFF	19		
GRAHAM	19		
HERMÈS	20		
HEUER	20		
HUBLLOT	20		
INTERNATIONAL WATCH CO.	21		
JACOB & CO.	21		
JAEGER-LECOULTRE	22		
A. LANGE & SÖHNE	23		
LONGINES	24		
LOUIS VUITTON	24		
MAURICE LACROIX	25		
MONTBLANC	25		
OMEGA	25		
PATEK PHILIPPE	31		
PIAGET	32		
ROLEX	32		
TAG HEUER	47		
TIFFANY & CO.	49		
TUDOR	50		
VACHERON CONSTANTIN	50		
MISCELLANEOUS WRIST WATCHES	51		
MILITARY WRIST WATCHES	56		
WATCH BOXES	56		
		COMPLICATED POCKET WATCHES	58
		VICTORIAN POCKET WATCHES	58
		GEORGIAN POCKET WATCH	59
		20TH CENTURY POCKET WATCHES	59
		MILITARY POCKET WATCH	59
		STOPWATCH	59
		CLOCKS & NOVELTIES	60
		ALBERT CHAINS	60



SELECTED WRIST WATCHES



AUDEMARS PIGUET - a gentleman's Royal Oak Offshore chronograph wrist watch. 18ct rose gold case. Reference 26320OR.OO.D002CR.01, serial 194941-4807. Signed automatic calibre 2385 with quick date set, numbered 936332. Black 'Grande Tapisserie' dial with luminous baton hour markers, subsidiary recorder dials to three, six and nine, date aperture between four and five. Fitted to a signed black alligator strap with 18ct rose gold deployant clasp. 41mm. Box and papers. **£16,000-22,000** (plus 27.6% BP*)

2 

AUDEMARS PIGUET - a lady's Royal Oak bracelet watch. 18ct yellow gold case. Numbered B90131. Signed quartz movement. Champagne 'Tapisserie' dial with baton hour markers. Fitted to a signed 18ct yellow gold bracelet with folding clasp. 26mm. **£2,800-3,600** (plus 27.6% BP*)

3 

AUDEMARS PIGUET - a wrist watch. Yellow metal case, stamped 0.750. Numbered 19412. Signed manual wind calibre 2003, numbered 78612. White dial with Roman numeral hour markers. Fitted to an unsigned black leather strap with gold plated pin buckle. 25mm. **£560-760** (plus 27.6% BP*)

4  

AUDEMARS PIGUET - a gentleman's wrist watch. Yellow metal case, stamped 18k with poincon. Numbered 12446. Signed manual wind calibre 2003. Silvered dial with baton hour markers. Fitted to an unsigned dark grey lizard strap with gold plated pin buckle. 31mm. **£1,200-1,800** (plus 27.6% BP*)

5   

BLANCPAIN - a gentleman's Villeret Moonphase wrist watch. Stainless steel case. Numbered 1988. Signed manual wind calibre 65 with quick date set. White dial with Roman numeral hour markers, day and month apertures to twelve, moonphase indicator to six, inner date track. Fitted to a signed black alligator strap with stainless steel pin buckle. 34mm. **Box and papers. £900-1,400** (plus 27.6% BP*)

6  

BREITLING - a gentleman's Datora triple date moonphase wrist watch. Rose metal case, stamped 18K 0.750. Numbered 84 28, 10, 575887. Signed automatic Felsa calibre 693 with quick date set. Silvered dial with alternating Arabic numeral and pyramid hour markers, day and month apertures to twelve, moonphase indicator to six, outer date track. Fitted to an unsigned brown crocodile strap with gold plated pin buckle. 35mm. **£1,800-2,600** (plus 27.6% BP*)

7 

BREITLING - a gentleman's Chronomat 44 chronograph bracelet watch. Circa 2017. Stainless steel case with yellow metal calibrated bezel. Reference CB0110, serial 3221777. Signed automatic calibre B01 with quick date set. Black dial with baton hour markers, subsidiary champagne recorder dials to three, six and nine, date aperture between four and five. Tachymeter rehaut. Fitted to a signed bi-metal Pilot bracelet with folding clasp. 44mm. **£2,500-3,500** (plus 27.6% BP*)

8   

CURRENT MODEL: BREITLING - a gentleman's Avenger II Seawolf wrist watch. Stainless steel case with calibrated bezel. Reference A17331, serial 2963636. Automatic calibre B17 with quick date set. Yellow dial with Arabic numeral hour markers, date aperture to three. Fitted to a signed bi-colour leather strap with stainless steel pin buckle. 45mm. **Box and papers. £1,400-2,000** (plus 27.6% BP*)

BP* - Buyer's Premium of 23% (plus VAT) or 27.6% (VAT included)



BREITLING - a gentleman's Navitimer Cosmonaute chronograph bracelet watch. Stainless steel case with yellow metal slide rule bezel. Reference B12019, serial 7802. Signed manual wind calibre B12. Silvered dial with twenty-four hour luminous Arabic numeral hour markers, subsidiary champagne recorder dials to three, six and nine. Tachymeter rehaut. Fitted to a signed bi-metal Pilot bracelet with folding clasp. 41mm. **£1,600-2,200** (plus 27.6% BP*)



BREITLING - a gentleman's Navitimer Quartz 2300 chronograph wrist watch. Gold plated case with calibrated bezel and stainless steel case back. Numbered 80970. Unsigned quartz movement. Black dial with baton hour markers, LCD display to six. Tachymeter rehaut. Fitted to an unsigned brown leather strap with gold plated deployant clasp. 43mm. **£460-560** (plus 27.6% BP*)



BREITLING - a gentleman's SuperOcean chronograph bracelet watch. Circa 2016. Stainless steel case with calibrated bezel. Reference A73310, serial 1570884. Signed quartz calibre B73 with quick date set. Black dial with luminous baton hour markers, subsidiary recorder dials to two, six and ten, date aperture between four and five. 46mm. **Box and papers. £1,200-1,800** (plus 27.6% BP*)



BREITLING - a gentleman's Avenger chronograph bracelet watch. Titanium case with calibrated bezel. Reference E13360, serial 269492. Signed automatic calibre B13 with quick date set. Black dial with Arabic numeral hour markers, subsidiary recorder dials to six, nine and twelve, date aperture to three. Fitted to a signed titanium Professional bracelet with folding clasp. 44mm. **£1,600-2,200** (plus 27.6% BP*)

BP* - Buyer's Premium of 23% (plus VAT) or 27.6% (VAT included)



BREITLING - a gentleman's SuperOcean Heritage 46 wrist watch. Circa 2014. Stainless steel case with calibrated bezel. Reference A17320, serial 1638966. Signed automatic calibre B17 with quick date set. Black dial with baton hour markers, date aperture to six. Fitted to a signed black rubber strap with stainless steel deployant clasp. 46mm. Box. **£1,500-2,000 (plus 27.6% BP*)**



BREITLING - a gentleman's Emergency Mission chronograph bracelet watch. Circa 2004. Stainless steel case with calibrated bezel. Reference A73321, serial 750905. Signed quartz calibre B73 with quick date set. White dial with Arabic numeral hour markers, subsidiary silvered recorder dials to two, six and ten, date aperture between four and five. Tachymeter rehaut. Fitted to a signed stainless steel Professional bracelet with folding clasp. 44mm. Box and papers. **£1,100-1,600 (plus 27.6% BP*)**



BREITLING - a gentleman's Chronomat Vitesse chronograph bracelet watch. Stainless steel case with bi-metal calibrated bezel. Reference B13350, serial 48746. Signed automatic calibre B13 with quick date set. Blue dial with Arabic numeral hour markers, subsidiary recorder dials to six, nine and twelve, date aperture to three. Fitted to a signed stainless steel Rouleaux bracelet with double folding clasp. 39mm. Box and papers. **£1,500-2,000 (plus 27.6% BP*)**



BREITLING - a limited edition gentleman's Colt Skyracer RAF 100 wrist watch. Circa 2017. Number 76 of 100. Breitlight case with calibrated bezel and engraved case back. Reference X74320, serial 6111037. Quartz movement with quick date set. Black dial with luminous baton hour markers, Arabic numeral six and twelve, RAF emblem to nine, date aperture to six. Fitted to a signed black rubber strap with Breitlight pin buckle. 45mm. Box and papers.

Together with a signed limited edition 'A Century of Aircraft Propellers' print by David Bent. Number 325 of 325. £800-1,200 (plus 27.6% BP)*



BREITLING - a gentleman's Navitimer Heritage chronograph bracelet watch. Stainless steel case with inner slide rule bezel. Reference A35340, serial 318132. Signed automatic calibre B35 with quick date set. Black dial with baton hour markers, Arabic numeral twelve, subsidiary silvered recorder dials to three, six and nine, date aperture between four and five. Fitted to a signed stainless steel integrated Navitimer bracelet with folding clasp. 43mm. Box. **£2,200-2,800 (plus 27.6% BP*)**

18 

BREITLING - a gentleman's Colt GMT bracelet watch. Circa 2005. Stainless steel case with calibrated bezel. Reference A32350, serial 901244. Signed automatic calibre 32. Black dial with Arabic numeral hour markers, inner twenty four hour track, date aperture to three. Fitted to a signed stainless steel Professional II bracelet with folding clasp. 40mm. **£900-1,400** (plus 27.6% BP*)

19  

BREITLING - a gentleman's Chronoliner chronograph bracelet watch. Circa 2015. Stainless steel case with ceramic calibrated bezel. Reference Y24310, serial 2877178. Automatic calibre B24 with quick date set. Black dial with luminous baton hour markers, subsidiary silvered recorder dials to six, nine and twelve, date aperture to three, outer twenty-four hour track. Fitted to a signed stainless steel Ocean Classic bracelet with folding clasp. 46mm. **Box and papers. £1,800-2,400** (plus 27.6% BP*)

20 

BREITLING - a lady's Colt Oceane bracelet watch. Stainless steel case with calibrated bezel. Reference A57350, serial 239496. Unsigned quartz calibre B57 with quick date set. Black dial with baton hour markers, Arabic numeral six, nine and twelve, date aperture to three. Fitted to a signed stainless steel Fighter bracelet with folding clasp. 33mm. **£350-450** (plus 27.6% BP*)

21 

BREITLING - a gentleman's Top Time chronograph wrist watch. Gold plated case with stainless steel case back. Reference 2008, serial 1103906. Signed manual wind Valjoux calibre 7730. Silvered dial with baton hour markers, subsidiary recorder dials to three and nine. Fitted to an unsigned tan leather strap with gold plated pin buckle. 34mm. **£600-800** (plus 27.6% BP*)

22 

BREITLING - a gentleman's chronograph wrist watch. Stainless steel case. Numbered 23696. Unsigned manual wind movement. Silvered dial with Arabic numeral hour markers, subsidiary recorder dials to three and nine, outer tachymeter track. Fitted to an unsigned black leather strap with stainless steel pin buckle. 38mm. **£900-1,400** (plus 27.6% BP*)

23  

BREITLING - a gentleman's Chronomat 44 Raven chronograph wrist watch. Circa 2014. Blacksteel case with calibrated bezel and exhibition case back. Reference MB0111, serial 3150822. Signed automatic calibre Breitling 01 with quick date set. Black dial with baton hour markers, subsidiary recorder dials to three, six and nine, date aperture between four and five. Tachymeter rehaut. Fitted to a signed bi-colour leather strap with Blacksteel pin buckle. 44mm. **Box and papers. £2,200-2,800** (plus 27.6% BP*)

BP* - Buyer's Premium of 23% (plus VAT) or 27.6% (VAT included)

24 ^{360°} View  



BREITLING - a gentleman's Cockpit bracelet watch. Circa 2006. Stainless steel case with bi-metal calibrated bezel. Reference B49350, serial 936615. Signed automatic calibre B49 with quick date set. Blue dial with baton hour markers, Roman numeral twelve, split date aperture to three. Fitted to a signed bi-metal Pilot bracelet with folding clasp. 41mm. Box and papers. **£1,800-2,400 (plus 27.6% BP*)**

25 ^{360°} View 



BREITLING - a gentleman's Chronomat Airborne chronograph bracelet watch. Circa 2014. Stainless steel case with calibrated bezel. Reference AB0144, serial 3146507. Signed automatic calibre B01 with quick date set. Silvered dial with luminous baton hour markers, subsidiary black recorder dials to three, six and nine, date aperture between four and five. Tachymeter rehaut. Fitted to a signed stainless steel Pilot bracelet with folding clasp. 41mm. Box. **£1,200-1,800 (plus 27.6% BP*)**

26 ^{360°} View  



BREITLING - a gentleman's Avenger Hurricane chronograph wrist watch. Circa 2016. Breitlight case with calibrated bezel. Reference XB1210, serial 4600786. Automatic calibre B12 with quick date set. Black dial with twenty four hour Arabic numeral hour markers, subsidiary recorder dials to three, six and nine, date aperture between four and five. Fitted to a bi-colour bi-material strap with Breitlight deployant clasp. 50mm. Box and papers. **£1,800-2,400 (plus 27.6% BP*)**

27 ^{360°} View 



BREITLING - a gentleman's Chronomat Evolution chronograph wrist watch. Circa 2006. Stainless steel case with calibrated bezel. Reference A13356, serial 253765. Signed automatic calibre B13 with quick date set. Silvered dial with baton hour markers, subsidiary recorder dials to six, nine and twelve, date aperture to three. Tachymeter rehaut. Fitted to a signed brown alligator strap with stainless steel pin buckle. 43mm. **£900-1,400 (plus 27.6% BP*)**

28 ^{360°} View 



BREITLING - a gentleman's Aeromarine Colt chronograph bracelet watch. Circa 2004. Stainless steel case with calibrated bezel. Reference A73350, serial 750408. Signed quartz calibre B73 with quick date set. Black dial with baton hour markers, silvered subsidiary recorder dials to two, six and ten, date aperture between four and five. Fitted to a signed stainless steel Fighter bracelet with folding clasp. 38mm. Box. **£750-1,000 (plus 27.6% BP*)**

29 ^{360°} View 



BREITLING - a gentleman's Navitimer chronograph wrist watch. Stainless steel case with inner slide-rule bezel. Numbered 1806. Signed automatic calibre 12. Black dial with luminous baton hour markers, luminous Arabic numeral twelve, subsidiary recorder dials to three and nine, date aperture to six. Fitted to an unsigned black nylon 'NATO' style strap with stainless steel pin buckle. 48mm. **£1,200-1,800 (plus 27.6% BP*)**

BP* - Buyer's Premium of 23% (plus VAT) or 27.6% (VAT included)

30 

BREITLING - a gentleman's Top Time chronograph wrist watch. Stainless steel case. Reference 2002. Manual wind movement. Black dial with baton hour markers, subsidiary silvered recorder dials to three and nine. Outer tachymeter track. Fitted to an unsigned black leather strap with gold plated pin buckle. 36mm. **£750-1,000 (plus 27.6% BP*)**

31 

BREITLING - a gentleman's Navitimer Chrono-Matic chronograph bracelet watch. Stainless steel case with inner slide rule bezel and engraved case back. Numbered 1806. Signed automatic calibre 12. Black dial with luminous baton hour markers, Arabic numeral twelve, subsidiary silvered recorder dials to three and nine, date aperture to six. Fitted to a signed stainless steel bracelet with folding clasp. 47mm. **£1,400-2,000 (plus 27.6% BP*)**

32  

BREITLING - a gentleman's SuperOcean Chronograph wrist watch. Stainless steel case with bi-metal calibrated bezel. Reference C13341, serial 2630893. Signed automatic calibre B13 with quick date set. Black dial with luminous hour markers, subsidiary recorder dials to six, nine and twelve, date aperture to three. Fitted to a signed black leather strap with stainless steel pin buckle. 44mm. **Box and papers. £1,800-2,600 (plus 27.6% BP*)**

33  

BREMONT - a gentleman's ALT1-B 28 Squadron Special Military Project GMT chronograph wrist watch. PVD-treated stainless steel case with inner rotating calibrated bezel and exhibition case back. Reference 06/28, serial ZJ122. Signed automatic movement with quick date set. Black dial with Arabic numeral hour markers, subsidiary recorder dials to six, nine and twelve, outer Arabic numeral twenty-four hour track, date aperture to three. Fitted to a signed black leather strap with PVD-treated stainless steel double folding clasp. 43mm. **Box and papers. £1,800-2,600 (plus 27.6% BP*)**

34  

CURRENT MODEL: BREMONT - a gentleman's ALT1-B GMT chronograph wrist watch. PVD-treated stainless steel case with exhibition case back. Reference ALT1-B, serial B/13925. Signed automatic movement with quick date set. Black dial with Arabic numeral hour markers, subsidiary recorder dials to six, nine and twelve, outer twenty-four hour track, date aperture to three. Calibrated rehaut. Fitted to a signed black leather strap with PVD-treated stainless steel pin buckle. 43mm. **Box and papers. £1,800-2,600 (plus 27.6% BP*)**

BP* - Buyer's Premium of 23% (plus VAT) or 27.6% (VAT included)

35 ^{360°}
View

BULGARI - a lady's Bulgari wrist watch. Stainless steel case. Reference BB33SL, serial D12967. Signed automatic calibre 220. Mother-of-pearl dial with factory set diamond baton hour markers, Arabic numeral twelve. Fitted to a signed pearl satin strap with stainless steel double folding clasp. 33mm. **£750-1,000** (plus 27.6% BP*)

36 ^{360°}
View X

BULGARI - a gentleman's Assioma wrist watch. 18ct yellow gold case. Reference AA44G, serial D752. Signed automatic calibre 220 with quick date set. Silvered dial with baton hour markers, Arabic numeral six and twelve, date aperture to three. Fitted to a signed brown alligator strap with 18ct yellow gold deployant clasp. 34mm. **£2,000-2,500** (plus 27.6% BP*)

37 ^{360°}
View

BULGARI - a limited edition gentleman's CarbonGold Berlin chronograph wrist watch. Number 771 of 999. Bi-material case. Reference BB 38 CLCH. Signed quartz movement with quick date set. Black dial with baton hour markers, Arabic numeral twelve, subsidiary champagne recorder dials to two, six and ten, date aperture to four. Fitted to a signed black leather strap with bi-material pin buckle. 38mm. **£750-1,000** (plus 27.6% BP*)

38 ^{360°}
View

CARTIER - a gentleman's Cougar bracelet watch. 18ct yellow gold case. Reference 887904, serial 001445. Signed quartz calibre 687 with quick date set. Cream dial with Roman numeral hour markers, date aperture to three. Fitted to a signed 18ct yellow gold bracelet with double folding clasp. 33mm. **£3,000-4,000** (plus 27.6% BP*)

39 ^{360°}
View

CARTIER - a lady's Tank Francaise bracelet watch. Stainless steel case. Reference 2465, serial 691997CD. Signed quartz calibre 175N with quick date set. Silvered dial with Roman numeral hour markers, date aperture to three. Fitted to a signed stainless steel bracelet with double folding clasp. 25mm. **£1,200-1,800** (plus 27.6% BP*)

40 ^{360°}
View

CARTIER - a gentleman's Santos Galbee XL bracelet watch. Stainless steel diamond set case with yellow metal diamond set bezel. Reference 2823, serial 217508NX. Signed automatic calibre 049 with quick date set. Silvered dial with Roman numeral hour markers, date aperture between four and five. Fitted to a signed bi-metal diamond set bracelet with double folding clasp. 32mm. **Please see the condition report for details of third party intervention. £900-1,400** (plus 27.6% BP*)

BP* - Buyer's Premium of 23% (plus VAT) or 27.6% (VAT included)

41 

CARTIER - a gentleman's Santos Galbée bracelet watch. Stainless steel case with yellow metal bezel. Reference 1172961, serial 107625. Automatic movement with quick date set. White dial with Roman numeral hour markers, date aperture to three. Fitted to a signed bi-metal bracelet with folding clasp. 29mm. **£660-860** (plus 27.6% BP*)

42 

CARTIER - a gentleman's Tank Française bracelet watch. Stainless steel case. Reference 2302, serial 146817CD. Signed automatic calibre 120 with quick date set. Silvered dial with Roman numeral hour markers, date aperture to six. Fitted to a signed stainless steel bracelet with double folding clasp. 28mm. **£1,200-1,800** (plus 27.6% BP*)

43  

CARTIER - a lady's Santos bracelet watch. Stainless steel case. Reference 2423, serial 594018CD. Signed automatic calibre 077 with quick date set. Silvered dial with Roman numeral hour markers, date aperture between four and five. Fitted to a signed stainless steel bracelet with double folding clasp. 24mm. **Box and papers. £640-840** (plus 27.6% BP*)

44 

CARTIER - a gentleman's Santos 100 wrist watch. Stainless steel case. Reference 2656, serial 731982RX. Signed automatic calibre 049. Silvered dial with Roman numeral hour markers. Fitted to a signed black alligator strap with stainless steel double folding clasp. 39mm. **£2,200-2,800** (plus 27.6% BP*)

45 

CARTIER - a lady's Rivoli bracelet watch. 18ct yellow gold case. Numbered 810921146. Signed quartz calibre 81. Silvered dial with Roman numeral hour markers. Fitted to a signed 18ct yellow gold bracelet with folding clasp. 24mm. **£2,000-2,500** (plus 27.6% BP*)

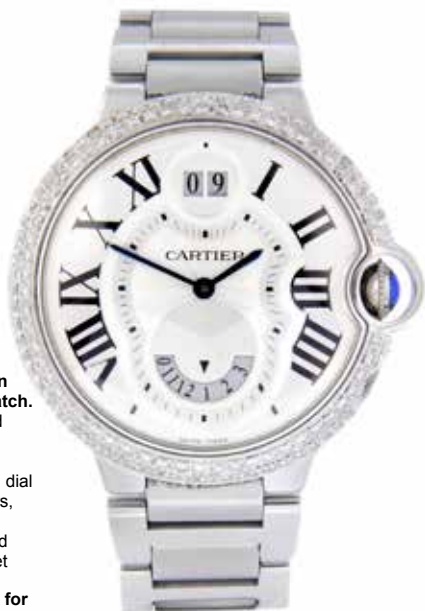
46 

CARTIER - a gentleman's Roadster bracelet watch. Stainless steel case. Reference 2510, serial 228997CE. Signed automatic calibre 3110 with quick date set. Silvered dial with Roman numeral hour markers, date aperture to three. Fitted to a signed stainless steel bracelet with double folding clasp. 37mm. **£1,500-2,000** (plus 27.6% BP*)

47  

CARTIER - a Tank wrist watch. Gold plated case. Reference 15705, serial 5512105 26324. Signed manual wind calibre 2512. White dial with Roman numeral hour markers. Fitted to an unsigned black leather strap with gold plated pin buckle. 23mm. **Box. £300-400** (plus 27.6% BP*)

BP* - Buyer's Premium of 23% (plus VAT) or 27.6% (VAT included)

48 

CARTIER - a gentleman's Ballon Bleu Two Timezone bracelet watch. Stainless steel case with diamond set bezel. Reference 3194, serial 197697QX. Signed quartz calibre 7100 with quick date set. Silvered dial with Roman numeral hour markers, second time zone indicator to six, split date aperture to twelve. Fitted to a signed stainless steel bracelet with double folding clasp. 39mm. **Please see the condition report for details of third party intervention.** £2,500-3,000 (plus 27.6% BP*)

49 

CARTIER - a mid-size Tank Francaise bracelet watch. Stainless steel case. Reference 2302, serial CC736624. Signed automatic calibre 120 with quick date set. Silvered dial with Roman numeral hour markers, date aperture to six. Fitted to a signed stainless steel bracelet with double folding clasp. 28mm. **£900-1,400** (plus 27.6% BP*)

50 

CARTIER - a lady's Santos Ronde bracelet watch. Stainless steel case with yellow metal bezel. Reference 187902, serial 01014. Signed quartz calibre 87 with quick date set. Silvered dial with Roman numeral hour markers, date aperture to three. Fitted to a signed bi-metal bracelet with folding clasp. 29mm. **£700-900** (plus 27.6% BP*)

51  

CARTIER - a gentleman's Pasha Seatimer bracelet watch. Stainless steel case with calibrated bezel. Reference 2790, serial 533386MX. Signed automatic calibre 049 with quick date set. Black dial with baton hour markers, quarterly Arabic numerals, date aperture between four and five. Fitted to a signed stainless steel bracelet with double folding clasp. 40mm. **Box and papers. £900-1,400** (plus 27.6% BP*)

52  

CARTIER - a lady's Must de Cartier wrist watch. Gold plated silver case. Reference 59004, serial 138329. White dial with tri-colour panels to each side, Roman numeral six and twelve. Fitted to a signed black caiman strap with gold plated deployant clasp. 24mm. **Papers. £300-400** (plus 27.6% BP*)

53 

CARTIER - a gentleman's Santos Galbee bracelet watch. Stainless steel case. Reference 987901, serial 22301. Signed quartz calibre 87.06 with quick date set. Silvered dial with Roman numeral hour markers, date aperture to six. Fitted to a signed stainless steel bracelet with folding clasp. 29mm. **£800-1,200** (plus 27.6% BP*)

54  

CARTIER - a lady's Vendome wrist watch. 18ct yellow gold diamond set case. Numbered 810024414. Signed quartz calibre 81. White dial with Roman numeral hour markers. Fitted to an unsigned black lizard strap with signed 18ct yellow gold deployant clasp. 24mm. **Please see the condition report for details of third party intervention.** **£1,000-1,500** (plus 27.6% BP*)

BP* - Buyer's Premium of 23% (plus VAT) or 27.6% (VAT included)

55 ^{360°}
View



CARTIER - a Santos Ronde bracelet watch. Stainless steel case with yellow metal bezel. Numbered 8191322760. Signed quartz calibre 81. White dial with Roman numeral hour markers. Fitted to a signed bi-metal bracelet with folding clasp. 27mm. **£600-800** (plus 27.6% BP*)

56 ^{360°}
View



CARTIER - a lady's Tank Solo wrist watch. Yellow metal case with stainless steel case back, stamped 750. Reference 2743, serial 818103LX. Signed quartz calibre 157. Silvered dial with Roman numeral hour markers. Fitted to an unsigned brown leather strap with signed yellow metal pin buckle, stamped 750. 24mm. **Box and papers. £900-1,400** (plus 27.6% BP*)

57 ^{360°}
View



CARTIER - a lady's Panthère bracelet watch. Stainless steel case with yellow metal bezel. Reference 1120, serial 644235UF. Signed quartz calibre 157. Cream dial with Roman numeral hour markers. Fitted to a signed bi-metal bracelet with double folding clasp. 22mm. **£700-900** (plus 27.6% BP*)

58 ^{360°}
View



CARTIER - a gentleman's Pasha wrist watch. Stainless steel case with calibrated bezel. Numbered R40205895. Signed automatic calibre 049 with quick date set. Silvered dial with baton hour markers, quarterly Arabic numerals, date aperture between four and five. Fitted to a signed black crocodile strap with stainless steel deployant clasp. 36mm. **£1,000-1,500** (plus 27.6% BP*)

59 ^{360°}
View



CARTIER - a lady's Santos bracelet watch. Stainless steel case. Reference 2423, serial 852644CC. Signed automatic calibre 077 with quick date set. Silvered dial with Roman numeral hour markers, date aperture between four and five. Fitted to a signed stainless steel bracelet with double folding clasp. 24mm. **£700-900** (plus 27.6% BP*)

60 ^{360°}
View



CARTIER - a lady's Cougar bracelet watch. Stainless steel case. Numbered 987906 004863. Signed quartz calibre 687. Silvered dial with Roman numeral hour markers, date aperture to three. Fitted to a signed stainless steel bracelet with double folding clasp. 26mm. **£500-700** (plus 27.6% BP*)

BP* - Buyer's Premium of 23% (plus VAT) or 27.6% (VAT included)

61 ^{360°}
View



CARTIER - a gentleman's Pasha GMT Big Date bracelet watch. Stainless steel case with calibrated bezel. Reference 2550, serial 825984CD. Signed automatic calibre 054 with quick date set. Black dial with baton hour markers, quarterly Arabic numerals, split date aperture to six. Fitted to a signed stainless steel bracelet with double folding clasp. 35mm. **£650-850** (plus 27.6% BP*)

63 ^{360°}
View



CARTIER - a lady's Libre Calisson wrist watch. 18ct white gold factory diamond set marquise-shaped case. Reference 2908, serial 24732LX. Signed quartz calibre 059. Silvered dial with Roman numeral hour markers. Fitted to a signed pale pink bi-material strap with 18ct white gold factory diamond set pin buckle. 47mm. **Papers. £7,000-10,000** (plus 27.6% BP*)

62 ^{360°}
View



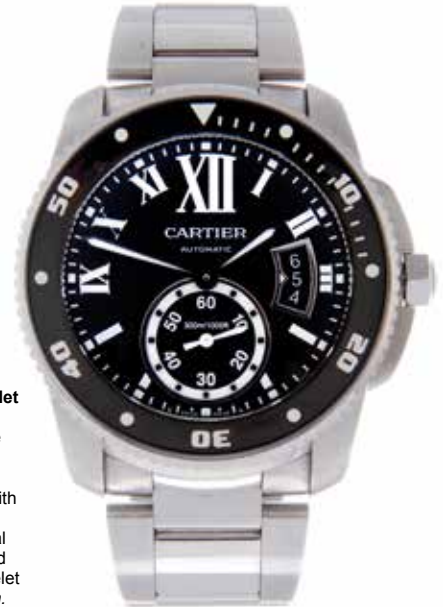
CARTIER - a lady's Vendome Trinity wrist watch. Yellow metal case with tri-colour bezel, stamped 18k with poinçon. Numbered 810042830. Signed quartz calibre 81. White dial with Roman numeral hour markers. Fitted to an unsigned blue leather strap with gold plated pin buckle. 25mm. **£650-850** (plus 27.6% BP*)

64 ^{360°}
View



CARTIER - a gentleman's Panthere bracelet watch. Stainless steel case. Reference 13000, serial R002079. Signed quartz calibre 87.06 with quick date set. Silvered dial with Roman numeral hour markers, date aperture to three. Fitted to a signed stainless steel bracelet with double folding clasp. 29mm. **£440-540** (plus 27.6% BP*)

65 ^{360°}
View



CARTIER - a gentleman's Calibre de Cartier Diver bracelet watch. Stainless steel case with calibrated bezel. Reference 3729, serial 133259UX. Signed automatic calibre 1904-PS MC with quick date set. Black dial with luminous Roman numeral hour markers, subsidiary seconds dial to six, date aperture to six. Fitted to a signed stainless steel bracelet with double folding clasp. 43mm. **Box and papers. £2,500-3,500** (plus 27.6% BP*)

BP* - Buyer's Premium of 23% (plus VAT) or 27.6% (VAT included)

66 ^{360°}
View 



CARTIER - a lady's Must De Cartier 21 bracelet watch. Bi-colour case with chapter ring bezel. Reference 1340, serial PL129683. Signed quartz calibre 690. Silvered dial. Fitted to a signed bi-metal bracelet with double folding clasp. 28mm. Papers. **£450-550** (plus 27.6% BP*)

67 ^{360°}
View 



CARTIER - a Tank wrist watch. Yellow metal case, stamped 18k with poinçon. Numbered 780865504. Signed manual wind calibre 78-1. White dial with Roman numeral hour markers, inner minute track. Fitted to an unsigned black leather strap with gold plated pin buckle. 23mm. **£1,200-1,800** (plus 27.6% BP*)

68 ^{360°}
View 



CARTIER - a gentleman's Santos 100 wrist watch. Stainless steel case with yellow metal bezel. Reference 2656, serial 743779CE. Signed automatic calibre 049. Silvered dial with Roman numeral hour markers. Fitted to an unsigned brown leather strap with signed bi-metal double folding clasp. 38mm. **£2,000-3,000** (plus 27.6% BP*)

69 ^{360°}
View 



CARTIER - a lady's Must De Cartier bracelet watch. Bi-colour case with chapter ring bezel. Numbered 901020375. Signed quartz calibre 90.06. Silvered dial. Fitted to a signed bi-colour bracelet with double folding clasp. 31mm. **£450-550** (plus 27.6% BP*)

70 ^{360°}
View 



CHANEL - a lady's J12 bracelet watch. Black ceramic case with stainless steel factory diamond set bezel and stainless steel case back. Numbered D.X.14327. Unsigned quartz movement with quick date set. Black dial with Arabic numeral hour markers, date aperture between four and five. Fitted to a signed black ceramic bracelet with stainless steel double folding clasp. 34mm. **£1,600-2,400** (plus 27.6% BP*)

71 ^{360°}
View 



CHOPARD - a lady's St Moritz bracelet watch. Stainless steel case with yellow metal bezel. Reference 8024, serial 14535. Signed quartz movement with quick date set. Grey dial with baton hour markers, Roman numeral three, nine and twelve, date aperture to six. Fitted to a signed bi-metal bracelet with double folding clasp. 23mm. **£300-400** (plus 27.6% BP*)

BP* - Buyer's Premium of 23% (plus VAT) or 27.6% (VAT included)

72 ^{360°} View  



CHOPARD - a gentleman's Classic Racing Superfast chronograph wrist watch. Stainless steel case with tachymeter bezel. Reference 8523, serial 1594297. Signed automatic movement with quick date set. Black dial with luminous hour markers, Arabic numeral twelve, subsidiary recorder dials to three, six and nine, date aperture to six, outer minute track. Fitted to a signed black rubber strap with stainless steel deployant clasp. 45mm. Box and papers. **£2,200-2,800 (plus 27.6% BP*)**

73 ^{360°} View 



CHOPARD - a gentleman's Mille Miglia Gran Turismo XL wrist watch. Stainless steel case with exhibition case back. Reference 8997, serial 1415121. Signed automatic calibre A07.211 with quick date set. Black dial with luminous baton hour markers, Arabic numeral twelve, power reserve indicator to six, date aperture to three. Fitted to a signed black rubber strap with stainless steel deployant clasp. 44mm. Box. **£1,200-1,800 (plus 27.6% BP*)**

74 ^{360°} View 



CHOPARD - a lady's Happy Sport wrist watch. Stainless steel case with calibrated bezel. Reference 28/8347/8-402, serial 1086449. Signed quartz calibre 955.112 with quick date set. Blue dial with luminous dot hour markers, Arabic numeral three, six and nine, date aperture between four and five, three free-play factory stone set fish. Fitted to a signed blue rubber strap with stainless steel pin buckle. 38mm. Box. **£900-1,400 (plus 27.6% BP*)**

75 ^{360°} View 



CHOPARD - a limited edition Happy Sport wrist watch. Number 2221 of 3000. Ceramic case with PVD-treated stainless steel calibrated bezel and titanium case back. Reference 28/8507, serial 1312825. Signed quartz movement with quick date set. Black dial with baton hour markers, quarterly Arabic numerals, date aperture between four and five, three free-play factory set diamonds. Fitted to a signed black rubber strap with stainless steel pin buckle. 38mm. Papers. **£500-700 (plus 27.6% BP*)**

76 ^{360°} View 



CHOPARD - a mid-size Mille Miglia wrist watch. Yellow metal case with calibrated bezel. Reference 1182, serial 260321. Automatic movement with quick date set. Silvered dial with baton hour markers, subsidiary recorder dials to nine and twelve, power reserve display to three, subsidiary date dial to six. Fitted to an unsigned black crocodile strap with signed gold plated pin buckle. 33mm. **£1,400-2,000 (plus 27.6% BP*)**

BP* - Buyer's Premium of 23% (plus VAT) or 27.6% (VAT included)

77 

CHOPARD - a gentleman's wrist watch. 18ct yellow gold case, import hallmarked London 1973. Numbered 1035 63974. Signed manual wind movement. Champagne dial with baton hour markers. Fitted to an unsigned black leather strap with gold plated pin buckle. 33mm. **£600-800 (plus 27.6% BP*)**

78  

CHOPARD - a lady's Happy Diamonds wrist watch. Yellow metal case. Reference 21/2646, serial 214474 1100. Quartz movement. Champagne dial, seven factory set free play diamonds suspended between dial and outer bezel. Fitted to a signed black crocodile strap with yellow metal pin buckle, stamped 750. 31mm. **£1,100-1,600 (plus 27.6% BP*)**

79  

CORUM - a gentleman's Square Chrono chronograph wrist watch. 18ct yellow gold case. Numbered 49. Reference 296.121.56, serial 537982. Signed automatic calibre 511540 with quick date set. White dial with Roman numeral hour markers, subsidiary champagne recorder dials to three, six and nine, date aperture to six. Fitted to a signed black crocodile strap with 18ct yellow gold pin buckle. 36mm. **£1,200-1,800 (plus 27.6% BP*)**

80   

DE GRISOGONO - a lady's Instrumentino bracelet watch. Stainless steel factory diamond set case. Numbered 033535. Unsigned quartz movement. Silvered dial with factory set diamond hour markers, subsidiary second time zone dial to six with Arabic numeral three, six and nine. Fitted to a signed stainless steel bracelet with double folding clasp. 29mm. *Box and papers.* **£800-1,200 (plus 27.6% BP*)**

81  

EBEL - a gentleman's 1911 chronograph bracelet watch. Stainless steel case with yellow metal bezel. Reference 1134901, serial 64600414. Signed automatic calibre 134 with quick date set. White dial with Roman numeral hour markers, subsidiary recorder dials to three, six and nine, date aperture between four and five. Tachymeter rehaut. Fitted to a signed bi-metal bracelet with folding clasp. 39mm. *Box.* **£400-500 (plus 27.6% BP*)**

82 

EBEL - a gentleman's 1911 Perpetual Calendar chronograph wrist watch. Yellow metal case, stamped 18K with poincon. Reference 6136901, serial 64102644. Signed automatic calibre 400 with quick date set. Cream dial with Roman numeral hour markers, subsidiary minute and date dial to three, subsidiary recorder dial and moonphase indicator to six, subsidiary seconds and day dial to nine, subsidiary month and leap year dial to twelve. Tachymeter rehaut. Fitted to a signed black leather strap with unsigned gold plated pin buckle. 40mm. **£5,500-7,500 (plus 27.6% BP*)**

BP* - Buyer's Premium of 23% (plus VAT) or 27.6% (VAT included)

83 ^{360°} View   



FRANCK MULLER - a gentleman's Cortez wrist watch. Stainless steel case. Reference 10000HSC, serial 2476. Automatic movement with quick date set. Black dial with luminous Arabic numeral hour markers, date aperture to six. Fitted to a signed black alligator strap with stainless steel pin buckle. 41mm. Box and papers. **£2,500-3,500 (plus 27.6% BP*)**

85 ^{360°} View  



FRANCK MULLER - a gentleman's Casablanca wrist watch. Stainless steel factory diamond set case. Reference 8880 C DT, serial 1882. Signed automatic calibre 2800SC with quick date set. Black dial with luminous Arabic numeral hour markers, date aperture to six. Fitted to an unsigned black leather strap with stainless steel factory diamond set pin buckle. 39mm. Box and papers. **£2,200-3,200 (plus 27.6% BP*)**

84 ^{360°} View 



FRANCK MULLER - a lady's Casablanca Cintrée Curvex bracelet watch. Stainless steel case. Reference 1750 S6, serial 134. Signed manual wind movement. Silvered dial with Arabic numeral hour markers, subsidiary seconds dial to six. Fitted to a signed stainless steel bracelet with double folding clasp. 25mm. Papers. **£900-1,400 (plus 27.6% BP*)**

86 ^{360°} View



FRANCK MULLER - a gentleman's Casablanca wrist watch. Stainless steel case. Reference 2852, serial 5589. Signed automatic calibre 2800. Peach dial with luminous Arabic numeral hour markers. Fitted to a signed brown leather strap with stainless steel pin buckle. 31mm. **£1,500-2,000 (plus 27.6% BP*)**

87 ^{360°} View 



FRANCK MULLER - a gentleman's Cintrée Curvex wrist watch. 18ct yellow gold case. Reference 2852SC, serial 1062. Signed automatic calibre 2000. Silvered dial with Arabic numeral hour markers. Fitted to a signed black alligator strap with yellow metal pin buckle, stamped 750. 31mm. **£1,800-2,400 (plus 27.6% BP*)**

88 ^{360°} View 



FRANCK MULLER - a lady's Conquistador wrist watch. Stainless steel case. Reference 8005 L QZ, serial 2507. Unsigned quartz movement. Silvered dial with luminous Arabic numeral hour markers. Fitted to a signed black alligator strap with stainless steel pin buckle. 28mm. **£750-1,000 (plus 27.6% BP*)**

BP* - Buyer's Premium of 23% (plus VAT) or 27.6% (VAT included)

89  



GIRARD-PERREGAUX - a gentleman's Vintage 1945 XXL chronograph wrist watch. Stainless steel case with exhibition case back. Reference 25840, serial 513/999. Signed automatic calibre 3370 with quick date set. Black dial with luminous Arabic numeral hour markers, subsidiary recorder dials to three, six and nine, date aperture between four and five. Fitted to a black rubber strap with stainless steel deployant clasp. 36mm. Box. **£1,200-1,800** (plus 27.6% BP*)

90 



GIRARD-PERREGAUX - a gentleman's Laureato Olimpico chronograph bracelet watch. Stainless steel case. Reference 8017, serial 163. Signed automatic calibre 3170-629 with quick date set. Grey dial with luminous hour markers, subsidiary recorder dials to three, six and nine, outer tachymeter track, date aperture between four and five. Fitted to a signed stainless steel bracelet with double folding clasp. 39mm. **£2,600-3,200** (plus 27.6% BP*)

91  



GLASHÜTTE ORIGINAL - a lady's Karrée bracelet watch. Stainless steel case with exhibition case back. Numbered 0069. Signed manual wind calibre 0146. Silvered dial with Roman numeral hour markers. Fitted to a signed stainless steel bracelet with double folding clasp. 23mm. Papers. **£560-760** (plus 27.6% BP*)

92   



GRAFF - a gentleman's ChronoGraff chronograph wrist watch. 18ct yellow gold case with exhibition case back. Numbered 017/500. Signed automatic calibre 3461 with quick date set. Black dial with Arabic numeral hour markers, factory set green stone to twelve, subsidiary recorder dials to three, six and nine, date aperture between four and five. Fitted to a signed red alligator strap with yellow metal deployant clasp, stamped 750. 45mm. Box. **£5,500-7,500** (plus 27.6% BP*)

93  



GRAHAM - a gentleman's Chronofighter chronograph wrist watch. Stainless steel case with calibrated bezel. Numbered 138. Automatic movement. Black carbon-fibre dial with luminous baton hour markers, subsidiary recorder dials to three and nine. Fitted to a signed black rubber strap with stainless steel pin buckle. 47mm. Papers. **£1,000-1,500** (plus 27.6% BP*)

BP* - Buyer's Premium of 23% (plus VAT) or 27.6% (VAT included)

94 ^{360°}
View



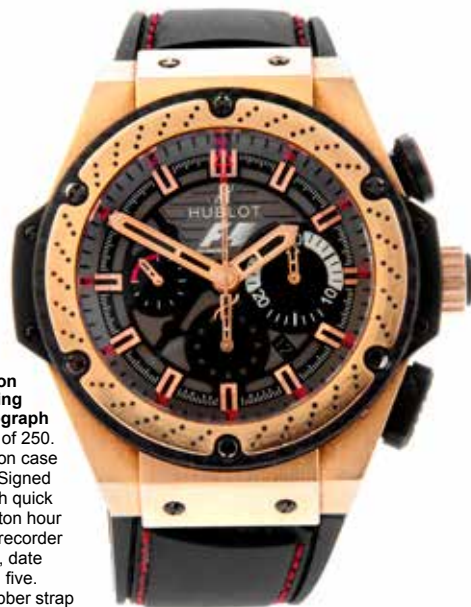
HERMÈS - a lady's Heure H wrist watch. Stainless steel case. Reference HH1.210, serial 2704013. Signed quartz movement. Silvered dial with Arabic numeral hour markers. Fitted to an unsigned black leather strap with signed stainless steel pin buckle. 21mm. **£400-600** (plus 27.6% BP*)

95 ^{360°}
View



HEUER - a gentleman's Carrera chronograph bracelet watch. Stainless steel case. Numbered 73928. Signed manual wind movement. Silvered dial with baton hour markers, subsidiary recorder dials to three and nine. Fitted to an unsigned stainless steel expandable bracelet. 35.5mm. **£2,000-2,500** (plus 27.6% BP*)

96 ^{360°}
View



HUBLOT - a limited edition gentleman's Big Bang King Power Formula 1 chronograph wrist watch. Number 190 of 250. Bi-metal case with exhibition case back. Numbered 933145. Signed automatic calibre 4100 with quick date set. Grey dial with baton hour markers, subsidiary black recorder dials to three, six and nine, date aperture between four and five. Fitted to a signed black rubber strap with bi-metal deployant clasp. 52mm. **£12,000-18,000** (plus 27.6% BP*)

97 ^{360°}
View



HUBLOT - a limited edition gentleman's Big Bang King Power Red Devil Manchester United chronograph wrist watch. Number 360 of 500. Ceramic case. Numbered 909785. Automatic movement with quick date set. Skeletonised dial with luminous hour markers, subsidiary seconds dial to nine, date aperture to four. Fitted to a signed black rubber strap with ceramic deployant clasp. 48mm. **£4,500-5,500** (plus 27.6% BP*)

98 ^{360°}
View



HUBLOT - a gentleman's Big Bang King Unico flyback chronograph wrist watch. Bi-metal case with exhibition case back, stamped AU 750. Numbered 1067230. Signed automatic Unico calibre HUB1280 with quick date set. Grey skeleton dial with alternating luminous Arabic numeral and baton hour markers, subsidiary recorder dials to three and nine, date aperture to three. Fitted to a signed black rubber strap with bi-metal deployant clasp. 49mm. **Box. £12,000-18,000** (plus 27.6% BP*)

BP* - Buyer's Premium of 23% (plus VAT) or 27.6% (VAT included)

99 



HUBLOT - a lady's MDM wrist watch. Stainless steel case with yellow metal diamond set bezel and lugs. Reference 245602, serial 1391.2.054. Signed quartz movement with quick date set. Black dial, date aperture to three. Fitted to a signed black rubber strap with 18ct yellow gold diamond set double folding clasp. 28mm. **Please see the condition report for details of third party intervention.** £550-750 (plus 27.6% BP*)

100 



IWC - a gentleman's Aquatimer 2000 bracelet watch. Stainless steel case with calibrated bezel. Reference 3568, serial 3546465. Signed automatic calibre 30110 with quick date set. Black dial with luminous baton hour markers, date aperture to three. Fitted to a signed stainless steel bracelet with folding clasp. 43mm. £1,600-2,200 (plus 27.6% BP*)

102  



JACOB & CO. - a gentleman's Five Time Zone wrist watch. PVD-treated stainless steel case. Numbered A1074. Unsigned quartz movements with quick date set. Black dial with quarterly luminous Arabic numerals, subsidiary time zone dials to two, four, eight and ten, date aperture to six. Fitted to a signed black alligator strap with stainless steel deployant clasp. 47mm. £600-900 (plus 27.6% BP*)

101   



IWC - a gentleman's Big Pilot's wrist watch. Stainless steel case. Reference 5004, serial 3276422. Signed automatic calibre 51110 with quick date set. Black dial with Arabic numeral hour markers, power reserve indicator to three, date aperture to six. Fitted to a signed black crocodile strap with stainless steel deployant clasp. 46mm. **Papers.** £3,000-4,000 (plus 27.6% BP*)

103 



JACOB & CO. - a gentleman's Five Time Zone wrist watch. Stainless steel case. Numbered S3310. Unsigned quartz movements with quick date set. Midnight blue glittered dial with quarterly luminous Arabic numerals, subsidiary time zone dials to two, four, eight and ten, date aperture to six. Fitted to a signed black polyurethane strap with stainless steel factory diamond set deployant clasp. 47mm. £700-1,000 (plus 27.6% BP*)

BP* - Buyer's Premium of 23% (plus VAT) or 27.6% (VAT included)

104 ^{360°}
View



JACOB & CO. - a mid-size Five Time Zone wrist watch. Stainless steel case with factory diamond set bezel. Numbered S2632. Unsigned quartz movements. Mother-of-pearl dial with quarterly luminous Arabic numerals, subsidiary time zone dials to two, four, eight and ten. Fitted to a signed red polyurethane strap with stainless steel deployant clasp. 40mm. **£460-560** (plus 27.6% BP*)

105 ^{360°}
View



JACOB & CO. - a limited edition gentleman's H24 Five Time Zone wrist watch. Number 782 of 1800. Stainless steel case with exhibition case back. Signed automatic calibre 2 with quick date set. Grey dial with Roman numeral six and twelve, subsidiary silvered time zone dials to two, four, eight and ten, date aperture to three. Fitted to a signed red polyurethane strap with stainless steel double folding clasp. 48mm. **£900-1,400** (plus 27.6% BP*)

106 ^{360°}
View



JACOB & CO. - a limited edition gentleman's Epic I chronograph wrist watch. Bi-material case with exhibition case back. Numbered 262. Signed automatic calibre 7750 with quick date set. Black dial with Arabic numeral hour markers, subsidiary recorder dials to three, six and nine, date aperture between twelve and one. Fitted to a signed black rubber strap with PVD-treated stainless steel deployant clasp. 47mm. **£2,200-2,800** (plus 27.6% BP*)

107 ^{360°}
View



JAEGER-LECOULTRE - a lady's Duo Plan wrist watch. Yellow metal case. Numbered 79893. Signed manual wind calibre 40. Silvered dial with Arabic numeral hour markers. Fitted to an unsigned brown leather strap with gold plated pin buckle. 13mm. **£500-700** (plus 27.6% BP*)

108 ^{360°} X
View



JAEGER-LECOULTRE - a gentleman's wrist watch. Yellow metal case, stamped 750, 18K. Numbered 1090037. Signed manual wind movement. Silvered dial with baton hour markers. Fitted to an unsigned black crocodile strap with gold plated pin buckle. 29mm. **£300-400** (plus 27.6% BP*)

BP* - Buyer's Premium of 23% (plus VAT) or 27.6% (VAT included)



A. LANGE & SÖHNE - a WW2 German military issue pilot wrist watch. Circa 1942. Base metal case. Case number FL23883, movement number 210610. Signed manual wind calibre, numbered 210610. Type B black dial with inner luminous Arabic numeral hour markers, outer minute track with timing divisions at five minute intervals. Fitted to an unsigned brown leather strap with base metal pin buckle. 55mm.

The German Air Force, or Luftwaffe, commissioned watches from A. Lange & Söhne, Stowa, Wempe, Laco and IWC throughout the 1940s. These pilots' watches had very specific features, typically very large in size and with an oversized crown for easy operation whilst wearing flight gloves. These custom engineered timepieces, known as Beobachtung-uhren, or observation watches, were issued to pilots for specific missions and then returned once that mission was over. This example displays a Type B dial, showing minutes at five minute intervals and an inner hour track. The case number, FL23883, is engraved to the case of the watch and identifies it as a navigational military tool. £8,000-12,000 (plus 27.6% BP)*

110 ^{360°}
View



LONGINES - a gentleman's DolceVita chronograph bracelet watch. Stainless steel case. Reference L5.680.4, serial 31961307. Signed quartz calibre L.538.2 with quick date set. White dial with Roman numeral hour markers, subsidiary recorder dials to two, six and ten, date aperture between four and five. Fitted to a signed stainless steel bracelet with double folding clasp. 30mm. **£300-400** (plus 27.6% BP*)

111 ^{360°}
View



LONGINES - a gentleman's Conquest bracelet watch. Stainless steel case with yellow metal bezel. Numbered 24900872. Signed quartz calibre L161.4. White dial with baton hour markers, Saddam Hussein's portrait to nine, date aperture to three. Fitted to a signed bi-metal bracelet with folding clasp. 32mm. *Box. Together with three commemorative medallions and a 250 Dinar note.* **£900-1,400** (plus 27.6% BP*)

112 ^{360°}
View



LONGINES - a lady's Prestige bracelet watch. 18ct yellow gold case with factory diamond set bezel. Reference L6 110 7, serial 29216507. Unsigned quartz movement. White dial with dot hour markers, quarterly Roman numerals. Fitted to a signed 18ct yellow gold bracelet with clasp. 17mm. 28gms. **£400-600** (plus 27.6% BP*)

113 ^{360°}
View



LONGINES - a gentleman's DolceVita chronograph wrist watch. Stainless steel case. Reference L5.656.4, serial 34060615. Signed quartz calibre L.538.2 with quick date set. White dial with baton hour markers, Arabic numeral twelve, subsidiary recorder dials to two, six and ten, date aperture between four and five. Fitted to a signed black leather strap with stainless steel pin buckle. 28mm. **£400-600** (plus 27.6% BP*)

114 ^{360°}
View



LOUIS VUITTON - a gentleman's Tambour GMT wrist watch. Stainless steel case. Reference Q1152, serial RD 7254. Signed automatic calibre LV113. Silvered dial with alternating Arabic numeral and baton hour markers, GMT aperture to six, date aperture to three. Fitted to a signed brown alligator strap with stainless steel deployant clasp. 42mm. *Box and papers.* **£650-850** (plus 27.6% BP*)

115 ^{360°}
View



LOUIS VUITTON - a lady's Tambour wrist watch. Stainless steel case. Reference Q1211, serial DL9989. Unsigned quartz movement with quick date set. Brown dial with alternating Arabic numeral and baton hour markers, date aperture to three. Fitted to a signed brown crocodile strap with stainless steel pin buckle. 28mm. **£300-400** (plus 27.6% BP*)

116 ^{360°}
View



LOUIS VUITTON - a Tambour Damier wrist watch. Stainless steel case. Reference Q1D05, serial T12519. Unsigned quartz movement. Grey and silvered dial with dot hour markers. Fitted to a signed grey leather strap with stainless steel pin buckle. 39mm. **£300-400** (plus 27.6% BP*)

BP* - Buyer's Premium of 23% (plus VAT) or 27.6% (VAT included)

117 ^{360°}View  



MAURICE LACROIX - a gentleman's Réveil Globe wrist watch. Stainless steel case with exhibition case back. Reference MP6388, serial AH59158. Signed automatic movement with quick date set. Black dial with baton hour markers, quarterly luminous Arabic numerals, GMT aperture to six, outer rotating disc with luminous Arabic numerals, date aperture between one and two. Fitted to a signed blue leather strap with stainless steel deployant clasp. 42mm. Box and papers. **£900-1,400 (plus 27.6% BP*)**

118 ^{360°}View   



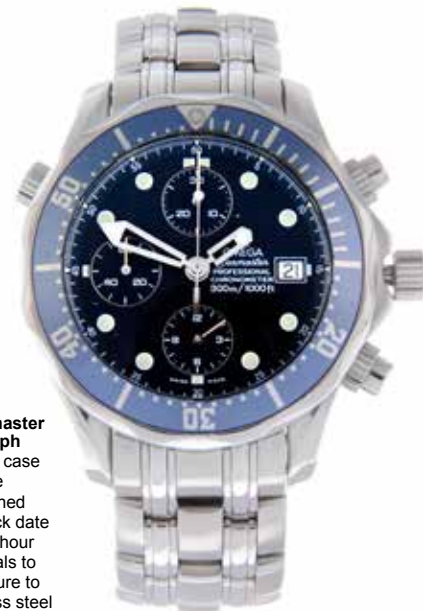
MONTBLANC - a gentleman's Star Classique wrist watch. 18ct rose gold case with exhibition case back. Reference 7214, serial PL805104. Signed automatic calibre 4810 408. Silvered dial with spearhead hour markers, quarterly Arabic numerals, subsidiary seconds dial to six. Fitted to a signed brown alligator strap with 18ct rose gold pin buckle. 39mm. Box and papers. **£2,400-3,000 (plus 27.6% BP*)**

119 ^{360°}View  



OMEGA - a gentleman's Seamaster Aqua Terra 150M Co-Axial chronograph bracelet watch. Stainless steel case with exhibition case back. Reference 231.10.44.50.06.001, serial 78419965. Signed automatic calibre 3313 with quick date set. Grey dial with luminous arrowhead hour markers, subsidiary black recorder dials to three, six and nine, date aperture between four and five, outer minute track with Arabic divisions at five minute intervals. Fitted to a signed stainless steel bracelet with double folding clasp. 44mm. Box and papers. **£2,200-3,200 (plus 27.6% BP*)**

120 ^{360°}View 




OMEGA - a gentleman's Seamaster Professional 300M chronograph bracelet watch. Stainless steel case with calibrated bezel. Reference 178 0514, serial 80678401. Signed automatic calibre 1164 with quick date set. Blue dial with luminous dot hour markers, subsidiary recorder dials to six, nine and twelve, date aperture to three. Fitted to a signed stainless steel bracelet with folding clasp. 41mm. **£1,200-1,800 (plus 27.6% BP*)**

BP* - Buyer's Premium of 23% (plus VAT) or 27.6% (VAT included)

121   



OMEGA - a gentleman's Seamaster bracelet watch. Stainless steel case. Reference 166.065. Signed automatic calibre 565 with quick date set, numbered 33069711. Silvered dial with square hour markers, date aperture to three. Fitted to a signed stainless steel bracelet with folding clasp. 38mm. Box and papers. **£300-400** (plus 27.6% BP*)

122 



OMEGA - a gentleman's Seamaster Professional 300M bracelet watch. Stainless steel case with calibrated bezel. Reference 196 1523, serial 58569086. Signed quartz calibre 1538 with quick date set. Blue dial with luminous hour markers, date aperture to three. Fitted to a signed stainless steel bracelet with folding clasp. 42mm. **£800-1,200** (plus 27.6% BP*)

123  



OMEGA - a gentleman's Speedmaster "pre-Ed White" chronograph bracelet watch. Stainless steel case with tachymeter bezel. Reference 105002-62. Signed manual wind calibre 321, numbered 19584938. Black dial with luminous baton hour markers, subsidiary recorder dials to three, six and nine. Fitted to a signed stainless steel bracelet with folding clasp, reference 7912. 40mm. Box. **£10,000-15,000** (plus 27.6% BP*)

124  



OMEGA - a gentleman's wrist watch. 9ct yellow gold case, hallmarked Birmingham 1956. Numbered 13322 771733. Signed manual wind calibre 266, numbered 15133850. Silvered dial with arrowhead hour markers, Arabic numeral three, nine and twelve, subsidiary seconds dial to six. Fitted to an unsigned black leather strap with 9ct yellow gold pin buckle. 33mm. Box. **£380-480** (plus 27.6% BP*)

125 



OMEGA - a gentleman's Seamaster Aqua Terra 150M Co-Axial bracelet watch. Stainless steel case with exhibition case back. Numbered 80480888. Signed automatic calibre 2500 with quick date set. Blue dial with arrowhead hour markers, date aperture to three. Fitted to a signed stainless steel bracelet with folding clasp. 36mm. **£800-1,200** (plus 27.6% BP*)

126   



OMEGA - a gentleman's Constellation '50 Years' bracelet watch. 18ct rose gold case with chapter ring bezel. Reference 1104.35.00, serial 81376966. Signed automatic calibre 1120 with quick date set. Silvered dial with factory set diamond dot hour markers, date aperture to three. Fitted to a signed 18ct rose gold bracelet with folding clasp. 35mm. Box and papers. **£4,500-5,500** (plus 27.6% BP*)

BP* - Buyer's Premium of 23% (plus VAT) or 27.6% (VAT included)

127 ^{360°}
View



OMEGA - a mid-size Seamaster Professional 300M bracelet watch. Stainless steel case with calibrated bezel. Reference 196.1502, serial 54521931. Signed quartz calibre 1438 with quick date set. Blue dial with luminous hour markers, date aperture to three. Fitted to a signed stainless steel bracelet with folding clasp. 36mm. **£540-740** (plus 27.6% BP*)

128 ^{360°}
View X



OMEGA - a gentleman's wrist watch. Yellow metal case, stamped 14k. Numbered J6587 165243. Signed manual wind calibre 520, numbered 16411532. Silvered dial with baton hour markers. Fitted to an unsigned black lizard strap with gold plated pin buckle. 33mm. **£300-400** (plus 27.6% BP*)

129 ^{360°}
View



OMEGA - a gentleman's Seamaster wrist watch. Stainless steel case. Reference 166.078. Signed automatic calibre 565, numbered 25689076. Silvered dial with baton hour markers, date aperture to three. Fitted to an unsigned black leather strap with stainless steel pin buckle. 44mm. **£500-700** (plus 27.6% BP*)

130 ^{360°}
View



OMEGA - a gentleman's Seamaster wrist watch. Gold plated case with stainless steel case back. Reference 166.032. Signed automatic calibre 752, numbered 26994102. Silvered dial with baton hour markers, day and date aperture to three. Fitted to an unsigned black lizard strap with signed gold plated pin buckle. 36mm. Box. **£300-400** (plus 27.6% BP*)

131 ^{360°}
View



OMEGA - a gentleman's Speedmaster Professional 'Pre-Moon' chronograph wrist watch. Stainless steel case with tachymeter bezel. Reference 2998-6. Signed manual wind calibre 321, numbered 18945184. Black dial with luminous baton hour markers, subsidiary recorder dials to three, six and nine. Fitted to an unsigned black leather strap with stainless steel pin buckle. 39mm. **£2,800-3,600** (plus 27.6% BP*)

132 ^{360°}
View



OMEGA - a gentleman's Seamaster bracelet watch. 18ct yellow gold case, import hallmarked London 1986. Reference 166.032, serial A88763. Signed automatic calibre 751 with quick date set, numbered 32619818. Champagne dial with baton hour markers, day and date aperture to three. Fitted to a signed yellow metal bracelet with folding clasp, stamped 750. 36mm. **£2,400-3,200** (plus 27.6% BP*)

BP* - Buyer's Premium of 23% (plus VAT) or 27.6% (VAT included)

133 ^{360°}
View



OMEGA - a gentleman's Memomatic bracelet watch. Stainless steel case. Reference 166.071. Signed automatic calibre 980 with quick date set, numbered 30016935. Grey dial with baton hour markers, rotating alarm disc to centre, date aperture to three. Fitted to an unsigned stainless steel bracelet with folding clasp. 40mm. **£650-850** (plus 27.6% BP*)

134 ^{360°}
View



OMEGA - a gentleman's Speedmaster chronograph bracelet watch. Stainless steel case with tachymeter bezel. Reference 17500331, serial 55492457. Signed automatic calibre 1143. Black dial with luminous baton hour markers, Arabic numeral divisions at five minute intervals, subsidiary recorder dials to three, six and nine. Fitted to a signed stainless steel bracelet with folding clasp. 39mm. **£900-1,400** (plus 27.6% BP*)

135 ^{360°}
View



OMEGA - a gentleman's Megaquartz 32KHz Genève bracelet watch. Stainless steel case. Reference 1960030. Signed quartz calibre 1310 with quick date set, numbered 35867611. Silvered dial with baton hour markers, split day and date aperture to three. Fitted to a signed stainless steel bracelet with folding clasp. 39mm. **£340-440** (plus 27.6% BP*)

136 ^{360°}
View 



OMEGA - a gentleman's Constellation bracelet watch. Stainless steel case with chapter ring bezel and engraved case back. Reference 123.10.35.60.02.001, serial 92026344. Quartz movement with quick date set. Silvered dial with baton hour markers, date aperture to three. Fitted to a signed stainless steel bracelet with double folding clasp. 35mm. **Box and papers. £900-1,400** (plus 27.6% BP*)

137 ^{360°}
View



OMEGA - a gentleman's Speedmaster 'Ed White' chronograph bracelet watch. Stainless steel case with tachymeter bezel. Reference ST105003-65. Signed manual wind calibre 321, numbered 24006212. Black dial with luminous baton hour markers, subsidiary recorder dials to three, six and nine. Fitted to a signed stainless steel bracelet with folding clasp, reference 1506. 39mm. **£7,000-10,000** (plus 27.6% BP*)

138 ^{360°}
View



OMEGA - a mid-size Art Collection Max Bill 87 wrist watch. 18ct yellow gold case with 18ct white gold case back. Numbered P 017/999, 1950430, 5950430. Signed quartz calibre 1436. White dial. Fitted to a signed black leather strap with PVD-treated pin buckle. 32mm. **£750-1000** (plus 27.6% BP*)

BP* - Buyer's Premium of 23% (plus VAT) or 27.6% (VAT included)

139 ^{360°}
View



OMEGA - a gentleman's Seamaster Memomatic bracelet watch. Stainless steel case. Reference 166.072. Signed automatic calibre 980 with quick date set, numbered 31337634. Silvered dial with baton hour markers, rotating alarm disc to centre, date aperture to three. Fitted to a signed stainless steel bracelet with folding clasp. 40mm. **£700-900** (plus 27.6% BP*)

140 ^{360°}
View



OMEGA - a gentleman's Seamaster Aqua Terra Co-Axial wrist watch. Stainless steel case with exhibition case back. Numbered 85682870. Signed automatic calibre 8500 with quick date set. Black dial with luminous chevron hour markers, date aperture to three. Fitted to a signed black leather strap with stainless steel deployant clasp. 38mm. **£1,100-1,600** (plus 27.6% BP*)

142 ^{360°}
View



OMEGA - a gentleman's Cosmic triple date moonphase wrist watch. Gold plated case with engraved case back. Reference 2486-2. Signed manual wind calibre 27DLPC with quick date set, numbered 11207601. Black dial with spearhead hour markers, day and month apertures to twelve, moonphase aperture to six, outer date track. Fitted to an unsigned black leather strap with signed gold plated pin buckle. 37mm. **£460-560** (plus 27.6% BP*)

141 ^{360°}
View



OMEGA - a gentleman's Speedmaster 'Pre-Moon' chronograph bracelet watch. Stainless steel case with tachymeter bezel. Reference 145.012-67SP. Signed calibre 321, numbered 26545284. Black dial with luminous baton hour markers, subsidiary recorder dials to three, six and nine. Fitted to a signed stainless steel bracelet with folding clasp. 42mm. **£5,000-7,000** (plus 27.6% BP*)

143 ^{360°}
View



OMEGA - a gentleman's Speedmaster chronograph bracelet watch. Stainless steel case with tachymeter bezel. Reference 175 0083, serial 58610996. Signed automatic calibre 1152 with quick date set. Silvered dial with baton hour markers, subsidiary recorder dials to six, nine and twelve, date aperture to three. Fitted to a signed stainless steel bracelet with folding clasp. 39mm. **£900-1,400** (plus 27.6% BP*)

144 ^{360°}
View



OMEGA - a gentleman's Seamaster chronograph bracelet watch. Stainless steel case. Reference 145.020. Signed manual wind Lemania calibre 1873, numbered 4528853. Black dial with baton hour markers, subsidiary recorder dials to three, six and nine. Outer tachymeter track. Fitted to a signed stainless steel bracelet with folding clasp. 41mm. **£900-1,400** (plus 27.6% BP*)

BP* - Buyer's Premium of 23% (plus VAT) or 27.6% (VAT included)



OMEGA - a gentleman's De Ville Central Tourbillon bracelet watch. 18ct Sedna red gold case. Reference 5133.30.00. Signed automatic calibre 2600. Silvered dial with baton hour markers, two superimposed sapphire discs on which the hour and minute hands are etched, subsidiary running seconds with exhibition cut out to centre revealing tourbillon escapement. Fitted to a signed 18ct Sedna red gold bracelet with folding clasp. 39mm. Presentation box with integrated watch winder.

This timepiece features Omega's exclusive Central Tourbillon movement, set in a tourbillon cage protecting it from the effects of gravity and visible through the scratch-resistant sapphire crystal covering the dial. Powering this watchmaking wonder is Omega's calibre 2600, the world's first Central Tourbillon movement. £26,000-32,000 (plus 27.6% BP)*

BP* - Buyer's Premium of 23% (plus VAT) or 27.6% (VAT included)



OMEGA - a gentleman's wrist watch. Yellow metal case with gold plated case back. Reference 2712-3. Signed manual wind calibre 266, numbered 13529954. Silvered dial with arrowhead hour markers, subsidiary seconds dial to six. Fitted to an unsigned black leather strap with gold plated pin buckle. 35mm. Papers. **£400-600 (plus 27.6% BP*)**



OMEGA - a gentleman's yellow metal Seamaster wrist watch. Yellow metal case, stamped 18K 0.750. Reference 14742SC-61, numbered 838925. Signed automatic calibre 552, numbered 17365422. Champagne dial with baton hour markers. Fitted to an unsigned brown leather strap with gold plated pin buckle. 35mm. **£440-540 (plus 27.6% BP*)**



OMEGA - a gentleman's wrist watch. Gold filled case. Numbered 682785. Signed manual wind movement, numbered 10384362. Silvered dial with Arabic numeral hour markers, subsidiary seconds dial to six. Fitted to an unsigned black leather strap with gold plated pin buckle. 29mm. **£300-400 (plus 27.6% BP*)**



OMEGA - a lady's Constellation bracelet watch. Stainless steel case with chapter ring bezel. Reference 795.1002, serial 91751941. Signed quartz calibre 1376. Mother-of-pearl dial with factory set diamond dot hour markers. Fitted to a signed stainless steel bracelet with double folding clasp. 24mm. **£300-400 (plus 27.6% BP*)**

150 ^{360°} View  



OMEGA - a gentleman's Seamaster Professional 300M bracelet watch. Stainless steel case with calibrated bezel. Reference 168 1623, serial 81303436. Signed automatic calibre 1120 with quick date set. Blue dial with luminous hour markers, date aperture to three. Fitted to a signed stainless steel bracelet with folding clasp. 41mm. Box and papers. **£900-1,400** (plus 27.6% BP*)

151 ^{360°} View 



OMEGA - a gentleman's Speedmaster triple-date chronograph bracelet watch. Stainless steel case with tachymeter bezel. Reference 175.0054, serial 54107230. Signed automatic calibre 1150 with quick day and date set. Silvered dial with baton hour markers, subsidiary recorder dials to six, nine and twelve, day and month apertures to twelve, outer date track. Fitted to a signed stainless steel bracelet with folding clasp. 39mm. **£1,100-1,600** (plus 27.6% BP*)

152 ^{360°} View  



PATEK PHILIPPE - a gentleman's Calatrava wrist watch. Yellow metal case, stamped 18k with poinçon. Reference 2451, serial _73604. Signed manual wind calibre 10-200, numbered 958988. Silvered dial with baton hour markers, subsidiary seconds dial to six. Fitted to an unsigned black leather strap with gold plated pin buckle. 30mm. Papers. **£3,200-4,200** (plus 27.6% BP*)

153 ^{360°} View  



PATEK PHILIPPE - a gentleman's Ellipse wrist watch retailed by Gübelin. 18ct yellow gold case. Reference 3788, serial 2828625. Signed quartz calibre E23C with quick date set. Blue dial with baton hour markers, date aperture to three. Fitted to an unsigned black alligator strap with signed yellow metal pin buckle, stamped 750. 27mm. **£2,800-3,600** (plus 27.6% BP*)

154 ^{360°} View 



PATEK PHILIPPE - a gentleman's Calatrava wrist watch. 18ct yellow gold case with hobnail bezel. Reference 3520/D, serial 2859632. Signed manual wind calibre 177. White dial with Roman numeral hour markers. Fitted to an unsigned brown leather strap with yellow metal pin buckle stamped 750. 32mm. **£3,600-4,600** (plus 27.6% BP*)

155 ^{360°} View  



PATEK PHILIPPE - a gentleman's wrist watch. Yellow metal case, stamped 18K 750. Reference 3503, serial 2635645. Signed manual wind calibre 175, numbered 1131764. Silvered dial with baton hour markers. Fitted to an unsigned black crocodile strap with gold plated pin buckle. 26mm. **£2,500-3,000** (plus 27.6% BP*)

BP* - Buyer's Premium of 23% (plus VAT) or 27.6% (VAT included)

156 



PATEK PHILIPPE - a gentleman's Calatrava wrist watch. 18ct rose gold case. Reference 3820, serial 2952770. Signed manual wind calibre 177, numbered 1376629. Silvered dial with Arabic numeral hour markers. Fitted to an unsigned brown leather strap with gold plated pin buckle. 32mm. **£2,800-3,600** (plus 27.6% BP*)

157 



PIAGET - a lady's Dancer bracelet watch. 18ct white gold case. Numbered P10547, 992155. Signed quartz calibre 857P. Silvered dial with baton hour markers. Fitted to a signed 18ct white gold bracelet with clasp. 28mm. 84gms. **£1,800-2,400** (plus 27.6% BP*)

158 



PIAGET - a gentleman's wrist watch. 18ct yellow gold case, import hallmarked London 1976. Numbered 9773 244026. Signed manual wind calibre 9P1, numbered 760285. Bronze dial with Roman numeral hour markers. Fitted to an unsigned brown leather strap with signed yellow metal pin buckle, stamped 18 .750. 32mm. **£460-560** (plus 27.6% BP*)

159  



PIAGET - a lady's Dancer bracelet watch. 18ct white gold case. Reference 80563K81, serial 516075. Signed quartz calibre 857P. Silvered dial with factory set diamond dot hour markers. Fitted to a signed 18ct white gold bracelet with clasp. 23mm. 64gms. Box. **£1,500-2,000** (plus 27.6% BP*)

160  



ROLEX - a gentleman's Oyster Perpetual Datejust II bracelet watch. Stainless steel case with diamond set bezel. Reference 116300, serial 0WZ94005. Signed automatic calibre 3136 with quick date set. Black dial with diamond set Roman numeral hour markers, date aperture to three. Fitted to a signed stainless steel Oyster bracelet with Oysterclasp. 41mm. Box. **Please see the condition report for details of third party intervention.** **£3,800-4,800** (plus 27.6% BP*)

BP* - Buyer's Premium of 23% (plus VAT) or 27.6% (VAT included)

161 



ROLEX - a gentleman's Oyster Perpetual Date bracelet watch. Circa 2009. Stainless steel case. Reference 115200, serial G626039. Signed automatic calibre 3135. Black dial with luminous baton hour markers, date aperture to three. Fitted to a signed stainless steel Oyster bracelet with Oysterclasp. 35mm. **£1,600-2,400** (plus 27.6% BP*)

162 



ROLEX - a gentleman's Oysterdate Precision bracelet watch. Circa 1970. Stainless steel case. Reference 6694, serial 2563747. Signed manual wind calibre 1225. Silvered dial with baton hour markers, date aperture to three. Fitted to a signed stainless steel Oyster bracelet with Oysterclasp. 34mm. **£1,200-1,800** (plus 27.6% BP*)

163 



ROLEX - a lady's Oyster Perpetual wrist watch. Circa 1965. 9ct yellow gold case with fluted bezel. Reference 6619, serial 1125732. Signed automatic calibre 1161. White dial with Roman numeral hour markers. Fitted to an unsigned brown leather strap with gold plated pin buckle. 25mm. **£750-1,000** (plus 27.6% BP*)

164 



ROLEX - a gentleman's Precision bracelet watch. 9ct yellow gold case with engraved case back, import hallmarked London 1954. Numbered 68149. Signed manual wind calibre 1210. Discoloured silvered dial, spearhead hour markers, Arabic numerals three, six and nine. Fitted to an unsigned rolled gold bracelet with folding clasp. 34mm. **£600-800** (plus 27.6% BP*)

165 



ROLEX - a lady's Cellini wrist watch. 18ct yellow gold case. Reference 6621, serial X602902. Signed quartz calibre 6620. White dial with Roman numeral hour markers. Fitted to a signed brown leather strap with 18ct yellow gold deployant clasp. 27mm. **£1,500-2,000** (plus 27.6% BP*)

166 



ROLEX - a lady's Oyster Perpetual Datejust bracelet watch. Circa 1996. Stainless steel case with diamond set bezel. Reference 69160, serial T9_086. Signed automatic calibre 2135 with quick date set. Blue dial with diamond dot hour markers, date aperture to three. Fitted to a signed stainless steel Oyster bracelet with Oysterclasp. 26mm. **Please see the condition report for details of third party intervention.** **£600-800** (plus 27.6% BP*)

BP* - Buyer's Premium of 23% (plus VAT) or 27.6% (VAT included)



ROLEX - a gentleman's Oyster Perpetual Day-Date bracelet watch. Circa 2018. 18ct white gold case with factory diamond set bezel. Reference 118399, serial 691L3545. Signed automatic movement with quick day and date set. Platinum mother-of-pearl Oxford dial with factory set diamond hour markers, day and date apertures to twelve and three. Fitted to a signed 18ct white gold Oyster bracelet with Crownclasp. 36mm. Box and papers. **£18,000-25,000** (plus 27.6% BP*)



ROLEX - a lady's Oyster Perpetual Date Yacht-Master bracelet watch. Circa 1996. 18ct yellow gold case with calibrated bezel. Reference 69628, serial T967767. Signed automatic calibre 2135 with quick date set. Champagne dial with luminous dot hour markers, date aperture to three. Fitted to a signed 18ct yellow gold Oyster bracelet with Fliplock clasp. 29mm. *Papers.*
£5,200-7,200 (plus 27.6% BP*)



ROLEX - a gentleman's Oyster Perpetual 'Bubbleback' wrist watch. Circa 1949. Stainless steel case with yellow metal bezel. Reference 5015, serial 633788. Signed automatic movement. Silvered dial with alternating Arabic numeral and arrowhead hour markers. Fitted to an unsigned brown crocodile strap with signed gold plated pin buckle. 32mm.
£1,400-2,000 (plus 27.6% BP*)



ROLEX - a gentleman's Cellini wrist watch. Circa 1995. 18ct yellow gold case. Reference 4112, serial W037201. Signed manual wind calibre 1602. Champagne dial with Roman numeral hour markers. Fitted to a signed black alligator strap with gold plated pin buckle. 32mm. **£1,600-2,200 (plus 27.6% BP*)**



ROLEX - a gentleman's Oysterdate Precision wrist watch. Circa 1973. Stainless steel case. Reference 6694, serial 3603403. Signed manual wind calibre 1225. Silvered dial with baton hour markers, date aperture to three. Fitted to an unsigned brown leather strap with stainless steel pin buckle. 35mm.
£900-1,400 (plus 27.6% BP*)



ROLEX - a gentleman's Oyster Perpetual 'Bubbleback' wrist watch. Circa 1948. Gold plated case with stainless steel case back. Reference 3696, serial 597847. Signed automatic calibre 58118. Silvered dial with baton hour markers. Fitted to an unsigned brown leather strap with gold plated pin buckle. 32mm.
£1,400-2,000 (plus 27.6% BP*)



ROLEX - a lady's Oyster Perpetual Datejust bracelet watch. Circa 1983. Stainless steel case with engine turned bezel. Reference 6919, serial 8217072. Signed automatic calibre 2030. White dial with Roman numeral hour markers, date aperture to three. Fitted to a signed stainless steel Jubilee bracelet with Oysterclasp. 26mm. **£700-900 (plus 27.6% BP*)**



ROLEX - a gentleman's Oysterdate Precision wrist watch. Stainless steel case. Reference and serial illegible. Signed manual wind calibre 1215. Silvered dial with baton hour markers, date aperture to three. Fitted to an unsigned brown leather strap with stainless steel pin buckle. 34mm. **Please see the condition report for details of third party intervention. £1,200-1,800 (plus 27.6% BP*)**

BP* - Buyer's Premium of 23% (plus VAT) or 27.6% (VAT included)

175 ^{360°}
View



ROLEX - a gentleman's Oyster Perpetual Air-King Precision bracelet watch. Circa 1972. Stainless steel case. Reference 5500, serial 2968255. Signed automatic calibre 1520. Silvered dial with baton hour markers. Fitted to a signed stainless steel U.S.A. Jubilee bracelet with Oysterclasp. 34mm. **£1,100-1,600** (plus 27.6% BP*)

176 ^{360°}
View 



ROLEX - a lady's Oyster Perpetual Datejust bracelet watch. Circa 1999. Stainless steel case with yellow metal fluted bezel. Reference 79173, serial A583607. Signed automatic calibre 2235 with quick date set. Black dial with baton hour markers, date aperture to three. Fitted to a signed bi-metal Jubilee bracelet with Oysterclasp. 26mm. **Box and papers.** **£1,100-1,600** (plus 27.6% BP*)

177 ^{360°}
View 



ROLEX - a lady's Cellini wrist watch. Circa 1995. 18ct yellow gold case. Reference 4109, serial W085250. Signed manual wind calibre 1602. White dial with Roman numeral hour markers. Fitted to an unsigned brown crocodile strap with signed 18ct yellow gold pin buckle. 26mm. **£1,100-1,600** (plus 27.6% BP*)

178 ^{360°}
View



ROLEX - a gentleman's Oysterdate Precision bracelet watch. Circa 1971. Stainless steel case. Reference 6694, serial 2709756. Signed manual wind calibre 1225. Silvered dial with baton hour markers, date aperture to three. Fitted to a signed stainless steel Oyster bracelet with Oysterclasp. 35mm. **£800-1,200** (plus 27.6% BP*)

179 ^{360°}
View



ROLEX - a lady's Oyster Perpetual Date bracelet watch. Circa 1978. 18ct yellow gold case with fluted bezel. Reference 6917, serial 5502809. Signed automatic calibre 2030. Champagne 'linen' dial with baton hour markers, date aperture to three. Fitted to a signed 18ct yellow gold Oyster bracelet with Oysterclasp. 25mm. **£1,800-2,600** (plus 27.6% BP*)

180 ^{360°}
View  



ROLEX - a gentleman's Cellini wrist watch. Circa 1965. 18ct white gold case. Reference 3602, serial 1179767. Signed manual wind calibre 1600. Silvered dial with baton hour markers. Fitted to an unsigned black crocodile strap with signed stainless steel pin buckle. 33mm. **Box.** **£1,200-1,800** (plus 27.6% BP*)

181 ^{360°}
View



ROLEX - a gentleman's Oysterdate Precision bracelet watch. Circa 1960. Stainless steel case. Reference 6694, serial 611058. Signed manual wind calibre 1210. Black dial with baton hour markers, date aperture to three. Fitted to a signed stainless steel Oyster bracelet with Oysterclasp. 35mm. **£1,200-1,800** (plus 27.6% BP*)

BP* - Buyer's Premium of 23% (plus VAT) or 27.6% (VAT included)

182 



ROLEX - a gentleman's Oyster Perpetual Explorer bracelet watch. Circa 1972. Stainless steel case. Reference 1016, serial 2962765. Signed automatic calibre 1570. Black dial with luminous baton hour markers, luminous Arabic numeral three, six and nine. Fitted to a signed stainless steel Oyster bracelet with Oysterclasp. 36mm. **£5,500-6,500** (plus 27.6% BP*)

183 



ROLEX - a gentleman's Oyster Perpetual Date wrist watch. Circa 1969. Reference 1500, serial 2183535. Signed automatic calibre 1570. Silvered dial with baton hour markers, date aperture to three. Fitted to an unsigned tan leather strap with stainless steel pin buckle. 34mm. **£900-1,400** (plus 27.6% BP*)

184 



ROLEX - a lady's Oyster Perpetual Datejust bracelet watch. Circa 1987. Stainless steel case with yellow metal fluted bezel. Reference 69173, serial R206569. Signed automatic calibre 2135 with quick date set. Black dial with diamond dot hour markers, date aperture to three. Fitted to a signed bi-metal Jubilee bracelet with Oysterclasp. 26mm. **Please see the condition report for details of third party intervention. £1,800-2,600** (plus 27.6% BP*)

185 



ROLEX - a mid-size Oyster Perpetual Datejust bracelet watch. Circa 1987. Stainless steel case with yellow metal fluted bezel. Reference 68273, serial R323723. Signed automatic calibre 2135 with quick date set. Light champagne dial with diamond dot hour markers, date aperture to three. Fitted to a signed bi-metal Jubilee bracelet with folding clasp. 30mm. **Please see the condition report for details of third party intervention. £1,200-1,800** (plus 27.6% BP*)

186 



ROLEX - a gentleman's Oyster Perpetual Datejust bracelet watch. Circa 1989. Stainless steel case. Reference 16200, serial L709645. Signed automatic calibre 3135 with quick date set. Silvered dial with baton hour markers, date aperture to three. Fitted to a signed stainless steel Jubilee bracelet with Oysterclasp. 35mm. **£2,200-3,200** (plus 27.6% BP*)

187 



ROLEX - a gentleman's Oyster Perpetual Explorer bracelet watch. Circa 1983. Stainless steel case with engraved case back. Reference 1016, serial 8155569. Signed automatic calibre 1570. Black dial with luminous baton hour markers, luminous Arabic numeral three, six and nine. Fitted to a signed stainless steel Oyster bracelet with Oysterclasp. 36mm. **£4,500-5,500** (plus 27.6% BP*)

BP* - Buyer's Premium of 23% (plus VAT) or 27.6% (VAT included)

188 



ROLEX - a gentleman's Oyster Speeding Precision wrist watch. Circa 1955. Gold plated case with stainless steel case back. Reference 6418, serial 149853. Signed manual wind calibre 1210. Silvered dial with spearhead hour markers. Fitted to an unsigned tan leather strap with gold plated pin buckle. 30mm. **£450-650** (plus 27.6% BP*)

189 




ROLEX - a gentleman's Oysterdate Precision bracelet watch. Circa 1969. Stainless steel case. Reference 6694, serial 2092705. Signed manual wind calibre 1225. Silvered dial with baton hour markers, date aperture to three. Fitted to a signed stainless steel Oyster riveted bracelet with Oysterclasp. 35mm. **£800-1,200** (plus 27.6% BP*)

190 



ROLEX - a lady's Oyster Perpetual Datejust bracelet watch. Circa 2005. Stainless steel case with white metal fluted bezel. Reference 179174, serial D886773. Signed automatic calibre 2235 with quick date set. Mother-of-pearl dial with Arabic numeral hour markers, diamond set markers to six and nine, date aperture to three. Fitted to a signed stainless steel Oyster bracelet with Oysterlock clasp. 26mm. **Please see the condition report for details of third party intervention.** **£2,500-3,500** (plus 27.6% BP*)

191 



ROLEX - a gentleman's Oysterdate Precision wrist watch. Circa 1959. Stainless steel case. Reference 6694, serial 475225. Signed manual wind calibre 1210. Silvered dial with baton hour markers, date aperture to three. Fitted to an unsigned brown leather strap with stainless steel pin buckle. 34mm. **£900-1,400** (plus 27.6% BP*)

192 



ROLEX - a lady's Oyster Perpetual bracelet watch. Circa 1967. Stainless steel case with yellow metal fluted bezel. Reference 6619, serial 1614530. Signed automatic calibre 1161. Champagne dial with spearhead hour markers. Fitted to a signed bi-metal Oyster riveted bracelet with 18ct yellow gold Oyster clasp. 24mm. **£800-1,200** (plus 27.6% BP*)

193  



ROLEX - a lady's Oyster Perpetual Datejust bracelet watch. Circa 1991. Stainless steel case with yellow metal fluted bezel. Reference 69173, serial X947008. Signed automatic calibre 2135 with quick date set. Champagne dial with factory set diamond dot hour markers. Fitted to a signed bi-metal Jubilee bracelet with folding clasp. 26mm. **Papers. £1,300-1,800** (plus 27.6% BP*)

BP* - Buyer's Premium of 23% (plus VAT) or 27.6% (VAT included)

194 ^{360°}
View 



ROLEX - a lady's Oyster Perpetual Datejust wrist watch. Circa 1987. 18ct yellow gold case with fluted bezel. Reference 69178, serial 9799791. Signed automatic calibre 2135 with quick date set. White dial with Roman numeral hour markers, date aperture to three. Fitted to an unsigned brown lizard strap with gold plated pin buckle. 26mm. **£1,200-1,800** (plus 27.6% BP*)

195 ^{360°}
View 



ROLEX - a gentleman's Oyster Perpetual Date bracelet watch. Circa 1970. Stainless steel case. Reference 1500, serial 2522112. Signed automatic calibre 1570. Black dial with baton hour markers, date aperture to three. Fitted to a signed stainless steel Oyster bracelet with Oysterclasp. 35mm. **£1,500-2,000** (plus 27.6% BP*)

196 ^{360°}
View  



ROLEX - a gentleman's Oyster Perpetual Day-Date bracelet watch. Circa 1981. 18ct yellow gold case with fluted bezel. Reference 18038, serial 7168204. Signed automatic calibre 3055 with quick date set. Champagne dial with Roman numeral hour markers, day and date apertures to twelve and three. Fitted to a signed 18ct yellow gold President bracelet with Crownclasp. 36mm. **Box and papers. £4,500-5,500** (plus 27.6% BP*)

197 ^{360°}
View 



ROLEX - a gentleman's Oyster Perpetual Precision bracelet watch. Circa 1973. Stainless steel case. Reference 6694, serial 3659960. Signed manual wind calibre 1225. Silvered dial with baton hour markers, date aperture to three. Fitted to a signed stainless steel Oyster bracelet with Oysterclasp. 35mm. **£1,100-1,600** (plus 27.6% BP*)

198 ^{360°}
View  



ROLEX - a gentleman's Oyster Perpetual Datejust bracelet watch. Circa 1979. Stainless steel case with yellow metal fluted bezel. Reference 16013, serial 6192657. Signed automatic calibre 3035 with quick date set. Champagne dial with baton hour markers, date aperture to three. Fitted to a signed bi-metal Jubilee bracelet with Oysterclasp. 35mm. **Papers. £1,600-2,200** (plus 27.6% BP*)

199 ^{360°}
View  



ROLEX - a lady's Oyster Perpetual Datejust bracelet watch. Circa 2000. Stainless steel case with yellow metal bezel. Reference 79163, serial P411614. Signed automatic calibre 2235 with quick date set. Champagne dial with baton hour markers, date aperture to three. Fitted to a signed bi-metal Jubilee bracelet with Oysterclasp. 26mm. **Papers. £1,200-1,800** (plus 27.6% BP*)

200 ^{360°}
View 



ROLEX - a gentleman's Oyster Perpetual 'Bubbleback' wrist watch. Gold plated case with stainless steel case back. Reference 2940. Signed automatic movement. Silvered dial with Arabic numeral hour markers. Fitted to an unsigned brown leather strap with gold plated deployant clasp. 32mm. **£600-800** (plus 27.6% BP*)

BP* - Buyer's Premium of 23% (plus VAT) or 27.6% (VAT included)

201 



ROLEX - a gentleman's wrist watch. 9ct yellow metal case with engraved case back, hallmarked Birmingham 1953. Numbered 562913. Signed manual wind calibre 710. Silvered dial with Arabic numeral hour markers. Fitted to an unsigned brown leather strap with gold plated pin buckle. 30mm. **£450-650** (plus 27.6% BP*)

202 



ROLEX - a lady's Oyster Perpetual bracelet watch. Circa 1973. 18ct yellow gold case with fluted bezel. Reference 6719, serial 5073946. Signed automatic calibre 2030. Champagne dial with baton hour markers. Fitted to a signed 18ct yellow gold Oyster bracelet with Oysterclasp. 25mm. **£1,800-2,600** (plus 27.6% BP*)

203 



ROLEX - a gentleman's Oyster Perpetual wrist watch. Circa 1961. 18ct yellow gold case. Reference 5018, serial 654359. Signed automatic movement. Cream dial with alternating dot and Roman numeral hour markers. Fitted to an unsigned black leather strap with gold plated pin buckle. 33mm **£1,500-2,000** (plus 27.6% BP*)

204 



ROLEX - a gentleman's Oyster Perpetual Datejust bracelet watch. Circa 1990. Stainless steel case with yellow metal fluted bezel. Reference 16233, serial E247930. Signed automatic calibre 3135 with quick date set. Mother-of-pearl dial with factory set diamond dot hour markers, date aperture to three. Fitted to a signed bi-metal Jubilee bracelet with Oysterclasp. 35mm. **£2,500-3,500** (plus 27.6% BP*)

205 



ROLEX - a lady's Oyster Perpetual Datejust bracelet watch. Circa 1978. 18ct yellow gold case with fluted bezel. Reference 6917, serial 566____. Signed automatic calibre 2030. Champagne dial with baton hour markers, date aperture to three. Fitted to a signed 18ct yellow gold Jubilee bracelet with Oysterclasp. 26mm. **£2,000-2,500** (plus 27.6% BP*)

206 



ROLEX - a gentleman's Oysterdate Precision bracelet watch. Circa 1977. Stainless steel case. Reference 6694, serial 5047650. Signed manual wind calibre 1225. Mother-of-pearl dial with diamond dot hour markers. Fitted to a assigned stainless steel Oyster bracelet with Oysterclasp. 34mm. **Please see the condition report for details of third party intervention. £800-1,200** (plus 27.6% BP*)

BP* - Buyer's Premium of 23% (plus VAT) or 27.6% (VAT included)

207 



ROLEX - a lady's Oyster Perpetual Datejust bracelet watch. Circa 1984. Stainless steel case with white metal fluted bezel. Reference 69174, serial 8731187. Signed automatic calibre 2135 with quick date set. Silvered dial with baton hour markers, date aperture to three. Fitted to a signed stainless steel Jubilee bracelet with Oysterclasp. 26mm. **£1,200-1,800** (plus 27.6% BP*)

208 



ROLEX - a mid-size Oyster Perpetual Datejust bracelet watch. Circa 1987. Stainless steel case with yellow metal fluted bezel. Reference 68273, serial R574441. Signed automatic calibre 2135 with quick date set. Champagne dial with factory set diamond hour markers, date aperture to three. Fitted to a signed bi-metal Jubilee bracelet with Oysterclasp. 30mm. **£1,500-2,000** (plus 27.6% BP*)

209   



ROLEX - a lady's Oyster Perpetual Datejust bracelet watch. Circa 1995. 18ct yellow gold case with fluted bezel. Reference 6917B, serial W587978. Signed automatic calibre 2135 with quick date set. Champagne dial with baton hour markers, date aperture to three. Fitted to a signed 18ct yellow gold Jubilee bracelet with Crownclasp. 26mm. **Box and papers.** **£2,000-2,500** (plus 27.6% BP*)

210 



ROLEX - a lady's Oyster Perpetual bracelet watch. Circa 1978. 18ct yellow gold case with fluted bezel. Reference 6719, serial 5751048. Signed automatic calibre 2030. Silvered dial with baton hour markers. Fitted to a signed 18ct yellow gold President bracelet with Oysterclasp. 24mm. **£1,800-2,600** (plus 27.6% BP*)

211 




ROLEX - a gentleman's Cellini bracelet watch. Circa 2001. 18ct yellow gold case. Reference 6633, serial K687965. Signed quartz calibre 6620. White dial with Roman numeral hour markers. Fitted to a signed 18ct yellow gold bracelet with folding clasp. 30mm. **£3,000-4,000** (plus 27.6% BP*)

212   



ROLEX - a gentleman's Oyster Perpetual Submariner bracelet watch. Circa 1967. Stainless steel case with calibrated bezel. Reference 5513, serial 1655983. Signed automatic calibre 1520. Black dial with luminous hour markers. Fitted to a signed stainless steel Oyster bracelet with Oysterlock clasp. 39mm. **Box and papers.** **£6,000-8,000** (plus 27.6% BP*)

BP* - Buyer's Premium of 23% (plus VAT) or 27.6% (VAT included)

213 



ROLEX - a gentleman's Oyster Perpetual Datejust wrist watch. Circa 1972. Stainless steel case with yellow metal fluted bezel. Reference 1601, serial 2925451. Signed automatic calibre 1570. Silvered dial with baton hour markers, date aperture to three. Fitted to an unsigned black leather strap with gold plated pin buckle. 35mm. **£800-1,200** (plus 27.6% BP*)

214 



ROLEX - a gentleman's Oysterdate Precision bracelet watch. Circa 1968. Stainless steel case. Reference 6694, serial 1854984. Signed manual wind calibre 1225. Silvered dial with baton hour markers, date aperture to three. Fitted to a signed stainless steel Oyster riveted bracelet with Oysterclasp. 34mm. **£1,200-1,800** (plus 27.6% BP*)

215 



ROLEX - a gentleman's Oyster Perpetual Datejust bracelet watch. Stainless steel case with yellow metal bezel. Reference 116203, serial U1525712. Signed automatic calibre 3135 with quick date set. White dial with Roman numeral hour markers, date aperture to three. Fitted to a signed bi-metal Oyster bracelet with Oysterclasp. 37mm. **£1,800-2,600** (plus 27.6% BP*)

216 



ROLEX - a mid-size Oyster Perpetual Datejust bracelet watch. Circa 1973. 18ct yellow gold case with fluted bezel. Reference 6824, serial 3244510. Signed automatic calibre 2030. Champagne dial with Roman numeral hour markers, date aperture to three. Fitted to a signed 18ct yellow gold Oyster bracelet with Oysterclasp. 30mm. **£3,200-4,200** (plus 27.6% BP*)

217 



ROLEX - a gentleman's Oysterdate Precision wrist watch. Circa 1965. Stainless steel case. Reference 6694, serial 1121110. Signed manual wind calibre 1215. Silvered dial with baton hour markers, date aperture to three. Fitted to an unsigned black leather strap with stainless steel pin buckle. 35mm. **£900-1,400** (plus 27.6% BP*)

218 



ROLEX - a gentleman's Prince 'Tiger Stripe' wrist watch. 9ct bi-colour gold flared case, import hallmarked Glasgow 1931. Reference 971A, serial 5162. Signed manual wind calibre 8310. Discoloured dial with Arabic numeral hour markers, subsidiary seconds dial to six. Fitted to an unsigned brown leather strap with base metal pin buckle. 24mm. **Box. £2,800-3,600** (plus 27.6% BP*)

BP* - Buyer's Premium of 23% (plus VAT) or 27.6% (VAT included)

219 ^{360°}
View

ROLEX - a gentleman's Oyster Precision bracelet watch. Circa 1971. Stainless steel case. Reference 6426, serial 2849866. Signed manual wind calibre 1225. Silvered dial with baton hour markers. Fitted to a signed stainless steel Oyster bracelet with Oysterclasp. 35mm. **£1,000-1,500 (plus 27.6% BP*)**

220 ^{360°}
View

ROLEX - a gentleman's Oyster Perpetual Cosmograph Daytona chronograph watch retailed by Tiffany & Co. Circa 1991. Stainless steel case with yellow metal tachymeter bezel. Reference 16523, serial X491300. Signed automatic calibre 4030. Champagne dial signed Tiffany & Co. with luminous baton hour markers, subsidiary recorder dials to three, six and nine. Fitted to a signed bi-metal Oyster bracelet with Oysterclasp. 38mm.

*During the 1950s Rolex and Tiffany & Co. paired up to offer luxury items to their ever increasing clientele. Rolex watches displaying the famous jeweller's logo were retailed at Tiffany & Co. stores for roughly three decades. The Tiffany & Co. dial makes this Daytona even more special. **£15,000-20,000 (plus 27.6% BP*)***

221 ^{360°}
View

ROLEX - a gentleman's Oyster Precision wrist watch. Circa 1948. Stainless steel case with engraved case back. Reference 4647, serial 555671. Signed manual wind movement. Silvered dial with Arabic numeral hour markers. Fitted to an unsigned brown leather strap with stainless steel pin buckle. 31mm. **£1,500-2,000 (plus 27.6% BP*)**

222 ^{360°}
View  

ROLEX - a gentleman's Oyster Perpetual Date GMT-Master II bracelet watch. Stainless steel case with Cerachrom calibrated bezel. Reference 116713, serial H27644E3. Automatic calibre 3186 with quick date set. Black dial with luminous hour markers, date aperture to three. Fitted to a signed bi-metal Oyster bracelet with Oysterclasp. 40mm. **Box and papers. £4,000-5,000 (plus 27.6% BP*)**

223 ^{360°}
View

ROLEX - a lady's Oyster Perpetual Datejust bracelet watch. Circa 1989. 18ct yellow gold case with diamond and stone set bezel. Reference 69178, serial L951967. Signed automatic calibre 2135 with quick date set. Champagne dial with baton hour markers, date aperture to three. Fitted to a signed 18ct yellow gold diamond set President bracelet with Crownclasp. 26mm. **Please see the condition report for details of third of third party intervention. £1,800-2,400 (plus 27.6% BP*)**

224 ^{360°}
View

ROLEX - a gentleman's Oyster Perpetual Date bracelet watch. Circa 1986. Stainless steel case with yellow metal engine-turned bezel. Reference 15053, serial 9469245. Signed automatic calibre 3035. White dial with Roman numeral hour markers, date aperture to three. Fitted to a signed stainless steel Jubilee bracelet with Oysterclasp. 34mm. **£1,400-2,000 (plus 27.6% BP*)**

BP* - Buyer's Premium of 23% (plus VAT) or 27.6% (VAT included)

225 ^{360°}
View



ROLEX - a gentleman's Oyster Perpetual Explorer wrist watch. Circa 1962. Stainless steel case. Reference 1016, serial 857365. Signed automatic calibre 1570. Black dial. Fitted to an unsigned black leather strap with stainless steel pin buckle. 36mm. **Please see the condition report for details of third party intervention. £5,000-7,000 (plus 27.6% BP*)**

226 ^{360°}
View X



ROLEX - a lady's Cellini wrist watch. Circa 1991. 18ct white gold case. Reference 6631, serial X606108. Signed quartz calibre 6620. Copper dial with Roman numeral hour markers. Fitted to a signed burgundy alligator strap with 18ct white gold deployant clasp. 25mm. **£1,500-2,000 (plus 27.6% BP*)**

227 ^{360°}
View



ROLEX - a gentleman's Oysterdate Precision bracelet watch. Circa 1969. Stainless steel case. Reference 6694, serial 2015650. Signed manual wind calibre 1215. Black dial with baton hour markers, date aperture to three. Fitted to a signed stainless steel Oyster riveted bracelet with Oysterclasp. 35mm. **£1,200-1,800 (plus 27.6% BP*)**

228 ^{360°}
View



ROLEX - a gentleman's Oyster Perpetual Datejust bracelet watch. Circa 1987. Stainless steel case with yellow metal fluted bezel. Reference 16233, serial R890918. Signed automatic calibre 3135 with quick date set. Black dial with factory set diamond dot hour markers, date aperture to three. Fitted to a signed bi-metal Jubilee bracelet with Oysterclasp. 35mm. **£2,000-2,500 (plus 27.6% BP*)**

229 ^{360°}
View



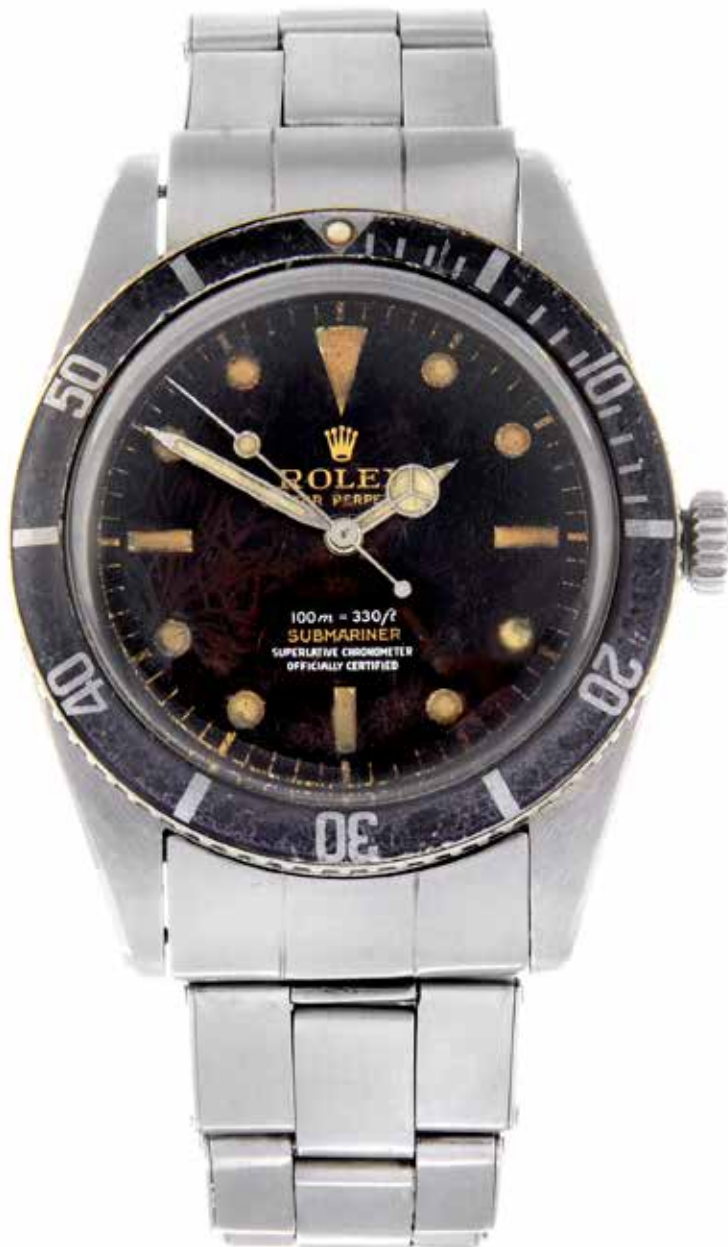
ROLEX - a lady's Oyster Perpetual bracelet watch. Circa 1977. 18ct yellow gold case with fluted bezel. Reference 6719, serial 5315383. Signed automatic calibre 2030. Champagne dial with baton hour markers. Fitted to a signed 18ct yellow gold Oyster bracelet with Oysterclasp. 25mm. **£1,700-2,200 (plus 27.6% BP*)**

230 ^{360°}
View



ROLEX - a lady's Oyster Perpetual bracelet watch. Circa 1999. Stainless steel case. Reference 76080, serial A4_241. Signed automatic calibre 2230. Blue dial with luminous baton hour markers, Arabic numeral three, six and nine. Fitted to a signed stainless steel Oyster bracelet with Oysterclasp. 25mm. **£1,200-1,800 (plus 27.6% BP*)**

BP* - Buyer's Premium of 23% (plus VAT) or 27.6% (VAT included)



ROLEX - a gentleman's Oyster Perpetual Submariner '4 Liner' bracelet watch. Circa 1962. Stainless steel case with calibrated bezel. Reference 5508, serial 763378. Signed automatic calibre 1530. Black 'Tropical' dial with luminous hour markers. Fitted to a signed stainless steel Oyster bracelet with Oysterclasp. 37mm.

The Rolex Submariner 5508 is commonly known by collectors as the "small crown" model. It is the last of the Submariner series to carry the "100m = 330ft" depth rating. The name '4 Liner' refers to the four lines of text to the dial. This particular variant is referred to as "SCOC," meaning the text is in the order "Superlative / Chronometer / Officially / Certified" on its dial, showing that this watch is equipped with a chronometer grade movement. £35,000-45,000 (plus 27.6% BP)*

BP* - Buyer's Premium of 23% (plus VAT) or 27.6% (VAT included)

232 ^{360°}
View 



ROLEX - a gentleman's Cellini Prince wrist watch. Circa 2005. 18ct white gold case with exhibition case back. Reference 5443, serial D779343. Signed manual wind calibre 704.0.4. Silvered and black dial with baton hour markers, Arabic numeral three, six and nine. Fitted to a signed black alligator strap with 18ct white gold deployant clasp. 28mm. **£2,800-3,600** (plus 27.6% BP*)

233 ^{360°}
View 



ROLEX - a gentleman's Oyster Perpetual Datejust bracelet watch. Circa 1974. Stainless steel case with rose metal fluted bezel. Reference 1601, serial 4139800. Signed automatic calibre 1570. Black dial with baton hour markers, date aperture to three. Fitted to a signed bi-metal Jubilee bracelet with Oysterclasp. 36mm. **£2,000-2,500** (plus 27.6% BP*)

234 ^{360°}
View 



ROLEX - a lady's Oyster Perpetual Datejust bracelet watch. Circa 1978. 18ct yellow gold case. Reference 6916, serial 5665152. Signed automatic calibre 2030. Champagne dial with baton hour markers, date aperture to three. Fitted to a signed 18ct yellow gold President bracelet with Oysterclasp. 26mm. **£2,000-3,000** (plus 27.6% BP*)

235 ^{360°}
View 



ROLEX - a gentleman's Oyster Perpetual Datejust bracelet watch. Circa 1984. Stainless steel case with white metal fluted bezel. Reference 16014, serial 8504174. Signed automatic calibre 3035. Silvered dial with baton hour markers, date aperture to three. Fitted to a signed stainless steel Jubilee bracelet with Oysterclasp. 35mm. **£1,400-2,000** (plus 27.6% BP*)

236 ^{360°}
View 



ROLEX - a gentleman's Oyster Perpetual Day-Date bracelet watch. Circa 1972. 18ct yellow gold case with fluted bezel, import hallmarked London 1972. Reference 1803, serial 3018838. Signed automatic calibre 1556. Silvered dial with baton hour markers, day and date apertures to twelve and three. Fitted to a signed 18ct yellow gold President bracelet with Oysterclasp. 36mm. Box. **£4,000-6,000** (plus 27.6% BP*)

237 ^{360°}
View 



ROLEX - a lady's Orchid bracelet watch. Circa 1975. 18ct yellow gold case. Reference 2764, serial 4338422. Signed manual wind calibre 1400. Champagne dial with baton hour markers. Fitted to a signed 18ct yellow gold integral bracelet with folding clasp. 21mm. **£1,000-1,500** (plus 27.6% BP*)

BP* - Buyer's Premium of 23% (plus VAT) or 27.6% (VAT included)

238 ^{360°}
View



ROLEX - a lady's Oyster Perpetual Datejust bracelet watch. Circa 1991. Stainless steel case with yellow metal fluted bezel. Reference 69173, serial X122707. Signed automatic calibre 2135 with quick date set. Champagne dial with diamond dot hour markers, date aperture to three. Fitted to a signed bi-metal Jubilee bracelet with Oysterclasp. 26mm. **Please see the condition report for details of third party intervention. £1,700-2,300 (plus 27.6% BP*)**

239 ^{360°}
View



TAG HEUER - a gentleman's Carrera Calibre S chronograph wrist watch. Stainless steel case with tachymeter bezel. Reference CV7A12, serial EPB6463. Signed quartz calibre S. Black dial with baton hour markers, subsidiary retrograde recorder dials between three and six and between six and nine. Fitted to an unsigned leather strap with stainless steel pin buckle. 44mm. **Box. £750-1,000 (plus 27.6% BP*)**

240 ^{360°}
View



TAG HEUER - a lady's Alter Ego bracelet watch. Bi-metal case. Reference WP1350-0, serial QN5784. Signed quartz movement. Mother-of-pearl dial. Fitted to a signed bi-metal bracelet with stainless steel double folding clasp. 29mm. **£300-400 (plus 27.6% BP*)**

241 ^{360°}
View



TAG HEUER - a gentleman's Formula 1 chronograph wrist watch. Stainless steel case with black tachymeter bezel. Reference CAU1116, serial RAB0700. Unsigned quartz movement with quick date set. Black dial with luminous hour markers, Arabic numeral twelve, subsidiary recorder dials to three, six and nine, date aperture to four. Fitted to a signed black rubber strap with stainless steel deployant clasp. 42mm. **£300-400 (plus 27.6% BP*)**

242 ^{360°}
View



TAG HEUER - a gentleman's Monaco chronograph wrist watch. Stainless steel case. Reference CW2113-0, serial DA8451. Signed automatic calibre 17 with quick date set. Blue dial with baton hour markers, subsidiary recorder dials to three and nine, date aperture to six. Fitted to a black alligator strap with signed stainless steel deployant clasp. 38mm. **£900-1,400 (plus 27.6% BP*)**

243 ^{360°}
View



TAG HEUER - a gentleman's Carrera chronograph wrist watch. Stainless steel case with tachymeter bezel and exhibition case back. Reference CV2010-3, serial RWA0499. Signed automatic calibre 16 with quick date set. Black dial with baton hour markers, subsidiary recorder dials to six, nine and twelve, date aperture to three. Fitted to an unsigned black leather strap with gold plated pin buckle. 41mm. **£800-1,200 (plus 27.6% BP*)**

BP* - Buyer's Premium of 23% (plus VAT) or 27.6% (VAT included)

244 ^{360°}
View



TAG HEUER - a gentleman's Carrera Twin-Time wrist watch. Stainless steel case with exhibition case back. Reference WV2116, serial illegible. Signed automatic calibre 7 with quick date set. Silvered dial with baton hour markers, date aperture to three. GMT rehaut. Fitted to a signed black leather strap with stainless steel deployant clasp. 39mm. **£540-740** (plus 27.6% BP*)

245 ^{360°}
View X



TAG HEUER - a limited edition gentleman's Carrera Calibre 16 chronograph wrist watch. Number 090 of 250. Stainless steel case with tachymeter bezel and exhibition case back. Reference CV2A1P, serial RME8785. Signed automatic calibre 16 with quick date set. Black dial with Arabic numeral timing divisions at five minute intervals, subsidiary recorder dials to six, nine and twelve, split day and date aperture to three. Fitted to a signed black alligator strap with stainless steel deployant clasp. 43mm. **£1,200-1,800** (plus 27.6% BP*)

246 ^{360°}
View



TAG HEUER - a gentleman's Monaco LS chronograph wrist watch. Stainless steel case. Reference CAL2110, serial EKJ8140. Signed automatic calibre 12 with quick date set. Black dial with baton hour markers, seconds aperture to three, subsidiary recorder dials to six and nine, date aperture to twelve. Fitted to an unsigned black leather strap with gold plated pin buckle. 42mm. **£1,500-2,000** (plus 27.6% BP*)

247 ^{360°}
View



TAG HEUER - a gentleman's Aquaracer Calibre S chronograph bracelet watch. Stainless steel case with calibrated bezel. Reference CAF7110, serial FQ0889. Signed quartz calibre S. Blue dial with luminous baton hour markers, subsidiary recorder dials between three and six and six and nine. Fitted to a signed stainless steel bracelet with folding clasp. 41mm. **Box and papers. £400-500** (plus 27.6% BP*)

248 ^{360°}
View



TAG HEUER - a gentleman's Aquaracer Chronotimer wrist watch. Stainless steel case with calibrated bezel. Reference CAF1011, serial ERX6410. Unsigned quartz movement. Yellow dial with baton hour markers, LCD displays to three, six and twelve. Fitted to an unsigned black leather coated rubber strap with stainless steel pin buckle. 43mm. **Box and papers. £400-600** (plus 27.6% BP*)

249 ^{360°}
View



TAG HEUER - a gentleman's Aquaracer Calibre 5 wrist watch. Stainless steel case with ceramic calibrated bezel. Reference WAY201C, serial RHV7792. Signed automatic calibre 5 with quick date set. Blue dial with luminous hour markers, date aperture to three. Fitted to a signed dark blue nylon strap with stainless steel deployant clasp. 43mm. **Box and papers. £700-900** (plus 27.6% BP*)

BP* - Buyer's Premium of 23% (plus VAT) or 27.6% (VAT included)

250 ^{360°}
View X



TAG HEUER - a gentleman's Monza re-edition chronograph wrist watch. Stainless steel case. Reference CR2110, serial 3816. Signed automatic movement with quick date set. Black dial with baton hour markers, Arabic numeral twelve, subsidiary recorder dials to three, six and nine, date aperture between four and five. Fitted to a signed black crocodile strap with stainless steel deployant clasp. 38mm. **£900-1,400** (plus 27.6% BP*)

251 ^{360°}
View



TAG HEUER - a gentleman's Grand Carrera chronograph wrist watch. PVD-treated titanium case with tachymeter bezel and exhibition case back. Reference CAV518B, serial 1693851. Signed automatic calibre 17 with quick date set. Black dial with baton hour markers, subsidiary recorder dials to three and nine, date aperture to six. Fitted to an unsigned black leather strap with stainless steel pin buckle. 43mm. **£1,400-2,000** (plus 27.6% BP*)

252 ^{360°}
View



TAG HEUER - a gentleman's Aquaracer bracelet watch. Stainless steel case with calibrated bezel. Reference WAF2111-0, serial RED2017. Signed automatic calibre 5 with quick date set. Silvered dial with luminous baton hour markers, date aperture to three. Fitted to a signed stainless steel bracelet with folding clasp. 39mm. **£400-500** (plus 27.6% BP*)

253 ^{360°}
View



TAG HEUER - a lady's Carrera bracelet watch. Stainless steel case with exhibition case back. Reference WAR2412, serial RVN7149. Signed automatic calibre 9 with quick date set. Silvered dial with baton hour markers, date aperture to three. Fitted to a signed stainless steel bracelet with folding clasp. 28mm. **£400-500** (plus 27.6% BP*)

254 ^{360°}
View X



TIFFANY & CO. - a gentleman's Atlas wrist watch. Silver case with chapter ring bezel. Reference M06940, serial 0601119_4. Signed automatic calibre 6839 with quick date set. Silvered dial, date aperture to three. Fitted to a signed black lizard strap with stainless steel pin buckle. 36mm. **£800-1,200** (plus 27.6% BP*)

BP* - Buyer's Premium of 23% (plus VAT) or 27.6% (VAT included)

255 ^{360°} View  



CURRENT MODEL: TUDOR - a gentleman's Pelagos bracelet watch. Titanium case with calibrated bezel and stainless steel case back. Reference 25600TN, serial I630755. Signed automatic movement with quick date set. Black dial with luminous hour markers, date aperture to three. Fitted to a signed titanium bracelet with stainless steel folding clasp. 42mm. Box and papers. **£500-700** (plus 27.6% BP*)

256 ^{360°} View



TUDOR - a gentleman's Prince Oysterdate Submariner wrist watch. Stainless steel case with calibrated bezel. Reference 9411, serial 930622. Signed automatic movement with quick date set. Black dial with luminous hour markers, date aperture to three. Fitted to an unsigned black and white nylon 'NATO' style strap with stainless steel pin buckle. 40mm. **£3,000-4,000** (plus 27.6% BP*)

259 ^{360°} View 



VACHERON CONSTANTIN - a gentleman's wrist watch. 18ct yellow gold case, import hallmarked London 1973. Reference 7811, serial 494707. Signed manual wind calibre K1014. Champagne dial with baton hour markers. Fitted to an unsigned black lizard strap with yellow metal pin buckle, stamped 750. 33mm. **£750-1,000** (plus 27.6% BP*)

257 ^{360°} View



TUDOR - a gentleman's Oyster Prince Submariner wrist watch. Stainless steel case with calibrated bezel. Reference 7016/0, serial 741358. Signed automatic calibre 2483. Black dial with luminous hour markers. Fitted to an unsigned green nylon 'NATO' style strap with stainless steel pin buckle. 40mm. **£6,000-8,000** (plus 27.6% BP*)

258 ^{360°} View



VACHERON CONSTANTIN - a gentleman's wrist watch. Yellow metal case, stamped 18K 0.750. Numbered 310866. Signed manual wind calibre 458, numbered 438320. Silvered dial with Arabic numeral hour markers, subsidiary seconds dial to six. Fitted to an unsigned brown leather strap with gold plated pin buckle. 25mm. **£1,100-1,600** (plus 27.6% BP*)

BP* - Buyer's Premium of 23% (plus VAT) or 27.6% (VAT included)

Miscellaneous Wrist Watches

260 ^{360°}
View



A gentleman's wrist watch. Yellow metal case, stamped 585. Numbered 16204. Unsigned manual wind movement. Champagne dial with Arabic numeral hour markers. Fitted to a brown leather strap with gold plated pin buckle. 25mm. **£300-400** (plus 27.6% BP*)

261 ^{360°}
View



A lady's cocktail watch by Movado. White metal case with factory blue stone and diamond set lugs. Signed manual wind movement. Silvered dial with alternating Arabic numeral and arrowhead hour markers. Fitted to an unsigned 9ct white gold bracelet with clasp, hallmarked Birmingham 1919. 13mm. Together with a lady's white metal cocktail watch. **£350-450** (plus 27.6% BP*)

262 ^{360°}
View



BMW - a gentleman's chronograph bracelet watch. Titanium case. Numbered 0180. Unsigned automatic movement with quick date set. Black dial with baton hour markers, subsidiary recorder dials to six, nine and twelve, date aperture to three, outer tachymeter track. 37mm. **£400-500** (plus 27.6% BP*)

263 ^{360°}
View



CURRENT MODEL: CARL F. BUCHERER - a gentleman's Patravi TravelTec GMT chronograph bracelet watch. Stainless steel case. Reference 10620.08, serial 10.0063. Signed automatic calibre 193116 with quick date set. Grey dial with baton hour markers, subsidiary recorder dials to three, six and nine, date aperture between four and five, rotating twenty-four hour track. Twenty-four hour rehaut. Fitted to a signed stainless steel bracelet with double folding clasp. 47mm. Box and papers. **£1,800-2,600** (plus 27.6% BP*)

264 ^{360°}
View



CHAUMET - a Class One chronograph bracelet watch. Stainless steel case with factory diamond set calibrated bezel. Signed quartz movement with quick date set. Silvered dial with luminous dot hour markers, subsidiary recorder dials to two, six and ten, date aperture to four. Fitted to a signed stainless steel bracelet with double folding clasp. 37mm. **£400-500** (plus 27.6% BP*)

265 ^{360°}
View



CHAUMET - a Class One chronograph wrist watch. Stainless steel case with calibrated bezel. Numbered 624-3459. Unsigned quartz movement with quick date set. Silvered dial with alternating Roman numeral and baton hour markers, subsidiary grey recorder dials to two, six and ten, date aperture to four. Fitted to a signed black rubber strap with stainless steel deployant clasp. 37mm. **£650-850** (plus 27.6% BP*)

BP* - Buyer's Premium of 23% (plus VAT) or 27.6% (VAT included)

266 ^{360°}
View



CYMA - a gentleman's wrist watch. Yellow metal case, stamped 18k with poinçon. Numbered 491 88320. Signed manual wind calibre 414, numbered 156032. Silvered dial with chevron hour markers, Arabic numeral twelve, subsidiary seconds dial to six. Fitted to an unsigned brown leather strap with gold plated pin buckle. 32mm. **£180-260** (plus 27.6% BP*)

267 ^{360°}
View



DOXA - a gentleman's Sub 300T Sharkhunter bracelet watch. Stainless steel case with calibrated bezel. Reference 33110, serial 58098-59. Automatic movement with quick date set, signed Synchron. Black dial with luminous baton hour markers, date aperture to three. Fitted to an unsigned stainless steel bracelet with folding clasp. 43mm. **£1,000-1,500** (plus 27.6% BP*)

268 ^{360°}
View



DUNHILL - a gentleman's Classic wrist watch. PVD-treated stainless steel case with exhibition case back. Reference CH079, serial 2674531. Signed automatic Jaeger-LeCoultre movement with quick date set. Black dial with baton hour markers, month and day apertures to three and nine, subsidiary seconds dial and moon phase indicator to six. Outer date track. Fitted to a signed black leather strap with stainless steel double folding clasp. 40mm. **£1,500-2,000** (plus 27.6% BP*)

269 ^{360°}
View



DUNHILL - a limited edition gentleman's A-Centric Pentagraph wrist watch. Number 0419 of 1000. Stainless steel case. Numbered 8081 10418. Signed automatic movement with quick date set. Black dial with luminous Arabic numeral hour markers, outer date and GMT track. Fitted to a signed black leather strap with stainless steel deployant clasp. 42mm. **£440-540** (plus 27.6% BP*)

270 ^{360°}
View



DUNHILL - a limited edition gentleman's Bobby FINDER chronograph wrist watch. Number 0437 of 1500. Stainless steel case with calibrated bezel. Reference 8068, serial 10470. Signed automatic movement. Black dial with chevron hour markers, subsidiary recorder dials to three and nine. Fitted to a signed black leather strap with stainless steel deployant clasp. 42mm. **£750-1,000** (plus 27.6% BP*)

BP* - Buyer's Premium of 23% (plus VAT) or 27.6% (VAT included)

271 ^{360°}View 



EBERHARD & CO. - a gentleman's chronograph wrist watch. White metal case, stamped 925. Numbered 31100357. Signed manual wind calibre 40-68. White dial with Arabic numeral hour markers, subsidiary recorder dials to three, six and nine, outer telemeter track. Fitted to a signed brown crocodile strap with stainless steel pin buckle. 38mm. **£400-500** (plus 27.6% BP*)

272 ^{360°}View  



ETERNA - a gentleman's Reveil 1948 Alarm wrist watch. 18ct rose gold case with exhibition case back. Reference 8510.69, serial 150.196. Signed automatic movement with quick date set. Silvered dial with alternating Arabic numeral and spearhead hour markers, subsidiary date and day apertures to three and six. Fitted to a signed brown crocodile strap with gold plated folding clasp. 39mm. Box. **£1,800-2,600** (plus 27.6% BP*)

273 ^{360°}View  



ETERNA - a gentleman's Soleure wrist watch. 18ct rose gold case. Reference 8310.69, serial 210.862. Signed automatic movement with quick date set. Silvered dial with baton hour markers, date aperture to six. Fitted to a signed brown crocodile strap with gold plated folding clasp. 42mm. Box. **£2,400-3,000** (plus 27.6% BP*)

274 ^{360°}View 



FREDERIQUE CONSTANT - a gentleman's Classics Heart Beat Moonphase wrist watch. Gold plated case with exhibition case back. Reference FC-330/335X4P4/5/6, serial 3329018. Signed automatic movement with quick date set. Silvered dial with Roman numeral hour markers, moonphase indicator to six, exposed balance wheel to twelve, outer date track. Fitted to a signed brown leather strap with gold plated pin buckle. 40mm. **£400-600** (plus 27.6% BP*)

275 ^{360°}View 



GENEVE - a gentleman's chronograph bracelet watch. 18ct yellow gold case with tachymeter bezel. Unsigned automatic movement with quick date set. White dial with baton hour markers, subsidiary recorder dials to six, nine and twelve, date aperture to three. outer tachymeter track. 36mm. 152gms. **£1,800-2,400** (plus 27.6% BP*)

276 ^{360°}View  



GUÉPARD - a gentleman's chronograph wrist watch. Rose metal case with exhibition case back, stamped 750. Numbered 33/50. Signed automatic movement with quick date set. Skeletonised dial with baton hour markers, subsidiary recorder dials to six, nine and twelve, subsidiary date dial to three, outer minute track. Fitted to an unsigned black leather strap with signed rose metal pin buckle, stamped 18K 750. 39mm. Box and papers. **£2,800-3,600** (plus 27.6% BP*)

BP* - Buyer's Premium of 23% (plus VAT) or 27.6% (VAT included)

277 ^{360°}View 



HAMILTON - a gentleman's Khaki Field chronograph bracelet watch. Stainless steel case with exhibition case back. Reference H715560. Signed automatic movement with quick date set. Black dial with luminous Arabic numeral hour markers, subsidiary recorder dials to six, nine and twelve, day and date aperture to three, outer telemeter track. Fitted to a signed stainless steel bracelet with folding clasp. 42mm. Box. **£360-460** (plus 27.6% BP*)

278 ^{360°}View 



JAQUET-DROZ - a limited edition gentleman's Ateliers D'Art Petite Heure Minute wrist watch. Number 80 of 88. 18ct rose gold case with exhibition case back. Signed automatic calibre 2653.4, numbered 001565. Ivory Grand Feu enamelled dial with miniature painted Chinese dragons, off-centre dial to twelve. Fitted to an unsigned black leather strap with signed 18ct rose gold pin buckle. 43mm. **£3,600-4,600** (plus 27.6% BP*)

279 ^{360°}View  



JUNGHANS - a gentleman's Munich 1972 chronograph wrist watch. Stainless steel case with calibrated bezel. Reference 041/4261, serial 9850821. Unsigned quartz movement with quick date set. Blue dial with square hour markers, subsidiary seconds dial to six, subsidiary grey recorder dials to three and nine, date aperture between four and five. Fitted to a signed black leather strap with stainless steel pin buckle. 43mm. Box and papers. **£300-400** (plus 27.6% BP*)

280 ^{360°}View  



KRIEGER - a limited edition gentleman's Gigantium wrist watch. Number 110 of 500. 18ct yellow gold case with factory diamond set bezel and exhibition case back. Numbered K5005. Signed manual wind movement. Black dial with Arabic numeral hour markers, subsidiary seconds dial to six. Fitted to a signed black alligator strap with gold plated deployant clasp. 43mm. Box and papers. **£1,400-2,000** (plus 27.6% BP*)

281 ^{360°}View 



LECOULTRE - a gentleman's Futurematic wrist watch. Gold filled case. Signed bumper automatic calibre 497. Silvered dial with triangle hour markers, subsidiary seconds dial to three, power reserve indicator to nine. Fitted to an unsigned brown alligator strap with gold plated pin buckle. 35mm. **£660-860** (plus 27.6% BP*)

282 ^{360°}View 



NATIONAL - a gentleman's wrist watch. Yellow metal case, stamped 750 18K with poinçon. Numbered 5174 165975. Signed bumper automatic calibre 67532. Silvered dial with dot hour markers, quarterly Arabic numerals. Fitted to an unsigned black leather strap with gold plated pin buckle. 34mm. **£400-600** (plus 27.6% BP*)

BP* - Buyer's Premium of 23% (plus VAT) or 27.6% (VAT included)

283 ^{360°}
View



ORIOSA - a gentleman's chronograph bracelet watch. Stainless steel case. Automatic JRGK calibre 12. Black dial with baton hour markers, subsidiary recorder dials to three and nine, date aperture to six. Tachymeter rehaut. Fitted to an unsigned stainless steel bracelet with folding clasp. 40mm. **£600-800 (plus 27.6% BP*)**

284 ^{360°}
View



PERRELET - a gentleman's Grand Maitre chronograph bracelet watch. Stainless steel case with exhibition case back. Numbered 257. Signed automatic movement with quick date set. Grey dial with Arabic numeral hour markers, subsidiary recorder dials to three, six and nine, automatic rotor to twelve, date aperture between four and five. Fitted to a signed stainless steel bracelet with double folding clasp. 40mm. **Box and papers. £1,100-1,600 (plus 27.6% BP*)**

285 ^{360°}
View



POIRAY - a lady's bracelet watch. Stainless steel case with factory diamond set bezel. Numbered B00160. Unsigned quartz movement. Mother-of-pearl dial with factory set diamond baton six and twelve. Fitted to a signed stainless steel bracelet with double folding clasp. 17mm. **£400-500 (plus 27.6% BP*)**

286 ^{360°}
View



PRESIDENT - a gentleman's chronograph wrist watch. Rose metal case, stamped 585. Numbered 045. Unsigned manual wind movement. Mother-of-pearl dial with Roman numeral hour markers, Russian emblem and flag to twelve, subsidiary recorder dials to three and nine, date aperture to six. Fitted to an unsigned brown leather strap with gold plated pin buckle. 39mm. **Box and papers. £900-1,400 (plus 27.6% BP*)**

287 ^{360°}
View



THE ROYAL DIAMOND - a lady's Double wrist watch. 18ct yellow gold factory diamond set case. Reference BA 812, serial 331. Unsigned quartz movements. Silvered factory diamond set dials, Arabic numerals six and twelve. Fitted to an unsigned black crocodile strap with signed yellow metal pin buckle. 31mm. **£1,800-2,400 (plus 27.6% BP*)**

288 ^{360°}
View



U-BOAT - a gentleman's Classico chronograph wrist watch. PVD-treated stainless steel case with exhibition case back. Reference 316-L, serial 0355. Signed automatic movement with quick date set. Black dial with baton hour markers, Arabic numeral four, eight and twelve, subsidiary carbon-fibre recorder dials to six and twelve, subsidiary seconds dial to three, date aperture to nine. Fitted to a signed black leather strap with PVD-treated stainless steel deployant clasp. 52mm. **Box and papers. £400-500 (plus 27.6% BP*)**

BP* - Buyer's Premium of 23% (plus VAT) or 27.6% (VAT included)

289 



WITTAUER - a gentleman's wrist watch. Yellow metal case, stamped 14k. Numbered 2384. Signed manual wind movement. Silvered dial with alternating Arabic numeral and baton hour markers, subsidiary seconds dial to six. Fitted to an unsigned black leather strap with gold plated pin buckle. 22mm. **£300-400** (plus 27.6% BP*)

292 



OMEGA - a military issue wrist watch. Stainless steel case, stamped with British Broad Arrow. Numbered W.W.W. Y 504, 10664703. Signed manual wind calibre 266, numbered 14203712. Black dial with Arabic numeral hour markers, subsidiary seconds dial to six. Fitted to an unsigned black nylon 'NATO' style strap with stainless steel pin buckle. 35mm. **£750-1,000** (plus 27.6% BP*)

Military Wrist Watches

290 



OMEGA - a military issue wrist watch. Stainless steel case, stamped with British Broad Arrow. Numbered W.W.W. Y 3407, 10667606. Signed manual wind calibre 30T2, numbered 10585619. Black dial with Arabic numeral hour markers, subsidiary seconds dial to six. Fitted to an unsigned green nylon 'NATO' style strap with stainless steel pin buckle. 35mm. **Please see the condition report for details of third party intervention. £400-500** (plus 27.6% BP*)

Watch Boxes

293



HUBLLOT - a complete watch box. **£40-60** (plus 27.6% BP*)

291 



LEMANIA - a military issue single button chronograph wrist watch. Stainless steel case, stamped with British Board Arrow. Numbered H.S 9 2663. Unsigned manual wind calibre 15 CHT. Silvered 'sterile' dial with Arabic numeral hour markers, subsidiary recorder dials to three and nine. Fitted to an unsigned black and grey nylon 'NATO' style strap with nickel plated pin buckle. 38mm.

This watch was issued to Acting Sub-Lieutenant Charlie Bowley, who was a member of the Goldfish Club after crash landing. He went over the side of HMS Indomitable but was rescued by a following destroyer. £1,500-2,000 (plus 27.6% BP*)

294



HUBLLOT - a complete watch box. **£40-60** (plus 27.6% BP*)

BP* - Buyer's Premium of 23% (plus VAT) or 27.6% (VAT included)

295



ROLEX - a complete watch box. **£70-100**
(plus 27.6% BP*)

296



ROLEX - a complete watch box. **£50-80**
(plus 27.6% BP*)

297



ROLEX - a complete watch box. **£50-80**
(plus 27.6% BP*)

298



ROLEX - a complete watch box. **£50-80**
(plus 27.6% BP*)

299



TUDOR - a complete watch box. **£50-80**
(plus 27.6% BP*)

BP* - Buyer's Premium of 23% (plus VAT) or 27.6% (VAT included)

Complicated Pocket Watches

300



A full hunter quarter repeater chronograph pocket watch. Yellow metal case, stamped 18K with poinçon. Unsigned keyless wind movement with club tooth lever escapement, repeating and chronograph complications. White dial with Roman numeral hour markers, subsidiary seconds dial to six. 52mm. 99gms. **£1,000-1,500** (plus 27.6% BP*)

301



A full hunter repeater chronograph pocket watch. Yellow metal case, stamped 18K. Unsigned keyless wind movement with chronograph and repeating complications, quick date set and club tooth lever escapement. White enamel dial with Roman numeral hour markers, day and month apertures to nine and three, subsidiary seconds dial and moonphase indicator to six, date dial to twelve. 58mm. 131gms. **£2,000-2,500** (plus 27.6% BP*)

302



An open face center seconds chronograph pocket watch by Monk Brothers. 18ct yellow gold case, hallmarked London 1886. Signed three quarter plate movement with ratchet tooth lever escapement, numbered 47247. White dial with Roman numeral hour markers. 51mm. 101gms. **£800-1,200** (plus 27.6% BP*)

303



An open face eight day chronometer pocket watch by Longines. Yellow metal case, stamped 18k with poinçon. Numbered 2973607. Signed keyless wind eight day nineteen jewel calibre 19.41 with club tooth lever escapement. White enamel dial with Arabic numeral hour markers, subsidiary power reserve dial to twelve, subsidiary seconds dial to six. 50mm. 97gms. **£800-1,200** (plus 27.6% BP*)

Victorian Pocket Watches

304



A half hunter pocket watch by Ollivant & Botsford. 18ct yellow gold case, hallmarked London 1863. Signed key wind three quarter plate movement with ratchet tooth lever escapement. White dial with Roman numeral hour markers, subsidiary seconds dial to six. 50mm. 103gms. **£660-860** (plus 27.6% BP*)

305



An open face fob watch by Webb & Son. 18ct yellow gold case, hallmarked London 1844. Signed key wind full plate movement with ratchet tooth lever escapement. Champagne dial with Roman numeral hour markers. 39mm. 49gms. **£300-400** (plus 27.6% BP*)

BP* - Buyer's Premium of 23% (plus VAT) or 27.6% (VAT included)

Georgian Pocket Watch**306**

A half hunter pocket watch. 18ct yellow gold case, import hallmarked London 1908. Numbered 126222. Unsigned keyless wind movement with club tooth lever escapement. White dial with Roman numeral hour markers, subsidiary seconds dial to six. 47mm. 73gms. **£750-1,000** (plus 27.6% BP*)

20th Century Pocket Watches**307**

An open face pocket watch by Ulysse Nardin. Yellow metal case, stamped 18K 0.750 with poinçon. Numbered 693282. Signed keyless wind movement with club tooth lever escapement, numbered 161277. Silvered dial with baton hour markers, subsidiary seconds dial to six. 49mm. 59gms. **£650-850** (plus 27.6% BP*)

308

A full hunter pocket watch by Waltham. 9ct yellow gold case, hallmarked Chester 1925. Numbered 3117. Signed keyless wind movement with club tooth lever escapement, numbered 23462959. White dial with Arabic numeral hour markers, subsidiary seconds dial to six. 50mm. 94gms. **£400-500** (plus 27.6% BP*)

309

An open face pocket watch by E. Gübelin. White metal case set with diamonds, stamped with the Swiss hallmark for Platinum. Numbered 43113. Signed keyless wind nineteen jewel movement with club tooth lever escapement. Silvered dial with Arabic numeral hour markers. 43mm. 46gms. **£1,000-1,500** (plus 27.6% BP*)

Military Pocket Watch**310**

An open face military issue pocket watch by Rolex. Nickel plated case, stamped A.12462 G.S Mk. II. Signed keyless wind calibre 718. Black dial with Arabic numeral hour markers, subsidiary seconds dial to six. 50mm. **£300-400** (plus 27.6% BP*)

Stopwatch**311**

A Ferrari Duostop lap timer by Hanhart. Base metal case. Keyless wind movements. Left timer, black dial with Arabic numeral divisions at five minute intervals, subsidiary recorder dial to twelve, right timer, black dial with luminous Arabic numeral hour markers, subsidiary recorder dials to six and twelve. 130mm. *Box.*

This Hanhart Duostop is from a very limited production run made for the Ferrari racing team in the late 1950s and early 1960s. This example comes with its original case and it's a fascinating part of Ferrari history. £6,500-8,500 (plus 27.6% BP)*

BP* - Buyer's Premium of 23% (plus VAT) or 27.6% (VAT included)

312



A gold plated alarm travel clock by Jaeger-LeCoultre. Gold plated case with chapter ring bezel. Numbered 786730. Signed manual wind calibre K814. Silvered dial with baton hour markers, inner champagne alarm indicator. **41mm. £360-460 (plus 27.6% BP*)**

313



A Dual Time alarm desk clock by Franck Muller. Stainless steel case. Numbered 0266. Unsigned quartz movements. Black dial with Arabic numeral hour markers, subsidiary second time zone dial to six. **85mm. £560-660 (plus 27.6% BP*)**

314



A yellow metal belcher link Albert chain, with T-bar and bloodstone swivel fob. **Stamped 9C. Total weight 34gms. Total length 38cm. £300-400 (plus 27.6% BP*)**

315



A yellow metal curb link Albert chain, with T-bar and horseshoe fob. **Total weight 48gms. Total length 38cm. £300-400 (plus 27.6% BP*)**

Notes

BP* - Buyer's Premium of 23% (plus VAT) or 27.6% (VAT included)

Fellows

Established 1876

Auction Calendar 2019

October	The Watch Sale	Tuesday 15th at 11am
	Jewellery & Pawnbroker Jewellery	Thursday 17th at 10am
November	Jewellery & Pawnbroker Jewellery	Thursday 7th at 10am
	Fine Jewellery	Thursday 14th at 11am
	Pawnbroker Jewellery & Watches	Thursday 21st at 11am*
	The Watch Sale	Tuesday 26th at 11am
Timed Auctions**	Online Jewellery	Ends from Thursday 7th November at 10am
	Online Jewellery & Costume Jewellery	Ends from Thursday 5th December at 10am

*Please note that there will be only one viewing day for this sale, visit our website for more information.

** Please note that this auction is a timed sale hosted by Fellows Live, more information can be found on our website.

Dates are subject to change, please check the website for the definitive auction list.

Fellows recommend that all bidders and buyers read our conditions of buying and buyer's premium available on our website.

For further information please contact:

Jewellery

Heather Bailey
heather@fellows.co.uk
0121 212 6303

Watches

Laura Bishop
laurab@fellows.co.uk
0121 212 5506

Silver & Coins

Alison Jakeway
alisonj@fellows.co.uk
0121 212 2131


Antiques & Fine Art

Kevin Jackson
kevin@fellows.co.uk
0121 212 2131

IMPORTANT NOTICES FOR PURCHASERS

Due to opening of case backs or possible deterioration of seals, we recommend that watches are re-sealed by an authorised technician to ensure any stated water resistance is retained.

Whilst Fellows makes every attempt to identify and disclose any custom attributes where possible, the absence of any disclosure is not a guarantee of authenticity, Fellows accepts no liability if an item is later found to be with non-brand alterations. Neither is it always possible to authenticate every component, this includes individual external and movement parts, watch glasses, hands, straps and buckles, this is often due to items having been previously maintained outside of authorised workshops, Fellows are therefore unable to accept any liability if any component or part is later found to be with issue – this includes compatible yet non-original brand parts and/or numbering that may limit maintenance options through workshops in the future.

 **Item may have export restrictions for customers outside of the EU.**

Export of Watches, Accessories and Parts containing materials from Endangered Species:

Many of the articles offered in this sale have components, or are parts which may contain material(s) derived from endangered or protected animal materials e.g. alligator, crocodile skin and as such are prohibited by law to be exported by Fellows without a CITES permit. Fellows are therefore required to remove any restricted strap prior to delivery of the watch and buckle/clasp, and are unable to ship from their offices any other restricted part. It is the responsibility of the prospective buyer to understand and comply with any restrictions.

Please contact our department specialist for further information.

Fellows routinely provide a number of viewing days to enable any prospective bidder, the opportunity to view and inspect any item prior to sale. It is assumed that any buyer who has viewed an item is able to make an informed decision and was sufficiently satisfied to bid. Neither Fellows nor its employees, agents or Vendors may accept liability for the correctness of such opinions, and all conditions and warranties, express, implied or statutory are hereby excluded.

Diamond Grading Terms

DIAMOND COLOUR

GIA	OLD WORLD TERMS	EXPLANATION	GIA	OLD WORLD TERMS	EXPLANATION
D	Finest White (Jager)	Colourless	K	Silver Cape (Top Cape)	Traces of colour. Small stones in this range will 'face up' colourless when mounted but larger stones will be tinted.
E	Finest White (River)	Colourless	L	Silver Cape (Top Cape)	Traces of colour. Small stones in this range will 'face up' colourless when mounted but larger stones will be tinted.
F	Fine White (River)	Colourless	M	Light Cape (Cape)	Traces of colour. Small stones in this range will 'face up' colourless when mounted but larger stones will be tinted.
G	Fine White (Top Wesselton)	Near Colourless: diamonds 'face up' colourless. Slight traces of colour will not be apparent in the mounted stones to other than the trained eye.	N	Light Cape (Low Cape)	Diamonds graded N through Z+ display a yellowish tint even to the untrained eye.
H	White (Top Wesselton)	Near Colourless: diamonds 'face up' colourless. Slight traces of colour will not be apparent in the mounted stones to other than the trained eye.	P	Cape O – R (Very Light Yellow)	Diamonds graded N through Z+ display a yellowish tint even to the untrained eye.
I	White (Top Wesselton)	Near Colourless: diamonds 'face up' colourless. Slight traces of colour will not be apparent in the mounted stones to other than the trained eye.	Z	Cape R – Z (Very Light Yellow)	Diamonds graded N through Z+ display a yellowish tint even to the untrained eye.
J	Top Silver (Top Wesselton)	Near Colourless: diamonds 'face up' colourless. Slight traces of colour will not be apparent in the mounted stones to other than the trained eye.	Z+	Fancy Yellow	Diamonds graded N through Z+ display a yellowish tint even to the untrained eye.

DIAMOND CLARITY

GIA	OLD WORLD TERMS	EXPLANATION	GIA	OLD WORLD TERMS	EXPLANATION
IF	Internally Flawless	No inclusions visible with a 10x lens even to an experienced grader.	SI1 & SI2	Slightly Included	Noticeable inclusions visible with a 10x lens.
VVS1 & VVS2	Very Very Slightly Included	Minute inclusions, which are difficult, even for experienced graders, to see with a 10x lens.	I1, I2 & I3	Pique 1, 2 & 3	Obvious inclusions, may be visible to the unaided eye, face up. In I3 they may affect the stone's durability.
VS1 & VS2	Very Slightly Included	Minor inclusions, observable with effort with a 10x lens.			

1	£1,000	46	£740	96	£2,600	144	£2,200	189	£1,200	234	£1,300	282	£2,000	332	£380	388	£85
3	£14,000	47	£660	97	£3,500	145	£520	190	£2,000	235	£1,200	283	£1,500	333	£2,700	389	£95
5	£1,100	48	£460	98	£3,000	148	£300	191	£1,800	236	£1,600	284	£820	334	£340	390	£80
6	£2,100	49	£500	99	£2,800	149	£980	192	£840	237	£7,800	285	£940	336	£280	391	£90
7	£760	50	£520	100	£460	150	£380	194	£1,200	238	£1,000	288	£5,500	337	£300	392	£100
8	£1,500	51	£1,100	102	£920	151	£360	195	£980	240	£5,700	289	£2,700	339	£440	393	£95
9	£1,900	53	£580	103	£2,800	152	£740	196	£600	241	£25,000	290	£2,200	340	£920	394	£110
10	£1,700	54	£1,200	104	£700	153	£840	197	£3,900	243	£5,100	292	£1,200	341	£680	395	£45
11	£2,100	56	£600	105	£1,300	154	£980	198	£1,300	244	£2,000	297	£540	342	£620	396	£40
12	£620	57	£400	106	£300	155	£620	199	£2,400	245	£2,000	298	£420	343	£1,600	397	£46
13	£960	59	£3,800	107	£1,100	156	£560	200	£1,300	246	£680	299	£460	344	£260	398	£1,400
14	£1,100	60	£1,300	112	£1,000	159	£280	201	£2,500	247	£1,000	300	£400	346	£840	400	£1,400
15	£1,700	61	£3,700	113	£940	160	£660	202	£1,200	248	£1,600	301	£500	347	£2,000	401	£1,800
16	£1,400	63	£520	114	£500	161	£4,700	203	£2,700	249	£3,600	303	£560	348	£2,000	402	£1,100
17	£2,000	65	£760	115	£820	162	£300	204	£2,200	250	£960	304	£260	349	£500	403	£340
18	£840	66	£1,400	116	£1,000	163	£360	205	£900	251	£980	305	£1,100	352	£380	404	£260
19	£2,300	67	£2,000	117	£460	164	£480	206	£1,000	252	£1,800	307	£400	353	£700	406	£420
20	£2,400	68	£1,000	118	£420	165	£540	207	£1,300	253	£1,200	308	£1,600	356	£900	407	£520
21	£1,100	70	£1,500	119	£860	166	£460	210	£1,600	254	£5,700	309	£660	357	£540		
22	£300	71	£1,500	121	£360	167	£5,800	211	£1,000	255	£2,800	310	£500	358	£280		
23	£1,600	72	£1,000	122	£500	168	£3,300	212	£880	256	£5,100	311	£720	359	£2,300		
25	£1,200	73	£600	123	£460	169	£1,200	213	£1,700	257	£2,100	312	£700	363	£320		
26	£1,900	74	£380	125	£500	170	£1,600	214	£480	258	£1,400	313	£540	364	£2,800		
27	£400	75	£1,100	126	£980	171	£820	216	£560	260	£880	315	£1,100	366	£280		
28	£760	76	£400	127	£760	172	£1,400	217	£1,400	262	£340	316	£360	367	£540		
29	£1,600	79	£2,500	128	£420	174	£1,700	218	£1,800	264	£1,600	317	£720	368	£460		
31	£460	80	£360	129	£2,900	175	£1,500	219	£780	267	£460	319	£320	369	£620		
32	£860	81	£2,000	130	£820	176	£3,300	221	£720	268	£1,800	320	£280	372	£400		
33	£3,500	83	£880	132	£460	177	£340	222	£1,100	269	£7,100	321	£740	373	£300		
34	£960	85	£620	133	£420	178	£940	223	£1,200	270	£4,300	322	£2,400	374	£580		
35	£840	86	£980	134	£460	179	£1,500	224	£2,500	272	£2,000	323	£10,000	378	£340		
37	£580	87	£300	135	£2,100	181	£2,500	226	£2,400	273	£900	324	£320	379	£460		
39	£580	88	£2,100	136	£360	182	£2,900	227	£1,200	274	£1,700	325	£440	380	£860		
40	£280	89	£2,700	137	£840	183	£3,800	228	£2,100	276	£17,500	326	£2,300	383	£760		
41	£300	90	£3,100	139	£380	184	£1,000	229	£1,800	277	£2,000	327	£2,000	384	£90		
42	£380	91	£1,200	141	£1,000	186	£4,200	230	£960	279	£1,900	328	£1,800	385	£50		
43	£2,700	93	£580	142	£280	187	£3,100	231	£1,800	280	£650	329	£15,000	386	£46		
44	£800	95	£4,100	143	£460	188	£4,600	233	£2,200	281	£860	331	£960	387	£46		



Free Live Bidding!

Fellows are delighted to announce the introduction of Fellows Live. This is a new bidding platform where all bidders can follow the sale and bid online for **free**. Say goodbye to additional surcharges when it comes to bidding!

Anyone using Fellows Live will only have to pay the standard Buyer's Premium (plus VAT), on items purchased using this method.

"Our main aim is to make bidding at Fellows as easy and uncomplicated as possible" said Stephen Whittaker, the company's Managing Director. Adding, ***"Our team has been working to create a user-friendly platform, without the additional surcharges levied by the leading auction aggregator sites. We have absorbed the costs associated with live and timed bidding for our customers because we believe it should all be part of the service. We are committed to offering value for money at Fellows"***.

As well as Fellows Live we have introduced a number of new features to improve the user journey:

- Bid Calculator - See exactly how much you would pay when using different bidding methods.
- An accumulating bid basket - know exactly what you are spending as you are bidding live.
- Lot alerts – be informed as soon as an item you are interested in is listed in an online catalogue.
- Complete transparency on other bids – the platform informs the user where the other bids are coming from, whether it is another bidding platform, the room or on the phone.

Fellows Auctioneers Ltd

Terms and Conditions

Fellows Auctioneers Ltd carries on business, including the conduct of Auctions, on the following general conditions. This includes business with Bidders, Buyers, Vendors, consignors, users of this website, and with all those present on the Premises prior to or in connection with an Auction (all as hereinafter defined).

1. INTRODUCTION

1.1 The following defined terms are used in these Conditions :

“Auction” means any Auction conducted by Fellows, either at their premises or elsewhere (including any internet-based auctions);

“Auctioneer” means Fellows or its authorised Auctioneer, as appropriate;

“Bidder” means a bidder at an Auction, including bidders personally present at the venue and those bidding by telephone or over the internet or otherwise;

“Buyer” means the bidder whose bid was the last bid when the Auctioneer brings down the hammer;

“Conditions” means these terms and conditions;

“Consigned Property” means the items consigned by the Vendor to Fellows for offer at an Auction;

“Deliberate Forgery” means an imitation made with the intention of deceiving as to authorship, origin, date, age, period, culture or source but which is unequivocally described by Fellows in the catalogue as being the work of a particular creator and which at the date of the sale had a value materially less than it would have had if it had been in accordance with the description;

“Fellows” means Fellows Auctioneers Ltd;

“Hammer Price” means the level of bidding reached (at or above any reserve) when the Auctioneer brings down the hammer;

“Includes” means “includes but not limited to”, and “including” means “including but not limited to”

“Lot” means any Consigned Property accepted by Fellows for offer at Auction;

“Stated Rate” means Fellows’ published rates of commission for the time being and value added tax thereon (also available on request);

“Terms of Consignment” means any stipulated terms and rates of commission on which Fellows accepts instructions from Vendors [or their agents];

“Total Amount Due” means the Hammer Price in respect of the Lot sold together with any premium, commission, value added tax chargeable and any additional charges payable by a defaulting Buyer under these Conditions;

“Vendor” means the vendor of an item (including Consigned Property) which is submitted to Fellows for offer for sale at an Auction;

“Website” means this website;

“You” means any user of the Website.

2. WEBSITE

2.1 You may access most areas of the Website without registering your details with us. Certain areas of the Website are only open to you if you register. By accessing any part of the Website, you shall be deemed to have accepted these Conditions notice in full. If you do not accept this legal notice in full, you must leave the Website immediately.

2.2 Fellows may revise these Conditions at any time by updating this posting. You should check the Website from time to time to review the then current legal notice, because it is binding on you. Certain provisions of this legal notice may be superseded by expressly designated legal notices or terms located on particular pages at the Website.

2.3 Unless otherwise stated, the copyright and other intellectual property rights in all material on the Website (including without limitation photographs and graphical this legal notice, your permission to use the Website automatically terminates and you must immediately destroy any downloaded or printed extracts from the Website.

2.4 No part of the Website may be reproduced or stored in any other website or included in any public or private electronic retrieval system or service without Fellows’ prior written permission.

2.5 Any rights not expressly granted in these Conditions are reserved.

3. VISITOR MATERIAL AND CONDUCT

3.1 Other than personally identifiable information, which is covered under our Privacy Policy, any material you transmit or post to the Website shall be considered nonconfidential and non-proprietary. Fellows shall have no obligations with respect to such material. Fellows and its designees shall be free to copy, disclose, distribute, incorporate and otherwise use such material and all data, images, sounds, text and other things embodied therein for any and all commercial or non-commercial purposes.

3.2 You are prohibited from posting or transmitting to or from the Website any material: that is threatening, defamatory, obscene, indecent, seditious, offensive, pornographic, abusive, liable to incite racial hatred, discriminatory, menacing, scandalous, inflammatory, blasphemous, in breach of confidence, in breach of privacy or which may cause annoyance or inconvenience; or for which you have not obtained all necessary licences and/or approvals; or which constitutes or encourages conduct that would be considered a criminal offence, give rise to civil liability, or otherwise be contrary to the law of or infringe the rights of any third party, in any country in the world; or which is technically harmful (including, without limitation, computer viruses, logic bombs, Trojan horses, worms, harmful components, corrupted data or other malicious software or harmful data).

3.3 You may not misuse the Website (including, without limitation, by hacking).

3.4 Each registration is for a single user only. Fellows does not permit you to share your user name and password with any other person nor with multiple users on a network.

3.5 Responsibility for the security of any passwords issued rests with you.

4. THE VENDOR

4.1 Fellows shall act as agent of the Vendor only. Any contract for the sale of a Lot will be formed between the Vendor and the Buyer.

4.2 The Vendor warrants and represents to Fellows and the Buyer that the Vendor is the sole and true owner of the Consigned Property or is properly authorised by the sole and true owner to consign it for sale and is able to transfer good and marketable title to the property free from any third party claims. The Vendor warrants and representatives that the Vendor has revealed all pertinent information that the Vendor possesses about the items, including in relation to any repairs or alterations that may have been carried out. The Vendor shall indemnify Fellows and the Buyer against any loss and expense caused by any breach of this clause 4.2.

4.3 The Vendor shall be entitled to place prior to the Auction a reserve on any Lot, being the minimum Hammer Price at which Lot may be sold. Reserves must be reasonable and Fellows may decline to offer goods which in Fellows’ opinion would be subject to an unreasonably high reserve (in which case goods carry the storage and insurance charges stipulated in the terms of consignment). Reserves will not be accepted on items with a bottom estimate less than £300. The Auctioneer also reserves the right not to accept items which they deem to be unsuitable for Auction. Any estimate given shall be an opinion and is not an undertaking of any kind.

4.4 A reserve once set cannot be changed except with the written prior consent of Fellows.

4.5 Where a reserve has been placed only Fellows may bid on behalf of the Vendor.

4.6 The Vendor authorises Fellows to deduct commission from any sold items at a rate of 15% (plus VAT) on any item with a hammer price of £3,000 (or under) or 12.5% (plus VAT) on items over £3,000. Loss or liability for damage will be charged at a rate of 1.5% (plus VAT) calculated on the hammer price. A Marketing fee of £10 (plus VAT) will be charged for each Lot, if unsold we will charge a nominal handling fee of £5 (plus VAT). All items below £35 are subject to a minimum fee of £5 (plus VAT) per Lot.

4.7 Fellows will pay the Hammer Price achieved for the Lot (less its commission and applicable fees in accordance with clauses 4.6, 9.2 and 9.3), to the Vendor on receipt of payment of the Total Amount Due in full by the Buyer.

- 4.8 The Vendor authorises Fellows in their discretion to negotiate a sale by private treaty in the case of a Lot unsold at Auction, in which case the same charges will be payable as if the Lot had been sold at Auction.
- 4.9 Fellows do not themselves undertake the collection of any items but may, as the Vendor's agent, instruct a contractor on behalf of the Vendor. Fellows accepts no liability for the actions of such contractor who contracts with the Vendor direct.
- 4.10 Fellows disclaims all liability for items delivered to their saleroom without sufficient sale instructions, and reserves the right to make a minimum warehousing charge of [£1.00] per item per day. Unsold items are subject to the same charges if the Vendor does not remove them within a reasonable time of notification. If not removed within three weeks Fellows reserves the right to sell the items and defray charges from any net proceeds of sale or at the Vendor's expense to consign them to the local authority for disposal. Fellows disclaims any liability for default by the Buyer or for paying out the Vendor before receiving payment by the Buyer.
- 4.11 Subject to clause 4.9, Fellows holds all items on their premises and in their custody covered against the risks of fire, burglary and water damage on the scale of charges notified in the terms of consignment and payable by the Vendor up to the date of any sale and (in Fellows' discretion) the Buyer thereafter until collection.
- 4.12 The right of Fellows to bid on behalf of the Vendor is expressly reserved. The Vendor acknowledges that Lots are sold subject to the stipulations of these Conditions in their entirety and on the Terms of Consignment as notified to consignors at the time of the entry of the Lot.
- 4.13 The Auctioneer reserves the right to dispose of any item that in their opinion is unsaleable. Items, including electrical goods and soft furnishings, which do not comply with current legislation will not be offered at Auction.
- 4.14 Any items unsold after an Auction will be reoffered in a subsequent Auction at a reduced reserve to be agreed within seven days. The Auctioneer may request the removal of an item if a reduced price cannot be agreed; items not removed within 14 days will be subject to a storage charge.
- 4.15 A charge of 10% (plus VAT) based on the middle estimate – plus any other charges incurred – may be levied for any Lot withdrawn by the Vendor from offer at an Auction. If the item has to be returned by post (or any other method) the Vendor will be responsible for this charge. These charges are to be paid before the item is returned.
- 4.16 By submitting the item to Fellows for offer at Auction, the Vendor agrees to the Terms of Consignment and authorises Fellows to deduct the specified charges.
5. PUBLICITY
- 5.1 Any catalogue and buyer guides are provided for information only and do not form part of these Conditions. The catalogue and the buyer guides may contain additional terms and conditions.
- 5.2 Fellows reserve the right to use any photographs, background information, and research for publicity purposes both before and after the sale.
6. THE AUCTION
- 6.1 Any Auction shall be conducted at the absolute discretion of the Auctioneer.
- 6.2 The Auctioneer shall conduct the Auction with reasonable skill and care. For example, what constitutes a bid shall be at the absolute discretion of the Auctioneer, acting with reasonable skill and care.
- 6.3 The Auctioneer shall have the right to refuse any bid which does not exceed the previous bid by at least 10% or by such greater proportion as the Auctioneer shall in his or her absolute discretion direct.
- 6.4 Where two or more bids at the same level are simultaneously received by the Auctioneer, the Auctioneer at his absolute discretion shall determine which bid to prefer. Subject to the foregoing, where two or more bids at the same level are simultaneously received by the Auctioneer, any bid by a Bidder personally present at an Auction shall take preference over any bid submitted by telephone or over the internet. Any bid made or attempted by telephone or over the internet shall be deemed to have been made only if received by the Auctioneer.
- 6.5 Fellows shall have the right, at its absolute discretion, to refuse admission to its premises or attendance at (or participation in) any Auction by any person.
7. BIDDERS
- 7.1 Bidders may be required to register their particulars. Bidders attending in person may be required to satisfy Fellows' security arrangements before entering any part of the premises to view or bid.
- 7.2 You accept full liability for all bids submitted via your My Fellows account. Once a bid has been made by a Bidder on our website, the bid can be lowered or increased up until 9am on the day of the auction. You must sign into your My Fellows account to do this and you will receive an email confirmation for any changes made.
Should a bid be placed in error on the website you must contact Fellows immediately. Failure to contact Fellows before the auction takes place will result in liability for the full payment of the item.
- 7.3 Bidders using the live bidding facility on www.fellows.co.uk are agreeing to the terms and conditions of sale for Fellows. Any successful bids using the live bidding facility will be subject to the usual Buyer's Premium, plus VAT.
- 7.4 Bidders are deemed to act as principals unless there is a written prior acknowledgement by Fellows that a Bidder is acting as an agent for a named principal.
- 7.5 Bidders are strongly encouraged to attend the Auction in person. Bidders shall be responsible for any decision to bid for a particular Lot and shall be deemed to have carefully inspected and satisfied themselves as to its condition. Neither Fellows nor its employees or agents shall be responsible for any neglect or default in doing or failing to do so.
- 7.6 Bidders are given ample opportunities to view and inspect before any sale and prospective Buyers must satisfy themselves as to all such matters. Neither Fellows or its employees or agents nor the Vendor accept liability for the correctness of such opinions and all conditions and warranties, express, implied or statutory are hereby excluded.
8. THE BUYER
- 8.1 Immediately a Lot is sold, the Buyer shall:
- (a) give to Fellows their name and address and, if requested proof of identity, and pay to Fellows the Total Amount Due.
- (b) [Fellows may, at its absolute discretion, agree credit terms with the Buyer before an Auction under which the Buyer may be entitled to take possession of Lots up to an agreed value in advance of payment by a stipulated future date of the Total Amount Due.]
- 8.2
- 8.3 Cheques shall not be acceptable by Fellows (unless Fellows in its absolute discretion permits payment by such method) nor are third party references or credit facilities with other Auction houses. If a cheque is tendered Fellows reserves the right to instruct its bank to check the Buyer's status and account balance before exercising any discretion. Any credit arrangement must be settled at least 4 days before the relevant sale. Any permitted payment by credit card shall carry an extra charge to the Buyer of such percentage of the Total Amount Due as is displayed on the premises.
- 8.4 Any payments by a Buyer to Fellows may be applied by Fellows towards any sums owing from that Buyer to Fellows on any account whatever without regard to any directions of the Buyer or his agent, whether express or implied.
9. THE PURCHASE PRICE
- 9.1 On the first £100,000 of the Hammer Price (of any individual Lot) the buyer will pay the Hammer Price and a premium of 23% (Plus VAT). The said premium not being negotiable and payable by ALL Buyers. The Vendor authorises Fellows to retain beneficially the premium payable by Buyers. Value Added Tax is charged at the rate prevailing by law at the date of sale.
- 9.2 On the excess over £100,000 of the Hammer Price (of any individual Lot), the Buyer will pay the Hammer Price and a premium of 15% (plus VAT). The said premium not being negotiable and payable by ALL Buyers. The Vendor authorises Fellows to retain beneficially the premium payable by Buyers. Value Added Tax is charged at the rate prevailing by law at the date of sale.
- 9.3 Value Added Tax on the Hammer Price is imposed on all items affixed with an asterisk thus - *.
- 9.4 Buyers using the Fellows Live bidding platform will not pay any additional commission, just the buyer's premium. Buyers will pay an additional commission

charge of 4.95% + VAT of the hammer price if lots are successfully purchased online via the saleroom.

9.5 Non UK or EU VAT registered buyers can have most classes of VAT refunded on their purchases - please

note that auctioneers are under no obligation to provide VAT refunds, although many will offer this service. HMRC are the ultimate refunding authority. VAT refunds are subject to provision of statutory export/import documentation. HMRC have decreed that VAT on buyer's premium is always payable whether the buyer is domiciled in the UK, the EU or outside the EU or wherever the goods are to be sent. So auctioneers cannot refund VAT on buyer's premium if the goods are sold under normal VAT rules.

10. TITLE AND COLLECTION OF PURCHASES

10.1 The ownership of any Lot purchased shall not pass to the relevant Buyer until they have made payment in full to Fellows of the Total Amount Due.

10.2 Buyers shall at their own risk and expense take away any Lot that they have purchased and paid for not later than 2 working days following the day of the Auction after which they shall be responsible for any removal, storage and insurance charges.

11. DEFAULT BY BUYER OR VENDOR

11.1 As Fellows act as agent for the Vendor, Fellows is not responsible for default by the Vendor or the Buyer.

11.2 If any Lot is not paid for in full and taken away in accordance with these Conditions, or if there is any other breach of these Conditions, Fellows as agent for the Vendor shall at its absolute discretion and without prejudice to any other rights it may have, be entitled to exercise all or any of the following rights and remedies:

- (a) to proceed against the Buyer for an action for debt or damages for breach of contract;
- (b) to rescind the sale of that Lot and/or any other Lots sold by Fellows to the defaulting Buyer;
- (c) to re-sell the Lot by Auction or private treaty. If a lower Hammer Price is achieved on the re-sale than that achieved on the original sale the defaulting Buyer shall be liable for the difference (after crediting any part payment and adding any re-sale costs). Fellows will account to the Vendor for any surplus achieved on a re-sale, however, it shall only be required to account to the Vendor for any resulting deficiency in the event that it receives payment of such sum in full from the defaulting Buyer.
- (d) to remove, store and insure the Lot at the expense of the defaulting Buyer and, in the case of storage, either at Fellows' premises or elsewhere;
- (e) to charge interest at a rate not exceeding [1.5%] per month on the total amount due to the extent it remains unpaid for more than 2 working days after the sale;
- (f) to retain that or any other Lot sold to the defaulting Buyer until that Buyer pays the total amount due;
- (g) to reject or ignore bids from the defaulting Buyer at future Auctions or to impose conditions before any such bids shall be accepted;
- (h) to apply any proceeds of sale of other Lots due or in future becoming due to the defaulting Buyer towards the settlement of the total amount due and to exercise a lien on any of the Buyer's property in Fellows' possession for any purpose.

12. DELIBERATE FORGERIES

12.1 Subject to clause 12.2, any representation or statement by Fellows (including in any catalogue) as to authorship, genuineness, origin, date, age, provenance, condition or estimated selling price is a statement of opinion only. Prospective Buyers are given ample opportunities to view and inspect before any sale and prospective Buyers must satisfy themselves as to all such matters. Neither Fellows or its employees or agents nor the Vendor accept liability for the correctness of such opinions and all conditions and warranties, express, implied or statutory are hereby excluded.

12.2 Any Lot which proves to be a Deliberate Forgery may be returned to Fellows by the Buyer within 21 days of the Auction provided it is in the same condition as when bought, and is accompanied by particulars identifying it from the relevant

catalogue description and a written statement of defects. If Fellows is satisfied from the evidence presented that the Lot is a Deliberate Forgery Fellows shall refund the money paid by the Buyer for the Lot (but not the amount of any consequential loss, damages, expenses or interest) provided that (1) if the catalogue description reflected the accepted view of scholars and experts as at the date of sale or (2) the Buyer personally is not able to transfer a good and marketable title to Fellows.

13. LIMITATIONS OF LIABILITY

13.1 All members of the public on the premises are there at their own risk and must note the lay-out of the accommodation and security arrangements.

13.2 Any indemnity under these Conditions shall extend to all actions, costs, expenses, claims and demands whatsoever suffered or incurred by the person entitled to the benefit of it and Fellows declares itself to be a trustee of the benefit of every such indemnity so far as it is expressed to be for the benefit of its employees and agents.

13.3 While Fellows endeavours to ensure that the information on the Website is correct, Fellows does not warrant the accuracy and completeness of the material on the Website. Fellows may make changes to the material on the Website, or to the products and prices described in it, at any time without notice. The material on the Website may be out of date, and Fellows makes no commitment to update such material.

13.4 The material on the Website is provided "as is", without any conditions, warranties or other terms of any kind. Accordingly, to the maximum extent permitted by law, Fellows provides you with the Website on the basis that Fellows excludes all representations, warranties, conditions and other terms which, but for this legal notice, might have effect in relation to the Website.

14. GENERAL

14.1 Any notice to any Buyer, Vendor, Bidder or viewer may be given by first class mail or email in which case it shall be deemed to have been received by the addressee 48 hours after posting or sending. All notices to Fellows must be sent in writing and email is not acceptable.

14.2 Any indulgence extended to any person by Fellows notwithstanding the strict terms of these Conditions or the Terms of Consignment shall affect the position at the relevant time only and in respect of that particular concession only; in all other respects these Conditions shall be construed as having full force and effect.

14.3 These Conditions and any disputes or claims arising out of or in connection with it or their subject matter or formation (including non-contractual disputes or claims) are governed by and construed in accordance with the law of England.

14.4 The parties irrevocably agree that the courts of England have exclusive jurisdiction to settle any dispute or claim that arises out of or in connection with the Agreement or its subject matter or formation (including non-contractual disputes or claims).

15. SHIPPING

15.1 We offer a tracked and insured shipping service for all items with the exception of those in our Antiques, Silver & Collectables sales.

15.2 Items posted outside of the UK will incur a £30 charge.

15.3 Within the UK, hammer totals under £100 will incur a £10 charge.

15.4 Hammer totals over £100 will incur a £20 charge.

15.5 Larger items, as well as those exceeding a value of £20,000 or weighing in excess of 2kg may be subject to additional fees.

15.6 If you have recently moved or wish to have your items sent to a different address, please contact us prior to the sale. We cannot accept alternative addresses for first-time buyers and your items will be sent the address on the ID/payment card. If you pay by bank transfer we can ship to any worldwide address of your choice.

If you would like to receive catalogues on a regular basis, please mark the appropriate category and return this form with a cheque made payable to Fellows for the full amount.

Subscriptions last for a 12 month period

Jewellery 18 catalogues per year	£120	
Fine Jewellery 6 catalogues per year	£60	
The Watch Sale 6 catalogues per year	£60	
The Designer Collection 5 catalogues per year	£50	
Antiques, Silver & Collectables 5 catalogues per year	£50	
The Gemstone Sale 4 catalogues per year	£35	
Watches 4 catalogues per year	£35	

All of the above catalogues are available to view **FREE** of charge on our website **www.fellows.co.uk**

Name (Block Capitals)

Address (Block Capitals)

.....

Post Code Telephone

Signature Date

Email

Fellows

Established 1876

Commission Bidding Slip

Tuesday 15th October 2019
The Watch Sale

Name

Address

.....

..... Postcode

Telephone

Email

Signed Date

Please bid on my behalf for the lot(s) shown below.

The bids will be executed as cheaply as is permitted by other bids in the room or reserves.

I have read and agree to comply with the Conditions of Sale as printed in the catalogue.

Any account for items purchased on my behalf will be settled within 24 hours of the sale and the items collected within two days of sale.

Please complete in block capitals.

Lot	Price	Lot	Price	Lot	Price	Lot	Price

Buyer's Premium

The buyer's premium is 23% (plus VAT) or 27.6% (VAT included) on the first £100,000 of any individual lot. For any individual lot in excess of £100,000 the buyer's premium is 23% (plus VAT) or 27.6% (VAT included) on the first £100,000, for all amounts after £100,001 the buyer's premium is 15% (plus VAT) or 18% (VAT included).

Lots prefixed with * will carry VAT at 20% on the hammer price.

Please note the bidding increments

£50 - £100	£5 increments	Any bids shown not complying with these increments will be ROUNDED UP to the next increment.
£100 - £200	£10 increments	
£200 - £1000	£20 increments	
£1000 - £10,000	£100 increments	
Over £10,000	£1000 increments	

Please check your bids

Fellows

Established 1876

Contact Information

Directors

Stephen Whittaker BA (Hons)

Jayne Whittaker

Ben Griffiths BSc (Hons)

Departments

Customer Services

0121 212 5508

info@fellows.co.uk

Jade Daniels MIWFM

Kain Holroyd

Janis Masters

Kasia McGovern-Hay

Gemma Sheldon

Photography

0121 212 2131

photography@fellows.co.uk

Francesca Allen BA (Hons)

Claire Cleaver

Polly Shave MA (Hons)

Marketing

0121 212 5500

marketing@fellows.co.uk

Liam Bolland BA (Hons)

Howard Cheung BA (Hons)

Jorden Guest MA (Hons)

Luke Poole BA (Hons)

Alexandra Whittaker BA (Hons)

Nicola Whittaker Bsc (Hons), Cert. GA

London Office

0207 127 4198

london@fellows.co.uk

Kirsty Bassett

Prudence Hopkins BA (Hons), FGA, DGA

Rianna Roston MA (Hons)

Annabel Zarandi BA (Hons)

Finance

0121 212 2131

wendy@fellows.co.uk

Wendy Butler

Angela Donnelly BA (Hons) ACMA

Gemma Wilkes

Specialist Departments

Jewellery

0121 212 6303

jewellery@fellows.co.uk

Heather Bailey

Lindsay Beardmore FGA, DGA

Jenny Darcy BA (Hons)

Alexander Duffy BSc (Hons), FGA, DGA

Patricia Grant BA (Hons)

Penelope Gilliver FGA, DGA

Kathryn Hodkin MSci (Hons), FGA, DGA

Howard Pace

David Pregon MA (Hons), FGA, DGA

Ben Randall BA (Hons), G.G., A.J.P.

Emma Scriven BA (Hons), FGA, DGA

Emma Testill FGA, DGA

Amanda Zhang FGA, Msc

Watches

0121 212 5506

watches@fellows.co.uk

Laura Bishop MA (Hons)

Kes Crockett BA (Hons)

Amy Hill CertHE

Michael Jagiela

Carrick Matley

Steven Yambo BA (Hons)

Pawnbrokers

0121 212 6308

pawnbroker@fellows.co.uk

Rachel Bache

Kate Bannister

Claire Dodwell

Annaliese Foster BA (Hons)

Antiques, Silver & Collectables

0121 212 6302

antiques@fellows.co.uk

silverdept@fellows.co.uk

Dannielle Blackledge MA (Hons)

Kevin Jackson

Alison Jakeway MA MRICS

Stephen Watton BA (Hons)

Designer Collection

0121 212 6306

thedesignercollection@fellows.co.uk

Sophie Higgs



Birmingham Saleroom

Situated in the heart of Birmingham's Jewellery Quarter, Fellows is easily accessible from all parts of the United Kingdom, Europe and beyond.

Head Office & Saleroom
Augusta House
19 Augusta Street
Birmingham
B18 6JA

Telephone: 0121 212 2131
Fax: 0121 212 1249
Email: info@fellows.co.uk

London Office

Fellows' London office offers valuations, please call to arrange a time to visit.

London Office
29 Charles Street
Mayfair
London
W1J 5DT

Telephone: 020 7127 4198
Email: london@fellows.co.uk

Follow us on....



[facebook.com/
fellowsauctions](https://facebook.com/fellowsauctions)



[fellowsauctions](https://www.instagram.com/fellowsauctions)



[@fellowsauctions](https://twitter.com/fellowsauctions)



youtube.com/fellows1876



Fellows

Established 1876

Head Office & Saleroom: Augusta House | 19 Augusta Street | Birmingham B18 6JA
London Office | 29 Charles Street | Mayfair | London W1J 5DT
Tel 0121 212 2131 | Tel 020 7127 4198 | www.fellows.co.uk