

Fellows
Established 1876



Fine Jewellery

Thursday 30th January 2020

Free Live Bidding!

Fellows are delighted to announce the introduction of Fellows Live. This is a new bidding platform where all bidders can follow the sale and bid online for **free**. Say goodbye to additional surcharges when it comes to bidding! Anyone using Fellows Live will only have to pay the standard Buyer's Premium (plus VAT), on items purchased using this method.



Fine Jewellery

Thursday 30th January 2020
Starts at 11:00am

Sale to be held in Upstairs Saleroom

Viewing Times

London	
Tuesday 21st January 2020	12 noon - 7pm
Birmingham	
Saturday 25th January 2020	11am - 4pm
Tuesday 28th January 2020	10am - 4pm
Wednesday 29th January 2020	10am - 4pm
Thursday 30th January 2020	8.30am - 11am

(Photo ID required)

Please be aware that you will be asked for photographic proof of identification to be allowed access to the viewing.

Certificated stones

Lot No. 24, 32, 65, 102, 113, 116, 125, 129, 134, 144, 155, 173, 174, 193, 200, 207, 212, 213, 217, 219, 227, 228, 229, 234, 249, 250, 256, 259, 269, 271, 274, 286, 291, 295, 312, 336, 341, 356, 358, 365, 367, 372, 375, 384, 395, 425, 440

Featured Lots

Lot 448
(Front Cover)



Lots 118 and 464
(Back Cover)



Why Buy?

- COMPETITIVE** buyer's premium
- FREE** live online bidding
- FULLY** illustrated catalogue
- EASY** to use, functional website
- ACCURATE** condition reports
- SPECIALISTS** on hand to offer advice
- TRACKED AND INSURED** shipping*

*Please contact Fellows for further information.

Why Sell?

- HIGH PRICES** consistently achieved
- FLEXIBLE** commission rates
- FREE** valuations with no obligation to consign
- RAPID** turnaround for your goods
- TARGETED** advertising to a global audience
- SUPERIOR** quality catalogues
- FULLY** integrated website

Contact the department...

Ben Randall Senior Specialist 0121 212 2131 ben@fellows.co.uk	Alex Duffy Cataloguer 0121 212 5503 alex@fellows.co.uk
---	--



Free delivery on this auction.

Further information

Additional Images and Condition Reports can be found online at our website www.fellows.co.uk

Telephone Bidding is available if you cannot attend an auction. Please ring 0121 212 2131 to arrange a telephone line.

Follow Us



Important Notice

Neither Fellows nor the Vendors are responsible for any reference as to the condition of lots listed. The absence of such reference does not imply that a lot is in good condition or free from faults or imperfections. All weights and dimensions are approximate. Purchasers are advised to carefully inspect lots and make their own opinion as to the condition. Please see section 7 under 'Bidders' in our full terms and conditions. View Fellows Important Notices in full and full terms and conditions at the back of the catalogue.

Key to Symbols

- Lot may have export restrictions.
- Lot comes with box.
- Lot comes with Report.
- Lot will carry an additional 20% VAT charge on the hammer price.

1 A diamond three-stone ring, with hinged band.

Principal diamond estimated weight 2cts, G-H colour, SI clarity. Triangular-shape diamonds estimated total weight 1.05cts, G-H colour, VS2-SI1 clarity. Ring size K. 5gms.

£3,000-4,000 (plus 27.6% BP*)

2 An 18ct gold sapphire line bracelet, with brilliant-cut diamond hexagonal spacers.

Estimated total diamond weight 0.65ct, H-J colour, VS-SI clarity. Hallmarks for London, 2009. Length 13.5cms. 8.1gms.

£500-700 (plus 27.6% BP*)

3 A sapphire and diamond dress ring, by Alfieri & St. John.

Estimated total diamond weight 0.25ct, G-H colour, VS clarity. Italian marks, stamped 750. Ring size M. 23.7gms.

£800-1,200 (plus 27.6% BP*)

4 A mid 20th century cultured pearl and diamond floral dress ring, by Vourakis.

Estimated total diamond weight 1.20cts, H-I colour, VS-SI clarity. Ring size O1/2. 12.2gms.

£500-700 (plus 27.6% BP*)

5 A 1970s amethyst and diamond geometric cluster ring.

Amethyst weight 4.09cts. Estimated total diamond weight 2.50cts, G-H colour, predominantly VS clarity. Ring size I. 14.3gms.

£600-800 (plus 27.6% BP*)

6 A 1960s 18ct gold sapphire and baguette-cut diamond cluster ring.

Sapphire calculated weight 4.32cts, based on estimated dimensions of 10.4 by 8.5 by 5.2mms. Estimated total diamond weight 1.25cts, G+ colour, VVS-VS clarity. Stamped 18ct. Ring size L. 7.4gms.

£800-1,200 (plus 27.6% BP*)

7 A platinum aquamarine single-stone ring, with tapered baguette-cut diamond shoulders, by Kutchinsky.

Aquamarine calculated weight 4.48cts, based on estimated dimensions of 14 by 9.4 by 6.4mms. Estimated total diamond weight 0.50ct, G-H colour, VS clarity. Hallmarks for London, 1979. Approximate ring size I. 6.5gms.

£500-700 (plus 27.6% BP*)

8 A Burmese sapphire and old-cut diamond cluster ring, with single-cut diamond shoulders.

Verbal from GCS, stating Burma, no heat. Calculated sapphire weight 1.53cts, based on estimated dimensions of 7.5 by 5.3 by 4.1mms. Estimated total diamond weight 0.85ct, I-J colour, SI1-P1 clarity. Ring size R1/2. 3.7gms.

£550-750 (plus 27.6% BP*)

9 A pair of sapphire and diamond cluster earrings.

Verbal from GCS, stating Basaltic, no heat. Sapphire total calculated weight 6.05cts, based on estimated dimensions. Estimated total diamond weight 0.50ct, G-H colour, VS clarity. Length 1.7cms. 4.8gms.

£900-1,400 (plus 27.6% BP*)

10 An 18ct gold brilliant-cut diamond collet line bracelet.

Estimated total diamond weight 4cts, H-I colour, VS clarity. Hallmarks for Birmingham, 2003. Length 18.3cms. 12.4gms.

£2,000-3,000 (plus 27.6% BP*)

11 A Colombian emerald and diamond dress ring.

Verbal from GCS, stating Colombia, moderate clarity enhancement. Emerald calculated weight 2.72cts, based on estimated dimensions of 11.2 by 8.7 by 3.8mms. Estimated total diamond weight 1.25cts, G-H colour, VS clarity. Ring size J. 6.1gms.

£2,000-3,000 (plus 27.6% BP*)

12 A circular-cut diamond single-stone ring, with single-cut diamond openwork foliate mount.

Principal diamond estimated weight 1.85cts, I-J colour, VS clarity. Ring size O1/2.

£2,500-3,500 (plus 27.6% BP*)



BP* - Buyer's Premium of 23% (plus VAT) or 27.6% (VAT included)

13 An Edwardian gold moonstone and split pearl floral brooch.

Diameter 2cms. 2.6gms.
With fitted case.

£500-700 (plus 27.6% BP*)

14 An 18ct gold marquise-shape and brilliant-cut diamond floral dress ring.

Estimated total diamond weight 1.10cts, G-H colour, VS clarity.
Hallmarks for London, 1996. Ring size N1/2. 3.8gms.

£500-700 (plus 27.6% BP*)

15 An early 20th century platinum square-shape old-cut diamond full eternity ring, by Lacloche Freres.

Estimated total diamond weight 1.25cts, predominantly H-I colour, VS-SI clarity.
Ring size O1/2. 2.6gms.

£550-750 (plus 27.6% BP*)

16 A Belle Epoque seed pearl, rose-cut diamond and enamel fob watch, with painted enamel scene by Fernand Paillet and chain.

Length of pendant 4.6cms. Length of chain 55.6cms. 27.2gms.

£550-750 (plus 27.6% BP*)

17 A natural pearl and seed pearl single-strand necklace, with sapphire and diamond cluster clasp.

Verbal from GCS stating natural, saltwater.
Estimated diameter of pearls 6.3 to 2mms.
Length 46.3cms.

£800-1,200 (plus 27.6% BP*)

18 A pair of early 20th century platinum and old-cut diamond and seed pearl pierced drop earrings.

Estimated total diamond weight 3cts.
Length 5.5cms. 9.2gms.

£800-1,200 (plus 27.6% BP*)

19 A platinum old and vari-cut diamond dress ring.

Estimated total diamond weight 1.35cts, I-J colour, P1-P2 clarity.
Stamped Platinum. Ring size M1/2. Weight 4.7gms.

£800-1,200 (plus 27.6% BP*)

20 A Belle Epoque platinum, old and rose-cut diamond openwork pendant.

Estimated total old-cut diamond weight 0.80ct, G-H colour, VS clarity.
Length 3.9cms. 7gms.

£1,000-1,500 (plus 27.6% BP*)

21 A black opal and rose-cut diamond accent ring.

Opal weight 4.61cts.
Ring size M. 3.8gms.

£1,800-2,400 (plus 27.6% BP*)

22 An Art Deco agate French desk clock, with diamond hands, attributed to Boucheron.

Length 9.6cms. 290.9gms.

£2,500-3,500 (plus 27.6% BP*)




BP* - Buyer's Premium of 23% (plus VAT) or 27.6% (VAT included)

23 A mid Victorian silver and gold, old and rose-cut diamond brooch.

May be worn as a pendant.
Estimated total old-cut diamond weight 1.90cts.
Principal diamond estimated I-J colour, SI2-P1 clarity. Length 3.8cms. 10.8gms.

£800-1,200 (plus 27.6% BP*)

24  A graduated oval-shape Sri Lankan sapphire three-stone ring.

With report 267976/20047553, dated 18th December 2019, from AnchorCert, stating 4.84cts, Sri Lanka(Ceylon), no heat.
Ring size K.

£700-900 (plus 27.6% BP*)

25 A pair of old-cut diamond floral cluster stud earrings.

Estimated total diamond weight 1ct, G-I colour, SI1-P1 clarity.
Diameter 1cm. 3.2gms.

£1,000-1,500 (plus 27.6% BP*)

26 A late Victorian silver and gold, old-cut diamond star brooch.

Estimated total diamond weight 5cts, H-J colour, VS-P1 clarity.
Diameter 4.3cms. 8.4gms.

£1,200-1,800 (plus 27.6% BP*)

27 A late Victorian silver and gold old-cut diamond floral brooch.

Estimated total diamond weight 4.15cts, H-I colour, VS-SI clarity.
Diameter 3.1cms. 14.1gms.

£1,500-2,000 (plus 27.6% BP*)

28 An early 20th century 18ct gold old-cut diamond cluster ring.

Estimated total diamond weight 1.60cts, H-J colour, VS-SI clarity.
Principal diamond estimated weight 0.80ct, I-J colour, VS clarity.
Approximate ring size 11/2. 3.8gms.

£1,500-2,000 (plus 27.6% BP*)

29 A late Victorian silver and gold old-cut diamond crescent brooch.

Estimated total diamond weight 3 to 3.50cts, H-J colour, VS-SI clarity.
Length 3.9cms. 10.5gms.

£2,500-3,000 (plus 27.6% BP*)

30 A sapphire and diamond three-stone ring.


Sapphire calculated weight 2.19cts, based on estimated dimensions of 8.2 by 7.3 by 3.9mms.
Estimated total diamond weight 1.30cts, J-K colour, SI clarity.
Ring size J. 4gms.

£2,000-2,500 (plus 27.6% BP*)

31 A mid 20th century platinum diamond floral spray brooch.

Estimated total diamond weight 8.25 to 8.75cts, H-I colour, VS2-P1 clarity.
Length 7.9cms. 26.5gms.

£3,000-4,000 (plus 27.6% BP*)

32  A late Victorian 15ct gold Burmese sapphire and diamond hinged bangle.

With report 80239-72, dated 11th November 2019, from GCS, stating Myanmar(Burma), no heat, estimated total weight 6cts.
Estimated total diamond weight 2.50cts, H-I colour, VS-P1 clarity.
Inner diameter 5.8cms. 24.7gms.

£5,000-7,000 (plus 27.6% BP*)



BP* - Buyer's Premium of 23% (plus VAT) or 27.6% (VAT included)

33 A pair of mid 20th century brilliant-cut diamond floral cluster earrings, with detachable cultured pearl drops.

Estimated total diamond weight 1.50cts, G-H colour, VS-SI clarity. Length 3.9cms. 8.5gms.

£500-700 (plus 27.6% BP*)

34 A mid 20th century diamond cocktail ring.

Estimated total diamond weight 2cts, G-H colour, VS-SI clarity. Ring size L1/2. 5.1gms.

£800-1,200 (plus 27.6% BP*)

35 A mid 20th century sapphire and diamond stylised foliate brooch.

Estimated total diamond weight 2.50 to 3cts, G-I colour, VS-SI clarity. Length 4.5cms. 16.4gms.

£800-1,200 (plus 27.6% BP*)

36 A mid 20th century platinum sapphire and diamond floral spray brooch.

Estimated total diamond weight 1.75 to 2cts, H-I colour, VS-SI clarity. Length 6.7cms. 31.9gms.

£900-1,400 (plus 27.6% BP*)

37 A mid 20th century sapphire and brilliant-cut diamond stepped bombe dress ring.

Estimated total diamond weight 3cts, G-H colour, predominantly VS clarity. Ring size N. 11.7gms.

£800-1,200 (plus 27.6% BP*)

38 A 1970s diamond cocktail watch, by Omega.

Estimated total diamond weight 0.50ct, G-H colour, VS clarity. Stamped 750. Length 18cms. 37.9gms.

£700-900 (plus 27.6% BP*)

39 A sapphire and diamond cluster dress ring.

Sapphire calculated weight 1.45cts, based on estimated dimensions of 7.2 by 5.8 by 4.15mms. Estimated total diamond weight 2cts, H-I colour, VS clarity. Stamped 18K. Ring size N. 12gms.

£1,200-1,800 (plus 27.6% BP*)

40 A pair of cushion-shape sapphire cabochon and vari-cut diamond cluster earrings.

Estimated total diamond weight 4cts, G-H colour, VS1-SI1 clarity. Length 2.4cms. 23.6gms.

£1,800-2,400 (plus 27.6% BP*)

41 A mid 20th century sapphire, synthetic sapphire and diamond brooch.

Estimated total diamond weight 4 to 4.50cts, predominantly G-H colour, VS clarity. Length 7.1cms. 20.2gms.

£1,000-1,500 (plus 27.6% BP*)

42 A diamond cluster fringe necklace.

Estimated total diamond weight 4.25 to 4.50cts, G-H colour, VS clarity. Stamped 750. Length 40.5cms. 50.8gms.

£2,000-2,500 (plus 27.6% BP*)



43 An aquamarine and brilliant-cut diamond cluster ring.

Aquamarine calculated weight 2.25cts, based on estimated dimensions of 14.9 by 6.8 by 4.3mms. Estimated total diamond weight 0.80ct, H-I colour, SI1-P1 clarity. Stamped 18ct. Ring size N. 5.2gms.

£900-1,400 (plus 27.6% BP*)

44 An engraved and textured scarab brooch, with old-cut diamond collet highlight, signed C. Burger.

Estimated diamond weight 0.50ct, H-I colour, P1 clarity. French assay mark. Length 6cms. 14.5gms.

£700-1,000 (plus 27.6% BP*)

45 An aquamarine pendant.

Aquamarine calculated weight 29.77cts, based on estimated dimensions of 19.1 by 17.4 by 12.2mms. Stamped 750. Length 4.5cms. 20.8gms.

£1,000-1,500 (plus 27.6% BP*)

46 An 18ct gold turquoise and diamond floral pendant.

May be worn as a brooch. Estimated total diamond weight 0.45ct, G-H colour, VS clarity. Estimated dimensions of central turquoise 13.5 by 10.8mms. Import marks for Sheffield, 1987. Length 5.7cms. 45.8gms.

£1,500-2,000 (plus 27.6% BP*)

47 A sapphire and tapered baguette-cut diamond dress ring.

Sapphire calculated weight 2.42cts, based on estimated dimensions of 8.8 by 6.7 by 4.9mms. Estimated total diamond weight 1.50cts, H-I colour, VS clarity. Ring size M. 5.3gms.

£1,800-2,400 (plus 27.6% BP*)

48 A 1970s ruby and diamond bracelet.

Ruby calculated total weight 2cts, based on estimated dimensions. Estimated total diamond weight 1.20cts, G-H colour, VS clarity. French assay marks. Length 18cms. 42.3gms.

£1,200-1,800 (plus 27.6% BP*)

49 A mid 20th century vari-cut diamond cocktail ring.

Estimated total old-cut diamond weight 2cts, G-I colour, VS-SI clarity. Stamped PLAT. Ring size N1/2. 5.4gms.

£2,000-3,000 (plus 27.6% BP*)

50 A mid 20th century 14ct gold and platinum aquamarine and diamond brooch.

Aquamarine calculated weight 20.34cts, based on estimated dimensions of 19.3 by 15.2 by 8.5mms. Estimated total diamond weight 1ct, H-I colour, VS-P1 clarity. Length 4cms. 18.9gms.

£1,500-2,000 (plus 27.6% BP*)

51 A 1970s 18ct gold Sri Lankan sapphire and diamond dress ring, by Grima.

With **photocopy** of report 79203-17, 28th February 2019, from GCS, stating Sri Lanka(Ceylon), no heat, estimated 30.20cts. Estimated total diamond weight 0.75ct, G-H colour, VS-SI clarity. Hallmarks for London, 1979. Ring size L. 23.1gms.

£5,500-7,500 (plus 27.6% BP*)

52 A baroque cultured pearl suite, by Tiffany & Co. Comprising necklace, bracelet, earrings and cufflinks.

Length of necklace 44.5cms. 97.6gms.

£5,500-7,500 (plus 27.6% BP*)



BP* - Buyer's Premium of 23% (plus VAT) or 27.6% (VAT included)

53 A tanzanite single-stone band ring, by Chaumet.

Tanzanite calculated weight 1.10cts, based on estimated dimensions of 7.5 by 5.2 by 4.1mms.
French assay mark. Ring size L. 10.4gms.

£400-600 (plus 27.6% BP*)

54 A platinum pink tourmaline and diamond ring, retailed by George Pragnell Jewellers.

Tourmaline calculated weight 1.90cts, based on estimated dimensions of 8.75 by 5.9 by 4mms.
Estimated total diamond weight 0.25ct, G+ colour, VS clarity.
Hallmarks for Birmingham. Ring size N. 6.5gms.
With retailer's case.

£500-700 (plus 27.6% BP*)

55 A pair of aquamarine briolette and diamond drop earrings.

Estimated total diamond weight 0.70ct, H-I colour, VS clarity.
Length 4cms. 4.2gms.

£700-900 (plus 27.6% BP*)

56 A mid 20th century multi-gem and diamond floral spray brooch.

Estimated total diamond weight 1ct, G-H colour, VS clarity.
Length 5.9cms. 8.7gms.

£600-800 (plus 27.6% BP*)

57 A peridot and diamond cluster ring.

Peridot calculated weight 9.73cts, based on estimated dimensions of 16.9 by 11.9 by 6.9mms.
Estimated total diamond weight 0.60ct, H-I colour, VS-SI clarity.
Ring size O. 8.7gms.

£1,500-2,000 (plus 27.6% BP*)

58 A tanzanite and diamond pendant, on chain.

Tanzanite calculated weight 5.06cts, based on estimated dimensions of 13 by 8.8 by 6.7mms.
Estimated total diamond weight 0.50ct, G-H colour, VS clarity.
Stamped Pt.
Length of pendant 2.5cms. Length of chain 44cms. 6gms.

£2,000-2,500 (plus 27.6% BP*)

59 A vari-cut diamond foliate spray brooch.

Estimated total diamond weight 5.50 to 6cts, G-H colour, VS clarity.
Length 4.7cms. 18.1gms.

£1,800-2,400 (plus 27.6% BP*)

60 A brilliant-cut diamond tapered full eternity ring.

Total diamond weight 3.56cts, estimated G-H colour, VS clarity.
Stamped Pt950. Ring size T. 7.2gms.

£2,200-2,800 (plus 27.6% BP*)

61 An emerald and brilliant-cut diamond three-stone ring.

Emerald calculated weight 1.42cts, based on estimated dimensions of 8.9 by 6.8 by 4.1mms.
Estimated total diamond weight 1ct, I-J colour, VS1-SI1 clarity.
Stamped Plat. Ring size N. 6gms.

£2,200-2,800 (plus 27.6% BP*)

62 An aquamarine and diamond cluster ring.

Aquamarine weight 16.25cts.
Estimated total diamond weight 1.25cts, estimated G-H colour, VS-SI clarity.
French re-strike mark, stamped 750.
Ring size L1/2. Weight 9.5gms.

£2,500-3,500 (plus 27.6% BP*)

63 A platinum rectangular-shape diamond line hinged bangle.

Total diamond weight 5.51cts, estimated G-H colour, VS clarity.
Hallmarks for London, 2004.
Inner diameter 6.3cms. 34.2gms.

£3,000-4,000 (plus 27.6% BP*)

64 An Art Deco platinum diamond bracelet.

Estimated total diamond weight 8 to 9cts, G-I colour, VS-SI clarity.
Stamped Plat. Length 19cms. 28.2gms.

£3,500-4,500 (plus 27.6% BP*)



BP* - Buyer's Premium of 23% (plus VAT) or 27.6% (VAT included)

65  **An orangey Red spinel and diamond cluster ring.**

With report 1910SNR0442, dated 3rd October 2019, from GCI, stating 2.24cts, no enhancement.
Estimated total diamond weight 0.85ct, G-H colour, VS-SI clarity.
Ring size N1/2. 4.7gms.

£600-800 (plus 27.6% BP*)

66 **An orange sapphire and diamond cluster ring.**

Sapphire calculated weight 2cts, based on estimated dimensions 8.8 by 7.1 by 3.8mms.
Estimated total diamond weight 0.30ct, H-I colour, SI clarity.
Stamped 750. Ring size L. 6.8gms.

£700-900 (plus 27.6% BP*)

67* **A pair of cushion-shape 'yellow' diamond and brilliant-cut diamond cluster earrings.**

Total diamond weight 1.41cts, brilliant-cut diamonds estimated G-H colour, VS-SI clarity.
Stamped 750. Length 1.7cms. 4.4gms.
Diamonds untested for natural colour origin.

£900-1,400 (plus 27.6% BP* and 20% VAT)

68 **An 18ct gold fire opal single-stone ring, with triangular-shape diamond shoulders.**

Opal weight 2.48cts.
Total diamond weight 0.30ct, estimated G-H colour, VS1-SI1 clarity.
Hallmarks for London, 2014. Ring size M. 4.9gms.

£1,200-1,800 (plus 27.6% BP*)

69 **A yellow sapphire and diamond cluster ring.**


Sapphire calculated weight 1.57cts, based on estimated dimensions of 7.7 by 6.6 by 3.3mms.
Estimated total diamond weight 0.60ct, H-I colour, VS-SI1 clarity.
Stamped Plat. Ring size N. 5gms.

£1,000-1,500 (plus 27.6% BP*)

70 **An amethyst and diamond cluster ring, by Buchwald.**


Amethyst weight 15.53cts.
Total diamond weight 0.90ct, estimated G+ colour, VS clarity.
Stamped 750. Ring size O. 15.3gms.

£1,400-2,000 (plus 27.6% BP*)

71  **An 18ct gold diamond and multi-gem 'Sorbet' ring, by Cartier.**

Estimated total diamond weight 0.60ct, G+ colour, VS clarity.
Hallmarks for London. Ring size N. Cartier size 54. 11.9gms.
With maker's case.

£2,000-2,500 (plus 27.6% BP*)

72  **A pair of 18ct gold diamond and multi-gem 'Sorbet' earrings, by Cartier.**

Estimated total diamond weight 0.30ct, G+ colour, VS clarity.
Hallmarks for London. Length 3.5cms. 9.5gms.
With maker's case and certificate of authenticity.

£2,000-2,500 (plus 27.6% BP*)

73 **An 18ct gold brilliant-cut diamond line bracelet.**

Estimated total diamond weight 6cts, predominantly H-I colour, SI clarity.
Hallmarks for London. Length 18cms. 15.4gms.

£3,500-4,500 (plus 27.6% BP*)

74 **A brilliant-cut diamond necklace.**

Estimated total diamond weight 15 to 16cts, G-H colour, VS1-SI1 clarity.
Stamped 750. Length 41cms. 31.9gms.

£5,000-7,000 (plus 27.6% BP*)



BP* - Buyer's Premium of 23% (plus VAT) or 27.6% (VAT included)

75 A kunzite and diamond pendant.

Kunzite weight 64.51cts, stamped to mount.
Total diamond weight 0.19ct, stamped to mount, estimated H-I colour, VS clarity.
Stamped Pt900. Length 4.9cms. 22.2gms.

£500-700 (plus 27.6% BP*)

76 A bluish green tourmaline cocktail ring, with diamond line highlight.

Tourmaline calculated weight 30.65cts, based on estimated dimensions of 21.6 by 19.2 by 11.5mms.
Estimated total diamond weight 0.30ct, I-J colour, VS clarity.
Ring size G1/2. 18.1gms.

£1,800-2,400 (plus 27.6% BP*)

77 A kunzite single-stone ring, with marquise-shape diamond accents.

Kunzite calculated weight 7.03cts, based on estimated dimensions of 12.1 by 10.1 by 6.7mms.
Estimated total diamond weight 0.35ct, H-I colour, VS1-SI1 clarity.
Ring size O. 9.3gms.

£450-650 (plus 27.6% BP*)

78 A pave-set diamond tapered band ring.

Estimated total diamond weight 1.75cts, H-I colour, VS clarity.
Stamped 18ct 750. Ring size K. 9.9gms.

£450-650 (plus 27.6% BP*)

79 An 18ct gold prasiolite and diamond cluster ring, attributed to Moraglione.

Prasiolite calculated weight 32.94cts, based on estimated dimensions of 24 by 18 by 12.2mms.
Estimated total diamond weight 0.65ct, G+ colour, VS clarity.
Hallmarks for Sheffield. Ring size N1/2. 19.7gms.

£600-800 (plus 27.6% BP*)

80 An 18ct gold pave-set diamond full eternity ring.

Estimated total diamond weight 4.25cts, H-I colour, VS-SI clarity.
Hallmarks for Birmingham. Ring size M. 6.6gms.

£550-750 (plus 27.6% BP*)

81 A pave-set diamond and deep green enamel penguin brooch, with ruby eye.

Estimated total diamond weight 2cts, G-H colour, VS-SI clarity.
Length 4.6cms. 17.7gms.

£900-1,400 (plus 27.6% BP*)

82 An 18ct gold pave-set pink sapphire, ruby and diamond dress ring, by Moraglione.

Total diamond weight 0.78ct, estimated G+ colour, VS-SI clarity.
Hallmarks for Sheffield. Ring size O1/2. 15.9gms.
With maker's certificate of authenticity.

£1,000-1,500 (plus 27.6% BP*)

83 A pair of pink sapphire and diamond cluster earrings.

Total sapphire weight 2.75cts.
Estimated total diamond weight 0.60ct, H-J colour, VS-SI clarity.
Length 1.2cms. 3.4gms.

£1,500-2,000 (plus 27.6% BP*)

84 A cultured pearl single-strand necklace, with dolphin highlight, by Cartier.

Stamped 750. Length 44cms.
With maker's certificate of authenticity and pouch.

£1,800-2,400 (plus 27.6% BP*)



85 A sapphire cabochon crossover dress ring, by Cartier.

Sapphire calculated weight 0.66ct, based on estimated dimensions of 5.6 by 3.8 by 2.9mms. Stamped 750. Ring size M. Cartier size 53. 9.6gms.

£350-450 (plus 27.6% BP*)

86 A pair of mabe pearl, sapphire and diamond heart earrings.

Sapphire total calculated weight 1.62cts, based on estimated dimensions. Estimated total diamond weight 0.40ct, G-H colour, VS-SI clarity. French re-strike marks. Length 3.1cms. 19.4gms.

£600-800 (plus 27.6% BP*)

87 An 18ct gold pink sapphire, diamond and onyx bunny brooch, by David Morris.

Estimated total diamond weight 1.50cts, G-H colour, VS-SI clarity. Hallmarks for London, 1990. Length 2.8cms. 9gms.

£600-800 (plus 27.6% BP*)

88 An 18ct gold emerald, diamond and onyx bear cub brooch, by David Morris.

Estimated total diamond weight 1.50cts, G-H colour, VS-SI clarity. Hallmarks for London, 1989. Length 1.8cms. 6.6gms.

£700-900 (plus 27.6% BP*)

89 An 18ct gold 'Happy Diamonds' Love ring, by Chopard.

Estimated total diamond weight 0.30ct, G-H colour, VS clarity. Swiss convention marks. Ring size J1/2. 7.9gms.

£550-750 (plus 27.6% BP*)

90 A 'Happy Diamonds' square ring, by Chopard.

Estimated total diamond weight 0.15ct, G-H colour, VS clarity. Stamped 750. Ring size O. 21.2gms.

£700-900 (plus 27.6% BP*)

91 A pair of ruby and diamond cufflinks.

Estimated total diamond weight 1.65cts. Stamped 750, SC. Length of cufflink face 1.5cms. 9.2cms.

£800-1,200 (plus 27.6% BP*)

92 An ancient Roman coin 'Monete' pendant, with chain, by Bulgari.

Engraved Oro E Bronzo, 750. Length of pendant 3.2cms. Length of chain 41cms. 28.4gms.

£800-1,200 (plus 27.6% BP*)

93 A ruby and diamond brooch, designed as a charioteer and horses.

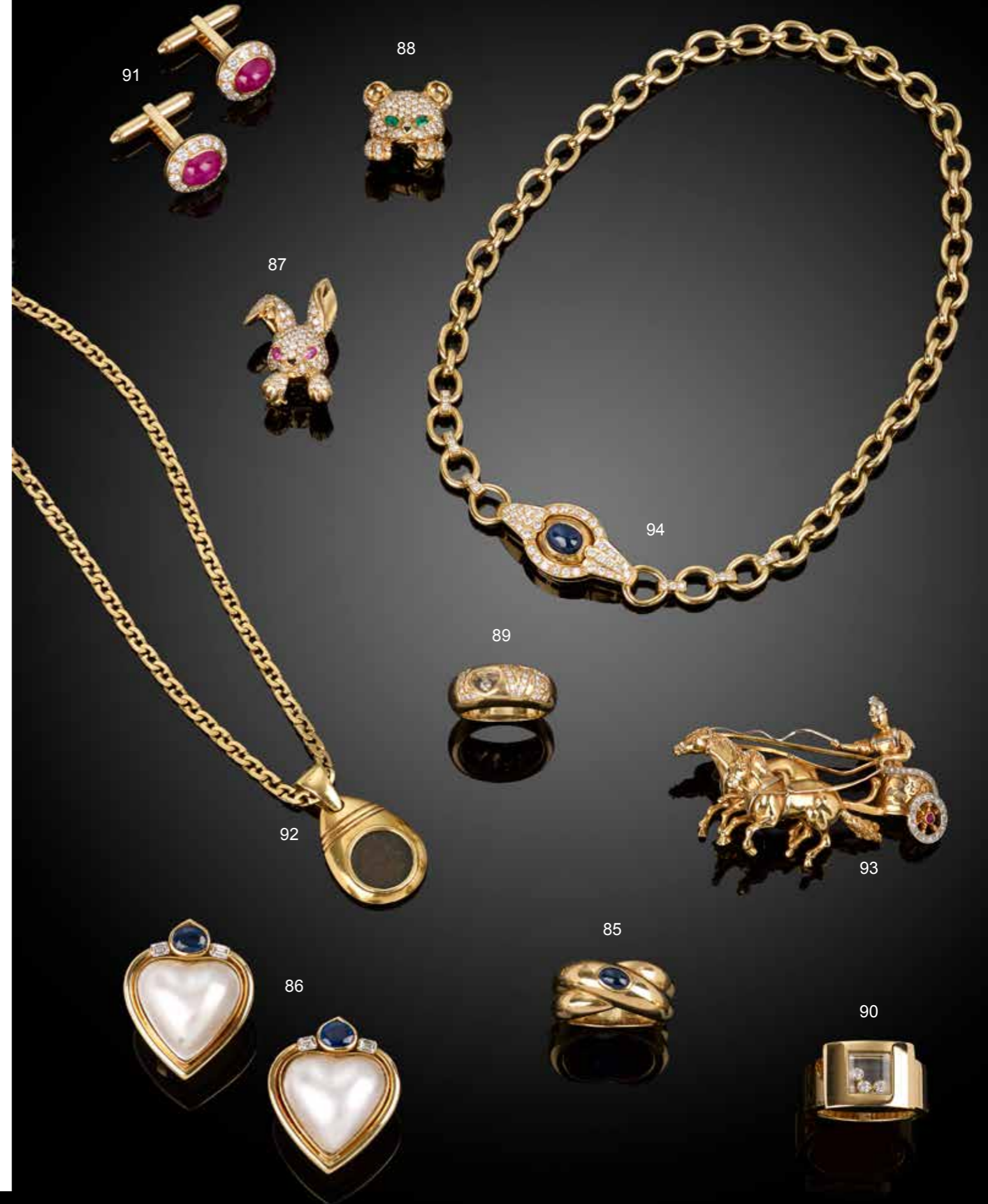
Estimated total diamond weight 0.15ct, H-I colour, SI1-P1 clarity. Length 5.6cms. 22.9gms.

£1,000-1,500 (plus 27.6% BP*)

94 An 18ct gold sapphire cabochon and brilliant-cut diamond necklace, by Mappin & Webb.

Estimated total diamond weight 0.85ct, G-H colour, VS2-SI1 clarity. Hallmarks for London, 1987. Length 37.5cms. 45.8gms.

£1,000-1,500 (plus 27.6% BP*)



95 A 1970s 18ct gold diamond dress ring.

Estimated total diamond weight 0.50ct, G-H colour, VS clarity. Import marks for London, 1972. Ring size L. 8.7gms.

£350-450 (plus 27.6% BP*)

96 A pave-set diamond scroll ring by Chaumet.

Estimated total diamond weight 1.65cts, G-H colour, VS clarity. French assay marks, stamped 750. Ring size L1/2. 8.8gms.

£500-700 (plus 27.6% BP*)

97 A pave-set diamond scroll ring by Chaumet.

Estimated total diamond weight 1.65cts, G-H colour, VS clarity. French assay marks, stamped 750. Ring size L1/2. 9.2gms.

£500-700 (plus 27.6% BP*)

98 A sapphire and diamond cluster ring.

Sapphire calculated weight 1.16cts, based on estimated dimensions of 6.6 by 5.8 by 3.6mms. Estimated total diamond weight 1ct, I-J colour, VS2-SI2 clarity. Stamped 18ct. Ring size N. 4.1gms.

£900-1,400 (plus 27.6% BP*)

99 A large amethyst single-stone dress ring.

Amethyst calculated weight 117.42cts, based on estimated dimensions of 33 by 24.5 by 21mms. Ring size J. 31.9gms.

£900-1,400 (plus 27.6% BP*)

100 An 18ct gold ruby and brilliant-cut diamond highlight necklace, by Kutchinsky.

Estimated total diamond weight 0.75ct, G-H colour, VS clarity. Import marks for London, 1980. Length 37.5cms. 44.7gms.

£900-1,400 (plus 27.6% BP*)

101 A zircon and diamond cluster ring.

Zircon calculated weight 3cts, based on estimated dimensions of 8.1 by 7.9 by 5.2mms.

Estimated total diamond weight 1.20cts, G-I colour, VS1-SI1 clarity. Stamped 18ct. Ring size L1/2. 6.1gms.

£1,000-1,500 (plus 27.6% BP*)

102 An 18ct gold Colombian emerald and brilliant-cut diamond scalloped cluster ring.

With report 79230-81, dated 29th August 2019, from GCS, stating Colombia, indications of moderate clarity enhancement, estimated weight 8.10cts.

Estimated total diamond weight 1.60cts, H-I colour, SI clarity. Hallmarks for Sheffield, 1998. Ring size P1/2. 8.6gms.

£3,000-4,000 (plus 27.6% BP*)

103 A mid 20th century 18ct gold mesh-link buckle bracelet, with brilliant-cut diamond scroll clasp.

Estimated total diamond weight 1.25cts, G-H colour, VS-SI clarity. Stamped 18ct. Length 25.5cms. 141.3gms.

£3,000-4,000 (plus 27.6% BP*)

104 A diamond and multi-gem fringe necklace.

Estimated total diamond weight 4 to 4.50cts, G-H colour, VS-SI clarity. Stamped 750. Length 118cms. 118.9gms.

£3,500-4,500 (plus 27.6% BP*)



BP* - Buyer's Premium of 23% (plus VAT) or 27.6% (VAT included)

105 A pair of 'Trinity' hoop earrings, by Cartier.

French assay marks. Length 2.3cms. 13.4gms.

£550-750 (plus 27.6% BP*)

106 A sapphire 'Axelle' band ring, by Boucheron.

Sapphire weight 1.07cts, marked to band.
French assay marks, stamped 750. Ring size J. 8.4gms.

£350-450 (plus 27.6% BP*)

107 A pair of calibre-cut aquamarine earrings.

Aquamarine estimated total weight 8.16cts, based on estimated dimensions of one stone.
Diameter 2.4cms. 16.2gms.

£550-750 (plus 27.6% BP*)

108 An amethyst and graduated pink sapphire dress ring.

Amethyst calculated weight 28.41cts, based on estimated dimensions of 23.5 by 18.5 by 11.7mms.
Stamped 750. Ring size L1/2. 28.9gms.

£700-900 (plus 27.6% BP*)

109 An 18ct gold calibre-cut diamond full eternity ring.

Estimated total diamond weight 3cts, G+ colour, VS clarity.
Hallmarks for London, 2010. Ring size J1/2. 2.6gms.

£1,200-1,800 (plus 27.6% BP*)

110 A baguette-cut diamond line hinged bangle.

Estimated total diamond weight 3.50 to 4cts, G-H colour, VS-SI clarity.
Stamped 750. Inner diameter 6cms. 22.7gms.

£1,600-2,200 (plus 27.6% BP*)

111 A pair of 18ct gold emerald and enamel 'Panthere' earrings, by Cartier.

Swiss convention marks. Length 2cms. 9.7gms.
With maker's case and certificate of authenticity.

£1,200-1,800 (plus 27.6% BP*)

112 An 18ct gold 'Panthere' pendant, by Cartier.

Swiss convention marks. Length 3.8cms. 18.8gms.
With certificate of authenticity.

£2,500-3,000 (plus 27.6% BP*)

113 A Colombian emerald single-stone ring.

With report 79230-79, dated 29th August 2019, from GCS, stating Colombia, indications of significant clarity enhancement, estimated weight 10.30cts.
Stamped 750. Ring size Q1/2. 10.4gms.

£3,500-4,500 (plus 27.6% BP*)

114 A 'Panthere' pendant, with fancy-link chain, by Cartier.

French assay marks, stamped 750.
Length of pendant 3.5cms. Length of chain 39.5cms. 36.6gms.
Chain with certificate of authenticity.

£4,500-5,500 (plus 27.6% BP*)



115 A sapphire, emerald, ruby and diamond heart pendant, by Victor Mayer.

Stamped 750. Length 2.8cms. 8.5gms.

£400-600 (plus 27.6% BP*)

116  A cultured Tahitian pearl single-strand necklace, with 18ct gold clasp.

With report card dated 30th April 2014, from NAGL, stating thirty cultured Tahitian pearls. Hallmarks for London. Length 48cms.

£600-800 (plus 27.6% BP*)

117 An 18ct gold onyx 'Pure Alhambra' ring, by Van Cleef & Arpels.

Swiss convention marks. Ring size L1/2. 10.7gms. With makers pouch.

£800-1,200 (plus 27.6% BP*)

118 An emerald and black enamel bee brooch pin, by Cartier.

French assay marks, stamped 750. Length 1.6cms. 2.7gms.

£800-1,200 (plus 27.6% BP*)

119 A diamond and enamel duck pin, by Cartier.

Stamped 750. Length 1.7cms. 3.7gms.

£1,000-1,500 (plus 27.6% BP*)

120 A brilliant-cut diamond 'Serpenti' ring, by Bulgari.

Estimated total diamond weight 0.40ct, G-H colour, VS clarity. Italian marks, stamped 750. Approximate ring size K1/2. 10.8gms. With maker's pouch.

£1,800-2,400 (plus 27.6% BP*)

121 A 'Quatre' ring and 18ct gold pendant, by Boucheron.

Pendant with Swiss convention marks. Ring stamped 750. Length of pendant 0.8cm. Ring size R1/2. 16.9gms.

£1,200-1,800 (plus 27.6% BP*)

122 A pair of black enamel earrings, with detachable hoop, by Fraleoni, Roma.

Italian marks, stamped 750. Length 10cms. 30.6gms.

£1,500-2,000 (plus 27.6% BP*)

123 A pair of onyx 'Octo' cufflinks, by Bulgari.

Italian marks, stamped 750. Diameter of cufflink face 1.6cms. 20.3gms.


£500-700 (plus 27.6% BP*)

124 A pair of interchangeable onyx, malachite and jasper 'Trinity' cufflinks, by Cartier.

Stamped 750. Length 2.2cms.

£1,500-2,000 (plus 27.6% BP*)



125  **A pair of brilliant-cut Fancy Yellow and Fancy Intense Yellow diamond and diamond scroll earrings.**

With report 1820000208BE, dated 7th May 2019, from AIG, stating 2.05cts natural 'yellow' and 1.91cts F-G colour, VS-SI clarity diamonds.
Stamped 750. Length 2.3cms. 7gms.

£500-700 (plus 27.6% BP*)

126 **An 18ct gold heart padlock pendant, with chain, by Tiffany & Co.**

Hallmarks for London, 2011.
Length of pendant 2.8cms. Length of chain 40cms. 16.2gms.

£600-800 (plus 27.6% BP*)

127* **An 18ct gold pear-shape rose-cut diamond bombe dress ring.**


Total diamond weight 1.01cts.
Hallmarks for London, 2013. Ring size M. 8.4gms.

£750-950 (plus 27.6% BP* and 20% VAT)

128 **A fancy-coloured diamond and diamond dress ring.**

Estimated total diamond weight 1.60cts.
Principal diamonds estimated weight 0.50ct each.
Stamped Au750. Ring size L. 9.5gms.
Diamonds untested for natural colour origin.

£1,000-1,500 (plus 27.6% BP*)

129  **A Sri Lankan sapphire single-stone ring, with brilliant-cut diamond sides.**

With report 792215-23, dated 20th May 2019, from GCS, stating 12.60cts, Sri Lanka, no heat.
Estimated total diamond weight 0.60ct, H-I colour, VS clarity.
Stamped 750. Ring size N1/2. 9.8gms.

£1,500-2,000 (plus 27.6% BP*)

130 **A square-shape 'brown' diamond and pave-set diamond ring.**

Principal diamond estimated weight 0.60ct, VS clarity.
Total diamond weight 1.78cts.
Stamped Au750. Ring size N. 7.1gms.
Diamond untested for natural colour origin.

£1,800-2,400 (plus 27.6% BP*)

131 **An 18ct gold diamond ring.**

Estimated total diamond weight 0.25ct.
Hallmarks for Sheffield, 2004. Ring size L1/2. 8.1gms.

£2,000-2,500 (plus 27.6% BP*)

132 **A platinum 'yellow' diamond and diamond necklace, by Hirsh.**

Estimated total diamond weight 1.25cts, VVS-VS clarity.
Hallmarks for London, 2008. Length 43cms. 4.5gms.
Diamond untested for natural colour origin.

£2,500-3,000 (plus 27.6% BP*)

133 **A square-link charm bracelet, with padlock clasp, suspending a key charm, by Louis Vuitton.**

French assay marks. Italian marks. Stamped 750.
Length 17cms. 103gms.

£3,000-4,000 (plus 27.6% BP*)

134  **A platinum Fancy Deep Brownish Yellowish Orange diamond and diamond three-stone ring, by Hans D. Krieger.**

With report 11280807, dated **18th October 2000**, from the GIA, stating 0.84ct, natural colour.
Total diamond weight 1.66cts.
Hallmarks for Sheffield. Ring size K. 8.1gms.

£3,200-4,200 (plus 27.6% BP*)



135 An onyx 'Bulgari Bulgari' ring, by Bulgari.

French re-strike mark. Stamped Au 750.
Ring size M1/2. 12.8gms.
With maker's pouch.

£340-440 (plus 27.6% BP*)

136 A pave-set diamond signet ring, by Versace.

Estimated total diamond weight 1ct, G-H colour, VS clarity.
Italian marks, stamped 750. Ring size Q1/2. 19.9gms.

£700-900 (plus 27.6% BP*)

137 An 18ct gold 'Happy Diamonds' 'Love' pendant, with box-link chain, by Chopard.

Estimated total diamond weight 0.30ct, G-H colour, VS clarity.
Swiss convention marks.
Length of pendant 2.8cms. Length of chain 42.5cms. 42.6gms.
With maker's case.

£1,200-1,800 (plus 27.6% BP*)

138 A diamond basketweave 'Vannerie' ring and matching earrings, by Tiffany & Co.

Estimated total diamond weight 0.90ct, G-H colour, VS clarity.
French re-strike marks, stamped 750.
Length of earrings 1.4cms. Ring size O1/2. 16.9gms.

£1,400-2,000 (plus 27.6% BP*)

139 A ruby and vari-cut diamond dress ring.

Ruby calculated weight 1.52cts, based on estimated dimensions of 7.9 by 6.4 by 3.2mm.
Estimated total diamond weight 2.65cts, mostly G-H colour, VS-SI clarity.
Stamped K18. Ring size M1/2. 7.3gms.

£1,000-1,500 (plus 27.6% BP*)

140 A pave-set diamond full circle eternity ring, by Hirsh.

Estimated total diamond weight 3.50 to 4cts, G-H colour, VS clarity.
Stamped 750. Ring size L1/2. 13.4gms.

£2,000-3,000 (plus 27.6% BP*)

141 A platinum square-shape ruby and diamond half eternity ring.

Total ruby weight 1.21cts.
Total diamond weight 0.83ct, estimated G-H colour, VS clarity.
Hallmarks for London, 2007. Ring size N1/2. 9.1gms.

£2,000-2,500 (plus 27.6% BP*)

142 An 18ct gold diamond 'Agrafe' ring, by Cartier.

Estimated total diamond weight 1.50cts, G+ colour, VS clarity.
Hallmarks for London, 2008.
Ring size J1/2. Cartier size 50. 8.9gms.
With maker's case and certificate of authenticity.

£3,000-4,000 (plus 27.6% BP*)

143 A diamond 'Lucea' bracelet, by Bulgari.

Estimated total diamond weight 7 to 7.50cts, G+ colour, VS clarity.
Stamped 750. Length 22cms. 94.2gms.
With maker's case.

£5,500-7,500 (plus 27.6% BP*)

144 A square-shape diamond single-stone ring, with baguette-cut diamond shoulders.

With report F6F59392, dated 16th September 2013, from IGI, stating 2.51cts, H colour, SI2 clarity.
Total diamond weight 3cts.
Stamped 18K. Ring size M1/2. 4.8gms.

£6,000-8,000 (plus 27.6% BP*)



BP* - Buyer's Premium of 23% (plus VAT) or 27.6% (VAT included)

145 An 18ct gold vari-cut diamond dress ring.

Total diamond weight 1.46cts, estimated H-I colour, VS-SI clarity. Hallmarks for Sheffield. Ring size O. 7.2gms.

£450-650 (plus 27.6% BP*)

146 A pair of platinum, pave-set diamond domed earrings.

Estimated total diamond weight 2 to 2.50cts, H-I colour, VS clarity. Hallmarks for London, 1995. Diameter 1.5cms. 15.4gms.

£600-800 (plus 27.6% BP*)

147 An 18ct gold brilliant and baguette-cut diamond cluster ring.

Estimated total diamond weight 2.25cts, H-I colour, VS1-SI2 clarity. Hallmarks for Sheffield, 2015. Ring size L. 5.5gms.

£700-900 (plus 27.6% BP*)

148 A brilliant-cut and pear-shape diamond three-stone ring.

Principal diamond laser inscribed GIA16548447, corresponding to a report dated, **8th November 2007**, by the GIA, stating 0.50ct, F colour, VS2 clarity. Stamped Pt950. Ring size N1/2. 4.6gms.

£700-900 (plus 27.6% BP*)

149 An 18ct gold pave-set diamond bracelet.

Estimated total diamond weight 2cts, G+ colour, VS clarity. Swiss convention marks. Length 18cms. 16.3gms.

£800-1,200 (plus 27.6% BP*)

150 A pave-set diamond hinged bangle, with threaded motif border, by Damiani.

Estimated total diamond weight 1.75cts, G-H colour, VS clarity. Italian marks, stamped 750. Inner diameter 5.7cms. 33.1gms.

£1,000-1,500 (plus 27.6% BP*)

151 An 18ct gold brilliant-cut diamond five-stone ring.

Total diamond weight 3.01cts, estimated I-J colour, P1 clarity. Hallmarks for Birmingham. Ring size L1/2. 4.5gms.

£1,800-2,400 (plus 27.6% BP*)

152 An 18ct gold brilliant-cut diamond floral cluster ring.

Estimated total diamond weight 3cts, H-I colour, VS2-SI2 clarity. Hallmarks for Sheffield. Ring size N. 6.2gms.

£2,500-3,000 (plus 27.6% BP*)

153 An 18ct gold tanzanite and diamond cluster ring.

Tanzanite weight 27.57cts. Total diamond weight 3.55cts, estimated J-K colour, VS clarity. Hallmarks for Birmingham, 2006. Ring size M. 18.5gms.

£4,000-6,000 (plus 27.6% BP*)

154 A pair of multi-faceted tanzanite and diamond earrings.

Estimated dimensions of one tanzanite 21.2 by 19.2 by 9mms. Estimated total diamond weight 2cts, H-I colour, SI1-P1 clarity. Stamped 750. Length 5.1cms. 18.9gms.

£4,000-6,000 (plus 27.6% BP*)



BP* - Buyer's Premium of 23% (plus VAT) or 27.6% (VAT included)

155  **A Madagascan star sapphire collet single-stone ring.**

With report 79215-21, dated 20th May 2019, from GCS, stating 10.84cts, Madagascar, no heat. Stamped 750. Ring size O1/2. 9.5gms.

£450-650 (plus 27.6% BP*)

156 **A platinum marquise-shape diamond single-stone open band ring, by Paul Spurgeon.**

Diamond weight 0.52ct, estimated G-H colour, VS clarity. Hallmarks for London, 2002. Ring size K. 15.1gms.

£650-850 (plus 27.6% BP*)

157  **An 18ct gold diamond 'C de Cartier' ring, by Cartier.**

Estimated total diamond weight 1ct, G+ colour, VS clarity. Swiss convention marks. Ring size P1/2. Cartier size 57. 11gms. With maker's case and certificate of authenticity.

£1,200-1,800 (plus 27.6% BP*)

158  **A pave-set diamond 'Cicliadi' ring, by Bulgari.**

Estimated total diamond weight 0.30ct, G-H colour, VS clarity. Italian marks, stamped 750. Ring size L. 8.8gms. With maker's case.

£1,000-1,500 (plus 27.6% BP*)

159 **A sapphire and diamond dress ring.**

Sapphire calculated weight 3.97cts, based on estimated dimensions of 10 by 8.6 by 5.5mms. Estimated total diamond weight 1.10cts, G-H colour, VS-SI clarity. Stamped 750. Ring size N1/2. 7.2gms.

£1,200-1,800 (plus 27.6% BP*)

160 **A pair of 18ct gold sapphire and diamond earrings, by Rodney Rayner.**

Estimated total diamond weight 1ct, G+ colour, VS clarity. Hallmarks for London, 2004. Length 2.4cms. 17.8gms.

£1,000-1,500 (plus 27.6% BP*)

161 **An 18ct gold sapphire and diamond necklace, by Rodney Rayner.**

Total sapphire weight 4.99cts. Total diamond weight 2.16cts, estimated G+ colour, VS clarity. Hallmarks for London, 2004. Length 43.5cms. 75.6gms.

£2,500-3,000 (plus 27.6% BP*)

162 **A platinum brilliant-cut diamond single-stone ring.**

Diamond weight 1.14cts, estimated H-I colour, VS clarity. Hallmarks for Birmingham. Ring size M. 4.7gms.

£2,200-2,800 (plus 27.6% BP*)

163 **A pair of heart-shape sapphire and brilliant-cut diamond drop earrings.**

Calculated total sapphire weight 5.87cts, based on estimated dimensions. Estimated total diamond weight 0.60ct, G-H colour, VS clarity. Length 2.5cms. 5.6gms.

£2,000-3,000 (plus 27.6% BP*)

164 **An old-cut diamond collet single-stone ring.**

Diamond weight 3.63cts, estimated tinted colour, VS clarity. Ring size J1/2. 12.4gms.

£8,000-12,000 (plus 27.6% BP*)



165 A platinum blue tourmaline and diamond ring.

Tourmaline calculated weight 1.23cts, based on estimated dimensions of 7.5 by 5.2 by 4.9mms.
Estimated total diamond weight 0.20ct, G-H colour, VS-SI clarity.
Hallmarks for Sheffield. Ring size L. 7.8gms.

£600-800 (plus 27.6% BP*)

166 An 18ct gold emerald and diamond ring, by Picchiotti.

Emerald calculated weight 1.18cts, based on estimated dimensions of 7.3 by 6.3 by 3.5mms.
Estimated total diamond weight 1ct, G+ colour, VS clarity.
Hallmarks for London, 2003. Ring size N. 4.5gms.

£1,800-2,400 (plus 27.6% BP*)

167 A sapphire and triangular-shape diamond three-stone ring.

Sapphire calculated weight 1.93cts, based on estimated dimensions of 8.35 by 6.3 by 3.4mms.
Total diamond weight 0.94ct, estimated G-H colour, VS1-SI1 clarity.
Stamped PT 950. Ring size J1/2. 6.9gms.

£1,800-2,400 (plus 27.6% BP*)

168 An 18ct gold brilliant-cut diamond cluster ring.

Principal diamond estimated weight 1ct, G-H colour, VS clarity.
Estimated total diamond weight 1.50cts.
Hallmarks for London, 2011. Ring size L1/2. 3.7gms.

£2,000-2,500 (plus 27.6% BP*)

169 A pair of sapphire and diamond cluster drop earrings.

Estimated total diamond weight 1.80cts, H-I colour, SI2-P2 clarity.
Length 5.1 cms. 9.9gms.

£2,000-3,000 (plus 27.6% BP*)

170 An 18ct gold brilliant-cut diamond line bracelet.

Total diamond weight 12.65cts, stamped to mount, estimated H-L colour, SI2-P2 clarity.
Hallmarks for Sheffield. Length 18.3cms.

£5,000-7,000 (plus 27.6% BP*)

171 A brilliant-cut diamond necklace.

Estimated total diamond weight 111cts, G-H colour, VS clarity.
French re-strike mark to clasp. Length 42cms. 38.5gms.

£5,000-7,000 (plus 27.6% BP*)

172 A pair of brilliant-cut diamond stud earrings.

With **photocopies** of reports from the GIA, stating 1.71cts, D colour, VS1 clarity and 1.70cts, E colour, VS1 clarity respectively.
Stamped 750. 3.3gms.

£12,000-18,000 (plus 27.6% BP*)

173 A cushion-shape diamond single-stone ring, with brilliant-cut diamond line sides.

With report 180000081141, dated 3rd May 2018, from HRD, stating 4.01cts, G colour, VS2 clarity.
Stamped 750. Ring size K1/2. 4.3gms.

£28,000-35,000 (plus 27.6% BP*)

174 A cut-corner rectangular-shape diamond single-stone ring, with baguette-cut diamond chevron shoulders.

With report 80247-01, dated 16th December 2019, from GCS, stating 4.38cts, E colour, VS2 clarity.
Stamped 18ct PLAT. Ring size O1/2. 5.3gms.

£40,000-60,000 (plus 27.6% BP*)



BP* - Buyer's Premium of 23% (plus VAT) or 27.6% (VAT included)

175 An Art Deco platinum diamond brooch.

Principal diamond estimated weight 1.75cts, G-H colour, SI clarity.
Estimated total diamond weight 7 to 7.50cts.
Length 6.1cms. 16.2gms.

£4,000-6,000 (plus 27.6% BP*)

176 An old-cut diamond openwork drop pendant, with chain.

Principal diamond estimated weight 1.15cts, G-H colour, VS clarity.
Estimated total non-principal diamond weight 0.85ct, G-H colour, VS-SI clarity.
Length of pendant 5.8cms. Length of chain 62cms. 7.9gms.

£4,000-6,000 (plus 27.6% BP*)

177 A brilliant and baguette-cut diamond dress ring.

Principal diamond estimated weight 2cts, tinted colour, VS clarity.
Estimated total diamond weight 2.80cts.
Stamped PLAT. Ring size K1/2. 3.8gms.

£3,500-4,500 (plus 27.6% BP*)

178 A mid 20th century platinum diamond floral brooch, suspending a pear-shape diamond drop.

Principal diamond estimated weight 1.30cts, K-L colour, VS clarity.
Estimated total non-principal diamond weight 3cts, H-I colour, VS clarity.
Stamped 14K. Length 4.5cms. 11.6gms.

£2,000-3,000 (plus 27.6% BP*)

179 A brilliant-cut diamond cluster ring.

Estimated total diamond weight 3.40cts, H-I colour, SI1-P1 clarity.
Stamped 18ct. Ring size O1/2. 5gms.

£1,800-2,400 (plus 27.6% BP*)

180 A brilliant-cut diamond full eternity ring, with calibre-cut emerald spacers.

Estimated total diamond weight 3.50cts, H-J colour, SI2-P1 clarity.
Stamped PT 950. Ring size N. 6gms.

£1,500-2,000 (plus 27.6% BP*)

181 An Edwardian platinum and diamond pendant, depicting diamond bull rushes, on integral trace-link chain.

Estimated total diamond weight 0.20ct, G-H colour, VS-SI clarity.
French re-strike marks.
Diameter of pendant 3.3cms. Length of chain 39cms. 10.4gms.
With Tessier case.

£1,500-2,000 (plus 27.6% BP*)

182 A marquise-shape diamond single-stone ring.

Principal diamond weight 1.56cts, estimated L-tinted colour, SI clarity.
Stamped 18ct Plat. Ring size L1/2. 3.4gms.

£1,500-2,000 (plus 27.6% BP*)

183 An 18ct gold emerald and diamond geometric pendant, with chain.

Emerald calculated weight 1.88cts, based on estimated dimensions of 8.7 by 6 by 4.9mms.
Total diamond weight 0.55ct, estimated G-H colour, VS-SI clarity.
Hallmarks for London, 2017.
Length of pendant 5cms. Length of chain 40.5cms. 6.7gms.

£1,000-1,500 (plus 27.6% BP*)

184 An emerald and diamond cluster ring.

Emerald calculated weight 1.75cts, based on estimated dimensions of 8 by 6.5 by 4.6mms.
Estimated total diamond weight 0.75ct, H-I colour, VS clarity.
Ring size M1/2. 8.3gms.

£1,200-1,800 (plus 27.6% BP*)

185 A pair of 18ct gold fancy-shape diamond stud earrings, each cut to resemble a fish.

Estimated total diamond weight 1.15cts, SI clarity, presumed D colour.
Hallmarks for Birmingham. Length 0.9cm. 2.2gms.

£800-1,200 (plus 27.6% BP*)

186 An emerald and diamond dress ring.

Estimated total diamond weight 0.65ct, H-I colour, VS-SI clarity.
Approximate ring size L. 5.6gms.

£800-1,200 (plus 27.6% BP*)



187  A pair of Art Deco platinum and diamond lorgnettes, by Tiffany & Co., with non-designer chain.

Estimated total diamond weight 0.40ct, G-H colour, VS clarity. Lorgnettes signed Tiffany & Co. IRID PLAT. Length of lorgnettes 10.6cms. Length of chain 41.5cms. 27.2gms. With maker's case.

£700-900 (plus 27.6% BP*)

188 An Art Deco platinum emerald and diamond cocktail watch, by Longines.

Estimated total diamond weight 1ct, G-H colour, VS-SI clarity. Length 18cms. 19.1gms.

£450-650 (plus 27.6% BP*)

189 A sapphire and diamond cluster ring.

Principal sapphire weight 3.77cts. Estimated total diamond weight 1ct, H-I colour, VS2-P1 clarity. Ring size L1/2. 5gms.

£1,000-1,500 (plus 27.6% BP*)

190 A brilliant-cut diamond single-stone ring, with diamond accent foliate engraved shoulders.

Principal diamond estimated weight 1.20cts, H-I colour, P1 clarity. Ring size N1/2. 3.4gms.

£1,000-1,500 (plus 27.6% BP*)

191 An Art Deco platinum sapphire and diamond dress ring.


Principal sapphire calculated weight 1.72cts, based on estimated dimensions of 6.5 by 6 by 4.4mms. Estimated total diamond weight 0.20ct, H-J colour, VS2-P1 clarity. Ring size L. 3.1gms.

£1,200-1,800 (plus 27.6% BP*)

192 An Art Deco platinum brilliant and baguette-cut diamond brooch, by A.E. Kochert.

Estimated total diamond weight 5.50cts, G-H colour, predominantly VS clarity. Austrian marks, stamped 950. Length 4.9cms. 12.6gms.

£1,200-1,800 (plus 27.6% BP*)

193  A mid 20th century natural pearl and diamond dress ring.

With report 79228-77, dated 7th August 2019, from GCS, stating natural, saltwater. Estimated total diamond weight 0.10ct. French re-strike marks. Ring size N. 5.2gms.

£2,500-3,500 (plus 27.6% BP*)

194 A mid 20th century vari-cut diamond platinum brooch.


Principal diamond estimated weight 0.85ct, H-I colour, VS clarity. Estimated total diamond weight 4cts. Austrian marks, stamped 950. Length 5.7cms. 19.4gms.

£2,200-3,200 (plus 27.6% BP*)

195 A mid 20th century platinum brilliant-cut diamond single-stone ring, with vari-cut diamond geometric sides.

Principal diamond estimated weight 2.10cts, G-H colour, P1 clarity. Stamped PLAT. Approximate ring size O. 5.9gms.

£2,500-3,000 (plus 27.6% BP*)

196  An Art Deco platinum, diamond, onyx and synthetic ruby geometric bracelet.

Estimated total diamond weight 3.25cts, G-H colour, VS-SI clarity. Length 17.8cms. 21.2gms. With fitted case.

£6,000-8,000 (plus 27.6% BP*)

197 An Art Deco 14ct gold diamond and jade bracelet, by A.E. Kochert.

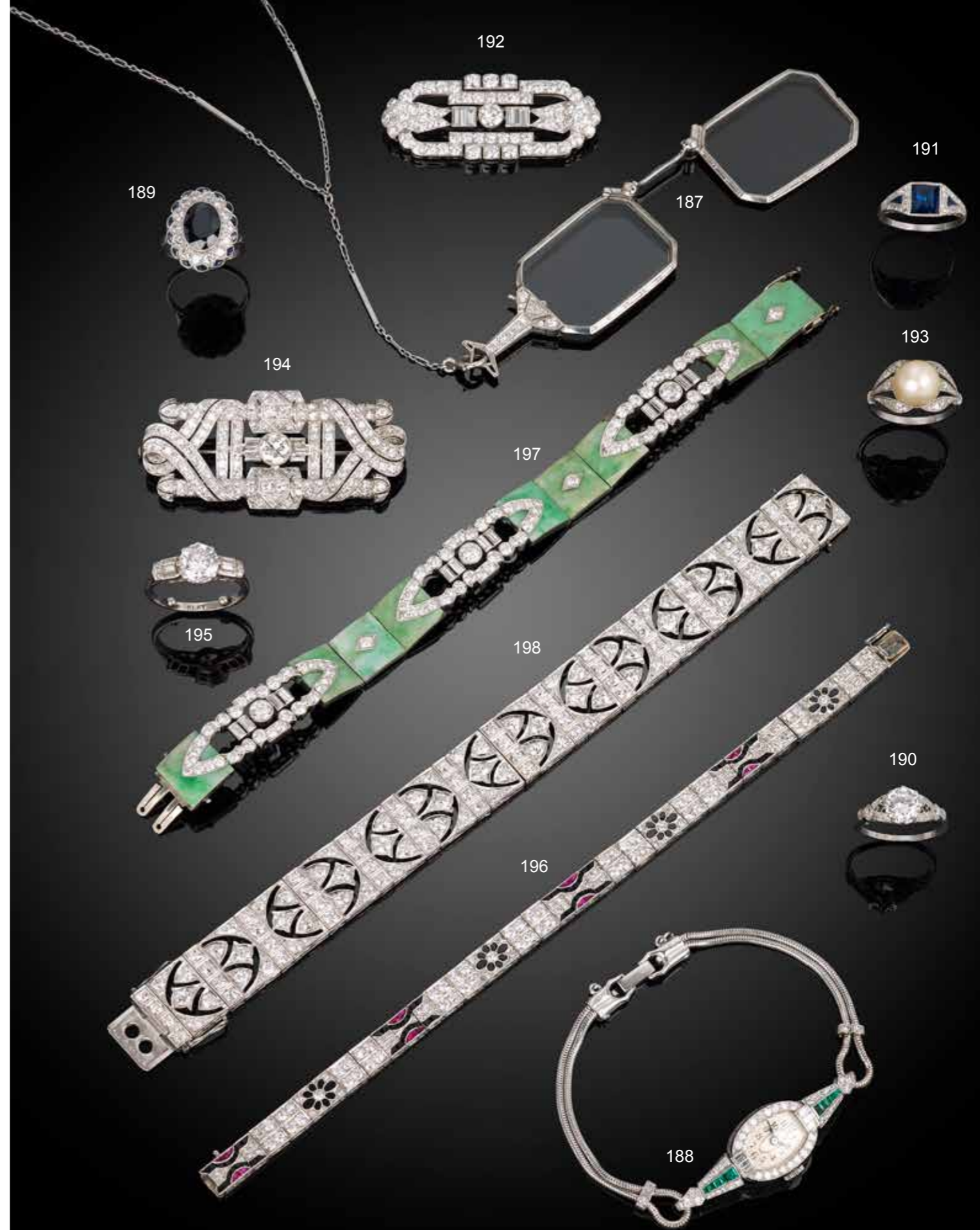
Estimated total diamond weight 7cts, predominantly G-H colour, VS clarity. Austrian marks, stamped 585. Length 18cms. 36.9gms.

£2,500-3,000 (plus 27.6% BP*)

198  An Art Deco platinum circular-cut diamond openwork bracelet.

Estimated total diamond weight 11cts, H-I colour, VS2-P1 clarity. Engraved 'All Platinum'. Length 18.2cms. 36.9gms. With fitted case.

£7,000-9,000 (plus 27.6% BP*)



199 An 18ct gold pear-shape diamond spray pendant, on snake-link chain.

Total diamond weight 1.05cts, estimated H-I colour, VS clarity. Hallmarks for Birmingham. Length of pendant 4cms. Length of chain 41cms. 6.4gms.

£500-700 (plus 27.6% BP*)

200  A Sri Lankan sapphire single-stone ring, with diamond line shoulders.

With report 1905CDS5022, dated 13th May 2019, from GCI, stating 3.15cts, Sri Lanka, no heat. Total diamond weight 0.20ct, estimated H-I colour, VS clarity. Stamped 750. Ring size N1/2. 5.1gms.

£500-700 (plus 27.6% BP*)

201 A pair of sapphire and diamond cluster earrings.

Total sapphire weight 1.94cts. Total diamond weight 0.36ct, estimated G-H colour, VS clarity. Stamped 18K 750. Length 1.1cms. 3.6gms.

£700-900 (plus 27.6% BP*)

202 A pair of platinum, pave-set diamond 'Hug' earrings, by Boodles.

Estimated total diamond weight 0.80ct, G-H colour, VS-SI clarity. Hallmarks for London, 1992. Length 2cms. 18.1gms.

£800-1,200 (plus 27.6% BP*)

203 A sapphire and diamond cluster ring.

Sapphire weight 1.14cts. Total diamond weight 0.19ct, estimated G-H colour, VS clarity. Stamped 18K 750. Ring size L1/2. 3.6gms.

£700-900 (plus 27.6% BP*)

204 A pair of 18ct gold diamond earrings.

Estimated total diamond weight 4cts, H-I colour, VS-SI clarity. Hallmarks for Sheffield. Length 5.1cms. 10.5gms.

£900-1,400 (plus 27.6% BP*)

205 A brilliant-cut diamond collet dress ring.


Total diamond weight 1.50cts, estimated H-I colour, VS2-SI2 clarity. Stamped 18K. Ring size O1/2. 8.7gms.

£1,500-2,000 (plus 27.6% BP*)

206 An 18ct gold pave-set diamond loop bracelet.

Estimated total diamond weight 6 to 6.50cts, G-H colour, VS-SI clarity. Hallmarks for Sheffield. Length 19cms. 27.5gms.

£1,500-2,000 (plus 27.6% BP*)

207  An 18ct gold square-shape diamond and sapphire three-stone band ring, with baguette-cut diamond line highlights.

With report 991188708, dated **7th September 1999**, from HRD, stating 0.55ct, E colour, VVS2 clarity. Hallmarks for London, 2002. Ring size R. 27.7gms.

£2,000-3,000 (plus 27.6% BP*)

208 A platinum brilliant-cut diamond single-stone ring.

Estimated diamond weight 1.90cts, H-I colour, P1 clarity. Hallmarks for London, 2013. Ring size L1/2. 5.9gms.

£3,000-4,000 (plus 27.6% BP*)



209  **A brilliant-cut diamond full eternity ring, by Tiffany & Co.**

Estimated total diamond weight 1.10cts, G+ colour, VS clarity. Stamped PT950. Ring size M. 4.1gms. With maker's case.

£1,000-1,500 (plus 27.6% BP*)

210 **A pair of 18ct gold marquise-shape and brilliant-cut diamond floral articulated bar earrings, by Stefan Hafner.**

Estimated total diamond weight 1.75cts, G-H colour, VS-SI clarity. Hallmarks for London, 2004. Length 6cms. 7.1gms.

£1,000-1,500 (plus 27.6% BP*)

211 **An aquamarine briolette and brilliant-cut diamond necklace.**

Aquamarine calculated weight 11.71cts, based on estimated dimensions of 23 by 11.5 by 7.4mms. Estimated total diamond weight 1.10cts, G-H colour, SI clarity. Stamped 750. Length 41cms. 8.3gms.

£900-1,400 (plus 27.6% BP*)

212  **A platinum brilliant-cut diamond single-stone ring, with diamond chevron shoulders.**

With report 2116589829, dated 22nd October 2010, from the GIA, stating 0.70ct, E colour, SI1 clarity. Estimated total diamond weight 1ct. Hallmarks for London, 2013. Ring size M. 6gms.

£900-1,400 (plus 27.6% BP*)

213  **A platinum marquise and pear-shape diamond three-stone ring.**

With report 08000015003, dated 19th December 2007, from HRD, stating 0.52ct, F colour, VVS2 clarity. Total pear-shape diamond weight 0.28ct, estimated G-H colour, VS clarity. Hallmarks for Birmingham. Ring size P. 4.1gms.

£1,400-2,000 (plus 27.6% BP*)

214 **A brilliant-cut diamond collet necklace.**


Estimated total diamond weight 1.25cts, H-I colour, SI-P1 clarity. Stamped 750. Length 46cms. 25.9gms.

£1,500-2,000 (plus 27.6% BP*)

215 **A pair of brilliant-cut diamond collet stud earrings.**


Total diamond weight 1.40cts, H colour, SI1 clarity, stamped to mounts. 3.5gms.

£1,600-2,200 (plus 27.6% BP*)

216  **A platinum old-cut diamond single-stone pendant, on chain, by Hirsh.**

Estimated diamond weight 1.15cts, H-I colour, VVS-VS clarity. Hallmarks for London, 2004. Length 41.5cms. 3.3gms. With Hirsh retailer's case.

£2,000-3,000 (plus 27.6% BP*)

217  **A platinum square-shape diamond single-stone ring.**

With report 20003367704, dated 27th July 2000, from HRD, stating 1.04cts, H colour, VVS2 clarity. Hallmarks for Sheffield, 2000. Ring size M. 4.7gms.

£2,000-2,500 (plus 27.6% BP*)

218 **A diamond 'Happy Spirit' pendant, by Chopard, with non-designer chain.**

Estimated total diamond weight 1.70cts, G-H colour, VS clarity. Pendant stamped 750. Chain stamped 14k. Length of pendant 7.5cms. Length of chain 46cms. 11.9gms.

£2,000-2,500 (plus 27.6% BP*)

219  **A platinum rectangular-shape diamond single-stone ring, with pave-set diamond accents.**

With report 13256350, dated 5th April 2004, from the GIA, stating 1.06cts, F colour, VS2 clarity. Hallmarks for London, 2004. Ring size M. 10gms.

£2,800-3,800 (plus 27.6% BP*)

220 **A mid 20th century platinum brilliant-cut diamond line bracelet, by Cartier.**

Estimated total diamond weight 3.50cts, G-I colour, VS-SI clarity. Length 16.4cms. 19.5gms.

£6,000-8,000 (plus 27.6% BP*)



221 A baguette-cut diamond full eternity ring.

Estimated total diamond weight 3cts, predominantly H-I colour, VS-SI clarity.
Ring size J. 3.9gms.

£400-600 (plus 27.6% BP*)

222 A pair of 18ct gold square-shape diamond stud earrings.

Estimated total diamond weight 0.80ct, G+ colour, SI clarity.
Hallmarks for Birmingham. 1.5gms.

£550-750 (plus 27.6% BP*)

223 A pave-set diamond bangle.

Total diamond weight 0.74ct, estimated G-H colour, VS clarity.
French assay marks.
Inner diameter 6.1cms. 22gms.

£800-1,200 (plus 27.6% BP*)

224 A platinum rectangular-shape diamond single-stone ring, with platinum diamond fitted band ring.

Principal diamond estimated weight 0.75ct, G-H colour, VVS-VS clarity.
Hallmarks for London, 2004 and Birmingham, 2006.
Ring sizes I and J. 10.1gms.

£1,000-1,500 (plus 27.6% BP*)

225 A pair of brilliant-cut diamond tapered drop earrings, by Stefan Hafner.

Total diamond weight 1.81cts, estimated G-H colour, VS clarity.
Italian marks, stamped 750. 8.9gms.

£1,200-1,800 (plus 27.6% BP*)

226 A platinum square-shape diamond single-stone ring, with rectangular-shape diamond shoulders.

Principal diamond estimated weight 1.60cts, K-L colour, VS clarity.
Hallmarks for London, 2000. Ring size N1/2. 4.1gms.

£1,800-2,400 (plus 27.6% BP*)

227 A platinum brilliant-cut diamond single-stone pendant, with chain.

With report 20043175704, dated **10th February 2004**, from HRD, stating 1.02cts, G colour, VS2 clarity.
Hallmarks for Birmingham, 2000 and London, 2004.
Length 40cms. 5.2gms.

£2,500-3,000 (plus 27.6% BP*)

228 A platinum oval-shape diamond single-stone ring, with tapered baguette-cut diamond shoulders.

With mini-report BIR6295-010, from AnchorCert, stating 1.07cts, H colour, VS1 clarity.
Total diamond weight 1.27cts.
Hallmarks for London, 2006. Ring size N. 4.5gms.

£2,000-2,500 (plus 27.6% BP*)

229 A square-shape diamond single-stone ring, with triangular-shape diamond shoulders.

With report 170002944951, dated 14th February 2017, from HRD, stating 1.02cts, F colour, VVS2 clarity.
Estimated total non-principal diamond weight 0.20ct, G-H colour, VS clarity.
Stamped Pt950. Ring size N. 6.2gms.

£2,500-3,000 (plus 27.6% BP*)

230 A brilliant-cut diamond crossed swag necklace, by Stefan Hafner.

Principal diamond weight 0.85ct, estimated H-I colour, SI clarity.
Total diamond weight 6.81cts.
Italian marks, stamped 750. Length 38cms. 25.4gms.

£3,500-4,500 (plus 27.6% BP*)



BP* - Buyer's Premium of 23% (plus VAT) or 27.6% (VAT included)

231 A mid 20th century platinum sapphire and diamond dress ring.

Sapphire calculated weight 0.82ct, based on estimated dimensions of 5.8 by 5.4 by 2.8mms.
Estimated total diamond weight 0.90ct, H-J colour, SI1-P1 clarity.
Ring size 11/2. 5.9gms.

£500-700 (plus 27.6% BP*)

232 A sapphire and old-cut diamond geometric cluster ring.

Sapphire calculated weight 1.44cts, based on estimated dimensions of 6.7 by 6 by 3.8mms.
Estimated total diamond weight 0.60ct, H-I colour, SI1-P1 clarity.
Stamped Plat. Ring size O1/2. 4.8gms.

£900-1,400 (plus 27.6% BP*)

233 An 18ct gold brilliant-cut diamond stepped bar bracelet.

Total diamond weight 3.06cts, estimated G-H colour, VS clarity.
Hallmarks for Sheffield. Length 19cms. 22.2gms.

£1,000-1,500 (plus 27.6% BP*)

234 A Colombian emerald and diamond cluster ring.

With report 78153-96, dated 27th April 2018, from GCS, stating 1.73cts, Colombia, moderate clarity enhancement.
Estimated total diamond weight 1.50cts, G-H colour, VS-SI clarity.
Stamped 950PT. Ring size L. 7gms.

£3,500-4,500 (plus 27.6% BP*)

235 A sapphire and vari-cut diamond floral cluster ring.

Sapphire calculated weight 1.56cts, based on estimated dimensions of 7.9 by 6.1 by 3.9mms.
Estimated total diamond weight 2.25cts, G-H colour, VS clarity.
Ring size J1/2. 5.8gms.

£1,000-1,500 (plus 27.6% BP*)

236 A brilliant-cut diamond single-stone ring.

Estimated diamond weight 1.55cts, I-J colour, P1-P2 clarity.
Stamped Plat. Ring size Q1/2. 3.2gms.

£1,500-2,000 (plus 27.6% BP*)

237 An early 20th century platinum and gold, sapphire and diamond bracelet.

Estimated total old-cut diamond weight 2.75cts, G-I colour, VS2-P1 clarity.
Length 18cms. 20.2gms.
With case.

£3,500-4,500 (plus 27.6% BP*)

238 A 14ct gold sapphire and diamond cluster ring.

Sapphire calculated weight 3.35cts, based on estimated dimensions of 10.6 by 8.6 by 4.6mms.
Estimated total diamond weight 3cts, G-I colour, VS-SI clarity.
Hallmarks for Sheffield, 1989. Ring size M. 12.3gms.

£1,600-2,200 (plus 27.6% BP*)

239 A sapphire and old-cut diamond cluster ring.

Sapphire calculated weight 2.01cts, based on estimated dimensions of 10.7 by 8 by 2.8mms.
Estimated total diamond weight 1ct, I-K colour, SI1-P1 clarity.
Ring size M1/2. 3.5gms.

£900-1,400 (plus 27.6% BP*)

240 A sapphire and brilliant-cut diamond graduated cluster bracelet.

Estimated total diamond weight 5.50cts, H-I colour, SI1-P1 clarity.
Stamped 18K, 750. Length 17.8cms. 25gms.

£3,500-4,500 (plus 27.6% BP*)



241 An 18ct gold textured bracelet, by Chiampesan.

Hallmarks for Edinburgh. Length 18.5cms. 21.9gms.

£650-850 (plus 27.6% BP*)

242* An emerald and pear-shape diamond three-stone ring.

Emerald weight 2.45cts.
Total diamond weight 0.30ct, estimated G-H colour, VS clarity.
Stamped 18K. Ring size M1/2. 3.9gms.

£700-900 (plus 27.6% BP* and 20% VAT)

243 A mid 20th century diamond cocktail ring.

Estimated total diamond weight 2.85cts, principal diamond estimated I-J colour, P1 clarity.
Ring size J. 13.8gms.

£700-1,000 (plus 27.6% BP*)

244 An emerald and diamond geometric cluster pendant, on chain.

Emerald weight 1.02cts.
Total diamond weight 0.39ct, estimated G-H colour, VS-SI clarity.
Stamped 18K 750.
Length of pendant 2.1cms. Length of chain 43cms. 6.1gms.

£900-1,400 (plus 27.6% BP*)

245 A platinum emerald and brilliant-cut diamond line bracelet.

Estimated total diamond weight 2cts, H-J colour, VS1-P1 clarity.
Hallmarks for Sheffield. Length 18.5cms. 16.4gms.

£1,500-2,000 (plus 27.6% BP*)

246 An emerald single-stone ring, with square-shape diamond panel shoulders.

Emerald calculated weight 2.72cts, based on estimated dimensions of 9.2 by 7.2 by 5.6mms.
Estimated total diamond weight 1.50cts, G+ colour, VS clarity.
French assay marks. Ring size J. 10.2gms.

£1,800-2,400 (plus 27.6% BP*)

247 A pair of triangular-shape diamond collet earrings.

Estimated total diamond weight 1.50cts, I-J colour, SI1-P1 clarity.
Stamped 750. Length 0.9cm. 5.6gms.

£2,000-2,500 (plus 27.6% BP*)

248 A platinum marquise-shape diamond single-stone ring, by Paul Spurgeon.

With maker's guarantee card, stating 0.92ct, G colour, VS1 clarity.
Hallmarks for London, 2004. Ring size M1/2. 11.1gms.

£1,500-2,000 (plus 27.6% BP*)

249 A Colombian emerald and vari-cut diamond cocktail ring.

With report 78159-72, dated 5th June 2018, from GCS, stating 2.14cts, Colombia, minor clarity enhancement.
Estimated total diamond weight 0.70ct, G-I colour, VS-SI clarity.
Ring size L1/2. 6.4gms.

£3,500-4,500 (plus 27.6% BP*)

250 A platinum square-shape diamond single-stone ring, with brilliant-cut diamond line sides.

With report 1159314653, dated 9th July 2013, from the GIA, stating 1.56cts, F colour, VVS1 clarity.
Hallmarks for Birmingham. Ring size Q1/2. 4.8gms.

£5,500-7,500 (plus 27.6% BP*)



BP* - Buyer's Premium of 23% (plus VAT) or 27.6% (VAT included)

251 An 18ct gold diamond accent 'Love' ring, by Cartier.

Swiss convention marks. Ring size K. 4.7gms.

£450-650 (plus 27.6% BP*)

252 An 18ct gold baguette and brilliant-cut diamond full circle eternity ring.

Estimated total diamond weight 1.25 to 1.50cts, G-H colour, predominantly VS clarity. Hallmarks for London. Ring size K1/2. 3.6gms.

£450-650 (plus 27.6% BP*)

253 An 18ct gold tanzanite and diamond cluster ring.

Tanzanite calculated weight 4.46cts, based on estimated dimensions of 11 by 9 by 6.5mms. Estimated total diamond weight 0.50ct, G-H colour, VS-SI clarity. Hallmarks for Sheffield. Approximate ring size L1/2. 9.6gms.

£450-650 (plus 27.6% BP*)

254 An 18ct gold diamond pendant loop, on chain, by Stefan Hafner.

Total diamond weight 0.95ct, estimated G-H colour, VS clarity. Hallmarks for Sheffield. Length of pendant 5.3cms. Length of chain 37cms. 7.7gms.

£600-800 (plus 27.6% BP*)

255 A diamond 'Infinity' bangle cuff, by Tiffany & Co.

Total diamond weight 0.39ct, estimated G-H colour, VS clarity. Stamped 750. Inner diameter 5.6cms. 18.6gms. With maker's case.

£750-950 (plus 27.6% BP*)

256 An A-type jadeite jade and diamond dress ring.

Verbal from GCS stating no impregnation. Report from China Inspection Gold and Silver Jewelry Testing Center(CTDM) stating A jade. Estimated total diamond weight 0.35ct, G-H colour, VS-SI clarity. Stamped Pm900. Ring size L1/2. 5.9gms.

£800-1,200 (plus 27.6% BP*)

257 An emerald and brilliant-cut diamond cluster pendant, with chain.

Emerald calculated weight 2.35cts, based on estimated dimensions of 9.8 by 7 by 6.3mms. Estimated total diamond weight 0.90ct, I-J colour, VS-P1 clarity. Chain with Italian marks, stamped 750. Length of pendant 2.3cms. Length of chain 41cms. 3.9gms.

£1,000-1,500 (plus 27.6% BP*)

258 A pair of brilliant-cut diamond stud earrings.

Estimated total diamond weight 1.50cts, I-J colour, SI clarity. 1.9gms.

£3,500-4,500 (plus 27.6% BP*)

259 A platinum square-shape diamond single-stone ring, with brilliant-cut diamond line shoulders.

With report 6157322856, dated 15th March 2013, from the GIA, stating 1.05cts, G colour, VVS2 clarity. Hallmarks for Birmingham. Ring size L1/2. 3.9gms.

£3,000-4,000 (plus 27.6% BP*)

260 A brilliant-cut diamond single-stone pendant.

Diamond weight 3.32cts, estimated L-tinted colour, VS clarity. Stamped 750. Length 1.5cms. 2.4gms.

£6,500-8,500 (plus 27.6% BP*)



BP* - Buyer's Premium of 23% (plus VAT) or 27.6% (VAT included)

261 A diamond bi-colour floral pendant.

Estimated total diamond weight 1.50cts, G-H colour, VS-SI clarity. Stamped 18K. Length 4.7cms. 11gms.

£350-450 (plus 27.6% BP*)

262 A platinum vari-cut diamond octagonal cluster ring.

Estimated total diamond weight 1ct, I-J colour, VS clarity. Hallmarks for London, 2001. Ring size N. 6.4gms.

£600-800 (plus 27.6% BP*)

263 A diamond and 'yellow' diamond stepped bands dress ring.

Estimated total diamond weight 1.25cts, H-I and 'yellow' colour, SI clarity. Stamped 750 K18. Ring size N. 7.7gms. Diamonds untested for natural colour origin.

£600-800 (plus 27.6% BP*)

264 A pair of 18ct gold brilliant-cut diamond cluster earrings.

Principal diamonds total weight 1ct, estimated H-I colour, VS2-SI1 clarity. Total diamond weight 1.44cts. Hallmarks for Sheffield, 2015. Diameter 0.9cm. 2.5gms.

£1,000-1,500 (plus 27.6% BP*)

265 A brilliant-cut diamond floral cluster ring.

Estimated total diamond weight 2cts. Principal diamond estimated weight 1ct, tinted colour, VS clarity. Ring size J1/2. 2.8gms.

£1,200-1,800 (plus 27.6% BP*)

266 An 18ct gold graduated brilliant-cut diamond line necklace.

Total diamond weight 7.08cts, scratch engraved to clasp, estimated H-K colour, VS2-P1 clarity. Hallmarks for London, 2010. Length 43.7cms. 16.3gms.

£1,800-2,400 (plus 27.6% BP*)

267 A baguette-cut diamond three-stone ring.

Principal diamond weight 0.87ct, estimated G+ colour, VVS2-VS1 clarity. Total diamond weight 1.12cts. Ring size L. 3.6gms.

£2,000-2,500 (plus 27.6% BP*)

268 A platinum marquise-shape 'yellow' diamond ring, with brilliant-cut diamond trefoil shoulders, attributed to Hans D. Krieger.

Principal diamond weight 0.90ct, estimated VS clarity. Total diamond weight 1.22cts. Hallmarks for Sheffield. Ring size N. 7.6gms.

£2,800-3,600 (plus 27.6% BP*)

269 An 18ct gold brilliant-cut diamond single-stone ring, with diamond shoulders.

With report 1245519508, dated 26th December 2016, from the GIA, stating 1.01cts, D colour, VS2 clarity. Hallmarks for Sheffield. Ring size L. 4gms.

£3,000-4,000 (plus 27.6% BP*)

270 A brilliant-cut 'brown' diamond single-stone pendant, weighing 3.70cts, with 18ct gold curb-link chain.

Diamond weight 3.70cts, estimated SI clarity. Pendant stamped 750. Chain with hallmarks for Sheffield. Length of pendant 1.5cms. Length of chain 40cms. 3.9gms. Diamond untested for natural colour origin.

£3,500-4,500 (plus 27.6% BP*)

271 A platinum rectangular-shape Fancy Yellow diamond and triangular-shape diamond three-stone ring, attributed to Hans D. Krieger.

With report 15605510, dated 9th November 2006, from the GIA, stating 1.51cts, natural colour, VS2 clarity. Total diamond weight 1.75cts. Hallmarks for Sheffield. Ring size L1/2. 5.7gms.

£3,000-4,000 (plus 27.6% BP*)

272 A platinum square-shape diamond single-stone ring, with diamond chevron shoulders, together with a brilliant-cut diamond fitted band ring.

Principal diamond estimated weight 1.80cts, G-H colour, VVS-VS1 clarity. Hallmarks for London, 2009. Ring size H. 9.2gms.

£4,500-5,000 (plus 27.6% BP*)


273 An old-cut diamond single-stone ring.

Diamond weight 2.39cts, estimated L-tinted colour, VS2-SI1 clarity. Ring size M1/2. 5gms.

£5,000-7,000 (plus 27.6% BP*)



BP* - Buyer's Premium of 23% (plus VAT) or 27.6% (VAT included)

274  A late Victorian 18ct gold Burmese ruby five-stone ring.

With report 80236-93, dated 23rd October 2019, from GCS, stating 1.33cts total weight, Myanmar(Burma), no heat. Ring size M. 3.4gms.

£700-900 (plus 27.6% BP*)

275 An 18ct gold diamond Football Association shield brooch.

Estimated total diamond weight 1ct, G-H colour, VS-SI clarity. Hallmarks for London, 1996. Length 3.7cms. 14.8gms.

PROVENANCE

Once in the collection of Lady Barbara Millichip and Sir Frederick Albert 'Bert' Millichip, former footballer and director of West Bromwich Albion and former director of the FA.

£600-800 (plus 27.6% BP*)

276 A 19th century 18ct gold fancy-link chain, with slider and glove terminal.

Length 135cms. 24.8gms.

£700-900 (plus 27.6% BP*)

277 A brilliant-cut diamond cluster ring.

Estimated total diamond weight 2.90cts, H-J colour, SI1-P1 clarity. Stamped 18ct. Approximate ring size N1/2. 5.7gms.

£600-800 (plus 27.6% BP*)

278 A mid 19th century gold floral embossed bracelet.

Length 17.5cms. 34.5gms.

£1,200-1,800 (plus 27.6% BP*)

279 A pair of blue enamel ear hoops, by Buccellati.

Stamped 750. Diameter 2.1cms. 13.3gms.

£900-1,400 (plus 27.6% BP*)

280 An 18ct gold bi-colour hinged bangle, designed as a carousel.

Import marks for Birmingham, 1993. Inner diameter 6.1cms. 55.9gms.

£1,500-2,000 (plus 27.6% BP*)

281 A brilliant-cut diamond single-stone ring.

Diamond weight 1.03cts, estimated tinted colour, VS clarity. Stamped 18ct. Ring size M1/2. 3.2gms.

£1,000-1,500 (plus 27.6% BP*)

282 A late Victorian gold citrine necklace.

Central citrine calculated weight 14.46cts, based on estimated dimensions of 18.2 by 15.3 by 9.3mms. French re-strike mark. Length 38cms. 59.4gms.

£1,500-2,000 (plus 27.6% BP*)



283 An Edwardian silver and gold, opal heart and diamond openwork pendant.

Estimated total old-cut diamond weight 0.40ct, H-I colour, SI1-P1 clarity.
Length 4.5cms. 13.6gms.
May be worn as a brooch.

£300-400 (plus 27.6% BP*)

284 An early 20th century silver and gold, moonstone and demantoid garnet pendant, in the manner of Liberty & Co.

May be worn as a brooch.
Length 4.1cms. 5.1gms.

£400-600 (plus 27.6% BP*)

285 A pair of early 20th century 18ct gold mother-of-pearl Royal Presentation cufflinks, depicting the King George VI cypher.

Stamped 18. Diameter of cufflink face 1.4cms. 9.9gms.

£400-600 (plus 27.6% BP*)

286 A pair of natural pearl and orange zircon earrings.

With report 265008/20046282, dated 24th October 2019, from AnchorCert, stating natural, saltwater pearl and 8.07cts of zircon.
Length 3cms. 4.6gms.

£500-700 (plus 27.6% BP*)

287 An early 20th century gold old and rose-cut diamond floral cluster hinged bangle.

Estimated total diamond weight 1.05cts, H-I colour, SI1-P1 clarity.
Inner diameter 5.8cms. 10.7gms.

£600-800 (plus 27.6% BP*)

288 An emerald and old-cut diamond five-stone ring.

Principal emerald calculated weight 0.53ct, based on estimated dimensions of 5.2 by 4.5 by 3.6mms.
Estimated total diamond weight 0.65ct, H-I colour, SI clarity.
Stamped Plat. Approximate ring size K. 3.8gms.

£700-900 (plus 27.6% BP*)

289 An early 20th century platinum and 18ct gold, diamond and seed pearl foliate pendant, with gold seed pearl chain.

Length of pendant 4.2cms. 46.5cms. 9.6gms.

£700-900 (plus 27.6% BP*)

290 An early 20th century 18ct gold calibre-cut sapphire floral panel bracelet.

Stamped Depose, 18k. Length 19.6cms. 32.8gms.

£800-1,200 (plus 27.6% BP*)

291 A pair of natural pearl, pearl and old-cut diamond cluster drop earrings.

With report 79218-76, dated 26th June 2019, from GCS, stating natural, saltwater pearls, no indications of treatment.
Estimated total diamond weight 0.80ct, H-J colour, SI1-P1 clarity.
Length 3.2cms. 4.2gms.
With case.

£1,500-2,000 (plus 27.6% BP*)

292 An old-cut diamond openwork heart pendant, with later 18ct gold chain.

Estimated total diamond weight 2.50 to 3cts, G-H colour, VS-SI clarity.
Chain with hallmarks for London, 2004.
Length of pendant 4cms. Length of chain 2.7cms. 13.5gms.
May be worn as a brooch.

£800-1,200 (plus 27.6% BP*)

293 An early 20th century 18ct gold cultured pearl, enamel and diamond foliate brooch, by A. Beaudouin.

Maker's mark for A. Beaudouin, believed to be a Georges Le Turcq design.
French assay marks. Length 3.4cm Weight 7.1gms.
With fitted Tessier case.


£1,500-2,000 (plus 27.6% BP*)

294 An old-cut diamond three-stone ring.

Estimated total diamond weight 4cts, H-J colour, VS2-P1 clarity.
Stamped Plat. Ring size L. 4.1gms.

£5,500-7,500 (plus 27.6% BP*)



295  A natural pearl single-strand necklace, with spiral diamond point barrel clasp.

With report 265009/20046283, dated 24th October 2019, from AnchorCert, stating natural, saltwater. Length 44cms.

£300-400 (plus 27.6% BP*)

296 An early 20th century silver and gold, blister pearl, rose-cut diamond and ruby brooch, depicting a mythical creature.

Length 4.5cms. 11.2gms.

£700-900 (plus 27.6% BP*)

297 A mid 20th century natural pearl and diamond cluster ring.

Verbal from GCS, stating natural, saltwater. Estimated dimensions of pearl 8.5 by 8.4 by 7.5mms. Estimated total diamond weight 0.20ct, I-J colour, VS-SI clarity. Stamped Pt. Ring size N1/2. 3.9gms.

£800-1,200 (plus 27.6% BP*)

298 A late Victorian 15ct gold old-cut diamond dress ring, with scrolling gallery and shoulders.

Estimated total diamond weight 1.40cts. Principal diamond estimated weight 0.75ct, I-J colour, VS clarity. Approximate ring size N. 4.8gms.

£700-900 (plus 27.6% BP*)

299 An early 20th century silver and gold, cultured pearl and diamond brooch.

Estimated total old-cut diamond weight 0.75ct, G-I colour, SI1-P1 clarity. Length 3.7cms. 8.7gms.

£900-1,400 (plus 27.6% BP*)

300 An emerald and old-cut diamond five-stone ring.

Estimated total diamond weight 0.50ct, H-I colour, SI clarity. Ring size N1/2. 2.7gms.

£1,500-2,000 (plus 27.6% BP*)

301  A mid 20th century enamel and diamond bracelet, by Giovanni Apa.

Estimated total diamond weight 0.25ct, G-H colour, VS-SI clarity. Stamped 750. Length 18.5cms. 86gms. With maker's case.

£2,800-3,800 (plus 27.6% BP*)

302 An early 20th century gold sapphire, diamond, seed pearl and white enamel brooch.


Sapphire weight 4.79cts. Estimated total old-cut diamond weight 0.10ct, H-I colour, SI2-P1 clarity. Length 3.8cms. 9.4gms.

£2,000-3,000 (plus 27.6% BP*)

303 A mid 20th century oval old-cut diamond single-stone ring, with diamond accent gallery.

Principal diamond estimated weight 1.50cts, G-H colour, SI clarity. Approximate ring size M. 2.8gms.

£3,000-4,000 (plus 27.6% BP*)

304  An early 20th century gold seed pearl, split pearl and enamel foliate suite, comprising pendant, necklace and bracelet.

Stamped 18ct and 15ct. Length of pendant 3.4cms. Length of necklace 40.5cms. Length of bracelet 18cms. 47.2gms. With fitted case.

£2,000-3,000 (plus 27.6% BP*)



305 A late Victorian silver and 18ct gold, ruby and rose-cut diamond snake stickpin.

Ruby calculated weight 0.36ct, based on estimated dimensions of 4 by 3.5 by 2.8mms.
French assay mark, partially indistinct.
Length of stickpin head 1.1cms. 2.6gms.
With Tiffany & Co. case.

£300-400 (plus 27.6% BP*)

306 An Edwardian 12ct gold rock crystal and agate pendant, with central rose-cut diamond letter 'F'.

Length 4.3cms. 11.8gms.

£350-450 (plus 27.6% BP*)

307 A pair of cultured pearl and pearl insect earrings, with ruby eye highlights.

Length 8cms. 6.7gms.
Pearls untested for natural origin.

£450-650 (plus 27.6% BP*)

308 An early 20th century green beryl and seed pearl fringe necklace.

Estimated dimensions of principal beryl 15.4 by 10.3 by 10mms.
Length 43cms. 12.1gms.

£500-700 (plus 27.6% BP*)

309 A late Victorian 18ct gold ruby three-stone ring, with diamond spacers.

Principal ruby calculated weight 0.68ct, based on estimated dimensions of 5.5 by 5 by 2.95mms.
Estimated total diamond weight 0.15ct, G-H colour, VS-SI clarity.
Ring size N. 4.4gms.

£700-900 (plus 27.6% BP*)

310 A late Victorian gold rose-cut diamond, ruby and green gem locket.

Length 5.2cms. 17.5gms.

£700-900 (plus 27.6% BP*)

311 A platinum and 18ct gold old-cut diamond marquise-shape ring.

Estimated total diamond weight 2 to 2.50cts, H-J colour, SI1-P1 clarity.
Ring size N1/2. 5.7gms.

£1,000-1,500 (plus 27.6% BP*)

312 An early 20th century 18ct gold and platinum, Colombian emerald and old-cut diamond three-stone ring.

With report 80247-74, dated 16th December 2019, from GCS, stating Colombia, minor clarity enhancement, estimated weight 0.70ct.
Estimated total diamond weight 1ct, G-H colour, VS-SI clarity.
Stamped 18ct Plat. Ring size L. 3.8gms.

£2,000-2,500 (plus 27.6% BP*)

313 A late Victorian silver and gold Burmese ruby and diamond brooch.

Verbal from GCS stating Burma, no heat.
Estimated total diamond weight 2.50 to 3cts, predominately H-I colour, VS-SI clarity.
Diameter 2.3cms. 7.4gms.

£1,500-2,000 (plus 27.6% BP*)

314 An emerald and old-cut diamond cluster ring.

Emerald calculated weight 0.92ct, based on estimated dimensions of 11 by 8 by 5mms.
Estimated total diamond weight 1ct, G-J colour, VS-SI2 clarity.
Ring size T. 9.8gms.

£2,000-2,500 (plus 27.6% BP*)



BP* - Buyer's Premium of 23% (plus VAT) or 27.6% (VAT included)

315 A ruby five-stone ring, with old-cut diamond gallery.

Estimated total diamond weight 0.20ct, H-I colour, VS clarity.
Ring size N. 3.5gms.

£600-800 (plus 27.6% BP*)

316 A mid 20th century rose-cut diamond, enamel, emerald, ruby and sapphire insect brooch.

Emerald calculated weight 6.11cts, based on estimated dimensions of 13 by 10 by 6.4mms.
Length 4cms. 14.7gms.

£450-650 (plus 27.6% BP*)

317 A late Victorian gold foil-back gem and split pearl shield brooch, with tassel swag and glazed locket reverse.

Length 8.4cms. 23.5gms.

£600-800 (plus 27.6% BP*)

318 An early 20th century 18ct gold emerald and diamond three-stone ring.

Emerald calculated weight 0.31ct, based on estimated dimensions of 4.6 by 4.5 by 2.4mms.
Estimated total diamond weight 0.70ct, G-H colour, SI clarity.
Ring size L. 2.4gms.

£550-750 (plus 27.6% BP*)

319 An early 20th century 15ct gold garnet brooch, with split pearl and rose-cut diamond star inset.

Stamped 15ct. Diameter 4cms. 15.2gms.

£700-900 (plus 27.6% BP*)

320 An emerald and old-cut diamond cluster ring.

Emerald calculated weight 5.65cts, based on estimated dimensions of 12.4 by 11.5 by 5.4mms.
Estimated total diamond weight 0.75ct.
Ring size J. 5.3gms.

£700-900 (plus 27.6% BP*)

321 An old and rose-cut diamond garnet heart and star pendant, with locket reverse.

Estimated total old-cut diamond weight 0.30ct, H-J colour, VS-SI clarity.
Length 3.9cms. 10.5gms.
With fitted case.

£1,200-1,800 (plus 27.6% BP*)

322 A late Victorian silver and gold, green enamel and diamond heart pendant locket, with diamond bow surmount, on seed pearl spacer chain.

Length of pendant 3.3cms. Length of chain 45cms. 12.3gms.
With fitted retailer's case.

£1,000-1,500 (plus 27.6% BP*)

323 A mid Victorian gold, garnet, diamond and green enamel snake pendant, with snake-link chain.

Length of pendant 3.9cms. Length of chain 47.5cms. 26.1gms.
With fitted case.

£2,000-3,000 (plus 27.6% BP*)

324 An emerald and brilliant-cut diamond cluster ring.

Emerald calculated weight 0.80ct, based on estimated dimensions of 6.3 by 6.2 by 3.2mms.
Estimated total diamond weight 1.35cts, K-L colour, VS-SI clarity.
Stamped 18ct. Ring size N. 4.7gms.

£1,000-1,500 (plus 27.6% BP*)

325 A foil back garnet floral pendant, on garnet foliate chain.

Length of pendant 4.5cms. Length of chain section 32cms.
29.4gms.

£2,000-3,000 (plus 27.6% BP*)

326 A late Victorian old-cut diamond floral brooch, with near-period 18ct gold woven bracelet fitting.

Estimated total diamond weight 3.50cts, H-J colour, VS-SI clarity.
Bracelet stamped 18.
Length of bracelet 18.2cms. Length of brooch 100.1gms.

£5,000-7,000 (plus 27.6% BP*)



BP* - Buyer's Premium of 23% (plus VAT) or 27.6% (VAT included)

327 A Sri Lankan sapphire and diamond three-stone ring.

Verbal from GCS, stating Sri Lanka, no heat.
Sapphire calculated weight 1.82cts, based on estimated dimensions of 7.7 by 6.3 by 4mms.
Estimated total diamond weight 0.20ct, J-K colour, SI2-P1 clarity.
Ring size M. 2.7gms.

£550-750 (plus 27.6% BP*)

328 A late Victorian 18ct gold sapphire three-stone and diamond spacer ring.

Hallmarks for Birmingham, 1891. Ring size M. 3.7gms.

£500-700 (plus 27.6% BP*)

329 A 19th century 18ct gold hardstone cameo brooch, possibly carved to depict bearded Hercules, with chain-link surround.

Stamped 18ct. Length 6cms. 49.3gms.

£900-1,400 (plus 27.6% BP*)

330 A late 19th century gold floral micro mosaic bracelet.

Length 20.5cms. 40.8gms.
With case.

£900-1,400 (plus 27.6% BP*)

331 A granulated fringe necklace, with geometric, wild cat and ram head motif, with Greek script.

French re-strike marks. Length 47cms. 32.6gms.

£1,500-2,000 (plus 27.6% BP*)

332 An early 20th century 9ct gold sapphire and diamond cluster bracelet.

Sapphire calculated total weight 2.66cts, based on estimated dimensions.
Estimated total diamond weight 1.75cts, H-J colour, SI1-P1 clarity.
Stamped 9. Length 17.5cms. 16.7gms.

£1,000-1,500 (plus 27.6% BP*)

333 A 19th century silver and gold, blue enamel and diamond cluster ring.

Estimated total diamond weight 1.45cts, predominantly H-I colour, VS clarity.
French assay marks. Ring size K1/2. 5.8gms.

£1,800-2,400 (plus 27.6% BP*)

334 A mid Victorian gold, Burmese ruby, old-cut diamond and enamel hinged bangle.

Verbal from GCS, stating Burma, no heat.
Principal ruby calculated weight 0.93ct, based on estimated dimensions.
Estimated total diamond weight 1ct, H-I colour, SI2-P1 clarity.
Inner diameter 5.7cms. 29.3gms.

£2,500-3,500 (plus 27.6% BP*)

335 An early 20th century 18ct gold old-cut diamond three-stone ring, with rose-cut diamond accents.

Estimated total old-cut diamond weight 2.50cts, I-J colour, SI2-P1 clarity.
Stamped 18ct. Ring size L. 5.1gms.

£1,800-2,400 (plus 27.6% BP*)

336 An early 20th century gold Burmese sapphire and diamond cluster ring.

With report 79217-55, dated 25th June 2019, from GCS, stating Myanmar(Burma), no heat, estimated weight 2.10cts.
Estimated total diamond weight 1.50cts, predominantly H-I colour, VS-SI clarity.
Ring size K. 4.6gms.

£4,000-6,000 (plus 27.6% BP*)



BP* - Buyer's Premium of 23% (plus VAT) or 27.6% (VAT included)

337 An 18ct gold ruby and brilliant-cut diamond cluster ring.

Ruby weight 0.79ct, stamped to band.
Total diamond weight 0.26ct, stamped to band, estimated H-I colour, VS clarity.
Hallmarks for London, 2012. Ring size M. 3.1gms.

£400-600 (plus 27.6% BP*)

338 A 'Happy Diamonds' heart ring, by Chopard.

Stamped Au750. Ring size L1/2. 12.5gms.

£400-600 (plus 27.6% BP*)

339 An 18ct gold red tourmaline and diamond dress ring.

Tourmaline calculated weight 5.62cts, based on estimated dimensions of 10 by 10 by 7.35mms.
Estimated total diamond weight 0.30ct, G-H colour, VS clarity.
Hallmarks for London, 2001. Ring size N1/2. 10.5gms.

£450-650 (plus 27.6% BP*)

340 A pair of diamond accent earrings, with stylised floral motif.

Estimated total diamond weight 0.85ct, G-H colour, VS-SI clarity.
Stamped 750. Length 2.7cms. 25gms.

£600-800 (plus 27.6% BP*)

341  A Fancy Intense Pink diamond and diamond cluster ring.

With report 2135024173, dated 19th September 2011, from the GIA, stating 0.11ct, natural colour.
Total non-principal diamond weight 0.22ct, stamped to band, estimated H-I colour, VS clarity.
Stamped 750. Ring size M1/2. 3.1gms.

£800-1,200 (plus 27.6% BP*)

342 An 18ct gold belt bracelet, with pave-set diamond buckle.

Estimated total diamond weight 0.15ct, H-I colour, VS-SI clarity.
Hallmarks for London, 2005. Length 19.9cms. 25.3gms.

£800-1,200 (plus 27.6% BP*)

343 A pair of 18ct gold brilliant-cut diamond front-facing ear hoops.

Total diamond weight 2.20cts, estimated H-I colour, VS clarity.
Hallmarks for London, 2006. Diameter 4.3cms. 15.5gms.

£900-1,400 (plus 27.6% BP*)

344 An 18ct gold diamond pendant, with chain, by Picchiotti.

Estimated total diamond weight 1.20cts, G-H colour, VS clarity.
Hallmarks for London, 2002.
Length of pendant 1.9cms. Length of chain 42.5cms. 15.4gms.

£800-1,200 (plus 27.6% BP*)

345 An 18ct gold square-shape ruby and diamond half eternity ring.

Total ruby weight 1.20cts.
Total diamond weight 0.72ct, estimated G-H colour, VS clarity.
Hallmarks for Edinburgh. Ring size M. 5.8gms.

£1,800-2,400 (plus 27.6% BP*)

346 A heart-shape diamond single-stone ring.

Estimated diamond weight 1.85cts, H-I colour, SI2-P1 clarity.
Ring size H1/2. 3.8gms.

£3,000-4,000 (plus 27.6% BP*)



347 A yellow topaz and diamond cluster ring.

Topaz calculated weight 1.19cts, based on estimated dimensions of 8.2 by 6 by 5.25mms.
Estimated total diamond weight 0.25ct, G-H colour, VS-SI clarity.
Hallmarks for London, 1992. Ring size O1/2. 3.7gms.

£400-600 (plus 27.6% BP*)

348 A diamond cluster pendant, with scrolling surmount.

Total diamond weight 0.89ct, estimated G-H colour, VS-SI clarity.
Stamped 18K 750. Length 4.1cms. 2.6gms.

£800-1,200 (plus 27.6% BP*)

349 A pink sapphire and diamond drop pendant, on chain, by Stephen Hafner.

Total sapphire weight 0.65ct.
Total diamond weight 0.32ct, estimated G+ colour, VS clarity.
Stamped 750.
Length of pendant 7.2cms. Length of chain 41.5cms. 11.4gms.

£600-800 (plus 27.6% BP*)

350 A pair of pink sapphire and diamond drop earrings, by Stephen Hafner.

Total sapphire weight 1.63cts.
Total diamond weight 0.65ct, estimated G+ colour, VS clarity.
Stamped 750. Length 7.2cms. 16gms.

£1,200-1,800 (plus 27.6% BP*)

351 A pave-set pink sapphire and diamond 'Mimi' ring, by Cartier.

Estimated total diamond weight 0.50ct, G+ colour, VS clarity.
Stamped 750. French assay marks.
Ring size Q. Cartier size 58. 6.4gms.

£1,500-2,000 (plus 27.6% BP*)

352 A circular-cut diamond single-stone ring.

Estimated diamond weight 1ct, I-J colour, VS2-SI1 clarity.
Stamped 18ct. Ring size M. 2.9gms.

£1,000-1,500 (plus 27.6% BP*)

353 A 'B. Zero 1' hinged bangle, by Bulgari.

Stamped 750. Inner diameter 6.6cms. 52.8gms.

£1,500-2,000 (plus 27.6% BP*)

354 A pair of multifaceted morganite and pave-set diamond earrings, by Buchwald.

Estimated dimensions of one morganite 20.6 by 10.2 by 6mms.
Estimated total diamond weight 1.70cts, G-H colour, VS clarity.
Hallmarks for Sheffield, 2004. Length 4.1cms. 10.9gms.

£1,500-2,000 (plus 27.6% BP*)

355 A platinum marquise-shape 'pinkish-brown' diamond and brilliant-cut diamond three-stone cluster ring, attributed to Hans D. Krieger.

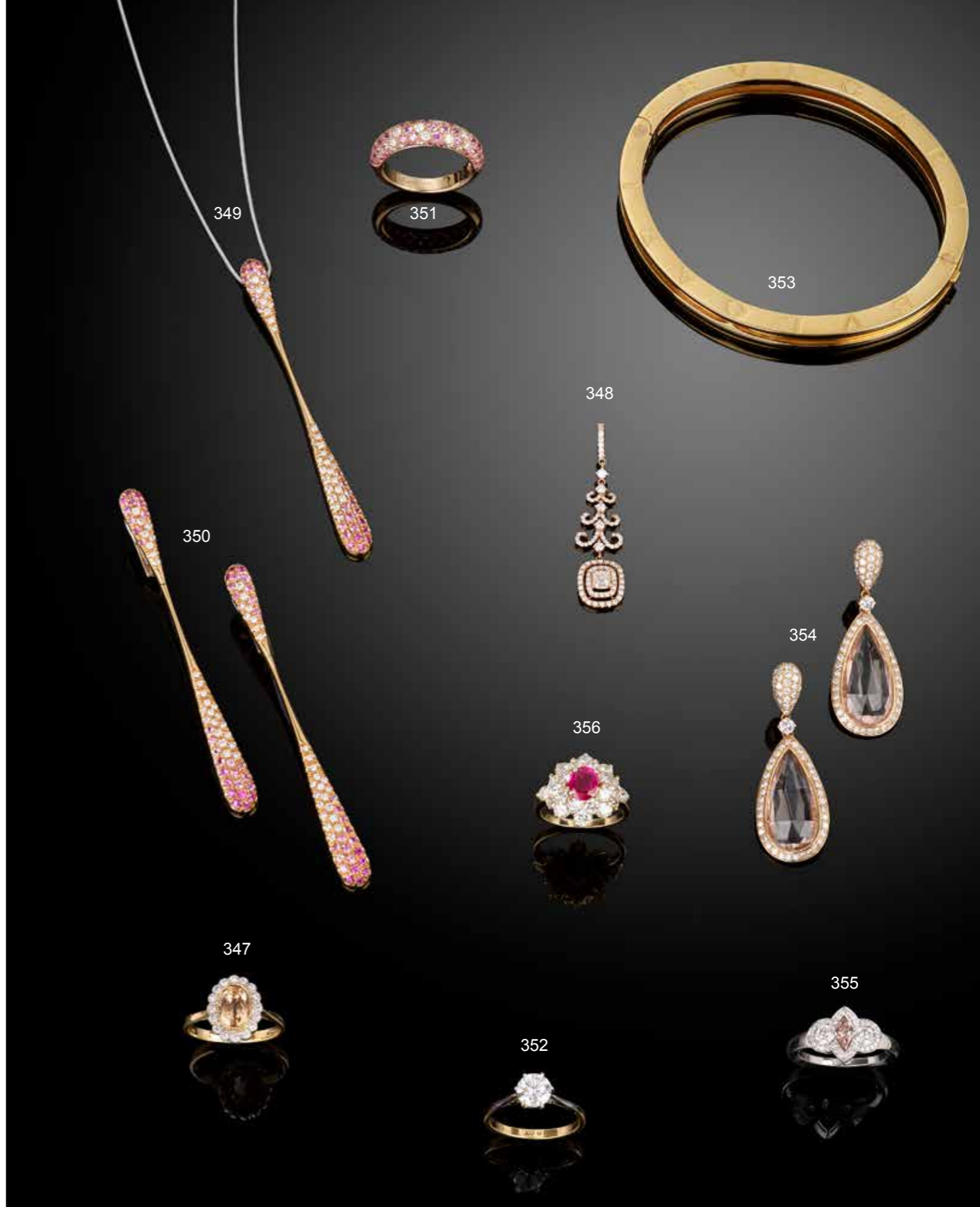
Total diamond weight 0.98ct, estimated VS-SI clarity.
Hallmarks for Sheffield. Ring size M. 7.6gms.
Diamond untested for natural colour origin.

£2,800-3,600 (plus 27.6% BP*)

356 A Burmese ruby and brilliant-cut diamond cluster ring.

With report 79226-61, dated 21st August 2019, from GCS, stating Myanmar(Burma), no heat, estimated 0.80ct.
Estimated total diamond weight 2.50cts, G-H colour, VS-SI clarity.
French re-strike mark. Ring size K. 6.1gms.

£3,500-4,500 (plus 27.6% BP*)




BP* - Buyer's Premium of 23% (plus VAT) or 27.6% (VAT included)

357 An 18ct gold square-shape diamond single-stone band ring, by Gucci.

Estimated diamond weight 0.20ct, G-H colour, VS clarity. Hallmarks for London, 2000. Ring size P1/2. 12.3gms.

£400-600 (plus 27.6% BP*)

358  **A Burmese pink sapphire single-stone ring, with brilliant-cut diamond line sides.**

With report 1901CDP1700, dated 15th January 2019, from GCI, stating 1.01cts, Burma(Myanmar) no heat. Estimated total diamond weight 0.20ct, H-I colour, VS clarity. Stamped 750. Ring size O1/2. 2gms.

£450-650 (plus 27.6% BP*)

359 An 18ct gold wire hinged bangle, with diamond highlights.

Total diamond weight 0.68ct, estimated G-H colour, VS clarity. Hallmarks for Sheffield, 2004. Inner diameter 5.9cms. 15gms.

£500-700 (plus 27.6% BP*)

360 An 18ct gold diamond-set wire collar necklace, by Dal Lago.

Total diamond weight 0.89ct, G-H colour, VS clarity. Hallmarks for London, 2004. Italian marks. Inner diameter 11.6cms. 26.6gms.

£800-1,200 (plus 27.6% BP*)

361 A square-shape ruby and diamond full eternity ring.

Estimated total diamond weight 1.10cts, G-H colour, VS clarity. Ring size J. 4.1gms.

£700-900 (plus 27.6% BP*)

362 A platinum brilliant-cut diamond single-stone ring, with diamond chevron shoulders.

Principal diamond laser inscribed 2156319547, corresponding to a report dated 12th April 2017, from the GIA, stating 0.70ct, D colour, VS2 clarity. Estimated total diamond weight 1ct. Hallmarks for London, 2014. Ring size M. 5.9gms.

£900-1,400 (plus 27.6% BP*)

363 A pair of pave-set diamond and ruby snake earrings.

Total ruby weight 0.42ct. Total diamond weight 1.06cts, estimated G-H colour, VS-SI clarity. Stamped 18K 750. Length 2.1cms. 4.5gms.

£900-1,400 (plus 27.6% BP*)

364 An 18ct gold brilliant and baguette-cut diamond crossover ring, by Picchiotti.

Estimated total diamond weight 2cts, H-I colour, VS clarity. Hallmarks for London, 2001. Ring size M. 6.7gms.

£1,000-1,500 (plus 27.6% BP*)

365  **A platinum brilliant-cut diamond single-stone ring.**

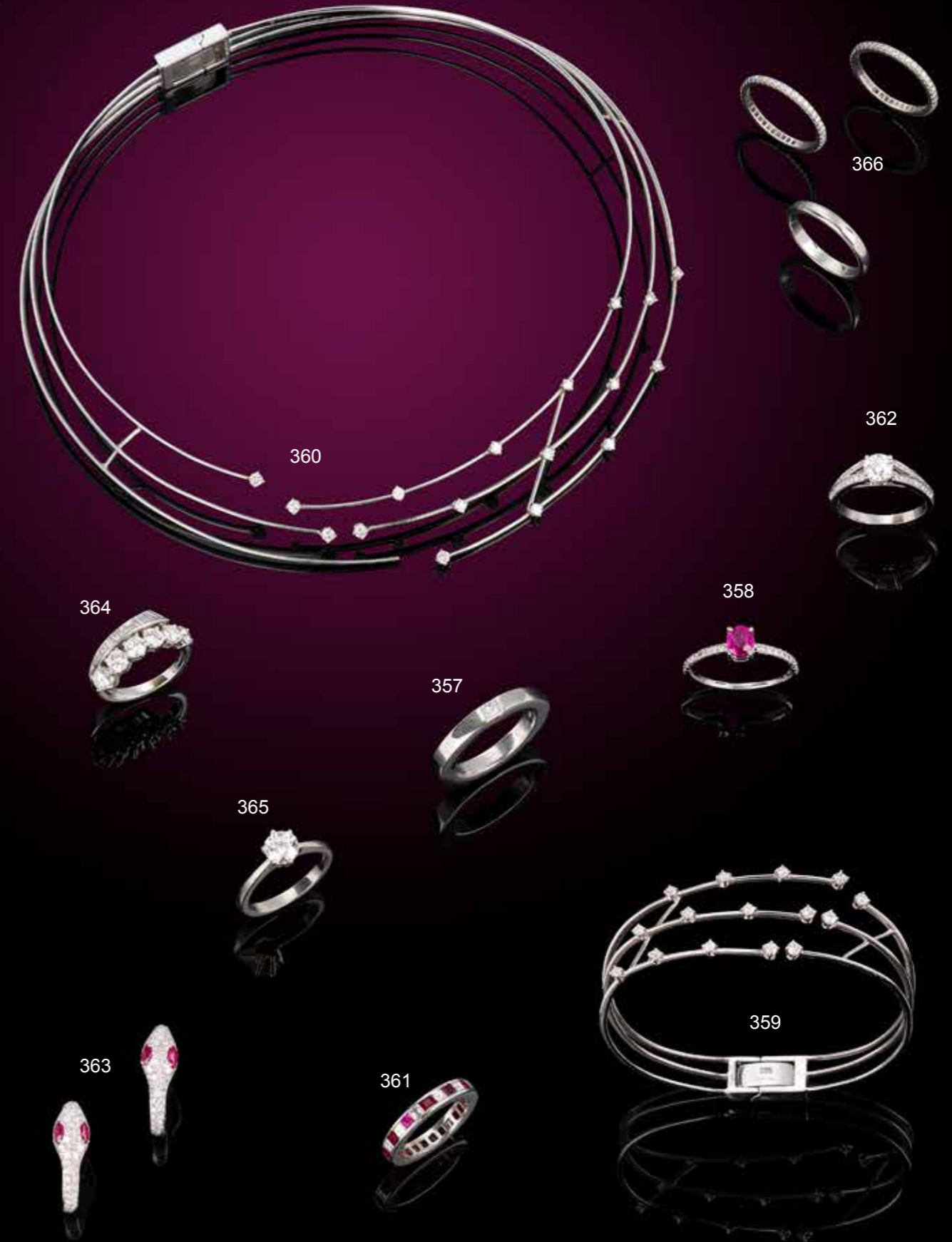
With report 11913274, dated **28th February 2002**, from the GIA, stating 1.09cts, I colour, VVS2 clarity. Hallmarks for London, 2005. Ring size N1/2. 5.3gms.

£1,800-2,400 (plus 27.6% BP*)


366 A band ring and two brilliant-cut diamond full eternity rings, by Tiffany & Co.

Estimated total diamond weight 0.90ct, G-H colour, VS clarity. Stamped Pt950. Ring size N. 9.9gms.

£2,500-3,500 (plus 27.6% BP*)



BP* - Buyer's Premium of 23% (plus VAT) or 27.6% (VAT included)

367  **A red spinel and diamond pendant, with snake-link chain.**

With report 1903SNR0364, dated 29th March 2019, from GCI, stating 1.71cts, natural spinel.
Diamond weight 0.12ct, estimated G-H colour, VS clarity.
Stamped 750.
Length of pendant 1.4cms. Length of chain 43.5cms. 6.2gms.

£400-600 (plus 27.6% BP*)

368 **An 18ct gold amethyst and brilliant-cut diamond cluster ring.**

Amethyst calculated weight 12.15cts, based on estimated dimensions of 17.4 by 13.9 by 9mms.
Estimated total diamond weight 1.40cts, G-H colour, VS clarity.
Hallmarks for London. Approximate ring size M1/2. 14.7gms.

£750-950 (plus 27.6% BP*)

369 **An 18ct gold diamond, pink tourmaline and sapphire adapted 'Flora' necklace.**

Maker's marks for Boodles.
Estimated total diamond weight 0.40ct, G+ colour, VS clarity.
Hallmarks for London, 2015.
Length of pendant 3.9cms. 47cms. 7.3gms.

£700-900 (plus 27.6% BP*)

370 **An emerald single-stone ring, with baguette-cut diamond stepped shoulders.**


Emerald calculated weight 1.60cts, based on estimated dimensions of 7.3 by 6.2 by 4.8mms.
Estimated total diamond weight 0.25ct, G-H colour, VS clarity.
Ring size M. 4.1gms.

£450-650 (plus 27.6% BP*)

371 **An 18ct gold brilliant-cut diamond floral cluster ring.**

Total diamond weight 2.94cts, estimated H-I colour, VS1-SI1 clarity.
Hallmarks for London, 1999. Ring size M. 6.2gms.

£1,000-1,500 (plus 27.6% BP*)

372  **A platinum Fancy Yellow diamond and diamond cluster ring, by Hans D. Krieger.**

With report VY 915, dated **2nd October 2007**, from DPL, stating 1.51cts, natural colour, VVS1 clarity.
Estimated total diamond weight 2.40cts.
Hallmarks for Sheffield. Stamped Au 750 Pt950.
Ring size M. 7.2gms.

£1,500-2,000 (plus 27.6% BP*)

373 **An emerald and diamond pendant, with 18ct gold snake-link chain.**

Emerald total calculated weight 0.75ct.
Estimated total diamond weight 1.25cts, G+ colour, VS-SI1 clarity.
Chain with hallmarks for London, 2004.
Length of pendant 2.4cms. Length of chain 41.5cms. 18.8gms.

£1,500-2,000 (plus 27.6% BP*)

374 **A circular-cut diamond dress ring.**

Estimated total diamond weight 2.25cts.
Principal diamond estimated weight 0.75ct, I-J colour, VS2-SI1 clarity.
Ring size N. 5gms.

£1,200-1,800 (plus 27.6% BP*)

375  **An 18ct gold square-shape diamond single-stone ring, by De Beers.**

With report 2156964866, dated 25th September 2013, from the GIA, stating 1.01cts, E colour, SI1 clarity.
Hallmarks for London. Ring size J. 3gms.
With maker's case.

£3,000-4,000 (plus 27.6% BP*)

376 **A brilliant-cut diamond single-stone ring, with marquise-shape diamond shoulders.**

Principal diamond estimated weight 1.65cts, I-J colour, SI2-P1 clarity.
Hallmarks for London, 2013. Ring size N. 3.9gms.

£3,500-4,500 (plus 27.6% BP*)



377 An 18ct gold pave-set orange sapphire and diamond dress ring, by Moraglione.

Total sapphire weight 1.94cts.
Total diamond weight 0.19ct, estimated G+ colour, VS clarity.
Hallmarks for Sheffield. Ring size O. 10.4gms.
With maker's certificate of authenticity.

£450-650 (plus 27.6% BP*)

378 An 18ct gold square-shape diamond two-row hinged bangle, by Aspial.

Estimated total diamond weight 2cts, G-H colour, VS clarity.
Hallmarks for Sheffield, 2002.
Inner diameter 6.1cms. 16.5gms.

£600-800 (plus 27.6% BP*)

379 A textured bracelet.

Length 19.6cms. 29.8gms.

£700-900 (plus 27.6% BP*)

380 A gold peridot, citrine, blue quartz and diamond floral dress ring, attributed to Moraglione.

Estimated total diamond weight 0.85ct, G-H colour, VS clarity.
Ring size N. 9.5gms.

£600-800 (plus 27.6% BP*)

381 A gold vari-quartz and diamond pendant, with chain, attributed to Moraglione.

Estimated total diamond weight 0.85ct, G-H colour, VS clarity.
Length of pendant 3.6cms. Length of chain 42cms. 11.5gms.

£700-900 (plus 27.6% BP*)

382 A diamond and emerald frog brooch, with ruby eyes.

Estimated total diamond weight 0.70ct, H-I colour, VS clarity.
Stamped 18ct PLAT. Length 3.3cms. 17.7gms.

£1,000-1,500 (plus 27.6% BP*)

383 An aquamarine and brilliant-cut diamond scalloped cluster ring.

Aquamarine calculated weight 4.46cts, based on estimated dimensions of 13.2 by 9.4 by 6.3mms.
Estimated total diamond weight 1.60cts, I-J colour, VS clarity.
Stamped 18ct. Ring size O1/2. 5.8gms.

£1,200-1,800 (plus 27.6% BP*)

384 A Burmese ruby and diamond bombe dress ring.

With report 79188-77, dated 10th December 2018, from GCS, stating Burma, no heat, moderate oil in fissures.
Estimated total diamond weight 1.10cts, G-H colour, VS clarity.
Stamped Brooks, 18K. Ring size P. 10.2gms.

£1,800-2,400 (plus 27.6% BP*)

385 A brilliant-cut diamond single-stone ring, with bi-colour crossover shoulders.

With photocopy of duplicate report F2D80872, from IGI, stating 1.33cts, F colour, VS1 clarity.
Ring size M. 8.4gms.

£3,000-4,000 (plus 27.6% BP*)

386 A pave-set diamond keyring, with enamel Ferrari logo.

Estimated total diamond weight 6.50 to 7cts, G-H colour, VVS-VS clarity.
Italian marks, surmount with 18ct gold hallmarks for London, 2001.
Length 6.2cms. 34.2gms.

£3,500-4,500 (plus 27.6% BP*)



378



379

384



382

383



380



381



386

377



385



387 A 1940s ruby and diamond dress ring.

Estimated total diamond weight 1.50cts, H-I colour, SI clarity.
Ring size L. 8.9gms.

£500-700 (plus 27.6% BP*)

388 A 1940s 18ct gold ruby, synthetic ruby and diamond double clip brooch.

French assay marks. Length 6.6cms. 35.2gms.

£1,000-1,500 (plus 27.6% BP*)

389 A 1940s 18ct gold diamond cocktail watch, by Heursel.

Estimated total diamond weight 1.50cts, G-H colour, VS clarity.
Austrian marks, stamped 750. Length 17.5cms. 62.5gms.

£800-1,200 (plus 27.6% BP*)

390 A mid 20th century bi-colour gold geometric bracelet.

Length 18.8cms. 38.6gms.

£900-1,400 (plus 27.6% BP*)

391 A mid 20th century gold, diamond and synthetic ruby double clip brooch.

Estimated total diamond weight 1.75cts, H-I colour, VS-P1 clarity.
Length 6.5cms. 36.3gms.

£800-1,200 (plus 27.6% BP*)

392 A 1940s 18ct gold old-cut diamond and ruby ring.

Estimated total diamond weight 1.30cts, L-tinted colour, VS-P1 clarity.
Ring size J. 13.7gms.

£800-1,200 (plus 27.6% BP*)

393 A 1940s 18ct gold ruby cocktail watch, by Eviana.

French assay marks. Length 17cms. 50.8gms.
With Marcel Fonseque case.

£1,200-1,800 (plus 27.6% BP*)

394 A calibre-cut sapphire and pave-set diamond bombe ring.

Estimated total diamond weight 1.10cts, G-H colour, VS clarity.
Stamped 18K 750. Ring size Q1/2. 10.2gms.

£1,500-2,000 (plus 27.6% BP*)

395 A 1940s 18ct gold Sri Lankan sapphire and sapphire brooch.

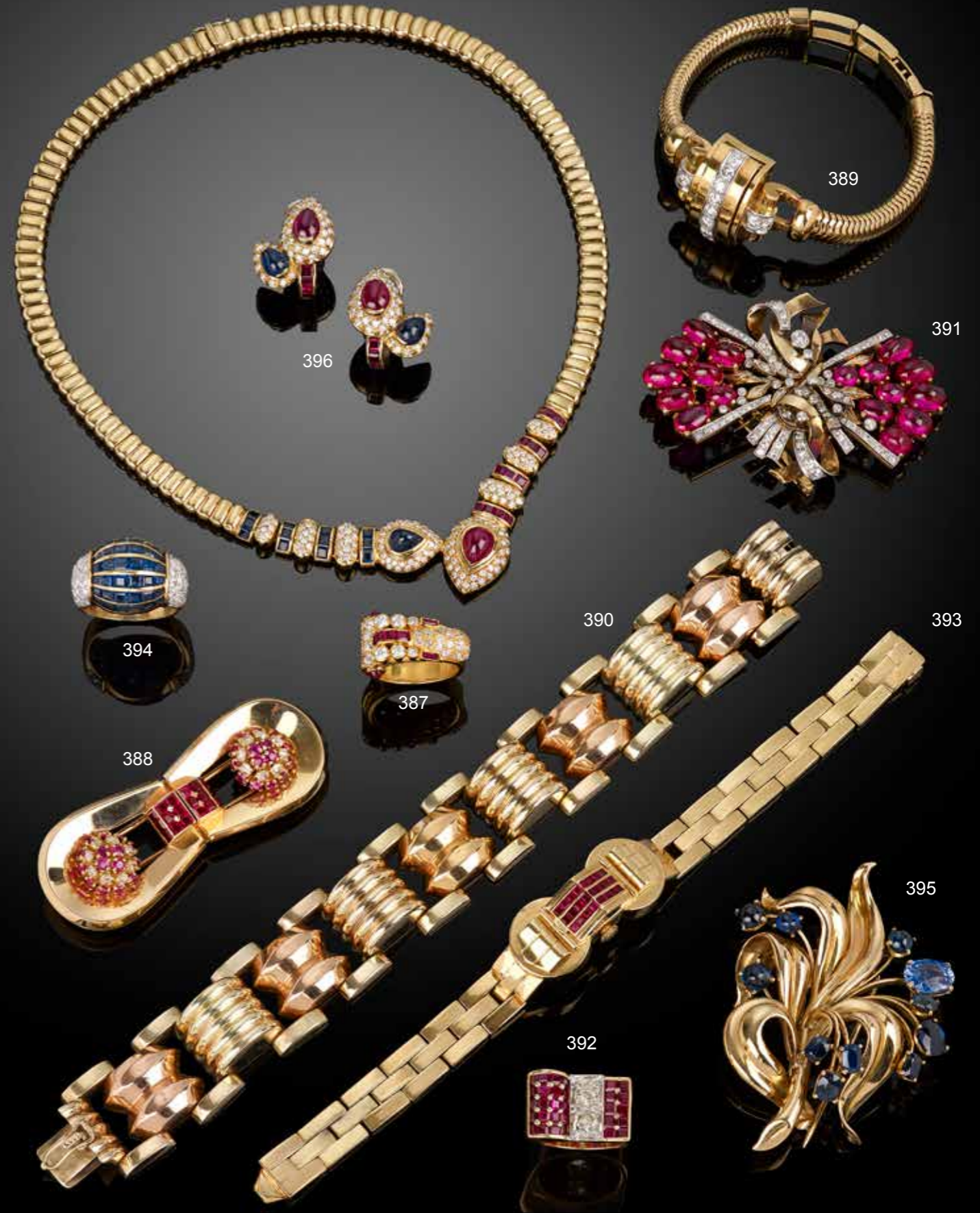
With report 6194376173, dated 23rd of July 2018, from the GIA,
stating principal sapphire 3.58cts, Sri Lanka, no heat.
Italian marks, stamped 750. Length 6.5cms. 33.1gms.

£1,500-2,000 (plus 27.6% BP*)

396 A ruby, sapphire and diamond necklace and earrings.

Estimated total diamond weight 2.50cts, G+ colour, VS clarity.
Italian marks, stamped 750.
Length of necklace 38cms. Length of earrings 2.2cms. 96.1gms.

£3,800-4,800 (plus 27.6% BP*)



BP* - Buyer's Premium of 23% (plus VAT) or 27.6% (VAT included)

397 A reverse-carved and painted rock crystal intaglio brooch, depicting a foxhound.

Stamped 750. Diameter 2.8cms. 12.3gms.

£300-400 (plus 27.6% BP*)

398 A 1970s textured 18ct gold tiger's-eye signet ring, by Kutchinsky.

Hallmarks for London, 1970. Ring size R. 23.2gms.

£450-650 (plus 27.6% BP*)

399 A pair of citrine and diamond 'Sunrise' earrings, by H. Stern.

Estimated total diamond weight 0.15ct, G+ colour, VS clarity. Stamped 750. Length 5.8cms. 7gms.

£400-600 (plus 27.6% BP*)

400 A citrine and sapphire accent 'Sunrise' necklace, by H. Stern.

Calculated total citrine weight 28.29cts, based on estimated dimensions. Length of pendant 6.5cms. Length of chain 43.7cms. 14gms.

£700-900 (plus 27.6% BP*)

401 A pair of 'Trinity' cufflinks and matching tie clip, by Cartier.

Swiss marks, stamped 750. Length of cufflink face 1.7cms. Length of tie clip 5.8cms. 25.7gms. Cufflinks with certificate of authenticity.

£800-1,200 (plus 27.6% BP*)

402 An 18ct gold pave-set diamond bangle.

Total diamond weight 0.74ct, estimated G-H colour, VS clarity. Hallmarks for Sheffield, 2004. Inner diameter 6.1cms. 21.3gms.

£800-1,200 (plus 27.6% BP*)

403 A pair of mid 20th century 18ct gold curb-link cufflinks, with synthetic sapphire highlights, by Boucheron.

Import marks for London, partially indistinct. French assay marks. Length 3cms. 16.5gms.

£1,000-1,500 (plus 27.6% BP*)

404 A pave-set diamond and tinted diamond crossover band ring.

Estimated total diamond weight 3cts, H-I and tinted colour, VS clarity. Italian marks. Ring size P1/2. 20.5gms.

£900-1,400 (plus 27.6% BP*)

405 A 1970s 18ct gold diamond, emerald and enamel lion ring, by Kutchinsky.

Hallmarks for London, 1969. Approximate ring size I-J. 20.3gms.

£900-1,400 (plus 27.6% BP*)

406 A 1960s 18ct gold, enamel, diamond and emerald lion brooch, by Kutchinsky.

Estimated total diamond weight 0.50ct, G+ colour, VS clarity. Hallmarks for London, 1969. Length 4.5cms. 51.1gms.

£2,000-2,500 (plus 27.6% BP*)

407 An 18ct gold brilliant-cut diamond single-stone ring.

Estimated diamond weight 1.50cts, G-H colour, VS clarity. Hallmarks for Birmingham. Ring size O. 4.2gms.

£3,000-4,000 (plus 27.6% BP*)

408 An 18ct gold brilliant-cut diamond single-stone ring, with similarly-cut diamond scattered sides.

Principal diamond estimated weight 3.30cts, tinted colour, SI clarity. Estimated total diamond weight 3.80cts. French assay marks. Ring size K. 10.7gms.

£5,000-7,000 (plus 27.6% BP*)



409 ✕ A pink coral single-stone dress ring, by Van Cleef & Arpels.

French assay marks. Ring size H. 6.3gms.

£280-380 (plus 27.6% BP*)

410 A braided band dress ring, by Van Cleef and Arpels.

French assay marks. Ring size J1/2. 7.3gms.

£280-380 (plus 27.6% BP*)

411 A mid 20th century 18ct gold pave-set diamond and textured dress ring.

Estimated total diamond weight 0.50ct, H-I colour, VS-P1 clarity. Stamped 18ct. Ring size G1/2. 12.9gms.

£350-450 (plus 27.6% BP*)

412 ✕ A pair of mid 20th century coral and pave-set diamond earrings, by Graff.

Estimated total diamond weight 0.75ct, G-H colour, VS-P1 clarity. Stamped 18K. Length 3.6cms. 30.3gms. Coral untested for natural colour origin.

£450-650 (plus 27.6% BP*)

413 A single-cut diamond bi-colour snake ring.

Estimated total diamond weight 0.10ct. Approximate ring size G1/2. 18.4gms.

£550-750 (plus 27.6% BP*)

414 A pair of 18ct gold pave-set diamond and grooved half-hoop earrings.

Estimated total diamond weight 0.50ct, H-I colour, VS clarity. Hallmarks for Birmingham, 2001. Length 2.4cms. 15.9gms.

£700-900 (plus 27.6% BP*)

415 A sapphire, ruby and diamond floral basket brooch.

Estimated total diamond weight 1.50cts, G-H colour, VS clarity. Length 4.5cms. 13.3gms.

£800-1,200 (plus 27.6% BP*)

416 A 1970s 18ct gold foliate brooch, by Cartier.

Hallmarks for London, 1972. Length 4.9cms. 22.5gms.

£800-1,200 (plus 27.6% BP*)

417 A French 18ct gold mid 20th century pave-set diamond and onyx cocktail ring.

Signed 'H. Martin, Nice'. Estimated total diamond weight 0.90ct, G-H colour, VS clarity. French assay marks. Ring size K. 15gms.

£900-1,400 (plus 27.6% BP*)

418 ✕ A coral heart pendant with spiral surround.

Length 4.7cms. 21.1gms. Coral untested for natural colour origin.

£1,000-1,500 (plus 27.6% BP*)

419 A 1960s 18ct gold ruby and diamond textured bracelet, by Kutchinsky.

Estimated total diamond weight 5.50cts, G-H colour, VS-SI clarity. Hallmarks for London, 1964. Length 18.5cms. 111.5gms.

£4,500-6,500 (plus 27.6% BP*)

420 A loose brilliant-cut diamond, with vacant textured ring mount.

Diamond weight 2.96cts, estimated I-J colour, VS clarity. Approximate ring size P1/2. Weight of mount 6.1gms.

£9,000-14,000 (plus 27.6% BP*)



421 A mid 20th century diamond openwork band ring.

Estimated total diamond weight 0.80ct, G-H colour, VS-SI clarity.
Ring size R. 8.8gms.

£350-450 (plus 27.6% BP*)

422 An aquamarine and diamond cluster ring.

Aquamarine calculated weight 7.48cts, based on estimated dimensions of 16.1 by 10.7 by 7.6mms.
Estimated total diamond weight 0.65ct, H-I colour, SI1-P1 clarity.
Stamped 18ct. Ring size K1/2. 6.7gms.

£450-650 (plus 27.6% BP*)

423 An aquamarine cabochon and diamond 'Lux' ring, by Fope.

Total diamond weight 0.27ct, estimated G-H colour, VS clarity.
Italian marks, stamped 750. Ring size O. 10.7gms.

£500-700 (plus 27.6% BP*)

424 A pair of aquamarine and diamond 'Lux' earrings, by Fope.

Estimated dimensions of one aquamarine 12.5 by 6.2mms.
Total diamond weight 0.19ct, estimated G-H colour, VS clarity.
Italian marks, stamped 750. Length 2.4cms. 7.5gms.

£500-700 (plus 27.6% BP*)

425 An A-type jadeite jade and diamond dress ring.

Verbal from GCS stating no impregnation.
Report from China Inspection Gold and Silver Jewelry Testing Center(CTDM) stating A jade.
Total diamond weight 0.27ct, estimated G-H colour, VS clarity.
Stamped Pt850. Ring size L1/2. 6.6gms.

£800-1,200 (plus 27.6% BP*)

426 An aquamarine and diamond dress ring.

Aquamarine calculated weight 5.28cts, based on estimated dimensions of 14.1 by 10 by 5.1mms.
Estimated total diamond weight 0.40ct, I-J colour, VS-SI clarity.
Stamped Plat. Ring size O1/2. 8.2gms.

£900-1,400 (plus 27.6% BP*)

427* An emerald and diamond cluster ring.

Emerald weight 4.76cts.
Total diamond weight 0.66ct, estimated G-H colour, VS-SI clarity.
Stamped 18K 750. Ring size M. 5.7gms.

£1,000-1,500 (plus 27.6% BP* and 20% VAT)

428 A pair of 18ct gold peridot and diamond floral cluster drop earrings.

Estimated total diamond weight 1 ct, G-H colour, VS clarity.
Hallmarks for London, 2005. Length 5cms. 19.4gms.

£1,800-2,400 (plus 27.6% BP*)

429 A platinum brilliant-cut diamond single-stone ring.

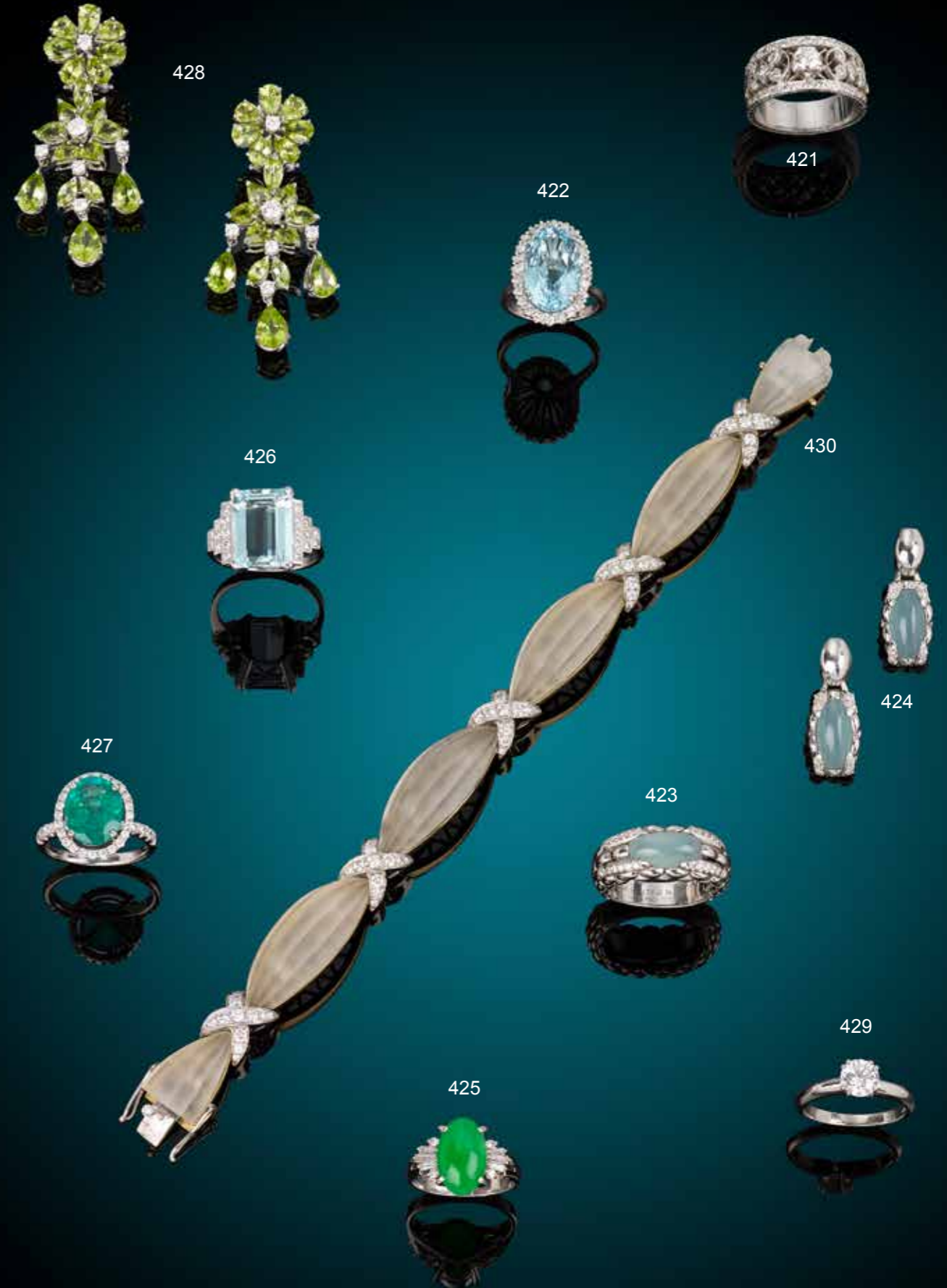
With photocopy of report 20040483583, dated **7th June 2004**, from HRD, stating 1.10cts, E colour, VS1 clarity.
Hallmarks for London, 2004. Ring size L1/2. 5.1gms.

£2,800-3,800 (plus 27.6% BP*)

430 A mid 20th century carved rock crystal bracelet, with pave-set diamond cross spacers.

Estimated total diamond weight 1.85cts, G-H colour, VS clarity.
French assay marks, stamped 750. Length 18.5cms. 41gms.
With Mappin & Webb case.

£2,000-3,000 (plus 27.6% BP*)



BP* - Buyer's Premium of 23% (plus VAT) or 27.6% (VAT included)

431 A diamond accent 'Love' ring, by Cartier.

Swiss marks, stamped 750. Ring size R. Cartier size 59. 5.3gms.

£550-750 (plus 27.6% BP*)

432 A pair of 18ct gold sapphire and diamond cluster earrings.

Sapphire total calculated weight 2.30cts, based on estimated dimensions.
Estimated total diamond weight 0.70ct, G-H colour, VS2-P1 clarity.
Hallmarks for Birmingham. Length 1.2cms. 5.8gms.

£650-850 (plus 27.6% BP*)

433 A sapphire and old-cut diamond cluster ring.

Sapphire weight 1.38cts.
Estimated total diamond weight 0.60ct, G-H colour, VS-SI clarity.
French assay mark. Ring size M. 3.7gms.

£900-1,400 (plus 27.6% BP*)

434 A brilliant-cut diamond floral cluster necklace.

Estimated total diamond weight 2.50cts, G-H colour, VS clarity.
Stamped 750. Length 43cms. 23.4gms.

£800-1,200 (plus 27.6% BP*)

435 A graduated circular-cut diamond five-stone ring.

Estimated total diamond weight 1.40cts, I-K colour, SI2-P1 clarity.
Stamped PLAT. Ring size M1/2. 5.2gms.

£1,000-1,500 (plus 27.6% BP*)

436 A mid 20th century platinum, synthetic sapphire and circular-cut diamond bracelet.

Estimated total diamond weight 2.25cts, I-J colour, SI1-P1 clarity.
Length 17.8cms. 19.3gms.

£900-1,400 (plus 27.6% BP*)

437 An 18ct gold sapphire and diamond ring, by Picchiotti.

Principal sapphire calculated weight 1.45cts, based on estimated dimensions of 6.7 by 5 by 4mms.
Estimated total diamond weight 0.50ct, stated F-G colour, IF-VVS clarity.
Hallmarks for London, 2003. Ring size O1/2. 6.7gms.

£1,500-2,000 (plus 27.6% BP*)

438 An 18ct gold rectangular and triangular-shape diamond three-stone ring, attributed to Krieger.

Rectangular-shape diamond weight 1.01cts, estimated I-J colour, VS clarity.
Total triangular-shape diamond weight 0.79ct, estimated H-I colour, VS2-SI1 clarity.
Hallmarks for Sheffield. Ring size M1/2. 5gms.

£1,500-2,000 (plus 27.6% BP*)

439 An 18ct gold tanzanite and diamond cluster ring.

Tanzanite calculated weight 12.68cts, based on estimated dimensions of 19.9 by 12.1 by 7.6mms.
Estimated total diamond weight 2cts, I-K colour, VS2-P1 clarity.
Hallmarks for Birmingham. Ring size N. 12.2gms.

£1,800-2,400 (plus 27.6% BP*)

440  A platinum brilliant-cut diamond single-stone ring, with similarly-cut diamond line sides, by Tiffany & Co.

With report 33819293/P06160349, from Tiffany & Co, stating 0.96ct, H colour, VS2 clarity.
Hallmarks for London, 2014. Ring size J. 3.3gms.

£2,500-3,000 (plus 27.6% BP*)



441 A composite early 20th century platinum and 15ct gold, diamond bow pendant, with later chain.

Estimated total old-cut diamond weight 1.35cts, I-J colour, P2 clarity.
Length of pendant 4.8cms. Length of chain 40cms.

£1,000-1,500 (plus 27.6% BP*)

442 A brilliant-cut diamond three-stone ring.

Estimated total diamond weight 1.70cts, H-J colour, VS2-SI2 clarity.
Stamped Platinum. Ring size N1/2. 2.8gms.

£1,500-2,000 (plus 27.6% BP*)

443 A pair of mid 20th century old-cut diamond drop earrings.

Estimated total diamond weight 2.75cts, principal diamonds estimated G-I colour, VS2-SI1 clarity.
Stamped Platinum. Length 2.5cms. 5.4gms.

£1,500-2,000 (plus 27.6% BP*)

444 A late Victorian gold and silver, ruby and old-cut diamond crescent brooch.

Verbal from GCS, stating predominantly Burma, all no heat.
Estimated total diamond weight 1.85cts, H-J colour, VS2-P1 clarity.
Length 3.7cms. 8.9gms.

£1,500-2,000 (plus 27.6% BP*)

445 A graduated old-cut diamond dress ring.

Estimated total diamond weight 1.65cts, H-I colour, VS-P1 clarity.
Ring size O. 6.1gms.

£1,800-2,400 (plus 27.6% BP*)

446 A mid 20th century platinum old-cut diamond single-stone ring, with diamond line shoulders.

Principal diamond estimated weight 1.85cts, H-I colour, SI clarity.
Approximate ring size N. 3gms.

£3,000-4,000 (plus 27.6% BP*)

447 An early 20th century diamond bow pendant, with central pear-shape diamond drop, suspended from a trace-link chain.

Principal diamond estimated weight 1.50cts, K-L colour, SI2-P1 clarity.

Estimated total diamond weight 2.15cts.
Length of pendant 3.1cms. Length of chain 41.5cms. 8.1gms.

£3,800-4,200 (plus 27.6% BP*)

448 An early 20th century silver and gold diamond tiara.

Estimated total old-cut diamond weight 14 to 15cts.
Principal diamond estimated weight 1.10cts, G-H colour, VS2-SI1 clarity.
Inner diameter 11.2cms. Height 7cms. 66.1gms.

£10,000-15,000 (plus 27.6% BP*)



449 A late Victorian 18ct gold old-cut diamond two-row ring.

Estimated total diamond weight 1.50cts, H-I colour, SI1-P1 clarity. Stamped 18ct. Ring size N. 4.3gms.

£400-600 (plus 27.6% BP*)

450 A late Victorian silver and gold, natural pearl and rose-cut diamond bow brooch.

With report 267145/20047259, dated 5th December 2019, from AnchorCert, stating 7.4mms, natural, saltwater, Pinctada species. Length 2.4cms.

£600-800 (plus 27.6% BP*)

451 An 18ct gold brilliant-cut diamond five-stone ring, with single-cut diamond spacers.

Estimated total diamond weight 1.60cts, H-I colour, VS2-P1 clarity. Hallmarks for London, 1975. Ring size M. 5.8gms.

£600-800 (plus 27.6% BP*)

452 A rose-cut diamond single-stone ring, with rose and old-cut diamond openwork surrounds.

Principal diamond estimated dimensions 7.6 by 7.6mms. Estimated total old-cut diamond weight 1ct, H-J colour, SI1-P1 clarity. Ring size P. 6.6gms.

£700-900 (plus 27.6% BP*)

453 An Edwardian 18ct gold cultured pearl and old-cut diamond three-stone memorial ring, with black enamel sides.

Estimated total diamond weight 1.05cts, G-H colour, VS clarity. Stamped 18ct. Ring size L. 3.4gms.

£1,500-2,000 (plus 27.6% BP*)

454 A mid 19th century colonial Australian 18ct gold and seed pearl brooch, depicting a kangaroo and emu amongst foliage.

Length 2.9cms. 4.2gms.

£1,500-2,000 (plus 27.6% BP*)

455 A late Victorian silver and gold, citrine, aquamarine and rose-cut diamond fringe necklace.

Principal citrine calculated weight 17.30cts, based on estimated dimensions of 21.1 by 16.4 by 8mms. Length 40cms. 57.4gms.

£1,200-1,800 (plus 27.6% BP*)

456 A late 19th century gold Holbeinesque garnet, diamond and enamel pendant.

Garnet calculated weight 20.27cts, based on estimated dimensions of 20 by 14.6 by 6.8mms. Length 5cms. 18.7gms.

£2,000-3,000 (plus 27.6% BP*)

457 A late Victorian silver and gold rose-cut diamond floral cluster brooch, with similarly-set detachable drop.

May be worn as a pendant. Estimated total diamond weight 6.15cts, predominantly H-I colour, VS-SI clarity. Length 5.5cms. 13.1gms.

£2,000-2,500 (plus 27.6% BP*)

458 A pair of old-cut diamond earrings.

Estimated total diamond weight 3.30cts, H-J colour, VS2-P1 clarity. Length 3.8cms. 6.9gms. With case.

£3,500-4,500 (plus 27.6% BP*)



459 A late Georgian 12ct gold portrait miniature locket, possibly depicting an Officer of the Royal Artillery, with seed pearl monogram hair work glazed front.

Length 8.5cms. 75.4gms.

£450-650 (plus 27.6% BP*)

460 ✕ An early 20th century gold miniature brooch, painted to depict a wedding procession.

Length 5.7cms. 20.2gms.

£500-700 (plus 27.6% BP*)

461 A late Georgian 18ct gold cross pendant, with glazed panel and butterfly accent.

Length 9.1cms. 14.4gms.

£500-700 (plus 27.6% BP*)

462 ✎ An early Victorian 9ct gold seed pearl floral tiara and knot brooch.

Length of tiara 46.3cms. Length of brooch 5.7cms.
With fitted case.

£800-1,200 (plus 27.6% BP*)

463 A late Georgian gold carved agate seal, the pedestal carved to depict Fortuna with diamond and ruby crown, the seal carved with three figures around a cross totem.

Length 5.5cms. 21.3gms.

£900-1,400 (plus 27.6% BP*)

464 A 19th century 18ct gold cockerel/rooster figurine, with detachable head, diamond eyes, emerald collar and ruby trim.

Height 6.4cms. 46.2gms.

£1,200-1,800 (plus 27.6% BP*)

465 A Georgian silver and 18ct gold old-cut diamond cluster ring.

Estimated total diamond weight 3.15cts, H-L colour, SI1-P1 clarity.
Ring size O. 5gms.

£1,200-1,800 (plus 27.6% BP*)





Fellows

Established 1876

Auctioneers & Valuers
Antiques | Jewellery | Watches

The Watch Sale

Monday 10th February at 11am

For more information visit www.fellows.co.uk,
contact us on info@fellows.co.uk or call 0121 212 2131

Fellows

Established 1876

Sale Results For Fine Jewellery : 14/11/2019

1	£1,300	83	£1,600	168	£1,200	267	£1,700	363	£900
2	£1,200	84	£3,000	169	£1,600	268	£1,800	365	£1,500
3	£760	86	£2,900	173	£840	270	£9,700	366	£1,900
4	£2,800	89	£780	175	£1,000	271	£660	367	£3,600
5	£6,300	90	£600	177	£1,500	272	£1,400	369	£4,400
6	£900	91	£980	178	£2,800	274	£740	371	£720
7	£1,400	92	£1,100	179	£1,700	275	£2,000	372	£1,600
8	£3,000	93	£1,200	181	£2,600	277	£1,000	374	£1,400
9	£2,600	94	£1,000	182	£4,900	280	£3,100	375	£2,000
11	£5,200	95	£1,800	183	£4,800	283	£600	376	£1,800
12	£18,000	96	£1,900	184	£6,900	284	£800	377	£1,700
13	£360	98	£8,300	185	£620	285	£2,000	378	£2,300
14	£620	99	£940	186	£1,300	286	£1,800	379	£2,400
15	£600	100	£1,700	187	£2,600	287	£1,400	380	£4,300
16	£920	101	£880	190	£3,300	288	£1,800	381	£2,600
17	£1,600	103	£700	192	£6,000	289	£2,700	383	£3,400
18	£1,300	106	£1,300	197	£28,000	290	£2,700	384	£500
19	£1,500	107	£1,600	198	£27,000	294	£5,900	385	£2,300
20	£920	110	£5,100	199	£17,000	295	£820	386	£760
21	£2,900	111	£3,200	200	£14,000	296	£1,600	389	£1,000
23	£620	112	£1,900	201	£8,300	297	£1,200	391	£1,800
26	£600	113	£2,000	203	£6,100	298	£1,400	392	£4,300
27	£820	114	£960	204	£3,800	299	£1,300	394	£560
28	£1,900	115	£1,300	205	£4,100	300	£1,100	395	£760
29	£1,200	116	£760	207	£1,600	302	£5,100	396	£520
30	£2,400	119	£1,100	208	£1,600	303	£3,700	397	£900
33	£5,000	121	£2,600	209	£1,100	304	£11,000	398	£1,300
34	£6,000	123	£1,300	210	£780	305	£720	399	£980
35	£1,300	124	£1,300	211	£1,000	306	£1,100	400	£2,100
36	£1,100	126	£2,000	212	£1,700	307	£1,400	401	£1,300
39	£1,500	127	£2,700	213	£1,800	308	£1,500	404	£2,800
40	£960	128	£3,800	214	£2,200	309	£1,400	406	£1,200
41	£1,400	129	£660	215	£3,000	310	£1,500	407	£880
43	£500	130	£960	219	£7,100	311	£2,000	408	£500
45	£920	131	£900	221	£12,000	313	£2,100	412	£2,000
47	£1,100	132	£1,500	222	£14,000	317	£720	413	£1,700
48	£1,000	133	£880	223	£720	318	£1,400	417	£2,800
51	£3,100	134	£1,000	224	£1,800	319	£820	418	£260
52	£1,800	135	£2,000	225	£1,800	320	£1,300	419	£1,800
53	£2,600	136	£2,000	226	£2,400	321	£1,200	420	£380
54	£2,000	137	£2,500	229	£2,000	322	£1,400	421	£240
55	£540	138	£3,800	232	£2,400	323	£1,600	422	£400
56	£1,600	139	£480	234	£10,000	326	£5,300	423	£580
57	£740	140	£420	235	£1,300	327	£12,000	424	£680
58	£2,500	141	£840	236	£1,200	328	£20,000	425	£800
59	£820	142	£1,600	237	£1,500	329	£520	426	£1,100
60	£920	144	£1,600	239	£2,400	330	£500	427	£920
61	£1,000	145	£1,400	240	£1,800	331	£920	430	£1,300
62	£1,300	146	£3,400	242	£6,600	332	£1,700	431	£580
63	£3,600	147	£1,600	244	£5,200	333	£2,000	432	£640
64	£2,900	148	£6,800	246	£6,500	335	£2,600	433	£620
65	£3,700	149	£740	247	£860	339	£1,100	434	£560
66	£3,900	151	£800	248	£1,400	340	£920	435	£1,000
67	£580	152	£460	249	£740	341	£820	436	£2,500
68	£540	153	£580	250	£1,500	342	£940	437	£1,400
69	£1,100	154	£840	251	£1,600	343	£980	438	£1,800
70	£760	155	£700	252	£1,500	344	£2,200	439	£2,700
71	£1,500	156	£900	253	£3,100	346	£2,000	440	£1,300
72	£2,500	157	£540	255	£5,100	347	£2,000	441	£8,600
73	£1,100	158	£3,300	256	£12,000	348	£6,100		
74	£2,100	159	£1,000	257	£12,000	349	£520		
75	£3,100	160	£1,200	259	£840	350	£600		
76	£4,900	161	£620	260	£720	351	£600		
77	£7,600	162	£600	261	£560	353	£900		
79	£860	163	£2,300	262	£960	357	£3,000		
80	£1,700	165	£1,000	263	£900	360	£1,200		
81	£1,300	166	£940	265	£2,000	361	£840		
82	£1,900	167	£1,150	266	£1,700	362	£1,700		

Live Auctions

February	Jewellery & Pawnbroker Jewellery	Thursday 6th at 10am
	The Watch Sale	Monday 10th at 11am
	Antiques, Silver & Collectables	Monday 17th at 10am
	Jewellery & Pawnbroker Jewellery	Thursday 20th at 10am
	The Designer Collection	Monday 24th at 11am
March	Watches	Monday 2nd at 10am
	Pawnbrokers Jewellery & Watches	Thursday 5th at 11am*
	Fine Jewellery	Thursday 12th at 11am
	Pawnbrokers Jewellery & Watches Jewellery	Thursday 19th at 11am*
		Thursday 26th at 10am
April	Pawnbrokers Jewellery & Watches Jewellery	Thursday 2nd at 11am*
	The Watch Sale	Thursday 9th at 10am
	Jewellery & Pawnbroker Jewellery	Monday 20th at 11am
	The Designer Collection	Thursday 23rd at 10am
		Monday 27th at 11am

Timed Auctions**

Online Jewellery & Costume Jewellery	Ends Friday 21st February from 10am
Online Watches & Watch Accessories	Ends Tuesday 3rd March from 10am
Online Jewellery	Ends Thursday 19th March from 10am
The Gemstone Sale	Ends Friday 20th March from 10am
Online Jewellery & Costume Jewellery	Ends Friday 24th April from 10am

** Please note that these auctions are timed sales hosted by Fellows Live, more information can be found on our website.

Dates are subject to change, please check the website for the definitive auction list.

Fellows recommend that all bidders and buyers read our conditions of buying and buyer's premium available on our website.

For further information please contact:

Jewellery
David Pregon
david@fellows.co.uk
0121 212 2131

Watches
Laura Bishop
laurab@fellows.co.uk
0121 212 5506

Silver & Coins
Alison Jakeway
alisonj@fellows.co.uk
0121 212 2131

Antiques & Fine Art
Kevin Jackson
kevin@fellows.co.uk
0121 212 2131

IMPORTANT NOTICES FOR PURCHASERS

IMPORTANT NOTICE TO PROSPECTIVE BUYERS OF GEMSTONES/JEWELS

We recommend that you view any items you intend to purchase as refunds will not be given for buyer's remorse. This doesn't affect your statutory rights.

Notes 1 - Coloured Gemstones

Purchasers are advised that whilst great care has been taken in the examination of gemstones, it is not possible to test every gemstone within the constraints of time and equipment available outside of laboratory conditions. Any gemstone not provided with a laboratory report has been assessed by Fellows within the limitations of any mounting and an opinion has been given where possible.

Historically, many coloured gemstones have been subjected to a variety of treatments designed to enhance their appearance. Certain enhancement methods, such as heating, are routinely used to alter aspects of rubies, sapphires, and other gemstones. Oiling is often undertaken to enhance the clarity of emeralds. The international jewellery trade has generally accepted these and other enhancement methods. Some treatments are permanent whereas others may only be semi-permanent, possibly requiring further re-treatment in order to retain their appearance.

Because of the widespread variety of treatments within the jewellery industry, prospective purchasers should assume that all gemstones will have been treated unless statements are made to the contrary. Gemmological reports from internationally recognised Gemmological Laboratories will be noted in the item description where available.

Note 2 - Diamonds

Advancements in technology have led to some diamonds being treated in a number of ways, all designed to improve their appearance or alter their colour. Processes include but are not necessarily limited to: fracture filling, laser drilling, a combination of drilling and filling, HPHT treatment, irradiation and various coatings. Buyers are also alerted to the fact that synthetic diamonds are now produced in large quantities. Whilst every effort is made to identify or disclose treated and synthetic goods, it is not possible for Fellows to guarantee that all diamond set lots do not contain such material.

Fellows do not knowingly offer treated diamonds for sale, unless a gemmological opinion disclosing the type of treatment has been obtained and the treatment would be stated within the item description.

Note 3 - Weights and Measures

Estimated Diamond weights, colours and clarities (see Notes on Diamond Grading terms opposite) given by Fellows are intended as guides for prospective purchasers, with the given limitations of mounts and settings, and are opinions only, not guaranteed by Fellows.

Weights of coloured gemstones offered are extrapolated on the estimated dimensions, using trade standard formulae. Due to the traditional cutting techniques for coloured gemstones it is possible there may be discrepancy between the stated estimate and the unmounted weight.

Fellows uses a Thermo Scientific Nitron Handheld XRF Analyser to test metals. This technology is limited to examining metal to a depth of approximately 8 microns. Fellows does not guarantee the standard of gold or platinum unless an item is hallmarked. Results from electronically tested items should only be used as a guide and with caution, as false readings are possible.

Lengths and weights provided are estimates only.

The information stated in reports is the opinion of the respective laboratory and is not necessarily the opinion of Fellows auctioneers.

Note 4 - Condition Reports

Statements in the catalogue regarding the condition of lots in this sale may appear in the description, however, the absence of such a reference does not imply a lack of damage or wear, or lack of any further faults within the piece.

Please note that Fellows offer condition reports on almost every lot offered. Our condition reports are the opinion of Fellows and should only be referenced as a guide. We highly recommend that a prospective buyer views in person or sends a representative to satisfy themselves to the condition, originality and suitability of a piece(s) before bidding.

Our lots are almost exclusively antique or secondhand and as such should be expected to have small signs of wear and use commensurate with the age of the piece.

Some jewellery sales will also have a condition report banding scale which applies as follows:

A
No obvious faults other than wear in keeping with age and use.

B
Minor faults. There may be abrasion and/or small nicks to gemstones. General moderate wear from use possibly including but not necessarily limited to small dents and deep scratches. The piece may have been altered from its original design but to a reasonable standard.

C
Faults. Gemstones may be noticeably chipped along with abrasion and nicks. Non-principal gems may be deficient. The piece may have noticeable dents/tears or small losses that affect the overall appearance of the design. The piece may have had alterations from its original design that may be apparent under scrutiny.

D
Significant faults. Gemstones may be deficient, chipped or otherwise damaged. The piece may require attention before it is wearable, pins or clasps may be broken. There may be significant dents, tears, losses or alterations to the metal. The piece may have had alterations from its original design that are readily apparent.

E
At Fault. Gems will be damaged and/or deficient. Noticeable damage. The piece is unwearable.

Diamond Grading Terms

DIAMOND COLOUR

GIA	OLD WORLD TERMS	EXPLANATION	GIA	OLD WORLD TERMS	EXPLANATION
D	Finest White (Jager)	Colourless	K	Silver Cape (Top Cape)	Traces of colour. Small stones in this range will 'face up' colourless when mounted but larger stones will be tinted.
E	Finest White (River)	Colourless	L	Silver Cape (Top Cape)	Traces of colour. Small stones in this range will 'face up' colourless when mounted but larger stones will be tinted.
F	Fine White (River)	Colourless	M	Light Cape (Cape)	Traces of colour. Small stones in this range will 'face up' colourless when mounted but larger stones will be tinted.
G	Fine White (Top Wesselton)	Near Colourless: diamonds 'face up' colourless. Slight traces of colour will not be apparent in the mounted stones to other than the trained eye.	N	Light Cape (Low Cape)	Diamonds graded N through Z+ display a yellowish tint even to the untrained eye.
H	White (Top Wesselton)	Near Colourless: diamonds 'face up' colourless. Slight traces of colour will not be apparent in the mounted stones to other than the trained eye.	P	Cape O - R (Very Light Yellow)	Diamonds graded N through Z+ display a yellowish tint even to the untrained eye.
I	White (Top Wesselton)	Near Colourless: diamonds 'face up' colourless. Slight traces of colour will not be apparent in the mounted stones to other than the trained eye.	Z	Cape R - Z (Very Light Yellow)	Diamonds graded N through Z+ display a yellowish tint even to the untrained eye.
J	Top Silver (Top Wesselton)	Near Colourless: diamonds 'face up' colourless. Slight traces of colour will not be apparent in the mounted stones to other than the trained eye.	Z+	Fancy Yellow	Diamonds graded N through Z+ display a yellowish tint even to the untrained eye.

DIAMOND CLARITY

GIA	OLD WORLD TERMS	EXPLANATION	GIA	OLD WORLD TERMS	EXPLANATION
IF	Internally Flawless	No inclusions visible with a 10x lens even to an experienced grader.	S11 & S12	Slightly Included	Noticeable inclusions visible with a 10x lens.
VVS1 & VVS2	Very Very Slightly Included	Minute inclusions, which are difficult, even for experienced graders, to see with a 10x lens.	I1, I2 & I3	Pique 1, 2 & 3	Obvious inclusions, may be visible to the unaided eye, face up. In I3 they may affect the stone's durability.
VS1 & VS2	Very Slightly Included	Minor inclusions, observable with effort with a 10x lens.			

Catalogue Subscription Service

If you would like to receive catalogues on a regular basis, please mark the appropriate category and return this form with a cheque made payable to Fellows for the full amount.

Subscriptions last for a 12 month period

Jewellery 18 catalogues per year	£120
Fine Jewellery 6 catalogues per year	£60
The Watch Sale 6 catalogues per year	£60
The Designer Collection 5 catalogues per year	£50
Antiques, Silver & Collectables 5 catalogues per year	£50
The Gemstone Sale 4 catalogues per year	£35
Watches & Watch Parts 4 catalogues per year	£35

All of the above catalogues are available to view **FREE** of charge on our website www.fellows.co.uk

Name (Block Capitals)

Address (Block Capitals)

Post Code Telephone

Signature Date

Email

Commission Bidding Slip

Thursday 30th January 2020
Fine Jewellery

Name

Address

..... Postcode

Telephone.....

Email

Signed Date.....

Please bid on my behalf for the lot(s) shown below.

The bids will be executed as cheaply as is permitted by other bids in the room or reserves.

I have read and agree to comply with the Conditions of Sale as printed in the catalogue.

Any account for items purchased on my behalf will be settled within 24 hours of the sale and the items collected within two days of sale.

Please complete in block capitals.

Lot	Price	Lot	Price	Lot	Price	Lot	Price

Buyer's Premium

The buyer's premium is 23% (+ VAT) or 27.6% (VAT inclusive) on the first £100,000 of any individual lot. For any individual lot in excess of £100,001, the buyer's premium is 15% (+ VAT) or 18% (VAT inclusive).

Lots prefixed with * will carry VAT at 20% on the hammer price.

Please note the bidding increments

£50 - £100	£5 increments
£100 - £200	£10 increments
£200 - £1000	£20 increments
£1000 - £10,000	£100 increments
Over £10,000	£1000 increments

Any bids shown not complying with these increments will be **ROUNDED UP** to the next increment.

Contact Information

Directors

Stephen Whittaker BA (Hons) Jayne Whittaker Ben Griffiths BSc (Hons)

Departments

Customer Services

0121 212 5508
info@fellows.co.uk
 Jade Daniels MIWFM
 Kain Holroyd
 Janis Masters
 Kasia McGovern-Hay
 Gemma Sheldon

Photography

0121 212 2131
photography@fellows.co.uk
 Francesca Allen BA (Hons)
 Claire Cleaver
 Polly Shave MA (Hons)

Marketing

0121 212 5500
marketing@fellows.co.uk
 Liam Bolland BA (Hons)
 Howard Cheung BA (Hons)
 Jordan Guest MA (Hons)
 Luke Poole BA (Hons)
 Alexandra Whittaker BA (Hons)
 Nicola Whittaker Bsc (Hons), Cert. GA

London Office

0207 127 4198
london@fellows.co.uk
 Kirsty Basset
 Natasha Davis
 Rianna Roston MA (Hons)
 Marina Vieira
 Annabel Zarandi BA (Hons)

Finance

0121 212 2131
wendy@fellows.co.uk
 Wendy Butler
 Angela Donnelly BA (Hons) ACMA
 Gemma Wilkes

Specialist Departments

Jewellery

0121 212 6303
jewellery@fellows.co.uk
 Lindsay Beardmore FGA, DGA
 Jenny Darcy BA (Hons)
 Alexander Duffy BSc (Hons), FGA, DGA
 Penelope Gilliver FGA, DGA
 Patricia Grant BA (Hons)
 Kathryn Hodkin MSci (Hons), FGA, DGA
 Howard Pace
 David Pregun MA (Hons), FGA, DGA
 Ben Randall BA (Hons), G.G., A.J.P.
 Emma Scriven BA (Hons), FGA, DGA
 Emma Testill FGA, DGA
 Amanda Zhang FGA, Msc

Watches

0121 212 5506
watches@fellows.co.uk
 Laura Bishop MA (Hons)
 Kes Crockett BA (Hons)
 Amy Hill CertHE
 Michael Jagiela
 Carrick Matley
 Steven Yambo BA (Hons)

Pawnbrokers

0121 212 6308
pawnbroker@fellows.co.uk
 Rachel Bache
 Kate Bannister
 Claire Dodwell
 Annaliese Foster BA (Hons)

Antiques, Silver & Collectables

0121 212 6302
antiques@fellows.co.uk
silverdept@fellows.co.uk
 Dannielle Blackledge MA (Hons)
 Kevin Jackson
 Alison Jakeway MA MRICS
 Stephen Watton BA (Hons)

Designer Collection

0121 212 6306
thedesignercollection@fellows.co.uk
 Sophie Higgs



Birmingham Saleroom

Situated in the heart of Birmingham's Jewellery Quarter, Fellows is easily accessible from all parts of the United Kingdom, Europe and beyond.

Head Office & Saleroom
 Augusta House
 19 Augusta Street
 Birmingham
 B18 6JA

Telephone: 0121 212 2131
 Email: info@fellows.co.uk

London Office

Fellows' London office offers valuations, please call to arrange a time to visit.

London Office
 29 Charles Street
 Mayfair
 London
 W1J 5DT

Telephone: 020 7127 4198
 Email: london@fellows.co.uk



Follow us on....



facebook.com/fellowsauctions



[fellowsauctions](https://www.instagram.com/fellowsauctions)



[@fellowsauctions](https://twitter.com/fellowsauctions)



youtube.com/fellows1876



Fellows

Established 1876

Head Office & Saleroom: Augusta House | 19 Augusta Street | Birmingham B18 6JA
London Office: 29 Charles Street | Mayfair | London W1J 5DT
Tel 0121 212 2131 | Tel 020 7127 4198 | www.fellows.co.uk