



Jewellery

Thursday 26th March 2020

Fellows
Established 1876

Jewellery

Thursday 26th March 2020 at 10.00am

Index

Jewellery	1 - 328
Designer jewellery	329 - 416
Jewellery	417 - 711

Viewing Times

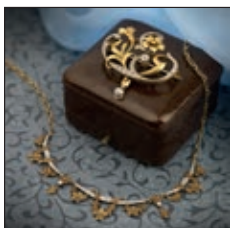
London	
Tuesday 17th March 2020	12noon - 7pm
Wednesday 18th March 2020	9.30am - 11am

Birmingham Head Office & Saleroom	
Saturday 21st March 2020	11am - 4pm
Tuesday 24th March 2020	10am - 4pm
Wednesday 25th March 2020	10am - 4pm
Thursday 26th March 2020	8.30am - 10am

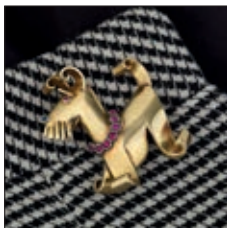
(Photo ID required)

Featured Lots

Lot 7 and 164
(Front cover)



Lot 658
(Back Cover)



We also hold sales of...

Fine
Jewellery



The Luxury Watch
Sale



Fellows

Established 1876

General Information

Free Live Bidding!

Fellows are delighted to announce the introduction of Fellows Live. This is a new bidding platform where all bidders can follow the sale and bid online for **free**. Say goodbye to additional surcharges when it comes to bidding! Anyone using Fellows Live will only have to pay the standard Buyer's Premium (plus VAT), on items purchased using this method.

Why Buy?

- COMPETITIVE** buyer's premium
- FREE** live online bidding
- FULLY** illustrated catalogue
- EASY** to use, functional website
- ACCURATE** condition reports
- SPECIALISTS** on hand to offer advice
- TRACKED AND INSURED** shipping*

*Please contact Fellows for further information.

Why Sell?

- HIGH PRICES** consistently achieved
- FLEXIBLE** commission rates
- FREE** valuations with no obligation to consign
- RAPID** turnaround for your goods
- TARGETED** advertising to a global audience
- SUPERIOR** quality catalogues
- FULLY** integrated website



Free delivery on this auction.
For more information see
page 106.

Contact the department...

Lindsay Beardmore
FGA, DGA
Specialist & Catalogue
Manager
0121 212 2131
lindsay@fellows.co.uk

Emma Testill
FGA, DGA
Catalogue Manager
0121 212 2131
emmat@fellows.co.uk

Important Notice

Neither Fellows nor the Vendors are responsible for any reference as to the condition of lots listed. The absence of such reference does not imply that a lot is in good condition or free from faults or imperfections. All weights and dimensions are approximate. Purchasers are advised to carefully inspect lots and make their own opinion as to the condition. Please see section 7 under 'Bidders' in our full terms and conditions. View Fellows Important Notices in full and full terms and conditions at the back of the catalogue.

Further information





 **Additional Images and Condition Reports** can be found online at our website www.fellows.co.uk

 **Telephone Bidding** is available if you cannot attend an auction. Please ring 0121 212 2131 to arrange a telephone line.

Follow Us



Key to Symbols

-  Item may have export restrictions for customers outside of the EU.
-  Certified Lots
-  Lot comes with box.
-  Lot comes with associated papers/warranty cards.

Lots prefixed with * will carry VAT at 20% on the hammer price.

JEWELLERY

1

A mid 19th century gold split pearl and vari-cut emerald ring.
Ring size N. 3.1gms.
£120-180
(plus 27.6% BP*)



5

A calibre-cut ruby and brilliant-cut diamond pendant, suspended from a trace-link chain.
Total ruby weight 1.86cts, based on estimated dimensions of one ruby 2.9 by 3 by 1.9mms.
Estimated total diamond weight 0.60ct.
Length of pendant 5.2cms.
Length of chain 46cms. 6.2gms.
£300-400
(plus 27.6% BP*)



9

A 14ct gold sapphire and baguette-cut diamond line bracelet.
Estimated total diamond weight 0.90ct.
Total sapphire weight 9.12cts, based on estimated dimensions of one sapphire 6.1 by 4 by 2.8mms.
Hallmarks for London. Length 18cms. 15.1g
£300-400
(plus 27.6% BP*)



13

A rectangular-shape amethyst and old-cut diamond brooch.
Amethyst calculated weight 13.87cts, based on estimated dimensions of 23.6 by 12.2 by 7.3mms.
Estimated total diamond weight 0.70ct, H-I colour, VS clarity.
Length 3.6cms. 16.5gms.
£300-400
(plus 27.6% BP*)



2

A Burmese ruby cabochon and old-cut diamond cluster ring.
With report 80256-62, dated 25th of February 2020, from GCS, stating Myanmar (Burma), no heat, 2.80cts.
Estimated total diamond weight 0.30ct.
Ring size P. 2.9gms.
£250-350
(plus 27.6% BP*)



6

A pair of oval-shape 'pink' diamond and brilliant-cut diamond earrings.
Estimated total weight of principal 'pink' diamonds 0.80ct, P1 clarity.
Length 1.2cms. 3.2gms.
Coloured diamonds untested.
£400-600
(plus 27.6% BP*)



10

A late 19th century split pearl and old-cut diamond cluster ring, with replacement band.
Approximate split pearl dimensions 5.2mms.
Estimated total diamond weight 0.65ct.
Ring size Q. Total weight 3.3gms.
£150-200
(plus 27.6% BP*)



14

A brilliant-cut diamond and circular-shape emerald dress ring.
Estimated total diamond weight 0.25ct.
Ring size L 1/2. 5.2gms.
£200-300
(plus 27.6% BP*)



3

A pair of brilliant-cut diamond cluster earrings.
Estimated total diamond weight 0.70ct, principal diamonds estimated I-J colour, SI clarity.
Butterfly back stamped 750.
Diameter 0.9cm. 2.6gms.
£150-200
(plus 27.6% BP*)



7

A Belle Époque 18ct gold rose-cut diamond necklace.
Length 46cms.
13.4gms.
£400-600
(plus 27.6% BP*)



11

A sapphire and vari-cut diamond pendant, suspended from a trace-link chain.
Sapphire calculated weight 0.44ct, based on estimated dimensions of 4.6 by 4.5 by 2mms.
Estimated total diamond weight 1ct.
Length of pendant 2.5cms. Length of chain 45cms. 8.8gms.
£300-400
(plus 27.6% BP*)



15

An early 20th century 18ct gold cushion-shape sapphire and vari-cut diamond floral cluster ring.
Sapphire calculated weight 0.44ct, based on estimated dimensions 4.3 by 4.2 by 2.6mms.
Estimated total diamond weight 0.80ct, H-I colour, SI clarity.
Stamped 18ct.
Ring size P. 2.5gms.
£180-260
(plus 27.6% BP*)



4

A rectangular-shape morganite, circular-shape pink tourmaline and single-cut diamond pendant, suspended from a chain.
Morganite calculated weight 38.25cts, based on estimated dimensions of 24.8 by 18.7 by 11.8mms.
Estimated total diamond weight 0.25ct.
Length of pendant 3cms. Length of chain 46cms. 19.8gms.
£450-550
(plus 27.6% BP*)



8

An early 20th century platinum old-cut diamond ring.
Estimated diamond weight 1ct, I-J colour, SI2-P1 clarity.
Stamped plat.
Ring size M. 3.3gms.
£350-450
(plus 27.6% BP*)



12

An 18ct gold brilliant-cut diamond bangle.
Estimated total diamond weight 2cts, H-I colour, VS2-P1 clarity.
Hallmarks for London.
Inner diameter 6.5cms. 11.6gms.
£350-450
(plus 27.6% BP*)



16

A rectangular-shape diamond graduated five-stone ring.
Estimated total diamond weight 1.50cts, G-H colour, predominately VS clarity.
Ring size O. 5.1gms.
£600-800
(plus 27.6% BP*)



BP* - Buyer's Premium of 23% (plus VAT) or 27.6% (VAT included)

BP* - Buyer's Premium of 23% (plus VAT) or 27.6% (VAT included)

17

An 18ct gold brilliant-cut diamond pendant, suspended from a curb-link chain. Estimated diamond weight 1.15cts, H-I colour, SI clarity. Hallmarks for London. Length of pendant 1.2cms. Length of chain 46cms. 6.2gms. **£1,800-2,400** (plus 27.6% BP*)



21

An 18ct gold oval-shape sapphire and brilliant-cut diamond cluster ring. Estimated total diamond weight 0.35ct. Hallmarks for London, 1981. Ring size K1/2. 4.8gms. **£200-300** (plus 27.6% BP*)



25

A pair of oval-shape emerald and vari-cut diamond earrings. Emerald calculated weights 0.92ct and 0.92ct, based on estimated dimensions of 7.7 by 5 by 4.2mms and 7.5 by 5 by 4.3mms respectively. Estimated total diamond weight 1.60cts, H-I colour, VS2-SI2 clarity. Stamped 585. Length 1.3cms. 7.5gms. **£500-700** (plus 27.6% BP*)



29

An 18ct gold pendant, with brilliant-cut diamond, inset to the glazed panel. Diamond weight 0.17ct, stamped to surmount, estimated G-H colour, VS clarity. Hallmarks for London, 2004. Length 2.3cms. 7.4gms. **£250-350** (plus 27.6% BP*)



18

An early 20th century 18ct gold turquoise bracelet. Approximate dimensions of one turquoise 19 by 16.4mms. Length 17cms. 40.5gms. **£150-200** (plus 27.6% BP*)



22

An 18ct gold brilliant-cut diamond full eternity ring. Estimated total diamond weight 1.20cts. Hallmarks for London. Ring size L. 6.1gms. **£400-600** (plus 27.6% BP*)



26

A cushion-shape sapphire and vari-cut diamond cluster ring. Sapphire calculated weight 1.01cts, based on estimated dimensions 6.6 by 5.3 by 3.1mms. Estimated total diamond weight 0.65ct, H-I colour, SI1-P1 clarity. Stamped plat. Ring size N. 4.1gms. **£280-380** (plus 27.6% BP*)



30

A late Victorian silver and gold old-cut diamond and cultured pearl bar brooch. Estimated total diamond weight 1ct, H-I colour, SI clarity. Length 4.5cms. 5.3gms. **£450-650** (plus 27.6% BP*)



19

A 'You and Me' ring, designed with pink and green tourmaline, within green garnet and spinel surrounds. Principal pink tourmaline calculated weight 0.61ct, based on estimated dimensions of 8.9 by 6 by 1.8mms. Green tourmaline calculated weight 0.41ct, based on estimated dimensions 7.1 by 5.3 by 1.7mms French assay marks. Stamped 750. Ring size K. 4gms. **£400-600** (plus 27.6% BP*)



23

A brilliant-cut diamond double cluster ring. Estimated total diamond weight 1.20cts, H-I colour, SI clarity. Stamped 18ct. Ring size M1/2. 4.7gms. **£280-380** (plus 27.6% BP*)



27

A cushion-shape ruby and single-cut diamond dress ring. Ruby calculated weight 0.75ct, based on estimated dimensions of 6.7 by 5.2 by 3mms. Estimated total diamond weight 0.60ct. Ring size O. 3.7gms. **£340-440** (plus 27.6% BP*)



31

Two vari-cut emerald and brilliant-cut diamond bangles. Estimated total diamond weight 5.50 to 5.70cts. Inner diameters 5.8 and 6cms. **£700-800** (plus 27.6% BP*)



20

An 18ct gold brilliant-cut diamond single-stone ring. Estimated diamond weight 0.40ct, I-J colour, VS clarity. Hallmarks for Sheffield, 2001. Ring size L. 2.5gms. **£200-300** (plus 27.6% BP*)



24

An 18ct gold rectangular-shape ruby and diamond three-stone ring. Ruby calculated weight 1.11cts, based on estimated dimensions of 6.7 by 4.8 by 3.2mms. Estimated total diamond weight 0.60ct, G-H colour, VS clarity. Hallmarks for London. Ring size N. 3.9gms. **£350-450** (plus 27.6% BP*)



28

An 18ct gold brilliant-cut diamond and square-shape citrine dress ring. Hallmarks for Sheffield. Ring size N. 5.7gms. **£200-300** (plus 27.6% BP*)



32

An emerald bracelet with single-cut diamond double spacers. Total emerald weight 8.28cts, based on estimated dimensions of one emerald 5 by 4 by 3.2mms. Estimated total diamond weight 0.45ct. Stamped 18K. Length 17cms. 8.4gms. **£280-380** (plus 27.6% BP*)



33

A sapphire cabochon and old-cut diamond cluster ring.
Sapphire calculated weight 9.76cts, based on estimated dimensions of 11.9 by 10 by 7.6mms.
Estimated total diamond weight 1.40cts, H-J colour, SI-P1 clarity.
Ring size O. 6.4gms.
£1,500-2,000
(plus 27.6% BP*)

**37**

A pair of calibre-cut emerald and vari-cut diamond cluster earrings.
Estimated total diamond weight 1.80cts, principal diamonds estimated I-J colour, SI2-P1 clarity.
Diameter 1.3cms. 5.1gms.
£350-450
(plus 27.6% BP*)

**41**

A brilliant-cut diamond half eternity ring.
Total diamond weight 0.68ct, stamped to band.
Stamped 585.
Ring size O1/2.
5.8gms.
£250-350
(plus 27.6% BP*)

**45**

A cultured pearl three-row necklace, with sapphire and cultured pearl cluster clasp.
Clasp stamped K14.
Length 34cms.
£400-600
(plus 27.6% BP*)

**34**

A platinum rectangular-shape diamond single-stone ring.
Diamond weight 0.40ct, G-H colour, VS clarity.
Hallmarks for London.
Ring size L. 3.5gms.
£250-350
(plus 27.6% BP*)

**38**

An 18ct gold brilliant-cut diamond floral cluster ring.
Estimated total diamond weight 2cts.
Hallmarks for Birmingham.
Ring size M.
17.9gms.
£800-1,200
(plus 27.6% BP*)

**42**

A late 19th century silver and gold old and rose-cut diamond pendant.
Estimated principal old-cut diamond weight 0.20ct, I-J colour, P1 clarity.
Length 3.6cms. 10.6gms.
£280-380
(plus 27.6% BP*)

**46**

A pair of vari-shape amethyst and circular-cut diamond earrings.
Estimated total diamond weight 0.40ct, estimated I-J colour, VS2-SI2 clarity.
Stamped 18K.
Length 2.3cms.
17.5gms.
£350-450
(plus 27.6% BP*)

**35**

A cultured pearl and vari-cut diamond cluster ring.
Cultured pearl measuring approximately 11mms.
Estimated total diamond weight 0.60ct.
Stamped 750.
Ring size M. 6.9gms.
£200-300
(plus 27.6% BP*)

**39**

A vari-cut diamond and gem-set bracelet.
Gems include ruby, sapphire, emerald with further gems.
Estimated total diamond weight 2.40cts, predominantly H-I colour, SI1-P1 clarity.
French assay marks.
Length 21cms. 22.1gms.
£900-1,400
(plus 27.6% BP*)

**43**

An 18ct gold gem-set and brilliant-cut diamond necklace.
Gems include ruby, sapphire and emerald.
Import marks for London, 1995, partially indistinct.
Length 42cms.
17.2gms.
£500-700
(plus 27.6% BP*)

**47**

Three items of jewellery, to include a 9ct gold necklace, 9ct gold bracelet and a matching ring.
Two with import marks for Birmingham, 1979.
Length of necklace 38cms. Length of bracelet 17cms. Ring size O. Total weight 16.9gms.
£200-300
(plus 27.6% BP*)

**36**

A 1970s 18ct gold brilliant-cut diamond dress ring.
Band AF.
Estimated total diamond weight 1.10cts, H-I colour, P1 clarity.
Hallmarks for Birmingham, 1973.
Ring size O. 13.7gms.
£400-600
(plus 27.6% BP*)

**40**

An oval-shape sapphire and brilliant-cut diamond cluster ring.
Sapphire calculated weight 1.68cts, based on estimated dimensions 7.7 by 6.5 by 4mms.
Total diamond weight 0.40ct, stamped to band.
Ring size N. 4.1gms.
£280-380
(plus 27.6% BP*)

**44**

A garnet cabochon dress ring, with brilliant-cut diamond accents.
Garnet calculated weight 1.47cts, based on estimated dimensions of 7 by 5.5 by 3.75mms.
Estimated total diamond weight 0.10ct, G-H colour, SI clarity.
Stamped 14KS.
Ring size L1/2. 9.7gms.
£250-350
(plus 27.6% BP*)

**48**

A platinum diamond ring.
Total diamond weight 0.18ct, stamped to band.
Swiss convention marks for platinum.
Ring size M1/2.
6.3gms.
£150-200
(plus 27.6% BP*)



49

A brilliant-cut diamond star-shape necklace. Total diamond weight 0.41ct. Stamped 750. Length 41cms. 4gms. **£480-580** (plus 27.6% BP*)

53

An 18ct gold square-shape diamond single-stone ring. Estimated diamond weight 0.25ct, H-I colour, VS clarity. Hallmarks for Birmingham, 2005. Ring size M1/2. 4.8gms. **£150-200** (plus 27.6% BP*)

57

An 18ct gold cushion-shape emerald and brilliant-cut diamond cluster ring. Emerald weight 1.25cts. Total diamond weight 0.18ct, stamped to band. Hallmarks for London, 2019. Ring size M. 4.2gms. **£700-1,000** (plus 27.6% BP*)

61

A brilliant-cut diamond and marquise-shape sapphire floral necklace. Estimated total diamond weight 0.30ct. Length 42cms. 15gms. **£400-600** (plus 27.6% BP*)

50

A brilliant-cut diamond and black gem pendant, suspended from a trace-link chain. Principal diamond estimated 0.30ct, H-I colour, SI clarity. Chain stamped 750. Length of pendant 1.7cms. Length of chain 44cms. 7.9gms. **£350-450** (plus 27.6% BP*)

54

An 18ct gold circular-shape tsavorite garnet and brilliant-cut diamond cluster ring. Estimated total diamond weight 0.50ct. Hallmarks for London, 2015. Ring size L. 4.2gms. **£350-450** (plus 27.6% BP*)

58

A pear-shape diamond, with old-cut diamond surround, suspended from an 18ct gold bead-link chain. Estimated total diamond weight 1.60cts, principal diamond estimated weight 1.10cts, J-K colour, P1 clarity. Chain with hallmarks for Birmingham. Length of pendant 2.4cms. Length of chain 45.5cms. Total weight 7.1gms. **£250-350** (plus 27.6% BP*)

62

A pair of cultured pearl and rose-cut diamond earrings. Butterfly back stamped 750. Length 2.6cms. Total weight 5.4gms. **£300-400** (plus 27.6% BP*)

51

A brilliant-cut diamond single-stone ring, with pave-set diamond and black gem sides. Principal diamond estimated weight 0.50ct, H-I colour, VS clarity. French Assay marks. Ring size N. 12.1gms. **£800-1,200** (plus 27.6% BP*)

55

A 14ct gold vari-cut diamond dress ring. Estimated total diamond weight 1ct, I-J colour, VS-SI clarity. Hallmarks for Birmingham. Ring size R. 8.1gms. **£220-320** (plus 27.6% BP*)

59

A late 19th century gold rose-cut diamond, enamel locket, depicting a lady. Length 3.3cms. 12.5gms. **£220-320** (plus 27.6% BP*)

63

A pair of rose-cut diamond earrings. Length 4.3cms. 12.3gms. **£400-600** (plus 27.6% BP*)

52

A marquise-shape emerald and brilliant-cut diamond floral band ring. Estimated total diamond weight 0.50ct, G-H colour, VS clarity. Stamped 750. Ring size W. 12.2gms. **£300-400** (plus 27.6% BP*)

56

A brilliant-cut diamond bi-colour band ring. One diamond deficient. Estimated total diamond weight 0.80ct. Ring size M1/2. 7.5gms. **£300-400** (plus 27.6% BP*)

60

An 18ct gold brilliant-cut fracture-filled diamond two-stone crossover ring. Estimated total diamond weight 2cts. Hallmarks for Sheffield, 2017. Ring size M. 5.2gms. **£800-1,200** (plus 27.6% BP*)

64

A 1940s gold rose-cut diamond ring. Ring size K. 11.1gms. **£500-700** (plus 27.6% BP*)

65

A brilliant-cut diamond full eternity ring.
Estimated total diamond weight 0.90ct, H-I colour, SI clarity.
Ring size K1/2.
3.4gms.
£250-350
(plus 27.6% BP*)

**69**

A vari-cut citrine, sapphire and synthetic red spinel cluster ring.
Two synthetic red spinels deficient.
Citrine calculated weight 12.73cts, based on estimated dimensions of 17.3 by 12.5 by 8.2mms.
Ring size O. 22.9gms.
£350-450
(plus 27.6% BP*)

**73**

An 18ct gold brilliant-cut diamond single-stone ring, with square-shape diamond sides.
Principal diamond estimated 0.30ct, I-J colour, VS clarity.
Hallmarks for Sheffield.
Ring size O. 4.4gms.
£250-350
(plus 27.6% BP*)

**77**

A mid 20th century platinum and gold sapphire and vari-cut diamond bow brooch.
Estimated total diamond weight 0.25ct, I-J colour, SI clarity.
Stamped 18ct & Pt.
Length 3cms. 3.9gms.
£150-200
(plus 27.6% BP*)

**66**

An 18ct gold brilliant-cut diamond single-stone ring.
Estimated diamond weight 0.90ct, H-I colour, P1 clarity.
Hallmarks for Birmingham, 1983.
Ring size J1/2. 2.3gms.
£700-900
(plus 27.6% BP*)

**70**

An early 20th century 9ct gold circular-shape ruby and old-cut diamond hinged bangle.
Estimated total diamond weight 0.20ct.
Inner diameter 6.2cms. 14.7gms.
£700-900
(plus 27.6% BP*)

**74**

A mid 20th century gold and platinum circular-shape sapphire and old-cut diamond ring.
Estimated total diamond weight 0.50ct, H-I colour, SI clarity.
Stamped 18ct and plat.
Ring size M. 3.1gms.
£300-400
(plus 27.6% BP*)

**78**

A pear-shape emerald and brilliant-cut diamond cluster terminal bangle.
Estimated total diamond weight 0.60ct, H-I colour, VS-SI clarity.
Inner diameter 6.4cms. 11gms.
£200-300
(plus 27.6% BP*)

**67**

A brilliant-cut diamond dress ring.
Estimated total diamond weight 0.90ct.
Stamped 750.
Ring size O. 14.7gms.
£500-700
(plus 27.6% BP*)

**71**

A pair of vari-cut diamond floral scroll earrings.
Estimated total diamond weight 0.80ct, H-J colour, VS2-SI2 clarity.
Stamped 750.
Length 2.3cms. 8.1gms.
£240-340
(plus 27.6% BP*)

**75**

A bi-colour 18ct gold vari-cut diamond 'Morse Code' full eternity ring.
Estimated total diamond weight 0.55ct.
Hallmarks for Edinburgh, 2002.
Ring size M1/2. 9gms.
£400-600
(plus 27.6% BP*)

**79**

A bi-colour 18ct gold brilliant-cut diamond single-stone ring.
Estimated diamond weight 0.40ct, H-I colour, SI2-P1 clarity.
Hallmarks for Edinburgh.
Ring size N. 3.6gms.
£300-400
(plus 27.6% BP*)

**68**

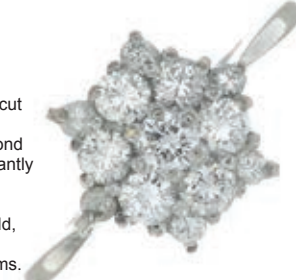
An oval-shape pink sapphire and brilliant-cut diamond cluster ring.
Sapphire calculated weight 1.53cts, based on estimated dimensions of 7.2 by 5.8 by 3.4mms.
Estimated total diamond weight 0.60ct.
Stamped 18ct.
Ring size N1/2. 3.7gms.
£600-800
(plus 27.6% BP*)

**72**

A brilliant-cut diamond bi-colour heart-shape ring.
Estimated total diamond weight 0.60ct.
Stamped 18ct.
Ring size N. 6.8gms.
£350-450
(plus 27.6% BP*)

**76**

An 18ct gold brilliant-cut diamond cluster ring.
Estimated total diamond weight 1ct, predominantly H-I colour, VS2-SI2 clarity.
Hallmarks for Sheffield, 2018.
Ring size O1/2. 4.2gms.
£200-300
(plus 27.6% BP*)

**80**

A gem-set bar bracelet, variously set to depict musical notes.
Gems include diamond, sapphire, ruby, emerald, amethyst with further gems.
Length 18cms. 30.1gms.
£750-950
(plus 27.6% BP*)



81

An 18ct gold brilliant-cut diamond and circular-shape gem-set bar brooch, depicting musical notes. Gems include emerald and amethyst. Hallmarks for London, 2008. Length 3cms. 4gms. **£120-180** (plus 27.6% BP*)

**85**

An amber bead necklace. Approximate dimensions of amber beads 9.5 to 20mms. Length 68cms. Total weight 34.41gms. Amber untested. **£300-400** (plus 27.6% BP*)

**89**

An 18ct gold brilliant-cut diamond single-stone ring. Estimated diamond weight 0.25ct, I-J colour, SI clarity. Hallmarks for Birmingham. Ring size M1/2. 7.7gms. **£300-450** (plus 27.6% BP*)

**93**

A pair of oval-shape amethyst and brilliant-cut diamond earrings. Total amethyst weight 3.12cts based on estimated dimensions of one amethyst 8.1 by 6.9 by 5mms. Length 1.7cms. 7.3gms. **£250-450** (plus 27.6% BP*)

**82**

A brilliant-cut diamond bi-colour necklace. Estimated total diamond weight 1ct. Stamped 14ct, partially indistinct. Length 43cms. 22.8gms. **£500-700** (plus 27.6% BP*)

**86**

A rectangular-shape sapphire and brilliant-cut diamond dress ring. Sapphire calculated weight 1.73cts, based on estimated dimensions of 8 by 5.9 by 4mms. Ring size N1/2. 3.4gms. **£300-400** (plus 27.6% BP*)

**90**

An 18ct gold vari-cut diamond bangle. Estimated total diamond weight 1.40cts. Hallmarks for Sheffield. Inner diameter 5.7cms. 17gms. **£600-700** (plus 27.6% BP*)

**94**

A single-cut diamond bi-colour snake ring. Estimated total diamond weight 0.10ct. Approximate ring size G1/2. 18.4gms. **£500-700** (plus 27.6% BP*)

**83**

An early 20th century old-cut diamond three-stone ring. Estimated total diamond weight 0.90ct, H-I colour, SI clarity. Ring size O1/2. 2.4gms. **£200-300** (plus 27.6% BP*)

**87**

A star ruby oval cabochon and brilliant-cut diamond dress ring. Ruby is glass-filled. Glass filled-ruby weight 30.21cts. Estimated total diamond weight 1ct. French marks. Ring size N1/2. 30.7gms. **£2,800-3,200** (plus 27.6% BP*)

**91**

A square-shape aquamarine and brilliant-cut diamond ring. Aquamarine calculated weight 1.65cts, based on estimated dimensions 7.6 by 7.1 by 4.5mms. Estimated total diamond weight 0.25ct. Stamped 18ct. Ring size L. 3.6gms. **£250-350** (plus 27.6% BP*)

**95**

An 18ct gold vari-cut diamond dress ring. Estimated total diamond weight 0.60ct. Hallmarks for London, 1993. Ring size N1/2. 11.4gms. **£300-400** (plus 27.6% BP*)

**84**

An oval-shape sapphire and brilliant-cut diamond bracelet. Total diamond weight 0.41ct, stamped to clasp. Stamped 14k. Length 16.5cms. 12.4gms. **£200-300** (plus 27.6% BP*)

**88**

An 18ct gold square-shape diamond two-row half eternity ring. Total diamond weight 1.17cts, stamped to band, estimated H-I colour, SI clarity. Hallmarks for London, 2013. Ring size N. 5.1gms. **£400-600** (plus 27.6% BP*)

**92**

A brilliant-cut diamond bi-colour web pendant. Estimated total diamond weight 2.60cts. Length 5.8cms. 11.2gms. **£500-700** (plus 27.6% BP*)

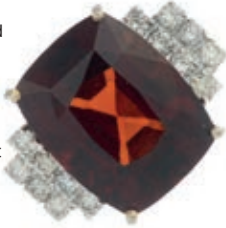
**96**

A pair of 18ct gold brilliant-cut diamond earrings. Estimated total diamond weight 0.60ct, H-I colour, SI2-P1 clarity. Import marks for Sheffield. Length 1.5cms. 6.7gms. **£250-350** (plus 27.6% BP*)



97

An 18ct gold cushion-shape garnet and brilliant-cut diamond dress ring.
Garnet calculated weight 19.27cts, based on estimated dimensions of 16.2 by 12.5 by 10mms.
Estimated total diamond weight 0.60ct, predominantly I-J colour, VS2-SI1 clarity.
Hallmarks for London, 2013.
Ring size M1/2. 7.7gms.
See Plate 2
£360-460 (plus 27.6% BP*)

**101**

An 18ct gold brilliant-cut diamond single-stone ring.
Estimated diamond weight 0.50ct, I-J colour, P1 clarity.
Hallmarks for London, 1983.
Ring size R. 2gms.
£250-350
(plus 27.6% BP*)

**105**

A calibre-cut sapphire and brilliant-cut diamond dress ring.
One diamond deficient.
Estimated total diamond weight 1.20cts, G-H colour, VS clarity.
French assay mark.
Ring size J. 13.4gms.
£400-600
(plus 27.6% BP*)

**109**

A brilliant-cut diamond dress ring.
Estimated total diamond weight 0.75ct, H-I colour, VS2-SI1 clarity.
Ring size L. 5.2gms.
£700-900
(plus 27.6% BP*)

**98 X**

An early 19th century gold coral bracelet, with a coral brooch and a pair of coral earrings.
Length of bracelet 16.5cms. Length of brooch 3.2cms. Length of earrings 2cms. Total weight 28.2gms.
Coral untested.
£400-600
(plus 27.6% BP*)

**102**

An 18ct gold oval-shape emerald and brilliant-cut diamond cluster ring.
Emerald calculated weight 0.76ct, based on estimated dimensions of 6.8 by 4.8 by 4.4mms.
Estimated total diamond weight 0.50ct, H-I colour, VS2-SI2 clarity.
Import marks for London, 1996.
Ring size L1/2. 4.4gms.
£350-450
(plus 27.6% BP*)

**106**

A circular-shape synthetic sapphire and paste necklace, together with matching earrings.
Necklace stamped 18K. Earrings stamped 18C.
Length of necklace 40cms. Length of earrings 1.4cms.
37.3gms.
Necklace with case.
£120-180
(plus 27.6% BP*)

**110**

A vari-cut diamond pendant.
Principal diamond estimated weight 0.15ct, H-I colour, VS clarity.
Length 3.4cms. 2.4gms.
£350-450
(plus 27.6% BP*)

**99**

An 18ct gold circular-shape ruby and brilliant-cut diamond drop pendant, suspended from a 9ct gold chain.
Estimated total diamond weight 0.45ct, G-H colour, P1 clarity.
Pendant with hallmarks for Sheffield. Chain with hallmarks for Birmingham.
Length of pendant 2.5cms. Length of chain 44cms. Total weight 3.7gms.
£180-220
(plus 27.6% BP*)

**103**

A brilliant-cut diamond single-stone ring.
Estimated diamond weight 0.60ct, I- J colour, SI clarity.
Stamped 18ct & Plat.
Ring size O. 2.5gms.
£500-600
(plus 27.6% BP*)

**107**

An 18ct gold square-shape diamond two-stone ring.
Total diamond weight 0.28ct, G-H colour, VS clarity.
Hallmarks for London.
Ring size N. 6.9gms.
£200-300
(plus 27.6% BP*)

**111**

A brilliant-cut diamond and cultured pearl dress ring.
Cultured pearls measuring 6.7 to 6.6mms.
Estimated total diamond weight 0.35ct, H-I colour, VS2-SI1 clarity.
Ring size K1/2. 4.8gms.
£200-300
(plus 27.6% BP*)

**100**

A pair of 18ct gold brilliant-cut diamond curved earrings.
Estimated total diamond weight 0.30ct.
Hallmarks for London, 2002.
Length 3.8cms. 8.2gms.
£400-600
(plus 27.6% BP*)

**104**

A vari-cut diamond pendant.
Estimated total diamond weight 3.20cts, H-I colour, VS2-SI2 clarity.
Length 3.4cms. 8.5gms.
£600-800
(plus 27.6% BP*)

**108**

An 18ct gold circular-shape tanzanite and brilliant-cut diamond cluster ring.
Estimated total diamond weight 0.50ct, H-I colour, SI clarity.
Hallmarks for London, 2015.
Ring size M. 3.9gms.
£260-360
(plus 27.6% BP*)

**112**

An 18ct gold brilliant-cut diamond half eternity ring.
Total diamond weight 0.92ct, estimated H-I colour, VS2-SI1 clarity.
Hallmarks for London, 2010.
Ring size O1/2. 3.3gms.
£400-600
(plus 27.6% BP*)



113

A brilliant-cut diamond single-stone ring. Estimated diamond weight 0.35ct, H-I colour, SI clarity. Stamped 585. Ring size O. 2gms. **£180-260** (plus 27.6% BP*)

**117**

A rose-cut diamond dress ring. Ring size J. 9.1gms. **£700-900** (plus 27.6% BP*)

**121**

A pair of 18ct gold brilliant-cut diamond accent earrings. Hallmarks for London, 2001. Length 3cms. 7.8gms. **£150-200** (plus 27.6% BP*)

**125***

A brilliant-cut diamond bracelet. Total diamond weight 0.17ct, stamped to side. Length 19cms. 2gms. **£180-260** (plus 27.6% BP*)

**114**

A platinum vari-cut diamond crossover ring. Estimated total diamond weight 1.15cts, principal pear-shape diamonds estimated 0.50ct and 0.44ct, H-I colour, VS2-SI1 clarity. Hallmarks for London, 1998. Ring size I. 5.9gms. **£700-900** (plus 27.6% BP*)

**118**

A baroque pearl and briolette-cut amethyst and peridot necklace. Length 40cms. 6.5gms. **£180-260** (plus 27.6% BP*)

**122**

An 18ct gold rectangular-shape diamond single-stone ring, with brilliant-cut diamond accent shoulders. Estimated total diamond weight 0.40ct, principal diamond estimated H-I colour, VS2-SI1 clarity. Hallmarks for Birmingham. Ring size M. 3.8gms. **£300-400** (plus 27.6% BP*)

**126**

A cultured pearl and brilliant-cut diamond pendant, suspended from an integral chain. Estimated total diamond weight 0.80ct. Cultured pearl measuring approximately 10.8mms. Clasp stamped 585. Length of pendant 3cms. Length of chain 42cms. 14gms. **£280-380** (plus 27.6% BP*)

**115**

A platinum textured ring, with brilliant-cut diamond accents. Estimated total diamond weight 0.10ct. Hallmarks for London, 2001. Ring size N. 6.2gms. **£200-300** (plus 27.6% BP*)

**119**

An oval-shape sapphire and vari-cut diamond dress ring. Sapphire calculated weight 1.04cts, based on estimated dimensions 7.7 by 6 by 2.7mms. Estimated total diamond weight 0.85ct, H-I colour, SI clarity. Ring size Q1/2. 5gms. **£300-400** (plus 27.6% BP*)

**123**

A vari-cut diamond crown brooch. Estimated total diamond weight 3.25cts, predominantly H-I colour, VS2-SI1 clarity. French assay marks. Length 3.8cms. 11.6gms. **£1,000-1,500** (plus 27.6% BP*)

**127**

A pear-shape sapphire and old-cut diamond pendant, suspended from a trace-link chain. Sapphire calculated weight 1.72cts, based on estimated dimensions of 8.2 by 8.5 by 3.1mms. Estimated total diamond weight 0.60ct, H-I colour, SI-P1 clarity. Chain stamped 18ct. Length of pendant 1.8cms. Length of chain 41cms. 3.2gms. **£250-350** (plus 27.6% BP*)

**116**

A brilliant-cut diamond pendant, suspended from a 9ct gold chain. Estimated diamond weight 0.15ct, I-J colour, VS2-SI1 clarity. Chain with hallmarks for London, 1979. Length of pendant 2.8cms. Length of chain 62cms. Total weight 16.4gms. **£220-320** (plus 27.6% BP*)

**120**

An 18ct gold baguette and pave-set diamond dress ring. Estimated total diamond weight 1ct, G-H colour, VS clarity. Import marks for Birmingham, 1993. Ring size O. 6.9gms. **£320-420** (plus 27.6% BP*)

**124**

A 9ct gold brilliant-cut diamond single-stone ring. Diamond weight 0.50ct, H-I colour, P2 clarity. Hallmarks for Birmingham. Ring size L1/2. 2gms. **£150-200** (plus 27.6% BP*)

**128**

An old-cut diamond three-stone ring. Estimated total diamond weight 0.80ct, G-H colour, VS2-SI1 clarity. Ring size H1/2. 2.2gms. **£300-400** (plus 27.6% BP*)



129

An 18ct gold brilliant-cut diamond and square-shape citrine drop earrings.
Estimated total diamond weight 0.20ct.
Hallmarks for Sheffield.
Length 4.7cms. 8gms.
£200-300
(plus 27.6% BP*)

133

A pair of brilliant-cut diamond line drop earrings.
Estimated total diamond weight 2cts, H-I colour, VS2-SI1 clarity.
Butterfly backers stamped 585.
Length 5.6cms. 14.3gms.
£500-700
(plus 27.6% BP*)

137

A mid 20th century 14ct gold circular-cut diamond three-stone band ring.
Estimated total diamond weight 0.90ct, G-H colour, VS clarity.
Stamped 585.
Ring size U. 10.6gms.
£700-900
(plus 27.6% BP*)

141

Two pairs of 18ct gold diamond earrings.
Estimated total diamond weight 0.20ct.
Hallmarks for London, 1988 and 1997.
Lengths 2.3 and 2.5cms.
19.2gms.
£500-700
(plus 27.6% BP*)

130

A late 19th century oval-shape citrine and rose-cut diamond brooch.
Citrine calculated weight 4.22cts, based on estimated dimensions of 12.8 by 9.2 by 5mms.
Length 2.8cms. 9.7gms.
£180-260
(plus 27.6% BP*)

134

A fancy-link chain, with push-piece clasp.
Stamped 750.
Length 41cms. 64.7gms.
£1,200-1,800
(plus 27.6% BP*)

138

A pear-shape ruby, sapphire and brilliant-cut diamond snake ring.
Ruby weight 0.46ct. Sapphire weight 0.51ct.
Estimated total diamond weight 0.40ct.
Ring size P. 3.8gms.
£450-650
(plus 27.6% BP*)

142

A pair of 18ct gold square-shape spessartine garnet and brilliant-cut diamond swirl earrings.
Estimated total diamond weight 0.30ct.
Hallmarks for Sheffield, 2004.
Length 4.2cms. 7.7gms.
£200-300
(plus 27.6% BP*)

131

An 18ct gold oval-shape ruby and brilliant-cut diamond cluster ring.
Ruby weight 1.16cts.
Total diamond weight 0.32ct, estimated H-I colour, VS2-SI1 clarity.
Hallmarks for London, 2015.
Ring size M. 6gms.
£380-480
(plus 27.6% BP*)

135

A vari-shape green tourmaline and brilliant-cut diamond floral dress ring.
Stamped 14K.
Ring size J1/2. 8.7gms.
£180-260
(plus 27.6% BP*)

139

An 18ct gold rectangular-shape tanzanite single-stone ring.
Tanzanite weight 3cts.
Hallmarks for London, 2017.
Ring size M. 7.7gms.
£900-1,400
(plus 27.6% BP*)

143

A marquise-shape diamond single-stone ring, with vari-cut diamond shoulders.
With report 15982118, dated 15th June 2007, from the GIA, stating 0.52ct, F colour, SI2 clarity.
Stamped 14K.
Ring size I. 3.1gms.
£650-750
(plus 27.6% BP*)

132

An oval-shape emerald and brilliant-cut diamond cluster ring.
Emerald calculated weight 1.83cts, based on estimated dimensions of 9.8 by 6.8 by 5.3mms.
Estimated total diamond weight 0.75ct, H-I colour, VS clarity.
Ring size R. 10.9gms.
£250-350
(plus 27.6% BP*)

136

An early 20th century vari-cut sapphire, rose-cut diamond and seed pearl brooch.
Length 3.5cms. 6.2gms.
£220-320
(plus 27.6% BP*)

140

A 9ct gold opal and split pearl pendant.
May also be worn as a brooch.
Hallmarks for London, 1990.
Length 3.9cms. 4.8gms.
£150-200
(plus 27.6% BP*)

144

A pair of cabochon ruby and brilliant-cut diamond cluster earrings.
Total ruby weight 6.62cts, based on estimated dimensions of one ruby 9 by 7.1 by 4.8mms.
Estimated total diamond weight 1.30cts.
Length 1.6cms. 5.3gms.
£300-400
(plus 27.6% BP*)

145

An 18ct gold square-shape emerald and baguette-cut diamond ring.
Estimated total diamond weight 0.20ct, H-I colour, SI clarity.
Hallmarks for London, 1996.
Ring size M1/2. 4.2gms.
£150-200
(plus 27.6% BP*)

**149**

A late 19th century gold enamel and rock crystal locket, depicting a robed gentleman with a sword.
Length 5.2cms. 26.1gms.
£200-300
(plus 27.6% BP*)

**153**

A mabe pearl and diamond cluster ring.
Mabe pearl measuring approximately 13mms.
Estimated total diamond weight 0.40ct.
Stamped 585.
Ring size O. 5.9gms.
£200-300
(plus 27.6% BP*)

**157**

A brilliant-cut diamond single-stone ring.
Estimated diamond weight 0.50ct, I-J colour, P1 clarity.
Ring size M1/2. 4.8gms.
£300-400
(plus 27.6% BP*)

**146**

An 18ct gold brilliant-cut diamond shaped band ring.
Estimated total diamond weight 0.30ct, H-I colour, VS2-SI1 clarity.
Hallmarks for London, 2016.
Ring size P. 2gms.
£150-200
(plus 27.6% BP*)

**150**

An 18ct gold brilliant-cut diamond dress ring.
Estimated principal diamond weight 1ct, estimated J-K colour SI2-P1 clarity.
Hallmarks for Sheffield.
Ring size O1/2. 4.2gms.
£500-700
(plus 27.6% BP*)

**154**

A peridot and single-cut diamond dress ring.
Peridot calculated weight 4.84cts, based on estimated dimensions 11 by 11 by 6mms.
Estimated total diamond weight 0.30ct.
Ring size L. 6gms.
£250-350
(plus 27.6% BP*)

**158**

A circular-shape tanzanite and brilliant-cut diamond ring.
Stamped 18k.
Ring size M. 6gms.
£250-350
(plus 27.6% BP*)

**147**

A vari-shape ruby and brilliant-cut diamond dress ring.
Stamped 14k.
Ring size R. 4.1gms.
£150-200
(plus 27.6% BP*)

**151**

An 18ct gold vari-cut diamond hinged bangle.
Estimated total diamond weight 2.15cts, H-I colour, SI1-P1 clarity.
Hallmarks for Sheffield, 2013.
Inner diameter 5.8cms. 21.6gms.
£600-800
(plus 27.6% BP*)

**155**

An opal cabochon and old-cut diamond necklace.
Estimated dimensions of opal 20.3 by 12mms.
Estimated total diamond weight 0.60ct, predominantly I-J colour, SI1-P1 clarity.
Chain stamped 585.
Pendant stamped 750.
Length of opal drop 3.5cms.
Length of chain 34cms. Total weight 6.8gms.
£280-380
(plus 27.6% BP*)

**159**

A cultured pearl three-row necklace, with vari-cut diamond clasp.
Approximate dimensions of cultured pearls 6.8mms.
Estimated total diamond weight 0.65ct, principal diamond estimated 0.20ct, H-I colour, VS clarity.
Stamped 9ct.
Length 44cms.
£350-450
(plus 27.6% BP*)

**148**

An early 20th century 18ct gold old-cut diamond dress ring.
Estimated total diamond weight 0.35ct.
Stamped 18CT.
Ring size P. 4.1gms.
£200-300
(plus 27.6% BP*)

**152**

A pair of gem-set earrings and matching ring.
Gems to include cultured pearls, diamond, emerald, ruby and sapphire.
Stamped 585.
Length of earrings 1.8cms. Ring size M1/2. 9.1gms.
£200-300
(plus 27.6% BP*)

**156**

A mid 20th century platinum, circular-shape sapphire and vari-cut diamond spray brooch.
Estimated total diamond weight 0.70ct.
Length 4.9cms. 9.4gms.
£300-400
(plus 27.6% BP*)

**160**

A circular-shape peridot, old-cut diamond and seed pearl openwork brooch.
Estimated total diamond weight 1.20cts, H-I colour, SI1-P1 clarity.
Stamped 18K.
Length 5.2cms. 13.1gms.
£400-600
(plus 27.6% BP*)



161

An 18ct gold marquise-shape ruby and brilliant-cut diamond three-stone ring. Ruby weight 0.73ct. Total diamond weight 0.10ct, estimated H-I colour, SI clarity. Hallmarks for London, 2012. Ring size K. 3gms. **£220-320** (plus 27.6% BP*)

**165**

A square-shape sapphire and brilliant-cut diamond dress ring. Estimated total diamond weight 0.25ct. Stamped 18CT. Ring size O1/2. 2.9gms. **£280-380** (plus 27.6% BP*)

**169**

A pair of 1960s 18ct gold circular-shape ruby and single-cut diamond flower earrings. Hallmarks for Birmingham, 1960. Fittings for non pierced ears. Length 2.4cms. 13.4gms. **£320-420** (plus 27.6% BP*)

**173**

A late 19th century circular-shape ruby and old-cut diamond horseshoe brooch. Estimated total diamond weight 0.75ct. Length 4.2cms. 6.8gms. **£300-400** (plus 27.6% BP*)

**162**

An 18ct gold cushion-shape sapphire and brilliant-cut diamond cluster ring. Sapphire weight 0.86ct. Total diamond weight 0.12ct, stamped to band. Hallmarks for London, 2019. Ring size M1/2. 3.7gms. **£460-660** (plus 27.6% BP*)

**166**

An early 20th century 15ct gold oval-shape garnet and split pearl bracelet. Total garnet weight 5.90cts, based on estimated dimensions of one garnet 8.7 by 5.8 by 3.1mm. Stamped 15ct. Length 17.7cms. 7.9gms. **£150-200** (plus 27.6% BP*)

**170**

A brilliant-cut diamond four-stone dress ring. Estimated total diamond weight 0.60ct, H-I colour, VS clarity. Stamped 585. Ring size Q. 4.6gms. **£150-200** (plus 27.6% BP*)

**174**

A late Victorian 18ct gold old-cut diamond snake ring. Estimated total diamond weight 0.50ct, H-J colour, SI1-P1 clarity. Hallmarks for London, 1883. Ring size K1/2. 6.7gms. **£600-800** (plus 27.6% BP*)

**163**

A pair of cultured pearl and brilliant-cut diamond earrings. Cultured pearls measuring approximately 14 to 13.5mm. Estimated total diamond weight 0.50ct, H-I colour, SI clarity. Length 3.6cms. 12.2gms. **£540-640** (plus 27.6% BP*)

**167**

A carved garnet and old-cut diamond dress ring. Ring size L1/2. 8.1gms. **£500-700** (plus 27.6% BP*)

**171**

A pair of brilliant-cut diamond stud earrings. Total diamond weight 2.71cts, estimated I-J colour, P1-P2 clarity. Diameter 0.8cm. 2.1gms. **£2,500-3,500** (plus 27.6% BP*)

**175**

An 18ct gold fancy-link necklace, with circular garnet cabochon clasp. Import marks for Edinburgh, 1995. Length 44cms. 104.9gms. **£2,500-3,000** (plus 27.6% BP*)

**164**

An Art Nouveau 18ct gold old and rose-cut diamond brooch. Estimated total old-cut diamond weight 0.40ct, H-I colour, SI clarity. Length 4.2cms. 10.8gms. **£400-600** (plus 27.6% BP*)

**168**

A pair of old-cut diamond drop earrings. Estimated total diamond weight 1.20cts, I-J colour, SI-P1 clarity. Length 3.7cms. 4.2gms. **£240-340** (plus 27.6% BP*)

**172**

An old-cut diamond and emerald dress ring. Estimated total diamond weight 1.25cts, I-K colour, SI1-P1 clarity. Approximate ring size J. 6.3gms. **£500-700** (plus 27.6% BP*)

**176**

A palladium rectangular-shape blue topaz and diamond pendant, on chain. Topaz calculated weight 13.29cts, based on estimated dimensions of 14 by 12 by 8.3mm. Estimated total diamond weight 0.15ct, I-J colour, VS clarity. Pendant with hallmarks for London. Length of pendant 2.4cms. Length of chain 48.5cms. 10gms. **£250-350** (plus 27.6% BP*)



177

A pair of vari-shape ruby and brilliant-cut diamond earrings. Estimated total principal diamond weight 0.30ct, H-I colour, SI2-P1 clarity. Length 3.5cms. 8.3gms. **£220-320** (plus 27.6% BP*)



181

A pair of 18ct gold brilliant-cut diamond curved earrings. Estimated total diamond weight 0.10ct. Hallmarks for Sheffield, 2004. Length 5.2cms. 5.3gms. **£120-180** (plus 27.6% BP*)



185

A pair of cushion-shape topaz and brilliant-cut diamond drop earrings. Total topaz calculated weight 1.90cts, based on estimated dimensions of 6.4 by 5.4 by 3.7mms. Estimated total diamond weight 0.60ct. Stamped 18ct. Length 1.9gms. 5.1gms. **£150-200** (plus 27.6% BP*)



189

A vari-cut diamond textured hinged bangle. Estimated total diamond weight 0.60ct. Stamped 14K. Inner diameter 6cms. 20.4gms. **£400-600** (plus 27.6% BP*)



178

An 18ct gold rectangular-shape emerald and brilliant-cut diamond cluster ring. Emerald calculated weight 1ct, based on estimated dimensions 7.6 by 5.5 by 3.4mms. Estimated total diamond weight 0.70ct, H-I colour, VS2-S11 clarity. Hallmarks for London, 1987. Ring size K. 4.1gms. **£400-600** (plus 27.6% BP*)



182

A platinum brilliant-cut diamond single-stone ring. Estimated diamond weight 1ct, I-J colour, SI2-P1. Hallmarks for Birmingham. Ring size L1/2. 3.2gms. **£800-1,200** (plus 27.6% BP*)



186

A vari-shape ruby and single-cut diamond foliate spray brooch. Estimated total diamond weight 0.20ct. Stamped 750. Length 6.7cms. 14gms. **£600-800** (plus 27.6% BP*)



190

A ruby cabochon and brilliant-cut diamond pendant, suspended from a trace-link chain. Ruby weight 4.12cts, stamped to pendant. Estimated total diamond weight 0.65ct. Stamped 750. Length of pendant 1.8cms. Length of chain 38cms. 3.6gms. **£500-700** (plus 27.6% BP*)



179

An 18ct gold brilliant-cut diamond three-stone crossover ring. Estimated total diamond weight 0.65ct, G-H colour, SI1-P1 clarity. Hallmarks for London, 1985. Ring size K. 2.6gms. **£180-260** (plus 27.6% BP*)



183

A brilliant-cut diamond double floral cluster ring. Estimated total diamond weight 0.75ct, H-J colour, SI clarity. Ring size N. 4.5gms. **£250-350** (plus 27.6% BP*)



187

A brilliant-cut diamond and square-shape synthetic yellow sapphire pendant. Estimated 0.20ct. Italian marks. Stamped 750. Length 4.5cms. 3.8gms. **£150-200** (plus 27.6% BP*)



191

An early 20th century 18ct gold old-cut diamond three-stone ring. Estimated total diamond weight 0.80ct, I-J colour, SI2-P1 clarity. Stamped 18C. Ring size L. 3.3gms. **£450-650** (plus 27.6% BP*)



180

A pair of mid 20th century palladium circular-shape blue zircon and brilliant-cut diamond cluster earrings. Total zircon weight 1.72cts, based on estimated dimensions of 5.8 by 5.8 by 3.2mms. Estimated total diamond weight 0.80ct. Diameter 1cm. 3.9gms. **£360-460** (plus 27.6% BP*)



184

A marquise-shape sapphire and brilliant-cut diamond dress ring. Total sapphire calculated weight 1.53cts, based on estimated dimensions of one sapphire 4 by 2.5 by 1.2mms. Estimated total diamond weight 0.35ct. Stamped 18K. Ring size O1/2. 8gms. **£220-320** (plus 27.6% BP*)



188

A rectangular-shape sapphire and circular-cut diamond cluster ring. Sapphire calculated weight 1.95cts, based on estimated dimensions 8 by 6.2 by 3.4mms. Estimated total diamond weight 0.30ct, H-I colour, SI2-P1 clarity. Stamped 18ct. Ring size M1/2. 3.3gms. **£150-200** (plus 27.6% BP*)

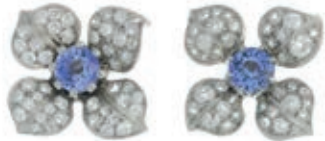


192

A mid Victorian gold, garnet cabochon bracelet, with glazed panel reverse. Clasp deficient. Length 16.5cms. 9.9gms. **£400-600** (plus 27.6% BP*)



193



A pair of circular-shaped sapphire and pave-set diamond floral earrings.
Estimated total diamond weight 1.50cts, predominantly H-I colour, VS-SI clarity.
Length 2.1cms. 9.9gms.
£280-380
(plus 27.6% BP*)

197



A platinum brilliant-cut diamond chevron band ring.
Estimated total diamond weight 0.35ct, H-I colour, VS2-SI1 clarity.
Hallmarks for London.
Ring size O. 4.2gms.
£150-200
(plus 27.6% BP*)

194



A brilliant-cut diamond necklace, with integral box-link chain.
Estimated total diamond weight 0.35ct, I-J colour, P1 clarity.
Stamped 750.
Length 40cms. 12.4gms.
£300-400
(plus 27.6% BP*)

198



A vari-cut sapphire and diamond bracelet.
Length 17.5cms. Total weight 6.1gms.
£180-260
(plus 27.6% BP*)

195



An oval-shaped pink paste and brilliant-cut diamond necklace.
Estimated dimensions of one pink paste 11.5 by 9 by 4.9mms.
Estimated total diamond weight 5.50 to 5.70cts.
Length 44cms. 38gms.
£1,000-1,500
(plus 27.6% BP*)

199



An 18ct gold brilliant-cut diamond cluster ring, with similarly-cut diamond sides.
Total diamond weight 0.50ct, stamped to mount, principal diamond estimated H-I colour, SI clarity.
Hallmarks for London.
Ring size N. 3.5gms.
£300-500
(plus 27.6% BP*)

196



A platinum brilliant-cut diamond dress ring.
Estimated diamond weight 0.30ct, G-H colour, VS clarity.
Hallmarks for London, 2001.
Approximate ring size M. 14.7gms.
£400-600
(plus 27.6% BP*)

200



A mid 19th century gold garnet, split pearl and turquoise floral locket pendant.
Length 3.7cms. Total weight 5gms.
£150-200
(plus 27.6% BP*)

Lot featured:

Lot 2

A Burmese ruby cabochon and old-cut diamond cluster ring.

£250-350



201

A brilliant-cut 'yellow' diamond and diamond cluster ring. 'Yellow' diamond estimated weight 0.25ct, VS2-S11 clarity. Ring size L1/2. 2.8gms. Coloured diamond untested. **£200-300** (plus 27.6% BP*)

**205**

Four early to mid 20th century vari-cut diamond zircon dress rings. Estimated total diamond weight 1ct. One with hallmarks for 18ct gold, Birmingham, 1919. Total weight 10.7gms. **£400-600** (plus 27.6% BP*)

**209**

An old-cut diamond floral cluster ring. Estimated total diamond weight 0.55ct, H-I colour, SI clarity. Stamped 18ct. Ring size M. 2.3gms. **£220-320** (plus 27.6% BP*)

**213**

A brilliant-cut diamond star bracelet. Estimated total diamond weight 1.20cts. Stamped 750. Length 18cms. 9.5gms. **£400-600** (plus 27.6% BP*)

**202**

A carved nephrite jade and brilliant-cut diamond flower brooch. Estimated total diamond weight 0.15ct. Stamped 585. French marks. Length 4.7cms. 9.5gms. **£250-350** (plus 27.6% BP*)

**206**

A pair of pear-shape emerald and brilliant-cut diamond cluster earrings. Emerald calculated weights 2.25cts and 2.37cts, based on estimated dimensions of 10.2 by 7.5 by 5.8mms and 10.1 by 7.7 by 5.9mms respectively. Estimated total diamond weight 1.25cts, H-I colour, SI2-P1 clarity. Stamped 750. Length 2.4cms. 8.4gms. **£450-650** (plus 27.6% BP*)

**210**

A platinum rectangular-shape diamond single-stone ring. Estimated diamond weight 0.55ct, G-H colour, SI clarity. Hallmarks for Birmingham. Ring size N. 5.4gms. **£500-700** (plus 27.6% BP*)

**214**

A platinum shaped band ring, with brilliant-cut diamond highlights. Hallmarks for London. Ring size N. 10gms. **£200-300** (plus 27.6% BP*)

**203**

A dress ring, variously set with square-shape and baguette-cut diamonds. Estimated total diamond weight 1.60cts. Stamped 14k. Ring size Q. 8.7gms. **£300-400** (plus 27.6% BP*)

**207**

An early 20th century enamel and split pearl brooch. Pin with partial marks pertaining to Faberge. Pin is replacement. Russian marks. Length 2.4cms. 3.4gms. **£250-350** (plus 27.6% BP*)

**211**

A circular-shape peridot and baguette-cut diamond dress ring. Peridot calculated weight 2cts, based on estimated dimensions of 7.7 by 7.5 by 5.2mms. Estimated total diamond weight 1.50cts. Stamped 750. Ring size N. 8.8gms. **£280-380** (plus 27.6% BP*)

**215**

A platinum rectangular-shape diamond single-stone ring. With report 2146103402, dated 16th October 2012, from the GIA, stating 0.44ct, D colour, VVS1 clarity. Hallmarks for London, 2015. Ring size Q1/2. 6.3gms. **£650-750** (plus 27.6% BP*)

**204**

A late 19th century silver and gold turquoise and split pearl heart pendant, suspended from an early 20th century enamel and cultured pearl chain. Length of pendant 2cms. Length of chain 40cms. Total weight 8.4gms. **£280-380** (plus 27.6% BP*)

**208**

An 18ct gold brilliant-cut diamond single-stone ring. Estimated diamond weight 0.75ct, tinted colour. SI2-P1 clarity. Hallmarks partially indistinct. Ring size S. 9.4gms. **£800-1,200** (plus 27.6% BP*)

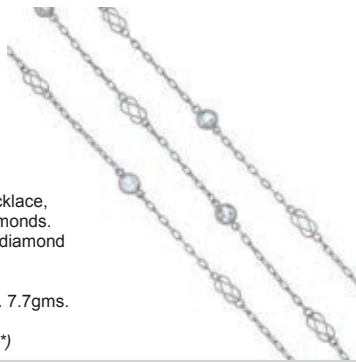
**212**

An early 20th century 15ct gold curb-link bracelet, with turquoise and rose-cut diamond highlights. Stamped 15ct. Length 15cms. 20.8gms. **£350-450** (plus 27.6% BP*)

**216**

An early 20th century 18ct gold old-cut diamond single-stone ring. Estimated diamond weight 0.50ct, K-L colour, SI2-P1 clarity. Approximate size W. 6.1gms. **£300-400** (plus 27.6% BP*)



217

A trace-link necklace, with old-cut diamonds. Estimated total diamond weight 1.40cts. Stamped 750. Length 100cms. 7.7gms. **£300-400** (plus 27.6% BP*)

221

A square-shaped and brilliant-cut diamond dress ring. Three diamonds deficient. AF. Estimated total diamond weight 0.75ct, G-I colour, VS-P1 clarity. Stamped 750. Ring size L. 8.5gms. **£300-400** (plus 27.6% BP*)

225

A platinum brilliant-cut diamond single-stone ring, together with a platinum band ring. Estimated diamond weight 0.50ct, J-K colour, P1 clarity. Hallmarks for Sheffield and Birmingham. Ring sizes G1/2 and H. 5.7gms. **£300-500** (plus 27.6% BP*)

229

An early 20th century 15ct gold turquoise bracelet. Stamped 15ct. Length 17cms. 17.2gms. **£400-600** (plus 27.6% BP*)

218

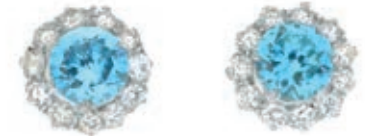
An 18ct gold cushion-cut 'brown' diamond and brilliant-cut diamond dress ring. 'Brown' diamond weight 1.02cts. Total diamond weight 0.23ct, stamped to band. Hallmarks for London, 2011. Ring size M. 5.1gms. Coloured diamond untested. **£700-1,000** (plus 27.6% BP*)

222

A vari-cut diamond dress ring. One diamond deficient. Estimated total diamond weight 0.90ct. Stamped 750. Ring size Q. 4.6gms. **£180-260** (plus 27.6% BP*)

226

An 18ct gold brilliant-cut diamond half-eternity ring. Estimated total diamond weight 0.90ct, I-K colour, VS1-SI1 clarity. Hallmarks for Sheffield, 2013. Ring size P1/2. 5.7gms. **£250-350** (plus 27.6% BP*)

230

A pair of circular-shaped blue zircon and brilliant-cut diamond cluster earrings. Total zircon weight 2.18cts. Estimated total diamond weight 0.45ct. Diameter 1cm. 3gms. **£700-900** (plus 27.6% BP*)

219

A platinum marquise-shaped tanzanite and brilliant-cut diamond cluster ring. Tanzanite weight 2.10cts. Total diamond weight 0.33ct. Hallmarks for London, 2008. Ring size M. 4.7gms. **£800-1,200** (plus 27.6% BP*)

223

A brilliant-cut diamond dress ring. Estimated total diamond weight 0.45ct. Stamped 750. Ring size G. 8.3gms. **£180-260** (plus 27.6% BP*)

227

A platinum rectangular-shaped diamond single-stone ring. Diamond weight 0.43ct, stamped to band, estimated H-I colour, VS2-SI1 clarity. Hallmarks for London, 2001. Ring size K1/2. 3.9gms. **£250-350** (plus 27.6% BP*)

231

A rectangular-shaped aquamarine and single-cut diamond cluster ring. Aquamarine calculated weight 1.13cts, based on estimated dimensions of 7.5 by 5.8 by 3.8mms. Estimated total diamond weight 0.35ct, predominately H-I colour, SI clarity. Stamped 18CT. Ring size M1/2. 3.6gms. **£350-450** (plus 27.6% BP*)

220

An 18ct gold rectangular-shaped tanzanite and brilliant-cut diamond three-stone ring. Tanzanite calculated weight 1.24cts, based on estimated dimensions 7.4 by 5.6 by 3.5mms. Estimated total diamond weight 0.40ct, G-H colour, VS clarity. Hallmarks for London, 2014. Ring size P. 4.3gms. **£420-620** (plus 27.6% BP*)

224

A brilliant-cut diamond and 'brown' diamond bangle. Estimated total brown diamond weight 1.25cts, VS2-SI1 clarity. Estimated total diamond weight 1.25cts, H-I colour, VS2-SI1 clarity. Italian marks. Stamped 750. Inner diameter 5.5cms. 22.2gms. Coloured diamonds untested. **£1,000-1,500** (plus 27.6% BP*)

228

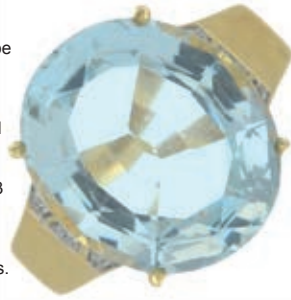
An 18ct gold square-shaped diamond single-stone ring. Estimated diamond weight 0.35ct, H-I colour, VS clarity. Hallmarks for London, 2004. Ring size M. 4.4gms. **£200-300** (plus 27.6% BP*)

232

An oval-shaped sapphire and brilliant-cut diamond cluster ring. Sapphire calculated weight 0.29ct, based on estimated dimensions of 6.8 by 5.2 by 2.3mms. Estimated total diamond weight 0.80ct, H-I colour, VS clarity. Ring size M. 5.1gms. **£300-400** (plus 27.6% BP*)

233

An 18ct gold oval-shape aquamarine and brilliant-cut diamond dress ring.
Aquamarine calculated weight 8.24cts, based on estimated dimensions of 15 by 13 by 7.4mms.
Hallmarks for Birmingham.
Ring size N1/2. 9.7gms.
£360-460
(plus 27.6% BP*)

**237***

A pair of rectangular-shape emerald and brilliant-cut diamond cluster earrings.
Total emerald weight 0.98ct.
Total diamond weight 0.30ct.
Stamped 750.
Length 0.9cm. 3.8gms.
£600-800
(plus 27.6% BP*)

**241**

An articulated bracelet.
Stamped 750.
Length 19.5cms.
26.4gms.
£550-750
(plus 27.6% BP*)

**245**

An early 20th century 18ct gold, diamond, ruby and seed pearl bar brooch.
Principal diamond estimated weight 0.20ct, H-I colour, SI clarity.
Length 7.8cms. 7.3gms.
£200-300
(plus 27.6% BP*)

**234**

An 18ct gold vari-cut diamond dress ring.
Estimated total diamond weight 1ct, G-H colour, VS-SI clarity.
Hallmarks for London.
Ring size L. 7.3gms.
£220-320
(plus 27.6% BP*)

**238**

An 18ct gold old-cut diamond single-stone ring.
Estimated diamond weight 0.85ct, I-J colour, SI2-P1 clarity.
Hallmarks for London, 1983.
Ring size O. 2.8gms.
£600-800
(plus 27.6% BP*)

**242**

A brilliant-cut diamond five-stone ring.
Estimated total diamond weight 0.75ct, I-J colour, VS2-SI1 clarity.
Stamped 750.
Ring size M. 5.5gms.
£350-450
(plus 27.6% BP*)

**246**

An oval-shape blue topaz and brilliant-cut diamond dress ring.
Topaz calculated weight 3.67cts, based on estimated dimensions of 11 by 8.5 by 5.3mms.
Estimated total diamond weight 0.50ct.
Stamped 750.
Ring size Q. 6.3gms.
£180-260
(plus 27.6% BP*)

**235**

A brilliant-cut diamond, 'brown' diamond and circular-shape yellow sapphire dress ring.
Estimated total diamond weight 0.85ct.
Stamped 14k.
Ring size N. 7gms.
Coloured diamonds untested.
£300-400
(plus 27.6% BP*)

**239**

An 18ct gold oval-shape tsavorite garnet single-stone ring.
Hallmarks for London, 2015.
Ring size N. 4.3gms.
£220-320
(plus 27.6% BP*)

**243**

An old-cut diamond single-stone ring.
Principal diamond estimated 3.20cts, tinted colour, VS clarity.
Ring size O. 6.5gms.
£7,000-9,000
(plus 27.6% BP*)

**247**

A rectangular-shape diamond dress ring.
Total diamond weight 0.60ct, stamped to band, estimated G-H colour, VS2-SI1 clarity.
Stamped 750.
Ring size L1/2. 2gms.
£260-360
(plus 27.6% BP*)

**236**

A brilliant-cut diamond single-stone ring.
Principal diamond estimated weight 0.55ct, G-H colour, P1 clarity.
Stamped 585.
Ring size L. 7.8gms.
£400-600
(plus 27.6% BP*)

**240**

An 18ct gold oval-shape ruby and brilliant-cut diamond cluster ring.
Estimated total diamond weight 0.45ct, H-J colour, SI1-P1 clarity.
Hallmarks for London, 1979.
Ring size N1/2. 6.9gms.
£300-400
(plus 27.6% BP*)

**244**

A pair of vari-shape sapphire cabochon earrings, to depict a bunch of grapes.
Estimated dimensions of largest sapphire 5.5 by 4.5 by 3mms.
Length 4cms. Total weight 8.7gms.
£300-400
(plus 27.6% BP*)

**248**

A cushion-shape aquamarine and vari-cut diamond bar brooch.
Aquamarine calculated weight 1.35cts, based on estimated dimensions of 9.5 by 6.2 by 3.6mms.
Estimated total old-cut diamond weight 0.30ct.
Length 5.5cms. 8.4gms.
£180-260
(plus 27.6% BP*)



249

A platinum brilliant-cut diamond single-stone ring, with similarly-set diamond sides. Principal diamond estimated weight 0.35ct, H-I colour, SI clarity. Hallmarks for London, 2007. Ring size K1/2. 4.3gms. **£350-450** (plus 27.6% BP*)

**253**

A circular-shape emerald and rose-cut diamond dress ring. Ring size N1/2. 5.4gms. **£200-300** (plus 27.6% BP*)

**257**

A platinum square-shape diamond single stone ring with diamond shoulders. Principal diamond estimated 0.70ct, H-I colour, VS2-SI1 clarity. Hallmarks for Birmingham, 2005. Ring size K1/2. 4.3gms. **£500-700** (plus 27.6% BP*)

**261**

An 18ct gold brilliant-cut diamond half eternity ring. Estimated total diamond weight 0.50ct, I-J colour, SI2-P1 clarity. Partial hallmarks for 18ct gold. Ring size O1/2. 4gms. **£180-260** (plus 27.6% BP*)

**250**

A platinum brilliant-cut diamond single-stone ring. Estimated diamond weight 1.35cts, J-K colour, SI clarity. Hallmarks for Sheffield. Ring size O. 4.7gms. **£1,500-2,000** (plus 27.6% BP*)

**254**

An 18ct gold vari-cut diamond cluster ring. Estimated total diamond weight 0.70ct, principal diamond estimated 0.25ct, I-J colour, SI1 clarity. Hallmarks for London, 2013. Ring size K1/2. 4.6gms. **£300-400** (plus 27.6% BP*)

**258**

A vari-cut emerald and brilliant-cut diamond ring. Estimated total diamond weight 0.30ct. Stamped 18CT. Ring size N. 13.4gms. With case. **£500-700** (plus 27.6% BP*)

**262**

A rectangular-shape green beryl and diamond dress ring. Green beryl calculated weight 13.38cts, based on estimated dimensions of 18.7 by 11.7 by 7.5mms. Estimated total diamond weight 0.20ct. Stamped 750. Ring size M1/2. 6.1gms. **£300-400** (plus 27.6% BP*)

**251**

A pair of platinum and gold old and single-cut diamond clip earrings. Estimated total old-cut diamond weight 1.10cts, I-J colour, P1-P2 clarity. Hallmarks for London. Length 2.5cms. 8gms. **£450-550** (plus 27.6% BP*)

**255**

An oval-shape aquamarine and brilliant-cut diamond dress ring. Estimated dimensions of aquamarine 8.1 by 6mms. Estimated total diamond weight 1ct, I-J colour, VS2-SI2 clarity. Stamped 750. Ring size L. 6.2gms. **£250-350** (plus 27.6% BP*)

**259**

A pair of brilliant-cut diamond stud earrings. Estimated total diamond weight 0.85ct, H-I colour, P1 clarity. Diameter 0.5cm. 1.4gms. **£300-500** (plus 27.6% BP*)

**263**

An 18ct gold brilliant-cut diamond half eternity ring. Total diamond weight 0.54ct, estimated H-I colour, SI clarity. Hallmarks for Sheffield. Ring size O. 5.7gms. **£400-600** (plus 27.6% BP*)

**252**

An 18ct gold oval-shape 'brown' diamond and rectangular-cut diamond dress ring. 'Brown' diamond weight 1.05cts. Total baguette-cut diamond weight 0.29ct, stamped to band, estimated H-I colour, SI clarity. Hallmarks for London, 2011. Ring size M. 3.6gms. Coloured diamond untested. **£700-1,000** (plus 27.6% BP*)

**256**

A pair of openwork hoop earrings, variously set with vari-hue chrysoberyl. Colours include colourless, green, light brown and brown. Length 6.2cms. 29.3gms. **£500-700** (plus 27.6% BP*)

**260**

A brilliant-cut diamond single-stone ring with diamond shoulders. Principal diamond estimated 0.75ct, H-I colour, SI clarity. Stamped plat. Ring size O1/2. 2.5gms. **£550-750** (plus 27.6% BP*)

**264**

An early 20th century gold vari-shape peridot seed pearl and pendant, suspended from an integral chain. Chain stamped 9. Length of pendant 4.6cms. Length of chain 36cms. 5.6gms. With case. **£150-200** (plus 27.6% BP*)



265

An 18ct gold circular-shape tanzanite and brilliant-cut diamond dress ring. Tanzanite calculated weight 0.86ct, based on estimated dimensions 6.3 by 6.3 by 3.3mms. Total diamond weight 0.21ct. Hallmarks for London, 2012. Ring size M. 3.6gms. **£300-400** (plus 27.6% BP*)

**269**

A pair of circular-shape sapphire and single-cut diamond cluster earrings. Estimated total diamond weight 0.55ct, H-I colour, SI2-P1 clarity. Stamped 375. Diameter 1.3cms. 3.3gms. **£350-450** (plus 27.6% BP*)

**273**

An intaglio sapphire, ruby and emerald ring. Ring size O. 25.8gms. **£450-650** (plus 27.6% BP*)

**277**

A 14ct gold oval-shape sapphire and brilliant-cut diamond cluster ring. Sapphire calculated weight 2.16cts, based on estimated dimensions 9 by 7 by 4.1mms. Estimated total diamond weight 1.50cts, H-I colour, SI clarity. Import marks for Birmingham, 1987. Ring size M1/2. 4.4gms. **£400-600** (plus 27.6% BP*)

**266**

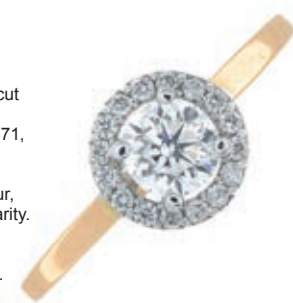
An 18ct gold circular-shape brown zircon single-stone ring, with brilliant-cut diamond line shoulders. Estimated dimension of zircon 7 by 7 by 5.6mms. Total diamond weight 0.16ct, estimated G-H colour, VS-SI clarity. Hallmarks for Sheffield. Ring size N. 5.2gms. **£320-420** (plus 27.6% BP*)

**270**

An 18ct gold rectangular-shape emerald and square-shape diamond three-stone ring. Emerald calculated weight 0.83ct, based on estimated dimensions of 6.5 by 5 by 3.5mms. Total diamond weight 0.20ct, estimated H-I colour, VS clarity. Hallmarks for Sheffield, 2016. Ring size O. 4.2gms. **£320-420** (plus 27.6% BP*)

**274**

An 18ct gold brilliant-cut diamond cluster ring. With report 2247955471, dated 18th February 2017, from the GIA, stating 0.50ct, E colour, Internally Flawless clarity. Hallmarks for Birmingham. Ring size N1/2. 3gms. **£1,200-1,800** (plus 27.6% BP*)

**278**

A set of cubic zirconia jewellery, comprising a necklace, a pair of earrings and a ring. Length of pendant 2.7cms. Length of chain 40cms. Ring size L. Length of earrings 2cms. 25.9gms. **£500-700** (plus 27.6% BP*)

**267**

A brilliant-cut diamond four-stone ring. Estimated total diamond weight 1.40cts, G+ colour, VS clarity. Ring size S. 5.6gms. **£700-1,000** (plus 27.6% BP*)

**271**

A platinum pear-shape and brilliant-cut diamond ring. Estimated total diamond weight 0.30ct, H-I colour, VS clarity. Hallmarks for Edinburgh, 2001. Ring size M. 8gms. **£300-400** (plus 27.6% BP*)

**275**

A pair of brilliant-cut diamond hoop earrings. Estimated total diamond weight 0.60ct. Stamped 750. Length 2cms. 13.3gms. **£350-450** (plus 27.6% BP*)

**279**

A pair of brilliant-cut diamond stud earrings. Estimated total diamond weight 0.70ct, tinted colour, SI clarity. Stamped 750. Diameter 0.6cm. 1.7gms. **£350-450** (plus 27.6% BP*)

**268**

A square-shape emerald and old-cut diamond ring. Emerald calculated weight 0.79cts, based on estimated dimensions 6 by 5.6 by 3.5mms. Estimated total diamond weight 0.30ct, H-I colour, SI2-P1 clarity. Stamped 18ct and plat. Ring size O. 3gms. **£300-400** (plus 27.6% BP*)

**272**

A platinum rectangular-shape diamond single-stone ring. With report 2205458150, dated 19th July 2019, from the GIA, stating 3.01cts, K colour, P1 clarity. Hallmarks for Birmingham. Ring size N. 6.8gms. **£3,000-4,000** (plus 27.6% BP*)

**276**

A platinum brilliant-cut diamond ring. Principal diamond estimated weight 0.45ct, H-I colour, VS clarity. Hallmarks for London, 2009. Ring size K1/2. 4.2gms. **£380-480** (plus 27.6% BP*)

**280**

A platinum brilliant-cut diamond single-stone ring, with similarly-cut diamond line shoulders. Principal diamond weight 0.50ct, estimated G-H colour, VS clarity. Hallmarks for London, 2004. Ring size N1/2. 3.3gms. **£500-700** (plus 27.6% BP*)



281

An old-cut diamond single-stone ring, with replacement late Victorian 18ct gold band.
Estimated diamond weight 1ct, H-I colour, P1-P2 clarity.
Band with hallmarks for London, 1881.
Ring size M1/2.
2.4gms.
£700-900
(plus 27.6% BP*)

**285**

A late 19th century gold vari-cut diamond and gem-set butterfly brooch.
Gems to include diamonds, rubies, sapphires and opals.
Length 3.8cms. 13.3gms.
£300-400
(plus 27.6% BP*)

**289**

A brilliant-cut diamond single-stone ring, with pave-set diamond shoulders.
Estimated total diamond weight 1.50cts, principal diamond estimated 0.85ct, tinted colour, VS clarity.
Stamped 750.
Ring size N. 6gms.
£600-800
(plus 27.6% BP*)

**293**

A rectangular-shape topaz and brilliant and baguette-cut diamond pendant, suspended from a trace-link chain.
Topaz calculated weight, based on estimated dimensions of 7 by 5 by 3.8mm.
Total diamond weight 1.96cts, stamped to mount.
Stamped 18k.
Length of pendant 1.5cms.
Length of chain 41cms. 3.9gms.
£280-380
(plus 27.6% BP*)

**282**

A pair of 18ct gold brilliant-cut diamond curved earrings.
Estimated total diamond weight 0.40ct.
Hallmarks for Sheffield, 2004.
Length 8cms. 7.6gms.
£200-300
(plus 27.6% BP*)

**286**

A cultured pearl and brilliant-cut diamond bar brooch.
Estimated total diamond weight 1.15cts, H-I colour, VS2-SI2 clarity.
Cultured pearl measuring approximately 7.2mms.
Length 6.6cms. 6.7gms.
£250-350
(plus 27.6% BP*)

**290**

A brilliant-cut diamond dress ring.
Estimated total diamond weight 1.20cts, I-J colour, VS-SI1 clarity.
Ring size N.
10.5gms.
£600-900
(plus 27.6% BP*)

**294**

A brilliant-cut diamond three-stone ring.
Estimated total diamond weight 0.85ct, H-I colour, VS2-SI1 clarity.
Stamped plat.
Ring size M.
5.5gms.
£400-600
(plus 27.6% BP*)

**283**

A pair of 18ct gold square-shape peridot and brilliant-cut diamond earrings.
Total peridot weight 4.09cts.
Total diamond weight 0.26ct.
Hallmarks for London, 2008.
Length 1cm. 3.8gms.
£280-380
(plus 27.6% BP*)

**287***

A pair of brilliant-cut diamond cluster earrings.
Total diamond weight 0.62cts, H-I colour, VS2-SI1 clarity.
Stamped 750.
Diameter 0.7cm. 2.6gms.
£400-600
(plus 27.6% BP*)

**291**

A cultured pearl and brilliant-cut diamond pendant, suspended from a snake-link chain.
Cultured pearl measuring approximately 9.1mms.
Stamped 750.
Length of pendant 2.4cms. Length of chain 42cms. 6.9gms.
£150-200
(plus 27.6% BP*)

**295**

A mid 20th century 18ct gold and platinum old-cut diamond single-stone ring.
Estimated diamond weight 0.75ct, H-I colour, SI clarity.
Stamped 18ct PLAT.
Ring size M. 2.6gms.
£800-1,200
(plus 27.6% BP*)

**284**

A brilliant-cut diamond single-stone ring.
Principal diamond estimated weight 0.60ct, H-I colour, P1 clarity.
Stamped plat.
Ring size L1/2. 3gms.
£200-300
(plus 27.6% BP*)

**288**

An early 20th century 18ct gold snake ring, with old-cut diamond highlight.
Estimated diamond weight 0.20ct, H-I colour, SI clarity.
Hallmarks for London, 1917.
Ring size Y. 9.8gms.
£450-650
(plus 27.6% BP*)

**292 ✕**

An 18ct gold mother-of-pearl and brilliant-cut diamond ring.
Estimated total diamond weight 0.15ct.
Hallmarks for Sheffield, 2002.
Ring size N. 8.4gms.
£300-400
(plus 27.6% BP*)

**296**

A vari-cut diamond cluster ring.
Estimated total diamond weight 0.65ct, H-I colour, VS2-P1 clarity.
Stamped 18ct.
Ring size M. 4.1gms.
£300-400
(plus 27.6% BP*)



297

An 18ct gold colourless sapphire pendant, with brilliant-cut diamond highlights.
Estimated total diamond weight 0.25ct.
Hallmarks for London.
Length 3cms. 17.4gms.
£500-700
(plus 27.6% BP*)

**301**

An oval-shape ruby and brilliant-cut diamond cluster ring.
Estimated total diamond weight 1.50cts, H-I colour, VS2-SI1 clarity.
Stamped 18ct.
Ring size M1/2. 5.3gms.
With case.
£250-350
(plus 27.6% BP*)

**305**

A cultured pearl and rose-cut diamond cat brooch.
Length 4.4cms.
£300-400
(plus 27.6% BP*)

**309**

An 18ct gold brilliant-cut diamond, vari-shape ruby and seed pearl hand/gauntlet pendant.
Estimated total diamond weight 0.55ct, G-H colour, VS-SI clarity.
Hallmarks for London.
Length 4.5cms. 9.2gms.
£300-400
(plus 27.6% BP*)

**298**

A square-shape yellow sapphire and brilliant-cut diamond three-stone ring.
Sapphire calculated weight 1.40cts, based on estimated dimensions of 6.5 by 6.2 by 3.8mms.
Estimated total diamond weight 0.40ct.
Stamped Plat.
Ring size L1/2. 4.2gms.
£460-660
(plus 27.6% BP*)

**302**

A brilliant-cut diamond and black gem ring.
Total diamond weight 0.53ct, stamped to band, estimated H-I colour, SI2-P1 clarity.
Stamped 750.
Ring size K. 5.7gms.
£200-300
(plus 27.6% BP*)

**306**

A platinum rectangular-shape diamond single-stone ring.
Estimated diamond weight 1ct, H-I colour, P1 clarity.
Hallmarks for London, 2012.
Ring size M. 5.4gms.
£800-1,200
(plus 27.6% BP*)

**310**

An 18ct gold square-shape diamond half eternity ring.
Total diamond weight 0.29ct, estimated G-H colour, VS-SI clarity.
Hallmarks for London, 2015.
Ring size M. 3.7gms.
£220-320
(plus 27.6% BP*)

**299**

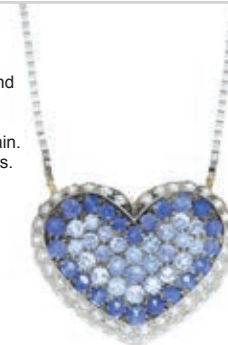
An 18ct gold brilliant-cut diamond single-stone ring.
Estimated diamond weight 1.10cts, I-J colour, P1 clarity.
Hallmarks for Birmingham.
Ring size M1/2. 3.4gms.
£800-1,200
(plus 27.6% BP*)

**303**

A pair of mid 20th century cultured pearl and brilliant-cut diamond earrings.
Estimated total diamond weight 0.75ct.
Approximate dimensions of one cultured pearl 5mms.
Fittings for non-pierced ears.
Length 1.2cms. 6.3gms.
£200-300
(plus 27.6% BP*)

**307**

A circular-shape sapphire and brilliant-cut diamond heart-shape pendant, suspended from an integral box-link chain.
Total sapphire weight 3.60cts.
Estimated total diamond weight 1.85cts, H-I colour, VS2-SI1 clarity.
Chain stamped 750.
Length of pendant 2.4cms.
Length of chain 43cms. 10.6gms.
£800-1,200
(plus 27.6% BP*)

**311**

A brilliant-cut diamond and 'brown' diamond dress ring.
One diamond deficient.
Estimated total diamond weight 2cts.
Stamped 14k.
Ring size N. 8.7gms.
Coloured diamonds untested.
£120-180
(plus 27.6% BP*)

**300**

A 14ct gold fracture-filled brilliant-cut diamond single-stone ring.
Estimated diamond weight 3.30cts.
Hallmarks for London, 2017.
Ring size O. 2.7gms.
£1,000-1,500
(plus 27.6% BP*)

**304**

A circular-cut diamond and calibre-cut sapphire half eternity ring.
Estimated total diamond weight 0.10ct.
Stamped 18ct.
Ring size P. 3.1gms.
£180-260
(plus 27.6% BP*)

**308**

A vari-cut topaz and brilliant-cut diamond dress ring.
Principal square-shape topaz calculated weight 2.69cts, based on estimated dimensions of 8 by 8.3 by 5mms.
Estimated total diamond weight 0.40ct.
Approximate ring size M. 10.3gms.
£700-900
(plus 27.6% BP*)

**312**

A vari-cut diamond dress ring.
Total diamond weight 0.81ct, stamped to band, estimated G-H colour, VS2-SI1 clarity.
Stamped 750.
Ring size M. 3.4gms.
£450-650
(plus 27.6% BP*)



313

An 18ct gold band ring, with brilliant-cut diamond highlights. Total diamond weight 0.19ct, marked to band, Swiss convention marks. Ring size M1/2. 6.5gms. **£200-300** (plus 27.6% BP*)

**317**

An early 20th century gold old-cut diamond cluster ring. Estimated total diamond weight 0.90ct, H-I colour, SI1-P1 clarity. Ring size L1/2. 4gms. **£350-450** (plus 27.6% BP*)

**321**

An 18ct gold brilliant-cut diamond single-stone ring, with crossover shoulders. Estimated diamond weight 0.30ct, H-I colour, VS2-SI1 clarity. Hallmarks for Birmingham. Ring size J. 3.6gms. **£200-300** (plus 27.6% BP*)

**325**

An oval-shape sapphire and brilliant-cut diamond cluster ring. Sapphire calculated weight 1.25cts, based on estimated dimensions 7.5 by 5.7 by 3.5mms. Estimated total diamond weight 0.40ct, H-J colour, SI clarity. Stamped 18ct. Ring size P1/2. 6.7gms. **£200-300** (plus 27.6% BP*)

**314**

A brilliant-cut diamond and 'brown' diamond dress ring. One diamond deficient. Estimated total diamond weight 2cts. Stamped 14k. Ring size N. 8.7gms. Coloured diamonds untested. **£220-320** (plus 27.6% BP*)

**318**

An 18ct gold circular-shape emerald and brilliant-cut diamond full eternity ring. Estimated total diamond weight 1ct, H-I colour, P1 clarity. Hallmarks for Birmingham. Ring size M. 3.2gms. **£200-300** (plus 27.6% BP*)

**322**

An oval-shape ruby and single-cut diamond floral cluster ring. Ruby calculated weight 0.60ct, based on estimated dimensions of 5.85 by 4.5 by 2.5mms. Estimated total diamond weight 0.20ct, G-H colour, VS1-SI1 clarity. Stamped 18ct. Ring size O1/2. 2.6gms. **£150-200** (plus 27.6% BP*)

**326**

An 18ct gold square-shape diamond single-stone ring. Estimated diamond weight 0.75ct, H-I colour, P1 clarity. Hallmarks for Birmingham. Ring size N1/2. 5.1gms. **£300-400** (plus 27.6% BP*)

**315**

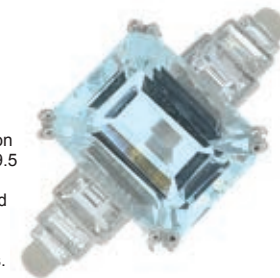
An oval-shape emerald and brilliant-cut diamond ring. Estimated total diamond weight 0.20ct. Ring size Q. 3.5gms. **£250-350** (plus 27.6% BP*)

**319**

A square-shape diamond cluster ring, with brilliant-cut diamond sides. Total diamond weight 0.50ct, stamped to band, principal diamonds estimated H-I colour, SI-P1 clarity. Hallmarks for Birmingham. Ring size J. 5.9gms. **£200-300** (plus 27.6% BP*)

**323**

A rectangular-shape aquamarine and baguette-cut diamond dress ring. Aquamarine calculated weight 2.80cts, based on estimated dimensions 9.5 by 7.8 by 5.4mms. Estimated total diamond weight 0.40ct. Stamped PLAT. Ring size O1/2. 5.1gms. **£750-950** (plus 27.6% BP*)

**327**

An 18ct gold brilliant-cut diamond four-stone ring. Estimated total diamond weight 1ct, H-I colour, SI2-P1 clarity. Import marks for Sheffield. Ring size M. 6gms. **£350-450** (plus 27.6% BP*)

**316**

A 9ct gold fancy bracelet, with garnet padlock clasp. Hallmarks for Birmingham. Length 20cms. 43.7gms. **£500-700** (plus 27.6% BP*)

**320**

A pair of vari-shape emerald drop earrings. Length 8.3gms. 29.6gms. **£300-400** (plus 27.6% BP*)

**324**

A rectangular-shape sapphire and baguette-cut diamond ring. Sapphire calculated weight 1.14cts, based on estimated dimensions 7.3 by 4.5 by 3mms. Estimated total diamond weight 0.15ct, H-I colour, SI1-P1 clarity. Stamped platinum. Ring size O1/2. 3.3gms. **£150-200** (plus 27.6% BP*)

**328**

A vari-cut diamond bi-colour dress ring. Estimated total diamond weight 0.80ct. Stamped 10k. Ring size M1/2. 6.6gms. **£250-350** (plus 27.6% BP*)



DESIGNER JEWELLERY

329

A 9ct gold pear-shape pink tourmaline hinged bangle, by Boodles & Dunthorne. Maker's marks for Boodles & Dunthorne. Hallmarks for London, 1989. Inner diameter 5.6cms. 19gms. **£300-400** (plus 27.6% BP*)



333

A bi-colour 'Parentesi' ring, by Bulgari. Signed Bulgari. Italian marks. Stamped 750. Ring size K1/2. 12.5gms. **£400-600** (plus 27.6% BP*)



330

A textured band ring, with brilliant-cut diamond accents, by Buccellati. Signed Federico Buccellati. Estimated total diamond weight 0.30ct, G-H colour, VS clarity. Stamped Pt950. Italian marks. Ring size L1/2. 6.7gms. With makers pouch. **£350-450** (plus 27.6% BP*)



334

A 1970s 18ct gold bi-colour 'Knot' ring, by Cartier. Maker's marks for Cartier, JC. Import marks for London, 1973. Ring size J. 8.2gms. **£500-700** (plus 27.6% BP*)



331

A pave-set diamond 'Monologo' ring, by Bulgari. Signed Bulgari. Estimated total diamond weight 0.50ct, G-H colour, VS-SI clarity. Italian marks. Stamped 750. Ring size M. 13gms. With maker's case. **£600-800** (plus 27.6% BP*)



335

A tri-colour band ring, by Cartier. Signed Cartier, D81600. Stamped 750. Ring size M. Cartier ring size 53. 4.6gms. **£200-300** (plus 27.6% BP*)



332

A brilliant-cut diamond 'Bulgari Bulgari' dress ring. Signed Bulgari. Estimated total diamond weight 0.15ct. Italian marks. Stamped 750. Ring size J. 6gms. **£350-450** (plus 27.6% BP*)



336

A bracelet, by Cartier. Signed Cartier, H60785. Swiss assay marks. Stamped 750. Length 19cms. 11.6gms. **£400-600** (plus 27.6% BP*)



Lot featured:

Lot 339

A brilliant-cut diamond 'E 52nd' street sign pendant, with cord, by Cartier. **£300-400**



BP* - Buyer's Premium of 23% (plus VAT) or 27.6% (VAT included)

337

A brilliant-cut diamond 'Anniversary' ring, by Cartier.
Signed Cartier, AM4683.
Estimated diamond weight 0.10ct, H-I colour, VS2-SI1 clarity.
Swiss assay marks.
Stamped 750.
Ring size S1/2. Cartier size 53. 14gms.
£450-650
(plus 27.6% BP*)

**341**

A 'C De Cartier' ring, by Cartier.
Signed Cartier, BF4004.
Stamped 750.
Ring size L. Cartier size 52. 7.9gms.
With maker's papers.
£200-300
(plus 27.6% BP*)

**345**

A 'les must de Cartier, Trinity' ring, by Cartier.
Signed Cartier, A3098X.
French assay marks.
Stamped 750.
Ring size J. Cartier size 50. 7.3gms.
£250-350
(plus 27.6% BP*)

**349**

A 'les must de Cartier, Trinity' ring, by Cartier.
Signed Cartier, O4534N.
French assay marks.
Stamped 750.
Ring size L. Cartier size 52. 8gms.
£250-350
(plus 27.6% BP*)

**338**

A brilliant-cut diamond 'C De Cartier' tri-colour ring, by Cartier.
Signed Cartier, G41363.
Estimated total diamond weight 0.15ct.
Stamped 750.
Ring size R1/2. Cartier size 58. 5.6gms.
With makers case.
£700-900
(plus 27.6% BP*)

**342**

A citrine 'Tank' ring, by Cartier.
Signed Cartier, F59037.
Stamped 750.
Ring size I1/2. Cartier size 49. 11.5gms.
£350-450
(plus 27.6% BP*)

**346**

A 'les must de Cartier, Trinity' ring, by Cartier.
Signed Cartier, O4691B.
Dutch marks.
Stamped 750.
Ring size M. Cartier size 54. 8.5gms.
£250-350
(plus 27.6% BP*)

**350**

A 'les must de Cartier, Trinity' ring, by Cartier.
Signed Cartier, A9969X.
French assay marks.
Stamped 750.
Ring size L. Cartier size 54. 8.5gms.
£250-350
(plus 27.6% BP*)

**339**

A brilliant-cut diamond 'E 52nd' street sign pendant, with cord, by Cartier.
Signed Cartier, ND9728.
Estimated total diamond weight 0.20ct.
Italian marks. Stamped 750.
Length of pendant 3cms.
Length of cord 70cms.
Total weight 6.9gms.
£300-400
(plus 27.6% BP*)

**343**

A 'Lanieres' ring, by Cartier.
Signed Cartier.
Stamped 750.
Ring size K1/2. 6.1gms.
£200-300
(plus 27.6% BP*)

**347**

A 'les must de Cartier, Trinity' ring, by Cartier.
Partial convention marks for 18ct gold.
Stamped 750.
Ring size J1/2. Cartier size 51. 7.7gms.
£250-350
(plus 27.6% BP*)

**351**

A 'les must de Cartier, Trinity' ring, by Cartier.
Signed Cartier.
Stamped 750.
Ring size I1/2. Cartier size 49. 7gms.
£300-400
(plus 27.6% BP*)

**340**

A 'C De Cartier' ring, by Cartier.
Signed Cartier, AY5476.
Stamped 750.
Ring size L. Cartier size 52. 7.8gms.
£250-350
(plus 27.6% BP*)

**344**

A 'les must de Cartier, Trinity' ring, by Cartier.
Signed Cartier, O7828X.
French assay marks.
Stamped 750.
Ring size I. Cartier size 48. 6.8gms.
£200-300
(plus 27.6% BP*)

**348**

A 'les must de Cartier, Trinity' ring, by Cartier.
Signed Cartier, O8315Y.
French assay marks.
Stamped 750.
Ring size L. Cartier size 52. 8gms.
£250-350
(plus 27.6% BP*)

**352**

A 'Love' ring, by Cartier.
Signed Cartier, M80247.
Stamped 750.
Ring size J1/2. Cartier ring size 50. 6.8gms.
£250-350
(plus 27.6% BP*)



353

A 'Love' ring, by Cartier.
Signed Cartier, AG6390.
Stamped 750.
Ring size K. Cartier ring size 51. 6.9gms.
£250-350
(plus 27.6% BP*)

**357**

A pair of 'Trinity' cultured pearl earrings, by Cartier.
Signed Cartier, F207 13.
French assay marks.
Stamped 750.
Diameter 0.7cm. 3.9gms.
With maker's case.
£250-350
(plus 27.6% BP*)

**361**

A platinum band ring, by Cartier.
Signed Cartier, HP7742.
Swiss convention marks.
Ring size I. Cartier size 48. 4.7gms.
£120-180
(plus 27.6% BP*)

**365**

A 'Trinity' ring, by Cartier.
Signed Cartier.
Stamped 750.
Ring size O. Cartier size 59. 12.8gms.
£350-450
(plus 27.6% BP*)

**354**

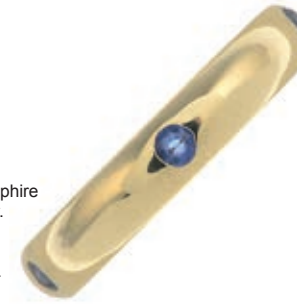
A 'Love' ring, by Cartier.
Signed Cartier, DK0489.
Stamped 750.
Ring size N1/2. Cartier size 55. 4.4gms.
£200-300
(plus 27.6% BP*)

**358**

An pendant, suspended from an 18ct gold chain, by Cartier.
Signed Cartier, EO2249.
Pendant stamped 750. Chain with Swiss convention marks for 18ct gold.
Length of pendant 1.7cms. Length of chain 40cms. 14.2gms.
£500-700
(plus 27.6% BP*)

**362**

A circular-shape sapphire band ring, by Cartier.
Signed Cartier.
Stamped 750.
Ring size K. 4.6gms.
£250-350
(plus 27.6% BP*)

**366**

A 'Trinity' ring, by Cartier.
Signed Cartier, BB9690.
Stamped 750.
Ring size J. Cartier size 50. 10.9gms.
£300-400
(plus 27.6% BP*)

**355**

A 'Love' ring, by Cartier.
Signed Cartier, DC5945.
Stamped 750.
Ring size K. Cartier size 50. 7.2gms.
£250-350
(plus 27.6% BP*)

**359**

A peridot 'Tank' ring, by Cartier.
Signed Cartier, J08624.
Peridot calculated weight 1ct, based on estimated dimensions of 5.7 by 5.8 by 3.6mms
Stamped 750.
Ring size K. Cartier ring size 50.8gms.
£400-600
(plus 27.6% BP*)

**363**

A tri-colour hematite ring, by Cartier.
Signed Cartier, 290978.
Italian marks.
Stamped 750.
Ring size G. 6.7gms.
£250-350
(plus 27.6% BP*)

**367**

A 'Trinity' ring, by Cartier.
Signed Cartier, Paris.
Stamped 750.
Ring size F1/2. Cartier size 45. 10.9gms.
£300-400
(plus 27.6% BP*)

**356**

A moonstone 'Tank' ring, by Cartier.
Signed Cartier, L76108.
Stamped 750.
Ring size K1/2. Cartier size 51. 12.9gms.
£450-650
(plus 27.6% BP*)

**360**

A platinum band ring, by Cartier.
Signed Cartier, K73736.
Swiss convention marks.
Ring size Q1/2. Cartier size 58. 5.7gms.
£180-260
(plus 27.6% BP*)

**364**

A tri-colour 'Trinity' bracelet, by Cartier.
Signed Cartier, 9808.
Stamped 750.
Length 16.5cms. 9.1gms.
£300-500
(plus 27.6% BP*)

**368**

An 18ct gold 'Astro Love' ring, by Cartier.
Signed Cartier, 159537.
May also be worn as a pendant.
Swiss convention marks.
Ring size L1/2. Cartier size 52. 12.9gms.
£500-700
(plus 27.6% BP*)



BP* - Buyer's Premium of 23% (plus VAT) or 27.6% (VAT included)

BP* - Buyer's Premium of 23% (plus VAT) or 27.6% (VAT included)

369

An 18ct gold 'les must de Cartier, Trinity' ring, by Cartier.
Signed Cartier, 01227B.
Convention marks for 18ct gold.
Ring size M1/2.
8.4gms.
£250-350
(plus 27.6% BP*)

**373**

An 18ct gold 'Trinity' ring, by Cartier.
Signed Cartier, Rd9582.
Swiss convention marks.
Ring size J1/2. Cartier size 50. 7.8gms.
£250-350
(plus 27.6% BP*)

**377**

A 'Happy Diamonds' pendant, by Chopard.
Signed Chopard, 9109399 83/1382.
Estimated total diamond weight 0.10ct.
Stamped 750.
Length 2.1cms. 4.4gms.
£150-200
(plus 27.6% BP*)

**381**

A 'Happy Diamond' flexible ring, by Chopard.
Signed Chopard.
Ring size J. 11gms.
£350-450
(plus 27.6% BP*)

**370**

An 18ct gold 'Love' ring, by Cartier.
Signed Cartier, D07803.
Swiss Convention marks.
With inner sizing aid.
Approximate ring size K. 9.1gms.
£350-450
(plus 27.6% BP*)

**374**

An amethyst 'Tank' ring, by Cartier.
Signed Cartier, E52743.
Stamped 750.
Ring size M1/2. Cartier size 54. 12gms.
With maker's case.
£500-700
(plus 27.6% BP*)

**378**

A 'Happy Diamonds' heart ring, by Chopard.
Stamped Au750.
Ring size L1/2. 12.5gms.
£350-450
(plus 27.6% BP*)

**382**

A mid 20th century 9ct gold carved jade cabochon and single-cut diamond necklace, by Cropp & Farr.
Maker's marks for Cropp & Farr.
Length 49cms. 47.4gms.
Jade untested.
£500-700
(plus 27.6% BP*)

**371**

An 18ct gold 'Love' ring, by Cartier.
Signed Cartier, N75132.
Swiss convention marks.
Ring size L1/2. Cartier size 53. 7.2gms.
£300-400
(plus 27.6% BP*)

**375**

A brilliant-cut diamond accent 'Camelia' ring, by Chanel.
Signed Chanel, S14131.
French assay marks.
Stamped 750.
Ring size L. Chanel size 50. 2.4gms.
£150-250
(plus 27.6% BP*)

**379**

A 'Happy Diamonds' heart ring, by Chopard.
Signed Chopard to band and glazed panel, 9105436.
Estimated total diamond weight 0.25ct, G-H colour, VS-SI clarity.
Stamped 750.
Ring size L1/2. 5.6gms.
With maker's case.
£400-600
(plus 27.6% BP*)

**383**

A brilliant-cut diamond 'D. Side' ring, co-designed by Brad Pitt for Damiani.
Signed Damiani.
Estimated total diamond weight 0.10ct.
Italian marks. Stamped 750.
Ring size S1/2. 7.1gms.
£180-260
(plus 27.6% BP*)

**372**

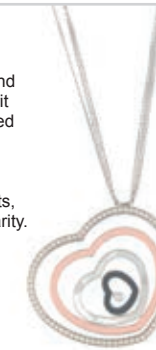
An 18ct gold 'Love' ring, by Cartier.
Signed Cartier, GAE379.
Swiss convention marks.
Ring size O1/2. Cartier size 56. 3.5gms.
£200-300
(plus 27.6% BP*)

**376**

An 18ct gold 'Happy Diamond' heart ring, by Chopard.
Swiss convention marks. Ring size K1/2. 4.9gms.
With maker's case.
£250-350
(plus 27.6% BP*)

**380**

A diamond, enamel, onyx and mother-of-pearl 'Happy Spirit - Colour' pendant, suspended from a chain, by Chopard.
Signed Chopard, 6059468 79/6229/01.
Total diamond weight 1.38cts, estimated G+ colour, VS clarity.
Stamped 750.
Length of pendant 5.2cms.
Length of chain 60cms. 51.7gms.
£1,200-1,800
(plus 27.6% BP*)

**384**

A pair of oval-shape aquamarine and brilliant-cut diamond 'Lux' earrings, by Fope.
Signed Fope.
Estimated dimensions of one aquamarine 12.5 by 6.2mms.
Total diamond weight 0.19ct, estimated G-H colour, VS clarity.
Italian marks, stamped 750.
Length 2.4cms. 7.5gms.
£400-600
(plus 27.6% BP*)



385

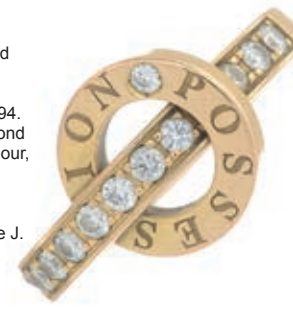
A platinum rectangular-shape diamond ring, by Furrer Jacot. Maker's mark for Furrer Jacot. Swiss convention marks. Ring size K. 10.2gms. **£200-300** (plus 27.6% BP*)

**389**

An 18ct gold diamond line hinged bangle, by Hamilton & Inches. Maker's mark for Hamilton & Inches. Estimated total diamond weight 1.90cts, H-I colour, VS clarity. Hallmarks for Edinburgh, 2002. Inner diameter 6cms. 17.8gms. **£450-650** (plus 27.6% BP*)

**393**

A brilliant-cut diamond 'Possession' ring, by Piaget. Signed Piaget, E60894. Estimated total diamond weight 0.35ct, H-I colour, SI clarity. Swiss assay marks. Stamped 750. Approximate ring size J. 5.6gms. With papers. **£280-380** (plus 27.6% BP*)

**397**

An 18ct gold circular-shape citrine ring, by Theo Fennell. Maker's marks for Theo Fennell. Hallmarks for London, 1996. Ring size I. 8.2gms. **£400-600** (plus 27.6% BP*)

**386**

A turquoise and brilliant-cut diamond cross pendant, by Gavello. Signed Gavello. Estimated total diamond weight 0.50ct. Italian marks. Stamped 750. Length 5.5cms. Total weight 15.7gms. **£600-800** (plus 27.6% BP*)

**390**

A brilliant-cut diamond 'Etoile Divine' necklace and earrings, by Mauboussin. Signed Mauboussin, Paris. Estimated total diamond weight 0.50ct. Stamped 750. Length of earrings 1.4cms. Length of necklace 40cms. 5.5gms. With maker's papers. **£400-600** (plus 27.6% BP*)

**394**

A brilliant-cut diamond 'Possession' ring, by Piaget. Estimated total diamond weight 0.30ct, G+ colour, VS clarity. Stamped 750. Ring size O. 13.7gms. **£500-700** (plus 27.6% BP*)

**398**

A square-shape sapphire and diamond three-stone ring, by Tiffany & Co. Signed Tiffany & Co. Stamped 750. Ring size K. 3.7gms. **£250-350** (plus 27.6% BP*)

**387**

An 18ct gold brilliant-cut diamond 'Icon Twirl' ring, by Gucci. Signed Gucci. Estimated total diamond weight 0.20ct. Hallmarks for London. Ring size J1/2. 6.8gms. **£220-320** (plus 27.6% BP*)

**391**

A brilliant-cut diamond 'Possession' bangle, by Piaget. Signed Piaget, G83620. Estimated total diamond weight 0.25ct. Stamped 750. Inner diameter 5.7cms. 7.6gms. With makers papers. **£380-480** (plus 27.6% BP*)

**395**

A bi-colour 18ct gold and diamond floral band ring, by Stephen Webster. Maker's mark for SW. Total diamond weight 0.68ct, estimated G-H colour, VS clarity. Hallmarks for London, 2000. Ring size L. 15.9gms. **£500-700** (plus 27.6% BP*)

**399**

A brilliant-cut diamond chevron band, by Elsa Peretti, for Tiffany & Co. Signed Tiffany & Co. Peretti. Estimated diamond weight 0.15ct, H-I colour, VS2-SI1 clarity. Stamped PT950. Ring size P1/2. 7.3gms. **£200-300** (plus 27.6% BP*)

**388**

A pair of 18ct gold brilliant-cut diamond earrings and a matching pendant necklace, by Gucci. Signed Gucci. Estimated total diamond weight 0.25ct. Hallmarks for London. Diameter of earrings 1cm. Length of necklace chain 42.5cms. 8.4gms. **£250-350** (plus 27.6% BP*)

**392**

A brilliant-cut diamond 'Possession' necklace, by Piaget. Signed Piaget, D80384. Estimated total diamond weight under 0.10ct. Stamped 750. Length 42cms. 11gms. With makers papers. **£350-450** (plus 27.6% BP*)

**396**

A brilliant-cut diamond openwork necklace, by Tasaki. Maker's marks for Tasaki. Total diamond weight 1.64cts, estimated G-H colour, VS clarity. Stamped PT900. Length 42cms. 57.3gms. With maker's case. **£2,200-2,800** (plus 27.6% BP*)

**400**

A brilliant-cut diamond 'Signature X Kiss' ring, by Tiffany & Co. Signed Tiffany & Co. Estimated total diamond weight 0.40ct. Stamped 750. Ring size M. 5.9gms. **£300-400** (plus 27.6% BP*)



401

A brilliant-cut diamond 'Atlas' ring, by Tiffany & Co.
Signed T&Co.
Estimated total diamond weight 0.15ct.
Stamped 750.
Ring size M. 6.2gms.
£300-400
(plus 27.6% BP*)

**405**

A brilliant-cut diamond chevron band ring, by Tiffany & Co.
Signed Tiffany & Co., Peretti, Spain.
Estimated total diamond weight 0.10ct, G-H colour, VS-SI clarity.
Engraved Pt950.
Ring size N. 5.9gms.
£300-400
(plus 27.6% BP*)

**409**

An 'Atlas' open band ring, by Tiffany & Co.
Signed Tiffany & Co.
Ring size K. 5gms.
£300-400
(plus 27.6% BP*)

**413**

A pave-set diamond pendant, suspended from an integral chain, by Tiffany & Co.
Signed Tiffany & Co.
Estimated total diamond weight 0.15ct.
Stamped 750. Italy.
Length of pendant 2.1cms. Length of chain 40cms. 6.7gms.
£400-600
(plus 27.6% BP*)

**402**

A brilliant-cut diamond 'Full Heart' pendant, suspended from a chain, by Elsa Peretti, for Tiffany & Co.
Signed Tiffany & Co. Peretti.
Estimated total diamond weight 0.25ct.
Stamped 18K.
Length of pendant 1.2cms. Length of chain 38cms. 4.7gms.
£200-300
(plus 27.6% BP*)

**406**

A heart motif band ring, by Elsa Peretti, for Tiffany & Co.
Signed Tiffany & Co. Peretti.
Stamped 18K.
Ring size L. 5.2gms.
£150-200
(plus 27.6% BP*)

**410**

A brilliant-cut diamond duo ring, by Tiffany & Co.
Signed Tiffany & Co.
Stamped 750.
Ring size M1/2. 6.8gms.
£350-450
(plus 27.6% BP*)

**414**

An 'Infinity' pendant, suspended from an integral chain, by Tiffany & Co.
Signed Tiffany & Co.
Chain stamped 750.
Length of pendant 2.1cms. Length of chain 38cms. 4.3gms.
£180-260
(plus 27.6% BP*)

**403**

An 'Open Heart' ring, by Elsa Peretti, for Tiffany & Co.
Signed Tiffany & Co. Peretti.
Stamped 750.
Ring size M. 9.7gms.
£350-450
(plus 27.6% BP*)

**407**

An 18ct gold ginkgo leaf brooch, by Angela Cummings, for Tiffany & Co.
Signed Tiffany & Co.
Import marks for London, 1996.
Length 6.5cms. 9.1gms.
With makers pouch.
£300-400
(plus 27.6% BP*)

**411**

An 'Open Heart' ring, by Tiffany & Co.
Signed Tiffany & Co.
Ring size K1/2. 8.1gms.
£250-350
(plus 27.6% BP*)

**415**

A 'Bone' cuff, by Elsa Peretti for Tiffany & Co.
Signed Tiffany & Co., facsimile for Elsa Peretti.
Stamped 925. Italy.
Inner diameter 5.7cms. 73.2gms.
£200-300
(plus 27.6% BP*)

**404**

A brilliant-cut diamond band ring, by Elsa Peretti for Tiffany & Co.
Signed Tiffany & Co. Peretti, Spain.
Estimated total diamond weight 0.10ct.
Stamped 950.
Ring size J. 5.1gms.
£300-500
(plus 27.6% BP*)

**408**

A platinum brilliant-cut diamond cluster ring, by Tiffany & Co.
Signed Tiffany & Co.
Estimated total diamond weight 0.25ct.
Hallmarks for London, 2013.
Ring size M1/2. 4gms.
With makers case.
£300-400
(plus 27.6% BP*)

**412**

An 18ct gold oval-shape sapphire and brilliant-cut diamond ring, by Tiffany and Co.
Signed T & Co.
Estimated total diamond weight under 0.10ct.
Hallmarks for Sheffield, 1997.
Ring size L1/2. 7.4gms.
£250-350
(plus 27.6% BP*)

**416**

A pave-set diamond signet ring, by Versace.
Signed Versace.
Estimated total diamond weight 1ct, G-H colour, VS clarity.
Italian marks, stamped 750.
Ring size Q1/2. 19.9gms.
£620-820
(plus 27.6% BP*)



417

An amethyst and split pearl negligee pendant, suspended from a bi-colour chain. Principal amethyst calculated weight 3.37cts, based on estimated dimensions of 11 by 9 by 6.1mms. Length 37cms. 5.5gms. **£150-200** (plus 27.6% BP*)



421

A late 19th century gold opal three-stone ring with rose-cut diamond accents. Ring size Q. 4.4gms. **£250-350** (plus 27.6% BP*)



425

A brilliant-cut 'orangey-brown' diamond and diamond cluster ring. 'Orangey-brown' diamond estimated weight 0.35ct, SI clarity. Total non-principal diamond weight 0.50ct, stamped to band. Stamped 750. Ring size L1/2. 4.7gms. Colour diamond untested. **£450-650** (plus 27.6% BP*)



429 

A platinum square-shape diamond single-stone ring. With report 12436717, dated **23rd December 2002**, from the GIA, stating 0.52ct, E colour, VVS2 clarity. Hallmarks for Birmingham. Ring size L1/2. 3.3gms. **£500-700** (plus 27.6% BP*)



418

An oval-shape ruby and rose-cut diamond cluster ring. Ruby calculated weight 1.61cts, based on estimated dimensions of 8.8 by 5.6 by 3.9mms. With French marks. Ring size L1/2. 4.4gms. **£550-750** (plus 27.6% BP*)



422

An 18ct gold brilliant-cut diamond five-stone ring. Estimated total diamond weight 1ct, H-I colour, SI2-P1 clarity. Hallmarks for London, 1973. Ring size M. 3.9gms. **£400-600** (plus 27.6% BP*)



426 

A platinum brilliant-cut diamond single-stone ring. With mini report 144566-001, from AnchorCert, stating 0.41ct, F colour, SI1 clarity. Hallmarks for Birmingham. Ring size J1/2. 4.6gms. **£500-600** (plus 27.6% BP*)



430

An 18ct gold pave-set diamond dress ring. Estimated total diamond weight 0.50ct. Hallmarks for London, 2009. Ring size N. 4.3gms. **£300-400** (plus 27.6% BP*)



419

A pair of circular-shape ruby and single-cut diamond cluster earrings. Estimated total diamond weight 0.65ct. Earring backers stamped 375. Length 1cm. 3gms. **£200-300** (plus 27.6% BP*)



423

A band ring, with brilliant-cut diamond highlight. Stamped 750. Ring size M1/2. 3.6gms. **£150-200** (plus 27.6% BP*)



427

An 18ct gold brilliant-cut diamond cluster ring, with similarly-set diamond gallery and sides. Estimated total diamond weight 0.80ct. Hallmarks for Birmingham. Ring size L1/2. 3.6gms. **£250-350** (plus 27.6% BP*)



431

An 18ct gold brilliant-cut diamond five-stone ring. Estimated total diamond weight 1.25cts, H-I colour, VS clarity. Hallmarks for London. Ring size L. 3.4gms. **£600-800** (plus 27.6% BP*)



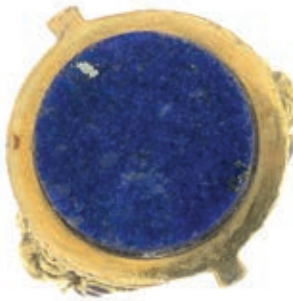
420

An 18ct gold brilliant-cut diamond bangle. Estimated total diamond weight 0.75ct. Hallmarks for Birmingham, 1976. Inner diameter 6cms. 12.4gms. **£340-440** (plus 27.6% BP*)



424

A lapis lazuli single-stone ring, with vari-hue enamel sides. Approximate dimensions of lapis lazuli 13.5 by 13.5mms. Ring size L1/2. 15.8gms. **£300-400** (plus 27.6% BP*)



428

An 18ct gold brilliant-cut diamond single-stone ring, with diamond surround. Principal diamond estimated weight 0.40ct, H-I colour, VS2-SI1 clarity. Hallmarks for Birmingham, 1997. Ring size L. 5.1gms. **£350-450** (plus 27.6% BP*)



432

An early 20th century gold split pearl floral cluster necklace, with similarly designed earrings. Length of necklace 42.5cms. Length of earrings 1.4cms. 13.4gms. **£280-380** (plus 27.6% BP*)



433

An 18ct gold oval-shape sapphire and brilliant-cut diamond three-stone ring. Sapphire weight 1.58cts. Total diamond weight 0.30ct, estimated H-I colour, SI clarity. Hallmarks for Sheffield. Ring size P. 5.1gms. **£450-650** (plus 27.6% BP*)

**437**

A brilliant-cut diamond necklace. Total diamond weight 0.48ct. Stamped 750. Length 46cms. 3.3gms. **£440-660** (plus 27.6% BP*)

**441**

A brilliant-cut diamond pendant, suspended from a chain. Estimated diamond weight 1ct, I-J colour, P1 clarity. Pendant with Cypriot marks and stamped 750. Length of pendant 1.5cms. Length of chain 48cms. Weight of pendant 3gms. **£800-1,200** (plus 27.6% BP*)

**445**

An 18ct gold emerald and single-cut diamond cluster ring, with baguette-cut diamond sides. Emerald calculated weight 0.41ct, based on estimated dimensions of 6.6 by 3.7 by 2.3mms. Estimated total diamond weight 0.45ct. Partial hallmarks for 18ct gold. Ring size N1/2. 2.5gms. **£150-200** (plus 27.6% BP*)

**434**

A single-cut diamond heart-shaped brooch. Estimated total diamond weight 1.20cts, J-K colour, VS2-SI1 clarity. Length 2.7cms. 3.5gms. **£180-260** (plus 27.6% BP*)

**438**

An 18ct gold brilliant-cut diamond three-stone ring. Estimated total diamond weight 0.60ct, H-I colour, SI2-P1 clarity. Hallmarks for London, 2004. Ring size N1/2. 5.2gms. **£300-400** (plus 27.6% BP*)

**442**

An 18ct gold square-shape ruby and diamond three-stone ring. Ruby calculated weight 0.54ct, based on estimated dimensions 4.3 by 4.5 by 2.8mms. Estimated total diamond weight 0.30ct, H-I colour, VS clarity. Hallmarks for London, 2014. Ring size N. 4.3gms. **£420-620** (plus 27.6% BP*)

**446**

An emerald and single-cut diamond dress ring. Emerald calculated weight 0.40ct, based on estimated dimensions 5.7 by 4.4 by 2.8mms. Estimated total diamond weight 0.25ct. Stamped 750. Ring size J1/2. 4.6gms. **£300-500** (plus 27.6% BP*)

**435**

An early 20th century gold old-cut diamond and enamel signet ring. Estimated diamond weight 0.50ct, H-I colour, P1-P2 clarity. Ring size Q. 11.2gms. **£300-400** (plus 27.6% BP*)

**439**

An old-cut diamond and vari-shape sapphire dress ring. Estimated total diamond weight 1.15cts, I-J colour, SI2-P1 clarity. Ring size J1/2. 3.6gms. **£450-650** (plus 27.6% BP*)

**443**

A pair of 18ct gold cultured pearl and diamond drop earrings. Estimated total diamond weight 0.80ct. Approximate dimensions of cultured pearl 7mms. Hallmarks for London. Length 2.8cms. 6.9gms. **£200-300** (plus 27.6% BP*)

**447**

An Art Nouveau silver and gold, old-cut diamond floral brooch. Estimated total diamond weight 1ct, H-I colour, SI1-P1 clarity. Length 4.3cms. 6.7gms. With case. **£250-350** (plus 27.6% BP*)

**436**

An early 20th century 18ct gold turquoise and old-cut diamond dress ring. Estimated total diamond weight 0.35ct, H-I colour, SI clarity. Stamped 18CT. Ring size J1/2. 3.8gms. **£300-400** (plus 27.6% BP*)

**440**

A pair of 18ct gold oval-shape sapphire and brilliant-cut diamond cluster earrings. Total sapphire weight 0.64ct. Total diamond weight 0.20ct. Hallmarks for London. Length 0.8cm. 2.2gms. **£400-600** (plus 27.6% BP*)

**444**

A pair of 18ct gold diamond single-stone stud earrings. Estimated total diamond weight 0.30ct, I-J colour, SI clarity. Hallmarks for London. Length 0.8cm. 2.6gms. **£120-180** (plus 27.6% BP*)

**448**

A textured feather brooch. Stamped 750. Length 6.1cms. 7.6gms. **£180-260** (plus 27.6% BP*)



449

An old-cut diamond single-stone ring. Estimated diamond weight 0.75ct, J-K colour, SI clarity. Ring size N1/2. 2.7gms. **£500-700** (plus 27.6% BP*)

**453**

A brilliant-cut diamond bangle, to the hinged plain reverse. Estimated total diamond weight 0.90ct, predominantly I-J colour, SI clarity. Stamped 9K. Inner diameter 5.8cms. 14.8gms. **£350-450** (plus 27.6% BP*)

**457**

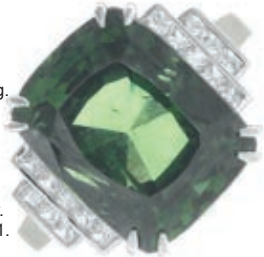
A platinum brilliant-cut diamond dress ring. Estimated total diamond weight 0.45ct, H-I colour, SI clarity. Hallmarks for London. Ring size K1/2. 4gms. **£400-600** (plus 27.6% BP*)

**461**

An Edwardian 18ct gold old-cut diamond buckle ring. Hallmarks for Chester, 1901. Ring size M. 4.3gms. **£180-260** (plus 27.6% BP*)

**450**

An 18ct gold rectangular-zircon and square-shape diamond ring. Zircon calculated weight 19.30cts, based on estimated dimensions of 14.5 by 11.3 by 10.1mms. Total diamond weight 0.41ct, H-I colour, SI clarity. Hallmarks for London, 2011. Ring size M1/2. 11.6gms. **£1,500-2,000** (plus 27.6% BP*)

**454**

A tanzanite and brilliant-cut diamond three-stone ring. Tanzanite calculated weight 2cts, based on estimated dimensions 8.8 by 6.4 by 5.5mms. Estimated total diamond weight 0.45ct, I-J colour, P1 clarity. Stamped PLAT. Ring size N1/2. 4.6gms. **£580-780** (plus 27.6% BP*)

**458**

An 18ct gold square-shape diamond half eternity ring. Estimated total diamond weight 0.50ct, H-I colour, VS2-SI1 clarity. Hallmarks for London, 2010. Ring size M. 4gms. **£300-400** (plus 27.6% BP*)

**462**

A brilliant-cut diamond ring, with similarly-cut diamond and sapphire scrolling surround. Estimated total diamond weight 1ct, principal diamond estimated 0.25ct, H-I colour, SI clarity. Stamped 14k. Approximate ring size T. 6gms. **£300-400** (plus 27.6% BP*)

**451**

A sapphire and brilliant-cut diamond bracelet. Total sapphire weight 2.34cts, based on estimated dimensions of one sapphire 6.1 by 4 by 2.6mms. Estimated total diamond weight 0.50ct. Stamped 585. Length 18cms. 13.1gms. **£350-450** (plus 27.6% BP*)

**455**

An early 20th century 15ct gold brooch, designed as rose-cut diamond and enamel pheasant, atop enamel floral fronds. Length 5.3cms. 8gms. **£300-400** (plus 27.6% BP*)

**459**

An mid Victorian 15ct gold enamel and split pearl Celtic cross pendant, Circa 1870. Length 5.6cms. 6gms. With case. **£200-300** (plus 27.6% BP*)

**463**

A pair of vari-cut diamond and ruby earrings. Estimated total diamond weight 0.40ct. Length 4.2cms. 6.2gms. **£220-320** (plus 27.6% BP*)

**452**

A platinum brilliant-cut diamond single-stone ring. Diamond weight 0.44ct, stamped to band, estimated H-I colour, SI clarity. Hallmarks for London. Ring size N. 5.3gms. **£300-400** (plus 27.6% BP*)

**456**

A pair of ruby and single-cut diamond earrings. Fittings for non-pierced ears. Estimated total diamond weight 0.45ct. Stamped 14k. Length 1.8cms. 9gms. **£300-400** (plus 27.6% BP*)

**460**

A pair of 18ct gold ruby and brilliant-cut diamond cluster earrings. Fittings for non-pierced ears. Total ruby weight 1.12cts, based one estimated dimensions of one ruby 6.4 by 4.2 by 2.5mms. Estimated total diamond weight 0.80ct. Hallmarks for London. Length 2cms. 6.2gms. **£400-600** (plus 27.6% BP*)

**464**

A ruby and diamond full eternity ring. Estimated total diamond weight 1.10cts, G-H colour, VS clarity. Ring size J. 4.1gms. **£620-820** (plus 27.6% BP*)



BP* - Buyer's Premium of 23% (plus VAT) or 27.6% (VAT included)

BP* - Buyer's Premium of 23% (plus VAT) or 27.6% (VAT included)

465

A late 19th century 18ct gold sapphire and old-cut diamond five-stone ring. Total sapphire weight 0.65ct. Estimated total diamond weight 0.80ct, H-J colour, SI2-P1 clarity. Stamped 18CT. Ring size N. 3.8gms. **£700-900** (plus 27.6% BP*)

**469**

A sapphire and brilliant-cut diamond crossover dress ring. Estimated total diamond weight 0.55ct. Stamped 14KT. Ring size N1/2. 7.8gms. **£350-450** (plus 27.6% BP*)

**473**

A 9ct gold diamond hinged bangle. Estimated total diamond weight 2cts. Hallmarks for Birmingham. Inner diameter 6.2cms. 15.6gms. **£450-650** (plus 27.6% BP*)

**477**

An 18ct gold pave-set diamond bracelet. Estimated total diamond weight 2cts, G+ colour, VS clarity. Swiss convention marks. Length 18cms. 16.3gms. **£700-1,000** (plus 27.6% BP*)

**466**

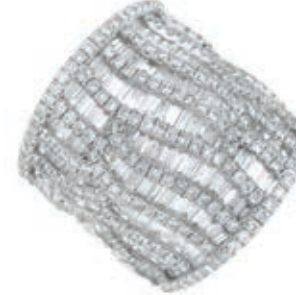
An 18ct gold square-shape diamond single-stone pendant. Estimated diamond weight 1ct, I-J colour, P2 clarity. Hallmarks for Birmingham, 1999. Length 1.8cms. 1.1gms. **£200-300** (plus 27.6% BP*)

**470**

An 18ct bi-colour gold pave-set diamond leaf ring. Estimated total diamond weight 0.60ct. Hallmarks for Sheffield. Ring size N1/2. 10.1gms. **£300-400** (plus 27.6% BP*)

**474**

A vari-cut diamond dress ring, variously set with brilliant and baguette-cut diamonds. Estimated total diamond weight 3.50cts. Stamped 750. Ring size P. 15.7gms. **£350-450** (plus 27.6% BP*)

**478**

A pair of emerald and brilliant-cut diamond earrings. Total emerald weight 1.04cts, based on estimated dimensions of one emerald 5.4 by 4.7 by 2.9mms. Estimated total diamond weight 0.35ct. Length 1.6cms. 5.5gms. **£200-300** (plus 27.6% BP*)

**467**

A cabochon emerald and pave-set diamond dress ring, of stylised floral design. Emerald calculated weight 7.05cts, based on estimated dimensions of 14 by 9.8 by 7mms. Estimated total diamond weight 0.65ct. Ring size K1/2. Total weight 11.7gms. **£300-400** (plus 27.6% BP*)

**471**

A mid 20th century 9ct gold brilliant-cut diamond and sapphire brooch. Estimated total diamond weight 1.80cts. Length 5.2cms. 15gms. **£350-450** (plus 27.6% BP*)

**475**

A pair of late 19th century split pearl drop earrings. Length 6cms. 7gms. **£250-350** (plus 27.6% BP*)

**479**

An aquamarine and brilliant-cut diamond dress ring. Aquamarine calculated weight 10.85cts, based on estimated dimensions of 17.2 by 13 by 8.5mms. Estimated total diamond weight 0.75ct, H-I colour, VS2-SI1 clarity. Ring size L1/2. 19gms. **£1,500-2,000** (plus 27.6% BP*)

**468**

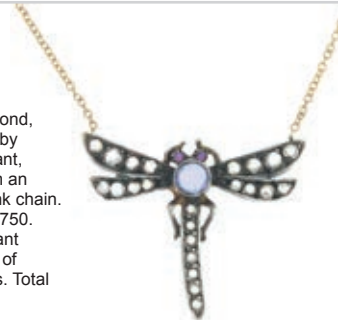
An 18ct gold brilliant-cut diamond dress ring. Estimated total diamond weight 0.20ct. Hallmarks for Birmingham. Ring size J1/2. 6gms. **£150-200** (plus 27.6% BP*)

**472**

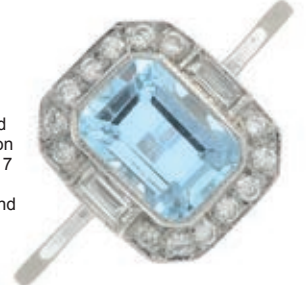
An 18ct gold tanzanite and brilliant-cut diamond cluster ring. Tanzanite weight 2.22cts. Estimated total diamond weight 0.25ct. Hallmarks for London, 2011. Ring size N. 5.6gms. **£700-1,000** (plus 27.6% BP*)

**476**

A rose-cut diamond, sapphire and ruby dragonfly pendant, suspended from an integral trace-link chain. Clasp stamped 750. Length of pendant 2.5cms. Length of necklace 43cms. Total weight 2.8gms. **£200-300** (plus 27.6% BP*)

**480**

An aquamarine and vari-cut diamond ring. Aquamarine calculated weight 0.97ct, based on estimated dimensions 7 by 5 by 3.4mms. Estimated total diamond weight 0.20ct. Stamped 18CT. Ring size L 2.6gms. **£400-600** (plus 27.6% BP*)



481

A pair of sapphire and diamond cluster earrings.
Total sapphire calculated weight 0.92ct, based on estimated dimensions of one sapphire 5.7 by 3.9 by 2.5mms.
Estimated total diamond weight 0.50ct.
Stamped 750.
Length 1.2cms. 3gms.
£180-260
(plus 27.6% BP*)

**485**

An 18ct gold brilliant-cut diamond floral cluster ring.
Estimated total diamond weight 0.85ct, H-I colour, SI2-P1 clarity.
Hallmarks for Birmingham, partially indistinct.
Ring size P1/2.
3.5gms.
£250-350
(plus 27.6% BP*)

**489**

An 18ct gold square-shape diamond and 'yellow' diamond ring.
Estimated total diamond weight 0.75ct, H-I colour, VS clarity.
Hallmarks for London, 2000.
Ring size N. 6.2gms.
Coloured diamonds untested.
£300-400
(plus 27.6% BP*)

**493**

A pair of grey cultured pearl and diamond earrings.
Estimated total diamond weight 0.75ct.
Stamped 750, 18K.
Diameter 1.8cms. 12.5gms.
£600-800
(plus 27.6% BP*)

**482**

A brilliant-cut diamond five-stone ring.
Estimated total diamond weight 0.85ct, H-I colour, SI2-P1 clarity.
Stamped 18ct.
Ring size M. 3.8gms.
£300-400
(plus 27.6% BP*)

**486**

A vari-cut amethyst and diamond briolette multi-row necklace, with briolette-cut diamond clasp.
One amethyst measuring approximately 5 by 4.5 by 3.2mms.
One briolette-cut diamond measuring approximately 4.6 by 2.6 by 3.1mms.
Estimated total brilliant-cut diamond weight 0.40ct.
Stamped 18K.
Length 46cms. Total weight 42.4gms.
£1,500-2,000
(plus 27.6% BP*)

**490**

An 18ct gold square-shape diamond cluster ring, with brilliant-cut diamond sides.
Total diamond weight 0.75ct, stamped to band, estimated H-I colour, SI clarity.
Hallmarks for London.
Ring size N. 4.7gms.
£180-260
(plus 27.6% BP*)

**494**

A pair of baguette and pave-set diamond earrings.
Estimated total diamond weight 1ct, G-H colour, VS clarity.
Italian marks, stamped 750.
Length 2.2cms. 12.5gms.
£400-600
(plus 27.6% BP*)

**483**

An 18ct gold ruby and diamond half eternity ring.
Total ruby weight 0.63ct, stamped to band.
Estimated total diamond weight 0.30ct, G-H colour, VS clarity.
Hallmarks for London, 2013.
Ring size N. 4.3gms.
£220-320
(plus 27.6% BP*)

**487**

An early 20th century platinum and gold vari-cut diamond and split pearl ring.
Estimated total old-cut diamond weight 0.40ct, H-I colour, SI clarity.
Ring size J1/2.
3.4gms.
£400-600
(plus 27.6% BP*)

**491**

An early 20th century 18ct gold opal and diamond dress ring.
Estimated total diamond weight 0.15ct.
Stamped 18ct.
Ring size Y1/2. 4.3gms.
£300-400
(plus 27.6% BP*)

**495**

An aquamarine and baguette-cut diamond dress ring.
Aquamarine calculated weight 1.81cts, based on estimated dimensions of 9.8 by 6.2 by 4.2mms.
Estimated total diamond weight 0.50ct, I-J colour, VS clarity.
Stamped 750.
Ring size N1/2. 5.4gms.
£300-400
(plus 27.6% BP*)

**484**

A sapphire and brilliant-cut diamond cluster ring.
Band AF.
Sapphire calculated weight 1.20cts, based on estimated dimensions 8.2 by 6.6 by 2.7mms.
Estimated total diamond weight 0.85ct, H-I colour, SI2-P1 clarity.
Stamped Pt.
Ring size P. 4.5gms.
£600-800
(plus 27.6% BP*)

**488**

A pair of brilliant-cut diamond cluster clip earrings.
Fittings for non-pierced ears.
Estimated total diamond weight 2.25cts, H-I colour, VS2-SI1 clarity.
Length 1.6cms. 8.8gms.
£400-600
(plus 27.6% BP*)

**492**

An early 20th century 9ct gold snake bangle.
Stamped 9CT.
Approximate inner diameter 5.5cms. 20.5gms.
£280-380
(plus 27.6% BP*)

**496**

An 18ct gold sapphire and brilliant-cut diamond three-stone ring.
Sapphire weight 2.27cts.
Estimated total diamond weight 0.20ct, H-I colour, VS2-SI1 clarity.
Hallmarks for London, 2014.
Ring size O. 5gms.
£600-800
(plus 27.6% BP*)



497

Two 18ct gold vari-cut diamond single-stone rings.
Total diamond weight 0.50ct, stamped to bands, estimated G-H colour, P1 clarity. Hallmarks for Sheffield. Ring size M1/2 and P. 8.1gms.
£200-300
(plus 27.6% BP*)

**501**

A brilliant-cut diamond full eternity ring.
Estimated total diamond weight 1.10cts, H-I colour, SI1-P1 clarity. Ring size O. 3gms.
£250-350
(plus 27.6% BP*)

**505**

An early 20th century platinum old and rose-cut diamond openwork brooch.
Estimated total old-cut diamond weight 0.55ct, SI2-P1 clarity. Length 4.6cms. 5.8gms.
£180-260
(plus 27.6% BP*)

**509**

An 18ct gold vari-cut diamond 'Morse Code' full eternity ring.
Estimated total diamond weight 0.55ct. Hallmarks for Edinburgh, 2002. Ring size L1/2. 6.9gms.
£400-600
(plus 27.6% BP*)

**498**

An 18ct gold emerald and old-cut diamond five-stone ring.
Estimated total diamond weight 0.50ct, H-I colour, SI1 clarity. Hallmarks for Sheffield, 2019. Ring size N1/2. 2.8gms.
£300-400
(plus 27.6% BP*)

**502**

A 14ct gold baguette-cut diamond full eternity ring.
Estimated total diamond weight 2cts, H-J colour, VS2-SI2 clarity. Hallmarks for London, 2011. Ring size L1/2. 4.3gms.
£400-600
(plus 27.6% BP*)

**506**

An 18ct gold opal three-stone ring with brilliant-cut diamond spacers.
Hallmarks for London, 1990. Ring size O. 3.7gms.
£450-650
(plus 27.6% BP*)

**510**

A brilliant-cut diamond pendant.
Estimated total diamond weight 2cts, Predominately K-L colour, VS-SI1 clarity. Diameter 4.3cms. 18.9gms. May also be worn as a brooch.
£400-600
(plus 27.6% BP*)

**499**

A ruby and vari-cut diamond snake ring.
Ruby calculated weights 0.49ct and 0.40ct, based on estimated dimensions of 6.5 by 4.1 by 2.5mms and 6.1 by 4.5 by 2mms. Estimated total diamond weight 1.30cts, H-I colour, VS2-SI1 clarity. Stamped 750. Ring size I. 7.1gms.
£280-380
(plus 27.6% BP*)

**503**

A mid 20th century platinum cultured pearl and diamond dress ring.
Approximate cultured pearl dimensions 5.6mms. Principal diamond estimated weight 0.30ct, H-I colour, P1 clarity. Stamped Plat. Ring size P1/2. 4.6gms.
£300-400
(plus 27.6% BP*)

**507**

An old and brilliant-cut diamond dress ring.
Estimated total diamond weight 0.65ct, principal diamond estimated I-J colour, SI2-P1 clarity. Stamped PLAT. Ring size M. 3.2gms.
£500-700
(plus 27.6% BP*)

**511**

A brilliant-cut diamond pendant, suspended from an 18ct gold spiga-link chain.
Estimated total diamond weight 0.75ct. Pendant stamped 750. Chain with hallmarks for Birmingham. Length of pendant 1.3cms. Length of chain 44cms. Total weight 3.8gms.
£400-600
(plus 27.6% BP*)

**500**

A jade and brilliant-cut diamond dress ring.
Jade measures approximately 14.5 by 14.4 by 8.7mms. Stamped 14k. Ring size K. 8.7gms. Jade untested.
£150-200
(plus 27.6% BP*)

**504**

A pair of gem-set earrings.
Gemstones to include, citrine, amethyst, rubies, sapphires, together with other gemstones. AF.
Estimated total diamond weight 1.80cts, H-I colour, SI1 clarity. Length 7.3cms. 27.5gms.
£700-1,000
(plus 27.6% BP*)

**508**

An 18ct gold single-cut diamond bangle and matching 18ct gold diamond ring.
Estimated total diamond weight 0.25ct. Hallmarks for Birmingham, 1977. Inner diameter 6cms. Ring size G. 13.7gms.
£320-420
(plus 27.6% BP*)

**512**

An 18ct gold and brilliant-cut diamond signet ring.
Estimated total diamond weight 0.65ct, H-I colour, VS2-SI1 clarity. Hallmarks for London, 1986. Ring size R1/2. 24.4gms.
£600-800
(plus 27.6% BP*)



513

A pair of brilliant-cut diamond floral stud earrings. Estimated total diamond weight 1.40cts. Stamped 750. Length 1.1cms. 2.8gms. **£650-850** (plus 27.6% BP*)

517

A sapphire and single-cut diamond cluster ring. Sapphire calculated weight 1.20cts, based on estimated dimensions of 7.5 by 5.8 by 3.8mms. Estimated total diamond weight 0.55ct. Stamped 18CT. Ring size K1/2. 2.5gms. **£500-700** (plus 27.6% BP*)

521

A brilliant-cut diamond band ring, hinged to reveal sapphire highlights. Estimated total diamond weight 0.20ct. Stamped 750. Ring size N1/2. 11.5gms. **£320-420** (plus 27.6% BP*)

525

A sapphire and brilliant-cut diamond three-stone ring. Sapphire calculated weight 1.19cts, based on estimated dimensions of 7.8 by 5.9 by 3.1mms. Estimated total diamond weight 0.40ct, I-J colour, SI1-P1 clarity. Stamped 18ct. Ring size P. 3.3gms. **£300-400** (plus 27.6% BP*)

514

An 18ct gold ruby and brilliant-cut diamond three-stone ring. Ruby calculated weight 0.59ct, based on estimated dimensions 6.6 by 4.9 by 1.7mms. Estimated total diamond weight 0.50ct, H-I colour, SI clarity. Hallmarks for London. Ring size M. 3gms. **£220-320** (plus 27.6% BP*)

518

A pair of earrings. Length 4.5cms. 9.7gms. **£200-300** (plus 27.6% BP*)

522

An early 20th century gold fire opal and demantoid garnet necklace. Estimated dimensions of fire opal 14.5 by 10.5 by 7.1mms. Length 47.5cms. 4gms. **£300-400** (plus 27.6% BP*)

526

A two-row cultured pearl necklace, with 18ct gold brilliant-cut diamond and emerald clasp. Estimated total diamond weight 0.30ct. Gem-set clasp with hallmarks for London. Second clasp is gold plate. Length 45cms. **£400-600** (plus 27.6% BP*)

515

A brilliant-cut diamond dress ring. Estimated total diamond weight 0.50ct. Stamped 750. Ring size M. 2.8gms. **£300-400** (plus 27.6% BP*)

519

A mid 20th century 18ct gold, platinum sapphire and diamond half eternity ring. Stamped 18ct & Plat. Ring size O. 1.8gms. **£200-300** (plus 27.6% BP*)

523

An 18ct gold tanzanite and brilliant-cut diamond three-stone ring. Tanzanite weight 1ct. Total diamond weight 0.22ct, estimated H-I colour, SI2-P1 clarity. Hallmarks for London, 2017. Ring size L. 5.9gms. **£450-650** (plus 27.6% BP*)

527

A cultured pearl and brilliant-cut diamond dress ring. Cultured pearl measures approximately 12.6mms. Estimated total diamond weight 1ct. Stamped 750. Ring size P. 9.5gms. **£400-600** (plus 27.6% BP*)

516

A platinum square-shape diamond full eternity ring. Estimated total diamond weight 0.75ct. Hallmarks for London. Ring size I. 3.1gms. **£220-320** (plus 27.6% BP*)

520

An 18ct gold square-shape red tourmaline and brilliant-cut diamond dress ring. Tourmaline calculated weight 5.62cts, based on estimated dimensions of 10 by 10 by 7.35mms. Estimated total diamond weight 0.30ct, G-H colour, VS clarity. Hallmarks for London, 2001. Ring size N1/2. 10.5gms. **£400-600** (plus 27.6% BP*)

524

A pair of sapphire and pave-set diamond cluster earrings. Estimated total diamond weight 0.20ct. Butterfly backs stamped 18. Length 1.5cms. 6gms. **£220-320** (plus 27.6% BP*)

528

An 18ct gold sapphire and brilliant-cut diamond cluster ring. Sapphire calculated weight 1ct, based on estimated dimensions of 6.5 by 4.6 by 4mms. Estimated total diamond weight 0.40ct. Hallmarks for Birmingham, 1990. Ring size M1/2. 4.1gms. **£250-350** (plus 27.6% BP*)

529

A cultured pearl and pave-set diamond pendant.
Estimated total diamond weight 0.15ct.
Approximate dimensions of cultured pearl 14.5 by 13.8mms.
Length 4.6cms. 11.7gms.
£150-200
(plus 27.6% BP*)

533

An emerald and diamond bracelet.
Total emerald calculated weight 3.24cts, based on estimated dimensions of one emerald of 3 by 3 by 1.5mms.
Estimated total diamond weight 1.40cts.
Stamped 750.
Length 18cms. 19.8gms.
£800-1,200
(plus 27.6% BP*)

537

A pair of rose-cut diamond earrings, together with a matching pendant.
Length of earrings 2.2cms Length of pendant 3cms.
4.8gms.
£250-350
(plus 27.6% BP*)

541

A green paste cross pendant, suspended from a trace-link chain, with green paste bead highlights.
Length of pendant 6cms.
Length of chain 45cms.
36.8gms.
£500-700
(plus 27.6% BP*)

530

An early 20th century old-cut diamond floral cluster brooch.
Estimated total diamond weight 1ct, H-I colour, SI1-P1 clarity.
Length 6.4cms. 4.1gms.
£500-700
(plus 27.6% BP*)

534

A brilliant-cut diamond dress ring.
Estimated total diamond weight 0.90ct.
Stamped 14k.
Ring size N1/2. 6.5gms.
£250-350
(plus 27.6% BP*)

538

A vari-cut diamond dress ring.
Estimated total diamond weight 1ct, G-H colour, SI1 clarity.
Stamped 14k.
Ring size P. 4.3gms.
£450-650
(plus 27.6% BP*)

542

A brilliant-cut diamond three-stone ring.
Total diamond weight 1ct, estimated I-J colour, P1 clarity.
Stamped 750.
Ring size K1/2. 4.9gms.
£400-600
(plus 27.6% BP*)

531

A pair of brilliant-cut diamond half-hoop earrings.
Estimated total diamond weight 2cts, H-I colour, VS clarity.
Length 1.7cms.
10.4gms.
£500-700
(plus 27.6% BP*)

535

A slightly graduated old-cut diamond full eternity ring.
Estimated total diamond weight 1.50cts.
Ring size P1/2. 4.5gms.
£1,000-1,500
(plus 27.6% BP*)

539

A brilliant-cut diamond necklace, with flat curb-link back-chain.
Estimated total diamond weight 1.50cts, G-H colour, VS clarity.
Length 41cms. 30.3gms.
£600-800
(plus 27.6% BP*)

543

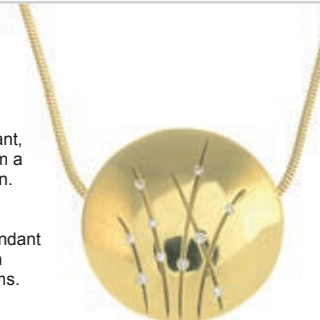
A pair of brilliant-cut diamond hinged hoop earrings.
Estimated total diamond weight 0.30ct.
Length 1.2cms. 4gms.
£150-300
(plus 27.6% BP*)

532

An early 20th century ruby and old-cut diamond bar brooch.
Estimated total diamond weight 0.65ct, G-H colour, SI1-P1 clarity.
Stamped 15ct.
Length 5.5cms. 4.8gms.
£150-200
(plus 27.6% BP*)

536

A sapphire and brilliant-cut diamond five-stone ring.
Estimated total diamond weight 0.50ct, J-L colour, SI1-P1 clarity.
Stamped 18CT.
Ring size P1/2. 3.8gms.
£280-380
(plus 27.6% BP*)

540

An 18ct gold diamond pendant, suspended from a snake-link chain.
Hallmarks for Birmingham.
Diameter of pendant 2.4cms. Length of chain 41.5cms.
18.3gms.
£500-700
(plus 27.6% BP*)

544

A cubic zirconia pendant, suspended from a snake-link chain.
Chain stamped 750.
Length of pendant 6cms.
Length of chain 45cms.
10.4gms.
£280-380
(plus 27.6% BP*)

545

A 1970's 18ct gold emerald and diamond cluster ring. Emerald calculated weight 2.42cts, based on estimated dimensions of 9.3 by 7.6 by 4.2mms. Estimated total diamond weight 1.25cts, predominantly I-J colour, VS2-SI1 clarity. Hallmarks for London, 1977. Ring size Q. 7.1gms. **£800-1,200** (plus 27.6% BP*)

**549**

A brilliant-cut diamond half eternity ring. Principal diamond estimated weight 0.22ct, estimated H-I colour, SI clarity. Stamped 750. Ring size N. 3gms. **£150-200** (plus 27.6% BP*)

**553**

A mid 20th century platinum old-cut diamond and sapphire ring. Principal old-cut diamond estimated weight 0.55ct, H-I colour, P1-P2 clarity. Stamped PLAT. Ring size M. 9.4gms. **£600-800** (plus 27.6% BP*)

**557**

An 18ct bi-colour gold brilliant-cut diamond dress ring. Estimated diamond weight 0.40ct, H-I colour, SI-P1 clarity. Import marks for London. Ring size L. 5.8gms. **£500-600** (plus 27.6% BP*)

**546**

A brilliant-cut diamond eternity ring. Estimated total diamond weight 1.80cts, H-I colour, VS clarity. Stamped 750. Ring size P. 3.3gms. **£700-900** (plus 27.6% BP*)

**550**

An 18ct bi-colour gold diamond bracelet. Estimated total diamond weight 1.70cts. Stamped 14k. Length 18cms. 20.2gms. **£500-700** (plus 27.6% BP*)

**554**

A vari-cut diamond three-row band ring. Estimated total diamond weight 1.50cts, H-I colour, SI clarity. Stamped 14k. Ring size L1/2. 7.2gms. **£200-300** (plus 27.6% BP*)

**558**

An emerald and diamond bracelet. Total emerald weight 2.35cts, marked to clasp. Total diamond weight 0.33ct, marked to clasp, estimated I-K colour, VS-SI clarity. Stamped 750. Length 19cms. 13.5gms. **£300-400** (plus 27.6% BP*)

**547**

A ruby, synthetic ruby and vari-cut diamond half eternity ring. Estimated total diamond weight 0.25ct, predominantly H-I colour, P1 clarity. Ring size M1/2. 2.3gms. **£180-260** (plus 27.6% BP*)

**551**

A brilliant-cut diamond three-stone ring. Estimated total diamond weight 0.75ct, H-I colour, SI1-P1 clarity. Stamped 585. Ring size T. 4.4gms. **£200-300** (plus 27.6% BP*)

**555**

An old-cut diamond cluster ring. Estimated total diamond weight 1.10cts, I-J colour, SI1-P1 clarity. Ring size P. 3.5gms. **£450-650** (plus 27.6% BP*)

**559**

An 18ct bi-colour gold diamond pendant, suspended from an 18ct gold chain. Estimated diamond weight 0.15ct, I-J colour, P1 clarity. Import marks for London, 1997 and 1998. Length of pendant 1.9cms. Length of chain 40cms. 5.2gms. **£300-400** (plus 27.6% BP*)

**548**

A pair of brilliant-cut diamond stud earrings. Total diamond weight 0.62ct, stamped to post, estimated H-I colour, SI2-P1 clarity. Diameter 0.5cm. 1.5gms. **£180-260** (plus 27.6% BP*)

**552**

An 18ct bi-colour gold oval-shape diamond single-stone ring. Diamond weight 0.37ct, stamped to band, estimated J-K colour, SI clarity. Hallmarks for Birmingham. Ring size M1/2. 4.6gms. **£180-260** (plus 27.6% BP*)

**556**

A platinum rectangular-shape diamond single-stone ring, with baguette-cut diamonds sides. Total diamond weight 1.01cts, stamped to mount, Principal diamond weight 0.75ct, estimated I-J colour, VS2-SI1 clarity. Hallmarks for Birmingham. Ring size L. 5.7gms. **£700-900** (plus 27.6% BP*)

**560**

An 18ct gold diamond three-stone ring. Estimated total diamond weight 0.15ct, I-J colour, VS2-SI1 clarity. Hallmarks for Birmingham. Ring size O1/2. 9gms. **£200-300** (plus 27.6% BP*)



561

An 18ct gold diamond cluster pendant, suspended from an 18ct gold snake-link chain. Estimated total diamond weight 2cts, H-I colour, SI2-P1 clarity. Hallmarks for London and Sheffield. Length of pendant 2cms. Length of chain 40cms. 11.4gms.
£700-1,000
(plus 27.6% BP)*

**565**

An old-cut diamond hinged bangle. Estimated total diamond weight 1.30cts, J-K colour, SI clarity. Inner diameter 5.6cms. 13gms.
£380-480
(plus 27.6% BP)*

**569**

An 18ct gold orange sapphire bracelet. Total sapphire calculated weight 6.66cts, based on estimated dimensions of one sapphire 4.5 by 2.4 by 1.4mms. Hallmarks for Birmingham, 2006. Length 19cms. 19.9gms.
£400-600
(plus 27.6% BP)*

**573**

A vari-cut emerald and old-cut diamond five-stone ring. Total diamond weight 0.60ct. Estimated total diamond weight 0.55ct, tinted colour, VS2-SI1 clarity. Ring size M. 2.5gms.
£500-700
(plus 27.6% BP)*

**562**

A diamond cluster ring. Total diamond weight 0.47ct, stamped to band, estimated H-I colour, SI clarity. Stamped 750. Ring size M. 2.8gms.
£440-660
(plus 27.6% BP)*

**566**

A pair of brilliant-cut diamond cluster earrings. Total diamond weight 1.20cts, stamped to post, estimated H-I colour, P1 clarity. Stamped 18k. Diameter 1cms. 2.6gms.
£280-380
(plus 27.6% BP)*

**570**

An 18ct gold diamond bracelet. Estimated total diamond weight 0.60ct, H-I colour, SI clarity. Hallmarks for Birmingham. Length 20cms. 17.5gms.
£400-600
(plus 27.6% BP)*

**574**

An early 20th century sapphire, rose-cut diamond and seed pearl brooch. Sapphire calculated weight 2.91cts, based on estimated dimensions 8.8 by 8.4 by 4.2mms. Length 4.5cms. 9gms.
£400-600
(plus 27.6% BP)*

**563**

An 18ct gold brilliant-cut diamond and mother-of-pearl dress ring. Estimated total diamond weight 0.25ct. Hallmarks for Sheffield, 2002. Ring size N1/2. 7.7gms.
£300-400
(plus 27.6% BP)*

**567**

A square-shape diamond three-stone pendant, suspended from a 9ct gold curb-link chain. Estimated total diamond weight 0.70ct, H-I colour, SI1-P1 clarity. Pendant stamped 14K. Chain with hallmarks for Sheffield. Length of pendant 2.3cms. Length of chain 50cms. Total weight 3.3gms.
£250-350
(plus 27.6% BP)*

**571**

A sapphire and brilliant-cut diamond butterfly ring. Estimated total diamond weight 0.25ct. French assay marks. Stamped 750. Ring size K1/2. 8.1gms.
£400-600
(plus 27.6% BP)*

**575**

A platinum brilliant-cut diamond single-stone ring. Diamond weight 0.90ct, stamped to band, estimated H-I colour, P1 clarity. Hallmarks for London, 2008. Ring size O1/2. 5.9gms.
£800-1,200
(plus 27.6% BP)*

**564**

An 18ct gold sapphire and diamond cluster ring. Sapphire calculated weight 2.76cts, based on estimated dimensions 9.2 by 7.3 by 4.9cms. Estimated total diamond weight 0.55ct, H-I colour, SI2-P1 clarity. Hallmarks for Birmingham, 1986. Ring size J1/2. 4.5gms.
£200-300
(plus 27.6% BP)*

**568**

An 18ct gold pink sapphire and diamond half eternity ring. Estimated total diamond weight 0.30ct. Hallmarks for London, 2002. Ring size M1/2. 3.4gms.
£200-300
(plus 27.6% BP)*

**572**

A peridot and circular-cut diamond cross pendant. Estimated total diamond weight 0.40ct. Length 4.7cms. 5.1gms.
£280-380
(plus 27.6% BP)*

**576**

A pair of late 19th century split pearl and gem-set earrings. Gems include emerald and green paste. Length 4cms. 6.8gms.
£250-350
(plus 27.6% BP)*



577

A tanzanite and brilliant-cut diamond cluster ring.
Tanzanite calculated weight 1.95cts, based on estimated dimensions of 9.6 by 7.5 by 4.4mms.
Estimated total diamond weight 0.60ct. Stamped 18K.
Ring size I. 5.3gms.
£300-400
(plus 27.6% BP*)

**581**

A sapphire and old-cut diamond five-stone ring.
Total sapphire weight 1.58cts. Estimated total diamond weight 0.90ct, J-K colour, SI clarity.
Ring size M. 3.7gms.
£700-900
(plus 27.6% BP*)

**585**

An 18ct gold brilliant-cut diamond single-stone ring, with diamond line shoulders.
Estimated total diamond weight 1.20cts. Principal diamond estimated weight 1ct, tinted colour, SI2-P1 clarity.
Hallmarks for Sheffield.
Ring size L1/2. 3.5gms.
£800-1,200
(plus 27.6% BP*)

**589**

A brilliant-cut diamond swallow brooch, with ruby eye detail.
Estimated total diamond weight 2 to 2.50cts.
Length 5.3cms.
£550-750
(plus 27.6% BP*)

**578**

A pair of emerald and brilliant-cut diamond drop earrings.
Total emerald weight 0.84ct, based on estimated dimensions of one emerald 6.2 by 4.1 by 2.3mms.
Estimated total diamond weight 0.80ct. Length 2cms. 5gms.
£200-300
(plus 27.6% BP*)

**582**

A pair of 18ct bi-colour gold brilliant-cut diamond earrings.
Estimated total diamond weight 0.20ct.
Hallmarks for London.
Length 1.5cms. 5gms.
£180-260
(plus 27.6% BP*)

**586**

A vari-cut diamond cluster ring, with sapphire highlights.
Estimated total diamond weight 0.50ct, H-J colour, SI-P1 clarity.
Stamped 18ct.
Ring size M 1/2. 3.6gms.
£350-450
(plus 27.6% BP*)

**590**

A pair of emerald and brilliant-cut diamond cluster earrings.
Emerald total calculated weight 0.38ct, based on estimated dimensions of one emerald 5 by 3.2 by 2.1mms.
Estimated total diamond weight 0.50ct, G-H colour, VS1-SI1 clarity.
Butterfly Backs stamped 14K.
Length 1cm. 1.7gms.
£220-320
(plus 27.6% BP*)

**579**

A late Victorian 18ct gold garnet and rose-cut diamond brooch.
Stamped 18ct.
Length 5.9cms. 10.7gms.
£180-260
(plus 27.6% BP*)

**583**

A 1960s 18ct gold opal three-stone ring, with single-cut diamond highlights.
Hallmarks for London, 1965.
Ring size M. 6.1gms.
£200-300
(plus 27.6% BP*)

**587**

A brilliant-cut diamond single-stone ring, with similarly-cut diamond sides.
Estimated total diamond weight 0.50ct, principal diamond estimated I-J colour, VS clarity.
Stamped 750.
Ring size L1/2. 3.1gms.
£200-300
(plus 27.6% BP*)

**591**

An emerald and old-cut diamond cluster ring.
Emerald calculated weight 0.52ct, based on estimated dimensions 6 by 4.9 by 3.1mms.
Estimated total diamond weight 0.30ct, H-I colour, P1 clarity.
Stamped 18ct.
Ring size O1/2. 3.5gms.
£300-400
(plus 27.6% BP*)

**580**

A brilliant-cut diamond three-row dress ring.
Total diamond weight 0.51ct, estimated H-I colour, VS-SI clarity.
Stamped 18K 750.
Ring size M1/2. 4.6gms.
£300-400
(plus 27.6% BP*)

**584**

A brilliant-cut diamond bracelet.
Estimated total diamond weight 1ct, H-I colour, VS clarity.
Stamped 18K.
Length 16.5cms. 14.8gms.
£600-900
(plus 27.6% BP*)

**588**

An 18ct gold brilliant-cut diamond cluster ring.
Estimated total diamond weight 0.20ct.
Hallmarks for Birmingham.
Ring size L. 2.8gms.
£150-200
(plus 27.6% BP*)

**592**

A vari-cut diamond, sapphire and ruby hinged ring.
Estimated total diamond weight 0.40ct, H-I colour, SI clarity.
Ring size P. 7gms.
£400-600
(plus 27.6% BP*)



593

An old-cut diamond single-stone pendant, suspended from a 9ct gold snake-link chain. Estimated principal diamond weight 0.35ct, I-J colour, P1 clarity. Chain with hallmarks for Sheffield. Length of pendant 1.5cms. Length of chain 48cms. Total weight 10.7gms. **£300-500** (plus 27.6% BP*)

**597**

An early 20th century gold sapphire, ruby and rose-cut diamond ring. Sapphire calculated weight 1.02cts, based on estimated dimensions 7.4 by 5.9 by 2.8mms. Ring size J1/2. 4.3gms. **£280-380** (plus 27.6% BP*)

**601**

A ruby and brilliant-cut diamond cluster ring. Principal ruby calculated weight 0.52ct, based on estimated dimensions of 5 by 5 by 2.6mms. Ring size O. 8.4gms. **£200-300** (plus 27.6% BP*)

**605**

A pair of cultured pearl and brilliant-cut diamond drop earrings. Approximate cultured pearl dimensions 10.8mms. Estimated total diamond weight 0.40ct, I-J colour, SI-P1 clarity. Stamped 800. Length 3.4cms. 13.6gms. **£280-380** (plus 27.6% BP*)

**594**

A mid 20th century platinum single-cut diamond bracelet. Estimated total diamond weight 1.50cts, predominantly H-I colour, SI1-P1 clarity. Length 16cms. 25.4gms. **£500-700** (plus 27.6% BP*)

**598**

A sapphire and brilliant-cut diamond ring. Sapphire calculated dimensions 1.33cts, based on estimated dimensions of 8 by 6.2 by 2.5mms. Estimated total diamond weight 0.60ct, H-I colour, VS2-S11 clarity. Stamped 750. Ring size L. 4gms. **£350-450** (plus 27.6% BP*)

**602**

A pave-set diamond dress ring. Estimated total diamond weight 0.35ct. Stamped 750. Ring size S1/2. 13.2gms. **£320-420** (plus 27.6% BP*)

**606**

A brilliant-cut diamond dress ring. Estimated total diamond weight 0.35ct, H-I colour, SI clarity. Ring size N. 10.3gms. **£300-400** (plus 27.6% BP*)

**595**

An 18ct gold ruby, synthetic ruby and vari-cut diamond pendant. Estimated total diamond weight 0.40ct. Hallmarks for Birmingham, 1986. Length 2.6cms. 3.6gms. **£150-200** (plus 27.6% BP*)

**599**

An 18ct gold pear-shape diamond single-stone ring. Diamond weight 1ct, marked to band, estimated G-H colour, P1-P2 clarity. Hallmarks for Birmingham, 2003. Ring size I. 2.8gms. **£600-800** (plus 27.6% BP*)

**603**

A ruby and brilliant-cut diamond pendant, suspended from a fancy-link chain. Estimated total diamond weight 0.90ct, H-I colour, P1 clarity. Chain stamped 750. Length of pendant 3.3cms. Length of chain 44cms. 15.5gms. **£400-500** (plus 27.6% BP*)

**607**

A late 19th century 18ct gold old-cut diamond cluster ring, with replacement band. Estimated total diamond weight 0.60ct, H-J colour, SI-P1 clarity. Stamped 18ct. Ring size O. 3.7gms. **£180-260** (plus 27.6% BP*)

**596**

An 18ct gold jade and single-cut diamond cluster ring. Approximate jade dimensions 13.2 by 10.8 by 7mms. Hallmarks for London. Estimated total diamond weight 0.20ct. Ring size N. 9.6gms. Jade untested. **£320-420** (plus 27.6% BP*)

**600**

An early 20th century 18ct gold old-cut diamond five-stone ring. Estimated total diamond weight 0.90ct, H-J colour, P1 clarity. Hallmarks for London, 1918. Ring size P. 5gms. **£400-600** (plus 27.6% BP*)

**604**

An early 20th century platinum cultured pearl and old-cut diamond negligee necklace. Estimated total diamond weight 0.30ct. Length of drop 3.2cms. Length of chain 36cms. 5.2gms. **£280-380** (plus 27.6% BP*)

**608**

An 18ct gold brilliant-cut diamond single-stone ring. Diamond weight 0.75ct, stamped to band, estimated H-I colour, P1-P2 clarity. Hallmarks for Birmingham. Ring size M. 2gms. **£300-400** (plus 27.6% BP*)



609

An early 20th century platinum emerald cabochon and old-cut diamond bow pendant, suspended from a later integral chain.

Emerald calculated weight 4.92cts, based on estimated dimensions of 13.2 by 10 by 5.6mms.
Estimated total diamond weight 0.60ct.
Length of pendant 4.5cms.
Length of chain 40cms. 8.4gms.

£400-600*(plus 27.6% BP*)***613**

A brilliant-cut diamond three-stone ring.
Estimated total diamond weight 0.60ct, H-I colour, SI2-P1 clarity.
Ring size L1/2.
2.8gms.

£250-350*(plus 27.6% BP*)***610**

An 18ct gold yellow sapphire and brilliant-cut diamond cluster ring.
Sapphire calculated weight 0.51ct, based on estimated dimensions of 4.5 by 4.5 by 3.15mms.
Total diamond weight 0.20ct, estimated H-I colour, VS-SI clarity.
Hallmarks for London, 2015.

Ring size N. 5.5gms.

£400-600*(plus 27.6% BP*)***614**

An 18ct gold curb-link necklace, with sapphire and emerald cabochon highlights.
Total sapphire weight 5.80cts, based on estimated dimensions of one sapphire 7.2 by 6 by 4mms.
Total emerald weight 5.10cts, based on estimated dimensions of one emerald on 7.6 by 6 by 5.1mms.

Hallmarks for Edinburgh, 2016.

Length 40cms. 59.8gms.

£1,600-2,200*(plus 27.6% BP*)***611**

A brilliant-cut diamond full eternity ring.
Estimated total diamond weight 1ct, H-I colour, SI clarity.
Ring size K1/2.
4gms.

£300-400*(plus 27.6% BP*)***615**

An 18ct gold sapphire and vari-cut diamond cluster ring.
Sapphire calculated weight 1.49cts, based on estimated dimension 8.2 by 6.8 by 3.6mms.
Estimated total diamond weight 0.90ct, G-H colour, VS1-SI1 clarity.
Import marks for London, 1988.

Ring size K1/2. 4.3gms.

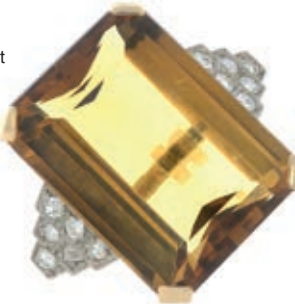
£600-800*(plus 27.6% BP*)***612**

A yellow sapphire and brilliant-cut diamond fancy bracelet.
Estimated total diamond weight 1.20cts.
Stamped 18ct, Italian marks.
Length 17cms. 32gms.

£750-950*(plus 27.6% BP*)***616**

A citrine and single-cut diamond dress ring.
Citrine calculated weight 36.53cts, based on estimated dimensions of 25 by 18.5 by 11mms.
Estimated total diamond weight 0.65ct, H-I colour, SI1-P1 clarity.

Ring size Q. 13.7gms.

£180-260*(plus 27.6% BP*)***617**

An 18ct gold sapphire and brilliant-cut diamond three-stone ring.
Sapphire calculated weight 1.43cts, based on estimated dimensions 7.5 by 6 by 3.8mms.

Estimated total diamond weight 0.40ct, J-K colour, VS2-SI1 clarity.

Hallmarks for London, 1979.

Ring size L1/2. 3.5gms.

£150-200*(plus 27.6% BP*)***621**

A 9ct gold brilliant-cut diamond single-stone ring.
Estimated diamond weight 0.50ct, H-I colour, P1 clarity.
Hallmarks for Birmingham.

Ring size P. 2.3gms.

£200-300*(plus 27.6% BP*)***618**

A pair of vari-cut diamond cluster earrings.

Estimated old-cut diamond weight 0.80ct.

Length 2cms. 7.5gms.

£400-600*(plus 27.6% BP*)***622**

An 18ct gold brilliant-cut diamond band ring.
Total diamond weight 0.55ct, estimated H-I colour, VS2-SI1 clarity.
Hallmarks for London, 2016.

Ring size L. 2.5gms.

£260-360*(plus 27.6% BP*)***619***

A sapphire and diamond ring.

Total sapphire weight 0.84ct, total diamond weight 0.14ct, stamped to band.

Stamped 750.

Ring size M. 3.4gms.

£360-460*(plus 27.6% BP*)***623**

A brilliant-cut diamond dress ring.
Estimated total diamond weight 0.80ct, principal diamonds estimated H-I colour, SI clarity.
Ring size N1/2.
3.2gms.

£300-400*(plus 27.6% BP*)***620**

A diamond cluster ring, with hinged band.

Estimated total diamond weight 2cts, tinted colour, SI1-P1 clarity.

Stamped 14K. Ring size M. 10.3gms.

£300-400*(plus 27.6% BP*)***624**

An 18ct gold pink sapphire and brilliant-cut diamond cluster bracelet.

Total sapphire weight 2.51cts.

Total diamond weight 1.51cts, estimated H-I colour, VS-SI clarity.

Hallmarks for Birmingham.

Length 16.5cms. 8.1gms.

£400-600*(plus 27.6% BP*)*

BP* - Buyer's Premium of 23% (plus VAT) or 27.6% (VAT included)

BP* - Buyer's Premium of 23% (plus VAT) or 27.6% (VAT included)

625

An 18ct gold brilliant-cut diamond single-stone ring.
Diamond weight 0.40ct, estimated H-I colour, SI-P1 clarity.
Hallmarks for London.
Ring size M. 2.7gms.
£200-300
(plus 27.6% BP*)

**629**

A brilliant-cut diamond three-stone ring.
Estimated total diamond weight 1.50cts, principal diamond estimated I-J colour, P1 clarity.
Ring size L1/2.
5.2gms.
£1,000-1,200
(plus 27.6% BP*)

**633**

A 1940s 9ct gold bi-colour bracelet.
Stamped 9CT.
Length 19.5cms.
44gms.
£500-700
(plus 27.6% BP*)

**637**

An 18ct gold brilliant-cut diamond single-stone ring, with pave-set diamond sides.
Principal diamond estimated 0.55ct, tinted colour, P1 clarity.
Hallmarks for Birmingham.
Ring size L1/2.
3.9gms.
£200-300
(plus 27.6% BP*)

**626**

An 18ct gold pave-set diamond half eternity ring.
Estimated total diamond weight 0.30ct.
Hallmarks for London, 2011.
Ring size M1/2.
2.5gms.
£180-260
(plus 27.6% BP*)

**630**

A mid 20th century old-cut diamond bracelet.
Estimated total diamond weight 1.25cts, H-J colour, VS2-SI1 clarity.
Length 16cms. 8.4gms.
£300-400
(plus 27.6% BP*)

**634**

A brilliant-cut diamond hinged bangle.
One diamond deficient.
Estimated total diamond weight 1.75cts.
Stamped 750.
Inner diameter 6cms. 12.5gms.
£500-700
(plus 27.6% BP*)

**638**

An emerald, ruby and vari-cut diamond spray brooch.
Principal emerald calculated weight 1.01cts, based on estimated dimensions of 7 by 5.8 by 3.4mms.
Estimated total single-cut diamond weight 0.30ct.
Length 8cms. 40gms.
£900-1,400
(plus 27.6% BP*)

**627**

An 18ct gold brilliant-cut diamond three-stone ring.
Total diamond weight 1ct, estimated H-I colour, SI1-P1 clarity.
Hallmarks for London, 2013.
Ring size N. 3.5gms.
£600-800
(plus 27.6% BP*)

**631**

An 18ct gold square-shape diamond half eternity ring.
Total diamond weight 0.96ct, stamped to band, estimated H-I colour, VS clarity.
Hallmarks for London, 2015.
Ring size N. 4.4gms.
£450-650
(plus 27.6% BP*)

**635**

An opal cabochon dress ring, with brilliant-cut diamond sides.
Estimated dimensions of opal 17.3 by 13.2 by 4.3mms.
Estimated total diamond weight 0.10ct.
Stamped 585.
Ring size N1/2. 4.6gms.
£280-380
(plus 27.6% BP*)

**639**

An 18ct gold tanzanite and diamond cluster ring.
Total diamond weight 0.29ct, stamped to band.
Hallmarks for Sheffield.
Ring size K. 4.5gms.
£250-350
(plus 27.6% BP*)

**628**

An early 20th century platinum opal and single and rose-cut diamond pendant, suspended from an integral fancy-link chain.
Estimated dimensions of opal 25 by 17 by 5.2mms.
Length of pendant drop 5.5cms. Length of necklace 41cms. 8.5gms.
£300-400
(plus 27.6% BP*)

**632**

A brilliant-cut diamond and ruby dress ring.
Estimated total diamond weight 1ct, I-J colour, P1 clarity.
Stamped 18ct.
Ring size N. 9.4gms.
£450-650
(plus 27.6% BP*)

**636**

An early 20th century 18ct gold opal three-stone ring, with old-cut diamond double spacers.
Hallmarks for Birmingham, 1919.
Ring size X1/2.
4.7gms.
£180-260
(plus 27.6% BP*)

**640**

An 18ct gold green tourmaline and vari-cut diamond cluster ring.
Tourmaline calculated weight 2.71cts, based on estimated dimensions 9.1 by 7.3 by 4.6mms.
Estimated total diamond weight 0.65ct, H-I colour, P1 clarity.
Hallmarks for London, 1981.
Ring size N1/2. 5.3gms.
£280-380
(plus 27.6% BP*)



641

A late 19th century gold split pearl and lapis lazuli bangle, with hinged plain reverse.
 Inner diameter 5cms. 17.6gms.
£250-350
(plus 27.6% BP)*

645

An early 20th century gold ruby and old-cut diamond three-stone ring.
 Ruby weight 0.68ct.
 Estimated total diamond weight 0.30ct, H-I colour, SI1-P1 clarity.
 Ring size L. 5.8gms.
£350-450
(plus 27.6% BP)*

649

A mid 20th century opal and circular-cut diamond cluster ring.
 Estimated total diamond weight 0.80ct, H-I colour, SI clarity.
 Stamped 18ct.
 Ring size L 1/2.
 6.3gms.
£300-400
(plus 27.6% BP)*

653

A pair of 18ct gold brilliant-cut diamond earrings.
 Estimated total diamond weight 1.40cts, H-I colour, SI2-P1 clarity.
 Hallmarks for London, 1992.
 Length 2cms. 12.6gms.
£350-450
(plus 27.6% BP)*

642

An 18ct gold brilliant-cut diamond and blue topaz earrings.
 Estimated total diamond weight 0.25ct.
 Hallmarks for Sheffield, 2004.
 Length 3.8cms. 7.7gms.
£200-300
(plus 27.6% BP)*

646

An 18ct gold ruby and brilliant-cut diamond dress ring.
 Ruby calculated weight 0.87ct, based on estimated dimensions 7 by 5.4 by 2.9mms.
 Total diamond weight 0.21ct, stamped to band.
 Hallmarks for London, 2012.
 Ring size N. 4.1gms.
£450-650
(plus 27.6% BP)*

650

A rectangular-shape aquamarine and brilliant-cut diamond dress ring.
 Aquamarine calculated weight 3.16cts, based on estimated dimensions of 9.9 by 8 by 5.7mms.
 Estimated total diamond weight 0.30ct.
 Stamped PLAT.
 Ring size N. 3.3gms.
£450-650
(plus 27.6% BP)*

654

A sapphire and brilliant-cut diamond cluster ring.
 Sapphire calculated weight 1.56cts, based on estimated dimensions 7.3 by 5.8 by 4.4mms.
 Estimated total diamond weight 0.55ct, H-I colour, SI2-P1 clarity.
 Stamped 750.
 Ring size O1/2. 5gms.
£300-400
(plus 27.6% BP)*

643

An early 20th century turquoise and old-cut diamond cluster ring.
 Estimated total diamond weight 1ct.
 Approximate dimensions of turquoise 6.6 by 5.2 by 3.5mms.
 Ring size G. 3.2gms.
£300-400
(plus 27.6% BP)*

647

A pair of drop earrings.
 Length 6cms. 5gms.
£250-350
(plus 27.6% BP)*

651

A sapphire and vari-cut diamond cluster ring.
 sapphire calculated weight 0.97ct, based on estimated dimensions of 6.7 by 5 by 2.7mms.
 Estimated total diamond weight 0.45ct.
 Stamped 18ct.
 Ring size N1/2. 4gms.
£280-380
(plus 27.6% BP)*

655

A sapphire single-stone pendant.
 Sapphire calculated weight 1.80cts, based on estimated dimensions of 9.2 by 6.5 by 3.6mms.
 Length 2cms. 1.9gms.
£180-260
(plus 27.6% BP)*

644

An 18ct gold vari-cut diamond 'Morse Code' ring.
 Estimated total diamond weight 0.55ct.
 Hallmarks for Edinburgh, 2002.
 Ring size N1/2.
 7.4gms.
£400-600
(plus 27.6% BP)*

648

An 18ct gold sapphire and circular-cut diamond dress ring.
 Hallmarks for Sheffield, 1987.
 Ring size N. 5.7gms.
£300-400
(plus 27.6% BP)*

652

A pair of 18ct gold ruby and pave-set diamond drop earrings.
 Hallmarks for Birmingham.
 Length 3.3cms. 8.7gms.
£200-300
(plus 27.6% BP)*

656

A sapphire and single-cut diamond bow brooch.
 Sapphire calculated weight 0.92ct, based on estimated dimensions of 8.4 by 4.3 by 2.6mms.
 Estimated total diamond weight 1.35cts.
 Length 4.6cms. 6.7gms.
£200-300
(plus 27.6% BP)*

BP* - Buyer's Premium of 23% (plus VAT) or 27.6% (VAT included)

BP* - Buyer's Premium of 23% (plus VAT) or 27.6% (VAT included)

657

A baguette-cut diamond half- eternity ring.
Estimated total diamond weight 1.30cts, H-I colour, VS clarity.
Stamped Plat.
Ring size M1/2. 7.6gms.
£700-1,000
(plus 27.6% BP*)

661

A pair of 18ct gold diamond bi-colour earrings.
Estimated total diamond weight 0.30ct, G-H colour, VS-SI clarity.
Hallmarks for London.
Diameter 1.7cms. 8.8gms.
£250-350
(plus 27.6% BP*)

665

An early 20th century platinum opal and diamond brooch.
Pin deficient.
Approximate opal dimensions 16.7 by 12.5 by 4.4mm.
Estimated total diamond weight 0.40ct.
Length 3.3cms. 4.9gms.
£300-400
(plus 27.6% BP*)

669

A pair of 18ct gold brilliant-cut diamond stud earrings.
Estimated total diamond weight 1.10cts, J-K colour, P1-P2 clarity.
Hallmarks for Edinburgh.
Diameter 0.6cm. 1.6gms.
£600-800
(plus 27.6% BP*)

658

A mid 20th century 18ct gold dog brooch, with circular-shape ruby collar and eye detail, and sapphire accent nose.
Length 3.8cms. 11.7gms.
£300-400
(plus 27.6% BP*)

662

An 18ct gold emerald and diamond dress ring.
Emerald weight 0.90ct.
Estimated total diamond weight 0.50ct, H-I colour, SI clarity.
Hallmarks for London, 2013.
Ring size N. 5.1gms.
£700-1,000
(plus 27.6% BP*)

666

A brilliant-cut diamond cross pendant, suspended from a curb-link chain.
Estimated total diamond weight 0.75ct.
Length of pendant 2cms.
Length of chain 43cms.
3.7gms.
£400-600
(plus 27.6% BP*)

670

A brilliant-cut diamond cluster ring.
Total diamond weight 1ct, marked to band, estimated I-J colour, SI1-P1 clarity.
Stamped 585.
Ring size N. 5gms.
£250-350
(plus 27.6% BP*)

659

A pair of brilliant-cut diamond drop earrings.
Estimated total diamond weight 1ct, I-J colour, SI2-P1 clarity.
Stamped 750.
Length 2.2cms. 2.9gms.
£800-1,200
(plus 27.6% BP*)

663

An 18ct gold diamond single-stone ring.
Estimated diamond weight 0.50ct, G+ colour, SI2-P1 clarity.
Hallmarks for Birmingham.
Ring size K1/2. 3.3gms.
£300-400
(plus 27.6% BP*)

667

An 18ct gold brilliant-cut diamond half eternity ring.
Estimated total diamond weight 1ct, H-I colour, VS-P1 clarity.
Hallmarks for Sheffield, 2018.
Ring size R. 5.6gms.
£300-400
(plus 27.6% BP*)

671

A brilliant-cut diamond and gem-set flamingo brooch.
Gems include ruby, emerald, sapphire and yellow sapphire.
Estimated total diamond weight 1ct.
Length 7.7cms. 31.9gms.
£2,500-3,000
(plus 27.6% BP*)

660

A single-cut diamond and emerald dress ring.
Estimated total diamond weight 0.15ct.
Stamped 750.
Ring size M1/2. 2.7gms.
£150-200
(plus 27.6% BP*)

664

A sapphire and single-cut diamond bracelet.
Total sapphire weight 4.83cts, based on estimated dimensions of one sapphire 6.1 by 5.9 by 4.5mm.
Estimated total diamond weight 0.10ct..
Length 16.7cms. 9.6gms.
£250-350
(plus 27.6% BP*)

668

An early 20th century 15ct gold split pearl hinged bangle.
Inner diameter 5.6cms. 11.4gms.
With fitted case.
£450-650
(plus 27.6% BP*)

672

A pair of old-cut diamond drop earrings.
Estimated total diamond weight 1.65cts.
Length 3cms. 4.7gms.
£320-420
(plus 27.6% BP*)

BP* - Buyer's Premium of 23% (plus VAT) or 27.6% (VAT included)

BP* - Buyer's Premium of 23% (plus VAT) or 27.6% (VAT included)

673

An 18ct gold square-shape diamond half eternity ring.
Estimated total diamond weight 0.25ct, H-I colour, SI clarity.
Hallmarks for Sheffield.
Ring size M. 3.8gms.
£150-200
(plus 27.6% BP*)

**677**

A brilliant-cut diamond pendant.
Estimated diamond weight 0.50ct, H-I colour, VS clarity.
Stamped 18K.
Length 2.4cms.
6.2gms.
£400-600
(plus 27.6% BP*)

**681**

A pair of 18ct gold oval-shape aquamarine and old-cut diamond earrings.
Aquamarine calculated weights 2.36cts and 2.48cts, based on estimated dimensions 10.8 by 8 by 4.8mms and 10.6 by 8.2 by 5mms respectively.
Estimated total diamond weight 0.50ct, H-I colour, P1 clarity.
Hallmarks for Sheffield.
Length 1.6cms. 4gms.
£220-320
(plus 27.6% BP*)

**685**

A sapphire and brilliant-cut diamond cluster ring.
Sapphire calculated weight 1.80cts, based on estimated dimensions of 9.7 by 6.6 by 3.8mms.
Estimated total diamond weight 1.20cts, H-I colour, SI clarity.
Ring size O. 5.3gms.
£400-600
(plus 27.6% BP*)

**674**

A baguette and pave-set diamond hinged bangle.
Estimated total diamond weight 1ct, G-H colour, VS clarity.
Italian marks, stamped 750.
Inner diameter 5.8cms. 26.9gms.
£650-850
(plus 27.6% BP*)

**678**

A brilliant-cut diamond single-stone ring, with baguette-cut shoulders.
Principal diamond estimated weight 0.45ct, H-I colour, VS2-SI1 clarity.
Stamped 750.
Ring size J. 2.4gms.
£180-260
(plus 27.6% BP*)

**682**

A 14ct bi-colour gold square-shape diamond bracelet.
Estimated total diamond weight 2.50cts.
Hallmarks for Edinburgh.
Length 21cms. 18.3gms.
£500-700
(plus 27.6% BP*)

**686**

A pair of old-cut diamond floral cluster earrings.
Estimated total diamond weight 2.40cts, H-I colour, SI2-P1 clarity.
Length 1.3cms. 5.1gms.
£400-600
(plus 27.6% BP*)

**675**

A synthetic ruby and old-cut diamond bracelet.
Estimated total diamond weight 1.10cts, predominantly I-J colour, SI1-P1 clarity.
Length 16cms. 9.6gms.
£350-450
(plus 27.6% BP*)

**679**

A mid Victorian gold rose-cut diamond shield pendant, circa 1870s, suspended from a later 9ct gold chain.
Pendant with registry mark circa 1870s. Chain with import marks for London, 1979.
Length of pendant 4cms.
Length of chain 50cms.
Total weight 6.7gms.
£180-260
(plus 27.6% BP*)

**683**

A platinum rectangular-shape diamond ring, with pave-set diamond surround and sides.
Total diamond weight 0.77ct, stamped to band, H-I colour, SI clarity.
Hallmarks for London.
Ring size L. 5.9gms.
£300-400
(plus 27.6% BP*)

**687**

An emerald and brilliant-cut diamond three-stone ring.
Emerald calculated weight 0.22ct, based on estimated dimensions of 4.1 by 4 by 2.2mms.
Estimated total diamond weight 0.20ct.
Ring size L. 2.5gms.
£300-400
(plus 27.6% BP*)

**676**

A brilliant-cut diamond jewellery set, to include a 9ct gold necklace and 9ct gold bracelet, with matching ring and earrings.
Estimated total diamond weight 0.25ct.
Two with import marks for Birmingham, 1979.
Total weight 17.6gms.
£200-300
(plus 27.6% BP*)

**680**

An aquamarine and brilliant-cut diamond cluster ring.
Aquamarine calculated weight 1.20cts, based on estimated dimensions of 9.1 by 6.8 by 3.9mms.
Estimated total diamond weight 0.80ct.
Stamped PLAT and 18CT.
Ring size P. 3.6gms.
£650-850
(plus 27.6% BP*)

**684**

An 18ct gold fancy-link bracelet, with circular garnet cabochon clasp.
Signed Chiampesan
Import marks for Edinburgh, 1996.
Length 19cms. 47.2gms.
£1,000-1,500
(plus 27.6% BP*)

**688**

A pair of emerald and vari-cut diamond drop earrings.
Estimated total diamond weight 1.30cts, H-I colour, P1 clarity.
Length 4.5cms. 7gms.
£200-300
(plus 27.6% BP*)



689

An 18ct gold ruby and brilliant-cut diamond cluster ring. Ruby calculated weight 1.38cts, based on estimated dimensions of 8.3 by 6 by 3.3mms. Estimated total diamond weight 1ct, G-H colour, VS clarity. Hallmarks for Birmingham. Ring size O. 7.4gms. **£900-1,400** (plus 27.6% BP*)

**693**

A two-stone vacant pear-shape mount and vari-cut diamond pendant, suspended from a chain. Length of largest drop 3.7cms. Length of chain 40cms. 3.6gms. With case. **£150-200** (plus 27.6% BP*)

**697**

A mid 20th century 9ct gold enamel tiepin, depicting the 'Iraq Petroleum Company' motif, by Garrard & Co. Maker's marks for Garrard & Co. Hallmarks for Birmingham, 1957. Length 6.2cms. 8.9gms. With maker's case. **£150-200** (plus 27.6% BP*)

**701**

A gentleman's palladium fancy band ring. Swiss convention marks. Ring size T. 10.2gms. **£400-600** (plus 27.6% BP*)

**690**

A vari-cut diamond dress ring. Estimated total diamond weight 2.75 to 3cts, H-I colour, SI2-P1 clarity. Ring size O1/2. 10.2gms. **£400-600** (plus 27.6% BP*)

**694**

A pendant mount, with opal highlight, on an integral chain. Length of pendant drop 4.3cms. Length of chain 42cms. 3.9gms. **£150-200** (plus 27.6% BP*)

**698**

A mid 20th century 18ct gold enamel tiepin, depicting the 'Iraq Petroleum Company' motif, by Asprey & Co. Maker's marks for Asprey & Co. Hallmarks for Birmingham, 1964. Length 6.3cms. 9.4gms. With maker's case. **£300-400** (plus 27.6% BP*)

**702**

A gentleman's palladium openwork band ring. Swiss convention marks. Ring size T. 8.3gms. **£300-400** (plus 27.6% BP*)

**691**

An 18ct gold brilliant-cut diamond cluster ring. Total diamond weight 1ct, stamped to band, estimated H-I colour, P1 clarity. Import marks for Birmingham. Ring size P. 5.2gms. **£250-350** (plus 27.6% BP*)

**695**

A jade carving of a tiger. Length 7.8cms. Total weight 122.6gms. **£800-1,200** (plus 27.6% BP*)

**699**

Twelve late 19th to early 20th century mostly gem-set stick pins. To include a sword, seed pearl horseshoe, turquoise knot, together with other variously designed stick pins. Length of stick pin heads 0.7 to 2.2cms. Total weight 22.2gms. **£200-300** (plus 27.6% BP*)

**703**

A pair of 18ct gold enamel cufflinks, by Chopard. Signed Chopard, 75/1860 2751990. Swiss convention marks. Diameter of cufflink face 1.5cms. 15.7gms. With maker's case. **£300-400** (plus 27.6% BP*)

**692**

A two-row cultured pearl necklace, with diamond push-piece clasp. Approximate cultured pearl dimensions 8.7mms. Estimated total diamond weight 1ct. Length 58cms. **£200-300** (plus 27.6% BP*)

**696**

A 'Trinity' tie clip, by Cartier. Signed Cartier, 747242. Stamped 750. Length 6.1cms. 12.6gms. **£400-600** (plus 27.6% BP*)

**700**

A gentleman's brilliant-cut diamond single-stone ring. Estimated diamond weight 1ct, H-I colour, P2-P3 clarity. Stamped 14K. Ring size T1/2. 10.4gms. **£400-600** (plus 27.6% BP*)

**704**

A pair of early 20th century 18ct gold cufflinks, with initial monogram. Hallmarks for Chester, 1917, partially indistinct. Length of cufflink face 1.8 and 1.4cms. 14.1gms. **£300-400** (plus 27.6% BP*)



IMPORTANT NOTICES FOR PURCHASERS

IMPORTANT NOTICE TO PROSPECTIVE BUYERS OF GEMSTONES/JEWELS

We recommend that you view any items you intend to purchase as refunds will not be given for buyer's remorse. This doesn't affect your statutory rights.

Notes 1 - Coloured Gemstones

Purchasers are advised that whilst great care has been taken in the examination of gemstones, it is not possible to test every gemstone within the constraints of time and equipment available outside of laboratory conditions. Any gemstone not provided with a laboratory report has been assessed by Fellows within the limitations of any mounting and an opinion has been given where possible.

Historically, many coloured gemstones have been subjected to a variety of treatments designed to enhance their appearance. Certain enhancement methods, such as heating, are routinely used to alter aspects of rubies, sapphires, and other gemstones. Oiling is often undertaken to enhance the clarity of emeralds. The international jewellery trade has generally accepted these and other enhancement methods. Some treatments are permanent whereas others may only be semi-permanent, possibly requiring further re-treatment in order to retain their appearance.

Because of the widespread variety of treatments within the jewellery industry, prospective purchasers should assume that all gemstones will have been treated unless statements are made to the contrary. Gemmological reports from internationally recognised Gemmological Laboratories will be noted in the item description where available.

Note 2 - Diamonds

Advancements in technology have led to some diamonds being treated in a number of ways, all designed to improve their appearance or alter their colour. Processes include but are not necessarily limited to: fracture filling, laser drilling, a combination of drilling and filling, HPHT treatment, irradiation and various coatings. Buyers are also alerted to the fact that synthetic diamonds are now produced in large quantities. Whilst every effort is made to identify or disclose treated and synthetic goods, it is not possible for Fellows to guarantee that all diamond set lots do not contain such material.

Fellows do not knowingly offer treated diamonds for sale, unless a gemmological opinion disclosing the type of treatment has been obtained and the treatment would be stated within the item description.

Note 3 – Weights and Measures

Estimated Diamond weights, colours and clarities (see Notes on Diamond Grading terms opposite) given by Fellows are intended as guides for prospective purchasers, with the given limitations of mounts and settings, and are opinions only, not guaranteed by Fellows.

Weights of coloured gemstones offered are extrapolated on the estimated dimensions, using trade standard formulae. Due to the traditional cutting techniques for coloured gemstones it is possible there may be discrepancy between the stated estimate and the unmounted weight.

Fellows uses a Thermo Scientific Nitron Handheld XRF Analyser to test metals.

This technology is limited to examining metal to a depth of approximately 8 microns. Fellows does not guarantee the standard of gold or platinum unless an item is hallmarked. Results from electronically tested items should only be used as a guide and with caution, as false readings are possible.

Lengths and weights provided are estimates only.

The information stated in reports is the opinion of the respective laboratory and is not necessarily the opinion of Fellows auctioneers.

Note 4 – Condition Reports

Statements in the catalogue regarding the condition of lots in this sale may appear in the description, however, the absence of such a reference does not imply a lack of damage or wear, or lack of any further faults within the piece.

Please note that Fellows offer condition reports on almost every lot offered. Our condition reports are the opinion of Fellows and should only be referenced as a guide. We highly recommend that a prospective buyer views in person or sends a representative to satisfy themselves to the condition, originality and suitability of a piece(s) before bidding.

Our lots are almost exclusively antique or secondhand and as such should be expected to have small signs of wear and use commensurate with the age of the piece.

Diamond Grading Terms

DIAMOND COLOUR

GIA	OLD WORLD TERMS	EXPLANATION	GIA	OLD WORLD TERMS	EXPLANATION
D	Finest White (Jager)	Colourless	K	Silver Cape (Top Cape)	Traces of colour. Small stones in this range will 'face up' colourless when mounted but larger stones will be tinted.
E	Finest White (River)	Colourless	L	Silver Cape (Top Cape)	Traces of colour. Small stones in this range will 'face up' colourless when mounted but larger stones will be tinted.
F	Fine White (River)	Colourless	M	Light Cape (Cape)	Traces of colour. Small stones in this range will 'face up' colourless when mounted but larger stones will be tinted.
G	Fine White (Top Wesselton)	Near Colourless: diamonds 'face up' colourless. Slight traces of colour will not be apparent in the mounted stones to other than the trained eye.	N	Light Cape (Low Cape)	Diamonds graded N through Z+ display a yellowish tint even to the untrained eye.
H	White (Top Wesselton)	Near Colourless: diamonds 'face up' colourless. Slight traces of colour will not be apparent in the mounted stones to other than the trained eye.	P	CAPE O - R (Very Light Yellow)	Diamonds graded N through Z+ display a yellowish tint even to the untrained eye.
I	White (Top Wesselton)	Near Colourless: diamonds 'face up' colourless. Slight traces of colour will not be apparent in the mounted stones to other than the trained eye.	Z	Cape R- Z (Very Light Yellow)	Diamonds graded N through Z+ display a yellowish tint even to the untrained eye.
J	Top Silver (Top Wesselton)	Near Colourless: diamonds 'face up' colourless. Slight traces of colour will not be apparent in the mounted stones to other than the trained eye.	Z+	Fancy Yellow	Diamonds graded N through Z+ display a yellowish tint even to the untrained eye.

DIAMOND CLARITY

GIA	OLD WORLD TERMS	EXPLANATION	GIA	OLD WORLD TERMS	EXPLANATION
IF	Internally Flawless	No inclusions visible with a 10x lens even to an experienced grader	Sit & S12	Slightly Included	Noticeable inclusions visible with a 10x lens.
VS1 & VS2	Very Very Slightly Included	Minute inclusions, which are difficult, even for experienced graders, to see with a 10x lens.	I1, 12 & 13	Pique 1, 2 & 3 & 13	Obvious inclusions, may be visible to the unaided eye, face up. In 13 they may affect the stone's durability.
VS1 & VS2	Very Slightly Included	Minor inclusions, observable with effort with a 10x lens.			

Live Auctions

April	Pawnbrokers Jewellery & Watches	Thursday 2nd at 11am*
	Jewellery	Thursday 9th at 10am
	The Watch Sale	Monday 20th at 11am
	Jewellery & Pawnbroker Jewellery	Thursday 23rd at 10am
May	The Designer Collection	Monday 4th at 11am
	Pawnbrokers Jewellery & Watches	Thursday 7th at 11am*
	Watches	Monday 11th at 10am
	Fine Jewellery	Thursday 14th at 11am
	Pawnbrokers Jewellery & Watches	Thursday 21st at 11am*
Jewellery	Thursday 28th at 10am	

Timed Auctions**

Online Jewellery & Costume Jewellery	Ends Friday 24th April from 10am
Online Watches & Watch Accessories	Ends Tuesday 12th May from 10am
Online Jewellery Timed Auction	Ends Thursday 21st May from 10am

* Please note that there will be only one viewing day for this sale, visit our website for more information.

** Please note that this auction is a timed sale hosted by Fellows Live, more information can be found on our website.

Dates are subject to change, please check the website for the definitive auction list.

Fellows recommend that all bidders and buyers read our conditions of buying and buyer's premium available on our website.

For further information please contact:

Jewellery

David Pregon
david@fellows.co.uk
0121 212 2131

Watches

Laura Bishop
laurab@fellows.co.uk
0121 212 5506

Silver & Coins

Alison Jakeway
alisonj@fellows.co.uk
0121 212 2131

Antiques & Fine Art

Kevin Jackson
kevin@fellows.co.uk
0121 212 2131

Previous Auction Results



To view results from our previous auctions
please register or sign in to your Fellows account at
www.fellows.co.uk
and view our auction archive via the search bar
or a hard copy by request.

Jewellery



As well as offering 0% bidding surcharge via **Fellows Live** we are also delighted to announce that our offer of **free** worldwide shipping has been extended into the New Year. Please read the terms and conditions* of this offer carefully before proceeding.

Please note that any lot displaying the free shipping icon will be eligible for free shipping.

If the free shipping icon isn't displayed then normal shipping costs will apply.

*Terms & conditions for the offer:

- Due to the size and vulnerability of the items in our Antiques, Silver & Collectables auction, we are unable to post the majority of items. Please speak to a member of the team before bidding.
- Due to the size and weight of the bags in our Costume Jewellery and Online Watches & Watch Accessories auctions, we are unable to post the majority of these free of charge. Please speak to a member of the team before bidding, you will be contacted after the sale with a shipping quote.
- Buyer is responsible for all customs / import charges levied against the parcel.
- Buyer is responsible for any and all import restrictions in their country / state.
- Payment is required within two working day following the auction.
- Fellows Auctioneers Ltd does not accept payment by American Express.

Fellows
Established 1876

Fellows
Established 1876



At our London office, we offer valuations for jewellery, watches and handbags as well as viewing days for upcoming auctions.

For more information please contact our London office on 020 7127 4198 or london@fellows.co.uk
29 Charles Street, Mayfair, London, W1J 5DT

Fellows Auctioneers Ltd Terms and Conditions

Fellows Auctioneers Ltd carries on business, including the conduct of Auctions, on the following general conditions. This includes business with Bidders, Buyers, Vendors, consignors, users of this website, and with all those present on the Premises prior to or in connection with an Auction (all as hereinafter defined).

1. INTRODUCTION

1.1 The following defined terms are used in these Conditions:

“Auction” means any Auction conducted by Fellows, either at their premises or elsewhere (including any internet-based auctions);

“Auctioneer” means Fellows or its authorised Auctioneer, as appropriate;

“Bidder” means a bidder at an Auction, including bidders personally present at the venue and those bidding by telephone or over the internet or otherwise;

“Buyer” means the bidder whose bid was the last bid when the Auctioneer brings down the hammer;

“Conditions” means these terms and conditions;

“Consigned Property” means the items consigned by the Vendor to Fellows for offer at an Auction;

“Deliberate Forgery” means an imitation made with the intention of deceiving as to authorship, origin, date, age, period, culture or source but which is unequivocally described by Fellows in the catalogue as being the work of a particular creator and which at the date of the sale had a value materially less than it would have had if it had been in accordance with the description;

“Fellows” means Fellows Auctioneers Ltd;

“Hammer Price” means the level of bidding reached (at or above any reserve) when the Auctioneer brings down the hammer;

“Includes” means “includes but not limited to”, and

“including” means “including but not limited to”

“Lot” means any Consigned Property accepted by Fellows for offer at Auction;

“Stated Rate” means Fellows’ published rates of commission for the time being and value added tax thereon (also available on request);

“Terms of Consignment” means any stipulated terms and rates of commission on which Fellows accepts instructions from Vendors (or their agents);

“Total Amount Due” means the Hammer Price in respect of the Lot sold together with any premium, commission, value added tax chargeable and any additional charges payable by a defaulting Buyer under these Conditions;

“Vendor” means the vendor of an item (including Consigned Property) which is submitted to Fellows for offer for sale at an Auction;

“Website” means this website;

“You” means any user of the Website.

2. WEBSITE

2.1 You may access most areas of the Website without registering your details with us. Certain areas of the Website are only open to you if you register. By accessing any part of the Website, you shall be deemed to have accepted these Conditions notice in full. If you do not accept this legal notice in full, you must leave the Website immediately.

2.2 Fellows may revise these Conditions at any time by updating this posting. You should check the

Website from time to time to review the then current legal notice, because it is binding on you. Certain provisions of this legal notice may be superseded by expressly designated legal notices or terms located on particular pages at the Website.

2.3 Unless otherwise stated, the copyright and other intellectual property rights in all material on the Website (including without limitation photographs and graphical this legal notice, your permission to use the Website automatically terminates and you must immediately destroy any downloaded or printed extracts from the Website.

2.4 No part of the Website may be reproduced or stored in any other website or included in any public or private electronic retrieval system or service without Fellows’ prior written permission.

2.5 Any rights not expressly granted in these Conditions are reserved.

3. VISITOR MATERIAL AND CONDUCT

3.1 Other than personally identifiable information, which is covered under our Privacy Policy, any material you transmit or post to the Website shall be considered nonconfidential and non-proprietary. Fellows shall have no obligations with respect to such material. Fellows and its designees shall be free to copy, disclose, distribute, incorporate and otherwise use such material and all data, images, sounds, text and other things embodied therein for any and all commercial or non-commercial purposes.

3.2 You are prohibited from posting or transmitting to or from the Website any material: that is threatening, defamatory, obscene, indecent, seditious, offensive, pornographic, abusive, liable to incite racial hatred, discriminatory, menacing, scandalous, inflammatory, blasphemous, in breach of confidence, in breach of privacy or which may cause annoyance or inconvenience; or for which you have not obtained all necessary licences and/or approvals; or which constitutes or encourages conduct that would be considered a criminal offence, give rise to civil liability, or otherwise be contrary to the law of or infringe the rights of any third party, in any country in the world; or which is technically harmful (including, without limitation, computer viruses, logic bombs, Trojan horses, worms, harmful components, corrupted data or other malicious software or harmful data).

3.3 You may not misuse the Website (including, without limitation, by hacking).

3.4 Each registration is for a single user only. Fellows does not permit you to share your user name and password with any other person nor with multiple users on a network.

3.5 Responsibility for the security of any passwords issued rests with you.

4. THE VENDOR

4.1 Fellows shall act as agent of the Vendor only. Any contract for the sale of a Lot will be formed between the Vendor and the Buyer.

4.2 The Vendor warrants and represents to Fellows and the Buyer that the Vendor is the sole and true owner of the Consigned Property or is properly authorised by the sole and true owner to consign it for sale

and is able to transfer good and marketable title to the property free from any third party claims. The Vendor warrants and representatives that the Vendor has revealed all pertinent information that the Vendor possesses about the items, including in relation to any repairs or alterations that may have been carried out. The Vendor shall indemnify Fellows and the Buyer against any loss and expense caused by any breach of this clause 4.2.

4.3 The Vendor shall be entitled to place prior to the Auction a reserve on any Lot, being the minimum Hammer Price at which Lot may be sold. Reserves must be reasonable and Fellows may decline to offer goods which in Fellows’ opinion would be subject to an unreasonably high reserve (in which case goods carry the storage and insurance charges stipulated in the terms of consignment). Reserves will not be accepted on items with a bottom estimate less than £300. The Auctioneer also reserves the right not to accept items which they deem to be unsuitable for Auction. Any estimate given shall be an opinion and is not an undertaking of any kind.

4.4 A reserve once set cannot be changed except with the written prior consent of Fellows.

4.5 Where a reserve has been placed only Fellows may bid on behalf of the Vendor.

4.6 The Vendor authorises Fellows to deduct commission from any sold items at a rate of 15% (plus VAT) on any item with a hammer price of £3,000 (or under) or 12.5% (plus VAT) on items over £3,000. Loss or liability for damage will be charged at a rate of 1.5% (plus VAT) calculated on the hammer price. A Marketing fee of £10 (plus VAT) will be charged for each Lot, if unsold we will charge a nominal handling fee of £5 (plus VAT). All items below £35 are subject to a minimum fee of £5 (plus VAT) per Lot.

4.7 Fellows will pay the Hammer Price achieved for the Lot (less its commission and applicable fees in accordance with clauses 4.6, 9.2 and 9.3), to the Vendor on receipt of payment of the Total Amount Due in full by the Buyer.

4.8 The Vendor authorises Fellows in their discretion to negotiate a sale by private treaty in the case of a Lot unsold at Auction, in which case the same charges will be payable as if the Lot had been sold at Auction.

4.9 Fellows do not themselves undertake the collection of any items but may, as the Vendor’s agent, instruct a contractor on behalf of the Vendor. Fellows accepts no liability for the actions of such contractor who contracts with the Vendor direct.

4.10 Fellows disclaims all liability for items delivered to their saleroom without sufficient sale instructions, and reserves the right to make a minimum warehousing charge of [£1.00] per item per day. Unsold items are subject to the same charges if the Vendor does not remove them within a reasonable time of notification. If not removed within three weeks Fellows reserves the right to sell the items and defray charges from any net proceeds of sale or at the Vendor’s expense to consign them to the local authority for disposal. Fellows disclaims any liability for default by the Buyer or for paying out the Vendor before receiving payment by the Buyer.

4.11 Subject to clause 4.9, Fellows holds all items on their premises and in their custody covered against the risks of fire, burglary and water damage on the scale of charges notified in the terms of

consignment and payable by the Vendor up to the date of any sale and (in Fellows’ discretion) the Buyer thereafter until collection.

4.12 The right of Fellows to bid on behalf of the Vendor is expressly reserved. The Vendor acknowledges that Lots are sold subject to the stipulations of these Conditions in their entirety and on the Terms of Consignment as notified to consignors at the time of the entry of the Lot.

4.13 The Auctioneer reserves the right to dispose of any item that in their opinion is unsaleable. Items, including electrical goods and soft furnishings, which do not comply with current legislation will not be offered at Auction.

4.14 Any items unsold after an Auction will be reoffered in a subsequent Auction at a reduced reserve to be agreed within seven days. The Auctioneer may request the removal of an item if a reduced price cannot be agreed; items not removed within 14 days will be subject to a storage charge.

4.15 A charge of 10% (plus VAT) based on the middle estimate – plus any other charges incurred – may be levied for any Lot withdrawn by the Vendor from offer at an Auction. If the item has to be returned by post (or any other method) the Vendor will be responsible for this charge. These charges are to be paid before the item is returned.

4.16 By submitting the item to Fellows for offer at Auction, the Vendor agrees to the Terms of Consignment and authorises Fellows to deduct the specified charges.

5. PUBLICITY

5.1 Any catalogue and buyer guides are provided for information only and do not form part of these Conditions. The catalogue and the buyer guides may contain additional terms and conditions.

5.2 Fellows reserve the right to use any photographs, background information, and research for publicity purposes both before and after the sale.

6. THE AUCTION

6.1 Any Auction shall be conducted at the absolute discretion of the Auctioneer.

6.2 The Auctioneer shall conduct the Auction with reasonable skill and care. For example, what constitutes a bid shall be at the absolute discretion of the Auctioneer, acting with reasonable skill and care.

6.3 The Auctioneer shall have the right to refuse any bid which does not exceed the previous bid by at least 10% or by such greater proportion as the Auctioneer shall in his or her absolute discretion direct.

6.4 Where two or more bids at the same level are simultaneously received by the Auctioneer, the Auctioneer at his absolute discretion shall determine which bid to prefer. Subject to the foregoing, where two or more bids at the same level are simultaneously received by the Auctioneer, any bid by a Bidder personally present at an Auction shall take preference over any bid submitted by telephone or over the internet. Any bid made or attempted by telephone or over the internet shall be deemed to have been made only if received by the Auctioneer.

6.5 Fellows shall have the right, at its absolute discretion, to refuse admission to its premises or attendance at (or participation in) any Auction by any person.

7. BIDDERS
- 7.1 Bidders may be required to register their particulars. Bidders attending in person may be required to satisfy Fellows' security arrangements before entering any part of the premises to view or bid.
- 7.2 You accept full liability for all bids submitted via your My Fellows account. Once a bid has been made by a Bidder on our website, the bid can be lowered or increased up until 9am on the day of the auction. You must sign into your My Fellows account to do this and you will receive an email confirmation for any changes made. Should a bid be placed in error on the website you must contact Fellows immediately. Failure to contact Fellows before the auction takes place will result in liability for the full payment of the item.
- 7.3 Bidders using the live bidding facility on www.fellows.co.uk are agreeing to the terms and conditions of sale for Fellows. Any successful bids using the live bidding facility will be subject to the usual Buyer's Premium, plus VAT.
- 7.4 Subject to clause 6.3, the highest Bidder at the Hammer Price shall be the Buyer. Any dispute about a bid shall be settled at the Auctioneer's absolute discretion.
- 7.5 Bidders are strongly encouraged to attend the Auction in person. Bidders shall be responsible for any decision to bid for a particular Lot and shall be deemed to have carefully inspected and satisfied themselves as to its condition. Neither Fellows nor its employees or agents shall be responsible for any neglect or default in doing or failing to do so.
- 7.6 Bidders are given ample opportunities to view and inspect before any sale and prospective Buyers must satisfy themselves as to all such matters. Neither Fellows or its employees or agents nor the Vendor accept liability for the correctness of such opinions and all conditions and warranties, express, implied or statutory are hereby excluded.
8. THE BUYER
- 8.1 Immediately a Lot is sold, the Buyer shall:
- (a) give to Fellows their name and address and, if requested proof of identity, and
- (b) pay to Fellows the Total Amount Due.
- 8.2 [Fellows may, at its absolute discretion, agree credit terms with the Buyer before an Auction under which the Buyer may be entitled to take possession of Lots up to an agreed value in advance of payment by a stipulated future date of the Total Amount Due.]
- 8.3 Cheques shall not be acceptable by Fellows (unless Fellows in its absolute discretion permits payment by such method) nor are third party references or credit facilities with other Auction houses. If a cheque is tendered Fellows reserves the right to instruct its bank to check the Buyer's status and account balance before exercising any discretion. Any credit arrangement must be settled at least 4 days before the relevant sale. Any permitted payment by credit card shall carry an extra charge to the Buyer of such percentage of the Total Amount Due as is displayed on the premises.
- 8.4 Any payments by a Buyer to Fellows may be applied by Fellows towards any sums owing from that Buyer to Fellows on any account whatever without regard to any directions of the Buyer or his agent, whether express or implied.
9. THE PURCHASE PRICE
- 9.1 On the first £100,000 of the Hammer Price (of any individual Lot) the buyer will pay the Hammer Price and a premium of 23% (Plus VAT). The said premium not being negotiable and payable by ALL Buyers. The Vendor authorises Fellows to retain beneficially the premium payable by Buyers. Value Added Tax is charged at the rate prevailing by law at the date of sale.
- 9.2 On the excess over £100,000 of the Hammer Price (of any individual Lot), the Buyer will pay the Hammer Price and a premium of 15% (plus VAT). The said premium not being negotiable and payable by ALL Buyers. The Vendor authorises Fellows to retain beneficially the premium payable by Buyers. Value Added Tax is charged at the rate prevailing by law at the date of sale.
- 9.3 Value Added Tax on the Hammer Price is imposed on all items affixed with an asterisk thus - *.
- 9.4 Buyers using the Fellows Live bidding platform will not pay any additional commission, just the buyer's premium. Buyers will pay an additional commission charge of 4.95% + VAT of the hammer price if lots are successfully purchased online via the-saleroom. Buyers using Easy Live Auction can choose whether to pay a live bidding charge of 3% + VAT of the hammer price, or a fixed fee of £3 per sale. Buyers will pay a commission charge of an additional 5% + VAT of the hammer price if lots are successfully purchased online via Live Auctioneers.
- 9.5 Non UK or EU VAT registered buyers can have most classes of VAT refunded on their purchases - please note that auctioneers are under no obligation to provide VAT refunds, although many will offer this service. HMRC are the ultimate refunding authority. VAT refunds are subject to provision of statutory export/import documentation. HMRC have decreed that VAT on buyer's premium is always payable whether the buyer is domiciled in the UK, the EU or outside the EU or wherever the goods are to be sent. So auctioneers cannot refund VAT on buyer's premium if the goods are sold under normal VAT rules.
10. TITLE AND COLLECTION OF PURCHASES
- 10.1 The ownership of any Lot purchased shall not pass to the relevant Buyer until they have made payment in full to Fellows of the Total Amount Due.
- 10.2 Buyers shall at their own risk and expense take away any Lot that they have purchased and paid for not later than 2 working days following the day of the Auction after which they shall be responsible for any removal, storage and insurance charges.
11. DEFAULT BY BUYER OR VENDOR
- 11.1 As Fellows act as agent for the Vendor, Fellows is not responsible for default by the Vendor or the Buyer.
- 11.2 If any Lot is not paid for in full and taken away in accordance with these Conditions, or if there is any other breach of these Conditions, Fellows as agent for the Vendor shall at its absolute discretion and without prejudice to any other rights it may have, be entitled to exercise all or any of the following rights and remedies:
- (a) to proceed against the Buyer for an action for debt or damages for breach of contract;
- (b) to rescind the sale of that Lot and/or any other Lots sold by Fellows to the defaulting Buyer;
- (c) to re-sell the Lot by Auction or private treaty. If a lower Hammer Price is achieved on the re-sale than that achieved on the original sale the defaulting Buyer shall be liable for the difference (after crediting any part payment and adding any re-sale costs). Fellows will account to the Vendor for any surplus achieved on a re-sale, however, it shall only be required to account to the Vendor for any resulting deficiency in the event that it receives payment of such sum in full from the defaulting Buyer.
- (d) to remove, store and insure the Lot at the expense of the defaulting Buyer and, in the case of storage, either at Fellows' premises or elsewhere;
- (e) to charge interest at a rate not exceeding [1.5%] per month on the total amount due to the extent it remains unpaid for more than 2 working days after the sale;
- (f) to retain that or any other Lot sold to the defaulting Buyer until that Buyer pays the total amount due;
- (g) to reject or ignore bids from the defaulting Buyer at future Auctions or to impose conditions before any such bids shall be accepted;
- (h) to apply any proceeds of sale of other Lots due or in future becoming due to the defaulting Buyer towards the settlement of the total amount due and to exercise a lien on any of the Buyer's property in Fellows' possession for any purpose.
12. DELIBERATE FORGERIES
- 12.1 Subject to clause 12.2, any representation or statement by Fellows (including in any catalogue) as to authorship, genuineness, origin, date, age, provenance, condition or estimated selling price is a statement of opinion only. Prospective Buyers are given ample opportunities to view and inspect before any sale and prospective Buyers must satisfy themselves as to all such matters. Neither Fellows or its employees or agents nor the Vendor accept liability for the correctness of such opinions and all conditions and warranties, express, implied or statutory are hereby excluded.
- 12.2 Any Lot which proves to be a Deliberate Forgery may be returned to Fellows by the Buyer within 21 days of the Auction provided it is in the same condition as when bought, and is accompanied by particulars identifying it from the relevant catalogue description and a written statement of defects. If Fellows is satisfied from the evidence presented that the Lot is a Deliberate Forgery Fellows shall refund the money paid by the Buyer for the Lot (but not the amount of any consequential loss, damages, expenses or interest) provided that (1) if the catalogue description reflected the accepted view of scholars and experts as at the date of sale or (2) the Buyer personally is not able to transfer a good and marketable title to Fellows.
13. LIMITATIONS OF LIABILITY
- 13.1 All members of the public on the premises are there at their own risk and must note the lay-out of the accommodation and security arrangements.
- 13.2 Any indemnity under these Conditions shall extend to all actions, costs, expenses, claims and demands whatsoever suffered or incurred by the person entitled to the benefit of it and Fellows declares itself to be a trustee of the benefit of every such indemnity so far as it is expressed to be for the benefit of its employees and agents.
- 13.3 While Fellows endeavours to ensure that the information on the Website is correct, Fellows does not warrant the accuracy and completeness of the material on the Website. Fellows may make changes to the material on the Website, or to the products and prices described in it, at any time without notice. The material on the Website may be out of date, and Fellows makes no commitment to update such material.
- 13.4 The material on the Website is provided "as is", without any conditions, warranties or other terms of any kind. Accordingly, to the maximum extent permitted by law, Fellows provides you with the Website on the basis that Fellows excludes all representations, warranties, conditions and other terms which, but for this legal notice, might have effect in relation to the Website.
14. GENERAL
- 14.1 Any notice to any Buyer, Vendor, Bidder or viewer may be given by first class mail or email in which case it shall be deemed to have been received by the addressee 48 hours after posting or sending. All notices to Fellows must be sent in writing and email is not acceptable.
- 14.2 Any indulgence extended to any person by Fellows notwithstanding the strict terms of these Conditions or the Terms of Consignment shall affect the position at the relevant time only and in respect of that particular concession only; in all other respects these Conditions shall be construed as having full force and effect.
- 14.3 These Conditions and any disputes or claims arising out of or in connection with it or their subject matter or formation (including non-contractual disputes or claims) are governed by and construed in accordance with the law of England.
- 14.4 The parties irrevocably agree that the courts of England have exclusive jurisdiction to settle any dispute or claim that arises out of or in connection with the Agreement or its subject matter or formation (including non-contractual disputes or claims).
15. SHIPPING
- 15.1 We offer a tracked and insured shipping service for all items with the exception of those in our Antiques, Silver & Collectables sales.
- 15.2 Items posted outside of the UK will incur a £30 charge.
- 15.3 Within the UK, hammer totals under £100 will incur a £10 charge.
- 15.4 Hammer totals over £100 will incur a £20 charge.
- 15.5 Larger items, as well as those exceeding a value of £20,000 or weighing in excess of 2kg may be subject to additional fees.
- 15.6 If you have recently moved or wish to have your items sent to a different address, please contact us prior to the sale. We cannot accept alternative addresses for first-time buyers and your items will be sent the address on the ID/payment card. If you pay by bank transfer we can ship to any worldwide address of your choice.

Commission Bidding Slip

Thursday 26th March 2020

Jewellery

Name _____

Address _____

Postcode _____

Telephone _____

Email _____

Signed _____ Date _____

Please bid on my behalf for the lot(s) shown below.

The bids will be executed as cheaply as is permitted by other bids in the room or reserves.

I have read and agree to comply with the Conditions of Sale as printed in the catalogue.

Any account for items purchased on my behalf will be settled within 24 hours of the sale and the items collected within two days of sale.

Please complete in block capitals.

Lot	Price	Lot	Price	Lot	Price

Buyer's Premium Please note the bidding increments

The buyer's premium is 23% (+ VAT) or 27.6% (VAT inclusive) on the first £100,000 of any individual lot. For any individual lot in excess of £100,001, the buyer's premium is 15% (+ VAT) or 18% (VAT inclusive).

Lots prefixed with * will carry VAT at 20% on the hammer price.

Please note the bidding increments

£50 - £100	£5 increments
£100 - £200	£10 increments
£200 - £1000	£20 increments
£1000 - £10,000	£100 increments
Over £10,000	£1000 increments

Any bids shown not complying with these increments will be **ROUNDED UP** to the next increment.

If you would like to receive catalogues on a regular basis, please mark the appropriate category and return this form with a cheque made payable to Fellows for the full amount.

Subscriptions last for a 12 month period

Jewellery 18 catalogues per year	£120	
Fine Jewellery 6 catalogues per year	£60	
The Watch Sale 6 catalogues per year	£60	
The Designer Collection 5 catalogues per year	£50	
Antiques, Silver & Collectables 5 catalogues per year	£50	
The Gemstone Sale 4 catalogues per year	£35	
Watches 4 catalogues per year	£35	

All of the above catalogues are available to view FREE of charge on our website www.fellows.co.uk

Name (Block Capitals) _____

Address (Block Capitals) _____

Post Code _____ Telephone _____

Signature _____ Date _____

Email _____

Contact Information

Directors

Stephen Whittaker BA (Hons) Jayne Whittaker Ben Griffiths BSc (Hons)

Departments

Customer Services

0121 212 5508

info@fellows.co.uk
Jade Daniels MIWFM
Janis Masters
Kasia McGovern-Hay
Gemma Sheldon

Finance

0121 212 2131
wendy@fellows.co.uk
Wendy Butler
Angela Donnelly BA (Hons) ACMA
Gemma Wilkes

Photography

0121 212 2131
photography@fellows.co.uk
Francesca Allen BA (Hons)
Claire Cleaver
Polly Shave MA (Hons)

Marketing

0121 212 5500
marketing@fellows.co.uk
Liam Bolland BA (Hons)
Jordan Guest MA (Hons)
Luke Poole BA (Hons)
Alexandra Whittaker BA (Hons)
Nicola Whittaker Bsc (Hons), Cert. GA

London Office

0207 127 4198
london@fellows.co.uk
Kirsty Basset
Natasha Davis BA (Hons), FGA
Rianna Roston MA (Hons)
Marina Vieira MA (Hons), GD
Annabel Zarandi BA (Hons)

Specialist Departments

Jewellery

0121 212 6303
jewellery@fellows.co.uk
Lindsay Beardmore FGA, DGA
Jenny Darcy BA (Hons)
Alexander Duffy BSc (Hons), FGA, DGA
Penelope Gilliver FGA, DGA
Patricia Grant BA (Hons)
Kathryn Hodkin MSci (Hons), FGA, DGA
Howard Pace FGA, DGA
David Pregun MA (Hons), FGA, DGA
Ben Randall BA (Hons), G.G., A.J.P.
Emma Scriven BA (Hons), FGA, DGA
Emma Testill FGA, DGA
Amanda Zhang PhD, FGA

Watches

0121 212 5506
watches@fellows.co.uk
Laura Bishop MA (Hons)
Scott Brunton
Kes Crockett BA (Hons)
Amy Hill CertHE
Kain Holroyd
Michael Jagiela
Steven Yambo BA (Hons)

Pawnbrokers

0121 212 6308
pawnbroker@fellows.co.uk
Rachel Bache
Kate Bannister
Laura Boccardo
Claire Dodwell
Annaliese Foster BA (Hons)
Nicole Flavell-Avery
Ross Popescu

Antiques, Silver & Collectables

0121 212 6302
antiques@fellows.co.uk
silverdept@fellows.co.uk
Dannielle Blackledge MA (Hons)
Kevin Jackson
Alison Jakeway MA MRICS
Stephen Watton BA (Hons)

Designer Collection

0121 212 6306
thedesignercollection@fellows.co.uk
Monisha Cooper
Sophie Higgs



Birmingham Saleroom

Situated in the heart of Birmingham's Jewellery Quarter, Fellows is easily accessible from all parts of the United Kingdom, Europe and beyond.

Head Office & Saleroom
Augusta House
19 Augusta Street
Birmingham
B18 6JA

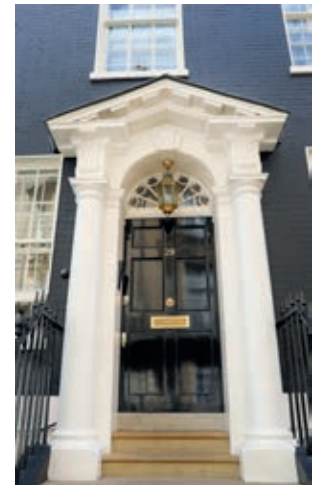
Telephone: 0121 212 2131
Email: info@fellows.co.uk

London Office

Fellows' London office offers valuations, please call to arrange a time to visit.

London Office
29 Charles Street
Mayfair
London
W1J 5DT

Telephone: 020 7127 4198
Email: london@fellows.co.uk



Follow us on....



facebook.com/fellowsauctions



[fellowsauctions](https://www.instagram.com/fellowsauctions)



[@fellowsauctions](https://twitter.com/fellowsauctions)



youtube.com/fellows1876



Fellows

Established 1876

Head Office & Saleroom:

Augusta House | 19 Augusta Street | Birmingham B18 6JA

London Office:

29 Charles Street | Mayfair | London W1J 5DT

Tel 0121 212 2131 | Tel 020 7127 4198 | www.fellows.co.uk