

Fellows
Established 1876



Fine Jewellery

Thursday 23rd July 2020

Fine Jewellery

Thursday 23rd July 2020
Starts at 11:00am

Viewing Times

London

Tuesday 14th July

12 noon - 7pm

Wednesday 15th July

9.30am - 3pm

Birmingham

Tuesday 21st July

10am - 4pm

Wednesday 22nd July

10am - 4pm

Thursday 23rd July

8.30am - 11am

(Photo ID required)

Please be aware that you will need to book an appointment to view. These can be booked through our website or by calling 0121 212 2131. You will be asked for photographic proof of identification and to wear a mask to be allowed access to the viewing.

Free virtual viewings are available by appointment. Please email hello@fellows.co.uk for more information and to book an appointment.

Certificated stones

Lot No. 1, 7, 9, 11, 17, 20, 24, 27, 38, 41, 47, 49, 56, 58, 62, 63, 74, 75, 76, 98, 119, 135, 136, 140, 150, 162, 165, 173, 185, 187, 191, 195, 208, 209, 210, 219, 222, 226, 242, 243, 244, 245, 246, 255, 258, 259, 262, 271, 283, 284, 288, 292, 293, 299, 310, 312, 332, 345, 347, 349, 380, 397, 405, 407, 423, 436

Inside Cover

Lot No. 441, 442, 446, 447, 448

Featured Lots

Lots 23, 74, 208, 209
(Front Cover)

Lots 96, 326, 327, 328, 343
(Back Cover)



Lots 96, 97, 98, 101, 459

Free Live Bidding!

As well as offering 0% bidding surcharge via **Fellows Live** we are also delighted to announce that there is **free** worldwide shipping on this auction.



Free delivery on this auction.

Why Buy?

- COMPETITIVE** buyer's premium
- FREE** live online bidding
- FULLY** illustrated catalogue
- EASY** to use, functional website
- ACCURATE** condition reports
- SPECIALISTS** on hand to offer advice
- TRACKED AND INSURED** shipping*

*Please contact Fellows for further information.

Why Sell?

- HIGH PRICES** consistently achieved
- FLEXIBLE** commission rates
- FREE** valuations with no obligation to consign
- RAPID** turnaround for your goods
- TARGETED** advertising to a global audience
- SUPERIOR** quality catalogues
- FULLY** integrated website


Contact the department...

Alex Duffy
Cataloguer
0121 212 5503
alex@fellows.co.uk



Further information





 **Additional Images and Condition Reports** can be found online at our website www.fellows.co.uk

 **Telephone Bidding** is available if you cannot attend an auction. Please ring 0121 212 2131 to arrange a telephone line.

Important Notice

Neither Fellows nor the Vendors are responsible for any reference as to the condition of lots listed. The absence of such reference does not imply that a lot is in good condition or free from faults or imperfections. All weights and dimensions are approximate. Purchasers are advised to carefully inspect lots and make their own opinion as to the condition. Please see section 7 under 'Bidders' in our full terms and conditions. View Fellows Important Notices in full and full terms and conditions at the back of the catalogue.

Key to Symbols

-  Lot may have export restrictions.
-  Lot comes with box.
-  Lot comes with Report.
-  Lot will carry an additional 20% VAT charge on the hammer price.

Follow Us





Safety at
Fellows
Established 1876

We want our colleagues and customers to both feel safe as we gradually re-open our offices.

As such, there are new processes and standard operating procedures in place at both our London and Birmingham offices for the foreseeable future.

Visitors to our offices

- Hand sanitising points are available at all entry points with clear signage.
- All visitors will be required to wear gloves and masks, stocks are in place to provide these for all visitors if necessary.
- Floors will be clearly marked to ensure that social distancing can be maintained throughout the building.
- HikVision Thermal Camera in reception areas both in London and Birmingham to test for elevated temperatures.
- Physical viewing in both London and Birmingham will be by appointment, via our online automated booking system.
- Lots and equipment will be cleaned with UV light after each customer has viewed an item.
- Items will be cleaned with UV light before dispatch.
- Valuations will be conducted by prior appointment at our offices in London and Birmingham, or by Zoom.

Our team

- All Fellows employees will have their own gloves and masks.
- Home working and staggered working hours will become the norm, we have embraced technology such as Zoom and Slack to allow our colleagues to communicate seamlessly regardless of their location.
- Safety screens are in place to protect our colleagues and customers.

It is important that the measures above are respected and adhered to.

Fellows

Established 1876

Open for Business



Birmingham

Our Birmingham office is open for auctions, valuations and viewings. These are available by appointment only and new safety measures have been introduced to ensure safety for customers and members of staff.

Opening hours for our Birmingham office are currently Monday to Thursday 9am till 5pm and Friday 9am till 4pm




London

Our London office will be reopening from Monday 13th July. Viewings and valuations will be available but by appointment only. Measures have also been introduced to enhance the safety of our customers and members of staff.

Opening hours for our London office are currently Monday to Thursday 9am till 5pm and Friday 9am till 4pm.

To book an appointment or find out more information
please visit www.fellows.co.uk
email info@fellows.co.uk or call **0121 212 2131**

1  A Burmese ruby dress ring, with brilliant-cut diamond floral shoulders and gallery.

With report 80257-73, dated 3rd March 2020, from GCS, stating Myanmar (Burma), no heat, estimated weight 1.30cts.
Estimated total diamond weight 0.25ct.
Stamped 950. Ring size M1/2. 3.6gms.
£600-800 (plus 27.6% BP*)

2 An Edwardian gold, ruby and circular-cut diamond butterfly brooch, with demantoid garnet eyes.

Estimated total diamond weight 0.35ct.
Principal ruby calculated weight 0.15ct, based on estimated dimensions of 3.2 by 3.2 by 1.8mms.
Length 3.7cms. 4.2gms.
£350-450 (plus 27.6% BP*)

3 A pair of mid 20th century vari-shape diamond, ruby and emerald floral bouquet earrings.

Estimated total diamond weight 1ct, G-H colour, predominantly VS clarity.
Length 2.3cms. 5.3gms.
£400-600 (plus 27.6% BP*)

4 A late 19th century ruby, rose and old-cut diamond crescent brooch.

Verbal from GCS, stating Thai, no heat.
Estimated old-cut diamond weight 0.35ct.
Length 2.7cms. 6.3gms.
£800-1,200 (plus 27.6% BP*)

5 A mid 20th century platinum ruby cabochon and diamond dress ring.

Ruby calculated weight* 21cts, based on estimated dimensions of 15.7 by 12.9 by 9.6mms.
Estimated total diamond weight 0.20ct, H-I colour, SI clarity.
Stamped Plat.
Ring size M1/2. 8gms.
£1,000-1,500 (plus 27.6% BP*)

6 A pair of vari-cut diamond earrings.


Estimated total diamond weight 1.20cts, H-I colour, SI2-P1 clarity.
Length 3.6cms. 7.1gms.
£800-1,200 (plus 27.6% BP*)

7  A Belle Époque platinum and 18ct gold, no heat sapphire and vari-cut diamond dress ring.

With report 18516, dated 17th March 2020, from The Gem & Pearl Laboratory, stating no heat.
Estimated total old-cut diamond weight 0.25ct, G-H colour, SI2-P1 clarity. Ring size O1/2. 4.9gms.
£650-850 (plus 27.6% BP*)

8 An early 20th century gold old-cut diamond bracelet.


Estimated total diamond weight 1ct, H-J colour, SI1-P1 clarity.
Length 17.5cms. 8.6gms.
£500-700 (plus 27.6% BP*)

9  An Edwardian 18ct gold no heat sapphire and old-cut diamond five-stone ring.

With report 18524, dated 17th March 2020, from the Gem & Pearl Laboratory, stating no heat.
Sapphire calculated total weight 0.77ct, based on estimated dimensions.
Estimated total diamond weight 0.80ct, H-I colour, SI1-P1 clarity.
Stamped 18ct. Ring size N1/2. 3.4gms.
£500-700 (plus 27.6% BP*)

10 An Art Deco platinum diamond and synthetic sapphire panel bracelet.

Estimated total diamond weight 2.70cts, principal old-cut diamonds estimated H-I colour, SI clarity.
Length 17cms. 31gms.
£2,200-3,200 (plus 27.6% BP*)

11  An early 20th century 18ct gold Sri Lankan sapphire and old-cut diamond cluster ring.

With report 18519, dated 17th March 2020, from The Gem & Pearl Laboratory, stating Sri Lanka, no heat.
Sapphire calculated weight 2.25cts, based on estimated dimensions of 9.1 by 6.7 by 4.4mms.
Estimated total diamond weight 1.40cts, G-I colour, VS2-P1 clarity.
Stamped 18ct. Ring size O. 4.9gms.
£1,200-1,800 (plus 27.6% BP*)

12  A late Victorian silver and gold green tourmaline, pearl and diamond pendant, with later chain.

Tourmaline calculated weight 3.31cts, based on estimated dimensions of 11.4 by 8.6 by 4.8mms.
Estimated total old-cut diamond weight 4cts, H-J colour, VS2-SI1 clarity.
Length of pendant 8.2cms. Length of chain 42cms. 21.2gms.
Pearl untested for natural origin. With fitted case.
£2,200-2,800 (plus 27.6% BP*)



13 A pair of brilliant-cut diamond drop earrings.

Total diamond weight 0.25cts, stamped to back, estimated H-I colour, SI clarity.
Stamped 18k.
Length 3.9cms. 3.4gms.

£400-600 (plus 27.6% BP*)

14 A sapphire and brilliant-cut diamond three-stone ring.

Sapphire weight 1.12cts.
Estimated total diamond weight 0.70ct, I-J colour, P1 clarity.
Ring size K1/2. 3.2gms.

£700-900 (plus 27.6% BP*)

15 A pair of rock crystal, brilliant-cut diamond and sapphire geometric cluster earrings.

Estimated total diamond weight 0.70ct, H-I colour, SI1-P1 clarity.
Length 4cms. 8.7gms.

£700-900 (plus 27.6% BP*)

16 A platinum aquamarine and baguette-cut diamond three-stone ring.

Aquamarine calculated weight 7.29cts, based on estimated dimensions of 14 by 10 by 7.1mms.
Estimated total diamond weight 0.80ct, G-H colour, VS clarity.
Hallmarks for London, 2005. Ring size Q. 8.8gms.

£1,000-1,500 (plus 27.6% BP*)

17 A pair of 18ct gold Natural Fancy Intense Pink and Yellow diamond and diamond floral cluster earrings.

With report F4J90326, stating two Natural Fancy Intense Pink colour, VS1-SI1 clarity, estimated total weight 0.20ct and two Natural Fancy Intense Yellow colour, VVS-SI1 clarity, estimated total weight 0.20ct.
Hallmarks for London.
Length 1.5cms. 6.7gms.

£1,200-1,800 (plus 27.6% BP*)

18 An 18ct gold pave-set diamond novelty duck brooch, with sapphire, mother-of-pearl and onyx accents.

Estimated total diamond weight 0.70ct, G-I colour, VS-P1 clarity.
Import marks for London, 1998.
Length 5cms. 17.8gms.

£1,200-1,800 (plus 27.6% BP*)

19 An aquamarine, sapphire and brilliant-cut diamond necklace.

Aquamarine calculated weight 63.6cts, based on estimated dimensions of 33 by 21 by 12.5mms.
Estimated total diamond weight 2.80cts, principal diamond estimated H-I colour, P1 clarity.
Stamped 750.
Length of pendant 6.7cms. Length of chain 43.5cms. 51gms.

£2,000-3,000 (plus 27.6% BP*)

20 A Sri Lankan sapphire and circular-cut diamond rectangular cluster ring.

With report 18514, dated 17th March 2020, from The Gem & Pearl Laboratory, stating Sri Lanka, no heat.
Sapphire calculated weight 6.01cts, based on estimated dimensions of 12.2 by 9.3 by 5.1mms.
Estimated total diamond weight 1.25cts, I-K colour, SI1-P1 clarity.
Ring size J. 8.5gms.

£2,000-2,500 (plus 27.6% BP*)

21 A pair of brilliant-cut diamond drop earrings.

Estimated total diamond weight 4cts, predominantly H-I colour, VS2-SI1 clarity.
Stamped 750.
Length 5.4cms. 23.4gms.

£3,000-4,000 (plus 27.6% BP*)

22 A brilliant-cut diamond line bracelet.

Estimated total diamond weight 8.25 to 8.50cts, G-H colour, VS-SI1 clarity.
Length 17cms. 12.3gms.

£3,000-4,000 (plus 27.6% BP*)

23 An 18ct gold aquamarine and diamond ring.

Aquamarine calculated weight 13.57cts, based on estimated dimensions of 14.3 by 13.9 by 9.3mms.
Estimated total diamond weight 0.40ct, H-I colour, VS-SI1 clarity.
Hallmarks for London, 2012.
Ring size O. 12.9gms.

£2,000-3,000 (plus 27.6% BP*)

24 A pair of vari-cut diamond drop earrings.

Estimated total diamond weight 2.54cts.
One principal diamond with report 5776-4504, dated 8th February 2016, from GCS, stating 1.02cts, F colour, SI1 clarity.
One principal diamond estimated weight 1ct, H-I colour, VS clarity.
Length 2.5cms. 3.7gms.

£4,000-6,000 (plus 27.6% BP*)

BP* - Buyer's Premium of 23% (plus VAT) or 27.6% (VAT included)



15



23



14



21



19



24



20



22



16



17



18



13

25 A brilliant-cut diamond tassel pendant, with integral chain.



Estimated total diamond weight 0.70ct.
Hallmarks for London.
Length of pendant 3cms. Length of chain 42cms. 6.8gms.

£500-700 (plus 27.6% BP*)

26 A brilliant-cut diamond and ruby dress ring.

Principal diamond estimated weight 0.80ct, tinted colour, P1 clarity.
Stamped 750.
Ring size N. 3.8gms.

£800-1,200 (plus 27.6% BP*)

27   An early 20th century carved jadeite and vari-cut diamond pendant, with chain.

With report 80245-47, dated 3rd December 2019, from GCS, stating natural Jadeite, no indications of impregnation.
Estimated total diamond weight 0.10ct.
Length of pendant 4.8cms. Length of chain 40cms. 5gms.

£1,000-1,500 (plus 27.6% BP*)

28 An Art Deco old-cut diamond bar brooch.

Estimated total diamond weight 2.75cts, I-J colour, SI1-P1 clarity.
Length 4.5cms. 6.4gms.

£1,200-1,800 (plus 27.6% BP*)

29 A sapphire and brilliant-cut diamond cluster ring.

Estimated total diamond weight 0.55cts, H-I colour, SI clarity.
Ring size N. 6.9gms.

£1,200-1,800 (plus 27.6% BP*)

30 An old-cut diamond geometric brooch.

Estimated total diamond weight 4.10ts, H-I colour, SI1-P1 clarity.
Stamped 585.
Length 5.2cms. 10.4gms.

£1,200-1,800 (plus 27.6% BP*)

31 A ruby and brilliant-cut diamond cluster ring.

Ruby calculated weight 5.94cts, based on estimated dimensions of 10.8 by 8.5 by 6mms.
Total diamond weight 0.70ct.
Ring size N1/2. 6.6gms.

£2,000-3,000 (plus 27.6% BP*)

32  A mid 20th century sapphire and old-cut diamond bracelet.

Estimated total diamond weight 6.40cts, H-I colour, SI1-P1 clarity.
Length 18cms. 35.4gms.

£2,000-2,500 (plus 27.6% BP*)

33 A cushion-shape diamond and sapphire cluster ring.

Principal diamond estimated weight 2.20cts, tinted colour, SI2-P1 clarity.
Ring size O. 4.4gms.

£2,800-3,600 (plus 27.6% BP*)

34 A mid 20th century old-cut diamond and calibre-cut sapphire twin cluster ring.

Principal diamonds estimated total weight 1.60cts, J-K colour, SI2-P1 clarity.
French assay marks. Ring size L1/2. 5.9gms.

£3,000-4,000 (plus 27.6% BP*)

35 A cushion-shape diamond and ruby dress ring.

Principal diamond estimated weight 1.88cts, tinted colour, SI2-P1 clarity.
Ring size M1/2. 4.7gms.

£2,000-3,000 (plus 27.6% BP*)

36 A geometric necklace, set with diamond and carved ruby, emerald and sapphire.

Estimated total diamond weight 5.75cts, H-I colour, SI2-P1 clarity.
Stamped 750.
Length 38cms. 86gms.

£5,000-7,000 (plus 27.6% BP*)

35



26



30



27



36



25



33



28



34



29




31



32



37  **An early 20th century old-cut diamond negligee pendant, suspended from an integral trace-link chain.**

Principal diamond weights 1.03ct and 1.04cts, estimated I-J colour, SI-P1 clarity.
Length of pendant 5.5cms. Length of chain 42cms. 7.9gms.

£4,000-6,000 (plus 27.6% BP*)

38   **An early 20th century platinum natural saltwater baroque pearl and old-cut diamond necklace.**

Pearl with report 337228, dated 19th April 2018, from LFG Paris, stating natural saltwater.
Pearl measuring approximately 20.5 by 14 by 9.7mms.
Estimated total diamond weight 2.50cts.
Principal diamond estimated weight 1.40cts, H-I colour, SI2-P1 clarity.
Length 45.5cms. 15.8gms.
With case.

£5,000-7,000 (plus 27.6% BP*)

39  **An early 20th century graduated old-cut diamond crescent brooch.**

Estimated total diamond weight 5cts, I-K colour, SI-P1 clarity.
Length 6.4cms. 6.5gms.

£4,000-6,000 (plus 27.6% BP*)

40 **A mid 20th century gold old-cut diamond, pearl and calibre-cut sapphire brooch.**

Estimated total diamond weight 3 to 3.50cts, G-J colour, SI1-P1 clarity.
Estimated dimensions of pearl 6.3 by 6.1mms.
Length 6.2cms. 1.1gms.

£1,500-2,000 (plus 27.6% BP*)

41  **A late 19th century Sri Lankan sapphire and old-cut diamond pendant.**

With report 78125-78, dated 19th October 2017, from GCS, stating principal sapphire Sri Lanka (Ceylon), no heat.
Estimated total diamond weight 5-6cts, principal diamonds predominately H-I colour, SI-P1 clarity.
Length 7.4cms. 18.5gms.
With case.

£6,500-7,500 (plus 27.6% BP*)

42 **An early 20th century 18ct gold sapphire and rose-cut diamond cluster ring.**

Calculated sapphire weight 3.20cts, based on estimated dimensions 10.8 by 8.3 by 3.8mms.
French marks.
Ring size K1/2. 7gms.

£1,000-1,500 (plus 27.6% BP*)

43  **An old-cut diamond and calibre-cut sapphire openwork brooch.**

Estimated total diamond weight 1ct, principal diamonds estimated H-I colour, SI-P1 clarity.
Length 4.5cms. 7.1gms.
With case.

£700-900 (plus 27.6% BP*)

44 **An early 20th century platinum old-cut and circular-cut diamond propeller bar brooch.**

Estimated total diamond weight 2cts, predominantly G-H colour, VS-SI clarity.
Length 7.4cms. 9.9gms.

£700-900 (plus 27.6% BP*)

45 **An early 20th century old-cut diamond cluster ring.**

Estimated total diamond weight 0.85ct, principal diamond estimated H-I colour, SI-P1 clarity.
Ring size M1/2. 2.4gms.

£600-800 (plus 27.6% BP*)

46 **A pair of 18ct gold brilliant-cut diamond and ruby earrings.**

Estimated total diamond weight 1.60cts, H-I colour SI clarity.
Import marks for Sheffield, 1988.
Length 3.7cms. 9.1gms.

£700-900 (plus 27.6% BP*)



38



43



45



40



41



39



37



42



46



44

47  An early 20th century platinum, Thai ruby three-stone and circular-cut diamond ring.

With report 80256-64, dated 25th February 2020, from GCS, stating Thailand, no heat, estimated total weight 1.60cts. Estimated total diamond weight 0.35ct, G-H colour, SI clarity. Ring size M1/2. 4.2gms.

£500-700 (plus 27.6% BP*)

48 A platinum brilliant-cut diamond necklace, with matching earrings.

Estimated total diamond weight 1.40cts, H-I colour, VS2-SI1 clarity. Hallmarks for Sheffield, 2010. Length of pendant 4.5cms. Length of chain 40cms. Length of earrings 5.5cms. 8gms.

£600-800 (plus 27.6% BP*)

49  A Thai ruby and baguette-cut diamond asymmetric dress ring.

With report number 80249-51, dated 9th January 2020, stating Thailand, no heat. Estimated total diamond weight 1.20cts, G-H colour, VS clarity. Ring size N. 8.6gms.

£700-900 (plus 27.6% BP*)

50 A platinum brilliant-cut diamond full eternity ring.

Total diamond weight 3.65cts, estimated predominantly G-H colour, VS clarity. Hallmarks for London, 2017. Ring size J. 7gms.

£800-1,200 (plus 27.6% BP*)

51 An 18ct gold square-shape ruby and diamond half eternity ring.

Total ruby weight 1.20cts. Total diamond weight 0.72ct, estimated G-H colour, VS clarity. Hallmarks for Edinburgh. Ring size M. 5.8gms.

£1,200-1,800 (plus 27.6% BP*)

52 A brilliant-cut and baguette-cut diamond pendant, suspended from an 18ct gold curb-link chain.

Estimated total diamond weight 3.80cts, principal diamond estimated 0.30ct, H-I colour, SI1 clarity. Chain with hallmarks for Sheffield. Length of pendant 3.5cms. Length of chain 50cms. Total weight 13.3gms.

£1,000-1,500 (plus 27.6% BP*)

53 A pair of ruby and vari-cut diamond cluster earrings.

Rubies show evidence of glass-filling treatment. Estimated total diamond weight 3cts, G-H colour, VS2-SI clarity. Length 2.3cms. 13.3gms.

£1,400-2,000 (plus 27.6% BP*)

54 An 18ct gold brilliant-cut diamond single-stone ring.

Diamond weight 1.49cts, estimated H-I colour, VS2-SI1 clarity. Hallmarks for Birmingham. Ring size L1/2. 3.4gms.

£3,500-4,500 (plus 27.6% BP*)

55 A pair of vari-cut diamond earrings.

Estimated total diamond weight 2.90cts, H-J colour, SI1-P1 clarity. Length 3cms. 8.8gms.

£2,000-2,500 (plus 27.6% BP*)

56   A pair of brilliant-cut diamond stud earrings, by Tiffany & Co.

With reports 36653345, from Tiffany & Co., each stating 0.73ct, H colour, VVS1 clarity. Stamped Pt950. 3.2gms. With maker's case.

£4,500-6,500 (plus 27.6% BP*)

57 An 18ct gold brilliant-cut diamond bracelet.

Diamond weight 7.50cts, estimated J-K colour, predominately VS clarity. Hallmarks for London. Length 18cms. 14.9gms.

£3,000-4,000 (plus 27.6% BP*)

58  A mid 20th century platinum circular-cut diamond single-stone ring.

With report 103208-002, dated 7th March 2002, from AnchorCert, stating 2.95ct (calculated), L colour, VS2 clarity. Stamped PLAT. Ring size N. 4.7gms.

£4,000-6,000 (plus 27.6% BP*)



59 An 18ct gold brilliant-cut diamond bracelet.

Estimated total diamond weight 6.40cts, H-I colour, SI clarity.
Hallmarks for London.
Length 19cms. 35.8gms.

£1,200-1,800 (plus 27.6% BP*)

60 A brilliant-cut diamond single-stone ring, with pave-set diamond shoulders.

Principal diamond estimated weight 0.85ct, H-I colour, P1 clarity.
Stamped 18k.
Ring size J. 3.8gms.

£900-1,200 (plus 27.6% BP*)

61 A circular-cut diamond and cultured pearl necklace.

Estimated total diamond weight 4cts, H-I colour, SI clarity.
Length of necklace 38cms. Length of drop 7cms. 49.8gms.

£1,800-2,400 (plus 27.6% BP*)

62 A platinum old-cut diamond single-stone ring, with baguette-cut diamond shoulders.

With report 2175746807, dated 19th July 2016, from the GIA, stating 2.05cts, E colour, VS2 clarity.
Estimated total baguette-cut diamond weight 0.55ct, G+ colour, VS clarity.
Hallmarks for London, 2015.
Ring size M. 5.9gms.

£14,000-18,000 (plus 27.6% BP*)

63 A cut-corner rectangular-shape diamond single-stone ring, with baguette-cut diamond chevron shoulders.

With report 80247-01, dated 16th December 2019, from GCS, stating 4.38cts, E colour, VS2 clarity.
Stamped 18ct PLAT. Ring size O1/2. 5.3gms.

£35,000-45,000 (plus 27.6% BP*)

64 A mid 20th century vari-cut diamond and ruby dress clip.

Estimated total diamond weight 2cts, H-I colour, SI1-P1 clarity.
Length 3.5cms. 13.6gms.

£800-1,200 (plus 27.6% BP*)

65 A garnet and brilliant-cut diamond cluster ring.

Garnet weight 11.83cts.
Estimated total diamond weight 0.55ct.
Ring size N1/2. 10gms.

£1,500-2,000 (plus 27.6% BP*)

66 An aquamarine and diamond dress ring.

Aquamarine calculated weight 8.32cts, based on estimated dimensions of 14 by 10 by 8.1mms.
Estimated total diamond weight 0.40ct, H-I colour, SI clarity.
Stamped Plat.
Ring size O1/2. 8.8gms.

£1,000-1,500 (plus 27.6% BP*)

67 A brilliant-cut diamond single-stone ring, with pave-set diamond and black gem sides.

Principal diamond estimated weight 0.50ct, H-I colour, VS clarity.
French assay marks.
Ring size N. 12.1gms.

£700-1,000 (plus 27.6% BP*)

68 A bombe dress ring, by Bulgari.

Stamped 750.
Ring size O1/2. 14.9gms.

£650-850 (plus 27.6% BP*)

69 A brilliant-cut diamond and black gem full eternity ring.

Estimated total diamond weight 1.90cts, G-H colour, VS1-SI1 clarity.
Ring size X. 38.4gms.

£1,000-1,500 (plus 27.6% BP*)

70 An 18ct gold star sapphire and pave-set diamond hexagonal dress ring.

Sapphire calculated weight 4.83cts, based on estimated dimensions of 8.7 by 8.3 by 6.2mms.
Estimated total diamond weight 0.20ct, H-I colour, SI clarity.
Partial hallmarks for London, 1981.
Ring size Q. 7.9gms.

£600-800 (plus 27.6% BP*)

BP* - Buyer's Premium of 23% (plus VAT) or 27.6% (VAT included)

69



68



66



67



61



62



63



65



70



59



60



64



71 A baguette-cut diamond full eternity spinner ring.

Estimated total diamond weight 3cts, G-H colour, VS-SI clarity.
Ring size O1/2. 17.4gms.

£1,000-1,500 (plus 27.6% BP*)

72 A pair of 18ct gold diamond and blue tourmaline 'Wild Rose' earrings, by Stephen Webster.

Estimated total diamond weight 1ct, G-H colour, VS clarity.
Hallmarks for London, 2004. Length 4.2cms. 7.4gms.

£1,200-1,800 (plus 27.6% BP*)

73 A pair of triangular-shape diamond collet stud earrings.

Estimated total diamond weight 1.50cts, I-J colour, SI clarity.
Stamped 750.
Length 0.9cm. 5.6gms.

£1,600-2,200 (plus 27.6% BP*)

74 An aquamarine and brilliant-cut diamond necklace.

Calculated aquamarine weight 38.02cts, based on estimated dimensions 23.5 by 17.7 by 14.3mms.
Estimated total diamond weight 0.80ct, H-I colour, VS2-SI1 clarity.
Stamped 585.
Length 42cms. 41.7gms.

£3,000-4,000 (plus 27.6% BP*)

75 A cushion-shape diamond single-stone ring, by Graff.

With report 1109884264, dated 3rd March 2010, from the GIA, stating 2.02cts, H colour, VS1 clarity.
Stamped Pt950.
Ring size L1/2. 4.7gms.

£7,000-10,000 (plus 27.6% BP*)

76 An impressive rectangular-shape diamond ring, with trapezoid-shape diamond shoulders.

With report 5181912265, dated 7th December, 2017, from the GIA, stating 5.01cts, E colour, VS2 clarity.
Total trapezoid-shape diamond weight 1.09cts, estimated G+ colour, VS clarity.
Ring size L. 7.3gms.

£80,000-120,000 (plus 27.6% BP*)

77 A brilliant-cut diamond single-stone pendant, suspended from a chain.

Diamond weight 3.51cts, estimated L-tinted colour, SI2-P1 clarity.
Chain stamped 750.
Length of pendant 1.5cms. Length of chain 50cms. 8gms.

£10,000-15,000 (plus 27.6% BP*)

78 An 18ct gold 'Love' bangle, by Cartier.

Swiss convention marks.
Inner diameter 6.2cms. Cartier size 19. 38.1gms.
With maker's case and screwdriver.

£2,000-2,500 (plus 27.6% BP*)

79 A pair of vari-cut diamond earrings.

Estimated total diamond weight 7 to 7.50cts, predominantly H-I colour, VS2-SI2 clarity.
Length 3.5cms. 21gms.

£2,800-3,200 (plus 27.6% BP*)

80 An 18ct gold aquamarine and baguette-cut diamond ring.

Aquamarine weight 10.84cts.
Estimated total diamond weight 1ct, G-H colour, VS-SI clarity.
Hallmarks for Birmingham.
Ring size M. 8.4gms.

£1,500-2,000 (plus 27.6% BP*)

81 A brilliant-cut diamond line bracelet.

Estimated total diamond weight 6.10cts, H-I colour, SI2-P1 clarity.
Stamped 750.
Length 19cms. 22.4gms.

£2,000-2,500 (plus 27.6% BP*)

82 A mid 20th century platinum baguette-cut diamond full eternity ring, by Cartier.

Estimated total diamond weight 2.50cts.
Hallmarks for London, 1970.
Ring size W. 4.4gms.
With maker's case.

£2,000-3,000 (plus 27.6% BP*)



83 An 18ct gold stylised knot ring, set with orange and yellow sapphires.

Hallmarks for London, 2012.
Ring size N1/2. 7.7gms.

£500-700 (plus 27.6% BP*)

84 A pair of peridot and brilliant-cut diamond earrings.

Total peridot weight 18.60cts.
Estimated total diamond weight 1.75cts.
Length 3.3cms. 19.4gms.

£700-1,000 (plus 27.6% BP*)

85 A jade and rock crystal 'Giotto' ring, by Vhernier.

Italian marks. Stamped 750.
Ring size L1/2. 26.3gms.

£900-1,200 (plus 27.6% BP*)

86 An emerald and diamond pendant, with 18ct gold snake-link chain.

Emerald total calculated weight 0.75ct.
Estimated total diamond weight 1.25cts, G+ colour, VS-SI clarity.
Chain with hallmarks for London, 2004.
Length of pendant 2.4cms. Length of chain 41.5cms. 18.8gms.

£1,200-1,800 (plus 27.6% BP*)

87 A purple, green and brown enamel 'Zellige' necklace, by Tiffany & Co.

Stamped 750. Length 93.5cms. 41gms.
With maker's pouch.

£1,800-2,600 (plus 27.6% BP*)

88 An 18ct gold diamond 'Atlas' bangle, by Tiffany & Co.

Estimated total diamond weight 0.15ct, G+ colour, VS clarity.
Hallmarks for London.
Inner diameter 5.6cms. 25.9gms.
With maker's case.

£1,500-2,000 (plus 27.6% BP*)

89 An 18ct gold diamond 'Happy Hearts' sautoir necklace, by Chopard.

Swiss convention marks. Length 120cms. 28gms.
With maker's case.

£1,800-2,600 (plus 27.6% BP*)

90 A diamond 'Love' bangle, by Cartier.

Estimated total diamond weight 0.40ct, G-H colour, VS-SI clarity.
Stamped 750.
Inner diameter 5.5cms. Cartier size 16. 29.4gms.
With maker's case and screwdriver.

£4,000-6,000 (plus 27.6% BP*)

91 A diamond, emerald, sapphire and ruby cluster bracelet, by Vourakis.

Estimated total diamond weight 8.25cts, predominantly G-H colour, VS clarity.
Stamped 18K. Length 19cms. 89.1gms.

£4,500-5,500 (plus 27.6% BP*)

92 An 18ct gold diamond double 'Love' bangle, by Cartier.

Estimated total diamond weight 0.75ct, G+ colour, VS clarity.
Swiss convention marks.
Inner diameter 5.8cms. Cartier size 17. 47.2gms.
With maker's case.

£7,000-9,000 (plus 27.6% BP*)



90

84

86

89

92

87

83

85

88

91

93 A 'C de Cartier' necklace, by Cartier.

French assay marks. Stamped 750.
Length 39cms. 132.6gms.
With maker's pouch.

£5,000-7,000 (plus 27.6% BP*)

94 A 'Happy Diamonds' elephant pendant, with chain, by Chopard.

Estimated total diamond weight 2cts, G+ colour, VS clarity.
French assay marks, stamped 750.
Length of pendant 6cms. Length of chain 70cms. 129gms.
With maker's case.

£5,000-7,000 (plus 27.6% BP*)

95 A mid 20th century 18ct gold old-cut diamond single-stone ring, with openwork gallery and shoulders.

Estimated diamond weight 2cts, K-L colour, VS clarity.
Stamped 18K.
Ring size 11/2. 2.6gms.

£6,000-9,000 (plus 27.6% BP*)

96 A mid 20th century 18ct gold flexible 'Gas Pipe' necklace, by Cartier.

Stamped K18.
Length 41.7cms. 89.6gms.

£4,500-5,500 (plus 27.6% BP*)

97 An 18ct gold diamond 'Love' bangle, by Cartier.

Estimated total diamond weight 0.40ct, G+ colour, VS clarity.
Swiss convention marks.
Inner diameter 6.3cms. Cartier size 19. 35.5gms.
With maker's case and screwdriver.

£3,500-4,500 (plus 27.6% BP*)

98 A no heat sapphire and old-cut diamond floral cluster ring.

With report 18515, dated 17th March 2020, from The Gem & Pearl Laboratory, stating no heat.
Sapphire calculated weight 4.52cts, based on estimated dimensions of 12.5 by 10 by 3.85mms.
Estimated total diamond weight 1.50cts, G-I colour, predominantly VS-SI clarity.
French re-strike marks.
Ring size Q. 6gms.

£1,500-2,000 (plus 27.6% BP*)

99 A late 19th century continental garnet and rose-cut diamond beetle brooch, with ruby eye detail.

Estimated total diamond weight 1ct.
Length 4.2cms. 16.8gms.

£1,800-2,400 (plus 27.6% BP*)

100 An 18ct gold diamond 'Hearts and Symbols' ring, by Cartier.

Estimated total diamond weight 0.15ct, G+ colour, VS clarity.
Swiss convention marks.
Ring size L1/2. Cartier size 53. 7.2gms.

£700-1,000 (plus 27.6% BP*)

101 A diamond sun brooch.

Estimated total diamond weight 2cts, G-H colour, VS-SI clarity.
French re-strike marks.
Length 4cms. 23.6gms.

£1,000-1,500 (plus 27.6% BP*)

102 A pair of 18ct gold textured, bi-colour earrings, by De Vroomen.

Hallmarks for London, 2000.
Length 2.9cms. 27.1gms.

£600-800 (plus 27.6% BP*)



101

96



94



93



98



99



95



102



97



100

103 An 18ct gold diamond key pendant, with chain, by Tiffany & Co.

Estimated total diamond weight 0.25ct, G+ colour, VS clarity.
Hallmarks for London.
Length of pendant 4cms. Length of chain 46cms. 5.5gms.
With maker's pouch.

£1,200-1,800 (plus 27.6% BP*)

104 An 18ct gold 'Lucida'-cut diamond full eternity ring, by Tiffany & Co.

Estimated total diamond weight 1.30cts, G+ colour, VS clarity.
Hallmarks for London, 2000. Stamped 750 Pt950.
Ring size I. 4.1gms.

£1,000-1,500 (plus 27.6% BP*)

105 An 18ct gold pink tourmaline and fancy-shape diamond three-stone ring, with brilliant-cut diamond shared surround and shoulders.

Tourmaline weight 2.90cts, stamped to band.
Total diamond weight 0.99ct, stamped to band, estimated G-I colour, VS clarity.
Hallmarks for London, 2015. Ring size M1/2. 5.4gms.

£1,200-1,800 (plus 27.6% BP*)

106 An 18ct gold old-cut diamond, ruby and brilliant-cut diamond floral cluster ring.

Old-cut diamond estimated weight 1ct, I-J colour, SI2-P1 clarity.
Hallmarks for London, 2003.
Ring size P. 6.9gms.

£1,400-2,000 (plus 27.6% BP*)

107 An 18ct gold 'Vannerie' collar necklace, by Tiffany & Co.

Hallmarks for London, 2000.
Length 42cms. 103.8gms.

£3,500-4,500 (plus 27.6% BP*)

108 An alternating square-shape diamond and ruby full eternity ring, by Tiffany & Co.

Estimated total diamond weight 0.75ct, G+ colour, VS clarity.
Stamped 750. Ring size L. 3.1gms.

£900-1,200 (plus 27.6% BP*)

109 A diamond 'Possession' necklace, by Piaget.

Estimated total diamond weight 0.20ct, G+ colour, VS clarity.
Length 72cms. 18.6gms.

£900-1,200 (plus 27.6% BP*)

110 A diamond 'Possession' ring, by Piaget.

Estimated total diamond weight 0.10ct, G+ colour, VS clarity.
Stamped 750.
Ring size J1/2. Piaget size 50. 12.9gms.

£1,000-1,500 (plus 27.6% BP*)

111 A pave-set diamond 'Vannerie' necklace, by Tiffany & Co.

Estimated total diamond weight 2cts.
Stamped 750.
Length 38.6cms. 117gms.

£6,500-8,500 (plus 27.6% BP*)

112 A lady's 18ct gold 'Tesoro' wristwatch, by Tiffany & Co.

Swiss convention marks.
Length 16.5cms. 75.4gms.
With maker's case and papers.

£1,800-2,400 (plus 27.6% BP*)



105



106



111



109



112



110



108



104



107



103

113 An 18ct gold pave-set diamond dress ring, with brilliant-cut diamond highlight.

Principal diamond estimated weight 0.30ct, H-I colour, VS clarity.
Total diamond weight 0.84ct, stamped to band.
Swiss convention marks. Ring size M. 7.6gms.

£1,200-1,800 (plus 27.6% BP*)

114 A pair of diamond and 'brown' diamond earrings.

Estimated total diamond weight 3cts.
French re-strike mark.
Length 2.2cms. 11.8gms.
Diamonds untested for natural colour origin.

£700-1,000 (plus 27.6% BP*)

115 A mother-of-pearl 'Bulgari Bulgari' ring, by Bulgari.

Italian marks. Stamped 750.
Ring size N1/2. 13.7gms.

£800-1,200 (plus 27.6% BP*)

116 A 'Love' bangle, by Cartier.

Stamped 750. Italian marks.
Inner diameter 6.2cms. Cartier size 19. 34.9gms.
With screwdriver and unassociated maker's case.

£3,000-4,000 (plus 27.6% BP*)

117 A cultured pearl and brilliant-cut diamond collar necklace.

Estimated total diamond weight 2cts.
French marks.
Length 38.3cms. 143gms.
With unassociated Vourakis case.

£4,500-5,500 (plus 27.6% BP*)

118 A pave-set diamond flexible bangle, by Bulgari.

Estimated total diamond weight 5.50 to 6cts, G-H colour, VS clarity.
Stamped 750.
Inner diameter 6cms. 70.6gms.

£3,000-4,000 (plus 27.6% BP*)

119 A platinum fancy Deep Brownish Yellowish Orange diamond and diamond three-stone ring, by Hans D. Krieger.

With report 11280807, dated 18th October 2000, from the GIA, stating 0.84ct, natural colour.
Total diamond weight 1.66cts.
Hallmarks for Sheffield. Ring size K. 8.1gms.

£2,500-3,000 (plus 27.6% BP*)

120 A diamond 'Love' bangle, by Cartier.

Estimated total diamond weight 0.40ct, G+ colour, VS clarity.
Stamped 750.
Inner diameter 6.3cms. Cartier size 19. 34.4gms.

£3,000-4,000 (plus 27.6% BP*)

121 A brilliant-cut diamond line bracelet.

Estimated total diamond weight 8.80cts, G-I colour, SI1-P1 clarity.
Stamped 14K. Length 17.8cms. 22.4gms.

£3,000-4,000 (plus 27.6% BP*)

122 A diamond bracelet, by Piaget.

Estimated total diamond weight 0.90ct, G+ colour, VS clarity.
Stamped 750.
Length 18.5cms. 76.6gms.

£4,000-6,000 (plus 27.6% BP*)

123 A pair of 18ct gold Keshi pearl and diamond earrings.

Total diamond weight 0.78ct, estimated H-I colour, SI clarity.
Hallmarks for London.
Length 2.6cms. 13gms.

£1,000-1,500 (plus 27.6% BP*)

124 A yellow sapphire and brilliant-cut diamond cluster ring.

Sapphire calculated weight 2.75cts, based on estimated dimensions of 8.4 by 8.3 by 4.3mms.
Estimated total diamond weight 1.20cts, G-H colour, SI clarity.
Stamped 18ct.
Ring size O1/2. 5.3gms.

£1,000-1,500 (plus 27.6% BP*)



117

115

124

118

122

123

119

116

120

113

121

114

125 A late Victorian 15ct gold ruby, sapphire and diamond heart locket pendant.

Stamped 15ct.
Length 2.5cms. 2.8gms.

£300-400 (plus 27.6% BP*)

126 An early 20th century 18ct gold cat's-eye chrysoberyl and old-cut diamond cluster ring.

Chrysoberyl calculated weight 5.34cts, based on estimated dimensions of 10.3 by 10.1 by 5.1mms.
Estimated total diamond weight 0.80ct, G-H colour, VS2-P1 clarity.
Ring size N. 6.1gms.

£800-1,200 (plus 27.6% BP*)

127 A mid 20th century 18ct gold ruby and demantoid garnet snake ring.

Hallmarks for Chester, 1954.
Ring size S. 11.6gms.

£450-650 (plus 27.6% BP*)

128  A Roman 1st Century BC carnelian intaglio ring.

Ring size Q1/2. 14.5gms.
With case.

£800-1,200 (plus 27.6% BP*)

129 A late 19th century silver and gold, pearl and diamond angel brooch.

Estimated total diamond weight 0.65ct, H-I colour, SI clarity.
Length 3.8cms. 11.5gms.
May be worn as a pendant.

£700-900 (plus 27.6% BP*)

130 A mid to late Victorian gold bracelet, with garnet clasp.

Length 21cms. 19.3gms.

£800-1,200 (plus 27.6% BP*)

131  A late 19th century garnet cabochon brooch.

May also be worn as a pendant.
Length 5.6cms. 20gms.
With case.

£1,000-1,500 (plus 27.6% BP*)

132 A late Victorian gold garnet and split pearl hinged bangle.

French re-strike mark.
Inner diameter 5.6cms. 20.8gms.

£1,000-1,500 (plus 27.6% BP*)

133  A Georgian 18ct gold carved bloodstone seal.

Carved with the Coat of Arms of Frederick Michael, Count Palatine of Zweibrucken-Birkenfield (1724-1764).
Length 3cms. 7.9gms.
With fitted D.S. Lavender case.

£1,000-1,500 (plus 27.6% BP*)

134  A mid Victorian garnet cabochon fringe necklace, with swag detail.

Length 43cms. 49.1gms.
With case.

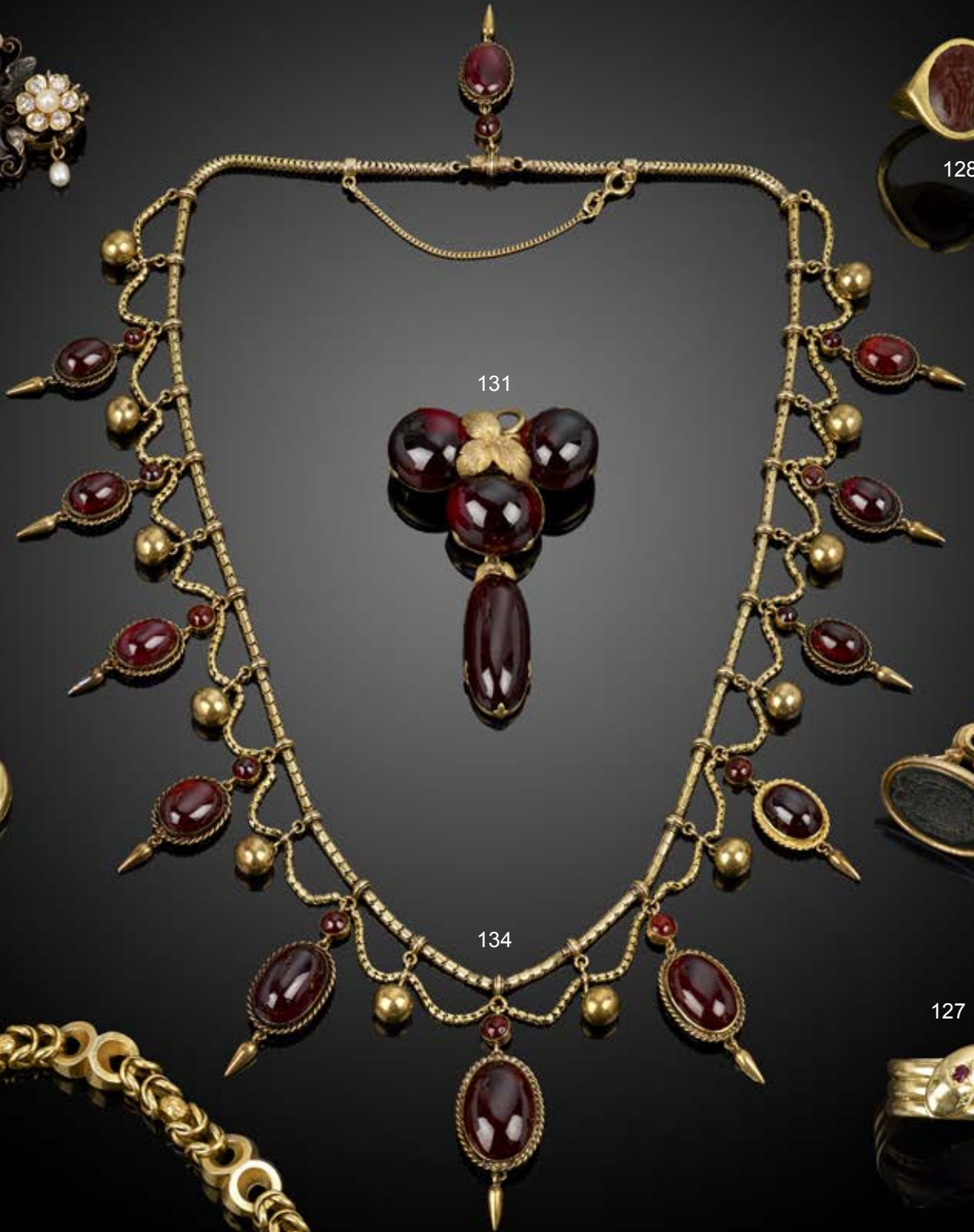
£4,000-6,000 (plus 27.6% BP*)



129



128



131

134

125



133

127



132



130

126



135  **A late Victorian silver and gold, natural pearl and rose-cut diamond brooch.**

With report 18203, dated 17th December 2019, from The Gem & Pearl Laboratory, stating natural, saltwater.
Length 4.1cms. 5.9gms.

£1,500-2,000 (plus 27.6% BP*)

136  **An early 20th century gold Burmese sapphire and diamond cluster ring.**

With report 79217-55, dated 25th June 2019, from GCS, stating Myanmar (Burma), no heat, estimated weight 2.10cts.
Estimated total diamond weight 1.50cts, predominantly H-I colour, VS-SI clarity.
Ring size K. 4.6gms.

£3,500-4,500 (plus 27.6% BP*)

137 **A late Victorian silver and gold diamond star brooch, with reverse-carved intaglio depicting a horse and jockey.**

Estimated total diamond weight 1.50cts, G-I colour, VS2-P1 clarity.
Length 3.2cms. 8.7gms.

£1,000-1,500 (plus 27.6% BP*)

138 **A mid Victorian gold, Burmese ruby, old-cut diamond and enamel hinged bangle.**


Verbal from GCS, stating Burma, no heat.
Principal ruby calculated weight 0.93ct, based on estimated dimensions.
Estimated total diamond weight 1ct, H-I colour, SI2-P1 clarity.
Inner diameter 5.7cms. 29.3gms.

£2,000-3,000 (plus 27.6% BP*)

139  **A suite of late Victorian gold blue enamel and split pearl jewellery, to include a brooch and a pair of earrings.**

Length of brooch 3.6cms. Length of earring 4.3cms. Total weight 16.3gms.
With case.

£800-1,200 (plus 27.6% BP*)

140  **A late Victorian 15ct gold Sri Lankan yellow sapphire and old-cut diamond floral cluster brooch, with rose-cut diamond accents.**

With report 18531, dated 17th March 2020, from The Gem & Pearl Laboratory, stating Sri Lanka, no heat.
Sapphire calculated weight 7.67cts, based on estimated dimensions of 11.2 by 9 by 8.1mms.
Estimated total old-cut diamond weight 2cts, G-J colour, VS2-P1 clarity.
Length 2.5cms. 7.3gms.

£1,500-2,000 (plus 27.6% BP*)

141 **A late Victorian silver and gold, old-cut diamond floral brooch.**

Estimated total diamond weight 3cts, predominantly H-I colour, VS-P1 clarity.
Diameter 3.3cms. 11.3gms.

£700-1,000 (plus 27.6% BP*)

142 **An early 20th century silver and gold, sapphire and diamond bracelet.**

Estimated total sapphire weight 6.85cts, based on estimated dimensions of one stone.
Estimated total diamond weight 1.65cts, H-J colour, SI1-P2 clarity.
Length 19.5cms. 16.2gms.

£1,200-1,800 (plus 27.6% BP*)

143 **A late Victorian 18ct gold old-cut diamond cluster ring.**

Estimated total diamond weight 1ct, H-I colour, VS2-SI2 clarity.
Stamped 18ct, indistinct.
Ring size L1/2. 5gms.

£600-800 (plus 27.6% BP*)

144  **A late Victorian gold turquoise ribbon brooch.**

Length 9.7cms. 22.3gms.
With case.

£700-900 (plus 27.6% BP*)

145 **A late Victorian 18ct gold split pearl, enamel and diamond brooch.**

Stamped 18ct.
Length 7.3cms. 23.9gms.

£500-700 (plus 27.6% BP*)



139



135



141



143



136



140



138



145



137



142



146  **A late Victorian 18ct gold and platinum old-cut diamond geometric cluster ring.**

Estimated total diamond weight 0.90ct, principal diamond estimated H-I colour, SI clarity.
Stamped Plat & 18ct.
Ring size N. 4.3gms.

£800-1,200 (plus 27.6% BP*)

147  **A pair of old-cut diamond drop earrings.**

Estimated total diamond weight 2.70cts, I-J colour, SI1-P1 clarity.
Length 3.8cms. 4.4gms.
With case.

£1,000-1,500 (plus 27.6% BP*)

148 **An early 20th century platinum circular-cut diamond dress ring.**



Estimated total diamond weight 1.50cts, G-I colour, VS2-P1 clarity.
Ring size O. 7.7gms.

£1,200-1,800 (plus 27.6% BP*)

149 **A mid 20th century circular-cut and rose-cut diamond bracelet.**

Estimated total circular-cut diamond weight 0.25ct, predominantly H-J colour, SI-P1 clarity.
Length 18.8cms. 7.3gms.

£600-800 (plus 27.6% BP*)

150   **A natural saltwater pearl and coral necklace, with Burmese pink sapphire and diamond clasp.**

With report 80265-63, dated 6th July 2020, from GCS, stating Burma, no heat and saltwater, natural pearls and seed pearls.
Approximate dimensions of largest pearl 7.2 to 2.2mms.
Length 45cms. 34.2gms.
Coral untested.

£1,000-1,500 (plus 27.6% BP*)

151  **An early 20th century aquamarine, sapphire and pink topaz necklace.**

Total sapphire weight 3.73cts. Topaz weight 6.05cts.
Aquamarine calculated weight 3.93cts, based on estimated dimensions of 12.3 by 9.5 by 5.9mms.
Length 42cms. 11.2gms.
With fitted case.

£1,200-1,800 (plus 27.6% BP*)

152  **A late 19th century sapphire, demantoid garnet and old-cut diamond pendant.**

Sapphire calculated weight 3.12cts, based on estimated dimensions of 9.3 by 8.9 by 4.5mms.
Estimated total diamond weight 0.70ct.
French assay marks.
Length 3cms. 5.5gms.
With case.

£2,500-3,000 (plus 27.6% BP*)

153 **A pair of brilliant-cut diamond floral cluster earrings.**

Estimated total diamond weight 5cts, G-I colour, predominantly VS2-SI2 clarity.
Length 2.7cms. 5.4gms.

£3,500-4,500 (plus 27.6% BP*)

154  **An early 20th century enamel and diamond horse and jockey brooch.**

Estimated total old-cut diamond weight 0.50ct.
Length 3.5cms. Weight 7.7gms.
With fitted case.

£1,400-2,000 (plus 27.6% BP*)

155  **A mid 20th century coral, onyx and diamond star cluster ring.**

Ring size P. 6.3gms.
Coral untested.

£600-800 (plus 27.6% BP*)

156 **An 18ct gold emerald and brilliant-cut diamond cluster ring.**

Emerald calculated weight 1.73cts, based on estimated dimensions of 7.5 by 5.8 by 4.9mms.
Estimated total diamond weight 0.55ct, H-I colour, SI1-P1 clarity.
Hallmarks for Birmingham, 1992.
Ring size L. 5gms.

£600-800 (plus 27.6% BP*)

157 **A gentleman's diamond and blue enamel dress set.**

Estimated total diamond weight 0.30ct, G-H colour, VS clarity.
Stamped 750. Italian marks. 50.1gms.
With Mappin & Webb case.

£800-1,200 (plus 27.6% BP*)



158 **A sapphire and old-cut diamond cluster ring.**

Sapphire calculated weight 1.44cts, based on estimated dimensions of 9 by 5.3 by 3.6mms.
Estimated total diamond weight 0.70ct, H-I colour, SI1-P1 clarity.
French assay marks. Ring size M1/2. 6.7gms.

£800-1,200 (plus 27.6% BP*)

159 **A mid 20th century onyx, old and rose-cut diamond bracelet.**

Estimated total old-cut diamond weight 0.60ct, principal diamonds estimated I-J colour, predominantly VS2-SI clarity.
Length 18cms. 9gms.

£1,000-1,500 (plus 27.6% BP*)

160 **A mid 20th century platinum sapphire and old-cut diamond scrolling brooch.**

Sapphire calculated weight 6.08cts, based on estimated dimensions of 10.8 by 9 by 5.8mms.
Estimated total diamond weight 2.50cts, predominantly G-I colour, VS2-SI2 clarity. Length 5.6cms. 16.6gms.
With fitted Mappin & Webb case.

£1,200-1,800 (plus 27.6% BP*)

161 **A pair of mid 20th century platinum vari-cut diamond scrolling earrings.**

Estimated total diamond weight 3.40cts, G-H colour, VS-P1 clarity.
Length 3.6cms. 23.4gms.

£2,800-3,200 (plus 27.6% BP*)

162 **A mid 20th century predominantly Burmese ruby and vari-cut diamond scroll brooch.**

With report 80260-16, dated 19th March 2020, from GCS, stating forty-two Burma, no heat.
Estimated total diamond weight 3.75cts, G-H colour, VS-SI1 clarity.
Length 7.2cms. 29.9gms.

£1,500-2,000 (plus 27.6% BP*)

163 **An early 20th century gold, vari-cut diamond and seed pearl necklace.**

Estimated total old-cut diamond weight 0.60ct, H-J colour, SI clarity.
Length 42cms. 14gms.

£2,500-3,000 (plus 27.6% BP*)

164 **A vari-cut diamond and calibre-cut ruby cluster ring.**

Principal diamond estimated 1.25cts, tinted colour, SI clarity.
Ring size O. 6.1gms.

£1,500-2,000 (plus 27.6% BP*)

165 **A mid 20th century platinum, Burmese ruby and vari-cut diamond double-clip brooch.**

With report 80260-17, dated 19th March 2020, from GCS, stating thirty-eight Burma, no heat, one synthetic.
Estimated total diamond weight 3cts, I-J colour, VS2-P1 clarity.
Length 5.4cms. 28gms.

£1,000-1,500 (plus 27.6% BP*)

166 **A vari-cut diamond and garnet negligee pendant necklace.**

Estimated old-cut diamond weight 0.70ct, I-J colour, SI clarity.
Length of pendant 3.4cms. Length of chain 40cms. 9.5gms.

£800-1,200 (plus 27.6% BP*)

167 **A mid 20th century vari-cut diamond and cultured pearl pendant, suspended from an 18ct gold chain.**

May be worn as a brooch.
Estimated length of cultured pearl 21.7mms.
Estimated total diamond weight 4.75cts, H-J colour, SI clarity.
Chain with hallmarks for Birmingham.
Length of pendant 4.7cms. Length of chain 42cms. Total weight 25.4gms.

£1,500-2,000 (plus 27.6% BP*)

168 **A pair of ruby and old-cut diamond earrings.**

Estimated total diamond weight 0.90ct, H-I colour, SI2-P1 clarity.
Length 4.3cms. 7.7gms.

£500-700 (plus 27.6% BP*)

160



163



162



166



158



164



167



159



165



161



168



169 A platinum ruby and vari-cut diamond cluster ring.

Estimated total diamond weight 2.20cts, G-H colour, VS2-SI1 clarity.

Hallmarks for London, 2002.

Ring size N1/2. 9.7gms.

£800-1,200 (plus 27.6% BP*)

170 An 18ct gold sapphire and diamond dress ring.

Sapphire weight 1.64cts.

Total diamond weight 1.02cts, estimated G-H colour, SI clarity.

Hallmarks for London, 2008.

Ring size M. 6gms.

£900-1,400 (plus 27.6% BP*)

171 A pair of vari-cut diamond and cultured pearl fancy drop earrings.

Estimated total diamond weight 3.50 to 4cts, H-I colour, VS-SI clarity.

Approximate dimensions of one cultured pearl 11.5mms.

Length 5.5cms. 20gms.

£2,000-3,000 (plus 27.6% BP*)

172 A mid 20th century platinum old-cut diamond single-stone ring, with diamond foliate shoulders.

Principal diamond estimated weight 1.90cts, G+ colour, SI clarity.

Stamped Plat.

Ring size K. 3.6gms.

£3,000-4,000 (plus 27.6% BP*)

173 A mid 20th century Burmese ruby and circular-cut diamond bracelet.

With report 77103-95, dated 26th May 2017, from GCS, stating Myanmar (Burma), no heat.

Estimated total diamond weight 5.50cts, H-I colour, SI2-P1 clarity.

Length 18cms. 38.6gms.

£3,000-4,000 (plus 27.6% BP*)

174 A brilliant-cut diamond floral necklace, with cultured pearl drop.

Estimated total diamond weight 7.50cts, G-H colour, VS clarity.

Length 36.8cms. 29.2gms.

£3,000-4,000 (plus 27.6% BP*)

175 A pair of marquise-shape diamond and ruby earrings.

Estimated total diamond weight 1.90cts, H-J colour, P1 clarity.

Total ruby weight 5.66cts,

One with hallmarks for platinum.

Length 1.8cms. Total weight 5.4gms.

£2,000-3,000 (plus 27.6% BP*)

176 An amethyst, brilliant-cut diamond and emerald foliate spray brooch.

Estimated total diamond weight 3.40cts, H-I colour, SI2-P1 clarity.

Stamped 18ct and plat.

Length 5.8cms. 16.8gms.

£1,000-1,500 (plus 27.6% BP*)

177 An early 20th century platinum emerald and diamond wreath pendant, with later cultured pearl drop and 18ct gold chain.

Estimated total diamond weight 2cts, predominantly G-I colour, VS2-SI2 clarity.

Chain with hallmarks for Birmingham.

Length of pendant 4.5cms. Length of chain 46cms. 11gms.

£1,500-2,000 (plus 27.6% BP*)

178 A mid 20th century vari-cut diamond floral spray brooch.

Estimated total diamond weight 3.40cts, H-I colour, SI2-P1 clarity.

Length 9.3cms. 36.6gms.

£1,000-1,500 (plus 27.6% BP*)

179 A pair of marquise-shape diamond stud earrings.

Each laser inscribed GIA 16023705 and GIA15571769, corresponding to reports dated 16th July 2007 and 27th March 2007, from the GIA, stating 0.71ct, F colour, VS2 clarity and 0.70ct, G colour, VS2 clarity.

3.5gms.

£1,800-2,500 (plus 27.6% BP*)

180 A vari-cut diamond geometric dress ring.

Estimated total diamond weight 1ct, G-I colour, VS-P1 clarity.

Stamped 18ct.

Ring size O. 3.2gms.

£1,000-1,500 (plus 27.6% BP*)



174

181  **A mid 20th century palladium single and brilliant-cut diamond openwork bracelet.**

Estimated total diamond weight 7.50 to 8cts, principal diamond estimated 0.50ct, G-H colour, SI2-P1 clarity.
Length 17.5cms. 45.2gms.

£2,800-3,800 (plus 27.6% BP*)

182 **A pair of mid 20th century circular-cut diamond drop earrings.**

Principal diamonds weight 4.68 and 4.30cts respectively, estimated tinted colour, VS clarity.
Estimated total non-principal diamond weight 0.80ct.
Length 5.4cms. 11.6gms.

£25,000-30,000 (plus 27.6% BP*)

183  **An early 20th century 18ct gold and platinum, Sri Lankan sapphire, pearl and diamond pendant, with chain.**

With photocopy of report 79211-03, dated 29th April 2019, from GCS, stating Sri Lanka (Ceylon), no heat, estimated weight 4.40cts. Estimated total old-cut diamond weight 1.20cts, G-I colour, SI1-P1 clarity.
French re-strike marks.
Length of pendant 6cms. Length of chain 40cms. 11.5gms.
With fitted case.

£3,500-4,500 (plus 27.6% BP*)

184 **A pair of old-cut diamond and pink spinel earrings.**

Calculated total spinel weight 10.56cts, based on estimated dimensions 11 by 10 by 7mms and 11.5 by 9.5 by 4.4mms.
Estimated total diamond weight 1.60cts, H-J colour, SI clarity.
Length 3.3cms. 11.2gms.

£3,500-4,500 (plus 27.6% BP*)

185  **A natural pearl and rose-cut diamond stickpin.**

With report 79227-30, dated 7th August 2019, from GCS, stating natural, saltwater, estimated dimensions 13.5 by 12.3 by 9.7mms.
Length of stickpin head 2.1cms. 4.2gms.
With case.

£5,000-6,000 (plus 27.6% BP*)

186 **A pair of foil-back rose-cut diamond earrings.**

Approximate dimensions of one rose-cut diamond 8.5 by 6.9mms.
Length 1.4cms. Total weight 4.9gms.

£2,000-2,500 (plus 27.6% BP*)

187  **A Sri Lankan sapphire and single-cut diamond dress ring.**

With report 80251-00, dated 29th January 2020, from GCS, stating Sri Lanka, no heat.
Estimated total diamond weight 0.30ct.
Ring size K1/2. 6gms.

£1,800-2,400 (plus 27.6% BP*)

188  **An Edwardian platinum and gold, tourmaline and old-cut diamond negligee necklace.**

Largest tourmaline estimated weight 1.25cts, based on estimated dimensions of 7.1 by 7 by 4.1mms.
Estimated total diamond weight 0.50ct, G-H colour, VS-SI clarity.
Length 41.5cms. 5.6gms. With fitted case.

£1,000-1,500 (plus 27.6% BP*)

189  **An early 20th century black opal brooch, with old and rose-cut diamond surround.**

Approximate dimensions of opal 15.1 by 13.8 by 3.7mms.
Length 2.3cms. 3.1gms.
With case.

£2,500-3,000 (plus 27.6% BP*)

190  **A late Victorian 18ct gold sapphire cabochon and old-cut diamond triple cluster ring.**

Principal sapphire calculated weight 1.20cts, based on estimated dimensions 6.2 by 4.5 by 4mms.
Estimated total diamond weight 1.10cts, H-J colour, SI clarity.
Stamped 18CT.
Ring size P. 5gms.
With case.

£1,000-1,500 (plus 27.6% BP*)

191  **A Sri Lankan yellow sapphire and old-cut pendant, suspended from a trace-link chain.**

With report 5776-6667, dated 12th August 2016, from GCS, stating Sri Lanka (Ceylon), no heat.
Estimated total diamond weight 0.60ct.
Length of pendant 4.5cms. Length of chain 42.3cms. 8.3gms.

£1,500-2,000 (plus 27.6% BP*)

192 **A ruby, pearl and rose-cut diamond bow brooch.**

Principal ruby calculated weight 0.43ct, based on estimated dimensions of 4.8 by 4.7 by 2.4mms.
Length 5.8cms.
Pearls untested.

£600-800 (plus 27.6% BP*)

BP* - Buyer's Premium of 23% (plus VAT) or 27.6% (VAT included)



181



184



189



182



183



191



187



185



188



192



190



186

193  **A brilliant and old-cut diamond pendant, with chain.**

Estimated total diamond weight 2cts. Principal diamond weight 0.75ct, estimated H-I colour, P1 clarity.
Length of pendant 3.2cms. Length of chain 47cms. 8.3gms.
With fitted case.

£800-1,200 (plus 27.6% BP*)

194 **A sapphire and diamond geometric cluster ring.**

Principal sapphire calculated weight 1.21cts, based on estimated dimensions of 10 by 5 by 3.2mms.
Estimated total diamond weight 0.50ct, G-H colour, VS-SI clarity.
Ring size O. 4gms.

£500-700 (plus 27.6% BP*)

195  **A pear-shape diamond single-stone ring, with vari-cut diamond sides.**

With report 06028181056, dated **29th November 2006**, from HRD, stating principal diamond weight 1.01cts, F colour, SI1 clarity.
Stamped 750.
Ring size L. 6gms.

£1,200-1,800 (plus 27.6% BP*)

196 **A pair of cultured pearl and brilliant-cut diamond drop earrings.**

Estimated diameter of cultured pearls 15.7 to 15mms.
Estimated total diamond weight 3.20cts, H-J colour, SI2-P1 clarity.
Length 5.2cms. 20.6gms.

£700-900 (plus 27.6% BP*)

197 **A mid 20th century platinum blue zircon and vari-cut diamond cocktail ring.**

Zircon calculated weight 19.28cts, based on estimated dimensions of 15.5 by 15.3 by 8.65mms.
Estimated total diamond weight 0.60ct, G-H colour, VS-SI clarity.
Ring size L1/2. 8.9gms.

£1,500-2,000 (plus 27.6% BP*)

198 **A mid 20th century brilliant-cut diamond brooch, with matching earrings.**

Estimated total diamond weight 2.30cts, H-I colour, SI clarity.
Length of brooch 7.3cms. Length of earrings 4.4cms. 31.6gms.

£800-1,200 (plus 27.6% BP*)

199 **A pair of circular and single-cut diamond scroll earrings.**

Estimated total diamond weight 8cts, H-K colour, VS-SI clarity.
Italian marks, stamped 750.
Length 5.5cms. 28.9gms.

£2,200-2,800 (plus 27.6% BP*)

200 **A brilliant-cut diamond floral dress ring.**

Total diamond weight 3.43cts.
Stamped 750.
Ring size O. 26.9gms.

£2,000-3,000 (plus 27.6% BP*)

201 **An 18ct gold brilliant-cut diamond line necklace.**

Estimated total diamond weight 5 to 6cts, G-I colour, VS-P1 clarity.
Hallmarks for London, 2010.
Length 44cms. 16.3gms.

£2,500-3,000 (plus 27.6% BP*)

202 **A sapphire and diamond dress ring.**

Principal sapphire calculated weight 3.27cts, based on estimated dimensions of 8.5 by 8.2 by 5mms.
Principal old-cut diamonds estimated total weight 1.15cts, tinted colour, SI clarity.
Stamped 750. Ring size M. 6.6gms.

£1,800-2,400 (plus 27.6% BP*)

203 **A sapphire and vari-cut diamond cocktail ring.**

Sapphire calculated weight 6.50 to 7cts, based on estimated dimensions of 12.7 by 9.5 by 6.5mms.
Estimated total diamond weight 3cts, G-I colour, VS-SI clarity.
Ring size L. 11.4gms.

£3,000-4,000 (plus 27.6% BP*)

204  **A pair of coral, pear and marquise-shape diamond earrings, with brilliant-cut diamond scroll accent.**

Estimated total diamond weight 6cts, I-K colour, P1 clarity.
Length 3.4cms. 17gms.
Coral untested.

£3,500-4,500 (plus 27.6% BP*)



198



204



197



203



196

201



199



200



194



202



195



193

205  **A brilliant-cut diamond foliate motif bracelet, by Chaumet.**

Estimated total diamond weight 2.40cts, G-H colour, VS clarity.
French assay marks, stamped 750. Length 17cms. 22.7gms.
With maker's case.

£1,800-2,500 (plus 27.6% BP*)

206 **A pair of brilliant-cut diamond foliate-motif hoop earrings, by Chaumet.**

Estimated total diamond weight 1ct, G+ colour, VS clarity.
French assay marks. Engraved 750.
Length 1.3cms. 8.7gms.
With maker's pouch.

£800-1,200 (plus 27.6% BP*)

207 **A brilliant-cut diamond floral necklace, by Chaumet.**

Estimated total diamond weight 6cts, G-H colour, VS clarity.
Stamped 750.
Length 39cms. 50gms.

£3,500-4,500 (plus 27.6% BP*)

208  **An impressive platinum old-cut pear-shape diamond single-stone ring, with diamond shoulders.**

With report 2201066482, dated 13th February 2019, from the GIA, stating 5.28cts, F colour, VS2 clarity.
Total shoulder diamond weight 0.50ct, estimated G+ colour, VS clarity.
Hallmarks for London.
Ring size M. 4.9gms.

£80,000-120,000 (plus 27.6% BP*)

209  **An impressive platinum old-cut diamond single-stone ring, with diamond gallery and shoulders.**

With report 2191931742, dated 18th December 2018, from the GIA, stating 8.07cts, I colour, VS1 clarity.
Hallmarks for London, 2018.
Ring size M. 8.4gms.

£90,000-140,000 (plus 27.6% BP*)

210  **A platinum cushion old-cut diamond single-stone ring, with brilliant-cut diamond shoulders.**

Principal diamond with report 1192333572, dated 3rd May 2018, from the GIA, stating 3.04cts, E colour, VS2 clarity.
Hallmarks for London, 2013.
Ring size M. 4.2 grams.

£28,000-38,000 (plus 27.6% BP*)

211 **An 18ct gold vari-cut diamond graduated heart line bracelet.**

Estimated total diamond weight 7.50 to 8cts, G-H colour, VS clarity.
Hallmarks for London, 2008.
Length 17.7cms. 13.5gms.

£3,000-4,000 (plus 27.6% BP*)

212  **A pair of pear-shape and brilliant-cut diamond drop earrings.**

Estimated total diamond weight 2.20cts. Principal diamonds estimated weight 0.80ct, G-H colour, VS clarity.
Length 2.1cms. 3.6gms.
With case.

£2,500-3,000 (plus 27.6% BP*)

213 **A marquise-shape diamond and coloured brilliant-cut diamond full eternity ring.**

Total marquise-shape diamond weight 4cts.
Total coloured diamond weight 0.45ct.
Ring size P1/2. 8gms.

£1,800-2,600 (plus 27.6% BP*)

214 **A diamond ladybird floral dress ring, by Dior.**

Estimated total diamond weight 1ct, G-H colour, VS clarity.
French marks, stamped 750.
Ring size I. 7.4gms.

£1,200-1,800 (plus 27.6% BP*)

215 **A platinum marquise-shape 'pinkish-brown' diamond and brilliant-cut diamond three-stone cluster ring, attributed to Hans D. Krieger.**

Total diamond weight 0.98ct, estimated VS-SI clarity.
Hallmarks for Sheffield. Ring size M. 7.6gms.
Diamond untested for natural colour origin.

£2,000-2,500 (plus 27.6% BP*)

216 **A pair of brilliant-cut diamond floral earrings.**

Estimated total diamond weight 2.60cts, G-H colour, VS2-SI1 clarity.
Length 2cms. 15.8gms.

£800-1,200 (plus 27.6% BP*)



216



212



205

207



210



211



209



206



214



208



213



215

217 A sapphire and diamond dress ring.

Principal sapphire calculated weight 1.90cts, based on estimated dimensions of 8.8 by 6.6 by 3.9mms.
Estimated total diamond weight 0.25ct, G-H colour, VS-SI clarity.
Ring size N. 5.9gms.

£700-900 (plus 27.6% BP*)

218 A sapphire and brilliant-cut diamond hinged bangle.

Estimated total diamond weight 3.60cts, H-I colour, SI clarity.
Inner diameter 5.3cms. 26.5gms.

£800-1,200 (plus 27.6% BP*)

219 A brilliant-cut diamond single-stone ring.

With report 400919048, dated 6th January 2020, from IGI, stating 1.02cts, H colour, SI2 clarity.
Stamped 750.
Ring size N1/2. 3.3gms.

£1,200-1,800 (plus 27.6% BP*)

220 A pair of multi-faceted tanzanite and diamond earrings.

Estimated dimensions of one tanzanite 21.2 by 19.2 by 9mms.
Estimated total diamond weight 2cts, H-I colour, SI1-P1 clarity.
Stamped 750. Length 5.1cms. 18.9gms.

£2,500-3,500 (plus 27.6% BP*)

221 An 18ct gold diamond pendant, on chain, by Stephen Webster.

Estimated total diamond weight 1.15cts, G-H colour, VS-SI1 clarity.
Hallmarks for London, 2004.
Length of pendant 4.3cms. Length of chain 42cms. 21gms.

£1,600-2,200 (plus 27.6% BP*)

222 A Sri Lankan sapphire single-stone ring, with baguette-cut diamond trefoil sides.

With report 18518, dated 17th March 2020, from The Gem & Pearl Laboratory, stating Sri Lanka, no heat.
Sapphire calculated weight 4.97cts, based on estimated dimensions of 10.5 by 10.4 by 5.7mms.
Estimated total diamond weight 1ct, I-J colour, VS2-SI2 clarity.
Approximate ring size N. 6gms.

£3,000-4,000 (plus 27.6% BP*)

223 An 18ct gold sapphire and diamond necklace, by Rodney Rayner.

Total sapphire weight 4.99cts.
Total diamond weight 2.16cts, estimated G+ colour, VS clarity.
Hallmarks for London, 2004. Length 43.5cms. 75.6gms.

£2,000-2,500 (plus 27.6% BP*)

224 A brilliant-cut diamond single-stone ring, with tapered baguette-cut diamond sides.

Principal diamond laser inscribed 204681119, corresponding to a report dated 28th March 2016, from IGI, stating 1.51cts, H colour, VS1 clarity.
Estimated total baguette-cut diamond weight 0.20ct, G-H colour, VS2-SI1 clarity.
Stamped 950.
Approximate ring size L. 4.4gms.

£4,000-6,000 (plus 27.6% BP*)

225 A platinum sapphire and brilliant-cut diamond cluster ring.

Sapphire weight 3.11cts.
Total diamond weight 0.88ct, estimated I-J colour, VS clarity.
Hallmarks for London.
Ring size L1/2. 8.1gms.

£1,800-2,600 (plus 27.6% BP*)

226 A square-shape diamond single-stone ring, by Graff.

With report 2115347678, dated 11th November 2009, from the GIA, stating 2.01cts, G colour, VS1 clarity.
Stamped Pt950.
Ring size L1/2. 4.7gms.

£8,000-12,000 (plus 27.6% BP*)

227 A pair of 18ct gold cultured pearl and brilliant-cut diamond earrings.

Total diamond weight 0.78ct, estimated G-H colour, VS2-SI1 clarity.
Hallmarks for London.
Length 2.6cms. 17.7gms.

£1,200-1,800 (plus 27.6% BP*)

228 A pair of kyanite and brilliant-cut diamond cluster earrings.

Total kyanite calculated weight 4cts, based on estimated dimensions.
Estimated total diamond weight 3.50cts, H-I colour, Si1-P1 clarity.
Stamped 750.
Length 1.8cms. 10.3gms.

£1,500-2,000 (plus 27.6% BP*)



223



228



218



222



226



220



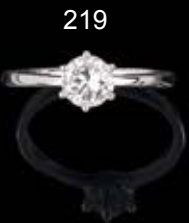
221



227



217



219



225



224

229 An amethyst and brilliant-cut diamond cocktail ring.

Amethyst calculated weight 7.31cts, based on estimated dimensions of 14 by 12 by 7.8mms.
Estimated total diamond weight 4.25cts, H-I colour, predominantly VS clarity.
Stamped 18ct.
Ring size P1/2. 11gms.

£1,400-2,000 (plus 27.6% BP*)

230 An 18ct gold ruby and diamond floral open ring.

Total diamond weight 1.13cts.
Hallmarks for London, 2018.
Approximate ring size M1/2. 8.9gms.

£650-850 (plus 27.6% BP*)

231 An 18ct gold vari-hue sapphire line bracelet.

Total sapphire calculated weight 16.50cts, based on estimated dimensions of one sapphire at 4 by 3.2 by 2mms.
Hallmarks for London.
Length 17.8cms. 19.9gms.

£800-1,200 (plus 27.6% BP*)

232 An 18ct gold sapphire and diamond floral open ring.

Total diamond weight 1.16cts.
Hallmarks for London, 2018.
Approximate ring size M1/2. 8.7gms.

£700-900 (plus 27.6% BP*)

233 A vari-hue sapphire and pave-set diamond 'lantern' pendant.

Total sapphire weight 21.36cts, stamped to mount.
Total diamond weight 2.60cts, stamped to mount, estimated G-H colour, VS clarity.
Stamped Pt950. Length 5.9cms. 26.4gms.

£1,800-2,400 (plus 27.6% BP*)

234 An opal, ruby and diamond cluster ring.

Estimated dimensions of opal 17.9 by 11.8 by 5.25mms.
Estimated total diamond weight 0.50ct, G-H colour, VS-SI clarity.
Stamped 750.
Ring size M1/2. 6.9gms.

£1,200-1,800 (plus 27.6% BP*)

235 A pair of mid 20th century turquoise earrings, with baguette and brilliant-cut diamond surrounds.

Estimated total diamond weight 2.75cts, H-I colour, VS-SI clarity.
Length 1.9cms. 10.2gms.

£1,800-2,400 (plus 27.6% BP*)

236 A pair of 18ct gold opal and diamond foliate cluster drop earrings.

Estimated dimensions of one opal 13.6 by 8.5mms.
Estimated total diamond weight 0.70ct, G-H colour, VS-SI clarity.
Hallmarks for London, 2015.
Length 3.4cms. 7.3gms.

£700-900 (plus 27.6% BP*)

237 An 18ct gold trace-link necklace, with pave-set pink sapphire and diamond floral slide.

Estimated total diamond weight 0.35ct, I-J colour, SI clarity.
Hallmarks for London, 2017.
Length 68cms. 11.7gms.

£600-800 (plus 27.6% BP*)

238 A pair of 18ct gold diamond and gem-set earrings.

Gems to include sapphire, moonstone, spinel, amethyst.
Estimated total diamond weight 0.15ct.
Swiss convention marks.
Length 3.1cms. 16.3gms.

£600-800 (plus 27.6% BP*)

239 An 18ct gold hinged bangle, suspending a brilliant-cut diamond charm.

Total diamond weight 1.45cts, estimated G-H colour, VS clarity.
Hallmarks for London, 2004.
Inner diameter 5.7cms. 25.8gms.


£700-1,000 (plus 27.6% BP*)

240 A platinum colour-treated 'pink' diamond and diamond cluster ring.

With copy of report 6173645064, dated 9th August 2019, from the GIA, stating colour-treated fancy intense orangy pink colour, VVS2 clarity, 2.04cts.
Estimated total non-principal diamond weight 0.50ct, G-H colour, VS clarity.
Hallmarks for Birmingham.
Ring size K. 8.1gms.

£7,000-10,000 (plus 27.6% BP*)



241  **An 18ct gold guilloche enamel, brilliant-cut diamond and carved hardstone 'Floral Bouquet' hinged egg, on green onyx pedestal base, by Faberge.**

Stamped Faberge 53/75.
Estimated total diamond weight 0.15ct, G-H colour, VS clarity.
Hallmarks for Edinburgh, 2003. Height 10.4cms. 167.9gms.
With maker's case.

£2,800-3,800 (plus 27.6% BP*)



BP* - Buyer's Premium of 23% (plus VAT) or 27.6% (VAT included)


241



242  **A platinum Madagascar cushion-shape purple sapphire and brilliant-cut diamond ring.**

With report 80252-93, dated 11th February 2020, from GCS, stating Madagascar, no heat, estimated weight 3.04cts. Estimated total diamond weight 1.15cts, predominantly H-I colour, VS clarity. Hallmarks for London, 2013. Ring size L1/2. 7.2gms.

£2,000-2,500 (plus 27.6% BP*)

243  **A platinum oval old-cut diamond single-stone ring, with single-cut diamond line shoulders.**

Principal diamond with report 2183929277, dated 26th January 2018, from the GIA, stating 2.44cts, E colour, Internally Flawless. Estimated total single-cut diamond weight 0.40ct. Hallmarks for London, 2017. Ring size M. 5.3gms.

£16,000-20,000 (plus 27.6% BP*)

244  **A pair of 18ct gold brilliant-cut and pear-shape diamond cluster articulated earrings.**

Each principal diamond with GIA report, ranging from 0.30 to 0.33cts, D colour, VVS1-VS2 clarity. Estimated total diamond weight 9.05cts. Hallmarks for London, 2015. Length 5cms. 19.7gms.

£4,000-6,000 (plus 27.6% BP*)

245  **A pair of graduated brilliant-cut diamond and pink sapphire drop earrings.**

With report 79228-21, dated 7th August 2019, from GCS, stating natural pink sapphires, no heat. Estimated total diamond weight 0.85ct, G-H colour, VS-SI clarity. Butterfly backs stamped 750. Length 2.9cms. 4.2gms.

£1,400-2,000 (plus 27.6% BP*)

246  **A brilliant-cut diamond single-stone ring.**

With report 407952830, dated 6th March 2020, from IGI, stating 1.28cts, E colour, SI1 clarity. Stamped 750. Ring size M. 3.7gms.

£2,000-2,500 (plus 27.6% BP*)

247 **A brilliant-cut diamond, rock crystal and ruby cluster ring.**

Principal diamond estimated weight 2cts, tinted colour, P1-P2 clarity. Ring size M. 5.3gms.

£1,500-2,000 (plus 27.6% BP*)

248 **A pair of vari-cut diamond drop earrings.**

Estimated total diamond weight 1.40ctcs, principal diamonds estimated G-H colour, VS clarity. Length 2.4cms. 2.5gms.

£1,200-1,800 (plus 27.6% BP*)

249 **An 18ct gold pave-set diamond and pink sapphire 'jaster' skull ring, by Theo Fennell.**

Estimated total diamond weight 1ct. Hallmarks for London, 2011. Ring size Q. 15.5gms.

£1,000-1,500 (plus 27.6% BP*)

250 **An 18ct gold diamond, pink sapphire, haematite and rock crystal 'Midnight Haze' pendant, with chain, by Stephen Webster.**

Estimated total diamond weight 0.40ct. Hallmarks for London, 2006. Length of pendant 6.2cms. Length of chain 42cms. 29.9gms.

£1,600-2,200 (plus 27.6% BP*)

251 **An 18ct gold pink sapphire and brilliant-cut diamond floral cluster ring.**

Principal pink sapphire weight 1.52cts. Total diamond weight 1.24cts. Hallmarks for London. Ring size M1/2. 12.7gms.

£2,000-3,000 (plus 27.6% BP*)

252 **A pair of triangular-shape diamond stud earrings.**

Estimated total diamond weight 1.50cts, G-H colour, SI clarity. 1.6gms.

£1,400-2,000 (plus 27.6% BP*)

253 **A ruby and brilliant-cut diamond cluster ring.**

Ruby weight 1.74cts. Total diamond weight 0.41cts, stamped to band, estimated H-I colour, SI clarity. Stamped 750. Ring size N. 4.5gms.

£700-1,000 (plus 27.6% BP*)

251



244



250



243



247



246



252



249



245



242



248



253



254 An emerald and brilliant-cut diamond cluster ring.

Emerald calculated weight 0.91ct, based on estimated dimensions of 6.5 by 5.5 by 3.5mms.

Estimated total diamond weight 1ct, H-I colour, VS-SI clarity.

Stamped Plat.

Ring size L1/2. 8.4gms.

£500-700 (plus 27.6% BP*)

255 A Sri Lankan sapphire and old-cut diamond floral cluster ring.

With report 18532, dated 17th March 2020, from The Gem & Pearl Laboratory, stating Sri Lanka, no heat.

Sapphire calculated weight 2.48cts, based on estimated dimensions of 10 by 7.8 by 3.8mms.

Estimated total diamond weight 1.20cts, H-J colour, VS2-P1 clarity.

Ring size O. 4.7gms.

£800-1,200 (plus 27.6% BP*)

256 A pave-set diamond floral fringe necklace.

Estimated total diamond weight 4 to 4.50cts, H-I colour, VS2-SI2 clarity.

Length 41.5cms. 35.6gms.

£1,500-2,000 (plus 27.6% BP*)

257 An aquamarine and old-cut diamond cluster ring.

Aquamarine calculated weight 6.26cts, based on estimated dimensions of 13 by 9.6 by 7.1mms.

Estimated total diamond weight 1.60cts, H-I colour, SI2-P1 clarity.

Stamped 18ct.

Ring size M1/2. 10.6gms.

£1,500-2,000 (plus 27.6% BP*)

258 A Colombian emerald and vari-cut diamond dress ring.

With report 5776-5870, dated 7th June 2016, from GCS, stating 1.39cts, Colombia, minor enhancement.

Estimated total diamond weight 0.35ct, H-I colour, VS clarity.

Ring size N. 3.9gms.

£1,800-2,400 (plus 27.6% BP*)

259 A brilliant-cut diamond single-stone ring, with pave-set diamond sides and gallery.

With report 1139271600, from the GIA, stating principal diamond weight 0.93ct, G colour, VS2 clarity.

Estimated total diamond weight 1.40cts.

Hallmarks for London, 2012.

Approximate ring size H. 3.7gms.

£1,800-2,400 (plus 27.6% BP*)

260 A pair of brilliant-cut diamond stylised foliate articulated earrings.

Estimated total diamond weight 2.50cts, predominantly I-J colour, VS clarity.

Length 5.5 and 5.7cms. 17.5gms.

£1,200-1,800 (plus 27.6% BP*)

261 An old-cut diamond five-stone ring.

Estimated total diamond weight 1.50cts, H-J colour, SI clarity.

Stamped Plat.

Ring size M1/2. 5gms.

£1,400-2,000 (plus 27.6% BP*)

262 A pair of brilliant-cut diamond stud earrings.

With reports 08025096009 and 080250967012, dated 4th November 2008, from HRD, stating 0.92ct and 0.90ct, F colour, VS2 clarity.

Total diamond weight 1.82cts.

Stamped 750. 2.4gms.

£4,000-6,000 (plus 27.6% BP*)

263 An old-cut diamond single-stone ring.

Diamond weight 2.04cts, estimated I-J colour, VS2 clarity.

Ring size O. 2.4gms.

£5,000-7,000 (plus 27.6% BP*)

264 A square-shape diamond line bracelet.

Estimated total diamond weight 7.40cts, predominantly H-I colour, VS2-SI2 clarity.

Stamped 14K.

Length 18cms. 12.6gms.

£2,500-3,000 (plus 27.6% BP*)

265 A pair of cultured pearl and old-cut diamond earrings.

Estimated total diamond weight 0.60ct, H-I colour, SI clarity.

Stamped 750.

Length 3.7cms. 12.4gms.

£800-1,200 (plus 27.6% BP*)

262



258



256

260



261



255

257



254



263



259



264



265

266 An opal and old-cut diamond foliate pendant.

Opal weight 2.83cts.
Estimated total diamond weight 1.30cts, H-I colour, predominantly VS clarity. Length 5cms. 5.8gms.
£1,400-2,000 (plus 27.6% BP*)

267 A vari-cut diamond and calibre-cut ruby dress ring.

Principal diamond estimated weight 0.75ct, tinted colour, SI clarity.
Ring size P1/2. 6.8gms.
£1,500-2,000 (plus 27.6% BP*)

268 An old and rose-cut diamond wreath pendant.

Estimated total diamond weight 1.20cts, principal diamond estimated H-I colour, SI2-P1 clarity.
Length 3.5cms. 5.5gms.
£1,600-2,200 (plus 27.6% BP*)

269 An early 20th century mabe pearl, old and rose-cut diamond pierced dress ring.

Estimated total diamond weight 0.60ct, H-K colour, SI clarity.
Ring size P. 3.9gms.
£2,500-3,000 (plus 27.6% BP*)

270 An early 20th century old-cut diamond floral necklace, with fancy-link back-chain.

Estimated total diamond weight 3.50cts, H-J colour, VS-P1 clarity.
Length 39.4cms. 12.6gms.
£2,500-3,500 (plus 27.6% BP*)

271 A pair of natural pearl drop earrings, with sapphire, diamond and seed pearl highlights.

With report 80261-82, dated 21st May 2020, from GCS, stating natural, saltwater. Length 3.1cms. 4.2gms.
£3,500-4,500 (plus 27.6% BP*)

272 An old-cut diamond openwork drop pendant, with chain.

Principal diamond estimated weight 1.15cts, G-H colour, VS clarity.
Estimated total non-principal diamond weight 0.85ct, G-H colour, VS-SI clarity.
Length of pendant 5.8cms. Length of chain 62cms. 7.9gms.
£3,500-4,500 (plus 27.6% BP*)

273 An early 20th century Belle Époque old-cut diamond brooch.

Estimated total diamond weight 1.20cts, principal diamond estimated 0.40ct, I-J colour, SI clarity.
Length 1.4cms. 5.3gms.
£1,400-2,000 (plus 27.6% BP*)

274 An early 20th century platinum diamond and pearl pendant, with detachable chain and brooch fitting.

May be worn as a brooch.
Estimated total diamond weight 3.50 to 4cts, predominantly G-I colour, SI clarity.
Principal diamond estimated weight 0.60ct, I-J colour, VS2-SI1 clarity. French re-strike marks.
Length of pendant 7.6cms. Length of chain 45cms. Length of brooch 6.4cms. 24.3gms. Pearl untested for natural origin.
£1,200-1,800 (plus 27.6% BP*)

275 A jade and diamond pendant, on chain.

Signed Vahak, Paris.
Estimated total diamond weight 1.15cts, principal diamonds estimated G-H colour, VS1-SI1 clarity.
Stamped Platinum.
Length of pendant 5.6cms. Length of chain 41 cms. 14.3gms.
Jade untested.
£1,000-1,500 (plus 27.6% BP*)

276 An emerald and single-cut diamond cluster ring.

Emerald weight 2.13cts, stamped to band.
Total diamond weight 0.71ct, stamped to band, estimated G-H colour, VS-SI clarity.
Stamped Plat. Ring size M. 7.7gms.
£1,500-2,000 (plus 27.6% BP*)

277 An early 20th century platinum, old and rose-cut diamond circular brooch.

Old-cut diamond estimated weight 0.20ct, G-H colour, VS clarity.
Diameter 2.7cms. 6.4gms.
£500-700 (plus 27.6% BP*)

278 An aquamarine and vari-cut diamond pendant, suspended from a trace-link chain.

Aquamarine weight 10.90cts.
Estimated total diamond weight 0.50ct.
Length of pendant 3cms. Length of chain 45.5cms. 6.7gms.
£700-900 (plus 27.6% BP*)

269



270



277



275



272



274



271



273



266



276



267



268



279  **A mid 20th century peridot and rose-cut diamond brooch.**

May be worn as a pendant.
Calculated total peridot weight 5.20cts, based on estimated dimensions 13.9 by 10.2 by 5.2mms and 10.7 by 6 by 4.4mms.
Length 6.9cms. 14.2gms.
With fitted case.

£1,000-1,500 (plus 27.6% BP*)

280 **A pair of emerald and old-cut diamond drop earrings.**

Total principal pear-shape emerald calculated weight 5.08cts, based on estimated dimensions 14.2 by 7.5 by 4mms and 14 by 7.3 by 5mms.
Estimated total diamond weight 2.60cts, H-J colour, SI1-P1 clarity.
Stamped 9CT.
Length 6.7cms. 16gms.

£1,500-2,000 (plus 27.6% BP*)

281 **A pair of sapphire and circular-cut diamond drop earrings.**

Estimated total diamond weight 1.20cts, H-I colour, SI clarity.
Length 5.2cms. 8.8gms.

£1,000-1,500 (plus 27.6% BP*)

282 **A pink topaz, old-cut diamond and cultured pearl necklace.**


Topaz calculated weight 1.20cts, based on estimated dimensions of 9 by 6.2 by 2.9mms.
Estimated total diamond weight 0.40ct.
Length 33cms. 5.3gms.

£500-700 (plus 27.6% BP*)

283  **An Edwardian Madagascan pink sapphire and old-cut diamond two-stone crossover ring, with rose-cut diamond shoulders.**

With report 18517, dated 17th March 2020, from The Gem & Pearl Laboratory, stating Madagascar, no heat.
Sapphire calculated weight 1.33cts, based on estimated dimensions of 7.1 by 5.7 by 3.5mms.
Principal diamond estimated weight 1ct, tinted colour, VS2-SI1 clarity. Ring size P. 4.7gms.

£1,800-2,400 (plus 27.6% BP*)

284  **An early 20th century natural pearl and vari-cut diamond openwork brooch.**

With report 80250-29, dated 27th January 2020, from GCS, stating natural, saltwater.
Estimated total old-cut diamond weight 1.10cts, principal diamonds estimated H-J colour, SI-P1 clarity.
Length 5.3cms. 15.4gms.

£2,500-3,000 (plus 27.6% BP*)

285 **A rose-cut diamond, obsidian and seed pearl tassel, on diamond and pearl chain.**

Length of tassel 8.6cms. Length of chain 46cms. 22.5gms.
Pearls untested for natural origin.

£2,000-2,500 (plus 27.6% BP*)

286 **An early 20th century platinum seed pearl chain, with old-cut diamond openwork spacers.**

Estimated total diamond weight 0.65ct, H-I colour, SI1-P1 clarity.
Length 138cms. 16.2gms.

£3,000-4,000 (plus 27.6% BP*)

287 **A rock crystal, enamel and rose-cut diamond dress set.**

French marks.
Length of cufflink face 1.4cms. 19.3gms.

£1,000-1,500 (plus 27.6% BP*)



285



279



282



283



284



287



286



278



281



280

288  **An oval jadeite jade cabochon and diamond cluster ring.**

With report 79212-91, dated 14th May 2019, from GCS, stating no impregnation, estimated weight 5.7cts.
Estimated total diamond weight 0.80ct, H-J colour, SI clarity.
Ring size L. 6gms.

£1,400-2,000 (plus 27.6% BP*)

289 **An old-cut diamond, calibre-cut emerald and onyx cluster ring.**

Estimated total diamond weight 0.25ct, J-K colour, P1 clarity.
Ring size N. 6gms.

£800-1,200 (plus 27.6% BP*)

290 **A pair of emerald and single-cut diamond drop earrings.**

Approximate dimensions of emerald 7.8 by 6.2mms.
Estimated total diamond weight 0.40ct.
Length 3.3cms. 3.8gms.

£800-1,200 (plus 27.6% BP*)

291 **A mid 20th century platinum emerald and diamond brooch.**

Estimated total diamond weight 0.55ct, G+ colour, VS clarity.
Length 5cms. 7.1gms.

£500-700 (plus 27.6% BP*)

292  **A pair of old and single-cut diamond geometric earrings, with natural and cultured pearl drops.**

With report 80260-18, dated 19th March 2020, from GCS, stating two grey cultured pearls and two cream natural saltwater pearls.
Estimated total diamond weight 1.75cts, G-I colour, VS-SI clarity.
Length 5.2 and 5.4cms. 12.1gms.

£1,000-1,500 (plus 27.6% BP*)

293  **A natural saltwater pearl and old-cut diamond pendant, with integral trace-link chain.**


With report 80259-28, dated 3rd March 2020, from GCS, stating natural, saltwater.
Estimated total diamond weight 0.50ct, I-J colour, SI clarity.
Length of pendant 1.8cms. Length of chain 41.7cms. 4.5gms.

£2,000-3,000 (plus 27.6% BP*)

294 **A mid 20th century vari-cut emerald and diamond clip.**

Principal emerald calculated weight 0.78ct, based on estimated dimensions of 9.9 by 5.1 by 3mms.
Estimated total diamond weight 5.25cts, predominantly G-H colour, VS-SI clarity.
Length 4.5cms. 17.5gms.

£1,800-2,600 (plus 27.6% BP*)

295  **An early 20th century old-cut diamond negligee pendant, suspended from an integral trace-link chain.**

Estimated total diamond weight 5.90cts, principal diamonds estimated I-K colour, SI-P1 clarity.
Length of pendant 5.7cms. Length of chain 40cms. 14gms.
With fitted case.

£3,500-4,500 (plus 27.6% BP*)

296 **An emerald and circular-cut diamond pierced dress ring, with foliate engraved band.**

Emerald calculated weight 0.66ct, based on estimated dimensions of 5.5 by 5.3 by 3.1mms.
Principal two diamonds estimated total weight 1.80cts, H-I colour, VS2-SI1 clarity. Ring size K. 7.2gms.

£3,000-4,000 (plus 27.6% BP*)

297  **An early 20th century Belle Époque platinum old-cut diamond pendant, suspended from a fancy-link chain.**

Estimated total diamond weight 3.75cts, principal diamond weight 0.85ct, estimated H-I colour, SI clarity.
Length of pendant 6cms. Length of chain 39cms. 10gms.

£5,000-7,000 (plus 27.6% BP*)

298 **An emerald and old-cut diamond cluster ring.**

Emerald calculated weight 0.92ct, based on estimated dimensions of 11 by 8 by 5mms.
Estimated total diamond weight 1ct, G-J colour, VS-SI2 clarity.
Ring size T. 9.8gms.

£2,000-3,000 (plus 27.6% BP*)

299  **A pair of natural saltwater pearl and rose-cut diamond drop earrings.**

With report 890262-03, dated 22nd May 2020, from GCS, stating natural, saltwater.
Length 4.2cms. 4.2gms.

£3,000-4,000 (plus 27.6% BP*)

297



293



295



294



289



291



298



292



296



299



290



288



300  **A vari-hue sapphire, emerald and ruby brooch.**

Principal sapphire weight 5.76cts.
Length 4.4cms. 11.6gms.
With case.

£2,000-3,000 (plus 27.6% BP*)

301 **A mid 19th century gold emerald, chrysoberyl, ruby and diamond cluster bracelet.**

Principal emerald calculated weight 5.98cts, based on estimated dimensions of 11 by 9.5 by 7.8mms.
Estimated total diamond weight 0.40ct, H-I colour, SI2-P1 clarity.
Length 16.5cms. 18.7gms.

£1,200-1,800 (plus 27.6% BP*)

302 **A hinged serpent bangle, set with jade and single-cut diamond head detail and ruby eye highlights.**

Estimated total diamond weight 0.25ct.
French marks.
Inner diameter 6.5cms. 53gms.
Jade untested.

£2,000-3,000 (plus 27.6% BP*)

303 **A late 19th century gold pink sapphire, split pearl and enamel bracelet.**

Length 18.5cms. 37.1gms.

£1,000-1,500 (plus 27.6% BP*)

304 **A mid to late 19th century garnet snake necklace.**

Length 41cms. 38.4gms.

£2,000-3,000 (plus 27.6% BP*)

305 **A gold Egyptian Revival rose-cut diamond, ruby, emerald and seed pearl pendant.**

Length 7.1cms. 19.8gms.

£800-1,200 (plus 27.6% BP*)

306 **A mid/late 19th century gold amethyst and old-cut diamond brooch.**

Estimated total diamond weight 1.25cts, predominately G-H colour, SI clarity.
Length 5.3cms. 19.3gms.

£800-1,200 (plus 27.6% BP*)

307 **A pink tourmaline and brilliant-cut diamond cluster ring.**

Tourmaline calculated weight 2.26cts, based on estimated 9.9 by 7.1 by 3.9mms.
Estimated total diamond weight 0.30ct.
Ring size N1/2. 4.2gms.

£700-900 (plus 27.6% BP*)

308 **A late Victorian silver and gold carved jade and old-cut diamond cluster brooch.**

Estimated total diamond weight 2.25cts, predominantly G-H colour, SI clarity.
Length 4.5cms. 12.5gms.

£700-900 (plus 27.6% BP*)

309  **An onyx cameo brooch, within coiled serpent surround and rose-cut diamond eye detail.**

Length 5.8cms. 41gms.
With case.

£1,200-1,800 (plus 27.6% BP*)

310  **An early 20th century 18ct gold no heat sapphire and diamond cluster ring.**

With report 18522, dated 17th March 2020, from The Gem & Pearl Laboratory, stating no heat.
Sapphire calculated weight 0.98ct, based on estimated dimensions of 5.6 by 5.5 by 3.4mms.
Estimated total diamond weight 0.50ct, H-J colour, VS2-P2 clarity.
Austrian marks.
Ring size P1/2. 5.6gms.

£500-700 (plus 27.6% BP*)

311 **A mid 19th century 18ct gold citrine brooch.**

French re-strike marks.
Length 7.4cms. 18gms.

£700-1,000 (plus 27.6% BP*)



308



305



302



300



304



311



309



310



307



306



301



303

312  **A Sri Lankan yellow sapphire and vari-cut diamond cluster ring.**

With report 18520, dated 17th March 2020, from The Gem & Pearl Laboratory, stating Sri Lanka, no heat.
Sapphire calculated weight 3.26cts, based on estimated dimensions of 11.1 by 6.6 by 5.3mms.
Estimated total diamond weight 1.40cts, G-H colour, VS-SI clarity.
Stamped 18ct.
Ring size Q. 5.9gms.

£1,200-1,800 (plus 27.6% BP*)

313 **A diamond foliate brooch and earrings.**

Estimated total diamond weight 1.50cts, G-H colour, VS-SI clarity.
Length of brooch 5.2cms. Length of earrings 3.3cms. 46.9gms.

£1,500-2,000 (plus 27.6% BP*)

314 **A mid 20th century 18ct gold diamond and gem-set owl brooch.**

Estimated total diamond weight 0.10ct.
Length 3.8cms. 8.1gms.

£350-450 (plus 27.6% BP*)

315 ✕ **A coral and diamond cluster ring.**

Estimated total diamond weight 0.30ct, H-I colour, SI2-P1 clarity.
Stamped 18k.
Ring size L1/2. 16.7gms.
Coral untested.

£500-700 (plus 27.6% BP*)

316 ✕ **A pair of mid 20th century coral and single-cut diamond cluster earrings.**

Estimated total diamond weight 0.20ct.
Length 2.2cms. 17.6gms.
Coral untested.

£1,000-1,500 (plus 27.6% BP*)

317 **A mid 20th century ruby and diamond floral brooch.**

Estimated total diamond weight 0.90ct, G-H colour, predominantly VS clarity.
Stamped 750. Length 6.3cms. 18.7gms.

£1,800-2,400 (plus 27.6% BP*)

318 **A mid 20th century 14ct gold bi-colour tank bracelet.**

Austrian marks.
Length 18cms. 45.3gms.

£1,200-1,800 (plus 27.6% BP*)

319 **A vari-cut diamond hinged bangle.**

Estimated total diamond weight 3.75cts, H-I colour, SI1-P1 clarity.
Inner diameter 6.5cms. 28.2gms.

£1,000-1,500 (plus 27.6% BP*)

320 **A 1970s 18ct gold bracelet, by Wolfers.**

Stamped 750.
Length 21cms. 87.3gms.

£3,000-4,000 (plus 27.6% BP*)

321 **A mid 20th century vari gem floral spray dress clip.**

Gems to include diamonds, rubies, sapphires, aquamarines and citrines.
Estimated total diamond weight 1.70cts, H-I colour, SI clarity.
Length 10.7cms. 73.6gms.

£1,800-2,600 (plus 27.6% BP*)

322 **A 1970s 18ct gold textured necklace, with brilliant-cut diamond highlights, by George Lenfant.**

Estimated total diamond weight 2cts.
French marks.
Length 41.5cms. 113gms.

£5,000-7,000 (plus 27.6% BP*)

323 **A sapphire and old-cut diamond cluster ring.**

Sapphire calculated weight 1.45cts, based on estimated dimensions of 7.2 by 6.4 by 2.7mms.
Estimated total diamond weight 0.55ct.
Stamped 18ct.
Ring size L1/2. 4.2gms.

£1,200-1,800 (plus 27.6% BP*)



320



322



319



323



315



316



313



312

314



321



317



318

324 A 'Horsebit' necklace, by Gucci.

Stamped 750.
Length 45cms. 20.1gms.

£600-800 (plus 27.6% BP*)

325 A ruby and brilliant-cut diamond cluster ring.

Ruby calculated weight 0.94ct, based on estimated dimensions of 7 by 6.5 by 2.2mms.
Estimated total diamond weight 1ct, H-I colour, VS-SI clarity.
French assay marks.
Ring size I. 5.7gms.

£800-1,200 (plus 27.6% BP*)

326 A carnelian and diamond 'Vintage Alhambra' ring, by Van Cleef & Arpels.

French assay marks. Stamped 750.
Ring size M1/2. VCA size 54. 7gms.

£1,200-1,800 (plus 27.6% BP*)

327 A pair of carnelian 'Vintage Alhambra' earrings, by Van Cleef & Arpels.

Stamped 750. French assay marks.
Length 1.4cms. 7.7gms.

£2,000-2,500 (plus 27.6% BP*)

328 A carnelian 'Vintage Alhambra' necklace, by Van Cleef & Arpels.

Stamped 750. French assay marks.
Length 42.5cms. 22.2gms.
With maker's case.

£4,000-6,000 (plus 27.6% BP*)

329 A 'Love' bangle, by Cartier.

Stamped 750.
Inner diameter 5.9cms. Cartier size 18. 34.1gms.
With screwdriver.

£2,000-2,500 (plus 27.6% BP*)

330 A brilliant-cut diamond necklace, with bi-colour fancy-link back chain.

Total diamond weight 7.98cts, stamped to mount, estimated H-I colour, SI1-P1 clarity.
Length 42cms. 28.7gms.

£1,500-2,000 (plus 27.6% BP*)

331 A 'Trinity' bangle, by Cartier.

Stamped 750.
Inner diameter 6.2cms. 63.2gms.
With maker's case.

£3,000-4,000 (plus 27.6% BP*)

332 A platinum rectangular-shape fancy Yellow diamond and triangular-shape diamond three-stone ring, attributed to Hans D. Krieger.

With report 15605510, dated 9th November 2006, from the GIA, stating 1.51cts, natural colour, VS2 clarity.
Total diamond weight 1.75cts.
Hallmarks for Sheffield. Ring size L1/2. 5.7gms.

£2,500-3,000 (plus 27.6% BP*)

333 A 'Panthere' pendant, with fancy-link chain, by Cartier.

French assay marks, stamped 750.
Length of pendant 3.5cms. Length of chain 39.5cms. 36.6gms.
Chain with certificate of authenticity.

£3,800-4,800 (plus 27.6% BP*)

334 An 18ct gold brilliant-cut diamond floral necklace.

Estimated total diamond weight 0.40ct, H-I colour, VS clarity.
Import marks for London, 1988. Length 42cms. 48.3gms.

£1,500-2,000 (plus 27.6% BP*)

335 An 18ct gold ruby and brilliant-cut diamond cluster ring.

Ruby calculated weight 0.94ct, based on estimated dimensions of 7.4 by 5.4 by 2.8mms.
Estimated total diamond weight 2cts, G-H colour, SI clarity.
Hallmarks for Edinburgh, 2001. Ring size Q. 4.6gms.

£900-1,400 (plus 27.6% BP*)

333



335



334



324



326



332



325



328



330



327



331



329



336 A pave-set diamond abstract bombe ring.

Estimated total diamond weight 3cts, G-H colour, VS-SI clarity.
Ring size H1/2. 14.7gms.

£800-1,200 (plus 27.6% BP*)

337 A mid 20th century gold turquoise abstract dress ring.

Ring size M. 13.3gms.

£800-1,200 (plus 27.6% BP*)

338 An aquamarine and brilliant-cut diamond cluster ring.

Aquamarine weight 19.31cts.
Estimated total diamond weight 2.50cts, G-H colour, VS-SI clarity.
Ring size L1/2. 13.1gms.

£3,000-4,000 (plus 27.6% BP*)

339 A suite of turquoise and diamond jewellery, comprising a necklace and pair of earrings.

Estimated total diamond weight 2.10cts, H-I colour, VS2-SI2 clarity.
Stamped 18K.
Length of necklace 40cms. Length of earrings 2.6cms. 138.8gms.

£4,000-6,000 (plus 27.6% BP*)

340 A pave-set diamond textured bombe ring, by Birks.

Estimated total diamond weight 3.50 to 4cts, G-H colour, VS-SI clarity.
French re-strike mark. Stamped 18K.
Ring size Q. 25.1gms.

£2,500-3,000 (plus 27.6% BP*)

341 A mid 20th century 18ct gold and platinum, diamond and turquoise bracelet.

Estimated total diamond weight 2cts, G+ colour, VS clarity.
French assay marks.
Length 17cms. 59.4gms.

£2,000-3,000 (plus 27.6% BP*)

342 A 1970s 18ct gold onyx pendant, suspended from a textured fancy-link chain, by Kutchinsky.

Hallmarks for London, 1972.
Length of pendant 6cms. Length of chain 81.5cms. 95.6gms.

£2,500-3,000 (plus 27.6% BP*)

343 A 1970s 18ct gold diamond collar, by Andrew Grima.

Estimated total diamond weight 1.40cts.
Hallmarks for London, 1974.
Inner diameter 10.5cms. 113.3gms.

£5,500-7,500 (plus 27.6% BP*)



341



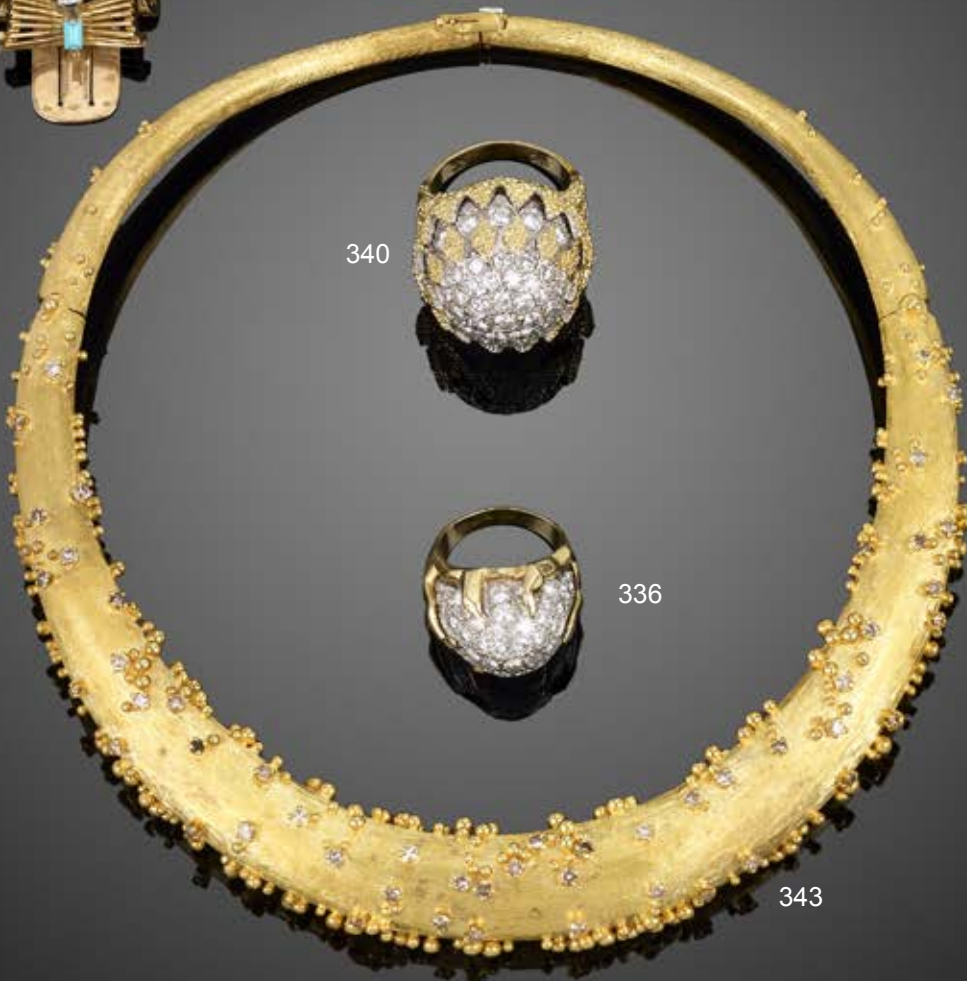
339



337



338



340



336

343



342

344 A mid 20th century diamond necklace, by Cartier.

Estimated total diamond weight 2.75cts, G-H colour, VS clarity.
Length 36.5cms. 57.8gms.

£7,000-10,000 (plus 27.6% BP*)

345 An 18ct gold and platinum Fancy Yellow diamond single-stone ring, with diamond gallery and shoulders.

With report 1162977020, dated 3rd February 2015, from the GIA, stating 3.38cts, natural colour, VS2 clarity.
Estimated total diamond weight 4cts.
Hallmarks for Sheffield, 2015. Ring size K. 4.8gms.

£9,000-14,000 (plus 27.6% BP*)

346 A mid 20th century vari-cut diamond, sapphire and emerald cabochon bracelet.

Estimated total diamond weight 3.50cts, G-H colour, predominantly VS clarity.
Stamped 750. Length 18.7cms. 86.4gms.

£2,500-3,000 (plus 27.6% BP*)

347 An 18ct gold old-cut diamond single-stone ring, with brilliant-cut diamond gallery and shoulders.

With report 5172277403, dated 18th August 2015, from the GIA, stating 3.28cts, J colour, VS1 clarity.
Estimated total diamond weight 3.60cts.
Hallmarks for London, 2016.
Ring size L1/2. 4.8gms.

£16,000-20,000 (plus 27.6% BP*)

348 A nephrite jade, diamond and white gem Tikka/ pendant.

Estimated total diamond weight 0.65ct, predominantly G+ colour, VS clarity.
French re-strike marks. Stamped 750.
Length 8.7cms. 43.9gms.

£1,500-2,000 (plus 27.6% BP*)

349 A Colombian emerald and vari-cut diamond cluster ring.

With report 80257-98, dated 3rd March 2020, from GCS, stating Colombia, indications of moderate clarity enhancement, estimated weight 2.80cts.
Estimated total diamond weight 2cts, G-H colour, VS-SI clarity.
Ring size P. 11gms.

£3,000-4,000 (plus 27.6% BP*)

350 An 18ct gold rose-cut diamond single-stone ring.

Diamond weight 1.51cts, estimated J-K colour, VS clarity.
Hallmarks for London, 2019. Ring size K1/2. 5.4gms.

£2,000-2,500 (plus 27.6% BP*)

351 A pair of diamond half hoop earrings.

Estimated total diamond weight 0.35ct, G-H colour, VS-SI clarity.
Stamped 18K.
Length 2.5cms. 15.9gms.

£500-700 (plus 27.6% BP*)

352 An 18ct gold sapphire and brilliant-cut diamond cluster ring with tapered baguette-cut diamond highlights.

Sapphire calculated weight 1.13cts, based on estimated dimensions of 7.5 by 6 by 3mms.
Estimated total diamond weight 0.70ct, G-H colour, VS-SI clarity.
Stamped 18ct.
Ring size P1/2. 3.8gms.

£700-900 (plus 27.6% BP*)

353 A mid 20th century bird brooch, with sapphire eyes, by Kern.

French assay marks.
Length 4cms. 13gms.

£400-600 (plus 27.6% BP*)

354 An 18ct gold sapphire and diamond key pendant, by Theo Fennell.

Estimated total diamond weight 1.50cts, G+ colour, VS clarity.
Hallmarks for London, 1993.
Length 6.5cms. 23.8gms.

£1,200-1,800 (plus 27.6% BP*)

355 A yellow sapphire and old-cut diamond cluster ring.

Sapphire calculated weight 20.06cts, based on estimated dimension of 17.35 by 13.5 by 10.2mms.
Estimated total diamond weight 1.50cts, G-H colour, predominantly VS clarity.
Stamped 18ct. Ring size O. 12gms.

£900-1,400 (plus 27.6% BP*)



346

352



351



349



348



344



355



345



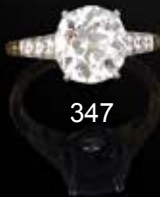
350



354



347



353



356 A graduated brilliant-cut diamond three-stone ring.

Estimated total diamond weight 1.80cts, J-K colour, SI clarity.
Stamped 18ct. Ring size M1/2. 4.4gms.

£1,200-1,800 (plus 27.6% BP*)

357 A sapphire and brilliant-cut diamond cluster ring.

Sapphire calculated weight 1.36cts, based on estimated dimensions of 8 by 5.5 by 3.7mms.
Estimated total diamond weight 1.25cts, H-I colour, SI clarity.
Stamped Plat.
Ring size M. 6.5gms.

£1,500-2,000 (plus 27.6% BP*)

358 A mid 20th century 18ct gold circular-cut diamond floral cluster ring.

Principal diamond estimated weight 0.50ct, G+ colour, SI clarity.
Estimated total diamond weight 0.85ct.
Ring size P. 2.7gms.

£700-900 (plus 27.6% BP*)

359 An aquamarine and brilliant-cut diamond cluster ring.

Aquamarine calculated weight 2.71cts, based on estimated dimensions of 11 by 9 by 4.8mms.
Estimated total diamond weight 1.40cts, I-J colour, VS-SI clarity.
Stamped Plat.
Ring size M1/2. 8.2gms.

£1,000-1,500 (plus 27.6% BP*)

360 A pair of brilliant-cut diamond and sapphire cluster earrings.

Total calculated sapphire weight 2.52cts, based on estimated dimensions 7.7 by 6.2 by 3.4mms and 7.6 by 5.7 by 3.2mms.
Estimated total diamond weight 2cts, H-I colour, P1 clarity.
Stamped 750.
Length 1.5cms. 4.8gms.

£900-1,400 (plus 27.6% BP*)

361 An aquamarine and diamond cluster pendant, on chain.

Aquamarine calculated weight 5.59cts, based on estimated dimensions of 13.5 by 10 by 7.25mms.
Estimated total diamond weight 1.60cts, H-J colour, VS-SI clarity.
Length of pendant 2.6cms. Length of chain 40cms. 5.8gms.

£1,200-1,800 (plus 27.6% BP*)

362 A sapphire and brilliant-cut diamond necklace.

Total sapphire calculated weight 33.58cts, based on estimated dimensions of one sapphire 7 by 5 by 2.5mms.
Estimated total diamond weight 7cts.
Clasp stamped 14k.
Length 41.8cms. 36.9gms.

£2,500-3,500 (plus 27.6% BP*)

363 A tri-colour 18ct gold brilliant-cut diamond bracelet, with pave-set diamond terminal toggle clasp.

Estimated total diamond weight 8 to 8.50cts, G-H colour, SI clarity.
Hallmarks for London, 2017. Adjustable length 13 to 25cms.
27.6gms.

£3,000-4,000 (plus 27.6% BP*)

364 An old-cut diamond floral cluster ring.

Estimated total diamond weight 1.10cts, H-J colour, SI1-P1 clarity.
Stamped 18ct & Plat.
Ring size O1/2. 3.4gms.

£800-1,200 (plus 27.6% BP*)

365 A tri-colour 18ct gold brilliant-cut diamond flexible full eternity three-row ring.

Total diamond weight 3.28cts, estimated H-I colour, SI1-P1 clarity.
Hallmarks for London. Ring size N1/2. 1.3gms.

£1,000-1,500 (plus 27.6% BP*)

366 A brilliant and square-shape diamond three-stone ring.

Estimated total diamond weight 1.20cts, H-I colour, VS2-SI1 clarity.
Stamped 750.
Ring size L1/2. 5gms.

£600-800 (plus 27.6% BP*)

367 A bi-colour, square-shape diamond three-row rotating band ring.

Total diamond weight 5.40cts, estimated H-I colour, VS clarity.
Ring size Q. 22.8gms.

£1,500-2,000 (plus 27.6% BP*)

362



364



363



360



365



367



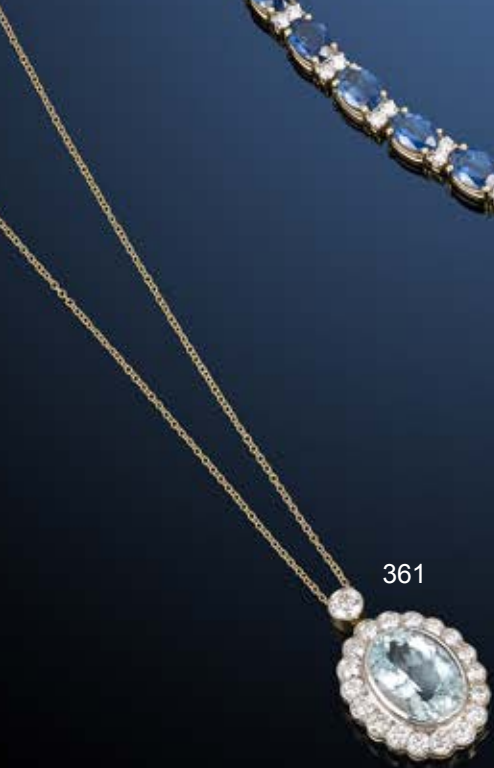
357



358



361



359



366



356



368 An alternating brilliant and baguette-cut diamond full eternity ring, by Christian Bauer.

Total diamond weight 1.70cts, engraved to band, estimated G-H colour, VS-SI clarity.
Stamped 750. Ring size K. 2.8gms.

£700-900 (plus 27.6% BP*)

369 An 18ct gold emerald ring, with baguette-cut diamond sides.

Emerald weight 0.90ct.
Estimated total diamond weight 0.50ct, H-I colour, SI clarity.
Hallmarks for London, 2013.
Ring size N. 5.1gms.

£800-1,200 (plus 27.6% BP*)

370 An 18ct gold heart-shape sapphire and brilliant-cut diamond trefoil cluster full eternity ring.

Total diamond weight 0.57ct, estimated H-I colour, SI1-P1 clarity.
Hallmarks for London. Ring size P1/2. 4.8gms.

£600-800 (plus 27.6% BP*)

371 An 18ct gold baguette and brilliant-cut diamond three-row full eternity ring.

Total diamond weight 4.69cts, stamped to band, estimated G-H colour, VS clarity.
Hallmarks for London, 2018. Ring size L1/2. 7.8gms.

£1,000-1,500 (plus 27.6% BP*)

372 A pair of 18ct gold emerald and brilliant-cut diamond earrings.

Total emerald weight 2.62cts.
Total diamond weight 0.32ct, estimated H-I colour, SI clarity.
Hallmarks for London, 2018.
Length 1.1cms. 4.4gms.

£900-1,400 (plus 27.6% BP*)

373 An aquamarine, onyx and brilliant-cut diamond ring.

Calculated aquamarine weight 18.78cts, based on estimated dimensions 16.5 by 14.5 by 11.1mms.
Estimated total diamond weight 0.75ct, H-I colour, SI2-P1 clarity.
Approximate ring size L. 13.3gms.

£1,800-2,400 (plus 27.6% BP*)

374 A brilliant-cut diamond crossed swag necklace, by Stefan Hafner.

Principal diamond weight 0.85ct, estimated H-I colour, SI clarity.
Total diamond weight 6.81cts.
Italian marks, stamped 750. Length 38cms. 25.4gms.

£3,000-4,000 (plus 27.6% BP*)

375 A platinum brilliant-cut diamond single-stone ring, with tapered baguette-cut diamond sides.

Principal diamond estimated weight 2.20cts, J-K colour, VS2-SI1 clarity.
Hallmarks for London, 2010.
Ring size M. 6.4gms.

£4,500-5,500 (plus 27.6% BP*)

376 An 18ct gold diamond stepped line bracelet.

Total diamond weight 4.77cts, stamped to clasp, estimated G-I colour, VS clarity.
Hallmarks for London, 2004.
Length 17.5cms. 13.9gms.

£2,000-3,000 (plus 27.6% BP*)

377 A baguette-cut diamond full eternity ring.

Total diamond weight 1.14cts, stamped to band, estimated G-H colour, SI clarity.
Stamped 18k.
Ring size N. 5gms.

£900-1,400 (plus 27.6% BP*)

378 A pair of 18ct gold triangular-shape diamond hoop earrings.

Total diamond weight 2.05cts, estimated G-H colour, VS2-P1 clarity.
Hallmarks for London, 2018. Length 1.9cms. 4.4gms.

£600-800 (plus 27.6% BP*)

379 An 18ct gold emerald and brilliant-cut diamond halo ring.

Emerald weight 2.30cts, stamped to band.
Total diamond weight 0.64ct, stamped to band.
Hallmarks for London, 2016.
Ring size M. 7gms.

£1,000-1,500 (plus 27.6% BP*)



378



372



379



375



374



376



373

377



369



368



371



380  A platinum marquise-shape diamond single-stone ring, with pave-set diamond gallery.

With report 13046424, dated 2nd January 2004, from the GIA, stating 0.91ct, E colour, VVS2 clarity. Hallmarks for London, 2004. Ring size M. 9.6gms.

£1,600-2,200 (plus 27.6% BP*)

381 A pair of brilliant-cut 'yellow' diamond and vari-cut diamond earrings, with similarly-set articulated detachable drop.

Estimated total diamond weight 5cts, predominantly G-H colour, VS clarity. Length 6.8cms. 22.4gms. Diamonds untested for natural colour origin.

£3,000-4,000 (plus 27.6% BP*)

382 A platinum marquise-shape 'yellow' diamond ring, with brilliant-cut diamond trefoil shoulders, attributed to Hans D. Krieger.

Principal diamond weight 0.90ct, estimated VS clarity. Total diamond weight 1.22cts. Hallmarks for Sheffield. Ring size N. 7.6gms.

£2,500-3,000 (plus 27.6% BP*)

383 A 'Yellow' diamond and diamond cluster ring.

'Yellow' diamond weight 0.59ct, stamped to band. Total diamond weight 0.31ct, stamped to band, estimated H-I colour, SI clarity. Stamped 750. Ring size M. 2.7gms.

£1,000-1,500 (plus 27.6% BP*)

384 A square-shape 'brown' diamond and pave-set diamond ring.

Principal diamond estimated weight 0.60ct, VS clarity. Total diamond weight 1.78cts. Stamped Au750. Ring size N. 7.1gms. Diamond untested for natural colour origin.

£1,500-2,000 (plus 27.6% BP*)

385 A yellow sapphire and brilliant-cut diamond floral cluster ring.

Sapphire calculated weight 1.29cts, based on estimated dimensions of 6.5 by 5.5 by 3.3mms. Estimated total diamond weight 1.25cts, J-K colour, SI1-P1 clarity. Stamped Plat. Ring size O. 7gms.

£900-1,400 (plus 27.6% BP*)

386 A pair of 'Yellow' diamond and diamond earrings.

Total 'Yellow' diamond weight 0.60ct, stamped to hoop. Total diamond weight 0.84ct, stamped to hoop. Stamped 18k. Length 3.9cms. 5gms.

£1,000-1,500 (plus 27.6% BP*)

387 A pair of 18ct gold briolette morganite and pave-set diamond earrings.

Total morganite weight 22.99cts. Total diamond weight 2.30cts, estimated G-H colour, VS clarity. Hallmarks for London, 2014. Length 3.5cms. 9.9gms.

£800-1,200 (plus 27.6% BP*)

388 A sapphire, 'pink' diamond and diamond dress ring.

Sapphire weight 0.82ct. Total 'Pink' diamond weight 0.33ct, stamped to band. Total diamond weight 0.38ct, stamped to band. Ring size M. 6.5gms.

£800-1,200 (plus 27.6% BP*)

389 A vari-cut diamond pendant necklace.

Total diamond weight 1.07cts, estimated G-H colour, SI clarity. Length of pendant 3.1cms. Length of chain 40cms. 3.4gms.

£1,500-2,000 (plus 27.6% BP*)

390 A diamond and 'coloured' diamond bangle.

Estimated total diamond weight 17.50 to 18cts. Stamped 750. Inner diameter 5.7cms. 55.7gms. Coloured diamonds untested.

£3,000-4,000 (plus 27.6% BP*)

391  An openwork brilliant-cut diamond lattice pendant.

Estimated total diamond weight 5cts, total principal diamond weight estimated 1.20cts, G-H colour, VS clarity. Length 8cms. 27gms.

£3,000-4,000 (plus 27.6% BP*)



386



389



391



390



385



384



381



383



387



388



380



382

392 An 18ct gold aquamarine and diamond cluster ring.

Aquamarine calculated weight 16.09cts, based on estimated dimensions of 19.9 by 14.9 by 9.5mms.
Total diamond weight 1.84cts, estimated G-H colour, VS clarity.
Hallmarks for London, 2014. Ring size M. 12.6gms.

£3,200-4,200 (plus 27.6% BP*)

393 A platinum square-shape diamond single-stone ring, with diamond chevron shoulders, together with a brilliant-cut diamond fitted band ring.

Principal diamond estimated weight 1.80cts, G-H colour, VVS-VS clarity.
Hallmarks for London, 2009. Ring size H. 9.2gms.

£3,800-4,800 (plus 27.6% BP*)

394 An 18ct gold diamond dress ring.

Estimated total diamond weight 2.10cts, principal diamond estimated weight 1.07cts, H-I colour, SI clarity.
Hallmarks for Birmingham.
Ring size M. 7gms.

£1,500-2,000 (plus 27.6% BP*)

395 An 18ct gold pave-set diamond hinged bangle.

Estimated total diamond weight 5.50cts, G-H colour, VS clarity.
Hallmarks for London, 2013. Inner diameter 5.9cms. 24.8gms.

£800-1,200 (plus 27.6% BP*)

396 A pair of brilliant-cut diamond stud earrings.

Estimated total diamond weight 1.50cts, I-J colour, VS-SI clarity.
1.9gms.

£1,200-1,800 (plus 27.6% BP*)

397 An 18ct gold brilliant-cut diamond single-stone ring.

With mini-report 20047875, from AnchorCert, stating 1.01cts, I colour, VS1 clarity.
Hallmarks for Birmingham.
Ring size M1/2. 3gms.

£2,000-2,500 (plus 27.6% BP*)

398 An 18ct gold brilliant-cut diamond circle pendant, on similarly-cut diamond circle accent chain.

Estimated total diamond weight 2.80cts, G-H colour, VS clarity.
Hallmarks for London, 2011.
Diameter of pendant 3.4cms. Length of chain 45cms. 13gms.

£700-900 (plus 27.6% BP*)

399 An 18ct gold pave-set diamond and sapphire crossover ring.

Total diamond weight 1.10cts, estimated I-K colour, SI clarity.
Total sapphire weight 1.45cts.
Hallmarks for London, 2007. Ring size M. 11.4gms.

£600-800 (plus 27.6% BP*)

400 An 18ct gold pave-set diamond full eternity ring.

Estimated total diamond weight 3cts, G-I colour, VS clarity.
Hallmarks for London, partially indistinct. Ring size P1/2. 9.8gms.

£1,000-1,500 (plus 27.6% BP*)

401 A brilliant-cut diamond heart dress ring, by Boucheron.

Estimated total diamond weight 0.40ct, G-H colour, VS clarity.
Stamped 750. French assay marks.
Ring size L. 8.3gms.

£600-800 (plus 27.6% BP*)

402 A platinum brilliant-cut cluster diamond ring, together with similarly-cut diamond half eternity ring.

Principal diamond estimated weight 1ct, G+ colour, P1 clarity.
Estimated total diamond weight 1.50cts.
Hallmarks for Birmingham.
Ring sizes K1/2. 8.8gms.

£1,500-2,000 (plus 27.6% BP*)

403 A pave-set diamond 'Juste un Clou' bangle, by Cartier.

Estimated total diamond weight 0.75ct.
Stamped 750.
Inner diameter 6.5cms. 29.8gms.

£2,000-2,500 (plus 27.6% BP*)



403



396



395



392



398



399



402



401



400



393



397



394

404 A sapphire and vari-cut diamond geometric fringe pendant, suspended from an integral trace-link chain.

Estimated total diamond weight 2.75cts, predominantly H-I colour, SI clarity.

Length of pendant 5.7cms. Length of chain 41cms. 14gms.

£1,000-1,500 (plus 27.6% BP*)

405  A platinum paraiba tourmaline two-stone crossover ring, with single-cut diamond scrolling sides.

With report 79179-34, dated 8th October 2018, from GCS, stating 0.94 and 0.90ct, Paraiba tourmaline.

Estimated total diamond weight 0.50ct, H-I colour, VS clarity.

Hallmarks for London, 2017. Ring size L1/2. 6.4gms.

£2,000-2,500 (plus 27.6% BP*)

406 A pair of sapphire and vari-cut diamond cluster earrings.

Total sapphire weight 2.49cts, stamped to mount.

Total diamond weight 0.29cts, stamped to mount, estimated G-H colour, VS2-SI1 clarity.

Stamped 18k. Length 1.1cms. 4.4gms.

£1,200-1,800 (plus 27.6% BP*)

407  A platinum square-shape diamond single-stone ring.

With report F5B39712, dated 21st May 2008, from IGI, stating 1.01cts, G colour, VS1 clarity.

Hallmarks for Birmingham. Ring size L. 6.2gms.

£1,500-2,000 (plus 27.6% BP*)

408 A sapphire and brilliant-cut diamond dress ring.

Total sapphire weight 2.50cts, stamped to band.

Total diamond weight 0.33cts, stamped to band, estimated H-I colour, SI clarity.

Stamped 750. Ring size L1/2. 6.2gms.

£1,000-1,500 (plus 27.6% BP*)

409 A Colombian emerald and old-cut diamond three-stone ring.

Verbal from GCS, stating Colombia, moderate treatment.

Emerald calculated weight 0.91ct, based on estimated dimensions 6.6 by 5.8 by 3.8mms.

Total diamond weight 1.60cts, estimated H-I colour, VS2-SI1 clarity. Stamped PLATINUM. Ring size M1/2. 4gms.

£4,000-6,000 (plus 27.6% BP*)

410 A green tourmaline, ruby and circular-cut diamond dress ring.

Calculated tourmaline weight 6.90cts, based on estimated dimensions 11.8 by 11 by 7.4mms.

Estimated total diamond weight 0.60ct, H-I colour, VS2-SI1 clarity. Stamped 750. Ring size L. 7.3gms.

£1,000-1,500 (plus 27.6% BP*)

411 An aquamarine and brilliant-cut diamond cluster ring.

Aquamarine calculated weight 3.87cts, based on estimated dimensions of 10 by 10 by 6.2mms.

Estimated total diamond weight 2.50cts, I-J colour, VS-SI clarity.

Stamped 18ct. Ring size Q. 7.6gms.

£2,000-2,500 (plus 27.6% BP*)

412 A brilliant-cut diamond necklace.

Total diamond weight 0.57ct, stamped to clasp, estimated H-I colour, SI clarity.

Stamped 750. Length 47.5cms. 5.9gms.

£700-1,000 (plus 27.6% BP*)

413 An 18ct gold alternately-set pear-shape diamond bracelet, with pave-set diamond toggle clasp.

Total diamond weight 4.85cts.

Hallmarks for London, 2017. Length 12.4 to 23.4cms. 14.7gms.

£1,000-1,500 (plus 27.6% BP*)

414 A vari-cut diamond pendant, suspended from a square-link chain.

Estimated total diamond weight 0.80ct, H-I colour, SI clarity.

Stamped 750. Length of pendant 1.6cms. Length of chain 40cms. 3.3gms.

£500-700 (plus 27.6% BP*)

415 A brilliant-cut diamond and sapphire dress ring.

Principal diamond estimated weight 0.50ct, I-J colour, SI clarity. Ring size O. 4.5gms.

£900-1,400 (plus 27.6% BP*)



416 An aquamarine briolette and pave-set diamond pendant, suspended from a fancy-link chain.

Aquamarine weight 15.35cts.
Estimated total diamond weight 0.25ct, G-H colour, SI clarity.
French re-strike marks.
Length of pendant 3.2cms. Length of chain 42cms. 6gms.

£1,800-2,400 (plus 27.6% BP*)

417 A platinum old-cut diamond and sapphire three-stone ring.

Calculated sapphire weight 2.92cts, based on estimated dimensions 7.8 by 7 by 5.7mms.
Estimated total diamond weight 0.20ct, I-J colour, VS2-SI1 clarity.
Hallmarks for London. Ring size P1/2. 5.4gms.

£1,200-1,800 (plus 27.6% BP*)

418 A brilliant-cut diamond dress ring.

Estimated total diamond weight 1.25cts, I-J colour, VS-SI clarity.
Stamped Plat. Ring size Q. 6.5gms.

£1,000-1,500 (plus 27.6% BP*)

419 A sapphire and baguette-cut diamond three-stone ring.

Sapphire calculated weight 5.69cts, based on estimated dimensions of 11.8 by 9.5 by 5.4mms.
Estimated total diamond weight 1ct, H-I colour, VS2-SI1 clarity.
Stamped 18K. Ring size K. 10gms.

£1,000-1,500 (plus 27.6% BP*)

420 A brilliant-cut diamond and graduated aquamarine necklace.

Estimated total diamond weight 4.55cts, H-I colour, SI clarity.
Length 40cms. 32.6gms.

£2,000-2,500 (plus 27.6% BP*)

421 A cushion-shape diamond two-stone crossover ring, with pave-set diamond sides.

Principal diamonds estimated weights 0.90ct and 0.95cts, J-K colour, VS clarity.
Ring size H. 4.9gms.

£3,000-4,000 (plus 27.6% BP*)

422 A mid 20th century platinum brilliant-cut diamond line bracelet, by Cartier.

Estimated total diamond weight 3.50cts, G-I colour, VS-SI clarity.
Length 16.4cms. 19.5gms.

£5,000-8,000 (plus 27.6% BP*)

423   A pair of pave-set and natural pearl drop earrings.

With report 80246-55, dated 9th December 2019, from GCS, stating natural pearl, saltwater.
Estimated total diamond weight 2.40cts.
Length 4.4cms. 9gms.

£1,800-2,400 (plus 27.6% BP*)

424 An 18ct gold old-cut diamond single-stone ring.

Estimated diamond weight 1.40cts, H-I colour, SI clarity.
Hallmarks for London, 1981. Ring size Q. 3.2gms.

£1,800-2,400 (plus 27.6% BP*)

425  An old and rose-cut diamond brooch.

Principal diamond estimated weight 1.60cts, J-tinted colour, VS-SI clarity.
Length 6.6cms. 4.7gms.

£1,200-1,800 (plus 27.6% BP*)

426 An aquamarine and diamond cluster pendant, suspended from a trace-link chain.

Aquamarine calculated weight 2.18cts, based on estimated dimensions of 7.9 by 7.9 by 5.6mms.
Estimated total diamond weight 0.75cts, H-I colour, SI1-P1 clarity.
Stamped 750.
Length of pendant 1.9cms. Length of chain 41cms. 4.1gms.

£800-1,200 (plus 27.6% BP*)

427  A pair of vari-cut diamond and coral earrings.

Estimated total diamond weight 3cts, H-I colour, SI1-P1 clarity.
Approximate dimensions of one coral 30 by 10.5 by 8.1mm.
Butterfly backs stamped 18K. Length 7.2cms. 14.7gms.
Coral untested.

£2,500-3,000 (plus 27.6% BP*)



416

419

417

420

424

421

423

425

418

426

427

422

428 A late 19th century silver and 18ct gold, old and rose-cut diamond cluster brooch.

Estimated total old-cut diamond weight 3cts, predominantly G-I colour, SI clarity.
French re-strike marks.
Length 4cms. 20.8gms.

£600-800 (plus 27.6% BP*)

429 A pair of 19th century composite silver and gold diamond drop earrings.

Estimated total old-cut diamond weight 1.30cts, H-J colour, SI-P1 clarity.
Length 4.5cms. 6.7gms.

£1,000-1,500 (plus 27.6% BP*)

430 A late Victorian silver and gold, diamond spider and fly bar brooch, with pearl terminal.

Length 4.7cms. 4.6gms.
Pearl untested for natural origin.

£500-700 (plus 27.6% BP*)

431 An early 20th century gold, sapphire and old-cut diamond dress ring.

Principal sapphire calculated weight 1.65cts, based on estimated dimensions 6.8 by 5.8 by 5mms.
Estimated total diamond weight 0.40ct, H-I colour, VS2-SI2 clarity.
Ring size K. 5gms.

£500-700 (plus 27.6% BP*)

432  A late Georgian gold onyx cameo ring.

Ring size M1/2. 18.7gms.

£800-1,200 (plus 27.6% BP*)

433  A pair of Georgian gold Stuart Crystal earrings.

Length 2.8cms. 4.7gms.

£2,000-3,000 (plus 27.6% BP*)

434 An early 20th century gold amethyst and citrine riviére necklace.



Length 44.8cms. 27.7gms.

£2,200-2,800 (plus 27.6% BP*)

435 A rose-cut diamond cluster ring, with woven band.

Principal diamond estimated dimensions 8.7 by 7.7mms.
Ring size L1/2. 4.2gms.

£2,000-2,500 (plus 27.6% BP*)

436   A late 19th century Burmese ruby, rose-cut diamond, seed pearl and rock crystal pendant.

With report 5777-6918, dated 30th March 2017, from GCS, Myanmar (Burma), no heat.
Length 5.4cms. 25.6gms.
With case.

£3,000-4,000 (plus 27.6% BP*)

437 A late 19th century 18ct gold snake hinged bangle, with sapphire highlight.

Stamped 750. Inner diameter 5.8cms. 20.2gms.

£800-1,200 (plus 27.6% BP*)

438 A late Victorian 18ct gold old-cut diamond three-stone ring, with rose-cut diamond accents.

Estimated total old-cut diamond weight 1.75cts, G+ colour, VS1-SI1 clarity.
Ring size N. 3.5gms.

£2,000-2,500 (plus 27.6% BP*)

439 A 19th century silver and gold, citrine cameo and rose-cut diamond cluster brooch.

Estimated dimensions of citrine cameo 21 by 16 by 8.6mms.
Length 4.3cms. 18.8gms.

£1,500-2,000 (plus 27.6% BP*)

437



430



438



439



433



434



432



435



436



429



428



431



**440 An early 19th century framed portrait miniature,
by John Smart (1741-1811).**

Dimensions of frame 26.5 by 21.3 by 3.4cms.
Dimensions of portrait 10.7 by 8.8cms.

A miniature by John Smart, signed and dated 1807, of Frances, Mrs Chambers, wife of Robert Chambers, Chief Justice of Bengal. The reverse later inscribed by Arthur Jaffe with sitter's biography.

LITERATURE The miniature is in the List of Known Sitters in John Smart; The Man and his Miniatures, D. Foskett, London, 1964, p. 64.

PROVENANCE By familial descent from the artist; Mrs Busted, great-granddaughter of the artist; The Busted Collection, Christie's, London, 17 December 1936, lot 42.; Property of the late Arthur Jaffe (1880-1954), Christie's London, 17 November 2016, lot 70.

£1,800-2,500 (plus 27.6% BP*)



441 An early 19th century portrait miniature, depicting a gentleman in a blue coat, dated 1813.

Length 10.1cms. 63.9gms.

£500-700 (plus 27.6% BP*)

445 An 18th century portrait miniature pendant, depicting a gentleman with powdered wig and blue jacket, by Jeremiah Meyer (1735-1789).

Length 5.8cms. 12.9gms.

£700-900 (plus 27.6% BP*)

442 A late 18th century portrait miniature pendant, depicting a colonel of the French royal infantry.

Length 9cms. 38.7gms.
With leather pouch.

£900-1,400 (plus 27.6% BP*)

446 A 19th century gold portrait miniature pendant, depicting a lady, by Kenneth Macleay (1802-1878).

Length 10.6cms. 67.3gms.

£800-1,200 (plus 27.6% BP*)

443 A mid 18th century gold portrait miniature pendant, depicting a lady, by Sophia Smith.

Length 9.2cms. 46.9gms.

£600-800 (plus 27.6% BP*)

447 A late 18th to early 19th century portrait miniature pendant, depicting a gentleman in a blue coat, attributed to Thomas Hazlehurst (1760-1818).

Signed T.H.
Length 9.1cms. 59.8gms.

£600-800 (plus 27.6% BP*)

444 A late 18th century 18ct gold portrait miniature pendant, depicting a lady, by Abraham Daniel (1750-1806).

Length 6.3cms. 21.7gms.

£500-700 (plus 27.6% BP*)

448 A late 18th to early 19th century portrait miniature locket pendant, depicting a girl in white ruffled dress.

Length 7.4gms. 40.9gms.

£800-1,200 (plus 27.6% BP*)

BP* - Buyer's Premium of 23% (plus VAT) or 27.6% (VAT included)

441



442



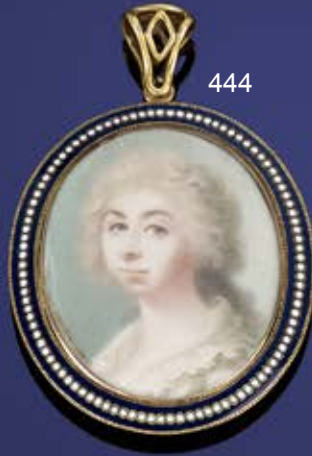
443



448



444



445



446



447





Fellows

Established 1876

Auctioneers & Valuers
Antiques | Jewellery | Watches

Virtual Viewings and Valuations

**View our auctions or receive a free valuation
from the comfort of your own home!**

We are offering viewings of our auctions and valuations to you from the comfort of your own home.

We appreciate that you may not be able to visit either of our offices so we are bringing it to you.

We use video conferencing technology called 'Zoom' where you will be able to see our specialists on your screen. In this private appointment they will be able to either appraise your item or show you a number of lots from an upcoming auction.

All you need is an appointment and a computer or laptop with a webcam. A phone or tablet will also work.

Interested?

Book an appointment today by emailing
hello@fellows.co.uk or call **0121 212 2131**

Fellows

Established 1876

Auctioneers & Valuers
Antiques | Jewellery | Watches



An invitation to consign

We are consigning for our autumn auctions of jewellery, watches, antiques and designer handbags.

For a free no-obligation valuation, email info@fellows.co.uk,

visit www.fellows.co.uk or call 0121 212 2131

Fellows

Established 1876

Sale Results For Fine Jewellery : 12/03/2020

| | | | | | | | | | |
|----|--------|-----|---------|-----|---------|-----|--------|-----|---------|
| 1 | £2,400 | 62 | £960 | 121 | £800 | 181 | £720 | 252 | £680 |
| 2 | £1,600 | 63 | £820 | 122 | £680 | 187 | £1,700 | 253 | £1,000 |
| 3 | £700 | 64 | £2,300 | 123 | £1,600 | 188 | £2,200 | 254 | £1,100 |
| 4 | £520 | 65 | £1,600 | 124 | £1,400 | 189 | £2,700 | 255 | £1,200 |
| 5 | £480 | 66 | £560 | 125 | £680 | 190 | £480 | 256 | £1,700 |
| 6 | £900 | 67 | £1,600 | 126 | £1,000 | 192 | £960 | 257 | £1,500 |
| 7 | £2,300 | 68 | £2,900 | 127 | £1,600 | 193 | £1,400 | 258 | £2,000 |
| 8 | £560 | 69 | £3,300 | 128 | £1,800 | 194 | £1,200 | 259 | £3,100 |
| 9 | £1,500 | 70 | £2,500 | 129 | £3,000 | 195 | £620 | 260 | £5,400 |
| 10 | £5,000 | 71 | £2,800 | 130 | £30,000 | 196 | £1,500 | 262 | £15,000 |
| 11 | £2,100 | 72 | £6,300 | 131 | £39,000 | 197 | £1,400 | 263 | £1,300 |
| 12 | £7,900 | 73 | £580 | 132 | £540 | 198 | £2,200 | 264 | £2,000 |
| 13 | £620 | 74 | £1,000 | 133 | £780 | 199 | £2,500 | 265 | £600 |
| 14 | £680 | 75 | £760 | 134 | £850 | 200 | £3,600 | 266 | £860 |
| 15 | £1,100 | 76 | £1,500 | 135 | £1,200 | 201 | £3,400 | 267 | £480 |
| 16 | £1,200 | 77 | £1,400 | 136 | £1,500 | 202 | £820 | 268 | £580 |
| 17 | £500 | 78 | £1,000 | 137 | £2,600 | 205 | £2,300 | 269 | £720 |
| 18 | £720 | 79 | £980 | 140 | £5,700 | 207 | £5,000 | 270 | £800 |
| 22 | £980 | 80 | £1,000 | 141 | £6,200 | 208 | £3,400 | 271 | £1,700 |
| 23 | £1,700 | 82 | £2,800 | 142 | £740 | 209 | £3,500 | 272 | £1,100 |
| 24 | £2,800 | 83 | £2,400 | 143 | £740 | 210 | £7,500 | 273 | £820 |
| 25 | £640 | 84 | £6,000 | 145 | £900 | 212 | £4,200 | 276 | £5,000 |
| 27 | £900 | 85 | £740 | 146 | £1,200 | 213 | £9,400 | 277 | £540 |
| 28 | £1,100 | 86 | £460 | 147 | £920 | 214 | £760 | 278 | £820 |
| 29 | £1,800 | 87 | £740 | 148 | £2,300 | 215 | £880 | 279 | £1,300 |
| 32 | £960 | 88 | £1,100 | 149 | £2,400 | 216 | £860 | 280 | £1,300 |
| 35 | £2,300 | 89 | £760 | 152 | £2,100 | 217 | £1,200 | 281 | £760 |
| 36 | £1,300 | 90 | £1,200 | 153 | £1,800 | 218 | £900 | 282 | £940 |
| 37 | £600 | 92 | £2,000 | 154 | £740 | 219 | £1,500 | 283 | £940 |
| 38 | £520 | 93 | £2,200 | 155 | £480 | 220 | £880 | 284 | £1,500 |
| 39 | £1,600 | 94 | £2,000 | 156 | £640 | 222 | £1,400 | 285 | £1,100 |
| 40 | £760 | 95 | £12,000 | 157 | £900 | 223 | £2,100 | 287 | £2,200 |
| 41 | £1,300 | 96 | £620 | 158 | £2,600 | 224 | £4,200 | 288 | £2,500 |
| 42 | £960 | 97 | £660 | 159 | £1,100 | 225 | £6,800 | 289 | £560 |
| 43 | £1,600 | 98 | £1,300 | 160 | £1,000 | 226 | £400 | 291 | £1,400 |
| 44 | £1,400 | 99 | £780 | 161 | £800 | 228 | £760 | 294 | £1,600 |
| 45 | £1,600 | 100 | £1,800 | 162 | £2,500 | 231 | £2,100 | 295 | £2,300 |
| 46 | £720 | 101 | £780 | 163 | £1,300 | 232 | £2,400 | 297 | £1,700 |
| 47 | £2,500 | 102 | £1,400 | 164 | £2,300 | 233 | £2,300 | 298 | £1,200 |
| 48 | £7,100 | 103 | £900 | 165 | £2,800 | 237 | £3,500 | 299 | £8,100 |
| 49 | £600 | 104 | £1,100 | 166 | £1,200 | 239 | £1,300 | 300 | £8,600 |
| 51 | £780 | 108 | £960 | 167 | £1,300 | 240 | £1,100 | 302 | £1,200 |
| 52 | £760 | 109 | £1,600 | 168 | £800 | 241 | £980 | 304 | £1,300 |
| 53 | £1,700 | 110 | £1,100 | 169 | £660 | 242 | £2,100 | 305 | £1,100 |
| 54 | £1,100 | 111 | £880 | 170 | £2,600 | 243 | £1,800 | 308 | £1,400 |
| 55 | £3,000 | 112 | £920 | 171 | £700 | 244 | £600 | 309 | £1,500 |
| 56 | £960 | 114 | £1,000 | 172 | £1,200 | 245 | £600 | 310 | £2,400 |
| 57 | £1,600 | 115 | £1,100 | 173 | £1,000 | 247 | £2,500 | 312 | £960 |
| 58 | £1,900 | 117 | £4,500 | 174 | £2,300 | 249 | £3,100 | 313 | £920 |
| 59 | £1,800 | 118 | £3,900 | 176 | £1,900 | 250 | £400 | 314 | £800 |
| 61 | £800 | 120 | £600 | 177 | £2,700 | 251 | £400 | 315 | £2,000 |

Fellows

Established 1876

Sale Results For Fine Jewellery : 12/03/2020

| | | | | | | | | | |
|-----|--------|-----|--------|-----|--------|-----|--------|-----|--------|
| 317 | £2,000 | 391 | £1,600 | 460 | £460 | 531 | £1,100 | 618 | £600 |
| 319 | £3,400 | 392 | £1,500 | 461 | £900 | 533 | £2,200 | 619 | £1,600 |
| 321 | £3,500 | 393 | £1,300 | 462 | £760 | 535 | £2,100 | 620 | £1,700 |
| 322 | £680 | 394 | £1,300 | 463 | £800 | 536 | £2,200 | 621 | £1,300 |
| 323 | £760 | 395 | £1,100 | 464 | £800 | 537 | £680 | | |
| 324 | £620 | 396 | £820 | 465 | £740 | 538 | £720 | | |
| 325 | £940 | 397 | £680 | 466 | £820 | 539 | £2,400 | | |
| 327 | £920 | 398 | £760 | 467 | £1,000 | 540 | £1,600 | | |
| 328 | £1,600 | 400 | £560 | 468 | £1,500 | 542 | £980 | | |
| 329 | £1,700 | 401 | £460 | 469 | £2,900 | 543 | £1,000 | | |
| 330 | £2,000 | 402 | £780 | 470 | £700 | 544 | £900 | | |
| 331 | £6,500 | 403 | £840 | 471 | £1,600 | 548 | £4,800 | | |
| 332 | £4,300 | 406 | £840 | 472 | £880 | 550 | £540 | | |
| 334 | £820 | 408 | £1,600 | 473 | £1,200 | 551 | £720 | | |
| 335 | £500 | 410 | £640 | 474 | £1,200 | 552 | £820 | | |
| 336 | £800 | 412 | £2,600 | 475 | £1,800 | 553 | £620 | | |
| 337 | £700 | 413 | £480 | 476 | £1,500 | 554 | £760 | | |
| 338 | £800 | 415 | £740 | 481 | £920 | 555 | £980 | | |
| 339 | £800 | 416 | £760 | 482 | £920 | 557 | £760 | | |
| 340 | £1,300 | 418 | £600 | 483 | £980 | 562 | £820 | | |
| 342 | £1,200 | 422 | £700 | 484 | £1,000 | 563 | £660 | | |
| 344 | £3,100 | 423 | £460 | 487 | £1,500 | 567 | £1,600 | | |
| 345 | £4,500 | 424 | £1,200 | 488 | £2,100 | 568 | £860 | | |
| 346 | £520 | 425 | £760 | 489 | £4,000 | 570 | £1,050 | | |
| 347 | £700 | 426 | £1,100 | 490 | £700 | 571 | £2,200 | | |
| 348 | £880 | 427 | £1,400 | 491 | £1,000 | 573 | £540 | | |
| 350 | £1,000 | 428 | £1,600 | 492 | £700 | 574 | £540 | | |
| 352 | £2,000 | 431 | £1,700 | 493 | £480 | 575 | £920 | | |
| 353 | £2,100 | 432 | £1,900 | 495 | £820 | 576 | £800 | | |
| 354 | £2,200 | 434 | £380 | 499 | £2,400 | 577 | £1,100 | | |
| 356 | £820 | 435 | £620 | 500 | £4,500 | 578 | £2,300 | | |
| 357 | £460 | 436 | £480 | 501 | £4,000 | 579 | £3,200 | | |
| 358 | £800 | 437 | £600 | 503 | £620 | 580 | £2,900 | | |
| 359 | £680 | 438 | £880 | 505 | £680 | 581 | £540 | | |
| 361 | £1,100 | 439 | £400 | 506 | £880 | 583 | £600 | | |
| 362 | £700 | 440 | £840 | 508 | £1,600 | 584 | £750 | | |
| 363 | £960 | 442 | £2,000 | 509 | £1,600 | 586 | £2,200 | | |
| 364 | £1,700 | 443 | £900 | 511 | £2,700 | 592 | £4,000 | | |
| 365 | £920 | 444 | £2,500 | 513 | £2,800 | 593 | £500 | | |
| 366 | £2,000 | 446 | £700 | 514 | £520 | 596 | £3,100 | | |
| 370 | £1,900 | 448 | £800 | 515 | £900 | 597 | £6,600 | | |
| 371 | £780 | 450 | £1,200 | 516 | £1,100 | 598 | £480 | | |
| 374 | £1,500 | 451 | £1,400 | 517 | £1,100 | 599 | £400 | | |
| 375 | £2,000 | 452 | £1,300 | 518 | £1,300 | 603 | £1,600 | | |
| 376 | £770 | 453 | £4,000 | 519 | £2,500 | 604 | £1,500 | | |
| 377 | £1,900 | 454 | £2,400 | 521 | £2,600 | 606 | £2,300 | | |
| 379 | £1,500 | 455 | £2,000 | 525 | £5,300 | 609 | £2,000 | | |
| 381 | £4,700 | 456 | £600 | 526 | £500 | 612 | £400 | | |
| 382 | £3,900 | 457 | £4,000 | 527 | £1,400 | 613 | £580 | | |
| 384 | £6,700 | 458 | £440 | 529 | £1,100 | 616 | £1,500 | | |
| 390 | £2,500 | 459 | £800 | 530 | £960 | 617 | £660 | | |

Fellows

Established 1876

Live Auctions

| | | |
|---------------|---|-----------------------------------|
| July | Antiques, Silver & Collectables Timed Auction | Ends Monday 27th July from 9am |
| | Silver & Costume Jewellery Timed Auction | Ends Thursday 30th July from 9am |
| | Costume Jewellery Timed Auction | Ends Friday 31st July from 9am |
| August | Online Watches Timed Auction | Ends Monday 3rd August from 10am |
| | Watch Parts & Accessories Timed Auction | Ends Tuesday 4th August from 10am |
| | Online Jewellery Timed Auction | Ends Thursday 6th August from 9am |
| | Pawnbrokers Jewellery & Watches | Thursday 13th August at 11am* |
| | Jewellery Timed Auction | Ends Thursday 20th August at 9am |
| | The Luxury Watch Sale | Monday 24th August at 11am |
| | Pawnbrokers Jewellery & Watches | Thursday 27th August at 11am* |

** Please note that these auctions are timed sales hosted by Fellows Live, more information can be found on our website.

Dates are subject to change, please check the website for the definitive auction list.

Fellows recommend that all bidders and buyers read our conditions of buying and buyer's premium available on our website.

For further information please contact:

Jewellery
David Pregon
david@fellows.co.uk
0121 212 2131

Watches
Laura Bishop
laurab@fellows.co.uk
0121 212 5506

Silver & Coins
Alison Jakeway
alisonj@fellows.co.uk
0121 212 2131

Antiques & Fine Art
Kevin Jackson
kevin@fellows.co.uk
0121 212 2131

Fellows

Established 1876

IMPORTANT NOTICES FOR PURCHASERS

IMPORTANT NOTICE TO PROSPECTIVE BUYERS OF GEMSTONES/JEWELS

We recommend that you view any items you intend to purchase as refunds will not be given for buyer's remorse. This doesn't affect your statutory rights.

Notes 1 - Coloured Gemstones

Purchasers are advised that whilst great care has been taken in the examination of gemstones, it is not possible to test every gemstone within the constraints of time and equipment available outside of laboratory conditions. Any gemstone not provided with a laboratory report has been assessed by Fellows within the limitations of any mounting and an opinion has been given where possible.

Historically, many coloured gemstones have been subjected to a variety of treatments designed to enhance their appearance. Certain enhancement methods, such as heating, are routinely used to alter aspects of rubies, sapphires, and other gemstones. Oiling is often undertaken to enhance the clarity of emeralds. The international jewellery trade has generally accepted these and other enhancement methods. Some treatments are permanent whereas others may only be semi-permanent, possibly requiring further re-treatment in order to retain their appearance.

Because of the widespread variety of treatments within the jewellery industry, prospective purchasers should assume that all gemstones will have been treated unless statements are made to the contrary. Gemmological reports from internationally recognised Gemmological Laboratories will be noted in the item description where available.

Note 2 - Diamonds

Advancements in technology have led to some diamonds being treated in a number of ways, all designed to improve their appearance or alter their colour. Processes include but are not necessarily limited to: fracture filling, laser drilling, a combination of drilling and filling, HPHT treatment, irradiation and various coatings. Buyers are also alerted to the fact that synthetic diamonds are now produced in large quantities. Whilst every effort is made to identify or disclose treated and synthetic goods, it is not possible for Fellows to guarantee that all diamond set lots do not contain such material.

Fellows do not knowingly offer treated diamonds for sale, unless a gemmological opinion disclosing the type of treatment has been obtained and the treatment would be stated within the item description.

Note 3 - Weights and Measures

Estimated Diamond weights, colours and clarities (see Notes on Diamond Grading terms opposite) given by Fellows are intended as guides for prospective purchasers, with the given limitations of mounts and settings, and are opinions only, not guaranteed by Fellows.

Weights of coloured gemstones offered are extrapolated on the estimated dimensions, using trade standard formulae. Due to the traditional cutting techniques for coloured gemstones it is possible there may be discrepancy between the stated estimate and the unmounted weight.

Fellows uses a Thermo Scientific Nitron Handheld XRF Analyser to test metals. This technology is limited to examining metal to a depth of approximately 8 microns. Fellows does not guarantee the standard of gold or platinum unless an item is hallmarked. Results from electronically tested items should only be used as a guide and with caution, as false readings are possible.

Lengths and weights provided are estimates only.

The information stated in reports is the opinion of the respective laboratory and is not necessarily the opinion of Fellows auctioneers.

Note 4 - Condition Reports

Statements in the catalogue regarding the condition of lots in this sale may appear in the description, however, the absence of such a reference does not imply a lack of damage or wear, or lack of any further faults within the piece.

Please note that Fellows offer condition reports on almost every lot offered. Our condition reports are the opinion of Fellows and should only be referenced as a guide. We highly recommend that a prospective buyer views in person or sends a representative to satisfy themselves to the condition, originality and suitability of a piece(s) before bidding.

Our lots are almost exclusively antique or secondhand and as such should be expected to have small signs of wear and use commensurate with the age of the piece.

Some jewellery sales will also have a condition report banding scale which applies as follows:

A

No obvious faults other than wear in keeping with age and use.

B

Minor faults. There may be abrasion and/or small nicks to gemstones. General moderate wear from use possibly including but not necessarily limited to small dents and deep scratches. The piece may have been altered from its original design but to a reasonable standard.

C

Faults. Gemstones may be noticeably chipped along with abrasion and nicks. Non-principal gems may be deficient. The piece may have noticeable dents/tears or small losses that affect the overall appearance of the design. The piece may have had alterations from its original design that may be apparent under scrutiny.

D

Significant faults. Gemstones may be deficient, chipped or otherwise damaged. The piece may require attention before it is wearable, pins or clasps may be broken. There may be significant dents, tears, losses or alterations to the metal. The piece may have had alterations from its original design that are readily apparent.

E

At Fault. Gems will be damaged and/or deficient. Noticeable damage. The piece is unwearable.

Diamond Grading Terms

DIAMOND COLOUR

| GIA | OLD WORLD TERMS | EXPLANATION | GIA | OLD WORLD TERMS | EXPLANATION |
|-----|----------------------------|---|-----|--------------------------------|---|
| D | Finest White (Jager) | Colourless | K | Silver Cape (Top Cape) | Traces of colour. Small stones in this range will 'face up' colourless when mounted but larger stones will be tinted. |
| E | Finest White (River) | Colourless | L | Silver Cape (Top Cape) | Traces of colour. Small stones in this range will 'face up' colourless when mounted but larger stones will be tinted. |
| F | Fine White (River) | Colourless | M | Light Cape (Cape) | Traces of colour. Small stones in this range will 'face up' colourless when mounted but larger stones will be tinted. |
| G | Fine White (Top Wesselton) | Near Colourless: diamonds 'face up' colourless. Slight traces of colour will not be apparent in the mounted stones to other than the trained eye. | N | Light Cape (Low Cape) | Diamonds graded N through Z+ display a yellowish tint even to the untrained eye. |
| H | White (Top Wesselton) | Near Colourless: diamonds 'face up' colourless. Slight traces of colour will not be apparent in the mounted stones to other than the trained eye. | P | Cape O - R (Very Light Yellow) | Diamonds graded N through Z+ display a yellowish tint even to the untrained eye. |
| I | White (Top Wesselton) | Near Colourless: diamonds 'face up' colourless. Slight traces of colour will not be apparent in the mounted stones to other than the trained eye. | Z | Cape R - Z (Very Light Yellow) | Diamonds graded N through Z+ display a yellowish tint even to the untrained eye. |
| J | Top Silver (Top Wesselton) | Near Colourless: diamonds 'face up' colourless. Slight traces of colour will not be apparent in the mounted stones to other than the trained eye. | Z+ | Fancy Yellow | Diamonds graded N through Z+ display a yellowish tint even to the untrained eye. |

DIAMOND CLARITY

| GIA | OLD WORLD TERMS | EXPLANATION | GIA | OLD WORLD TERMS | EXPLANATION |
|-------------|-----------------------------|---|-------------|-------------------|---|
| IF | Internally Flawless | No inclusions visible with a 10x lens even to an experienced grader. | S11 & S12 | Slightly Included | Noticeable inclusions visible with a 10x lens. |
| VVS1 & VVS2 | Very Very Slightly Included | Minute inclusions, which are difficult, even for experienced graders, to see with a 10x lens. | I1, I2 & I3 | Pique 1, 2 & 3 | Obvious inclusions, may be visible to the unaided eye, face up. In I3 they may affect the stone's durability. |
| VS1 & VS2 | Very Slightly Included | Minor inclusions, observable with effort with a 10x lens. | | | |

Our lots are almost exclusively antique or secondhand and as such should be expected to have small signs of wear and use commensurate with the age of the piece.

Some jewellery sales will also have a condition report banding scale which applies as follows:

A

No obvious faults other than wear in keeping with age and use.

B

Minor faults. There may be abrasion and/or small nicks to gemstones. General moderate wear from use possibly including but not necessarily limited to small dents and deep scratches. The piece may have been altered from its original design but to a reasonable standard.

C

Faults. Gemstones may be noticeably chipped along with abrasion and nicks. Non-principal gems may be deficient. The piece may have noticeable dents/tears or small losses that affect the overall appearance of the design. The piece may have had alterations from its original design that may be apparent under scrutiny.

D

Significant faults. Gemstones may be deficient, chipped or otherwise damaged. The piece may require attention before it is wearable, pins or clasps may be broken. There may be significant dents, tears, losses or alterations to the metal. The piece may have had alterations from its original design that are readily apparent.

E

At Fault. Gems will be damaged and/or deficient. Noticeable damage. The piece is unwearable.

Catalogue Subscription Service

If you would like to receive catalogues on a regular basis, please mark the appropriate category and return this form with a cheque made payable to Fellows for the full amount.

Subscriptions last for a 12 month period

| | | |
|---|-------------|--|
| Jewellery 18 catalogues per year | £120 | |
| Fine Jewellery 6 catalogues per year | £60 | |
| The Luxury Watch Sale 6 catalogues per year | £60 | |
| The Designer Collection 5 catalogues per year | £50 | |
| Antiques, Silver & Collectables 5 catalogues per year | £50 | |
| The Gemstone Sale 4 catalogues per year | £35 | |
| Watches & Watch Parts 4 catalogues per year | £35 | |

All of the above catalogues are available to view **FREE** of charge on our website www.fellows.co.uk

Name (Block Capitals)

Address (Block Capitals)

.....
.....

Post Code Telephone

Signature Date

Email

Fellows Auctioneers Ltd

Terms and Conditions

Fellows Auctioneers Ltd carries on business, including the conduct of Auctions, on the following general conditions. This includes business with Bidders, Buyers, Vendors, consignors, users of this website, and with all those present on the Premises prior to or in connection with an Auction (all as hereinafter defined).

1. INTRODUCTION

1.1 The following defined terms are used in these Conditions :

"Auction" means any Auction conducted by Fellows, either at their premises or elsewhere (including any internet-based auctions);

"Auctioneer" means Fellows or its authorised Auctioneer, as appropriate;

"Bidder" means a bidder at an Auction, including bidders personally present at the venue and those bidding by telephone or over the internet or otherwise;

"Buyer" means the bidder whose bid was the last bid when the Auctioneer brings down the hammer;

"Conditions" means these terms and conditions;

"Consigned Property" means the items consigned by the Vendor to Fellows for offer at an Auction;

"Deliberate Forgery" means an imitation made with the intention of deceiving as to authorship, origin, date, age, period, culture or source but which is unequivocally described by Fellows in the catalogue as being the work of a particular creator and which at the date of the sale had a value materially less than it would have had if it had been in accordance with the description;

"Fellows" means Fellows Auctioneers Ltd;

"Hammer Price" means the level of bidding reached (at or above any reserve) when the Auctioneer brings down the hammer;

"Includes" means "includes but not limited to", and "including" means "including but not limited to"

"Lot" means any Consigned Property accepted by Fellows for offer at Auction;

"Stated Rate" means Fellows' published rates of commission for the time being and value added tax thereon (also available on request);

"Terms of Consignment" means any stipulated terms and rates of commission on which Fellows accepts instructions from Vendors [or their agents];

"Total Amount Due" means the Hammer Price in respect of the Lot sold together with any premium, commission, value added tax chargeable and any additional charges payable by a defaulting Buyer under these Conditions;

"Vendor" means the vendor of an item (including Consigned Property) which is submitted to Fellows for offer for sale at an Auction;

"Website" means this website;

"You" means any user of the Website.

2. WEBSITE

2.1 You may access most areas of the Website without registering your details with us. Certain areas of the Website are only open to you if you register. By accessing any part of the Website, you shall be deemed to have accepted these Conditions notice in full. If you do not accept this legal notice in full, you must leave the Website immediately.

2.2 Fellows may revise these Conditions at any time by updating this posting. You should check the Website from time to time to review the then current legal notice, because it is binding on you. Certain provisions of this legal notice may be superseded by expressly designated legal notices or terms located on particular pages at the Website.

2.3 Unless otherwise stated, the copyright and other intellectual property rights in all material on the Website (including without limitation photographs and graphical this legal notice, your permission to use the Website automatically terminates and you must immediately destroy any downloaded or printed extracts from the Website.

2.4 No part of the Website may be reproduced or stored in any other website or included in any public or private electronic retrieval system or service without Fellows' prior written permission.

2.5 Any rights not expressly granted in these Conditions are reserved.

3. VISITOR MATERIAL AND CONDUCT

3.1 Other than personally identifiable information, which is covered under our Privacy Policy, any material you transmit or post to the Website shall be considered nonconfidential and non-proprietary. Fellows shall have no obligations with respect to such material. Fellows and its designees shall be free to copy, disclose, distribute, incorporate and otherwise use such material and all data, images, sounds, text and other things embodied therein for any and all commercial or non-commercial purposes.

3.2 You are prohibited from posting or transmitting to or from the Website any material: that is threatening, defamatory, obscene, indecent, seditious, offensive, pornographic, abusive, liable to incite racial hatred, discriminatory, menacing, scandalous, inflammatory, blasphemous, in breach of confidence, in breach of privacy or which may cause annoyance or inconvenience; or for which you have not obtained all necessary licences and/or approvals; or which constitutes or encourages conduct that would be considered a criminal offence, give rise to civil liability, or otherwise be contrary to the law of or infringe the rights of any third party, in any country in the world; or which is technically harmful (including, without limitation, computer viruses, logic bombs, Trojan horses, worms, harmful components, corrupted data or other malicious software or harmful data).

3.3 You may not misuse the Website (including, without limitation, by hacking).

3.4 Each registration is for a single user only. Fellows does not permit you to share your user name and password with any other person nor with multiple users on a network.

3.5 Responsibility for the security of any passwords issued rests with you.

4. THE VENDOR

4.1 Fellows shall act as agent of the Vendor only. Any contract for the sale of a Lot will be formed between the Vendor and the Buyer.

4.2 The Vendor warrants and represents to Fellows and the Buyer that the Vendor is the sole and true owner of the Consigned Property or is properly authorised by the sole and true owner to consign it for sale and is able to transfer good and marketable title to the property free from any third party claims. The Vendor warrants and representatives that the Vendor has revealed all pertinent information that the Vendor possesses about the items, including in relation to any repairs or alterations that may have been carried out. The Vendor shall indemnify Fellows and the Buyer against any loss and expense caused by any breach of this clause 4.2.

4.3 The Vendor shall be entitled to place prior to the Auction a reserve on any Lot, being the minimum Hammer Price at which Lot may be sold. Reserves must be reasonable and Fellows may decline to offer goods which in Fellows' opinion would be subject to an unreasonably high reserve (in which case goods carry the storage and insurance charges stipulated in the terms of consignment). Reserves will not be accepted on items with a bottom estimate less than £300. The Auctioneer also reserves the right not to accept items which they deem to be unsuitable for Auction. Any estimate given shall be an opinion and is not an undertaking of any kind.

4.4 A reserve once set cannot be changed except with the written prior consent of Fellows.

4.5 Where a reserve has been placed only Fellows may bid on behalf of the Vendor.

4.6 The Vendor authorises Fellows to deduct commission from any sold items at a rate of 15% (plus VAT) on any item with a hammer price of £3,000 (or under) or 12.5% (plus VAT) on items over £3,000. Loss or liability for damage will be charged at a rate of 1.5% (plus VAT) calculated on the hammer price. A Marketing fee of £10 (plus VAT) will be charged for each Lot, if unsold we will charge a nominal handling fee of £5 (plus VAT). All items below £35 are subject to a minimum fee of £5 (plus VAT) per Lot.

4.7 Fellows will pay the Hammer Price achieved for the Lot (less its commission and applicable fees in accordance with clauses 4.6, 9.2 and 9.3), to the Vendor on receipt of payment of the Total Amount Due in full by the Buyer.

4.8 The Vendor authorises Fellows in their discretion to negotiate a sale by private treaty in the case of a Lot unsold at Auction, in which case the same charges will be payable as if the Lot had been sold at Auction.

4.9 Fellows do not themselves undertake the collection of any items but may, as the Vendor's agent, instruct a contractor on behalf of the Vendor. Fellows accepts no liability for the actions of such contractor who contracts with the Vendor direct.

4.10 Fellows disclaims all liability for items delivered to their saleroom without sufficient sale instructions, and reserves the right to make a minimum warehousing charge of [£1.00] per item per day. Unsold items are subject to the same charges if the Vendor does not remove them within a reasonable time of notification. If not removed within three weeks Fellows reserves the right to sell the items and defray charges from any net proceeds of sale or at the Vendor's expense to consign them to the local authority for disposal. Fellows disclaims any liability for default by the Buyer or for paying out the Vendor before receiving payment by the Buyer.

4.11 Subject to clause 4.9, Fellows holds all items on their premises and in their custody covered against the risks of fire, burglary and water damage on the scale of charges notified in the terms of consignment and payable by the Vendor up to the date of any sale and (in Fellows' discretion) the Buyer thereafter until collection.

4.12 The right of Fellows to bid on behalf of the Vendor is expressly reserved. The Vendor acknowledges that Lots are sold subject to the stipulations of these Conditions in their entirety and on the Terms of Consignment as notified to consignors at the time of the entry of the Lot.

4.13 The Auctioneer reserves the right to dispose of any item that in their opinion is unsaleable. Items, including electrical goods and soft furnishings, which do not comply with current legislation will not be offered at Auction.

4.14 Any items unsold after an Auction will be reoffered in a subsequent Auction at a reduced reserve to be agreed within seven days. The Auctioneer may request the removal of an item if a reduced price cannot be agreed; items not removed within 14 days will be subject to a storage charge.

4.15 A charge of 10% (plus VAT) based on the middle estimate – plus any other charges incurred – may be levied for any Lot withdrawn by the Vendor from offer at an Auction. If the item has to be returned by post (or any other method) the Vendor will be responsible for this charge. These charges are to be paid before the item is returned.

4.16 By submitting the item to Fellows for offer at Auction, the Vendor agrees to the Terms of Consignment and authorises Fellows to deduct the specified charges.

5. PUBLICITY

5.1 Any catalogue and buyer guides are provided for information only and do not form part of these Conditions. The catalogue and the buyer guides may contain additional terms and conditions.

5.2 Fellows reserve the right to use any photographs, background information, and research for publicity purposes both before and after the sale.

6. THE AUCTION

6.1 Any Auction shall be conducted at the absolute discretion of the Auctioneer.

6.2 The Auctioneer shall conduct the Auction with reasonable skill and care. For example, what constitutes a bid shall be at the absolute discretion of the Auctioneer, acting with reasonable skill and care.

6.3 The Auctioneer shall have the right to refuse any bid which does not exceed the previous bid by at least 10% or by such greater proportion as the Auctioneer shall in his or her absolute discretion direct.

6.4 Where two or more bids at the same level are simultaneously received by the Auctioneer, the Auctioneer at his absolute discretion shall determine which bid to prefer. Subject to the foregoing, where two or more bids at the same level are simultaneously received by the Auctioneer, any bid by a Bidder personally present at an Auction shall take preference over any bid submitted by telephone or over the internet. Any bid made or accepted by telephone or over the internet shall be deemed to have been made only if received by the Auctioneer.

- 6.5 Fellows shall have the right, at its absolute discretion, to refuse admission to its premises or attendance at (or participation in) any Auction by any person.
- 7. BIDDERS**
- 7.1 Bidders may be required to register their particulars. Bidders attending in person may be required to satisfy Fellows' security arrangements before entering any part of the premises to view or bid.
- 7.2 You accept full liability for all bids submitted via your My Fellows account. Once a bid has been made by a Bidder on our website, the bid can be lowered or increased up until 9am on the day of the auction. You must sign into your My Fellows account to do this and you will receive an email confirmation for any changes made. Should a bid be placed in error on the website you must contact Fellows immediately. Failure to contact Fellows before the auction takes place will result in liability for the full payment of the item.
- 7.3 Bidders using the live bidding facility on www.fellows.co.uk are agreeing to the terms and conditions of sale for Fellows. Any successful bids using the live bidding facility will be subject to the usual Buyer's Premium, plus VAT.
- 7.4 Subject to clause 6.3, the highest Bidder at the Hammer Price shall be the Buyer. Any dispute about a bid shall be settled at the Auctioneer's absolute discretion..
- 7.5 Bidders are strongly encouraged to attend the Auction in person. Bidders shall be responsible for any decision to bid for a particular Lot and shall be deemed to have carefully inspected and satisfied themselves as to its condition. Neither Fellows nor its employees or agents shall be responsible for any neglect or default in doing or failing to do so.
- 7.6 Bidders are given ample opportunities to view and inspect before any sale and prospective Buyers must satisfy themselves as to all such matters. Neither Fellows or its employees or agents nor the Vendor accept liability for the correctness of such opinions and all conditions and warranties, express, implied or statutory are hereby excluded.
- 8. THE BUYER**
- 8.1 Immediately a Lot is sold, the Buyer shall:
- (a) give to Fellows their name and address and, if requested proof of identity, and pay to Fellows the Total Amount Due.
- 8.2 [Fellows may, at its absolute discretion, agree credit terms with the Buyer before an Auction under which the Buyer may be entitled to take possession of Lots up to an agreed value in advance of payment by a stipulated future date of the Total Amount Due.]
- 8.3 Cheques shall not be acceptable by Fellows (unless Fellows in its absolute discretion permits payment by such method) nor are third party references or credit facilities with other Auction houses. If a cheque is tendered Fellows reserves the right to instruct its bank to check the Buyer's status and account balance before exercising any discretion. Any credit arrangement must be settled at least 4 days before the relevant sale. Any permitted payment by credit card shall carry an extra charge to the Buyer of such percentage of the Total Amount Due as is displayed on the premises.
- 8.4 Any payments by a Buyer to Fellows may be applied by Fellows towards any sums owing from that Buyer to Fellows on any account whatever without regard to any directions of the Buyer or his agent, whether express or implied.
- 9. THE PURCHASE PRICE**
- 9.1 On the first £100,000 of the Hammer Price (of any individual Lot) the buyer will pay the Hammer Price and a premium of 23% (Plus VAT). The said premium not being negotiable and payable by ALL Buyers. The Vendor authorises Fellows to retain beneficially the premium payable by Buyers. Value Added Tax is charged at the rate prevailing by law at the date of sale.
- 9.2 On the excess over £100,000 of the Hammer Price (of any individual Lot), the Buyer will pay the Hammer Price and a premium of 15% (plus VAT). The said premium not being negotiable and payable by ALL Buyers. The Vendor authorises Fellows to retain beneficially the premium payable by Buyers. Value Added Tax is charged at the rate prevailing by law at the date of sale.
- 9.3 Value Added Tax on the Hammer Price is imposed on all items affixed with an asterisk thus - *.
- 9.4 Buyers using the Fellows Live bidding platform will not pay any additional commission, just the buyer's premium. Buyers will pay an additional commission charge of 4.95% + VAT of the hammer price if lots are successfully purchased online via the saleroom. Buyers using Easy Live Auction can choose whether to pay a live bidding charge of 3% + VAT of the hammer price, or a fixed fee of £3 per sale. Buyers will pay a commission charge of an additional 5% + VAT of the hammer price if lots are successfully purchased online via Live Auctioneers.
- 9.5 Non UK or EU VAT registered buyers can have most classes of VAT refunded on their purchases - please note that auctioneers are under no obligation to provide VAT refunds, although many will offer this service. HMRC are the ultimate refunding authority. VAT refunds are subject to provision of statutory export/import documentation. HMRC have decreed that VAT on buyer's premium is always payable whether the buyer is domiciled in the UK, the EU or outside the EU or wherever the goods are to be sent. So auctioneers cannot refund VAT on buyer's premium if the goods are sold under normal VAT rules.
- 10. TITLE AND COLLECTION OF PURCHASES**
- 10.1 The ownership of any Lot purchased shall not pass to the relevant Buyer until they have made payment in full to Fellows of the Total Amount Due.
- 10.2 Buyers shall at their own risk and expense take away any Lot that they have purchased and paid for not later than 2 working days following the day of the Auction after which they shall be responsible for any removal, storage and insurance charges.
- 11. DEFAULT BY BUYER OR VENDOR**
- 11.1 As Fellows act as agent for the Vendor, Fellows is not responsible for default by the Vendor or the Buyer.
- 11.2 If any Lot is not paid for in full and taken away in accordance with these Conditions, or if there is any other breach of these Conditions, Fellows as agent for the Vendor shall at its absolute discretion and without prejudice to any other rights it may have, be entitled to exercise all or any of the following rights and remedies:
- (a) to proceed against the Buyer for an action for debt or damages for breach of contract;
- (b) to rescind the sale of that Lot and/or any other Lots sold by Fellows to the defaulting Buyer;
- (c) to re-sell the Lot by Auction or private treaty. If a lower Hammer Price is achieved on the re-sale than that achieved on the original sale the defaulting Buyer shall be liable for the difference (after crediting any part payment and adding any re-sale costs). Fellows will account to the Vendor for any surplus achieved on a re-sale, however, it shall only be required to account to the Vendor for any resulting deficiency in the event that it receives payment of such sum in full from the defaulting Buyer.
- (d) to remove, store and insure the Lot at the expense of the defaulting Buyer and, in the case of storage, either at Fellows' premises or elsewhere;
- (e) to charge interest at a rate not exceeding [1.5%] per month on the total amount due to the extent it remains unpaid for more than 2 working days after the sale;
- (f) to retain that or any other Lot sold to the defaulting Buyer until that Buyer pays the total amount due;
- (g) to reject or ignore bids from the defaulting Buyer at future Auctions or to impose conditions before any such bids shall be accepted;
- (h) to apply any proceeds of sale of other Lots due or in future becoming due to the defaulting Buyer towards the settlement of the total amount due and to exercise a lien on any of the Buyer's property in Fellows' possession for any purpose.
- 12. DELIBERATE FORGERIES**
- 12.1 Subject to clause 12.2, any representation or statement by Fellows (including in any catalogue) as to authorship, genuineness, origin, date, age, provenance, condition or estimated selling price is a statement of opinion only. Prospective Buyers are given ample opportunities to view and inspect before any sale and prospective Buyers must satisfy themselves as to all such matters. Neither Fellows or its employees or agents nor the Vendor accept liability for the correctness of such opinions and all conditions and warranties, express, implied or statutory are hereby excluded.
- 12.2 Any Lot which proves to be a Deliberate Forgery may be returned to Fellows by the Buyer within 21 days of the Auction provided it is in the same condition as when bought, and is accompanied by particulars identifying it from the relevant catalogue description and a written statement of defects. If Fellows is satisfied from the evidence presented that the Lot is a Deliberate Forgery Fellows shall refund the money paid by the Buyer for the Lot (but not the amount of any consequential loss, damages, expenses or interest) provided that (1) if the catalogue description reflected the accepted view of scholars and experts as at the date of sale or (2) the Buyer personally is not able to transfer a good and marketable title to Fellows.
- 13. LIMITATIONS OF LIABILITY**
- 13.1 All members of the public on the premises are there at their own risk and must note the lay-out of the accommodation and security arrangements.
- 13.2 Any indemnity under these Conditions shall extend to all actions, costs, expenses, claims and demands whatsoever suffered or incurred by the person entitled to the benefit of it and Fellows declares itself to be a trustee of the benefit of every such indemnity so far as it is expressed to be for the benefit of its employees and agents.
- 13.3 While Fellows endeavours to ensure that the information on the Website is correct, Fellows does not warrant the accuracy and completeness of the material on the Website. Fellows may make changes to the material on the Website, or to the products and prices described in it, at any time without notice. The material on the Website may be out of date, and Fellows makes no commitment to update such material.
- 13.4 The material on the Website is provided "as is", without any conditions, warranties or other terms of any kind. Accordingly, to the maximum extent permitted by law, Fellows provides you with the Website on the basis that Fellows excludes all representations, warranties, conditions and other terms which, but for this legal notice, might have effect in relation to the Website.
- 14. GENERAL**
- 14.1 Any notice to any Buyer, Vendor, Bidder or viewer may be given by first class mail or email in which case it shall be deemed to have been received by the addressee 48 hours after posting or sending. All notices to Fellows must be sent in writing and email is not acceptable.
- 14.2 Any indulgence extended to any person by Fellows notwithstanding the strict terms of these Conditions or the Terms of Consignment shall affect the position at the relevant time only and in respect of that particular concession only; in all other respects these Conditions shall be construed as having full force and effect.
- 14.3 These Conditions and any disputes or claims arising out of or in connection with it or their subject matter or formation (including non-contractual disputes or claims) are governed by and construed in accordance with the law of England.
- 14.4 The parties irrevocably agree that the courts of England have exclusive jurisdiction to settle any dispute or claim that arises out of or in connection with the Agreement or its subject matter or formation (including non-contractual disputes or claims).
- 15. SHIPPING**
- 15.1 We offer a tracked and insured shipping service for all items with the exception of those in our Antiques, Silver & Collectables sales.
- 15.2 Items posted outside of the UK will incur a £30 charge
- 15.3 Within the UK, hammer totals under £100 will incur a £10 charge
- 15.4 Hammer totals over £100 will incur a £20 charge
- 15.5 Larger items, as well as those exceeding a value of £20,000 or weighing in excess of 2kg may be subject to additional fees
- 15.6 If you have recently moved or wish to have your items sent to a different address, please contact us prior to the sale. We cannot accept alternative addresses for first-time buyers and your items will be sent the address on the ID/payment card. If you pay by bank transfer we can ship to any worldwide address of your choice.

Fellows

Established 1876

Contact Information

Directors

Stephen Whittaker BA (Hons)

Jayne Whittaker

Ben Griffiths BSc (Hons)

Departments

Customer Services

0121 212 5508

info@fellows.co.uk

Jade Daniels MIWFM
Olivia Dean-Goodchild
Kain Holroyd
Janis Masters
Kasia McGovern-Hay
Gemma Sheldon

Photography

0121 212 2131

photography@fellows.co.uk

Francesca Allen BA (Hons)
Claire Cleaver
Polly Shave MA (Hons)

Marketing

0121 212 5500

marketing@fellows.co.uk

Liam Bolland BA (Hons)
Jordan Guest MA (Hons)
Rory Pickin BSc (Hons)
Luke Poole BA (Hons)
Alexandra Whittaker BA (Hons)
Nicola Whittaker Bsc (Hons), Cert. GA

London Office

0207 127 4198

london@fellows.co.uk

Kirsty Basset
Natasha Davis BA (Hons), FGA
Rianna Roston MA (Hons)
Marina Vieira MA (Hons), GD
Annabel Zarandi BA (Hons)

Finance

0121 212 2131

wendy@fellows.co.uk

Wendy Butler
Angela Donnelly BA (Hons) ACMA
Gemma Wilkes

Specialist Departments

Jewellery

0121 212 6303

jewellery@fellows.co.uk

Lindsay Beardmore FGA, DGA
Jenny Darcy BA (Hons)
Alexander Duffy BSc (Hons), FGA, DGA
Penelope Gilliver FGA, DGA
Patricia Grant BA (Hons)
Kathryn Hodkin MSci (Hons), FGA, DGA
Howard Pace FGA, DGA
David Pregun MA (Hons), FGA, DGA
Ben Randall BA (Hons), G.G., A.J.P.
Emma Scriven BA (Hons), FGA, DGA
Emma Testill FGA, DGA
Amanda Zhang FGA, Msc

Watches

0121 212 5506

watches@fellows.co.uk

Laura Bishop MA (Hons)
Scott Brunton
Kes Crockett BA (Hons)
Amy Hill CertHE
Michael Jagiela
Steven Yambo BA (Hons)

Pawnbrokers

0121 212 6308

pawnbroker@fellows.co.uk

Rachel Bache
Kate Bannister
Claire Dodwell
Annaliese Foster BA (Hons)

Antiques, Silver & Collectables

0121 212 6302

antiques@fellows.co.uk

silverdept@fellows.co.uk
Madeleine Cater BA (Hons)
Kevin Jackson
Alison Jakeway MA MRICS
Stephen Watton BA (Hons)

Designer Collection

0121 212 6306

thedesignercollection@fellows.co.uk

Monisha Cooper
Sophie Higgs



Birmingham Saleroom

Situated in the heart of Birmingham's Jewellery Quarter, Fellows is easily accessible from all parts of the United Kingdom, Europe and beyond.

Head Office & Saleroom
Augusta House
19 Augusta Street
Birmingham
B18 6JA

Telephone: 0121 212 2131
Email: info@fellows.co.uk

London Office

Fellows' London office offers valuations, please call to arrange a time to visit.

London Office
29 Charles Street
Mayfair
London
W1J 5DT

Telephone: 020 7127 4198
Email: london@fellows.co.uk



Follow us on....



[facebook.com/
fellowsauctions](https://facebook.com/fellowsauctions)



[fellowsauctions](https://instagram.com/fellowsauctions)



[@fellowsauctions](https://twitter.com/fellowsauctions)



youtube.com/fellows1876



Fellows

Established 1876

Head Office & Saleroom: Augusta House | 19 Augusta Street | Birmingham B18 6JA
London Office: 29 Charles Street | Mayfair | London W1J 5DT
Tel 0121 212 2131 | Tel 020 7127 4198 | www.fellows.co.uk