

Fellows
Established 1876



Fine Jewellery

Thursday 21st January 2021

Fine Jewellery

Thursday 21st January 2021
Starts at 11:00am

Viewing Times

London	
Tuesday 12 January	10am - 7pm
Wednesday 13 January	9.30am - 3pm
Birmingham	
Saturday 16 January	11am - 4pm
Tuesday 19 January	10am - 4pm
Wednesday 20 January	10am - 4pm
Thursday 21 January	8.30am - 10am

(Photo ID required)

Please be aware that you will need to book an appointment to view. These can be booked through our website or by calling 0121 212 2131. You will be asked for photographic proof of identification and to wear a mask to be allowed access to the viewing.

Free virtual viewings are available by appointment. Please email hello@fellows.co.uk for more information and to book an appointment.

Certificated stones

Lot No. 22, 31, 96, 98, 122, 133, 143, 181, 182, 191, 194, 223, 324, 337, 343, 359, 361, 374, 376, 428, 509, 510, 513, 514, 526

Featured Lots

Lots 352, 353, 354, 416, 417
(Front Cover)



Lots 381
(Back Cover)



Free Live Bidding!

As well as offering 0% bidding surcharge via **Fellows Live** we are also delighted to announce that there is **free** worldwide shipping on this auction.



Free delivery on this auction.

Why Buy?

- COMPETITIVE** buyer's premium
- FREE** live online bidding
- FULLY** illustrated catalogue
- EASY** to use, functional website
- ACCURATE** condition reports
- SPECIALISTS** on hand to offer advice
- TRACKED AND INSURED** shipping*

*Please contact Fellows for further information.

Why Sell?


- HIGH PRICES** consistently achieved
- FLEXIBLE** commission rates
- FREE** valuations with no obligation to consign
- RAPID** turnaround for your goods
- TARGETED** advertising to a global audience
- SUPERIOR** quality catalogues
- FULLY** integrated website


Contact the department...

Ben Randall Senior Specialist & Catalogue Manager 0121 212 6312 ben@fellows.co.uk	Alexander Duffy Cataloguer 0121 212 6301 alex@fellows.co.uk
--	---

Free virtual viewings are available by appointment. Please email hello@fellows.co.uk for more information and to book an appointment.

Further information

 **Additional Images and Condition Reports** can be found online at our website www.fellows.co.uk

 **Telephone Bidding** is available if you cannot attend an auction. Please ring 0121 212 2131 to arrange a telephone line.





Follow Us



Important Notice

Neither Fellows nor the Vendors are responsible for any reference as to the condition of lots listed. The absence of such reference does not imply that a lot is in good condition or free from faults or imperfections. All weights and dimensions are approximate. Purchasers are advised to carefully inspect lots and make their own opinion as to the condition. Please see section 7 under 'Bidders' in our full terms and conditions. View Fellows Important Notices in full and full terms and conditions at the back of the catalogue.

Key to Symbols

-  Lot may have export restrictions.
-  Lot comes with box.
-  Lot comes with Report.
-  Lot will carry an additional 20% VAT charge on the hammer price.





Safety at
Fellows
 Established 1876



We want our colleagues and customers to both feel safe as we gradually re-open our offices.

As such, there are new processes and standard operating procedures in place at both our London and Birmingham offices for the foreseeable future.

Visitors to our offices

- Hand sanitising points are available at all entry points with clear signage.
- All visitors will be required to wear gloves and masks, stocks are in place to provide these for all visitors if necessary.
- Floors will be clearly marked to ensure that social distancing can be maintained throughout the building.
- HikVision Thermal Camera in reception areas both in London and Birmingham to test for elevated temperatures.
- Physical viewing in both London and Birmingham will be by appointment, via our online automated booking system.
- Valuations will be conducted by prior appointment at our offices in London and Birmingham, or by Zoom.

Our team

- All Fellows employees will have their own gloves and masks.
- Home working and staggered working hours will become the norm, we have embraced technology such as Zoom and Slack to allow our colleagues to communicate seamlessly regardless of their location.
- Safety screens are in place to protect our colleagues and customers.

It is important that the measures above are respected and adhered to.

Fellows

Established 1876

Auctioneers & Valuers
 Antiques | Jewellery | Watches

Virtual Viewings and Valuations

View our auctions or receive a free valuation from the comfort of your own home!

We are offering viewings of our auctions and valuations to you from the comfort of your own home.

We appreciate that you may not be able to visit either of our offices so we are bringing it to you.

We use video conferencing technology called 'Zoom' where you will be able to see our specialists on your screen. In this private appointment they will be able to either appraise your item or show you a number of lots from an upcoming auction.

All you need is an appointment and a computer or laptop with a webcam. A phone or tablet will also work.

Interested?

Book an appointment today by emailing info@fellows.co.uk or call **0121 212 2131**

1 An Edwardian 18ct gold Thai ruby three-stone and diamond ring.

Verbal from GCS, stating Thailand, no heat.
Ruby calculated total weight 1.18cts, based on estimated dimensions.
Hallmarks for Chester, 1902. Ring size J1/2. 3.8gms.
£300-400 (plus 27.6% BP*)

2 A pair of late Victorian gold cannetille and Greek-Key motif earrings.

Length 4cms. 2.8gms.
£200-300 (plus 27.6% BP*)

3 Two items of mid to late 19th century gold Archaeological Revival jewellery, to include a micro mosaic brooch and an enamel stickpin.

Length of brooch 4.8cms. Length of stickpin head 1.4cms. 10.5gms.
£280-380 (plus 27.6% BP*)

4 A pair of 19th century gold, figural and floral carved coral earrings, with winged medusa carved coral surmounts.

Length 7.7cms. 13.9gms.
Coral untested for natural colour origin.
£300-400 (plus 27.6% BP*)

5 A late Victorian gold citrine and seed pearl brooch.

Citrine calculated weight 11.62cts, based on estimated dimensions of 18.5 by 15 by 7.5mms.
Length 3.5cms. 9.4gms.
£300-400 (plus 27.6% BP*)

6 A late Georgian silver and gold, old-cut diamond and split pearl 'Halley's Comet' brooch.

May be worn as a pendant.
Estimated diamond weight 0.45ct, I-J colour, SI2-P1 clarity.
Length 2.5cms. 3gms.
£350-450 (plus 27.6% BP*)

7 A pair of mid to late 19th century gold coral cameo earrings.

Length 3.4cms. 6.5gms.
Coral untested.
£350-450 (plus 27.6% BP*)

8 A pair of early 20th century gold enamel cufflinks, depicting a coat of arms.

Diameter of cufflink face 2cms. 17.5gms.
£400-600 (plus 27.6% BP*)

9 A ruby and vari-cut diamond floral cluster ring.

Estimated total diamond weight 0.30ct, principal old-cut diamond estimated H-I colour, SI clarity.
Ring size M1/2. 3.6gms.
£500-700 (plus 27.6% BP*)

10 A mid to late 19th century 18ct gold and silver reverse-carved monogrammed spherical watch chatelaine, with key.

French assay marks. Length 15cms. 59.7gms.
£700-900 (plus 27.6% BP*)

11 A late Victorian gold citrine and swag fringe necklace.

Length 45.8cms. 33gms.
£1,000-1,500 (plus 27.6% BP*)

12 A late Georgian gold peachy yellow topaz cross pendant.

Length 5.6cms. 8.2gms.
With near period case.
£3,500-4,500 (plus 27.6% BP*)



BP* - Buyer's Premium of 23% (plus VAT) or 27.6% (VAT included)

13 An early 20th century 15ct gold sapphire and circular-cut diamond hinged bangle, with foliate cannetille sides.

Estimated total diamond weight 0.20ct, G-H colour, VS clarity.
Hallmarks for Chester, 1912. Inner diameter 6cms. 13.4gms.
With case.
£450-650 (plus 27.6% BP*)

14 A carved Celadon jade pendant, designed as three entwined dragons, possibly Qing Dynasty.

Length 5.7cms. 21.5gms.
£150-200 (plus 27.6% BP*)

15 A late Victorian 18ct gold diamond, split pearl and blue enamel star motif brooch.

Stamped 18ct. Length 7cms. 23.7gms.
£700-900 (plus 27.6% BP*)

16 An early 19th century gold multi-strand filigree necklace.

Length 38cms. 27.4gms.
£900-1,400 (plus 27.6% BP*)

17 A late Victorian gold cat's-eye chrysoberyl and old-cut diamond cluster ring.

Chrysoberyl calculated weight 3.54cts, based on estimated dimensions of 8.3 by 8 by 5.3mms.
Estimated total diamond weight 0.45ct, G-H colour, VS-SI clarity.
Approximate ring size N1/2. 4.4gms.
£1,400-2,000 (plus 27.6% BP*)

18 A sapphire and brilliant-cut diamond cluster ring.

Sapphire calculated weight 2.50cts, based on estimated dimensions of 12.3 by 6.5 by 2.9mms.
Estimated total diamond weight 3cts, H-J colour, VS2-P1 clarity.
Stamped 18ct. Ring size J. 16.3gms.
£1,200-1,800 (plus 27.6% BP*)

19 A Kundan emerald and polki diamond enamel bracelet.

Length 16.8cms. 58.3gms.
£1,600-2,200 (plus 27.6% BP*)

20 A Kundan polki diamond and enamel necklace.

Length of pendant 2cms. Length of necklace 44cms. 76.5gms.
£2,000-2,500 (plus 27.6% BP*)

21 An engraved and textured snake bangle, with jade crest, ruby eyes and single-cut diamond highlights.

Estimated total diamond weight 0.25ct, G-H colour, VS2-SI1 clarity.
French re-strike marks. Inner diameter 6.7cms. 53.6gms.
Jade untested for natural colour origin.
£2,000-3,000 (plus 27.6% BP*)

22 A late Victorian 18ct gold no-heat sapphire three-stone and diamond point accent ring.

With report 19339, dated 24th November 2020, from The Gem & Pearl Laboratory, stating natural sapphires, no heat.
Sapphire calculated total weight 5.48cts, based on estimated dimensions.
Stamped 18ct. Ring size N1/2. 7.5gms.
£2,500-3,000 (plus 27.6% BP*)

23 A Russian pre-Revolutionary silver and gold Imperial Russian Garde du Korps NCO's parade helmet locket.

56 Zolotnik mark.
Workmaster's mark for Erik August Kollin.
Length 3.7cms. 15.1gms.
Erik August Kollin was a known workmaster for Fabergé.
£1,800-2,400 (plus 27.6% BP*)

24 A graduated old-cut diamond three-stone ring, with single-cut diamond accents.

Principal diamond estimated weight 2.10cts, J-K colour, VS clarity.
Estimated total diamond weight 3.85cts.
Ring size N. 8.5gms.
£9,000-14,000 (plus 27.6% BP*)



BP* - Buyer's Premium of 23% (plus VAT) or 27.6% (VAT included)

25 An 18ct gold naturalistic lotus leaf brooch.

Import marks for London, 1987.
Length 3.6cms. 6.9gms.
£250-350 (plus 27.6% BP*)

26 A 1970s 18ct gold garnet and diamond abstract dress ring.

Estimated total diamond weight 0.10ct, I-J colour, SI clarity.
Hallmarks for London, 1971. Ring size N. 10.9gms.
£350-450 (plus 27.6% BP*)

27 A 1970s 18ct gold diamond abstract dress ring.

Estimated total diamond weight 0.90ct, G-H colour, VS2-SI1 clarity.
Hallmarks for Birmingham, 1973. Ring size P1/2. 13.7gms.
£700-900 (plus 27.6% BP*)

28 A 1970s 18ct gold emerald and diamond floral brooch.

Estimated total diamond weight 0.75ct, G-H colour, VS-Si clarity.
Stamped 18, 750. Length 4.1cms. 17.8gms.
£700-900 (plus 27.6% BP*)

29 A pair of mabé pearl and diamond earrings.

Estimated total diamond weight 1ct, G-H colour, VS-SI clarity.
Stamped 18Kt. Diameter 2.7cms. 29.2gms.
£900-1,400 (plus 27.6% BP*)

30 An 18ct gold square-shape diamond full eternity ring.

Estimated total diamond weight 4cts, G-H colour, VS1-SI1 clarity.
Hallmarks for Birmingham. Ring size M1/2. 6.8gms.
£1,200-1,800 (plus 27.6% BP*)

31 A Colombian emerald and diamond star clip brooch.

With report 81289-57, dated 10th December 2020, from GCS, stating Colombia, minor clarity enhancement, estimated weight 1.20cts.
Estimated total diamond weight 0.65ct, G-I colour, SI1-P1 clarity.
Length 4.2cms. 9.8gms.
£1,400-2,000 (plus 27.6% BP*)

32 A pair of 1970's textured openwork and scattered brilliant-cut diamond earrings, with detachable drop, by George Weil.

Estimated total diamond weight 1.25cts, G-H colour, VS clarity.
Stamped 18ct Plat. Length 5.3cms. 29gms.
£2,000-2,500 (plus 27.6% BP*)

33 A 1970's textured openwork 18ct gold and scattered brilliant-cut diamond hinged bangle, by George Weil.

Estimated total diamond weight 2cts, G-H colour, VS clarity.
Stamped 18ct plat. Inner diameter 6cms. 67.4gms.
£3,500-4,500 (plus 27.6% BP*)

34 A lady's 1970s 18ct gold 'Oyster Perpetual Datejust' watch, by Omega, with champagne dial, textured bezel and strap.

Reference 6517, serial 2378855. Signed automatic calibre 1161.
Import marks for London, 1970. Length 16cms. 61.5gms.
With copy of Mappin & Webb receipt dated 1974.
£2,800-3,200 (plus 27.6% BP*)

35 An emerald and diamond heart pendant, with fancy-link chain.

Chain section may be worn as a bracelet.
Estimated total diamond weight 2cts, G-I colour, predominantly VS-SI clarity.
Chain with Italian marks, stamped 750.
Length of pendant 6.4cms. Length of chain 68.5cms. 71.6gms.
£3,000-4,000 (plus 27.6% BP*)

36 A pair of 1960s 18ct gold old-cut diamond and pearl textured earrings.

Estimated total diamond weight 3cts, G-H colour, SI2-P1 clarity.
Stamped 18ct and 750. Length 1.9cms. 13.6gms.
Pearls untested for natural origin.
£3,000-4,000 (plus 27.6% BP*)



37 A 'brown' diamond and diamond cluster ring, with pavé-set diamond shoulders.

Estimated total diamond weight 1.35cts, VS2-SI2 clarity.
Stamped 18ct. Ring size P. 6.6gms.
Diamonds untested for natural colour origin.
£350-450 (plus 27.6% BP*)

38 A pair of 1940s 18ct gold calibré-cut ruby and old-cut diamond foliate earrings.

Estimated total diamond weight 0.45ct, G-I colour, VS2-P1 clarity.
Foreign marks. Length 2.5cms. 11.8gms.
£600-800 (plus 27.6% BP*)

39 ✕ A coral and pavé-set diamond 'Art Design' ring, by Günter Krauss.

Estimated total diamond weight 0.35ct, G-H colour, VS clarity.
Stamped 750. Ring size L. 11.5gms.
Coral untested for natural colour origin.
£500-700 (plus 27.6% BP*)

40 A 1970s 18ct gold textured openwork panel ring with five interchangeable agate spheres, by Gilbert Albert.

Hallmarks for London, 1970s. Ring size M.
Weight of unmounted ring 10.5gms.
With maker's pouch.
£350-450 (plus 27.6% BP*)

41 A pair of brilliant-cut diamond stud earrings, with pavé-set diamond surrounds.

Maker's marks for Yossi Harari.
Principal diamonds estimated total weight 1ct, G-H colour, SI clarity.
Estimated total diamond weight 2cts.
Stamped 750. Diameter 1cm. 7gms.
£800-1,200 (plus 27.6% BP*)

42 A mid 20th century 18ct gold ruby, diamond, seed pearl and enamel sedan chair novelty watch clip, by UTI.

French assay marks. Length 4.4cms. 19.8gms.
£700-900 (plus 27.6% BP*)

43 A mid 20th century 18ct gold citrine and diamond floral brooch.

Estimated total diamond weight 0.15ct, G-H colour, VS-SI clarity.
Length 5.8cms. 22.4gms.
£900-1,400 (plus 27.6% BP*)

44 A 1970s 18ct gold bangle watch, signed Chopard, with tiger's-eye dial.

Import marks for London, 1972. Inner diameter 5.7cms. 50.9gms.
With original retail receipt from Kutchinsky.
£1,800-2,400 (plus 27.6% BP*)

45 ✕ A coral and brilliant-cut diamond dress ring.

Estimated dimensions of coral 24 by 17.3 by 10.1mms.
Estimated total diamond weight 2cts, H-I colour, VS-SI clarity.
Ring size N. 21.5gms.
Coral untested for natural colour origin.
£1,500-2,000 (plus 27.6% BP*)

46 ✕ A pair of coral and diamond earrings.

Estimated total diamond weight 4cts, H-I colour, VS clarity.
Length 3.5cms. 27.1gms.
Coral untested for natural colour origin.
£1,500-2,000 (plus 27.6% BP*)

47 ✕ A coral and diamond brooch.

Estimated total diamond weight 2.75cts, H-I colour, VS-SI clarity.
Estimated dimensions of coral cabochon 26 by 18.3 by 12mms.
Length 4.2cms. 22gms.
Coral untested for natural colour origin.
£1,500-2,000 (plus 27.6% BP*)

48 A 1950s 18ct gold wristwatch, with sapphire sides and flared head, to a tapered brick-link bracelet, by Omega.

Signed Omega to dial, movement and case.
Swiss marks, stamped 750. Length 18.6cms. 78.6gms.
£2,500-3,500 (plus 27.6% BP*)



49 A multi-gem cluster pendant, to include vari-hue sapphires and zircons.

Length 4.5cms.
£300-400 (plus 27.6% BP*)

50 A ruby and emerald floral cluster pendant and chain, with matching earrings.

Stamped 916 or 22K.
Length of pendant 2.6cms. Length of chain 44.5cms.
Length of earrings 1.1cms.
12gms.
£450-650 (plus 27.6% BP*)

51 A mid 20th century 18ct gold multi-gem woven-link bracelet.

Pink tourmaline calculated weight 5.94cts, based on estimated dimensions of 12 by 10 by 6mms.
Stamped 18K, 0.750. Length 19.2cms. 58.5gms.
£2,000-2,500 (plus 27.6% BP*)

52 An Indian enamel and paste-set necklace and matching earrings.

Length of earrings 5.5cms. 56.5gms.
£2,000-2,500 (plus 27.6% BP*)

53 An Indian necklace, with matching earrings.

Necklace stamped 916.
Length of metal section of necklace 48cms. Length of earrings 4cms. 85.3gms.
£3,000-4,000 (plus 27.6% BP*)

54 A mid 20th century 18ct gold bracelet, suspending four amethyst, citrine and gem-set charms, to include a carriage.

Italian marks, stamped 750. Length 22cms. 101.6gms.
£3,000-4,000 (plus 27.6% BP*)



55 An 18ct gold ruby and diamond dress ring.

Estimated total diamond weight 0.30ct, G-I colour, VS-SI clarity. Hallmarks for Birmingham. Ring size N1/2. 5.1gms. **£350-450** (plus 27.6% BP*)

56 A pavé-set diamond dress ring.

Estimated total diamond weight 1.30cts, G-H colour, VS clarity. Stamped 18. Approximate ring size O. 11.6gms. **£450-650** (plus 27.6% BP*)

57 An old-cut diamond and ruby rope-twist necklace, with flat curb-link back-chain.

Estimated total diamond weight 1.75cts, G-J colour, SI1-P1 clarity. Italian marks, stamped 585. Length 41cms. 19.7gms. **£550-750** (plus 27.6% BP*)

58 A pair of cultured pearl and diamond earrings, by David Webb.

Estimated dimensions of one cultured pearl 15 by 11.2 by 10.3mms. Estimated total diamond weight 0.20ct, G+ colour, VS-SI clarity. Stamped 18K. Length 1.8cms. 14.9gms. **£600-800** (plus 27.6% BP*)

59 A cultured pearl and diamond bombe lattice dress ring.

Estimated total diamond weight 0.80ct, G-H colour, VS-SI clarity. French assay marks. Ring size K. 8.5gms. **£600-800** (plus 27.6% BP*)

60 A 1950s 18ct gold sapphire and diamond rope twist brooch, with matching earrings, by Henry George Murphy.

Estimated total diamond weight 0.30ct, G-H colour, VS-SI clarity. Hallmarks for London, 1954. Length of brooch 4.7cms. Length of earrings 2.3cms. 24.3gms. With fitted case. **£900-1,400** (plus 27.6% BP*)

61 A sapphire and diamond dress ring.

Sapphire calculated weight 1.26cts, based on estimated dimensions of 6.2 by 6 by 3.7cms. Estimated total diamond weight 2cts, predominantly G-H colour, VS clarity. Stamped 18Kt. Ring size Q. 13.5gms. **£1,000-1,500** (plus 27.6% BP*)

62 A lapis lazuli, chrysoprase and seed pearl textured bracelet.

French re-strike marks, stamped 750. Length 18.3cms. 46.5gms. Lapis lazuli untested for natural colour origin. **£1,500-2,000** (plus 27.6% BP*)

63 A mid 20th century 14ct gold single-cut diamond wrist watch, by Le Coultre.

Signed to dial, movement and case back. Estimated total diamond weight 0.50ct, G-H colour, VS clarity. Stamped 14K. Length 17.5cms. 57.2gms. **£1,200-1,800** (plus 27.6% BP*)

64 A mid 20th century diamond floral brooch, by Vourakis.

Estimated total diamond weight 1.50cts, G-H colour, VS clarity. Stamped Kt18. Length 5.6cms. 30.1gms. **£1,400-2,000** (plus 27.6% BP*)

65 A 1960s sapphire and diamond crossover dress ring.

Estimated total diamond weight 0.60ct, G-H colour, VS clarity. Stamped 750. Ring size M. 10.6gms. **£2,000-2,500** (plus 27.6% BP*)

66 A mid 20th century 18ct gold ruby, sapphire, emerald and diamond spray brooch, by Cartier.

Estimated total diamond weight 0.35ct, G+ colour, VS clarity. French assay marks. Length 5cms. 29.8gms. **£3,000-4,000** (plus 27.6% BP*)



67 An 18ct gold turquoise and old-cut diamond cluster ring.

Estimated dimensions of turquoise 10.3 by 6.9 by 5.2mms.
Estimated total diamond weight 0.80ct, G-I colour, SI1-P1 clarity.
Hallmarks for London, 1991. Ring size Q. 5.2gms.
£300-400 (plus 27.6% BP*)

68 A 1940s 14ct gold aquamarine floral brooch.

Aquamarine total calculated weight 13.19cts, based on estimated dimensions.
Stamped 14ct. Length 7.3cms. 16.5gms.
£400-600 (plus 27.6% BP*)

69 A mid 20th century garnet cocktail watch, by Lucien Piccard.

Stamped 14KT. Length 17.5cms. 24.7gms.
£600-800 (plus 27.6% BP*)

70 A 1970s 9ct gold grooved oval-link bracelet.

Import marks for London, 1974. Length 20.5cms. 52.2gms.
£1,000-1,500 (plus 27.6% BP*)

71 A diamond cluster dress ring.

Principal diamond estimated weight 0.80ct, H-I colour, P1 clarity.
Estimated total diamond weight 1.20cts.
Ring size K1/2. 17.5gms.
£1,400-2,000 (plus 27.6% BP*)

72 An openwork cuff bangle, with floral motif.

Inner diameter 5.7cms. 53gms.
£1,400-2,000 (plus 27.6% BP*)

73 A lady's 1960s 18ct gold 'Chameleon' wristwatch, by Rolex.

Numbered 9667 to interior.
Import marks for Glasgow, 1960. Swiss marks.
Length 17cms. 40.1gms.
with maker's case and two spare leather straps.
£1,500-2,000 (plus 27.6% BP*)

74 A mid 20th century platinum and 18ct gold turquoise and diamond fringe necklace.

Estimated total diamond weight 4.50cts, I-J colour, SI1-P1 clarity.
Length 39cms. 71.8gms.
£2,000-2,500 (plus 27.6% BP*)

75 An aquamarine and diamond dress ring.

Aquamarine weight 27.76cts.
Estimated total diamond weight 0.40ct, H-J colour, VS-SI clarity.
Ring size M1/2. 13.6gms.
£2,000-3,000 (plus 27.6% BP*)

76 A gentleman's 1970s 18ct gold textured wristwatch, by Patek Philippe.

Signed to dial, movement and case.
Swiss convention marks. Length 19.5cms. 90.8gms.
£2,800-3,200 (plus 27.6% BP*)



77 A sapphire cabochon and calibr -cut sapphire and diamond dress ring.

Sapphire cabochon calculated weight 1.71cts, based on estimated dimensions of 6.3 by 4mms.
Estimated total diamond weight 0.30ct, G-H colour, VS clarity.
Stamped 750. Ring size L1/2. 5.2gms.
£400-600 (plus 27.6% BP*)

78 A sapphire and diamond pear-shape cluster ring.

Estimated total diamond weight 0.30ct, I-K colour, VS-SI clarity.
Stamped 18ct. Ring size N1/2. 7.1gms.
£500-700 (plus 27.6% BP*)

79 An 18ct gold marquise-shape and square-shape diamond cluster ring.

Total diamond weight 1.34cts, estimated G-I colour, SI1-P1 clarity.
Hallmarks for Birmingham. Ring size N. 4gms.
£800-1,200 (plus 27.6% BP*)

80 A pair of emerald and diamond cluster earrings.

Estimated total emerald weight 4cts.
Estimated total diamond weight 0.75ct.
Length 2.6cms. 11.8gms.
£1,200-1,800 (plus 27.6% BP*)

81 An opal, sapphire and diamond dress ring, by Fei Liu.

Opal weight 2.80cts.
Total sapphire weight 2.45cts.
Total diamond weight 0.28ct, estimated G-H colour, VS-SI clarity.
Stamped Au750. Ring size M. 7.9gms.
£1,000-1,500 (plus 27.6% BP*)

82 A synthetic sapphire and diamond cluster ring.

Estimated total diamond weight 1.25cts, H-J colour, VS2-P1 clarity.
Ring size N. 4.6gms.
£2,000-2,500 (plus 27.6% BP*)

83 A carved emerald and brilliant-cut diamond textured necklace.

Emerald weight 40.13cts.
Estimated total diamond weight 0.35ct, G-H colour, VS clarity.
Stamped 750. Length of pendant 4.3cms. Length of chain 44cms.
46.8gms.
£3,400-4,400 (plus 27.6% BP*)

84 An 18ct gold emerald and brilliant-cut diamond cluster ring.

Emerald weight 2.43cts.
Total diamond weight 1.23cts, estimated G-H colour, SI clarity.
Hallmarks for Birmingham. Ring size O. 6gms.
£2,400-3,000 (plus 27.6% BP*)

85 An 18ct gold diamond geometric-link bracelet.

Estimated total diamond weight 8 to 9cts, K-tinted colour, predominantly SI clarity.
Hallmarks for London. Length 18cms. 75gms.
£4,000-6,000 (plus 27.6% BP*)

86 An emerald and ruby bead accent sapphire bead multi-strand necklace, with sapphire, emerald and ruby cabochon and pav -set diamond floral highlight and similarly-designed earrings.

Highlight may be worn as a brooch.
Estimated total diamond weight 9.25cts, G-I colour, VS2-P1 clarity.
Length of necklace 45cms. Length of earrings 3.3cms.
Weight of earrings and brooch 43.5gms.
£4,000-6,000 (plus 27.6% BP*)



BP* - Buyer's Premium of 23% (plus VAT) or 27.6% (VAT included)

87 A pair of sapphire and brilliant-cut diamond floral hoop earrings.

Estimated total diamond weight 1.50cts, G-H colour, VS-SI clarity. Length 2.2cms. 23.3gms. **£700-900** (plus 27.6% BP*)

88 A vari-cut diamond panel highlight hinged bangle, with textured sides.

Estimated total diamond weight 0.75ct, G-H colour, VS clarity. Inner diameter 6cms. 32.5gms. **£900-1,400** (plus 27.6% BP*)

89 A vari-cut diamond panel highlight collar, with textured sides.

Estimated total diamond weight 0.75ct, G-H colour, VS clarity. Stamped 750. Length 43.5cms. 40.2gms. **£1,000-1,500** (plus 27.6% BP*)

90 A pair of 18ct gold tanzanite and brilliant-cut diamond cluster earrings.

Total tanzanite weight 2.55cts. Total diamond weight 1.22cts, estimated G-H colour, SI1-P1 clarity. Hallmarks for Birmingham. Length 1.3cms. 3.8gms. **£900-1,400** (plus 27.6% BP*)

91 An 18ct gold tanzanite and baguette-cut diamond dress ring.

Tanzanite calculated weight 10cts, based on estimated dimensions of 13.9 by 12.2 by 7.6mms. Estimated total diamond weight 1ct, G-H colour, VS clarity. Hallmarks for London, 2003. Ring size O1/2. 10gms. **£1,000-1,500** (plus 27.6% BP*)

92 A set of amethyst, prasiolite and diamond Misbaha or prayer beads.

Estimated total diamond weight 1.50cts, G-H colour, VS-SI clarity. Length 35cms. 51.5gms. With William & Son maker's case. **£1,000-1,500** (plus 27.6% BP*)

93 A platinum square-shape diamond single-stone ring, with pavé-set diamond line shoulders.

Principal diamond estimated weight 1.25cts, K-L colour, SI clarity. Estimated total diamond weight 1.45cts. Hallmarks for Birmingham. Ring size L1/2. 4.7gms. **£1,000-1,500** (plus 27.6% BP*)

94 An 18ct gold tanzanite and diamond cluster ring.

Tanzanite weight 7.50cts. Total diamond weight 0.41ct, estimated H-I colour, SI clarity. Hallmarks for Birmingham. Ring size N1/2. 6.3gms. **£2,500-3,000** (plus 27.6% BP*)

95 A sapphire and brilliant-cut diamond graduated cluster bracelet.

Estimated total diamond weight 5.50cts, H-I colour, SI1-P1 clarity. Stamped 18K, 750. Length 17.8cms. 25gms. **£3,500-4,500** (plus 27.6% BP*)

96 A Sri Lankan sapphire and brilliant-cut diamond cluster ring.

With report 79211-05, dated 25th April 2019, from GCS, stating Sri Lanka (Ceylon), no heat, estimated weight 9.50cts. Total diamond weight 0.54ct, stamped to band, estimated H-I colour, VS-SI clarity. Stamped 750. Ring size N. 7.9gms. **£5,000-7,000** (plus 27.6% BP*)

97 An 18ct gold brilliant-cut diamond line bracelet.

Total diamond weight 16.73cts, estimated G-L colour, SI2-P2 clarity. Hallmarks for Sheffield. Length 18.5cms. 26.2gms. **£10,000-15,000** (plus 27.6% BP*)

98 A Burmese sapphire and brilliant-cut diamond cluster ring.

With report 83928, dated 1st February 2016, from SSEF, stating 9.717cts, Burma (Myanmar), no heat. Estimated total diamond weight 1.80cts, G-H colour, VS-SI clarity. Stamped 750. Ring size M. 9.8gms. **£12,000-18,000** (plus 27.6% BP*)



99 A sapphire cabochon and single-cut diamond cluster ring.

Sapphire calculated weight 5.45cts, based on estimated dimensions of 11 by 9 by 5.1mms.
Estimated total diamond weight 0.80ct, G-I colour, VS2-P1 clarity.
Ring size Q1/2. 4.4gms.
£300-400 (plus 27.6% BP*)

100 A pavé-set diamond and polished, tapered crossover dress ring.

Estimated total diamond weight 1.10cts.
Stamped 750. Ring size V. 18.1gms.
£550-750 (plus 27.6% BP*)

101 A brilliant-cut diamond full eternity ring.

Total diamond weight 1.11cts, estimated H-I colour, VS-SI clarity.
Stamped 750. Ring size N. 1.9gms.
£800-1,200 (plus 27.6% BP*)

102 A pair of brilliant-cut diamond cluster earrings, with detachable diamond cluster drops.

Estimated total diamond weight 3.75cts.
Length 2.9cms. 8.1gms.
£800-1,200 (plus 27.6% BP*)

103 A platinum old-cut diamond three-stone ring.

Estimated total diamond weight 0.90ct, G-tinted colour, P1 clarity.
Hallmarks for Sheffield. Ring size Q. 4.5gms.
£800-1,200 (plus 27.6% BP*)

104 A sapphire and diamond three-stone ring.

Sapphire calculated weight 1.49cts, based on estimated dimensions of 7 by 7 by 3.8mms.
Total diamond weight 0.17ct, estimated H-I colour, SI clarity.
Stamped K18. Ring size N. 3.9gms.
£900-1,400 (plus 27.6% BP*)

105 A pair of 18ct gold sapphire and brilliant-cut diamond cluster earrings.

Total sapphire weight 3.54cts.
Total diamond weight 1.10cts, estimated G-H colour, SI1-P1 clarity.
Hallmarks for Birmingham. Length 1.3cms. 3.9gms.
£1,200-1,800 (plus 27.6% BP*)

106 A sapphire single-stone ring, with diamond line shoulders.

Sapphire calculated weight 2cts, based on estimated dimensions of 8.5 by 7 by 4mms.
Total diamond weight 0.11ct, estimated G-H colour, VS-SI clarity.
Stamped 18K 750. Ring size M. 3.2gms.
£1,000-1,500 (plus 27.6% BP*)

107 A tanzanite and diamond dress ring.

Tanzanite weight 5.44cts.
Total diamond weight 1.66cts, estimated H-I colour, VS2-SI1 clarity.
Stamped 750. Ring size M1/2. 7.4gms.
£1,500-2,000 (plus 27.6% BP*)

108 An 18ct gold diamond 'Horsebit' necklace, by Gucci.

Estimated total diamond weight 1.75cts, G-H colour, VS clarity.
Swiss import marks.
Length of pendant section 6.2cms. Length of chain 41cms.
49.6gms.
£1,800-2,400 (plus 27.6% BP*)

109 A sapphire and diamond line bracelet.

Estimated total diamond weight 3.60cts, J-tinted colour, SI1-P1 clarity.
Stamped 750. Length 18.5cms. 12.6gms.
£2,000-3,000 (plus 27.6% BP*)

110 A pair of brilliant and baguette-cut diamond interwoven line motif earrings.

Total diamond weight 5.44cts, stamped to mount, estimated G-I colour, VS clarity.
Stamped 18ct, 750. Length 2.5cms. 16.9gms.
£2,500-3,500 (plus 27.6% BP*)



111 A transitional-cut diamond single-stone ring.

Estimated diamond weight 0.90ct, G-H colour, P1-P2 clarity.
Stamped Plat. Ring size O1/2. 3.6gms.
£900-1,400 (plus 27.6% BP*)

112 An 18ct gold diamond floral dress ring.

Principal diamond estimated weight 0.35ct, I-J colour, VS2-SI1 clarity.
Estimated total diamond weight 1.35cts.
Hallmarks for Birmingham. Ring size P1/2. 10.9gms.
£900-1,400 (plus 27.6% BP*)

113 An emerald and diamond dress ring.

Total emerald weight 2.89cts.
Principal emerald calculated weight 2.29cts, based on estimated dimensions of 9.8 by 7.6 by 5.4mms.
Total diamond weight 0.61ct, estimated H-I colour, VS-SI clarity.
Stamped 750. Ring size O1/2. 5.2gms.
£750-950 (plus 27.6% BP*)

114 A green tourmaline and diamond geometric pendant.

Tourmaline weight 2.67cts.
Total diamond weight 0.62ct, estimated G-H colour, VS-SI clarity.
Stamped 18K 750. Length 5.1cms. 6.3gms.
£1,000-1,500 (plus 27.6% BP*)

115 An 18ct gold emerald and vari-cut diamond cluster ring.

Emerald weight 1.91cts.
Total diamond weight 0.84ct, estimated G-I colour, VS-SI clarity.
Hallmarks for Birmingham. Ring size O. 4.5gms.
£1,200-1,800 (plus 27.6% BP*)

116 A sapphire and diamond line bracelet.

Total sapphire weight 11.54cts.
Total diamond weight 0.35ct, estimated H-J colour, SI clarity.
Stamped 750. Length 18cms. 11.2gms.
£1,200-1,800 (plus 27.6% BP*)

117 A pair of 18ct gold sapphire and diamond earrings.

Sapphire calculated total weight 2.79cts, based on estimated dimensions.
Estimated total diamond weight 0.40ct, G-H colour, VS clarity.
Hallmarks for London, 2018. Length 1.2cms. 4.6gms.
£1,200-1,800 (plus 27.6% BP*)

118 A platinum tanzanite and diamond cluster ring.

Tanzanite weight 4.27cts.
Total diamond weight 0.46ct, estimated G-H colour, VS-SI clarity.
Hallmarks for Birmingham. Ring size L1/2. 7.4gms.
£1,500-2,000 (plus 27.6% BP*)

119 An emerald and diamond pendant, with chain.

Emerald calculated weight 1.59cts, based on estimated dimensions of 9.7 by 6.7 by 4.5mms.
Total diamond weight 0.44ct, estimated G-H colour, VS-SI clarity.
Stamped 18K 750.
Length of pendant 3.3cms. Length of chain 45cms. 6.9gms.
£1,500-2,000 (plus 27.6% BP*)

120 A brilliant-cut diamond line bracelet.

Estimated total diamond weight 6cts, G-I colour, SI1-P1 clarity.
Length 19cms. 10.7gms.
£1,800-2,400 (plus 27.6% BP*)

121 A pair of brilliant-cut diamond circular cluster earrings.

Total diamond weight 2.67cts, estimated G-H colour, VS-SI clarity.
Hallmarks for Birmingham. Diameter 1.4cms. 6.3gms.
£2,200-2,800 (plus 27.6% BP*)

122 A vari-cut diamond and Sri Lankan sapphire briolette necklace.

With report 80249-17, dated 13th January 2020, from GCS, stating Sri Lanka (Ceylon), no heat, estimated weight 7.90cts.
Length of pendant 4.7cms. Length of chain 40cms. 7.3gms.
With fitted case.
£4,500-6,500 (plus 27.6% BP*)

BP* - Buyer's Premium of 23% (plus VAT) or 27.6% (VAT included)



123 An early 20th century 18ct gold diamond snake ring.

Estimated total diamond weight 0.25ct.
Hallmarks for Birmingham, 1911.
Ring size P1/2. 6.8gms.
£280-360 (plus 27.6% BP*)

124 A pair of pearl and old-cut diamond earrings.

Estimated total diamond weight 1.70cts, G-I colour, SI1-P1 clarity.
Length 2.3cms. 5.1gms.
Pearls untested for natural origin.
£500-700 (plus 27.6% BP*)

125 A late Victorian gold sapphire and old-cut diamond five-stone ring.

Total sapphire weight 0.87ct.
Estimated total diamond weight 0.55ct, G-H colour, SI1-P1 clarity.
Ring size M. 3.7gms.
£900-1,400 (plus 27.6% BP*)

126 A late 19th century silver and gold, pearl and rose-cut diamond bow brooch.

Length 5.4cms. 12.1gms.
Pearls untested for natural origin.
£600-800 (plus 27.6% BP*)

127 A late Victorian no-heat sapphire, rose-cut diamond and pearl fly brooch.

Verbal from The Gem & Pearl Laboratory, stating no heat.
Sapphire weight 0.90ct.
Length 3cms. 6.6gms.
Pearl untested for natural origin.
£700-900 (plus 27.6% BP*)

128 A late Victorian silver and gold, sapphire and old-cut diamond horseshoe bar brooch.

Sapphire calculated weight 0.46ct, based on estimated dimensions of 4.5 by 4.5 by 2.9mms.
Estimated total diamond weight 0.70ct, G-I colour, VS-SI clarity.
Length 3.7cms. 3.4gms.
£700-900 (plus 27.6% BP*)

129 A late Victorian gold and silver, sapphire and old-cut diamond dress ring.

Total sapphire weight 1.51cts.
Estimated total diamond weight 0.80ct, G-I colour, VS2-P1 clarity.
Ring size M. 5.2gms.
£1,000-1,500 (plus 27.6% BP*)

130 A late Victorian 18ct gold old-cut diamond three-stone ring.

Estimated total diamond weight 1ct, G-I colour, VS2-SI1 clarity.
Ring size M. 3.1gms.
£1,000-1,500 (plus 27.6% BP*)

131 An early 20th century silver and gold, old-cut diamond cluster necklace.

Principal diamond estimated weight 0.70ct, H-I colour, VS2-SI1 clarity.
Estimated total diamond weight 1.25cts.
Length 45cms. 3.8gms.
£2,000-2,500 (plus 27.6% BP*)

132 A late 19th century silver and gold, sapphire and diamond brooch.

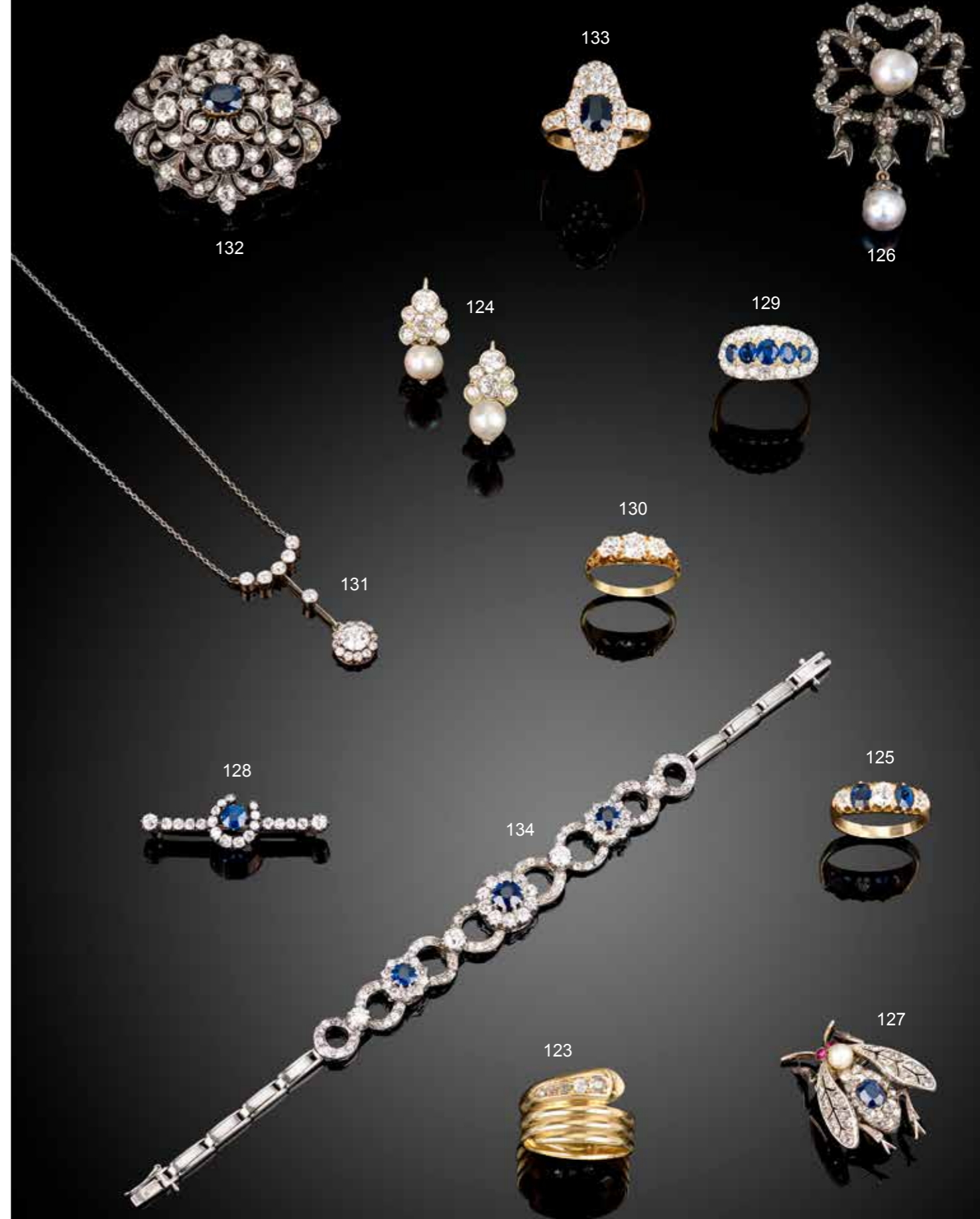
Sapphire calculated weight 2.10cts, based on estimated dimensions of 8.2 by 6.1 by 5mms.
Estimated total old-cut diamond weight 4.50cts, G-L colour, SI1-P2 clarity.
Length 4.7cms. 23.8gms.
£2,000-2,500 (plus 27.6% BP*)

133 A late Victorian 18ct gold no-heat sapphire and old-cut diamond ring.

With report 19338, dated 24th November 2020, from The Gem & Pearl Laboratory, stating natural sapphire, no heat.
Sapphire calculated weight 1.73cts, based on dimensions in report.
Estimated total diamond weight 2.15cts, G-H colour, predominantly VS2-SI1 clarity.
Stamped 18C. Ring size S1/2.
£2,800-3,200 (plus 27.6% BP*)

134 A late Victorian silver and gold, sapphire and old-cut diamond bracelet, with later back section.

Sapphire calculated total weight 1.43cts, based on estimated dimensions.
Estimated total diamond weight 2.80cts, G-I colour, VS2-P1 clarity.
Length 16.5cms. 13.1gms.
£3,500-4,500 (plus 27.6% BP*)



135 An aquamarine briolette and brilliant-cut diamond, seed pearl multi-strand necklace.

Estimated dimensions of principal aquamarine 19.5 by 8.6 by 5.5mms.
Estimated total diamond weight 1.40cts, G-H colour, VS2-SI1 clarity.
Stamped 585 14K. Length 42cms. 42.8gms.
£600-800 (plus 27.6% BP*)

136 A cultured pearl two-stone crossover ring, with tapered baguette-cut diamond shoulders.

Estimated total diamond weight 0.30ct, G-H colour, VS clarity.
Stamped 750. Ring size S. 7.8gms.
£700-900 (plus 27.6% BP*)

137 A mid 20th century sapphire and brilliant-cut diamond cluster ring.

Sapphire calculated weight 1.55cts, based on estimated dimensions of 8.3 by 7.2 by 3.1mms.
Estimated total diamond weight 0.60ct, H-I colour, SI clarity.
Stamped 750. Ring size P. 5.3gms.
£600-800 (plus 27.6% BP*)

138 A pair of old-cut diamond earrings.

Estimated total diamond weight 0.45ct, H-I colour, P1 clarity.
Length 1.5cms. 3.2gms.
£700-900 (plus 27.6% BP*)

139 An emerald and diamond cluster pendant.

Emerald calculated weight 1.83cts, based on estimated dimensions of 7.1 by 6.9 by 5.5mms.
Total diamond weight 0.35ct, estimated G-H colour, VS-SI clarity.
Stamped 18K 750. Length 2.4cms. 3gms.
£700-900 (plus 27.6% BP*)

140 A tanzanite and brilliant-cut diamond cluster ring.

Tanzanite calculated weight 3.40cts, based on estimated dimensions of 11.4 by 8.5 by 5mms.
Estimated total diamond weight 0.65ct, H-I colour, SI clarity.
Stamped 18K. Ring size R. 5.2gms.
£700-900 (plus 27.6% BP*)

141 A pair of early to mid 20th century 18ct gold lorgnettes.

Stamped 18Kt. Length 14.4cms. 27.6gms.
With fitted case.
£800-1,200 (plus 27.6% BP*)

142 A blue zircon and old-cut diamond necklace.

Estimated total diamond weight 0.60ct.
Length of pendant section 7.8cms. Length of chain 42cms. 17.6gms.
£1,400-2,000 (plus 27.6% BP*)

143 A Colombian emerald single-stone ring, with graduated baguette-cut diamond shoulders.

With report 81288-58, dated 10th December 2020, from GCS, stating Colombia, minor clarity enhancement.
Estimated total diamond weight 0.60ct, G+ colour, VS clarity.
Ring size N. 5.2gms.
£1,800-2,400 (plus 27.6% BP*)

144 A pair of vari-cut diamond and coral earrings.

Estimated total diamond weight 3cts, H-I colour, SI1-P1 clarity.
Approximate dimensions of one coral 30 by 10.5 by 8.1mm.
Butterfly backs stamped 18K. Length 7.2cms. 14.7gms.
Coral untested for natural colour origin.
£2,000-3,000 (plus 27.6% BP*)

145 A brilliant-cut diamond 'Love' bangle, by Cartier.

Estimated total diamond weight 0.30ct, G-H colour, SI1-P1 clarity.
Stamped 750. Cartier size 20. Inner diameter 5.9cms. 31.9gms.
With screwdriver and maker's case.
£4,000-6,000 (plus 27.6% BP*)

146 An 18ct gold brilliant-cut diamond line bracelet.

Total diamond weight 13.25cts, estimated H-tinted colour, SI1-P2 clarity.
Hallmarks Sheffield. Length 18.5cms. 19.3gms.
£6,500-8,500 (plus 27.6% BP*)



147 An early 20th century gold split pearl and ruby swallows brooch.

Length 4.8cms. 8.5gms.
£280-380 (plus 27.6% BP*)

148 A French Art Nouveau gold medallion pendant, depicting Eros and Psyche, with rose-cut diamond accents, by Frédéric Charles Victor de Vernon.

Length 3.2cms. 9.7gms.
£300-400 (plus 27.6% BP*)

149 An Art Nouveau gold figural pendant, with near-period fancy-link spacer trace-link chain.

Length of pendant 4cms. Length of chain 44cms. 8.2gms.
£400-600 (plus 27.6% BP*)

150 A late Victorian 18ct gold opal three-stone ring, with old-cut diamond spacers.

Estimated dimensions of central opal 7.3 by 6.1 by 4.2mms.
Estimated total diamond weight 0.30ct, H-I colour, SI clarity.
Stamped 18. Ring size O1/2. 6.1gms.
£400-600 (plus 27.6% BP*)

151 An early 20th century gold split pearl floral hinged bangle.

Inner diameter 6cms. 13.8gms.
£550-750 (plus 27.6% BP*)

152 An early 20th century 15ct gold peridot, seed pearl and diamond pendant, with chain.

Peridot calculated weight 3.53cts, based on estimated dimensions of 12 by 7 by 6mms.
Estimated total diamond weight 0.15ct, G-H colour, SI clarity.
Length of pendant 2.9cms. Length of chain 39.5cms. 6.5gms.
£700-900 (plus 27.6% BP*)

153 A 1920s Art Deco gold tri-colour geometric motif mesh purse, with mesh carrying handle.

Mesh electronically tests as approximately 15ct gold.
Mount with 9ct gold import marks for Chester, 1924.
Estimated dimensions of bag mesh 13.5 by 14cms. 156.2gms.
£800-1,200 (plus 27.6% BP*)

154 An early 20th century Belle Époque gold, ruby cabochon and vari-cut diamond bracelet.

Length 18.2cms. 12.1gms.
£800-1,200 (plus 27.6% BP*)

155 A late 19th century 15ct gold hinged bangle with enamel panel depicting Eros and Psyche and cannetille sides.

Stamped 15ct. Inner diameter 5.3cms. 13.8gms.
£900-1,400 (plus 27.6% BP*)

156 A late 19th century silver and gold, carved moonstone cherub brooch, with calibré ruby line and rose-cut diamond highlights.

French assay marks. Length 3.5cms. 8.7gms.
£700-900 (plus 27.6% BP*)

157 A Burmese ruby and old-cut diamond dress ring.

Verbal from GCS, stating Burma, no heat.
Principal two rubies calculated weights 1.07cts and 0.90ct respectively, based on estimated dimensions.
Estimated total diamond weight 0.40ct, H-J colour SI1-P1 clarity.
Ring size L1/2. 5.3gms.
£1,800-2,400 (plus 27.6% BP*)

158 An early 20th century Belle Époque silver and gold, ruby and diamond dress ring.

Ruby calculated weight 0.87ct, based on estimated dimensions of 6 by 5.2 by 3mms.
Estimated total diamond weight 1ct, G-I colour, SI clarity.
Ring size V. 7.9gms.
£2,000-2,500 (plus 27.6% BP*)



159 A late Victorian 18ct gold heart-shape fob watch, with enamel Christian iconography.

Length 4.2cms. 22.4gms.
With fitted case and gold enamel key.
£400-600 (plus 27.6% BP*)

160 A cultured pearl single-stone ring, with rose-cut diamond shoulders.

Estimated dimensions of cultured pearl 8.4 by 8.4 by 8.6mms.
Ring size N. 2.4gms.
£400-600 (plus 27.6% BP*)

161 An early 20th century 18ct gold and platinum, aquamarine and pearl two-stone crossover ring, with rose-cut diamond shoulders.

Aquamarine calculated weight 1.22cts, based on estimated dimensions of 7 by 7 by 4.6mms.
French re-strike marks. Ring size T1/2. 5.1gms.
Pearl untested for natural origin.
£450-650 (plus 27.6% BP*)

162 A late 19th century silver and gold, pearl and old-cut diamond brooch.

Estimated total diamond weight 1.25cts, G-I colour, SI1-P1 clarity.
Length 5.2cms. 7.4gms.
Pearls untested for natural origin.
£600-800 (plus 27.6% BP*)

163 A Belle Époque silver and gold, pearl and old-cut diamond floral swag and bow pendant, with integral chain.

Estimated total diamond weight 0.50ct, H-J colour, SI1-P1 clarity.
Length of pendant 3.7cms. Length of chain 38.5cms. 8.3gms.
Pearls untested for natural origin.
£600-800 (plus 27.6% BP*)

164 An early 20th century platinum and gold, ruby, seed pearl and diamond floral pendant.

Total ruby weight 0.60ct.
Estimated total diamond weight 0.30ct, G-I colour, SI2-P2 clarity.
Austrian marks. Length 3.3cms. 5.4gms.
With fitted case.
£750-950 (plus 27.6% BP*)

165 A pearl and diamond pendant.

Estimated dimension of pearl 11.2 by 11.1 by 9.5mms.
Estimated total diamond weight 1.35cts, H-J colour, VS-SI clarity.
Length 5cms. 8.6gms.
Pearl untested for natural origin.
£700-900 (plus 27.6% BP*)

166 A late Victorian 15ct gold old-cut diamond bracelet, the diamond section convertible to a brooch.

Estimated total diamond weight 2cts, H-I colour, VS-SI clarity.
Inner diameter of bangle 5.8cms. Length of brooch 3.9cms.
15.2gms.
With James Crichton & Co. Edinburgh fitted case.
£1,800-2,400 (plus 27.6% BP*)

167 An early 20th century 18ct gold sapphire and diamond bracelet.

Estimated total diamond weight 0.80ct, G-I colour, VS-SI clarity.
Stamped 18ct. Length 18cms. 12.9gms.
£1,500-2,000 (plus 27.6% BP*)

168 An early 20th century sapphire and diamond star brooch.

Sapphire calculated weight 0.95ct, based on estimated dimensions of 6 by 6 by 3.3mms.
Estimated total old-cut diamond weight 2.80cts, predominantly G-I colour, SI clarity.
Length 4.8cms. 11.3gms.
£2,000-2,500 (plus 27.6% BP*)

169 A late Victorian silver and gold, split pearl and old-cut diamond double heart ring.

Estimated total diamond weight 0.65ct, H-J colour, predominantly SI clarity.
Ring size S1/2. 6.4gms.
£1,600-2,200 (plus 27.6% BP*)

170 An early 20th century platinum natural pearl and diamond bracelet.

Verbal from GCS, stating natural pearls, saltwater.
Estimated total diamond weight 4cts, predominantly G-I colour, SI1-P1 clarity.
Dutch and French re-strike marks.
Length 17.5cms. 26gms.
£6,000-8,000 (plus 27.6% BP*)



171 An early 20th century platinum and gold synthetic sapphire and rose-cut diamond cross pendant.

French assay mark.
Length 4.2cms. 3.5gms.
£200-300 (plus 27.6% BP*)

172 A late 19th century 18ct gold Ceylon sapphire and rose-cut diamond cluster ring.

Verbal from GCS, stating Ceylon, no heat.
French re-strike mark. Ring size J. 2.2gms.
£350-450 (plus 27.6% BP*)

173 A 9ct gold mounted shell cameo brooch, depicting a convivium with courtesans, possibly The Muses.

Hallmarks for Birmingham, 1968. Length 7.4gms. 28.5gms.
£350-450 (plus 27.6% BP*)

174 An Art Nouveau silver and gold, sapphire, diamond and cultured pearl brooch.

Estimated total diamond weight 0.15ct, H-J colour, SI clarity.
Length 4.1cms. 4.7gms.
£450-650 (plus 27.6% BP*)

175 An early 20th century 15ct gold, old-cut diamond and sapphire pendant, with chain.

Principal diamond estimated weight 0.45ct, G-H colour, SI clarity.
Chain stamped 15ct.
Length of pendant 4.3cms. Length of chain 50cms. 8.1gms.
£300-400 (plus 27.6% BP*)

176 An Art Deco 18ct gold sapphire and diamond ring.

Principal sapphire calculated weight 1.15cts, based on estimated dimensions of 7.4 by 6.2 by 3mms.
Estimated total diamond weight 0.35ct.
Band stamped 18K. Ring size N1/2. 3.9gms.
£1,500-2,000 (plus 27.6% BP*)

177 A pearl graduated single-strand necklace, with rose-cut diamond clasp.

Length 46cms. 13.5gms.
Pearls untested, believed to be natural.
£600-800 (plus 27.6% BP*)

178 A pair of early 20th century silver and gold, sapphire cabochon and old-cut diamond cluster earrings.

Estimated total diamond weight 0.80ct, predominantly H-I colour, SI clarity.
Length 1.7cms. 5.1gms.
£600-800 (plus 27.6% BP*)

179 A late 19th century gold enamel, split pearl and rose-cut diamond fob watch, depicting a young Poseidon riding a dolphin.

Length 6.5cms. 25.5gms.
£1,200-1,800 (plus 27.6% BP*)

180 A late Victorian silver and gold, sapphire, diamond and pearl floral pendant, with later chain.

Sapphire calculated weight 0.44ct, based on estimated dimensions of 5.8 by 4.3 by 2.1mms.
Estimated total diamond weight 0.80ct, H-I colour, SI clarity.
Length of pendant 4cms. Length of chain 48cms. 8.7gms.
£2,000-2,500 (plus 27.6% BP*)

181 An early 20th century platinum and 15ct gold, Sri Lankan sapphire cabochon and old-cut diamond bracelet.

With report 19372, dated 1st December 2020, from The Gem & Pearl Laboratory, stating Sri Lanka, no heat.
Sapphire total calculated weight 13.29cts, based on estimated dimensions.
Estimated total diamond weight 0.45ct, H-I colour, VS-SI clarity.
Length 17.7cms. 15.1gms.
£3,000-4,000 (plus 27.6% BP*)

182 A Sri Lankan sapphire and diamond cluster ring.

With report 80271-28, dated 11th August 2020, from GCS, stating weight 5.96cts, Sri Lanka (Ceylon), no heat.
Estimated total diamond weight 0.90ct, I-J colour, VS-SI clarity.
Stamped 750. Ring size K. 4.9gms.
£3,500-4,500 (plus 27.6% BP*)



183 An Art Deco platinum, synthetic sapphire and rose-cut diamond bar brooch.

Length 7.2cms. 11.4gms.
£400-600 (plus 27.6% BP*)

184 An old-cut diamond square-shape cluster ring.

Estimated total diamond weight 1.20cts.
Stamped 18ct. Ring size L1/2. 4.5gms.
£500-700 (plus 27.6% BP*)

185 An early 20th century synthetic sapphire and diamond bar brooch.

Principal diamond estimated weight 0.30ct, H-I colour, P1 clarity.
French assay marks. Length 8.2cms. 6.6gms.
£800-1,200 (plus 27.6% BP*)

186 A lady's Art Deco platinum and 18ct gold diamond wristwatch, with seed pearl and diamond strap.

Estimated total diamond weight 1.50cts, G-I colour, predominantly VS-SI clarity.
French assay marks. Length 17cms. 20.9gms.
£2,000-3,000 (plus 27.6% BP*)

187 A diamond openwork brooch.

Principal diamond estimated weight 0.60ct, I-J colour, SI2-P1 clarity.
Estimated total diamond weight 3cts.
Length 6.6cms. 19.8gms.
£2,000-2,500 (plus 27.6% BP*)

188 A sapphire and diamond square-shape cluster ring.

Principal diamond estimated weight 0.30ct, K-L colour, VS clarity.
Estimated total diamond weight 0.45ct.
Stamped 750. Ring size N. 2.9gms.
£1,200-1,800 (plus 27.6% BP*)

189 An Art Deco platinum, old-cut diamond and synthetic sapphire bracelet.

Estimated total diamond weight 3.30cts, H-J colour, VS-SI clarity.
Length 18cms. 25gms.
£2,800-3,200 (plus 27.6% BP*)

190 An Art Deco platinum sapphire and diamond dress ring.

Sapphire calculated weight 2.31cts, based on estimated dimensions of 7.4 by 6.8 by 4.9mm.
Estimated total diamond weight 0.35ct.
Ring size K1/2. 3.9gms.
£2,500-3,000 (plus 27.6% BP*)

191 A natural pearl five-strand necklace, with sapphire and diamond clasp.

With report 80266-63, dated 16th July 2020, from GCS, stating natural pearls, saltwater, no indications of treatment.
Estimated total diamond weight 0.25ct, H-I colour, VS-SI clarity.
Length 40cms. 50.4gms.
£3,400-4,400 (plus 27.6% BP*)

192 An Art Deco platinum old-cut diamond ring, with calibré-cut synthetic sapphire and diamond sides.

Principal diamond estimated weight 2.60cts, tinted colour, P1 clarity.
Estimated total diamond weight 2.90cts.
Ring size L. 5.4gms.
£6,000-8,000 (plus 27.6% BP*)

193 An old-cut diamond single-stone ring, with synthetic sapphire and single-cut diamond pierced sides.

Principal diamond estimated weight 1.85cts, I-J colour, SI clarity.
Stamped Platinum. Ring size L. 4gms.
£5,800-7,800 (plus 27.6% BP*)

194 A Burmese sapphire single-stone ring, with vari-cut diamond gallery and shoulders.

With report 80259-04, dated 5th March 2020, from GCS, stating 6.28cts, Myanmar (Burma), no heat.
Estimated total diamond weight 0.50ct, predominantly G-H colour, VS-SI clarity.
Ring size J. 4.9gms.
£14,000-20,000 (plus 27.6% BP*)



195 An Art Deco platinum single-cut diamond cocktail watch, with similarly-set Greek-key motif lugs, on later leather strap.

Estimated total diamond weight 2cts, G-H colour, VS clarity.
Length of diamond section 4cms. 17.2gms.
£550-750 (plus 27.6% BP*)

196 A mid 20th century natural split pearl and rose-cut diamond brooch.

Length 5cms. 11.3gms.
£600-800 (plus 27.6% BP*)

197 An Art Deco platinum, pearl, diamond and black enamel bar brooch.

Estimated total diamond weight 1.35cts, G-I colour, SI1-P1 clarity.
French assay mark. Length 6.6cms. 12.6gms.
Pearl untested for natural origin.
£800-1,200 (plus 27.6% BP*)

198 An Art Deco 18ct gold brilliant-cut diamond and onyx ring.

Estimated diamond weight 0.50ct, G-H colour, VS2-SI1 clarity.
Ring size M. 3.2gms.
£1,400-2,000 (plus 27.6% BP*)

199 An old-cut diamond geometric dress ring.

Estimated total diamond weight 1.15cts, H-J colour, SI clarity.
Stamped Plat. Ring size O1/2. 5gms.
£900-1,400 (plus 27.6% BP*)

200 An aquamarine and old-cut diamond three-stone ring.

Aquamarine calculated weight 1.66cts, based on estimated dimensions of 7.9 by 7.9 by 4.9mms.
Estimated total diamond weight 0.40ct, K-L colour, SI2-P1 clarity.
French assay mark. Ring size N1/2. 6gms.
£1,000-1,500 (plus 27.6% BP*)

201 A pavé-set diamond dress ring.

Estimated total old-cut diamond weight 2.25cts, H-I colour, SI1-P1 clarity.
Ring size M. 6gms.
£1,500-2,500 (plus 27.6% BP*)

202 A platinum old-cut diamond and calibre-cut ruby ring.

Principal diamond estimated weight 1.10cts, tinted colour, SI2-P1 clarity.
Hallmarks for London, 2014. Ring size M1/2. 5.1gms.
£1,800-2,400 (plus 27.6% BP*)

203 A pair of Art Deco platinum diamond clip brooches.

Estimated total diamond weight 2cts, G-I colour, VS-SI clarity.
Length 2.7cms. 14.3gms.
With later fitted case.
£2,500-3,500 (plus 27.6% BP*)

204 A pair of old-cut diamond and onyx earrings.

Estimated total diamond weight 1.75cts, H-J colour, VS2-P1 clarity.
Length 3.3cms. 8gms.
£3,000-4,000 (plus 27.6% BP*)

205 An Art Deco hardstone and rose-cut diamond floral basket brooch.

Stamped 750. Length 3.6cms. 7.1gms.
With fitted case.
£3,000-4,000 (plus 27.6% BP*)

206 An Art Deco platinum diamond fringe necklace.

Estimated total diamond weight 2.25cts.
Principal diamonds estimated H-I colour, VS1-SI1 clarity.
Length 35cms. 14.5gms.
£4,000-6,000 (plus 27.6% BP*)



207 An 18ct gold sapphire and diamond cluster ring.

Sapphire calculated weight 1.58cts, based on estimated dimensions of 7.6 by 5.5 by 3.5mms.
Estimated total diamond weight 0.40ct, G-H colour, VS-SI clarity.
Hallmarks for Birmingham. Ring size O. 4.6gms.
£350-450 (plus 27.6% BP*)

208 An aquamarine and diamond pendant, with 9ct gold chain.

Aquamarine calculated weight 10.74cts, based on estimated dimensions of 20 by 13 by 7.6mms.
Estimated total diamond weight 0.10ct, G-H colour, VS-SI clarity.
Pendant stamped 585. Chain with hallmarks for Birmingham.
Length of pendant 3.2cms. 7gms.
£500-700 (plus 27.6% BP*)

209 A pair of 18ct gold diamond 'The London Collection' earrings, with detachable rock crystal tassels.

Estimated total diamond weight 1.30cts, G-H colour, VS-SI clarity.
Hallmarks for London, 2018. Length 7.5cms. 27.6gms.
£500-700 (plus 27.6% BP*)

210 An 18ct gold sapphire and diamond cluster ring.

Diamond weight 0.30ct, stamped to band, estimated G-H colour, P1 clarity.
Hallmarks for Birmingham, 1998. Ring size O. 5gms.
£400-600 (plus 27.6% BP*)

211 An 18ct gold diamond 'Fleur de Lis' key pendant, with chain, by Tiffany & Co.

Estimated total diamond weight 0.15ct, G+ colour, VS clarity.
Hallmarks for London.
Length of pendant 2.9cms. Length of chain 45cms. 3.3gms.
With maker's case.
£500-700 (plus 27.6% BP*)

212 An oval-shape natural fancy Light Yellow Brown diamond single-stone pendant, with 9ct gold chain.

With copy of report 2151962660, dated 8th April 2014, from the GIA, stating 0.78ct, natural colour, VS1 clarity.
Chain with hallmarks for Sheffield.
Length of pendant 1.2cms. Length of chain 46cms. 1.3gms.
£800-1,200 (plus 27.6% BP*)

213 An 18ct gold sapphire and diamond cluster ring.

Sapphire calculated weight 3.14cts, based on estimated dimensions of 10.5 by 8.3 by 4.3mms.
Estimated total diamond weight 1.35cts, H-I colour, VS2-SI2 clarity.
Hallmarks for Sheffield, 2019. Ring size P1/2. 7.9gms.
£700-900 (plus 27.6% BP*)

214 A pair of 18ct gold pavé-set diamond heart earrings.

Total diamond weight 1.47cts, estimated G-H colour, VS-SI clarity.
Hallmarks for Birmingham. Length 1.1cms. 2.9gms.
£900-1,400 (plus 27.6% BP*)

215 A brilliant-cut diamond floral cluster ring.

Estimated total diamond weight 1.50cts, J-K colour, VS-SI clarity.
Stamped 18ct. Ring size O. 3.5gms.
£1,000-1,500 (plus 27.6% BP*)

216 An 18ct gold aquamarine and diamond cluster ring.

Aquamarine calculated weight 4.43cts, based on estimated dimensions of 12.9 by 9.7 by 6.2mms.
Estimated total diamond weight 1.40cts, H-I colour, VS clarity.
Hallmarks for London, 1988. Approximate ring size K. 7.6gms.
£1,000-1,500 (plus 27.6% BP*)

217 A brilliant-cut diamond three-stone ring.

Estimated total diamond weight 1.30cts, G-H colour, SI2-P1 clarity.
Stamped 18ct. Ring size N. 3.5gms.
£1,800-2,400 (plus 27.6% BP*)

218 A square-shape diamond and calibré-cut sapphire line bracelet, by Carl Bucherer.

Estimated total diamond weight 4.15cts, G-H colour, VS clarity.
French re-strike marks, stamped 750. Length 18.3cms. 19.4gms.
£3,000-4,000 (plus 27.6% BP*)



219 An 18ct gold brilliant-cut diamond three-stone ring.

Estimated total diamond weight 0.90ct, estimated L-tinted colour, SI2-P1 clarity.
Hallmarks for London. Ring size J. 3.6gms.
£450-650 (plus 27.6% BP*)

220 A pavé-set diamond full eternity band ring.

Estimated total diamond weight 2cts, predominantly G-H colour, VS-SI clarity.
French assay mark. Ring size L. 5gms.
£500-700 (plus 27.6% BP*)

221 A 14ct gold brilliant-cut diamond single-stone ring.

Estimated diamond weight 0.90ct, G-H colour, P1-P2 clarity.
Hallmarks for London, 2012. Ring size L. 2.3gms.
£800-1,200 (plus 27.6% BP*)

222 A pair of emerald, sapphire and diamond drop earrings.

Emerald total calculated weight 2.05cts, based on estimated dimensions.
Estimated total diamond weight 1.15cts, I-K colour, SI2-P2 clarity.
Stamped 18K. Length 5cms. 11.2gms.
£1,200-1,800 (plus 27.6% BP*)

223 A Sri Lankan sapphire single-stone ring, with brilliant-cut diamond line shoulders.

With report 79215-22, dated 20th May 2019, from GCS, stating 5.50cts, Sri Lanka (Ceylon), no heat.
Total diamond weight 0.21ct, stamped to band, estimated H-I colour, VS-SI clarity.
Stamped 750. Ring size O1/2. 4.8gms.
£2,000-2,500 (plus 27.6% BP*)

224 An 18ct gold teal enamel and diamond egg lariat necklace, by Fabergé.

Total diamond weight 0.19ct, estimated G+ colour, VS clarity.
Hallmarks for Edinburgh. Length 56cms. 13.6gms.
With maker's case and certificate of authenticity.
£2,000-3,000 (plus 27.6% BP*)

225 An 18ct gold ruby and vari-cut diamond cluster ring.

Ruby weight 4.66cts.
Total diamond weight 0.88ct, estimated G-J colour, SI clarity.
Hallmarks for Birmingham. Ring size O. 6.3gms.
£3,000-4,000 (plus 27.6% BP*)

226 An emerald and diamond necklace.

Emerald calculated weight 0.60ct, based on estimated dimensions of 6.4 by 3.8 by 3.4mms.
Estimated total diamond weight 3cts, G-I colour, SI clarity.
Stamped 750. Length 40.5cms. 46.9gms.
£3,000-4,000 (plus 27.6% BP*)

227 An 18ct gold brilliant-cut diamond line bracelet.

Total diamond weight 6.61cts, estimated H-J colour, VS1-SI1 clarity.
Hallmarks for Sheffield. Length 18.5cms. 12.9gms.
£3,200-4,200 (plus 27.6% BP*)

228 A pair of sapphire, ruby and emerald cabochon earrings, with diamond highlights, signed Cartier.

Estimated total diamond weight 1.50cts, G-J colour, VS-SI clarity.
Stamped 750. Length 3.3cms. 20.5gms.
£4,500-6,500 (plus 27.6% BP*)

229 An 18ct gold sapphire and brilliant-cut diamond cluster ring.

Sapphire weight 5.72cts.
Total diamond weight 1.64cts, estimated H-I colour, SI2-P1 clarity.
Hallmarks for Birmingham. Ring size N1/2. 6gms.
£6,000-8,000 (plus 27.6% BP*)



230 A sapphire and brilliant-cut diamond peacock tail feather hinged bangle.

Estimated total diamond weight 0.75ct, G-H colour, VS-SI clarity. Inner diameter 5.5cms. 10.2gms.

£400-500 (plus 27.6% BP*)

231 A sapphire cabochon and vari-cut diamond dress ring.

Sapphire calculated weight 3.35cts, based on estimated dimensions of 7.8 by 7.8 by 5.1mms. Estimated total diamond weight 1.40cts, G-H colour, VS-SI clarity. French re-strike mark, stamped 18K. Ring size O1/2. 6.1gms.

£400-600 (plus 27.6% BP*)

232 A brilliant and baguette-cut diamond half eternity ring.

Estimated total diamond weight 1.30cts, G-H colour, VS-SI clarity. Stamped 750. Ring size M. 7.2gms.

£500-700 (plus 27.6% BP*)

233 An 18ct gold aquamarine and diamond cluster ring.

Aquamarine weight 4cts. Total diamond weight 0.38ct, estimated G-H colour, VS-SI clarity. Hallmarks for Birmingham. Ring size N1/2. 4.7gms.

£800-1,200 (plus 27.6% BP*)

234 An aquamarine and diamond cluster pendant, on chain.

Aquamarine calculated weight 2.34cts, based on estimated dimensions of 11 by 8 by 4.9mms. Estimated total diamond weight 0.70ct, I-K colour, VS-SI clarity. Italian marks, stamped 750. Length of pendant 2.4cms. Length of chain 40cms. 5.1gms.

£900-1,400 (plus 27.6% BP*)

235 An aquamarine and brilliant-cut diamond ring.

Aquamarine calculated weight 4.53cts, based on estimated dimensions of 11.7 by 8.8 by 6mms. Estimated total diamond weight 0.55ct, H-I colour, VS-SI clarity. Ring size N1/2. 4gms.

£700-900 (plus 27.6% BP*)

236 An opal, diamond and rock crystal pendant, with chain, by Fei Liu.

Opal weight 8.15cts. Rock crystal weight 57.50cts. Total diamond weight 0.50ct, estimated G-H colour, VS-SI clarity. Stamped Au750. Length of pendant 4.8cms. Length of chain 46cms. 19.4gms.

£1,000-1,500 (plus 27.6% BP*)

237 A rectangular-shape diamond single-stone ring, with square-shape diamond shoulders.

Principal diamond estimated weight 1.05cts, I-J colour, VS clarity. Estimated total diamond weight 1.55cts. Stamped 14K. Ring size M. 3.3gms.

£1,200-1,800 (plus 27.6% BP*)

238 A pair of multi-faceted tanzanite and diamond earrings.

Estimated dimensions of one tanzanite 21.2 by 19.2 by 9mms. Estimated total diamond weight 2cts, H-I colour, SI1-P1 clarity. Stamped 750. Length 5.1cms. 18.9gms.

£2,500-3,000 (plus 27.6% BP*)

239 An aquamarine and diamond dress ring.

Aquamarine weight 10.48cts. Estimated total diamond weight 2cts, H-I colour, VS-SI clarity. Ring size M. 8.8gms.

£3,500-4,500 (plus 27.6% BP*)

240 A pair of 18ct gold marquise-shape diamond stud earrings.

With Certicards F6C31171 and F6C31172, dated 21st February 2012, from IGI, stating 1.02cts, D colour, SI1 clarity and 1.02cts, D colour, SI2 clarity respectively.

Hallmarks for Birmingham. 2gms.

£4,500-6,500 (plus 27.6% BP*)

241 An 18ct gold brilliant-cut diamond and turquoise bracelet, by Picchiotti.

Estimated total diamond weight 6.75cts, G-I colour, VS clarity. Hallmarks for London, 2003. Length 17cms. 52.3gms.

£4,500-6,500 (plus 27.6% BP*)



BP* - Buyer's Premium of 23% (plus VAT) or 27.6% (VAT included)

242 An 18ct gold 'B. Zero 1' ring, by Bulgari.

Hallmarks for Sheffield.
Ring size T1/2. Bulgari size 63. 12.6gms.
£400-600 (plus 27.6% BP*)

243 A pair of brilliant-cut diamond drop earrings.

Estimated total diamond weight 1.25cts, G-H colour, VS-SI clarity.
Stamped 750. Length 2.6cms. 4.3gms.
£800-1,200 (plus 27.6% BP*)

244 An 18ct gold brilliant-cut diamond three-stone ring.

Total diamond weight 1.25cts, estimated H-I colour, P1 clarity.
Hallmarks for London. Ring size M. 4gms.
£1,000-1,500 (plus 27.6% BP*)

245 An emerald and diamond cluster ring.

Emerald calculated weight 0.76ct, based on estimated dimensions of 6.6 by 4.8 by 3.3mms.
Estimated total diamond weight 0.80ct, G-I colour, SI1-P1 clarity.
Ring size N1/2. 3.8gms.
£900-1,400 (plus 27.6% BP*)

246 A pair of peridot and diamond cluster earrings.

Estimated total diamond weight 1ct, H-I colour, SI1-P1 clarity.
Length 1.3cms. 5.7gms.
£900-1,400 (plus 27.6% BP*)

247 An 18ct gold brilliant-cut diamond single-stone ring.

Estimated diamond weight 1.75cts, K-L colour, P1 clarity.
Hallmarks for Sheffield. Ring size L. 4.1gms.
£900-1,400 (plus 27.6% BP*)

248 An 18ct gold sapphire and brilliant-cut diamond cluster ring.

Sapphire weight 2.66cts.
Total diamond weight 1.44cts, estimated G-H colour, VS2-SI2 clarity.
Hallmarks for Birmingham. Ring size N1/2. 5.3gms.
£2,400-3,000 (plus 27.6% BP*)

249 A citrine and bead bracelet, by Sabbadini.

Italian marks, stamped 750. Length 18.8cms. 103.1gms.
£2,800-3,200 (plus 27.6% BP*)

250 A mid 20th century old-cut diamond three-stone ring, with diamond line highlights.

Principal diamond estimated weight 2.20cts, K-L colour, SI clarity.
Estimated total diamond weight 3.15cts.
Ring size J. 7gms.
£5,000-7,000 (plus 27.6% BP*)

251 A brilliant-cut diamond accent foliate choker and matching bracelet, by Ilias Lalaounis.

Estimated total diamond weight 1.50cts, G-H colour, predominantly VS clarity.
Stamped 750. Length of necklace 41.5cms. Length of bracelet 18.2cms. 161.2gms.
With necklace maker's case.
£6,000-8,000 (plus 27.6% BP*)

252 An 18ct gold brilliant-cut diamond line bracelet.

Total diamond weight 12.65cts, estimated G-J colour, SI2-P2 clarity.
Hallmarks for Sheffield. Length 18.5cms. 20.4gms.
£6,000-8,000 (plus 27.6% BP*)

253 An 18ct gold rectangular-shape diamond single-stone ring.

Diamond weight 4.34cts, estimated tinted colour, VS clarity.
Hallmarks for London, 2005. Ring size L. 5.7gms.
£12,000-18,000 (plus 27.6% BP*)

244



247



243 A pair of brilliant-cut diamond drop earrings.

Estimated total diamond weight 1.25cts, G-H colour, VS-SI clarity.
Stamped 750. Length 2.6cms. 4.3gms.
£800-1,200 (plus 27.6% BP*)

244 An 18ct gold brilliant-cut diamond three-stone ring.

Total diamond weight 1.25cts, estimated H-I colour, P1 clarity.
Hallmarks for London. Ring size M. 4gms.
£1,000-1,500 (plus 27.6% BP*)

245 An emerald and diamond cluster ring.

Emerald calculated weight 0.76ct, based on estimated dimensions of 6.6 by 4.8 by 3.3mms.
Estimated total diamond weight 0.80ct, G-I colour, SI1-P1 clarity.
Ring size N1/2. 3.8gms.
£900-1,400 (plus 27.6% BP*)

246 A pair of peridot and diamond cluster earrings.

Estimated total diamond weight 1ct, H-I colour, SI1-P1 clarity.
Length 1.3cms. 5.7gms.
£900-1,400 (plus 27.6% BP*)

247 An 18ct gold brilliant-cut diamond single-stone ring.

Estimated diamond weight 1.75cts, K-L colour, P1 clarity.
Hallmarks for Sheffield. Ring size L. 4.1gms.
£900-1,400 (plus 27.6% BP*)

248 An 18ct gold sapphire and brilliant-cut diamond cluster ring.

Sapphire weight 2.66cts.
Total diamond weight 1.44cts, estimated G-H colour, VS2-SI2 clarity.
Hallmarks for Birmingham. Ring size N1/2. 5.3gms.
£2,400-3,000 (plus 27.6% BP*)

249 A citrine and bead bracelet, by Sabbadini.

Italian marks, stamped 750. Length 18.8cms. 103.1gms.
£2,800-3,200 (plus 27.6% BP*)

250 A mid 20th century old-cut diamond three-stone ring, with diamond line highlights.

Principal diamond estimated weight 2.20cts, K-L colour, SI clarity.
Estimated total diamond weight 3.15cts.
Ring size J. 7gms.
£5,000-7,000 (plus 27.6% BP*)

251 A brilliant-cut diamond accent foliate choker and matching bracelet, by Ilias Lalaounis.

Estimated total diamond weight 1.50cts, G-H colour, predominantly VS clarity.
Stamped 750. Length of necklace 41.5cms. Length of bracelet 18.2cms. 161.2gms.
With necklace maker's case.
£6,000-8,000 (plus 27.6% BP*)

252 An 18ct gold brilliant-cut diamond line bracelet.

Total diamond weight 12.65cts, estimated G-J colour, SI2-P2 clarity.
Hallmarks for Sheffield. Length 18.5cms. 20.4gms.
£6,000-8,000 (plus 27.6% BP*)

253 An 18ct gold rectangular-shape diamond single-stone ring.

Diamond weight 4.34cts, estimated tinted colour, VS clarity.
Hallmarks for London, 2005. Ring size L. 5.7gms.
£12,000-18,000 (plus 27.6% BP*)

250



251



242



246



253



249



252



248



245



243



254 A brilliant-cut diamond five-stone ring.

Estimated total diamond weight 0.50ct, G-H colour, VS2-SI1 clarity. Stamped 750. Ring size J1/2. 3.2gms. **£300-400** (plus 27.6% BP*)

255 An 18ct gold emerald cabochon and brilliant-cut diamond dress ring, by Alan Martin Gard.

Emerald calculated weight 0.73ct, based on estimated dimensions of 5.4 by 5.3 by 3.5mms. Estimated total diamond weight 0.25ct, G-H colour, SI clarity. Hallmarks for London, 1984. Ring size L. 10.5gms. **£450-650** (plus 27.6% BP*)

256 A ruby cabochon and baguette-cut diamond cluster ring.

Ruby calculated weight 3.34cts, based on estimated dimensions of 10 by 7.2 by 4.3mms. Estimated total diamond weight 2.10cts, G+ colour, VS clarity. Stamped 750. Italian marks. Ring size F. 8.6gms. **£800-1,200** (plus 27.6% BP*)

257 A mid 20th century 18ct gold brilliant-cut diamond, grooved triple-band crossover ring, by Cartier.

Estimated total diamond weight 0.40ct, G-H colour, VS clarity. Foreign marks, stamped 750. Ring size J. 14.1gms. **£800-1,200** (plus 27.6% BP*)

258 A pair of peridot and tanzanite earrings, by Theo Fennell.

Peridot calculated total weight 4.40cts, based on estimated dimensions. Partial hallmarks for 18ct gold. Length 3cms. 14.9gms. **£700-900** (plus 27.6% BP*)

259 A 1980s pink tourmaline, peridot and purple tourmaline cabochon bracelet, by Bulgari.

Italian marks, stamped 750. Approximate inner diameter 5.6cms. 19.8gms. With copy of original purchase receipt. **£900-1,400** (plus 27.6% BP*)

260 A pair of 18ct gold garnet and diamond drop earrings.

Hallmarks for London, 1994. Length 3.5cms. 20gms. **£800-1,200** (plus 27.6% BP*)

261 A 22ct gold ruby cabochon and rose-cut diamond, textured floral cross pendant.

Hallmarks for London, 2017. Length 9.5cms. 47.8gms. **£2,200-2,800** (plus 27.6% BP*)

262 A pair of textured drop earrings, by Ilias Lalaounis.

Stamped 750. Length 6.9cms. 33.8gms. **£1,400-2,000** (plus 27.6% BP*)

263 A diamond, citrine, pink sapphire and onyx cuff bangle, by Marina B.

Estimated total diamond weight 0.50ct, G-H colour, VS clarity. Italian marks, stamped 750. Inner diameter 5.1 cms. 48.8gms. **£2,200-2,800** (plus 27.6% BP*)

264 An 18ct gold spiral bar collar, with peridot, tourmaline, garnet and amethyst cabochon spacers.

Import marks for London, 1993. Length 40cms. 86.1gms. **£3,000-4,000** (plus 27.6% BP*)

265 Two 18ct gold diamond full eternity 'Wave' rings, by Cartier.

Estimated total diamond weight 1.70cts, G+ colour, VS clarity. Hallmarks for London. Ring size N. Cartier size 54. 8gms. With maker's case. **£2,500-3,000** (plus 27.6% BP*)



BP* - Buyer's Premium of 23% (plus VAT) or 27.6% (VAT included)

266 An 18ct gold brilliant-cut diamond floral cluster ring.

Estimated total diamond weight 1ct, G-I colour, SI1-P1 clarity. Hallmarks for Birmingham, 1980. Ring size P1/2. 5.3gms. **£550-750** (plus 27.6% BP*)

267 A pair of pavé-set diamond circular earrings.

Estimated total diamond weight 1.90cts, G-H colour, VS-SI clarity. Stamped 750. Length 2.7cms. 17.9gms. **£600-800** (plus 27.6% BP*)

268 An 18ct gold tanzanite and diamond cluster ring.

Tanzanite calculated weight 1.55cts, based on estimated dimensions of 8.8 by 6.7 by 3.8mms. Estimated total diamond weight 1ct, I-J colour, SI1-P1 clarity. Hallmarks for Sheffield. Ring size M. 6.5gms. **£650-850** (plus 27.6% BP*)

269 An 18ct gold brilliant-cut diamond three-stone ring.

Total diamond weight 1ct, estimated J-M colour, SI1-P1 clarity. Hallmarks for London. Ring size J1/2. 3.7gms. **£900-1,400** (plus 27.6% BP*)

270 An 18ct gold tanzanite single-stone ring, with diamond trefoil shoulders.

Tanzanite weight 4.12cts. Estimated total diamond weight 0.30ct, G-H colour, VS clarity. Hallmarks for Birmingham. Ring size O1/2. 3.9gms. **£800-1,200** (plus 27.6% BP*)

271 A pavé-set diamond dress ring, by Bulgari.

Estimated total diamond weight 1.35cts, G+ colour, VS clarity. Italian marks, stamped 750. Ring size R. 15.4gms. **£900-1,400** (plus 27.6% BP*)

272 A circular-cut and brilliant-cut diamond cluster pendant.

Principal diamond estimated weight 1ct, G-H colour, SI2-P1 clarity. Estimated total diamond weight 1.40cts. Length 2.7cms. 3.3gms. **£1,200-1,800** (plus 27.6% BP*)

273 An 18ct gold sapphire and diamond cluster ring.

Sapphire calculated weight 2.53cts, based on estimated dimensions of 9.8 by 7.9 by 3.9mms. Estimated total diamond weight 1.50cts, G-H colour, VS-SI clarity. Hallmarks for Birmingham. Ring size R. 7.5gms. **£1,800-2,400** (plus 27.6% BP*)

274 A pavé-set diamond bi-colour chevron motif bangle, attributed to Bosco Giovanni.

Estimated total diamond weight 1ct, G-H colour, VS-SI clarity. Italian marks, stamped 750, 1670AL. Inner diameter 5.8cms. 63gms. **£1,800-2,400** (plus 27.6% BP*)

275 A pavé-set diamond 'Vannerie' necklace, by Tiffany & Co.

Estimated total diamond weight 2cts, G-H colour, VS clarity. Stamped 750. Length 38.6cms. 117gms. **£6,000-8,000** (plus 27.6% BP*)

276 A 'Happy Diamonds' teddy bear pendant, with chain, by Chopard.

Estimated total diamond weight 0.35ct, G+ colour, VS clarity. Foreign marks, stamped 750. Length of pendant 4.6cms. Length of chain 56cms. 102.7gms. **£3,500-4,500** (plus 27.6% BP*)

277 An 18ct gold brilliant-cut diamond line bracelet.

Total diamond weight 12.84cts, estimated G-J colour, P1-P2 clarity. Hallmarks for Sheffield. Length 18.5cms. 20.3gms. **£6,000-8,000** (plus 27.6% BP*)



278 A calibre-cut sapphire and pavé-set diamond heart pendant.

Estimated total diamond weight 0.65ct, G-H colour, VS-SI clarity. Italian marks, stamped 750. Length 2.6cms. 6gms. **£600-800** (plus 27.6% BP*)

279 A pair of 18ct gold 'Bean' cufflinks, by Elsa Peretti, for Tiffany & Co.

Later hallmarks for Birmingham. Length of cufflink face 2.1cms. 21.2gms. **£600-800** (plus 27.6% BP*)

280 A pair of diamond, ruby and sapphire 'Constellation' earrings, by Cartier.

Estimated total diamond weight 0.15ct, G-H colour, VS clarity. Stamped 750. Length 2cms. 13.8gms. With maker's case. **£700-900** (plus 27.6% BP*)

281 A square-shape diamond single-stone ring.

Estimated diamond weight 0.90ct, G-H colour, P1 clarity. Ring size J1/2. 6.3gms. **£800-1,200** (plus 27.6% BP*)

282 A ruby and faceted sapphire bead multi-strand bracelet, by Maria Grazia Cassetti.

Length 21cms. 67.2gms. **£1,000-1,500** (plus 27.6% BP*)

283 An 18ct gold necklace, with lapis lazuli highlights.

Hallmarks for London. Length 42cms. 48.2gms. Lapis lazuli untested for natural colour origin. **£1,200-1,800** (plus 27.6% BP*)

284 A pair of 'Trouble' snake earrings, by Boucheron.

French assay marks, stamped 750. Length 3.5cms. 25gms. **£1,800-2,400** (plus 27.6% BP*)

285 A pair of 18ct gold diamond earrings, by De Vroomen and a cultured pearl bracelet with an 18ct gold pavé-set diamond spherical clasp.

Estimated total diamond weight 1.60cts, G-I colour, VS-SI clarity. Hallmarks for London, 1986 and 1989. Length of earrings 2.2cms. Length of bracelet 18cms. Weight of earrings 28gms. Weight of bracelet 21.2gms. **£1,800-2,400** (plus 27.6% BP*)

286 A pair of diamond earrings, with interchangeable diamond and grooved lapis lazuli components, by Boucheron.

Estimated total diamond weight 1ct, G-H colour, VS-SI clarity. French assay marks. Length 2cms. 24.3gms. **£2,000-2,500** (plus 27.6% BP*)

287 Two miniature enamel egg charms, by Fabergé.

Length 2.2cms. 5gms. **£400-600** (plus 27.6% BP*)

288 An 18ct gold blue enamel and diamond egg pendant, suspending an enamel duck, by Fabergé, with non-designer chain.

Total diamond weight 0.08ct, estimated G+ colour, VS clarity. Hallmarks for Edinburgh, 2001 and Birmingham. Length of pendant 4.6cms. Length of chain 45cms. 20gms. With maker's case and certificate of authenticity. **£2,000-3,000** (plus 27.6% BP*)

289 A diamond, vari-hue sapphire and onyx cuff bangle, by Marina B.

Estimated total diamond weight 0.50ct, G-H colour, VS clarity. Italian marks, stamped 750. Inner diameter 5.1cms. 48.1gms. **£2,200-2,800** (plus 27.6% BP*)



290 A cultured pearl single-stone ring, with tapered baguette-cut diamond shoulders.

Estimated dimensions of pearl 10.6 by 10.4 by 10.3mms.
Estimated total diamond weight 0.25ct, G-H colour, VS clarity.
Stamped Pt. Ring size Q1/2. 4.9gms.
£200-300 (plus 27.6% BP*)

291 A tri-colour 'C de Cartier' ring, by Cartier.

French assay marks, stamped 750.
Ring size Q. Cartier size 55. 8gms.
with maker's pouch and certificate of authenticity.
£400-600 (plus 27.6% BP*)

292 An 18ct gold square-shape diamond single-stone ring, by Van Cleef & Arpels.

Estimated diamond weight 0.30ct, G+ colour, VS clarity.
Import marks for London, 1998. Ring size M. 5.3gms.
With maker's case.
£500-700 (plus 27.6% BP*)

293 A pair of 14ct gold mabé pearl, onyx and diamond earrings, by Trianon.

Estimated total diamond weight 0.50ct, H-I colour, SI clarity.
Import marks for Birmingham, 1989. Diameter 2.4cms. 21.8gms.
£700-900 (plus 27.6% BP*)

294 An onyx and diamond dress ring, by Van Cleef & Arpels.

Estimated total diamond weight 0.50ct, G-H colour, VS clarity.
French assay marks, stamped 750. Ring size J. 7.1gms.
£1,000-1,500 (plus 27.6% BP*)

295 A pair of diamond and vari-texture overlapping disc motif abstract earrings.

Estimated total diamond weight 1.80cts, H-I colour, SI clarity.
Length 3.3cms. 21.7gms.
£800-1,200 (plus 27.6% BP*)

296 A square-shape diamond full eternity ring.

Estimated total diamond weight 3.10cts, predominantly G-H colour, VS clarity.
Ring size Q1/2. 5.5gms.
£1,000-1,500 (plus 27.6% BP*)

297 A vari-hue cultured pearl crossover ring, with baguette-cut diamond shoulders.

Estimated total diamond weight 1.20cts, G-H colour, VS clarity.
Italian marks, stamped 750. Approximate ring size Q. 11.3gms.
£1,500-2,000 (plus 27.6% BP*)

298 A vari-hue cultured pearl and pavé-set diamond hinged bangle.

Estimated total diamond weight 3.75cts, G-H colour, predominantly VS clarity.
Stamped 750. Inner diameter 5.5cms. 33.9gms.
£1,800-2,400 (plus 27.6% BP*)

299 A diamond foliate necklace.

Estimated total diamond weight 3cts, G-H colour, VS-SI clarity.
Stamped 585. Length 53cms. 20.6gms.
£1,800-2,400 (plus 27.6% BP*)

300 A 'Trinity' cuff bangle, with sapphire cabochon terminals, by Cartier.

Stamped 750.
Inner diameter 6cms. 24.8gms.
£1,500-2,000 (plus 27.6% BP*)

301 A brilliant-cut diamond single-stone dress ring, by Cartier.

Estimated diamond weight 0.85ct, G-H colour, VS clarity.
French assay marks, stamped 750 and 800.
Ring size L. Cartier size 52. 13.4gms.
£2,500-3,500 (plus 27.6% BP*)



302 A circular-cut diamond ring, with single-cut diamond pierced geometric surround.

Principal diamond estimated weight 0.55ct, H-I colour, SI clarity. Stamped Plat. Ring size K. 2.4gms.

£600-800 (plus 27.6% BP*)

303 An 18ct gold bracelet, with brilliant-cut diamond buckle clasp.

Total diamond weight 0.50ct, stamped to clasp. Hallmarks for Birmingham. Length 22.3cms. 30.7gms.

£1,000-1,500 (plus 27.6% BP*)

304 A baroque cultured pearl, diamond and 'yellow' diamond dress ring.

Estimated total diamond weight 0.80ct, VS-SI clarity. Ring size O. 11.6gms.

Diamonds untested for natural colour origin.

£1,000-1,500 (plus 27.6% BP*)

305 A pair of vari-hue cultured pearl and diamond earrings.

Estimated total diamond weight 2cts, G-H colour, VS-SI clarity. Stamped 750, Pt. Length 2.2cms. 11gms.

£1,200-1,800 (plus 27.6% BP*)

306 A marquise-shape jade cabochon and vari-cut diamond ring.

Estimated dimensions of jade 17.4 by 6.8 by 3.3mms. Estimated total diamond weight 1ct, G-H colour, VS-SI clarity. Ring size K1/2. 4gms.

Jade untested for natural colour origin.

£1,200-1,800 (plus 27.6% BP*)

307 A mid 20th century emerald and diamond floral brooch, by Cropp & Farr.

Estimated total diamond weight 2.80cts, G-H colour, VS-SI clarity. Stamped Plat 18ct. Length 4.4cms. 22.5gms.

£1,200-1,800 (plus 27.6% BP*)

308 A pair of mid 20th century platinum, circular-cut diamond and vari-hue cultured pearl drop earrings.

Estimated total diamond weight 3.50cts, predominantly H-I colour, VS-SI clarity.

Length 6.2cms. 26.1gms.

£2,000-2,500 (plus 27.6% BP*)

309 A circular-cut diamond single-stone ring, with single-cut diamond floral shoulders.

Principal diamond weight 1.85cts, estimated tinted colour, SI2-P1 clarity.

Ring size L1/2. 3.8gms.

£2,500-3,000 (plus 27.6% BP*)

310 A brilliant-cut diamond cluster crossover ring.

Estimated total diamond weight 4cts, G-K colour, VS1-P1 clarity. Ring size L. 15.5gms.

£3,000-4,000 (plus 27.6% BP*)

311 A brilliant-cut diamond single-stone ring.

Diamond weight 1.51cts, estimated L-M colour, VS clarity. Stamped 18ct. Ring size N1/2. 3.1gms.

£3,000-4,000 (plus 27.6% BP*)

312 A cultured pearl graduated two-strand necklace, with emerald and diamond clasp.

Estimated total diamond weight 3cts, predominantly H-I colour, VS-SI clarity.

Length 43cms.

£3,000-4,000 (plus 27.6% BP*)

313 An early 20th century 18ct gold old-cut diamond single-stone ring.

Estimated diamond weight 1.60cts, H-I colour, VS clarity. Ring size O. 6.8gms.

£3,500-4,500 (plus 27.6% BP*)



314 An opal and diamond dress ring.

Estimated dimensions of opal 23.5 by 17.5 by 6.2mms.
Estimated total diamond weight 0.15ct, G-H colour, SI clarity.
Stamped 750. Ring size M. 17.7gms.
£650-850 (plus 27.6% BP*)

315 A 'yellow' diamond and diamond triple cluster ring.

Total diamond weight 1.01cts, estimated 'yellow' and G-H colour,
VS-SI clarity.
Stamped 18K 750. Ring size M. 4gms.
Diamonds untested for natural colour origin.
£1,000-1,500 (plus 27.6% BP*)

316 An emerald and diamond brooch.

Emerald calculated weight 1.94cts, based on estimated dimensions
of 8.5 by 6.5 by 4.8mms.
Estimated total diamond weight 2.50cts, G-H colour, VS clarity.
Soviet marks, stamped 750. Length 5.5cms. 16.7gms.
£800-1,200 (plus 27.6% BP*)

317 A pavé-set emerald and diamond frog brooch, with ruby cabochon eyes.

Estimated total diamond weight 0.60ct, H-J colour, VS-SI clarity.
Stamped 18ct plat. Length 3.4cms. 17.8gms.
£1,000-1,500 (plus 27.6% BP*)

318 An emerald and brilliant-cut diamond cluster ring.

Emerald calculated weight 1.33cts, based on estimated dimensions
of 8.7 by 6.7 by 4mms.
Total diamond weight 0.83ct, stamped to mount, estimated G-H
colour, VS1-SI1 clarity.
Stamped 750. Ring size M. 6.2gms.
£1,200-1,800 (plus 27.6% BP*)

319 An 18ct gold brilliant-cut diamond full eternity ring.

Estimated total diamond weight 1.60cts, G-H colour, SI clarity.
Hallmarks for Birmingham, 2005. Ring size W. 5.2gms.
£1,000-1,500 (plus 27.6% BP*)

320 A vari-cut diamond fringe pendant, suspended on a brilliant-cut diamond collet spacer integral chain.

Total diamond weight 1.31cts, stamped to mount, estimated G-H
colour, VS clarity.
Stamped 18K 750. Length of pendant 3cms. Length of chain
40cms. 3.4gms.
£1,500-2,000 (plus 27.6% BP*)

321 A square-shape diamond ring, with brilliant-cut diamond shoulders and surround.

Principal diamond estimated weight 1ct, H-I colour, VS clarity.
Estimated total diamond weight 1.75cts.
Stamped 14K. Ring size L. 7.3gms.
£2,000-2,500 (plus 27.6% BP*)

322 An 'A-type' jade and diamond cluster ring.

Verbal from GCS, stating no indications of impregnation.
Estimated dimensions of jade 9.5 by 7.7mms.
Estimated total diamond weight 0.50ct, G-H colour, VS2-SI2 clarity.
Stamped G18K. Ring size J1/2. 3.1gms.
£2,200-2,800 (plus 27.6% BP*)

323 A brilliant-cut diamond line bracelet.

Estimated total diamond weight 3.75cts, G-H colour, VS clarity.
Length 17cms. 38.2gms.
£2,400-3,000 (plus 27.6% BP*)


324 A Colombian emerald and brilliant-cut diamond cluster ring.

With report CGL22168, dated September 2020, from Carat
Gem Lab, stating 4.29cts, Colombia, Indications of minor clarity
enhancement.
Estimated total diamond weight 1.25cts, G-H colour, VS2-SI1
clarity.
Ring size Q1/2. 6.4gms.
£3,000-4,000 (plus 27.6% BP*)

325 An 18ct gold old-cut diamond single-stone ring.

Estimated diamond weight 2.40cts, J-K colour, P1-P2 clarity.
Hallmarks for Sheffield. Ring size K. 5.8gms.
£5,000-7,000 (plus 27.6% BP*)



326  A set of citrine and diamond Misbaha or prayer beads.

Estimated total diamond weight 1ct, G-H colour, VS-SI clarity.
Length 34cms. 51.8gms.
With William & Son maker's case.
£1,000-1,500 (plus 27.6% BP*)

327 A pair of 18ct gold emerald and brilliant-cut diamond cluster earrings.

Total emerald weight 2.28cts.
Total diamond weight 1.34cts, estimated G-H colour, SI1-P1 clarity.
Hallmarks for Birmingham. Length 1.3cms. 3.6gms.
£1,000-1,500 (plus 27.6% BP*)

328 A pair of 18ct gold diamond fan earrings, with detachable citrine drop sections.

Estimated total diamond weight 2.25cts, G-H colour, VS clarity.
Hallmarks for London, 2016. Length 5.3cms. 18.9gms.
£1,000-1,500 (plus 27.6% BP*)

329 An 18ct gold brilliant-cut diamond full eternity ring.

Estimated total diamond weight 2.75cts, predominantly H-J colour, SI1-P1 clarity.
Hallmarks for Sheffield, partially indistinct. Ring size N. 6.3gms.
£1,500-2,000 (plus 27.6% BP*)

330 An emerald and diamond cluster ring.

Emerald calculated weight 1.55cts, based on estimated dimensions of 9.2 by 6.9 by 4.3mmms.
Estimated total diamond weight 1.25cts, G-J colour, SI clarity.
Stamped Plat. Ring size N. 6.1gms.
£1,500-2,000 (plus 27.6% BP*)

331 An 18ct gold brilliant-cut diamond line bracelet.

Total diamond weight 3.98cts, estimated G-I colour, VS2-SI2 clarity.
Hallmarks for London. Length 18.5cms. 10.1gms.
£1,800-2,400 (plus 27.6% BP*)

332 A brilliant-cut diamond line necklace.

Total diamond weight 3.01cts, estimated H-J colour, VS-SI clarity.
Stamped 18ct. Length 43cms. 15.5gms.
£2,000-2,500 (plus 27.6% BP*)

333 A platinum marquise-shape diamond single stone ring.

Diamond weight 1.93cts, estimated tinted colour, SI2-P1 clarity.
Hallmarks for Birmingham. Ring size K. 5gms.
£3,500-4,500 (plus 27.6% BP*)

334 An 18ct gold brilliant-cut 'brown' diamond and brilliant-cut diamond cluster ring.


Principal diamond weight 2.50cts, estimated SI2-P1 clarity.
Total diamond weight 4.09cts.
Hallmarks for Birmingham. Ring size N1/2. 4.8gms.
Diamond untested for natural colour origin.
£2,800-3,200 (plus 27.6% BP*)

335 A graduated brilliant-cut diamond three-stone ring.

Estimated total diamond weight 3.80cts, I-tinted colour, P1 clarity.
Stamped 18ct. Ring size O1/2. 5gms.
£5,000-7,000 (plus 27.6% BP*)

336 An oval cushion-shape diamond ring, with triangular-shape diamond sides.

Principal diamond estimated weight 2.60cts, tinted colour, SI clarity.
Estimated total diamond weight 4cts.
Ring size P. 5.6gms.
£7,000-9,000 (plus 27.6% BP*)

337  A brilliant-cut diamond single-stone ring, with pavé-set diamond shoulders.

With mini-report 20049461, from AnchorCert, stating M-N colour, VS clarity, estimated weight 3.08cts.
Estimated total diamond weight 3.30cts.
Ring size J1/2. 6.4gms.
£8,000-12,000 (plus 27.6% BP*)



338 A sapphire and diamond cluster ring.

Sapphire calculated weight 1.47cts, based on estimated dimensions of 7.8 by 6.3 by 3.2mms.
Estimated total diamond weight 0.50ct, SI1-P1 clarity.
Ring size M1/2. 3.9gms.
£500-700 (plus 27.6% BP*)

339 A ruby single-stone ring with tapered baguette-cut diamond sides.

Ruby calculated weight 1.10cts, based on estimated dimensions of 7 by 5.2 by 2.8mms.
Estimated total diamond weight 0.15ct, G-H colour, VS clarity.
Ring size M. 3.2gms.
£550-750 (plus 27.6% BP*)

340 A carved amethyst, diamond and ruby flamingo brooch.

Total diamond weight 1ct, estimated predominantly G-I colour, VS-SI clarity.
Stamped K18. Length 6.2cms. 8.6gms.
£800-1,200 (plus 27.6% BP*)

341 A pair of vari-cut diamond earrings.

Total diamond weight 0.62ct, stamped to mount, estimated G-H colour, VS clarity.
Stamped 18K 750. Length 2.6cms. 5.7gms.
£900-1,400 (plus 27.6% BP*)

342 An 18ct gold brilliant-cut and baguette-cut diamond dress ring.

Total diamond weight 1.20cts, estimated H-J colour, SI1-P1 clarity.
Hallmarks for Birmingham. Ring size O. 3.7gms.
£800-1,200 (plus 27.6% BP*)

343 A natural pearl single-stone ring, with baguette-cut diamond shoulders.

With report 78132-24, dated 6th December 2017, from GCS, stating 7.2-7.4 by 5.6mms, natural pearl, saltwater.
Estimated total diamond weight 0.65ct, H-I colour, VS clarity.
Ring size L1/2. 4.2gms.
£1,000-1,500 (plus 27.6% BP*)

344 A pair of pink tourmaline and diamond drop earrings.

Estimated total tourmaline weight 13 to 14cts.
Estimated total diamond weight 1.35cts, I-J colour, VS-SI clarity.
Stamped 750. Length 4.4cms. 13.6gms.
£1,200-1,800 (plus 27.6% BP*)

345 A ruby cabochon and vari-cut diamond cluster ring.

Ruby calculated weight 3.58cts, based on estimated dimensions of 8.8 by 7.4 by 5.1mms.
Estimated total diamond weight 0.60ct, H-I colour, VS-SI clarity.
Ring size K. 7.1gms.
£1,500-2,000 (plus 27.6% BP*)

346 An 18ct gold tanzanite and diamond dress ring.

Tanzanite weight 9.59cts.
Total diamond weight 0.93ct, estimated G-H colour, VS-SI clarity.
Hallmarks for Birmingham. Ring size M. 8.8gms.
£2,200-2,800 (plus 27.6% BP*)

347 A ruby and diamond hinged bangle.

Total ruby weight 6.34cts.
Total diamond weight 0.70ct, estimated G-H colour, VS-SI clarity.
Stamped 18K 750. Inner diameter 5.9cms. 24.5gms.
£3,500-4,500 (plus 27.6% BP*)

348 A platinum brilliant-cut diamond single-stone ring.

Estimated diamond weight 2.15cts, K-L colour, P1 clarity.
Hallmarks for Birmingham. Ring size N1/2. 5.9gms.
£5,000-7,000 (plus 27.6% BP*)

349 A brilliant-cut diamond line necklace.

Estimated total diamond weight 13.50cts, G-H colour, VS clarity.
Stamped 750. Length 83cms. 35.4gms.
£7,000-9,000 (plus 27.6% BP*)



BP* - Buyer's Premium of 23% (plus VAT) or 27.6% (VAT included)

350 An 18ct gold aquamarine and diamond cluster ring.

Aquamarine weight 4.31 cts.
Total diamond weight 0.41ct, estimated G-H colour, SI clarity.
Hallmarks for Birmingham. Ring size O. 5.2gms.
£600-800 (plus 27.6% BP*)

351 A set of blue topaz, rock crystal and diamond Misbaha or prayer beads.

Estimated total diamond weight 2cts, G-H colour, VS-SI clarity.
Length 28cms. 57gms.
With William & Son maker's case.
£1,000-1,500 (plus 27.6% BP*)

352 A pair of platinum aquamarine and tapered baguette-cut diamond 'Gala Collection' earrings.

Aquamarine calculated total weight 14.12cts, based on estimated dimensions.
Estimated total diamond weight 5cts, G-H colour, VS clarity.
Partial hallmarks for 2017. Length 2.6cms. 17.3gms.
£4,000-6,000 (plus 27.6% BP*)

353 A platinum aquamarine and tapered baguette-cut diamond 'Gala Collection' pendant.

Aquamarine calculated weight 18.97cts, based on estimated dimensions of 21.9 by 15.8 by 9.6mms.
Estimated total diamond weight 5cts, G-H colour, VS clarity.
Hallmarks for London, 2017. Length 3.3cms. 13.4gms.
£3,500-4,500 (plus 27.6% BP*)

354 A mid 20th century aquamarine cocktail ring, with baguette-cut diamond staggered sides.

Aquamarine calculated weight 30.76cts, based on estimated dimensions of 22.5 by 17.9 by 10.4mms.
Estimated total diamond weight 2.80cts, G-H colour, predominantly VS clarity.
Ring size L. 20.6gms.
£4,000-6,000 (plus 27.6% BP*)

355 A mid 20th century platinum old-cut diamond cocktail ring, with vari-cut diamond sides.

Principal diamond weight 1.90cts, estimated K-L colour SI2-P1 clarity.
Estimated total diamond weight 3.90cts.
Ring size G1/2. 13.5gms.
£5,800-7,800 (plus 27.6% BP*)

356 An 18ct gold brilliant-cut diamond line bracelet.

Total diamond weight 12.88cts, estimated H-tinted colour, P1-P2 clarity.
Hallmarks for Sheffield. Length 18.5cms. 19.9gms.
£6,000-8,000 (plus 27.6% BP*)

357 A diamond 'Serpenti' bangle, by Bulgari.

Estimated total diamond weight 5.50 to 6cts, G+ colour, VS clarity.
Italian marks, stamped 750. Inner diameter 4.6cms. 127gms.
£9,000-14,000 (plus 27.6% BP*)



358 An emerald and diamond dress ring.

Estimated total diamond weight 0.50ct, G-H colour, SI1-P1 clarity.
Ring size M1/2. 4.6gms.
£500-700 (plus 27.6% BP*)

359 A carved 'A-type' jade brooch.

With report 3777-8108, dated 14th December 2016, from GCS,
stating no indications of impregnation.
Length 6.7cms. 8.3gms.
£700-900 (plus 27.6% BP*)

360 A brilliant and rose-cut diamond openwork pendant,
with integral fancy-link chain.

Estimated total brilliant-cut diamond weight 0.60ct.
Length of pendant 4.7cms. Length of chain 44cms. 9.2gms.
£750-950 (plus 27.6% BP*)

361 An Art Deco 18ct gold 'A-type' jade and old-cut
diamond openwork brooch.

With report 81289-56, dated 10th December 2020, from GCS,
stating no indications of impregnation.
Estimated total diamond weight 0.90ct, H-K colour, SI1-P1 clarity.
Length 4.8cms. 9.1gms.
£1,000-1,500 (plus 27.6% BP*)

362 A mid 20th century platinum diamond geometric panel
brooch.

Estimated total diamond weight 5cts.
Principal diamond estimated weight 0.90ct, G-H colour, SI clarity.
Length 5.4cms. 16.8gms.
£1,500-2,000 (plus 27.6% BP*)

363 An Art Deco platinum old-cut diamond, pierced,
geometric dress ring.

Estimated total diamond weight 2.20cts, G-I colour, SI1-P1 clarity.
Ring size M. 6.6gms.
£2,500-3,000 (plus 27.6% BP*)

364 An Art Deco platinum old-cut and rectangular-shape
diamond geometric brooch.

Estimated total diamond weight 4.50cts, G-H colour, VS-SI clarity.
French assay marks. Length 4.4cms. 13.3gms.
£2,000-3,000 (plus 27.6% BP*)

365 A pair of Art Deco platinum diamond clip brooches.

Estimated total diamond weight 5cts, H-J colour, VS2-P1 clarity.
Length 3.2cms. 23.4gms.
With fitted later case.
£4,500-6,500 (plus 27.6% BP*)

366 A rectangular-shape diamond and emerald cluster ring,
with similarly-set shoulders.

Principal diamond estimated weight 2.30cts, J-K colour, VS clarity.
Ring size K1/2. 5.1gms.
£8,000-12,000 (plus 27.6% BP*)

367 An Art Deco platinum vari-cut diamond bracelet.

Two principal diamonds estimated total weight 2.35cts, J-L colour,
SI2-P1 clarity.
Estimated total diamond weight 8cts.
Length 19cms. 27.4gms.
£8,000-12,000 (plus 27.6% BP*)

368 A mid 20th century platinum diamond geometric
bracelet.

Estimated total diamond weight 18 to 19cts, predominantly G-J
colour, SI clarity.
Length 19cms. 52.9gms.
£12,000-18,000 (plus 27.6% BP*)

369 A circular-cut diamond single-stone ring, with calibre-
cut emerald and brilliant-cut diamond surround and shoulders.

Principal diamond weight 3.64cts, engraved to mount, estimated
tinted colour, VS clarity.
Ring size J. 4.7gms.
£15,000-20,000 (plus 27.6% BP*)



BP* - Buyer's Premium of 23% (plus VAT) or 27.6% (VAT included)

370 A heart-shape peridot and brilliant-cut diamond cluster ring.

Peridot calculated weight 2.82cts, based on estimated dimensions of 9.5 by 8 by 5.7mms.
Estimated total diamond weight 0.55ct, G-H colour, VS-SI clarity.
Stamped 18ct. Ring size O1/2. 6.6gms.
£250-350 (plus 27.6% BP*)

371 A pair of pearl and vari-cut diamond earrings.

Estimated total diamond weight 0.20ct, G-H colour, VS clarity.
Estimated diameter of pearls 8.3mms.
Length 4.1cms. 4.9gms.
Pearls untested for natural origin.
£250-350 (plus 27.6% BP*)

372 An amethyst and rose-cut diamond cluster ring.

Amethyst calculated weight 6.19cts, based on estimated dimensions of 11.8 by 11.2 by 7.5mms.
Ring size 11/2. 5gms.
£500-700 (plus 27.6% BP*)

373 A semi-baroque natural pearl ring.

Verbal from GCS, stating natural pearl, saltwater.
Estimated diameter of pearl 9.3 to 9.6mms, by 9mms.
Ring size M1/2. 2.6gms.
£600-800 (plus 27.6% BP*)

374 A late 19th century gold and silver, natural pearl, enamel and diamond pendant.

With report 80261-33, dated 20th March 2020, from GCS, stating natural, saltwater.
Estimated total diamond weight 1ct, G-I colour, VS2-SI1 clarity.
Length 4.1cms. 5.1gms.
With fitted case.
£1,500-2,000 (plus 27.6% BP*)

375 An early 20th century platinum crossed and twisted wire-link graduated two-strand necklace, with natural pearl spacers.

Verbal from GCS, stating natural pearls, saltwater.
Length 40cms. 15.6gms.
£700-900 (plus 27.6% BP*)

376 An early 20th century 18ct gold natural pearl and old-cut diamond cluster ring.

With report from The Gem & Pearl Laboratory, stating natural, saltwater.
Estimated total diamond weight 0.35ct, H-J colour, VS2-SI1 clarity.
Stamped 18ct. Ring size O. 3.4gms.
£800-1,200 (plus 27.6% BP*)

377 A mid 20th century platinum opal and single-cut diamond cluster ring.

Estimated dimensions of opal 16 by 10 by 4mms.
Estimated total diamond weight 0.65ct, G-H colour, VS-SI clarity.
Ring size R. 5.1gms.
£900-1,400 (plus 27.6% BP*)

378 A natural pearl and vari-cut diamond brooch.

Verbal from GCS, stating natural, saltwater.
Principal pearl estimated diameter 6.3mms.
Principal diamonds estimated total weight 1.05cts, H-J colour, SI clarity.
Estimated total diamond weight 1.90cts.
Length 4.7cms. 10.2gms.
£1,500-2,000 (plus 27.6% BP*)

379 An Art Nouveau platinum and 14ct gold, old and circular-cut diamond and natural pearl pendant.

May be worn as a brooch.
Verbal from GCS, stating natural, saltwater.
Estimated total diamond weight 4cts, H-K colour, VS2-P1 clarity.
Length of pendant 7cms. 10.6gms.
£2,500-3,500 (plus 27.6% BP*)

380 An early 20th century platinum old-cut and circular-cut diamond cross pendant, with chain.

Estimated total diamond weight 4.50cts, predominantly G-I colour, VS-SI clarity.
Foreign marks.
Length of pendant 8cms. Length of chain 48cms. 14gms.
£4,000-6,000 (plus 27.6% BP*)

381 An early 20th century Art Nouveau platinum and gold, green plique-à-jour enamel, amethyst and diamond dragonfly brooch, with ruby cabochon eyes.

May be worn as a pendant.
Estimated total old-cut diamond weight 0.40ct, G-I colour, SI1-P1 clarity.
Length 9.5cms. 22.2gms.
With fitted S.J. Phillips case.
This piece displays the colours commonly associated with the Suffragette movement.
£8,000-12,000 (plus 27.6% BP*)



382 A brilliant-cut diamond single-stone ring, by Bulgari.

Estimated diamond weight 0.30ct, G-H colour, VS clarity.
Stamped 950Pt. Ring size K. 5.7gms.
£450-650 (plus 27.6% BP*)

383 A brilliant-cut diamond full eternity ring.

Estimated total diamond weight 1.40cts, H-I colour, VS-SI clarity.
Ring size M. 6.7gms.
£450-650 (plus 27.6% BP*)

384 A pink sapphire and brilliant-cut diamond three-stone ring.

Sapphire calculated weight 1.20cts, based on estimated dimensions of 7.8 by 5.9 by 3.1mms.
Estimated total diamond weight 0.60ct, K-tinted colour, VS2-SI1 clarity.
Stamped Plat. Ring size P. 5.4gms.
£1,000-1,500 (plus 27.6% BP*)

385 A pair of pearl, old-cut diamond and pink sapphire earrings.

Estimated total diamond weight 0.90ct, I-J colour, SI1-P1 clarity.
Length 2cms. 5.3gms.
Pearls untested for natural origin.
£1,200-1,800 (plus 27.6% BP*)

386 An 18ct gold white sapphire and brilliant-cut diamond collet 'Beneath the Rose' necklace.

Estimated total white sapphire weight 9.30cts, based on calculated weight of two sapphires.
Estimated total diamond weight 0.40ct, G-H colour, VS clarity.
Hallmarks for London, 2017. Length 96cms. 12.3gms.
£800-1,200 (plus 27.6% BP*)

387 A pink sapphire and diamond cluster ring.

Sapphire calculated weight 1.18cts, based on estimated dimensions of 8 by 6.1 by 2.9mms.
Total diamond weight 1ct, estimated H-K colour, SI1-P1 clarity.
Stamped Plat. Ring size N. 5.5gms.
£1,000-1,500 (plus 27.6% BP*)

388 A brilliant-cut diamond cluster ring.

Estimated total diamond weight 0.85ct, G-I colour, SI1-P1 clarity.
Ring size M. 5.7gms.
£1,200-1,800 (plus 27.6% BP*)

389 A pair of 18ct gold vari-cut diamond cluster earrings.

Total diamond weight 1.77cts, estimated G-I colour, VS-SI clarity.
Hallmarks for Birmingham. Diameter 0.9cm. 3.4gms.
£1,200-1,800 (plus 27.6% BP*)

390 A platinum rectangular-shape and brilliant-cut diamond dress ring.

Principal diamond estimated weight 1ct, G-H colour, VVS-VS clarity.
Estimated total diamond weight 1.30cts.
Hallmarks for London, 2015. Ring size M. 5.6gms.
£1,800-2,400 (plus 27.6% BP*)

391 A diamond spiral-link bracelet.

Estimated total diamond weight 3cts, H-J colour, SI1-P1 clarity.
Stamped 18K 750. Length 17.5gms. 29.4gms.
£1,800-2,400 (plus 27.6% BP*)

392 An 18ct gold vari-cut diamond necklace.

Estimated total diamond weight 2cts, G-I colour, VS-SI clarity.
Hallmarks for London, 2008. Length 48.5cms. 5.8gms.
£1,500-2,000 (plus 27.6% BP*)

393 A pair of pavé-set diamond 'Étincelle' hoop earrings, by Cartier.

Estimated total diamond weight 1.20cts, G-H colour, VS clarity.
French assay marks, stamped PT950. Length 1.4cms. 5.4gms. with maker's case.
£2,000-2,500 (plus 27.6% BP*)



BP* - Buyer's Premium of 23% (plus VAT) or 27.6% (VAT included)

394 A brilliant-cut diamond and knife-edge bar bracelet, by Tiffany & Co.

Estimated total diamond weight 0.40ct, G+ colour, VS clarity. Stamped PT950. Length 17.5cms. 14.2gms. **£300-400** (plus 27.6% BP*)

395 A brilliant-cut diamond single-stone ring, with graduated diamond sides.

Principal diamond estimated weight 0.90ct, tinted colour, SI2-P1 clarity. Ring size P. 3.4gms. **£500-700** (plus 27.6% BP*)

396 A 'Happy Diamonds' heart pendant, with chain, by Chopard.

Estimated total diamond weight 0.25ct, G+ colour, VS clarity. Stamped 750. Length of pendant 1.6cms. Length of chain 44.5cms. 12.2gms. **£700-900** (plus 27.6% BP*)

397 An 18ct gold pear and oval-shape diamond 'MYA' ring.

Estimated total diamond weight 1.15cts, G-H colour, VS clarity. Hallmarks for London, 2017. Ring size K. 2.7gms. **£800-1,200** (plus 27.6% BP*)

398 An 18ct gold diamond 'Happy Bubbles' bracelet, by Chopard.

Estimated total diamond weight 0.30ct, G-H colour, VS clarity. Swiss convention marks. Length 17.5cms. 11.7gms. **£800-1,200** (plus 27.6% BP*)

399 An 18ct gold diamond 'Happy Bubbles' pendant, with chain, by Chopard.

Total diamond weight 0.11ct, estimated G-H colour, VS clarity. Swiss convention marks. Length of pendant 2.9cms. Length of chain 42cms. 10gms. **£900-1,400** (plus 27.6% BP*)

400 A brilliant-cut diamond full eternity ring, by Tiffany & Co.

Estimated total diamond weight 1.25cts, G+ colour, VS clarity. Stamped Irid. Plat. Ring size P. 3.7gms. **£1,000-2,000** (plus 27.6% BP*)

401 A brilliant-cut diamond geometric cluster ring.

Principal diamond estimated weight 0.70ct, I-J colour, SI clarity. Estimated total diamond weight 1ct. Stamped Plat. Ring size M. 4.5gms. **£1,600-2,200** (plus 27.6% BP*)

402 A pavé-set diamond pendant, on black cord, by Tiffany & Co.

Estimated total diamond weight 0.65ct, G-H colour, VS clarity. French re-strike marks, stamped 750. Length of pendant 5cms. Length of cord 44.7cms. 8gms. With maker's pouch. **£2,000-3,000** (plus 27.6% BP*)

403 An 18ct gold diamond 'Happy Spirit' pendant, with chain, by Chopard.

Estimated total diamond weight 1.40cts, G+ colour, VS clarity. Swiss convention marks. Length of pendant 3cms. Length of chain 42cms. 19.4gms. **£2,500-3,000** (plus 27.6% BP*)

404 A pair of vari-cut diamond earrings.

Estimated total diamond weight 4.50cts, G-K colour, VS2-P1 clarity. Stamped 750. Length 3cms. 5.3gms. **£2,500-3,500** (plus 27.6% BP*)

405 A platinum brilliant-cut diamond single-stone ring.

With copy of valuation for insurance, from Harrods, stating 2.20cts, H colour, VS1 clarity. Hallmarks for London. Ring size K1/2. 8gms. **£9,000-14,000** (plus 27.6% BP*)



406 An 18ct gold amethyst and diamond dress ring, by Fei Liu.

Estimated total diamond weight 0.50ct, H-I colour, SI clarity. Hallmarks for Birmingham. Ring size N. 6.9gms. **£400-600** (plus 27.6% BP*)

407 A pair of 18ct gold diamond 'The London Collection' earrings, with detachable black spinel tassels.

Estimated total diamond weight 1.30cts, G-H colour, VS-SI clarity. Hallmarks for London, 2018. Length 7.5cms. 28.6gms. **£500-700** (plus 27.6% BP*)

408 An 18ct gold black spinel and diamond 'The London Collection' necklace, with detachable bracelet.

Estimated total diamond weight 9 to 10cts, G-H colour, VS-SI clarity. Hallmarks for London, 2017. Length 55cms. 78.4gms. **£3,000-4,000** (plus 27.6% BP*)

409 An 18ct gold diamond 'The London Collection' geometric bracelet.

Total diamond weight 3.12cts, estimated G-H colour, VS-SI clarity. Hallmarks for London, 2014. Length 17.5cms. 17.8gms. **£800-1,200** (plus 27.6% BP*)

410 An 18ct gold diamond and black gem geometric hinged bangle, with polished reverse.

Estimated total diamond weight 4.25cts, G-H colour, VS clarity. Hallmarks for Edinburgh, 2010. Inner diameter 5.7cms. 22.9gms. **£1,500-2,000** (plus 27.6% BP*)

411 An 18ct gold pavé-set diamond bracelet, suspending five diamond and black diamond heart 'Art' charms, by Theo Fennell.

Estimated total diamond weight 7 to 8cts. Hallmarks for London, 2005. Length 19.5cms. 39.1gms. **£1,500-2,000** (plus 27.6% BP*)



412 An 18ct gold diamond, rock crystal and blue gem 'Crystal Haze' dress ring, by Stephen Webster.

Estimated total diamond weight 0.50ct, predominantly G-H colour, VS clarity.
Hallmarks for London, 2008. Ring size N. 20.4gms.
£700-900 (plus 27.6% BP*)

413 An aquamarine, diamond and frosted rock crystal ring.

Estimated dimensions of aquamarine 13.7 by 10mms.
Estimated total diamond weight 0.50ct, G-H colour, VS clarity.
Stamped 750. Ring size L1/2. 21.9gms.
£1,500-2,000 (plus 27.6% BP*)

414 A pair of aquamarine and diamond half-hoop earrings.

Total aquamarine weight 7.20cts.
Estimated total diamond weight 0.80ct, H-I colour, VS-SI clarity.
Length 2.1 cms. 14.7gms.
£1,500-2,000 (plus 27.6% BP*)

415 An 18ct gold aquamarine and diamond cluster ring.

Aquamarine weight 5.95cts.
Total diamond weight 0.56ct, estimated H-I colour, SI clarity.
Hallmarks for Birmingham. Ring size M1/2. 6.3gms.
£1,200-1,800 (plus 27.6% BP*)

416 An 18ct gold multifaceted aquamarine bracelet.

Estimated dimensions of apparent largest aquamarine 13.5 by 11 by 5mms.
Hallmarks for London, 2018. Length 19.8cms. 139.1gms.
£1,500-2,000 (plus 27.6% BP*)

417 An 18ct gold multifaceted aquamarine graduated three-strand necklace, with similarly-set clasp.

Principal aquamarine estimated dimensions 15.5 by 11 by 6.6mms.
Hallmarks for London, 2018. Length 49.5cms. 124.1gms.
£1,500-2,000 (plus 27.6% BP*)



418 A baguette-cut diamond half eternity ring.

Estimated total diamond weight 1ct, predominantly G-H colour, VS clarity.
Stamped 750. Ring size O1/2. 5.7gms.
£400-600 (plus 27.6% BP*)

419 An 18ct gold aquamarine and diamond dress ring.

Aquamarine calculated total weight 2.73cts, based on estimated dimensions.
Estimated total diamond weight 0.90ct, H-I colour, SI clarity.
Hallmarks for London, 1975, partially indistinct. Ring size S. 7.7gms.
£800-1,200 (plus 27.6% BP*)

420 A pair of 18ct gold white sapphire and diamond 'Beneath the Rose' earrings, with detachable drop.

Estimated total diamond weight 1.10cts, G-H colour, VS clarity.
Hallmarks for London, 2017. Length 5.8cms. 13.8gms.
£600-800 (plus 27.6% BP*)

421 An 18ct gold white sapphire and diamond 'Beneath the Rose' bracelet.

Estimated total diamond weight 3.20cts, G-H colour, VS clarity.
Hallmarks for London, 2017. Length 18.5cms. 18.9gms.
£1,500-2,000 (plus 27.6% BP*)

422 An 18ct gold white sapphire and diamond 'Beneath the Rose' necklace.

Estimated total diamond weight 5cts, G-H colour, VS-SI clarity.
Hallmarks for London, 2016. Length 46cms. 45.2gms.
£3,000-4,000 (plus 27.6% BP*)

423 An 18ct gold aquamarine and diamond cluster ring.

Aquamarine weight 6.56cts.
Total diamond weight 0.41ct, estimated H-I colour, SI clarity.
Hallmarks for Birmingham. Ring size N1/2. 6gms.
£1,000-1,500 (plus 27.6% BP*)

424 A mid 20th century diamond ribbon brooch.

Estimated total diamond weight 3cts, G-I colour, VS-SI clarity.
Length 4.3cms. 15.4gms.
£1,200-1,800 (plus 27.6% BP*)

425 A brilliant-cut diamond single-stone ring, with similarly-cut diamond line sides.

Principal diamond estimated weight 1ct, J-K colour, P1 clarity.
Stamped 750. Ring size K1/2. 3.4gms.
£1,200-1,800 (plus 27.6% BP*)

426 A pair of 18ct gold brilliant-cut diamond heart-shape cluster earrings.

Total diamond weight 1.98cts, estimated G-I colour, VS-SI clarity.
Hallmarks for Birmingham. Length 1.2cms. 3.6gms.
£1,500-2,000 (plus 27.6% BP*)

427 A pair of 18ct gold multifaceted aquamarine, sapphire and vari-cut diamond earrings.

Estimated total diamond weight 1.50cts, G-H colour, VS clarity.
Hallmarks for London, 2016. Length 3.8cms. 23.6gms.
£1,500-2,000 (plus 27.6% BP*)

428 A 9ct gold brilliant-cut diamond single-stone ring.

With report US50285801D, dated **8th of July 2008**, from EGL, stating 1.40cts, E-F colour, SI2 clarity.
Hallmarks for Sheffield. Ring size M1/2. 2.9gms.
£2,500-3,000 (plus 27.6% BP*)

429 A graduated old-cut diamond three-stone ring.

Estimated total diamond weight 2.40cts, G-H colour, SI1-P1 clarity.
Ring size J. 3.1gms.
£2,500-3,000 (plus 27.6% BP*)



BP* - Buyer's Premium of 23% (plus VAT) or 27.6% (VAT included)

430 A pair of 1940s platinum sapphire and vari-cut diamond earrings.

Estimated total old-cut diamond weight 1.75cts, H-tinted colour, SI1-P1 clarity.
Length 2.6cms. 8.5gms.
£400-600 (plus 27.6% BP*)

431 A sapphire and diamond full eternity ring.

Estimated total diamond weight 1.50cts, H-I colour, VS2-SI2 clarity.
Ring size O. 8.1gms.
£350-450 (plus 27.6% BP*)

432 A pair of pavé-set diamond and calibré-cut sapphire hoop earrings.

Estimated total diamond weight 2.50cts, G-H colour, VS-P1 clarity.
Length 2.4cms. 27.3gms.
£1,500-2,000 (plus 27.6% BP*)

433 A mid 20th century platinum circular-cut diamond three-stone ring, with scroll motif gallery.

Estimated total diamond weight 1.50cts, G-H colour, SI clarity.
Ring size K. 6.4gms.
£1,800-2,400 (plus 27.6% BP*)

434 A 1970s 18ct gold 'De Ville' watch, by Omega, with textured dial, brilliant-cut diamond bezel and integral textured bracelet.

Signed to dial and movement.
Estimated total diamond weight 1.60cts, G-H colour, VS-SI clarity.
Length 17.4cms. 49.6gms.
£1,800-2,400 (plus 27.6% BP*)

435 A 1970s 18ct gold old-cut diamond single-stone ring, with textured sides.

Estimated diamond weight 1.35cts, L-tinted colour, VS clarity.
Stamped 18ct. Ring size 11/2. 5.3gms.
£2,000-2,500 (plus 27.6% BP*)

436 A mid 20th century vari-cut diamond floral spray brooch.

Estimated total diamond weight 4 to 4.50cts, G-H colour, VS-SI clarity.
Length 6.4cms. 19.9gms.
£3,000-4,000 (plus 27.6% BP*)

437 A pair of mid 20th century platinum diamond scroll earrings, with detachable drop sections.

Signed J. Rosenthal.
Estimated total diamond weight 5cts, predominantly G-H colour, VS clarity.
Length 4.5cms. 24.7gms.
£3,000-4,000 (plus 27.6% BP*)

438 A mid 20th century cultured pearl, vari-cut diamond foliate brooch, by Schilling.

Estimated total diamond weight 7.25cts, G-H colour, VS clarity.
Length 5.4cms. 18.7gms.
£4,000-6,000 (plus 27.6% BP*)

439 A pair of mid 20th century platinum, vari-cut diamond and vari-colour baroque cultured pearl earrings.

Drop is detachable.
Estimated total diamond weight 6.25cts, G-H colour, VS-SI clarity.
Length 7cms. 37.9gms.
£3,000-4,000 (plus 27.6% BP*)

440 A mid 20th century platinum brilliant and baguette-cut diamond bracelet.

Estimated total diamond weight 16 to 17cts, G-H colour, VS clarity.
Length 18cms. 48.4gms.
£10,000-15,000 (plus 27.6% BP*)

441 A mid 20th century platinum vari-cut diamond bracelet.

Estimated total diamond weight 14 to 15cts, G-I colour, VS-SI clarity.
Length 18cms. 55.4gms.
£10,000-15,000 (plus 27.6% BP*)



442 A South Sea cultured pearl ring, by Carl Bucherer.

Estimated diameter 15.1mms.
Stamped 750. Ring size M. 9.1gms.
£1,200-1,800 (plus 27.6% BP*)

443 A sapphire and diamond dress ring.

Sapphire calculated weight 2.75cts, based on estimated dimensions of 10.5 by 6.8 by 4.6mms.
Estimated total diamond weight 0.80ct, H-I colour, VS-SI clarity.
Ring size H1/2. 12.4gms.
£1,400-2,000 (plus 27.6% BP*)

444 A mid 20th century 14ct gold sapphire and old-cut diamond cocktail ring.

Sapphire calculated weight 1.40cts, based on estimated dimensions of 6.5 by 6.2 by 3.7mms.
Principal diamonds estimated total weight 1.20cts, G-H colour, VS-SI clarity.
Estimated total diamond weight 2.10cts.
Stamped 585. Approximate ring size T. 12.6gms.
£1,500-2,000 (plus 27.6% BP*)

445 A mid 20th century pink sapphire, blue sapphire and diamond bird brooch, signed Marchak.

Estimated total diamond weight 2.25cts.
Length 9.8cms. 33.4gms.
£1,500-2,000 (plus 27.6% BP*)

446 A mid 20th century platinum vari-cut diamond brooch.

Estimated total diamond weight 5.25cts, G-I colour, VS-SI clarity.
Length 4.7cms. 18.1gms.
£2,500-3,000 (plus 27.6% BP*)

447 A 1970s 18ct gold 'De Ville' watch, by Omega, with deep blue dial, brilliant-cut diamond bezel and integral textured bracelet.

Signed to dial and movement.
Estimated total diamond weight 0.65ct, G-H colour, VS clarity.
Swiss marks. Length 16.5cms. 58gms.
£2,500-3,000 (plus 27.6% BP*)

448 A pair of cultured pearl earrings, with brilliant and baguette-cut diamond undulating surrounds.

Estimated total diamond weight 4.50cts, H-I colour, predominantly VS clarity.
French re-strike marks. Length 2.5cms. 15.8gms.
£2,000-3,000 (plus 27.6% BP*)

449 A rhodolite garnet and vari-cut diamond cluster ring.

Garnet weight 14.88cts.
Total diamond weight 1.72cts, estimated G-H colour, VS-SI clarity.
Stamped Pt900. Ring size N1/2. 27.2gms.
£2,500-3,000 (plus 27.6% BP*)

450 A mid 20th century platinum emerald and vari-cut diamond spray brooch.

Emerald calculated weight 1.14cts, based on estimated dimensions of 7.4 by 6.8 by 3.1mms.
Estimated total diamond weight 9cts, G-H colour, VS-SI clarity.
French re-strike marks. Length 6.3cms. 26.2gms.
£4,000-6,000 (plus 27.6% BP*)

451 A mid 20th century cultured pearl three-strand choker necklace, with ruby, sapphire, emerald and vari-cut diamond cluster clasp.

Estimated total diamond weight 5cts, G-H colour, VS clarity.
Length 32cms. 92.4gms.
£3,000-4,000 (plus 27.6% BP*)

452 A ruby, sapphire, emerald and brilliant-cut diamond bracelet.

Total diamond weight 8.42cts, stamped to clasp, estimated G-H colour, VS-SI clarity.
French re-strike mark, stamped 750. Length 18.5cms. 56.4gms.
£7,000-9,000 (plus 27.6% BP*)

453 A mid 20th century marquise-shape and baguette-cut diamond bracelet.

Estimated total diamond weight 14cts, G-I colour, VS clarity.
Length 17.5cms. 60.9gms.
£10,000-15,000 (plus 27.6% BP*)



454 A pavé-set diamond band ring.

Estimated total diamond weight 1.10cts, H-I colour, VS-SI clarity.
Ring size Q. 12.5gms.
£450-650 (plus 27.6% BP*)

455 A pair of 18ct gold diamond 'The London Collection' earrings, with detachable cultured pearl tassels.

Estimated total diamond weight 1.30cts, G-H colour, VS-SI clarity.
Hallmarks for London, 2018. Length 7.5cms. 23.6gms.
£500-700 (plus 27.6% BP*)

456 A pair of Tahitian cultured pearl and diamond drop earrings.

Estimated total diamond weight 0.80ct, H-I colour, SI1-P1 clarity.
Stamped 750. Length 6.4cms. 18.6gms.
With unassociated Mikimoto case.
£700-900 (plus 27.6% BP*)

457 An 18ct gold brilliant and 'Shiva'-cut diamond 'Two Hearts' pendant, designed by Phil Collins, suspended from a trace-link chain.

Estimated total diamond weight 1.25cts, G-H colour, VS-SI1 clarity.
Hallmarks for London, 2003 and Sheffield.
Length of pendant 3.6cms. Length of chain 40cms. 12.1gms.
£800-1,200 (plus 27.6% BP*)

458 A Tahitian cultured pearl and diamond ring, with matching stud earrings, by Gellner.

Total diamond weight 0.76ct, stamped to mounts, estimated G-H colour, VS clarity.
Stamped 750. Ring size M. Length of earrings 1.4cms. 7.3gms.
£900-1,400 (plus 27.6% BP*)

459 An 18ct gold cushion-shape and brilliant-cut diamond cluster ring.

Principal diamond estimated weight 0.80ct, I-J colour, SI clarity.
Estimated total diamond weight 1.10cts.
Hallmarks for London, 2009. Ring size N. 5.6gms.
£1,000-1,500 (plus 27.6% BP*)

460 A brilliant-cut diamond five-stone ring, with diamond shoulders.

Estimated total diamond weight 1.15cts, K-tinted colour, VS-SI clarity.
Stamped 18ct. Ring size N1/2. 5.2gms.
£1,000-1,500 (plus 27.6% BP*)

461 A pair of triangular-shape diamond collet stud earrings.

Estimated total diamond weight 1.50cts, I-J colour, SI clarity.
Stamped 750. Length 0.9cm. 5.6gms.
£1,200-1,800 (plus 27.6% BP*)

462 A hematite and diamond heart necklace.

Estimated total diamond weight 2.75cts, G-H colour, VS-SI clarity.
Stamped 750. Length 42cms. 52.8gms.
£1,500-2,000 (plus 27.6% BP*)

463 A pavé-set diamond heart ring.

Estimated total diamond weight 4cts, predominantly H-I colour, VS-SI clarity.
Approximate ring size H1/2. 14.5gms.
£1,600-2,200 (plus 27.6% BP*)

464 A platinum brilliant-cut diamond single-stone ring.

Diamond weight 2.05cts, estimated G-H colour, P1 clarity.
Hallmarks for Birmingham. Ring size M1/2. 5.5gms.
£2,500-3,500 (plus 27.6% BP*)

465 An 18ct gold diamond brick-link bracelet.

Estimated total diamond weight 5cts, G-I colour, VS-SI clarity.
Hallmarks for Edinburgh. Length 18.3cms. 70.6gms.
£4,500-6,500 (plus 27.6% BP*)



466 An 18ct gold diamond 'Whisper' ring, by Fei Liu.

Estimated total diamond weight 0.60ct, G-I colour, VS-SI clarity. Hallmarks for Birmingham. Ring size O1/2. 3.9gms. **£300-400** (plus 27.6% BP*)

467 A pair of 18ct gold citrine and diamond drop earrings, by Fei Liu.

Hallmarks for Birmingham. Length 2.3cms. 4.7gms. **£300-400** (plus 27.6% BP*)

468 An 18ct gold pavé-set diamond five-stone ring.

Estimated total diamond weight 0.60ct, H-I colour, VS2-SI2 clarity. Hallmarks for Birmingham. Ring size O. 9.7gms. **£450-650** (plus 27.6% BP*)

469 A pair of 18ct gold 'Happy Diamonds' earrings, by Chopard.

Total diamond weight 0.34ct, estimated G-H colour, VS clarity. Swiss convention marks. Length 1.2cms. 7.1gms. With maker's case and certificate. **£400-600** (plus 27.6% BP*)

470 A lady's 'Happy Diamonds' wristwatch, with green crocodile skin strap, by Chopard.

Total diamond weight 0.19ct, estimated G+ colour, VS clarity. Swiss marks. Stamped 750. Length 20.5cms. 17.5gms. With maker's case, certificate of authenticity and watch tool. **£600-800** (plus 27.6% BP*)

471 An 18ct gold 'Happy Diamonds' pendant, with chain, by Chopard.

Total diamond weight 0.50ct, estimated G-H colour, VS clarity. Swiss convention marks. Length of pendant 2.2cms. Length of chain 42.2cms. 11.8gms. With maker's case and certificate. **£800-1,200** (plus 27.6% BP*)

472 A 'Happy Diamonds' necklace, by Chopard.

Estimated total diamond weight 0.80ct, G+ colour, VS clarity. Stamped 750. Length 44.5cms. 19.1gms. With maker's case. **£1,200-1,800** (plus 27.6% BP*)

473 An 18ct gold brilliant-cut diamond marquise-shape cluster ring.

Total diamond weight 1.06cts, estimated H-I colour, SI1-P1 clarity. Hallmarks for Birmingham. Ring size O. 4.2gms. **£700-900** (plus 27.6% BP*)

474 An 18ct gold vari-cut diamond cluster ring.

Estimated total diamond weight 2cts. Principal diamond estimated weight 1ct, G-H colour, SI clarity. Import marks for London, 1989. Ring size L. 5.1gms. **£1,200-1,800** (plus 27.6% BP*)

475 A pair of brilliant-cut diamond earrings.

Estimated total diamond weight 4cts, G-H colour, predominantly VS clarity. French re-strike marks. Length 3.7cms. 16.9gms. **£1,400-2,000** (plus 27.6% BP*)

476 An 18ct gold 'Love' bangle, by Cartier.

Swiss convention marks. Inner diameter 6.9cms. Cartier size 21. 40gms. With maker's case, screwdriver and certificate of authenticity. **£2,800-3,200** (plus 27.6% BP*)

477 A diamond 'Atlas' bangle, by Tiffany & Co.

Estimated total diamond weight 1.10cts, G+ colour, VS clarity. Italian marks, stamped Au750. Inner diameter 5.9cms. 30.1gms. **£3,500-4,500** (plus 27.6% BP*)



478 A floral carved ruby, moonstone and blue gem butterfly brooch.

Length 3cms. 5.7gms.
£250-350 (plus 27.6% BP*)

479 A pair of 18ct gold vari-hue sapphire and diamond earrings.

Estimated total diamond weight 0.40ct, G-H colour, VS-SI clarity.
Hallmarks for Edinburgh. Length 1.7cms. 5.6gms.
£400-600 (plus 27.6% BP*)

480 A square-shape amethyst full eternity ring.

Approximate ring size O. 5.8gms.
£450-650 (plus 27.6% BP*)

481 A pair of 18ct gold diamond 'The London Collection' earrings, with detachable pink sapphire tassels.

Estimated total diamond weight 1.30cts, G-H colour, VS-SI clarity.
Hallmarks for London, 2018. Length 7.5cms. 30gms.
£500-700 (plus 27.6% BP*)

482 An 18ct gold brilliant-cut diamond highlight 'The London Collection' two-strand necklace.

Estimated total diamond weight 1ct, G-H colour, VS-SI clarity.
Hallmarks for London, 2016. Length 72cms. 10.3gms.
£500-700 (plus 27.6% BP*)

483 A pair of 18ct gold pink tourmaline and brilliant-cut diamond cluster earrings.

Total tourmaline weight 2.32cts.
Total diamond weight 1.27cts, estimated G-H colour, VS-SI clarity.
Hallmarks for Birmingham. Length 1.3cms. 3.7gms.
£750-950 (plus 27.6% BP*)

484 An 18ct gold diamond 'The London Collection' geometric bracelet.

Total diamond weight 3.12cts, estimated G-H colour, VS-SI clarity.
Hallmarks for London, 2017. Length 17.7gms.
£800-1,200 (plus 27.6% BP*)

485 A pair of 18ct gold morganite, pink sapphire and diamond earrings.

Estimated total diamond weight 1.90cts, G-H colour, VS clarity.
Hallmarks for London, 2015. Length 3cms. 15.2gms.
£1,000-1,500 (plus 27.6% BP*)

486 An 'A-type' lavender jade and diamond cluster pendant.

Verbal from GCS, stating no indications of impregnation.
Jade calculated weight 54.07cts, based on estimated dimensions of 25 by 19.5 by 12.3mms.
Estimated total diamond weight 0.35ct, G-H colour, SI1-P1 clarity.
Stamped G18K. Length 3.9cms. 13.4gms.
£1,500-2,000 (plus 27.6% BP*)

487 An 'A-type' lavender jade and diamond cluster ring.

Verbal from GCS, stating no indications of impregnation.
Jade calculated weight 19.28cts, based on estimated dimensions of 16.8 by 14.3 by 8.9mms.
Estimated total diamond weight 0.25ct, H-I colour, SI1-P1 clarity.
Stamped G18K. Ring size M. 6.8gms.
£1,600-2,200 (plus 27.6% BP*)

488 An 18ct gold pink sapphire and diamond cluster ring.

Sapphire weight 2.69cts.
Total diamond weight 0.91ct, estimated H-I colour, SI clarity.
Hallmarks for Birmingham. Ring size O. 4.8gms.
£2,000-2,500 (plus 27.6% BP*)

489 An 18ct gold 'Fleur-de-Lis' necklace, set with pink and green tourmaline and blue topaz cabochons, by Garrard.

Import marks for London, 1997. Length 43cms. 102.1gms.
With maker's case.
£3,000-4,000 (plus 27.6% BP*)

490 A 1970s 18ct gold kunzite, diamond and onyx owl brooch.

Kunzite weight 42.80cts.
Estimated total diamond weight 0.30ct, G-H colour, VS clarity.
Hallmarks for London, 1975. Length 5.4cms. 34.5gms.
With fitted case.
£4,500-6,500 (plus 27.6% BP*)



491 A ladies 'Class One' wrist watch, by Chaumet, with mother-of-pearl dial, brilliant-cut diamond bezel and pink rubber bracelet.

Estimated total diamond weight 0.15ct. Diameter 2.4cms.
£350-450 (plus 27.6% BP*)

492 An 18ct gold pink sapphire and diamond 'Beneath the Rose' dress ring.

Sapphire total calculated weight 1.89cts, based on estimated dimensions.
Estimated total diamond weight 0.35ct, G-H colour, VS-SI clarity.
Hallmarks for London, 2015. Ring size M. 5.1gms.
£500-700 (plus 27.6% BP*)

493 A pair of 18ct gold morganite and diamond earrings, with detachable drop sections.

Estimated total diamond weight 1.50cts, G-H colour, VS-SI clarity.
Hallmarks for London, 2016. Length 3.4cms. 12gms.
£600-800 (plus 27.6% BP*)

494 A carved pink and green tourmaline, heart-shape amethyst and brilliant-cut diamond floral brooch.

May be worn as a pendant.
Estimated total diamond weight 0.20ct, H-I colour, SI clarity.
Length 4.7cms. 18.2gms.
£500-700 (plus 27.6% BP*)

495 A pair of floral carved pink and green tourmaline earrings, with brilliant-cut diamond spacers.

Total tourmaline weight 40.89cts.
Total diamond weight 0.17ct, estimated H-I colour, VS clarity.
Length 4.3cms. 15.6gms.
£600-800 (plus 27.6% BP*)

496 An 18ct gold morganite and diamond cluster ring.

Morganite weight 9.58cts.
Total diamond weight 0.48ct, estimated H-I colour, SI clarity.
Hallmarks for Birmingham. Ring size N1/2. 7.1gms.
£900-1,400 (plus 27.6% BP*)

497 A rock crystal, pink opal and diamond 'Crystal Haze' ring, by Stephen Webster.

Estimated total diamond weight 0.50ct, G+ colour, VS clarity.
Stamped 18K. Ring size J. 25.5gms.
£900-1,400 (plus 27.6% BP*)

498 An 18ct gold pink sapphire and brilliant-cut diamond 'Beneath the Rose' necklace.

Estimated total pink sapphire weight 7.80cts, based on calculated weight of two sapphires.
Estimated total diamond weight 0.40ct, G-H colour, VS clarity.
Hallmarks for London, 2017. Length 94cms. 17.5gms.
£1,000-1,500 (plus 27.6% BP*)

499 A tourmaline and diamond dress ring.

Tourmaline calculated weight 6.37cts, based on estimated dimensions of 13.5 by 10.5 by 7mms.
Estimated total diamond weight 0.30ct, G-H colour, VS clarity.
Ring size S. 19.3gms.
£1,000-1,500 (plus 27.6% BP*)

500 A brilliant-cut diamond and calibr -cut ruby cocktail ring.

Principal diamond estimated weight 1.10cts, M-tinted colour, P1 clarity.
Ring size N. 6.1gms.
£1,800-2,400 (plus 27.6% BP*)

501 An 18ct gold pav -set tsavorite garnet and ruby bracelet, suspending diamond and similarly-set bitten apple, strawberry, snake and apple and winged heart 'Art' charms, by Theo Fennell.

Estimated total diamond weight 0.75ct, G-H colour, VS clarity.
Bracelet and three charms with hallmarks for London, 2007.
Length of bracelet 19.4cms. Length of charms 2.3 and 3cms. 44.8gms.
With maker's case.
£1,800-2,400 (plus 27.6% BP*)

502 A pav -set diamond and ruby snake and heart motif pendant.

Estimated total diamond weight 4.50 to 5cts, G-H colour, VS clarity.
Stamped 750. Length 4.8cms. 27.7gms.
With case.
£3,000-4,000 (plus 27.6% BP*)

BP* - Buyer's Premium of 23% (plus VAT) or 27.6% (VAT included)



503 A Victorian gold pink sapphire and split pearl locket, with later 18ct gold chain.

Chain with hallmarks for Edinburgh, 2000.
Length of pendant 4.2cms. Length of chain 43cms. 17.5gms.
£400-600 (plus 27.6% BP*)

504 A late 19th century gold pink tourmaline and rose-cut diamond cluster ring.

Tourmaline calculated weight 2.25cts, based on estimated dimensions of 10.1 by 6.8 by 5.1mms.
Approximate ring size K. 3.4gms.
£500-700 (plus 27.6% BP*)

505 An early 20th century 18ct gold and platinum, ruby and old-cut diamond crossover ring, with diamond shoulders.

Ruby calculated weight 1ct, based on estimated dimensions of 6.5 by 5.5 by 3.3mms.
Principal diamond estimated weight 0.60ct, J-K colour, P1 clarity.
French re-strike marks. Ring size L1/2. 4.6gms.
£800-1,200 (plus 27.6% BP*)

506 A late Victorian silver and gold, ruby and old-cut diamond shamrock brooch.

May be worn as a pendant.
Total ruby weight 2.46cts.
Estimated total diamond weight 0.85ct, H-I colour, SI1-P1 clarity.
Length 3.6cms. 5.4gms.
£1,000-1,500 (plus 27.6% BP*)

507 A late Victorian gold ruby three-stone ring, with old-cut and rose-cut diamond spacers.

Principal ruby calculated weight 0.88ct, based on estimated dimensions of 5.4 by 5.1 by 3.4mms.
Estimated total old-cut diamond weight 0.20ct, G-H colour, SI1-P1 clarity.
Ring size O. 3.2gms.
£1,000-1,500 (plus 27.6% BP*)

508 A 19th century 18ct gold longuard chain, with scrolling foliate engraved spherical locket, gloved hand and floral embossed slider.

French assay marks.
Length of chain 128cms. Diameter of locket 1.6cms. 31gms.
£1,200-1,800 (plus 27.6% BP*)

509 A late Victorian gold Burmese pink sapphire and old-cut diamond three-stone ring, with rose-cut diamond accents.

With report 81289-58, dated 10th December 2020, from GCS, stating Myanmar (Burma), no heat, estimated weight 0.70ct.
Estimated total diamond weight 0.70ct, G-H colour, SI1-P1 clarity.
Ring size K1/2. 4.4gms.
£1,500-2,000 (plus 27.6% BP*)

510 An early 20th century 18ct gold Burmese ruby five-stone ring, with diamond point spacers.

With report 81289-51, dated 10th December 2020, from GCS, stating Myanmar (Burma), no heat, estimated total weight 2.10cts.
Stamped 18ct. Ring size M. 4.1gms.
£1,400-2,000 (plus 27.6% BP*)

511 An early 20th century platinum and 18ct gold old and rose-cut diamond bracelet.

Estimated total old-cut diamond weight 1.25cts, G-H colour, VS-SI clarity.
Length 18.2cms. 20.2gms.
£1,800-2,400 (plus 27.6% BP*)

512 A late Victorian silver and gold, ruby and old-cut diamond target cluster brooch.

Estimated total diamond weight 3.50cts, G-I colour, VS-SI clarity.
Diameter 3cms. 9.8gms.
With fitted case.
£3,000-4,000 (plus 27.6% BP*)

513 A pair of brilliant-cut diamond drop earrings.

One with report 2175499088, dated 26th February 2016, from the GIA, stating 1.53cts, Fancy Light Yellow-Brown colour, SI1 clarity.
Estimated total diamond weight 3cts.
Length 2.5cms. 3.7gms.
£3,500-4,500 (plus 27.6% BP*)

514 A late Victorian 18ct gold Burmese ruby and diamond hinged bangle.

With report 78165-89, dated 20th June 2018, from GCS, stating Myanmar (Burma), no heat, stated weight 3.40cts.
Estimated total diamond weight 1.90cts, H-I colour, VS2-SI2 clarity.
French re-strike mark. Inner diameter 5.4cms. 26.2gms.
£4,500-6,500 (plus 27.6% BP*)



515 A pair of late Georgian 18ct gold foil back amethyst cannetille earrings.

Length 4cms. 8.5gms.
£200-300 (plus 27.6% BP*)

516 A late Georgian gold enamel and colourless paste pendant.

Length 4.2cms. 8gms.
£280-380 (plus 27.6% BP*)

517 A Georgian gold, black enamel and rose cut diamond ring.

Estimated diameter of diamond 7.1mms.
Ring size L. 4.7gms.
£300-400 (plus 27.6% BP*)

518 A late 19th century 18ct gold sardonyx cameo brooch.

Length 4.3cms. 13gms.
£250-350 (plus 27.6% BP*)

519 An early to mid 19th century gold aquamarine, diamond and emerald cannetille brooch.

Aquamarine weight 10.62cts.
Estimated total diamond weight 0.50ct, H-I colour, VS2-SI1 clarity.
Length 2.9cms. 9.3gms.
£700-900 (plus 27.6% BP*)

520 A rose-cut diamond floral cluster dress ring.

Estimated dimensions of principal diamond 6.8 by 5.6mms.
Ring size M1/2. 8.9gms.
£500-700 (plus 27.6% BP*)

521 A foil back rose-cut diamond scrolling foliate brooch.

Estimated dimensions of principal rose-cut diamond 6 by 6.8mms.
Length 5.4cms.
£600-800 (plus 27.6% BP*)

522 A Georgian rose-cut diamond and blue glass ring.

Foreign mark. Ring size R1/2. 14.9gms.
£1,500-2,000 (plus 27.6% BP*)

523 A late Georgian gold and silver, diamond and enamel stickpin.

Principal old-cut diamond estimated weight 0.85ct, G-H colour, SI2-P1 clarity.
Diameter of stickpin head 2.1cms. 10.3gms.
£2,500-3,500 (plus 27.6% BP*)

524 An early to mid 19th century gold aquamarine brooch.

Aquamarine total weight 21cts.
Length 8cms. 16.2gms.
With later fitted case.
£1,400-2,000 (plus 27.6% BP*)

525 A late Georgian gold cannetille, aquamarine and garnet necklace, with matching brooch.

Length of necklace 44.5cms. Length of brooch 2.5cms. 86.1gms.
With fitted case.
£4,000-6,000 (plus 27.6% BP*)

526 A 19th century Burmese sapphire and old-cut diamond cluster ring.

With report 80261-95, dated 22nd May 2020, from GCS, stating Myanmar (Burma), no heat, estimated weight 2.30cts.
Estimated total diamond weight 1.90cts, H-I colour, VS clarity.
Approximate ring size L. 5.8gms.
With case.
£4,500-6,500 (plus 27.6% BP*)



BP* - Buyer's Premium of 23% (plus VAT) or 27.6% (VAT included)

Upcoming Events

The Jewellery of Henry VIII's Wives
Wednesday 28th October 2020
Live Webinar

Throughout history jewels have been viewed as the ultimate symbol of wealth and power: a visual statement of portable riches, and a vital part of the projection of majesty. This was particularly important in the sixteenth century, as it was an age when outward display was of the utmost importance. Nowhere is this more apparent than in the instances of the six wives of Henry VIII.

Nicola's talk will investigate the jewellery collections of these extraordinary women, as well as exploring the ways in which they wore and used jewels in varying contexts. In so doing, a fascinating new dimension to the famous Tudor King's queens is revealed.

Live Webinar (including recording) £5
Recording £3

Past Events

The Regicide of Charles I
Wednesday 23rd September 2020
Live Webinar

At 2pm, on Tuesday 30 January 1649, King Charles I stepped onto a wooden scaffold outside Whitehall's Banqueting House, knelt down in front of an audience of thousands and was publicly beheaded as a traitor. From imprisonment and trial to execution and legacy, historian Rebecca Rideal unravels one of the most important events in British history – the regicide of Charles I.

Live Webinar (including recording) £5
Recording £3

Dead Famous with Greg Jenner
Wednesday 26th August 2020
Live Webinar

From the Bronze Age to the coming of Hollywood's Golden Age, Greg has assembled a vibrant cast of over 125 actors, singers, dancers, sportspeople, freaks, demigods, ruffians, and more, in search of celebrity's historical roots. He reveals why celebrity burst into life in the early eighteenth century, how it differs to ancient ideas of fame, the techniques through which it was acquired, how it was maintained, the effect it had on public tastes, and the psychological burden stardom could place on those in the glaring limelight.

Recording £3

Watches for War with Simon de Burton
Wednesday 12th August 2020
Live Webinar

To celebrate August's Luxury Watch Auction, we invited watch aficionado, author and journalist Simon de Burton to share his knowledge and passion for rare watches with you. He explored the history of watches used in military settings from as far back as the 19th Century to the modern day. Simon also spoke about a set of watches that featured in the auction called the 'Dirty Dozen'.

Recording Free

Forensic Jewellery with Dr Maria MacLennan
Wednesday 24th June 2020
Live Webinar

Through a case study approach, Maria's talk will discuss some of her award-winning research into the area of 'Forensic Jewellery'; investigating the ways in which jewellery can assist with human identification in investigations of death, crime and disaster.

Recording £3



An invitation to consign

We are consigning for our winter auctions of jewellery, watches, antiques and designer handbags. For a free no-obligation valuation, email info@fellows.co.uk, visit www.fellows.co.uk or call 0121 212 2131

Sale Results For Fine Jewellery : 12/11/2020

1	£300	56	£620	121	£820	185	£3,600
2	£940	57	£3,000	122	£1,700	187	£2,200
3	£500	58	£2,500	123	£2,500	188	£2,300
4	£2,200	60	£1,600	124	£2,100	189	£1,800
5	£1,400	63	£800	125	£1,600	190	£1,500
6	£700	64	£2,900	126	£2,600	191	£740
7	£2,000	65	£3,200	127	£2,000	192	£2,700
8	£2,100	66	£2,400	128	£4,000	194	£1,600
9	£2,300	67	£2,500	130	£400	196	£5,800
10	£2,000	69	£4,700	132	£1,100	197	£3,000
11	£2,800	71	£540	134	£1,600	198	£2,700
12	£2,400	72	£380	136	£1,400	199	£2,500
13	£680	74	£460	138	£1,900	200	£1,600
14	£900	75	£760	139	£2,000	201	£2,700
15	£880	76	£900	140	£2,900	202	£1,200
16	£1,100	81	£2,400	141	£8,300	203	£900
17	£2,600	84	£700	142	£540	204	£960
18	£1,400	85	£940	143	£480	205	£800
19	£3,600	86	£820	146	£3,500	206	£1,400
23	£780	88	£1,500	147	£8,700	207	£4,700
24	£660	89	£2,000	150	£4,200	208	£2,100
25	£860	90	£960	151	£2,700	209	£2,700
26	£960	91	£2,000	154	£2,200	211	£1,900
27	£860	92	£2,800	155	£640	213	£2,500
28	£660	93	£8,000	156	£1,400	214	£1,100
29	£2,300	94	£820	157	£2,100	215	£2,300
30	£900	95	£580	158	£1,600	216	£700
31	£1,100	96	£1,400	159	£2,100	217	£1,100
33	£2,600	97	£920	160	£1,600	218	£860
34	£4,100	98	£1,000	161	£1,400	219	£820
35	£660	99	£960	162	£4,100	220	£1,100
36	£960	100	£1,300	163	£3,800	221	£2,400
37	£1,300	101	£1,100	164	£3,400	222	£1,300
38	£1,000	102	£2,000	165	£8,100	224	£1,600
39	£1,000	103	£1,700	166	£27,000	225	£1,100
40	£1,100	105	£1,800	167	£13,500	226	£2,200
41	£1,500	106	£1,300	168	£8,800	227	£3,600
42	£1,500	107	£460	169	£5,400	228	£3,200
43	£2,200	108	£1,200	173	£2,200	229	£2,800
44	£2,000	109	£1,300	174	£2,700	230	£1,100
45	£4,700	110	£1,600	175	£1,200	231	£3,400
47	£980	111	£2,200	176	£2,000	232	£720
48	£1,200	113	£900	177	£840	233	£2,000
49	£920	114	£1,400	178	£920	234	£4,400
50	£900	115	£920	179	£680	235	£460
51	£660	116	£1,100	180	£860	238	£1,800
52	£820	117	£4,500	181	£1,100	239	£2,600
53	£2,000	118	£920	182	£800	240	£1,900
54	£2,400	119	£680	183	£4,000	242	£550

Sale Results For Fine Jewellery : 12/11/2020

307	£560	363	£920	426	£780	482	£1,700	542	£1,000
308	£760	364	£560	427	£700	483	£3,100	543	£1,600
309	£1,600	365	£540	428	£1,400	485	£1,400	544	£2,700
310	£1,300	366	£500	429	£1,700	486	£1,900	547	£3,500
311	£1,000	367	£660	430	£2,800	487	£2,900	548	£3,500
312	£2,600	368	£880	431	£2,700	488	£2,000	550	£29,000
314	£2,000	371	£2,800	432	£740	489	£1,200	551	£620
315	£3,500	372	£2,900	433	£1,500	490	£2,100	552	£2,600
316	£860	374	£600	435	£1,100	491	£8,500	553	£1,500
317	£940	375	£1,400	436	£1,500	492	£920	555	£1,700
318	£1,300	376	£500	437	£980	493	£880	557	£1,200
319	£1,000	377	£1,400	438	£2,600	494	£1,200	558	£2,700
320	£1,600	379	£1,300	439	£1,800	495	£780	559	£4,100
322	£2,100	381	£5,400	440	£1,900	496	£1,800	560	£1,700
323	£3,100	382	£3,100	441	£1,600	497	£1,100	562	£2,500
324	£2,900	384	£620	442	£3,400	499	£1,400	563	£720
326	£3,800	385	£660	443	£4,400	500	£1,000	564	£1,300
327	£3,500	386	£940	444	£1,900	501	£1,400	565	£2,300
328	£1,400	387	£1,100	445	£2,300	503	£1,700	568	£2,100
329	£2,100	388	£2,100	446	£920	504	£640	569	£1,200
330	£880	389	£980	448	£2,800	505	£580	570	£3,500
331	£1,400	390	£1,100	449	£2,800	506	£750	571	£2,700
332	£1,200	392	£1,600	450	£2,200	508	£2,500	573	£2,400
334	£2,000	394	£2,500	451	£3,200	509	£1,800	574	£4,700
335	£3,600	395	£3,600	452	£5,100	510	£2,300	575	£450
336	£3,500	396	£820	453	£2,600	511	£780	576	£740
339	£8,800	397	£600	454	£3,800	512	£1,400	577	£800
340	£500	398	£1,300	455	£5,000	513	£2,100	578	£1,000
341	£1,400	399	£1,400	456	£1,600	514	£6,400	579	£1,500
342	£2,800	400	£1,200	457	£1,000	515	£3,100	581	£2,300
343	£1,100	401	£1,600	458	£1,000	516	£460	583	£4,100
344	£3,000	403	£2,000	459	£1,500	517	£900	584	£1,300
345	£2,100	405	£2,600	460	£1,100	518	£560		
346	£3,200	408	£740	461	£1,700	519	£800		
347	£5,400	409	£460	462	£1,800	520	£900		
348	£5,500	410	£500	463	£5,600	522	£600		
349	£7,200	412	£800	465	£11,500	524	£3,400		
350	£11,000	413	£1,900	466	£4,900	526	£1,000		
351	£20,000	414	£760	467	£18,000	527	£760		
352	£1,400	415	£1,300	468	£1,700	528	£760		
353	£1,900	416	£2,600	469	£1,300	529	£920		
354	£1,000	418	£1,700	470	£340	530	£1,300		
355	£1,800	419	£4,200	471	£600	531	£1,400		
356	£2,000	420	£620	474	£940	532	£1,200		
357	£2,300	421	£440	476	£1,600	534	£2,000		
359	£900	422	£820	477	£1,500	537	£6,400		
360	£6,000	423	£2,000	478	£2,900	538	£680		
361	£8,800	424	£720	480	£300	539	£1,100		
362	£600	425	£760	481	£640	541	£1,300		

Live Auctions

January	Pawnbroker Jewellery & Watches	Thursday 7th at 11am
	Online Jewellery Timed Auction	Ends Thursday 7th from 9am
	Silver & Costume Jewellery Timed Auction	Ends Thursday 14th from 9am
	Fine Jewellery	Thursday 21st at 11am
	The Gemstone Sale Timed Auction	Ends Friday 22nd from 9am
	Antiques, Silver & Collectables Timed Auction	Ends Monday 25th from 9am

IMPORTANT NOTICES FOR PURCHASERS

IMPORTANT NOTICE TO PROSPECTIVE BUYERS OF GEMSTONES/JEWELS

We recommend that you view any items you intend to purchase as refunds will not be given for buyer's remorse. This doesn't affect your statutory rights.

Notes 1 - Coloured Gemstones

Purchasers are advised that whilst great care has been taken in the examination of gemstones, it is not possible to test every gemstone within the constraints of time and equipment available outside of laboratory conditions. Any gemstone not provided with a laboratory report has been assessed by Fellows within the limitations of any mounting and an opinion has been given where possible.

Historically, many coloured gemstones have been subjected to a variety of treatments designed to enhance their appearance. Certain enhancement methods, such as heating, are routinely used to alter aspects of rubies, sapphires, and other gemstones. Oiling is often undertaken to enhance the clarity of emeralds. The international jewellery trade has generally accepted these and other enhancement methods. Some treatments are permanent whereas others may only be semi-permanent, possibly requiring further re-treatment in order to retain their appearance.

Because of the widespread variety of treatments within the jewellery industry, prospective purchasers should assume that all gemstones will have been treated unless statements are made to the contrary. Gemmological reports from internationally recognised Gemmological Laboratories will be noted in the item description where available.

Note 2 - Diamonds

Advancements in technology have led to some diamonds being treated in a number of ways, all designed to improve their appearance or alter their colour. Processes include but are not necessarily limited to: fracture filling, laser drilling, a combination of drilling and filling, HPHT treatment, irradiation and various coatings. Buyers are also alerted to the fact that synthetic diamonds are now produced in large quantities. Whilst every effort is made to identify or disclose treated and synthetic goods, it is not possible for Fellows to guarantee that all diamond set lots do not contain such material.

Fellows do not knowingly offer treated diamonds for sale, unless a gemmological opinion disclosing the type of treatment has been obtained and the treatment would be stated within the item description.

Note 3 - Weights and Measures

Estimated Diamond weights, colours and clarities (see Notes on Diamond Grading terms opposite) given by Fellows are intended as guides for prospective purchasers, with the given limitations of mounts and settings, and are opinions only, not guaranteed by Fellows.

Weights of coloured gemstones offered are extrapolated on the estimated dimensions, using trade standard formulae. Due to the traditional cutting techniques for coloured gemstones it is possible there may be discrepancy between the stated estimate and the unmounted weight.

Fellows uses a Thermo Scientific Nitron Handheld XRF Analyser to test metals. This technology is limited to examining metal to a depth of approximately 8 microns. Fellows does not guarantee the standard of gold or platinum unless an item is hallmarked. Results from electronically tested items should only be used as a guide and with caution, as false readings are possible.

Lengths and weights provided are estimates only.

The information stated in reports is the opinion of the respective laboratory and is not necessarily the opinion of Fellows auctioneers.

Note 4 - Condition Reports

Statements in the catalogue regarding the condition of lots in this sale may appear in the description, however, the absence of such a reference does not imply a lack of damage or wear, or lack of any further faults within the piece.

Please note that Fellows offer condition reports on almost every lot offered. Our condition reports are the opinion of Fellows and should only be referenced as a guide. We highly recommend that a prospective buyer views in person or sends a representative to satisfy themselves to the condition, originality and suitability of a piece(s) before bidding.

** Please note that these auctions are timed sales hosted by Fellows Live, more information can be found on our website.

Dates are subject to change, please check the website for the definitive auction list.

Fellows recommend that all bidders and buyers read our conditions of buying and buyer's premium available on our website.

For further information please contact:

Jewellery
David Pregun
david@fellows.co.uk
0121 212 2131

Watches
Laura Bishop
laurab@fellows.co.uk
0121 212 5506

Silver & Coins
Alison Jakeway
alisonj@fellows.co.uk
0121 212 2131

Antiques & Fine Art
Kevin Jackson
kevin@fellows.co.uk
0121 212 2131

Diamond Grading Terms

DIAMOND COLOUR

GIA	OLD WORLD TERMS	EXPLANATION	GIA	OLD WORLD TERMS	EXPLANATION
D	Finest White (Jager)	Colourless	K	Silver Cape (Top Cape)	Traces of colour. Small stones in this range will 'face up' colourless when mounted but larger stones will be tinted.
E	Finest White (River)	Colourless	L	Silver Cape (Top Cape)	Traces of colour. Small stones in this range will 'face up' colourless when mounted but larger stones will be tinted.
F	Fine White (River)	Colourless	M	Light Cape (Cape)	Traces of colour. Small stones in this range will 'face up' colourless when mounted but larger stones will be tinted.
G	Fine White (Top Wesselton)	Near Colourless: diamonds 'face up' colourless. Slight traces of colour will not be apparent in the mounted stones to other than the trained eye.	N	Light Cape (Low Cape)	Diamonds graded N through Z+ display a yellowish tint even to the untrained eye.
H	White (Top Wesselton)	Near Colourless: diamonds 'face up' colourless. Slight traces of colour will not be apparent in the mounted stones to other than the trained eye.	P	Cape O - R (Very Light Yellow)	Diamonds graded N through Z+ display a yellowish tint even to the untrained eye.
I	White (Top Wesselton)	Near Colourless: diamonds 'face up' colourless. Slight traces of colour will not be apparent in the mounted stones to other than the trained eye.	Z	Cape R - Z (Very Light Yellow)	Diamonds graded N through Z+ display a yellowish tint even to the untrained eye.
J	Top Silver (Top Wesselton)	Near Colourless: diamonds 'face up' colourless. Slight traces of colour will not be apparent in the mounted stones to other than the trained eye.	Z+	Fancy Yellow	Diamonds graded N through Z+ display a yellowish tint even to the untrained eye.

DIAMOND CLARITY

GIA	OLD WORLD TERMS	EXPLANATION	GIA	OLD WORLD TERMS	EXPLANATION
IF	Internally Flawless	No inclusions visible with a 10x lens even to an experienced grader.	S11 & S12	Slightly Included	Noticeable inclusions visible with a 10x lens.
VVS1 & VVS2	Very Very Slightly Included	Minute inclusions, which are difficult, even for experienced graders, to see with a 10x lens.	I1, I2 & I3	Pique 1, 2 & 3	Obvious inclusions, may be visible to the unaided eye, face up. In I3 they may affect the stone's durability.
VS1 & VS2	Very Slightly Included	Minor inclusions, observable with effort with a 10x lens.			

Our lots are almost exclusively antique or secondhand and as such should be expected to have small signs of wear and use commensurate with the age of the piece.

Some jewellery sales will also have a condition report banding scale which applies as follows:

A

No obvious faults other than wear in keeping with age and use.

B

Minor faults. There may be abrasion and/or small nicks to gemstones. General moderate wear from use possibly including but not necessarily limited to small dents and deep scratches. The piece may have been altered from its original design but to a reasonable standard.

C

Faults. Gemstones may be noticeably chipped along with abrasion and nicks. Non-principal gems may be deficient. The piece may have noticeable dents/tears or small losses that affect the overall appearance of the design. The piece may have had alterations from its original design that may be apparent under scrutiny.

D

Significant faults. Gemstones may be deficient, chipped or otherwise damaged. The piece may require attention before it is wearable, pins or clasps may be broken. There may be significant dents, tears, losses or alterations to the metal. The piece may have had alterations from its original design that are readily apparent.

E

At Fault. Gems will be damaged and/or deficient. Noticeable damage. The piece is unwearable.

Catalogue Subscription Service

If you would like to receive catalogues on a regular basis, please mark the appropriate category and return this form with a cheque made payable to Fellows for the full amount.

Subscriptions last for a 12 month period

Jewellery 18 catalogues per year	£120
Fine Jewellery 6 catalogues per year	£60
The Luxury Watch Sale 6 catalogues per year	£60
The Designer Collection 5 catalogues per year	£50
Antiques, Silver & Collectables 5 catalogues per year	£50
The Gemstone Sale 4 catalogues per year	£35
Watches & Watch Parts 4 catalogues per year	£35

All of the above catalogues are available to view **FREE** of charge on our website www.fellows.co.uk

Name (Block Capitals)

Address (Block Capitals)

Post Code Telephone

Signature Date

Email

Commission Bidding Slip

Thursday 21st January 2021

Fine Jewellery

Please bid on my behalf for the lot(s) shown below.

The bids will be executed as cheaply as is permitted by other bids in the room or reserves.

I have read and agree to comply with the Conditions of Sale as printed in the catalogue.

Any account for items purchased on my behalf will be settled within 24 hours of the sale and the items collected within two days of sale.

Please complete in block capitals.

Name

Address

Postcode.....

Telephone.....

Email

Signed Date.....

Lot	Price	Lot	Price	Lot	Price	Lot	Price

Buyer's Premium <small>On the first £100,000 of the Hammer Price (of any individual Lot) the Buyer will pay the Hammer Price and a premium of 23% (plus VAT) or 27.6% (inclusive of VAT). On the excess over £100,000 of the Hammer Price (of any individual Lot), the Buyer will pay the Hammer Price and a premium of 15% (plus VAT) or 18% (inclusive of VAT). Lots prefixed with * will carry VAT at 20% on the hammer price.</small>	Please note the bidding increments £50 - £100 £5 increments £100 - £200 £10 increments £200 - £1000 £20 increments £1000 - £10,000 £100 increments Over £10,000 £1000 increments	Any bids shown not complying with these increments will be ROUNDED UP to the next increment.
---	--	---

Contact Information

Directors

Stephen Whittaker BA (Hons) Jayne Whittaker Ben Griffiths BSc (Hons)

Departments

Customer Services

0121 212 5508
info@fellows.co.uk
 Olivia Dean-Goodchild
 Gemma Sheldon

Finance

0121 212 2131
wendy@fellows.co.uk
 Wendy Butler
 Angela Donnelly BA (Hons) ACMA
 Gemma Wilkes

Photography

0121 212 2131
photography@fellows.co.uk
 Claire Cleaver
 Polly Shave MA (Hons)

Marketing

0121 212 5500
marketing@fellows.co.uk
 Liam Bolland BA (Hons)
 Jordan Guest MA (Hons)
 Luke Poole BA (Hons)
 Alexandra Whittaker BA (Hons)
 Nicola Whittaker Bsc (Hons), Cert. GA

London Office

0207 127 4198
london@fellows.co.uk
 Kirsty Basset
 Natasha Davis BA (Hons), FGA
 Isabelle Mettan-Ure
 Annabel Zarandi BA (Hons)

Specialist Departments

Jewellery

0121 212 6303
jewellery@fellows.co.uk
 Lindsay Beardmore FGA, DGA
 Jenny Darcy BA (Hons)
 Alexander Duffy BSc (Hons), FGA, DGA
 Penelope Gilliver FGA, DGA
 Patricia Grant BA (Hons)
 Kathryn Hodkin MSci (Hons), FGA, DGA
 Ben Randall BA (Hons), G.G., A.J.P.
 Emma Scriven BA (Hons), FGA, DGA
 Emma Testill FGA, DGA
 Amanda Zhang FGA, Msc

Watches

0121 212 5506
watches@fellows.co.uk
 Laura Bishop MA (Hons)
 Kes Crockett BA (Hons)
 Michael Jagiela
 Steven Yambo BA (Hons)

Pawnbrokers

0121 212 6308
pawnbroker@fellows.co.uk
 Kate Bannister
 Laura Boccardo
 Claire Dodwell
 Annaliese Foster BA (Hons)
 Nicole Flavell-Avery
 Ross Popescu

Antiques, Silver & Collectables

0121 212 6302
antiques@fellows.co.uk
silverdept@fellows.co.uk
 Madeleine Cater BA (Hons)
 Kevin Jackson
 Alison Jakeway MA MRICS
 Stephen Watton BA (Hons)

Designer Collection

0121 212 6306
thedesignercollection@fellows.co.uk
 Monisha Cooper
 Sophie Higgs



Birmingham Saleroom

Situated in the heart of Birmingham's Jewellery Quarter, Fellows is easily accessible from all parts of the United Kingdom, Europe and beyond.

Head Office & Saleroom
 Augusta House
 19 Augusta Street
 Birmingham
 B18 6JA

Telephone: 0121 212 2131
 Email: info@fellows.co.uk

London Office

Fellows' London office offers valuations, please call to arrange a time to visit.

London Office
 29 Charles Street
 Mayfair
 London
 W1J 5DT

Telephone: 020 7127 4198
 Email: london@fellows.co.uk



Follow us on....



facebook.com/fellowsauctions



[fellowsauctions](https://instagram.com/fellowsauctions)



[@fellowsauctions](https://twitter.com/fellowsauctions)



youtube.com/fellows1876



Fellows

Established 1876

Head Office & Saleroom: Augusta House | 19 Augusta Street | Birmingham B18 6JA
London Office: 29 Charles Street | Mayfair | London W1J 5DT
Tel 0121 212 2131 | Tel 020 7127 4198 | www.fellows.co.uk