

Fellows
Established 1876



Fine Jewellery

Thursday 25th March 2021

Fine Jewellery

Thursday 25th March 2021
Starts at 11:00am

Viewing Times

Virtual viewings are available by request.
Please email hello@fellows.co.uk to arrange your appointment.

Certificated stones,

Lot No. 17, 18, 37, 47, 48, 51, 59, 119, 142, 148, 157, 167, 183, 206, 207, 208,
249, 287, 303, 305, 306, 318, 325, 333, 396, 438, 447, 458, 464, 479, 481, 562,
573, 584, 629

Featured Lots

Lots 94, 144, 145, 160, 194 and 196
(Front Cover)



Lots 188, 190 and 195
(Back Cover)



Lots 394

Free Live Bidding!

As well as offering 0% bidding surcharge via **Fellows Live** we are also delighted to announce that there is **free** worldwide shipping on this auction.



Free delivery on this auction.

Why Buy?

- COMPETITIVE** buyer's premium
- FREE** live online bidding
- FULLY** illustrated catalogue
- EASY** to use, functional website
- ACCURATE** condition reports
- SPECIALISTS** on hand to offer advice
- TRACKED AND INSURED** shipping*

*Please contact Fellows for further information.

Why Sell?

- HIGH PRICES** consistently achieved
- FLEXIBLE** commission rates
- FREE** valuations with no obligation to consign
- RAPID** turnaround for your goods
- TARGETED** advertising to a global audience
- SUPERIOR** quality catalogues
- FULLY** integrated website

Contact the department...

Ben Randall
Senior Specialist & Catalogue Manager
0121 212 6312
ben@fellows.co.uk


Alexander Duffy
Cataloguer
0121 212 6301
alex@fellows.co.uk



Free virtual viewings are available by appointment. Please email hello@fellows.co.uk for more information and to book an appointment.

Further information





 **Additional Images and Condition Reports** can be found online at our website www.fellows.co.uk

 **Telephone Bidding** is available if you cannot attend an auction. Please ring 0121 212 2131 to arrange a telephone line.

Important Notice

Neither Fellows nor the Vendors are responsible for any reference as to the condition of lots listed. The absence of such reference does not imply that a lot is in good condition or free from faults or imperfections. All weights and dimensions are approximate. Purchasers are advised to carefully inspect lots and make their own opinion as to the condition. Please see section 7 under 'Bidders' in our full terms and conditions. View Fellows Important Notices in full and full terms and conditions at the back of the catalogue.

Key to Symbols

-  Lot may have export restrictions.
-  Lot comes with box.
-  Lot comes with Report.
-  Lot will carry an additional 20% VAT charge on the hammer price.

Follow Us





Safety at
Fellows
Established 1876

We want our colleagues and customers to both feel safe when we re-open our offices on Monday 12th April 2021.

As such, processes and standard operating procedures will be in place at both our London and Birmingham offices for the foreseeable future.

Visitors to our offices

- Hand sanitising points are available at all entry points with clear signage.
- All visitors will be required to wear gloves and masks, stocks are in place to provide these for all visitors if necessary.
- Floors will be clearly marked to ensure that social distancing can be maintained throughout the building.
- HikVision Thermal Camera in reception areas both in London and Birmingham to test for elevated temperatures.
- Physical viewing in both London and Birmingham will be by appointment, via our online automated booking system.
- Valuations will be conducted by prior appointment at our offices in London and Birmingham, or by Zoom.

Our team

- All Fellows employees will have their own gloves and masks.
- Home working and staggered working hours will become the norm, we have embraced technology such as Zoom and Slack to allow our colleagues to communicate seamlessly regardless of their location.
- Safety screens are in place to protect our colleagues and customers.

It is important that the measures above are respected and adhered to.



Fellows

Established 1876

Auctioneers & Valuers
Antiques | Jewellery | Watches

Virtual Viewings and Valuations

**View our auctions or receive a free valuation
from the comfort of your own home!**

We are offering viewings of our auctions and valuations to you from the comfort of your own home.

We appreciate that you may not be able to visit either of our offices so we are bringing it to you.

We use video conferencing technology called 'Zoom' where you will be able to see our specialists on your screen. In this private appointment they will be able to either appraise your item or show you a number of lots from an upcoming auction.

All you need is an appointment and a computer or laptop with a webcam. A phone or tablet will also work.

Interested?

Book an appointment today by emailing
info@fellows.co.uk or call **0121 212 2131**

1 A platinum tanzanite and brilliant-cut diamond pendant, with chain.

Tanzanite weight 2.75cts.
Diamond laser inscribed to girdle GIA 2196316173, corresponding to a report dated 22nd January 2015, from the GIA, stating 0.76ct, D colour, VS2 clarity.
Hallmarks for Sheffield. Length of pendant 2.5cms. Length of chain 43cms. 6.3gms.
£1,000-1,500 (plus 27.6% BP*)

2 A platinum tanzanite and diamond three-stone ring.

Tanzanite calculated weight 5.65cts, based on estimated dimensions of 12.5 by 9.4 by 7mms.
Estimated total diamond weight 0.75ct, VS-SI clarity.
Hallmarks for Sheffield. Ring size O. 12.3gms.
£600-800 (plus 27.6% BP*)

3 An 18ct gold garnet and diamond ring.

Garnet weight 4.73cts.
Estimated total diamond weight 0.15ct, H-I colour, VS-SI clarity.
Hallmarks for Birmingham, 2018.
Ring size N. 5.7gms.
£150-200 (plus 27.6% BP*)

4 A heart-shape cabochon emerald and brilliant-cut diamond pendant.

Emerald calculated weight 3.30cts, based on estimated dimensions of 8.9 by 8.8 by 6.2mms.
Estimated total diamond weight 0.50ct, G-H colour, VS clarity.
Dutch mark, stamped 750. Length 2.4cms. 6.1gms.
£300-400 (plus 27.6% BP*)

5 An 18ct gold emerald and diamond dress ring.

Emerald calculated weight 5.79cts, based on estimated dimensions of 10.7 by 9.7 by 7.6mms.
Estimated total diamond weight 0.80ct, G-H colour, VS-SI clarity.
Hallmarks for Edinburgh. Ring size N. 9gms.
£500-700 (plus 27.6% BP*)

6 An oval-shape 'brown' diamond ring, with brilliant-cut diamond surround.

Principal diamond estimated weight 1.50cts, 'brown' colour, SI clarity.
Estimated total brilliant-cut diamond weight 0.20ct, G-H colour, VS clarity.
Ring size K1/2. 3.7gms.
Diamond untested for natural colour origin.
£700-900 (plus 27.6% BP*)

7 A pair of sapphire, yellow sapphire and diamond floral earrings.

Estimated total diamond weight 0.10ct, G-H colour, VS-SI clarity.
Length 2.1cms. 9.7gms.
£400-600 (plus 27.6% BP*)

8 A ruby and diamond cluster ring.

Ruby calculated weight 1.08cts, based on estimated dimensions of 6.4 by 5.3 by 3.4mms.
Estimated total diamond weight 1.60cts, G-H colour, VS-SI clarity.
Ring size Q. 4.2gms.
£700-900 (plus 27.6% BP*)

9 An 18ct gold ruby and diamond cluster heart pendant, with chain.

Ruby calculated weight 1.09cts, based on estimated dimensions of 7.8 by 6.4 by 2.8mms.
Estimated total diamond weight 0.65ct, G-I colour, VS1-SI1 clarity.
Hallmarks for Birmingham, 1997 and import marks for Birmingham.
Length of pendant 2.1cms. Length of chain 41.5cms. 9.1gms.
£700-900 (plus 27.6% BP*)

10 An old-cut diamond floral cluster bangle.

Principal diamond estimated weight 1.40cts, F-G colour, VS clarity.
Estimated total diamond weight 10cts, F-I colour, predominantly VS-SI clarity.
Inner diameter 5cms. 25.5gms.
£3,500-4,500 (plus 27.6% BP*)

11 A cushion-shape and circular-cut diamond triple bar brooch, with chain swag spacers.

Principal diamond weight 3.52cts, estimated tinted colour, VVS2-VS1 clarity.
Estimated total circular-cut diamond weight 2.75cts, H-I colour, VS1-SI1 clarity.
Length of bar brooches 3.6cms each. 12.1gms.
£7,000-10,000 (plus 27.6% BP*)

12 A circular-cut Light Pinkish Brown diamond and diamond graduated two-stone pendant, with 18ct gold chain.

Principal diamond with **verbal** from GCS, stating Type IIA, Light Pinkish Brown colour, SI1 clarity, colour origin undeterminable.
Weight of principal diamond 4.37cts. Contact department for further details.
Estimated weight of non-principal diamond 1.60cts, H-I colour, SI clarity.
Chain with hallmarks for Birmingham.
Length of pendant 2.6cms. Length of chain 40cms. 4.8gms.
£10,000-15,000 (plus 27.6% BP*)



12

11

10

1

9

2

3

5

8

7

6

4

13 A Burmese ruby and circular-cut diamond cluster ring.

Verbal from GCS, stating Burma, no heat.
Ruby calculated weight 0.58ct, based on estimated dimensions of 5.5 by 4.5 by 2.8mms.
Estimated total diamond weight 0.50ct, H-I colour, SI1-P1 clarity.
Ring size M1/2. 2.4gms.
£250-350 (plus 27.6% BP*)

14 A late Victorian silver and gold old-cut diamond heart pendant, with similarly-cut diamond bow surmount.

Estimated total diamond weight 1ct.
Length 2.6cms. 3.1gms.
£300-400 (plus 27.6% BP*)

15 A late 19th century silver and 18ct gold, rose-cut diamond and pearl lyre and laurel branch brooch.

French assay marks. Length 5.3cms. 7gms.
With Mappin & Webb case.
£350-450 (plus 27.6% BP*)

16 An 18ct gold ruby and old-cut diamond cluster dress ring.

Estimated total diamond weight 0.60ct, G-H colour, SI clarity.
Hallmarks for Birmingham, 2011. Ring size I. 3.1gms.
£300-400 (plus 27.6% BP*)

17 A natural pearl and old-cut diamond clasp.

With report 18489, dated 10th March 2020, from The Gem & Pearl Laboratory, stating 8.3-8.5mms width, natural, saltwater.
Estimated total diamond weight 0.40ct, H-I colour, SI1-P1 clarity.
Length 1.8cms. 3.4gms.
£600-800 (plus 27.6% BP*)

18 A graduated natural pearl single-strand necklace, with 19th century silver and gold old-cut diamond clasp.

With report 19259, dated 6th November 2020, from The Gem & Pearl Laboratory, stating all but two natural, saltwater.
Estimated total diamond weight 0.25ct, H-I colour, SI clarity.
Length 36cms. 5.5gms.
£600-800 (plus 27.6% BP*)

19 An emerald and diamond half eternity ring.

Estimated total diamond weight 0.25ct, G-H colour, VS-SI clarity.
Ring size K1/2. 4.3gms.
£700-900 (plus 27.6% BP*)

20 An early 20th century Belle Époque platinum and gold, aquamarine briolette and diamond necklace.

Aquamarine calculated weight 3.70cts, based on estimated dimensions of 15.5 by 7.7 by 7.6mms.
Estimated total old-cut diamond weight 0.30ct, H-I colour, SI clarity.
Length 38.5cms. 4.7gms.
With fitted Goldsmiths & Silversmiths Co. Ltd case.
£700-900 (plus 27.6% BP*)

21 An early 20th century platinum ruby and vari-cut diamond cluster ring.

Estimated total old-cut diamond weight 0.15ct, G-I colour, SI1-P1 clarity.
Ring size L. 4.4gms.
£650-850 (plus 27.6% BP*)

22 An early 20th century 18ct gold sapphire and old-cut diamond dress ring.

Estimated total diamond weight 0.50ct, G-I colour, VS2-P1 clarity.
Stamped 18ct. Ring size P. 4.2gms.
£800-1,200 (plus 27.6% BP*)

23 An early 20th century platinum ruby and old-cut diamond two-stone ring, with rose-cut diamond shoulders.

Ruby calculated weight 0.86ct, based on estimated dimensions of 5.6 by 5.5 by 3.5mms.
Old-cut diamond estimated weight 0.70ct, I-J colour, SI clarity.
French re-strike mark. Ring size L1/2. 3.5gms.
£1,000-1,500 (plus 27.6% BP*)

24 A pair of ruby and diamond cluster earrings.

Estimated total diamond weight 1.25cts, G-H colour, VS-SI clarity.
Diameter 1.4cms. 8.1gms.
£1,000-1,500 (plus 27.6% BP*)

19



15



20



21



14



23



22



24



18



16



17



13



25 A pair of 18ct gold diamond 'The London Collection' earrings, with detachable black spinel tassel.

Estimated total diamond weight 1.25cts, G-H colour, VS clarity. Hallmarks for London, 2018. Length 7.5cms. 28.3gms.

£500-700 (plus 27.6% BP*)

26 An 18ct gold diamond, rock crystal and blue gem 'Crystal Haze' dress ring, by Stephen Webster.

Estimated total diamond weight 0.50ct, predominantly G-H colour, VS clarity.

Hallmarks for London, 2008. Ring size N. 20.4gms.

£700-900 (plus 27.6% BP*)

27 A blue zircon and old-cut diamond necklace.

Estimated total diamond weight 0.60ct. Length of pendant section 7.8cms. Length of chain 42cms. 17.6gms.

£1,000-1,500 (plus 27.6% BP*)

28 An 18ct gold green zircon and French-cut diamond ring.

Zircon weight 19.30cts. Total diamond weight 0.41 ct, estimated G-H colour, SI clarity. Hallmarks for London, 2011. Ring size M1/2. 11.7gms.

£1,000-1,500 (plus 27.6% BP*)

29 An aquamarine single-stone ring.

Aquamarine weight 16.80cts. Ring size M1/2. 8.6gms.

£900-1,400 (plus 27.6% BP*)

30 A sapphire and diamond cluster dress ring.

Sapphire weight 2.06cts. Total diamond weight 0.30ct, estimated H-I colour, VS-SI clarity. Stamped 18K 750. Ring size M. 5.1gms.

£1,000-1,500 (plus 27.6% BP*)

31 An 18ct gold aquamarine and diamond cluster ring.

Aquamarine weight 6.02cts. Total diamond weight 0.47ct, estimated H-I colour, SI1-P1 clarity. Hallmarks for Birmingham. Ring size N. 5.7gms.

£1,200-1,800 (plus 27.6% BP*)

32 An 18ct gold sapphire and brilliant-cut diamond three-stone ring.

Estimated total diamond weight 0.90ct, H-I colour, SI clarity. Hallmarks for Sheffield. Ring size N. 5.4gms.

£1,500-2,000 (plus 27.6% BP*)

33 A pair of brilliant-cut diamond circular cluster earrings.

Total diamond weight 2.67cts, estimated G-H colour, VS-SI clarity. Hallmarks for Birmingham. Diameter 1.4cms. 6.3gms.

£2,000-2,500 (plus 27.6% BP*)

34 An 18ct gold tanzanite and diamond cluster ring.

Tanzanite weight 6.62cts. Total diamond weight 0.37ct, estimated H-I colour, SI clarity. Hallmarks for Birmingham. Ring size O. 5.9gms.

£1,800-2,400 (plus 27.6% BP*)

35 An emerald, sapphire and pavé-set diamond fleur-de-lis dress ring.

Emerald calculated weight 2.11 cts, based on estimated dimensions of 13.1 by 7.1 to 5.5 by 4.1 mms.

Estimated total diamond weight 2cts, predominantly H-J colour, SI clarity.

Stamped 750. Ring size N1/2. 16.2gms.

£2,000-2,500 (plus 27.6% BP*)

36 An 18ct gold brilliant-cut diamond line bracelet.

Total diamond weight 12.88cts, estimated H-tinted colour, P1-P2 clarity. Hallmarks for Sheffield. Length 18.5cms. 19.9gms.

£4,500-6,500 (plus 27.6% BP*)



37 A pair of brilliant-cut diamond stud earrings.

With report card 23J764181808, from IGI, stating total diamond weight 0.64ct, F-G colour, VS clarity.

Stamped 18K. 1.7gms.

£500-700 (plus 27.6% BP*)

38 A brilliant-cut diamond single-stone ring, by Boucheron.

Diamond weight 0.38ct, estimated G-H colour, VS clarity.

Stamped 950PT. French assay marks.

Ring size K. 7.4gms.

£700-900 (plus 27.6% BP*)

39 A pair of pavé-set diamond earrings.

Estimated total diamond weight 1ct, H-I colour, VS-SI clarity.

Stamped 750. Length 1.6cms. 5gms.

£700-900 (plus 27.6% BP*)

40 An 18ct gold brilliant-cut diamond line bracelet.

Estimated total diamond weight 2.60cts, H-J colour, VS-SI clarity.

Hallmarks for London. Length 17cms. 8.5gms.

£1,000-1,500 (plus 27.6% BP*)

41 A pair of pavé-set diamond 'Ice Cube' earrings, by Chopard.

Estimated total diamond weight 0.35ct, G-H colour, VS clarity.

Stamped 750. Length 1.5cms. 12gms.

£900-1,400 (plus 27.6% BP*)

42 An 'Atlas' bracelet, by Tiffany & Co.

Stamped 750, Italy, 2003. Length 17.2cms. 25.4gms.

£1,200-1,800 (plus 27.6% BP*)

43 A pair of 18ct gold pavé-set diamond earrings, by Piaget.

Estimated total diamond weight 2.20cts, H-I colour, VS clarity.

Swiss marks, stamped 750. Length 1.8cms. 13.4gms.

£1,000-1,500 (plus 27.6% BP*)

44 A diamond crossover dress ring, by Cartier.

Estimated total diamond weight 0.60ct, G-H colour, VS clarity.

French assay marks, stamped 750. Ring size N. Cartier size 54. 18.5gms.

With maker's case.

£1,500-2,000 (plus 27.6% BP*)

45 A platinum brilliant-cut diamond halo cluster ring.

Principal diamond estimated weight 0.90ct, G-H colour, SI2-P1 clarity.

Estimated total diamond weight 1.20cts, G-H colour, VS-SI clarity.

Hallmarks for Birmingham. Ring size L. 4.8gms.

£1,500-2,000 (plus 27.6% BP*)

46 A pair of 18ct gold brilliant-cut diamond floral cluster earrings.

Total diamond weight 2.06cts, estimated H-I colour, SI clarity.

Hallmarks for Birmingham. Diameter 1.3cms. 4gms.

£1,400-2,000 (plus 27.6% BP*)

47 A platinum brilliant-cut diamond single-stone ring, with matching band ring, by Tiffany & Co.

With report 22376233/H09200477, from Tiffany & Co., stating

0.93ct, E colour, VS1 clarity.

Hallmarks for London, 2007. Band ring stamped PT950. Ring sizes R and S. 8gms.

£2,800-3,200 (plus 27.6% BP*)

48 A brilliant-cut diamond single-stone ring, by Cartier.

With report 2186015894, dated 1st September 2014, from the GIA, stating 1.17cts, G colour, VVS1 clarity.

Stamped Pt950. Ring size L. Cartier size 52. 5.2gms.

With maker's case and certificate of authenticity.

£4,500-5,500 (plus 27.6% BP*)



39



38



43



46



45



48



47



41



37



42



40



44

49 A pair of sapphire and diamond cluster earrings.

Sapphire calculated total weight 0.90ct, based on estimated dimensions.
Estimated total diamond weight 0.60ct, H-K colour, SI1-P2 clarity.
Stamped 14K. Length 0.9cm. 2.5gms.
£280-360 (plus 27.6% BP*)

50 An Akoya cultured pearl necklace, by Mikimoto.

Stamped K18. Length 40cms. 5.9gms.
With maker's case.
£400-600 (plus 27.6% BP*)

51 A pair of brilliant-cut diamond stud earrings.

With report card 23J764021808, from IGI, stating total diamond weight 0.64ct, F-G colour, VS clarity.
Stamped 18K. 1.7gms.
£500-700 (plus 27.6% BP*)

52 A pavé-set diamond bow ring, by Hermès.

Estimated total diamond weight 0.20ct, H-I colour, VS clarity.
French assay marks, stamped Au750. Ring size M. 9.8gms.
With maker's case.
£600-900 (plus 27.6% BP*)

53 An 18ct gold brilliant-cut diamond three-stone crossover ring.

Estimated total diamond weight 1ct, principal diamonds estimated G+ colour, P1 clarity.
Hallmarks for Birmingham. Ring size H. 3.4gms.
£800-1,200 (plus 27.6% BP*)

54 An 18ct gold 'Love' bangle, by Cartier.

Swiss convention marks.
Inner diameter 5.6cms. Cartier size 17. 20.1gms.
£900-1,400 (plus 27.6% BP*)

55 A diamond 'Dedicata a Venezia' ring, by Bulgari.

Principal diamond laser inscribed to girdle GIA 2121652935, corresponding to a report dated 15th October 2010, from the GIA, stating 0.50ct, D colour, VS1 clarity.
Estimated total diamond weight 1ct. Stamped Pt950. Ring size L1/2. 4.8gms.
£900-1,400 (plus 27.6% BP*)

56 A blue topaz and diamond 'So Happy - Happy Diamonds' heart pendant, with chain.

Stamped 750. Length of pendant 2cms. Length of chain 41 cms. 6.4gms.
With maker's case and certificate of authenticity.
£900-1,400 (plus 27.6% BP*)

57 An 18ct gold aquamarine and diamond cluster ring.

Aquamarine weight 7.01cts.
Total diamond weight 0.42ct, estimated H-I colour, SI clarity.
Hallmarks for Birmingham. Ring size N1/2. 5.9gms.
£1,200-1,800 (plus 27.6% BP*)

58 A platinum no heat sapphire cabochon and old-cut diamond three-stone ring.

With **photocopy** of report 5777-9454, dated 27th March 2017, from GCS, stating basaltic, no heat.
Estimated total diamond weight 0.50ct, G-J colour, VS2-SI1 clarity.
Hallmarks for London, 2017. Ring size M. 9.7gms.
£1,800-2,400 (plus 27.6% BP*)

59 A platinum brilliant-cut diamond single-stone ring, with diamond floral gallery and shoulders.

With report 6157851088, dated 6th January 2014, from the GIA, stating 1.01cts, H colour, VVS2 clarity.
Hallmarks for London, 2014. Ring size P. 6.1gms.
£3,000-4,000 (plus 27.6% BP*)

60 An 18ct gold brilliant-cut diamond single-stone ring.

Estimated diamond weight 2cts, tinted colour, SI2-P1 clarity.
Hallmarks for Sheffield. Ring size M. 4.7gms.
£4,000-6,000 (plus 27.6% BP*)



50



54



52



56



57



60



49



53



51



59



58



55

61 An 18ct gold diamond 'Idylle Blossom LV' bracelet, by Louis Vuitton.

Hallmarks for London. Length 17.5cms. 3gms.
£300-400 (plus 27.6% BP*)

62 A pair of 18ct gold diamond 'Monogram Idylle' earrings, by Louis Vuitton.

Estimated total diamond weight 0.10ct, G+ colour, VS clarity.
Hallmarks for London. Length 3.6cms. 10.2gms.
With maker's case.
£500-700 (plus 27.6% BP*)

63 An 18ct gold citrine and diamond cluster ring.

Citrine weight 4.13cts.
Total diamond weight 0.36ct, estimated H-I colour, SI1-P1 clarity.
Hallmarks for Birmingham. Ring size N1/2. 4.8gms.
£450-650 (plus 27.6% BP*)

64 A pair of 'Diamonds by the Yard' stud earrings, by Elsa Peretti, for Tiffany & Co.

Total diamond weight 0.34ct, estimated D-F colour, VVS-VS clarity.
Stamped PT950. 1.5gms.
With maker's case.
£450-650 (plus 27.6% BP*)

65 A 'Diamonds by the Yard' necklace, by Elsa Peretti, for Tiffany & Co.

Diamond weight 0.17ct, estimated D-F colour, VS clarity.
Stamped PT950. Length 42cms. 2.3gms.
With maker's case.
£450-650 (plus 27.6% BP*)

66 A brilliant-cut diamond single-stone ring, by Tiffany & Co.

Diamond weight 0.58ct, estimated G-H colour, VS clarity.
Stamped PT950. Ring size M1/2. 5gms.
£800-1,200 (plus 27.6% BP*)

67 A diamond 'T Smile' necklace, by Tiffany & Co.

Estimated total diamond weight 0.10ct, G-H colour, VS clarity.
Stamped AU750. Length 42cms. 2.1cms.
With maker's case.
£600-800 (plus 27.6% BP*)

68 A brilliant-cut diamond bar motif eternity ring, by Chanel.

Estimated total diamond weight 0.55ct, G-H colour, predominantly VS clarity.
French assay marks. Ring size L. 5.4gms.
£600-800 (plus 27.6% BP*)

69 A brilliant-cut diamond and ruby rope-twist tapered band ring, by Dior.

Estimated total diamond weight 0.25ct, G-H colour, VS clarity.
Stamped 750. Ring size K. 4.9gms.
With maker's case.
£600-800 (plus 27.6% BP*)

70 A brilliant-cut diamond full eternity ring, with similarly-cut diamond sides, by Boucheron.

Estimated total diamond weight 1ct, G-H colour, VS clarity.
Stamped 750. Ring size J1/2. 5gms.
£900-1,400 (plus 27.6% BP*)

71 A diamond 'Snowflake' cluster ring, by Tiffany & Co.

Estimated total diamond weight 0.45ct, G-H colour, VS clarity.
Stamped PT950. Ring size G1/2. 4.1gms.
£800-1,200 (plus 27.6% BP*)

72 An 18ct gold sapphire and diamond 'Flora' necklace, by Gucci.

Hallmarks for Birmingham. Italian marks.
Length 44cms. 3.9gms.
£1,200-1,800 (plus 27.6% BP*)



65



68



62



62

62

67

67



69

69



63

63

72

72



61

61



70

70

66

66

71

71

64

64



64

73 A pearl and diamond bar brooch, with enamel accent tentacle-like mounts.

Estimated total diamond weight 0.10ct, H-I colour, VS-SI clarity.
Length 9cms. 11.5gms.
Pearls untested for natural origin.
£300-400 (plus 27.6% BP*)

74 A pair of deep red garnet and brilliant-cut diamond earrings.

Estimated total garnet weight 9cts.
Italian marks. Length 2cms. 4.7gms.
£350-450 (plus 27.6% BP*)

75 A tanzanite and diamond cluster ring.

Tanzanite calculated weight 1.73cts, based on estimated dimensions of 7.9 by 6 by 4.1mms.
Estimated total diamond weight 1ct, H-K colour, SI1-P1 clarity.
Ring size N. 4.4gms.
£700-1,000 (plus 27.6% BP*)

76 A boulder opal, garnet and diamond cluster ring, by Fei Liu.

Boulder opal weight 3.56cts.
Total diamond weight 0.18ct, estimated G-H colour, VS-SI clarity.
Stamped Au750. Ring size N. 7.3gms.
£900-1,400 (plus 27.6% BP*)

77 A boulder opal, garnet and diamond pendant, with chain, by Fei Liu.

Boulder opal weight 4.41cts.
Total diamond weight 0.35ct, estimated G-H colour, VS-SI clarity.
Stamped 750. Length of pendant 3.4cms. Length of chain 46cms. 7.3gms.
£1,000-1,500 (plus 27.6% BP*)

78 A square-shape diamond full eternity ring.

Estimated total diamond weight 3.10cts, predominantly G-H colour, VS clarity.
Ring size Q1/2. 5.5gms.
£900-1,400 (plus 27.6% BP*)

79 An 18ct gold diamond and fancy coloured diamond necklace.

Estimated total diamond weight 6.40cts, VS2-P1 clarity.
Hallmarks for Birmingham, 2018. Length 46.5cms. 21.7gms.
Diamonds untested for natural colour origin.
£1,800-2,400 (plus 27.6% BP*)

80 An 18ct gold brilliant-cut diamond line bracelet.

Total diamond weight 12.65cts, estimated G-J colour, SI2-P2 clarity.
Hallmarks for Sheffield. Length 18.5cms. 20.4gms.
£5,000-7,000 (plus 27.6% BP*)

81 A pair of old-cut diamond stud earrings.

Total diamond weight 2.97cts, estimated H-I colour, VS-SI clarity.
3.7gms.
£3,000-4,000 (plus 27.6% BP*)

82 An old-cut diamond single-stone ring.

Diamond weight 3.46cts, estimated G-H colour, VS clarity.
Ring size J1/2. 4.1gms.
£5,000-7,000 (plus 27.6% BP*)



79



73



76



77



78



82



81



80



75



74

83 An 18ct gold marquise-shape and square-shape diamond cluster ring.

Total diamond weight 1.34cts, estimated G-I colour, SI1-P1 clarity. Hallmarks for Birmingham. Ring size N. 4gms.

£700-900 (plus 27.6% BP*)

84 A marquise-shape and baguette-cut diamond full eternity ring.

Estimated total diamond weight 3.30cts, G-H colour, predominantly VS-SI clarity.

Ring size N1/2. 8gms.

£900-1,400 (plus 27.6% BP*)

85 A brilliant-cut diamond and sapphire bombe lattice ring.

Total diamond weight 0.50ct, stamped to band, estimated G-H colour, VS-SI clarity.

Stamped 18K. Ring size 11/2. 7.3gms.

£700-900 (plus 27.6% BP*)

86 A pair of pavé-set diamond hinged hoop earrings.

Estimated total diamond weight 2.40cts, G-H colour, VS-SI clarity. Stamped 18K. Length 1.6cms. 13.9gms.

£800-1,200 (plus 27.6% BP*)

87 A brilliant-cut diamond and emerald chequerboard ring.

Estimated total diamond weight 0.80ct, G-H colour, predominantly VS clarity.

French re-strike marks, stamped 750. Ring size P. 10.1gms.

£700-900 (plus 27.6% BP*)

88 A vari-shape rose-cut diamond bombé dress ring.

Total diamond weight 1.70cts, G-H colour, VS-SI clarity. Ring size M1/2. 8gms.

£1,000-1,500 (plus 27.6% BP*)

89 A 'Happy Diamonds' necklace, by Chopard.

Estimated total diamond weight 0.80ct, G+ colour, VS clarity. Stamped 750. Length 44.5cms. 19.1gms.

With maker's case.

£1,000-1,500 (plus 27.6% BP*)

90 A rectangular-shape diamond ring, with brilliant-cut diamond trefoil sides.

Principal diamond estimated weight 0.60ct, I-J colour, SI clarity. Hallmarks for Birmingham, 2012. Ring size M. 2.9gms.

£1,200-1,800 (plus 27.6% BP*)

91 A diamond and black gem dog tag pendant, by Roberto Coin, with non-designer bead-link surmount and chain.

Estimated total diamond weight 1.30cts, G-H colour, VS clarity. Stamped 750. Length of pendant 5.2cms. Length of chain 49cms. 43gms.

£2,500-3,500 (plus 27.6% BP*)

92 An 18ct gold baguette-cut and brilliant-cut diamond cluster ring.

Estimated total diamond weight 2.50cts, G-H colour, VS-SI clarity. Hallmarks for London, 2003. Ring size O. 8.6gms.

£2,000-3,000 (plus 27.6% BP*)

93 An 18ct gold diamond geometric-link bracelet.

Estimated total diamond weight 8 to 9cts, K-tinted colour, predominantly SI clarity.

Hallmarks for London. Length 18cms. 75gms.

£3,200-4,200 (plus 27.6% BP*)

94 A pavé-set diamond 'Love' bangle, by Cartier.

Estimated total diamond weight 2cts, G-H colour, VS clarity. Stamped Au750. Inner diameter 5.2cms. Cartier size 16. 44.3gms. with maker's case.

£12,000-18,000 (plus 27.6% BP*)

94



91



85



86



89



92



84



87



83



88



90



93



95 A pair of 14ct gold mabé pearl, onyx and diamond earrings, by Trianon.

Estimated total diamond weight 0.50ct, H-I colour, SI clarity. Import marks for Birmingham, 1989. Diameter 2.4cms. 21.8gms.

£550-750 (plus 27.6% BP*)

96 A pair of boulder opal, onyx and diamond cluster earrings, by Fei Liu.

Boulder opal total weight 1.90cts. Total diamond weight 0.23ct, estimated G-H colour, VS-SI clarity. Stamped Au750. Length 1.2cms. 3.2gms.

£600-800 (plus 27.6% BP*)

97 A star sapphire cabochon and rose-cut diamond cluster ring.

Sapphire weight 9.32cts. Stamped 18ct. Ring size N. 7.8gms.

£1,500-2,000 (plus 27.6% BP*)

98 A horse bit bracelet, by Hermès.

French assay marks. Length 20cms. 45.5gms.

£1,500-2,000 (plus 27.6% BP*)

99  A pair of mid 20th century 18ct gold curb-link stirrup cufflinks, by Cartier.

French assay marks. Length 2cms. 12.4gms. With maker's case.

£1,500-2,000 (plus 27.6% BP*)

100 An 18ct gold diamond 'Love' ring, by Cartier.

Estimated total diamond weight 0.25ct, G+ colour, VS clarity. Swiss convention marks. Ring size T1/2. Cartier size 62. 10.3gms.

£800-1,200 (plus 27.6% BP*)

101  An 18ct gold 'Love' cuff bangle, by Cartier.

Swiss convention marks. Inner diameter 6.2cms. Cartier size 19. 25.2gms.

With maker's case and cleaning set.

£1,000-1,500 (plus 27.6% BP*)

102 A pair of pavé-set diamond earrings, by Tabbah.

Estimated total diamond weight 1.10cts, G-H colour, VS clarity. French assay marks. Length 2.2cms. 17.5gms.

£800-1,200 (plus 27.6% BP*)

103 A brilliant-cut diamond modified curb-link necklace, by Tabbah.

Estimated total diamond weight 4.15cts, G-H colour, VS clarity. French assay marks. Length 40cms. 68.4gms.

£3,000-4,000 (plus 27.6% BP*)

104 An 18ct gold brilliant-cut diamond line bracelet.

Total diamond weight 12.84cts, estimated G-J colour, P1-P2 clarity. Hallmarks for Sheffield. Length 18.5cms. 20.3gms.

£4,500-6,500 (plus 27.6% BP*)



105 A pair of 18ct gold diamond 'The London Collection' earrings, with detachable tsavorite garnet tassel.

Estimated total diamond weight 1.30cts, G-H colour, VS-SI clarity. Hallmarks for London, 2018. Length 7.5cms. 30gms.

£500-700 (plus 27.6% BP*)

106 A yellow sapphire and brilliant-cut diamond bracelet.

Estimated total sapphire weight 21.85cts, based on calculated weight of one sapphire.

Estimated total diamond weight 0.75ct, H-I colour, VS-SI clarity. Length 17.5cms. 24.6gms.

£1,200-1,800 (plus 27.6% BP*)

107 A pair of 18ct gold amethyst and brilliant-cut diamond earrings.

Estimated total diamond weight 0.30ct.

Hallmarks for Birmingham. Length 6.8cms. 26.7gms.

£1,200-1,800 (plus 27.6% BP*)

108 A pair of 'Full Heart' earrings, by Elsa Peretti for Tiffany & Co.

Stamped 750. Length 2.5cms. 13.3gms.

£650-850 (plus 27.6% BP*)

109 A graduated curb-link necklace, with pavé-set diamond highlight link.

Estimated total diamond weight 0.35ct, H-I colour, SI1-P1 clarity. Dutch marks, stamped 585. Length 42.3cms. 55.8gms.

£1,800-2,400 (plus 27.6% BP*)

110 An 18ct gold 'orangey brown' diamond and diamond cluster ring.

Principal diamond weight 1.01cts, estimated SI clarity.

Total diamond weight 1.60cts.

Hallmarks for Birmingham. Ring size O. 5gms.

Diamond untested for natural colour origin.

£2,500-3,000 (plus 27.6% BP*)

111 A diamond and 'yellow' diamond dress ring, by Van Cleef & Arpels.

Total diamond weight 0.49ct, engraved to band, estimated G+ and 'yellow' colour, VS clarity.

French assay marks, engraved 18KT. Ring size K1/2. 5.3gms.

Diamonds untested for natural colour origin.

£3,500-4,500 (plus 27.6% BP*)

112 An 18ct gold emerald and diamond cluster ring.

Emerald weight 4.21cts.

Total diamond weight 1.74cts, estimated H-I colour, VS2-SI2 clarity.

Hallmarks for Birmingham. Ring size O. 7.8gms.

£2,800-3,200 (plus 27.6% BP*)

113 A marquise-shape diamond single-stone ring, with brilliant-cut diamond line shoulders.

With **photocopy** of report 000009084000, dated 25th March 2009, from North American Gemological Laboratory, stating 1.72cts, F colour, VS2 clarity.

Estimated total brilliant-cut diamond weight 0.85ct, G-H colour, VS2-SI2 clarity.

Ring size P1/2. 8.4gms.

£3,500-4,500 (plus 27.6% BP*)

114 A diamond, citrine, peridot and amethyst cabochon sailboat brooch, by Loris Abate.

Estimated total diamond weight 3cts, G-H colour, VS clarity.

Stamped 750. Length 7.5cms. 48.7gms.

£4,500-5,500 (plus 27.6% BP*)



107

111

109

108

106

114

113

105

112

110

115 A cylindrical multi-strand bracelet, with grooved spacers, by Ilias Lalaounis.

Stamped 750. Length 18.3cms. 41.6gms.
£3,000-4,000 (plus 27.6% BP*)

116 A pair of figural sodalite earrings, by Ilias Lalaounis.

Stamped 750. Length 2.8cms. 21.3gms.
£1,000-1,500 (plus 27.6% BP*)

117 A sodalite figural pendant, on woven collar, by Ilias Lalaounis.

Stamped 750. Length of pendant 5.3cms. Length of chain 39cms.
61.2gms.
£2,200-2,800 (plus 27.6% BP*)

118 A geometric 'Choreographism' bangle, by Ilias Lalaounis.

Stamped K22.
Inner diameter 5.8cms. 80.4gms.
This design features on the cover of the book 'Metamorphoses', by Ilias Lalaounis.
£4,500-5,500 (plus 27.6% BP*)



117



116



118



115

119  **A Burmese red spinel butterfly pendant, with ruby eyes.**

With report 12634084, dated 6th January 2018, from Stalwart, stating Mogok, Burma (Myanmar), no heat.
Length 3.1cms. 4.1gms.
£300-400 (plus 27.6% BP*)

120 **A garnet cabochon three-stone dress ring.**

Italian marks, stamped 750. Ring size H. 14.4gms.
£650-850 (plus 27.6% BP*)

121 **An 18ct gold cabochon ruby flat curb-link bracelet.**

Estimated total ruby weight 6.80cts, based on calculated weight of one ruby.
Hallmarks for London, partially indistinct. Length 18.7cms. 19.2gms.
£700-900 (plus 27.6% BP*)

122 **A pair of 18ct gold sapphire cabochon and enamel cufflinks.**

Hallmarks for Birmingham, 2010.
Length of cufflink face 1.8cms. 21.4gms.
£700-900 (plus 27.6% BP*)

123 **A jade bi and diamond pendant.**

Estimated total diamond weight 0.25ct, G-H colour, VS-SI clarity.
Stamped 850. Length 3.3cms. 9.7gms.
Jade untested for natural colour origin.
£600-800 (plus 27.6% BP*)

124 **A jade and diamond dress ring.**

Estimated total diamond weight 0.15ct, G-H colour, VS-SI clarity.
Stamped 18ct. Ring size N1/2. 14gms.
Jade untested for natural colour origin.
£600-800 (plus 27.6% BP*)

125 **A pair of jade and diamond earrings.**

Estimated total diamond weight 0.30ct, H-I colour, VS-SI clarity.
Stamped 18ct. Length 2.8cms. 22.9gms.
Jade untested for natural colour origin.
£1,200-1,800 (plus 27.6% BP*)

126 **A pair of jasper knot earrings, designed by Angela Cummings for Tiffany and Co.**

Stamped 18Kt. Length 1.9cms. 7.6gms.
£800-1,200 (plus 27.6% BP*)

127 **A jasper pendant, with chain, designed by Angela Cummings for Tiffany & Co.**

Marked 18K. Length of pendant 2.8cms. Length of chain 41cms. 6.2gms.
£800-1,200 (plus 27.6% BP*)

128 **A ruby and diamond dress ring.**

Estimated total diamond weight 1ct, H-I colour, VS-SI clarity.
Italian marks, stamped 750. Ring size Q. 21.1gms.
£1,000-1,500 (plus 27.6% BP*)

129 **A red spinel cabochon and diamond dress ring.**

Spinel calculated weight 5.96cts, based on estimated dimensions of 11.7 by 8.2 by 6.4mms.
Estimated total diamond weight 0.80ct, G-H colour, VS-SI clarity.
Ring size I1/2. 22.2gms.
£1,200-1,800 (plus 27.6% BP*)

130 **A diamond foliate necklace.**

Estimated total diamond weight 3cts, G-H colour, VS-SI clarity.
Stamped 585. Length 53cms. 20.6gms.
£1,400-2,000 (plus 27.6% BP*)

129



120



122



119



126



130



128



124



127



123



121



125



131 A sapphire cabochon and diamond dress ring.

Sapphire calculated weight 2.93cts, based on estimated dimensions of 8.7 by 7.1 by 4.4mms.
Estimated total diamond weight 0.75ct, H-I colour, SI clarity.
Stamped 750. Ring size R1/2. 8.6gms.
£400-600 (plus 27.6% BP*)

132 A mid 20th century 18ct gold sapphire and diamond foliate brooch, by Cartier.

Estimated diamond weight 0.10ct, G+ colour, VS clarity.
Import marks for Sheffield, 1988. Length 3.6cms. 8.5gms.
£800-1,200 (plus 27.6% BP*)

133 A sapphire and old-cut diamond five-stone ring.

Estimated total diamond weight 0.75ct, H-L colour, VS clarity.
Stamped 18ct. Ring size Q1/2. 3.8gms.
£500-700 (plus 27.6% BP*)

134 A collar, by Gübelin.

Stamped 750.
Length 37cms. 38.2gms.
£1,200-1,800 (plus 27.6% BP*)

135 ✕ A pair of coral and diamond cluster earrings.

Estimated total diamond weight 1.60cts, G-H colour, VS clarity.
Italian marks, stamped 750. Length 2.8cms. 20.9gms.
£1,500-2,000 (plus 27.6% BP*)

136 🍷 An 18ct gold 'Draperie' bracelet, by Cartier.

Swiss convention marks. Length 17cms. 27.3gms.
With maker's case.
£1,600-2,000 (plus 27.6% BP*)

137 An emerald and vari-cut diamond dress ring.

Emerald calculated weight 0.34ct, based on estimated dimensions of 5 by 5 by 2.2mms.
Estimated total diamond weight 1.50cts, predominantly G-H colour, VS clarity.
Italian marks, stamped 750. Ring size M1/2. 10.9gms.
£1,500-2,000 (plus 27.6% BP*)

138 An 18ct gold pavé-set diamond necklace.

Estimated total diamond weight 2.20cts, H-I colour, VS-SI clarity.
Hallmarks for London, partially indistinct. Length 41cms. 50.8gms.
£2,400-3,000 (plus 27.6% BP*)

139 A pavé-set diamond heart dress ring, by Cartier.

Estimated total diamond weight 0.50ct, G-H colour, VS-SI clarity.
French assay marks, stamped 750. Ring size I1/2. Cartier size 49.
3.6gms.
£1,600-2,000 (plus 27.6% BP*)

140 A pair of pavé-set diamond heart earrings, by Cartier.

Estimated total diamond weight 1ct, G-H colour VS clarity.
Stamped 750. Length 1cm. 4.4gms.
£2,000-2,500 (plus 27.6% BP*)

132



135



137



138



140



139



136



131

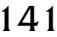


113



134



141  **A pavé-set diamond heart pendant, by Cartier, with non-designer chain.**

Estimated total diamond weight 1.15cts, G-H colour, VS clarity.
French assay marks, stamped 750.
Length of pendant 2.2cms. Length of chain 41cms. 5.9gms.
£2,800-3,200 (plus 27.6% BP*)

142  **An 18ct gold brilliant-cut diamond single-stone ring.**

With report 1248445826, dated 14th December 2016, from the GIA, stating 1ct, D colour, SI1 clarity.
Hallmarks for Sheffield. Ring size M. 3.7gms.
£3,500-4,500 (plus 27.6% BP*)

143 **A 'Love' bangle, by Cartier.**

Stamped 750. Inner diameter 5.2cms. Cartier size 16. 27gms.
£2,500-3,000 (plus 27.6% BP*)

144 **An 18ct gold brilliant-cut diamond 'Love' ring, by Cartier.**

Estimated total diamond weight 0.20ct, G-H colour, VS clarity.
Swiss convention marks. Ring size M. Cartier size 53. 8.8gms.
£700-900 (plus 27.6% BP*)

145  **A 'Panthère' brooch, with emerald and enamel accents, by Cartier.**

French assay marks. Length 5.4cms. 17.1gms.
With maker's case.
£1,800-2,400 (plus 27.6% BP*)

146  **A pavé-set diamond and sapphire 'Panthère' band ring, by Cartier.**

Estimated total diamond weight 0.25ct, predominantly G-H colour, VS clarity.
French assay marks. Ring size L. Cartier size 51. 10.5gms.
With maker's case.
£1,000-1,500 (plus 27.6% BP*)

147 **An emerald and diamond bracelet.**

Estimated total diamond weight 2.25cts, G-I colour, predominantly, VS-SI clarity.
Length 18.5cms. 27.8gms.
£2,000-3,000 (plus 27.6% BP*)

148  **A Colombian emerald and brilliant-cut diamond pendant.**

With report 19257, dated 6th November 2020, from The Gem & Pearl Laboratory, stating Colombia, moderate clarity enhancement.
Emerald calculated weight 3.65cts, based on dimensions given in report.
Estimated total diamond weight 0.55ct, G-H colour, SI clarity.
Length 4.1cms. 6.7gms.
£1,800-2,400 (plus 27.6% BP*)

149 **A pair of boulder opal, blue topaz and diamond earrings, by Fei Liu.**

Total boulder opal weight 6.32cts.
Total diamond weight 0.54ct, estimated G-H colour, VS-SI clarity.
Stamped Au750. Length 3.8cms. 7.9gms.
£1,200-1,800 (plus 27.6% BP*)

150 **An aquamarine and brilliant-cut diamond cluster pendant, with chain.**

Aquamarine calculated weight 5.19cts, based on estimated dimensions of 14 by 10 by 6.5mms.
Estimated total diamond weight 1.50cts, I-J colour, VS-SI clarity.
Chain stamped 750. Length of pendant 2.8cms. Length of chain 41cms. 6gms.
£1,400-2,000 (plus 27.6% BP*)

151 **An 18ct gold emerald and diamond cluster ring.**

Emerald calculated weight 1.12cts, based on estimated dimensions of 8 by 6 by 3.2mms.
Estimated total diamond weight 0.60ct, H-J colour, VS-SI clarity.
Hallmarks for Birmingham. Ring size M. 6.9gms.
£1,200-1,800 (plus 27.6% BP*)

152 **A square-shape diamond full eternity ring.**

Total diamond weight 2.12cts, estimated G-H colour, VVS-VS clarity.
Stamped 750. Ring size L1/2. 12.8gms.
£900-1,400 (plus 27.6% BP*)

145



143



150



149



142



141



151



146



148



147



152



144



153 A diamond band ring, by Boucheron.

Estimated total diamond weight 0.30ct, G-H colour, VS-SI clarity. French assay marks, stamped 750. Ring size M1/2. 7gms.
£500-700 (plus 27.6% BP*)

154 A diamond dress ring, by Dior.

Estimated total diamond weight 0.50ct, G-H colour, VS clarity. Stamped 750. Ring size J. 10.3gms.
£600-900 (plus 27.6% BP*)

155 A tanzanite and diamond cluster ring.

Tanzanite calculated weight 1.75cts, based on estimated dimensions of 8 by 6 by 4.1mms. Estimated total diamond weight 1.10cts, H-K colour, VS-P1 clarity. Stamped 18ct. Ring size O. 4.3gms.
£1,000-1,500 (plus 27.6% BP*)

156 A brilliant-cut diamond necklace.

Estimated total diamond weight 0.55ct, G-H colour, VS clarity. Stamped 750. Length 45cms. 30.8gms.
£1,000-1,500 (plus 27.6% BP*)

157 A sapphire and diamond three-row dress ring, by Wempe.

With report 1897, from Wempe, stating total diamond weight 1ct, TW (Top Wesselton) colour, VVS clarity, total sapphire weight 1.10cts. Stamped 750. Ring size O. 9.8gms.
£700-900 (plus 27.6% BP*)

158 A square-shape diamond and calibr -cut sapphire line bracelet, by Carl Bucherer.

Estimated total diamond weight 4.15cts, G-H colour, VS clarity. French re-strike marks, stamped 750. Length 18.3cms. 19.4gms.
£2,800-3,600 (plus 27.6% BP*)

159 An 18ct gold 'Juste un Clou' ring, by Cartier.

Swiss convention marks. Ring size P. Cartier size 57. 8.3gms. With maker's case and certificate of authenticity.
£600-800 (plus 27.6% BP*)

160 An 18ct gold diamond 'Juste un Clou' ring, by Cartier.

Total diamond weight 0.08ct, estimated G+ colour, VVS-VS clarity. Swiss convention marks. Ring size L1/2. Cartier size 52. 5.4gms.
£700-900 (plus 27.6% BP*)

161 An 18ct gold 'Juste un Clou' bangle, by Cartier.

Swiss convention marks. Inner diameter 6.3cms. Cartier size 18. 34.8gms. With maker's case and certificate of authenticity.
£1,800-2,400 (plus 27.6% BP*)

162 A sapphire cabochon and pav -set diamond dress ring, by Chaumet.

Sapphire calculated weight 0.74ct, based on estimated dimensions of 4.6 by 4.4 by 3.4mms. Estimated total diamond weight 0.70ct, G-H colour, VS clarity. French assay mark. Ring size O1/2. 5.3gms.
£900-1,400 (plus 27.6% BP*)

163 A pair of diamond earrings, with interchangeable diamond and grooved lapis lazuli components, by Boucheron.

Estimated total diamond weight 1ct, G-H colour, VS-SI clarity. French assay marks. Length 2cms. 24.3gms.
£1,600-2,200 (plus 27.6% BP*)

164 A mid 20th century Australian 22ct gold opal and black opal brooch, with matching earrings, by E. H. Staines.

Estimated dimensions of principal opal 22.6 by 15.2 by 4.7mms. Stamped 22ct. Length of brooch 4.3cms. Length of earrings 1.6cms. 16.2gms.
£2,500-3,500 (plus 27.6% BP*)



165 An early 20th century 14ct gold, diamond, split pearl and pink enamel bracelet, by A.J. Hedges.


Stamped 14k. Length 16.8cms. 8.3gms.
£150-200 (plus 27.6% BP*)

169 A late Victorian 15ct gold seed pearl, enamel and diamond bracelet.

Estimated total diamond weight 0.10ct.
Stamped 15. Length 18.5cms. 21.7gms.
£800-1,200 (plus 27.6% BP*)

166 An early 20th century gold turquoise and old-cut diamond cluster bar brooch.

Estimated total diamond weight 0.65ct, G-K colour, SI1-P1 clarity.
Length 5.3cms. 7.2gms.
£300-400 (plus 27.6% BP*)

170  A late Victorian 15ct gold multi-gem and enamel necklace, comprising sapphire, emerald, demantoid garnet and further gems, with floral spacer back-chain.

Sapphire calculated weight 1.21cts, based on estimated dimensions of 6.2 by 5.5 by 3.8mms.
Length 40cms. 16.8gms.
With fitted Bright & Sons Scarborough case and original receipt listing the gems.
£2,500-3,500 (plus 27.6% BP*)

167  An 18ct gold Colombian emerald and old-cut diamond ring.

With report 81293-06, dated 20th January 2021, from GCS, stating Colombia, indications of minor to moderate clarity enhancement, estimated total weight 1.20cts.
Estimated total diamond weight 0.70ct, G-H colour, VS2-SI1 clarity.
Hallmarks for Birmingham, 1996. Ring size N1/2. 5.9gms.
£1,000-1,500 (plus 27.6% BP*)

171 An early 20th century gold enamel, rose-cut diamond and emerald floral fringe necklace.

French assay marks.
Length 46cms. 25gms.
£2,200-3,200 (plus 27.6% BP*)

168 A sapphire and old-cut diamond ring.

Sapphire calculated weight 0.76ct, based on estimated dimensions of 7 by 4 by 2.9mms.
Estimated total diamond weight 0.75ct, G-I colour, VS-SI clarity.
Ring size K1/2. 3.4gms.
£1,200-1,800 (plus 27.6% BP*)

172 An 18ct gold opal and diamond cluster pendant, on diamond accent chain.

Estimated dimensions of opal 26 by 18 by 3.5mms.
Estimated total diamond weight 2cts, H-I colour, VS-SI clarity.
Hallmarks for London, 1990. Length of pendant 4.5cms. 43cms.
£2,000-2,500 (plus 27.6% BP*)



166



172



171



168



165



170



167



169

173 A graduated red spinel five-stone ring.

Spinel calculated total weight 4.33cts, based on estimated dimensions.

Ring size O1/2. 3gms.

£200-300 (plus 27.6% BP*)

174 A pair of old-cut diamond openwork cufflinks.

Estimated total diamond weight 0.60ct, H-J colour, VS2-SI2 clarity. Length of cufflink face 1.8cms. 9.5gms.

£400-600 (plus 27.6% BP*)

175 An early 20th century gold, split pearl and old-cut diamond butterfly brooch, with ruby eyes.

Estimated diamond weight 0.15ct, G-H colour, SI2-P1 clarity. Length 3cms. 9.6gms.

£450-650 (plus 27.6% BP*)

176 An old-cut diamond ribbon pendant, with 18ct gold chain.

Estimated total diamond weight 1.25cts, G-J colour, SI1-P1 clarity. Chain with hallmarks for Birmingham.

Length of pendant 4.4cms. Length of chain 41cms. 7.2gms.

£500-700 (plus 27.6% BP*)

177 A pair of vari-cut diamond floral cluster earrings.

Estimated total diamond weight 0.80ct, G-H colour, VS clarity.

Length 3.8cms. 6.1gms.

£600-800 (plus 27.6% BP*)

178 A brilliant-cut diamond three-stone ring.

Estimated total diamond weight 1.30cts, G-H colour, SI2-P1 clarity. Stamped 18ct. Ring size N. 3.5gms.

£900-1,400 (plus 27.6% BP*)

179 An early 20th century gold ruby and old-cut diamond hinged bangle.

Estimated total diamond weight 0.25ct, G-I colour, SI1-P1 clarity. Inner diameter 5.4cms. 12.2gms.

£1,000-1,800 (plus 27.6% BP*)

180 An early 20th century gold split pearl floral necklace.

Length 39.5cms. 18.8gms.

£1,000-1,500 (plus 27.6% BP*)

181 A marquise-shape diamond ring with brilliant-cut diamond scroll surround.

Principal diamond estimated weight 1ct, L-tinted colour, SI2-P1 clarity.

Estimated total diamond weight 2.50cts, G-I colour, SI1-P1 clarity.

Ring size J1/2. 4.1gms.

£600-800 (plus 27.6% BP*)

182 An early 20th century platinum and 18ct gold old and rose-cut diamond bracelet.

Estimated total old-cut diamond weight 1.25cts, G-H colour, VS-SI clarity.

Length 18.2cms. 20.2gms.

£1,200-1,800 (plus 27.6% BP*)

183 An Edwardian 15ct gold Burmese ruby and opal floral hinged bangle, with old-cut diamond spacers.

With report 81293-02, dated 20th January 2021, from GCS, stating Myanmar (Burma), no heat, estimated total weight 2cts.

Estimated total diamond weight 0.20ct, H-I colour, SI2-P1 clarity.

Inner diameter 6cms. 22.2gms.

With case.

£2,500-3,500 (plus 27.6% BP*)

184 A 1930s 18ct gold sapphire, ruby, rose-cut diamond and cultured pearl butterfly brooch, by René Boivin.

With documentation from Françoise Cailles.

Length 3.7cms. 5gms.

£2,500-3,500 (plus 27.6% BP*)



176



183



179



178



182



177



173



184



174



175



185 A brilliant-cut diamond accent grooved band ring, by Damiani.

Estimated total diamond weight 0.20ct, G-H colour, VS clarity. Italian marks, stamped 750. Ring size S. 8.6gms.

£280-380 (plus 27.6% BP*)

186 A pair of 18ct gold pink sapphire 'Beneath the Rose' earrings.

One pear-shape sapphire calculated weight 0.86ct, based on estimated dimensions of 8 by 5.9 by 2.3mms.

Hallmarks for London, 2017. Length 2.2cms. 7gms.

£400-600 (plus 27.6% BP*)

187  A pair of 18ct gold 'Happy Diamonds' heart earrings, by Chopard.

Total diamond weight 0.10ct, estimated G+ colour, VS clarity. Swiss convention marks. Length 2.3cms. 4.9gms.

With maker's case and certificate of authenticity.

£600-800 (plus 27.6% BP*)

188  An 18ct gold diamond 'Happy Bubbles' pendant, with chain, by Chopard.

Diamond weight 0.03ct, estimated G+ colour, VS clarity.

Swiss convention marks. Length of pendant 2.9cms. Length of chain 42cms. 9.7gms.

With maker's case and certificate of authenticity.

£700-900 (plus 27.6% BP*)

189 An 18ct gold morganite and diamond cluster ring.

Morganite weight 8.42cts.

Total diamond weight 0.42ct, estimated H-I colour, SI clarity.

Hallmarks for Birmingham. Ring size N1/2. 5.7gms.

£800-1,200 (plus 27.6% BP*)

190  A rose quartz and diamond 'Class One Croisière' dress ring, by Chaumet.

Estimated total diamond weight 0.25ct, G+ colour, VS clarity. French assay marks, stamped 750. Ring size J1/2. 8.8gms.

With maker's case.

£1,000-1,500 (plus 27.6% BP*)

191 A ruby and diamond cluster ring.

Ruby weight 1.20cts, stamped to band.

Estimated total diamond weight 0.80ct, G-H colour, VS-SI clarity. Stamped 18K. Ring size Q. 5.8gms.

£1,600-2,000 (plus 27.6% BP*)

192 A 'Love' cuff bangle, by Cartier.

Stamped 750. Inner diameter 6.2cms. Cartier size 19. 28gms.

£2,000-3,000 (plus 27.6% BP*)

193 An 18ct gold brilliant and baguette-cut diamond bracelet.

Total diamond weight 4.29cts, estimated G-H colour, VS-SI clarity. Hallmarks for London, 2020. Length 16.5cms. 14gms.

£4,000-6,000 (plus 27.6% BP*)

194 A diamond 'Love' bangle, by Cartier.

Estimated total diamond weight 0.80ct, G-H colour, VS clarity.

Stamped 750. Inner diameter 6.5cms. Cartier size 20. 36.5gms.

£4,000-6,000 (plus 27.6% BP*)

195 A pavé-set diamond 'Chaine d'Ancre Punk' bracelet, by Hermès.

Total diamond weight 3.63cts, estimated G+ colour, VS clarity.

French assay marks. Length 16.5cms. 22.3gms.

£4,000-6,000 (plus 27.6% BP*)

196 A pavé-set diamond 'Juste un Clou' bangle, by Cartier.

Estimated total diamond weight 2.50cts, G-H colour, VS-SI clarity.

Stamped Au750. Inner diameter 5.8cms. Cartier size 18. 52.7gms.

£18,000-22,000 (plus 27.6% BP*)



197 An 18ct gold pink sapphire and diamond 'Beneath the Rose' dress ring.

Sapphire total calculated weight 1.93cts, based on estimated dimensions.

Estimated total diamond weight 0.35ct, G-H colour, VS clarity. Hallmarks for London, 2014. Ring size L. 5gms.

£500-700 (plus 27.6% BP*)

198 A pair of 18ct gold pink sapphire and diamond 'Beneath the Rose' earrings.

Estimated total diamond weight 1.10cts, G-H colour, VS clarity. Hallmarks for London, 2015. Length 5.4cms. 14.4gms.

£800-1,200 (plus 27.6% BP*)

199 An 18ct gold pink sapphire and diamond 'Beneath the Rose' bracelet.

Estimated total diamond weight 3.20cts, G-H colour, VS clarity. Hallmarks for London, 2017. Length 18.6cms. 20.7gms.

£1,500-2,000 (plus 27.6% BP*)

200 An 18ct gold white sapphire and brilliant-cut diamond collet 'Beneath the Rose' necklace.

Estimated total sapphire weight 9.30cts, based on calculated weight of two sapphires.

Estimated total diamond weight 0.40ct, G-H colour, VS clarity. Hallmarks for London, 2017. Length 95cms. 10.8gms.

£800-1,200 (plus 27.6% BP*)

201 An 18ct gold pavé-set diamond open band ring, by De Beers.

Estimated total diamond weight 1ct, G-H colour, VS-SI clarity. Hallmarks for Sheffield. Ring size L. 14.3gms.

£700-900 (plus 27.6% BP*)

202  A pair of pavé-set diamond heart cufflinks, by Theo Fennell.

Estimated total diamond weight 0.70ct, G-H colour, VS-SI clarity. Hallmarks for London, 2004. Length of cufflink face 1.4cms.

12.5gms.
With maker's case.

£900-1,400 (plus 27.6% BP*)

203 A pair of 18ct gold white sapphire and diamond 'Beneath the Rose' earrings, with detachable drop.

Estimated total diamond weight 1.10cts, G-H colour, VS clarity. Hallmarks for London, 2016. Length 5.8cms. 14gms.

£600-800 (plus 27.6% BP*)

204 An 18ct gold white sapphire and diamond 'Beneath the Rose' bracelet.

Estimated total diamond weight 3.20cts, G-H colour, VS clarity. Hallmarks for London, 2017. Length 18.3cms. 19.2gms.

£1,500-2,000 (plus 27.6% BP*)

205 A 'Love' bangle, by Cartier.

Italian marks, stamped 750. Inner diameter 5cms. Cartier size 16. 31.8gms.

With screwdriver.

£2,000-3,000 (plus 27.6% BP*)


206   A platinum brilliant-cut diamond single-stone ring, by Cartier.

With report 2131439497, dated 26th May 2011, from the GIA, stating 1.28cts, F colour, VVS2 clarity.

Hallmarks for London, 2012. Ring size I. 4.6gms.

With maker's case.


£6,000-8,000 (plus 27.6% BP*)

207  A platinum rectangular-shape diamond single-stone ring.

With report 1152586337, dated 13th August 2013, from the GIA, stating 4cts, J colour, VS2 clarity.

Hallmarks for London, 2006. Ring size H1/2. 5.5gms.

£18,000-26,000 (plus 27.6% BP*)

208  An impressive platinum cushion-shape diamond and diamond cluster ring.

With report 5171773732, dated 2nd August 2016, from the GIA, stating 4.08cts, G colour, VS2 clarity.

Total diamond weight 4.61cts.

Hallmarks for London, 2019. Ring size L. 7.7gms.

£35,000-55,000 (plus 27.6% BP*)

202



201



205



207



208



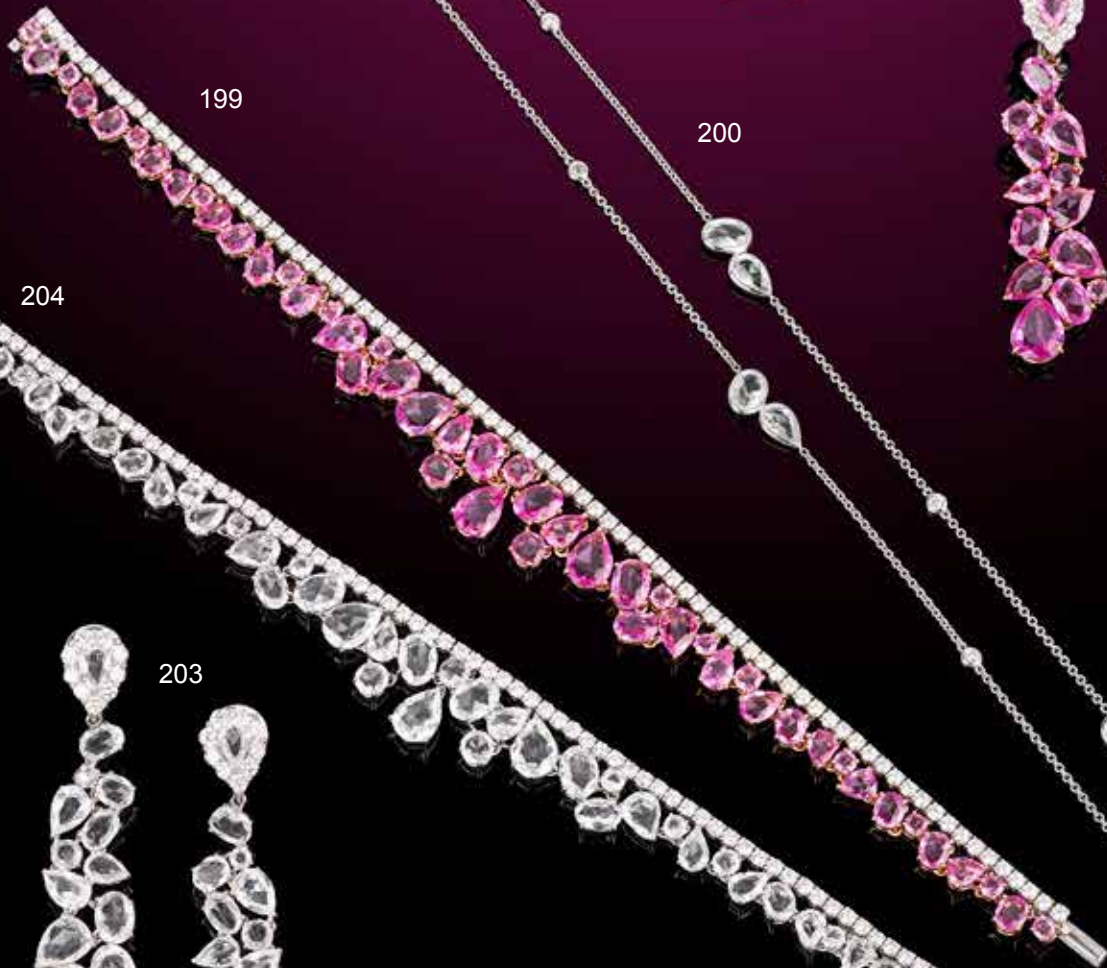
206



198



199



200

197



204



203



209 An 18ct gold sapphire and diamond cluster ring.

Sapphire calculated weight 2.93cts, based on estimated dimensions of 9.3 by 7.1 by 5.3mms.
Total diamond weight 1.54cts, estimated G-I colour, V-SI clarity.
Hallmarks for Birmingham. Ring size O. 9.6gms.
£900-1,400 (plus 27.6% BP*)

210 A brilliant-cut diamond bombe dress ring.

Estimated total diamond weight 3cts, H-J colour, SI1-P2 clarity.
Stamped 14K. Ring size N. 10.9gms.
£900-1,400 (plus 27.6% BP*)

211 A pair of 18ct gold square-shape diamond stud earrings.

Estimated total diamond weight 1.20cts, H-I colour, VS clarity.
Hallmarks for London, 2011. 2.2gms.
£1,000-1,500 (plus 27.6% BP*)

212 A pair of 18ct gold ruby and diamond cluster earrings.

Total ruby weight 2.20cts.
Total diamond weight 1.37cts, estimated H-I colour, SI1-P1 clarity.
Hallmarks for Birmingham. Length 1.3cms. 3.7gms.
£900-1,400 (plus 27.6% BP*)

213 An 18ct gold brilliant-cut diamond line bracelet.

Estimated total diamond weight 3.95cts, H-J colour, VS2-P1 clarity.
Hallmarks for Sheffield. Length 20cms. 14.2gms.
£1,200-1,800 (plus 27.6% BP*)

214 A platinum circular-cut diamond three-stone ring.

Total diamond weight 2.50cts, estimated G-H colour, P1-P2 clarity.
Hallmarks for Sheffield. Ring size M. 7.5gms.
£2,000-3,000 (plus 27.6% BP*)

215 A sapphire and diamond butterfly necklace, with matching earrings.

Total sapphire weight 2.45cts.
Total diamond weight 1.75cts, estimated H-I colour, VS-SI clarity.
Stamped 750. Length of necklace 42cms. Length of earrings 2.2cms. 9.4gms.
£2,000-2,500 (plus 27.6% BP*)

216 An 18ct gold ruby and diamond cluster ring.

Ruby weight 4.71cts.
Total diamond weight 1.76cts, estimated H-I colour, SI1-P1 clarity.
Hallmarks for Birmingham. Ring size O. 7.8gms.
£2,800-3,200 (plus 27.6% BP*)

217 A mid 20th century sapphire and old-cut diamond three-stone ring.

Sapphire calculated weight 1.78cts, based on estimated dimensions of 7.2 by 7.2 by 4.3mms.
Estimated total diamond weight 1.90cts, J-K colour, VS2-SI1 clarity.
Stamped Irid Plat. Ring size N1/2. 6.2gms.
£3,500-4,500 (plus 27.6% BP*)

218 An 18ct gold diamond, ruby and sapphire butterfly brooch, by Van Cleef & Arpels.

Estimated total diamond weight 1.80cts, G-H colour, VS clarity.
Convention marks. Length 4.7cms. 10.2gms.
£3,000-4,000 (plus 27.6% BP*)

219 A pair of brilliant-cut and pear-shape diamond floral cluster earrings.

Total diamond weight 2.54cts, estimated G-H colour, VS clarity.
Diameter 1.2cms. 5.5mms.
£4,000-6,000 (plus 27.6% BP*)

220 A ruby and brilliant-cut diamond cluster fringe necklace, with pear-shape diamond accents.

Estimated total diamond weight 32 to 34cts, predominantly H-I colour, VS clarity.
Estimated total ruby weight 7.40cts, based on calculated weight of one ruby.
Stamped 750. Length 41cms. 92.6gms.
£15,000-20,000 (plus 27.6% BP*)



219



212



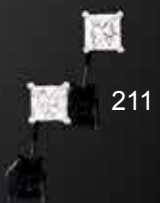
218



214



220



211



215

213

209



216



210



217



221 A brilliant-cut diamond dress ring, with calibr -cut sapphire halo.

Principal diamond estimated weight 0.40ct, G-H colour, VS clarity. Stamped 750 18K. Ring size O1/2. 5gms.

 600-800 (plus 27.6% BP*)

222 A diamond dress ring.

Estimated total diamond weight 0.75ct, I-tinted colour, VS-SI clarity.

Stamped Plat. Ring size O. 5.2gms.

 800-1,200 (plus 27.6% BP*)

223 A mid 20th century platinum, emerald and vari-cut diamond rectangular-shape cluster ring.

Emerald calculated weight 0.63ct, based on estimated dimensions of 7.6 by 3.8 by 3mms.

Estimated total diamond weight 0.40ct, G-H colour, VS2-SI2 clarity. Ring size Q1/2. 4.3gms.

 800-1,200 (plus 27.6% BP*)

224 A diamond openwork brooch.

Principal diamond estimated weight 0.60ct, I-J colour, SI2-P1 clarity.

Estimated total diamond weight 3cts.

Length 6.6cms. 19.8gms.

 900-1,400 (plus 27.6% BP*)

225 A circular-cut diamond full eternity ring.

Estimated total diamond weight 2cts, H-J colour, SI1-P1 clarity. Ring size N1/2. 4.2gms.

 1,000-1,500 (plus 27.6% BP*)

226 A diamond brooch.

Principal diamond estimated weight 0.50ct, I-J colour, VS2-SI1 clarity.

Estimated total diamond weight 3.10cts, H-J colour, VS2-P1 clarity. Length 4.9cms. 13.3gms.

 1,800-2,400 (plus 27.6% BP*)

227 A pair of diamond cluster drop earrings.

Estimated total diamond weight 2.20cts, predominantly G-I colour, SI1-P1 clarity.

Length 3.8cms. 7.3gms.

 2,000-3,000 (plus 27.6% BP*)

228 An old-cut diamond openwork bracelet.

Estimated total diamond weight 5.50cts, principal diamonds estimated G-I colour, VS-SI clarity.

Length 16cms. 20.9gms.

 1,200-1,800 (plus 27.6% BP*)

229 A mid 20th century platinum diamond geometric bracelet.

Estimated total diamond weight 18 to 19cts, predominantly G-J colour, SI clarity.

Length 19cms. 52.9gms.

 9,000-14,000 (plus 27.6% BP*)

230 An old-cut diamond necklace.

Principal diamond estimated weight 2.85cts, tinted colour, VVS-VS clarity.

Estimated total diamond weight 9cts.

Length 40.5cms. 13.7gms.

 7,000-10,000 (plus 27.6% BP*)



230



223



226



224



222



227



228

229



225



221

231 A circular-cut diamond floral pendant.

Estimated total diamond weight 2.10cts, H-I colour, SI1-P1 clarity.
Length 5cms. 7.2gms.
£600-800 (plus 27.6% BP*)

232 A Belle Époque silver and gold, pearl and old-cut diamond floral swag and bow pendant, with integral chain.

Estimated total diamond weight 0.50ct, H-J colour, SI1-P1 clarity.
Length of pendant 3.7cms. Length of chain 38.5cms. 8.3gms.
Pearls untested for natural origin.
£500-700 (plus 27.6% BP*)

233 An old and rose-cut diamond brooch, with pearl highlights.

May be worn as a pendant.
Estimated total old-cut diamond weight 1.25cts, H-J colour, SI2-P1 clarity.
Length 6.6cms. 15.7gms.
Pearls untested for natural origin.
£700-900 (plus 27.6% BP*)

234 A pavé-set old-cut diamond heart pendant.

Estimated total diamond weight 4.30cts, predominantly J-L colour, VS-SI clarity.
Length 3.5cms. 8gms.
£1,200-1,800 (plus 27.6% BP*)

235 An old-cut diamond moonstone pendant, on chain.

Estimated total diamond weight 4.50cts, G-tinted, VS2-P1 clarity.
Length of pendant 5.8cms. Length of chain 41.5cms.
£1,500-2,000 (plus 27.6% BP*)

236 A circular-cut and brilliant-cut diamond cluster pendant, with 9ct gold chain.

Principal diamond estimated weight 1ct, G-H colour, SI2-P1 clarity.
Estimated total diamond weight 1.40cts.
Chain with hallmarks for Birmingham.
Length of pendant 2.7cms. Length of chain 45cms. 5.6gms.
£1,200-1,800 (plus 27.6% BP*)

237 An old-cut diamond floral swag fringe necklace.

Estimated total diamond weight 5.75cts, G-J colour, VS-P2 clarity.
Length 43.5cms. 21.9gms.
£2,000-2,500 (plus 27.6% BP*)

238 An old-cut diamond necklace.

Estimated total diamond weight 4.80cts, G-I colour, predominantly VS-SI clarity.
Length 38.5cms. 15.8gms.
£3,000-4,000 (plus 27.6% BP*)

239 An early 20th century platinum natural pearl and diamond bracelet.

Verbal from GCS, stating natural pearls, saltwater.
Estimated total diamond weight 4cts, predominantly G-I colour, SI1-P1 clarity.
Dutch and French re-strike marks.
Length 17.5cms. 26gms.
£3,500-4,500 (plus 27.6% BP*)

240 A pair of old-cut diamond drop earrings.

Estimated total diamond weight 5.20cts.
Principal diamonds respectively estimated 1.90cts, L-tinted colour, VS2-SI1 clarity and 2.30cts, I-J colour, VS clarity.
Length 4.6cms. 4.9gms.
£5,500-6,500 (plus 27.6% BP*)



241 A late 19th century silver natural pearl and diamond brooch.

Verbal from GCS, stating natural, saltwater.
Estimated dimensions of larger pearl 8.9 by 7.4 by 5.6mms.
Estimated total old-cut diamond weight 0.90ct, H-J colour, SI1-P1 clarity.
Length 5cms. 8.6gms.
£450-750 (plus 27.6% BP*)

242 A late Victorian gold garnet bangle, with light blue enamel entrelacé and floral engraved ground.

Inner diameter 5.7cms. 22.2gms.
£800-1,200 (plus 27.6% BP*)

243 A pair of 19th century gold enamel and pearl earrings.

Foreign marks. Length 4.9cms. 8.8gms.
£1,000-1,500 (plus 27.6% BP*)

244 An early 20th century 15ct gold trace-link necklace, with blue and white enamel spiral spacers and semi-baroque pearl sides.

Length 154cms. 22.4gms.
Pearls untested for natural origin.
£1,000-1,500 (plus 27.6% BP*)

245 A late 19th century gold, opal, enamel and split pearl target brooch.

Maker's mark to pin hinge C.G
Estimated diameter of opal 17mms.
Diameter of brooch 2.6cms. 9gms.
£1,200-1,800 (plus 27.6% BP*)

246  A late 19th century gold, diamond, seed pearl and enamel mounted portrait miniature pendant, with chain.

Estimated total diamond weight 0.65ct, G-H colour, SI clarity.
Length of pendant 6.6cms. Length of chain 40cms. 27.5gms.
With fitted case.
£2,200-3,200 (plus 27.6% BP*)

247 An early 20th century 15ct gold and silver, sapphire and old-cut diamond cluster bangle.

Sapphire calculated weight 0.68ct, based on estimated dimensions of 5.7 by 4.9 by 2.6mms.
Estimated total diamond weight 1.80cts, H-J colour, SI1-P1 clarity.
Inner diameter 5.2cms. 10.2gms.
£2,000-3,000 (plus 27.6% BP*)

248 A late Victorian 18ct gold old-cut diamond cluster ring.

Estimated total diamond weight 3.40cts, VS2-P1 clarity.
Stamped 18c. Ring size M1/2. 6.9gms.
£2,000-2,500 (plus 27.6% BP*)

249  A late Victorian 18ct gold no-heat sapphire and old-cut diamond ring.

With report 19338, dated 24th November 2020, from The Gem & Pearl Laboratory, stating natural sapphire, no heat.
Sapphire calculated weight 1.73cts, based on dimensions in report.
Estimated total diamond weight 2.15cts, G-H colour, predominantly VS2-SI1 clarity.
Stamped 18C. Ring size S1/2. 7.1gms.
£1,800-2,400 (plus 27.6% BP*)

250 An Edwardian silver and gold old-cut diamond sunburst brooch.

Estimated total diamond weight 7.25cts, H-I colour, predominantly VS-SI clarity.
Length 6.4cms. 18.4gms.
£2,500-3,000 (plus 27.6% BP*)

251 A late Victorian silver and gold, sapphire and old-cut diamond bracelet, with later back section.

Sapphire calculated total weight 1.43cts, based on estimated dimensions.
Estimated total diamond weight 2.80cts, G-I colour, VS2-P1 clarity.
Length 16.5cms. 13.1gms.
£3,500-4,500 (plus 27.6% BP*)

252  A late Victorian silver and gold old-cut diamond cluster pendant.

Estimated total diamond weight 9.50cts, H-J colour, predominantly VS2-SI1 clarity.
Principal diamond estimated weight 1.35cts, I-J colour, VS2-SI1 clarity.
Length 4cms. 9.3gms.
With fitted case.
£6,000-8,000 (plus 27.6% BP*)



244



251



253 A citrine floral cluster brooch, with similarly-set drop.

May be worn as a brooch.
Length 7.5cms. 15.1gms.
£500-700 (plus 27.6% BP*)

257 A late Victorian gold amethyst rivière necklace, with detachable cross pendant.

Length 43.5cms. 30gms.
£4,500-5,500 (plus 27.6% BP*)

254 A late Victorian gold citrine and swag fringe necklace.

Length 45.8cms. 33gms.
£900-1,400 (plus 27.6% BP*)

258 A graduated old-cut diamond three-stone ring, with single-cut diamond accents.

Principal diamond estimated weight 2.10cts, J-K colour, VS clarity.
Estimated total diamond weight 3.85cts.
Ring size N. 8.5gms.
£6,000-8,000 (plus 27.6% BP*)

255 A late Victorian gold amethyst rivière necklace.

Length 39.5cms. 23.7gms.
£1,000-1,500 (plus 27.6% BP*)

259 An old-cut diamond floral cluster bangle.

Principal diamond estimated weight 0.80ct, H-I colour, SI clarity.
Estimated total diamond weight 18cts, predominantly H-I colour, VS-SI clarity.
Inner diameter 5.2cms. 39.3gms.
£4,000-6,000 (plus 27.6% BP*)

256 A late Victorian 15ct gold enamel and split pearl star motif locket, with 9ct gold fancy-link chain necklace.

Length of locket 5.5cms. Length of chain 46.5cms. 39.6gms.
£1,200-1,800 (plus 27.6% BP*)

260 A pair of old-cut diamond stud earrings.

Estimated total diamond weight 6.60cts, tinted colour, VS-SI clarity.
3.7gms.
£7,500-8,500 (plus 27.6% BP*)



259



260

254



255



257



253



256



258

261 A pair of 18ct gold diamond 'The London Collection' earrings, with detachable pink sapphire tassels.

Estimated total diamond weight 1.30cts, G-H colour, VS-SI clarity. Hallmarks for London, 2018. Length 7.4cms. 30.6gms.

£500-700 (plus 27.6% BP*)

262 An 18ct gold diamond highlight 'The London Collection' two-strand necklace.

Estimated total diamond weight 1.30cts, G-H colour, VS-SI clarity. Hallmarks for London, 2016. Length 72cms. 10.4gms.

£500-700 (plus 27.6% BP*)

263 An 18ct gold pink sapphire and diamond cluster pendant, with chain.

Sapphire weight 1.23cts.
Total diamond weight 0.53ct, estimated H-I colour, SI1-P1 clarity. Hallmarks for Birmingham and Sheffield.
Length of pendant 1.9cms. Length of chain 50cms. 3.4gms.

£600-800 (plus 27.6% BP*)

264 A brilliant-cut diamond cluster pendant, attributed to Buchwald.

Estimated total diamond weight 0.60ct, G-H colour, VS clarity. Stamped 750. Length 2.3cms. 2.7gms.

£550-750 (plus 27.6% BP*)

265 A pair of brilliant-cut diamond cluster earrings, by Buchwald.

Estimated total diamond weight 1.10cts, G-H colour, VS clarity. Stamped 750. Diameter 1cm. 4.6gms.

£900-1,400 (plus 27.6% BP*)

266 An 18ct gold morganite and diamond cluster ring.

Morganite weight 9.04cts.
Total diamond weight 0.42ct, estimated H-I colour, SI clarity. Hallmarks for Birmingham. Ring size O. 6.4gms.

£900-1,400 (plus 27.6% BP*)

267 A pair of 18ct gold pavé-set purple sapphire cufflinks.

Hallmarks for London, 2015.
Length of cufflink face 1.8cms. 11.3gms.

£800-1,200 (plus 27.6% BP*)

268 A pair of 18ct gold, diamond 'The London Collection' earrings, with detachable rock crystal tassel.

Estimated total diamond weight 1.25cts, G-H colour, VS clarity. Hallmarks for London, 2018. Length 7.5cms. 25.1gms.

£500-700 (plus 27.6% BP*)

269 An 18ct gold diamond 'The London Collection' geometric bracelet.

Total diamond weight 3.12cts, estimated G-H colour, VS-SI clarity. Hallmarks for London, 2014. Length 17.5cms. 18.7gms.

£800-1,200 (plus 27.6% BP*)

270 An 18ct gold rock crystal and diamond 'The London Collection' necklace, with detachable bracelet.

Estimated total diamond weight 9 to 10cts, G-H colour, VS-SI clarity. Hallmarks for London, 2014, 2016 and 2017. Length 55cms. 72.5gms.

£3,000-4,000 (plus 27.6% BP*)



271 An early 20th century platinum and gold, old-cut diamond and ruby bar brooch.

Estimated total diamond weight 2cts, predominantly H-J colour, SI-P1 clarity.
Length 8.6cms. 8gms.
£900-1,400 (plus 27.6% BP*)

272 A vari-cut diamond geometric bracelet.

Estimated total diamond weight 10cts, G-I colour, VS2-P1 clarity.
French assay marks. Length 17.6cms. 56.2gms.
£6,000-8,000 (plus 27.6% BP*)

273 A diamond dress ring.

Estimated total diamond weight 1ct, H-tinted colour, VS-SI clarity.
Stamped Plat. Ring size P. 5.2gms.
£900-1,400 (plus 27.6% BP*)

274 An Art Deco 18ct gold brilliant-cut diamond and onyx ring.

Estimated diamond weight 0.50ct, G-H colour, VS2-SI1 clarity.
Ring size M. 3.2gms.
£1,000-1,500 (plus 27.6% BP*)

275 An Art Deco platinum old-cut and rectangular-shape diamond geometric brooch.

Estimated total diamond weight 4.50cts, G-H colour, VS-SI clarity.
French assay marks. Length 4.4cms. 13.3gms.
£1,800-2,600 (plus 27.6% BP*)

276 A brilliant and baguette-cut diamond geometric ring.

Estimated total diamond weight 1.25cts, J-L colour, VS-P1 clarity.
Stamped Plat. Ring size M. 5.8gms.
£1,000-1,500 (plus 27.6% BP*)

277 A pair of old-cut diamond and onyx earrings.

Estimated total diamond weight 1.75cts, H-J colour, VS2-P1 clarity.
Length 3.3cms. 8gms.
£1,800-2,600 (plus 27.6% BP*)

278 An Art Deco platinum diamond fringe necklace.

Estimated total diamond weight 2.25cts.
Principal diamonds estimated H-I colour, VS1-SI1 clarity.
Length 35cms. 14.5gms.
£2,800-3,600 (plus 27.6% BP*)

279 An old-cut diamond single-stone ring, with synthetic sapphire and single-cut diamond pierced sides.

Principal diamond estimated weight 1.85cts, I-J colour, SI clarity.
Stamped Platinum. Ring size L. 4gms.
£3,500-4,500 (plus 27.6% BP*)

280 A mid 20th century platinum vari-cut diamond geometric bracelet.

Estimated total diamond weight 9cts, G-H colour, VS clarity.
Stamped Pt. Length 18cms. 33gms.
£7,000-9,000 (plus 27.6% BP*)

276



273



274



275



279



278



272



280



277



271



281 An 18ct gold tanzanite and diamond cluster ring.

Tanzanite weight 7cts.
Total diamond weight 0.55ct, estimated G-H colour, VS-SI clarity.
Hallmarks for Sheffield.
Ring size O. 10.2gms.
£300-400 (plus 27.6% BP*)

282 A pair of 18ct gold emerald and diamond cluster earrings.

Total emerald weight 3.35cts.
Total diamond weight 0.29ct, estimated H-I colour, SI clarity.
Hallmarks for Birmingham. Length 1cm. 3.6gms.
£500-700 (plus 27.6% BP*)

283 An 18ct gold emerald and diamond dress ring.

Total emerald weight 0.57ct.
Total diamond weight 1.10cts, estimated H-I colour, SI clarity.
Hallmarks for Birmingham. Ring size L1/2. 6.1gms.
£800-1,200 (plus 27.6% BP*)

284 A pair of 18ct gold enamel and diamond cufflinks.

Estimated total diamond weight 0.30ct, G-H colour, VS clarity.
Hallmarks for Birmingham, 2015.
Length of cufflink face 1.7cms. 22.2gms.
£800-1,200 (plus 27.6% BP*)

285 An 18ct gold brilliant-cut diamond full eternity ring.

Estimated total diamond weight 2.75cts, predominantly H-J colour, SI1-P1 clarity.
Hallmarks for Sheffield, partially indistinct. Ring size N. 6.3gms.
£1,500-2,000 (plus 27.6% BP*)

286 A pair of emerald and diamond cluster drop earrings.

Estimated dimensions of one emerald 9 by 7mms.
Estimated total diamond weight 1.20cts, H-I colour, SI clarity.
Stamped 18K 750. Length 3.2cms. 10.8gms.
£1,000-1,500 (plus 27.6% BP*)

287 A Colombian emerald and brilliant-cut diamond pierced geometric dress ring.

With report 81293-04, dated 20th January 2021, from GCS, stating Colombia, indications of moderate clarity enhancement, estimated weight 5cts.
Estimated total diamond weight 0.15ct. Stamped 18K 750. Ring size N. 9.1gms.
£1,500-2,500 (plus 27.6% BP*)

288 An 18ct gold emerald and diamond line bracelet.

Total emerald weight 1.92cts.
Total diamond weight 1.80ct, estimated H-I colour, VS-SI clarity.
Hallmarks for Sheffield. Length 18cms. 8.1gms.
£1,600-2,200 (plus 27.6% BP*)

289 A rectangular-shape diamond three-stone ring.

Estimated total diamond weight 1.20cts, J-K colour, VS1-SI1 clarity.
Stamped Plat. Ring size L1/2. 4.5gms.
£2,000-3,000 (plus 27.6% BP*)

290 An emerald and diamond necklace.

Emerald calculated weight 0.60ct, based on estimated dimensions of 6.4 by 3.8 by 3.4mms.
Estimated total diamond weight 3cts, G-I colour, SI clarity.
Stamped 750. Length 40.5cms. 46.9gms.
£2,000-3,000 (plus 27.6% BP*)

291 A brilliant-cut diamond cluster crossover ring.

Estimated total diamond weight 4.20cts, predominantly G-I colour, VS2-SI2 clarity.
Ring size L. 14.7gms.
£2,500-3,000 (plus 27.6% BP*)

292 A pair of sapphire and diamond earrings.

Estimated total sapphire weight 26.50cts.
Estimated total diamond weight 1.50cts, H-J colour, SI1-P1 clarity.
Stamped 18K. Length 3.6gms. 26gms.
£3,000-4,000 (plus 27.6% BP*)



284



286



281



282

287



291



289



285



283



288

292



290



293 An aquamarine and brilliant-cut diamond cluster ring.

Aquamarine weight 6.13cts.
Estimated total diamond weight 0.55ct, H-I colour, VS-SI clarity.
Ring size M. 5.3gms.

£1,200-1,800 (plus 27.6% BP*)

294 A platinum square-shape diamond single-stone ring, with diamond line shoulders.

Principal diamond estimated weight 1ct, G+ colour, SI clarity.
Estimated total diamond weight 1.15cts.
Hallmarks for Birmingham. Ring size L. 4.8gms.

£1,200-1,800 (plus 27.6% BP*)

295 An 18ct gold brilliant-cut diamond line bracelet.

Estimated total diamond weight 2.75cts, G-H colour, VS-SI clarity.
Hallmarks for Sheffield, 2016. Length 18.4cms. 9.1gms.

£1,400-2,000 (plus 27.6% BP*)

296 An 18ct gold aquamarine and diamond cluster ring.

Aquamarine weight 4.38cts.
Total diamond weight 0.36ct, estimated H-I colour, SI clarity.
Hallmarks for Birmingham. Ring size O. 4.9gms.

£1,200-1,800 (plus 27.6% BP*)

297 A pair of vari-cut diamond earrings.

Estimated total diamond weight 4.50cts, G-K colour, VS2-P1 clarity.
Stamped 750. Length 3cms. 5.3gms.

£1,800-2,600 (plus 27.6% BP*)

298 An 18ct gold sapphire and diamond cluster ring.

Sapphire calculated weight 8.37cts, based on estimated dimensions OF 13.5 by 11 by 6mms.
Estimated total diamond weight 0.30ct, H-I colour, SI clarity.
Hallmarks for Birmingham. Ring size O. 9.1gms.

£2,000-2,500 (plus 27.6% BP*)

299 A platinum marquise-shape diamond single stone ring.

Diamond weight 1.93cts, estimated tinted colour, SI2-P1 clarity.
Hallmarks for Birmingham. Ring size K. 5gms.

£1,800-2,600 (plus 27.6% BP*)

300 A sapphire and diamond cluster ring.

Sapphire calculated weight 7.80cts, based on estimated dimensions of 12 by 10.6 by 6.6mms.
Estimated total diamond weight 1.80cts, G-I colour, VS1-SI1 clarity.
Ring size U. 7.6gms.

£2,500-3,000 (plus 27.6% BP*)

301 A pair of old-cut diamond stud earrings, with brilliant-cut diamond detachable halo.

Estimated total old-cut diamond weight 1.40cts, H-J colour, SI2-P1 clarity.

Estimated total diamond weight 2.50cts. Diameter 1.2cms.
8.4gms.

£2,500-3,500 (plus 27.6% BP*)

302 A marquise-shape and brilliant-cut diamond cluster necklace.

Estimated total diamond weight 4.70cts, G-I colour, VS clarity.
Length 40.7cms. 8.7gms.

£3,000-4,000 (plus 27.6% BP*)

303 A Sri Lankan sapphire and diamond cluster ring.

With report 80271-28, dated 11th August 2020, from GCS, stating weight 5.96cts, Sri Lanka (Ceylon), no heat.

Estimated total diamond weight 0.90ct, I-J colour, VS-SI clarity.
Stamped 750. Ring size K. 4.9gms.

£3,000-4,000 (plus 27.6% BP*)

304 A pair of brilliant-cut diamond stud earrings.

Total diamond weight 1.49cts, estimated G-J colour, SI clarity.
Stamped 750. 2gms.

£8,000-12,000 (plus 27.6% BP*)

298



296



293



303



302



299



300



301



297



304



294




295



305  **A platinum rectangular-shape diamond ring, with baguette-cut diamond shoulders.**

With report 1192314165, dated 12th November 2018, from the GIA, stating 3.19cts, D colour, Internally Flawless clarity.
Total diamond weight 4.03cts.
Hallmarks for London, 2019. Ring size L1/2. 6.2gms.
£50,000-80,000 (plus 27.6% BP*)

306  **A rectangular-shape diamond ring, with trapezoid-shape diamond shoulders.**

With report 5181912265, dated 7th December 2017, from the GIA, stating 5.01cts, E colour, VS2 clarity.
Total diamond weight 6.10cts.
Ring size L. 7.3gms.
£80,000-120,000 (plus 27.6% BP*)



305



306



307 A pair of 18ct gold tsavorite garnet, mother-of-pearl and diamond cufflinks.

Estimated total diamond weight 0.50ct, G-H colour, VS-SI clarity. Hallmarks for London, 2015. Length of cufflink face 1.8cms. 27.6gms.

£900-1,400 (plus 27.6% BP*)

308 An 18ct gold opal and brilliant-cut diamond cluster ring.

Estimated dimensions of opal 17 by 12.7 by 3.7mms. Estimated total diamond weight 1ct, J-tinted colour, SI clarity. Hallmarks for London, 1975. Ring size Q1/2. 7.9gms.

£900-1,400 (plus 27.6% BP*)

309 An 18ct gold emerald and diamond cluster ring.

Emerald weight 1.25cts. Total diamond weight 0.42ct, estimated H-I colour, VS-SI clarity. Hallmarks for London, 2016. Ring size L1/2. 5.9gms.

£1,200-1,800 (plus 27.6% BP*)

310 A pair of 18ct gold, diamond 'The London Collection' earrings, with detachable cultured pearl tassel.

Estimated total diamond weight 1.25cts, G-H colour, VS clarity. Hallmarks for London, 2018. Length 7.4cms. 22.7gms.

£500-700 (plus 27.6% BP*)

311 An 18ct gold diamond 'The London Collection' geometric bracelet.

Total diamond weight 3.12cts, estimated G-H colour, VS-SI clarity. Hallmarks for London, 2017. Length 17.4cms. 17gms.

£800-1,200 (plus 27.6% BP*)

312 An 18ct gold cultured pearl and diamond 'The London Collection' necklace, with detachable bracelet.

Estimated total diamond weight 9 to 10cts, G-H colour, VS-SI clarity. Hallmarks for London, 2016, 2017 and 2018. Length 55cms. 73.9gms.

£2,800-3,200 (plus 27.6% BP*)

313 A square-shape diamond ring, with brilliant-cut diamond shoulders and surround.

Principal diamond estimated weight 1ct, H-I colour, VS clarity. Estimated total diamond weight 1.75cts. Stamped 14K. Ring size L. 7.3gms.

£1,800-2,400 (plus 27.6% BP*)

314 An emerald and brilliant-cut diamond quatrefoil-link bracelet, with magnetic clasp.

Estimated total diamond weight 2.75cts, J-tinted colour, VS clarity. Length 18.6cms. 21.3gms.

£3,400-4,400 (plus 27.6% BP*)

315 A platinum brilliant-cut diamond single-stone ring.

Estimated diamond weight 2.15cts, K-L colour, P1 clarity. Hallmarks for Birmingham. Ring size N1/2. 5.9gms.

£3,500-4,500 (plus 27.6% BP*)

316 A pair of cultured pearl earrings, with brilliant and baguette-cut diamond undulating surrounds.

Estimated total diamond weight 4.50cts, H-I colour, predominantly VS clarity.

French re-strike marks. Length 2.5cms. 15.8gms.

£3,000-4,000 (plus 27.6% BP*)

317 A pair of Colombian emerald and diamond cluster earrings.

Verbal from GCS, stating Colombia.

Estimated total emerald weight 16cts.

Estimated total diamond weight 8.40cts, G+ colour, VS clarity. Stamped 750. Length 2.1cms. 18.4gms.

£15,000-20,000 (plus 27.6% BP*)

318  A Colombian emerald dress ring, with emerald and diamond sides.

With report 80262-57, dated 27th May 2020, from GCS, stating Colombia, minor clarity enhancement, estimated weight 9cts. Portuguese marks, stamped 750. Ring size P1/2. 6.5gms.

£18,000-22,000 (plus 27.6% BP*)



307

315

310

314

317

312

311

316

318

308

313

309

319 A pair of 18ct gold ruby 'Greca' earrings, by Versace.

Later hallmarks for Birmingham.
Length 2.3cms. 17gms.
£600-800 (plus 27.6% BP*)

320 A blue topaz 'Nudo' ring, by Pomellato.

Italian marks, stamped 750. Ring size N. 8.6gms.
With maker's case.
£800-1,200 (plus 27.6% BP*)

321 A pair of pink tourmaline hoop earrings.

Estimated total tourmaline weight 10cts.
Length 2.4cms. 16.1gms.
£800-1,200 (plus 27.6% BP*)

322 A brilliant-cut diamond interwoven triple-band ring.

Estimated total diamond weight 1.70cts, H-I colour, SI clarity.
Ring size N. 10gms.
£800-1,200 (plus 27.6% BP*)

323 A pair of 'Happy Diamonds' crossover earrings, by Chopard.

Total diamond weight 0.38ct, estimated G-H colour, VS clarity.
Stamped Au750. Length 2.4cms. 24.8gms.
With maker's case and certificate of authenticity.
£1,000-1,500 (plus 27.6% BP*)

324 A tanzanite single-stone ring, with diamond crossover shoulders.

Tanzanite calculated weight 6.81cts, based on estimated dimensions of 12.8 by 9.8 by 6.1mms.
Estimated total diamond weight 0.05ct. Stamped 18K. Ring size N. 5gms.
£1,000-1,500 (plus 27.6% BP*)

325 A Colombian emerald and diamond cluster ring.

With report 81293-05, dated 20th January 2021, from GCS stating Colombia, indications of minor clarity enhancement, estimated weight 2cts.
Estimated total diamond weight 0.65ct, H-I colour, SI2-P1 clarity.
Stamped 18ct. Ring size M. 4.3gms.
£900-1,400 (plus 27.6% BP*)

326 A mid 20th century 18ct gold multi-gem woven-link bracelet.

Pink tourmaline calculated weight 5.94cts, based on estimated dimensions of 12 by 10 by 6mms.
Stamped 18K, 0.750. Length 19.2cms. 58.5gms.
£1,800-2,400 (plus 27.6% BP*)

327 A vari-cut diamond cluster ring.

Estimated total diamond weight 2.25cts, G-J colour, VS1-P1 clarity.
Ring size M1/2. 7.6gms.
£2,000-3,000 (plus 27.6% BP*)

328 An 18ct gold spiral bar collar, with peridot, tourmaline, garnet and amethyst cabochon spacers.

Import marks for London, 1993. Length 40cms. 86.1gms.
£2,500-3,000 (plus 27.6% BP*)



321



328



324



323



327



326



325



320



319



322

329 ✕ A coral and carved jade dress ring, with vine motif mount.

Approximate ring size N. 17gms.
£600-800 (plus 27.6% BP*)

330 A pavé-set diamond hinged bangle.


Estimated total diamond weight 3cts, H-I colour, VS-SI clarity.
Stamped 18kt. Inner diameter 5.6cms. 35.4gms.
£1,200-1,800 (plus 27.6% BP*)

331 An Art Deco platinum and gold, rectangular-shape and single-cut diamond geometric link-motif brooch.

Principal diamond estimated weight 0.75ct, G-H colour, VS clarity.
Estimated total diamond weight 2.55cts. Length 3.1cms. 6.3gms.
£1,200-1,800 (plus 27.6% BP*)

332 A 9ct gold emerald and diamond dress ring.

Estimated total diamond weight 0.80ct, H-J colour, VS-SI clarity.
Hallmarks for London. Ring size O1/2. 11.2gms.
£1,200-1,800 (plus 27.6% BP*)

333  An Art Deco silver and gold, Colombian emerald and diamond clip brooch.

With report 15517, dated 2nd April 2018, from The Gem & Pearl Laboratory, stating Colombia, minor clarity enhancement.
Emerald calculated weight 8.81cts, based on dimensions stated in report.
Estimated total diamond weight 1.20cts, G-I colour, VS-SI clarity.
Length 2.8cms. 7.5gms.
£1,500-2,000 (plus 27.6% BP*)

334 A pair of mid 20th century platinum and gold, coloured diamond and diamond abstract cluster earrings.


Estimated total diamond weight 3cts.
Length 1.9cms. 9.5gms.
Diamonds untested for natural colour origin.
£1,800-2,400 (plus 27.6% BP*)

335 A pair of mid 20th century 18ct gold sapphire stirrup cufflinks, by Cartier.

French assay marks.
Length 3.9cms. 11.7gms.
£1,800-2,400 (plus 27.6% BP*)

336 An 18ct gold 'Kelly' watch, by Hermès, with silvered dial and diamond dot quarterly hour markers.

'1995 Édition spéciale du vingtième anniversaire de la montre Kelly, No., 730.'
Swiss convention marks. Wearable length 18cms. 51.3gms.
£2,000-3,000 (plus 27.6% BP*)

337  A mid 20th century 18ct gold engine-turned, hinged pill box, with concave sides and single-cut diamond line grip, by Cartier.


Engraved with crowned Tudor rose to inside of lid.
Estimated total diamond weight 0.25ct, G-H colour, VS clarity.
French assay marks. Length 7.7cms. 95.3gms.
With original fitted maker's case.
£4,000-6,000 (plus 27.6% BP*)

338 A 1940s 18ct gold old-cut diamond and ruby bow ring.

Estimated diamond weight 1.15cts, J-K colour, SI clarity.
French assay marks. Ring size M. 14.8gms.
£1,000-1,500 (plus 27.6% BP*)

339 A mid 20th century diamond bi-colour collar necklace, with matching earrings, by Illario.

Estimated total diamond weight 1.50cts, G-H colour, VS-SI clarity.
Italian marks, stamped 750.
Length of necklace 39.5cms. Length of earrings 2.6cms. 137.7gms.
£5,500-7,500 (plus 27.6% BP*)

340  A mid 20th century 18ct gold diamond cocktail watch, retailed by Kutchinsky.

Dial signed Jaeger LeCoultre. Maker's mark for Sannit & Stein.
Estimated total diamond weight 1ct, G-H colour, VS-SI clarity.
Hallmarks for London, 1958. Length 17.7cms. 67.5gms.
With original Kutchinsky case, further marked Jaeger-Le Coultre.
£3,000-4,000 (plus 27.6% BP*)

337



339



336

332



333



331



330



329



335

338



334



340



341 A pair of 1960s 18ct gold citrine cufflinks, by Alan Martin Gard.

Citrine calculated total weight 17.33cts, based on estimated dimensions.

Hallmarks for London, 1966. Length of cufflink face 1.6cms. 10.5gms.

£450-650 (plus 27.6% BP*)

342 A pair of 18ct gold sapphire, ruby, cultured pearl and diamond star brooches.

Estimated total diamond weight 0.50ct, G-H colour, VS-SI clarity. Hallmarks for London. Length 2.7 and 4.8cms. 16.8gms.

£800-1,200 (plus 27.6% BP*)

343 ✕ A coral and brilliant-cut diamond dress ring.

Estimated dimensions of coral 24 by 17.3 by 10.1mms.

Estimated total diamond weight 2cts, H-I colour, VS-SI clarity.

Ring size N. 21.5gms.

Coral untested for natural colour origin.

£1,000-1,500 (plus 27.6% BP*)

344 ✕ A coral and diamond brooch.

Estimated total diamond weight 2.75cts, H-I colour, VS-SI clarity.

Estimated dimensions of coral cabochon 26 by 18.3 by 12mms.

Length 4.2cms. 22gms.

Coral untested for natural colour origin.

£1,200-1,800 (plus 27.6% BP*)

345 ✕ A pair of coral and diamond earrings.

Estimated total diamond weight 4cts, H-I colour, VS clarity.

Length 3.5cms. 27.1gms.

Coral untested for natural colour origin.

£1,400-2,000 (plus 27.6% BP*)

346 A brilliant-cut diamond asymmetric dress ring.

Estimated total diamond weight 1ct, G-H colour, VS-SI clarity. French assay marks. Ring size 11/2. 9.8gms.

£1,200-1,800 (plus 27.6% BP*)

347 A mid 20th century 18ct gold floral watch, with vari-cut diamond and ruby hinged cover and foliate bracelet, by Carl Bucherer.

Estimated total diamond weight 1ct, G-H colour, VS clarity.

Swiss marks, stamped 18K, 0.750. Length 16.6cms. 68.9gms.

£2,000-3,000 (plus 27.6% BP*)

348 An old-cut diamond two-stone ring.

Total diamond weight 2.11cts, estimated G-J colour, VS2-SI1 clarity.

Foreign marks, stamped 22K. Ring size M1/2. 11.8gms.

£2,000-2,500 (plus 27.6% BP*)

349 A mabé pearl, ruby and diamond bracelet, by Victoria Cartier.

Estimated total diamond weight 0.75ct, G-H colour, VS clarity.

French re-strike marks. Length 18.5cms. 62.4gms.

£2,800-3,200 (plus 27.6% BP*)

350 A 1970s 18ct gold necklace, by Kutchinsky.

Hallmarks for London, 1979. Length 38.2cms. 77.7gms.

£3,000-4,000 (plus 27.6% BP*)



351 A mid 20th century 18ct gold and platinum, turquoise and diamond floral brooch.

Estimated diamond weight 0.15ct, G+ colour, VS clarity.
French assay marks. Length 5.6cms. 22.6gms.

£500-700 (plus 27.6% BP*)

352 An aquamarine and diamond dress ring.

Estimated total diamond weight 0.15ct, G-H colour, VS clarity.
Stamped 750. Ring size N. 8.7gms.

£400-600 (plus 27.6% BP*)

353 A 1970s 18ct gold diamond and blue enamel belt ring, for Ben Rosenfeld Ltd.

Estimated total diamond weight 0.15ct, G-H colour, VS clarity.
Hallmarks for London, 1976. Ring size K1/2. 8.2gms.

£280-380 (plus 27.6% BP*)

354 An 18ct gold diamond dress ring, by Kutchinsky.

Estimated total diamond weight 0.80ct, G-H colour, VS-SI clarity.
Hallmarks for London, partially indistinct. Ring size O1/2. 11.2gms.

£600-800 (plus 27.6% BP*)

355 A 1960s 18ct gold brilliant-cut diamond cluster abstract dress ring.

Estimated total diamond weight 1ct, H-I colour, VS clarity.
Hallmarks for London, 1967, partially indistinct. Ring size K.
9.6gms.

£400-600 (plus 27.6% BP*)

356 A mid 20th century 18ct gold aquamarine, sapphire and rose-cut diamond floral brooch.

Length 5.5cms. 20gms.

£750-950 (plus 27.6% BP*)

357 A shishi or guardian lion brooch, with ruby eyes and emerald nose.

Length 5.1cms. 19.4gms.

£800-1,200 (plus 27.6% BP*)

358 A pair of mid 20th century platinum baroque pearl and vari-cut diamond earrings.

Estimated total diamond weight 1.50cts, G-H colour, VS clarity.
Lengths 5.7 and 6cms. 24.3gms.
Pearls untested for natural origin.

£1,000-1,500 (plus 27.6% BP*)

359 A mid 20th century diamond stylised bird brooch.

Estimated total diamond weight 3.90cts, G-I colour, VS-SI clarity.
Length 8.4cms. 27.9gms.

£1,500-2,000 (plus 27.6% BP*)

360 An old-cut diamond star brooch.

Estimated total diamond weight 3.25cts, G-I colour, SI2-P2 clarity.
Length 4.5cms. 18.9gms.

£2,000-3,000 (plus 27.6% BP*)

361 A pair of 1960s 18ct gold citrine and diamond earrings, by Andrew Grima.

Estimated total diamond weight 0.20ct, G-H colour, VS clarity.
Hallmarks for London, 1969. Length 3.2cms. 18.2gms.

£2,500-3,000 (plus 27.6% BP*)

362 A mid 20th century 18ct gold citrine and diamond abstract pendant, by Andrew Grima.

May be worn as a brooch.

Citrine calculated weight 31.13cts, based on estimated dimensions of 26.2 by 18.5 by 11.5mms.

Estimated total diamond weight 0.40ct, G-H colour, VS clarity.
Length 6.4cms. 36.7gms.

£3,500-4,500 (plus 27.6% BP*)



358



359



351



361



362



360



354



355



352



356



353



357

363 A mid 20th century 18ct gold citrine and diamond floral brooch.

Estimated total diamond weight 0.15ct, G-H colour, VS-SI clarity.
Length 5.8cms. 22.4gms.

£700-900 (plus 27.6% BP*)

364 A 1940s gold citrine and synthetic ruby buckle brooch.

Citrine calculated weight 49cts, based on estimated dimensions of
27 by 20.4 by 12.4 by

Length 7.5cms. 36.9gms.

£800-1,200 (plus 27.6% BP*)

365 A mid 20th century 18ct gold and platinum ruby and diamond floral brooch.

Estimated total diamond weight 0.60ct, G-H colour, VS-SI clarity.
Length 6.9cms. 30.4gms.

£1,000-1,500 (plus 27.6% BP*)

366 A 1970s 18ct gold bangle watch, signed Chopard, with tiger's-eye dial.

Import marks for London, 1972. Inner diameter 5.7cms. 50.9gms.
With original retail receipt from Kutchinsky.

£1,400-2,000 (plus 27.6% BP*)

367 A 1970s 18ct gold tiger's-eye necklace.

Import marks for London, 1976.

Length 67.5cms. 54.7gms.

£1,500-2,000 (plus 27.6% BP*)

368  A 1960s 18ct gold ruby and diamond spray brooch, by Kutchinsky.

Estimated total diamond weight 2.80cts, G-H colour, VS-SI clarity.
Hallmarks for London, 1962. Length 7.6cms. 41.5gms.

With maker's case.

£2,000-3,000 (plus 27.6% BP*)

369 A mid 20th century tri-colour bracelet.

Italian marks, stamped 750. Length 20cms. 100.8gms.

£3,000-4,000 (plus 27.6% BP*)

370 A gentleman's 'Constellation' wristwatch, by Omega.

Stamped 18K 0.750. Length 19cms. 91.1gms.

£3,000-4,000 (plus 27.6% BP*)

369



363



366



368



365



367



364



370



371 A mid 20th century ruby cabochon floral brooch.

French assay marks.
Length 5.1cms. 16.4gms.
£450-650 (plus 27.6% BP*)

372 A mid 20th century 18ct gold novelty duck brooch, with emerald eyes and ruby and diamond accents.

Maker's mark for Ben Rosenfeld Ltd.
Hallmarks for London, 1959. Length 3.7cms. 15.1gms.
£600-800 (plus 27.6% BP*)

373 A 1960s 18ct gold sapphire and diamond floral brooch.

Estimated total diamond weight 0.20ct, G-H colour, VS-SI clarity.
Import marks for Birmingham, 1962. Length 5.9cms. 18.6gms.
£500-700 (plus 27.6% BP*)

374 A diamond cluster dress ring.

Principal diamond estimated weight 0.80ct, H-I colour, P1 clarity.
Estimated total diamond weight 1.20cts.
Ring size K1/2. 17.5gms.
£1,000-1,500 (plus 27.6% BP*)

375 A 1950s 18ct gold wristwatch, with sapphire sides and flared head, to a tapered brick-link bracelet, by Omega.

Signed Omega to dial, movement and case.
Swiss marks, stamped 750. Length 18.6cms. 78.6gms.
£2,000-3,000 (plus 27.6% BP*)

376 A 1970s 18ct gold bracelet, by Cartier.

French assay marks.
Length 19cms. 62.3gms.
£3,000-4,000 (plus 27.6% BP*)

377  A pair of 1970s 'Etrier' bracelets, by Hermès.

One with French assay marks for 18ct gold.
Lengths 17.5 and 19cms. 79.9gms.
With one maker's case.
£3,500-4,500 (plus 27.6% BP*)

378 A 1940s 18ct gold bi-colour woven tubogas necklace.

French assay marks.
Length 38.5cms. 89.5gms.
£3,500-4,500 (plus 27.6% BP*)



372



378



375



377

376

374



371



373

379 An 18ct gold tanzanite and diamond cluster ring.

Tanzanite calculated weight 4.46cts, based on estimated dimensions of 11 by 9 by 6.5mms.
Estimated total diamond weight 0.50ct, G-H colour, VS-SI clarity.
Hallmarks for Sheffield. Approximate ring size L1/2. 9.6gms.
£500-700 (plus 27.6% BP*)

380 An 18ct gold sapphire, ruby, emerald and diamond bracelet.

Estimated total diamond weight 0.80ct, G-H colour, VS-SI clarity.
Hallmarks for London. Length 18.5cms. 15.7gms.
£700-900 (plus 27.6% BP*)

381 A sapphire and diamond cluster ring.

Sapphire calculated weight 1.97cts, based on estimated dimensions of 7.8 by 6.7 by 4.5mms.
Estimated total diamond weight 1ct, H-J colour, VS-SI clarity.
French assay marks. Ring size L1/2. 6.6gms.
£600-800 (plus 27.6% BP*)

382 A graduated modified rectangular-shape diamond and baguette-cut diamond ring.

Estimated total diamond weight 1.25cts, H-J colour, predominantly VS clarity.
Stamped 18K. Ring size O1/2. 3gms.
£800-1,200 (plus 27.6% BP*)

383 A sapphire cabochon and brilliant-cut diamond tortoise brooch, with articulated limbs and ruby eyes.

May be worn as a brooch.
Estimated total diamond weight 0.40ct. Length 6cms. 27.5gms.
£900-1,400 (plus 27.6% BP*)

384 An emerald and brilliant-cut diamond cluster ring.

Emerald calculated weight 6.31cts, based on estimated dimensions of 12.5 by 10.4 by 8.5mms.
Estimated total diamond weight 1.35cts, VS2-SI2 clarity.
Ring size N. 8.9gms.
£900-1,400 (plus 27.6% BP*)

385 A pair of 18ct gold emerald and diamond cluster earrings.

Total emerald weight 1.97cts.
Total diamond weight 1.26cts, estimated I-J colour, SI1-P1 clarity.
Hallmarks for Birmingham. Length 1.3cms. 3.5gms.
£1,000-1,500 (plus 27.6% BP*)

386 An emerald and diamond cluster ring.

Emerald calculated weight 1.57cts, based on estimated dimensions of 9.2 by 6.8 by 4.4mms.
Estimated total diamond weight 1.10cts, G-I colour, SI1-P1 clarity.
Stamped Plat. Ring size N1/2. 6.1gms.
£1,500-2,000 (plus 27.6% BP*)

387 A tanzanite and diamond dress ring.

Tanzanite weight 5.44cts.
Total diamond weight 1.66cts, estimated H-I colour, VS2-SI1 clarity.
Stamped 750. Ring size M1/2. 7.4gms.
£1,000-1,500 (plus 27.6% BP*)

388 A calibr -cut sapphire bi-colour bracelet, with brilliant-cut diamond spacers.

Estimated total sapphire weight 4.95cts.
Estimated total diamond weight 0.25ct, H-I colour, SI clarity.
Stamped 18K. Length 18.5cms. 28.2gms.
£1,200-1,800 (plus 27.6% BP*)

389 An 18ct gold fancy-link chain necklace, with pav -set diamond drop.

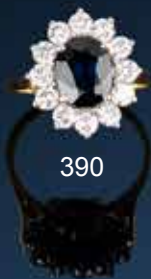
Estimated total diamond weight 0.20ct, G-H colour, VS-SI clarity.
Hallmarks for Birmingham. Length 45cms. 46.2gms.
£1,500-2,000 (plus 27.6% BP*)

390 An 18ct gold sapphire and diamond cluster ring.

Sapphire calculated weight 2.53cts, based on estimated dimensions of 9.8 by 7.9 by 3.9mms.
Estimated total diamond weight 1.50cts, G-H colour, VS-SI clarity.
Hallmarks for Birmingham. Ring size R. 7.5gms.
£1,400-2,000 (plus 27.6% BP*)



383



390



389



387



384



381



385



386



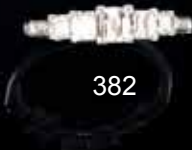
388



380



379



382

391 An 'Entrelacés' band ring, with diamond line highlight, by Cartier.

Stamped Or et Acier. Ring size K. Cartier size 50. 8.6gms.
£500-700 (plus 27.6% BP*)

392 A pair of old-cut diamond bi-colour cufflinks.

Estimated total diamond weight 1.30cts, G-I colour, SI1-P1 clarity.
Diameter of cufflink face 1.3cms. 9.1gms.
£700-900 (plus 27.6% BP*)

393 A pavé-set diamond tri-colour dress ring, by Guy Laroche.

Estimated total diamond weight 0.50ct, H-I colour, VS -SI clarity.
French re-strike marks. Ring size L1/2. 9.7gms.
£800-1,200 (plus 27.6% BP*)

394 A brooch, designed as stack of three monkeys, by Chaumet.

French assay marks. Length 4.6cms. 9.8gms.
£1,400-2,000 (plus 27.6% BP*)

395 A pair of 18ct gold diamond earrings, by De Vroomen and a cultured pearl bracelet with an 18ct gold pavé-set diamond spherical clasp.

Estimated total diamond weight 1.60cts, G-I colour, VS-SI clarity.
Hallmarks for London, 1986 and 1989.
Length of earrings 2.2cms. Length of bracelet 18cms.
Weight of earrings 28gms. Weight of bracelet 21.2gms
£1,800-2,400 (plus 27.6% BP*)

396  A platinum Fancy Yellow diamond single-stone ring, with graduated brilliant-cut diamond line shoulders.

With report 2145649205, dated 11th May 2012, from the GIA, stating natural colour, VS1 clarity.
Hallmarks for Birmingham. Ring size K1/2. 5.4gms.
£1,800-2,400 (plus 27.6% BP*)

397 A sapphire, emerald and yellow sapphire dress ring, attributed to Phillippe Pfeiffer.

Marked 750. Ring size P1/2. 27.3gms.
£2,200-3,200 (plus 27.6% BP*)

398 A pair of 'Trinity' knot cufflinks, by Cartier.

Stamped 750. Length of cufflink face 1.4cms. 18.4gms.
£900-1,400 (plus 27.6% BP*)

399 An 18ct gold 'Trinity' bangle, by Cartier.

Swiss convention marks.
Inner diameter 6.1cms. Cartier size 62. 83.2gms.
£2,800-3,200 (plus 27.6% BP*)

400 A pair of pavé-set diamond heart earrings, with graduated spiral surround, by Tiffany & Co.

Estimated total diamond weight 3cts, G-H colour, VS clarity.
Stamped Pt950, 750. Length 1.9cms. 16.6gms.
£3,500-4,500 (plus 27.6% BP*)

399



395



397



398



394



393



391



400



396



392



401 A pair of 18ct gold sapphire and single-cut diamond floral earrings.

Estimated total diamond weight 0.50ct, predominantly G-H colour, VS clarity.
Import marks for Sheffield, 1998. Length 2.4cms. 14.5gms.
£600-800 (plus 27.6% BP*)

402 A brilliant-cut diamond single-stone pendant, with 18ct gold chain.

Estimated diamond weight 0.90ct, H-I colour, SI clarity.
Chain with hallmarks for Birmingham. Pendant stamped 750.
Length of pendant 1.5cms. Length of chain 41cms. 3gms.
£800-1,200 (plus 27.6% BP*)

403 A pair of 18ct gold tanzanite and brilliant-cut diamond cluster earrings.

Total tanzanite weight 2.55cts.
Total diamond weight 1.22cts, estimated G-H colour, SI1-P1 clarity.
Hallmarks for Birmingham. Length 1.3cms. 3.8gms.
£800-1,200 (plus 27.6% BP*)

404 A brilliant-cut diamond fancy-link necklace.

Estimated total diamond weight 1ct, G-H colour, VS clarity.
Stamped 750. Length 44.6cms. 24.3gms.
£900-1,400 (plus 27.6% BP*)

405 A pair of 18ct gold emerald and brilliant-cut diamond cluster earrings.

Total emerald weight 2.28cts.
Total diamond weight 1.34cts, estimated G-H colour, SI1-P1 clarity.
Hallmarks for Birmingham. Length 1.3cms. 3.6gms.
£1,000-1,500 (plus 27.6% BP*)

406 A brilliant-cut diamond floral cluster ring.

Estimated total diamond weight 1.60cts, H-J colour, VS-SI clarity.
Stamped Plat. Ring size O. 4.8gms.
£1,000-1,500 (plus 27.6% BP*)

407 An 18ct gold sapphire and diamond cluster ring.

Sapphire calculated weight 2.19cts, based on estimated dimensions of 8.2 by 7.5 by 3.8mms.
Estimated total diamond weight 1ct, H-I colour, VS-SI clarity.
Hallmarks for Birmingham. Ring size P1/2. 6.5gms.
£1,500-2,000 (plus 27.6% BP*)

408 A brilliant-cut diamond line bracelet.

Estimated total diamond weight 4.15cts, I-L colour, VS-SI clarity.
Stamped 14k. Length 19cms. 8gms.
£1,500-2,000 (plus 27.6% BP*)

409 An emerald cabochon and diamond cluster ring.

Emerald calculated weight 11.51cts, based on estimated dimensions of 16 by 12.4 by 7.9mms.
Estimated total diamond weight 1.10cts, H-I colour, SI1-P1 clarity.
Stamped Plat. Ring size Q1/2. 7.6gms.
£1,500-2,000 (plus 27.6% BP*)

410 An 18ct gold tanzanite and diamond cluster ring.

Tanzanite weight 5.16cts.
Total diamond weight 0.37ct, estimated H-I colour, SI clarity.
Hallmarks for Birmingham. Ring size O. 4.8gms.
£1,800-2,400 (plus 27.6% BP*)

411 A brilliant-cut diamond line bracelet.

Estimated total diamond weight 5.25cts, G-tinted colour, SI1-P1 clarity.
Stamped 750. Length 18cms. 13.5gms.
£3,500-4,500 (plus 27.6% BP*)

412 An 18ct gold sapphire and brilliant-cut diamond cluster ring.

Sapphire weight 5.72cts.
Total diamond weight 1.64cts, estimated H-I colour, SI2-P1 clarity.
Hallmarks for Birmingham. Ring size N1/2. 6gms.
£5,500-7,500 (plus 27.6% BP*)



402



403



404



407



410



401



412



406



408

411



405



409

413 A rose-cut diamond cluster ring.

Approximate ring size N. 4.5gms.

£600-800 (plus 27.6% BP*)

414 A ruby and pavé-set diamond Ace of Hearts playing card pendant.

Ruby weight 0.35ct.

Total diamond weight 0.70ct, H-I colour, VS-SI clarity.

Stamped K18. Length 3.2cms. 4.3gms.

£600-800 (plus 27.6% BP*)

415 A platinum tanzanite and triangular-shape diamond pendant, with chain.

Tanzanite weight 10cts.

Diamond weight 0.50ct, estimated G-H colour, VS clarity.

Hallmarks for Sheffield. Length of pendant 1.9cms. Length of chain 42cms. 9.2gms.

£800-1,200 (plus 27.6% BP*)

416 An 18ct gold tanzanite single-stone ring, with square-shape diamond shoulders.

Tanzanite calculated weight 5.89cts, based on estimated dimensions of 13.4 by 10.4 by 6.1mms.

Estimated total diamond weight 0.30ct, G-H colour, VS clarity.

Hallmarks for London. Ring size O. 8.4gms.

£1,200-1,800 (plus 27.6% BP*)

417 A rock crystal, pink opal and diamond 'Crystal Haze' ring, by Stephen Webster.

Estimated total diamond weight 0.50ct, G+ colour, VS clarity.

Stamped 18K. Ring size J. 25.5gms.

£800-1,200 (plus 27.6% BP*)

418 A platinum brilliant-cut diamond single-stone ring.

Laser inscription to girdle GIA 11823823, corresponding to a report dated 21st December 2001, from the GIA, which states 1.01cts, L colour, P1 clarity.

Hallmarks for Birmingham. Ring size I1/2. 5.7gms.

£800-1,200 (plus 27.6% BP*)

419 A sapphire and vari-cut diamond dress ring.

Sapphire weight 1.06cts.

Total diamond weight 0.56ct, estimated H-I colour, VS-SI clarity.

Ring size M1/2. 5gms.

£1,200-1,800 (plus 27.6% BP*)

420 A pair of sapphire and diamond cluster earrings.

Total sapphire weight 2.14cts.

Total diamond weight 0.32ct, estimated H-I colour, VS-SI clarity.

Stamped 750. Length 1.1cms. 4.3gms.

£1,000-1,500 (plus 27.6% BP*)

421 A pink sapphire and diamond cross pendant, with multi-strand chain.

Estimated total diamond weight 1.25cts, H-I colour, VS1-SI1 clarity.

Stamped 750. Length of pendant 3.3cms. Length of chain 44cms.

33.5gms.

£1,400-2,000 (plus 27.6% BP*)

422 A 'Love' bangle, by Cartier.

Italian marks, stamped 750. Inner diameter 5.2cms. Cartier size 16. 32.9gms.

With screwdriver.

£2,000-3,000 (plus 27.6% BP*)

423 An 18ct gold tanzanite and diamond cluster ring.

Tanzanite weight 7.50cts.

Total diamond weight 0.41ct, estimated H-I colour, SI clarity.

Hallmarks for Birmingham. Ring size N1/2. 6.3gms.

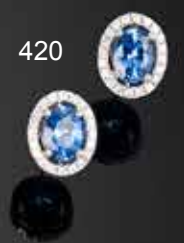
£2,400-3,400 (plus 27.6% BP*)

424 A 9ct gold brilliant-cut diamond line bracelet.

Total diamond weight 6.20cts, estimated H-tinted colour, VS2-P1 clarity.

Hallmarks for Sheffield. Length 19.5cms. 7.7gms.

£2,500-3,500 (plus 27.6% BP*)



425 A pair of garnet and brilliant-cut diamond cluster earrings.

Estimated total diamond weight 0.40ct, G-H colour, VS clarity.
Length 1.4cms. 6.1gms.

£400-600 (plus 27.6% BP*)

426 An 18ct gold purplish red tourmaline and brilliant-cut diamond cluster ring.

Tourmaline weight 1.93cts.
Estimated total diamond weight 0.35ct, H-I colour, VS-SI clarity.
Hallmarks for Birmingham. Ring size M1/2. 3.3gms.

£500-700 (plus 27.6% BP*)

427 A pink tourmaline and vari-cut diamond cluster ring.

Tourmaline weight 2.52cts.
Total diamond weight 0.44ct, estimated G-H colour, VS-SI clarity.
Ring size M1/2. 4.6gms.

£800-1,200 (plus 27.6% BP*)

428 A pair of amethyst and brilliant-cut diamond cluster earrings.

Estimated total diamond weight 0.40ct, G-H colour, VS clarity.
Stamped 750. Length 1.3cms. 6gms.

£350-450 (plus 27.6% BP*)

429 An amethyst and diamond dress ring, by Mauboussin.

Estimated total diamond weight 0.30ct, G-H colour, VS clarity.
Stamped 750. Ring size M1/2. 8.4gms.

£900-1,400 (plus 27.6% BP*)

430 An 18ct gold diamond highlight 'The London Collection' two-strand necklace.

Estimated total diamond weight 1.30cts, G-H colour, VS-SI clarity.
Hallmarks for London, 2016. Length 72cms. 10.2gms.

£500-700 (plus 27.6% BP*)

431 An 18ct gold pink tourmaline and diamond cluster ring.

Tourmaline weight 1.42cts.
Total diamond weight 0.62ct, estimated H-I colour, VS2-SI2 clarity.
Hallmarks for Birmingham. Ring size O. 3.4gms.

£700-1,000 (plus 27.6% BP*)

432 A pair of 18ct gold pink tourmaline and diamond cluster earrings.

Total tourmaline weight 2.01cts.
Total diamond weight 1.22cts, estimated H-J colour, SI1-P1 clarity.
Hallmarks for Birmingham. Length 1.3cms. 3.6gms.

£800-1,200 (plus 27.6% BP*)

433 A pale vari-hue sapphire and diamond cluster ring.

Sapphire weight 2.56cts.
Total diamond weight 0.52ct, estimated H-I colour, VS-SI clarity.
Stamped 750. Ring size L. 3.1gms.

£1,000-1,500 (plus 27.6% BP*)

434 A purple synthetic sapphire and brilliant-cut diamond dress ring.

Estimated total diamond weight 2.50cts, G-H colour, VS clarity.
Stamped IRID PLAT. Ring size M1/2. 12.8gms.

£1,500-2,000 (plus 27.6% BP*)

435 A kunzite dress ring, with pavé-set diamond claws and shoulders.

Kunzite weight 22.09cts.
Total diamond weight 0.23ct, estimated G-H colour, VS-SI clarity.
French re-strike marks. Ring size M1/2. 10.8gms.

£1,800-2,400 (plus 27.6% BP*)

436 A heart-shape diamond single-stone pendant, with chain.

Diamond weight 1.75cts, estimated H-I colour, SI2-P1 clarity
Pendant stamped 750. Chain stamped 14K.
Length of pendant 1.6cms. Length of chain 41cms. 4.6gms.

£3,000-4,000 (plus 27.6% BP*)



430



435



436



433



434



429



426



428



431



425



432



427

437 An 18ct gold pink tourmaline, pink sapphire and diamond abstract dress ring.

Estimated total diamond weight 0.10ct, G-H colour, VS-SI clarity. Hallmarks for Birmingham. Ring size N1/2. 6.8gms.

£400-600 (plus 27.6% BP*)

438  A pair of diamond hoop earrings.

With evaluation report card, dated **31st August 2010**, from IGI, stating estimated total diamond weight 1 to 1.10cts, H-I colour, VS clarity.

Stamped 14K. Length 2.9cms. 4.8gms.

£500-700 (plus 27.6% BP*)

439 An 18ct gold emerald and diamond dress ring.

Total emerald weight 0.36ct. Total diamond weight 0.44ct, estimated H-I colour, VS-SI clarity. Hallmarks for Birmingham. Ring size L1/2. 5.1gms.

£700-900 (plus 27.6% BP*)

440 A pair of 18ct gold cultured pearl abstract drop earrings, with amethyst, aquamarine and diamond highlights.

Estimated total diamond weight 0.30ct, H-I colour, VS-SI clarity. Hallmarks for Birmingham. Length 4.8cms. 15.3gms.

£700-900 (plus 27.6% BP*)

441 An 18ct gold emerald and vari-cut diamond cluster ring.

Emerald weight 1.91cts. Total diamond weight 0.84ct, estimated G-I colour, VS-SI clarity. Hallmarks for Birmingham. Ring size O. 4.5gms.

£1,000-1,500 (plus 27.6% BP*)

442 A ruby cabochon and vari-cut diamond cluster ring.

Ruby calculated weight 3.58cts, based on estimated dimensions of 8.8 by 7.4 by 5.1mms.

Estimated total diamond weight 0.60ct, H-I colour, VS-SI clarity. Ring size K. 7.1gms.

£1,000-1,500 (plus 27.6% BP*)

443 An 18ct gold brilliant-cut diamond single-stone ring, with diamond shoulders.

Principal diamond estimated weight 0.90ct, G-H colour, P1-P2 clarity.

Estimated total diamond weight 1ct.

Hallmarks for Birmingham. Ring size K. 2.8gms.

£1,200-1,800 (plus 27.6% BP*)

444 A carved jade, natural pearl, ruby and diamond necklace, by Fei Liu.

Estimated total diamond weight 0.60ct, G-H colour, VS-SI clarity. Stamped Au750.

Length of pendant 5.8cms. Length of chain 41cms. 13.5gms.

£1,400-2,000 (plus 27.6% BP*)

445 An 18ct gold emerald and diamond cluster ring.

Emerald weight 2.84cts. Total diamond weight 0.68ct, estimated I-J colour, VS-SI clarity. Hallmarks for London, 2017. Ring size N. 6.1gms.

£2,000-2,500 (plus 27.6% BP*)


446 A Tanzanian ruby and diamond three-stone ring.

With **photocopy** of report 5775-2294, dated 16th June 2015, from GCS, stating 5.45cts, Tanzania, no heat.

Estimated total diamond weight 0.90ct, G-H colour, VS clarity.

Ring size K. 5.5gms.

£4,000-6,000 (plus 27.6% BP*)

447  A brilliant-cut diamond single-stone ring, with pavé-set diamond shoulders.

With mini-report 20049461, from AnchorCert, stating M-N colour, VS clarity, estimated weight 3.08cts.

Estimated total diamond weight 3.30cts.

Ring size J1/2. 6.4gms.

£7,000-9,000 (plus 27.6% BP*)

448 An 18ct gold emerald and diamond cluster bracelet.

Total emerald weight 9.06cts.

Total diamond weight 3.28cts, estimated G-H colour, VS-SI clarity. Hallmarks for London. Length 17.5cms. Weight 20.3gms.

£5,500-7,500 (plus 27.6% BP*)



448

438

445

442

437

441

444

447

443

440

446

439



449 An 18ct gold '4810' pendant, with cord necklace, by Montblanc.

Pendant with Swiss convention marks. Cord with marks for silver. Length of pendant 3.3cms. Length of cord 40cms. 18gms. With maker's pouch.
£500-700 (plus 27.6% BP*)

450  A 'Matelassé' ring, by Chanel.

Stamped 750. Ring size K. 13.3gms. With maker's case.
£600-800 (plus 27.6% BP*)

451 A pair of 'Camélia' earrings, by Chanel.


French marks, stamped 750. Diameter 5.3cms. 16.5gms.
£600-800 (plus 27.6% BP*)

452 A pair of 18ct gold diamond 'Fil de Camélia' earrings, by Chanel.

Estimated total diamond weight 1.50cts, G+ colour, VS clarity. Hallmarks for London. Length 2cms. 10.8gms.
£2,800-3,200 (plus 27.6% BP*)

453 An amethyst and diamond bracelet.

Estimated total diamond weight 0.60ct, H-I colour, VS-SI clarity. Stamped 750. Length 18.5cms. 19.4gms.
£900-1,400 (plus 27.6% BP*)

454  An 'Optical Illusion' rotating onyx pendant, with chain, by Bulgari.

Italian marks, stamped 750. Length of pendant 4.2cms. 50.5cms. With maker's case.
£1,000-1,500 (plus 27.6% BP*)

455 A 'Double C' brooch, by Cartier.

French assay mark, stamped 750. Length 3.8cms. 21.6gms.
£1,000-1,500 (plus 27.6% BP*)

456 An 18ct gold diamond 'Love' bangle, by Cartier.

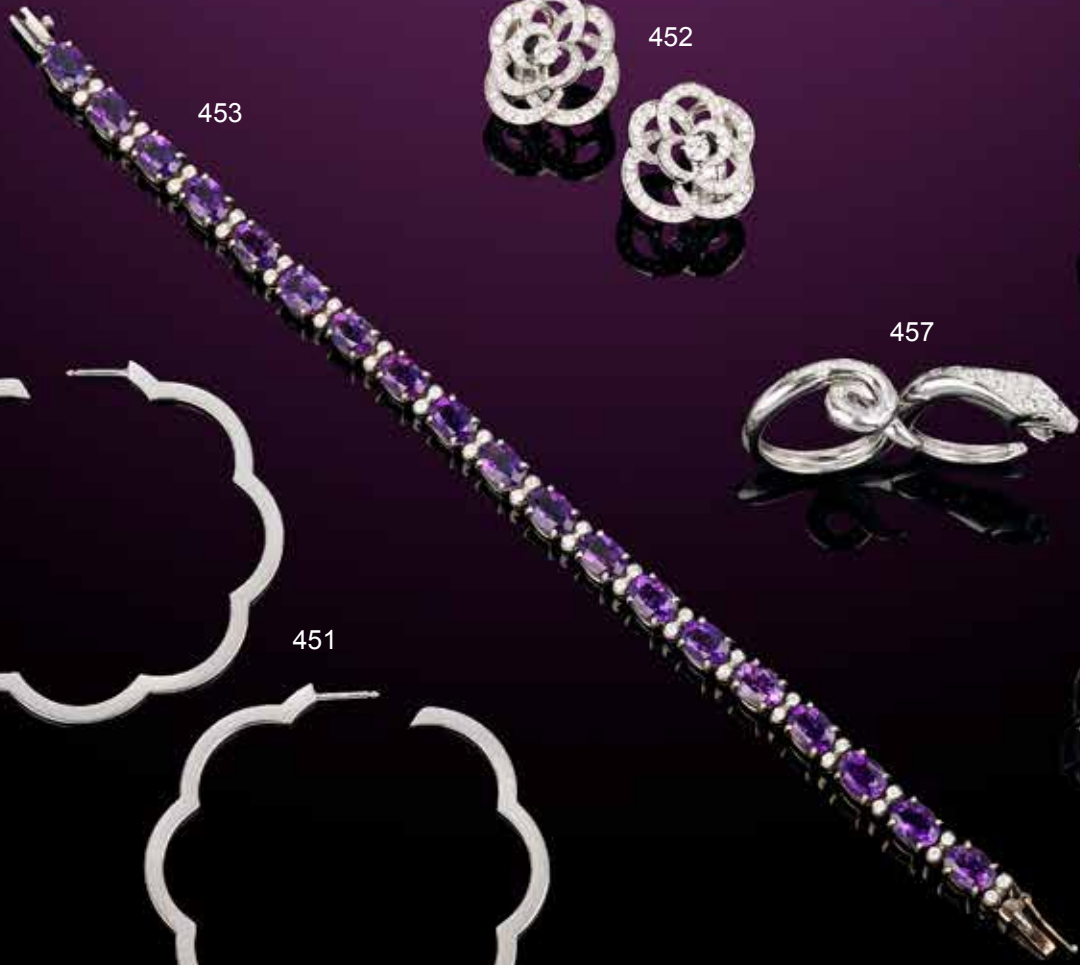
Estimated total diamond weight 0.50ct, G-H colour, VS clarity. Swiss convention marks. Inner diameter 6.2cms. Cartier size 19. 33.4gms.
£2,500-3,000 (plus 27.6% BP*)

457 A diamond 'Kaa Double Trouble' snake ring, by Boucheron.

Estimated total diamond weight 0.20ct, G-H colour, VS clarity. French assay marks. Ring size L. 14gms.
£1,000-1,500 (plus 27.6% BP*)

458  A brilliant-cut diamond single-stone ring, by Larry.

With report 661899, from LKI, stating 1.01cts, G colour, VS2 clarity. Stamped 750. Ring size J. 5.7gms.
£2,000-3,000 (plus 27.6% BP*)



459 An 18ct gold diamond floral dress ring.

Estimated total diamond weight 1ct, predominantly G-I colour, SI2-P1 clarity.

Hallmarks for Birmingham. Ring size P1/2. 11.2gms.

£500-800 (plus 27.6% BP*)

460 An 18ct gold tanzanite and baguette-cut diamond crossover ring.

Tanzanite calculated total weight 1.35cts, based on estimated dimensions.

Estimated total diamond weight 0.65ct, G-H colour, predominantly VS clarity.

Hallmarks for London, 2008. Ring size M. 6.5gms.

£700-1,000 (plus 27.6% BP*)

461 An 18ct gold pink tourmaline and diamond cluster ring.

Tourmaline weight 0.94ct.

Total diamond weight 0.61ct, estimated H-I colour, SI1-P1 clarity.

Hallmarks for Birmingham. Ring size O. 3.6gms.

£700-1,000 (plus 27.6% BP*)

462 An 18ct gold sapphire and brilliant-cut diamond cluster ring.

Sapphire calculated weight 1.65cts, based on estimated dimensions of 8.9 by 6.7 by 3.3mms.

Estimated total diamond weight 1.80cts, I-J colour, SI clarity.

Hallmarks for London. Ring size M. 5.6gms.

£800-1,200 (plus 27.6% BP*)

463 A pair of 18ct gold tanzanite and diamond cluster earrings.

Total tanzanite weight 2.60cts.

Total diamond weight 1.12cts, estimated H-I colour, SI1-P1 clarity.

Hallmarks for Birmingham. Length 1.3cms. 3.8gms.

£900-1,400 (plus 27.6% BP*)

464 A platinum brilliant-cut diamond single-stone ring.

With report F5A63176, dated **27th February 2008**, from IGI, stating 0.60ct, E colour, VS1 clarity.

Hallmarks for London. Ring size J1/2. 4.5gms.

£800-1,200 (plus 27.6% BP*)

465 A pair of 18ct gold pink sapphire and diamond cluster earrings.

Total sapphire weight 2.33cts.

Total diamond weight 1.07cts, estimated H-I colour, SI1-P1 clarity.

Hallmarks for Birmingham. Length 1.2cms. 3.7gms.

£1,000-1,500 (plus 27.6% BP*)

466 A seed pearl four-row necklace, with frosted quartz and single-cut diamond cluster clasp.

Estimated total diamond weight 0.75ct, G-H colour, VS clarity.

Stamped 750. Length 42.5cms.

£1,000-1,500 (plus 27.6% BP*)

467 A pair of diamond cluster earrings, with detachable pearl and diamond drops.

Estimated total diamond weight 1.65cts, G-I colour, VS-SI clarity.

Length 3.2cms. 10.2gms.

With fitted Harvey & Gore case.

£1,500-2,000 (plus 27.6% BP*)

468 An 18ct gold tanzanite single-stone ring, with diamond quatrefoil shoulders.

Tanzanite calculated weight 7.07cts, based on estimated dimensions of 14.4 by 10.4 by 5.3mms.

Estimated total diamond weight 0.30ct, H-I colour, VS2-SI1 clarity.

Hallmarks for Birmingham, 2010. Ring size O. 10.2gms.

£1,500-2,000 (plus 27.6% BP*)

469 An 18ct gold tanzanite and diamond necklace.

Principal tanzanite calculated weight 20.25cts, based on estimated dimensions of 17.4 by 12.8 by 10.6mms.

Estimated total diamond weight 1ct.

Hallmarks for Birmingham, 2016. Length 47cms. 53.8gms.

£1,800-2,400 (plus 27.6% BP*)

470 An 18ct gold pink sapphire and diamond cluster ring.

Sapphire weight 3.66cts.

Total diamond weight 1.48cts, estimated H-I colour, SI1-P1 clarity.

Hallmarks for Birmingham. Ring size O. 5.5gms.

£4,400-6,400 (plus 27.6% BP*)

468



462



459



460



469



467



466



464



470



461



463



465



471 An Art Deco sapphire and vari-cut diamond geometric brooch.

Estimated total diamond weight 2cts, G-I colour, VS-SI clarity.
Length 3.9cms. 9.1gms.
£550-750 (plus 27.6% BP*)

472 A pair of emerald and diamond cluster drop earrings.

Emerald total calculated weight 0.48ct, based on estimated dimensions.
Estimated total diamond weight 4cts, H-I colour, VS-SI clarity.
Length 3.7cms. 4.9gms.
£1,000-1,500 (plus 27.6% BP*)

473 An Art Deco platinum diamond openwork geometric brooch.

Estimated total diamond weight 3.65cts, G-H colour, predominantly VS-SI clarity.
Principal diamond estimated weight 0.50ct, G-H colour, VS2-SI1 clarity.
French re-strike mark. Length 5.1cms. 12.2gms.
£1,800-2,400 (plus 27.6% BP*)

474 A calibr -cut sapphire and diamond cluster ring.

Principal diamond estimated weight 0.65ct, J-K colour, SI2-P1 clarity.
Stamped 750. Ring size N. 3.4gms.
£1,800-2,400 (plus 27.6% BP*)

475 A mid 20th century platinum and gold, star ruby and diamond double clip brooch.

Estimated total ruby weight 28cts.
Estimated total diamond weight 3.30cts, H-J colour, predominantly VS-SI clarity.
Length 5.7cms. 24.9gms.
£2,800-3,200 (plus 27.6% BP*)

476 An Art Deco platinum old-cut diamond ring, with calibr -cut synthetic sapphire and diamond sides.

Principal diamond estimated weight 2.60cts, tinted colour, P1 clarity.
Estimated total diamond weight 2.90cts.
Ring size L. 5.4gms.
£3,000-4,000 (plus 27.6% BP*)

477 A mid 20th century platinum and 15ct gold, aquamarine and circular-cut diamond necklace, with chain.

May be worn as a brooch.
Aquamarine calculated weight 28.17cts, based on estimated dimensions of 23.2 by 16.2 by 10.6mms.
Estimated total diamond weight 0.85ct, G-H colour, SI clarity.
Length of pendant 3.6cms. Length of chain 41cms. 17.3gms.
With fitted case.
£3,000-4,000 (plus 27.6% BP*)

478 An Art Deco platinum vari-cut diamond bracelet.

Two principal diamonds estimated total weight 2.35cts, J-L colour, SI2-P1 clarity.
Estimated total diamond weight 8cts.
Length 19cms. 27.4gms.
£5,000-7,000 (plus 27.6% BP*)

479 A platinum rose-cut diamond and diamond cluster ring.

With report 2173352738, dated 16th October 2015, from the GIA, stating 2.05cts, I colour, SI1 clarity.
Total diamond weight 2.69cts.
Hallmarks for London, 2020. Ring size L. 5.7gms.
£6,000-8,000 (plus 27.6% BP*)

480 A mid 20th century platinum sapphire and diamond geometric bracelet.

Estimated total diamond weight 4.20cts, predominantly H-J colour, VS-SI clarity.
Length 16cms. 35.3gms.
£6,000-8,000 (plus 27.6% BP*)

481 A Burmese sapphire single-stone ring, with vari-cut diamond gallery and shoulders.

With report 80259-04, dated 5th March 2020, from GCS, stating 6.28cts, Myanmar (Burma), no heat.
Estimated total diamond weight 0.50ct, predominantly G-H colour, VS-SI clarity.
Ring size J. 4.9gms.
£10,000-15,000 (plus 27.6% BP*)

482 A vari-cut diamond geometric bracelet.

Principal diamond estimated weight 1.15cts, H-I colour, SI clarity.
Estimated total diamond weight 34.50cts, G-I colour, VS-SI clarity.
Length 17.8cms. 93.4gms.
£25,000-35,000 (plus 27.6% BP*)



480



477



472



474



471



481



479



473



478



482



476



475

483 A sapphire and diamond dress ring.

Sapphire calculated weight 2.75cts, based on estimated dimensions of 10.5 by 6.8 by 4.6mms.
Estimated total diamond weight 0.80ct, H-I colour, VS-SI clarity.
Ring size H1/2. 12.4gms.
£1,000-1,500 (plus 27.6% BP*)

484 A 1970s 18ct gold 'De Ville' watch, by Omega, with deep blue dial, brilliant-cut diamond bezel and integral textured bracelet.

Signed to dial and movement.
Estimated total diamond weight 0.65ct, G-H colour, VS clarity.
Swiss marks. Length 16.5cms. 58gms.
£1,500-2,000 (plus 27.6% BP*)

485 A diamond floral brooch.

Estimated total diamond weight 3.50cts, G-H colour, VS clarity.
French assay marks. Length 3.4cms. 15.6gms.
£1,500-2,000 (plus 27.6% BP*)

486 A mid 20th century vari-cut diamond floral spray brooch.

Estimated total diamond weight 4 to 4.50cts, G-H colour, VS-SI clarity.
Length 6.4cms. 19.9gms.
£1,800-2,600 (plus 27.6% BP*)

487 A brilliant-cut diamond cluster crossover ring.

Estimated total diamond weight 4cts, G-K colour, VS1-P1 clarity.
Ring size L. 15.5gms.
£2,000-3,000 (plus 27.6% BP*)

488 A mid 20th century platinum vari-cut diamond brooch.

Estimated total diamond weight 5.25cts, G-I colour, VS-SI clarity.
Length 4.7cms. 18.1gms.
£2,000-3,000 (plus 27.6% BP*)

489 A pair of Sri Lankan sapphire and vari-cut diamond earrings.

Verbal from GCS, stating Sri Lanka, no heat.
Sapphire calculated total weight 5.53cts, based on estimated dimensions.
Estimated total diamond weight 0.40ct, G-H colour, VS-SI clarity.
Length 1.8cms. 4.8gms.
£2,500-3,500 (plus 27.6% BP*)

490 A mid 20th century cultured pearl, vari-cut diamond foliate brooch, by Schilling.

Estimated total diamond weight 7.25cts, G-H colour, VS clarity.
Length 5.4cms. 18.7gms.
£3,000-4,000 (plus 27.6% BP*)

491 A mid 20th century platinum old-cut diamond cocktail ring, with vari-cut diamond sides.

Principal diamond weight 1.90cts, estimated K-L colour SI2-P1 clarity.
Estimated total diamond weight 3.90cts.
Ring size G1/2. 13.5gms.
£3,500-4,500 (plus 27.6% BP*)

492 A pair of 18ct gold cultured pearl and brilliant-cut diamond earrings.

Estimated total diamond weight 6cts, G-H colour, VS clarity.
Hallmarks for London, 1990. Length 3.1cms. 26.6gms.
With Asprey retailer's case.
£5,000-7,000 (plus 27.6% BP*)

493 A mid 20th century platinum vari-cut diamond and sapphire floral brooch.

Estimated total diamond weight 5cts, G-H colour, VS clarity.
Length 4cms. 22.3gms.
£5,000-7,000 (plus 27.6% BP*)

494 A mid 20th century marquise-shape and baguette-cut diamond bracelet.

Estimated total diamond weight 14cts, G-I colour, VS clarity.
Length 17.5cms. 60.9gms.
£8,000-12,000 (plus 27.6% BP*)



490



487



486



483



492



488



485



493



491



484

494



489

495 A diamond 'Astrale Cerchi' ring, by Bulgari.

Estimated total diamond weight 0.60ct, G+ colour, VS clarity.
Italian marks, stamped 750. Ring size M. 10.8gms.

£400-600 (plus 27.6% BP*)

496 An 18ct gold key pendant, by Theo Fennell, with 18ct gold non-designer chain.

Hallmarks for London, 2001 and Edinburgh, 2000.
Length of pendant 6cms. Length of chain 35cms. 26.4gms.

£900-1,400 (plus 27.6% BP*)

497 A brilliant and baguette-cut diamond foliate brooch.

May be worn as a pendant.
Total diamond weight 2.82cts, stamped to mount.
Stamped K18. Length 6.2cms. 11.3gms.

£900-1,400 (plus 27.6% BP*)

498 A pair of cultured pearl and diamond floral cluster drop earrings.

Estimated total diamond weight 1.70cts, H-I colour, VS-SI clarity.
French re-strike marks, stamped 750. Length 3.9cms. 14.1gms.

£1,000-1,500 (plus 27.6% BP*)

499 A pavé-set diamond heart ring.

Estimated total diamond weight 4cts, predominantly H-I colour,
VS-SI clarity.
Approximate ring size H1/2. 14.5gms.

£1,200-1,800 (plus 27.6% BP*)

500 A pair of diamond and black gem earrings.

Estimated total diamond weight 1.35cts, H-I colour, VS2-SI1 clarity.
Stamped 750. Length 4.8cms. 33.3gms.

£1,200-1,800 (plus 27.6% BP*)

501 A ruby and diamond necklace, with detachable cultured pearl drop and onyx bead chain.

Estimated total diamond weight 2cts, G-I colour, SI clarity.
Length 45cms. 35.4gms.

£1,800-2,400 (plus 27.6% BP*)

502 A pavé-set diamond 'Serpent Bohème' ring, by Boucheron.

Estimated total diamond weight 0.80ct, G-H colour, VS-SI clarity.
Stamped 750. Ring size M1/2. 14.3gms.

£2,000-3,000 (plus 27.6% BP*)

503 A pavé-set diamond, sapphire and black gem bird brooch, with grey baroque cultured pearl and enamel highlights.

Estimated total diamond weight 3cts, G-H colour, VS clarity.
Stamped 750. Length 8.9cms. 30.5gms.

£2,800-3,600 (plus 27.6% BP*)

504 A brilliant and tapered baguette-cut diamond pendant.

Total diamond weight 15.60cts, estimated G-H colour,
predominantly VS clarity.
Length 7.8cms. 39gms.

£4,500-5,500 (plus 27.6% BP*)



497

501



500



498



503



502



496



495



499



504

505 A South Sea cultured pearl ring, by Carl Bucherer.

Estimated diameter 15.1mms.
Stamped 750. Ring size M. 9.1gms.
£700-900 (plus 27.6% BP*)

506 An 18ct gold blue topaz and diamond brooch.

Topaz calculated weight 18.76cts, based on estimated dimensions of 19 by 14.8 by 9mms.
Estimated total diamond weight 0.20ct, H-I colour, VS-SI clarity.
Hallmarks for Birmingham. Length 5.8cms. 9gms.
£700-900 (plus 27.6% BP*)

507 A blue topaz, iolite and diamond dress ring, by Mauboussin.

Estimated total diamond weight 0.30ct, G-H colour, VS clarity.
Stamped 750. Ring size L. 8.6gms.
£900-1,400 (plus 27.6% BP*)

508 An 18ct gold brilliant-cut diamond single-stone ring, with similarly-cut diamond stepped surrounds and shoulders.

Principal diamond estimated weight 0.75ct, L-M colour, VS clarity.
Estimated total diamond weight 0.95ct.
Hallmarks for Birmingham. Ring size K. 3.8gms.
£800-1,200 (plus 27.6% BP*)

509 A blue topaz and diamond dress ring.

Topaz weight 12.08cts.
Total diamond weight 0.075ct, estimated H-I colour, VS-SI clarity.
Stamped Au750. Ring size N. 6gms.
£500-700 (plus 27.6% BP*)

510 A brilliant-cut diamond full eternity ring.

Estimated total diamond weight 2.20cts, H-I colour, VS-SI clarity.
Ring size P. 3gms.
£900-1,400 (plus 27.6% BP*)

511 A pair of cultured pearl and brilliant-cut diamond floral cluster earrings.

Estimated total diamond weight 2cts, H-I colour, VS clarity.
Diameter 1.6cms. 11.2gms.
£1,000-1,500 (plus 27.6% BP*)

512 An aquamarine, diamond and frosted rock crystal ring.

Estimated dimensions of aquamarine 13.7 by 10mms.
Estimated total diamond weight 0.50ct, G-H colour, VS clarity.
Stamped 750. Ring size L1/2. 21.9gms.
£1,000-1,500 (plus 27.6% BP*)

513 A pair of reconstituted turquoise and diamond drop earrings.

Estimated total diamond weight 1.20cts, H-J colour, SI2-P1 clarity.
Stamped 18K. Length 7.6cms. 31.1gms.
£1,200-1,800 (plus 27.6% BP*)

514 An 18ct gold aquamarine and diamond cluster ring.

Aquamarine weight 6.56cts.
Total diamond weight 0.41ct, estimated H-I colour, SI clarity.
Hallmarks for Birmingham. Ring size N1/2. 6gms.
£1,000-1,500 (plus 27.6% BP*)

515 An 18ct gold aquamarine and diamond cluster ring.

Aquamarine weight 9.89cts.
Total diamond weight 2.42cts, estimated H-J colour, VS-SI clarity.
Hallmarks for London, 2016. Ring size M1/2. 10.3gms.
£3,500-4,500 (plus 27.6% BP*)

516 A reconstituted turquoise bead collar, with brilliant-cut diamond highlights.

With small additional section, loose.
Estimated total diamond weight 2.50cts, I-J colour, VS-SI clarity.
Length 43cms. 105.6gms.
£4,000-6,000 (plus 27.6% BP*)



515



509



516

506



512



508



513



505

514



511

507



510



517 A mid 20th century nephrite jade, amethyst, blue agate and diamond floral brooch.

Estimated total diamond weight 0.20ct, H-J colour, SI1-P1 clarity. Length 6.7cms. 14gms.

£500-700 (plus 27.6% BP*)

518 A mid 20th century 18ct gold brilliant and single-cut diamond floral brooch.

Estimated total diamond weight 2.50 to 3cts, G-H colour, VS clarity.

Length 4.8cms. 16.5gms.

£900-1,400 (plus 27.6% BP*)

519 An aquamarine and diamond dress ring, by Larry.

Aquamarine calculated weight 5.90cts, based on estimated dimensions of 13.7 by 10.2 by 7.4mms.

Estimated total diamond weight 0.35ct, H-I colour, VS-SI clarity.

Stamped 750. Ring size N. 8.6gms.

£1,000-1,500 (plus 27.6% BP*)

520 A 1960s 18ct gold cultured pearl and diamond brooch.

Estimated total diamond weight 0.75ct, G-I colour, VS-SI clarity. Import marks for Birmingham, 1967. Length 6cms. 10.9gms.

£500-700 (plus 27.6% BP*)

521 A mid 20th century 18ct gold vari-cut diamond abstract brooch, by J. E. Caldwell.

Estimated total diamond weight 1.50cts, G-I colour, VS clarity. Stamped 18K 750. Length 4.3cms. 5.7gms.

£1,200-1,800 (plus 27.6% BP*)

522 A platinum amethyst and diamond dress ring.

Amethyst calculated weight 5.97cts, based on estimated dimensions of 12 by 9.9 by 7mms.

Estimated total diamond weight 1.20cts, G-H colour, VS-SI clarity.

Hallmarks for Birmingham. Ring size L1/2. 11.4gms.

£800-1,200 (plus 27.6% BP*)

523 A vari-cut diamond cluster dress ring.

Estimated total diamond weight 2.25cts, G-I colour, VS-SI clarity. Stamped Plat. Ring size J1/2. 7.7gms.

£1,200-1,800 (plus 27.6% BP*)

524 A turquoise and vari-cut diamond cluster ring.

Estimated total diamond weight 2cts, predominantly H-I colour, VS-SI clarity.

Stamped 750. Ring size L. 9.8gms.

£800-1,200 (plus 27.6% BP*)

525 A turquoise and vari-cut diamond spray brooch.

Estimated total diamond weight 1.75cts, predominantly H-J colour, VS-SI clarity.

Stamped 750. Length 6cms. 29.3gms.

£1,200-1,800 (plus 27.6% BP*)

526 A mid 20th century sapphire and ruby full eternity ring, with diamond hinged sides.

Estimated total diamond weight 0.30ct, H-I colour, VS-SI clarity. Ring size R. 5.3gms.

£900-1,500 (plus 27.6% BP*)

527 A mid 20th century 18ct gold cultured pearl and diamond floral bracelet, by Sterlé.

Estimated total diamond weight 1.20cts, G-H colour, VS-SI clarity. French assay marks. Length 19cms. 31.5gms.

£1,800-2,400 (plus 27.6% BP*)

528 A mid 20th century cultured pearl three-strand choker necklace, with ruby, sapphire, emerald and vari-cut diamond cluster clasp.

Estimated total diamond weight 5cts, G-H colour, VS clarity. Length 32cms. 92.4gms.

£2,000-3,000 (plus 27.6% BP*)



525



518

528



524



523



519



520



526



521

527



517



522

529 An 18ct gold aquamarine and diamond floral cluster brooch.

Aquamarine calculated weight 1.55cts, based on estimated dimensions of 7.6 by 7.5 by 5mms.
Estimated total diamond weight 1.20cts, H-I colour, VS-SI clarity.
Import marks for London. Diameter 3.8cms. 13gms.
£500-700 (plus 27.6% BP*)

530 An amethyst and single-cut diamond dress ring.

Amethyst calculated weight 7.51cts, based on estimated dimensions of 14.4 by 11.4 by 8.2mms.
Estimated total diamond weight 0.30ct, H-I colour, VS2-SI1 clarity.
Ring size R. 5.3gms.
£500-700 (plus 27.6% BP*)

531 An aquamarine and old-cut diamond three-stone ring.

Aquamarine calculated weight 1.66cts, based on estimated dimensions of 7.9 by 7.9 by 4.9mms.
Estimated total diamond weight 0.40ct, K-L colour, SI2-P1 clarity.
French assay mark. Ring size N1/2. 6gms.
£800-1,200 (plus 27.6% BP*)

532 A ladies 1960s 18ct gold diamond wristwatch, by Omega.

Estimated total diamond weight 0.40ct, G-H colour, VS-SI clarity.
Stamped 18K 750. Length 16.5cms. 34.1gms.
£1,200-1,800 (plus 27.6% BP*)

533 A mid 20th century platinum circular-cut diamond three-stone ring, with scroll motif gallery.

Estimated total diamond weight 1.50cts, G-H colour, SI clarity.
Ring size K. 6.4gms.
£1,400-2,000 (plus 27.6% BP*)

534 A mid 20th century brilliant and baguette-cut diamond floral brooch.

Estimated total diamond weight 4 to 4.50cts, H-I colour, VS-SI clarity.
Length 6.2cms. 19gms.
£1,400-2,000 (plus 27.6% BP*)

535 A 1970s 18ct gold 'De Ville' watch, by Omega, with textured dial, brilliant-cut diamond bezel and integral textured bracelet.

Signed to dial and movement.
Estimated total diamond weight 1.60cts, G-H colour, VS-SI clarity.
Length 17.4cms. 49.6gms.
£1,500-2,000 (plus 27.6% BP*)

536 A mid 20th century diamond floral brooch.

Estimated total diamond weight 4 to 4.50cts, predominantly G-J colour, VS-SI clarity.
Length 6.8cms. 26.6gms.
£1,500-2,000 (plus 27.6% BP*)

537 A mid 20th century platinum, emerald and vari-cut diamond spray brooch.


Emerald calculated weight 1.14cts, based on estimated dimensions of 7.4 by 6.8 by 3.1mms.
Estimated total diamond weight 9cts, G-H colour, VS-SI clarity.
French re-strike marks. Length 6.3cms. 26.2gms.
£3,000-4,000 (plus 27.6% BP*)

538  Two mid 20th century platinum vari-cut diamond clip brooches.

Estimated total diamond weight 14.50cts, G-J colour, VS-SI clarity.
Lengths 4.4 and 4.8cms. 39.1gms.
With fitted case.
£6,000-8,000 (plus 27.6% BP*)

539 A mid 20th century platinum vari-cut diamond bracelet.

Estimated total diamond weight 14 to 15cts, G-I colour, VS-SI clarity.
Length 18cms. 55.4gms.
£7,000-9,000 (plus 27.6% BP*)

540  A pair of emerald and vari-cut diamond earrings, by Bulgari.

Estimated total emerald weight 3.15cts.
Estimated total diamond weight 4.50 to 5cts.
Length 5cms. 28.2gms.
With fitted maker's case.
£8,000-12,000 (plus 27.6% BP*)



538



529



540



531



536



532



539



530



537



535



534



533

541 A late Victorian 15ct gold amethyst and split pearl cluster brooch.

Amethyst calculated weight 27.66cts, based on estimated dimensions of 23.7 by 19 by 11mms.
Stamped 15ct. Length 3cms. 11.7gms.
£300-400 (plus 27.6% BP*)

542 An 18ct gold 'Happy Diamonds' Love ring, by Chopard.

Estimated total diamond weight 0.30ct, G-H colour, VS clarity.
Swiss convention marks. Ring size K1/2. 10.6gms.
£700-900 (plus 27.6% BP*)

543 A garnet cabochon and diamond cluster ring.

Garnet calculated weight 8.59cts, based on estimated dimensions of 13.8 by 10.7 by 5.7mms.
Estimated total diamond weight 1ct, I-J colour, VS-SI clarity.
Stamped 750. Ring size K1/2. 8.2gms.
£900-1,400 (plus 27.6% BP*)

544 An 18ct gold aquamarine single-stone ring.

Aquamarine calculated weight 7.51cts, based on estimated dimensions of 15.5 by 9.3 by 7.1mms.
Hallmarks for London, 1979. Ring size N. 6.6gms.
£900-1,400 (plus 27.6% BP*)

545 An amethyst pendant, with pierced floral surround and fancy-link chain.

Amethyst calculated weight 28.46cts, based on estimated dimensions of 25 by 17.4 by 12.3mms.
Pendant stamped 18K. Length of pendant 4.9cms. Length of chain 46cms. 22.4gms.
£600-800 (plus 27.6% BP*)

546 An Italian pavé-set diamond and ruby cabochon turtle brooch, by Marcello Duchi.

Estimated total diamond weight 0.15ct, G-H colour, VS clarity.
Stamped 750. Length 3.7cms. 10.3gms.
£1,500-2,000 (plus 27.6% BP*)

547 A purplish red tourmaline and brilliant and marquise-shape diamond necklace, with fancy-link back-chain.

Tourmaline calculated weight 1.37cts, based on estimated dimensions of 11 by 6.1 by 3.2mms.
Estimated total diamond weight 2.75cts, G-J colour, VS-SI clarity.
Stamped 750. Length of drop 3.1cms. Length of chain 40.5cms. 22.7gms.
£1,500-2,000 (plus 27.6% BP*)

548 A ruby and pavé-set diamond bombe dress ring.

Ruby calculated weight 0.58ct, based on estimated dimensions of 5.4 by 5.2 by 2.6mms.
Estimated total diamond weight 1.75cts, H-I colour, VS-SI clarity.
Stamped 750. Ring size N. 5.1gms.
£1,500-2,000 (plus 27.6% BP*)

549 A cultured pearl and old-cut diamond cluster pendant, on chain.

Estimated total diamond weight 2.25cts, G-I colour, VS2-P1 clarity.
Length of pendant 4.5cms. Length of chain 41cms. 5.3gms.
£1,600-2,000 (plus 27.6% BP*)

550 A pair of cultured pearl and brilliant-cut diamond earrings.

Estimated total diamond weight 2cts, G-H colour, VS clarity.
Estimated diameter of cultured pearls 13.8mms.
Diameter 1.8cms.
£2,000-2,500 (plus 27.6% BP*)

551 A brilliant and baguette-cut diamond hinged bangle.

Total diamond weight 4.63cts, stamped to mount, estimated H-I colour, VS-SI clarity.
Inner diameter 6cms. 22.5gms.
£2,500-3,500 (plus 27.6% BP*)

544



542



551



543



545



548



550



547



546



541



549



552 A Georgian gold swivel chalcedony fob seal, possibly depicting the coat of arms for a branch of the Biggs family.

Length 5.2cms. 17.5gms.
£200-300 (plus 27.6% BP*)

553 An early to mid 20th century silver and gold, rose-cut diamond cluster brooch, with similarly-cut diamond foliate sides.

Dutch marks. Length 7.8cms. 9.5gms.
£250-350 (plus 27.6% BP*)

554 A rose-cut diamond floral bracelet.

Length 18.4cms. 9.1gms.
£500-700 (plus 27.6% BP*)

555 A late 19th century silver and gold, diamond, split and seed pearl bird pendant, with later 18ct gold chain.

Estimated total old-cut diamond weight 0.15ct.
Chain with import marks for Sheffield, 1998.
Length of pendant 3.9cms. Length of chain 52cms. 5.1gms.
£400-600 (plus 27.6% BP*)

556 A rose-cut diamond single-stone ring, with single-cut diamond line and blue enamel bird motif shoulders.

Ring size K1/2.
£300-400 (plus 27.6% BP*)

557 A 19th century 18ct gold rose-cut diamond and enamel floral brooch.

Length 4.6cms. 17.5gms.
£450-650 (plus 27.6% BP*)

558 A rose-cut diamond and blue enamel ring.

Ring size J1/2. 7.7gms.
£800-1,200 (plus 27.6% BP*)

559 A 19th century silver and 18ct gold, old and rose-cut diamond and blue enamel memorial brooch.

May we worn as a pendant.
Length 3.1cms. 12.1gms.
£700-900 (plus 27.6% BP*)

560 A pair of pear-shape and brilliant-cut diamond drop earrings.

Estimated total diamond weight 2.10cts, H-J colour, VS clarity.
Length 2.6cms. 5.1gms.
£1,000-1,500 (plus 27.6% BP*)

561 A late 19th century silver and gold, sapphire and diamond brooch.

Sapphire calculated weight 2.10cts, based on estimated dimensions of 8.2 by 6.1 by 5mms.
Estimated total old-cut diamond weight 4.50cts, G-L colour, SI1-P2 clarity.
Length 4.7cms. 23.8gms.
£1,400-2,000 (plus 27.6% BP*)

562   A 19th century Burmese sapphire and old-cut diamond cluster ring.

With report 80261-95, dated 22nd May 2020, from GCS, stating Myanmar (Burma), no heat, estimated weight 2.30cts.
Estimated total diamond weight 1.90cts, H-I colour, VS clarity.
Approximate ring size L. 5.8gms.
With case.
£3,500-4,500 (plus 27.6% BP*)

563 An old-cut diamond single-stone ring, with diamond shoulders.

Principal diamond estimated weight 3.25cts, J-K colour, VS clarity.
Ring size L. 4.3gms.
£7,000-9,000 (plus 27.6% BP*)

553



555



561



556



562



559



563



560



557



554



558



552



564 An early 20th century 15ct gold aquamarine and split pearl necklace.

Principal aquamarine calculated weight 0.77ct, based on estimated dimensions of 6.2 by 6.2 by 3.7mms.
Stamped 15ct. Length 41cms. 5.7gms.
£450-650 (plus 27.6% BP*)

565 A pair of early 20th century 18ct gold sugarloaf moonstone cabochon cufflinks.

French assay marks.
Length of cufflink face 1.2cms. 7.8gms.
£450-650 (plus 27.6% BP*)

566 An early 20th century 9ct gold moonstone pendant.

Stamped 9ct. Length 4.8cms. 7.2gms.
£450-650 (plus 27.6% BP*)

567 An early 20th century gold amethyst, diamond, seed and split pearl pendant.

Estimated total old-cut diamond weight 0.15ct, H-J colour, SI1-P1 clarity.
Length 4.6cms. 5.5gms.
£550-750 (plus 27.6% BP*)

568 An early 20th century 15ct gold and silver, turquoise and old-cut diamond cluster bracelet.


Estimated total diamond weight 1.75cts, H-J colour, VS2-P1 clarity.
Length 18.5cms. 9.7gms.
£800-1,200 (plus 27.6% BP*)

569 An Art Deco agate French desk clock, with diamond hands, attributed to Boucheron.

Length 9.6cms. 290.9gms.
£1,000-1,500 (plus 27.6% BP*)

570 An Art Nouveau silver and gold, peridot, amethyst, cultured pearl and diamond pendant, with bi-colour chain.

Peridot calculated weight 1.39cts, based on estimated dimensions of 7.1 by 7 by 4.2mms.
Estimated total diamond weight 1.50cts, predominantly H-J colour, SI clarity.
Length of pendant 5.4cms. Length of chain 39.5cms. 23.4gms.
This piece displays the colours commonly associated with the suffragette movement.
£1,500-2,500 (plus 27.6% BP*)

571  A set of early 20th century platinum and gold, sapphire and diamond dress studs.

With cufflink fittings.
Estimated total diamond weight 0.20ct, G-H colour, SI clarity.
French assay marks. Diameter of one stud 1.4cms. 14.5gms.
Period retailer's case for Marzo & Laillet.
£2,200-2,800 (plus 27.6% BP*)

572 An opal and diamond cluster pendant.

Estimated dimensions of opal 27 by 22.5 by 8.2mms.
Estimated total diamond weight 0.70ct, H-I colour, VS-SI clarity.
Length 3.6cms. 13.1gms.
£3,000-5,000 (plus 27.6% BP*)

573  An Edwardian platinum natural pearl and diamond necklace.

With report 2211359971, dated 7th January 2021, from the GIA, stating natural, saltwater.
Estimated total old-cut diamond weight 0.85ct.
French assay marks. Length 41.5cms. 8.8gms.
£3,500-4,500 (plus 27.6% BP*)



569



573



565



566



568



570



572



567



571

564

574 A brilliant-cut diamond four-stone ring.

Estimated total diamond weight 1ct, K-tinted colour, SI1-P1 clarity.
Stamped Plat. Ring size N. 4.6gms.
£1,000-1,500 (plus 27.6% BP*)

575 An old-cut diamond single-stone pendant, with 18ct gold chain.

Principal diamond estimated weight 1.25cts, G-H colour, P1 clarity.
Chain with hallmarks for Birmingham.
Length of pendant 1.6cms. Length of chain 41cms. 2.6gms.
£1,000-1,500 (plus 27.6% BP*)

576 A Belle Époque platinum and gold, old and rose-cut diamond pendant.

May be worn as a brooch.
Estimated total circular-cut diamond weight 1.40cts, H-I colour, SI1-P1 clarity.
Length 4.9cms. 8.6gms.
With fitted case.
£1,500-2,000 (plus 27.6% BP*)

577 An early 20th century platinum floral carved emerald and diamond dress ring.

Estimated total single-cut diamond weight 0.30ct, H-I colour, SI clarity.
Ring size N1/2. 7.6gms.
£1,400-2,000 (plus 27.6% BP*)

578 A Belle Époque platinum and gold diamond necklace.

Estimated total old-cut diamond weight 1.35cts, predominantly H-I colour, VS-SI clarity.
Length 42cms. 8.2gms.
£1,600-2,200 (plus 27.6% BP*)

579 An Art Nouveau platinum and 14ct gold, old and circular-cut diamond and natural pearl pendant.

May be worn as a brooch.
Verbal from GCS, stating natural, saltwater.
Estimated total diamond weight 4cts, H-K colour, VS2-P1 clarity.
Length 7cms. 10.6gms.
£1,800-2,600 (plus 27.6% BP*)

580 An early 20th century platinum old-cut and circular-cut diamond cross pendant, with chain.

Estimated total diamond weight 4.50cts, predominantly G-I colour, VS-SI clarity.
Foreign marks.
Length of pendant 8cms. Length of chain 48cms. 14gms.
£2,800-3,600 (plus 27.6% BP*)

581 An early 20th century opal and diamond brooch.

Estimated dimensions of opal 33 by 26.5 by 5.4mms.
Estimated total diamond weight 0.80ct, G-I colour, VS-SI clarity.
Length 4.6cms. 15.2gms.
£3,500-4,500 (plus 27.6% BP*)

582 A late Victorian gold opal and diamond necklace.

Estimated dimensions of central opal 9.3 by 9.3 by 4.2mms.
Estimated total diamond weight 0.20ct, H-I colour, VS-SI clarity.
Length 48.5cms. 22.8gms.
£5,500-7,500 (plus 27.6% BP*)

583 A mid 20th century gold Colombian emerald and diamond cluster ring.

Verbal from GCS, stating Colombia, minor clarity enhancement.
Emerald calculated weight 2.29cts, based on estimated dimensions of 7.9 by 6.7 by 5.9mms.
Estimated total diamond weight 3.20cts, G-H colour, VS2-SI2 clarity.
Ring size N1/2. 5.8gms.
£4,000-6,000 (plus 27.6% BP*)

584 An Art Deco platinum Colombian emerald and diamond openwork bracelet, with butterfly motif links.

With report 80274-87, dated 10th September 2020, from GCS, stating Colombia, minor clarity enhancement, estimated weight 3cts.
Principal six diamonds estimated total weight 4.40cts, estimated H-L colour, VS-SI clarity.
Estimated total diamond weight 13.50cts.
Length 17.5cms. 30.1gms.
With fitted Heming & Co. case.
£12,000-18,000 (plus 27.6% BP*)

585 A graduated old-cut diamond three-stone ring.

Total diamond weight 6.24cts, estimated H-J colour, VS clarity.
Ring size M. 5.6gms.
£20,000-30,000 (plus 27.6% BP*)



578



575



581



580



579



582



585



583



576



584



577



574

586 A pair of rose-cut diamond cluster earrings.

Diameter 1.1cms. 6.1gms.
£500-700 (plus 27.6% BP*)

587 An early 20th century 18ct gold emerald and old-cut diamond three-stone ring.

Emerald calculated weight 0.75ct, based on estimated dimensions of 6.8 by 6 by 2.9mms.
Estimated total diamond weight 0.60ct, G-H colour, SI clarity.
Ring size P. 4.3gms.
£300-400 (plus 27.6% BP*)

588 A pair of old-cut diamond and cultured pearl earrings.

Estimated total old-cut diamond weight 0.60ct, H-I colour, SI1-P1 clarity.
Length 6cms. 6.1gms.
£500-700 (plus 27.6% BP*)

589 A late Victorian silver and gold, chrysoprase and diamond double heart and bow brooch.

Estimated total old-cut diamond weight 0.25ct, G-I colour, VS2-SI2 clarity.
Length 2.5cms. 5.5gms.
£1,000-1,500 (plus 27.6% BP*)

590 A pearl and old-cut diamond two-stone crossover ring.

Estimated diamond weight 0.90ct, G-H colour, VS2-SI1 clarity.
French assay mark. Ring size M1/2. 3.2gms.
Pearl untested for natural origin.
£1,000-1,500 (plus 27.6% BP*)

591 A sapphire and old-cut diamond openwork bracelet.

Estimated total diamond weight 0.35ct, H-J colour, SI1-P1 clarity.
Length 18cms. 11.9gms.
£900-1,400 (plus 27.6% BP*)

592 An emerald and diamond cluster ring.

Emerald calculated weight 0.90ct, based on estimated dimensions of 8 by 6.4 by 3.1mms.
Estimated total diamond weight 2.25cts, G-tinted colour, SI1-P2 clarity.
Ring size Q. 8.2gms.
£1,500-2,000 (plus 27.6% BP*)

593 An opal and diamond cluster pendant.

Estimated dimensions of opal 17.8 by 10.8 by 5mms.
Estimated total diamond weight 0.75ct, G-H colour, VS2-SI2 clarity.
Length 3.1cms. 5.4gms.
£2,000-3,000 (plus 27.6% BP*)

594 A pair of early 20th century gold and silver, turquoise and old-cut diamond cluster drop earrings.

Estimated total diamond weight 2.30cts, predominantly G-I colour, VS-SI clarity. Length 3.6cms. 8.4gms.
£2,500-3,500 (plus 27.6% BP*)

595 An early 20th century 18ct gold and silver, turquoise and old-cut diamond cluster ring.

Estimated total diamond weight 2cts, predominantly G-I colour, VS-SI clarity.
Estimated dimensions of turquoise 16.7 by 7.2 by 2.7mms.
Stamped 18ct. Ring size P1/2. 7.3gms.
£2,500-3,500 (plus 27.6% BP*)

596 An early 20th century 15ct gold and silver, turquoise and diamond cluster necklace, with detachable bracelet back-chain.

Estimated total diamond weight 4cts, predominantly G-I colour, VS-SI clarity.
Length 39.5cms. 25.7gms.
£3,000-5,000 (plus 27.6% BP*)

597 An old-cut 'yellow' diamond and diamond foliate triple bar brooch, with chain swag spacers.

Principal diamond estimated weight, 2cts, 'yellow' colour, SI2-P1 clarity.
Estimated total non-principal diamond weight 5cts, G-I colour, VS1-SI2 clarity.
Lengths of brooches 4.2 and 4.5cms. 23gms.
Diamond untested for natural colour origin.
£4,000-6,000 (plus 27.6% BP*)



591



588



587



595



592



586

594

596



597



590



589

593

598 A pair of emerald earrings, with graduated pearl drop.

Length 4.1cms. 4.3gms.
Pearls untested for natural origin.
£300-400 (plus 27.6% BP*)

602 A mid 19th century gold pink topaz and green paste brooch.

Length 3.8cms. 7.7gms.
£700-900 (plus 27.6% BP*)

599 A Georgian gold and garnet aigrette hair piece.

Length 9.6cms. 15.9gms.
£400-600 (plus 27.6% BP*)

603 A 19th century gold turquoise necklace, with diamond and pearl accent bird and heart locket.


Length 42.5cms. 26.5gms.
£800-1,200 (plus 27.6% BP*)

600  **A 19th century silver, green and colourless paste girandole pendant.**

Length 6.7cms. 11.4gms.
With fitted case.
£200-300 (plus 27.6% BP*)

604 A late Georgian gold mounted portrait miniature pendant, with split pearl surround and bright-cut engraved, blue glass and hair work reverse.

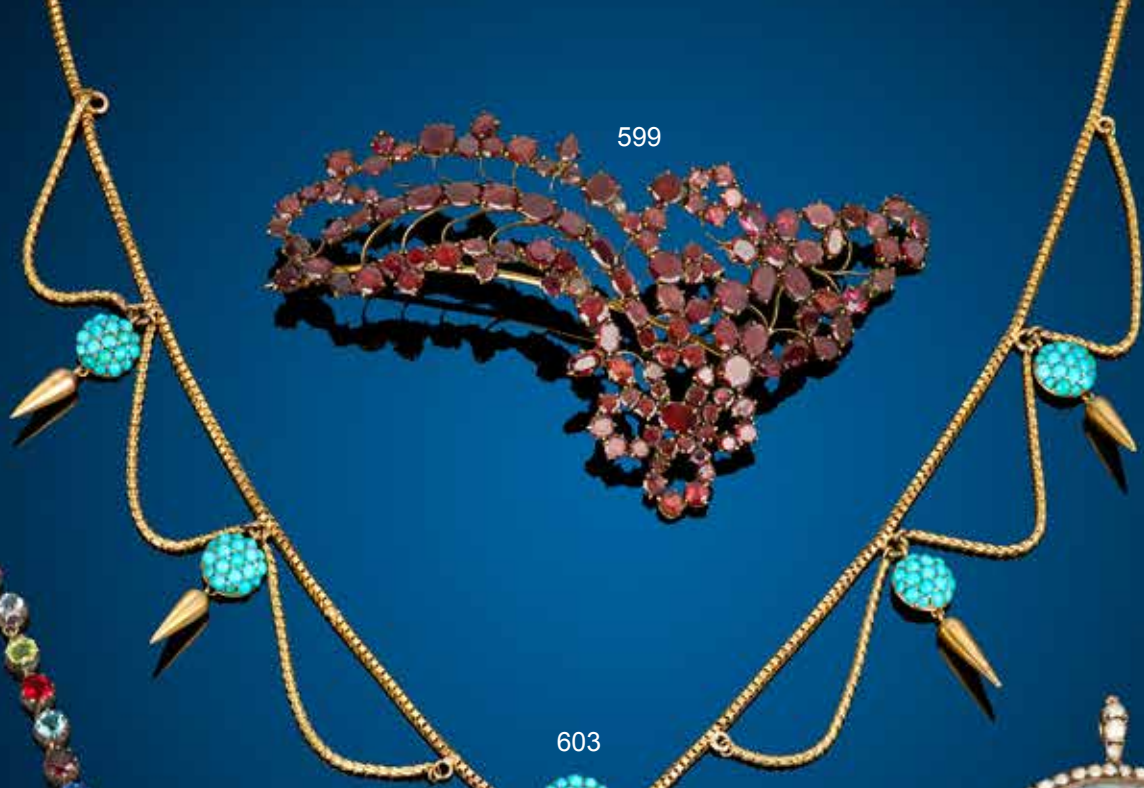
Length 7cms. 32gms.
£700-900 (plus 27.6% BP*)

601  **A 19th century set of silver and gold harlequin paste jewellery, to include a graduated rivière necklace, earrings and pendant component.**

Length of necklace 37.5cms. Length of earrings 4.4cms. 54.2gms.
With fitted case.
£400-600 (plus 27.6% BP*)

605 A late Victorian gold and silver, old-cut diamond cluster bangle.

Estimated total diamond weight 2.50cts, H-J colour, SI2-P2 clarity.
Inner diameter 5.6cms. 15.6gms.
£2,000-3,000 (plus 27.6% BP*)



599



598



603

601



604



600



602



605

606 A late Victorian 15ct gold amethyst brooch.

Amethyst calculated weight 24.85cts, based on estimated dimensions of 22.5 by 17.5 by 11.3mms.
Length 4.4cms. 15.7gms.

£250-350 (plus 27.6% BP*)

607 A late Victorian 15ct gold citrine and split pearl hinged bangle.

Citrine calculated weight 13.33cts, based on estimated dimensions of 15.6 by 10.3mms.

Stamped 15. Inner diameter 5.9cms. 16.3gms.

£400-600 (plus 27.6% BP*)

608 A citrine dress ring with rose-cut diamond foliate surround and pierced half-band.

Ring size M. 10.3gms.

£300-400 (plus 27.6% BP*)

609 A citrine brooch, with vari-cut diamond openwork floral surround.

Estimated total circular-cut diamond weight 1.20cts, G-I colour, VS2-P1 clarity.

Length 6cms. 21.3gms.

£800-1,200 (plus 27.6% BP*)

610 A late Victorian gold split pearl cross, with detachable surmount.

Length 6.6cms. 18gms.

£1,000-1,500 (plus 27.6% BP*)

611 An old-cut diamond floral brooch.

Estimated total diamond weight 3.20cts, G-I colour, SI1-P2 clarity.
Length 3.2cms. 8.2gms.

£800-1,200 (plus 27.6% BP*)

612 A late Victorian gold garnet and diamond floral pendant, with chain.

Length of pendant 4.3cms. Length of chain 48.5cms. 18.1gms.

£1,200-1,800 (plus 27.6% BP*)

613 A late Victorian gold banded agate and split pearl necklace.

Length 35.5cms. 20.3gms.

£1,500-2,000 (plus 27.6% BP*)

614 An early 20th century 18ct gold old-cut diamond single-stone ring.

Estimated diamond weight 1.35cts, I-J colour, VS clarity.

Ring size N. 4.9gms.

£1,800-2,400 (plus 27.6% BP*)

615 A pair of old-cut diamond cluster drop earrings.

Estimated total diamond weight 5.20cts, H-K colour, VS-SI clarity.
Length 5.1cms. 12.8gms.

£2,800-3,200 (plus 27.6% BP*)

616  A mid 19th century gold split pearl bracelet.

Length 18.5cms. 71.2gms.

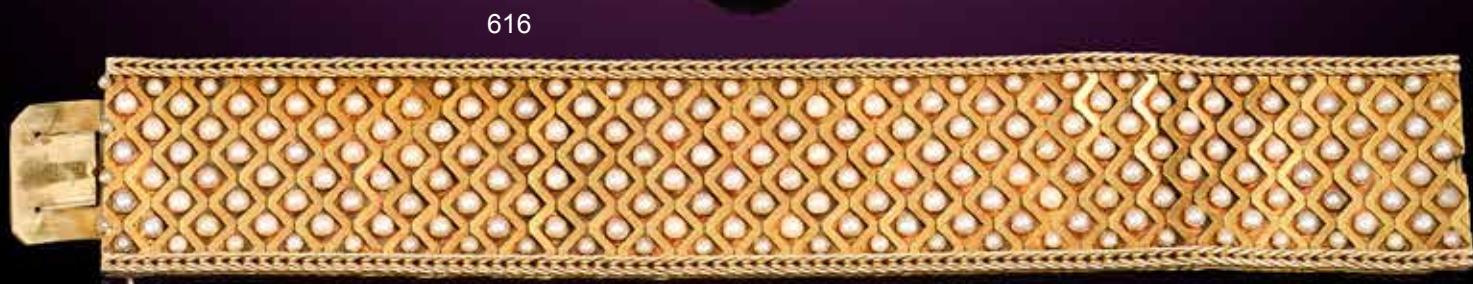
With fitted case.

£3,500-4,500 (plus 27.6% BP*)

617 An 18ct gold brilliant-cut diamond single-stone ring.

Diamond weight 3.01cts, estimated I-J colour, P1 clarity.
Hallmarks for London, 2005. Ring size P1/2. 5.8gms.

£6,000-8,000 (plus 27.6% BP*)



618 A late Georgian gold Wedgewood jasperware cameo dress ring, depicting a classical figure of a water bearer.

Ring size O. 9.6gms.
£300-400 (plus 27.6% BP*)

619 A late Georgian gold Wedgewood jasperware cameo bracelet.

Length 18cms. 32.9gms.
£800-1,200 (plus 27.6% BP*)

620 A Georgian gold agate cameo stickpin, depicting a putto wrestling a swan.

Length of stickpin head 2.3cms. 5.8gms.
£450-650 (plus 27.6% BP*)

621 A 1st century AD agate intaglio depicting Nero, within a later 20ct gold mount.

Estimated dimensions of agate 11.8 by 10mms.
Ring size R1/2. 16.1gms.
£1,200-1,800 (plus 27.6% BP*)

622 A 19th century 18ct gold hardstone cameo ring, with floral surround, the shoulders with bird and frond motif.

Ring size P1/2. 23.8gms.
£1,200-1,800 (plus 27.6% BP*)

623 A late Georgian gold swivel fob, depicting armorial, seal and monogram.

Length 5cms. 21.6gms.
£700-900 (plus 27.6% BP*)

624  A late Victorian gold portrait miniature brooch, depicting a gentleman in court dress.

Length 6.2cms. 40.5gms.
With fitted case.
£1,000-1,500 (plus 27.6% BP*)

625 An 18th century shell and floral motif 18ct gold box, with bevelled agate lid and base.

Foreign marks, possibly French, Paris Maison Commune circa 1740s.
Length 7.3cms. 76.1gms.
£1,500-2,000 (plus 27.6% BP*)

626 A late Georgian gold mounted citrine vinaigrette, with scrolling foliate pierced grille.

Length 3.4cms. 22.5gms.
£1,800-2,400 (plus 27.6% BP*)

627 A mid to late Victorian silver and gold, old-cut diamond bow brooch, with orange topaz drop.

Topaz estimated weight 7.20cts.
Estimated total diamond weight 1.20cts, H-J colour, VS-SI clarity.
Length 4.3cms. 6.3gms.
£3,000-4,000 (plus 27.6% BP*)

628  A late Georgian gold peachy yellow topaz cross pendant.

Length 5.6cms. 8.2gms.
With near period case.
£3,000-4,000 (plus 27.6% BP*)

629  A Sri Lankan yellow sapphire ring, with bi-colour foliate mount and green enamel and diamond point foliate shoulders.

With report 80268-78, dated 23rd July 2020, from GCS, stating 21.39cts, Sri Lanka (Ceylon), no heat.
Ring size P. 10gms.
£7,000-9,000 (plus 27.6% BP*)

628



623



620



626



627



624



629



628



622



618



621



610



Fellows

Established 1876

Sale Results For Fine Jewellery : 21/1/2021

1	£720	56	£600	112	£900	167	£1,400	230	£720
2	£640	57	£680	113	£1,700	168	£2,100	231	£820
3	£280	58	£600	114	£1,100	169	£1,800	232	£720
4	£1,300	59	£900	116	£1,400	171	£380	233	£1,400
5	£460	60	£860	118	£1,400	172	£520	234	£900
6	£380	61	£1,400	119	£1,600	173	£340	235	£940
7	£420	62	£1,600	120	£3,900	174	£520	237	£1,500
8	£420	63	£1,400	123	£600	175	£540	238	£2,200
9	£800	64	£1,300	124	£2,500	176	£2,200	240	£4,700
10	£760	66	£3,400	125	£1,400	177	£800	242	£560
13	£660	67	£940	126	£540	178	£960	245	£1,000
14	£260	68	£440	127	£960	179	£2,200	247	£1,200
16	£1,700	69	£540	129	£1,200	181	£3,400	248	£2,300
17	£1,400	73	£1,350	130	£1,000	183	£680	250	£5,400
18	£1,200	74	£3,700	131	£2,000	184	£500	251	£6,500
19	£1,800	76	£3,400	135	£960	185	£1,100	253	£12,000
20	£2,600	77	£800	137	£900	186	£2,500	254	£340
22	£2,400	78	£600	139	£860	189	£3,500	255	£820
23	£2,300	80	£1,100	140	£880	190	£2,600	256	£1,800
25	£241	81	£2,100	141	£780	191	£3,900	257	£1,300
26	£560	84	£2,300	143	£1,600	195	£1,100	258	£740
27	£1,300	86	£3,800	145	£5,000	196	£640	259	£1,600
28	£760	87	£1,100	146	£6,900	197	£740	260	£900
29	£880	88	£1,100	147	£400	199	£1,200	262	£2,100
30	£2,200	89	£1,500	148	£1,100	202	£2,700	263	£2,900
31	£1,500	91	£2,700	149	£500	207	£540	265	£2,900
32	£3,100	93	£1,200	150	£620	208	£640	266	£720
33	£3,600	95	£3,500	152	£740	209	£860	267	£640
34	£3,000	96	£4,900	153	£2,800	211	£820	268	£720
35	£3,200	97	£10,000	154	£1,100	212	£860	270	£1,100
36	£3,500	99	£740	155	£860	213	£1,900	271	£1,100
37	£380	100	£580	156	£1,600	215	£1,200	274	£1,800
38	£900	101	£1,300	157	£2,900	216	£1,900	275	£6,000
39	£620	102	£1,700	158	£2,100	220	£640	276	£3,700
40	£1,200	104	£920	159	£960	221	£800	278	£700
41	£1,300	105	£1,300	160	£360	223	£2,000	279	£740
49	£560	106	£980	161	£680	224	£5,000	280	£1,400
50	£560	108	£2,000	164	£740	225	£3,000	282	£2,600
54	£3,000	109	£1,900	165	£900	227	£4,300	283	£1,400
55	£460	110	£2,900	166	£2,000	228	£6,300	284	£2,500

Fellows

Established 1876

Sale Results For Fine Jewellery : 21/1/2021

287	£940	352	£5,100	411	£2,700	473	£760	522	£2,100
288	£3,100	353	£5,000	415	£1,600	474	£2,000	524	£1,400
289	£3,800	354	£4,500	416	£3,200	475	£1,400	525	£4,00
290	£280	357	£9,700	417	£3,400	476	£3,600		
291	£520	358	£1,100	418	£480	478	£260		
292	£580	359	£680	419	£860	479	£1,700		
294	£1,100	360	£820	420	£1,600	480	£460		
295	£1,800	361	£1,900	421	£2,000	481	£1,500		
300	£2,400	362	£1,800	422	£4,200	482	£980		
302	£720	363	£2,500	424	£1,700	484	£1,400		
303	£1,100	366	£8,100	425	£1,700	485	£1,400		
304	£980	370	£840	426	£1,500	486	£2,600		
305	£1,400	371	£600	427	£2,300	488	£2,700		
307	£1,400	372	£560	428	£3,200	489	£4,000		
308	£3,900	373	£620	429	£3,100	491	£480		
309	£2,900	376	£840	430	£1,200	492	£720		
311	£3,300	377	£1,500	431	£640	493	£800		
312	£3,400	378	£2,200	432	£1,500	496	£940		
314	£700	381	£12,500	435	£2,000	498	£1,700		
315	£1,200	382	£740	437	£3,900	499	£1,000		
317	£1,100	383	£500	439	£7,500	500	£1,800		
319	£980	386	£1,100	440	£11,000	501	£3,000		
323	£2,300	387	£1,700	444	£1,500	502	£2,900		
324	£3,000	389	£1,200	445	£4,000	503	£480		
325	£5,200	390	£2,000	448	£3,300	504	£940		
328	£1,700	392	£1,400	449	£3,300	505	£1,400		
331	£2,800	393	£3,100	452	£7,000	506	£1,200		
332	£2,600	394	£1,200	454	£540	507	£1,400		
334	£3,400	395	£800	455	£900	508	£1,500		
335	£6,700	396	£820	456	£940	509	£1,600		
336	£6,900	397	£2,500	457	£780	510	£2,700		
338	£640	398	£1,500	458	£1,200	512	£3,000		
339	£680	399	£1,100	459	£1,100	513	£4,300		
340	£1,600	400	£1,100	461	£1,200	515	£560		
342	£860	403	£3,200	464	£2,800	516	£280		
344	£1,400	405	£11,000	467	£560	517	£620		
346	£3,100	406	£440	468	£600	518	£380		
347	£3,700	407	£1,000	469	£720	519	£780		
349	£7,200	408	£3,800	470	£700	520	£980		
350	£1,100	410	£1,700	471	£1,700	521	£640		

Fellows

Established 1876

Live Auctions

April	Online Jewellery Timed Auction	Ends Thursday 8th from 9am
	Silver & Costume Jewellery Timed Auction	Ends Thursday 15th from 9am
	The Luxury Watch Sale	Monday 19th at 11am
	The Gemstone Sale Timed Auction	Ends Friday 23rd from 9am
	Jewellery Timed Auction	Ends Thursday 29th from 9am
May	Online Jewellery Timed Auction	Ends Thursday 13th from 9am
	Online Watches Timed Auction	Ends Monday 17th from 9am
	Fine Jewellery	Thursday 27th at 11am
June	The Designer Collection Timed Auction	Ends Monday 7th from 10am
	Online Jewellery Timed Auction	Ends Thursday 10th from 9am
	The Luxury Watch Sale	Monday 14th at 11am
	Silver & Costume Jewellery Timed Auction	Ends Thursday 17th from 9am
	Jewellery Timed Auction	Ends Thursday 24th from 9am
	Antiques, Silver & Collectables Timed Auction	Ends Monday 28th from 9am

** Please note that these auctions are timed sales hosted by Fellows Live, more information can be found on our website.

Dates are subject to change, please check the website for the definitive auction list.

Fellows recommend that all bidders and buyers read our conditions of buying and buyer's premium available on our website.

For further information please contact:

Jewellery

Penelope Gilliver

penelope@fellows.co.uk

0121 212 2131

Watches

Laura Bishop

laurab@fellows.co.uk

0121 212 5506

Silver & Coins

Alison Jakeway

alisonj@fellows.co.uk

0121 212 2131

Antiques & Fine Art

Kevin Jackson

kevin@fellows.co.uk

0121 212 2131

Fellows

Established 1876

IMPORTANT NOTICES FOR PURCHASERS

IMPORTANT NOTICE TO PROSPECTIVE BUYERS OF GEMSTONES/JEWELS

We recommend that you view any items you intend to purchase as refunds will not be given for buyer's remorse. This doesn't affect your statutory rights.

Notes 1 - Coloured Gemstones

Purchasers are advised that whilst great care has been taken in the examination of gemstones, it is not possible to test every gemstone within the constraints of time and equipment available outside of laboratory conditions. Any gemstone not provided with a laboratory report has been assessed by Fellows within the limitations of any mounting and an opinion has been given where possible.

Historically, many coloured gemstones have been subjected to a variety of treatments designed to enhance their appearance. Certain enhancement methods, such as heating, are routinely used to alter aspects of rubies, sapphires, and other gemstones. Oiling is often undertaken to enhance the clarity of emeralds. The international jewellery trade has generally accepted these and other enhancement methods. Some treatments are permanent whereas others may only be semi-permanent, possibly requiring further re-treatment in order to retain their appearance.

Because of the widespread variety of treatments within the jewellery industry, prospective purchasers should assume that all gemstones will have been treated unless statements are made to the contrary. Gemmological reports from internationally recognised Gemmological Laboratories will be noted in the item description where available.

Note 2 - Diamonds

Advancements in technology have led to some diamonds being treated in a number of ways, all designed to improve their appearance or alter their colour. Processes include but are not necessarily limited to: fracture filling, laser drilling, a combination of drilling and filling, HPHT treatment, irradiation and various coatings. Buyers are also alerted to the fact that synthetic diamonds are now produced in large quantities. Whilst every effort is made to identify or disclose treated and synthetic goods, it is not possible for Fellows to guarantee that all diamond set lots do not contain such material.

Fellows do not knowingly offer treated diamonds for sale, unless a gemmological opinion disclosing the type of treatment has been obtained and the treatment would be stated within the item description.

Note 3 - Weights and Measures

Estimated Diamond weights, colours and clarities (see Notes on Diamond Grading terms opposite) given by Fellows are intended as guides for prospective purchasers, with the given limitations of mounts and settings, and are opinions only, not guaranteed by Fellows.

Weights of coloured gemstones offered are extrapolated on the estimated dimensions, using trade standard formulae. Due to the traditional cutting techniques for coloured gemstones it is possible there may be discrepancy between the stated estimate and the unmounted weight.

Fellows uses a Thermo Scientific Nitron Handheld XRF Analyser to test metals. This technology is limited to examining metal to a depth of approximately 8 microns. Fellows does not guarantee the standard of gold or platinum unless an item is hallmarked. Results from electronically tested items should only be used as a guide and with caution, as false readings are possible.

Lengths and weights provided are estimates only.

The information stated in reports is the opinion of the respective laboratory and is not necessarily the opinion of Fellows auctioneers.

Note 4 - Condition Reports

Statements in the catalogue regarding the condition of lots in this sale may appear in the description, however, the absence of such a reference does not imply a lack of damage or wear, or lack of any further faults within the piece.

Please note that Fellows offer condition reports on almost every lot offered. Our condition reports are the opinion of Fellows and should only be referenced as a guide. We highly recommend that a prospective buyer views in person or sends a representative to satisfy themselves to the condition, originality and suitability of a piece(s) before bidding.

Our lots are almost exclusively antique or secondhand and as such should be expected to have small signs of wear and use commensurate with the age of the piece.

Some jewellery sales will also have a condition report banding scale which applies as follows:

A

No obvious faults other than wear in keeping with age and use.

B

Minor faults. There may be abrasion and/or small nicks to gemstones. General moderate wear from use possibly including but not necessarily limited to small dents and deep scratches. The piece may have been altered from its original design but to a reasonable standard.

C

Faults. Gemstones may be noticeably chipped along with abrasion and nicks. Non-principal gems may be deficient. The piece may have noticeable dents/tears or small losses that affect the overall appearance of the design. The piece may have had alterations from its original design that may be apparent under scrutiny.

D

Significant faults. Gemstones may be deficient, chipped or otherwise damaged. The piece may require attention before it is wearable, pins or clasps may be broken. There may be significant dents, tears, losses or alterations to the metal. The piece may have had alterations from its original design that are readily apparent.

E

At Fault. Gems will be damaged and/or deficient. Noticeable damage. The piece is unwearable.

Diamond Grading Terms

DIAMOND COLOUR

GIA	OLD WORLD TERMS	EXPLANATION	GIA	OLD WORLD TERMS	EXPLANATION
D	Finest White (Jager)	Colourless	K	Silver Cape (Top Cape)	Traces of colour. Small stones in this range will 'face up' colourless when mounted but larger stones will be tinted.
E	Finest White (River)	Colourless	L	Silver Cape (Top Cape)	Traces of colour. Small stones in this range will 'face up' colourless when mounted but larger stones will be tinted.
F	Fine White (River)	Colourless	M	Light Cape (Cape)	Traces of colour. Small stones in this range will 'face up' colourless when mounted but larger stones will be tinted.
G	Fine White (Top Wesselton)	Near Colourless: diamonds 'face up' colourless. Slight traces of colour will not be apparent in the mounted stones to other than the trained eye.	N	Light Cape (Low Cape)	Diamonds graded N through Z+ display a yellowish tint even to the untrained eye.
H	White (Top Wesselton)	Near Colourless: diamonds 'face up' colourless. Slight traces of colour will not be apparent in the mounted stones to other than the trained eye.	P	Cape O - R (Very Light Yellow)	Diamonds graded N through Z+ display a yellowish tint even to the untrained eye.
I	White (Top Wesselton)	Near Colourless: diamonds 'face up' colourless. Slight traces of colour will not be apparent in the mounted stones to other than the trained eye.	Z	Cape R - Z (Very Light Yellow)	Diamonds graded N through Z+ display a yellowish tint even to the untrained eye.
J	Top Silver (Top Wesselton)	Near Colourless: diamonds 'face up' colourless. Slight traces of colour will not be apparent in the mounted stones to other than the trained eye.	Z+	Fancy Yellow	Diamonds graded N through Z+ display a yellowish tint even to the untrained eye.

DIAMOND CLARITY

GIA	OLD WORLD TERMS	EXPLANATION	GIA	OLD WORLD TERMS	EXPLANATION
IF	Internally Flawless	No inclusions visible with a 10x lens even to an experienced grader.	S11 & S12	Slightly Included	Noticeable inclusions visible with a 10x lens.
VVS1 & VVS2	Very Very Slightly Included	Minute inclusions, which are difficult, even for experienced graders, to see with a 10x lens.	I1, I2 & I3	Pique 1, 2 & 3	Obvious inclusions, may be visible to the unaided eye, face up. In I3 they may affect the stone's durability.
VS1 & VS2	Very Slightly Included	Minor inclusions, observable with effort with a 10x lens.			

Our lots are almost exclusively antique or secondhand and as such should be expected to have small signs of wear and use commensurate with the age of the piece.

Some jewellery sales will also have a condition report banding scale which applies as follows:

A

No obvious faults other than wear in keeping with age and use.

B

Minor faults. There may be abrasion and/or small nicks to gemstones. General moderate wear from use possibly including but not necessarily limited to small dents and deep scratches. The piece may have been altered from its original design but to a reasonable standard.

C

Faults. Gemstones may be noticeably chipped along with abrasion and nicks. Non-principal gems may be deficient. The piece may have noticeable dents/tears or small losses that affect the overall appearance of the design. The piece may have had alterations from its original design that may be apparent under scrutiny.

D

Significant faults. Gemstones may be deficient, chipped or otherwise damaged. The piece may require attention before it is wearable, pins or clasps may be broken. There may be significant dents, tears, losses or alterations to the metal. The piece may have had alterations from its original design that are readily apparent.

E

At Fault. Gems will be damaged and/or deficient. Noticeable damage. The piece is unwearable.

Catalogue Subscription Service

If you would like to receive catalogues on a regular basis, please mark the appropriate category and return this form with a cheque made payable to Fellows for the full amount.

Subscriptions last for a 12 month period

Jewellery 18 catalogues per year	£120	
Fine Jewellery 6 catalogues per year	£60	
The Luxury Watch Sale 6 catalogues per year	£60	
The Designer Collection 5 catalogues per year	£50	
Antiques, Silver & Collectables 5 catalogues per year	£50	
The Gemstone Sale 4 catalogues per year	£35	
Watches & Watch Parts 4 catalogues per year	£35	

All of the above catalogues are available to view **FREE** of charge on our website www.fellows.co.uk

Name (Block Capitals)

Address (Block Capitals)

.....
.....

Post Code Telephone

Signature Date

Email

Fellows Auctioneers Ltd

Terms and Conditions

Fellows Auctioneers Ltd carries on business, including the conduct of Auctions, on the following general conditions. This includes business with Bidders, Buyers, Vendors, consignors, users of this website, and with all those present on the Premises prior to or in connection with an Auction (all as hereinafter defined).

1. INTRODUCTION

1.1 The following defined terms are used in these Conditions :

"Auction" means any Auction conducted by Fellows, either at their premises or elsewhere (including any internet-based auctions);

"Auctioneer" means Fellows or its authorised Auctioneer, as appropriate;

"Bidder" means a bidder at an Auction, including bidders personally present at the venue and those bidding by telephone or over the internet or otherwise;

"Buyer" means the bidder whose bid was the last bid when the Auctioneer brings down the hammer;

"Conditions" means these terms and conditions;

"Consigned Property" means the items consigned by the Vendor to Fellows for offer at an Auction;

"Deliberate Forgery" means an imitation made with the intention of deceiving as to authorship, origin, date, age, period, culture or source but which is unequivocally described by Fellows in the catalogue as being the work of a particular creator and which at the date of the sale had a value materially less than it would have had if it had been in accordance with the description;

"Fellows" means Fellows Auctioneers Ltd;

"Hammer Price" means the level of bidding reached (at or above any reserve) when the Auctioneer brings down the hammer;

"Includes" means "includes but not limited to", and "including" means "including but not limited to"

"Lot" means any Consigned Property accepted by Fellows for offer at Auction;

"Stated Rate" means Fellows' published rates of commission for the time being and value added tax thereon (also available on request);

"Terms of Consignment" means any stipulated terms and rates of commission on which Fellows accepts instructions from Vendors [or their agents];

"Total Amount Due" means the Hammer Price in respect of the Lot sold together with any premium, commission, value added tax chargeable and any additional charges payable by a defaulting Buyer under these Conditions;

"Vendor" means the vendor of an item (including Consigned Property) which is submitted to Fellows for offer for sale at an Auction;

"Website" means this website;

"You" means any user of the Website.

2. WEBSITE

2.1 You may access most areas of the Website without registering your details with us. Certain areas of the Website are only open to you if you register. By accessing any part of the Website, you shall be deemed to have accepted these Conditions notice in full. If you do not accept this legal notice in full, you must leave the Website immediately.

2.2 Fellows may revise these Conditions at any time by updating this posting. You should check the Website from time to time to review the then current legal notice, because it is binding on you. Certain provisions of this legal notice may be superseded by expressly designated legal notices or terms located on particular pages at the Website.

2.3 Unless otherwise stated, the copyright and other intellectual property rights in all material on the Website (including without limitation photographs and graphical this legal notice, your permission to use the Website automatically terminates and you must immediately destroy any downloaded or printed extracts from the Website.

2.4 No part of the Website may be reproduced or stored in any other website or included in any public or private electronic retrieval system or service without Fellows' prior written permission.

2.5 Any rights not expressly granted in these Conditions are reserved.

3. VISITOR MATERIAL AND CONDUCT

3.1 Other than personally identifiable information, which is covered under our Privacy Policy, any material you transmit or post to the Website shall be considered nonconfidential and non-proprietary. Fellows shall have no obligations with respect to such material. Fellows and its designees shall be free to copy, disclose, distribute, incorporate and otherwise use such material and all data, images, sounds, text and other things embodied therein for any and all commercial or non-commercial purposes.

3.2 You are prohibited from posting or transmitting to or from the Website any material: that is threatening, defamatory, obscene, indecent, seditious, offensive, pornographic, abusive, liable to incite racial hatred, discriminatory, menacing, scandalous, inflammatory, blasphemous, in breach of confidence, in breach of privacy or which may cause annoyance or inconvenience; or for which you have not obtained all necessary licences and/or approvals; or which constitutes or encourages conduct that would be considered a criminal offence, give rise to civil liability, or otherwise be contrary to the law of or infringe the rights of any third party, in any country in the world; or which is technically harmful (including, without limitation, computer viruses, logic bombs, Trojan horses, worms, harmful components, corrupted data or other malicious software or harmful data).

3.3 You may not misuse the Website (including, without limitation, by hacking).

3.4 Each registration is for a single user only. Fellows does not permit you to share your user name and password with any other person nor with multiple users on a network.

3.5 Responsibility for the security of any passwords issued rests with you.

4. THE VENDOR

4.1 Fellows shall act as agent of the Vendor only. Any contract for the sale of a Lot will be formed between the Vendor and the Buyer.

4.2 The Vendor warrants and represents to Fellows and the Buyer that the Vendor is the sole and true owner of the Consigned Property or is properly authorised by the sole and true owner to consign it for sale and is able to transfer good and marketable title to the property free from any third party claims. The Vendor warrants and representatives that the Vendor has revealed all pertinent information that the Vendor possesses about the items, including in relation to any repairs or alterations that may have been carried out. The Vendor shall indemnify Fellows and the Buyer against any loss and expense caused by any breach of this clause 4.2.

4.3 The Vendor shall be entitled to place prior to the Auction a reserve on any Lot, being the minimum Hammer Price at which Lot may be sold. Reserves must be reasonable and Fellows may decline to offer goods which in Fellows' opinion would be subject to an unreasonably high reserve (in which case goods carry the storage and insurance charges stipulated in the terms of consignment). Reserves will not be accepted on items with a bottom estimate less than £300. The Auctioneer also reserves the right not to accept items which they deem to be unsuitable for Auction. Any estimate given shall be an opinion and is not an undertaking of any kind.

4.4 A reserve once set cannot be changed except with the written prior consent of Fellows.

4.5 Where a reserve has been placed only Fellows may bid on behalf of the Vendor.

4.6 The Vendor authorises Fellows to deduct commission from any sold items at a rate of 15% (plus VAT) on any item with a hammer price of £3,000 (or under) or 12.5% (plus VAT) on items over £3,000. Loss or liability for damage will be charged at a rate of 1.5% (plus VAT) calculated on the hammer price. A Marketing fee of £10 (plus VAT) will be charged for each Lot, if unsold we will charge a nominal handling fee of £5 (plus VAT). All items below £35 are subject to a minimum fee of £5 (plus VAT) per Lot.

4.7 Fellows will pay the Hammer Price achieved for the Lot (less its commission and applicable fees in accordance with clauses 4.6, 9.2 and 9.3), to the Vendor on receipt of payment of the Total Amount Due in full by the Buyer.

4.8 The Vendor authorises Fellows in their discretion to negotiate a sale by private treaty in the case of a Lot unsold at Auction, in which case the same charges will be payable as if the Lot had been sold at Auction.

4.9 Fellows do not themselves undertake the collection of any items but may, as the Vendor's agent, instruct a contractor on behalf of the Vendor. Fellows accepts no liability for the actions of such contractor who contracts with the Vendor direct.

4.10 Fellows disclaims all liability for items delivered to their saleroom without sufficient sale instructions, and reserves the right to make a minimum warehousing charge of [£1.00] per item per day. Unsold items are subject to the same charges if the Vendor does not remove them within a reasonable time of notification. If not removed within three weeks Fellows reserves the right to sell the items and defray charges from any net proceeds of sale or at the Vendor's expense to consign them to the local authority for disposal. Fellows disclaims any liability for default by the Buyer or for paying out the Vendor before receiving payment by the Buyer.

4.11 Subject to clause 4.9, Fellows holds all items on their premises and in their custody covered against the risks of fire, burglary and water damage on the scale of charges notified in the terms of consignment and payable by the Vendor up to the date of any sale and (in Fellows' discretion) the Buyer thereafter until collection.

4.12 The right of Fellows to bid on behalf of the Vendor is expressly reserved. The Vendor acknowledges that Lots are sold subject to the stipulations of these Conditions in their entirety and on the Terms of Consignment as notified to consignors at the time of the entry of the Lot.

4.13 The Auctioneer reserves the right to dispose of any item that in their opinion is unsaleable. Items, including electrical goods and soft furnishings, which do not comply with current legislation will not be offered at Auction.

4.14 Any items unsold after an Auction will be reoffered in a subsequent Auction at a reduced reserve to be agreed within seven days. The Auctioneer may request the removal of an item if a reduced price cannot be agreed; items not removed within 14 days will be subject to a storage charge.

4.15 A charge of 10% (plus VAT) based on the middle estimate – plus any other charges incurred – may be levied for any Lot withdrawn by the Vendor from offer at an Auction. If the item has to be returned by post (or any other method) the Vendor will be responsible for this charge. These charges are to be paid before the item is returned.

4.16 By submitting the item to Fellows for offer at Auction, the Vendor agrees to the Terms of Consignment and authorises Fellows to deduct the specified charges.

5. PUBLICITY

5.1 Any catalogue and buyer guides are provided for information only and do not form part of these Conditions. The catalogue and the buyer guides may contain additional terms and conditions.

5.2 Fellows reserve the right to use any photographs, background information, and research for publicity purposes both before and after the sale.

6. THE AUCTION

6.1 Any Auction shall be conducted at the absolute discretion of the Auctioneer.

6.2 The Auctioneer shall conduct the Auction with reasonable skill and care. For example, what constitutes a bid shall be at the absolute discretion of the Auctioneer, acting with reasonable skill and care.

6.3 The Auctioneer shall have the right to refuse any bid which does not exceed the previous bid by at least 10% or by such greater proportion as the Auctioneer shall in his or her absolute discretion direct.

6.4 Where two or more bids at the same level are simultaneously received by the Auctioneer, the Auctioneer at his absolute discretion shall determine which bid to prefer. Subject to the foregoing, where two or more bids at the same level are simultaneously received by the Auctioneer, any bid by a Bidder personally present at an Auction shall take preference over any bid submitted by telephone or over the internet. Any bid made or accepted by telephone or over the internet shall be deemed to have been made only if received by the Auctioneer.

- 6.5 Fellows shall have the right, at its absolute discretion, to refuse admission to its premises or attendance at (or participation in) any Auction by any person.
- 7. BIDDERS**
- 7.1 Bidders may be required to register their particulars. Bidders attending in person may be required to satisfy Fellows' security arrangements before entering any part of the premises to view or bid.
- 7.2 You accept full liability for all bids submitted via your My Fellows account. Once a bid has been made by a Bidder on our website, the bid can be lowered or increased up until 9am on the day of the auction. You must sign into your My Fellows account to do this and you will receive an email confirmation for any changes made. Should a bid be placed in error on the website you must contact Fellows immediately. Failure to contact Fellows before the auction takes place will result in liability for the full payment of the item.
- 7.3 Bidders using the live bidding facility on www.fellows.co.uk are agreeing to the terms and conditions of sale for Fellows. Any successful bids using the live bidding facility will be subject to the usual Buyer's Premium, plus VAT.
- 7.4 Subject to clause 6.3, the highest Bidder at the Hammer Price shall be the Buyer. Any dispute about a bid shall be settled at the Auctioneer's absolute discretion.
- 7.5 Bidders are strongly encouraged to attend the Auction in person. Bidders shall be responsible for any decision to bid for a particular Lot and shall be deemed to have carefully inspected and satisfied themselves as to its condition. Neither Fellows nor its employees or agents shall be responsible for any neglect or default in doing or failing to do so.
- 7.6 Bidders are given ample opportunities to view and inspect before any sale and prospective Buyers must satisfy themselves as to all such matters. Neither Fellows or its employees or agents nor the Vendor accept liability for the correctness of such opinions and all conditions and warranties, express, implied or statutory are hereby excluded.
- 8. THE BUYER**
- 8.1 Immediately a Lot is sold, the Buyer shall:
- (a) give to Fellows their name and address and, if requested proof of identity, and pay to Fellows the Total Amount Due.
- 8.2 [Fellows may, at its absolute discretion, agree credit terms with the Buyer before an Auction under which the Buyer may be entitled to take possession of Lots up to an agreed value in advance of payment by a stipulated future date of the Total Amount Due.]
- 8.3 Cheques shall not be acceptable by Fellows (unless Fellows in its absolute discretion permits payment by such method) nor are third party references or credit facilities with other Auction houses. If a cheque is tendered Fellows reserves the right to instruct its bank to check the Buyer's status and account balance before exercising any discretion. Any credit arrangement must be settled at least 4 days before the relevant sale. Any permitted payment by credit card shall carry an extra charge to the Buyer of such percentage of the Total Amount Due as is displayed on the premises.
- 8.4 Any payments by a Buyer to Fellows may be applied by Fellows towards any sums owing from that Buyer to Fellows on any account whatever without regard to any directions of the Buyer or his agent, whether express or implied.
- 9. THE PURCHASE PRICE**
- 9.1 On the first £100,000 of the Hammer Price (of any individual Lot) the buyer will pay the Hammer Price and a premium of 23% (Plus VAT). The said premium not being negotiable and payable by ALL Buyers. The Vendor authorises Fellows to retain beneficially the premium payable by Buyers. Value Added Tax is charged at the rate prevailing by law at the date of sale.
- 9.2 On the excess over £100,000 of the Hammer Price (of any individual Lot), the Buyer will pay the Hammer Price and a premium of 15% (plus VAT). The said premium not being negotiable and payable by ALL Buyers. The Vendor authorises Fellows to retain beneficially the premium payable by Buyers. Value Added Tax is charged at the rate prevailing by law at the date of sale.
- 9.3 Value Added Tax on the Hammer Price is imposed on all items affixed with an asterisk thus - *.
- 9.4 Buyers using the Fellows Live bidding platform will not pay any additional commission, just the buyer's premium. Buyers will pay an additional commission charge of 4.95% + VAT of the hammer price if lots are successfully purchased online via the saleroom. Buyers using Easy Live Auction can choose whether to pay a live bidding charge of 3% + VAT of the hammer price, or a fixed fee of £3 per sale. Buyers will pay a commission charge of an additional 5% + VAT of the hammer price if lots are successfully purchased online via Live Auctioneers.
- 9.5 Non UK or EU VAT registered buyers can have most classes of VAT refunded on their purchases - please note that auctioneers are under no obligation to provide VAT refunds, although many will offer this service. HMRC are the ultimate refunding authority. VAT refunds are subject to provision of statutory export/import documentation. HMRC have decreed that VAT on buyer's premium is always payable whether the buyer is domiciled in the UK, the EU or outside the EU or wherever the goods are to be sent. So auctioneers cannot refund VAT on buyer's premium if the goods are sold under normal VAT rules.
- 10. TITLE AND COLLECTION OF PURCHASES**
- 10.1 The ownership of any Lot purchased shall not pass to the relevant Buyer until they have made payment in full to Fellows of the Total Amount Due.
- 10.2 Buyers shall at their own risk and expense take away any Lot that they have purchased and paid for not later than 2 working days following the day of the Auction after which they shall be responsible for any removal, storage and insurance charges.
- 11. DEFAULT BY BUYER OR VENDOR**
- 11.1 As Fellows act as agent for the Vendor, Fellows is not responsible for default by the Vendor or the Buyer.
- 11.2 If any Lot is not paid for in full and taken away in accordance with these Conditions, or if there is any other breach of these Conditions, Fellows as agent for the Vendor shall at its absolute discretion and without prejudice to any other rights it may have, be entitled to exercise all or any of the following rights and remedies:
- (a) to proceed against the Buyer for an action for debt or damages for breach of contract;
- (b) to rescind the sale of that Lot and/or any other Lots sold by Fellows to the defaulting Buyer;
- (c) to re-sell the Lot by Auction or private treaty. If a lower Hammer Price is achieved on the re-sale than that achieved on the original sale the defaulting Buyer shall be liable for the difference (after crediting any part payment and adding any re-sale costs). Fellows will account to the Vendor for any surplus achieved on a re-sale, however, it shall only be required to account to the Vendor for any resulting deficiency in the event that it receives payment of such sum in full from the defaulting Buyer.
- (d) to remove, store and insure the Lot at the expense of the defaulting Buyer and, in the case of storage, either at Fellows' premises or elsewhere;
- (e) to charge interest at a rate not exceeding [1.5%] per month on the total amount due to the extent it remains unpaid for more than 2 working days after the sale;
- (f) to retain that or any other Lot sold to the defaulting Buyer until that Buyer pays the total amount due;
- (g) to reject or ignore bids from the defaulting Buyer at future Auctions or to impose conditions before any such bids shall be accepted;
- (h) to apply any proceeds of sale of other Lots due or in future becoming due to the defaulting Buyer towards the settlement of the total amount due and to exercise a lien on any of the Buyer's property in Fellows' possession for any purpose.
- 12. DELIBERATE FORGERIES**
- 12.1 Subject to clause 12.2, any representation or statement by Fellows (including in any catalogue) as to authorship, genuineness, origin, date, age, provenance, condition or estimated selling price is a statement of opinion only. Prospective Buyers are given ample opportunities to view and inspect before any sale and prospective Buyers must satisfy themselves as to all such matters. Neither Fellows or its employees or agents nor the Vendor accept liability for the correctness of such opinions and all conditions and warranties, express, implied or statutory are hereby excluded.
- 12.2 Any Lot which proves to be a Deliberate Forgery may be returned to Fellows by the Buyer within 21 days of the Auction provided it is in the same condition as when bought, and is accompanied by particulars identifying it from the relevant catalogue description and a written statement of defects. If Fellows is satisfied from the evidence presented that the Lot is a Deliberate Forgery Fellows shall refund the money paid by the Buyer for the Lot (but not the amount of any consequential loss, damages, expenses or interest) provided that (1) if the catalogue description reflected the accepted view of scholars and experts as at the date of sale or (2) the Buyer personally is not able to transfer a good and marketable title to Fellows.
- 13. LIMITATIONS OF LIABILITY**
- 13.1 All members of the public on the premises are there at their own risk and must note the lay-out of the accommodation and security arrangements.
- 13.2 Any indemnity under these Conditions shall extend to all actions, costs, expenses, claims and demands whatsoever suffered or incurred by the person entitled to the benefit of it and Fellows declares itself to be a trustee of the benefit of every such indemnity so far as it is expressed to be for the benefit of its employees and agents.
- 13.3 While Fellows endeavours to ensure that the information on the Website is correct, Fellows does not warrant the accuracy and completeness of the material on the Website. Fellows may make changes to the material on the Website, or to the products and prices described in it, at any time without notice. The material on the Website may be out of date, and Fellows makes no commitment to update such material.
- 13.4 The material on the Website is provided "as is", without any conditions, warranties or other terms of any kind. Accordingly, to the maximum extent permitted by law, Fellows provides you with the Website on the basis that Fellows excludes all representations, warranties, conditions and other terms which, but for this legal notice, might have effect in relation to the Website.
- 14. GENERAL**
- 14.1 Any notice to any Buyer, Vendor, Bidder or viewer may be given by first class mail or email in which case it shall be deemed to have been received by the addressee 48 hours after posting or sending. All notices to Fellows must be sent in writing and email is not acceptable.
- 14.2 Any indulgence extended to any person by Fellows notwithstanding the strict terms of these Conditions or the Terms of Consignment shall affect the position at the relevant time only and in respect of that particular concession only; in all other respects these Conditions shall be construed as having full force and effect.
- 14.3 These Conditions and any disputes or claims arising out of or in connection with it or their subject matter or formation (including non-contractual disputes or claims) are governed by and construed in accordance with the law of England.
- 14.4 The parties irrevocably agree that the courts of England have exclusive jurisdiction to settle any dispute or claim that arises out of or in connection with the Agreement or its subject matter or formation (including non-contractual disputes or claims).
- 15. SHIPPING**
- 15.1 We offer a tracked and insured shipping service for all items with the exception of those in our Antiques, Silver & Collectables sales.
- 15.2 Items posted outside of the UK will incur a £30 charge
- 15.3 Within the UK, hammer totals under £100 will incur a £10 charge
- 15.4 Hammer totals over £100 will incur a £20 charge
- 15.5 Larger items, as well as those exceeding a value of £20,000 or weighing in excess of 2kg may be subject to additional fees
- 15.6 If you have recently moved or wish to have your items sent to a different address, please contact us prior to the sale. We cannot accept alternative addresses for first-time buyers and your items will be sent the address on the ID/payment card. If you pay by bank transfer we can ship to any worldwide address of your choice.

Fellows

Established 1876

Contact Information

Directors

Stephen Whittaker BA (Hons)

Jayne Whittaker

Ben Griffiths BSc (Hons)

Departments

Customer Services

0121 212 5508

info@fellows.co.uk

Olivia Dean-Goodchild

Gemma Sheldon

Janis Masters

Finance

0121 212 2131

wendy@fellows.co.uk

Wendy Butler

Angela Donnelly BA (Hons) ACMA

Gemma Wilkes

Photography

0121 212 2131

photography@fellows.co.uk

Claire Cleaver

Polly Shave MA (Hons)

Stephen Watton BA (Hons)

Marketing

0121 212 5500

marketing@fellows.co.uk

Liam Bolland BA (Hons)

Jorden Guest MA (Hons)

Luke Poole BA (Hons)

Alexandra Whittaker BA (Hons)

Nicola Whittaker Bsc (Hons), Cert. GA

London Office

0207 127 4198

london@fellows.co.uk

Kirsty Basset

Natasha Davis BA (Hons), FGA

Isabelle Mettan-Ure

Annabel Zarandi BA (Hons)

Specialist Departments

Jewellery

0121 212 6303

jewellery@fellows.co.uk

Lindsay Beardmore FGA, DGA

Jenny Darcy BA (Hons)

Alexander Duffy BSc (Hons), FGA, DGA

Penelope Gilliver FGA, DGA

Patricia Grant BA (Hons)

Kathryn Hodkin MSci (Hons), FGA, DGA

Ben Randall BA (Hons), G.G., A.J.P.

Emma Scriven BA (Hons), FGA, DGA

Emma Testill FGA, DGA

Amanda Zhang FGA, Msc

Annaliese Foster BA (Hons)

Laura Boccardo

Nicole Flavell-Avery BA (Hons), FGA, AJP

Sarah Throneloe

Watches

0121 212 5506

watches@fellows.co.uk

Laura Bishop MA (Hons)

Kes Crockett BA (Hons)

Michael Jagiela

Steven Yambo BA (Hons)

Kain Holroyd

Pawnbrokers

0121 212 6308

pawnbroker@fellows.co.uk

Kate Bannister

Claire Dodwell

Ross Popescu

Connor Baker

Antiques, Silver & Collectables

0121 212 6302

antiques@fellows.co.uk

silverdept@fellows.co.uk

Madeleine Cater BA (Hons)

Kevin Jackson

Alison Jakeway MA MRICS

Designer Collection

0121 212 6306

thedesignercollection@fellows.co.uk

Sophie Higgs

Matthew Osbourne

Abigail Moses



Birmingham Saleroom

Situated in the heart of Birmingham's Jewellery Quarter, Fellows is easily accessible from all parts of the United Kingdom, Europe and beyond.

Head Office & Saleroom
Augusta House
19 Augusta Street
Birmingham
B18 6JA

Telephone: 0121 212 2131
Email: info@fellows.co.uk

London Office

Fellows' London office offers valuations, please call to arrange a time to visit.

London Office
29 Charles Street
Mayfair
London
W1J 5DT

Telephone: 020 7127 4198
Email: london@fellows.co.uk



Follow us on....



[facebook.com/
fellowsauctions](https://facebook.com/fellowsauctions)



[fellowsauctions](https://instagram.com/fellowsauctions)



[@fellowsauctions](https://twitter.com/fellowsauctions)



youtube.com/fellows1876



Fellows

Established 1876

Head Office & Saleroom: Augusta House | 19 Augusta Street | Birmingham B18 6JA
London Office: 29 Charles Street | Mayfair | London W1J 5DT
Tel 0121 212 2131 | Tel 020 7127 4198 | www.fellows.co.uk