

Fellows
Established 1876



Fine Jewellery
Thursday 26th May 2022

Fine Jewellery

Thursday 26th May 2022
Starts at 10:00am

Viewing Times

London 29 Charles Street Mayfair	
Tuesday 17th May	12:00 - 19:00pm
Wednesday 18th May	9:30 - 13:30pm
Birmingham Head Office & Saleroom	
Tuesday 24th May	10:00 - 16:00pm
Wednesday 25th May	10:00 - 16:00pm
Thursday 26th May	8:30 - 10:00am

(Photo ID required)

Virtual viewings available by request, to book your appointment please contact info@fellows.co.uk

Certificated Stones,

Lot 21, 22, 105, 107, 154, 157, 188, 191, 215, 240, 246, 247, 294, 303, 379, 474, 482, 484, 546, 557, 582

Featured Lots

Lots 222, 223
(Front Cover)



Lots 441, 442, 443, 450
(Back Cover)



Lot 378

General Information

Fellows

Established 1876

Contact the department

Ben Randall
Jewellery Department Manager
0121 212 6312
ben@fellows.co.uk

Alexander Duffy
BSc(Hons) FGA DGA
Jewellery Department

Nicole Flavell-Avery
BA(Hons) FGA DGA AJP
Jewellery Department

Virtual Viewings

Virtual viewings available by request, to book your appointment please contact info@fellows.co.uk

Fellows Live



Say goodbye to additional surcharges thanks to Fellows Live. Using our platform means you only pay the standard Buyer's Premium (plus VAT).

Free Delivery



We offer free worldwide shipping on the majority of items that we auction.

Free delivery on this auction.

Keep your eye out for this icon and be sure to read the terms and conditions.

Why Buy?

- In-depth descriptions and condition reports
- Free worldwide postage w/ free insurance
- Competitive Buyers Premium
- Guarantee authenticity
- Free live bidding
- Virtual viewings
- Sustainability

Why Sell?

- Competitive commission rates
- Free no-obligation valuations
- Worldwide customer base
- High quality photography
- Array of auction types
- Expert cataloguing

Further information

Live Auction Bidding Increments

From	To	Increment
£0	£50	£2
£50	£100	£5
£100	£200	£10
£200	£1,000	£20
£1,000	£10,000	£100
£10,000	£1,000,000	£1,000

Important Notice

All bidders accept full liability for bids placed. Placing a bid is a legally binding obligation to buy and pay for the lot if your bid is successful. Refunds will not be given for "buyer's remorse". Please note that by submitting a bid you are agreeing to our Terms & Conditions.

Key to Symbols

- Item may have export restrictions for customers outside of the EU.
- Lot comes with box.
- Lot comes with associated papers/warranty cards.
- Lot comes with report.
- Lot will carry an additional 20% VAT charge on the hammer price.



Tudor Jewels at Harvington Hall

Monday 13th June

Harvington Hall, Harvington, Kidderminster, DY10 4LR

Join Fellows Auctioneers and Dr Nicola Tallis at The House of Secrets and delve into its fascinating history as well as the legacy of the Tudor period left there. Harvington Hall is a stunning Elizabethan Manor House with history that can be traced back to the 13th-century. Harvington has a rich and fascinating history of religious upheaval including priest hunts.

Tickets £120

Tickets include all food and refreshments, numbers are limited so book now to avoid disappointment.

Fellows
Established 1876

*To purchase your ticket or to get more information visit
www.fellows.co.uk/events or email hello@fellows.co.uk*

Fellows

Established 1876

IMPORTANT NOTICES FOR PURCHASERS

IMPORTANT NOTICE TO PROSPECTIVE BUYERS OF GEMSTONES/JEWELS

We recommend that you view any items you intend to purchase as refunds will not be given for buyer's remorse. This doesn't affect your statutory rights.

Notes 1 - Coloured Gemstones

Purchasers are advised that whilst great care has been taken in the examination of gemstones, it is not possible to test every gemstone within the constraints of time and equipment available outside of laboratory conditions. Any gemstone not provided with a laboratory report has been assessed by Fellows within the limitations of any mounting and an opinion has been given where possible.

Historically, many coloured gemstones have been subjected to a variety of treatments designed to enhance their appearance. Certain enhancement methods, such as heating, are routinely used to alter aspects of rubies, sapphires, and other gemstones. Oiling is often undertaken to enhance the clarity of emeralds. The international jewellery trade has generally accepted these and other enhancement methods. Some treatments are permanent whereas others may only be semi-permanent, possibly requiring further re-treatment in order to retain their appearance.

Because of the widespread variety of treatments within the jewellery industry, prospective purchasers should assume that all gemstones will have been treated unless statements are made to the contrary. Gemmological reports from internationally recognised Gemmological Laboratories will be noted in the item description where available.

Note 2 - Diamonds

Advancements in technology have led to some diamonds being treated in a number of ways, all designed to improve their appearance or alter their colour. Processes include but are not necessarily limited to: fracture filling, laser drilling, a combination of drilling and filling, HPHT treatment, irradiation and various coatings. Buyers are also alerted to the fact that synthetic diamonds are now produced in large quantities. Whilst every effort is made to identify or disclose treated and synthetic goods, it is not possible for Fellows to guarantee that all diamond set lots do not contain such material.

Fellows do not knowingly offer treated diamonds for sale, unless a gemmological opinion disclosing the type of treatment has been obtained and the treatment would be stated within the item description.

Note 3 - Weights and Measures

Estimated Diamond weights, colours and clarities (see Notes on Diamond Grading terms opposite) given by Fellows are intended as guides for prospective purchasers, with the given limitations of mounts and settings, and are opinions only, not guaranteed by Fellows.

Weights of coloured gemstones offered are extrapolated on the estimated dimensions, using trade standard formulae. Due to the traditional cutting techniques for coloured gemstones it is possible there may be discrepancy between the stated estimate and the unmounted weight.

Fellows uses a Thermo Scientific Nitron Handheld XRF Analyser to test metals. This technology is limited to examining metal to a depth of approximately 8 microns. Fellows does not guarantee the standard of gold or platinum unless an item is hallmarked. Results from electronically tested items should only be used as a guide and with caution, as false readings are possible.

Lengths and weights provided are estimates only.

The information stated in reports is the opinion of the respective laboratory and is not necessarily the opinion of Fellows auctioneers.

Note 4 - Condition Reports

Statements in the catalogue regarding the condition of lots in this sale may appear in the description, however, the absence of such a reference does not imply a lack of damage or wear, or lack of any further faults within the piece.

Please note that Fellows offer condition reports on almost every lot offered. Our condition reports are the opinion of Fellows and should only be referenced as a guide. We highly recommend that a prospective buyer views in person or sends a representative to satisfy themselves to the condition, originality and suitability of a piece(s) before bidding.

Our lots are almost exclusively antique or secondhand and as such should be expected to have small signs of wear and use commensurate with the age of the piece.

Some jewellery sales will also have a condition report banding scale which applies as follows:

A

No obvious faults other than wear in keeping with age and use.

B

Minor faults. There may be abrasion and/or small nicks to gemstones. General moderate wear from use possibly including but not necessarily limited to small dents and deep scratches. The piece may have been altered from its original design but to a reasonable standard.

C

Faults. Gemstones may be noticeably chipped along with abrasion and nicks. Non-principal gems may be deficient. The piece may have noticeable dents/tears or small losses that affect the overall appearance of the design. The piece may have had alterations from its original design that may be apparent under scrutiny.

D

Significant faults. Gemstones may be deficient, chipped or otherwise damaged. The piece may require attention before it is wearable, pins or clasps may be broken. There may be significant dents, tears, losses or alterations to the metal. The piece may have had alterations from its original design that are readily apparent.

E

At Fault. Gems will be damaged and/or deficient. Noticeable damage. The piece is unwearable.

Diamond Grading Terms

DIAMOND COLOUR

GIA	OLD WORLD TERMS	EXPLANATION	GIA	OLD WORLD TERMS	EXPLANATION
D	Finest White (Jager)	Colourless	K	Silver Cape (Top Cape)	Traces of colour. Small stones in this range will 'face up' colourless when mounted but larger stones will be tinted.
E	Finest White (River)	Colourless	L	Silver Cape (Top Cape)	Traces of colour. Small stones in this range will 'face up' colourless when mounted but larger stones will be tinted.
F	Fine White (River)	Colourless	M	Light Cape (Cape)	Traces of colour. Small stones in this range will 'face up' colourless when mounted but larger stones will be tinted.
G	Fine White (Top Wesselton)	Near Colourless: diamonds 'face up' colourless. Slight traces of colour will not be apparent in the mounted stones to other than the trained eye.	N	Light Cape (Low Cape)	Diamonds graded N through Z+ display a yellowish tint even to the untrained eye.
H	White (Top Wesselton)	Near Colourless: diamonds 'face up' colourless. Slight traces of colour will not be apparent in the mounted stones to other than the trained eye.	P	Cape O - R (Very Light Yellow)	Diamonds graded N through Z+ display a yellowish tint even to the untrained eye.
I	White (Top Wesselton)	Near Colourless: diamonds 'face up' colourless. Slight traces of colour will not be apparent in the mounted stones to other than the trained eye.	Z	Cape R - Z (Very Light Yellow)	Diamonds graded N through Z+ display a yellowish tint even to the untrained eye.
J	Top Silver (Top Wesselton)	Near Colourless: diamonds 'face up' colourless. Slight traces of colour will not be apparent in the mounted stones to other than the trained eye.	Z+	Fancy Yellow	Diamonds graded N through Z+ display a yellowish tint even to the untrained eye.

DIAMOND CLARITY

GIA	OLD WORLD TERMS	EXPLANATION	GIA	OLD WORLD TERMS	EXPLANATION
IF	Internally Flawless	No inclusions visible with a 10x lens even to an experienced grader.	S11 & S12	Slightly Included	Noticeable inclusions visible with a 10x lens.
VVS1 & VVS2	Very Very Slightly Included	Minute inclusions, which are difficult, even for experienced graders, to see with a 10x lens.	I1, I2 & I3	Pique 1, 2 & 3	Obvious inclusions, may be visible to the unaided eye, face up. In I3 they may affect the stone's durability.
VS1 & VS2	Very Slightly Included	Minor inclusions, observable with effort with a 10x lens.			

Our lots are almost exclusively antique or secondhand and as such should be expected to have small signs of wear and use commensurate with the age of the piece.

Some jewellery sales will also have a condition report banding scale which applies as follows:

A

No obvious faults other than wear in keeping with age and use.

B

Minor faults. There may be abrasion and/or small nicks to gemstones. General moderate wear from use possibly including but not necessarily limited to small dents and deep scratches. The piece may have been altered from its original design but to a reasonable standard.

C

Faults. Gemstones may be noticeably chipped along with abrasion and nicks. Non-principal gems may be deficient. The piece may have noticeable dents/tears or small losses that affect the overall appearance of the design. The piece may have had alterations from its original design that may be apparent under scrutiny.

D

Significant faults. Gemstones may be deficient, chipped or otherwise damaged. The piece may require attention before it is wearable, pins or clasps may be broken. There may be significant dents, tears, losses or alterations to the metal. The piece may have had alterations from its original design that are readily apparent.

E

At Fault. Gems will be damaged and/or deficient. Noticeable damage. The piece is unwearable.

1 A pair of 'yellow' and 'brown' brilliant-cut diamond drop earrings.

Estimated total diamond weight 1.80cts, 'fancy light brown' and 'fancy brownish yellow' colour, SI1-P1 clarity.
Length 1.6cms. 3gms.
Diamonds untested for natural colour origin.
£300-400 (plus 27.6% BP*)

2 A 9ct gold horse brooch, by Alabaster & Wilson.

Hallmarks for Birmingham, partially indistinct.
Length 4.2cms. 10.6gms.
£200-300 (plus 27.6% BP*)

3 A tri-colour 18ct gold foliate motif necklace, with pavé-set diamond highlight, by Asprey.

Estimated total diamond weight 0.10ct.
Hallmarks for London, 2017. Length 45cms. 6.4gms.
£250-350 (plus 27.6% BP*)

4 A bluish green tourmaline single-stone ring.

Tourmaline calculated weight 4.69cts, based on estimated dimensions of 12.1 by 9.9 by 6.1mms.
Ring size P1/2. 3.2gms.
£150-200 (plus 27.6% BP*)

5 A pair of yellow sapphire and diamond pear-shape cluster earrings.

Estimated total diamond weight 0.90ct, G-I colour, VS-SI clarity.
Length 1.4cms. 4.4gms.
£500-700 (plus 27.6% BP*)

6 A sapphire and pavé-set diamond bow ring, by Van Cleef & Arpels.

Sapphire weight 0.19ct.
Total diamond weight 0.39ct, estimated G-H colour, VS-SI clarity.
French assay marks, stamped 18Kt. Ring size K. 3.5gms.
£600-800 (plus 27.6% BP*)

7 An emerald and brilliant-cut diamond cluster ring.


Emerald calculated weight 0.94ct, based on estimated dimensions of 7 by 6.3 by 2.9mms.
Estimated total diamond weight 0.50ct, G-I colour, VS-SI clarity.
Stamped 18ct PLAT. Ring size P1/2. 4gms.
£600-800 (plus 27.6% BP*)

8 A pair of 18ct gold half hoop earrings, with square-shape diamond cross detachable drop, by Theo Fennell.

Estimated total diamond weight 1.20cts, G-H colour, VS clarity.
Hallmarks for London, 2001. Length 2.5cms. 6.4gms.
£800-1,200 (plus 27.6% BP*)

9 An 18ct gold square-shape diamond cross pendant, by Theo Fennell.

Estimated total diamond weight 1.80cts, G-H colour, VS clarity.
Hallmarks for London, 2002. Length 2.4cms. 3.4gms.
£1,000-1,500 (plus 27.6% BP*)

10  A brilliant-cut diamond and red enamel 'The Venue' pendant, by Celeste, from their 'Symphony of Lust' collection.

Estimated total diamond weight 0.40ct, G-H colour, VS clarity.
Length 4.6cms. 17.5gms.
With maker's case.
£900-1,400 (plus 27.6% BP*)

11 A ruby and diamond cluster ring.

Ruby calculated weight 2.53cts, based on estimated dimensions of 9.5 by 8.6 by 3.7mms.
Estimated total diamond weight 1.20cts, I-L colour, VS-SI clarity.
Stamped 18ct. Ring size K1/2. 6.1gms.
£900-1,400 (plus 27.6% BP*)

12 A cultured pearl, baguette and brilliant-cut diamond ring, by Cartier.

Estimated total diamond weight 1ct, G+ colour, VS clarity.
French re-strike marks, stamped 750.
Ring size L. Cartier size 52. 9.1gms.
£1,500-2,000 (plus 27.6% BP*)



13 An early 20th century 18ct gold vari-cut ruby, diamond point and seed pearl pendant.

French assay marks. Length 3.7cms. 3.1gms.

£150-200 (plus 27.6% BP*)

14 An early 20th century 15ct gold old-cut diamond, red guilloché and white spot enamel brooch.

Estimated total diamond weight 0.25ct, G-H colour, VS-SI clarity. Length 3.3cms. 5.3gms.

£200-300 (plus 27.6% BP*)

15 An early 20th century 15ct gold ruby, split and seed pearl bow necklace.

Stamped 15ct. Length 40.2cms. 7.9gms.

£300-400 (plus 27.6% BP*)

16 An early 20th century Austrian 14ct gold brooch, depicting two chicks upon a seed pearl budding branch.

Austrian marks. Length 7.2cms. 11.1gms.

£300-400 (plus 27.6% BP*)

17 A 9ct gold red enamel 'Caterpillar Club' badge, engraved 'Sgt. W.H.T. Farmer'.

Length 1.9cms. 1gm.

Sgt. W.H.T. Farmer was a Spitfire pilot who went down on operation Sweep, 23rd July 1942, no. 234 Squadron.

Spitfire Vb AD454, Sgt. Farmer 570023 RAFVR, PoW No: 25657 at camp Stalag Lamsdorf (344).

£400-600 (plus 27.6% BP*)

18 ✕ A reverse carved and painted horse and carriage brooch, with split pearl floral surround.

Diameter 3.5cms. 9.4gms.

£400-600 (plus 27.6% BP*)

19 A ruby and circular-cut diamond cluster ring.

Ruby calculated weight 0.50ct, based on estimated dimensions of 4.8 by 3.9 by 3.2mms.

Estimated total diamond weight 0.35ct.

Stamped 18ct. Ring size L1/2. 2.9gms.

£500-700 (plus 27.6% BP*)

20 A graduated pearl and rose-cut diamond mounted comb.

Portuguese marks, stamped 375.

Length of gem-set section 7cms. 11.2gms.

Pearls untested for natural origin.

£600-800 (plus 27.6% BP*)

21  A Burmese ruby and old-cut diamond navette-shape ring.

With report 21615, dated 20th April 2022, from The Gem & Pearl Laboratory, stating Burma, no heat.

Ruby calculated weight 0.50ct, based on dimensions stated in the report.

Estimated total diamond weight 0.30ct, H-I colour, VS-SI clarity.

Band stamped 18ct. Ring size P. 4.1gms.

With Harrods case.

£600-800 (plus 27.6% BP*)

22  A late 19th century gold Thai ruby and old-cut diamond cluster ring.

With report from AnchorCert, stating Thailand, no treatment, estimated weight 1.20cts.

Estimated total diamond weight 0.60ct, G-I colour, VS2-P1 clarity. Ring size R1/2. 4.8gms.

£550-750 (plus 27.6% BP*)

23 An early 20th century platinum and gold vari-cut diamond bracelet.

Principal diamond estimated weight 0.45ct, K-L colour, P1 clarity.

Estimated total diamond weight 1.10cts.

Length 17.2cms. 6.3gms.

£1,000-1,500 (plus 27.6% BP*)

24 A ruby cabochon and old-cut diamond three-stone ring.

Ruby calculated weight 6.44cts, based on estimated dimensions of 11 by 9.2 by 5.9mms.

Estimated total diamond weight 1.50cts, J-K colour, P1 clarity.

Ring size P. 5.3gms.

£6,000-8,000 (plus 27.6% BP*)



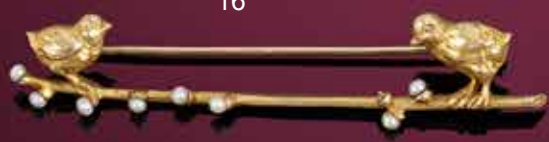
20



13



15



16



14



24



21



17



22



23



19



18

25 An early 20th century lightly textured 14ct gold garnet, peridot and seed pearl brooch.

Stamped 14K. Length 3cms. 7.2gms.
£150-200 (plus 27.6% BP*)

26 An Art Nouveau 15ct gold peridot foliate pendant.

Hexagonal-shape peridot calculated weight 1.51cts, based on estimated dimensions of 7.1 by 4.1mms.
Stamped 15ct. Length 4.8cms. 6.1gms.
£200-300 (plus 27.6% BP*)

27  An early 20th century 15ct gold peridot and split pearl negligee pendant.

Length 36cms. 7.6gms.
With fitted case.
£200-300 (plus 27.6% BP*)

28 An Art Nouveau gold ruby, pearl and rose-cut diamond brooch.

Length 3.2cms. 4.2gms.
Pearls untested for natural origin.
£300-400 (plus 27.6% BP*)

29 An early 20th century Russian gold garnet and rose-cut diamond stylised floral brooch.

56 zolotnik mark. Maker's mark partially indistinct.
Length 3.2cms. 4.5gms.
£400-600 (plus 27.6% BP*)

30 A ladies early 20th century gold fob watch, by Le Coultre and Cie, with ruby and diamond point floral motif, suspended from a near period 9ct gold bow brooch.

Watch with French re-strike marks and further marks, obscured.
Length of watch 3.9cms. Total length 6.7cms. 18.9gms.
£300-400 (plus 27.6% BP*)

31 A pair of single-cut diamond accent cufflinks, each designed as a woman in profile, with bar reverse.

Stamped 18K. Length of cufflink face 1.7cms. 8.1gms.
£350-450 (plus 27.6% BP*)

32 A French Art Nouveau platinum and 18ct gold, ruby and diamond point floral bracelet.

French assay marks. Length 19.2cms. 16.1gms.
£500-700 (plus 27.6% BP*)

33 A late 19th century carved moonstone and garnet pansy pendant, with old-cut diamond highlights, on brilliant-cut diamond accent chain.


Estimated total diamond weight 0.95ct, H-J colour, SI1-P1 clarity.
Length of pendant 4.7cms. Length of chain 45cms. 10.6gms.
£900-1,400 (plus 27.6% BP*)

34 A French Art Nouveau 18ct gold old-cut diamond, emerald and ruby scrolling foliate brooch, with seed pearl drop.

May be worn as a pendant.
Estimated diamond weight 0.15ct, G-H colour, SI clarity.
French assay marks. Length 4.3cms. 12.7gms.
£1,000-1,500 (plus 27.6% BP*)

35 A pair of Art Nouveau 18ct gold old-cut diamond and enamel cufflinks, possibly by Joseph Anton Hodel.

Stamped HODEL.
Estimated total diamond weight 0.25ct, G-H colour, SI clarity.
French re-strike marks. Length of cufflink face 1.8cms. 18.1gms.
£1,000-1,500 (plus 27.6% BP*)

36  An Art Nouveau silver and gold, vari-cut diamond, pink gem and cultured pearl ginkgo leaf pendant.

May be worn as a pendant.
Length 8.8cms. 18.6gms.
With fitted case.
£4,500-6,500 (plus 27.6% BP*)



37 A pair of bi-colour 18ct gold pear-shape 'light yellow' diamond earrings, with brilliant-cut diamond stud surmount.

Estimated total diamond weight 1.05cts, G-H and 'fancy light yellow' colour, VS-SI clarity.
Hallmarks for Sheffield. Length 1cm. 2gms.
Diamonds untested for natural colour origin.
£200-300 (plus 27.6% BP*)

38 A pair of brilliant-cut diamond geometric earrings, by Janis Savitt.

Estimated total diamond weight 1ct, G-H colour, VS-SI clarity.
Stamped 18K. Length 4.8cms. 10.3gms.
£350-450 (plus 27.6% BP*)

39 A mid 20th century 18ct gold green tourmaline and circular-cut diamond cocktail ring, with shaped band.

Tourmaline calculated weight 6.68cts, based on estimated dimensions of 16.8 by 7.6 by 5.7mms.
Estimated total diamond weight 0.30ct, H-I colour, VS clarity.
Ring size T1/2. 9.1gms.
£300-400 (plus 27.6% BP*)

40 An early to mid 20th century 18ct gold lapis lazuli pendant.

Lapis lazuli estimated dimensions 28.3 by 18.8 by 4mms.
Stamped 750. Length 4.9cms. 15.5gms.
Lapis lazuli untested for natural colour origin.
£300-400 (plus 27.6% BP*)

41 A 1970s bi-colour 18ct gold brilliant-cut diamond ring, by David Thomas.

Estimated total diamond weight 0.15ct, G-H colour, VS clarity.
Hallmarks for London, 1973. Ring size M1/2. 10.5gms.
£400-600 (plus 27.6% BP*)

42 A pair of 18ct gold 'Serpent Trace' hoop earrings, by Shaun Leane.

Hallmarks for London, 2013. Diameter 4.3cms. 13.8gms.
£400-600 (plus 27.6% BP*)

43 A mid 20th century 18ct gold brilliant-cut diamond highlight, geometric openwork pendant, by John Donald.

Estimated diamond weight 0.10ct, G-H colour, VS clarity.
Hallmarks for London, 1978. Length 3.5cms. 4gms.
£450-650 (plus 27.6% BP*)

44 A mid 20th century 18ct gold diamond geometric openwork ring, by John Donald, together with a fitted band ring of similar design.

Estimated total diamond weight 0.20ct, H-I colour, VS clarity.
One with hallmarks for London, partially indistinct.
Ring size M. 5.5gms.
£800-1,200 (plus 27.6% BP*)

45 A 1970s 18ct gold 'Lover's Knot' brooch, by Cartier.

Hallmarks for London, 1974. Length 8cms. 14.9gms.
£800-1,200 (plus 27.6% BP*)

46 A pavé-set 'yellow' diamond and marquise-shape diamond cocktail ring.

Estimated total diamond weight 3cts.
French re-strike marks. Ring size M. 8.8gms.
Diamonds untested for natural colour origin.
£1,400-2,000 (plus 27.6% BP*)

47 A 1980s 18ct gold brilliant-cut diamond 'Scribble' brooch, by Paloma Picasso for Tiffany & Co.

Estimated total diamond weight 0.20ct, G-H colour, VS clarity.
Import marks for London, 1988. Length 6.5cms. 25.9gms.
£1,600-2,200 (plus 27.6% BP*)

48 A geometric multi-strand cuff bangle, by Eddi Borgo.

Numbered 2 of 2.
Stamped 750. Inner diameter 153gms.
With maker's pouch.
Worn by Izabel Goulart on the catwalk at the 'Ultimate Gold Collection Fashion Show', curated by Carine Roitfeld for the 20th annual amfAR Cinema Against AIDS benefit at the 2013 Cannes Film Festival.
£4,500-6,500 (plus 27.6% BP*)



47



37



48



40



43



45



44



39



41



46



38



42

49 An early 20th century 18ct gold lapis lazuli negligee necklace.

Length 41cms. Length of drop 7.1cms. 14.2gms.
Lapis lazuli untested for natural colour origin.

£250-350 (plus 27.6% BP*)

50 A limited edition diamond and blue enamel ring, by Victor Mayer for Fabergé.

Total diamond weight 0.09ct, estimated G-H colour, VS clarity.
Stamped 750. Ring size N. 4.6gms.
With certificate of authenticity.

£450-650 (plus 27.6% BP*)

51 A pair of old-cut diamond and cultured pearl earrings.

Estimated total diamond weight 0.90ct, H-J colour, SI1-P1 clarity.
Length 3cms. 9.9gms.

£500-700 (plus 27.6% BP*)

52 An 18ct gold sapphire three-stone and brilliant-cut diamond cluster ring.

Sapphire total weight 0.61ct.
Total diamond weight 0.91ct, estimated G-H colour, SI1-P1 clarity.
Hallmarks for Birmingham. Ring size O. 3.8gms.

£650-850 (plus 27.6% BP*)

53 A mid 20th century gold lapis lazuli, blue enamel and textured ring.

Ring size J. 18.9gms.
Lapis lazuli untested for natural colour origin.

£800-1,200 (plus 27.6% BP*)

54 An 18ct gold diamond crossover ring, by Tiffany & Co.

Estimated total diamond weight 0.20ct, H-I colour, VS clarity.
Import marks for London, 1997. Ring size K1/2. 7.1gms.

£800-1,200 (plus 27.6% BP*)

55 A 1960s textured 18ct gold bracelet, retailed by Kutchinsky.

Import marks for London, 1969. Length 18.2cms. 51.1gms.

£1,500-2,000 (plus 27.6% BP*)

56 A sapphire and brilliant-cut diamond dress ring.

Sapphire calculated weight 3.19cts, based on estimated dimensions of 9.2 by 7.8 by 5.3mms.
Estimated total diamond weight 0.40ct, H-I colour, SI1-P1 clarity.
Stamped 18K. Ring size N1/2. 5.3gms.

£1,400-2,000 (plus 27.6% BP*)

57 A curb-link bracelet, with turquoise cannetille charm.

Egyptian marks.
Length of charm 2.5cms. Length of chain 19.5cms. 54.2gms.

£1,800-2,400 (plus 27.6% BP*)

58 An 18ct gold tanzanite and brilliant-cut diamond cluster ring.

Tanzanite weight 6.62cts.
Total diamond weight 1.55cts, estimated G-H colour, VS-SI clarity.
Hallmarks for Birmingham. Ring size O. 6.4gms.

£2,500-3,500 (plus 27.6% BP*)

59 A light grey moonstone and brilliant-cut diamond textured necklace, by Slane.

Estimated dimensions of principal moonstone 19.5 by 15 by 8.3mms.
Estimated total diamond weight 3.10cts, G-H colour, VS-SI clarity.
Length 48cms. 184.5gms.

£5,800-7,800 (plus 27.6% BP*)

60 A diamond, textured bangle, by Slane.

Estimated total diamond weight 8.80cts, G-H colour, VS clarity.
Stamped 750. Inner diameter 5.1cms. 243.9gms.

£7,500-9,500 (plus 27.6% BP*)



61 A pair of brilliant-cut diamond and ruby bi-colour earrings.

Estimated total diamond weight 0.15ct, G-I colour, VS2-SI1 clarity. Stamped 750. Length 1.9cms. 11.5gms.

£600-800 (plus 27.6% BP*)

62 A mid 20th century 18ct gold and platinum old-cut diamond dress ring.

Estimated total diamond weight 0.65ct, H-tinted colour, SI1-P1 clarity.

French assay marks. Ring size O. 15gms.

£700-900 (plus 27.6% BP*)

63 A mid 20th century old-cut diamond openwork feather brooch.

Estimated total diamond weight 0.90ct, G-L colour, VS2-P1 clarity. Length 7.7cms. 12.3gms.

£900-1,400 (plus 27.6% BP*)

64 A mid 20th century gold and platinum, rectangular-shape diamond and ruby brooch.

Estimated total diamond weight 0.50ct, G-H colour, predominantly VS clarity.

French assay marks. Length 4.8cms. 16.4gms.

£900-1,400 (plus 27.6% BP*)

65 A 1940s 18ct gold mesh-link ribbon necklace.

Italian marks, stamped 750.

Length 42cms. 34.4gms.

£1,500-2,000 (plus 27.6% BP*)

66 A 1940s tri-colour 18ct gold pink sapphire, pink tourmaline and vari-cut diamond floral spray brooch.

Estimated total diamond weight 1.85cts, H-I colour, VS-SI clarity. Italian marks, stamped 750. Length 6.2cms. 36.7gms.

£1,500-2,000 (plus 27.6% BP*)

67 A 1960s 9ct gold cigarette case, by Dunhill.

Hallmarks for London, 1964.

Length 9.1cms. 134.1gms.

£1,800-2,400 (plus 27.6% BP*)

68 A pair of 1940s 9ct gold sapphire and ruby ear clips.

Apparent largest sapphire calculated weight 1.56cts, based on estimated dimensions of 7.7 by 5.9 by 4.1mms.

Length 2.2cms. 9.4gms.

£2,500-3,000 (plus 27.6% BP*)

69 A mid 20th century gold sapphire, ruby and brilliant-cut diamond bracelet, with matching ring and earrings.

Estimated total diamond weight 1.60cts, H-J colour, VS clarity. Length of bracelet 17.5cms. Length of earrings 2.5cms. Ring size L.

81.2gms.

£2,800-3,200 (plus 27.6% BP*)

70 A mid 20th century 18ct gold diamond wheat sheaf brooch.

Estimated total diamond weight 6 to 6.50cts, G-I colour, VS1-SI1 clarity.

French re-strike mark. Length 6.7cms. 65.3gms.

£3,500-4,500 (plus 27.6% BP*)

64



67



62



66



65



61

68



63



70



69



71 A mid 20th century gold carved and pierced jade dress ring.

Approximate ring size O. 7.1gms.
Jade untested for natural colour origin.

£150-200 (plus 27.6% BP*)

72 A mid 20th century 14ct gold cultured pearl foliate and interwoven bar brooch.

Stamped 14K. Length 6.2cms. 16gms.

£400-600 (plus 27.6% BP*)

73 A jade panel bracelet, with Chinese character spacers.

Stamped 14K.
Length 17.5cms. 10.4gms.
Jade untested for natural colour origin.

£400-600 (plus 27.6% BP*)

74 An early to mid 20th century 14ct gold pink tourmaline floral brooch.

Tourmaline calculated weight 4.74cts, based on estimated dimensions of 10.6 by 6.9mms.
Austrian marks, stamped 585. Length 5.7cms. 14.2gms.

£400-600 (plus 27.6% BP*)

75 A mid 20th century 18ct gold agate bead ring, with engraved foliate mount.

Stamped 18ct, 750. Ring size O1/2. 11.2gms.

£400-600 (plus 27.6% BP*)

76 A 1960s 18ct gold druzy agate and ruby brooch, by John Donald.

Hallmarks for London, 1965. Length 5cms. 21.4gms.

£550-750 (plus 27.6% BP*)

77 A pair of aquamarine and diamond openwork floral earrings.

Aquamarine calculated total weight 25.89cts, based on estimated dimensions.

Estimated total diamond weight 0.40ct, H-I colour, VS-SI clarity.
Length 3.8cms. 25.6gms.

£800-1,200 (plus 27.6% BP*)

78 A mid 20th century 18ct gold citrine single-stone ring with spiral, tapered bands.

Citrine calculated weight 18.68cts, based on estimated dimensions of 22.3 by 15.5 by 10.8mms.

French assay marks. Ring size N. 15.7gms.

£900-1,400 (plus 27.6% BP*)

79 A pair of mid 20th century mesh earrings, with detachable tiger's-eye hoop drops.

Stamped 14K.
Length 5.4cms. 34.7gms.

£1,200-1,800 (plus 27.6% BP*)

80 An Italian 1940s 18ct gold mesh-link stylised knot bracelet.

Italian marks, stamped 750.
Length 19.5cms. 81.3gms.

£3,200-4,200 (plus 27.6% BP*)

81 A pair of pink tourmaline, emerald and brilliant-cut diamond drop earrings.

Tourmaline calculated weight 8.34cts, based on estimated dimensions of 15.2 by 11.1 by 7.7mms.

Emerald calculated weight 7.27cts, based on estimated dimensions of 15.3 by 11.1 by 7.5mms.

Estimated total diamond weight 0.60ct, L-tinted colour, VS clarity.
Stamped 14K.

Length 2.5cms. 8.7gms.

£2,500-3,000 (plus 27.6% BP*)

82 A marquise-shape diamond pendant, with chain.

Estimated diamond weight 2.10cts, L-tinted colour, VS clarity.
Length of pendant 3.2cms. Length of chain 40cms. 14.2gms.

£3,500-4,500 (plus 27.6% BP*)

80



72



75



74



76



82



78



73



81



79



71



77



83 A brilliant-cut diamond full eternity ring.

Estimated total diamond weight 1.60cts, G-J colour, SI1-P1 clarity.
Ring size H1/2. 2.7gms.
£600-800 (plus 27.6% BP*)

84 A tri-colour 18ct gold interwoven band ring, with square-shape diamond highlight, by Boodles.

Estimated diamond weight 0.40ct, G-H colour, VS clarity.
Hallmarks for London, 2000. Ring size Q1/2. 20.1gms.
£650-850 (plus 27.6% BP*)

85 A blue topaz and brilliant-cut diamond dress ring.

Topaz calculated weight 12.58cts, based on estimated dimensions of 16 by 12.2 by 8.7mms.
Estimated total diamond weight 0.45ct, H-J colour, VS-SI clarity.
Ring size M. 10.4gms.
£800-1,200 (plus 27.6% BP*)

86 An 18ct gold emerald and brilliant-cut diamond ring.

Emerald total weight 2.14cts.
Total diamond weight 0.52ct, estimated H-J colour, SI1-P1 clarity.
Hallmarks for Birmingham. Ring size O. 6gms.
£1,000-1,500 (plus 27.6% BP*)

87 A pair of baguette and brilliant-cut diamond bombé earrings.

Estimated total diamond weight 4.15cts, G-H colour, VS2-P1 clarity.
French assay marks, stamped 750. Length 2.5cms. 19.6gms.
£2,000-2,500 (plus 27.6% BP*)

88 A pair of graduated pink tourmaline drop earrings, with brilliant-cut diamond spacers.

One of the larger tourmaline calculated weight 1.10cts, based on estimated dimensions of 10.1 by 6.4 by 2.8mms.
Estimated total diamond weight 0.30ct, H-J colour, SI clarity.
Stamped 14K. Length 5cms. 8.7gms.
£1,800-2,400 (plus 27.6% BP*)

89 A fairtrade 18ct gold multicolour enamel 'Strata' cuff, by Hattie Rickards, commissioned by the World Gold Council for the Ultimate Fashion Show in Cannes 2013.

Hallmarks for London, 2013. Inner diameter 6.2cms. 81gms.
With maker's case.
Hattie Rickards was worn by Dalianah Arekion on the catwalk at the 'Ultimate Gold Collection Fashion Show', curated by Carine Roitfeld for the 20th annual amfAR Cinema Against AIDS benefit at the 2013 Cannes Film Festival.
£2,500-3,000 (plus 27.6% BP*)

90 A ruby single-stone ring, with tapered baguette-cut diamond shoulders.

Ruby weight 1.96cts.
Estimated total diamond weight 0.25ct, G-H colour, VS clarity.
Ring size N. 4.1gms.
£2,800-3,200 (plus 27.6% BP*)

91 A pair of green and pink tourmaline and square-shape diamond earrings.

Estimated total diamond weight 0.30ct, I-K colour, SI1-P1 clarity.
Stamped 14K. Length 3.3cms. 12.5gms.
£2,200-2,800 (plus 27.6% BP*)

92 A pair of 18ct gold brilliant-cut diamond stud earrings.

Estimated total diamond weight 1.50cts, G-H colour, SI clarity.
Hallmarks for London, 2002. 2gms.
£3,000-4,000 (plus 27.6% BP*)

93 A 1970s tri-colour 18ct gold kunzite and diamond owl brooch, with onyx eyes.

Kunzite weight 42.80cts.
Estimated total diamond weight 0.35ct, G-H colour, VS clarity.
Hallmarks for London, 1975. Length 5.5cms. 34.5gms.
With fitted case.
£4,000-6,000 (plus 27.6% BP*)

94 A foliate carved green beryl brooch, with vari-cut diamond and emerald surround.

Green beryl estimated dimensions 35 by 35 by 20mms.
Estimated total diamond weight 1.75cts.
Length 5.6cms. 75.3gms.
£5,000-7,000 (plus 27.6% BP*)

95 A Madagascan ruby, sapphire and old-cut diamond star brooch.

May be worn as a pendant.
Verbal from GCS, stating ruby Madagascar, heated, sapphires mixed origin, no heat.
Ruby calculated weight 3.85cts, based on estimated dimensions of 11.9 by 7.5 by 4.6mms.
Estimated total diamond weight 0.70ct, G-H colour, SI1-P1 clarity.
Length 5.6cms. 15.4gms.
£5,000-7,000 (plus 27.6% BP*)



91

92



85



89

86



84



94



83



95

90



88



87



93



96 A yellow sapphire and brilliant-cut diamond ring.

Sapphire calculated weight 2cts, based on estimated dimensions of 8.5 by 6.8 by 4.1 mms.

Estimated total diamond weight 0.50ct, H-I colour, VS-SI clarity.
Stamped 750. Ring size M. 5.2gms.

£400-600 (plus 27.6% BP*)

97 A pair of mid 20th century 18ct gold brilliant-cut diamond, emerald and sapphire cabochon floral earrings.

Estimated total diamond weight 0.30ct, G-H colour, VS-SI clarity.
Stamped 18K. Length 2.4cms. 13.4gms.

£600-800 (plus 27.6% BP*)

98 A pear and oval-shape diamond and emerald floral pendant.

Estimated total diamond weight 1.75cts, H-J colour, VS-SI clarity.
Length 2.9cms. 5.6gms.

£1,000-1,500 (plus 27.6% BP*)

99 A pair of emerald and old-cut diamond half-hoop earrings.

Estimated total diamond weight 0.70ct, G-I colour, SI1-P1 clarity.
French assay marks.

Length 2.3cms. 12.3gms.

£1,000-1,500 (plus 27.6% BP*)

100 An 18ct gold brilliant-cut diamond and sapphire bird brooch, with emerald eye.

Estimated total diamond weight 1.40cts, G-H colour, VS clarity.
Import marks for London, 1982. Length 3.6cms. 9.6gms.

£1,200-1,800 (plus 27.6% BP*)

101 A brilliant-cut diamond ring, by Boucheron.

Principal diamond estimated weight 0.65ct, G-H colour, VS clarity.
Estimated total diamond weight 1.15cts.
French re-strike marks, stamped 750. Ring size K1/2. 11.6gms.

£1,600-2,200 (plus 27.6% BP*)

102 A pair of 18ct gold sapphire and diamond cluster earrings.

Total sapphire weight 3.12cts.

Total diamond weight 1.22cts, estimated G-I colour, VS-SI clarity.
Hallmarks for Birmingham.

Length 1.3cms. 3.8gms.

£1,400-2,000 (plus 27.6% BP*)

103 An 18ct gold sapphire and vari-cut diamond cluster ring.

Sapphire calculated weight 3.98cts, based on estimated dimensions of 11.1 by 8.9 by 4.8mms.

Estimated total diamond weight 1.15cts, G-I colour, VS-SI clarity.
Hallmarks for London, 2011.

Ring size Q. 6.2gms.

£1,800-2,400 (plus 27.6% BP*)

104 A mid 20th century 18ct gold 'sea anemone' brooch, by Tiffany & Co.

Stamped 750. Diameter 3.8cms. 22.9gms.

£1,200-1,800 (plus 27.6% BP*)

105 An 18ct gold Colombian emerald and diamond ring.

With Jewellery Report 288661/20055211, dated 18th November 2021, from AnchorCert, stating emerald, Colombia, no evidence of treatment, estimated weight 1.64cts and estimated total diamond weight 1.88cts, G-H colour, VS-SI clarity.

Hallmarks for London, 1991. Ring size M1/2. 7.2gms.

£3,500-4,500 (plus 27.6% BP*)

106 A woven-link chain necklace, by Cartier.

French assay marks.

Length 40.5cms. 68gms.

£3,500-4,500 (plus 27.6% BP*)

107 A Colombian emerald, diamond, citrine and onyx ring, by Sabbadini.

With report 5777-9903, dated 21th April 2017, from GCS, stating Colombia, indications of moderate clarity enhancement, estimated weight 6cts.

Estimated total diamond weight 1.75cts, G-H colour, predominantly VS clarity.

Italian marks, stamped 750. Ring size J1/2. 18.1gms.

£3,500-4,500 (plus 27.6% BP*)



108 A mid 20th century palladium diamond floral brooch.

Estimated total diamond weight 1.85cts, G-I colour, VS2-SI2 clarity.
Length 4.3cms. 7.1gms.
£500-700 (plus 27.6% BP*)

109 A pair of 18ct gold brilliant-cut diamond rope-twist earrings.

Estimated total diamond weight 0.45ct, G-H colour, VS clarity.
Hallmarks for London, 1991. Diameter 1.8cms. 11.6gms.
£500-700 (plus 27.6% BP*)

110 A lady's wrist watch, with diamond bezel and integral bracelet, the dial signed Omega, De Ville.

Estimated total diamond weight 0.40ct.
Stamped 585 14k. Length 15.5cms. 33.9gms.
£500-700 (plus 27.6% BP*)

111 A pavé-set diamond openwork lattice ring, by Tiffany & Co.

Estimated total diamond weight 0.50ct, G-H colour, VS-SI clarity.
Stamped 750.
Ring size L. 8.4gms.
£500-700 (plus 27.6% BP*)

112 A mid 20th century gold circular-cut diamond scrolling foliate brooch.

Estimated total diamond weight 2.75cts, G-tinted colour, VS-P1 clarity.
Length 3.9cms. 9.8gms.
£800-1,200 (plus 27.6% BP*)

113 A pair of turquoise and vari-cut diamond cluster earrings.

Estimated total diamond weight 1.60cts, K-tinted colour, VS-SI clarity.
Length 1.7cms. 9gms.
£800-1,200 (plus 27.6% BP*)

114 A mid 20th century 18ct gold brilliant and single-cut diamond brooch.

Estimated total diamond weight 0.55ct, G-H colour, VS-SI clarity.
Stamped Italy 18K. Length 5.4cms. 17.8gms.
£900-1,400 (plus 27.6% BP*)

115 An aquamarine and brilliant-cut diamond cluster ring.

Aquamarine calculated weight 3.74cts, based on estimated dimensions of 11.5 by 9.2 by 6.2mms.
Estimated total diamond weight 1ct, G-I colour, SI clarity.
Stamped 18ct. Ring size N1/2. 7.9gms.
£700-900 (plus 27.6% BP*)

116 A pair of aquamarine and diamond pear-shape drop earrings.

Aquamarine calculated total weight 5.52cts, based on estimated dimensions.
Estimated total diamond weight 1.80cts, H-J colour, VS-SI clarity.
Stamped 750. Length 2.5cms. 7.6gms.
£2,000-2,500 (plus 27.6% BP*)

117 A diamond openwork bi-colour band ring, by Buccellati.

Estimated total diamond weight 0.35ct, G-H colour, VS clarity.
Italian marks. Ring size N. 7.6gms.
£2,500-3,500 (plus 27.6% BP*)

118 A mid 20th century turquoise and diamond floral brooch, by Mario Buccellati.

Estimated total diamond weight 1.75cts, G-I colour, VS-SI clarity.
Stamped 750. Length 5.7cms. 14.2gms.
£8,000-12,000 (plus 27.6% BP*)

119 An 18ct gold old-cut diamond single-stone ring.

Estimated diamond weight 2.35cts, I-J colour, VS2-SI1 clarity.
Hallmarks for Sheffield, 1996. Ring size O. 4.9gms.
£5,000-7,000 (plus 27.6% BP*)

114



113



112



115



111



108



119



118



116



110



117



109



120 An emerald cabochon ring, with brilliant-cut diamond asymmetric sides.

Emerald calculated weight 2.58cts, based on estimated dimensions of 10 by 8 by 4.4mms.
Estimated total diamond weight 0.15ct, H-I colour, VS2-SI1 clarity.
Stamped 18ct. Ring size K. 2.8gms.
£350-450 (plus 27.6% BP*)

121 A pair of 18ct gold aquamarine and diamond cluster earrings.

Aquamarine total weight 4.21cts.
Total diamond weight 0.62ct, estimated H-I colour, VS-SI clarity.
Hallmarks for Birmingham. Length 1.2cms. 5.1gms.
£600-800 (plus 27.6% BP*)

122 An aquamarine and diamond cluster ring.

Aquamarine calculated weight 1.47cts, based on estimated dimensions of 8.2 by 7.4 by 3.8mms.
Estimated total diamond weight 1.10cts, G-I colour, SI1-P1 clarity.
Stamped 18ct. Ring size N1/2. 4.9gms.
£1,000-1,500 (plus 27.6% BP*)

123 An emerald and diamond cluster ring.

Emerald calculated weight 1.60cts, based on estimated dimensions of 9 by 6.5 by 4.8mms.
Estimated total diamond weight 1.50cts, G-I colour, VS1-SI1 clarity.
Stamped 750. Ring size L1/2. 8.1gms.
£800-1,200 (plus 27.6% BP*)

124 A bar-link bracelet, by Bulgari.

Italian marks, stamped 750. Length 18cms. 14.4gms.
£700-900 (plus 27.6% BP*)

125 A bar-link bracelet, by Bulgari.

Italian marks, stamped 750. Length 18cms. 14.3gms.
£700-900 (plus 27.6% BP*)

126 A bi-colour bar-link bracelet, by Bulgari.

Italian marks, stamped 750. Length 18cms. 14.4gms.
£700-900 (plus 27.6% BP*)

127 A brilliant-cut diamond floral cluster ring.

Estimated total diamond weight 1.40cts, I-L colour, SI1-P1 clarity.
Stamped Plat. Ring size N. 4.4gms.
£1,000-1,500 (plus 27.6% BP*)

128 An 18ct gold old-cut diamond single-stone pendant, with chain.

Estimated diamond weight 0.70ct, I-J colour, P1 clarity.
Pendant hallmarks partially indistinct.
Chain with French assay mark, stamped 750.
Length of pendant 1.2cms. Length of chain 50cms. 7.1gms.
£1,000-1,500 (plus 27.6% BP*)

129 A pavé-set diamond and textured bar-link articulated collar.

Estimated total diamond weight 2.75cts, G-I colour, VS clarity.
Length 46cms. 38.1gms.
£1,400-2,000 (plus 27.6% BP*)

130 An emerald cabochon and diamond cluster ring.

Emerald calculated weight 7.33cts, based on estimated dimensions of 13.6 by 10.2 by 7.2mms.
Estimated total diamond weight 0.80ct, I-L colour, VS-SI clarity.
Stamped 14K. Ring size M1/2. 7.2gms.
£2,500-3,000 (plus 27.6% BP*)

131 A 9ct gold brilliant-cut diamond line bracelet.

Total diamond weight 5.70cts, estimated tinted colour, VS2-SI2 clarity.
Hallmarks for London. Length 19cms. 17.5gms.
£3,000-4,000 (plus 27.6% BP*)



124



129



128



127



122



131



130



123



125



120



121



126

132 An 18ct gold brilliant-cut diamond floral pendant, with chain.

Estimated total diamond weight 0.50ct, H-I colour, VS-SI clarity. Hallmarks for Birmingham. Length of pendant 2cms. Length of chain 20cms. 5.2gms. **£200-300** (plus 27.6% BP*)

133 A pair of sapphire and brilliant-cut diamond scalloped cluster earrings.

Estimated total diamond weight 0.50ct, G-I colour, VS2-SI1 clarity. Stamped 14K. Length 1.1cms. 3.6gms. **£250-350** (plus 27.6% BP*)

134 A 'Tiffany T Smile' necklace, by Tiffany & Co.

Estimated total diamond weight 0.50ct, G-H colour, VS-SI clarity. Stamped Au750. Length 45.5cms. 4.4gms. **£400-600** (plus 27.6% BP*)

135  **A platinum diamond 'Lynn' ring, by Jean Schlumberger, for Tiffany & Co.**

Estimated total diamond weight 0.20ct, G-H colour, VS clarity. Hallmarks for London, 2011. Ring size O1/2. 5gms. With maker's case. **£400-600** (plus 27.6% BP*)

136  **A platinum brilliant-cut diamond 'Legacy' full eternity ring, by Tiffany & Co.**

Estimated total diamond weight 0.40ct, G-H colour, VS clarity. Hallmarks for London, 2009. Ring size I. 3.8gms. With maker's case. **£500-700** (plus 27.6% BP*)

137 A platinum brilliant-cut diamond single-stone pendant, with chain.

Diamond laser inscribed GIA5176981721, corresponding to a report dated 20th August 2014, from the GIA, stating 0.75ct, G colour, VVS1 clarity. Hallmarks for Sheffield. Length of pendant 1.2cms. Length of chain 45cms. 4.9gms. **£800-1,200** (plus 27.6% BP*)

138 A tanzanite and diamond pear-shape cluster ring.

Tanzanite calculated weight 3.76cts, based on estimated dimensions of 12 by 8.8 by 5.4mms. Estimated total diamond weight 0.75ct, predominantly G-I colour, SI clarity. Stamped 750. Ring size L. 6.6gms. **£600-800** (plus 27.6% BP*)

139 An aquamarine and brilliant-cut diamond cluster ring.

Aquamarine calculated weight 6.96cts, based on estimated dimensions of 11.8 by 9.2mms. Estimated total diamond weight 0.65ct, G-H colour, VS clarity. Stamped 750. Ring size O. 9.4gms. **£600-800** (plus 27.6% BP*)

140 An orange sapphire and brilliant-cut diamond ring, with asymmetric shoulders.

Sapphire calculated weight 4.87cts, based on estimated dimensions of 11.5 by 8.7 by 5.8mms. Estimated total diamond weight 1ct, G-I colour, VS2-SI1 clarity. Stamped 750. Ring size M1/2. 8.5gms. **£700-900** (plus 27.6% BP*)

141 A pair of emerald and brilliant-cut diamond earrings.

Emerald calculated total weight 5.39cts, based on estimated dimensions. Estimated total diamond weight 1.25cts, H-I colour, VS-SI clarity. Stamped 585. Length 1.6cms. 8gms. **£700-900** (plus 27.6% BP*)

142 A ruby and brilliant-cut diamond cluster ring.

Ruby calculated weight 1.86cts, based on estimated dimensions of 8.4 by 8 by 3.3mms. Estimated total diamond weight 1.70cts, G-H colour, VS clarity. French assay marks. Ring size K1/2. 6.7gms. **£900-1,400** (plus 27.6% BP*)

143 An 18ct gold square-shape diamond bangle.

Estimated total diamond weight 3.25cts, H-I colour, VS clarity. Hallmarks for Birmingham, 2004. Inner diameter 6cms. 29.4gms. **£1,500-2,000** (plus 27.6% BP*)



143



140



134



139



138



132



137



142



141



133



135



136

144 A brilliant-cut diamond half eternity ring.

Estimated total diamond weight 0.90ct, G-I colour, VS2-SI2 clarity.
Stamped 18ct. Ring size N1/2. 4.8gms.
£500-700 (plus 27.6% BP*)

145 A pair of vari-cut diamond star motif earrings.

Total diamond weight 0.86ct, estimated G-H colour, VS-SI clarity.
Backs stamped 750 18K. Length 1.9cms. 4.6gms.
£700-900 (plus 27.6% BP*)

146 A brilliant-cut diamond panel bracelet.

Estimated total diamond weight 3.50cts, H-J colour, VS-SI clarity.
Stamped 14k. Length 17.9cms. 18.7gms.
£1,000-1,500 (plus 27.6% BP*)

147 A tanzanite and diamond cluster pendant.

Tanzanite weight 7.59cts.
Total diamond weight 0.60ct.
Stamped 750. Length 2.8cms. 4gms.
£800-1,200 (plus 27.6% BP*)

148 A pair of 18ct gold tanzanite and diamond cluster earrings.

Tanzanite total weight 2.61cts.
Total diamond weight 1.22cts, estimated H-I colour, VS-SI clarity.
Hallmarks for Birmingham. Length 1.3cms. 3.8gms.
£1,200-1,800 (plus 27.6% BP*)

149 A pair of 18ct gold sapphire earrings.

Sapphire calculated total weight 4.41cts, based on estimated dimensions.
Hallmarks for London, 2007. Length 1.5cms. 10gms.
£1,000-1,500 (plus 27.6% BP*)

150 A 9ct gold sapphire and single-cut diamond cluster ring.

Sapphire calculated weight 2.46cts, based on estimated dimensions of 8.1 by 7.2 by 4.5mms.
Estimated total diamond weight 0.10ct.
Hallmarks for Birmingham, 1989. Ring size O1/2. 4gms.
£1,400-2,000 (plus 27.6% BP*)

151 An aquamarine, heart-shape sapphire and brilliant-cut diamond dress ring.

Aquamarine weight 14.48cts.
Total sapphire weight 0.99ct.
Total diamond weight 1.11cts.
Stamped Au750. Ring size N. 11.4gms.
£1,500-2,000 (plus 27.6% BP*)

152 An opal ring, with brilliant and tapered baguette-cut diamond surround.

Opal calculated weight 5.75cts, based on estimated dimensions of 16 by 10 by 6.2mms.
Estimated total diamond weight 1ct, predominantly G-H colour, VS clarity.
Ring size M1/2. 6.7gms.
£1,500-2,000 (plus 27.6% BP*)

153 An aquamarine and diamond dress ring.

Aquamarine weight 14.58cts.
Estimated total diamond weight 0.65ct.
Ring size N1/2. 8.1gms.
£1,800-2,400 (plus 27.6% BP*)

154 A Sri Lankan sapphire ring, with baguette-cut and square-shape diamond sides.

With Jewellery Report 287469/20054724, dated 11th October 2021, from AnchorCert, stating Sri Lanka, no evidence of treatment, estimated weight 2.50cts.
Estimated total diamond weight 1.75cts, J-K colour, VS clarity.
Stamped 750. Ring size T. 8.3gms.
£1,800-2,400 (plus 27.6% BP*)

155 A square-shape diamond line necklace, with rectangular-link back-chain.

Estimated total diamond weight 10cts, G-I colour, VS clarity.
French assay marks. Length 41.5cms. 39.9gms.
£3,500-4,500 (plus 27.6% BP*)

152



144



151



155



153



154



150



149



147



148



145



146



156 A sapphire and oval-shape diamond three-stone ring, with baguette-cut diamond line sides and brilliant-cut diamond gallery.

Sapphire weight 0.61ct.
Total diamond weight 0.45ct, estimated G-H colour, VS clarity.
Stamped K18. Ring size M. 3.4gms.
£450-650 (plus 27.6% BP*)

157  A tanzanite and diamond dress ring.

With partial report 141002369/521784, from EGL, stating 3.64cts, violet blue.
Estimated total diamond weight 1.85cts, H-J colour, VS2-P1 clarity.
Stamped Pt. Ring size J1/2. 14.4gms.
£900-1,400 (plus 27.6% BP*)

158 A diamond full eternity ring.

Estimated total diamond weight 2.25cts, H-J colour, SI1-P1 clarity.
Approximate ring size U. 7.5gms.
£900-1,400 (plus 27.6% BP*)

159 An 18ct gold brilliant-cut diamond ring.

Estimated total diamond weight 1.60cts, principal diamonds estimated G-H colour, VS clarity.
Hallmarks for Edinburgh. Ring size M. 11.7gms.
£800-1,200 (plus 27.6% BP*)

160 A pair of brilliant-cut diamond half-hoop earrings.

Estimated total diamond weight 2cts, principal diamonds estimated G-H colour, VS clarity.
French assay marks. Length 2.4cms. 14.2gms.
£900-1,400 (plus 27.6% BP*)

161 An 18ct gold brilliant-cut diamond heart pendant, with chain.

Estimated total diamond weight 3.50cts, principal diamonds estimated G-H colour, VS clarity.
Hallmarks for Edinburgh and Birmingham.
Length of pendant 3.8cms. Length of chain 46cms. 21.9gms.
£1,800-2,400 (plus 27.6% BP*)

162 A platinum sapphire and brilliant-cut diamond floral accent dress ring.

Estimated total diamond weight 0.75ct, G-H colour, VS2-SI1 clarity.
Hallmarks for London, 2021. Ring size M1/2. 9.4gms.
£1,500-2,000 (plus 27.6% BP*)

163 A platinum rectangular-shape diamond single-stone ring.


Estimated diamond weight 1.35cts, G-H colour, VS clarity.
Hallmarks for Birmingham. Ring size L. 6.4gms.
£2,000-2,500 (plus 27.6% BP*)

164 A free moving sapphire briolette, sapphire cabochon and pavé-set diamond floral ring.


Sapphire total weight 8.71cts.
Total diamond weight 2.55cts, estimated G-I colour, VS clarity.
Stamped 750 18K. Ring size M 13.2gms.
£2,500-3,000 (plus 27.6% BP*)

165 A platinum brilliant-cut diamond single-stone ring.

Estimated diamond weight 1.15cts, G-H colour, VS clarity.
Hallmarks for Birmingham. Ring size O. 5.3gms.
£3,000-4,000 (plus 27.6% BP*)

166  An 18ct gold South Sea baroque cultured pearl, diamond, sapphire and paraiba tourmaline 'Midnight Sky' bracelet, by Mikimoto.

Total diamond weight 5.71cts, estimated G-H colour, VS clarity.
Total sapphire weight 5.71cts.
Total tourmaline weight 0.35ct.
Hallmarks for London. Length 21.6cms. 42.5gms.
With maker's case and certificate of authenticity.
£1,800-2,400 (plus 27.6% BP*)

167  A South Sea baroque cultured pearl, diamond, sapphire and paraiba tourmaline 'Midnight Sky' necklace, by Mikimoto.

Total diamond weight 4.05cts, estimated G-H colour. VS clarity.
Total sapphire weight 30.76cts.
Total tourmaline weight 2.29cts.
Stamped 750. Length 56.5cms. 143.4gms.
With maker's case and certificate of authenticity.
£10,000-15,000 (plus 27.6% BP*)

159



167



161



166



164



162



165



160



157



163



158



156



168 A tanzanite and brilliant-cut diamond cluster pendant.

Tanzanite calculated weight 3.46cts, based on estimated dimensions of 10.8 by 8 by 5.7mms.
Estimated total diamond weight 0.90ct, H-I colour, VS-SI clarity.
Stamped 750. Length 2.6cms. 3.1gms.
£400-600 (plus 27.6% BP*)

169 A tanzanite and brilliant-cut diamond cluster ring.

Tanzanite calculated weight 2.85cts, based on estimated dimensions of 10.2 by 7.4 by 4.8mms.
Estimated total diamond weight 0.50ct, H-I colour, VS-SI clarity.
Stamped 750. Ring size L. 4.9gms.
£500-700 (plus 27.6% BP*)

170 An 18ct gold diamond 'Parentesi' pendant, on chain, by Bulgari.

Estimated total diamond weight 1ct, G-H colour, VS clarity.
Swiss convention marks.
Diameter of pendant 1.5cms. Length of chain 45cms. 12.5gms.
£500-700 (plus 27.6% BP*)

171 A brilliant-cut diamond full eternity ring.

Estimated total diamond weight 1.60cts, G-H colour, predominantly VS clarity.
Ring size N. 2.9gms.
£450-650 (plus 27.6% BP*)

172 An 18ct gold amethyst and brilliant-cut diamond ring.

Amethyst weight 5.42cts.
Total diamond weight 0.57ct, estimated G-H colour, VS-SI clarity.
Hallmarks for Birmingham. Ring size N1/2. 5.1gms.
£600-800 (plus 27.6% BP*)

173 A pair of 18ct gold amethyst and diamond cluster earrings.

Amethyst total weight 4.26cts.
Total diamond weight 0.62ct, estimated G-I colour, VS-SI clarity.
Hallmarks for Birmingham. Length 1.2cms. 5.2gms.
£900-1,400 (plus 27.6% BP*)

174 A brilliant-cut diamond 'Possession' adjustable lariat necklace, by Piaget.

Estimated total diamond weight 1ct, H-I colour, VS clarity.
Stamped Au750. Length 75cms. 18.2gms.
£600-800 (plus 27.6% BP*)

175 An amethyst cabochon and pavé-set diamond dress ring.

Amethyst calculated weight 7.02cts, based on estimated dimensions of 11.5 by 7.4mms.
Estimated total diamond weight 2.15cts, H-J colour, VS-SI clarity.
Stamped 750. Ring size N. 10.5gms.
£650-850 (plus 27.6% BP*)

176 A tanzanite and diamond dress ring.

Tanzanite calculated weight 2.17cts, based on estimated dimensions of 8.8 by 7.2 by 3.8mms.
Estimated total diamond weight 0.25ct, G-I colour, VS2-P1 clarity.
Stamped PLAT. Ring size N. 5gms.
£900-1,400 (plus 27.6% BP*)

177 An 18ct gold tanzanite and brilliant-cut diamond cluster ring.

Tanzanite weight 4.35cts.
Total diamond weight 0.55ct, estimated G-I colour, VS-SI clarity.
Hallmarks for Birmingham. Ring size O. 5.5gms.
£1,500-2,000 (plus 27.6% BP*)

178 A 1960s 18ct gold brilliant-cut diamond line bracelet, with textured and polished chainlink sides.

Estimated total diamond weight 3.50cts, G-I colour, VS-SI clarity.
Import marks for London, 1967. Length 17.6cms. 29.8gms.
£2,400-3,400 (plus 27.6% BP*)

179 A tanzanite and brilliant-cut diamond ring, with single-cut diamond line sides.

Tanzanite calculated weight 16.21cts, based on estimated dimensions of 14.3 by 14.7 by approximately 9.8mms.
Estimated total diamond weight 1.60cts, I-tinted colour, VS-SI clarity.
Stamped 18K. Ring size O1/2. 19.9gms.
£3,000-4,000 (plus 27.6% BP*)

169



176



168



177



175



174



172



178



179



173



170



171



180 An early to mid 20th century 14ct gold old-cut diamond stylised floral brooch.

Principal diamond estimated weight 0.35ct, H-I colour, P1 clarity. Austrian marks, stamped 585. Length 5.4cms. 10.7gms.

£400-600 (plus 27.6% BP*)

181 An 18ct gold tanzanite and brilliant-cut diamond dress ring.

Tanzanite weight 3.07cts.
Total diamond weight 0.63ct, estimated G-I colour, VS-SI clarity. Hallmarks for Birmingham. Ring size N1/2. 7.7gms.

£1,500-2,000 (plus 27.6% BP*)

182 A pair of brilliant-cut diamond cluster earrings.

Estimated total diamond weight 2.70cts, G-H colour, VS2-SI1 clarity.

Diameter 1.2cms. 3.9gms.

£1,500-2,000 (plus 27.6% BP*)

183 An aquamarine and diamond cluster ring.

Aquamarine calculated weight 9.57cts, based on estimated dimensions of 14.3 by 11.4 by 8mms.
Estimated total diamond weight 1.75cts, H-K colour, VS2-P2 clarity. Stamped 18K. Ring size K1/2. 11.4gms.

£1,800-2,400 (plus 27.6% BP*)

184 A mid 20th century vari-cut diamond stylised floral double clip brooch.

Estimated total diamond weight 3cts, G-I colour, VS-P1 clarity. Length 5.8cms. 20.3gms.

£3,000-4,000 (plus 27.6% BP*)

185 A tanzanite and graduated brilliant-cut diamond stepped cluster ring.

Tanzanite weight 4.34cts, stamped to mount.
Total diamond weight 2cts, stamped to mount, estimated G-I colour, VS2-P1 clarity. Stamped Pt900 18K. Ring size L. 9.4gms.

£2,200-3,200 (plus 27.6% BP*)

186 A tanzanite and brilliant-cut diamond graduated cluster bracelet.

Tanzanite total weight 5.40cts.
Total diamond weight 7.20cts, estimated G-H colour, predominantly VS clarity. Length 16.2cms. 26.4gms.

£3,000-5,000 (plus 27.6% BP*)

187 An 18ct gold tanzanite and brilliant-cut diamond pendant, on diamond accent two-row chain.

Tanzanite calculated weight 6.03cts, based on estimated dimensions of 13.2 by 10 by 6.5mms.
Estimated total diamond weight 2cts, G-H colour, VS-SI clarity. Hallmarks for London, 2013.

Length of pendant 3.8cms. Length of chain 40cms. 14.9gms.

£3,500-4,500 (plus 27.6% BP*)

188  A square-shape diamond, calibre-cut sapphire and brilliant-cut diamond geometric dress ring.

With report 11911880, dated **21st February 2002**, from the GIA, stating 1.01cts, H colour, VS1 clarity.

Ring size M. 3.9gms.

£3,500-4,500 (plus 27.6% BP*)

189 A mid 20th century Austrian 14ct gold old-cut diamond stylised floral brooch.

Estimated total diamond weight 6.85cts, G-J colour, VS-P2 clarity. Austrian marks, stamped 585. Length 5.8cms. 19.3gms.

£3,000-4,000 (plus 27.6% BP*)

190 A pair of circular-cut diamond earrings, with brilliant and single-cut diamond surrounds.

Principal diamonds estimated total weight 1.90cts, H-I colour, SI2-P1 clarity.

Estimated total diamond weight 3.55cts.

Diameter 1.9cms. 17gms.

£4,000-6,000 (plus 27.6% BP*)

191  A Kashmir sapphire cabochon and pavé-set diamond floral ring.

With report 115516, dated 14th December 2020, from SSEF, stating 4.121cts, Kashmir, no heat.
Estimated total diamond weight 2.85cts, G-J colour, VS2-P1 clarity. Ring size N. 14.6gms.

£25,000-35,000 (plus 27.6% BP*)



192 A ruby and diamond floral cluster brooch, by Van Cleef & Arpels.

Principal ruby calculated weight 1.82cts, based on estimated dimensions of 6.6 by 6.4 by 4.6mms.
Estimated total diamond weight 8 to 9cts, G-H colour, VS clarity.
French assay marks. Length 7.3cms. 22.1gms.
£14,000-20,000 (plus 27.6% BP*)

193 A ruby and brilliant-cut diamond cluster ring.

Ruby calculated weight 1.81cts, based on estimated dimensions of 6.8 by 6.6 by 4.3mms.
Estimated total diamond weight 2.35cts, H-J colour, predominantly VS clarity.
French assay marks. Ring size L. 5.7gms.
£800-1,200 (plus 27.6% BP*)

194 An 18ct gold sapphire and diamond pendant, with chain.

Sapphire calculated weight 9.86cts, based on estimated dimensions of 13.5 by 11.6 by 7.5mms.
Estimated total diamond weight 1.60cts, G-H colour, VS-SI clarity.
Hallmarks for Birmingham.
Length of pendant 2.9cms. Length of chain 50cms. 23.6gms.
£4,500-6,500 (plus 27.6% BP*)

195 A cushion-shape diamond single-stone ring, with sapphire shoulders and band.

Attributed to report 15169623, dated **25th May 2006**, from the GIA, stating 1.08cts, G colour, VS1 clarity.
Ring size K1/2. 4gms.
£3,500-4,500 (plus 27.6% BP*)

196 A pair of sapphire and diamond earrings.

Estimated total diamond weight 2cts, G-I colour, VS-SI clarity.
Italian marks, stamped 750. Length 2.3cms. 19.2gms.
£3,000-4,000 (plus 27.6% BP*)

197 A mid 20th century platinum brilliant-cut diamond single-stone ring, with baguette and single-cut diamond scrolling surround and shoulders.

Principal diamond estimated weight 1ct, I-J colour, VS clarity.
Estimated total diamond weight 1.60cts.
Stamped PLAT. Ring size O. 6.8gms.
£2,000-2,500 (plus 27.6% BP*)

198 A mid 20th century 18ct gold vari-cut diamond spray brooch, by Alabaster & Wilson.

Estimated total diamond weight 5.50 to 6cts, H-K colour, VS2-P1 clarity.
Stamped 18ct. Length 5.5cms. 24.9gms.
£2,500-3,000 (plus 27.6% BP*)

199 A sapphire cabochon and vari-cut diamond cocktail ring.

Estimated dimensions of sapphire 17.5 by 13mms.
Estimated total diamond weight 4cts, G-I colour, VS-SI clarity.
Stamped 750. Ring size J1/2. 14.3gms.
£3,000-5,000 (plus 27.6% BP*)

200 A diamond floral cluster line bracelet.

Estimated total diamond weight 3.25cts, G-I colour, VS-SI clarity.
Length 17.5cms. 22.1gms.
£1,800-2,400 (plus 27.6% BP*)

201 ✕ A pair of brilliant-cut diamond stud earrings, with detachable vari-cut diamond and coral drop, by Sabbadini.

Estimated total diamond weight 2.55cts, H-I colour, VS clarity.
Earring backs stamped 750. Length 8.3cms. 16.9gms.
With maker's pouch.
Coral untested for natural colour origin.
£1,800-2,400 (plus 27.6% BP*)

202 A mid 20th century 18ct gold vari-cut diamond and sapphire dress ring.

Principal diamond estimated weight 0.45ct, J-K colour, SI clarity.
Estimated total diamond weight 1.10cts.
Ring size L. 4.8gms.
£400-600 (plus 27.6% BP*)

203 A platinum ruby and vari-cut diamond dress ring.

Ruby calculated weight 0.57ct, based on estimated dimensions of 5.1 by 5 by 2.8mms.
Estimated total diamond weight 2.50cts, G-I colour, VS-SI clarity.
Hallmarks for Birmingham, 2004. Ring size P. 8.1gms.
£300-400 (plus 27.6% BP*)



201



194



198



196



193



195



199



197



200



192



202



203

204 An early 20th century 15ct gold carved 'A-type' jadeite jade brooch.

Verbal from GCS, stating no indication of impregnation.
Stamped 15ct. Length 4.6cms. 9.8gms.
£400-600 (plus 27.6% BP*)

205 A floral carved A-type jade pendant.

Verbal from GCS, stating no indications of impregnation.
Length 6.2cms. 17.2gms.
£600-800 (plus 27.6% BP*)

206 A pair of carved emerald and diamond drop earrings.

Estimated total diamond weight 0.45ct.
Stamped 14K. Length 3.5cms. 7.7gms.
£1,200-1,800 (plus 27.6% BP*)

207 A mid 20th century platinum star ruby cabochon and vari-cut diamond geometric ring.

Ruby calculated weight 6.77cts, based on estimated dimensions of 9.7 by 8.4 by 7.7mms.
Estimated total diamond weight 0.30ct, G-I colour, VS-SI clarity.
Portuguese marks, stamped 850.
Stamped irid plat, partially indistinct.
Ring size N1/2. 4.9gms.
£600-800 (plus 27.6% BP*)

208 A circular-cut diamond and pearl ring.

Estimated total diamond weight 0.60ct, G-H colour, VS clarity.
Estimated dimensions of pearl 5.8 by 6.3mms.
Stamped 585. Ring size R. 4gms.
Pearl untested for natural origin.
£800-1,200 (plus 27.6% BP*)

209 A pearl single-stone ring, with calibre-cut emerald line sides and brilliant-cut diamond surround.

Estimated total diamond weight 2.25cts, H-I colour, VS2-P1 clarity.
French assay mark. Ring size K1/2. 14.9gms.
Pearl untested for natural origin.
£1,400-2,000 (plus 27.6% BP*)

210 An Art Deco platinum, cultured pearl and diamond geometric brooch.

Estimated total diamond weight 7.50 to 8cts, G-I colour, VS-SI clarity.
Length 5.9cms. 29gms.
£3,000-4,000 (plus 27.6% BP*)

211 An Art Deco platinum and gold, calibre-cut ruby and circular-cut diamond bar brooch, by Cartier.

Estimated total diamond weight 0.65ct, G-H colour, VS clarity.
French assay marks. Length 5.6cms. 5.6gms.
£800-1,200 (plus 27.6% BP*)

212 A 1940s palladium and gold ruby and pavé-set diamond double clip brooch.

Estimated total diamond weight 4cts, G-I colour, VS2-SI1 clarity.
Length 4cms. 28.1gms.
£2,500-3,000 (plus 27.6% BP*)

213 A pair of no heat ruby cabochon and vari-cut diamond foliate earrings.

Verbal, stating no heat.
Estimated total ruby weight 3.75cts.
Estimated total diamond weight 0.90ct. G-J colour, SI1-P1 clarity.
Length 1.9cms. 4.3gms.
£2,800-3,200 (plus 27.6% BP*)

214 A mid 20th century vari-cut diamond bracelet.

Estimated total diamond weight 7 to 7.50cts, G-I colour, VS-SI clarity.
Length 17.5cms. 30.9gms.
£7,000-9,000 (plus 27.6% BP*)

215  A brilliant-cut Fancy Light Yellow diamond and diamond cluster ring, by Mellerio.

With report 389029, dated 21st February 2022, from LFG Paris, stating 2.59cts, Fancy Light Yellow colour, VS2 clarity.
Estimated total diamond weight 3.40cts.
French assay marks. Ring size I1/2. 6.5gms.
£12,000-18,000 (plus 27.6% BP*)

204



213



212



211

215



208



210



209



214

205



206



207



216 An Art Deco platinum and gold old-cut diamond and carved jade geometric brooch.

Estimated total diamond weight 0.15ct, H-I colour, P1 clarity.
Length 3.8cms. 5.5gms.
Jadeite untested for natural colour origin.
£400-600 (plus 27.6% BP*)

217 An 18ct gold citrine single-stone ring, with brilliant-cut diamond shoulders.

Citrine calculated weight 7.07cts, based on estimated dimensions of 13.7mms by 9mms by 6.1mms.
Estimated total diamond weight 0.20ct, H-I colour, VS clarity.
Hallmarks for London, 1973. Ring size M. 5.8gms.
£600-800 (plus 27.6% BP*)

218 An Art Deco platinum vari-cut diamond brooch.

Estimated total diamond weight 2cts, G-H colour, VS clarity.
Length 4.7cms. 6.5gms.
£800-1,200 (plus 27.6% BP*)

219  A pair of Art Deco vari-cut diamond clips.

Estimated total diamond weight 1.40cts, H-I colour, VS clarity.
Length 2.7cms. 14.3gms.
With fitted case.
£2,800-3,200 (plus 27.6% BP*)

220 An Art Deco platinum old-cut diamond, seed pearl and black enamel necklace.

Estimated total diamond weight 1.10cts, J-K colour, SI clarity.
Length of drop 5.6cms. Length of necklace 41.3cms. 7.2gms.
£4,000-6,000 (plus 27.6% BP*)

221 An early 20th century 18ct gold vari-cut diamond geometric panel bracelet.

Estimated total diamond weight 5cts, I-J colour, SI2-P1 clarity.
French assay marks. Length 17.7cms. 34gms.
£5,500-7,500 (plus 27.6% BP*)

222 An Art Deco platinum and 18ct gold citrine and circular-cut diamond brooch, attributed to Cartier.

Principal citrine calculated weight 11.28cts, based on estimated dimensions of 15.5 by 12 by 7.6mms.
Estimated total diamond weight 2.75cts, G-H colour, predominantly VS clarity.
Length 5.7cms. 30.6gms.
£3,500-4,500 (plus 27.6% BP*)

223 An Art Deco turquoise, rock crystal and black enamel silver necklace, by René Boivin.

Maker's mark.
French assay mark.
Length 46.5cms. 123.7gms.
For a similar example please see: Sotheby's Magnificent Jewels
29th April 2014, lot 361.
£2,000-3,000 (plus 27.6% BP*)

219



217



218



216



223



220



222



221



224 A mid 20th century pavé-set diamond cocktail watch.

Estimated total diamond weight 2.50cts, predominantly G-I colour, VS2-SI2 clarity.

Length 17cms. 23.6gms.

£400-600 (plus 27.6% BP*)

225 A mid 20th century silver and gold sapphire cabochon and old-cut diamond brooch.

Estimated total diamond weight 1.50cts, G-J colour, SI2-P1 clarity.

Length 5.1cms. 8.7gms.

£1,000-1,500 (plus 27.6% BP*)

226 A sapphire and diamond dress ring.

Sapphire weight 2.26cts.

Estimated total diamond weight 0.50ct, H-J colour, VS-SI clarity.

Ring size M1/2. 3.9gms.

£1,000-1,500 (plus 27.6% BP*)

227 A star sapphire and brilliant-cut diamond ring.

Star sapphire calculated weight 6.16cts, based on estimated dimensions of 10.5 by 8.5 by 6.4mms.

Estimated total diamond weight 0.45ct, H-I colour, SI clarity.

Stamped 18k. Ring size K1/2. 7.7gms.

£1,200-1,800 (plus 27.6% BP*)

228 A sapphire and diamond dress ring.

Estimated total diamond weight 0.50ct, principal diamond estimated H-I colour, P1 clarity.

Band stamped 950.

Ring size O1/2. 5.4gms.

£1,200-1,800 (plus 27.6% BP*)

229 A vari-cut diamond geometric bracelet.

Estimated total diamond weight 6 to 6.50cts, G-J colour, VS2-P1 clarity.

Length 18.5cms. 43gms.

£2,500-3,000 (plus 27.6% BP*)

230 A mid 20th century platinum and gold pavé-set diamond double-clip bow brooch.

Estimated total diamond weight 5cts, predominantly G-I colour, VS-SI clarity.

Length 7.5cms. 34.7gms.

£2,500-3,000 (plus 27.6% BP*)

231 An early 20th century platinum old-cut diamond bar brooch.

Estimated total diamond weight 4cts, H-J colour, VS2-P1 clarity.

French assay marks. Length 8.8cms. 9.3gms.

£2,500-3,000 (plus 27.6% BP*)

232 A pair of jade bi earrings, suspended from a jade bead, diamond and seed pearl line and cluster surmount.

Estimated total diamond weight 0.50ct, H-I colour, VS-SI clarity.

Length 7.1cms. 12gms.

With fitted Hancocks & Co. case.

Jade untested for natural colour origin.

£3,500-4,500 (plus 27.6% BP*)

233 A mid 20th century platinum vari-cut diamond articulated spray brooch.

Estimated total diamond weight 6 to 6.50cts, G-I colour, VS-SI clarity.

Length 6.9cms. 24.8gms.

£5,000-7,000 (plus 27.6% BP*)

234 A platinum brilliant-cut diamond single-stone ring.

Estimated diamond weight 4.60cts, tinted colour, VS clarity.

Hallmarks for Birmingham, 1983. Ring size N1/2. 5gms.

£14,000-20,000 (plus 27.6% BP*)

235 An Art Deco platinum diamond geometric-link necklace, convertible to three bracelets.

Estimated total diamond weight 18cts, predominantly H-K colour, SI1-P1 clarity.

Length 58cms. 80.7gms.

£20,000-30,000 (plus 27.6% BP*)



235

227

228

230

232

234

233

225

226

231

224

229

236 A pair of brilliant and baguette-cut diamond hoop earrings.

Total diamond weight 2.20cts, estimated G-J colour, VS-SI clarity. Stamped K18 750. Length 1.9cms. 9.4gms.
£800-1,200 (plus 27.6% BP*)

237 An emerald and brilliant-cut diamond geometric pendant, with chain.


Emerald weight 2.33cts.
Total diamond weight 0.55ct, estimated G-I colour, VS-SI clarity. Stamped 750.
Length of pendant 4.9cms. Length of chain 45cms. 7.6gms.
£1,800-2,400 (plus 27.6% BP*)

238 A pair of jade and diamond drop earrings.

Jade total weight 2.72cts.
Total diamond weight 0.89ct.
Stamped Au750. Length 3.8cms. 4.6gms.
£900-1,400 (plus 27.6% BP*)

239 An emerald cabochon and pavé-set diamond dress ring.

Emerald calculated weight 5.89cts, based on estimated dimensions of 11 by 10.9 by 6.7mms.
Estimated total diamond weight 1ct.
Stamped 18K. Ring size P1/2. 9.8gms.
£1,200-1,800 (plus 27.6% BP*)

240  A platinum marquise-shape diamond and triangular-shape emerald three-stone ring.

Diamond is chipped.
With report F5A62201, dated **19th February 2008**, from IGI, stating 0.61ct, E colour, VS2 clarity.
Emerald total weight 0.65ct.
Hallmarks for Sheffield. Ring size M1/2. 4.4gms.
£1,800-2,400 (plus 27.6% BP*)

241 A mid 20th century 14ct gold emerald and vari-cut diamond cluster ring.

Emerald calculated weight 0.94ct, based on estimated dimensions of 8.2 by 7.2 by 2.8mms.
Estimated total diamond weight 2.25cts, G-I colour, VS-SI clarity. Import marks for London, 1976. Ring size I1/2. 9.9gms.
£1,800-2,400 (plus 27.6% BP*)

242 A brilliant-cut diamond single-stone ring, with diamond shoulders.

Principal diamond estimated weight 1.50cts, tinted colour, VS clarity.
Stamped Plat. Ring size L1/2. 3.1gms.
£1,800-2,400 (plus 27.6% BP*)

243 An 18ct gold emerald and diamond cluster ring.

Emerald weight 3.53cts.
Total diamond weight 1.24cts, estimated G-I colour, SI1-P1 clarity. Hallmarks for Birmingham. Ring size O. 5.7gms.
£2,500-3,000 (plus 27.6% BP*)

244 An 18ct gold emerald and diamond cluster line bracelet.

Total emerald weight 4.98cts.
Total diamond weight 1.40cts.
Hallmarks for Birmingham. Length 18.5cms. 15.8gms.
£2,800-3,200 (plus 27.6% BP*)

245 A mid 20th century 18ct gold wrist watch, by Piaget, with calibr -cut emerald and brilliant-cut diamond bezel, on integral textured strap.

Signed Piaget to dial and clasp.
Estimated total diamond weight 4cts, predominantly G-H colour, VS clarity.
Swiss marks, stamped 750. Length 18cms. 68.3gms.
£3,500-4,500 (plus 27.6% BP*)

246  A Colombian emerald and old-cut diamond three-stone ring.

With report 81307-67, dated 17th May 2021, from GCS, stating 4.57cts, Colombia, moderate clarity enhancement.
Total diamond weight 3.17cts, estimated I-J colour, SI1-P1 clarity. Stamped Plat. Ring size N1/2. 5.6gms.
£10,000-15,000 (plus 27.6% BP*)

247  An 18ct gold pear-shape diamond pendant, with brilliant-cut diamond surmount, on chain.

With report 288661/20055208, dated 18th November 2021, from AnchorCert, stating pear-shape diamond estimated weight 4.92cts, L colour, VS clarity; round brilliant-cut diamond estimated weight 0.27ct, I colour, SI clarity.
Import marks for Sheffield, 1993. Length 44cms. 5.9gms.
£12,000-18,000 (plus 27.6% BP*)

237



247



238



240



236



244



246



241



245



243



239



242



248 A mid 20th century 18ct gold aquamarine single-stone ring, with textured band.

Aquamarine calculated weight 14.22cts, based on estimated dimensions of 19.9 by 14.9 by 8.4mms.

Foreign mark. Ring size L. 7.7gms.

£300-400 (plus 27.6% BP*)

249 A mid 20th century 18ct gold vari-cut diamond and seed pearl starburst brooch.

Estimated total diamond weight 1.50cts, H-K colour, SI1-P1 clarity. Stamped 750. Length 4.5cms. 10.2gms.

£450-650 (plus 27.6% BP*)

250 A 'Tahitian' grey cultured pearl, brilliant-cut diamond and cultured pearl floral bombé ring.

Total diamond weight 0.85ct, stamped to band, estimated H-I colour, SI clarity.

Stamped 750. Ring size M1/2. 18.8gms.

Cultured pearls untested for natural colour.

£600-800 (plus 27.6% BP*)

251 A pair of mid 20th century brilliant and single-cut diamond articulated earrings, with cultured pearl terminal.

Estimated total diamond weight 2.25cts, predominantly G-H colour and VS clarity.

Length 5.9cms. 13.6gms.

£1,000-1,500 (plus 27.6% BP*)

252 An old-cut diamond floral dress ring.

Estimated total diamond weight 0.85ct, J-K colour, VS-SI clarity. Ring size K. 4.7gms.

£1,000-1,500 (plus 27.6% BP*)

253 A mid 20th century 18ct gold circular-cut diamond two-stone ring, with textured surround.

Estimated total diamond weight 0.50ct, H-I colour, VS clarity.

French assay marks. Ring size M. 16gms.

£1,000-1,500 (plus 27.6% BP*)

254 An aquamarine dress ring, with brilliant and tapered baguette-cut diamond undulating surround.

Aquamarine calculated weight 5.61cts, based on estimated dimensions of 14.9 by 9.7 by 6.8mms.

Estimated total diamond weight 0.55ct, G-H colour, VS clarity.

Stamped Pm900. Ring size P1/2. 10.6gms.

£1,600-2,200 (plus 27.6% BP*)

255 A lady's 18ct gold black dial wrist watch, with single-cut diamond bezel and integral textured bracelet, by Baume & Mercier.

Estimated total diamond weight 0.65ct, H-I colour, VS clarity.

Swiss convention marks. Length 17.5cms. 58.4gms.

£1,500-2,000 (plus 27.6% BP*)

256 A black opal, brilliant and tapered baguette-cut diamond dress ring.

Black opal weight 4.34cts.

Total diamond weight 1.62cts, estimated G-H colour, VS-SI clarity.

Stamped Pt900. Ring size N. 16.5gms.

£2,800-3,200 (plus 27.6% BP*)

257 A pair of sapphire cabochon and brilliant-cut diamond articulated earrings.

Estimated total sapphire weight 18 to 20cts, based on calculated weight of one sapphire.

Estimated total diamond weight 2.25cts, G-I colour, VS2-P1 clarity.

One stamped 750. Length 6.5cms. 33.6gms.

£1,200-1,800 (plus 27.6% BP*)

258 A sapphire cabochon and brilliant-cut diamond collar necklace.

Estimated total sapphire weight 80 to 100cts, based on calculated weights of two sapphires.

Estimated total diamond weight 8.50cts, G-I colour, VS2-P1 clarity.

Foreign marks, stamped 750. Length 42.7cms. 98.7gms.

£4,000-6,000 (plus 27.6% BP*)

259 A pair of bi-colour natural pearl and vari-cut diamond earrings.

Verbal stating natural.

Estimated total diamond weight 3.40cts, G-H colour, VS-SI clarity.

Diameter 2.3cms. 9.6gms.

£5,500-7,500 (plus 27.6% BP*)

258



257



253



250



251



252



256



259



255



249



248



254



260 A sapphire cabochon and brilliant-cut diamond jabot.

Estimated total diamond weight 0.55ct, G-H colour, VS clarity. Length 10.2cms. 8.1gms.

£380-480 (plus 27.6% BP*)

261 A pair of sapphire cabochon and calibre-cut sapphire earrings.

Stamped 750. Length 2cms. 11.5gms.

£400-600 (plus 27.6% BP*)

262 A sapphire cabochon bi-colour panel bracelet.

Length 16.8cms. 16.6gms.

£500-700 (plus 27.6% BP*)

263 A near pair of 18ct gold lapis lazuli 'Stirrup' cufflinks, one by Cartier.

Hallmarks for London, 1971 and 1998.

Lengths 3.6 and 3.7cms. 16.3gms.

Lapis lazuli untested for natural colour origin.

£500-700 (plus 27.6% BP*)

264 A sapphire and brilliant-cut diamond stepped bombé ring.

Estimated total diamond weight 0.30ct, G-H colour, predominantly VS clarity.

Stamped 750. Ring size 11/2. 9.8gms.

£600-800 (plus 27.6% BP*)

265 A lapis lazuli and diamond ring, with similarly-designed single earring.

Estimated total diamond weight 0.80ct, G-H colour, SI1-P1 clarity.

Stamped 750 18K. Ring size M1/2. Length 3.2cms. 45.2gms.

Lapis lazuli untested for natural colour origin.

£500-700 (plus 27.6% BP*)

266 An 18ct gold brilliant-cut diamond and blue enamel lattice ring.

Estimated total diamond weight 0.40ct, G-H colour, VS-SI clarity. Hallmarks for London, 2014. Ring size V. 12.7gms.

£800-1,200 (plus 27.6% BP*)

267 A grooved spiral motif hinged bangle, with single-cut diamond accents.

Estimated total diamond weight 0.20ct, G-H colour, VS clarity.

Stamped 750. Inner diameter 5.8cms. 27.7gms.

£900-1,400 (plus 27.6% BP*)

268 An 18ct gold sapphire and vari-cut diamond cluster ring, retailed by Hirsh.

Sapphire calculated weight 1.01cts, based on estimated dimensions of 7.7 by 5.4 by 2.9mms.

Estimated total diamond weight 1.50cts, G-I colour, VS2-P1 clarity.

Hallmarks for London, 1992. Ring size N. 6.6gms.

With retailer's case.

£1,000-1,500 (plus 27.6% BP*)

269 A baroque cultured pearl single-strand necklace, with 18ct gold pavé-set sapphire and diamond clasp.

Estimated total diamond weight 0.30ct.

Hallmarks for London. Length 46.8cms.

£1,000-1,500 (plus 27.6% BP*)

270 A floral carved tanzanite pendant, with white enamel surrounds and rose-cut diamond highlights.

Stamped 14K. Length 6.4cms. 16.4gms.

£1,800-2,400 (plus 27.6% BP*)

271 A circular-cut diamond and pavé-set sapphire fish brooch.

Estimated total diamond weight 0.75ct, G-I colour, VS2-P1 clarity.

French assay marks. Length 7cms. 29gms.

£2,500-3,000 (plus 27.6% BP*)



272 A brilliant-cut diamond two-row hinged bangle.

Estimated total diamond weight 0.65ct, H-I colour, SI clarity.
Stamped 750. Inner diameter 5cms. 14.8gms.
£500-700 (plus 27.6% BP*)

273 A brilliant-cut diamond marquise-shape cluster ring.

Estimated total diamond weight 1.20cts, H-I colour, predominantly VS clarity.
French assay marks. Ring size N1/2. 5.9gms.
£900-1,400 (plus 27.6% BP*)

274 A sapphire and brilliant-cut diamond cluster ring.

Sapphire calculated weight 1.29cts, based on estimated dimensions of 7.1 by 5.7 by 3.8mms.
Estimated total diamond weight 0.65ct, G-J colour, SI1-P1 clarity.
Stamped 18ct PLAT. Ring size O. 4.6gms.
£1,200-1,800 (plus 27.6% BP*)

275 A pink tourmaline and brilliant-cut diamond cluster ring.

Tourmaline calculated weight 1.95cts, based on estimated dimensions of 9 by 7.2 by 4.7mms.
Total diamond weight 0.93ct, stamped to band, estimated H-I colour, SI1-P1 clarity.
Stamped 585. Ring size N. 4.9gms.
£900-1,400 (plus 27.6% BP*)

276 A graduated brilliant-cut diamond triple cluster ring.

Estimated total diamond weight 1.35cts, L-tinted colour, VS2-SI2 clarity.
Stamped PLAT. Ring size N1/2. 5.1gms.
£1,200-1,800 (plus 27.6% BP*)

277 An 18ct gold square-shape diamond pendant, on snake-link chain, by Boodles.

Diamond estimated weight 0.40ct, G-H colour, VS clarity.
Hallmarks for London, 2000.
Length of pendant 2.2cms. Length of chain 40.5cms. 34.1gms.
£1,400-2,000 (plus 27.6% BP*)

278 A pair of hollow hoop earrings, by Chaumet.

French assay marks, stamped 750. Diameter 2.6cms. 11.9gms.
£1,500-2,000 (plus 27.6% BP*)

279 An emerald and vari-cut diamond stylised floral ring.

Emerald calculated weight 1.57cts, based on estimated dimensions of 8 by 6.4 by 4.2mms.
Estimated total diamond weight 2cts, G-L colour, VS2-P1 clarity.
Stamped 750. Ring size O. 10.1gms.
£1,500-2,000 (plus 27.6% BP*)

280 A Burmese ruby cabochon ring, with graduated old-cut diamond surround.

Verbal from GCS, stating Burma, no heat, minor oil in fissures.
Ruby calculated weight 10.02cts, based on estimated dimensions of 15.6 by 9.6 by 6.2mms.
Estimated total diamond weight 0.80ct, G-K colour, SI1-P1 clarity.
Stamped 750. Ring size N. 9.2gms.
£1,500-2,000 (plus 27.6% BP*)

281 A ruby and brilliant-cut diamond geometric bracelet.

Ruby total weight 4.80cts.
Estimated total diamond weight 2.40cts, G-I colour, VS-SI clarity.
Stamped 18K 750. Length 17.4cms. 20gms.
£3,000-4,000 (plus 27.6% BP*)

282 A layered geometric cuff bangle, by House of Waris.

Stamped 18K. Inner diameter 5.4cms. 88.9gms.
Worn on the catwalk at the 'Ultimate Gold Collection Fashion Show', curated by Carine Roitfeld for the 20th annual amfAR Cinema Against AIDS benefit at the 2013 Cannes Film Festival.
£2,800-3,200 (plus 27.6% BP*)

283 An 18ct gold tanzanite and brilliant-cut diamond cluster ring.

Tanzanite weight 4.24cts.
Total diamond weight 1.43cts, estimated G-H colour, VS-SI clarity.
Hallmarks for Birmingham. Ring size N1/2. 5.9gms.
£2,000-2,500 (plus 27.6% BP*)

282



276



278



274



273



283



279



281



275



280



277



272



284 An 18ct gold brilliant-cut diamond cross pendant, with square-shape diamond terminals.

Total diamond weight 0.49ct, estimated G-H colour, VS clarity. Hallmarks for London, 2014. Length 3.7cms. 1.3gms.

£280-380 (plus 27.6% BP*)

285 A 'Trinity' ring, by Cartier.

Stamped 750. Ring size K. Cartier size 50. 12.3gms.

£520-720 (plus 27.6% BP*)

286 A pair of opal and diamond cluster drop earrings, with ruby spacers.

Total opal weight 3.80cts.

Total ruby weight 0.44ct.

Total diamond weight 0.58ct.

Stamped Au750. Length 2.5cms. 4.4gms.

£600-800 (plus 27.6% BP*)

287 An early to mid 20th century 15ct gold watch head, with synthetic ruby and split pearl highlights, signed Ciro.

Length 3.1cms. 35.1gms.

£600-800 (plus 27.6% BP*)

288 A mid 20th century 14ct gold snake bangle, with green paste eyes.

Austrian marks, stamped 585. Approximate inner diameter 4.5cms. 27.9gms.

£800-1,200 (plus 27.6% BP*)

289 A blue chalcedony, sapphire and diamond pendant, with chain.

Chalcedony weight 6.85cts.

Total sapphire weight 0.16ct.

Total diamond weight 0.17ct.

Stamped Au750.

Length of pendant 3cms. Length of chain 46cms. 4.3gms.

£700-900 (plus 27.6% BP*)

290 A 'lavender' jade and single-cut diamond ring.

Jade estimated dimensions 16.6 by 14.3 by 8.9mm.

Estimated total diamond weight 0.15ct.

Stamped G18K. Ring size M. 6.8gms.

Jade untested for natural colour origin.

£1,200-1,800 (plus 27.6% BP*)

291 An old-cut diamond single-stone ring.

Estimated diamond weight 0.85ct, J-K colour, SI2-P1 clarity.

French assay marks. Ring size P. 3.8gms.

£1,400-2,000 (plus 27.6% BP*)

292 A mid 20th century 18ct gold floral and geometric motif collar.

Italian marks, stamped 75. Length 42.5cms. 48.2gms.

£1,500-2,000 (plus 27.6% BP*)

293 An 18ct gold brilliant and baguette-cut diamond line bracelet.

Total diamond weight 4.29cts, stamped to mount, estimated G-H colour, VS clarity.

Hallmarks for London, 2020. Length 16.3cms. 14gms.

£3,500-4,500 (plus 27.6% BP*)

294  A Fancy Intense Pink diamond, diamond and coloured diamond necklace.

With report 79217-77, dated 11th June 2019, from GCS, stating central brilliant-cut pink diamond weight 0.23ct, Natural Fancy Intense Pink colour and central pear-shape pink diamond weight 0.19ct, Natural Fancy Intense Brownish Pink colour.

Estimated total diamond weight 2.50cts, VS-P1 clarity.

Stamped 750. Length 41.5cms. 6.1gms.

£3,500-4,500 (plus 27.6% BP*)

295 An 18ct gold pavé-set diamond cocktail watch, by Van Cleef and Arpels.

Estimated total diamond weight 0.60ct, G-H colour, VS-SI clarity. Swiss convention marks. Length 17.5cms. 39.6gms.

£4,000-6,000 (plus 27.6% BP*)



296 A pair of old-cut diamond stud earrings.

Estimated total diamond weight 0.50ct, G-H colour, VS2-SI1 clarity. 1gm.

£250-350 (plus 27.6% BP*)

297 An 18ct gold brilliant-cut diamond cluster ring.

Estimated total diamond weight 1.60cts, H-I colour, VS2-SI2 clarity. Hallmarks for Sheffield, 2005. Ring size R. 5.4gms.

£800-1,200 (plus 27.6% BP*)

298 A pair of mid 20th century 18ct gold knot earrings, with brilliant-cut diamond highlights.

Estimated total diamond weight 0.20ct, G-H colour, SI2-P1 clarity. Stamped K18. Length 1.8cms. 1.3gms.

£700-900 (plus 27.6% BP*)

299 A sapphire and brilliant-cut diamond cluster ring.

Sapphire weight 1.54cts. Total diamond weight 0.33ct, estimated G-H colour, VS clarity. Ring size M. 4.1gms.

£900-1,400 (plus 27.6% BP*)

300 An 18ct gold brilliant-cut diamond cluster ring.

Estimated total diamond weight 2.75cts, H-J colour, SI clarity. Hallmarks for London, 1976. Ring size L. 5.2gms.

£1,000-1,500 (plus 27.6% BP*)

301 A 1960s 18ct gold scattered diamond abstract textured brooch, by Ben Rosenthal.

Estimated total diamond weight 1ct, G-H colour, VS-SI clarity. Hallmarks for London, 1967. Length 5cms. 26.3gms.

£1,400-2,000 (plus 27.6% BP*)

302 A pair of mid 20th century 18ct gold sapphire, ruby, emerald and diamond stylised floral earrings.

Estimated total diamond weight 0.35ct, G-J colour, SI1-P1 clarity. French assay marks. Length 2.8cms. 20gms.

£1,800-2,400 (plus 27.6% BP*)

303 An emerald and diamond cluster ring.

With report 285540/20053623, dated 31st August 2021, from AnchorCert stating 3.02cts, Brazil/ Zambia, moderate fracture filling.

Estimated total diamond weight 2.50cts, predominantly H-J colour, SI1-P1 clarity.

Ring size Q. 9.2gms.

£2,000-2,500 (plus 27.6% BP*)

304 An 18ct gold brilliant-cut diamond line bracelet.

Estimated total diamond weight 8.50cts, G-I colour, VS-SI clarity. Hallmarks for Edinburgh. Length 18.5cms. 16.5gms.

£4,500-5,500 (plus 27.6% BP*)

305 An emerald and tapered baguette-cut diamond pendant, on brilliant-cut diamond chain.

Emerald calculated weight 1.38cts, based on estimated dimensions of 8.9 by 5.3 by 4mms.

Estimated total diamond weight 6.70cts, H-J colour, VS-SI1 clarity. Stamped 750. Length 40cms. 22gms.

£6,000-8,000 (plus 27.6% BP*)

306 An 18ct gold graduated sapphire hinged bangle, with brilliant-cut diamond double spacers.

Principal sapphire calculated weight 0.98ct, based on estimated dimensions of 6.7 by 5 by 3.5mms.

Estimated total diamond weight 0.50ct, G-H colour, SI1-P1 clarity. Hallmarks for London, 1989. Inner diameter 5.7cms. 24.1gms.

£2,400-3,400 (plus 27.6% BP*)

307 An emerald and diamond cocktail ring.

Emerald weight 12.80cts.

Total diamond weight 5.67cts, estimated H-J colour, VS-SI clarity. Stamped 750 Pt900. Approximate ring size L. 16.8gms.

£10,000-15,000 (plus 27.6% BP*)

296



306



303

307

305



301

300



299



302



304



297



298



308 A mid 19th century gold emerald and split pearl cluster ring.

Ring size T. 2gms.
£150-200 (plus 27.6% BP*)

309 A pair of late 19th century gold old-cut diamond earrings, with foliate engraved undulating belt surround.

Estimated total diamond weight 0.60ct, G-H colour, VS2-SI1 clarity.
Length 2cms. 4.9gms.
£200-300 (plus 27.6% BP*)

310 A mid 19th century gold emerald and rose-cut diamond cluster ring, with glazed locket reverse.

Ring size Q1/2. 3.6gms.
£300-400 (plus 27.6% BP*)

311 A late 19th century gold, garnet, enamel, split and seed pearl foliate brooch.

Length 3cms. 4.6gms.
£350-450 (plus 27.6% BP*)

312 A mid 19th century gold emerald and diamond ring.

Ring size O. 3.2gms.
£250-350 (plus 27.6% BP*)

313 A pair of mid 19th century gold cannetille aquamarine and rock crystal earrings.

Length 3.8cms. 6.4gms.
£200-300 (plus 27.6% BP*)

314 A mid 19th century gold emerald fruiting vine brooch, with glazed reverse and similarly designed drop.

Length 5cms. 12.4gms.
£400-600 (plus 27.6% BP*)

315  An early to mid 19th century gold and Swiss scenic enamel bracelet.

Length 18cms. 30.5gms.
With fitted case.
£800-1,200 (plus 27.6% BP*)

316 An early to mid 19th century enamel miniature brooch, depicting a woman in 18th century Rococo dress, with gold floral surround.

Length 5.2cms. 23.2gms.
£600-800 (plus 27.6% BP*)

317 A mid 19th century gold floral enamel and engraved scroll link bracelet.

Personal inscription dated 1856.
Length 16.2cms. 21gms.
£800-1,200 (plus 27.6% BP*)

318 A late 19th century gold blister pearl, emerald and rose-cut diamond fly brooch, with ruby eyes.

Length 2.7cms. 5.3gms.
£900-1,400 (plus 27.6% BP*)

319 A late 19th century grooved belcher-link necklace, with green paste fringe.

Length 40.2cms. 28.6gms.
£3,500-4,500 (plus 27.6% BP*)

316



311



310



313



314



319



312



308



318



309



317



315



320 ✕ An early 20th century gold portrait miniature ring, with diamond point highlight scroll surround.

Stamped, indistinct. Ring size L1/2. 4.2gms.
£150-200 (plus 27.6% BP*)

321 An emerald cabochon and single-cut diamond cluster ring, with scrolling floral band.

Stamped 18ct. Ring size M. 5gms.
£200-300 (plus 27.6% BP*)

322 An early 20th century gold butterfly wing and diamond point cluster ring.

Ring size P1/2. 2.9gms.
£180-260 (plus 27.6% BP*)

323 An early 19th century 18ct gold shell cameo brooch, carved to depict a classically draped gentleman in profile.

French assay marks, indistinct. Length 3.7cms. 13gms.
£250-350 (plus 27.6% BP*)

324 ✕ A Georgian portrait miniature pendant, depicting a gentleman wearing a blue coat, in the manner of George Engleheart.

Length 5.2cms. 11gms.
£350-450 (plus 27.6% BP*)

325 A George III gold and enamel portrait miniature mourning pendant, depicting a woman in profile, by Thomas Hay.

Length 4.8cms. 14.3gms.
£350-450 (plus 27.6% BP*)

326 An early 20th century continental diamond floral brooch.

Estimated total diamond weight 1.50cts, H-J colour, SI1-P1 clarity.
Length 7.5cms. 16.4gms.
£600-800 (plus 27.6% BP*)

327 A pair of old and rose-cut diamond floral drop earrings.

Estimated total old-cut diamond weight 1.50cts.
Length 3.1cms. 7.6gms.
£1,000-1,500 (plus 27.6% BP*)

328 A pair of rose-cut diamond cluster earrings.

Length 2.3cms. 2.9gms.
£1,200-1,800 (plus 27.6% BP*)

329 A rose-cut diamond cluster ring.

Ring size L1/2. 4.6gms.
£1,500-2,000 (plus 27.6% BP*)

330 A Georgian gold chain necklace, with sapphire accent fede clasp.

Length 127cms. 40.5gms.
£1,200-1,800 (plus 27.6% BP*)

331 An early to mid 19th century graduated chrysoprase necklace, with openwork spacers.

Length 52cms. 36.8gms.
£1,800-2,400 (plus 27.6% BP*)



332 A late 19th century silver and gold St. George and the dragon brooch, engraved to the surround 'S. Georgivs Equitvm Patronvs'.

Diameter 3.8cms. 15.7gms.
£300-400 (plus 27.6% BP*)

333 A late 18th century portrait miniature, by Ozias Humphry, in black frame.

Length 11.6cms. 55gms.
£350-450 (plus 27.6% BP*)

334 An early 20th century 18ct gold old-cut diamond single-stone ring.

Estimated diamond weight 0.50ct, J-K colour, P1 clarity.
Ring size M. 7.5gms.
£380-480 (plus 27.6% BP*)

335 An early 20th century 18ct gold sapphire and old-cut diamond cluster ring.

Sapphire calculated weight 1.03cts, based on estimated dimensions of 6.2 by 5.4 by 3.3mms.
Estimated total diamond weight 0.60ct, H-I colour, SI1-P1 clarity.
Stamped 18ct. Ring size K1/2. 2.9gms.
£400-600 (plus 27.6% BP*)

336 An early 20th century Austrian 14ct gold snake puzzle ring.

Austrian marks, stamped 585.
Ring size O. 13.6gms.
£400-600 (plus 27.6% BP*)

337 A late 17th century portrait miniature pendant, depicting a gentleman wearing a long wig and white scarf, with high carat gold engraved mount.

Length 9cms. 40.8gms.
£750-950 (plus 27.6% BP*)

338 An early 20th century 9ct gold old-cut diamond cluster ring.

Estimated total diamond weight 1.35cts, I-K colour, P1-P2 clarity.
Ring size L. 5.3gms.
£800-1,200 (plus 27.6% BP*)

339 A pair of late 19th century silver and gold old-cut diamond cluster earrings.

Estimated total diamond weight 4.75cts, H-J colour, SI1-P1 clarity.
Length 2.2cms. 6.6gms.
£1,200-1,800 (plus 27.6% BP*)

340 Four 19th century hardstone intaglio fob seals, suspended from a gold longuard chain.

Length of fob seals 2.4 to 3.4cms. Length of chain 139cms.
75.6gms.
£1,000-1,500 (plus 27.6% BP*)

341 A citrine intaglio dress ring, carved to depict a coat of arms.

Ring size T1/2. 11.5gms.
£800-1,200 (plus 27.6% BP*)

342 An agate cameo and diamond pendant, carved to depict a bearded man in profile.

Estimated total diamond weight 0.65ct, G-I colour, SI clarity.
Length 4.5cms. 12.8gms.
£1,800-2,400 (plus 27.6% BP*)

343 A late 19th century continental old and rose-cut diamond floral cluster bangle.

Old-cut diamond estimated weight 0.50ct, I-J colour, SI clarity.
French re-strike marks. Inner diameter 5.9cms. 41.2gms.
£3,000-4,000 (plus 27.6% BP*)



344 An early 20th century gold old and single-cut diamond floral cluster ring.

Estimated total diamond weight 0.50ct, H-tinted colour, VS-SI clarity.
Ring size P. 2.5gms.
£100-150 (plus 27.6% BP*)

345 A pair of pear and oval-shape aquamarine drop earrings.

Aquamarine calculated total weight 4.50cts, based on estimated dimensions.
Length 2.7cms. 2.3gms.
£150-200 (plus 27.6% BP*)

346 An early 20th century 18ct gold graduated opal five-stone ring.

Hallmarks for Birmingham, partially indistinct. Ring size K1/2. 4gms.
£150-200 (plus 27.6% BP*)

347 A late 19th century 9ct gold turquoise and trace-link swag fringe necklace.

Stamped 9ct. Length 40.3cms. 5.7gms.
£180-260 (plus 27.6% BP*)

348 An early 20th century bi-colour gold seed pearl mistletoe brooch.

Length 4.1cms. 4gms.
£250-350 (plus 27.6% BP*)

349 An early 20th century French platinum and 18ct gold seed pearl mistletoe wreath brooch.

French assay marks. Diameter 2.6cms. 3.8gms.
£250-350 (plus 27.6% BP*)

350 An early to mid 20th century Austrian 14ct gold cultured pearl mistletoe brooch.


Austrian marks. Length 9.4cms. 16.9gms.
£400-600 (plus 27.6% BP*)

351 An early 20th century gold slightly graduated moonstone cabochon bracelet, with curb link back-chain.

Length 17cms. 16.7gms.
£300-400 (plus 27.6% BP*)

352 An early 20th century 18ct gold old-cut diamond and split pearl cluster ring.

Estimated total diamond weight 0.55ct, H-I colour, VS-SI clarity. Stamped 18ct. Ring size P. 5.4gms.
£500-700 (plus 27.6% BP*)

353  An Edwardian 15ct gold seed and split pearl floral necklace.

Stamped 15ct.
Length 37.5cms. 16.2gms.
With fitted case.
£500-700 (plus 27.6% BP*)

354 An early 20th century 18ct gold old-cut diamond single-stone ring.

Estimated diamond weight 0.70ct, I-J colour, VS2 clarity. Hallmarks for Chester, 1914. Ring size P. 2.7gms.
£800-1,200 (plus 27.6% BP*)

355 An early 20th century gold opal, old and rose-cut diamond floral brooch.

Principal opal estimated dimensions 23.3 by 6.4 by 4.2mms. Estimated total old-cut diamond weight 0.35ct. Length 5.2cms. 9.2gms.
£1,600-2,200 (plus 27.6% BP*)



356 An early 20th century platinum and gold seed pearl grape vine pendant.

Length 4cms. 3.3gms.
£150-200 (plus 27.6% BP*)

357 An Art Deco seed pearl lattice bracelet, with platinum and gold onyx and single-cut diamond clasp.

Length 18.8cms. 10.3gms.
£400-600 (plus 27.6% BP*)

358 A seed pearl flexible ring, with diamond and polished bar spacers.

Estimated total diamond weight 0.20ct.
Ring size Z+. 3.5gms.
£500-700 (plus 27.6% BP*)

359 An Art Deco seed pearl necklace, with platinum and gold rose-cut diamond geometric highlight.

Austrian marks.
Length 59cms. 9.6gms.
£600-800 (plus 27.6% BP*)

360 An early 20th century gold circular-cut diamond floral cluster ring.

Estimated total diamond weight 0.45ct, G-I colour, VS-SI clarity.
Ring size N. 2.4gms.
£200-300 (plus 27.6% BP*)

361 An early 20th century silver and gold, old and rose-cut diamond, pearl and seed pearl openwork brooch.

May be worn as a pendant.
Estimated total old-cut diamond weight 0.40ct, H-J colour, SI clarity.
Length 4.6cms. 6.1gms.
Pearl untested for natural origin.
£300-400 (plus 27.6% BP*)

362 An early 20th century blue zircon and circular-cut diamond cluster ring.

Zircon calculated weight 1.20cts, based on estimated dimensions of 5.5 by 4.3mms.
Estimated total diamond weight 0.45ct, H-I colour, VS2-SI1 clarity.
Ring size Q1/2. 2.2gms.
£500-700 (plus 27.6% BP*)

363 An early 20th century gold, aquamarine, bouton pearl and enamel brooch.

Aquamarine calculated weight 10.59cts, based on estimated dimensions of 16.1 by 12.8 by 9mms.
Length 3.4cms. 10gms.
Pearls untested for natural origin.
£400-600 (plus 27.6% BP*)

364 An early 20th century platinum and gold turquoise and old-cut diamond pendant.

Turquoise estimated dimensions 32.2 by 18.5 by 9mms.
Estimated total diamond weight 0.50ct, predominantly H-I colour, VS-SI clarity.
Length 5.4cms. 12.6gms.
£400-600 (plus 27.6% BP*)

365 A pair of early 20th century old-cut diamond floral cluster earrings.

Estimated total diamond weight 2.50cts, H-J colour, VS2-P1 clarity.
Length 2.8cms. 3.4gms.
£800-1,200 (plus 27.6% BP*)

366 A brilliant-cut diamond wreath brooch.

Estimated total diamond weight 1.50cts, H-I colour, VS-SI clarity.
Diameter 2.6cms. 9.4gms.
£1,200-1,800 (plus 27.6% BP*)

367 An early 20th century graduated old-cut diamond fringe necklace.

Estimated total diamond weight 3.75cts, G-I colour, VS2-P1 clarity.
Length 42.7cms. 7.6gms.
£2,800-3,200 (plus 27.6% BP*)



358

365

367

360

363

364

356

361

362

359

366

357

368 An early 20th century platinum bracelet, suspending three sapphire and vari-cut diamond charms.

Estimated total diamond weight 0.50ct, H-I colour, VS-SI clarity.
Stamped irid plat. Length 18cms. 6.8gms.
£200-300 (plus 27.6% BP*)

369 An early 20th century sapphire ring, with single-cut diamond pierced geometric surround and shoulders.

Sapphire calculated weight 1.36cts, based on estimated dimensions of 6.7 by 3.8mm.
Ring size P. 3.4gms.
£300-400 (plus 27.6% BP*)

370 An early 20th century gold sapphire cabochon and white enamel dress set, comprising four buttons and a pair of studs.

Diameter of buttons 1.1cms. Diameter of stud face 0.7cm.
11.3gms.
With Sanz Joyeros, Madrid case.
£600-800 (plus 27.6% BP*)

371 An Art Nouveau platinum old and rose-cut diamond scrolling floral brooch.

May be worn as a pendant.
Old-cut diamond estimated weight 0.15ct, H-I colour, SI2-P1 clarity.
Length 4cms. 7.6gms.
£300-400 (plus 27.6% BP*)

372 A pair of old-cut diamond stud earrings.

Estimated total diamond weight 1ct, H-I colour, SI clarity.
1gm.
£800-1,200 (plus 27.6% BP*)

373 An old and rose-cut diamond pierced geometric pendant.

Estimated total diamond weight 1.35cts, G-J colour, VS2-P1 clarity.
French re-strike marks. Length 5.7cms. 5.8gms.
£1,000-1,500 (plus 27.6% BP*)

374 An old-cut diamond single-stone ring.

Estimated diamond weight 2.50cts, K-L colour, P1 clarity.
Ring size M1/2. 3.3gms.
£4,000-6,000 (plus 27.6% BP*)

375 An early 20th century platinum old-cut diamond magnifying lens.

Estimated total diamond weight 3.85cts, H-J colour, VS2-P2 clarity.
Length 8.1cms. 13.1gms.
£2,500-3,000 (plus 27.6% BP*)

376 An early 20th century platinum old-cut diamond single-stone ring, with single-cut diamond foliate surround.

Principal diamond estimated weight 1.35cts, H-I colour, SI2-P1 clarity.
Portuguese marks, stamped 950. Ring size K1/2. 4.4gms.
£2,500-3,000 (plus 27.6% BP*)

377 A mid 20th century old-cut diamond pierced geometric brooch.

Principal diamond estimated weight 3.35cts, J-K colour, SI clarity.
Estimated total diamond weight 15.25cts.
Length 8.7cms. 32.8gms.
£14,000-20,000 (plus 27.6% BP*)

378  An Art Deco platinum circular and single-cut diamond pierced geometric bracelet, by Tiffany & Co.

Estimated total diamond weight 7cts, G-H colour, predominantly VS clarity.
French re-strike marks, stamped Pt950. Length 18.4cms. 29.6gms.
With maker's case.
£14,000-20,000 (plus 27.6% BP*)

379  A natural pearl and vari-cut diamond scrolling foliate necklace.

With report 5782-986, dated 28th February 2022, from GCS, stating 26.94cts, natural, saltwater, no indications of treatment.
Estimated total diamond weight 3.50cts, G-I colour, predominantly VS-SI clarity.
Length 41.5cms. 30.6gms.
£35,000-45,000 (plus 27.6% BP*)



379



371



375



376



373



369



377



378



374



372



370



368

380 A platinum 'Black South Sea' cultured pearl and brilliant-cut diamond ring, by Mikimoto.

'Black South Sea' cultured pearl estimated diameter 9mms.
Total diamond weight 0.82ct, estimated G-H colour, VS clarity.
Hallmarks for London. Ring size L. 7.5gms.
£450-650 (plus 27.6% BP*)

381 A brilliant-cut diamond full eternity ring.

Total diamond weight 1.89cts, stamped to band, estimated G-J colour, VS2-SI2 clarity.
Stamped K18. Ring size L1/2. 2.5gms.
£900-1,400 (plus 27.6% BP*)

382 An 18ct gold, stainless steel and brilliant-cut diamond 'Shanghai' bracelet cuff, by Jarretiere.

Total diamond weight 3.80cts, estimated G-I colour, VS clarity.
Hallmarks for London, 2008. Length 18cms. 84.6gms.
£1,000-1,500 (plus 27.6% BP*)

383 A brilliant-cut diamond and calibre-cut onyx stylised floral ring.

Principal diamond estimated weight 0.70ct, tinted colour, SI clarity.
Stamped 750. Ring size N. 5.8gms.
£1,200-1,800 (plus 27.6% BP*)

384 An 18ct gold pavé-set diamond and undulating black enamel striped heart pendant, with bead-link chain, by Theo Fennell.

Estimated total diamond weight 1ct, G-H colour, VS clarity.
Hallmarks for London, 2007 and Birmingham, 2005.
Length of pendant 3.4cms. Length of chain 45cms. 38.9gms.
£1,800-2,400 (plus 27.6% BP*)

385 A sapphire and brilliant-cut diamond cluster ring.

Sapphire calculated weight 3.23cts, based on estimated dimensions of 10.8 by 8.1 by 4.4mms.
Estimated total diamond weight 1.75cts, G-I colour, SI1-P1 clarity.
Stamped 18ct. Ring size L. 8.1gms.
£1,000-1,500 (plus 27.6% BP*)

386 A sapphire, diamond and citrine 'butterfly' ring, by Gavello.

Estimated total diamond weight 0.65ct, G-H colour, VS clarity.
Italian marks, stamped 750. Ring size P1/2. 23gms.
£900-1,400 (plus 27.6% BP*)

387 A pair of sapphire, brilliant-cut diamond and citrine earrings, by Gavello.

Estimated total diamond weight 1.50cts, G-H colour, VS clarity.
Italian marks, stamped 750. Length 7.6cms. 37gms.
£1,500-2,000 (plus 27.6% BP*)

388 A sapphire, brilliant-cut diamond and citrine bracelet, by Gavello.

Estimated total diamond weight 1.25cts, G-H colour, VS clarity.
Italian marks. Length 17.5cms. 101.7gms.
£2,000-2,500 (plus 27.6% BP*)

389 An opal, brilliant and tapered baguette-cut diamond cocktail ring.

Estimated total diamond weight 1.70cts, G-H colour, VS clarity.
Ring size L1/2. 10.6gms.
£1,200-1,800 (plus 27.6% BP*)

390 A marquise-shape colour treated 'orangey brown' diamond and diamond dress ring.

Estimated total diamond weight 1.85cts, G-H and 'orangey brown' colour, VS clarity.
Stamped 18K. Ring size K. 6.9gms.
£1,800-2,400 (plus 27.6% BP*)

391 A brilliant-cut diamond single-stone ring, with brilliant-cut diamond and 'brown' diamond floral shoulders.

Principal diamond estimated weight 3.10cts, L-M colour, VS clarity.
Estimated total diamond weight 3.70cts.
Stamped 750. Ring size K. 4.9gms.
Diamonds untested for natural colour origin.
£12,000-18,000 (plus 27.6% BP*)



388



387



391



385



386



390



389



381



380



384



382



383

392 A Penny Farthing bicycle pendant, with diamond light and free moving wheels.

Length 3.5cms. 2.1gms.
£150-200 (plus 27.6% BP*)

393 A vari-hue cultured pearl and concave disc stylised wreath brooch.

Stamped 585.
Length 4.4cms. 15.9gms.
£400-600 (plus 27.6% BP*)

394 A pair of synthetic ruby and old-cut diamond earrings.

Estimated total diamond weight 0.40ct, G-I colour, SI1-P1 clarity.
Length 2.2cms. 10.7gms.
£500-700 (plus 27.6% BP*)

395 ✕ A pair of grooved coral and single-cut diamond earrings.

Estimated total diamond weight 0.20ct.
Length 1.8cms. 8.8gms.
Coral untested for natural colour origin.
£400-600 (plus 27.6% BP*)

396 ✕ A coral cabochon ring, with grooved, tapered band.

Stamped 750. Ring size I. 20gms.
Coral untested for natural colour origin.
£800-1,200 (plus 27.6% BP*)

397 ✕ A carved coral, onyx, mother-of-pearl and diamond brooch.

May be worn as a pendant.
Estimated total diamond weight 0.15ct, G-I colour, SI1-P1 clarity.
Stamped Italy, 750. Length 7.3cms. 30.4gms.
Coral untested for natural colour origin.
£1,000-1,500 (plus 27.6% BP*)

398 ✕ A pair of coral and diamond drop earrings.

Estimated total diamond weight 1ct, H-K colour, SI1-P1 clarity.
Stamped 14K. Length 5.6cms. 11.8gms.
Coral untested for natural colour origin.
£1,800-2,400 (plus 27.6% BP*)

399 A brilliant-cut diamond two-row bi-colour bracelet.

Estimated total diamond weight 0.70ct.
Stamped 750. Length 17.5cms. 25.2gms.
£900-1,400 (plus 27.6% BP*)

400 A pair of 18ct gold pavé-set diamond heart earrings.

Estimated total diamond weight 1ct, G-H colour, VS-SI clarity.
Import marks for London, 1987. Length 1.8cms. 17.6gms.
£1,800-2,400 (plus 27.6% BP*)

401 A pavé-set diamond 'Liens' ring, with matching earrings, by Cartier.

Estimated total diamond weight 0.50ct, G-H colour, VS-SI clarity.
French assay marks. Ring size M. Length of earrings 2.3cms.
9.3gms.
£2,500-3,000 (plus 27.6% BP*)

402 🍷 A multi-strand 'Draperie' necklace, by Cartier.

Stamped 750. Length 36.5cms. 102.6gms.
With maker's case.
£3,500-4,500 (plus 27.6% BP*)

403 A pavé-set diamond geometric bi-colour bangle.

Estimated total diamond weight 3.75cts, G-H colour, VS-SI clarity.
Inner diameter 5.3cms. 90.8gms.
£6,000-8,000 (plus 27.6% BP*)

401



402



398



397

394



400



393



392



399



395



403



396



404 A late Victorian 18ct gold graduated old-cut diamond five-stone ring.

Estimated total diamond weight 0.50ct, G-I colour, VS2-P1 clarity.
Hallmarks for Birmingham, 1896. Ring size Q. 3gms.
£200-300 (plus 27.6% BP*)

405 A pair of early to mid 20th century circular-cut diamond stud earrings.

Estimated total diamond weight 0.75ct, H-I colour, P1-P2 clarity.
Austrian marks. 1.3gms.
£300-400 (plus 27.6% BP*)

406 An early 20th century 18ct gold and platinum old-cut diamond five-stone ring.

Estimated total diamond weight 0.80ct, J-K colour, P1 clarity.
Stamped 18ct and PLAT, partially indistinct.
Ring size S. 3.3gms.
£280-380 (plus 27.6% BP*)

407 An opal and old-cut diamond cluster ring.


Estimated total diamond weight 0.40ct.
Stamped 18ct PLAT. Ring size N. 4.1gms.
£300-400 (plus 27.6% BP*)

408 A pair of citrine and amethyst drop earrings, with granulated spacers.

Principal two citrines estimated total weight 23cts, based on estimated dimensions of one citrine.
Length 4.4cms. 17.6gms.
£600-800 (plus 27.6% BP*)

409 An early 20th century 18ct gold longuard chain.

French maker's mark to clasp.
Length 121.3cms. 19.9gms.
£800-1,200 (plus 27.6% BP*)

410  A late 19th century gold old-cut diamond and split pearl floral necklace.

Estimated total diamond weight 0.55ct, H-I colour, VS-SI clarity.
Length 39.8cms. 23.3gms.
With fitted case.
£1,000-1,500 (plus 27.6% BP*)

411 A late 19th century garnet and old-cut diamond moth brooch, with emerald eyes.

Estimated total diamond weight 0.70ct, J-K colour, P1 clarity.
Length 3.9cms. 5.2gms.
£600-800 (plus 27.6% BP*)

412  A late 19th century gold onyx mourning locket pendant, with coral and demantoid garnet inlay and black enamel surmount.

Length 7.2cms. 26.8gms.
Coral untested for natural colour origin.
£1,200-1,800 (plus 27.6% BP*)

413 A rose-cut diamond snake bangle, with ruby eyes.

Inner diameter 6.5cms. 38.9gms.
£1,500-2,000 (plus 27.6% BP*)

414 A late 19th century old-cut diamond crescent moon brooch.

Estimated total diamond weight 2.40cts, I-tinted colour, SI2-P1 clarity.
Length 4cms. 8.7gms.
£2,600-3,200 (plus 27.6% BP*)

415  An early 19th century carved coral link graduated necklace, with floral clasp.

Approximate length of largest coral link 15.3mms.
Length 71.5cms. 75.7gms.
Coral untested for natural colour origin.
£2,800-3,200 (plus 27.6% BP*)

407



404



413



409



410

412



411



408



406



414



405



415



416 ✕ A late 19th century coral stickpin, carved to depict the bust of a young boy or putto.

Length of stickpin head 1.5cms. 2.3gms.
Coral untested for natural colour origin.
£150-200 (plus 27.6% BP*)

417 ✕ A pair of late 19th century gold carved coral shell drop earrings.

Length 7cms. 12.1gms.
Coral untested for natural colour origin.
£250-350 (plus 27.6% BP*)

418 A pair of late 19th century 9ct gold pierced scrolling foliate and bead earrings, with multifaceted central drop and surmount.

Length 4.7cms. 4gms.
£180-260 (plus 27.6% BP*)

419 An early 20th century 18ct gold ruby and circular-cut diamond five-stone ring.

Principal ruby calculated weight 0.54ct, based on estimated dimensions of 5 by 4.6 by 2.5mms.
Estimated total diamond weight 0.30ct, G-H colour, SI clarity.
Hallmarks for Birmingham, 1915. Ring size P. 4.3gms.
£300-400 (plus 27.6% BP*)

420 A 19th century gold mounted shell cameo brooch/clasp, carved to depict the birth of Venus.

Length 6.1cms. 23.4gms.
£380-480 (plus 27.6% BP*)

421 A mid to late Victorian 18ct gold split pearl and blue enamel ring.

Stamped 18. Ring size L1/2. 3.8gms.
£200-300 (plus 27.6% BP*)

422 A mid to late Victorian gold stylised knot brooch, with split pearl and blue enamel star highlight and tassel swags.

Glazed locket reverse.
Length 8.8cms. 25.1gms.
£400-600 (plus 27.6% BP*)

423 An Austrian late 19th century gold split pearl and diamond point locket, with graduated chain.

Austrian marks.
Length of locket 5.7cms. Length of chain 45cms. 32.7gms.
£700-900 (plus 27.6% BP*)

424 A Victorian gold cannetille and scrolling foliate engraved brooch, with detachable drop.

Kite patent mark to reverse.
Length 7.1cms. 16.1gms.
£600-800 (plus 27.6% BP*)

425  A late 19th century gold cannetille hinged bangle, with locket compartment.

Inner diameter 5.6cms. 16.5gms.
With case.
£1,000-1,500 (plus 27.6% BP*)

426  ✕ A mid to late 19th century gold snake-link swag necklace, with cannetille coral locket drops.

Length 38cms. 21gms.
With fitted case.
Coral untested for natural colour origin.
£800-1,200 (plus 27.6% BP*)

427 ✕ A mid 19th century gold coral cameo bracelet, carved to depict Zeus with a male to either side.

Length 17.5cms. 48.4gms.
Coral untested for natural colour origin.
£3,000-4,000 (plus 27.6% BP*)



423

422

425

421

416

424

418

426

417

420

419

427

428 A 19th century agate watch key.

Length 4.7cms. 6.8gms.
£120-180 (plus 27.6% BP*)

429 A 19th century citrine and chalcedony acorn motif watch key.

Length 5cms. 11.3gms.
£180-260 (plus 27.6% BP*)

430 A late Victorian gold Aesthetic Movement locket ring, depicting a bird upon a blossom branch.

Ring size L. 5.5gms.
£200-300 (plus 27.6% BP*)

431 A late 19th century 14ct gold sardonyx cameo ring, carved to depict the muse Erato, with engraved surround.

Ring size S1/2. 5.5gms.
£200-300 (plus 27.6% BP*)

432 A sardonyx cameo brooch, with seed pearl foliate surround.

French re-strike mark.
Length 3.5cms. 9.6gms.
£400-600 (plus 27.6% BP*)

433 A pair of late 19th century gold banded agate drop earrings, with snake surmount.

Length 2.1cms. 3.8gms.
£100-150 (plus 27.6% BP*)

434 A late 19th century 18ct gold onyx cameo brooch, carved to depict Omphale.

French assay marks.
Length 4.9cms. 14.5gms.
£400-600 (plus 27.6% BP*)

435 A late Victorian gold onyx cameo brooch, carved to depict a woman in profile.

Personal inscription to the reverse, 'Presented to Sarah Hart, by the Parishioners of the Old Parish Church Nailsea March 1884'.
Length 6.3cms. 30.4gms.
£650-850 (plus 27.6% BP*)

436 A late Victorian gold Scottish agate bracelet, with padlock locket charm.

Length 17.7cms. 33.1gms.
£600-800 (plus 27.6% BP*)

437 An 18ct gold ruby and brilliant-cut diamond five-stone ring.

Total diamond weight 0.44ct, stamped to band, estimated G-H colour, VS clarity.
Hallmarks for London, 1991. Ring size N. 4.6gms.
£400-600 (plus 27.6% BP*)

438 An early to mid 20th century Austrian 18ct gold agate bracelet.

Austrian marks, stamped 750. Length 19.4cms. 90.8gms.
£500-700 (plus 27.6% BP*)

439 An intertwined snake ring, each with diamond crest, supporting a central cat's-eye chrysoberyl cabochon.

Chrysoberyl weight 3cts.
Estimated total diamond weight 0.15ct.
Ring size L. 12.3gms.
£2,200-3,200 (plus 27.6% BP*)

438



436



437



431



434



429



432



439



435



428



430



433



440 An openwork rose pendant, by Tre Spighe, with 9ct gold trace-link chain.

Pendant with Italian marks, stamped 750.
Chain with hallmarks for Birmingham.
Length of pendant 7.7cms. Length of chain 60cms. 30.2gms.
£800-1,200 (plus 27.6% BP*)

441 A brilliant-cut diamond bee brooch.

Estimated total diamond weight 0.85ct, G-H colour, VS2-SI1 clarity.
Stamped 18K 750. Length 2.9cms. 6.1gms.
£700-900 (plus 27.6% BP*)

442 A carved citrine and single-cut diamond floral brooch.

Estimated total diamond weight 0.30ct, G-I colour, VS-SI clarity.
Length 4.4cms. 14.1gms.
£750-950 (plus 27.6% BP*)

443 A pair of carved citrine and single-cut diamond floral earrings.

Estimated total diamond weight 0.55ct, predominantly G-I colour, SI clarity.
Portuguese marks, stamped 585 and 900. Length 3.5cms. 17.5gms.
£800-1,200 (plus 27.6% BP*)

444 A pair of mid 20th century brilliant-cut diamond tri-colour textured gold foliate earrings.

Stamped STERN V.
Estimated total diamond weight 0.90ct, G-H colour, VS2-P1 clarity.
Length 2.8cms. 16.6gms.
£800-1,200 (plus 27.6% BP*)

445 A pair of citrine earrings, with grooved scroll surround, by Tambetti.

Stamped 18K. Length 2.7cms. 29.6gms.
£900-1,400 (plus 27.6% BP*)

446 A citrine and brilliant-cut diamond cluster ring.

Citrine calculated weight 17.10cts, based on estimated dimensions of 19 by 15.5 by 10.4mms.
Estimated total diamond weight 1.20cts, H-I colour, VS clarity.
Stamped 750. Ring size O. 13.3gms.
£1,000-1,500 (plus 27.6% BP*)

447 A mabé pearl ring, with foliate surround, by Vicari.

Italian marks, stamped 750.
Ring size O. 13.9gms.
£700-900 (plus 27.6% BP*)

448 A pair of mabé pearl earrings, with foliate surround, by Vicari.

Italian marks, stamped 750. Length 2.9cms. 24.2gms.
£1,000-1,500 (plus 27.6% BP*)

449 An 18ct gold brilliant-cut diamond cluster ring.

Total diamond weight 2cts, stamped to band, estimated K-L colour, VS-SI clarity.
Hallmarks for London. Ring size L1/2. 5.8gms.
£1,000-1,500 (plus 27.6% BP*)

450 A brilliant and single-cut diamond textured floral necklace.

Estimated total diamond weight 2.25cts, G-I colour, VS2-P1 clarity.
Stamped K189. Length 40.5cms. 64.8gms.
£2,200-2,800 (plus 27.6% BP*)

451 A circular-cut diamond ring, with graduated baguette-cut diamond line shoulders.

Principal diamond estimated weight 1.25cts, H-I colour, SI clarity.
Estimated total baguette-cut diamond weight 1ct, G-H colour, VS clarity.
Stamped 750. Ring size R. 7.6gms.
£3,000-4,000 (plus 27.6% BP*)



445

446

441

443

450

442

447

448

440

449

444

451

452 A late 19th century 18ct gold slightly graduated opal three-stone ring, with diamond point spacers.

Stamped 18ct. Ring size P. 4.4gms.
£180-260 (plus 27.6% BP*)

453 An early 20th century 15ct gold amethyst cross necklace.

Stamped 15ct.
Length 40cms. 9gms.
£150-200 (plus 27.6% BP*)

454 A late 19th century 15ct gold amethyst and split pearl brooch.

Amethyst calculated weight 18.31cts, based on estimated dimensions of 19.1 by 14.8 by 11.6mms.
Stamped 15ct. Length 2.7cms. 7.9gms.
£200-300 (plus 27.6% BP*)

455 A late Victorian gold rope-twist necklace, suspending opal heart and circular opal cabochon drops.

Length 41cms. 8.3gms.
£250-350 (plus 27.6% BP*)

456 An 18ct gold brilliant-cut diamond single-stone ring.

Estimated diamond weight 0.80ct, H-I colour, SI2-P1 clarity.
Stamped 18ct. Ring size M. 2.8gms.
£300-400 (plus 27.6% BP*)

457 A late 19th century gold amethyst brooch.

Amethyst calculated weight 26.50cts, based on estimated dimensions of 22.5 by 18.5 by 11.4mms.
Length 3.4cms. 13.2gms.
£300-400 (plus 27.6% BP*)

458 A late 19th century gold amethyst ring, with later band.

Amethyst calculated weight 9.45cts, based on estimated dimensions of 17 by 12.6 by 7.9mms.
Band stamped 9ct. Ring size L1/2. 9.3gms.
£300-400 (plus 27.6% BP*)

459 A late 19th century graduated amethyst rivière necklace.

Central amethyst calculated weight 24.51cts, based on estimated dimensions of 22 by 19 by 10.5mms.
Length 44cms. 80gms.
With fitted case.
£3,000-4,000 (plus 27.6% BP*)

460 A late 19th century gold cannetille mounted micro mosaic brooch depicting a Cherub.

Diameter 3.6cms. 20.5gms.
£700-900 (plus 27.6% BP*)

461 A 19th century silver and gold amethyst and old-cut diamond ring.

Amethyst calculated weight 3.13cts, based on estimated dimensions of 11 by 8.5 by 6mms.
Estimated total diamond weight 1.50cts, G-L colour, VS2-P1 clarity.
Foreign marks to outside of band.
Ring size P. 6.9gms.
£1,000-1,500 (plus 27.6% BP*)

462 An early 20th century 18ct gold old-cut diamond five-stone ring.

Estimated total diamond weight 1ct, H-I colour, predominantly SI clarity.
Stamped 18ct.
Ring size N. 5.6gms.
£1,000-1,500 (plus 27.6% BP*)

463 An opal and diamond cluster ring.

Estimated dimensions of opal 20 by 10.6 by 4.5mms.
Estimated total diamond weight 1.40cts, H-J colour, SI2-P2 clarity.
Stamped 18ct.
Ring size Q. 9.2gms.
£1,400-2,000 (plus 27.6% BP*)



457



458



459



454



463



452



455

461



453



460



462



456



464 An early 20th century cultured pearl three-strand choker necklace, with 18ct gold amethyst and split pearl enhancer.

Amethyst calculated weight 32.99cts, based on estimated dimensions of 25 by 18.9 by 12.5mms.

Enhancer stamped 18c.

Length 39cms. 39.8gms.

£550-750 (plus 27.6% BP*)

465 An early 20th century 18ct gold french-cut amethyst bangle.

French assay marks.

Inner diameter 6.5cms. 18.3gms.

£800-1,200 (plus 27.6% BP*)

466 An early 20th century 15ct gold curb-link bangle, with knot highlight.

Stamped 15.

Inner diameter 5.5cms. 21.3gms.

£500-700 (plus 27.6% BP*)

467 A pair of early 20th century 18ct gold and platinum bi-colour cufflinks.

French assay marks.

Length of cufflink face 1.1cms. 15.3gms.

£500-700 (plus 27.6% BP*)

468 An early 20th century platinum and gold woven mesh buckle fob.

Clasps stamped PLAT.

Length 14.5cms. 14.7gms.

£400-600 (plus 27.6% BP*)

469 An early 20th century gold and platinum curb-link bracelet, suspending eleven egg charms.

Length 19.5cms. Length of charms 1.5 to 2.5cms. 63.8gms.

£2,200-3,200 (plus 27.6% BP*)

470 An early 20th century 18ct gold mesh coin purse, with sapphire cabochon clasp.

Swedish mark, stamped 18K.

Length 6.8cms. 35.1gms.

£900-1,400 (plus 27.6% BP*)

471 An emerald and old-cut diamond square-shape cluster ring.

Emerald calculated weight 0.42ct, based on estimated dimensions of 4.8 by 4.6 by 2.8mms.

Estimated total diamond weight 1.10cts, H-J colour, SI1-P1 clarity.

Ring size M. 6.8gms.

£1,400-2,000 (plus 27.6% BP*)

472 An old-cut diamond single-stone ring.

Estimated diamond weight 0.75ct, G-H colour, SI clarity.

Ring size Q1/2. 4.2gms.

£1,400-2,000 (plus 27.6% BP*)

473 A pair of early 20th century opera glasses, with pink guilloché enamel and mother-of-pearl highlights, by Cartier.

Length 8.7cms. 121.3gms.

With maker's case.

£2,800-3,200 (plus 27.6% BP*)



469



473



472



468



466



471

464



470



467



465

474 A Sri Lankan pink spinel bi-colour pendant.

With report 81317-00, dated 7th July 2021, from GCS, stating Sri Lanka (Ceylon), no heat, estimated weight 3.30cts. Length 2cms. 1.9gms.
£500-700 (plus 27.6% BP*)

475 A ruby and vari-cut diamond cluster ring.

Ruby calculated weight 1.53cts, based on estimated dimensions of 9.2 by 6.4 by 3.1mms. Estimated total diamond weight 0.60ct, H-J colour, VS2-P1 clarity. Stamped Pt900. Ring size J1/2. 6.4gms.
£1,000-1,500 (plus 27.6% BP*)

476 A pair of 18ct gold kunzite and diamond cluster earrings.

Kunzite total weight 7.01cts. Total diamond weight 0.28ct. Hallmarks for Birmingham. Length 1.3cms. 5.1gms.
£600-800 (plus 27.6% BP*)

477 A kunzite and diamond pendant, with 18ct gold chain.

Kunzite weight 23.82cts. Total diamond weight 0.89ct. Pendant stamped Au750. Chain with hallmarks for Birmingham. Length of pendant 3.6cms. Length of chain 40cms. 13.4gms.
£1,500-2,000 (plus 27.6% BP*)

478 An opal and brilliant-cut diamond cocktail ring.

Opal estimated dimensions 29.5 by 20.5 by 11mms. Estimated total diamond weight 1ct, G-I colour, VS2-SI1 clarity. Ring size N1/2. 14gms.
£1,500-2,000 (plus 27.6% BP*)

479 A pair of pink sapphire and brilliant-cut diamond foliate earrings.

Estimated total diamond weight 0.25ct, H-I colour, VS-SI clarity. Stamped 750 18K. Length 2.8cms. 2.3gms.
£1,400-2,000 (plus 27.6% BP*)

480 A platinum brilliant-cut diamond three-stone ring.

Estimated total diamond weight 1.20cts, G-I colour, VS-SI clarity. Hallmarks for London, 2019. Ring size M. 4.1gms.
£2,000-2,500 (plus 27.6% BP*)

481 A platinum brilliant-cut diamond single-stone pendant, with diamond accent surmount.

Principal diamond estimated weight 1.05cts, H-I colour, P1 clarity. Hallmarks for Birmingham, 2004. Length 1.5cms. 1.6gms.
£1,800-2,400 (plus 27.6% BP*)

482 A Sri Lankan star sapphire ring, with triangular-shape diamond sides.

With report 5782-1270, dated 21st March 2022. from GCS, stating 31.78cts, Sri Lanka (Ceylon), no heat. Estimated total diamond weight 1ct, J-K colour, VS-SI clarity. Stamped 18K. Ring size P. 11.9gms.
£3,000-4,000 (plus 27.6% BP*)

483 A pink sapphire and diamond butterfly brooch.

Estimated total brilliant-cut diamond weight 0.50ct. Stamped 750. Length 8.7cms. 46.4gms.
£2,800-3,800 (plus 27.6% BP*)

484 A heart-shape diamond ring, with diamond shoulders.

Principal diamond with report no. 20044027501, dated **20th July 2004**, from HRD, stating 1.51cts, SI1 clarity, F colour. Estimated total brilliant-cut diamond weight 0.30ct. Stamped 750. Ring size L1/2. 3.5gms.
£4,000-6,000 (plus 27.6% BP*)

485 A South Sea baroque cultured pearl necklace, with diamond clasp, by Mikimoto.

Total diamond weight 1.47cts, estimated G-H colour, VS clarity. Stamped 750, indistinct. Length 46.4cms. 145.8gms. With maker's case and certificate of authenticity.
£5,000-7,000 (plus 27.6% BP*)



485

479

476

478

477

484

475

481

482

483

480

474



486 A brilliant-cut diamond geometric tie clip.

Total diamond weight 0.31ct, stamped to mount.
Stamped 18K 750. Length 5.4cms. 14gms.
£450-650 (plus 27.6% BP*)

487 An 18ct gold brilliant-cut diamond split cross pendant, on chain, by Gucci.

Estimated total diamond weight 0.25ct, G-H colour, VS clarity.
Swiss convention marks.
Length of pendant 2.8cms. Length of chain 45cms. 9gms.
£500-700 (plus 27.6% BP*)

488 A brilliant-cut diamond full eternity ring.

Estimated total diamond weight 1.25cts, H-K colour, predominantly SI clarity.
Ring size K1/2. 3gms.
£500-700 (plus 27.6% BP*)

489 An 18ct gold ruby and diamond cluster ring.

Ruby weight 2.27cts.
Total diamond weight 0.31ct, I-J colour, VS-SI clarity.
Hallmarks for Birmingham.
Ring size O. 4.4gms.
£800-1,200 (plus 27.6% BP*)

490 A ruby and brilliant-cut diamond geometric pendant.

Ruby weight 1.10cts.
Total diamond weight 0.78ct.
Stamped 750 18K. Length 3.8cms. 4.9gms.
£900-1,400 (plus 27.6% BP*)

491 An 18ct gold brilliant-cut diamond stepped cluster ring.

Estimated total diamond weight 1.85cts, H-I colour, VS-SI clarity.
Hallmarks for London, 1975, partially indistinct.
Ring size N. 8.7gms.
£700-900 (plus 27.6% BP*)

492 A brilliant-cut diamond line bracelet.

Estimated total diamond weight 3.50cts, G-I colour, VS-SI clarity.
Stamped 14k. Length 17.9cms. 18.7gms.
£1,000-1,500 (plus 27.6% BP*)

493 A pair of 18ct gold ruby and diamond cluster earrings.

Ruby total weight 3.07cts.
Total diamond weight 1.22cts, estimated I-J colour, VS-SI clarity.
Hallmarks for Birmingham.
Length 1.3cms. 3.9gms.
£1,200-1,800 (plus 27.6% BP*)

494 A ruby and brilliant-cut diamond cluster ring.

Ruby weight 1.80cts.
Total diamond weight 0.17ct, estimated H-I colour, VS-SI clarity.
Stamped 18K 750. Ring size M. 4.6gms.
£1,200-1,800 (plus 27.6% BP*)

495 A platinum square-shape diamond single-stone ring, with brilliant-cut diamond line sides.

Square-shape diamond laser inscribed GIA 1197900293, corresponding to a report dated 24th April 2015, from the GIA, stating 1.01cts, F colour, SI1 clarity.
Estimated total brilliant-cut diamond weight 0.25ct.
Hallmarks for Birmingham. Ring size L1/2. 5.5gms.
£1,500-2,000 (plus 27.6% BP*)

496 A marquise-shape ruby and diamond cluster ring.

Ruby weight 1.53cts.
Total diamond weight 1.08cts, estimated I-J colour, SI1-P1 clarity.
Stamped Pt900. Ring size L. 8.4gms.
£1,400-2,000 (plus 27.6% BP*)

497 An 18ct gold diamond two-stone pendant, with chain.

Principal diamonds estimated total weight 1.80cts, I-K colour, SI clarity.
Hallmarks for Birmingham, 2002.
Length of pendant 2.1cms. Length of chain 46.5cms. 10.1gms.
£2,000-2,500 (plus 27.6% BP*)



497



490



486



491



496



489



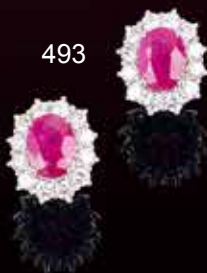
495



492



494



493



488



487

498 A carved rock crystal, ruby and diamond floral necklace, with chain.

Rock crystal weight 5.48cts.
Ruby weight 0.38ct.
Total diamond weight 0.04ct.
Pendant stamped Au750. Chain stamped 750. Length 1.7cms.
3gms.
£450-650 (plus 27.6% BP*)

499 A pair of carved rock crystal, ruby and diamond floral earrings.

Ruby total weight 0.66ct.
Total diamond weight 0.08ct.
Stamped Au750. Length 1.5cms. 4.1gms.
£620-820 (plus 27.6% BP*)

500 A brilliant-cut diamond floral cluster ring, with single-cut diamond line shoulders.

Estimated total diamond weight 1ct, G-I colour, SI1-P1 clarity.
Ring size M1/2. 4.3gms.
£600-800 (plus 27.6% BP*)

501 A tourmaline and brilliant-cut diamond cluster ring.

Tourmaline calculated weight 6.33cts, based on estimated dimensions of 12.8 by 11 by 7mms.
Estimated total diamond weight 2cts, H-J colour, SI clarity.
Ring size M1/2. 9.6gms.
£700-900 (plus 27.6% BP*)

502 A brilliant-cut diamond floral brooch.

With later pearl enhancer optional attachment.
Estimated total diamond weight 2cts, G-I colour, VS-SI clarity.
Attachment stamped 14K.
Length of brooch 3cms. 9.9gms.
£750-950 (plus 27.6% BP*)

503 An emerald and brilliant-cut diamond cluster ring.

Emerald weight 1.40cts.
Total diamond weight 0.83ct, estimated H-I colour, VS-SI clarity.
Stamped 750. Ring size M. 6.2gms.
£1,200-1,800 (plus 27.6% BP*)

504 An opal and diamond cluster ring.

Opal weight 9.50cts.
Total diamond weight 0.65ct.
Stamped Au750. Ring size N. 6.8gms.
£1,000-1,500 (plus 27.6% BP*)

505 An 18ct gold ruby and baguette-cut diamond ring.

Ruby weight 2.53cts.
Total diamond weight 0.44ct, estimated H-I colour, VS-SI clarity.
Hallmarks for Birmingham. Ring size N1/2. 4.8gms.
£1,200-1,800 (plus 27.6% BP*)

506 A brilliant-cut diamond four-stone ring.

Estimated total diamond weight 1ct, I-L colour, SI1-P1 clarity.
Stamped PLAT. Ring size N. 4.6gms.
£1,000-1,500 (plus 27.6% BP*)

507 A brilliant-cut diamond single-stone ring.

Estimated diamond weight 0.90ct, I-J colour, SI clarity.
Ring size K. 5gms.
£1,400-2,000 (plus 27.6% BP*)

508 An 18ct gold emerald and diamond cluster ring.

Emerald weight 3.64cts.
Total diamond weight 0.95ct, estimated H-J colour, VS-SI clarity.
Hallmarks for Birmingham. Ring size N1/2. 5gms.
£2,800-3,200 (plus 27.6% BP*)

509 A brilliant and baguette-cut diamond cluster line bracelet.

Total diamond weight 3.88cts, estimated G-I colour, VS-SI clarity.
Stamped 750. Length 18.5cms. 17.5gms.
£3,800-4,800 (plus 27.6% BP*)

510 An emerald and diamond dress ring, with diamond fringe.

Emerald calculated weight 3.18cts, based on estimated dimensions of 9.6 by 9.3 by 5.7mms.
Estimated total diamond weight 1.15cts.
Stamped 750. Ring size L. 10.6gms.
£3,000-5,000 (plus 27.6% BP*)

511 An 18ct gold brilliant-cut diamond undulating line choker.

Total diamond weight 9.33cts, stamped to mount, estimated G-I colour, VS-SI clarity.
Hallmarks for London, 2008. Length 36cms. 38.3gms.
£4,500-6,500 (plus 27.6% BP*)



504

511



499



498



502



501



508



503



507



505



510



509



500



506

512 A platinum amethyst and diamond dress ring.

Amethyst calculated weight 2.53cts, based on estimated dimensions of 8.7 by 6.9 by 5.3mms.
Estimated total diamond weight 0.20ct.
Hallmarks for Sheffield. Ring size M. 7.5gms.
£500-700 (plus 27.6% BP*)

513 An 18ct gold pink sapphire and diamond cluster ring.

Sapphire calculated weight 1.21cts, based on estimated dimensions of 7.2 by 5.2 by 3mms.
Estimated total diamond weight 0.30ct.
Hallmarks for Sheffield. Ring size P1/2. 4.6gms.
£600-800 (plus 27.6% BP*)

514 A platinum aquamarine and diamond ring.

Aquamarine calculated weight 3.03cts, based on estimated dimensions of 9.3 by 8.5 by 6mms.
Estimated total diamond weight 0.10ct.
Hallmarks for Sheffield. Ring size M. 5.6gms.
£600-800 (plus 27.6% BP*)

515 A platinum ruby and diamond dress ring.

Ruby calculated weight 0.71ct, based on estimated dimensions of 6.5 by 4.7 by 2.8mms.
Estimated total diamond weight 0.70ct, G-I colour, SI1-P1 clarity.
Hallmarks for Sheffield. Ring size Q. 8gms.
£900-1,400 (plus 27.6% BP*)

516 A platinum sapphire and diamond cluster ring.

Sapphire calculated weight 1.62cts, based on estimated dimensions of 8.5 by 6.5 by 3.5mms.
Estimated total diamond weight 0.45ct, H-J colour, SI1-P1 clarity.
Hallmarks for Sheffield. Ring size L. 6gms.
£1,200-1,800 (plus 27.6% BP*)

517 An aquamarine and diamond dress ring.

Aquamarine calculated weight 1.76cts, based on estimated dimensions of 9 by 7.3 by 4.7mms.
Estimated total diamond weight 0.60ct, G-J colour, VS2-SI2 clarity.
French assay mark. Ring size H1/2. 14.5gms.
£1,200-1,800 (plus 27.6% BP*)

518 An emerald and diamond cluster ring.

Emerald weight 3.08cts.
Total diamond weight 1.14cts, estimated H-K colour, SI clarity.
Ring size L1/2. 5.2gms.
£1,500-2,000 (plus 27.6% BP*)

519 A pair of 'Happy Diamonds' heart-shape earrings, by Chopard.

Estimated total diamond weight 0.20ct, G+ colour, VS clarity.
French assay marks. Length 1.6cms. 13.5gms.
With maker's case.
£1,500-2,000 (plus 27.6% BP*)

520 An 18ct gold bi-colour tourmaline and diamond cluster ring.

Tourmaline calculated weight 6.06cts, based on estimated dimensions of 13.6 by 9 by 6mms.
Estimated total diamond weight 0.85ct, H-J colour, SI1-P1 clarity.
Hallmarks for Sheffield. Ring size M. 7.1gms.
£1,500-2,000 (plus 27.6% BP*)

521 A sapphire and diamond dress ring.

Sapphire calculated weight 3.11cts, based on estimated dimensions of 9.8 by 6.5 by 5.2mms.
Estimated total diamond weight 1.10cts, G-I colour, VS2-P1 clarity.
French assay mark. Ring size N. 14.4gms.
£2,200-2,800 (plus 27.6% BP*)

522 A platinum aquamarine and diamond dress ring.

Aquamarine weight 14.01cts.
Estimated total diamond weight 1ct, G-I colour, VS2-SI2 clarity.
Hallmarks for Sheffield. Ring size M. 12.4gms.
£2,200-2,800 (plus 27.6% BP*)

523 A diamond spiral necklace, by Boucheron.

Estimated total diamond weight 4cts, G-H colour, VS-SI clarity.
French assay marks. Length 42cms. 57.4gms.
£5,500-7,500 (plus 27.6% BP*)



512



520



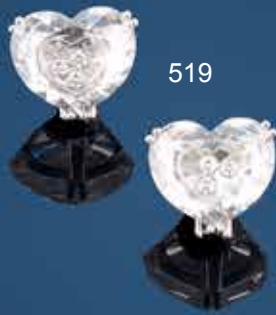
518



516



519



523

515



521



522



517



513



514



524 An emerald and brilliant-cut diamond pendant.

Emerald calculated weight 1.77cts, based on estimated dimensions of 8.7 by 5.8 by 4.8mms.

Estimated total diamond weight 0.50ct, G-I colour, VS2-SI1 clarity. Length 2.4cms. 4.6gms.

£350-450 (plus 27.6% BP*)

525 An emerald and brilliant-cut diamond ring.

Emerald calculated weight 1.41cts, based on estimated dimensions of 6.8 by 6.4 by 5.1mms.

Estimated total diamond weight 0.75ct, G-I colour, VS-SI clarity. Stamped 750. Ring size K. 4.5gms.

£500-700 (plus 27.6% BP*)

526 A slightly graduated cultured pearl single-strand necklace, with 9ct gold diamond floral clasp.

Cultured pearl estimated diameter 9.3 to 6mms. Hallmarks for Birmingham, 1959. Length 50cms.

£300-400 (plus 27.6% BP*)

527 An orange sapphire and brilliant-cut diamond dress ring.

Sapphire calculated weight 2.38cts, based on estimated dimensions of 7.4 by 6.6 by 5.2mms.

Estimated total diamond weight 0.55ct, G-H colour, VS-SI clarity. Stamped 750. Ring size M1/2. 8.5gms.

£400-600 (plus 27.6% BP*)

528 A pair of green garnet and brilliant-cut diamond cluster earrings.

Estimated total diamond weight 0.70ct, G-I colour, VS-SI clarity. Stamped 14K. Diameter 0.9cm. 3.6gms.

£500-700 (plus 27.6% BP*)

529 An 18ct gold citrine and brilliant-cut diamond ring.

Citrine weight 3.14cts.

Total diamond weight 0.55ct, estimated G-I colour, VS-SI clarity. Hallmarks for Birmingham. Ring size N1/2. 4.4gms.

£500-700 (plus 27.6% BP*)

530 An 18ct gold morganite and brilliant-cut diamond cluster ring.

Morganite weight 2.61cts.

Total diamond weight 0.56ct, estimated G-H colour, VS-SI clarity. Hallmarks for Birmingham. Ring size N1/2. 4.3gms.

£800-1,200 (plus 27.6% BP*)

531 An emerald single-stone ring, with baguette and brilliant-cut diamond line sides.

Emerald weight 8.02cts.

Total diamond weight 0.517cts, estimated G-I colour, VS2-P1 clarity.

Stamped Pt950. Ring size N. 9.1gms.

£1,500-2,000 (plus 27.6% BP*)

532 A brilliant-cut diamond dress ring.

Estimated total diamond weight 1ct, G-I colour, VS2-P1 clarity. Stamped PLAT. Ring size N. 6.2gms.

£1,200-1,800 (plus 27.6% BP*)

533 An emerald and brilliant-cut diamond cluster ring.

Emerald calculated weight 1.48cts, based on estimated dimensions of 8.5 by 6.8 by 4.5mms.

Estimated total diamond weight 1.25cts, G-H colour, SI1-P1 clarity. Stamped PLAT. Ring size N. 6.6gms.

£1,600-2,200 (plus 27.6% BP*)

534 An 18ct gold baguette and brilliant-cut diamond necklace.

Estimated total diamond weight 4cts, G-I colour, VS-SI clarity. Hallmarks for London, 2007. Length 47cms. 41.2gms.

£2,500-3,000 (plus 27.6% BP*)

535 A circular-cut diamond line bracelet, with engraved sides.

Estimated total diamond weight 5cts, G-H colour, VS-SI clarity. Length 19.9cms. 18.6gms.

£3,500-4,500 (plus 27.6% BP*)

533



527



525



531



529



532



530



534



528



526



524

535



536 A brilliant-cut diamond full eternity ring.

Estimated total diamond weight 1.30cts, G-I colour, VS-SI clarity.
Ring size L. 4.1gms.
£200-300 (plus 27.6% BP*)

537 A pair of sapphire and diamond cluster earrings.

Estimated total diamond weight 0.90ct, H-J colour, predominantly VS-SI clarity.
Stamped 14K. Length 1.2cms. 4gms.
£500-700 (plus 27.6% BP*)

538 A brilliant-cut diamond cluster ring.

Estimated total diamond weight 1ct, predominantly H-I colour, VS-SI clarity.
Ring size K1/2. 3.8gms.
£600-800 (plus 27.6% BP*)

539 A tanzanite and diamond cluster ring.

Tanzanite calculated weight 2cts, based on estimated dimensions of 7.8 by 7.7 by 4.3mms.
Estimated total diamond weight 1.25cts, H-I colour, VS-SI clarity.
Stamped 750. Ring size L. 5.8gms.
£800-1,200 (plus 27.6% BP*)

540 A platinum square-shape diamond single-stone ring, with brilliant-cut diamond shoulders.

Principal diamond laser inscribed GIA 17594604, corresponding to report dated **18th August 2008**, from the GIA, stating 0.80ct, E colour, VS1 clarity.
Estimated total diamond weight 1ct.
Hallmarks for Birmingham. Ring size H. 4gms.
£900-1,400 (plus 27.6% BP*)

541 A moonstone sapphire and diamond dress ring.

Moonstone weight 6.90cts.
Total sapphire weight 0.81ct.
Total diamond weight 0.31ct.
Stamped Au750. Ring size N. 7.1gms.
£1,000-1,500 (plus 27.6% BP*)

542 An 18ct gold heart-shape diamond single-stone ring.

Estimated diamond weight 0.50ct, G-H colour, SI clarity.
Hallmarks for Birmingham. Ring size L. 3gms.
£700-900 (plus 27.6% BP*)

543 A pair of brilliant-cut diamond halo cluster earrings.

Principal diamonds estimated total weight 1ct, L-tinted colour, VS clarity.
Diameter 0.9cm. 2.6gms.
£1,000-1,500 (plus 27.6% BP*)

544 A tanzanite and diamond dress ring.

Tanzanite weight 4.02cts, stamped to band.
Total diamond weight 0.67ct, estimated G-I colour, VS-SI clarity.
Stamped Pt900. Ring size M. 8.1gms.
£1,400-2,000 (plus 27.6% BP*)

545 A sapphire and baguette-cut diamond cocktail ring.

Sapphire calculated weight 2.63cts, based on estimated dimensions of 8.7 by 5.5 by 5.1mms.
Estimated total diamond weight 2cts, G-H colour, VS clarity.
Ring size N. 12.2gms.
£1,800-2,400 (plus 27.6% BP*)

546 A Burmese sapphire and diamond cluster ring.

With report 116005, dated 29th January 2021, from SSEF, stating 1.92cts, Burma (Myanmar), no heat.
Estimated total diamond weight 1.25cts, G-I colour, VS-SI clarity.
Stamped 750. Ring size O. 6.1gms.
£1,500-2,000 (plus 27.6% BP*)

547 A sapphire and diamond bracelet.

Sapphire calculated weight 2.11cts, based on estimated dimensions of 9.2 by 7.2 by 3.8mms.
Estimated total diamond weight 3.50cts, H-tinted colour, SI clarity.
Stamped 750. Length 17.5cms. 32.8gms.
£2,500-3,000 (plus 27.6% BP*)

548 A sapphire and diamond necklace.

Sapphire calculated weight 4.39cts, based on estimated dimensions of 11.3 by 8.9 by 5.2mms.
Estimated total diamond weight 2cts, H-K colour, VS2-SI2 clarity.
Stamped 750. Length 45cms. 54.1gms.
£3,800-4,800 (plus 27.6% BP*)

549 An 18ct gold tanzanite and diamond cluster ring.

Tanzanite weight 6.60cts.
Total diamond weight 1.35cts, G-J colour, SI1-P1 clarity.
Hallmarks for Birmingham. Ring size O. 6.4gms.
£3,000-4,000 (plus 27.6% BP*)



550 An 18ct gold brilliant-cut diamond split cross pendant, on chain, by Gucci.

Estimated total diamond weight 0.25ct, G-H colour, VS clarity.
Hallmarks for London.
Length of pendant 2.8cms. Length of chain 41cms. 8.6gms.
£500-700 (plus 27.6% BP*)

551 A brilliant-cut diamond and aquamarine cabochon three-stone ring.

Estimated diamond weight 0.40ct, H-I colour, VS clarity.
Stamped Platinum. Ring size I. 10.7gms.
£600-800 (plus 27.6% BP*)

552 An aquamarine, brilliant-cut diamond and seed pearl cluster pendant, with chain.

Aquamarine weight 0.93ct.
Total diamond weight 0.378cts.
Stamped Au750 and 750.
Length of pendant 2.8cms. Length of chain 40cms. 4.5gms.
£650-850 (plus 27.6% BP*)

553 A pair of aquamarine and diamond cluster drop earrings.

Aquamarine total weight 3.70cts.
Total diamond weight 0.66ct.
Stamped Au750. Length 2.3cms. 4.3gms.
£700-900 (plus 27.6% BP*)

554 An aquamarine and diamond ring.


Aquamarine calculated weight 3.36cts, based on estimated dimensions of 11.7 by 8 by 4.9mms.
Estimated total diamond weight 0.20ct.
Stamped Plat. Ring size M1/2. 6.1gms.
£900-1,400 (plus 27.6% BP*)

555 An opal and vari-cut diamond dress ring.

Opal weight 3.04cts.
Total diamond weight 0.78ct.
Stamped Pt900. Ring size M. 11.1gms.
£800-1,200 (plus 27.6% BP*)

556 An 18ct gold brilliant-cut diamond cross pendant, by Theo Fennell, with non-designer chain.

Total diamond weight 2.08cts, estimated G-H colour, VS clarity.
Pendant with hallmarks for London. Chain stamped 750.
Length of pendant 4cms. Length of chain 44cms. 16.2gms.
£1,000-1,500 (plus 27.6% BP*)

557  A brilliant-cut diamond single-stone ring, with similarly-cut diamond sides.

With report 09005431010, dated **2nd April 2009**, from HRD Antwerp, stating 0.58ct, E colour, VS2 clarity.
Non-principal diamonds total weight 0.18ct.
Stamped 18K 750. Ring size M. 3.2gms.
£1,200-1,800 (plus 27.6% BP*)

558 An 18ct gold aquamarine and diamond cluster ring.

Aquamarine weight 7.45cts.
Total diamond weight 0.41ct.
Hallmarks for Birmingham. Ring size O. 5.9gms.
£1,500-2,000 (plus 27.6% BP*)

559 A pair of pavé-set diamond hoop earrings.

Estimated total diamond weight 2.50cts, H-I colour, VS-SI clarity.
Stamped 750. Length 1.4cms. 8.3gms.
£1,600-2,200 (plus 27.6% BP*)

560 A brilliant-cut diamond line bracelet.

Estimated total diamond weight 8.20cts, G-I colour, SI2-P1 clarity.
Length 17.5cms. 13.3gms.
£4,000-6,000 (plus 27.6% BP*)

558



552



556



551



550



555



553



559



554



557



560



561 A late 19th century silver and gold old-cut diamond and sapphire fly stickpin.

Sapphire calculated weight 1.59cts, based on estimated dimensions of 7.5mms by 4.8mms by 4.7mms.

Length of stickpin head 1.8cms. 3gms.

£150-200 (plus 27.6% BP*)

562 An early 20th century gold sapphire and old-cut diamond three-stone ring.

Sapphire calculated weight 1.49cts, based on estimated dimensions of 7.3mms by 7.3mms by 3.5mms.

Estimated total diamond weight 0.65ct, H-I colour, SI clarity.

Ring size N1/2. 3.6gms.

£150-200 (plus 27.6% BP*)

563 A 1970's gold old-cut diamond and sapphire three-stone ring.

Estimated diamond weight 0.50ct, H-I colour, P1 clarity.

Partial hallmarks, dated 1975.

Ring size N1/2. 4.6gms.

£200-300 (plus 27.6% BP*)

564 A late Victorian silver and gold, sapphire and vari-cut diamond brooch.

May be worn as a pendant.

Estimated total old-cut diamond weight 0.45ct, G-I colour, VS-SI clarity.

Diameter 3cms. 6.1gms.

£300-400 (plus 27.6% BP*)

565 A pair of early 20th century silver and gold old-cut diamond stylised anchor earrings, with later surmounts.

Estimated total diamond weight 1.60cts, I-J colour, VS2-SI1 clarity.

Length 3.4cms. 3.8gms.

£300-400 (plus 27.6% BP*)

566 A 1960's 18ct gold sapphire and single-cut diamond cluster ring.

Sapphire calculated weight 1.25cts, based on estimated dimensions of 7.4 by 6.3 by 3.2mms.

Estimated total diamond weight 0.15ct, H-I colour, VS clarity.

Hallmarks for Birmingham, 1967. Ring size N. 3.9gms.

£150-200 (plus 27.6% BP*)

567 A late 19th century silver and gold sapphire and old-cut diamond floral pendant.

Sapphire calculated weight 0.68ct, based on estimated dimensions of 6.5mms by 5mms by 2.5mms.

Estimated total diamond weight 0.80ct, H-I colour, SI clarity.

Length 2.8cms. 2.4gms.

£300-400 (plus 27.6% BP*)

568 A 18ct gold old-cut diamond cluster ring, by Garrard.

Principal diamond estimated weight 0.65ct, I-J colour, SI1-P1 clarity.

Estimated total diamond weight 1.15cts.

Hallmarks for London, 1997. Ring size J1/2. 4gms.

£450-650 (plus 27.6% BP*)

569 A late 19th century silver and gold old-cut diamond floral brooch.

Estimated total diamond weight 2.45cts, H-J colour, VS2-SI1 clarity.

Length 6.3cms. 22.2gms.

£800-1,200 (plus 27.6% BP*)

570 A late 19th century silver and gold old-cut diamond crescent brooch.

Estimated total diamond weight 2.30cts, H-I colour, SI clarity.

Length 3.6cms. 12gms.

£1,000-1,500 (plus 27.6% BP*)

571 A late 19th century silver and gold, ruby, sapphire and old-cut diamond butterfly clip.

Estimated total diamond weight 0.40ct.

Length 3.2cms. 8.4gms.

£1,200-1,800 (plus 27.6% BP*)

572 A late 19th century silver and gold old-cut diamond drop necklace, with later 18ct gold back-chain.

Estimated total diamond weight 6cts, I-K colour, SI1-P1 clarity.

Chain stamped 18k.

Length of drop 5.8cms. Wearable length of necklace 34.5cms.

20.4gms.

£3,000-4,000 (plus 27.6% BP*)

571



561



570



568



572



564



569



563



567



566



565



562



573 A late Victorian silver and gold old-cut diamond lover's knot brooch.

Estimated total diamond weight 0.60ct, H-I colour, VS2-SI1 clarity.
Length 2.2cms. 2.7gms.

£200-300 (plus 27.6% BP*)

574 An early 20th century platinum and 18ct gold vari-cut diamond cluster ring.

Principal diamond estimated weight 0.40ct, G-H colour, SI2-P1 clarity.

Estimated total diamond weight 1.15cts.
Stamped 18ct and PLAT. Ring size P. 3.2gms.

£500-700 (plus 27.6% BP*)

575 An early 20th century 18ct gold graduated old-cut diamond three-stone ring.

Estimated total diamond weight 1.35cts, H-J colour, SI2-P1 clarity.
Stamped 18ct. Ring size N. 3.8gms.

£500-700 (plus 27.6% BP*)

576 A platinum brilliant and old-cut diamond cross ring.

Estimated total diamond weight 1.70cts, H-I colour, VS2-SI1 clarity.
Hallmarks for Birmingham, 1986. Ring size P. 4.7gms.

£900-1,400 (plus 27.6% BP*)

577 A late 19th century silver and gold, pearl and rose-cut diamond brooch.

Length 5.1cms. 8.1gms.
Pearls untested for natural colour origin.

£700-900 (plus 27.6% BP*)

578 A mid 20th century platinum sapphire and diamond cluster ring.

Estimated total diamond weight 1ct, G-H colour, SI clarity.
Stamped Platinum. Ring size J1/2. 4gms.

£1,600-2,200 (plus 27.6% BP*)

579 An early 20th century platinum and gold old and single-cut diamond pendant, on later chain.


Estimated total diamond weight 2.20cts.
Length 46.5cms. 13gms.

£1,500-2,000 (plus 27.6% BP*)

580 An early 20th century old-cut diamond horseshoe brooch.

Estimated total diamond weight 3.60cts, G-I colour, VS2-P1 clarity.
Length 4.7cms. 13.3gms.



£2,800-3,200 (plus 27.6% BP*)

581  A late 19th century old-cut diamond floral brooch, set en tremblant.

Estimated total diamond weight 5.15cts.
Length 8cms. 12.9gms.

With fitted Garrard & Co. case.

£2,500-3,000 (plus 27.6% BP*)

582   An early 20th century graduated natural pearl single-strand necklace, with brilliant-cut diamond barrel clasp.

With report 21465, dated 27th March 2022, from The Gem and Pearl Laboratory, stating natural, saltwater, 8.6 to 3mms.

Estimated total diamond weight 0.90ct, G-H colour, VS-SI clarity.
Length 46cms. 15.7gms.

With Wartski case.

£4,000-6,000 (plus 27.6% BP*)

583 A pair of late 19th century silver and gold old-cut diamond floral earrings.

Estimated total diamond weight 4.50cts.
Principal diamonds estimated total weight 2cts, I-J colour, VS clarity.

Length 2.2cms. 10.9gms.

£5,000-7,000 (plus 27.6% BP*)

584 A brilliant-cut diamond single-stone ring.

Estimated diamond weight 4.40cts, M-tinted colour, SI clarity.
Stamped 900 PLAT, 100 IRID. Ring size S. 6.2gms.

£12,000-18,000 (plus 27.6% BP*)



581



582



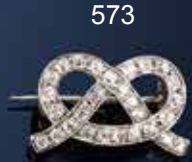
578



574



584



573



579



577



576



583



575



580

585 A 19th century 15ct gold blue and white enamel brooch, with rose-cut diamond foliate highlight.

Stamped 15ct.
Length 2.8cms. 5.3gms.
£120-180 (plus 27.6% BP*)

586 A graduated pearl single-strand necklace, with late Georgian gold rose-cut diamond foliate clasp.

Length 40.5cms. 7.4gms.
Pearls untested for natural origin.
£400-600 (plus 27.6% BP*)

587 An early to mid 19th century gold floral rose-cut diamond, split pearl and blue enamel brooch.

Length 3.2cms. 6.8gms.
£250-350 (plus 27.6% BP*)

588 An early 19th century gold, rose-cut diamond giardinetti, blue enamel and split pearl brooch.

Length 2.8cms. 10.4gms.
£250-350 (plus 27.6% BP*)

589 An early to mid 19th century gold, orange topaz and split pearl floral cluster ring.

Approximate ring size I. 2.7gms.
£250-350 (plus 27.6% BP*)

590 An early 19th century silver and gold, foil back navette-shape citrine and diamond point cluster ring.

Ring size P1/2. 4.6gms.
£200-300 (plus 27.6% BP*)

591 A late Georgian silver and gold old-cut diamond two-row ring.

Estimated total diamond weight 0.70ct.
Ring size I. 2.2gms.
£200-300 (plus 27.6% BP*)

592 A late Georgian silver and gold garnet and diamond point ring.

Ring size J. 2.5gms.
£200-300 (plus 27.6% BP*)

593 A 19th century silver mounted carnelian intaglio ring, carved to depict Hermes.


Approximate ring size L. 8.2gms.
£200-300 (plus 27.6% BP*)

594 A Georgian gold sepia mourning brooch depicting an urn with anchor beneath a weeping willow tree, the white enamel surround reading 'MARY SEWELL OB: 12 JULY 1779 AE: 20'.

Length 2.2cms. 3.9gms.
£150-200 (plus 27.6% BP*)

595 A late 19th century 15ct gold padlock clasp, with central garnet and snake surmount.

Length 3.3cms. 10gms.
£400-600 (plus 27.6% BP*)

596  A mid 19th century gold and silver rose-cut diamond floral necklace, with detachable drop, the reverse converting to a bracelet.

Foreign marks.
Length of combined necklace components 39cms.
Length of drop 2.7cms. 27.6gms.
With fitted Harvey & Gore case.
£4,500-5,500 (plus 27.6% BP*)

595



588



587



590



596



585



592



593



589



594



591



586



Fellows

Established 1876

Sale Results For Fine Jewellery : 31/03/2022

1	£1,500	55	£1,000	112	£2,800	168	£560	242	£1,900
2	£740	57	£1,400	113	£1,500	169	£600	245	£480
3	£960	58	£3,200	115	£5,000	172	£980	246	£540
4	£400	59	£5,900	117	£480	176	£4,300	247	£920
5	£1,300	61	£940	118	£600	177	£720	248	£760
6	£920	62	£720	119	£700	178	£820	250	£980
7	£680	63	£1,000	120	£420	179	£880	251	£660
8	£640	65	£2,500	121	£1,100	180	£1,000	252	£1,200
9	£1,300	66	£2,100	122	£280	181	£900	254	£2,300
10	£1,600	67	£3,300	123	£620	182	£1,800	256	£5,600
11	£900	69	£3,800	124	£460	183	£1,700	257	£500
12	£3,100	70	£5,100	125	£800	184	£1,700	258	£600
13	£680	71	£190	126	£660	185	£1,900	259	£720
15	£780	72	£240	127	£1,500	186	£960	260	£780
16	£860	73	£220	128	£1,900	188	£2,000	264	£1,700
17	£660	75	£560	129	£360	189	£840	265	£960
19	£3,300	76	£1,400	130	£380	191	£1,300	266	£2,200
20	£5,800	77	£1,800	131	£460	192	£400	267	£1,600
21	£1,100	78	£2,700	132	£1,300	193	£460	268	£4,000
22	£2,000	79	£1,300	133	£960	194	£1,100	269	£540
23	£460	81	£240	134	£2,200	196	£2,200	270	£720
24	£2,000	82	£500	136	£1,700	197	£4,000	271	£620
26	£560	83	£280	137	£3,000	200	£5,700	272	£900
28	£1,100	84	£400	139	£3,100	202	£980	273	£680
31	£860	85	£520	141	£460	203	£920	275	£940
32	£900	86	£380	142	£920	207	£1,100	279	£2,500
33	£3,300	87	£680	143	£880	208	£680	280	£2,200
35	£3,100	88	£680	144	£980	209	£960	281	£420
37	£240	90	£3,100	145	£2,200	211	£1,500	282	£860
38	£620	91	£4,500	147	£940	212	£8,100	283	£500
39	£320	92	£8,000	149	£1,000	216	£800	284	£600
40	£800	93	£720	151	£3,100	217	£940	286	£620
41	£720	94	£860	152	£3,200	218	£1,100	287	£1,200
42	£860	95	£920	153	£680	219	£1,500	288	£1,000
43	£1,200	96	£3,000	154	£860	221	£2,000	290	£1,000
44	£2,800	97	£820	155	£1,100	222	£2,700	291	£1,400
45	£1,400	98	£880	156	£840	224	£3,300	292	£4,600
46	£880	100	£1,400	157	£1,200	225	£400	293	£420
47	£4,900	103	£2,700	158	£1,100	226	£820	294	£620
48	£2,400	105	£920	159	£1,500	227	£700	295	£1,500
49	£460	106	£560	160	£5,000	231	£4,000	296	£1,300
50	£380	107	£480	161	£6,300	232	£1,400	297	£2,100
51	£420	108	£560	162	£10,500	234	£5,900	298	£2,800
52	£720	109	£1,000	163	£24,000	239	£820	299	£1,300
53	£1,600	110	£3,100	167	£500	240	£1,200	300	£1,900

Fellows

Established 1876

Sale Results For Fine Jewellery : 31/03/2022

301	£4,100	378	£840	453	£1,000	520	£820	604	£400
302	£15,000	379	£1,000	454	£960	521	£1,000	605	£480
304	£8,100	383	£1,400	455	£2,400	522	£960	606	£280
306	£780	384	£2,500	459	£680	524	£880	607	£460
307	£820	387	£120	463	£2,300	527	£2,500	608	£460
308	£1,200	389	£480	465	£920	530	£4,100	610	£1,300
313	£7,100	390	£760	466	£5,600	531	£280	612	£640
314	£7,300	391	£900	468	£6,600	532	£580	613	£540
315	£9,000	393	£1,900	469	£10,000	533	£500	616	£480
317	£5,800	396	£1,700	471	£440	534	£900	617	£540
318	£3,100	397	£2,100	472	£440	535	£2,000	618	£420
321	£2,100	399	£460	473	£600	536	£1,700	619	£2,200
325	£960	400	£500	475	£480	537	£720	621	£640
326	£1,100	401	£460	476	£440	538	£1,300	622	£460
327	£1,900	402	£340	477	£720	539	£1,900	623	£500
328	£480	403	£280	478	£700	542	£3,200	626	£2,500
329	£660	404	£1,200	480	£680	545	£940	628	£100
334	£780	405	£660	481	£2,200	546	£600	629	£180
336	£1,200	406	£460	483	£840	547	£860	630	£600
338	£2,000	408	£760	484	£940	549	£700	631	£740
339	£1,700	409	£1,200	485	£700	550	£1,800	632	£520
343	£760	410	£3,800	489	£1,700	551	£1,500	633	£380
344	£720	411	£460	491	£1,500	552	£1,900	634	£520
346	£940	412	£3,000	492	£2,200	553	£2,500	635	£380
348	£1,200	413	£1,600	493	£2,800	555	£1,400	636	£840
349	£1,300	414	£500	494	£3,800	556	£320	637	£620
350	£2,800	415	£360	495	£600	557	£1,800	638	£620
353	£660	417	£700	496	£740	559	£1,900	640	£580
354	£1,900	418	£580	497	£720	560	£3,500	641	£160
357	£980	419	£700	498	£880	564	£2,400	642	£920
360	£1,800	420	£2,000	499	£560	567	£680	643	£620
361	£2,700	421	£920	501	£760	568	£820	644	£260
362	£1,800	423	£760	502	£660	570	£1,200	645	£860
363	£2,800	424	£700	503	£1,200	574	£960	646	£1,600
364	£5,600	426	£720	505	£1,400	575	£1,600	647	£700
365	£880	429	£1,700	508	£600	577	£1,800	648	£560
366	£1,000	431	£2,100	509	£380	580	£360	649	£1,900
367	£1,700	438	£1,100	510	£420	584	£980	650	£2,900
369	£3,200	440	£960	511	£1,600	591	£2,800	651	£400
371	£3,700	443	£1,500	513	£1,100	592	£800		
372	£4,500	445	£2,600	514	£980	593	£480		
373	£7,400	447	£1,600	515	£1,200	594	£580		
375	£480	449	£780	516	£1,600	595	£1,900		
376	£360	450	£500	517	£1,300	600	£1,200		
377	£580	452	£920	519	£400	601	£1,300		

Fellows

Established 1876

Upcoming Auctions

May

The Gemstone Sale

Ends Monday 30th from 9am

June

The Designer Collection

Ends Monday 6th from 10am

Jewellery | Day One

Ends Tuesday 7th from 9am

Jewellery | Day Two

Ends Wednesday 8th from 9am

Pawnbrokers Jewellery & Watches

Thursday 9th at 11am

Watches & Watch Accessories

Ends Monday 13th from 9am

Silver, Coins & Medals

Ends Tuesday 14th from 10am

Antiques & Collectables

Ends Wednesday 15th from 10am

Jewellery | Day One

Ends Tuesday 21st from 9am

Jewellery | Day Two

Ends Wednesday 22nd from 9am

Pawnbrokers Jewellery & Watches

Thursday 23rd at 11am

Jewellery | Day One

Ends Tuesday 28th from 9am

Jewellery & Costume Jewellery | Day Two

Ends Wednesday 29th from 9am

Dates are subject to change, please check the website for the definitive auction list.

Fellows recommend that all bidders and buyers read our conditions of buying and buyer's premium available on our website.

For further information please contact:

Jewellery

Penelope Gilliver

penelope@fellows.co.uk

0121 212 2131

Watches

Michael Jagiela

michaelj@fellows.co.uk

0121 212 2131

Silver & Coins

Alison Jakeway

alisonj@fellows.co.uk

0121 212 2131

Antiques & Fine Art

Kevin Jackson

kevin@fellows.co.uk

0121 212 2131

Fellows

Established 1876

Commission Bidding Slip

Thursday 26th May 2022

Fine Jewellery

Please bid on my behalf for the lot(s) shown below.

The bids will be executed as cheaply as is permitted by other bids in the room or reserves.

I have read and agree to comply with the Conditions of Sale as printed in the catalogue.

Any account for items purchased on my behalf will be settled within 24 hours of the sale and the items collected within two days of sale.

Please complete in block capitals.

Name

Address

Postcode

Telephone

Email

Signed Date

Lot	Price	Lot	Price	Lot	Price	Lot	Price

Buyer's Premium

On the first £100,000 of the Hammer Price (of any individual Lot) the Buyer will pay the Hammer Price and a premium of 23% (plus VAT) or 27.6% (inclusive of VAT). On the excess over £100,000 of the Hammer Price (of any individual Lot), the Buyer will pay the Hammer Price and a premium of 15% (plus VAT) or 18% (inclusive of VAT).
 Lots prefixed with * will carry VAT at 20% on the hammer price.

Please note the bidding increments

£50 - £100	£5 increments
£100 - £200	£10 increments
£200 - £1,000	£20 increments
£1,000 - £10,000	£100 increments
Over £10,000	£1,000 increments

Please note that any bids that do not comply with these increments will be **ROUNDED UP** to the next increment.

Fellows Auctioneers Ltd

Terms and Conditions

Fellows Auctioneers Ltd carries on business, including the conduct of Auctions, on the following general conditions. This includes business with Bidders, Buyers, Vendors, consignors, users of this website, and with all those present on the Premises prior to or in connection with an Auction (all as hereinafter defined).

1. INTRODUCTION

1.1 The following defined terms are used in these Conditions :

"Auction" means any Auction conducted by Fellows, either at their premises or elsewhere (including any internet-based auctions);

"Auctioneer" means Fellows or its authorised Auctioneer, as appropriate;

"Bidder" means a bidder at an Auction, including bidders personally present at the venue and those bidding by telephone or over the internet or otherwise;

"Buyer" means the bidder whose bid was the last bid when the Auctioneer brings down the hammer;

"Conditions" means these terms and conditions;

"Consigned Property" means the items consigned by the Vendor to Fellows for offer at an Auction;

"Deliberate Forgery" means an imitation made with the intention of deceiving as to authorship, origin, date, age, period, culture or source but which is unequivocally described by Fellows in the catalogue as being the work of a particular creator and which at the date of the sale had a value materially less than it would have had if it had been in accordance with the description;

"Fellows" means Fellows Auctioneers Ltd;

"Hammer Price" means the level of bidding reached (at or above any reserve) when the Auctioneer brings down the hammer;

"Includes" means "includes but not limited to", and "including" means "including but not limited to"

"Lot" means any Consigned Property accepted by Fellows for offer at Auction;

"Stated Rate" means Fellows' published rates of commission for the time being and value added tax thereon (also available on request);

"Terms of Consignment" means any stipulated terms and rates of commission on which Fellows accepts instructions from Vendors [or their agents];

"Total Amount Due" means the Hammer Price in respect of the Lot sold together with any premium, commission, value added tax chargeable and any additional charges payable by a defaulting Buyer under these Conditions;

"Vendor" means the vendor of an item (including Consigned Property) which is submitted to Fellows for offer for sale at an Auction;

"Website" means this website;

"You" means any user of the Website.

2. WEBSITE

2.1 You may access most areas of the Website without registering your details with us. Certain areas of the Website are only open to you if you register. By accessing any part of the Website, you shall be deemed to have accepted these Conditions notice in full. If you do not accept this legal notice in full, you must leave the Website immediately.

2.2 Fellows may revise these Conditions at any time by updating this posting. You should check the Website from time to time to review the then current legal notice, because it is binding on you. Certain provisions of this legal notice may be superseded by expressly designated legal notices or terms located on particular pages at the Website.

2.3 Unless otherwise stated, the copyright and other intellectual property rights in all material on the Website (including without limitation photographs and graphical this legal notice, your permission to use the Website automatically terminates and you must immediately destroy any downloaded or printed extracts from the Website.

2.4 No part of the Website may be reproduced or stored in any other website or included in any public or private electronic retrieval system or service without Fellows' prior written permission.

2.5 Any rights not expressly granted in these Conditions are reserved.

3. VISITOR MATERIAL AND CONDUCT

3.1 Other than personally identifiable information, which is covered under our Privacy Policy, any material you transmit or post to the Website shall be considered nonconfidential and non-proprietary. Fellows shall have no obligations with respect to such material. Fellows and its designees shall be free to copy, disclose, distribute, incorporate and otherwise use such material and all data, images, sounds, text and other things embodied therein for any and all commercial or non-commercial purposes.

3.2 You are prohibited from posting or transmitting to or from the Website any material: that is threatening, defamatory, obscene, indecent, seditious, offensive, pornographic, abusive, liable to incite racial hatred, discriminatory, menacing, scandalous, inflammatory, blasphemous, in breach of confidence, in breach of privacy or which may cause annoyance or inconvenience; or for which you have not obtained all necessary licences and/or approvals; or which constitutes or encourages conduct that would be considered a criminal offence, give rise to civil liability, or otherwise be contrary to the law of or infringe the rights of any third party, in any country in the world; or which is technically harmful (including, without limitation, computer viruses, logic bombs, Trojan horses, worms, harmful components, corrupted data or other malicious software or harmful data).

3.3 You may not misuse the Website (including, without limitation, by hacking).

3.4 Each registration is for a single user only. Fellows does not permit you to share your user name and password with any other person nor with multiple users on a network.

3.5 Responsibility for the security of any passwords issued rests with you.

4. THE VENDOR

4.1 Fellows shall act as agent of the Vendor only. Any contract for the sale of a Lot will be formed between the Vendor and the Buyer.

4.2 The Vendor warrants and represents to Fellows and the Buyer that the Vendor is the sole and true owner of the Consigned Property or is properly authorised by the sole and true owner to consign it for sale and is able to transfer good and marketable title to the property free from any third party claims. The Vendor warrants and representatives that the Vendor has revealed all pertinent information that the Vendor possesses about the items, including in relation to any repairs or alterations that may have been carried out. The Vendor shall indemnify Fellows and the Buyer against any loss and expense caused by any breach of this clause 4.2.

4.3 The Vendor shall be entitled to place prior to the Auction a reserve on any Lot, being the minimum Hammer Price at which Lot may be sold. Reserves must be reasonable and Fellows may decline to offer goods which in Fellows' opinion would be subject to an unreasonably high reserve (in which case goods carry the storage and insurance charges stipulated in the terms of consignment). Reserves will not be accepted on items with a bottom estimate less than £300. The Auctioneer also reserves the right not to accept items which they deem to be unsuitable for Auction. Any estimate given shall be an opinion and is not an undertaking of any kind.

4.4 A reserve once set cannot be changed except with the written prior consent of Fellows.

4.5 Where a reserve has been placed only Fellows may bid on behalf of the Vendor.

4.6 The Vendor authorises Fellows to deduct commission from any sold items at a rate of 15% (plus VAT) on any item with a hammer price of £3,000 (or under) or 12.5% (plus VAT) on items over £3,000. Loss or liability for damage will be charged at a rate of 1.5% (plus VAT) calculated on the hammer price. A Marketing fee of £10 (plus VAT) will be charged for each Lot, if unsold we will charge a nominal handling fee of £5 (plus VAT). All items below £35 are subject to a minimum fee of £5 (plus VAT) per Lot.

4.7 Fellows will pay the Hammer Price achieved for the Lot (less its commission and applicable fees in accordance with clauses 4.6, 9.2 and 9.3), to the Vendor on receipt of payment of the Total Amount Due in full by the Buyer.

4.8 The Vendor authorises Fellows in their discretion to negotiate a sale by private treaty in the case of a Lot unsold at Auction, in which case the same charges will be payable as if the Lot had been sold at Auction.

4.9 Fellows do not themselves undertake the collection of any items but may, as the Vendor's agent, instruct a contractor on behalf of the Vendor. Fellows accepts no liability for the actions of such contractor who contracts with the Vendor direct.

4.10 Fellows disclaims all liability for items delivered to their saleroom without sufficient sale instructions, and reserves the right to make a minimum warehousing charge of [£1.00] per item per day. Unsold items are subject to the same charges if the Vendor does not remove them within a reasonable time of notification. If not removed within three weeks Fellows reserves the right to sell the items and defray charges from any net proceeds of sale or at the Vendor's expense to consign them to the local authority for disposal. Fellows disclaims any liability for default by the Buyer or for paying out the Vendor before receiving payment by the Buyer.

4.11 Subject to clause 4.9, Fellows holds all items on their premises and in their custody covered against the risks of fire, burglary and water damage on the scale of charges notified in the terms of consignment and payable by the Vendor up to the date of any sale and (in Fellows' discretion) the Buyer thereafter until collection.

4.12 The right of Fellows to bid on behalf of the Vendor is expressly reserved. The Vendor acknowledges that Lots are sold subject to the stipulations of these Conditions in their entirety and on the Terms of Consignment as notified to consignors at the time of the entry of the Lot.

4.13 The Auctioneer reserves the right to dispose of any item that in their opinion is unsaleable. Items, including electrical goods and soft furnishings, which do not comply with current legislation will not be offered at Auction.

4.14 Any items unsold after an Auction will be reoffered in a subsequent Auction at a reduced reserve to be agreed within seven days. The Auctioneer may request the removal of an item if a reduced price cannot be agreed; items not removed within 14 days will be subject to a storage charge.

4.15 A charge of 10% (plus VAT) based on the middle estimate – plus any other charges incurred – may be levied for any Lot withdrawn by the Vendor from offer at an Auction. If the item has to be returned by post (or any other method) the Vendor will be responsible for this charge. These charges are to be paid before the item is returned.

4.16 By submitting the item to Fellows for offer at Auction, the Vendor agrees to the Terms of Consignment and authorises Fellows to deduct the specified charges.

5. PUBLICITY

5.1 Any catalogue and buyer guides are provided for information only and do not form part of these Conditions. The catalogue and the buyer guides may contain additional terms and conditions.

5.2 Fellows reserve the right to use any photographs, background information, and research for publicity purposes both before and after the sale.

6. THE AUCTION

6.1 Any Auction shall be conducted at the absolute discretion of the Auctioneer.

6.2 The Auctioneer shall conduct the Auction with reasonable skill and care. For example, what constitutes a bid shall be at the absolute discretion of the Auctioneer, acting with reasonable skill and care.

6.3 The Auctioneer shall have the right to refuse any bid which does not exceed the previous bid by at least 10% or by such greater proportion as the Auctioneer shall in his or her absolute discretion direct.

6.4 Where two or more bids at the same level are simultaneously received by the Auctioneer, the Auctioneer at his absolute discretion shall determine which bid to prefer. Subject to the foregoing, where two or more bids at the same level are simultaneously received by the Auctioneer, any bid by a Bidder personally present at an Auction shall take preference over any bid submitted by telephone or over the internet. Any bid made or accepted by telephone or over the internet shall be deemed to have been made only if received by the Auctioneer.

- 6.5 Fellows shall have the right, at its absolute discretion, to refuse admission to its premises or attendance at (or participation in) any Auction by any person.
- 7. BIDDERS**
- 7.1 Bidders may be required to register their particulars. Bidders attending in person may be required to satisfy Fellows' security arrangements before entering any part of the premises to view or bid.
- 7.2 You accept full liability for all bids submitted via your My Fellows account. Once a bid has been made by a Bidder on our website, the bid can be lowered or increased up until 9am on the day of the auction. You must sign into your My Fellows account to do this and you will receive an email confirmation for any changes made. Should a bid be placed in error on the website you must contact Fellows immediately. Failure to contact Fellows before the auction takes place will result in liability for the full payment of the item.
- 7.3 Bidders using the live bidding facility on www.fellows.co.uk are agreeing to the terms and conditions of sale for Fellows. Any successful bids using the live bidding facility will be subject to the usual Buyer's Premium, plus VAT.
- 7.4 Subject to clause 6.3, the highest Bidder at the Hammer Price shall be the Buyer. Any dispute about a bid shall be settled at the Auctioneer's absolute discretion.
- 7.5 Bidders are strongly encouraged to attend the Auction in person. Bidders shall be responsible for any decision to bid for a particular Lot and shall be deemed to have carefully inspected and satisfied themselves as to its condition. Neither Fellows nor its employees or agents shall be responsible for any neglect or default in doing or failing to do so.
- 7.6 Bidders are given ample opportunities to view and inspect before any sale and prospective Buyers must satisfy themselves as to all such matters. Neither Fellows or its employees or agents nor the Vendor accept liability for the correctness of such opinions and all conditions and warranties, express, implied or statutory are hereby excluded.
- 8. THE BUYER**
- 8.1 Immediately a Lot is sold, the Buyer shall:
- (a) give to Fellows their name and address and, if requested proof of identity, and pay to Fellows the Total Amount Due.
- 8.2 [Fellows may, at its absolute discretion, agree credit terms with the Buyer before an Auction under which the Buyer may be entitled to take possession of Lots up to an agreed value in advance of payment by a stipulated future date of the Total Amount Due.]
- 8.3 Cheques shall not be acceptable by Fellows (unless Fellows in its absolute discretion permits payment by such method) nor are third party references or credit facilities with other Auction houses. If a cheque is tendered Fellows reserves the right to instruct its bank to check the Buyer's status and account balance before exercising any discretion. Any credit arrangement must be settled at least 4 days before the relevant sale. Any permitted payment by credit card shall carry an extra charge to the Buyer of such percentage of the Total Amount Due as is displayed on the premises.
- 8.4 Any payments by a Buyer to Fellows may be applied by Fellows towards any sums owing from that Buyer to Fellows on any account whatever without regard to any directions of the Buyer or his agent, whether express or implied.
- 9. THE PURCHASE PRICE**
- 9.1 On the first £100,000 of the Hammer Price (of any individual Lot) the buyer will pay the Hammer Price and a premium of 23% (Plus VAT). The said premium not being negotiable and payable by ALL Buyers. The Vendor authorises Fellows to retain beneficially the premium payable by Buyers. Value Added Tax is charged at the rate prevailing by law at the date of sale.
- 9.2 On the excess over £100,000 of the Hammer Price (of any individual Lot), the Buyer will pay the Hammer Price and a premium of 15% (plus VAT). The said premium not being negotiable and payable by ALL Buyers. The Vendor authorises Fellows to retain beneficially the premium payable by Buyers. Value Added Tax is charged at the rate prevailing by law at the date of sale.
- 9.3 Value Added Tax on the Hammer Price is imposed on all items affixed with an asterisk thus - *.
- 9.4 Buyers using the Fellows Live bidding platform will not pay any additional commission, just the buyer's premium. Buyers will pay an additional commission charge of 4.95% + VAT of the hammer price if lots are successfully purchased online via the saleroom. Buyers using Easy Live Auction can choose whether to pay a live bidding charge of 3% + VAT of the hammer price, or a fixed fee of £3 per sale. Buyers will pay a commission charge of an additional 5% + VAT of the hammer price if lots are successfully purchased online via Live Auctioneers.
- 9.5 Non UK or EU VAT registered buyers can have most classes of VAT refunded on their purchases - please note that auctioneers are under no obligation to provide VAT refunds, although many will offer this service. HMRC are the ultimate refunding authority. VAT refunds are subject to provision of statutory export/import documentation. HMRC have decreed that VAT on buyer's premium is always payable whether the buyer is domiciled in the UK, the EU or outside the EU or wherever the goods are to be sent. So auctioneers cannot refund VAT on buyer's premium if the goods are sold under normal VAT rules.
- 10. TITLE AND COLLECTION OF PURCHASES**
- 10.1 The ownership of any Lot purchased shall not pass to the relevant Buyer until they have made payment in full to Fellows of the Total Amount Due.
- 10.2 Buyers shall at their own risk and expense take away any Lot that they have purchased and paid for not later than 2 working days following the day of the Auction after which they shall be responsible for any removal, storage and insurance charges.
- 11. DEFAULT BY BUYER OR VENDOR**
- 11.1 As Fellows act as agent for the Vendor, Fellows is not responsible for default by the Vendor or the Buyer.
- 11.2 If any Lot is not paid for in full and taken away in accordance with these Conditions, or if there is any other breach of these Conditions, Fellows as agent for the Vendor shall at its absolute discretion and without prejudice to any other rights it may have, be entitled to exercise all or any of the following rights and remedies:
- (a) to proceed against the Buyer for an action for debt or damages for breach of contract;
- (b) to rescind the sale of that Lot and/or any other Lots sold by Fellows to the defaulting Buyer;
- (c) to re-sell the Lot by Auction or private treaty. If a lower Hammer Price is achieved on the re-sale than that achieved on the original sale the defaulting Buyer shall be liable for the difference (after crediting any part payment and adding any re-sale costs). Fellows will account to the Vendor for any surplus achieved on a re-sale, however, it shall only be required to account to the Vendor for any resulting deficiency in the event that it receives payment of such sum in full from the defaulting Buyer.
- (d) to remove, store and insure the Lot at the expense of the defaulting Buyer and, in the case of storage, either at Fellows' premises or elsewhere;
- (e) to charge interest at a rate not exceeding [1.5%] per month on the total amount due to the extent it remains unpaid for more than 2 working days after the sale;
- (f) to retain that or any other Lot sold to the defaulting Buyer until that Buyer pays the total amount due;
- (g) to reject or ignore bids from the defaulting Buyer at future Auctions or to impose conditions before any such bids shall be accepted;
- (h) to apply any proceeds of sale of other Lots due or in future becoming due to the defaulting Buyer towards the settlement of the total amount due and to exercise a lien on any of the Buyer's property in Fellows' possession for any purpose.
- 12. DELIBERATE FORGERIES**
- 12.1 Subject to clause 12.2, any representation or statement by Fellows (including in any catalogue) as to authorship, genuineness, origin, date, age, provenance, condition or estimated selling price is a statement of opinion only. Prospective Buyers are given ample opportunities to view and inspect before any sale and prospective Buyers must satisfy themselves as to all such matters. Neither Fellows or its employees or agents nor the Vendor accept liability for the correctness of such opinions and all conditions and warranties, express, implied or statutory are hereby excluded.
- 12.2 Any Lot which proves to be a Deliberate Forgery may be returned to Fellows by the Buyer within 21 days of the Auction provided it is in the same condition as when bought, and is accompanied by particulars identifying it from the relevant catalogue description and a written statement of defects. If Fellows is satisfied from the evidence presented that the Lot is a Deliberate Forgery Fellows shall refund the money paid by the Buyer for the Lot (but not the amount of any consequential loss, damages, expenses or interest) provided that (1) if the catalogue description reflected the accepted view of scholars and experts as at the date of sale or (2) the Buyer personally is not able to transfer a good and marketable title to Fellows.
- 13. LIMITATIONS OF LIABILITY**
- 13.1 All members of the public on the premises are there at their own risk and must note the lay-out of the accommodation and security arrangements.
- 13.2 Any indemnity under these Conditions shall extend to all actions, costs, expenses, claims and demands whatsoever suffered or incurred by the person entitled to the benefit of it and Fellows declares itself to be a trustee of the benefit of every such indemnity so far as it is expressed to be for the benefit of its employees and agents.
- 13.3 While Fellows endeavours to ensure that the information on the Website is correct, Fellows does not warrant the accuracy and completeness of the material on the Website. Fellows may make changes to the material on the Website, or to the products and prices described in it, at any time without notice. The material on the Website may be out of date, and Fellows makes no commitment to update such material.
- 13.4 The material on the Website is provided "as is", without any conditions, warranties or other terms of any kind. Accordingly, to the maximum extent permitted by law, Fellows provides you with the Website on the basis that Fellows excludes all representations, warranties, conditions and other terms which, but for this legal notice, might have effect in relation to the Website.
- 14. GENERAL**
- 14.1 Any notice to any Buyer, Vendor, Bidder or viewer may be given by first class mail or email in which case it shall be deemed to have been received by the addressee 48 hours after posting or sending. All notices to Fellows must be sent in writing and email is not acceptable.
- 14.2 Any indulgence extended to any person by Fellows notwithstanding the strict terms of these Conditions or the Terms of Consignment shall affect the position at the relevant time only and in respect of that particular concession only; in all other respects these Conditions shall be construed as having full force and effect.
- 14.3 These Conditions and any disputes or claims arising out of or in connection with it or their subject matter or formation (including non-contractual disputes or claims) are governed by and construed in accordance with the law of England.
- 14.4 The parties irrevocably agree that the courts of England have exclusive jurisdiction to settle any dispute or claim that arises out of or in connection with the Agreement or its subject matter or formation (including non-contractual disputes or claims).
- 15. SHIPPING**
- 15.1 We offer a tracked and insured shipping service for all items with the exception of those in our Antiques, Silver & Collectables sales.
- 15.2 Items posted outside of the UK will incur a £30 charge
- 15.3 Within the UK, hammer totals under £100 will incur a £10 charge
- 15.4 Hammer totals over £100 will incur a £20 charge
- 15.5 Larger items, as well as those exceeding a value of £20,000 or weighing in excess of 2kg may be subject to additional fees
- 15.6 If you have recently moved or wish to have your items sent to a different address, please contact us prior to the sale. We cannot accept alternative addresses for first-time buyers and your items will be sent the address on the ID/payment card. If you pay by bank transfer we can ship to any worldwide address of your choice.

Fellows

Established 1876

Contact Information

Directors

Stephen Whittaker BA (Hons)

Jayne Whittaker

Nicholas Challinor Halford BSc (Hons)

Departments

Customer Services

0121 212 5508

info@fellows.co.uk

Emma Davies

Claire Dodwell

Gemma Sheldon

Photography

0121 212 2131

photography@fellows.co.uk

Claire Cleaver

Polly Shave MA (Hons)

Stephen Watton BA (Hons)

Marketing

0121 212 5500

marketing@fellows.co.uk

Liam Bolland BA (Hons)

Jorden Guest MA (Hons)

Luke Poole BA (Hons)

Krishna Vara BA (Hons)

Alexandra Whittaker BA (Hons)

Nicola Whittaker Bsc (Hons), Cert. GA

London Office

0207 127 4198

london@fellows.co.uk

Laura Crook

Natasha Davis BA (Hons), FGA

Oliver Horner DGA

Isabelle Mettan-Ure

Annabel Zarandi BA (Hons)

Finance

0121 212 2131

wendy@fellows.co.uk

Wendy Butler

Angela Donnelly BA (Hons) ACMA

Samantha Fennell

Gemma Wilkes

Specialist Departments

Jewellery

0121 212 6303

jewellery@fellows.co.uk

Lindsay Beardmore FGA, DGA

Laura Boccardo MA (Hons)

Jenny Darcy BA (Hons)

Alexander Duffy BSc (Hons), FGA, DGA

Nicole Flavell-Avery BA (Hons), FGA, AJP

Helen Foster BA (Hons)

Penelope Gilliver FGA, DGA

Patricia Grant BA (Hons)

Ben Randall BA (Hons), G.G., A.J.P.

Sarah Thorneloe BSc (Hons), DGA

Amanda Zhang FGA, Msc

Watches

0121 212 5506

watches@fellows.co.uk

Laura Bishop MA (Hons)

Kes Crockett BA (Hons)

Kain Holroyd

Michael Jagiela

Steven Yambo BA (Hons)

Pawnbrokers

0121 212 6308

pawnbroker@fellows.co.uk

Connor Baker

Charlie Chitty

Amelia Moorhouse

Ross Popescu

Antiques, Silver & Collectables

0121 212 6302

antiques@fellows.co.uk

Kevin Jackson

Alison Jakeway MA MRICS

Oria Taylor-Davies BA (Hons)

Designer Collection

0121 212 6306

thedesignercollection@fellows.co.uk

Callum Charles



Birmingham Saleroom

Situated in the heart of Birmingham's Jewellery Quarter, this office can offer viewings for all of our auctions as well as free valuations.

Visit our website or please call to arrange an appointment.

Head Office & Saleroom
Augusta House
19 Augusta Street
Birmingham
B18 6JA

Telephone: 0121 212 2131
Email: info@fellows.co.uk

London Office

Fellows' London office sits in the prestigious Mayfair area and offers valuations as well as viewings for our flagship auctions.

Visit our website or please call to arrange an appointment.

London Office
29 Charles Street
Mayfair
London
W1J 5DT

Telephone: 020 7127 4198
Email: london@fellows.co.uk



Fellows

Established 1876

Head Office & Saleroom: Augusta House | 19 Augusta Street | Birmingham B18 6JA
London Office: 29 Charles Street | Mayfair | London W1J 5DT
Tel 0121 212 2131 | Tel 020 7127 4198 | www.fellows.co.uk