

Watches & Watch Accessories

Monday 13th June 2022 from 9am

Fellows

Established 1876

Watches & Watch Accessories

Monday 13th June 2022 from 9.00am

Fellows

Established 1876

Watches

Selected Wrist Watches	1 – 121
Military Watches	122 - 125
Miscellaneous Wrist Watches	126 - 258
Small Repairers Lots	259 - 402
Large Bags of Watches	403 - 442
Pocket Watches	443 - 500
Group of Pocket Watches	501- 512
Stopwatches	513 - 516
Clocks & Novelties	517 - 520
Watch Movements	521 - 525
Watch Parts	526 - 538
Watch Straps & Bracelets	539 - 550
Watch Boxes	551 - 602
Watch Display / Storage	603 - 605
Memorabilia	606 - 612

Viewing Times

Birmingham Head Office & Saleroom	
Thursday 9th June	10am-4pm
Friday 10th June	10am-4pm

Photo identification is required to gain access to the viewing.



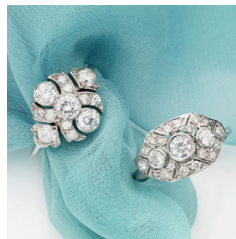
Fine Jewellery



The Designer Collection



Jewellery



Watches



Contact the department

Senior Specialist
0121 212 6308
Steven Yambo
steveny@fellows.co.uk

Virtual Viewings

Virtual viewings available by request, to book your appointment please contact info@fellows.co.uk

Fellows Live

Say goodbye to additional surcharges thanks to Fellows Live. Using our platform means you only pay the standard Buyer's Premium (plus VAT).



Free Delivery

We offer free worldwide shipping on the majority of items that we auction.

Keep your eye out for this icon and be sure to read the terms and conditions.



Free delivery on this auction.

Why Buy?

- In-depth descriptions and condition reports
- Free worldwide postage w/ free insurance
- Competitive Buyers Premium
- Guarantee authenticity
- Free live bidding
- Virtual viewings
- Sustainability

Why Sell?

- Competitive commission rates
- Free no-obligation valuations
- Worldwide customer base
- High quality photography
- Array of auction types
- Expert cataloguing

Further information

Timed Auction Bidding Increments

From	To	Increment
£0	£50	£2
£50	£100	£5
£200	£1,000	£10
£1,000	£10,000	£100
£10,000	£100,000	£500
£100,000	£1,000,000	£1,000

Important Notice

All bidders accept full liability for bids placed. Placing a bid is a legally binding obligation to buy and pay for the lot if your bid is successful. Refunds will not be given for "buyer's remorse". Please note that by submitting a bid you are agreeing to our Terms & Conditions.

Key to Symbols



Item may have export restrictions for customers outside of the EU.



Lot comes with box.



Lot comes with associated papers/warranty cards.



Lot comes with report.



Lot will carry an additional 20% VAT charge on the hammer price.



Free Delivery at Fellows

As well as offering 0% bidding surcharge via **Fellows Live** we are also delighted to be able to offer **free** worldwide delivery for the majority of items in our auctions. Please read the terms and conditions* of this offer carefully before proceeding.

Please note that any lot displaying the free shipping icon will be eligible for free shipping. **If the free shipping icon isn't displayed then normal shipping costs will apply.**

*Terms & conditions for the offer:

- Due to the size and vulnerability of the items in our Antiques, Silver & Collectables auction, we are unable to post the majority of items. Please speak to a member of the team before bidding.
- Due to the size and weight of the bags in our Costume Jewellery and Watches & Watch Accessories auctions, we are unable to post the majority of these free of charge. Please speak to a member of the team before bidding, you will be contacted after the sale with a shipping quote.
- Buyer is responsible for all customs / import charges levied against the parcel.
- Buyer is responsible for any and all import restrictions in their country / state.
- Payment is required within two working day following the auction.
- Fellows Auctioneers Ltd does not accept payment by American Express.

SELECTED WRIST WATCHES

1

BREITLING - a stainless steel Callisto wrist watch. Stainless steel case with calibrated bezel. Case width 33mm. Reference 80510. Quartz movement. Burgundy dial. Fitted to an unsigned brown leather strap with stainless steel pin buckle.

£180-260 (plus 30% BP*)

2 X

CARTIER - a Must De Cartier wrist watch. Gold plated silver case. Case width 27mm. Reference 2735, serial PL23064. Signed quartz movement. White dial. Fitted to an unsigned black alligator strap with gold plated deployant clasp.

£300-400 (plus 30% BP*)

3 X

CARTIER - a Must de Cartier wrist watch. Gold plated silver case. Case width 23mm. Numbered 025945 590004. Signed quartz calibre 690. Cream dial. Fitted to a signed brown lizard strap with gold plated pin buckle.

£250-350 (plus 30% BP*)

4

CARTIER - a Must De Cartier wrist watch. Silver case. Case width 33mm. Reference 1815 1, serial 002430. Signed quartz movement. White dial. Fitted to an unsigned black leather strap with stainless steel pin buckle.

£200-300 (plus 30% BP*)

5

CARTIER - a Must de Cartier wrist watch. Gold plated silver case. Case width 20mm. Numbered 3195800. Signed manual wind calibre 78-1. Cream dial. Fitted to an unsigned brown leather strap with signed gold plated pin buckle.

£250-350 (plus 30% BP*)

6 X

CARTIER - a Must De Cartier Tank wrist watch. Gold plated silver case. Case width 20mm. Numbered 366001 20201. Signed quartz calibre 157. Tri-colour dial. Fitted to an unsigned burgundy lizard strap with gold plated pin buckle.

£250-350 (plus 30% BP*)

7 X

CARTIER - a Must de Cartier wrist watch. Gold plated silver case. Case width 20mm. Numbered 3 014457. Signed manual wind movement. Black dial. Fitted to an unsigned black lizard strap with gold plated pin buckle.

£280-380 (plus 30% BP*)

8 X

CARTIER - a Must de Cartier wrist watch. Gold plated silver case. Case width 24mm. Numbered 18108153. Signed quartz calibre 90. Burgundy dial. Fitted to a signed burgundy lizard strap with gold plated pin buckle.

£250-350 (plus 30% BP*)

9 X

CARTIER - a Tank wrist watch. Gold plated case. Case width 23mm. Numbered 13479, 5512105. Signed manual wind movement. White dial. Fitted to an unsigned black crocodile strap with gold plated pin buckle.

£300-400 (plus 30% BP*)

10

CHANEL - a J12 bracelet watch. Ceramic case with factory diamond set calibrated bezel. Case width 39mm. Numbered D.X.14721. Signed automatic movement. White dial. Fitted to a bi-material factory diamond set bracelet with double folding clasp.

£1,200-1,800 (plus 30% BP*)

11

CORUM - a Tabogan wrist watch. Hinged stainless steel case. Case width 26mm. Reference 145.161.20, serial 620748. Signed automatic movement. Red dial. Fitted to a signed black leather strap with stainless steel pin buckle.

£350-450 (plus 30% BP*)

12

GIRARD-PERREGAUX - a Ferrari wrist watch. Gold plated case with stainless steel case back. Case width 37mm. Signed manual wind movement. Yellow dial. Fitted to an unsigned brown leather strap with gold plated pin buckle.

£100-150 (plus 30% BP*)

13

GIRARD PERREGAUX - a Gyromatic bracelet watch. Stainless steel case. Case width 33mm. Signed automatic movement. Silvered dial. Fitted to an unsigned stainless steel bracelet with folding clasp.

£50-80 (plus 30% BP*)

14

GIRARD PERREGAUX - a wrist watch. Yellow metal case, stamped .375. Case width 32mm. Signed manual wind movement. Silvered dial. Fitted to a signed brown leather strap with gold plated pin buckle.

£120-180 (plus 30% BP*)

15

JACOB & CO. - a Five Time Zone wrist watch. Stainless steel case with factory diamond set bezel. Case width 47mm. Numbered 079. Unsigned quartz movements. Mother-of-pearl dial. Fitted to a signed yellow leather strap with stainless steel deployment clasp. 47mm.

£1,100-1,600 (plus 30% BP*)

16

JACOB & CO. - a Five Time Zone wrist watch. Stainless steel case with factory diamond set bezel. Case width 40mm. Number 240. Unsigned quartz movement. Dark grey dial. Fitted to a signed yellow leather strap with stainless steel deployant clasp.

£1,400-2,000 (plus 30% BP*)

17

JACOB & CO. - a Five Time Zone wrist watch. Stainless steel case with factory diamond set bezel. Case width 40mm. Numbered A1718. Unsigned quartz movements. Fitted to a signed blue polyurethane strap with stainless steel deployant clasp.

£1,700-2,200 (plus 30% BP*)

18

JAEGER-LECOULTRE - a DuoPlan wrist watch. Stainless steel case. Case width 17mm. Numbered 61066. Manual wind movement. Black dial. Fitted to a black leather strap with nickel plated pin buckle.

£400-600 (plus 30% BP*)

BP* - Buyer's Premium of 25% (plus VAT) or 30% (VAT included)

19

JAEGER-LECOULTRE - a bracelet watch. 9ct white gold case, import hallmarked London 1969. Case width 20mm. Numbered 1148342. Signed manual wind movement. Silvered dial. Fitted to an integral 9ct white gold bracelet with folding clasp. 29gms.

£400-600 (plus 30% BP*)

20

JAEGER-LECOULTRE - a wrist watch. 9ct yellow gold case with engraved case back, hallmarked London 1954. Case width 34mm. Numbered 10595. Signed manual wind movement. Champagned dial. Fitted to an unsigned black leather strap with gold plated pin buckle.

£550-750 (plus 30% BP*)

21

LONGINES - a Dolce Vita bracelet watch. Stainless steel case. Case width 26mm. Reference L56554, serial 29379976. Unsigned quartz movement. White dial. Fitted to a stainless steel bracelet with double folding clasp.

£300-400 (plus 30% BP*)

22

LONGINES - a Dolce Vita bracelet watch. Stainless steel case. Case width 26mm. Reference L5.755.4, serial 44825178. Quartz movement. Silvered dial. Fitted to a signed stainless steel bracelet with folding clasp.

£150-200 (plus 30% BP*)

23

LONGINES - a wrist watch. Yellow metal case, stamped .375. Case width 33mm. Numbered 34580. Signed manual wind movement. Silvered dial. Fitted to an unsigned brown leather strap with gold plated pin buckle.

£150-200 (plus 30% BP*)

24

LONGINES - a V.H.P. Perpetual Calendar bracelet watch. Stainless steel case. Case width 35mm. Reference L4 722 4, serial 31141492. Unsigned quartz movement. Black dial. Fitted to a signed stainless steel bracelet with double folding clasp. Box.

£300-400 (plus 30% BP*)

25

LONGINES - a stainless steel La Grande Classique wrist watch. Stainless steel case. Case width 33mm. Reference L47094, serial 30744902. Unsigned quartz movement. Silvered dial. Fitted to an unsigned black leather strap with signed stainless steel pin buckle.

£300-400 (plus 30% BP*)

26

CURRENT MODEL: LONGINES - a Conquest bracelet watch. Stainless steel case. Case width 29mm. Reference L2.286.4, serial 50993415. Signed quartz calibre L152. Mother-of-pearl dial. Fitted to a signed stainless steel bracelet with double folding clasp. Box.

£400-600 (plus 30% BP*)

27

LONGINES - a bracelet watch. 9ct white gold case, import hallmarked London 1970. Case width 18mm. Signed manual wind movement. Silvered dial. Fitted to an integral 9ct white gold bracelet with folding clasp. 28gms.

£300-500 (plus 30% BP*)

28

LONGINES - a Presence wrist watch. Gold plated case with stainless steel case back. Case width 33mm. Numbered 24696964. Signed quartz movement. White dial. Fitted to a signed black leather strap with gold plated pin buckle. Together with another gold plated quartz Longines wrist watch.

£120-180 (plus 30% BP*)

29

LONGINES - a wrist watch. 9ct yellow gold case hallmarked London 1960. Case width 32mm. Reference 3253. Signed manual wind calibre 19.4. Silvered dial. Fitted to an unsigned brown leather strap with gold plated pin buckle.

£250-350 (plus 30% BP*)

30

LONGINES - a wrist watch. Yellow metal case, stamped 14KT. Case width 29mm. Numbered 881667. Signed manual wind movement. Silvered dial. Fitted to a signed brown leather strap with gold plated pin buckle.

£600-800 (plus 30% BP*)

31

LONGINES - a Conquest bracelet watch. Stainless steel case with factory diamond set bezel. Case width 35mm. Reference L3.280.0, serial 37304314. Signed quartz calibre L.263.2. Black dial. Fitted to a signed stainless steel bracelet with double folding clasp. Box and papers.

£350-450 (plus 30% BP*)

32

LONGINES - a bracelet watch. Gold filled case. Case width 29mm. Numbered T533715. Signed manual wind calibre 10L. Silvered dial. Fitted to an unsigned gold plated expandable bracelet.

£100-150 (plus 30% BP*)

33

LONGINES - an Admiral wrist watch. Stainless steel case. Case width 35mm. Numbered 16898058. Signed automatic movement. Silvered dial. Fitted to an unsigned brown leather strap with stainless steel pin buckle.

£250-350 (plus 30% BP*)

34

LONGINES - a Golden Wing bracelet watch. Bi-colour case. Case width 33mm. Reference L3.606.5, serial 27887562. Signed quartz calibre L.263.2. White dial. Fitted to a signed bi-colour bracelet with folding clasp. Box and papers.

Together with a bi-colour Longines bracelet watch. Box.

£100-150 (plus 30% BP*)

35

LONGINES - a wrist watch. Factory diamond set yellow metal case, stamped 14K. Case width 25mm. Numbered 603-608 682861. Signed manual wind calibre L9.4. Champagne dial. Fitted to an unsigned brown leather strap with gold plated pin buckle.

£300-400 (plus 30% BP*)

36

LONGINES - a wrist watch. Yellow metal case, stamped 750. Case width 34mm. Numbered 18601490. Signed manual wind movement. Champagne dial. Fitted to an unsigned brown leather strap with gold plated pin buckle.

£800-1,200 (plus 30% BP*)

BP* - Buyer's Premium of 25% (plus VAT) or 30% (VAT included)

37

LONGINES - a Flagship wrist watch. Stainless steel case. Case width 35mm. Numbered 1044922. Signed manual wind calibre 30LS. Silvered dial. Fitted to an unsigned black leather strap with stainless steel pin buckle.
£120-180 (plus 30% BP*)

38

LONGINES - a wrist watch. Gold plated case with stainless steel case back. Case width 25mm. Reference 41271817, serial 17854577. Signed manual wind calibre L817.4. White dial. Fitted to an unsigned brown leather strap with gold plated pin buckle.
£40-60 (plus 30% BP*)

39

LONGINES - a La Grande Classique wrist watch. Gold plated case. Case width 24mm. Reference L4 135 2, serial 28655668. Signed quartz movement. Silvered dial. Fitted to an unsigned brown leather strap with gold plated pin buckle.
£40-60 (plus 30% BP*)

40

MONTBLANC - a Meisterstruck chronograph bracelet watch. Stainless steel case with exhibition case back. Case width 38mm. Reference 7016, serial PL50845. Signed automatic calibre 4810 501. Black dial. Fitted to a signed stainless steel bracelet with double folding clasp.
£600-800 (plus 30% BP*)

41

OMEGA - a wrist watch. Gold plated case. Case width 33mm. Numbered 14371-1 14373. Signed manual wind calibre 511, numbered 16430746. Silvered dial. Fitted to an unsigned brown leather strap with gold plated pin buckle.
£140-200 (plus 30% BP*)

42

OMEGA - a De Ville wrist watch. Stainless steel case. Case width 33mm. Reference 192.0034. Signed quartz calibre 1342, numbered 42566348. Silvered dial. Fitted to an unsigned black leather strap with stainless steel pin buckle.
£120-180 (plus 30% BP*)

43

OMEGA - a bracelet watch. Gold plated case with stainless steel case back. Case width 34.5mm. Reference 166.0202. Signed automatic calibre 1012, numbered 39003436. Champagne dial. Fitted to a signed gold plated bracelet with folding clasp.
£150-200 (plus 30% BP*)

44

OMEGA - a Constellation wrist watch. Stainless steel case. Case width 35mm. Reference 168019. Signed automatic calibre 751, numbered 28030468. Silvered dial. Fitted to an unsigned black leather strap with gold plated pin buckle.
£700-900 (plus 30% BP*)

45

OMEGA - a Constellation bracelet watch. Gold capped case with stainless steel case back. Case width 34mm. Reference 2943. Signed automatic calibre 504, numbered 16569893. Silvered dial. Fitted to a signed gold plated bracelet with folding clasp.
£300-400 (plus 30% BP*)

46

OMEGA - a De Ville wrist watch. Stainless steel case. Case width 32mm. Reference 196 2432, serial 54474218. Signed quartz movement. White dial. Fitted to an unsigned black leather strap with stainless steel pin buckle. Papers.
£200-300 (plus 30% BP*)

47

OMEGA - a wrist watch. Gold filled case. Case width 30mm. Numbered 26640438. Signed manual wind movement, numbered 8605723. Silvered dial. Fitted to an unsigned black leather strap with signed gold plated pin buckle.
£80-120 (plus 30% BP*)

48

OMEGA - a Seamaster bracelet watch. Stainless steel case with gold plated bezel. Case width 33mm. Numbered 1430. Signed quartz movement. Champagne dial. Fitted to a signed bi-colour bracelet with folding clasp.
£120-180 (plus 30% BP*)

49

OMEGA - a wrist watch. 9ct yellow gold case, hallmarked London 1966. Case width 33.5mm. Numbered 131/25016. Signed manual wind calibre 601, numbered 23282742. Silvered dial. Fitted to an unsigned brown leather strap with stainless steel pin buckle.
£200-300 (plus 30% BP*)

50

OMEGA - a Constellation wrist watch. Gold capped case with stainless steel case back. Case width 34mm. Reference 168.005. Signed automatic calibre 561, numbered 21303946. Silvered dial. Fitted to an unsigned black leather strap with gold plated pin buckle. Box.
£300-400 (plus 30% BP*)

51

OMEGA - a De Ville wrist watch. Gold plated case with stainless steel case back. Case width 27mm. Reference 511.0472. Signed manual wind movement. Champagne dial. Fitted to an unsigned tan leather strap with gold plated pin buckle.
£120-180 (plus 30% BP*)

52

OMEGA - a bracelet watch. Yellow metal case, stamped 14K. Case width 20mm. Numbered 0016821. Signed manual wind calibre 620, numbered 29721695. Black diamond set dial. Fitted to an unsigned gold plated expandable bracelet.
£80-120 (plus 30% BP*)

53

OMEGA - a Genève bracelet watch. Stainless steel case. Case width 34mm. Reference 166041. Signed automatic calibre 565, numbered 31435718. Silvered dial. Fitted to an unsigned stainless steel bracelet with folding clasp.
£200-300 (plus 30% BP*)

54

OMEGA - a wrist watch. Yellow metal case, stamped 18k with poinçon. Case width 25mm. Numbered 1445361. Signed manual wind calibre 620, numbered 18220642. Silvered dial. Fitted to an unsigned black leather strap with gold plated pin buckle.
£280-360 (plus 30% BP*)

BP* - Buyer's Premium of 25% (plus VAT) or 30% (VAT included)

55

OMEGA - a Constellation wrist watch. Stainless steel case. Case width 35mm. Automatic movement. Silvered dial. Fitted to an unsigned black leather strap with base metal pin buckle. Box.

£200-300 (plus 30% BP*)

56

OMEGA - a Dynamic wrist watch. Gold plated case with stainless steel case back. Case width 30mm. Automatic movement. Tri-colour dial. Fitted to a signed black leather strap with gold plated pin buckle.

£150-200 (plus 30% BP*)

57

OMEGA - a wrist watch. 9ct yellow gold case. Case width 17mm. Numbered 5115642. Signed manual wind movement. Champagne dial. Fitted to an unsigned tan leather strap with gold plated pin buckle. Box.

£120-180 (plus 30% BP*)

58

OMEGA - a wrist watch. Stainless steel case. Case width 36mm. Numbered 2505-29. Signed manual wind movement. Black dial. Fitted to a tan leather strap with gold plated pin buckle.

£600-800 (plus 30% BP*)

59

OMEGA - a bracelet watch. Stainless steel case. Case width 17mm. Reference 511.169. Signed manual wind calibre 484, numbered 23140895. Silvered dial. Fitted to an unsigned stainless steel bracelet with folding clasp.

£60-90 (plus 30% BP*)

60

OMEGA - a Constellation wrist watch. Gold plated case with stainless steel case back. Case width 35mm. Reference 168016. Signed automatic movement, numbered 27669065. Silvered dial. Fitted to an unsigned brown leather strap with gold plated pin buckle.

£180-260 (plus 30% BP*)

61

OMEGA - a De Ville bracelet watch. Bi-colour case. Case width 32mm. Reference 396.2379. Signed quartz calibre 1479. Champagne dial. Fitted to a signed bi-colour bracelet with deployment clasp.

£150-200 (plus 30% BP*)

62

OMEGA - a Geneve wrist watch. Stainless steel case. Case width 35mm. Reference 136.070. Signed manual wind movement, numbered 30881765. Silvered dial. Fitted to an unsigned black leather strap with stainless steel pin buckle.

£180-260 (plus 30% BP*)

63

OMEGA - a wrist watch. Gold filled case. Case width 30mm. Numbered 973595. Signed manual wind movement, numbered 8126093. Silvered dial. Fitted to an unsigned brown leather strap with gold plated pin buckle.

£80-120 (plus 30% BP*)

64

OMEGA - a wrist watch. Stainless steel case. Case width 33mm. Numbered 121.001-63. Signed manual wind movement. Textured silvered dial. Fitted to an unsigned black leather strap with gold plated pin buckle.

£80-120 (plus 30% BP*)

65

OMEGA - a Genève wrist watch. Gold plated case with stainless steel case back. Case width 36mm. Reference 166.0168. Signed automatic calibre 1012, numbered 38130914. Silvered dial. Fitted to an unsigned black leather strap with gold plated pin buckle.

£120-180 (plus 30% BP*)

66

OMEGA - a Constellation bracelet watch. Stainless steel case with yellow metal bezel. Case width 33mm. Automatic movement. Silvered dial. Fitted to a signed bi-metal bracelet with folding clasp.

£200-300 (plus 30% BP*)

67

OMEGA - a Geneve wrist watch. 9ct yellow gold case with engraving to case back, hallmarked London 1968. Case width 33mm. Numbered 131/25016. Signed manual wind calibre 601, numbered 28112444. Silvered dial. Fitted to an unsigned brown leather strap with gold plated pin buckle.

£300-400 (plus 30% BP*)

68

OMEGA - a Seamaster Chronostop bracelet watch. Stainless steel case. Case width 41mm. Reference 145.008. Signed manual wind calibre 865. Black dial. Fitted to a signed stainless steel bracelet with folding clasp.

£400-600 (plus 30% BP*)

69

OMEGA - a Dynamic bracelet watch. Gold plated case with stainless steel case back. Case width 30mm. Automatic movement. Champagne dial. Fitted to a signed gold plated bracelet with folding clasp.

£150-200 (plus 30% BP*)

70

OMEGA - a Genève Megaquartz 32MHz wrist watch. Gold plated case. Case width 37mm. Reference 196.0038. Signed quartz calibre 1310, numbered 37496757. Champagne dial. Fitted to an unsigned black leather strap with gold plated pin buckle.

£200-300 (plus 30% BP*)

71

OMEGA - a Seamaster wrist watch. Stainless steel case. Case width 34mm. Reference 166.067. Signed automatic calibre 565, numbered 30300251. Silvered dial. Fitted to an unsigned black leather strap with gold plated pin buckle. Together with a gold plated Omega Seamaster wrist watch.

£60-90 (plus 30% BP*)

72

OMEGA - a De Ville bracelet watch. Gold plated case with stainless steel case back. Case width 30mm. Reference 396.1017. Signed quartz movement. White dial. Fitted to a signed bi-colour bracelet with deployment clasp.

£150-200 (plus 30% BP*)

73

OMEGA - a bracelet watch. White metal case, stamped 18K 0,750. Case width 22mm. Signed manual wind movement. Silvered dial. Fitted to an integral white metal bracelet with folding clasp, stamped 750. 37gms.

£1,000-1,500 (plus 30% BP*)

BP* - Buyer's Premium of 25% (plus VAT) or 30% (VAT included)

74

OMEGA - a Constellation bracelet watch. 18ct yellow gold case with diamond set bezel. Case width 33mm. Numbered 1960136, 3960875. Signed quartz movement. Champagne dial. Fitted to an integral 18ct yellow gold bracelet with folding clasp. 140gms.

£3,500-5,500 (plus 30% BP*)

75

OMEGA - a Ladymatic wrist watch. Yellow metal case, stamped 18K, 750 with poinçon. Case width 18mm. Numbered 551008. Signed automatic calibre 661. Champagne dial. Fitted to a black leather strap with gold plated pin buckle.

£300-400 (plus 30% BP*)

76

OMEGA - a 'Scarab' wrist watch. Stainless steel case. Case width 30mm. Numbered 9718495. Signed manual wind calibre 26.5 SOB T.2, numbered 8918744. Discoloured silvered dial. Fitted to an unsigned black leather strap with stainless steel pin buckle.

£180-260 (plus 30% BP*)

77

OMEGA - a Seamaster wrist watch. Gold plated case with stainless steel case back. Case width 33mm. Reference 196.0281. Signed quartz calibre 1337, numbered 45216285. Champagne dial. Fitted to an unsigned brown leather strap with gold plated pin buckle.

£80-120 (plus 30% BP*)

78

OMEGA - a wrist watch. 9ct yellow gold case. Case width 34mm. Quartz movement. Champagne dial. Fitted to an unsigned black leather strap with gold plated pin buckle.

£120-180 (plus 30% BP*)

79

OMEGA - a bracelet watch. 9ct yellow gold case, hallmarked London 1961. Case width 19mm. Numbered 950 140136. Signed manual wind movement. Silvered dial. Fitted to an unsigned 9ct yellow gold bracelet with folding clasp. 16gms. Box

£200-300 (plus 30% BP*)

80

OMEGA - a watch head. White metal case with factory diamond set bezel, stamped 18K. Case width 15mm. Silvered dial. 7gms.

£120-180 (plus 30% BP*)

81

OMEGA - a De Ville bracelet watch. Gold plated case. Case width 32mm. Reference 395.0875.2. Signed quartz calibre 1378. Champagne dial. Fitted to a signed bi-colour bracelet with folding clasp.

£100-150 (plus 30% BP*)

82

OMEGA - a De Ville wrist watch. Gold plated case with stainless steel case back. Case width 17mm. Automatic movement. Silvered dial. Fitted to an unsigned red leather strap with gold plated pin buckle.

£60-90 (plus 30% BP*)

83

OMEGA - a watch head. Stainless steel case. Case width 35mm. Reference 135 034. Signed manual wind calibre 267, numbered 20528592. Silvered dial. Fitted to a black leather strap with gold plated pin buckle.

£300-400 (plus 30% BP*)

84

ORIS - a Artelier Date bracelet watch. Stainless steel case with exhibition case back and gold plated bezel. Case width 40.5mm. Reference 7670, serial 3326785. Signed automatic movement. Silvered dial. Fitted to a signed bi-colour bracelet with double folding clasp.

£300-400 (plus 30% BP*)

85

ORIS - a Big Crown Pointer Date wrist watch. Stainless steel case with gold plated bezel and exhibition case back. Case width 36mm. Reference 7463B. Signed automatic movement. Silvered dial. Fitted to signed brown leather strap with stainless steel pin buckle.

£450-650 (plus 30% BP*)

86

PIAGET - a wrist watch. Yellow metal case, stamped 18K, 750. Case width 33mm. Reference 9031, serial 144464. Signed manual wind calibre 9P. Champagne dial. Fitted to an unsigned black alligator strap with yellow metal deployant clasp, stamped 750.

£1,400-2,000 (plus 30% BP*)

87

ROLEX - an Oyster Precision bracelet watch. Stainless steel case. Circa 1962. Case width 24mm. Reference 6410, serial 831898. Signed manual wind movement. Silvered dial. Fitted to a signed stainless steel riveted Oyster bracelet with Oysterclasp.

£1,000-1,500 (plus 30% BP*)

88

ROLEX - a lady's Cellini bracelet watch. 18ct yellow gold case and diamond set bezel. Case width 25mm. Numbered 811 4904. Signed manual wind calibre 1601. Champagne dial. Fitted to a signed 18ct yellow gold bracelet with folding. 54gms. Box. Please see the condition report for details of third party intervention.

£2,000-3,000 (plus 30% BP*)

89

ROLEX - a wrist watch. Stainless steel case. Case width 28mm. Reference 2284, serial 019401. Signed manual wind movement. Silvered dial. Fitted to an unsigned brown leather strap with stainless steel pin buckle.

£200-300 (plus 30% BP*)

90

ROLEX - an Oyster Perpetual Air-King bracelet watch. Circa 1971. 14ct yellow gold case. Case width 34mm. Reference 5500, serial 2666041. Signed automatic calibre 1520. Purple dial. Fitted to a yellow metal bracelet with signed 14ct gold folding clasp, hallmarked Birmingham 1973. 83gms.

£1,500-2,000 (plus 30% BP*)

91

ROLEX - an Oyster Perpetual Datejust bracelet watch. Circa 1980. 18ct yellow gold case with fluted bezel. Case width 25mm. Reference 6917, serial 6701406. Signed automatic calibre 2030. Brown dial. Fitted to a signed 18ct yellow gold President bracelet with Crownclasp. 62gms.

£3,500-5,500 (plus 30% BP*)

BP* - Buyer's Premium of 25% (plus VAT) or 30% (VAT included)

92

ROLEX - a trench style wrist watch. Silver case. Case width 32mm. Numbered 606697. Signed manual wind movement. White dial. Fitted to an unsigned brown leather strap with base metal pin buckle.
£120-180 (plus 30% BP*)

93

ROLEX - a bracelet watch. 9ct yellow gold case with engraved case back, hallmarked London 1960. Case width 20mm. Numbered 10104. Signed manual wind movement. Silvered dial. Fitted to an expandable gold plated bracelet. Box.
£200-300 (plus 30% BP*)

94

ROLEX - a bracelet watch. 18ct yellow gold case, import hallmark Glasgow 1936. Case width 19mm. Numbered 21670 2580. Signed manual wind movement. Silvered dial. Fitted to an unsigned 9ct yellow gold bracelet with expandable folding clasp. 17gms.
£200-300 (plus 30% BP*)

95

ROLEX - a Precision watch head. Yellow metal case, stamped 0,750 18K with poincon. Numbered 46 2000. Signed manual wind calibre 1400. Silvered dial. 16mm. 14gms.
£450-650 (plus 30% BP*)

96

ROLEX - an Oyster Speedking Precision wrist watch. Gold plated case with stainless steel case back. Case width 30mm. Reference 6418, serial 149354. Signed manual wind movement. Discoloured silvered dial. Fitted to an unsigned burgundy leather strap with signed gold plated pin buckle.
£800-1,200 (plus 30% BP*)

97

ROLEX - an Orchid wrist watch. 18ct yellow gold case. Case width 16mm. Numbered 2661. Signed manual wind calibre 1400. Champagne dial. Fitted to an unsigned black leather strap with gold plated pin buckle.
£360-460 (plus 30% BP*)

98

ROLEX - a trench style wrist watch. Silver case. Case width 26mm. Signed manual wind movement. Silvered dial. Fitted to an unsigned black leather strap with signed stainless steel pin buckle.
£100-150 (plus 30% BP*)

99

TAG HEUER - an Aquaracer bracelet watch. Stainless steel case with calibrated bezel. Case width 28mm. Reference WAF1418, serial EWK5789. Unsigned quartz movement. Pink mother-of-pearl dial. Fitted to a signed stainless steel bracelet with folding clasp.
£280-360 (plus 30% BP*)

100

TAG HEUER - a 2000 Exclusive chronograph bracelet watch. Stainless steel case with calibrated bezel. Case width 39mm. Reference CN1110, serial TL9055. Unsigned quartz movement. Black dial. Fitted to a signed stainless steel bracelet with folding clasp.
£350-550 (plus 30% BP*)

101

TAG HEUER - a Formula 1 chronograph bracelet watch. Stainless steel case with calibrated bezel. Case width 40mm. Reference CAH1111, serial EKF4630. Quartz movement. Silvered dial. Fitted to a signed stainless steel bracelet with folding clasp.
£300-400 (plus 30% BP*)

102

TAG HEUER - a Kirium bracelet watch. Stainless steel case. Case width 36mm. Reference WL1110, serial PQ8552. Signed quartz movement. White dial. Fitted to a signed stainless steel bracelet with folding clasp.
£180-260 (plus 30% BP*)

103

TAG HEUER - a Formula 1 bracelet watch. Stainless steel case with bi-material calibrated bezel. Case width 34mm. Reference WAH1210, serial EBV7175. Unsigned quartz movement. Black dial. Fitted to a signed bi-material bracelet with double folding clasp.
£280-360 (plus 30% BP*)

104

TAG HEUER - an Alter Ego bracelet watch. Stainless steel case. Case width 28mm. Reference WP1313, serial ZP7757. Unsigned quartz movement. Blue dial. Fitted to a signed stainless steel bracelet with double folding clasp.
£120-180 (plus 30% BP*)

105

TAG HEUER - a Formula 1 chronograph bracelet watch. Stainless steel case with factory diamond set ceramic calibrated bezel. Case width 41mm. Reference CAH1213, serial EBG9324. Unsigned quartz movement. White dial. Fitted to a signed bi-material bracelet with double folding clasp. Box.
£450-650 (plus 30% BP*)

106

TAG HEUER - a Link bracelet watch. Stainless steel case with calibrated bezel. Case width 27mm. Reference WJ1316-0, serial SN0678. Quartz movement. Mother-of-pearl dial. Fitted to a signed stainless steel bracelet with folding clasp.
£120-180 (plus 30% BP*)

107

TAG HEUER - a Formula 1 bracelet watch. Stainless steel case with plastic calibrated bezel. Case width 35mm. Reference WAC1211, serial JB4068. Unsigned quartz movement. White dial. Fitted to a signed stainless steel bracelet with folding clasp.
£120-180 (plus 30% BP*)

108

TUDOR - a Prince Oysterdate wrist watch. Stainless steel case. Case width 31mm. Reference 7970/0, serial 626694. Signed automatic movement. Silvered dial. Fitted to an unsigned black leather strap with gold plated pin buckle.
£300-400 (plus 30% BP*)

109

TUDOR - an Oyster wrist watch. Yellow metal case, stamped 10K 0,417 with poincon. Case width 22mm. Signed manual wind movement. Silvered dial. Fitted to an unsigned brown leather strap with gold plated pin buckle.
£150-200 (plus 30% BP*)

BP* - Buyer's Premium of 25% (plus VAT) or 30% (VAT included)

110

TUDOR - an Oyster wrist watch. Stainless steel case. Case width 31mm. Numbered 75009 7803. Signed manual wind movement. Silvered dial. Fitted to an unsigned black leather strap with stainless steel pin buckle.

£250-350 (plus 30% BP*)

111

TUDOR - a Royal bracelet watch. 9ct yellow gold case, hallmarked Birmingham 1964. Case width 18mm. Numbered 390596. Signed manual wind movement. Silvered dial. Fitted to a signed 9ct yellow gold bracelet with folding clasp. 14gms. Box.

£240-340 (plus 30% BP*)

112

TUDOR - an Oyster Prince bracelet watch. Stainless steel case. Case width 34mm. Reference 7809, serial 139542. Signed automatic movement. Silvered dial. Fitted to a signed stainless steel riveted Oyster bracelet with Oysterclasp.

£350-450 (plus 30% BP*)

113

TUDOR - a bracelet watch. 9ct yellow gold case, hallmarked Birmingham 1966. Case width 19mm. Signed manual wind movement. Silvered dial. Fitted to a 9ct yellow gold bracelet with folding clasp displaying Rolex coronet. 15gms.

£180-250 (plus 30% BP*)

114

TUDOR - an Oyster Prince bracelet watch. Stainless steel case. Case width 34mm. Reference 7809, serial 59687. Signed automatic movement. Silvered dial. Fitted to a signed stainless steel bracelet with folding clasp.

£450-650 (plus 30% BP*)

115

TUDOR - a wrist watch. 9ct yellow gold case, hallmarked Edinburgh 1965. Case width 21mm. Signed manual wind movement. Silvered dial. Fitted to an unsigned black leather strap with gold plated pin buckle.

£120-180 (plus 30% BP*)

116

TUDOR - an Oyster Royal wrist watch. Stainless steel case. Case width 34mm. Reference 7934, serial 377605. Signed manual wind movement. Discoloured silvered dial. Fitted to an unsigned black leather strap with gold plated pin buckle. Together with a stainless steel Omega Geneve watch head.

£100-150 (plus 30% BP*)

117

TUDOR - a Oyster Prince wrist watch. Stainless steel case. Case width 34mm. Reference 7808, serial 53097. Signed automatic movement. Silvered dial. Fitted to an unsigned brown leather strap with stainless steel pin buckle.

£400-600 (plus 30% BP*)

118

UNIVERSAL GENEVE - a wrist watch. Yellow metal case, stamped 18K 0,750. Case width 33mm. Reference 142100, serial 2971626. Signed manual wind movement. Champagne dial. Fitted to an unsigned black lizard strap with gold plated pin buckle.

£450-650 (plus 30% BP*)

119

ZENITH - a wrist watch. Gold plated case with stainless steel case back. Case width 35mm. Signed manual wind movement. Silvered dial. Fitted to an unsigned black leather strap with gold plated pin buckle.

£80-120 (plus 30% BP*)

120

ZENITH - a wrist watch. Gold plated case with stainless steel case back. Case width 34mm. Signed automatic calibre 2532PC. Silvered dial. Fitted to an unsigned black leather strap with gold plated pin buckle.

£120-180 (plus 30% BP*)

121

ZENITH - a wrist watch. 9ct yellow gold case, hallmarked London 1973. Case width 31mm. Numbered 29689. Signed manual wind movement. Silvered dial. Fitted to an unsigned black leather strap with gold plated pin buckle. Box and papers.

£300-400 (plus 30% BP*)

MILITARY WATCHES

122

CWC - a military issue wrist watch. Stainless steel case, stamped with British broad arrow. Case width 35mm. Numbered 0552/6645-99 5415317 7387 85. Unsigned quartz movement. Black dial. Fitted to an unsigned black leather strap with stainless steel pin buckle.

£70-100 (plus 30% BP*)

123

OMEGA - a military issue wrist watch. Stainless steel case. Case width 32mm. Numbered 6B/159 A29986 with stamped with British broad arrow. Signed manual wind movement. Silvered dial. Fitted to an unsigned brown leather strap with stainless steel pin buckle.

£450-650 (plus 30% BP*)

124

LEONIDAS - a military issue wrist watch. Base metal case, stamped with British broad arrow. Case width 31mm. Numbered 299189 114292. Unsigned manual wind movement. Silvered dial. Fitted to a khaki 'NATO' style nylon strap with PVD-treated stainless steel pin buckle.

£220-320 (plus 30% BP*)

125

EBEL - a military issue wrist watch. Stainless steel case stamped with British broad arrow. Case width 32mm. Numbered A.T.P. F00376. Unsigned manual wind movement. Silvered dial. Fitted to an unsigned grey nylon 'NATO' style strap with stainless steel pin buckle.

£300-400 (plus 30% BP*)

MISCELLANEOUS WRIST WATCHES

126

A trench style wrist watch. 9ct rose gold case, import hallmarked London 1915. Case width 33mm. Unsigned manual wind movement. White dial. Fitted to an unsigned brown leather strap with nickel plated pin buckle.

£100-150 (plus 30% BP*)

BP* - Buyer's Premium of 25% (plus VAT) or 30% (VAT included)

127

A bracelet watch. 9ct yellow gold case, hallmarked Birmingham 1929. Case width 24mm. Unsigned manual wind movement. Silvered dial. Fitted to an unsigned 9ct yellow gold bracelet with folding clasp. 20gms.
£150-200 (plus 30% BP*)

128

A bracelet watch. 9ct yellow gold case, hallmarked London 1917. Case width 24mm. Unsigned manual wind movement. White dial. Fitted to an unsigned yellow metal expandable bracelet, stamped 9ct. 18gms. Together with two 9ct gold watches with gold plated expandable bracelets.
£60-90 (plus 30% BP*)

129

A trench style wrist watch. Silver case. Case width 34mm. Numbered 19563. Unsigned manual wind movement. White dial. Fitted to an unsigned black leather strap with stainless steel pin buckle.
£40-60 (plus 30% BP*)

130

A trench wrist watch. Silver case. Case width 33mm. Numbered 93221. Unsigned manual wind movement. White dial. Fitted to a brown leather strap with gold plated pin buckle.
£90-140 (plus 30% BP*)

131

A trench style watch head. Yellow metal case, stamped .585. Case width 28mm. Numbered 25181. Unsigned manual wind movement. Cream dial. 18gms.
£180-260 (plus 30% BP*)

132

ACCURIST - a bracelet watch. 9ct yellow gold case, hallmarked London 1977. Case width 16mm. Unsigned quartz movement. Silvered dial. Fitted to a signed yellow metal bracelet with folding clasp, stamped 9ct. 10gms.
£100-150 (plus 30% BP*)

133

ACTIV - a wrist watch. Stainless steel case with exhibition case back. Case width 44mm. Unsigned manual wind movement. Blue dial. Fitted to an unsigned black leather strap with stainless steel pin buckle.
£40-60 (plus 30% BP*)

134

ALPINA - an AlpinerX wrist watch. Bi-material case with calibrated bezel. Case width 46.5mm. Numbered 202-SMF112. Electronic movement. Black dial with digital display. Fitted to a signed brown leather strap with stainless steel pin buckle. Box and papers.
£200-300 (plus 30% BP*)

135

ASPREY - a bracelet watch. 9ct yellow gold case, import hallmarked London 1974. Case width 31mm. Unsigned manual wind movement. Champagne dial. Fitted to an integral 9ct yellow gold bracelet with folding clasp. 66gms.
£900-1,400 (plus 30% BP*)

136

ASPREY & GARRARD - an Oceana bracelet watch. Stainless steel case with gold plated bezel and engraved case back. Case width 36mm. Numbered 117 374. Unsigned quartz movement. White dial. Fitted to a signed bi-colour bracelet with double folding clasp.
£100-150 (plus 30% BP*)

137

AVIA - a Dayter bracelet watch. Gold plated case with stainless steel case back. Signed automatic movement. Silvered dial. Fitted to an unsigned gold plated bracelet with folding clasp. Together with a gold plated Jageur wrist watch.
£60-90 (plus 30% BP*)

138

AVIA - a bracelet watch. Yellow metal case, stamped 18k. Case width 16mm. Unsigned manual wind movement. Silvered dial. Fitted to a yellow metal integral bracelet with folding clasp. 23gms.
£600-800 (plus 30% BP*)

139

BAUME - a wrist watch. 9ct yellow gold case, hallmarked Birmingham 1954. Case width 31mm. Numbered 573556. Signed manual wind movement. Silvered dial. Fitted to an unsigned brown leather strap with gold plated pin buckle.
£150-200 (plus 30% BP*)

140

BAUME & MERCIER - a Promesse bracelet watch. Bi-colour case. Case width 29mm. Reference 65753, serial 5710498. Quartz movement. Silvered dial. Fitted to a signed bi-colour bracelet with double folding clasp.
£120-180 (plus 30% BP*)

141

BAUME & MERCIER - a Riviera bracelet watch. Stainless steel case with yellow metal bezel. Case width 33.5mm. Reference 5131.038, serial 1619791. Signed quartz calibre BM11295. White dial. Fitted to a bi-colour bracelet with folding clasp.
£150-200 (plus 30% BP*)

142

BAUME & MERCIER - a Hampton wrist watch. Stainless steel case with exhibition case back. Case width 31mm. Reference 65751, serial 5758992. Signed automatic movement. Off-white dial. Fitted to a signed black leather strap with stainless steel double folding clasp. Box.
£250-350 (plus 30% BP*)

143

BAUME & MERCIER - a Hampton bracelet watch. Stainless steel case. Case width 20mm. Reference 65433, serial 4684330. Unsigned quartz movement. White dial. Fitted to a signed stainless steel bracelet with double folding clasp.
£120-180 (plus 30% BP*)

144

BOUCHERON - a wrist watch. Yellow metal case, stamped 750. Case width 26mm. Numbered 1203255. Unsigned quartz movement. Gilt dial. Fitted to an unsigned black leather strap.
£1,300-1,800 (plus 30% BP*)

BP* - Buyer's Premium of 25% (plus VAT) or 30% (VAT included)

145

BUECHE GIROD - a wrist watch. Yellow metal case, stamped 0,375. Case width 24mm. Reference 1001, serial 10010075. Unsigned quartz movement. White dial. Fitted to an unsigned black leather strap with gold plated pin buckle.
£100-150 (plus 30% BP*)

146

BUECHE-GIROD - a bracelet watch. 9ct yellow gold case, hallmarked London 1976. Case width 27mm. Signed manual wind movement. Tiger eye dial. Fitted to an integral 9ct yellow gold bracelet with folding clasp. 53gms. Box and papers.

£700-900 (plus 30% BP*)

147

BULGARI - a Bulgari Bulgari bracelet watch. 18ct yellow gold case. Case width 23mm. Reference BB2GGD, serial L173563. Signed quartz calibre 712BB6. Black dial. Fitted to a signed 18ct yellow gold bracelet with folding clasp. 88gms.
£2,800-3,200 (plus 30% BP*)

148

BULGARI - a B.zero1 wrist watch. Stainless steel case. Case width 22mm. Reference BZ22S, serial D192155. Signed quartz movement. Dark grey dial. Fitted to a signed dark grey strap with stainless steel deployant clasp.

£250-350 (plus 30% BP*)

149

BULOVA - an Accutron wrist watch. Gold plated case with stainless steel case back. Case width 35mm. Reference 8135-1, serial 5-353833. Signed quartz movement. Champagne dial. Fitted to an unsigned brown leather strap with gold plated pin buckle. Together with a stainless steel Bulova Accutron wrist watch and a gold plated Bulova wrist watch.

£70-100 (plus 30% BP*)

150

BULOVA - a wrist watch. Gold filled case. Case width 21mm. Numbered 9347832. Signed manual wind calibre 7AP. Discoloured silvered dial. Fitted to an unsigned brown leather strap with gold plated pin buckle. Together with a gold plated Windsor wrist watch and a nickel plated Lathin triple date watch head.

£100-150 (plus 30% BP*)

151

BULOVA - a wrist watch. Gold plated case with stainless steel case back. Case width 31mm. Numbered L3 7095624. Signed automatic calibre 10CSC. Two tone silvered dial. Fitted to a signed black crocodile strap with gold plated pin buckle. Together with a gold plated Gruen Veri-Thin wrist watch.

£60-90 (plus 30% BP*)

152

BULOVA - a wrist watch. Stainless steel case with exhibition case back. Case width 42mm. Reference 96A120. Serial 21089925. Unsigned automatic movement. Brown dial. Fitted to a signed brown leather strap with stainless steel deployant clasp. Together with a Vostok Almaz wrist watch. Both boxed.

£100-150 (plus 30% BP*)

153

CERTINA - a wrist watch. 9ct yellow gold case, hallmarked Edinburgh 1959 with engraved case back. Case width 35mm. Numbered 22555. Signed manual wind movement. Silvered dial. Fitted to an unsigned black leather strap with gold plated pin buckle. Together with a gold plated Accurist bracelet watch and bi-colour Ellesse bracelet watch.

£100-150 (plus 30% BP*)

154

CERTINA - a Waterking wrist watch. Stainless steel case. Case width 33mm. Reference 7102 084, serial 4874173. Signed manual wind calibre 28-16. Silvered dial. Fitted to an unsigned black leather strap with gold plated pin buckle. Together with a stainless steel Certina Waterking wrist watch. Box.

£80-120 (plus 30% BP*)

155

CHALET - a lady's wrist watch. Yellow metal case, stamped 14K. Case width 21mm. Unsigned manual wind movement. Silvered dial. Fitted to an unsigned tan leather strap with gold plated pin buckle.

£70-100 (plus 30% BP*)

156

CHRONOGRAPH SUISSE - a chronograph wrist watch. Yellow metal case, stamped 18K. Case width 37mm. Unsigned manual wind movement. Silvered dial. Fitted to an unsigned black and grey nylon 'NATO' style strap with stainless steel pin buckle.

£400-600 (plus 30% BP*)

157

CHRONOGRAPHE SUISSE - a chronograph wrist watch. Yellow metal case, stamped 18K 0,750. Case width 37.5mm. Numbered 148. Unsigned manual wind movement. Silvered dial. Fitted to an unsigned brown leather strap with gold plated pin buckle.

£200-300 (plus 30% BP*)

158

CYMA - a wrist watch. 9ct yellow gold case. Case width 35mm. Numbered 22060. Signed manual wind calibre R.496. Silvered dial. Fitted to an unsigned brown leather strap with gold plated pin buckle.

£200-300 (plus 30% BP*)

159

DUNHILL - a bracelet watch. Stainless steel case with yellow metal bezel. Case width 32mm. Numbered 610394GQ. Signed quartz movement. White dial. Fitted to a signed stainless steel bracelet with folding clasp.

£70-100 (plus 30% BP*)

160

EBEL - a wrist watch. 9ct yellow gold case, hallmarked Edinburgh 1950. Case width 32mm. Unsigned automatic movement. Silvered dial. Fitted to an unsigned black leather strap with gold plated pin buckle.

£300-400 (plus 30% BP*)

161

EBEL - a Classic Wave bracelet watch. Stainless steel case with yellow metal bezel. Case width 34mm. Reference 183903, serial 14672212. Signed quartz movement. White dial. Fitted to a signed bi-colour bracelet with double folding clasp. Box.

£300-400 (plus 30% BP*)

BP* - Buyer's Premium of 25% (plus VAT) or 30% (VAT included)

162

EBEL - a Classic Wave bracelet watch. Stainless steel case with yellow metal bezel. Case width 35mm. Reference E 1187141, serial 54623068. Quartz movement. Cream dial. Fitted to a signed bi-colour bracelet with folding clasp.
£200-300 (plus 30% BP*)

163

EBEL - a Sportwave bracelet watch. Stainless steel case. Case width 36mm. Reference E6187631, serial 93942341. Signed quartz calibre 187-1. Black dial. Fitted to a signed stainless steel bracelet with double folding clasp.
£150-200 (plus 30% BP*)

164 ✕

EBEL - a wrist watch. Yellow metal case, stamped 18K 0.750 with poincon. Case width 30mm. Numbered 897026 142. Signed manual wind movement. Silvered dial. Fitted to an unsigned black crocodile strap with signed gold plated pin buckle. Box and papers.
£300-400 (plus 30% BP*)

165

ETERNA - a bracelet watch. Stainless steel case. Case width 33mm. Numbered 3675595. Signed manual wind calibre 1274U. Black dial. Fitted to an unsigned stainless steel bracelet with folding clasp.
£60-90 (plus 30% BP*)

166 🐢 ✕

ETERNA - a Vaughan Big Date wrist watch. Stainless steel case with exhibition case back. Case width 42mm. Reference 7630.41, serial 209.47. Signed automatic movement. Silvered dial. Fitted to a signed brown crocodile strap with stainless steel deployant clasp.
£600-800 (plus 30% BP*)

167 ✕

ETERNA-MATIC - a 3000 wrist watch. Stainless steel case with gold capped bezel and lugs. Case width 34mm. Numbered 4898825. Signed automatic calibre 1466U. Silvered dial. Fitted to an unsigned brown lizard strap with gold plated pin buckle. Box and papers. Together with a gold plated Eterna-matic Centenaire wrist watch.
£300-400 (plus 30% BP*)

168

ETERNA-MATIC - a Kontiki bracelet watch. Stainless steel case with calibrated bezel. Case width 39mm. Reference 1400.47. Signed automatic movement. Black dial. Fitted to a signed bi-colour bracelet with folding clasp.
£80-120 (plus 30% BP*)

169

FAVRE-LEUBA - a Royal Grasp bracelet watch. Gold plated case with stainless steel case back. Case width 34mm. Numbered 59502 468. Signed automatic calibre FL 1152. Silvered dial. Fitted to a signed gold plated bracelet with pin buckle clasp. Box, papers, spare strap and tool for changing strap.
£100-150 (plus 30% BP*)

170

FAVRE-LEUBA - a 32768Hz bracelet watch. Stainless steel case. Case width 39mm. Numbered 11043 834. Signed quartz calibre 352. Silvered dial. Fitted to a signed stainless steel bracelet with folding clasp. Together with a stainless steel Bulova Ambassador bracelet watch.
£70-100 (plus 30% BP*)

171 🐢 📄

FURLAN MARRI - a chronograph wrist watch. Stainless steel case. Case width 38mm. Numbered 20201. Quartz movement. Blue dial. Fitted to a signed blue leather strap with stainless steel pin buckle. Box and papers.
£550-750 (plus 30% BP*)

172

GARRARD - a bracelet watch. 9ct yellow gold case with engraved case back, hallmarked London 1973. Case width 34mm. Numbered 42576. Unsigned manual wind movement. Silvered dial. Fitted to an unsigned gold plated expandable bracelet.
£180-260 (plus 30% BP*)

173

GARRARD - a wrist watch. 9ct yellow gold case, hallmarked Birmingham 1957. Case width 29mm. Numbered 819572. Unsigned manual wind movement. Silvered dial. Fitted to an unsigned brown leather strap with gold plated pin buckle.
£250-350 (plus 30% BP*)

174

GARRARD - a wrist watch. 9ct yellow gold case, hallmarked London 1981. Case width 34mm. Numbered 4673. Signed manual wind movement. Silvered dial. Fitted to an unsigned black leather strap with gold plated pin buckle.
£150-200 (plus 30% BP*)

175

GERALD GENTA - a bracelet watch. White metal case, stamped 18k, 750 with poincon. Case width 28mm. Signed manual wind movement. Black dial. Fitted to an integral white metal bracelet with folding clasp, stamped 750. 70gms.
£1,200-1,800 (plus 30% BP*)

176 🐢 📄

GUCCI - a 4500M wrist watch. Bi-colour case. Case width 29mm. Reference 4500M, serial 003-947. Signed quartz movement. Silvered dial. Fitted to a signed black leather strap with gold plated pin buckle. Box and papers.
£70-100 (plus 30% BP*)

177 🐢

GUCCI - an 1100L bracelet watch. Gold plated case. Case width 26mm. Reference 1100L. Quartz movement. White dial. Fitted to a signed gold plated bracelet with folding clasp. Together with box and five coloured interchangeable bezels.
£50-80 (plus 30% BP*)

178 🐢

GUCCI - an 1800L bracelet watch. Gold plated case. Case width 16mm. Reference 1800L, serial 0042235. Signed quartz movement. White dial. Fitted to a signed gold plated bracelet with folding clasp. Box and spare straps.
£80-120 (plus 30% BP*)

179 🐢

GUCCI - a 133.3 wrist watch. PVD-treated stainless steel case. Case width 37mm. Reference 133.3, serial 13746521. Unsigned quartz movement. Brown dial. Fitted to a signed brown leather strap with signed stainless steel pin buckle. Box.
£60-90 (plus 30% BP*)

BP* - Buyer's Premium of 25% (plus VAT) or 30% (VAT included)

180

GUCCI - a 100L bracelet watch. Stainless steel case. Case width 27mm. Reference 134.5, serial 14474037. Quartz movement. White dial. Fitted to a stainless steel bracelet with folding clasp.

£80-120 (plus 30% BP*)

181

GUCCI - a 7100M wrist watch. Stainless steel case. Case width 30mm. Reference 7100M, serial 0002426. Signed quartz movement. Black dial. Fitted to an unsigned black leather strap with stainless steel pin buckle. Box and papers.

£100-150 (plus 30% BP*)

182

GUCCI - a 3600L bracelet watch. Stainless steel case. Case width 23mm. Reference 3600L, serial 0215245. Unsigned quartz movement. Silvered dial. Fitted to a signed stainless steel bracelet with double folding clasp.

£80-120 (plus 30% BP*)

183

GUCCI - a Twirl bracelet watch. Stainless steel case with diamond set bezel. Case width 23mm. Reference 112, serial 11375066. Quartz movement. Grey dial. Fitted to a stainless steel bracelet with folding clasp.

£120-180 (plus 30% BP*)

184

H. STERN - a wrist watch. Sapphire and yellow metal case with stainless steel case back. Case width 23mm. Numbered QE 059 ZFM. Quartz movement. Dark navy blue dial. Fitted to an unsigned black leather strap with gold plated pin buckle.

£300-400 (plus 30% BP*)

185

H. STERN - a wrist watch. Ceramic case with bi-colour case back. Case width 24mm. Unsigned quartz movement. Black dial. Fitted to an unsigned black leather strap with gold plated pin buckle.

£80-120 (plus 30% BP*)

186

H. STERN - a wrist watch. Sapphire and 18ct yellow gold case. Case width 24mm. Numbered 13319. Unsigned quartz movement. Factory diamond set dark navy blue dial. Fitted to an unsigned blue leather strap with signed yellow metal diamond set pin buckle. Together with a H. Stern bracelet watch.

£200-300 (plus 30% BP*)

187 ✕

HAMILTON - a wrist watch. Gold filled case. Case width 20mm. Numbered 1902928. Signed manual wind calibre 980. Silvered dial. Fitted to an unsigned black lizard strap with gold plated folding clasp. Together with a stainless steel Swiss Army wrist watch and a Naidi wrist watch.

£70-100 (plus 30% BP*)

188

HAMILTON - a Westminster wrist watch. Gold plated case with stainless steel case back. Case width 34mm. Numbered 92005 4. Signed automatic micro-rotor calibre 92. Champagne dial. Fitted to an unsigned brown leather strap with gold plated pin buckle.

£70-100 (plus 30% BP*)

189

HAMILTON - a wrist watch. Gold filled case with engraved case back. Case width 22mm. Numbered S578084. Signed manual wind movement. Discoloured silvered dial. Fitted to an unsigned brown leather strap with gold plated pin buckle.

£80-120 (plus 30% BP*)

190 ✕

HAMILTON - a wrist watch. Yellow metal case with engraved case back, stamped 14K. Case width 20mm. Numbered S350093. Signed manual wind movement. Silvered dial. Fitted to an unsigned brown lizard strap with gold plated pin buckle. Box.

£180-240 (plus 30% BP*)

191

HAMILTON - a wrist watch. Gold plated case with stainless steel case back. Case width 34mm. Numbered S174061. Signed automatic micro-rotor calibre 666. Silvered dial. Fitted to an unsigned brown leather strap with gold plated pin buckle. Together with a gold plated Fortis Powertouch bracelet watch and a gold plated MuDu Doublematic bracelet watch.

£100-150 (plus 30% BP*)

192

HAMILTON - a Bagley bracelet watch. Stainless steel case. Case width 23mm. Reference H123510. Quartz movement. Silvered dial. Fitted to a signed stainless steel bracelet with double folding clasp.

£40-60 (plus 30% BP*)

193 ✕

HAMILTON - a Ventura wrist watch. Stainless steel case. Case width 35mm. Reference H245150. Signed automatic movement. Silvered skeletonised dial. Fitted to a signed brown leather strap with stainless steel deployant clasp. Box.

£250-350 (plus 30% BP*)

194

HARWOOD - a wrist watch. Silver case, import hallmarked Birmingham 1929. Case width 30mm. Numbered 2982. Signed bumper automatic movement. Silvered dial. Fitted to an unsigned black leather strap with gold plated pin buckle.

£200-300 (plus 30% BP*)

195

HEFIK - a wrist watch. 9ct yellow gold case, hallmarked Birmingham 1959. Case width 32.5mm. Signed manual wind movement. Discoloured silvered dial. Fitted to an unsigned black nylon 'NATO' style strap with plastic pin buckle.

£180-260 (plus 30% BP*)

196

IRA - a wrist watch. Stainless steel case. Case width 34mm. Signed manual wind calibre I045. Cream dial. Fitted to an unsigned black leather strap with gold plated pin buckle.

£40-60 (plus 30% BP*)

197

J. W. BENSON - a bracelet watch. 9ct yellow gold case, hallmarked London 1954. Case width 29mm. Manual wind calibre R.458 signed by Cyma. Silvered dial. Fitted to an unsigned 9ct yellow gold bracelet with folding clasp. 43gms.

£600-800 (plus 30% BP*)

BP* - Buyer's Premium of 25% (plus VAT) or 30% (VAT included)

198

JAHAN - a Prado wrist watch. Black PVD-treated stainless steel case with factory diamond set bezel. Case width 32mm. Quartz movement. White dial. Fitted to an unsigned white leather strap with signed stainless steel pin buckle.
£400-600 (plus 30% BP*)

199

JAHAN - a Ritz wrist watch. Factory diamond set white metal case with exhibition case back, stamped 750. Case width 36mm. Numbered 045. Unsigned automatic movement. Mother-of-pearl dial. Fitted to a signed white leather strap with nickel plated pin buckle.
£1,500-2,000 (plus 30% BP*)

200

JENNY - a triple date moonphase wrist watch. Gold plated case with stainless steel case back. Case width 33mm. Numbered 4661. Unsigned automatic movement. Silvered dial. Fitted to an unsigned brown leather strap with gold plated pin buckle.
£180-260 (plus 30% BP*)

201

JUNKERS - a Lufthansa JU52 chronograph wrist watch. Stainless steel case with exhibition case back. Case width 42mm. Number 6620/086. Signed automatic movement. Silvered dial. Fitted to an unsigned black leather strap with stainless steel pin buckle.
£700-900 (plus 30% BP*)

202 ✕

LORD ELGIN - a wrist watch. Gold filled case with engraved case back. Case width 24mm. Numbered S452643. Signed manual wind movement. Silvered dial. Fitted to an unsigned black lizard strap with gold plated pin buckle.
£80-120 (plus 30% BP*)

203

MARVIN - a bracelet watch. 9ct yellow gold case, hallmarked Birmingham 1950. Case width 14mm. Numbered 353535. Signed manual wind movement. Silvered dial. Fitted to a 9ct yellow gold bracelet with folding clasp. 19gms.
£150-200 (plus 30% BP*)

204

MARVIN - a wrist watch. 9ct yellow gold case, hallmarked Birmingham 1964. Case width 34mm. Signed manual wind movement. Silvered dial. Fitted to an unsigned black leather strap with stainless steel pin buckle.
£200-300 (plus 30% BP*)

205

MARVIN - a wrist watch. Yellow metal case, stamped 18K 0,750. Case width 33mm. Numbered 0160549. Signed manual wind movement. Champagne dial. Fitted to an unsigned brown leather strap with gold plated pin buckle.
£300-400 (plus 30% BP*)

206 📁

MAURICE LACROIX - an Eliros chronograph wrist watch. Stainless steel case. Case width 40mm. Reference EL1088, serial AU87160. Unsigned quartz movement. Silvered dial. Fitted to an unsigned black leather strap with stainless steel pin buckle. Box.
£150-200 (plus 30% BP*)

207 📁

MAURICE LACROIX - an Intuition bracelet watch. Stainless steel case. Case width 20mm. Reference IN3012, serial AF78092. Signed quartz movement. Silvered dial. Fitted to a signed stainless steel bracelet with double folding clasp. Box and papers.
£100-150 (plus 30% BP*)

208 📁

MAURICE LACROIX - a Les Classiques wrist watch. Stainless steel case with exhibition case back. Case width 38mm. Reference LC6067, serial AU77319. Signed automatic movement. White dial. Fitted to an unsigned black leather strap with nickel plated pin buckle. Box.
£200-300 (plus 30% BP*)

209

MAURICE LACROIX - a Sphere bracelet watch. Stainless steel case. Case width 34mm. Reference SH1014, serial AG29005. Quartz movement. White dial. Fitted to a signed stainless steel bracelet with double folding clasp.
£60-90 (plus 30% BP*)

210 📁

MECCANICHE VENEZIANE - a Nereide wrist watch. Stainless steel PVD-treated case with calibrated bezel and exhibition case back. Case width 41mm. Signed automatic calibre MV285. Black dial. Fitted to a signed green leather strap with PVD-treated pin buckle. Box.
£220-320 (plus 30% BP*)

211

MORTIMA - a Super Datomatic wrist watch. Nickel plated case with calibrated bezel and stainless steel case back. Case width 35mm. Manual wind movement signed Cattin Co. Black dial. Fitted to an unsigned black rubber strap with stainless steel pin buckle. Together with a nickel plated Timemaster wrist watch.
£40-60 (plus 30% BP*)

212

OMICRON - a chronograph wrist watch. Gold plated case with stainless steel case back. Case width 34mm. Unsigned manual wind Landeron calibre 48. Silvered dial. Fitted to an unsigned black leather strap with gold plated pin buckle.
£200-300 (plus 30% BP*)

213

ORFINA - an asymmetrical Deluxe bracelet watch. Gold plated case with stainless steel case back. Case width 39mm. Numbered 25785. Unsigned automatic movement. Black and champagne dial. Fitted to an unsigned gold plated bracelet with folding clasp. Together with a gold plated asymmetrical Orfina wrist watch.
£100-150 (plus 30% BP*)

214

OYSTER WATCH CO. - a Raleigh wrist watch. Stainless steel case. Case width 29mm. Numbered 211382. Signed manual wind movement. Silvered dial. Fitted to an unsigned brown leather strap with stainless steel pin buckle.
£450-650 (plus 30% BP*)

BP* - Buyer's Premium of 25% (plus VAT) or 30% (VAT included)

215

PHANTOMS - a Trinity Force tourbillon wrist watch. PVD-treated stainless steel case. Case width 42mm. Reference PHTW-103-30, numbered 30/99. Signed manual wind movement. Black dial with tourbillon to six. Fitted to a signed white rubber strap with PVD-treated stainless steel deployant clasp.
£400-600 (plus 30% BP*)

216

POLJOT - a Alarm bracelet watch. Nickel plated case. Case width 37mm. Numbered 256786. Unsigned manual wind movement. Grey dial. Fitted to an unsigned stainless steel bracelet with folding clasp.
£70-100 (plus 30% BP*)

217

PRECISTA - a bracelet watch. Yellow metal stone set case, stamped 0,585. Case width 24mm. Numbered 82388. Unsigned manual wind movement. White dial. Fitted to an unsigned bi-colour bracelet with folding clasp.
£100-150 (plus 30% BP*)

218

RADO - a DiaStar bracelet watch. Ceramic case with stainless steel case back. Case width 23mm. Numbered 32722941. Quartz movement. Black dial. Fitted to a bi-material bracelet with folding clasp. Together with a bi-material Rado DiaStar bracelet watch.
£180-260 (plus 30% BP*)

219

RADO - a Florence wrist watch. Ceramic case with stainless steel case back. Case width 24mm. Numbered 30330438. Unsigned quartz movement. Champagne dial. Fitted to an unsigned black leather strap with stainless steel pin buckle. Together with a Gucci bracelet watch and a Raymond Weil watch head.
£50-80 (plus 30% BP*)

220

RADO - a Jubilé bracelet watch. Factory diamond set ceramic case with stainless steel case back. Case width 18mm. Reference 153.0339.3, serial 034420483. Unsigned quartz movement. Black dial. Fitted to a signed bi-material bracelet with double folding clasp.
£200-300 (plus 30% BP*)

221

RADO - a DiaStar Sintra bracelet watch. Ceramic case with diamond set bezel. Case width 30mm. Reference 152.0577.3, serial 06471179. Unsigned quartz movement. Black dial. Fitted to a signed silver ceramic bracelet with folding clasp. Box.
£150-200 (plus 30% BP*)

222

RAYMOND WEIL - a Tango bracelet watch. Gold plated case. Case width 24mm. Reference 5349, serial Z116129. Unsigned quartz movement. White dial. Fitted to an unsigned gold plated bracelet with folding clasp. Box.
£70-100 (plus 30% BP*)

223

RAYMOND WEIL - a Parsifal bracelet watch. Stainless steel case with exhibition case back. Case width 39mm. Reference 2844, serial V418463. Signed automatic movement. Black dial. Fitted to a signed stainless steel bracelet with double folding clasp.
£220-320 (plus 30% BP*)

224

RAYMOND WEIL - a Tango bracelet watch. Gold plated case with stone set bezel. Case width 36mm. Reference 5560, serial Z452136. Unsigned quartz movement. Champagne dial. Fitted to a signed gold plated bracelet with double folding clasp.
£80-120 (plus 30% BP*)

225

RAYMOND WEIL - a Parsifal W1 wrist watch. Bi-material case. Case width 35mm. Reference 6000, serial A918211. Unsigned quartz movement. Silvered dial. Fitted to a signed black rubber strap with stainless steel pin buckle.
£80-120 (plus 30% BP*)

226

RAYMOND WEIL - a Tango bracelet watch. Gold plated case. Case width 36mm. Reference 5560. Unsigned quartz movement. Cream dial. Fitted to a signed gold plated bracelet with folding clasp. Box and papers.
£80-120 (plus 30% BP*)

227

RECORD - a bracelet watch. 9ct yellow gold case, hallmarked London 1946. Case width 29mm. Numbered 957795. Signed manual wind movement. White dial. Fitted to a gold plated expandable bracelet.
£180-260 (plus 30% BP*)

228

ROAMER - a wrist watch. 9ct yellow gold case with engraved case back, hallmarked Edinburgh 1956. Case width 33mm. Numbered 28929. Signed manual wind movement. Silvered dial. Fitted to an unsigned expandable gold plated bracelet.
£180-280 (plus 30% BP*)

229

ROLCO - a bracelet watch. Yellow metal case, stamped 9ct. Case width 25mm. Numbered 800011. Signed manual wind movement. Silvered dial. Fitted to an unsigned yellow metal bracelet with gold plated folding clasp.
£120-180 (plus 30% BP*)

230

ROTARY - a wrist watch. 9ct rose gold case, hallmarked London 1957. Case width 20mm. Signed manual wind calibre 5/300. Silvered dial. Fitted to a black leather strap with base metal pin buckle.
£200-300 (plus 30% BP*)

231

ROTARY - a bracelet watch. 9ct yellow gold case, hallmarked London 1960. Case width 17mm. Signed manual wind movement. Silvered dial. Fitted to an unsigned 9ct yellow gold bracelet with folding clasp. 12gms. Box.
£100-150 (plus 30% BP*)

232

ROTARY - a watch head. 9ct yellow gold case, hallmarked London 1969. Case width 32mm. Numbered 41675. Unsigned manual wind movement. Silvered dial. 20gms.
£180-260 (plus 30% BP*)

BP* - Buyer's Premium of 25% (plus VAT) or 30% (VAT included)

233

ROTARY - a wrist watch. 9ct yellow gold case, hallmarked London 1967. Signed manual wind movement. Silvered dial. Fitted to an unsigned black leather strap with gold plated pin buckle. Together with a 9ct yellow gold Sovereign bracelet watch.

£200-300 (plus 30% BP*)

234

ROTARY - an Elite wrist watch. Stainless steel reversible case with exhibition case back. Case width 26mm. Reference 10729-PO:01466, numbered 0770. Signed automatic movement. Silvered dial. Fitted to a signed brown leather strap with stainless steel pin buckle. Box. Together with two Seiko bracelet watches.

£60-90 (plus 30% BP*)

235

ROY KING - a bracelet watch. Silver case, hallmarked London 1973. Case width 28mm. Manual wind movement. Silvered dial. Fitted to an unsigned silver bracelet with pin buckle.

£150-200 (plus 30% BP*)

236

SEIKO - a bracelet watch. Bi-colour case. Case width 37mm. Reference SA32-0060, serial 830102. Unsigned quartz movement. Black dial. Fitted to a signed bi-colour bracelet with folding clasp. Box.

£30-50 (plus 30% BP*)

237

SEIKO - a Bell-Matic wrist watch. Stainless steel case. Case width 40mm. Reference 4006-6031, serial 249429. Signed automatic calibre 4006A. Blue dial. Fitted to an unsigned brown leather strap with stainless steel pin buckle.

£70-100 (plus 30% BP*)

238

SEIKO - a "Captain Willard" wrist watch. Stainless steel case with calibrated bezel. Case width 44mm. Reference 6105-8110, serial 602843. Signed automatic movement. Black dial. Fitted to an unsigned black rubber strap with stainless steel pin buckle.

£450-650 (plus 30% BP*)

239

SEIKO - a "Pogue" chronograph bracelet watch. Stainless steel case with calibrated bezel. Case width 41mm. Reference 6139-6002, serial 653542. Signed automatic movement. Champagne dial. Fitted to a signed stainless steel bracelet with folding clasp.

£400-600 (plus 30% BP*)

240

SEIKO - a Bell-Matic bracelet watch. Stainless steel case. Case width 39mm. Numbered 512013. Signed automatic movement. Blue dial. Fitted to a signed stainless steel bracelet with folding clasp. Box and papers.

£150-200 (plus 30% BP*)

241

SEIKO - a 'Bullshhead' chronograph bracelet watch. Stainless steel case with tachymeter bezel. Case width 44mm. Reference 6138-0040, serial 484496. Signed automatic calibre 6138B. Black dial. Fitted to a signed stainless steel bracelet with folding clasp.

£300-400 (plus 30% BP*)

242

SEIKO - a Diver wrist watch. Stainless steel case. Case width 40mm. Reference 7S26-0040, serial 7D5329. Signed automatic movement. Blue dial. Fitted to an unsigned bi-colour rubber strap with stainless steel pin buckle.

£80-120 (plus 30% BP*)

243

SEIKO - a Navigator Timer GMT wrist watch. Stainless steel case and calibrated bezel. Case width 41mm. Reference 6117-6410, serial 410152. Signed automatic calibre 6117B. Black dial. Fitted to an unsigned black rubber strap with stainless steel pin buckle.

£120-180 (plus 30% BP*)

244

SEIKO - an LCD bracelet watch. Stainless steel case. Case width 37mm. Numbered 7N3204. Quartz movement. Digital display dial. Fitted to a signed stainless steel bracelet with folding clasp.

£70-100 (plus 30% BP*)

245

SILVERWATCH - a bracelet watch. 9ct yellow gold case, hallmarked Birmingham 1929. Case width 30mm. Unsigned manual wind movement. Silvered dial. Fitted to an unsigned gold plated expandable bracelet.

£80-120 (plus 30% BP*)

246

SMITHS - a military style wrist watch. Stainless steel case with calibrated bezel. Case width 32mm. Unsigned manual wind calibre 512. Black dial. Fitted to an unsigned black bund strap with stainless steel buckle.

£400-600 (plus 30% BP*)

247

SWATCH - an Irony chronograph bracelet watch. Aluminium and resin case. Case width 42mm. Quartz movement. Silvered dial. Fitted to a bi-material bracelet with folding clasp. Together with another Swatch Irony chronograph bracelet watch.

£30-50 (plus 30% BP*)

248

TEGROV - a chronograph wrist watch. Nickel plated case with stainless steel case back and calibrated bezels including cities of the world. Case width 47mm. Unsigned manual wind movement. Blue dial. Fitted to an unsigned blue leather strap with gold plated pin buckle.

£120-180 (plus 30% BP*)

249

TISSOT - a Seastar Seven bracelet watch. 9ct yellow gold case. Case width 33.5mm. Manual wind movement. Silvered dial. Fitted to an expandable gold plated bracelet.

£200-300 (plus 30% BP*)

250

TISSOT - a Seastar chronograph bracelet watch. Stainless steel case with calibrated bezel. Case width 40mm. Manual wind movement. Grey dial. Fitted to an unsigned stainless steel bracelet with folding clasp. Box.

£300-400 (plus 30% BP*)

BP* - Buyer's Premium of 25% (plus VAT) or 30% (VAT included)

251

TREMATIC - a wrist watch. Stainless steel case. Case width 36mm. Reference 502, serial 10508. Signed automatic movement. Silvered dial. Fitted to a signed black leather strap with stainless steel pin buckle.

£120-180 (plus 30% BP*)

252

TW STEEL - a CEO Goliath wrist watch. Factory diamond set stainless steel case. Case width 37mm. Reference CE3015. Unsigned quartz movement. Mother-of-pearl dial. Fitted to a signed white leather strap with stainless steel pin buckle. Box.

£50-80 (plus 30% BP*)

253

TW STEEL - a CEO Goliath wrist watch. Stainless steel case. Case width 37mm. Reference CE3004. Unsigned quartz movement. Black dial. Fitted to signed black leather strap with stainless steel clasp. Box.

£50-80 (plus 30% BP*)

254 ✕

VAN CLEEF & ARPELS - a wrist watch. Stainless steel case with yellow metal bezel. Case width 24mm. Numbered 430688. Unsigned quartz movement. White dial. Fitted to a signed brown lizard strap with gold plated pin buckle.

£400-600 (plus 30% BP*)

255 ✕

VAN CLEEF & ARPELS - a wrist watch. Yellow metal case, stamped 18K, 750. Case width 26mm. Numbered 9063101833. Signed manual wind calibre 9P2, signed Piaget. White dial. Fitted to a signed brown lizard strap with yellow metal pin buckle, stamped 750.

£600-800 (plus 30% BP*)

256

VERITY - a wrist watch. 9ct yellow gold case, hallmarked London 1974. Case width 34mm. Unsigned automatic movement. Silvered dial. Fitted to an unsigned black leather strap with gold plated pin buckle.

£450-650 (plus 30% BP*)

257

WITTNAUER - a wrist watch. Yellow metal case, stamped 18K with poincon. Case width 34mm. Signed automatic calibre C11KAS-1. Champagne dial. Fitted to an unsigned black leather strap with gold plated pin buckle.

£650-850 (plus 30% BP*)

258

ZODIAC - a 'Red Dot' bracelet watch. Stainless steel case with calibrated bezel. Case width 27mm. Reference 108.22.06. Unsigned quartz movement. Black dial. Fitted to a bi-colour bracelet with folding clasp. Spare links.

£80-120 (plus 30% BP*)

SMALL REPAIRERS LOTS

259

A wrist watch. 9ct yellow gold case. Case width 27mm. Unsigned manual wind movement. Silvered dial. Fitted to an unsigned black leather strap with gold plated pin buckle. Recommended for spares or repair purposes only.

£200-300 (plus 30% BP*)

260

A wrist watch. Gold plated case with stainless steel case back. Case width 33mm. Manual wind movement signed Rolex. Silvered dial. Fitted to an unsigned brown leather strap with gold plated pin buckle. Together with an Accurist Rainbow bangle watch complete with box and papers. Both recommended for spares or repair purposes only.

£80-120 (plus 30% BP*)

261

A bracelet watch. Yellow metal case, stamped 9.375. Case width 25mm. Unsigned manual wind movement. Silvered dial. Fitted to an unsigned yellow metal bracelet with clasp. 20gms. Recommended for spares or repair purposes only.

£250-350 (plus 30% BP*)

262

A bracelet watch. 18ct yellow gold case, hallmarked Chester 1917. Case width 24mm. Unsigned manual wind movement. Silvered dial. Fitted to an unsigned 9ct yellow gold expandable bracelet. 18gms. Together with two silver watch heads. All recommended for spares or repair purposes only.

£150-200 (plus 30% BP*)

263

AVIA - a bracelet watch. 9ct yellow gold case, hallmarked London 1966. Case width 19mm. Unsigned manual wind movement. Silvered dial. Fitted to an unsigned 9ct yellow gold bracelet with folding clasp. 13gms. Recommended for spares or repair purposes only.

£100-150 (plus 30% BP*)

264

BENTINA - a Star bracelet watch. Yellow metal case, stamped 9K. Case width 19mm. Manual wind movement. Silvered dial. Fitted to a 9ct yellow gold integral bracelet with folding clasp, import hallmarked London 1977. 21gms. Recommended for spares or repairs purposes only.

£250-350 (plus 30% BP*)

265

BRAVINGTONS - a 9ct yellow gold Renown wrist watch, 22mm. 9ct yellow gold case, hallmarked London 1938. Signed manual wind calibre 812. Silvered dial. Fitted to an unsigned brown leather strap with gold plated pin buckle. 22mm. Box. Recommended for spares or repair purposes only.

£180-260 (plus 30% BP*)

266

BREITLING - a Top Time chronograph wrist watch. Gold plated case with stainless steel case back. Case width 36mm. Reference 2003, serial L001280. Signed manual wind Valjoux calibre 7730. Bi-colour dial. Fitted to an unsigned black leather strap with gold plated pin buckle. Recommended for spares or repair purposes only.

£700-900 (plus 30% BP*)

267

BREITLING - a Chronomat Evolution bracelet watch. Diamond set stainless steel case. Case width 43mm. Reference A13356, serial 812053. Signed automatic movement. Black dial. Fitted to a diamond set stainless steel bracelet with folding clasp. Box. Recommended for spares or repair purposes only. Please see condition report for details of third party intervention.

£500-700 (plus 30% BP*)

BP* - Buyer's Premium of 25% (plus VAT) or 30% (VAT included)

268

BREITLING - a Top Time chronograph bracelet watch. Gold plated case with stainless steel case back. Case width 36mm. Reference 2000. Signed manual wind movement. Black dial. Fitted to an unsigned expandable gold plated bracelet. Recommended for spares or repair purposes only. **£500-700** (plus 30% BP*)

269

CARTIER - a Must De Cartier 21 bracelet watch. Stainless steel case with bi-colour chapter ring bezel. Case width 31mm. Reference 1330, serial PL284363. Signed quartz movement. Silvered dial. Fitted to a signed bi-colour bracelet with double folding clasp. Recommended for spares or repair purposes only. **£300-400** (plus 30% BP*)

270 ✕

CARTIER - a Must De Cartier wrist watch. Gold plated silver case. Case width 24mm. Numbered 18 112412. Quartz movement. Burgundy dial. Fitted to a signed brown lizard strap with gold plated pin buckle. Recommended for spares or repair purposes only. **£200-300** (plus 30% BP*)

271

CHOPARD - a bracelet watch. 18ct yellow gold case, possible import marks for London 1972. Case width 15mm. Numbered 94080. Signed manual wind movement. Grey dial. Fitted to a signed 18ct yellow gold integral bracelet with folding clasp. 45gms. Recommended for spares or repair purposes only. **£1,400-2,000** (plus 30% BP*)

272

CHOPARD - a La Strada bracelet watch. Stainless steel case. Case width 24mm. Reference 8357, serial 41/8380 964753. Unsigned quartz movement. White dial. Fitted to a signed stainless steel bracelet with double folding clasp. Recommended for spares or repair purposes only. **£350-550** (plus 30% BP*)

273 ✕

CHRONOGRAPH SUISSE - a chronograph wrist watch. Yellow metal case, stamped 18K with poinçon. Case width 37mm. Numbered 164. Unsigned manual wind movement. Champagne dial. Fitted to an unsigned brown crocodile strap with gold plated double folding clasp. Recommended for spares or repair purposes only. **£400-600** (plus 30% BP*)

274

CITIZEN - a bracelet watch. Gold plated case with stainless steel case back. Case width 23mm. Quartz movement. Champagne dial. Fitted to an integral gold plated bracelet with folding clasp. Together with a gold plated Sekonda bracelet watch. Recommended for spares or repair purposes only. **£30-50** (plus 30% BP*)

275 🍀

CITIZEN - an Eco-Drive bracelet watch. Stainless steel case with factory diamond setting. Case width 21mm. Reference B023-S063434, serial 9D0047. Signed quartz movement. Mother-of-pearl dial. Fitted to a signed stainless steel bracelet with lobster clasp. Box. Recommended for spares or repair purposes only. **£30-50** (plus 30% BP*)

276

CONCORD - a wrist watch. 14ct yellow gold case. Case width 23mm. Numbered 2862265 100000. Signed quartz movement. Cream dial. Fitted to an unsigned burgundy leather strap with gold plated pin buckle. Recommended for spares or repair purposes only. **£160-240** (plus 30% BP*)

277

CWC - a military issue wrist watch. Stainless steel case. Case width 33mm. Numbered W10/6645-99 5415317. Unsigned quartz movement. Black dial. Fitted to an unsigned brown leather strap with stainless steel pin buckle. Recommended for spares or repair purposes only. **£50-80** (plus 30% BP*)

278

DOYLE - a triple date wrist watch. Gold plated case with stainless steel case back. Case width 34mm. Unsigned manual wind movement. Silvered dial. Fitted to an unsigned brown suede strap with gold plated pin buckle. Recommended for spares or repair purposes only. **£100-150** (plus 30% BP*)

279

ELGIN - a wrist watch. Gold filled case with nickel plated case back. Case width 25mm. Numbered 9812710. Signed manual wind calibre 554. Silvered dial. Fitted to an unsigned black leather strap with gold plated pin buckle. Recommended for spares or repair purposes only. **£40-60** (plus 30% BP*)

280

ETERNA - a Minx bracelet watch. Stainless steel case. Case width 21mm. Numbered 2608.41/C. Unsigned quartz movement. Black dial. Fitted to a signed stainless steel bracelet with double folding clasp. Recommended for spares or repair purposes only. **£40-60** (plus 30% BP*)

281 ✕

GIRARD PERREGAUX - a 7700 chronograph wrist watch. Stainless steel case with yellow metal tachymeter bezel. Case width 34mm. Reference 7700, numbered B-379. Signed quartz calibre 810-965. Brown dial. Fitted to an unsigned brown alligator strap with stainless steel pin buckle. Box and papers. Recommended for spares or repair purposes only. **£400-600** (plus 30% BP*)

282

GIRARD-PERREGAUX - a wrist watch. Gold plated case. Case width 32mm. Numbered 9712 MF. Signed manual wind movement. Silvered dial. Fitted to an unsigned black leather strap with gold plated pin buckle. Recommended for spares or repair purposes only. **£60-90** (plus 30% BP*)

283

GUCCI - a wrist watch. Gold plated case with stainless steel case back. Case width 21mm. Quartz movement. Black dial. Fitted to a signed black leather strap with gold plated pin buckle. Recommended for spares or repair purposes only. **£30-50** (plus 30% BP*)

BP* - Buyer's Premium of 25% (plus VAT) or 30% (VAT included)

284

GUCCI - a 11/12.2 bracelet watch. Gold plated case with plastic bezel. Case width 26mm. Reference 11.12.2, serial 0894941. White dial. Fitted to a signed gold plated bracelet with folding clasp. Together with a stainless steel Raymond Weil Coliseum bracelet watch and a stainless steel Verity wrist watch. Recommended for spares or repairs purposes only.

£70-100 (plus 30% BP*)

285

GUCCI - a 600M bracelet watch. Stainless steel case. Case width 30mm. Reference 600M, serial 0005761. Quartz movement. Black dial. Fitted to a signed stainless steel bracelet with double folding clasp. Recommended for spares or repair purposes only.

£120-180 (plus 30% BP*)

286

GUCCI - a 5400L bracelet watch. Gold plated case. Case width 27mm. Reference 5400L, serial 0037806. Signed quartz movement. White dial. Fitted to a signed gold plated bracelet with double folding clasp. Recommended for spares or repair purposes only.

£80-100 (plus 30% BP*)

287

GUCCI - a Twirl bangle watch. Stainless steel case. Case width 24mm. Reference 112, serial 10896935. Signed quartz movement. Grey dial. Fitted to a signed stainless steel bangle with folding clasp. Together with a stainless steel Emporio Armani bangle watch and a DKNY bracelet watch. Recommended for spares or repair purposes only.

£100-150 (plus 30% BP*)

288

HAMILTON - a bracelet watch. 9ct yellow gold case, hallmarked London 1962. Case width 30mm. Signed manual wind calibre 60. Silvered dial. Fitted to a signed integral 9ct yellow gold bracelet with folding clasp. 48gms. Box. Recommended for spares or repair purposes only.

£750-1,000 (plus 30% BP*)

289

HAMILTON - a military issue wrist watch. Stainless steel case with British broad arrow. Case width 35mm. Numbered 6BB-6645-99 523-8290 7518/75. Manual wind movement. Black dial. Fitted to a bi-colour nylon NATO style strap with stainless steel pin buckle. Recommended for spares or repair purposes only.

£200-300 (plus 30% BP*)

290

HERMÈS - a Arceau wrist watch. Bi-metal case. Case width 33mm. Number 711020. Signed quartz movement. White dial. Fitted to a signed black caiman strap with gold plated pin buckle. Recommended for spares or repair purposes only.

£600-800 (plus 30% BP*)

291

HEUER - a Diver Pewter wrist watch. Stainless steel case with calibrated bezel. Case width 37mm. Reference 982.013. Signed quartz movement. Silvered dial. Fitted to an unsigned black leather strap with pin buckle. Recommended for spares or repairs purposes only.

£100-150 (plus 30% BP*)

292

JAEGER-LECOULTRE - an Albatros bracelet watch. Stainless steel case with yellow metal bezel. Case width 24mm. Reference 146210.5, serial 1618394. Signed quartz movement. Grey dial. Fitted to a signed bi-metal bracelet with double folding clasp. Papers. Recommended for spares or repair purposes only.

£300-400 (plus 30% BP*)

293

JAEGER-LECOULTRE - a Rendezvous wrist watch. Stainless steel case with factory diamond set bi-metal chapter ring bezel. Case width 29mm. Reference 421.5.09, serial 1 653 296. Signed quartz movement. Mother-of-pearl dial. Fitted to an unsigned black crocodile strap with gold plated pin buckle. Recommended for spares or repair purposes only.

£300-400 (plus 30% BP*)

294

JAEGER-LECOULTRE - a wrist watch. Yellow metal case. Case width 24mm. Numbered 157627. Manual wind movement. Silvered dial. Fitted to a brown leather strap with gold plated pin buckle. Recommended for spares or repair purposes only.

£300-400 (plus 30% BP*)

295

JAEGER-LECOULTRE - a wrist watch. Yellow metal case, stamped 18K, 0,750. Case width 25mm. Reference 1932, serial 970420. Signed manual wind movement. Silvered dial. Fitted to an unsigned black leather strap with gold plated pin buckle. Recommended for spares or repair purposes only.

£600-800 (plus 30% BP*)

296

LECOULTRE - a Futurematic wrist watch. Gold filled case. Case width 35mm. Signed bumper automatic calibre 497. Silvered dial. Fitted to an unsigned brown ostrich strap with gold plated pin buckle. Recommended for spares or repair purposes only.

£700-900 (plus 30% BP*)

297

LONGINES - a bracelet watch. 9ct yellow gold case with engraved case back, hallmarked Birmingham 1985. Case width 16mm. Signed automatic calibre L817.4. Champagne dial. Fitted to a signed 9ct yellow gold bracelet with folding clasp. 31gms. Recommended for spares or repair purposes only.

£300-500 (plus 30% BP*)

298

LONGINES - a wrist watch. 9ct yellow gold case. Case width 32mm. Signed automatic calibre L994.1. Champagne dial. Fitted to an unsigned black lizard strap with gold plated pin buckle. Recommended for spares or repair purposes only.

£200-300 (plus 30% BP*)

299

LONGINES - a Presence bracelet watch. 9ct yellow gold case. Reference 26.065.042, serial 0611 153. Case width 21mm. Signed quartz movement. White dial. Fitted to a signed integral 9ct yellow gold bracelet with folding clasp. 27gms. Recommended for spares or repair purposes only.

£300-500 (plus 30% BP*)

BP* - Buyer's Premium of 25% (plus VAT) or 30% (VAT included)

300

MUDU - a bracelet watch. Yellow metal case, stamped 18K 0.750 with poinçon. Case width 15mm. Unsigned manual wind movement. Silvered dial. Fitted to an unsigned 9ct yellow gold bracelet with folding clasp, hallmarked London 1970. 11gms. Recommended for spares or repair purposes only.

£180-260 (plus 30% BP*)

301

OMEGA - a Constellation bracelet watch. Gold plated case with stainless steel case back. Case width 34mm. Reference 196.0138. Signed quartz calibre 1332. Champagne dial. Fitted to a signed gold plated bracelet with folding clasp. All recommended for spares or repair purposes only.

£80-120 (plus 30% BP*)

302

OMEGA - a bracelet watch. 9ct yellow gold case, hallmarked Birmingham 1953. Case width 19mm. Signed manual wind calibre 244, numbered 12990436. Silvered dial. Fitted to an integral 9ct yellow gold bracelet with folding clasp. 16gms. Recommended for spares or repair purposes only.

£160-240 (plus 30% BP*)

303

OMEGA - a Genève wrist watch. 9ct yellow gold case hallmarked London 1973. Case width 33.5mm. Numbered 1315016. Signed manual wind movement. Champagne dial. Fitted to an unsigned black leather strap with gold plated pin buckle. Recommended for spares or repair purposes only.

£220-320 (plus 30% BP*)

304

OMEGA - a Constellation Megaquartz 32KHz bracelet watch. Stainless steel case. Case width 36mm. Reference 196.0015. Signed quartz calibre 1310, numbered 35877130. Silvered dial. Fitted to a signed stainless steel bracelet with folding clasp. Recommended for spares or repair purposes only.

£150-200 (plus 30% BP*)

305

OMEGA - a bracelet watch. 9ct yellow gold case. Case width 20mm. Numbered 691 743. Signed quartz calibre 1337, numbered 45961447. Champagne dial. Fitted to a signed 9ct yellow gold integral bracelet with folding clasp. Box. Recommended for spares or repair purposes only.

£350-450 (plus 30% BP*)

306

OMEGA - a Constellation Megaquartz 32KHz bracelet watch. Stainless steel case. Case width 37mm. Reference 196.0015. Signed quartz calibre 1310, numbered 35863565. Silvered dial. Fitted to a signed stainless steel bracelet with folding clasp. Recommended for spares or repair purposes only.

£150-200 (plus 30% BP*)

307

OMEGA - a De Ville bracelet watch. Gold plated case with stainless steel case back. Case width 31mm. Numbered 39108370. Signed quartz movement. Fitted to an integral gold plated bracelet with signed folding clasp. Box. Recommended for spares or repair purposes only.

£50-80 (plus 30% BP*)

308

OMEGA - a Seamaster bracelet watch. Stainless steel case. Case width 36mm. Reference 196.0209. Signed quartz calibre 1332. Blue dial. Fitted to a signed stainless steel bracelet with folding clasp. Together with a stainless steel Omega Seamaster bracelet watch. All recommended for spares or repair purposes only.

£150-200 (plus 30% BP*)

309

OMEGA - a De Ville wrist watch. Gold plated case with stainless steel case back. Case width 34mm. Reference 192.0034. Signed quartz calibre 1342, numbered 40765054. Champagne dial. Fitted to an unsigned brown leather strap with gold plated pin buckle. Recommended for spares or repair purposes only.

£80-120 (plus 30% BP*)

310

OMEGA - a Genève wrist watch. 9ct yellow gold case, hallmarked London 1974. Case width 33mm. Reference 1625422. Signed automatic calibre 1012, numbered 36194216. Light champagne dial. Fitted to an unsigned black leather strap with gold plated pin buckle. Recommended for spares or repair purposes only.

£450-650 (plus 30% BP*)

311

OMEGA - an Electronic f300Hz Genève wrist watch. Gold plated case with stainless steel case back. Case width 34mm. Reference 198.0066. Signed quartz calibre 1260, numbered 36945038. Silvered dial. Fitted to an unsigned black leather strap with gold plated pin buckle. Recommended for spares or repair purposes only.

£80-120 (plus 30% BP*)

312

OMEGA - a 9ct yellow gold wrist watch, 33mm. 9ct yellow gold case, hallmarked London 1967. Case width 33mm. Numbered 131/25016. Signed manual wind calibre 601, numbered 24028480. Silvered dial. Fitted to an unsigned black leather strap with signed gold plated pin buckle. Recommended for spares or repair purposes only.

£400-600 (plus 30% BP*)

313

OMEGA - a bracelet watch. 9ct yellow gold case, hallmarked London 1973. Case width 36mm. Reference 166 5032. Signed automatic calibre 752, numbered 32597888. Silvered dial. Fitted to a signed 9ct yellow gold integral bracelet with folding clasp. 86gms. Recommended for spares or repair purposes only.

£1,000-1,500 (plus 30% BP*)

314

OMEGA - a Genève bracelet watch. Gold plated case with stainless steel case back. Case width 35mm. Reference 166.0099. Signed automatic calibre 1481, numbered 36460905. Champagne dial. Fitted to an unsigned gold plated bracelet with folding clasp. Together with a gold plated Seamaster wrist watch. All recommended for spares or repair purposes only.

£100-120 (plus 30% BP*)

BP* - Buyer's Premium of 25% (plus VAT) or 30% (VAT included)

315

OMEGA - a Seamaster 120M bracelet watch. Stainless steel case. Case width 36mm. Reference 196.0209. Signed quartz calibre 1332, numbered 44327467. Black dial. Fitted to a signed stainless steel bracelet with folding clasp. Recommended for spares or repairs purposes only.
£60-90 (plus 30% BP*)

316

OMEGA - a Geneve wrist watch. Gold plated case. Case width 34mm. Reference 166.021. Signed automatic calibre 565, numbered 27216710. Silvered dial. Fitted to an unsigned black leather strap with gold plated pin buckle. Recommended for spares or repair purposes only.
£180-260 (plus 30% BP*)

317

OMEGA - a Dynamic wrist watch. Stainless steel case. Case width 30mm. Automatic movement. Silvered dial. Fitted to a signed blue leather strap with stainless steel pin buckle. Papers. Recommended for spares or repair purposes only.
£180-260 (plus 30% BP*)

318

OMEGA - a wrist watch. Gold filled case with personal engraved case back. Case width 32mm. Numbered F6212 W191297. Signed bumper automatic calibre 342, numbered 12329746. Silvered dial. Fitted to a signed black leather strap with gold plated pin buckle. Recommended for spares or repair purposes only.
£250-350 (plus 30% BP*)

319

OMEGA - a Memomatic wrist watch. Stainless steel case. Case width 40mm. Signed automatic movement. Black and grey dial. Fitted to an unsigned black leather strap with stainless steel pin buckle. Recommended for spares or repair purposes only.
£350-450 (plus 30% BP*)

320

OMEGA - a bracelet watch. Yellow metal case, stamped 18K 0,750. Case width 14mm. Numbered 8101 949552. Signed manual wind movement. Discoloured champagne dial. Fitted to an integral yellow metal bracelet with folding clasp, stamped 750. Papers. Recommended for spares or repair purposes only.
£800-1,000 (plus 30% BP*)

321

OMEGA - a bracelet watch. 18ct yellow gold case with factory diamond set bezel. Case width 23mm. Numbered 690 743 G. Signed quartz calibre 1387. Silvered dial. Fitted to an integral woven 18ct yellow gold bracelet with clasp. 45gms. Recommended for spares or repair purposes only.
£1,500-2,000 (plus 30% BP*)

322 ✕

PALACE - a wrist watch. Gold plated case with stainless steel case back. Case width 34mm. Numbered 46880 1231. Unsigned manual wind movement. Silvered dial. Fitted to an unsigned brown lizard strap with gold plated pin buckle. Recommended for spares or repair purposes only.
£100-150 (plus 30% BP*)

323

PIAGET - a wrist watch. 18ct yellow gold case with diamond set bezel. Case width 20mm. Numbered 41535 393406. Signed manual wind calibre 4P1. Champagne dial. Fitted to a signed satin strap with 18ct yellow gold pin buckle. Recommended for spares or repair purposes only. Please see the condition report for details of third party intervention.
£600-800 (plus 30% BP*)

324

PIAGET - a wrist watch. White metal case, stamped 18k. Case width 24mm. Numbered 70714. Signed manual wind calibre 9P. Silvered dial. Fitted to a signed black satin leather strap with white metal deployant clasp. Recommended for spares or repair purposes only.
£1,300-1,800 (plus 30% BP*)

325

PIAGET - a wrist watch. White metal case, stamped 750. Case width 31mm. Reference 2631, serial 421169. Signed manual wind calibre 20P. Silvered dial. Fitted to an unsigned black leather strap with stainless steel pin buckle. Recommended for spares or repair purposes only.
£1,600-2,200 (plus 30% BP*)

326

RADO - a Florence bracelet watch. Stainless steel case. Case width 23mm. Reference 153.3680.4, serial 03896236. Quartz movement. Silvered dial. Fitted to a signed stainless steel bracelet with folding clasp. Recommended for spares or repair purposes only.
£60-90 (plus 30% BP*)

327

RAYMOND WEIL - a Tango bracelet watch. Bi-colour case. Case width 37mm. Reference 5590, serial V297234. Unsigned quartz movement. Blue dial. Fitted to a bi-colour bracelet with double folding clasp. Together with a gold plated Beltex triple date bracelet watch. All recommended for spares or repair purposes only.
£60-90 (plus 30% BP*)

328

ROLCO - a bracelet watch. 9ct yellow gold case. Case width 22mm. Numbered 48351. Manual wind movement signed Rolex. Silvered dial. Fitted to an expandable 9ct yellow gold bracelet. 14gms. Recommended for spares or repair purposes only.
£150-200 (plus 30% BP*)

329

ROLEX - a Precision bracelet watch. Stainless steel case. Case width 17mm. Numbered 478189. Signed manual wind movement. Silvered dial. Fitted to a chrome plated bracelet with folding clasp. Recommended for spares or repairs purposes only.
£120-180 (plus 30% BP*)

330

ROLEX - a Precision wrist watch. Stainless steel case. Case width 22mm. Reference 4815, serial 600270. Signed manual wind movement. White dial. Fitted to an unsigned brown leather strap with nickel plated pin buckle. Recommended for spares or repair purposes only.
£350-450 (plus 30% BP*)

BP* - Buyer's Premium of 25% (plus VAT) or 30% (VAT included)

331

ROLEX - a watch head. 9ct yellow gold case. Case width 23mm. Numbered 11281. Signed manual wind movement. 12gms. Recommended for spares or repair purposes only. **£120-180** (plus 30% BP*)

332

ROLEX - a watch head. Silver case. Case width 21mm. Numbered 17 54944. Signed manual wind movement. Silvered dial with additional retailer branding. Recommended for spares or repair purposes only. **£100-150** (plus 30% BP*)

333

ROLEX - an Oyster Speedking wrist watch. Stainless steel case with engraved case back. Case width 30mm. Reference 4220, serial 503633. Signed manual wind movement. Silvered dial. Fitted to an unsigned black leather strap with stainless steel pin buckle. Recommended for spares or repair purposes only. **£500-700** (plus 30% BP*)

334

ROTARY - a 9ct yellow gold watch head. Case width 33mm. Numbered 3528. Unsigned quartz movement. Light champagne dial. 20mm. Recommended for spares or repair purposes only. **£150-200** (plus 30% BP*)

335

ROTARY - a wrist watch. 9ct yellow gold case, import hallmarked Glasgow 1926. Case width 26mm. Signed manual wind calibre 440. Silvered dial. Fitted to an unsigned brown leather strap. Recommended for spares or repair purposes only. **£180-260** (plus 30% BP*)

336

SANDOZ - a gold plated bracelet watch, 31mm. Gold plated case with stainless steel case back. Case width 31mm. Unsigned quartz movement. Champagne dial. Fitted to a signed yellow metal bracelet with folding clasp, stamped 18K. Recommended for spares or repair purposes only. **£1,000-1,500** (plus 30% BP*)

337

SEIKO - a 'John Player Special' chronograph bracelet watch. Stainless steel case. Case width 40mm. Reference 6138-8030, serial 676157. Signed automatic calibre 6138B. Black and gold dial. Fitted to a signed stainless steel bracelet with folding clasp. Recommended for spares or repair purposes only. **£250-350** (plus 30% BP*)

338

SEIKO - a Solar chronograph bracelet watch. Stainless steel case. Case width 40mm. Numbered 177974. Signed quartz movement. Black dial. Fitted to a signed stainless steel bracelet with folding clasp. Together with a stainless steel Seiko bracelet watch. All recommended for spares or repair purposes only. **£80-120** (plus 30% BP*)

339

SEIKO - a cocktail watch. Gold plated case. Case width 13mm. Reference 1320-5950, serial 370130. Quartz movement. Fitted to a signed gold plated bracelet with folding clasp. Together with a gold plated Santima bracelet watch. Recommended for spares or repair purposes only. **£30-50** (plus 30% BP*)

340

SEIKO - a World Time bracelet watch. Stainless steel case. Case width 37.5mm. Numbered 7701400. Signed automatic calibre 6217A. Silvered dial. Fitted to an unsigned stainless steel expandable bracelet. Recommended for spares or repair purposes only. **£80-120** (plus 30% BP*)

341

SEWILLS - a gold plated power reserve wrist watch. Gold plated case with exhibition case back. Case width 36mm. Unsigned automatic movement. Silvered dial. Fitted to an unsigned brown leather strap with gold plated pin buckle. Recommended for spares or repair purposes only. **£100-150** (plus 30% BP*)

342

SICURA - a chronograph bracelet watch. Stainless steel case with tachymeter bezel. Case width 41mm. Unsigned ETA calibre 8420. Black dial. Fitted to an unsigned stainless steel bracelet with folding clasp. Together with a stainless steel Sicura bracelet watch. Recommended for spares or repairs purposes only. **£80-120** (plus 30% BP*)

343

SMITHS - an Everest wrist watch. 9ct yellow gold case, hallmarked Edinburgh 1956. Case width 33mm. Numbered 34133. Signed automatic calibre 10144G. Cream dial. Fitted to an unsigned black leather strap with gold plated pin buckle. Recommended for spares or repair purposes only. **£350-450** (plus 30% BP*)

344

SWISS EMPEROR - a Alarm bracelet watch. Stainless steel case. Case width 40mm. Numbered 2978W. Unsigned automatic movement. Silvered dial. Fitted to an unsigned stainless steel bracelet with folding clasp. Recommended for spares or repair purposes only. **£70-100** (plus 30% BP*)

345

TAG HEUER - a Formula 1 bracelet watch. Stainless steel case with calibrated plastic bezel. Case width 28mm. Reference 371.508. Unsigned quartz movement. Luminous dial. Fitted to a signed stainless steel bracelet with folding clasp. Together with a stainless steel Tissot Vintage wrist watch. Recommended for spares or repair purposes only. **£50-80** (plus 30% BP*)

346

TAG HEUER - a Link bracelet watch. Stainless steel case with calibrated bezel. Case width 27mm. Reference WT1417, serial MM3280. Signed quartz movement. Black factory diamond set dial. Fitted to a signed stainless steel bracelet with folding clasp. Papers. **£150-200** (plus 30% BP*)

347

TAG HEUER - a Connected wrist watch. PVD-treated stainless steel case. Case width 45mm. Reference SBG8A, serial SRB1510. Unsigned electronic movement. Black screen. Fitted to a signed black rubber strap with PVD-treated stainless steel folding clasp. Recommended for spares or repair purposes only. **£600-900** (plus 30% BP*)

BP* - Buyer's Premium of 25% (plus VAT) or 30% (VAT included)

348

TISSOT - a lady's bracelet watch. 9ct yellow gold case, hallmarked Birmingham 1957. Case width 19mm. Signed manual wind movement. Silvered dial. Fitted to an unsigned 9ct yellow gold bracelet with folding clasp. 17gms. Together with a 9ct gold Marvin bracelet watch. 16gms. All recommended for spares or repair purposes only.
£300-500 (plus 30% BP*)

349

TISSOT - a bracelet watch. Yellow metal case, stamped 14K 0.585. Case width 17mm. Signed manual wind movement. Silvered dial. Fitted to an unsigned 9ct yellow gold bracelet with folding clasp. 19gms. Recommended for spares or repair purposes only.
£250-350 (plus 30% BP*)

350

TUDOR - a Pelagos bracelet watch. Titanium case. Case width 42mm. Reference MT25600TN, serial I513168. Signed automatic movement. Black dial. Fitted to a signed titanium bracelet with folding extendable clasp. Papers. Recommended for spares or repair purposes only.
£1,200-1,800 (plus 30% BP*)

351

TUDOR - a bracelet watch. Yellow metal case, stamped 10K 0.417 with poincon. Case width 17mm. Numbered 718649 1009. Signed manual wind movement. Discoloured silvered dial. Fitted to an unsigned gold plated bracelet with folding clasp. Recommended for spares or repair purposes only.
£120-180 (plus 30% BP*)

352

VAN CLEEF & ARPELS - a wrist watch. 18ct yellow gold case. Case width 30mm. Numbered 18101, 82153. Unsigned quartz movement. White dial. Fitted to an unsigned burgundy leather strap with gold plated pin buckle. Recommended for spares or repair purposes only.
£600-800 (plus 30% BP*)

353

WALTHAM - a wrist watch. Chrome plated case. Case width 31mm. Numbered 57719. Signed manual wind movement. Black dial. Fitted to an unsigned black leather strap with gold plated pin buckle. Together with a manual wind Alpina bracelet watch. All recommended for spares or repairs purposes only.
£60-90 (plus 30% BP*)

354

WALTHAM - a wrist watch. Yellow metal case, stamped 14K. Case width 20mm. Numbered 2005480. Signed manual wind movement. Silvered dial. Fitted to an unsigned brown leather strap with gold plated pin buckle. Box. Recommended for spares or repair purposes only.
£200-300 (plus 30% BP*)

355

ZENITH - a wrist watch. Stainless steel case. Case width 34mm. Signed automatic calibre 2542PC. Silvered dial. Fitted to an unsigned black leather strap with gold plated pin buckle. Recommended for spares or repairs purposes only.
£60-90 (plus 30% BP*)

356

A group of four assorted watches, to include a Christopher Ward chronograph, Emporio Armani chronograph, BMW chronograph and a Mercedes Benz chronograph. Boxes. Recommended for spares or repair purposes only.
£50-80 (plus 30% BP*)

357

A group of four assorted watches, to include an example by Gucci and an example by Jaquet-Droz. All recommended for spares or repair purposes only.
£40-60 (plus 30% BP*)

358

A group of four assorted watches, to include an example by Raymond Weil. All recommended for spares or repair purposes only.
£60-90 (plus 30% BP*)

359

A group of four assorted wrist watches, to include an example by Cartier, Longines, Raymond Weil and Maurice Lacroix. All recommended for spares or repair purposes only.
£80-120 (plus 30% BP*)

360

A group of four stainless steel Seiko LCD bracelet watches. Recommended for spares or repair purposes only.
£120-180 (plus 30% BP*)

361

A group of four Tissot watches, to include two Tradition examples. Recommended for spares or repair purposes only.
£150-200 (plus 30% BP*)

362

A group of four Alfex watches, to include a chronograph example. All recommended for spares or repairs purposes only.
£120-180 (plus 30% BP*)

363

A group of five assorted watches, to include a Citizen Alarm-Date and a Tissot Seastar. All recommended for spares or repairs purposes only.
£60-90 (plus 30% BP*)

364

A group of five assorted watches, to include a Seiko Divers example. All recommended for spares or repair purposes only.
£60-90 (plus 30% BP*)

365

A group of five assorted Raymond Weil & Longines watches, to include three examples by Raymond Weil and two examples by Longines. All recommended for spares or repair purposes only.
£80-120 (plus 30% BP*)

366

A group of five assorted watches, to include examples by Citizen. All recommended for spares or repair purposes only.
£60-90 (plus 30% BP*)

BP* - Buyer's Premium of 25% (plus VAT) or 30% (VAT included)

367

A group of five Raymond Weil watches, to include two Tango examples. All recommended for spares or repairs purposes only.

£50-80 (plus 30% BP*)

368

A group of five assorted boxed Seiko watches. All recommended for spares or repair purposes only.

£200-300 (plus 30% BP*)

369

A group of six assorted watches, to include examples by Accurist and Dunlop. All recommended for spares or repair purposes only.

£30-50 (plus 30% BP*)

370

A group of six assorted watches, to include two examples by Oris and a chronograph example by Exactima. All recommended for spares or repair purposes only.

£80-120 (plus 30% BP*)

371

A group of six assorted Seiko watches. All recommended for spares or repairs purposes only.

£80-120 (plus 30% BP*)

372

A group of six assorted Tissot watches. All recommended for spares or repair purposes only.

£60-90 (plus 30% BP*)

373

A group of six assorted Omega watches. All recommended for spares or repair purposes only.

£100-150 (plus 30% BP*)

374

A group of seven assorted watches, to include an example by Omega and a Rotary triple date watch head. All recommended for spares or repair purposes only.

£50-80 (plus 30% BP*)

375

A group of eight assorted watches, to include examples by Timex and Regency. All recommended for spares or repairs purposes only.

£40-60 (plus 30% BP*)

376

A group of eight assorted watches. All recommended for spares or repair purposes only.

£80-120 (plus 30% BP*)

377

A group of eight assorted watches. All recommended for spares or repair purposes only.

£70-100 (plus 30% BP*)

378

A group of eight assorted watches, to include an example by Edox and Rotary. All recommended for spares or repairs purposes only.

£60-90 (plus 30% BP*)

379

A group of eight assorted Roamer watches, to include a triple date and a Stingray example. All recommended for spares or repairs purposes only.

£50-80 (plus 30% BP*)

380

A group of eight assorted Longines watches, to include a Conquest example. All recommended for spares or repairs purposes only.

£100-150 (plus 30% BP*)

381

A group of eight assorted Omega watches, to include a Seamaster example. All recommended for spares or repairs purposes only.

£100-150 (plus 30% BP*)

382

A group of seven assorted Rado watches, to include a DiaStar and Voyager example. All recommended for spares or repairs purposes only.

£80-120 (plus 30% BP*)

383

A group of eight assorted Seiko watches. All recommended for spares or repair purposes only.

£70-100 (plus 30% BP*)

384

A group of nine assorted watches, to include a Gianni Sabatini chronograph. All recommended for spares or repair purposes only.

£40-60 (plus 30% BP*)

385

A group of nine assorted watches, to include examples by Seiko and an example by Zenith. All recommended for spares or repair purposes only.

£60-90 (plus 30% BP*)

386

A group of ten assorted watches, to include an example by Citizen. All recommended for spares or repair purposes only.

£70-100 (plus 30% BP*)

387

A group of ten assorted Swatch watches. All recommended for spares or repair purposes only.

£30-50 (plus 30% BP*)

388

A group of ten watches, to include examples by Oris, Zenith and Eterna. All recommended for spares or repairs purposes only.

£100-150 (plus 30% BP*)

389

A group of ten assorted Seiko watches. All recommended for spares or repair purposes only.

£60-90 (plus 30% BP*)

390

A group of eleven assorted watches, to include examples by Seiko and an example by Zenith. All recommended for spares or repairs purposes only.

£60-90 (plus 30% BP*)

BP* - Buyer's Premium of 25% (plus VAT) or 30% (VAT included)

391

A group of twelve assorted watches. All recommended for spares or repair purposes only.

£50-80 (plus 30% BP*)

392

A group of thirteen watches and pocket watches. All recommended for spares or repair purposes only.

£30-50 (plus 30% BP*)

393

A group sixteen assorted watches, to include examples by Michael Kors. All recommended for spares or repair purposes only.

£40-60 (plus 30% BP*)

394

A group of sixteen assorted watches, to include an example by Tissot and Rotary. All recommended for spares or repairs purposes only.

£50-80 (plus 30% BP*)

395

A group of sixteen assorted watches. All recommended for spares or repair purposes only.

£50-80 (plus 30% BP*)

396

A group of sixteen assorted Seiko watches, to include a chronograph example. All recommended for spares or repair purposes only.

£100-150 (plus 30% BP*)

397

A group of eighteen assorted trench style watches. All recommended for spares or repair purposes only.

£70-100 (plus 30% BP*)

398

A group of eighteen assorted watches, to include an example by Girard-Perregaux. All recommended for spares or repair purposes only.

£80-120 (plus 30% BP*)

399

A group of eighteen assorted watches, to include examples by Sekonda and Citron. All recommended for spares or repair purposes only.

£60-90 (plus 30% BP*)

400

A group of twenty assorted watches and pocket watches, to include examples by Swatch and a Raymond Weil. All recommended for spares and repair purposes only.

£50-80 (plus 30% BP*)

401

A group of twenty assorted watches, to include examples by Seiko. All recommended for spares or repair purposes only.

£70-100 (plus 30% BP*)

402

A group of twenty assorted watches, with an example by Bulova and Gruen. All recommended for spares or recommended spares or repair purposes only.

£80-120 (plus 30% BP*)

LARGE BAGS OF WATCHES

403

A bag of assorted watches, to include examples by Citron and Orlando. All recommended for spares or repair purposes only. Approximately 30.

£30-50 (plus 30% BP*)

404

A bag of assorted mechanical watch heads. All recommended for spares or repair purposes only. Approximately 30.

£70-100 (plus 30% BP*)

405

A bag of assorted watches, to include examples by Rotary and Tissot. All recommended for spares or repairs purposes only. Approximately 30.

£60-90 (plus 30% BP*)

406

A bag of assorted watches, to include an example by Oris. All recommended for spares or repair purposes only. Approximately 35.

£70-100 (plus 30% BP*)

407

A bag of assorted watch, to include an example by Seiko and Police. All recommended for spares or repairs purposes only. Approximately 45.

£70-100 (plus 30% BP*)

408

A bag of assorted watches. All recommended for spares or repair purposes only. Approximately 60.

£50-80 (plus 30% BP*)

409

A bag of assorted mechanical watches. All recommended for spares or repair purposes only. Approximately 100.

£70-100 (plus 30% BP*)

410

A bag of assorted mechanical watches. All recommended for spares or repair purposes only. Approximately 100.

£70-100 (plus 30% BP*)

411

A bag of assorted mechanical watches. All recommended for spares or repair purposes only. Approximately 100.

£70-100 (plus 30% BP*)

412

A bag of assorted mechanical watches. All recommended for spares or repair purposes only. Approximately 100.

£70-100 (plus 30% BP*)

413

A bag of assorted watches. All recommended for spares or repair purposes only. Approximately 125.

£40-60 (plus 30% BP*)

414

A bag of assorted watches, to include some examples by Boss. All recommended for spares or repair purposes only. Approximately 125.

£100-150 (plus 30% BP*)

415

A bag of assorted watches. All recommended for spares and repairs purposes only. Approximately 200.

£50-80 (plus 30% BP*)

BP* - Buyer's Premium of 25% (plus VAT) or 30% (VAT included)

416

A bag of assorted watches. All recommended for spares and repairs purposes only. Approximately 200.

£50-80 (plus 30% BP*)

417

A bag of assorted watches. All recommended for spares and repairs purposes only. Approximately 200.

£50-80 (plus 30% BP*)

418

A bag of assorted watches. All recommended for spares and repairs purposes only. Approximately 200.

£50-80 (plus 30% BP*)

419

A bag of assorted watches. All recommended for spares and repairs purposes only. Approximately 200.

£50-80 (plus 30% BP*)

420

A bag of assorted watches. All recommended for spares and repairs purposes only. Approximately 200.

£50-80 (plus 30% BP*)

421

A bag of assorted watches. All recommended for spares and repairs purposes only. Approximately 200.

£50-80 (plus 30% BP*)

422

A bag of assorted watches. All recommended for spares and repairs purposes only. Approximately 200.

£50-80 (plus 30% BP*)

423

A bag of assorted watches. All recommended for spares and repairs purposes only. Approximately 200.

£50-80 (plus 30% BP*)

424

A bag of assorted watches. All recommended for spares and repairs purposes only. Approximately 200.

£50-80 (plus 30% BP*)

425

A bag of assorted watches. All recommended for spares and repairs purposes only. Approximately 200.

£50-80 (plus 30% BP*)

426

A bag of assorted watches. All recommended for spares and repairs purposes only. Approximately 200.

£50-80 (plus 30% BP*)

427

A bag of assorted watches. All recommended for spares and repairs purposes only. Approximately 200.

£50-80 (plus 30% BP*)

428

A bag of assorted watches. All recommended for spares and repairs purposes only. Approximately 200.

£50-80 (plus 30% BP*)

429

A bag of assorted watches. All recommended for spares or repair purposes only. Approximately 200.

£50-80 (plus 30% BP*)

430

A bag of assorted watches. All recommended for spares and repairs purposes only. Approximately 200.

£50-80 (plus 30% BP*)

431

A bag of assorted watches. All recommended for spares and repairs purposes only. Approximately 200.

£50-80 (plus 30% BP*)

432

A bag of assorted watches. All recommended for spares or repair purposes only. Approximately 200 (plus 30% BP*)

£50-80 (plus 30% BP*)

433

A bag of assorted watches. All recommended for spares and repairs purposes only. Approximately 200.

£50-80 (plus 30% BP*)

434

A bag of assorted watches. All recommended for spares and repairs purposes only. Approximately 200.

£50-80 (plus 30% BP*)

435

A bag of assorted watches. All recommended for spares and repairs purposes only. Approximately 200.

£50-80 (plus 30% BP*)

436

A bag of assorted watches. All recommended for spares and repairs purposes only. Approximately 200.

£50-80 (plus 30% BP*)

437

A bag of assorted watches. All recommended for spares and repairs purposes only. Approximately 200.

£50-80 (plus 30% BP*)

438

A bag of assorted watches. All recommended for spares or repair purposes only. Approximately 200 (plus 30% BP*)

£50-80 (plus 30% BP*)

439

A bag of assorted watches. All recommended for spares and repairs purposes only. Approximately 200.

£50-80 (plus 30% BP*)

440

A bag of assorted watches. All recommended for spares and repairs purposes only. Approximately 200.

£50-80 (plus 30% BP*)

441

A bag of assorted watches. All recommended for spares and repairs purposes only. Approximately 200.

£50-80 (plus 30% BP*)

BP* - Buyer's Premium of 25% (plus VAT) or 30% (VAT included)

442

A bag of assorted watches. All recommended for spares and repairs purposes only. Approximately 200.

£50-80 (plus 30% BP*)

POCKET WATCHES

443

An open face pocket watch by T. Milton. White metal case. Case width 44mm. Signed key wind fusee and chain movement with pierced balance cock, baluster pillars and verge escapement. White dial.

£180-260 (plus 30% BP*)

444

An open face pocket watch. 9ct yellow gold case with engraved case back, import hallmarked London 1912. Case width 45mm. Unsigned keyless wind movement with club tooth lever escapement. Silvered dial. 45gms.

£180-260 (plus 30% BP*)

445

An open face fob watch. 9ct yellow gold case, import hallmark London 1910. Case width 29mm. Unsigned Swiss bar movement with cylinder escapement. White dial. 17gms. Together with a yellow metal brooch. 4.5gms.

£100-150 (plus 30% BP*)

446

A full hunter pocket watch. Yellow metal case, stamped 18K. Case width 40mm. Unsigned key wind three quarter plate movement with ratchet tooth lever escapement. Gilt dial. 49gms.

£500-700 (plus 30% BP*)

447

An open face pocket watch. 18ct yellow gold case, hallmarked London 1850. Case width 45mm. Unsigned key wind three quarter plate fusee and chain movement with ratchet tooth escapement. White dial. 67gms.

£600-800 (plus 30% BP*)

448

An open face pocket watch. Yellow metal case, stamped 14K. Case width 31mm. Numbered 22297. Unsigned keyless wind movement with cylinder escapement. White dial. 25gms.

£220-320 (plus 30% BP*)

449

A half hunter fob watch. Yellow metal case, stamped 18K 0,755 with poincon. Case width 34mm. Unsigned keyless wind movement with club tooth lever escapement. White dial. 34gms.

£520-720 (plus 30% BP*)

450

A half hunter pendent watch. Yellow metal case with pink enamel chapter ring bezel. Case width 29mm. Unsigned Swiss bar movement with cylinder escapement. White dial. 22gms.

£200-300 (plus 30% BP*)

451

A full hunter pocket watch by Elgin. Yellow metal case, stamped 14K. Case width 40mm. Signed keyless wind movement with club tooth lever escapement. White dial. 57gms.

£600-800 (plus 30% BP*)

452

A full hunter pocket watch by Elgin. Yellow metal case, stamped 14K, with single diamond and engraving to case back. Case width 33mm. Numbered 5122090. Signed keyless wind movement with club tooth lever escapement. White dial. 30gms. Together with a gold plated pocket watch.

£300-400 (plus 30% BP*)

453

A full hunter pocket watch by Waltham. 9ct yellow gold case, hallmarked Birmingham 1928. Signed keyless wind fifteen jewel movement with club tooth lever escapement. White dial. 95gms.

£900-1,200 (plus 30% BP*)

454

An open face fob watch. 9ct yellow gold case, import hallmark London 1910. Case width 30mm. Unsigned keyless wind movement with club tooth lever escapement. White dial. 22gms. Together with a yellow metal chain and pin. 0.4gms.

£100-150 (plus 30% BP*)

455

A full hunter fob watch by Tiffany & Co. Yellow metal case, stamped K18. Case width 35mm. Numbered 40838. Signed keyless wind three quarter plate movement with club tooth lever escapement. White dial. 50gms. Together with a yellow metal, pearl and enamel brooch.

£900-1,400 (plus 30% BP*)

456

A full hunter pocket watch by Waltham. 9ct yellow gold case, hallmarked Birmingham 1919. Signed keyless movement with club tooth lever escapement. White dial signed Equity. 94gms.

£900-1,200 (plus 30% BP*)

457

A half hunter pocket watch. Yellow metal case, stamped 18C. Case width 50mm. Unsigned keyless wind movement with club tooth lever escapement. White dial. 101gms.

£1,200-1,800 (plus 30% BP*)

458

An open face pocket watch. 9ct yellow gold case, hallmarked London 1904. Case width 50mm. Numbered 3116. Unsigned keyless wind movement with club tooth lever escapement. White dial. 83gms.

£500-700 (plus 30% BP*)

459

An open face pocket watch. Yellow metal case, stamped 14K. Case width 39mm. Numbered 120175. Unsigned key wind three quarter plate movement with club tooth lever escapement. Gilt dial. 47gms.

£400-600 (plus 30% BP*)

460

A half hunter fob watch. Yellow metal case, stamped 18K with poincon. Case width 31mm. Unsigned keyless wind movement with cylinder escapement. White dial. 26gms.

£320-420 (plus 30% BP*)

461

An open face pocket watch. Yellow metal case, stamped 18K. Case width 39mm. Unsigned key wind Swiss bar movement with cylinder escapement. Gilt dial. 35gms. Together with a yellow metal brooch. 5gms.

£300-400 (plus 30% BP*)

BP* - Buyer's Premium of 25% (plus VAT) or 30% (VAT included)

462

An open face pocket watch by J.W Benson. 9ct yellow gold case, hallmarked London 1943. Signed keyless wind fifteen jewel movement with club tooth lever escapement. White dial. 75gms.

£500-600 (plus 30% BP*)

463

An open face pocket watch. 9ct yellow gold case, import hallmark London 1910. Case width 38mm. Unsigned keyless wind Swiss bar movement with club tooth lever escapement. White dial. 42gms.

£250-350 (plus 30% BP*)

464

An open face pocket watch by Omega. 9ct yellow gold case, hallmarked Birmingham 1920. Case width 49mm. Signed keyless wind movement with club tooth lever escapement. White dial. 87gms.

£550-650 (plus 30% BP*)

465

An open face pocket watch by Freeman & Co. Silver case, import hallmark London 1914. Case width 54mm. Unsigned key wind three quarter plate movement with club tooth lever escapement. White dial.

£40-60 (plus 30% BP*)

466

An open face pocket watch. Silver case, import hallmark London 1913. Case width 48mm. Unsigned keyless wind fifteen jewel movement with club tooth lever escapement. White dial. Together with a plated case and a nickel plated chronograph pocket watch.

£60-90 (plus 30% BP*)

467

An open face fob watch. Silver case with gilt bezel. Case width 34mm. Numbered 52522. Unsigned keyless wind Swiss bar movement with club tooth lever escapement. White dial. Together with a silver fob chain and bow shaped brooch.

£60-90 (plus 30% BP*)

468

A centre seconds pocket watch. Nickel plated case. Case width 57mm. Unsigned key wind movement with cylinder escapement. White dial.

£50-80 (plus 30% BP*)

469

An open face pocket watch. Silver case, hallmarked Chester 1900. Case width 56mm. Unsigned key wind going barrel movement with club tooth lever escapement. White dial.

£40-60 (plus 30% BP*)

470

An open face pocket watch by Elka Watch Co. Yellow metal case, stamped 14K. Case width 48mm. Numbered 7079399 358. Signed keyless wind three quarter plate movement with ratchet tooth escapement valve. 60gms. Together with yellow metal chain. 12gms.

£300-400 (plus 30% BP*)

471

An open face pocket watch by Longines. Silver case. Case width 48mm. Numbered 5167576. Signed keyless wind three quarter plate calibre 1869Z. White dial.

£100-150 (plus 30% BP*)

472

An open face pocket watch by Neva. Silver case, import hallmark London 1918. Case width 48mm. Unsigned keyless wind ten jewel movement with club tooth lever escapement. White dial. Together with another silver open face pocket watch.

£70-100 (plus 30% BP*)

473

A military issue open face pocket watch by Aristo. Case width 55mm. Nickel plated case stamped with British broad arrow. Numbered 11017. Unsigned keyless wind fifteen jewel movement with club tooth lever escapement. White dial.

£80-120 (plus 30% BP*)

474

A military issue open face pocket watch by Waltham. Case width 52mm. Chrome plated case stamped with British broad arrow. Numbered 7652. Signed keyless wind nine jewel movement with club tooth lever escapement. Black dial.

£70-100 (plus 30% BP*)

475

A military issue open face pocket watch by Vulcain. Case width 52mm. Chrome plated case, numbered AM GS 6E/50 G&S Co. Ltd. 743/40. Signed keyless wind fifteen jewel movement with club tooth lever escapement. White dial.

£50-80 (plus 30% BP*)

476

A military issue open face pocket watch by Jaeger-LeCoultre. Case width 52mm. Chrome plated case stamped with British broad arrow. Numbered 6E/50 A21121. Signed keyless wind calibre 467. White dial.

£180-260 (plus 30% BP*)

477

A military issue open face pocket watch by Jaeger-LeCoultre. Case width 52mm. Chrome plated case stamped with British broad arrow. Numbered G.S.T.P F009051. Signed keyless wind calibre 467/2. White dial.

£180-260 (plus 30% BP*)

478

A military issue open face pocket watch by Cortebert. Case width 52mm. Chrome plated case stamped with British broad arrow. Numbered G.S.T.P 105288. Signed keyless wind calibre 526. Black dial.

£50-80 (plus 30% BP*)

479

A military issue open face pocket watch by Omega. Case width 52mm. Chrome plated case stamped with British broad arrow. Numbered G.S.T.P F027339. Signed keyless wind calibre 38.5. White dial.

£200-300 (plus 30% BP*)

480

A military issue open face pocket watch. Case width 52mm. Chrome plated case stamped with British broad arrow. Numbered 6E/50 B.2905. Unsigned keyless wind fifteen jewel movement with club tooth lever escapement. Silvered dial. Together with a chrome plated military issue open face pocket watch.

£70-100 (plus 30% BP*)

BP* - Buyer's Premium of 25% (plus VAT) or 30% (VAT included)

481

A pair case pocket watch by Edward Tompion. Silver cases, hallmarked Birmingham 1815. Outer case 52mm. Signed keyless wind fusee and chain movement with verge escapement and pierced balance cock. White dial. Recommended for spares or repairs purposes only.
£150-200 (plus 30% BP*)

482

An open face pocket watch by Patek Philippe. Gold plated case. Case width 45.5mm. Numbered 11077706. Signed keyless wind movement with club tooth lever escapement. White dial.
£1,200-1,800 (plus 30% BP*)

483

A half hunter fob watch. Yellow metal case, stamped 18ct. Case width 34mm. Unsigned keyless wind movement with club tooth escapement. White dial. 37gms. Recommended for spares or repair purposes only.
£500-800 (plus 30% BP*)

484

An open face pocket watch by Tavanne & Co. Yellow metal case, stamped 18K. Case width 48mm. Signed keyless wind movement with club tooth lever escapement. White dial. 64gms. Recommended for spares or repair purposes only.
£300-500 (plus 30% BP*)

485

A half hunter fob watch. Yellow metal case, stamped K18. Case width 34mm. Unsigned keyless wind movement with cylinder escapement. White dial. 33gms.
£350-450 (plus 30% BP*)

486

An open face repeater pocket watch by Ed Gasser. Yellow metal case, stamped 18k with poincon. Case width 51mm. Numbered 50615. Unsigned keyless wind three quarter plate movement with ratchet tooth lever escapement and repeater complication. White dial. 98gms. Recommended for spares or repairs purposes only.
£1,000-1,500 (plus 30% BP*)

487

A centre seconds open face pocket watch by Batty & Sons. 18ct yellow gold case with engraved dust cover, hallmarked London 1914. Case width 50mm. Signed keyless wind three quarter plate movement with ratchet tooth lever escapement. White dial. 111gms. Recommended for spares or repair purposes only.
£1,200-1,800 (plus 30% BP*)

488

A full hunter pocket watch by J.W Benson. 18ct yellow gold case with monogram to front cover, hallmarked London 1901. Case width 50mm. Signed keyless wind three quarter plate movement with ratchet tooth lever escapement. White dial. 114gms. Recommended for spares or repair purposes only.
£1,200-1,800 (plus 30% BP*)

489

An open face pocket watch. Yellow metal case, stamped 14K. Case width 37mm. Unsigned keyless wind Swiss bar movement with cylinder escapement. Gilt dial. 41gms. Recommended for spares or repairs purposes only.
£180-260 (plus 30% BP*)

490

A half hunter pocket watch. Yellow metal case, stamped 18K. Case width 31mm. Numbered 77467. Unsigned keyless wind movement with cylinder escapement. White dial. 23gms. Recommended for spares or repair purposes only.
£400-600 (plus 30% BP*)

491

An open face pocket watch. Yellow metal case, stamped 14K. Case width 32mm. Unsigned keyless wind Swiss bar movement with cylinder escapement. Gilt dial. Together with a yellow metal bow brooch. Total weight 29gms.
£250-350 (plus 30% BP*)

492 ✕

An open face pocket watch. 9ct yellow gold case, import hallmarked London 1909. Case width 26mm. Unsigned keyless wind movement with club tooth lever escapement. Gilt dial. 15gms. Recommended for spares or repair purposes only.
£100-150 (plus 30% BP*)

493

An open face pocket watch retailed by Empire Stores Ltd. Silver case, hallmarked Chester 1879. Case width 52mm. Unsigned key wind three quarter plate movement. White dial. Recommended for spares or repair purposes only.
£40-60 (plus 30% BP*)

494

An open face pocket watch. Yellow metal case, stamped K14. Case width 36mm. Unsigned Swiss bar movement with cylinder escapement. Gilt dial. 34gms. Together with a white metal open face pocket watch. All recommended for spares or repair purposes only.
£60-90 (plus 30% BP*)

495

An open face centre seconds pocket watch by W. Greenwood. 9ct yellow gold case, hallmarked Chester 1912. Case width 50mm. Signed keyless wind three quarter plate movement with ratchet tooth lever escapement. White dial. 100gms. Box. Recommended for spares or repair purposes only.
£400-600 (plus 30% BP*)

496

An open face pocket watch by W.M Dodge. 18ct yellow gold case, hallmarked Chester 1840. Case width 48mm. Signed key wind three quarter plate movement with ratchet tooth lever escapement. White dial. 88gms. Recommended for spares or repair purposes only.
£800-1,200 (plus 30% BP*)

497

An open face pocket watch by Elgin. Gold plated case with engraved dust cover. Case width 50mm. Signed keyless wind seven jewel movement with club tooth lever escapement. White dial. Recommended for spares or repair purposes only.
£80-120 (plus 30% BP*)

498

A Goliath pocket watch by J. Rothschild & Fils. Nickel plated case. Case width 69mm. Numbered 3508682. Unsigned keyless wind three quarter plate movement with club tooth escapement. White dial. Recommended for spares or repairs purposes only.
£50-80 (plus 30% BP*)

BP* - Buyer's Premium of 25% (plus VAT) or 30% (VAT included)

499

A full hunter pocket watch by Waltham. Gold plated case. Case width 50mm. Numbered 377756. Signed keyless wind three quarter plate movement with club tooth lever escapement. White dial. Recommended for spares or repairs purposes only.

£40-60 (plus 30% BP*)

500

An open face military issue pocket watch by Cyma. Nickel plated case with British Broad Arrow, numbered G.S.T.P T12917. Signed keyless wind fifteen jewel movement. White dial. Together with a military issue Lemania timer and two stopwatches. All recommended for spares or repair purposes only.

£30-50 (plus 30% BP*)

GROUP OF POCKET WATCHES

501

A group of four pocket watches, to include three Ingersoll examples and a stop watch by Jacquet-Droz. All recommended for spares or repairs purposes only.

£60-90 (plus 30% BP*)

502

A group of five assorted pocket watch, a stopwatch by Lemania, three assorted watches, to include an example by Omega and a quantity of assorted watch movements. All recommended for spares or repair purposes only.

£40-60 (plus 30% BP*)

503

A group of five assorted pocket watches, an assortment of watch and pocket watch movements and an after-set lady's Rolex dial. All recommended for spares or repair purposes only.

£30-50 (plus 30% BP*)

504

A group of five assorted pocket watches, to include an example by Longines. All recommended for spares or repair purposes only.

£80-120 (plus 30% BP*)

505

A group of six assorted pocket watches, three pocket watch movements and a stopwatch by Smiths. All recommended for spares or repair purposes only.

£40-60 (plus 30% BP*)

506

A group of six assorted silver pocket watches. All recommended for spares or repair purposes only.

£100-150 (plus 30% BP*)

507

A group of seven assorted pocket watches, to include a military example. All recommended for spares or repair purposes only.

£40-60 (plus 30% BP*)

508

A group of seven assorted white metal pocket watches, to include four silver examples. All recommended for spares or repair purposes only.

£80-120 (plus 30% BP*)

509

A group of eleven assorted pocket watches, to include four silver examples. All recommended for spares or repair purposes only.

£60-90 (plus 30% BP*)

510

A group of thirteen assorted pocket watches, to include two pair case examples. All recommended for spares or repair purposes only.

£60-90 (plus 30% BP*)

511

A group of sixteen assorted pocket watches, to include an example by Marvin, with four pocket watch movements and four pocket watch cases. All recommended for spares or repair purposes only.

£70-100 (plus 30% BP*)

512

A group of seventeen assorted pocket watches with two silver part watch cases. All recommended for spares or repair purposes only.

£60-90 (plus 30% BP*)

STOPWATCHES

513

A US Bureau of Ordnance stopwatch by Meylan. Nickel plated case. Case width 50mm. Numbered 4631. Unsigned keyless wind movement. White dial.

£40-60 (plus 30% BP*)

514

A stop watch by Heuer. Coated metal case. Case width 53mm. Signed manual wind calibre 7710. White dial.

£50-80 (plus 30% BP*)

515

A stopwatch by Lemania. Base metal case. Case width 64.5mm. Reference 1230. Signed keyless wind movement. White dial. Together with another base metal Lemania stopwatch.

£60-90 (plus 30% BP*)

516

A stopwatch by Heuer. Base metal case. Case width 51mm. Numbered 1022436. Signed keyless wind movement, numbered 107006. White dial. Together with another base metal stopwatch by Heuer.

£150-200 (plus 30% BP*)

CLOCKS & NOVELTIES

517

MOVADO - an Ermeto purse watch. Stainless steel case. Case width 47mm. Numbered 1231 109M. Manual wind movement. Silvered dial.

£100-150 (plus 30% BP*)

518

MOVADO - an Ermeto purse watch. Gold plated case with leather outer case. Case width 51mm. Numbered 1236 466M. Manual wind movement. Silvered dial.

£200-300 (plus 30% BP*)

BP* - Buyer's Premium of 25% (plus VAT) or 30% (VAT included)

519

CARTIER - an alarm clock. Gold plated case. Case width 75mm. Reference 7504, serial 10133. Signed keyless wind movement. White dial.
£250-350 (plus 30% BP*)

520

CARTIER - a desk alarm clock. Gold plated case. Case width 74mm. Numbered 890809240. Quartz movement. White dial. Box and papers.
£300-400 (plus 30% BP*)

WATCH MOVEMENTS

521

A pair of pocket watch movements, to include an example by Waltham. All recommended for spares or repair purposes only.

£30-50 (plus 30% BP*)

522

A group of six assorted watch movements and silver watch head. All recommended for spares or repair purposes only.

£30-50 (plus 30% BP*)

523

A group of assorted watch movements. All recommended for spares or repairs purposes only. Approximately 30.

£50-80 (plus 30% BP*)

524

A bag of assorted watch movements. All recommended for spares or repair purposes only. Approximately 225.

£30-50 (plus 30% BP*)

525

A bag of assorted watch movements. All recommended for spares or repair purposes only. Approximately 400.

£80-80 (plus 30% BP*)

WATCH PARTS

526

A selection of six pocket watch dials signed Elgin. Recommended for spares or repairs purposes only.

£20-30 (plus 30% BP*)

527

A group of seven assorted watch heads, together with two Omega Seamaster case backs. All recommended for spares or repairs purposes only.

£200-300 (plus 30% BP*)

528

A group of assorted watch parts, to include six Longines boxes, a small selection of Breitling and Tag Heuer bracelet links and assorted paperwork. Recommended for spares or repair purposes only.

£60-80 (plus 30% BP*)

529

A group of watch links, to include Rolex Oyster and Jubilee examples and examples by Breitling and Tag Heuer. All recommended for spares or repair purposes only.

£80-120 (plus 30% BP*)

530

A group of watch links, to include Rolex Oyster and Jubilee links and examples by Tag Heuer and Breitling. All recommended for spares or repair purposes only.
£80-180 (plus 30% BP*)

531

A yellow metal diamond set watch bezel in the style of Rolex. Recommended for spares or repair purposes only.

£120-180 (plus 30% BP*)

532

OMEGA - a group of stainless steel watch parts, to include a tachymeter bezel. All recommended for spares or repairs purposes only.

£50-80 (plus 30% BP*)

533

OMEGA - a group of assorted watch parts to include movements, cases and part bracelets. All recommended for spares or repair purposes only.

£50-80 (plus 30% BP*)

534

OMEGA - a NOS Speedmaster Mitsukoshi dial. Recommended for spares or repair purposes only.

£450-650 (plus 30% BP*)

535

OMEGA - a selection of watch parts, to include a Dynamic watch strap, bracelet links, paperwork and a gold plated buckle, together with an Omega box. Recommended for spares or repair purposes only.

£80-120 (plus 30% BP*)

536

OMEGA - an assortment of movements, dials and rotors, some incomplete. All recommended for spares or repairs purposes only.

£100-150 (plus 30% BP*)

537

ROLEX - a pair of yellow metal riveted Oyster bracelet links. Recommended for spares or repair purposes only.

£100-150 (plus 30% BP*)

538

ROLEX - a group of four stainless steel Oyster bracelet links. Recommended for spares or repair purposes only.

£70-100 (plus 30% BP*)

WATCH STRAPS & BRACELETS

539

JAEGER LECOULTRE - a brown leather strap with stainless steel deployment clasp. Recommended for spares or repair purposes only.

£40-60 (plus 30% BP*)

540

OMEGA - a stainless steel bracelet with clasp. Clasp numbered 1502, end links numbered 11. Recommended for spares or repair purposes only.

£80-120 (plus 30% BP*)

541

PATEK PHILIPPE - a platinum deployant clasp. Recommended for spares or repair purposes only.

£2,800-3,600 (plus 30% BP*)

BP* - Buyer's Premium of 25% (plus VAT) or 30% (VAT included)

542

ROLEX - a stainless steel Oyster bracelet with clasp. Numbered 7835 19, end links 361. Recommended for spares or repair purposes only.
£200-300 (plus 30% BP*)

543

TAG HEUER - a red rubber Connected watch strap. Box. All recommended for spares or repair purposes only.
£30-50 (plus 30% BP*)

544 ✕

DE GRISOGONO - a group of assorted watch straps. Approximately 50. All recommended for spares or repair purposes only.
£150-200 (plus 30% BP*)

545 ✕

DE GRISOGONO - a group of assorted watch straps. Approximately 50. All recommended for spares or repair purposes only.
£150-200 (plus 30% BP*)

546 ✕

DE GRISOGONO - a group of assorted watch straps. Approximately 50. All recommended for spares or repair purposes only.
£150-200 (plus 30% BP*)

547 ✕

DE GRISOGONO - a group of assorted watch straps. Approximately 50. All recommended for spares or repair purposes only.
£150-200 (plus 30% BP*)

548

A group of assorted gold plated expandable bracelets. Approximately 20. All recommended for spares or repair purposes only.
£40-60 (plus 30% BP*)

549

A group of military style 'NATO' nylon watch straps. Approximately 50. Recommended for spares or repair purposes only.
£40-60 (plus 30% BP*)

550

A group of assorted leather straps. Approximately 50. All recommended for spares or repair purposes only.
£40-60 (plus 30% BP*)

WATCH BOXES

551

BREITLING - a group of ten watch boxes, some incomplete.
£100-150 (plus 30% BP*)

552

CHOPARD - a group of five watch boxes, some incomplete.
£50-80 (plus 30% BP*)

553

GRAND SEIKO - a group of eighteen watch boxes, some incomplete.
£70-100 (plus 30% BP*)

554

HUBLLOT - a group of ten watch boxes, some incomplete.
£100-150 (plus 30% BP*)

555

HUBLLOT - a group of twelve watch boxes, some incomplete.
£120-180 (plus 30% BP*)

556

IWC - a group of fourteen watch boxes, some incomplete.
£100-150 (plus 30% BP*)

557

JAEGER-LECOULTRE - a group of six watch boxes, some incomplete.
£70-100 (plus 30% BP*)

558

JAEGER-LECOULTRE - a group of six watch boxes, some incomplete.
£70-100 (plus 30% BP*)

559

LONGINES - a group of twenty watch boxes, some incomplete.
£60-90 (plus 30% BP*)

560

LONGINES - a group of twenty watch boxes, some incomplete.
£60-90 (plus 30% BP*)

561

LONGINES - a group of twenty watch boxes, some incomplete.
£60-90 (plus 30% BP*)

562

OMEGA - two incomplete Legendary Moonwatch watch boxes.
£60-90 (plus 30% BP*)

563

OMEGA - a group of five watch boxes, some incomplete.
£80-120 (plus 30% BP*)

564

OMEGA - a group of five watch boxes, some incomplete.
£80-120 (plus 30% BP*)

565

OMEGA - a group of five watch boxes, some incomplete.
£80-120 (plus 30% BP*)

566

OMEGA - a group of five watch boxes, some incomplete.
£80-120 (plus 30% BP*)

567

OMEGA - a group of five watch boxes, some incomplete.
£80-120 (plus 30% BP*)

568

OMEGA - a group of ten watch boxes, some incomplete.
£100-150 (plus 30% BP*)

569

OMEGA - a group of ten watch boxes, some incomplete.
£100-150 (plus 30% BP*)

570

OMEGA - a group of ten watch boxes, some incomplete.
£100-150 (plus 30% BP*)

BP* - Buyer's Premium of 25% (plus VAT) or 30% (VAT included)

571

OMEGA - a group of ten watch boxes, some incomplete.
 £100-150 (plus 30% BP*)

572

OMEGA - a group of ten watch boxes, some incomplete.
 £100-150 (plus 30% BP*)

573

OMEGA - a group of ten watch boxes, some incomplete.
 £100-150 (plus 30% BP*)

574

OMEGA - a group of ten watch boxes, some incomplete.
 £100-150 (plus 30% BP*)

575

OMEGA - a group of ten watch boxes, some incomplete.
 £100-150 (plus 30% BP*)

576

OMEGA - a group of twenty watch boxes, some incomplete.
 £150-200 (plus 30% BP*)

577

ROLEX - a complete watch box.
 £70-100 (plus 30% BP*)

578

ROLEX - a complete watch box.
 £70-100 (plus 30% BP*)

579

ROLEX - a complete large watch box.
 £90-140 (plus 30% BP*)

580

ROLEX - a complete large watch box.
 £90-140 (plus 30% BP*)

581

ROLEX - a pair of complete watch boxes.
 £100-150 (plus 30% BP*)

582

ROLEX - a group of three watch boxes, some incomplete.
 £150-200 (plus 30% BP*)

583

ROLEX - a group of three watch boxes, some incomplete.
 £150-200 (plus 30% BP*)

584

ROLEX - a group of five watch boxes, some incomplete.
 £120-180 (plus 30% BP*)

585

ROLEX - a group of five watch boxes, some incomplete.
 £200-300 (plus 30% BP*)

586

ROLEX - a group of five watch boxes, some incomplete.
 £200-300 (plus 30% BP*)

587

SEIKO - a group of watch boxes, some incomplete.
 Approximately 50.
 £50-80 (plus 30% BP*)

588

TAG HEUER - a group of ten watch boxes, some incomplete.
 £80-120 (plus 30% BP*)

589

TAG HEUER - a group of nine watch boxes, some incomplete.
 £80-120 (plus 30% BP*)

590

TAG HEUER - a group of ten watch boxes, some incomplete.
 £80-120 (plus 30% BP*)

591

TAG HEUER - a group of fifteen watch boxes, some incomplete.
 £100-150 (plus 30% BP*)

592

TAG HEUER - a group of twenty watch boxes, some incomplete.
 £120-180 (plus 30% BP*)

593

TISSOT - a group of thirty watch boxes, some incomplete.
 £60-90 (plus 30% BP*)

594

TISSOT - a group of thirty watch boxes, some incomplete.
 £60-90 (plus 30% BP*)

595

TUDOR - a group of eight watch boxes, some incomplete.
 £80-120 (plus 30% BP*)

596

ZENITH - a group of six watch boxes, some incomplete.
 £100-150 (plus 30% BP*)

597

A group of twelve assorted watch boxes, to include examples by Breitling & Blancpain, some incomplete.
 £100-150 (plus 30% BP*)

598

A group of twelve assorted watch boxes, to include examples by Breitling & Panerai, some incomplete.
 £100-150 (plus 30% BP*)

599

A group of twenty assorted watch boxes, to include examples by Breitling and Cartier, some incomplete.
 £70-100 (plus 30% BP*)

600

A group of twenty assorted watch boxes, to include examples by Rolex and Tudor, some incomplete.
 £80-120 (plus 30% BP*)

601

A large quantity of assorted watches, some incomplete.
 £100-150 (plus 30% BP*)

602

A large quantity of assorted watches, some incomplete.
 £100-150 (plus 30% BP*)

BP* - Buyer's Premium of 25% (plus VAT) or 30% (VAT included)

Notes

Fellows

Established 1876

Upcoming Auctions

June

Silver, Coins & Medals	Ends Tuesday 14th from 10am
Antiques & Collectables	Ends Wednesday 15th from 10am
Jewellery Tiffany & Co.	Ends Tuesday 21st from 9am
Jewellery Day Two	Ends Wednesday 22nd from 9am
Pawnbrokers Jewellery & Watches	Thursday 23rd at 11am
Jewellery Day One	Ends Tuesday 28th from 9am
Jewellery & Costume Jewellery Day Two	Ends Wednesday 29th from 9am

Dates are subject to change, please check the website for the definitive auction list.
Fellows recommend that all bidders and buyers read our conditions of buying and buyer's premium available on our website.

For further information please contact:

Jewellery

Penelope Gilliver
penelope@fellows.co.uk
0121 212 2131

Watches

Michael Jagiela
michaelj@fellows.co.uk
0121 212 5506

Silver & Coins

Alison Jakeway
alisonj@fellows.co.uk
0121 212 2131

Antiques & Fine Art

Kevin Jackson
kevin@fellows.co.uk
0121 212 2131

Fellows Auctioneers Ltd

Terms and Conditions

Fellows Auctioneers Ltd carries on business, including the conduct of Auctions, on the following general conditions. This includes business with Bidders, Buyers, Vendors, consignors, users of this website, and with all those present on the Premises prior to or in connection with an Auction (all as hereinafter defined).

1. INTRODUCTION

1.1 The following defined terms are used in these Conditions :

“Auction” means any Auction conducted by Fellows, either at their premises or elsewhere (including any internet-based auctions);

“Auctioneer” means Fellows or its authorised Auctioneer, as appropriate;

“Bidder” means a bidder at an Auction, including bidders personally present at the venue and those bidding by telephone or over the internet or otherwise;

“Buyer” means the bidder whose bid was the last bid when the Auctioneer brings down the hammer;

“Conditions” means these terms and conditions;

“Consigned Property” means the items consigned by the Vendor to Fellows for offer at an Auction;

“Deliberate Forgery” means an imitation made with the intention of deceiving as to authorship, origin, date, age, period, culture or source but which is unequivocally described by Fellows in the catalogue as being the work of a particular creator and which at the date of the sale had a value materially less than it would have had if it had been in accordance with the description;

“Fellows” means Fellows Auctioneers Ltd;

“Hammer Price” means the level of bidding reached (at or above any reserve) when the Auctioneer brings down the hammer;

“Includes” means “includes but not limited to”, and “including” means “including but not limited to”

“Lot” means any Consigned Property accepted by Fellows for offer at Auction;

“Stated Rate” means Fellows’ published rates of commission for the time being and value added tax thereon (also available on request);

“Terms of Consignment” means any stipulated terms and rates of commission on which Fellows accepts instructions from Vendors [or their agents];

“Total Amount Due” means the Hammer Price in respect of the Lot sold together with any premium, commission, value added tax chargeable and any additional charges payable by a defaulting Buyer under these Conditions;

“Vendor” means the vendor of an item (including Consigned Property) which is submitted to Fellows for offer for sale at an Auction;

“Website” means this website;

“You” means any user of the Website.

2. WEBSITE

2.1 You may access most areas of the Website without registering your details with us. Certain areas of the Website are only open to you if you register. By accessing any part of the Website, you shall be deemed to have accepted these Conditions notice in full. If you do not accept this legal notice in full, you must leave the Website immediately.

2.2 Fellows may revise these Conditions at any time by updating this posting. You should check the Website from time to time to review the then current legal notice, because it is binding on you. Certain provisions of this legal notice may be superseded by expressly designated legal notices or terms located on particular pages at the Website.

2.3 Unless otherwise stated, the copyright and other intellectual property rights in all material on the Website (including without limitation photographs and graphical this legal notice, your permission to use the Website automatically terminates and you must immediately destroy any downloaded or printed extracts from the Website.

2.4 No part of the Website may be reproduced or stored in any other website or included in any public or private electronic retrieval system or service without Fellows’ prior written permission.

2.5 Any rights not expressly granted in these Conditions are reserved.

3. VISITOR MATERIAL AND CONDUCT

3.1 Other than personally identifiable information, which is covered under our Privacy Policy, any material you transmit or post to the Website shall be considered nonconfidential and non-proprietary. Fellows shall have no obligations with respect to such material. Fellows and its designees shall be free to copy, disclose, distribute, incorporate and otherwise use such material and all data, images, sounds, text and other things embodied therein for any and all commercial or non-commercial purposes.

3.2 You are prohibited from posting or transmitting to or from the Website any material: that is threatening, defamatory, obscene, indecent, seditious, offensive, pornographic, abusive, liable to incite racial hatred, discriminatory, menacing, scandalous, inflammatory, blasphemous, in breach of confidence, in breach of privacy or which may cause annoyance or inconvenience; or for which you have not obtained all necessary licences and/or approvals; or which constitutes or encourages conduct that would be considered a criminal offence, give rise to civil liability, or otherwise be contrary to the law of or infringe the rights of any third party, in any country in the world; or which is technically harmful (including, without limitation, computer viruses, logic bombs, Trojan horses, worms, harmful components, corrupted data or other malicious software or harmful data).

3.3 You may not misuse the Website (including, without limitation, by hacking).

3.4 Each registration is for a single user only. Fellows does not permit you to share your user name and password with any other person nor with multiple users on a network.

3.5 Responsibility for the security of any passwords issued rests with you.

4. THE VENDOR

4.1 Fellows shall act as agent of the Vendor only. Any contract for the sale of a Lot will be formed between the Vendor and the Buyer.

- 4.2 The Vendor warrants and represents to Fellows and the Buyer that the Vendor is the sole and true owner of the Consigned Property or is properly authorised by the sole and true owner to consign it for sale and is able to transfer good and marketable title to the property free from any third party claims. The Vendor warrants and representatives that the Vendor has revealed all pertinent information that the Vendor possesses about the items, including in relation to any repairs or alterations that may have been carried out. The Vendor shall indemnify Fellows and the Buyer against any loss and expense caused by any breach of this clause 4.2.
- 4.3 The Vendor shall be entitled to place prior to the Auction a reserve on any Lot, being the minimum Hammer Price at which Lot may be sold. Reserves must be reasonable and Fellows may decline to offer goods which in Fellows' opinion would be subject to an unreasonably high reserve (in which case goods carry the storage and insurance charges stipulated in the terms of consignment). Reserves will not be accepted on items with a bottom estimate less than £300. The Auctioneer also reserves the right not to accept items which they deem to be unsuitable for Auction. Any estimate given shall be an opinion and is not an undertaking of any kind.
- 4.4 A reserve once set cannot be changed except with the written prior consent of Fellows.
- 4.5 Where a reserve has been placed only Fellows may bid on behalf of the Vendor.
- 4.6 The Vendor authorises Fellows to deduct commission from any sold items at a rate of 15% (plus VAT) on any item. Loss or liability for damage will be charged at a rate of 1.5% (plus VAT) calculated on the hammer price. A Marketing fee of £10 (plus VAT) will be charged for each Lot, if unsold we will charge a nominal handling fee of £5 (plus VAT). All items below £35 are subject to a minimum fee of £5 (plus VAT) per Lot.
- 4.7 Fellows will pay the Hammer Price achieved for the Lot (less its commission and applicable fees in accordance with clauses 4.6, 9.2 and 9.3), to the Vendor on receipt of payment of the Total Amount Due in full by the Buyer.
- 4.8 The Vendor authorises Fellows in their discretion to negotiate a sale by private treaty in the case of a Lot unsold at Auction, in which case the same charges will be payable as if the Lot had been sold at Auction.
- 4.9 Fellows do not themselves undertake the collection of any items but may, as the Vendor's agent, instruct a contractor on behalf of the Vendor. Fellows accepts no liability for the actions of such contractor who contracts with the Vendor direct.
- 4.10 Fellows disclaims all liability for items delivered to their saleroom without sufficient sale instructions, and reserves the right to make a minimum warehousing charge of [£1.00] per item per day. Unsold items are subject to the same charges if the Vendor does not remove them within a reasonable time of notification. If not removed within three weeks Fellows reserves the right to sell the items and defray charges from any net proceeds of sale or at the Vendor's expense to consign them to the local authority for disposal. Fellows disclaims any liability for default by the Buyer or for paying out the Vendor before receiving payment by the Buyer.
- 4.11 Subject to clause 4.9, Fellows holds all items on their premises and in their custody covered against the risks of fire, burglary and water damage on the scale of charges notified in the terms of consignment and payable by the Vendor up to the date of any sale and (in Fellows' discretion) the Buyer thereafter until collection.
- 4.12 The right of Fellows to bid on behalf of the Vendor is expressly reserved. The Vendor acknowledges that Lots are sold subject to the stipulations of these Conditions in their entirety and on the Terms of Consignment as notified to consignors at the time of the entry of the Lot.
- 4.13 The Auctioneer reserves the right to dispose of any item that in their opinion is unsaleable. Items, including electrical goods and soft furnishings, which do not comply with current legislation will not be offered at Auction.
- 4.14 Any items unsold after an Auction will be reoffered in a subsequent Auction at a reduced reserve to be agreed within seven days. The Auctioneer may request the removal of an item if a reduced price cannot be agreed; items not removed within 14 days will be subject to a storage charge.
- 4.15 A charge of 10% (plus VAT) based on the middle estimate – plus any other charges incurred – may be levied for any Lot withdrawn by the Vendor from offer at an Auction. If the item has to be returned by post (or any other method) the Vendor will be responsible for this charge. These charges are to be paid before the item is returned.
- 4.16 By submitting the item to Fellows for offer at Auction, the Vendor agrees to the Terms of Consignment and authorises Fellows to deduct the specified charges.
- ## 5. PUBLICITY
- 5.1 Any catalogue and buyer guides are provided for information only and do not form part of these Conditions. The catalogue and the buyer guides may contain additional terms and conditions.
- 5.2 Fellows reserve the right to use any photographs, background information, and research for publicity purposes both before and after the sale.
- ## 6. THE AUCTION
- 6.1 Any Auction shall be conducted at the absolute discretion of the Auctioneer.
- 6.2 The Auctioneer shall conduct the Auction with reasonable skill and care. For example, what constitutes a bid shall be at the absolute discretion of the Auctioneer, acting with reasonable skill and care.
- 6.3 The Auctioneer shall have the right to refuse any bid which does not exceed the previous bid by at least 10% or by such greater proportion as the Auctioneer shall in his or her absolute discretion direct.
- 6.4 Where two or more bids at the same level are simultaneously received by the Auctioneer, the Auctioneer at his absolute discretion shall determine which bid to prefer. Subject to the foregoing, where two or more bids at the same level are simultaneously received by the Auctioneer, any bid by a Bidder personally present at an Auction shall take preference over any bid submitted by telephone or over the internet. Any bid made or attempted by telephone or over the internet shall be deemed to have been made only if received by the Auctioneer.

- 6.5 Fellows shall have the right, at its absolute discretion, to refuse admission to its premises or attendance at (or participation in) any Auction by any person.
7. BIDDERS
- 7.1 Bidders may be required to register their particulars. Bidders attending in person may be required to satisfy Fellows' security arrangements before entering any part of the premises to view or bid.
- 7.2 You accept full liability for all bids submitted via your My Fellows account. Once a bid has been made by a Bidder on our website, the bid can be lowered or increased up until 9am on the day of the auction. You must sign into your My Fellows account to do this and you will receive an email confirmation for any changes made. Should a bid be placed in error on the website you must contact Fellows immediately. Failure to contact Fellows before the auction takes place will result in liability for the full payment of the item.
- 7.3 Subject to clause 6.3, the highest Bidder at the Hammer Price shall be the Buyer. Any dispute about a bid shall be settled at the Auctioneer's absolute discretion.
- 7.4 Bidders are deemed to act as principals unless there is a written prior acknowledgement by Fellows that a Bidder is acting as an agent for a named principal.
- 7.5 Bidders are strongly encouraged to attend the Auction in person. Bidders shall be responsible for any decision to bid for a particular Lot and shall be deemed to have carefully inspected and satisfied themselves as to its condition. Neither Fellows nor its employees or agents shall be responsible for any neglect or default in doing or failing to do so.
- 7.6 Bidders are given ample opportunities to view and inspect before any sale and prospective Buyers must satisfy themselves as to all such matters. Neither Fellows or its employees or agents nor the Vendor accept liability for the correctness of such opinions and all conditions and warranties, express, implied or statutory are hereby excluded.
8. THE BUYER
- 8.1 Immediately a Lot is sold, the Buyer shall:
- (a) give to Fellows their name and address and, if requested proof of identity, and
- (b) pay to Fellows the Total Amount Due.
- 8.2 [Fellows may, at its absolute discretion, agree credit terms with the Buyer before an Auction under which the Buyer may be entitled to take possession of Lots up to an agreed value in advance of payment by a stipulated future date of the Total Amount Due.]
- 8.3 Cheques shall not be acceptable by Fellows (unless Fellows in its absolute discretion permits payment by such method) nor are third party references or credit facilities with other Auction houses. If a cheque is tendered Fellows reserves the right to instruct its bank to check the Buyer's status and account balance before exercising any discretion. Any credit arrangement must be settled at least 4 days before the relevant sale. Any permitted payment by credit card shall carry an extra charge to the Buyer of such percentage of the Total Amount Due as is displayed on the premises.
- 8.4 Any payments by a Buyer to Fellows may be applied by Fellows towards any sums owing from that Buyer to Fellows on any account whatever without regard to any directions of the Buyer or his agent, whether express or implied.
9. THE PURCHASE PRICE
- 9.1 On the first £100,000 of the Hammer Price (of any individual Lot) the buyer will pay the Hammer Price and a premium of 25% (Plus VAT). The said premium not being negotiable and payable by ALL Buyers. The Vendor authorises Fellows to retain beneficially the premium payable by Buyers. Value Added Tax is charged at the rate prevailing by law at the date of sale.
- 9.2 On the excess over £100,000 of the Hammer Price (of any individual Lot), the Buyer will pay the Hammer Price and a premium of 15% (plus VAT). The said premium not being negotiable and payable by ALL Buyers. The Vendor authorises Fellows to retain beneficially the premium payable by Buyers. Value Added Tax is charged at the rate prevailing by law at the date of sale.
- 9.3 Value Added Tax on the Hammer Price is imposed on all items affixed with an asterisk thus - *.
- 9.4 Buyers using the Fellows Live bidding platform will not pay any additional commission, just the buyer's premium. Buyers will pay an additional commission charge of 4.95% + VAT of the hammer price if lots are successfully purchased online via the-saleroom. Buyers using Easy Live Auction can choose whether to pay a live bidding charge of 3% + VAT of the hammer price, or a fixed fee of £3 per sale. Buyers will pay a commission charge of an additional 5% + VAT of the hammer price if lots are successfully purchased online via Live Auctioneers.
- 9.5 Non UK or EU VAT registered buyers can have most classes of VAT refunded on their purchases - please note that auctioneers are under no obligation to provide VAT refunds, although many will offer this service. HMRC are the ultimate refunding authority. VAT refunds are subject to provision of statutory export/import documentation. HMRC have decreed that VAT on buyer's premium is always payable whether the buyer is domiciled in the UK, the EU or outside the EU or wherever the goods are to be sent. So auctioneers cannot refund VAT on buyer's premium if the goods are sold under normal VAT rules.
10. TITLE AND COLLECTION OF PURCHASES
- 10.1 The ownership of any Lot purchased shall not pass to the relevant Buyer until they have made payment in full to Fellows of the Total Amount Due.
- 10.2 Buyers shall at their own risk and expense take away any Lot that they have purchased and paid for not later than 2 working days following the day of the Auction after which they shall be responsible for any removal, storage and insurance charges.
11. DEFAULT BY BUYER OR VENDOR
- 11.1 As Fellows act as agent for the Vendor, Fellows is not responsible for default by the Vendor or the Buyer.
- 11.2 If any Lot is not paid for in full and taken away in accordance with these Conditions, or if there is any other breach of these Conditions, Fellows as agent for the Vendor shall at its absolute discretion and without prejudice to any other rights it may have, be entitled to exercise all or any of the following rights and remedies:

- (a) to proceed against the Buyer for an action for debt or damages for breach of contract;
- (b) to rescind the sale of that Lot and/or any other Lots sold by Fellows to the defaulting Buyer;
- (c) to re-sell the Lot by Auction or private treaty. If a lower Hammer Price is achieved on the re-sale than that achieved on the original sale the defaulting Buyer shall be liable for the difference (after crediting any part payment and adding any re-sale costs). Fellows will account to the Vendor for any surplus achieved on a re-sale, however, it shall only be required to account to the Vendor for any resulting deficiency in the event that it receives payment of such sum in full from the defaulting Buyer.
- (d) to remove, store and insure the Lot at the expense of the defaulting Buyer and, in the case of storage, either at Fellows' premises or elsewhere;
- (e) to charge interest at a rate not exceeding [1.5%] per month on the total amount due to the extent it remains unpaid for more than 2 working days after the sale;
- (f) to retain that or any other Lot sold to the defaulting Buyer until that Buyer pays the total amount due;
- (g) to reject or ignore bids from the defaulting Buyer at future Auctions or to impose conditions before any such bids shall be accepted;
- (h) to apply any proceeds of sale of other Lots due or in future becoming due to the defaulting Buyer towards the settlement of the total amount due and to exercise a lien on any of the Buyer's property in Fellows' possession for any purpose.

12. DELIBERATE FORGERIES

- 12.1 Subject to clause 12.2, any representation or statement by Fellows (including in any catalogue) as to authorship, genuineness, origin, date, age, provenance, condition or estimated selling price is a statement of opinion only. Prospective Buyers are given ample opportunities to view and inspect before any sale and prospective Buyers must satisfy themselves as to all such matters. Neither Fellows or its employees or agents nor the Vendor accept liability for the correctness of such opinions and all conditions and warranties, express, implied or statutory are hereby excluded.
- 12.2 Any Lot which proves to be a Deliberate Forgery may be returned to Fellows by the Buyer within 21 days of the Auction provided it is in the same condition as when bought, and is accompanied by particulars identifying it from the relevant catalogue description and a written statement of defects. If Fellows is satisfied from the evidence presented that the Lot is a Deliberate Forgery Fellows shall refund the money paid by the Buyer for the Lot (but not the amount of any consequential loss, damages, expenses or interest) provided that (1) if the catalogue description reflected the accepted view of scholars and experts as at the date of sale or (2) the Buyer personally is not able to transfer a good and marketable title to Fellows.

13. LIMITATIONS OF LIABILITY

- 13.1 All members of the public on the premises are there at their own risk and must note the lay-out of the accommodation and security arrangements.
- 13.2 Any indemnity under these Conditions shall extend to all actions, costs, expenses, claims

and demands whatsoever suffered or incurred by the person entitled to the benefit of it and Fellows declares itself to be a trustee of the benefit of every such indemnity so far as it is expressed to be for the benefit of its employees and agents.

- 13.3 While Fellows endeavours to ensure that the information on the Website is correct, Fellows does not warrant the accuracy and completeness of the material on the Website. Fellows may make changes to the material on the Website, or to the products and prices described in it, at any time without notice. The material on the Website may be out of date, and Fellows makes no commitment to update such material.
- 13.4 The material on the Website is provided "as is", without any conditions, warranties or other terms of any kind. Accordingly, to the maximum extent permitted by law, Fellows provides you with the Website on the basis that Fellows excludes all representations, warranties, conditions and other terms which, but for this legal notice, might have effect in relation to the Website.

14. GENERAL

- 14.1 Any notice to any Buyer, Vendor, Bidder or viewer may be given by first class mail or email in which case it shall be deemed to have been received by the addressee 48 hours after posting or sending. All notices to Fellows must be sent in writing and email is not acceptable.
- 14.2 Any indulgence extended to any person by Fellows notwithstanding the strict terms of these Conditions or the Terms of Consignment shall affect the position at the relevant time only and in respect of that particular concession only; in all other respects these Conditions shall be construed as having full force and effect.
- 14.3 These Conditions and any disputes or claims arising out of or in connection with it or their subject matter or formation (including non-contractual disputes or claims) are governed by and construed in accordance with the law of England.
- 14.4 The parties irrevocably agree that the courts of England have exclusive jurisdiction to settle any dispute or claim that arises out of or in connection with the Agreement or its subject matter or formation (including non-contractual disputes or claims).

15. SHIPPING

- 15.1 We offer a tracked and insured shipping service for all items with the exception of those in our Antiques, Silver & Collectables sales.
- 15.2 Items posted outside of the UK will incur a £30 charge.
- 15.3 Within the UK, hammer totals under £100 will incur a £10 charge.
- 15.4 Hammer totals over £100 will incur a £20 charge.
- 15.5 Larger items, as well as those exceeding a value of £20,000 or weighing in excess of 2kg may be subject to additional fees.
- 15.6 If you have recently moved or wish to have your items sent to a different address, please contact us prior to the sale. We cannot accept alternative addresses for first-time buyers and your items will be sent the address on the ID/payment card. If you pay by bank transfer we can ship to any worldwide address of your choice.

1	£710	72	£195	144	£280	219	£210	289	£145	353	£250	415	£400	494	£135
2	£680	73	£210	145	£1,150	220	£185	290	£360	354	£800	416	£600	495	£165
3	£1,250	74	£180	146	£195	221	£720	291	£260	355	£640	417	£600	496	£300
4	£210	75	£330	147	£120	223	£2,350	292	£940	356	£680	418	£460	497	£310
5	£1,500	76	£200	148	£160	224	£240	293	£530	357	£940	419	£470	498	£400
6	£610	77	£220	149	£195	225	£110	295	£130	358	£1,600	420	£610	499	£400
7	£1,650	78	£330	150	£210	226	£100	296	£900	359	£1,750	421	£600	500	£290
8	£570	79	£250	151	£130	227	£20	297	£710	360	£970	422	£450	501	£400
9	£610	80	£600	152	£105	228	£410	298	£920	361	£530	423	£560	502	£310
10	£200	81	£320	153	£195	229	£280	299	£1,050	362	£680	424	£190	503	£380
11	£330	82	£290	154	£100	230	£115	300	£1,150	363	£1,750	425	£170	504	£300
12	£750	83	£260	155	£270	231	£260	302	£110	364	£550	426	£400	505	£190
13	£310	85	£430	156	£330	232	£450	303	£150	365	£840	427	£180	506	£165
14	£85	86	£490	157	£410	234	£105	304	£860	366	£800	428	£50	507	£175
15	£260	87	£420	158	£360	235	£60	305	£700	367	£900	429	£190	508	£270
16	£175	88	£220	161	£220	236	£470	306	£130	368	£1,200	430	£195	509	£190
17	£430	89	£390	162	£240	237	£75	307	£510	369	£950	431	£195	510	£230
19	£40	90	£310	164	£280	238	£600	308	£530	370	£1,900	432	£260	511	£300
20	£60	91	£290	166	£150	239	£270	309	£630	371	£1,000	433	£210	512	£480
22	£350	93	£1,100	167	£50	240	£175	310	£650	372	£1,350	434	£195	513	£470
23	£120	95	£250	169	£65	241	£230	311	£670	373	£700	435	£190	514	£580
24	£150	96	£250	170	£70	242	£540	312	£940	374	£1,400	436	£200	515	£450
26	£530	97	£3,100	171	£125	244	£1,500	313	£990	375	£700	437	£200	516	£490
27	£165	99	£500	172	£85	245	£190	314	£990	376	£960	438	£200	517	£310
29	£220	101	£500	173	£70	247	£190	315	£1,000	377	£1,050	439	£200	518	£310
30	£760	102	£280	175	£130	248	£390	316	£1,050	378	£1,100	440	£190	519	£440
32	£240	103	£260	178	£70	249	£55	317	£1,300	379	£1,350	441	£190	520	£460
33	£280	104	£220	179	£75	251	£3,250	318	£1,050	380	£1,450	442	£210	521	£450
34	£200	105	£720	182	£135	252	£125	319	£1,050	381	£1,800	443	£120	522	£460
35	£700	106	£200	183	£250	253	£60	320	£1,050	382	£1,250	445	£600	523	£460
36	£210	107	£150	185	£430	254	£30	321	£1,150	383	£1,250	446	£1,300	524	£300
37	£290	108	£170	186	£290	255	£140	322	£1,100	384	£1,200	447	£350	525	£450
38	£270	109	£340	187	£400	258	£280	323	£690	385	£860	454	£50	526	£430
39	£200	110	£1,600	188	£420	259	£410	324	£930	386	£1,000	456	£270	527	£450
40	£550	112	£350	189	£400	260	£55	325	£470	387	£640	459	£1,650	528	£240
41	£135	113	£270	190	£460	261	£390	326	£480	388	£670	461	£320	529	£430
44	£170	114	£410	191	£490	262	£190	327	£480	389	£590	462	£135	530	£420
45	£610	115	£790	192	£240	263	£360	328	£430	390	£810	463	£490	531	£210
46	£410	116	£155	193	£600	264	£260	329	£300	391	£850	464	£600	532	£210
47	£700	117	£135	194	£250	265	£330	330	£180	392	£550	466	£95	533	£185
48	£600	118	£320	195	£330	266	£450	331	£165	393	£800	468	£70	534	£480
49	£650	119	£160	196	£380	267	£710	332	£350	394	£660	469	£310	535	£750
50	£800	120	£130	197	£75	268	£95	333	£510	395	£550	470	£110	536	£310
51	£810	122	£560	198	£420	269	£780	334	£550	396	£510	471	£150	537	£270
52	£330	123	£155	199	£630	270	£300	335	£125	397	£520	472	£240	538	£290
53	£800	125	£280	200	£700	271	£1,350	336	£230	398	£550	474	£380	539	£440
54	£1,300	126	£120	201	£910	272	£260	337	£1,050	399	£480	475	£50	540	£550
55	£175	127	£200	202	£1,100	274	£3,000	338	£1,600	400	£400	476	£100	541	£155
56	£220	128	£320	203	£1,200	275	£135	339	£1,150	401	£460	477	£70	542	£210
58	£450	129	£1,350	204	£1,600	276	£50	340	£1,050	402	£500	478	£290	543	£410
59	£3,300	130	£360	205	£2,600	277	£90	341	£950	403	£400	479	£200	544	£540
61	£1,950	131	£130	206	£1,650	278	£230	342	£1,000	404	£560	481	£80	545	£470
62	£380	132	£90	207	£1,250	279	£130	343	£1,100	405	£600	482	£460	546	£170
63	£2,850	133	£230	209	£300	280	£175	344	£1,050	406	£700	483	£40	547	£990
64	£350	135	£155	210	£220	281	£320	345	£1,100	407	£570	484	£85	548	£280
65	£220	137	£190	211	£1,200	282	£520	346	£1,200	408	£740	486	£260	549	£230
66	£1,100	138	£360	212	£400	283	£990	347	£750	409	£450	487	£1,150	550	£165
67	£360	139	£70	213	£1,650	284	£800	348	£960	410	£570	488	£600	551	£85
68	£310	140	£140	214	£310	285	£800	349	£630	411	£460	490	£40	552	£105
69	£140	141	£310	215	£1,200	286	£820	350	£590	412	£700	491	£410	553	£490
70	£390	142	£350	216	£1,850	287	£240	351	£910	413	£680	492	£350		
71	£680	143	£150	217	£430	288	£230	352	£170	414	£620	493	£135		

Contact Information

Directors

Stephen Whittaker BA (Hons)

Jayne Whittaker

Nicholas Challinor Halford
BSc (Hons)

Departments

Customer Services

0121 212 5508

info@fellows.co.uk

Claire Dodwell

Gemma Sheldon

Finance

0121 212 2131

wendy@fellows.co.uk

Wendy Butler

Angela Donnelly BA (Hons) ACMA

Samantha Fennell

Gemma Wilkes

Photography

0121 212 2131

photography@fellows.co.uk

Claire Cleaver

Polly Shave MA (Hons)

Stephen Watton BA (Hons)

Marketing

0121 212 5500

marketing@fellows.co.uk

Liam Bolland BA (Hons)

Jorden Guest MA (Hons)

Luke Poole BA (Hons)

Krishna Vara BA (Hons)

Alexandra Whittaker BA (Hons)

Nicola Whittaker Bsc (Hons), Cert. GA

London Office

0207 127 4198

london@fellows.co.uk

Laura Crook

Natasha Davis BA (Hons), FGA

Oliver Horner DGA

Isabelle Mettan-Ure

Annabel Zarandi BA (Hons)

Specialist Departments

Jewellery

0121 212 6303

jewellery@fellows.co.uk

Lindsay Beardmore FGA, DGA

Laura Boccardo MA (Hons)

Jenny Darcy BA (Hons)

Alexander Duffy BSc (Hons), FGA, DGA

Nicole Flavell-Avery BA (Hons), FGA, AJP

Helen Foster BA (Hons)

Penelope Gilliver FGA, DGA

Patricia Grant BA (Hons)

Ben Randall BA (Hons), G.G., A.J.P.

Sarah Thomeloe BSc (Hons), DGA

Amanda Zhang FGA, Msc

Watches

0121 212 5506

watches@fellows.co.uk

Laura Bishop MA (Hons)

Kes Crockett BA (Hons)

Kain Holroyd

Michael Jagiela

Steven Yambo BA (Hons)

Pawnbrokers

0121 212 6308

pawnbroker@fellows.co.uk

Connor Butler

Charlie Chitty

Amelia Moorhouse

Ross Popescu

Antiques, Silver & Collectables

0121 212 6302

antiques@fellows.co.uk

Kevin Jackson

Alison Jakeway MA MRICS

Orla Taylor-Davies BA (Hons)

Designer Collection

0121 212 6306

thedesignercollection@fellows.co.uk

Callum Charles

Fellows

Established 1876

Travel Information



Birmingham Saleroom

Situated in the heart of Birmingham's Jewellery Quarter, this office can offer viewings for all of our auctions as well as free valuations.

Visit our website or please call to arrange an appointment.

Head Office & Saleroom
Augusta House
19 Augusta Street
Birmingham
B18 6JA

Telephone: 0121 212 2131
Email: info@fellows.co.uk

London Office

Fellows' London office sits in the prestigious Mayfair area and offers valuations as well as viewings for our flagship auctions.

Visit our website or please call to arrange an appointment.

London Office
29 Charles Street
Mayfair
London
W1J 5DT

Telephone: 020 7127 4198
Email: london@fellows.co.uk

Fellows

Established 1876

Head Office & Saleroom:

Augusta House | 19 Augusta Street | Birmingham B18 6JA

London Office:

29 Charles Street | Mayfair | London W1J 5DT

Tel 0121 212 2131 | Tel 020 7127 4198 | www.fellows.co.uk