

Fellows
Established 1876



Fine Jewellery
Thursday 9th February 2023



Lots 24

Fine Jewellery

Thursday 9th February 2023
Starts at 10:00am

Viewing Times

London

Tuesday 31st January

12:00 - 19:00

Wednesday 1st February

09:30 - 16:00

Birmingham

Tuesday 7th February

10:00 - 16:00

Wednesday 8th February

10:00 - 16:00

Thursday 9th February

08:30 - 10:00

Virtual viewings are available by request.

Please email info@fellows.co.uk to arrange your appointment.

Certificated stones,

Lot 80, 82, 106, 237, 240, 247, 253, 263, 321, 420, 429, 445, 452, 460, 462, 472, 483, 484, 529, 561, 636

Featured Lots

Lots 645, 646, 648, 650, 662 and 663
(Front Cover)



Lots 109, 111 and 140
(Back Cover)



General Information

Fellows

Established 1876

Contact the department

Ben Randall
Jewellery Department Manager
0121 212 6312
ben@fellows.co.uk

Nicole Flavell-Avery
BA(Hons) FGA DGA AJP
Jewellery Department

Virtual Viewings

Virtual viewings available by request, to book your appointment please contact info@fellows.co.uk

Fellows Live

Say goodbye to additional surcharges thanks to Fellows Live. Using our platform means you only pay the standard Buyer's Premium (plus VAT).



Free Delivery

We offer free worldwide shipping on the majority of items that we auction. Keep your eye out for this icon and be sure to read the terms and conditions.



Why Buy?

- In-depth descriptions and condition reports
- Free worldwide postage w/ free insurance
- Competitive Buyers Premium
- Guarantee authenticity
- Free live bidding
- Virtual viewings
- Sustainability

Why Sell?

- Competitive commission rates
- Free no-obligation valuations
- Worldwide customer base
- High quality photography
- Array of auction types
- Expert cataloguing

Further information

Live Auction Bidding Increments

From	To	Increment
£0	£50	£2
£50	£100	£5
£100	£200	£10
£200	£1,000	£20
£1,000	£10,000	£100
£10,000	£1,000,000	£1,000

Important Notice

All bidders accept full liability for bids placed. Placing a bid is a legally binding obligation to buy and pay for the lot if your bid is successful. Refunds will not be given for "buyer's remorse". Please note that by submitting a bid you are agreeing to our Terms & Conditions.

Key to Symbols

- Item may have export restrictions for customers outside of the EU.
- Lot comes with box.
- Lot comes with associated papers/warranty cards.
- Lot comes with report.
- Lot will carry an additional 20% VAT charge on the hammer price.



Dates for your diary...

Don't miss our flagship auctions in 2023.

Fine Jewellery

13th April

15th June

17th August

12th October

30th November

The Luxury Watch Sale

16th March

18th May

13th July

14th September

16th November

Fellows

Established 1876

IMPORTANT NOTICES FOR PURCHASERS

IMPORTANT NOTICE TO PROSPECTIVE BUYERS OF GEMSTONES/JEWELS

We recommend that you view any items you intend to purchase as refunds will not be given for buyer's remorse. This doesn't affect your statutory rights.

Notes 1 - Coloured Gemstones

Purchasers are advised that whilst great care has been taken in the examination of gemstones, it is not possible to test every gemstone within the constraints of time and equipment available outside of laboratory conditions. Any gemstone not provided with a laboratory report has been assessed by Fellows within the limitations of any mounting and an opinion has been given where possible.

Historically, many coloured gemstones have been subjected to a variety of treatments designed to enhance their appearance. Certain enhancement methods, such as heating, are routinely used to alter aspects of rubies, sapphires, and other gemstones. Oiling is often undertaken to enhance the clarity of emeralds. The international jewellery trade has generally accepted these and other enhancement methods. Some treatments are permanent whereas others may only be semi-permanent, possibly requiring further re-treatment in order to retain their appearance.

Because of the widespread variety of treatments within the jewellery industry, prospective purchasers should assume that all gemstones will have been treated unless statements are made to the contrary. Gemmological reports from internationally recognised Gemmological Laboratories will be noted in the item description where available.

Note 2 - Diamonds

Advancements in technology have led to some diamonds being treated in a number of ways, all designed to improve their appearance or alter their colour. Processes include but are not necessarily limited to: fracture filling, laser drilling, a combination of drilling and filling, HPHT treatment, irradiation and various coatings. Buyers are also alerted to the fact that synthetic diamonds are now produced in large quantities. Whilst every effort is made to identify or disclose treated and synthetic goods, it is not possible for Fellows to guarantee that all diamond set lots do not contain such material.

Fellows do not knowingly offer treated diamonds for sale, unless a gemmological opinion disclosing the type of treatment has been obtained and the treatment would be stated within the item description.

Note 3 - Weights and Measures

Estimated Diamond weights, colours and clarities (see Notes on Diamond Grading terms opposite) given by Fellows are intended as guides for prospective purchasers, with the given limitations of mounts and settings, and are opinions only, not guaranteed by Fellows.

Weights of coloured gemstones offered are extrapolated on the estimated dimensions, using trade standard formulae. Due to the traditional cutting techniques for coloured gemstones it is possible there may be discrepancy between the stated estimate and the unmounted weight.

Fellows uses a Thermo Scientific Nitron Handheld XRF Analyser to test metals. This technology is limited to examining metal to a depth of approximately 8 microns. Fellows does not guarantee the standard of gold or platinum unless an item is hallmarked. Results from electronically tested items should only be used as a guide and with caution, as false readings are possible.

Lengths and weights provided are estimates only.

The information stated in reports is the opinion of the respective laboratory and is not necessarily the opinion of Fellows auctioneers.

Note 4 - Condition Reports

Statements in the catalogue regarding the condition of lots in this sale may appear in the description, however, the absence of such a reference does not imply a lack of damage or wear, or lack of any further faults within the piece.

Please note that Fellows offer condition reports on almost every lot offered. Our condition reports are the opinion of Fellows and should only be referenced as a guide. We highly recommend that a prospective buyer views in person or sends a representative to satisfy themselves to the condition, originality and suitability of a piece(s) before bidding.

Our lots are almost exclusively antique or secondhand and as such should be expected to have small signs of wear and use commensurate with the age of the piece.

Some jewellery sales will also have a condition report banding scale which applies as follows:

A

No obvious faults other than wear in keeping with age and use.

B

Minor faults. There may be abrasion and/or small nicks to gemstones. General moderate wear from use possibly including but not necessarily limited to small dents and deep scratches. The piece may have been altered from its original design but to a reasonable standard.

C

Faults. Gemstones may be noticeably chipped along with abrasion and nicks. Non-principal gems may be deficient. The piece may have noticeable dents/tears or small losses that affect the overall appearance of the design. The piece may have had alterations from its original design that may be apparent under scrutiny.

D

Significant faults. Gemstones may be deficient, chipped or otherwise damaged. The piece may require attention before it is wearable, pins or clasps may be broken. There may be significant dents, tears, losses or alterations to the metal. The piece may have had alterations from its original design that are readily apparent.

E

At Fault. Gems will be damaged and/or deficient. Noticeable damage. The piece is unwearable.

Diamond Grading Terms

DIAMOND COLOUR

GIA	OLD WORLD TERMS	EXPLANATION	GIA	OLD WORLD TERMS	EXPLANATION
D	Finest White (Jager)	Colourless	K	Silver Cape (Top Cape)	Traces of colour. Small stones in this range will 'face up' colourless when mounted but larger stones will be tinted.
E	Finest White (River)	Colourless	L	Silver Cape (Top Cape)	Traces of colour. Small stones in this range will 'face up' colourless when mounted but larger stones will be tinted.
F	Fine White (River)	Colourless	M	Light Cape (Cape)	Traces of colour. Small stones in this range will 'face up' colourless when mounted but larger stones will be tinted.
G	Fine White (Top Wesselton)	Near Colourless: diamonds 'face up' colourless. Slight traces of colour will not be apparent in the mounted stones to other than the trained eye.	N	Light Cape (Low Cape)	Diamonds graded N through Z+ display a yellowish tint even to the untrained eye.
H	White (Top Wesselton)	Near Colourless: diamonds 'face up' colourless. Slight traces of colour will not be apparent in the mounted stones to other than the trained eye.	P	Cape O - R (Very Light Yellow)	Diamonds graded N through Z+ display a yellowish tint even to the untrained eye.
I	White (Top Wesselton)	Near Colourless: diamonds 'face up' colourless. Slight traces of colour will not be apparent in the mounted stones to other than the trained eye.	Z	Cape R - Z (Very Light Yellow)	Diamonds graded N through Z+ display a yellowish tint even to the untrained eye.
J	Top Silver (Top Wesselton)	Near Colourless: diamonds 'face up' colourless. Slight traces of colour will not be apparent in the mounted stones to other than the trained eye.	Z+	Fancy Yellow	Diamonds graded N through Z+ display a yellowish tint even to the untrained eye.

DIAMOND CLARITY

GIA	OLD WORLD TERMS	EXPLANATION	GIA	OLD WORLD TERMS	EXPLANATION
IF	Internally Flawless	No inclusions visible with a 10x lens even to an experienced grader.	S11 & S12	Slightly Included	Noticeable inclusions visible with a 10x lens.
VVS1 & VVS2	Very Very Slightly Included	Minute inclusions, which are difficult, even for experienced graders, to see with a 10x lens.	I1, I2 & I3	Pique 1, 2 & 3	Obvious inclusions, may be visible to the unaided eye, face up. In I3 they may affect the stone's durability.
VS1 & VS2	Very Slightly Included	Minor inclusions, observable with effort with a 10x lens.			

Our lots are almost exclusively antique or secondhand and as such should be expected to have small signs of wear and use commensurate with the age of the piece.

Some jewellery sales will also have a condition report banding scale which applies as follows:

A

No obvious faults other than wear in keeping with age and use.

B

Minor faults. There may be abrasion and/or small nicks to gemstones. General moderate wear from use possibly including but not necessarily limited to small dents and deep scratches. The piece may have been altered from its original design but to a reasonable standard.

C

Faults. Gemstones may be noticeably chipped along with abrasion and nicks. Non-principal gems may be deficient. The piece may have noticeable dents/tears or small losses that affect the overall appearance of the design. The piece may have had alterations from its original design that may be apparent under scrutiny.

D

Significant faults. Gemstones may be deficient, chipped or otherwise damaged. The piece may require attention before it is wearable, pins or clasps may be broken. There may be significant dents, tears, losses or alterations to the metal. The piece may have had alterations from its original design that are readily apparent.

E

At Fault. Gems will be damaged and/or deficient. Noticeable damage. The piece is unwearable.

1 A pair of 18ct gold emerald and brilliant-cut diamond cluster stud earrings.

Estimated total diamond weight 0.15ct.
Hallmarks for Sheffield, 2016. Length 0.7cm. 2.1gms.
£100-150 (plus 30% BP*)

2 An emerald and brilliant-cut diamond cluster pendant.

Emerald calculated weight 2.28cts, based on estimated dimensions of 11.1 by 8 by 4.5mms.
Estimated total diamond weight 1ct, G-I colour, predominantly VS clarity.
Stamped 750. Length 2.8cms. 4.5gms.
£450-650 (plus 30% BP*)

3 A pair of carved jadeite jade moth earrings, with mother-of-pearl circle 'moon' spacer and brilliant-cut diamond highlights.

Total diamond weight 0.16ct.
Stamped K18, 750. Length 4cms. 6.5gms.
Jade untested for natural colour origin.
£150-200 (plus 30% BP*)

4 A brilliant-cut diamond and pink sapphire necklace.

Total sapphire weight 0.98ct.
Total diamond weight 1.31cts, estimated G-I colour, VS-SI clarity.
Stamped K18. Length of pendant 4.4cms. Length of chain 42.7cms. 9.4gms.
£500-700 (plus 30% BP*)

5 A pair of pink sapphire and brilliant-cut diamond cluster earrings.

Estimated total diamond weight 1.35cts, G-I colour, VS-SI clarity.
Length 1.7cms. 5gms.
£350-450 (plus 30% BP*)

6 A pair of diamond 'Metro' hoop earrings, by Tiffany & Co.

Stamped 750.
Total diamond weight 0.34ct, estimated G-H colour, VS clarity.
Diameter 1.3cms. 3gms.
£600-800 (plus 30% BP*)

7 An 18ct gold brilliant-cut diamond and vari-shape 'yellow' diamond stylised floral pendant, with 18ct gold chain.

Estimated total diamond weight 1.65cts.
Hallmarks for London, 2009.
Length of pendant 4.2cms. Length of chain 44cms. 7.9gms.
Diamonds untested for natural colour origin.
£600-800 (plus 30% BP*)

8 A platinum marquise-shape and brilliant-cut diamond 'Adonis Rose' undulating band ring, by De Beers.

Estimated total diamond weight 0.55ct.
Hallmarks for London. Ring size K1/2. 2.9gms.
£800-1,200 (plus 30% BP*)

9 A hinged bangle, with amethyst, morganite, iolite and further collet-set gems.

Kunzite calculated weight 8.06cts, based on estimated dimensions of 12.8 by 10.6 by 8.9mms.
Stamped 750. Inner diameter 6.2cms. 42.3gms.
£700-900 (plus 30% BP*)

10 A pear-shape and brilliant-cut diamond 'Petal' ring, by De Beers.

Estimated total diamond weight 0.80ct.
Hallmarks for London. Ring size K. 1.9gms.
£800-1,200 (plus 30% BP*)

11 An 18ct gold pavé-set diamond knot motif cuff bangle, with initial 'K' safety clasp, by Chimento.

Estimated total diamond weight 3cts.
Hallmarks for London, 2001. Inner diameter 5.9cms. 35.2gms.
£1,400-2,000 (plus 30% BP*)

12 A tanzanite and brilliant-cut diamond cluster pendant.

Tanzanite calculated weight 20cts, based on estimated dimensions of 26 by 11.2 by 10.8mms.
Estimated total diamond weight 2.75cts, G-J colour, VS-SI clarity.
Length 5.2cms. 11.9gms.
£2,200-3,200 (plus 30% BP*)



9



7



11



2



12



3



4



1



5



8



10



6

13 An 18ct gold ruby and brilliant-cut diamond cluster ring.

Ruby calculated weight 0.60ct, based on estimated dimensions of 6.1 by 4.4 by 2.7mms.

Estimated total diamond weight 0.40ct, H-I colour, SI clarity. Hallmarks indistinct. Ring size 11/2. 2.8gms.

£150-200 (plus 30% BP*)

14 An 18ct gold emerald and brilliant-cut diamond cluster ring.

Maker's mark for Cropp & Farr.

Emerald calculated weight 1.17cts, based on estimated dimensions of 8.1 by 5.5 by 4.6mms.

Estimated total diamond weight 1ct, G-H colour, VS clarity.

Hallmarks for London, 1988. Ring size P. 4.8ms.

£200-300 (plus 30% BP*)

15 A yellow topaz single-stone ring.

Topaz calculated weight 8.20cts, based on estimated dimensions of 13.1 by 11 by 6.2mms.

Ring size P1/2. 12.6gms.

£350-450 (plus 30% BP*)

16 A pair of 18ct gold multifaceted citrine and cultured pearl earrings by Kiki McDonough.

Hallmarks for Birmingham, 2001. Length 2.3cms. 11.7gms.

£400-600 (plus 30% BP*)

17 An 18ct gold pavé-set diamond wasp brooch, by Kat Florence.

Estimated total diamond weight 0.70ct, G-H colour, VS clarity.

Hallmarks for Birmingham.

Length 4.2cms. 12.3gms.

£500-700 (plus 30% BP*)

18 A cuff bangle, with emerald, ruby, sapphire and brilliant-cut diamond butterfly terminals.

Stamped 750.

Inner diameter 5.6cms. 18.1gms.

£650-850 (plus 30% BP*)

19 An 18ct gold brilliant-cut diamond openwork spiral bombé ring, by Boodles.

Estimated total diamond weight 0.85ct, G-H colour, VS clarity. Import marks for London, 1989. Ring size N. 10.6gms.

£800-1,200 (plus 30% BP*)

20 A 'Torque' ring, by Frank Gehry for Tiffany & Co.

Ring size O. 22.1gms.

£800-1,200 (plus 30% BP*)

21 An 18ct gold sapphire and pavé-set diamond necklace, by Chiampesan.

Estimated total diamond weight 0.45ct.

Import marks for Sheffield, 1986. Length 45cms. 27.8gms.

£1,000-1,500 (plus 30% BP*)

22 A limited edition 18ct gold diamond and red enamel hinged egg pendant, containing a treble clef, by Fabergé.

Total diamond weight 0.115ct.

Hallmarks for Edinburgh, 2000. Length 3.4cms. 15.2gms.

With certificate of authenticity.

£1,400-2,000 (plus 30% BP*)

23 An 18ct gold brilliant-cut diamond collet bracelet, by Tiffany & Co.

Estimated total diamond weight 2.15cts, G-H colour, VS clarity.

Hallmarks for London, 2005. Length 17.5cms. 19gms.

With maker's case.

£1,400-2,000 (plus 30% BP*)

24 A mid 20th century 18ct gold old-cut diamond squirrel brooch, holding a rose-cut diamond nut, by René Boivin.

Estimated total old-cut diamond weight 1.10cts, G-H colour, VS clarity.

French assay marks. Boivin maker's mark.

Length 6cms. 35.4gms.

£1,800-2,600 (plus 30% BP*)



25 A 19th century 9ct gold dendritic agate brooch, the agate loosely depicting a butterfly or moth.

Length 4.9cms. 4.7gms.
£100-150 (plus 30% BP*)

26 A 19th century 15ct gold moss agate and garnet cluster pendant.

Length 2.3cms. 2.9gms.
£100-150 (plus 30% BP*)

27 A late 19th century gold pink garnet cross pendant.

Length 4.7cms. 3.2gms.
£100-150 (plus 30% BP*)

28 A Georgian gold black garnet mourning ring, with hairwork panel and foliate shoulders.

Ring size O. 3.6gms.
£100-150 (plus 30% BP*)

29 An early to mid 19th century gold portrait miniature ring, with blue and gilt painted surround.

Ring size Q. 1.6gms.
£100-150 (plus 30% BP*)

30 ✕ A mid Victorian 18ct gold coral and black enamel 'In Memory Of' mourning ring.

Personal inscription dated 1869.
Hallmarks worn, indistinct. Ring size M. 2.2gms.
Coral untested for natural colour origin.
£100-150 (plus 30% BP*)

31 ✕ A late Georgian gold, red enamel and split pearl brooch, the central glazed hairwork panel depicting love birds at a fountain.

Length 2.6cms. 3.7gms.
£200-300 (plus 30% BP*)

32 A 19th century 9ct gold scenic hairwork memorial ring, with purple garnet surround.

Ring size O1/2. 3.6gms.
£200-300 (plus 30% BP*)

33 An early 19th century gold multi-gem 'REGARD' acrostic mourning brooch, hinged to reveal a glazed locket.

Length 3.1cms. 8.2gms.
£200-300 (plus 30% BP*)

34 ✕ A late Georgian portrait miniature, in an early 20th century gold double-sided locket mount.

May be worn as a brooch.
Length 6.3cms. 25.2gms.
£400-600 (plus 30% BP*)

35 A late Georgian gold black enamel 'In Memory Of' memorial band ring.

Engraved 'Joseph Cockell Ob 12 Oct 1814 At 54'.
Hallmarks for London, 1814. Ring size O. 6.1gms.
£500-700 (plus 30% BP*)

36 A 19th century gold filigree chain.

Length 78cms. 31.4gms.
£900-1,400 (plus 30% BP*)



33

30

28

27

29

34

35

25

36

31

26

32

37 ✕ Two early 19th century gold cannetille, split pearl, turquoise and tortoiseshell brooches, circa 1825, designed as a cross and a quatrefoil.

May be worn as pendants.
Lengths 7.3 and 7.8cms. 19gms.
£120-180 (plus 30% BP*)

38 A late Georgian 18ct gold glazed woven hair memorial ring, with black enamel and split pearl surrounds.

Ring size F1/2. 3.7gms.
£120-180 (plus 30% BP*)

39 A mid 19th century daguerreotype photographic memorial brooch, with woven hair glazed locket and engraved reverse.

Length 4.3cms. 19.1gms.
£120-180 (plus 30% BP*)

40 A late 19th century 15ct gold, rose-cut diamond forget-me-not and black enamel 'In Memory Of' garter belt memorial brooch.

Length 1.9cms. 4.5gms.
£150-200 (plus 30% BP*)

41 A Georgian 18ct gold black garnet, split pearl and old-cut diamond mourning ring, with floral shoulders.

Estimated old-cut diamond weight 0.10ct.
Hallmarks for London.
Ring size P. 3.5gms.
£300-400 (plus 30% BP*)

42 A Georgian 22ct gold black enamel mourning ring, marked for Henry Somerset, 5th Duke of Beaufort'.

Hallmarks for London, 1803.
Ring size K. 4.1gms.
£300-400 (plus 30% BP*)

43 An early Victorian gold carved onyx urn and ouroboros mourning brooch, with split pearl and black enamel surrounds.

Engraved to the reverse 'Joseph Redish, Ob't 7th July 1841 At 75'.
Length 3.4cms. 10.3gms.
£300-400 (plus 30% BP*)

44 An early Victorian 22ct gold black enamel and gilt 'In Memory Of' band ring, with foliate embossed sides.

Hallmarks for London, 1857. Approximate ring size Q. 8.7gms.
£380-480 (plus 30% BP*)

45 A 19th century 15ct gold black enamel, mourning hinged loop pendant, with script 'Je Reste Sur Mes Souvenirs' and basket and ferns to the reverse.

Length 4.8cms. 11.3gms.
£350-450 (plus 30% BP*)

46 A 19th century gold graduated amethyst rivière necklace.

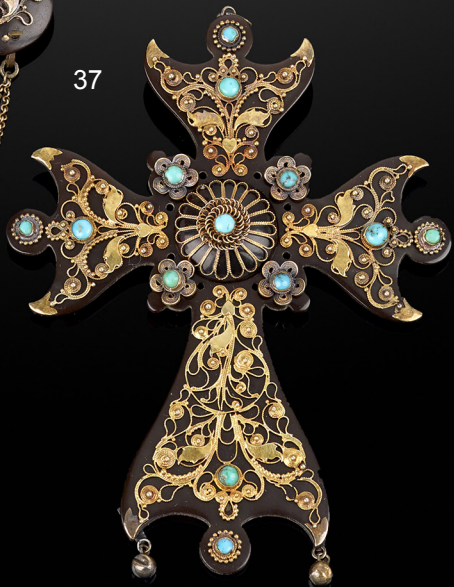
Clasp stamped 15.
Length 38.5cms. 11.6gms.
£300-400 (plus 30% BP*)

47 ✕ An antique portrait miniature, blue enamel, diamond point and split pearl memorial brooch, with floral engraved and glazed locket reverse.

Diameter 4.5cms. 25.6gms.
£600-800 (plus 30% BP*)

48 A late 19th century 18ct gold sardonyx cameo brooch, carved to depict a woman in profile, possibly Hera, with black enamel and split pearl surrounds.

French assay marks. Length 4.9cms. 32.3gms.
With fitted case.
£2,200-3,200 (plus 30% BP*)



49 A mid Victorian gold emerald and split pearl three-stone scrolled ring.

Emerald calculated weight 0.60ct, based on estimated dimensions of 5.7 by 5 by 3.4mms.

Ring size J. 1.9gms.

£150-200 (plus 30% BP*)

50 A 19th century 12ct gold bloodstone fob seal and split ring.

Length of fob 2.7cms. Diameter of split ring 2.4cms. 15.6gms.

£200-300 (plus 30% BP*)

51 A late Georgian/early 19th century silver and gold old-cut diamond two-row ring.

Estimated total diamond weight 1ct.

Ring size P1/2. 3.5gms.

£200-300 (plus 30% BP*)

52 An early 20th century 18ct gold graduated old-cut diamond five-stone ring.

Estimated total diamond weight 1ct, I-L colour, SI1-P1 clarity. Stamped 18ct. Ring size O1/2. 3.8gms.

£350-450 (plus 30% BP*)

53 A late 19th century gold onyx and vari-cut diamond mourning brooch, with black enamel and split pearl surround.

Length 5.2cms. 14.8gms.

£400-600 (plus 30% BP*)

54 A 19th century micro mosaic brooch, depicting a dog and duck at the lakeside, within a 9ct gold surround.

Length 5.9cms. 30.4gms.

£400-600 (plus 30% BP*)

55 A late 19th century silver and gold, split pearl floral brooch, with matching earrings.

Diameter of brooch 3.9cms. Diameter of earrings 1.7cms.

Later Portuguese marks. 23.3gms.

£700-900 (plus 30% BP*)

56 A 19th century 18ct gold rose-cut diamond and enamel floral brooch.

Length 4.6cms. 17.5gms.

£1,000-1,500 (plus 30% BP*)

57 A composite Georgian gold textured belcher-link and 19th century graduated banded agate bead necklace.

Length 42.3cms. 78gms.

£1,200-1,800 (plus 30% BP*)

58 A rose-cut diamond cluster ring.

Ring size L1/2. 4.5gms.

£1,200-1,800 (plus 30% BP*)

59 A late 19th century gold alternating graduated old-cut diamond and emerald five-stone ring.

Estimated total diamond weight 1.50cts, H-J colour, SI1-P1 clarity.

Ring size R. 4.2gms.

£2,000-3,000 (plus 30% BP*)

60 A late 19th century 18ct gold old-cut diamond fringe brooch, the fringe detachable and the brooch to be worn as a necklace.

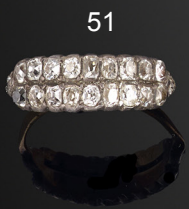
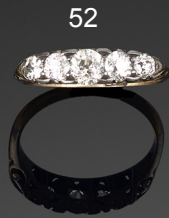
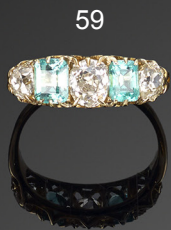
Estimated total diamond weight 3.75cts, G-I colour, VS-P1 clarity.

Length as a brooch 6cms. Diameter as a pendant 2.7cms.

Wearable length of chain 37cms.

Chain with French assay marks. 21.3gms.

£3,000-4,000 (plus 30% BP*)



57

61 A pair of yellow sapphire and brilliant-cut diamond cluster earrings.

Estimated total diamond weight 1ct, H-I colour, VS clarity.
Stamped 750. Length 1.4cms. 3.8gms.

£450-650 (plus 30% BP*)

62 A baroque cultured pearl, 'yellow' diamond and diamond floral brooch, partially set 'en tremblant'.

Estimated total diamond weight 1.75cts, G-H, tinted and 'yellow' colour, SI1-P1 clarity.

Stamped 750. Length 5.6cms. 29.5gms.
Diamonds untested for natural colour origin.

£450-650 (plus 30% BP*)

63 An 18ct gold citrine and brilliant-cut diamond cluster ring.

Citrine weight 3.74cts.

Total diamond weight 0.46ct, estimated G-H colour, VS-SI clarity.
Hallmarks for Birmingham. Ring size O. 5.3gms.

£500-700 (plus 30% BP*)

64 A pair of emerald and brilliant-cut diamond cluster earrings.

Estimated total diamond weight 2cts, G-I colour, VS-SI clarity.
Length 1.7cms. 6.7gms.

£500-700 (plus 30% BP*)

65 A yellow sapphire and brilliant-cut diamond cluster ring.

Sapphire calculated weight 1.76cts, based on estimated dimensions of 8.5 by 6.2 by 4.2mms.

Estimated total diamond weight 1.75cts, G-I colour, VS-SI clarity.
Stamped 750. Ring size M. 8.5gms.

£600-800 (plus 30% BP*)

66 An orange sapphire and brilliant-cut diamond cluster ring.

Sapphire calculated weight 2.57cts, based on estimated dimensions of 9.5 by 7.5 by 4.3mms.

Estimated total diamond weight 1ct.
Ring size N. 5.6gms.

£600-800 (plus 30% BP*)

67 An emerald and circular-cut diamond cluster ring.

Emerald calculated weight 1.97cts, based on estimated dimensions of 8 by 7.9 by 5mms.

Estimated total diamond weight 1ct, predominantly G-H colour and VS-SI clarity.

French assay mark, stamped 750. Ring size M1/2. 5.2gms.

£700-900 (plus 30% BP*)

68 A pair of brilliant-cut diamond cluster earrings.

Estimated total diamond weight 3.60cts, tinted colour, VS2-P1 clarity.

Diameter 1.8cms. 11.3gms.

£800-1,200 (plus 30% BP*)

69 An opal three-stone and diamond ring.

Opal total weight 4.59cts.

Total diamond weight 0.26ct.

Stamped Au750. Ring size N. 6.3gms.

£1,000-1,500 (plus 30% BP*)

70 A brilliant-cut diamond line bracelet.

Estimated total diamond weight 5.30cts, G-J colour, predominantly VS-SI clarity.

Stamped 750. Length 17.2cms. 12.1gms.

£1,800-2,600 (plus 30% BP*)

71 An 18ct gold 'brown' diamond and diamond cluster ring.

Principal diamond weight 1.01cts.

Total diamond weight 1.64cts.

Hallmarks for Birmingham. Ring size O. 3gms.

Diamond untested for natural colour origin.

£2,500-3,500 (plus 30% BP*)

72 A graduated brilliant-cut diamond spectacle-set necklace.

Estimated total diamond weight 5 to 6cts. G-I colour, VS-SI clarity.
Stamped Pt950. Length 67cms. 11.8gms.

£5,000-7,000 (plus 30% BP*)



62



68



65



64



69



71



66



63



61



72



70



67

73 A mid 20th century 18ct gold brilliant-cut diamond five-stone band ring.

Estimated total diamond weight 0.75ct, H-I colour, VS-SP1 clarity. Stamped 18Kt. Ring size L1/2. 3.8gms.

£140-200 (plus 30% BP*)

74 A pair of emerald and brilliant-cut diamond earrings.

Emerald total weight 1.63cts.

Total diamond weight 0.41ct.

Stamped Au750. Length 2.9cms. 2.3gms.

£700-900 (plus 30% BP*)

75 An 18ct gold square-shape diamond single-stone ring.

Estimated diamond weight 1ct, I-J colour, VS2-SI1 clarity.

Hallmarks for Birmingham. Ring size K. 4.3gms.

£1,000-1,500 (plus 30% BP*)

76 An 18ct gold brilliant-cut diamond floral cluster ring.

Estimated total diamond weight 1.90cts, G-H colour, VS-SI2 clarity.

Hallmarks for London, 2013.

Ring size P. 4.8gms.

£1,000-1,500 (plus 30% BP*)

77 An opal and brilliant-cut diamond cluster pendant.

Opal estimated dimensions 18.4 by 14.2 by 5.6mms.

Estimated total diamond weight 2cts, G-I colour, VS2-SI1 clarity.

Length 3.3cms. 7gms.

£1,500-2,000 (plus 30% BP*)

78 A jadeite jade and diamond floral brooch.

Jade total weight 5.64cts.

Total diamond weight 0.419ct.

Stamped Au750. Length 4.8cms. 4.9gms.

Jade untested for natural colour origin.

£1,500-2,000 (plus 30% BP*)

79 An emerald and vari-cut diamond dress ring.

Emerald calculated weight 1.61cts, based on estimated dimensions of 7.25 by 7.2 by 4.9mms.

Estimated total diamond weight 0.50ct, H-I colour, VS-SI clarity.

Stamped Pt900. Ring size M. 6gms.

£2,000-3,000 (plus 30% BP*)

80 A Colombian emerald and brilliant-cut diamond cluster ring.

With report 5783-982, dated 4th January 2023, from GCS, stating Colombia, moderate clarity enhancement, weight 5.97ct (engraved).

Diamond weight 1.81cts, stamped to band.

Stamped Pt900.

Ring size L. 13.7gms.

£3,000-4,000 (plus 30% BP*)

81 A brilliant-cut diamond single-stone ring.

Estimated diamond weight 2cts, G-H colour, P1 clarity.

Stamped 18ct. Ring size P1/2. 4.2gms.

£4,000-6,000 (plus 30% BP*)

82 A Colombian emerald and brilliant-cut diamond pendant, with chain.

With report 5783-983, dated 4th January 2023, stating Colombia, significant clarity enhancement, weight 7.38ct (engraved).

Total diamond weight 1.14cts.

Pendant and chain stamped Pt950.

Length of pendant 3.3cms. Length of chain 45.5cms. 9.7gms.

£4,500-6,500 (plus 30% BP*)

83 An emerald and diamond pierced lattice bracelet.

Emerald total weight 3.98cts, stamped to metal.

Total diamond weight 1.79cts, stamped to metal.

Stamped 850 PLAT.

Length 19.5cms. 48.3gms.

£4,500-6,500 (plus 30% BP*)

84 A pair of 18ct gold old-cut diamond stud earrings.

Diamond weights 2.43 and 2.50cts respectively, estimated L-tinted colour, VS clarity.

Hallmarks for Birmingham. 6.3gms.

£15,000-20,000 (plus 30% BP*)



80



77



74



81



82



84



79



76



78



73



75



85 A mid 20th century cocktail watch, by Omega.

Length of watch case 3.1cms. 17.6gms.
£80-120 (plus 30% BP*)

86 A mid 20th century gold old-cut diamond, opal and split pearl floral spray brooch.

Estimated total diamond weight 1.75cts, H-L colour, VS-SI clarity.
Length 5.9cms. 11.2gms.
£450-650 (plus 30% BP*)

87 A 1950s 18ct gold and single-cut diamond cocktail watch, by Cyra.

Estimated total diamond weight 1.20cts, I-J colour, SI clarity.
Hallmarks for London, 1959.
Length of watch case 1.7cms. Length of bracelet 15.3cms.
13.6gms.
£700-900 (plus 30% BP*)

88 A mid 20th century 18ct gold emerald, baguette and brilliant-cut diamond abstract geometric brooch.

Estimated total diamond weight 2.75cts, G-H colour, VS clarity.
Partial Austrian export mark, stamped 750. Length 5.2cms.
15.8gms.
£800-1,200 (plus 30% BP*)

89 An early to mid 20th century bi-colour 18ct gold old-cut diamond brooch.

Principal diamond estimated weight 0.75ct, L-tinted colour, SI clarity.
Estimated total diamond weight 1.40cts.
Stamped 18ct. Length 5.1cms. 6.9gms.
£1,000-1,500 (plus 30% BP*)

90 A mid 20th century 18ct gold vari-cut diamond and sapphire cocktail ring.

Estimated total diamond weight 3.85cts, H-J colour, VS2-P1 clarity.
Stamped 18ct. Ring size M1/2. 16.2gms.
£1,400-2,000 (plus 30% BP*)

91 A mid 20th century 18ct gold vari-cut diamond and sapphire floral brooch, by Gubelin.

Estimated total diamond weight 2.50cts, G-H colour, VS clarity.
Stamped 750.
Length 4.7cms. 9gms.
£1,800-2,600 (plus 30% BP*)

92 A Zimbabwean emerald and vari-cut diamond cluster ring.

Verbal, from GCS, stating Zimbabwe, significant treatment.
Emerald calculated weight 1.09cts, based on estimated dimensions of 7 by 6.9 by 3.1mms.
Estimated total diamond weight 0.95ct, I-J colour, SI clarity.
Ring size J1/2. 5.3gms.
£1,500-2,000 (plus 30% BP*)

93 A mid 20th century 18ct gold vari-cut diamond brooch.

Estimated total diamond weight 4.30cts, G-I colour, predominantly VS clarity.
Length 5.6cms. 14.2gms.
£2,000-3,000 (plus 30% BP*)

94 A pair of 1940s brilliant-cut diamond scroll earrings.

Estimated total diamond weight 2.20cts, H-J colour, VS2-SI1 clarity.
Length 2.1cms. 10.8gms.
£2,500-3,500 (plus 30% BP*)

95 An aquamarine and pear-shape diamond three-stone dress ring.

Aquamarine calculated weight 18cts, based on estimated dimensions of 17 by 15 by 10mms.
Estimated total diamond weight 0.60ct, I-J colour, SI2-P1 clarity.
Stamped 14k. Ring size L. 10.4gms.
£2,800-3,800 (plus 30% BP*)

96 A mid 20th century 9ct gold vari-cut diamond openwork bracelet.

Estimated total diamond weight 9.35cts, H-J colour, SI clarity.
Length 15.9cms. 40.7gms.
£4,000-6,000 (plus 30% BP*)

96



93



89



88



94



92



90



86



87



95



91



85



97 A pavé-set diamond, carved emerald and sapphire bead panel depicting parrots amongst foliate, on steel mesh bracelet.

Estimated total diamond weight 1ct.
Approximate inner diameter 6cms.
£240-340 (plus 30% BP*)

98 A pair of cultured pearl and brilliant-cut diamond stud earrings.

Estimated total diamond weight 0.40ct, H-I colour, SI clarity.
Stamped 750.
Length 1.7cms. 8.4gms.
Cultured pearls untested.
£280-380 (plus 30% BP*)

99 A graduated cultured pearl necklace, with a brilliant-cut diamond clasp.

Clasp stamped 750.
Length 48.5cms. 73.5gms.
Cultured pearls untested.
£500-700 (plus 30% BP*)

100 A pair of pavé-set diamond hoop earrings, with detachable black rubber and diamond drop.

Estimated total diamond weight 1ct.
Stamped 750. Length 5.3cms. 15.5gms.
£550-750 (plus 30% BP*)

101  An 18ct gold brilliant-cut diamond and black ceramic 'Ultra' ring, by Chanel.

Estimated total diamond weight 0.40ct, G-H colour, VS clarity.
Swiss convention marks. Ring size K1/2. 10gms.W
With maker's case.
£500-700 (plus 30% BP*)

102 An 18ct gold diamond and black gem leaf ring, with matching earrings.

Estimated total diamond weight 1.25cts.
Ring with hallmarks for Sheffield. Earrings stamped 18ct.
Ring size T1/2. Length of earrings 2.5cms. 28.3gms.
£700-900 (plus 30% BP*)

103 An 18ct gold yellow sapphire, brilliant-cut diamond and black gem cluster ring, with diamond shoulders, together with an 18ct gold brilliant-cut diamond eternity ring.

Yellow sapphire calculated weight 2.11cts, based on estimated dimensions of 7.3 by 5.8 by 4.6mms.
Estimated total diamond weight 1ct, H-I colour, VS2-SI2 clarity.
Hallmarks for London, 2017 and 2019.
Ring sizes I (with ring sizers) and K. 10.6gms.
£1,000-1,500 (plus 30% BP*)

104 An 18ct gold brilliant-cut diamond and 'yellow' diamond floral cluster ring.

'Yellow' diamond weight 0.70ct, estimated VS clarity.
Total diamond weight 1.35cts, estimated H-I colour, VS2-SI2 clarity.
Hallmarks for Birmingham. Ring size N1/2. 3.3gms.
Diamond untested for natural colour origin.
£1,500-2,000 (plus 30% BP*)

105  An 18ct gold pavé-set diamond and black ceramic 'Trilogy' ring, by Cartier.

Estimated total diamond weight 0.45ct, G-H colour, VS clarity.
Swiss convention marks. Ring size L1/2. Cartier size 52. 4.8gms.
With maker's case and certificate of authenticity.
£1,500-2,000 (plus 30% BP*)

106  A Colombian emerald and brilliant-cut diamond cluster ring.

With report 5783-980, dated 3rd January 2023, from GCS, stating Colombia, significant clarity enhancement, weight 3.56ct (engraved).
Total diamond weight 0.74ct.
Stamped Pt900.
Ring size I. 9.6gms.
£2,000-3,000 (plus 30% BP*)

107 An 18ct gold bluish green beryl and brilliant-cut diamond cluster ring, with diamond shoulders.

Beryl weight 3.58cts.
Total diamond weight 0.40ct, estimated H-I colour, VS clarity.
Hallmarks for London, 2016.
Ring size L. 4.8gms.
£3,000-4,000 (plus 30% BP*)

108  A brilliant-cut diamond and black gem ostrich brooch.

Estimated total diamond weight 1.80cts.
Stamped 750.
Length 4.8cms. 31.6gms.
£3,000-4,000 (plus 30% BP*)



99



98



101



100



106



107



103



108



105



104



102



97

109 An early to mid 20th century graduated two-row jadeite jade bead necklace, with 15ct gold carved jadeite jade floral clasp.

Diameter of beads 10.6 to 4.1mms.
Length 43cms. 68.7gms.
Jade untested for natural colour origin.
£100-150 (plus 30% BP*)

110 An early 20th century gold rose and old-cut diamond openwork pendant.

Estimated total diamond weight 1.40cts, I-J colour, SI2-P1 clarity.
Length 4.5cms.
£100-150 (plus 30% BP*)

111 A graduated jadeite jade bead single-strand necklace, with diamond point accent 9ct gold clasp.

Diameter of beads 9 to 4.6mms.
Hallmarks for Birmingham, 1960. Length 78.5cms. 60.9gms.
Jade untested for natural colour origin.
£100-150 (plus 30% BP*)

112 A pair of early 20th century 15ct gold carved and pierced jade earrings, with single-cut diamond spacer.

Length 5cms. 4.7gms.
Jade untested for natural origin.
£200-300 (plus 30% BP*)

113 An early 20th century 18ct gold demantoid garnet, seed pearl and rose-cut diamond bar brooch.

Stamped 18. Length 3.8cms. 2.7gms.
£120-180 (plus 30% BP*)

114 An early 20th century 18ct gold old-cut diamond two-stone crossover ring.

Estimated total diamond weight 0.20ct, I-K colour, SI1-P1 clarity.
Stamped 18ct. Ring size N. 2.5gms.
£200-300 (plus 30% BP*)

115 An early 20th century silver and 15ct gold, vari-cut diamond pierced lattice dress ring.

Estimated total diamond weight 0.40ct, G-I colour, VS-SI clarity.
Ring size M. 2.4gms.
£200-300 (plus 30% BP*)

116 A mid 20th century 18ct gold graduated circular-cut diamond three-stone ring.

Estimated total diamond weight 0.85ct, G-I colour, SI1-P1 clarity.
Stamped 18ct PLAT. Approximate ring size L. 2.7gms.
£200-300 (plus 30% BP*)

117 An early 20th century 15ct gold demantoid garnet and split pearl floral hinged bangle.

Stamped 15ct. Inner diameter 5.8cms. 10.1gms.
£300-400 (plus 30% BP*)

118 An early 20th century platinum and 15ct gold demantoid garnet and rose-cut diamond ring.

Demantoid garnet calculated weight 1.15cts, based on estimated dimensions of 6.2 by 3.9mms.
Ring size M. 3.9gms.
£500-700 (plus 30% BP*)

119 An Art Deco platinum and 18ct gold diamond and onyx dress ring.

Estimated total diamond weight 0.60ct, H-I colour, VS-SI clarity.
Ring size K1/2. 6.2gms.
£1,800-2,600 (plus 30% BP*)

120 A platinum Art Deco Colombian emerald and single-cut diamond dress ring.

Verbal from GCS, stating Colombia, indications of moderate clarity enhancement.
Principal emerald calculated weight 0.98ct, based on estimated dimensions of 6 by 5.3 by 3.8mms.
Estimated total diamond weight 0.15ct.
Approximate ring size L1/2. 2.9gms.
£2,000-3,000 (plus 30% BP*)



109

120

110

112



117



115



116



113



111

114



119



118



121 ✕ A pair of early 20th century 15ct gold coral and split pearl earrings.

Length 2.9cms. 2.4gms.
Coral untested for natural colour origin.
£100-150 (plus 30% BP*)

122 An early to mid 20th century 14ct gold garnet and old-cut diamond bar brooch.

Estimated total diamond weight 0.40ct, H-I colour, SI2-P1 clarity.
Stamped 585. Length 6.7cms. 5.2gms.
£120-180 (plus 30% BP*)

123 An early 20th century 18ct gold graduated old-cut diamond five-stone ring.

Estimated total diamond weight 0.70ct, G-I colour, VS-SI clarity.
Stamped 18ct. Ring size M1/2. 2.2gms.
£100-150 (plus 30% BP*)

124 An early to mid 20th century 18ct gold graduated old-cut diamond collet three-stone ring.

Estimated total diamond weight 0.50ct, H-I colour, VS2-SI2 clarity.
Stamped 18ct. Ring size N1/2. 3.5gms.
£150-200 (plus 30% BP*)

125 An early to mid 20th century 18ct gold sapphire and old-cut diamond cluster ring.

Sapphire calculated weight 1ct, based on estimated dimensions of 5.7 by 5.7 by 3.3mms.
Estimated total diamond weight 0.70ct.
Stamped 18ct. Ring size N1/2. 2.8gms.
£200-300 (plus 30% BP*)

126 An early 20th century gold graduated Thai ruby and single-cut diamond hinged bangle.

Verbal from GCS, stating Thailand, no heat.
Central ruby calculated weight 0.61ct, based on estimated dimensions of 4.9 by 4.3 by 3.1mms.
Estimated total diamond weight 0.25ct.
Inner diameter 5.9cms. 12.1gms.
£800-1,200 (plus 30% BP*)

127 ✕ An Edwardian 14ct gold portrait miniature pendant, with glazed locket reverse.

Engraved 'Florence Geraldine Victoria Walter, Born March 31st 1897'.
Length 7.4cms. 36.3gms.
With fitted case.
£700-900 (plus 30% BP*)

128 A pair of 18ct gold old-cut and diamond point earrings.

Estimated total diamond weight 0.90ct, G-H colour, SI clarity.
Foreign marks. Length 1.7cms. 3.8gms.
£900-1,400 (plus 30% BP*)

129 An early 20th century 15ct gold pink topaz and old-cut diamond pendant, on chain.

Topaz calculated weight 4.20cts, based on estimated dimensions of 16.2 by 6.8 by 4.6mms.
Estimated diamond weight 0.25ct, I-J colour, SI clarity.
Length of pendant 5.8cms. Length of chain 43cms. 5.8gms.
£1,000-1,500 (plus 30% BP*)

130 An early to mid 20th century multi-gem suite, comprising brooch, ring and earrings, in the manner of Dorrie Nossiter.

Principal sapphire calculated weight 5.17cts, based on estimated dimensions of 12.5 by 7.6 by 5.8mms.
Length of brooch 3.5cms. Length of earrings 1.7cms. Ring size G. 23.9gms.
With case.
£1,200-1,800 (plus 30% BP*)

131 A late 19th century gold vari-hue sapphire, yellow zircon and citrine fringe necklace.

Principal sapphire calculated weight 2.20cts, based on estimated dimensions of 10.7 by 6.3 by 3.9mms.
Length 46.5cms. 10.2gms.
£1,500-2,000 (plus 30% BP*)

132 An early 20th century 14ct gold opal necklace, with seed pearl spacer trace-link chain.

Principal opal estimated dimensions of 18.8 by 14.3 by 3.5mms.
Length of pendant 5.3cms. Wearable length of chain 39cms. 5.2gms.
£1,200-1,800 (plus 30% BP*)

126



132



121



131



123



125



129



124



130



127



128



122



133 A late 19th century gold moonstone single-stone ring.

Stamped 'ORR18', indistinct.
Ring size P. 4.1gms.

£100-150 (plus 30% BP*)

134 An early 20th century 9ct gold turquoise modified curb-link bracelet.

Stamped 9ct. Length 18.5cms. 9.4gms.

£180-260 (plus 30% BP*)

135 A late 19th century silver and 15ct gold blister pearl and turquoise pendant, by William Hair Haseler for Liberty & Co.

Please see design 9598 from the Liberty Sketchbook for a very similar design.

Stamped 15ct. Length 2.6cms. 3.1gms.

£100-150 (plus 30% BP*)

136 An Arts and Crafts silver blister pearl and enamel floral pendant, by Liberty & Co., with near period chain.

Length of pendant 3.1cms. Length of chain 57.4cms. 9.4gms.

£100-150 (plus 30% BP*)

137 A Jugendstil silver opal and enamel brooch, by Levinger & Bissinger, together with an Arts and Crafts silver and enamel floral brooch, by Liberty & Co.

Both with marks indicating silver.
Lengths 2.7 and 3.2cms. 10.6gms.

£200-300 (plus 30% BP*)

138 An early 20th century 15ct gold boulder opal and old-cut diamond brooch, in the manner of Archibald Knox for Liberty & Co.

Boulder opal estimated dimensions 16 by 9.5 by 5mm.
Estimated total diamond weight 0.25ct, G-H colour, SI2-P1 clarity.
Length 4cms. 5.4gms.

£300-400 (plus 30% BP*)

139 An Australian early 20th century Arts & Crafts 15ct gold turquoise, blister and split pearl necklace, by William James Proud.

Stamped 15ct, PROUD.

Length 36cms. 9.6gms.

£200-300 (plus 30% BP*)

140 An early 20th century Arts and Crafts silver necklace, suspending a carved mutton fat and russet jade pendant, with citrine tonneau spacer.

Length of jade 5cms. Length of necklace 72cms. 47.7gms.

Nephrite jade untested for natural colour origin.

£200-300 (plus 30% BP*)

141 A late 19th century silver and gold rose-cut diamond and enamel brooch, depicting a cherub listening to a song bird amongst flowers.

Diameter 3cms. 6.7gms.

£350-450 (plus 30% BP*)

142 An early 20th century 18ct gold demantoid and split pearl cluster ring, with split pearl shoulders.

Partial hallmarks, mostly indistinct, dated 1910.

Ring size P. 2.5gms.

£200-300 (plus 30% BP*)

143 A late Victorian 9ct gold turquoise and split pearl buckle bracelet.

Stamped 9ct.

Length 20.9cms. 18.1gms.

£350-450 (plus 30% BP*)

144 An early 20th century Arts & Crafts gold turquoise and old-cut diamond necklace.

Estimated total diamond weight 0.40ct, G-I colour, VS clarity.

Length of drop 6cms. length of chain 35cms. 9.9gms.

£400-600 (plus 30% BP*)



145 A pair of early 20th century gold aquamarine and seed pearl drop earrings.

Length 2.5cms. 2.5gms.
£100-150 (plus 30% BP*)

146 An early 20th century 18ct gold and platinum sapphire and old-cut diamond two-stone crossover ring.

Sapphire calculated weight 0.46ct, based on estimated dimensions of 4.9 by 4.9 by 2.4mms.
Estimated diamond weight 0.30ct, I-J colour, VS clarity.
Stamped 18ct and PLAT.
Ring size N1/2. 2.4gms.
£150-200 (plus 30% BP*)

147 A Pre-Revolutionary Russian gold red spinel and demantoid garnet floral brooch.

56 zolotnik mark. Partial maker's mark. Length 5.2cms. 4.9gms.
£100-150 (plus 30% BP*)

148 An Edwardian 18ct gold sapphire three-stone and diamond ring.

Hallmarks for Birmingham, 1901. Ring size N. 2.7gms.
£150-200 (plus 30% BP*)

149 An early 20th century 15ct gold amethyst and split pearl pendant, with 9ct gold chain.

Stamped 15 and 9ct.
Length of pendant 2.8cms. Length of chain 49cms. 7.3gms.
£150-200 (plus 30% BP*)

150 A late 19th century silver and gold amethyst pendant, with rose-cut diamond foliate surround.

Length 3.3cms. 9.1gms.
£200-300 (plus 30% BP*)

151 An early 20th century 15ct gold split pearl blue passionflower leaf brooch.

Stamped 15ct.
Length 4.5cms. 8.9gms.
£250-300 (plus 30% BP*)

152 An early to mid 20th century 18ct gold graduated amethyst bead single-strand necklace.

Stamped 18K. Length 90cms. 45.6gms.
£350-450 (plus 30% BP*)

153 An early 20th century 18ct gold and platinum opal and single-cut diamond cluster ring.

Estimated total diamond weight 0.45ct, I-J colour, SI clarity.
Stamped '18ct&Pt'. Ring size L. 2.7gms.
£400-600 (plus 30% BP*)

154 An early 20th century gold old-cut diamond and enamel pansy brooch.

Estimated diamond weight 0.15ct.
Length 2.9cms. 8.4gms.
£600-800 (plus 30% BP*)

155 An early 20th century gold aventurine quartz bead necklace, together with a matching bracelet.

Length of necklace 37.5cms. Length of bracelet 20.1cms. 71.8gms.
£900-1,400 (plus 30% BP*)

156 An early 20th century platinum and 18ct gold old-cut diamond two-stone crossover ring.

Principal diamonds estimated total weight 1.40cts, H-I colour, VS-SI clarity.
Ring size N. 3.3gms.
£1,500-2,000 (plus 30% BP*)



152

154

155

146

149

153

145

156

150

151

147

148

157 A pair of 18ct gold amethyst 'Kiki Classics' earrings, by Kiki McDonough.

Hallmarks for Birmingham, 2003. Length 1.7cms. 8.3gms.
£350-450 (plus 30% BP*)

158  A vari-tone faceted amethyst bead torsade necklace, by Kiki McDonough.

Length 43cms. 214.3gms.
With maker's case.
£350-450 (plus 30% BP*)

159 An 18ct gold amethyst and brilliant-cut diamond ring.

Amethyst weight 4.08cts.
Total diamond weight 0.36ct.
Hallmarks for Birmingham. Ring size O. 4.7gms.
£400-600 (plus 30% BP*)

160 A pair of 18ct gold amethyst and brilliant-cut diamond cluster earrings.

Amethyst total weight 3.32cts.
Total diamond weight 0.37ct.
Hallmarks for Birmingham. Length 1.4cms. 4.7gms.
£400-600 (plus 30% BP*)

161 A pair of lilac sapphire and brilliant-cut diamond cluster earrings.

Sapphire total weight 2.63cts.
Total diamond weight 0.31ct, estimated G-H colour, VS clarity.
Earring backs stamped 750.
Length 0.9cm. 3.9gms.
£600-800 (plus 30% BP*)

162 A faceted tanzanite bead multi-strand choker, with sapphire, citrine, cultured pearl and enamel panel, by Kim Poor.

Stamped 18c. Length 31cms. 108.2gms.
£800-1,200 (plus 30% BP*)

163 An 18ct gold amethyst and brilliant-cut diamond cluster ring.

Amethyst calculated weight 6.93cts, based on estimated dimensions of 13.9 by 11.5 by 7.8mms.
Estimated total diamond weight 0.50ct, H-I colour, SI2-P1 clarity.
Hallmarks for Birmingham, 2006.
Ring size K. 7.4gms.
£400-600 (plus 30% BP*)

164 An iolite and brilliant-cut diamond geometric dress ring.

Iolite weight 5.45cts.
Total diamond weight 0.225cts.
Stamped Au750. Ring size 5.3gms.
£1,000-1,500 (plus 30% BP*)

165 An 18ct gold amethyst and diamond 'Dragon' ring, by Rodney Rayner.

Estimated total diamond weight 0.75ct, G-H colour, VS clarity.
Hallmarks for London, 2005. Ring size M. 20.7gms.
£1,000-1,500 (plus 30% BP*)

166 An agate and brilliant-cut diamond leaf brooch.

Agate weight 101.55cts.
Total diamond weight 0.531ct.
Stamped Au750. Length 7.1cms. 30.6gms.
£1,500-2,000 (plus 30% BP*)

167 An aquamarine, sapphire and colour-treated 'blue' diamond floral ring, by Zorab Creations.

Principal aquamarine calculated weight 9.85cts, based on estimated dimensions of 14.6 by approximately 8.5mms.
Stamped 750. Ring size N1/2. 28.4gms.
£1,400-2,000 (plus 30% BP*)

168 An amethyst, sapphire and brilliant-cut diamond 'Noctua' owl ring, by Boucheron.

Estimated total diamond weight 0.50ct, G-H colour, VS clarity.
Ring size O. 19gms.
£2,000-3,000 (plus 30% BP*)

165



158



163



157



160



168



167



164



159



161



166



162



169 A turquoise and diamond stylised cross pendant.

Estimated total diamond weight 0.30ct.
Length 3cms. 4.2gms.
£350-450 (plus 30% BP*)

170 A pair of turquoise and diamond drop earrings.

Estimated total diamond weight 0.80ct.
Length 2.8cms. 11.9gms.
£500-700 (plus 30% BP*)

171 A pavé-set diamond scroll pendant necklace.

Estimated total diamond weight 1.15cts, G-I colour, VS-SI clarity.
Stamped 750. Length of pendant 5.1cms. Length of chain 45cms.
13.2gms.
£600-800 (plus 30% BP*)

172 A platinum graduated brilliant-cut diamond and pink sapphire 'Jazz' ring, by Tiffany & Co.

Estimated total diamond weight 0.20ct, G-H colour, VS clarity.
Hallmarks for London, 2012. Ring size L. 3.7gms.
£600-800 (plus 30% BP*)

173 An opal and brilliant-cut diamond cluster ring.

Opal estimated dimensions of 13.8 by 10.1 by 4.2mms.
Estimated total diamond weight 1.15cts, H-J colour, SI1-P2 clarity.
Ring size L1/2. 5.1gms.
£800-1,200 (plus 30% BP*)

174 An 18ct gold kunzite and brilliant-cut diamond dress ring.

Kunzite weight 10.88cts.
Total diamond weight 0.58ct, estimated G-H colour, VS-SI clarity.
Hallmarks for Birmingham. Ring size N1/2.
£900-1,400 (plus 30% BP*)

175 An aquamarine and brilliant-cut diamond pendant.

Aquamarine calculated weight 9.05cts, based on estimated dimensions of 19.7 by 10.1 by 6.2mms.
Estimated total diamond weight 0.50ct.
Stamped 750. Length 2.5cms. 4.2gms.
£700-900 (plus 30% BP*)

176 A pair of 18ct gold pink sapphire and brilliant-cut diamond cluster earrings.

Sapphire total weight 2.75cts.
Total diamond weight 0.30ct.
Hallmarks for Birmingham. Length 1.2cms. 3.9gms.
£900-1,400 (plus 30% BP*)

177 An 18ct gold baguette and brilliant-cut diamond hinged bangle.

Estimated total diamond weight 2.75cts, G-H colour, VS-SI clarity.
Hallmarks for London, 2003. Inner diameter 6cms. 22.6gms.
£2,500-3,500 (plus 30% BP*)

178 An aquamarine and old-cut diamond cluster ring.

Aquamarine calculated weight 4.29cts, based on estimated dimensions of 12.2 by 10.2 by 5.4mms.
Estimated total diamond weight 1.25cts, G-I colour, VS2-P1 clarity.
Austrian marks, stamped 585. Ring size P1/2. 4.8gms.
£2,500-3,500 (plus 30% BP*)

179 A pair of tapered baguette-cut diamond earrings.

Estimated total diamond weight 3.75cts, G-I colour, predominantly VS clarity.
Length 2.5cms. 23.1gms.
£2,800-3,800 (plus 30% BP*)

180 A Madagascan sapphire ring, with brilliant and baguette-cut diamond surround.

Verbal from GCS, stating Madagascar, no heat.
Sapphire calculated weight 2.72cts, based on estimated dimensions of 8.4 by 8 by 4.4mms.
Estimated total diamond weight 1ct, G-H colour, VS-P1 clarity.
Stamped 18ct, partially indistinct. Ring size N. 5.6gms.
£3,200-4,200 (plus 30% BP*)



171



180



170



175



172



169



174



179



178



176



177



173

181 A late 19th century gold turquoise and scrolling foliate engraved heart locket, on small section of snake-link chain.

Length 4cms. 1.9gms.
£80-120 (plus 30% BP*)

182 A late 19th century silver and gold turquoise and rose-cut diamond cluster ring.

Band stamped 15ct. Ring size O. 3.7gms.
£100-150 (plus 30% BP*)

183 A late 19th century gold, floral vari-cut diamond and blue enamel bar brooch.

Length 6.4cms. 5.6gms.
£100-150 (plus 30% BP*)

184 A late Victorian silver and gold turquoise and mabe pearl openwork brooch/pendant.

Length 3.4cms. 14.3gms.
£100-150 (plus 30% BP*)

185 A 19th century 18ct gold turquoise five-stone band ring.

Stamped 18ct. Ring size R1/2. 5.1gms.
£150-200 (plus 30% BP*)

186 A late Victorian gold turquoise horseshoe and whip motif bangle.

Inner diameter 5.5cms. 13.1gms.
£300-400 (plus 30% BP*)

187 A late 19th century 18ct gold horseshoe stickpin.

Length of stickpin head 2cms. 5.6cms.
£100-150 (plus 30% BP*)

188 A late Victorian gold horseshoe brooch.

Length 2.7cms. 7.6gms.
With fitted Hancocks' & Co. case.
£250-350 (plus 30% BP*)

189 A late Victorian silver and gold, old-cut diamond, ruby and pearl horseshoe brooch.

Estimated total diamond weight 0.20ct.
Length 4.3cms. 4.1gms.
Pearl untested for natural origin.
£100-150 (plus 30% BP*)

190 An early 20th century silver and gold old-cut diamond horseshoe and riding crops brooch.

Estimated total diamond weight 0.30ct, H-I colour, SI clarity.
Length 4.6cms. 4.8gms.
£150-200 (plus 30% BP*)

191 A mid to late 19th century gold and turquoise mounted shell cameo and glazed panel swivel brooch, the shell carved to depict a village scene.

Length 6.8cms. 31.2gms.
£400-600 (plus 30% BP*)

192 An early 20th century platinum and gold, turquoise and old-cut diamond cluster brooch.

Turquoise estimated dimensions of 17.6 by 16 by 8.5mm.
Estimated total diamond weight 3.90cts, G-I colour, SI1-P1 clarity.
Length 2.6cms. 12.2gms.
£2,000-3,000 (plus 30% BP*)



191



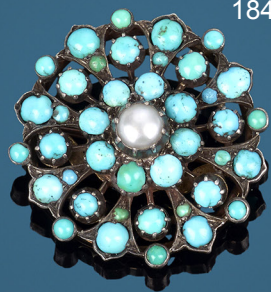
186



188



187



184



189



190



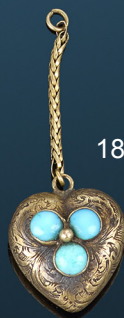
183



192



182



181



185

193 A mid to late Victorian 9ct gold citrine and vari-agate penannular brooch.

Engraved kite mark to reverse.
Length 4.8cms. 14.3gms.
£150-200 (plus 30% BP*)

194 A Victorian gold bloodstone seal, with figural horse and encircling whip.

Length 2.8cms. 10.5gms.
£300-400 (plus 30% BP*)

195 A late 19th century silver and gold rose-cut diamond crescent brooch, with star sapphire cabochon accent.

Sapphire calculated weight 18.28cts, based on estimated dimensions of 15.5 by 12 by 9.1mms.
Length 2.8cms. 8.5gms.
£250-350 (plus 30% BP*)

196 ✕ A navaratna, polki diamond and turquoise floral enamel pendant, suspended from a pearl necklace with sapphire, ruby, yellow sapphire, carved emerald and coral bead spacers.

Length of pendant (excluding pearl and turquoise drop) 7cms.
Length of necklace 50cms. 61.8gms.
Pearls untested for natural origin.
£300-400 (plus 30% BP*)

197 A late 19th century 18ct gold pearl, rose-cut diamond and split pearl floral cluster brooch.

Diameter 3.2cms. 13gms.
Pearl untested for natural origin.
£550-750 (plus 30% BP*)

198 An early 20th century 18ct gold graduated old-cut diamond five-stone ring.

Estimated total diamond weight 1.25cts, G-I colour, VS-SI clarity.
Stamped 18. Ring size U. 4.7gms.
£500-700 (plus 30% BP*)

199 An early 20th century 18ct gold snake ring, with old-cut diamond crest.

Estimated diamond weight 0.20ct, I-J colour, P1 clarity.
Hallmarks for London, 1916. Ring size Z. 15.5gms.
£600-800 (plus 30% BP*)

200 A late 19th century gold monogrammed locket.

Length 6cms. 26.7gms.
£800-1,200 (plus 30% BP*)

201 A late Victorian gold geometric, hinged bangle.

Inner diameter 5.8cms. 29.2gms.
With fitted retailer's case.
£900-1,400 (plus 30% BP*)

202 An early 20th century 18ct gold old-cut diamond single-stone ring.

Estimated total diamond weight 0.60ct, G-H colour, SI clarity.
Hallmarks worn, indistinct. Ring size T1/2. 4.8gms.
£1,000-1,500 (plus 30% BP*)

203 A late 19th century gold graduated ruby five-stone ring.

Central ruby calculated weight 0.55ct, based on estimated dimensions of 5.8 by 4.2 by 2.4mms.
Ring size J1/2. 6.6gms.
£1,800-2,600 (plus 30% BP*)

204 A late Victorian gold floral engraved and bead motif collar.

Length 41.5cms. 57.6gms.
£1,800-2,600 (plus 30% BP*)



204

200



195

202

198

203

197

199



193



194



196



201

205 A pair of rose-cut diamond floral cluster drop earrings.

Length 2.9cms. 5.2gms.
£100-150 (plus 30% BP*)

206 An early 19th century French Napoleonic Prisoner of War Masonic locket pendant, circa 1805.

Length 5.6cms.
£300-400 (plus 30% BP*)

207 A late 19th century 18ct gold ruby three-stone and diamond spacer ring.

Central ruby calculated weight 0.64ct, based on estimated dimensions of 6 by 5 by 2.3mms.
Ring size P1/2. 3.7gms.
£500-700 (plus 30% BP*)

208 A graduated old-cut diamond five-stone ring, with brilliant-cut diamond spacers.

Estimated total diamond weight 0.65ct, H-tinted colour, SI clarity.
Ring size M1/2. 5.3gms.
£650-850 (plus 30% BP*)

209 A 19th century gold turquoise and garnet quatrefoil cluster brooch, with swag and bead highlights.

Length 5.6cms. 10.7gms.
£700-900 (plus 30% BP*)

210 A late 19th century 9ct gold modified trace-link longuard chain, with lobster clasp.

Stamped 9ct. Length 154cms.
£900-1,400 (plus 30% BP*)

211 A late 19th century silver and gold old-cut diamond star brooch.

Estimated total diamond weight 2.30cts, G-I colour, VS-SI clarity.
Diameter 2.9cms. 6.7gms.
£1,000-1,500 (plus 30% BP*)

212 A late 19th century silver and gold, old and rose-cut diamond bow brooch.

Estimated total diamond weight 2.25cts, predominantly H-I colour, VS2-P2 clarity.
Length 4cms. 11.6gms.
£1,200-1,800 (plus 30% BP*)

213 A 19th century silver and gold, vari-cut diamond floral spray brooch.

Estimated total diamond weight 4cts, I-tinted colour, VS2-P1 clarity.
Length 7.1cms. 12.5gms.
£1,500-2,000 (plus 30% BP*)

214 A graduated old-cut diamond line pendant, with flat curb-link chain.

Estimated total old-cut diamond weight 1.60cts, H-I colour, VS2-P1 clarity.
Chain with Italian marks, stamped 750.
Length of pendant 3.8cms. Length of chain 46cms. 8.2gms.
£2,400-3,400 (plus 30% BP*)

215 A 19th century silver and gold old and rose-cut diamond pierced floral cluster brooch.

Principal diamond estimated weight 0.75ct, I-J colour, VS2-SI1 clarity.
Estimated total diamond weight 3.75cts.
Length 3cms. 6.6gms.
£3,500-4,500 (plus 30% BP*)

216 A pair of late 19th century 18ct gold old-cut diamond cluster earrings.

Estimated total diamond weight 4.40cts, H-I colour, SI1-P1 clarity.
French assay marks.
Length 1.3cms. 5.4gms.
£3,500-4,500 (plus 30% BP*)



214

210



216



205



211



212



215



213



209



206



208



207

217 A pair of 18ct gold vari-hue sapphire and diamond accent hoop earrings.

Sapphire total weight 2.24cts.
Total diamond weight 0.07ct.
Hallmarks for Birmingham. Diameter 2.5cms. 5.7gms.
£450-650 (plus 30% BP*)

218 A garnet and brilliant-cut diamond dress ring.

Garnet weight 7.89cts, stamped to band, estimated dimensions 14.1 by 10.4 by 6.5mms.
Total diamond weight 0.43ct, stamped to band. Estimated H-I colour, SI clarity.
Stamped 900.
Ring size L. 10.1gms.
£500-700 (plus 30% BP*)

219 A pair of 18ct gold citrine and brilliant-cut diamond cluster earrings.

Citrine total weight 4.10cts.
Total diamond weight 0.61ct.
Hallmarks for Birmingham. Length 1.2cms. 5.2gms.
£550-750 (plus 30% BP*)

220 A brilliant-cut diamond cluster pendant, with box-link chain.

Estimated total diamond weight 1.10cts, H-I colour, VS clarity.
Stamped 750. Length of pendant 2.1cms. Length of chain 39cms. 6.9gms.
£700-900 (plus 30% BP*)

221 An 18ct gold aquamarine and brilliant-cut diamond pendant, with trace-link chain.

Aquamarine weight 2.39cts.
Total diamond weight 0.30ct.
Pendant with hallmarks for Birmingham. Chain stamped 750.
Length of pendant 2cms. Length of chain 40.4cms. Total weight 3.6gms.
£550-750 (plus 30% BP*)

222 A purple garnet and brilliant-cut diamond cluster line bracelet.

Estimated total diamond weight 1ct.
Length 17.2cms. 14.6gms.
£900-1,400 (plus 30% BP*)

223 A fire opal and vari-cut diamond dress ring.

Fire opal weight 6.05cts, stamped to band.
Total diamond weight 1.12cts, stamped to band. Estimated H-I colour, VS clarity.
Stamped PT900.
Ring size K1/2. 13.7gms.
£900-1,400 (plus 30% BP*)

224 An 18ct gold aquamarine and brilliant-cut diamond dress ring.

Aquamarine weight 7.45cts.
Estimated total diamond weight 0.41ct.
Hallmarks for Birmingham. Ring size O. 5.9gms.
£1,200-1,800 (plus 30% BP*)

225 An 18ct gold pink tourmaline and brilliant-cut diamond heart-shape pendant.

Pink tourmaline weight 7.78cts.
Total diamond weight 0.30ct.
Hallmarks for Birmingham.
Length 2.4cms. 5gms.
£1,500-2,000 (plus 30% BP*)

226 A vari-cut diamond bow brooch, suspending a fancy-shape aquamarine drop.

Aquamarine weight 9.35cts.
Total diamond weight 0.96ct.
Stamped Au750. Length 3.7cms. 11.9gms.
£2,200-3,200 (plus 30% BP*)

227  An 'Allegra' multi-gem and brilliant-cut diamond three-row ring, by Bulgari.

Gems to include peridot, blue topaz, pink tourmaline and citrine.
Estimated total diamond weight 0.80ct, H-I colour, VS clarity.
Italian marks. Stamped 750.
Approximate ring size N. 11.7gms.
With maker's case and certificate of authenticity.
£2,500-3,500 (plus 30% BP*)

228 A pair of old-cut diamond stud earrings.

Estimated total diamond weight 2.50cts, H-J colour, SI2-P1 clarity.
2.6gms.
£2,800-3,800 (plus 30% BP*)



220



221



225



217



226



219



227



222



228



224



218



223

229 A 'B.Zero1' ring, by Bulgari.

Italian marks, stamped 750. Ring size L. 10.7gms.
£400-600 (plus 30% BP*)

230 A pair of brilliant-cut diamond 'B.Zero1' hinged hoop earrings, by Bulgari.

Estimated total diamond weight 0.50ct, G-H colour, VS clarity.
Italian marks, stamped 750. Diameter 14.5gms.
With maker's pouch.
£1,200-1,800 (plus 30% BP*)

231 A trace-link necklace, with brilliant-cut diamond openwork clasp, by Garrard.

Estimated total diamond weight 0.55ct.
Italian marks, stamped 750. Length 42cms. 13.3gms.
With maker's case.
£800-1,200 (plus 30% BP*)

232 A pair of 18ct gold tanzanite and brilliant-cut diamond cluster earrings.

Tanzanite total weight 2.49cts.
Total diamond weight 1.23cts, estimated G-I colour, VS-SI clarity.
Hallmarks for Birmingham. Length 1.3cms. 3.7gms.
£1,200-1,800 (plus 30% BP*)

233 An 18ct gold oval-shape ruby and brilliant-cut diamond cluster ring, with calibre-cut ruby line shoulders.

Ruby total weight 2.73cts.
Total diamond weight 0.69ct.
Hallmarks for Birmingham.
Ring size O. 4.4gms.
£1,200-1,800 (plus 30% BP*)

234 A sapphire and brilliant-cut diamond cluster ring, with tapered baguette shoulders.

Sapphire weight 1.70cts.
Total diamond weight 1.16cts, estimated H-I colour, VS2-SI2 clarity.
Stamped 750.
Ring size O. 3.3gms.
£2,000-3,000 (plus 30% BP*)

235 An 18ct gold oval-shape aquamarine and brilliant-cut diamond cluster ring.

Aquamarine calculated weight 14.18cts, based on estimated dimensions of 18.8 by 14.6 by 10.1mms.
Estimated total diamond weight 0.55ct.
Hallmarks for Sheffield.
Ring size P1/2. 10.7gms.
£2,500-3,500 (plus 30% BP*)

236 A tourmaline and brilliant-cut diamond cluster cocktail ring.

Tourmaline weight 15.18cts.
Total diamond weight 1.98cts, estimated G-H colour, predominantly VS clarity.
Italian marks, stamped 750. Ring size L1/2. 16.4gms.
£2,800-3,800 (plus 30% BP*)

237 A platinum brilliant-cut diamond single-stone ring.

With report 20058198, dated 27th June 2022, from AnchorCert, stating 2.37cts, K colour, SI2 clarity.
Hallmarks for Birmingham.
Ring size N. 6gms.
£4,500-6,500 (plus 30% BP*)

238 An 18ct gold brilliant-cut diamond single-stone ring.

Estimated diamond weight 2cts, I-J colour, SI clarity.
Hallmarks for Sheffield, 1978.
Ring size M. 3.5gms.
£6,000-8,000 (plus 30% BP*)

239 A pair of 18ct gold square-shape diamond drop, brilliant-cut diamond hinged hoop earrings.

Principal diamonds estimated total weight 4cts, I-J colour, VS clarity.
Hallmarks for Sheffield. Length 2.4cms. 4.5gms.
£10,000-15,000 (plus 30% BP*)

240 A loose square-shape diamond, with mount.

With report 1218136356, dated 16th November 2015, from the GIA, stating 2.01cts, G colour, VS1 clarity.
£10,000-15,000 (plus 30% BP*)



229



238



235



239



237



231

236



240



233



234



232



230



241 An 18ct gold sapphire and brilliant-cut diamond ring.

Sapphire weight 2.37cts.
Total diamond weight 0.66ct.
Hallmarks for Birmingham. Ring size O. 5.7gms.
£1,000-1,500 (plus 30% BP*)

242 An aquamarine ring, with brilliant-cut diamond three-row shoulders.

Aquamarine calculated weight 3.03cts, based on estimated dimensions of 12 by 8 by 4.3mms.
Estimated total diamond weight 0.15ct, I-J colour, SI clarity.
Stamped PLAT, mostly indistinct.
Ring size M1/2. 6.2gms.
£1,000-1,500 (plus 30% BP*)

243 A brilliant-cut diamond single-stone pendant.

Estimated diamond weight 0.90ct, I-J colour, SI clarity.
Stamped 750. Length 1.3cms. 1.2gms.
£1,500-2,000 (plus 30% BP*)

244 A brilliant-cut diamond and aquamarine drop pendant, with chain.

Aquamarine calculated weight 7.22cts, based on estimated dimensions of 17 by 11 by 7.1mms.
Estimated diamond weight 0.45ct, H-I colour, SI2-P1 clarity.
Chain stamped 750. Italian marks.
Length of pendant 2.8cms. Length of chain 47.7cms. 4.7gms.
£1,200-1,800 (plus 30% BP*)

245 An opal and old-cut diamond cluster ring.

Opal estimated dimensions of 14 by 12 by 8.4mms.
Estimated total diamond weight 1.40cts, I-J colour, SI1-P2 clarity.
Ring size N. 10.9gms.
£1,500-2,000 (plus 30% BP*)

246 A pair of sapphire and diamond chandelier earrings.

Sapphire total weight 4.73cts, stamped to post.
Total diamond weight 0.49ct, stamped to post. Estimated H-I colour, SI clarity.
Stamped 750.
Length 3.3cms. 11.5gms.
£1,200-1,800 (plus 30% BP*)

247 An 18ct gold square-shape diamond single-stone ring.

With report AE 410012, dated 17th April 2013, from EGL, stating 1.01cts, F colour, VS1 clarity.
Hallmarks for Birmingham, partially indistinct. Ring size M1/2. 4.2gms.
£2,000-3,000 (plus 30% BP*)

248 A pair of sapphire stud earrings, with detachable brilliant-cut diamond cluster cuff.

Sapphire total weight 2.48cts.
Total diamond weight 0.21ct, estimated H-I colour, VS clarity.
Stamped 750.
Diameter of cuff 0.9cm. 3.8gms.
£2,000-3,000 (plus 30% BP*)

249 A pair of brilliant-cut diamond bangles.

Estimated total diamond weight 4cts, H-I colour, VS clarity.
Inner diameter 6.2cms. 31.2gms.
£2,500-3,500 (plus 30% BP*)

250 A brilliant-cut diamond graduated three-row necklace, with similarly-cut diamond spacer highlights and polished back-chain.

Estimated total diamond weight 12cts, G-H colour, VS-SI clarity.
Stamped K18. Length 42cms. 52.7gms.
£9,000-14,000 (plus 30% BP*)



249



250

245

241



246

243



242



244



248

247



251 An 18ct gold sapphire and brilliant-cut diamond cluster ring.

Sapphire total weight 1.38cts.
Total diamond weight 0.25ct.
Hallmarks for Birmingham.
Ring size O. 4.4gms.
£550-750 (plus 30% BP*)

252 A tanzanite and brilliant-cut diamond cluster ring.

Tanzanite calculated weight 2.95cts, based on estimated dimensions of 8.1 by 8 by 5.8mms.
Estimated total diamond weight 1ct, H-I colour, VS-SI clarity.
Stamped 750. Ring size L. 5.7gms.
£500-700 (plus 30% BP*)

253 A platinum square-shape diamond three-stone ring.

With report S2J8174, dated 12th June 2002, from IGI, stating total diamond weight 1.14cts, F-G colour, VVS clarity.
Hallmarks for Birmingham.
Ring size K. 6.1gms.
£800-1,200 (plus 30% BP*)

254 A pair of sapphire and brilliant-cut diamond drop earrings.

Sapphire total weight 1.05cts.
Total diamond weight 0.78ct, estimated G-H colour, VS clarity.
Earring backs stamped 750.
Length 2.4cms. 4.8gms.
£1,200-1,800 (plus 30% BP*)

255 A sapphire and old-cut diamond cluster ring.

Sapphire calculated weight 2.50cts, based on estimated dimensions of 8.7 by 6.8 by 4.5mms.
Estimated total diamond weight 0.65ct, G-H colour, VS-SI clarity.
Ring size M1/2. 4gms.
£1,200-1,800 (plus 30% BP*)

256 A graduated calibre-cut sapphire line bracelet.

Largest sapphire calculated weight 0.47ct, based on estimated dimensions of 4.9 by 3.5 by 2.4mms.
Stamped PLAT. Length 18.3cms. 22.7gms.
£700-900 (plus 30% BP*)

257 A pair of sapphire and brilliant-cut diamond cluster earrings.

Sapphire total weight 2.19cts.
Total diamond weight 0.40ct, estimated G-H colour, VS clarity.
Earring backs stamped 750.
Length 1cm. 3.5gms.
£1,200-1,800 (plus 30% BP*)

258 A pair of brilliant-cut diamond halo cluster earrings.

Estimated total diamond weight 1.20cts, principal diamonds estimated tinted colour, SI clarity.
Diameter 0.9cm. 3gms.
£1,500-2,000 (plus 30% BP*)

259 A calibre-cut sapphire and rectangular-shape diamond dress ring.

Sapphire total weight 3.86cts, total diamond weight 0.62ct, stamped to band.
Stamped PT, partially indistinct.
Ring size M. 12.3gms.
£1,800-2,600 (plus 30% BP*)

260 A Basaltic sapphire and brilliant-cut diamond dress ring.

Sapphire with verbal report from GCS, stating no heat, Basaltic. Sapphire calculated weight 1.10cts, based on estimated dimensions of 6.4 by 5.6 by 3.5mms.
Estimated total diamond weight 1.30cts, H-I colour, VS clarity.
Ring size O1/2. 4.5gms.
£2,200-3,200 (plus 30% BP*)

261 A vari-cut diamond necklace.

Estimated total diamond weight 8.90cts, H-I colour, VS-SI clarity.
Stamped 750.
Length 46.2cms. 49.9gms.
£3,000-4,000 (plus 30% BP*)

262 A brilliant-cut diamond single-stone ring, by Tiffany & Co.

Diamond weight 1.71cts, marked to band, estimated H-I colour, VS clarity.
Stamped Pt950. Ring size K. 5.7gms.
£12,000-18,000 (plus 30% BP*)

261



258



251



255



257



252



260



259



262



254



256



253



263  **A rectangular-shape diamond 'Lia' ring, by Cartier.**

With report 15271050, dated 5th September 2006, from the GIA, stating 4.57cts, D colour, Internally Flawless clarity.

Ring size K1/2. Weight 16gms.

With maker's case.

£100,000-150,000 *(plus 30% BP*)*

263



264 A pair of 18ct gold ruby and brilliant-cut diamond cluster earrings.

Estimated total diamond weight 0.75ct.
Hallmarks for Sheffield, 2016. Length 1.1cms. 3.1gms.
£200-300 (plus 30% BP*)

265 An 18ct gold ruby and brilliant-cut diamond dress ring.

Ruby total weight 1.95cts.
Total diamond weight 0.12ct, H-I colour, VS clarity.
Hallmarks for Birmingham.
Ring size O. 3.9gms.
£500-700 (plus 30% BP*)

266 A ruby and brilliant-cut diamond floral openwork ring.

Ruby weight 1.42cts, stamped to band.
Total diamond weight 0.29ct, stamped to band. Estimated H-I colour, VS2-SI1 clarity.
Stamped Au750.
Ring size N. 3.6gms.
£900-1,400 (plus 30% BP*)

267 An 18ct gold graduated brilliant-cut diamond line necklace, with bead-link back-chain.

Estimated total diamond weight 4.50cts, predominantly G-I colour, VS-P1 clarity.
Hallmarks for Edinburgh. Length 41cms.
£900-1,400 (plus 30% BP*)

268 A pink tourmaline and brilliant-cut diamond cluster ring.

Pink tourmaline calculated weight 3.31cts, based on estimated dimensions of 12.2 by 9.4 by 4.5mms.
Estimated total diamond weight 0.25ct, H-I colour, VS clarity.
Stamped 750.
Ring size M. 9gms.
£1,200-1,800 (plus 30% BP*)

269 A ruby, brilliant and tapered baguette-cut diamond floral cluster pendant, with chain.

Ruby weight 0.72ct.
Total diamond weight 0.43ct, estimated G-H colour, VS clarity.
Chain with Italian marks, stamped 750.
Length of pendant 1.3cms. Length of chain 41cms. 3.7gms.
£1,200-1,800 (plus 30% BP*)

270 A ruby, brilliant and tapered baguette-cut diamond floral cluster ring, with asymmetric band.

Ruby weight 0.76ct.
Total diamond weight 0.44ct, estimated G-H colour, VS clarity.
Stamped 18k. Ring size M1/2. 4.8gms.
£1,200-1,800 (plus 30% BP*)

271  An 18ct gold brilliant-cut diamond 'Metro' band ring, by Tiffany & Co.

Estimated total diamond weight 1ct, G-H colour, VS clarity.
Stamped 750.
Ring size L. 4gms.
With maker's case.
£1,000-1,500 (plus 30% BP*)

272 A 'Pigeon's Blood' Burmese ruby and vari-cut diamond dress ring.

With photocopy of report GRS2021-011099, dated 11th January 2021, stating 0.72ct, Burma (Myanmar), no heat.
Total diamond weight 0.78ct, estimated G-H colour, VS-SI clarity.
Stamped 18K. Ring size M1/2. 4.1gms.
£1,500-2,000 (plus 30% BP*)

273  A platinum brilliant-cut diamond full circle eternity ring, by Tiffany & Co.

Estimated total diamond weight 1.90cts, H-I colour, VS clarity.
Hallmarks for London, 2001. Ring size J1/2. 3.8gms.
With maker's case.
£2,000-3,000 (plus 30% BP*)

274 A ruby and brilliant-cut diamond geometric panel bracelet.

Ruby total weight 4cts, stamped to metal.
Total diamond weight 1.71cts, stamped to metal. Estimated H-I colour, SI clarity.
Stamped Au750.
Length 18.5cms. 35gms.
£3,000-4,000 (plus 30% BP*)

275 A 18ct gold brilliant-cut diamond single-stone ring.

Estimated diamond weight 1.30cts, G-H colour, VS clarity.
Hallmarks for London, 1986.
Ring size O. 3.6gms.
£4,000-6,000 (plus 30% BP*)



267



268



265



269



266



274



273



275



264



272



271



270

276 An emerald and brilliant-cut diamond cluster ring.

Estimated total diamond weight 0.50ct, M-tinted colour, SI1-P1 clarity.
Stamped PLAT.
Ring size N1/2. 4.5gms.
£800-1,200 (plus 30% BP*)

277 A pair of brilliant-cut diamond cluster stud earrings.

With Jewellery Report B823566, dated 2nd March 2022, from E.D.R., stating total weight 1.23cts, H-J colour, VS clarity.
Length 1cm. 2.8gms.
£800-1,200 (plus 30% BP*)

278 An 18ct gold band ring, with brilliant-cut diamond highlights.

Estimated total diamond weight 0.15ct.
Hallmarks for London.
Ring size W. 19.8gms.
£800-1,200 (plus 30% BP*)

279 A graduated brilliant-cut diamond heart-shape pendant, with trace-link chain.

Total diamond weight 1.08cts, estimated H-I colour, VS clarity.
Stamped 750.
Length of pendant 2cms. Length of chain 42.4cms. 4.5gms.
£1,000-1,500 (plus 30% BP*)

280 A pavé-set diamond open band ring, by Cartier.

Estimated total diamond weight 0.20ct, G-H colour, VS clarity.
Stamped 750. Ring size K1/2. Cartier size 51. 13.8gms.
£1,200-1,800 (plus 30% BP*)

281 A pair of 18ct gold diamond earrings.

Estimated total diamond weight 1.80cts, H-I colour, VS-SI clarity.
Hallmarks for London. Length 3.3cms. 6.5gms.
£1,200-1,800 (plus 30% BP*)

282 A 'Love' bangle, by Cartier.

Stamped Au750. Inner diameter 5.7cms. Cartier size 18. 21.3gms.
With maker's case, screwdriver and certificate of authenticity.
£1,500-2,000 (plus 30% BP*)

283 A pair of platinum circular-cut diamond stud earrings.

Estimated total diamond weight 2cts, K-L colour, VS clarity.
Hallmarks for Birmingham, partially indistinct. 1.8gms.
£3,000-4,000 (plus 30% BP*)

284 A vari-cut diamond cross pendant.

Estimated total diamond weight 3.50cts, H-I colour, VS clarity.
Stamped 750.
Length 5.4cms. 28.3gms.
£3,500-4,500 (plus 30% BP*)

285 A graduated brilliant-cut diamond line necklace.

Estimated total diamond weight 10cts, H-K colour, VS2-P1 clarity.
Length 43cms. 29.8gms.
£8,000-12,000 (plus 30% BP*)



279



281



282



276



277



284



285



278



280



283

286 A ruby and brilliant-cut diamond half eternity ring.

Estimated total diamond weight 0.20ct, H-I colour, SI2-P1 clarity.
Stamped 18ct.
Ring size L1/2. 4.4gms.
£280-360 (plus 30% BP*)

287 A fancy-link chain.

Stamped Pt950.
Length 51cms. 16.9gms.
£400-600 (plus 30% BP*)

288 An 18ct gold brilliant-cut diamond cluster pendant, on 18ct gold chain.

Estimated total diamond weight 2cts, H-I colour, VS1-SI1 clarity.
Pendant with hallmarks for London, 1989. Chain with hallmarks for Sheffield.
Length of pendant 2cms. Length of chain 46cms. 5.8gms.
£1,000-1,500 (plus 30% BP*)

289 A pair of 18ct gold ruby and brilliant-cut diamond earrings.

Ruby total weight 2.75cts.
Total diamond weight 1.22cts, estimated G-H colour, VS-SI clarity.
Hallmarks for Birmingham. Length 1.4cms. 3.8gms.
£1,000-1,500 (plus 30% BP*)

290 A marquise-shape diamond eternity ring.

Estimated total diamond weight 3.30cts, I-J colour, VS clarity.
Ring size L. 7gms.
£1,400-2,000 (plus 30% BP*)

291 A brilliant-cut diamond floral cluster ring.

Estimated total diamond weight 1.80cts, K-Tinted colour, SI clarity.
Stamped 18ct and PLAT.
Ring size P1/2. 4.9gms.
£1,800-2,600 (plus 30% BP*)

292 A pair of mid 20th century 18ct gold brilliant and single-cut diamond earrings.

Estimated total diamond weight 2.75cts, predominantly G-H colour and VS clarity.
Dutch marks, stamped 750, 18K. Length 4.7cms. 12.7gms.
£2,200-3,200 (plus 30% BP*)

293 A brilliant-cut diamond foliate necklace.

Estimated total diamond weight 7cts, H-K colour, SI2-P2 clarity.
Stamped 14K. Length 43cms. 38.6gms.
£2,500-3,500 (plus 30% BP*)

294 A pair of ruby and pavé-set diamond drop earrings.

Rubies total weight 1.74cts.
Total diamond weight 1.29cts. Estimated H-I colour, VS2-SI1 clarity.
Length 4.5cms. 9.8gms.
£2,500-3,500 (plus 30% BP*)

295 An opal and diamond cluster pendant.

Opal estimated dimensions 34 by 25mm.
Estimated total diamond weight 2cts, H-J colour, VS2-SI1 clarity.
Length 5.2cms. 15.7gms.
£4,500-6,500 (plus 30% BP*)

293



286



295



292



287

288



294



291



290



289



296 An amethyst pendant, with necklace, by Bent Gabrielsen for Georg Jensen.

Signed Georg Jensen, 143 and 195.

Stamped 925 S Denmark.

Length of pendant 10.3cms. Length of necklace 65cms. 75.5gms.

£700-900 (plus 30% BP*)

297 A silver smokey quartz bangle, by Vivianna Torun Bülow-Hübe for Georg Jensen.

Hallmarks for London. Inner diameter 6cms. 97.8gms.

£900-1,400 (plus 30% BP*)

297



296



298 A pair of 18ct gold morganite and illusion-set diamond cluster earrings.

Morganite total weight 2.50cts.
Total diamond weight 0.50ct.
Hallmarks for Birmingham.
Length 1.1cms. 4.6gms.
£550-750 (plus 30% BP*)

299 A vari-cut diamond heart-shape cluster pendant, on an integral 18ct gold trace-link chain.

Total diamond weight 0.64ct, principal diamonds estimated H-I colour, VS clarity.
Hallmarks for Birmingham.
Length of pendant 1.1cms. Lengths of necklace 39 to 41cms. 2.2gms.
£800-1,200 (plus 30% BP*)

300 A pair of 18ct gold vari-cut diamond heart-shape cluster earrings.

Total diamond weight 0.92ct, principal diamonds estimated H-I colour, VS clarity.
Hallmarks for Birmingham.
Length 1cm. 1.9gms.
£800-1,200 (plus 30% BP*)

301 A pair of 18ct gold brilliant-cut diamond hoop earrings.

Total diamond weight 0.77ct.
Hallmarks for Birmingham.
Length 3cms. 6.6gms.
£900-1,400 (plus 30% BP*)

302 An emerald-cut diamond ring, with brilliant-cut diamond split shoulders.

Estimated total diamond weight 0.80ct, H-I colour, VS clarity.
Stamped 750.
Ring size J. 3gms.
£1,000-1,500 (plus 30% BP*)

303 A vari-cut diamond geometric dress ring.

Estimated total diamond weight 0.70ct, H-I colour, SI2-P2 clarity.
Stamped PLAT.
Ring size O. 4.8gms.
£800-1,200 (plus 30% BP*)

304 An 18ct gold morganite and brilliant-cut diamond cluster ring, with similarly-cut diamond line shoulders.

Morganite weight 5.53cts.
Total diamond weight 0.33ct.
Hallmarks for Birmingham.
Ring size O. 5.1gms.
£900-1,400 (plus 30% BP*)

305 A brilliant-cut diamond geometric openwork dress ring.

Estimated total diamond weight 1ct, H-J colour, VS2-SI1 clarity.
Stamped PLAT.
Ring size N1/2. 6.1gms.
£1,200-1,800 (plus 30% BP*)

306 A square-shape diamond ring, with square-shape diamond shoulders and brilliant-cut diamond sides.

Estimated total diamond weight 1.50cts, I-J colour, VS2-SI2 clarity.
Stamped 14k.
Ring size L1/2. 3.8gms.
£1,400-2,000 (plus 30% BP*)

307 A star ruby and brilliant-cut diamond cluster ring.

Ruby weight 12.43cts, stamped to mount.
Total diamond weight 0.14ct.
Stamped Au750.
Ring size N. 6.5gms.
£1,500-2,000 (plus 30% BP*)

308 An 18ct gold brilliant-cut diamond three-stone ring.

Estimated total diamond weight 1.80cts, H-I colour, SI clarity.
Hallmarks for Birmingham, 2002.
Ring size J. 5.8gms.
£2,000-3,000 (plus 30% BP*)

309 A necklace, designed as a series of graduated brilliant-cut diamond flowers, with cultured pearl spacers, suspending a similarly-designed detachable pendant.

Cultured pearls measuring 12 to 10mms.
Total diamond weight 8.39cts, stamped to mount.
Stamped K18.
Length of pendant drop 3.7cms. Length of necklace 43cms. 65.4gms.
£7,000-9,000 (plus 30% BP*)

303



306



304



298



308



309



305



299



301



300



302



307



310 An 18ct gold emerald and diamond geometric dress ring.

Emerald total weight 1.12cts.
Total diamond weight 0.31ct.
Hallmarks for Birmingham. Ring size O. 4gms.
£600-800 (plus 30% BP*)

311 A brilliant-cut diamond dress ring.

Estimated total diamond weight 1ct, I-J colour, SI2-P1 clarity.
Stamped 585 14K. Ring size N1/2. 7.8gms.
£500-700 (plus 30% BP*)

312 A late 19th century 9ct gold trace-link longuard chain.

Clasp stamped 9ct. Length 148cms. 39.5gms.
£800-1,200 (plus 30% BP*)

313 A brilliant-cut diamond two-stone crossover ring.

Estimated total diamond weight 0.75ct, G-H colour, SI clarity.
Ring size M/2. 4.1gms.
£500-700 (plus 30% BP*)

314 A pink sapphire and brilliant-cut diamond cluster ring.

Sapphire calculated weight 0.77ct, based on estimated dimensions of 7 by 5.3 by 2.5mms.
Estimated total diamond weight 0.90ct, H-I colour, VS-SI clarity.
Stamped 18ct PLAT. Ring size N. 3.6gms.
£1,000-1,500 (plus 30% BP*)

315 An 18ct gold brilliant-cut diamond cluster ring.

Estimated total diamond weight 2cts, I-K colour, VS-SI clarity.
Hallmarks for Birmingham. Ring size M. 7.7gms.
£1,000-1,500 (plus 30% BP*)

316 A pair of vari-cut diamond hexagonal-shape cufflinks.

Estimated total diamond weight 2.85cts, G-H colour, VS clarity.
Stamped 750.
Length of cufflink face 1.3cms. 8gms.
£1,500-2,000 (plus 30% BP*)

317 A sapphire and circular-cut diamond cluster ring.

Sapphire calculated weight 0.91ct, based on estimated dimensions of 6.4 by 5.3 by 3.2mms.
Estimated total diamond weight 0.75ct, I-J colour, SI clarity.
Ring size N1/2. 4.5gms.
£1,000-1,500 (plus 30% BP*)

318 A brilliant-cut diamond three-stone band ring.

Estimated total diamond weight 1ct, H-K colour, SI2-P1 clarity.
Stamped 18ct. Ring size O. 10.9gms.
£1,500-2,000 (plus 30% BP*)

319 An 18ct gold tanzanite and brilliant-cut diamond cluster ring.

Tanzanite weight 6.99cts.
Total diamond weight 1.56cts, estimated G-H colour, VS-SI clarity.
Hallmarks for Birmingham. Ring size O. 6.7gms.
£2,800-3,800 (plus 30% BP*)

320 An open heart-link necklace, with pavé-set diamond link highlights.

Estimated total diamond weight 0.70ct, G-I colour, VS-SI clarity.
Stamped 750. Length 39.5cms. 56.5gms.
£2,200-3,200 (plus 30% BP*)

321 A Sri Lankan sapphire and brilliant-cut diamond single-stone ring.

With report 214969, dated 28th March 2022, from the Gemmological Institute of India, stating 6.55cts, Sri Lanka, no heat.
Total diamond weight 1ct, estimated H-I colour, SI1-P1 clarity.
Hallmarks for Birmingham. Ring size O. 5.7gms.
£7,000-9,000 (plus 30% BP*)



322 A late Victorian gold rock crystal cameo stickpin, carved to depict the head of Medusa.

Diameter of stickpin head 2cms. 6gms.
£100-150 (plus 30% BP*)

323 An early 20th century 18ct gold split pearl and diamond point ring.

Stamped 18c. Ring size P1/2. 3.4gms.
£120-180 (plus 30% BP*)

324 An early 20th century 18ct gold alternating graduated split pearl and old-cut diamond five-stone ring.

Estimated total diamond weight 0.65ct, G-I colour, SI clarity.
Stamped 18c. Ring size I1/2. 3.1gms.
£150-200 (plus 30% BP*)

325 A late 19th century gold colourless topaz fringe necklace.

Central topaz calculated weight 4.15cts, based on estimated dimensions of 9.9 by 9.9 by 6mms.
Length 39.6cms. 11.5gms.
£300-400 (plus 30% BP*)

326 A mid Victorian 18ct gold old-cut diamond three-stone band ring.

Estimated total diamond weight 1ct, I-K colour, SI1-P1 clarity.
Stamped 18ct.
Ring size O1/2. 3gms.
£100-150 (plus 30% BP*)

327 A mid Victorian 18ct gold old-cut diamond five-stone ring.

Estimated total diamond weight 1.10cts, H-I colour, SI1-P1 clarity.
Hallmarks for Birmingham, 1865.
Ring size J1/2. 3.4gms.
£200-300 (plus 30% BP*)

328 A composite 19th century gold colourless and light blue topaz cluster pendant, on chain.


Principal topaz calculated weight 17.08cts, based on estimated dimensions of 16.4 by 9mms.
Length of pendant 6.5cms. Length of chain 52cms. 18.5gms.
£300-400 (plus 30% BP*)

329 An early 20th century 18ct gold old and rose-cut diamond crescent brooch.

Estimated total diamond weight 0.65ct, G-H colour, VS-SI clarity.
Diameter 2.5cms. 4.5gms.
£300-400 (plus 30% BP*)

330 An early 20th century platinum and 18ct gold graduated old-cut diamond three-stone ring.

Estimated total diamond weight 0.55ct, H-I colour, VS-SI clarity.
Stamped '18ct & Pt'. Ring size R. 3.3gms.
£500-700 (plus 30% BP*)

331  A late 19th century 15ct gold shell cameo brooch, carved to depict a bacchante.

Stamped 15C. Length 6cms. 19gms.
With case.
£800-1,200 (plus 30% BP*)

332 A 19th century graduated moonstone collar.

Principal moonstone calculated weight 14.64cts, based on estimated dimensions of 19.7 by 12.8 by 8.4mms.
Length 35cms. 42.6gms.
£2,000-3,000 (plus 30% BP*)

333 A late 19th century 18ct gold old-cut diamond cluster ring.

Principal diamond estimated weight 2.05cts, H-I colour, P1 clarity.
Estimated total diamond weight 3.50cts.
Ring size J. 6.1gms.
£4,500-6,500 (plus 30% BP*)



325



332



329



324



331



333



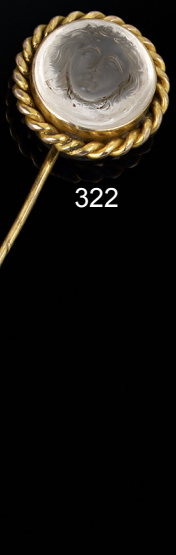
328



327



330



322



323



326

334 A late Victorian gold lapis lazuli pendant.

Length 5.6cms. 7.1gms.
Lapis lazuli untested for natural colour origin.
£100-150 (plus 30% BP*)

335 A 19th century gold, garnet and split pearl floral accent blue enamel heart locket.

Length 2.6cms. 5.3gms.
£100-150 (plus 30% BP*)

336 An Edwardian gold rose-cut diamond, seed pearl and blue enamel heart dress ring.

Approximate ring size M. 3.2gms.
£200-300 (plus 30% BP*)

337 An early 20th century gold sapphire and old-cut diamond cluster ring, with openwork shoulders.

Estimated total diamond weight 0.20ct, H-I colour, VS2-SI1 clarity.
Ring size H. 2.2gms.
£200-300 (plus 30% BP*)

338 A late Victorian 15ct gold sapphire and old-cut diamond floral bar brooch.

Central sapphire calculated weight 1.43cts, based on estimated dimensions of 7.5 by 6 by 3.8mms.
Estimated total diamond weight 0.35ct, H-J colour, P1-P2 clarity.
Stamped 15ct.
Length 4.3cms. 5.8gms.
£150-200 (plus 30% BP*)

339 A mid to late 19th century gold agate cameo brooch, carved to depict a woman in profile.

Length 4.6cms. 23.5gms.
£200-300 (plus 30% BP*)

340 A late Victorian 18ct gold blue enamel and diamond initial fob watch, suspended from a blue enamel and diamond bow brooch.

Engraved 'From the Wives of the staff officers, Guernsey 1894.'
Estimated total diamond weight 0.35ct, G-H colour, VS-SI clarity.
Watch with Swiss mark, stamped K18. Length 5.5cms. 21.4gms.
£400-600 (plus 30% BP*)

341 A late 19th century 18ct gold rose-cut diamond star and blue enamel fob watch, suspended from a blue enamel scroll bow brooch.

Watch with import marks for London. Length 5.2cms. 23.6gms.
£500-700 (plus 30% BP*)

342 A late 19th century 20ct gold sapphire and old-cut diamond crescent moon brooch.

Estimated total diamond weight 0.50ct, G-H colour, SI1-P1 clarity.
Length 3.3cms. 8.5gms.
£1,000-1,500 (plus 30% BP*)

343 A late Victorian 18ct gold blue enamel, split pearl and old-cut diamond brooch.

Estimated old-cut diamond weight 0.30ct, G-H colour, SI clarity.
Length 4.9cms. 37.4gms.
£1,000-1,500 (plus 30% BP*)

344 A late 19th century gold old and rose-cut diamond and blue enamel floral brooch.

Estimated old-cut diamond weight 0.20ct.
Length 3.5cms. 11.2gms.
£1,000-1,500 (plus 30% BP*)

345 A 19th century gold snake bracelet, with sapphire crest and old-cut diamond eyes.

Sapphire calculated weight 2.44cts, based on estimated dimensions of 9.2 by 6.6 by 4.8mms.
Length 20cms. 28.5gms.
£1,500-2,000 (plus 30% BP*)



346 An early 20th century 9ct gold carved shell cameo, depicting a man of antiquity in profile, wearing a laurel wreath.

Stamped 9ct.
Length 4.9cms. 15.1gms.
£120-180 (plus 30% BP*)

347 An early 20th century 18ct gold garnet and old-cut diamond ring.

Garnet calculated weight 2.03cts, based on estimated dimensions of 8.2 by 5.7 by 4.9mmms.
Estimated total diamond weight 0.30ct.
Hallmarks for London, 1915. Ring size P. 3.8gms.
£140-200 (plus 30% BP*)

348 A late Georgian foil back garnet and vari-cut diamond cluster, on later 19th century 15ct gold ring mount.

Ring size O1/2. 4.2gms.
£100-150 (plus 30% BP*)

349 A 19th century gold garnet stickpin, with ruby and rose-cut diamond floral overlay, to a locket reverse.

Length of stickpin head 2cms. 8.7gms.
£100-150 (plus 30% BP*)

350 An early to mid 19th century floral embossed 15ct gold garnet cabochon ring.

Stamped 15ct. Ring size J. 4.2gms.
£200-300 (plus 30% BP*)

351 A 19th century gold foil-back garnet mourning pendant, with hair work reverse.

Length 4.3cms. 9gms.
£200-300 (plus 30% BP*)

352 A Georgian gold foil-back garnet line bracelet.

Length 18cms. 11.3gms.
£200-300 (plus 30% BP*)

353 A late 19th century 9ct gold faceted, graduated belcher-link Albert chain, with later T-bar and clasp.

Clasp stamped 9ct. Length 38cms. 24.8gms.
£300-400 (plus 30% BP*)

354 A late Victorian 18ct gold diamond and ruby tapered band ring.

Hallmarks for Birmingham, 1896. Ring size M1/2. 3.5gms.
£350-450 (plus 30% BP*)

355 A 19th century gold 'Etruscan Revival' brooch, with garnet foliate highlights.

Length 5cms. 14.7gms.
£400-600 (plus 30% BP*)

356  A mid to late Victorian 14ct gold foliate hinged bangle, with garnet locket drop.

Inner diameter 5.3cms. 19gms.
With fitted case.
£600-800 (plus 30% BP*)

357 A ruby and old-cut diamond cluster ring.

Estimated total diamond weight 1.20cts, H-I colour, SI clarity.
Ring size H. 5.2gms.
£2,500-3,500 (plus 30% BP*)



358 A 19th century 15ct gold garnet and split pearl floral cluster ring.

Ring size O. 1.8gms.
£100-150 (plus 30% BP*)

359 An early 20th century 18ct gold graduated ruby three-stone ring, with diamond spacers.

Principal ruby calculated weight 0.37ct, based on estimated dimensions of 5.1 by 3.9 by 2mms.
Hallmarks indistinct. Ring size Q1/2. 2.9gms.
£100-150 (plus 30% BP*)

360 An early to mid 19th century gold foil back rock crystal brooch.

Length 6.8cms. 9.3gms.
£100-150 (plus 30% BP*)

361 A mid 19th century gold pink topaz, ruby and chrysoberyl scrolling foliate brooch, with glazed hair locket reverse.

Length 3.8cms. 7.8gms.
£120-180 (plus 30% BP*)

362 A late 19th to early century gold citrine, amethyst and ruby pansy ring.

Ring size M1/2. 2.8gms.
£100-150 (plus 30% BP*)

363 A mid 19th century gold opal, emerald and ruby bow brooch, suspending a similarly-set heart locket.

Length 3.1cms. 5.5gms.
£200-300 (plus 30% BP*)

364 A Georgian gold foil-back pink topaz and split pearl cannetille pendant, with later 15ct gold trace-link chain.

Chain stamped 15ct.
Length of pendant 5.2cms. Length of necklace 45.9cms. 9.2gms.
£240-340 (plus 30% BP*)

365 A Georgian gold cannetille, foil-back amethyst, pink topaz, split pearl and turquoise brooch.

Length 4cms. 7.8gms.
£300-400 (plus 30% BP*)

366 A Georgian gold foil-back pink topaz cannetille brooch, with glazed hairwork locket to reverse.

May be worn as a pendant.
Length 4.4cms. 7.4gms.
£300-400 (plus 30% BP*)

367 An early to mid 19th century gold painted porcelain portrait brooch, depicting a girl in Tyrolean dress.

Length 5cms.
£450-650 (plus 30% BP*)

368 A late 19th century silver and gold, opal heart and vari-cut diamond shamrock brooch.

Estimated total old-cut diamond weight 0.15ct.
Length 3cms. 5.9gms.
£1,000-1,500 (plus 30% BP*)

369 A late 19th century 15ct gold opal and old-cut diamond hinged bangle.

Estimated total diamond weight 2.25cts, G-H colour, VS2-P1 clarity.
Inner diameter 6cms. 13.3gms.
£1,800-2,600 (plus 30% BP*)



364



361



369



359



367



368



365



366



362



360



358



363

370 A pair of early 20th century platinum and 14ct gold diamond and mother-of-pearl cufflinks.

Estimated total diamond weight 0.10ct.
Stamped 14K. Diameter of cufflink face 1.4cms. 6.4gms.
£100-150 (plus 30% BP*)

371 ✕ An early 20th century gold, coral cameo and circular-cut diamond ring, with foliate shoulders.

Ring size K. 2.8gms.
Coral untested for natural colour origin.
£200-300 (plus 30% BP*)

372 A late Victorian gold old-cut diamond and pavé-set split pearl heart, on later 9ct gold bar brooch.

Estimated diamond weight 0.10ct, G-H colour, VS clarity.
Bar with hallmarks for London, 1947. Length 5.7cms. 4.7gms.
£150-200 (plus 30% BP*)

373 A late 19th century gold ruby, synthetic ruby and split pearl cross pendant.

Length 4.6cms. 6gms.
£200-300 (plus 30% BP*)

374 A late Victorian gold split pearl swallow brooch, with ruby eyes.

Length 5cms. 13.5gms.
£450-650 (plus 30% BP*)

375 ✕ An early 20th century gold portrait miniature pendant, with split pearl surround and surmount.

Length 6cms. 19.8gms.
£450-650 (plus 30% BP*)

376 An early 20th century 9ct gold mesh buckle bracelet, with turquoise and split pearl highlights.

Stamped 9ct. Length 19.2cms (at longest). 18.8gms.
£350-450 (plus 30% BP*)

377 A late Victorian gold diamond, split pearl and turquoise ring.

Ring size M1/2. 10.1gms.
£500-700 (plus 30% BP*)

378 A late 19th century gold floral split pearl hinged bangle.

Inner diameter 6.2cms. 18.3gms.
£500-700 (plus 30% BP*)

379 An early 20th century silver gilt, guilloché enamel and split pearl compact, with a sapphire pusher, the interior with three lidded compartments and mirror.

Stamped 900. Length 9.6cms.
£300-400 (plus 30% BP*)

380 An Edwardian 18ct gold vesta case, with ruby bezel highlight.

Import marks for Birmingham, 1909.
Length 4.3cms. 23.2gms.
£750-950 (plus 30% BP*)

381 An Art Nouveau gold 'The Night' pendant, with rose-cut diamond 'star' highlights, by Frederic De Vernon.

Length 5.5cms. 18.5gms.
£1,000-1,500 (plus 30% BP*)

374



381



380



372



373



375



376



371



370



377



379



378



382 An Edwardian 18ct gold old-cut diamond, split pearl and sapphire floral cluster ring.

Hallmarks for 1903.
Ring size L. 2.5gms.
£100-150 (plus 30% BP*)

383 An early 20th century 18ct gold and platinum sapphire and old-cut diamond five-stone crossover ring.

Estimated total diamond weight 0.15ct, H-I colour, P1-P2 clarity.
Stamped 18ct and PLAT.
Ring size O. 3gms.
£100-150 (plus 30% BP*)

384 An early 20th century gold sapphire and split pearl floral brooch, with glazed locket reverse.

Diameter 2.3cms. 4.3gms.
£100-150 (plus 30% BP*)

385 An early 20th century platinum and 18ct gold sapphire and old-cut diamond cluster ring.

Sapphire calculated weight 0.45ct, based on estimated dimensions of 4.3 by 3.1mms.
Estimated total diamond weight 0.35ct, G-I colour, SI1-P1 clarity.
Ring size K. 1.9gms.
£200-300 (plus 30% BP*)

386 An early 20th century 15ct gold aquamarine and split pearl pendant, on chain.

Circular aquamarine calculated weight 0.66ct, based on estimated dimensions of 6.2 by 3.2mms.
Stamped 15ct. Length of pendant 7cms. Length of chain 40cms.
8gms.
£200-300 (plus 30% BP*)

387 A late 19th century 14ct gold, diamond, garnet-topped-doublet and split pearl butterfly brooch.

Length 2.6cms. 3.2gms.
£250-350 (plus 30% BP*)

388 An early 20th century 18ct gold sapphire and old-cut diamond five-stone ring.

Estimated total diamond weight 0.10ct.
Stamped 18ct.
Ring size L1/2. 2.5gms.
£350-450 (plus 30% BP*)

389 An early 20th century 15ct gold sapphire and split pearl pendant, with later 9ct gold chain.

Pendant stamped 15. Chain with import marks for London, 1978.
Length of pendant 5.3cms. Length of chain 55cms. 9.2gms.
£300-400 (plus 30% BP*)

390 An early 20th century gold and platinum rose-cut diamond and seed pearl floral bar brooch.

Length 4.7cms. 5.4gms.
£200-300 (plus 30% BP*)

391 An early 20th century 18ct gold sapphire and white enamel floral bracelet.

Sapphire estimated total weight 3.90cts, based on calculated weight of one sapphire.
French assay marks. Length 18.3cms. 9gms.
£800-1,200 (plus 30% BP*)

392 ✕ An Art Nouveau gold, diamond point and pearl glazed portrait brooch.

French assay marks. Length 3.7cms. 11.1gms.
£900-1,400 (plus 30% BP*)

393 An early 20th century gold opal and old-cut diamond pendant, on chain.

Opal estimated dimensions of 15 by 8.6 by 2.3mms.
Estimated diamond weight 0.15ct, H-I colour, SI clarity.
Length of pendant 4.6cms. Length of chain 40cms. 4.7gms.
£1,000-1,500 (plus 30% BP*)



389



393



386



392



383



384



387



388



382



385



391



390

394 An 18ct gold diamond 'Flower Press' ring, by Boodles & Dunthorne.

Estimated total diamond weight 0.50ct, G-H colour, SI clarity. Hallmarks partially deficient. Ring size J1/2. 3.2gms.

£200-300 (plus 30% BP*)

395  A pair of 18ct gold topaz, citrine and diamond 'Kiki Classics' earrings, by Kiki McDonough.

Hallmarks for London, 2018. Length 1.8cms. 7.6gms. With maker's case.

£550-750 (plus 30% BP*)

396  A ruby and diamond swan necklace, by Carrera Y Carrera.

Estimated total diamond weight 0.15ct, G-H colour, VS clarity. Length 39.5cms. 7.6gms. With maker's case.

£600-800 (plus 30% BP*)

397 An agate, citrine and diamond pendant, with chain.

Agate weight 20.83cts. Citrine weight 0.67ct. Total diamond weight 0.308ct. Pendant stamped Au750. Chain stamped 18K. Length of pendant 4.9cms. Length of chain 45cms. 8.2gms.

£700-900 (plus 30% BP*)

398 An agate and brilliant-cut diamond dress ring.

Agate weight 24.88cts. Total diamond weight 0.308ct. Stamped Au750. Ring size N. 13.6gms.

£700-900 (plus 30% BP*)

399 An 18ct gold brilliant-cut diamond rotating circles ring, by Garrard.

Estimated total diamond weight 0.40ct. Hallmarks for London, 2003. Ring size Q. 17.6gms.

£700-900 (plus 30% BP*)

400 A pair of 18ct gold pavé-set diamond articulated panel earrings, by Tiffany & Co.

Estimated total diamond weight 0.55ct, G-H colour, VS clarity. Hallmarks for London, 2002. Length 2.1cms. 7.5gms.

£600-800 (plus 30% BP*)

401 A pair of 'Hawaii' earrings, by Buccellati.

Marked 18K. Length 7.4cms. 20.3gms.

£1,500-2,000 (plus 30% BP*)

402 A pavé-set diamond dress ring, by Van Cleef & Arpels.

Estimated total diamond weight 1.40cts, G-H colour, VS clarity. French assay marks. Ring size L. 10.3gms.

£2,800-3,800 (plus 30% BP*)

403 A brilliant-cut diamond 'Love' ring, by Cartier.

Estimated total diamond weight 0.20ct, G-H colour, VS clarity. Stamped 750. Ring size L1/2. Cartier size 52. 8.3gms.

£900-1,400 (plus 30% BP*)

404 A brilliant-cut diamond 'Love' bangle, by Cartier.

Estimated total diamond weight 0.40ct, G-H colour, VS clarity. Stamped 750. Inner diameter 5.8cms. Cartier size 18. 31.1gms.

£3,500-4,500 (plus 30% BP*)

405  A diamond thirteen-strand 'Goa' bracelet, By Marco Bicego.

Estimated total diamond weight 1.20cts, G-I colour, VS clarity. Italian marks, stamped 750. Length 17.5cms. 46.4gms.

With maker's case.

£3,000-4,000 (plus 30% BP*)



405



404



402



401



396



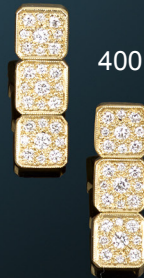
395



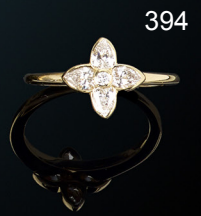
397



403



400



394



398



399

406 A brilliant-cut diamond single-stone ring, with brilliant-cut diamond shoulders.

Estimated principal diamond 0.50ct, G-H colour, VS2-SI1 clarity.
Ring size Q. 3.8gms.

£120-180 (plus 30% BP*)

407 A brilliant-cut diamond racket brooch.

Estimated total diamond weight 0.75ct, G-H colour, VS clarity.
Stamped 750.

Length 5.1cms. 7.5gms.

£280-380 (plus 30% BP*)

408 A star sapphire and brilliant-cut diamond dress ring.

Sapphire weight 14.68cts.

Total diamond weight 0.53ct, estimated G-H colour, VS2-P1 clarity.
Stamped 18K. Ring size M. 6gms.

£900-1,400 (plus 30% BP*)

409  A pavé-set diamond grooved band ring, by Hermès.

Estimated total diamond weight

Estimated total diamond weight 0.40ct, G-H colour, VS clarity.

French assay marks. Ring size J1/2. 11gms.

With maker's case.

£1,400-2,000 (plus 30% BP*)

410 An 18ct gold brilliant-cut diamond single-stone ring, with similarly-cut diamond shoulders.

Principal diamond estimated weight 1.20cts, G-H colour, SI clarity.
Hallmarks for London, 2012. Ring size L1/2. 4.6gms.

£1,500-2,000 (plus 30% BP*)

411 A pair of bi-colour earrings, attributed to Chimento.

Length 2.5cms. 11.9gms.

£350-450 (plus 30% BP*)

412 A bi-colour bracelet, by Chimento.

Italian marks, stamped 750. Length 21cms. 44.4gms.

£1,400-2,000 (plus 30% BP*)

413 A bi-colour necklace, by Chimento.

Italian marks, stamped 750. Length 45cms. 88.3gms.

£2,800-3,800 (plus 30% BP*)

414  A pair of diamond and rock crystal 'Myst' earrings, by Cartier.

Estimated total diamond weight 0.25ct, G-H colour, VS clarity.

French assay marks. Length 1.4cms. 12.1gms.

With maker's case.

£1,000-1,500 (plus 30% BP*)

415 A pavé-set diamond 'Mimi' eternity ring, by Cartier.

Estimated total diamond weight 1.10cts, G-H colour, VS clarity.

French assay marks, stamped 750. Ring size G1/2. Cartier size 46.
3.2gms.

£2,800-3,800 (plus 30% BP*)

416 An 18ct gold brilliant-cut diamond single-stone ring.

Estimated diamond weight 1.80cts, G-H colour, SI clarity.

Hallmarks for Birmingham, 1992. Ring size J. 3.3gms.

£5,000-7,000 (plus 30% BP*)

417 An 18ct gold vari-shape diamond watch, by Rolex.

Estimated total diamond weight 22cts, G+ colour, VS clarity.

Swiss convention marks.

Length 17.3cms. 67.5gms.

£18,000-22,000 (plus 30% BP*)



407

413

411

409

417

416

410

414

415

406

408

412

418 A sapphire and brilliant-cut diamond cluster ring.

Total diamond weight 0.50ct, stamped to band. Estimated G-H colour, VS clarity.
Sapphire calculated weight 0.97ct, based on estimated dimensions of 5.9 by 5.9 by 3.5mms.
Stamped 585.
Ring size R. 4gms.
£200-300 (plus 30% BP*)

419 A sapphire and vari-cut diamond dress ring.

Sapphire weight 2.03cts, stamped to band.
Total diamond weight 0.65ct, stamped to band. Estimated H-I colour, SI clarity.
Stamped Pt900.
Ring size L. 6.6gms.
£750-950 (plus 30% BP*)

420 A brilliant-cut diamond single-stone ring, by Bulgari.

With Bulgari report, stating 0.503ct, F colour, VS2 clarity.
Stamped Pt950. Ring size K. 6.2gms.
£1,200-1,800 (plus 30% BP*)

421 A pair of brilliant-cut diamond stud earrings, with similarly-cut diamond halo.

Principal diamonds estimated total weight 1.25cts, I-J colour, VS2-P2 clarity.
Diameter 0.8cm. 2.8gms.
£1,200-1,800 (plus 30% BP*)

422 A sapphire cabochon and vari-cut diamond cluster ring.

Sapphire weight 3.49cts, stamped to band.
Total diamond weight 0.65ct.
Stamped Pt900.
Ring size O. 9.5gms.
£800-1,200 (plus 30% BP*)

423 A brilliant-cut diamond 'C de Cartier' ring, by Cartier.

Estimated total diamond weight 0.20ct, G-H colour, VS clarity.
French assay marks. Ring size N1/2. Cartier size 55. 13.4gms.
£1,200-1,800 (plus 30% BP*)

424 A limited edition 18ct gold calibre-cut sapphire and pavé-set diamond ring, by Fabergé.

Signed Fabergé 125/300.
Estimated total diamond weight 0.40ct, G-H colour, VS clarity.
Hallmarks for Edinburgh, 2001. Ring size O. 9.7gms.
£1,500-2,000 (plus 30% BP*)

425 A vari-cut diamond five-row band ring.

Estimated total diamond weight 2cts, H-I colour, predominantly VS clarity.
Stamped 750. Ring size M1/2. 10.5gms.
£1,500-2,000 (plus 30% BP*)

426 A brilliant-cut diamond asymmetric two-row necklace, with disc-link back-chain.

Estimated total diamond weight 6.75cts, I-K colour, VS clarity.
Stamped 750. Length 42cms. 29.7gms.
£1,800-2,600 (plus 30% BP*)

427 An 18ct gold brilliant-cut diamond single-stone ring, with rectangular-shape diamond shoulders.

Principal diamond estimated weight 1.20cts, I-J colour, VS2-SI1 clarity.
Hallmarks for London, 2017. Ring size K1/2. 3.1gms.
£2,000-3,000 (plus 30% BP*)

428 A pair of vari-cut sapphire and brilliant-cut diamond cluster drop earrings.

Estimated total diamond weight 6.25cts, G-I colour, VS2-P1 clarity.
Sapphires calculated total weight 9.18cts, based on estimated dimensions of two sapphires.
Length 5.1cms. 31.7gms.
£3,000-4,000 (plus 30% BP*)

429 A brilliant-cut diamond single-stone ring, with brilliant-cut diamond line sides.

With report 13645663, dated 22nd September 2004, from the GIA, stating 1.54cts, J colour, VS2 clarity.
Ring size G1/2. 8gms.
£4,500-6,500 (plus 30% BP*)

418



419



426



420



427



429



428



422



425



421



423



424



430 A ruby and vari-cut diamond cluster ring.

Ruby weight 1.07cts, stamped to band.
Total diamond weight 0.69ct, I-J colour, SI clarity.
Stamped PT900.
Approximate ring size L. 6.6gms.
£600-800 (plus 30% BP*)

431 A baguette and brilliant-cut diamond cross pendant, with 18ct gold chain.

Total diamond weight 2.09cts, stamped to mount, estimated G-I colour, VS-SI clarity.
Pendant stamped K18. Chain with hallmarks for Birmingham.
Length of pendant 4cms. Length of chain 49cms. 9.5gms.
£700-900 (plus 30% BP*)

432 A pair of 18ct gold pink sapphire and diamond cluster earrings.

Total sapphire weight 2.33cts.
Total diamond weight 1.07cts, estimated H-I colour, SI1-P1 clarity.
Hallmarks for Birmingham. Length 1.2cms. 3.7gms.
£800-1,200 (plus 30% BP*)

433 A calibre-cut ruby line bracelet.

Estimated total ruby weight 11.77cts, based on calculated weight of one ruby.
Stamped 750. Length 18.6cms. 23.7gms.
£700-900 (plus 30% BP*)

434 A pair of 1940s platinum ruby and single-cut diamond scroll earrings.

Estimated total diamond weight 1ct, H-J colour, SI clarity.
Length 2.5cms. 8.6cms.
£700-900 (plus 30% BP*)

435 A pink topaz and brilliant-cut diamond cluster ring.

Topaz calculated weight 2.14cts, based on estimated dimensions of 9 by 7 by 4.6mms.
Estimated total diamond weight 1ct, J-tinted colour, P1-P2 clarity.
Ring size M1/2. 6.4gms.
£900-1,400 (plus 30% BP*)

436 A pair of pavé-set vari-cut diamond earrings.

Estimated total diamond weight 3cts, H-I colour, SI clarity.
Stamped 750. Length 3.4cms. 14.2gms.
£1,200-1,800 (plus 30% BP*)

437 A ruby and brilliant-cut diamond cluster ring.

Ruby calculated weight 2.77cts, based on estimated dimensions of 8.2 by 7.5 by 4.8mms.
Estimated total diamond weight 1ct, G-J colour, SI clarity.
Ring size O. 5.1gms.
£1,400-2,000 (plus 30% BP*)

438 A pavé-set diamond and pink sapphire foliate cocktail ring.

Estimated total diamond weight 1ct, G-H colour, VS clarity.
Stamped 750. Ring size N1/2. 26.7gms.
£1,000-1,500 (plus 30% BP*)

439 An 18ct gold brilliant-cut diamond 'Tectonique' ring, by Cartier.

Estimated total diamond weight 1.35cts, G-H colour, VS clarity.
Swiss convention marks. Ring size K. 8.3gms.
With certificate of authenticity.
£2,000-3,000 (plus 30% BP*)

440 A ruby and vari-cut diamond cluster ring.

Ruby weight 1.06cts.
Total diamond weight 1.10cts, estimated H-I colour, VS clarity.
Stamped 750.
Ring size M1/2. 5.6gms.
£2,500-3,500 (plus 30% BP*)

441 A brilliant-cut diamond 'Love' bangle, by Cartier.

Estimated total diamond weight 0.40ct, G-H colour, VS clarity.
Stamped Au 750. Inner diameter 5.4cms. Cartier size 17. 33.6gms.
£4,000-6,000 (plus 30% BP*)



441



437



440



432



431



430



439



435



433



436



438



434

442 An emerald four-stone ring, with single-cut diamond spacers.


Estimated total diamond weight 0.10ct.
Stamped 585.
Ring size Q. 3gms.
£180-260 (plus 30% BP*)

443 An emerald line bracelet, with brilliant-cut diamond spacers.

Emerald total weight 6.70cts, stamped to clasp.
Total diamond weight 0.15ct, stamped to clasp.
Stamped 750.
Length 18.3cms. 13.6gms.
£360-460 (plus 30% BP*)

444 An emerald, onyx and diamond geometric dress ring.

Emerald total weight 0.97ct.
Total diamond weight 0.18ct.
Engraved JoAq, PLAT. Ring size M. 5.2gms.
£700-900 (plus 30% BP*)

445  A brilliant-cut diamond single-stone ring, with diamond shoulders.

With report 2227295445, dated 7th April 2016, from the GIA, stating 0.60ct, D colour, SI1 clarity.
Estimated total non-principal diamond weight 0.25ct.
Stamped 950. Ring size O. 4.7gms.
£700-900 (plus 30% BP*)

446 A circular-cut diamond single-stone geometric ring, with single-cut diamond surround and diamond point shoulders.

Principal diamond estimated weight 0.50ct, I-J colour, VS2-SI1 clarity.
Ring size S1/2. 5.2gms.
£800-1,200 (plus 30% BP*)

447 An emerald and vari-cut diamond cluster pendant, with diamond surmount.

Emerald weight 0.85ct.
Total diamond weight 0.43ct, estimated H-I colour, VS clarity.
Stamped 750.
Length 1.4cms. 1.7gms.
£800-1,200 (plus 30% BP*)

448 A pair of 18ct gold brilliant-cut diamond cluster earrings.

Total diamond weight 2.26cts, estimated G-H colour, VS-SI clarity.
Hallmarks for Birmingham. Diameter 1.2cms. 3.7gms.
£800-1,200 (plus 30% BP*)

449 An emerald dress ring, with graduated old-cut diamond trefoil sides.

Emerald calculated weight 0.68ct, based on estimated dimensions of 6.7 by 5 by 2.5mms.
Estimated total diamond weight 0.85ct, G-H colour, SI1-P1 clarity.
Stamped PLAT. Ring size L. 4.7gms.
£1,000-1,500 (plus 30% BP*)

450 A pair of emerald and brilliant-cut diamond geometric openwork drop earrings.

Emerald total weight 1.12cts.
Total diamond weight 0.71ct, estimated G-H colour, VS clarity.
Stamped 750.
Length 5.2cms. 7gms.
£1,400-2,000 (plus 30% BP*)

451 An emerald and vari-cut diamond cluster ring.

Emerald calculated weight 1.73cts, based on estimated dimensions of 8 by 7.2 by 4.1mms.
Estimated total diamond weight 1.50cts, H-I colour, VS-SI clarity.
Stamped 750. Ring size V. 5.1gms.
£1,000-1,500 (plus 30% BP*)

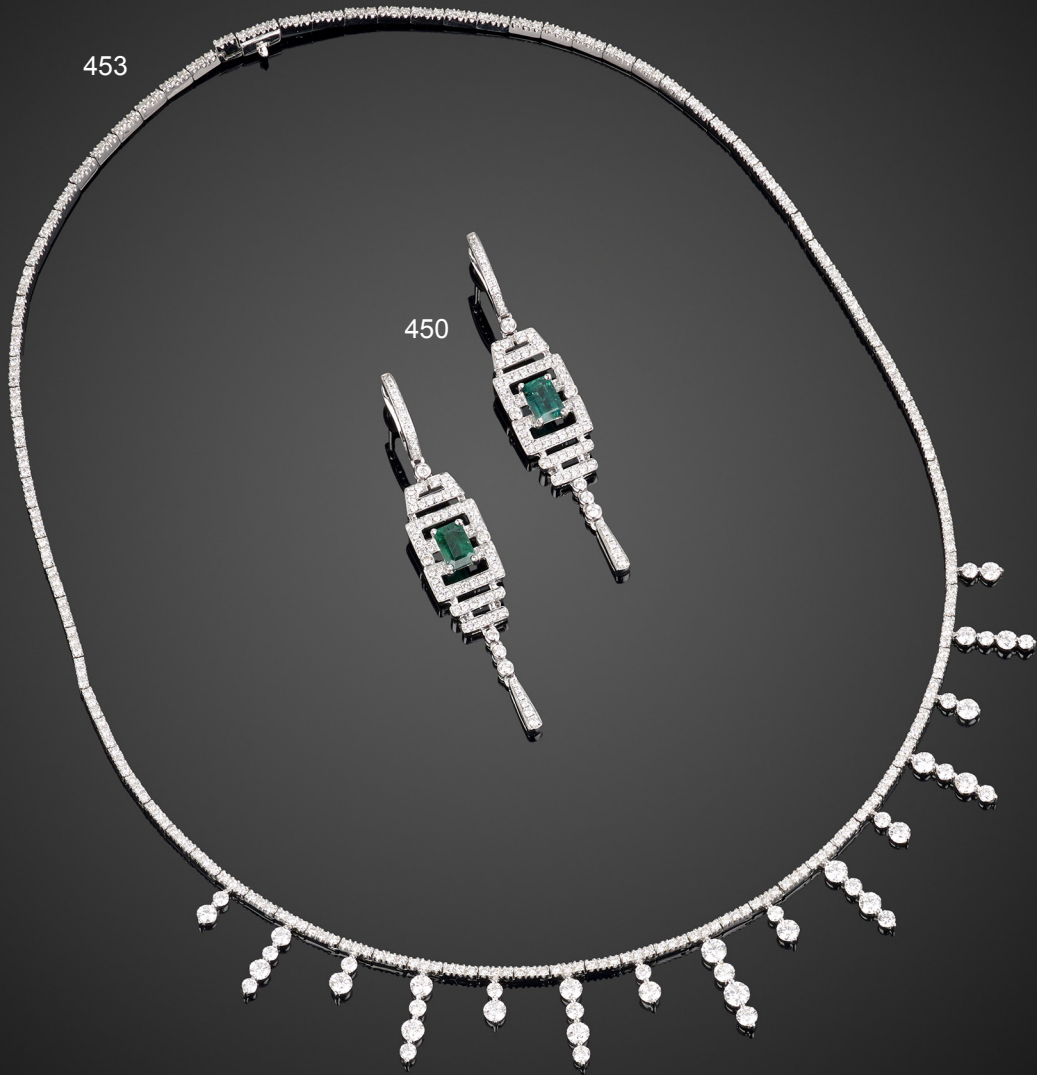
452  A Colombian emerald and brilliant-cut diamond dress ring.

With report 5783-981, dated 4th January 2023, from GCS, stating Colombia, moderate clarity enhancement, weight 5.20ct (engraved).
Total diamond weight 0.30ct.
Stamped Pt900. Ring size L1/2. 6.7gms.
£2,500-3,500 (plus 30% BP*)

453 A brilliant-cut diamond line necklace, with brilliant-cut diamond drop fringe.

Total diamond weight 4.85cts, estimated H-I colour, VS clarity.
Stamped K18.
Length 41.3cms. 19.2gms.
£3,500-4,500 (plus 30% BP*)

453



450



446



442



448



447



452



449



445



451



444



443



454  **A mid 20th century platinum brilliant-cut diamond five-stone ring.**

Estimated total diamond weight 0.70ct, H-I colour, VS-SI clarity.
Chinese character marks, stamped PLAT. Ring size N. 3.2gms.
£100-150 (plus 30% BP*)

455 **A pair of chalcedony and brilliant-cut diamond cluster drop earrings.**

Chalcedony total weight 5.03cts.
Total diamond weight 0.21ct.
Stamped 750.
Length 3cms. 4.7gms.
£500-700 (plus 30% BP*)

456 **An 18ct gold sapphire and vari-cut diamond dress ring.**

Sapphire total weight 1.37cts.
Total diamond weight 0.54ct.
Hallmarks for Birmingham.
Ring size O. 4.4gms.
£600-800 (plus 30% BP*)

457  **An 18ct gold 'Happy Diamonds' square-shape pendant, with chain, by Chopard.**

Total diamond weight 0.38ct, estimated G-H colour, VS clarity.
Swiss convention marks.
Length of pendant 1.5cms. Length of chain 42cms. 9.1gms.
With maker's case and certificate of authenticity.
£500-700 (plus 30% BP*)

458 **An 18ct gold brilliant-cut diamond 'The London Collection' geometric bracelet.**

Total diamond weight 3.12cts, G-H colour, VS clarity.
Hallmarks for London, 2017.
Length 17.5cms. 17gms.
£800-1,200 (plus 30% BP*)

459  **A brilliant-cut diamond eternity ring, by Graff.**

Estimated total diamond weight 0.45ct, G-H colour, VS clarity.
Ring size I. 5.1gms.
With box.
£1,000-1,500 (plus 30% BP*)

460  **An 18ct gold pear-shape diamond single-stone ring, with brilliant-cut diamond shoulders.**

Principal diamond with report no. 17392974, dated 3rd July 2008, from the GIA, stating 0.51ct, G colour, VS1 clarity.
Estimated total diamond weight 0.60ct.
Hallmarks for Birmingham.
Ring size O. 2.7gms.
£1,000-1,500 (plus 30% BP*)

461 **A tanzanite and brilliant-cut diamond cluster ring.**

Tanzanite calculated weight 2.57cts, based on estimated dimensions of 8.9 by 7 by 4.9mms.
Estimated total diamond weight 0.50ct.
Stamped PLAT.
Ring size O. 5.9gms.
£1,200-1,800 (plus 30% BP*)

462  **A rectangular-shape diamond and brilliant-cut diamond cluster ring, with brilliant-cut diamond shoulders.**

Principal diamond with report no. 310840465, dated 29th March 2018, from IGI, stating 0.75ct, E colour, VVS1 clarity.
Estimated total diamond weight 1.05cts.
With partial hallmarks for platinum.
Ring size I. 6.8gms.
£1,500-2,000 (plus 30% BP*)

463 **A brilliant-cut diamond five-stone ring.**

Estimated total diamond weight 1.35cts, tinted colour, VS2-SI2 clarity.
Stamped PLAT.
Ring size N1/2. 5gms.
£1,500-2,000 (plus 30% BP*)

464 **A sapphire ring, with brilliant-cut diamond trefoil shoulders.**

Sapphire calculated weight 3cts, based on estimated dimensions of 8.4 by 6.9 by 4.3mms.
Estimated total diamond weight 0.35ct, I-J colour, SI2-P1 clarity.
Stamped 750.
Ring size M. 6.7gms.
£1,200-1,800 (plus 30% BP*)

465 **An 18ct gold tanzanite and brilliant-cut diamond cluster ring.**

Tanzanite weight 6.60cts.
Total diamond weight 1.35cts.
Hallmarks for Birmingham.
Ring size O. 6.3gms.
£2,800-3,800 (plus 30% BP*)



455



464



460



457



456



465



459



458



454



463



461



462

466 A brilliant and single-cut diamond crescent moon brooch.

Estimated total diamond weight 0.45ct, G-I colour, VS-SI clarity.
Length 3.1cms. 3.1gms.

£400-600 (plus 30% BP*)

467 An early 20th century platinum and gold circular-cut diamond bow brooch.

Estimated total diamond weight 0.90ct, predominantly G-H colour, VS2-SI2 clarity.

French assay marks, numbered to clasp 3471. Length 3.2cms.
3.4gms.

£700-900 (plus 30% BP*)

468 A kunzite and brilliant-cut diamond wreath pendant, with 18ct gold chain.

Kunzite weight 17.20cts.

Total diamond weight 0.43ct.

Stamped Au750 and hallmarks for Birmingham.

Length of pendant 3.5cms. Length of chain 46cms. 9gms.

£700-900 (plus 30% BP*)

469 A pair of old-cut diamond line circular cufflinks, with torpedo reverse.

Estimated total diamond weight 0.35ct, G-I colour, VS-SI clarity.
Diameter of cufflink face 1.3cms. 6.7gms.

£600-800 (plus 30% BP*)

470 An early 20th century platinum circular-cut and diamond point floral lattice brooch.

Estimated total circular-cut diamond weight 0.40ct, H-I colour, SI clarity.

Length 4.4cms. 6.7gms.


£700-900 (plus 30% BP*)

471 A single-cut diamond lizard brooch.

Estimated total diamond weight 0.85ct, G-H colour, VS clarity.
Portuguese marks.

Length 7.1cms. 9.2gms.

£800-1,200 (plus 30% BP*)

472  A natural pearl necklace, with old-cut diamond cluster clasp.

With report 18446, dated 3rd March 2020, from The Gem & Pearl Laboratory, stating natural (saltwater), 4.8 to 1.7-2.1mms.

Estimated total diamond weight 0.55ct, H-I colour, VS-SI clarity.
Length 40.5cms. 5.9gms.

£900-1,400 (plus 30% BP*)

473 A pair of vari-cut diamond hexagonal-shape cufflinks.

Estimated total diamond weight 1ct, H-I colour, VS clarity.
French assay marks.

Length of cufflink face 1.3cms. 14.3gms.

£800-1,200 (plus 30% BP*)

474 A pair of 18ct gold pink sapphire and brilliant-cut diamond cluster earrings.

Total sapphire weight 2.70cts.

Total diamond weight 1.10cts, estimated H-I colour, SI clarity.

Hallmarks for Birmingham. Length 1.2cms. 3.8gms.

£1,400-2,000 (plus 30% BP*)

475 A graduated brilliant-cut diamond three-stone crossover ring.

Estimated total diamond weight 2cts, G-K colour, SI1-P1 clarity.
Stamped 750 18ct. Ring size N. 4.8gms.

£1,800-2,600 (plus 30% BP*)

476 A ruby and diamond dress ring.

Signed JoAq.

Principal ruby weight 3.20cts.

Total diamond weight 0.40ct, estimated G-H colour, VS clarity.

Total calibre-cut ruby weight 1.1cts.

Engraved PLAT. Ring size M1/2. 8.4gms.

£1,800-2,600 (plus 30% BP*)

477 An 18ct gold old-cut diamond single-stone ring.

Estimated diamond weight 1.35cts, H-I colour, SI clarity.

Hallmarks for Birmingham.

Ring size K. 2.8gms.

£1,800-2,600 (plus 30% BP*)



472



470



475



467



468



474



469



477



476



466



471



473

478 An Art Deco platinum, synthetic ruby and diamond cocktail watch head.

Estimated total diamond weight 0.40ct.
Engraved '991/2 Platinum'. Length 2.9cms. 11.5gms.
£200-300 (plus 30% BP*)

479 A mid 20th century 18ct gold ruby and single-cut diamond floral cluster ring.

Estimated total diamond weight 0.15ct.
Stamped 18ct.
Ring size O. 2.8gms.
£100-150 (plus 30% BP*)

480 An early 20th century 18ct gold old-cut diamond two-stone crossover ring.

Estimated total diamond weight 0.40ct, H-I colour, SI2-P1 clarity.
Stamped 18ct.
Ring size K. 2.4gms.
£100-150 (plus 30% BP*)

481 A mid 20th century platinum brilliant-cut diamond eternity ring.

Estimated total diamond weight 1.45cts, H-I colour, predominantly SI1-P1 clarity.
Stamped PLAT.
Ring size S. 5.1gms.
£140-200 (plus 30% BP*)

482 An early 20th century 18ct gold old-cut oval shape diamond three-stone ring, with rose-cut diamond spacers.

Estimated total diamond weight 1.15cts, I-J colour, SI2-P1 clarity.
Ring size L1/2. 2.1gms.
£200-300 (plus 30% BP*)

483  An early 20th century platinum and gold Burmese ruby, old-cut diamond and diamond point ring.

With report 5783-870, dated 16th December 2022, from GCS, stating Myanmar (Burma-Mogok), no indications of heat, estimated weight 0.30ct.
Estimated total diamond weight 0.20ct, H-I colour, VS2-P1 clarity.
Ring size J1/2. 2.6gms.
£300-400 (plus 30% BP*)

484  A mid 20th century platinum and gold ruby and rose and point-cut diamond négligée necklace.

Rubies with reports 2111CDR1096 and 2111CDR1097, dated 23rd November 2021, from Gemological Consultancy, stating 0.56ct and 0.59ct, no heat.
Length of drop 4cms. Length of necklace 45.2cms. 7.3gms.
£600-800 (plus 30% BP*)

485 A late 19th century silver and gold ruby, rose-cut diamond and sapphire dragonfly brooch.

Length 4.7cms. 9.5gms.
£800-1,200 (plus 30% BP*)

486 A pair of rose-cut diamond earrings.

Length 2.4cms. 7.4gms.
£1,000-1,500 (plus 30% BP*)

487 A pair of cultured pearl and old-cut diamond drop earrings.

Estimated total diamond weight 0.80ct, G-H colour, SI clarity.
Length 2.8cms. 6.1gms.
£1,400-2,000 (plus 30% BP*)

488 A vari-cut diamond pierced marquise-shape ring.

Estimated total diamond weight 1ct, H-J colour, VS2-P1 clarity.
Ring size O. 4.6gms.
£2,200-3,200 (plus 30% BP*)

489 An early 20th century platinum and gold, diamond point, ruby and pearl lattice necklace, with later white metal back-chain.

Length 37.5cms. 12.1gms.
Pearls untested for natural origin.
£2,500-3,500 (plus 30% BP*)

481



484



489



485



480



486



488



482



478



483



487



479



490 An 18ct gold emerald and old-cut diamond five-stone ring, with partial band replacement.

Estimated total diamond weight 0.20ct, H-I colour, SI2-P1 clarity. Partial band replacement with hallmarks for Birmingham, 1897. Ring size P. 2.8gms.
£100-150 (plus 30% BP*)

491 An early 20th century silver and gold old-cut diamond and sapphire dress ring, with replacement band.

Estimated total diamond weight 0.80ct, H-I colour, SI2-P1 clarity. Ring size N. 4gms.
£100-150 (plus 30% BP*)

492 An Art Nouveau 9ct gold amethyst and split pearl pendant, with dogtooth pearl drop and integral chain.

Stamped 9ct. Length of drop 5.3cms. Length of chain 43cms. 9.1gms.
£280-380 (plus 30% BP*)

493 A late Victorian 9ct gold longuard chain, with later albert clasp.

Stamped 9ct. Length 148.5cms. 22.6gms.
£500-700 (plus 30% BP*)

494 A late 19th century silver and gold old and rose-cut diamond star brooch.

Estimated total old-cut diamond weight 1.35cts, I-K colour, VS-SI clarity. Length 3.5cms. 5.7gms.
£600-800 (plus 30% BP*)

495 A mid 20th century 18ct gold old pear-cut diamond and single-cut diamond cluster ring.

Estimated total diamond weight 1ct, estimated principal diamond weight 0.90ct, I-J colour, SI2 clarity. Stamped 18ct. Ring size N. 2.7gms.
£700-900 (plus 30% BP*)

496 An 18ct gold brilliant-cut diamond single-stone ring.

Estimated diamond weight 0.80ct, I-J colour, SI clarity. Hallmarks for Birmingham, 1977. Ring size O. 2.7gms.
£900-1,400 (plus 30% BP*)

497 An early 20th century 18ct gold transitional-cut diamond five-stone ring.

Estimated total diamond weight 1.65cts, J-K colour, VS2-SI1 clarity. Hallmarks for 18ct gold, partially indistinct. Ring size N. 7gms.
£900-1,400 (plus 30% BP*)

498 A pair of graduated old-cut diamond drop earrings.

Estimated total diamond weight 1.15cts, G-I colour, SI1-P1 clarity. French assay marks. Length 3.9cms. 4.3gms.
£1,500-2,000 (plus 30% BP*)

499 An early 20th century 18ct gold old-cut diamond single-stone ring.

Estimated diamond weight 1.27cts, L-M colour, VS clarity. Stamped 18ct.
£1,600-2,200 (plus 30% BP*)

500 A pair of late 19th century gold old-cut diamond and pearl cluster earrings.

Estimated total diamond weight 3.25cts, H-J colour, SI1-P1 clarity. Length 2.1cms. 4.9gms. Pearls untested for natural origin.
£3,200-4,200 (plus 30% BP*)

501 A brilliant-cut diamond floral fringe necklace.

Estimated total diamond weight 2.15cts, H-I colour, SI clarity. Clasp stamped 750. Length 44.5cms. 14.9gms.
£4,500-6,500 (plus 30% BP*)



500

494

501

497

498

499

496

490

492

491

493

495

502 A mid 20th century palladium blue zircon and single and old-cut diamond bar brooch.

Estimated total diamond weight 0.15ct, H-I colour, SI clarity.
Length 6cms. 5.8gms.

£140-200 (plus 30% BP*)

503 An Art Deco 14ct gold blue zircon and single-cut diamond geometric ring.

Zircon calculated weight 3.11cts, based on estimated dimensions of 7.6 by 5.8mms.

Estimated total diamond weight 0.15ct.

Stamped 14K. Ring size O. 3.9gms.

£200-300 (plus 30% BP*)

504 An early 20th century platinum and 15ct gold sapphire, seed pearl and rose-cut diamond pendant, on chain.

Length of pendant 4.4cms. Length of chain 38cms. 3.6gms.

£150-200 (plus 30% BP*)

505 An early 20th century silver and gold old and rose-cut diamond bow brooch.

Engraved to the reverse 'From the members of the M.L.G.C. 1912'.

Principal diamond estimated weight 0.15ct, I-J colour, SI clarity.

Length 3.1cms. 4.9gms.

£200-300 (plus 30% BP*)

506 A pearl and seed pearl necklace.

Width of 4.2 to 3.1mms. Length 50cms. 9.5gms.

Pearls untested for natural origin.

£300-400 (plus 30% BP*)

507 An Art Deco platinum and gold, vari-cut diamond and seed pearl geometric bar brooch.

Estimated total diamond weight 0.65ct, G-H colour, VS2-P1 clarity.
French assay marks. Length 6.2cms. 8.3gms.

£550-750 (plus 30% BP*)

508 A Belle Epoque platinum old and rose-cut diamond stylised floral bar brooch.

Estimated total old-cut diamond weight 0.70ct.

Length 6.6cms. 8.7gms.

£700-900 (plus 30% BP*)

509 An early 20th century gold aquamarine and old-cut diamond brooch.

Aquamarine calculated weight 18.13cts, based on estimated dimensions of 20.6 by 16.2 by 8.5mms.

Estimated total diamond weight 0.60ct, H-I colour, VS-SI clarity.

Length 2.8cms. 8.4gms.

£1,000-1,500 (plus 30% BP*)

510 A mid 20th century brilliant-cut diamond single-stone ring, with single-cut diamond line sides.

Principal diamond estimated weight 1ct, G-H colour, SI2-P1 clarity.
Ring size L. 2.5gms.

£1,500-2,000 (plus 30% BP*)

511 An Art Deco platinum circular-cut diamond single-stone ring, with single-cut diamond pierced geometric mount.

Principal diamond estimated weight 1.20cts, tinted colour, VS clarity.

Ring size J. 3.1gms.

£2,200-3,200 (plus 30% BP*)

512 A pair of aquamarine and diamond earrings.

Aquamarine calculated total weight 16.40cts, based on estimated dimensions.

Estimated total diamond weight 1ct, G-I colour, VS2-P1 clarity.

Length 2.5cms. 13.9gms.

£3,500-4,500 (plus 30% BP*)

513 An early 20th century platinum and gold, Sri Lankan sapphire and vari-cut diamond pendant, on later chain.

With photocopy of report 285141/20053501 dated 23rd August 2021, from AnchorCert, stating Sri Lanka, no evidence of treatment, estimated weight 5.35cts.

Estimated total old-cut diamond weight 0.25ct.

Length of pendant 5.1cms. Length of chain 48.5cms. 11.3gms.

£4,000-6,000 (plus 30% BP*)



511



513



507



505



508



504



502



503



506

509



512



510



514 A sapphire and brilliant-cut diamond ring.

Sapphire calculated weight 1.25cts, based on estimated dimensions of 5.7 by 4.7 by 4.5mms.
Estimated total diamond weight 0.30ct, H-I colour, VS-SI clarity.
Marks indistinct. Ring size N. 3.6gms.
£100-150 (plus 30% BP*)

515 An 18ct gold cultured pearl, brilliant-cut diamond and blue paste geometric dress ring.

Estimated total diamond weight 0.15ct.
Hallmarks for Birmingham.
Ring size O. 7.3gms.
£240-340 (plus 30% BP*)

516 An early 20th century carved lapis lazuli cameo pendant, depicting Augustus Caesar, suspended from an integral trace-link chain.

Length of pendant 4cms. Length of necklace 43cms. 7.2gms.
£300-400 (plus 30% BP*)

517 An Art Deco palladium old-cut diamond geometric brooch.

Estimated total diamond weight 0.50ct, I-K colour, SI clarity.
Length 3.7cms. 6gms.
£550-750 (plus 30% BP*)

518 A sapphire and brilliant-cut diamond cluster ring.

Sapphire calculated weight 1.58cts, based on estimated dimensions of 7.8 by 5.9 by 4.1mms.
Estimated total diamond weight 0.50ct, H-J colour, SI1-P1 clarity.
Ring size N. 5.1gms.
£800-1,200 (plus 30% BP*)

519 An Art Deco platinum and 18ct gold old and rose-cut diamond and calibre-cut sapphire pierced geometric brooch.

Estimated total old-cut diamond weight 0.75ct, G-I colour, VS-SI clarity.
Partial marks, stamped 18K. Length 4.5cms. 7.8gms.
£900-1,400 (plus 30% BP*)

520 An early 20th century old-cut diamond and calibre-cut sapphire ring.

Estimated total diamond weight 1ct, I-J colour, SI clarity.
Ring size Q. 5.1gms.
£1,200-1,800 (plus 30% BP*)

521 An old-cut diamond textured bow and diamond point flaming heart brooch, with diamond point crossed arrow sides.

Length 4.2cms. 10.5gms.
£1,500-2,000 (plus 30% BP*)

522 An opal pendant, on chain.

Estimated dimensions of opal 22.9 by 18.4 by 5.9mms.
Length of chain 43cms. 5.7gms.
£1,500-2,000 (plus 30% BP*)

523 An early 20th century platinum graduated old-cut diamond five-stone ring.

Estimated total diamond weight 2.50cts, H-J colour, VS2-P1 clarity.
Ring size P1/2. 5.4gms.
£1,400-2,000 (plus 30% BP*)

524 An early 20th century platinum mabé pearl, single and old-cut diamond brooch.

Estimated total diamond weight 3cts, H-J colour, SI clarity.
Length 6.2cms. 14.7gms.
£1,800-2,600 (plus 30% BP*)

525 A sapphire and vari-cut diamond dress ring.

Sapphire calculated weight 2.92cts, based on estimated dimensions of 7.4 by 7 by 6mms.
Estimated total diamond weight 0.40ct, G-I colour, VS2-P1 clarity.
Ring size Q. 4.7gms.
£3,500-4,500 (plus 30% BP*)

517



522



516



523



518



524



521



525



515



519



520



514



526 A platinum brilliant-cut diamond three-stone ring.

Estimated total diamond weight 0.90ct, G-H colour, SI2-P1 clarity. Hallmarks for London, 1997. Ring size J1/2. 6.6gms.

£180-260 (plus 30% BP*)

527 A sapphire and square-shape diamond three-stone ring.

Sapphire calculated weight 3.14cts, based on estimated dimensions of 8.5 by 7.6 by 5.8mms.

Estimated total diamond weight 0.20ct, G-H colour, VS clarity.

Stamped PLAT 950. Ring size O. 6.7gms.

£550-750 (plus 30% BP*)

528 A mid 20th century 18ct gold circular-cut diamond half eternity ring.

Estimated total diamond weight 1.65cts, G-I colour, SI1-P1 clarity.

£700-900 (plus 30% BP*)

529 A platinum brilliant-cut diamond single-stone ring.

With report F1Q27216, dated 18th April 2013, from IGI, stating 0.71ct, D colour, VS2 clarity.

Hallmarks for Birmingham. Ring size K1/2. 4.2gms.

£900-1,400 (plus 30% BP*)

530 A sapphire and brilliant-cut diamond bracelet.

Estimated total diamond weight 1ct.

Stamped 750.

Length 19cms. 20gms.

£1,500-2,000 (plus 30% BP*)

531 A pair of 18ct gold ruby and brilliant-cut diamond cluster earrings.

Ruby total weight 2.58cts.

Total diamond weight 0.40ct, estimated G-H colour, VS clarity.

Hallmarks for London.

Length 1.2cms. 4.6gms.

£1,800-2,600 (plus 30% BP*)

532 A pair of 18ct gold brilliant-cut diamond floral cluster earrings.

Estimated total diamond weight 3cts, H-J colour, VS clarity.

Hallmarks for London, 2011. Diameter 1.2cms. 4.9gms.

£2,000-3,000 (plus 30% BP*)

533 An 18ct gold ruby and brilliant-cut diamond cluster ring.

Ruby weight 3.03cts.

Total diamond weight 0.62ct, estimated G-I colour, VS-SI clarity.

Hallmarks for Birmingham. Ring size N1/2. 4gms.

£2,000-3,000 (plus 30% BP*)

534 A platinum brilliant-cut diamond ring, with baguette-cut diamond shoulders.

Estimated total diamond weight 1.70cts. Estimated principal

diamond weight 1.30cts, H-I colour, SI2-P1 clarity.

Hallmarks for Birmingham.

Ring size J1/2. 8.1gms.

£2,500-3,500 (plus 30% BP*)

535 A pair of Sri Lankan sapphire and vari-cut diamond earrings.

Verbal stating Sri Lanka, no heat.

Sapphire estimated total weight 3.50 to 4cts.

Estimated total diamond weight 0.25ct, G-H colour, VS-SI clarity.

Length 1.7cms. 4.1gms.

£2,800-3,800 (plus 30% BP*)

536 An 18ct gold ruby and brilliant-cut diamond three-stone ring.

Ruby weight 3.64cts, stamped to band.

Estimated total diamond weight 0.40ct, H-I colour, VS2-SI1 clarity.

Hallmarks for London, 2020. Ring size N. 3.5gms.

£3,500-4,500 (plus 30% BP*)

537 An 18ct gold brilliant-cut diamond collet line necklace, by De Beers.

Estimated total diamond weight 5.90cts, G-H colour, VS clarity.

Hallmarks for Sheffield. Length 38.5cms. 22gms.

With maker's case.

£4,000-6,000 (plus 30% BP*)

537



526



531



532



535



527



536



534



528



533



529



530



538  **A pair of 9ct gold blue and red enamel Royal cypher cufflinks.**

Hallmarks for Birmingham, 1984.
Length of cufflink face 1.8cms. 13.2gms.
With Plante presentation case.
£350-450 (plus 30% BP*)

539 **A pair of 18ct gold brilliant-cut diamond curved bar earrings.**

Estimated total diamond weight 0.30ct, G-I colour, VS2-P1 clarity.
Hallmarks for Sheffield, 1991. Length 2.3cms. 5.8gms.
£300-400 (plus 30% BP*)

540 **An 18ct gold brilliant-cut diamond chevron necklace.**

Estimated total diamond weight 0.70ct, G-I colour, VS-SI clarity.
Hallmarks for Sheffield, 1991. Length 43cms. 18.7gms.
£800-1,200 (plus 30% BP*)

541 **A sapphire and vari-cut diamond cluster ring.**

Estimated total diamond weight 1.10ct, estimated G-I colour, VS-SI clarity.
Stamped 750.
Ring size O. 5gms.
£600-800 (plus 30% BP*)

542 **A pair of garnet and brilliant-cut diamond chandelier drop earrings.**

Garnets total weight 11.15cts, stamped to metal.
Total diamond weight 0.22ct, stamped to metal.
Stamped 750.
Length 3.4cms. 11.2gms.
£600-800 (plus 30% BP*)

543 **A ruby and brilliant-cut diamond openwork dress ring, by Jahan.**

Estimated total diamond weight 0.15ct.
Stamped 750.
Ring size R. 9.5gms.
£1,000-1,500 (plus 30% BP*)

544 **A cabochon sapphire and pavé-set diamond dress ring.**

Estimated total diamond weight 1.75cts, H-I colour, VS-SI clarity.
Ring size N1/2. 11.8gms.
£1,000-1,500 (plus 30% BP*)

545 **A sapphire and blue enamel band ring, with brilliant-cut diamond shoulders, by Fabergé.**

Estimated total diamond weight 0.20ct, G-H colour, VS clarity.
Stamped 750.
Ring size M. 7.5gms.
£1,200-1,800 (plus 30% BP*)

546 **A red and blue enamel fob watch, with flower basket motif to reverse and removable bow surmount.**

Watch case stamped 18K. Surmount stamped 750, mostly indistinct.
Diameter of watch case 3.2cms. Length 6cms. 37.4gms.
£1,200-1,800 (plus 30% BP*)

547 **A 1953 9ct gold coronation coin, made to commemorate Queen Elizabeth II's ascension, by Spink.**

Stamped 9ct.
Diameter 5.8cms. 76.9gms.
£1,500-2,000 (plus 30% BP*)

548 **An 18ct gold ruby and brilliant-cut diamond cluster ring.**

Ruby calculated weight 1.78cts, based on estimated dimensions of 8.2 by 6.8 by 3.8mms.
Estimated total diamond weight 1ct, G-H colour, VS clarity.
Hallmarks for London, 1973. Ring size O. 5.3gms.
£1,400-2,000 (plus 30% BP*)

549 **A pair of ruby and marquise-shape diamond clip-on earrings.**

Estimated total diamond weight 2cts, G-H colour, predominantly SI clarity.
Stamped 750. Italian marks.
Length 1.6cms. 7.6gms.
£2,000-3,000 (plus 30% BP*)

543



547



540



542



539



546



544



545



548



549



541



538



550 ✕ A coral bead bracelet, by Ilias Lalaounis.

Stamped 750. Length 17.5cms. 22.1gms.
Coral untested for natural colour origin.
£200-300 (plus 30% BP*)

551 An 18ct gold brooch by Paloma Picasso for Tiffany & Co.

May be worn as a pendant.
Import marks for London, 1986. Length 4.4cms. 7.4gms.
£300-400 (plus 30% BP*)

552 A pair of pink sapphire and brilliant-cut diamond cluster earrings.

Estimated total diamond weight 1ct, G-I colour, VS-SI clarity.
Stamped 18ct. Length of cluster 1.2cms. 5.7gms.
£500-700 (plus 30% BP*)

553 A diamond stem highlight carved foliate agate pendant, with ruby bud and chain.

Agate weight 4.93cts. Ruby weight 0.30ct.
Total diamond weight 0.038ct.
Stamped Au750 and 750.
Length of pendant 2.2cms. Length of chain 46cms. 2.5gms.
£400-600 (plus 30% BP*)

554 A pair of carved foliate agate earrings, with diamond stem and ruby bud.

Agate total weight 21cts.
Ruby total weight 1.02cts.
Total diamond weight 0.108cts.
Stamped Au750. Length 3cms. 7.1gms.
£900-1,400 (plus 30% BP*)

555 A pair of cultured pearl and diamond textured shell earrings, by Ilias Lalaounis.

Estimated total diamond weight 0.55ct.
Stamped 750. Length 3.4cms. 25.7gms.
£800-1,200 (plus 30% BP*)

556 An 'Etrusque' ring, by Boucheron.

French assay marks. Ring size K1/2. 15.8gms.
£1,000-1,500 (plus 30% BP*)

557 A pair of 'Etrusque' earrings, by Boucheron.

French assay marks. Length 6.9cms. 45.4gms.
£3,000-4,000 (plus 30% BP*)

558 ✎ A pair of 'Open Heart' earrings, by Elsa Peretti for Tiffany & Co.

Stamped 18K. Length 2.2cms. 17.1gms.
With cardboard maker's case.
£900-1,400 (plus 30% BP*)

559 An 18ct gold crossed brilliant-cut diamond heart pendant, on chain.

Estimated total diamond weight 1ct, G-H colour, VS-SI clarity.
Hallmarks for Birmingham.
Length of heart 4cms.
Length of pendant (including heart) 16cms. Length of chain 52cms. 137.9gms.
£4,500-6,500 (plus 30% BP*)

560 A 1970s 18ct gold flared bangle, by Georg Jensen, with later engraved bunny.

Import marks for London, 1970. Inner diameter 6.7cms. 73.4gms.
£3,000-4,000 (plus 30% BP*)

561  A pair of 'pigeon's blood' Burma ruby and pear-shape diamond cluster earrings, with marquise and pear-shape diamond detachable drop.

With reports dated 20th March and 12th May 2020, from GRS, stating total weight 3cts, intense to vivid red, no heat.
Total diamond weight 3.80cts, stamped to drops, estimated J-'yellow' colour, VS-SI clarity.
Stamped 750 to drops. Length 24cms. 8gms.
£4,500-6,500 (plus 30% BP*)



551

560

559

555

553

550

552

554

561

557

556

558

562 An ID trace-link bracelet, by Tiffany & Co.

Stamped AU750.
Length 18cms. 3.6gms.
£150-200 (plus 30% BP*)

563 A 'lavender' jade and brilliant-cut diamond cluster ring.

Jade estimated dimensions 15.6 by 12.1 by 5.3mms.
Estimated total diamond weight 0.50ct.
Stamped 14K 585. Ring size M. 7.1gms.
Jadeite jade untested for natural colour origin.
£200-300 (plus 30% BP*)

564 A brilliant-cut diamond 'D'Amour' eternity ring, by Cartier.

Total diamond weight 0.15ct, estimated G-H colour, VS clarity.
Stamped 750. Ring size M. Cartier size 53. 1.9gms.
With maker's case.
£500-700 (plus 30% BP*)

565 A pair of brilliant-cut diamond bi-colour drop earrings.

Total diamond weight 0.42ct, estimated G-H colour, SI clarity.
Earring backs stamped 750.
Length 3.1cms. 4.5gms.
£600-800 (plus 30% BP*)

566 An 18ct gold pink tourmaline and brilliant-cut diamond cluster ring, with diamond line shoulders.

Tourmaline weight 3.38cts.
Total diamond weight 0.53ct, estimated G-H colour, VS2-P1 clarity.
Hallmarks for Birmingham. Ring size O. 4.8gms.
£700-900 (plus 30% BP*)

567 A bi-colour 18ct gold bracelet, by Boodles & Dunthorne.

Hallmarks for London, 2000. Length 20cms. 20.3gms.
With maker's case.
£700-900 (plus 30% BP*)

568 A set of three 18ct gold diamond and 'yellow' diamond 'Aura' band rings, by De Beers.

Estimated total diamond weight 1.10cts.
Hallmarks for Sheffield. Ring size J1/2 and K. 4.4gms.
Diamonds untested for natural colour origin.
£1,000-1,500 (plus 30% BP*)

569 A moonstone and diamond cobra dress ring, by Theo Fennell.

Estimated total diamond weight 0.35ct, G+ colour, VS clarity.
Hallmarks for London, 2010.
Ring size P. 13.6gms.
£1,500-2,000 (plus 30% BP*)

570 A set of three 18ct gold diamond and 'yellow' diamond 'Aura' band rings, by De Beers.

Estimated total diamond weight 1.10cts.
Hallmarks for Sheffield. Ring size J1/2. 4.5gms.
Diamonds untested for natural colour origin.
£1,000-1,500 (plus 30% BP*)

571 A bi-colour 18ct gold necklace, by Boodles & Dunthorne.

Hallmarks for London, 2000. Length 46cms. 45.6gms.
With maker's case.
£1,500-2,000 (plus 30% BP*)

572 An amethyst cabochon heart and diamond 'Philosophy of Love' pendant, with pavé-set ruby heart drop, by Simone Muzi.

Estimated total diamond weight 0.60ct, H-I colour, VS clarity.
Italian marks, stamped 750.
Length 12.5cms. 75.1gms.
£2,000-3,000 (plus 30% BP*)

573 An 18ct gold brilliant-cut diamond 'Clash de Cartier' ring, by Cartier.

Estimated total diamond weight 0.50ct, G-H colour, VS clarity.
Swiss convention marks. Ring size J1/2. Cartier size 51. 9.7gms.
With maker's case and certificate of authenticity.
£3,000-4,000 (plus 30% BP*)



572



563



570



565



568



564



571

567



573



566



569



562

574 A late 19th century grooved belcher-link longuard chain, with barrel clasp.

Length 144.5cms. 34gms.
£700-900 (plus 30% BP*)

575 A South Sea cultured pearl, ruby and diamond cocktail ring.

Diameter of cultured pearl 15.8mms.
Estimated total diamond weight 0.90ct, I-K colour, SI1-P1 clarity.
Stamped 14K. Ring size N. 13gms.
£700-900 (plus 30% BP*)

576 A ruby and brilliant-cut diamond necklace.

Estimated total diamond weight 1ct, H-I colour, SI clarity.
Estimated total ruby weight 5.50cts.
Stamped 750. Length 44cms. 20.5gms.
£1,000-1,500 (plus 30% BP*)

577 A ruby and vari-cut diamond dress ring.

Ruby calculated weight 0.92ct, based on estimated dimensions of 7.4 by 5.7 by 2.6mms.
Estimated total diamond weight 1.25cts, G-H colour, VS clarity.
Stamped 750. Ring size P. 12.3gms.
£900-1,400 (plus 30% BP*)

578 A mid 20th century gold fancy-link bracelet.

Foreign marks, indistinct. Length 19cms. 54.8gms.
£1,800-2,600 (plus 30% BP*)

579 A mid 20th century Italian 18ct gold textured bracelet, by Unoerre.

Stamped 750. Length 19.5cms. 48.1gms.
£1,800-2,600 (plus 30% BP*)

580 A pavé-set diamond tri-colour eagle brooch, with ruby eyes.

Estimated total diamond weight 0.70ct, G-I colour, VS clarity.
Italian marks, stamped 750. Length 7.8cms. 28gms.
£2,800-3,800 (plus 30% BP*)

581 An 18ct gold circular-cut diamond single-stone ring.

Estimated diamond weight 2.80cts, tinted colour, SI2-P1 clarity.
Hallmarks for London, 1992. Ring size N1/2. 4.4gms.
£4,000-6,000 (plus 30% BP*)

582 A pair of vari-cut diamond and calibre-cut ruby earrings, suspending a central marquise-shape diamond drop.

Total diamond weight 6.18cts, estimated H-tinted colour, predominantly VS clarity.
Total ruby weight 4.14cts.
Length 5.5cms. 20.4gms.
£4,000-6,000 (plus 30% BP*)

583 A 9ct gold kunzite necklace.

Calculated weight of pear-shape kunzite drop terminal 51.50cts, based on estimated dimensions of 28 by 18.3 by 15.8mms.
Chain marked Unoerre. Import marks for London, 1988.
Length 48cms. 81.3gms.
£5,000-7,000 (plus 30% BP*)

577



575



576



583



580



581



574



582



579



578



584 A mid 20th century 18ct gold baroque cultured pearl, sapphire and diamond bird brooch, with red gem eye.

Italian marks, stamped 750. Length 4.3cms. 10.9gms.

£280-380 (plus 30% BP*)

585 A mid 20th century 9ct gold mounted crocodile skin cigarette case, by Cartier.

Stamped 9ct. Length 9.9cms. 69.8gms.

With maker's case.

£300-400 (plus 30% BP*)

586 A 1940s gold and platinum single-cut diamond and mabe pearl duck brooch.

Estimated total diamond weight 0.40ct, I-K colour, SI2-P1 clarity. Length 3.6cms. 13.1gms.

£900-1,400 (plus 30% BP*)

587 A 1940s gold single-cut diamond feather brooch.

Estimated total diamond weight 0.10ct.

Length 7.2cms. 15.7gms.

£900-1,400 (plus 30% BP*)

588 A 1970s gold single-cut diamond and cultured baroque pearl floral brooch.

Estimated total diamond weight 0.90ct, H-J colour, VS2-SI1 clarity. Length 6.5cms. 13.9gms.

£1,000-1,500 (plus 30% BP*)

589 A mid 20th century gold brilliant-cut diamond and sapphire textured brooch.

Estimated total diamond weight 0.50ct, H-I colour, SI1-P1 clarity. Length 5.6cms. 23.7gms.

£1,000-1,500 (plus 30% BP*)

590 A pair of 1940s gold sapphire clips.

Stamped 800. Portuguese marks.

Length 2.5cms. 15.1gms.

£1,000-1,500 (plus 30% BP*)

591 A mid 20th century textured and polished 18ct gold bracelet.

Stamped 18K. Length 19.5cms. 64.8gms.

£1,800-2,600 (plus 30% BP*)

592 A mid 20th century 18ct gold textured rose floral brooch, with pavé-set diamond highlights.

Estimated total diamond weight 0.55ct, G-I colour, VS clarity. Marked 18K-0750. Length 8cms. 29.8gms.

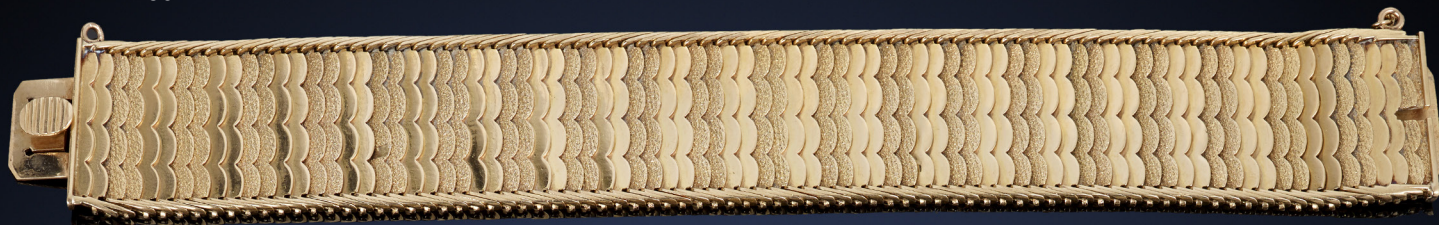
£2,000-3,000 (plus 30% BP*)

593 A mid 20th century old-cut diamond ring.

Principal diamond estimated weight 2.55cts, J-K colour, P1 clarity. Ring size Q. 4.2gms.

£2,800-3,800 (plus 30% BP*)

591



587



586



593



584



590



588



592



585



589



594 A 1960s 18ct gold tourmaline and peridot brooch, by Deakin & Francis.

Hallmarks for Birmingham, 1968. Length 3.9cms. 15.6gms.
£300-400 (plus 30% BP*)

595 A novelty tortoise brooch, with blue and opalescent white enamel shell and ruby eyes.

Italian marks, stamped 750. Length 3.7cms. 11.2gms.
£400-600 (plus 30% BP*)

596 A mid 20th century 18ct gold cultured pearl and single-cut diamond floral bombé ring.

Stamped 18K. Ring size M. 13.9gms.
£500-700 (plus 30% BP*)

597 A mid 20th century 18ct gold diamond and red enamel elephant brooch.

Estimated diamond weight 0.10ct, G-H colour, VS clarity. Length 3.9cms. 19.8gms.
£700-900 (plus 30% BP*)

598 A mid 20th century 18ct gold rock crystal and pavé-set diamond heart bracelet, by Cartier.

Estimated total diamond weight 0.10ct, G-H colour, VS clarity. French assay marks, stamped 750. Length 16.4cms. 12.3gms.
£700-900 (plus 30% BP*)

599 A mid 20th century bi-colour 18ct gold, diamond and emerald abstract brooch.

Estimated total diamond weight 0.40ct, G-H colour, VS clarity. Italian marks, stamped 750. Length 6.2cms. 23.8gms.
£900-1,400 (plus 30% BP*)

600 A mid 20th century 18ct gold enamel lion brooch, with single-cut diamond eyes.

Italian marks, partially indistinct, stamped 750. Length 6cms. 37.6gms.
£1,200-1,800 (plus 30% BP*)

601 A brilliant-cut diamond cluster ring.

Estimated total diamond weight 4.40cts, G-I colour, VS2-P1 clarity. Stamped 14K. Ring size L. 15.7gms.
£1,800-2,600 (plus 30% BP*)

602 A mid 20th century Italian 18ct gold blue and green enamel and single-cut diamond bracelet.

Estimated total diamond weight 0.25ct. Italian marks, stamped 750. Length 18.5cms. 59.2gms.
£2,200-3,200 (plus 30% BP*)

603 An 18ct gold boulder opal and single-cut diamond brooch, with textured, stepped surrounds, by Grima.

Hallmarks for London, 1970. Length 5.5cms. 41gms.
£2,500-3,500 (plus 30% BP*)



594



596



598



601



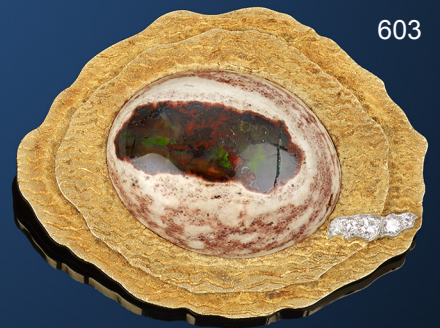
599



595



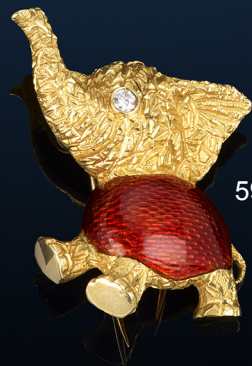
602



603



600



597

604 A tanzanite dress ring, with tapered baguette-cut diamond sides.

Tanzanite calculated weight 2.50cts, based on estimated dimensions of 9.9 by 8 by 4.5mms.
Stamped 14K. Ring size N1/2. 6.1gms.
£150-200 (plus 30% BP*)

605 A gold cabochon amethyst and emerald dress ring.

Stamped 750.
Ring size M. 14.1gms.
£600-800 (plus 30% BP*)

606 An emerald and brilliant-cut diamond pavé-set leopard brooch.

Estimated total diamond weight 1.80cts, G-I colour, SI clarity.
Stamped k18.
Length 6.2cms. 20.4gms.
£800-1,200 (plus 30% BP*)

607 ✕ A blue enamel, chrysoprase, coral and ruby duck brooch, by Cartier.

French assay marks, stamped 750.
Length 2.3cms. 5.8gms.
Coral untested for natural colour origin.
£1,000-1,500 (plus 30% BP*)

608 A pair of opal and brilliant-cut diamond drop earrings.

Opals total weight 7.10cts, stamped to metal.
Total diamond weight 0.44ct, stamped to metal.
Stamped Au750.
Length 3.5cms. 11.1gms.
£1,000-1,500 (plus 30% BP*)

609 A brilliant-cut diamond line bracelet.

Estimated total diamond weight 2.20cts, H-I colour, SI clarity.
Stamped k18.
Length 19cms. 7.7gms.
£1,000-1,500 (plus 30% BP*)

610 A heart-shape emerald cabochon and pavé-set diamond dress ring.

Estimated total diamond weight 1.40cts, G-H colour, VS clarity.
French assay marks. Ring size L. 6.9gms.
£1,500-2,000 (plus 30% BP*)

611 A brilliant-cut diamond panther head necklace.

Estimated total diamond weight 0.50ct.
Stamped 750.
Length 49cms. 57.3gms.
£2,000-3,000 (plus 30% BP*)

612 A brilliant-cut diamond and grooved malachite dress ring, by Boucheron.

Estimated total diamond weight 0.30ct, G-H colour, VS clarity.
French assay marks. Ring size L. 10.6gms.
£1,500-2,000 (plus 30% BP*)

613 An emerald and brilliant-cut diamond cluster ring.

Emerald calculated weight 2.52cts, based on estimated dimensions of 9.3 by 7.7 by 4.8mms.
Estimated total diamond weight 0.65ct, G-I colour, VS-SI clarity.
Ring size Q. 6.3gms.
£2,000-3,000 (plus 30% BP*)

614 An 18ct gold brilliant-cut diamond two-stone crossover ring.

Estimated total diamond weight 2.20cts, H-I colour, SI2-P1 clarity.
Hallmarks for Sheffield, 1977.
Ring size L. 3.6gms.
£2,800-3,800 (plus 30% BP*)

615 An 18ct gold Colombian emerald and diamond accent ring.

Emerald calculated weight 2.90cts, based on estimated dimensions of 9.1 by 8.8 by 4.9mms.
Hallmarks for Birmingham. Ring size M1/2. 3.5gms.
£4,500-6,500 (plus 30% BP*)

611



606



614



608



613



612



610



607



605



604



609



615



616 A brilliant-cut diamond dress ring.

Estimated total diamond weight 0.50ct, H-J colour, VS-SI clarity.
Stamped 750. Ring size M1/2. 12gms.
£700-900 (plus 30% BP*)

617 A pair of brilliant-cut diamond earrings.

Estimated total diamond weight 0.60ct, H-I colour, VS-SI clarity.
Stamped 750, indistinct. Length 2.5cms. 18.8gms.
£900-1,400 (plus 30% BP*)

618 A brilliant-cut diamond hinged bangle.

Estimated total diamond weight 1.25cts, H-I colour, VS-SI clarity.
Stamped 750, indistinct. Inner diameter 5.8cms. 52.5gms.
£1,800-2,600 (plus 30% BP*)

619 A brilliant-cut diamond articulated collar necklace.

Estimated total diamond weight 1.50cts, H-I colour, VS2-P1 clarity.
Stamped 750. Length 43cms. 96.2gms.
£3,000-4,000 (plus 30% BP*)

620 An 18ct gold brilliant-cut diamond ring, by Jean Schlumberger for Tiffany & Co.

Estimated total diamond weight 0.60ct, G-H colour, VS clarity.
Hallmarks for London, 2012. Approximate ring size L. 11.9gms.
£1,000-1,500 (plus 30% BP*)

621 A pair of emerald and brilliant-cut diamond hoop earrings.

Estimated total diamond weight 0.55cts, H-J colour, VS2-SI1 clarity.
Stamped 750.
Length 2.1cms. 13.5gms.
£1,000-1,500 (plus 30% BP*)

622 An emerald and brilliant-cut diamond cluster ring.

Emerald calculated weight 0.80ct, based on estimated dimensions of 6.5 by 4.7 by 3.6mms.
Estimated total diamond weight 0.75ct, H-J colour, VS-SI clarity.
Stamped 18ct. Ring size N. 3.8gms.
£1,000-1,500 (plus 30% BP*)

623 An agate and pavé-set diamond beetle brooch, with emerald and sapphire cabochon highlights, gripping a cultured pearl.

Estimated total diamond weight 0.60ct.
Stamped 750. Length 6cms. 44.7gms.
£1,000-1,500 (plus 30% BP*)

624 An 18ct gold brilliant-cut diamond cluster ring.

Estimated total diamond weight 3.25cts, predominantly G-H colour and VS clarity.
Hallmarks for Sheffield, 1989. Ring size N1/2. 7.9gms.
£1,200-1,800 (plus 30% BP*)

625 An 18ct gold brilliant-cut diamond collet single-stone ring.

Estimated diamond weight 1.10cts, H-I colour, SI clarity.
Hallmarks for Birmingham, 2002. Approximate ring size L. 5gms.
£1,800-2,600 (plus 30% BP*)

626 A pavé-set diamond hinged snake bangle, with black gem pattern and emerald eyes.

Estimated total diamond weight 1.35cts.
Inner diameter 5.2cms. 41.8gms.
£2,000-3,000 (plus 30% BP*)

627 An 18ct gold brilliant-cut diamond 'Maillon Panthère' ring, by Cartier.

Estimated total diamond weight 0.50ct, G-H colour, VS clarity.
Hallmarks for London. Ring size K. 11.7gms.
With maker's case.
£2,200-3,200 (plus 30% BP*)



619

623

627



626



621

625



622



617



624



620



616



618



628 An early to mid 19th century 18ct gold star motif heart locket.

Length 3cms. 6.6gms.
£120-180 (plus 30% BP*)

629 A pair of mid to late Victorian gold granite dress studs, each engraved to the reverse 'A Chip of Cleopatra's Needle.

Diameter 1.2cms. 4gms.
£200-300 (plus 30% BP*)

630 A late Georgian black spot paste cluster ring head, on later 9ct gold band.

Stamped 9ct. Ring size N1/2. 4.6gms.
£100-150 (plus 30% BP*)

631 A 17th to 18th century silver and gold foil back rock crystal three-stone ring, with traces of black enamel remaining to the gallery.

Ring size N. 3gms.
£200-300 (plus 30% BP*)

632 A Georgian silver and gold table-cut diamond cluster ring.

Estimated total diamond weight 0.75ct.
Ring size R1/2. 4.3gms.
£300-400 (plus 30% BP*)

633 An early 19th century 18ct gold foliate embossed vinaigrette.


With original sponge.
French assay marks. Length 3.7cms. 6.6gms.
£300-400 (plus 30% BP*)

634  A Georgian gold mounted spherical agate vinaigrette.

Diameter 2.1cms. 9.5gms.
With fitted Wartski retailer's case.
£400-600 (plus 30% BP*)

635 A Georgian silver old and rose-cut diamond floral brooch.

May be worn as a pendant.
Estimated total old-cut diamond weight 2cts, H-J colour, SI1-P1 clarity.
Length 3.2cms. 11.6gms.
£500-700 (plus 30% BP*)

636  An early 19th century 18ct gold engraved snake bangle, with Colombian emerald crest and diamond point eyes.

With report 5783-904, dated 4th January 2023, from GCS, stating Colombia, indications of minor clarity enhancement, estimated weight 1ct.
French assay marks. Inner diameter 5.8cms. 13.1gms.
£800-1,200 (plus 30% BP*)

637 A Georgian gold and shagreen etui, containing scissors, combination tweezers and nail file, pencil holder and vacant compartment.

Length 9cms. 47.2gms.
£800-1,200 (plus 30% BP*)

638 A mid 18th century Georgian chatelaine, with figural scenes and musical trophies amongst Rococo scrolls, believed to be by William Hunt.

Maker's mark WH. Length 13.9gms.
£1,500-2,000 (plus 30% BP*)

639 A pair of early 19th century gold floral earrings, each with right-facing profile portrait.

Length 5.9cms. 16.6gms.
£700-900 (plus 30% BP*)



639



635



633



638



634



630



629



637



631



628



632



636

640 ✕ A 19th century gold coral four-strand bracelet.

Length 19cms. 19.1gms.
Coral untested for natural colour origin.
£100-150 (plus 30% BP*)

641 ✕ A mid to late 19th century gold cannetille sword pin, with coral bead highlights.

Length 9.1cms. 4.1gms.
Coral untested for natural colour origin.
£100-150 (plus 30% BP*)

642 ✕ An early 20th century gold coral cameo ring.

Ring size R. 5.3gms.
Coral untested for natural colour origin.
£100-150 (plus 30% BP*)

643 An early 19th century shell cameo, carved to depict Asclepius and Hygieia, on later necklace.

Length 41.5cms. 7.3gms.
£200-300 (plus 30% BP*)

644 A pair of 19th century gold carnelian cameo cufflinks, each carved to depict a gentleman in profile.

Length of cufflink face 1.1cms. 4.9gms.
£200-300 (plus 30% BP*)

645 A late 19th century gold cannetille 'ROMA' brooch, with micro mosaic owl terminals.

Length 4.5cms. 5.8gms.
£150-200 (plus 30% BP*)

646 A mid to late 19th century gold cannetille 'ROMA' brooch.

Length 5.6cms. 12.1gms.
£400-600 (plus 30% BP*)

647 A late 19th century micro mosaic brooch, depicting goldfinches, with 18ct gold cannetille surround.

Length 4.9cms. 11.6gms.
£450-650 (plus 30% BP*)

648 A mid 19th century micro mosaic brooch, depicting a Venetian Lion, with gold cannetille surround, together with matching earrings.

Diameter of brooch 3.7cms. Length of earrings 4.5cms. 24.1gms.
£400-600 (plus 30% BP*)

649 A mid to late 19th century gold cannetille, ruby, sapphire and split pearl accent quatrefoil brooch.

Stamped 15ct to back bar.
Length 3.4cms. 10.3gms.
£300-400 (plus 30% BP*)

650 ✕ A 19th century gold foliate engraved and faceted bead bracelet, with coral heart locket padlock clasp.

Length 19.5cms. 13.7gms.
Coral untested for natural colour origin.
£350-450 (plus 30% BP*)

651 A late 19th century silver and 18ct gold sapphire and rose-cut diamond hinged bangle.

Central sapphire calculated weight 0.50ct, based on estimated dimensions of 4.8 by 3.7 by 3mms.
French assay marks. Inner diameter 5.8cms. 29.8gms.
£1,800-2,600 (plus 30% BP*)



643



641



651



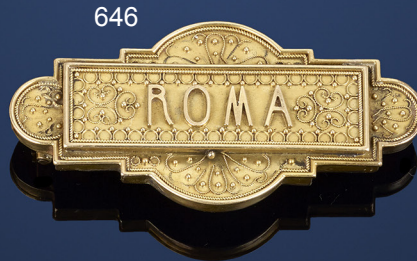
642



640



645



646



648



650



649



644



647

652 A late Victorian erotic stanhope stickpin, depicting a semi-clad woman.

Diameter of stickpin head 1.3cms.

£100-150 (plus 30% BP*)

653 An early 19th century gold carnelian intaglio fob, carved to depict a bearded gentleman, presumably Zeus.

Length (excluding jump ring) 1.9cms. 1.9gms.

£100-150 (plus 30% BP*)

654 A late Victorian 9ct gold rock crystal brooch.

Rock crystal calculated weight 56.20cts, based on estimated dimensions of 26.9 by 14.6mms.

Stamped 9ct. Diameter 2.8cms. 15gms.

£100-150 (plus 30% BP*)

655 An early to mid 20th century 18ct gold citrine single-stone ring.

Citrine calculated weight 2.42cts, based on estimated dimensions of 9.3 by 7.4 by 4.9mms.

Stamped 18ct. Ring size G1/2. 2.4gms.

£100-150 (plus 30% BP*)

656 A late 19th century 14ct gold citrine and split pearl brooch.

Citrine calculated weight 22.62cts, based on estimated dimensions of 21.4 by 16.9 by 11.2mms.

Length 3.4cms. 12.2gms.

£150-200 (plus 30% BP*)

657 A late 19th century carved mother-of-pearl panel brooch, depicting a bird and flora.

Length 4.7cms. 17.1gms.

£80-120 (plus 30% BP*)

658 An Edwardian 18ct gold shield-shape glass signet ring.

Hallmarks for Birmingham, 1901. Ring size R1/2. 6.9gms.

£250-350 (plus 30% BP*)

659 An early to mid 19th century gold, engraved spacer Kings-link bracelet, with ruby ring accent citrine and foliate motif gloved hand clasp holding an ouroboros snake.

Length 20.8cms. 9.5gms.

£300-400 (plus 30% BP*)

660 An early to mid 19th century gold emerald and split pearl mourning ring, with snake shoulders.

Ring size M1/2. 2.1gms.

£300-400 (plus 30% BP*)

661 ✕ A late 19th to early 20th century 18ct gold portrait miniature brooch of Mumtaz Mahal, with split pearl and scrolling white enamel surround, by Marcus & Co.

Length 6cms. 31.1gms.

£400-600 (plus 30% BP*)

662 A late Victorian gold Scottish agate inlay panel bracelet, with Greek key motif.

Length 17.6cms. 47.9gms.

£700-900 (plus 30% BP*)

663 A Georgian carnelian panel necklace.

Length 43.5cms. 44.7gms.

£200-300 (plus 30% BP*)

664 A Sri Lankan sapphire and pavé-set diamond pendant.

Verbal from The Gem & Pearl Laboratory, stating Sri Lanka, no heat,

'There are features reminiscent of Kashmir', please speak to department for details.

Sapphire calculated weight 9.30cts, based on estimated dimensions of 14.2 by 12 by 5.8mms.

Estimated total diamond weight 0.75ct, predominantly G-H colour, VS clarity.

Stamped 18K. Length 3.4cms. 10.5gms.

£6,000-8,000 (plus 30% BP*)



662



663

657



653



656



654



655



658



650



652



661



659

664

Fellows

Established 1876

Sale Results For Fine Jewellery : 24/11/2022

1	£440	65	£1,300	138	£1,300	210	£1,200	294	£1,200
2	£320	66	£900	139	£1,100	211	£1,000	295	£960
3	£520	67	£1,000	141	£2,100	214	£2,000	296	£3,800
4	£620	68	£1,100	142	£1,800	215	£580	297	£3,800
5	£440	69	£1,500	143	£8,100	216	£1,100	298	£2,100
6	£680	71	£3,700	144	£6,800	217	£800	300	£1,100
7	£700	73	£540	145	£1,000	219	£1,200	302	£500
8	£1,200	74	£340	147	£920	220	£980	303	£400
9	£920	75	£460	148	£920	221	£880	304	£1,400
10	£580	76	£360	149	£860	222	£460	306	£940
11	£1,500	77	£580	150	£1,500	228	£540	307	£1,600
13	£800	78	£660	153	£1,900	229	£2,500	309	£2,000
14	£380	79	£1,000	154	£2,800	232	£3,100	311	£2,300
15	£300	80	£960	155	£3,000	239	£5,500	312	£200
16	£300	81	£2,100	156	£3,800	240	£460	313	£240
17	£520	82	£3,500	157	£480	244	£2,300	315	£460
18	£640	83	£2,300	158	£480	245	£2,300	318	£1,100
19	£460	85	£160	160	£3,000	246	£5,600	319	£1,500
20	£780	86	£2,000	161	£760	248	£2,800	320	£6,100
21	£600	87	£400	163	£800	249	£2,000	322	£2,500
22	£600	88	£740	165	£3,300	250	£3,400	323	£5,600
23	£920	91	£1,400	166	£15,000	251	£2,700	324	£100
24	£1,800	92	£4,100	168	£1,200	252	£500	325	£240
26	£740	94	£3,400	169	£1,400	253	£340	328	£170
27	£860	95	£10,000	171	£2,100	254	£1,700	329	£280
28	£1,300	97	£820	172	£2,800	255	£560	331	£380
29	£1,100	99	£660	174	£2,500	256	£680	332	£260
31	£1,100	100	£1,300	175	£3,300	257	£940	333	£1,000
34	£5,400	101	£1,400	177	£2,900	258	£800	334	£1,300
35	£8,100	102	£2,200	178	£3,500	259	£2,900	335	£2,000
36	£8,700	103	£2,100	181	£800	261	£1,800	336	£240
37	£600	105	£3,900	182	£1,300	262	£4,200	337	£400
38	£660	107	£4,600	185	£1,200	264	£580	338	£260
41	£860	108	£6,300	186	£2,400	266	£640	339	£260
43	£1,200	109	£400	187	£1,200	268	£760	341	£560
44	£2,800	110	£1,500	190	£7,500	269	£850	342	£520
46	£380	112	£460	191	£240	270	£1,300	344	£480
47	£480	114	£1,200	192	£400	271	£1,800	345	£460
48	£1,400	115	£1,900	193	£540	273	£1,700	346	£1,100
49	£780	117	£1,100	194	£680	274	£1,800	348	£460
51	£900	119	£2,000	195	£980	275	£2,900	349	£150
53	£1,300	121	£420	196	£1,000	276	£340	350	£130
54	£800	122	£800	198	£1,500	277	£400	351	£300
55	£2,200	123	£880	200	£3,200	282	£660	352	£100
56	£1,100	126	£2,500	201	£2,500	283	£2,000	353	£240
57	£2,200	128	£2,400	202	£3,200	284	£2,000	354	£220
59	£4,600	132	£5,700	203	£520	288	£280	356	£360
60	£4,200	133	£780	204	£540	289	£740	358	£400
61	£320	134	£620	205	£440	291	£680	360	£160
62	£520	135	£1,200	208	£600	292	£2,000	361	£320
63	£440	137	£1,200	209	£660	293	£980	362	£500

Fellows

Established 1876

Sale Results For Fine Jewellery : 24/11/2022

363	£600	428	£2,000	500	£1,500	598	£280	661	£560
364	£500	429	£3,100	501	£1,900	599	£420	662	£1,800
366	£820	430	£3,000	503	£1,800	600	£400	664	£1,700
367	£1,200	431	£4,400	505	£3,000	601	£400	665	£2,000
370	£1,700	432	£180	509	£820	602	£2,000	666	£360
372	£440	433	£180	510	£1,000	603	£1,000	667	£180
373	£260	434	£360	511	£1,200	604	£2,200	668	£520
374	£340	437	£2,700	512	£900	605	£2,000	669	£150
375	£190	438	£1,700	513	£800	606	£220	670	£420
376	£320	439	£1,200	514	£3,400	607	£220	671	£640
377	£1,100	440	£2,500	515	£14,000	608	£320	672	£280
378	£400	442	£2,400	517	£16,000	609	£680	673	£420
379	£840	444	£700	518	£1,100	610	£800	674	£620
380	£820	445	£380	519	£1,300	611	£720	675	£2,300
381	£520	446	£700	520	£1,100	612	£620	676	£1,000
383	£1,100	447	£420	521	£1,600	613	£940	678	£320
384	£480	448	£700	522	£840	615	£200	679	£180
385	£380	449	£720	524	£1,400	616	£460	680	£700
386	£700	450	£2,900	528	£8,500	617	£2,100	681	£260
387	£440	451	£560	530	£980	618	£260	682	£400
388	£360	452	£2,800	531	£640	619	£420	683	£320
389	£360	453	£2,700	534	£920	620	£300	684	£1,000
390	£360	454	£3,900	536	£1,300	622	£920	685	£780
392	£1,000	455	£19,000	537	£1,500	623	£2,400	686	£340
393	£720	456	£520	538	£2,200	624	£1,400	687	£1,500
395	£3,000	457	£320	539	£1,200	627	£2,700	688	£1,100
396	£680	458	£980	543	£8,500	629	£6,800	689	£1,100
400	£920	459	£660	544	£480	630	£320	690	£90
401	£500	460	£1,600	546	£580	631	£220	691	£320
402	£1,500	462	£1,200	548	£700	632	£220	692	£170
403	£1,800	464	£3,000	550	£1,900	633	£420	694	£600
404	£2,800	465	£2,500	551	£1,700	634	£200	695	£680
405	£1,900	466	£4,200	552	£2,900	635	£400	696	£2,100
406	£1,900	468	£420	554	£5,500	636	£420	697	£500
407	£3,200	469	£840	560	£1,300	637	£380	698	£1,700
408	£300	470	£660	562	£1,200	638	£540	699	£860
409	£2,300	472	£1,800	570	£600	642	£580	700	£2,300
410	£1,800	475	£2,200	574	£960	643	£180	701	£1,800
411	£1,700	479	£8,600	576	£1,300	644	£400	702	£560
413	£2,000	481	£4,000	578	£2,300	645	£1,100	703	£820
415	£1,700	482	£600	583	£720	648	£840	704	£700
417	£2,500	484	£800	584	£660	649	£640	705	£1,400
418	£9,300	486	£940	586	£1,700	652	£4,000	706	£840
419	£3,200	487	£960	587	£2,300	653	£3,500	707	£1,700
420	£480	488	£1,700	591	£3,300	654	£580	708	£1,400
421	£720	489	£2,000	592	£2,800	655	£300	709	£500
422	£860	491	£4,100	593	£6,900	656	£160	710	£1,200
423	£2,300	492	£3,500	594	£180	657	£400	711	£800
424	£3,500	493	£5,700	595	£420	658	£380	712	£1,800
425	£1,400	494	£780	596	£460	659	£420	713	£3,000
427	£2,600	495	£700	597	£460	660	£780		

Fellows

Established 1876

Live Auctions

February

Jewellery Day One	Ends Tuesday 14th from 10am
Jewellery Day Two	Ends Wednesday 15th from 10am
Watches & Watch Accessories Day One	Ends Thursday 16th from 10am
Pawnbrokers Jewellery & Watches	Thursday 16th at 11am
Watches & Watch Accessories Day Two	Ends Friday 17th from 10am
Jewellery Day One	Ends Tuesday 21st from 10am
Jewellery Day Two	Ends Wednesday 22nd from 10am
The Designer Collection	Ends Thursday 23rd from 10am

** Please note that these auctions are timed sales hosted by Fellows Live, more information can be found on our website.

Dates are subject to change, please check the website for the definitive auction list.

Fellows recommend that all bidders and buyers read our conditions of buying and buyer's premium available on our website.

For further information please contact:

Jewellery

Penelope Gilliver

penelope@fellows.co.uk

0121 212 2131

Watches

Laura Bishop

laurab@fellows.co.uk

0121 212 2131

Silver & Coins

Alison Jakeway

alisonj@fellows.co.uk

0121 212 2131

Antiques & Fine Art

Kevin Jackson

kevin@fellows.co.uk

0121 212 2131

Fellows

Established 1876

Commission Bidding Slip

Thursday 9th February 2023

Fine Jewellery

Please bid on my behalf for the lot(s) shown below.

The bids will be executed as cheaply as is permitted by other bids in the room or reserves.

I have read and agree to comply with the Conditions of Sale as printed in the catalogue.

Any account for items purchased on my behalf will be settled within 24 hours of the sale and the items collected within two days of sale.

Please complete in block capitals.

Name

Address

..... Postcode

Telephone

Email

Signed Date

Lot	Price	Lot	Price	Lot	Price	Lot	Price
.....
.....
.....
.....
.....
.....
.....
.....
.....
.....
.....
.....
.....
.....
.....
.....
.....
.....
.....
.....
.....
.....
.....
.....
.....
.....
.....
.....
.....
.....
.....
.....
.....
.....

Buyer's Premium

On the first £100,000 of the Hammer Price (of any individual Lot) the Buyer will pay the Hammer Price and a premium of 25% (plus VAT) or 30% (inclusive of VAT). On the excess over £100,000 of the Hammer Price (of any individual Lot), the Buyer will pay the Hammer Price and a premium of 15% (plus VAT) or 18% (inclusive of VAT).
Lots prefixed with * will carry VAT at 20% on the hammer price.

Please note the bidding increments

£50 - £100	£5 increments
£100 - £200	£10 increments
£200 - £1000	£20 increments
£1000 - £10,000	£100 increments
Over £10,000	£1000 increments

Any bids shown not complying with these increments will be **ROUNDED UP** to the next increment.

its premises or attendance at (or participation in) any Auction by any person.

7. BIDDERS

- 7.1 Bidders may be required to register their particulars. Bidders attending in person may be required to satisfy Fellows' security arrangements before entering any part of the premises to view or bid.
- 7.2 You accept full liability for all bids submitted via your My Fellows account. Once a bid has been made by a Bidder on our website, the bid can be lowered or increased up until 9am on the day of the auction. You must sign into your My Fellows account to do this and you will receive an email confirmation for any changes made. Should a bid be placed in error on the website you must contact Fellows immediately. Failure to contact Fellows before the auction takes place will result in liability for the full payment of the item.
- 7.3 Bidders using the live bidding facility on www.fellows.co.uk are agreeing to the terms and conditions of sale for Fellows. Any successful bids using the live bidding facility will be subject to the usual Buyer's Premium, plus VAT.
- 7.4 Subject to clause 6.3, the highest Bidder at the Hammer Price shall be the Buyer. Any dispute about a bid shall be settled at the Auctioneer's absolute discretion..
- 7.5 Bidders are strongly encouraged to attend the Auction in person. Bidders shall be responsible for any decision to bid for a particular Lot and shall be deemed to have carefully inspected and satisfied themselves as to its condition. Neither Fellows nor its employees or agents shall be responsible for any neglect or default in doing or failing to do so.
- 7.6 Bidders are given ample opportunities to view and inspect before any sale and prospective Buyers must satisfy themselves as to all such matters. Neither Fellows or its employees or agents nor the Vendor accept liability for the correctness of such opinions and all conditions and warranties, express, implied or statutory are hereby excluded.

8. THE BUYER

- 8.1 Immediately a Lot is sold, the Buyer shall:
 - (a) give to Fellows their name and address and, if requested proof of identity, and
 - (b) pay to Fellows the Total Amount Due.
- 8.2 [Fellows may, at its absolute discretion, agree credit terms with the Buyer before an Auction under which the Buyer may be entitled to take possession of Lots up to an agreed value in advance of payment by a stipulated future date of the Total Amount Due.]
- 8.3 Cheques shall not be acceptable by Fellows (unless Fellows in its absolute discretion permits payment by such method) nor are third party references or credit facilities with other Auction houses. If a cheque is tendered Fellows reserves the right to instruct its bank to check the Buyer's status and account balance before exercising any discretion. Any credit arrangement must be settled at least 4 days before the relevant sale. Any permitted payment by credit card shall carry an extra charge to the Buyer of such percentage of the Total Amount Due as is displayed on the premises.
- 8.4 Any payments by a Buyer to Fellows may be applied by Fellows towards any sums owing from that Buyer to Fellows on any account whatever without regard to any directions of the Buyer or his agent, whether express or implied.

9. THE PURCHASE PRICE

- 9.1 On the first £100,000 of the Hammer Price (of any individual Lot) the buyer will pay the Hammer Price and a premium of 25% (Plus VAT). The said premium not being negotiable and payable by ALL Buyers. The Vendor authorises Fellows to retain beneficially the premium payable by Buyers. Value Added Tax is charged at the rate prevailing by law at the date of sale.
- 9.2 On the excess over £100,000 of the Hammer Price (of any individual Lot), the Buyer will pay the Hammer Price and a premium of 15% (plus VAT). The said premium not being negotiable and payable by ALL Buyers. The Vendor authorises Fellows to retain beneficially the premium payable by Buyers. Value Added Tax is charged at the rate prevailing by law at the date of sale.
- 9.3 Value Added Tax on the Hammer Price is imposed on all items affixed with an asterisk thus - *.
- 9.4 Buyers using the Fellows Live bidding platform will not pay any additional commission, just the buyer's premium. Buyers will pay an additional commission charge of 4.95% + VAT of the hammer price if lots are successfully purchased online via the-saleroom. Buyers using Easy Live Auction can choose whether to pay a live bidding charge of 3% + VAT of the hammer price, or a fixed fee of £3 per sale. Buyers will pay a commission charge of an additional 5% + VAT of the hammer price if lots are successfully purchased online via Live Auctioneers.
- 9.5 Non UK or EU VAT registered buyers can have most classes of VAT refunded on their purchases - please note that auctioneers are under no obligation to provide VAT refunds, although many will offer this service. HMRC are the ultimate refunding authority. VAT refunds are subject to provision of statutory export/import documentation. HMRC have decreed that VAT on buyer's premium is always payable whether the buyer is domiciled in the UK, the EU or outside the EU or wherever the goods are to be sent. So auctioneers cannot refund VAT on buyer's premium if the goods are sold under normal VAT rules.

10. TITLE AND COLLECTION OF PURCHASES

- 10.1 The ownership of any Lot purchased shall not pass to the relevant Buyer until they have made payment in full to Fellows of the Total Amount Due.
- 10.2 Buyers shall at their own risk and expense take away any Lot that they have purchased and paid for not later than 2 working days following the day of the Auction after which they shall be responsible for any removal, storage and insurance charges.

11. DEFAULT BY BUYER OR VENDOR

- 11.1 As Fellows act as agent for the Vendor, Fellows is not responsible for default by the Vendor or the Buyer.
- 11.2 If any Lot is not paid for in full and taken away in accordance with these Conditions, or

if there is any other breach of these Conditions, Fellows as agent for the Vendor shall at its absolute discretion and without prejudice to any other rights it may have, be entitled to exercise all or any of the following rights and remedies:

- (a) to proceed against the Buyer for an action for debt or damages for breach of contract;
- (b) to rescind the sale of that Lot and/or any other Lots sold by Fellows to the defaulting Buyer;
- (c) to re-sell the Lot by Auction or private treaty. If a lower Hammer Price is achieved on the re-sale than that achieved on the original sale the defaulting Buyer shall be liable for the difference (after crediting any part payment and adding any re-sale costs). Fellows will account to the Vendor for any surplus achieved on a re-sale, however, it shall only be required to account to the Vendor for any resulting deficiency in the event that it receives payment of such sum in full from the defaulting Buyer.
- (d) to remove, store and insure the Lot at the expense of the defaulting Buyer and, in the case of storage, either at Fellows' premises or elsewhere;
- (e) to charge interest at a rate not exceeding [1.5%] per month on the total amount due to the extent it remains unpaid for more than 2 working days after the sale;
- (f) to retain that or any other Lot sold to the defaulting Buyer until that Buyer pays the total amount due;
- (g) to reject or ignore bids from the defaulting Buyer at future Auctions or to impose conditions before any such bids shall be accepted;
- (h) to apply any proceeds of sale of other Lots due or in future becoming due to the defaulting Buyer towards the settlement of the total amount due and to exercise a lien on any of the Buyer's property in Fellows' possession for any purpose.

12. DELIBERATE FORGERIES

- 12.1 Subject to clause 12.2, any representation or statement by Fellows (including in any catalogue) as to authorship, genuineness, origin, date, age, provenance, condition or estimated selling price is a statement of opinion only. Prospective Buyers are given ample opportunities to view and inspect before any sale and prospective Buyers must satisfy themselves as to all such matters. Neither Fellows or its employees or agents nor the Vendor accept liability for the correctness of such opinions and all conditions and warranties, express, implied or statutory are hereby excluded.
- 12.2 Any Lot which proves to be a Deliberate Forgery may be returned to Fellows by the Buyer within 21 days of the Auction provided it is in the same condition as when bought, and is accompanied by particulars identifying it from the relevant catalogue description and a written statement of defects. If Fellows is satisfied from the evidence presented that the Lot is a Deliberate Forgery Fellows shall refund the money paid by the Buyer for the Lot (but not the amount of any consequential loss, damages, expenses or interest) provided that (1) if the catalogue description reflected the accepted view of scholars and experts as at the date of sale or (2) the Buyer personally is not able to transfer a good and marketable title to Fellows.

13. LIMITATIONS OF LIABILITY

- 13.1 All members of the public on the premises are there at their own risk and must note the lay-out of the accommodation and security arrangements.
- 13.2 Any indemnity under these Conditions shall extend to all actions, costs, expenses, claims and demands whatsoever suffered or incurred by the person entitled to the benefit of it and Fellows declares itself to be a trustee of the benefit of every such indemnity so far as it is expressed to be for the benefit of its employees and agents.
- 13.3 While Fellows endeavours to ensure that the information on the Website is correct, Fellows does not warrant the accuracy and completeness of the material on the Website. Fellows may make changes to the material on the Website, or to the products and prices described in it, at any time without notice. The material on the Website may be out of date, and Fellows makes no commitment to update such material.
- 13.4 The material on the Website is provided "as is", without any conditions, warranties or other terms of any kind. Accordingly, to the maximum extent permitted by law, Fellows provides you with the Website on the basis that Fellows excludes all representations, warranties, conditions and other terms which, but for this legal notice, might have effect in relation to the Website.

14. GENERAL

- 14.1 Any notice to any Buyer, Vendor, Bidder or viewer may be given by first class mail or email in which case it shall be deemed to have been received by the addressee 48 hours after posting or sending. All notices to Fellows must be sent in writing and email is not acceptable.
- 14.2 Any indulgence extended to any person by Fellows notwithstanding the strict terms of these Conditions or the Terms of Consignment shall affect the position at the relevant time only and in respect of that particular concession only; in all other respects these Conditions shall be construed as having full force and effect.
- 14.3 These Conditions and any disputes or claims arising out of or in connection with it or their subject matter or formation (including non-contractual disputes or claims) are governed by and construed in accordance with the law of England.
- 14.4 The parties irrevocably agree that the courts of England have exclusive jurisdiction to settle any dispute or claim that arises out of or in connection with the Agreement or its subject matter or formation (including non-contractual disputes or claims).

15. SHIPPING

- 15.1 We offer a tracked and insured shipping service for all items with the exception of those in our Antiques, Silver & Collectables sales.
- 15.2 Items posted outside of the UK will incur a £30 charge
- 15.3 Within the UK, hammer totals under £100 will incur a £10 charge
- 15.4 Hammer totals over £100 will incur a £20 charge
- 15.5 Larger items, as well as those exceeding a value of £20,000 or weighing in excess of 2kg may be subject to additional fees
- 15.6 If you have recently moved or wish to have your items sent to a different address, please contact us prior to the sale. We cannot accept alternative addresses for first-time buyers and your items will be sent the address on the ID/payment card. If you pay by bank transfer we can ship to any worldwide address of your choice.

Fellows

Established 1876

Contact Information

Directors

Stephen Whittaker BA (Hons)

Jayne Whittaker

Departments

Customer Services

0121 212 5508

info@fellows.co.uk

Jessica Court
Claire Dodwell
Natalie Hawksworth
Luke Rowan
Emma Quirke
Gemma Sheldon

Photography

0121 212 2131

photography@fellows.co.uk

Claire Cleaver
Polly Shave MA (Hons)
Stephen Watton BA (Hons)

Marketing

0121 212 5500

marketing@fellows.co.uk

Harry Burgess BA (Hons)
Luke Poole BA (Hons)
Krishna Vara BA (Hons)
Alexandra Whittaker BA (Hons)
Nicola Whittaker Bsc (Hons), Cert. GA

London Office

0207 127 4198

london@fellows.co.uk

Barbara Akwa
Oliver Horner DGA
Annabel Zarandi BA (Hons)

Finance

0121 212 2131

wendy@fellows.co.uk

Wendy Butler
Janet Chow
Angela Donnelly BA (Hons) ACMA
Gemma Wilkes
Aidan Smith

Specialist Departments

Jewellery

0121 212 6303

jewellery@fellows.co.uk

Lindsay Beardmore FGA, DGA
Helen Cooper
Eve Darby MA (Hons)
Jenny Darcy BA (Hons)
Nicole Flavell-Avery BA (Hons), FGA, AJP, DGA
Helen Foster BA (Hons)
Penelope Gilliver FGA, DGA
Arianna Pedrazzoli BA (Hons), MLitt, FGA
Ben Randall BA (Hons), G.G., A.J.P.
Sarah Thorneloe BSc (Hons), DGA
Amanda Zhang FGA, Msc

Watches

0121 212 5506

watches@fellows.co.uk

Laura Bishop MA (Hons)
Kes Crockett BA (Hons)
Kain Holroyd
Sam Jeens BA (Hons)
Steven Yambo BA (Hons)

Pawnbrokers

0121 212 6308

pawnbroker@fellows.co.uk

Nathan Boot
Connor Butler
Charlie Chitty
Ross Popescu
Cordelia Porter

Antiques, Silver & Collectables

0121 212 6302

antiques@fellows.co.uk

Kevin Jackson
Alison Jakeway MA
Orla Taylor-Davies BA (Hons)

Designer Collection

0121 212 6306

thedesignercollection@fellows.co.uk

Callum Charles



Birmingham Saleroom

Situated in the heart of Birmingham's Jewellery Quarter, this office can offer viewings for all of our auctions as well as free valuations.

Visit our website or please call to arrange an appointment.

Head Office & Saleroom
Augusta House
19 Augusta Street
Birmingham
B18 6JA

Telephone: 0121 212 2131
Email: info@fellows.co.uk

London Office

Fellows' London office sits in the prestigious Mayfair area and offers valuations as well as viewings for our flagship auctions.

Visit our website or please call to arrange an appointment.

London Office
29 Charles Street
Mayfair
London
W1J 5DT

Telephone: 020 7127 4198
Email: london@fellows.co.uk



Fellows

Established 1876

Head Office & Saleroom: Augusta House | 19 Augusta Street | Birmingham B18 6JA
London Office: 29 Charles Street | Mayfair | London W1J 5DT
Tel 0121 212 2131 | Tel 020 7127 4198 | www.fellows.co.uk