

Fellows
Established 1876



Fine Jewellery
Thursday 13th April 2023



Fine Jewellery

Thursday 13th April 2023
Starts at 10:00am

Viewing Times

London

Tuesday 4th April

12:00 - 19:00

Wednesday 5th April

09:00 - 13:00

Birmingham

Tuesday 11th April

10:00 - 16:00

Wednesday 12th April

10:00 - 16:00

Thursday 13th April

08:30 - 10:00

Virtual viewings are available by request.

Please email info@fellows.co.uk to arrange your appointment.

Certificated stones,

Lot 91, 95, 119, 131, 132, 150, 151, 155, 168, 171, 179, 190, 198, 210, 234, 235, 247, 259, 331, 363, 427, 451, 453, 480, 547, 558, 559, 580, 581, 613

Featured Lots

Lots 309, 310, 313, 314, 601 and 507
(Front Cover)



Lots 464, 465, 478, 484 and 485
(Back Cover)



Lots 694, 695 and 701

General Information

Fellows

Established 1876

Contact the department

Ben Randall
Jewellery Department Manager
0121 212 6312
ben@fellows.co.uk

Nicole Flavell-Avery
BA(Hons) FGA DGA AJP
Jewellery Department

Virtual Viewings

Virtual viewings available by request, to book your appointment please contact info@fellows.co.uk

Fellows Live

Say goodbye to additional surcharges thanks to Fellows Live. Using our platform means you only pay the standard Buyer's Premium (plus VAT).



Free Delivery

We offer free worldwide shipping on the majority of items that we auction.



Free delivery on this auction.

Keep your eye out for this icon and be sure to read the terms and conditions.

Why Buy?

- In-depth descriptions and condition reports
- Free worldwide postage w/ free insurance
- Competitive Buyers Premium
- Guarantee authenticity
- Free live bidding
- Virtual viewings
- Sustainability

Why Sell?

- Competitive commission rates
- Free no-obligation valuations
- Worldwide customer base
- High quality photography
- Array of auction types
- Expert cataloguing

Further information

Live Auction Bidding Increments

From	To	Increment
£0	£50	£2
£50	£100	£5
£100	£200	£10
£200	£1,000	£20
£1,000	£10,000	£100
£10,000	£1,000,000	£1,000

Important Notice

All bidders accept full liability for bids placed. Placing a bid is a legally binding obligation to buy and pay for the lot if your bid is successful. Refunds will not be given for "buyer's remorse". Please note that by submitting a bid you are agreeing to our Terms & Conditions.

Key to Symbols

- Item may have export restrictions for customers outside of the UK
- Lot comes with box.
- Lot comes with associated papers/warranty cards.
- Lot comes with report.
- Lot will carry an additional 20% VAT charge on the hammer price.

1 An 18ct gold amethyst and brilliant-cut diamond cluster ring.

Estimated total diamond weight 0.20ct.
Hallmarks for London, 1989. Ring size N. 3.5gms.
£100-150 (plus 30% BP*)

2 A jade cabochon and brilliant-cut diamond cluster ring.

Jade estimated dimensions of 10.7 by 8.3 by 3.3mms.
Estimated total diamond weight 0.65ct, G-H colour, VS-SI clarity.
Stamped 18K. Ring size Q. 4.7gms.
Jade untested for natural colour origin.
£150-200 (plus 30% BP*)

3 An 18ct gold emerald dress ring, with calibre-cut diamond line sides.

Emerald calculated weight 1ct, based on estimated dimensions of 6.8 by 5.7 by 3.5mms.
Estimated total diamond weight 0.75ct, G-H colour, VS-SI clarity.
Import marks for Sheffield. Ring size Q. 7.1gms.
£250-350 (plus 30% BP*)

4 A 'Sevillana' pendant, on black cord, by Elsa Peretti for Tiffany & Co.

Stamped 750. Length of pendant 3.6cms. Length of cord 44cms.
8.3gms.
£300-400 (plus 30% BP*)

5 An aquamarine single-stone ring.

Aquamarine calculated weight 9.53cts, based on estimated dimensions of 17.2 by 12.6 by 7.7mms.
Stamped 18K. Ring size L. 5gms.
£300-400 (plus 30% BP*)

6 A sapphire, brilliant-cut diamond and blue enamel stylised rosette ring.

Estimated total diamond weight 0.60ct, I-K colour, VS2-SI2 clarity.
Stamped 18K. Ring size O. 4.2gms.
£150-200 (plus 30% BP*)

7 A pair of 18ct gold cultured pearl and brilliant-cut diamond earrings, by Mikimoto.

Estimated total diamond weight 0.10ct.
Import marks for London, 1997. Diameter 1.1cms. 4gms.
£350-450 (plus 30% BP*)

8 An 18ct gold emerald and vari-cut diamond dress ring.

Emerald calculated weight 1.41cts, based on estimated dimensions of 7 by 6 by 4.6mms.
Estimated total diamond weight 0.25ct, H-I colour, VS-SI clarity.
Hallmarks for London, 1999. Ring size M. 5.6gms.
£200-300 (plus 30% BP*)

9 An 18ct gold brilliant-cut diamond, sapphire, emerald and ruby hinged bangle.

Estimated total diamond weight 1.10cts, G-H colour, VS-P1 clarity.
Import marks for London, 1995. Inner diameter 5.2cms. 13.6gms.
£500-700 (plus 30% BP*)

10 A pair of 18ct gold enamel earrings, by De Vroomen.

Hallmarks for London, 1992.
Diameter 2.5cms. 17.3gms.
£600-800 (plus 30% BP*)

11 An 18ct gold enamel egg charm bracelet, by Fabergé.

Hallmarks for Edinburgh. Length 19cms. 22gms.
£900-1,400 (plus 30% BP*)

12 A pair of amethyst, onyx and pavé-set diamond earrings, by Marina B.

Estimated total diamond weight 1.20cts, G-H colour, VS clarity.
Italian marks, stamped 750. Length 5.2cms. 45.1gms.
£1,500-2,000 (plus 30% BP*)



4



9



10



2



7



6



8



3



5



11



12



1

13 A pair of 18ct gold brilliant-cut diamond and ruby cluster drop earrings.

Estimated total diamond weight 0.50ct.
Hallmarks for London, 2011. Length 1.8cms. 4.1gms.
£150-200 (plus 30% BP*)

14 An 18ct gold aquamarine ring, with brilliant-cut diamond mount.

Aquamarine calculated weight 4cts, based on estimated dimensions of 11.1 by 9.3 by 6.1mms.
Estimated total diamond weight 0.25ct.
Hallmarks for London, 2008. Ring size N. 4.1gms.
£150-200 (plus 30% BP*)

15 A pair of 18ct gold sapphire and brilliant-cut diamond earrings, by Mappin & Webb.

Estimated total diamond weight 0.35ct.
Hallmarks for London, 2008. Length 2.2cms. 3.7gms.
£250-350 (plus 30% BP*)

16 A pair of 18ct gold pink sapphire and grey cultured pearl drop earrings, by Mikimoto.

Hallmarks for London, partially indistinct. Length 3.2cms. 6.5gms.
Cultured pearls untested for natural colour origin.
£350-450 (plus 30% BP*)

17 A grey cultured pearl and brilliant-cut diamond crossover dress ring.

Diameter of cultured pearl 10.3mms.
Estimated total diamond weight 0.25ct, G-H colour, VS clarity.
Stamped 750. Ring size L1/2. 14.2gms.
Cultured pearl untested for natural colour origin.
£550-750 (plus 30% BP*)

18 A platinum graduated baguette-cut diamond dress ring.

Principal diamond laser inscribed GIA 6205537054, GIA report check states 0.56ct, E colour, VVS2 clarity.
Estimated total diamond weight 1.15cts.
Hallmarks for London, 2015. Ring size L. 5.5gms.
£400-600 (plus 30% BP*)

19 An 18ct gold garnet and brilliant-cut diamond triple cluster ring.

Largest garnet calculated weight 1.52cts, based on estimated dimensions 7.6 by 7.6 by 3.9mms.
Estimated total diamond weight 0.35ct.
Hallmarks for Birmingham. Ring size L. 11.1gms.
£450-650 (plus 30% BP*)

20 A platinum diamond 'Jazz' full eternity ring, by Tiffany & Co.

Estimated total diamond weight 0.70ct, G-H colour, VS clarity.
Hallmarks for London, 2006. Ring size P. 3.4gms.
With maker's pouch.
£600-800 (plus 30% BP*)

21 A tanzanite and brilliant-cut diamond pendant, with rope-link chain.

Tanzanite calculated weight 4.63cts, based on estimated dimensions of 12.2 by 9.8 by 5.6mms.
Estimated total diamond weight 0.75ct, H-J colour, SI clarity.
Pendant stamped 18k. Clasp stamped 750.
Length of pendant 2.4cms. Length of chain 37.8cms. 6.5gms.
£700-900 (plus 30% BP*)

22 A moonstone and star ruby bangle.

Ruby calculated weight 5.25cts, based on estimated dimensions of 8.4 by 6.9mms.
Stamped 750. Inner diameter 6.3cms. 24.4gms.
£800-1,200 (plus 30% BP*)

23 A brilliant-cut diamond star motif necklace.

Estimated total diamond weight 1ct, H-I colour, VS-SI clarity.
Stamped 750. Length 41cms. 23.9gms.
£900-1,400 (plus 30% BP*)

24 An 18ct gold brilliant-cut diamond terminal crossover cuff bangle, by Fope.

Estimated total diamond weight 0.35ct.
Hallmarks for Sheffield. Inner diameter 6cms. 37.9gms.
£1,400-2,000 (plus 30% BP*)



19

13

23

20

14

22

18

15

21

17

16

24



25 An early 20th century platinum graduated circular-cut diamond three-stone ring.

Estimated total diamond weight 0.60ct, H-I colour, SI1-P1 clarity. Stamped PLAT. Ring size J. 2.4gms.

£120-180 (plus 30% BP*)

26 An early 20th century platinum and 18ct gold graduated sapphire five-stone ring, with single-cut diamond shared surround.

Central sapphire calculated weight 0.43ct, based on estimated dimensions of 4.8 by 3.8 by 2.8mms.

Estimated total diamond weight 0.30ct.

Stamped 18. Ring size S. 3.1gms.

£150-200 (plus 30% BP*)

27 A late Victorian silver and gold rose and old-cut diamond openwork crescent moon brooch.

Estimated total diamond weight 0.55ct.

Length 3.1cms. 5.2gms.

£400-600 (plus 30% BP*)

28 A late Victorian silver and gold, sapphire, ruby, split pearl and rose-cut diamond butterfly jewellery component.

Length 3.9cms. 8.1gms.

£400-600 (plus 30% BP*)

29 A late Victorian silver and gold pearl and diamond Northern star and crescent moon brooch.

Estimated total diamond weight 1.05cts, G-I colour, VS-SI clarity.

Length 4.9cms. 7.2gms.

Pearl untested for natural origin.

£600-800 (plus 30% BP*)

30  A late 19th century silver and gold old-cut diamond crescent moon and heart brooch.

Estimated total diamond weight 2.10cts, G-J colour, SI1-P1 clarity.

Length 6.2cms. 6.8gms.

With fitted case.

£700-900 (plus 30% BP*)

31 A mid 19th century silver and gold old and rose-cut diamond floral spray brooch, set en tremblant.

Old-cut diamond estimated weight 0.20ct, G-H colour, P1 clarity. French assay marks. Length 6.7cms. 15.7gms.

£700-900 (plus 30% BP*)

32 A late Victorian palladium and gold old-cut diamond bow brooch.

Estimated total diamond weight 3.50cts, G-K colour, VS2-P1 clarity. Length 5cms. 8.1gms.

£900-1,400 (plus 30% BP*)

33 A late Victorian silver and gold old-cut diamond star brooch.

May be worn as a pendant.

Estimated total diamond weight 4.60cts, H-J colour, VS2-P1 clarity.

Length 3.8cms. 8.8gms.

£1,000-1,500 (plus 30% BP*)

34 A late Victorian silver and gold, ruby and diamond floral cluster pendant.

Ruby calculated weight 0.47ct, based on estimated dimensions of 4.4 by 4.4 by 2.6mms.

Estimated total diamond weight 1.65cts, G-I colour, VS2-P2 clarity.

Length 3.7cms. 6.6gms.

£1,500-2,000 (plus 30% BP*)

35 A late 19th century gold sapphire and old-cut diamond crescent moon brooch.

Central sapphire calculated weight 0.60ct, based on estimated dimensions of 5.4 by 4.2 by 2.8mms.

Estimated total diamond weight 0.70ct.

Later Portuguese marks. Length 6.6cms. 5.3gms.

£2,000-3,000 (plus 30% BP*)

36 A graduated old-cut diamond line pendant, with flat curb-link chain.

Estimated total old-cut diamond weight 1.60cts, H-I colour, VS2-P1 clarity.

Chain with Italian marks, stamped 750.

Length of pendant 3.8cms. Length of chain 46cms. 8.2gms.

£2,400-3,400 (plus 30% BP*)



32



31



26



34



35



30



36



29



33



28



25



27

37 An 18ct gold blue topaz single-stone ring, with vari-cut diamond geometric sides.

Topaz calculated weight 13.44cts, based on estimated dimensions of 16.1 by 12 by 7.3mms.
Estimated total diamond weight 0.20ct, H-I colour, VS-SI clarity.
Hallmarks for Sheffield, 2003. Ring size N. 7.8gms.
£120-180 (plus 30% BP*)

38 An early to mid 20th century platinum and 18ct gold blue zircon ring, with single-cut diamond bar shoulders.

Zircon calculated weight 3.17cts, based on estimated dimensions of 8.1 by 5.2mms.
Stamped '18ct & PLAT'. Ring size K1/2. 4.1gms.
£150-200 (plus 30% BP*)

39 A 1940s gold old-cut diamond and sapphire tank ring.

Estimated diamond weight 0.70ct, G-H colour, SI clarity.
Ring size H. 5.6gms.
£180-260 (plus 30% BP*)

40 An early to mid 20th century silver and gold aquamarine, single and brilliant-cut diamond bracelet.

Aquamarine calculated weight 6.38cts, based on estimated dimensions of 16 by 10.4 by 6mms.
Estimated total diamond weight 0.50ct, H-J colour, SI1-P1 clarity.
Length 14.2cms. With extra links. 8.4gms.
£200-300 (plus 30% BP*)

41 A mid 20th century platinum old-cut diamond single-stone ring, with vari-cut diamond shoulders.

Principal diamond estimated weight 1ct, tinted colour, P1 clarity.
Stamped PLAT, indistinct.
Ring size O1/2. 4.4gms.
£400-600 (plus 30% BP*)

42 An Art Deco platinum and 14ct gold vari-cut diamond and sapphire geometric ring.

Principal diamonds estimated total weight 0.45ct, H-I colour, SI clarity.
Austrian marks.
Ring size Q1/2. 4gms.
£200-300 (plus 30% BP*)

43 A sapphire and brilliant-cut diamond pierced geometric brooch.

Estimated total diamond weight 2.25cts, H-J colour, SI1-P2 clarity.
Length 7.3cms. 23.3gms.
£1,000-1,500 (plus 30% BP*)

44 A sapphire and old-cut diamond cluster ring.

Sapphire calculated weight 0.82ct, based on estimated dimensions of 6.5 by 5 by 2.7mms.
Estimated total diamond weight 1.20cts, I-J colour, SI2-P2 clarity.
Stamped 585. Ring size O. 3.8gms.
£900-1,400 (plus 30% BP*)

45 A pair of mid 20th century 18ct gold blue topaz and vari-cut diamond earrings.

Topaz calculated total weight 4.95cts.
Estimated total diamond weight 3.30cts, Stamped 18ct. Length 3.9cms. 23.1gms.
£1,200-1,800 (plus 30% BP*)

46 A rose-cut diamond pendant, with old-cut diamond terminals, suspended from a figaro-link chain.

Principal two diamonds estimated total weight 0.90ct, G-H colour, P1 clarity.
Length of pendant 4.1cms. Length of chain 42cms. 5.1gms.
£1,200-1,800 (plus 30% BP*)

47 An Art Deco platinum and gold black opal and diamond geometric pendant, on chain.

Opal estimated dimensions of 25.4 by 16.6 by 4.8mms.
Estimated total diamond weight 0.10ct.
Stamped 18c to panel near clasp.
Length of pendant 4.6cms. Length of chain 44cms. 6.8gms.
£1,400-2,000 (plus 30% BP*)

48 An 18ct gold diamond and calibre-cut sapphire dress ring.

Principal diamond estimated weight 0.50ct, H-I colour, VS clarity.
Estimated total diamond weight 0.75ct.
Hallmarks for Edinburgh. Ring size M. 4.6gms.
£1,500-2,000 (plus 30% BP*)



49 An early to mid 20th century gold emerald ring, with old-cut diamond trefoil shoulders.

Emerald calculated weight 0.40ct, based on estimated dimensions of 5.8 by 3.5 by 2.7mms.
Estimated total diamond weight 0.90ct, I-J colour, SI2-P1 clarity.
Ring size M. 3.2gms.
£120-180 (plus 30% BP*)

50 A mid 20th century silver and gold, sapphire, old-cut and diamond point bar brooch.

Estimated total old-cut diamond weight 0.40ct, H-J colour, SI clarity.
Length 5.3cms. 6.6gms.
£350-450 (plus 30% BP*)

51 A mid 20th century palladium and gold, blue topaz, cultured pearl and diamond geometric bar brooch.

Length 6.3cms. 7.2gms.
£400-600 (plus 30% BP*)

52 A mid 20th century 18ct gold Brazilian emerald and brilliant-cut diamond cluster ring.

Verbal from GCS stating Brazil, indications of significant clarity enhancement.
Emerald calculated weight 3.76cts, based on estimated dimensions of 10.4 by 9.3 by 5.3mms.
Estimated total diamond weight 0.45ct.
Stamped 750. Ring size M1/2. 8.5gms.
£400-600 (plus 30% BP*)

53 A mid 20th century platinum sapphire and old-cut diamond cluster ring.

Sapphire calculated weight 1.70cts, based on estimated dimensions of 10.5 by 6 by 3.2mms.
Estimated total diamond weight 0.70ct, I-K colour, VS2-P1 clarity.
Ring size L1/2. 4.6gms.
£1,000-1,500 (plus 30% BP*)

54 A mid 20th century 18ct gold circular-cut diamond single-stone ring, with diamond line shoulders.

Principal diamond estimated weight 1.15cts, I-J colour, SI clarity.
Stamped 18ct. Ring size M. 3.2gms.
£1,400-2,000 (plus 30% BP*)

55 A mid 20th century 14ct gold emerald and vari-cut diamond cluster ring.

Emerald calculated weight 0.94ct, based on estimated dimensions of 8.2 by 7.2 by 2.8mms.
Estimated total diamond weight 2.25cts, G-I colour, VS-SI clarity.
Import marks for London, 1976. Ring size I1/2. 9.9gms.
£1,500-2,000 (plus 30% BP*)

56 A mid 20th century 18ct gold sapphire and vari-cut diamond floral spray brooch.

Principal diamond estimated weight 0.50ct, H-I colour, SI clarity.
Estimated total diamond weight 4cts.
Stamped 18ct. Length 8cms. 29gms.
£2,000-3,000 (plus 30% BP*)

57 An early 20th century platinum and gold old and rose-cut diamond brooch.

Principal diamond estimated weight 1.25cts, K-L colour, SI clarity.
Estimated total old-cut diamond weight 3.50cts, predominantly I-J colour, SI1-P1 clarity.
Length 4.2cms. 16.9gms.
£3,500-4,500 (plus 30% BP*)

58 A pair of mid 20th century gold diamond geometric brooches.

Principal diamonds estimated total weight 1.20cts, H-I colour, VS2-SI1 clarity.
Estimated total diamond weight 6.50cts.
French re-strike marks. Lengths 4.5cms. 14.6gms.
£3,500-4,500 (plus 30% BP*)

59 A mid 20th century platinum, vari-shape colourless gem and baguette-cut diamond scroll bracelet, with gold fittings.

Estimated total diamond weight 9ct, H-I colour, VS clarity.
Length 14.5cms. 50.1gms.
£4,000-6,000 (plus 30% BP*)

60 An old-cut diamond bracelet, with calibre-cut sapphire and emerald surrounds.

Estimated total diamond weight 2.35cts, I-K colour, SI2-P1 clarity.
Length 19.7cms. 14.7gms.
£5,000-7,000 (plus 30% BP*)



61 A pair of blue topaz earrings.

Stamped 750. Length 1.6cms. 10.8gms.
£150-200 (plus 30% BP*)

62 A pair of brilliant-cut diamond spiral half hoop earrings.

Estimated total diamond weight 1.75cts, H-I colour, SI1-P1 clarity.
Length 2.7cms. 11.5gms.
£700-900 (plus 30% BP*)

63 A brilliant-cut diamond full eternity ring.

Estimated total diamond weight 2.50cts, H-I colour, VS2-P1 clarity.
Ring size R. 6.5gms.
£800-1,200 (plus 30% BP*)

64 An opal and sapphire three-stone ring, with brilliant-cut diamond surround.

Opal weight 8.26cts, stamped to metal.
Sapphire total weight 1.70cts, stamped to metal.
Total diamond weight 0.20ct.
Stamped 750.
Ring size N. 6.3gms.
£1,000-1,500 (plus 30% BP*)

65 An 18ct gold diamond 'Nouvelle Vague' ring, by Cartier.

Estimated total diamond weight 0.80ct, G-H colour, VS clarity.
Swiss convention marks. Ring size O. Cartier size 55. 14.3gms.
With maker's case.
£1,200-1,800 (plus 30% BP*)

66 An 18ct gold aquamarine and brilliant-cut diamond floral openwork ring.

Aquamarine weight 14.56cts, stamped to band.
Total diamond weight 0.82ct, stamped to band, estimated H-I colour, VS-SI clarity.
Hallmarks for Birmingham.
Ring size N. 11.3gms.
£1,800-2,600 (plus 30% BP*)

67 A cultured pearl four-row necklace, with aquamarine and diamond clasp.

Aquamarine calculated weight 42.60cts, based on estimated dimensions of 23 by 19 by 12.8mms.
Estimated total diamond weight 1.10cts.
Length 39.5cms. 156.1gms.
£2,800-3,800 (plus 30% BP*)

68 A Sri Lankan sapphire and brilliant-cut diamond dress ring.

With photocopy of report 5782-2055, dated 21st June 2022, from GCS, stating Sri Lanka (Ceylon), no heat, estimated weight 5cts.
Estimated total diamond weight 0.75ct, H-I colour, SI1-P1 clarity.
Stamped 750, indistinct. Ring size N. 8.9gms.
£2,200-3,200 (plus 30% BP*)

69 A blue topaz, old and rose-cut diamond brooch, in the manner of Buccellati.

One topaz calculated weight 2.23cts, based on estimated dimensions of 7.8 by 5.2mms.
Estimated total old-cut diamond weight 1.75cts, G-J colour, VS2-P1 clarity.
Length 4.5cms. 13.1gms.
£2,500-3,500 (plus 30% BP*)

70 A brilliant-cut diamond line bracelet.

Estimated total diamond weight 5.25cts, G-tinted colour, SI1-P1 clarity.
Stamped 750. Length 18cms. 13.5gms.
£3,500-4,500 (plus 30% BP*)

71 An 18ct gold sapphire and diamond cluster ring.

Sapphire weight 5.72cts.
Total diamond weight 1.64cts, estimated G-I colour, SI1-P1 clarity.
Hallmarks for Birmingham. Ring size N1/2. 6gms.
£4,800-6,800 (plus 30% BP*)

72 An 18ct gold brilliant-cut diamond single-stone ring.

Estimated diamond weight 2cts, I-J colour, SI clarity.
Hallmarks for Sheffield, 1978.
Ring size M. 3.5gms.
£5,000-7,000 (plus 30% BP*)



66



67



65



62



68



63



61



72



69



70



71

64



73 A mid 20th century gold circular-cut diamond scroll brooch.

Estimated total diamond weight 1.15cts, H-J colour, SI1-P1 clarity. Foreign marks. Length 3.3cms. 10gms.

£300-400 (plus 30% BP*)

74 A platinum brilliant-cut diamond single-stone ring, with green paste pear-shape sides.

Diamond estimated weight 0.70ct, I-J colour, VS2-SI1 clarity. Hallmarks for London, 2020. Ring size U. 6.5gms.

£300-400 (plus 30% BP*)

75 A mid 20th century gold brilliant-cut diamond foliate spray brooch.

Estimated total diamond weight 1.40cts, H-I colour, VS-SI clarity. Length 5.9cms. 14.2gms.

£450-650 (plus 30% BP*)

76 A pair of mid 20th century green tourmaline and single-cut diamond earrings.

Tourmaline estimated total weight 6.60cts, based on calculated weight of one gem.

Estimated total diamond weight 0.15ct, H-J colour, VS clarity. Length 1.7cms. 6.6gms.

£400-600 (plus 30% BP*)

77 A mid 20th century green tourmaline and single-cut diamond ring.

Tourmaline calculated weight 5.20cts, based on estimated dimensions of 15.5 by 7 by 5.8mms.

Estimated total diamond weight 0.15ct, H-I colour, VS clarity. Ring size O1/2. 5gms.

£500-700 (plus 30% BP*)

78 A mid 20th century green tourmaline and vari-cut diamond pendant.

Tourmaline calculated weight 18.50cts, based on estimated dimensions of 21.4 by 11.5 by 9.1mms.

Estimated total diamond weight 0.25ct, G-H colour, VS clarity. Length 3cms. 9.1gms.

£600-800 (plus 30% BP*)

79 A 1970s 18ct gold woven band ring, by Kutchinsky.

Hallmarks for London, 1970. Ring size Q. 8.8gms.

£800-1,200 (plus 30% BP*)

80 A gentleman's 1970s 18ct gold diamond ring, by Kutchinsky.

Estimated total diamond weight 0.70ct, G-H colour, VS-SI clarity. Hallmarks for London, 1970. Ring size T1/2. 19.1gms.

£800-1,200 (plus 30% BP*)

81 A 1970s 18ct gold brilliant-cut diamond undulating line ring, by Kutchinsky.

Estimated total diamond weight 1.65cts, G-H colour, predominantly VS clarity.

Hallmarks for London, 1979. Ring size M. 5.2gms.

£1,000-1,500 (plus 30% BP*)

82 A lady's mid 20th century 18ct gold wristwatch, with graduated brilliant-cut diamond bezel, by Omega.

Estimated total diamond weight 2.70cts, G-H colour, predominantly VS clarity.

Stamped 750. Length 16.5cms. 26.4gms.

£1,800-2,600 (plus 30% BP*)

83 A brilliant-cut diamond swag necklace, gathered to baguette-cut diamond spacers.

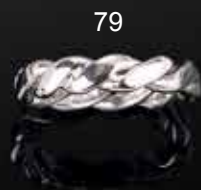
Estimated total diamond weight 12.50cts, G-I colour, VS clarity. Stamped 750. Length 41cms. 37.7gms.

£4,500-6,500 (plus 30% BP*)

84 An 18ct gold brilliant-cut diamond stepped line bracelet.

Estimated total diamond weight 8.50cts, G-I colour, VS clarity. Hallmarks for London, 2006. Length 17.4cms. 43.7gms.

£5,000-7,000 (plus 30% BP*)



85 A mid 20th century platinum and 18ct gold black opal and brilliant-cut diamond cluster ring.

Opal estimated dimensions 17.1 by 10.4 by 3.5mms.

Estimated total diamond weight 0.80ct.

Ring size L1/2. 7.7gms.

£300-400 (plus 30% BP*)

86 An early to mid 20th century platinum and brilliant-cut diamond three-stone ring, with single-cut diamond surround.

Maker's mark for Alabaster & Wilson.

Estimated total diamond weight 0.85ct, H-I colour, VS-SI clarity.

Stamped PLATINUM. Ring size L. 3.6gms.

£350-450 (plus 30% BP*)

87 A mid 20th century platinum aquamarine single-stone ring, with single-cut diamond shoulders.

Aquamarine calculated weight 6cts, based on estimated dimensions of 13.6 by 10 by 6mms.

Ring size J1/2. 4.9gms.

£350-450 (plus 30% BP*)

88 A star sapphire and diamond ring.

Sapphire calculated weight 4.37cts, based on estimated dimensions of 9.6 by 6.8 by 6.2mms.

Estimated total diamond weight 0.40ct.

Stamped 750 to outside of the band. Ring size O. 7gms.

£600-800 (plus 30% BP*)

89 An early to mid 20th century bi-colour 18ct gold old-cut diamond brooch.

Principal diamond estimated weight 0.75ct, L-tinted colour, SI clarity.

Estimated total diamond weight 1.40cts.

Stamped 18ct. Length 5.1cms. 6.9gms.

£800-1,200 (plus 30% BP*)

90 A brilliant-cut diamond, sapphire and ruby gardenetti brooch.

Estimated total diamond weight 0.70ct.

Length 3.5cms. 6.1gms.

£750-950 (plus 30% BP*)

91  A mid 20th century diamond brooch, with later natural pearl drop.

With report 22698, dated 25th January 2023, from The Gem & Pearl Laboratory, stating natural, saltwater, dimensions 12.8 - 14.6mms width, ~ 18-19mms length.

Estimated total diamond weight 0.30ct.

Length 8.7cms. 17.6gms.

£1,200-1,800 (plus 30% BP*)

92  A sapphire and brilliant-cut diamond brooch by Gübelin.

Estimated total diamond weight 0.90ct, G-H colour, VS clarity.

Stamped 750. Length 8.3cms. 38gms.

With maker's case.

£1,200-1,800 (plus 30% BP*)

93 A mid 20th century 18ct gold floral carved sapphire and brilliant-cut diamond brooch.

Estimated total diamond weight 3.75cts, G-I colour, VS-SI clarity.

Length 4cms. 10.9gms.

£2,000-3,000 (plus 30% BP*)

94 A gentleman's 18ct gold diamond dot dial wrist watch, by Audemars Piguet.

Swiss convention marks.

Length 20.4cms. 77.6gms.

£2,800-3,800 (plus 30% BP*)

95  A mid 20th century platinum sapphire and vari-cut diamond bracelet.

With additional loose links.

With report 10142, dated 8th July 2014, from The Gem & Pearl Laboratory, stating sapphire cabochon weight 3.75cts, with no evidence of heat treatment.

Estimated total diamond weight 11cts, G-I colour, VS2-P1 clarity.

Stamped PLAT. Length 14.9cms (length including loose links

17.3cms). 45.1gms.

£4,000-6,000 (plus 30% BP*)

96 A brilliant and baguette-cut diamond geometric bracelet.

Estimated total diamond weight 28 to 30cts, H-I colour, predominantly VS clarity.

Length 17.3cms. 75.9gms.

£18,000-26,000 (plus 30% BP*)

92



93



91

87



86



95



94

89



96

88



90



85



97 An Art Deco platinum seed pearl tassel, with rose-cut diamond and onyx openwork cap.

Length 6.3cms. 7.2gms.
£150-200 (plus 30% BP*)

98 An Art Deco platinum and 18ct gold, carved jade and vari-cut diamond pierced brooch.

Stamped 18 PLAT to brooch pin.
Length 3.8cms. 3.1gms.
Jade untested for natural colour origin.
£250-350 (plus 30% BP*)

99 A lady's Art Deco platinum and 18ct gold vari-cut diamond, emerald and seed pearl wrist watch.

Estimated total diamond weight 1.50cts, G-I colour, VS-SI clarity.
French assay marks. Length 16cms. 25.5gms.
£800-1,200 (plus 30% BP*)

100 A graduated cultured pearl four-row necklace, with vari-cut diamond geometric clasp.

Estimated total diamond weight 2.25cts, H-K colour, VS2-P1 clarity.
Length 40cms. 63.8gms.
With re-fitted case, at fault.
£800-1,200 (plus 30% BP*)

101 An Art Deco platinum blue topaz, old and rose-cut diamond brooch.

Estimated total old-cut diamond weight 1.40cts, H-K colour, VS2-P1 clarity.
French assay marks. Length 9.3cms. 13gms.
£800-1,200 (plus 30% BP*)

102 A brilliant and rose-cut diamond pierced geometric ring.

Estimated total diamond weight 0.60ct, H-I colour, VS-SI clarity.
Ring size Q. 3.7gms.
£900-1,400 (plus 30% BP*)

103 An oval-shape blue zircon dress ring, with single-cut diamond stepped sides.

Zircon calculated weight 20cts, based on estimated dimensions of 17 by 12.4 by 9.8mms.
Estimated total diamond weight 0.10ct. Ring size L1/2. 10.6gms.
£900-1,400 (plus 30% BP*)

104 An early to mid 20th century platinum pearl, single and baguette-cut diamond dress ring.

Diameter of bouton-shape pearl 8.5mms.
Estimated total diamond weight 1ct, G-I colour, VS clarity.
Portuguese marks. Ring size J. 6.4gms.
Pearl untested for natural origin.
£1,200-1,800 (plus 30% BP*)

105 A Sri Lankan sapphire and old-cut diamond ring.

Verbal from GCS, stating Sri Lanka, no heat.
Sapphire calculated weight 8.67cts, based on estimated dimensions of 11.5 by 10.7 by 7.5mms.
Estimated total diamond weight 1.15cts, H-I colour, VS-SI clarity.
Ring size O. 7.8gms.
£2,000-3,000 (plus 30% BP*)

106 An Art Deco rose and old-cut diamond and calibre-cut sapphire ring.

Estimated principal diamond weight 0.45ct, H-I colour, VS clarity.
Ring size P. 4.7gms.
£2,000-3,000 (plus 30% BP*)

107 A mid 20th century platinum brilliant-cut diamond single-stone ring, with single-cut diamond geometric shoulders.

Principal diamond estimated weight 2.50cts, I-J colour, P1-P2 clarity.
Stamped PLAT. Ring size M. 5.2gms.
£3,500-4,000 (plus 30% BP*)

108 A mid 20th century platinum circular-cut diamond single-stone ring with baguette-cut diamond sides.

Principal diamond estimated weight 2.10cts, I-J colour, VS2-SI1 clarity.
Stamped PLAT. Ring size M1/2. 5.1gms.
£7,000-9,000 (plus 30% BP*)



104



106



105



100



98



107



108



101

99



97



103



102



109 A platinum square-shape diamond half eternity ring.

Estimated total diamond weight 0.80ct, G-H colour, predominantly VS clarity.

Hallmarks for Birmingham. Ring size N1/2. 7.8gms.

£350-450 (plus 30% BP*)

110 An 18ct gold vari-cut pave-set diamond square-shape dress ring.

Estimated total diamond weight 0.55ct, G-H colour, VS1-SI1 clarity. Hallmarks for Birmingham.

Ring size K. 5.9gms.

£450-650 (plus 30% BP*)

111 An 18ct gold emerald and diamond cluster ring.

Emerald total weight 1ct.

Total diamond weight 0.25ct, estimated H-I colour, SI clarity.

Hallmarks for Birmingham. Ring size N1/2. 3.9gms.

£500-700 (plus 30% BP*)

112 A pair of emerald and brilliant-cut diamond cluster earrings.

Estimated total diamond weight 1ct, G-H colour, VS clarity.

Backs stamped 750. Length 1.3cms. 7.2gms.

£550-750 (plus 30% BP*)

113 An emerald and brilliant-cut diamond crossover ring.

Emerald total weight 0.67ct.

Total diamond weight 0.44ct.

Ring size L1/2. 3.6gms.

£600-800 (plus 30% BP*)

114 A pair of pavé-set diamond square-shape stud earrings.

Estimated total diamond weight 0.90ct.

Stamped 750.

Length 1.1cms. 5.9gms.

£350-450 (plus 30% BP*)

115 A pavé-set diamond square-shape dress ring.

Estimated total diamond weight 0.55ct.

Stamped 750.

Ring size N. 7.4gms.

£400-600 (plus 30% BP*)

116 An 18ct gold diamond pavé-set square-shape pendant, with integral multi-strand chain.

Estimated total diamond weight 0.90ct.

Hallmarks for Edinburgh. Italian marks.

Length of pendant 1.5cms. Length of chain 40.5cms. 21.1gms.

£900-1,400 (plus 30% BP*)

117 An 18ct gold pavé-set diamond hinged bangle.

Estimated total diamond weight 1.75cts, G-I colour, predominantly VS clarity.

Import marks for Birmingham, 1998. Inner diameter 6cms.

25.1gms.

£1,000-1,500 (plus 30% BP*)

118 An 18ct gold emerald and brilliant-cut diamond three-stone ring.

Emerald weight 1.03cts, stamped to band.

Estimated total diamond weight 0.85ct, G-H colour, SI clarity.

Hallmarks for London, 1976. Ring size O. 4.5gms.

£1,000-1,500 (plus 30% BP*)

119 A Colombian emerald and brilliant-cut diamond cluster ring.

With report 5783-980, dated 3rd January 2023, from GCS, stating Colombia, significant clarity enhancement, weight 3.56cts (engraved).

Total diamond weight 0.74ct.

Stamped Pt900.

Ring size I. 9.6gms.

£2,000-3,000 (plus 30% BP*)

120 An 18ct gold pave-set diamond 'Butterfly' wrist watch, by Corum.

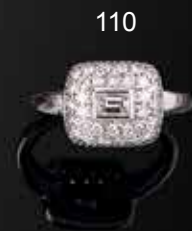
Estimated total diamond weight 2.35cts, G-H colour, VS clarity.

Case width 23mm. Reference 137.641.69, serial 805060.

Unsigned quartz movement.

With maker's case.

£2,500-3,500 (plus 30% BP*)



121 A 'Nouvelle Vague' ring, by Cartier.

Stamped 750. Ring size M. Cartier size 53. 15.7gms.
£600-800 (plus 30% BP*)

122 An 18ct gold 'Happy Diamonds' 'Sun' pendant, with chain, by Chopard.

Total diamond weight 0.09ct, estimated G-H colour, VS clarity.
Swiss convention marks.
Length of pendant 4cms. Length of chain 41cms. 26.3gms.
With maker's case and certificate of authenticity.
£800-1,200 (plus 30% BP*)

123 A platinum aquamarine dress ring, with brilliant-cut diamond trefoil sides.

Aquamarine calculated weight 3.82cts, based on estimated dimensions of 12.6 by 9.5 by 5mms.
Estimated total diamond weight 0.60ct, H-I colour, predominantly VS clarity.
Hallmarks for London, 2018. Ring size K. 8.3gms.
£1,000-1,500 (plus 30% BP*)

124 A blue topaz and brilliant-cut diamond cocktail ring.

Principal topaz calculated weight 13.38cts, based on estimated dimensions of 16.2 by 12 by 8.3mms.
Estimated total diamond weight 1ct, G-H colour, VS clarity.
Stamped 750. Ring size M. 14.6gms.
£1,000-1,500 (plus 30% BP*)

125 An 18ct gold diamond 'Happy Spirit' ring, by Chopard.

Estimated total diamond weight 0.65ct, G-H colour, VS clarity.
Swiss convention marks. Ring size O. 17gms.
With maker's case.
£1,200-1,800 (plus 30% BP*)

126 An 18ct gold diamond 'Happy Spirit' pendant, with chain, by Chopard.

Estimated total diamond weight 1ct, estimated G-H colour, VS clarity.
Swiss convention marks.
Length of pendant 2.8cms. Length of chain 42cms. 18.8gms.
£2,500-3,500 (plus 30% BP*)

127 A star sapphire cabochon, brilliant-cut diamond and pavé-set sapphire cocktail ring.

Principal sapphire weight 20.20cts.
Total non-principal sapphire weight 4.101cts.
Total diamond weight 0.27ct.
Stamped Au750. Ring size P. 13.2gms.
£1,800-2,600 (plus 30% BP*)

128 A platinum circular-cut diamond single-stone ring, with brilliant-cut diamond surround and gallery.

Principal diamond weight 1.71cts, stamped to band, estimated I-J colour, SI2-P1 clarity.
Estimated total brilliant-cut diamond weight 0.70ct, G-H colour, VS clarity.
Hallmarks for Birmingham. Ring size N1/2. 8.1gms.
£3,500-4,500 (plus 30% BP*)

129 A brilliant-cut diamond cuff bangle.

Estimated total diamond weight 12cts, H-I colour, SI clarity.
Stamped 18K, 750. Inner diameter 5.5cms. 48.6gms.
£6,500-8,500 (plus 30% BP*)

130 A platinum old-cut diamond single-stone ring, with brilliant-cut diamond line shoulders.

Old-cut diamond estimated weight 2.85cts, I-J colour, SI clarity.
Hallmarks for Birmingham. Ring size J1/2. 5.9gms.
£7,000-9,000 (plus 30% BP*)

131 A Kashmir sapphire ring, with tapered baguette-cut diamond sides.

With report 305797/20061236, dated 22nd February 2023, from AnchorCert, stating 4.50cts, Kashmir, no evidence of treatment.
Estimated total diamond weight 0.55ct, G-H colour, VS clarity.
Stamped PT900. Ring size I. 5.5gms.
£12,000-18,000 (plus 30% BP*)

132 A brilliant-cut diamond single-stone ring, with Tiffany & Co. mount.

With report 396616, dated 7th December 2022, from LFG, stating 2.13cts, F colour, VVS2 clarity.
Stamped Pt950. Ring size J. 5gms.
£25,000-35,000 (plus 30% BP*)



122



125



126



121



131



129



130



124



128



123



132



127

133 An amethyst and brilliant-cut diamond ring.

Estimated total diamond weight 0.80ct, G-K colour, VS clarity.
Portuguese marks, stamped 800. Ring size O. 9.1gms.
£600-800 (plus 30% BP*)

134 A heart-shape emerald and diamond necklace, with diamond and curved bar spacers, by Callegher.

Estimated total diamond weight 2cts, G-I colour, predominantly VS clarity.
Italian marks, stamped 750. Length 42cms. 24.2gms.
£1,000-1,500 (plus 30% BP*)

135 A bi-colour 18ct gold 'Cancer' zodiac ring, by Elizabeth Gage.

Hallmarks for London, 2015. Ring size G. 8.3gms.
With maker's case.
£800-1,200 (plus 30% BP*)

136 An 18ct gold baroque cultured pearl tanzanite and enamel foliate dress ring, by Elizabeth Gage.

Length of baroque cultured pearl 12.5mms.
Hallmarks for London, 2007. Ring size M. 17.4gms.
With maker's case, hand-drawn renders and paperwork.
£2,500-3,500 (plus 30% BP*)

137 An 18ct gold amethyst, diamond and enamel marine dress ring, by Elizabeth Gage.

Amethyst calculated weight 8.12cts, based on estimated dimensions of 15.8 by 12 by 7.7mms.
Hallmarks for London, 2017. Ring size P. 23.4gms.
With maker's case, hand-drawn renders and paperwork.
£2,500-3,500 (plus 30% BP*)

138 An 18ct gold prasiolite and brilliant-cut diamond 'Heliotrope' ring, by Elizabeth Gage.

Prasiolite weight 4.20cts.
Total diamond weight 0.22ct, estimated G-H colour, VS clarity.
Hallmarks for London, 2014. Ring size M. 17.6gms.
With maker's case, hand-drawn renders and paperwork.
£2,500-3,500 (plus 30% BP*)

139 A platinum 'Diamonds By The Yard' bracelet, by Elsa Peretti, for Tiffany & Co.

Signed Peretti.
Estimated total diamond weight 4.80cts, G-H colour, VS clarity.
Hallmarks for London, 2009. Length 18.5cms. 6.6gms.
£2,000-3,000 (plus 30% BP*)

140 An 18ct gold 'brown' diamond and diamond cluster ring.

Principal diamond weight 1.01cts.
Total diamond weight 1.64cts.
Hallmarks for Birmingham. Ring size O. 3gms.
Diamond untested for natural colour origin.
£2,800-3,800 (plus 30% BP*)

141 An 18ct gold alternating brilliant-cut diamond and screw motif 'Love' ring, by Cartier.

Total diamond weight 0.22ct, estimated G-H colour, VS clarity.
Swiss convention marks. Ring size J. Cartier size 49. 8.2gms.
With maker's case and certificate of authenticity.
£800-1,200 (plus 30% BP*)

142 A brilliant-cut diamond 'Love' bangle, by Cartier.

Estimated total diamond weight 0.40ct, G-H colour, VS clarity.
Stamped Au 750. Inner diameter 5.4cms. Cartier size 17. 33.6gms.
£3,500-4,500 (plus 30% BP*)

143 A platinum Colombian emerald and tapered baguette-cut diamond ring.

Verbal from GCS stating Colombia, moderate clarity enhancement.
Emerald weight 4.30cts.
Estimated total diamond weight 0.50ct, H-I colour, VS clarity.
Hallmarks for Birmingham. Ring size L1/2. 7.3gms.
£4,000-6,000 (plus 30% BP*)

144 An 18ct gold rectangular-shape diamond single-stone ring.

Diamond weight 5.76cts, estimated tinted 'light yellowish brown' colour, SI2-P1 clarity.
Hallmarks for London, 2011. Ring size M. 5.1gms.
£9,000-14,000 (plus 30% BP*)



142



141



140



136



137



138



144



135



134



133



143



139

145 A square-shape diamond and pink sapphire two-row half-eternity ring.

Total sapphire weight 0.72ct.
Estimated total diamond weight 0.60ct, G-H colour, VS-SI clarity.
Stamped PT950. Ring size N. 7.9gms.
£450-650 (plus 30% BP*)

146 An 18ct gold citrine and diamond cluster ring.

Citrine weight 6.73cts.
Total diamond weight 0.55ct.
Hallmarks for Birmingham. Ring size N1/2. 6gms.
£600-800 (plus 30% BP*)

147 A pink sapphire and diamond accent dress ring.

Stamped 750. Ring size N1/2. 10.9gms.
£550-750 (plus 30% BP*)

148 A ruby and brilliant-cut diamond floral cluster pendant, with 18ct gold chain.

Ruby weight 1.03cts.
Total diamond weight 0.167cts.
Chain with hallmarks for Birmingham. Pendant stamped Au750.
Length of pendant 1.8cms. Length of chain 46cms. 3gms.
£700-900 (plus 30% BP*)

149 A pair of ruby and brilliant-cut diamond floral cluster earrings.

Ruby total weight 0.58ct, stamped to metal.
Total diamond weight 0.16ct, stamped to metal, estimated H-I colour, VS-SI clarity.
Stamped 750.
Length 1.8cms. 4.1gms.
£1,000-1,500 (plus 30% BP*)

150  A platinum fancy Intense Yellow diamond ring, with slightly graduated square-shape diamond line sides.

With report 6205632459, dated 1st September 2015, from the GIA, stating 0.77ct, natural colour, VS1 clarity.
Hallmarks for Birmingham. Ring size N. 4.8gms.
£1,400-2,000 (plus 30% BP*)

151  A pair of fancy Yellow diamond stud earrings, with brilliant-cut diamond detachable jacket.

With reports 7218192927 and 6211097642, dated 15th December and 19th November 2015, from the GIA, stating 0.44ct, natural colour, VS1 clarity and 0.43ct, natural colour, VS1 clarity respectively.
Stamped 750. Length 0.8cm. 2.6gms.
£1,500-2,000 (plus 30% BP*)

152 A 'yellow' diamond and diamond cluster bracelet.

Total diamond weight 3.41cts, stamped to mount, estimated 'yellow' and G-H colour, VS-SI clarity.
Stamped K18. Length 17cms. 11.7gms.
Diamonds untested for natural colour origin.
£1,500-2,000 (plus 30% BP*)

153 A pair of 18ct gold pink sapphire and brilliant-cut diamond cluster stud earrings.

Sapphire total weight 2.86cts.
Total diamond weight 1.22cts, estimated G-H colour, VS-SI clarity.
Hallmarks for Birmingham. Length 1.3cms. 3.8gms.
£1,200-1,800 (plus 30% BP*)

154 A diamond, 'pink', 'yellow' and 'brown' diamond butterfly and scrolling foliate motif pendant, with two-row chain.

Total diamond weight 3.31cts.
Stamped 18K 750. Length of pendant 4.7cms. Length of chain 39cms. 13.6gms.
Diamonds untested for natural colour origin.
£2,000-3,000 (plus 30% BP*)

155  An 18ct gold Sri Lankan yellow sapphire and diamond ring.

With report 5775-2286, dated 16th June 2015, from GCS, stating 10.78cts, Sri Lanka (Ceylon), no heat.
Estimated total diamond weight 0.35ct, H-I colour, VS-SI clarity.
Hallmarks for London, 2008. Ring size M1/2. 7.1gms.
£2,000-3,000 (plus 30% BP*)

156 A brilliant-cut diamond single-stone ring.

Diamond weight 1.65cts, marked to band, estimated H-I colour, VS2-SI1 clarity.
Foreign marks, stamped 750. Ring size K1/2. 5gms.
£3,500-4,500 (plus 30% BP*)



150

149

155

156

153

154

148

145

147

146

152

151

157 An 18ct gold fire opal and brilliant-cut diamond ring.

Estimated total diamond weight 0.15ct.
Hallmarks for London, 2013. Ring size M. 2.2gms.
£450-650 (plus 30% BP*)

158 A ruby and brilliant-cut diamond pendant.

Ruby weight 1.12cts.
Total diamond weight 0.26ct.
Stamped 750 18K. Length 2.8cms. 2.3gms.
£600-800 (plus 30% BP*)

159 A brilliant-cut diamond eternity ring.

Estimated total diamond weight 1.80cts, G-J colour, VS2-P1 clarity.
Ring size K1/2. 6.3gms.
£700-900 (plus 30% BP*)

160 An 18ct gold ruby and diamond crossover dress ring.

Ruby total weight 0.90ct.
Total diamond weight 0.44ct.
Hallmarks for London, 2008. Ring size O. 3.9gms.
£700-900 (plus 30% BP*)

161 A graduated brilliant-cut diamond three-stone ring.

Total diamond weight 1.44cts, estimated G-H colour, SI2-P1 clarity.
Stamped 750. Ring size I1/2. 4.3gms.
£800-1,200 (plus 30% BP*)

162 A brilliant-cut diamond and ruby marquise-shape cluster ring, with diamond shoulders.

Estimated total diamond weight 0.70ct, H-I colour, VS2-SI1 clarity.
Stamped 750. Italian marks.
Ring size M. 5gms.
£1,000-1,500 (plus 30% BP*)

163 An 18ct gold ruby and diamond cluster ring.

Ruby weight 3.32cts.
Total diamond weight 0.47ct, estimated G-I colour, VS-SI clarity.
Hallmarks for Birmingham. Ring size O. 5.5gms.
£1,200-1,800 (plus 30% BP*)

164 A pair of 18ct gold pink sapphire and brilliant-cut diamond cluster earrings.

Total sapphire weight 2.70cts.
Total diamond weight 1.10cts, estimated H-I colour, SI clarity.
Hallmarks for Birmingham. Length 1.2cms. 3.8gms.
£1,200-1,800 (plus 30% BP*)

165 An 18ct gold ruby and brilliant-cut diamond three-stone ring.

Ruby weight 1.18cts.
Total diamond weight 0.80ct, estimated H-I colour, SI1-P1 clarity.
Hallmarks for Birmingham. Ring size O. 3.5gms.
£1,200-1,800 (plus 30% BP*)

166 A pavé-set diamond crossover pendant, suspended from a diamond spacer two-row chain.

Total diamond weight 1.97cts. Chain stamped 750 18K.
Length of pendant 6.4cms. Length of chain 45cms. 13.9gms.
£1,800-2,600 (plus 30% BP*)

167 A pair of ruby and brilliant-cut diamond floral drop earrings.

Rubies total weight 2.83cts, stamped to metal.
Total diamond weight 0.196ct, stamped to metal, estimated H-I colour, VS-SI clarity.
Stamped 750.
Length 3.6cms. 10gms.
£1,500-2,000 (plus 30% BP*)

168 A platinum square-shape diamond single-stone pendant.

With report 14829388, dated 15th June 2018, stating 1.50cts, E colour, VS1 clarity.
Hallmarks for Birmingham. Length 1.4cms. 2gms.
£6,000-8,000 (plus 30% BP*)



167



160



162



158



159



166



165



161



168



157



164



163

169 A brilliant-cut diamond chevron ring, by Tiffany & Co.

Estimated total diamond weight 0.50ct, G-H colour, VS clarity.
Stamped PT950. Ring size J. 5.3gms.
£500-700 (plus 30% BP*)

170 A square-shape diamond ring, with square-shape diamond shoulders and brilliant-cut diamond sides.

Estimated total diamond weight 1.50cts, I-J colour, VS2-SI2 clarity.
Stamped 14k.
Ring size L1/2. 3.8gms.
£1,000-1,500 (plus 30% BP*)

171 A 'Happy Diamonds' 'Love' pendant, with box-link chain, by Chopard.

Estimated total diamond weight 0.15ct.
Stamped 750. Length of pendant 2.9cms. Length of chain 42.5cms. 49.5gms.
£1,400-2,000 (plus 30% BP*)

172 A pair of brilliant-cut diamond cluster earrings.

Estimated total diamond weight 2cts, G-H colour, predominantly VS clarity.
Backs stamped 750. Diameter 1.5cms. 8.5gms.
£1,500-2,000 (plus 30% BP*)

173 A platinum brilliant-cut diamond ring, with baguette-cut diamond shoulders.

Principal diamond estimated weight 1.30cts, H-I colour, SI2-P1 clarity.
Estimated total diamond weight 1.70cts.
Hallmarks for Birmingham. Ring size J1/2. 8.1gms.
£2,500-3,500 (plus 30% BP*)

174 A brilliant-cut diamond five-row bracelet.

Estimated total diamond weight 11cts, H-J colour, predominantly VS-SI clarity.
Stamped 750. Length 18.2cms. 44.3gms.
£3,500-4,500 (plus 30% BP*)

175 A rectangular-shape diamond ring, with pavé-set diamond mount.

Principal diamond estimated weight 1.55cts, I-J colour, P2 clarity.
Estimated total diamond weight 2.40cts, non-principal diamonds estimated H-J colour, SI2-P1 clarity.
Stamped 14K. Ring size K. 5.6gms.
£2,500-3,500 (plus 30% BP*)

176 An 18ct gold brilliant-cut diamond single-stone ring.

Estimated diamond weight 1.80cts, I-J colour, VS clarity.
Hallmarks for Birmingham, 1979. Ring size L. 3.8gms.
£3,200-4,200 (plus 30% BP*)

177 A platinum brilliant-cut diamond single-stone ring.

With AnchorCert report 20061021, stating estimated weight 2.11cts, H colour, P1 clarity.
Hallmarks for Birmingham. Ring size K1/2. 5gms.
£5,500-7,500 (plus 30% BP*)

178 A brilliant-cut diamond eternity ring.

Estimated total diamond weight 6.50cts, G-I colour, predominantly VS clarity.
Ring size F. 6gms.
£7,000-9,000 (plus 30% BP*)



173



169



172



177



176



171



174



175



170



178



179  **A pair of diamond and orange agate earrings.**

Estimated total diamond weight 0.50ct.
Stamped 750. Length 6.4cms. 12gms.
£500-700 (plus 30% BP*)

180 **An 18ct gold brilliant-cut diamond single-stone pendant, with platinum chain.**

With report 6232854748, dated 27th September 2016, from the GIA, stating 0.90ct, K colour, SI1 clarity.
Hallmarks for Sheffield. Length of pendant 1.2cms. Length of chain 46cms. 2.7gms.
£1,200-1,800 (plus 30% BP*)

181 **An orange sapphire and diamond cluster ring.**

Sapphire calculated weight 0.79ct, based on estimated dimensions of 6.1 by 4 by 3mms.
Estimated total diamond weight 0.10ct.
Stamped 750. Ring size N. 1.5gms.
£220-320 (plus 30% BP*)

182 **A pair of 18ct gold citrine and diamond earrings, with similarly-set detachable drop.**

Citrine total weight 3.59cts.
Total diamond weight 0.50ct.
Earrings with hallmarks for Birmingham.
Length 2.7cms. 5.1gms.
£500-700 (plus 30% BP*)

183 **A vari-cut diamond and pink quartz carnation brooch.**

Estimated total diamond weight 0.30ct, G-H colour, VS clarity.
Stamped 750. Length 7.1cms. 15.9gms.
£600-800 (plus 30% BP*)

184 **A pair of 18ct gold pink sapphire and diamond cluster earrings.**

Total sapphire weight 2.33cts.
Total diamond weight 1.07cts, estimated H-I colour, SI1-P1 clarity.
Hallmarks for Birmingham. Length 1.2cms. 3.7gms.
£600-800 (plus 30% BP*)

185 **An 18ct gold yellow sapphire dress ring, with graduated baguette-cut diamond line sides.**

Sapphire estimated dimensions of 9.3 by 8.2 by 5.3mms.
Estimated total diamond weight 0.60ct, G-H colour, VS clarity.
Hallmarks for London. Ring size M 1/2. 6.1gms.
£800-1,200 (plus 30% BP*)

186 **A cultured pearl and brilliant-cut diamond dress ring.**

Cultured pearl estimated diameter 14mms.
Estimated total diamond weight 2.70cts, principal diamonds estimated H-I colour, VS clarity.
Stamped 585. Ring size M. 15.1gms.
£1,200-1,800 (plus 30% BP*)

187 **An 18ct gold brilliant-cut diamond line bracelet.**

Estimated total diamond weight 4.80cts, predominantly G-I colour, VS-SI clarity.
Hallmarks for Birmingham.
Length 18cms. 13.1gms.
£1,400-2,000 (plus 30% BP*)

188 **An early 20th century platinum graduated circular-cut diamond three-stone ring.**

Estimated total diamond weight 1.95cts, H-J colour, SI2-P1 clarity.
Stamped PLAT. Ring size N. 4.6gms.
£1,500-2,000 (plus 30% BP*)

189 **An old-cut diamond single-stone ring, with single-cut diamond shoulders.**

Principal diamond estimated weight 1.60cts, I-J colour, SI clarity.
Ring size M. 4gms.
£1,800-2,600 (plus 30% BP*)

190  **A mid 20th century platinum old-cut diamond single-stone ring, with single-cut diamond line shoulders.**

Principal diamond with minireport 20061599, from AnchorCert, stating estimated weight 3.01cts, J-K colour, VS clarity.
Stamped PLATINUM. Ring size K. 3.3gms.
£15,000-20,000 (plus 30% BP*)

180



186



179



189



188



190



184



182



187



183



185



181



191 A sapphire and brilliant-cut diamond cluster ring.

Sapphire weight 2.65cts, stamped to band.
Estimated total diamond weight 0.35ct.
Stamped Au750. Ring size N1/2. 4gms.
£250-350 (plus 30% BP*)

192 A pair of 18ct gold amethyst and diamond cluster earrings.

Amethyst total weight 3cts.
Total diamond weight 0.50ct.
Hallmarks for Birmingham. Length 1.3cms. 4.8gms.
£450-650 (plus 30% BP*)

193 A platinum 'Tiffany Together' milgrain band ring, by Tiffany.

Hallmarks for London, 2014. Ring size R. 14.9gms.
With maker's case.
£450-650 (plus 30% BP*)

194 A pair of 18ct gold onyx and brilliant-cut diamond cufflinks.

Estimated total diamond weight 0.30ct, H-I colour, VS2-SI1 clarity.
Import marks for Birmingham, 1997.
Diameter of cufflink face 1.3cms. 13gms.
£500-700 (plus 30% BP*)

195 A pair of textured disc cufflinks, with single-cut diamond surround.

Estimated total diamond weight 0.50ct, G-H colour, predominantly VS clarity.
Stamped 750. Diameter of cufflink head 1.7cms. 18.2gms.
£700-900 (plus 30% BP*)

196 A pair of grey cultured pearl and brilliant-cut diamond cluster earrings.

Total diamond weight 1.60cts, stamped to mounts, estimated G-H colour, VS clarity.
Diameter of cultured pearls 8.6 and 8.7mms.
Length 1.9cms. 13.2gms.
Cultured pearls untested for natural colour origin.
£800-1,200 (plus 30% BP*)

197 A diamond and black gem crossover ring.

Estimated total diamond weight 1.25cts, G-I colour, VS clarity.
Stamped 750. Ring size N1/2. 15.8gms.
£800-1,200 (plus 30% BP*)

198 A platinum brilliant-cut diamond single-stone ring, by Boodles.

With report 2111838108, dated 25th March 2010, from the GIA, stating 0.71ct, G colour, VS2 clarity.
Hallmarks for London, 2010. Ring size K1/2. 4.1gms.
With maker's case.
£1,000-1,500 (plus 30% BP*)

199 A vari-cut diamond bi-colour bracelet.

Total diamond weight 2.31cts, estimated H-J colour, VS-SI clarity.
Stamped 750. Length 18.5cms. 8.7gms.
£1,000-1,500 (plus 30% BP*)

200 A brilliant-cut diamond and black gem ostrich brooch.

Estimated total diamond weight 1.80cts.
Stamped 750.
Length 4.8cms. 31.6gms.
£3,000-4,000 (plus 30% BP*)

201 A brilliant-cut diamond line necklace.

Estimated total diamond weight 9cts, G-J colour, VS-SI clarity.
Length 47.2cms. 25.5gms.
£4,500-6,500 (plus 30% BP*)

202 A platinum brilliant-cut diamond single-stone ring, with triangular-shape diamond sides.

Principal diamond estimated weight 2cts, G-H colour, VS clarity.
Estimated total diamond weight 3cts.
Hallmarks for London, 1999. Ring size M. 7.3gms.
£7,000-9,000 (plus 30% BP*)



201

193



195



198



194



202



192



191



200



197



199



196



203 An 18ct gold brilliant-cut diamond 'Atlas' key pendant, by Tiffany & Co.

Hallmarks for London, 2013. Length 5cms. 3.8gms.
£400-600 (plus 30% BP*)

204  A platinum brilliant-cut diamond half eternity ring, by Boodles.

Estimated total diamond weight 0.65ct, G-H colour, predominantly VS clarity.
Hallmarks for London, 2012. Ring size K1/2. 3.6gms.
With maker's case.
£450-650 (plus 30% BP*)

205 An 18ct gold aquamarine and diamond cluster ring.

Aquamarine weight 2.41cts.
Total diamond weight 0.42ct.
Hallmarks for Birmingham. Ring size O. 4gms.
£550-750 (plus 30% BP*)

206  An 18ct gold tanzanite and diamond 'Joy' pendant, on chain, by Bucherer.

Tanzanite weight 1.03cts.
Total diamond weight 0.14ct, G colour, SI clarity.
Swiss convention marks. Length of pendant 1.2cms. Length of chain 44cms. 4.9gms.
With maker's case.
£600-800 (plus 30% BP*)

207 A platinum rectangular-shape diamond single-stone ring.

Diamond estimated weight 0.35ct, H-I colour, VS clarity.
Hallmarks for Edinburgh, 2003. Ring size M1/2. 4.4gms.
£600-800 (plus 30% BP*)

208 A square-shape diamond ring, with brilliant-cut diamond shoulders, by Tiffany & Co.

Principal diamond weight 0.19ct, stamped to band, estimated G-H colour, VS clarity.
Estimated total diamond weight 0.40ct.
Hallmarks for London. Ring size L. 3.3gms.
£600-800 (plus 30% BP*)

209 An aquamarine and brilliant-cut diamond ring.

Aquamarine weight 3.46cts.
Total diamond weight 0.24ct.
Stamped Au750. Ring size N. 3.9gms.
£800-1,200 (plus 30% BP*)

210   A brilliant-cut diamond single-stone pendant, with chain, by Tiffany & Co.

Signed Tiffany & Co.
Diamond with report 68949319/11130331, from Tiffany & Co, stating 0.35ct, I colour, VS2 clarity.
Stamped Pt950. Length 41cms. 2.5gms.
With maker's case.
£1,200-1,800 (plus 30% BP*)

211 A pair of brilliant-cut diamond front-facing hoop earrings.

Total diamond weight 1.08cts.
Hallmarks for Birmingham. Diameter 4cms. 8.5gms.
£1,200-1,800 (plus 30% BP*)

212 A platinum pear-shape and brilliant-cut diamond ring.

Principal diamond with laser inscription GIA 6215933237, corresponding to an online report stating 0.70ct, D colour, SI1 clarity.
Estimated total brilliant-cut diamond weight, 0.35ct, G-H colour, VS clarity.
Hallmarks for Birmingham. Ring size M. 4.2gms.
£1,200-1,800 (plus 30% BP*)

213 A sapphire and diamond pendant, with cultured pearl drop and 18ct gold chain.

Sapphire total weight 1.29cts.
Total diamond weight 0.72ct.
Chain with hallmarks for Sheffield.
Length of pendant 4.6cms. Length of chain 45cms. 6.8gms.
£1,500-2,000 (plus 30% BP*)

214 A diamond 'Jazz' bracelet, by Tiffany & Co.

Estimated total diamond weight 1.50cts, G-H colour, VS clarity.
Stamped Pt950. Length 18.1cms. 11.2gms.
£3,000-4,000 (plus 30% BP*)



210



206



213



204



203



212



214



205



211



207



209



208

215 An early to mid 20th century platinum old-cut diamond five-stone ring.

Estimated total diamond weight 0.50ct, G-J colour, SI2-P1 clarity.
Ring size O. 2.7gms.

£100-150 (plus 30% BP*)

216 A pair of early 20th century 14ct gold carved mother-of-pearl and white enamel button motif cufflinks.

Engraved 14. Diameter 1.5cms. 4.8gms.

£120-180 (plus 30% BP*)

217 An early 20th century platinum and gold opal and old-cut diamond foliate pendant, on near-period base metal chain.

Opal estimated dimensions of 17.1 by 8.9 by 2.4mms.
Length of pendant 3.8cms. Length of chain 42cms. 2.9gms.

£120-180 (plus 30% BP*)

218 An early to mid 20th century 18ct gold single-cut diamond fox mask bar brooch, with ruby eyes.

Estimated total diamond weight 0.15ct.
Stamped 18ct. Length 5.7cms. 4.9gms.

£180-260 (plus 30% BP*)

219 A ruby star cabochon and single-cut diamond cluster ring.

Ruby calculated weight 3.86cts, based on estimated dimensions of 9 by 7.8 by 5.1mms.

Estimated total diamond weight 0.35ct, G-H colour, VS-SI clarity.

Ring size M. 2.6gms.

£400-600 (plus 30% BP*)

220 An early 20th century platinum, graduated circular-cut diamond and ruby five-stone ring.

Estimated total diamond weight 0.40ct, H-I colour, SI2-P1 clarity.
Stamped Platinum, partially indistinct. Ring size L. 2.5gms.

£500-700 (plus 30% BP*)

221 A pair of ruby and old-cut diamond floral cluster earrings.

Estimated total diamond weight 1.50cts, G-I colour, SI2-P2 clarity.
Length 2.1cms. 3.1gms.

£600-800 (plus 30% BP*)

222 An early 20th century natural pearl single-strand necklace, with gold old-cut diamond clasp.

Verbal from GCS, stating natural, saltwater.

Estimated dimension range of pearls 7.2 by 6.3mms to 3.5 by 3.8mms.

Estimated diamond weight 1.30cts, J-K colour, P1-P2 clarity.

Length 46.7cms. 12.4gms.

£600-800 (plus 30% BP*)

223 An Edwardian Belle Époque platinum and gold articulated diamond bow and double swag brooch.

Estimated total diamond weight 1ct, predominantly G-I colour, VS clarity.

Length 3cms. 7.6gms.

£800-1,200 (plus 30% BP*)

224 A mid 20th century 18ct gold Thai ruby and diamond cluster ring.

Verbal from GCS, stating Thailand, no heat.

Ruby calculated weight 1.55cts, based on estimated dimensions of 9.7 by 6.5 by 2.7mms.

Estimated total diamond weight 0.85ct, G-I colour, SI1-P1 clarity.

Stamped 18ct. Ring size P. 5.2gms.

£1,000-1,500 (plus 30% BP*)

225 A mid 20th century platinum old-cut diamond single-stone ring.

Estimated diamond weight 1.60cts, tinted colour, VS clarity.

Stamped PLAT. Ring size N1/2. 3.9gms.

£2,200-3,200 (plus 30% BP*)

226 A Belle Epoque platinum vari-cut diamond and calibre-cut emerald and sapphire brooch, with later centrepiece.

Principal diamond estimated weight 1.55cts, I-J colour, P1 clarity.

Estimated total old and single-cut diamond weight 2.90cts.

Length 3.9cms. 16.2gms.

£7,000-9,000 (plus 30% BP*)

217



218



220



226



222



219



221



223



225



224



216



215



227 An 18ct gold emerald and brilliant-cut diamond pendant necklace.

Emerald weight 0.89ct.
Total diamond weight 0.41ct.
Hallmarks partially indistinct. Length 41.5cms. 6gms.
£600-800 (plus 30% BP*)

228 An emerald and brilliant-cut diamond cluster ring.

Emerald weight 1.28cts.
Total diamond weight 0.173ct.
Stamped Au750. Ring size N.3.8gms.
£700-900 (plus 30% BP*)

229  An 18ct gold vari-cut diamond 'Baguette Love' ring, by Bucherer.

Total diamond weight 1.13cts, H colour, SI clarity.
Swiss convention marks. Ring size M. 6.2gms.
With maker's case.
£1,000-1,500 (plus 30% BP*)

230 A pair of peridot and diamond drop earrings.

Peridot calculated total weight 5.91cts.
Estimated total diamond weight 0.80ct.
Length 4.1cms. 10.9gms.
£1,000-1,500 (plus 30% BP*)

231 An emerald and brilliant-cut diamond dress ring.

Emerald weight 1.81cts.
Total diamond weight 0.36ct.
Stamped 18K 750. Ring size L1/2 5gms.
£1,000-1,500 (plus 30% BP*)

232 A pair of 18ct gold old-cut diamond stud earrings.

Estimated total diamond weight 1.40cts, G-I colour, VS clarity.
Hallmarks for Sheffield. 1.8gms.
£1,400-2,000 (plus 30% BP*)

233 A brilliant-cut diamond line bracelet.

Estimated total diamond weight 4.50cts, H-J colour, VS2-P1 clarity.
Stamped 14K.
Length 18cms. 16.6gms.
£2,500-3,500 (plus 30% BP*)

234  A Colombian emerald and brilliant-cut diamond cluster ring.

With report 5783-982, dated 4th January 2023, from GCS, stating Colombia, moderate clarity enhancement, weight 5.97ct (engraved).
Diamond weight 1.81cts, stamped to band.
Stamped Pt900.
Ring size L. 13.7gms.
£3,000-4,000 (plus 30% BP*)

235  A brilliant-cut diamond single-stone ring.

With report 20013039901, dated 12th February 2001, from HRD, stating 1.11cts, G colour, VVS1 clarity.
Stamped 18K. Ring size O. 4.8gms.
£4,000-6,000 (plus 30% BP*)

236 A rectangular-shape diamond full eternity ring.

Estimated total diamond weight 6.95cts, estimated G-I colour, VS clarity.
Ring size P. 6gms.
£4,500-6,500 (plus 30% BP*)

237 A brilliant-cut diamond line necklace.

Estimated total diamond weight 11 to 12cts, G-I colour, VS-SI clarity.
Stamped 750. Length 61.5cms. 32.5gms.
£7,000-9,000 (plus 30% BP*)



230



235



227



234



229



236



232



231



228



237

233

238 An 18ct gold diamond pendant, with chain.

Total diamond weight 0.41ct.
Pendant with hallmarks for Birmingham. Chain stamped 750.
Length of pendant 1.7cms. Length of chain 40cms. 2.7gms.
£450-650 (plus 30% BP*)

239 A pair of 18ct gold vari-cut diamond earrings.

Total diamond weight 0.47ct.
Hallmarks for Birmingham. Length 0.9cm. 2.7gms.
£550-750 (plus 30% BP*)

240 A brilliant-cut diamond full eternity ring.

Estimated total diamond weight 1.60cts, estimated H-I colour,
VS-SI clarity.
Italian marks, stamped 750. Ring size J. 4.1gms.
£900-1,400 (plus 30% BP*)

241 A baguette-cut diamond line bracelet.

Estimated total diamond weight 4.65cts, G-I colour, predominantly
VS clarity.
Length 18cms. 12.9gms.
£1,200-1,800 (plus 30% BP*)

242 A baguette and brilliant-cut diamond three-row half eternity ring.

Estimated total diamond weight 2.50cts, G-I colour, VS-SI clarity.
Stamped 750. Ring size S. 8.4gms.
£1,200-1,800 (plus 30% BP*)

243 A pair of 18ct gold brilliant and baguette-cut diamond earrings.

Total diamond weight 1.73cts, stamped to a back, estimated H-J
colour, VS2-SI1 clarity.
Hallmarks for Sheffield. Length 1.3cms. 7.6gms.
£1,000-1,500 (plus 30% BP*)

244 An 18ct gold vari-cut, pavé-set diamond ovoid pendant.

Total diamond weight 1.34cts, marked to mount, estimated G-H
colour, VS clarity.
Hallmarks for London. Length 2cms. 4.1gms.
£1,200-1,800 (plus 30% BP*)

245 A platinum brilliant-cut diamond single-stone ring.

Estimated diamond weight 1ct, G+ colour, VS clarity.
Hallmarks for Sheffield. Ring size L. 5gms.
£2,000-3,000 (plus 30% BP*)

246 A vari-cut diamond cross pendant, with chain.

Estimated total diamond weight 3.85cts, G-I colour, predominantly
VS clarity.
Pendant stamped 18K, chain stamped 375.
Length of pendant 7.8cms. Length of chain 41cms. Total weight
17.3gms.
£2,000-3,000 (plus 30% BP*)

247 A platinum oval-shape diamond ring, with brilliant-cut diamond line sides.

With report 2256011505, dated 24th February 2017, from the GIA,
stating 1.31cts, F colour, VS2 clarity.
Hallmarks for Birmingham. Ring size M. 4.4gms.
£3,500-4,500 (plus 30% BP*)



246



238



247



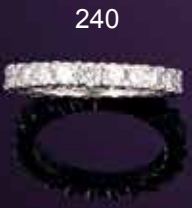
243



239



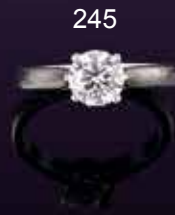
242



240



241



245




244

248 An 18ct gold multifaceted aquamarine and brilliant-cut diamond pendant, with chain.

Hallmarks for London, 2004 and Sheffield.
Length of pendant 3.1cms. Length of chain 41cms. 7.1gms.
£350-450 (plus 30% BP*)

249 A brilliant-cut diamond chevron ring.

Estimated total diamond weight 0.75ct, G-H colour, VS clarity.
Ring size K1/2. 7.9gms.
£450-650 (plus 30% BP*)

250  A trace-link necklace, with brilliant-cut diamond openwork clasp, by Garrard.

Estimated total diamond weight 0.55ct.
Italian marks, stamped 750. Length 42cms. 13.3gms.
With maker's case.
£600-800 (plus 30% BP*)

251 An 18ct gold brilliant-cut diamond and sapphire cluster ring.

Sapphire calculated weight 3cts, based on estimated dimensions of 9.4 by 7.3 by 5.2mms.
Estimated total diamond weight 1ct, G-J colour, VS2-P1 clarity.
Hallmarks for Sheffield, 2016. Ring size M. 7.6gms.
£700-900 (plus 30% BP*)

252 A sapphire and brilliant-cut diamond bracelet.

Sapphire estimated weight 5.35cts, based on calculated weight of one sapphire.
Estimated total diamond weight 1.70cts.
Stamped K14. Length 16.5cms. 14.9gms.
£800-1,200 (plus 30% BP*)

253 An 18ct gold sapphire and diamond cluster ring.

Sapphire weight 2.37cts.
Total diamond weight 0.66ct, estimated H-I colour, SI clarity.
Hallmarks for Birmingham. Ring size O. 5.7gms.
£1,000-1,500 (plus 30% BP*)

254 A sapphire and aquamarine three-stone ring, with brilliant-cut diamond shared surround.

Sapphire weight 3.08cts.
Aquamarine weight 1.16cts.
Total diamond weight 0.25ct.
Stamped Au750. Ring size N. 4.3gms.
£1,000-1,500 (plus 30% BP*)

255 A pair of 18ct gold tanzanite and brilliant-cut diamond cluster earrings.

Tanzanite total weight 2.46cts.
Total diamond weight 1.24cts, estimated G-I colour, VS-SI clarity.
Hallmarks for Birmingham. Length 1.3cms. 3.9gms.
£1,200-1,800 (plus 30% BP*)

256 A pair of brilliant-cut diamond halo cluster earrings.

Principal diamonds estimated total weight 1ct, L-tinted colour, VS clarity.
Diameter 0.9cm. 2.6gms.
£1,500-2,000 (plus 30% BP*)

257 An 18ct gold vari-cut diamond three-stone ring.

Principal diamond 1.50cts, stamped to band, estimated H-I colour, SI1-SI2 clarity.
Estimated total baguette-cut diamond weight 0.40ct, G-H colour, VS clarity.
Hallmarks for Birmingham.
Ring size N1/2. 4.3gms.
£3,200-4,200 (plus 30% BP*)

258 A Madagascan sapphire ring, with brilliant and baguette-cut diamond surround.

Verbal from GCS, stating Madagascar, no heat.
Sapphire calculated weight 2.72cts, based on estimated dimensions of 8.4 by 8 by 4.4mms.
Estimated total diamond weight 1ct, G-H colour, VS-P1 clarity.
Stamped 18ct, partially indistinct. Ring size N. 5.6gms.
£3,200-4,200 (plus 30% BP*)

259  A platinum oval-shape Light Pink diamond single-stone ring.

With report no. 981271, dated 7th September, 2006, from The Precious Stone Laboratory, stating 1.03cts, natural colour, SI1 clarity.
Hallmarks for Birmingham.
Ring size H. 3.7gms.
£5,000-7,000 (plus 30% BP*)

249



258



254



255



248



250



251



256



253



259



257



252



260 A ruby and vari-cut diamond cluster pendant.

Ruby calculated weight 0.85ct, based on estimated dimensions of 7 by 5.2 by 2.8mms.

Estimated total diamond weight 0.45ct, G-H colour, VS clarity. Stamped 750. Length 1.6cms. 2.1gms.

£150-200 (plus 30% BP*)

261 A pair of 18ct gold ruby and brilliant-cut diamond cluster earrings.

Estimated total diamond weight 0.50ct, G-I colour, VS2-SI1 clarity. Hallmarks for Birmingham. Length 1.1 cms. 3gms.

£250-350 (plus 30% BP*)

262 A ruby and vari-cut diamond cluster ring.

Ruby calculated weight 0.95ct, based on estimated dimensions of 7.1 by 5 by 3.2mms.

Estimated total diamond weight 0.50ct, G-H colour, VS clarity. Stamped 750. Ring size N1/2. 5.2gms.

£400-600 (plus 30% BP*)

263 A 'Happy Diamonds' cross pendant, with 18ct gold two-row chain, by Chopard.

Chain with Swiss convention marks. Pendant stamped 750. Length of pendant 2.7cms. Length of chain 42cms. 10.4gms. With maker's case.

£450-650 (plus 30% BP*)

264 An 18ct gold square-shape diamond line ring.

Estimated total diamond weight 1.10cts, G-H colour, VS clarity. Hallmarks for London, 1994. Ring size Q1/2. 5.2gms.

£450-650 (plus 30% BP*)

265 An 18ct gold 'Love' ring, by Cartier.

Swiss convention marks.

Ring size R. Cartier size 59. 6.8gms.

With maker's case and certificate of authenticity.

£450-650 (plus 30% BP*)

266 A brilliant-cut diamond line hinged bangle.

Estimated total diamond weight 1ct, H-J colour, VS-SI clarity. Inner diameter 5.7cms. 16.8gms.

£600-800 (plus 30% BP*)

267 An 18ct gold 'Happy Diamonds' heart bracelet, by Chopard.

Swiss convention marks. Length 19.5cms. 23.7gms.

£800-1,200 (plus 30% BP*)

268 An 18ct gold brilliant-cut diamond 'Happy Spirit' pendant, with chain, by Chopard.

Estimated total diamond weight 0.75ct, G-H colour, VS clarity. Pendant with Swiss convention marks. Chain stamped 750.

Length of pendant 2.3cms. Length of chain 42cms. 15.7gms.

£1,800-2,600 (plus 30% BP*)

269 An 18ct gold ruby and brilliant-cut diamond cluster ring.

Ruby calculated weight 1.78cts, based on estimated dimensions of 8.2 by 6.8 by 3.8mms.

Estimated total diamond weight 1ct, G-H colour, VS clarity. Hallmarks for London, 1973. Ring size O. 5.3gms.

£1,200-1,800 (plus 30% BP*)

270 An 18ct gold brilliant-cut diamond single-stone ring, with brilliant-cut diamond line shoulders.

Principal diamond 1.41cts, stamped to mount, estimated J-K colour, VS clarity.

Hallmarks for Birmingham. Ring size O. 5.5gms.

£2,200-3,200 (plus 30% BP*)

271 A square-shape diamond necklace, with similarly-designed polished back-chain.

Estimated total diamond weight 3.50cts, G-H colour, VS clarity. Stamped 750. Length 45cms. 45.3gms.

£2,200-3,200 (plus 30% BP*)



272 An early to mid 19th century silver and gold amethyst and rose-cut diamond brooch.

Length 2.1cms. 3.6gms.
£100-150 (plus 30% BP*)

273 A Georgian gold garnet and yellow topaz closed-back cross pendant.

Length 4.7cms. 3.4gms.
£100-150 (plus 30% BP*)

274 A mid Victorian gold emerald, ruby and rose-cut diamond floral ring.

Ring size P1/2. 3gms.
£100-150 (plus 30% BP*)

275 A graduated multi-gem bracelet, with gate-link back-chain, to include blue and green zircon, garnet, peridot, deep purple spinel and citrine.

Principal green zircon calculated weight 6.90cts, based on estimated dimensions of 11.4 by 8.5 by 6.6mms.
Length 16cms. 8.8gms.
£150-200 (plus 30% BP*)

276 An early to mid 19th century gold garnet and chrysoberyl ring, with scrolling shoulders.

Ring size L. 2.3gms.
£100-150 (plus 30% BP*)

277 An early to mid 19th century silver rock crystal pendant.

Length 4.9cms. 10gms.
£80-120 (plus 30% BP*)

278 A 19th century silver colourless paste rivière necklace and Georgian black spot paste pendant.

Length of necklace 38cms. Length of pendant 3.1cms. 19.8gms.
£100-150 (plus 30% BP*)

279 A Georgian silver and gold graduated foil back paste five-stone ring.

Ring size Q1/2. 2.7gms.
£150-200 (plus 30% BP*)

280 A 19th century silver purple paste rivière necklace.

Length 44cms. 26.5gms.
£250-350 (plus 30% BP*)

281 A late 19th century silver gilt multi-gem star motif necklace, suspending a similarly gemset cluster stylised witches heart pendant.

Length of pendant 2.7cms. Length of chain 40.5cms. 26.8gms.
£300-400 (plus 30% BP*)

282 A semi-baroque cultured pearl and brilliant-cut diamond cluster ring, with rose-cut diamond accent floral shoulders.

Estimated total diamond weight 0.65ct, H-J colour, VS-SI clarity. Portuguese marks. Ring size L1/2. 9.5gms.
£700-900 (plus 30% BP*)

283 A 19th century silver and gold blue topaz rivière necklace.

Apparent largest topaz calculated weight 2.25cts, based on estimated dimensions of 8 by 5mms.
Apparent smallest topaz calculated weight 0.76ct, based on estimated dimensions of 5.5 by 3.6mms.
Length 46.5cms. 35gms.
£2,000-3,000 (plus 30% BP*)



277



274



276



282



279



281



275



280



278



283



273



272

284 A late Victorian silver and gold rose-cut diamond knot brooch.

Length 2.9cms. 2.2gms.
£80-120 (plus 30% BP*)

285 A late Victorian silver and gold, old and rose-cut diamond heart pendant.

Length 1.9cms. 1.9gms.
£120-180 (plus 30% BP*)

286 ✕ A Georgian gold portrait miniature brooch, depicting a woman.

Length 3.2cms. 5.5gms.
£100-150 (plus 30% BP*)

287 An Edwardian 18ct gold graduated circular-cut diamond five-stone ring, with diamond point spacers.

Estimated total diamond weight 0.65ct, I-J colour, SI1-P1 clarity. Stamped 18ct. Ring size N. 3.1gms.
£150-200 (plus 30% BP*)

288 An early to mid 19th century gold Scottish agate bracelet.

Length 17cms. 20.4gms.
£150-200 (plus 30% BP*)

289 A late Victorian 15ct gold mounted labradorite brooch, carved to depict a lion mask.

Length 2.1cms. 4gms.
£200-300 (plus 30% BP*)

290 A 19th century silver and gold foil back rose-cut diamond cluster ring.

Foreign marks to the outside of the band, Ring size M. 2.3gms.
£100-150 (plus 30% BP*)

291 A rose-cut diamond cluster ring, with similarly-cut diamond foliate shoulders.

Ring size N1/2. 5.7gms.
£300-400 (plus 30% BP*)

292 A 19th century woven hair snake necklace, with engraved gold and turquoise head and tail.

Approximate length 35cms. 23.6gms.
£100-150 (plus 30% BP*)

293 ✕ A 19th century gold mounted portrait miniature of a gentleman, with hairwork reverse.

Length 7.7cms. 40.3gms.
£450-650 (plus 30% BP*)

294 A rose-cut diamond cluster ring.

Ring size M. 5.4gms.
With Peter Szuhay retailer's case.
£700-900 (plus 30% BP*)

295 A Georgian silver and gold, old-cut diamond two-row ring.

Estimated total diamond weight 1.10cts, G-I colour, VS-SI clarity. Ring size R1/2. 3.6gms.
£600-800 (plus 30% BP*)



286



292

287



290



289



295



294



291



285



288

284



293



296 An early 20th century platinum and 18ct gold sapphire and single-cut diamond cluster ring.

Sapphire calculated weight 0.38ct, based on estimated dimensions of 4.7 by 3.9 by 2.2mms.
Estimated total diamond weight 0.20ct.
Stamped 18ct & Pt. Ring size P1/2. 2.8gms.
£100-150 (plus 30% BP*)

297 A Victorian 15ct gold shell cameo brooch, carved to depict Bacchus.

Can be worn as a pendant.
Length 6.1cms. 25.5gms.
£100-150 (plus 30% BP*)

298 A late Victorian 15ct gold old-cut diamond and split pearl hinged bangle.

Estimated diamond weight 0.15ct, H-I colour, P1 clarity.
Inner diameter 5.8cms. 8gms.
£200-300 (plus 30% BP*)

299 A late Victorian 18ct gold graduated sapphire and old-cut diamond five-stone ring.

Estimated total diamond weight 0.10ct.
Hallmarks for Birmingham, 1898. Ring size Q. 3.6gms.
£150-200 (plus 30% BP*)

300 A late Victorian 15ct gold graduated old-cut diamond five-stone ring, with diamond point spacers.

Estimated total diamond weight 1ct, H-L colour, P1 clarity.
Stamped, indistinct. Ring size L1/2. 2.8gms.
£200-300 (plus 30% BP*)

301 A Victorian 15ct gold shell cameo brooch, depicting Cupid.

Length 4.2cms. 20.5gms.
£300-400 (plus 30% BP*)

302 A 19th century gold agate 'a little bird told me' fob seal, engraved with a dove holding an olive branch and script 'il piccolo uccello' or 'a little bird'.

Length 2.6cms. 11.7gms.
£300-400 (plus 30% BP*)

303 A mid 19th century gold foliate engraved locket, suspended from a snake-link chain with foliate engraved terminals.

Length of locket 3.4cms. Length of chain 46.5cms. 16.6gms.
£600-800 (plus 30% BP*)

304 An early 20th century 18ct gold old-cut diamond single-stone ring, with vari-cut diamond shoulders.

Principal diamond estimated weight 0.80ct, J-K colour, P1-P2 clarity.
Ring size K1/2. 3.4gms.
£600-800 (plus 30% BP*)

305 ✕ A late Victorian gold coral and diamond point star locket.

Length 5.6cms. 27.5gms.
Coral untested for natural colour origin.
£900-1,400 (plus 30% BP*)

306 An old-cut diamond cluster ring.

Estimated total diamond weight 1.50cts, H-J colour, SI1-P1 clarity.
Stamped 750. Ring size N1/2. 3.9gms.
£1,000-1,500 (plus 30% BP*)

307 A 19th century 15ct gold fancy-link chain, with turquoise accent gloved hand clasp.

Length 118cms. 38.3gms.
£1,200-1,800 (plus 30% BP*)



301

297

305

303

306

304

296

307

302

298

299

300

308 A 19th century 18ct gold mounted shell cameo brooch, depicting Night after a bas-relief by Bertel Thorvaldsen, Nyx carries the children Hypnos and Thanatos.

Length 5.3cms. 11.1gms.
£120-180 (plus 30% BP*)

309 A Georgian gold enamel ouroboros mourning brooch.

Length 2.2cms. 5.3gms.
£100-150 (plus 30% BP*)

310 A Georgian gold ouroboros snake locket.

Length 2.8cms. 3.8gms.
£200-300 (plus 30% BP*)

311 A mid Victorian 15ct gold scrolling foliate engraved and black enamel cross mourning locket.

Length 4.2cms. 10.3gms.
£200-300 (plus 30% BP*)

312 A gold split pearl and black enamel 'In Memory Of' mourning ring, converted from a 22ct gold band ring.

Hallmarks for Birmingham, 1893. Ring size W. 7.3gms.
£360-460 (plus 30% BP*)

313 A late Victorian 18ct gold snake ring, with old-cut diamond crest and ruby eyes.

Estimated diamond weight 0.15ct, I-J colour, P1-P2 clarity. Hallmarks for Birmingham, 1899. Ring size V. 7.7gms.
£300-400 (plus 30% BP*)

314 A late Georgian 15ct gold ouroboros snake magnifying glass, with late 19th century long guard chain.

Length of magnifying glass 5.7cms. Length of chain 155cms. 31.4gms.
£600-800 (plus 30% BP*)

315 A late 19th century gold mounted floral bouquet micro mosaic brooch, with cannetille surround.

Length 6cms. 36.9gms.
£500-700 (plus 30% BP*)

316 An early to mid 19th century gold black Vauxhall glass bracelet.

Length 15.5cms. 36.4gms.
£900-1,400 (plus 30% BP*)

317 A late Victorian gold black enamel monogrammed mourning locket.

Length 6.4cms. 50.5gms.
£1,500-2,000 (plus 30% BP*)

318 An early 20th century 18ct gold old-cut diamond and black enamel cross pendant.

Estimated total diamond weight 1.25cts, G-H colour, P1-P2 clarity. French assay marks. Length 5.5cms. 5.2gms.
£1,800-2,600 (plus 30% BP*)

319 A late 19th century 18ct gold old-cut diamond fringe brooch, the fringe detachable and the brooch to be worn as a necklace.

Estimated total diamond weight 3.75cts, G-I colour, VS-P1 clarity. Length as a brooch 6cms. Diameter as a pendant 2.7cms. Wearable length of chain 37cms. Chain with French assay marks. 21.3gms.
£3,000-4,000 (plus 30% BP*)



313



315



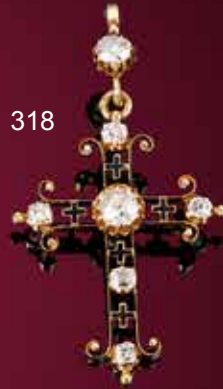
319



309



318



312



317



314



308



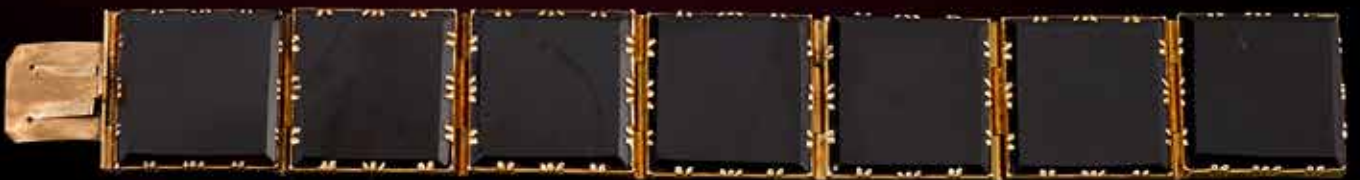
311



310



316



320 A ruby bracelet, with brilliant-cut diamond spacers.

Ruby estimated total weight 8.15cts, based on calculated weight of one ruby.

Estimated total diamond weight 0.45ct.

Length 14cms. 9.3gms.

£400-600 (plus 30% BP*)

321 An 18ct gold 'Tiffany T' 'Square' ring, by Tiffany & Co.

Hallmarks for London, 2016. Ring size N. 6.6gms.

£550-750 (plus 30% BP*)

322 A pair of 18ct gold 'Atlas' cufflinks, by Tiffany & Co.

Hallmarks for London, 2001. Length of cufflink face 1.7cms.

16.3gms.

£650-850 (plus 30% BP*)

323 A pair of 18ct gold ruby and brilliant-cut diamond half hoop earrings.

Total ruby weight 1.90cts.

Total diamond weight 0.56ct.

Hallmarks for Birmingham. Length 1.9cms. 6.2gms.

£700-900 (plus 30% BP*)

324 An 18ct gold graduated brilliant-cut diamond three-stone ring.

Estimated total diamond weight 1.65cts, H-I colour, SI clarity.

Hallmarks for Sheffield, 2004. Approximate ring size O. 4.9gms.

£900-1,400 (plus 30% BP*)

325 An 18ct gold Cartier 'Love' ring.

Swiss convention marks. Ring size R. Cartier size 60. 3.8gms.

£400-600 (plus 30% BP*)

326 An 18ct gold Love bangle, by Cartier.

Swiss convention marks. Inner diameter 5cms. Cartier size 16. 18.7gms.

With maker's case.

£1,000-1,500 (plus 30% BP*)

327 An 18ct gold pink sapphire and brilliant-cut diamond cluster ring.

Sapphire weight 1.92cts.

Total diamond weight 0.47ct, estimated G-H colour, VS2-P1 clarity.

Hallmarks for Birmingham. Ring size O. 4.3gms.

£1,200-1,800 (plus 30% BP*)

328 An 18ct gold 'Motion' 'Hidden diamond' ring, by Bobby White.

Estimated total diamond weight 0.55ct, G-H colour, VS clarity.

Hallmarks for London, 2014. Ring size W. 28.7gms.

£1,200-1,800 (plus 30% BP*)

329 A graduated ruby, brilliant and baguette-cut diamond necklace.

Apparent largest ruby calculated weight 0.40ct, based on estimated dimensions of 4.9 by 3.9 by 2.5mms.

Estimated total diamond weight 11cts, G-H colour, VS2-SI1 clarity.

Length 43.6cms. 38gms.

£3,000-4,000 (plus 30% BP*)

330 A circular-shape diamond single-stone pendant.

Estimated diamond weight 2.25cts, I-J colour, SI2-P1 clarity.

Length of pendant 1.5cms. Length of (at fault) chain 43cms. 7gms.

£3,500-4,500 (plus 30% BP*)

331 A Burmese ruby and marquise-shape diamond dress ring.

With report 21070, dated 18th January 2022, from The Gem & Pearl Laboratory, stating 1.74cts, Burma, no heat.

Estimated total diamond weight 0.40ct, G-H colour, VS2-SI1 clarity.

Ring size M. 3.8gms.

£3,500-4,500 (plus 30% BP*)



331

324

330

329



326



328



325



323



320

327

321

322

332 A mid 20th century 18ct gold smokey quartz single-stone ring, with graduated circularcut diamond line shoulders.

Quartz calculated weight 13.50cts, based on estimated dimensions of 20.6 by 12 by 7.6mms.
Estimated total diamond weight 0.20ct, G-H colour, VS2-P1 clarity.
French assay marks. Ring size N. 6.3gms.
£120-180 (plus 30% BP*)

333 An Art Deco silver and gold powder compact, by Gustave Keller.

French assay marks. Length 7.5cms. 141.7gms.
£200-300 (plus 30% BP*)

334 A lady's mid 20th century platinum vari-cut diamond wrist watch, by Movado.

Estimated total diamond weight 1.10cts, G-H colour, VS clarity.
Case stamped 10% IRIDIUM PLAT.
Length 16.6cms. 15.8gms.
£300-400 (plus 30% BP*)

335 An Art Deco platinum and gold, synthetic ruby and diamond point bar brooch.

Length 6.4cms. 4gms.
With Amsterdam jeweller's case.
£450-650 (plus 30% BP*)

336 An early 20th century silver and gold synthetic ruby and diamond cross pendant.

Estimated total diamond weight 0.25ct.
Portuguese marks. Length 4.5cms. 2.3gms.
£450-650 (plus 30% BP*)

337 A mid 20th century silver and gold, ruby cabochon and circular-cut diamond brooch.

Ruby calculated weight 1.69cts, based on estimated dimensions of 6.9 by 3.3mms.
Estimated total diamond weight 1.25cts, G-I colour, SI1-P1 clarity.
Length 7.7cms. 7gms.
£700-900 (plus 30% BP*)

338 A 1940s 14ct gold sapphire, synthetic sapphire and single-cut diamond brooch, by Tiffany & Co.

Length 6.5cms. 10.8gms.
£600-800 (plus 30% BP*)

339 An Art Deco platinum and gold rose-cut diamond, calibre-cut onyx and mabe pearl bar brooch.

Diameter of mabe pearl 5.4mms.
French assay marks for platinum.
Length 9cms. 13.4gms.
£700-900 (plus 30% BP*)

340 An Art Deco platinum and gold blue topaz, onyx and vari-cut diamond bracelet.

Topaz calculated weight 2.27cts, based on estimated dimensions of 8.2 by 4.8mms.
Length 17.4cms. 10.1gms.
£800-1,200 (plus 30% BP*)

341 A synthetic ruby and old-cut diamond marquise-shape cluster ring.

Estimated total diamond weight 1ct, G-I colour, VS2-P1 clarity.
Stamped 18K. Ring size N. 5.5gms.
£900-1,400 (plus 30% BP*)

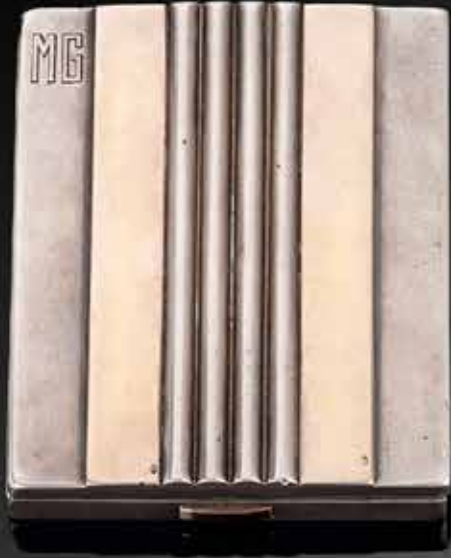
342 A vari-cut diamond and calibre-cut ruby geometric dress ring.

Principal diamond estimated weight 0.60ct, I-J colour, VS clarity.
Estimated total diamond weight 1.35cts.
Stamped 750. Ring size M1/2. 10gms.
£1,400-2,000 (plus 30% BP*)

343 An Art Deco silver and 18ct gold old-cut diamond and onyx geometric dress ring.

Estimated total diamond weight 1.25cts, H-J colour, SI1-P1 clarity.
Stamped 18ct. Ring size R. 3.2gms.
£1,800-2,600 (plus 30% BP*)

333



338



334



339



336



337



343



340



335



341



342



332



344 A pair of diamond 'Move' 'Addiction' earrings, by Gigi Hadid for Messika.

Total diamond weight 0.15ct, estimated G-H colour, VS clarity.
Stamped 750. Length 2.1cms. 3.8gms.

£100-150 (plus 30% BP*)

345 An 18ct gold 'Tiffany T' 'Square' ring, by Tiffany & Co.

Hallmarks for London. Ring size O. 6.9gms.
With maker's pouch.

£450-650 (plus 30% BP*)

346 A vari-hue sapphire and brilliant-cut diamond initial 'I' pendant, on chain.

Sapphire total weight 0.46ct.
Total diamond weight 0.22ct.
Stamped 750. Length of pendant 1.6cms. Length of chain 41cms.
3gms.

£500-700 (plus 30% BP*)

347 An 18ct gold pavé-set diamond 'Love' band ring, by Cartier.

Estimated total diamond weight 0.70ct, G-H colour, VS clarity.
Swiss convention marks.
Ring size K. Cartier size 51. 10.1gms.

£600-800 (plus 30% BP*)

348 An 18ct gold alternating brilliant-cut diamond and screw motif 'Love' ring, by Cartier.

Total diamond weight 0.22ct, estimated G-H colour, VS clarity.
Swiss convention marks. Ring size P 1/2. Cartier size 57. 9.2gms.

£1,000-1,500 (plus 30% BP*)

349 A brilliant-cut diamond and onyx cross pendant.

Total diamond weight 0.38ct.
Stamped 18K 750. Length 4.8cms. 4.1gms.

£600-800 (plus 30% BP*)

350  A pair of tiger's-eye 'Santos' cufflinks, by Cartier.

Swiss marks, stamped 750. Length of cufflink face 1.6cms.
17.6gms.

With maker's case.

£700-900 (plus 30% BP*)

351 A brilliant-cut diamond bi-colour ballerina brooch.

May be worn as a pendant.

Total diamond weight 1.448cts, stamped to mount, estimated G-H colour, VS-SI clarity.

Stamped 18K 750. Length 5cms. 12.9gms.

£2,000-3,000 (plus 30% BP*)

352 An 18ct gold diamond 'Double Juste Un Clou' ring, by Cartier.

Total diamond weight 0.08ct, estimated G-H colour, VS clarity.
Swiss convention marks.

Ring size L. Cartier size 52. 5.9gms.

£250-350 (plus 30% BP*)

353 An 18ct gold diamond 'Juste un Clou' bangle, by Cartier.

Estimated total diamond weight 0.55ct, G-H colour, VS clarity.
Swiss convention marks, stamped 750.

Inner diameter 5.4cms. Cartier size 15. 29.1gms.

With maker's pouch.

£3,500-4,500 (plus 30% BP*)

354 An 18ct gold brilliant-cut diamond 'Clash de Cartier' ring, by Cartier.

Estimated total diamond weight 0.50ct, G-H colour, VS clarity.
Swiss convention marks. Ring size J1/2. Cartier size 51. 9.7gms.

With maker's case and certificate of authenticity.

£3,000-4,000 (plus 30% BP*)

355  An 18ct gold diamond 'Victoria' bracelet, by Tiffany & Co.

Total diamond weight 3.08cts, estimated G-H colour, VS clarity.
Hallmarks for London. Length 17cms. 8.4gms.

With maker's case.

£4,000-6,000 (plus 30% BP*)



353



345



352



349

354



348



346

347



355



350



351



344



356 An 18ct gold scattered brilliant-cut diamond band ring, by Boodles.

Estimated total diamond weight 0.25ct, G-H colour, VS clarity. Hallmarks for London, 2004. Ring size O. 8.6gms.

£350-450 (plus 30% BP*)

357 A brilliant-cut diamond and calibre-cut citrine dress ring.

Estimated total diamond weight 0.40ct, G-H colour, VS clarity. French assay marks. Approximate ring size K. 4.2gms.

£300-400 (plus 30% BP*)

358 An 18ct gold garnet and diamond dress ring.

Garnet calculated weight 3.47cts, based on estimated dimensions of 9 by 8.2 by 5.3mms.

Estimated total diamond weight 0.15ct.

Hallmarks for Birmingham, 2020. Ring size N. 5.7gms.

£400-600 (plus 30% BP*)

359  A brilliant-cut diamond 'Ava' pendant on chain, by Boucheron.

Estimated total diamond weight 0.35ct, G-H colour, VS clarity. Stamped 750. Length 42cms. 3gms.

With maker's case.

£400-600 (plus 30% BP*)

360 A pair of brilliant-cut diamond 'Ava' earrings, by Boucheron.

Estimated total diamond weight 0.75ct, G-H colour, VS clarity. Backs stamped 18K. Diameter 0.9cm. 2.7gms.

£500-700 (plus 30% BP*)

361 A pair of 18ct gold vari-hue sapphire and diamond hoop earrings.

Total sapphire weight 2.72cts.

Total diamond weight 0.07ct.

Hallmarks for Birmingham. Diameter 3cms. 7gms.

£500-700 (plus 30% BP*)

362 A sapphire and tapered baguette-cut diamond dress ring.

Sapphire calculated weight 1.20cts, based on estimated dimensions of 7.4 by 5.6 by 3.5mms.

Estimated total diamond weight 0.50ct, H-J colour, VS2-SI1 clarity. Stamped 750. Ring size L. 8gms.

£800-1,200 (plus 30% BP*)

363  A pair of brilliant-cut diamond and Colombian emerald earrings.

With report 22677, dated 20th January 2023, from The Gem & Pearl Laboratory, stating Colombia, 0.42ct with no evidence of clarity enhancement and 0.46ct with negligible clarity enhancement.

Estimated total diamond weight 0.30ct, G-H colour, SI2-P1 clarity. Length 1.2cms. 2.4gms.

£800-1,200 (plus 30% BP*)

364 An 18ct gold brilliant-cut diamond hinged bangle.

Estimated total diamond weight 1.85cts, G-H colour, VS2-SI2 clarity.

Hallmarks for Birmingham.

Inner diameter 6.2cms. 20.1gms.

£900-1,400 (plus 30% BP*)

365 An 18ct gold diamond accent bangle, by Fope.

Hallmarks for London, 2000. Length 18cms. 12.4gms.

£450-650 (plus 30% BP*)

366 An 18ct gold diamond accent collar necklace, by Fope.

Hallmarks for London, 2000. Length 35cms. 26.2gms.

£900-1,400 (plus 30% BP*)

367 A tanzanite and brilliant-cut diamond cluster ring.

Tanzanite weight 4.30cts.

Total diamond weight 0.71ct, estimated G-H colour, VS-SI clarity.

Stamped 750. Ring size M. 5.3gms.

£2,000-3,000 (plus 30% BP*)



365

366



364



359



361



367



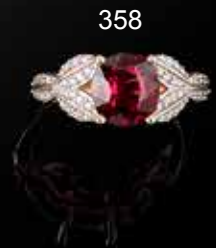
356



357



362



358



360



363

368 An 18ct gold brilliant-cut diamond floral cluster ring.

Estimated total diamond weight 1.10cts, J-K colour, VS clarity.
Import marks for Birmingham.
Ring size K1/2. 4.7gms.
£450-650 (plus 30% BP*)

369 An 18ct gold emerald and brilliant-cut diamond three-row band ring.

Estimated total diamond weight 0.50ct, I-J colour, VS-SI clarity.
Hallmarks partially indistinct. Ring size T. 11.9gms.
£550-750 (plus 30% BP*)

370 A pair of sapphire, mother-of-pearl and brilliant-cut diamond foliate earrings.

Estimated total diamond weight 0.80ct.
Stamped 18K. Length 2.6cms. 15.5gms.
£600-800 (plus 30% BP*)

371 A freeform opal and brilliant-cut diamond pendant, with snake-link chain.

Estimated dimensions of opal 29.2 by 20.8 by 3.4mms.
Estimated diamond weight 0.15ct, H-I colour, VS2-SI1 clarity.
Chain stamped 750.
Length of pendant 4.2cms. Length of chain 45.5cms. 17gms.
£800-1,200 (plus 30% BP*)

372 An 18ct gold tanzanite and brilliant-cut diamond cluster ring.

Tanzanite calculated weight 3.90cts, based on estimated dimensions of 12.2 by 9.2 by 5.2mms.
Estimated total diamond weight 0.10ct.
Hallmarks for Birmingham. Ring size S1/2. 19.4gms.
£1,000-1,500 (plus 30% BP*)

373 A wristwatch, with single-cut diamond bezel and woven integral strap, by Piaget.

Estimated total diamond weight 0.40ct, G-H colour, VS clarity.
Stamped 750. Length 16.8cms. 44gms.
£1,200-1,800 (plus 30% BP*)

374 An 18ct gold graduated brilliant-cut diamond three-stone ring.

Estimated total diamond weight 1.45cts, H-I colour, VS-SI clarity.
Hallmarks for Birmingham, 2001. Ring size P1/2. 4.1gms.
£1,200-1,800 (plus 30% BP*)

375 An 18ct gold tanzanite and brilliant-cut diamond spacer bracelet.

Estimated total diamond weight 1.60cts, H-J colour, VS-SI clarity.
Hallmarks for London. Length 19.6cms. 23.2gms.
£1,500-2,000 (plus 30% BP*)

376 A pair of pavé-set 'Happy Diamond' heart earrings, by Chopard.

Estimated total diamond weight 2.75cts, G-H colour, VS clarity.
Stamped 750. Length 2.1cms. 18.8gms.
With maker's case.
£2,800-3,800 (plus 30% BP*)

377 A 1970s 18ct gold flared bangle, by Georg Jensen, with later engraved bunny.

Import marks for London, 1970. Inner diameter 6.7cms. 73.4gms.
£3,000-4,000 (plus 30% BP*)

378 An 18ct gold emerald and brilliant-cut diamond three-stone ring.

Emerald calculated weight 2.44cts, based on estimated dimensions of 7.9 by 7.4 by 5.7mms.
Estimated total diamond weight 1.40cts, H-I colour, SI clarity.
Hallmarks for Sheffield, 1989. Ring size N1/2. 5gms.
£3,500-4,500 (plus 30% BP*)

379 A brilliant-cut diamond hinged bangle.

Estimated total diamond weight 3.50cts, I-J colour, VS clarity.
Stamped 750 18K. Inner diameter 5.8cms. 23gms.
£4,500-6,500 (plus 30% BP*)



377



379



376



368



378



375

371



370



374



373



372



369

380 A 19th century 15ct gold graduated split pearl ring.

Ring size M1/2. 2.5gms.
£100-150 (plus 30% BP*)

381 A late Victorian 15ct gold old-cut diamond cluster ring.

Estimated total diamond weight 0.40ct, G-I colour, SI1-P1 clarity.
Ring size Q. 2.5gms.
£200-300 (plus 30% BP*)

382 A mid Victorian gold old-cut diamond and blue enamel band ring, with locket to inside of ring head.

Estimated total diamond weight 0.45ct.
Ring size M. 5.6gms.
£180-260 (plus 30% BP*)

383 A Georgian gold chrysoberyl and enamel brooch.

Estimated dimensions of central chrysoberyl 6.3 by 5.5mms.
Length 2.4cms. 4.3gms.
£200-300 (plus 30% BP*)

384 A Georgian gold rose-cut diamond, split pearl and enamel portrait miniature brooch, depicting a lady in pre-Regency attire.

Length 3.6cms. 11.3gms.
£400-600 (plus 30% BP*)

385 A Victorian gold pierced bracelet, with split pearl and blue enamel locket heart clasp.

Length 18cms. 11gms.
£320-420 (plus 30% BP*)

386 A mid to late 19th century engraved gold, old-cut diamond and blue enamel brooch.

Estimated total diamond weight 0.30ct.
Length 5.1cms. 14.8gms.
£500-700 (plus 30% BP*)

387 A mid Victorian gold old-cut diamond and enamel frilled bow brooch.

Estimated total diamond weight 0.15ct.
Length 5.9cms. 17.8gms.
£800-1,200 (plus 30% BP*)

388 A late Victorian 18ct gold graduated old-cut diamond five-stone ring.

Estimated total diamond weight 1.20cts, G-I colour, VS-SI clarity.
Hallmarks indistinct. Ring size N. 2.7gms.
£300-400 (plus 30% BP*)

389 An opal and old-cut diamond cluster ring.

Opal estimated dimensions 9.1 by 4.3mms.
Estimated total diamond weight 1.50cts, G-H colour, VS2-P1 clarity.
Stamped 18ct. Ring size P. 7.2gms.
£550-750 (plus 30% BP*)

390 ✕ A Georgian gold mounted portrait miniature pendant, with seed pearl and hairwork reverse, attributed to Philip Jean.

Length 9.5cms. 63.4gms.
£800-1,200 (plus 30% BP*)

391 A sapphire and brilliant-cut diamond scrolling foliate locket brooch.

Estimated total diamond weight 1.30cts, G-H colour, VS-SI clarity.
Diameter 3.8cms. 24.8gms.
£1,800-2,600 (plus 30% BP*)

387



380



391



383



386



390



384



389



382



388



381



385



392 A late Victorian 18ct gold alternating sapphire and old-cut diamond two-row ring.

Estimated total diamond weight 0.15ct.
Hallmarks for Chester, 1892. Ring size N. 3gms.
£100-150 (plus 30% BP*)

393 A late Victorian 18ct gold alternating graduated sapphire and old-cut diamond fivestone ring.

Central sapphire calculated weight 0.29ct, based on estimated dimensions of 4.2 by 3.7 by 2mms.
Estimated total diamond weight 0.20ct.
Stamped 18ct. Ring size O. 2.5gms.
£100-150 (plus 30% BP*)

394 A late Victorian 18ct gold graduated opal three-stone ring, with old-cut diamond spacers.

Central opal calculated weight 0.40ct, based on estimated dimensions of 7 by 5.1 by 1.9mms.
Estimated total diamond weight 0.25ct, G-H colour, VS-SI clarity.
Stamped 18ct. Ring size Q. 4.5gms.
£150-200 (plus 30% BP*)

395  An early 20th century 15ct gold enamel anchor flag brooch.

Length 2.8cms. 5gms.
With fitted Gowland Bros. Ltd. 48 Cornhill. case.
£150-200 (plus 30% BP*)

396 An Edwardian 15ct gold sapphire and split pearl hinged bangle.

Stamped 15ct.
Inner diameter 5.8cms. 7.2gms.
£200-300 (plus 30% BP*)

397 An Edwardian 18ct gold sapphire and old-cut diamond cluster ring.

Sapphire calculated weight 0.60ct, based on estimated dimensions of 4.5 by 4.3 by 2.8mms.
Estimated total diamond weight 0.20ct.
Stamped 18ct. Ring size M1/2. 2.7gms.
£200-300 (plus 30% BP*)

398 An Edwardian 15ct gold moonstone drop necklace.

Principal moonstone estimated dimensions of 18.6 by 10.3 by 4.8mms.
Length 42cms. 11.7gms.
£300-400 (plus 30% BP*)

399 An early 20th century 18ct gold sapphire and diamond ring.

Central sapphire calculated weight 0.30ct, based on estimated dimensions of 4.7 by 3.5 by 2.2mms.
Stamped 18ct. Ring size O. 4gms.
£150-200 (plus 30% BP*)

400 A late Victorian 15ct gold sapphire, seed and split pearl quatrefoil pendant.

Central sapphire calculated weight 0.71ct, based on estimated dimensions of 5 by 3.8 by 4.5mms.
Length 4.2cms. 8.8gms.
£250-350 (plus 30% BP*)

401 A composite early 20th century gold brooch, the central blister pearl, suspended within a split pearl, sapphire and diamond point crowned surround, to a plain bar surmount.

Length 6.2cms. 12.8gms.
Blister pearl untested for natural origin.
£350-450 (plus 30% BP*)

402 A lady's late 19th century 18ct gold diamond, split pearl and gilt guilloche blue enamel fob watch, suspended from a similarly-set foliate spacer and scalloped shell brooch surmount, by Le Coultre & Co.

Signed to movement.
Length 7cms. 24gms.
Pearl untested for natural origin.
£600-800 (plus 30% BP*)

403 An early 20th century 18ct gold curb-link bracelet, with three enamel initial panel spacers reading MER, suspending three gold enamel charms of a pig, pheasant and partridge.

Length 17.1cms. 23.6gms.
£1,000-1,500 (plus 30% BP*)

394



399



400



398



393



402



401



395



397



392



396



403



404 A mid to late Victorian gold ruby and pavé-set split pearl heart pendant.

Length 2.1cms. 2.4gms.
£100-150 (plus 30% BP*)

405 An early 20th century 18ct gold old-cut diamond and ruby three-stone crossover ring, with single-cut diamond sides.

Estimated total diamond weight 0.35ct, H-J colour, VS-SI clarity. Hallmarks indistinct. Ring size O1/2. 3.4gms.
£150-200 (plus 30% BP*)

406 A pair of early 20th century gold rose-cut diamond and synthetic ruby textured cufflinks.

Diameter of cufflink faces 1.2cms. 4.8gms.
£200-300 (plus 30% BP*)

407 A late 19th century 18ct gold ruby and old-cut diamond five-stone ring.

Principal ruby calculated weight 0.46ct, based on estimated dimensions of 4.8 by 4.5 by 2.7mms. Estimated total diamond weight 0.20ct, H-I colour, SI clarity. Stamped 18. Ring size M. 2.5gms.
£200-300 (plus 30% BP*)

408 An Arts & Crafts 15ct gold blister pearl fringe necklace.

Length 39.5cms. 14gms.
£320-420 (plus 30% BP*)

409 A mid 19th century gold tiger's-eye and quartz 'gold rush' bracelet, with nugget surrounds.

Length 17.8cms. 22gms.
£400-600 (plus 30% BP*)

410 A bi-colour gold ruby, diamond point and plique-a-jour enamel religious pendant.

Stamped 18. Portuguese marks, stamped 585. Length 4.7cms. 5.9gms.
£450-650 (plus 30% BP*)

411 A late Victorian 18ct gold hinged four panel locket, with dimpled exterior.

French import marks. Length 3.9cms. 12.4gms.
£450-650 (plus 30% BP*)

412 An early 20th century 18ct gold red spinel and old-cut diamond bar brooch.

Central spinel calculated weight 0.85ct, based on estimated dimensions of 5.7 by 5.5 by 3.2mms. Estimated total diamond weight 1.75cts, G-H colour, VS2-P1 clarity. Length 6.8cms. 7.5gms.
£700-900 (plus 30% BP*)

413 An early 20th century Russian gold red enamel pencil case, by Fabergé.

Length 8.7cms. 16.4gms.
£1,200-1,800 (plus 30% BP*)

414 A red spinel and diamond cluster pendant.

Spinel calculated weight 3.04cts, based on estimated dimensions of 10 by 9 by 4.7mms. Estimated total diamond weight 1.80cts, H-I colour, SI1-P1 clarity. Length 3cms. 5.2gms.
£1,500-2,000 (plus 30% BP*)

415 An early 20th century gold seed pearl, synthetic ruby cabochon and diamond point dragonfly brooch.

Length 4.7cms. 9gms.
£1,500-2,000 (plus 30% BP*)



411

405

410

404

414

408

415

406

407

413

412

409

416 An early 20th century 18ct gold graduated opal three-stone ring, with single-cut diamond spacers.

Ring size O. 2gms.
£100-150 (plus 30% BP*)

417 A late Victorian 18ct gold old-cut diamond scalloped marquise-shape ring.

Estimated total diamond weight 1.10cts, G-L colour, SI2-P2 clarity.
Stamped 18ct. Ring size L1/2. 3.4gms.
£150-200 (plus 30% BP*)

418 A late 19th century 18ct gold pearl and old-cut diamond cluster ring.

Pearl estimated dimensions 6.5 by 6.3 by 5.2mms.
Estimated total diamond weight 0.35ct.
Ring size L. 4.3gms.
Pearl untested for natural colour origin.
£150-200 (plus 30% BP*)

419 A late Victorian 9ct gold mounted shell cameo brooch, carved to depict a family fishing at a river or lakeside.

Stamped 9ct. Length 6.2cms. 19.6gms.
£200-300 (plus 30% BP*)

420 A mid 20th century platinum and 18ct gold old-cut diamond single-stone ring.

Estimated diamond weight 0.60ct, G-H colour, P1 clarity.
Stamped 18 PLAT. Ring size M1/2. 2gms.
£200-300 (plus 30% BP*)

421 A late 19th century silver and gold old-cut diamond two-row clasp, suspending a graduated cultured pearl single-strand.

Estimated total diamond weight 0.35ct, H-I colour, SI1-P1 clarity.
Length 41cms. 10.5gms.
£250-350 (plus 30% BP*)

422  A pair of late Victorian gold baroque and seed pearl earrings.

Estimated dimensions of one baroque pearl 14.2 by 12.3 by 10.9mms.
Length 4cms. 5.5gms.
With fitted Carrington & Co. case.
Pearls untested for natural origin.
£200-300 (plus 30% BP*)

423 A late Victorian gold seed and split pearl floral hinged bangle.

Inner diameter 5.7cms. 13.3gms.
£350-450 (plus 30% BP*)

424 An Art Nouveau 18ct gold mistletoe locket, suspended from a near-period 18ct gold bar-spacer chain.


Length of locket 3.1cms. Length of chain 54cms. 11.7gms.
£350-450 (plus 30% BP*)

425 A late 19th century gold portrait miniature ring, with rose-cut diamond surround and replacement band.

Ring size P. 5.3gms.
£450-650 (plus 30% BP*)

426 An early 20th century 18ct gold brooch of two embracing figures with diamond and cultured pearl highlight floral and torch surround.

May be worn as a pendant.
Portuguese marks. Length 4.8cms. 18gms.
£2,000-3,000 (plus 30% BP*)

427  A brilliant-cut diamond single-stone ring, with single-cut diamond shoulders.

With report 0024720, dated 25th November 1996, from The Gem Testing Laboratory of Great Britain, stating 2.02cts, J colour, SI1 clarity.
Stamped 18ct. Ring size M. 3.3gms.
£5,000-7,000 (plus 30% BP*)



418



416



422



421

419



427



424



426



417



420



425



423



428 An opal heart and single-cut diamond cluster ring.

Opal estimated dimensions of 8 by 7.1 by 2.9mms.
Estimated total diamond weight 0.45ct, H-I colour, VS2-P1 clarity.
Ring size M1/2. 4gms.
£100-150 (plus 30% BP*)

429 An aquamarine and diamond cross pendant.

Estimated total diamond weight 0.10ct.
Stamped 750. Length 4.3cms. 8.3gms.
£350-450 (plus 30% BP*)

430 An 18ct gold morganite and brilliant-cut diamond cluster ring, with similarly-cut diamond underbezel.

Morganite calculated weight 2.51cts, based on estimated dimensions of 10.2 by 8 by 5.4mms.
Estimated total diamond weight 1.50cts, G-H colour, predominantly VS2 clarity.
Hallmarks for Sheffield. Ring size L. 10.3gms.
£600-800 (plus 30% BP*)

431 A brilliant-cut diamond and polished interwoven line hinged bangle.

Total diamond weight 1.23cts, marked to mount.
Marked 18K. Inner diameter 5.8cms. 18.9gms.
£700-900 (plus 30% BP*)

432 A circular-cut diamond single-stone ring, with rose-cut diamond accent bi-colour crossover bands.

Principal diamond estimated weight 0.70ct, tinted colour, SI clarity.
Ring size R. 9.2gms.
£800-1,200 (plus 30% BP*)

433 An 18ct gold brilliant-cut diamond cluster ring.

Estimated total diamond weight 2cts, I-K colour, VS-SI clarity.
Hallmarks for Birmingham. Ring size M. 7.7gms.
£1,000-1,500 (plus 30% BP*)

434 An 18ct gold diamond 'Maori' bracelet, by Fope.

Estimated total diamond weight 0.15ct.
Hallmarks for Birmingham, 2007. Length 18.5cms. 35.4gms.
£1,200-1,800 (plus 30% BP*)

435 A vari-cut diamond, seed pearl, ruby, sapphire and emerald floral brooch.

Length 3.4cms. 13.6gms.
£1,500-2,000 (plus 30% BP*)

436 An 18ct gold emerald and brilliant-cut diamond cluster ring.

Emerald weight 2.47cts.
Total diamond weight 1.23cts, H-I colour, VS2-P1 clarity.
Hallmarks for Birmingham. Ring size O. 6.4gms.
£2,000-3,000 (plus 30% BP*)

437 A brilliant-cut diamond, ruby and sapphire accent cuff bangle.

Estimated total diamond weight 0.40ct, G-H colour, VS-SI clarity.
Stamped 750. Inner diameter 6cms. 70.3gms.
£2,800-3,800 (plus 30% BP*)

438 A brilliant-cut diamond geometric collar necklace.

Estimated total diamond weight 5.75cts, G-H colour, VS-SI clarity.
Stamped 750. Length 42cms. 90.7gms.
£3,000-4,000 (plus 30% BP*)

439 An 18ct gold crossed brilliant-cut diamond heart pendant, on chain.

Estimated total diamond weight 1ct, G-H colour, VS-SI clarity.
Hallmarks for Birmingham.
Length of heart 4cms.
Length of pendant (including heart) 16cms. Length of chain 52cms.
137.9gms.
£4,500-6,500 (plus 30% BP*)



428



430



434



436



429

432



439



435



440 A 19th century gold carnelian spinner ring.

Ring size O. 2gms.
£100-150 (plus 30% BP*)

441 An 18ct gold sapphire and brilliant-cut diamond cluster ring.

Sapphire calculated weight 1.16cts, based on estimated dimensions of 7.4 by 5.2 by 3.6mms.
Estimated total diamond weight 0.40ct, H-J colour, VS2-P1 clarity.
Hallmarks for Birmingham, 1988. Ring size L1/2. 4.9gms.
£180-260 (plus 30% BP*)

442 An 18ct gold vari-cut diamond half eternity ring.

Estimated total diamond weight 0.45ct.
Hallmarks for Birmingham.
Ring size O. 4.4gms.
£250-350 (plus 30% BP*)

443 A tanzanite and brilliant-cut diamond spacer bracelet.

Tanzanite total weight 10.93cts, stamped to mount.
Estimated total diamond weight 0.75ct, G-I colour, VS-SI clarity.
Stamped 18K. Length 18cms. 14.2gms.
£500-700 (plus 30% BP*)

444 A sapphire three-stone ring, with single-cut diamond shared surround.

Estimated total diamond weight 0.40ct, G-I colour, SI1-P1 clarity.
Stamped 18ct. Ring size Q. 2.9gms.
£900-1,400 (plus 30% BP*)

445 An 18ct bi-colour gold ruby and diamond bracelet.

Estimated total diamond weight 0.40ct.
Hallmarks for Birmingham.
Length 17.5cms. 20.8gms.
£900-1,400 (plus 30% BP*)

446 An 18ct gold sapphire and brilliant-cut diamond cluster ring.

Sapphire calculated weight 2.96cts, based on estimated dimensions of 9.6 by 7.5 by 4.9mms.
Estimated total diamond weight 0.85ct, G-I colour, VS2-P1 clarity.
Hallmarks for London, 1990. Ring size N1/2. 6.7gms.
£700-900 (plus 30% BP*)

447 An 18ct gold emerald three-stone and brilliant-cut diamond cluster ring.

Estimated total diamond weight 1.20cts, H-J colour, SI1-P1 clarity.
Hallmarks for London, 1981. Ring size N. 5.5gms.
£900-1,400 (plus 30% BP*)

448 An 18ct gold brilliant-cut diamond cluster ring.

With photocopy of report 524230821, dated 23rd August 2022, from IGI, stating 1ct, K colour, VS1 clarity.
Hallmarks for Birmingham. Ring size M. 3gms.
£1,800-2,600 (plus 30% BP*)

449 An aquamarine and single-cut diamond bracelet.

Aquamarine total weight 14.54cts, marked to mount.
Estimated total diamond weight 0.75ct, G-I colour, VS-SI clarity.
Stamped 750. Length 18.5cms. 56.8gms.
£3,500-4,500 (plus 30% BP*)

450 A lady's pavé-set diamond 'Colisee' wristwatch, by Cartier.

Estimated total diamond weight 3.50cts, G-H colour, VS clarity.
Swiss and French re-strike marks, stamped 18K.
Length 17.5cms. 62.7gms.
With maker's case.
£3,500-4,500 (plus 30% BP*)

451 An 18ct gold Sri Lankan sapphire and diamond dress ring.

With report OA925195, dated 1st April 2022, from the IGITL, stating 4.34cts, Sri Lanka (Ceylon), no heat.
Total diamond weight 0.95ct, G-I colour, VS2-P1 clarity.
Hallmarks for Birmingham. Ring size O. 5.7gms.
£3,400-4,400 (plus 30% BP*)

452 An emerald and tapered baguette-cut diamond pendant, on brilliant-cut diamond chain.

Emerald calculated weight 1.38cts, based on estimated dimensions of 8.9 by 5.3 by 4mms.
Estimated total diamond weight 6.70cts, H-J colour, VS-SI1 clarity.
Stamped 750. Length 40cms. 22gms.
£5,000-7,000 (plus 30% BP*)

453 An 18ct gold Colombian emerald and brilliant-cut diamond cluster ring.

With report 214967, dated 28th March 2022, from the Gemmological Institute of India, stating 4.79cts, Colombia, Presence of resin confirmed by FTIR.
Total diamond weight 0.77ct, estimated H-I colour, VS-SI clarity.
Hallmarks for Birmingham. Ring size N1/2. 5gms.
£6,000-8,000 (plus 30% BP*)



446

442

447

441

453

448

440

445

452

450

449

451

443

444

454 A mid 20th century 18ct gold synthetic spinel dress ring.

Synthetic spinel estimated dimensions 18 by 12.6 by 9mms.
Stamped 18K. Ring size R1/2. 8.3gms.

£150-200 (plus 30% BP*)

455 A vari-shape aquamarine textured abstract brooch.

Stamped 750. Length 5.6cms. 17gms.


£600-800 (plus 30% BP*)

456 A pair of 1970s 18ct gold textured cufflinks, with brilliant-cut diamond highlight.

Estimated total diamond weight 0.15ct, G-H colour, VS-SI clarity.
Partial hallmarks for London, 1971, indistinct.

Length of cufflink face 1.8cms. 20.1gms.

£700-900 (plus 30% BP*)

457  A brilliant-cut diamond highlight, bi-colour braided bracelet, by Meister.

Estimated total diamond weight 0.45ct, H-I colour, VS clarity.
Stamped 750. Length 18.7cms. 35.2gms.

With maker's case.

£1,000-1,500 (plus 30% BP*)

458 A pair of mid 20th century platinum and 18ct gold blue zircon clips, by Chaumet.

French assay marks. Lengths 3.2 and 3.3cms. 21.6gms.

£2,000-3,000 (plus 30% BP*)

459 A 1970s 18ct gold brilliant-cut diamond abstract openwork brooch, by David Thomas.

Estimated total diamond weight 1ct, G-H colour, VS2-SI1 clarity.
Hallmarks for London, 1972. Length 5.5cms. 48.8gms.

£1,800-2,600 (plus 30% BP*)

460 A 1970s 18ct bicolour gold necklace, with helix motif, by David Thomas.

Hallmarks for London, 1972.

Length 57cms. 54.9gms.

£2,000-3,000 (plus 30% BP*)

461 A 1960s 18ct gold grooved band ring, by Kutchinsky.

Hallmarks for London, 1964. Ring size N1/2. 12.2gms.

£800-1,200 (plus 30% BP*)

462 A 1970s 18ct gold grooved dress ring, by Kutchinsky.

Hallmarks for London, 1972. Ring size R. 11.4gms.

£800-1,200 (plus 30% BP*)

463 A pair of 1970s 18ct gold grooved hoop earrings, by Kutchinsky.

Hallmarks for London, 1972. Diameter 2.9cms. 28.1gms.

£2,000-3,000 (plus 30% BP*)

464 A 1970s 18ct gold pavé-set diamond cocktail ring, by Kutchinsky.

Estimated total diamond weight 1.75cts, G-H colour, VS1-SI1 clarity.

Hallmarks for London, 1973. Ring size P. 17gms.

£2,000-3,000 (plus 30% BP*)

465 A 1970s 18ct gold fancy-link necklace, with grooved onyx bead and barrel spacers, by Kutchinsky.

Import marks for London, 1977. Length 104cms. 120.1gms.

£9,000-14,000 (plus 30% BP*)



464

455

454

462

463

456

458

457

460

461



459

465

466 A pair of mid 20th century 18ct gold turquoise and single-cut diamond earrings.

Estimated total diamond weight 0.70ct, G-I colour, VS-P1 clarity. Length 3.9cms. 25.7gms.

£500-700 (plus 30% BP*)

467   A mid 20th century 14ct gold baroque cultured pearl owl brooch, with sapphire eyes, perched upon a diamond accent coral branch.

Stamped 14K. Length 5.7cms. 40.7gms. With fitted case.

Coral untested for natural colour origin.

£1,200-1,800 (plus 30% BP*)

468 A mid 20th century 18ct gold diamond and ruby floral brooch, by Tiffany & Co.

May be worn as a pendant.


Stamped 18kt. Length 3.8cms. 12.4gms.

£1,500-2,000 (plus 30% BP*)

469 A mid 20th century 18ct gold dachshund brooch, by Tiffany and Co.

Stamped 18K. Length 3.6cms. 18gms.

£1,400-2,000 (plus 30% BP*)

470  A mid 20th century 18ct gold cat brooch, with tourmaline eyes, coral nose and diamond collar, by Tiffany and Co.

Stamped 18K. Length 4.5cms. 23.6gms.

Coral untested for natural colour origin.

£1,800-2,600 (plus 30% BP*)

471 A mid 20th century 18ct gold brilliant-cut diamond and ruby floral brooch, by Tiffany & Co.

May be worn as a pendant.

Estimated total diamond weight 0.20ct, G-I colour, VS-SI clarity.

Stamped 18kt. Length 5.8cms. 23.2gms.

£2,500-3,500 (plus 30% BP*)

472 A mid 20th century 18ct gold brilliant-cut diamond grooved band ring, with rope-twist accents.

Estimated total diamond weight 1.75cts, G-H colour, predominantly VS clarity.

Ring size R. 17.1gms.

£2,000-3,000 (plus 30% BP*)

473 A mid 20th century 18ct gold, ruby and diamond 'feather' motif bracelet.

Estimated total diamond weight 0.15ct.

Length 17.5cms. 66.7gms.

£2,500-3,500 (plus 30% BP*)

474 A 1970s 18ct gold single-cut diamond bracelet, by Kutchinsky.

Estimated total diamond weight 1.35cts.

Hallmarks for London, 1979. Length 18.1cms. 26.7gms.

£3,000-4,000 (plus 30% BP*)

475 A 1970s 18ct gold single-cut diamond necklace, by Kutchinsky.

Estimated total diamond weight 2.75cts.

Hallmarks for London, 1979, partially indistinct. Length 36.5cms.

52.3gms.

£5,000-7,000 (plus 30% BP*)



470



469



472



467



468



471



473



466



475

474

476 A pavé-set diamond bow ring, by Van Cleef & Arpels.

Estimated total diamond weight 0.10ct, G-H colour, VS clarity.
French assay marks, stamped 750. Ring size R1/2. 11.3gms.
£500-700 (plus 30% BP*)

477 A mid 20th century 18ct gold and enamel hobo rat brooch.


Length 5.6cms. 21.4gms.
£750-950 (plus 30% BP*)

478 A mid 20th century Italian 18ct gold blue and green enamel and single-cut diamond bracelet.

Estimated total diamond weight 0.25ct.
Italian marks, stamped 750. Length 18.5cms. 59.2gms.
£1,800-2,600 (plus 30% BP*)

479 A brilliant-cut diamond and emerald cabochon shishi or temple lion mask brooch.

Estimated total diamond weight 0.50ct, G-I colour, VS-SI clarity.
Stamped ZVI 18K. Length 6.4cms. 51gms.
£1,800-2,600 (plus 30% BP*)

480  A brilliant-cut diamond dress ring, with baguette-cut diamond shoulders.

Principal diamond with report 5782-2570, dated 19th July 2022, from GCS, stating 1.08cts, K colour, VVS1 clarity.
Stamped 750, partially indistinct. Ring size M. 8.5gms.
£2,500-3,500 (plus 30% BP*)

481 A brilliant-cut diamond foliate motif hinged cuff bangle.

Estimated total diamond weight 2cts.
Inner diameter 5cms. 117.6gms.
£3,500-4,500 (plus 30% BP*)

482 A brilliant-cut diamond floral dress ring, by Kutchinsky.

Estimated total diamond weight 0.70ct, G-H colour, VS1-SI1 clarity.
Stamped 750. Ring size O1/2. 15.3gms.
£2,000-3,000 (plus 30% BP*)

483 A 1960s 18ct gold pavé-set diamond stylised bird brooch, by Kutchinsky.

Estimated total diamond weight 5.65cts, G-H colour, VS clarity.
Hallmarks for London, 1962. Length 6.2cms. 34.5gms.
With maker's case.
£4,000-6,000 (plus 30% BP*)

484 A brilliant-cut diamond and blue enamel bubble motif bombé dress ring, by Kutchinsky.

Estimated total diamond weight 2cts, G-H colour, VS1-SI1 clarity.
Stamped 750. Ring size R. 26.2gms.
£5,000-7,000 (plus 30% BP*)

485 A 1970s 18ct gold diamond and malachite pendant, with malachite chain, by Kutchinsky.

Estimated total diamond weight 1.75cts, G-H colour, VS clarity.
Import and hallmarks for London, 1972.
Length of pendant 7.5cms. Length of chain 72cms. 146.5gms.
£12,000-18,000 (plus 30% BP*)



481



483



476



480



477



482



485

478



484



479



486 A 1970s 18ct gold green tourmaline and brilliant-cut diamond ring.

Green tourmaline calculated weight 2.91cts, based on estimated dimensions of 10 by 7.2 by 4.9mms.
Estimated total diamond weight 0.20ct, H-I colour, VS2-SI1 clarity.
Hallmarks for London, 1976, partially indistinct.
Ring size H1/2. 11.6gms.
£350-450 (plus 30% BP*)

487 A mid 20th century bi-colour 18ct gold citrine dress ring.

Citrine calculated weight 19.72cts, based on estimated dimensions of 20.2 by 15.2 by 11.5mms.
Stamped 18ct. Ring size L. 14.9gms.
£350-450 (plus 30% BP*)

488 A 1970s 18ct gold brilliant-cut diamond textured floral brooch.

Estimated total diamond weight 0.20ct, G-H colour, VS clarity.
Import marks for London, 1970. Length 3.8cms. 10gms.
£400-600 (plus 30% BP*)

489 A mid 20th century 9ct gold ruby and sapphire spray brooch.

Length 6.8cms. 14.2gms.
£500-700 (plus 30% BP*)

490 An enamel four-leaf clover cross pendant, with split pearl highlight.

Length of pendant 8cms. Length of chain 65cms. Weight of pendant 20.6gms.
£600-800 (plus 30% BP*)

491 An amethyst and single-cut diamond pendant.

Amethyst calculated weight 23.37cts, based on estimated dimensions of 19.5 by 15.6 by 10.7mms.
Length 4.2cms. 17.8gms.
£650-850 (plus 30% BP*)

492 A pair of amethyst and diamond textured earrings.

Amethyst estimated total weight 14.25cts, based on calculated weight of one gem.
Length 3cms. 20.1gms.
£750-950 (plus 30% BP*)

493 A mid 20th century 18ct gold old and single-cut diamond floral spray brooch.

Estimated total diamond weight 2.25cts, G-I colour, VS2-P1 clarity.
French assay marks. Length 5.2cms. 11.7gms.
£700-900 (plus 30% BP*)

494 A grey cultured pearl pendant, with bi-colour rope-twist chain.

Chain stamped Italy, 18Kt, 750.
Length of pendant 2.8cms. Length of chain 51.5cms. 26.9gms.
Cultured pearl untested for natural colour origin.
£700-900 (plus 30% BP*)

495 A late 19th century Chinese export 18ct gold jadeite jade and pierced floral buckle.

Stamped 18 and maker's mark KC.
Length 9.2cms. 34.2gms.
Jade untested for natural colour origin.
£800-1,200 (plus 30% BP*)

496 A 1970s 18ct gold diopside on quartz crystal textured pendant, with 9ct gold bar-link chain.

Pendant may be worn as a brooch.
Hallmarks for London, 1972 and import marks for London, 1973.
Length of pendant 6.2cms. Length of chain 55cms. 30.1gms.
£1,000-1,500 (plus 30% BP*)

497  A pair of pink sapphire and amethyst 'Hawaii' earrings, by Van Cleef & Arpels.

French assay marks, stamped 750.
Length 2.1cms. 12.2cms.
With maker's case.
£3,000-4,000 (plus 30% BP*)

488



493



486



490



492



491



494



496



487



489



495



497




498 A Victorian 18ct gold old-cut diamond and split pearl quatrefoil cluster ring, with grooved shoulders.

Ring size O. 4.2gms.
£120-180 (plus 30% BP*)

499 A late Victorian 18ct gold old and single-cut diamond triple cluster ring.

Estimated total diamond weight 0.65ct, H-J colour, SI-P1 clarity.
Stamped 18ct. Ring size P1/2. 3.7gms.
£120-180 (plus 30% BP*)

500  A mid 19th century gold opal and emerald bow brooch, with opal ribbon drop.


Length 5.1cms. 8.5gms.
With fitted case.
£320-420 (plus 30% BP*)

501 An Edwardian 18ct gold and platinum old-cut diamond and emerald five-stone ring.

Estimated total diamond weight 0.40ct, H-I colour, VS2-SI2 clarity.
Stamped '18ct&PT'. Ring size M. 2.6gms.
£350-450 (plus 30% BP*)

502 A late Victorian 18ct gold floral engraved locket, with split pearl and blue enamel star highlight.

Length 3.8cms. 10.1gms.
£400-600 (plus 30% BP*)

503  A mid 19th century 18ct gold garnet and foliate engraved scroll brooch, with garnet and white coral drops and swag.

Length 6.8cms. 19.5gms.
Coral untested.
£350-450 (plus 30% BP*)

504 A late 19th century Russian gold malachite bracelet.

Stamped 56, further marks.
Length 19cms. 59.2gms.
£500-700 (plus 30% BP*)

505 A late Georgian gold emerald and enamel pansy locket pendant.

Length 5cms. 10.8gms.
£600-800 (plus 30% BP*)

506 An early 20th century 'Egyptian Revival' gold and silver calibre-cut ruby, diamond and enamel 'Khepri' scarab beetle brooch.

Estimated total diamond weight 0.65ct.
Foreign marks. Length 6cms. 17.7gms.
£700-900 (plus 30% BP*)

507 A Victorian 18ct gold snake necklace, with foil-back goshenite crest and emerald eyes.


Length 40cms. 27.4gms.
£1,200-1,800 (plus 30% BP*)

508 A late Victorian 18ct gold split pearl and rose-cut diamond accent buckle motif hinged bracelet, with glazed locket interior.

Inner diameter 5.9cms. 51.1gms.
£1,500-2,000 (plus 30% BP*)

509 An ancient Viking braided gold ring, circa 950 AD.

Ring size Q. 12.3gms.
£1,800-2,600 (plus 30% BP*)

510  A mid 19th century gold foil-back green gem cannetille locket brooch, with matching earrings.

Length of brooch 6.9cms. Length of earrings 5.8cms. 22.3gms.
£2,400-3,400 (plus 30% BP*)

511 An early to mid 19th century silver and gold multifaceted emerald and rose-cut diamond cluster brooch.

Please see department for details of the emerald.
Length 1.9cms. 5.8gms.
£3,000-4,000 (plus 30% BP*)



504

500



501



499



498



508



505

506



509

502



503



507



511



510



512 A late Victorian gold pinned fly brooch, with amethyst eyes.

Length 4.4cms. 3.9gms.
£100-150 (plus 30% BP*)

513 A pair of late Victorian gold aquamarine foliate earrings.

Length 3.3cms. 3.1gms.
£150-200 (plus 30% BP*)

514 An 18ct gold brilliant-cut diamond single-stone ring.

Estimated diamond weight 0.85ct, K-L colour, VS2-SI1 clarity. Hallmarks for Birmingham, 1970. Ring size T. 7.1gms.
£300-400 (plus 30% BP*)

515 An early 20th century 18ct gold Sri Lankan sapphire single-stone ring.

Verbal from GCS, stating Sri Lanka, no heat. Sapphire calculated weight 2.51cts, based on estimated dimensions of 7.7 by 6.8 by 5.1mms. Stamped 18ct. Ring size R. 7.8gms.
£300-400 (plus 30% BP*)

516 A late Victorian gold foliate and belt motif locket.

Length 3.9cms. 12.2gms.
£500-700 (plus 30% BP*)

517 An old-cut diamond openwork bracelet.

Estimated total diamond weight 1.60cts, H-L colour, VS2-P1 clarity. Length 16.4cms. 8.9gms.
£500-700 (plus 30% BP*)

518 A late 19th century gold ruby and split pearl cross motif locket.

Length 6.2cms. 14gms.
£600-800 (plus 30% BP*)

519 A pair of 19th century Indian gold filigree, seed pearl, ruby and red paste earrings.

Length 8.3cms. 21.6gms.
£600-800 (plus 30% BP*)

520 A foil back colourless gem, ruby bead, seed pearl and red paste bead fringe collar, on adjustable fabric back cord, together with matching earrings.

Gems to include ruby beads, cultured pearl and red gem. Length of earrings 6cms. Total weight 93.2gms.
£3,500-4,500 (plus 30% BP*)

521 A 19th century 18ct gold watch key, modelled as a pistol with lion head grip.

Length 4.9cms. 3.7gms.
£100-150 (plus 30% BP*)

522 A carved Burmese ruby pistol pendant.

Length 2.1cms. 2.6gms.
£1,200-1,800 (plus 30% BP*)

523 A late Victorian 18ct gold old-cut diamond cluster ring.

Estimated total diamond weight 1.25cts, H-K colour, VS-SI clarity. Hallmarks for Birmingham, 1895. Ring size M1/2. 5.5gms.
£500-700 (plus 30% BP*)



512

516



520

514



521



513



517



522



515



519



518



523



524 A late Victorian 15ct gold garnet single-stone ring, with pierced foliate shoulders.

Hallmarks for Birmingham, partially indistinct.

Ring size O. 4gms.

£120-180 (plus 30% BP*)

525 A late Victorian 18ct gold old-cut diamond five-stone ring.

Estimated total diamond weight 0.50ct, H-I colour, VS2-SI2 clarity.

Stamped 18ct. Ring size K1/2. 3.8gms.

£120-180 (plus 30% BP*)

526 A late 19th century citrine and amethyst cluster pendant, with later surmount and tracelink chain.

Central citrine calculated weight 6cts, based on estimated dimensions of 12 by 11.9 by 7.9mms.

Length of pendant 5.9cms. Length of chain 46cms. 12.1gms.

£200-300 (plus 30% BP*)

527 A late Victorian gold carved garnet and split pearl foliate engraved brooch, with locket reverse.

Diameter 4.3cms. 17.9gms.

£250-350 (plus 30% BP*)

528 A late Victorian gold garnet locket and snake-link swag necklace.

Length 37cms. 14.4gms.

£350-450 (plus 30% BP*)

529 A late Victorian tri-colour gold Aesthetic movement locket, depicting a bird and insects amongst flowers.

Length 5.5cms. 19gms.

£350-450 (plus 30% BP*)

530 A late 19th century gold stag hunt trophy stickpin, suspending a trussed deer.

Length of suspended component 3.2cms. 9.8gms.

£320-420 (plus 30% BP*)

531 An early 20th century gold split pearl and purple paste bangle.

Inner diameter 5.5cms. 19.9gms.

£600-800 (plus 30% BP*)

532 A late Victorian 15ct gold ruby and old-cut diamond bracelet.

Estimated total diamond weight 0.25ct, H-I colour, SI2-P1 clarity.

Length 19.4cms. 16.2gms.

£1,200-1,800 (plus 30% BP*)

533 A late Victorian 18ct gold old-cut diamond three-stone ring.

Estimated total diamond weight 1.50cts, G-H colour, VS2-SI2 clarity.

Ring size S. 4.4gms.

£1,800-2,600 (plus 30% BP*)

534  A late Victorian gold cannetille and sardonyx cameo brooch, carved to depict Demeter.

Length 6.2cms. 25.4gms.

With fitted A. B. Savory & Sons case.

£1,500-2,000 (plus 30% BP*)

535  A late Victorian tri-colour gold floral locket, with geometric book-link chain.

Length of locket 6.3cms. Length of chain 48cms. 47.6gms.

With fitted case.

£2,400-3,400 (plus 30% BP*)

527



524



535



528



533



526



531



529



525



530



534



532



536 A pair of sapphire and pavé-set diamond cluster earrings.

Total diamond weight 0.66ct, stamped to metal.
Stamped 750.
Length 1cm. 3gms.
£250-350 (plus 30% BP*)

537 A sapphire and pavé-set diamond dress ring.

Sapphire calculated weight 1.55cts, based on estimated dimensions of 8 by 6.1 by 3.8mms.
Estimated total diamond weight 1.50cts, G-H colour, VS2-SI1 clarity.
Stamped 14k.
Ring size N. 8.2gms.
£500-700 (plus 30% BP*)

538 A platinum graduated sapphire three-stone ring, with brilliant-cut diamond shared surround.

Sapphire total weight 0.64ct.
Total diamond weight 0.13ct.
Hallmarks for London, 2011. Ring size M. 5.9gms.
£400-600 (plus 30% BP*)

539 A sapphire and brilliant-cut diamond pendant.

Sapphire weight 1.65cts.
Total diamond weight 0.26ct.
Stamped 750 18K. Length 2.7cms. 2.3gms.
£500-700 (plus 30% BP*)

540 A pair of 18ct gold sapphire and diamond earrings, with similarly-set detachable drop.

Sapphire total weight 2.05cts.
Total diamond weight 0.55ct.
Cluster studs with hallmarks for Birmingham. Drops stamped 750.
Length 2.5cms. 4.8gms.
£700-900 (plus 30% BP*)

541  An 18ct gold 'Happy Diamonds' ring, by Chopard.

Total diamond weight 0.38ct, estimated G-H colour, VS clarity.
Swiss convention marks. Ring size L 1/2. 11.3gms.
With maker's case and certificate of authenticity.
£500-700 (plus 30% BP*)

542  An 18ct gold 'Happy Diamonds' pendant, with chain, by Chopard.

Total diamond weight 0.38ct, estimated G-H colour, VS clarity.
Swiss convention marks.
Length of pendant 1.5cms. Length of chain 42cms. 13.1gms.
With maker's case and certificate of authenticity.
£600-800 (plus 30% BP*)

543 A moonstone, sapphire and brilliant-cut diamond pendant, with chain.

Moonstone weight 5.12cts.
Sapphire total weight 0.54ct.
Total diamond weight 0.55ct.
Stamped 750.
Length of pendant 2.6cms. Length of chain 45cms. 5.4gms.
£700-900 (plus 30% BP*)

544 A moonstone, sapphire and brilliant-cut diamond cluster ring.

Moonstone weight 6cts.
Sapphire total weight 0.48ct.
Total diamond weight 0.52ct.
Stamped Au750. Ring size N. 6.4gms.
£700-900 (plus 30% BP*)

545 A pair of 18ct gold moonstone, brilliant-cut diamond and sapphire earrings.

Moonstone total weight 11.90cts.
Total diamond weight 1.18cts.
Total sapphire weight 0.80ct.
Hallmarks for Birmingham. Length 3.5cms. 16.4gms.
£1,000-1,500 (plus 30% BP*)

546 A tanzanite and brilliant-cut diamond dress ring.

Tanzanite calculated weight 4.67cts, based on estimated dimensions of 12.6 by 9.4 by 5.7mms.
Estimated total diamond weight 0.65ct, G-I colour, VS2-P1 clarity.
Stamped 750. Ring size N. 6.3gms.
£1,500-2,000 (plus 30% BP*)

547  An 18ct gold pear-shape diamond single-stone ring, with brilliant-cut diamond openwork sides.

With report 20060037, dated 28th October 2022, from AnchorCert, stating 1.05cts, I colour, VS2 clarity.
Hallmarks for Birmingham. Ring size L1/2. 3.9gms.
£2,000-3,000 (plus 30% BP*)

544



545



539



543



547



541



542



546



538



540



537



536



548 A single-cut diamond two-row eternity ring.

Estimated total diamond weight 0.50ct.
Ring size P. 4.2gms.
£350-450 (plus 30% BP*)

549 A pair of emerald and brilliant-cut diamond floral cluster earrings.

Emeralds total weight 1.77cts, stamped to metal.
Total diamond weight 0.15ct, stamped to metal, estimated H-I colour, VS-SI clarity.
Stamped 750.
Length 1.5cms. 4gms.
£800-1,200 (plus 30% BP*)

550 A square-shape diamond ring, with diamond shoulders.

Principal diamond estimated weight 0.60ct, I-J colour, VS clarity.
Estimated total diamond weight 1ct.
Stamped 18ct. Ring size I1/2. 3.2gms.
£500-700 (plus 30% BP*)

551 An emerald and brilliant-cut diamond pendant.

Emerald weight 1.02cts.
Total diamond weight 0.26ct.
Stamped 750 18K. Length 2.7cms. 2.2gms.
£600-800 (plus 30% BP*)

552 An emerald and vari-cut diamond dress ring.

Emerald weight 2.80cts, stamped to band.
Total diamond weight 0.67ct, stamped to mount, estimated G-I colour, VS-SI clarity.
Stamped Pt900. Ring size L1/2. 7.9gms.
£700-900 (plus 30% BP*)

553 A pair of 18ct gold emerald and brilliant-cut diamond cluster earrings.

Emerald total weight 2.45cts.
Total diamond weight 1.21cts, estimated H-I colour, SI clarity.
Hallmarks for Birmingham. Length 1.3cms. 3.7gms.
£1,000-1,500 (plus 30% BP*)

554 A curb-link chain, by Chopard.

Stamped 750. Length 70cms. 45.2gms.
£1,400-2,000 (plus 30% BP*)

555 A pair of platinum old-cut diamond single-stone earrings.

Estimated total diamond weight 1.85cts, estimated J-L colour, SI2-P2 clarity.
Hallmarks for Birmingham. 3gms.
£1,500-2,000 (plus 30% BP*)

556 A platinum square-shape diamond single-stone ring, with brilliant-cut diamond line sides.

Principal diamond laser inscribed GIA1 199132370, corresponding to an online report from the GIA stating 0.91ct, F colour, SI1 clarity.
Hallmarks for Birmingham. Ring size L1/2. 4gms.
£1,800-2,600 (plus 30% BP*)

557 A platinum brilliant-cut diamond single-stone ring.

Diamond weight 1.16cts, estimated H-I colour, VS clarity.
Hallmarks for Birmingham. Ring size L1/2. 4.5gms.
£3,000-4,000 (plus 30% BP*)

558 A platinum square-shape diamond single-stone pendant.

With minireport 20059429, from AnchorCert, stating 1.52cts, I colour, VS1 clarity.
Hallmarks for Birmingham. Length 2.4gms.
£4,000-6,000 (plus 30% BP*)

559 A Colombian emerald and brilliant-cut diamond pendant, with chain.

With report 5783-983, dated 4th January 2023, stating Colombia, significant clarity enhancement, weight 7.38cts (engraved).
Total diamond weight 1.14cts.
Pendant and chain stamped Pt950.
Length of pendant 3.3cms. Length of chain 45.5cms. 9.7gms.
£4,500-6,500 (plus 30% BP*)

552



555



559



557



551



553



558



549



548



550



556



554



560 A cultured pearl and brilliant-cut diamond floral cluster ring.

Cultured pearl diameter 14.4mms.
Estimated total diamond weight 2.65cts, H-I colour, VS clarity.
Stamped 750. Ring size L. 17.8gms.
£1,800-2,600 (plus 30% BP*)

564 A pair of synthetic sapphire and rose-cut diamond floral earrings.

May be worn as brooches.
Length 2.6cms. 14.8gms.
£900-1,400 (plus 30% BP*)

561 A pair of cultured pearl and brilliant-cut diamond cluster earrings.

Cultured pearl estimated diameter 14.8mms.
Estimated total diamond weight 5cts, H-I colour, predominantly VS clarity.
Stamped 750. Diameter 2.6cms. 26gms.
£2,800-3,800 (plus 30% BP*)

565 A mid 20th century silver sapphire cabochon and old-cut diamond floral brooch.

Sapphire calculated weight 12.42cts, based on estimated dimensions of 12.6 by 11 by 8.3mms.
Estimated total diamond weight 5cts, H-L colour, SI1-P2 clarity.
Length 4.5cms. 15.9gms.
£2,200-3,200 (plus 30% BP*)

562 An aquamarine and vari-cut diamond geometric pendant, with chain.

Aquamarine calculated weight 52.19cts, based on estimated dimensions of 25.8 by 22.3 by 11.5mms.
Length of pendant 4.5cms. Length of chain 43cms. 18.3gms.
£2,800-3,800 (plus 30% BP*)

566 A mid 20th century gold powder compact, with sapphire cabochon grip, by Cartier.

Signed Cartier Paris.
French assay marks. Length 8cms. 179gms.
£5,000-7,000 (plus 30% BP*)

563 A ruby cabochon and brilliant-cut diamond accent necklace, by Van Cleef & Arpels.

Estimated total diamond weight 1.35cts, G-H colour, VS clarity.
French assay marks, stamped 750. Length 41.5cms. 20.2gms.
£2,800-3,800 (plus 30% BP*)

567 An early 20th century 18ct gold bi-colour lattice mesh purse, with sapphire cabochon clasp.

Stamped 18K. Length (excluding handle) 16.5cms. 216.1gms.
£6,500-8,500 (plus 30% BP*)



567

568 A pair of Georgian 12ct gold foil back garnet earrings.

Length 7.7cms. 18.9gms.
£200-300 (plus 30% BP*)

569 A late 19th century 9ct gold glass intaglio ring, believed to depict Zeus.

Ring size W. 13.2gms.
£600-800 (plus 30% BP*)

570 A black opal, old and single-cut diamond pierced geometric ring.

Signed JoAq. Engraved 850 Plat. Ring size N. 6.1gms.
£1,000-1,500 (plus 30% BP*)

571 A mid 20th century 18ct gold sapphire, ruby and circular-cut diamond phoenix or bird-of-paradise brooch.

Sapphire calculated weight 3cts, based on estimated dimensions of 10.5 by 8.2 by 3.7mms.
French assay marks. Length 5cms. 7.8gms.
£1,200-1,800 (plus 30% BP*)

572 An aquamarine single-stone ring.

Aquamarine calculated weight 18.97cts, based on estimated dimensions of 20.3 by 14.3 by 8.9mms.
Ring size J1/2. 10.3gms.
£1,400-2,000 (plus 30% BP*)

573 A vari-cut diamond and onyx geometric dress ring.

Estimated total diamond weight 0.45ct, G-I colour, VS2-P1 clarity.
Stamped 950. Ring size M1/2. 5.1gms.
£1,500-2,000 (plus 30% BP*)

574 A sapphire and diamond geometric ring.

Signed JoAq.
Principal sapphire weight 3.18cts.
Total non-principal sapphire weight 0.60ct.
Total diamond weight 0.07ct.
Engraved 850 PLAT. Ring size M. 4.7gms.
£1,500-2,000 (plus 30% BP*)

575 A portrait miniature necklace, with rose-cut diamond floral garland surround and old-cut diamond drop and surmount.

Estimated total old-cut diamond weight 0.50ct, G-H colour, VS-SI clarity.
Length of drop 6.8cms. Length of chain 45cms. 14.8gms.
£2,000-3,000 (plus 30% BP*)

576 An early 20th century 18ct gold snake ring, each with pear-shape diamond crest.

Estimated total old-cut diamond weight 1.05cts, G-H colour, VS-SI clarity.
Stamped 18. Ring size W. 14.9gms.
£3,000-4,000 (plus 30% BP*)

577 A ruby cabochon and old-cut diamond three-stone ring.

Ruby calculated weight 6.43cts, based on estimated dimensions of 10.8 by 9.2 by 6mms.
Estimated total diamond weight 1.60cts, H-J colour, P1 clarity.
Ring size P. 5.2gms.
£4,500-6,500 (plus 30% BP*)

578 A mid 20th century platinum vari-cut diamond geometric bracelet.


Estimated total diamond weight 14cts, H-J colour, VS2-P2 clarity.
Length 17.4cms. 57.5gms.
£6,000-8,000 (plus 30% BP*)

579 A ruby and tapered baguette-cut diamond dress ring.

Ruby estimated dimensions of 12.3 by 9 by 2.4mms.
Estimated total diamond weight 2.25cts, G-I colour, predominantly VS clarity.
Stamped 750. Ring size N. 6.8gms.
£5,000-7,000 (plus 30% BP*)

580  A Colombian emerald and fancy-shape diamond ring.

With report 18050150, dated 28th May 2018, from Gübelin, stating 5.03cts, Colombia, insignificant clarity enhancement.
Estimated total diamond weight 2cts, H-I colour, predominantly VS clarity.
Ring size M. 5.8gms.
£15,000-20,000 (plus 30% BP*)

581  A brilliant-cut diamond single-stone ring, with tapered baguette-cut diamond shoulders.

With report 180000159743, dated 24th October 2018, from HRD Antwerp, stating 5.23cts, E colour, SI2 clarity.
Ring size P. 4.9gms.
£50,000-70,000 (plus 30% BP*)

576



573



571



574



570



580



575



572



581



568



569



577



579



578



582 A pair of late Victorian silver and gold, sapphire and rose-cut diamond cluster earrings.

Diameter of cluster 0.9cm. 2gms.
£80-120 (plus 30% BP*)

583 An Edwardian 18ct gold graduated sapphire three-stone ring, with diamond spacers.

Central sapphire calculated weight 0.46ct, based on estimated dimensions of 5 by 4.7 by 2.1mms.
Hallmarks for Chester, 1903. Ring size J. 2.8gms.
£150-200 (plus 30% BP*)

584  A late 19th century gold sapphire and old-cut diamond hinged bangle.

Principal sapphire calculated weight 0.58ct, based on estimated dimensions of 4.5 by 4.3 by 3.2mms.
Estimated total diamond weight 0.30ct, Inner diameter 5.5cms. 10.1gms.
With fitted Goldsmiths & Silversmiths case.
£180-260 (plus 30% BP*)

585 An early 20th century 18ct gold graduated ruby and old-cut diamond five-stone ring.

Principal ruby calculated weight 0.27ct, based on estimated dimensions of 4 by 3.5 by 2.1mms.
Estimated total diamond weight 0.25ct, I-J colour, SI clarity.
Ring size L1/2. 2.5gms.
£150-200 (plus 30% BP*)

586 A late Victorian 18ct gold old-cut diamond five-stone ring.

Estimated total diamond weight 0.55ct, G-I colour, VS clarity.
Stamped 18. Ring size K. 3.3gms.
£200-300 (plus 30% BP*)

587 A 19th century gold emerald and split pearl cross motif locket, with later 14ct gold chain.

Chain with hallmarks for Sheffield.
Length of locket 3.7cms. Length of chain 45cms. 10.8gms.
£300-400 (plus 30% BP*)

588 An early 20th century gold multi-hue sapphire, garnet and further gem-set fringe necklace.

Length 40.4cms. 11.7gms.
£450-650 (plus 30% BP*)

589 An early 20th century 15ct gold old-cut diamond marquise-shape cluster ring, with foliate shoulders.

Estimated total diamond weight 1ct, G-I colour, VS2-P1 clarity.
Portuguese marks. Ring size M. 3.5gms.
£900-1,400 (plus 30% BP*)

590 An early 20th century old-cut diamond three-stone ring.

Estimated total diamond weight 1.40cts, I-J colour, VS clarity.
Ring size M. 3.3gms.
£1,000-1,500 (plus 30% BP*)

591 An early to mid 20th century gold and platinum old-cut diamond cluster ring.

Estimated total diamond weight 1.50ct, H-J colour, predominantly SI1-P1 clarity.
Ring size I. 4.3gms.
£1,000-1,500 (plus 30% BP*)

592 A mid 20th century silver and 9ct gold old-cut diamond and sapphire bead floral brooch.

Estimated total diamond weight 3.50cts, G-J colour, VS2-P1 clarity.
Length 6.4cms. 39.5gms.
£1,500-2,000 (plus 30% BP*)

593 A late Victorian silver and gold old and rose-cut diamond star brooch.

Estimated total diamond weight 1.75cts, G-K colour, VS2-P1 clarity.
Diameter 3.7cms. 7.6gms.
£3,000-4,000 (plus 30% BP*)



592



588



591



587



584



589



583



593



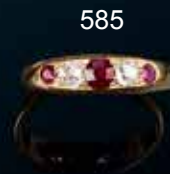
590



582



586



585

594 A late Victorian silver and gold turquoise and rose-cut diamond witches heart brooch.

Length 1.9cms. 2gms.
£100-150 (plus 30% BP*)

595 An early 20th century 18ct gold graduated turquoise three-stone ring, with old-cut diamond spacers.

Estimated total diamond weight 0.10ct.
Ring size O. 3.7gms.
£150-200 (plus 30% BP*)

596 A late Victorian 18ct gold graduated old-cut diamond five-stone ring.

Estimated total diamond weight 0.75ct, H-I colour, VS-SI clarity.
Hallmarks for London, 1897. Ring size R. 4.1gms.
£150-200 (plus 30% BP*)

597 A late Victorian 15ct gold sapphire and old-cut diamond marquise-shape ring.

Sapphire calculated weight 0.51ct, based on estimated dimensions of 5.4 by 4.2 by 2.4mms.
Estimated total diamond weight 0.70ct, G-I colour, VS_SI clarity.
Ring size 11/2. 3.2gms.
£200-300 (plus 30% BP*)

598 An early 20th century gold mounted enamel brooch depicting a woman, to a shell and scroll cannetille surround, with rose-cut diamond and seed pearl highlights.

French assay marks. Diameter 2.9cms. 6.8gms.
£450-650 (plus 30% BP*)

599 ✕ A late 19th century silver and 18ct gold sapphire mounted glazed locket, with painting depicting a woman and opposing skull in floral headdress, later suspended from an early 19th century gold enamel floral pin and chain.

Total length 8.8cms. 15.4gms.
£550-750 (plus 30% BP*)

600 🍷 A mid 19th century 18ct gold shell cameo brooch, carved to depict Amphitrite, together with similarly-set earrings.

Length of brooch. Length of earrings 5.6cms. 25.9gms.
With fitted Marshall & Sons, Edinburgh case.
£500-700 (plus 30% BP*)

601 An early Victorian gold turquoise snake necklace, with similarly-designed heart locket drop and garnet eyes.

Length 38.5cms. Length of snake head and drop 4.8cms. 21.4gms.
£600-800 (plus 30% BP*)

602 A late 19th century gold reverse carved and painted rock crystal floral brooch.

Austrian marks. Length 3.7cms. 11.1gms.
£750-950 (plus 30% BP*)

603 A 19th century graduated moonstone collar.

Principal moonstone calculated weight 14.64cts, based on estimated dimensions of 19.7 by 12.8 by 8.4mms.
Length 35cms. 42.6gms.
£1,500-2,500 (plus 30% BP*)

604 A late 19th century silver and gold, ruby, sapphire and old-cut diamond butterfly clip.

Estimated total diamond weight 0.40ct.
Length 3.2cms. 8.4gms.
£1,000-1,500 (plus 30% BP*)

605 An 18ct gold circular-cut diamond single-stone ring.

Estimated diamond weight 1.70cts, J-K colour, SI clarity.
Hallmarks for Birmingham, 1988. Ring size M1/2. 3gms.
£2,800-3,800 (plus 30% BP*)



603



600

594



598



595



602



599



596

605

601

597



604

606 An early 20th century 9ct gold moonstone split pearl pendant, suspended from a moonstone bead spacer trace-link chain.

Length of pendant 2.1cms. Length of chain 43cms.

£100-150 (plus 30% BP*)

607 An early 20th century 18ct gold sapphire and rose-cut diamond crossover ring.

Sapphire calculated weight 0.86ct, based on estimated dimensions of 5.8 by 5.4 by 3.3mms.

Stamped 18ct. Ring size P. 2.7gms.

£100-150 (plus 30% BP*)

608 An Edwardian 15ct gold opal pendant, with integral chain and later clasp.

Approximate dimensions of largest opal 26.8 by 12.5 by 7mms. Length of drop 6.1cms. Length of necklace 41.5cms. 6.4gms.

£180-260 (plus 30% BP*)

609 A natural pearl and pavé-set diamond drop.

Verbal from GCS, stating natural, saltwater, partially hollow.

Estimated dimensions of pearl 13.3 by 11.2 by approximately 13mms.

Estimated total diamond weight 0.80ct, G-I colour, VS-SI clarity.

Length 3.3gms. 5.8gms.

£300-400 (plus 30% BP*)

610 An Arts & Crafts gold opal mosaic and pearl necklace, attributed to Archibald Knox for Liberty & Co.

Length of main panel 4.4cms. Length 38cms. 10.8gms.

Pearls untested for natural origin.

£300-400 (plus 30% BP*)

611 An early 20th century gold chick and seed pearl egg brooch.

Length 2.9cms. 6.3gms.

£300-400 (plus 30% BP*)

612 A star sapphire cabochon and brilliant-cut diamond scalloped cluster ring.

Sapphire estimated diameter 10mms.

Estimated total diamond weight 0.70ct, H-J colour, VS2-P1 clarity.

Ring size J1/2. 3.3gms.

£400-600 (plus 30% BP*)


613  A natural pearl and old-cut diamond pendant, with chain.

With report 271848/20048445, dated 20th March 2020, from AnchorCert, stating 5.45cts, natural, saltwater.

Estimated diamond weight 0.15ct, I-J colour, SI2-P1 clarity.

Length of pendant 3.5cms. Length of chain 42cms. 5.2gms.

£1,000-1,500 (plus 30% BP*)

614  An early 20th century Art Nouveau 18ct gold openwork brooch, designed as fir tree branches, with lapis lazuli drop.

Length 6cms. 17gms.

With fitted N. Bloom & Son case.

Lapis lazuli untested for natural colour origin.

£1,400-2,000 (plus 30% BP*)

615 An Art Nouveau 18ct gold old-cut diamond and seed pearl brooch.

May be worn as a pendant.

Estimated diamond weight 0.15ct, G-H colour, SI clarity.

French assay marks. Length 4.2cms. 6.2gms.

£1,500-2,000 (plus 30% BP*)

616 An early 20th century silver and gold sapphire lover's knot and diamond anchor-link bracelet.

Length 18.5cms. 18.9gms.

£1,800-2,600 (plus 30% BP*)

617 A 19th century 18ct gold brooch, titled 'L'odorat', depicting a woman and two children gathering flowers, by Boucheron.

Length 3.6cms. 11.7gms.

£2,000-3,000 (plus 30% BP*)

612



613



608



609



607



610



615



616

611



614



606



617



618 A late Victorian gold semi-baroque pearl ring.

Pearl estimated dimensions of 10.3 by 7.7 by 6.2mms.
Ring size N1/2. 2.3gms.
Pearl untested for natural origin.
£100-150 (plus 30% BP*)

619 An Edwardian 9ct gold curb-link bracelet, with amethyst and split pearl floral highlights.

Import marks for London, 1907. Length 19.5cms. 6.7gms.
£120-180 (plus 30% BP*)

620 An early to mid 20th century platinum and 18ct gold old-cut diamond floral dress ring.

Estimated total diamond weight 1.20cts, H-I colour, SI1-P1 clarity.
Ring size O1/2. 3.3gms.
£150-200 (plus 30% BP*)

621 An early 20th century Arts & Crafts silver amethyst pendant on chain, by Liberty & Co.

Liberty & Co. sketchbook reference 9487.
Length of pendant 4.5cms. Length of chain 38cms. 23.4gms.
£150-200 (plus 30% BP*)

622 An Edwardian silver muzzled bear pin cushion pendant, with articulated limbs.

Maker's mark for H.V. Pithy & Co.
Hallmarks for Birmingham, 1909. Length 5.1cms. 7.8gms.
£300-400 (plus 30% BP*)

623 An Edwardian gold old-cut diamond, seed and split pearl floral brooch.

Estimated total diamond weight 0.25ct.
Length 3.4cms. 6.6gms.
£200-300 (plus 30% BP*)

624 An early 20th century gold, amethyst, split pearl and green glass brooch.

Diameter 4cms. 15.5gms.
This piece displays the colours commonly associated with the Suffragette Movement.
£200-300 (plus 30% BP*)

625 An early 20th century 15ct gold amethyst, peridot, pearl and split pearl pendant.

Principal amethyst calculated weight 4.17cts, based on estimated dimensions of 10.5 by 7.3mms.
Length 5.5cms. 6.1gms.
Pearls untested for natural origin.
This piece displays the colours commonly associated with the Suffragette movement.
£250-350 (plus 30% BP*)

626 A late 19th century silver and gold, vari-cut diamond, demantoid garnet and pearl brooch.

Principal diamond estimated weight 0.30ct, I-J colour, SI2-P1 clarity.
Length 6.5cms. 12.6gms.
Pearls untested for natural origin.
£500-700 (plus 30% BP*)

627 A mid 20th century platinum and 14ct gold cultured pearl and vari-cut diamond wreath brooch.

Estimated total brilliant-cut diamond weight 0.40ct, I-K colour, VS-SI clarity.
Diameter 2.9cms. 6.6gms.
£500-700 (plus 30% BP*)

628 An early 20th century platinum and 18ct gold amethyst necklace.

Length 40.5cms. 14.2gms.
£600-800 (plus 30% BP*)

629 An early 20th century platinum and 18ct gold old-cut diamond floral cluster ring, with replacement band.

Estimated total diamond weight 1.10cts, H-I colour, VS-SI clarity.
Stamped 18ct. Ring size O. 3.4gms.
£700-900 (plus 30% BP*)



627



624



628



625



622



621



620



623



626



629



618



619

630 An early 20th century 18ct gold old and single-cut diamond floral openwork cluster ring.

Estimated total diamond weight 0.25ct, H-I colour, SI clarity.
Stamped 18ct, indistinct. Ring size S. 2.4gms.

£100-150 (plus 30% BP*)

631 An early 20th century gold Egyptian Revival carved carnelian scarab ring.

Ring size N. 3.8gms.

£150-200 (plus 30% BP*)

632 An Indian kada or bangle, with makara head terminals to a central stylised rudraksha bead clasp, with citrine, yellow sapphire and paste highlights.

Inner diameter 5.4cms. 48.6gms.

£150-200 (plus 30% BP*)

633 A mid 20th century 18ct gold amethyst and brilliant-cut diamond cluster ring.

Estimated total diamond weight 0.50ct, G-H colour, VS-SI clarity.
Stamped 18ct. Ring size J. 3.8gms.

£150-200 (plus 30% BP*)

634 A Victorian 15ct gold split pearl and amethyst floral brooch/pendant.

Amethyst calculated weight 4.30cts, based on estimated dimensions of 10.3 by 10.1 by 7.8mms.

Length 2.7cms. 7gms.

£200-300 (plus 30% BP*)

635  An early 20th century 9ct gold peridot and split pearl pendant.

May be worn as a brooch.

Stamped 9C. Length 5.5cms. 5.5gms.

With fitted case.

£150-200 (plus 30% BP*)

636 A vari-gem floral dress ring.

Gems to include amethyst and peridot amongst others.

Stamped 585.

Ring size N. 8.5gms.

£200-300 (plus 30% BP*)

637 A pair of mid 20th century gold jade earrings, with Chinese character accent.

Diameter 2.7cms. 14.7gms.

Jade untested for natural colour origin.

£300-400 (plus 30% BP*)

638 An early 20th century 15ct gold amethyst and old-cut diamond foliate drop pendant, with integral chain.

Estimated total diamond weight 0.10ct.

Clasp stamped 15ct.

Length of drop 4.5cms. Length of necklace 38.7cms. 7.9gms.

£200-300 (plus 30% BP*)

639 An Edwardian gold peridot and rose-cut diamond négligée necklace.

Principal peridot calculated weight 4.13cts, based on estimated dimensions of 11.7 by 7.4 by 5.5mms.

Length of drop 4.7cms. Length of necklace 40.3cms. 6.7gms.

£300-400 (plus 30% BP*)

640 A graduated jade bead single-strand necklace.

Estimated diameter of beads 4.5 to 9.7mms.

Length 75cms. 59.6gms.

Please see department for details of the jadeite.

£300-400 (plus 30% BP*)

641 An Arts & Crafts enamel, turquoise, blister and dog's-tooth pearl necklace, by Edith & Nelson Dawson.

Length 44cms. 17.1gms.

£500-700 (plus 30% BP*)



632

638

634

636

633

630

639

631

641

640

637

635

642 An early 20th century 18ct gold sapphire and old-cut diamond five-stone ring.

Principal sapphire calculated weight 0.20ct, based on estimated dimensions of 4.1 by 3.4 by 1.7mms.
Hallmarks for Birmingham, 1915. Ring size K. 2.7gms.
£100-150 (plus 30% BP*)

643 An Edwardian 9ct gold seed pearl and turquoise floral cluster bracelet.

Length 17cms. 8.1gms.
£150-200 (plus 30% BP*)

644 A late Victorian 18ct gold sapphire and rose-cut diamond five-stone ring.

Maker's marks for Deakin & Francis.
Stamped 18ct. Ring size M1/2. 2.8gms.
£100-150 (plus 30% BP*)

645 An early 20th century 18ct gold heart locket.

Length 2.1cms. 3.8gms.
£150-200 (plus 30% BP*)

646 An early 20th century 18ct gold alternating graduated sapphire and circular-cut diamond five-stone ring.

Estimated total diamond weight 0.20ct.
Stamped 18ct. Ring size O. 3.2gms.
£150-200 (plus 30% BP*)

647 An early 20th century 15ct gold old-cut diamond three-stone brooch.

Estimated total diamond weight 0.40ct, G-I colour, SI1-P1 clarity.
Stamped 15. Length 4cms. 3.8gms.
£200-300 (plus 30% BP*)

648 An early 20th century 15ct gold shell cameo brooch with filigree surround, carved to depict a pointer hunting dog.

Length 5.6cms. 13.4gms.
£300-400 (plus 30% BP*)

649 An early 20th century 15ct gold turquoise and split pearl bracelet.

Stamped 15ct. Length 18.8cms. 14.8gms.
£350-450 (plus 30% BP*)

650 A pair of early 20th century 15ct gold alternating split pearl and turquoise line cufflinks.

Engraved 15ct. Length of cufflink face 2.2cms. 7.9gms.
£450-650 (plus 30% BP*)

651 A mid to late 19th century gold turquoise matrix necklace.

Length 46cms. 36.5gms.
£650-850 (plus 30% BP*)

652 ✕ An early 20th century gold mounted, reverse carved and painted dog brooch.

Diameter 2.4cms. 11.5gms.
£1,000-1,500 (plus 30% BP*)

653 An early 20th century 18ct gold old-cut diamond two-stone crossover ring.

Estimated total diamond weight 1.45cts, G-H colour, SI clarity.
Ring size P. 3.3gms.
£1,500-2,000 (plus 30% BP*)



654 An early 20th century 18ct gold ruby three-stone ring, with old-cut diamond spacers.

Estimated total diamond weight 0.10ct.
Stamped 18. Ring size N1/2. 2.7gms.
£100-150 (plus 30% BP*)

655 An early 20th century 15ct gold monogram stickpin for Princess Helen of Waldeck and Pymont, later Duchess of Albany.

Length of stickpin head 1.6cms. 2.1gms.
£200-300 (plus 30% BP*)

656 A late Victorian tri-colour 18ct gold Mizpah tapered band ring.

Hallmarks for Chester, 1883. Ring size N1/2. 4.5gms.
£180-260 (plus 30% BP*)

657 A late Victorian 18ct gold ring, with crimped motif.

Hallmarks for Chester, 1884. Ring size N. 5.3gms.
£200-300 (plus 30% BP*)

658 An early 20th century 9ct gold agate and tapered bead station necklace.

Stamped 9ct. Length 43cms. 33gms.
£300-400 (plus 30% BP*)

659 A late Victorian silver and gold, pearl and old-cut diamond floral cluster hinged bangle.

Estimated total diamond weight 0.40ct, H-I colour, VS2-P1 clarity.
Inner diameter 5.7cms. 8.9gms.
Pearls untested for natural origin.
£280-380 (plus 30% BP*)

660 A late 19th century 18ct gold sardonyx cameo brooch, with split pearl accents and seed pearl drop.

May be worn as a pendant.
Length 5.5cms. 13.7gms.
£500-700 (plus 30% BP*)

661 ✕ A late Georgian gold mounted portrait miniature of Rebecca Johnson, with hairwork reverse, by N. Freese.

Length 8cms. 25.8gms.
£600-800 (plus 30% BP*)

662 An early 20th century platinum and 18ct gold carved rock crystal cameo brooch, by Tiffany & Co.

Length 6.5cms. 18gms.
£900-1,400 (plus 30% BP*)

663 A late Victorian 18ct gold locket, with period 15ct gold Albert.

Length of locket (excluding chain) 3.3cms. Length of chain 35.5cms. 41.5gms.
£1,500-2,000 (plus 30% BP*)

664 A late Victorian silver and 12ct gold old-cut diamond hinged bangle.

Estimated total diamond weight 1.25cts, G-J colour, VS2-P1 clarity.
Inner diameter 5.8cms. 10gms.
£1,500-2,000 (plus 30% BP*)

665 A late 19th century 14ct gold long guard chain.

Austrian marks. Length 166cms. 87.2gms.
£2,500-3,500 (plus 30% BP*)



658



664



655



663



657



654



656



662



660

659

661

666 A late Victorian gold interwoven agate spherical stickpin.

Diameter of head 1.3cms. 3.6gms.
£100-150 (plus 30% BP*)

667 An early 20th century 14ct gold garnet signet ring.

Ring size P1/2. 7.4gms.
£200-300 (plus 30% BP*)

668 A hessonite garnet drop pendant.

Principal garnet calculated weight 7.71cts, based on estimated dimensions of 14.3 by 11.9 by 5.3mms.
Length 4.6cms. 3.3gms.
£100-150 (plus 30% BP*)

669 A slightly graduated hessonite garnet two-row rivieré necklace.

Length 54.7cms. 39.4gms.
£300-400 (plus 30% BP*)

670 A late Victorian gold citrine cannetille brooch, with locket reverse and swags.

Length 5.2cms. 24.2gms.
£250-350 (plus 30% BP*)

671 A late Victorian Scottish gold citrine cluster brooch, with engraved highlights.

Diameter 4cms. 18.1gms.
£350-450 (plus 30% BP*)

672 A 15th century Timurid carved carnelian ring, Persia.

Ring size M. 7.4gms.
Provenance The Property of a European Private Collector, mainly formed in the late 19th-early 20th Century; Christie's, London, 25 April 2001, lot 111 (part).
Private US collection acquired from the above sale.
£300-400 (plus 30% BP*)

673 A late Victorian 9ct gold green sapphire and brown garnet necklace.

Sapphire calculated weight 1.40cts, based on estimated dimensions of 6.6 by 6.5 by 4.1mms.
Length 44.5cms. 5.7gms.
£150-200 (plus 30% BP*)

674 A Victorian gold demantoid garnet and hessonite garnet fringe necklace.

Length 36.5cms. 14.7gms.
£600-800 (plus 30% BP*)

675 A 19th century chalcedony intaglio, carved to depict Ganymede, with later mount.

Length of ring head 2.6cms. Approximate ring size O. 5.2gms.
£300-400 (plus 30% BP*)

676 A late Victorian 18ct gold carnelian intaglio signet ring, carved to depict a griffin crest for the 'Tabor' family, with interwoven ribbon surround.

Ring size N1/2. 13gms.
£500-700 (plus 30% BP*)

677 A carnelian intaglio circa 1st century AD, possibly depicting two warriors before Nike, the goddess of victory, with later mount.

Ring size R. 17.6gms.
£1,500-2,000 (plus 30% BP*)



666

670

667



668



677



669

671



674

676



673



675



672



678 A pair of early to mid 19th century gold carnelian earrings, with star surmount.

Length 4.1cms. 5.5gms.
£100-150 (plus 30% BP*)

679 A late Georgian gold graduated carnelian faceted circular-link bracelet, with split pearl spacers and canneltile clasp.

Length 21cms. 16.5gms.
£100-150 (plus 30% BP*)

680 A 19th century gold golden topaz cross pendant.

Estimated total topaz weight 12cts, based on calculated weight of one gem.
Length 4.7cms. 4.9gms.
£100-150 (plus 30% BP*)

681 A 19th century gold pearl ring, with foliate engraved shoulders and grooved half-band.

Ring size Q1/2. 5.6gms.
Pearl untested for natural origin.
£200-300 (plus 30% BP*)

682 A 19th century gold pearl ring, with foliate engraved tapered band.

Ring size Q. 7.4gms.
Pearls untested for natural origin.
£250-350 (plus 30% BP*)

683 ✕ An early 20th century 18ct gold coral bead and floral filigree bar brooch.

Stamped 18K. Length 8.1cms. 7.1gms.
Coral untested for natural colour origin.
£200-300 (plus 30% BP*)

684 ✕ An early 20th century gold, seed pearl accent trace-link open necklace, with coral drop terminals.

Length 64cms. 9.1gms.
Coral untested for natural colour origin.
£180-260 (plus 30% BP*)

685 ✕ A late 19th century 18ct gold coral scalloped cluster brooch.

Diameter 4.1cms. 9.2gms.
Coral untested for natural colour origin.
£340-440 (plus 30% BP*)

686 ✕ A pair of 19th century gold canneltile earrings, with coral fringe.

Length 7.5cms. 11gms.
Coral untested for natural colour origin.
£150-200 (plus 30% BP*)

687 A 19th century 15ct gold floral filigree brooch.

Diameter 3.2cms. 7.4gms.
£250-350 (plus 30% BP*)

688 A 19th century gold canneltile brown agate brooch.

Length 5.1cms. 20.6gms.
£300-400 (plus 30% BP*)

689 A yellow sapphire and garnet cluster ring.

Sapphire calculated weight 6cts, based on estimated dimensions of 10 by 7.5mms.
Ring size P1/2. 6.2gms.
£200-300 (plus 30% BP*)

685



682



686



681



678



688



687



689



680



679

684



683



690 ✕ A 19th century slightly graduated coral bead single-strand necklace, with 15ct gold faceted barrel clasp.

Coral bead estimated length 8.6 to 5.9mms.
Length 49.4cms. 42gms.
Coral untested for natural colour origin.
£100-150 (plus 30% BP*)

691 ✕ A 19th century gold coral brooch, carved to depict a winged putto.

Length 5.4cms. 10.6gms.
Coral untested for natural colour origin.
£100-150 (plus 30% BP*)

692 ✕ A mid to late 19th century gold coral brooch, with drop fringe.

Length 6.4cms. 17.7gms.
With fitted case by Luigi Casalta, Naples.
Coral untested for natural colour origin.
£300-400 (plus 30% BP*)

693 ✕ An early to mid 19th century gold mounted carved coral demi parure, consisting of bracelet, brooch and two links, each with floral theme, the brooch with bird accent.

Length of bracelet 21.8cms. Length of brooch 7.5cms.
Length of links 4.5 to 5cms. 50.1gms.
Coral untested for natural colour origin.
£450-650 (plus 30% BP*)

694 A Georgian glass intaglio, depicting Kronos, harpe in hand, devouring one of his children.

A glass copy of a carnelian intaglio, by Apollonides, reference T2 in the Poniatowski collection.
Length 3.9cms. 24.8gms.
£150-200 (plus 30% BP*)

695 A Georgian glass intaglio, depicting the nymph Philyra transforming into a linden tree, with Chiron at her feet.

A glass copy of a sardonyx intaglio, by Apollonides, reference T8 in the Poniatowski collection.
Length 3.3cms. 17.4gms.
£150-200 (plus 30% BP*)

696 A Georgian glass intaglio, depicting the Princess Eurymedousa as she is seduced by Zeus in the form of an ant.

A glass copy of an amethyst intaglio, by Dioskourides, reference T60 in the Poniatowski collection. Eurymedousa is referred to as Clytoris.
Length 3.4cms. 16.3gms.
£150-200 (plus 30% BP*)

697 A Georgian glass intaglio, depicting Apollo Smintheus, with bow and mice.

A glass copy of an amethyst intaglio, by Gnaiois, reference T180 in the Poniatowski collection.
Length 3.1cms. 15gms.
£150-200 (plus 30% BP*)

698 A 19th century gold carnelian intaglio ring, carved to depict Athena with owl attribute.

Ring size K1/2. 2.1gms.
£100-150 (plus 30% BP*)

699 A 19th century gold carnelian intaglio pendant, carved to depict Zeus, Poseidon and Hades in profile.

Length 4.4cms. 11.7gms.
£200-300 (plus 30% BP*)

700 A 19th century Revivalist 18ct gold garnet intaglio ring, possibly depicting Augustus.

Ring size M1/2. 4.2gms.
£150-200 (plus 30% BP*)

701 A late Georgian gold carnelian intaglio of Hebe feeding Zeus as an eagle, by William Brown. Length 2.9cms. 7gms.

This is very similar to engraving No. 1307 from the Tassie collection.
£1,000-1,500 (plus 30% BP*)



694



697



696



695



692



691



701



698



700



699

690



693



Fellows

Established 1876



Dates for your diary...

Don't miss our flagship auctions in 2023.

Fine Jewellery

15th June
17th August
12th October
30th November

The Luxury Watch Sale

18th May
13th July
14th September
16th November

Fellows

Established 1876

IMPORTANT NOTICES FOR PURCHASERS

IMPORTANT NOTICE TO PROSPECTIVE BUYERS OF GEMSTONES/JEWELS

We recommend that you view any items you intend to purchase as refunds will not be given for buyer's remorse. This doesn't affect your statutory rights.

Notes 1 - Coloured Gemstones

Purchasers are advised that whilst great care has been taken in the examination of gemstones, it is not possible to test every gemstone within the constraints of time and equipment available outside of laboratory conditions. Any gemstone not provided with a laboratory report has been assessed by Fellows within the limitations of any mounting and an opinion has been given where possible.

Historically, many coloured gemstones have been subjected to a variety of treatments designed to enhance their appearance. Certain enhancement methods, such as heating, are routinely used to alter aspects of rubies, sapphires, and other gemstones. Oiling is often undertaken to enhance the clarity of emeralds. The international jewellery trade has generally accepted these and other enhancement methods. Some treatments are permanent whereas others may only be semi-permanent, possibly requiring further re-treatment in order to retain their appearance.

Because of the widespread variety of treatments within the jewellery industry, prospective purchasers should assume that all gemstones will have been treated unless statements are made to the contrary. Gemmological reports from internationally recognised Gemmological Laboratories will be noted in the item description where available.

Note 2 - Diamonds

Advancements in technology have led to some diamonds being treated in a number of ways, all designed to improve their appearance or alter their colour. Processes include but are not necessarily limited to: fracture filling, laser drilling, a combination of drilling and filling, HPHT treatment, irradiation and various coatings. Buyers are also alerted to the fact that synthetic diamonds are now produced in large quantities. Whilst every effort is made to identify or disclose treated and synthetic goods, it is not possible for Fellows to guarantee that all diamond set lots do not contain such material.

Fellows do not knowingly offer treated diamonds for sale, unless a gemmological opinion disclosing the type of treatment has been obtained and the treatment would be stated within the item description.

Note 3 - Weights and Measures

Estimated Diamond weights, colours and clarities (see Notes on Diamond Grading terms opposite) given by Fellows are intended as guides for prospective purchasers, with the given limitations of mounts and settings, and are opinions only, not guaranteed by Fellows.

Weights of coloured gemstones offered are extrapolated on the estimated dimensions, using trade standard formulae. Due to the traditional cutting techniques for coloured gemstones it is possible there may be discrepancy between the stated estimate and the unmounted weight.

Fellows uses a Thermo Scientific Nitron Handheld XRF Analyser to test metals. This technology is limited to examining metal to a depth of approximately 8 microns. Fellows does not guarantee the standard of gold or platinum unless an item is hallmarked. Results from electronically tested items should only be used as a guide and with caution, as false readings are possible.

Lengths and weights provided are estimates only.

The information stated in reports is the opinion of the respective laboratory and is not necessarily the opinion of Fellows auctioneers.

Note 4 - Condition Reports

Statements in the catalogue regarding the condition of lots in this sale may appear in the description, however, the absence of such a reference does not imply a lack of damage or wear, or lack of any further faults within the piece.

Please note that Fellows offer condition reports on almost every lot offered. Our condition reports are the opinion of Fellows and should only be referenced as a guide. We highly recommend that a prospective buyer views in person or sends a representative to satisfy themselves to the condition, originality and suitability of a piece(s) before bidding.

Our lots are almost exclusively antique or secondhand and as such should be expected to have small signs of wear and use commensurate with the age of the piece.

Some jewellery sales will also have a condition report banding scale which applies as follows:

A

No obvious faults other than wear in keeping with age and use.

B

Minor faults. There may be abrasion and/or small nicks to gemstones. General moderate wear from use possibly including but not necessarily limited to small dents and deep scratches. The piece may have been altered from its original design but to a reasonable standard.

C

Faults. Gemstones may be noticeably chipped along with abrasion and nicks. Non-principal gems may be deficient. The piece may have noticeable dents/tears or small losses that affect the overall appearance of the design. The piece may have had alterations from its original design that may be apparent under scrutiny.

D

Significant faults. Gemstones may be deficient, chipped or otherwise damaged. The piece may require attention before it is wearable, pins or clasps may be broken. There may be significant dents, tears, losses or alterations to the metal. The piece may have had alterations from its original design that are readily apparent.

E

At Fault. Gems will be damaged and/or deficient. Noticeable damage. The piece is unwearable.

Diamond Grading Terms

DIAMOND COLOUR

GIA	OLD WORLD TERMS	EXPLANATION	GIA	OLD WORLD TERMS	EXPLANATION
D	Finest White (Jager)	Colourless	K	Silver Cape (Top Cape)	Traces of colour. Small stones in this range will 'face up' colourless when mounted but larger stones will be tinted.
E	Finest White (River)	Colourless	L	Silver Cape (Top Cape)	Traces of colour. Small stones in this range will 'face up' colourless when mounted but larger stones will be tinted.
F	Fine White (River)	Colourless	M	Light Cape (Cape)	Traces of colour. Small stones in this range will 'face up' colourless when mounted but larger stones will be tinted.
G	Fine White (Top Wesselton)	Near Colourless: diamonds 'face up' colourless. Slight traces of colour will not be apparent in the mounted stones to other than the trained eye.	N	Light Cape (Low Cape)	Diamonds graded N through Z+ display a yellowish tint even to the untrained eye.
H	White (Top Wesselton)	Near Colourless: diamonds 'face up' colourless. Slight traces of colour will not be apparent in the mounted stones to other than the trained eye.	P	Cape O - R (Very Light Yellow)	Diamonds graded N through Z+ display a yellowish tint even to the untrained eye.
I	White (Top Wesselton)	Near Colourless: diamonds 'face up' colourless. Slight traces of colour will not be apparent in the mounted stones to other than the trained eye.	Z	Cape R - Z (Very Light Yellow)	Diamonds graded N through Z+ display a yellowish tint even to the untrained eye.
J	Top Silver (Top Wesselton)	Near Colourless: diamonds 'face up' colourless. Slight traces of colour will not be apparent in the mounted stones to other than the trained eye.	Z+	Fancy Yellow	Diamonds graded N through Z+ display a yellowish tint even to the untrained eye.

DIAMOND CLARITY

GIA	OLD WORLD TERMS	EXPLANATION	GIA	OLD WORLD TERMS	EXPLANATION
IF	Internally Flawless	No inclusions visible with a 10x lens even to an experienced grader.	S11 & S12	Slightly Included	Noticeable inclusions visible with a 10x lens.
VVS1 & VVS2	Very Very Slightly Included	Minute inclusions, which are difficult, even for experienced graders, to see with a 10x lens.	I1, I2 & I3	Pique 1, 2 & 3	Obvious inclusions, may be visible to the unaided eye, face up. In I3 they may affect the stone's durability.
VS1 & VS2	Very Slightly Included	Minor inclusions, observable with effort with a 10x lens.			

Our lots are almost exclusively antique or secondhand and as such should be expected to have small signs of wear and use commensurate with the age of the piece.

Some jewellery sales will also have a condition report banding scale which applies as follows:

A

No obvious faults other than wear in keeping with age and use.

B

Minor faults. There may be abrasion and/or small nicks to gemstones. General moderate wear from use possibly including but not necessarily limited to small dents and deep scratches. The piece may have been altered from its original design but to a reasonable standard.

C

Faults. Gemstones may be noticeably chipped along with abrasion and nicks. Non-principal gems may be deficient. The piece may have noticeable dents/tears or small losses that affect the overall appearance of the design. The piece may have had alterations from its original design that may be apparent under scrutiny.

D

Significant faults. Gemstones may be deficient, chipped or otherwise damaged. The piece may require attention before it is wearable, pins or clasps may be broken. There may be significant dents, tears, losses or alterations to the metal. The piece may have had alterations from its original design that are readily apparent.

E

At Fault. Gems will be damaged and/or deficient. Noticeable damage. The piece is unwearable.

Fellows

Established 1876

Sale Results For Fine Jewellery : 09/02/2023

1	£540	55	£800	122	£140	181	£260	256	£1,700
2	£700	56	£1,500	123	£420	182	£300	261	£4,500
3	£520	57	£1,700	124	£280	183	£170	263	£115,000
4	£780	58	£1,500	125	£1,200	184	£120	264	£620
5	£460	59	£3,300	126	£2,500	185	£240	265	£660
6	£880	61	£860	127	£780	186	£460	267	£2,700
7	£1,300	62	£460	128	£980	187	£130	268	£1,300
8	£780	63	£520	129	£1,400	189	£280	271	£1,600
9	£1,100	64	£780	130	£3,300	190	£300	272	£1,800
10	£760	65	£820	131	£1,800	191	£460	273	£2,300
11	£1,800	66	£620	132	£1,700	192	£2,400	275	£4,600
12	£2,600	67	£740	133	£360	193	£200	276	£900
13	£420	68	£1,400	134	£320	194	£340	279	£1,300
14	£1,100	69	£1,500	135	£260	195	£680	282	£2,800
15	£1,000	70	£2,900	136	£170	196	£3,100	283	£3,100
17	£880	73	£440	137	£200	197	£520	285	£7,400
18	£740	74	£800	138	£520	198	£780	286	£280
19	£720	75	£1,300	139	£660	199	£900	288	£1,800
20	£800	76	£1,600	140	£1,700	200	£800	289	£1,100
22	£1,600	77	£1,800	141	£760	201	£1,600	290	£1,400
23	£2,700	78	£1,400	142	£280	203	£2,200	292	£2,400
24	£8,800	79	£1,900	143	£340	204	£2,900	293	£3,100
25	£150	81	£4,600	144	£520	205	£160	294	£2,700
26	£620	88	£840	145	£320	206	£820	295	£5,200
27	£320	90	£1,500	146	£460	207	£1,300	296	£1,600
28	£360	91	£1,900	147	£400	208	£700	298	£600
29	£380	92	£2,300	148	£480	211	£1,500	299	£880
30	£320	93	£2,800	149	£420	213	£2,200	300	£920
31	£840	96	£3,800	150	£580	216	£3,300	302	£1,300
32	£480	97	£240	151	£260	217	£580	305	£1,300
33	£780	98	£420	152	£340	218	£740	308	£2,500
35	£720	99	£940	153	£740	221	£600	309	£6,800
36	£1,100	101	£500	156	£2,900	223	£1,600	311	£500
37	£400	102	£760	157	£600	224	£1,300	313	£560
38	£260	103	£1,200	158	£360	227	£2,600	314	£1,000
39	£130	105	£1,600	159	£520	228	£2,800	316	£1,200
40	£360	109	£420	160	£460	229	£620	321	£7,400
41	£680	110	£500	161	£580	230	£1,100	322	£760
42	£800	111	£420	162	£760	237	£7,100	323	£280
44	£580	112	£500	163	£560	239	£12,000	324	£420
45	£1,100	113	£340	165	£1,200	242	£980	325	£460
46	£720	114	£320	168	£3,300	245	£1,700	326	£640
47	£1,000	115	£420	169	£360	246	£1,300	327	£1,400
49	£440	116	£800	170	£720	247	£1,900	328	£360
50	£420	117	£420	171	£580	251	£620	329	£660
51	£2,200	118	£700	173	£820	252	£880	333	£8,000
52	£720	120	£5,000	175	£700	253	£820	334	£160
54	£1,600	121	£220	177	£2,300	255	£1,600	335	£280

Fellows

Established 1876

Sale Results For Fine Jewellery : 09/02/2023

336	£680	389	£400	457	£820	533	£2,100	617	£900
337	£620	390	£200	458	£1,200	537	£3,800	618	£2,000
338	£420	391	£840	461	£1,200	538	£2,100	620	£1,700
339	£660	393	£1,200	464	£1,200	539	£300	622	£1,200
340	£720	394	£380	466	£440	541	£560	623	£1,100
341	£520	395	£660	468	£780	542	£720	624	£1,200
343	£1,400	396	£920	469	£280	543	£1,200	625	£2,600
344	£1,200	399	£820	471	£800	547	£1,500	626	£2,500
345	£2,100	400	£820	475	£1,700	549	£2,100	627	£2,600
346	£110	403	£1,500	477	£2,000	550	£280	628	£1,600
347	£600	404	£4,000	479	£190	553	£480	629	£580
348	£340	405	£4,400	480	£320	555	£940	630	£130
349	£500	406	£440	481	£320	561	£5,100	631	£540
350	£620	407	£540	482	£660	562	£220	632	£680
351	£640	408	£960	483	£760	563	£500	633	£660
352	£500	409	£1,400	484	£920	564	£520	634	£1,700
353	£360	410	£2,600	485	£880	567	£1,000	635	£1,900
355	£440	411	£580	486	£1,100	568	£1,100	636	£4,500
356	£740	412	£2,200	490	£380	570	£1,000	638	£1,900
358	£180	413	£3,900	491	£500	571	£2,200	639	£660
359	£240	414	£1,400	492	£540	572	£2,000	640	£240
360	£260	416	£7,000	493	£500	574	£660	641	£340
361	£240	417	£27,000	494	£920	575	£760	642	£140
362	£540	418	£280	495	£1,500	576	£1,100	643	£320
363	£280	419	£860	496	£1,100	577	£960	644	£580
364	£300	421	£640	497	£940	578	£2,000	645	£680
365	£440	423	£1,100	502	£700	580	£3,100	646	£600
366	£480	424	£1,600	503	£480	581	£4,800	647	£680
368	£1,100	426	£3,000	504	£420	582	£4,300	648	£2,300
369	£1,800	427	£2,100	505	£580	584	£280	649	£660
370	£500	430	£580	506	£880	585	£300	651	£3,700
371	£560	431	£980	508	£740	589	£1,300	652	£920
372	£240	433	£800	509	£2,100	591	£1,900	653	£300
373	£260	434	£800	510	£1,700	593	£2,800	654	£200
374	£700	435	£980	512	£3,600	594	£400	655	£220
375	£560	436	£1,100	514	£200	595	£400	656	£460
376	£350	437	£1,800	515	£260	597	£860	657	£100
377	£780	442	£280	516	£720	598	£820	658	£300
378	£500	443	£1,100	518	£800	601	£1,800	659	£620
380	£740	444	£1,200	519	£1,400	604	£190	660	£780
381	£1,000	445	£740	520	£1,200	606	£2,100	661	£2,100
382	£420	446	£820	523	£3,500	607	£2,800	662	£1,100
383	£340	447	£980	526	£400	608	£1,200	663	£1,700
384	£420	448	£1,100	527	£720	611	£2,500	664	£12,000
385	£400	451	£1,700	528	£940	612	£1,600		
386	£560	452	£3,100	529	£1,100	613	£2,100		
387	£520	454	£520	530	£1,500	614	£3,200		
388	£360	455	£580	532	£2,400	616	£700		

Fellows

Established 1876

Live Auctions

April

The Gemstone Sale	Ends Thursday 20th from 10am
Pawnbrokers Jewellery & Watches	Thursday 20th at 11am
Jewellery & Costume Jewellery Day One	Ends Tuesday 25th from 10am
Jewellery & Costume Jewellery Day Two	Ends Wednesday 26th from 10am
Bags of Fashion & Costume Jewellery	Ends Thursday 27th from 10am

May

Jewellery Day One	Ends Wednesday 3rd from 10am
Jewellery Day Two	Ends Thursday 4th from 10am
Pawnbrokers Jewellery & Watches	Thursday 4th at 11am
The Designer Collection	Ends Thursday 11th from 10am
Jewellery Day One	Ends Tuesday 16th from 10am
Jewellery Day Two	Ends Wednesday 17th from 10am
The Luxury Watch Sale	Thursday 18th at 10am
Pawnbrokers Jewellery & Watches	Thursday 18th at 11am
Silver, Coins & Medals	Ends Wednesday 24th from 10am
Antiques, Fine Art & Collectables	Ends Thursday 25th from 10am

** Please note that these auctions are timed sales hosted by Fellows Live, more information can be found on our website.

Dates are subject to change, please check the website for the definitive auction list.

Fellows recommend that all bidders and buyers read our conditions of buying and buyer's premium available on our website.

For further information please contact:

Jewellery

Penelope Gilliver

penelope@fellows.co.uk

0121 212 2131

Watches

Laura Bishop

laurab@fellows.co.uk

0121 212 2131

Silver & Coins

Alison Jakeway

alisonj@fellows.co.uk

0121 212 2131

Antiques & Fine Art

Kevin Jackson

kevin@fellows.co.uk

0121 212 2131

Fellows Auctioneers Ltd

Terms and Conditions

Fellows Auctioneers Ltd carries on business, including the conduct of Auctions, on the following general conditions. This includes business with Bidders, Buyers, Vendors, consignors, users of this website, and with all those present on the Premises prior to or in connection with an Auction (all as hereinafter defined).

1. INTRODUCTION

1.1 The following defined terms are used in these Conditions :

"Auction" means any Auction conducted by Fellows, either at their premises or elsewhere (including any internet-based auctions);

"Auctioneer" means Fellows or its authorised Auctioneer, as appropriate;

"Bidder" means a bidder at an Auction, including bidders personally present at the venue and those bidding by telephone or over the internet or otherwise;

"Buyer" means the bidder whose bid was the last bid when the Auctioneer brings down the hammer;

"Conditions" means these terms and conditions;

"Consigned Property" means the items consigned by the Vendor to Fellows for offer at an Auction;

"Deliberate Forgery" means an imitation made with the intention of deceiving as to authorship, origin, date, age, period, culture or source but which is unequivocally described by Fellows in the catalogue as being the work of a particular creator and which at the date of the sale had a value materially less than it would have had if it had been in accordance with the description;

"Fellows" means Fellows Auctioneers Ltd;

"Hammer Price" means the level of bidding reached (at or above any reserve) when the Auctioneer brings down the hammer;

"Includes" means "includes but not limited to", and "including" means "including but not limited to"

"Lot" means any Consigned Property accepted by Fellows for offer at Auction;

"Stated Rate" means Fellows' published rates of commission for the time being and value added tax thereon (also available on request);

"Terms of Consignment" means any stipulated terms and rates of commission on which Fellows accepts instructions from Vendors [or their agents];

"Total Amount Due" means the Hammer Price in respect of the Lot sold together with any premium, commission, value added tax chargeable and any additional charges payable by a defaulting Buyer under these Conditions;

"Vendor" means the vendor of an item (including Consigned Property) which is submitted to Fellows for offer for sale at an Auction;

"Website" means this website;

"You" means any user of the Website.

2. WEBSITE

2.1 You may access most areas of the Website without registering your details with us. Certain areas of the Website are only open to you if you register. By accessing any part of the Website, you shall be deemed to have accepted these Conditions notice in full. If you do not accept this legal notice in full, you must leave the Website immediately.

2.2 Fellows may revise these Conditions at any time by updating this posting. You should check the Website from time to time to review the then current legal notice, because it is binding on you. Certain provisions of this legal notice may be superseded by expressly designated legal notices or terms located on particular pages at the Website.

2.3 Unless otherwise stated, the copyright and other intellectual property rights in all material on the Website (including without limitation photographs and graphical this legal notice, your permission to use the Website automatically terminates and you must immediately destroy any downloaded or printed extracts from the Website.

2.4 No part of the Website may be reproduced or stored in any other website or included in any public or private electronic retrieval system or service without Fellows' prior written permission.

2.5 Any rights not expressly granted in these Conditions are reserved.

3. VISITOR MATERIAL AND CONDUCT

3.1 Other than personally identifiable information, which is covered under our Privacy Policy, any material you transmit or post to the Website shall be considered nonconfidential and non-proprietary. Fellows shall have no obligations with respect to such material. Fellows and its designees shall be free to copy, disclose, distribute, incorporate and otherwise use such material and all data, images, sounds, text and other things embodied therein for any and all commercial or non-commercial purposes.

3.2 You are prohibited from posting or transmitting to or from the Website any material: that is threatening, defamatory, obscene, indecent, seditious, offensive, pornographic, abusive, liable to incite racial hatred, discriminatory, menacing, scandalous, inflammatory, blasphemous, in breach of confidence, in breach of privacy or which may cause annoyance or inconvenience; or for which you have not obtained all necessary licences and/or approvals; or which constitutes or encourages conduct that would be considered a criminal offence, give rise to civil liability, or otherwise be contrary to the law of or infringe the rights of any third party, in any country in the world; or which is technically harmful (including, without limitation, computer viruses, logic bombs, Trojan horses, worms, harmful components, corrupted data or other malicious software or harmful data).

3.3 You may not misuse the Website (including, without limitation, by hacking).

3.4 Each registration is for a single user only. Fellows does not permit you to share your user name and password with any other person nor with multiple users on a network.

3.5 Responsibility for the security of any passwords issued rests with you.

4. THE VENDOR

4.1 Fellows shall act as agent of the Vendor only. Any contract for the sale of a Lot will be formed between the Vendor and the Buyer.

4.2 The Vendor warrants and represents to Fellows and the Buyer that the Vendor is the sole and true owner of the Consigned Property or is properly authorised by the sole and true owner to consign it for sale and is able to transfer good and marketable title to the property free from any third party claims. The Vendor warrants and representatives that the Vendor has revealed all pertinent information that the Vendor possesses about the items, including in relation to any repairs or alterations that may have been carried out. The Vendor shall indemnify Fellows and the Buyer against any loss and expense caused by any breach of this clause 4.2.

4.3 The Vendor shall be entitled to place prior to the Auction a reserve on any Lot, being the minimum Hammer Price at which Lot may be sold. Reserves must be reasonable and Fellows may decline to offer goods which in Fellows' opinion would be subject to an unreasonably high reserve (in which case goods carry the storage and insurance charges stipulated in the terms of consignment). Reserves will not be accepted on items with a bottom estimate less than £300. The Auctioneer also reserves the right not to accept items which they deem to be unsuitable for Auction. Any estimate given shall be an opinion and is not an undertaking of any kind.

4.4 A reserve once set cannot be changed except with the written prior consent of Fellows.

4.5 Where a reserve has been placed only Fellows may bid on behalf of the Vendor.

4.6 The Vendor authorises Fellows to deduct commission from any sold items at a rate of 15% (plus VAT) on any item. Loss or liability for damage will be charged at a rate of 1.5% (plus VAT) calculated on the hammer price. A Marketing fee of £10 (plus VAT) will be charged for each Lot, if unsold we will charge a nominal handling fee of £5 (plus VAT). All items below £35 are subject to a minimum fee of £5 (plus VAT) per Lot.

4.7 Fellows will pay the Hammer Price achieved for the Lot (less its commission and applicable fees in accordance with clauses 4.6, 9.2 and 9.3), to the Vendor on receipt of payment of the Total Amount Due in full by the Buyer.

4.8 The Vendor authorises Fellows in their discretion to negotiate a sale by private treaty in the case of a Lot unsold at Auction, in which case the same charges will be payable as if the Lot had been sold at Auction.

4.9 Fellows do not themselves undertake the collection of any items but may, as the Vendor's agent, instruct a contractor on behalf of the Vendor. Fellows accepts no liability for the actions of such contractor who contracts with the Vendor direct.

4.10 Fellows disclaims all liability for items delivered to their saleroom without sufficient sale instructions, and reserves the right to make a minimum warehousing charge of [£1.00] per item per day. Unsold items are subject to the same charges if the Vendor does not remove them within a reasonable time of notification. If not removed within three weeks Fellows reserves the right to sell the items and defray charges from any net proceeds of sale or at the Vendor's expense to consign them to the local authority for disposal. Fellows disclaims any liability for default by the Buyer or for paying out the Vendor before receiving payment by the Buyer.

4.11 Subject to clause 4.9, Fellows holds all items on their premises and in their custody covered against the risks of fire, burglary and water damage on the scale of charges notified in the terms of consignment and payable by the Vendor up to the date of any sale and (in Fellows' discretion) the Buyer thereafter until collection.

4.12 The right of Fellows to bid on behalf of the Vendor is expressly reserved. The Vendor acknowledges that Lots are sold subject to the stipulations of these Conditions in their entirety and on the Terms of Consignment as notified to consignors at the time of the entry of the Lot.

4.13 The Auctioneer reserves the right to dispose of any item that in their opinion is unsaleable. Items, including electrical goods and soft furnishings, which do not comply with current legislation will not be offered at Auction.

4.14 Any items unsold after an Auction will be reoffered in a subsequent Auction at a reduced reserve to be agreed within seven days. The Auctioneer may request the removal of an item if a reduced price cannot be agreed; items not removed within 14 days will be subject to a storage charge.

4.15 A charge of 10% (plus VAT) based on the middle estimate – plus any other charges incurred – may be levied for any Lot withdrawn by the Vendor from offer at an Auction. If the item has to be returned by post (or any other method) the Vendor will be responsible for this charge. These charges are to be paid before the item is returned.

4.16 By submitting the item to Fellows for offer at Auction, the Vendor agrees to the Terms of Consignment and authorises Fellows to deduct the specified charges.

5. PUBLICITY

5.1 Any catalogue and buyer guides are provided for information only and do not form part of these Conditions. The catalogue and the buyer guides may contain additional terms and conditions.

5.2 Fellows reserve the right to use any photographs, background information, and research for publicity purposes both before and after the sale.

6. THE AUCTION

6.1 Any Auction shall be conducted at the absolute discretion of the Auctioneer.

6.2 The Auctioneer shall conduct the Auction with reasonable skill and care. For example, what constitutes a bid shall be at the absolute discretion of the Auctioneer, acting with reasonable skill and care.

6.3 The Auctioneer shall have the right to refuse any bid which does not exceed the previous bid by at least 10% or by such greater proportion as the Auctioneer shall in his or her absolute discretion direct.

6.4 Where two or more bids at the same level are simultaneously received by the Auctioneer, the Auctioneer at his absolute discretion shall determine which bid to prefer. Subject to the foregoing, where two or more bids at the same level are simultaneously received by the Auctioneer, any bid by a Bidder personally present at an Auction shall take preference over any bid submitted by telephone or over the internet. Any bid made or attempted by telephone or over the internet shall be deemed to have been made only if received by the Auctioneer.

6.5 Fellows shall have the right, at its absolute discretion, to refuse admission to

- its premises or attendance at (or participation in) any Auction by any person.
- 7. BIDDERS**
- 7.1 Bidders may be required to register their particulars. Bidders attending in person may be required to satisfy Fellows' security arrangements before entering any part of the premises to view or bid.
- 7.2 You accept full liability for all bids submitted via your My Fellows account. Once a bid has been made by a Bidder on our website, the bid can be lowered or increased up until 9am on the day of the auction. You must sign into your My Fellows account to do this and you will receive an email confirmation for any changes made. Should a bid be placed in error on the website you must contact Fellows immediately. Failure to contact Fellows before the auction takes place will result in liability for the full payment of the item.
- 7.3 Bidders using the live bidding facility on www.fellows.co.uk are agreeing to the terms and conditions of sale for Fellows. Any successful bids using the live bidding facility will be subject to the usual Buyer's Premium, plus VAT.
- 7.4 Subject to clause 6.3, the highest Bidder at the Hammer Price shall be the Buyer. Any dispute about a bid shall be settled at the Auctioneer's absolute discretion..
- 7.5 Bidders are strongly encouraged to attend the Auction in person. Bidders shall be responsible for any decision to bid for a particular Lot and shall be deemed to have carefully inspected and satisfied themselves as to its condition. Neither Fellows nor its employees or agents shall be responsible for any neglect or default in doing or failing to do so.
- 7.6 Bidders are given ample opportunities to view and inspect before any sale and prospective Buyers must satisfy themselves as to all such matters. Neither Fellows or its employees or agents nor the Vendor accept liability for the correctness of such opinions and all conditions and warranties, express, implied or statutory are hereby excluded.
- 8. THE BUYER**
- 8.1 Immediately a Lot is sold, the Buyer shall:
- (a) give to Fellows their name and address and, if requested proof of identity, and
- (b) pay to Fellows the Total Amount Due.
- 8.2 [Fellows may, at its absolute discretion, agree credit terms with the Buyer before an Auction under which the Buyer may be entitled to take possession of Lots up to an agreed value in advance of payment by a stipulated future date of the Total Amount Due.]
- 8.3 Cheques shall not be acceptable by Fellows (unless Fellows in its absolute discretion permits payment by such method) nor are third party references or credit facilities with other Auction houses. If a cheque is tendered Fellows reserves the right to instruct its bank to check the Buyer's status and account balance before exercising any discretion. Any credit arrangement must be settled at least 4 days before the relevant sale. Any permitted payment by credit card shall carry an extra charge to the Buyer of such percentage of the Total Amount Due as is displayed on the premises.
- 8.4 Any payments by a Buyer to Fellows may be applied by Fellows towards any sums owing from that Buyer to Fellows on any account whatever without regard to any directions of the Buyer or his agent, whether express or implied.
- 9. THE PURCHASE PRICE**
- 9.1 On the first £100,000 of the Hammer Price (of any individual Lot) the buyer will pay the Hammer Price and a premium of 25% (Plus VAT). The said premium not being negotiable and payable by ALL Buyers. The Vendor authorises Fellows to retain beneficially the premium payable by Buyers. Value Added Tax is charged at the rate prevailing by law at the date of sale.
- 9.2 On the excess over £100,000 of the Hammer Price (of any individual Lot), the Buyer will pay the Hammer Price and a premium of 15% (plus VAT). The said premium not being negotiable and payable by ALL Buyers. The Vendor authorises Fellows to retain beneficially the premium payable by Buyers. Value Added Tax is charged at the rate prevailing by law at the date of sale.
- 9.3 Value Added Tax on the Hammer Price is imposed on all items affixed with an asterisk thus - *.
- 9.4 Buyers using the Fellows Live bidding platform will not pay any additional commission, just the buyer's premium. Buyers will pay an additional commission charge of 4.95% + VAT of the hammer price if lots are successfully purchased online via the-saleroom. Buyers using Easy Live Auction can choose whether to pay a live bidding charge of 3% + VAT of the hammer price, or a fixed fee of £3 per sale. Buyers will pay a commission charge of an additional 5% + VAT of the hammer price if lots are successfully purchased online via Live Auctioneers.
- 9.5 Non UK or EU VAT registered buyers can have most classes of VAT refunded on their purchases - please note that auctioneers are under no obligation to provide VAT refunds, although many will offer this service. HMRC are the ultimate refunding authority. VAT refunds are subject to provision of statutory export/import documentation. HMRC have decreed that VAT on buyer's premium is always payable whether the buyer is domiciled in the UK, the EU or outside the EU or wherever the goods are to be sent. So auctioneers cannot refund VAT on buyer's premium if the goods are sold under normal VAT rules.
- 10. TITLE AND COLLECTION OF PURCHASES**
- 10.1 The ownership of any Lot purchased shall not pass to the relevant Buyer until they have made payment in full to Fellows of the Total Amount Due.
- 10.2 Buyers shall at their own risk and expense take away any Lot that they have purchased and paid for not later than 2 working days following the day of the Auction after which they shall be responsible for any removal, storage and insurance charges.
- 11. DEFAULT BY BUYER OR VENDOR**
- 11.1 As Fellows act as agent for the Vendor, Fellows is not responsible for default by the Vendor or the Buyer.
- 11.2 If any Lot is not paid for in full and taken away in accordance with these Conditions, or
- if there is any other breach of these Conditions, Fellows as agent for the Vendor shall at its absolute discretion and without prejudice to any other rights it may have, be entitled to exercise all or any of the following rights and remedies:
- (a) to proceed against the Buyer for an action for debt or damages for breach of contract;
- (b) to rescind the sale of that Lot and/or any other Lots sold by Fellows to the defaulting Buyer;
- (c) to re-sell the Lot by Auction or private treaty. If a lower Hammer Price is achieved on the re-sale than that achieved on the original sale the defaulting Buyer shall be liable for the difference (after crediting any part payment and adding any re-sale costs). Fellows will account to the Vendor for any surplus achieved on a re-sale, however, it shall only be required to account to the Vendor for any resulting deficiency in the event that it receives payment of such sum in full from the defaulting Buyer.
- (d) to remove, store and insure the Lot at the expense of the defaulting Buyer and, in the case of storage, either at Fellows' premises or elsewhere;
- (e) to charge interest at a rate not exceeding 1.5% per month on the total amount due to the extent it remains unpaid for more than 2 working days after the sale;
- (f) to retain that or any other Lot sold to the defaulting Buyer until that Buyer pays the total amount due;
- (g) to reject or ignore bids from the defaulting Buyer at future Auctions or to impose conditions before any such bids shall be accepted;
- (h) to apply any proceeds of sale of other Lots due or in future becoming due to the defaulting Buyer towards the settlement of the total amount due and to exercise a lien on any of the Buyer's property in Fellows' possession for any purpose.
- 12. DELIBERATE FORGERIES**
- 12.1 Subject to clause 12.2, any representation or statement by Fellows (including in any catalogue) as to authorship, genuineness, origin, date, age, provenance, condition or estimated selling price is a statement of opinion only. Prospective Buyers are given ample opportunities to view and inspect before any sale and prospective Buyers must satisfy themselves as to all such matters. Neither Fellows or its employees or agents nor the Vendor accept liability for the correctness of such opinions and all conditions and warranties, express, implied or statutory are hereby excluded.
- 12.2 Any Lot which proves to be a Deliberate Forgery may be returned to Fellows by the Buyer within 21 days of the Auction provided it is in the same condition as when bought, and is accompanied by particulars identifying it from the relevant catalogue description and a written statement of defects. If Fellows is satisfied from the evidence presented that the Lot is a Deliberate Forgery Fellows shall refund the money paid by the Buyer for the Lot (but not the amount of any consequential loss, damages, expenses or interest) provided that (1) if the catalogue description reflected the accepted view of scholars and experts as at the date of sale or (2) the Buyer personally is not able to transfer a good and marketable title to Fellows.
- 13. LIMITATIONS OF LIABILITY**
- 13.1 All members of the public on the premises are there at their own risk and must note the lay-out of the accommodation and security arrangements.
- 13.2 Any indemnity under these Conditions shall extend to all actions, costs, expenses, claims and demands whatsoever suffered or incurred by the person entitled to the benefit of it and Fellows declares itself to be a trustee of the benefit of every such indemnity so far as it is expressed to be for the benefit of its employees and agents.
- 13.3 While Fellows endeavours to ensure that the information on the Website is correct, Fellows does not warrant the accuracy and completeness of the material on the Website. Fellows may make changes to the material on the Website, or to the products and prices described in it, at any time without notice. The material on the Website may be out of date, and Fellows makes no commitment to update such material.
- 13.4 The material on the Website is provided "as is", without any conditions, warranties or other terms of any kind. Accordingly, to the maximum extent permitted by law, Fellows provides you with the Website on the basis that Fellows excludes all representations, warranties, conditions and other terms which, but for this legal notice, might have effect in relation to the Website.
- 14. GENERAL**
- 14.1 Any notice to any Buyer, Vendor, Bidder or viewer may be given by first class mail or email in which case it shall be deemed to have been received by the addressee 48 hours after posting or sending. All notices to Fellows must be sent in writing and email is not acceptable.
- 14.2 Any indulgence extended to any person by Fellows notwithstanding the strict terms of these Conditions or the Terms of Consignment shall affect the position at the relevant time only and in respect of that particular concession only; in all other respects these Conditions shall be construed as having full force and effect.
- 14.3 These Conditions and any disputes or claims arising out of or in connection with it or their subject matter or formation (including non-contractual disputes or claims) are governed by and construed in accordance with the law of England.
- 14.4 The parties irrevocably agree that the courts of England have exclusive jurisdiction to settle any dispute or claim that arises out of or in connection with the Agreement or its subject matter or formation (including non-contractual disputes or claims).
- 15. SHIPPING**
- 15.1 We offer a tracked and insured shipping service for all items with the exception of those in our Antiques, Silver & Collectables sales.
- 15.2 Items posted outside of the UK will incur a £30 charge
- 15.3 Within the UK, hammer totals under £100 will incur a £10 charge
- 15.4 Hammer totals over £100 will incur a £20 charge
- 15.5 Larger items, as well as those exceeding a value of £20,000 or weighing in excess of 2kg may be subject to additional fees
- 15.6 If you have recently moved or wish to have your items sent to a different address, please contact us prior to the sale. We cannot accept alternative addresses for first-time buyers and your items will be sent the address on the ID/payment card. If you pay by bank transfer we can ship to any worldwide address of your choice.

Fellows

Established 1876

Contact Information

Directors

Stephen Whittaker BA (Hons)

Jayne Whittaker

Departments

Customer Services

0121 212 5508

info@fellows.co.uk

Jessica Court
Claire Dodwell
Natalie Hawksworth
Lucian Perry
Emma Quirke
Gemma Sheldon

Photography

0121 212 2131

photography@fellows.co.uk

Claire Cleaver
Polly Shave MA (Hons)
Stephen Watton BA (Hons)

Marketing

0121 212 5500

marketing@fellows.co.uk

Harry Burgess BA (Hons)
Luke Poole BA (Hons)
Krishna Vara BA (Hons)
Alexandra Whittaker BA (Hons)
Nicola Whittaker Bsc (Hons), Cert. GA

London Office

0207 127 4198

london@fellows.co.uk

Barbara Akwa
Oliver Horner DGA
Annabel Zarandi BA (Hons)

Finance

0121 212 2131

wendy@fellows.co.uk

Wendy Butler
Janet Chow
Angela Donnelly BA (Hons) ACMA
Gemma Wilkes
Aidan Smith

Specialist Departments

Jewellery

0121 212 6303

jewellery@fellows.co.uk

Lindsay Beardmore FGA, DGA
Helen Cooper
Eve Darby MA (Hons)
Jenny Darcy BA (Hons)
Nicole Flavell-Avery BA (Hons), FGA, AJP, DGA
Helen Foster BA (Hons)
Penelope Gilliver FGA, DGA
Arianna Pedrazzoli BA (Hons), MLitt, FGA
Ben Randall BA (Hons), G.G., A.J.P.
Sarah Thorneloe BSc (Hons), DGA
Amanda Zhang FGA, Msc

Watches

0121 212 5506

watches@fellows.co.uk

Laura Bishop MA (Hons)
Kes Crockett BA (Hons)
Kain Holroyd
Sam Jeens BA (Hons)
Steven Yambo BA (Hons)

Pawnbrokers

0121 212 6308

pawnbroker@fellows.co.uk

Nathan Boot
Connor Butler
Charlie Chitty
Ross Popescu
Cordelia Porter

Antiques, Silver & Collectables

0121 212 6302

antiques@fellows.co.uk

Kevin Jackson
Alison Jakeway MA
Orla Taylor-Davies BA (Hons)

Designer Collection

0121 212 6306

thedesignercollection@fellows.co.uk

Callum Charles



Birmingham Saleroom

Situated in the heart of Birmingham's Jewellery Quarter, this office can offer viewings for all of our auctions as well as free valuations.

Visit our website or please call to arrange an appointment.

Head Office & Saleroom
Augusta House
19 Augusta Street
Birmingham
B18 6JA

Telephone: 0121 212 2131
Email: info@fellows.co.uk



London Office

Fellows' London office sits in the prestigious Mayfair area and offers valuations as well as viewings for our flagship auctions.

Visit our website or please call to arrange an appointment.

London Office
29 Charles Street
Mayfair
London
W1J 5DT

Telephone: 020 7127 4198
Email: london@fellows.co.uk



Fellows

Established 1876

Head Office & Saleroom: Augusta House | 19 Augusta Street | Birmingham B18 6JA
London Office: 29 Charles Street | Mayfair | London W1J 5DT
Tel 0121 212 2131 | Tel 020 7127 4198 | www.fellows.co.uk