

Fellows
Established 1876



Jewellery

Thursday 25th January 2024

Jewellery

Please note this auction will be ran as a timed auction

Thursday 25th January 2024
Ends from 10:00am

Viewing Times

London

Tuesday 16th January

12:00 - 19:00

Wednesday 17th January

10:00 - 16:00

Birmingham

Tuesday 23rd January

10:00 - 16:00

Wednesday 24th January

10:00 - 16:00

Thursday 25th January

8:30 - 10:00

Virtual viewings are available by request.

Please email info@fellows.co.uk to arrange your appointment.

Certificated stones,

Lot 30, 147, 157, 166, 264, 286, 293, 297, 306, 318, 391, 414, 440, 445

Featured Lots

Lots 473 & 474
(Front Cover)

Lot 483
(Back Cover)



Lots 55, 96, 97 & 106

General Information

Fellows

Established 1876

Contact the department

Ben Randall G.G.
Jewellery Co-ordinator
0121 212 2131
ben@fellows.co.uk

Jonathan Riches
Jewellery Department
0121 212 2131
jonathanr@fellows.co.uk

Virtual Viewings

Virtual viewings available by request, to book your appointment please contact info@fellows.co.uk

Fellows Live

Say goodbye to additional surcharges thanks to Fellows Live. Using our platform means you only pay the standard Buyer's Premium (plus VAT).



Free Delivery

We offer free worldwide shipping on the majority of items that we auction.



Free delivery on this auction.

Keep your eye out for this icon and be sure to read the terms and conditions.

Why Buy?

- In-depth descriptions and condition reports
- Free worldwide postage w/ free insurance
- Competitive Buyers Premium
- Guarantee authenticity
- Free live bidding
- Virtual viewings
- Sustainability

Why Sell?

- Competitive commission rates
- Free no-obligation valuations
- Worldwide customer base
- High quality photography
- Array of auction types
- Expert cataloguing

Further information

Timed Auction Bidding Increments

From	To	Increment
£0	£50	£2
£50	£200	£5
£200	£1,000	£10
£1,000	£10,000	£50
£10,000	£100,000	£500
£100,000	£1,000,000	£1,000

Important Notice

All bidders accept full liability for bids placed. Placing a bid is a legally binding obligation to buy and pay for the lot if your bid is successful. Refunds will not be given for "buyer's remorse". Please note that by submitting a bid you are agreeing to our Terms & Conditions.

Key to Symbols

- Item may have export restrictions for customers outside of the UK
- Lot comes with box.
- Lot comes with associated papers/warranty cards.
- Lot comes with report.
- Lot will carry an additional 20% VAT charge on the hammer price.



1 An early 20th century Montana sapphire and purple sapphire crossover two-stone ring.

Verbal from GCS stating USA (Montana), no heat.
Sapphire (blue) calculated weight 1.30cts, based on estimated dimensions of 6.3 by 4.1mms.
Ring size M1/2. 3.1gms.
£200-300 (plus 30% BP*)



4 A diamond and seed pearl geometric pendant, with 18ct gold chain.

Estimated total diamond weight 0.30ct.
Chain with hallmarks for Birmingham.
Length of pendant 3.1cms. Length of chain 40cms. 5.6gms.
£300-400 (plus 30% BP*)



7 An early 20th century silver and rose-cut diamond pierced floral lattice pendant.

Length 6.2cms. 12.6gms.
£80-120 (plus 30% BP*)



2 An early 20th century platinum and 14ct gold seed pearl and diamond arrow brooch.

Stamped 14K. Length 5.7cms. 3.2gms.
£150-200 (plus 30% BP*)



5 An Edwardian seed pearl lattice two-row chain, with platinum and 18ct gold seed pearl and diamond point clasp.

Length 44cms. 17.5gms.
£400-600 (plus 30% BP*)



8 An early 20th century 18ct gold and platinum vari-cut diamond pierced dress ring.

Estimated total diamond weight 0.10ct.
Stamped '18ct & Pt'. Ring size L1/2.
2.6gms.
£100-150 (plus 30% BP*)



3 An early to mid 20th century platinum pearl ring, with single-cut diamond line shoulders.

Width of pearl 7.1mms.
Ring size L1/2. 3.7gms.
Pearl untested for natural origin.
£150-200 (plus 30% BP*)



6 A graduated natural pearl single-strand necklace, with seed pearl and old-cut diamond cluster clasp.

Verbal from GCS, stating natural, saltwater.
Estimated diameter of pearls 7.5 to 2.5mms.
Estimated total diamond weight 0.35ct.
Length 46.4cms.
£200-300 (plus 30% BP*)



9 An Edwardian platinum pearl, single and rose-cut diamond openwork brooch.

Length 5.3cms. 6.5gms.
Pearls untested for natural origin.
£200-300 (plus 30% BP*)



10 An Art Nouveau gold turquoise, blister pearl and dog tooth pearl necklace.

Length 38.5cms. 6.4gms.
 Pearls untested for natural origin.
£120-180 (plus 30% BP*)



12 A late 19th century Arts & Crafts silver and gold enamel pendant, depicting a galleon, with baroque pearl fringe.

Central pearl estimated length 11mms.
 Length 6.7cms. 10gms.
 Pearls untested for natural origin.
£150-200 (plus 30% BP*)



15 An early 20th century 15ct gold moonstone brooch, by Liberty & Co.

Stamped 15ct.
 Length 3.7cms. 2.7gms.
£200-300 (plus 30% BP*)



11 An Arts & Crafts gold, blister pearl heart, opal, pink spinel and imitation pearl pendant, on chain.

Length of pendant 5.2cms. Length of chain 44cms. 5.7gms.
£90-140 (plus 30% BP*)



13 An Arts & Crafts platinum, aquamarine and old-cut diamond brooch.

Aquamarine calculated weight 6.36cts, based on estimated dimensions of 13.2 by 10.3 by 8.2mms.
 Estimated total diamond weight 0.40ct.
 Length 3.4cms. 9.1gms.
£800-1,200 (plus 30% BP*)



14 A pair of Arts & Crafts 9ct gold amethyst earrings, attributed to Bernard Instone.

Length 3.2cms. 5.9gms.
£150-200 (plus 30% BP*)



16 An Austrian Arts & Crafts silver gilt turquoise matrix and baroque pearl necklace, by the Wiener Werkstätte.

Austrian marks.
 Length of pendant panel 5.7cms. Wearable length 38cms. 15.5gms.
 With maker's case.
£200-300 (plus 30% BP*)



17 An Edwardian 15ct gold peridot and seed pearl brooch.

Diameter 2.8cms. 5.2gms.
£100-150 (plus 30% BP*)



20 An Edwardian 15ct gold amethyst and peridot spider brooch, with ruby cabochon eyes.

Stamped 15ct.
Diameter 2.8cms. 5gms.
£150-200 (plus 30% BP*)



23 An early 20th century 15ct gold peridot, pink topaz and pearl necklace.

Stamped 15ct.
Length 37.4cms. 8gms.
Pearls untested for natural origin.
£300-400 (plus 30% BP*)



18 A late Victorian gold, amethyst and seed pearl station necklace.

Length 58cms. 17.5gms.
£100-150 (plus 30% BP*)



21 An Edwardian 15ct gold amethyst and split pearl necklace.

Principal amethyst calculated weight 3.78cts, based on estimated dimensions of 12 by 9 by 5.6mms.
Stamped 15ct.
Length 40.3cms. 6.8gms.
£200-300 (plus 30% BP*)



24 An Edwardian 9ct gold pig pomander pendant.

Stamped 9ct.
Length 2.8cms. 2.9gms.
£80-120 (plus 30% BP*)



19 An early 20th century 14ct gold peridot and diamond bar brooch.

Peridot calculated weight 4.75cts, based on estimated dimensions of 10.5 by 10.5 by 5.5mms.
Length 4.7cms. 4.7gms.
£100-150 (plus 30% BP*)



22 An early 20th century gold split pearl swallow brooch.

Length 4.6cms. 4.3gms.
£150-200 (plus 30% BP*)



25 A late Victorian 15ct gold, ruby, old-cut diamond and sapphire propelling pencil.

Estimated total diamond weight 0.20ct.
Length 5.4cms. 31.1gms.
£700-900 (plus 30% BP*)



26 | A carved coral, diamond and gem-set dress ring, designed as a lizard upon a leaf.

Total diamond weight 0.45ct, stamped to mount.
 Stamped 18K 750.
 Ring size M1/2. 15.1gms.
 Coral untested for natural colour origin.
£500-700 (plus 30% BP*)



29 A pair of square-shape emerald half-hoop earrings, with baguette-cut diamond spacers and brilliant-cut diamond line sides.

Estimated total emerald weight 2.57cts, based on calculated weight of one gem.
 Estimated total diamond weight 1.25cts, G-I colour, VS-SI clarity.
 Stamped 750. Length 2cms. 8.4gms.
£600-800 (plus 30% BP*)



32 An 18ct gold brilliant-cut diamond scroll pendant, on chain.

Diamond weight 0.60ct, marked to mount, estimated H-I colour, VS clarity.
 Hallmarks for Sheffield.
 Length of pendant 3.5cms. Length of chain 42cms. 8gms.
£900-1,400 (plus 30% BP*)



27 An 18ct gold morganite and brilliant-cut diamond dress ring.

Morganite calculated weight 3.35cts, based on estimated dimensions of 9.9 by 6.3mms.
 Estimated total diamond weight 0.50ct.
 Hallmarks for London, 2016.
 Ring size M. 8.2gms.
£500-700 (plus 30% BP*)



30  A platinum oval-shape diamond and brilliant-cut diamond cluster ring.

With report 6311735571, dated 21st January 2019, from the GIA, stating 0.90ct, D colour, SI1 clarity.
 Estimated total brilliant-cut diamond weight 0.30ct.
 Hallmarks for Birmingham. Ring size K. 4.5gms.
£900-1,400 (plus 30% BP*)



33 An opal and single-cut diamond cluster ring, with hinged band.

Opal estimated dimensions 20.6 by 10.6 by 3.5mms.
 Estimated total diamond weight 0.15ct.
 Ring size O1/2. 8.7gms.
£900-1,400 (plus 30% BP*)



28 A platinum brilliant-cut diamond floral cluster ring.


Estimated total diamond weight 1.75cts, G-H colour, VS2-SI1 clarity.
 Hallmarks for Birmingham. Ring size J. 7.7gms.
£550-750 (plus 30% BP*)



31 A baguette and square-shape diamond full eternity ring.

Estimated total diamond weight 2.75cts, G-I colour, VS clarity.
 Stamped 750.
 Ring size Q. 7.3gms.
£800-1,200 (plus 30% BP*)



34  A pair of 18ct gold 'Crystal Haze' and diamond earrings, by Stephen Webster.

Estimated total diamond weight 0.60ct.
 Hallmarks for London, 1997.
 Length 2.7cms. 37.2gms.
 With maker's case.
£1,200-1,800 (plus 30% BP*)



35 A floral carved pink and green tourmaline pendant, on faceted pink tourmaline bead graduated two-row strand.

Stamped 585 to clasp.
Length of pendant 7cms.
Length of necklace 44cms. 60.9gms.
£200-300 (plus 30% BP*)



38 An 18ct gold brilliant-cut diamond five-stone ring.

Estimated total diamond weight 1.65cts, G-H colour, predominantly VS clarity. Hallmarks for London, 1999. Ring size M1/2. 4.3gms.
£1,000-1,500 (plus 30% BP*)



41 A pair of brilliant-cut diamond earrings.

Estimated total diamond weight 1ct, G-H colour, VS-SI clarity. Backs stamped K18. Length 1.6cms. 8.5gms.
£500-700 (plus 30% BP*)



36 An 18ct gold ruby and brilliant-cut diamond cluster ring.

Ruby calculated weight 0.92ct, based on estimated dimensions of 6.8 by 5.2 by 3.1mms.
Estimated total diamond weight 0.60ct, G-H colour, VS-SI clarity. Hallmarks for Edinburgh. Ring size L1/2. 3.6gms.
£400-600 (plus 30% BP*)



39 An emerald, sapphire, ruby and brilliant-cut diamond stylised floral bow ring.

Estimated total diamond weight 0.75ct, H-I colour, VS-SI clarity. Stamped 750. Ring size M. 7.1gms.
£500-700 (plus 30% BP*)



42 An enamel and foil back gem pendant, with cultured pearl drop.

Length 4.5cms. 13.8gms.
£450-650 (plus 30% BP*)



37 A limited edition 18ct gold enamel, diamond and gem-set 'Egg with Spring Bouquet', by Victor Mayer for Fabergé.

Edition 55 of 75. Hallmarks for Edinburgh, partially indistinct. Height 10cms. 164.5gms. With maker's case and certificate of authenticity.
£2,800-3,800 (plus 30% BP*)



40 A pair of emerald, ruby, sapphire and brilliant-cut diamond bow fringe earrings.

Estimated total diamond weight 2.80cts, H-J colour, VS-SI clarity. Stamped 750. Length 3.3cms. 21.9gms.
£1,500-2,000 (plus 30% BP*)



43 A diamond, 'yellow' diamond and ruby elephant brooch.

Total diamond weight 5.05cts, engraved to mount, estimated G-I and 'yellow' colour, predominantly VS clarity. Length 4.9cms. 26.1gms.
£2,200-3,200 (plus 30% BP*)



44 A mid 20th century 18ct gold diamond floral brooch, by Cartier.

Estimated diamond weight 0.10ct, G-H colour, VS clarity.
Stamped 18K.
Length 3cms. 5.6gms.
£400-600 (plus 30% BP*)



47 A 1960s 18ct gold ruby and diamond floral cluster ring, by Ben Rosenfeld Ltd.

Estimated total diamond weight 0.45ct, G-H colour, VS clarity.
Hallmarks for London, 1964.
Ring size Q. 13.3gms.
£600-800 (plus 30% BP*)



50 A 1960s textured gold diamond necklace, on box-link back-chain.

Estimated total diamond weight 2.65cts, G-H colour, VS clarity.
Length 44cms. 45.6gms.
£1,800-2,600 (plus 30% BP*)



45 A mid 20th century 18ct gold diamond and ruby cabochon floral spray brooch.

Estimated total diamond weight 0.75ct.
Stamped 750. Length 5.3cms. 15.7gms.
£600-800 (plus 30% BP*)



48 A pair of mid 20th century 18ct gold diamond and ruby earrings.

Estimated total diamond weight 1.15cts, G-H colour, VS-SI clarity.
French re-strike marks, stamped 18K Italy.
Length 2.5cms. 18.2gms.
£900-1,400 (plus 30% BP*)



51 A fish ring, with sapphire eyes.

Stamped Kt 18.
Approximate ring size L. 12.2gms.
£500-700 (plus 30% BP*)



46 A mid 20th century platinum and 18ct gold foliate carved sapphire and diamond spray brooch.

Estimated total diamond weight 0.25ct.
French assay marks.
Length 5.3cms. 23.5gms.
£1,000-1,500 (plus 30% BP*)



49 A 1960s textured 18ct gold diamond bracelet.

Estimated total diamond weight 2cts, G-H colour, predominantly VS clarity.
Import marks for Birmingham, 1968.
Length 17.5gms. 30.3gms.
£1,400-2,000 (plus 30% BP*)



52 A mid 20th century silver and gold, sapphire cabochon budgerigar motif lipstick holder, by Boucheron.

Length 6.4cms. 41.2gms.
£100-150 (plus 30% BP*)



55 A 9ct gold World War Two Irvin Caterpillar Club member brooch named to Sgt. S C Alldis set with garnet eyes.

Length 1.9cm. 1gm.
 Flight Sargent Stanley Cranston Alldis, 57 Sqdn, service number 1398378. On the 11th November 1944, he was a bomb aimer aboard an Avro Lancaster Mk 1 which took off from East Kirby at 16:54hrs for an operation against the Rhenania-Ossag oil refinery at Harburg in Hamburg. At 19:27hrs the Lancaster was hit by heavy flak. On the first impact one engine and rear turret were torn away. The remainder of the aircraft bounced and flew on for over a kilometre before finally crash landing near Beckdorf. Five of the seven occupants were killed. It is believed that he bailed the aircraft by parachute. He was taken prison (POW 1219) and held at Stalag Luft L7 Bankau near Kreuzburg, Upper Silesia.
£300-400 (plus 30% BP*)



58 A mid 20th century textured gold and emerald bracelet.

Length 17.6cms. 40.5gms.
£1,500-2,000 (plus 30% BP*)



53 A mid 20th century 14ct gold jade floral brooch.

May be worn as a pendant.
 Stamped 585 to hinged surmount.
 Length 5.6cms. 10.2gms.
 Jadeite untested for natural colour origin.
£180-260 (plus 30% BP*)



56 A 1950s 9ct gold enamel sailing yacht brooch, by J.W. Benson.

Length 3.9cms. 10.1gms.
£180-260 (plus 30% BP*)



59 A 9ct gold money clip, by Cartier.

Hallmarks for London, 1947.
 Length 5cms. 16.5gms.
£380-480 (plus 30% BP*)



54 An early to mid 20th century gold ruby geometric fob watch.

Dial signed UTI.
 French assay marks.
 Length 5.6cms. 13.8gms.
£450-650 (plus 30% BP*)



57 An 18ct gold baroque cultured pearl duck brooch, with diamond line and sapphire eyes, wearing a blue enamel boater hat and monocle, by E. Wolfe & Co.

Hallmarks for London, 2011.
 Length 3.2cms. 10.9gms.
£2,000-3,000 (plus 30% BP*)



60 A mid 20th century 18ct gold cigarette case.

Foreign marks, stamped 750.
 Personal engraving to interior dated 1947.
 Measuring 9 by 7.5cms. 143.6gms.
£4,500-6,500 (plus 30% BP*)



61 An 18ct gold brilliant-cut diamond spiral pendant, on chain, by Links of London.

Estimated total diamond weight 0.10ct.
Hallmarks for Edinburgh, 2005.
Length of pendant 5.7cms. Length of chain 49cms. 11.1gms.
£450-650 (plus 30% BP*)



63 A 'Magic' ring, by Georg Jensen.

Stamped 750.
Ring size I. 8.7gms.
£450-650 (plus 30% BP*)



66 A graduated 'Siviglia' necklace, by Marco Bicego.

Italian marks, stamped 750.
Length 91cms. 19.6gms.
With maker's case.
£700-900 (plus 30% BP*)



64 A pair of rock crystal cufflinks, by Cartier.

Stamped 750.
Length of rock crystal 2.2cms. 8.8gms.
£800-1,200 (plus 30% BP*)



67 An 18ct gold brilliant-cut diamond Heritage Collection 'Simple' egg charm, by Fabergé.

Total diamond weight 0.22ct, estimated G-H colour, VS clarity.
Hallmarks for London.
Length 2cms. 3.6gms.
With maker's case and certificate of authenticity.
£1,200-1,800 (plus 30% BP*)



62 An 18ct gold diamond 'Running' cuff bangle, by Gucci.

Estimated total diamond weight 0.15ct.
Hallmarks for Birmingham. Inner diameter 6cms. 5.2gms.
With maker's case.
£550-750 (plus 30% BP*)



65 A diamond and emerald bead-link cuff bangle, by Lani.


Estimated total diamond weight 0.60ct, G-H colour, VS clarity.
Italian marks, stamped 750.
Inner diameter 6cms. 29.4gms.
£1,000-1,500 (plus 30% BP*)



68 An 18ct gold buckle bangle, by Gucci.

Swiss convention marks. 36.2gms.
With maker's case.
£1,500-2,000 (plus 30% BP*)



69  A pavé-set diamond 'Teardrop' pendant, with chain, by Elsa Peretti for Tiffany & Co.

Estimated total diamond weight 1.80cts, G-H colour, VS clarity.
Chain stamped 750.
Length of pendant 2.2cms. Length of chain 41cms. 4.7gms.
With maker's case.
£700-900 (plus 30% BP*)



72 A calibre-cut sapphire and brilliant-cut diamond bombé ring, by Stefan Hafner.

Estimated total diamond weight 1.20cts, G-H colour, VS clarity.
Italian marks, stamped 750.
Ring size M1/2. 14.3gms.
£1,000-1,500 (plus 30% BP*)



75  A pair of diamond 'Starfish' earrings, by Elsa Peretti for Tiffany & Co.

Estimated total diamond weight 0.15ct.
Stamped 750. Length 1.6cms. 5.4gms.
With maker's case.
£550-750 (plus 30% BP*)



70  A pair of pavé-set diamond 'Teardrop' earrings, by Elsa Peretti for Tiffany & Co.

Estimated total diamond weight 2.75cts, G-H colour, VS clarity.
Stamped 750. Length 2.2cms. 8.1gms.
£1,400-2,000 (plus 30% BP*)



73 An aquamarine and brilliant-cut diamond foliate design pendant with chain.

Aquamarine weight 15.72cts.
Total diamond weight 0.27ct.
Pendant and chain stamped AU750.
Length of pendant 4cms. Length of chain 45cms.
14.8gms.
£1,800-2,600 (plus 30% BP*)



76 A brilliant-cut diamond full eternity ring, by Tiffany & Co.

Estimated total diamond weight 1.10cts, G-H colour, VS clarity.
Stamped 750. Ring size N. 3.1gms.
£900-1,400 (plus 30% BP*)



71 A curb-link bracelet, with iolite cabochon spacers.

Italian marks, stamped 750.
Length 19cms. 29gms.
£700-900 (plus 30% BP*)



74 An 18ct gold diamond bee brooch, with ruby eyes, by E. Wolfe & Co.

Total diamond weight 0.95ct, estimated G-H colour, predominantly VS clarity.
Hallmarks for London, 2020.
Length 2.5cms. 5gms.
£1,500-2,000 (plus 30% BP*)



77 A pair of 18ct gold diamond earrings, by Picchiotti.

Total diamond weight 5.02cts, F-G colour, VS clarity.
Hallmarks for London, 2002.
Length 1.7cms. 10.3gms.
£3,800-4,800 (plus 30% BP*)



78 A pair of mid to late 19th century gold agate cameo and split pearl earrings.

Length 4.9cms. 8gms.
£100-150 (plus 30% BP*)



81 A late Victorian 18ct gold alternating emerald and old-cut diamond five-stone ring.

Estimated total diamond weight 0.50ct, tinted colour, SI2-P1 clarity.
Ring size U. 3.2gms.
£120-180 (plus 30% BP*)



84 A Victorian gold and citrine dog head fob and combination watch key charm.

Length 1.7cms. 1.2gms.
£100-150 (plus 30% BP*)



79 A mid Victorian gold shell cameo brooch, carved to depict Aurora in chariot, with glazed hairwork reverse.

Length 4.9cms. 14.7gms.
£200-300 (plus 30% BP*)



82 ✕ A late Victorian 15ct gold pearl, coral and rose-cut diamond ring.

Ring size L1/2. 3.6gms.
Pearl estimated diameter 5.1mms.
Pearl untested for natural origin.
Coral untested for natural colour origin.
£120-180 (plus 30% BP*)



85 A late 19th century 15ct gold bloodstone seal, depicting a dog.

Length 2.8cms. 5gms.
£100-150 (plus 30% BP*)



80 ✦ An early to mid 19th century gold foil back rock crystal, scrolling shell and floral brooch, with similarly-designed detachable drop.

Length 6.4cms. 10.3gms.
With fitted case.
£400-600 (plus 30% BP*)



83 A late Victorian 18ct gold old-cut diamond and split pearl star brooch.

Estimated total diamond weight 0.65ct, H-K colour, VS2-P1 clarity.
Stamped 18. Diameter 4cms. 7.9gms.
£250-350 (plus 30% BP*)



86 A late Victorian 18ct gold bloodstone intaglio ring, carved to depict a lion crest and motto 'Spes Mea in Deo' for the Roper family.

Hallmarks for Birmingham, partially indistinct.
Ring size J1/2. 7.7gms.
£200-300 (plus 30% BP*)



87 A 19th century gold carnelian intaglio fob, engraved with an owl on a tree stump and motto 'I think for myself', with period split ring.

Length of fob 2.4cms. 5.5gms.
£100-150 (plus 30% BP*)



90 Victorian 9ct gold agate butterfly brooch, with enamel antennae and monogram shield.

Diameter 2.8cms. 7.4gms.
£150-200 (plus 30% BP*)



93 An early 19th century gold hessonite garnet brooch.

Diameter 2.6cms. 8.7gms.
£300-400 (plus 30% BP*)



88 A 19th century jasper cameo brooch, carved to depict Bacchus.

Length 3.6cms. 12gms.
£100-150 (plus 30% BP*)



91 A pair of Victorian gold foil back garnet cannetille earrings.

Length 2.5cms. 2.5gms.
£100-150 (plus 30% BP*)



94 A Georgian gold portrait miniature clasp component, believed to depict Stephen Fox-Strangways, by Samuel Cotes.

Length 3.5cms. 13.1gms.
£220-320 (plus 30% BP*)



89 A Georgian slightly graduated agate cabochon necklace.

Length 50.5cms. 21.9gms.
£240-340 (plus 30% BP*)



92 A Victorian 15ct gold old-cut diamond signet ring.

Estimated diamond weight 0.40ct, H-I colour, SI clarity.
Hallmarks for Birmingham, 1870.
Ring size P. 6.3gms.
£200-300 (plus 30% BP*)



95 A pair of garnet drop earrings.

Length 3.4cms. 5.3gms.
£100-150 (plus 30% BP*)



96 A Victorian rose-cut diamond and red enamel poppy brooch.

Diameter 2.4cms. 7.5gms.
£150-200 (plus 30% BP*)



99 A graduated pearl and seed pearl two-row necklace, with spring ring clasp.

Pearl estimated length range 7.1 to 2.4mms.
Length 41.5cms. 16.5gms.
Pearls untested for natural origin.
£100-150 (plus 30% BP*)



102 A pair of Victorian gold foil back garnet and split pearl earrings.

Length 4.1cms. 7gms.
£200-300 (plus 30% BP*)



97 A pair of Victorian gold rose-cut diamond and red enamel poppy earrings.

Diameter 1.9cms. 8.1gms.
£150-200 (plus 30% BP*)



100 An Edwardian 18ct gold graduated ruby three-stone and old-cut diamond spacer ring.

Principal ruby calculated weight 0.69ct, based on estimated dimensions of 5.8 by 5.3 by 2.4mms.
Estimated total diamond weight 0.15ct.
Hallmarks for Birmingham, 1903. Ring size R1/2. 3.5gms.
£200-300 (plus 30% BP*)



103 A 19th century gold carnelian Halley's comet intaglio fob.

Length 3.8cms. 12gms.
£300-400 (plus 30% BP*)



98 A Victorian 15ct gold bracelet, with split pearl and red enamel heart charm.

Marked 15 at clasp.
Length 18.5cms. 8.2gms.
£300-400 (plus 30% BP*)



101 A late Victorian gold garnet and vari-cut diamond star brooch.

Old-cut diamond estimated weight 0.25ct.
Length 2.6cms. 7.2gms.
£200-300 (plus 30% BP*)



104 A late Victorian 9ct gold necklace.

Length 100cms. 38.1gms.
£800-1,200 (plus 30% BP*)



105 An 18ct gold graduated ruby five-stone ring, with single-cut diamond spacers.

Central ruby calculated weight 0.47ct, based on estimated dimensions of 5.7 by 4 by 2.5mms.
Hallmarks for London, 1970.
Ring size O. 5.8gms.
£300-400 (plus 30% BP*)



108 A late 19th century Etruscan Revival 9ct gold amethyst fringe necklace.

Stamped 9ct. Length 41cms. 16.3gms.
£200-300 (plus 30% BP*)



111 A late Victorian gold amethyst, seed and split pearl brooch.

Amethyst calculated weight 25.78cts, based on estimated dimensions of 22.3 by 18 by 11.5mms.
Length 3.9cms. 14.1gms.
£350-400 (plus 30% BP*)



106 A late Victorian silver and gold, split pearl, ruby, sapphire and rose-cut diamond butterfly brooch.

Length 3.8cms. 7.3gms.
£450-650 (plus 30% BP*)



109 A late Victorian 18ct gold graduated opal five-stone ring, with diamond point spacers.

Stamped 18ct.
Approximate ring size M. 5.3gms.
£180-260 (plus 30% BP*)



112 A late Victorian gold old-cut diamond and blue enamel star motif brooch, with snake-link tassels.

Estimated total diamond weight H-I colour, SI2-P1 clarity.
Length 4.9cms. 10.4gms.
£400-600 (plus 30% BP*)



107 A late Victorian 15ct gold amethyst and split pearl pendant.

Amethyst calculated weight 34cts, based on estimated dimensions of 25.6 by 19.2 by 12.4mms.
Stamped 15ct.
Length 3.8cms. 12.6gms.
£150-200 (plus 30% BP*)



110 A late Victorian 9ct gold opal and diamond crescent moon brooch.

Estimated total diamond weight 0.45ct.
Length 5cms. 4.9gms.
£150-200 (plus 30% BP*)



113 An early to mid 19th century gold and foil back topaz textured foliate brooch, with similarly-designed detachable drop.

Length 7.4cms. 10.3gms.
With fitted case.
£500-700 (plus 30% BP*)



114 A ruby and brilliant-cut diamond three-stone ring.

Ruby calculated weight 0.59ct, based on estimated dimensions of 5.6 by 5.5 by 2.4mms.
Estimated total diamond weight 0.30ct, H-I colour, VS clarity.
Stamped 18ct PLAT. Ring size K. 2.3gms.
£100-150 (plus 30% BP*)



117 A circular-cut diamond full eternity ring.

Estimated total diamond weight 1ct, G-I colour, VS2-P1 clarity.
Ring size O. 3gms.
£200-300 (plus 30% BP*)



120 An early to mid 20th century platinum circular-cut diamond three-stone ring.

Estimated total diamond weight 1ct, G-H colour, VS2-SI2 clarity.
Ring size 11/2. 3.5gms.
£500-700 (plus 30% BP*)



115 A sapphire and ruby full eternity ring, with single-cut diamond hinged sides.

Estimated total diamond weight 0.50ct, G-H colour, VS clarity.
Engraved PLAT. Ring size L1/2. 5.9gms.
£200-300 (plus 30% BP*)



118 An early to mid 20th century graduated old-cut diamond five-stone ring.

Estimated total diamond weight 1.50cts, H-K colour, SI1-P1 clarity.
Stamped '18ct & PLAT'. Ring size P1/2. 3.3gms.
£120-180 (plus 30% BP*)



121 An early 20th century old-cut diamond and pearl ring, with replacement band.

Estimated total diamond weight 0.75ct. Ring size N. 10.1gms.
Pearls untested for natural origin.
£900-1,400 (plus 30% BP*)



116 An Edwardian 15ct gold butterfly wing, old-cut diamond and ruby butterfly brooch.

Hallmarks for London, 1909.
Length 4.6cms. 9.5gms.
£200-300 (plus 30% BP*)



119 An Art Deco platinum and gold old-cut diamond pierced geometric ring.

Estimated total diamond weight 0.95ct, G-I colour, VS-SI clarity.
Ring size P1/2. 4.5gms.
£350-450 (plus 30% BP*)



122 An early to mid 20th century platinum old-cut diamond single-stone ring, with diamond line sides.

Principal diamond estimated weight 1.70cts, tinted colour, VS clarity.
Stamped PLAT. Ring size L1/2. 3.8gms.
£1,400-2,000 (plus 30% BP*)



123 An early 20th century palladium and 18ct gold vari-cut diamond cluster bar brooch, by Barnet Henry Joseph.

Estimated total diamond weight 0.50ct
Stamped 18. Length 5.4cms. 3.6gms.
£100-150 (plus 30% BP*)



126 A brilliant-cut diamond full eternity ring.

Estimated total diamond weight 1.85cts,
G-I colour, VS-SI clarity.
Ring size L. 2.8gms.
£100-150 (plus 30% BP*)



129 An early 20th century aquamarine briolette drop, with platinum rose-cut diamond openwork cap.

Aquamarine calculated weight 42.38cts,
based on estimated dimensions of 39.5 by
16.3 by 12.1mms.
Length 4.5cms. 10gms.
£1,000-1,500 (plus 30% BP*)



124 A late Victorian silver and 18ct gold old-cut diamond cluster ring.

Estimated total diamond weight 0.70ct,
G-H colour, SI1-P1 clarity.
Stamped 18. Ring size Q1/2. 3.4gms.
£220-320 (plus 30% BP*)



127 An early to mid 20th century platinum and 18ct gold ruby and diamond ring.

Estimated total diamond weight 0.80ct,
G-H colour, SI1-P1 clarity.
Stamped '18ct & PLAT'. Ring size T.
4.7gms.
£600-800 (plus 30% BP*)



130 A composite early 20th century old-cut diamond pendant, on chain.

Principal diamond estimated weight
1.20cts, H-I colour, VS2-SI1 clarity.
Estimated total diamond weight 2cts.
Length of pendant 4.9cms. Length of chain
48cms. 9.4gms.
£2,200-3,200 (plus 30% BP*)



125 An 18ct gold old-cut diamond two-stone ring, with rose-cut diamond surround, by E. Wolfe & Co.

Estimated total old-cut diamond weight
1.45cts, H-I colour, SI2-P1 clarity.
Hallmarks for London, 2012.
Approximate ring size P1/2. 6.1gms.
£400-600 (plus 30% BP*)



128 A pair of silver white and white natural pearl and single-cut diamond earrings.

Verbal from GCS stating natural, saltwater
(silver white) and freshwater (white) pearls.
Estimated width of pearls 9.7 and 9.4mms.
Estimated total diamond weight 0.50ct, G-I
colour, VS-SI clarity.
Diameter 1.2cms. 5.8gms.
£600-800 (plus 30% BP*)



131 An early 20th century circular-cut diamond single-stone ring, with old-cut diamond sides.

Principal diamond estimated weight 3cts,
tinted colour, VS2-SI1 clarity.
Ring size J. 3.3gms.
£7,000-9,000 (plus 30% BP*)



132 An early 20th century platinum old-cut diamond single-stone ring.

Estimated diamond weight 1.40cts, H-I colour, SI clarity.
Ring size O. 3.2gms.
£2,000-3,000 (plus 30% BP*)



135 An early to mid 20th century platinum old and single-cut diamond brooch.

Estimated total diamond weight 3.75cts, G-I colour, VS2-P1 clarity.
Length 6.1cms. 12gms.
£1,500-2,000 (plus 30% BP*)



137 An early 20th century gold old-cut diamond single-stone ring.

Estimated diamond weight 0.45ct, H-I colour, SI clarity.
Ring size P1/2. 4.1gms.
£180-260 (plus 30% BP*)



133 A late Victorian silver and gold old-cut diamond brooch, designed as a stylised lightning cloud.

Estimated total diamond weight 5cts, H-J colour, VS2-P1 clarity.
Length 5cms. 15.8gms.
£2,500-3,500 (plus 30% BP*)



136 An early 20th century platinum and gold old-cut diamond and pearl pendant, with later chain.

May be worn as a brooch.
Estimated total diamond weight 1.65cts, H-J colour, VS2-P1 clarity.
Chain with hallmarks for Birmingham.
Length of pendant 5cms. Length of chain 46cms.
Pearls untested for natural origin.
£800-1,200 (plus 30% BP*)



138 A late Victorian 18ct gold old-cut diamond marquise-shape ring.

Estimated total diamond weight 3.90cts, G-K colour, SI2-P2 clarity.
Stamped 18ct. Ring size Q1/2. 4.5gms.
£600-800 (plus 30% BP*)



134 A Victorian silver and gold old-cut diamond conjoined hearts brooch, with pear-shape old-cut diamond highlight and cultured pearl hinged drop.

Estimated total diamond weight 2cts, H-K colour, SI1-P1 clarity.
Length 3.7cms. 6gms.
Together with a non-associated Skinner & Co. case.
£600-800 (plus 30% BP*)



139 An early 20th century 18ct gold old-cut diamond single-stone ring.

Estimated diamond weight 4cts, tinted colour, VS clarity.
Stamped 18CT.
Ring size O. 4.5gms.
£9,000-14,000 (plus 30% BP*)



140 A 19th century silver green paste rivière necklace.

Length 37.5cms. 28gms.
£100-150 (plus 30% BP*)



143 A pair of late 19th century gold earrings, with mask surmount.

Length 4.3cms. 10.4gms.
£350-450 (plus 30% BP*)



146 A Victorian 18ct gold alternating graduated emerald and old-cut diamond five-stone ring.

Principal emerald calculated weight 0.90ct, based on estimated dimensions of 6.1 by 6.1 by 3.8mms.
Estimated total diamond weight 0.75ct, I-J colour, VS clarity.
Ring size N. 4.3gms.
£500-700 (plus 30% BP*)



141 A late Victorian silver, garnet and demantoid garnet heart pendant, by Child & Child.


Length 5.2cms. 10.6gms.
£150-200 (plus 30% BP*)



144 A late Victorian 18ct gold turquoise five-stone ring, with single-cut diamond spacers.

Hallmarks for Birmingham, 1900, partially indistinct.
Ring size O. 4.7gms.
£150-200 (plus 30% BP*)



147  A late 19th century 18ct gold demantoid garnet cabochon and old-cut diamond ring.

With report 80242-33, dated 11th November 2019, from GCS, stating 2.70cts, demantoid garnet, treatment undetermined.
Estimated total diamond weight 0.35ct. Stamped 18ct. Ring size J1/2. 4gms.
£2,000-3,000 (plus 30% BP*)



142 An early 20th century gold old-cut diamond ring.

Principal diamond estimated weight 0.50ct, G-H colour, SI2-P1 clarity.
Ring size L1/2. 2.4gms.
£200-300 (plus 30% BP*)



145 A late Victorian silver and gold, demantoid garnet, rose-cut diamond and ruby fly brooch.

Length 2.7cms. 3.2gms.
£500-700 (plus 30% BP*)



148 An early 20th century platinum and 18ct gold Fancy Yellow diamond and old-cut diamond three-stone ring.

Verbal from GCS, stating natural diamond, Fancy Yellow, VS clarity.
Principal diamond estimated weight 3cts. Estimated total 'near colourless' diamond weight 1.65cts, H-I colour, VS2-SI1 clarity. Stamped 18. Ring size R. 4.5gms.
£4,000-6,000 (plus 30% BP*)



149 An Edwardian 18ct gold turquoise three-stone ring, with old-cut diamond spacers.

Estimated total diamond weight 0.15ct.
Hallmarks for London, 1908.
Ring size L1/2. 4.1gms.
£150-200 (plus 30% BP*)



152 A late Victorian 15ct gold old-cut diamond, turquoise and split pearl floral necklace.

Estimated diamond weight 0.25ct, H-I colour, SI clarity.
Stamped 15ct.
Length 40cms. 16.2gms.
£480-680 (plus 30% BP*)



155 An early 20th century 14ct gold old-cut diamond, ruby and emerald hinged bangle.

Estimated total diamond weight 0.60ct, G-H colour, SI1-P1 clarity.
Inner diameter 6cms. 12gms.
£400-600 (plus 30% BP*)



150 An early 20th century 14ct gold old-cut diamond crossover ring.

Estimated total diamond weight 0.85ct, J-K colour, SI2-P1 clarity.
Stamped 585. Ring size M. 3.5gms.
£200-300 (plus 30% BP*)



153 An Edwardian 15ct gold old-cut diamond and split pearl floral hinged bangle.

Stamped 15ct.
Inner diameter 5.9cms. 17.1gms.
£400-600 (plus 30% BP*)



156 An early 20th century 18ct gold carnelian and rose motif necklace.

French assay marks.
Length 44cms. 12.6gms.
£400-600 (plus 30% BP*)



151 An early 20th century palladium and 18ct gold old-cut diamond cluster bar brooch.

Estimated total diamond weight 0.75ct, G-H colour, VS-SI clarity.
Stamped 18ct. Length 5.8cms. 6.1gms.
£300-400 (plus 30% BP*)



154 An Edwardian 18ct gold old-cut diamond and split pearl star and fleur-de-lis pendant, with near period 15ct gold chain.

Pendant may be worn as a brooch or hair ornament. Estimated diamond weight 0.15ct, H-I colour, VS2-SI1 clarity.
Stamped 18 and 15C.
Length of pendant 5.2cms. Length of chain 42cms. 18.5gms. With fitted case.
£600-800 (plus 30% BP*)



157 A demantoid garnet and brilliant-cut diamond cluster ring.

With report 81292-35, dated 22nd December 2020, from GCS, stating demantoid garnet, treatment undetermined. Demantoid garnet weight 1.06cts, marked to band. Total diamond weight 0.41ct, estimated G-I colour, VS-SI clarity. Swedish marks, stamped 18K. Ring size N. 4.6gms.
£2,500-3,500 (plus 30% BP*)



158 A pair of late Victorian gold Etruscan Revival earrings.

Length 3.7cms. 3.7gms.
£90-140 (plus 30% BP*)



161 An Etruscan Revival gold cannetille, sapphire and split pearl hinged bangle.

Inner diameter 5.9cms. 9.6gms.
£300-400 (plus 30% BP*)



164 A late Victorian silver and gold, moonstone, rose-cut diamond and sapphire crowned heart brooch.

Length 4.3cms. 4.8gms.
£350-400 (plus 30% BP*)



159 A Victorian gold rock crystal reverse-carved and painted GB monogram heart locket, with split pearl bow surmount.

Length 5.1cms. 17gms.
£200-300 (plus 30% BP*)



162 A mid Victorian gold tassel drop, with sapphire and diamond band highlight.

Kite registration mark dated 1861.
Length 7.3cms. 14.5gms.
£500-700 (plus 30% BP*)



165 A pair of sapphire and old-cut diamond cluster earrings.

Sapphire calculated total weight 0.97ct.
Estimated total diamond weight 0.90ct, G-I colour, VS2-P1 clarity.
Length 1.1cms. 3.9gms.
£200-300 (plus 30% BP*)



160 A late Victorian Etruscan Revival gold split pearl and enamel locket.

Length 7.1cms. 13.6gms.
£300-400 (plus 30% BP*)



163 An onyx signet ring, with armorial intaglio.

Ring size T. 10.1gms.
£500-700 (plus 30% BP*)



166  A late Victorian gold graduated sapphire five-stone ring, with diamond spacers.

With report 5783-3371, dated 13th of July 2023, from GCS, stating basaltic, no heat. Central sapphire calculated weight 1.28cts, based on estimated dimensions of 6.3 by 5.7 by 3.8mm.
Ring size O. 6.6gms.
£2,000-3,000 (plus 30% BP*)



167 An early 20th century 18ct gold sapphire and diamond ring.

Central sapphire calculated weight 0.40ct, based on estimated dimensions of 4.6 by 4 by 2.6mms.

Hallmarks for Birmingham, indistinct.
Ring size P. 4.1gms.

£150-200 (plus 30% BP*)



170 A pair of Victorian Etruscan Revival gold cannetille earrings.

Length 6.7cms. 6.9gms.

£240-340 (plus 30% BP*)



173 A late Victorian gold split pearl and enamel fringe brooch, with glazed locket reverse.

Length 7.3cms. 14.5gms.

£350-400 (plus 30% BP*)



168 A late Victorian 18ct gold sapphire cabochon and old-cut diamond cluster ring.

Sapphire calculated weight 3.10cts, based on estimated dimensions of 8.4 by 6.6 by 5.2mms.

Estimated total diamond weight 0.35ct.
Ring size Q1/2. 5.1gms.

£250-350 (plus 30% BP*)



171 A late Victorian gold graduated old-cut diamond five-stone ring, with similarly-cut diamond spacers.

Estimated total diamond weight 2.15cts, G-H colour, SI1-P1 clarity.

Ring size M. 4.5gms.

£500-700 (plus 30% BP*)



174 A late Victorian gold collar.

Length 41.5cms. 21.2gms.

£900-1,400 (plus 30% BP*)



169 A late Victorian Etruscan Revival 15ct gold cannetille and sapphire hinged bangle.

Engraved 15ct.

Inner diameter 5.9cms. 7.6gms.

£260-360 (plus 30% BP*)



172 A pair of late Victorian gold split pearl and enamel fringe earrings.

Length 6cms. 5.4gms.

£220-320 (plus 30% BP*)



175 A late Victorian gold, split pearl, red gem and blue enamel locket.

Length 5.5cms. 23.5gms.

£900-1,400 (plus 30% BP*)



176 An Edwardian 18ct gold old-cut diamond single-stone ring.

Estimated diamond weight 0.45ct, H-I colour, P1 clarity.
Hallmarks for Chester, 1906.
Ring size R1/2. 4.4gms.
£200-300 (plus 30% BP*)



179 A late Victorian 18ct gold old-cut diamond single-stone ring.

Estimated diamond weight 0.75ct, J-K colour, VS2-SI1 clarity.
Stamped 18. Ring size K. 7gms.
£300-400 (plus 30% BP*)



182 An Edwardian platinum and 18ct gold old-cut diamond crescent moon brooch.

Estimated total diamond weight 3cts, G-I colour, SI1-P1 clarity.
Length 8cms. 8.7gms.
£1,200-1,800 (plus 30% BP*)



177 A pair of rose-cut diamond earrings.

Length 5.6cms. 7.8gms.
£300-400 (plus 30% BP*)



180 A late Victorian 18ct gold reverse-carved and painted rock crystal stick pin, depicting a Jack Russell Terrier.

Stamped 18ct.
Diameter of stickpin head 1.5cms. 3.8gms.
£100-150 (plus 30% BP*)



183 An early 20th century platinum and 18ct gold sapphire and old-cut diamond cluster ring.

Sapphire calculated weight 1.54cts, based on estimated dimensions of 6.4 by 6.4 by 4mms.
Estimated total diamond weight 0.45ct, G-I colour, SI1-P1 clarity.
Stamped PLAT 18ct. Ring size O. 3.4gms.
£400-600 (plus 30% BP*)



178 An early 20th century 9ct gold opal bracelet.

Stamped 9ct. Length 18.8cms. 12.8gms.
£250-350 (plus 30% BP*)



181 A late Victorian 18ct gold graduated curb-link double Albert chain, with T-bar and clasps.

Maker's mark for Charles Daniel Broughton.
Hallmarks for Birmingham.
Length 38.5cms. 56.7gms.
£2,000-3,000 (plus 30% BP*)



184 An 18ct gold sapphire and diamond cluster ring.

Sapphire calculated weight 5.68cts, based on estimated dimensions of 10.3 by 5.7mms.
Estimated total diamond weight 1.15cts, G-K colour, VS2-P1 clarity.
Hallmarks for Birmingham, 2011. Ring size M. 11.5gms.
£700-900 (plus 30% BP*)



185 A diamond and enamel Thai regimental badge.

Length 3.7cms. 6.3gms.
£280-380 (plus 30% BP*)



188 An opal, aquamarine and brilliant-cut diamond drop pendant, with 18ct gold chain.

Opal weight 10.68cts.
Aquamarine weight 2.48cts.
Total diamond weight 0.35ct.
Pendant stamped 750, chain with hallmarks for Birmingham.
Length of pendant 4cms. Length of chain 45cms. 5.3gms.
£900-1,400 (plus 30% BP*)



191 A mid 20th century 18ct gold multi-gem bracelet.

Aquamarine calculated weight 3.66cts, based on estimated dimensions of 9.5 by 8.9 by 5.9mms.
Stamped 18K 750. Length 18.8cms. 47.7gms.
£1,800-2,600 (plus 30% BP*)



186 A sapphire single-stone ring, with baguette-cut diamond shoulders.

Sapphire weight 4.76cts.
Ring size N. 4.8gms.
£350-450 (plus 30% BP*)



189 An 18ct gold sapphire and brilliant-cut diamond cluster ring.

Estimated total diamond weight 1.20cts, G-I colour, VS-SI clarity.
Hallmarks for Sheffield.
Ring size O. 6.1gms.
£480-680 (plus 30% BP*)



192 An 18ct gold sapphire and brilliant-cut diamond cluster ring.

Sapphire weight 1.91cts.
Total diamond weight 1.04cts.
Hallmarks for Birmingham.
Ring size O. 4.4gms.
£1,400-2,000 (plus 30% BP*)



187 A sapphire and brilliant-cut diamond ring.

Sapphire calculated weight 1.29cts, based on estimated dimensions of 7.5 by 5.7 by 2.8mms.
Estimated total diamond weight 0.45ct, H-I colour, VS clarity.
Stamped 750. Ring size G. 7.6gms.
£450-650 (plus 30% BP*)



190 A sapphire line bracelet.

Total sapphire weight 8.42cts.
Stamped AU750.
Length 17cms. 10gms.
£800-1,200 (plus 30% BP*)



193 A pair of brilliant-cut diamond and blue enamel scrolling earrings.

Total diamond weight 3.29cts, marked to mount, estimated G-H colour, VS clarity.
Stamped 18K 750. Diameter 2.7cms. 18.2gms.
£2,000-3,000 (plus 30% BP*)



194 A pair of 18ct gold diamond circles earrings.

Total diamond weight 0.14ct, G colour, VS clarity.
Hallmarks for Sheffield, 2015.
Length 3.4cms. 6.2gms.
£300-400 (plus 30% BP*)



197 A pair of brilliant-cut diamond hoop earrings.

Total diamond weight 0.73ct.
Stamped 750.
Inner diameter 2.5cms. 6.9gms.
£900-1,400 (plus 30% BP*)



200 A brilliant-cut diamond line bracelet.

Estimated total diamond weight 2.20cts, H-I colour, SI clarity.
Stamped k18.
Length 19cms. 7.7gms.
£500-700 (plus 30% BP*)



195 An 18ct gold citrine and brilliant-cut diamond pendant, with chain.

Citrine weight 3.05cts.
Total diamond weight 0.61ct.
Pendant with hallmarks for Birmingham, chain stamped 750.
Length of pendant 2cms. Length of chain 45.5cms.
5gms.
£450-650 (plus 30% BP*)



198 A brilliant-cut diamond drop necklace.

Estimated total diamond weight 1.75cts, G-I colour, VS-SI clarity.
Stamped 750.
Length 40.6gms.
£800-1,200 (plus 30% BP*)



201 A pair of brilliant-cut diamond stud earrings.

Estimated total diamond weight 1ct, G-H colour, VS clarity.
1.6gms.
£500-700 (plus 30% BP*)



196 A pair of 18ct gold citrine and brilliant-cut diamond cluster earrings.

Total citrine weight 4.10cts.
Total diamond weight 0.61ct.
Hallmarks for Birmingham.
Length 1cm. 5.2gms.
£550-750 (plus 30% BP*)



199 A pair of pavé-set diamond earrings.

Estimated total diamond weight 2.40cts, G-H colour, VS clarity.
Length 2cms. 13.2gms.
£800-1,200 (plus 30% BP*)



202 A brilliant-cut diamond line necklace.

Estimated total diamond weight 12cts, G-J colour, VS-SI clarity.
Stamped 14K.
Length 47cms. 20.2gms.
£4,500-6,500 (plus 30% BP*)



203 A pair of yellow sapphire and brilliant-cut diamond cluster earrings.

Estimated total diamond weight 0.90ct.
Length 1.3cms. 4.6gms.
£350-450 (plus 30% BP*)



206 An 18ct gold emerald and brilliant-cut diamond cluster ring.

Total emerald weight 1.21cts.
Total diamond weight 0.91ct, estimated G-H colour, SI2-P1 clarity.
Hallmarks for Birmingham.
Ring size O. 4.6gms.
£1,000-1,500 (plus 30% BP*)



209 A pair of pavé-set diamond frog earrings, with emerald eyes.

Length 1.9cms. 12.5gms.
£2,500-3,500 (plus 30% BP*)



204 An 18ct gold emerald and brilliant-cut diamond cluster ring.

Please see department for details of a verbal result on the emerald.
Emerald calculated weight 2.50cts, based on estimated dimensions of 8.9 by 8.3 by 4.6mms.
Estimated total diamond weight 1ct.
Hallmarks for London, 2022. Ring size Q1/2. 7.6gms.
£900-1,400 (plus 30% BP*)



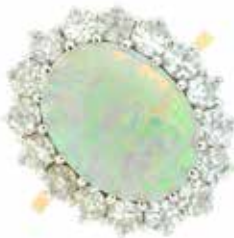
207 A diamond, yellow sapphire and green garnet fish pendant, with chain.

Estimated total diamond weight 0.40ct, G-H colour, VS clarity.
Stamped 750.
Length of pendant 3.9cms. Length of chain 59cms. 25.3gms.
£1,000-1,500 (plus 30% BP*)



210 A yellow sapphire and brilliant-cut diamond cluster ring.

Sapphire weight 2.40cts.
Total diamond weight 0.85ct.
Stamped 18CT.
Ring size O1/2. 4.2gms.
£1,200-1,800 (plus 30% BP*)



205 An opal and old-cut diamond cluster ring.

Opal estimated dimensions of 13.5 by 10.1 by 2.8mms.
Estimated total diamond weight 1.25cts, H-I colour, VS-SI clarity.
Ring size O. 5.2gms.
£450-650 (plus 30% BP*)



208 An 18ct gold emerald and diamond necklace.

Estimated total diamond weight 0.30ct.
Hallmarks for Birmingham.
Length 42cms. 25.4gms.
£900-1,400 (plus 30% BP*)



211 An 18ct gold emerald and brilliant-cut diamond cluster ring.

Emerald weight 5.21cts.
Total diamond weight 1.28cts.
Hallmarks for Birmingham.
Ring size O. 6.2gms.
£2,000-3,000 (plus 30% BP*)



212 An emerald and brilliant-cut diamond cluster ring.

Emerald weight 0.80ct.
Total diamond weight 0.45ct.
Stamped 18CT, partially indistinct.
Ring size N. 2.6gms.
£650-850 (plus 30% BP*)



215 An emerald ring, with triangular-shape diamond sides.

Please see department for details of a verbal result on the emerald.
Emerald calculated weight 3.30cts, based on estimated dimensions of 10.1 by 8.4 by 5.3mms.
Estimated total diamond weight 0.90ct, H-I colour, VS2-SI1 clarity.
Stamped 0.750. Ring size K1/2. 9.5gms.
£2,800-3,800 (plus 30% BP*)



218 A green tourmaline and pavé-set diamond ring, by Liliane Sicard.

Tourmaline calculated weight 1.44cts, based on estimated dimensions of 7.4 by 7.1 by 4.5mms.
Estimated total diamond weight 0.55ct, G-H colour, VS clarity.
Stamped 750. Ring size I1/2. 13.8gms.
£1,500-2,000 (plus 30% BP*)



213 An 18ct gold jade necklace, by Links of London.

Hallmarks for Edinburgh, 2007.
Length of pendant 2.7cms. Length of necklace 43cms. 17.3gms.
Jade untested for natural colour origin.
£600-800 (plus 30% BP*)



216 An 18ct gold 'brown' diamond and diamond cluster ring.

Principal diamond weight 3.49cts, estimated 'brown' colour, P2 clarity.
Total diamond weight 3.89cts.
Hallmarks for Birmingham. Ring size O. 5.8gms.
Diamonds untested for natural colour origin.
£2,500-3,500 (plus 30% BP*)



219 An 18ct gold tsavorite garnet frog brooch, by E. Wolfe & Co.

Garnet total weight 2.32cts.
Hallmarks for London, 2016.
Length 2.4cms. 10.7gms.
£1,400-2,000 (plus 30% BP*)



214 A 'Happy Diamonds' horseshoe pendant, by Chopard.

Estimated total diamond weight 0.20ct, G-H colour, VS clarity.
Stamped 750. Length 3.5cms. 22.8gms.
With maker's case.
Presented, by repute, to Mrs. Thomson, groom of Balanchine by the owners, the Maktoum family.
£1,400-2,000 (plus 30% BP*)



217 An 18ct gold emerald and brilliant-cut diamond cluster ring.

Total diamond weight 1.57cts, estimated H-I colour, SI2-P2 clarity.
Emerald weight 6.60cts.
Hallmarks for Birmingham.
Ring size O. 6.8gms.
£2,800-3,800 (plus 30% BP*)



220 An 18ct gold 'Touch Wood' 'Trinity' pendant, on bicolour chain, by Cartier.

Swiss convention marks.
Length of pendant 6cms. Length of chain 70cms. 53.4gms.
£1,800-2,600 (plus 30% BP*)



221 An 18ct gold pear-shape diamond pendant, with chain.

Estimated diamond weight 0.60ct, I-J colour, VS clarity.
Hallmarks for London, 2000 and Sheffield, 2001.
Length of pendant 1.4cms. Length of chain 45cms. 6.3gms.
£400-600 (plus 30% BP*)



224 A diamond crossover bicolour ring, by Carl Bucherer.

Estimated total diamond weight 0.50ct, H-I colour, VS-SI clarity.
Stamped 750. Ring size M. 6.6gms.
£500-700 (plus 30% BP*)



227 An 18ct gold diamond bombé ring, by Fope.

Total diamond weight 0.05ct, stamped to mount.
Hallmarks for Birmingham, 2012.
Ring size N. 12gms.
£450-650 (plus 30% BP*)



222 A mid 20th century orange topaz and brilliant-cut diamond three-stone ring.

Topaz calculated weight 1.33cts, based on estimated dimensions of 8 by 6.1 by 3.7mms.
Estimated total diamond weight 0.25ct, G-H colour, VS2-SI1 clarity.
Stamped 18ct PLAT. Ring size L. 3.2gms.
£320-420 (plus 30% BP*)



225 A pair of yellow topaz, diamond and 'yellow' diamond bi-colour earrings.

Estimated total diamond weight 1.15cts, G-H and 'yellow' colour, VS-SI clarity.
Length 2.6cms. 11.9gms.
Diamonds untested for natural colour origin.
£600-800 (plus 30% BP*)



228 A diamond 'Flex'it Solo' bracelet, by Fope.

Total diamond weight 0.19ct, stamped to bracelet.
Italian marks, stamped 750.
Length 19.5cms. 27.7gms.
With maker's case.
£1,400-2,000 (plus 30% BP*)



223 An 18ct gold 'orange' diamond and diamond cluster ring.

Principal diamond estimated weight 0.35ct.
Estimated total diamond weight 0.70ct.
Hallmarks for Birmingham. Ring size N1/2. 3.2gms.
Diamond untested for natural colour origin.
£600-800 (plus 30% BP*)



226 A yellow topaz, diamond and 'yellow' diamond bi-colour brooch.

Topaz calculated weight 3.52cts, based on estimated dimensions of 13.4 by 7.4 by 4.8mms.
Estimated total diamond weight 1.85cts, G-H and 'yellow' colour, VS-SI1 clarity.
Length 4.6cms. 15.8gms.
Diamonds untested for natural colour origin.
£800-1,200 (plus 30% BP*)



229 A brilliant and pavé-set diamond ring.

Principal diamond estimated weight 1.40cts, tinted colour, SI clarity.
Estimated total diamond weight 2.40cts.
Stamped 750. Approximate ring size N1/2. 15.5gms.
£3,500-4,500 (plus 30% BP*)



230 An 18ct gold diamond pendant, with chain.

Total diamond weight 0.48ct, estimated G-H colour, VS clarity. Pendant with hallmarks for London. Chain stamped 375. Length of pendant 1.5cms. Length of chain 40cms. 2gms.
£100-150 (plus 30% BP*)



233 An 18ct gold citrine and brilliant-cut diamond cluster ring.

Citrine calculated weight 1.97cts, based on estimated dimensions of 10.3 by 8 by 4.3mms. Estimated total diamond weight 0.60ct, G-I colour, VS clarity. Hallmarks for London, 1988. Ring size P1/2. 5.4gms.
£280-380 (plus 30% BP*)



236 A platinum baguette-cut diamond half eternity ring.

Estimated total diamond weight 1.25cts, G-H colour, VS clarity. Hallmarks for Birmingham, 2019. Ring size S. 5.9gms.
£320-420 (plus 30% BP*)



231 An 18ct gold orange sapphire and brilliant-cut diamond three-stone ring.

Sapphire calculated weight 0.84ct, based on estimated dimensions of 6.3 by 5.7 by 2.8mms. Estimated total diamond weight 0.30ct, G-H colour, VS2-SI1 clarity. Hallmarks for London, 2008. Ring size J1/2. 4gms.
£250-350 (plus 30% BP*)



234 A platinum brilliant-cut diamond single-stone ring.

Diamond estimated weight 1ct, H-I colour, SI2-P1 clarity. Hallmarks for London, 2004. Ring size M1/2. 4.5gms.
£300-400 (plus 30% BP*)



237 An 18ct gold brilliant-cut diamond horseshoe pendant, on chain.

Estimated total diamond weight 1ct, H-I colour, VS-SI clarity. Hallmarks for Birmingham. Length 48cms. 7gms.
£350-450 (plus 30% BP*)



232 A graduated pearl three-row necklace, with garnet and diamond cluster clasp.

Pearl diameter 7 to 2.3mms. Clasp tongue stamped 9, 375. Length 38.5cms. 31.4gms. Pearls untested for natural origin.
£200-300 (plus 30% BP*)



235 A pair of tsavorite garnet and brilliant-cut diamond cluster earrings.

Estimated total diamond weight 0.70ct. Length 1cm. 3.1gms.
£350-450 (plus 30% BP*)



238 A fire opal and diamond pendant, with 18ct gold chain.

Fire opal calculated weight 17.31cts, based on estimated dimensions 27 by 14.2 by 10.5mms. Estimated total diamond weight 0.70ct. Pendant stamped 18K. Chain with hallmarks for Sheffield. length of pendant 4.5cms. Length of chain 45cms. 12.3gms.
£450-650 (plus 30% BP*)



239 An 18ct gold aquamarine and graduated square-shape diamond five-stone ring.

Aquamarine calculated weight 0.40ct, based on estimated dimensions of 4.2 by 4.2 by 3.4mms.
Estimated total diamond weight 1ct, G-H colour, VS clarity.
Hallmarks for Birmingham. Ring size S. 4.5gms.
£320-420 (plus 30% BP*)



242 An 18ct gold diamond 'Strip' pendant, with chain, by Theo Fennell.

Estimated total diamond weight 2cts, H-I colour, predominantly VS clarity.
Hallmarks for London, 2001 and partially indistinct.
Length of pendant 3.1cms. Length of chain 40.5cms. 9.6gms.
£1,200-1,800 (plus 30% BP*)



245 A pair of 18ct gold sapphire and brilliant-cut diamond cluster earrings.

Estimated total diamond weight 0.50ct, H-I colour, SI clarity.
Hallmarks for Sheffield, partially indistinct.
Diameter 1cm. 2.5gms.
£250-350 (plus 30% BP*)



240 An 18ct gold diamond and tanzanite cross pendant, by Theo Fennell.

Estimated diamond weight 0.30ct, H-I colour, VS2-SI1 clarity.
Hallmarks for London, 2001. Length 2.5cms. 3.5gms.
£400-600 (plus 30% BP*)



243 A pair of sapphire and brilliant-cut diamond cluster earrings.

Estimated total diamond weight 0.40ct.
Stamped 750.
Length 1cm. 2.3gms.
£200-300 (plus 30% BP*)



246 A platinum aquamarine, cultured pearl, emerald and diamond drop pendant, with chain.

Aquamarine weight 5.99cts. Total emerald weight 0.63ct. Total diamond weight 0.24ct. Pendant with hallmarks for Birmingham. Chain with hallmarks for 18ct gold, Birmingham. Length of pendant 4.5cms. Length of chain 45cms. Total weight 7.3gms.
£1,400-2,000 (plus 30% BP*)



241 A pair of 18ct gold diamond 'Strip' earrings, by Theo Fennell.

Estimated total diamond weight 1.70cts, H-I colour, VS clarity.
Hallmarks for London, 2003.
Length 1.9cms. 5.9gms.
£600-800 (plus 30% BP*)



244 A sapphire and diamond bracelet, with textured and polished square-shape link sides.

Total diamond weight 0.85ct, engraved to clasp.
Stamped 585. Length 18.4cms. 12.5gms.
£300-400 (plus 30% BP*)



247 A pair of 18ct gold emerald and brilliant-cut diamond cluster earrings.

Estimated total diamond weight 0.80ct, G-H colour, VS clarity.
Hallmarks for London, partially indistinct.
Length 1.2cms. 4.2gms.
£300-400 (plus 30% BP*)



248  A 'Kiss' ring, by Tiffany & Co.

Stamped 750. Ring size O1/2. 5.9gms.
With maker's case.
£350-450 (plus 30% BP*)



251  A diamond spinner ring, by Gucci.

Estimated total diamond weight 0.70ct,
G-H colour, VS clarity.
Italian marks, stamped 750. Ring size J1/2.
11.7gms.
With maker's case.
£450-650 (plus 30% BP*)



254 A band ring, by Van Cleef & Arpels.

Stamped PT950.
Ring size N. 12.4gms.
£300-400 (plus 30% BP*)



249  An 18ct gold 'Chiodo' necklace, by Gucci.

Swiss convention marks.
Length of chain 48.5cms. 12gms.
With maker's case.
£500-700 (plus 30% BP*)



252  A diamond 'Etoile' heart pendant, on chain, by Tiffany & Co.

Estimated total diamond weight 0.10ct.
Stamped Pt950.
Length of pendant 1.4cms. Length of chain
40cms. 12.6gms.
With pouch and cardboard maker's case.
£650-850 (plus 30% BP*)



255 An 18ct gold diamond 'Clous' ring, by Louis Vuitton.

Estimated diamond weight 0.25ct, G-H
colour, VS clarity.
Swiss convention marks.
Ring size L1/2. 18.8gms.
£1,200-1,800 (plus 30% BP*)



250 An 18ct gold brilliant-cut diamond 'Ice Cube' ring, by Chopard.

Total diamond weight 0.38ct, estimated
G-H colour, VS clarity.
Swiss convention marks. Ring size K1/2.
3.4gms.
£400-600 (plus 30% BP*)



253 A blue enamel and brilliant-cut diamond bangle, by la Nouvelle Bague.

Italian marks, stamped 18K 750 and 925.
Inner diameter 6cms. 37gms.
£700-900 (plus 30% BP*)



256 An 18ct gold brilliant-cut diamond 'Ampoule' pendant, on chain, by Theo Fennell.

Estimated total diamond weight 1.50cts.
Hallmarks for London, 2007.
Length of ampoule 4.9cms. Length of
chain 59cms. 68.3gms.
£4,000-6,000 (plus 30% BP*)



257 A pair of 18ct gold moonstone and brilliant-cut diamond drop earrings.

Estimated total diamond weight 1.20cts. Hallmarks for Sheffield, partially indistinct. Length 4cms. 7.9gms.
£450-650 (plus 30% BP*)



260 A pair of opal and brilliant-cut diamond drop earrings.

Total opal weight 5.26cts. Total diamond weight 0.71ct. Stamped AU750. Length 2.3cms. 5.6gms.
£500-700 (plus 30% BP*)



263 An 18ct gold baroque cultured pearl and pavé-set diamond hippopotamus brooch, by E. Wolfe & Co.

Total diamond weight 0.60ct, estimated G-H colour, VS clarity. Hallmarks for London, 2008. Length 3.5cms. 23.1gms.
£3,500-4,500 (plus 30% BP*)



258 An 18ct gold diamond and Akoya cultured pearl pendant, with chain, by Mikimoto.

Total diamond weight 0.53ct, marked to mount, estimated G-H colour, VS clarity. Hallmarks for London. Length of pendant 3.3cms. Length of chain 47cms. 4.9gms. With maker's case and certificate of authenticity.
£700-900 (plus 30% BP*)



261 A star sapphire and diamond dress ring.

Sapphire weight 5.90cts. Total diamond weight 0.49ct. Stamped AU750. Ring size M1/2. 7.4gms.
£900-1,400 (plus 30% BP*)



264 A platinum diamond three-stone ring.

With reports:
1126900217 dated 16th December 2010, from the GIA, stating 1.20cts, G colour, VS2 clarity. 1136506747 dated 21st June 2011, from the GIA, stating 0.50ct, G colour, VS2 clarity. 2131840999, dated 22nd September 2011, from the GIA, stating 0.50ct, G colour, VS1 clarity. Hallmarks for Sheffield. Ring size P. 6.1gms.
£4,500-6,500 (plus 30% BP*)



259 A pair of 18ct gold diamond and Akoya cultured pearl earrings, by Mikimoto.

Total diamond weight 0.36ct, marked to mount, estimated G-H colour, VS clarity. Hallmarks for London. Length 3.2cms. 7.3gms. With maker's case and certificate of authenticity.
£1,000-1,500 (plus 30% BP*)



262 An 18ct gold white 'South Sea' cultured pearl and diamond ring, by Mikimoto.

Total diamond weight 0.36ct. Cultured pearl estimated diameter 11mms. Hallmarks for London. Ring size O. 7.9gms.
£1,000-1,500 (plus 30% BP*)



265 A platinum band ring.

Hallmarks for Birmingham. Ring size O. 4.8gms.
£90-140 (plus 30% BP*)



266 A band ring, by Van Cleef & Arpels.

Stamped PT950.
Ring size N. 6.3gms.
£150-200 (plus 30% BP*)



269 A platinum brilliant-cut diamond 'Soieste' half eternity ring, by Tiffany & Co.

Estimated total diamond weight 0.20ct, G-H colour, VS clarity.
Hallmarks for London, 2013. Ring size M. 2.9gms.
£300-400 (plus 30% BP*)



272 An 18ct gold brilliant-cut diamond collet dress ring.

Total diamond weight 0.76ct, marked to band, estimated G-H colour, VS clarity.
Hallmarks for Sheffield, 2015.
Ring size N1/2. 9.4gms.
£900-1,400 (plus 30% BP*)



267 A Sri Lankan pink sapphire and diamond ring.

Verbal from GCS, stating Sri Lanka, no heat.
Sapphire calculated weight 2.13cts, based on estimated dimensions of 7.5 by 6.4 by 5.3mms.
Total diamond weight 0.32ct.
Stamped Pt900. Ring size L. 7.2gms.
£550-750 (plus 30% BP*)



270 A brilliant-cut diamond cluster crossover ring.

Estimated total diamond weight 0.45ct, H-I colour, VS2-P1 clarity.
Stamped 750.
Ring size N. 3gms.
£400-600 (plus 30% BP*)



273 An 18ct gold kunzite and brilliant-cut diamond cluster ring.

Kunzite weight 8.61 cts.
Total diamond weight 0.40ct.
Hallmarks for Birmingham.
Ring size O. 5.9gms.
£800-1,200 (plus 30% BP*)



268 A pair of pink sapphire and brilliant-cut diamond drop earrings.

Total sapphire weight 1.90cts.
Total diamond weight 0.36ct.
Stamped AU750.
Length 3.5cms. 6.2gms.
£800-1,200 (plus 30% BP*)



271 An 18ct gold diamond circles pendant, on two-row chain.

Total diamond weight 0.12ct, marked to mount, G colour, VS clarity.
Diameter of pendant 2.4cms. Length of chain 41cms. 11.1gms.
£400-600 (plus 30% BP*)



274 An 18ct gold brilliant-cut diamond oval-link bracelet.

Estimated total diamond weight 2.50cts.
Hallmarks for Sheffield.
Length 18.5cms. 17.3gms.
£1,200-1,800 (plus 30% BP*)



275 An 18ct gold square-shape diamond half eternity ring.

Estimated total diamond weight 0.50ct, H-J colour, VS-SI clarity. Hallmarks for London, 2005. Ring size P1/2. 5.3gms. **£350-450** (plus 30% BP*)



278 A spinel and diamond ring.

Spinel weight 4.59cts. Estimated total diamond weight 0.15ct. Ring size K1/2. 4.9gms. **£400-600** (plus 30% BP*)



281 A diamond cluster ring.

Total diamond weight 0.85ct, principal diamonds estimated 0.40ct, K-L colour, VS clarity. Ring size N. 4.9gms. **£900-1,400** (plus 30% BP*)



276 An 18ct gold amethyst and brilliant-cut diamond cluster ring.

Amethyst weight 3.98cts. Total diamond weight 0.29ct. Hallmarks for Birmingham. Ring size O. 5gms. **£400-600** (plus 30% BP*)



279 A pair of vari-cut diamond hexagonal-shape cufflinks.

Estimated total diamond weight 1ct, H-I colour, VS clarity. French assay marks. Length of cufflink face 1.3cms. 14.3gms. **£550-750** (plus 30% BP*)



282 An 18ct gold synthetic purple sapphire and brilliant-cut diamond statement ring.

Estimated total diamond weight 1.10cts, G-H colour, VS clarity. Hallmarks for London. Ring size L1/2. 22.5gms. **£1,000-1,500** (plus 30% BP*)



277 A pair of 18ct gold amethyst and brilliant-cut diamond drop earrings.

Estimated total diamond weight 0.30ct. Hallmarks for Sheffield, partially indistinct. Length 3.5cms. 9.9gms. **£350-400** (plus 30% BP*)



280 A brilliant-cut diamond graduated three-stone ring, with similarly-cut diamond band.

Estimated total diamond weight 1.75cts, principal diamonds estimated H-I colour, VS clarity. Stamped 18K. Ring size K. 6.4gms. **£700-900** (plus 30% BP*)



283 An 18ct gold diamond 'Emotion Collection' egg charm, by Fabergé.

Total diamond weight 2.49cts, estimated G-H colour, VS clarity. Hallmarks for London. Length 2cms. 2.3gms. With maker's case and certificate of authenticity. **£2,500-3,000** (plus 30% BP*)



284 A sapphire single-stone ring, with brilliant-cut diamond surround and sides.

Sapphire calculated weight 2.34cts, based on estimated dimensions of 6.8 by 6.1 by approximately 6mms.
Estimated total diamond weight 1ct, G-I colour, VS2-P1 clarity.
Stamped 14K. Ring size N. 8.2gms.
£700-900 (plus 30% BP*)



287 An 18ct gold aquamarine and vari-shape diamond cluster ring.

Aquamarine weight 4.15cts.
Total diamond weight 1.24cts.
Hallmarks for Birmingham.
Ring size M1/2. 5.4gms.
£1,400-2,000 (plus 30% BP*)



290 An 18ct gold brilliant-cut diamond single-stone ring, with similarly-cut diamond line sides.

Laser inscribed GIA 7446339936, corresponding to an online report stating 1.70cts, I colour, VS2 clarity.
Hallmarks for London, 2023.
Ring size N. 8.2gms.
£5,000-7,000 (plus 30% BP*)



285 A pavé-set diamond heart pendant, on chain.

Estimated total diamond weight 1.75cts, G-I colour, predominantly VS clarity.
Italian marks, stamped 750.
Length of pendant 2cms. Length of chain 44cms. 7.9gms.
£1,000-1,500 (plus 30% BP*)



288 An 18ct gold diamond 'Xpandable' bracelet, by Picchiotti.

Total diamond weight 3.49cts, estimated G-H colour, VS clarity.
Hallmarks for London, 2016.
Approximate inner diameter 5.3cms. 12.8gms.
With maker's case.
£2,500-3,500 (plus 30% BP*)



291 A pair of brilliant-cut diamond stud earrings, by Tiffany & Co.

Estimated total diamond weight 1.75cts, G-H colour, VS clarity.
Stamped Pt950. 3.8gms.
With maker's case.
£5,000-7,000 (plus 30% BP*)



286 An A-type jade and pavé-set diamond ring.

With report 2225339090, dated 14th March 2022, from the GIA, stating 2.25cts, natural colour, no impregnation.
Total diamond weight 1.01cts, stamped to band, estimated G-H colour, predominantly VS clarity.
Stamped Pt900. Ring size K1/2. 8.8gms.
£1,200-1,800 (plus 30% BP*)



289 An 18ct gold sapphire 'Impératrice' egg pendant, with chain, by Fabergé.

Ruby total weight 2.80cts.
Hallmarks for London.
Length of pendant 2.4cms. Length of chain 49cms. 7.7gms.
With maker's case and certificate of authenticity.
£3,500-4,500 (plus 30% BP*)



292 A platinum graduated rectangular-shape diamond five-stone ring.

Principal stone laser inscribed GIA 2257137787, stating 2.50cts, G colour, SI1 clarity.
Estimated total diamond weight 3.10cts, G-I colour, VS2-P1 clarity.
Hallmarks for London, 2021.
Ring size N. 7gms.
£10,000-15,000 (plus 30% BP*)



293  **A Colombian emerald and tapered baguette-cut diamond cluster ring.**

With report 5782-2829, dated 18th August 2022, from GCS, stating Colombia, minor clarity enhancement, estimated weight 6.40cts.

Estimated total diamond weight 2cts, G-H colour, VS clarity.

Ring size N1/2. 9.4gms.

£10,000-15,000 (plus 30% BP*)



296 **A diamond and ruby cluster ring.**

Ruby estimated total weight 4.50cts, based on calculated weight of one gem.

Estimated total diamond weight 1.65cts, H-J colour, SI1-P1 clarity.

Ring size Q1/2. 12.5gms.

£1,500-2,000 (plus 30% BP*)



299 **A mid 20th century opal and vari-cut diamond cluster ring.**

Opal estimated dimensions of 14.4 by 10.8 by 2.9mms.

Estimated total diamond weight 1.35cts, G-H colour, VS clarity.

Ring size O. 7.3gms.

£800-1,200 (plus 30% BP*)



294 **A 1970s 18ct gold Sri Lankan sapphire and brilliant-cut diamond cluster ring.**

Verbal from GCS stating Sri Lanka, no heat.

Original paperwork stating 8.01cts, Ceylon and total diamond weight 0.88ct, Top Wesselton, Flawless.

Stamped 750. Ring size Q1/2. 7.3gms.

£7,000-9,000 (plus 30% BP*)



297  **A Burmese ruby and single-cut diamond ring.**

With report 81311-05, dated 14th June 2021, from GCS, stating 1.42cts, Myanmar (Burma), no heat.

Estimated total diamond weight 0.40ct. G-I colour, Vs clarity.

Stamped Pt. Ring size T. 6gms.

£2,800-3,800 (plus 30% BP*)



300 **A mid 20th century 18ct gold diamond feather brooch.**

Estimated total diamond weight 1.55cts, G-H colour, VS2-P1 clarity.

Stamped 18K. Length 5.3cms. 14.8gms.

£500-700 (plus 30% BP*)



295 **A 1960s 18ct gold ruby and diamond bracelet.**

Estimated total diamond weight 8.50cts, G-I colour, SI1-P1 clarity.

Hallmarks for London, 1966.

Length 18.2cms. 34.7gms.

£4,000-6,000 (plus 30% BP*)

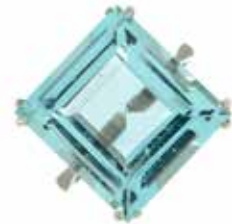


298 **A mid 20th century gold diamond and ruby dress ring.**

Estimated total diamond weight 0.75ct, G-I colour, P1 clarity.

Ring size N. 13.1gms.

£900-1,400 (plus 30% BP*)



301 **A mid 20th century 18ct gold aquamarine single-stone ring.**

Aquamarine calculated weight 12.23cts, based on estimated dimensions of 15.4 by 14.6 by 8mms.

Stamped 18ct. Ring size O1/2. 6.2gms.

£350-450 (plus 30% BP*)



302 A mid 20th century gold ruby and brilliant-cut diamond cluster ring.

Verbal from GCS, stating Thailand/Cambodia, no heat.
Ruby calculated weight 1.09cts, based on estimated dimensions of 7.7 by 5.6 by 2.7mms.
Estimated total diamond weight 0.45ct.
Ring size O1/2. 6.1gms.
£400-600 (plus 30% BP*)



305 An aquamarine ring, with brilliant-cut diamond trefoil sides.

Aquamarine calculated weight 7.89cts, based on estimated dimensions of 12.2 by 11.9 by 10mms.
Estimated total diamond weight 1ct, G-I colour, VS-SI clarity.
Ring size L. 8.6gms.
£700-900 (plus 30% BP*)



308 A 1970s 18ct gold textured bracelet.

Hallmarks for London, 1970.
Length 17.1cms. 75.1gms.
£2,200-3,200 (plus 30% BP*)



303 A mid 20th century diamond and sapphire cluster ring.

Estimated total diamond weight 2.25cts, G-I colour, VS2-P1 clarity.
Ring size O. 11.9gms.
£1,200-1,800 (plus 30% BP*)



306 An A-type jade and diamond cluster ring.

With report 2221270649, dated 12th March 2022, from the GIA, stating 4.86cts, natural colour, no impregnation.
Total diamond weight 1.74cts, stamped to band, estimated G-H colour, VS clarity.
Stamped Pt900. Ring size P1/2. 10gms.
£2,500-3,500 (plus 30% BP*)



309 A mid 20th century brilliant and baguette-cut diamond double clip brooch.

Estimated total diamond weight 7.50cts, predominantly G-I colour and VS-SI clarity.
Length 6.2cms.
£2,500-3,500 (plus 30% BP*)



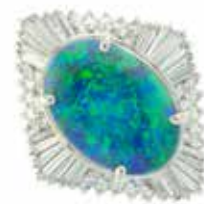
304 A sapphire and vari-cut diamond floral cluster brooch.

Sapphire estimated total weight 14.60cts, based on calculated weight of one gem.
Estimated total diamond weight 4cts, G-I colour, predominantly VS clarity.
Diameter 3.5cms. 22.6gms.
£1,500-2,000 (plus 30% BP*)



307 An aquamarine and brilliant-cut diamond cluster ring.

Aquamarine calculated weight 3.71cts, based on estimated dimensions of 10.9 by 8 by 5.8mms.
Estimated total diamond weight 1.25cts, G-H colour, VS clarity.
Stamped 585. Ring size O.
£1,000-1,500 (plus 30% BP*)



310 A black opal and diamond cluster ring.

Opal weight 4.15cts.
Total diamond weight 1.32cts, stamped to mount, estimated G-H colour, VS clarity.
Stamped Pt900.
Ring size K1/2. 13gms.
£3,000-4,000 (plus 30% BP*)



311 A triangular-shape tanzanite and brilliant-cut diamond cluster ring, with brilliant-cut diamond sides.

Tanzanite calculated weight 4.35cts, based on estimated dimensions of 10 by 10 by 7.2mms
 Estimated total diamond weight 0.20ct.
 Stamped 18K and 750.
 Ring size M. 5.7gms.
£500-700 (plus 30% BP*)



314 A pair of 18ct gold tanzanite & brilliant-cut diamond cluster earrings.

Total tanzanite weight 4.14cts.
 Total diamond weight 0.36ct.
 Hallmarks for Birmingham.
 Length 1.2cms. 4.6gms.
£1,200-1,800 (plus 30% BP*)



317 A brilliant-cut diamond line necklace.

Estimated total diamond weight 7.80cts, G-K colour, predominantly VS-SI clarity.
 Stamped 14K.
 Length 45cms. 14.1gms.
£3,000-4,000 (plus 30% BP*)



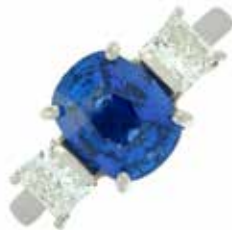
312 A pair of brilliant-cut diamond cluster earrings.

Principal diamonds estimated weight 0.35ct each, G-H colour, VS clarity.
 Estimated total diamond weight 1.20cts.
 Diameter 0.8cm. 2.8gms.
£700-900 (plus 30% BP*)



315 A sapphire and square-shape diamond three-stone ring.

Estimated total diamond weight 0.45ct, G-H colour, SI clarity.
 Ring size M. 4.5gms.
£1,000-1,500 (plus 30% BP*)



313 A platinum sapphire and square-shape diamond three-stone ring.


Sapphire calculated weight 2.65cts, based on estimated dimensions of 9 by 7.3 by 4.8mms.
 Estimated total diamond weight 0.80ct, G-H colour, VS clarity.
 Hallmarks for Birmingham. Ring size Q1/2. 5.7gms.
£900-1,400 (plus 30% BP*)



316 An 18ct gold tanzanite and brilliant-cut diamond cluster ring.

Tanzanite weight 5.29cts.
 Total diamond weight 0.58ct.
 Hallmarks for Birmingham.
 Ring size O. 5.5gms.
£1,800-2,600 (plus 30% BP*)



318  A brilliant-cut diamond single-stone ring.

With report 571386050, dated 3rd April 2023, from IGI, stating 2.11cts, D colour, VVS2 clarity.
 Stamped 750. Ring size N. 5.9gms.
£14,000-20,000 (plus 30% BP*)



319 A platinum square-shape diamond three-stone ring.

Estimated total diamond weight 1ct, G-H colour, VS clarity.
Hallmarks for Sheffield, 2002.
Ring size M. 7.3gms.
£600-800 (plus 30% BP*)



322 A topaz and brilliant-cut diamond pendant.

Topaz calculated weight 14.19cts, based on estimated dimensions 20.2 by 12.6 by 7.9mms.
Estimated total diamond weight 1.00ct.
Stamped 750.
Length 5cms. 11.8gms.
£600-800 (plus 30% BP*)



325 An 18ct gold aquamarine and brilliant-cut diamond cluster ring.

Aquamarine weight 5.89cts.
Total diamond weight 0.41ct.
Hallmarks for Birmingham.
Ring size N1/2. 5.2gms.
£1,000-1,500 (plus 30% BP*)



320 A pair of 18ct gold aquamarine and brilliant-cut diamond cluster earrings.

Total aquamarine weight 4.27cts.
Total diamond weight 0.61ct.
Hallmarks for Birmingham.
Length 1.2cms. 5.1gms.
£750-950 (plus 30% BP*)



323 An aquamarine, brilliant-cut diamond and sapphire foliate motif pendant, with 18ct gold chain.

Aquamarine weight 7.15cts.
Total diamond weight 1.16cts.
Pendant stamped AU750. Chain with hallmarks for Birmingham.
Length of pendant 3cms. Length of chain 40cms.
6.2gms.
£1,000-1,500 (plus 30% BP*)



326 A pair of blue topaz, dyed chalcedony and diamond earrings.

Estimated total diamond weight 2.50cts.
Stamped 585.
Length 5.4cms. 21.7gms.
£1,200-1,800 (plus 30% BP*)



321 A platinum aquamarine and tapered baguette-cut diamond three-stone ring.

Aquamarine weight 1.12cts.
Total diamond weight 0.20ct, estimated G-H colour, VS clarity.
Hallmarks for London, 2017.
Ring size K1/2. 5.3gms.
£900-1,400 (plus 30% BP*)



324 A pair of aquamarine and brilliant-cut diamond drop earrings.

Total aquamarine weight 10.69cts.
Total diamond weight 1.11cts.
Stamped AU750.
Length 3.5cms. 8.4gms.
£1,000-1,500 (plus 30% BP*)



327 A platinum brilliant-cut diamond single-stone ring, by Boodles.

Laser inscribed GIA 1126724805.
With report IGI F4B16526, dated 14th March 2005, from IGI, stating 0.70ct, F colour, VS1 clarity.
Hallmarks for London, 2006. Ring size H. 5.2gms.
With maker's case.
£1,800-2,600 (plus 30% BP*)



328 A pink sapphire and brilliant-cut diamond ring.

Sapphire calculated weight 2.23cts, based on estimate dimensions 8.1 by 7 by 4.2mms.
Estimated total diamond weight 0.30ct.
Stamped 750.
Ring size L1/2. 4.4gms.
£400-600 (plus 30% BP*)



331 A 'Tiffany Harmony' brilliant-cut diamond band ring, by Tiffany & Co.

Total diamond weight 0.25ct.
Stamped PT950.
Ring size O. 2.7gms.
£300-400 (plus 30% BP*)



334 A Sri Lankan pink sapphire and brilliant-cut diamond cluster ring.

Verbal from GCS, stating Sri Lanka, no heat.
Sapphire weight 5.16cts, stamped to mount.
Estimated total diamond weight 0.80ct, H-I colour, VS-SI clarity.
Stamped 750. Ring size O1/2. 6.3gms.
£900-1,400 (plus 30% BP*)



329 A pair of pink sapphire and brilliant-cut diamond cluster earrings.

Total sapphire weight 2.75cts.
Total diamond weight 0.30ct.
Hallmarks for Birmingham.
Length 1.2cms. 3.9gms.
£900-1,400 (plus 30% BP*)



332 A square-shape diamond single-stone ring, by Tiffany & Co.

Diamond weight 0.59ct, stamped to band, estimated G-H colour, VS clarity.
Stamped PT950.
Ring size O. 4gms.
£900-1,400 (plus 30% BP*)



335 A brilliant-cut diamond cluster ring.

Total diamond weight 1.10cts.
Principal diamond weight 0.75ct, estimated J-K colour, SI clarity.
Stamped PLAT.
Ring size M. 4.4gms.
£1,500-2,000 (plus 30% BP*)



330 A platinum brilliant-cut diamond cluster ring.

Total diamond weight 0.58ct, stamped to mount, estimated G-H colour, SI2-P1 clarity.
Hallmarks for Sheffield.
Ring size N1/2. 5gms.
£700-900 (plus 30% BP*)



333 A pair of pink sapphire & brilliant-cut diamond cluster earrings.

Total sapphire weight 3.10cts.
Total diamond weight 0.28ct.
Hallmarks for Birmingham.
Length 1cm. 3.6gms.
£1,000-1,500 (plus 30% BP*)



336 A brilliant-cut diamond line bracelet.

Estimated total diamond weight 8cts, G-I colour, SI2-P2 clarity.
Stamped Pt950.
Length 19.5cms. 40.2gms.
£2,800-3,600 (plus 30% BP*)



337 An 18ct gold ruby and brilliant-cut diamond cluster ring.

Ruby calculated weight 1.05cts, based on estimated dimensions of 7.7 by 5.8 by 2.8mms.
Estimated total diamond weight 1.15cts, G-H colour, predominantly VS-SI clarity. Hallmarks for Birmingham.
Ring size P. 4.8gms.
£350-400 (plus 30% BP*)



340 An 18ct gold ruby & brilliant cut diamond cluster pendant, with chain.

Ruby weight 2.17cts.
Total diamond weight 0.16ct.
Pendant with hallmarks for Birmingham, chain stamped 750.
Length of pendant 1.8cms. Length of chain 45cms.
2.9gms.
£800-1,200 (plus 30% BP*)



343 A pair of 18ct gold brilliant-cut diamond stud earrings.

Estimated total diamond weight 1.60cts, H-I colour, VS2-SI1 clarity. Hallmarks indistinct.
1.8gms.
£1,200-1,800 (plus 30% BP*)



338 A pair of 18ct gold diamond earrings.

Estimated total diamond weight 0.70ct, G-H colour, SI1-P1 clarity. Hallmarks for Birmingham.
Length 1.9cms. 2.8gms.
£600-800 (plus 30% BP*)



341 A pair of 18ct gold ruby and diamond cluster earrings.

Total ruby weight 3.36cts.
Total diamond weight 0.28ct.
Hallmarks for Birmingham.
Length 1cm. 3.5gms.
£900-1,400 (plus 30% BP*)



344 An 18ct gold brilliant-cut diamond line bracelet.

Total diamond weight 7.04cts, estimated I-J colour, SI1-P1 clarity. Hallmarks for London, 2022.
Length 19cms. 17.6gms.
£4,000-6,000 (plus 30% BP*)



339 A platinum brilliant-cut diamond five-stone ring.

Estimated total diamond weight 1.75cts, H-J colour, VS2-SI2 clarity. Hallmarks for Sheffield, 2012.
Ring size K1/2. 6.5gms.
£700-900 (plus 30% BP*)



342 A ruby, pink sapphire and brilliant-cut diamond dress ring.

Ruby weight 10.80cts.
Total pink sapphire weight 1.23cts.
Total diamond weight 0.99ct.
Stamped AU750.
Ring size O. 7.6gms.
£800-1,200 (plus 30% BP*)



345 A platinum oval-shape diamond three-stone ring.

Diamonds laser inscribed:
GIA5413729628 corresponding to an online report dated 21st March 2022, stating 0.80ct, E colour, VS2 clarity.
GIA2427638876 corresponding to an online report dated 14th December 2021, stating 0.40ct, E colour, VS2 clarity.
GIA7431310786 corresponding to an online report dated 6th May 2022, stating 0.40ct, D colour, VS2 clarity.
Hallmarks for London, 2022. Ring size M1/2. 5.8gms.
£5,000-7,000 (plus 30% BP*)



346 A pair of sapphire and brilliant-cut diamond cluster earrings.

Estimated total diamond weight 0.40ct.
Stamped 750.
Length 1cm. 2.3gms.
£200-300 (plus 30% BP*)



349 An 18ct gold amethyst and brilliant-cut diamond cluster ring.

Amethyst weight 5.65cts.
Total diamond weight 0.35ct.
Hallmarks for Birmingham.
Ring size O. 6gms.
£500-700 (plus 30% BP*)



351 A pair of diamond heart earrings, by Piaget.

Estimated total diamond weight 0.50ct.
Stamped 750.
Length 2.5cms. 12gms.
£1,200-1,800 (plus 30% BP*)



347 A sapphire and brilliant-cut diamond heart cluster ring.

Sapphire calculated weight 2.59cts, based on estimated dimensions 12.3 by 10 by 2.7mms.
Estimated total diamond weight 0.25ct.
Stamped 14K.
Ring size L1/2. 4.5gms.
£450-650 (plus 30% BP*)



350 A diamond 'Happy Spirit' heart pendant, with two-row chain, by Chopard.

Stamped 750. Length of pendant 2.1 cms.
Length of chain 41cms. 17.1gms.
£600-800 (plus 30% BP*)



352 A sapphire and brilliant-cut diamond cluster ring.

Sapphire weight 1.55cts.
Total diamond weight 0.95ct.
Stamped PLAT.
Ring size N1/2. 5.4gms.
£1,200-1,800 (plus 30% BP*)



348 A pair of brilliant and baguette-cut diamond earrings.

Total diamond weight 2.42cts, stamped to mount, estimated G-I colour, VS clarity.
Stamped 750. Length 2.3gms. 10.5gms.
£600-800 (plus 30% BP*)



353 A platinum brilliant-cut diamond single-stone ring.

Estimated diamond weight 2.25cts, J-K colour, VS clarity.
Hallmarks for Birmingham, 1991. Ring size L1/2. 6.4gms.
£5,500-7,500 (plus 30% BP*)



354 A pair of brilliant-cut diamond single-stone stud earrings.

Estimated total diamond weight 0.60ct, H-I colour, SI1-P1 clarity. 1.2gms.
£250-350 (plus 30% BP*)



357 A vari-cut diamond necklace.

Estimated total diamond weight 1.25cts, G-I colour, VS-SI clarity. Stamped 750. Length 45.3cms. 6.7gms.
£600-900 (plus 30% BP*)



359 An old-cut diamond single-stone ring.

Estimated diamond weight 1ct, G-H colour, P1-P2 clarity. Ring size W. 5.2gms.
£1,200-1,800 (plus 30% BP*)



355 A tanzanite and brilliant-cut diamond cluster ring.

Tanzanite calculated weight 3.44cts, based on estimated dimensions 8.2 by 8.2 by 6.6mms. Estimated total diamond weight 0.80ct. Stamped 750. Ring size M. 5.4gms.
£600-800 (plus 30% BP*)



360 A sapphire and brilliant-cut diamond floral cluster ring.

Sapphire calculated weight 1.78cts, based on estimated dimensions of 6.4 by 5.4 by 5.5mms. Estimated total diamond weight 0.40ct, H-I colour, VS clarity. Ring size M. 4.8gms.
£1,200-1,800 (plus 30% BP*)



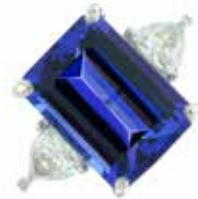
356 A pair of tanzanite and brilliant-cut diamond cluster earrings.

Calculated total tanzanite weight 7.78cts, based on estimated dimensions 11.1 by 8.3 by 6.1mms. Estimated total diamond weight 2.00ct. Length 2.0cms. 10.3gms.
£600-800 (plus 30% BP*)



358 A sapphire and brilliant-cut diamond cluster crossover ring.

Sapphire calculated total weight 1.86cts, based on estimated dimensions. Estimated total diamond weight 0.90ct, H-J colour, VS-SI clarity. Stamped 750. Ring size N. 6.1gms.
£800-1,200 (plus 30% BP*)



361 An 18ct gold tanzanite and triangular-shape diamond dress ring.

Tanzanite weight 5.29cts. Total diamond weight 0.68ct, estimated H-I colour, SI clarity. Hallmarks for Birmingham. Ring size P1/2. 4.8gms.
£2,200-3,200 (plus 30% BP*)



362 A pair of ruby and brilliant-cut diamond cluster earrings.

Estimated total diamond weight 0.40ct.
Stamped 750.
Length 1cm. 2.4gms.
£200-300 (plus 30% BP*)



365 An 18ct gold aquamarine and brilliant-cut diamond cluster ring.

Aquamarine weight 2.20cts.
Total diamond weight 0.41ct.
Hallmarks for Birmingham.
Ring size O. 4.1gms.
£750-950 (plus 30% BP*)



368 A ruby and oval-shape diamond three-stone ring, with brilliant-cut diamond gallery highlights.

Ruby calculated weight 0.80ct, based on estimated dimensions of 7.2 by 5.1 by 2.8mms.
Estimated total diamond weight 0.30ct, G-H colour, VS clarity.
Ring size N1/2. 4.7gms.
£900-1,400 (plus 30% BP*)



363 A platinum brilliant-cut diamond two-row eternity ring.

Estimated total diamond weight 0.45ct.
Hallmarks for Birmingham. Ring size H. 3.4gms.
£320-420 (plus 30% BP*)



366 An aquamarine, ruby and brilliant-cut diamond pendant, with 18ct gold chain.

Aquamarine weight 5.74cts.
Ruby weight 0.70ct.
Total diamond weight 0.29ct.
Pendant stamped PT950. Chain with hallmarks for Birmingham.
Length of pendant 2.2cms. Length of chain 40cms. Total weight 5.8gms.
£800-1,200 (plus 30% BP*)



369 An aquamarine and brilliant-cut diamond three-stone ring, with diamond accents.

Aquamarine weight 3.20cts.
Total diamond weight 0.70ct, principal diamonds estimated K-L colour, VS2-SI2 clarity.
Stamped PLAT.
Ring size N. 6.1gms.
£1,000-1,500 (plus 30% BP*)



364 A platinum rectangular-shape diamond single-stone ring.

Laser inscription GIA2387169605, stating 0.55ct, E colour, VVS2.
Hallmarks for London, 2022.
Ring size G. 4gms.
£350-450 (plus 30% BP*)



367 An aquamarine, ruby and brilliant-cut diamond dress ring.

Aquamarine weight 7.72cts.
Total ruby weight 1.01cts.
Total diamond weight 0.24ct.
Stamped PT950.
Ring size N. 7.3gms.
£900-1,400 (plus 30% BP*)



370 A brilliant-cut diamond chevron-link bracelet.

Estimated total diamond weight 8.50cts, H-J colour, SI1-P1 clarity.
Stamped 14K. Length 17.8cms.
£2,500-3,500 (plus 30% BP*)



371 A treated 'lavender' jade and brilliant-cut diamond cluster ring.

Jade estimated dimensions of 27.6 by 18.4 by 7.7mms.
Estimated total diamond weight 2cts, G-J colour, SI1-P1 clarity.
Stamped 14K. Ring size N. 20.2gms.
£600-800 (plus 30% BP*)



374 A pink sapphire and brilliant-cut diamond cluster ring.

Total diamond weight 1.00ct.
Sapphire weight 1.10cts.
Stamped 18CT, PLAT.
Ring size N. 3.8gms.
£1,200-1,800 (plus 30% BP*)



377 An 18ct gold rectangular-shape diamond ring, with similarly-cut diamond sides.

Principal diamond estimated weight 2.60cts, G-H colour, VS clarity.
Hallmarks for Birmingham, 1991. Ring size Q. 5.8gms.
£10,000-15,000 (plus 30% BP*)



372 A bicolour figaro-link chain.

Italian marks, stamped 750.
Length 41.5cms. 38.9gms.
£1,000-1,500 (plus 30% BP*)



375 A sapphire and vari-cut diamond dress ring, by Ariss.

Sapphire weight 3.70cts.
Total diamond weight 1.05ct.
Stamped 750, partially indistinct.
Approximate ring size O. 10.9gms.
£1,800-2,600 (plus 30% BP*)



378 An 18ct gold brilliant-cut diamond single-stone ring.

Diamond weight 5.07cts, stamped to mount, estimated tinted colour, SI clarity.
Hallmarks for Birmingham. Ring size O. 7.7gms.
£14,000-20,000 (plus 30% BP*)



373 An 18ct gold ruby and brilliant-cut diamond cluster ring.

Ruby weight 2.95cts.
Total diamond weight 0.80ct.
Hallmarks for Birmingham.
Ring size O. 5.3gms.
£1,200-1,800 (plus 30% BP*)



376 A mid 20th century 18ct gold brilliant-cut diamond bracelet.

Estimated total diamond weight 9cts, G-I colour, VS2-P1 clarity.
Stamped 18ct.
Length 18cms. 67gms.
£2,200-3,200 (plus 30% BP*)



379 An 18ct gold ruby and old-cut diamond cluster ring.

Ruby calculated weight 0.61ct, based on estimated dimensions of 6.05 by 2.1mms. Estimated total diamond weight 0.55ct, G-J colour, VS-SI clarity. Hallmarks indistinct. Ring size Q1/2. 3.9gms.
£100-150 (plus 30% BP*)



382 A brilliant-cut diamond bicolour, stylised floral line bracelet.

Estimated total diamond weight 1.10cts, G-I colour, VS-SI clarity. Stamped 750. Length 17.8cms. 19.8gms.
£800-1,200 (plus 30% BP*)



385 An 18ct gold ruby and brilliant-cut diamond cluster ring.

Ruby weight 2.65cts. Total diamond weight 0.48ct. Hallmarks for Birmingham. Ring size O. 3.4gms.
£1,600-2,200 (plus 30% BP*)



380 An 18ct gold amethyst and diamond cluster ring.

Amethyst calculated weight 1.61cts, based on estimated dimensions of 9 by 7 by 4.6mms. Estimated total diamond weight 0.40ct. Hallmarks for London, 1986. Ring size L. 4.5gms.
£220-320 (plus 30% BP*)



383 An 18ct gold rectangular-shape diamond single-stone ring.

Diamond estimated weight 0.85ct, H-I colour, VS2-SI1 clarity. Hallmarks for London, 2000. Ring size K1/2. 7.1gms.
£1,000-1,500 (plus 30% BP*)



386 A mid 20th century platinum and 18ct gold graduated old-cut diamond three-stone ring.

Estimated total diamond weight 1.50cts, G-I colour, P1 clarity. Stamped PLAT 18ct. Ring size P. 4.3gms.
£1,000-1,500 (plus 30% BP*)



381 An 18ct gold baguette and brilliant-cut diamond cluster ring.

Total diamond weight 1.08cts, stamped to mount, estimated G-H colour, VS-SI clarity. Hallmarks for London, 2015. Ring size K1/2. 5.3gms.
£400-600 (plus 30% BP*)



384 An 18ct gold tanzanite and brilliant-cut diamond ring.

Tanzanite calculated weight 10.26cts, based on estimated dimensions of 13.5 by 11.2 by 8.6mms. Estimated total diamond weight 0.65ct, G-H colour, VS clarity. Hallmarks for Birmingham, 1990. Ring size N. 9.6gms.
£1,500-2,000 (plus 30% BP*)



387 A diamond and blue paste necklace, with matching cuff bangle and earrings.

Total diamond weight 2.46cts, engraved to mounts. Length of necklace 39cms. Inner diameter of bangle 5.6cms. Length of earrings 2.4cms. 69.7gms.
£1,800-2,600 (plus 30% BP*)



388 A vari-hue gem and brilliant-cut diamond pendant.

Estimated total diamond weight 0.10ct.
Stamped 14K. Length 2.2cms. 2.9gms.
£150-200 (plus 30% BP*)



391  **An 18ct gold Fancy Deep Brown-Greenish Yellow diamond and brilliant-cut diamond cluster ring.**

Principal diamond with report no. 6271246478, from GIA, dated December 06 2017, stating 1.01cts, fancy deep brown-greenish yellow colour, natural colour origin. Total diamond weight 1.54cts. Hallmarks for Birmingham. Ring size N. 3.3gms.
£1,800-2,600 (plus 30% BP*)



394 A pair of pink sapphire and brilliant-cut diamond cufflinks.

Estimated total diamond weight 1ct.
Length of cufflink face 1cm. 8.1gms.
£350-400 (plus 30% BP*)



389 A pair of vari-hue gem and single-cut diamond earrings.

Estimated total diamond weight 0.15ct.
Stamped 14K. Length 1.7cms. 6.9gms.
£280-380 (plus 30% BP*)



392 An 18ct gold ametrine and brilliant-cut diamond dress ring.

Ametrine weight 20.69cts.
Total diamond weight 0.56ct.
Hallmarks for Birmingham.
Ring size N1/2. 11.3gms.
£700-900 (plus 30% BP*)



395 A sapphire and brilliant-cut diamond flexible ring.

Estimated total diamond weight 2.50cts,
G-I colour, SI1-P1 clarity.
Stamped 750. Ring size P. 23.5gms.
£900-1,400 (plus 30% BP*)



390 A vari-hue gem and brilliant-cut diamond bracelet.

Estimated total diamond weight 1.75cts.
Stamped 14K. Length 20.5cms. 47.6gms.
£1,500-2,000 (plus 30% BP*)



393 A yellow sapphire and brilliant-cut diamond ring.

Calculated sapphire weight 2.48cts, based on estimated dimensions 9.3 by 6.6 by 4.3mm.
Estimated total diamond weight 0.20ct.
Stamped 750.
Ring size M. 4gms.
£400-600 (plus 30% BP*)



396 An 18ct gold vari-hue sapphire line bracelet.

Total sapphire weight 7.24cts.
Hallmarks for Birmingham.
Length 19cms. 7.4gms.
£600-800 (plus 30% BP*)



397 A brilliant-cut diamond half eternity shaped band ring.

Estimated total diamond weight 0.20ct.
Ring size I1/2. 3.3gms.
£100-150 (plus 30% BP*)



400 A pair of brilliant-cut diamond drop earrings.

Estimated total diamond weight 1.50cts.
Length 3cms. 6.7gms.
£550-750 (plus 30% BP*)



403 An emerald and brilliant-cut diamond dress ring.

Emerald weight 2.38cts.
Total diamond weight 0.20ct.
Stamped PLAT.
Ring size N1/2. 4.1gms.
£900-1,400 (plus 30% BP*)



398 A tourmaline and brilliant-cut diamond dress ring.

Tourmaline calculated weight 4.88cts., based on estimated dimensions 11.2 by 8.7 by 7.8mms.
Estimated total diamond weight 0.70ct.
Stamped 14K.
Ring size N. 6gms.
£500-700 (plus 30% BP*)



401 An 18ct gold emerald and brilliant-cut diamond cluster ring.

Emerald weight 1.17cts.
Total diamond weight 0.57ct.
Hallmarks for Birmingham.
Ring size O. 3gms.
£700-900 (plus 30% BP*)



404 A brilliant-cut diamond line bracelet.

Estimated total diamond weight 4.50cts, H-J colour, VS2-P1 clarity.
Stamped 14K.
Length 18cms. 16.6gms.
£2,500-3,500 (plus 30% BP*)



399 An emerald and brilliant-cut diamond pendant.

Emerald calculated weight 4.24cts, based on estimated dimensions 10.7 by 10 by 5.4mms.
Estimated total diamond weight 0.75ct.
Stamped 14K.
Length of pendant 3cms. 5.1gms.
£600-800 (plus 30% BP*)



402 A platinum cushion-shape diamond single-stone ring, with brilliant-cut diamond surround and sides.

Principal diamond laser inscribed GIA 6183884979, corresponding to an online report check stating 0.60ct, D colour, VVS2 clarity.
Hallmarks for London, 2018.
Ring size G. 3.9gms.
£1,500-2,000 (plus 30% BP*)



405 A platinum graduated rectangular-shape diamond five-stone ring.

Diamonds laser inscribed corresponding to GIA online reports, totalling 2.93cts, E-F colour, VVS2-VS2 clarity.
Hallmarks for London, 2022.
Ring size M1/2. 6.6gms.
£5,500-7,500 (plus 30% BP*)



406 A pair of yellow sapphire and brilliant-cut diamond cluster earrings.

Estimated total diamond weight 0.70ct.
Stamped 750.
Length 1.2cms. 3.4gms.
£300-400 (plus 30% BP*)



409 A green beryl and brilliant-cut diamond cluster ring.

Green beryl calculated weight 8.61cts, based on estimated dimensions 16.5 by 12 by 8mms.
Estimated total diamond weight 0.50ct.
Stamped 14K.
Ring size J. 5.4gms.
£600-800 (plus 30% BP*)



412 An 18ct gold citrine and brilliant-cut diamond cluster ring.

Citrine weight 5.68cts.
Total diamond weight 0.52ct.
Hallmarks for Birmingham.
Ring size O. 6.7gms.
£600-800 (plus 30% BP*)



407 A yellow sapphire and brilliant-cut diamond ring.

Sapphire calculated weight 2.58cts, based on estimated dimensions of 8.2 by 7.7 by 4.8mms.
Estimated total diamond weight 0.30ct.
Stamped 750.
Ring size L1/2. 4.6gms.
£400-600 (plus 30% BP*)



410 A pair of 18ct gold emerald and brilliant-cut diamond drop earrings.

Total emerald weight 1.28cts.
Total diamond weight 0.56ct.
Hallmarks for Birmingham.
Length 2.3cms. 4.5gms.
£650-850 (plus 30% BP*)



413 A 1970s 18ct gold diamond necklace.

Estimated total diamond weight 1.40cts.
Import marks for London, 1978.
Length 38.6cms. 11gms.
With Garrard case.
£700-900 (plus 30% BP*)



408 An emerald and brilliant-cut diamond cluster ring.

Emerald calculated weight 1.63cts, based on estimated dimensions 8.9 by 6.6 by 3.8mms.
Estimated total diamond weight 0.35ct.
Stamped 750.
Ring size L1/2. 6.3gms.
£450-650 (plus 30% BP*)



411 A vari-cut diamond floral cluster ring.

Principal diamond estimated weight 0.75ct, H-I colour, VS clarity.
Stamped 14K. Ring size K. 4gms.
£700-900 (plus 30% BP*)



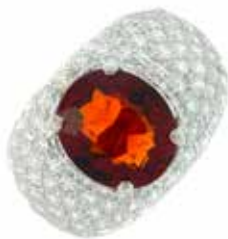
414 An A-type jade and brilliant-cut diamond cluster ring.

With report 2225339060, dated 15th March 2022, from the GIA, stating 2.04cts, natural colour, no impregnation.
Total diamond weight 0.61ct, stamped to band, estimated G-H colour, VS clarity.
Stamped Pt900. Ring size K1/2. 8.8gms.
£1,500-2,000 (plus 30% BP*)



415 A pair of yellow sapphire and brilliant-cut diamond cluster earrings.

Estimated total diamond weight 0.45ct.
Length 1cm. 3.2gms.
£250-350 (plus 30% BP*)



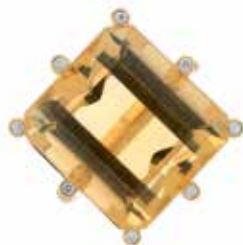
418 A citrine and pavé-set diamond ring.

Citrine calculated weight 2.74cts, based on estimated dimensions of 10.5 by 9 by 5.2mms.
Estimated total diamond weight 2cts, G-I colour, VS-SI clarity.
French assay marks.
Ring size M. 9.8gms.
£900-1,400 (plus 30% BP*)



421 An 18ct gold ruby, onyx and diamond ladybird brooch, by E. Wolfe & Co.

Ruby total weight 2.88cts.
Hallmarks for London, 1990.
Length 2.2cms. 6.5gms.
£1,200-1,800 (plus 30% BP*)



416 An 18ct gold citrine dress ring with brilliant-cut diamond accents.

Citrine weight 11.55cts.
Total diamond weight 0.25ct.
Hallmarks for Birmingham.
Ring size N. 10gms.
£600-800 (plus 30% BP*)



419 An 18ct gold brown zircon and vari-cut diamond bicolour ring.

Zircon calculated weight 3.73cts, based on estimated dimensions of 8.8 by 7.5 by 5.8mms.
Estimated total diamond weight 0.80ct, G-H colour, predominantly VS clarity.
Hallmarks for Birmingham. Ring size M1/2. 14.8gms.
£600-800 (plus 30% BP*)



422 An 18ct gold pavé-set diamond and sapphire woven cuff bangle.

Estimated total diamond weight 1.75cts.
Hallmarks for London, 2022.
Inner diameter 5.6cms. 57.4gms.
£2,500-3,500 (plus 30% BP*)



417 An 18ct gold, pink and green tourmaline brooch, by Alabaster & Wilson.

Hallmarks for Birmingham, 1987.
Length 6cms. 10.9gms.
£400-600 (plus 30% BP*)



420 An 18ct gold enamel egg cluster charm bracelet, by Fabergé.

Hallmarks for Edinburgh.
Length 19cms. 48.4gms.
With maker's case.
£1,800-2,600 (plus 30% BP*)



423 A 14ct gold brilliant-cut diamond single-stone ring.

With report 6211390878, dated 23rd December 2015, from the GIA, stating 0.70ct, H colour, VS1 clarity. Hallmarks for Dublin. Ring size L. 2.2gms.
£700-900 (plus 30% BP*)



426 A brilliant-cut diamond cluster ring.

Total diamond weight 1.10cts.
Stamped PLAT, partially indistinct.
Ring size N. 6.3gms.
£1,000-1,500 (plus 30% BP*)



429 A tourmaline and brilliant-cut diamond dress ring.

Tourmaline calculated weight 13.07cts, based on estimated dimensions 18 by 12.7 by 8.9mms.
Estimated total diamond weight 0.75ct.
Stamped 14K.
Ring size N1/2. 10.6gms.
£600-800 (plus 30% BP*)



424 A tourmaline and brilliant-cut diamond heart pendant.

Tourmaline calculated weight 65.69cts, based on estimated dimensions 26.8 by 26 by 15.8mms.
Estimated total diamond weight 0.50ct.
Stamped 14K.
Length 4cms. 17.2gms.
£900-1,400 (plus 30% BP*)



427 A pair of tourmaline and brilliant-cut diamond drop earrings.

Total tourmaline weight 8.92cts.
Total diamond weight 1.12cts.
Stamped AU750.
Length 3.5cms. 9.3gms.
£1,500-2,000 (plus 30% BP*)



430 A pair of Art Deco platinum and gold, black enamel and diamond point cufflinks, with three matching buttons, by Cartier.

One additional non-designer button.
Diameter of cufflink face 1.2cms. Diameter of button 1.2cms.
16.4gms.
With maker's case.
£2,500-3,500 (plus 30% BP*)



425 A ruby and brilliant-cut diamond cluster ring.

Ruby weight 1.50cts.
Total diamond weight 0.80ct.
Stamped PLAT.
Ring size M1/2. 5.7gms.
£1,200-1,800 (plus 30% BP*)



428 A pair of 18ct gold fracture-filled diamond stud earrings.

Estimated total diamond weight 2.75cts, J-K colour, P2 clarity.
Hallmarks for Sheffield. 2.7gms.
£1,500-2,000 (plus 30% BP*)



431 A platinum brilliant-cut diamond cluster ring.

Principal diamond weight 1.74cts, estimated H-I colour, P1 clarity.
Total diamond weight 2.40cts.
Hallmarks for London, 2022.
Ring size N1/2. 7.9gms.
£6,000-8,000 (plus 30% BP*)



432 A Burmese sapphire cabochon and brilliant-cut diamond cluster ring.

Verbal from GCS, stating Burma, no heat. Sapphire calculated weight 6.52cts, based on estimated dimensions of 11 by 9 by 6.1mms. Estimated total diamond weight 1.40cts, G-I colour, VS-SI clarity. Stamped 750. Ring size Q. 8.2gms. **£600-800** (plus 30% BP*)



435 An 18ct gold diamond 'Magic' ring, by Georg Jensen.

Estimated total diamond weight 0.45ct, G-H colour, VS clarity. Hallmarks for London, 2008 and Danish convention marks. Ring size I. 13gms. **£800-1,200** (plus 30% BP*)



438 A sapphire and vari-shape diamond cluster ring.

Estimated total diamond weight 0.85ct, G-H colour, VS-SI clarity. Ring size M. 6.7gms. **£1,800-2,600** (plus 30% BP*)



433 A calibre-cut sapphire and rectangular-shape diamond dress ring.

Sapphire total weight 3.86cts, total diamond weight 0.62ct, stamped to band. Stamped PT, partially indistinct. Ring size M. 12.3gms. **£600-800** (plus 30% BP*)



436 A slightly undulating band ring, by Pomellato.

Italian marks, stamped 750. Ring size N. 24.8gms. **£1,000-1,500** (plus 30% BP*)



439 A pair of 18ct gold diamond Heritage Collection 'Boris' blue enamel cufflinks, by Fabergé.

Total diamond weight 0.08ct, estimated G-H colour, VS clarity. Hallmarks for London. Length of cufflink face 1.7cms. 14.4gms. With maker's case and certificate of authenticity. **£1,800-2,600** (plus 30% BP*)



434 A pair of 18ct gold sapphire and brilliant-cut diamond drop earrings.

Total sapphire weight 2.06cts. Total diamond weight 0.49ct. Hallmarks for Birmingham. Length 2.5cms. 5.2gms. **£700-900** (plus 30% BP*)



437 A 'Happy Diamonds' heart pendant, with chain, by Chopard.

Total diamond weight 0.28ct, estimated G-H colour, VS clarity. Stamped 750. Length of pendant 2.1cms. Length of chain 42.5cms. 24.1gms. With maker's case and certificate of authenticity. **£1,500-2,000** (plus 30% BP*)



440 A heart-shape diamond single-stone ring, with baguette-cut diamond line sides.

With report 571386069, dated 19th April 2023, from IGI, stating 1.62cts, D colour, VS2 clarity. Stamped Pt900. Ring size K1/2. 4.8gms. **£3,600-4,600** (plus 30% BP*)



441 An 18ct gold sapphire and brilliant-cut diamond cluster ring.

Total sapphire weight 0.25ct.
Total diamond weight 0.35ct.
Hallmarks for Birmingham.
Ring size N1/2. 3.6gms.
£450-650 (plus 30% BP*)



444  **A brilliant-cut diamond 'Soleste' full eternity ring, by Tiffany & Co.**

Estimated total diamond weight 0.30ct.
Stamped Au750. Ring size I1/2. 1.1gms.
With maker's case.
£400-600 (plus 30% BP*)



447 A sapphire and fancy-cut diamond three-stone ring.

Sapphire calculated weight 1ct, based on estimated dimensions of 5.7 by 5.2 by 3.5mms.
Estimated total diamond weight 0.25ct, G+ colour, SI clarity.
Stamped PLAT.
Ring size L. 4.3gms.
£1,000-1,500 (plus 30% BP*)



442 A brilliant-cut diamond articulated dress ring.

Estimated total diamond weight 0.55ct.
Stamped 18K 750.
Ring size N. 6.9gms.
£350-400 (plus 30% BP*)



445  **A platinum Lucida-cut diamond single-stone ring, by Tiffany & Co.**

With report 26765544/L05030116, from Tiffany & Co. stating 0.45ct, I colour, VVS1 clarity.
Hallmarks for London, 2010. Ring size J1/2. 4gms.
With maker's case.
£1,000-1,500 (plus 30% BP*)



448 A pair of vari-cut diamond earrings.

Estimated total diamond weight 0.50ct, H-J colour, VS clarity.
Length 2.7cms. 7.6gms.
£300-400 (plus 30% BP*)



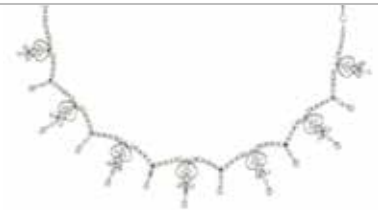
443 An 18ct gold diamond heart pendant, by Theo Fennell.

Estimated total diamond weight 0.30ct.
Hallmarks for London, 2003.
Length 4.9cms. 6.1gms.
£700-900 (plus 30% BP*)



446 A 14ct gold brilliant-cut diamond line bracelet.

Estimated total diamond weight 4.65cts, H-J colour, SI1-P1 clarity.
Hallmarks for Birmingham.
Length 18.2cms. 12.5gms.
£900-1,400 (plus 30% BP*)



449 A brilliant and baguette-cut diamond necklace.

Estimated total diamond weight 3cts, H-J colour, VS clarity.
Italian marks, stamped 750. Length 36cms. 24.1gms.
£1,800-2,600 (plus 30% BP*)



450 An 18ct gold Akoya cultured pearl bow ring, by Mikimoto.

Hallmarks for London.
Ring size N. 5gms.
£300-400 (plus 30% BP*)



453 A diamond highlight hexagonal-link bracelet.

Estimated total diamond weight 0.95ct.
French assay marks.
Length 18.4cms. 80gms.
£3,500-4,500 (plus 30% BP*)



451 An 18ct gold diamond and cultured pearl 'Dandelion' ring, by Mikimoto.

Hallmarks for London.
Ring size M. 5gms.
£350-450 (plus 30% BP*)



454 A diamond 'Move' ring, by Messika.

Estimated total diamond weight 0.60ct,
G-H colour, VS clarity.
Stamped 750. Ring size M1/2. 4.4gms.
£400-600 (plus 30% BP*)



456 An 18ct gold diamond 'Treillage' cuff bangle, by Fabergé.

Total diamond weight 0.36ct, F colour, VS clarity.
Hallmarks for London. Inner diameter 5.5cms. 8.8gms.
With certificate of authenticity.
£700-900 (plus 30% BP*)



452 A pair of 18ct gold diamond and cultured pearl 'Dandelion' earrings, by Mikimoto.

Total diamond weight 0.11ct, estimated G-H colour, VS clarity.
Hallmarks for London.
Length 2.3cms. 3.1gms.
£400-600 (plus 30% BP*)



455 A heart-shape diamond ring, with brilliant-cut diamond scrolling surround.

Heart-shape diamond laser inscribed GIA 1269591625, stating 0.91ct, G colour, SI1 clarity.
Estimated total brilliant-cut diamond weight 0.25ct.
Stamped 18ct. Ring size K. 4.1gms.
£800-1,200 (plus 30% BP*)



457 An 18ct gold diamond and gem-set 'Treillage' egg motif sautoir necklace, by Fabergé.

Gems to include ruby, sapphire, pink sapphire, amethyst, tsavorite garnet, fire opal and diamonds. Total diamond weight 0.48ct, F colour, VS clarity. Hallmarks for London. Length 104cms. 20.9gms.
With maker's case and certificate of authenticity.
£2,800-3,800 (plus 30% BP*)



458 A slightly graduated akoya, 'Tahitian' and 'pink' freshwater cultured pearl single-strand necklace, with 18ct gold spherical clasp.

Estimated diameter of cultured pearls 16.7 to 13.1mms.
Hallmarks for London, 2021.
Length 45cms. 127gms.
Cultured pearls untested for natural colour origin.
£500-700 (plus 30% BP*)



461 An 18ct gold brilliant-cut diamond scrolling openwork bombé ring.

Total diamond weight 1.79cts, marked to band, estimated G-H colour, predominantly VS clarity.
Hallmarks partially indistinct. Ring size L. 7.7gms.
£900-1,400 (plus 30% BP*)



464 An 18ct gold morganite and brilliant-cut diamond cluster ring.

Morganite weight 11.43cts.
Total diamond weight 0.54ct.
Hallmarks for Birmingham.
Ring size O. 7.4gms.
£900-1,400 (plus 30% BP*)



459 An 18ct gold morganite and diamond ring.

Morganite weight 2.98cts.
Total diamond weight 0.70ct, estimated G-H colour, VS clarity.
Hallmarks for London, 2015. Ring size L1/2. 6.8gms.
£600-800 (plus 30% BP*)



462 An 18ct gold diamond 'Rococo' ring, by Fabergé.

Total diamond weight 0.67ct, estimated G-H colour, VS clarity.
Hallmarks for London.
Ring size L. 3.6gms.
With certificate of authenticity.
£800-1,200 (plus 30% BP*)



465 An 18ct gold amethyst and diamond ring, by Picchiotti.

Amethyst weight 11.67cts.
Estimated total diamond weight 0.55ct, G-H colour, VS clarity.
Hallmarks for London, 2007. Ring size L1/2. 13gms.
With maker's case.
£1,000-1,500 (plus 30% BP*)



460 An 18ct gold pink tourmaline and diamond ring.

Tourmaline weight 2.50cts.
Total diamond weight 1.01cts, estimated G-H colour, VS clarity.
Hallmarks for Sheffield, 2014. Ring size N1/2. 16.8gms.
£1,200-1,800 (plus 30% BP*)



463 An 18ct gold pink enamel 'Rococo' pendant, on chain, by Fabergé.

Length of pendant 4cms. Length of chain 68cms.
19.4gms.
With certificate of authenticity.
£1,000-1,500 (plus 30% BP*)



466 An 18ct gold Akoya, 'South Sea' and 'Black South Sea' cultured pearl station three-row necklace, by Mikimoto.

Hallmarks for London.
Length 40.5cms. 29.6gms.
Cultured pearls untested for natural colour origin.
£1,000-1,500 (plus 30% BP*)



467  **A pair of 18ct gold diamond and black gem earrings, by Theo Fennell.**

Estimated total diamond weight 0.40ct.
Hallmarks for London, 2004. Diameter 1.4cms. 8.4gms.
With maker's case.
£320-420 (plus 30% BP*)



470 **A pair of onyx cufflinks, by Cartier.**

Stamped 750.
Length of onyx 2.2cms. 10.6gms.
£800-1,200 (plus 30% BP*)



472  **An 18ct gold 'Le Baiser du Dragon' pendant, with ruby bead tassel and black cord, by Cartier.**

Hallmarks for London.
Length of pendant 7.1cms. 24.7gms.
With maker's case and certificate of authenticity.
£1,000-1,500 (plus 30% BP*)



468  **An 18ct gold diamond and black gem heart pendant, with chain, by Theo Fennell.**

Estimated total diamond weight 1.75cts.
Hallmarks for London, 2004 and Birmingham, 2003.
Length of pendant 4.1cms. Length of chain 44.5cms. 20.5gms.
With maker's case.
£1,000-1,500 (plus 30% BP*)



471 **A 'Tahitian', 'South Sea' and freshwater cultured pearl necklace.**

Estimated diameter of cultured pearls 15.1 to 10.3mms.
Length 87cms. 149.5gms.
Cultured pearls untested for natural colour origin.
£1,000-1,500 (plus 30% BP*)



473 **A Silverium 'Panthere' pendant, by Cartier.**

French assay marks.
Length 5.8cms. 28.5gms.
£1,000-1,500 (plus 30% BP*)



469  **An 18ct gold diamond and 'black' diamond scroll bracelet.**

Total diamond weight 3.36cts, stamped to mount.
Hallmarks for Sheffield, 2008. Length 18.5cms. 15.5gms.
With Cathy Stephens case.
£600-800 (plus 30% BP*)



474 **A cultured pearl five-strand Silverium 'Panthere' necklace, with matching bracelet, by Cartier.**

French marks, stamped 750.
Length of necklace 39cms. Length of bracelet 21cms. 93.2gms.
£2,000-3,000 (plus 30% BP*)



475 A Victorian silver and gold, amethyst and diamond stickpin.

Length of stickpin head 1.3cms. 1.8gms.
£80-120 (plus 30% BP*)



478 A late 19th century silver and gold old-cut diamond crescent moon brooch.

Estimated total diamond weight 1.10cts, predominantly G-I colour, SI clarity.
Length 5cms. 4.8gms.
£320-420 (plus 30% BP*)



481 A 19th century silver and 12ct gold foil back rose-cut diamond ring.

Ring size R. 10gms.
£250-350 (plus 30% BP*)



476 A late Victorian silver and gold, amethyst and rose-cut diamond brooch.

Amethyst calculated weight 18.78cts, based on estimated dimensions of 22.4 by 15.8 by 9.5mms.
Length 3.2cms. 8.4gms.
£100-150 (plus 30% BP*)



479 An old-cut diamond star brooch.

Estimated total diamond weight 1.25cts
Length 5.2cms. 13.2gms.
£180-260 (plus 30% BP*)



482 A 19th century silver and gold foil back rose-cut diamond ring.

Ring size O. 5.2gms.
£1,000-1,500 (plus 30% BP*)



477 Two 19th century foil back diamond floral hair pins.

Diameter of flowers 1.6cms. 8gms.
£100-150 (plus 30% BP*)



480 A late Victorian silver and gold pearl and vari-cut diamond target brooch.

Estimated total old-cut diamond weight 0.30ct.
Diameter 3cms. 11.3gms.
Pearls untested for natural origin.
£450-650 (plus 30% BP*)



483 A Victorian silver and gold rose-cut diamond floral brooch.

Principal rose-cut diamond estimated dimensions of 7.5 by 7.2 by approximately 2.6mms.
Length 4cms. 13.2gms.
With fitted Harvey & Gore case.
£1,400-2,000 (plus 30% BP*)



484 A Victorian gold diamond point and turquoise forget-me-not floral ring.

Ring size K1/2. 1.8gms.
£100-150 (plus 30% BP*)



487 A Victorian 15ct gold turquoise snake ring, with old-cut diamond crest.

Estimated diamond weight 0.30ct, H-I colour, VS clarity.
Ring size N. 7.3gms.
£200-300 (plus 30% BP*)



490 A Georgian gold portrait miniature stick pin, with rose-cut diamond surround.

Length of stickpin head 1.8cms. 2.6gms.
£100-150 (plus 30% BP*)



485 A Victorian gold diamond point and turquoise forget-me-not ring, with glazed locket reverse.

Ring size J. 2gms.
£100-150 (plus 30% BP*)



488 ✕ A pair of gold carved coral earrings, with detachable drop.

Foreign marks, indistinct.
Length 4.8cms. 6gms.
Coral untested for natural colour origin.
£200-300 (plus 30% BP*)



491 A Georgian gold portrait miniature brooch, with graduated split pearl surround.

Diameter 2.5cms. 6.2gms.
£100-150 (plus 30% BP*)



486 A Victorian 18ct gold alternating turquoise and old-cut diamond five-stone ring.

Estimated total diamond weight 0.40ct, G-H colour, SI1-P1 clarity.
Ring size L1/2. 2.6gms.
£200-300 (plus 30% BP*)



489 A late Victorian silver and 18ct gold, sapphire and old-cut diamond triple cluster ring.

Estimated total diamond weight 1ct.
Stamped 18. Ring size S. 4.3gms.
£120-180 (plus 30% BP*)



492 A late Georgian gold mounted portrait miniature brooch, depicting a woman, with woven hair reverse.

Length 4cms. 17gms.
£220-320 (plus 30% BP*)



502 ✕ A 19th century gold carved coral hand pendant, suspending a group of coral charms, to include a cornucopia, horse leg and jug.

Length 5.4cms. 6.4gms.
Coral untested for natural colour origin.
£100-150 (plus 30% BP*)



505 A Georgian gold glazed woven hair memorial ring, with black enamel and script band, dated 1766.

Ring size P 1/2. 3.8gms.
£200-300 (plus 30% BP*)



508 A synthetic ruby and white enamel dress ring.

Synthetic ruby calculated weight 1.35cts, based on estimated dimensions of 8.5 by 6.1 by 3.1mms.
Ring size J1/2. 5.2gms.
£250-350 (plus 30% BP*)



503 An early Victorian gold glazed panel and black enamel snake stickpin, the reverse engraved with a crowned initial D and date 'April 12, 1845'.

Length of stickpin head 1.9cms. 3.4gms.
£150-200 (plus 30% BP*)



506 A Georgian gold diamond point pendant.

Length 4.1cms. 3gms.
£120-180 (plus 30% BP*)



509 A gold portrait miniature glazed slide, possibly mid 17th century.

Length 2.8cms. 5.5gms.
£200-300 (plus 30% BP*)



504 A mid 20th century 22ct gold band ring, with later black enamel skeleton and floral motif.

Hallmarks for Birmingham, 1967.
Ring size O1/2. 5.1gms.
£500-700 (plus 30% BP*)



507 A 1920s 18ct gold signet ring, with later enamel skull.

Hallmarks for Birmingham, 1921.
Ring size M. 4.5gms.
£450-650 (plus 30% BP*)



510 A mid 17th century portrait miniature on copper, within a glazed gold and enamel locket, the interior with blue and grey enamel scene, the reverse with amorous couple and motto border.

Length 4.4cms. 16.7gms.
£300-400 (plus 30% BP*)

Fellows

Established 1876



What could your items be worth?

Fellows have been providing specialist auction valuations of antiques, jewellery, watches and designer goods since 1876. Get in touch to receive your free no-obligation valuation.

Contact Us www.fellows.co.uk | info@fellows.co.uk
Birmingham 19 Augusta Street | B18 6JA | 0121 212 2131
London 29 Charles Street | W1J 5DT | 020 7127 4198



Fellows

Established 1876

IMPORTANT NOTICES FOR PURCHASERS

IMPORTANT NOTICE TO PROSPECTIVE BUYERS OF GEMSTONES/JEWELS

We recommend that you view any items you intend to purchase as refunds will not be given for buyer's remorse. This doesn't affect your statutory rights.

Notes 1 - Coloured Gemstones

Purchasers are advised that whilst great care has been taken in the examination of gemstones, it is not possible to test every gemstone within the constraints of time and equipment available outside of laboratory conditions. Any gemstone not provided with a laboratory report has been assessed by Fellows within the limitations of any mounting and an opinion has been given where possible.

Historically, many coloured gemstones have been subjected to a variety of treatments designed to enhance their appearance. Certain enhancement methods, such as heating, are routinely used to alter aspects of rubies, sapphires, and other gemstones. Oiling is often undertaken to enhance the clarity of emeralds. The international jewellery trade has generally accepted these and other enhancement methods. Some treatments are permanent whereas others may only be semi-permanent, possibly requiring further re-treatment in order to retain their appearance.

Because of the widespread variety of treatments within the jewellery industry, prospective purchasers should assume that all gemstones will have been treated unless statements are made to the contrary. Gemmological reports from internationally recognised Gemmological Laboratories will be noted in the item description where available.

Note 2 - Diamonds

Advancements in technology have led to some diamonds being treated in a number of ways, all designed to improve their appearance or alter their colour. Processes include but are not necessarily limited to: fracture filling, laser drilling, a combination of drilling and filling, HPHT treatment, irradiation and various coatings. Buyers are also alerted to the fact that synthetic diamonds are now produced in large quantities. Whilst every effort is made to identify or disclose treated and synthetic goods, it is not possible for Fellows to guarantee that all diamond set lots do not contain such material.

Fellows do not knowingly offer treated diamonds for sale, unless a gemmological opinion disclosing the type of treatment has been obtained and the treatment would be stated within the item description.

Note 3 - Weights and Measures

Estimated Diamond weights, colours and clarities (see Notes on Diamond Grading terms opposite) given by Fellows are intended as guides for prospective purchasers, with the given limitations of mounts and settings, and are opinions only, not guaranteed by Fellows.

Weights of coloured gemstones offered are extrapolated on the estimated dimensions, using trade standard formulae. Due to the traditional cutting techniques for coloured gemstones it is possible there may be discrepancy between the stated estimate and the unmounted weight.

Fellows uses a Thermo Scientific Nitron Handheld XRF Analyser to test metals. This technology is limited to examining metal to a depth of approximately 8 microns. Fellows does not guarantee the standard of gold or platinum unless an item is hallmarked. Results from electronically tested items should only be used as a guide and with caution, as false readings are possible.

Lengths and weights provided are estimates only.

The information stated in reports is the opinion of the respective laboratory and is not necessarily the opinion of Fellows auctioneers.

Note 4 - Condition Reports

Statements in the catalogue regarding the condition of lots in this sale may appear in the description, however, the absence of such a reference does not imply a lack of damage or wear, or lack of any further faults within the piece.

Please note that Fellows offer condition reports on almost every lot offered. Our condition reports are the opinion of Fellows and should only be referenced as a guide. We highly recommend that a prospective buyer views in person or sends a representative to satisfy themselves to the condition, originality and suitability of a piece(s) before bidding.

Our lots are almost exclusively antique or secondhand and as such should be expected to have small signs of wear and use commensurate with the age of the piece.

Some jewellery sales will also have a condition report banding scale which applies as follows:

A

No obvious faults other than wear in keeping with age and use.

B

Minor faults. There may be abrasion and/or small nicks to gemstones. General moderate wear from use possibly including but not necessarily limited to small dents and deep scratches. The piece may have been altered from its original design but to a reasonable standard.

C

Faults. Gemstones may be noticeably chipped along with abrasion and nicks. Non-principal gems may be deficient. The piece may have noticeable dents/tears or small losses that affect the overall appearance of the design. The piece may have had alterations from its original design that may be apparent under scrutiny.

D

Significant faults. Gemstones may be deficient, chipped or otherwise damaged. The piece may require attention before it is wearable, pins or clasps may be broken. There may be significant dents, tears, losses or alterations to the metal. The piece may have had alterations from its original design that are readily apparent.

E

At Fault. Gems will be damaged and/or deficient. Noticeable damage. The piece is unwearable.

Diamond Grading Terms

DIAMOND COLOUR

GIA	OLD WORLD TERMS	EXPLANATION	GIA	OLD WORLD TERMS	EXPLANATION
D	Finest White (Jager)	Colourless	K	Silver Cape (Top Cape)	Traces of colour. Small stones in this range will 'face up' colourless when mounted but larger stones will be tinted.
E	Finest White (River)	Colourless	L	Silver Cape (Top Cape)	Traces of colour. Small stones in this range will 'face up' colourless when mounted but larger stones will be tinted.
F	Fine White (River)	Colourless	M	Light Cape (Cape)	Traces of colour. Small stones in this range will 'face up' colourless when mounted but larger stones will be tinted.
G	Fine White (Top Wesselton)	Near Colourless: diamonds 'face up' colourless. Slight traces of colour will not be apparent in the mounted stones to other than the trained eye.	N	Light Cape (Low Cape)	Diamonds graded N through Z+ display a yellowish tint even to the untrained eye.
H	White (Top Wesselton)	Near Colourless: diamonds 'face up' colourless. Slight traces of colour will not be apparent in the mounted stones to other than the trained eye.	P	Cape O - R (Very Light Yellow)	Diamonds graded N through Z+ display a yellowish tint even to the untrained eye.
I	White (Top Wesselton)	Near Colourless: diamonds 'face up' colourless. Slight traces of colour will not be apparent in the mounted stones to other than the trained eye.	Z	Cape R - Z (Very Light Yellow)	Diamonds graded N through Z+ display a yellowish tint even to the untrained eye.
J	Top Silver (Top Wesselton)	Near Colourless: diamonds 'face up' colourless. Slight traces of colour will not be apparent in the mounted stones to other than the trained eye.	Z+	Fancy Yellow	Diamonds graded N through Z+ display a yellowish tint even to the untrained eye.

DIAMOND CLARITY

GIA	OLD WORLD TERMS	EXPLANATION	GIA	OLD WORLD TERMS	EXPLANATION
IF	Internally Flawless	No inclusions visible with a 10x lens even to an experienced grader.	S11 & S12	Slightly Included	Noticeable inclusions visible with a 10x lens.
VVS1 & VVS2	Very Very Slightly Included	Minute inclusions, which are difficult, even for experienced graders, to see with a 10x lens.	I1, I2 & I3	Pique 1, 2 & 3	Obvious inclusions, may be visible to the unaided eye, face up. In I3 they may affect the stone's durability.
VS1 & VS2	Very Slightly Included	Minor inclusions, observable with effort with a 10x lens.			

Our lots are almost exclusively antique or secondhand and as such should be expected to have small signs of wear and use commensurate with the age of the piece.

Some jewellery sales will also have a condition report banding scale which applies as follows:

A

No obvious faults other than wear in keeping with age and use.

B

Minor faults. There may be abrasion and/or small nicks to gemstones. General moderate wear from use possibly including but not necessarily limited to small dents and deep scratches. The piece may have been altered from its original design but to a reasonable standard.

C

Faults. Gemstones may be noticeably chipped along with abrasion and nicks. Non-principal gems may be deficient. The piece may have noticeable dents/tears or small losses that affect the overall appearance of the design. The piece may have had alterations from its original design that may be apparent under scrutiny.

D

Significant faults. Gemstones may be deficient, chipped or otherwise damaged. The piece may require attention before it is wearable, pins or clasps may be broken. There may be significant dents, tears, losses or alterations to the metal. The piece may have had alterations from its original design that are readily apparent.

E

At Fault. Gems will be damaged and/or deficient. Noticeable damage. The piece is unwearable.

Fellows

Established 1876

Sale Results For Jewellery : 30/11/2023

1	£460	59	£1,200	124	£1,900	192	£1,900	249	£800
2	£170	60	£660	127	£4,616	193	£3,100	251	£1,500
3	£340	61	£1,000	128	£2,400	194	£1,400	253	£480
4	£160	62	£1,800	129	£3,100	195	£1,200	255	£440
5	£320	64	£700	130	£7,800	196	£720	256	£660
6	£600	65	£1,000	133	£2,300	197	£3,100	258	£720
7	£1,500	66	£900	136	£1,200	199	£180	259	£160
8	£400	67	£1,800	137	£780	201	£820	260	£1,200
9	£580	72	£460	138	£1,000	202	£980	261	£1,500
10	£420	73	£280	145	£560	203	£820	263	£520
11	£320	74	£1,800	146	£260	204	£1,400	265	£700
12	£360	75	£600	147	£480	206	£380	268	£1,400
13	£500	76	£700	148	£320	208	£260	272	£760
14	£520	77	£1,400	149	£380	209	£240	275	£1,900
16	£240	78	£1,100	150	£320	210	£120	276	£2,000
17	£620	79	£1,100	151	£190	211	£1,300	277	£2,000
18	£500	81	£440	153	£1,300	212	£1,100	280	£620
19	£580	83	£640	155	£400	213	£420	286	£2,900
21	£780	87	£1,500	156	£1,300	215	£940	287	£640
22	£560	90	£320	157	£1,700	216	£1,800	288	£840
25	£1,000	91	£960	158	£620	217	£3,000	289	£860
26	£300	92	£1,100	159	£720	218	£360	294	£4,300
27	£1,000	93	£1,800	160	£1,000	219	£540	295	£4,800
29	£1,300	94	£1,600	163	£5,200	220	£1,800	302	£800
30	£1,600	95	£2,900	164	£460	221	£1,200	306	£1,700
32	£2,200	96	£3,600	165	£680	222	£1,100	307	£3,500
33	£4,300	99	£200	166	£520	223	£7,000	308	£2,700
34	£360	100	£440	167	£820	224	£1,700	310	£280
35	£740	101	£1,600	169	£900	225	£4,000	311	£820
36	£760	102	£1,800	172	£4,800	226	£2,100	313	£400
39	£1,000	103	£680	173	£340	227	£940	315	£1,700
42	£520	104	£880	177	£960	229	£1,400	316	£3,200
43	£580	107	£480	178	£1,100	231	£1,300	318	£220
44	£1,600	108	£3,000	179	£2,800	232	£1,300	319	£880
45	£900	109	£2,300	180	£800	233	£1,000	324	£920
47	£1,400	110	£660	181	£1,200	234	£1,800	325	£1,900
49	£1,400	111	£700	182	£4,000	235	£380	328	£320
50	£360	112	£1,200	183	£6,200	236	£580	330	£1,100
51	£560	113	£820	184	£1,400	239	£920	332	£2,000
53	£540	114	£740	185	£1,800	241	£2,300	336	£2,900
54	£1,700	116	£1,300	187	£320	244	£420	337	£2,400
55	£2,000	117	£2,300	188	£680	245	£800	338	£1,500
56	£1,100	120	£1,200	189	£900	246	£980	339	£2,300
57	£560	121	£220	191	£440	247	£1,100	342	£820

Fellows

Established 1876

Sale Results For Jewellery : 30/11/2023

343	£660	412	£540	462	£1,400	543	£960	631	£280
344	£440	413	£220	463	£420	544	£520	632	£1,800
346	£2,800	414	£460	464	£160	547	£2,000	633	£300
351	£1,600	415	£260	466	£540	548	£1,500	634	£680
352	£780	416	£840	468	£900	549	£4,000	636	£300
355	£2,200	417	£2,400	471	£680	550	£16,000	637	£400
357	£3,100	418	£190	472	£380	551	£1,400	638	£2,100
364	£700	419	£190	473	£220	554	£700	641	£800
368	£1,500	420	£680	474	£480	555	£5,800	643	£680
369	£400	421	£520	476	£1,000	556	£660	645	£820
370	£1,700	422	£1,200	477	£960	558	£460	647	£840
371	£760	423	£500	480	£140	561	£400	648	£700
372	£1,900	424	£360	481	£800	562	£940	649	£360
373	£800	425	£760	483	£620	567	£360	650	£1,600
374	£860	426	£1,100	485	£1,800	568	£700	651	£520
377	£480	428	£180	486	£2,000	571	£3,800	652	£400
378	£1,200	430	£620	488	£8,000	572	£4,400	653	£1,400
379	£680	431	£660	489	£150	577	£560	654	£720
380	£1,300	433	£720	490	£160	578	£720	655	£520
381	£3,400	434	£500	491	£200	579	£680	656	£240
383	£2,100	435	£280	492	£1,500	581	£900	657	£400
385	£900	436	£1,500	494	£560	582	£1,300	658	£1,200
388	£2,000	439	£1,300	498	£420	583	£4,200	659	£640
389	£4,600	440	£420	500	£200	585	£520	660	£420
391	£260	441	£720	503	£1,300	587	£880	662	£460
392	£300	442	£460	504	£3,800	589	£960	663	£200
393	£500	443	£300	507	£420	591	£1,700	664	£340
394	£580	444	£460	508	£380	594	£1,200	665	£1,200
395	£580	445	£1,700	510	£3,700	598	£1,200	667	£660
396	£260	446	£600	511	£3,100	603	£150	668	£440
397	£300	447	£380	512	£1,400	604	£620	669	£380
398	£1,100	448	£720	515	£4,100	605	£400	671	£360
399	£360	449	£140	516	£480	608	£1,000	672	£260
401	£190	450	£160	517	£1,600	611	£6,300	673	£620
402	£540	451	£300	522	£1,600	612	£200	674	£1,600
403	£960	452	£1,200	523	£4,400	613	£860	675	£400
404	£220	453	£200	524	£2,400	614	£760	676	£4,200
405	£130	454	£640	525	£400	622	£560	677	£5,500
406	£840	455	£1,400	526	£480	623	£600		
407	£460	457	£860	530	£2,300	624	£1,400		
408	£200	458	£600	534	£1,000	625	£900		
409	£360	459	£1,900	535	£1,800	627	£2,500		
410	£240	460	£1,000	539	£960	629	£380		
411	£280	461	£190	542	£620	630	£400		

Fellows

Established 1876

Live Auctions

January

Jewellery | Day One

Ends Tuesday 30th from 10am

Jewellery | Day Two

Ends Wednesday 31st from 10am

February

Pawnbrokers Jewellery & Watches

Wednesday 7th at 11am

Watches

Ends Thursday 8th from 10am

Jewellery | Day One

Ends Tuesday 13th from 10am

Jewellery | Day Two

Ends Wednesday 14th from 10am

Designer Handbags & Accessories

Ends Tuesday 20th from 10am

Jewellery & Costume Jewellery | Day One

Ends Wednesday 21st from 10am

Pawnbrokers Jewellery & Watches

Wednesday 21st at 11am

Jewellery & Costume Jewellery | Day Two

Ends Thursday 22nd from 10am

Jewellery | Day One

Ends Tuesday 27th from 10am

Jewellery | Day Two

Ends Wednesday 28th from 10am

Monies, Medals & Militaria

Ends Thursday 29th from 10am

** Please note that these auctions are timed sales hosted by Fellows Live, more information can be found on our website.

Dates are subject to change, please check the website for the definitive auction list.

Fellows recommend that all bidders and buyers read our conditions of buying and buyer's premium available on our website.

For further information please contact:

Jewellery

Lindsay Campbell
lindsay@fellows.co.uk
0121 212 2131

Watches

Kain Holroyd
kain@fellows.co.uk
0121 212 2131

Silver

Alison Jakeway
alisonj@fellows.co.uk
0121 212 2131

Antiques & Fine Art

Alison Snowdon
Alison.snowdon@fellows.co.uk
0121 212 2131

Coins and Medals

Sally Oliver
Sally.Oliver@Fellows.co.uk
0121 212 2131

Fellows Auctioneers Ltd

Terms and Conditions

Fellows Auctioneers Ltd carries on business, including the conduct of Auctions, on the following general conditions. This includes business with Bidders, Buyers, Vendors, consignors, users of this website, and with all those present on the Premises prior to or in connection with an Auction (all as hereinafter defined).

1. INTRODUCTION

1.1 The following defined terms are used in these Conditions :

"Auction" means any Auction conducted by Fellows, either at their premises or elsewhere (including any internet-based auctions);

"Auctioneer" means Fellows or its authorised Auctioneer, as appropriate;

"Bidder" means a bidder at an Auction, including bidders personally present at the venue and those bidding by telephone or over the internet or otherwise;

"Buyer" means the bidder whose bid was the last bid when the Auctioneer brings down the hammer;

"Conditions" means these terms and conditions;

"Consigned Property" means the items consigned by the Vendor to Fellows for offer at an Auction;

"Deliberate Forgery" means an imitation made with the intention of deceiving as to authorship, origin, date, age, period, culture or source but which is unequivocally described by Fellows in the catalogue as being the work of a particular creator and which at the date of the sale had a value materially less than it would have had if it had been in accordance with the description;

"Fellows" means Fellows Auctioneers Ltd;

"Hammer Price" means the level of bidding reached (at or above any reserve) when the Auctioneer brings down the hammer;

"Includes" means "includes but not limited to", and "including" means "including but not limited to"

"Lot" means any Consigned Property accepted by Fellows for offer at Auction;

"Stated Rate" means Fellows' published rates of commission for the time being and value added tax thereon (also available on request);

"Terms of Consignment" means any stipulated terms and rates of commission on which Fellows accepts instructions from Vendors [or their agents];

"Total Amount Due" means the Hammer Price in respect of the Lot sold together with any premium, commission, value added tax chargeable and any additional charges payable by a defaulting Buyer under these Conditions;

"Vendor" means the vendor of an item (including Consigned Property) which is submitted to Fellows for offer for sale at an Auction;

"Website" means this website;

"You" means any user of the Website.

2. WEBSITE

2.1 You may access most areas of the Website without registering your details with us. Certain areas of the Website are only open to you if you register. By accessing any part of the Website, you shall be deemed to have accepted these Conditions notice in full. If you do not accept this legal notice in full, you must leave the Website immediately.

2.2 Fellows may revise these Conditions at any time by updating this posting. You should check the Website from time to time to review the then current legal notice, because it is binding on you. Certain provisions of this legal notice may be superseded by expressly designated legal notices or terms located on particular pages at the Website.

2.3 Unless otherwise stated, the copyright and other intellectual property rights in all material on the Website (including without limitation photographs and graphical this legal notice, your permission to use the Website automatically terminates and you must immediately destroy any downloaded or printed extracts from the Website.

2.4 No part of the Website may be reproduced or stored in any other website or included in any public or private electronic retrieval system or service without Fellows' prior written permission.

2.5 Any rights not expressly granted in these Conditions are reserved.

3. VISITOR MATERIAL AND CONDUCT

3.1 Other than personally identifiable information, which is covered under our Privacy Policy, any material you transmit or post to the Website shall be considered nonconfidential and non-proprietary. Fellows shall have no obligations with respect to such material. Fellows and its designees shall be free to copy, disclose, distribute, incorporate and otherwise use such material and all data, images, sounds, text and other things embodied therein for any and all commercial or non-commercial purposes.

3.2 You are prohibited from posting or transmitting to or from the Website any material: that is threatening, defamatory, obscene, indecent, seditious, offensive, pornographic, abusive, liable to incite racial hatred, discriminatory, menacing, scandalous, inflammatory, blasphemous, in breach of confidence, in breach of privacy or which may cause annoyance or inconvenience; or for which you have not obtained all necessary licences and/or approvals; or which constitutes or encourages conduct that would be considered a criminal offence, give rise to civil liability, or otherwise be contrary to the law of or infringe the rights of any third party, in any country in the world; or which is technically harmful (including, without limitation, computer viruses, logic bombs, Trojan horses, worms, harmful components, corrupted data or other malicious software or harmful data).

3.3 You may not misuse the Website (including, without limitation, by hacking).

3.4 Each registration is for a single user only. Fellows does not permit you to share your user name and password with any other person nor with multiple users on a network.

3.5 Responsibility for the security of any passwords issued rests with you.

4. THE VENDOR

4.1 Fellows shall act as agent of the Vendor only. Any contract for the sale of a Lot will be formed between the Vendor and the Buyer.

4.2 The Vendor warrants and represents to Fellows and the Buyer that the Vendor is the sole and true owner of the Consigned Property or is properly authorised by the sole and true owner to consign it for sale and is able to transfer good and marketable title to the property free from any third party claims. The Vendor warrants and representatives that the Vendor has revealed all pertinent information that the Vendor possesses about the items, including in relation to any repairs or alterations that may have been carried out. The Vendor shall indemnify Fellows and the Buyer against any loss and expense caused by any breach of this clause 4.2.

4.3 The Vendor shall be entitled to place prior to the Auction a reserve on any Lot, being the minimum Hammer Price at which Lot may be sold. Reserves must be reasonable and Fellows may decline to offer goods which in Fellows' opinion would be subject to an unreasonably high reserve (in which case goods carry the storage and insurance charges stipulated in the terms of consignment). Reserves will not be accepted on items with a bottom estimate less than £300. The Auctioneer also reserves the right not to accept items which they deem to be unsuitable for Auction. Any estimate given shall be an opinion and is not an undertaking of any kind.

4.4 A reserve once set cannot be changed except with the written prior consent of Fellows.

4.5 Where a reserve has been placed only Fellows may bid on behalf of the Vendor.

4.6 The Vendor authorises Fellows to deduct commission from any sold items at a rate of 15% (plus VAT) on any item. Loss or liability for damage will be charged at a rate of 1.5% (plus VAT) calculated on the hammer price. A Marketing fee of £10 (plus VAT) will be charged for each Lot, if unsold we will charge a nominal handling fee of £5 (plus VAT). All items below £35 are subject to a minimum fee of £5 (plus VAT) per Lot.

4.7 Fellows will pay the Hammer Price achieved for the Lot (less its commission and applicable fees in accordance with clauses 4.6, 9.2 and 9.3), to the Vendor on receipt of payment of the Total Amount Due in full by the Buyer.

4.8 The Vendor authorises Fellows in their discretion to negotiate a sale by private treaty in the case of a Lot unsold at Auction, in which case the same charges will be payable as if the Lot had been sold at Auction.

4.9 Fellows do not themselves undertake the collection of any items but may, as the Vendor's agent, instruct a contractor on behalf of the Vendor. Fellows accepts no liability for the actions of such contractor who contracts with the Vendor direct.

4.10 Fellows disclaims all liability for items delivered to their saleroom without sufficient sale instructions, and reserves the right to make a minimum warehousing charge of [£1.00] per item per day. Unsold items are subject to the same charges if the Vendor does not remove them within a reasonable time of notification. If not removed within three weeks Fellows reserves the right to sell the items and defray charges from any net proceeds of sale or at the Vendor's expense to consign them to the local authority for disposal. Fellows disclaims any liability for default by the Buyer or for paying out the Vendor before receiving payment by the Buyer.

4.11 Subject to clause 4.9, Fellows holds all items on their premises and in their custody covered against the risks of fire, burglary and water damage on the scale of charges notified in the terms of consignment and payable by the Vendor up to the date of any sale and (in Fellows' discretion) the Buyer thereafter until collection.

4.12 The right of Fellows to bid on behalf of the Vendor is expressly reserved. The Vendor acknowledges that Lots are sold subject to the stipulations of these Conditions in their entirety and on the Terms of Consignment as notified to consignors at the time of the entry of the Lot.

4.13 The Auctioneer reserves the right to dispose of any item that in their opinion is unsaleable. Items, including electrical goods and soft furnishings, which do not comply with current legislation will not be offered at Auction.

4.14 Any items unsold after an Auction will be reoffered in a subsequent Auction at a reduced reserve to be agreed within seven days. The Auctioneer may request the removal of an item if a reduced price cannot be agreed; items not removed within 14 days will be subject to a storage charge.

4.15 A charge of 10% (plus VAT) based on the middle estimate – plus any other charges incurred – may be levied for any Lot withdrawn by the Vendor from offer at an Auction. If the item has to be returned by post (or any other method) the Vendor will be responsible for this charge. These charges are to be paid before the item is returned.

4.16 By submitting the item to Fellows for offer at Auction, the Vendor agrees to the Terms of Consignment and authorises Fellows to deduct the specified charges.

5. PUBLICITY

5.1 Any catalogue and buyer guides are provided for information only and do not form part of these Conditions. The catalogue and the buyer guides may contain additional terms and conditions.

5.2 Fellows reserve the right to use any photographs, background information, and research for publicity purposes both before and after the sale.

6. THE AUCTION

6.1 Any Auction shall be conducted at the absolute discretion of the Auctioneer.

6.2 The Auctioneer shall conduct the Auction with reasonable skill and care. For example, what constitutes a bid shall be at the absolute discretion of the Auctioneer, acting with reasonable skill and care.

6.3 The Auctioneer shall have the right to refuse any bid which does not exceed the previous bid by at least 10% or by such greater proportion as the Auctioneer shall in his or her absolute discretion direct.

6.4 Where two or more bids at the same level are simultaneously received by the Auctioneer, the Auctioneer at his absolute discretion shall determine which bid to prefer. Subject to the foregoing, where two or more bids at the same level are simultaneously received by the Auctioneer, any bid by a Bidder personally present at an Auction shall take preference over any bid submitted by telephone or over the internet. Any bid made or attempted by telephone or over the internet shall be deemed to have been made only if received by the Auctioneer.

6.5 Fellows shall have the right, at its absolute discretion, to refuse admission to

its premises or attendance at (or participation in) any Auction by any person.

7. BIDDERS

- 7.1 Bidders may be required to register their particulars. Bidders attending in person may be required to satisfy Fellows' security arrangements before entering any part of the premises to view or bid.
- 7.2 You accept full liability for all bids submitted via your My Fellows account. Once a bid has been made by a Bidder on our website, the bid can be lowered or increased up until 9am on the day of the auction. You must sign into your My Fellows account to do this and you will receive an email confirmation for any changes made. Should a bid be placed in error on the website you must contact Fellows immediately. Failure to contact Fellows before the auction takes place will result in liability for the full payment of the item.
- 7.3 Bidders using the live bidding facility on www.fellows.co.uk are agreeing to the terms and conditions of sale for Fellows. Any successful bids using the live bidding facility will be subject to the usual Buyer's Premium, plus VAT.
- 7.4 Subject to clause 6.3, the highest Bidder at the Hammer Price shall be the Buyer. Any dispute about a bid shall be settled at the Auctioneer's absolute discretion..
- 7.5 Bidders are strongly encouraged to attend the Auction in person. Bidders shall be responsible for any decision to bid for a particular Lot and shall be deemed to have carefully inspected and satisfied themselves as to its condition. Neither Fellows nor its employees or agents shall be responsible for any neglect or default in doing or failing to do so.
- 7.6 Bidders are given ample opportunities to view and inspect before any sale and prospective Buyers must satisfy themselves as to all such matters. Neither Fellows or its employees or agents nor the Vendor accept liability for the correctness of such opinions and all conditions and warranties, express, implied or statutory are hereby excluded.

8. THE BUYER

- 8.1 Immediately a Lot is sold, the Buyer shall:
 - (a) give to Fellows their name and address and, if requested proof of identity, and
 - (b) pay to Fellows the Total Amount Due.
- 8.2 [Fellows may, at its absolute discretion, agree credit terms with the Buyer before an Auction under which the Buyer may be entitled to take possession of Lots up to an agreed value in advance of payment by a stipulated future date of the Total Amount Due.]
- 8.3 Cheques shall not be acceptable by Fellows (unless Fellows in its absolute discretion permits payment by such method) nor are third party references or credit facilities with other Auction houses. If a cheque is tendered Fellows reserves the right to instruct its bank to check the Buyer's status and account balance before exercising any discretion. Any credit arrangement must be settled at least 4 days before the relevant sale. Any permitted payment by credit card shall carry an extra charge to the Buyer of such percentage of the Total Amount Due as is displayed on the premises.
- 8.4 Any payments by a Buyer to Fellows may be applied by Fellows towards any sums owing from that Buyer to Fellows on any account whatever without regard to any directions of the Buyer or his agent, whether express or implied.

9. THE PURCHASE PRICE

- 9.1 On the first £100,000 of the Hammer Price (of any individual Lot) the buyer will pay the Hammer Price and a premium of 25% (Plus VAT). The said premium not being negotiable and payable by ALL Buyers. The Vendor authorises Fellows to retain beneficially the premium payable by Buyers. Value Added Tax is charged at the rate prevailing by law at the date of sale.
- 9.2 On the excess over £100,000 of the Hammer Price (of any individual Lot), the Buyer will pay the Hammer Price and a premium of 15% (plus VAT). The said premium not being negotiable and payable by ALL Buyers. The Vendor authorises Fellows to retain beneficially the premium payable by Buyers. Value Added Tax is charged at the rate prevailing by law at the date of sale.
- 9.3 Value Added Tax on the Hammer Price is imposed on all items affixed with an asterisk thus - *.
- 9.4 Buyers using the Fellows Live bidding platform will not pay any additional commission, just the buyer's premium. Buyers will pay an additional commission charge of 4.95% + VAT of the hammer price if lots are successfully purchased online via the-saleroom. Buyers using Easy Live Auction can choose whether to pay a live bidding charge of 3% + VAT of the hammer price, or a fixed fee of £3 per sale. Buyers will pay a commission charge of an additional 5% + VAT of the hammer price if lots are successfully purchased online via Live Auctioneers.
- 9.5 Non UK or EU VAT registered buyers can have most classes of VAT refunded on their purchases - please note that auctioneers are under no obligation to provide VAT refunds, although many will offer this service. HMRC are the ultimate refunding authority. VAT refunds are subject to provision of statutory export/import documentation. HMRC have decreed that VAT on buyer's premium is always payable whether the buyer is domiciled in the UK, the EU or outside the EU or wherever the goods are to be sent. So auctioneers cannot refund VAT on buyer's premium if the goods are sold under normal VAT rules.

10. TITLE AND COLLECTION OF PURCHASES

- 10.1 The ownership of any Lot purchased shall not pass to the relevant Buyer until they have made payment in full to Fellows of the Total Amount Due.
- 10.2 Buyers shall at their own risk and expense take away any Lot that they have purchased and paid for not later than 2 working days following the day of the Auction after which they shall be responsible for any removal, storage and insurance charges.

11. DEFAULT BY BUYER OR VENDOR

- 11.1 As Fellows act as agent for the Vendor, Fellows is not responsible for default by the Vendor or the Buyer.
- 11.2 If any Lot is not paid for in full and taken away in accordance with these Conditions, or

if there is any other breach of these Conditions, Fellows as agent for the Vendor shall at its absolute discretion and without prejudice to any other rights it may have, be entitled to exercise all or any of the following rights and remedies:

- (a) to proceed against the Buyer for an action for debt or damages for breach of contract;
- (b) to rescind the sale of that Lot and/or any other Lots sold by Fellows to the defaulting Buyer;
- (c) to re-sell the Lot by Auction or private treaty. If a lower Hammer Price is achieved on the re-sale than that achieved on the original sale the defaulting Buyer shall be liable for the difference (after crediting any part payment and adding any re-sale costs). Fellows will account to the Vendor for any surplus achieved on a re-sale, however, it shall only be required to account to the Vendor for any resulting deficiency in the event that it receives payment of such sum in full from the defaulting Buyer.
- (d) to remove, store and insure the Lot at the expense of the defaulting Buyer and, in the case of storage, either at Fellows' premises or elsewhere;
- (e) to charge interest at a rate not exceeding 1.5% per month on the total amount due to the extent it remains unpaid for more than 2 working days after the sale;
- (f) to retain that or any other Lot sold to the defaulting Buyer until that Buyer pays the total amount due;
- (g) to reject or ignore bids from the defaulting Buyer at future Auctions or to impose conditions before any such bids shall be accepted;
- (h) to apply any proceeds of sale of other Lots due or in future becoming due to the defaulting Buyer towards the settlement of the total amount due and to exercise a lien on any of the Buyer's property in Fellows' possession for any purpose.

12. DELIBERATE FORGERIES

- 12.1 Subject to clause 12.2, any representation or statement by Fellows (including in any catalogue) as to authorship, genuineness, origin, date, age, provenance, condition or estimated selling price is a statement of opinion only. Prospective Buyers are given ample opportunities to view and inspect before any sale and prospective Buyers must satisfy themselves as to all such matters. Neither Fellows or its employees or agents nor the Vendor accept liability for the correctness of such opinions and all conditions and warranties, express, implied or statutory are hereby excluded.
- 12.2 Any Lot which proves to be a Deliberate Forgery may be returned to Fellows by the Buyer within 21 days of the Auction provided it is in the same condition as when bought, and is accompanied by particulars identifying it from the relevant catalogue description and a written statement of defects. If Fellows is satisfied from the evidence presented that the Lot is a Deliberate Forgery Fellows shall refund the money paid by the Buyer for the Lot (but not the amount of any consequential loss, damages, expenses or interest) provided that (1) if the catalogue description reflected the accepted view of scholars and experts as at the date of sale or (2) the Buyer personally is not able to transfer a good and marketable title to Fellows.

13. LIMITATIONS OF LIABILITY

- 13.1 All members of the public on the premises are there at their own risk and must note the lay-out of the accommodation and security arrangements.
- 13.2 Any indemnity under these Conditions shall extend to all actions, costs, expenses, claims and demands whatsoever suffered or incurred by the person entitled to the benefit of it and Fellows declares itself to be a trustee of the benefit of every such indemnity so far as it is expressed to be for the benefit of its employees and agents.
- 13.3 While Fellows endeavours to ensure that the information on the Website is correct, Fellows does not warrant the accuracy and completeness of the material on the Website. Fellows may make changes to the material on the Website, or to the products and prices described in it, at any time without notice. The material on the Website may be out of date, and Fellows makes no commitment to update such material.
- 13.4 The material on the Website is provided "as is", without any conditions, warranties or other terms of any kind. Accordingly, to the maximum extent permitted by law, Fellows provides you with the Website on the basis that Fellows excludes all representations, warranties, conditions and other terms which, but for this legal notice, might have effect in relation to the Website.

14. GENERAL

- 14.1 Any notice to any Buyer, Vendor, Bidder or viewer may be given by first class mail or email in which case it shall be deemed to have been received by the addressee 48 hours after posting or sending. All notices to Fellows must be sent in writing and email is not acceptable.
- 14.2 Any indulgence extended to any person by Fellows notwithstanding the strict terms of these Conditions or the Terms of Consignment shall affect the position at the relevant time only and in respect of that particular concession only; in all other respects these Conditions shall be construed as having full force and effect.
- 14.3 These Conditions and any disputes or claims arising out of or in connection with it or their subject matter or formation (including non-contractual disputes or claims) are governed by and construed in accordance with the law of England.
- 14.4 The parties irrevocably agree that the courts of England have exclusive jurisdiction to settle any dispute or claim that arises out of or in connection with the Agreement or its subject matter or formation (including non-contractual disputes or claims).

15. SHIPPING

- 15.1 We offer a tracked and insured shipping service for all items with the exception of those in our Antiques, Silver & Collectables sales.
- 15.2 Items posted outside of the UK will incur a £30 charge
- 15.3 Within the UK, hammer totals under £100 will incur a £10 charge
- 15.4 Hammer totals over £100 will incur a £20 charge
- 15.5 Larger items, as well as those exceeding a value of £20,000 or weighing in excess of 2kg may be subject to additional fees
- 15.6 If you have recently moved or wish to have your items sent to a different address, please contact us prior to the sale. We cannot accept alternative addresses for first-time buyers and your items will be sent the address on the ID/payment card. If you pay by bank transfer we can ship to any worldwide address of your choice.

Fellows

Established 1876

Contact Information

Directors

Stephen Whittaker BA (Hons)

Jayne Whittaker

Departments

Customer Services

0121 212 5508

info@fellows.co.uk

Ashley Boliver AIWFM

Claire Dodwell

Zahara Hussain

Hira-Eden Ilyas BA (Hons)

Gemma Sheldon

Photography

0121 212 2131

photography@fellows.co.uk

Claire Cleaver

Laura Dempster

Karisma Ghirrdra

Polly Shave MA (Hons)

Stephen Watton BA (Hons)

Marketing

0121 212 5500

marketing@fellows.co.uk

Luke Poole BA (Hons)

Cordelia Porter BA (Hons), MRRes

Krishna Vara BA (Hons)

Alexandra Whittaker BA (Hons)

Nicola Whittaker Bsc (Hons), Cert. GA

London Office

0207 127 4198

london@fellows.co.uk

Barbara Akwa

Phoebe Bradley-White MA (Hons)

Paul Greer DGA, RJDip, PJGemDip, FJVA

Sally Oliver MA (Hons), RCS

Finance

0121 212 2131

wendy@fellows.co.uk

Wendy Butler

Angela Fallon BA (Hons), ACMA, CGMA

Marija Rudjko

Aidan Smith CIMA Adv Dip MA

Gemma Wilkes

Specialist Departments

Jewellery

0121 212 6303

jewellery@fellows.co.uk

Lindsay Campbell FGA, DGA

Eve Darby MA (Hons)

Jenny Darcy BA (Hons)

Sarah Dunn-Bukhari

Helen Foster BA (Hons)

Paul Greer DGA, RJDip, PJGemDip, FJVA

Rahima Nuralah

Jennifer Pardoe BA(Hons), FGA, DGA

Arianna Pedrazzoli BA (Hons), MLitt, FGA

Ben Randall BA (Hons), G.G., A.J.P.

Jonathan Riches BSc (Hons)

Sarah Thorneloe BSc (Hons), DGA

Amanda Zhang FGA, Msc

Watches

0121 212 5506

watches@fellows.co.uk

Nathan Boot MA (Hons)

Kes Crockett BA (Hons)

Richard Griza

Kain Holroyd

Steven Yambo BA (Hons)

Pawnbrokers

0121 212 6308

pawnbroker@fellows.co.uk

Kallam Ali

Denise Bennet

Connor Butler

Ateeqa Ibrahim

Joni Lane

Anson Law

Luke McGurk MA (Hons)

Antiques, Silver & Collectables

0121 212 6302

antiques@fellows.co.uk

Alison Jakeway MA

Sally Oliver MA (Hons), RCS

Alison Snowdon

Orla Taylor-Davies BA (Hons)

Handbags & Accessories

0121 212 6306

handbags@fellows.co.uk

Patricia Preuschoff

Nicola Whittaker Bsc (Hons), Cert. GA



Birmingham Saleroom

Situated in the heart of Birmingham's Jewellery Quarter, this office can offer viewings for all of our auctions as well as free valuations.

Visit our website or please call to arrange an appointment.

Head Office & Saleroom
Augusta House
19 Augusta Street
Birmingham
B18 6JA

Telephone: 0121 212 2131
Email: info@fellows.co.uk



London Office

Fellows' London office sits in the prestigious Mayfair area and offers valuations as well as viewings for our flagship auctions.

Visit our website or please call to arrange an appointment.

London Office
29 Charles Street
Mayfair
London
W1J 5DT

Telephone: 020 7127 4198
Email: london@fellows.co.uk



Fellows

Established 1876

Head Office & Saleroom: Augusta House | 19 Augusta Street | Birmingham B18 6JA
London Office: 29 Charles Street | Mayfair | London W1J 5DT
Tel 0121 212 2131 | Tel 020 7127 4198 | www.fellows.co.uk